

CONTENTS**INHOUD**

<i>No.</i>	<i>Page No.</i>	<i>Gazette No.</i>	<i>No.</i>	<i>Bladsy No.</i>	<i>Koerant No.</i>
GOVERNMENT NOTICE			GOEWERMENTSKENNISGEWING		
Transport, Department of			Vervoer, Departement van		
<i>Government Notice</i>			<i>Goewermentskennisgewing</i>		
1084			1084		
South African National Roads Agency Limited and National Roads Act (7/1998): The South African National Roads Agency Limited: Declaration amendment of National Road N11 Section 7: Amendment of Declaration No. 1322 of 1989	3	30480	Suid-Afrikaanse Nasionale Padagentskap Beperk en Nasionale Paaie Wet (7/1998): Die Suid-Afrikaanse Nasionale Padagentskap Beperk: Verklaring wysiging van Nasionale Pad N11 Seksie 7: Wysiging van Verklaring No. 1322 van 1989	4	30480

**GOVERNMENT NOTICE
GOEWERMENTSKENNISGEWING**

**DEPARTMENT OF TRANSPORT
DEPARTEMENT VAN VERVOER**

No. 1084

16 November 2007

**THE SOUTH AFRICAN NATIONAL ROADS
AGENCY LIMITED**

Registration No: 98/09584/06

DECLARATION AMENDMENT OF NATIONAL ROAD N11 SECTION 7

AMENDMENT OF DECLARATION NO. 1322 OF 1989

By virtue of Section 40(1)(b) of The South African National Roads Agency Limited and National Roads Act, 1998 (Act No 7 of 1998) I hereby amend declaration No. 1322 of 1989 Schedule paragraph 14, by substituting the section of the descriptive declaration from the Vaal river (between Amersfoort and Ermelo) to Ermelo, with the subjoined sheets 1 to 7 of Plan No. P624/07.

(National Road N11 Section 7: Vaal river – Ermelo)


MINISTER OF TRANSPORT

No. 1084

16 November 2007

**DIE SUID-AFRIKAANSE NASIONALE
PADAGENTSKAP BEPERK**

Registrasie No: 98/09584/06

VERKLARING WYSIGING VAN NASIONALE PAD N11 SEKSIE 7

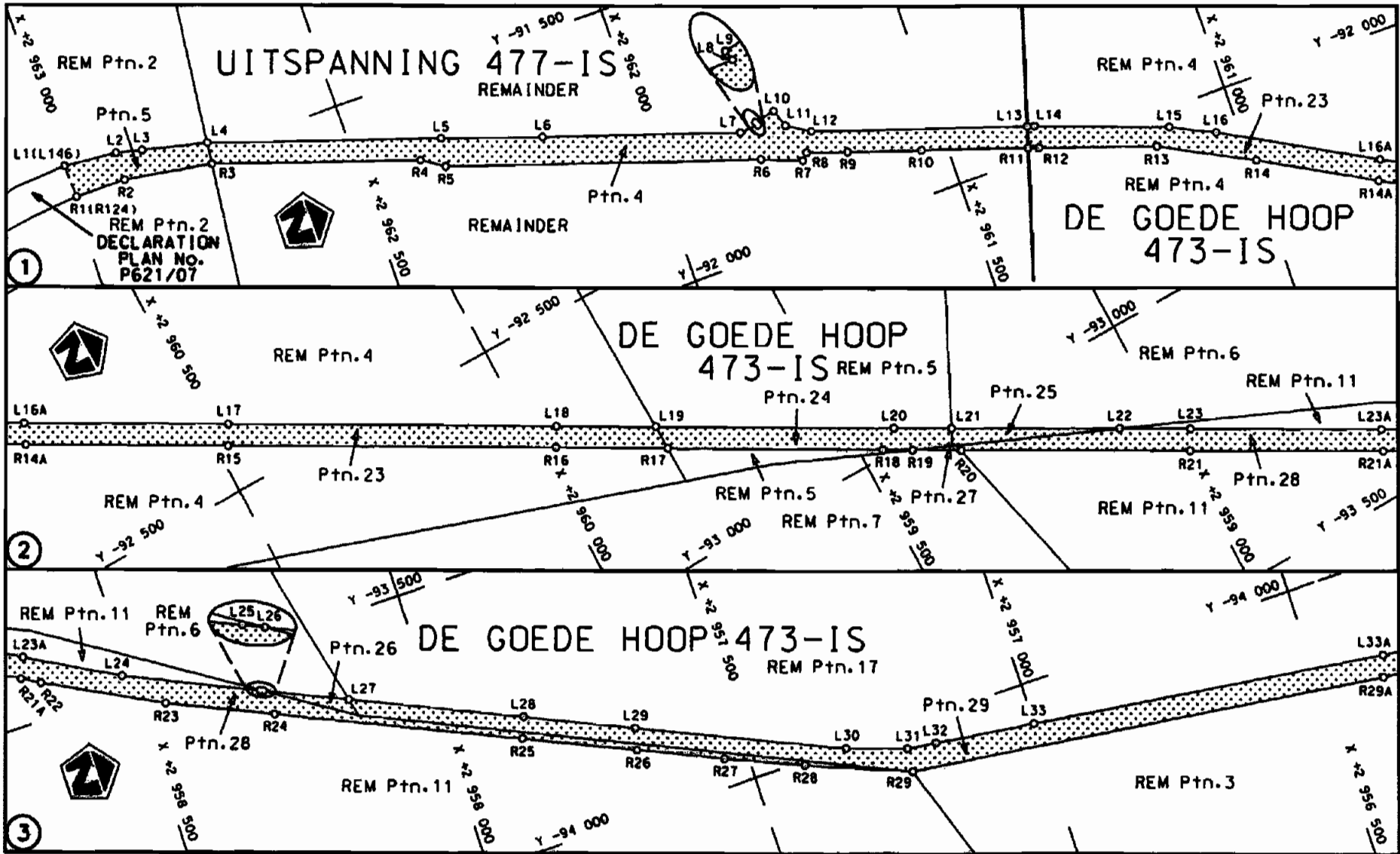
WYSIGING VAN VERKLARING NO. 1322 van 1989

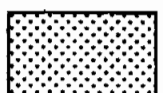
Kragtens artikel 40 (1)(b) van die Suid Afrikaanse Nasionale Padagentskap Beperk en Nasionale Paaie Wet (Wet No. 7 van 1998), wysig ek hiermee verklaring no.1322 van 1989 Bylae paragraaf 14, deur die gedeelte van die beskrywende verklaring vanaf die Vaalrivier (tussen Amersfoort en Ermelo) tot Ermelo, te vervang deur meegaande velle 1 tot 7 van Plan No. P624/07.

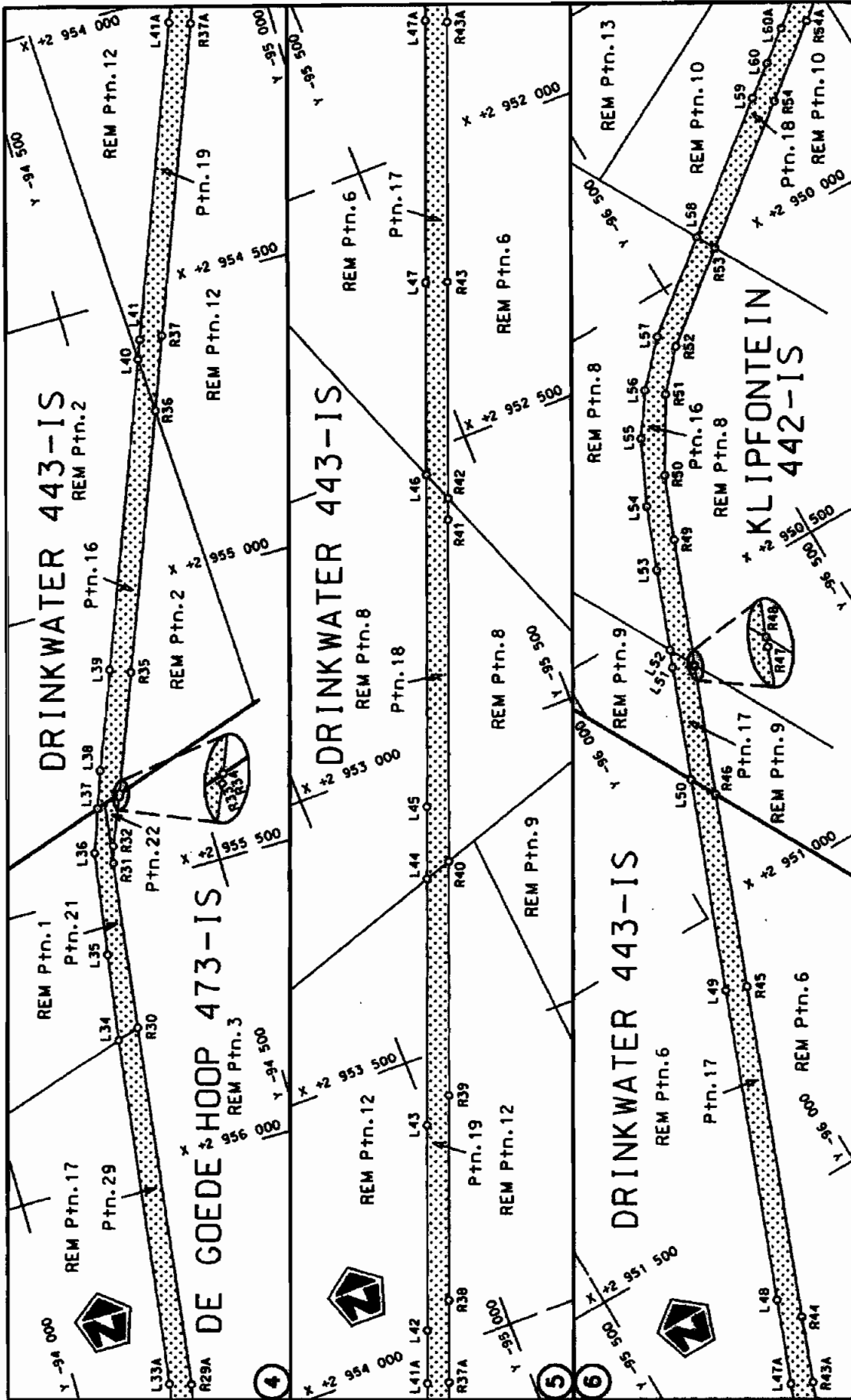
(Nasionale Pad N11 Seksie 7: Vaalrivier - Ermelo)



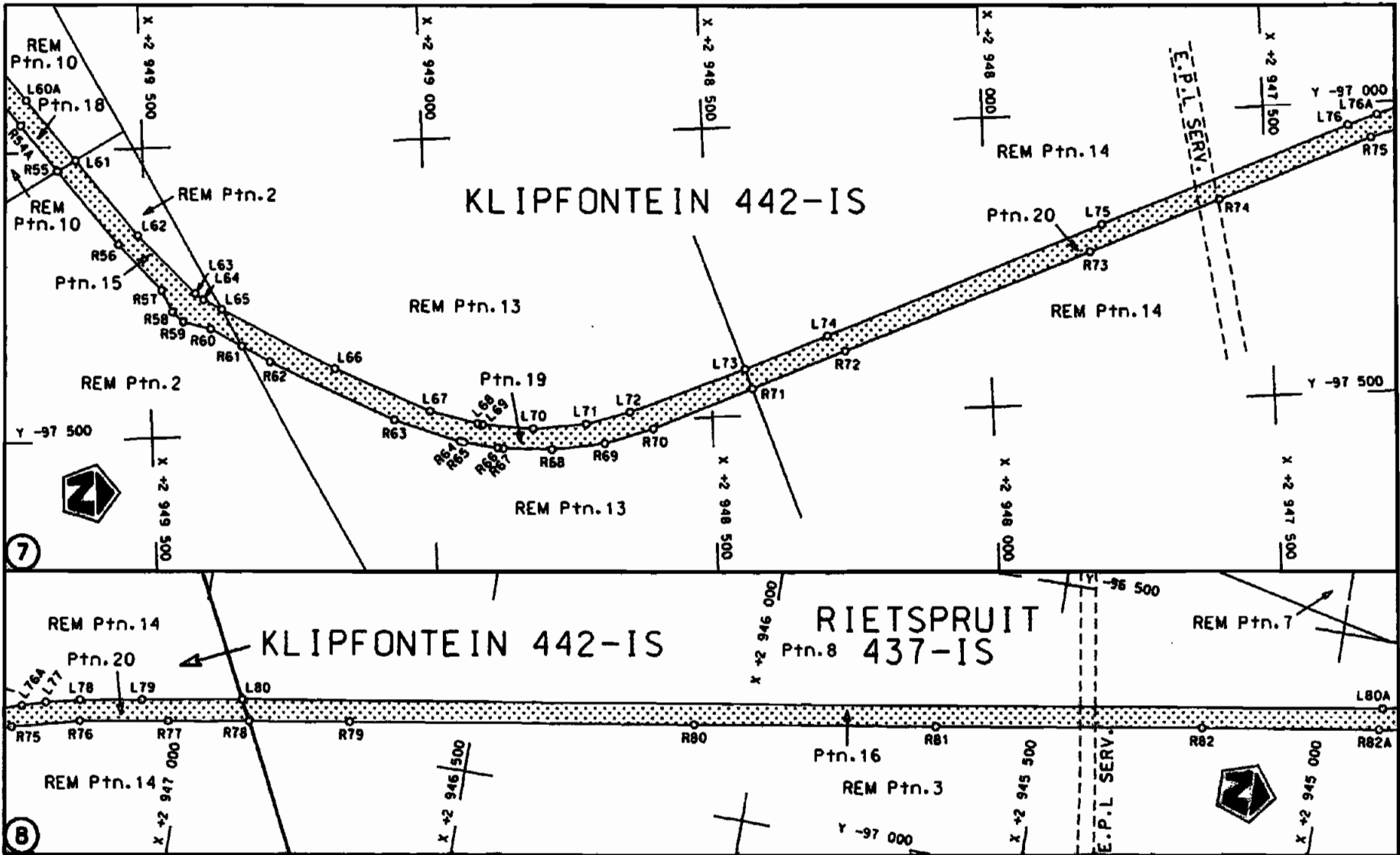
MINISTER VAN VERVOER




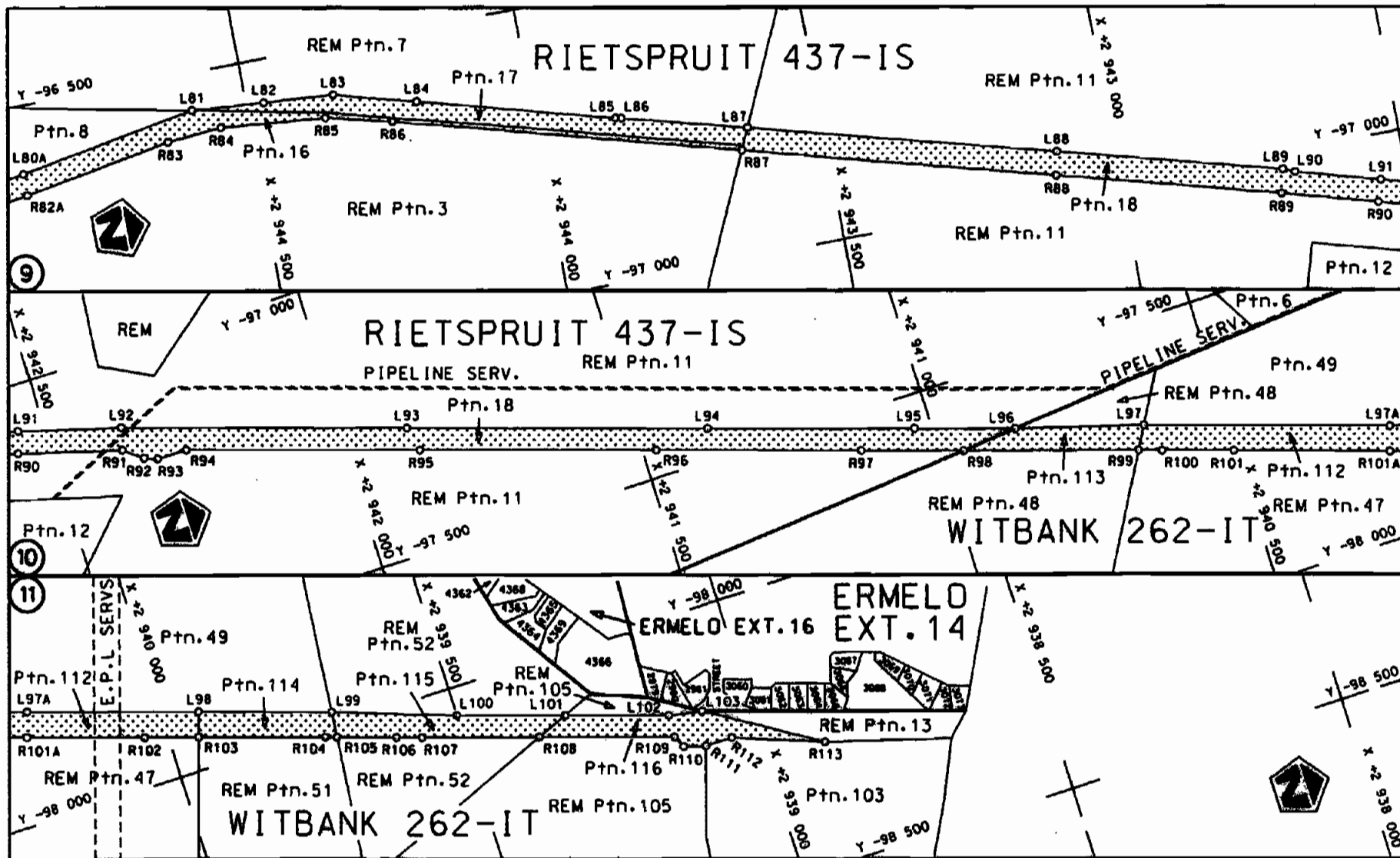
Die Suid Afrikaanse Nasionale Padogentskap Beperk The South African National Roads Agency Limited	Die figuur getoon The figure shown		st die padreserwe voor van 'n gedeelte represents the road reserve of a portion van Nasionale Roete N11 Seksie of National Route N11 Section 7	'Vel Sheet 1 van 7 Plan P624/07
--	---------------------------------------	--	---	------------------------------------

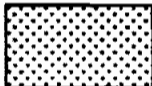


<p>Die Suid Afrikaanse Nasionale Padgedigenskap Beprek The South African National Roads Agency Limited</p>	<p>Die figuur getoon The figure shown</p>	<p>Die stelde padreserwe voor van 'n gedeelte represents the road reserve of a portion van Nasionale Roete N11 of National Route</p>	<p>Vel Sheet 2 of 7 Plan P624/07</p>
--	---	--	--



<p>Die Suid Afrikaanse Nasionale Padagentskap Beperk The South African National Roads Agency Limited</p>	<p>Die figuur getoon The figure shown</p>		<p>steldie padreserwe voor van 'n gedeelte represents the road reserve of a portion van Nasionale Roete N11 Sektie of National Route Section</p>	<p>Vel Sheet 3 van of 7</p>
			<p>7</p>	<p>Plan P624/07</p>



<p>Die Suid Afrikaanse Nasionale Padagentskap Beperk The South African National Roads Agency Limited</p>	<p>Die figuur getoon The figure shown</p> 	<p>stede padreserwe voor van 'n gedeelte represents the road reserve of a portion van Nasionale Roete N11 Sektie of National Route Section 7</p>	<p>Vel Sheet 4 van of 7 Plan P624/07</p>
--	--	--	--

PADRESERWE KOÖRDINATE				/ ROAD RESERVE CO-ORDINATES		
LINKERKANT/LEFT HAND SIDE				REGTERKANT/RIGHT HAND SIDE		
	Y	X	WG 29°		Y	X
L1	-91 434.680	2 962 994.200	R1	-91 492.320	2 962 991.880	
L2	-91 443.680	2 962 900.340	R2	-91 492.850	2 962 901.150	
L3	-91 454.870	2 962 854.780	R3	-91 518.750	2 962 744.220	
L4	-91 482.050	2 962 740.120	R4	-91 639.020	2 962 390.530	
L5	-91 615.580	2 962 343.190	R5	-91 663.880	2 962 352.060	
L6	-91 673.310	2 962 171.180	R6	-91 839.980	2 961 819.370	
L7	-91 783.890	2 961 838.290	R7	-91 866.830	2 961 750.500	
L8	-91 781.930	2 961 804.590	R8	-91 855.970	2 961 739.120	
L9	-91 775.710	2 961 807.050	R9	-91 879.550	2 961 669.610	
L10	-91 767.960	2 961 770.080	R10	-91 921.040	2 961 544.320	
L11	-91 798.990	2 961 758.960	R11	-91 982.120	2 961 364.640	
L12	-91 823.760	2 961 718.920	R12	-91 988.200	2 961 346.770	
L13	-91 946.010	2 961 353.380	R13	-92 056.010	2 961 147.700	
L14	-91 950.090	2 961 341.170	R14	-92 138.860	2 960 989.530	
L15	-92 031.950	2 961 115.400	R15	-92 421.120	2 960 480.180	
L16	-92 069.010	2 961 040.000	R16	-92 705.250	2 959 968.390	
L17	-92 388.240	2 960 462.170	R17	-92 801.600	2 959 796.120	
L18	-92 673.880	2 959 950.440	R18	-92 988.680	2 959 461.620	
L19	-92 759.200	2 959 797.120	R19	-93 014.390	2 959 415.280	
L20	-92 965.490	2 959 426.390	R20	-93 055.830	2 959 340.580	
L21	-93 015.120	2 959 336.860	R21	-93 253.600	2 958 984.090	
L22	-93 159.720	2 959 075.980	R22	-93 437.150	2 958 652.200	
L23	-93 221.040	2 958 965.340	R23	-93 542.310	2 958 453.580	
L24	-93 472.180	2 958 511.670	R24	-93 623.120	2 958 273.840	
L25	-93 575.630	2 958 286.230	R25	-93 804.370	2 957 869.290	
L26	-93 578.420	2 958 280.040	R26	-93 887.870	2 957 683.340	
L27	-93 641.440	2 958 139.960	R27	-93 951.610	2 957 541.360	
L28	-93 769.480	2 957 855.420	R28	-94 008.030	2 957 409.850	
L29	-93 850.830	2 957 674.230	R29	-94 080.250	2 957 231.000	
L30	-94 004.560	2 957 330.440	R30	-94 281.200	2 955 746.750	
L31	-94 039.830	2 957 227.240	R31	-94 320.730	2 955 454.750	
L32	-94 046.790	2 957 176.050	R32	-94 328.870	2 955 425.440	
L33	-94 071.200	2 957 000.670	R33	-94 363.300	2 955 344.670	
L34	-94 243.480	2 955 759.550	R34	-94 365.430	2 955 339.170	
L35	-94 266.180	2 955 608.520	R35	-94 443.530	2 955 137.890	
L36	-94 294.040	2 955 428.730	R36	-94 613.370	2 954 702.340	
L37	-94 321.070	2 955 354.080	R37	-94 661.350	2 954 579.320	
L38	-94 344.210	2 955 290.180	R38	-94 916.270	2 953 922.500	
L39	-94 409.220	2 955 123.740	R39	-95 049.040	2 953 581.570	
L40	-94 609.920	2 954 607.200	R40	-95 200.020	2 953 192.710	
L41	-94 622.340	2 954 575.220	R41	-95 419.460	2 952 627.880	
L42	-94 861.790	2 953 958.920	R42	-95 433.270	2 952 592.410	
L43	-94 994.160	2 953 618.460	R43	-95 572.150	2 952 235.640	
L44	-95 153.590	2 953 208.160	R44	-95 782.190	2 951 695.080	
L45	-95 199.850	2 953 089.100	R45	-95 998.610	2 951 138.180	
L46	-95 413.390	2 952 539.680	R46	-96 123.240	2 950 817.210	
L47	-95 536.580	2 952 222.810	R47	-96 206.260	2 950 603.400	
L48	-95 760.070	2 951 647.400	R48	-96 207.290	2 950 600.790	
L49	-95 963.130	2 951 125.210	R49	-96 289.480	2 950 391.520	
L50	-96 099.740	2 950 773.240	R50	-96 333.390	2 950 284.570	
L51	-96 172.430	2 950 585.950	R51	-96 407.920	2 950 161.410	

Vel	5	Van	7	P624/07
Sheet		of		

PADRESERWE KOÖRDINATE				/	ROAD RESERVE CO-ORDINATES			
LINKERKANT/LEFT HAND SIDE					REGTERKANT/RIGHT HAND SIDE			
	Y	X	WG	29°	Y	X		
L52	-96 183.860	2 950	556.700	R52	-96 466.280	2 950	097.990	
L53	-96 236.450	2 950	422.130	R53	-96 613.170	2 949	982.550	
L54	-96 278.520	2 950	316.500	R54	-96 833.390	2 949	809.480	
L55	-96 331.500	2 950	207.260	R55	-97 033.320	2 949	652.180	
L56	-96 381.000	2 950	137.330	R56	-97 165.010	2 949	548.560	
L57	-96 446.810	2 950	067.270	R57	-97 246.310	2 949	474.370	
L58	-96 595.530	2 949	949.960	R58	-97 284.420	2 949	456.350	
L59	-96 803.660	2 949	785.790	R59	-97 302.170	2 949	437.880	
L60	-96 856.520	2 949	745.090	R60	-97 315.690	2 949	388.570	
L61	-97 015.700	2 949	619.620	R61	-97 347.550	2 949	333.330	
L62	-97 150.550	2 949	513.320	R62	-97 376.340	2 949	283.430	
L63	-97 253.810	2 949	414.130	R63	-97 484.480	2 949	065.440	
L64	-97 265.000	2 949	399.800	R64	-97 524.930	2 948	951.930	
L65	-97 282.770	2 949	367.360	R65	-97 526.550	2 948	944.970	
L66	-97 392.290	2 949	167.430	R66	-97 538.900	2 948	884.380	
L67	-97 471.370	2 949	002.270	R67	-97 540.210	2 948	874.630	
L68	-97 495.430	2 948	919.190	R68	-97 544.690	2 948	788.210	
L69	-97 497.780	2 948	909.770	R69	-97 537.730	2 948	694.080	
L70	-97 507.740	2 948	820.450	R70	-97 515.390	2 948	606.360	
L71	-97 503.350	2 948	725.820	R71	-97 453.020	2 948	427.290	
L72	-97 485.550	2 948	647.180	R72	-97 394.420	2 948	259.060	
L73	-97 419.410	2 948	439.060	R73	-97 240.430	2 947	818.240	
L74	-97 367.070	2 948	289.290	R74	-97 158.540	2 947	583.890	
L75	-97 193.770	2 947	795.550	R75	-97 062.260	2 947	308.400	
L76	-97 039.160	2 947	348.220	R76	-97 030.940	2 947	189.660	
L77	-97 009.290	2 947	254.550	R77	-97 004.070	2 947	035.500	
L78	-96 994.630	2 947	195.810	R78	-96 980.670	2 946	892.040	
L79	-96 975.640	2 947	087.810	R79	-96 950.490	2 946	714.210	
L80	-96 945.040	2 946	910.810	R80	-96 850.630	2 946	111.650	
L81	-96 565.060	2 944	596.240	R81	-96 781.280	2 945	687.560	
L82	-96 575.790	2 944	468.860	R82	-96 704.630	2 945	222.080	
L83	-96 585.970	2 944	343.780	R83	-96 611.190	2 944	647.530	
L84	-96 625.110	2 944	199.510	R84	-96 604.360	2 944	552.220	
L85	-96 719.270	2 943	858.990	R85	-96 622.050	2 944	364.980	
L86	-96 721.460	2 943	848.290	R86	-96 651.090	2 944	247.910	
L87	-96 779.320	2 943	632.120	R87	-96 815.850	2 943	649.200	
L88	-96 923.540	2 943	100.980	R88	-96 963.740	2 943	109.510	
L89	-97 028.290	2 942	715.110	R89	-97 069.220	2 942	724.810	
L90	-97 036.840	2 942	694.060	R90	-97 115.120	2 942	558.470	
L91	-97 078.380	2 942	546.730	R91	-97 165.830	2 942	380.080	
L92	-97 128.220	2 942	370.080	R92	-97 190.370	2 942	347.750	
L93	-97 283.760	2 941	885.610	R93	-97 199.600	2 942	324.790	
L94	-97 446.090	2 941	378.750	R94	-97 199.540	2 942	272.040	
L95	-97 557.700	2 941	029.510	R95	-97 326.600	2 941	875.370	
L96	-97 612.470	2 940	859.920	R96	-97 453.700	2 941	476.700	
L97	-97 676.260	2 940	640.680	R97	-97 565.090	2 941	130.960	
L98	-97 902.010	2 939	936.260	R98	-97 620.510	2 940	958.410	
L99	-97 974.460	2 939	710.200	R99	-97 714.630	2 940	662.890	
L100	-98 047.990	2 939	500.760	R100	-97 727.400	2 940	623.690	
L101	-98 106.610	2 939	318.790	R101	-97 766.180	2 940	502.830	
L102	-98 162.990	2 939	143.080	R102	-97 914.880	2 940	040.420	

Vel	6	Van	7	P624/07
Sheet		of		

PADRESERWE KOÖRDINATE				/ ROAD RESERVE CO-ORDINATES			
LINKERKANT/LEFT HAND SIDE				REGTERKANT/RIGHT HAND SIDE			
	Y	X	WG	29°	Y	X	
L103	-98 173.600	2 939 084.060		R103	-97 943.710	2 939 949.630	
				R104	-98 012.030	2 939 734.510	
				R105	-98 018.580	2 939 714.310	
				R106	-98 052.060	2 939 612.920	
				R107	-98 065.460	2 939 570.310	
				R108	-98 128.460	2 939 373.580	
				R109	-98 201.260	2 939 144.630	
				R110	-98 221.780	2 939 133.980	
				R111	-98 232.710	2 939 096.060	
				R112	-98 232.430	2 939 048.640	
				R113	-98 290.160	2 938 892.800	
				Vel 7 Van 7		P624/07	
				Sheet of			