

CONTENTS

<i>No.</i>	<i>Page No.</i>	<i>Gazette No.</i>
GOVERNMENT NOTICE		
Transport, Department of		
<i>Government Notice</i>		
1087 South African National Roads Agency Limited and the National Roads Act (71/1998): The South African National Roads Agency Limited: Declaration amendment of National Road N4 Section 12: Amendment of Declaration No. 1322 of 1989	3	30483

INHOUD

<i>No.</i>	<i>Bladsy No.</i>	<i>Koerant No.</i>
GOEWERMENTSKENNISGEWING		
Vervoer, Departement van		
<i>Goewermentskennisgewing</i>		
1087 Suid-Afrikaanse Nasionale Padagentskap Beperk en die Nasionale Paaie Wet (71/1998): Die Suid-Afrikaanse Nasionale Padagentskap Beperk: Verklaring wysiging van Nasionale Pad N4 Seksie 12: Wysiging van verklaring No. 1322 van 1989	4	30483

**GOVERNMENT NOTICE
GOEWERMENTSKENNISGEWING**

**DEPARTMENT OF TRANSPORT
DEPARTEMENT VAN VERVOER**

No. 1087

16 November 2007

**THE SOUTH AFRICAN NATIONAL ROADS
AGENCY LIMITED**

Registration No: 98/09584/06

DECLARATION AMENDMENT OF NATIONAL ROAD N4 SECTION 12

AMENDMENT OF DECLARATION NO. 1322 OF 1989

By virtue of section 40 (1)(b) of the South African National Roads Agency Limited and the National Roads Act, 1998 (Act No. 7 of 1998), I hereby amend Declaration No.1322 of 1989 by substituting the descriptive section in section 17 of the annexure from the common boundary between Portion 507 of the farm Pretoria and Pretoria Townlands 351 – JR and Portion 234 of the farm Elandsfontein 352 – JR up to the common boundary between the farms Elandsdrift 467 – JQ and Kafferskraal 342 - JQ, as referred to in Administrators notices no's 2868 of 1985, 1271 of 1979, 910 of 1984, 368 of 1983, 179 of 1983, 990 of 1979, 579 of 1982 and 1587 of 1990 in declaration 1322 of 1989, with the subjoined sheets 1 to 26 of Plan No.P592/06.

(National Road N4 Section 12: Elandsfontein – Elands drift)


MINISTER OF TRANSPORT

No. 1087

16 November 2007

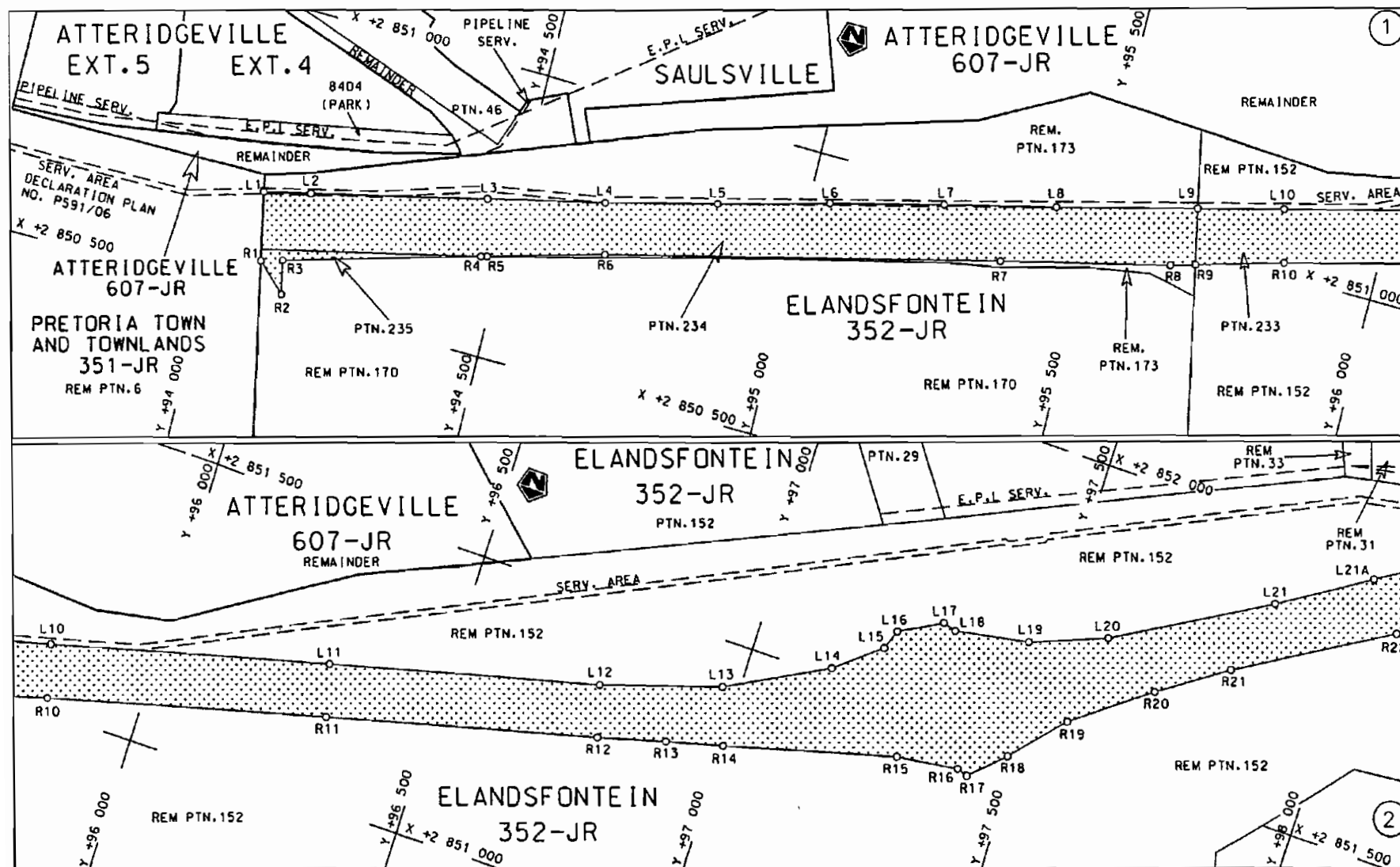
**DIE SUID-AFRIKAANSE NASIONALE
PADAGENTSKAP BEPERK**

Registrasie No: 98/09584/06

VERKLARING WYSIGING VAN NASIONALE PAD N4 SEKSIE 12.**WYSIGING VAN VERKLARING NO. 1322 VAN 1989**

Kragtens Artikel 40(1)(b) van die Suid Afrikaanse Nasionale Padagentskap Beperk en die Nasionale Paaie Wet, 1998 (Wet No.7 van 1998), wysig ek hiermee Verklaring No. 1322 van 1982, deur die beskrywende gedeelte in seksie 17 van die bylae vanaf die gemeenskaplike grens tussen Gedeelte 507 van die plaas Pretoria and Pretoria Townlands 351 – JR en Gedeelte 234 van die plaas Elandsfontein 352 – JR tot die gemeenskaplike grens tussen die plase Elandsdrift 467 – JQ en Kafferskraal 342 – JQ, soos verwys na Administrateurs kennisgewings no's 2868 van 1985, 1271 van 1979, 910 van 1984, 368 van 1983, 179 van 1983, 990 van 1979, 579 van 1982 en 1587 van 1990 in verklaring 1322 van 1989, te vervang met meegaande velle 1 tot 26 van Plan no. P592/06.

(Nasionale Pad N4 Seksie 12: Elandsfontein – Elandsdrift)**MINISTER VAN VERVOER**



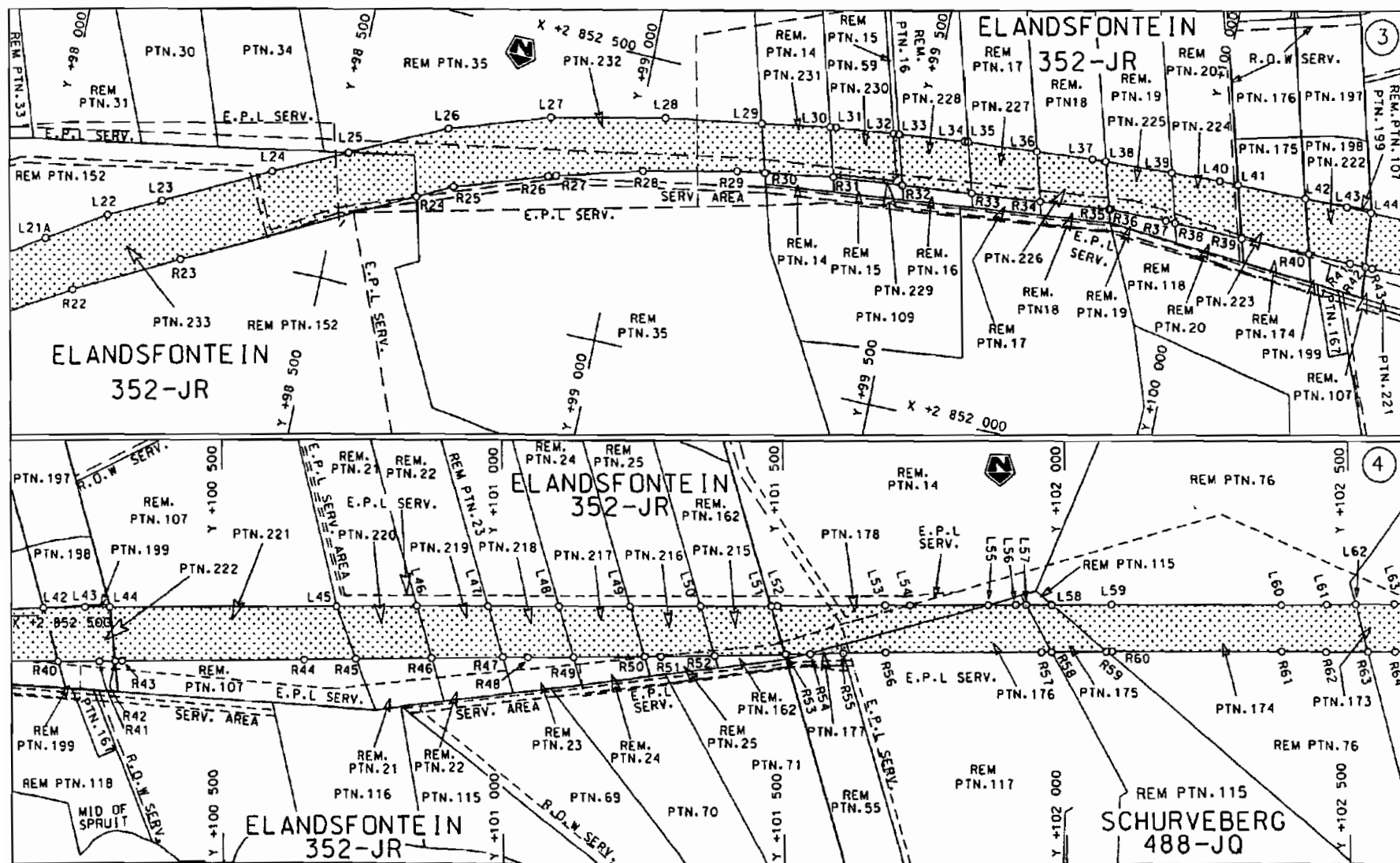
Die Suid Afrikaanse Nasionale Padagentskap Beperk
The South African National Roads Agency Limited

Die figuur getoon
The figure shown



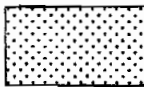
steldie padreserwe voor van 'n gedeelte
represents the road reserve of a portion
van Nasionale Roete N4 Seksie Section 12
of National Route

Vel Sheet 1 van of 26
Plan P592/06



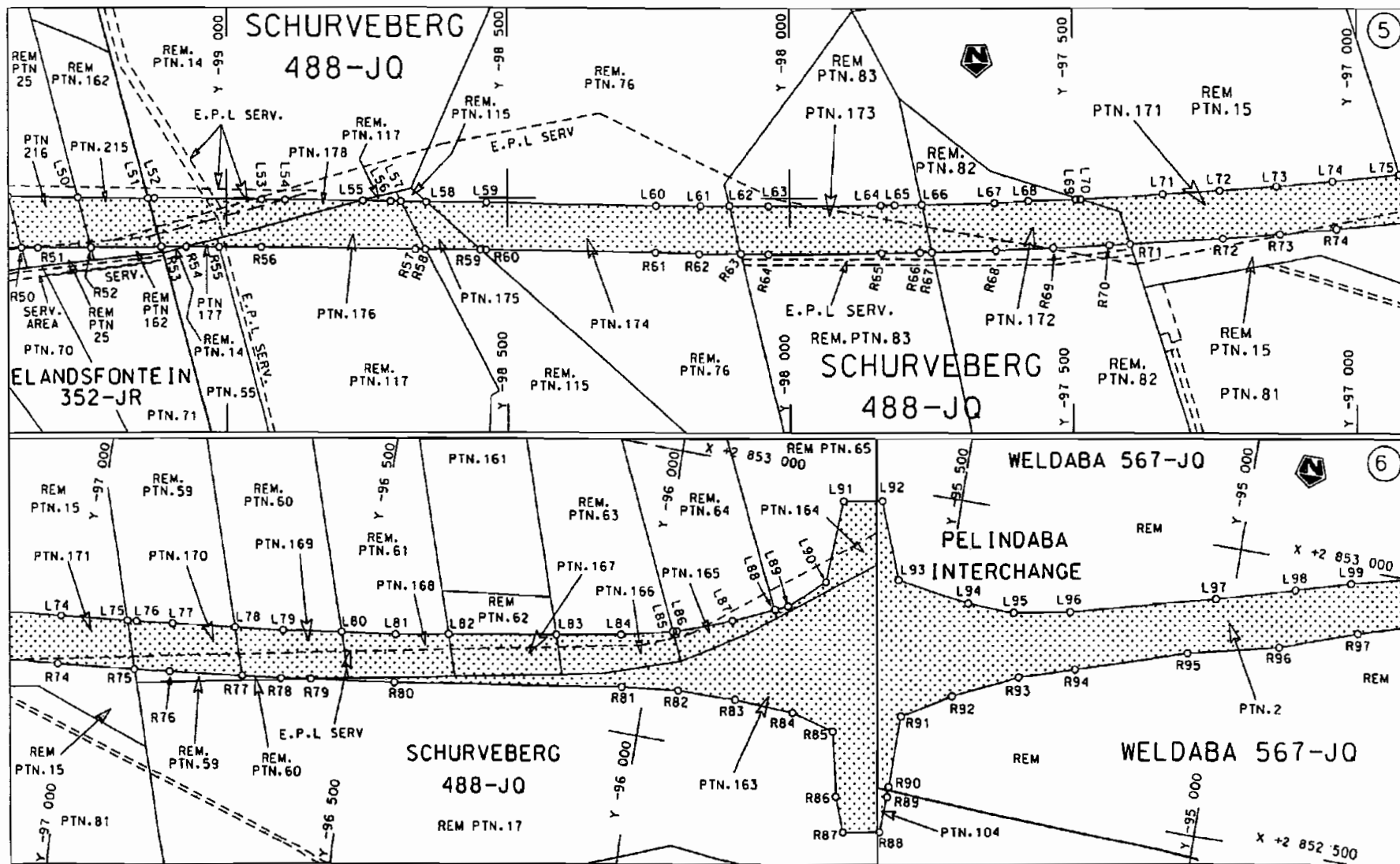
Die Suid Afrikaanse Nasionale Padagentskap Beperk
The South African National Roads Agency Limited

Die figuur getoon
The figure shown



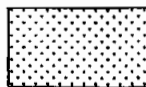
steldie padreserwe voor van 'n gedeelte
represents the road reserve of a portion
van Nasionale Roete of National Route N4 Seksie Section 12

Vel Sheet 2 of 26
Plan P592/06



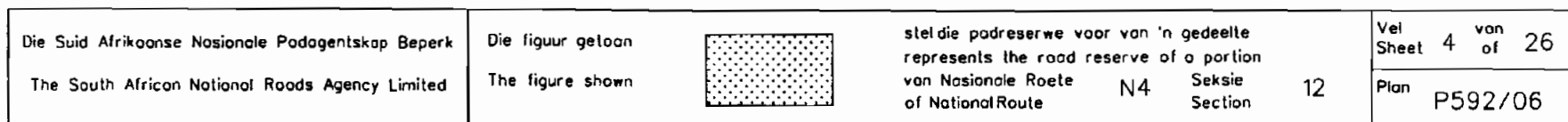
Die Suid Afrikaanse Nasionale Padagentskap Beperk
The South African National Roads Agency Limited

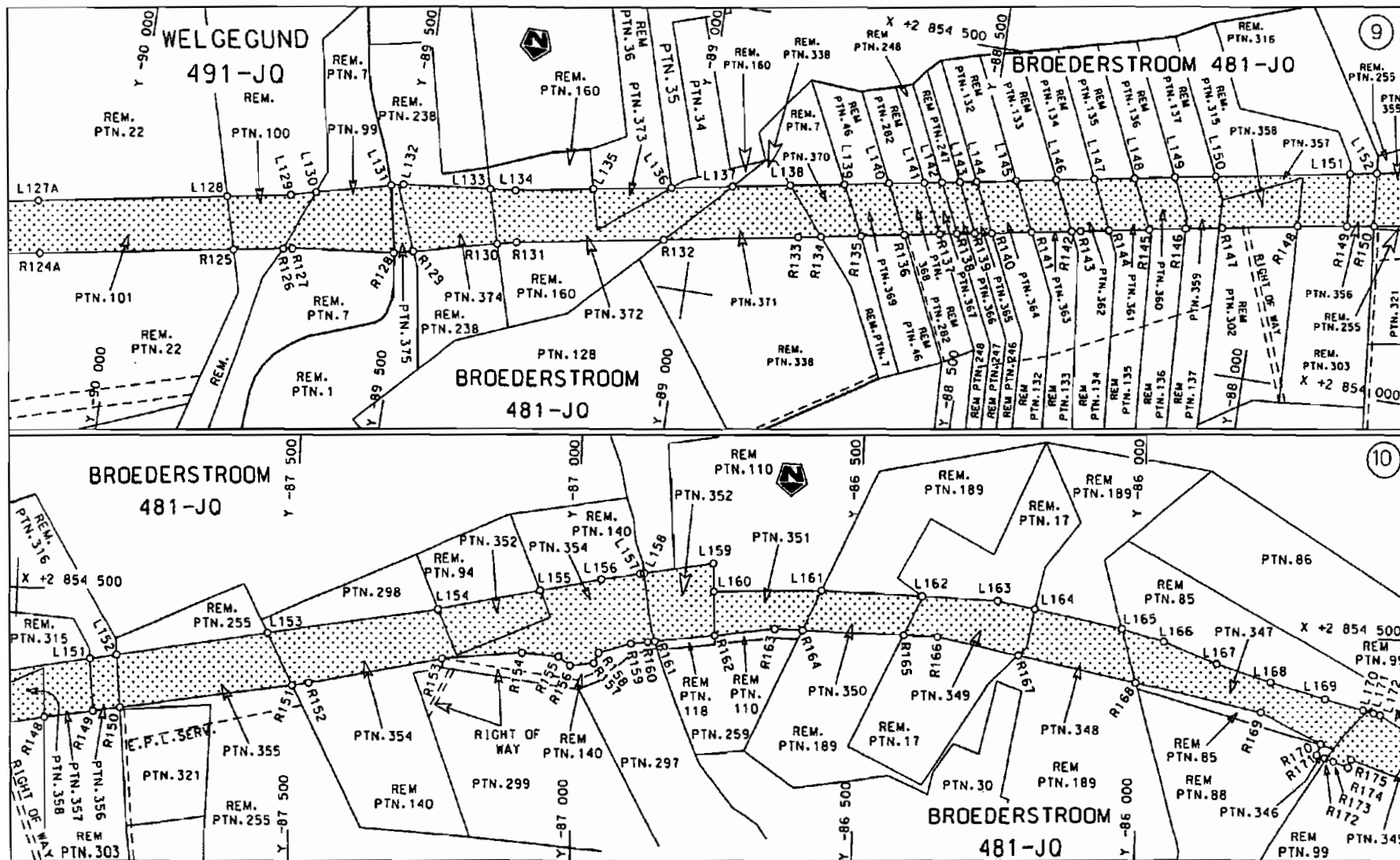
Die figuur getoon
The figure shown



steldie padreserwe voor van 'n gedeelte
represents the road reserve of a portion
van Nasionale Roete N4 Sektie 12
of National Route

Vel Sheet 3 van 26
Plan P592/06





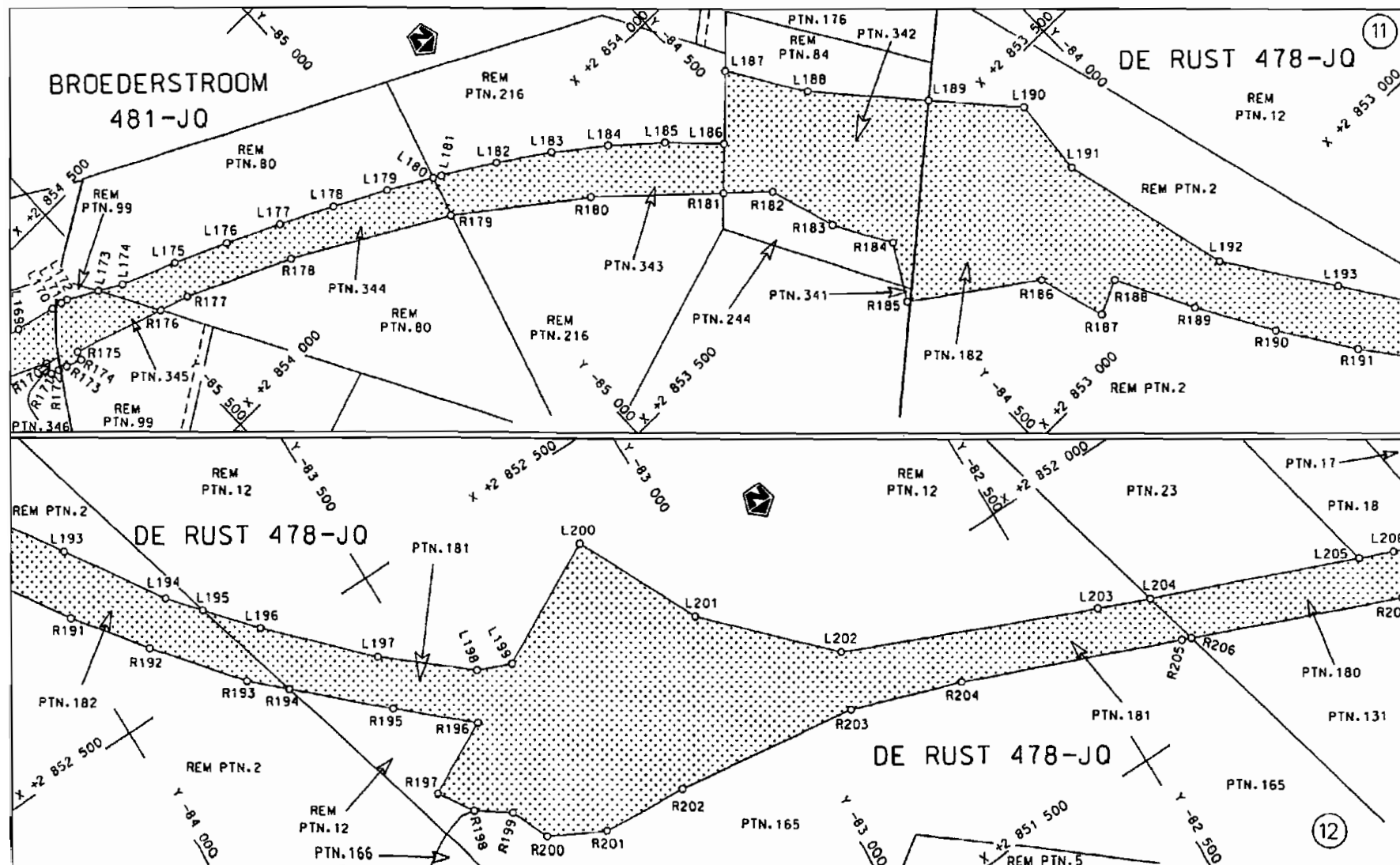
Die Suid Afrikaanse Nasionale Padagentskap Beperk
The South African National Roads Agency Limited

Die figuur getoon
The figure shown



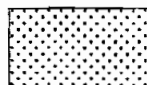
stel die padreserwe voor van 'n gedeelte
represents the road reserve of a portion
van Nasionale Roete N4 Seksie 12
of National Route Section

Vel Sheet 5 van 26
Plan P592/06



Die Suid Afrikaanse Nasionale Padagentskap Beperk
The South African National Roads Agency Limited

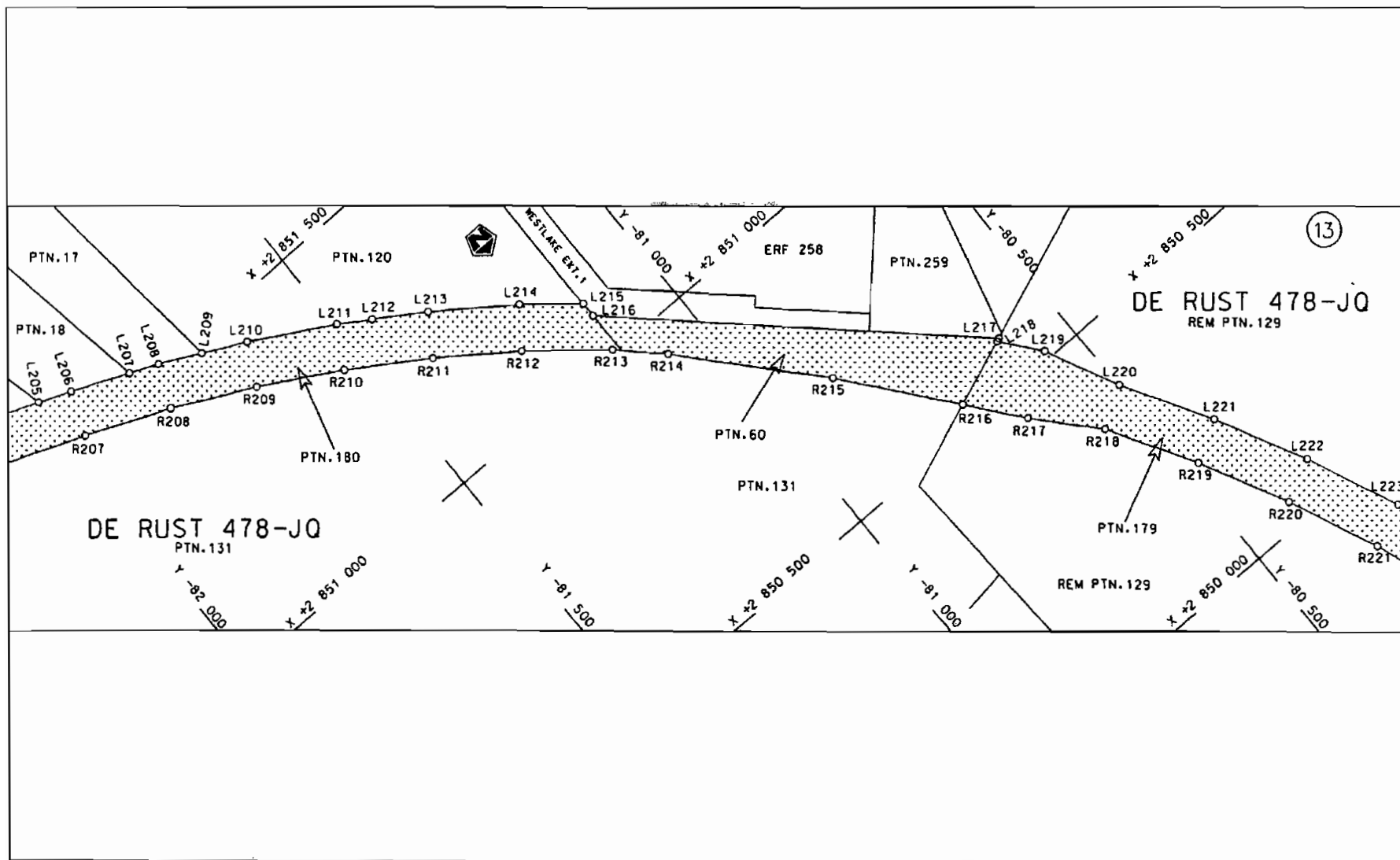
Die figuur getoon
The figure shown



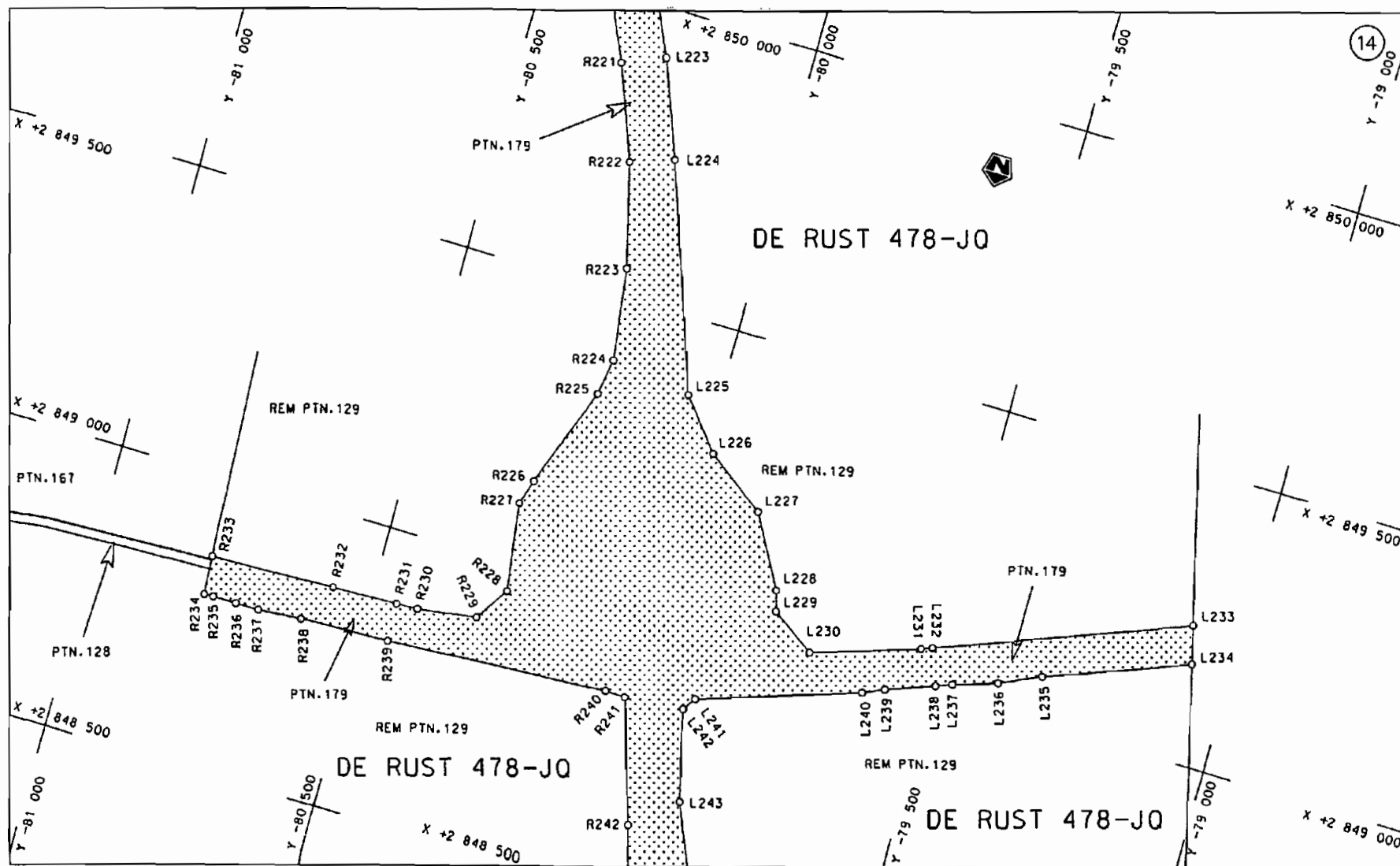
steldie padreserwe voor van 'n gedeelte
represents the road reserve of a portion
van Nasionale Roete N4 Seksie
of National Route Section 12

Vel
Sheet 6 van
of 26

Plan P592/06



<p>Die Suid Afrikaanse Nasionale Padagentskap Beperk</p> <p>The South African National Roads Agency Limited</p>	<p>Die figuur getoon</p> <p>The figure shown</p> <div data-bbox="929 1279 1078 1367" style="border: 1px solid black; width: 69px; height: 57px; background-color: #d3d3d3; margin: 10px 0;"></div>	<p>stel die padreserwe voor van 'n gedeelte</p> <p>represents the road reserve of a portion</p> <p>van Nasionale Roete N4</p> <p>of National Route</p> <p>Seksie 12</p> <p>Section</p>	<p>Vel Sheet 7 van of 26</p> <p>Plan P592/06</p>
---	--	--	--



Die Suid Afrikaanse Nasionale Padagentskap Beperk
The South African National Roads Agency Limited

Die figuur getoon
The figure shown

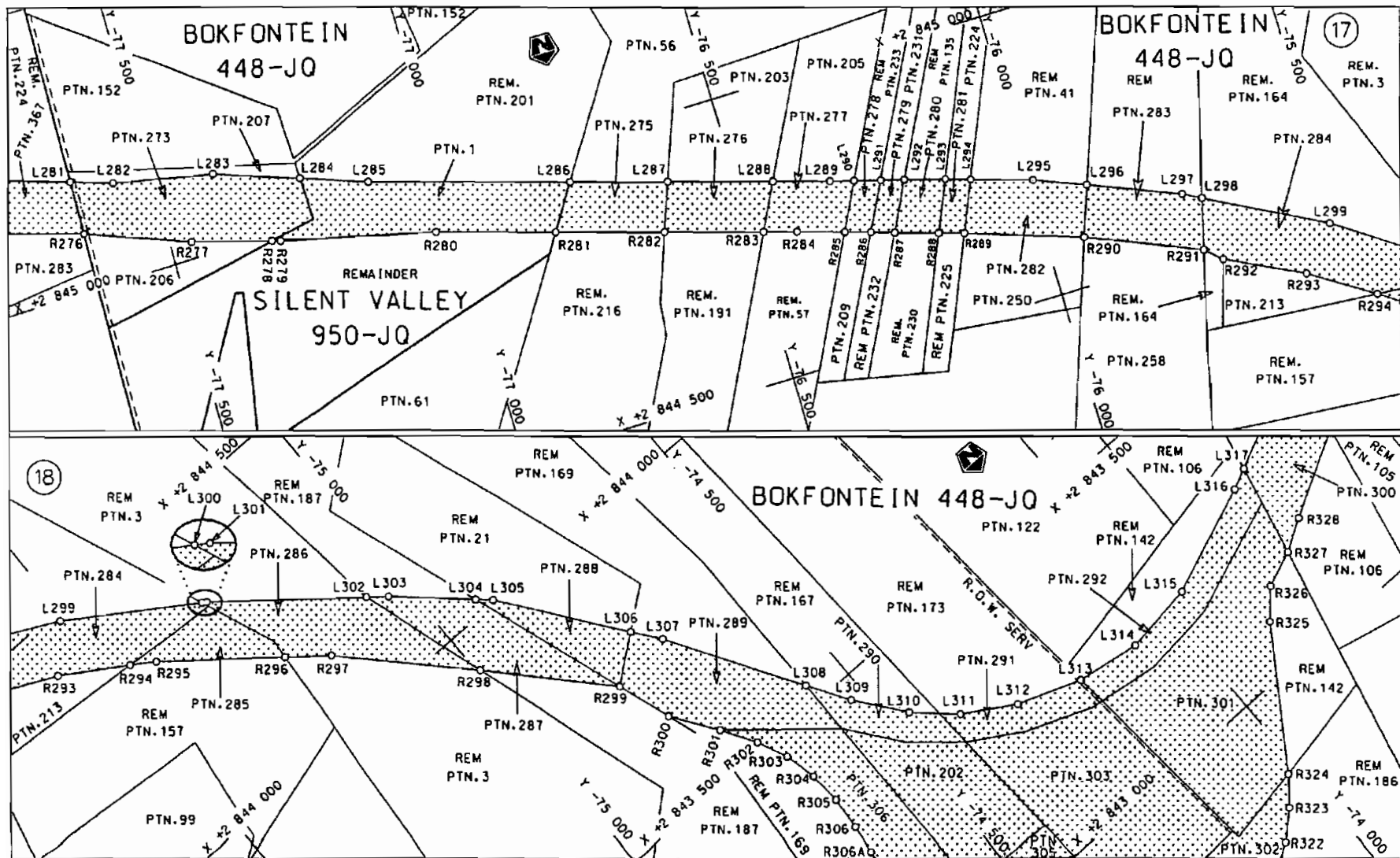


steldie padreserwe voor van 'n gedeelte
represents the road reserve of a portion
van Nasionale Roete
of National Route N4
Seksie
Section

12

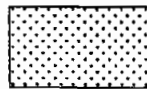
Vel
Sheet 8 van 26

Plan P592/06



Die Suid Afrikaanse Nasionale Padagentskap Beperk
The South African National Roads Agency Limited

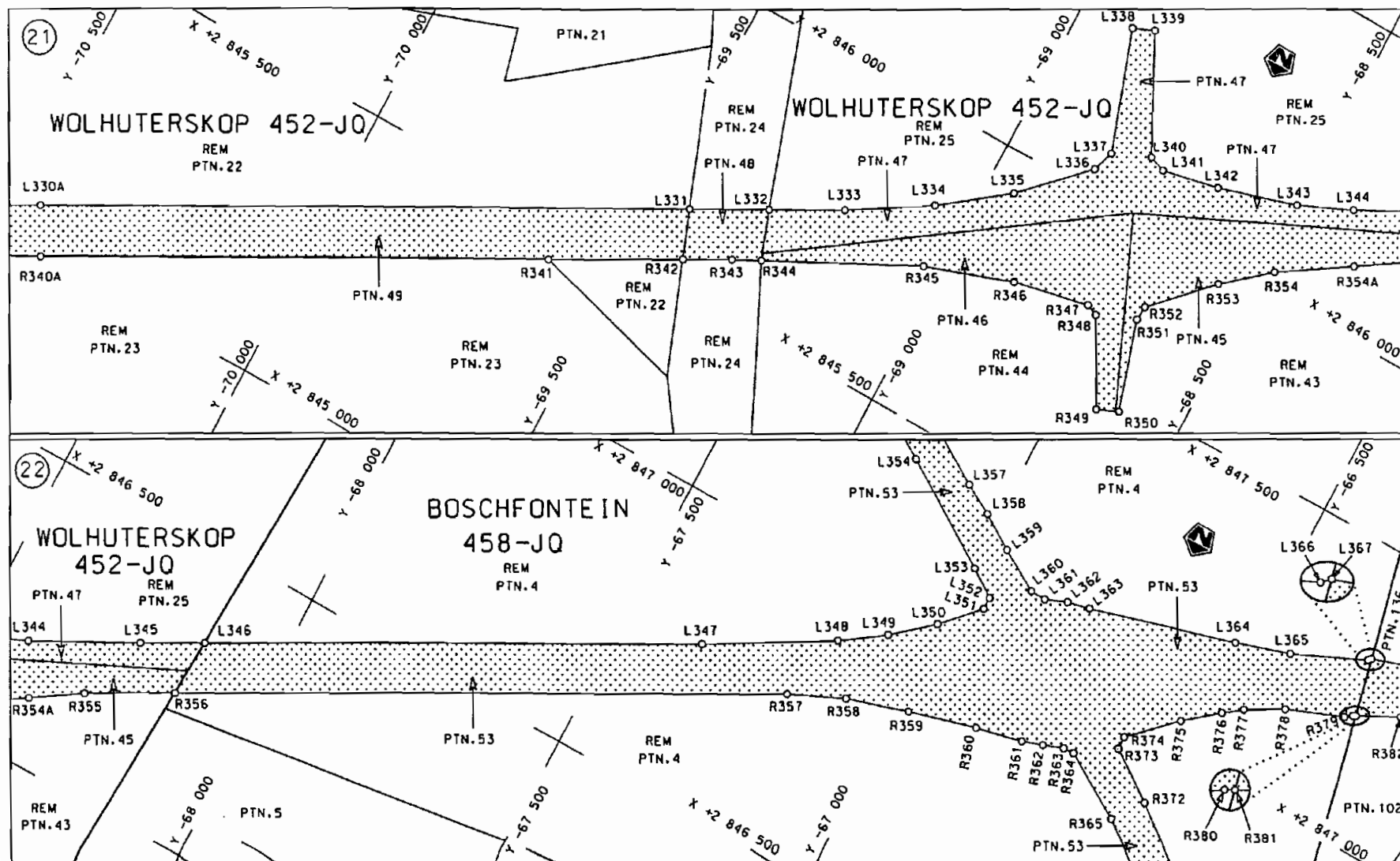
Die figuur getoon
The figure shown



steldie padreserwe voor van 'n gedeelte
represents the road reserve of a portion
van Nasionale Roete N4
of National Route N4

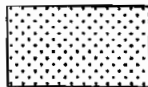
Seksie 12
Section

Vel Sheet 10 van 26
Plan P592/06



Suid-Afrikaanse Padagentskap Bpk.
South African National Roads Agency Ltd.

Die figuur getoon
The figure shown

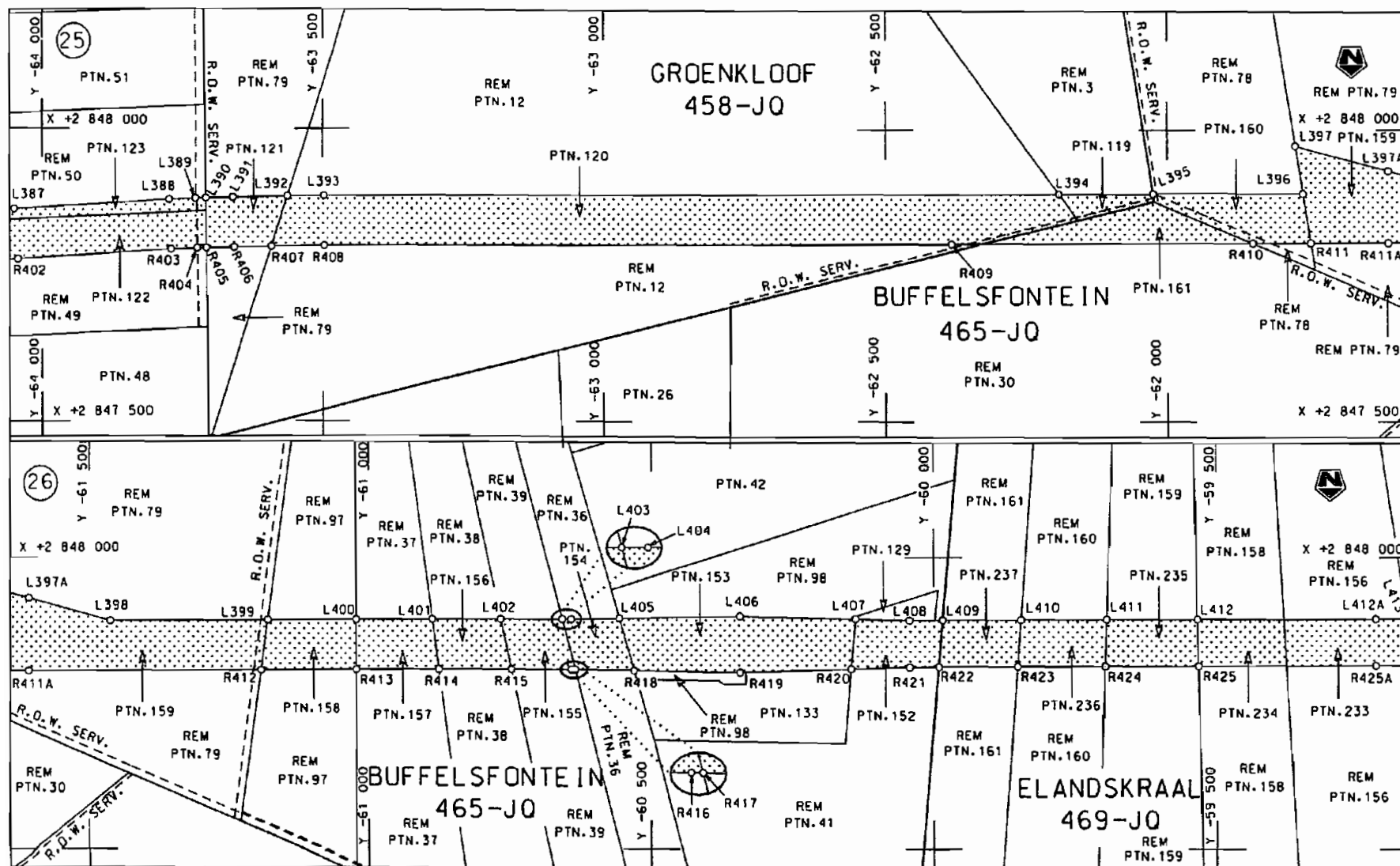


steldie podreserve voor van 'n gedeelte
represents the road reserve of a portion
van Nasionale Roete N4
of National Route N4

Seksie 12
Section 12

Vel 12 van 26
Sheet of

P P592/06



Suid-Afrikaanse Padogenskap Bpk.
South African National Roads Agency Ltd.

Die figuur getoon
The figure shown



steldie padreserwe voor van 'n gedeelte
represents the road reserve of a portion
van Nasionale Roete
of National Route

N4

Seksie
Section

12

Vel
Sheet 14 van 26

P
P592/06

PADRESERWE KOÖRDINATE / ROAD RESERVE CO-ORDINATES					
LINKERKANT/LEFT HAND SIDE			REGTERKANT/RIGHT HAND SIDE		
	Y	X WG 29°		Y	X
L1	94 060.83	2 850 679.28	R1	94 085.58	2 850 563.01
L2	94 144.35	2 850 698.57	R2	94 136.37	2 850 516.23
L3	94 448.25	2 850 769.56	R3	94 124.09	2 850 573.90
L4	94 650.66	2 850 817.26	R4	94 462.03	2 850 670.12
L5	94 844.40	2 850 866.84	R5	94 472.81	2 850 673.18
L6	95 037.42	2 850 919.15	R6	94 672.92	2 850 730.20
L7	95 231.40	2 850 968.51	R7	95 352.40	2 850 898.84
L8	95 425.81	2 851 015.12	R8	95 644.15	2 850 968.48
L9	95 666.46	2 851 076.46	R9	95 686.65	2 850 980.68
L10	95 813.47	2 851 113.93	R10	95 836.47	2 851 023.68
L11	96 297.81	2 851 237.67	R11	96 320.59	2 851 148.42
L12	96 761.62	2 851 355.96	R12	96 785.92	2 851 268.47
L13	96 969.11	2 851 422.30	R13	96 902.89	2 851 300.40
L14	97 144.16	2 851 514.11	R14	97 001.62	2 851 325.57
L15	97 220.56	2 851 576.61	R15	97 299.69	2 851 405.75
L16	97 233.01	2 851 610.81	R16	97 407.14	2 851 420.00
L17	97 305.67	2 851 650.67	R17	97 426.34	2 851 414.00
L18	97 329.32	2 851 643.61	R18	97 484.77	2 851 468.67
L19	97 459.75	2 851 666.78	R19	97 567.21	2 851 558.53
L20	97 590.62	2 851 717.28	R20	97 696.60	2 851 655.48
L21	97 850.57	2 851 866.92	R21	97 812.71	2 851 734.14
L22	98 105.15	2 852 025.90	R22	98 071.17	2 851 886.31
L23	98 195.00	2 852 070.52	R23	98 249.15	2 851 978.32
L24	98 376.34	2 852 162.19	R24	98 639.13	2 852 175.22
L25	98 505.20	2 852 223.25	R25	98 700.12	2 852 206.01
L26	98 670.35	2 852 301.50	R26	98 859.69	2 852 261.00
L27	98 843.66	2 852 360.67	R27	98 873.17	2 852 265.08
L28	99 042.66	2 852 404.42	R28	99 022.30	2 852 306.49
L29	99 212.03	2 852 432.58	R29	99 187.10	2 852 343.21
L30	99 332.05	2 852 452.53	R30	99 235.41	2 852 350.96
L31	99 342.62	2 852 454.29	R31	99 355.73	2 852 370.16
L32	99 444.10	2 852 466.06	R32	99 477.91	2 852 382.92
L33	99 453.60	2 852 467.17	R33	99 600.20	2 852 395.36
L34	99 569.81	2 852 480.81	R34	99 722.47	2 852 407.79
L35	99 575.31	2 852 481.27	R35	99 844.76	2 852 420.22
L36	99 698.16	2 852 491.44	R36	99 847.98	2 852 420.55
L37	99 797.42	2 852 499.65	R37	99 947.38	2 852 423.02
L38	99 821.23	2 852 500.87	R38	99 964.14	2 852 422.87
L39	99 939.91	2 852 506.91	R39	100 084.66	2 852 421.81
L40	100 025.88	2 852 511.08	R40	100 205.22	2 852 420.75
L41	100 059.00	2 852 511.65	R41	100 279.60	2 852 420.37
L42	100 179.07	2 852 513.73	R42	100 307.64	2 852 420.53
L43	100 254.59	2 852 515.03	R43	100 319.87	2 852 420.59
L44	100 298.43	2 852 515.12	R44	100 645.06	2 852 422.88
L45	100 704.90	2 852 515.91	R45	100 740.28	2 852 423.97
L46	100 849.11	2 852 516.20	R46	100 874.86	2 852 425.53
L47	100 975.08	2 852 516.44	R47	101 000.63	2 852 426.99
L48	101 100.99	2 852 516.68	R48	101 045.38	2 852 427.51
L49	101 226.91	2 852 516.93	R49	101 126.44	2 852 428.04
L50	101 352.89	2 852 517.18	R50	101 252.31	2 852 428.87
L51	101 479.02	2 852 517.42	R51	101 281.75	2 852 429.07
			Vel 17	Van 26	P592/06
			Sheet	of	

PADRESERWE KOÖRDINATE / ROAD RESERVE CO-ORDINATES					
LINKERKANT/LEFT HAND SIDE			REGTERKANT/RIGHT HAND SIDE		
Y	X	WG 29°	Y	X	
		R52	101 377.93	2 852 430.87	
		R53	101 503.57	2 852 433.22	
		WG 27°			
L52	- 99 128.48	2 852 499.52	R54	- 99 071.95	2 852 415.26
L53	- 98 937.03	2 852 497.93	R55	- 99 013.01	2 852 415.47
L54	- 98 893.39	2 852 497.38	R56	- 98 937.83	2 852 415.74
L55	- 98 755.70	2 852 495.33	R57	- 98 662.52	2 852 411.94
L56	- 98 706.31	2 852 494.59	R58	- 98 644.66	2 852 411.95
L57	- 98 688.11	2 852 494.35	R59	- 98 547.64	2 852 410.72
L58	- 98 643.20	2 852 493.76	R60	- 98 537.82	2 852 410.59
L59	- 98 537.17	2 852 492.37	R61	- 98 238.02	2 852 406.54
L60	- 98 237.17	2 852 487.31	R62	- 98 160.29	2 852 404.41
L61	- 98 157.69	2 852 487.14	R63	- 98 086.16	2 852 403.70
L62	- 98 106.30	2 852 486.78	R64	- 98 037.51	2 852 403.17
L63	- 98 037.32	2 852 486.30	R65	- 97 836.77	2 852 404.55
L64	- 97 838.03	2 852 487.84	R66	- 97 769.40	2 852 406.25
L65	- 97 813.85	2 852 488.17	R67	- 97 748.00	2 852 406.82
L66	- 97 766.02	2 852 489.35	R68	- 97 635.98	2 852 409.81
L67	- 97 638.89	2 852 492.49	R69	- 97 534.22	2 852 413.82
L68	- 97 578.91	2 852 495.39	R70	- 97 435.45	2 852 418.54
L69	- 97 494.38	2 852 497.66	R71	- 97 398.83	2 852 420.73
L70	- 97 486.12	2 852 498.15	R72	- 97 235.08	2 852 430.54
L71	- 97 340.42	2 852 506.82	R73	- 97 134.92	2 852 438.42
L72	- 97 240.82	2 852 513.50	R74	- 97 035.03	2 852 446.45
L73	- 97 141.53	2 852 521.02	R75	- 96 896.97	2 852 460.14
L74	- 97 042.32	2 852 529.30	R76	- 96 835.15	2 852 466.26
L75	- 96 923.49	2 852 540.86	R77	- 96 706.58	2 852 481.07
L76	- 96 907.36	2 852 542.43	R78	- 96 635.71	2 852 489.24
L77	- 96 844.02	2 852 548.88	R79	- 96 583.91	2 852 496.21
L78	- 96 733.08	2 852 561.74	R80	- 96 436.78	2 852 516.02
L79	- 96 646.09	2 852 571.83	R81	- 96 040.00	2 852 577.57
L80	- 96 543.70	2 852 585.67	R82	- 95 939.96	2 852 589.06
L81	- 96 448.66	2 852 598.51	R83	- 95 837.77	2 852 590.71
L82	- 96 355.92	2 852 614.55	R84	- 95 734.08	2 852 586.43
L83	- 96 169.25	2 852 646.83	R85	- 95 657.67	2 852 566.85
L84	- 96 056.07	2 852 666.44	R86	- 95 634.23	2 852 458.36
L85	- 95 965.71	2 852 687.73	R87	- 95 611.56	2 852 401.07
L86	- 95 959.07	2 852 689.29	R88	- 95 548.31	2 852 411.58
L87	- 95 864.52	2 852 724.03	R89	- 95 545.10	2 852 472.88
L88	- 95 793.32	2 852 756.00	R90	- 95 544.90	2 852 490.16
L89	- 95 771.60	2 852 765.76	R91	- 95 543.48	2 852 612.70
L90	- 95 712.22	2 852 819.23	R92	- 95 461.81	2 852 662.54
L91	- 95 705.88	2 852 963.21	R93	- 95 350.19	2 852 714.28
L92	- 95 636.79	2 852 974.41	R94	- 95 254.15	2 852 744.72
L93	- 95 586.04	2 852 844.11	R95	- 95 062.90	2 852 806.16
L94	- 95 459.53	2 852 825.54	R96	- 94 906.38	2 852 843.74
L95	- 95 377.12	2 852 823.01	R97	- 94 773.73	2 852 890.58
L96	- 95 279.14	2 852 841.60	R98	- 94 678.01	2 852 920.47
L97	- 95 028.85	2 852 907.17	R99	- 94 582.79	2 852 951.33
			Vel 18	Van 26	P592/06
			Sheet	of	

PADRESERWE KOÖRDINATE / ROAD RESERVE CO-ORDINATES					
LINKERKANT/LEFT HAND SIDE			REGTERKANT/RIGHT HAND SIDE		
	Y	X WG 27°		Y	X
L98	- 94 894.88	2 852 946.17	R100	- 94 548.57	2 852 962.41
L99	- 94 799.27	2 852 973.97	R101	- 94 294.15	2 853 046.44
L100	- 94 702.84	2 852 998.66	R102	- 94 202.72	2 853 076.24
L101	- 94 596.49	2 853 032.16	R103	- 94 012.39	2 853 135.39
L102	- 94 574.02	2 853 039.24	R104	- 93 820.97	2 853 191.04
L103	- 94 319.24	2 853 122.51	R105	- 93 724.24	2 853 214.69
L104	- 94 227.15	2 853 152.40	R106	- 93 433.68	2 853 284.02
L105	- 94 035.46	2 853 212.10	R107	- 93 046.12	2 853 376.60
L106	- 93 766.13	2 853 292.37	R108	- 92 829.03	2 853 407.40
L107	- 93 649.01	2 853 320.54	R109	- 92 755.92	2 853 423.61
L108	- 93 454.35	2 853 369.56	R110	- 92 555.53	2 853 467.08
L109	- 93 258.89	2 853 415.02	R111	- 92 476.41	2 853 480.97
L110	- 92 866.59	2 853 501.16	R112	- 92 161.64	2 853 536.37
L111	- 92 846.84	2 853 504.77	R113	- 92 029.03	2 853 559.74
L112	- 92 772.49	2 853 518.18	R114	- 91 669.16	2 853 623.15
L113	- 92 489.97	2 853 567.95	R115	- 91 371.14	2 853 660.40
L114	- 92 061.68	2 853 643.39	R116	- 91 158.24	2 853 654.37
L115	- 92 045.59	2 853 646.25	R117	- 91 106.90	2 853 653.11
L116	- 91 585.94	2 853 727.14	R118	- 91 083.73	2 853 636.89
L117	- 91 372.12	2 853 781.12	R119	- 91 030.55	2 853 646.23
L118	- 91 229.39	2 853 835.00	R120	- 91 014.34	2 853 669.40
L119	- 91 191.20	2 853 849.61	R121	- 90 969.61	2 853 686.41
L120	- 91 145.08	2 853 869.75	R122	- 90 778.55	2 853 754.59
L121	- 91 128.86	2 853 892.91	R123	- 90 605.09	2 853 807.49
L122	- 91 075.64	2 853 902.28	R124	- 90 415.50	2 853 840.25
L123	- 91 052.50	2 853 886.06	R125	- 89 802.65	2 853 946.17
L124	- 91 004.46	2 853 884.36	R126	- 89 714.13	2 853 961.47
L125	- 90 760.65	2 853 883.67	R127	- 89 698.56	2 853 964.16
L126	- 90 561.60	2 853 906.52	R128	- 89 519.25	2 853 983.86
L127	- 90 454.81	2 853 925.34	R129	- 89 485.70	2 853 991.56
L128	- 89 827.76	2 854 035.82	R130	- 89 338.78	2 854 027.28
L129	- 89 714.70	2 854 055.73	R131	- 89 304.99	2 854 035.50
L130	- 89 671.51	2 854 066.50	R132	- 89 049.04	2 854 080.55
L131	- 89 541.48	2 854 098.93	R133	- 88 812.66	2 854 122.16
L132	- 89 520.21	2 854 104.21	R134	- 88 772.60	2 854 129.25
L133	- 89 365.26	2 854 119.75	R135	- 88 703.00	2 854 141.58
L134	- 89 320.35	2 854 124.25	R136	- 88 627.86	2 854 154.94
L135	- 89 184.78	2 854 148.10	R137	- 88 566.92	2 854 165.65
L136	- 89 048.80	2 854 172.03	R138	- 88 536.53	2 854 170.94
L137	- 88 941.27	2 854 190.95	R139	- 88 505.56	2 854 176.38
L138	- 88 839.95	2 854 208.77	R140	- 88 475.44	2 854 181.67
L139	- 88 745.20	2 854 225.46	R141	- 88 405.66	2 854 193.92
L140	- 88 667.89	2 854 239.08	R142	- 88 335.76	2 854 206.02
L141	- 88 606.95	2 854 249.81	R143	- 88 320.25	2 854 208.92
L142	- 88 576.49	2 854 255.18	R144	- 88 270.92	2 854 217.74
L143	- 88 545.29	2 854 260.67	R145	- 88 200.75	2 854 230.28
L144	- 88 515.35	2 854 265.93	R146	- 88 137.38	2 854 241.60
L145	- 88 445.84	2 854 278.19	R147	- 88 074.15	2 854 252.94
L146	- 88 376.02	2 854 290.49	R148	- 87 943.27	2 854 276.29
L147	- 88 309.60	2 854 302.19	R149	- 87 856.90	2 854 289.93
L148	- 88 239.52	2 854 314.53	R150	- 87 809.49	2 854 297.52
			Vel 19	Van 26	P592/06
			Sheet	of	

PADRESERVE KOÖRDINATE / ROAD RESERVE CO-ORDINATES							
LINKERKANT/LEFT HAND SIDE			REGTERKANT/RIGHT HAND SIDE				
	Y	X	WG 27°	Y	X		
L149	- 88 169.51	2 854 326.87	R151	- 87 501.46	2 854 346.63		
L150	- 88 098.85	2 854 339.31	R152	- 87 472.13	2 854 351.31		
L151	- 87 864.77	2 854 380.55	R153	- 87 237.41	2 854 402.73		
L152	- 87 817.96	2 854 388.89	R154	- 87 094.99	2 854 418.68		
L153	- 87 549.18	2 854 436.77	R155	- 87 030.16	2 854 414.94		
L154	- 87 247.48	2 854 488.67	R156	- 87 009.04	2 854 400.35		
L155	- 87 066.24	2 854 528.00	R157	- 86 967.48	2 854 405.46		
L156	- 86 958.96	2 854 551.30	R158	- 86 959.37	2 854 423.84		
L157	- 86 890.74	2 854 563.43	R159	- 86 903.53	2 854 442.24		
L158	- 86 884.02	2 854 564.58	R160	- 86 873.93	2 854 446.40		
L159	- 86 761.44	2 854 586.59	R161	- 86 861.73	2 854 448.11		
L160	- 86 759.12	2 854 538.46	R162	- 86 755.47	2 854 463.04		
L161	- 86 567.03	2 854 547.05	R163	- 86 648.58	2 854 478.10		
L162	- 86 389.58	2 854 543.49	R164	- 86 598.99	2 854 477.50		
L163	- 86 255.41	2 854 540.80	R165	- 86 420.01	2 854 475.33		
L164	- 86 188.68	2 854 528.54	R166	- 86 360.95	2 854 474.62		
L165	- 86 034.05	2 854 500.14	R167	- 86 215.86	2 854 446.92		
L166	- 85 959.13	2 854 479.94	R168	- 86 006.52	2 854 407.13		
L167	- 85 864.44	2 854 445.20	R169	- 85 784.15	2 854 364.79		
L168	- 85 768.21	2 854 417.38	R170	- 85 676.12	2 854 314.46		
L169	- 85 671.21	2 854 391.86	R171	- 85 682.57	2 854 295.53		
L170	- 85 603.11	2 854 375.68	R172	- 85 668.37	2 854 290.69		
L171	- 85 584.74	2 854 371.31	R173	- 85 653.49	2 854 285.62		
L172	- 85 573.06	2 854 368.54	R174	- 85 626.99	2 854 276.58		
L173	- 85 522.95	2 854 340.72	R175	- 85 621.97	2 854 290.71		
L174	- 85 484.37	2 854 319.30	R176	- 85 466.62	2 854 240.15		
L175	- 85 391.39	2 854 281.89	R177	- 85 415.90	2 854 223.71		
L176	- 85 299.67	2 854 241.93	R178	- 85 236.18	2 854 142.93		
L177	- 85 208.90	2 854 199.74	R179	- 84 978.53	2 853 998.76		
L178	- 85 119.22	2 854 155.21	R180	- 84 776.39	2 853 850.11		
L179	- 85 030.71	2 854 108.38	R181	- 84 602.54	2 853 693.55		
L180	- 84 956.55	2 854 066.68	R182	- 84 536.96	2 853 634.37		
L181	- 84 943.45	2 854 059.32	R183	- 84 500.32	2 853 520.50		
L182	- 84 857.42	2 854 008.07	R184	- 84 444.54	2 853 424.42		
L183	- 84 773.47	2 853 953.25	R185	- 84 498.13	2 853 333.00		
L184	- 84 693.27	2 853 892.94	R186	- 84 300.33	2 853 195.17		
L185	- 84 617.31	2 853 827.45	R187	- 84 265.91	2 853 078.77		
L186	- 84 542.67	2 853 753.62	R188	- 84 207.78	2 853 106.11		
L187	- 84 455.14	2 853 841.43	R189	- 84 139.29	2 852 973.61		
L188	- 84 373.97	2 853 714.92	R190	- 84 063.57	2 852 846.03		
L189	- 84 229.98	2 853 555.65	R191	- 83 980.45	2 852 723.01		
L190	- 84 116.27	2 853 429.93	R192	- 83 890.41	2 852 605.13		
L191	- 84 126.52	2 853 298.21	R193	- 83 773.77	2 852 463.80		
L192	- 84 051.47	2 853 001.83	R194	- 83 717.56	2 852 411.79		
L193	- 83 929.70	2 852 824.76	R195	- 83 579.20	2 852 283.76		
L194	- 83 820.63	2 852 661.68	R196	- 83 464.73	2 852 182.69		
L195	- 83 774.70	2 852 609.13	R197	- 83 590.22	2 852 118.42		
L196	- 83 704.35	2 852 528.65	R198	- 83 551.26	2 852 059.65		
L197	- 83 553.14	2 852 374.06	R199	- 83 494.49	2 852 020.55		
L198	- 83 416.94	2 852 260.86	R200	- 83 463.41	2 851 953.04		
L199	- 83 358.07	2 852 237.71	R201	- 83 369.20	2 851 905.88		
			Vel	20	Van	26	P592/06
			Sheet		of		

PADRESERWE KOÖRDINATE / ROAD RESERVE CO-ORDINATES					
LINKERKANT/LEFT HAND SIDE			REGTERKANT/RIGHT HAND SIDE		
	Y	X WG 27°		Y	X
L200	- 83 144.76	2 852 347.71	R202	- 83 219.26	2 851 895.43
L201	- 83 039.29	2 852 135.02	R203	- 82 892.05	2 851 851.15
L202	- 82 852.89	2 851 945.32	R204	- 82 701.16	2 851 787.84
L203	- 82 429.90	2 851 766.30	R205	- 82 334.05	2 851 642.07
L204	- 82 343.27	2 851 731.90	R206	- 82 318.20	2 851 635.91
L205	- 81 993.75	2 851 593.44	R207	- 81 966.49	2 851 496.27
L206	- 81 936.93	2 851 570.88	R208	- 81 819.96	2 851 433.53
L207	- 81 836.91	2 851 528.04	R209	- 81 677.02	2 851 362.92
L208	- 81 786.41	2 851 506.41	R210	- 81 538.09	2 851 284.69
L209	- 81 715.12	2 851 471.23	R211	- 81 403.53	2 851 199.14
L210	- 81 639.57	2 851 433.95	R212	- 81 273.81	2 851 106.46
L211	- 81 496.90	2 851 353.62	R213	- 81 149.25	2 851 006.90
L212	- 81 443.83	2 851 319.87	R214	- 81 078.32	2 850 938.37
L213	- 81 358.72	2 851 265.73	R215	- 80 880.37	2 850 719.61
L214	- 81 225.51	2 851 170.46	R216	- 80 733.70	2 850 536.88
L215	- 81 137.68	2 851 100.29	R217	- 80 659.80	2 850 444.75
L216	- 81 137.74	2 851 073.55	R218	- 80 566.84	2 850 342.40
L217	- 80 609.78	2 850 583.87	R219	- 80 477.29	2 850 193.59
L218	- 80 615.98	2 850 581.52	R220	- 80 397.20	2 850 040.62
L219	- 80 561.88	2 850 514.12	R221	- 80 326.23	2 849 883.26
L220	- 80 498.77	2 850 384.75	R222	- 80 264.53	2 849 722.00
L221	- 80 407.74	2 850 232.73	R223	- 80 219.63	2 849 546.57
L222	- 80 325.29	2 850 075.65	R224	- 80 198.42	2 849 388.40
L223	- 80 252.37	2 849 914.01	R225	- 80 209.01	2 849 324.69
L224	- 80 188.98	2 849 748.42	R226	- 80 276.91	2 849 148.49
L225	- 80 055.03	2 849 368.18	R227	- 80 290.75	2 849 104.22
L226	- 79 984.53	2 849 284.19	R228	- 80 270.58	2 848 954.05
L227	- 79 880.36	2 849 209.67	R229	- 80 310.15	2 848 895.31
L228	- 79 812.92	2 849 090.43	R230	- 80 414.94	2 848 880.48
L229	- 79 803.24	2 849 055.77	R231	- 80 452.99	2 848 878.40
L230	- 79 726.95	2 849 004.01	R232	- 80 570.72	2 848 873.35
L231	- 79 538.18	2 849 065.56	R233	- 80 792.76	2 848 863.70
L232	- 79 519.25	2 849 072.77	R234	- 80 789.11	2 848 797.62
L233	- 79 086.54	2 849 238.61	R235	- 80 772.11	2 848 798.47
L234	- 79 070.20	2 849 173.98	R236	- 80 730.66	2 848 798.38
L235	- 79 318.15	2 849 079.20	R237	- 80 689.15	2 848 799.17
L236	- 79 390.70	2 849 047.14	R238	- 80 611.40	2 848 805.44
L237	- 79 467.59	2 849 021.91	R239	- 80 450.66	2 848 812.59
L238	- 79 495.60	2 849 011.21	R240	- 80 054.93	2 848 838.83
L239	- 79 581.00	2 848 979.94	R241	- 80 019.62	2 848 837.85
L240	- 79 618.29	2 848 964.06	R242	- 79 952.81	2 848 627.01
L241	- 79 899.50	2 848 869.88	R243	- 79 900.49	2 848 436.90
L242	- 79 915.21	2 848 846.78	R244	- 79 873.50	2 848 221.77
L243	- 79 876.37	2 848 691.26	R245	- 79 847.00	2 848 106.46
L244	- 79 797.51	2 848 503.71	R246	- 79 891.81	2 847 984.38
L245	- 79 752.12	2 848 241.55	R247	- 79 969.62	2 847 865.19
L246	- 79 749.00	2 848 077.62	R248	- 80 023.96	2 847 816.06
L247	- 79 690.42	2 847 959.41	R249	- 80 080.65	2 847 764.81
L248	- 79 572.62	2 847 880.63	R250	- 79 856.10	2 847 490.81
L249	- 79 507.41	2 847 837.01	R251	- 79 828.57	2 847 087.55
L250	- 79 582.91	2 847 618.35	R252	- 79 788.93	2 846 841.30
			Vel 21	Van 26	P592/06
			Sheet	of	

PADRESERWE KOÖRDINATE / ROAD RESERVE CO-ORDINATES							
LINKERKANT/LEFT HAND SIDE			REGTERKANT/RIGHT HAND SIDE				
	Y	X	WG 27°	Y	X		
L251	- 79 589.90	2 847 598.13	R253	- 79 743.74	2 846 682.66		
L252	- 79 627.56	2 847 437.04	R254	- 79 728.06	2 846 640.21		
L253	- 79 710.82	2 847 374.78	R255	- 79 704.67	2 846 644.82		
L254	- 79 712.89	2 847 194.93	R256	- 79 694.05	2 846 547.94		
L255	- 79 703.18	2 847 098.16	R257	- 79 664.77	2 846 476.94		
L256	- 79 661.62	2 846 868.59	R258	- 79 581.15	2 846 305.49		
L257	- 79 624.14	2 846 717.78	R259	- 79 450.98	2 846 103.48		
L258	- 79 556.58	2 846 523.66	R260	- 79 442.37	2 846 004.63		
L259	- 79 477.60	2 846 409.26	R261	- 79 382.26	2 846 013.06		
L260	- 79 471.24	2 846 400.04	R262	- 79 348.36	2 845 968.01		
L261	- 79 339.60	2 846 291.96	R263	- 79 195.85	2 845 802.64		
L262	- 79 286.13	2 846 263.49	R264	- 79 011.60	2 845 640.46		
L263	- 79 269.30	2 846 030.56	R265	- 78 942.90	2 845 591.81		
L264	- 79 280.33	2 846 028.57	R266	- 78 918.24	2 845 574.23		
L265	- 79 132.24	2 845 867.29	R267	- 78 844.53	2 845 522.13		
L266	- 79 016.41	2 845 762.31	R268	- 78 348.89	2 845 233.85		
L267	- 78 925.61	2 845 691.42	R269	- 78 331.56	2 845 214.12		
L268	- 78 893.11	2 845 666.06	R270	- 78 330.18	2 845 174.55		
L269	- 78 722.71	2 845 570.69	R271	- 78 243.0	2 845 175.45		
L270	- 78 563.59	2 845 509.79	R272	- 78 223.83	2 845 199.97		
L271	- 78 444.84	2 845 483.42	R273	- 78 118.61	2 845 200.92		
L272	- 78 348.33	2 845 471.40	R274	- 77 958.24	2 845 175.97		
L273	- 78 333.30	2 845 494.15	R275	- 77 802.30	2 845 144.08		
L274	- 78 250.17	2 845 495.17	R276	- 77 642.21	2 845 096.40		
L275	- 78 249.51	2 845 455.17	R277	- 77 461.14	2 845 028.01		
L276	- 78 235.21	2 845 435.39	R278	- 77 322.02	2 844 988.00		
L277	- 78 114.61	2 845 357.93	R279	- 77 307.38	2 844 983.78		
L278	- 78 101.87	2 845 352.13	R280	- 77 034.82	2 844 918.16		
L279	- 77 985.93	2 845 299.27	R281	- 76 832.17	2 844 858.52		
L280	- 77 957.83	2 845 290.23	R282	- 76 645.70	2 844 803.65		
L281	- 77 639.93	2 845 187.98	R283	- 76 477.09	2 844 754.03		
L282	- 77 566.91	2 845 164.45	R284	- 76 420.86	2 844 737.48		
L283	- 77 390.34	2 845 128.26	R285	- 76 339.19	2 844 712.32		
L284	- 77 243.68	2 845 076.30	R286	- 76 294.49	2 844 698.81		
L285	- 77 125.64	2 845 034.54	R287	- 76 253.67	2 844 686.03		
L286	- 76 782.64	2 844 933.55	R288	- 76 178.34	2 844 662.87		
L287	- 76 615.49	2 844 884.46	R289	- 76 134.97	2 844 649.53		
L288	- 76 436.66	2 844 831.80	R290	- 75 933.95	2 844 582.45		
L289	- 76 338.99	2 844 803.02	R291	- 75 737.21	2 844 501.29		
L290	- 76 297.66	2 844 791.61	R292	- 75 708.71	2 844 476.39		
L291	- 76 252.26	2 844 779.09	R293	- 75 575.62	2 844 411.47		
L292	- 76 210.89	2 844 767.68	R294	- 75 465.40	2 844 341.82		
L293	- 76 140.96	2 844 747.63	R295	- 75 426.33	2 844 316.02		
L294	- 76 097.79	2 844 734.14	R296	- 75 245.60	2 844 171.76		
L295	- 75 991.46	2 844 701.47	R297	- 75 180.90	2 844 120.11		
L296	- 75 903.47	2 844 666.01	R298	- 74 994.63	2 843 927.63		
L297	- 75 746.44	2 844 603.35	R299	- 74 823.67	2 843 746.81		
L298	- 75 714.49	2 844 586.74	R300	- 74 790.53	2 843 651.85		
L299	- 75 510.64	2 844 481.09	R301	- 74 735.95	2 843 574.89		
L300	- 75 297.34	2 844 339.85	R302	- 74 699.34	2 843 516.04		
L301	- 75 289.55	2 844 334.70	R303	- 74 675.93	2 843 463.43		
			Vel	22	Van	26	P592/06
			Sheet		of		

PADRESERWE KOÖRDINATE / ROAD RESERVE CO-ORDINATES					
LINKERKANT/LEFT HAND SIDE			REGTERKANT/RIGHT HAND SIDE		
	Y	X	WG 27°	Y	X
L302	- 75 065.88	2 844 153.87	R304	- 74 662.78	2 843 407.27
L303	- 75 035.25	2 844 129.11	R305	- 74 659.01	2 843 349.74
L304	- 74 921.31	2 844 025.58	R306	- 74 663.76	2 843 291.40
L305	- 74 898.53	2 844 004.88	R307	- 74 682.80	2 843 138.01
L306	- 74 746.79	2 843 805.87	R308	- 74 685.28	2 843 118.10
L307	- 74 711.29	2 843 759.31	R309	- 74 690.58	2 843 075.76
L308	- 74 570.53	2 843 534.53	R310	- 74 688.16	2 843 019.02
L309	- 74 525.82	2 843 463.12	R311	- 74 677.07	2 842 963.33
L310	- 74 460.87	2 843 379.76	R312	- 74 657.63	2 842 909.84
L311	- 74 393.32	2 843 318.00	R313	- 74 600.52	2 842 820.90
L312	- 74 304.60	2 843 264.62	R314	- 74 556.74	2 842 779.05
L313	- 74 193.08	2 843 224.10	R315	- 74 505.65	2 842 745.70
L314	- 74 081.51	2 843 208.16	R316	- 74 449.65	2 842 721.11
L315	- 73 957.93	2 843 223.72	R317	- 74 390.54	2 842 705.90
L316	- 73 772.01	2 843 295.32	R318	- 74 384.10	2 842 705.34
L317	- 73 736.04	2 843 312.42	R318A	- 74 329.96	2 842 700.66
L318	- 73 548.62	2 843 402.01	R319	- 74 269.00	2 842 705.27
L319	- 73 503.12	2 843 423.76	R320	- 74 209.71	2 842 719.91
L320	- 73 374.23	2 843 491.10	R321	- 74 153.41	2 842 744.06
L321	- 73 327.07	2 843 515.73	R322	- 74 101.97	2 842 776.98
L322	- 73 115.68	2 843 628.69	R323	- 74 057.70	2 842 818.81
L323	- 73 062.43	2 843 657.15	R324	- 74 020.80	2 842 864.79
L324	- 72 893.02	2 843 746.54	R325	- 73 873.15	2 843 084.49
L325	- 72 845.79	2 843 771.34	R326	- 73 832.69	2 843 129.23
L326	- 72 826.50	2 843 781.47	R327	- 73 771.65	2 843 153.54
L327	- 72 655.15	2 843 871.20	R328	- 73 718.75	2 843 185.43
L328	- 72 217.54	2 844 107.53	R329	- 73 574.64	2 843 265.90
L329	- 72 092.05	2 844 175.29	R330	- 73 455.34	2 843 332.52
L330	- 71 833.34	2 844 317.06	R331	- 73 394.01	2 843 365.28
L331	- 69 439.58	2 845 628.79	R332	- 73 386.82	2 843 369.12
L332	- 69 315.79	2 845 696.63	R333	- 73 278.42	2 843 427.00
L333	- 69 198.09	2 845 761.12	R334	- 73 137.60	2 843 504.18
L334	- 69 062.04	2 845 845.97	R335	- 73 067.71	2 843 542.48
L335	- 68 949.42	2 845 931.64	R336	- 72 853.28	2 843 660.00
L336	- 68 844.91	2 846 037.38	R337	- 72 221.31	2 844 006.35
L337	- 68 832.79	2 846 075.21	R338	- 71 875.08	2 844 196.09
L338	- 68 904.70	2 846 283.74	R339	- 71 828.33	2 844 219.52
L339	- 68 867.95	2 846 299.45	R340	- 71 819.90	2 844 223.95
L340	- 68 767.61	2 846 103.08	R341	- 69 617.41	2 845 430.97
L341	- 68 738.57	2 846 093.66	R342	- 69 408.41	2 845 547.44
L342	- 68 638.93	2 846 114.39	R343	- 69 331.78	2 845 589.50
L343	- 68 502.33	2 846 156.21	R344	- 69 285.64	2 845 613.09
L344	- 68 410.72	2 846 197.19	R345	- 69 029.18	2 845 744.24
L345	- 68 233.45	2 846 289.78	R346	- 68 875.86	2 845 797.47
L346	- 68 133.48	2 846 344.56	R347	- 68 742.95	2 845 825.91
L347	- 67 356.39	2 846 770.31	R348	- 68 723.01	2 845 817.92
L348	- 67 148.50	2 846 891.27	R349	- 68 644.99	2 845 677.02
L349	- 67 074.32	2 846 942.65	R350	- 68 608.38	2 845 692.62
L350	- 67 005.91	2 847 000.62	R351	- 68 656.40	2 845 846.14
L351	- 66 946.65	2 847 062.35	R352	- 68 653.98	2 845 871.18
L352	- 66 945.99	2 847 083.22			
			Vel Sheet	23 Van of	26 P592/06

PADRESERWE KOÖRDINATE / ROAD RESERVE CO-ORDINATES					
LINKERKANT/LEFT HAND SIDE			REGTERKANT/RIGHT HAND SIDE		
	Y	X	WG 27°		
L353	- 66 993.22	2 847 115.09	R353	- 68 559.03	2 845 968.85
L354	- 67 174.06	2 847 231.44	R354	- 68 481.61	2 846 035.18
L355	- 67 398.98	2 847 371.75	R355	- 68 279.61	2 846 166.49
L356	- 67 367.18	2 847 422.65	R356	- 68 139.09	2 846 243.50
L357	- 67 070.23	2 847 237.33	R357	- 67 183.60	2 846 767.16
L358	- 67 017.72	2 847 208.13	R358	- 67 088.47	2 846 810.62
L359	- 66 957.77	2 847 170.65	R359	- 66 980.40	2 846 844.03
L360	- 66 886.73	2 847 128.98	R360	- 66 861.95	2 846 876.75
L361	- 66 859.64	2 847 128.07	R361	- 66 780.03	2 846 895.17
L362	- 66 822.27	2 847 143.22	R362	- 66 744.34	2 846 906.99
L363	- 66 783.24	2 847 152.27	R363	- 66 709.96	2 846 919.65
L364	- 66 530.89	2 847 225.12	R364	- 66 690.84	2 846 920.50
L365	- 66 436.51	2 847 255.17	R365	- 66 577.95	2 846 851.53
L366	- 66 310.93	2 847 311.37	R366	- 66 453.79	2 846 758.00
L367	- 66 306.01	2 847 316.14	R367	- 66 335.82	2 846 656.85
L368	- 66 190.56	2 847 354.27	R368	- 66 313.79	2 846 635.12
L369	- 66 166.79	2 847 363.40	R369	- 66 281.66	2 846 689.07
L370	- 66 148.57	2 847 379.35	R370	- 66 294.68	2 846 701.51
L371	- 66 111.50	2 847 393.94	R371	- 66 414.00	2 846 806.77
L372	- 66 083.91	2 847 395.24	R372	- 66 540.35	2 846 904.32
L373	- 66 044.09	2 847 410.54	R373	- 66 625.27	2 846 964.81
L374	- 65 936.53	2 847 451.87	R374	- 66 626.01	2 846 987.43
L375	- 65 745.25	2 847 517.29	R375	- 66 550.89	2 847 060.04
L376	- 65 674.49	2 847 541.49	R376	- 66 493.90	2 847 107.01
L377	- 65 442.04	2 847 610.90	R377	- 66 462.64	2 847 130.53
L378	- 65 409.60	2 847 620.59	R378	- 66 398.88	2 847 166.56
L379	- 65 199.81	2 847 674.53	R379	- 66 301.04	2 847 204.88
L380	- 65 141.90	2 847 689.42	R380	- 66 288.58	2 847 213.71
L381	- 65 061.78	2 847 707.12	R381	- 66 284.06	2 847 215.98
L382	- 64 662.45	2 847 784.97	R382	- 66 213.18	2 847 252.14
L383	- 64 655.86	2 847 786.18	R383	- 66 162.07	2 847 273.17
L384	- 64 599.21	2 847 796.61	R384	- 66 059.72	2 847 312.52
L385	- 64 301.20	2 847 836.77	R385	- 65 907.00	2 847 371.26
L386	- 64 160.21	2 847 850.69	R386	- 65 748.08	2 847 425.49
L387	- 64 050.17	2 847 861.56	R387	- 65 648.51	2 847 459.30
L388	- 63 774.12	2 847 878.32	R388	- 65 433.23	2 847 523.66
L389	- 63 726.94	2 847 880.10	R389	- 65 386.47	2 847 537.81
L390	- 63 708.36	2 847 880.66	R390	- 65 209.75	2 847 583.40
L391	- 63 660.59	2 847 882.10	R391	- 65 121.93	2 847 606.06
L392	- 63 563.58	2 847 883.49	R392	- 65 071.62	2 847 616.93
L393	- 63 497.57	2 847 884.43	R393	- 64 854.54	2 847 663.83
L394	- 62 192.15	2 847 888.47	R394	- 64 655.16	2 847 699.39
L395	- 62 024.85	2 847 888.99	R395	- 64 648.58	2 847 700.57
L396	- 61 760.33	2 847 889.81	R396	- 64 585.99	2 847 711.73
L397	- 61 773.95	2 847 973.50	R397	- 64 414.00	2 847 736.66
L398	- 61 462.62	2 847 890.62	R398	- 64 316.37	2 847 745.76
L399	- 61 183.58	2 847 891.44	R399	- 64 275.35	2 847 749.59
L400	- 61 022.56	2 847 891.92	R400	- 64 140.89	2 847 766.90
L401	- 60 886.51	2 847 892.33	R401	- 64 137.57	2 847 767.33
L402	- 60 766.34	2 847 892.68	R402	- 64 043.32	2 847 775.83
L403	- 60 658.14	2 847 893.00	R403	- 63 770.40	2 847 792.52
			Vel	24	Van 26
			Sheet		of
			P592/06		

PADRESERWE KOÖRDINATE / ROAD RESERVE CO-ORDINATES					
LINKERKANT/LEFT HAND SIDE			REGTERKANT/RIGHT HAND SIDE		
	Y	X WG 27°			
L404	- 60 642.62	2 847 893.05	R404	- 63 723.95	2 847 794.17
L405	- 60 556.72	2 847 894.75	R405	- 63 707.34	2 847 794.67
L406	- 60 342.66	2 847 898.97	R406	- 63 658.39	2 847 796.15
L407	- 60 138.53	2 847 894.22	R407	- 63 592.20	2 847 797.14
L408	- 60 042.67	2 847 891.90	R408	- 63 497.19	2 847 798.59
L409	- 59 983.63	2 847 892.08	R409	- 62 382.10	2 847 802.10
L410	- 59 844.88	2 847 892.49	R410	- 61 848.51	2 847 803.55
L411	- 59 694.29	2 847 892.93	R411	- 61 746.35	2 847 803.86
L412	- 59 533.27	2 847 893.41	R412	- 61 195.40	2 847 805.53
L413	- 59 162.99	2 847 894.51	R413	- 61 022.24	2 847 806.06
L414	- 58 822.42	2 847 895.52	R414	- 60 874.85	2 847 806.50
L415	- 58 742.56	2 847 895.75	R415	- 60 747.63	2 847 806.89
L416	- 58 529.90	2 847 903.41	R416	- 60 642.24	2 847 807.21
L417	- 58 398.60	2 847 902.41	R417	- 60 635.27	2 847 807.11
L418	- 58 279.67	2 847 900.14	R418	- 60 530.28	2 847 805.62
L419	- 58 142.62	2 847 897.52	R419	- 60 342.37	2 847 802.97
L420	- 58 016.45	2 847 897.93	R420	- 60 146.02	2 847 808.79
L421	- 57 670.86	2 847 899.03	R421	- 60 042.39	2 847 811.87
L422	- 57 187.51	2 847 900.56	R422	- 59 990.65	2 847 812.03
L423	- 57 050.77	2 847 901.00	R424	- 59 697.15	2 847 812.97
L424	- 56 860.73	2 847 901.60	R425	- 59 531.50	2 847 813.63
L425	- 56 842.59	2 847 901.66	R426	- 59 150.74	2 847 814.95
L426	- 56 682.58	2 847 907.15	R427	- 58 801.15	2 847 815.87
L427	- 56 487.32	2 847 903.32	R428	- 58 742.37	2 847 816.02
L428	- 56 442.67	2 847 902.44	R429	- 58 478.88	2 847 809.88
L429	- 56 356.39	2 847 907.18	R430	- 58 442.26	2 847 809.03
L430	- 56 242.67	2 847 913.42	R431	- 58 377.32	2 847 810.87
L431	- 56 137.20	2 847 926.94	R432	- 58 328.86	2 847 812.12
L432	- 56 042.73	2 847 939.04	R433	- 58 214.30	2 847 815.53
L433	- 55 986.64	2 847 958.05	R434	- 58 142.30	2 847 817.55
L434	- 55 952.11	2 847 969.76	R435	- 58 128.20	2 847 817.60
L435	- 55 950.35	2 848 009.98	R436	- 57 970.01	2 847 818.07
L436	- 55 942.67	2 848 185.52	R437	- 57 647.73	2 847 819.04
L437	- 55 925.93	2 848 209.25	R438	- 57 164.36	2 847 820.50
L438	- 55 859.39	2 848 206.20	R439	- 57 027.51	2 847 820.91
L439	- 55 830.44	2 848 204.99	R440	- 56 979.81	2 847 821.06
L440	- 55 829.13	2 848 190.19	R441	- 56 842.33	2 847 821.47
L441	- 55 758.61	2 848 187.23	R442	- 56 682.34	2 847 811.97
L442	- 55 742.85	2 847 964.87	R443	- 56 555.98	2 847 821.44
L443	- 55 641.44	2 847 940.10	R444	- 56 542.34	2 847 822.46
L444	- 55 582.04	2 847 925.50	R445	- 56 426.32	2 847 818.57
L445	- 55 365.82	2 847 912.63	R446	- 56 218.53	2 847 811.60
L446	- 55 342.73	2 847 911.13	R447	- 56 142.15	2 847 809.04
L447	- 55 101.22	2 847 907.93	R448	- 56 111.78	2 847 803.12
L448	- 55 058.19	2 847 907.35	R449	- 56 102.99	2 847 791.58
L449	- 55 042.59	2 847 907.15	R450	- 56 002.18	2 847 659.31
L450	- 55 004.39	2 847 909.17	R451	- 55 930.04	2 847 564.66
L451	- 54 993.20	2 847 909.76	R452	- 55 869.17	2 847 554.33
L452	- 54 961.37	2 847 911.44	R453	- 55 851.70	2 847 554.53
L453	- 54 842.60	2 847 917.73	R454	- 55 817.16	2 847 554.92
L454	- 54 654.30	2 847 908.75	R455	- 55 738.54	2 847 547.14
			Vel 25 Sheet	Van 26 of	P592/06

PADRESERWE KOÖRDINATE / ROAD RESERVE CO-ORDINATES					
LINKERKANT/LEFT HAND SIDE			REGTERKANT/RIGHT HAND SIDE		
	Y	X WG 27°			
L455	- 54 642.64	2 847 908.19	R456	- 55 742.55	2 847 761.77
L456	- 54 486.92	2 847 925.75	R457	- 55 582.27	2 847 805.40
L457	- 54 450.69	2 847 929.83	R458	- 55 408.52	2 847 820.47
L458	- 54 402.21	2 847 941.67	R459	- 55 374.18	2 847 823.45
L459	- 54 341.59	2 847 956.47	R460	- 55 342.34	2 847 826.21
L460	- 54 261.71	2 847 975.98	R461	- 55 112.41	2 847 826.89
L461	- 54 080.66	2 848 046.91	R462	- 55 042.49	2 847 827.10
L462	- 53 910.53	2 848 141.18	R463	- 55 036.83	2 847 826.88
L463	- 53 861.12	2 848 179.46	R464	- 55 010.98	2 847 825.87
L464	- 53 824.30	2 848 206.37	R465	- 55 000.73	2 847 825.47
L465	- 53 748.69	2 848 262.29	R466	- 54 878.47	2 847 820.72
L466	- 53 603.11	2 848 387.83	R467	- 54 842.27	2 847 817.73
L467	- 53 445.03	2 848 528.02	R468	- 54 642.42	2 847 828.20
L468	- 53 292.41	2 848 646.33	R469	- 54 583.84	2 847 830.49
L469	- 53 118.00	2 848 753.52	R470	- 54 538.13	2 847 832.75
L470	- 52 972.43	2 848 822.07	R471	- 54 521.82	2 847 835.60
L471	- 52 932.81	2 848 840.72	R472	- 54 438.80	2 847 850.09
L472	- 52 789.85	2 848 889.54	R473	- 54 396.45	2 847 857.49
L473	- 52 739.16	2 848 906.85	R474	- 54 335.46	2 847 868.14
L474	- 52 634.80	2 848 930.11	R475	- 54 139.67	2 847 930.35
L475	- 52 539.36	2 848 951.11	R476	- 53 953.71	2 848 017.62
L476	- 52 335.86	2 848 973.02	R477	- 53 811.47	2 848 109.25
L477	- 52 242.60	2 848 972.88	R478	- 53 780.26	2 848 129.33
L478	- 52 131.18	2 848 972.15	R479	- 53 771.26	2 848 136.20
L479	- 52 000.56	2 848 956.18	R480	- 53 696.11	2 848 201.90
L480	- 51 996.47	2 848 956.14	R481	- 53 390.81	2 848 465.26
L481	- 51 844.06	2 848 935.64	R482	- 53 244.68	2 848 578.19
L482	- 51 755.93	2 848 923.78	R483	- 53 078.18	2 848 680.41
L483	- 51 732.02	2 848 920.78	R484	- 53 075.22	2 848 681.81
L484	- 51 638.06	2 848 915.57	R485	- 52 902.15	2 848 763.45
L485	- 51 563.69	2 848 911.44	R486	- 52 861.41	2 848 777.42
L486	- 51 537.50	2 848 909.99	R487	- 52 716.04	2 848 827.22
L487	- 51 447.88	2 848 915.46	R488	- 52 686.47	2 848 833.75
			R489	- 52 525.89	2 848 869.21
			R490	- 52 331.63	2 848 890.00
			R491	- 52 276.08	2 848 889.80
			R492	- 52 136.11	2 848 889.28
			R493	- 52 029.22	2 848 877.29
			R494	- 52 007.38	2 848 874.84
			R495	- 51 940.60	2 848 867.90
			R496	- 51 862.42	2 848 856.54
			R497	- 51 766.86	2 848 842.64
			R498	- 51 741.77	2 848 838.40
			R499	- 51 632.71	2 848 832.32
			R500	- 51 558.34	2 848 828.18
			R501	- 51 536.83	2 848 826.98
			R502	- 51 470.28	2 848 828.68
			R503	- 51 441.78	2 848 829.99
			Vel 26 Sheet	Van 26 of	P592/06