

CONTENTS**INHOUD**

<i>No.</i>	<i>Page No.</i>	<i>Gazette No.</i>	<i>No.</i>	<i>Bladsy No.</i>	<i>Koerant No.</i>
GOVERNMENT NOTICE			GOEWERMENSKENNISGEWING		
Transport, Department of			Vervoer, Departement van		
<i>Government Notice</i>			<i>Goewermentskennisgewing</i>		
1116			1116		
South African National Roads Agency Limited and the National Roads Act (7/1998): The South African National Roads Agency Limited: Declaration Amendment of National Road N4 Section 9: Amendment of Declaration No. 1010 of 1998			Suid-Afrikaanse Nasionale Padagentskap Beperk en die Nasionale Paaie Wet (7/1998): Die Suid-Afrikaanse Nasionale Padagentskap Beperk: Verklaring wysiging van Nasionale Pad N4 Seksie 9: Wysiging van Verklaring No. 1010 van 1998		
	3	30501		4	30501

**GOVERNMENT NOTICE
GOEWERMENSKENNISGEWING**

**DEPARTMENT OF TRANSPORT
DEPARTEMENT VAN VERVPER**

No. 1116

23 November 2007

**THE SOUTH AFRICAN NATIONAL ROADS
AGENCY LIMITED**

Registration No: 98/09584/06

DECLARATION AMENDMENT OF NATIONAL ROAD N4 SECTION 9

AMENDMENT OF DECLARATION No. 1010 OF 1998

By virtue of section 40 (1)(b) of the South African National Roads Agency Limited and the National Roads Act, 1998 (Act No. 7 of 1998), I hereby amend Declaration No. 1010 of 1998, by substituting the section from the common boundary between the farms Schietfontein 437 –JQ and Vissershoeek 435 – JQ on sheet 5 up to and including sheet 14 of Plan no. P414/98, and the applicable co-ordinates, with the subjoined sheets 1 to 22 of Plan no.P617/07.

(National Road N4 Section 9: Doornpoort – Gauteng/North West Provincial Border.)



MINISTER OF TRANSPORT

No. 1116

23 November 2007

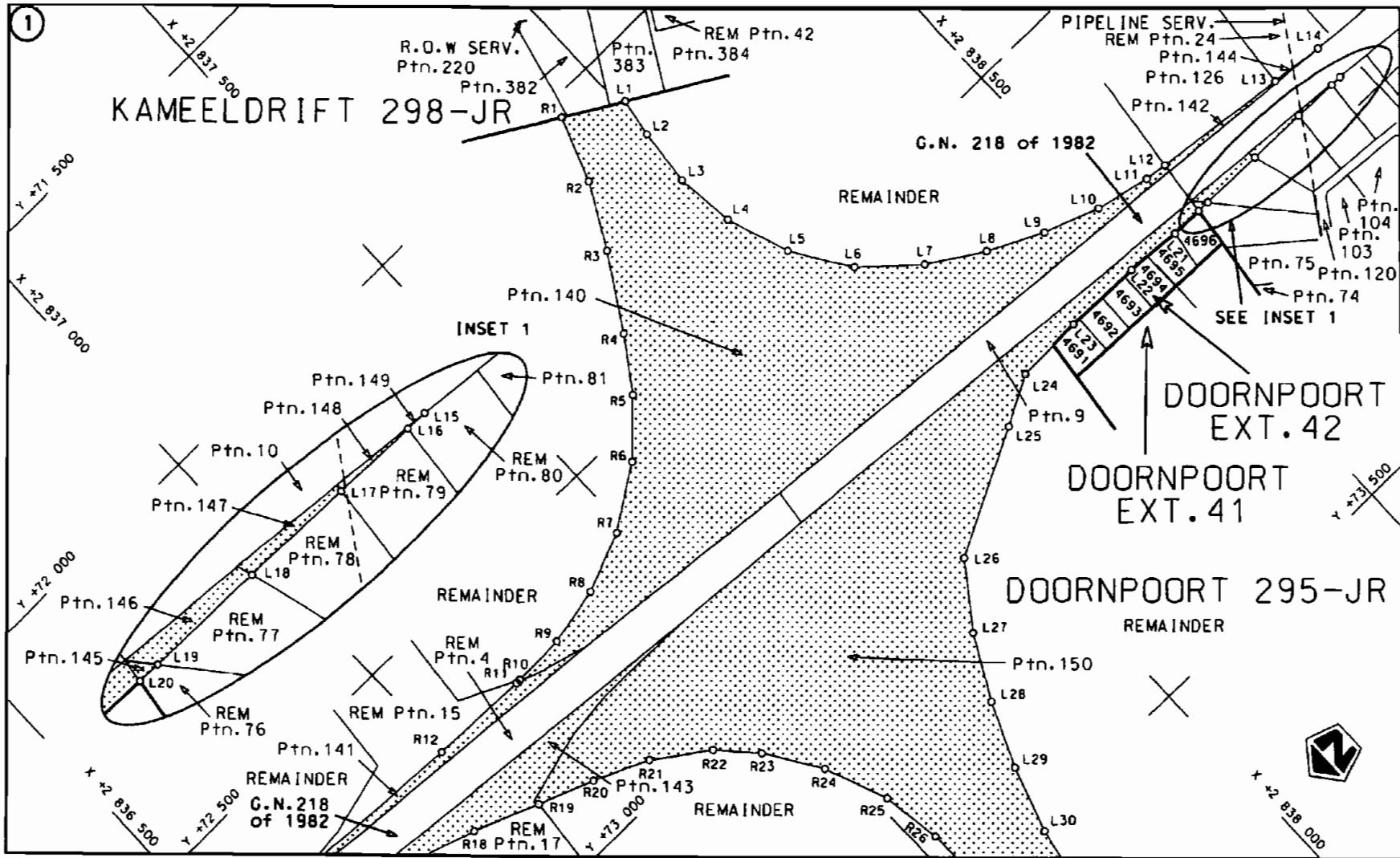
**DIE SUID-AFRIKAANSE NASIONALE
PADAGENTSKAP BEPERK**

Registrasie No: 98/09584/06

VERKLARING WYSIGING VAN NASIONALE PAD N4 SEKSIE 9.**WYSIGING VAN VERKLARING NO. 1010 VAN 1998**

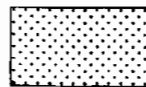
Kragtens Artikel 40(1)(b) van die Suid Afrikaanse Nasionale Padagentskap Beperk en die Nasionale Paaie Wet, 1998 (Wet No.7 van 1998), wysig ek hiermee Verklaring No.1010 van 1998, deur die gedeelte vanaf die gemeenskaplike grens tussen die plase Schietfontein 437 –JQ en Vissershoek 435 – JQ op vel 5 tot by en insluitende vel 14 van Plan no. P414/98, en die toepaslike koördinate, te vervang met meegaande velle 1 tot 22 van Plan no. P617/07.

(Nasionale Pad N4 Seksie 9: Doornpoort – Gauteng/Noord Wes Provinsiale Grens)**MINISTER VAN VERVOER**



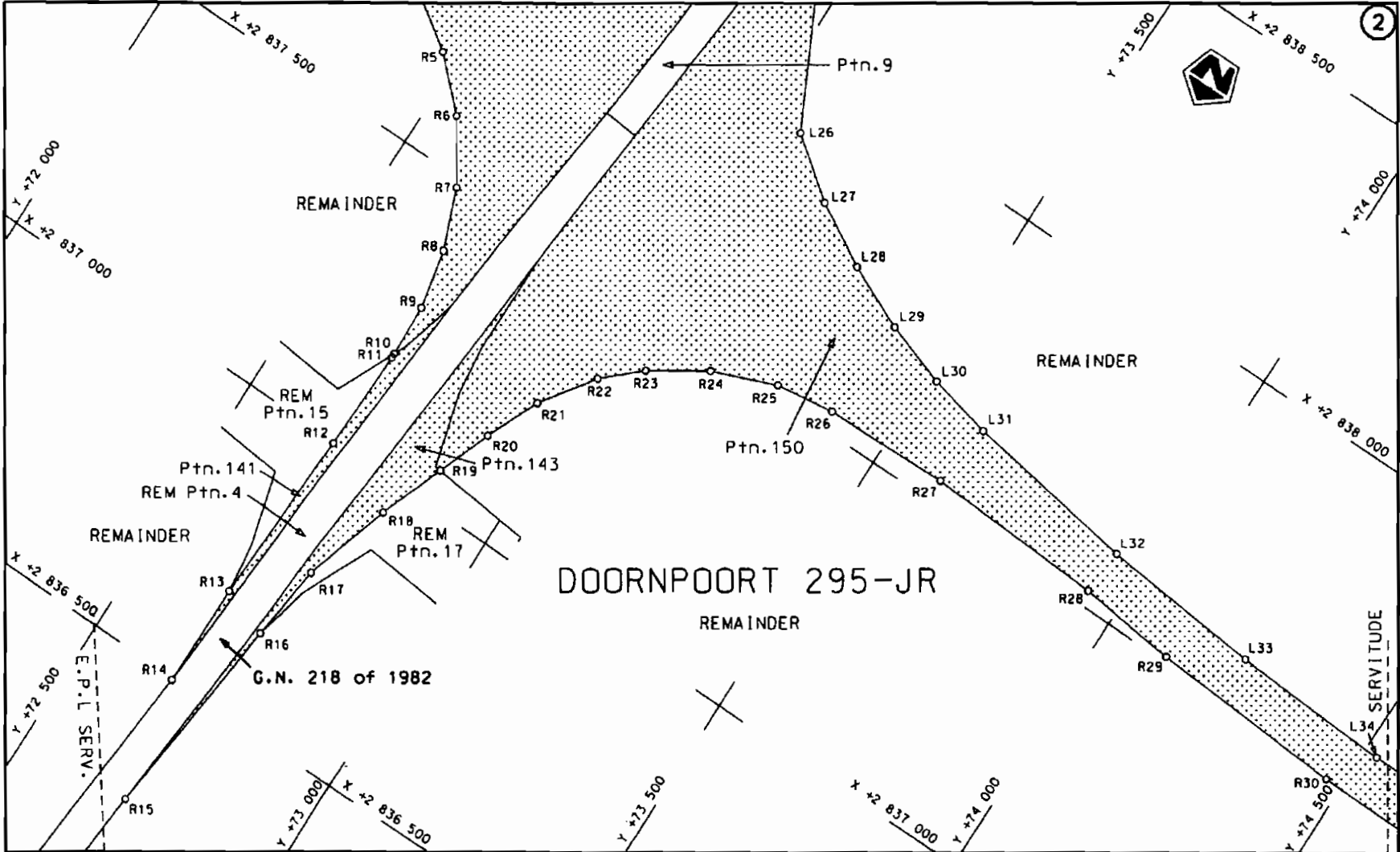
Die Suid Afrikaanse Nasionale Padagentskap Beperk
The South African National Roads Agency Limited


Die figuur getoon
The figure shown

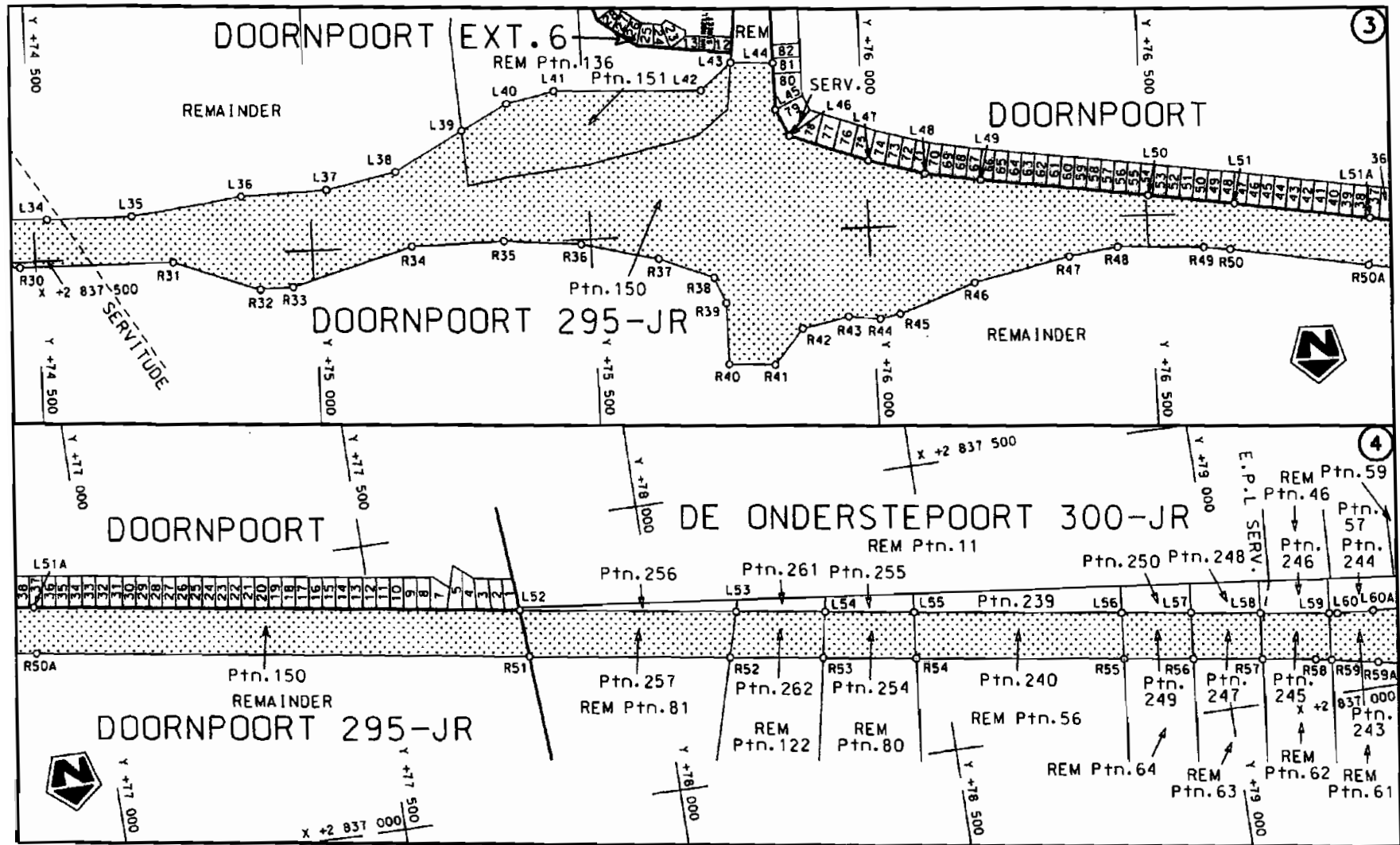


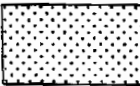
steldie padreserwe voor van 'n gedeelte
represents the road reserve of a portion
van Nasionale Roete N4 Seksie 9
of National Route Section

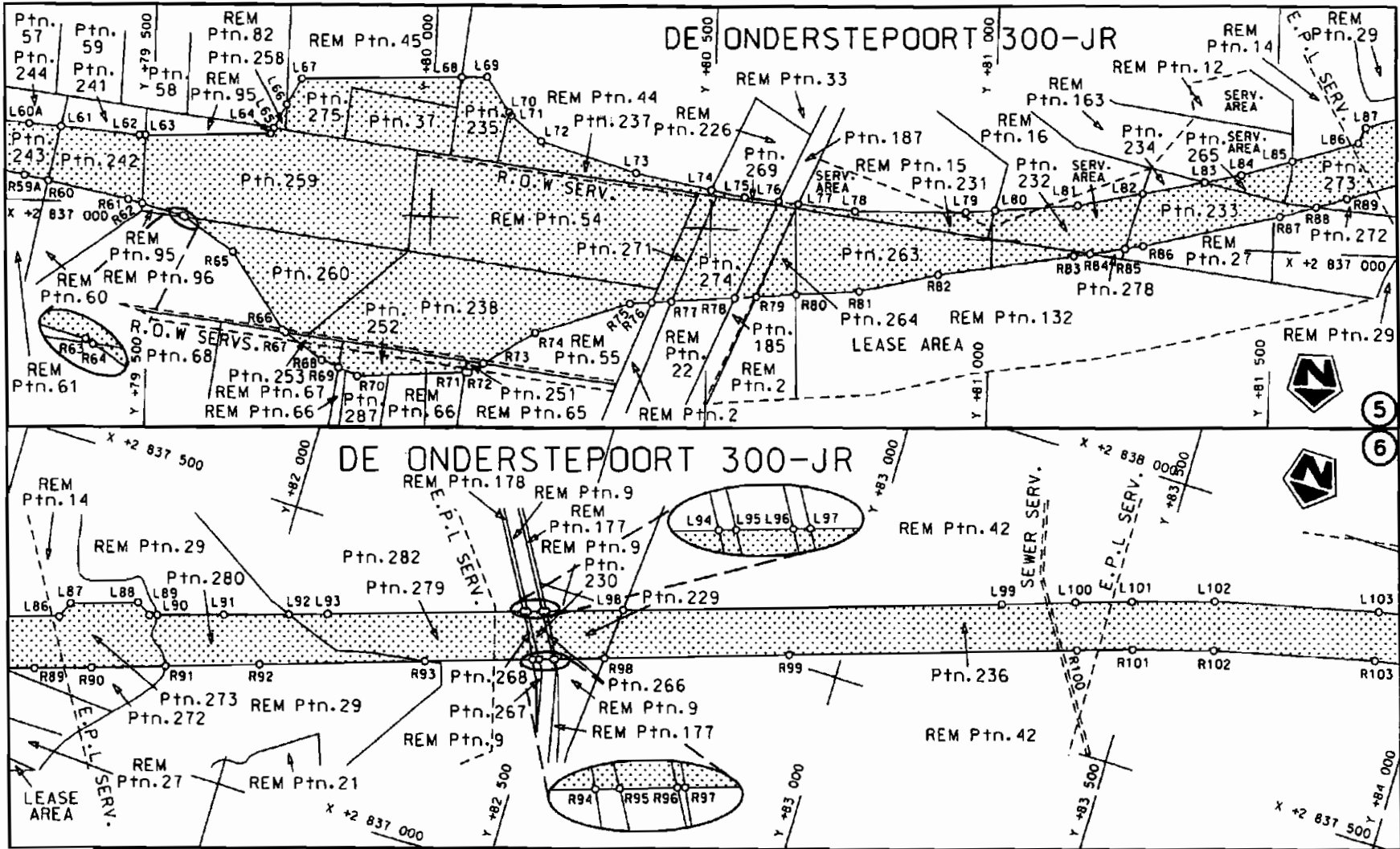
Vel Sheet 1 von of 22
Plan P617/07



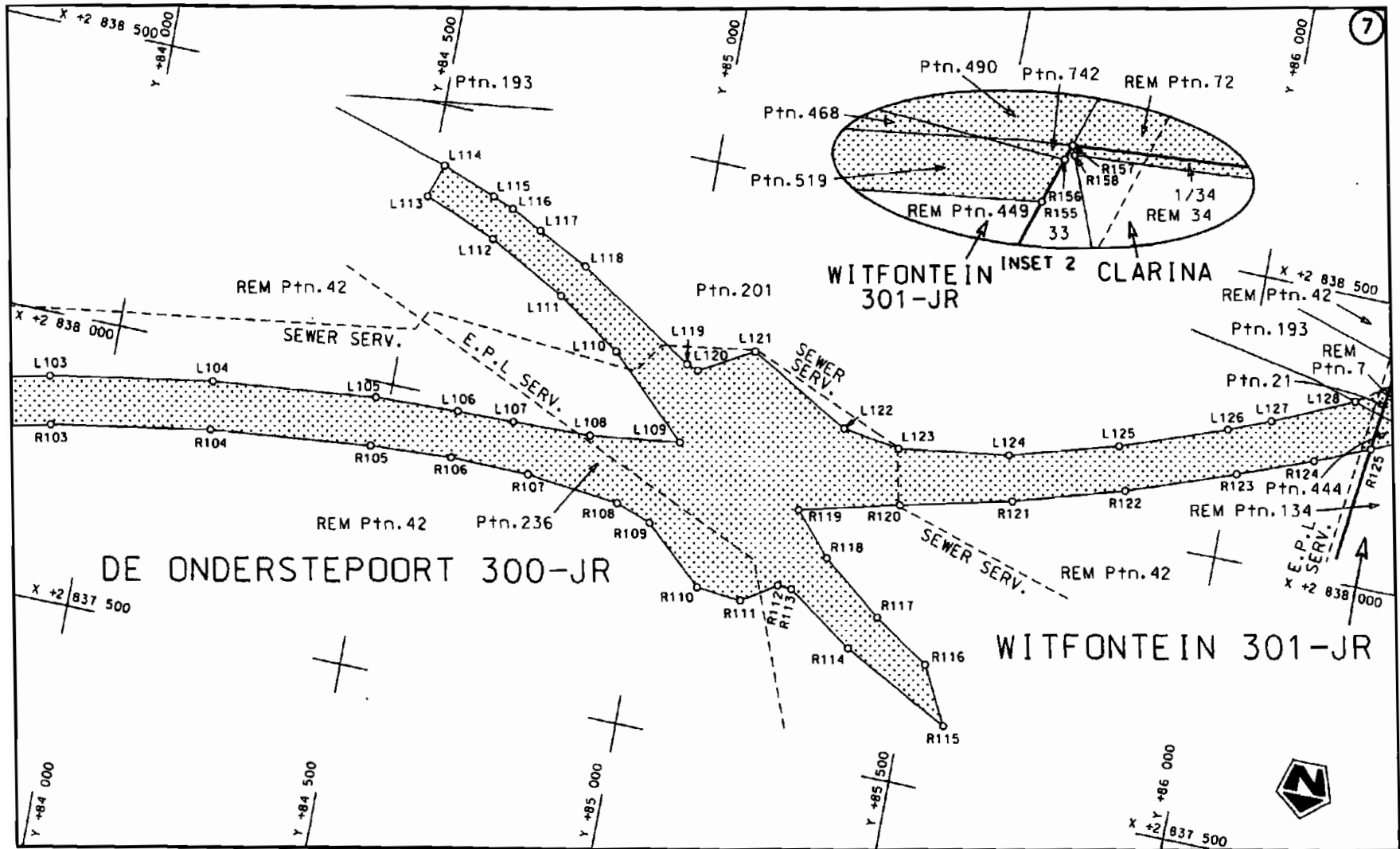
<p>Die Suid Afrikaanse Nasionale Podogentskap Beperk The South African National Roads Agency Limited</p>	<p>Die figuur getoon The figure shown</p>		<p>steldie padreserwe voor van 'n gedeelte represents the road reserve of a portion van Nasionale Roete N4 of National Route N4</p> <p>Seksie 9 Section 9</p>	<p>Vel Sheet 2 van of 22 Plan P617/07</p>
--------------------------------------------------------------------------------------------------------------	-----------------------------------------------	--------------------------------------------------------------------------------------	-------------------------------------------------------------------------------------------------------------------------------------------------------------------------------	-----------------------------------------------

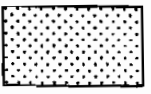


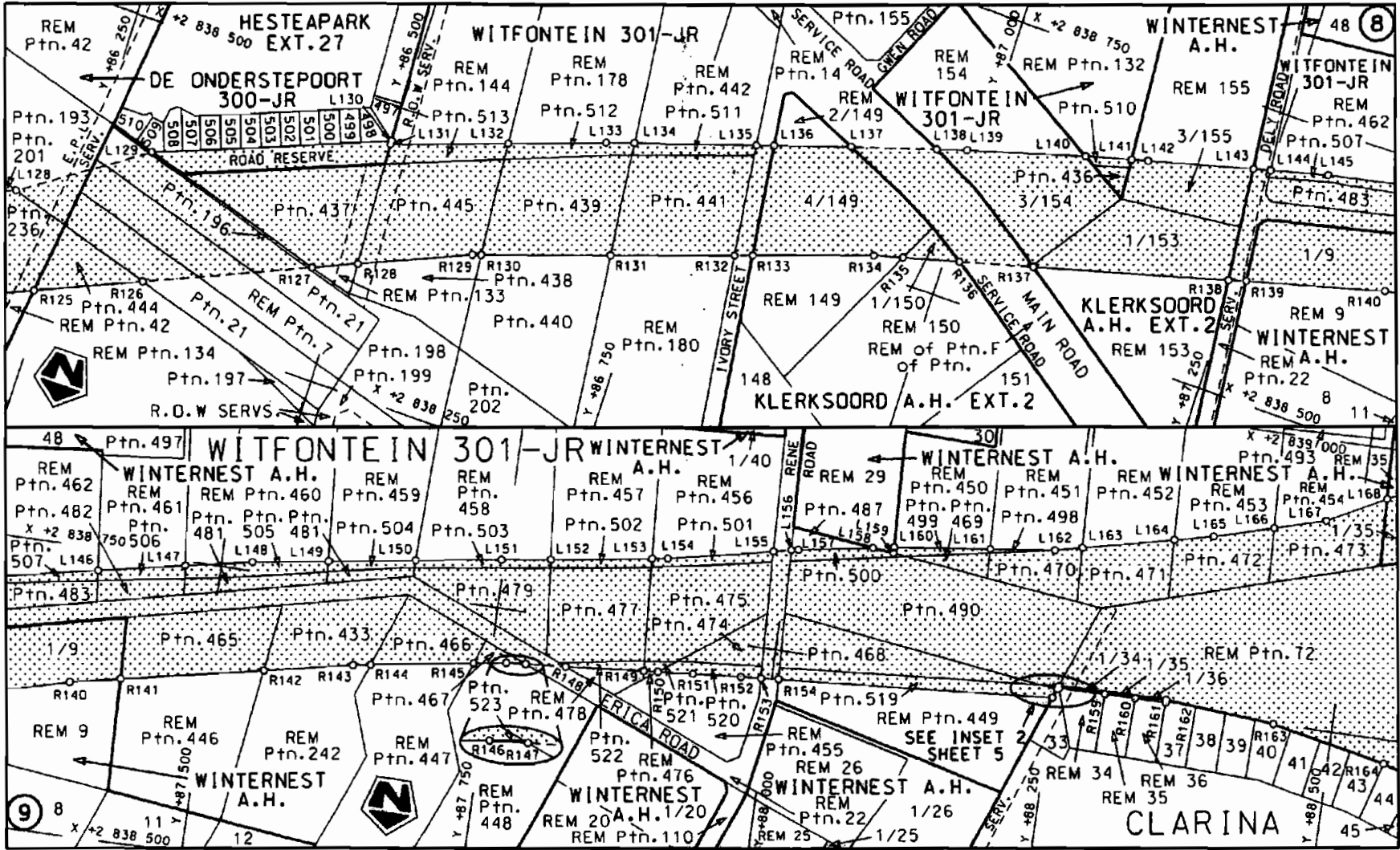
Die Suid Afrikaanse Nasionale Podogentskap Beperk The South African National Roads Agency Limited	Die figuur getoon The figure shown		steldie padreserwe voor van 'n gedeelte represents the road reserve of a portion van Nasionale Roete N4 of National Route Section 9	Vel Sheet 3 van of 22
				Plan P617/07




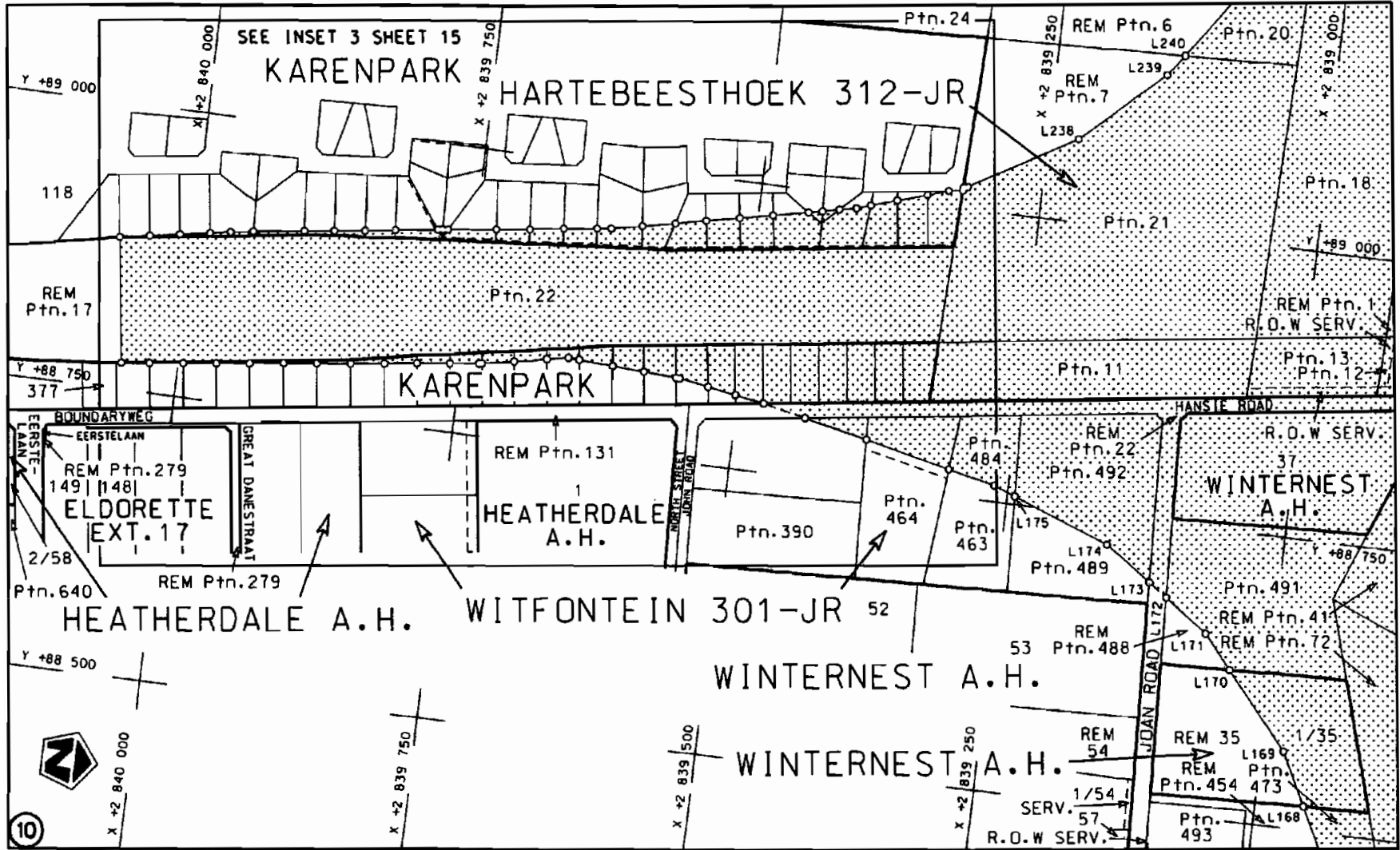
<p>Die Suid Afrikaanse Nasionale Padagentskap Beperk The South African National Roads Agency Limited</p>	<p>Die figuur getoon The figure shown</p>		<p>steldie padreserwe voor van 'n gedeelte represents the road reserve of a portion van Nasionale Roete N4 Seksie 9 of National Route N4 Section 9</p>	<p>Vel Sheet 4 van 22 Plan P617/07</p>
--------------------------------------------------------------------------------------------------------------	-----------------------------------------------	--	--------------------------------------------------------------------------------------------------------------------------------------------------------------------	--------------------------------------------

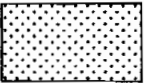


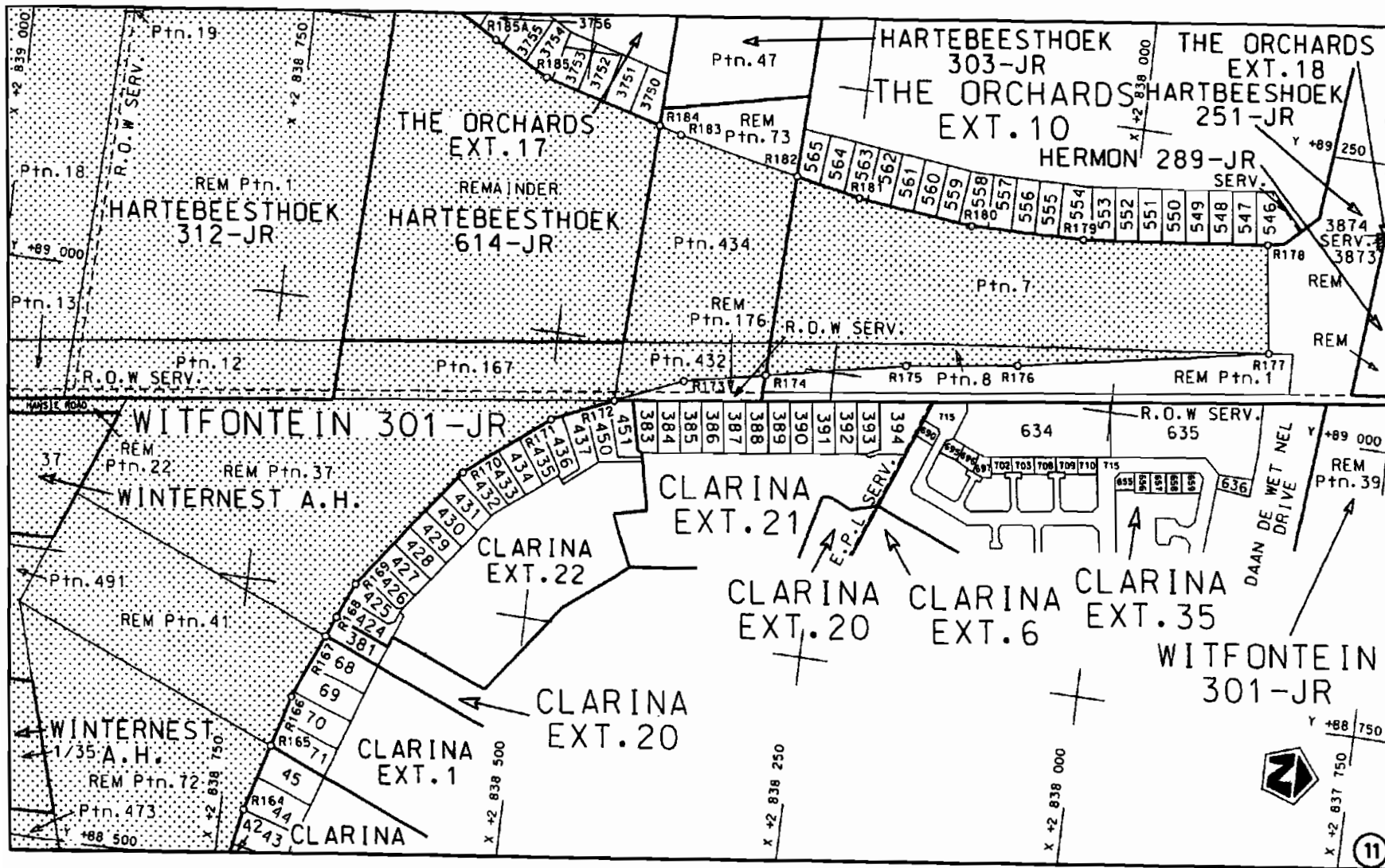
<p>Die Suid Afrikaanse Nasionale Padogentskap Beperk The South African National Roads Agency Limited</p>	<p>Die figuur getoon The figure shown</p>		<p>steldie padreserwe voor van 'n gedeelte represents the road reserve of a portion van Nasionale Roete of National Route</p>	<p>N4 9</p>	<p>Vel Sheet 5 van of 22</p> <p>Plan P617/07</p>
--------------------------------------------------------------------------------------------------------------	-----------------------------------------------	---------------------------------------------------------------------------------------	-------------------------------------------------------------------------------------------------------------------------------------------	------------------	--------------------------------------------------------------

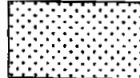


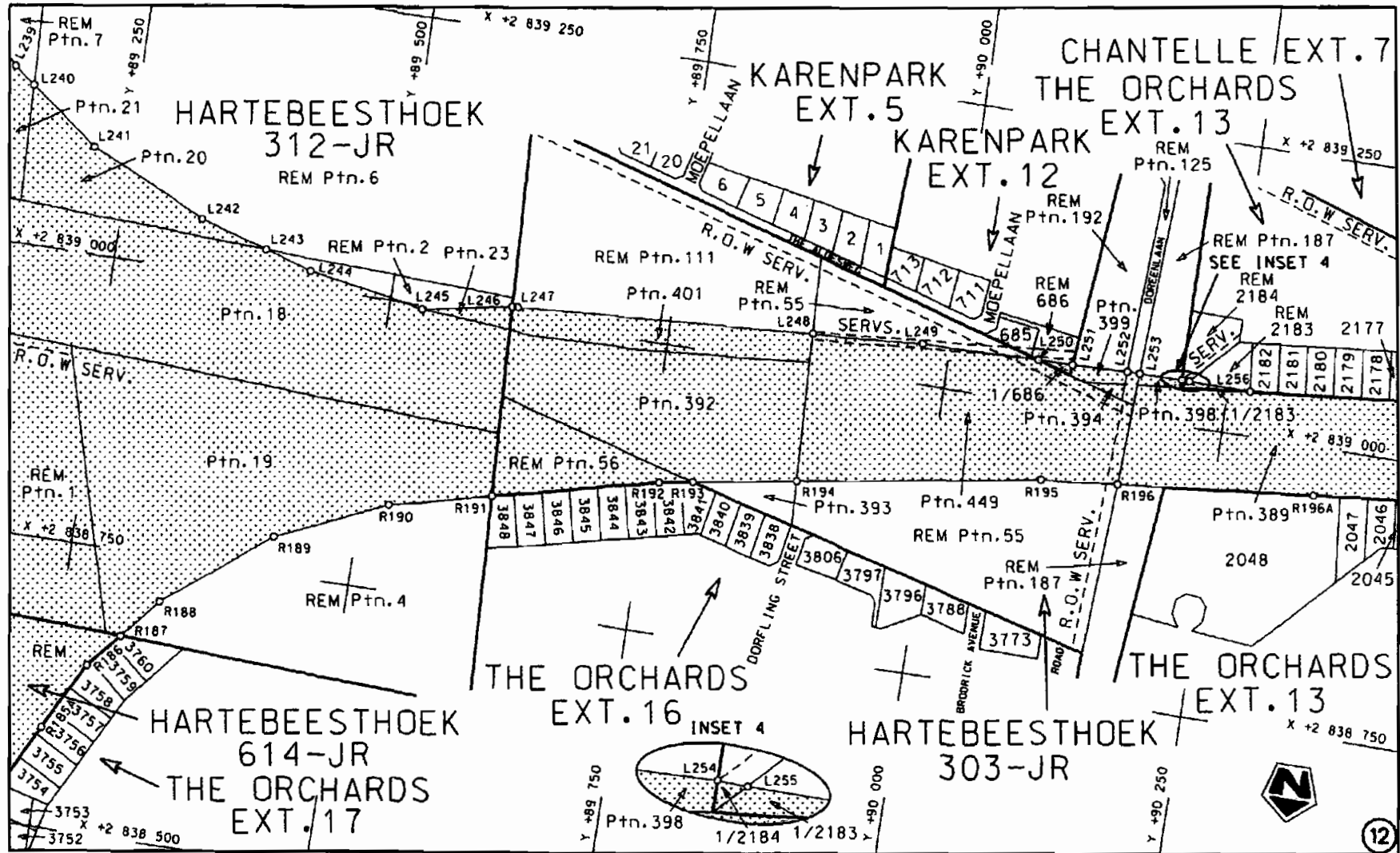
<p>Die Suid Afrikaanse Nasionale Padagentskap Beperk The South African National Roads Agency Limited</p>	<p>Die figuur getoon The figure shown</p>		<p>steldie padreserwe voor van 'n gedeelte represents the road reserve of a portion van Nasionale Roete N4 Seksie 9 of National Route Section</p>	<p>Vel Sheet 6 van of 22 Plan P617/07</p>
--------------------------------------------------------------------------------------------------------------	-----------------------------------------------	--------------------------------------------------------------------------------------	---------------------------------------------------------------------------------------------------------------------------------------------------------------	-----------------------------------------------



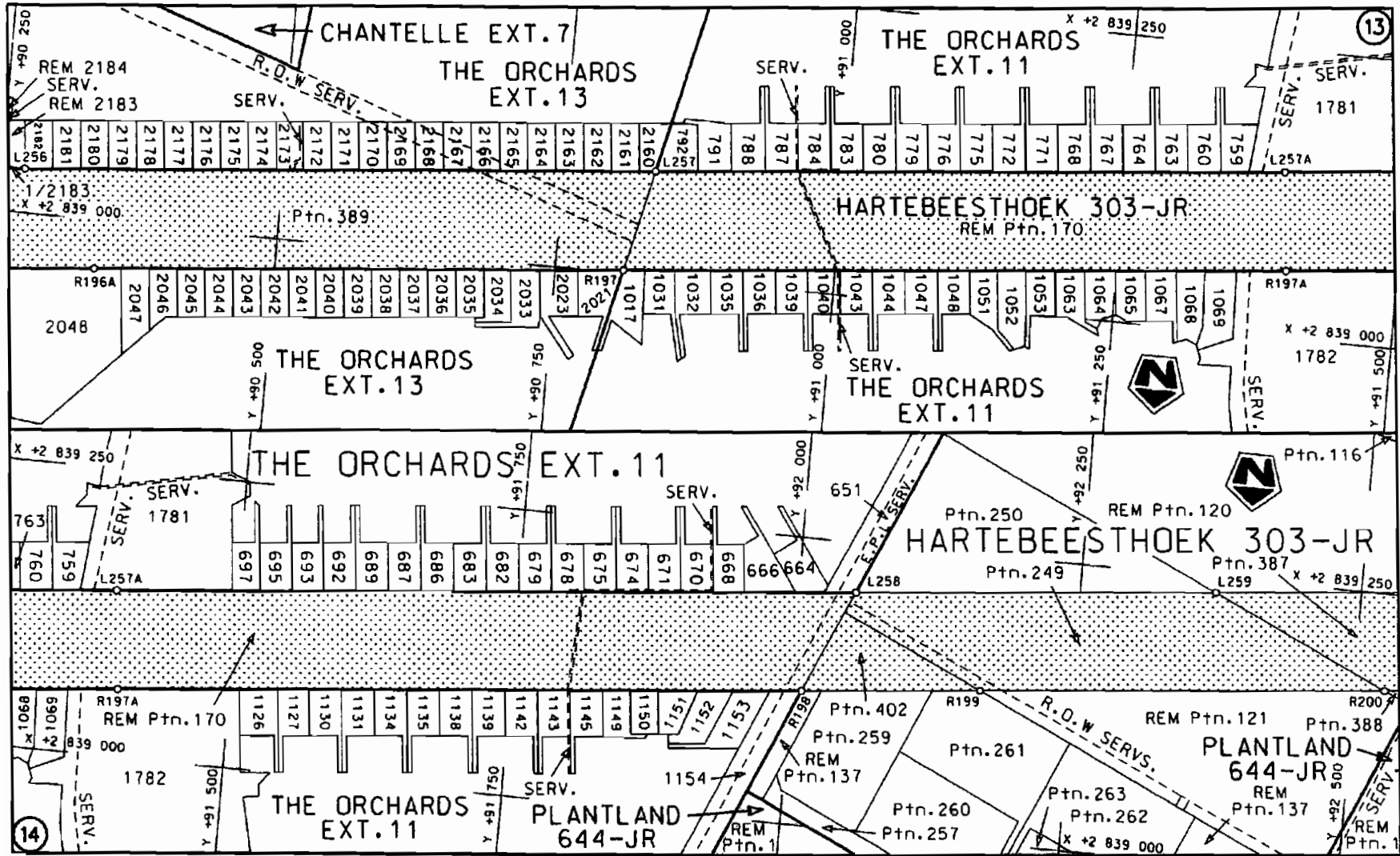
Die Suid Afrikaanse Nasionale Padagentskap Beperk The South African National Roads Agency Limited	Die figuur getoon The figure shown	 steldie padreserwe voor van 'n gedeelte represents the road reserve of a portion van Nasionale Roete N4 Seksie Section of National Route 9	Vel Sheet 7 van 22 Pion P617/07
------------------------------------------------------------------------------------------------------	---------------------------------------	-------------------------------------------------------------------------------------------------------------------------------------------------------------------------------------------------------------------------------------------	------------------------------------




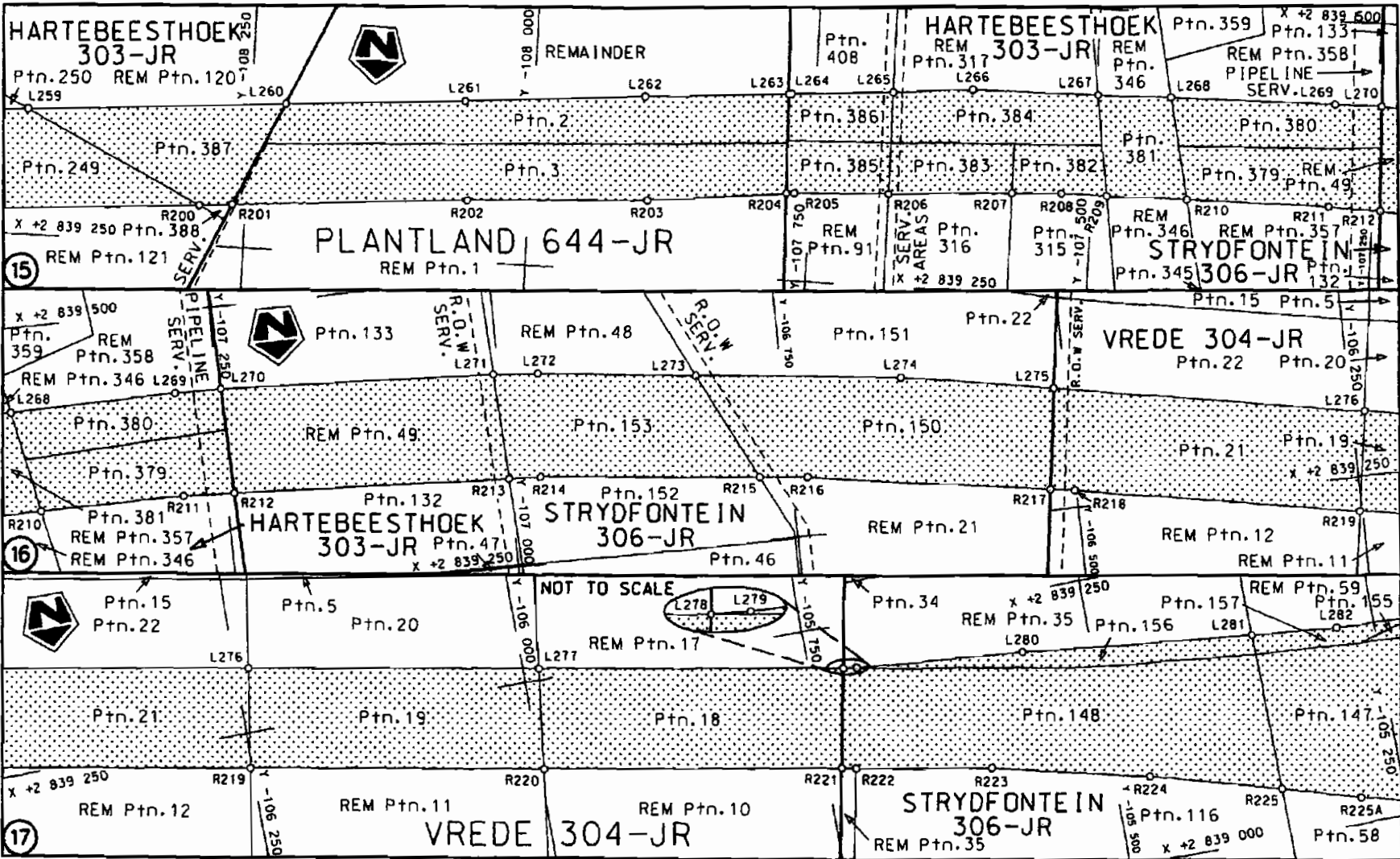
<p>Die Suid Afrikaanse Nasionale Padagentskap Beperk The South African National Roads Agency Limited</p>	<p>Die figuur getoon The figure shown</p> 	<p>steldie padreserwe voor van 'n gedeelte represents the road reserve of a portion van Nasionale Roete N4 of National Route N4</p> <p>Seksie 9 Section 9</p>	<p>Vel 8 van 22 Sheet 8 of 22</p> <p>Plan P617/07</p>
--------------------------------------------------------------------------------------------------------------	------------------------------------------------------------------------------------------------------------------------------------	-------------------------------------------------------------------------------------------------------------------------------------------------------------------------------	-----------------------------------------------------------

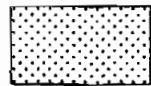


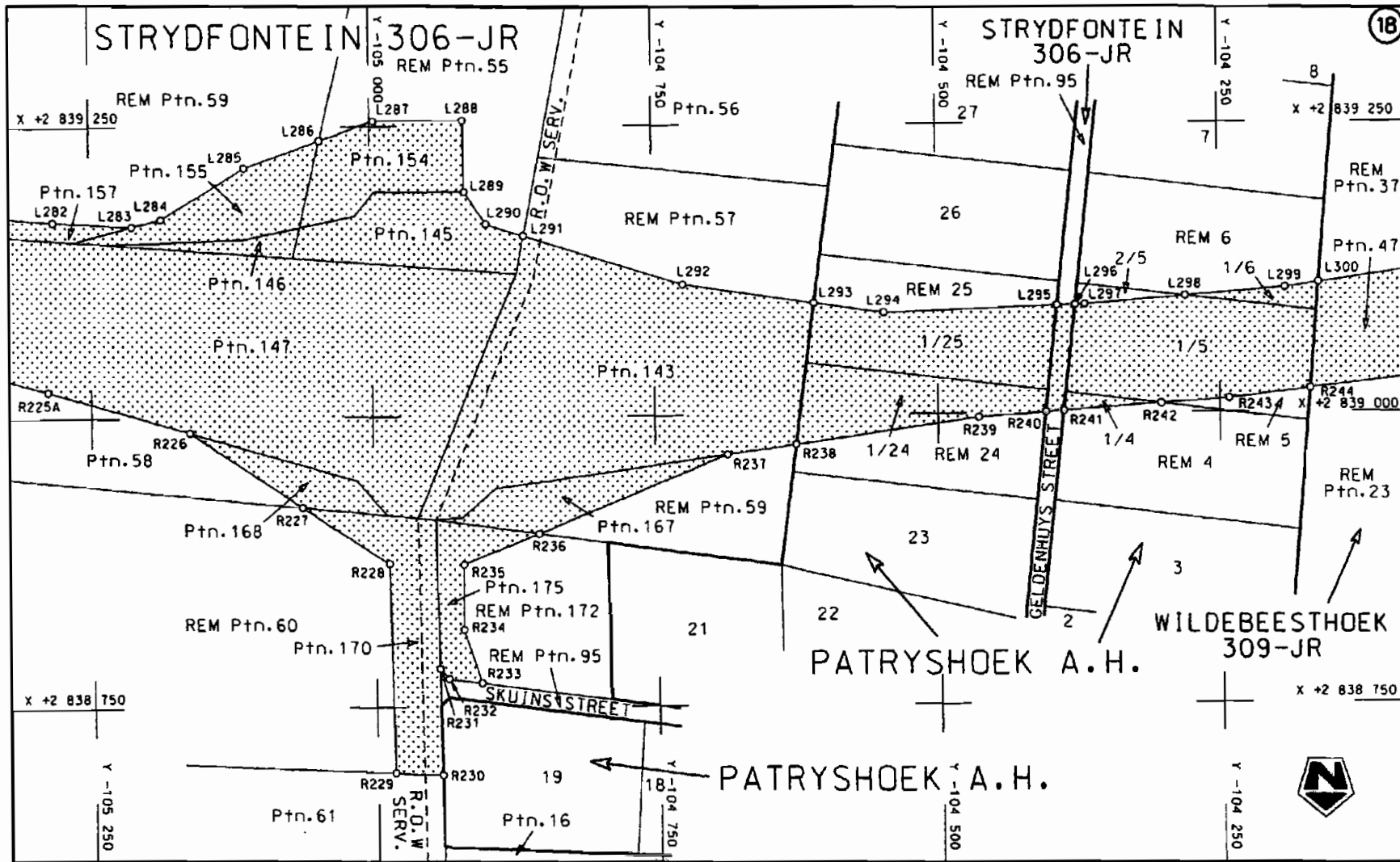
Die Suid Afrikaanse Nasionale Padagentskap Beperk	Die figuur getoon	steldie padreserwe voor van 'n gedeelte	Vel Sheet 9 van 22
The South African National Roads Agency Limited	The figure shown	represents the road reserve of a portion van Nasionale Roete N4 Seksie Section 9	Plan P617/07




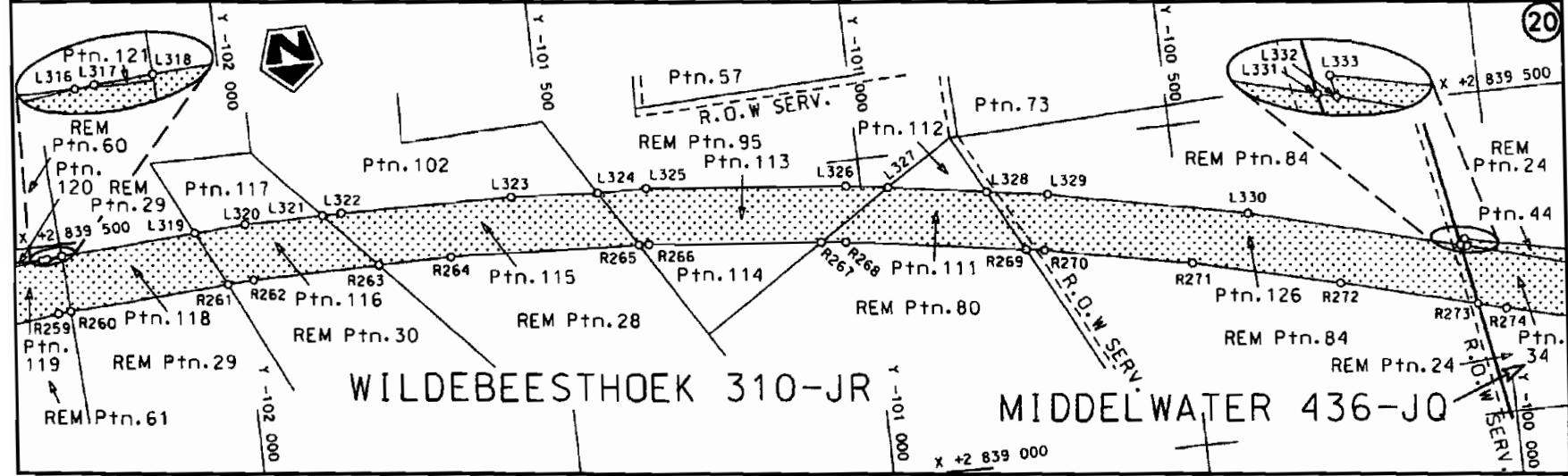
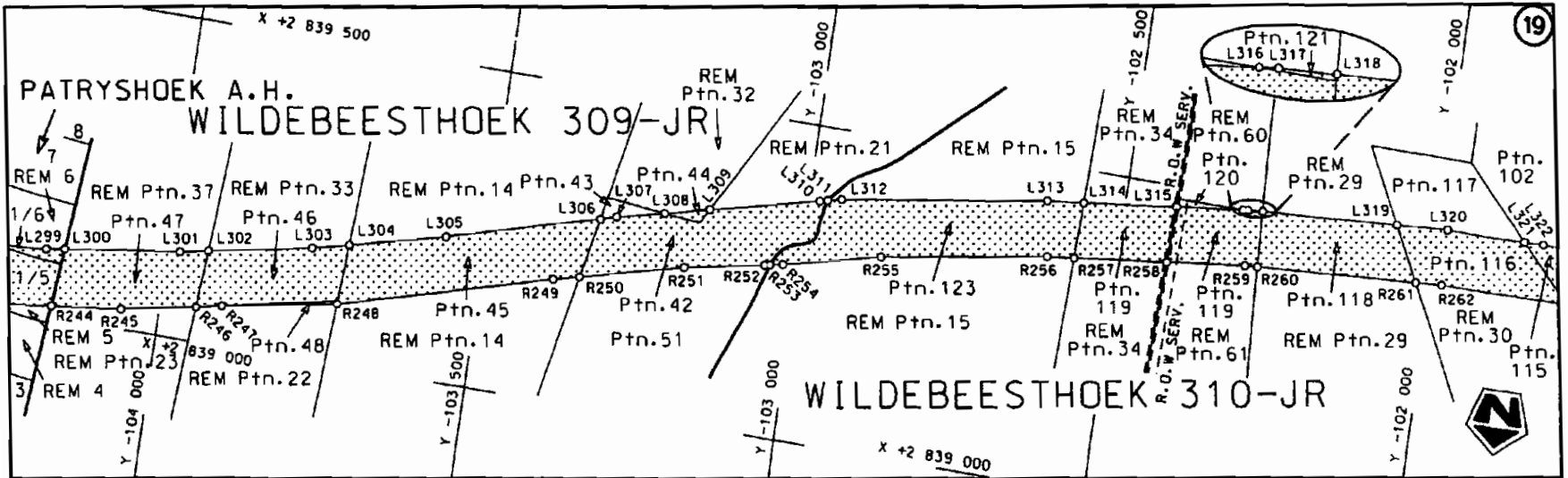
<p>Die Suid Afrikaanse Nasionale Padagentskop Beperk The South African National Roads Agency Limited</p>	<p>Die figuur getoon The figure shown</p>	<p> steldie padreserwe voor van 'n gedeelte represents the road reserve of a portion van Nasionale Roete N4 Seksie 9 of National Route</p>	<p>Vel Sheet 10 van of 22 Plan P617/07</p>
--------------------------------------------------------------------------------------------------------------	-----------------------------------------------	--------------------------------------------------------------------------------------------------------------------------------------------------------------------------------------------------------------------------------------------	------------------------------------------------

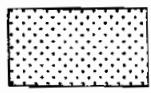


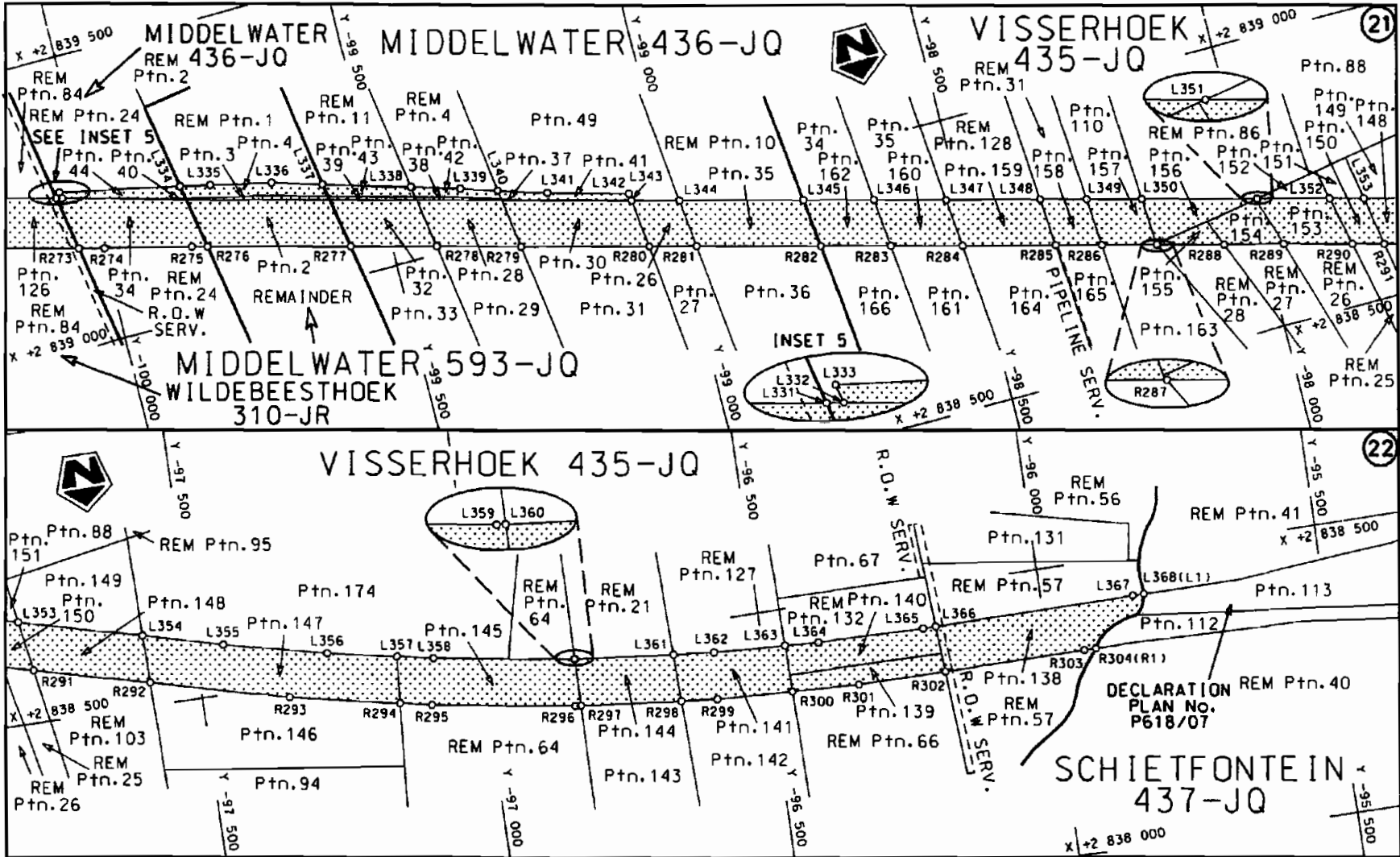
Die Suid Afrikaanse Nasionale Padagentskap Beperk The South African National Roads Agency Limited	Die figuur getoon The figure shown	 steldie padreserwe voor van 'n gedeelte represents the road reserve of a portion van Nasionale Roete N4 Seksie 9 of National Route N4 Section 9	Vel Sheet 11 van 22 Plan P617/07
------------------------------------------------------------------------------------------------------	---------------------------------------	-----------------------------------------------------------------------------------------------------------------------------------------------------------------------------------------------------------------------------------------------	-------------------------------------

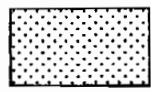


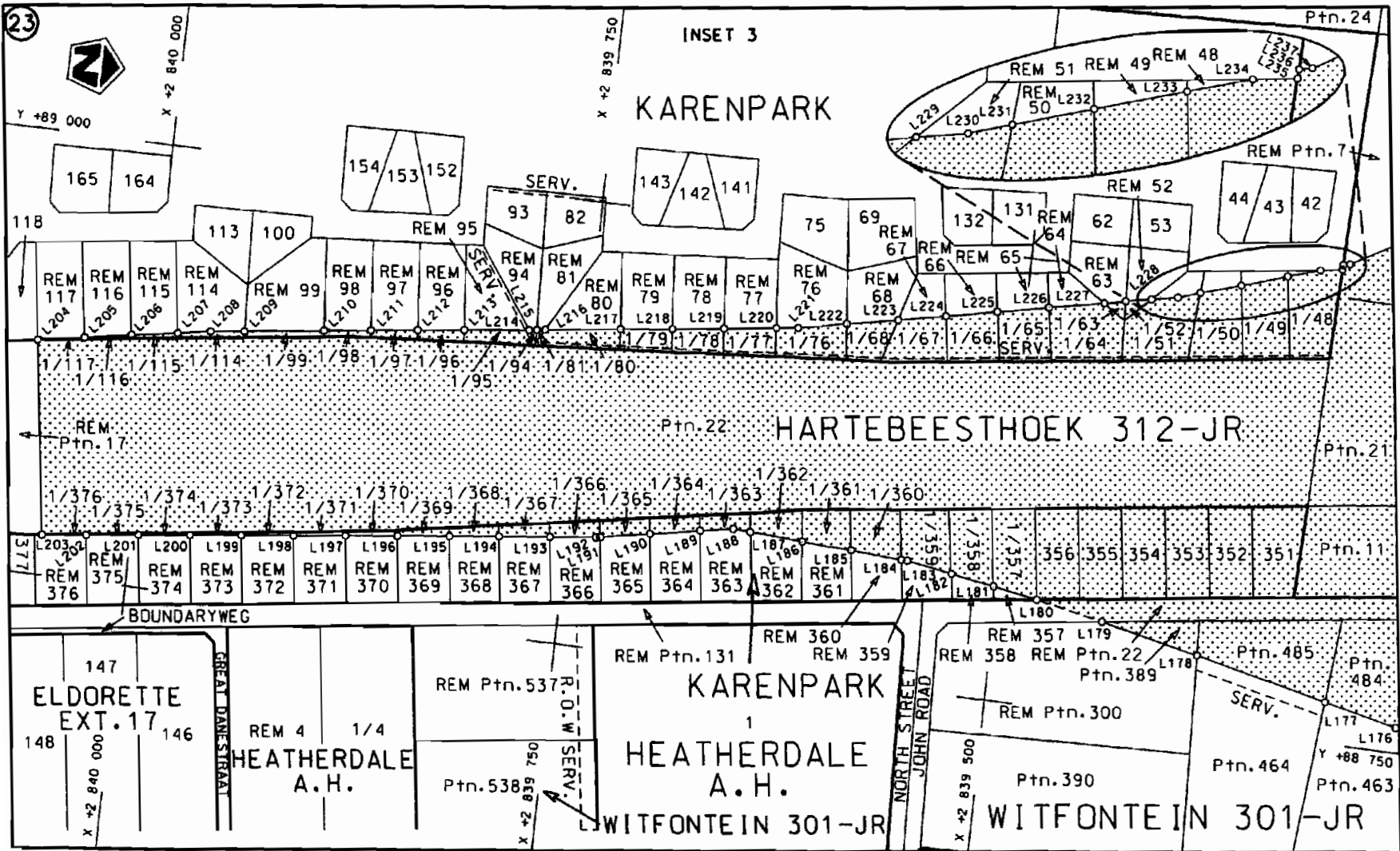
<p>Die Suid Afrikaanse Nasionale Padagentskop Beperk The South African National Roads Agency Limited</p>	<p>Die figuur getoon The figure shown</p> 	<p>steldie padreserve voor van 'n gedeelte represents the road reserve of a portion van Nasionale Roete N4 Sektie 9 of National Route N4 Section</p>	<p>Van Sheet 12 van 22 of Plan P617/07</p>
--------------------------------------------------------------------------------------------------------------	------------------------------------------------------------------------------------------------------------------------------------	------------------------------------------------------------------------------------------------------------------------------------------------------------------	----------------------------------------------------



<p>Die Suid Afrikaanse Nasionale Padagentskap Beperk The South African National Roads Agency Limited</p>	<p>Die figuur getoon The figure shown</p>		<p>steldie podreserwe voor van 'n gedeelte represents the road reserve of a portion van Nasionale Roete of National Route</p>	<p>N4 Seksie Section</p>	<p>9</p>	<p>Vel Sheet 13 van 22</p>	<p>Plan P617/07</p>
--------------------------------------------------------------------------------------------------------------	-----------------------------------------------	--------------------------------------------------------------------------------------	-------------------------------------------------------------------------------------------------------------------------------------------	----------------------------------	----------	--------------------------------	---------------------



<p>Die Suid Afrikaanse Nasionale Padagentskap Beperk The South African National Roads Agency Limited</p>	<p>Die figuur getoon The figure shown</p> 	<p>steldie padreserwe voor van 'n gedeelte represents the road reserve of a portion van Nasionale Roete N4 Seksie 9 of National Route N4 Section 9</p>	<p>Vel Sheet 14 van of 22 Plan P617/07</p>
--------------------------------------------------------------------------------------------------------------	------------------------------------------------------------------------------------------------------------------------------------	--------------------------------------------------------------------------------------------------------------------------------------------------------------------	------------------------------------------------



STAATSKOERANT, 23 NOVEMBER 2007

No. 30501 19

<p>Die Suid Afrikaanse Nasionale Padogenskap Beperk The South African National Roads Agency Limited</p>	<p>Die figuur getoon The figure shown</p> <div style="border: 1px solid black; width: 20px; height: 20px; background-color: #cccccc; margin: 5px;"></div>	<p>steldie padreserwe voor van 'n gedeelte represents the road reserve of a portion van Nasionale Roete N4 Sektie 9 of National Route</p>	<p>Vel Sheet 15 of 22 Plan P617/07</p>
-------------------------------------------------------------------------------------------------------------	---------------------------------------------------------------------------------------------------------------------------------------------------------------	-------------------------------------------------------------------------------------------------------------------------------------------------------	--------------------------------------------

PADRESERWE KOÖRDINATE				/	ROAD RESERVE CO-ORDINATES			
LINKERKANT/LEFT HAND SIDE					REGTERKANT/RIGHT HAND SIDE			
	Y	X	WG	29 ^o	Y	X		
L1	72 090.480	2 838 011.470		R1	72 032.740	2 837 909.330		
L2	72 159.020	2 837 999.540		R2	72 146.740	2 837 867.720		
L3	72 259.700	2 837 990.230		R3	72 255.890	2 837 808.700		
L4	72 365.620	2 838 001.850		R4	72 380.840	2 837 730.910		
L5	72 478.820	2 838 042.390		R5	72 468.490	2 837 669.330		
L6	72 581.310	2 838 109.760		R6	72 551.420	2 837 588.490		
L7	72 663.590	2 838 203.060		R7	72 620.690	2 837 484.020		
L8	72 723.580	2 838 298.170		R8	72 660.970	2 837 380.170		
L9	72 770.580	2 838 394.440		R9	72 681.500	2 837 277.840		
L10	72 806.690	2 838 491.690		R10	72 685.000	2 837 185.130		
L11	72 830.260	2 838 589.960		R11	72 685.300	2 837 177.140		
L12	72 835.310	2 838 630.000		R12	72 681.150	2 836 997.030		
L13	72 865.950	2 838 873.200		R13	72 664.890	2 836 680.140		
L14	72 877.810	2 838 967.250		R14	72 662.900	2 836 496.710		
L15	72 941.110	2 838 961.800		R15	72 707.880	2 836 278.610		
L16	72 940.060	2 838 941.555		R16	72 750.580	2 836 651.220		
L17	72 939.000	2 838 861.360		R17	72 771.420	2 836 788.420		
L18	72 936.760	2 838 755.140		R18	72 819.670	2 836 944.800		
L19	72 934.340	2 838 640.130		R19	72 864.050	2 837 060.480		
L20	72 933.880	2 838 618.280		R20	72 901.730	2 837 158.690		
L21	72 932.680	2 838 561.070		R21	72 944.560	2 837 255.040		
L22	72 923.960	2 838 461.340		R22	73 010.010	2 837 349.850		
L23	72 920.270	2 838 321.180		R23	73 073.500	2 837 408.520		
L24	72 923.900	2 838 200.520		R24	73 170.950	2 837 472.140		
L25	72 969.740	2 838 116.210		R25	73 283.970	2 837 517.600		
L26	73 078.500	2 837 902.370		R26	73 390.030	2 837 532.830		
L27	73 181.710	2 837 825.190		R27	73 616.390	2 837 538.820		
L28	73 290.240	2 837 765.720		R28	73 939.480	2 837 526.770		
L29	73 401.760	2 837 716.670		R29	74 116.210	2 837 509.080		
L30	73 516.030	2 837 679.230		R30	74 471.030	2 837 490.590		
L31	73 632.700	2 837 653.430		R31	74 748.070	2 837 489.110		
L32	73 947.340	2 837 606.410		R32	74 903.660	2 837 436.120		
L33	74 235.530	2 837 583.350		R33	74 962.140	2 837 438.060		
L34	74 524.330	2 837 571.410		R34	75 176.810	2 837 499.480		
L35	74 676.690	2 837 570.920		R35	75 343.460	2 837 502.820		
L36	74 878.010	2 837 598.840		R36	75 482.350	2 837 491.920		
L37	75 030.640	2 837 604.000		R37	75 621.010	2 837 461.040		
L38	75 154.420	2 837 631.930		R38	75 718.950	2 837 425.060		
L39	75 277.590	2 837 699.020		R39	75 737.900	2 837 381.040		
L40	75 360.780	2 837 744.340		R40	75 737.210	2 837 275.260		
L41	75 448.500	2 837 764.130		R41	75 818.460	2 837 270.770		
L42	75 713.430	2 837 754.760		R42	75 871.870	2 837 330.970		
L43	75 768.910	2 837 802.700		R43	75 954.980	2 837 348.630		
L44	75 843.630	2 837 798.580		R44	76 012.500	2 837 342.670		
L45	75 843.610	2 837 715.100		R45	76 048.500	2 837 349.550		
L46	75 866.410	2 837 667.580		R46	76 184.360	2 837 397.950		
L47	76 005.990	2 837 618.040		R47	76 356.620	2 837 434.920		
L48	76 105.370	2 837 590.970		R48	76 444.540	2 837 447.890		
L49	76 205.040	2 837 575.040		R49	76 598.680	2 837 441.250		
L50	76 504.250	2 837 535.240		R50	76 646.210	2 837 435.230		
L51	76 657.880	2 837 514.270		R51	77 769.020	2 837 269.720		

Vel	16	Van	22	P617/07
Sheet		of		

PADRESERWE KOÖRDINATE				/	ROAD RESERVE CO-ORDINATES				
LINKERKANT/LEFT HAND SIDE					REGTERKANT/RIGHT HAND SIDE				
	Y	X	WG	29°	Y	X			
L52	77 764.180	2 837 351.090		R52	78 125.910	2 837 217.120			
L53	78 149.030	2 837 294.420		R53	78 290.350	2 837 192.880			
L54	78 306.180	2 837 271.280		R54	78 455.730	2 837 168.500			
L55	78 464.530	2 837 247.960		R55	78 824.010	2 837 114.220			
L56	78 832.750	2 837 193.730		R56	78 947.150	2 837 096.060			
L57	78 955.890	2 837 175.600		R57	79 069.790	2 837 077.990			
L58	79 078.520	2 837 157.540		R58	79 164.790	2 837 063.980			
L59	79 201.330	2 837 139.450		R59	79 192.600	2 837 058.730			
L60	79 215.960	2 837 137.300		R60	79 317.060	2 837 035.230			
L61	79 336.420	2 837 129.800		R61	79 459.750	2 837 008.290			
L62	79 476.380	2 837 121.090		R62	79 485.450	2 837 001.860			
L63	79 487.460	2 837 121.660		R63	79 557.840	2 836 983.760			
L64	79 710.670	2 837 133.180		R64	79 562.200	2 836 981.000			
L65	79 716.150	2 837 143.210		R65	79 649.700	2 836 925.670			
L66	79 739.250	2 837 185.470		R66	79 742.030	2 836 796.860			
L67	79 764.880	2 837 232.360		R67	79 749.130	2 836 792.180			
L68	80 046.680	2 837 246.320		R68	79 815.870	2 836 748.090			
L69	80 091.840	2 837 248.560		R69	79 845.330	2 836 736.500			
L70	80 133.370	2 837 188.530		R70	79 878.310	2 836 723.530			
L71	80 137.840	2 837 182.070		R71	80 068.290	2 836 737.580			
L72	80 192.240	2 837 139.950		R72	80 074.900	2 836 738.070			
L73	80 363.550	2 837 091.000		R73	80 100.580	2 836 753.720			
L74	80 499.100	2 837 066.690		R74	80 191.950	2 836 809.410			
L75	80 558.140	2 837 056.110		R75	80 359.820	2 836 866.060			
L76	80 619.680	2 837 051.170		R76	80 398.460	2 836 869.640			
L77	80 654.960	2 837 048.330		R77	80 433.450	2 836 872.880			
L78	80 755.240	2 837 040.280		R78	80 546.000	2 836 883.320			
L79	80 952.780	2 837 046.200		R79	80 584.060	2 836 886.840			
L80	81 004.470	2 837 051.150		R80	80 655.870	2 836 893.490			
L81	81 149.930	2 837 065.090		R81	80 766.500	2 836 903.750			
L82	81 265.080	2 837 090.680		R82	80 905.810	2 836 937.580			
L83	81 374.620	2 837 115.010		R83	81 145.400	2 836 977.870			
L84	81 439.790	2 837 129.490		R84	81 174.520	2 836 983.080			
L85	81 530.700	2 837 157.430		R85	81 236.690	2 836 994.200			
L86	81 648.010	2 837 193.490		R86	81 268.550	2 836 999.890			
L87	81 660.380	2 837 220.630		R87	81 511.260	2 837 059.560			
L88	81 774.360	2 837 257.190		R88	81 576.540	2 837 079.360			
L89	81 800.160	2 837 242.390		R89	81 630.790	2 837 095.810			
L90	81 813.681	2 837 246.615		R90	81 726.990	2 837 126.290			
L91	81 926.790	2 837 281.980		R91	81 852.492	2 837 167.288			
L92	82 038.880	2 837 317.030		R92	82 012.120	2 837 219.400			
L93	82 105.570	2 837 337.890		R93	82 292.470	2 837 310.950			
L94	82 435.630	2 837 444.530		R94	82 474.640	2 837 370.440			
L95	82 442.880	2 837 446.850		R95	82 485.110	2 837 373.860			
L96	82 467.370	2 837 454.760		R96	82 509.560	2 837 381.850			
L97	82 474.550	2 837 457.080		R97	82 512.920	2 837 382.950			
L98	82 605.530	2 837 499.400		R98	82 596.810	2 837 410.340			
L99	83 247.340	2 837 706.720		R99	82 910.680	2 837 512.840			
L100	83 370.400	2 837 747.760		R100	83 396.280	2 837 669.650			
L101	83 466.760	2 837 778.280		R101	83 491.030	2 837 699.900			
L102	83 607.200	2 837 821.860		R102	83 629.580	2 837 740.560			
					Vel	17	Van	22	P617/07
					Sheet		of		

PADRESERWE KOÖRDINATE				/	ROAD RESERVE CO-ORDINATES			
LINKERKANT/LEFT HAND SIDE					REGTERKANT/RIGHT HAND SIDE			
	Y	X	WG	29°	Y	X		
L103	83 893.080	2 837 890.840		R103	83 910.190	2 837 808.150		
L104	84 182.780	2 837 941.000		R104	84 194.480	2 837 857.600		
L105	84 475.130	2 837 972.460		R105	84 481.500	2 837 888.320		
L106	84 622.090	2 837 978.740		R106	84 625.540	2 837 896.750		
L107	84 722.490	2 837 981.220		R107	84 765.590	2 837 895.490		
L108	84 862.230	2 837 986.040		R108	84 932.470	2 837 878.700		
L109	85 023.060	2 838 007.190		R109	84 995.720	2 837 856.230		
L110	84 881.510	2 838 138.980		R110	85 100.760	2 837 762.360		
L111	84 766.520	2 838 213.070		R111	85 180.950	2 837 754.750		
L112	84 627.670	2 838 284.920		R112	85 241.370	2 837 794.250		
L113	84 500.050	2 838 334.810		R113	85 266.910	2 837 792.940		
L114	84 519.440	2 838 393.720		R114	85 386.450	2 837 712.760		
L115	84 615.250	2 838 358.490		R115	85 577.570	2 837 615.190		
L116	84 653.280	2 838 343.650		R116	85 526.860	2 837 713.200		
L117	84 708.520	2 838 317.150		R117	85 427.150	2 837 776.020		
L118	84 800.220	2 838 272.050		R118	85 319.810	2 837 859.440		
L119	85 010.350	2 838 143.340		R119	85 253.880	2 837 933.130		
L120	85 031.430	2 838 136.450		R120	85 431.080	2 837 977.760		
L121	85 126.130	2 838 189.770		R121	85 627.800	2 838 025.020		
L122	85 308.050	2 838 090.250		R122	85 821.400	2 838 083.270		
L123	85 410.620	2 838 075.740		R123	86 011.490	2 838 152.460		
L124	85 606.470	2 838 104.080		R124	86 143.920	2 838 202.540		
L125	85 796.230	2 838 159.110		R125	86 240.050	2 838 243.950		
L126	85 981.790	2 838 226.830		R126	86 329.410	2 838 282.440		
L127	86 055.100	2 838 256.840		R127	86 469.600	2 838 342.830		
L128	86 197.310	2 838 320.520		R128	86 506.930	2 838 358.910		
L129	86 301.080	2 838 391.010		R129	86 600.940	2 838 399.400		
L130	86 501.120	2 838 469.650		R130	86 608.430	2 838 401.960		
L131	86 501.270	2 838 466.360		R131	86 716.770	2 838 438.930		
L132	86 599.790	2 838 501.440		R132	86 822.160	2 838 474.900		
L133	86 681.480	2 838 530.530		R133	86 837.290	2 838 480.060		
L134	86 705.880	2 838 538.440		R134	86 939.270	2 838 514.870		
L135	86 809.550	2 838 572.070		R135	86 964.450	2 838 521.580		
L136	86 824.590	2 838 576.940		R136	87 013.400	2 838 534.630		
L137	86 889.750	2 838 598.070		R137	87 077.460	2 838 551.710		
L138	86 962.690	2 838 620.810		R138	87 245.200	2 838 596.430		
L139	86 988.650	2 838 628.900		R139	87 260.550	2 838 600.890		
L140	87 090.490	2 838 657.850		R140	87 380.560	2 838 632.380		
L141	87 130.150	2 838 668.400		R141	87 424.640	2 838 641.330		
L142	87 144.180	2 838 672.210		R142	87 550.580	2 838 667.000		
L143	87 235.220	2 838 695.600		R143	87 629.530	2 838 682.930		
L144	87 250.460	2 838 699.520		R144	87 644.940	2 838 685.510		
L145	87 300.420	2 838 712.360		R145	87 735.120	2 838 699.930		
L146	87 392.120	2 838 730.700		R146	87 764.000	2 838 704.540		
L147	87 468.460	2 838 745.980		R147	87 780.990	2 838 706.050		
L148	87 527.370	2 838 757.760		R148	87 816.100	2 838 709.180		
L149	87 595.660	2 838 768.300		R149	87 885.680	2 838 715.370		
L150	87 671.910	2 838 780.070		R150	87 898.180	2 838 716.480		
L151	87 747.350	2 838 791.710		R151	87 929.810	2 838 719.290		
L152	87 790.320	2 838 798.260		R152	87 972.650	2 838 722.660		
L153	87 879.710	2 838 811.870		R153	87 990.300	2 838 724.040		
				Vel	18	Van	22	P617/07
				Sheet		of		

PADRESERWE KOÖRDINATE				/ ROAD RESERVE CO-ORDINATES			
LINKERKANT/LEFT HAND SIDE				REGTERKANT/RIGHT HAND SIDE			
	Y	X	WG	29°	Y	X	
L154	87 893.610	2 838 813.990		R154	88 006.000	2 838 725.260	
L155	87 986.260	2 838 833.590		R155	88 250.050	2 838 744.310	
L156	88 001.880	2 838 836.890		R156	88 253.140	2 838 752.160	
L157	88 008.170	2 838 838.220		R157	88 254.200	2 838 754.840	
L158	88 073.500	2 838 849.350		R158	88 254.764	2 838 753.160	
L159	88 092.190	2 838 847.280		R159	88 295.644	2 838 753.732	
L160	88 092.000	2 838 852.500		R160	88 322.747	2 838 754.111	
L161	88 177.440	2 838 863.000		R161	88 349.870	2 838 754.491	
L162	88 234.800	2 838 870.050		R162	88 349.915	2 838 756.589	
L163	88 258.530	2 838 875.620		R163	88 447.293	2 838 749.486	
L164	88 338.280	2 838 894.200		R164	88 549.513	2 838 729.595	
L165	88 372.380	2 838 902.150		R165	88 607.663	2 838 712.207	
L166	88 424.970	2 838 916.950		R166	88 652.789	2 838 698.718	
L167	88 470.180	2 838 930.000		R167	88 709.240	2 838 674.310	
L168	88 521.070	2 838 956.440		R168	88 726.680	2 838 666.760	
L169	88 565.930	2 838 979.740		R169	88 757.540	2 838 653.400	
L170	88 630.250	2 839 035.970		R170	88 868.020	2 838 570.370	
L171	88 658.700	2 839 060.840		R171	88 924.760	2 838 497.260	
L172	88 685.120	2 839 099.000		R172	88 948.780	2 838 442.970	
L173	88 696.320	2 839 115.160		R173	88 974.360	2 838 382.840	
L174	88 724.970	2 839 156.510		R174	88 989.350	2 838 310.150	
L175	88 756.990	2 839 243.290		R175	89 014.860	2 838 186.460	
L176	88 764.110	2 839 262.670		R176	89 028.680	2 838 087.460	
L177	88 773.470	2 839 304.890		R177	89 069.700	2 837 865.900	
L178	88 790.320	2 839 381.080		R178	89 163.130	2 837 878.470	
L179	88 802.187	2 839 437.429		R179	89 145.230	2 838 042.550	
L180	88 809.730	2 839 476.040		R180	89 143.820	2 838 143.250	
L181	88 813.820	2 839 501.750		R181	89 154.770	2 838 245.640	
L182	88 817.800	2 839 526.820		R182	89 166.460	2 838 303.230	
L183	88 821.960	2 839 552.930		R183	89 188.440	2 838 411.610	
L184	88 822.130	2 839 556.410		R184	89 193.640	2 838 431.220	
L185	88 823.570	2 839 585.840		R185	89 221.462	2 838 537.106	
L186	88 824.970	2 839 614.240		R186	89 279.512	2 838 645.834	
L187	88 826.470	2 839 644.720		R187	89 305.030	2 838 675.730	
L188	88 826.950	2 839 654.490		R188	89 334.620	2 838 710.430	
L189	88 823.340	2 839 673.530		R189	89 428.280	2 838 782.040	
L190	88 817.910	2 839 702.110		R190	89 524.560	2 838 825.270	
L191	88 812.490	2 839 730.640		R191	89 614.100	2 838 846.730	
L192	88 812.010	2 839 733.160		R192	89 760.420	2 838 881.792	
L193	88 808.740	2 839 759.350		R193	89 790.250	2 838 886.530	
L194	88 805.150	2 839 788.170		R194	89 881.930	2 838 901.120	
L195	88 801.560	2 839 816.940		R195	90 096.890	2 838 935.320	
L196	88 797.840	2 839 846.710		R196	90 165.120	2 838 941.760	
L197	88 794.130	2 839 876.480		R197	90 810.830	2 839 002.860	
L198	88 790.420	2 839 906.210		R198	92 009.990	2 839 116.220	
L199	88 786.700	2 839 936.010		R199	92 168.860	2 839 131.250	
L200	88 782.990	2 839 965.750		R200	92 527.830	2 839 165.217	
L201	88 779.270	2 839 995.540					
L202	88 775.560	2 840 025.320					
L203	88 772.400	2 840 050.580					
L204	88 881.310	2 840 065.250					
					WG 27°		
				R200	-108 291.900	2 839 284.420	
				Vel	19	Van	22
				Sheet		of	P617/07

PADRESERWE KOÖRDINATE					ROAD RESERVE CO-ORDINATES				
LINKERKANT/LEFT HAND SIDE					REGTERKANT/RIGHT HAND SIDE				
	Y	WG 29°	X		Y	WG 27°	X		
L205	88	886.000	2 840	038.630	R201	-108	262.050	2 839	286.780
L206	88	890.680	2 840	012.020	R202	-108	054.510	2 839	303.150
L207	88	895.360	2 839	985.410	R203	-107	894.770	2 839	312.820
L208	88	898.640	2 839	966.770	R204	-107	771.070	2 839	325.490
L209	88	901.310	2 839	946.920	R205	-107	764.060	2 839	326.210
L210	88	907.400	2 839	901.590	R206	-107	680.900	2 839	330.810
L211	88	911.010	2 839	874.790	R207	-107	570.670	2 839	336.900
L212	88	914.610	2 839	848.000	R208	-107	526.710	2 839	339.330
L213	88	918.210	2 839	821.200	R209	-107	486.340	2 839	339.620
L214	88	923.210	2 839	783.980	R210	-107	415.560	2 839	340.130
L215	88	923.800	2 839	779.620	R211	-107	289.010	2 839	341.050
L216	88	924.430	2 839	774.960	R212	-107	243.200	2 839	338.710
L217	88	930.240	2 839	731.750	R213	-107	000.140	2 839	326.530
L218	88	934.240	2 839	701.940	R214	-106	972.460	2 839	325.630
L219	88	938.240	2 839	672.170	R215	-106	778.210	2 839	305.230
L220	88	942.230	2 839	642.490	R216	-106	736.060	2 839	300.800
L221	88	943.940	2 839	629.810	R217	-106	522.680	2 839	267.980
L222	88	949.630	2 839	602.310	R218	-106	501.110	2 839	264.660
L223	88	955.680	2 839	573.030	R219	-106	251.910	2 839	220.200
L224	88	961.300	2 839	545.870	R220	-105	996.870	2 839	174.450
L225	88	967.380	2 839	516.460	R221	-105	736.550	2 839	128.500
L226	88	973.470	2 839	487.050	R222	-105	724.250	2 839	126.010
L227	88	979.970	2 839	455.620	R223	-105	605.510	2 839	104.860
L228	88	982.500	2 839	443.380	R224	-105	468.920	2 839	073.370
L229	88	985.530	2 839	428.750	R225	-105	356.670	2 839	041.960
L230	88	988.510	2 839	413.820	R226	-105	163.020	2 838	987.740
L231	88	992.570	2 839	401.320	R227	-105	063.600	2 838	923.510
L232	88	999.820	2 839	378.400	R228	-104	987.180	2 838	874.130
L233	89	008.090	2 839	352.270	R229	-104	984.480	2 838	693.420
L234	89	013.930	2 839	333.830	R230	-104	942.970	2 838	691.540
L235	89	015.640	2 839	321.070	R231	-104	944.050	2 838	782.850
L236	89	018.380	2 839	320.950	R232	-104	936.150	2 838	773.990
L237	89	019.230	2 839	317.080	R233	-104	906.760	2 838	770.260
L238	89	073.150	2 839	223.140	R234	-104	922.300	2 838	817.040
L239	89	138.350	2 839	151.470	R235	-104	921.340	2 838	873.000
L240	89	157.080	2 839	137.740	R236	-104	854.850	2 838	899.750
L241	89	218.070	2 839	093.070	R237	-104	686.560	2 838	966.620
L242	89	323.000	2 839	045.780	R238	-104	625.150	2 838	974.910
L243	89	384.240	2 839	027.770	R239	-104	463.750	2 838	996.690
L244	89	426.270	2 839	015.380	R240	-104	404.030	2 839	000.630
L245	89	528.660	2 838	996.960	R241	-104	388.050	2 839	001.690
L246	89	608.000	2 839	011.050	R242	-104	301.930	2 839	007.370
L247	89	612.950	2 839	011.940	R243	-104	241.690	2 839	011.350
L248	89	877.620	2 839	028.550	R244	-104	170.320	2 839	019.590
L249	89	975.820	2 839	034.710	R245	-104	060.810	2 839	032.230
L250	90	079.740	2 839	036.740	R246	-103	942.490	2 839	055.430
L251	90	110.330	2 839	037.340	R247	-103	901.910	2 839	063.420
L252	90	159.570	2 839	038.300	R248	-103	719.750	2 839	097.110
L253	90	170.630	2 839	038.520	R249	-103	385.890	2 839	191.130
L254	90	208.250	2 839	039.120	R250	-103	344.770	2 839	201.940
L255	90	215.030	2 839	039.000	R251	-103	182.260	2 839	244.640

Ve1	20	Van	22	P617/07
Sheet		of		

PADRESERWE KOÖRDINATE				ROAD RESERVE CO-ORDINATES			
LINKERKANT/LEFT HAND SIDE				REGTERKANT/RIGHT HAND SIDE			
	Y	WG 29°	X		Y	WG 27°	X
L256	90	270.330	2 839 038.020	R252	-103	055.440	2 839 268.820
L257	90	832.570	2 839 091.300	R253	-103	045.909	2 839 270.638
L258	92	050.970	2 839 206.500	R254	-103	025.970	2 839 274.440
L259	92	370.302	2 839 236.718	R255	-102	871.750	2 839 311.800
				R256	-102	612.140	2 839 354.940
		WG 27°		R257	-102	568.850	2 839 360.000
L259	-108	448.330	2 839 358.300	R258	-102	421.800	2 839 377.200
L260	-108	219.710	2 839 376.370	R259	-102	297.760	2 839 391.700
L261	-108	061.310	2 839 388.890	R260	-102	277.750	2 839 392.980
L262	-107	901.890	2 839 402.540	R261	-102	024.150	2 839 409.140
L263	-107	773.700	2 839 411.740	R262	-101	981.870	2 839 411.840
L264	-107	770.860	2 839 411.940	R263	-101	779.980	2 839 414.060
L265	-107	681.500	2 839 419.030	R264	-101	665.360	2 839 415.320
L266	-107	610.090	2 839 424.700	R265	-101	364.940	2 839 402.790
L267	-107	498.640	2 839 426.400	R266	-101	349.110	2 839 402.130
L268	-107	433.860	2 839 427.390	R267	-101	073.260	2 839 376.010
L269	-107	287.530	2 839 429.620	R268	-101	033.990	2 839 372.290
L270	-107	246.170	2 839 429.170	R269	-100	750.040	2 839 330.220
L271	-107	004.560	2 839 416.940	R270	-100	720.880	2 839 325.900
L272	-106	965.320	2 839 413.920	R271	-100	487.880	2 839 280.310
L273	-106	825.680	2 839 398.120	R272	-100	256.890	2 839 225.550
L274	-106	644.800	2 839 377.660	R273	-100	041.180	2 839 169.890
L275	-106	510.230	2 839 353.650	R274	-99	996.710	2 839 158.420
L276	-106	238.370	2 839 305.140	R275	-99	845.870	2 839 122.610
L277	-105	985.820	2 839 260.070	R276	-99	818.920	2 839 115.660
L278	-105	719.810	2 839 212.610	R277	-99	570.710	2 839 051.620
L279	-105	708.110	2 839 210.990	R278	-99	423.440	2 839 013.620
L280	-105	560.910	2 839 197.770	R279	-99	277.600	2 838 975.990
L281	-105	358.730	2 839 175.990	R280	-99	058.130	2 838 919.370
L282	-105	282.460	2 839 168.990	R281	-98	975.070	2 838 897.940
L283	-105	212.210	2 839 164.960	R282	-98	760.090	2 838 842.480
L284	-105	186.390	2 839 171.330	R283	-98	638.780	2 838 811.170
L285	-105	112.510	2 839 215.630	R284	-98	516.950	2 838 779.740
L286	-105	044.190	2 839 238.680	R285	-98	356.410	2 838 738.330
L287	-104	996.600	2 839 254.830	R286	-98	276.650	2 838 717.750
L288	-104	917.290	2 839 254.840	R287	-98	182.230	2 838 693.380
L289	-104	916.520	2 839 193.940	R288	-98	067.150	2 838 663.680
L290	-104	897.560	2 839 165.690	R289	-97	964.710	2 838 637.250
L291	-104	864.930	2 839 155.770	R290	-97	844.810	2 838 606.320
L292	-104	724.050	2 839 112.920	R291	-97	789.520	2 838 592.060
L293	-104	607.870	2 839 095.940	R292	-97	586.590	2 838 539.700
L294	-104	546.750	2 839 087.000	R293	-97	345.940	2 838 477.610
L295	-104	393.300	2 839 092.250	R294	-97	152.710	2 838 438.010
L296	-104	377.390	2 839 092.790	R295	-97	097.230	2 838 426.640
L297	-104	368.930	2 839 093.080	R296	-96	846.270	2 838 388.250
L298	-104	279.930	2 839 100.140	R297	-96	836.400	2 838 387.240
L299	-104	191.470	2 839 107.160	R298	-96	657.900	2 838 369.080
L300	-104	161.930	2 839 111.320	R299	-96	593.690	2 838 362.550
L301	-103	980.460	2 839 136.870	R300	-96	459.690	2 838 355.710
L302	-103	936.020	2 839 145.590	R301	-96	340.140	2 838 349.600
				R302	-96	186.130	2 838 349.500
				Vel	21	Van	22
				Sheet		of	P617/07

PADRESERWE KOÖRDINATE				/	ROAD RESERVE CO-ORDINATES			
LINKERKANT/LEFT HAND SIDE					REGTERKANT/RIGHT HAND SIDE			
	Y	X	WG	27°	Y	X		
L303	-103 771.350	2 839	177.890	R303	-95 937.120	2 838	349.340	
L304	-103 714.410	2 839	192.280	R304	-95 915.809	2 838	349.365	
L305	-103 564.760	2 839	230.110					
L306	-103 325.690	2 839	298.300					
L307	-103 300.820	2 839	305.390					
L308	-103 225.750	2 839	323.770					
L309	-103 154.760	2 839	341.150					
L310	-102 982.400	2 839	383.350					
L311	-102 970.220	2 839	386.330					
L312	-102 948.400	2 839	391.670					
L313	-102 624.680	2 839	442.160					
L314	-102 566.070	2 839	449.010					
L315	-102 419.070	2 839	466.200					
L316	-102 313.460	2 839	478.550					
L317	-102 305.680	2 839	479.460					
L318	-102 282.280	2 839	480.950					
L319	-102 067.200	2 839	494.670					
L320	-101 985.160	2 839	499.900					
L321	-101 859.980	2 839	500.470					
L322	-101 829.940	2 839	501.400					
L323	-101 558.660	2 839	498.680					
L324	-101 420.510	2 839	491.090					
L325	-101 343.120	2 839	490.040					
L326	-101 023.380	2 839	459.760					
L327	-100 955.920	2 839	449.770					
L328	-100 801.100	2 839	426.830					
L329	-100 705.680	2 839	412.690					
L330	-100 390.890	2 839	348.950					
L331	-100 058.330	2 839	263.150					
L332	-100 048.290	2 839	260.560					
L333	-100 050.580	2 839	271.900					
L334	-99 839.670	2 839	228.580					
L335	-99 787.420	2 839	217.820					
L336	-99 680.940	2 839	193.060					
L337	-99 591.310	2 839	167.470					
L338	-99 441.500	2 839	124.260					
L339	-99 357.460	2 839	100.010	L354	-97 587.850	2 838	622.630	
L340	-99 293.240	2 839	080.320	L355	-97 448.920	2 838	586.790	
L341	-99 209.070	2 839	054.590	L356	-97 266.620	2 838	543.420	
L342	-99 069.820	2 839	017.330	L357	-97 146.390	2 838	519.560	
L343	-99 068.300	2 839	004.610	L358	-97 082.870	2 838	506.960	
L344	-98 985.030	2 838	983.120	L359	-96 835.970	2 838	469.200	
L345	-98 770.170	2 838	927.690	L360	-96 835.060	2 838	469.110	
L346	-98 647.500	2 838	896.040	L361	-96 660.090	2 838	451.310	
L347	-98 524.810	2 838	864.380	L362	-96 587.480	2 838	443.920	
L348	-98 363.110	2 838	822.660	L363	-96 460.720	2 838	436.640	
L349	-98 282.770	2 838	801.930	L364	-96 400.450	2 838	433.180	
L350	-98 187.700	2 838	777.400	L365	-96 213.140	2 838	429.520	
L351	-97 990.210	2 838	726.450	L366	-96 191.080	2 838	429.510	
L352	-97 864.190	2 838	693.930	L367	-95 837.060	2 838	429.270	
L353	-97 804.630	2 838	678.570	L368	-95 817.215	2 838	429.256	
				Vel	22	Van	22	P617/07
				Sheet		of		