

**CONTENTS****INHOUD**

<i>No.</i>	<i>Page No.</i>	<i>Gazette No.</i>	<i>No.</i>	<i>Bladsy No.</i>	<i>Koerant No.</i>
<b>GOVERNMENT NOTICE</b>			<b>GOEWERMENTSKENNISGEWING</b>		
<b>Transport, Department of</b>			<b>Vervoer, Departement van</b>		
<i>Government Notice</i>			<i>Goewermentskennisgewing</i>		
1117			1117		
South African National Roads Agency Limited and the National Roads Act (7/1998): The South African National Roads Agency Limited: Declaration amendment of National Road N2 Section 20: Amendment of Declaration No. 676 of 2000 .....	3	30502	Suid-Afrikaanse Nasionale Padagentskap Beperk en die Nasionale Paaie Wet (7/1998): Die Suid-Afrikaanse Nasionale Padagentskap Beperk: Verklaring wysiging van Nasionale Pad N2 Seksie 20: Wysiging van Verklaring No. 676 van 2000 .....	4	30502

---

GOVERNMENT NOTICE  
GOEWERMENTSKENNISGEWING

---

DEPARTMENT OF TRANSPORT  
DEPARTEMENT VAN VERVOER

No. 1117

23 November 2007

THE SOUTH AFRICAN NATIONAL ROADS  
AGENCY LIMITED

Registration No: 98/09584/06

---

DECLARATION AMENDMENT OF NATIONAL ROAD N2 SECTION 20

AMENDMENT OF DECLARATION NO. 676 OF 2000

By virtue of section 40 (1)(b) of the South African National Roads Agency Limited and the National Roads Act, 1998 (Act No. 7 of 1998), I hereby amend Declaration No. 676 of 2000 Schedule paragraph 2 by substituting the section of the descriptive declaration from Mount Frere up to Brook's Nek, with the subjoined sheets 1 to 22 of Plan No. P620/07.

**(National Road N2 Section 20: Mount Frere – Brook's Nek)**

  
\_\_\_\_\_  
MINISTER OF TRANSPORT

No. 1117

23 November 2007

**DIE SUID-AFRIKAANSE NASIONALE  
PADAGENTSKAP BEPERK**

Registrasie No: 98/09584/06

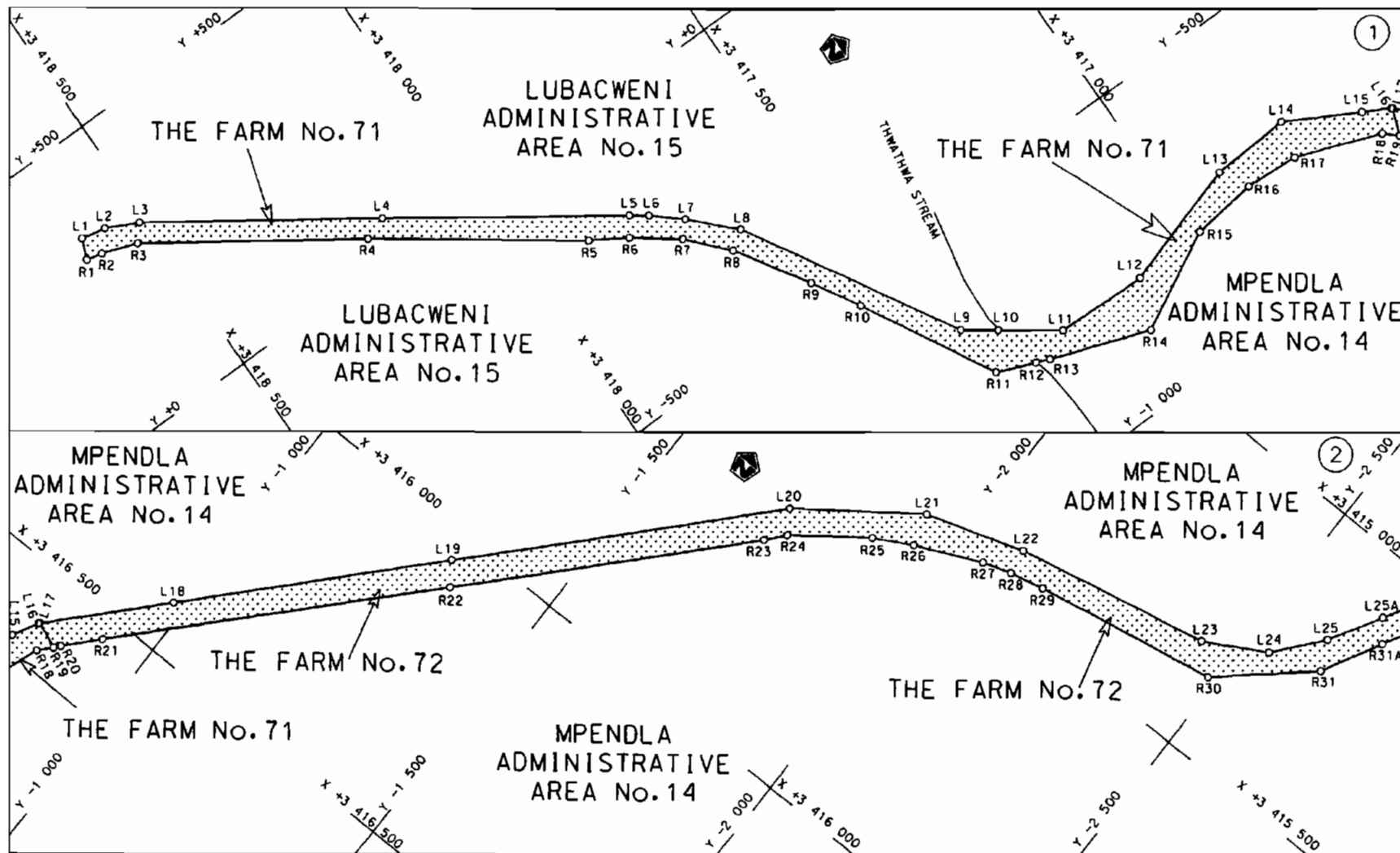
**VERKLARING WYSIGING VAN NASIONALE PAD N2 SEKSIE 20.**

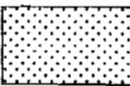
WYSIGING VAN VERKLARING NO. 676 VAN 2000

Kragtens Artikel 40(1)(b) van die Suid Afrikaanse Nasionale Padagentskap Beperk en die Nasionale Paaie Wet, 1998 (Wet No.7 van 1998), wysig ek hiermee Verklaring No. 676 van 2000 Bylae paragraaf 2, deur die gedeelte van die beskrywede verklaring vanaf Mount Frere tot by Brook's Nek, te vervang met meegaande velle 1 tot 22 van Plan No. P620/07.

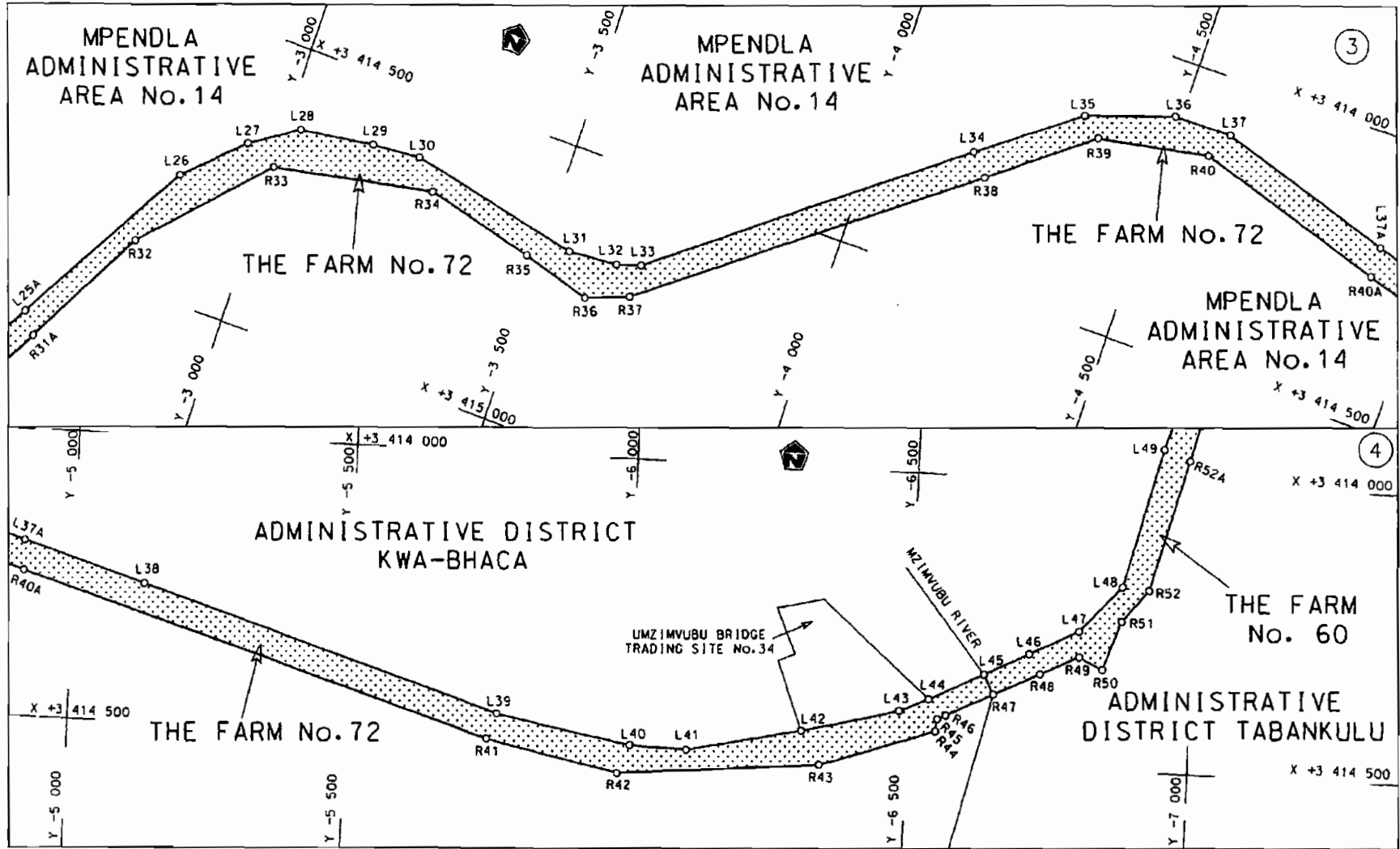
**(Nasionale Pad N2 Seksie 20: Mount Frere – Brook's Nek)**

  
**MINISTER VAN VERVOER**

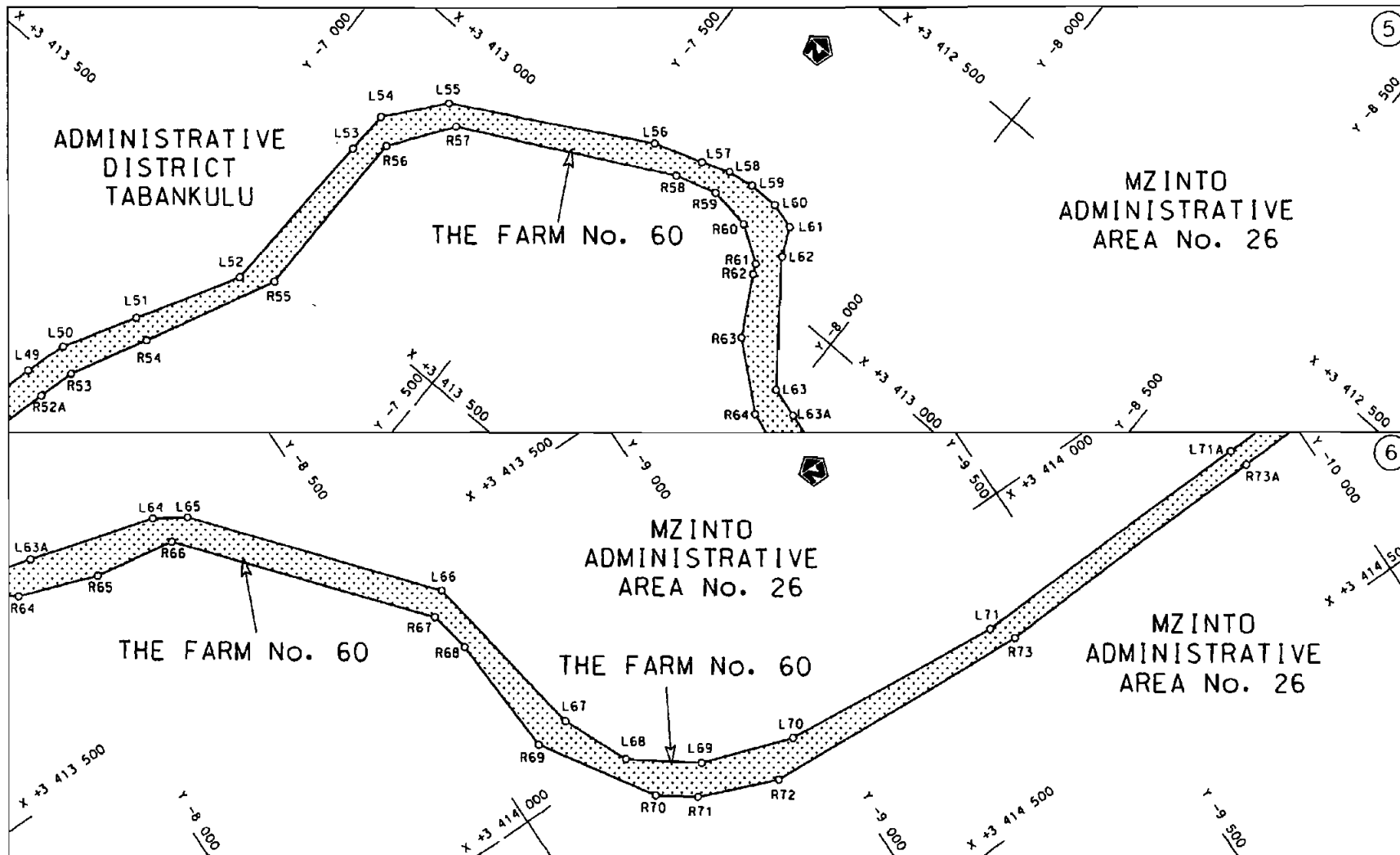


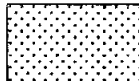
Die Suid Afrikaanse Nasionale Padagentskap Beperk The South African National Roads Agency Limited	Die figuur getoon The figure shown		steldie padreserwe voor van 'n gedeelte represents the rood reserve of a portion van Nasionale Roete N2 Seksie 20 of National Route N2 Section 20	Vel Sheet 1 van of 22 Plan P620/07
--	---------------------------------------	---	--	---------------------------------------

D.O.9.A

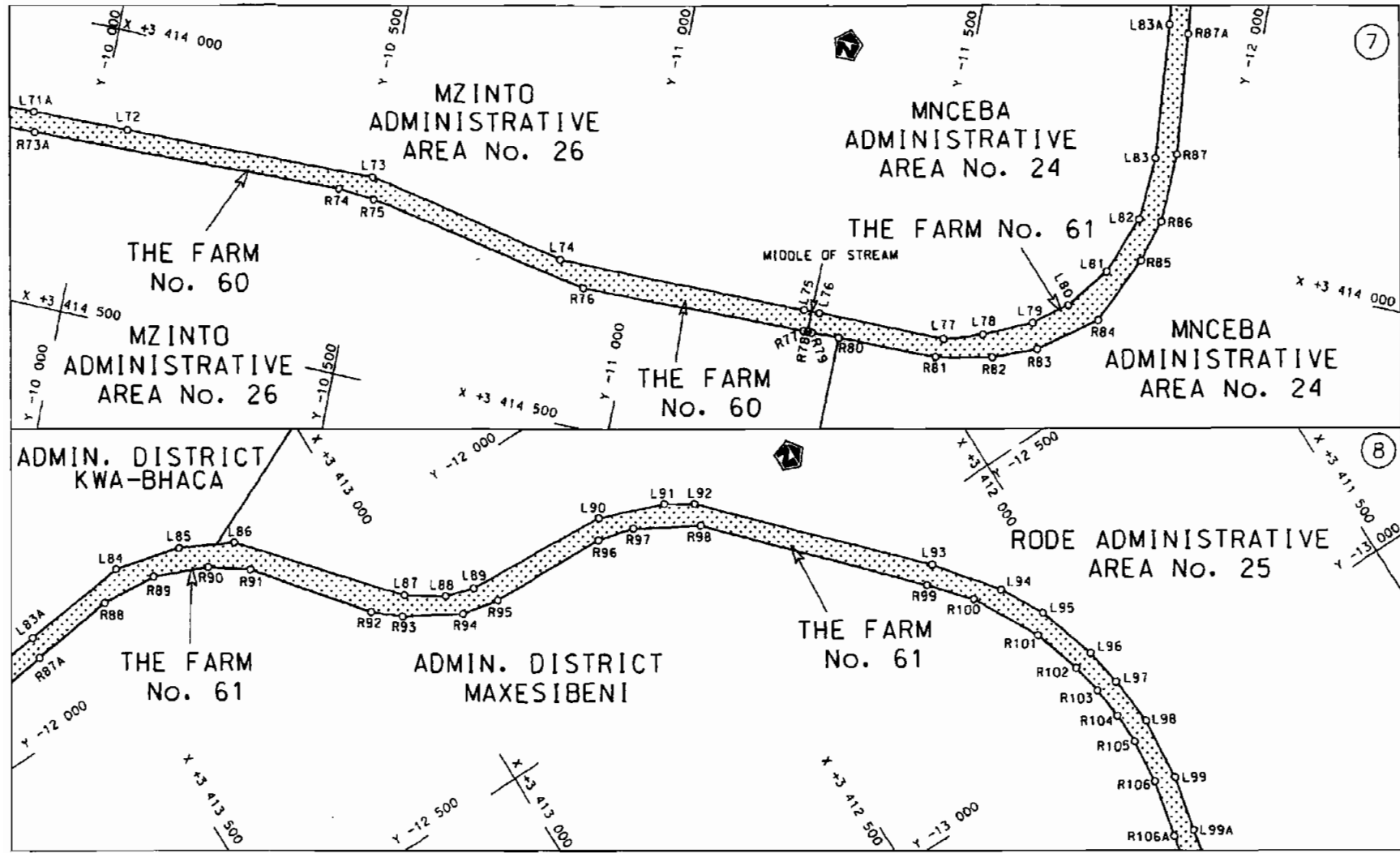


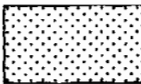
<p>Die Suid Afrikaanse Nasionale Padagentskap Beperk The South African National Roads Agency Limited</p>	<p>Die figuur getoon The figure shown</p>		<p>steldie padreserwe voor van 'n gedeelte represents the road reserve of a portion van Nasionale Roete N2 of National Route N2</p> <p>Seksie 20 Section 20</p>	<p>Vel Sheet 2 van 22 of 22 Plan P620/07</p>
--	---	--	---	--



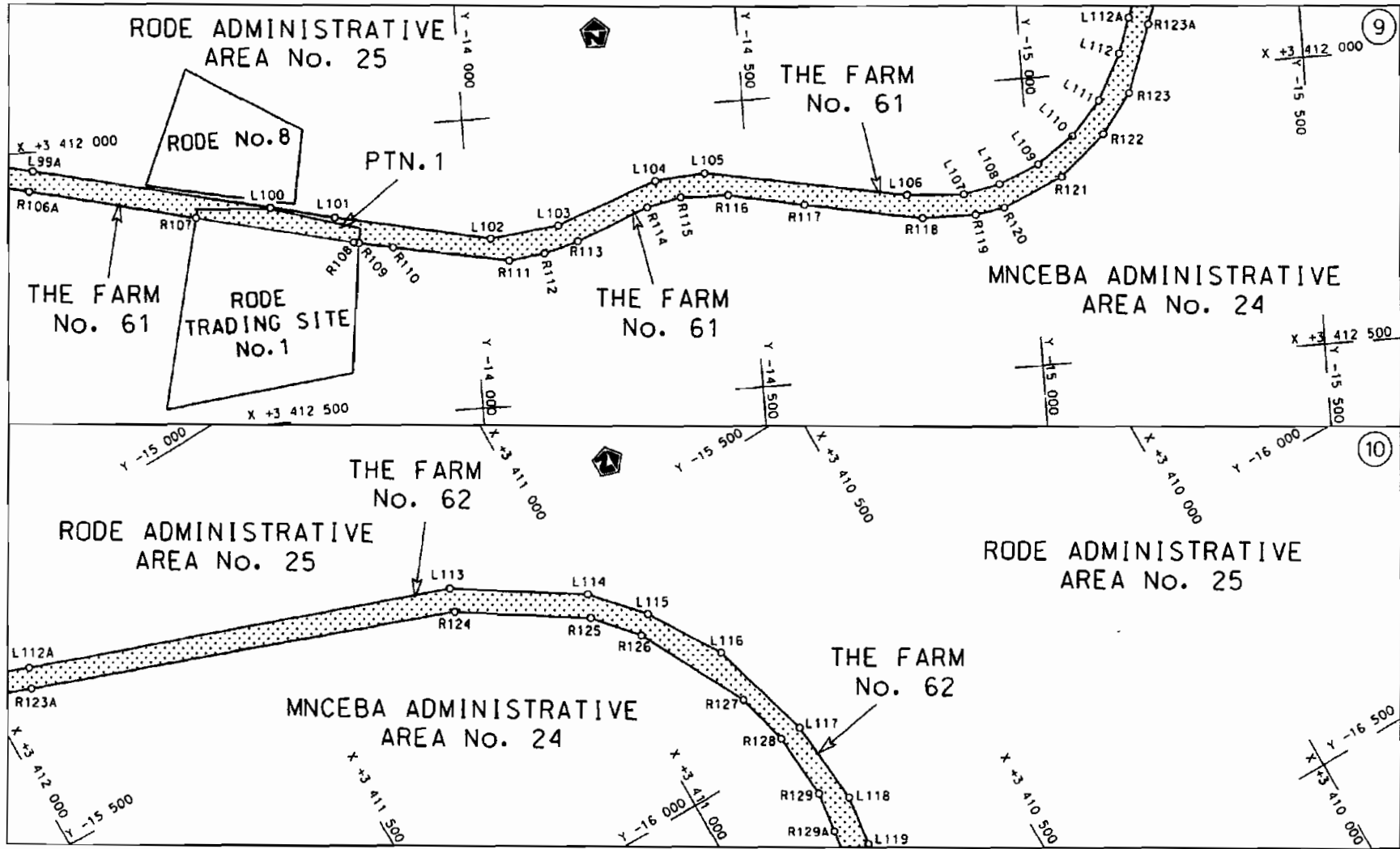
Die Suid Afrikaanse Nasionale Padagentskap Beperk The South African National Roads Agency Limited	Die figuur getoon The figure shown		steldie padreserwe voor van 'n gedeelte represents the road reserve of a portion van Nasionale Roete N2 Sektie of National Route N2 Section 20	Vel Sheet 3 van of 22 Plan P620/07
--	---------------------------------------	---	---	---------------------------------------


D.O.9.A



Die Suid Afrikaanse Nasionale Padagentskap Beperk The South African National Roads Agency Limited	Die figuur getoon The figure shown		steldie padreserwe voor van 'n gedeelte represents the road reserve of a portion van Nasionale Roete N2 of National Route N2 Seksie 20 Section 20	Vel Sheet 4 van 22 Plan P620/07
--	---------------------------------------	---	--	------------------------------------

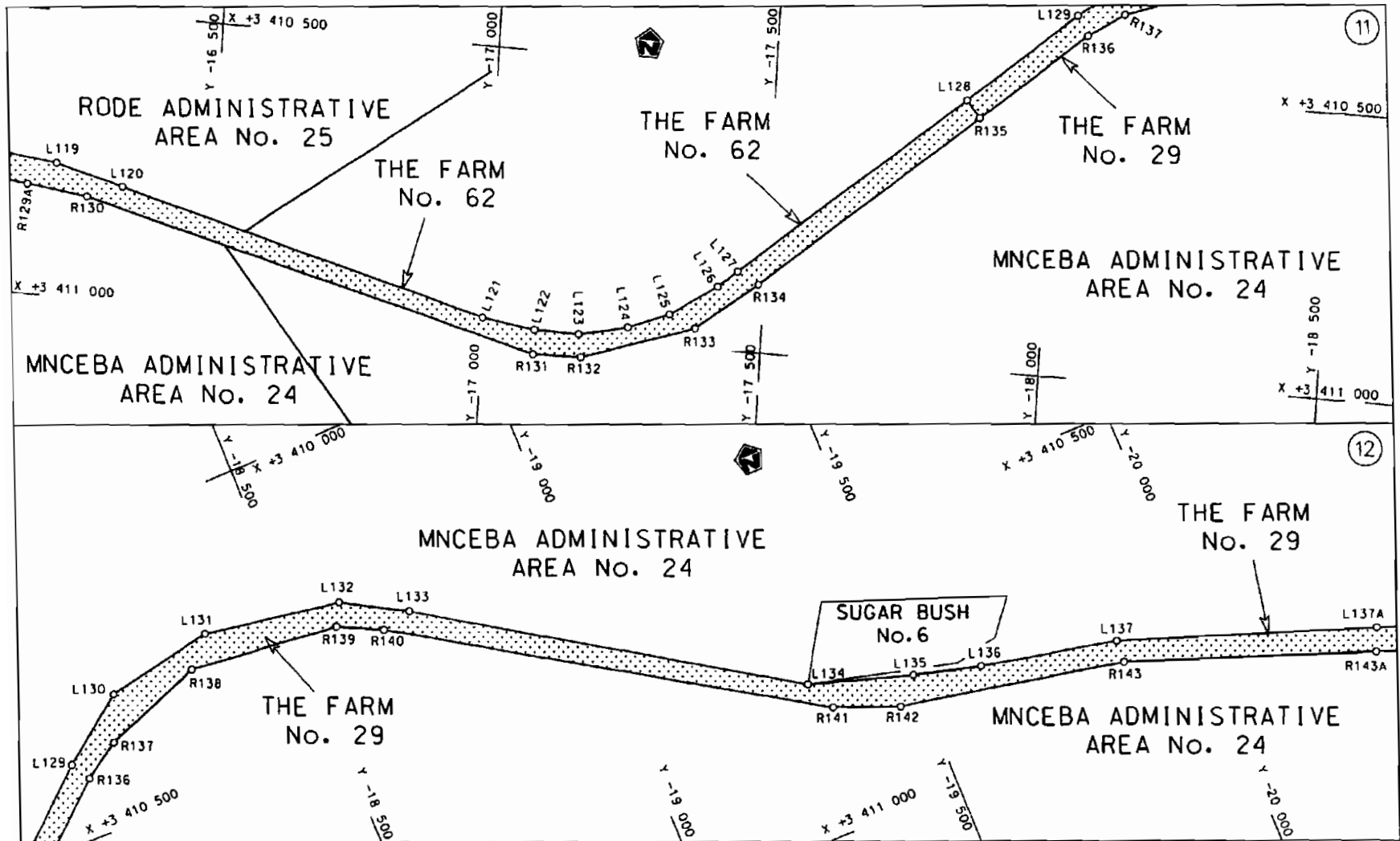
D.O.9.A



Die Suid Afrikaanse Nasionale Padogenskap Beperk The South African National Roads Agency Limited	Die figuur getoon The figure shown	 steldie padreserwe voor van 'n gedeelte represents the road reserve of a portion van Nasionale Roete N2 of National Route N2	Vel Sheet 5 van 22 Plan P620/07
---	---------------------------------------	---	------------------------------------

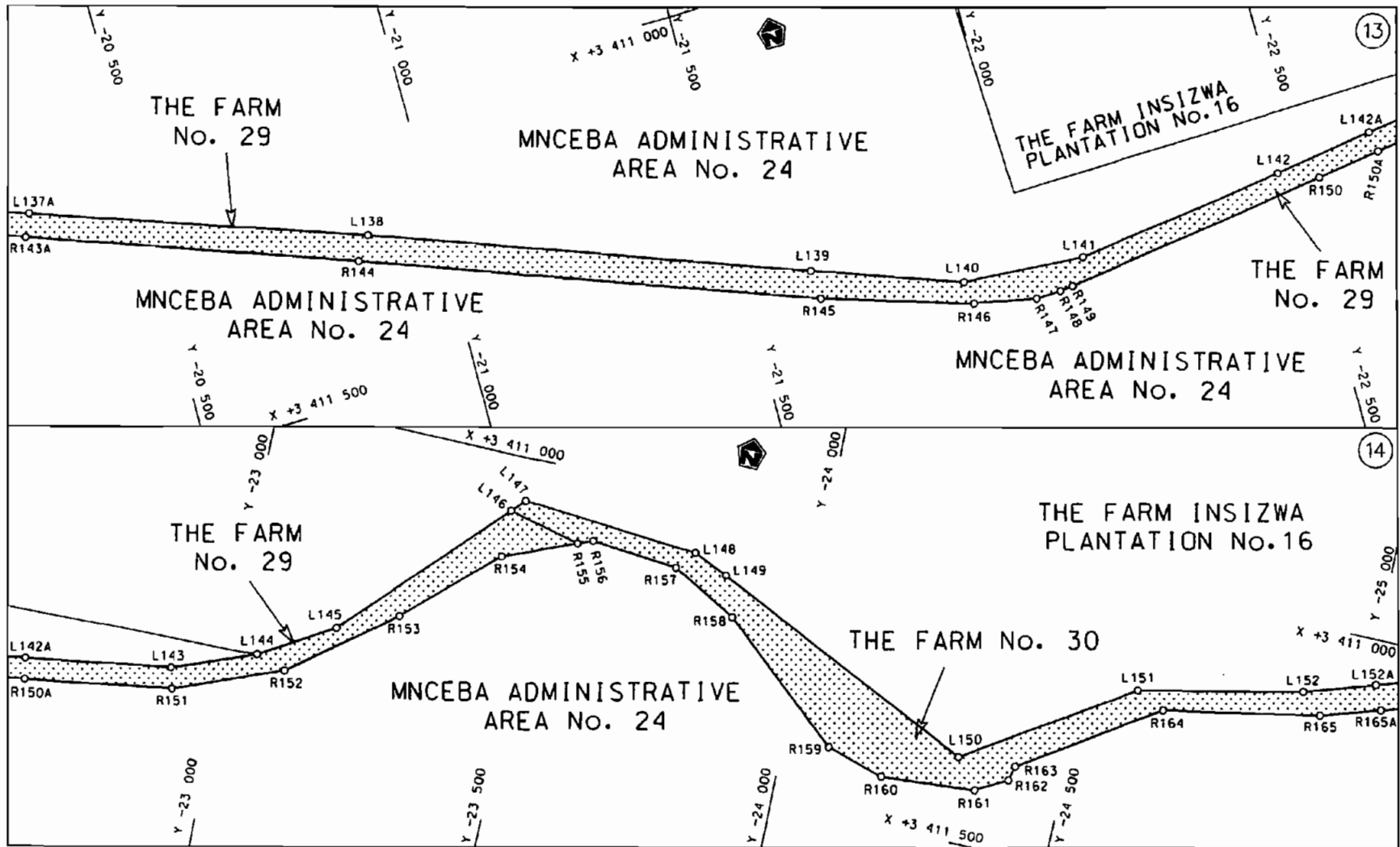
D.O.9.A






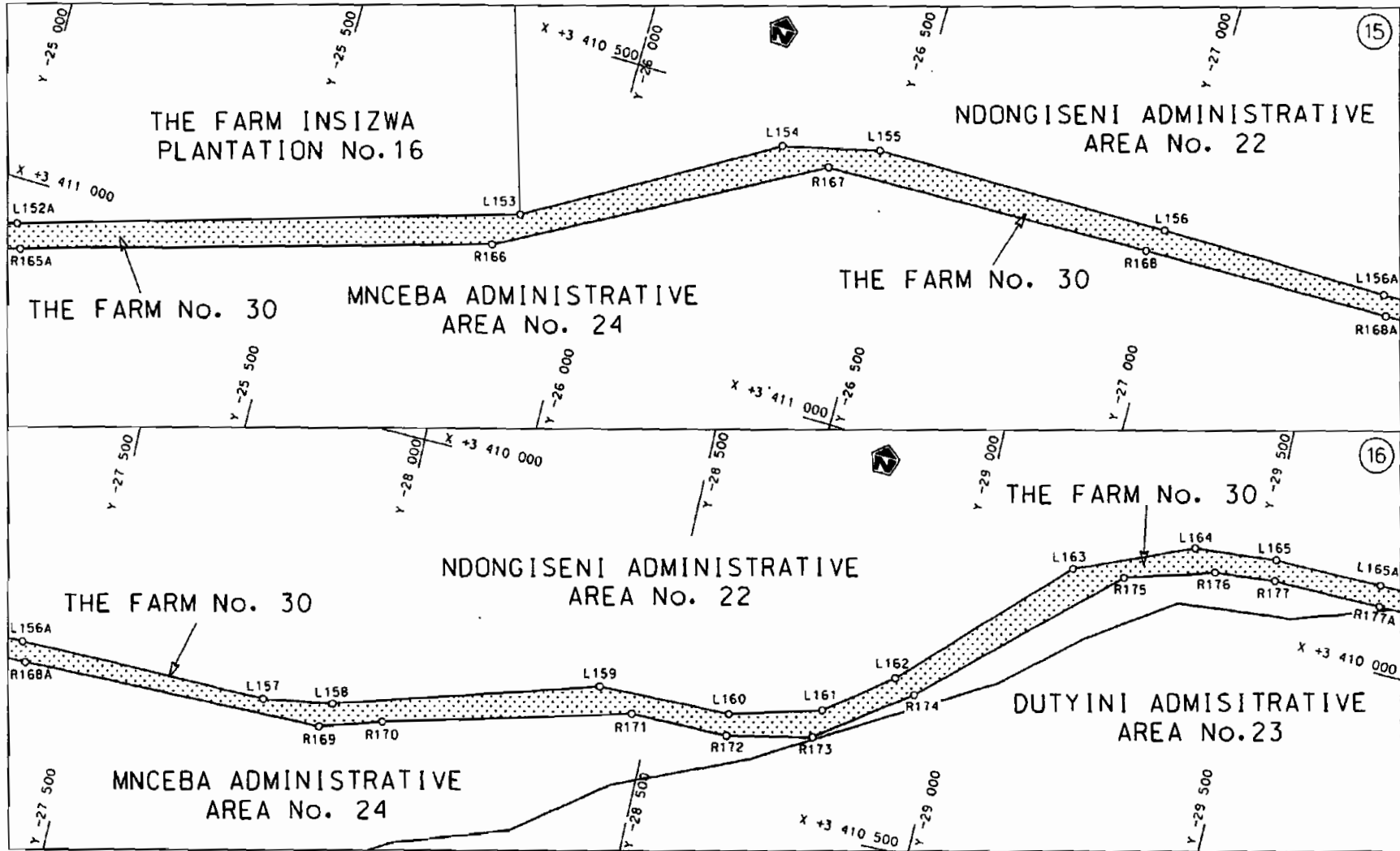
<p>Die Suid Afrikaanse Nasionale Padagentskap Beperk The South African National Roads Agency Limited</p>	<p>Die figuur getoon The figure shown</p>	<p>steldie padreserwe voor van 'n gedeelte represents the road reserve of a portion van Nasionale Roete N2 Seksie of National Route Section 20</p>	<p>Vel Sheet 6 van of 22 Plan P620/07</p>
--	---	--	---

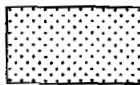
D.O.9.A

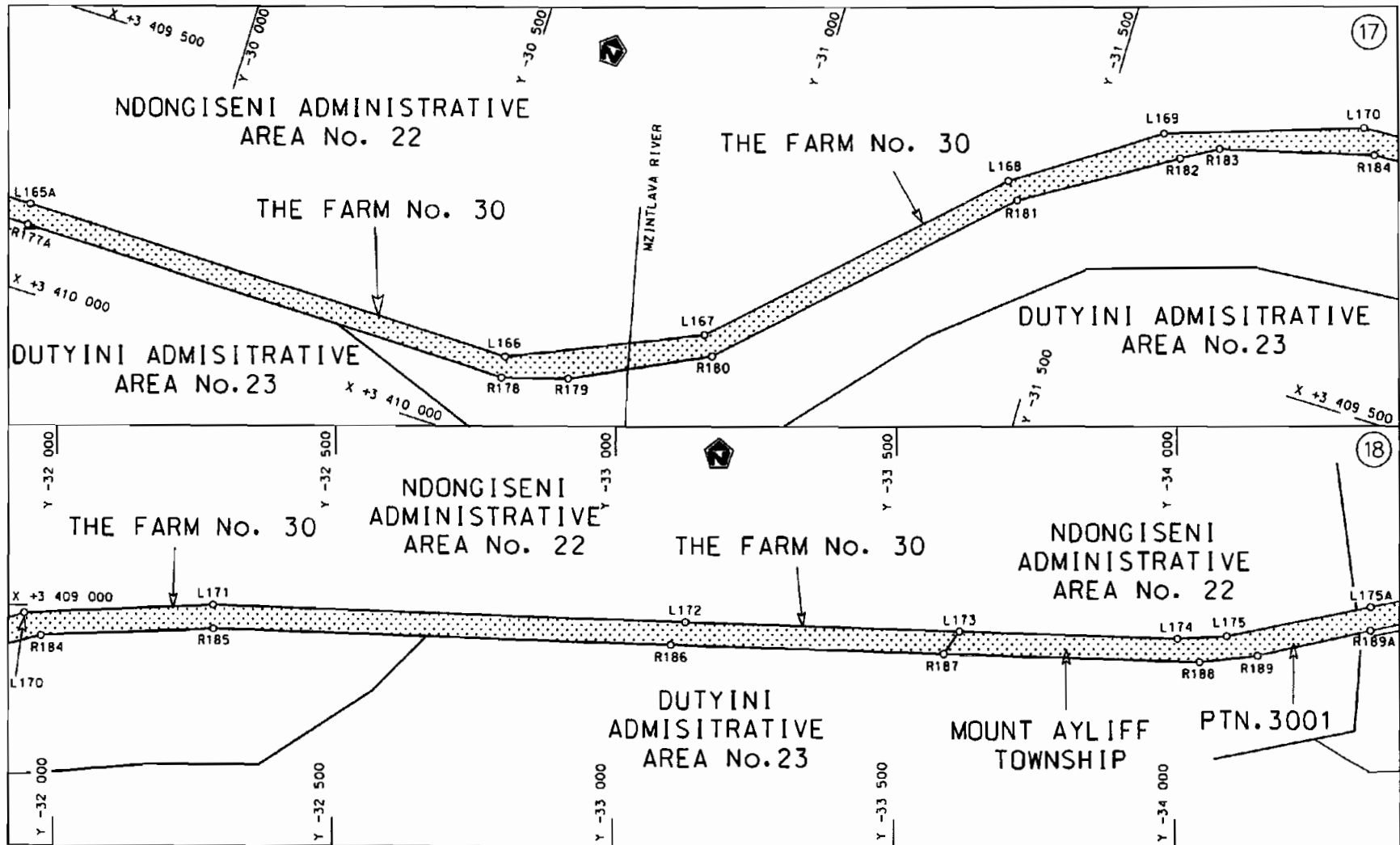



<p>Die Suid Afrikaanse Nasionale Padagentskap Beperk The South African National Roads Agency Limited</p>	<p>Die figuur getoon The figure shown</p>		<p>st die padreserwe voor van 'n gedeelte represents the road reserve of a portion van Nasionale Roete N2 Seksie of National Route Section 20</p>	<p>Vel Sheet 7 van 22 Plan P620/07</p>
--	---	---	---	--

D.O.9.A

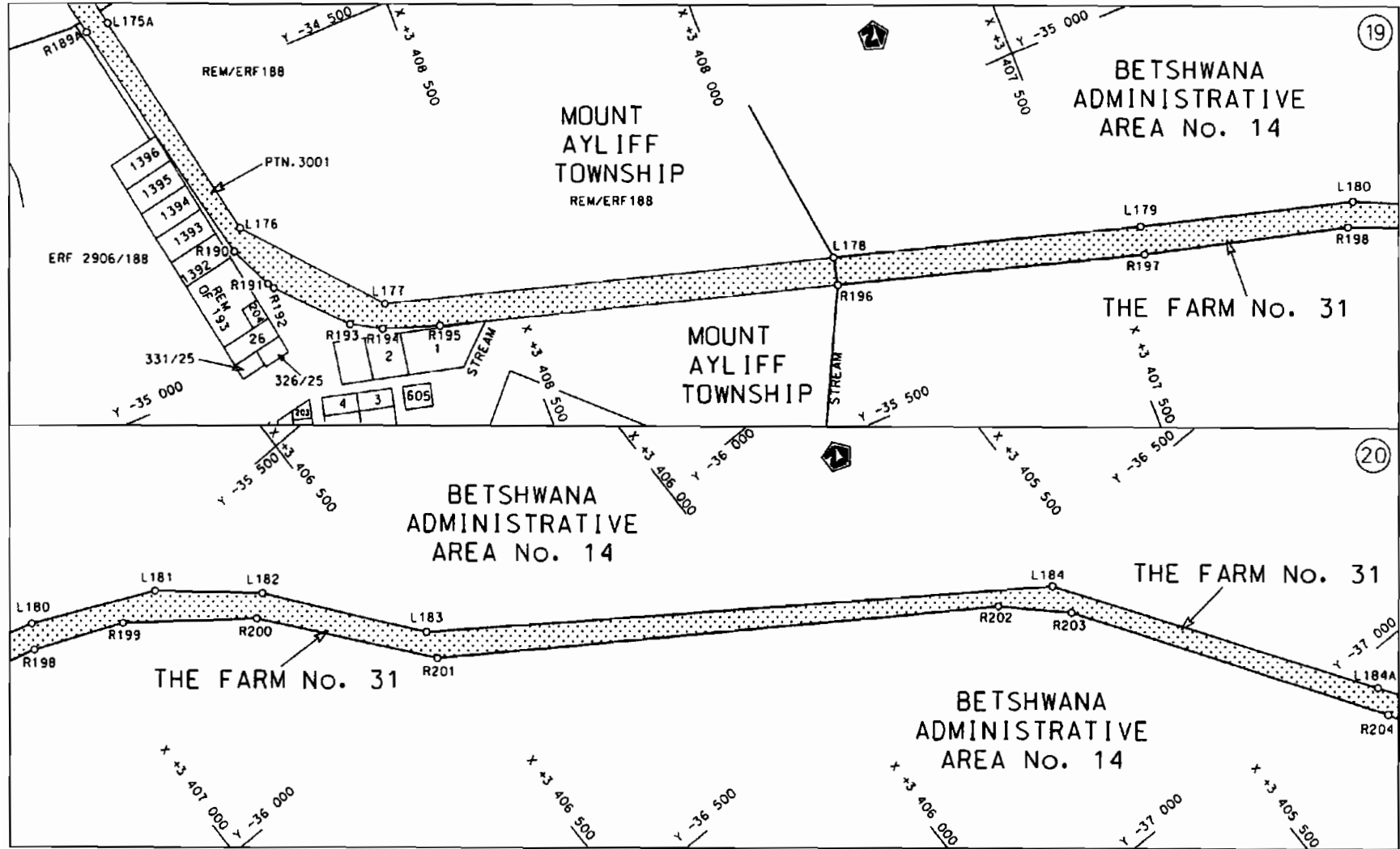


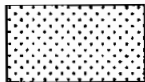
<p>Die Suid Afrikaanse Nasionale Padagentskap Beperk The South African National Roads Agency Limited</p>	<p>Die figuur getoon The figure shown</p> 	<p>steldie padreserwe voor van 'n gedeelte represents the road reserve of a portion van Nasionale Roete N2 Seksie of National Route N2 Section 20</p>	<p>Vel Sheet 8 van of 22 Plan P620/07</p>
--	--	---	---

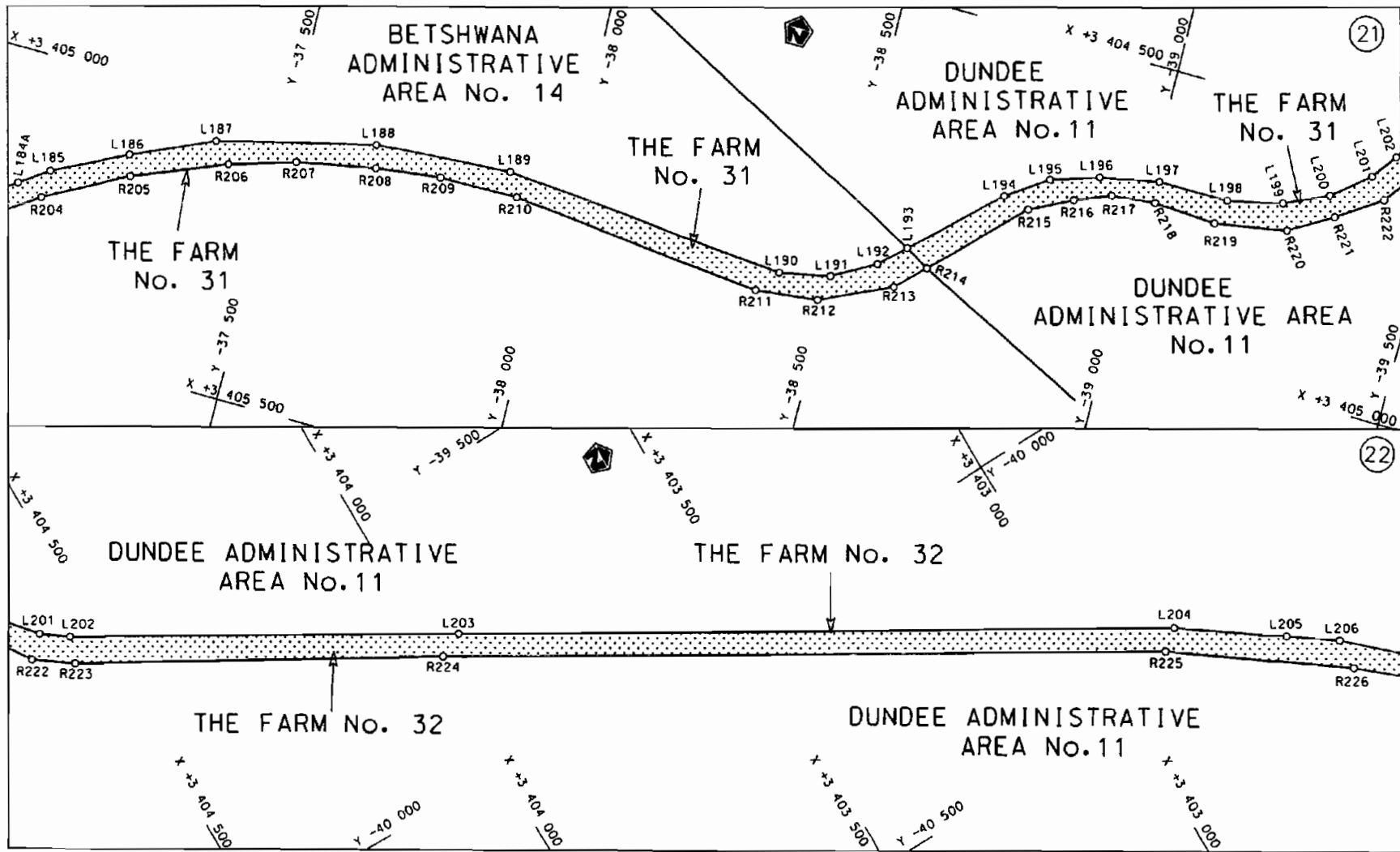



Die Suid Afrikaanse Nasionale Padagentskop Beperk	Die figuur getoon		steldie padreserwe voor van 'n gedeelte represents the road reserve of a portion van Nasionale Roete N2 Seksie 20 of National Route	Vet Sheet 9 van of 22
The South African National Roads Agency Limited	The figure shown			Plan P620/07

D.O.9.A

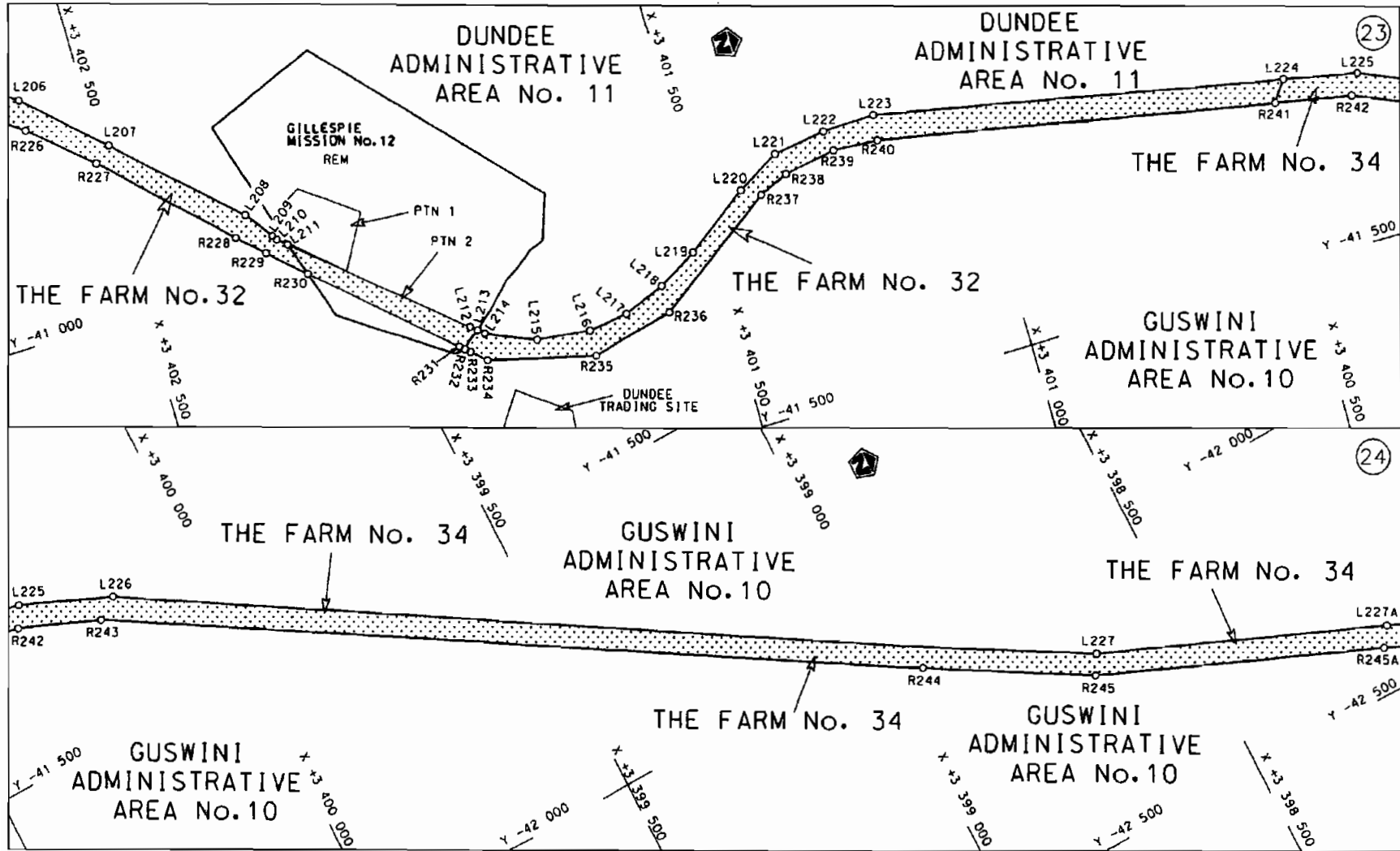



<p>Die Suid Afrikaanse Nasionale Padagentskap Beperk The South African National Roads Agency Limited</p>	<p>Die figuur getoon The figure shown</p>		<p>steldie padreserwe voor van 'n gedeelte represents the road reserve of a portion van Nasionale Roete N2 Seksie 20 of National Route N2 Section 20</p>	<p>Vel Sheet 10 van 22 Plan P620/07</p>
--	---	--	--	---



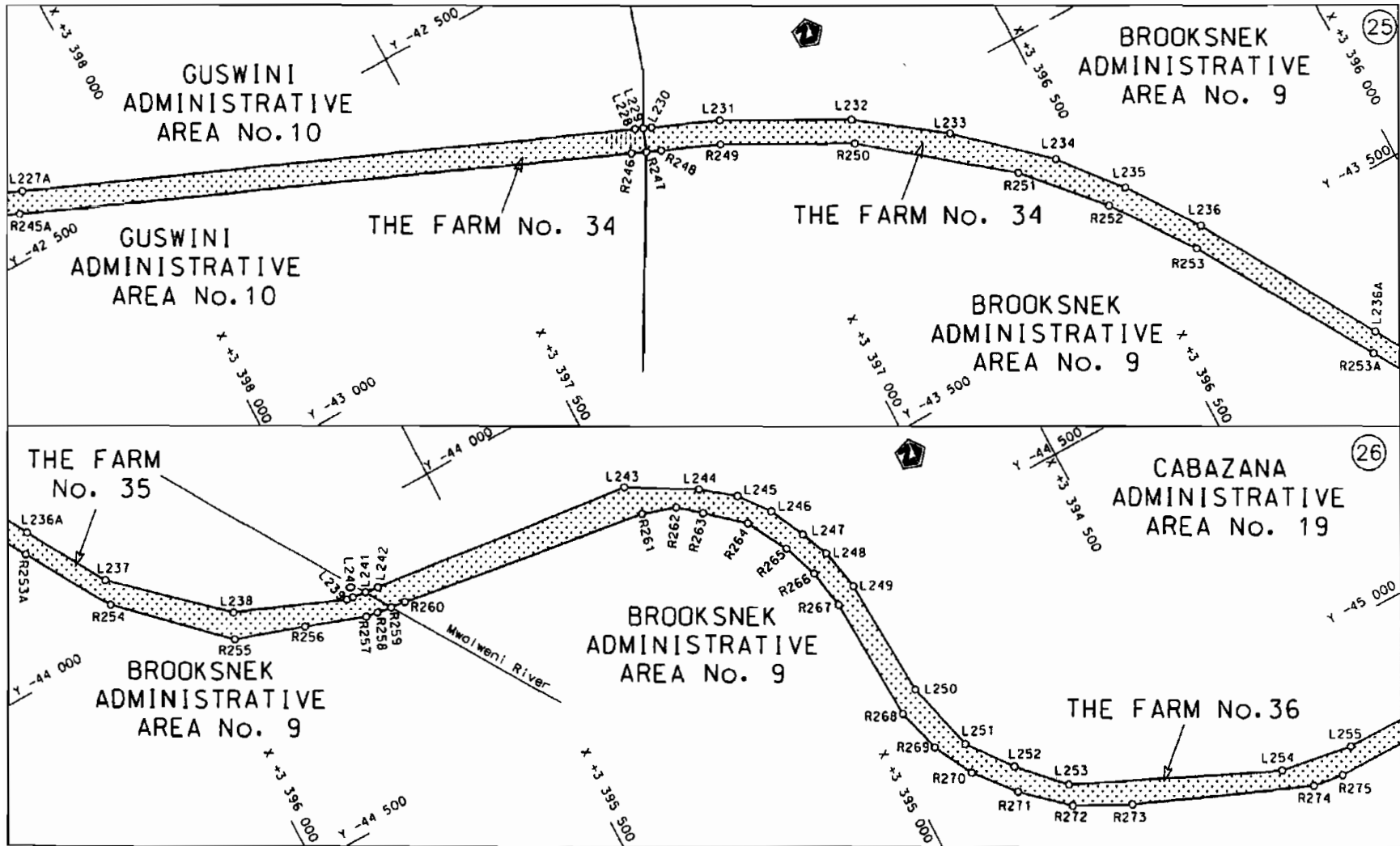
Die Suid Afrikaanse Nasionale Padagentskop Beperk The South African National Roads Agency Limited	Die figuur getoon The figure shown		steldie padreserwe voor van 'n gedeelte represents the road reserve of a portion van Nasionale Roete N2 Sektie 20 of National Route N2 Section 20	Vel Sheet 11 van 22 Plan P620/07
--	---------------------------------------	---	--	-------------------------------------


D.O.9.A



Die Suid Afrikaanse Nasionale Padagentskap Beperk	Die figuur getoon		steldie padreserwe voor van 'n gedeelte	Vei 12 van
The South African National Roads Agency Limited	The figure shown		represents the road reserve of a portion van Nasionale Roete N2 Seksie Section 20	of 22 Plan P620/07

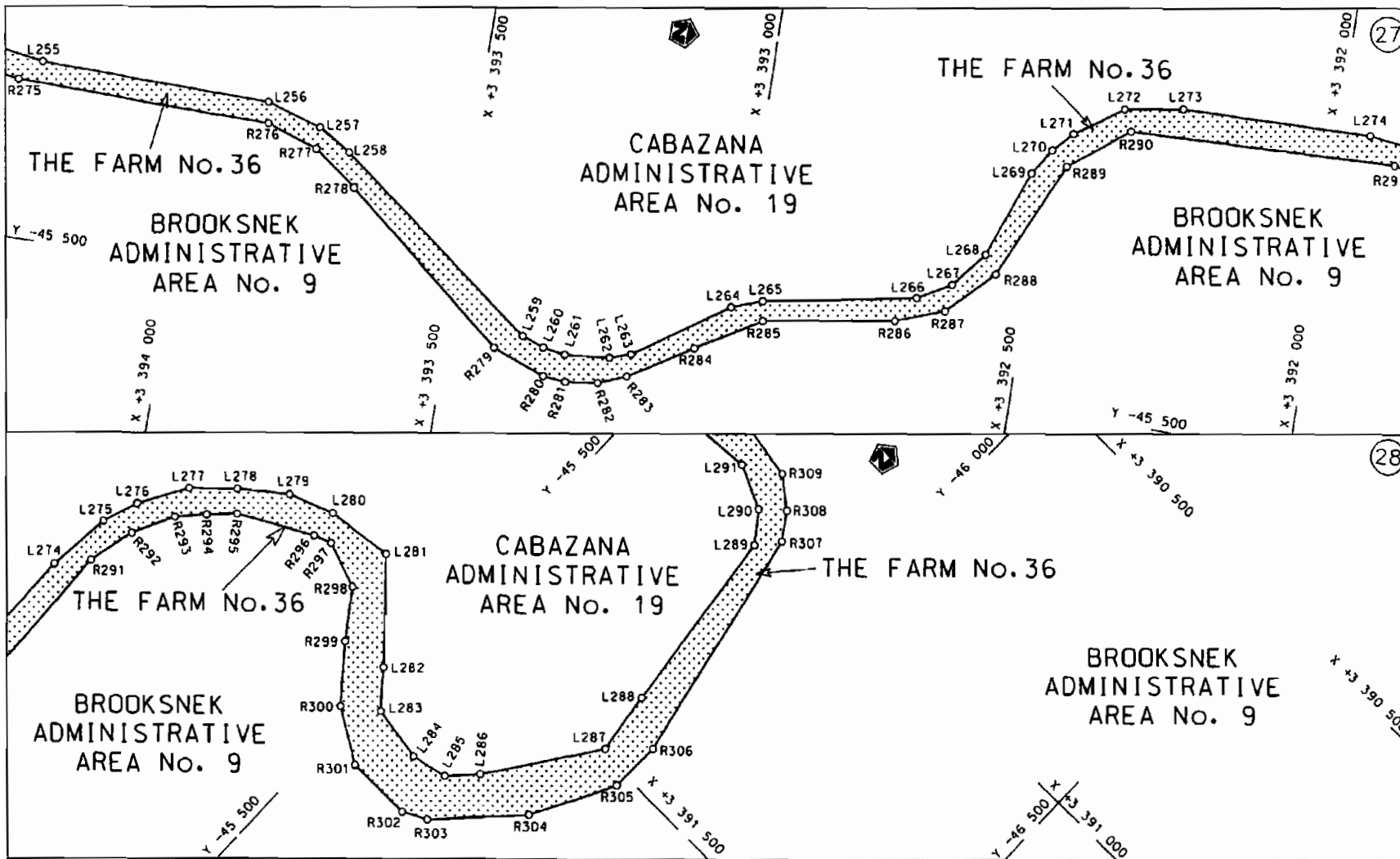
D.O.9.A




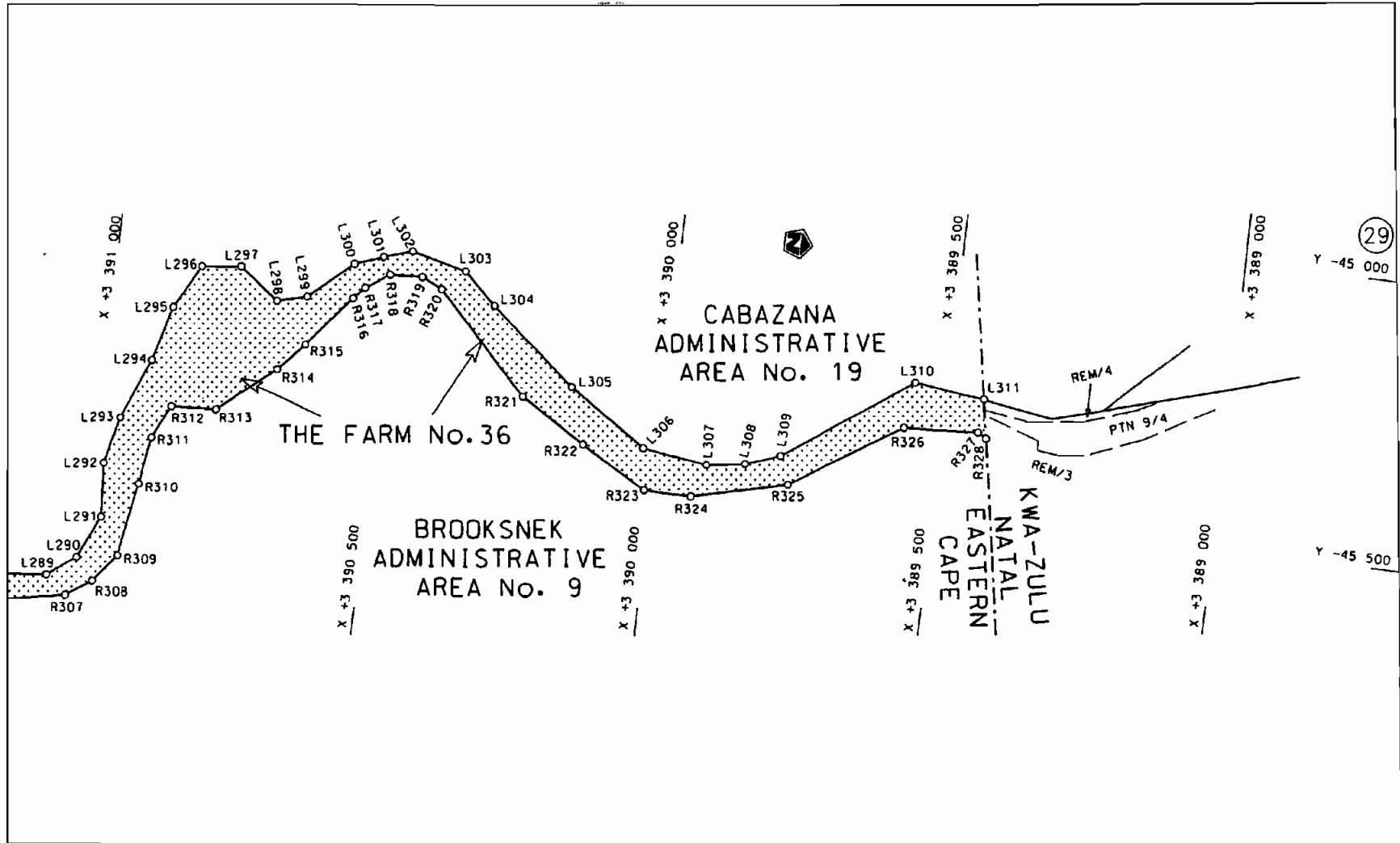
Die Suid Afrikaanse Nasionale Padagentskap Beperk The South African National Roads Agency Limited	Die figuur getoon The figure shown		steldie padreserwe voor van 'n gedeelte represents the road reserve of a portion van Nasionale Roete of National Route N2 Seksie Section 20	Vel Sheet 13 von of 22 Plan P620/07
--	---------------------------------------	---	--	--

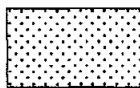
D.O.9.A





<p>Die Suid Afrikaanse Nasionale Padagentskap Beperk The South African National Roads Agency Limited</p>	<p>Die figuur getoon The figure shown</p> 	<p>steldie padreserwe voor van 'n gedeelte represents the road reserve of a portion van Nasionale Roete N2 Seksie 20 of National Route Section</p>	<p>Vel Sheet 14 van of 22 Plan P620/07</p>
--	--	--	--



<p>Die Suid Afrikaanse Nasionale Padagentskap Beperk The South African National Roads Agency Limited</p>	<p>Die figuur getoon The figure shown</p> 	<p>steldie podreserwe voor van 'n gedeelte represents the road reserve of a portion van Nasionale Roete N2 of National Route N2</p> <p>Seksie Section</p> <p>20</p>	<p>Vel Sheet 15 van 22 of of</p> <p>Plan P620/07</p>
--	---	---	--

D.O.9.A

PADRESERWE KOÖRDINATE				/	ROAD RESERVE CO-ORDINATES			
LINKERKANT/LEFT HAND SIDE					REGTERKANT/RIGHT HAND SIDE			
	Y	X	WG 29°		Y	X		
L1	340.70	3 418	612.18	R1	306.02	3 418	627.11	
L2	332.31	3 418	569.59	R2	299.76	3 418	599.13	
L3	305.12	3 418	513.18	R3	277.52	3 418	536.80	
L4	61.48	3 418	155.85	R4	47.12	3 418	198.03	
L5	-186.45	3 417	795.98	R5	- 180.08	3 417	880.88	
L6	-207.03	3 417	768.00	R6	- 218.12	3 417	818.72	
L7	-249.73	3 417	718.23	R7	- 275.06	3 417	741.81	
L8	-320.54	3 417	649.16	R8	- 342.64	3 417	680.92	
L9	-685.59	3 417	431.81	R9	- 467.73	3 417	601.04	
L10	-724.86	3 417	377.50	R10	- 548.75	3 417	552.91	
L11	-790.63	3 417	284.72	R11	- 781.21	3 417	421.57	
L12	-796.02	3 417	123.03	R12	- 808.00	3 417	354.94	
L13	-728.22	3 416	902.31	R13	- 817.46	3 417	331.61	
L14	-719.55	3 416	762.43	R14	- 879.13	3 417	158.38	
L15	-788.49	3 416	636.25	R15	- 792.66	3 416	990.62	
L16	-812.97	3 416	591.17	R16	- 778.11	3 416	874.94	
L17	-814.70	3 416	589.30	R17	- 783.75	3 416	779.20	
L18	- 978.10	3 416	413.48	R18	- 839.44	3 416	629.14	
L19	-1 317.06	3 416	047.52	R19	- 860.17	3 416	606.26	
L20	-1 728.01	3 415	603.09	R20	- 869.07	3 416	596.43	
L21	-1 922.76	3 415	460.36	R21	- 917.89	3 416	541.42	
L22	-2 096.88	3 415	403.21	R22	-1 344.43	3 416	085.92	
L23	-2 438.28	3 415	329.15	R23	-1 726.52	3 415	674.62	
L24	-2 543.08	3 415	269.82	R24	-1 753.58	3 415	642.18	
L25	-2 610.42	3 415	188.72	R25	-1 873.09	3 415	552.62	
L26	-2 847.19	3 414	783.65	R26	-1 938.34	3 415	516.84	
L27	-2 943.09	3 414	691.79	R27	-2 053.88	3 415	463.64	
L28	-3 027.33	3 414	636.89	R28	-2 104.22	3 415	446.60	
L29	-3 157.74	3 414	618.58	R29	-2 164.18	3 415	432.93	
L30	-3 242.11	3 414	612.23	R30	-2 484.47	3 415	369.76	
L31	-3 548.33	3 414	677.75	R31	-2 633.84	3 415	237.07	
L32	-3 635.33	3 414	671.59	R32	-2 809.61	3 414	917.87	
L33	-3 677.42	3 414	658.29	R33	-3 000.92	3 414	715.49	
L34	-4 170.81	3 414	275.19	R34	-3 283.23	3 414	661.35	
L35	-4 337.06	3 414	150.05	R35	-3 478.92	3 414	709.21	
L36	-4 489.62	3 414	098.15	R36	-3 601.29	3 414	744.69	
L37	-4 591.38	3 414	096.29	R37	-3 675.67	3 414	716.52	
L38	-5 128.02	3 414	259.71	R38	-4 204.05	3 414	311.78	
L39	-5 767.57	3 414	454.25	R39	-4 373.03	3 414	179.34	
L40	-6 007.35	3 414	496.30	R40	-4 567.02	3 414	143.49	
L41	-6 108.25	3 414	498.62	R41	-5 750.58	3 414	498.40	
L42	-6 313.10	3 414	456.35	R42	-5 986.83	3 414	545.30	
L43	-6 484.19	3 414	414.39	R43	-6 347.07	3 414	514.02	
L44	-6 535.20	3 414	392.06	R44	-6 549.36	3 414	445.86	
L45	-6 631.66	3 414	344.75	R45	-6 551.91	3 414	424.77	
L46	-6 710.78	3 414	305.96	R46	-6 566.83	3 414	417.72	
L47	-6 798.28	3 414	263.05	R47	-6 649.15	3 414	378.78	
L48	-6 873.04	3 414	182.65	R48	-6 731.46	3 414	339.84	
L49	-6 935.71	3 413	939.50	R49	-6 800.41	3 414	307.23	
L50	-6 958.15	3 413	868.99	R50	-6 842.77	3 414	327.14	
L51	-7 026.30	3 413	748.53	R51	-6 873.69	3 414	242.25	

Vel 16 Van 22  
Sheet of

P620/07

PADRESERWE KOÖRDINATE				/	ROAD RESERVE CO-ORDINATES			
LINKERKANT/LEFT HAND SIDE					REGTERKANT/RIGHT HAND SIDE			
	Y	X	WG	29°	Y	X		
L52	-7 125.00	3 413	577.73	R52	-6 920.27	3 414	187.00	
L53	-7 137.59	3 413	277.61	R53	-6 998.19	3 413	895.28	
L54	-7 140.99	3 413	204.11	R54	-7 065.08	3 413	766.26	
L55	-7 217.50	3 413	109.99	R55	-7 176.74	3 413	544.34	
L56	-7 541.92	3 412	931.37	R56	-7 180.50	3 413	236.52	
L57	-7 626.90	3 412	903.59	R57	-7 253.07	3 413	133.10	
L58	-7 675.08	3 412	886.11	R58	-7 607.30	3 412	950.69	
L59	-7 720.74	3 412	879.33	R59	-7 679.06	3 412	929.60	
L60	-7 773.06	3 412	879.79	R60	-7 751.62	3 412	939.63	
L61	-7 817.72	3 412	892.00	R61	-7 811.58	3 412	978.97	
L62	-7 839.65	3 412	940.18	R62	-7 819.00	3 412	995.63	
L63	-7 974.67	3 413	121.04	R63	-7 871.72	3 413	090.86	
L64	-8 245.63	3 413	198.26	R64	-7 972.57	3 413	176.32	
L65	-8 297.80	3 413	231.37	R65	-8 108.37	3 413	226.18	
L66	-8 596.95	3 413	589.28	R66	-8 250.36	3 413	250.97	
L67	-8 652.61	3 413	895.14	R67	-8 561.36	3 413	620.21	
L68	-8 704.14	3 414	009.31	R68	-8 576.18	3 413	691.96	
L69	-8 811.06	3 414	089.60	R69	-8 591.02	3 413	901.80	
L70	-8 968.33	3 414	145.03	R70	-8 712.62	3 414	090.13	
L71	-9 358.47	3 414	187.55	R71	-8 772.60	3 414	134.00	
L72	-10 050.80	3 414	167.66	R72	-8 906.32	3 414	189.50	
L73	-10 499.17	3 414	154.74	R73	-9 385.54	3 414	224.81	
L74	-10 856.24	3 414	223.42	R74	-10 444.73	3 414	187.29	
L75	-11 299.54	3 414	217.27	R75	-10 508.91	3 414	192.86	
L76	-11 327.48	3 414	216.88	R76	-10 906.67	3 414	262.74	
L77	-11 550.00	3 414	213.79	R77	-11 305.62	3 414	252.51	
L78	-11 617.43	3 414	192.53	R78	-11 313.28	3 414	252.31	
L79	-11 700.65	3 414	154.49	R79	-11 320.93	3 414	252.12	
L80	-11 756.63	3 414	111.26	R81	-11 542.22	3 414	246.45	
L81	-11 811.85	3 414	039.72	R82	-11 641.65	3 414	226.55	
L82	-11 850.68	3 413	939.89	R83	-11 717.47	3 414	195.80	
L83	-11 856.45	3 413	829.64	R84	-11 814.68	3 414	125.30	
L84	-11 813.39	3 413	408.61	R85	-11 867.73	3 414	008.63	
L85	-11 842.44	3 413	292.71	R86	-11 889.35	3 413	935.56	
L86	-11 887.59	3 413	204.08	R87	-11 892.43	3 413	815.22	
L87	-12 129.81	3 412	996.34	R88	-11 851.42	3 413	456.93	
L88	-12 170.89	3 412	934.98	R89	-11 860.49	3 413	358.27	
L89	-12 186.44	3 412	885.86	R90	-11 898.41	3 413	267.21	
L90	-12 204.04	3 412	631.64	R91	-11 943.53	3 413	205.08	
L91	-12 245.80	3 412	520.50	R92	-12 122.05	3 413	061.50	
L92	-12 275.12	3 412	475.39	R93	-12 159.57	3 413	019.04	
L93	-12 592.25	3 412	177.36	R94	-12 213.67	3 412	925.18	
L94	-12 694.99	3 412	097.08	R95	-12 226.81	3 412	859.94	
L95	-12 769.46	3 412	055.82	R96	-12 236.31	3 412	653.02	
L96	-12 873.35	3 412	021.79	R97	-12 252.64	3 412	589.22	
L97	-12 937.92	3 412	009.81	R98	-12 313.11	3 412	486.31	
L98	-13 023.81	3 412	002.51	R99	-12 616.61	3 412	204.09	
L99	-13 132.64	3 412	011.99	R100	-12 682.25	3 412	147.39	
L100	-13 647.97	3 412	127.27	R101	-12 796.66	3 412	084.38	
L101	-13 760.94	3 412	152.54	R102	-12 880.22	3 412	056.97	
L102	-14 035.47	3 412	209.98	R103	-12 933.81	3 412	045.75	

Vel	17	Van	22	P620/07
Sheet		of		

PADRESERWE KOÖRDINATE				ROAD RESERVE CO-ORDINATES			
LINKERKANT/LEFT HAND SIDE				REGTERKANT/RIGHT HAND SIDE			
	Y	X	WG 29°		Y	X	
L103	-14 156.58	3 412	194.91	R104	-12 988.45	3 412	039.83
L104	-14 334.85	3 412	130.06	R105	-13 042.70	3 412	038.35
L105	-14 423.91	3 412	122.83	R106	-13 118.78	3 412	045.92
L106	-14 779.48	3 412	188.91	R107	-13 514.49	3 412	135.61
L107	-14 880.65	3 412	195.40	R108	-13 791.33	3 412	198.35
L108	-14 946.23	3 412	182.43	R109	-13 800.50	3 412	200.29
L109	-15 017.83	3 412	152.82	R110	-13 860.29	3 412	212.95
L110	-15 081.48	3 412	107.81	R111	-14 066.10	3 412	249.99
L111	-15 133.59	3 412	049.06	R112	-14 128.73	3 412	241.99
L112	-15 175.49	3 411	969.77	R113	-14 189.48	3 412	225.33
L113	-15 457.54	3 411	189.81	R114	-14 316.88	3 412	175.45
L114	-15 589.10	3 410	982.21	R115	-14 378.45	3 412	162.55
L115	-15 672.09	3 410	906.34	R116	-14 463.22	3 412	165.22
L116	-15 794.68	3 410	827.20	R117	-14 597.46	3 412	192.34
L117	-15 977.09	3 410	770.56	R118	-14 803.53	3 412	231.25
L118	-16 125.47	3 410	755.13	R119	-14 899.32	3 412	232.45
L119	-16 214.56	3 410	767.40	R120	-14 951.54	3 412	224.59
L120	-16 334.78	3 410	799.55	R121	-15 058.09	3 412	178.01
L121	-16 999.28	3 410	977.17	R122	-15 136.75	3 412	108.75
L122	-17 093.52	3 410	989.96	R123	-15 187.99	3 412	039.87
L123	-17 172.18	3 410	991.74	R124	-15 496.13	3 411	202.27
L124	-17 259.09	3 410	973.58	R125	-15 626.89	3 410	998.00
L125	-17 332.44	3 410	944.86	R126	-15 697.83	3 410	934.93
L126	-17 417.44	3 410	889.76	R127	-15 884.96	3 410	833.32
L127	-17 451.56	3 410	860.63	R128	-15 977.03	3 410	808.77
L128	-17 842.86	3 410	527.32	R129	-16 093.39	3 410	798.36
L129	-18 033.31	3 410	365.10	R130	-16 272.86	3 410	822.12
L130	-18 150.28	3 410	279.33	R131	-17 093.92	3 411	033.10
L131	-18 344.85	3 410	244.05	R132	-17 178.48	3 411	031.79
L132	-18 591.79	3 410	285.22	R133	-17 380.09	3 410	965.77
L133	-18 702.06	3 410	346.32	R134	-17 489.94	3 410	881.00
L134	-19 319.59	3 410	731.49	R135	-17 867.52	3 410	557.62
L135	-19 499.79	3 410	787.61	R136	-18 053.30	3 410	398.49
L136	-19 618.27	3 410	818.79	R137	-18 117.34	3 410	357.16
L137	-19 862.37	3 410	870.18	R138	-18 298.19	3 410	293.00
L138	-20 876.73	3 411	221.89	R139	-18 570.87	3 410	322.19
L139	-21 624.39	3 411	495.33	R140	-18 647.48	3 410	358.99
L140	-21 880.26	3 411	587.16	R141	-19 345.79	3 410	785.54
L141	-22 096.71	3 411	602.86	R142	-19 457.40	3 410	828.77
L142	-22 470.60	3 411	555.72	R143	-19 860.30	3 410	908.92
L143	-22 904.33	3 411	492.01	R144	-20 848.15	3 411	261.82
L144	-23 052.17	3 411	438.26	R145	-21 628.45	3 411	546.82
L145	-23 180.26	3 411	364.05	R146	-21 887.43	3 411	628.20
L146	-23 444.26	3 411	096.08	R147	-21 997.27	3 411	650.54
L147	-23 466.20	3 411	073.82	R148	-22 041.99	3 411	649.20
L148	-23 780.65	3 411	101.38	R149	-22 065.53	3 411	646.69
L149	-23 842.57	3 411	129.39	R150	-22 539.56	3 411	583.17
L150	-24 310.28	3 411	351.00	R151	-22 913.84	3 411	527.84
L151	-24 600.38	3 411	173.71	R152	-23 105.33	3 411	455.23
L152	-24 889.32	3 411	115.21	R153	-23 285.19	3 411	320.91
L153	-25 870.67	3 410	808.29	R154	-23 443.79	3 411	178.58

Vel	18	Van	22	P620/07
Sheet		of		

PADRESERWE KOÖRDINATE				/	ROAD RESERVE CO-ORDINATES			
LINKERKANT/LEFT HAND SIDE					REGTERKANT/RIGHT HAND SIDE			
	Y	X	WG	29°	Y	X		
L154	-26 285.31	3 410	561.70	R155	-23 570.88	3 411	128.65	
L155	-26 453.47	3 410	520.38	R156	-23 597.30	3 411	118.27	
L156	-26 977.31	3 410	512.02	R157	-23 751.33	3 411	133.94	
L157	-27 822.45	3 410	505.79	R158	-23 868.36	3 411	198.29	
L158	-27 946.09	3 410	484.95	R159	-24 082.48	3 411	381.92	
L159	-28 401.71	3 410	343.53	R160	-24 182.85	3 411	412.82	
L160	-28 635.76	3 410	336.48	R161	-24 349.82	3 411	401.07	
L161	-28 796.46	3 410	291.33	R162	-24 404.72	3 411	372.84	
L162	-28 909.62	3 410	206.79	R163	-24 412.48	3 411	347.10	
L163	-29 172.71	3 409	948.42	R164	-24 650.44	3 411	198.02	
L164	-29 375.65	3 409	861.90	R165	-24 926.12	3 411	149.02	
L165	-29 520.21	3 409	849.48	R166	-25 836.97	3 410	873.19	
L166	-30 602.25	3 409	849.64	R167	-26 373.94	3 410	574.53	
L167	-30 930.28	3 409	707.19	R168	-26 955.75	3 410	555.01	
L168	-31 366.64	3 409	287.44	R169	-27 931.98	3 410	528.44	
L169	-31 607.46	3 409	126.56	R170	-28 038.27	3 410	494.78	
L170	-31 944.52	3 409	013.38	R171	-28 467.53	3 410	376.73	
L171	-32 284.89	3 408	995.65	R172	-28 640.21	3 410	373.39	
L172	-33 126.81	3 409	015.60	R173	-28 790.29	3 410	339.93	
L173	-33 614.97	3 409	027.10	R174	-28 948.12	3 410	227.43	
L174	-34 002.90	3 409	036.24	R175	-29 264.44	3 409	942.42	
L175	-34 090.48	3 409	031.11	R176	-29 419.48	3 409	895.71	
L176	-34 762.36	3 408	891.63	R177	-29 526.11	3 409	885.84	
L177	-34 983.39	3 408	700.56	R178	-30 606.52	3 409	885.92	
L178	-35 208.75	3 407	928.95	R179	-30 720.00	3 409	852.09	
L179	-35 362.61	3 407	402.16	R180	-30 954.03	3 409	738.47	
L180	-35 464.45	3 407	034.60	R181	-31 392.11	3 409	315.42	
L181	-35 559.25	3 406	826.67	R182	-31 647.54	3 409	159.12	
L182	-35 683.00	3 406	679.24	R183	-31 709.96	3 409	122.85	
L183	-35 920.46	3 406	491.51	R184	-31 975.08	3 409	052.79	
L184	-36 557.00	3 405	570.73	R185	-32 286.06	3 409	037.59	
L185	-37 106.60	3 405	194.55	R186	-33 101.09	3 409	055.17	
L186	-37 235.31	3 405	130.85	R187	-33 586.88	3 409	066.18	
L187	-37 381.86	3 405	065.46	R188	-34 042.43	3 409	076.51	
L188	-37 658.64	3 404	997.54	R189	-34 145.80	3 409	064.45	
L189	-37 900.05	3 404	979.98	R190	-34 796.89	3 408	916.96	
L190	-38 406.59	3 405	024.21	R191	-34 871.48	3 408	882.46	
L191	-38 495.87	3 405	006.18	R192	-34 882.56	3 408	875.28	
L192	-38 571.41	3 404	964.02	R193	-34 992.54	3 408	771.87	
L193	-38 616.02	3 404	922.91	R194	-35 021.79	3 408	721.12	
L194	-38 758.99	3 404	791.14	R195	-35 055.57	3 408	623.82	
L195	-38 829.06	3 404	741.82	R196	-35 256.33	3 407	940.25	
L196	-38 912.88	3 404	714.15	R197	-35 410.72	3 407	414.56	
L197	-39 016.98	3 404	694.83	R198	-35 503.10	3 407	059.67	
L198	-39 141.83	3 404	695.26	R199	-35 566.01	3 406	907.44	
L199	-39 239.21	3 404	674.48	R200	-35 710.64	3 406	714.08	
L200	-39 315.47	3 404	639.77	R201	-35 967.85	3 406	504.46	
L201	-39 379.01	3 404	587.64	R202	-36 523.70	3 405	667.40	
L202	-39 411.35	3 404	543.44	R203	-36 613.85	3 405	573.08	
L203	-39 766.07	3 403	946.78	R204	-37 102.57	3 405	243.60	
L204	-40 415.52	3 402	853.46	R205	-37 246.32	3 405	167.07	

Vel	19	Van	22	P620/07
Sheet		of		

PADRESERWE KOÖRDINATE				/	ROAD RESERVE CO-ORDINATES			
LINKERKANT/LEFT HAND SIDE					REGTERKANT/RIGHT HAND SIDE			
	Y	X	WG	29°	Y	X		
L205	-40 531.57	3 402	690.08	R206	-37 413.82	3 405	098.96	
L206	-40 585.97	3 402	613.59	R207	-37 528.75	3 405	064.41	
L207	-40 704.90	3 402	482.16	R208	-37 668.35	3 405	037.18	
L208	-40 887.82	3 402	280.23	R209	-37 781.97	3 405	023.70	
L209	-40 936.49	3 402	243.22	R210	-37 922.69	3 405	020.52	
L210	-40 944.45	3 402	237.20	R211	-38 374.17	3 405	064.92	
L211	-40 958.54	3 402	220.54	R212	-38 484.89	3 405	052.70	
L212	-41 187.20	3 401	950.16	R213	-38 610.40	3 404	995.07	
L213	-41 196.60	3 401	939.04	R214	-38 658.32	3 404	947.99	
L214	-41 206.00	3 401	927.92	R215	-38 805.93	3 404	802.96	
L215	-41 241.43	3 401	841.52	R216	-38 878.66	3 404	765.79	
L216	-41 252.71	3 401	747.14	R217	-38 941.70	3 404	740.26	
L217	-41 244.46	3 401	676.02	R218	-39 019.28	3 404	732.88	
L218	-41 214.80	3 401	601.55	R219	-39 130.47	3 404	738.95	
L219	-41 175.22	3 401	531.62	R220	-39 258.56	3 404	717.73	
L220	-41 095.64	3 401	419.98	R221	-39 333.77	3 404	673.63	
L221	-41 053.27	3 401	343.92	R222	-39 410.26	3 404	622.37	
L222	-41 040.62	3 401	250.06	R223	-39 455.71	3 404	559.51	
L223	-41 038.60	3 401	156.73	R224	-39 785.03	3 403	991.09	
L224	-41 186.65	3 400	440.57	R225	-40 442.57	3 402	887.73	
L225	-41 213.26	3 400	311.85	R226	-40 638.68	3 402	616.50	
L226	-41 279.57	3 400	157.29	R227	-40 727.89	3 402	511.96	
L227	-42 192.87	3 398	658.48	R228	-40 920.46	3 402	307.78	
L228	-42 816.24	3 397	165.74	R229	-40 961.75	3 402	263.10	
L229	-42 821.93	3 397	152.11	R230	-41 017.33	3 402	200.32	
L230	-42 827.63	3 397	138.47	R231	-41 214.45	3 401	977.65	
L231	-42 874.70	3 397	025.77	R232	-41 221.68	3 401	969.48	
L232	-42 985.49	3 396	819.58	R233	-41 228.92	3 401	961.30	
L233	-43 089.81	3 396	675.76	R234	-41 251.21	3 401	936.13	
L234	-43 218.76	3 396	532.92	R235	-41 297.27	3 401	748.60	
L235	-43 320.49	3 396	448.24	R236	-41 263.10	3 401	601.55	
L236	-43 442.34	3 396	361.37	R237	-41 113.61	3 401	387.65	
L237	-43 888.68	3 396	094.33	R238	-41 092.04	3 401	334.59	
L238	-44 047.44	3 395	915.91	R239	-41 076.39	3 401	242.40	
L239	-44 123.21	3 395	728.68	R240	-41 082.28	3 401	162.12	
L240	-44 124.58	3 395	717.15	R241	-41 221.46	3 400	466.29	
L241	-44 127.43	3 395	693.21	R242	-41 248.32	3 400	331.98	
L242	-44 130.29	3 395	669.27	R243	-41 304.75	3 400	195.07	
L243	-44 186.09	3 395	200.84	R244	-42 069.07	3 398	942.22	
L244	-44 252.62	3 395	085.11	R245	-42 225.39	3 398	677.90	
L245	-44 294.77	3 395	030.43	R246	-42 850.72	3 397	191.27	
L246	-44 346.40	3 394	990.05	R247	-42 861.12	3 397	166.54	
L247	-44 408.00	3 394	959.34	R248	-42 871.52	3 397	141.81	
L248	-44 455.97	3 394	938.94	R249	-42 912.52	3 397	044.35	
L249	-44 529.50	3 394	923.76	R250	-43 024.69	3 396	833.98	
L250	-44 740.36	3 394	913.17	R251	-43 207.94	3 396	602.16	
L251	-44 866.79	3 394	879.12	R252	-43 333.63	3 396	488.79	
L252	-44 942.74	3 394	821.83	R253	-43 473.62	3 396	387.10	
L253	-45 015.13	3 394	752.71	R254	-43 930.90	3 396	106.51	
L254	-45 173.42	3 394	408.31	R255	-44 089.56	3 395	936.56	
L255	-45 194.20	3 394	280.19	R256	-44 128.97	3 395	817.28	

Vel	20	Van	22	P620/07
Sheet		of		

PADRESERWE KOÖRDINATE				/ ROAD RESERVE CO-ORDINATES			
LINKERKANT/LEFT HAND SIDE				REGTERKANT/RIGHT HAND SIDE			
	Y	X	WG 29°		Y	X	
L256	-45 197.24	3 393 873.61		R257	-44 165.62	3 395 711.90	
L257	-45 226.68	3 393 774.17		R258	-44 168.67	3 395 691.00	
L258	-45 260.27	3 393 716.43		R259	-44 172.42	3 395 665.42	
L259	-45 519.02	3 393 365.56		R260	-44 176.16	3 395 639.84	
L260	-45 532.93	3 393 327.22		R261	-44 241.34	3 395 194.30	
L261	-45 539.13	3 393 288.28		R262	-44 260.23	3 395 134.95	
L262	-45 531.36	3 393 209.38		R263	-44 292.09	3 395 097.97	
L263	-45 519.82	3 393 172.11		R264	-44 345.19	3 395 036.48	
L264	-45 409.92	3 393 009.48		R265	-44 415.71	3 394 997.08	
L265	-45 391.55	3 392 956.82		R266	-44 476.86	3 394 974.38	
L266	-45 342.53	3 392 690.19		R267	-44 546.22	3 394 962.27	
L267	-45 309.68	3 392 631.83		R268	-44 767.59	3 394 953.22	
L268	-45 249.80	3 392 581.13		R269	-44 846.04	3 394 930.22	
L269	-45 100.59	3 392 522.31		R270	-44 915.36	3 394 893.18	
L270	-45 056.42	3 392 492.71		R271	-44 983.57	3 394 837.21	
L271	-45 023.24	3 392 460.26		R272	-45 050.11	3 394 763.77	
L272	-44 966.47	3 392 377.67		R273	-45 098.56	3 394 669.89	
L273	-44 949.56	3 392 276.57		R274	-45 223.02	3 394 370.83	
L274	-44 942.74	3 391 943.94		R275	-45 230.69	3 394 317.72	
L275	-44 955.41	3 391 830.78		R276	-45 234.41	3 393 867.54	
L276	-44 977.20	3 391 766.31		R277	-45 263.71	3 393 774.71	
L277	-45 025.80	3 391 683.93		R278	-45 317.95	3 393 698.84	
L278	-45 087.36	3 391 625.01		R279	-45 547.31	3 393 411.51	
L279	-45 161.44	3 391 566.05		R280	-45 581.53	3 393 320.16	
L280	-45 238.71	3 391 535.76		R281	-45 585.10	3 393 280.17	
L281	-45 354.63	3 391 519.76		R282	-45 577.23	3 393 223.59	
L282	-45 485.90	3 391 662.81		R283	-45 558.37	3 393 173.85	
L283	-45 535.20	3 391 721.22		R284	-45 490.68	3 393 061.92	
L284	-45 630.80	3 391 737.27		R285	-45 424.75	3 392 951.24	
L285	-45 692.80	3 391 722.51		R286	-45 387.19	3 392 721.75	
L286	-45 736.26	3 391 676.33		R287	-45 356.33	3 392 637.16	
L287	-45 862.33	3 391 492.56		R288	-45 279.98	3 392 558.07	
L288	-45 848.58	3 391 383.35		R289	-45 079.93	3 392 463.44	
L289	-45 809.65	3 391 054.87		R290	-45 002.65	3 392 360.84	
L290	-45 772.81	3 391 005.56		R291	-44 985.13	3 391 893.83	
L291	-45 699.17	3 390 970.95		R292	-45 005.54	3 391 809.39	
L292	-45 605.05	3 390 978.16		R293	-45 040.93	3 391 736.98	
L293	-45 522.21	3 390 959.00		R294	-45 078.59	3 391 694.49	
L294	-45 415.00	3 390 915.53		R295	-45 115.89	3 391 656.24	
L295	-45 318.40	3 390 888.91		R296	-45 241.65	3 391 585.99	
L296	-45 241.43	3 390 846.29		R297	-45 272.01	3 391 574.88	
L297	-45 233.14	3 390 774.65		R298	-45 350.52	3 391 601.82	
L298	-45 284.21	3 390 703.83		R299	-45 406.14	3 391 678.18	
L299	-45 269.41	3 390 650.56		R300	-45 478.09	3 391 764.95	
L300	-45 202.41	3 390 574.62		R301	-45 565.90	3 391 819.39	
L301	-45 184.72	3 390 524.72		R302	-45 681.84	3 391 819.46	
L302	-45 168.68	3 390 474.87		R303	-45 722.10	3 391 797.67	
L303	-45 189.93	3 390 377.81		R304	-45 844.84	3 391 666.58	
L304	-45 242.20	3 390 317.85		R305	-45 920.52	3 391 522.74	
L305	-45 364.49	3 390 164.71		R306	-45 923.70	3 391 432.65	
L306	-45 454.21	3 390 024.02		R307	-45 840.34	3 391 017.08	

Vel	21	Van	22	P620/07
Sheet		of		



PADRESERWE KOÖRDINATE				/	ROAD RESERVE CO-ORDINATES		
LINKERKANT/LEFT HAND SIDE					REGTERKANT/RIGHT HAND SIDE		
	Y	X	WG 29°		Y	X	
L307	-45 469.29	3 389 908.38		R308	-45 810.11	3 390 972.97	
L308	-45 459.14	3 389 840.84		R309	-45 761.31	3 390 933.89	
L309	-45 436.80	3 389 778.84		R310	-45 632.69	3 390 911.47	
L310	-45 279.34	3 389 557.96		R311	-45 549.71	3 390 898.99	
L311	-45 293.81	3 389 432.61		R312	-45 490.44	3 390 870.67	
				R313	-45 485.08	3 390 788.43	
				R314	-45 401.97	3 390 688.08	
				R315	-45 352.71	3 390 643.46	
				R316	-45 261.76	3 390 569.58	
				R317	-45 240.78	3 390 550.35	
				R318	-45 213.39	3 390 509.61	
				R319	-45 209.96	3 390 452.42	
				R320	-45 226.08	3 390 416.33	
				R321	-45 391.91	3 390 248.34	
				R322	-45 462.18	3 390 132.23	
				R323	-45 526.90	3 390 013.78	
				R324	-45 527.55	3 389 929.60	
				R325	-45 484.65	3 389 760.01	
				R326	-45 360.63	3 389 568.57	
				R327	-45 353.07	3 389 436.00	
				R328	-45 361.94	3 389 420.69	
				R80	-12 371.23	3 412 102.99	

Vel	22	Van	22	P620/07
Sheet		of		