

# Government Gazette Staatskoerant

REPUBLIC OF SOUTH AFRICA  
REPUBLIEK VAN SUID-AFRIKA

Vol. 514

Pretoria, 11 April 2008

**No. 30961**

**CONTENTS****INHOUD**

<i>No.</i>	<i>Page No.</i>	<i>Gazette No.</i>	<i>No.</i>	<i>Bladsy No.</i>	<i>Koerant No.</i>
<b>GOVERNMENT NOTICE</b>			<b>GOEWERMENTSKENNISGEWING</b>		
<b>Transport, Department of</b>			<b>Vervoer, Departement van</b>		
<i>Government Notice</i>			<i>Goewermentskennisgewing</i>		
409			409		
South African National Road Agency Limited and National Roads Act (7/1998): The South African National Road Agency Limited: Declaration of National Road R21 (also known as the P157-1 and P157/2) Sections 1 and 2: Hans Strydom Drive and Rietfontein Interchange (N12): Province of Gauteng	3	30961	Suid-Afrikaanse Nasionale Padagentskap Beperk en Nasionale Paaie Wet (7/1998): Die Suid-Afrikaanse Nasionale Padagentskap Beperk: Verklaring van Nasionale Pad R21 (ook bekend as die P157-1 en P157/2) Seksies 1 en 2: Hans Strydomweg tot Rietfontein Wisselaar (N12): Provinsie van Gauteng.....	3	30961

---

**GOVERNMENT NOTICE  
GOEWERMENTSKENNISGEWING**

---

**DEPARTMENT OF TRANSPORT  
DEPARTEMENT VAN VERVOER**

No. 409

11 April 2008

**THE SOUTH AFRICAN NATIONAL ROAD AGENCY LIMITED**

**DECLARATION OF NATIONAL ROAD R21 (ALSO KNOWN AS THE P157-1 AND P157/2)  
SECTIONS 1 AND 2: HANS STRYDOM DRIVE TO RIETFONTEIN INTERCHANGE (N12):  
PROVINCE OF GAUTENG.**

By virtue of section 40(1)(a) of the South African National Road Agency Limited and National Roads Act, 1998 (Act No. 7 of 1998), I hereby declare the Section of road as depicted on the attached Plan P653/08 sheets 1 to 26, as a National Road.

**[R21 Sections 1 and 2: Hans Strydom Drive – Rietfontein Interchange (N12)]**

  
\_\_\_\_\_  
MINISTER OF TRANSPORT

No. 409

11 April 2008

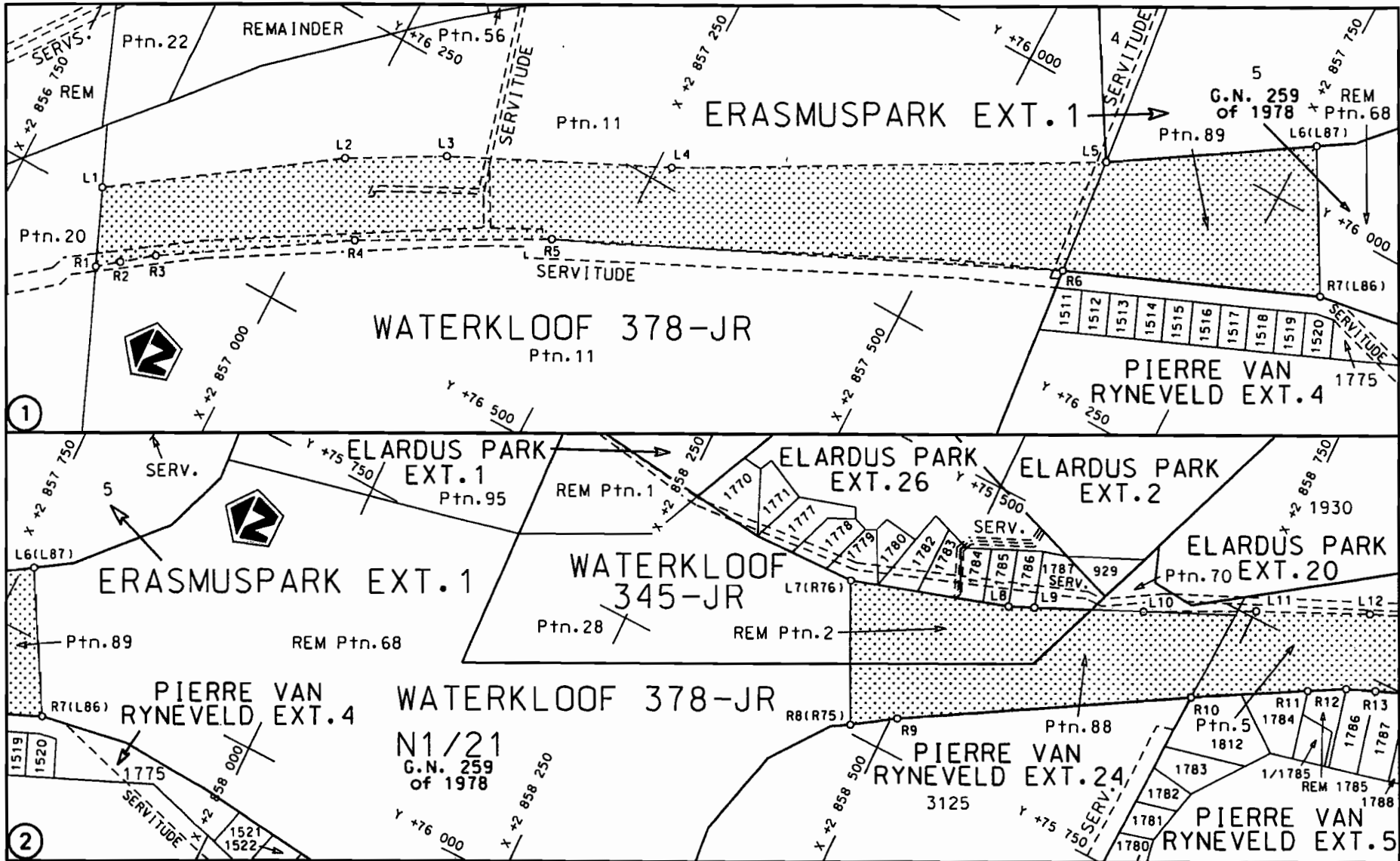
**DIE SUID-AFRIKAANSE NASIONALE PADAGENTSAP BEPERK**

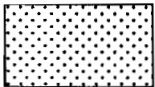
**VERKLARING VAN NASIONALE PAD R21 (OOK BEKEND AS DIE P157-1 EN P157/2)  
SEKSIES 1 EN 2: HANS STRYDOMWEG TOT RIETFONTEIN WISSELAAR (N12): PROVINSIE  
VAN GAUTENG.**

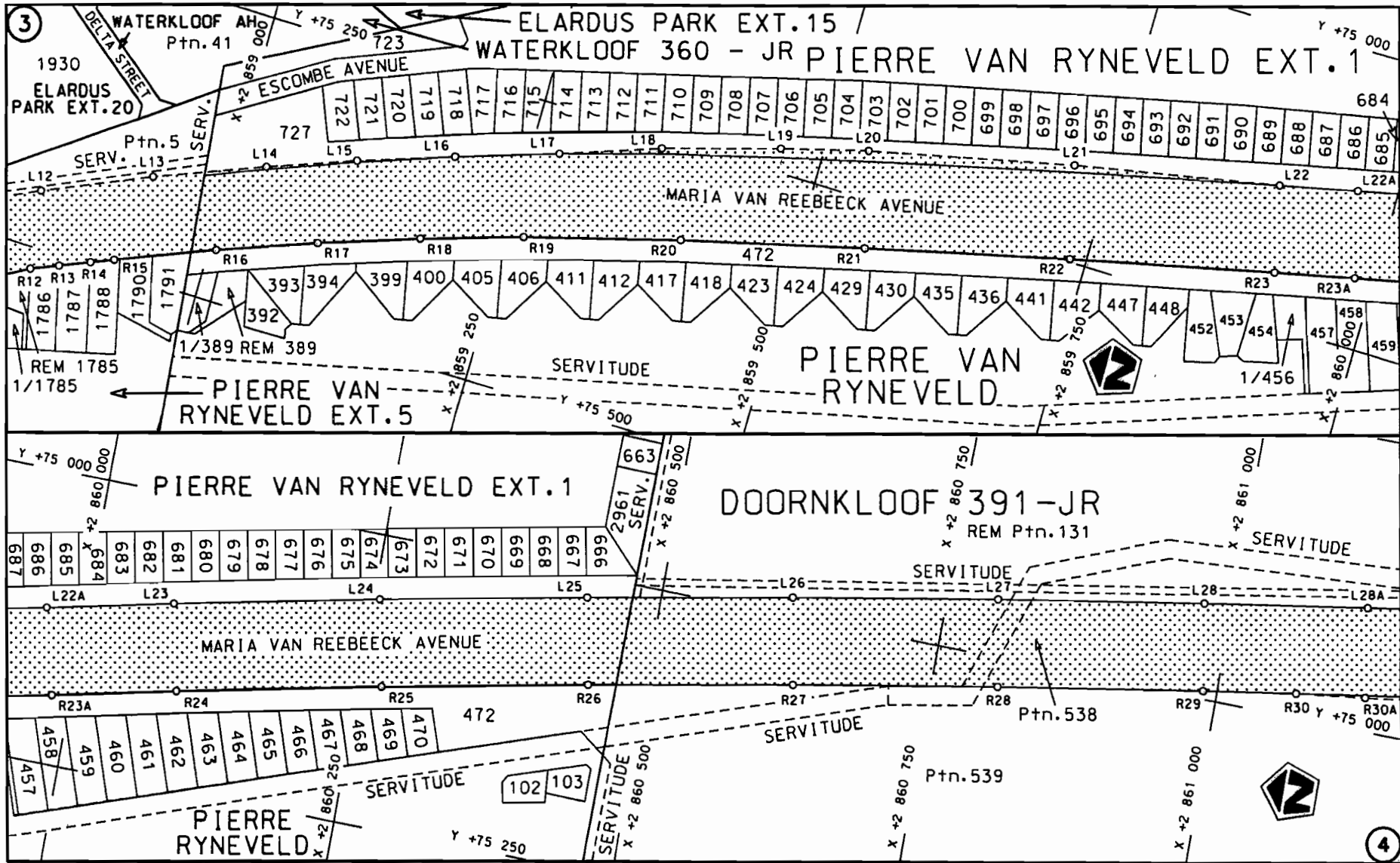
Kragtens Artikel 40(1)(a) van die Suid-Afrikaanse Nasionale Padagentskap Beperk en Nasionale Paaie Wet, 1998 (Wet No. 7 van 1998), verklaar ek hiermee die Gedeelte pad soos aangedui op die aangehegte Plan P653/08 velle 1 tot 26, as 'n Nasionale Pad.

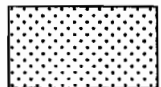
**[R21 Seksies 1 en 2: Hans Strydomweg – Rietfontein Wisselaar (N12)]**

  
\_\_\_\_\_  
MINISTER VAN VERVOER



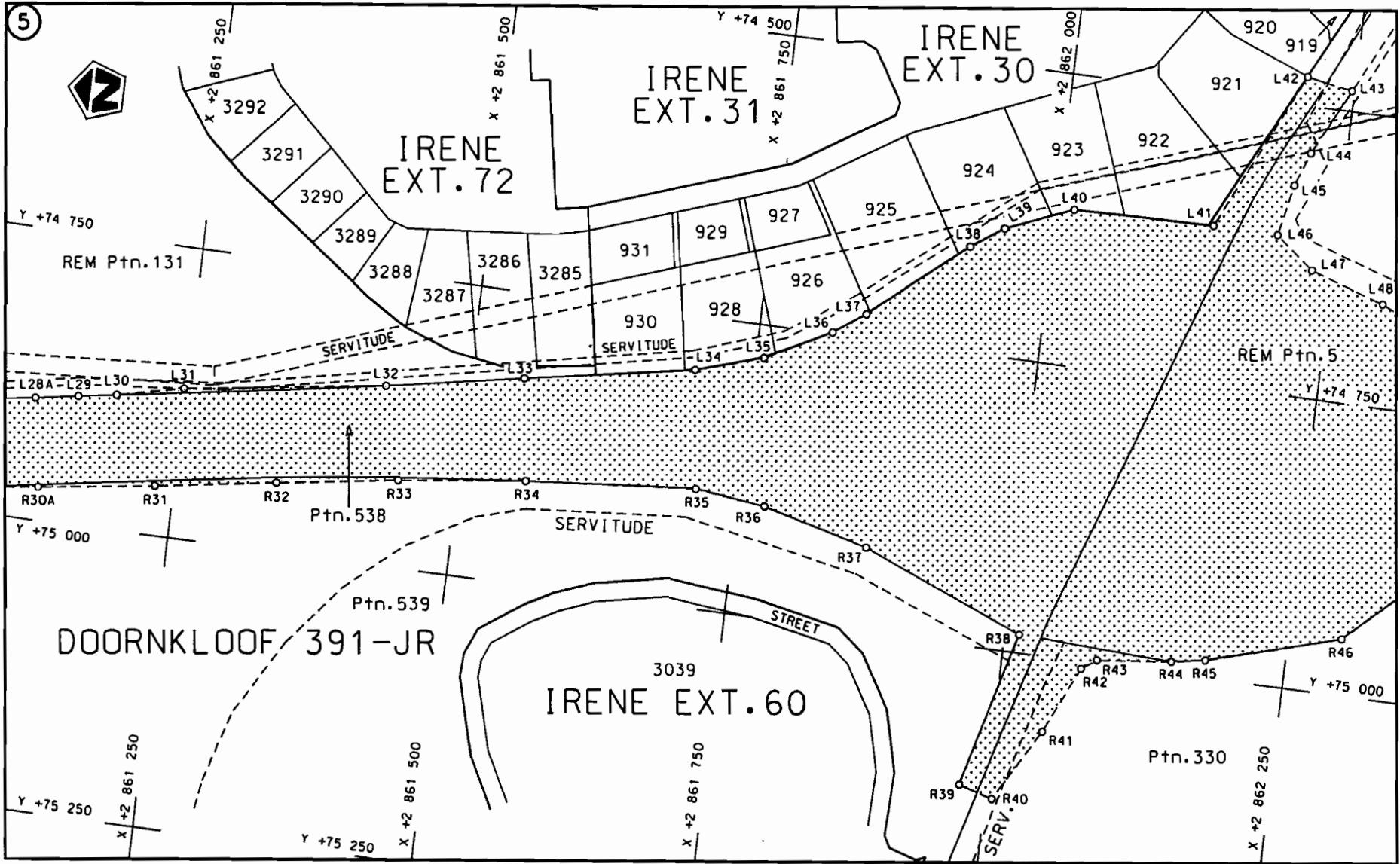
<p>Die Suid Afrikaanse Nasionale Padagentskap Beperk The South African National Roads Agency Limited</p>	<p>Die figuur getoon The figure shown</p> 	<p>stel die padreserwe voor van 'n gedeelte represents the road reserve of a portion van Nasionale Roete R21 Seksie of National Route Section 1</p>	<p>Vel 1 van Sheet of 26 Plon P653/08</p>
--	--	---	---



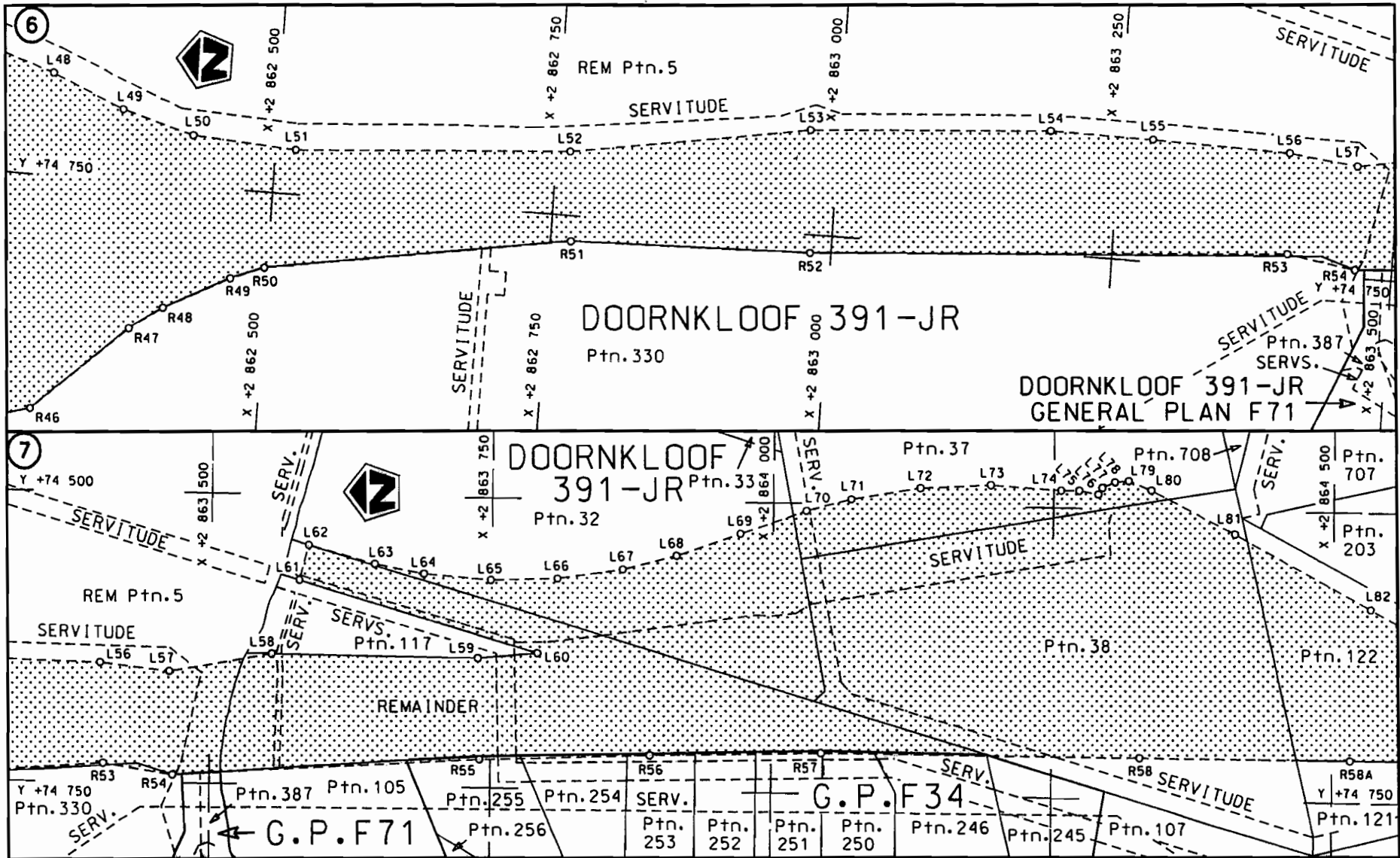
<p>Die Suid Afrikaanse Nasionale Padagentskap Beperk The South African National Roads Agency Limited</p>	<p>Die figuur getoon The figure shown</p> 	<p>steldie padreserwe voor van 'n gedeelte represents the road reserve of a portion van Nasionale Roete R21 Seksie 1 of National Route Section</p>	<p>Vel Sheet 2 van 26 Plan P653/08</p>
--	--	--	--

STAATSKOERANT, 11 APRIL 2008

No. 30961 5

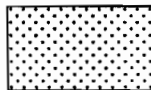


<p>Die Suid Afrikaanse Nasionale Padagentskap Beperk The South African National Roads Agency Limited</p>	<p>Die figuur getoon The figure shown</p>		<p>steldie padreserwe voor van 'n gedeelte represents the road reserve of a portion van Nasionale Roete R21 Seksie of National Route Section</p>	<p>Vel Sheet 3 van of 26 Plan P653/08</p>
			<p>1</p>	



Die Suid Afrikaanse Nasionale Padagentskap Beperk  
The South African National Roads Agency Limited

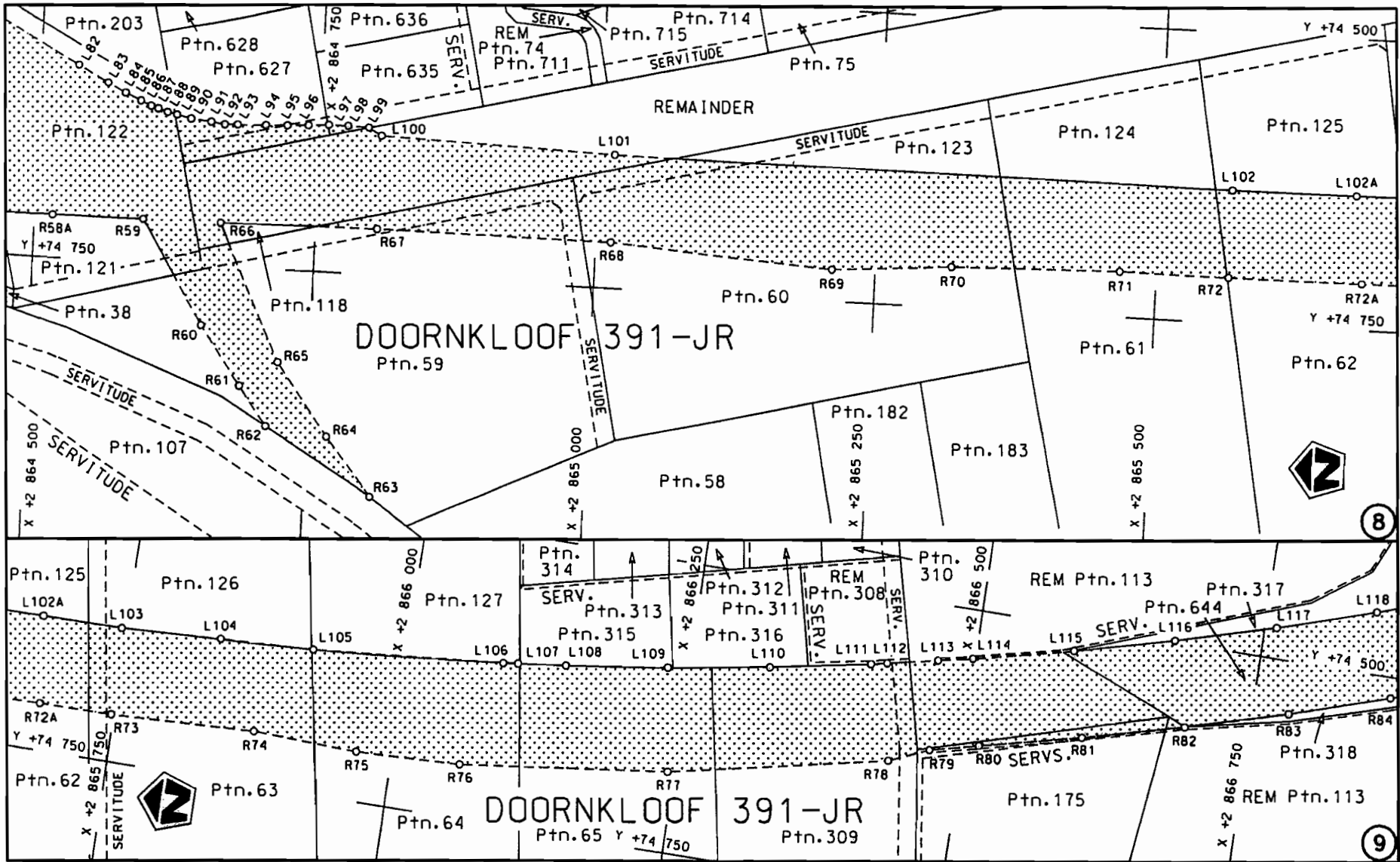
Die figuur getoon  
The figure shown

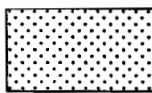


steldie padreserwe voor van 'n gedeelte  
represents the road reserve of a portion  
van Nasionale Roete R21 Seksie  
of National Route Section

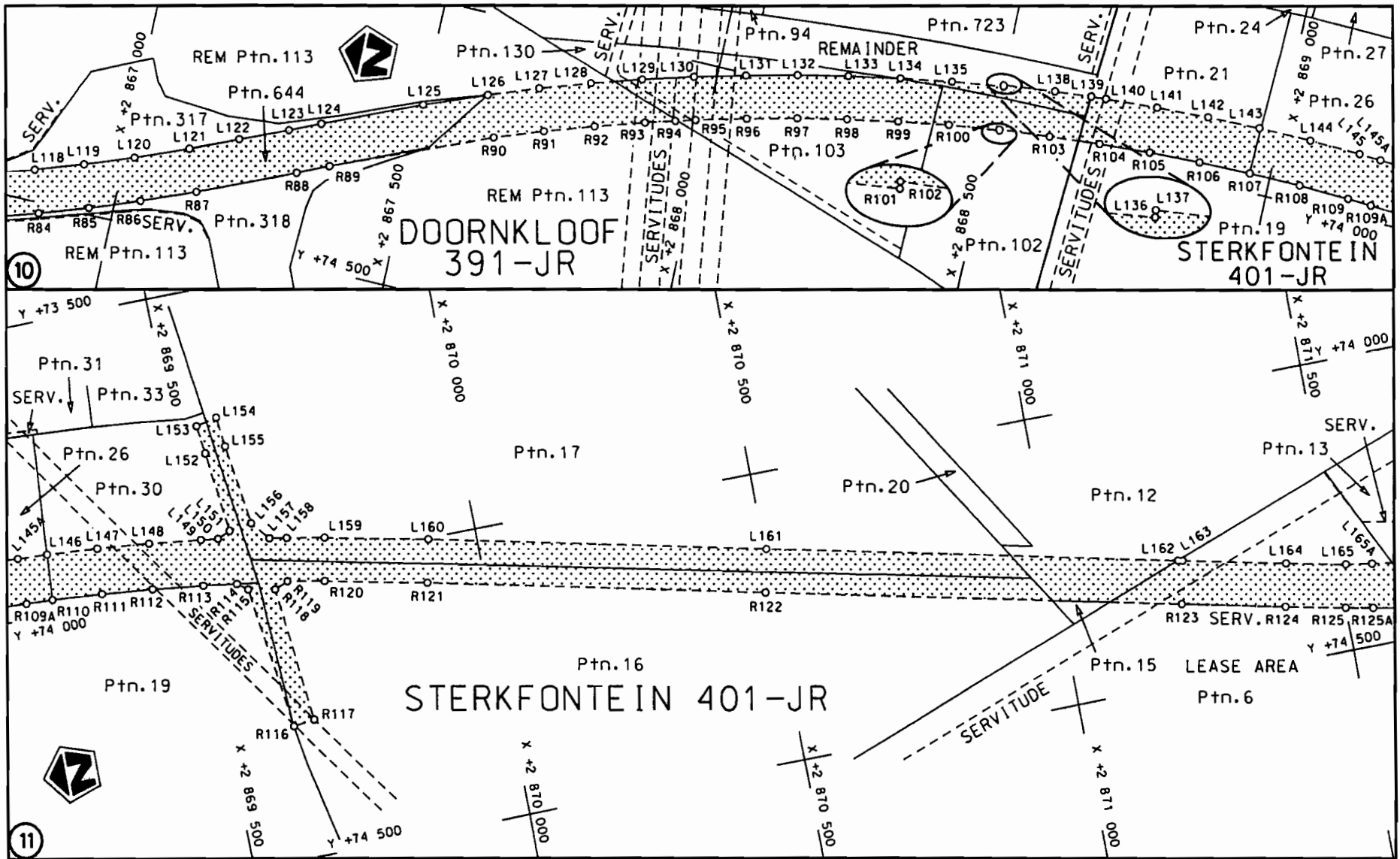
Vel Sheet 4 van of 26

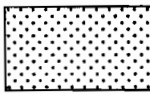
Plan P653/08

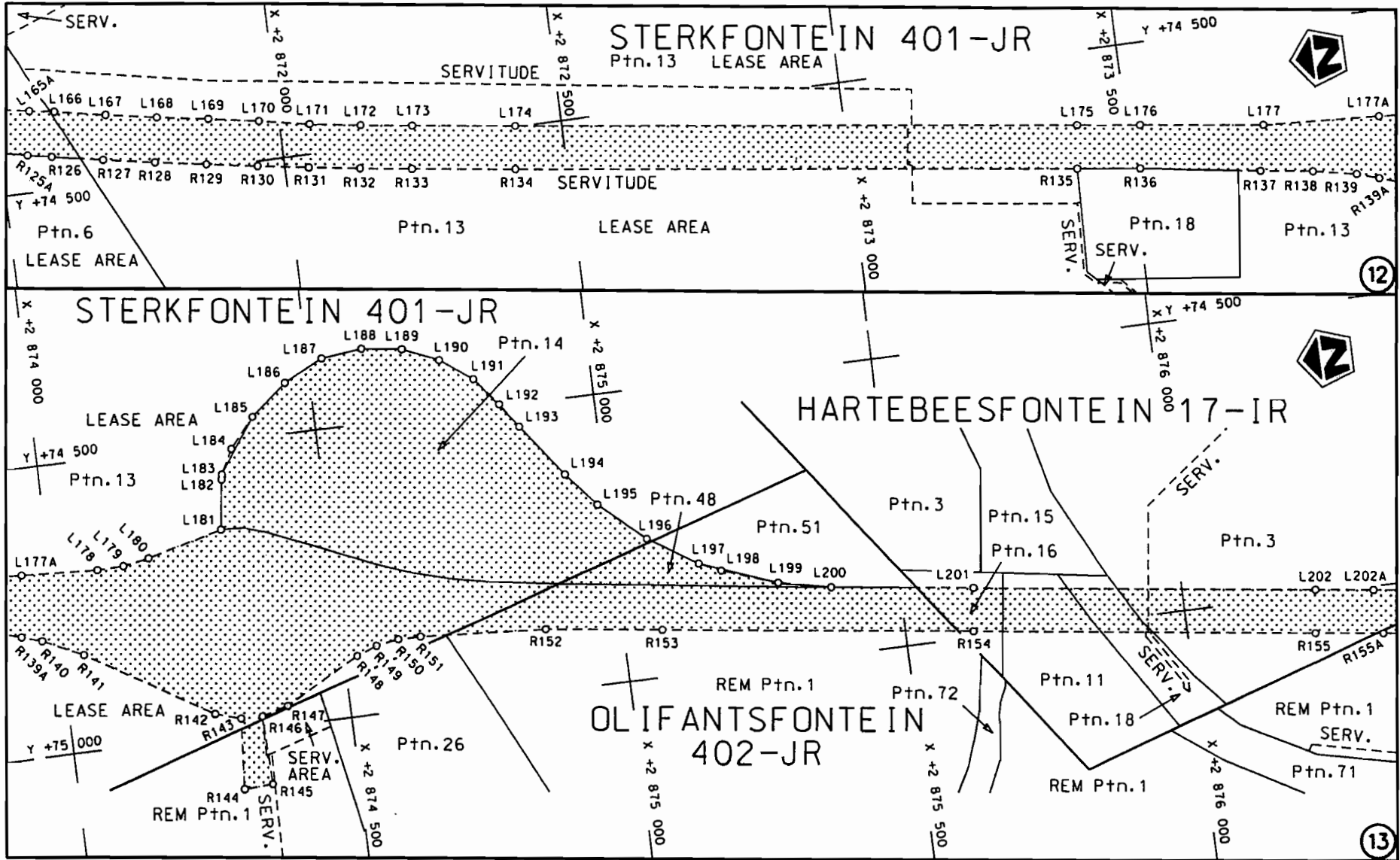


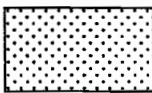
<p>Die Suid Afrikaanse Nasionale Padagentskap Beperk The South African National Roads Agency Limited</p>	<p>Die figuur getoon The figure shown</p>	<p></p> <p>steldie padreserwe voor van 'n gedeelte represents the road reserve of a portion van Nasionale Roete R21 Seksie 1 of National Route R21 Section 1</p>	<p>Vel Sheet 5 van of 26 Plan P653/08</p>
--	---	--	---

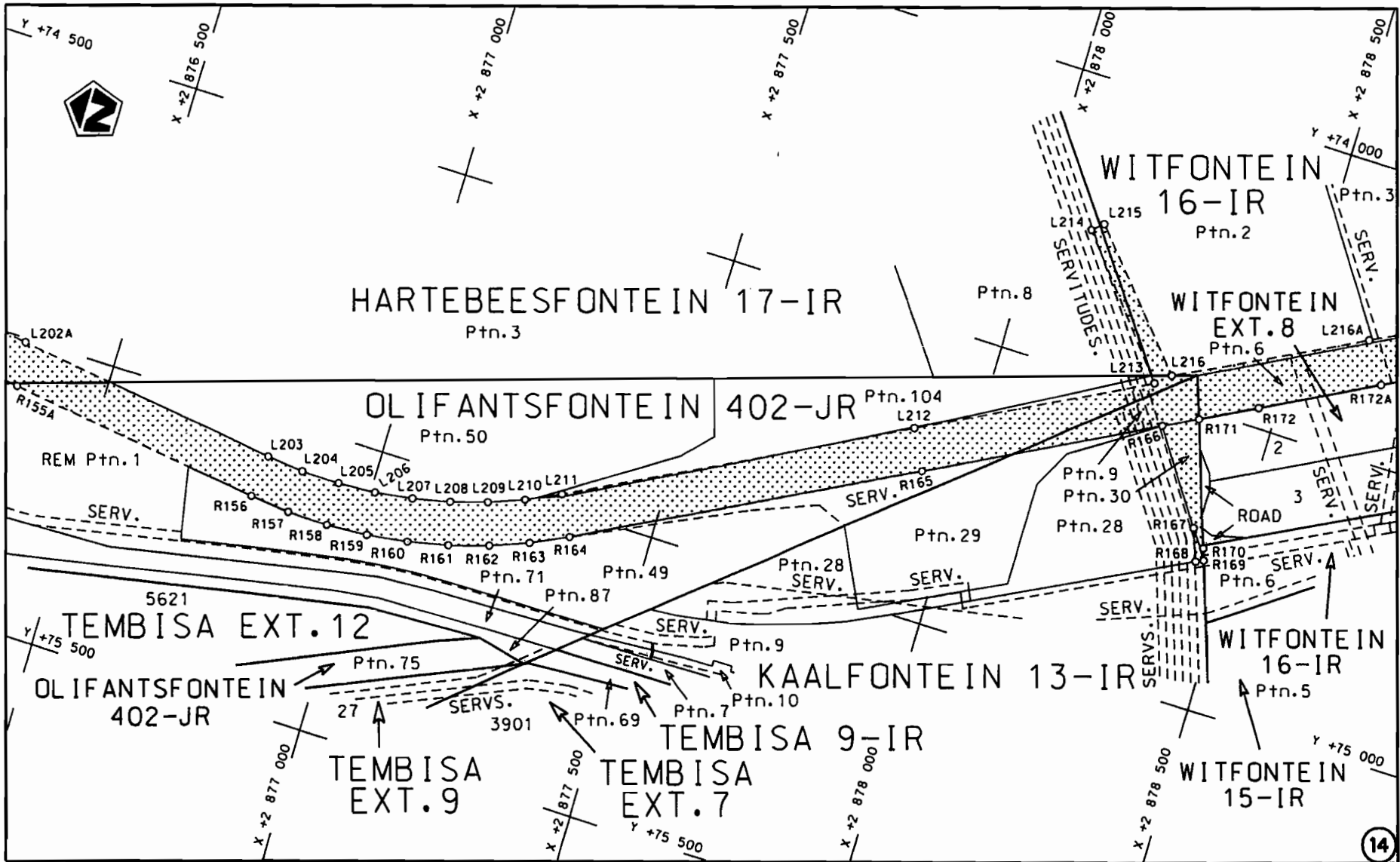


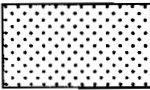


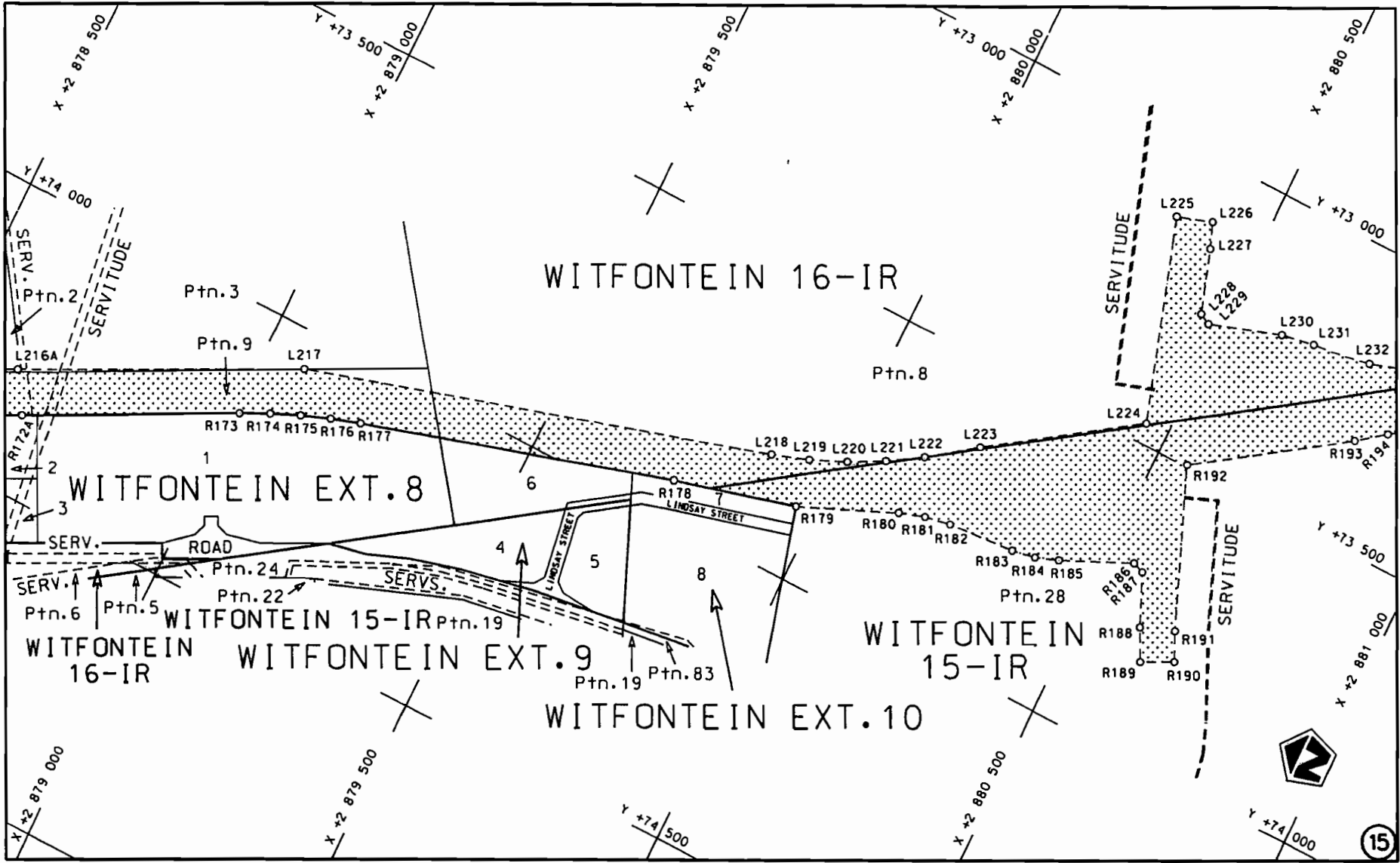
<p>Die Suid Afrikaanse Nasionale Padagentskap Beperk The South African National Roads Agency Limited</p>	<p>Die figuur getoon The figure shown</p> 	<p>steldie padreserwe voor van 'n gedeelte represents the road reserve of a portion van Nasionale Roete R21 Seksie Section of National Route 1</p>	<p>Vel Sheet 6 van of 26 Plan P653/08</p>
--	--	--	---

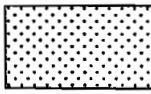


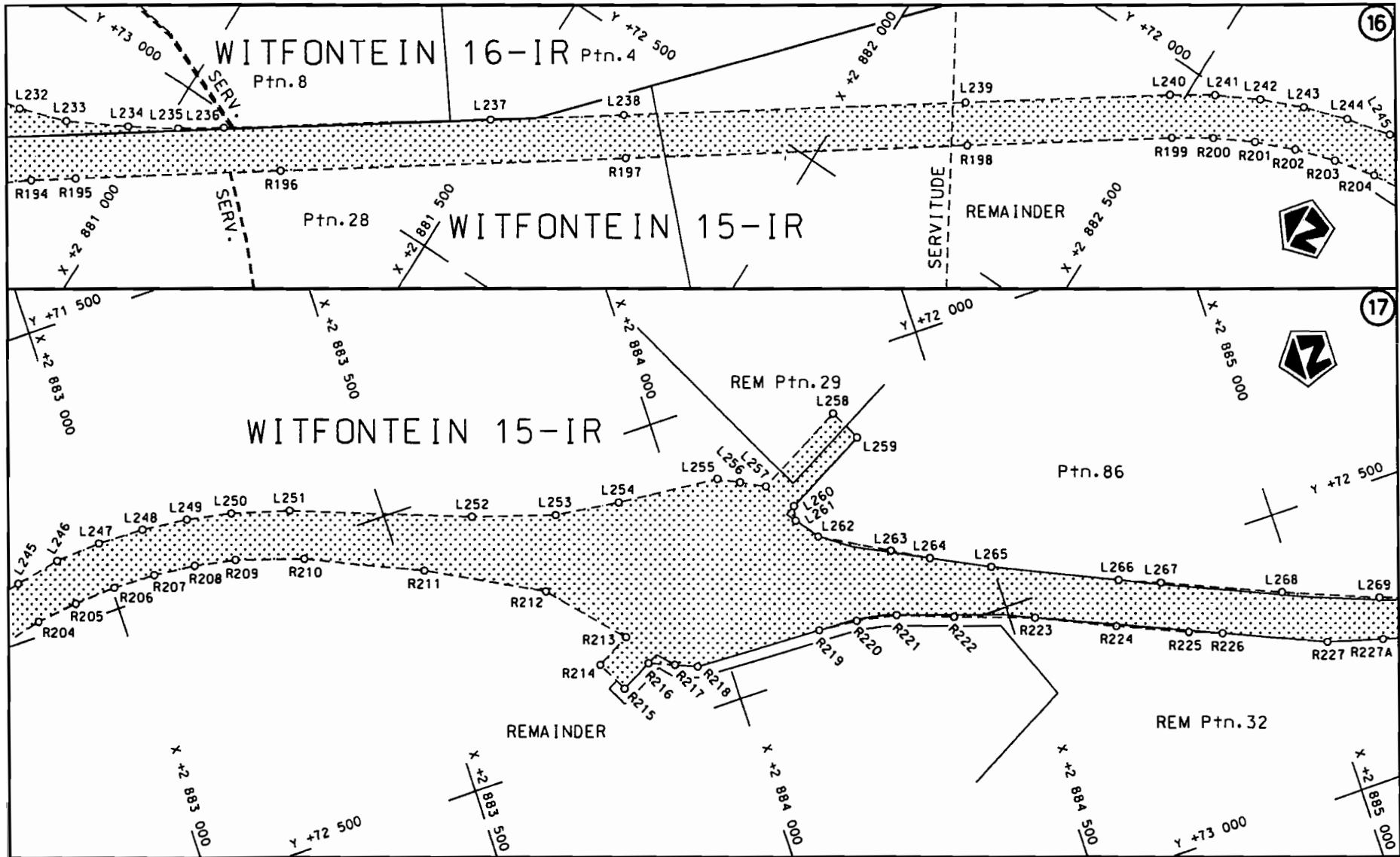
<p>Die Suid Afrikaanse Nasionale Padagentskap Beperk The South African National Roads Agency Limited</p>	<p>Die figuur getoon The figure shown</p> 	<p>steldie padreserwe voor van 'n gedeelte represents the road reserve of a portion van Nasionale Roete R21 Sektie 1 + 2 of National Route Section 1 + 2</p>	<p>Vel Sheet 7 van 26 Plan P653/08</p>
--	--	--	--




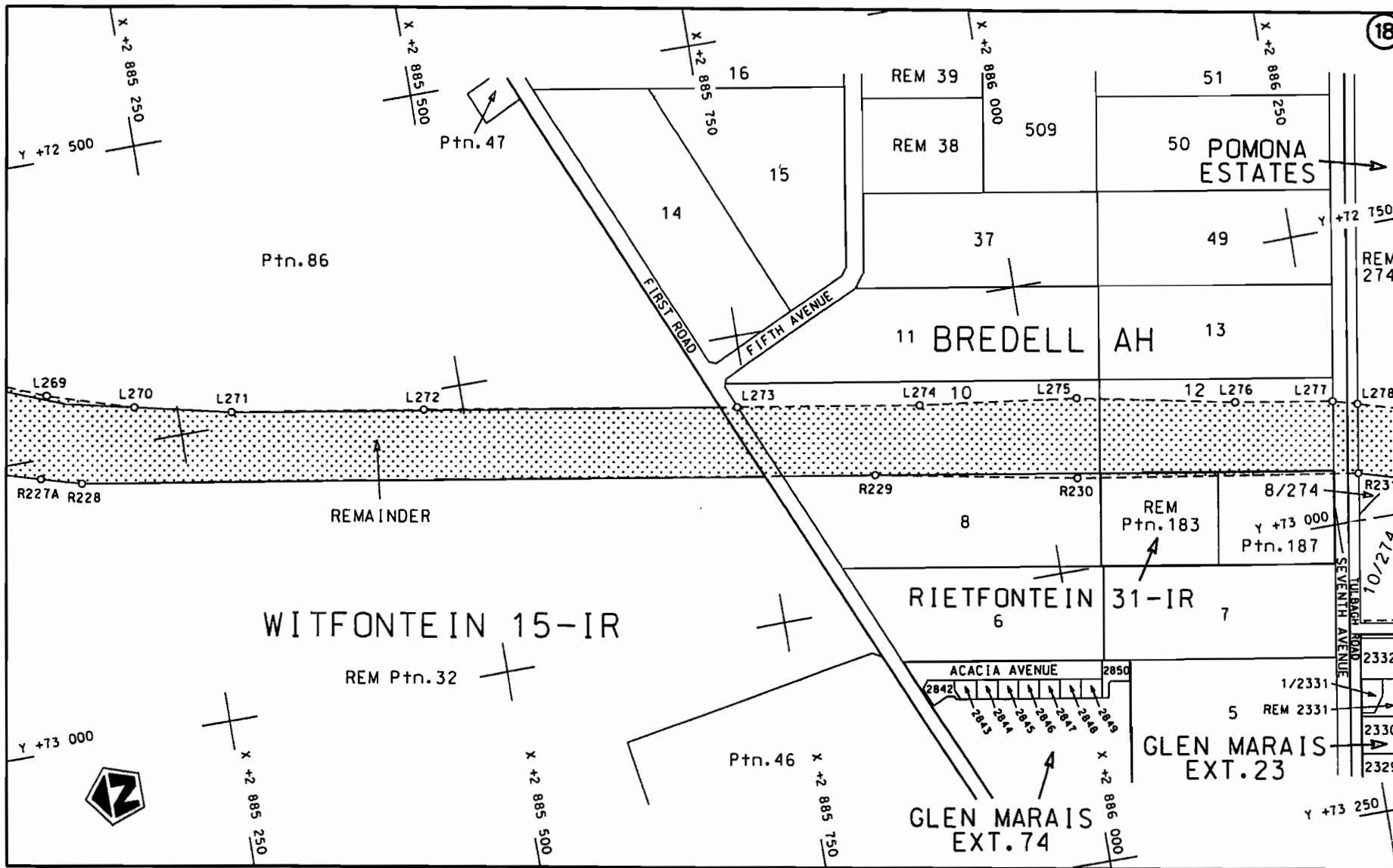
Die Suid Afrikaanse Nasionale Padagentskap Beperk The South African National Roads Agency Limited	Die figuur getoon The figure shown	 steldie padreserwe voor van 'n gedeelte represents the road reserve of a portion van Nasionale Roete R21 Sektie of National Route Section 2	Vel Sheet 8 van 26 Plan P653/08
--	---------------------------------------	---	------------------------------------




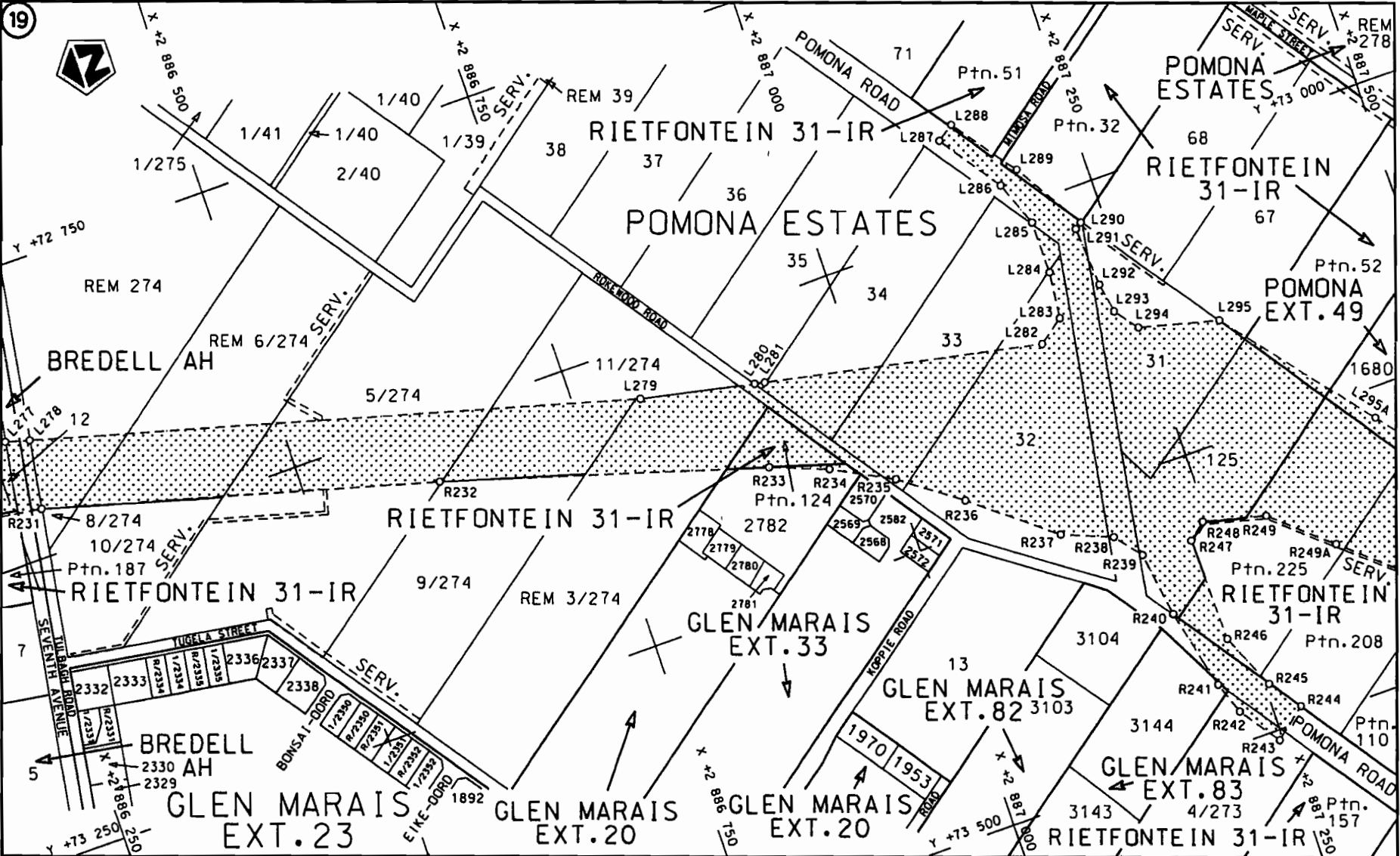
<p>Die Suid Afrikaanse Nasionale Padagentskap Beperk The South African National Roads Agency Limited</p>	<p>Die figuur getoon The figure shown</p> 	<p>steldie padreserwe voor van 'n gedeelte represents the road reserve of a portion van Nasionale Roete of National Route</p> <p>R21      Seksie             Section</p> <p>2</p>	<p>Vel Sheet 9 van of 26</p> <p>Plan P653/08</p>
--	--	---	--



<p>Die Suid Afrikaanse Nasionale Padagentskap Beperk The South African National Roads Agency Limited</p>	<p>Die figuur getoon The figure shown</p> 	<p>steldie padreserwe voor van 'n gedeelte represents the road reserve of a portion van Nasionale Roete R21 Seksie of National Route R21 Section</p>	<p>Vel Sheet 10 of 26 Plan P653/08</p>
--	--	--	--

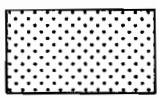


<p>Die Suid Afrikaanse Nasionale Padagentskap Beperk The South African National Roads Agency Limited</p>	<p>Die figuur getoon The figure shown</p> 	<p>steldie padreserwe voor van 'n gedeelte represents the rood reserve of o portion van Nasionale Roete R21 Seksie Section of National Route R21 Section</p>	<p>Vel Sheet 11 van 26 Plan P653/08</p>
--	--	--	---



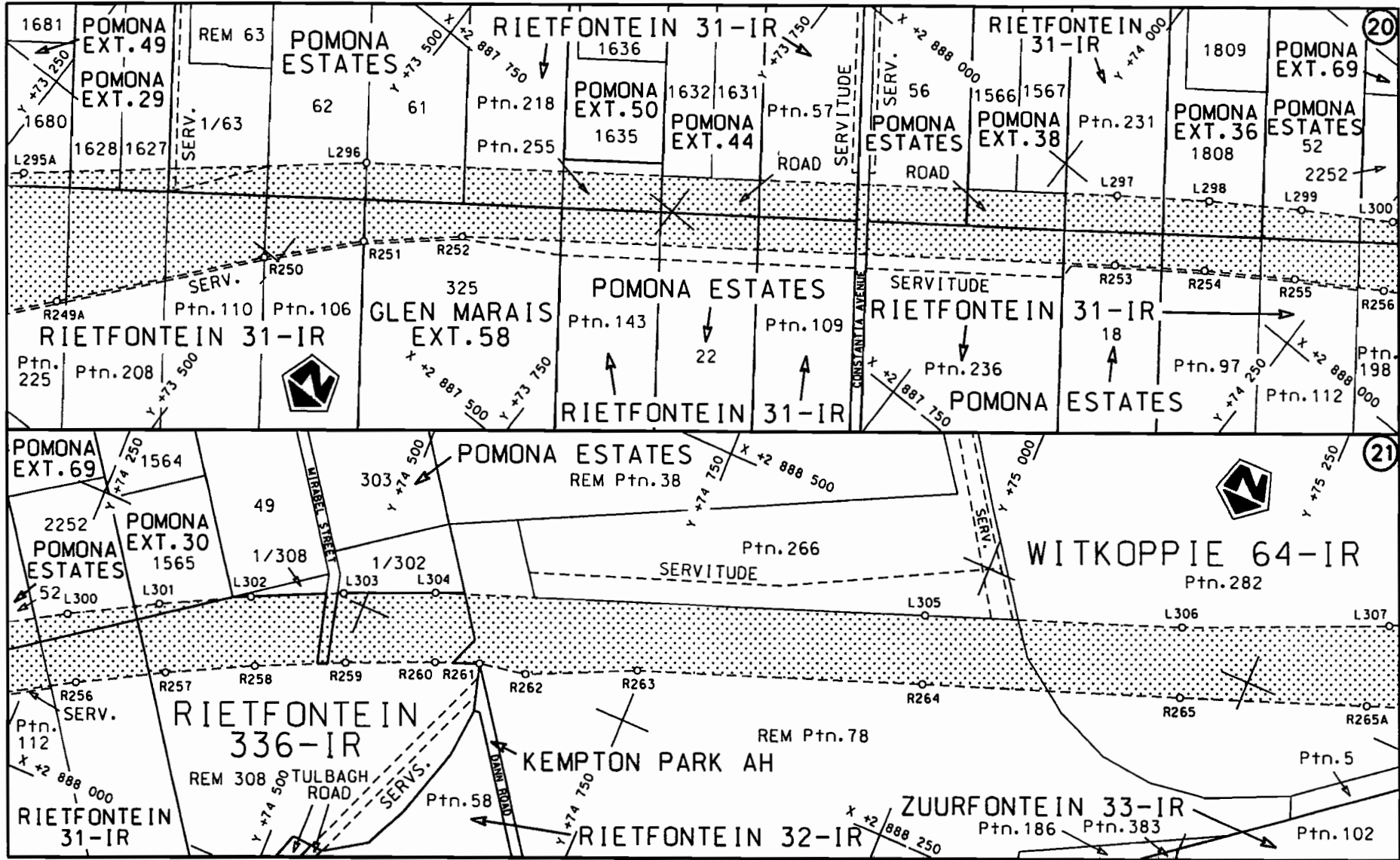
Die Suid Afrikaanse Nasionale Padagentskap Beperk  
 The South African National Roads Agency Limited

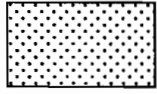
Die figuur getoon  
 The figure shown



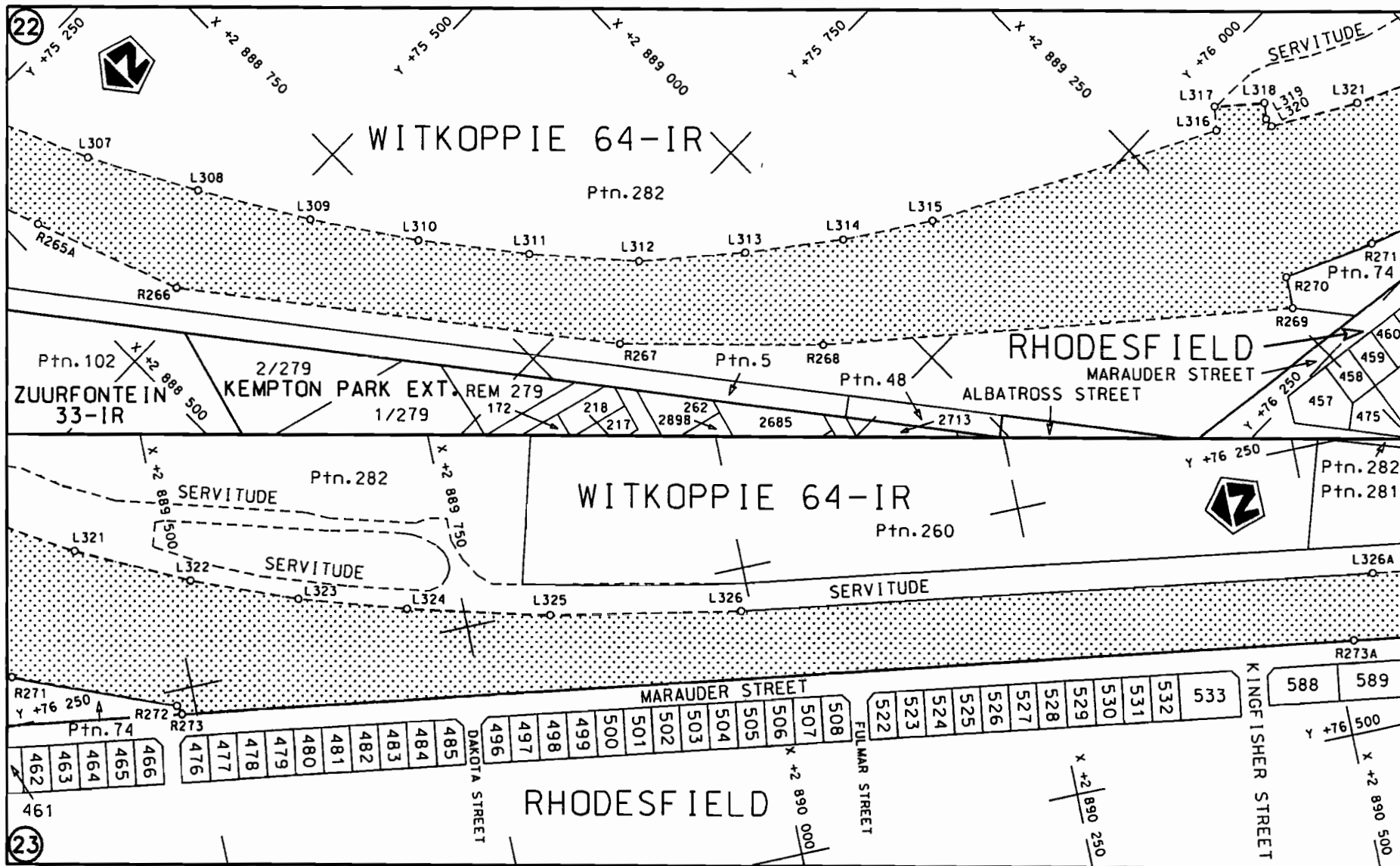
steldie padreserwe voor van 'n gedeelte  
 represents the road reserve of a portion  
 van Nasionale Roete R21 Seksie Section 2  
 of National Route

Vel Sheet 12 van of 26  
 Plan P653/08



<p>Die Suid Afrikaanse Nasionale Padagentskap Beperk The South African National Roads Agency Limited</p>	<p>Die figuur getoon The figure shown</p>		<p>steldie padreserwe voor van 'n gedeelte represents the road reserve of a portion van Nasionale Roete R21 Seksie 2 of National Route R21 Section 2</p>	<p>Vel Sheet 13 of 26 Plan P653/08</p>
--	---	--	--	--





Die Suid Afrikaanse Nasionale Padagentskap Beperk  
The South African National Roads Agency Limited

Die figuur getoon  
The figure shown

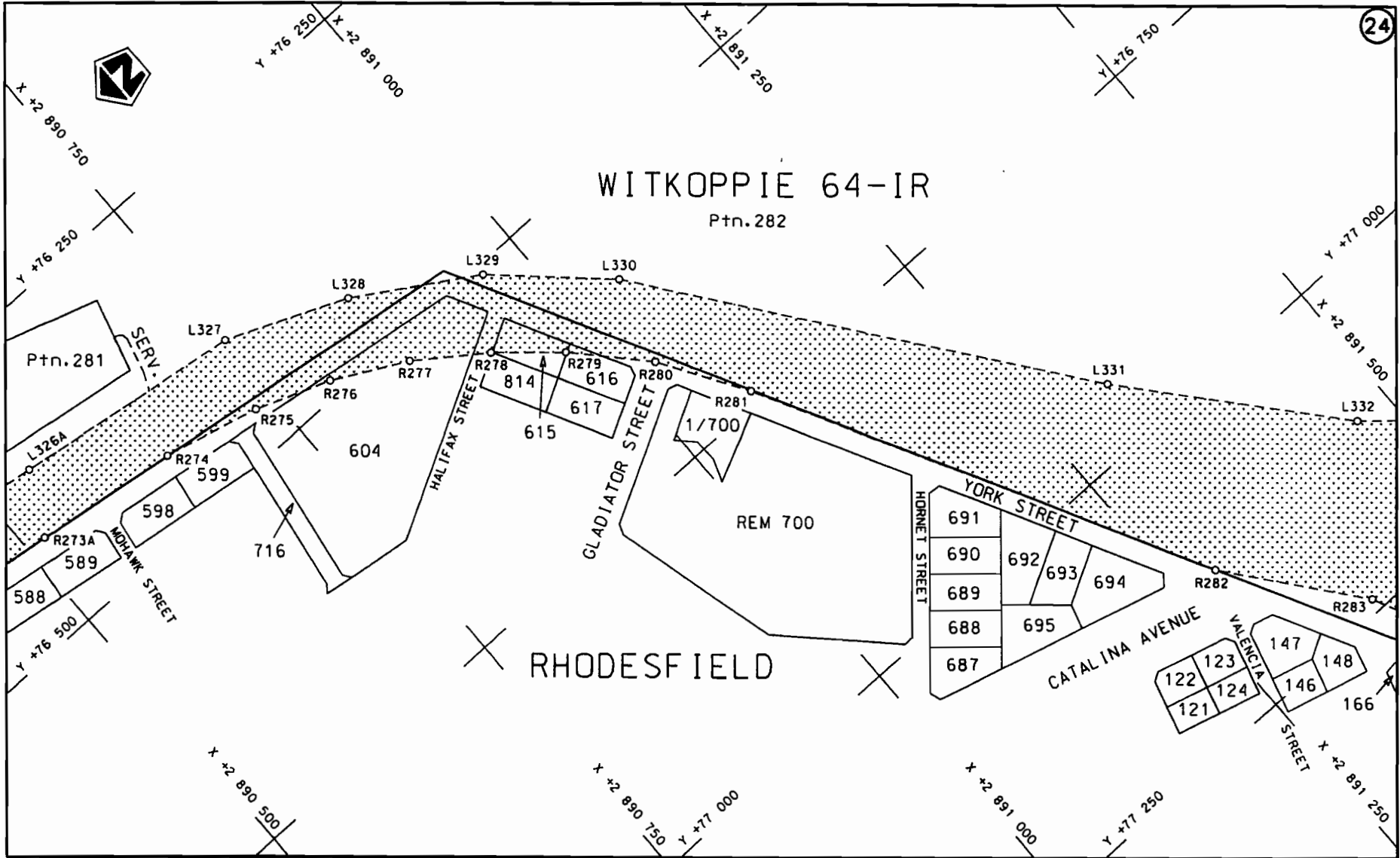


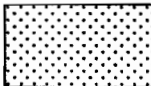
stel die padreserwe voor van 'n gedeelte  
represents the road reserve of a portion  
van Nasionale Roete R21 Seksie  
of National Route Section

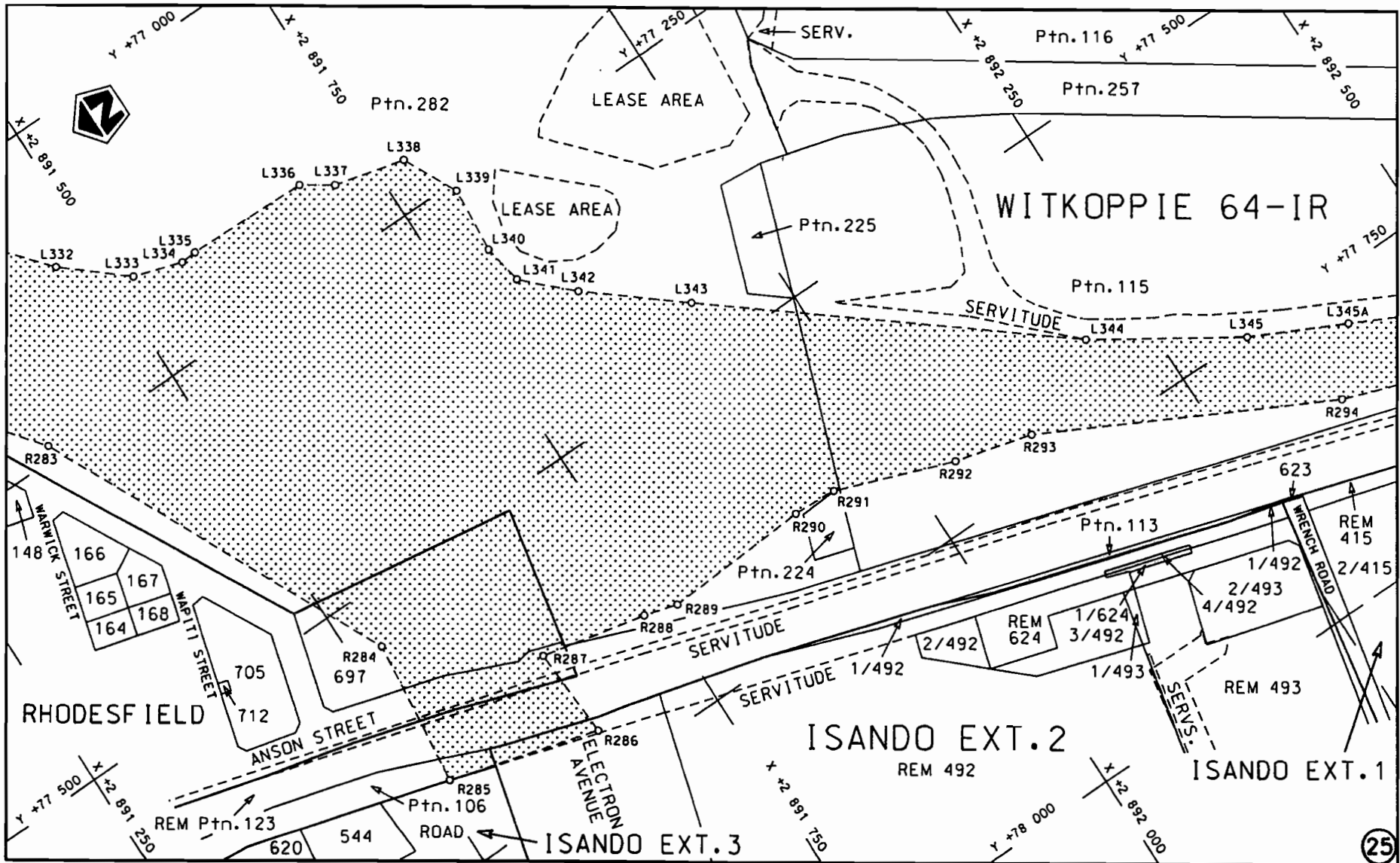
2

Vel  
Sheet 14 van  
of 26

Plan  
P653/08




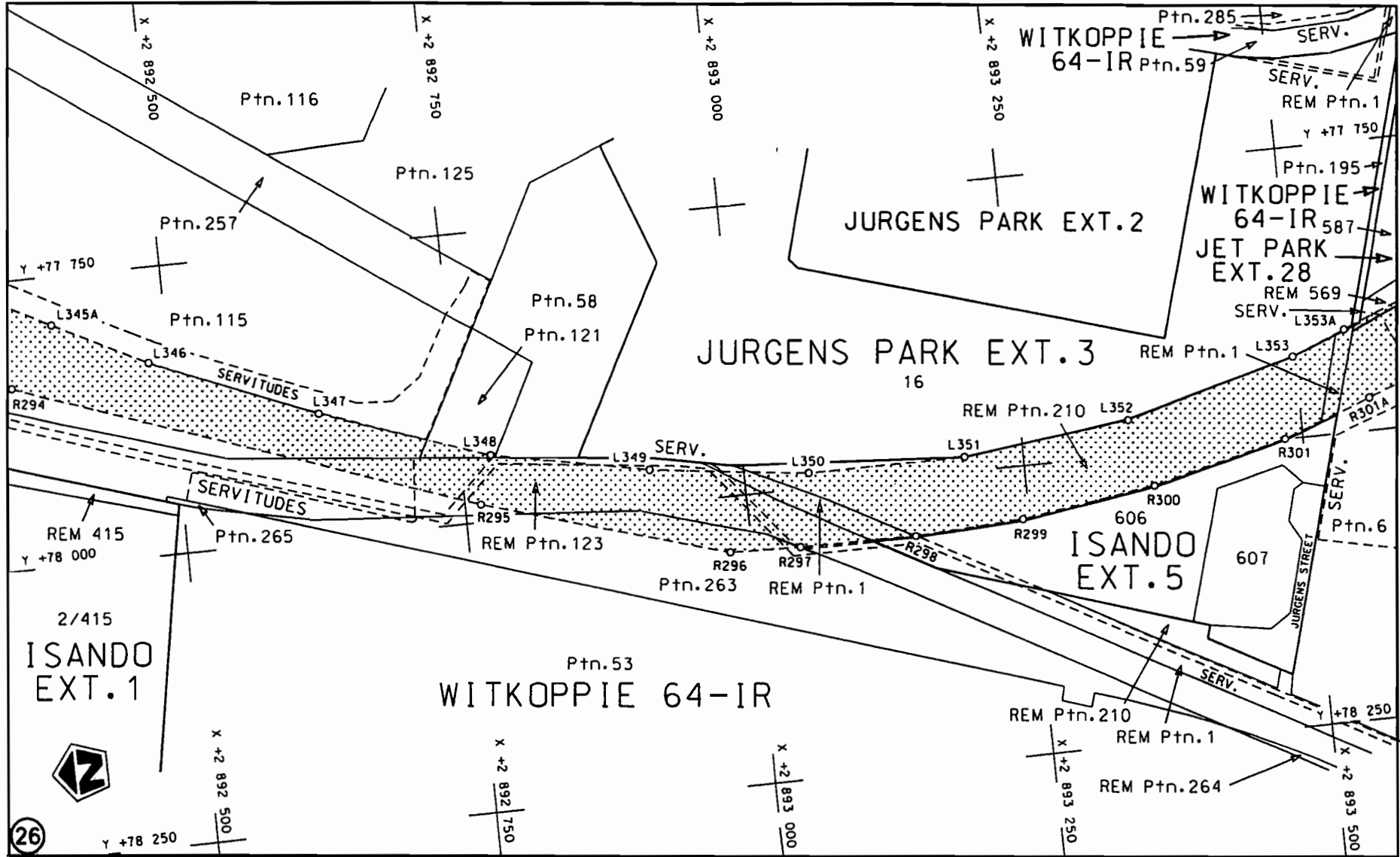
<p>Die Suid Afrikaanse Nasionale Padagentskap Beperk The South African National Roads Agency Limited</p>	<p>Die figuur getoon The figure shown</p> 	<p>steldie padreserwe voor van 'n gedeelte represents the road reserve of a portion van Nasionale Roete R21 Seksie of National Route R21 Section 2</p>	<p>Vel Sheet 15 van 26 Plan P653/08</p>
--	--	--	---

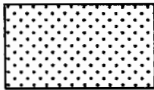


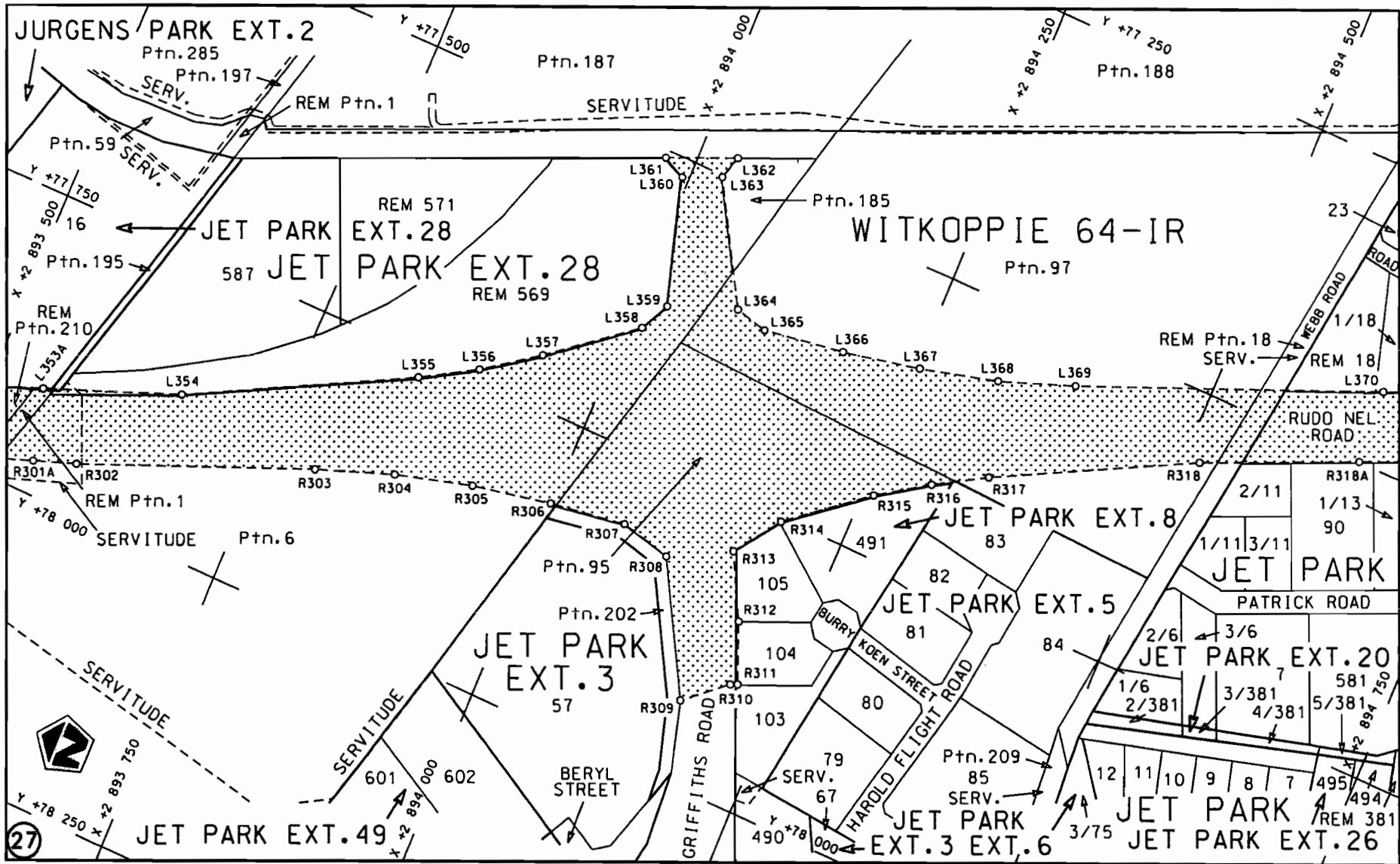
STAATSKOERANT, 11 APRIL 2008

No. 30961 19

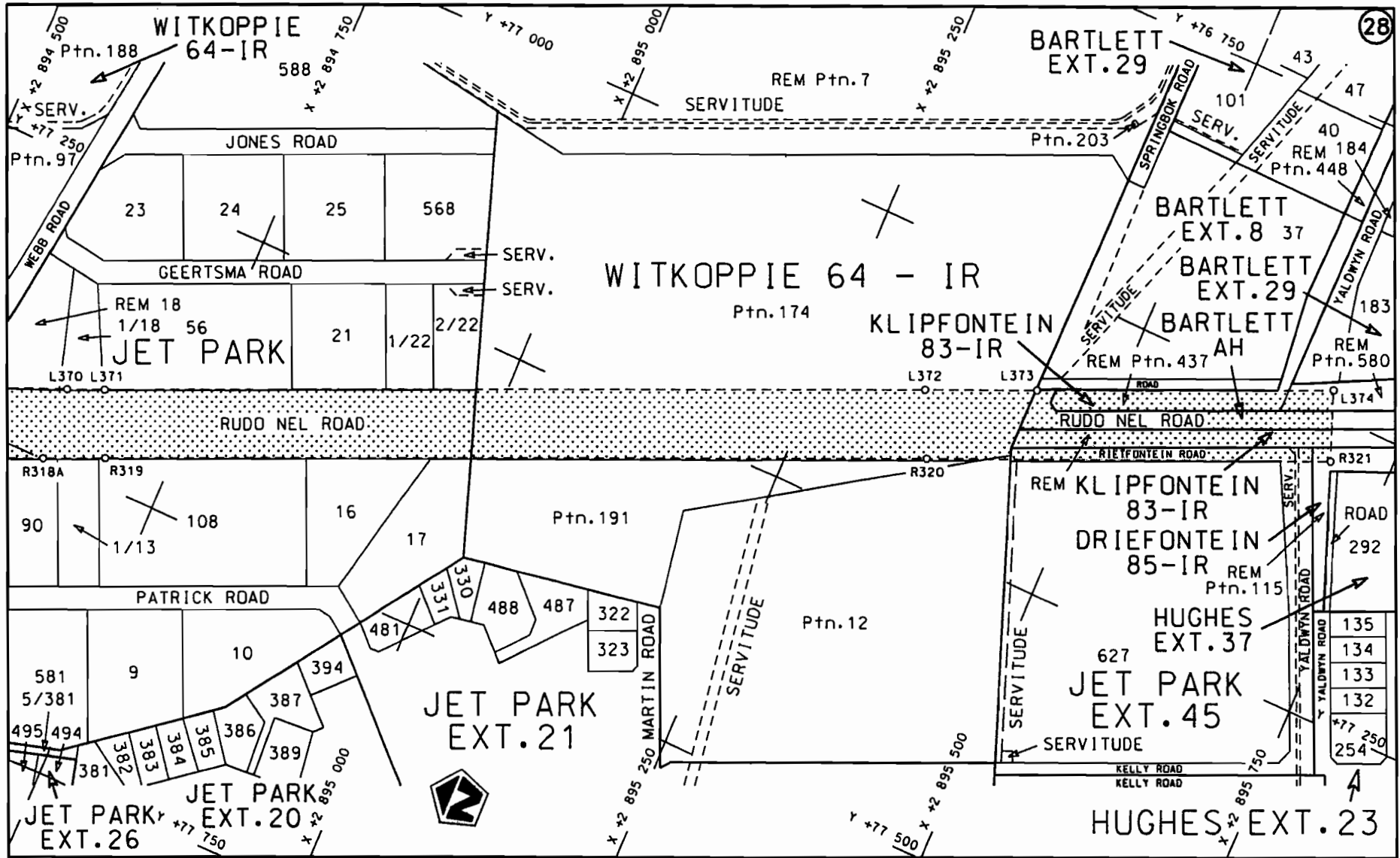
<p>Die Suid Afrikaanse Nasionale Padagentskap Beperk The South African National Roads Agency Limited</p>	<p>Die figuur getoon The figure shown</p>		<p>steldie padreserwe voor van 'n gedeelte represents the road reserve of a portion van Nasionale Roete of National Route</p> <p>R21      Seksie             Section</p> <p>2</p>	<p>Vel Sheet 16 van           of 26</p> <p>Plan P653/08</p>
--	---	--	---	---

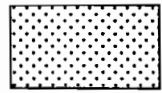


Die Suid Afrikaanse Nasionale Padogentskap Beperk The South African National Roads Agency Limited	Die figuur getoon The figure shown	 steldie padreserwe voor van 'n gedeelte represents the road reserve of a portion van Nasionale Roete of National Route	<table border="1"> <tr> <td>Vel Sheet</td> <td>17 of</td> <td>van 26</td> </tr> <tr> <td>Plan</td> <td colspan="2">P653/08</td> </tr> </table>	Vel Sheet	17 of	van 26	Plan	P653/08	
Vel Sheet	17 of	van 26							
Plan	P653/08								
		R21    Seksie    2 Section							



Die Suid Afrikaanse Nasionale Padagentskap Beperk The South African National Roads Agency Limited	Die figuur getoon The figure shown		steldie padreserwe voor van 'n gedeelte represents the road reserve of a portion von Nasionale Roete R21 Seksie of National Route R21 Section	Vel Sheet 18 van 26 Plan P653/08
--	---------------------------------------	--	--	-------------------------------------



<p>Die Suid Afrikaanse Nasionale Padagentskap Beperk The South African National Roads Agency Limited</p>	<p>Die figuur getoon The figure shown</p> 	<p>steldie padreserwe voor van 'n gedeelte represents the road reserve of a portion van Nasionale Roete R21 Seksie of National Route Section 2</p>	<p>Vel Sheet 19 van of 26 Plan P653/08</p>
--	--	--	--

PADRESERWE KOÖRDINATE				/	ROAD RESERVE CO-ORDINATES			
LINKERKANT/LEFT HAND SIDE					REGTERKANT/RIGHT HAND SIDE			
	Y	X	WG	29°	Y	X		
L1	76 487.382	2 856 823.511		R1	76 549.647	2 856 850.138		
L2	76 364.106	2 857 001.996		R2	76 535.783	2 856 867.503		
L3	76 319.423	2 857 082.053		R3	76 516.246	2 856 892.944		
L4	76 233.473	2 857 262.514		R4	76 421.818	2 857 042.673		
L5	76 046.035	2 857 600.600		R5	76 338.140	2 857 196.909		
L6	75 945.128	2 857 759.523		R6	76 146.057	2 857 610.427		
L7	75 631.662	2 858 415.634		R7	76 057.137	2 857 822.614		
L8	75 588.805	2 858 551.908		R8	75 743.422	2 858 470.023		
L9	75 579.275	2 858 572.839		R9	75 719.847	2 858 505.336		
L10	75 539.343	2 858 660.565		R10	75 586.580	2 858 731.765		
L11	75 494.009	2 858 750.832		R11	75 535.408	2 858 822.052		
L12	75 451.315	2 858 842.377		R12	75 518.602	2 858 851.985		
L13	75 411.254	2 858 935.104		R13	75 508.771	2 858 876.063		
L14	75 374.326	2 859 029.116		R14	75 497.954	2 858 902.559		
L15	75 346.353	2 859 104.918		R15	75 489.982	2 858 922.085		
L16	75 318.467	2 859 187.280		R16	75 456.082	2 859 006.536		
L17	75 289.969	2 859 274.666		R17	75 424.383	2 859 091.787		
L18	75 259.398	2 859 361.533		R18	75 394.941	2 859 177.832		
L19	75 229.255	2 859 462.726		R19	75 367.753	2 859 264.638		
L20	75 208.894	2 859 538.285		R20	75 330.355	2 859 399.663		
L21	75 168.754	2 859 717.170		R21	75 290.519	2 859 558.431		
L22	75 133.276	2 859 897.061		R22	75 247.605	2 859 735.854		
L23	75 093.471	2 860 075.885		R23	75 206.336	2 859 913.672		
L24	75 055.341	2 860 255.105		R24	75 166.713	2 860 091.856		
L25	75 018.828	2 860 434.661		R25	75 128.706	2 860 270.376		
L26	74 983.968	2 860 614.528		R26	75 092.345	2 860 449.261		
L27	74 950.778	2 860 794.723		R27	75 057.607	2 860 628.456		
L28	74 919.232	2 860 975.193		R28	75 024.537	2 860 807.982		
L29	74 889.332	2 861 155.968		R29	74 993.083	2 860 987.781		
L30	74 884.064	2 861 189.672		R30	74 979.621	2 861 069.194		
L31	74 871.203	2 861 248.397		R31	74 957.482	2 861 233.288		
L32	74 845.719	2 861 427.259		R32	74 941.066	2 861 339.445		
L33	74 823.534	2 861 547.502		R33	74 924.884	2 861 448.013		
L34	74 796.229	2 861 697.950		R34	74 911.072	2 861 559.782		
L35	74 778.309	2 861 757.172		R35	74 897.757	2 861 711.387		
L36	74 748.777	2 861 815.145		R36	74 904.678	2 861 773.597		
L37	74 729.241	2 861 843.553		R37	74 927.968	2 861 868.356		
L38	74 659.659	2 861 927.740		R38	74 984.330	2 862 012.705		
L39	74 640.275	2 861 956.361		R39	75 119.841	2 861 975.607		
L40	74 616.167	2 862 015.492		R40	75 128.315	2 862 005.934		
L41	74 613.734	2 862 140.398		R41	75 064.949	2 862 043.359		
L42	74 475.633	2 862 206.969		R42	75 006.440	2 862 070.787		
L43	74 482.745	2 862 247.684		R43	74 997.171	2 862 083.895		
L44	74 540.457	2 862 218.250		R44	74 989.912	2 862 149.802		
L45	74 569.914	2 862 207.068		R45	74 984.793	2 862 179.611		
L46	74 614.224	2 862 197.611		R46	74 951.117	2 862 297.508		
L47	74 640.625	2 862 231.768		R47	74 876.202	2 862 381.207		
L48	74 661.500	2 862 298.432		R48	74 856.269	2 862 409.737		
L49	74 688.447	2 862 362.713		R49	74 826.523	2 862 467.892		
L50	74 706.188	2 862 425.896		R50	74 815.216	2 862 497.367		
L51	74 711.951	2 862 518.493		R51	74 772.158	2 862 768.332		

Vel	20	Van	26	P653/08
Sheet		of		

PADRESERWE KOÖRDINATE				ROAD RESERVE CO-ORDINATES				
LINKERKANT/LEFT HAND SIDE				REGTERKANT/RIGHT HAND SIDE				
	Y	X	WG	29°	Y	X		
L52	74 694.983	2 862 762.268		R52	74 765.459	2 862 981.323		
L53	74 659.939	2 862 974.194		R53	74 733.862	2 863 405.949		
L54	74 644.463	2 863 188.009		R54	74 743.009	2 863 467.245		
L55	74 644.923	2 863 279.813		R55	74 725.736	2 863 740.473		
L56	74 647.427	2 863 402.005		R56	74 719.706	2 863 892.449		
L57	74 654.097	2 863 463.408		R57	74 715.139	2 864 044.486		
L58	74 638.159	2 863 554.484		R58	74 714.022	2 864 328.747		
L59	74 638.593	2 863 737.916		R59	74 713.116	2 864 597.127		
L60	74 633.534	2 863 791.013		R60	74 801.086	2 864 652.630		
L61	74 573.877	2 863 578.871		R61	74 851.714	2 864 688.960		
L62	74 543.579	2 863 587.376		R62	74 884.909	2 864 713.983		
L63	74 558.760	2 863 646.263		R63	74 941.059	2 864 810.584		
L64	74 566.474	2 863 689.911		R64	74 891.316	2 864 768.796		
L65	74 570.926	2 863 748.891		R65	74 829.770	2 864 721.971		
L66	74 568.703	2 863 807.993		R66	74 712.967	2 864 665.708		
L67	74 559.805	2 863 866.455		R67	74 710.960	2 864 805.919		
L68	74 547.249	2 863 914.462		R68	74 710.967	2 865 013.186		
L69	74 527.164	2 863 971.064		R69	74 723.126	2 865 211.311		
L70	74 506.501	2 864 029.344		R70	74 715.202	2 865 317.384		
L71	74 495.620	2 864 069.366		R71	74 710.905	2 865 467.347		
L72	74 484.924	2 864 131.180		R72	74 710.905	2 865 563.970		
L73	74 481.299	2 864 193.787		R73	74 709.474	2 865 747.707		
L74	74 484.775	2 864 256.394		R74	74 704.415	2 865 874.719		
L75	74 484.746	2 864 272.518		R75	74 707.280	2 865 967.562		
L76	74 487.582	2 864 289.616		R76	74 703.715	2 866 060.222		
L77	74 481.936	2 864 293.120		R77	74 680.581	2 866 244.050		
L78	74 476.873	2 864 304.413		R78	74 640.713	2 866 436.778		
L79	74 475.705	2 864 316.680		R79	74 625.839	2 866 471.495		
L80	74 483.299	2 864 337.124		R80	74 615.324	2 866 514.076		
L81	74 520.195	2 864 411.891		R81	74 594.018	2 866 603.902		
L82	74 583.475	2 864 533.680		R82	74 570.640	2 866 693.210		
L83	74 597.543	2 864 560.598		R83	74 545.193	2 866 781.937		
L84	74 605.526	2 864 576.370		R84	74 517.611	2 866 870.053		
L85	74 611.561	2 864 589.999		R85	74 487.956	2 866 957.467		
L86	74 615.650	2 864 599.150		R86	74 456.260	2 867 044.181		
L87	74 617.500	2 864 605.673		R87	74 419.246	2 867 138.008		
L88	74 620.226	2 864 613.948		R88	74 347.042	2 867 306.989		
L89	74 621.978	2 864 622.515		R89	74 323.086	2 867 361.883		
L90	74 624.704	2 864 635.171		R90	74 210.225	2 867 634.832		
L91	74 626.456	2 864 653.084		R91	74 179.442	2 867 719.994		
L92	74 628.014	2 864 665.204		R92	74 150.701	2 867 805.856		
L93	74 627.527	2 864 676.643		R93	74 123.998	2 867 892.442		
L94	74 626.846	2 864 701.566		R94	74 109.215	2 867 944.623		
L95	74 626.164	2 864 720.647		R95	74 099.309	2 867 979.553		
L96	74 625.288	2 864 739.534		R96	74 076.694	2 868 067.243		
L97	74 624.023	2 864 757.641		R97	74 056.056	2 868 155.483		
L98	74 623.925	2 864 775.067		R98	74 037.585	2 868 244.118		
L99	74 624.364	2 864 794.186		R99	74 021.283	2 868 333.147		
L100	74 630.827	2 864 805.921		R100	74 007.019	2 868 422.575		
L101	74 636.046	2 865 013.188		R101	73 996.925	2 868 512.614		
L102	74 635.984	2 865 563.971		R102	73 994.858	2 868 512.307		
				Vel	21	Van	26	P653/08
				Sheet	of			



PADRESERWE KOÖRDINATE				/	ROAD RESERVE CO-ORDINATES			
LINKERKANT/LEFT HAND SIDE					REGTERKANT/RIGHT HAND SIDE			
	Y	X	WG	29°	Y	X		
L103	74 634.552	2 865 745.939		R103	73 986.934	2 868 602.527		
L104	74 630.480	2 865 833.690		R104	73 979.039	2 868 692.686		
L105	74 626.820	2 865 916.260		R105	73 973.249	2 868 782.997		
L106	74 611.710	2 866 085.160		R106	73 969.592	2 868 873.430		
L107	74 610.030	2 866 098.060		R107	73 968.068	2 868 963.924		
L108	74 604.806	2 866 140.996		R108	73 968.648	2 869 054.419		
L109	74 592.309	2 866 230.700		R109	73 971.391	2 869 144.883		
L110	74 577.710	2 866 320.069		R110	73 976.268	2 869 235.254		
L111	74 561.007	2 866 409.072		R111	73 983.209	2 869 325.538		
L112	74 557.989	2 866 423.245		R112	73 992.393	2 869 415.542		
L113	74 548.662	2 866 467.289		R113	74 003.640	2 869 505.335		
L114	74 542.201	2 866 497.648		R114	74 012.296	2 869 565.044		
L115	74 521.322	2 866 585.767		R115	74 025.585	2 869 582.813		
L116	74 498.371	2 866 673.367		R116	74 271.609	2 869 618.391		
L117	74 473.414	2 866 760.390		R117	74 267.206	2 869 656.991		
L118	74 446.381	2 866 846.829		R118	74 034.547	2 869 630.453		
L119	74 417.274	2 866 932.567		R119	74 024.946	2 869 654.715		
L120	74 386.187	2 867 017.635		R120	74 037.351	2 869 721.252		
L121	74 349.873	2 867 109.632		R121	74 075.086	2 869 899.283		
L122	74 314.122	2 867 193.331		R122	74 204.565	2 870 487.419		
L123	74 278.370	2 867 276.998		R123	74 364.861	2 871 215.363		
L124	74 254.414	2 867 331.893		R124	74 403.753	2 871 394.340		
L125	74 182.211	2 867 500.569		R125	74 425.760	2 871 500.500		
L126	74 140.059	2 867 608.560		R126	74 443.591	2 871 590.476		
L127	74 108.667	2 867 695.367		R127	74 460.721	2 871 680.605		
L128	74 079.376	2 867 782.959		R128	74 477.120	2 871 770.855		
L129	74 052.127	2 867 871.167		R129	74 492.847	2 871 861.227		
L130	74 026.981	2 867 959.985		R130	74 507.843	2 871 951.721		
L131	74 003.909	2 868 049.382		R131	74 522.400	2 872 042.340		
L132	73 982.939	2 868 139.297		R132	74 535.691	2 872 133.077		
L133	73 964.103	2 868 229.670		R133	74 548.766	2 872 225.492		
L134	73 947.431	2 868 320.468		R134	74 572.755	2 872 407.089		
L135	73 932.862	2 868 411.633		R135	74 701.829	2 873 402.992		
L136	73 920.457	2 868 503.133		R136	74 716.002	2 873 514.914		
L137	73 918.324	2 868 502.859		R137	74 747.732	2 873 725.830		
L138	73 908.083	2 868 594.664		R138	74 760.534	2 873 817.879		
L139	73 902.352	2 868 659.982		R139	74 775.774	2 873 895.602		
L140	73 900.005	2 868 686.682		R140	74 799.852	2 873 970.277		
L141	73 894.093	2 868 778.853		R141	74 832.770	2 874 040.074		
L142	73 890.375	2 868 871.144		R142	74 964.136	2 874 258.306		
L143	73 888.820	2 868 963.528		R143	74 977.547	2 874 303.720		
L144	73 889.431	2 869 055.882		R144	75 098.507	2 874 294.440		
L145	73 892.235	2 869 148.205		R145	75 096.300	2 874 345.427		
L146	73 897.203	2 869 240.467		R146	74 978.766	2 874 341.484		
L147	73 904.367	2 869 332.545		R147	74 966.270	2 874 389.368		
L148	73 913.663	2 869 424.442		R148	74 895.253	2 874 523.478		
L149	73 925.124	2 869 516.125		R149	74 882.452	2 874 561.273		
L150	73 929.422	2 869 546.604		R150	74 876.051	2 874 601.505		
L151	73 919.699	2 869 569.799		R151	74 876.356	2 874 640.824		
L152	73 780.559	2 869 552.609		R152	74 890.885	2 874 863.603		
L153	73 731.538	2 869 546.029		R153	74 917.526	2 875 068.852		

Vel	22	Van	26	P653/08
Sheet		of		

PADRESERWE KOÖRDINATE				/	ROAD RESERVE CO-ORDINATES			
LINKERKANT/LEFT HAND SIDE					REGTERKANT/RIGHT HAND SIDE			
	Y	X	WG	29°	Y	X		
L154	73 723.532	2 869 583.454		R154	74 988.973	2 875 619.494		
L155	73 775.500	2 869 590.038		R155	75 067.400	2 876 224.025		
L156	73 914.243	2 869 610.276		R156	75 141.774	2 876 798.436		
L157	73 945.912	2 869 637.494		R157	75 148.358	2 876 870.551		
L158	73 951.154	2 869 667.821		R158	75 149.424	2 876 942.940		
L159	73 963.804	2 869 735.639		R159	75 145.005	2 877 015.208		
L160	74 001.904	2 869 915.408		R160	75 135.099	2 877 086.926		
L161	74 131.384	2 870 503.543		R161	75 119.768	2 877 157.700		
L162	74 289.850	2 871 223.228		R162	75 099.102	2 877 227.103		
L163	74 291.679	2 871 231.458		R163	75 073.195	2 877 294.737		
L164	74 330.450	2 871 409.854		R164	75 042.227	2 877 360.208		
L165	74 352.304	2 871 515.345		R165	74 747.096	2 877 927.568		
L166	74 367.026	2 871 605.320		R166	74 545.887	2 878 314.219		
L167	74 384.035	2 871 694.839		R167	74 698.328	2 878 419.023		
L168	74 400.263	2 871 784.551		R168	74 751.872	2 878 438.900		
L169	74 415.167	2 871 874.992		R169	74 745.971	2 878 451.655		
L170	74 430.851	2 871 964.187		R170	74 726.696	2 878 445.049		
L171	74 448.030	2 872 053.709		R171	74 515.560	2 878 372.688		
L172	74 461.533	2 872 143.868		R172	74 465.768	2 878 468.363		
L173	74 474.519	2 872 235.703		R173	74 184.409	2 879 009.126		
L174	74 498.446	2 872 416.721		R174	74 160.574	2 879 057.618		
L175	74 627.370	2 873 412.604		R175	74 138.995	2 879 107.148		
L176	74 641.574	2 873 524.555		R176	74 119.701	2 879 157.591		
L177	74 669.719	2 873 741.380		R177	74 102.724	2 879 208.887		
L178	74 690.020	2 874 083.057		R178	73 937.310	2 879 749.791		
L179	74 689.107	2 874 129.386		R179	73 877.815	2 879 964.671		
L180	74 681.487	2 874 175.106		R180	73 803.871	2 880 133.570		
L181	74 649.237	2 874 309.930		R181	73 789.011	2 880 177.846		
L182	74 564.232	2 874 322.059		R182	73 780.453	2 880 223.759		
L183	74 555.616	2 874 323.782		R183	73 770.206	2 880 342.594		
L184	74 513.818	2 874 346.474		R184	73 761.873	2 880 384.780		
L185	74 462.970	2 874 390.516		R185	73 746.786	2 880 425.019		
L186	74 411.529	2 874 455.766		R186	73 690.023	2 880 547.045		
L187	74 378.102	2 874 526.006		R187	73 697.376	2 880 566.801		
L188	74 370.409	2 874 598.891		R188	73 784.084	2 880 605.813		
L189	74 380.466	2 874 671.434		R189	73 837.592	2 880 633.119		
L190	74 407.476	2 874 733.983		R190	73 809.897	2 880 687.389		
L191	74 447.438	2 874 789.922		R191	73 761.385	2 880 664.488		
L192	74 496.648	2 874 830.212		R192	73 496.127	2 880 554.899		
L193	74 539.389	2 874 860.857		R193	73 322.910	2 880 802.451		
L194	74 631.778	2 874 932.245		R194	73 286.053	2 880 849.891		
L195	74 690.089	2 874 982.802		R195	73 239.930	2 880 915.668		
L196	74 758.676	2 875 061.320		R196	73 030.230	2 881 215.344		
L197	74 811.823	2 875 147.912		R197	72 677.801	2 881 719.131		
L198	74 828.896	2 875 186.323		R198	72 328.295	2 882 218.571		
L199	74 862.458	2 875 284.224		R199	72 118.567	2 882 518.279		
L200	74 881.960	2 875 378.065		R200	72 078.701	2 882 580.701		
L201	74 914.664	2 875 629.126		R201	72 044.259	2 882 646.293		
L202	74 993.091	2 876 233.656		R202	72 015.487	2 882 714.537		
L203	75 067.585	2 876 807.951		R203	71 992.567	2 882 785.006		
L204	75 073.652	2 876 874.397		R204	71 975.682	2 882 857.121		

Vel	23	Van	26	P653/08
Sheet		of		

PADRESERWE KOÖRDINATE				ROAD RESERVE CO-ORDINATES			
LINKERKANT/LEFT HAND SIDE				REGTERKANT/RIGHT HAND SIDE			
	Y	X	WG 29°		Y	X	
L205	75 074.658	2 876	941.086	R205	71 967.910	2 882	930.733
L206	75 070.573	2 877	007.684	R206	71 963.415	2 883	004.394
L207	75 061.429	2 877	073.763	R207	71 965.117	2 883	078.206
L208	75 047.318	2 877	138.959	R208	71 973.045	2 883	151.593
L209	75 028.269	2 877	202.906	R209	71 987.139	2 883	224.067
L210	75 004.310	2 877	265.324	R210	72 024.703	2 883	341.713
L211	74 975.781	2 877	325.644	R211	72 111.260	2 883	537.179
L212	74 680.651	2 877	893.004	R212	72 214.587	2 883	731.638
L213	74 479.630	2 878	279.440	R213	72 334.129	2 883	840.998
L214	74 260.200	2 878	094.310	R214	72 365.156	2 883	781.929
L215	74 243.520	2 878	113.390	R215	72 418.130	2 883	809.756
L216	74 457.665	2 878	305.118	R216	72 389.529	2 883	864.208
L217	74 064.808	2 879	076.820	R217	72 407.524	2 883	908.114
L218	73 817.678	2 879	884.844	R218	72 422.764	2 883	945.299
L219	73 795.001	2 879	949.766	R219	72 432.079	2 884	171.619
L220	73 767.299	2 880	012.712	R220	72 437.907	2 884	241.010
L221	73 734.747	2 880	073.304	R221	72 450.978	2 884	311.161
L222	73 697.562	2 880	131.155	R222	72 486.161	2 884	406.548
L223	73 637.616	2 880	211.585	R223	72 533.852	2 884	543.846
L224	73 465.481	2 880	457.562	R224	72 593.949	2 884	676.950
L225	73 121.697	2 880	345.177	R225	72 644.603	2 884	795.578
L226	73 101.043	2 880	405.579	R226	72 665.406	2 884	851.935
L227	73 144.477	2 880	422.174	R227	72 739.521	2 885	025.505
L228	73 251.889	2 880	458.907	R228	72 776.429	2 885	155.960
L229	73 261.809	2 880	478.139	R229	72 888.540	2 885	851.668
L230	73 220.025	2 880	603.044	R230	72 921.517	2 886	028.680
L231	73 208.780	2 880	661.653	R231	72 959.341	2 886	275.171
L232	73 192.855	2 880	765.951	R232	73 054.012	2 886	616.542
L233	73 165.128	2 880	848.300	R233	73 138.232	2 886	897.232
L234	73 113.890	2 880	945.405	R234	73 157.564	2 886	947.616
L235	73 069.020	2 881	021.801	R235	73 185.000	2 887	000.000
L236	73 023.512	2 881	090.285	R236	73 222.434	2 887	052.345
L237	72 753.293	2 881	480.577	R237	73 278.039	2 887	123.113
L238	72 616.415	2 881	676.186	R238	73 295.548	2 887	166.730
L239	<del>72 266.909</del>	<del>2 882</del>	<del>175.626</del>	R239	<del>73 318.427</del>	<del>2 887</del>	<del>185.839</del>
L240	72 057.211	2 882	475.302	R240	73 375.268	2 887	194.221
L241	72 013.901	2 882	543.059	R241	73 445.600	2 887	211.172
L242	71 976.473	2 882	614.229	R242	73 473.919	2 887	221.500
L243	71 945.201	2 882	688.325	R243	73 508.806	2 887	246.837
L244	71 920.482	2 882	764.768	R244	73 487.422	2 887	275.071
L245	71 902.134	2 882	843.039	R245	73 459.801	2 887	254.151
L246	71 887.467	2 882	922.439	R246	73 410.929	2 887	231.925
L247	71 882.552	2 883	002.848	R247	73 320.985	2 887	230.096
L248	71 884.418	2 883	083.507	R248	73 309.067	2 887	245.062
L249	71 893.102	2 883	163.707	R249	73 322.783	2 887	300.016
L250	71 908.513	2 883	242.867	R250	73 488.684	2 887	495.238
L251	71 937.079	2 883	343.418	R251	73 549.857	2 887	560.373
L252	72 050.151	2 883	646.692	R252	73 616.516	2 887	617.918
L253	72 095.106	2 883	790.594	R253	74 088.647	2 887	958.282
L254	72 110.043	2 883	903.813	R254	74 154.453	2 888	004.063
L255	72 126.199	2 884	083.373	R255	74 221.722	2 888	047.649

Vel	24	Van	26	P653/08
Sheet		of		

PADRESERWE KOÖRDINATE				/	ROAD RESERVE CO-ORDINATES			
LINKERKANT/LEFT HAND SIDE					REGTERKANT/RIGHT HAND SIDE			
	Y	X	WG	29°	Y	X		
L256	72 144.792	2 884 119.949		R256	74 290.422	2 888 088.978		
L257	72 165.875	2 884 161.422		R257	74 360.434	2 888 127.992		
L258	72 084.747	2 884 315.932		R258	74 431.726	2 888 164.598		
L259	72 137.721	2 884 343.760		R259	74 504.207	2 888 198.857		
L260	72 214.374	2 884 197.791		R260	74 577.785	2 888 230.677		
L261	72 239.364	2 884 192.360		R261	74 614.763	2 888 245.396		
L262	72 278.293	2 884 221.749		R262	74 655.935	2 888 252.989		
L263	72 342.956	2 884 337.177		R263	74 745.332	2 888 294.867		
L264	72 376.838	2 884 398.826		R264	74 984.000	2 888 384.000		
L265	72 425.816	2 884 497.589		R265	75 200.000	2 888 464.000		
L266	72 520.106	2 884 706.325		R266	75 482.000	2 888 571.000		
L267	72 548.214	2 884 775.836		R267	75 795.000	2 888 813.000		
L268	72 631.883	2 884 974.955		R268	75 924.000	2 888 940.000		
L269	72 696.550	2 885 137.955		R269	76 198.000	2 889 256.000		
L270	72 719.644	2 885 212.521		R270	76 175.000	2 889 271.000		
L271	72 738.634	2 885 297.386		R271	76 209.000	2 889 345.000		
L272	72 765.287	2 885 465.692		R272	76 263.000	2 889 484.000		
L273	72 810.049	2 885 740.437		R273	76 271.000	2 889 487.000		
L274	72 835.883	2 885 900.664		R274	76 440.000	2 890 646.000		
L275	72 853.386	2 886 039.598		R275	76 462.000	2 890 732.000		
L276	72 880.444	2 886 177.048		R276	76 487.000	2 890 798.000		
L277	72 894.358	2 886 263.345		R277	76 521.000	2 890 863.000		
L278	72 900.271	2 886 284.350		R278	76 563.000	2 890 922.000		
L279	73 045.477	2 886 808.260		R279	76 607.000	2 890 973.000		
L280	73 066.470	2 886 908.774		R280	76 665.000	2 891 027.000		
L281	73 068.330	2 886 917.644		R281	76 740.000	2 891 075.000		
L282	73 118.461	2 887 162.136		R282	77 128.000	2 891 286.000		
L283	73 102.637	2 887 184.061		R283	77 239.000	2 891 375.000		
L284	73 062.621	2 887 188.767		R284	77 547.000	2 891 527.000		
L285	73 017.215	2 887 188.182		R285	77 676.000	2 891 513.000		
L286	72 977.866	2 887 172.302		R286	77 713.343	2 891 646.802		
L287	72 923.764	2 887 133.197		R287	77 633.155	2 891 642.290		
L288	72 914.416	2 887 147.629		R288	77 653.071	2 891 735.763		
L289	72 969.744	2 887 190.432		R289	77 661.577	2 891 765.520		
L290	<del>73 031.344</del>	<del>2 887 228.788</del>		R290	<del>77 655.404</del>	<del>2 891 897.598</del>		
L291	73 035.164	2 887 222.961		R291	77 658.000	2 891 937.000		
L292	73 086.922	2 887 226.646		R292	77 696.000	2 892 041.000		
L293	73 112.923	2 887 231.435		R293	77 715.000	2 892 111.000		
L294	73 133.088	2 887 247.530		R294	77 843.000	2 892 358.000		
L295	73 150.594	2 887 316.563		R295	77 985.000	2 892 764.000		
L296	73 510.355	2 887 615.145		R296	78 048.000	2 892 981.000		
L297	74 053.656	2 888 006.806		R297	78 050.000	2 893 044.000		
L298	74 121.108	2 888 053.745		R298	78 051.000	2 893 148.000		
L299	74 190.053	2 888 098.397		R299	78 046.000	2 893 244.000		
L300	74 260.461	2 888 140.733		R300	78 029.000	2 893 365.000		
L301	74 332.241	2 888 180.692		R301	78 000.000	2 893 484.000		
L302	74 405.300	2 888 218.243		R302	77 959.000	2 893 599.000		
L303	74 479.549	2 888 253.354		R303	77 878.000	2 893 796.000		
L304	74 554.955	2 888 285.968		R304	77 854.000	2 893 862.000		
L305	74 963.000	2 888 440.000		R305	77 835.000	2 893 929.000		
L306	75 178.000	2 888 521.000		R306	77 821.000	2 893 999.000		

Vel	25	Van	26	P653/08
Sheet		of		

PADRESERWE KOÖRDINATE				ROAD RESERVE CO-ORDINATES			
LINKERKANT/LEFT HAND SIDE				REGTERKANT/RIGHT HAND SIDE			
	Y	X	WG	29°	Y	X	
L307	75 347.000	2 888	595.000	R307	77 811.000	2 894	066.000
L308	75 437.000	2 888	644.000	R308	77 821.721	2 894	110.759
L309	75 525.000	2 888	696.000	R309	77 930.051	2 894	171.112
L310	75 606.000	2 888	751.000	R310	77 899.490	2 894	206.826
L311	75 684.000	2 888	812.000	R311	77 896.874	2 894	212.914
L312	75 757.000	2 888	876.000	R312	77 847.240	2 894	192.342
L313	75 819.000	2 888	948.000	R313	77 793.369	2 894	163.925
L314	75 873.000	2 889	017.000	R314	77 753.000	2 894	193.000
L315	75 918.000	2 889	084.000	R315	77 699.000	2 894	260.000
L316	76 043.000	2 889	317.000	R316	77 670.000	2 894	303.000
L317	76 027.000	2 889	331.000	R317	77 644.000	2 894	347.000
L318	76 056.000	2 889	364.000	R318	77 557.000	2 894	514.000
L319	76 067.000	2 889	355.000	R319	77 477.000	2 894	695.000
L320	76 075.000	2 889	354.000	R320	77 181.000	2 895	367.000
L321	76 115.000	2 889	422.000	R321	77 037.515	2 895	697.869
L322	76 161.000	2 889	518.000				
L323	76 196.000	2 889	608.000				
L324	76 224.000	2 889	701.000				
L325	76 255.000	2 889	824.000				
L326	76 286.000	2 889	991.000				
L327	76 399.000	2 890	751.000				
L328	76 444.000	2 890	857.000				
L329	76 508.000	2 890	961.000				
L330	76 591.000	2 891	050.000				
L331	76 944.845	2 891	319.144				
L332	77 115.000	2 891	466.000				
L333	77 159.869	2 891	518.614				
L334	77 173.487	2 891	561.747				
L335	77 172.766	2 891	575.929				
L336	77 176.269	2 891	686.765				
L337	77 194.112	2 891	713.420				
L338	77 209.632	2 891	775.746				
L339	77 257.503	2 891	799.937				
L340	77 315.309	2 891	795.518				
L341	<del>77 350.974</del>	<del>2 891</del>	<del>802.486</del>	L358	<del>77 650.000</del>	<del>2 894</del>	<del>013.000</del>
L342	77 389.468	2 891	842.311	L359	77 624.000	2 894	026.000
L343	77 452.966	2 891	920.100	L360	77 516.540	2 893	993.829
L344	77 674.000	2 892	197.000	L361	77 506.786	2 893	974.017
L345	77 751.000	2 892	317.000	L362	77 481.184	2 894	033.148
L346	77 833.000	2 892	482.000	L363	77 501.910	2 894	027.052
L347	77 892.000	2 892	628.000	L364	77 601.000	2 894	085.000
L348	77 943.000	2 892	777.000	L365	77 608.000	2 894	114.000
L349	77 970.000	2 892	917.000	L366	77 597.000	2 894	186.000
L350	77 987.000	2 893	058.000	L367	77 583.000	2 894	254.000
L351	77 987.000	2 893	198.000	L368	77 565.000	2 894	322.000
L352	77 970.000	2 893	347.000	L369	77 541.000	2 894	387.000
L353	77 930.000	2 893	498.000	L370	77 436.000	2 894	640.000
L354	77 867.000	2 893	661.000	L371	77 423.000	2 894	671.000
L355	77 769.000	2 893	848.000	L372	77 127.000	2 895	342.000
L356	77 741.000	2 893	895.000	L373	77 087.000	2 895	434.000
L357	77 707.000	2 893	942.000	L374	76 980.035	2 895	675.949