

Government Gazette Staatskoerant

REPUBLIC OF SOUTH AFRICA
REPUBLIEK VAN SUID-AFRIKA

Vol. 512

Pretoria, 8 February 2008
Februarie

No. 30741

CONTENTS**INHOUD**

No.		Page No.	Gazette No.	No.		Bladsy No.	Koerant No.
GOVERNMENT NOTICE				GOEWERMENTSKENNISGEWING			
Transport, Department of				Vervoer, Departement van			
<i>Government Notice</i>				<i>Goewermentskennisgewing</i>			
139	South African National Roads Agency Limited and the National Roads Act (7/1998): South African National Roads Agency Limited: Declaration amendment of National Road N14 Section 6: Amendment of Declaration No. 629 of 2005	3	30741	139	Suid-Afrikaanse Nasionale Padagentskap Beperk en die Nasionale Paaie Wet (7/1998): Suid-Afrikaanse Nasionale Padagentskap Beperk: Verklaring wysiging van Nasionale Pad N14 Seksie 6: Wysiging van Verklaring No. 629 van 2005	4	30741

**GOVERNMENT NOTICE
GOEWERMENTSKENNISGEWING**

**DEPARTMENT OF TRANSPORT
DEPARTEMENT VAN VERVOER**

No. 139

8 February 2008

**THE SOUTH AFRICAN NATIONAL ROADS
AGENCY LIMITED**
Registration No: 98/09584/06

DECLARATION AMENDMENT OF NATIONAL ROAD N14 SECTION 6

AMENDMENT OF DECLARATION No. 629 OF 2005

By virtue of section 40 (1)(b) of the South African National Roads Agency Limited and the National Roads Act, 1998 (Act No. 7 of 1998), I hereby amend Declaration No. 629 of 2005, by substituting the descriptive section of the route from Olifantshoek up to the common boundary between the Remainder of the farm Sekgame 461 and the Remainder of Portion 4 of the farm Bestwood 459, with the subjoined sheets 1 to 9 of Plan P616/07.

(National Road N14 Section 6: Olifantshoek – Kathu)



MINISTER OF TRANSPORT

No. 139

8 February 2008

DIE SUID-AFRIKAANSE NASIONALE PADAGENTSKAP BEPERK

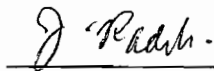
Registrasie No: 98/09584/06

VERKLARING WYSIGING VAN NASIONALE PAD N14 SEKSIE 6.

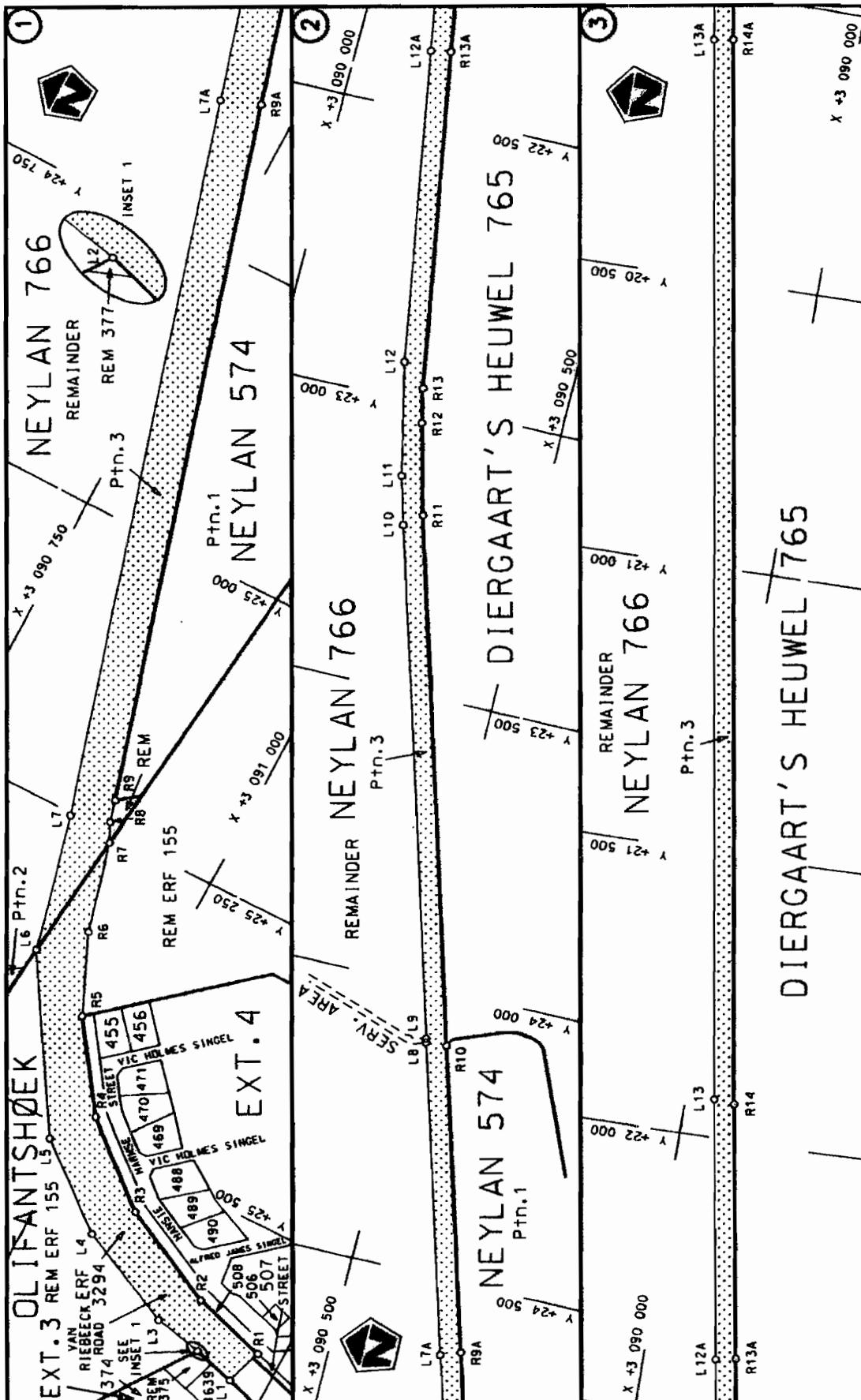
WYSIGING VAN VERKLARING NO. 629 VAN 2005


Kragtens Artikel 40(1)(b) van die Suid Afrikaanse Nasionale Padagentskap Beperk en die Nasionale Paaie Wet, 1998 (Wet No.7 van 1998), wysig ek hiermee Verklaring No.629 van 2005, deur die beskrywende gedeelte van die roete vanaf Olifantshoek tot by die gemeenskaplike grens tussen die Restant van die plaas Sekgame 461 en die Restant van Gedeelte 4 van die plaas Bestwood 459, te vervang met meegaande velle 1 tot 9 van Plan No. P616/07.

(Nasionale Pad N14 Seksie 6: Olifantshoek – Kathu)

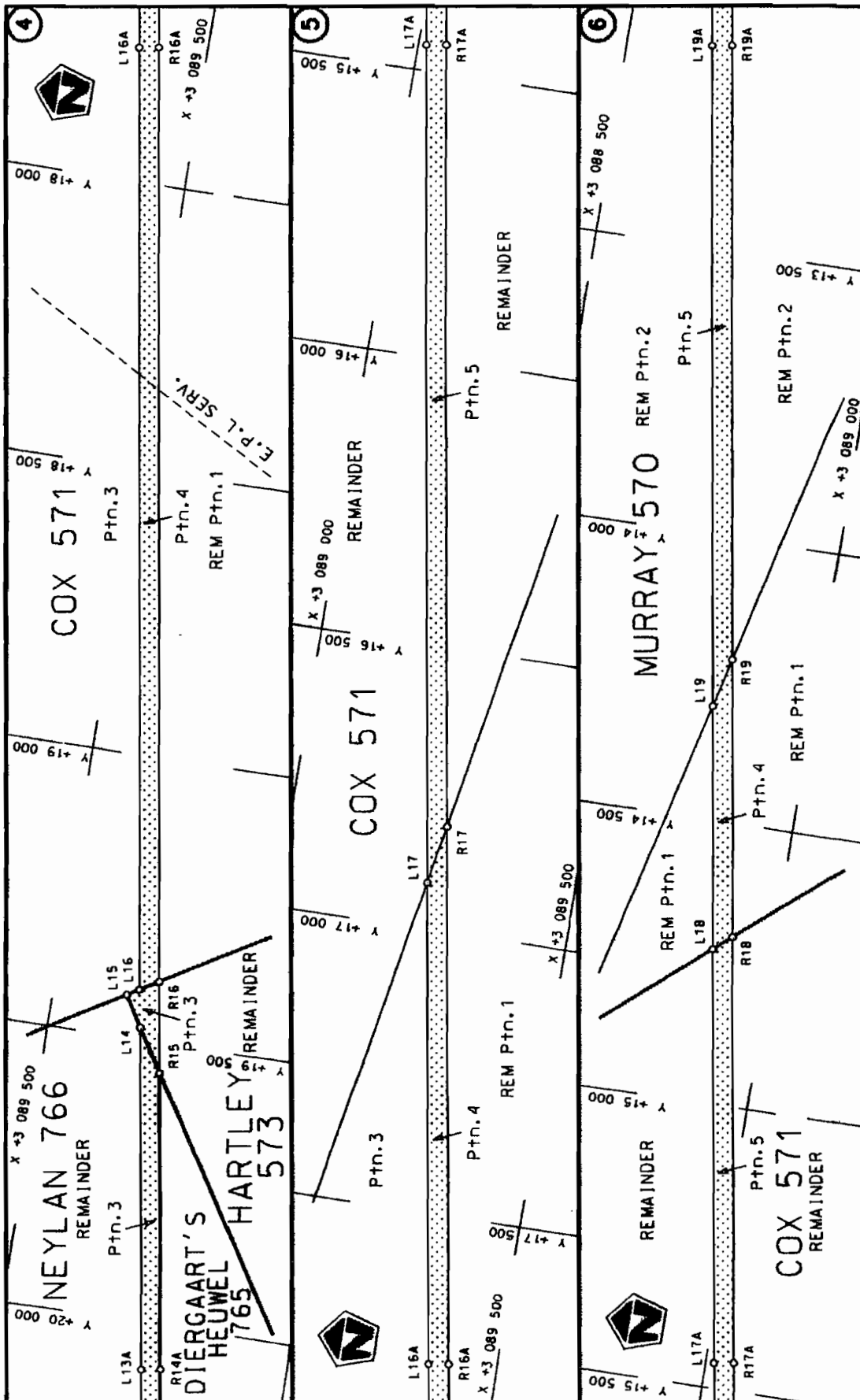


MINISTER VAN VERVOER



Die Suid Afrikaanse Nasionale Padagentskap Beperk The South African National Roads Agency Limited	<p>Die figuur getoon The figure shown</p>  <p>stelt die padreserwe voor van 'n gedeelte represents the road reserve of a portion</p> <p>van Nasionale Roete N14 of National Route</p>	<p>Vel Sheet</p> <p>1 of 9</p>
	6	<p>Plan</p> <p>P616/07</p>

D.O.9.A



Die Suid Afrikaanse Nasionale Padogenenskap Beperk
The South African National Roads Agency Limited

Die figuur getoon
The figure shown

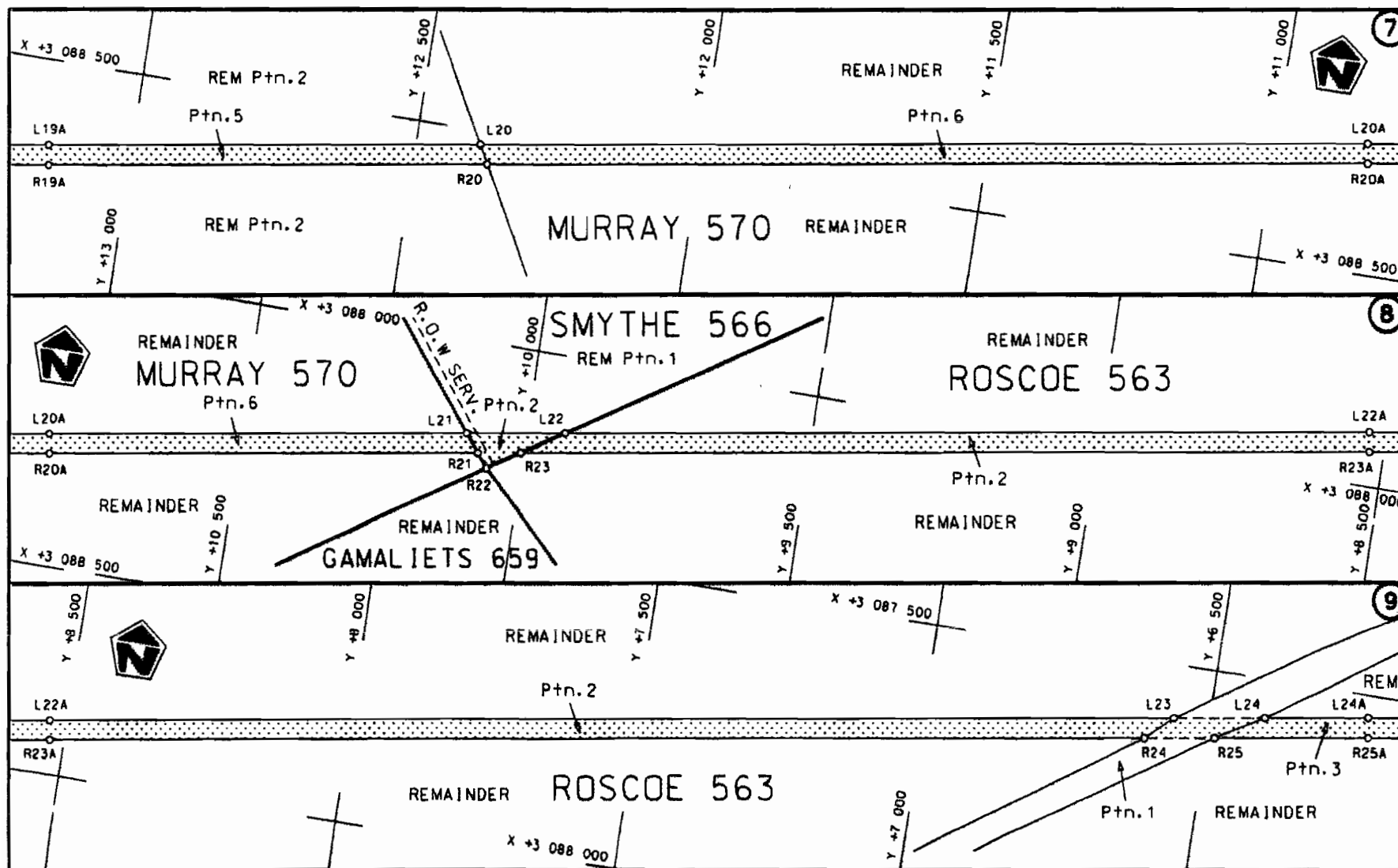


stelt die padreserwe voor van 'n gedeelte
represents the road reserve of a portion
van Nasionale Roete N14
of National Route

Vel
Sheet 2 of 9

Plan
P616/07

D.O.9.A



Die Suid Afrikaanse Nasionale Padagentskap Beperk
The South African National Roads Agency Limited

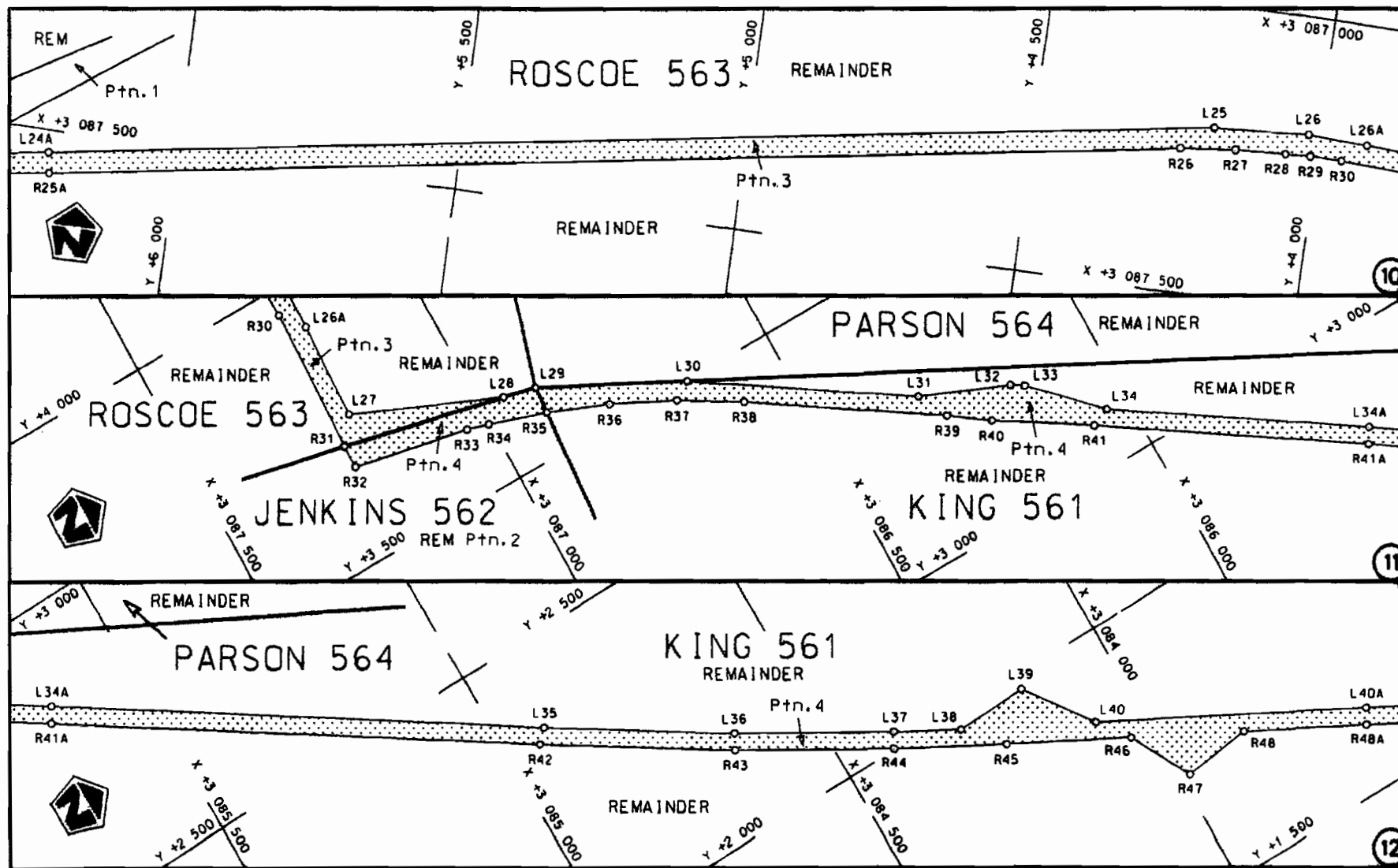
Die figuur getoon
The figure shown



steldie padreserwe voor van 'n gedeelte
represents the road reserve of a portion
van Nasionale Roete N14 Seksie 6
of National Route

Vel
Sheet 3 van 9
Plan P616/07

D.O.9.A



Die Suid Afrikaanse Nasionale Padagentskap Beperk
The South African National Roads Agency Limited

Die figuur getoon
The figure shown



steldie padreserwe voor van 'n gedeelte
represents the road reserve of a portion
van Nasionale Roete
of National Route

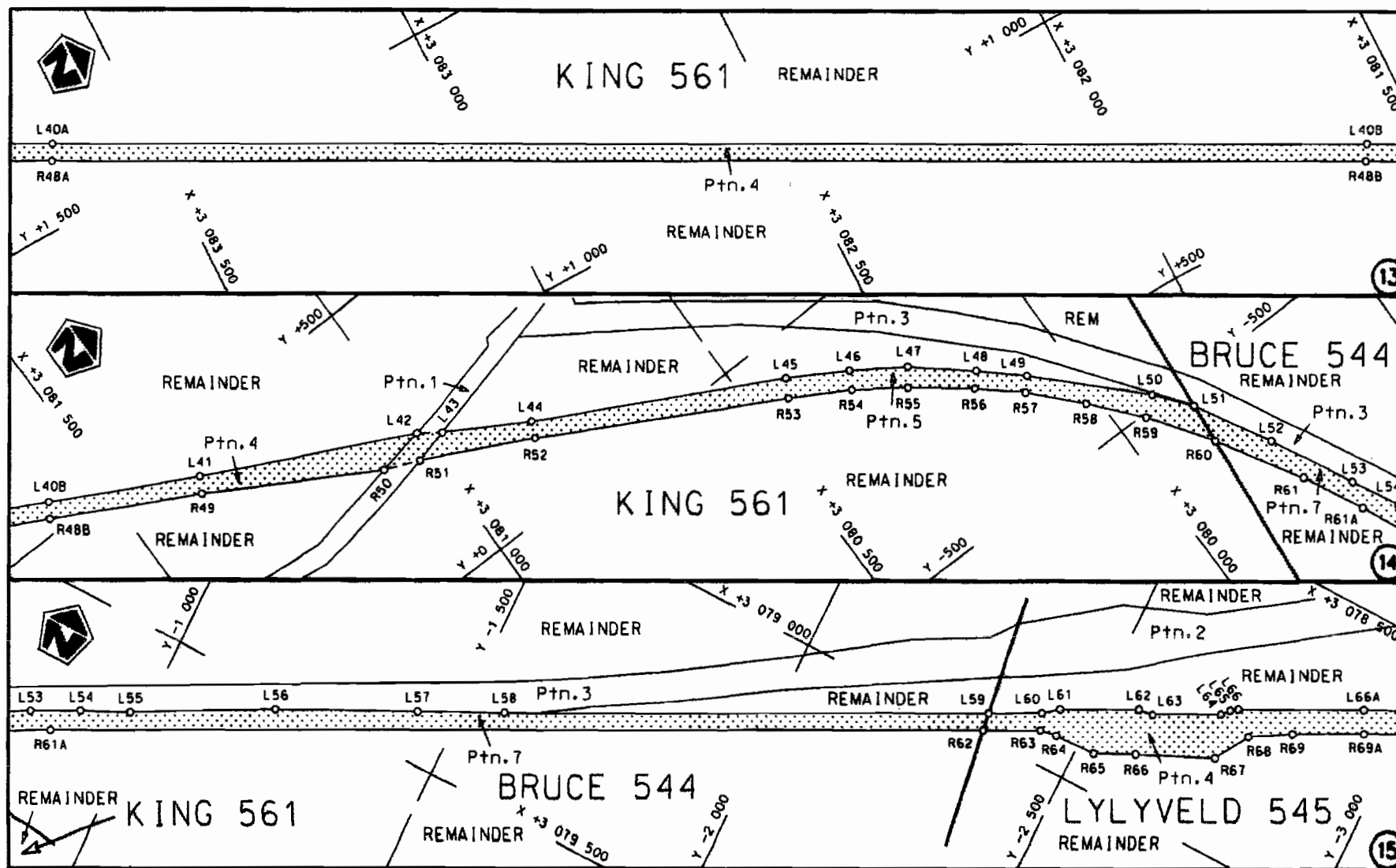
N14

Seksie
Section

6

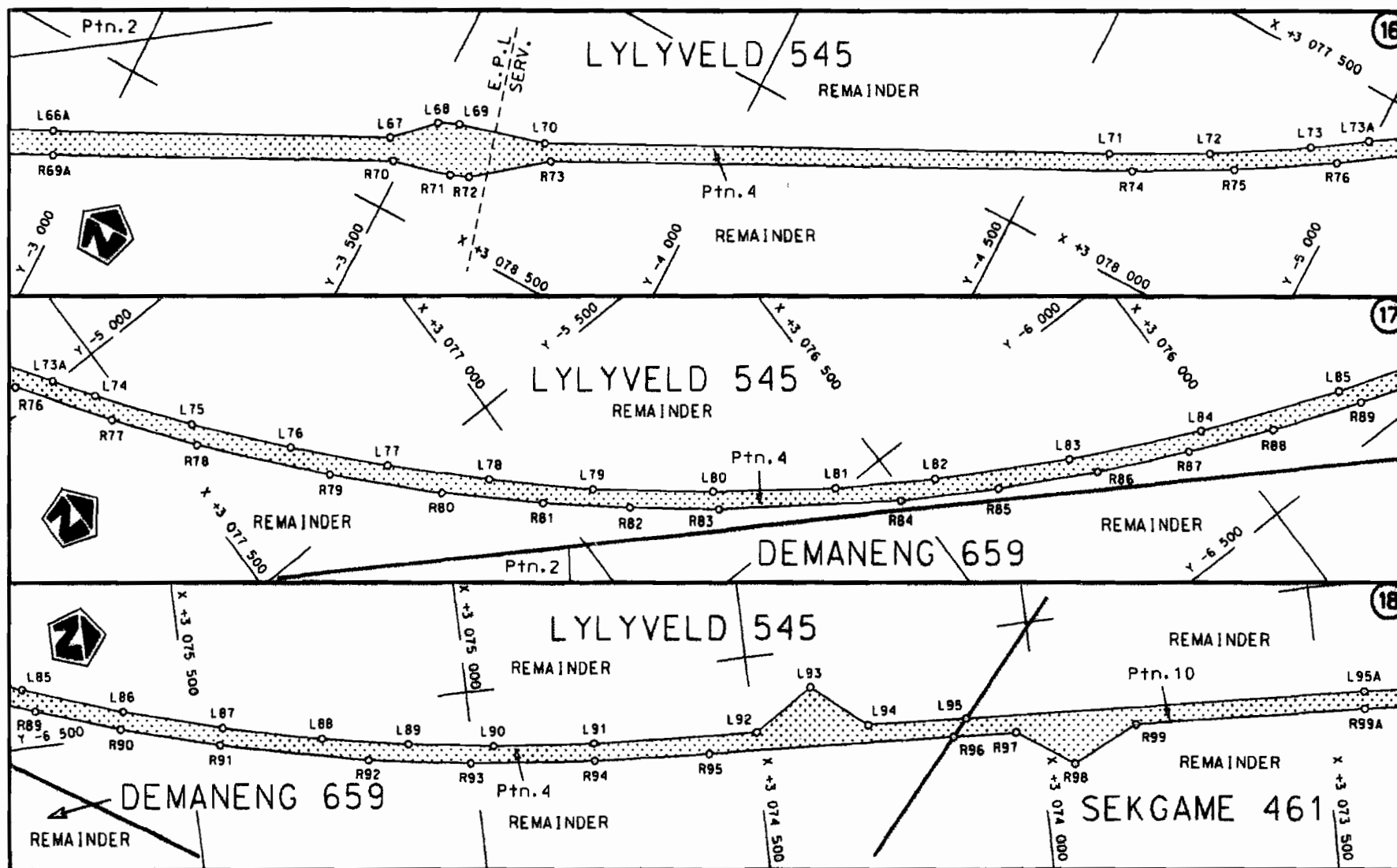
Vel
Sheet 4 van 9

Plan
P616/07



Die Suid Afrikaanse Nasionale Padagentskap Beperk The South African National Roads Agency Limited	Die figuur getoon The figure shown	steldie padreserwe voor van 'n gedeelte represents the road reserve of a portion van Nasionale Roete N14 of National Route N14 Seksie 6 Section 6	Vel 5 van 9 Sheet 5 of 9 Plan P616/07
--	---------------------------------------	--	---

D.O.9.A



Die Suid Afrikaanse Nasionale Padagentskap Beperk
The South African National Roads Agency Limited

Die figuur getoon
The figure shown



steldie padreserwe voor van 'n gedeelte
represents the road reserve of a portion
van Nasionale Roete N14
of National Route N14

Seksie
Section

6

Vel
Sheet 6 van
of 9

Plan
P616/07

D.O.9.A

PADRESERWE KOÖRDINATE					/ ROAD RESERVE CO-ORDINATES				
LINKERKANT/LEFT HAND SIDE					REGTERKANT/RIGHT HAND SIDE				
	Y	X	WG	23°		Y	X		
L1	25 634.88	3 091 219.34			R1	25 602.36	3 091 229.27		
L2	25 623.68	3 091 182.68			R2	25 582.50	3 091 164.24		
L3	25 614.61	3 091 140.22			R3	25 538.63	3 091 078.39		
L4	25 573.60	3 091 054.40			R4	25 478.82	3 091 008.65		
L5	25 514.12	3 090 982.25			R5	25 404.83	3 090 957.72		
L6	25 371.06	3 090 895.00			R6	25 336.21	3 090 927.39		
L7	25 251.88	3 090 865.33			R7	25 257.74	3 090 906.78		
L8	24 096.93	3 090 532.28			R8	25 241.19	3 090 898.75		
L9	24 090.10	3 090 530.75			R9	25 221.90	3 090 893.75		
L10	23 213.94	3 090 276.85			R10	24 094.36	3 090 567.07		
L11	23 131.09	3 090 254.56			R11	23 189.85	3 090 305.30		
L12	22 934.40	3 090 211.27			R12	23 033.02	3 090 265.83		
L13	21 932.59	3 090 050.24			R13	22 972.54	3 090 252.91		
L14	19 478.53	3 089 659.03			R14	21 935.62	3 090 085.00		
L15	19 424.85	3 089 626.53			R15	19 553.23	3 089 704.26		
L16	19 412.33	3 089 646.96			R16	19 392.92	3 089 678.68		
L17	16 917.14	3 089 248.19			R17	16 814.12	3 089 266.07		
L18	14 725.90	3 088 897.70			R18	14 699.67	3 088 927.84		
L19	14 298.99	3 088 829.45			R19	14 212.07	3 088 850.01		
L20	12 387.56	3 088 523.65			R20	12 369.87	3 088 555.28		
L21	10 105.03	3 088 158.59			R21	10 080.44	3 088 189.04		
L22	9 932.15	3 088 131.09			R22	10 061.46	3 088 212.54		
L23	6 562.37	3 087 591.50			R23	10 004.82	3 088 176.86		
L24	6 404.69	3 087 566.08			R24	6 608.76	3 087 633.48		
L25	4 184.49	3 087 211.14			R25	6 486.81	3 087 613.98		
L26	4 018.29	3 087 200.50			R26	4 238.77	3 087 254.16		
L27	3 744.35	3 087 209.70			R27	4 141.98	3 087 243.07		
L28	3 635.19	3 086 957.09			R28	4 054.39	3 087 237.27		
L29	3 621.96	3 086 898.82			R29	4 010.51	3 087 235.97		
L30	3 499.28	3 086 660.28			R30	3 955.55	3 087 235.85		
L31	3 274.00	3 086 318.29			R31	3 700.33	3 087 243.98		
L32	3 210.83	3 086 166.63			R32	3 659.75	3 087 244.75		
L33	3 197.51	3 086 145.24			R33	3 618.33	3 087 041.66		
L34	3 090.82	3 086 040.23			R34	3 607.09	3 087 003.04		
L35	2 352.70	3 084 919.19			R35	3 574.40	3 086 902.58		
L36	2 170.51	3 084 636.32			R36	3 531.73	3 086 799.28		
L37	2 027.83	3 084 393.25			R37	3 478.98	3 086 692.94		
L38	1 970.30	3 084 289.60			R38	3 417.99	3 086 590.86		
L39	1 974.85	3 084 162.36			R39	3 219.94	3 086 290.94		
L40	1 858.80	3 084 079.20			R40	3 173.39	3 086 225.42		
L41	420.54	3 081 353.30			R41	3 076.93	3 086 073.34		
L42	247.70	3 080 999.37			R42	2 331.13	3 084 940.71		
L43	221.69	3 080 962.56			R43	2 144.69	3 084 650.93		
L44	141.61	3 080 823.96			R44	2 001.77	3 084 408.40		
L45	-71.14	3 080 418.99			R45	1 906.26	3 084 233.38		
L46	-128.37	3 080 319.86			R46	1 804.01	3 084 039.55		
L47	-184.96	3 080 234.11			R47	1 695.41	3 083 983.31		
L48	-262.96	3 080 141.93			R48	1 710.82	3 083 862.90		
L49	-324.66	3 080 075.22			R49	394.63	3 081 367.69		
L50	-482.62	3 079 918.38			R50	231.81	3 081 084.09		
L51	-542.96	3 079 870.95			R51	207.21	3 081 023.12		
					Vel 8		Van 9		P616/07
					Sheet		of		

PADRESERWE KOÖRDINATE				/	ROAD RESERVE CO-ORDINATES			
LINKERKANT/LEFT HAND SIDE					REGTERKANT/RIGHT HAND SIDE			
	Y	X	WG	23°		Y	X	
L52	-672.94	3 079 798.00			R52	114.73	3 080 836.11	
L53	-814.59	3 079 725.53			R53	-101.07	3 080 435.86	
L54	-894.71	3 079 684.66			R54	-157.31	3 080 336.99	
L55	-974.53	3 079 646.96			R55	-213.84	3 080 256.05	
L56	-1 205.52	3 079 525.02			R56	-285.53	3 080 163.06	
L57	-1 430.99	3 079 414.71			R57	-345.85	3 080 095.18	
L58	-1 569.20	3 079 347.31			R58	-424.84	3 080 021.19	
L59	-2 335.78	3 078 959.79			R59	-507.23	3 079 950.22	
L60	-2 419.62	3 078 917.11			R60	-613.70	3 079 877.31	
L61	-2 445.33	3 078 897.07			R61	-756.92	3 079 791.07	
L62	-2 569.15	3 078 834.09			R62	-2 340.08	3 078 990.39	
L63	-2 594.80	3 078 830.75			R63	-2 430.85	3 078 944.95	
L64	-2 702.00	3 078 776.46			R64	-2 459.95	3 078 940.66	
L65	-2 713.97	3 078 763.10			R65	-2 531.57	3 078 938.20	
L66	-2 725.94	3 078 754.67			R66	-2 598.10	3 078 905.86	
L67	-3 460.55	3 078 385.68			R67	-2 726.36	3 078 848.47	
L68	-3 523.46	3 078 324.21			R68	-2 762.52	3 078 789.26	
L69	-3 558.05	3 078 309.23			R69	-2 829.45	3 078 749.40	
L70	-3 707.81	3 078 265.74			R70	-3 483.66	3 078 417.88	
L71	-4 599.70	3 077 814.71			R71	-3 584.12	3 078 393.72	
L72	-4 756.80	3 077 731.60			R72	-3 614.62	3 078 380.70	
L73	-4 908.78	3 077 639.77			R73	-3 731.18	3 078 287.65	
L74	-5 060.77	3 077 538.28			R74	-4 648.83	3 077 823.13	
L75	-5 204.90	3 077 431.31			R75	-4 807.86	3 077 736.28	
L76	-5 343.57	3 077 315.43			R76	-4 961.74	3 077 641.49	
L77	-5 474.34	3 077 197.03			R77	-5 111.27	3 077 538.97	
L78	-5 602.43	3 077 069.32			R78	-5 238.77	3 077 445.15	
L79	-5 729.18	3 076 932.35			R79	-5 424.47	3 077 287.86	
L80	-5 862.26	3 076 765.53			R80	-5 570.44	3 077 149.33	
L81	-5 990.26	3 076 590.36			R81	-5 693.56	3 077 017.46	
L82	-6 085.66	3 076 441.23			R82	-5 794.99	3 076 900.38	
L83	-6 203.72	3 076 232.95			R83	-5 893.65	3 076 776.40	
L84	-6 306.54	3 076 019.34			R84	-6 078.77	3 076 511.83	
L85	-6 400.82	3 075 785.16			R85	-6 166.88	3 076 362.23	
L86	-6 458.79	3 075 611.03			R86	-6 250.80	3 076 206.46	
L87	-6 507.83	3 075 438.14			R87	-6 322.06	3 076 057.92	
L88	-6 548.04	3 075 263.20			R88	-6 382.45	3 075 916.64	
L89	-6 575.23	3 075 111.39			R89	-6 439.60	3 075 765.98	
L90	-6 596.61	3 074 962.65			R90	-6 488.29	3 075 618.70	
L91	-6 613.68	3 074 783.95			R91	-6 536.76	3 075 446.10	
L92	-6 629.34	3 074 495.16			R92	-6 593.96	3 075 184.28	
L93	-6 564.26	3 074 391.68			R93	-6 621.45	3 075 006.21	
L94	-6 640.49	3 074 296.53			R94	-6 643.09	3 074 786.24	
L95	-6 649.69	3 074 123.53			R95	-6 655.53	3 074 582.58	
L96	-6 987.82	3 067 957.63			R96	-6 678.46	3 074 149.08	
L97	-6 954.50	3 067 794.33			R97	-6 684.40	3 074 039.12	
L98	-6 963.57	3 067 761.38			R98	-6 749.76	3 073 941.98	
L99	-7 006.12	3 067 625.37			R99	-6 695.73	3 073 827.81	
L100	-7 069.33	3 066 470.14			R100	-7 016.94	3 067 972.35	
R103	-7 035.66	3 067 627.04			R101	-7 045.92	3 067 824.35	
R104	-7 097.04	3 066 513.12			R102	-7 059.16	3 067 798.74	
					Vel	9	Van	9
					Sheet		of	
					P616/07			