

Government Gazette Staatskoerant

REPUBLIC OF SOUTH AFRICA
REPUBLIEK VAN SUID-AFRIKA

Vol. 512

Pretoria, 8 February 2008
Februarie

No. 30742

CONTENTS**INHOUD**

No.	Page No.	Gazette No.	No.	Bladsy No.	Koerant No.
GOVERNMENT NOTICE			GOEWERMENSKENNISGEWINGS		
Transport, Department of			Vervoer, Departement van		
<i>Government Notice</i>			<i>Goewermentskennisgewing</i>		
140			140		
South African National Roads Agency Limited and the National Roads Act (7/1998): South African National Roads Agency Limited: Declaration amendment of National Road N7 Section 8: Amendment of Declaration Nos. 2693 of 1990 and 516 of 1987			Suid-Afrikaanse Nasionale Padagentskap Beperk en die Nasionale Paaie Wet (7/1998): Suid-Afrikaanse Nasionale Padagentskap Beperk: Verklaring wysiging van Nasionale Pad N7 Seksie 8: Wysiging van Verklaring Nos. 2693 van 1990 en 516 van 1987		
	2	30742		3	30742

**GOVERNMENT NOTICE
GOEWERMENSKENNISGEWING**

**DEPARTMENT OF TRANSPORT
DEPARTEMENT VAN VERVOER**

No. 140

8 February 2008

**THE SOUTH AFRICAN NATIONAL ROADS
AGENCY LIMITED**

Registration No: 98/09584/06

DECLARATION AMENDMENT OF NATIONAL ROAD N7 SECTION 8

AMENDMENT OF DECLARATION NO'S. 2693 OF 1990 AND 516 OF 1987.

By virtue of section 40 (1)(b) of the South African National Roads Agency Limited and the National Roads Act, 1998 (Act No. 7 of 1998), I hereby amend the following declarations by substituting (I) Declaration No. 2693 of 1990, from points L584 and R532 on sheet 21 up to sheet 24 of Plan No. P367/90 and the applicable co-ordinates and (II) Declaration No. 516 of 1987 the descriptive section from O'kiep to Vioolsdrif, with the subjoined sheets 1 to 37 of Plan No. P629/07.

(National Road N7 Section 8: Springbok – Vioolsdrif)



MINISTER OF TRANSPORT

No. 140

8 Februarie 2008

DEPARTEMENT VAN VERVOER

**DIE SUID-AFRIKAANSE NASIONALE
PADAGENTSKAP BEPERK**

Registrasie No: 98/09584/06

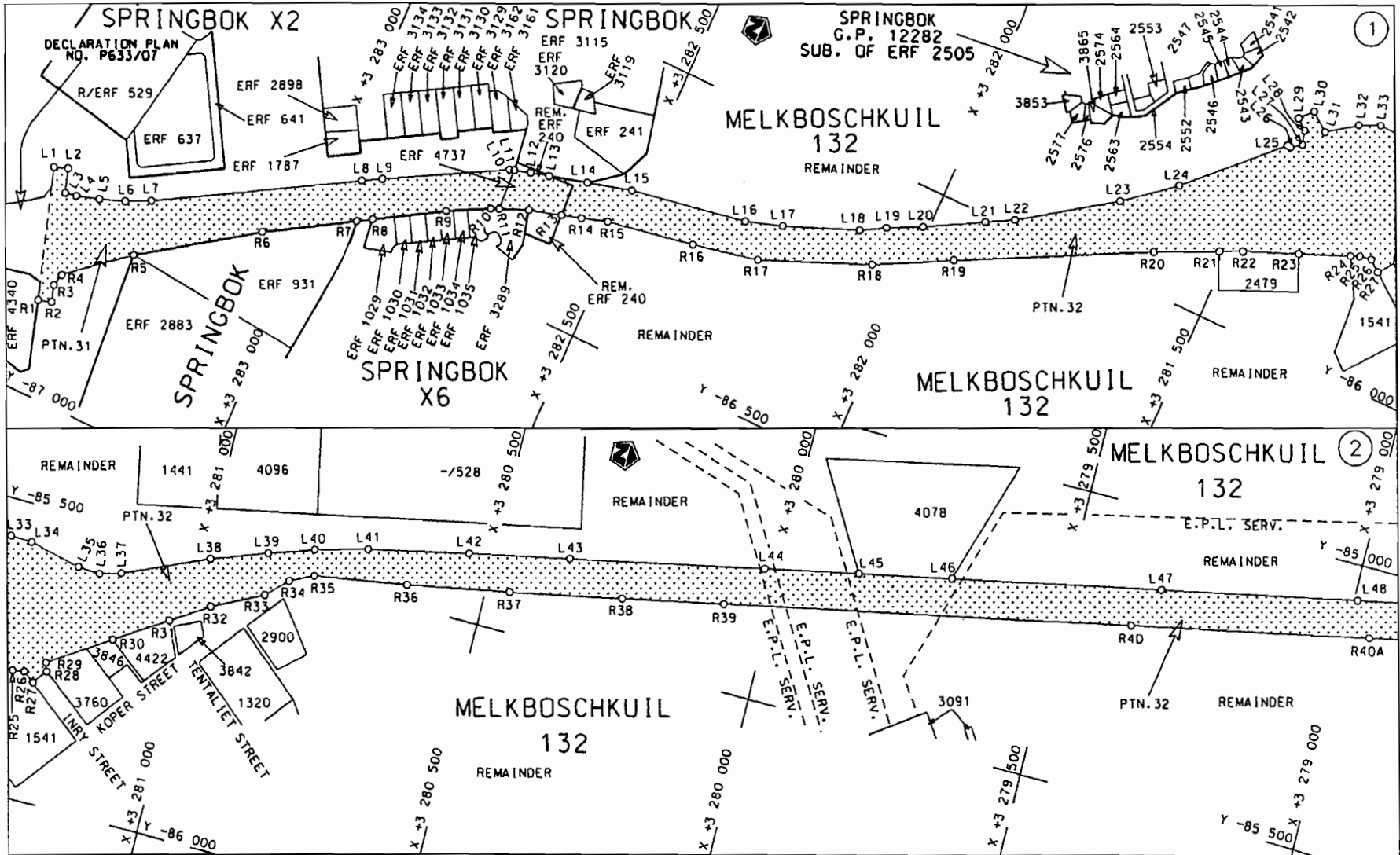
VERKLARING WYSIGING VAN NASIONALE PAD N7 SEKSIE 8.

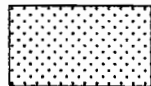
WYSIGING VAN VERKLARING NO'S. 2693 VAN 1990 EN 516 VAN 1987

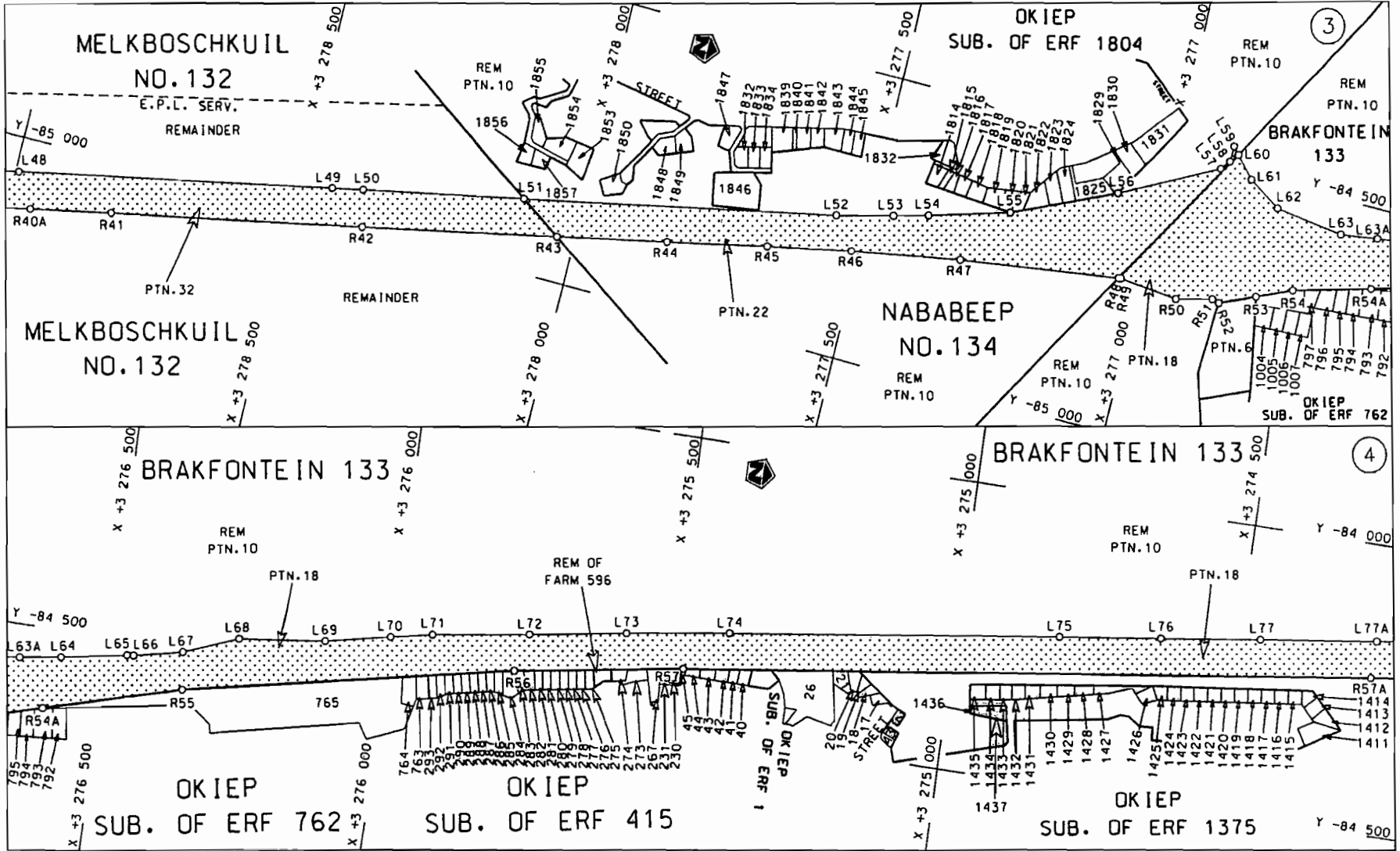
Kragtens Artikel 40(1)(b) van die Suid-Afrikaanse Nasionale Padagentskap Beperk en die Nasionale Paaie Wet, 1998 (Wet No.7 van 1998), wysig ek hiermee die volgende verklarings deur (I) Verklaring no. 2693 van 1990, vanaf punte L584 en R532 op vel 21 tot vel 24 van Plan no. P367/90 en die toepaslike koördinate en (II) Verklaring no. 516 van 1987 die beskrywende gedeelte vanaf O'kiep tot Vioolsdrif, te vervang met meegaande velle 1 tot 37 van Plan no. P629/07.

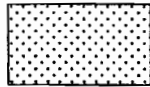
(Nasionale Pad N7 Seksie 8: Springbok – Vioolsdrif)

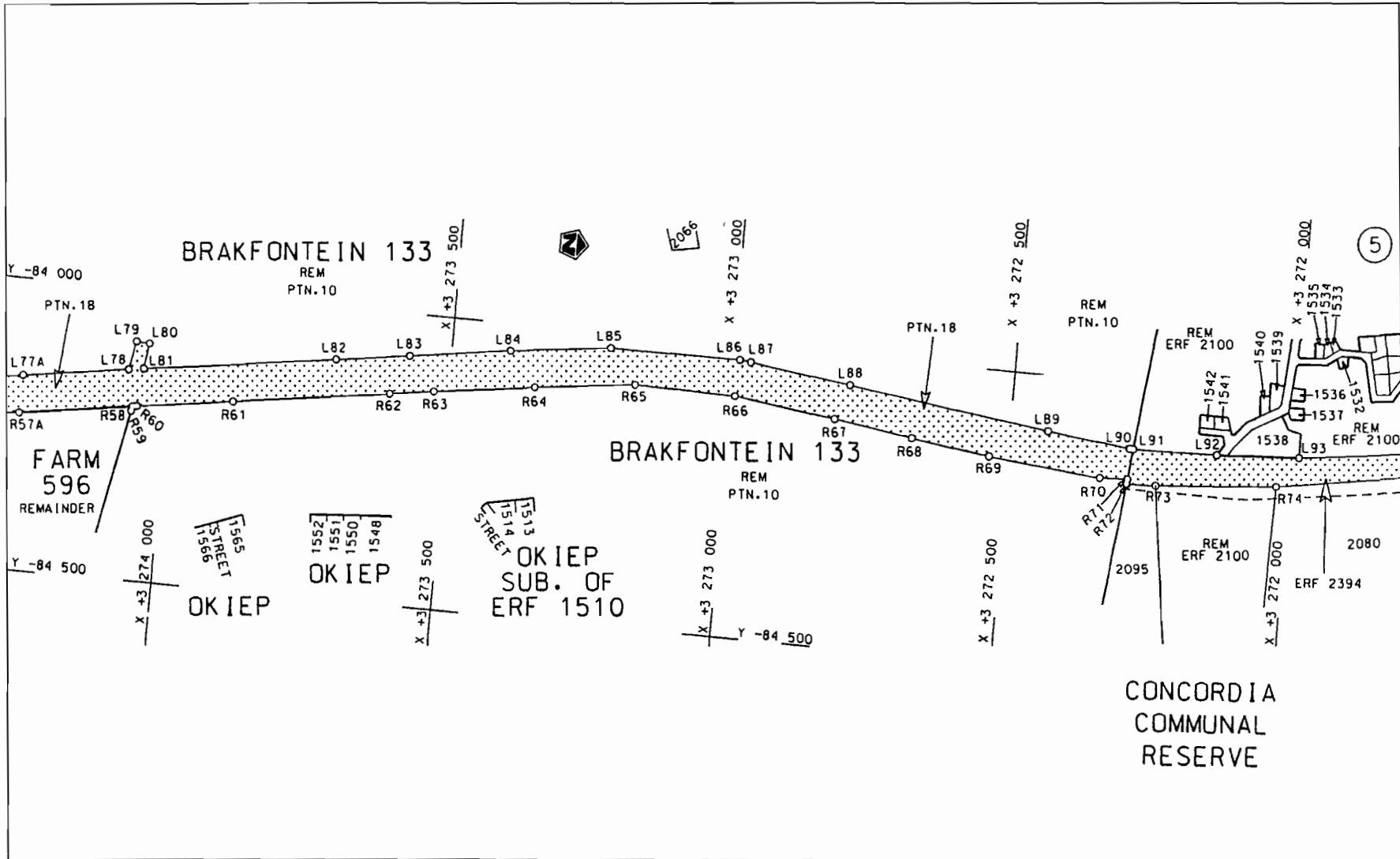
MINISTER VAN VERVOER

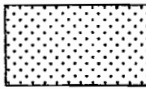


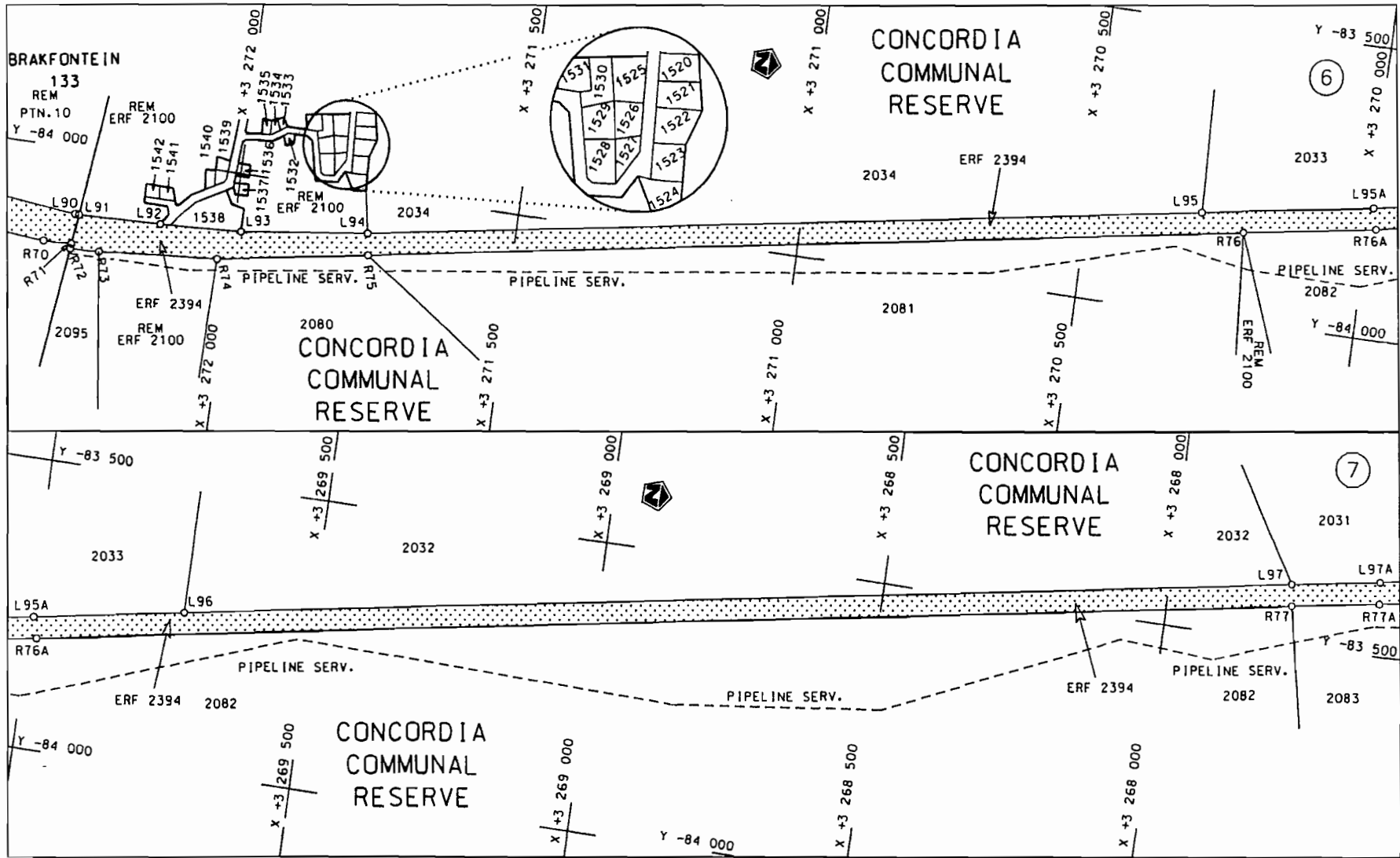
<p>Die Suid Afrikaanse Nasionale Padagentskap Beperk The South African National Roads Agency Limited</p>	<p>Die figuur getoon The figure shown</p> 	<p>steldie padreserwe voor van 'n gedeelte represents the road reserve of a portion van Nasionale Roete of National Route</p> <p>N7 Seksie Section</p> <p>8</p>	<p>Vel Sheet 1 van of 37</p> <p>Plan P629/07</p>
--	--	---	--

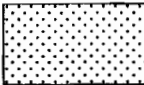


<p>Die Suid Afrikaanse Nasionale Padagentskap Beperk The South African National Roads Agency Limited</p>	<p>Die figuur getoon The figure shown</p> 	<p>steldie podreserwe voor van 'n gedeelte represents the road reserve of a portion van Nasionale Roete of National Route</p> <p style="text-align: center;">N7</p>	<p>Vel Sheet 2 van 37 of 37</p> <p>Plan P629/07</p>
--	--	---	---

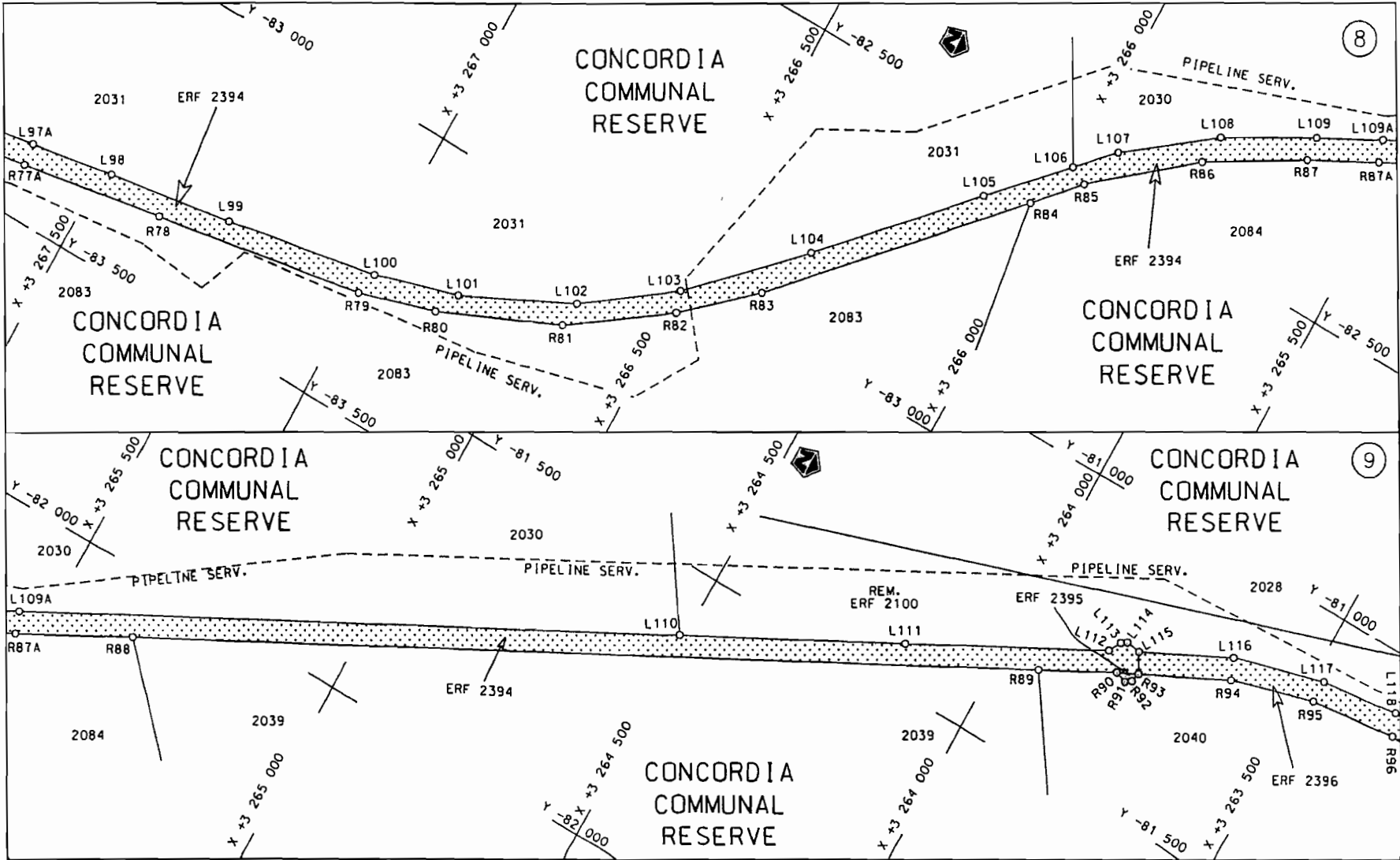


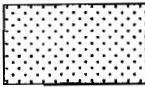
<p>Die Suid Afrikaanse Nasionale Padagentskap Beperk The South African National Roads Agency Limited</p>	<p>Die figuur getoon The figure shown</p> 	<p>steldie padreserwe voor van 'n gedeelte represents the raad reserve of a portion van Nasionale Roete N7 of National Route N7</p> <p>Seksie 8</p>	<p>Vel 3 van 37 Sheet of</p> <p>Plan P629/07</p>
--	--	---	--

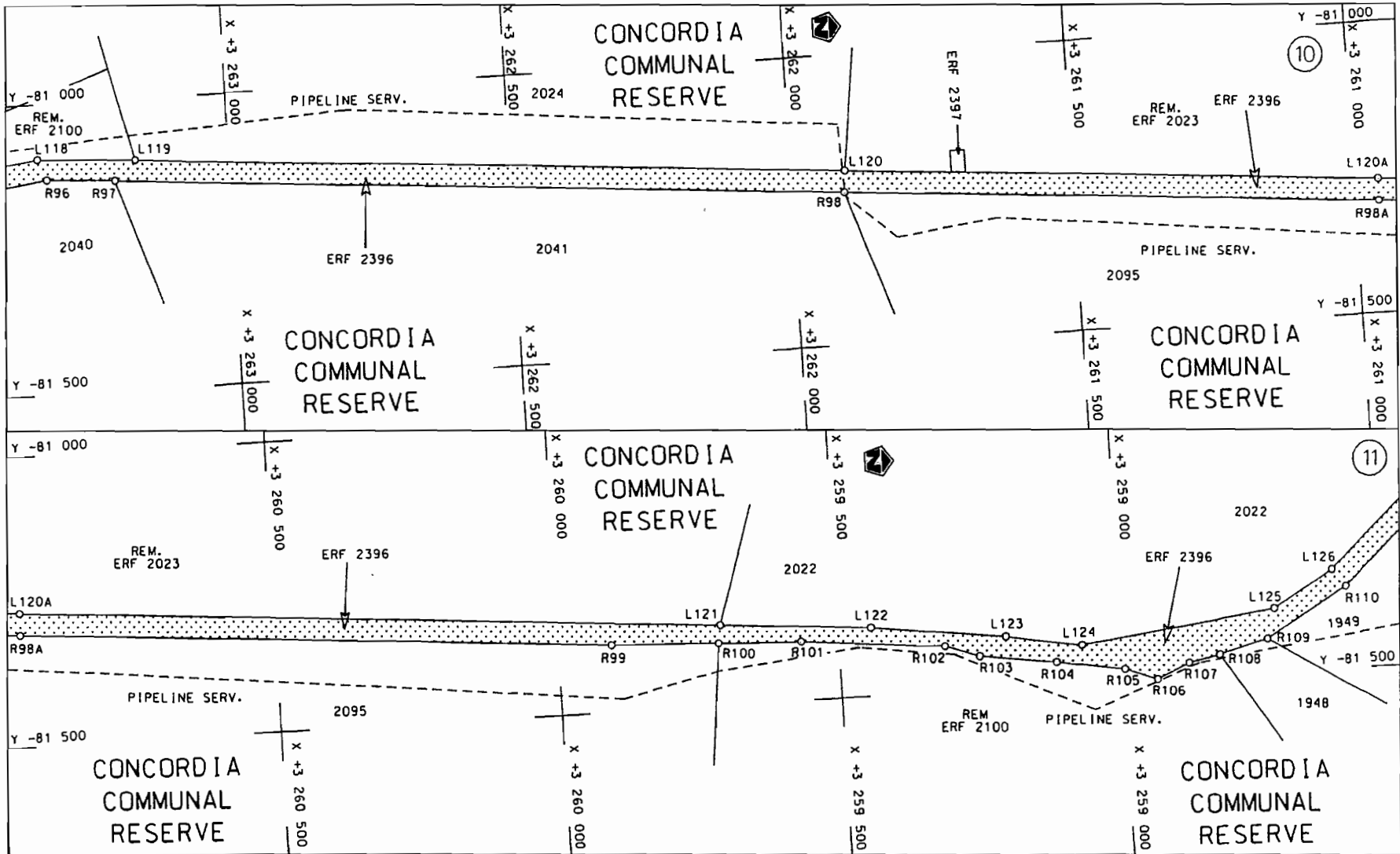



<p>Die Suid Afrikaanse Nasionale Padagentskap Beperk</p>	<p>Die figuur getoon</p>	<p>steldie padreserwe voor van 'n gedeelte represents the road reserve of a portion von Nasionale Roete N7 Seksie of National Route 8</p>	<p>Vet Sheet 4 van of 37</p>
<p>The South African National Roads Agency Limited</p>	<p>The figure shown</p> 	<p>8</p>	<p>Plan P629/07</p>

D.O.9.A

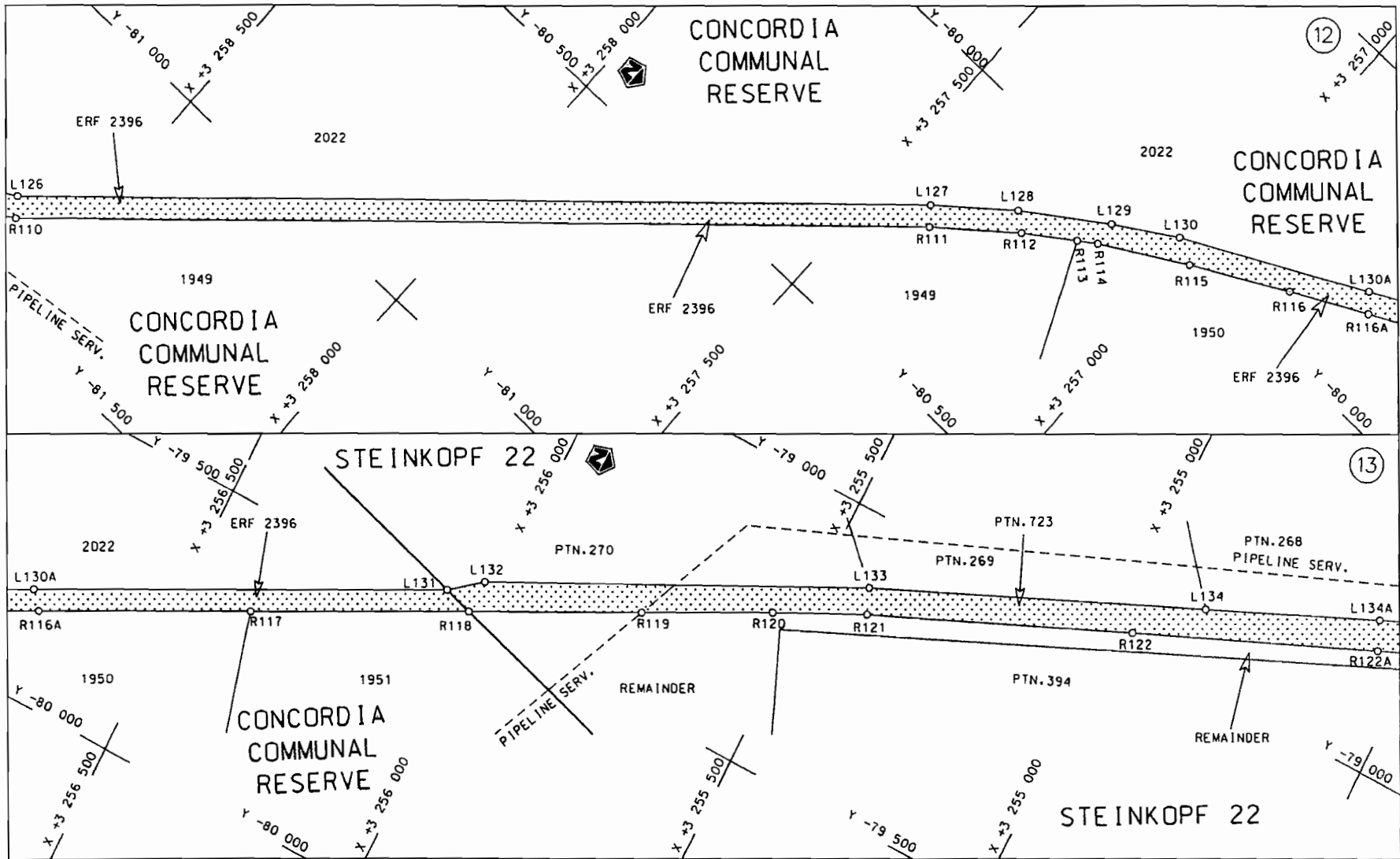


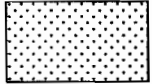
<p>Die Suid Afrikaanse Nasionale Padagentskop Beperk The South African National Roads Agency Limited</p>	<p>Die figuur getoon The figure shown</p>	 <p>steldie padreserve voor van 'n gedeelte represents the road reserve of a portion van Nasionale Roete N7 Sektie 8 of National Route N7 Section 8</p>	<p>Vel Sheet 5 van of 37</p>
			<p>Plan P629/07</p>

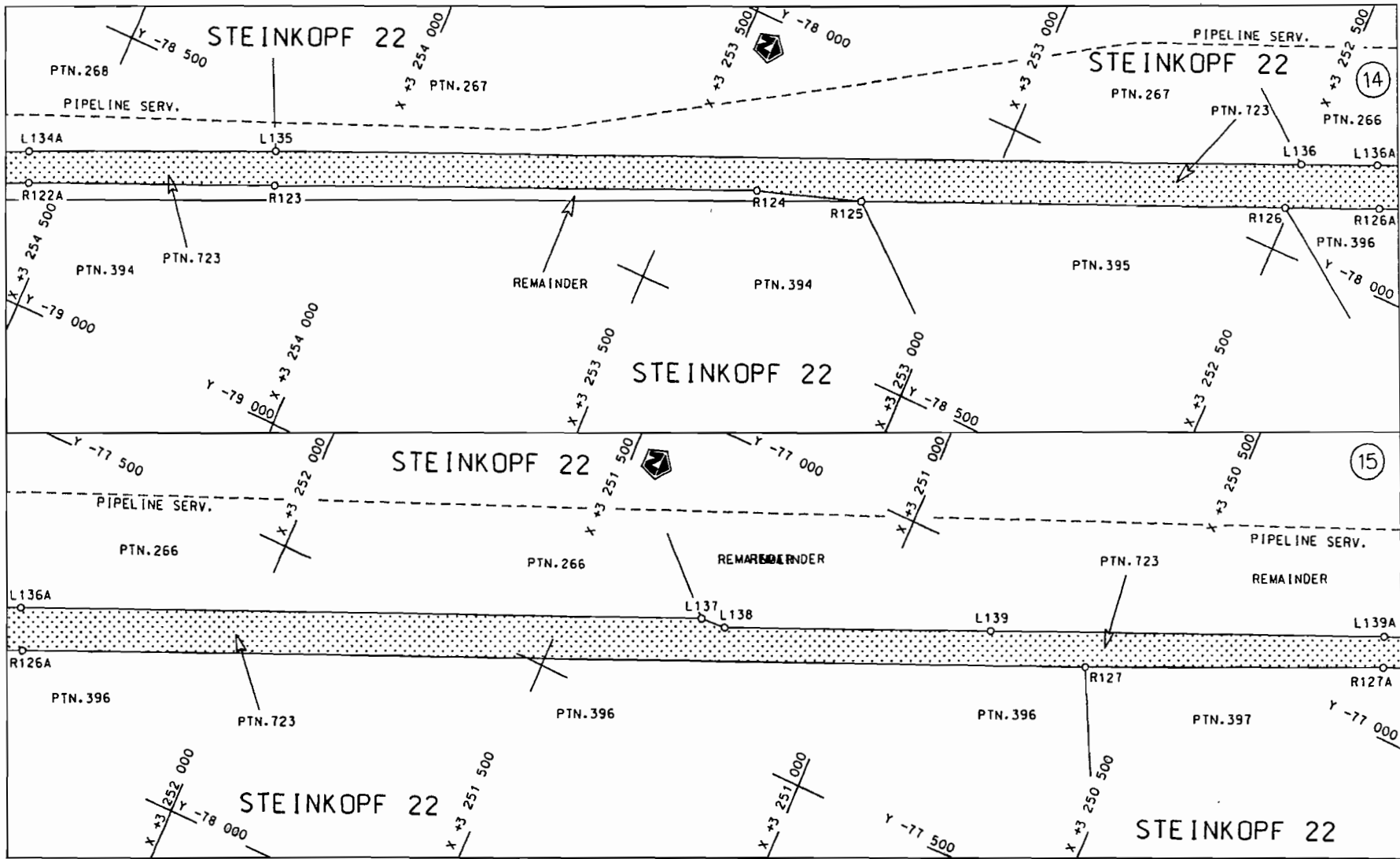


<p>Die Suid Afrikaanse Nasionale Padagentskap Beperk The South African National Roads Agency Limited</p>	<p>Die figuur getoon The figure shown</p> 	<p>stel die padreserwe voor van 'n gedeelte represents the road reserve of a portion van Nasionale Roete N7 of National Route N7</p> <p>Seksie 8 Section 8</p>	<p>Vel Sheet 6 van 37 of of</p> <p>Plan P629/07</p>
--	--	--	---

D.O.9.A

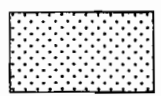


<p>Die Suid Afrikaanse Nasionale Padagentskap Beperk The South African National Roads Agency Limited</p>	<p>Die figuur getoon The figure shown</p>		<p>steldie padreserwe voor van 'n gedeelte represents the road reserve of a portion van Nasionale Roete N7 Sektie 8 of National Route N7 Section 8</p>	<p>Vel Sheet 7 van of 37 Plan P629/07</p>
--	---	--	--	---



Die Suid Afrikaanse Nasionale Padagentskap Beperk
 The South African National Roads Agency Limited

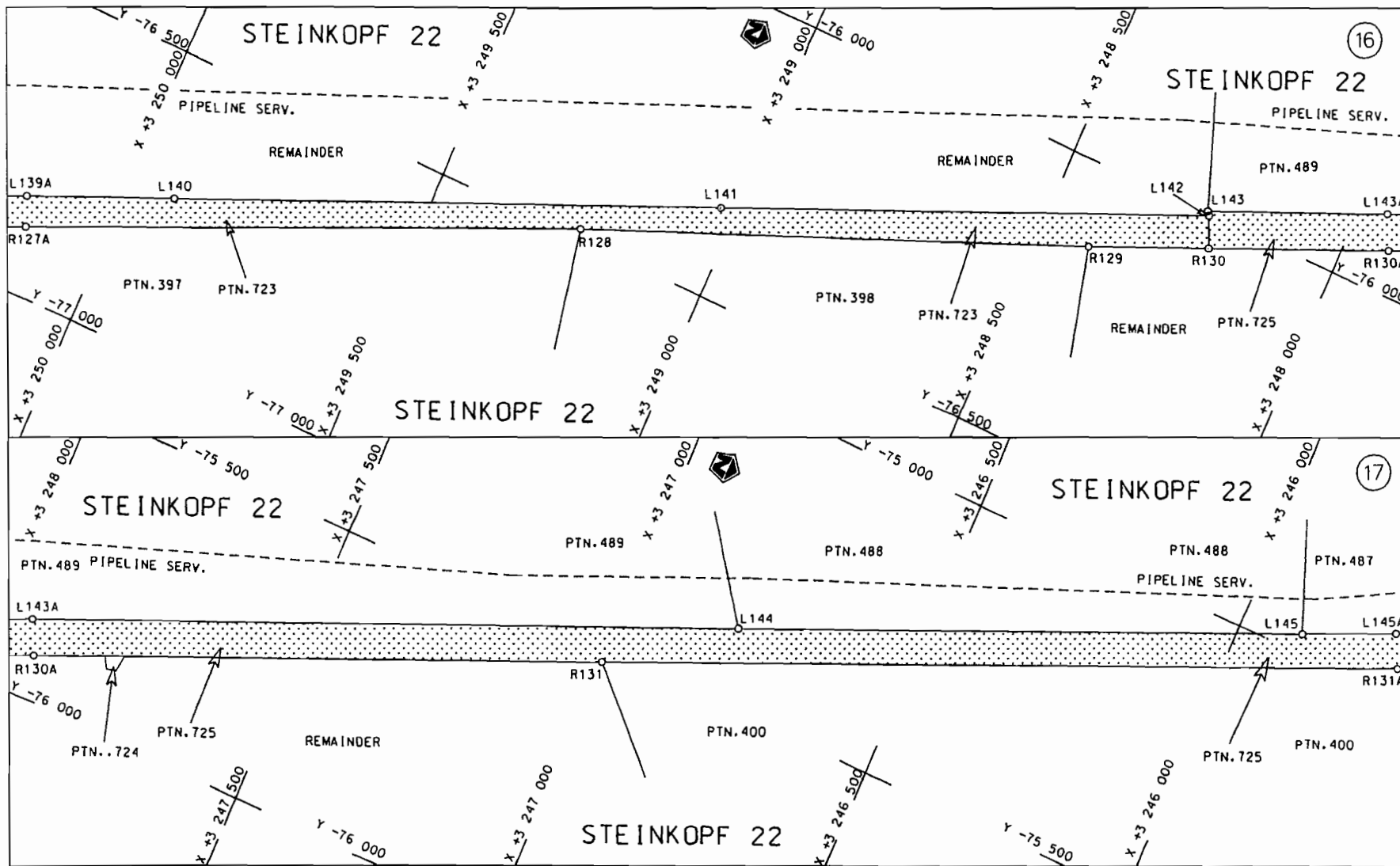
Die figuur getoon
 The figure shown

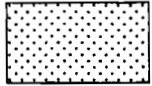


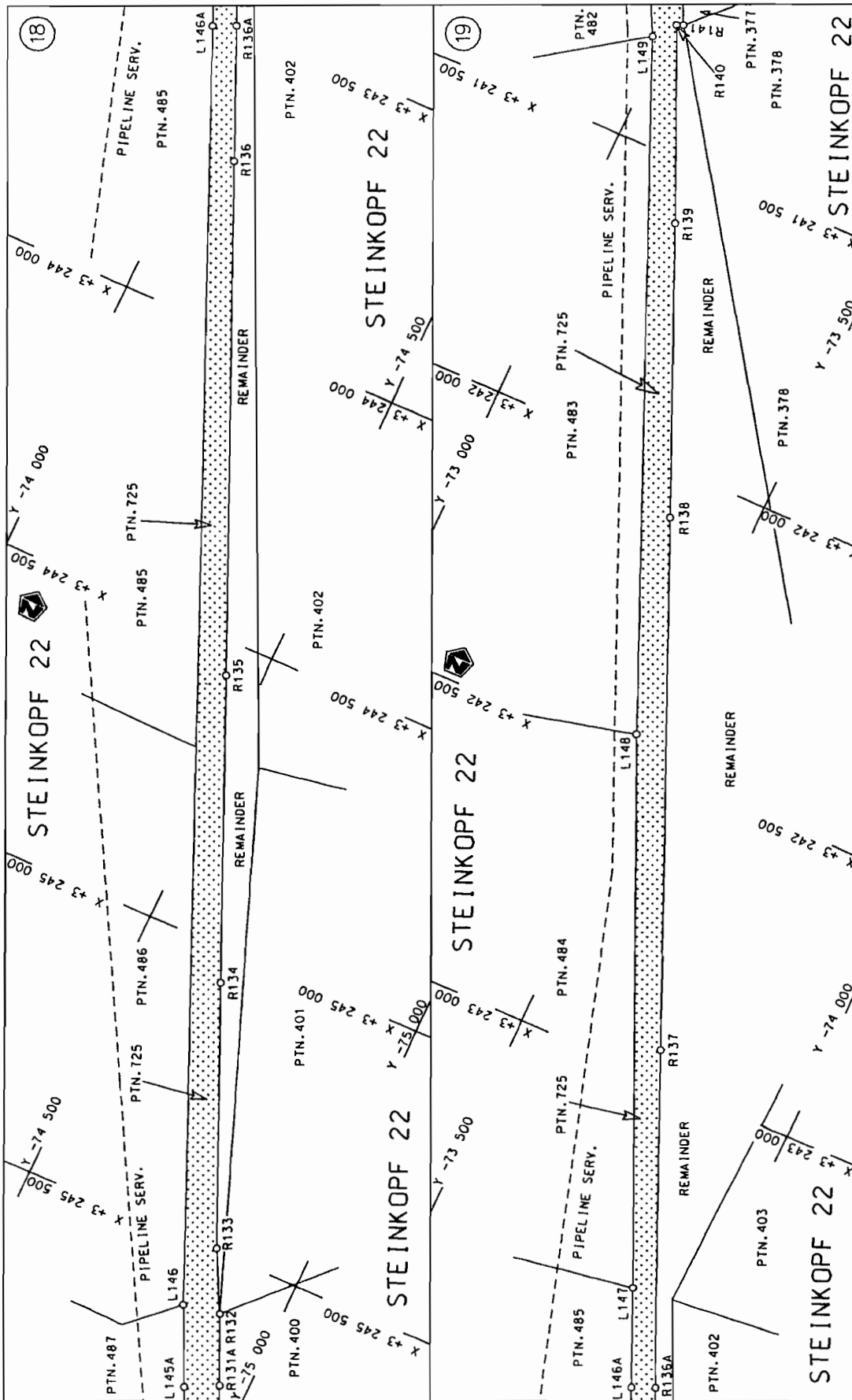
steldie podreserwe voor van 'n gedeelte
 represents the road reserve of a portion
 van Nasionale Roete N7
 of National Route N7
 Seksie 8
 Section 8

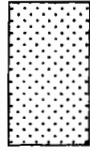
Vel Sheet	8 van of	37
Plan	P629/07	

D.O.9.A

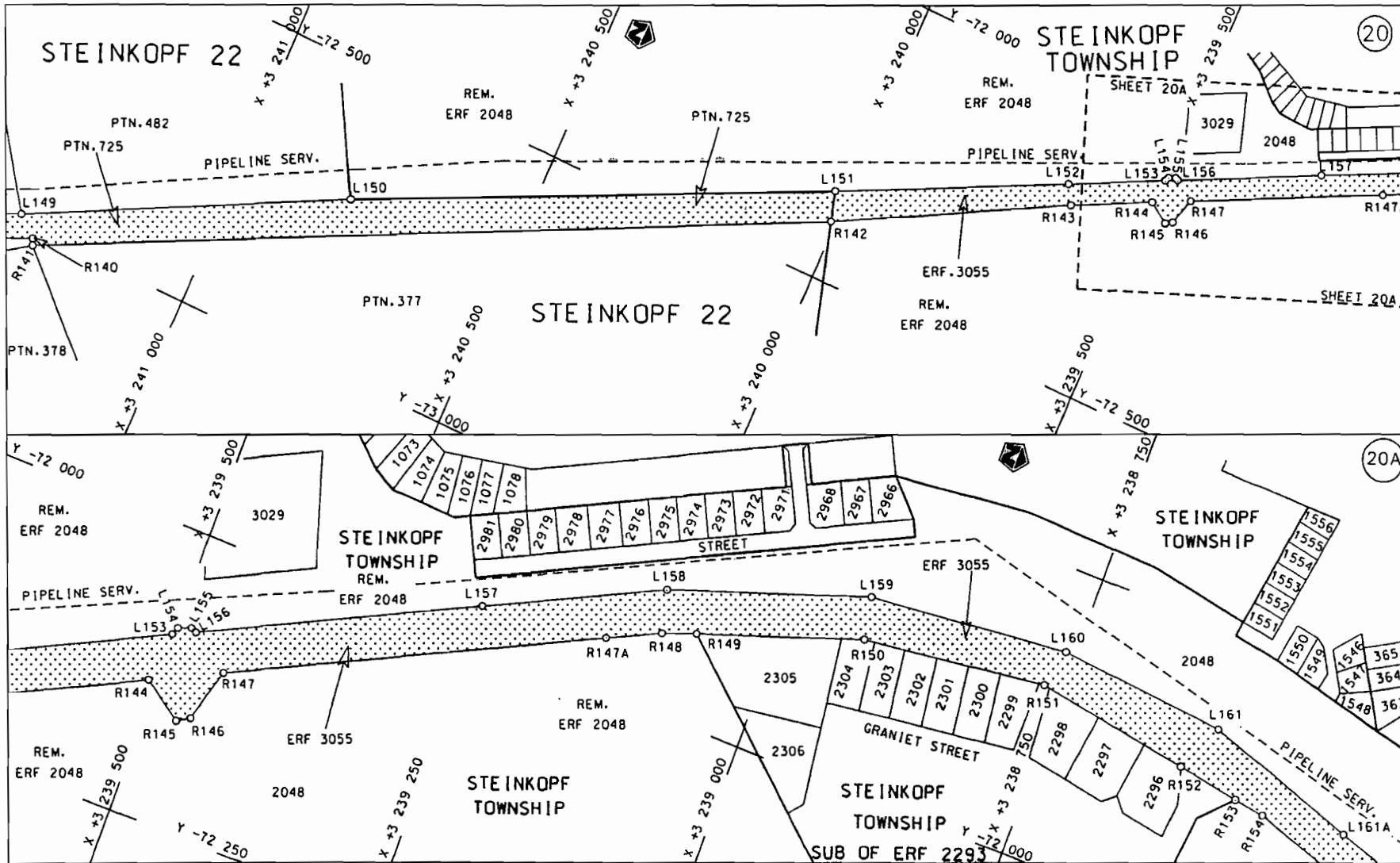


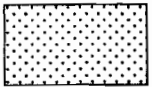
<p>Die Suid Afrikaanse Nasionale Padagentskap Beperk The South African National Roads Agency Limited</p>	<p>Die figuur getoon The figure shown</p> 	<p>steldie padreserwe voor van 'n gedeelte represents the road reserve of a portion van Nasionale Roete N7 Seksie 8 of National Route N7 Section 8</p>	<p>Vel Sheet 9 van 37 Plan P629/07</p>
--	--	--	--

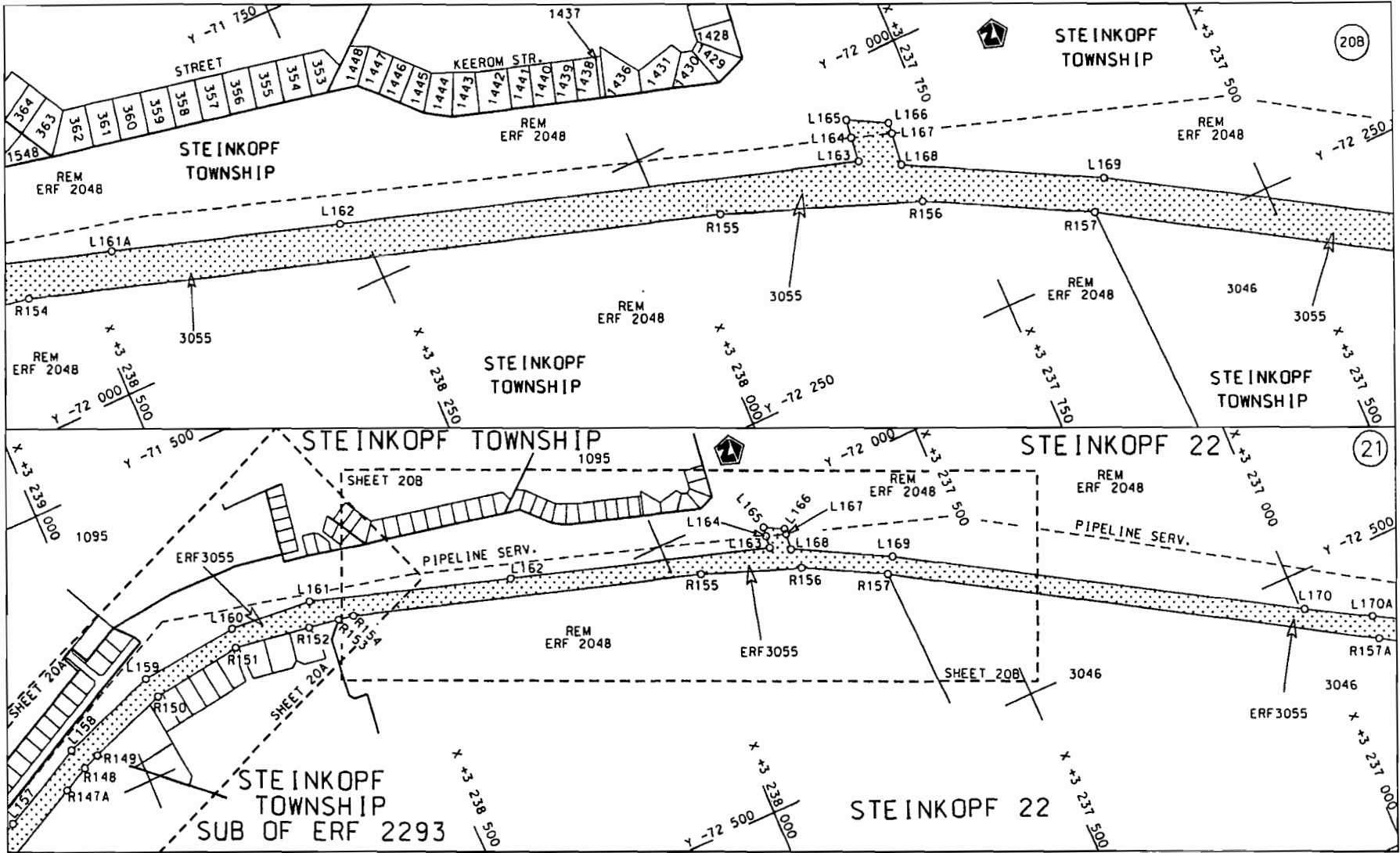


<p>Die Suid Afrikaanse Nasionale Padagentskap Beperk The South African National Roads Agency Limited</p>	<p>Die figuur getoon The figure shown</p>		<p>steeldie podreserwe voor von 'n gedeelte represents the road reserve of a portion von Nasionale Roete N7 of National Route</p>	
			<p>Vel Sheet</p> <p>10 of</p> <p>37</p>	<p>Plan</p> <p>P629/07</p>

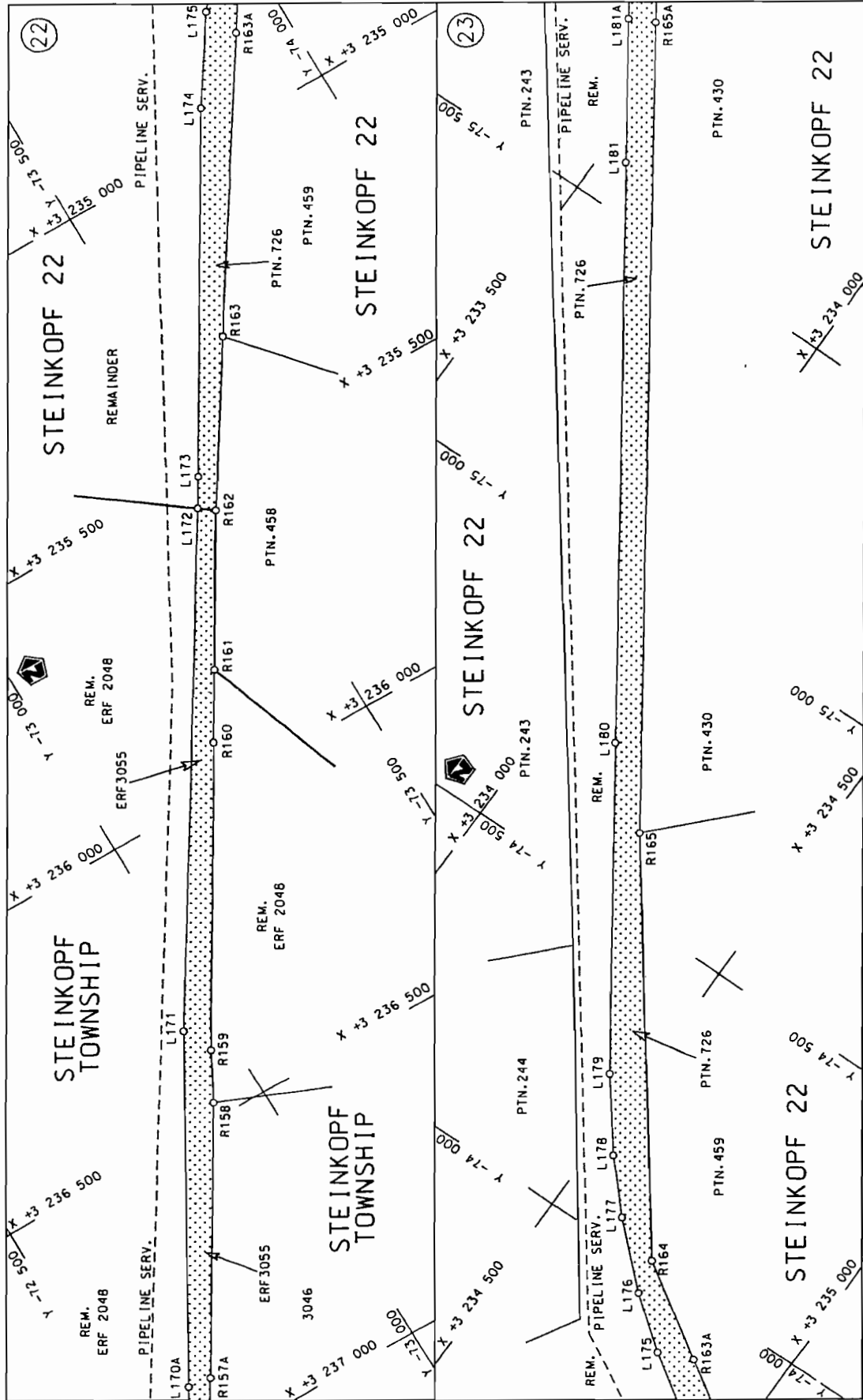
D.O.9.A




<p>Die Suid Afrikaanse Nasionale Padagentskap Beperk The South African National Roads Agency Limited</p>	<p>Die figuur getoon The figure shown</p> 	<p>steldie padreserwe voor van 'n gedeelte represents the road reserve of a portion van Nasionale Roete N7 Seksie of National Route N7 Section</p>	<p>Vel Sheet 11 van of 37 Plan P629/07</p>
--	--	--	--

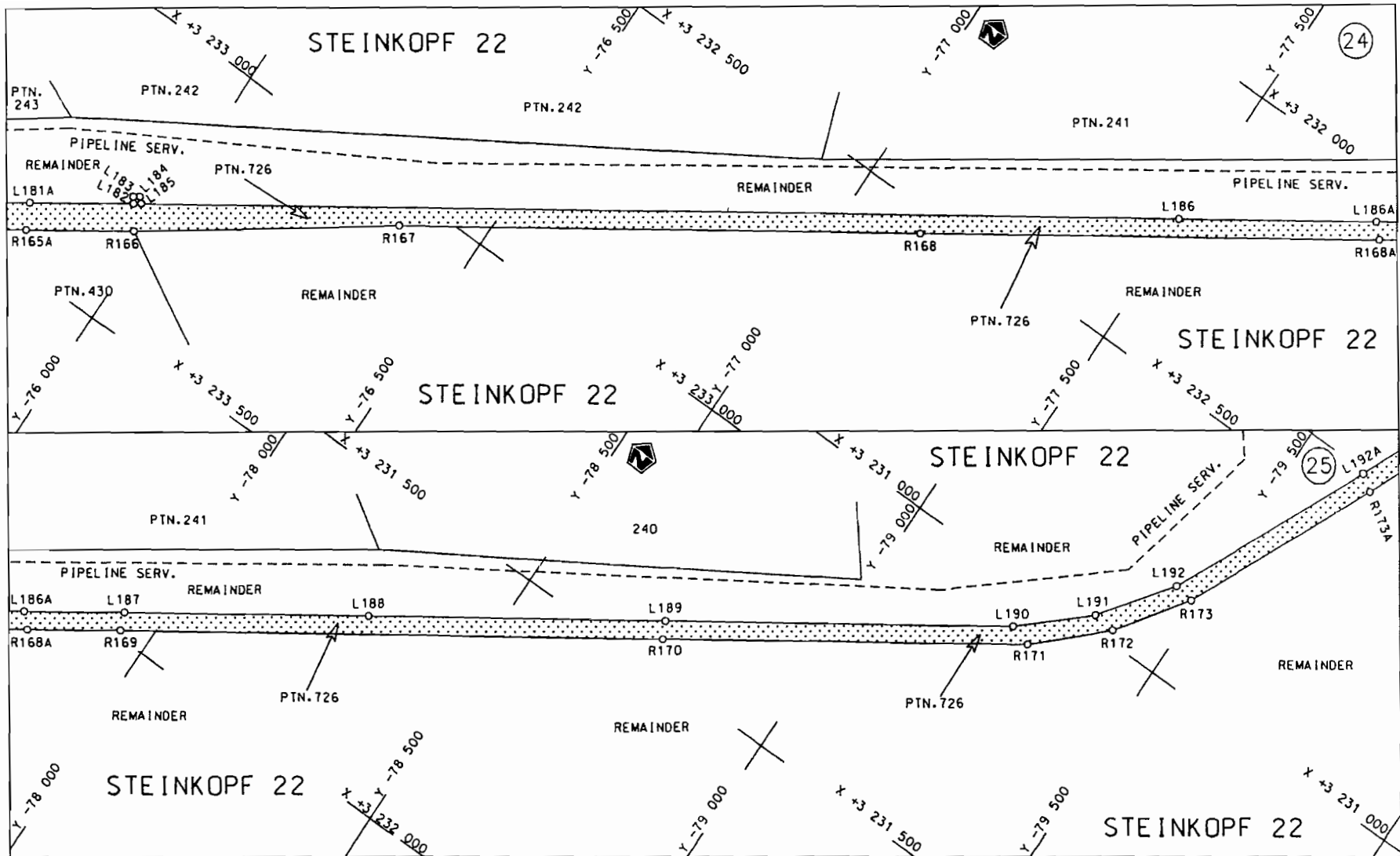


<p>Die Suid Afrikaanse Nasionale Padogenskap Beperk The South African National Roads Agency Limited</p>	<p>Die figuur getoon The figure shown</p>		<p>steldie padreserwe voor van 'n gedeelte represents the road reserve of a portion van Nasionale Route N7 of National Route</p>	<p>Vel Sheet 12 van of 37</p>
			<p>Seksie 8</p>	<p>Plan P629/07</p>



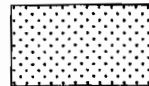
<p>Die Suid Afrikaanse Nasionale Padagentskap Beperk The South African National Roads Agency Limited</p>	<p>Die figuur getoon The figure shown</p>  <p>stelt die padreserwe voor van 'n gedeelte represents the road reserve of a portion van Nasionale Roete N7 of National Route</p> <p>8</p>	<p>Vel Sheet 13 of 37</p> <p>Plan P629/07</p>
--	---	---

D.O.9.A



Die Suid Afrikaanse Nasionale Padagentskap Beperk
The South African National Roads Agency Limited

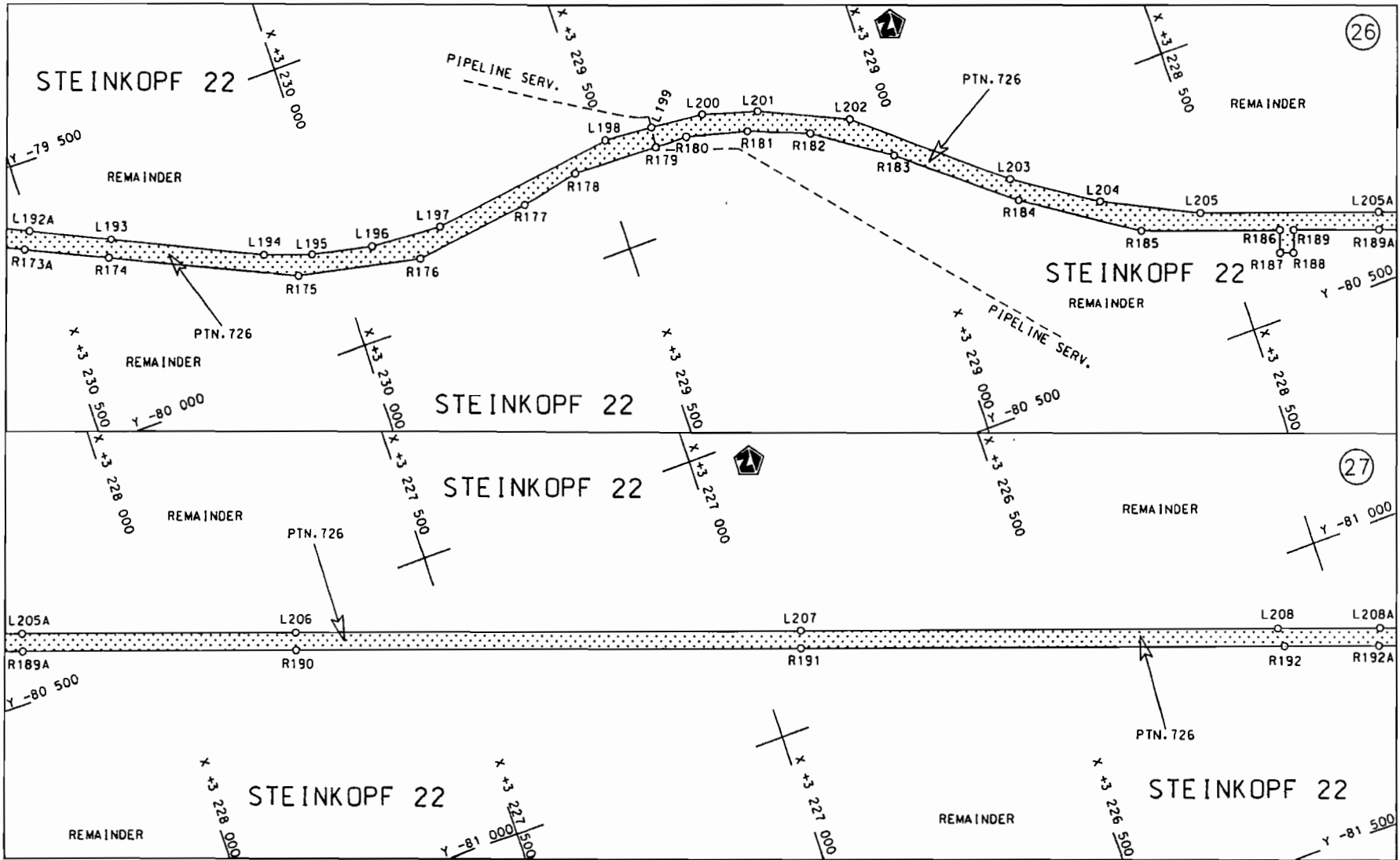
Die figuur getoon
The figure shown

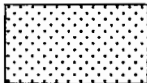


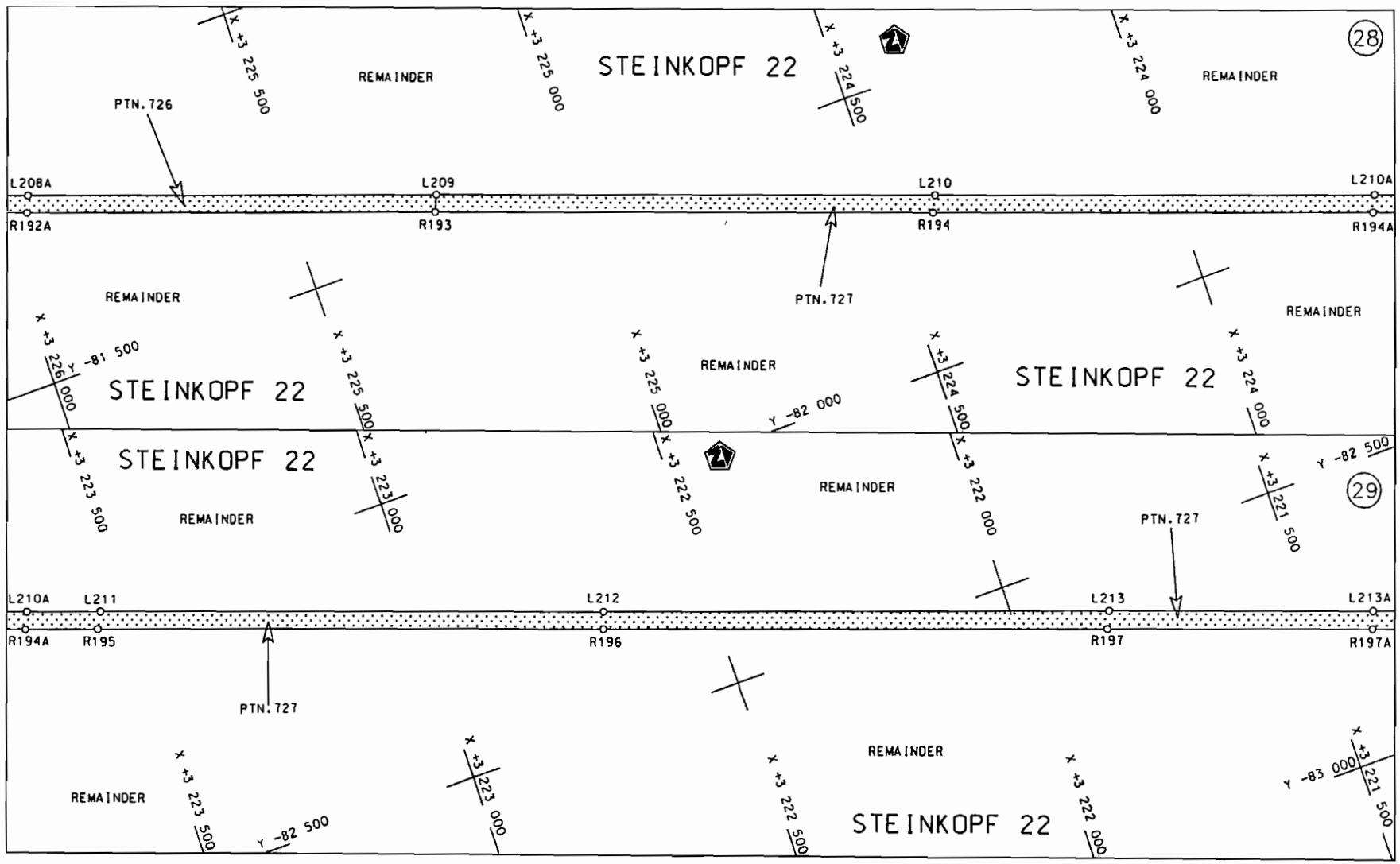
stel die padreserwe voor van 'n gedeelte
represents the road reserve of a portion
van Nasionale Roete N7 . Sektie
of National Route Section 8

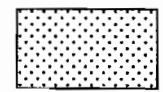
Vel Sheet 14 van of 37
Plan P629/07

D.O.9.A

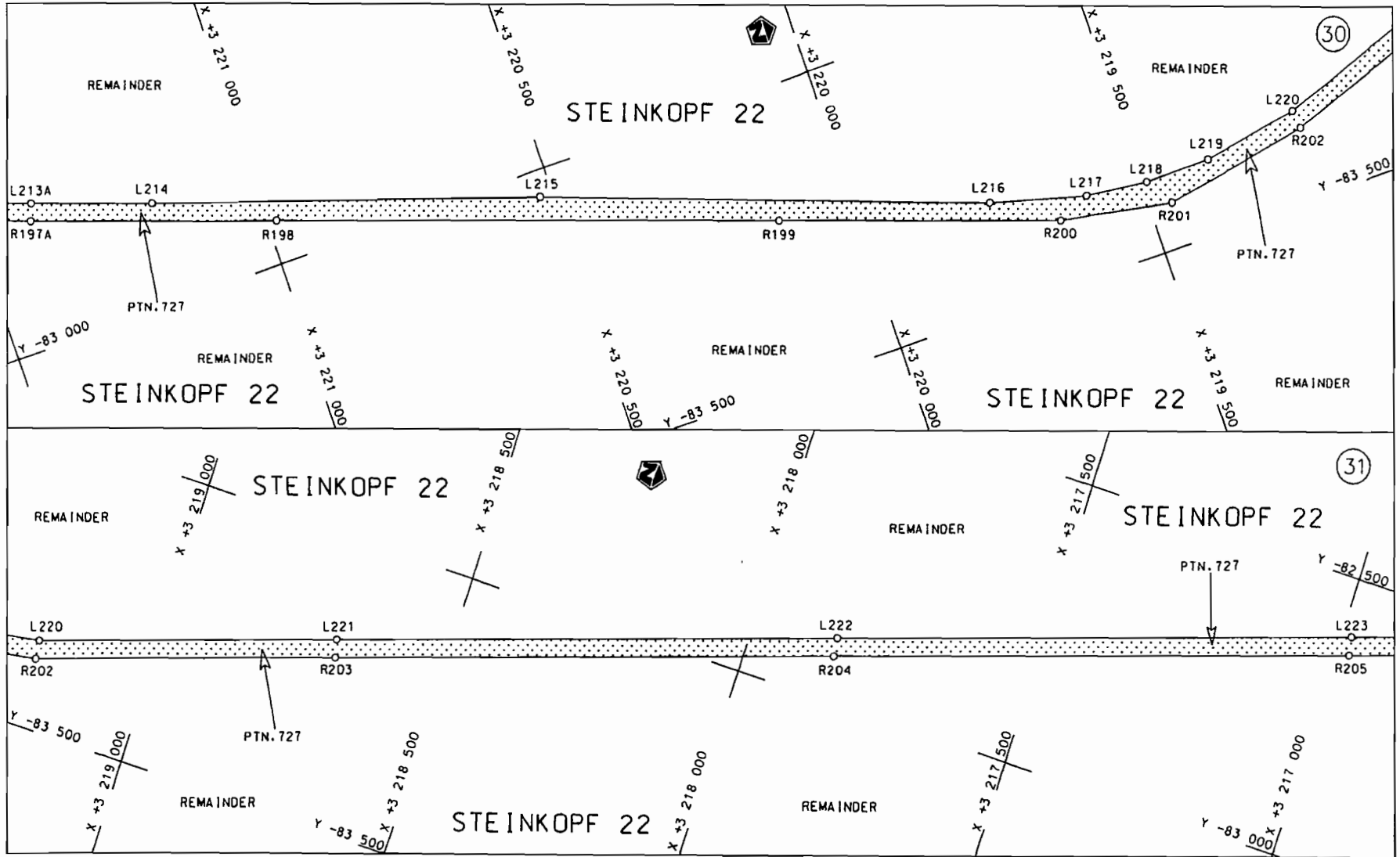


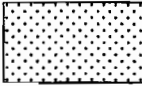
<p>Die Suid Afrikaanse Nasionale Padagentskap Beperk The South African National Roads Agency Limited</p>	<p>Die figuur getoon The figure shown</p> 	<p>stel die padreserwe voor van 'n gedeelte represents the rood reserve of a portion van Nasionale Roete N7 of National Route N7</p> <p>Seksie 8 Section 8</p>	<p>Vel 15 van 37 Sheet 15 of 37</p> <p>Plan P629/07</p>
--	--	--	---

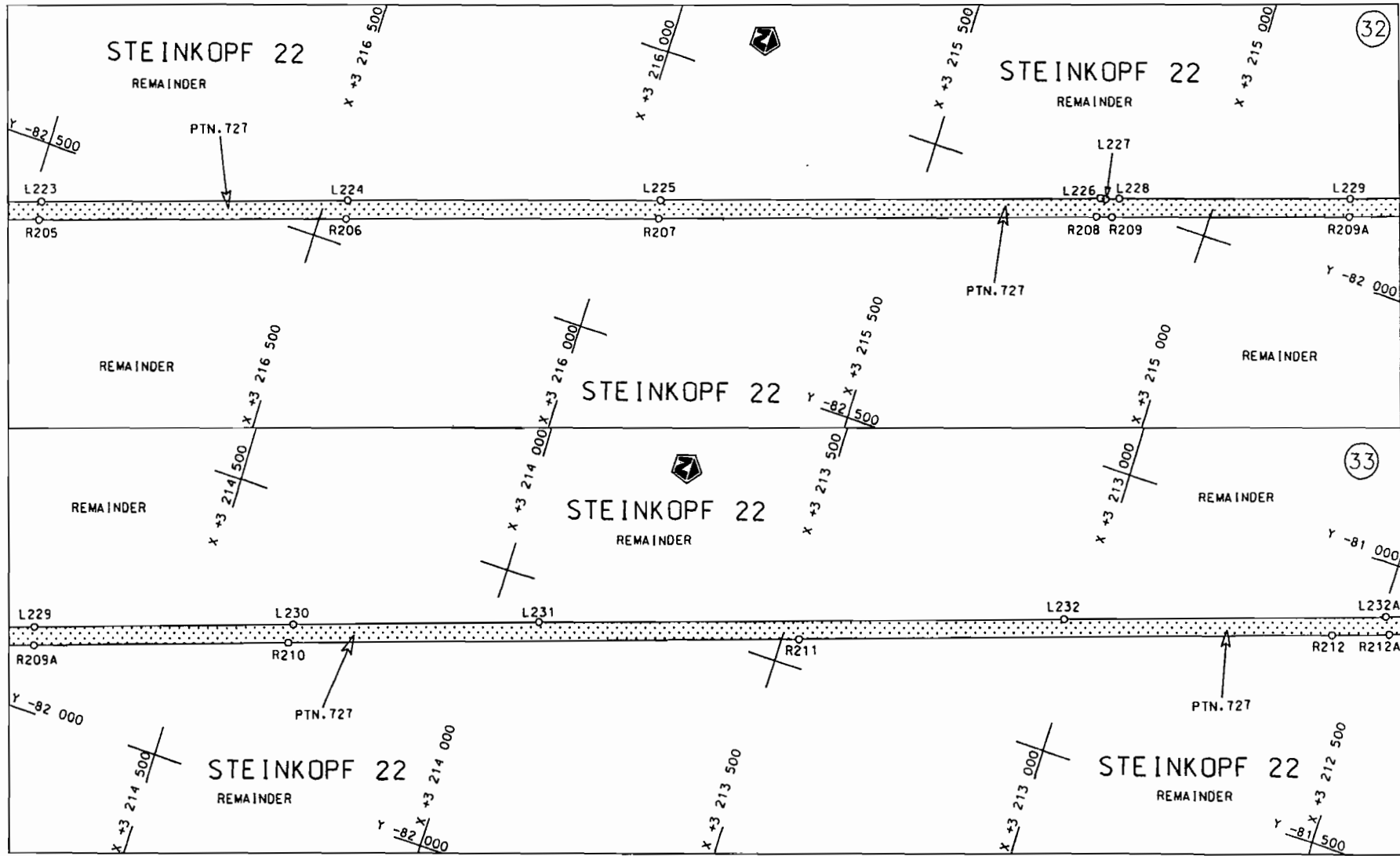


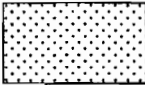
<p>Die Suid Afrikaanse Nasionale Padogentskop Beperk The South African National Roads Agency Limited</p>	<p>Die figuur getoon The figure shown</p>		<p>steldie padreserwe voor van 'n gedeelte represents the road reserve of a portion van Nasionale Roete N7 of National Route N7</p> <p>Seksie 8 Section</p>	<p>Vel Sheet 16 van of 37 Plan P629/07</p>
--	---	--	---	--

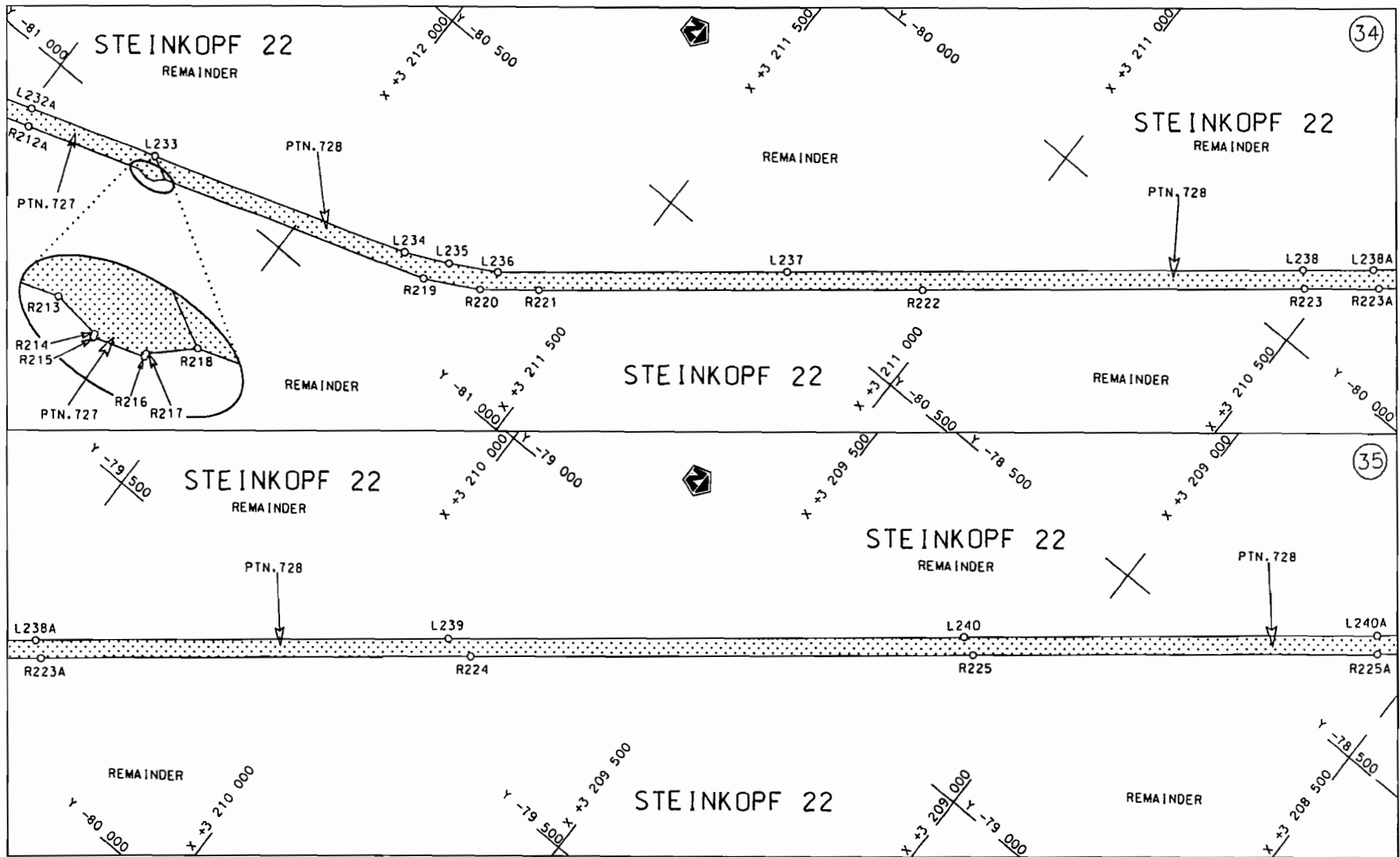
D.O.9.A




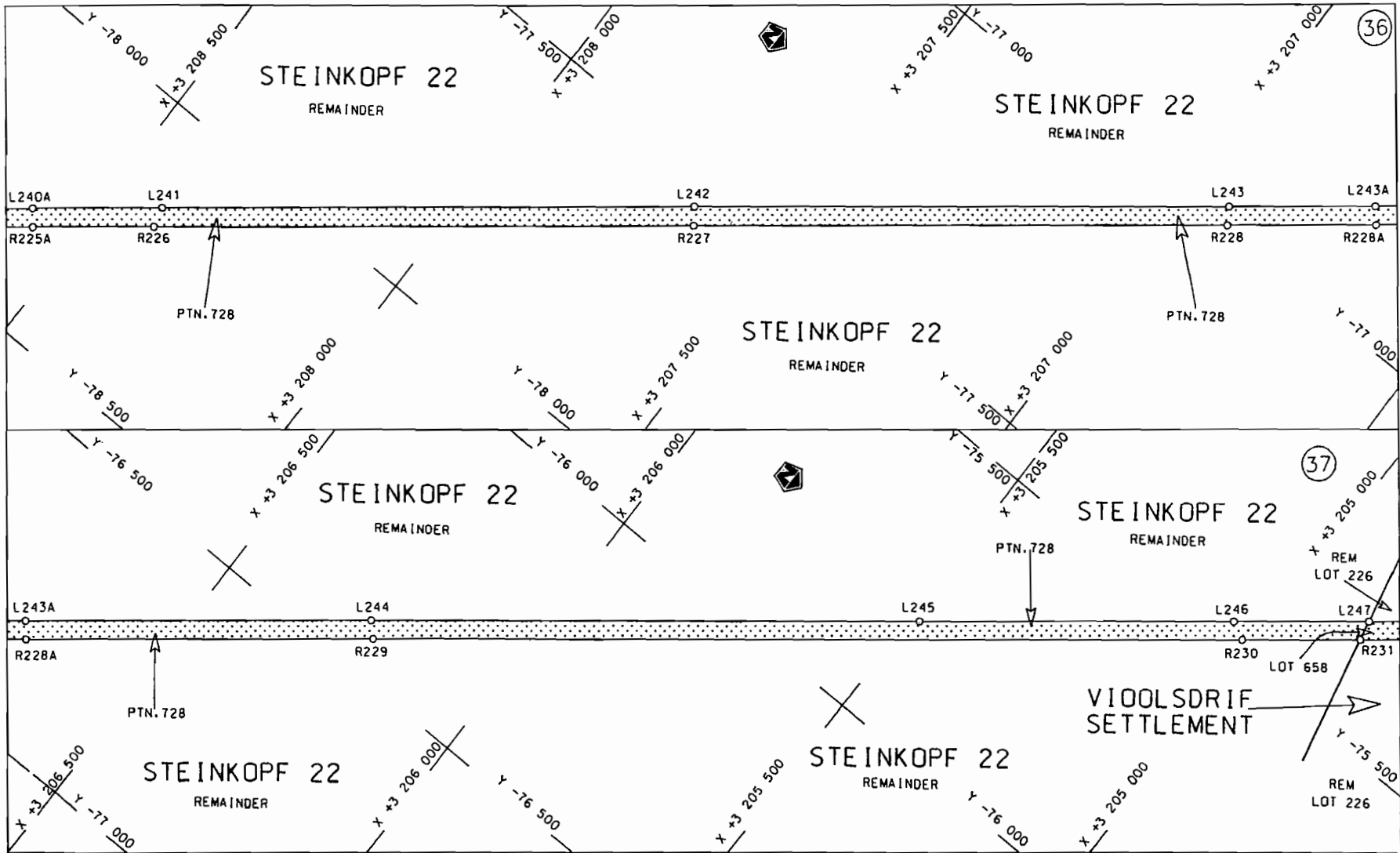
<p>Die Suid Afrikaanse Nasionale Padagentskap Beperk The South African National Roads Agency Limited</p>	<p>Die figuur getoon The figure shown</p> 	<p>steldie padreserwe voor van 'n gedeelte represents the road reserve of a portion van Nasionale Roete N7 Sektie 8 of National Route N7 Section 8</p>	<p>Vel Sheet 17 van of 37 Plan P629/07</p>
--	--	--	--



<p>Die Suid Afrikaanse Nasionale Padagentskop Beperk The South African National Roads Agency Limited</p>	<p>Die figuur getoon The figure shown</p>		<p>steldie padreserwe voor van 'n gedeelte represents the road reserve of a portion von Nasionale Roete N7 Seksie of National Route Section 8</p>	<p>Vel Sheet 18 van of 37 Plan P629/07</p>
--	---	--	---	--

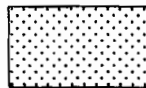


<p>Die Suid Afrikaanse Nasionale Padagentskap Beperk The South African National Roads Agency Limited</p>	<p>Die figuur getoon The figure shown</p>		<p>steldie padreserwe voor van 'n gedeelte represents the road reserve of a portion van Nasionale Roete N7 Seksie of National Route Section 8</p>	<p>Vel Sheet 19 van 37 Plan P629/07</p>
--	---	--	---	---



Die Suid Afrikaanse Nasionale Padagentskap Beperk
The South African National Roads Agency Limited

Die figuur getoon
The figure shown



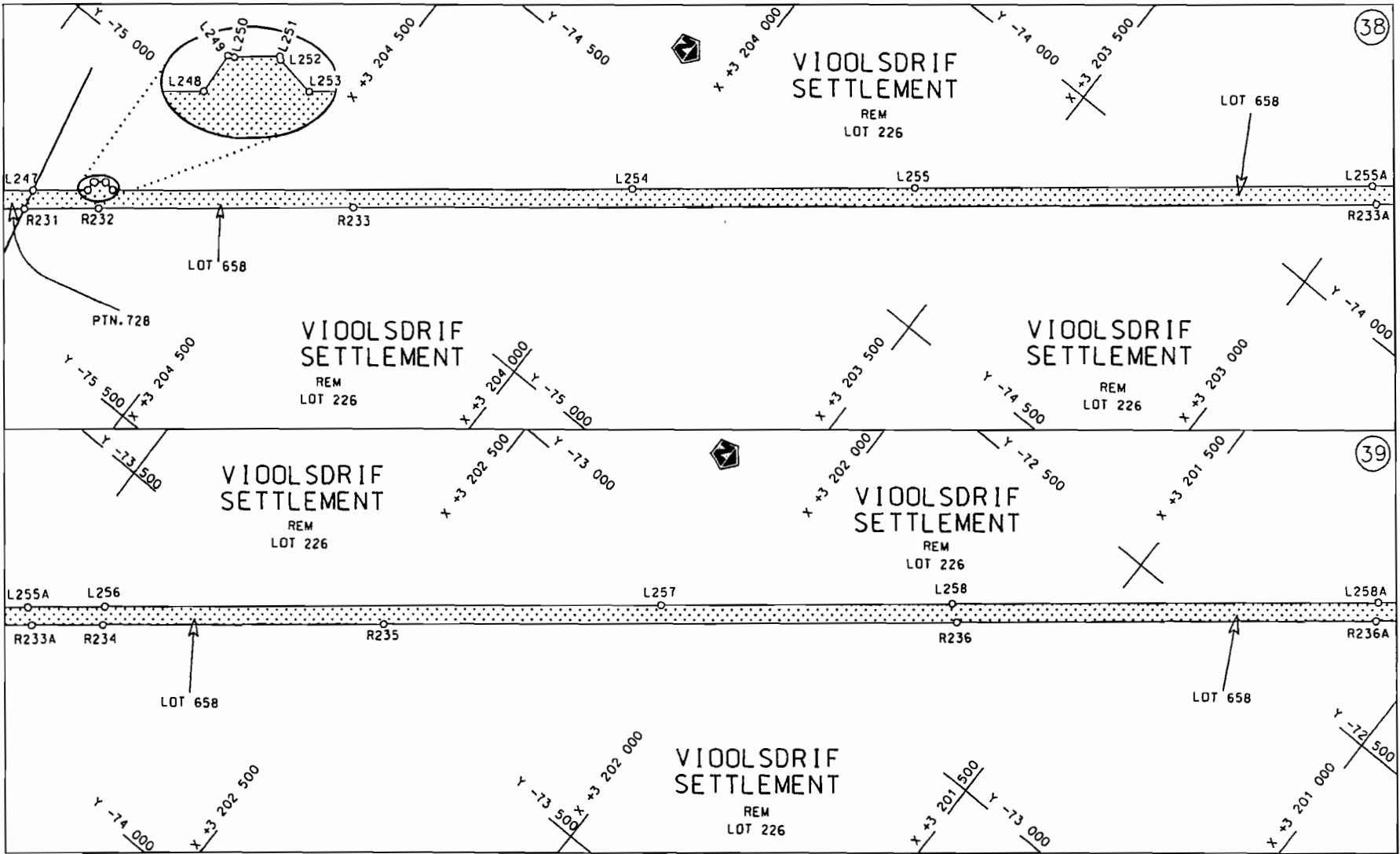
steldie padreserwe voor van 'n gedeelte
represents the road reserve of a portion
van Nasionale Roete N7
of National Route N7

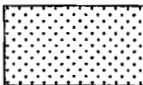
8

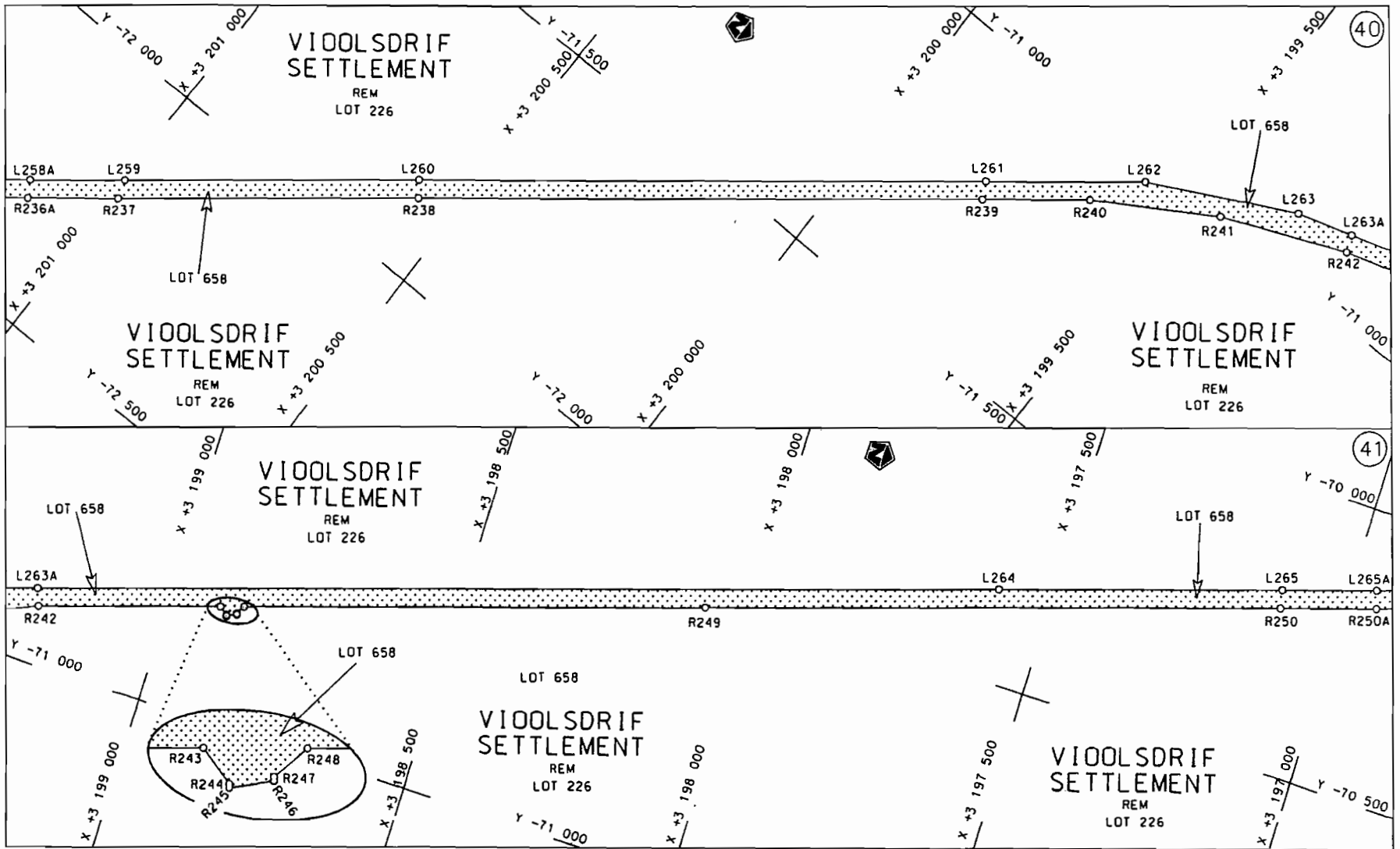
Vel
Sheet 20 van of 37

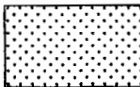
Plan P629/07

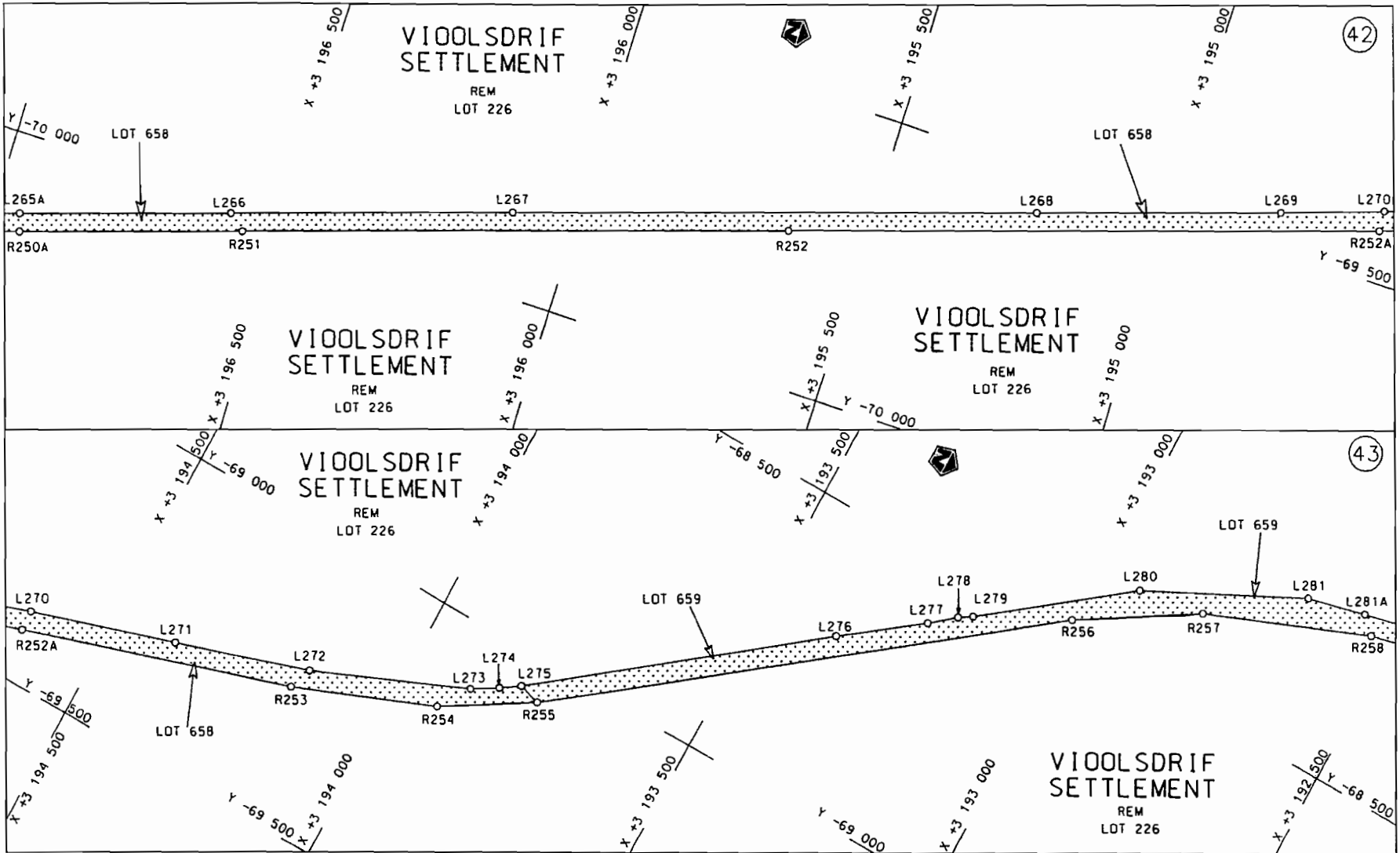
D.O.9.A



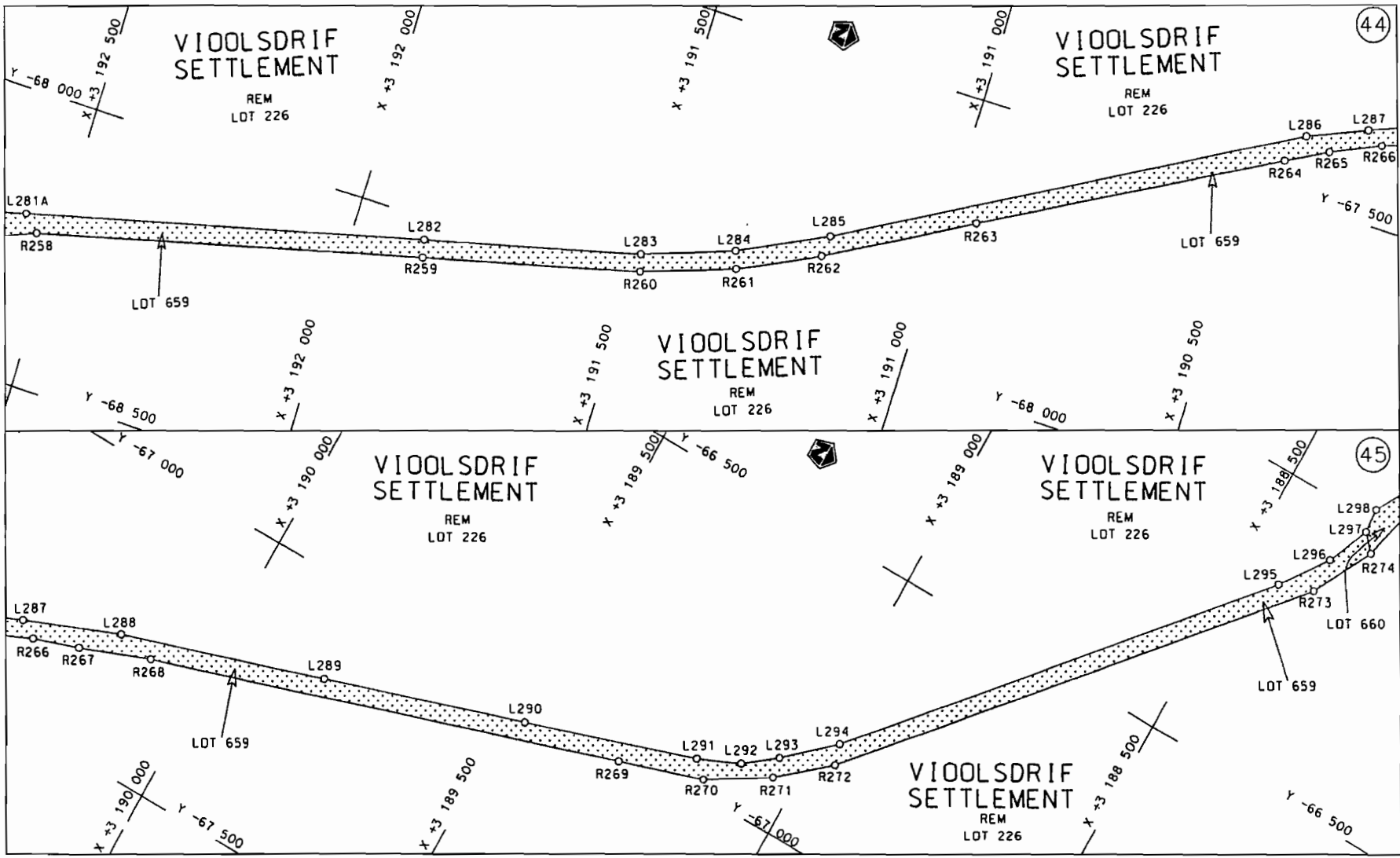
<p>Die Suid Afrikaanse Nasionale Padagentskap Beperk The South African National Roads Agency Limited</p>	<p>Die figuur getoon The figure shown</p> 	<p>stel die padreserwe voor van 'n gedeelte represents the road reserve of a portion van Nasionale Roete N7 Sektie of National Route Section</p> <p style="text-align: right;">8</p>	<p>Vel Sheet 21 van of 37 Plan P629/07</p>
--	--	--	--



<p>Die Suid Afrikaanse Nasionale Padagentskop Beperk The South African National Roads Agency Limited</p>	<p>Die figuur getoon The figure shown</p>	<p></p> <p>stel die padreserwe voor van 'n gedeelte represents the road reserve of a portion van Nasionale Roete N7 of National Route Section 8</p>	<p>Vel Sheet 22 van 37 of of Plan P629/07</p>
--	---	---	---

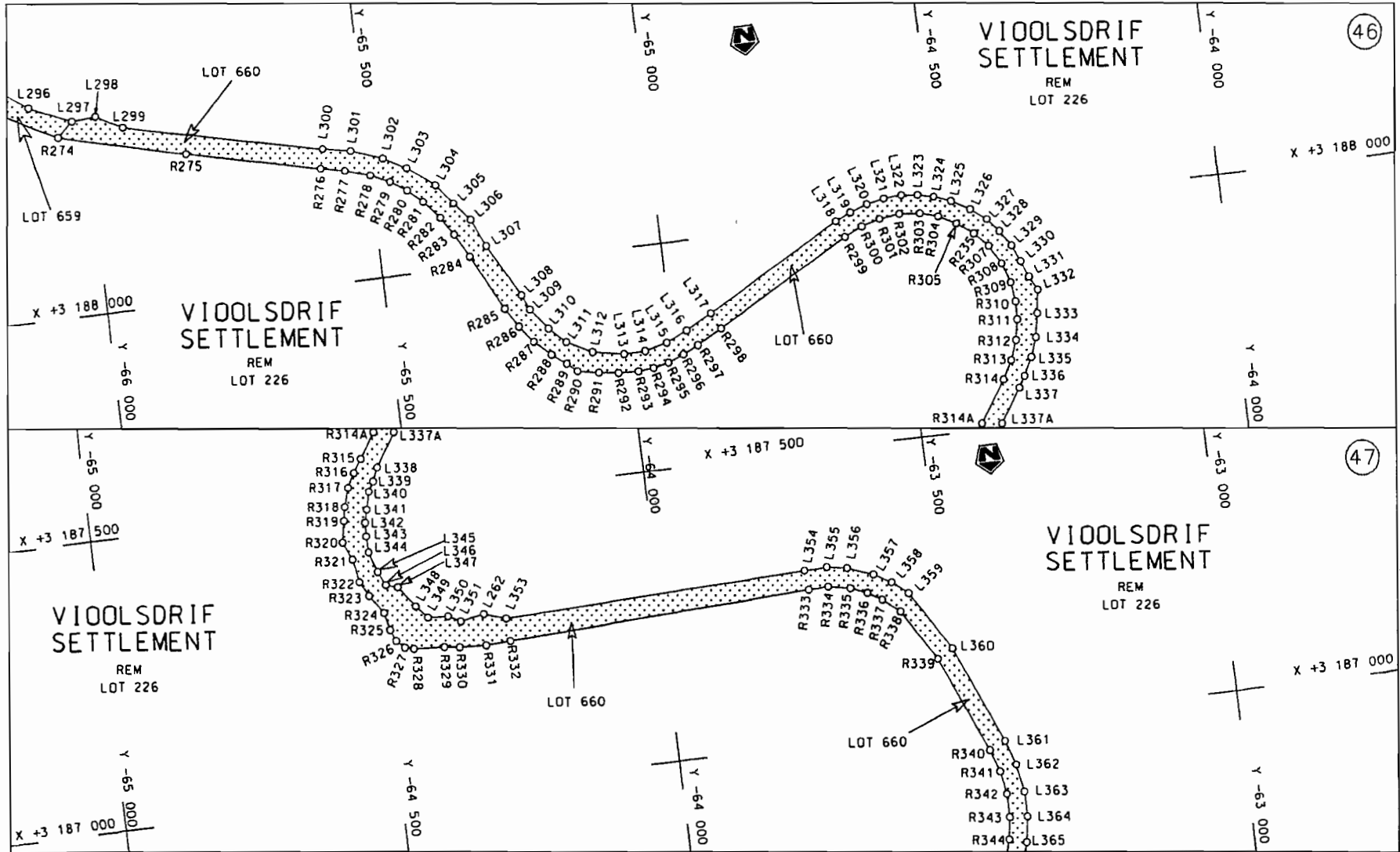


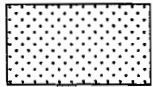
<p>Die Suid Afrikaanse Nasionale Padagentskap Beperk</p>	<p>Die figuur getoon</p>	<p>steldie padreserwe voor van 'n gedeelte</p>	<p>Vel Sheet 23 van 37</p>
<p>The South African National Roads Agency Limited</p>	<p>The figure shown</p>	<p>represents the road reserve of a portion of National Route N7</p>	<p>Plan P629/07</p>
		<p>Seksie 8</p>	

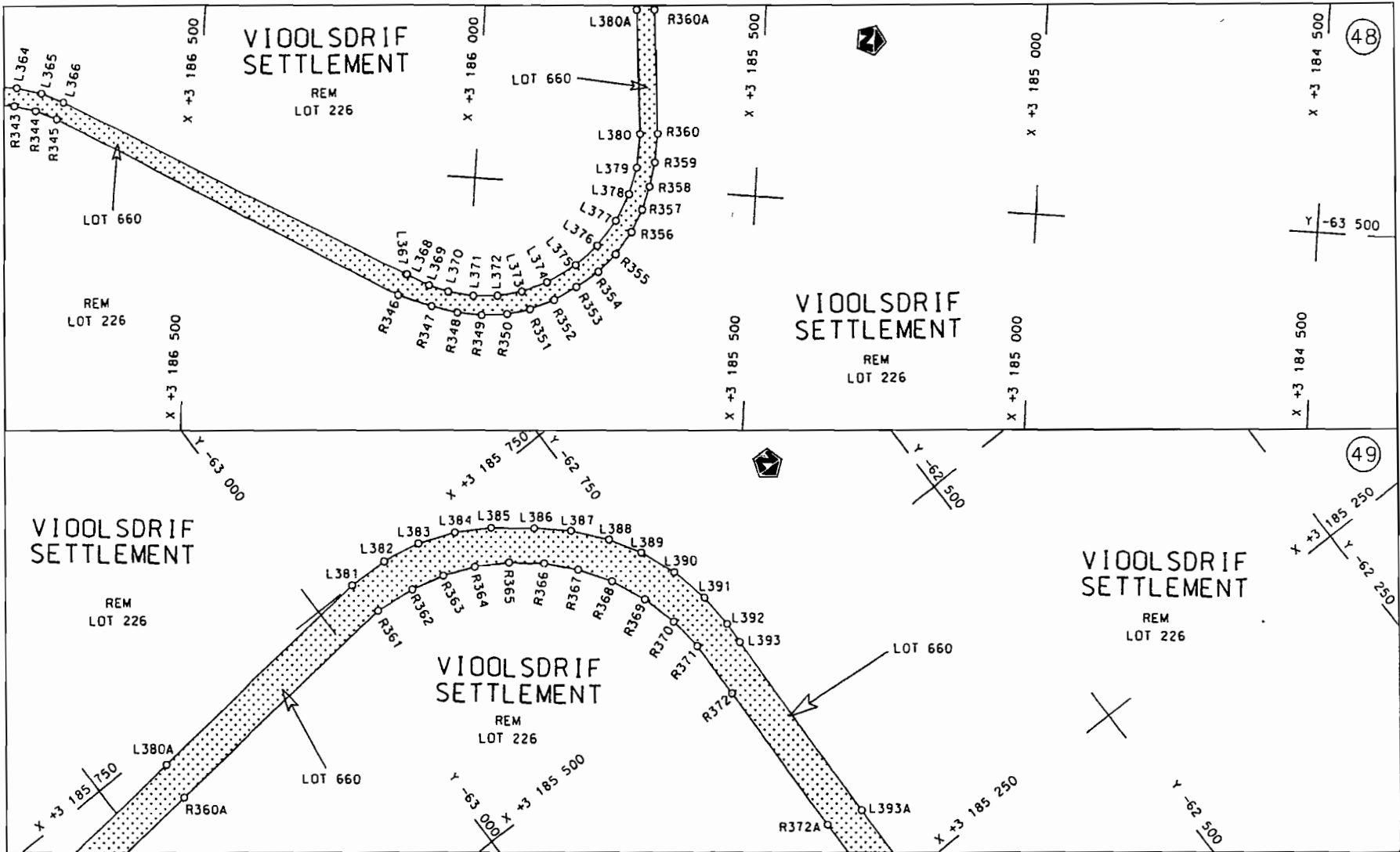


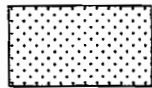
<p>Die Suid Afrikaanse Nasionale Padagentskap Beperk The South African National Roads Agency Limited</p>	<p>Die figuur getoon The figure shown</p>	<p>steldie padreserwe voor van 'n gedeelte represents the road reserve of a portion van Nasionale Roete N7 of National Route N7</p>	<p>Vel Sheet 24 van 37 of 37</p>
<p>Seksie 8</p>			<p>Plan P629/07</p>

D.O.9.A

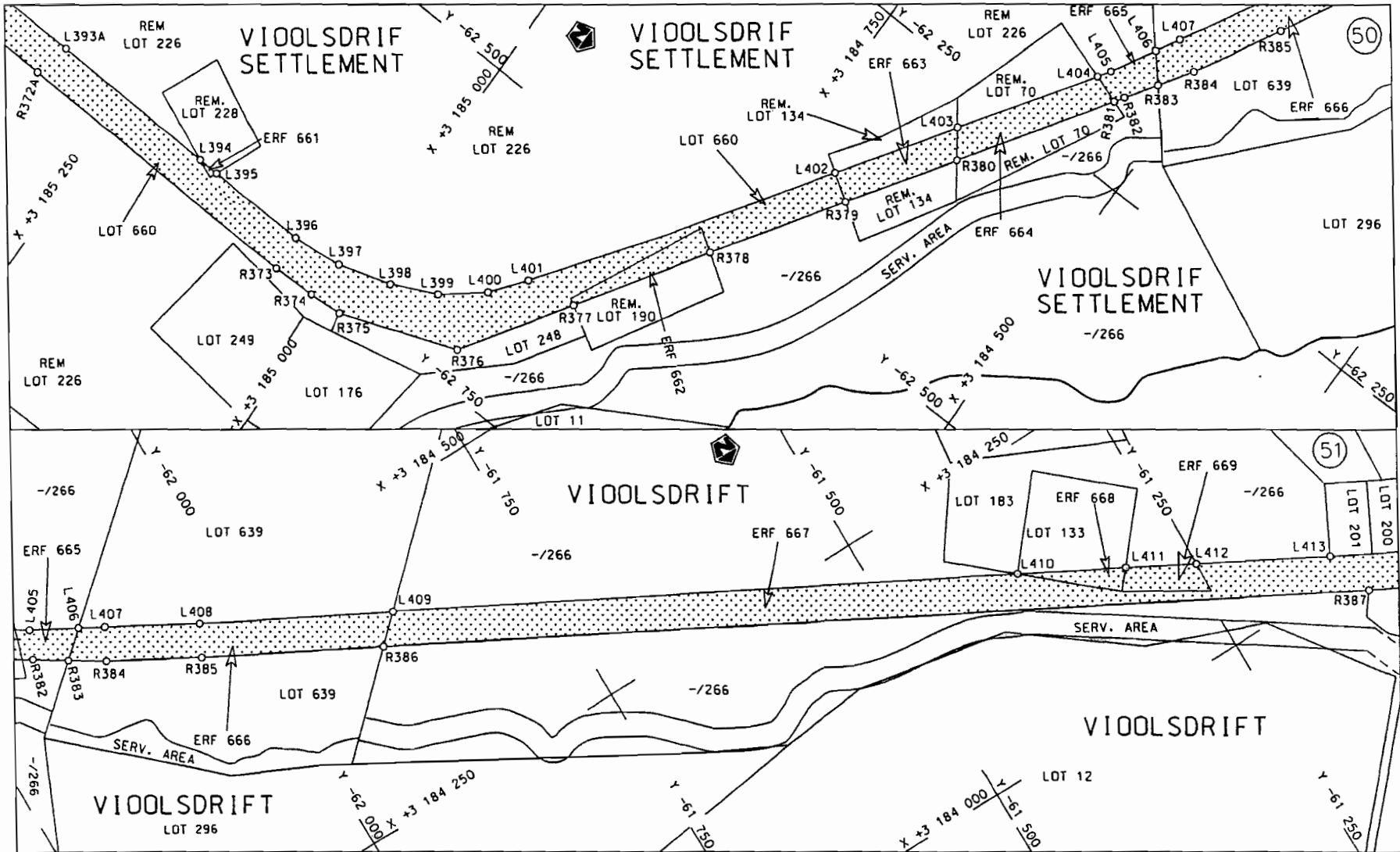


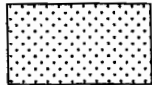
<p>Die Suid Afrikaanse Nasionale Padagentskap Beperk The South African National Roads Agency Limited</p>	<p>Die figuur getoon The figure shown</p> 	<p>steldie padreserwe voor van 'n gedeelte represents the road reserve of a portion van Nasionale Roete N7 of National Route N7</p> <p>Seksie 8</p>	<p>Vel Sheet 25 van 37</p> <p>Plan P629/07</p>
--	--	---	--

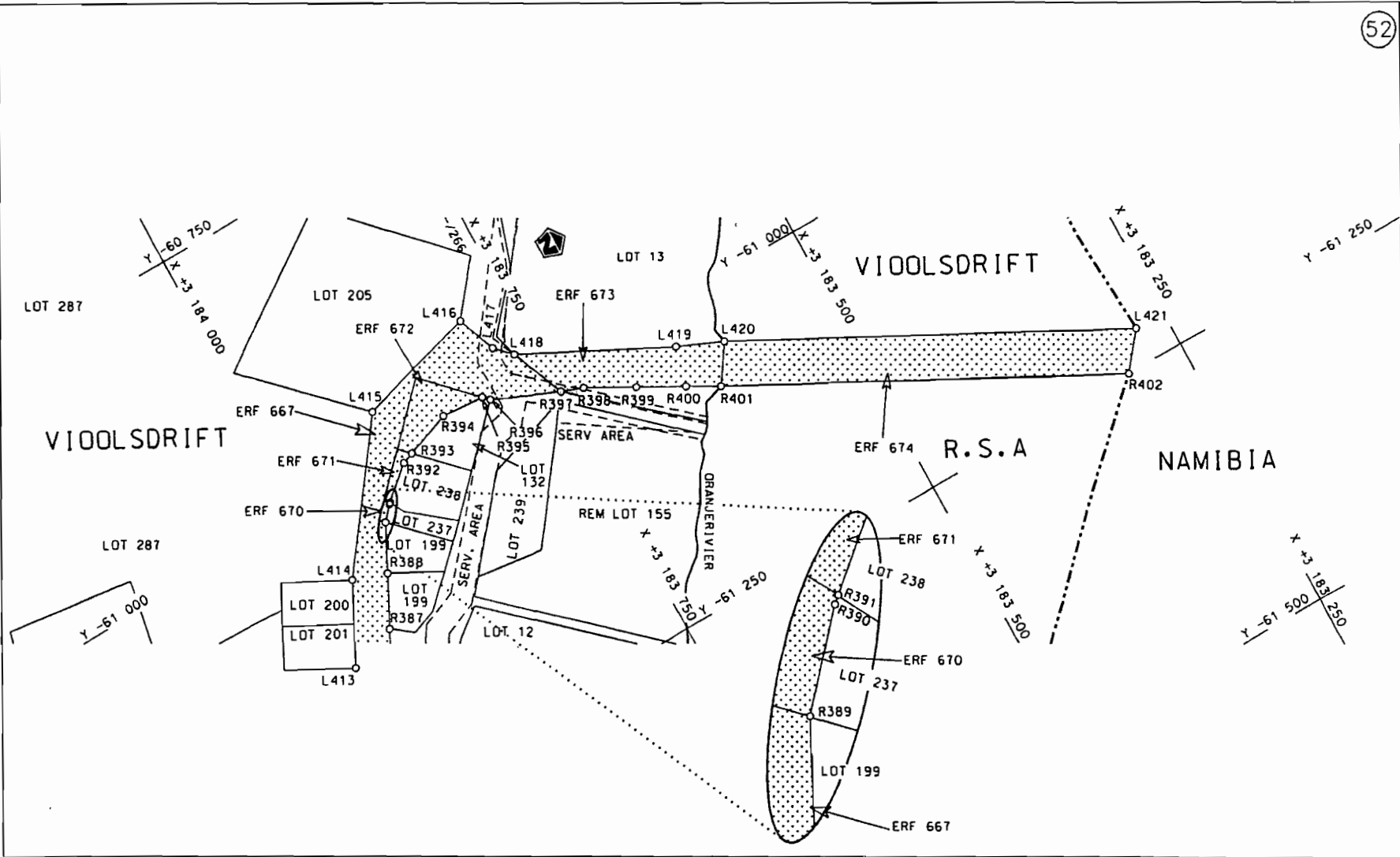


<p>Die Suid Afrikaanse Nasionale Padagentskap Beperk The South African National Roads Agency Limited</p>	<p>Die figuur getoon The figure shown</p> 	<p>steldie padreserwe voor van 'n gedeelte represents the road reserve of a portion van Nasionale Roete N7 of National Route N7</p> <p>Seksie 8</p>	<p>Vel Sheet 26 van 37 of 37 Plan P629/07</p>
--	--	---	---

D.O.9.A



<p>Die Suid Afrikaanse Nasionale Padagentskap Beperk The South African National Roads Agency Limited</p>	<p>Die figuur getoon The figure shown</p> 	<p>steldie padreserwe voor van 'n gedeelte represents the road reserve of a portion van Nasionale Roete N7 Seksie Section of National Route 8</p>	<p>Vel Sheet 27 von of 37 Plan P629/07</p>
--	--	---	--



Die Suid Afrikaanse Nasionale Padagentskap Beperk	Die figuur getoon		steldie padreserwe voor van 'n gedeelte represents the road reserve of a portion van Nasionale Roete N7 of National Route N7	Vel Sheet 28 of 37
The South African National Roads Agency Limited	The figure shown		Seksie Section 8	Plan P629/07

PADRESERWE KOÖRDINATE				/	ROAD RESERVE CO-ORDINATES			
LINKERKANT/LEFT HAND SIDE					REGTERKANT/RIGHT HAND SIDE			
	Y	X	WG	17°	Y	X		
L1	-86 623.87	3 283 462.20		R1	-86 843.18	3 283 393.00		
L2	-86 615.02	3 283 438.58		R2	-86 835.90	3 283 369.46		
L3	-86 655.58	3 283 425.78		R3	-86 808.51	3 283 377.93		
L4	-86 651.86	3 283 405.68		R4	-86 786.84	3 283 372.51		
L5	-86 639.48	3 283 366.29		R5	-86 701.89	3 283 270.56		
L6	-86 623.29	3 283 322.84		R6	-86 569.45	3 283 078.65		
L7	-86 602.69	3 283 281.36		R7	-86 480.81	3 282 931.00		
L8	-86 413.01	3 282 951.84		R8	-86 466.15	3 282 906.70		
L9	-86 394.79	3 282 919.85		R9	-86 397.71	3 282 793.65		
L10	-86 284.81	3 282 720.93		R10	-86 360.30	3 282 723.33		
L11	-86 282.26	3 282 712.59		R11	-86 354.32	3 282 709.20		
L12	-86 273.70	3 282 684.64		R12	-86 333.73	3 282 660.57		
L13	-86 264.90	3 282 652.57		R13	-86 317.40	3 282 604.58		
L14	-86 246.83	3 282 586.14		R14	-86 307.34	3 282 570.01		
L15	-86 225.58	3 282 508.05		R15	-86 293.16	3 282 525.28		
L16	-86 189.81	3 282 302.12		R16	-86 266.41	3 282 370.23		
L17	-86 169.87	3 282 238.22		R17	-86 241.98	3 282 254.02		
L18	-86 118.89	3 282 110.74		R18	-86 164.31	3 282 065.73		
L19	-86 094.80	3 282 068.60		R19	-86 096.00	3 281 936.48		
L20	-86 065.99	3 282 010.56		R20	-85 935.03	3 281 619.67		
L21	-86 011.34	3 281 912.57		R21	-85 884.98	3 281 514.12		
L22	-85 985.93	3 281 866.64		R22	-85 867.30	3 281 476.16		
L23	-85 878.99	3 281 711.18		R23	-85 829.04	3 281 383.77		
L24	-85 809.63	3 281 626.92		R24	-85 793.69	3 281 297.87		
L25	-85 664.75	3 281 480.17		R25	-85 787.40	3 281 282.62		
L26	-85 665.54	3 281 473.77		R26	-85 783.72	3 281 262.09		
L27	-85 652.85	3 281 456.19		R27	-85 798.76	3 281 242.54		
L28	-85 628.63	3 281 462.88		R28	-85 773.83	3 281 223.35		
L29	-85 613.27	3 281 482.12		R29	-85 758.89	3 281 228.25		
L30	-85 591.09	3 281 461.07		R30	-85 691.49	3 281 123.71		
L31	-85 615.58	3 281 428.99		R31	-85 633.96	3 281 034.39		
L32	-85 579.46	3 281 379.03		R32	-85 591.58	3 280 968.52		
L33	-85 563.76	3 281 343.43		R33	-85 547.99	3 280 880.36		
L34	-85 565.02	3 281 304.92		R34	-85 513.57	3 280 843.88		
L35	-85 585.84	3 281 213.79		R35	-85 493.15	3 280 802.34		
L36	-85 587.45	3 281 174.91		R36	-85 466.28	3 280 637.26		
L37	-85 576.78	3 281 137.05		R37	-85 431.02	3 280 457.41		
L38	-85 512.08	3 280 989.44		R38	-85 389.84	3 280 261.23		
L39	-85 476.45	3 280 892.23		R39	-85 352.85	3 280 082.90		
L40	-85 449.23	3 280 812.99		R40	-85 203.99	3 279 373.82		
L41	-85 423.84	3 280 719.52		R41	-85 086.69	3 278 816.27		
L42	-85 385.18	3 280 544.22		R42	-84 994.49	3 278 373.67		
L43	-85 347.81	3 280 368.42		R43	-84 921.34	3 278 031.90		
L44	-85 276.32	3 280 027.35		R44	-84 879.85	3 277 838.19		
L45	-85 241.60	3 279 863.77		R45	-84 841.26	3 277 663.16		
L46	-85 207.28	3 279 700.65		R46	-84 810.73	3 277 514.66		
L47	-85 131.12	3 279 336.42		R47	-84 776.44	3 277 321.89		
L48	-85 059.28	3 278 994.13		R48	-84 735.32	3 277 041.11		
L49	-84 943.40	3 278 442.67		R49	-84 734.70	3 277 036.83		
L50	-84 931.94	3 278 388.25		R50	-84 744.96	3 276 933.36		
L51	-84 872.92	3 278 104.86		R51	-84 728.72	3 276 870.13		

Vel	29	Van	37	P629/07
Sheet		of		

PADRESERWE KOÖRDINATE				/	ROAD RESERVE CO-ORDINATES			
LINKERKANT/LEFT HAND SIDE					REGTERKANT/RIGHT HAND SIDE			
	Y	X	WG	17°	Y	X		
L52	-84 757.79	3 277	556.35	R52	-84 732.16	3 276	857.61	
L53	-84 732.32	3 277	457.04	R53	-84 704.82	3 276	795.51	
L54	-84 715.95	3 277	396.59	R54	-84 677.36	3 276	734.53	
L55	-84 673.87	3 277	256.32	R55	-84 570.53	3 276	357.17	
L56	-84 592.42	3 277	079.26	R56	-84 448.88	3 275	772.61	
L57	-84 504.43	3 276	912.67	R57	-84 400.06	3 275	474.40	
L58	-84 487.91	3 276	899.63	R58	-84 203.93	3 274	058.55	
L59	-84 460.91	3 276	898.81	R59	-84 211.99	3 274	060.28	
L60	-84 472.90	3 276	887.70	R60	-84 202.90	3 274	050.72	
L61	-84 508.92	3 276	854.29	R61	-84 178.87	3 273	881.77	
L62	-84 544.94	3 276	796.82	R62	-84 140.75	3 273	603.66	
L63	-84 560.15	3 276	676.04	R63	-84 129.49	3 273	526.31	
L64	-84 546.88	3 276	580.93	R64	-84 105.60	3 273	348.18	
L65	-84 525.74	3 276	464.03	R65	-84 084.23	3 273	169.77	
L66	-84 524.73	3 276	452.35	R66	-84 087.54	3 272	991.65	
L67	-84 505.37	3 276	365.40	R67	-84 110.20	3 272	812.52	
L68	-84 467.66	3 276	269.26	R68	-84 129.14	3 272	673.14	
L69	-84 448.60	3 276	115.51	R69	-84 147.30	3 272	533.42	
L70	-84 423.92	3 276	000.88	R70	-84 165.97	3 272	335.00	
L71	-84 408.90	3 275	927.73	R71	-84 163.64	3 272	285.41	
L72	-84 381.87	3 275	755.38	R72	-84 172.26	3 272	286.43	
L73	-84 353.62	3 275	584.09	R73	-84 170.22	3 272	235.41	
L74	-84 325.85	3 275	401.61	R74	-84 152.26	3 272	023.01	
L75	-84 243.70	3 274	816.93	R75	-84 107.82	3 271	757.25	
L76	-84 219.50	3 274	638.63	R76	-83 847.80	3 270	217.85	
L77	-84 194.93	3 274	462.36	R77	-83 436.34	3 267	777.58	
L78	-84 141.59	3 274	071.00	R78	-83 368.25	3 267	373.92	
L79	-84 091.95	3 274	060.48	R79	-83 304.02	3 266	998.70	
L80	-84 093.07	3 274	037.48	R80	-83 264.76	3 266	864.61	
L81	-84 137.92	3 274	044.38	R81	-83 170.71	3 266	656.71	
L82	-84 090.52	3 273	702.93	R82	-83 052.17	3 266	491.26	
L83	-84 072.85	3 273	574.19	R83	-82 945.44	3 266	376.26	
L84	-84 047.17	3 273	396.39	R84	-82 573.24	3 266	039.49	
L85	-84 025.77	3 273	218.19	R85	-82 497.56	3 265	972.62	
L86	-84 025.15	3 272	988.33	R86	-82 359.30	3 265	810.43	
L87	-84 027.10	3 272	968.48	R87	-82 263.08	3 265	648.88	
L88	-84 050.40	3 272	790.00	R88	-82 105.35	3 265	353.16	
L89	-84 095.83	3 272	433.42	R89	-81 346.35	3 263	927.95	
L90	-84 112.22	3 272	286.23	R90	-81 281.06	3 263	805.05	
L91	-84 112.43	3 272	279.34	R91	-81 287.46	3 263	784.98	
L92	-84 108.03	3 272	132.46	R92	-81 280.27	3 263	775.19	
L93	-84 099.29	3 271	986.30	R93	-81 264.02	3 263	770.91	
L94	-84 070.48	3 271	762.98	R94	-81 190.98	3 263	624.67	
L95	-83 823.38	3 270	296.37	R95	-81 148.42	3 263	478.99	
L96	-83 727.59	3 269	729.45	R96	-81 129.98	3 263	327.77	
L97	-83 399.30	3 267	782.92	R97	-81 138.63	3 263	206.29	
L98	-83 348.57	3 267	482.70	R98	-81 235.07	3 261	906.39	
L99	-83 312.94	3 267	261.38	R99	-81 384.42	3 259	905.40	
L100	-83 262.85	3 266	989.70	R100	-81 392.40	3 259	714.55	
L101	-83 220.20	3 266	843.22	R101	-81 398.49	3 259	566.86	
L102	-83 126.34	3 266	652.45	R102	-81 421.61	3 259	312.34	

Vel	30	Van	37	P629/07
Sheet		of		

PADRESERWE KOÖRDINATE				/	ROAD RESERVE CO-ORDINATES			
LINKERKANT/LEFT HAND SIDE					REGTERKANT/RIGHT HAND SIDE			
	Y	X	WG	17°	Y	X		
L103	-83 015.72	3 266	503.67	R103	-81 441.99	3 259	252.03	
L104	-82 842.28	3 266	334.04	R104	-81 459.65	3 259	116.26	
L105	-82 603.83	3 266	117.72	R105	-81 479.53	3 258	996.10	
L106	-82 481.53	3 266	004.45	R106	-81 500.14	3 258	939.31	
L107	-82 420.29	3 265	947.08	R107	-81 474.52	3 258	881.68	
L108	-82 306.80	3 265	803.28	R108	-81 464.06	3 258	826.97	
L109	-82 221.61	3 265	652.90	R109	-81 441.86	3 258	740.81	
L110	-81 613.68	3 264	509.83	R110	-81 358.68	3 258	594.56	
L111	-81 425.81	3 264	155.62	R111	-80 262.81	3 257	386.66	
L112	-81 255.25	3 263	835.68	R112	-80 159.41	3 257	259.24	
L113	-81 233.63	3 263	823.93	R113	-80 102.20	3 257	177.44	
L114	-81 227.18	3 263	814.50	R114	-80 081.09	3 257	147.07	
L115	-81 230.75	3 263	788.81	R115	-79 997.90	3 257	003.91	
L116	-81 155.29	3 263	639.43	R116	-79 910.10	3 256	841.70	
L117	-81 110.09	3 263	478.61	R117	-79 669.19	3 256	377.16	
L118	-81 093.05	3 263	342.58	R118	-79 488.54	3 256	030.52	
L119	-81 104.65	3 263	167.60	R119	-79 347.41	3 255	757.49	
L120	-81 197.92	3 261	903.24	R120	-79 238.57	3 255	549.87	
L121	-81 361.20	3 259	709.89	R121	-79 164.03	3 255	400.18	
L122	-81 381.33	3 259	441.84	R122	-78 974.58	3 254	968.12	
L123	-81 410.63	3 259	203.92	R123	-78 624.08	3 254	163.54	
L124	-81 434.03	3 259	069.34	R124	-78 281.22	3 253	376.04	
L125	-81 390.53	3 258	724.95	R125	-78 221.71	3 253	199.09	
L126	-81 328.63	3 258	618.17	R126	-77 925.11	3 252	507.68	
L127	-80 233.75	3 257	410.81	R127	-77 104.70	3 250	619.97	
L128	-80 134.98	3 257	289.55	R128	-76 483.51	3 249	239.79	
L129	-80 039.66	3 257	152.17	R129	-76 138.75	3 248	409.88	
L130	-79 975.38	3 257	048.30	R130	-76 053.87	3 248	216.30	
L131	-79 473.51	3 256	081.83	R131	-75 521.06	3 247	001.10	
L132	-79 430.61	3 256	028.91	R132	-74 901.27	3 245	598.37	
L133	-79 121.52	3 255	417.63	R133	-74 847.78	3 245	494.07	
L134	-78 877.85	3 254	871.61	R134	-74 658.23	3 245	059.40	
L135	-78 569.19	3 254	185.63	R135	-74 440.16	3 244	558.40	
L136	-77 844.83	3 252	511.97	R136	-74 075.89	3 243	722.11	
L137	-77 308.81	3 251	273.91	R137	-73 739.34	3 242	949.09	
L138	-77 305.97	3 251	230.74	R138	-73 361.45	3 242	082.13	
L139	-77 117.49	3 250	798.07	R139	-73 153.35	3 241	604.80	
L140	-76 734.53	3 249	918.68	R140	-73 009.96	3 241	284.57	
L141	-76 346.66	3 249	028.28	R141	-73 020.64	3 241	279.79	
L142	-76 002.60	3 248	238.77	R142	-72 399.43	3 240	008.83	
L143	-75 996.11	3 248	243.89	R143	-72 198.25	3 239	635.13	
L144	-75 368.81	3 246	803.91	R144	-72 135.16	3 239	506.95	
L145	-74 967.29	3 245	892.81	R145	-72 159.00	3 239	471.44	
L146	-74 837.74	3 245	608.94	R146	-72 152.13	3 239	460.28	
L147	-73 872.77	3 243	355.97	R147	-72 105.41	3 239	446.70	
L148	-73 469.08	3 242	456.03	R148	-71 933.47	3 239	097.06	
L149	-72 980.21	3 241	319.74	R149	-71 923.20	3 239	068.15	
L150	-72 714.86	3 240	797.19	R150	-71 874.18	3 238	927.81	
L151	-72 348.24	3 240	023.76	R151	-71 853.04	3 238	765.86	
L152	-72 166.20	3 239	653.83	R152	-71 874.40	3 238	629.59	
L153	-72 090.96	3 239	501.23	R153	-71 882.95	3 238	575.29	

Vel	31	Van	37	P629/07
Sheet		of		

PADRESERWE KOÖRDINATE				/	ROAD RESERVE CO-ORDINATES			
LINKERKANT/LEFT HAND SIDE					REGTERKANT/RIGHT HAND SIDE			
	Y	X	WG	17°	Y	X		
L154	-72 084.04	3 239	498.21	R154	-71 887.29	3 238	548.10	
L155	-72 079.59	3 239	486.91	R155	-72 072.55	3 237	952.07	
L156	-72 081.70	3 239	482.05	R156	-72 135.49	3 237	782.76	
L157	-71 968.74	3 239	253.06	R157	-72 206.73	3 237	646.75	
L158	-71 896.67	3 239	106.24	R158	-72 916.30	3 236	473.67	
L159	-71 837.34	3 238	934.90	R159	-72 960.59	3 236	389.14	
L160	-71 819.73	3 238	758.23	R160	-73 241.08	3 235	921.33	
L161	-71 833.12	3 238	610.07	R161	-73 307.22	3 235	810.85	
L162	-71 941.89	3 238	265.91	R162	-73 452.75	3 235	568.14	
L163	-72 081.04	3 237	820.64	R163	-73 618.25	3 235	309.79	
L164	-72 060.11	3 237	818.22	R164	-74 014.84	3 234	698.09	
L165	-72 044.40	3 237	816.10	R165	-74 625.54	3 234	243.91	
L166	-72 061.76	3 237	782.79	R166	-75 976.98	3 233	336.35	
L167	-72 071.30	3 237	783.66	R167	-76 363.72	3 233	056.16	
L168	-72 098.93	3 237	786.96	R168	-77 132.76	3 232	537.74	
L169	-72 182.73	3 237	626.87	R169	-77 948.13	3 231	988.42	
L170	-72 562.11	3 236	993.26	R170	-78 752.63	3 231	447.96	
L171	-72 937.62	3 236	336.23	R171	-79 290.69	3 231	086.57	
L172	-73 427.44	3 235	549.33	R172	-79 400.62	3 230	980.99	
L173	-73 456.43	3 235	500.98	R173	-79 486.61	3 230	857.46	
L174	-73 790.61	3 234	943.81	R174	-79 704.47	3 230	384.65	
L175	-73 885.78	3 234	799.55	R175	-79 847.15	3 230	074.31	
L176	-73 954.41	3 234	712.40	R176	-79 892.91	3 229	857.81	
L177	-74 048.15	3 234	611.26	R177	-79 867.71	3 229	652.50	
L178	-74 129.84	3 234	536.36	R178	-79 846.52	3 229	549.71	
L179	-74 247.08	3 234	445.58	R179	-79 851.84	3 229	399.38	
L180	-74 733.68	3 234	117.37	R180	-79 853.55	3 229	341.90	
L181	-75 583.90	3 233	544.03	R181	-79 880.59	3 229	236.81	
L182	-75 949.29	3 233	297.75	R182	-79 921.55	3 229	132.51	
L183	-75 945.11	3 233	288.36	R183	-80 005.74	3 229	003.63	
L184	-75 951.28	3 233	285.01	R184	-80 151.52	3 228	820.43	
L185	-75 960.50	3 233	289.95	R185	-80 273.84	3 228	632.57	
L186	-77 495.62	3 232	255.02	R186	-80 354.79	3 228	399.84	
L187	-77 936.13	3 231	958.60	R187	-80 391.87	3 228	412.38	
L188	-78 300.02	3 231	713.46	R188	-80 400.02	3 228	389.47	
L189	-78 738.89	3 231	419.21	R189	-80 362.96	3 228	376.32	
L190	-79 251.54	3 231	075.14	R190	-80 573.07	3 227	770.02	
L191	-79 360.93	3 230	976.14	R191	-80 868.47	3 226	918.79	
L192	-79 451.41	3 230	852.31	R192	-81 150.04	3 226	107.69	
L193	-79 676.40	3 230	370.43	R193	-81 445.88	3 225	255.12	
L194	-79 792.46	3 230	121.51	R194	-81 737.06	3 224	416.20	
L195	-79 821.24	3 230	038.52	R195	-82 036.82	3 223	552.22	
L196	-79 845.05	3 229	931.78	R196	-82 333.36	3 222	696.74	
L197	-79 853.24	3 229	806.65	R197	-82 628.34	3 221	847.04	
L198	-79 810.71	3 229	480.05	R198	-82 927.57	3 220	984.11	
L199	-79 817.97	3 229	395.87	R199	-83 222.87	3 220	131.99	
L200	-79 826.60	3 229	302.65	R200	-83 387.19	3 219	657.37	
L201	-79 853.99	3 229	208.39	R201	-83 422.88	3 219	459.97	
L202	-79 921.72	3 229	058.12	R202	-83 378.76	3 219	202.57	
L203	-80 112.30	3 228	822.60	R203	-83 206.22	3 218	690.12	
L204	-80 201.96	3 228	684.62	R204	-82 922.74	3 217	846.42	

Vel	32	Van	37	P629/07
Sheet		of		

PADRESERWE KOÖRDINATE				/	ROAD RESERVE CO-ORDINATES			
LINKERKANT/LEFT HAND SIDE					REGTERKANT/RIGHT HAND SIDE			
	Y	X	WG	17°	Y	X		
L205	-80 279.47	3 228	523.67	R205	-82 630.41	3 216	976.76	
L206	-80 544.32	3 227	760.66	R206	-82 454.93	3 216	454.53	
L207	-80 839.54	3 226	909.18	R207	-82 277.56	3 215	926.44	
L208	-81 117.19	3 226	108.90	R208	-82 029.32	3 215	189.95	
L209	-81 417.80	3 225	242.73	R209	-82 021.24	3 215	163.75	
L210	-81 709.32	3 224	402.60	R210	-81 741.68	3 214	332.42	
L211	-82 009.59	3 223	537.62	R211	-81 451.61	3 213	470.20	
L212	-82 304.93	3 222	686.40	R212	-81 151.21	3 212	575.59	
L213	-82 600.40	3 221	833.99	R213	-81 051.97	3 212	280.63	
L214	-82 825.76	3 221	184.23	R214	-81 053.83	3 212	262.85	
L215	-83 044.99	3 220	522.32	R215	-81 055.13	3 212	262.38	
L216	-83 316.51	3 219	767.83	R216	-81 049.41	3 212	244.43	
L217	-83 362.56	3 219	599.69	R217	-81 048.06	3 212	244.65	
L218	-83 375.16	3 219	490.84	R218	-81 035.48	3 212	231.83	
L219	-83 373.82	3 219	375.34	R219	-80 878.17	3 211	764.10	
L220	-83 346.62	3 219	206.26	R220	-80 829.20	3 211	672.71	
L221	-83 175.62	3 218	697.54	R221	-80 764.57	3 211	590.74	
L222	-82 890.72	3 217	850.39	R222	-80 335.39	3 211	058.54	
L223	-82 598.57	3 216	982.34	R223	-79 909.50	3 210	531.16	
L224	-82 423.44	3 216	461.75	R224	-79 341.28	3 209	826.80	
L225	-82 246.47	3 215	933.45	R225	-78 780.02	3 209	130.86	
L226	-81 996.39	3 215	193.26	R226	-78 192.32	3 208	401.88	
L227	-81 995.26	3 215	183.93	R227	-77 586.09	3 207	650.94	
L228	-81 986.24	3 215	161.62	R228	-76 991.10	3 206	913.00	
L229	-81 856.75	3 214	773.08	R229	-76 434.07	3 206	222.30	
L230	-81 709.06	3 214	333.10	R230	-75 465.25	3 205	019.96	
L231	-81 569.18	3 213	918.95	R231	-75 332.98	3 204	856.84	
L232	-81 272.54	3 213	034.15	R232	-75 249.85	3 204	754.32	
L233	-81 016.02	3 212	270.21	R233	-74 962.04	3 204	397.63	
L234	-80 864.01	3 211	817.38	R234	-73 739.21	3 202	881.23	
L235	-80 829.25	3 211	744.12	R235	-73 422.15	3 202	487.87	
L236	-80 785.87	3 211	666.70	R236	-72 781.41	3 201	693.36	
L237	-80 461.54	3 211	265.13	R237	-72 212.51	3 200	988.01	
L238	-79 886.38	3 210	552.75	R238	-71 873.30	3 200	567.28	
L239	-79 341.59	3 209	877.48	R239	-71 240.54	3 199	782.27	
L240	-78 765.05	3 209	162.74	R240	-71 119.95	3 199	632.83	
L241	-78 157.69	3 208	410.46	R241	-70 995.66	3 199	434.84	
L242	-77 560.23	3 207	670.06	R242	-70 900.96	3 199	220.98	
L243	-76 964.30	3 206	930.60	R243	-70 800.38	3 198	909.42	
L244	-76 411.49	3 206	245.05	R244	-70 811.04	3 198	894.73	
L245	-75 799.70	3 205	485.63	R245	-70 812.46	3 198	894.29	
L246	-75 449.62	3 205	051.32	R246	-70 804.14	3 198	877.21	
L247	-75 298.58	3 204	864.40	R247	-70 802.64	3 198	877.63	
L248	-75 237.24	3 204	788.50	R248	-70 787.20	3 198	868.11	
L249	-75 219.78	3 204	789.64	R249	-70 532.20	3 198	083.85	
L250	-75 218.66	3 204	787.24	R250	-70 215.55	3 197	108.68	
L251	-75 206.72	3 204	772.76	R251	-70 039.09	3 196	565.09	
L252	-75 207.79	3 204	771.64	R252	-69 737.07	3 195	635.54	
L253	-75 209.92	3 204	754.09	R253	-69 261.02	3 194	169.16	
L254	-74 625.50	3 204	030.35	R254	-69 162.43	3 193	924.08	
L255	-74 309.32	3 203	638.26	R255	-69 067.48	3 193	771.41	

Vel	33	Van	37	P629/07
Sheet		of		

PADRESERWE KOÖRDINATE				/	ROAD RESERVE CO-ORDINATES			
LINKERKANT/LEFT HAND SIDE					REGTERKANT/RIGHT HAND SIDE			
	Y	X	WG	17°	Y	X		
L256	-73 712.81	3 202	898.21	R256	-68 474.87	3 193	012.00	
L257	-73 087.78	3 202	123.49	R257	-68 350.10	3 192	815.01	
L258	-72 762.01	3 201	719.79	R258	-68 236.24	3 192	536.72	
L259	-72 180.75	3 200	998.42	R259	-68 064.58	3 191	866.29	
L260	-71 848.28	3 200	586.24	R260	-67 969.09	3 191	491.89	
L261	-71 212.03	3 199	797.21	R261	-67 912.26	3 191	330.28	
L262	-71 033.69	3 199	575.44	R262	-67 844.90	3 191	191.29	
L263	-70 904.16	3 199	329.84	R263	-67 708.43	3 190	947.25	
L264	-70 340.21	3 197	594.81	R264	-67 437.89	3 190	459.98	
L265	-70 184.68	3 197	115.33	R265	-67 400.23	3 190	388.12	
L266	-70 015.35	3 196	593.77	R266	-67 361.66	3 190	301.60	
L267	-69 858.94	3 196	112.91	R267	-67 334.49	3 190	222.60	
L268	-69 570.83	3 195	224.72	R268	-67 287.88	3 190	101.91	
L269	-69 437.08	3 194	812.89	R269	-67 023.98	3 189	292.01	
L270	-69 377.78	3 194	638.01	R270	-66 976.69	3 189	146.46	
L271	-69 296.99	3 194	386.65	R271	-66 911.50	3 189	040.61	
L272	-69 220.48	3 194	153.63	R272	-66 837.52	3 188	955.22	
L273	-69 105.81	3 193	886.70	R273	-66 157.58	3 188	367.88	
L274	-69 078.36	3 193	842.00	R274	-66 051.05	3 188	310.94	
L275	-69 056.12	3 193	809.80	R275	-65 826.18	3 188	256.51	
L276	-68 704.61	3 193	362.85	R276	-65 587.06	3 188	201.95	
L277	-68 605.63	3 193	232.83	R277	-65 544.16	3 188	192.60	
L278	-68 570.76	3 193	190.74	R278	-65 500.57	3 188	178.92	
L279	-68 556.17	3 193	167.98	R279	-65 467.23	3 188	163.32	
L280	-68 371.27	3 192	931.66	R280	-65 438.66	3 188	144.47	
L281	-68 235.01	3 192	665.45	R281	-65 413.04	3 188	121.90	
L282	-68 034.92	3 191	872.92	R282	-65 386.18	3 188	091.04	
L283	-67 940.68	3 191	499.81	R283	-65 364.66	3 188	059.11	
L284	-67 883.34	3 191	340.42	R284	-65 341.68	3 188	017.67	
L285	-67 807.79	3 191	187.20	R285	-65 289.92	3 187	921.82	
L286	-67 385.80	3 190	435.90	R286	-65 268.52	3 187	888.88	
L287	-67 343.13	3 190	332.68	R287	-65 245.25	3 187	860.26	
L288	-67 277.59	3 190	168.48	R288	-65 216.97	3 187	834.99	
L289	-67 161.67	3 189	815.69	R289	-65 191.59	3 187	816.75	
L290	-67 048.63	3 189	468.95	R290	-65 173.74	3 187	801.70	
L291	-66 951.12	3 189	174.25	R291	-65 136.19	3 187	794.84	
L292	-66 918.79	3 189	101.46	R292	-65 101.65	3 187	789.38	
L293	-66 876.26	3 189	046.86	R293	-65 066.17	3 187	788.09	
L294	-66 802.25	3 188	965.89	R294	-65 038.98	3 187	790.79	
L295	-66 179.02	3 188	427.54	R295	-65 011.50	3 187	796.96	
L296	-66 096.96	3 188	368.55	R296	-64 983.60	3 187	807.09	
L297	-66 023.22	3 188	336.50	R297	-64 955.93	3 187	819.30	
L298	-65 980.54	3 188	340.12	R298	-64 911.74	3 187	842.62	
L299	-65 934.08	3 188	315.02	R299	-64 671.70	3 187	971.19	
L300	-65 579.67	3 188	235.16	R300	-64 639.97	3 187	985.49	
L301	-65 530.13	3 188	225.51	R301	-64 606.94	3 187	995.18	
L302	-65 474.96	3 188	206.11	R302	-64 571.46	3 187	999.36	
L303	-65 434.93	3 188	183.77	R303	-64 535.26	3 187	996.40	
L304	-65 387.84	3 188	148.16	R304	-64 503.53	3 187	987.28	
L305	-65 359.21	3 188	113.39	R305	-64 473.07	3 187	970.73	
L306	-65 332.18	3 188	080.86	R306	-64 443.94	3 187	949.85	

Vel	34	Van	37	P629/07
Sheet		of		

PADRESERWE KOÖRDINATE				ROAD RESERVE CO-ORDINATES			
LINKERKANT/LEFT HAND SIDE				REGTERKANT/RIGHT HAND SIDE			
	Y	X	WG 17°		Y	X	
L307	-65 309.76	3 188	032.57	R307	-64 420.98	3 187	925.48
L308	-65 257.22	3 187	941.66	R308	-64 401.54	3 187	892.75
L309	-65 245.26	3 187	915.75	R309	-64 389.61	3 187	858.58
L310	-65 216.60	3 187	879.09	R310	-64 384.62	3 187	825.45
L311	-65 187.70	3 187	852.90	R311	-64 385.94	3 187	794.68
L312	-65 143.21	3 187	831.06	R312	-64 392.11	3 187	760.57
L313	-65 088.06	3 187	820.23	R313	-64 405.08	3 187	727.78
L314	-65 050.31	3 187	821.10	R314	-64 422.42	3 187	697.17
L315	-65 010.40	3 187	830.43	R315	-64 498.23	3 187	584.14
L316	-64 972.92	3 187	846.12	R316	-64 513.61	3 187	560.54
L317	-64 926.73	3 187	870.28	R317	-64 526.67	3 187	536.13
L318	-64 684.79	3 187	999.83	R318	-64 537.00	3 187	503.80
L319	-64 657.45	3 188	012.32	R319	-64 541.45	3 187	479.26
L320	-64 626.48	3 188	023.17	R320	-64 548.58	3 187	442.73
L321	-64 595.17	3 188	029.41	R321	-64 534.76	3 187	411.60
L322	-64 563.82	3 188	031.01	R322	-64 527.70	3 187	371.25
L323	-64 535.22	3 188	028.37	R323	-64 513.54	3 187	345.53
L324	-64 507.37	3 188	022.04	R324	-64 491.21	3 187	313.61
L325	-64 477.56	3 188	011.01	R325	-64 484.12	3 187	283.82
L326	-64 445.81	3 187	992.43	R326	-64 475.87	3 187	263.83
L327	-64 418.30	3 187	971.61	R327	-64 462.16	3 187	250.29
L328	-64 398.57	3 187	948.51	R328	-64 446.61	3 187	246.48
L329	-64 380.26	3 187	921.56	R329	-64 392.38	3 187	243.45
L330	-64 367.23	3 187	893.02	R330	-64 365.09	3 187	239.89
L331	-64 356.38	3 187	864.31	R331	-64 317.09	3 187	236.67
L332	-64 343.49	3 187	840.17	R332	-64 272.87	3 187	239.18
L333	-64 349.53	3 187	800.38	R333	-63 733.21	3 187	261.71
L334	-64 356.74	3 187	760.52	R334	-63 698.27	3 187	262.16
L335	-64 368.95	3 187	728.53	R335	-63 658.74	3 187	254.79
L336	-64 384.57	3 187	698.82	R336	-63 629.70	3 187	243.48
L337	-64 396.30	3 187	679.63	R337	-63 605.17	3 187	229.17
L338	-64 471.51	3 187	565.51	R338	-63 575.88	3 187	204.47
L339	-64 481.67	3 187	541.99	R339	-63 520.21	3 187	118.00
L340	-64 491.21	3 187	525.04	R340	-63 448.83	3 186	951.51
L341	-64 498.87	3 187	494.76	R341	-63 435.34	3 186	912.26
L342	-64 504.74	3 187	471.91	R342	-63 428.52	3 186	872.25
L343	-64 505.98	3 187	448.50	R343	-63 428.15	3 186	832.22
L344	-64 504.89	3 187	420.68	R344	-63 433.89	3 186	793.45
L345	-64 493.50	3 187	384.96	R345	-63 445.91	3 186	755.23
L346	-64 481.89	3 187	360.87	R346	-63 711.11	3 186	125.62
L347	-64 461.41	3 187	354.05	R347	-63 725.63	3 186	065.06
L348	-64 434.10	3 187	317.46	R348	-63 733.60	3 186	018.25
L349	-64 415.02	3 187	296.07	R349	-63 735.00	3 185	974.29
L350	-64 379.21	3 187	294.13	R350	-63 729.96	3 185	928.75
L351	-64 357.47	3 187	282.68	R351	-63 719.13	3 185	888.66
L352	-64 314.73	3 187	289.43	R352	-63 700.78	3 185	847.19
L353	-64 275.61	3 187	277.50	R353	-63 676.45	3 185	808.88
L354	-63 736.76	3 187	295.52	R354	-63 648.21	3 185	772.12
L355	-63 696.71	3 187	296.14	R355	-63 616.14	3 185	742.53
L356	-63 660.55	3 187	290.48	R356	-63 576.26	3 185	716.84
L357	-63 615.37	3 187	274.31	R357	-63 536.64	3 185	700.25

Vel	35	Van	37	P629/07
Sheet		of		

PADRESERWE KOÖRDINATE				/	ROAD RESERVE CO-ORDINATES		
LINKERKANT/LEFT HAND SIDE					REGTERKANT/RIGHT HAND SIDE		
	Y	X	WG	17°	X	Y	
L358	-63 584.97	3 187	256.54	R358	-63 495.55	3 185	689.46
L359	-63 557.40	3 187	233.93	R359	-63 452.34	3 185	682.82
L360	-63 492.32	3 187	132.85	R360	-63 401.80	3 185	680.88
L361	-63 419.89	3 186	963.92	R361	-62 957.59	3 185	718.46
L362	-63 405.09	3 186	921.04	R362	-62 922.61	3 185	714.00
L363	-63 396.99	3 186	872.90	R363	-62 893.29	3 185	706.65
L364	-63 396.75	3 186	829.97	R364	-62 866.09	3 185	695.47
L365	-63 403.42	3 186	785.51	R365	-62 839.37	3 185	679.56
L366	-63 416.06	3 186	745.00	R366	-62 815.41	3 185	659.87
L367	-63 674.80	3 186	112.82	R367	-62 794.94	3 185	637.14
L368	-63 675.22	3 186	111.88	R368	-62 777.65	3 185	610.91
L369	-63 690.99	3 186	072.06	R369	-62 763.98	3 185	580.80
L370	-63 699.41	3 186	036.91	R370	-62 755.51	3 185	549.97
L371	-63 703.42	3 185	991.00	R371	-62 752.01	3 185	520.49
L372	-63 700.22	3 185	947.68	R372	-62 752.08	3 185	469.88
L373	-63 690.15	3 185	904.84	R373	-62 760.08	3 185	056.71
L374	-63 672.12	3 185	861.54	R374	-62 758.39	3 185	017.80
L375	-63 639.37	3 185	812.16	R375	-62 755.68	3 184	987.87
L376	-63 603.99	3 185	776.57	R376	-62 717.44	3 184	885.91
L377	-63 558.90	3 185	745.74	R377	-62 622.83	3 184	825.72
L378	-63 511.06	3 185	725.08	R378	-62 512.68	3 184	756.11
L379	-63 463.63	3 185	714.16	R379	-62 403.58	3 184	685.90
L380	-63 404.46	3 185	712.25	R380	-62 314.36	3 184	628.50
L381	-62 962.36	3 185	749.66	R381	-62 188.50	3 184	547.50
L382	-62 927.13	3 185	748.78	R382	-62 180.07	3 184	542.66
L383	-62 893.54	3 185	742.03	R383	-62 153.28	3 184	525.44
L384	-62 861.95	3 185	729.86	R384	-62 124.40	3 184	507.44
L385	-62 833.37	3 185	712.92	R385	-62 049.23	3 184	466.01
L386	-62 803.49	3 185	689.11	R386	-61 903.52	3 184	389.46
L387	-62 779.08	3 185	667.44	R387	-61 122.45	3 183	979.33
L388	-62 757.22	3 185	640.82	R388	-61 079.87	3 183	957.44
L389	-62 741.47	3 185	614.26	R389	-61 040.67	3 183	937.28
L390	-62 728.88	3 185	583.12	R390	-61 028.99	3 183	926.59
L391	-62 721.13	3 185	549.14	R391	-61 028.09	3 183	925.54
L392	-62 718.96	3 185	519.03	R392	-61 004.56	3 183	898.06
L393	-62 719.78	3 185	499.96	R393	-61 000.92	3 183	887.95
L394	-62 726.22	3 185	167.42	R394	-60 986.56	3 183	848.05
L395	-62 726.58	3 185	148.68	R395	-60 989.59	3 183	810.00
L396	-62 728.33	3 185	058.26	R396	-60 994.83	3 183	804.74
L397	-62 722.44	3 185	013.11	R397	-61 019.15	3 183	746.75
L398	-62 708.43	3 184	966.96	R398	-61 026.15	3 183	727.80
L399	-62 689.66	3 184	927.95	R399	-61 048.26	3 183	686.73
L400	-62 660.86	3 184	893.55	R400	-61 069.22	3 183	648.25
L401	-62 630.48	3 184	870.90	R401	-61 084.24	3 183	620.85
L402	-62 389.21	3 184	708.38	R402	-61 250.46	3 183	301.59
L403	-62 291.52	3 184	644.93				
L404	-62 180.07	3 184	572.54				
L405	-62 169.28	3 184	565.53				
L406	-62 130.73	3 184	544.51				
L407	-62 110.02	3 184	533.23				
L408	-62 035.46	3 184	491.70				

Vel	36	Van	37	P629/07
Sheet		of		

PADRESERWE KOÖRDINATE				/	ROAD RESERVE CO-ORDINATES	
LINKERKANT/LEFT HAND SIDE					REGTERKANT/RIGHT HAND SIDE	
	Y	X	WG 17°		Y	X
L409	-61 880.46	3 184	410.84			
L410	-61 383.95	3 184	151.82			
L411	-61 298.20	3 184	106.82			
L412	-61 242.88	3 184	077.79			
L413	-61 136.87	3 184	022.16			
L414	-61 069.67	3 183	987.60			
L415	-60 952.91	3 183	900.35			
L416	-60 923.45	3 183	794.92			
L417	-60 957.60	3 183	781.32			
L418	-60 971.74	3 183	767.25			
L419	-61 035.52	3 183	639.41			
L420	-61 052.59	3 183	599.39			
L421	-61 219.96	3 183	276.87			

Vel 37	Van 37	P629/07
Sheet	of	