

Government Gazette Staatskoerant

REPUBLIC OF SOUTH AFRICA
REPUBLIEK VAN SUID-AFRIKA

Vol. 512

Pretoria, 8 February 2008
Februarie

No. 30743

CONTENTS**INHOUD**

<i>No.</i>	<i>Page No.</i>	<i>Gazette No.</i>	<i>No.</i>	<i>Bladsy No.</i>	<i>Koerant No.</i>
GOVERNMENT NOTICE			GOEWERMENSKENNISGEWING		
Transport, Department of			Vervoer, Departement van		
<i>Government Notice</i>			<i>Goewermentskennisgewing</i>		
141			141		
South African National Roads Agency Limited and the National Roads Act (7/1998): The South African National Roads Agency Limited: Declaration amendment of National Road N7 Section 7: Amendment of Declaration No. 2693 of 1990			Suid-Afrikaanse Nasionale Padagentskap Beperk en die Nasionale Paaie Wet (7/1998): Die Suid-Afrikaanse Nasionale Padagentskap Beperk: Verklaring wysiging van Nasionale Pad N7 Seksie 7: Wysiging van Verklaring No. 2693 van 1990		
	3	30743		4	30743

GOVERNMENT NOTICE
GOEWERMENTSKENNISGEWING

DEPARTMENT OF TRANSPORT
DEPARTEMENT VAN VERVOER

No. 141

8 February 2008

THE SOUTH AFRICAN NATIONAL ROADS
AGENCY LIMITED

Registration No: 98/09584/06

DECLARATION AMENDMENT OF NATIONAL ROAD N7 SECTION 7

AMENDMENT OF DECLARATION NO. 2693 OF 1990.

By virtue of section 40 (1)(b) of the South African National Roads Agency Limited and the National Roads Act, 1998 (Act No. 7 of 1998), I hereby amend the following declaration by substituting Declaration No. 2693 of 1990, from sheet 1 up to points L584 and R532 on sheet 21 of Plan No. P367/90 and the applicable co-ordinates, with the subjoined sheets 1 to 40 of Plan No. P633/07.

(National Road N7 Section 7: Garies – Springbok)



MINISTER OF TRANSPORT

No. 141

8 Februarie 2008

**DIE SUID-AFRIKAANSE NASIONALE
PADAGENTSKAP BEPERK**

Registrasie No: 98/09584/06

VERKLARING WYSIGING VAN NASIONALE PAD N7 SEKSIE 7.

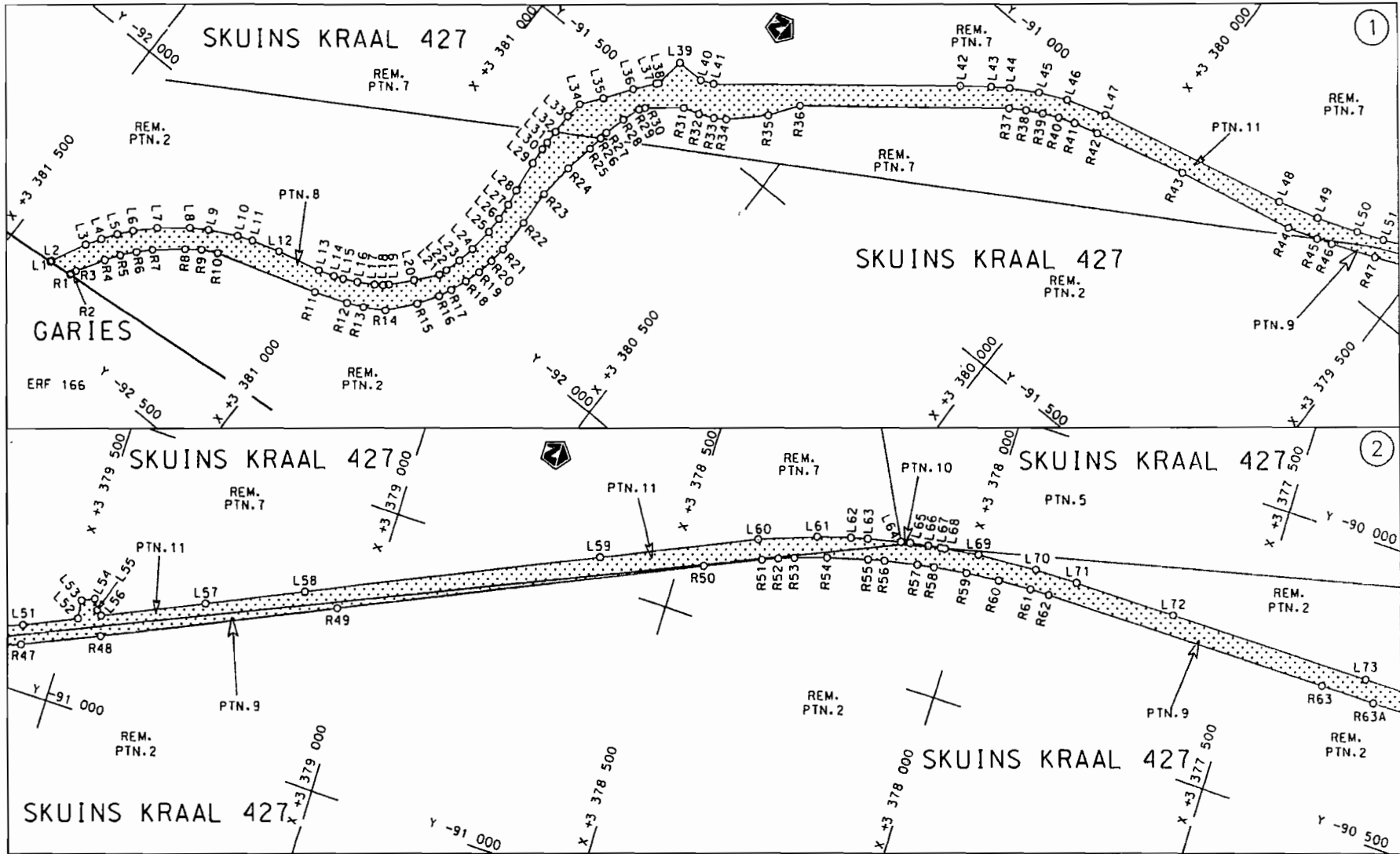
WYSIGING VAN VERKLARING NO. 2693 VAN 1990

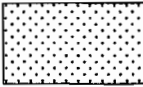
Kragtens Artikel 40(1)(b) van die Suid-Afrikaanse Nasionale Padagentskap Beperk en die Nasionale Paaie Wet, 1998 (Wet No.7 van 1998), wysig ek hiermee die volgende verklarings deur Verklaring no. 2693 van 1990, vanaf vel 1 tot punte L584 en R532 op vel 21 van Plan no. P367/90 en die toepaslike koördinate, te vervang met meegaande velle 1 tot 40 van Plan no. P633/07.

(Nasionale Pad N7 Seksie 7: Garies – Springbok)

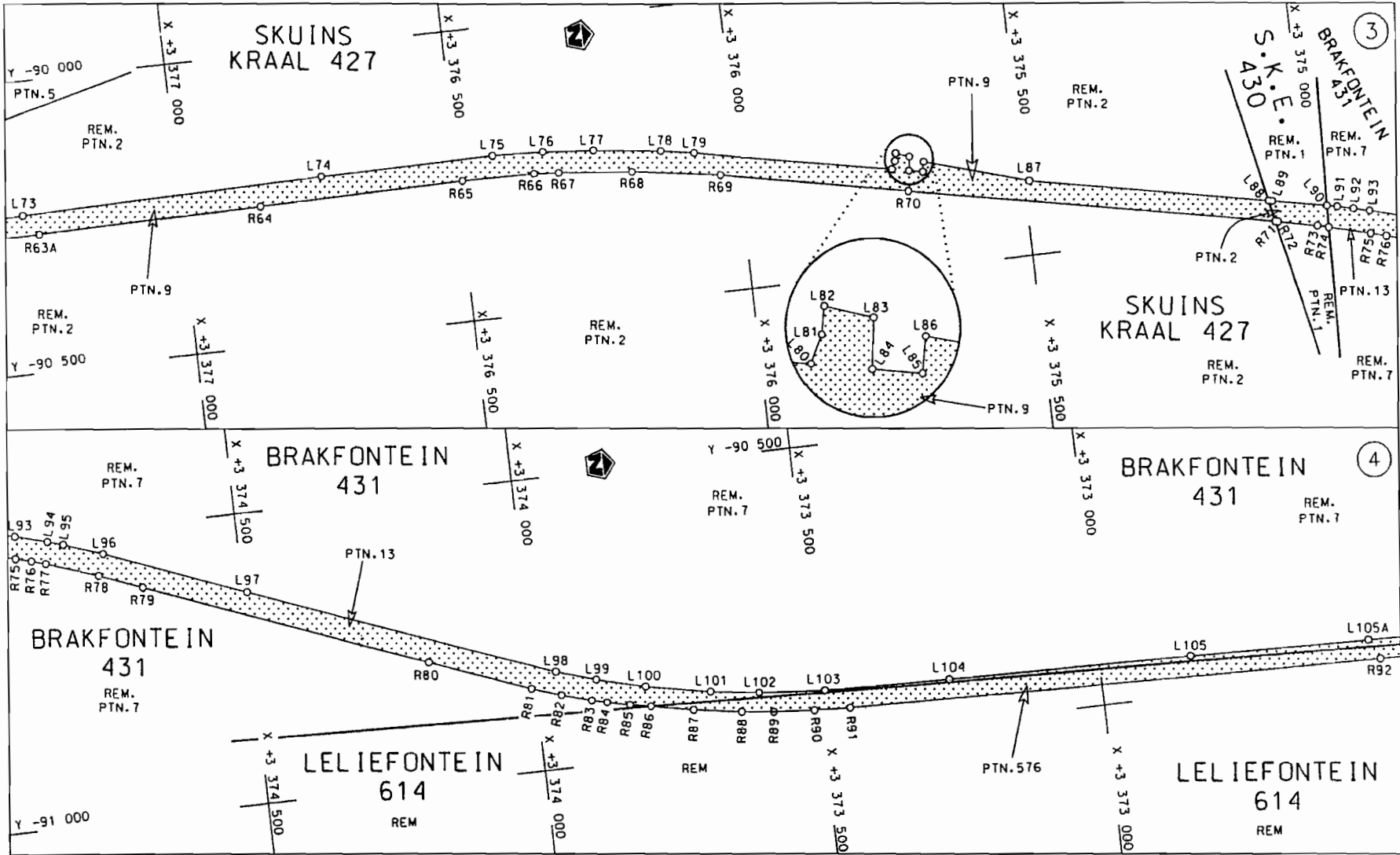


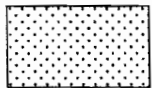
MINISTER VAN VERVOER

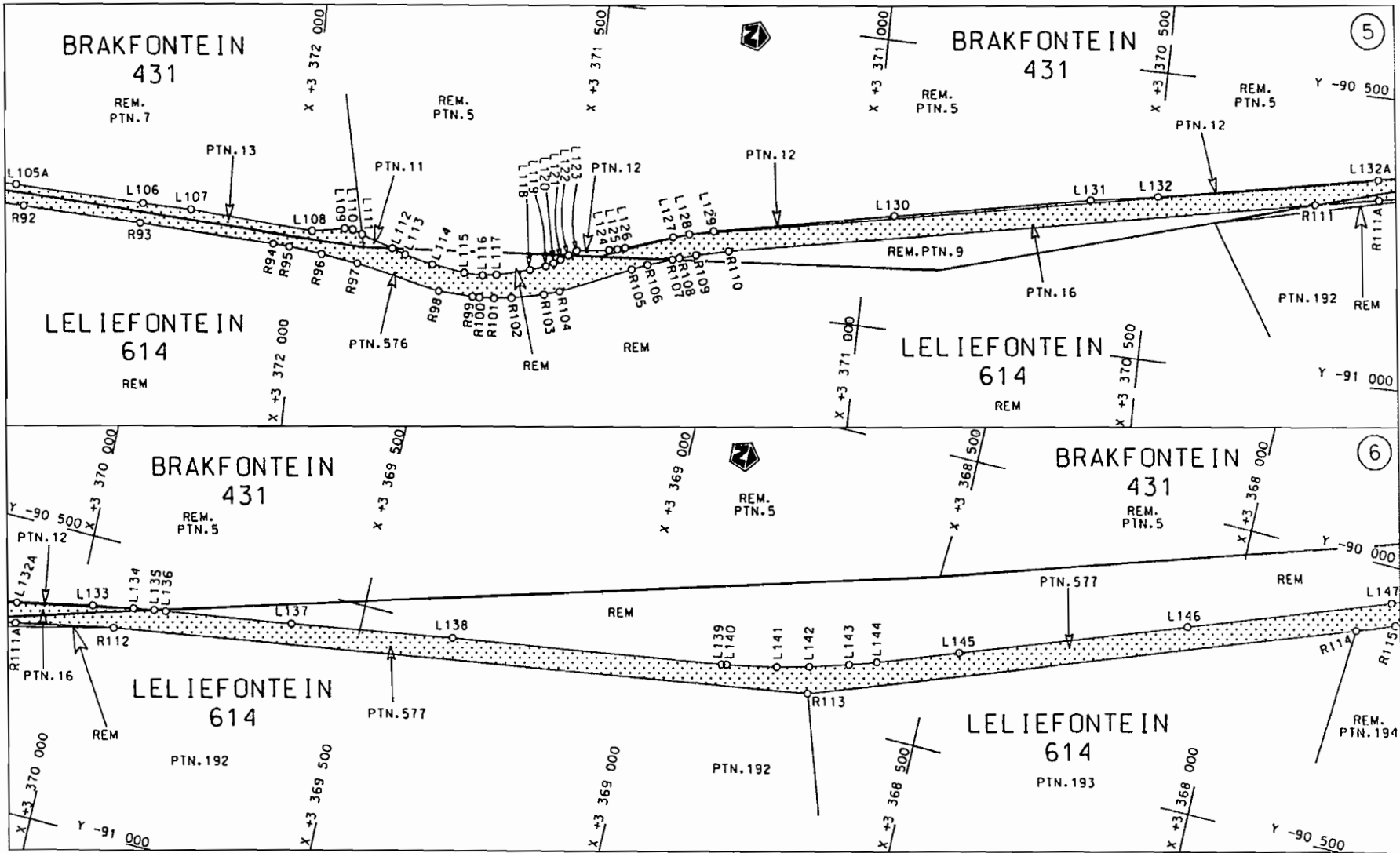


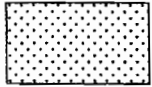
<p>Die Suid Afrikaanse Nasionale Padogentskop Beperk The South African National Roads Agency Limited</p>	<p>Die figuur getoon The figure shown</p> 	<p>steldie podreserwe voor van 'n gedeelte represents the road reserve of a portion van Nasionale Roete N7 Seksie Section of National Route 7</p>	<p>Vel Sheet 1 van of 40 Plan P633/07</p>
--	--	---	---

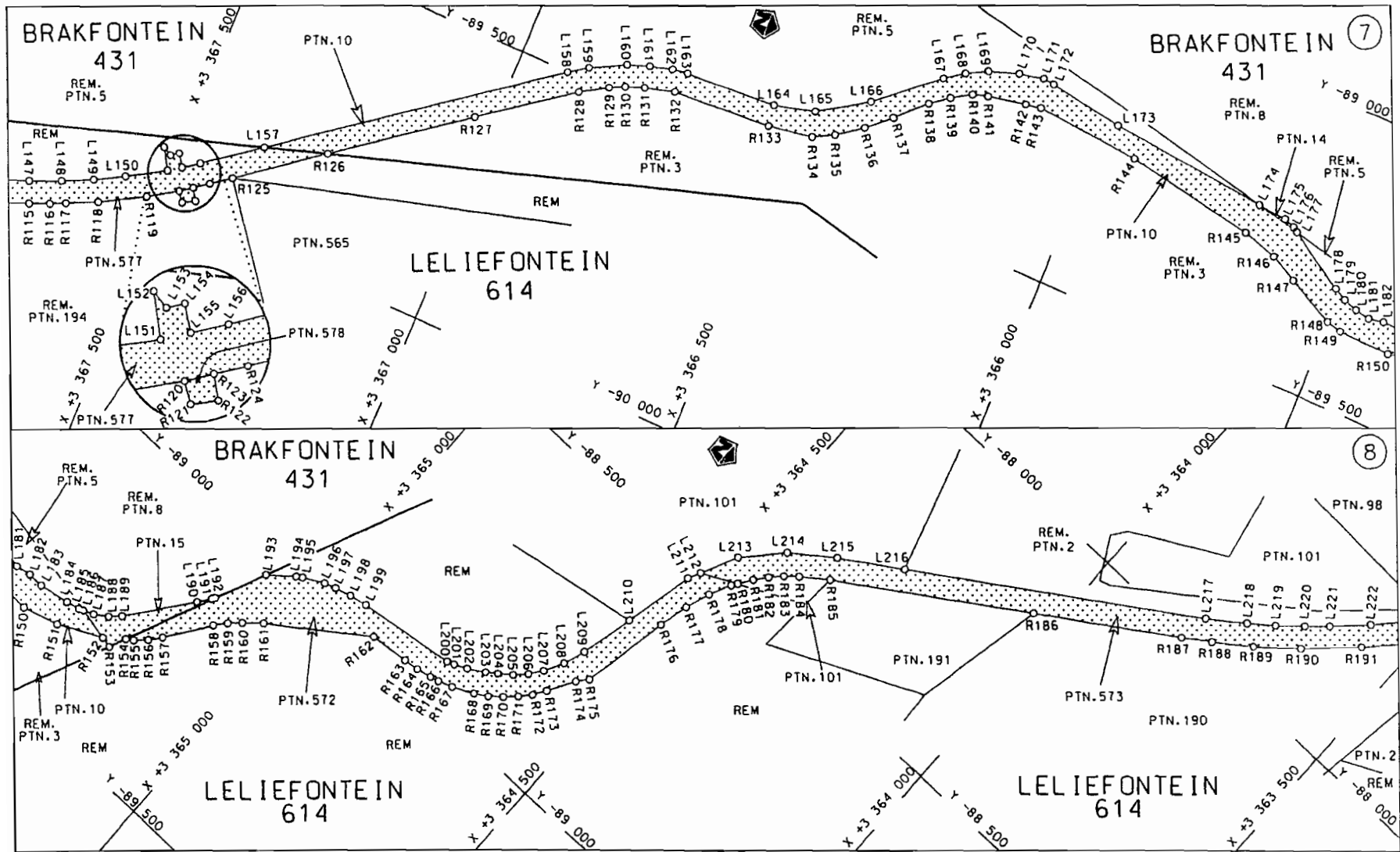
D.O.9.A

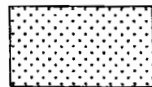


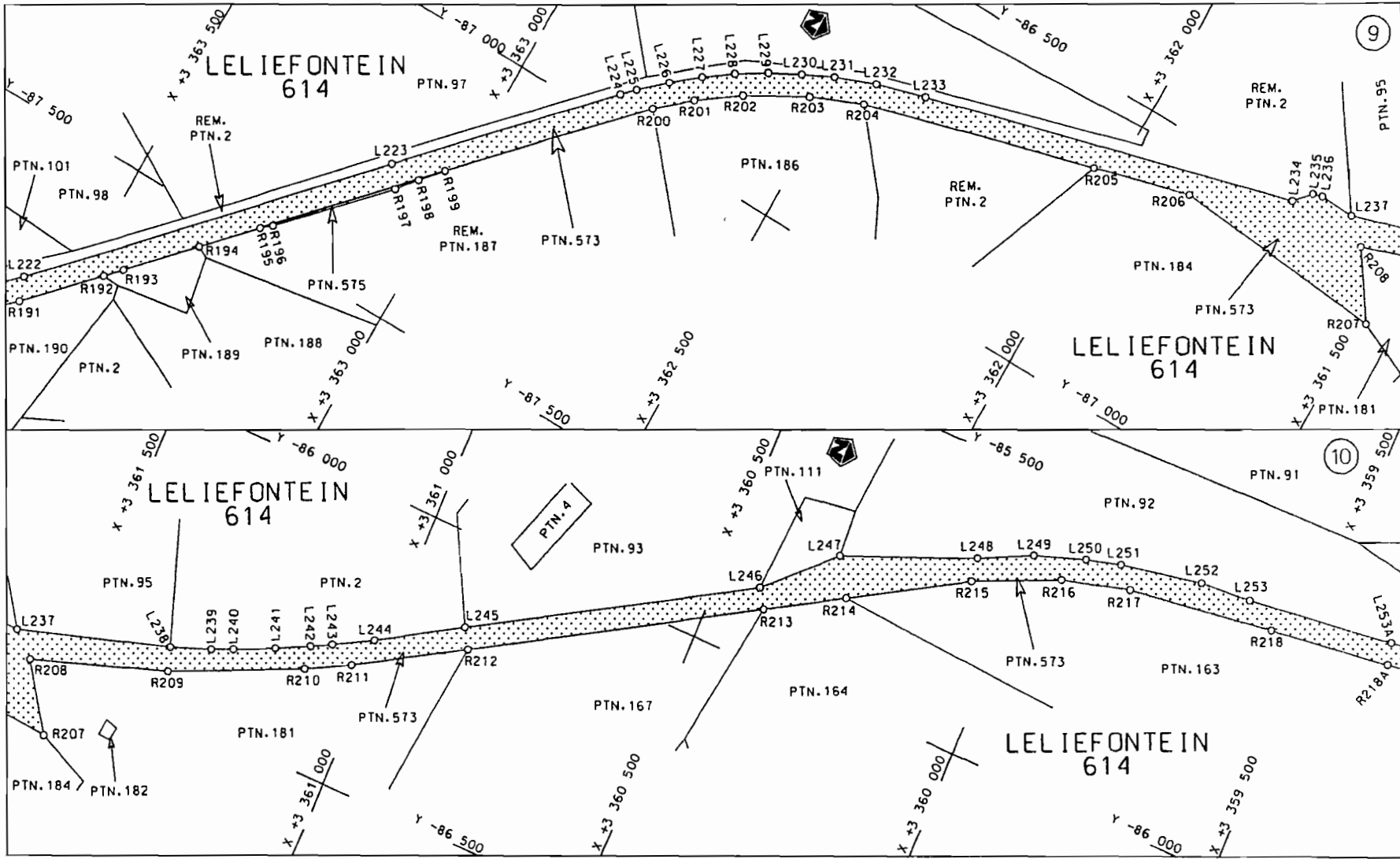
<p>Die Suid Afrikaanse Nasionale Padagentskap Beperk The South African National Roads Agency Limited</p>	<p>Die figuur getoon The figure shown</p> 	<p>stel die padreserwe voor van 'n gedeelte represents the road reserve of a portion van Nasionale Roete N7 of National Route N7</p> <p>Seksie 7 Section</p>	<p>Vel 2 van 40 Sheet of 40</p> <p>Plan P633/07</p>
--	--	--	---

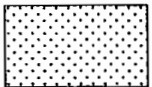


<p>Die Suid Afrikaanse Nasionale Padogentskap Beperk The South African National Roads Agency Limited</p>	<p>Die figuur getoon The figure shown</p> <div style="text-align: center;">  </div>	<p>stel die padreserwe voor van 'n gedeelte represents the road reserve of a portion van Nasionale Roete N7 of National Route N7</p> <p>Seksie Section 7</p>	<p>Vel Sheet 3 van 40 of of 40</p> <p>Plan P633/07</p>
--	---	--	--

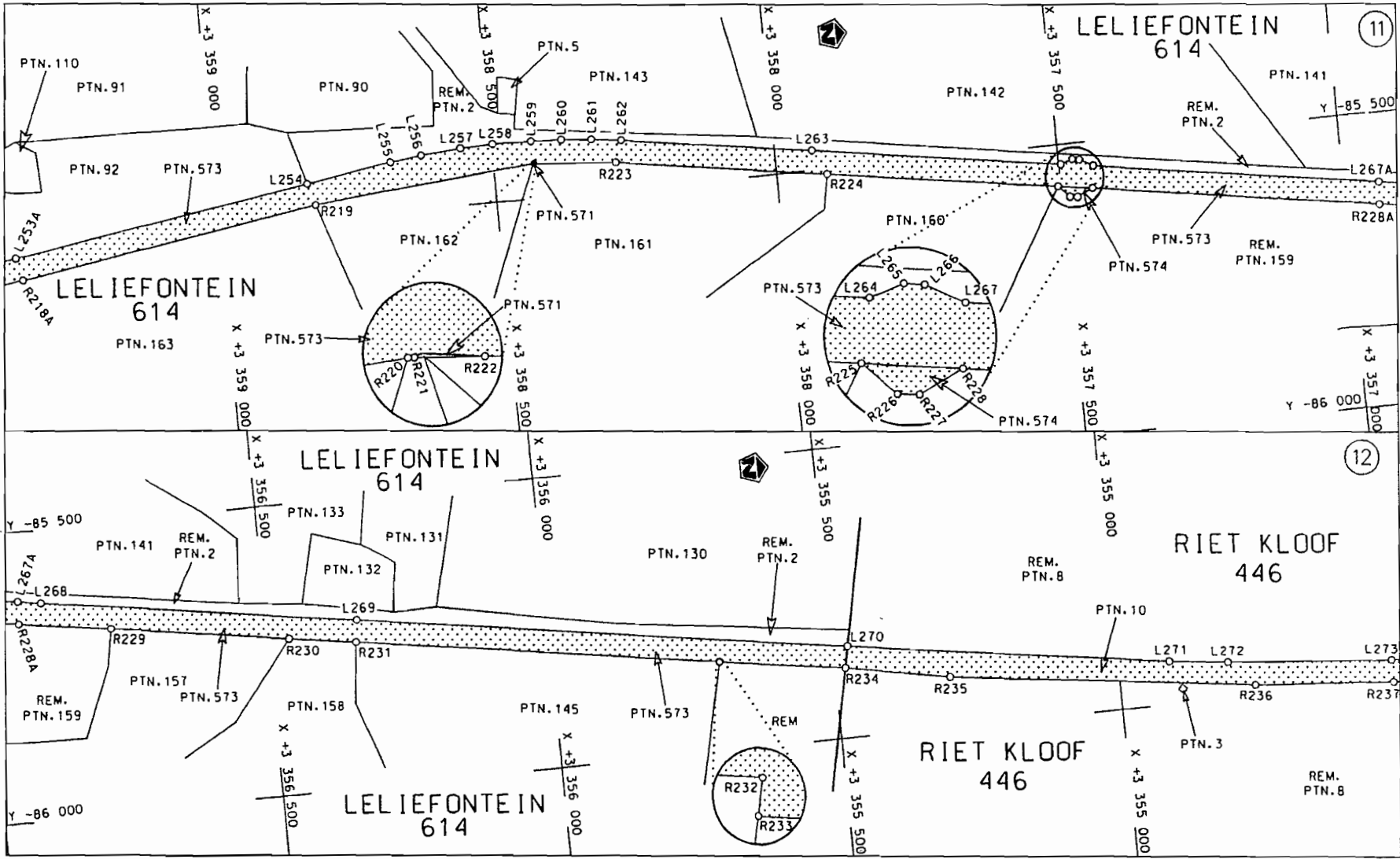


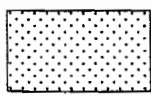
<p>Die Suid Afrikaanse Nasionale Padagentskap Beperk The South African National Roads Agency Limited</p>	<p>Die figuur getoon The figure shown</p> 	<p>steldie padreserwe voor van 'n gedeelte represents the road reserve of a portion van Nasionale Roete N7 of National Route N7</p> <p>Seksie 7 Section 7</p>	<p>Vel Sheet 4 van 40 of 40</p> <p>Plan P633/07</p>
--	--	---	---

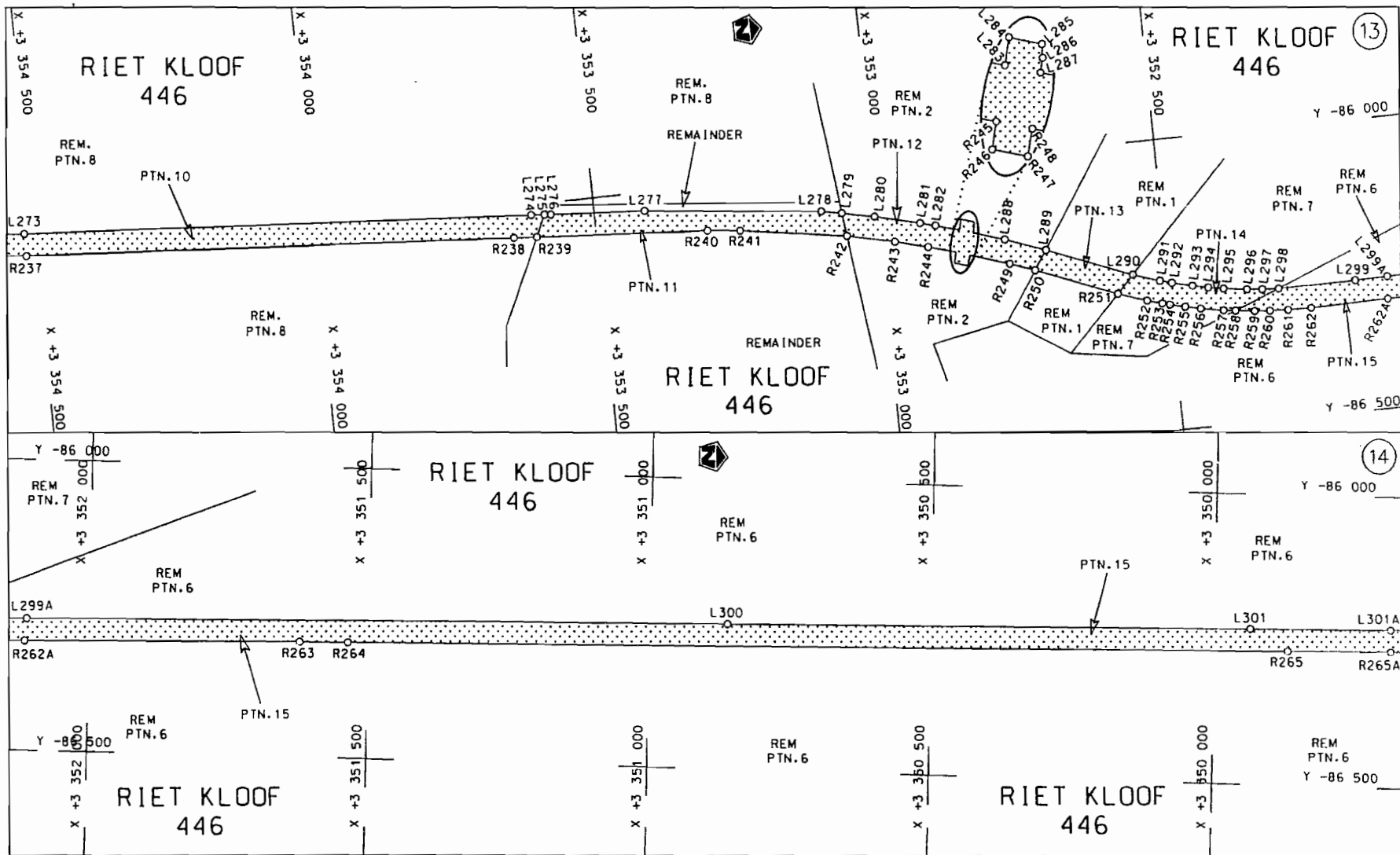


<p>Die Suid Afrikaanse Nasionale Padagentskop Beperk The South African National Roads Agency Limited</p>	<p>Die figuur getoon The figure shown</p>	 <p>steldie podreserwe voor van 'n gedeelte represents the road reserve of a portion van Nasionale Roete N7 of National Route N7</p>	<p>Vel Sheet 5 van 40 of of</p>
<p>Seksie Section 7</p>			<p>Plan P633/07</p>

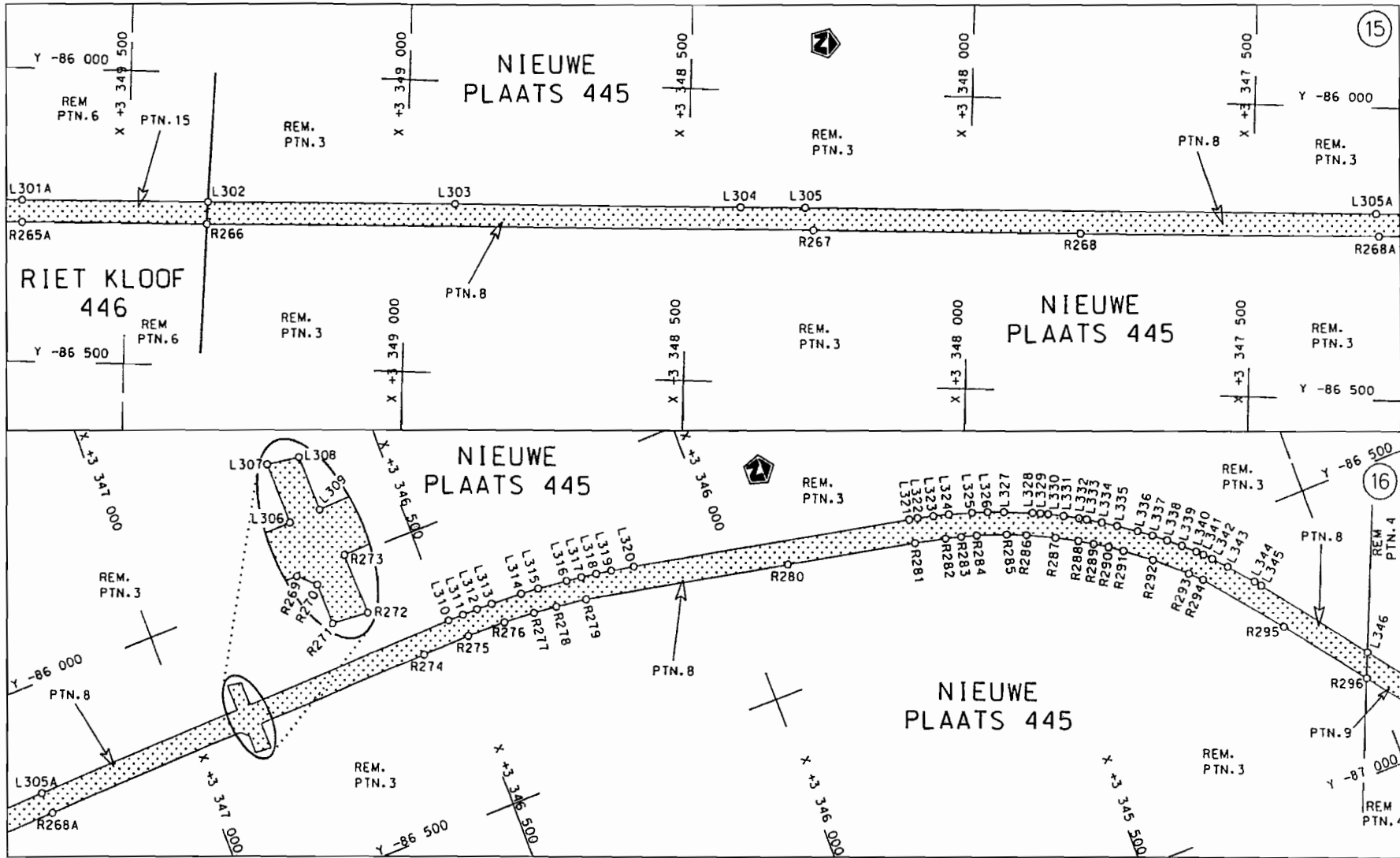
D.O.9.A



<p>Die Suid Afrikaanse Nasionale Padagentskap Beperk The South African National Roads Agency Limited</p>	<p>Die figuur getoon The figure shown</p>		<p>steldie padreserwe voor van 'n gedeelte represents the road reserve of a portion van Nasionale Roete N7 of National Route N7</p> <p>Seksie 7 Section 7</p>	<p>Vel Sheet 6 van of 40 Plan P633/07</p>
--	---	--	---	---

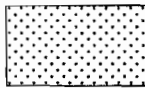


<p>Die Suid Afrikaanse Nasionale Padagentskap Beperk</p>	<p>Die figuur getoon</p>	<p>steldie podreserve voor van 'n gedeelte</p>	<p>Vel Sheet 7 van 40</p>
<p>The South African National Roads Agency Limited</p>	<p>The figure shown</p>	<p>represents the road reserve of a portion van Nasionale Roete N7 Sektie Section 7 of National Route</p>	<p>Plan P633/07</p>



Die Suid Afrikaanse Nasionale Padagentskap Beperk
The South African National Roads Agency Limited

Die figuur getoon
The figure shown

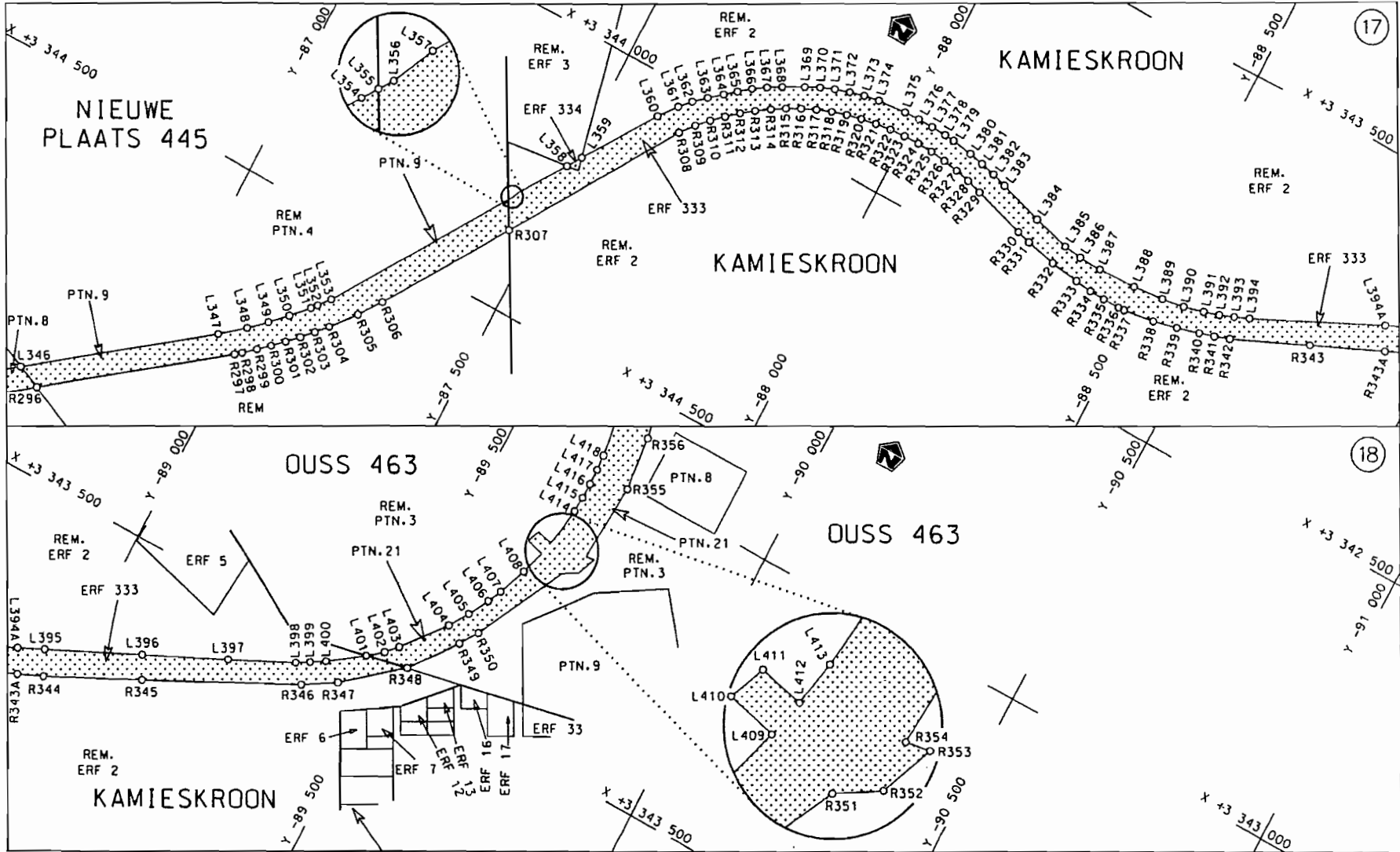



steldie padreserwe voor van 'n gedeelte
represents the road reserve of a portion
of Nasionale Roete
of National Route N7

N7 Seksie
Section 7

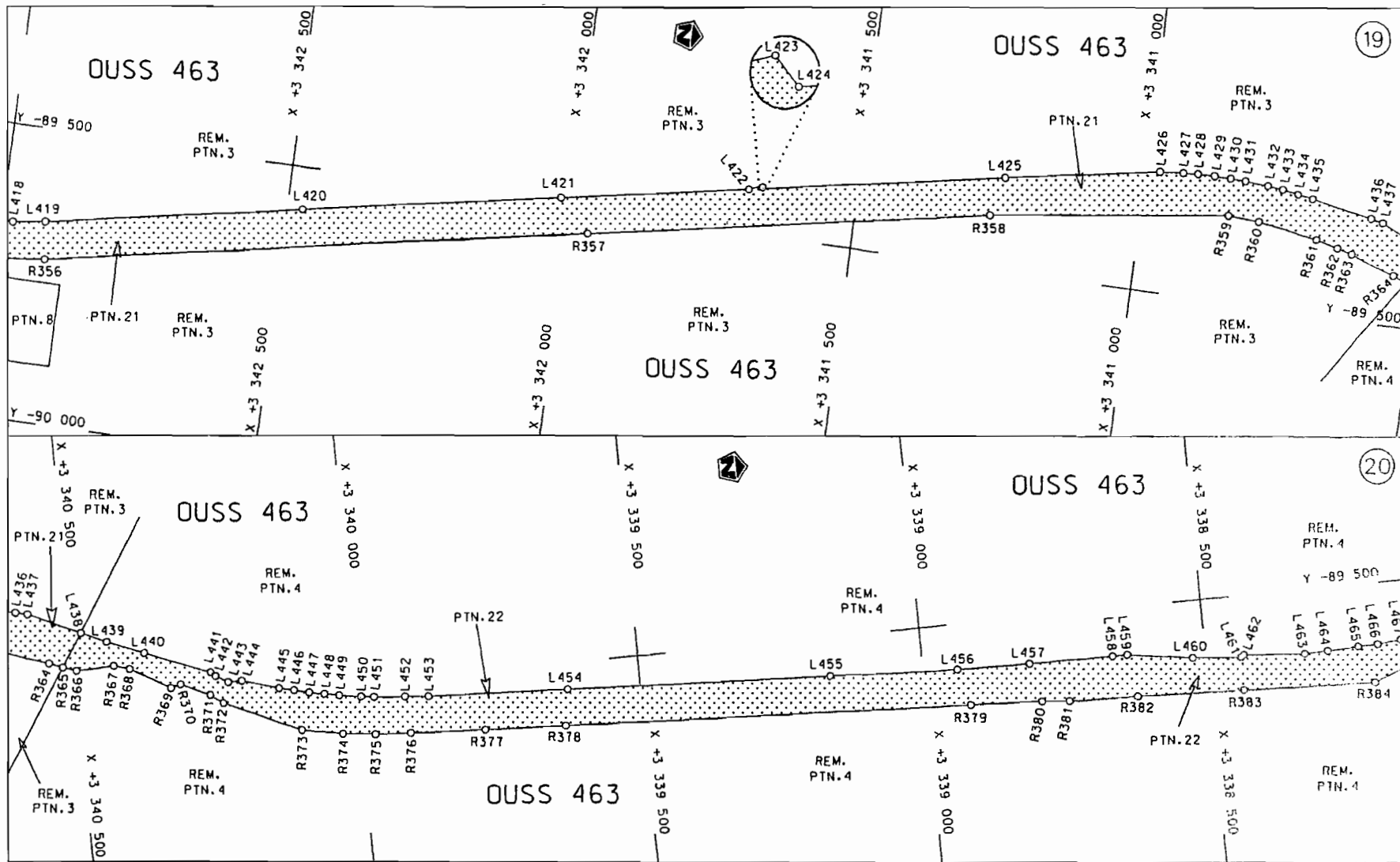
Vel
Sheet 8 van
of 40

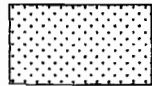
Plan P633/07

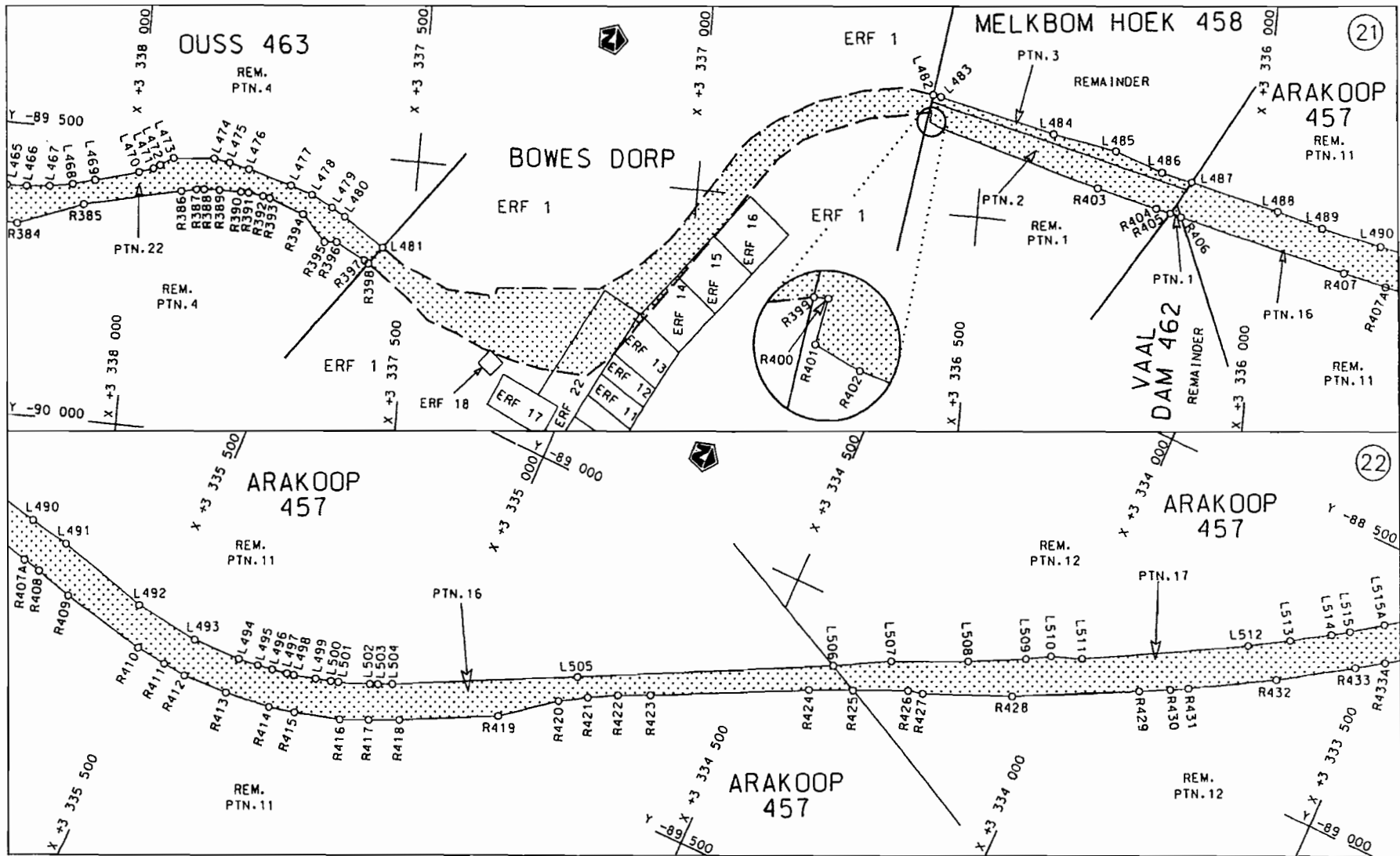


<p>Die Suid Afrikaanse Nasionale Padagentskap Beperk</p>	<p>Die figuur getoon</p>		<p>steldie padreserwe voor van 'n gedeelte represents the road reserve of a portion</p>	<p>Vel Sheet 9 van of 40</p>
<p>The South African National Roads Agency Limited</p>	<p>The figure shown</p>		<p>van Nasionale Roete N7 Seksie Section 7</p>	<p>Plan P633/07</p>

D.O.9.A

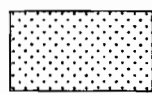


<p>Die Suid Afrikaanse Nasionale Padagentskap Beperk The South African National Roads Agency Limited</p>	<p>Die figuur getoon The figure shown</p> 	<p>steldie padreserwe voor van 'n gedeelte represents the road reserve of a portion van Nasionale Roete of National Route</p> <p>N7 Seksie 7</p> <p>Section</p>	<p>Vel Sheet 10 van of 40 Plan P633/07</p>
--	--	---	--



Die Suid Afrikaanse Nasionale Padogenskap Beperk
 The South African National Roads Agency Limited

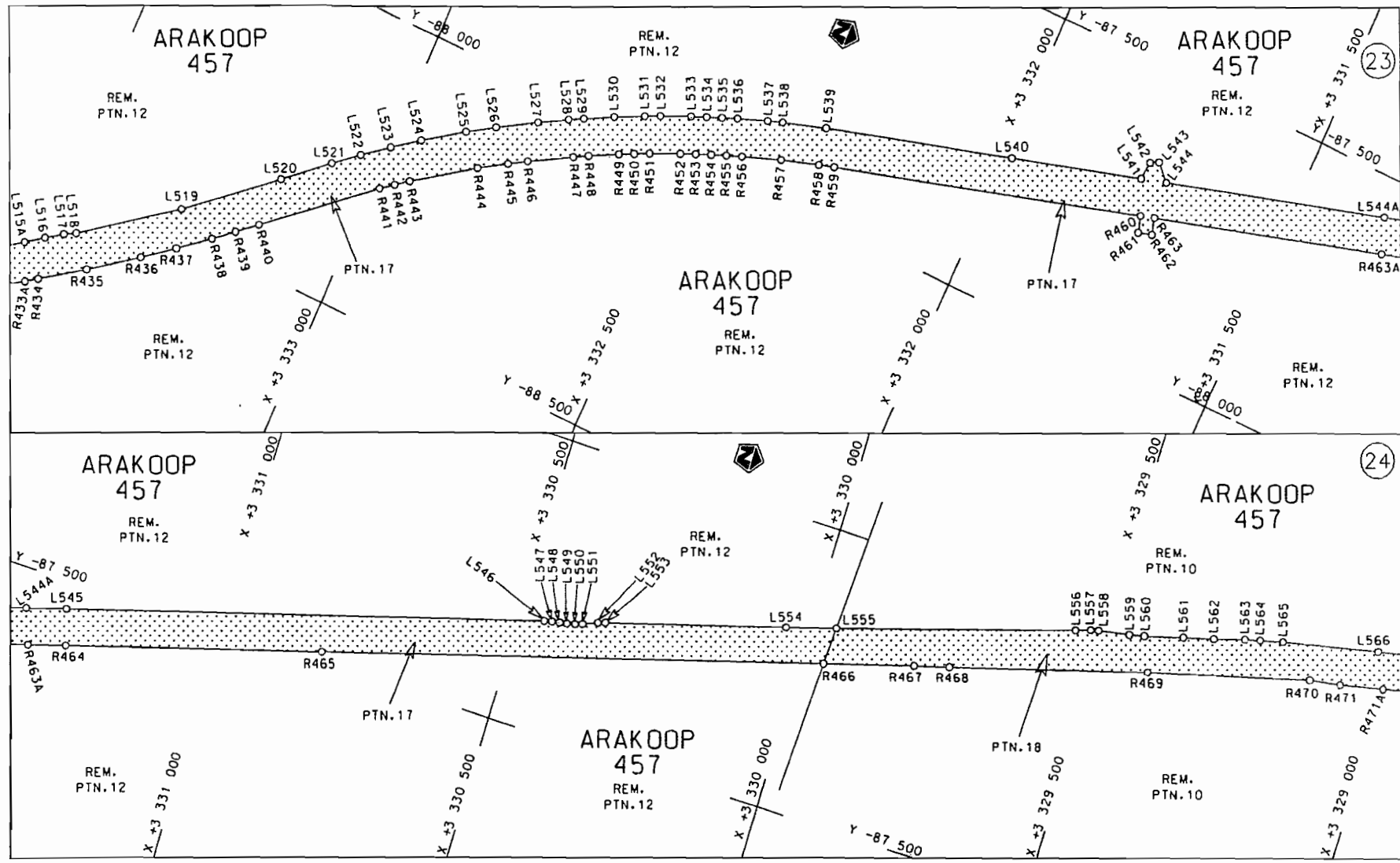
Die figuur getoon
 The figure shown



steldie padreserwe voor van 'n gedeelte
 represents the road reserve of a portion
 von Nasionale Roete N7 Sektie 7
 of National Route N7 Section 7

Vel Sheet 11 van 40
 Plan P633/07

D.O.9.A



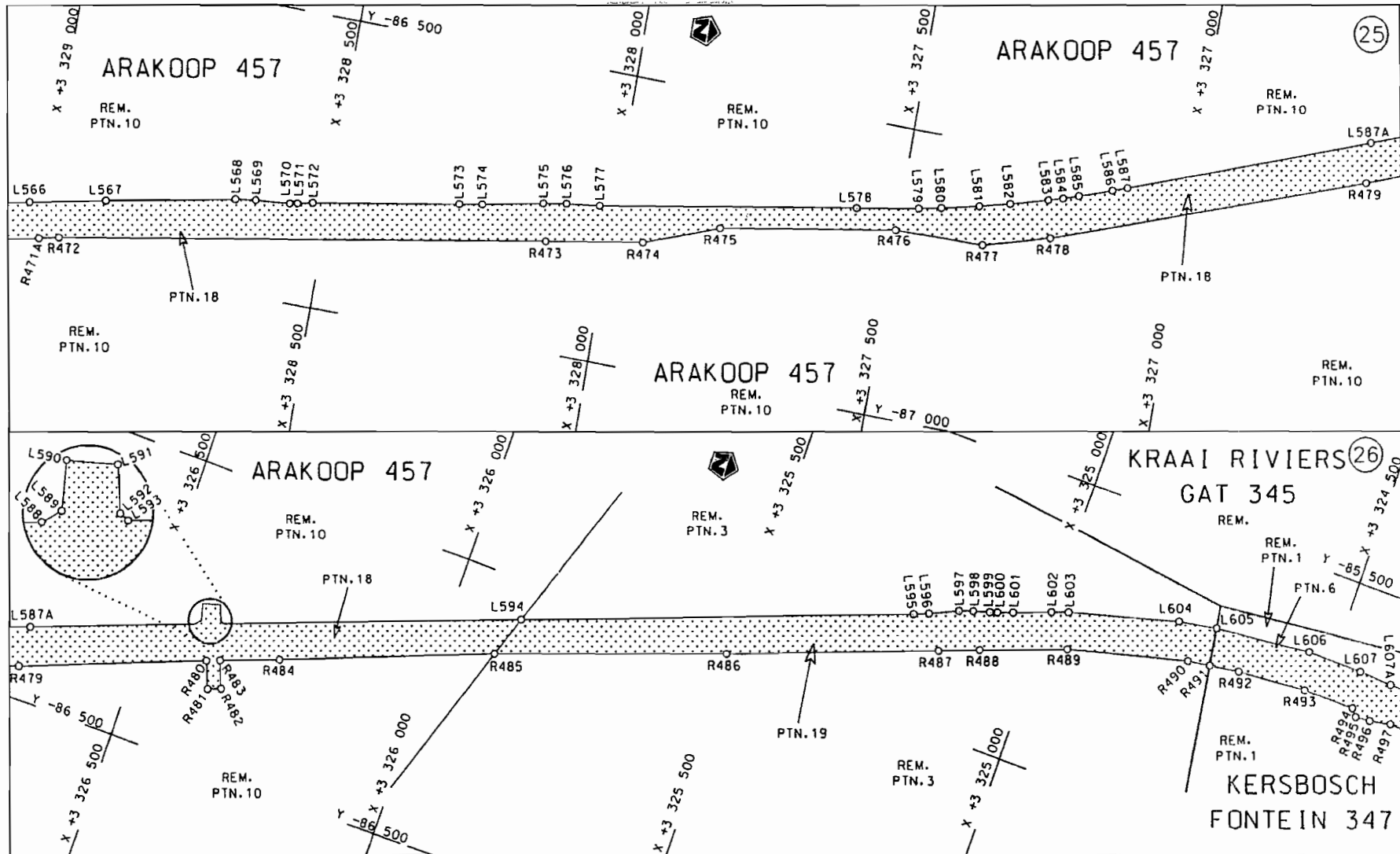
Die Suid Afrikaanse Nasionale Padagentskap Beperk
The South African National Roads Agency Limited

Die figuur getoon
The figure shown



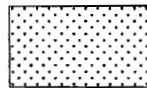
steldie padreserwe voor van 'n gedeelte
represents the road reserve of a portion
van Nasionale Roete N7 Seksie
of National Route 7 Section

Vel
Sheet 12 van 40
Plan P633/07



Die Suid Afrikaanse Nasionale Padagentskap Beperk
The South African National Roads Agency Limited

Die figuur getoon
The figure shown

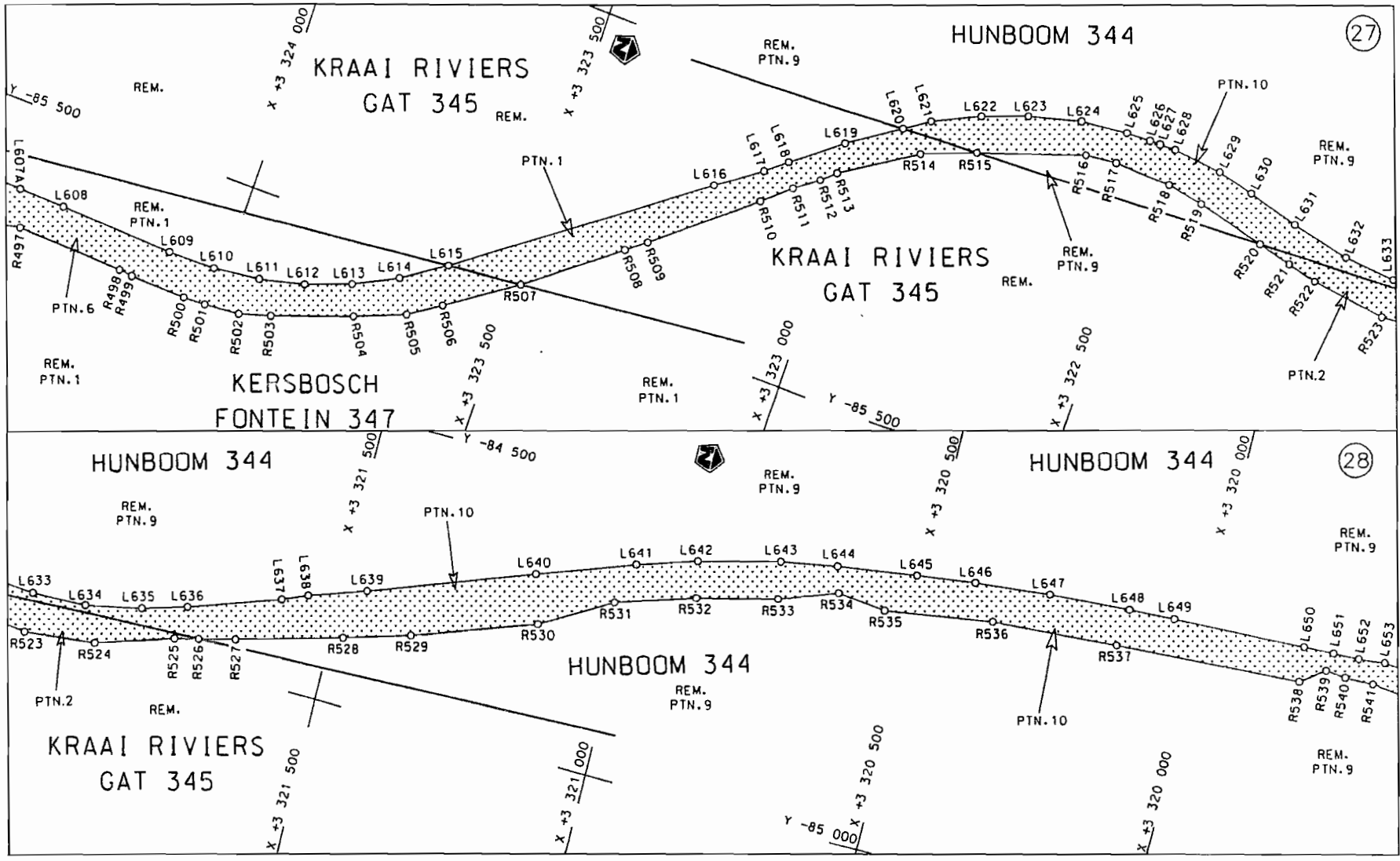


steldie padreserwe voor van 'n gedeelte
represents the road reserve of a portion
von Nasionale Roete N7 Seksie
of National Route Section

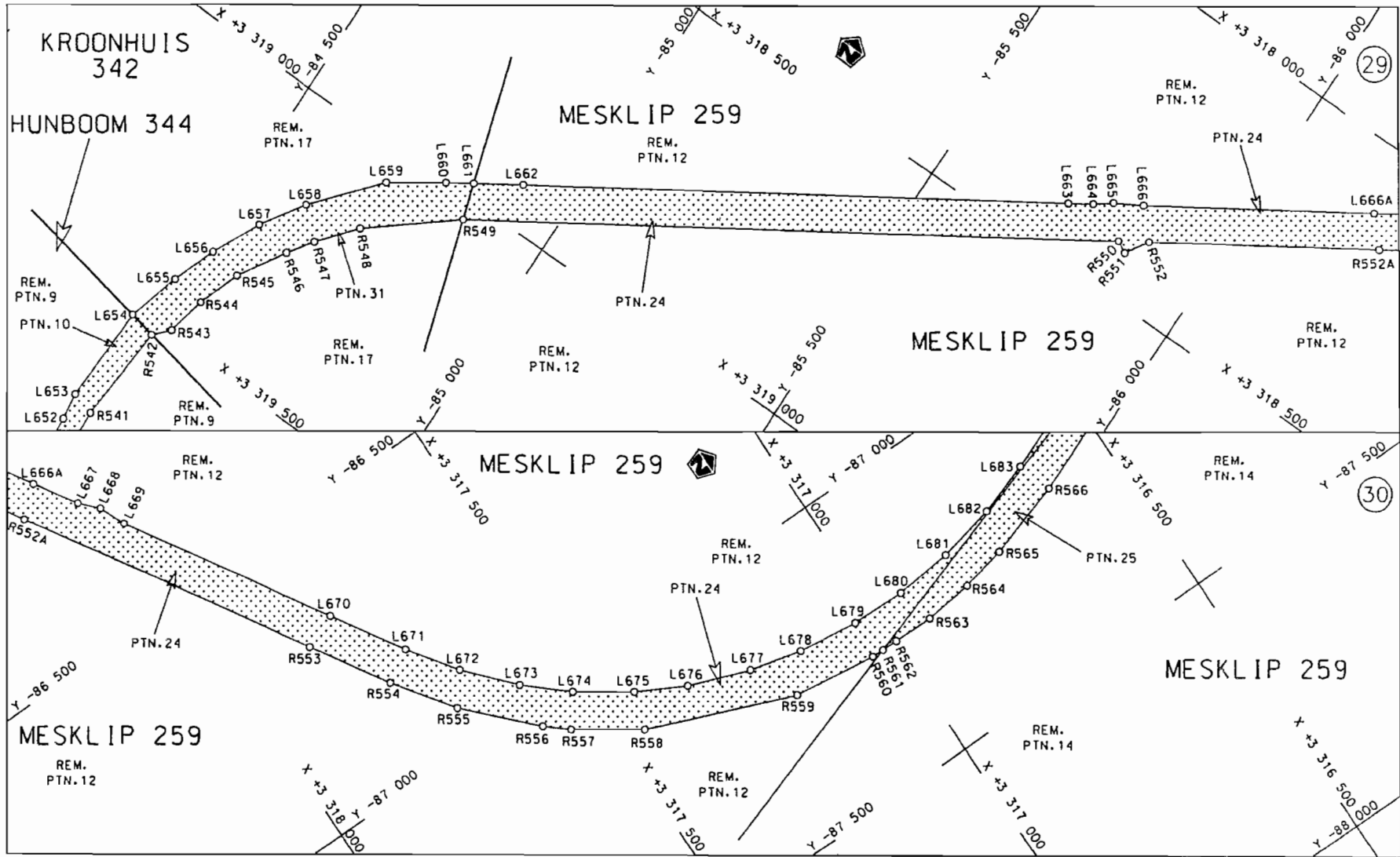
7

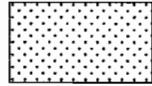
Vel Sheet 13 van of 40
Plan P633/07

D.O.9.A

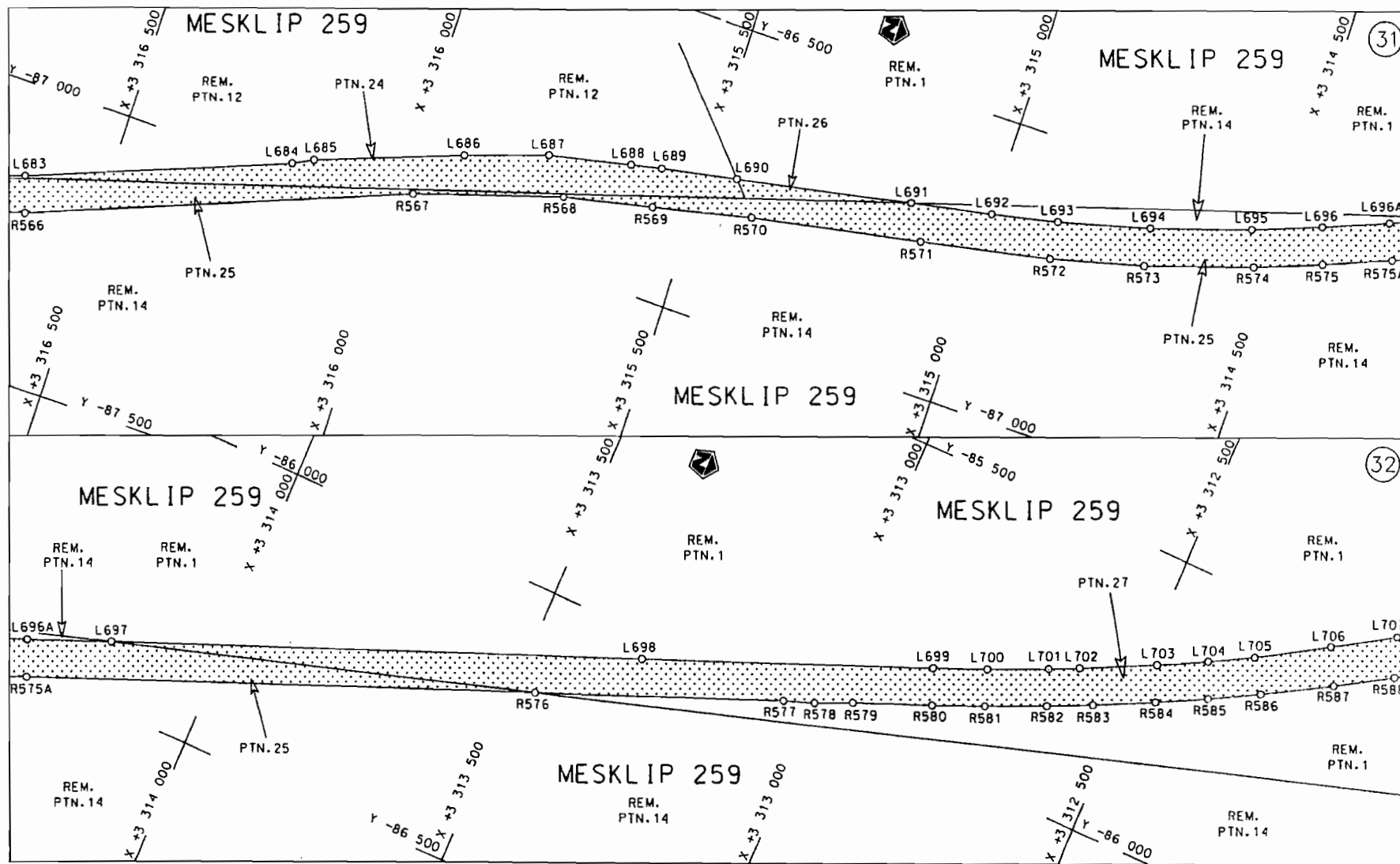


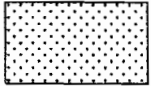
<p>Die Suid Afrikaanse Nasionale Padagentskap Beperk</p>	<p>Die figuur getoon</p>	<p>steldie padreserwe voor van 'n gedeelte</p>	<p>Vel Sheet 14 van of 40</p>
<p>The South African National Roads Agency Limited</p>	<p>The figure shown</p>	<p>represents the road reserve of a portion van Nasionale Roete of National Route N7</p>	<p>Plan P633/07</p>

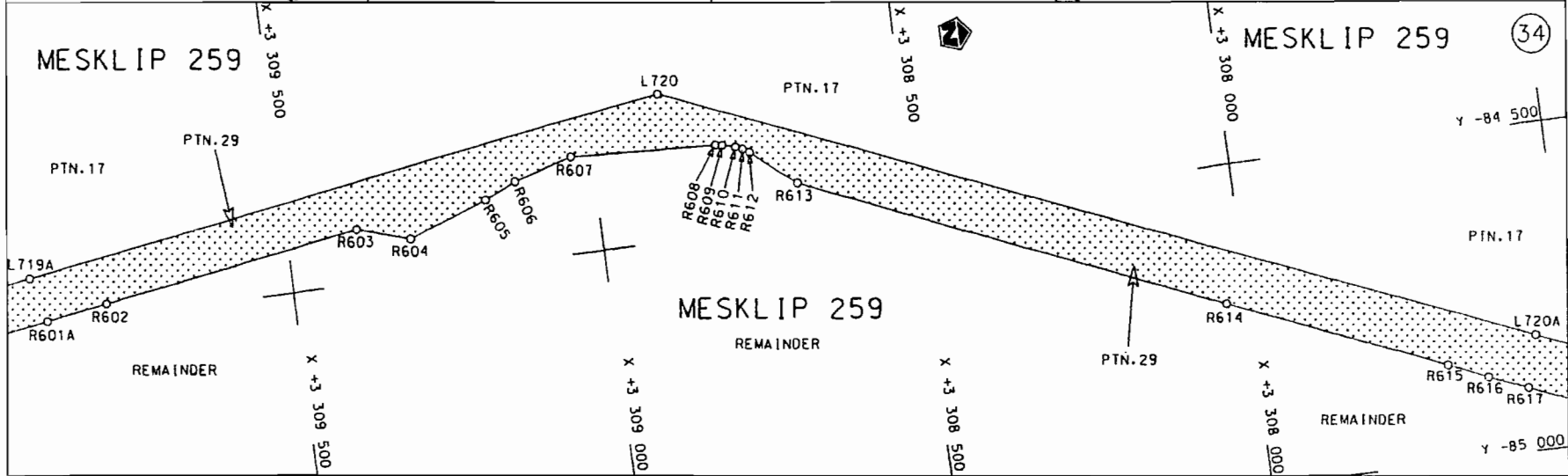
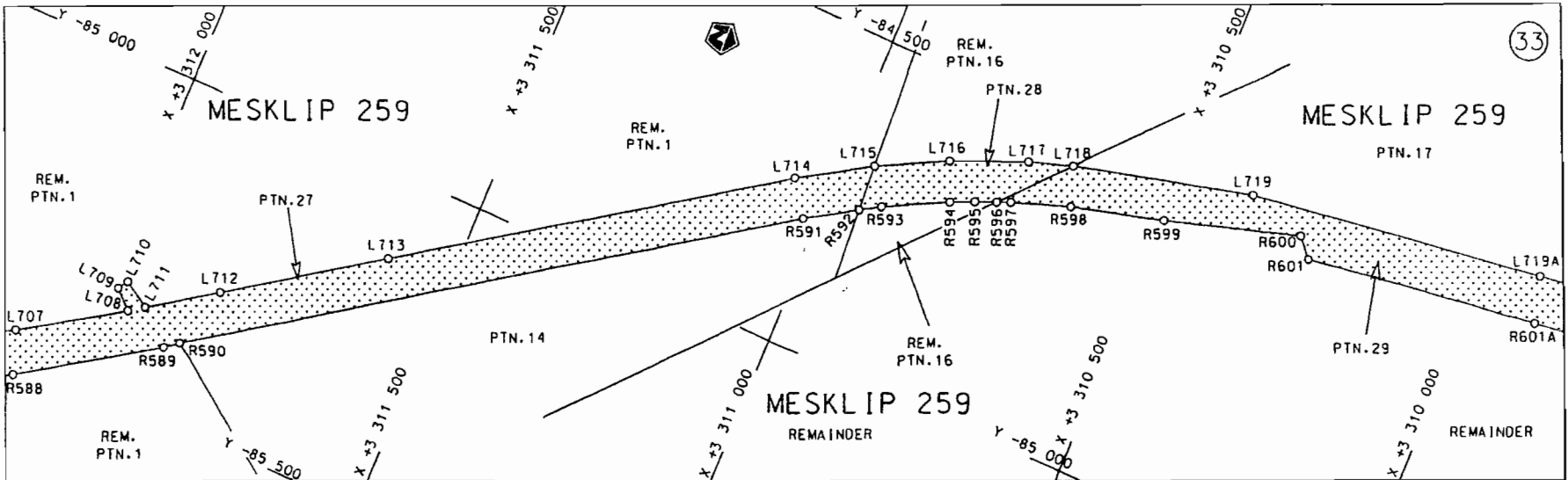



Die Suid Afrikaanse Nasionale Padagentskap Beperk The South African National Roads Agency Limited	Die figuur getoon The figure shown	 steldie padreserwe voor van 'n gedeelte represents the road reserve of a portion van Nasionale Roete N7 of National Route N7 Sektie Section 7	Vel Sheet 15 van of 40 Plan P633/07
--	---------------------------------------	--	--

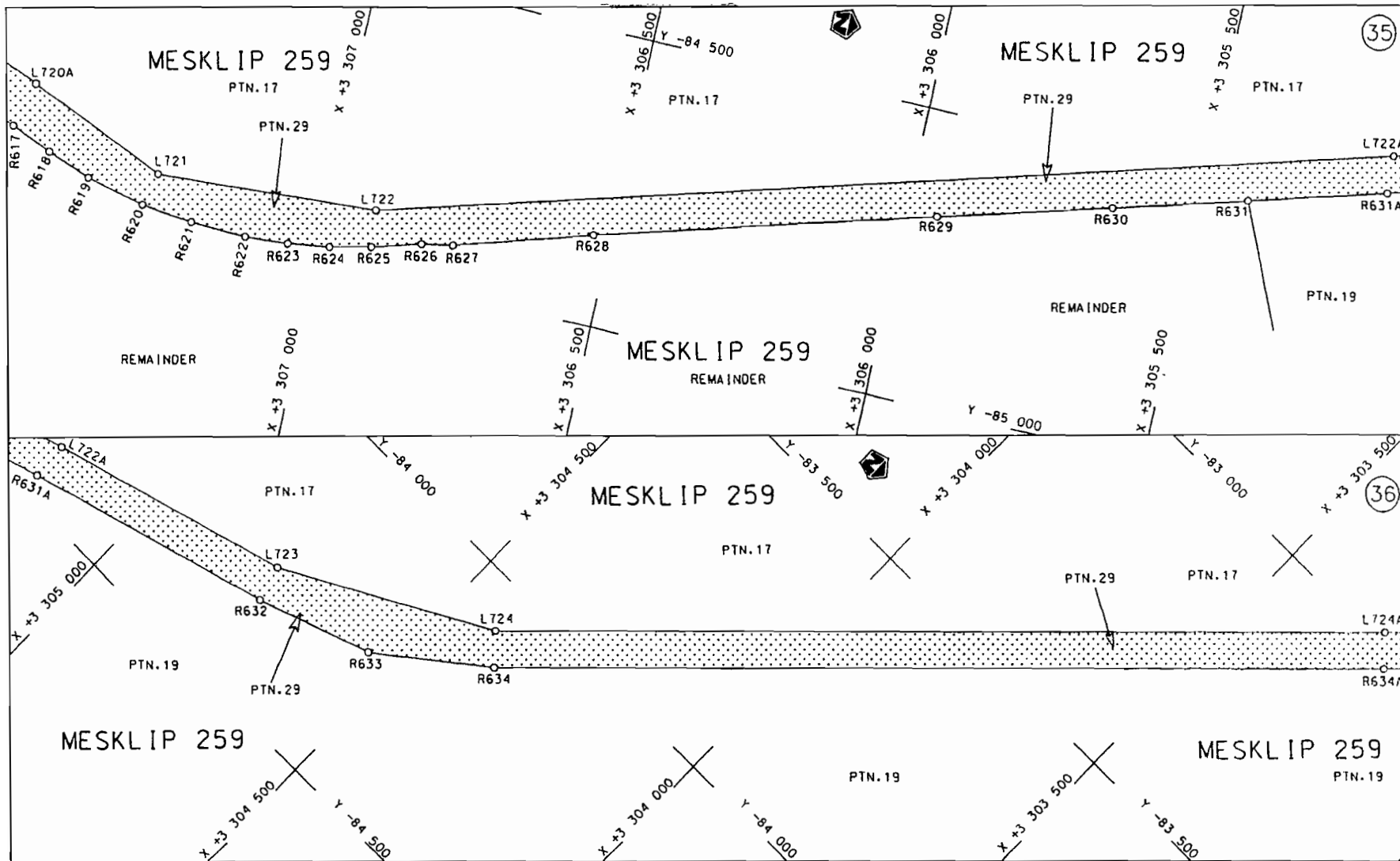
D.O.9.A

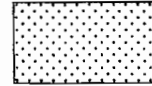


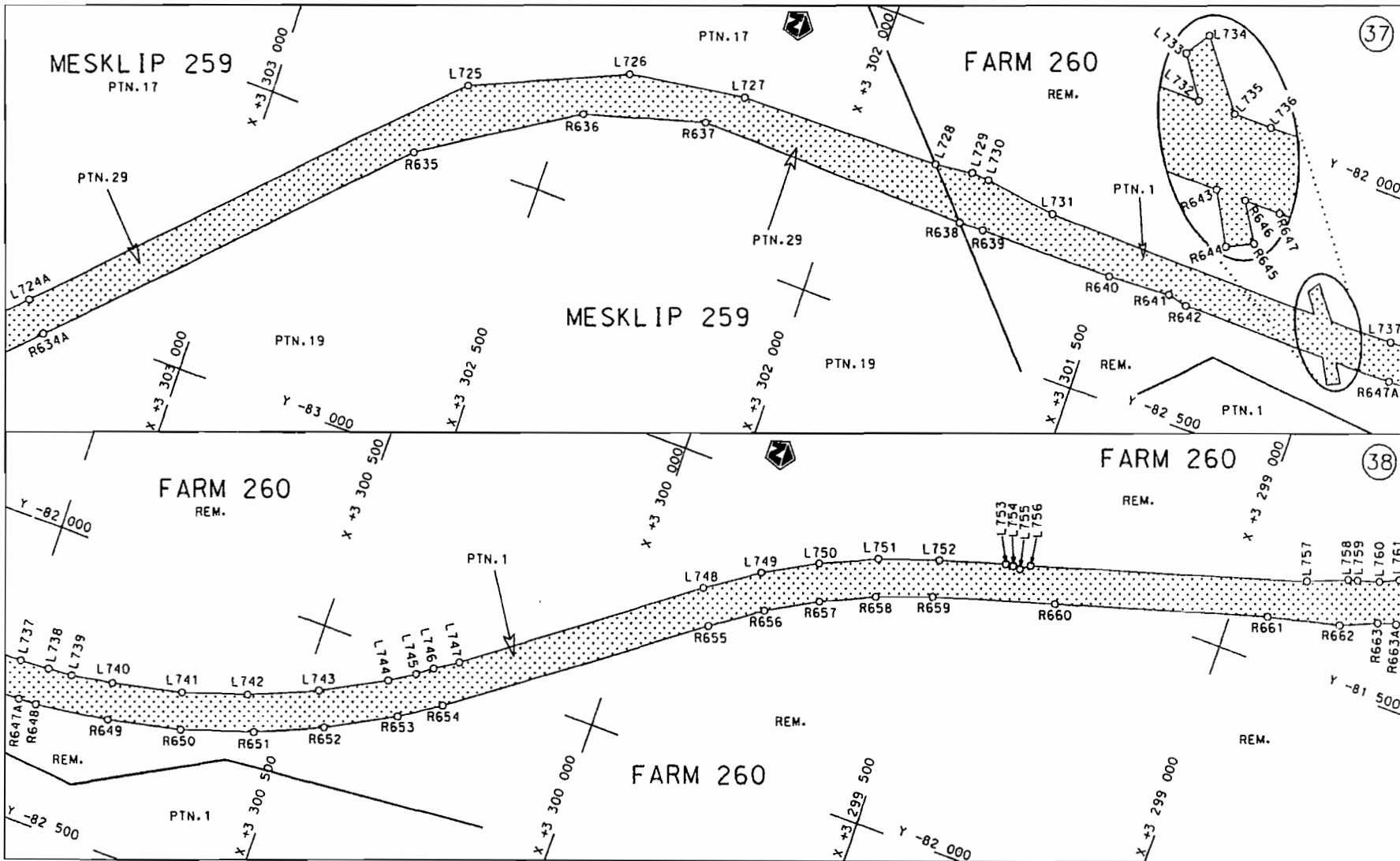
Die Suid Afrikaanse Nasionale Padagentskap Beperk The South African National Roads Agency Limited	Die figuur getoon The figure shown	 steldie padreserwe voor van 'n gedeelte represents the road reserve of a portion van Nasionale Roete N7 of National Route	Vel Sheet 16 van 40 of
Plan 7			P633/07

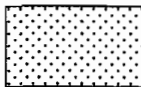


<p>Die Suid Afrikaanse Nasionale Padagentskap Beperk The South African National Roads Agency Limited</p>	<p>Die figuur getoon The figure shown</p>		<p>steldie padreserwe voor van 'n gedeelte represents the road reserve of a portion van Nasionale Roete N7 Seksie 7 of National Route N7 Section 7</p>	<p>Vel Sheet 17 van 40 Plan P633/07</p>
--	---	--	--	---

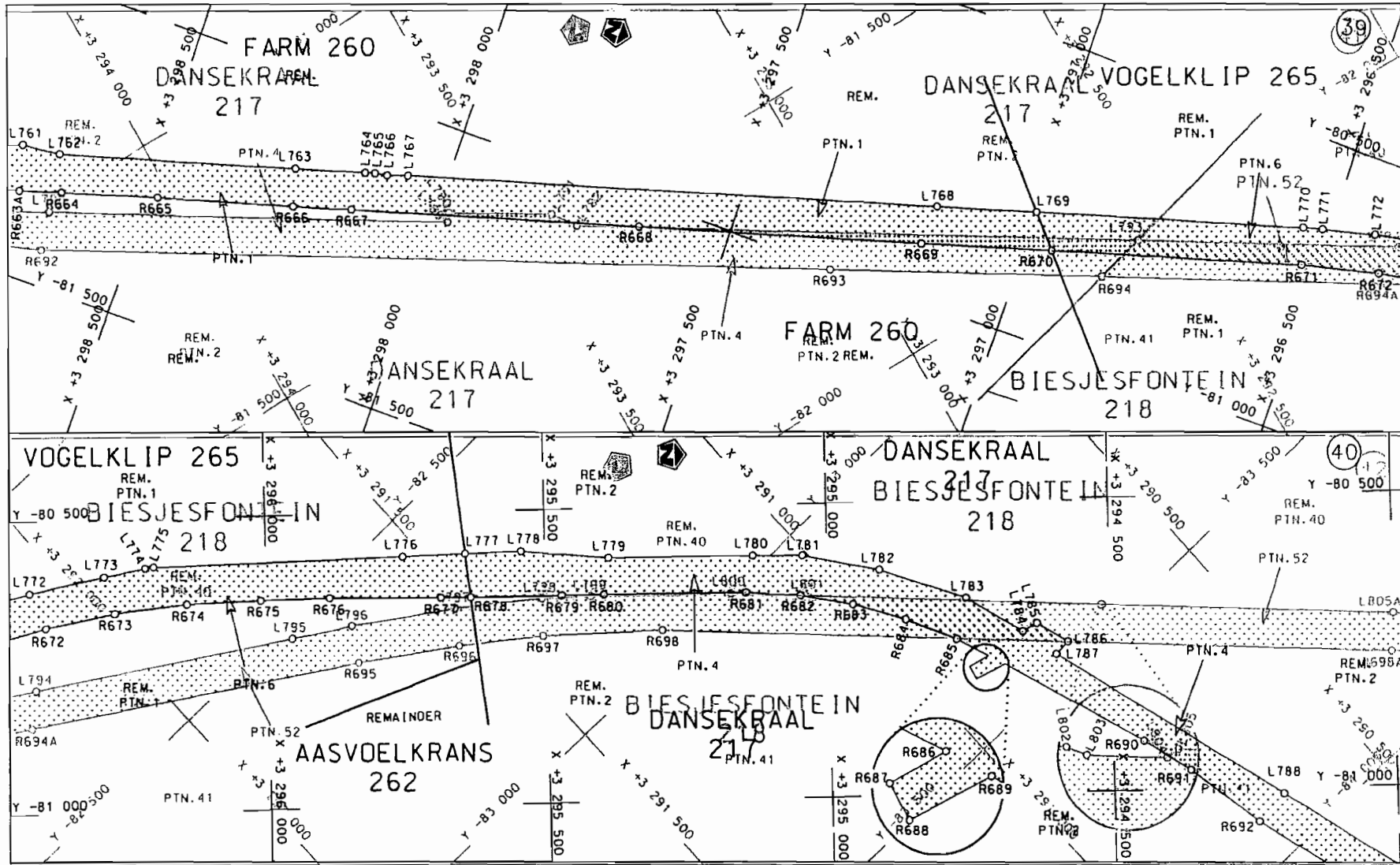


<p>Die Suid Afrikaanse Nasionale Padagentskap Beperk The South African National Roads Agency Limited</p>	<p>Die figuur getoon The figure shown</p> 	<p>steldie padreserwe voor van 'n gedeelte represents the road reserve of a portion van Nasionale Roete N7 of National Route Section 7</p>	<p>Vel Sheet 18 van 40 Plan P633/07</p>
--	--	--	---



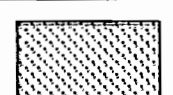
<p>Die Suid Afrikaanse Nasionale Padogenskop Beperk The South African National Roads Agency Limited</p>	<p>Die figuur getoon The figure shown</p> 	<p>steldie padreserwe voor van 'n gedeelte represents the road reserve of a portion van Nasionale Roete N7 Sektie 7 of National Route Section</p>	<p>Vel Sheet 19 van of 40 Plan P633/07</p>
---	--	---	--

D.O.9.A



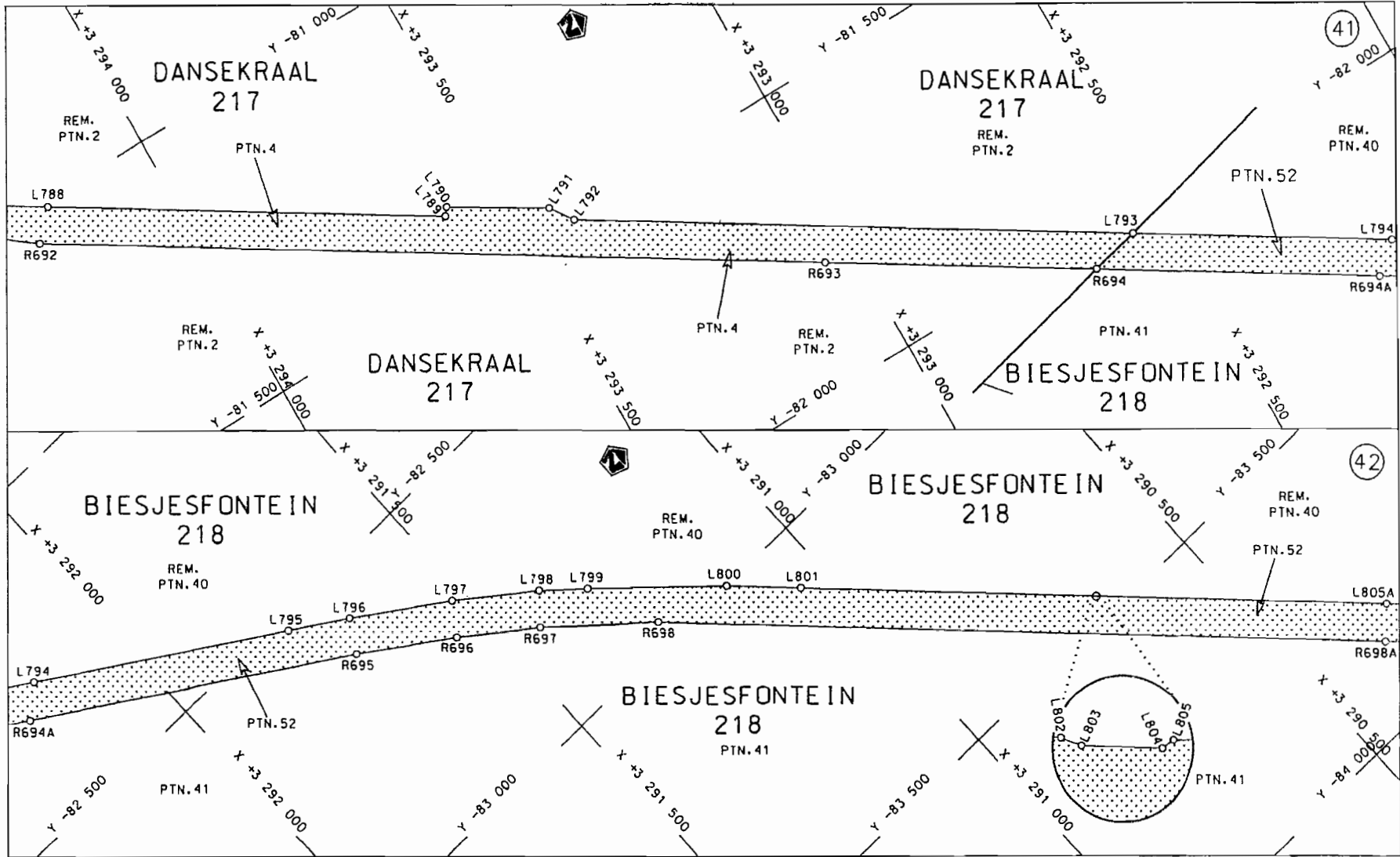
Die Suid-Afrikaanse Nasionale Padagentskap Beperk
The South African National Roads Agency Limited


Die figuur getoon
The figure shown

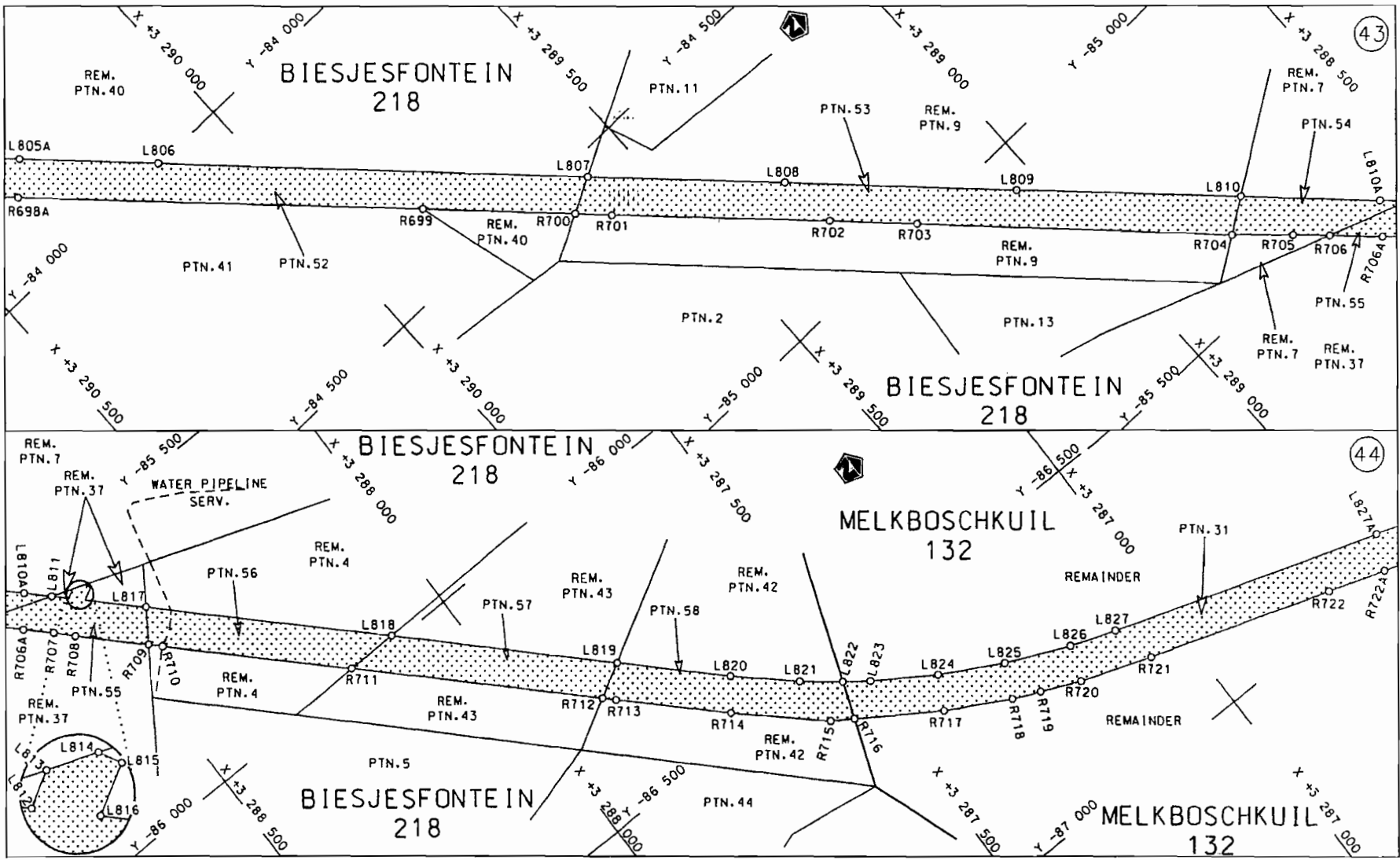


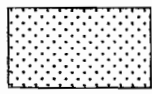
steldie padreserwe voor van 'n gedeelte
represents the road reserve of a portion
van Nasionale Roete N7
of National Route N7
Seksie 7
Section 7

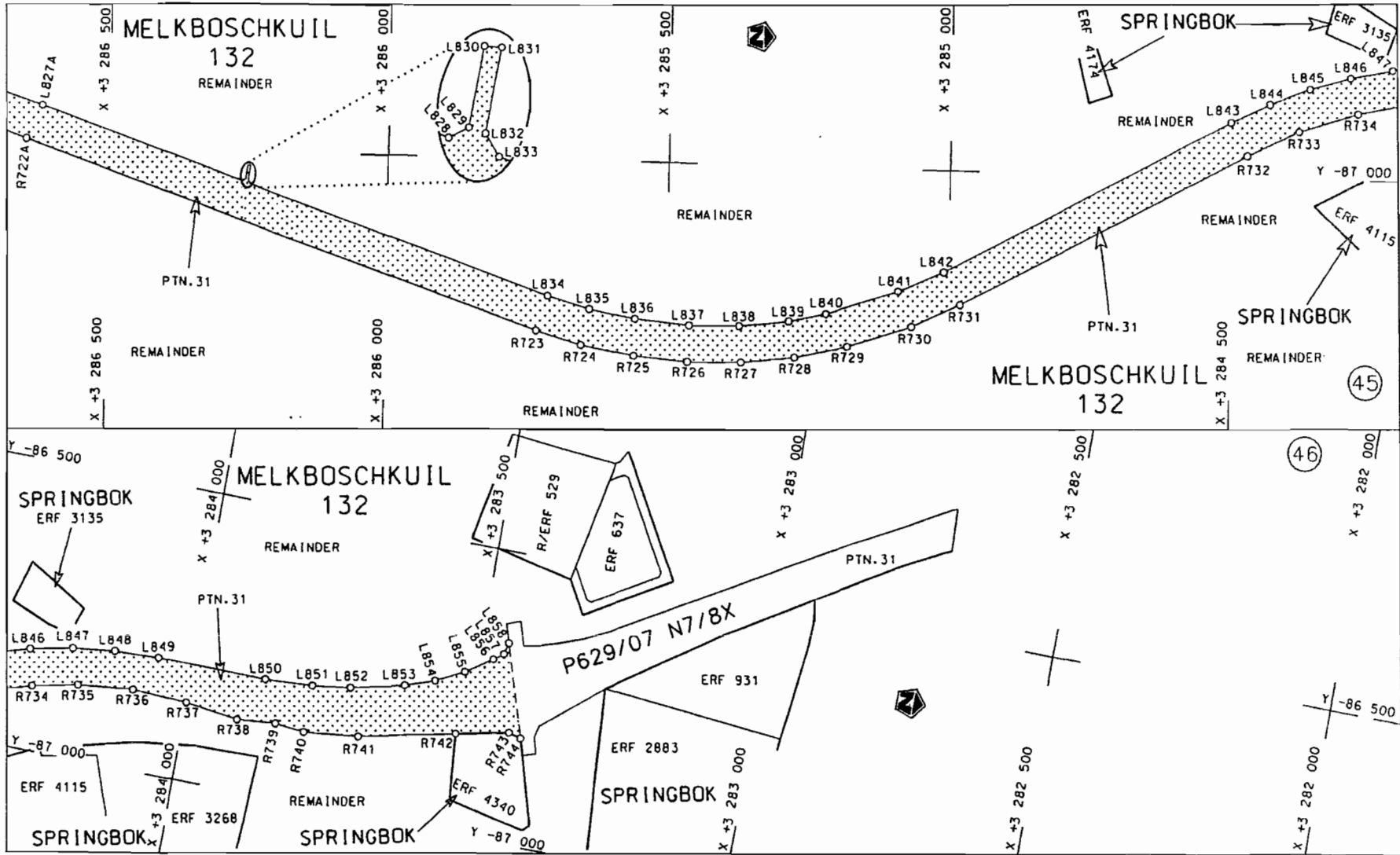
Vel Sheet 20 van 40
Plan P633/07

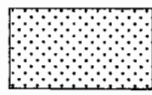


<p>Die Suid Afrikaanse Nasionale Padogentskap Beperk The South African National Roads Agency Limited</p>	<p>Die figuur getoon The figure shown</p>	 <p>steldie padreserwe voor van 'n gedeelte represents the road reserve of a portion van Nasionale Roete N7 of National Route N7</p>	<p>Vel Sheet 21 van 40 of 40</p>
<p>Seksie Section 7</p>			<p>Plan P633/07</p>



<p>Die Suid Afrikaanse Nasionale Padagentskap Beperk The South African National Roads Agency Limited</p>	<p>Die figuur getoon The figure shown</p> 	<p>stel die padreserwe voor van 'n gedeelte represents the road reserve of a portion van Nasionale Roete N7 of National Route N7</p> <p>Seksie 7 Section 7</p>	<p>Vel Sheet 22 van 40 of 40</p> <p>Plan P633/07</p>
--	--	--	--



<p>Die Suid Afrikaanse Nasionale Padagentskop Beperk The South African National Roads Agency Limited</p>	<p>Die figuur getoon The figure shown</p>		<p>stel die padreserwe voor van 'n gedeelte represents the road reserve of a portion van Nasionale Roete N7 of National Route N7</p> <p>Seksie Section 7</p>	<p>Vel Sheet 23 van 40 Plan P633/07</p>
--	---	--	--	---

PADRESERWE KOÖRDINATE				/	ROAD RESERVE CO-ORDINATES			
LINKERKANT/LEFT HAND SIDE					REGTERKANT/RIGHT HAND SIDE			
	Y	X	WG	17°	Y	X		
L1	-92 391.73	3 381 416.45		R1	-92 387.78	3 381 374.96		
L2	-92 389.55	3 381 415.65		R2	-92 385.58	3 381 374.61		
L3	-92 329.72	3 381 385.64		R3	-92 376.00	3 381 370.64		
L4	-92 304.45	3 381 369.42		R4	-92 329.37	3 381 342.01		
L5	-92 280.59	3 381 351.86		R5	-92 305.81	3 381 325.19		
L6	-92 258.78	3 381 333.47		R6	-92 283.62	3 381 306.23		
L7	-92 227.92	3 381 302.49		R7	-92 262.83	3 381 286.03		
L8	-92 191.37	3 381 257.12		R8	-92 225.63	3 381 241.28		
L9	-92 173.55	3 381 229.30		R9	-92 208.08	3 381 217.77		
L10	-92 149.34	3 381 182.30		R10	-92 194.91	3 381 191.85		
L11	-92 138.94	3 381 156.22		R11	-92 138.56	3 381 012.65		
L12	-92 123.75	3 381 106.46		R12	-92 117.59	3 380 955.65		
L13	-92 104.82	3 381 030.27		R13	-92 105.40	3 380 928.21		
L14	-92 095.91	3 381 002.51		R14	-92 085.35	3 380 893.76		
L15	-92 089.47	3 380 986.76		R15	-92 040.86	3 380 856.64		
L16	-92 077.71	3 380 963.44		R16	-92 006.20	3 380 834.66		
L17	-92 062.10	3 380 936.77		R17	-91 984.76	3 380 824.37		
L18	-92 053.22	3 380 924.10		R18	-91 956.76	3 380 813.04		
L19	-92 046.25	3 380 916.99		R19	-91 929.68	3 380 804.12		
L20	-92 012.46	3 380 886.21		R20	-91 900.99	3 380 799.09		
L21	-91 977.39	3 380 856.91		R21	-91 872.27	3 380 795.37		
L22	-91 963.26	3 380 852.16		R22	-91 813.73	3 380 795.12		
L23	-91 935.71	3 380 844.21		R23	-91 752.24	3 380 797.69		
L24	-91 905.66	3 380 838.24		R24	-91 691.04	3 380 791.21		
L25	-91 864.10	3 380 833.75		R25	-91 641.14	3 380 781.16		
L26	-91 835.21	3 380 833.52		R26	-91 615.33	3 380 777.19		
L27	-91 806.22	3 380 835.26		R27	-91 601.75	3 380 775.10		
L28	-91 777.83	3 380 839.43		R28	-91 564.86	3 380 765.01		
L29	-91 723.31	3 380 845.65		R29	-91 533.81	3 380 753.71		
L30	-91 694.54	3 380 847.04		R30	-91 525.28	3 380 746.83		
L31	-91 680.12	3 380 847.21		R31	-91 481.93	3 380 692.40		
L32	-91 656.80	3 380 847.08		R32	-91 473.56	3 380 664.90		
L33	-91 622.00	3 380 846.88		R33	-91 462.15	3 380 639.62		
L34	-91 592.35	3 380 843.03		R34	-91 450.20	3 380 620.95		
L35	-91 557.89	3 380 816.59		R35	-91 398.77	3 380 567.10		
L36	-91 512.51	3 380 783.94		R36	-91 350.88	3 380 533.10		
L37	-91 479.93	3 380 757.65		R37	-91 124.19	3 380 239.86		
L38	-91 476.21	3 380 754.15		R38	-91 108.08	3 380 214.25		
L39	-91 424.68	3 380 746.46		R39	-91 094.43	3 380 187.90		
L40	-91 425.53	3 380 698.50		R40	-91 082.38	3 380 161.04		
L41	-91 416.10	3 380 676.53		R41	-91 072.31	3 380 133.05		
L42	-91 147.26	3 380 332.27		R42	-91 060.98	3 380 090.71		
L43	-91 114.36	3 380 288.21		R43	-91 020.28	3 379 932.18		
L44	-91 095.85	3 380 261.29		R44	-90 977.22	3 379 725.70		
L45	-91 069.83	3 380 215.78		R45	-90 960.73	3 379 674.19		
L46	-91 048.93	3 380 168.47		R46	-90 951.56	3 379 648.56		
L47	-91 027.15	3 380 098.71		R47	-90 921.74	3 379 572.73		
L48	-90 951.92	3 379 766.58		R48	-90 863.75	3 379 441.78		
L49	-90 931.35	3 379 695.92		R49	-90 685.75	3 379 054.00		
L50	-90 906.68	3 379 625.21		R50	-90 411.61	3 378 456.55		
L51	-90 888.47	3 379 579.61		R51	-90 369.58	3 378 362.51		

Vel	24	Van	40	P633/07
Sheet		of		

PADRESERWE KOÖRDINATE				ROAD RESERVE CO-ORDINATES		
LINKERKANT/LEFT HAND SIDE				REGTERKANT/RIGHT HAND SIDE		
	Y	X	WG 17°		Y	X
L52	-90 847.44	3 379 489.44		R52	-90 358.72	3 378 335.55
L53	-90 816.02	3 379 493.17		R53	-90 348.53	3 378 308.38
L54	-90 806.05	3 379 471.63		R54	-90 329.92	3 378 253.22
L55	-90 823.27	3 379 461.52		R55	-90 309.97	3 378 183.28
L56	-90 830.09	3 379 451.73		R56	-90 302.88	3 378 154.98
L57	-90 751.69	3 379 281.39		R57	-90 290.86	3 378 097.96
L58	-90 676.91	3 379 118.18		R58	-90 285.69	3 378 069.07
L59	-90 456.34	3 378 637.46		R59	-90 277.44	3 378 011.21
L60	-90 339.03	3 378 379.15		R60	-90 271.52	3 377 953.24
L61	-90 302.11	3 378 280.89		R61	-90 267.96	3 377 894.96
L62	-90 284.62	3 378 223.16		R62	-90 267.29	3 377 861.67
L63	-90 277.07	3 378 194.51		R63	-90 264.51	3 377 353.42
L64	-90 263.39	3 378 137.20		R64	-90 262.10	3 376 857.73
L65	-90 260.06	3 378 121.21		R65	-90 260.26	3 376 492.14
L66	-90 254.29	3 378 089.75		R66	-90 261.74	3 376 363.66
L67	-90 250.82	3 378 068.06		R67	-90 264.72	3 376 320.37
L68	-90 249.59	3 378 060.28		R68	-90 278.10	3 376 190.86
L69	-90 241.24	3 378 000.75		R69	-90 301.80	3 376 033.51
L70	-90 233.57	3 377 895.95		R70	-90 366.25	3 375 705.80
L71	-90 232.38	3 377 820.95		R71	-90 492.18	3 375 064.86
L72	-90 231.59	3 377 641.88		R72	-90 493.15	3 375 059.93
L73	-90 229.67	3 377 282.52		R73	-90 507.67	3 374 990.95
L74	-90 224.03	3 376 743.61		R74	-90 512.61	3 374 971.23
L75	-90 222.65	3 376 433.71		R75	-90 530.91	3 374 898.08
L76	-90 225.85	3 376 344.07		R76	-90 538.16	3 374 870.98
L77	-90 233.16	3 376 254.37		R77	-90 545.39	3 374 845.77
L78	-90 248.23	3 376 135.68		R78	-90 576.15	3 374 754.17
L79	-90 258.37	3 376 076.46		R79	-90 605.11	3 374 677.31
L80	-90 326.12	3 375 730.16		R80	-90 789.68	3 374 183.86
L81	-90 312.51	3 375 723.34		R81	-90 855.17	3 374 007.31
L82	-90 299.09	3 375 720.51		R82	-90 872.24	3 373 955.64
L83	-90 307.39	3 375 696.94		R83	-90 887.77	3 373 903.10
L84	-90 332.03	3 375 700.53		R84	-90 894.42	3 373 876.58
L85	-90 336.79	3 375 676.07		R85	-90 903.47	3 373 836.67
L86	-90 319.08	3 375 672.44		R86	-90 910.58	3 373 800.40
L87	-90 373.24	3 375 490.76		R87	-90 925.33	3 373 725.26
L88	-90 455.32	3 375 072.75		R88	-90 938.50	3 373 639.48
L89	-90 456.64	3 375 066.05		R89	-90 945.01	3 373 582.02
L90	-90 475.74	3 374 969.98		R90	-90 950.51	3 373 510.31
L91	-90 479.43	3 374 951.44		R91	-90 953.29	3 373 447.47
L92	-90 485.97	3 374 922.95		R92	-90 973.91	3 372 502.85
L93	-90 492.99	3 374 894.85		R93	-90 978.51	3 372 290.69
L94	-90 508.53	3 374 838.43		R94	-90 984.27	3 372 049.59
L95	-90 516.90	3 374 810.91		R95	-90 986.04	3 372 020.91
L96	-90 540.68	3 374 742.00		R96	-90 991.86	3 371 962.49
L97	-90 633.84	3 374 492.96		R97	-91 000.20	3 371 896.26
L98	-90 830.73	3 373 960.57		R98	-91 030.57	3 371 746.92
L99	-90 852.27	3 373 890.87		R99	-91 032.68	3 371 685.98
L100	-90 874.03	3 373 805.82		R100	-91 032.50	3 371 673.88
L101	-90 895.97	3 373 691.06		R101	-91 030.79	3 371 647.57
L102	-90 907.83	3 373 604.08		R102	-91 026.51	3 371 617.15

Vel	25	Van	40	P633/07
Sheet		of		

PADRESERWE KOÖRDINATE				ROAD RESERVE CO-ORDINATES			
LINKERKANT/LEFT HAND SIDE				REGTERKANT/RIGHT HAND SIDE			
	Y	X	WG 17°		Y	X	
L103	-90 917.10	3 373	488.08	R103	-91 013.66	3 371	560.80
L104	-90 922.45	3 373	266.83	R104	-91 005.21	3 371	534.04
L105	-90 931.92	3 372	837.56	R105	-90 952.60	3 371	410.65
L106	-90 944.21	3 372	289.55	R106	-90 941.53	3 371	383.18
L107	-90 944.07	3 372	202.65	R107	-90 926.52	3 371	340.17
L108	-90 954.87	3 371	983.84	R108	-90 922.41	3 371	328.35
L109	-90 944.13	3 371	925.54	R109	-90 913.67	3 371	298.87
L110	-90 944.14	3 371	910.98	R110	-90 900.01	3 371	241.86
L111	-90 949.75	3 371	893.54	R111	-90 698.23	3 370	215.37
L112	-90 967.65	3 371	837.82	R112	-90 643.49	3 369	929.90
L113	-90 975.39	3 371	813.73	R113	-90 457.54	3 368	701.64
L114	-90 986.44	3 371	763.14	R114	-90 120.85	3 367	781.77
L115	-90 994.16	3 371	704.95	R115	-90 096.04	3 367	716.23
L116	-90 994.44	3 371	671.90	R116	-90 081.78	3 367	682.21
L117	-90 990.81	3 371	647.64	R117	-90 069.89	3 367	655.61
L118	-90 975.27	3 371	589.87	R118	-90 044.48	3 367	603.01
L119	-90 965.43	3 371	562.77	R119	-90 001.43	3 367	525.79
L120	-90 958.65	3 371	549.57	R120	-89 969.25	3 367	475.34
L121	-90 951.01	3 371	538.23	R121	-89 984.99	3 367	463.11
L122	-90 941.81	3 371	525.15	R122	-89 972.89	3 367	442.30
L123	-90 932.03	3 371	511.44	R123	-89 953.86	3 367	454.47
L124	-90 923.99	3 371	454.01	R124	-89 936.15	3 367	429.91
L125	-90 920.83	3 371	439.29	R125	-89 910.92	3 367	396.65
L126	-90 916.89	3 371	426.07	R126	-89 804.46	3 367	254.71
L127	-90 887.82	3 371	343.06	R127	-89 639.26	3 367	034.44
L128	-90 879.34	3 371	314.88	R128	-89 525.00	3 366	881.56
L129	-90 868.64	3 371	272.20	R129	-89 495.96	3 366	835.00
L130	-90 805.15	3 370	956.68	R130	-89 483.48	3 366	808.76
L131	-90 737.38	3 370	612.83	R131	-89 471.25	3 366	776.19
L132	-90 717.13	3 370	494.49	R132	-89 457.02	3 366	723.64
L133	-90 615.28	3 369	975.10	R133	-89 446.36	3 366	547.41
L134	-90 602.96	3 369	902.66	R134	-89 433.48	3 366	468.05
L135	-90 596.90	3 369	865.76	R135	-89 413.70	3 366	431.87
L136	-90 593.79	3 369	845.06	R136	-89 381.71	3 366	388.06
L137	-90 560.48	3 369	621.26	R137	-89 344.60	3 366	348.03
L138	-90 515.21	3 369	336.21	R138	-89 296.27	3 366	300.06
L139	-90 445.07	3 368	861.74	R139	-89 271.95	3 366	268.19
L140	-90 443.32	3 368	852.85	R140	-89 250.74	3 366	233.79
L141	-90 425.91	3 368	765.40	R141	-89 242.81	3 366	207.83
L142	-90 411.65	3 368	708.90	R142	-89 229.65	3 366	140.99
L143	-90 391.58	3 368	641.47	R143	-89 225.12	3 366	113.61
L144	-90 375.72	3 368	595.05	R144	-89 240.01	3 365	925.82
L145	-90 325.33	3 368	457.01	R145	-89 276.54	3 365	695.71
L146	-90 185.78	3 368	073.52	R146	-89 293.29	3 365	634.15
L147	-90 060.70	3 367	730.96	R147	-89 317.80	3 365	586.11
L148	-90 038.03	3 367	677.37	R148	-89 360.00	3 365	502.75
L149	-90 012.88	3 367	625.07	R149	-89 366.14	3 365	475.81
L150	-89 985.15	3 367	574.12	R150	-89 369.22	3 365	381.98
L151	-89 945.35	3 367	508.09	R151	-89 350.83	3 365	319.48
L152	-89 910.48	3 367	529.24	R152	-89 312.99	3 365	243.13
L153	-89 918.87	3 367	513.60	R153	-89 316.90	3 365	223.65

Vel	26	Van	40	P633/07
Sheet		of		

PADRESERWE KOÖRDINATE				/	ROAD RESERVE CO-ORDINATES			
LINKERKANT/LEFT HAND SIDE					REGTERKANT/RIGHT HAND SIDE			
	Y	X	WG	17°	Y	X		
L154	-89 909.06	3 367	500.34	R154	-89 287.17	3 365	210.60	
L155	-89 929.76	3 367	486.23	R155	-89 278.89	3 365	198.49	
L156	-89 910.26	3 367	459.19	R156	-89 260.59	3 365	179.56	
L157	-89 839.44	3 367	364.68	R157	-89 239.70	3 365	162.92	
L158	-89 501.11	3 366	913.18	R158	-89 162.40	3 365	109.82	
L159	-89 478.63	3 366	880.76	R159	-89 142.32	3 365	093.25	
L160	-89 446.94	3 366	820.49	R160	-89 123.81	3 365	074.78	
L161	-89 432.84	3 366	782.10	R161	-89 098.98	3 365	045.86	
L162	-89 422.35	3 366	742.37	R162	-88 980.87	3 364	882.58	
L163	-89 418.31	3 366	715.19	R163	-88 974.34	3 364	814.01	
L164	-89 408.56	3 366	552.32	R164	-88 970.27	3 364	787.60	
L165	-89 389.96	3 366	480.39	R165	-88 964.39	3 364	760.85	
L166	-89 334.40	3 366	395.75	R166	-88 960.38	3 364	745.29	
L167	-89 245.07	3 366	293.04	R167	-88 950.96	3 364	719.86	
L168	-89 221.57	3 366	259.77	R168	-88 932.57	3 364	683.70	
L169	-89 201.57	3 366	223.99	R169	-88 918.65	3 364	660.56	
L170	-89 184.05	3 366	172.41	R170	-88 901.23	3 364	640.23	
L171	-89 175.06	3 366	129.13	R171	-88 882.37	3 364	621.49	
L172	-89 178.02	3 366	108.64	R172	-88 863.17	3 364	604.61	
L173	-89 198.72	3 365	975.32	R173	-88 841.09	3 364	590.85	
L174	-89 223.21	3 365	691.47	R174	-88 794.03	3 364	564.28	
L175	-89 227.65	3 365	639.97	R175	-88 775.67	3 364	548.26	
L176	-89 233.92	3 365	620.46	R176	-88 617.37	3 364	517.78	
L177	-89 239.13	3 365	612.02	R177	-88 564.87	3 364	504.43	
L178	-89 301.13	3 365	511.46	R178	-88 520.41	3 364	489.06	
L179	-89 312.43	3 365	489.56	R179	-88 483.08	3 364	470.26	
L180	-89 320.62	3 365	464.48	R180	-88 473.39	3 364	463.83	
L181	-89 325.20	3 365	438.00	R181	-88 449.34	3 364	447.87	
L182	-89 320.71	3 365	411.24	R182	-88 427.43	3 364	429.86	
L183	-89 320.53	3 365	384.38	R183	-88 407.52	3 364	410.70	
L184	-89 310.78	3 365	331.35	R184	-88 389.43	3 364	390.04	
L185	-89 305.15	3 365	307.64	R185	-88 356.32	3 364	345.91	
L186	-89 301.69	3 365	299.54	R186	-88 153.11	3 364	040.80	
L187	-89 294.19	3 365	282.00	R187	-88 005.46	3 363	818.43	
L188	-89 279.04	3 365	259.27	R188	-87 974.54	3 363	773.09	
L189	-89 262.10	3 365	241.49	R189	-87 930.60	3 363	713.56	
L190	-89 152.15	3 365	157.81	R190	-87 875.80	3 363	648.76	
L191	-89 130.50	3 365	141.75	R191	-87 800.83	3 363	571.31	
L192	-89 125.22	3 365	138.29	R192	-87 687.00	3 363	463.72	
L193	-89 034.54	3 365	097.82	R193	-87 660.21	3 363	438.62	
L194	-88 999.76	3 365	056.27	R194	-87 556.83	3 363	341.88	
L195	-88 993.43	3 365	046.33	R195	-87 473.99	3 363	263.82	
L196	-88 973.60	3 365	010.37	R196	-87 459.27	3 363	245.10	
L197	-88 966.20	3 364	990.28	R197	-87 295.16	3 363	089.15	
L198	-88 956.76	3 364	960.47	R198	-87 261.22	3 363	060.54	
L199	-88 949.70	3 364	929.22	R199	-87 223.65	3 363	027.95	
L200	-88 924.19	3 364	756.15	R200	-86 944.57	3 362	765.00	
L201	-88 919.38	3 364	743.61	R201	-86 895.24	3 362	708.25	
L202	-88 908.64	3 364	721.33	R202	-86 844.05	3 362	637.69	
L203	-88 890.85	3 364	692.51	R203	-86 785.59	3 362	534.23	
L204	-88 877.75	3 364	674.18	R204	-86 748.18	3 362	445.08	

Vel	27	Van	40	P633/07
Sheet		of		

PADRESERWE KOÖRDINATE				ROAD RESERVE CO-ORDINATES		
LINKERKANT/LEFT HAND SIDE				REGTERKANT/RIGHT HAND SIDE		
	Y	X	WG 17°		Y	X
L205	-88 860.95	3 364	652.90	R205	-86 635.67	3 362 039.14
L206	-88 841.42	3 364	634.14	R206	-86 590.37	3 361 871.48
L207	-88 819.19	3 364	617.73	R207	-86 624.13	3 361 490.30
L208	-88 784.38	3 364	600.69	R208	-86 513.40	3 361 565.37
L209	-88 745.81	3 364	587.04	R209	-86 433.60	3 361 331.49
L210	-88 650.33	3 364	564.43	R210	-86 331.12	3 361 109.41
L211	-88 525.97	3 364	534.79	R211	-86 291.48	3 361 035.98
L212	-88 503.68	3 364	524.11	R212	-86 183.46	3 360 857.35
L213	-88 439.21	3 364	493.26	R213	-85 907.15	3 360 405.74
L214	-88 373.24	3 364	432.97	R214	-85 830.32	3 360 279.26
L215	-88 319.51	3 364	361.53	R215	-85 714.27	3 360 088.37
L216	-88 252.85	3 364	259.91	R216	-85 647.42	3 359 943.93
L217	-87 951.89	3 363	808.22	R217	-85 614.45	3 359 825.45
L218	-87 907.90	3 363	748.83	R218	-85 576.62	3 359 570.25
L219	-87 876.12	3 363	709.32	R219	-85 472.83	3 358 823.68
L220	-87 841.93	3 363	669.80	R220	-85 440.86	3 358 429.65
L221	-87 811.80	3 363	637.22	R221	-85 440.89	3 358 429.22
L222	-87 760.34	3 363	585.47	R222	-85 441.29	3 358 424.52
L223	-87 261.27	3 363	115.92	R223	-85 453.06	3 358 282.36
L224	-86 952.50	3 362	827.08	R224	-85 509.21	3 357 910.22
L225	-86 931.25	3 362	806.13	R225	-85 570.90	3 357 504.86
L226	-86 890.94	3 362	762.51	R226	-85 590.56	3 357 485.26
L227	-86 853.36	3 362	716.39	R227	-85 592.27	3 357 472.25
L228	-86 818.72	3 362	669.21	R228	-85 579.99	3 357 444.97
L229	-86 787.13	3 362	618.67	R229	-85 681.24	3 356 777.53
L230	-86 758.83	3 362	566.01	R230	-85 729.20	3 356 461.52
L231	-86 734.03	3 362	513.30	R231	-85 747.54	3 356 341.02
L232	-86 707.37	3 362	443.55	R232	-85 844.56	3 355 702.15
L233	-86 682.48	3 362	357.64	R233	-85 845.13	3 355 702.28
L234	-86 507.08	3 361	709.14	R234	-85 878.06	3 355 480.30
L235	-86 478.69	3 361	683.91	R235	-85 911.84	3 355 296.87
L236	-86 473.62	3 361	666.98	R236	-85 979.28	3 354 761.72
L237	-86 475.52	3 361	606.71	R237	-85 999.21	3 354 517.22
L238	-86 393.39	3 361	344.53	R238	-86 054.80	3 353 646.80
L239	-86 367.43	3 361	276.23	R239	-86 057.32	3 353 606.41
L240	-86 351.37	3 361	240.28	R240	-86 076.39	3 353 303.62
L241	-86 319.56	3 361	171.52	R241	-86 081.95	3 353 245.35
L242	-86 291.09	3 361	115.96	R242	-86 110.07	3 353 056.92
L243	-86 272.59	3 361	081.35	R243	-86 127.83	3 352 973.81
L244	-86 235.64	3 361	015.56	R244	-86 142.45	3 352 915.84
L245	-86 150.63	3 360	877.31	R245	-86 156.09	3 352 867.49
L246	-85 875.86	3 360	426.83	R246	-86 174.19	3 352 872.12
L247	-85 768.26	3 360	318.04	R247	-86 181.13	3 352 848.68
L248	-85 673.72	3 360	094.12	R248	-86 163.20	3 352 843.70
L249	-85 628.71	3 360	004.79	R249	-86 184.89	3 352 776.10
L250	-85 597.50	3 359	917.46	R250	-86 200.26	3 352 733.02
L251	-85 581.45	3 359	856.89	R251	-86 254.51	3 352 591.12
L252	-85 552.46	3 359	715.95	R252	-86 271.08	3 352 540.68
L253	-85 545.55	3 359	626.12	R253	-86 278.69	3 352 514.41
L254	-85 435.79	3 358	835.59	R254	-86 282.18	3 352 501.10
L255	-85 414.26	3 358	681.93	R255	-86 288.54	3 352 474.67

Vel	28	Van	40	P633/07
Sheet		of		

PADRESERWE KOÖRDINATE				ROAD RESERVE CO-ORDINATES			
LINKERKANT/LEFT HAND SIDE				REGTERKANT/RIGHT HAND SIDE			
	Y	X	WG 17°		Y	X	
L256	-85 407.99	3 358	626.10	R256	-86 294.42	3 352	447.83
L257	-85 402.94	3 358	555.50	R257	-86 301.35	3 352	407.95
L258	-85 401.31	3 358	498.03	R258	-86 304.07	3 352	387.24
L259	-85 402.49	3 358	429.69	R259	-86 308.15	3 352	353.75
L260	-85 404.90	3 358	376.08	R260	-86 310.16	3 352	326.79
L261	-85 409.67	3 358	322.32	R261	-86 311.69	3 352	294.35
L262	-85 416.52	3 358	269.20	R262	-86 312.38	3 352	253.38
L263	-85 467.00	3 357	933.20	R263	-86 299.13	3 351	622.16
L264	-85 533.78	3 357	496.20	R264	-86 298.23	3 351	536.33
L265	-85 527.56	3 357	475.07	R265	-86 266.82	3 349	870.17
L266	-85 529.51	3 357	462.78	R266	-86 257.09	3 349	357.41
L267	-85 542.13	3 357	439.64	R267	-86 236.59	3 348	276.28
L268	-85 624.62	3 356	897.80	R268	-86 227.86	3 347	803.78
L269	-85 709.83	3 356	336.29	R269	-86 210.73	3 346	911.55
L270	-85 840.95	3 355	472.69	R270	-86 222.19	3 346	899.29
L271	-85 924.54	3 354	908.48	R271	-86 252.78	3 346	898.48
L272	-85 936.24	3 354	806.26	R272	-86 255.15	3 346	869.99
L273	-85 961.31	3 354	516.97	R273	-86 209.92	3 346	871.72
L274	-86 019.12	3 353	612.40	R274	-86 203.84	3 346	554.22
L275	-86 020.68	3 353	588.84	R275	-86 202.49	3 346	469.14
L276	-86 021.44	3 353	577.34	R276	-86 203.52	3 346	401.13
L277	-86 031.90	3 353	410.45	R277	-86 206.46	3 346	346.66
L278	-86 064.10	3 353	097.69	R278	-86 210.39	3 346	305.94
L279	-86 070.67	3 353	061.74	R279	-86 217.87	3 346	251.70
L280	-86 081.85	3 353	005.51	R280	-86 290.50	3 345	895.47
L281	-86 100.72	3 352	925.55	R281	-86 338.04	3 345	670.64
L282	-86 107.73	3 352	899.09	R282	-86 350.37	3 345	617.53
L283	-86 119.26	3 352	857.71	R283	-86 357.43	3 345	590.76
L284	-86 101.32	3 352	853.01	R284	-86 365.06	3 345	564.17
L285	-86 107.88	3 352	831.30	R285	-86 382.62	3 345	514.31
L286	-86 117.02	3 352	831.87	R286	-86 395.88	3 345	482.29
L287	-86 126.42	3 352	834.40	R287	-86 418.51	3 345	436.67
L288	-86 143.24	3 352	780.70	R288	-86 438.16	3 345	401.13
L289	-86 168.04	3 352	710.82	R289	-86 452.39	3 345	377.81
L290	-86 224.87	3 352	561.32	R290	-86 466.95	3 345	354.79
L291	-86 239.70	3 352	514.52	R291	-86 482.18	3 345	332.55
L292	-86 245.37	3 352	493.69	R292	-86 514.96	3 345	289.57
L293	-86 253.79	3 352	458.10	R293	-86 559.47	3 345	238.38
L294	-86 259.38	3 352	431.13	R294	-86 578.44	3 345	218.74
L295	-86 263.85	3 352	404.17	R295	-86 704.80	3 345	114.49
L296	-86 269.35	3 352	363.37	R296	-86 841.01	3 345	009.88
L297	-86 271.78	3 352	336.25	R297	-87 126.00	3 344	791.01
L298	-86 273.42	3 352	307.20	R298	-87 136.52	3 344	782.21
L299	-86 272.85	3 352	169.69	R299	-87 156.99	3 344	764.11
L300	-86 247.62	3 350	862.38	R300	-87 177.26	3 344	745.68
L301	-86 230.29	3 349	937.37	R301	-87 197.37	3 344	726.68
L302	-86 219.31	3 349	356.34	R302	-87 216.74	3 344	707.51
L303	-86 210.79	3 348	913.43	R303	-87 235.42	3 344	687.68
L304	-86 201.26	3 348	406.68	R304	-87 253.74	3 344	667.21
L305	-86 199.27	3 348	292.18	R305	-87 288.59	3 344	624.85
L306	-86 172.70	3 346	902.45	R306	-87 316.87	3 344	584.88

Vel	29	Van	40	P633/07
Sheet		of		

PADRESERWE KOÖRDINATE				ROAD RESERVE CO-ORDINATES			
LINKERKANT/LEFT HAND SIDE				REGTERKANT/RIGHT HAND SIDE			
	Y	X	WG 17°		Y	X	
L307	-86 127.03	3 346	903.47	R307	-87 456.52	3 344	368.92
L308	-86 131.05	3 346	878.89	R308	-87 643.39	3 344	076.88
L309	-86 172.18	3 346	878.02	R309	-87 662.74	3 344	052.35
L310	-86 164.86	3 346	492.69	R310	-87 681.58	3 344	032.21
L311	-86 164.78	3 346	465.02	R311	-87 701.33	3 344	013.45
L312	-86 164.99	3 346	437.99	R312	-87 721.81	3 343	995.63
L313	-86 165.70	3 346	410.34	R313	-87 743.50	3 343	978.93
L314	-86 168.40	3 346	355.80	R314	-87 766.61	3 343	963.42
L315	-86 170.61	3 346	324.81	R315	-87 789.63	3 343	949.40
L316	-86 176.10	3 346	272.84	R316	-87 813.78	3 343	936.77
L317	-86 179.71	3 346	245.74	R317	-87 838.50	3 343	925.35
L318	-86 183.74	3 346	218.52	R318	-87 864.20	3 343	915.42
L319	-86 188.41	3 346	191.54	R319	-87 890.44	3 343	907.45
L320	-86 196.17	3 346	150.76	R320	-87 917.19	3 343	901.39
L321	-86 297.18	3 345	665.76	R321	-87 944.15	3 343	896.49
L322	-86 300.36	3 345	650.90	R322	-87 971.25	3 343	892.45
L323	-86 306.98	3 345	623.62	R323	-87 998.65	3 343	890.65
L324	-86 314.07	3 345	597.19	R324	-88 026.11	3 343	890.35
L325	-86 326.10	3 345	557.90	R325	-88 053.44	3 343	891.62
L326	-86 335.07	3 345	532.06	R326	-88 080.85	3 343	894.79
L327	-86 345.34	3 345	505.22	R327	-88 107.61	3 343	899.46
L328	-86 364.59	3 345	458.84	R328	-88 134.01	3 343	905.25
L329	-86 370.47	3 345	446.26	R329	-88 160.71	3 343	912.58
L330	-86 376.43	3 345	434.14	R330	-88 253.30	3 343	939.80
L331	-86 389.17	3 345	409.72	R331	-88 277.78	3 343	945.61
L332	-86 402.37	3 345	385.85	R332	-88 331.39	3 343	957.60
L333	-86 409.21	3 345	374.05	R333	-88 382.53	3 343	964.68
L334	-86 423.58	3 345	350.86	R334	-88 412.96	3 343	968.23
L335	-86 438.54	3 345	327.98	R335	-88 440.48	3 343	969.40
L336	-86 460.14	3 345	297.11	R336	-88 470.61	3 343	969.33
L337	-86 476.53	3 345	275.37	R337	-88 481.22	3 343	968.46
L338	-86 493.66	3 345	254.08	R338	-88 535.15	3 343	960.54
L339	-86 511.28	3 345	233.02	R339	-88 577.79	3 343	950.53
L340	-86 529.51	3 345	212.72	R340	-88 617.11	3 343	939.89
L341	-86 538.95	3 345	202.67	R341	-88 643.07	3 343	932.12
L342	-86 550.91	3 345	190.75	R342	-88 669.00	3 343	922.80
L343	-86 573.21	3 345	169.83	R343	-88 799.59	3 343	864.58
L344	-86 614.18	3 345	134.60	R344	-88 964.49	3 343	791.73
L345	-86 624.61	3 345	126.02	R345	-89 123.17	3 343	713.00
L346	-86 799.22	3 344	991.97	R346	-89 378.52	3 343	582.76
L347	-87 082.85	3 344	773.87	R347	-89 434.45	3 343	548.51
L348	-87 124.00	3 344	739.72	R348	-89 530.82	3 343	468.47
L349	-87 153.63	3 344	712.55	R349	-89 591.93	3 343	387.11
L350	-87 182.05	3 344	684.40	R350	-89 613.31	3 343	355.05
L351	-87 209.66	3 344	655.13	R351	-89 695.10	3 343	194.96
L352	-87 218.18	3 344	645.06	R352	-89 721.22	3 343	178.72
L353	-87 234.50	3 344	624.16	R353	-89 734.68	3 343	145.38
L354	-87 427.45	3 344	328.46	R354	-89 719.50	3 343	147.80
L355	-87 430.89	3 344	323.38	R355	-89 729.09	3 343	010.64
L356	-87 433.96	3 344	318.86	R356	-89 719.48	3 342	916.23
L357	-87 440.35	3 344	304.63	R357	-89 540.85	3 341	963.75

Vel	30	Van	40	P633/07
Sheet		of		

PADRESERWE KOÖRDINATE				ROAD RESERVE CO-ORDINATES			
LINKERKANT/LEFT HAND SIDE				REGTERKANT/RIGHT HAND SIDE			
	Y	X	WG 17°		Y	X	
L358	-87 494.37	3 344	222.93	R358	-89 408.65	3 341	261.90
L359	-87 511.06	3 344	197.71	R359	-89 349.93	3 340	845.35
L360	-87 595.82	3 344	069.92	R360	-89 352.75	3 340	790.77
L361	-87 620.51	3 344	037.40	R361	-89 368.57	3 340	685.00
L362	-87 638.36	3 344	017.71	R362	-89 378.06	3 340	645.87
L363	-87 658.67	3 343	999.26	R363	-89 384.98	3 340	619.43
L364	-87 680.51	3 343	980.52	R364	-89 411.81	3 340	542.49
L365	-87 699.81	3 343	964.32	R365	-89 420.84	3 340	519.33
L366	-87 720.24	3 343	947.69	R366	-89 429.76	3 340	496.50
L367	-87 742.53	3 343	932.76	R367	-89 427.64	3 340	429.72
L368	-87 765.97	3 343	919.47	R368	-89 435.82	3 340	402.31
L369	-87 801.43	3 343	900.14	R369	-89 475.81	3 340	331.69
L370	-87 825.68	3 343	887.77	R370	-89 471.79	3 340	313.61
L371	-87 850.18	3 343	877.86	R371	-89 494.79	3 340	262.64
L372	-87 876.50	3 343	869.73	R372	-89 510.69	3 340	241.15
L373	-87 902.39	3 343	862.99	R373	-89 570.52	3 340	106.59
L374	-87 929.11	3 343	858.07	R374	-89 584.19	3 340	033.13
L375	-87 979.70	3 343	853.85	R375	-89 591.26	3 339	974.64
L376	-88 007.10	3 343	852.94	R376	-89 595.38	3 339	912.21
L377	-88 034.16	3 343	853.71	R377	-89 601.84	3 339	779.69
L378	-88 061.25	3 343	855.01	R378	-89 608.27	3 339	638.15
L379	-88 079.01	3 343	856.39	R379	-89 642.43	3 338	920.65
L380	-88 115.36	3 343	862.25	R380	-89 648.74	3 338	794.78
L381	-88 141.66	3 343	867.49	R381	-89 653.14	3 338	746.52
L382	-88 168.11	3 343	874.05	R382	-89 656.13	3 338	626.09
L383	-88 194.18	3 343	881.53	R383	-89 663.56	3 338	438.98
L384	-88 272.20	3 343	904.95	R384	-89 671.42	3 338	206.07
L385	-88 337.03	3 343	921.66	R385	-89 628.88	3 338	091.25
L386	-88 369.88	3 343	926.32	R386	-89 589.60	3 337	919.48
L387	-88 410.15	3 343	927.28	R387	-89 584.47	3 337	892.34
L388	-88 477.60	3 343	924.29	R388	-89 583.06	3 337	878.92
L389	-88 531.65	3 343	919.20	R389	-89 581.23	3 337	851.68
L390	-88 571.22	3 343	913.03	R390	-89 580.57	3 337	812.52
L391	-88 606.55	3 343	903.52	R391	-89 580.91	3 337	798.86
L392	-88 632.81	3 343	895.03	R392	-89 584.52	3 337	772.02
L393	-88 657.98	3 343	885.14	R393	-89 586.96	3 337	759.00
L394	-88 683.29	3 343	874.65	R394	-89 608.67	3 337	697.13
L395	-88 944.23	3 343	749.57	R395	-89 653.13	3 337	654.78
L396	-89 102.70	3 343	674.37	R396	-89 650.68	3 337	632.75
L397	-89 241.22	3 343	608.52	R397	-89 677.73	3 337	580.35
L398	-89 351.80	3 343	554.87	R398	-89 682.34	3 337	572.66
L399	-89 373.96	3 343	541.85	R399	-89 328.64	3 336	601.35
L400	-89 398.54	3 343	527.03	R400	-89 328.60	3 336	596.43
L401	-89 456.70	3 343	484.06	R401	-89 344.47	3 336	599.44
L402	-89 482.69	3 343	462.96	R402	-89 351.99	3 336	583.41
L403	-89 501.30	3 343	443.12	R403	-89 430.32	3 336	292.17
L404	-89 560.75	3 343	369.25	R404	-89 455.38	3 336	185.93
L405	-89 583.05	3 343	334.70	R405	-89 461.15	3 336	160.54
L406	-89 602.95	3 343	298.67	R406	-89 465.64	3 336	140.84
L407	-89 614.90	3 343	273.94	R407	-89 533.59	3 335	842.60
L408	-89 634.15	3 343	224.38	R408	-89 558.22	3 335	735.84

Vel	31	Van	40	P633/07
Sheet		of		

PADRESERWE KOÖRDINATE				ROAD RESERVE CO-ORDINATES			
LINKERKANT/LEFT HAND SIDE				REGTERKANT/RIGHT HAND SIDE			
	Y	X	WG 17°		Y	X	
L409	-89 647.21	3 343	182.06	R409	-89 575.40	3 335	671.26
L410	-89 615.50	3 343	174.20	R410	-89 604.51	3 335	520.38
L411	-89 624.78	3 343	151.56	R411	-89 610.32	3 335	466.12
L412	-89 652.98	3 343	158.15	R412	-89 613.48	3 335	424.87
L413	-89 658.42	3 343	130.01	R413	-89 608.88	3 335	344.63
L414	-89 663.96	3 343	089.50	R414	-89 599.58	3 335	262.92
L415	-89 665.62	3 343	062.61	R415	-89 588.09	3 335	217.44
L416	-89 666.34	3 343	035.01	R416	-89 565.74	3 335	138.95
L417	-89 665.90	3 343	007.43	R417	-89 545.17	3 335	091.91
L418	-89 664.32	3 342	980.28	R418	-89 521.75	3 335	042.37
L419	-89 656.37	3 342	923.64	R419	-89 440.69	3 334	884.29
L420	-89 571.77	3 342	472.29	R420	-89 371.54	3 334	799.20
L421	-89 486.43	3 342	019.10	R421	-89 343.87	3 334	754.17
L422	-89 424.82	3 341	690.59	R422	-89 317.28	3 334	707.56
L423	-89 416.41	3 341	668.71	R423	-89 293.25	3 334	655.01
L424	-89 420.01	3 341	665.00	R424	-89 164.61	3 334	402.31
L425	-89 340.96	3 341	244.21	R425	-89 132.27	3 334	331.98
L426	-89 292.89	3 340	975.56	R426	-89 091.47	3 334	243.26
L427	-89 288.98	3 340	934.41	R427	-89 085.41	3 334	216.90
L428	-89 287.29	3 340	908.05	R428	-89 022.40	3 334	071.19
L429	-89 286.49	3 340	878.55	R429	-88 919.81	3 333	870.90
L430	-89 286.56	3 340	850.24	R430	-88 894.01	3 333	822.61
L431	-89 287.53	3 340	823.75	R431	-88 878.22	3 333	794.19
L432	-89 290.02	3 340	782.60	R432	-88 798.00	3 333	658.36
L433	-89 293.00	3 340	755.37	R433	-88 720.38	3 333	539.47
L434	-89 296.68	3 340	727.82	R434	-88 676.82	3 333	476.45
L435	-89 300.83	3 340	701.00	R435	-88 626.27	3 333	404.52
L436	-89 318.94	3 340	593.23	R436	-88 566.80	3 333	325.79
L437	-89 323.67	3 340	572.27	R437	-88 526.02	3 333	274.40
L438	-89 364.89	3 340	482.32	R438	-88 484.28	3 333	223.77
L439	-89 384.99	3 340	438.75	R439	-88 455.80	3 333	190.36
L440	-89 410.94	3 340	373.61	R440	-88 427.21	3 333	157.46
L441	-89 455.72	3 340	258.69	R441	-88 278.29	3 332	985.62
L442	-89 462.75	3 340	250.41	R442	-88 261.16	3 332	964.32
L443	-89 475.14	3 340	228.92	R443	-88 244.69	3 332	943.23
L444	-89 474.97	3 340	205.33	R444	-88 172.77	3 332	842.35
L445	-89 494.05	3 340	140.31	R445	-88 142.96	3 332	796.25
L446	-89 500.64	3 340	113.70	R446	-88 124.45	3 332	766.57
L447	-89 506.91	3 340	086.96	R447	-88 083.12	3 332	696.11
L448	-89 512.39	3 340	060.16	R448	-88 069.91	3 332	672.35
L449	-89 517.27	3 340	033.40	R449	-88 044.54	3 332	624.13
L450	-89 523.66	3 339	993.92	R450	-88 032.42	3 332	599.72
L451	-89 526.48	3 339	970.69	R451	-88 020.48	3 332	574.93
L452	-89 531.47	3 339	916.08	R452	-87 997.80	3 332	525.29
L453	-89 534.40	3 339	874.84	R453	-87 986.77	3 332	500.29
L454	-89 545.91	3 339	628.45	R454	-87 976.21	3 332	475.22
L455	-89 568.37	3 339	163.14	R455	-87 965.95	3 332	449.99
L456	-89 579.13	3 338	937.96	R456	-87 955.97	3 332	424.55
L457	-89 581.76	3 338	809.98	R457	-87 931.32	3 332	357.98
L458	-89 582.57	3 338	662.88	R458	-87 910.43	3 332	292.89
L459	-89 582.59	3 338	637.20	R459	-87 902.31	3 332	266.67

Vel	32	Van	40	P633/07
Sheet		of		

PADRESERWE KOÖRDINATE				/	ROAD RESERVE CO-ORDINATES			
LINKERKANT/LEFT HAND SIDE					REGTERKANT/RIGHT HAND SIDE			
	Y	X	WG	17°	Y	X		
L460	-89 598.94	3 338	522.77	R460	-87 749.54	3 331	740.00	
L461	-89 606.21	3 338	437.68	R461	-87 777.30	3 331	731.89	
L462	-89 602.78	3 338	433.07	R462	-87 770.37	3 331	708.47	
L463	-89 610.26	3 338	325.08	R463	-87 742.55	3 331	716.31	
L464	-89 609.29	3 338	284.29	R464	-87 609.10	3 331	258.69	
L465	-89 607.01	3 338	229.26	R465	-87 481.00	3 330	818.75	
L466	-89 605.83	3 338	194.95	R466	-87 229.30	3 329	958.91	
L467	-89 602.42	3 338	154.37	R467	-87 184.35	3 329	806.34	
L468	-89 595.15	3 338	114.15	R468	-87 167.47	3 329	745.88	
L469	-89 585.48	3 338	074.96	R469	-87 070.18	3 329	408.52	
L470	-89 564.62	3 337	997.84	R470	-86 995.95	3 329	130.13	
L471	-89 556.45	3 337	972.88	R471	-86 987.27	3 329	076.63	
L472	-89 549.36	3 337	961.28	R472	-86 963.06	3 328	966.21	
L473	-89 534.63	3 337	938.15	R473	-86 811.48	3 328	109.38	
L474	-89 528.83	3 337	865.59	R474	-86 782.02	3 327	939.19	
L475	-89 533.05	3 337	837.41	R475	-86 732.37	3 327	808.68	
L476	-89 540.80	3 337	801.65	R476	-86 678.57	3 327	501.07	
L477	-89 560.80	3 337	722.79	R477	-86 676.44	3 327	345.19	
L478	-89 574.12	3 337	684.13	R478	-86 643.35	3 327	229.34	
L479	-89 592.20	3 337	646.37	R479	-86 445.96	3 326	694.22	
L480	-89 605.86	3 337	622.58	R480	-86 324.54	3 326	382.85	
L481	-89 653.00	3 337	550.33	R481	-86 368.69	3 326	364.72	
L482	-89 297.70	3 336	596.72	R482	-86 360.14	3 326	342.30	
L483	-89 299.68	3 336	582.48	R483	-86 315.71	3 326	360.07	
L484	-89 345.22	3 336	378.03	R484	-86 277.74	3 326	258.33	
L485	-89 363.95	3 336	265.31	R485	-86 137.67	3 325	902.44	
L486	-89 391.85	3 336	181.28	R486	-85 997.09	3 325	515.40	
L487	-89 403.93	3 336	126.94	R487	-85 863.71	3 325	163.31	
L488	-89 439.42	3 335	969.49	R488	-85 837.44	3 325	095.06	
L489	-89 461.02	3 335	887.50	R489	-85 783.65	3 324	949.81	
L490	-89 482.65	3 335	782.04	R490	-85 730.00	3 324	742.28	
L491	-89 495.28	3 335	712.55	R491	-85 724.18	3 324	703.73	
L492	-89 536.76	3 335	549.11	R492	-85 716.36	3 324	652.40	
L493	-89 548.90	3 335	434.41	R493	-85 706.26	3 324	531.54	
L494	-89 546.20	3 335	348.15	R494	-85 705.85	3 324	440.50	
L495	-89 542.26	3 335	312.08	R495	-85 717.81	3 324	430.03	
L496	-89 537.89	3 335	284.98	R496	-85 715.38	3 324	404.22	
L497	-89 532.64	3 335	258.22	R497	-85 708.36	3 324	367.76	
L498	-89 529.97	3 335	245.86	R498	-85 716.38	3 324	176.82	
L499	-89 519.77	3 335	207.86	R499	-85 718.79	3 324	152.58	
L500	-89 511.84	3 335	181.68	R500	-85 720.77	3 324	052.17	
L501	-89 507.42	3 335	168.56	R501	-85 719.48	3 324	012.50	
L502	-89 487.29	3 335	115.90	R502	-85 714.43	3 323	950.51	
L503	-89 481.46	3 335	102.92	R503	-85 697.88	3 323	895.20	
L504	-89 470.31	3 335	079.66	R504	-85 646.95	3 323	752.31	
L505	-89 318.93	3 334	786.04	R505	-85 612.04	3 323	665.20	
L506	-89 108.70	3 334	381.45	R506	-85 575.15	3 323	609.90	
L507	-89 058.12	3 334	291.53	R507	-85 493.35	3 323	490.81	
L508	-89 000.39	3 334	166.58	R508	-85 373.74	3 323	336.89	
L509	-88 953.81	3 334	076.26	R509	-85 347.69	3 323	303.05	
L510	-88 930.42	3 334	037.73	R510	-85 211.50	3 323	138.07	

Vel	33	Van	40	P633/07
Sheet		of		

PADRESERWE KOÖRDINATE				/	ROAD RESERVE CO-ORDINATES			
LINKERKANT/LEFT HAND SIDE					REGTERKANT/RIGHT HAND SIDE			
	Y	X	WG	17°		Y	X	
L511	-88 911.57	3 333	986.23	R511	-85 170.33	3 323	090.88	
L512	-88 766.41	3 333	728.68	R512	-85 140.02	3 323	050.23	
L513	-88 725.91	3 333	664.30	R513	-85 118.25	3 323	026.14	
L514	-88 685.23	3 333	601.34	R514	-85 036.43	3 322	898.96	
L515	-88 666.66	3 333	573.94	R515	-85 000.24	3 322	805.23	
L516	-88 608.38	3 333	494.57	R516	-84 937.52	3 322	620.89	
L517	-88 588.83	3 333	466.43	R517	-84 931.87	3 322	565.76	
L518	-88 578.22	3 333	446.97	R518	-84 936.06	3 322	465.76	
L519	-88 460.43	3 333	294.28	R519	-84 947.15	3 322	401.52	
L520	-88 339.32	3 333	153.89	R520	-84 977.62	3 322	279.15	
L521	-88 275.71	3 333	081.94	R521	-84 992.78	3 322	218.27	
L522	-88 240.56	3 333	040.08	R522	-85 004.95	3 322	165.24	
L523	-88 206.45	3 332	997.28	R523	-85 021.78	3 322	032.05	
L524	-88 173.28	3 332	953.42	R524	-85 008.57	3 321	907.00	
L525	-88 126.07	3 332	887.04	R525	-84 964.40	3 321	770.09	
L526	-88 095.95	3 332	841.19	R526	-84 953.92	3 321	728.24	
L527	-88 056.66	3 332	777.76	R527	-84 937.94	3 321	664.40	
L528	-88 029.32	3 332	730.51	R528	-84 885.17	3 321	476.12	
L529	-88 016.10	3 332	706.66	R529	-84 850.32	3 321	360.39	
L530	-87 990.50	3 332	658.40	R530	-84 772.82	3 321	146.43	
L531	-87 966.28	3 332	609.50	R531	-84 701.28	3 321	023.49	
L532	-87 954.40	3 332	584.42	R532	-84 656.65	3 320	885.10	
L533	-87 932.19	3 332	534.68	R533	-84 620.62	3 320	742.76	
L534	-87 921.44	3 332	509.59	R534	-84 582.87	3 320	641.44	
L535	-87 910.97	3 332	484.20	R535	-84 590.91	3 320	555.72	
L536	-87 900.85	3 332	458.79	R536	-84 559.71	3 320	365.34	
L537	-87 881.70	3 332	407.71	R537	-84 541.70	3 320	142.04	
L538	-87 872.72	3 332	381.93	R538	-84 517.93	3 319	813.70	
L539	-87 848.52	3 332	307.26	R539	-84 487.26	3 319	771.58	
L540	-87 755.23	3 331	988.37	R540	-84 489.79	3 319	735.31	
L541	-87 690.44	3 331	766.27	R541	-84 487.89	3 319	685.01	
L542	-87 659.03	3 331	763.21	R542	-84 504.31	3 319	512.57	
L543	-87 651.61	3 331	749.24	R543	-84 529.28	3 319	486.09	
L544	-87 677.83	3 331	723.25	R544	-84 545.66	3 319	417.46	
L545	-87 547.98	3 331	276.08	R545	-84 573.95	3 319	342.65	
L546	-87 309.36	3 330	456.23	R546	-84 626.92	3 319	259.71	
L547	-87 305.93	3 330	442.85	R547	-84 658.12	3 319	216.07	
L548	-87 303.30	3 330	429.56	R548	-84 712.55	3 319	150.81	
L549	-87 301.19	3 330	416.69	R549	-84 855.12	3 319	035.74	
L550	-87 297.61	3 330	402.41	R550	-85 839.66	3 318	411.91	
L551	-87 293.26	3 330	389.50	R551	-85 860.06	3 318	422.56	
L552	-87 283.02	3 330	364.37	R552	-85 885.01	3 318	382.88	
L553	-87 278.65	3 330	351.40	R553	-86 702.10	3 317	864.70	
L554	-87 189.14	3 330	042.13	R554	-86 833.29	3 317	781.45	
L555	-87 163.66	3 329	955.70	R555	-86 935.66	3 317	707.50	
L556	-87 039.05	3 329	551.31	R556	-87 045.88	3 317	598.91	
L557	-87 030.39	3 329	525.70	R557	-87 078.56	3 317	560.54	
L558	-87 027.12	3 329	512.53	R558	-87 152.51	3 317	452.36	
L559	-87 017.74	3 329	458.33	R559	-87 257.82	3 317	193.51	
L560	-87 011.57	3 329	432.20	R560	-87 279.21	3 317	046.66	
L561	-86 993.05	3 329	366.61	R561	-87 279.45	3 317	025.34	

Vel 34 Van 40
Sheet of P633/07

PADRESERWE KOÖRDINATE				/	ROAD RESERVE CO-ORDINATES			
LINKERKANT/LEFT HAND SIDE					REGTERKANT/RIGHT HAND SIDE			
	Y	X	WG	17°	Y	X		
L562	-86 979.09	3 329 314.10		R562	-87 279.75	3 316 997.40		
L563	-86 963.55	3 329 261.97		R563	-87 281.68	3 316 926.33		
L564	-86 956.65	3 329 235.61		R564	-87 273.07	3 316 839.93		
L565	-86 946.88	3 329 195.91		R565	-87 257.04	3 316 759.06		
L566	-86 911.35	3 329 028.17		R566	-87 215.40	3 316 624.48		
L567	-86 884.73	3 328 894.77		R567	-86 961.40	3 315 978.92		
L568	-86 839.96	3 328 667.57		R568	-86 879.98	3 315 725.91		
L569	-86 834.78	3 328 630.95		R569	-86 846.30	3 315 570.89		
L570	-86 828.73	3 328 568.11		R570	-86 806.26	3 315 398.67		
L571	-86 826.07	3 328 554.69		R571	-86 747.89	3 315 102.96		
L572	-86 820.13	3 328 528.21		R572	-86 701.59	3 314 876.88		
L573	-86 775.20	3 328 271.93		R573	-86 659.62	3 314 716.03		
L574	-86 768.34	3 328 231.59		R574	-86 599.95	3 314 533.44		
L575	-86 746.50	3 328 125.25		R575	-86 556.31	3 314 419.13		
L576	-86 739.57	3 328 084.79		R576	-86 168.50	3 313 464.76		
L577	-86 732.12	3 328 026.11		R577	-86 002.58	3 313 056.29		
L578	-86 653.25	3 327 576.04		R578	-85 983.79	3 313 003.96		
L579	-86 634.05	3 327 467.99		R579	-85 956.09	3 312 941.88		
L580	-86 626.14	3 327 428.73		R580	-85 903.76	3 312 813.25		
L581	-86 610.99	3 327 362.67		R581	-85 867.55	3 312 727.06		
L582	-86 597.11	3 327 309.80		R582	-85 823.30	3 312 627.16		
L583	-86 578.32	3 327 244.46		R583	-85 788.65	3 312 552.74		
L584	-86 570.63	3 327 219.28		R584	-85 739.88	3 312 454.21		
L585	-86 561.61	3 327 192.76		R585	-85 697.13	3 312 372.74		
L586	-86 541.37	3 327 136.11		R586	-85 652.60	3 312 291.25		
L587	-86 531.98	3 327 110.39		R587	-85 586.82	3 312 178.42		
L588	-86 272.46	3 326 423.96		R588	-85 529.75	3 312 084.75		
L589	-86 262.37	3 326 414.94		R589	-85 395.28	3 311 880.78		
L590	-86 233.81	3 326 422.14		R590	-85 379.34	3 311 860.09		
L591	-86 225.75	3 326 392.40		R591	-84 807.81	3 311 023.37		
L592	-86 251.99	3 326 381.43		R592	-84 760.20	3 310 946.96		
L593	-86 254.24	3 326 375.76		R593	-84 740.93	3 310 915.78		
L594	-86 066.08	3 325 877.80		R594	-84 690.73	3 310 818.90		
L595	-85 819.40	3 325 225.83		R595	-84 675.17	3 310 783.43		
L596	-85 809.03	3 325 200.66		R596	-84 661.83	3 310 752.16		
L597	-85 786.95	3 325 152.02		R597	-84 653.05	3 310 731.57		
L598	-85 778.67	3 325 128.02		R598	-84 621.54	3 310 642.30		
L599	-85 770.50	3 325 099.63		R599	-84 582.69	3 310 497.42		
L600	-85 766.32	3 325 086.94		R600	-84 518.12	3 310 289.41		
L601	-85 757.10	3 325 061.02		R601	-84 546.10	3 310 264.57		
L602	-85 733.37	3 324 997.23		R602	-84 477.64	3 309 797.56		
L603	-85 723.34	3 324 969.04		R603	-84 417.71	3 309 385.91		
L604	-85 671.47	3 324 779.33		R604	-84 443.13	3 309 301.93		
L605	-85 660.24	3 324 713.38		R605	-84 400.47	3 309 177.15		
L606	-85 642.74	3 324 545.44		R606	-84 378.80	3 309 126.29		
L607	-85 642.46	3 324 447.90		R607	-84 353.45	3 309 033.13		
L608	-85 648.41	3 324 307.72		R608	-84 365.15	3 308 802.84		
L609	-85 656.90	3 324 102.67		R609	-84 367.28	3 308 792.59		
L610	-85 655.54	3 324 018.38		R610	-84 372.80	3 308 771.59		
L611	-85 645.20	3 323 936.27		R611	-84 377.30	3 308 761.05		
L612	-85 625.61	3 323 856.09		R612	-84 383.71	3 308 750.73		
					Vel 35	Van 40	P633/07	
					Sheet	of		

PADRESERWE KOÖRDINATE				/	ROAD RESERVE CO-ORDINATES			
LINKERKANT/LEFT HAND SIDE					REGTERKANT/RIGHT HAND SIDE			
	Y	X	WG	17°	Y	X		
L613	-85 595.21	3 323	773.54	R613	-84 438.92	3 308	681.92	
L614	-85 557.08	3 323	698.29	R614	-84 710.47	3 308	032.70	
L615	-85 507.17	3 323	622.93	R615	-84 849.79	3 307	698.89	
L616	-85 213.54	3 323	225.44	R616	-84 877.02	3 307	636.84	
L617	-85 159.84	3 323	149.43	R617	-84 901.28	3 307	575.60	
L618	-85 130.07	3 323	113.14	R618	-84 930.69	3 307	503.97	
L619	-85 065.37	3 323	030.34	R619	-84 958.01	3 307	426.42	
L620	-85 006.17	3 322	943.15	R620	-84 981.48	3 307	321.49	
L621	-84 976.96	3 322	900.11	R621	-84 990.41	3 307	230.84	
L622	-84 938.02	3 322	818.86	R622	-84 992.78	3 307	132.43	
L623	-84 909.28	3 322	739.68	R623	-84 987.10	3 307	055.95	
L624	-84 885.51	3 322	647.96	R624	-84 975.56	3 306	981.15	
L625	-84 877.20	3 322	565.48	R625	-84 958.40	3 306	907.03	
L626	-84 876.03	3 322	522.71	R626	-84 933.73	3 306	822.04	
L627	-84 875.72	3 322	503.99	R627	-84 923.11	3 306	767.19	
L628	-84 874.75	3 322	476.44	R628	-84 849.20	3 306	528.82	
L629	-84 883.86	3 322	389.24	R629	-84 680.57	3 305	944.98	
L630	-84 899.38	3 322	323.32	R630	-84 596.14	3 305	646.69	
L631	-84 924.49	3 322	231.71	R631	-84 529.76	3 305	418.00	
L632	-84 946.89	3 322	126.32	R632	-84 336.08	3 304	748.12	
L633	-84 953.73	3 322	034.33	R633	-84 262.33	3 304	546.38	
L634	-84 950.52	3 321	939.38	R634	-84 125.27	3 304	369.39	
L635	-84 929.90	3 321	839.84	R635	-82 513.88	3 302	728.28	
L636	-84 906.42	3 321	760.96	R636	-82 351.07	3 302	467.83	
L637	-84 850.44	3 321	601.45	R637	-82 291.76	3 302	257.66	
L638	-84 831.54	3 321	556.81	R638	-82 300.62	3 301	778.45	
L639	-84 796.61	3 321	453.84	R639	-82 299.60	3 301	735.34	
L640	-84 690.56	3 321	171.11	R640	-82 296.72	3 301	498.00	
L641	-84 628.38	3 321	002.57	R641	-82 290.88	3 301	389.11	
L642	-84 594.75	3 320	898.11	R642	-82 298.75	3 301	355.35	
L643	-84 557.44	3 320	754.24	R643	-82 301.83	3 301	098.03	
L644	-84 538.75	3 320	654.80	R644	-82 342.78	3 301	075.47	
L645	-84 517.64	3 320	515.29	R645	-82 332.44	3 301	053.78	
L646	-84 503.02	3 320	411.78	R646	-82 302.00	3 301	072.34	
L647	-84 488.31	3 320	277.75	R647	-82 302.10	3 301	040.92	
L648	-84 477.45	3 320	135.32	R648	-82 298.81	3 300	941.59	
L649	-84 472.44	3 320	055.50	R649	-82 282.62	3 300	812.76	
L650	-84 458.88	3 319	819.75	R650	-82 254.34	3 300	684.79	
L651	-84 455.47	3 319	765.75	R651	-82 214.63	3 300	560.51	
L652	-84 452.88	3 319	719.97	R652	-82 164.58	3 300	442.85	
L653	-84 447.27	3 319	673.45	R653	-82 102.42	3 300	327.30	
L654	-84 456.96	3 319	503.58	R654	-82 058.36	3 300	258.80	
L655	-84 485.68	3 319	410.52	R655	-81 770.77	3 299	861.51	
L656	-84 515.43	3 319	333.51	R656	-81 713.64	3 299	776.31	
L657	-84 558.43	3 319	247.89	R657	-81 665.14	3 299	688.90	
L658	-84 610.15	3 319	170.63	R658	-81 623.93	3 299	597.44	
L659	-84 706.13	3 319	058.69	R659	-81 590.21	3 299	504.40	
L660	-84 793.85	3 318	999.60	R660	-81 528.93	3 299	295.97	
L661	-84 835.86	3 318	972.64	R661	-81 423.38	3 298	936.21	
L662	-84 909.85	3 318	925.17	R662	-81 394.63	3 298	811.40	
L663	-85 729.23	3 318	407.03	R663	-81 367.53	3 298	748.21	

Vel 36 Van 40
Sheet of

P633/07

PADRESERWE KOÖRDINATE				ROAD RESERVE CO-ORDINATES			
LINKERKANT/LEFT HAND SIDE				REGTERKANT/RIGHT HAND SIDE			
	Y	X	WG	17°	Y	X	
L664	-85 766.85	3 318	383.14	R664	-81 337.35	3 298	645.10
L665	-85 795.00	3 318	361.79	R665	-81 287.16	3 298	480.87
L666	-85 841.70	3 318	335.30	R666	-81 221.04	3 298	248.74
L667	-86 261.65	3 318	069.17	R667	-81 190.59	3 298	146.16
L668	-86 292.16	3 318	040.81	R668	-81 046.96	3 297	655.73
L669	-86 337.71	3 318	020.99	R669	-80 905.29	3 297	174.41
L670	-86 678.91	3 317	804.73	R670	-80 840.36	3 296	953.52
L671	-86 801.39	3 317	727.15	R671	-80 714.96	3 296	527.94
L672	-86 884.42	3 317	667.18	R672	-80 682.04	3 296	393.93
L673	-86 965.18	3 317	593.24	R673	-80 659.48	3 296	270.27
L674	-87 027.48	3 317	521.76	R674	-80 646.41	3 296	141.16
L675	-87 089.14	3 317	431.36	R675	-80 642.27	3 296	010.16
L676	-87 134.52	3 317	346.48	R676	-80 640.51	3 295	886.07
L677	-87 175.52	3 317	238.71	R677	-80 644.58	3 295	686.38
L678	-87 199.58	3 317	146.23	R678	-80 644.94	3 295	632.77
L679	-87 214.08	3 317	039.53	R679	-80 645.13	3 295	471.92
L680	-87 216.79	3 316	944.31	R680	-80 644.98	3 295	397.22
L681	-87 207.69	3 316	841.35	R681	-80 647.03	3 295	145.46
L682	-87 186.26	3 316	737.60	R682	-80 654.56	3 295	047.99
L683	-87 155.78	3 316	644.05	R683	-80 671.23	3 294	955.21
L684	-86 981.92	3 316	200.85	R684	-80 698.90	3 294	862.67
L685	-86 963.67	3 316	165.24	R685	-80 734.09	3 294	773.25
L686	-86 869.79	3 315	913.72	R686	-80 763.38	3 294	717.30
L687	-86 820.99	3 315	772.72	R687	-80 781.44	3 294	751.84
L688	-86 789.19	3 315	629.94	R688	-80 802.92	3 294	740.35
L689	-86 777.88	3 315	576.49	R689	-80 778.59	3 294	690.25
L690	-86 751.77	3 315	444.52	R690	-80 915.51	3 294	446.09
L691	-86 690.99	3 315	139.31	R691	-80 967.66	3 294	363.94
L692	-86 663.18	3 314	998.56	R692	-81 057.37	3 294	245.85
L693	-86 638.05	3 314	883.62	R693	-81 799.92	3 293	052.08
L694	-86 596.04	3 314	725.79	R694	-82 055.29	3 292	642.08
L695	-86 540.99	3 314	556.81	R695	-82 635.53	3 291	709.42
L696	-86 496.34	3 314	439.63	R696	-82 736.92	3 291	558.15
L697	-86 394.58	3 314	189.32	R697	-82 825.74	3 291	437.32
L698	-86 039.25	3 313	314.77	R698	-82 961.90	3 291	277.41
L699	-85 844.84	3 312	836.69	R699	-84 376.06	3 289	837.94
L700	-85 808.02	3 312	748.50	R700	-84 566.99	3 289	643.28
L701	-85 763.79	3 312	649.24	R701	-84 612.71	3 289	597.39
L702	-85 740.34	3 312	599.46	R702	-84 885.07	3 289	320.00
L703	-85 680.38	3 312	477.22	R703	-84 994.35	3 289	209.58
L704	-85 638.62	3 312	397.73	R704	-85 387.60	3 288	814.19
L705	-85 599.30	3 312	326.02	R705	-85 461.75	3 288	734.55
L706	-85 528.18	3 312	209.45	R706	-85 506.73	3 288	688.00
L707	-85 465.00	3 312	108.09	R707	-85 609.65	3 288	581.50
L708	-85 367.25	3 311	954.73	R708	-85 638.10	3 288	554.79
L709	-85 341.74	3 311	982.86	R709	-85 731.31	3 288	460.38
L710	-85 327.01	3 311	972.05	R710	-85 749.24	3 288	442.23
L711	-85 351.51	3 311	931.75	R711	-85 988.41	3 288	199.23
L712	-85 283.31	3 311	831.63	R712	-86 303.84	3 287	879.13
L713	-85 127.66	3 311	603.68	R713	-86 320.72	3 287	862.01
L714	-84 756.33	3 311	060.07	R714	-86 464.99	3 287	715.02

Vel	37	Van	40
Sheet		of	

P633/07

PADRESERWE KOÖRDINATE				/	ROAD RESERVE CO-ORDINATES			
LINKERKANT/LEFT HAND SIDE					REGTERKANT/RIGHT HAND SIDE			
	Y	X	WG	17°	Y	X		
L715	-84 688.45	3 310	950.91	R715	-86 586.24	3 287	583.52	
L716	-84 632.88	3 310	843.82	R716	-86 609.15	3 287	548.03	
L717	-84 584.97	3 310	730.40	R717	-86 696.44	3 287	413.88	
L718	-84 562.81	3 310	663.14	R718	-86 754.91	3 287	305.62	
L719	-84 490.22	3 310	383.06	R719	-86 776.04	3 287	258.74	
L720	-84 275.35	3 308	884.28	R720	-86 805.84	3 287	191.15	
L721	-84 923.23	3 307	306.10	R721	-86 849.10	3 287	067.81	
L722	-84 895.67	3 306	913.21	R722	-86 954.57	3 286	749.63	
L723	-84 274.68	3 304	764.27	R723	-87 293.62	3 285	730.42	
L724	-84 078.92	3 304	411.71	R724	-87 316.30	3 285	650.84	
L725	-82 372.54	3 302	675.49	R725	-87 333.60	3 285	557.21	
L726	-82 257.42	3 302	413.29	R726	-87 341.62	3 285	461.71	
L727	-82 226.67	3 302	207.11	R727	-87 339.88	3 285	366.24	
L728	-82 221.85	3 301	851.18	R728	-87 328.84	3 285	270.44	
L729	-82 214.08	3 301	784.96	R729	-87 308.34	3 285	176.43	
L730	-82 216.01	3 301	753.52	R730	-87 270.24	3 285	063.99	
L731	-82 231.86	3 301	627.57	R731	-87 230.42	3 284	979.71	
L732	-82 237.79	3 301	136.38	R732	-86 962.58	3 284	474.46	
L733	-82 203.93	3 301	159.15	R733	-86 920.13	3 284	382.09	
L734	-82 184.06	3 301	145.34	R734	-86 887.26	3 284	276.48	
L735	-82 238.16	3 301	104.18	R735	-86 870.73	3 284	196.19	
L736	-82 238.65	3 301	071.08	R736	-86 860.60	3 284	097.84	
L737	-82 236.38	3 300	991.98	R737	-86 865.48	3 284	000.46	
L738	-82 233.55	3 300	941.22	R738	-86 877.84	3 283	905.37	
L739	-82 230.55	3 300	898.86	R739	-86 870.94	3 283	834.72	
L740	-82 219.42	3 300	825.90	R740	-86 876.40	3 283	782.58	
L741	-82 192.57	3 300	703.74	R741	-86 866.04	3 283	686.02	
L742	-82 156.99	3 300	592.31	R742	-86 829.36	3 283	516.43	
L743	-82 107.21	3 300	472.36	R743	-86 809.25	3 283	423.35	
L744	-82 049.33	3 300	363.43	R744	-86 815.17	3 283	401.40	
L745	-82 022.41	3 300	321.30					
L746	-82 003.51	3 300	295.26					
L747	-81 978.11	3 300	255.60					
L748	-81 712.76	3 299	891.83					
L749	-81 653.91	3 299	803.10					
L750	-81 603.81	3 299	710.82					
L751	-81 561.39	3 299	614.48					
L752	-81 527.27	3 299	514.17					
L753	-81 493.96	3 299	400.68					
L754	-81 492.54	3 299	387.41					
L755	-81 493.58	3 299	374.26					
L756	-81 481.58	3 299	358.30					
L757	-81 343.35	3 298	890.42					
L758	-81 315.97	3 298	822.37					
L759	-81 311.33	3 298	805.77					
L760	-81 300.00	3 298	768.62					
L761	-81 285.13	3 298	736.61					
L762	-81 278.38	3 298	669.33					
L763	-81 159.41	3 298	265.58					
L764	-81 123.18	3 298	142.92					
L765	-81 118.36	3 298	126.40					

Vel	38	Van	40	P633/07
Sheet		of		

PADRESERWE KOÖRDINATE				ROAD RESERVE CO-ORDINATES		
LINKERKANT/LEFT HAND SIDE				REGTERKANT/RIGHT HAND SIDE		
	Y	X	WG 17°	Y	X	
L766	-81 114.29	3 298	105.17			
L767	-81 102.38	3 298	070.48			
L768	-80 837.07	3 297	168.78			
L769	-80 787.39	3 297	000.34			
L770	-80 653.83	3 296	546.21			
L771	-80 644.48	3 296	512.58			
L772	-80 622.16	3 296	421.76			
L773	-80 596.87	3 296	287.59			
L774	-80 584.04	3 296	214.10			
L775	-80 581.96	3 296	199.19			
L776	-80 573.34	3 295	752.47			
L777	-80 570.73	3 295	641.36			
L778	-80 568.91	3 295	542.46			
L779	-80 582.76	3 295	387.67			
L780	-80 584.61	3 295	131.42			
L781	-80 586.86	3 295	043.11			
L782	-80 613.54	3 294	906.76			
L783	-80 664.33	3 294	755.48			
L784	-80 723.53	3 294	657.06			
L785	-80 709.71	3 294	631.97			
L786	-80 742.19	3 294	577.34			
L787	-80 763.10	3 294	598.43			
L788	-81 010.33	3 294	201.33			
L789	-81 387.11	3 293	595.56			
L790	-81 374.23	3 293	585.51			
L791	-81 468.28	3 293	428.72			
L792	-81 508.05	3 293	400.96			
L793	-82 034.24	3 292	555.44			
L794	-82 277.67	3 292	164.27			
L795	-82 522.98	3 291	769.82			
L796	-82 581.45	3 291	676.01			
L797	-82 685.08	3 291	520.77			
L798	-82 777.80	3 291	395.46			
L799	-82 833.44	3 291	330.23			
L800	-82 999.47	3 291	145.03			
L801	-83 092.72	3 291	050.60			
L802	-83 456.74	3 290	680.78			
L803	-83 458.74	3 290	679.85			
L804	-83 464.37	3 290	674.15			
L805	-83 464.52	3 290	672.77			
L806	-83 996.77	3 290	131.61			
L807	-84 535.96	3 289	584.25			
L808	-84 782.73	3 289	333.50			
L809	-85 072.15	3 289	039.99			
L810	-85 350.07	3 288	757.09			
L811	-85 558.29	3 288	545.82			
L812	-85 580.11	3 288	523.71			
L813	-85 571.60	3 288	509.11			
L814	-85 579.55	3 288	487.17			
L815	-85 589.18	3 288	481.99			
L816	-85 600.70	3 288	502.62			

Vel 39 Van 40
Sheet of

P633/07

PADRESERWE KOÖRDINATE				/	ROAD RESERVE CO-ORDINATES		
LINKERKANT/LEFT HAND SIDE					REGTERKANT/RIGHT HAND SIDE		
	Y	X	WG	17°	Y	X	
L817	-85 677.65	3 288	424.02				
L818	-85 987.82	3 288	109.08				
L819	-86 271.86	3 287	820.72				
L820	-86 414.12	3 287	676.18				
L821	-86 498.15	3 287	583.91				
L822	-86 546.15	3 287	524.67				
L823	-86 574.86	3 287	484.96				
L824	-86 640.59	3 287	383.88				
L825	-86 697.78	3 287	278.03				
L826	-86 746.53	3 287	167.89				
L827	-86 774.85	3 287	089.96				
L828	-87 050.18	3 286	261.11				
L829	-87 047.10	3 286	255.19				
L830	-87 023.88	3 286	251.15				
L831	-87 024.13	3 286	246.09				
L832	-87 048.70	3 286	250.27				
L833	-87 055.09	3 286	246.14				
L834	-87 233.17	3 285	711.17				
L835	-87 254.29	3 285	636.94				
L836	-87 269.46	3 285	556.08				
L837	-87 278.13	3 285	459.84				
L838	-87 276.70	3 285	370.14				
L839	-87 266.40	3 285	281.41				
L840	-87 251.82	3 285	215.26				
L841	-87 209.98	3 285	088.73				
L842	-87 174.36	3 285	008.98				
L843	-86 906.71	3 284	504.16				
L844	-86 873.65	3 284	435.45				
L845	-86 846.15	3 284	364.45				
L846	-86 825.01	3 284	291.41				
L847	-86 809.85	3 284	216.80				
L848	-86 800.73	3 284	141.36				
L849	-86 797.83	3 284	063.28				
L850	-86 798.79	3 283	866.41				
L851	-86 794.03	3 283	782.13				
L852	-86 784.93	3 283	715.15				
L853	-86 763.49	3 283	621.70				
L854	-86 745.27	3 283	569.56				
L855	-86 719.98	3 283	519.59				
L856	-86 688.92	3 283	473.58				
L857	-86 676.28	3 283	456.95				
L858	-86 656.26	3 283	451.98				

Vel	40	Van	40	P633/07
Sheet		of		