

Government Gazette Staatskoerant

REPUBLIC OF SOUTH AFRICA
REPUBLIEK VAN SUID-AFRIKA

Vol. 512

Pretoria, 8 February
Februarie 2008

No. 30748

CONTENTS**INHOUD**

| <i>No.</i> | <i>Page No.</i> | <i>Gazette No.</i> | <i>No.</i> | <i>Bladsy No.</i> | <i>Koerant No.</i> |
|---------------------------------|---------------------|--|---------------------------------|-----------------------|--|
| GOVERNMENT NOTICE | | | GOEWERMENSKENNISGEWING | | |
| Transport, Department of | | | Vervoer, Departement van | | |
| <i>Government Notice</i> | | | <i>Goewermenskennisgewing</i> | | |
| 146 | | South African National Roads Agency Limited and the National Roads Act (7/1998): The South African National Roads Agency Limited: Declaration Amendment of National Road N4 Section 3: Amendment of Declaration No.'s 116 of 1985 and 190 of 1985..... | 3 | 30748 | |
| | | | | | 146 Suid-Afrikaanse Nasionale Padagentskap Beperk en die Nasionale Paaie Wet (7/1998): Die Suid-Afrikaanse Nasionale Padagentskap Beperk: Verklaring van Nasionale Pad N4 Seksie 3: Wysiging van Verklaring No.'s 116 van 1985 en 190 van 1985 |
| | | | | 4 | 30748 |

**GOVERNMENT NOTICE
GOEWERMENTSKENNISGEWING**

**DEPARTMENT OF TRANSPORT
DEPARTEMENT VAN VERVOER**

No. 146

8 February 2008

**THE SOUTH AFRICAN NATIONAL ROADS
AGENCY LIMITED**

Registration No: 98/09584/06

DECLARATION AMENDMENT OF NATIONAL ROAD N4 SECTION 3

AMENDMENT OF DECLARATION NO'S. 116 OF 1985 AND 190 OF 1985.

By virtue of section 40 (1)(b) of the South African National Roads Agency Limited and the National Roads Act, 1998 (Act No. 7 of 1998), I hereby amend the following declarations by substituting **(I)** Declaration No. 116 of 1985 and **(II)** Declaration No. 190 of 1985, the section from sheet 1 up to the common boundary between farms Rhenosterfontein 318 –JS and Rietfontein 314 –JS on sheet 7 of Plan No. P341/84 and the applicable co-ordinates, with the subjoined sheets 1 to 18 of Plan No. P635/07.

(National Road N4 Section 3: Spitskop – Rhenosterfontein)



MINISTER OF TRANSPORT

No. 146

8 Februarie 2008

**DIE SUID-AFRIKAANSE NASIONALE
PADAGENTSKAP BEPERK**

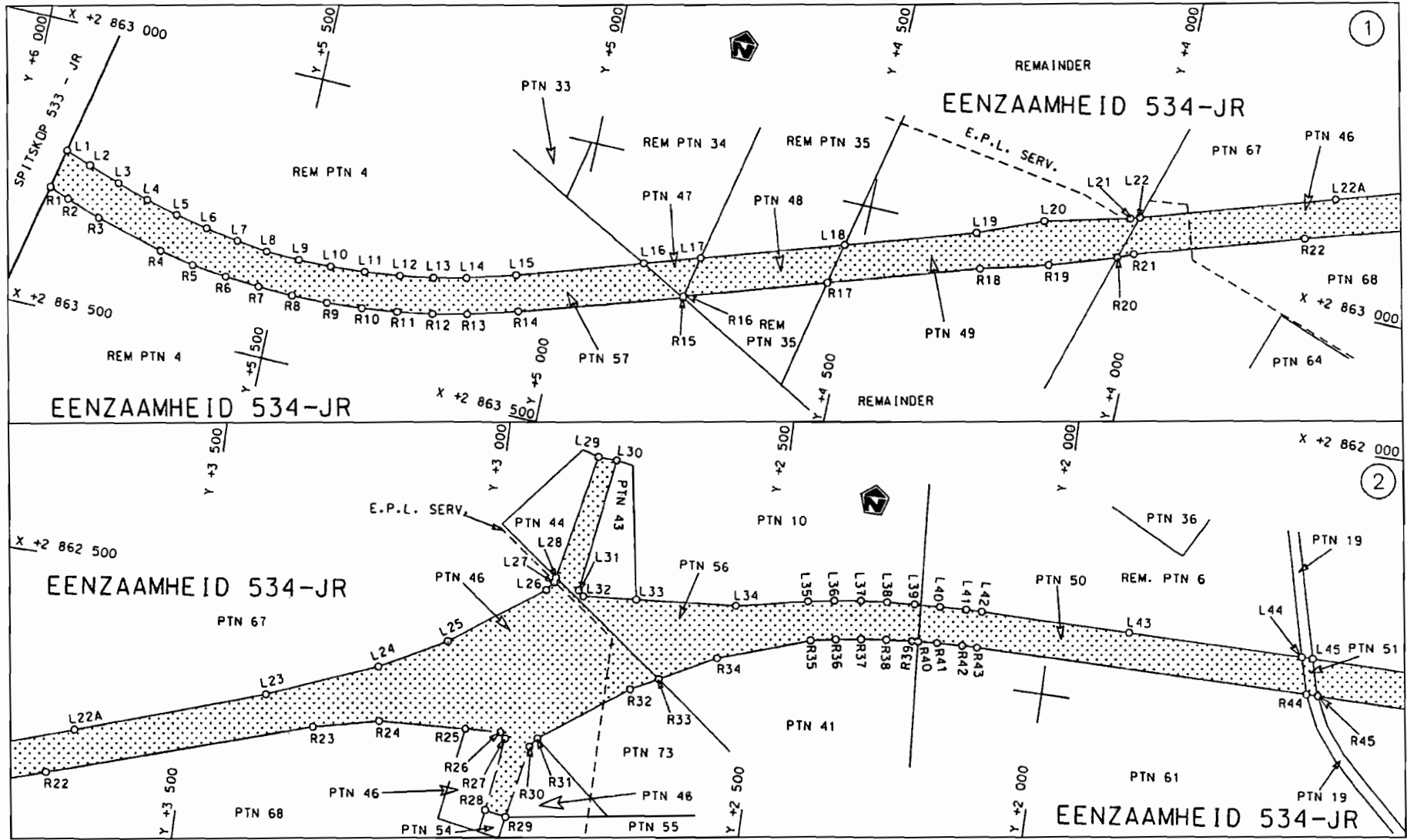
Registrasie No: 98/09584/06

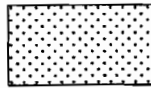
VERKLARING WYSIGING VAN NASIONALE PAD N4 SEKSIE 3

WYSIGING VAN VERKLARING NO'S. 116 VAN 1985 EN 190 VAN 1985

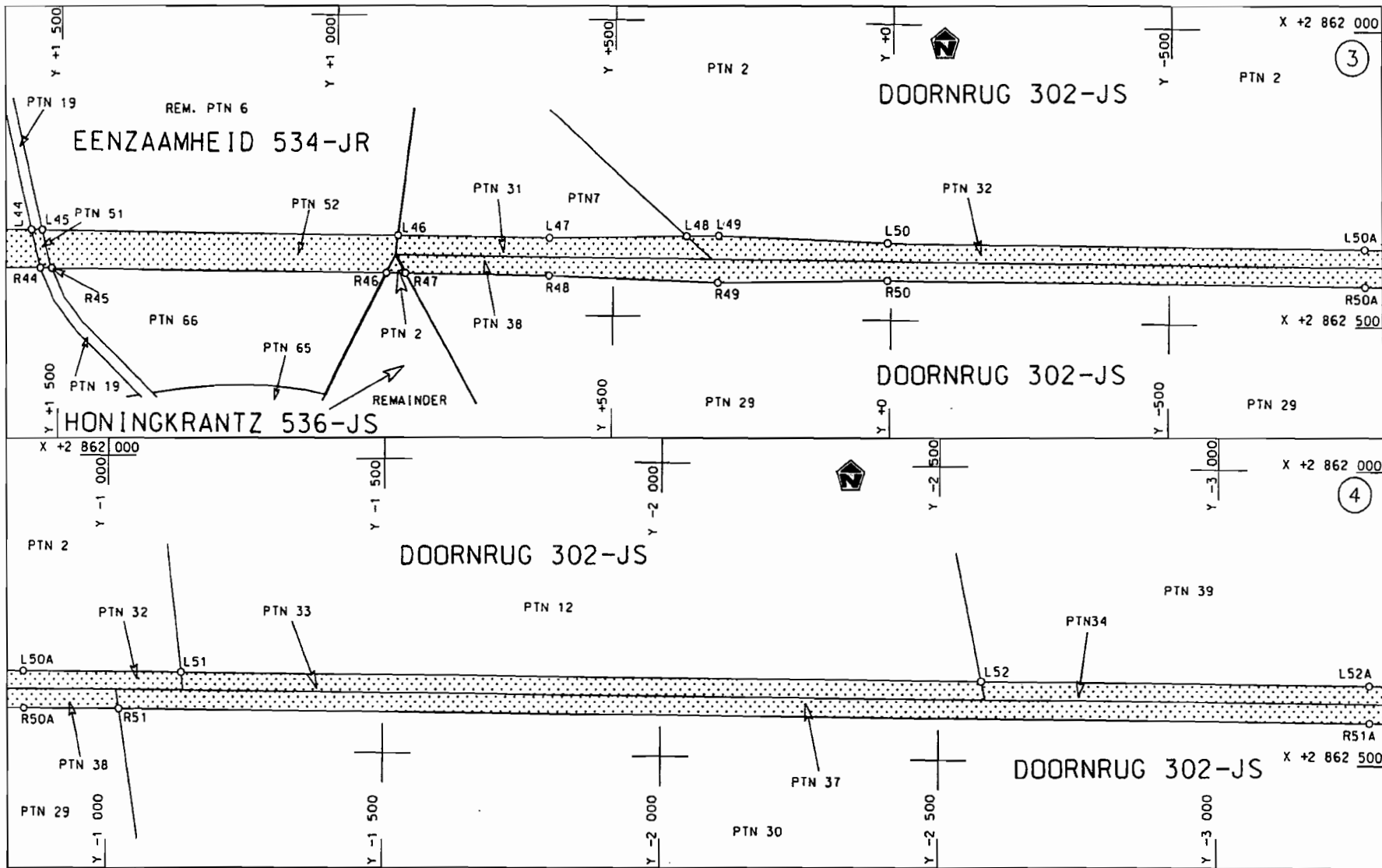
Kragtens Artikel 40(1)(b) van die Suid-Afrikaanse Nasionale Padagentskap Beperk en die Nasionale Paaie Wet, 1998 (Wet No.7 van 1998), wysig ek hiermee die volgende verklarings deur (I) Verklaring no. 116 van 1985 en (II) Verklaring no.190 van 1985 die gedeelte vanaf vel 1 tot die gemeenskaplike grens tussen plase Rhenosterfontein 318 – JS en Rietfontein 314 – JS op vel 7 van Plan no. P341/84 en die toepaslike koördinate, te vervang met meegaande velle 1 tot 18 van Plan no. P635/07.


(Nasionale Pad N4 Seksie 3: Spitskop – Rhenosterfontein)**MINISTER VAN VERVOER**

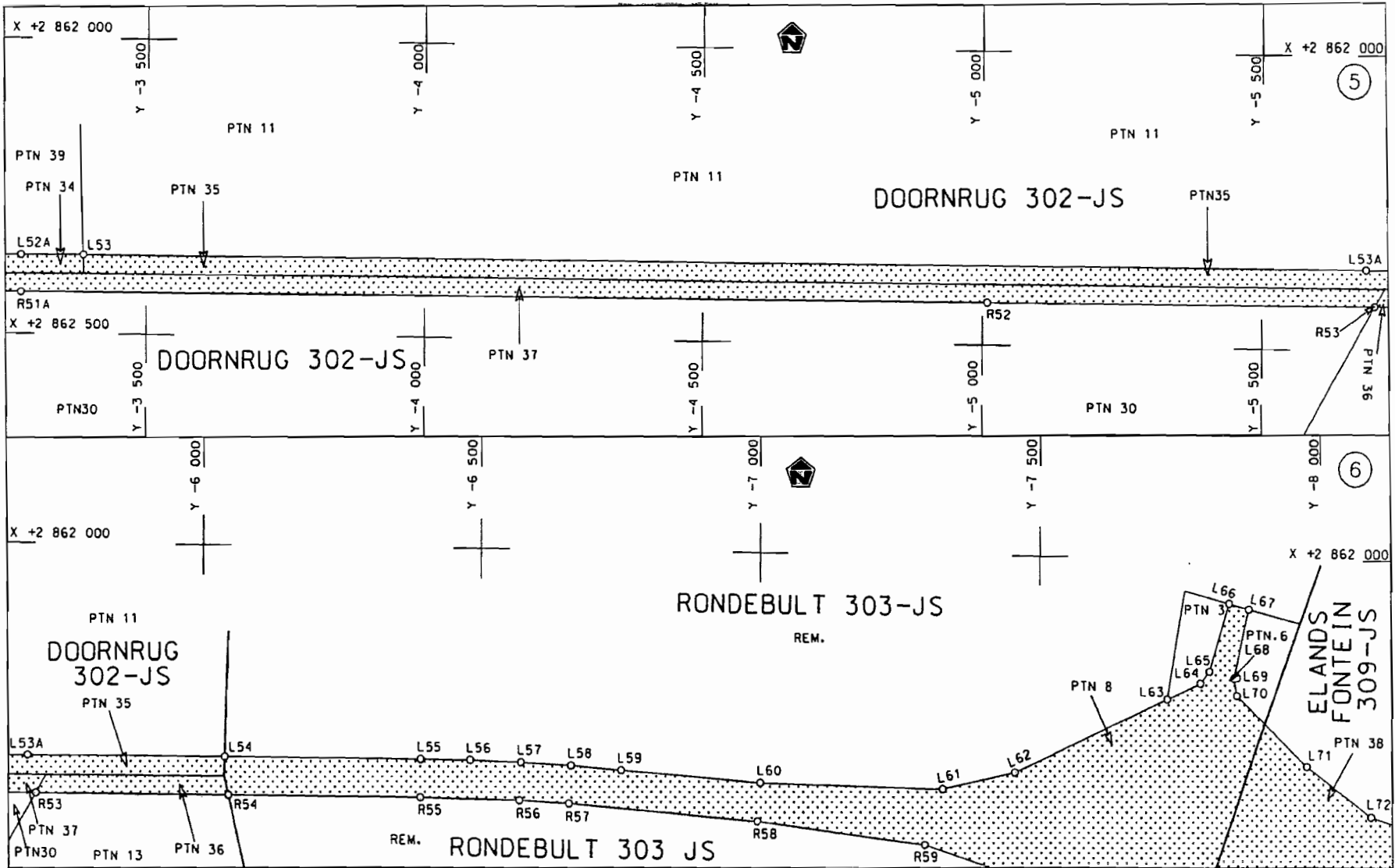


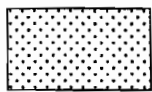
| | | | |
|--|--|---|--|
| <p>Die Suid Afrikaanse Nasionale Padagentskap Beperk The South African National Roads Agency Limited</p> | <p>Die figuur getoon The figure shown</p>  | <p>steldie padreserwe voor van 'n gedeelte represents the road reserve of a portion van Nasionale Roete N4 Seksie Section of National Route N4 Seksie Section 3</p> | <p>Vel Sheet 1 van 18 of 18 Plan P635/07</p> |
|--|--|---|--|

D.O.9.A

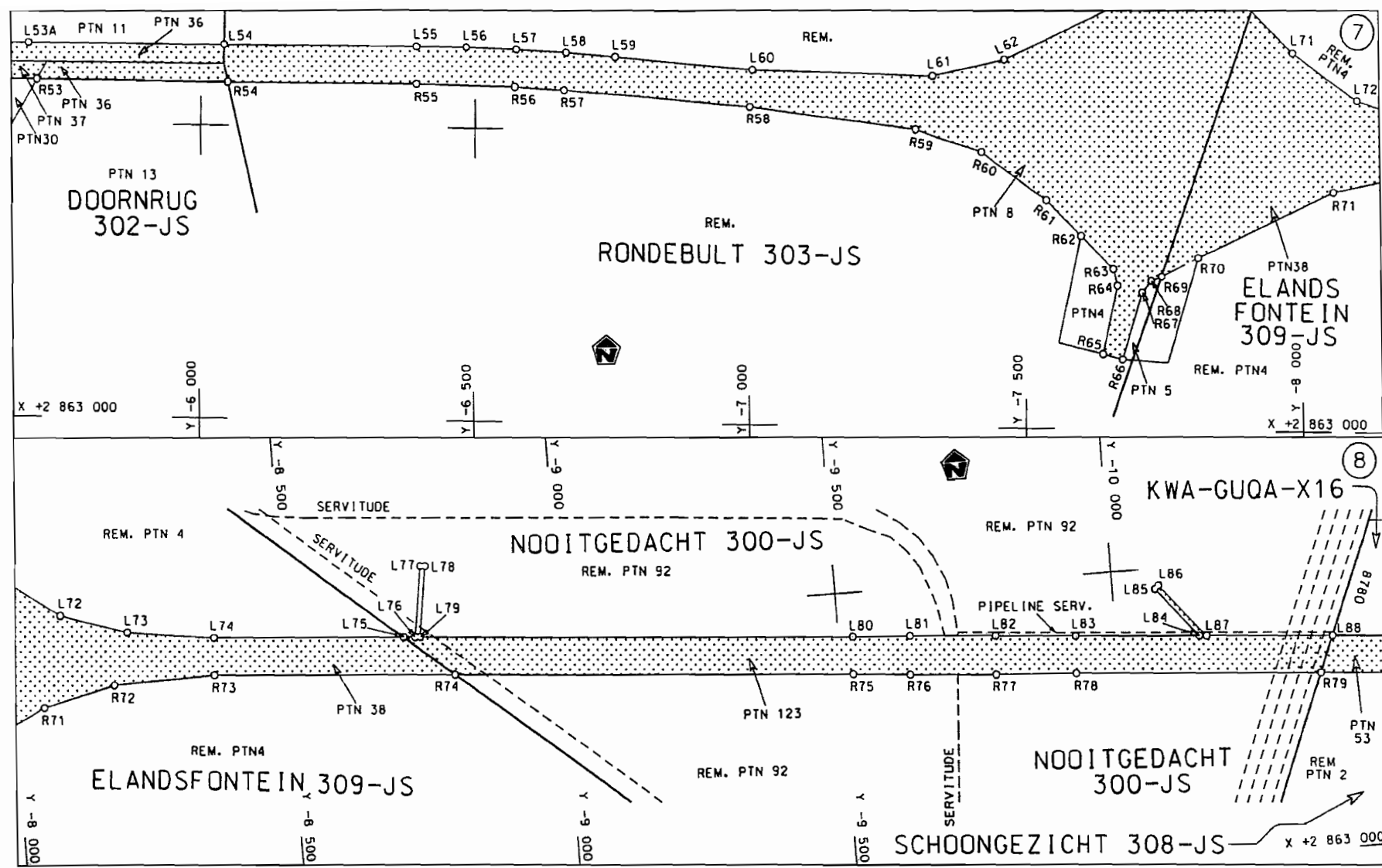


| | | | |
|--|--|---|---|
| <p>Die Suid Afrikaanse Nasionale Padagentskap Beperk The South African National Roads Agency Limited</p> | <p>Die figuur getoon The figure shown</p>  | <p>steldie padreserwe voor van 'n gedeelte represents the road reserve of a portion van Nasionale Roete N4 of National Route N4</p> <p>Seksie 3 Section</p> | <p>Vel Sheet 2 van of 18 Plan P635/07</p> |
|--|--|---|---|

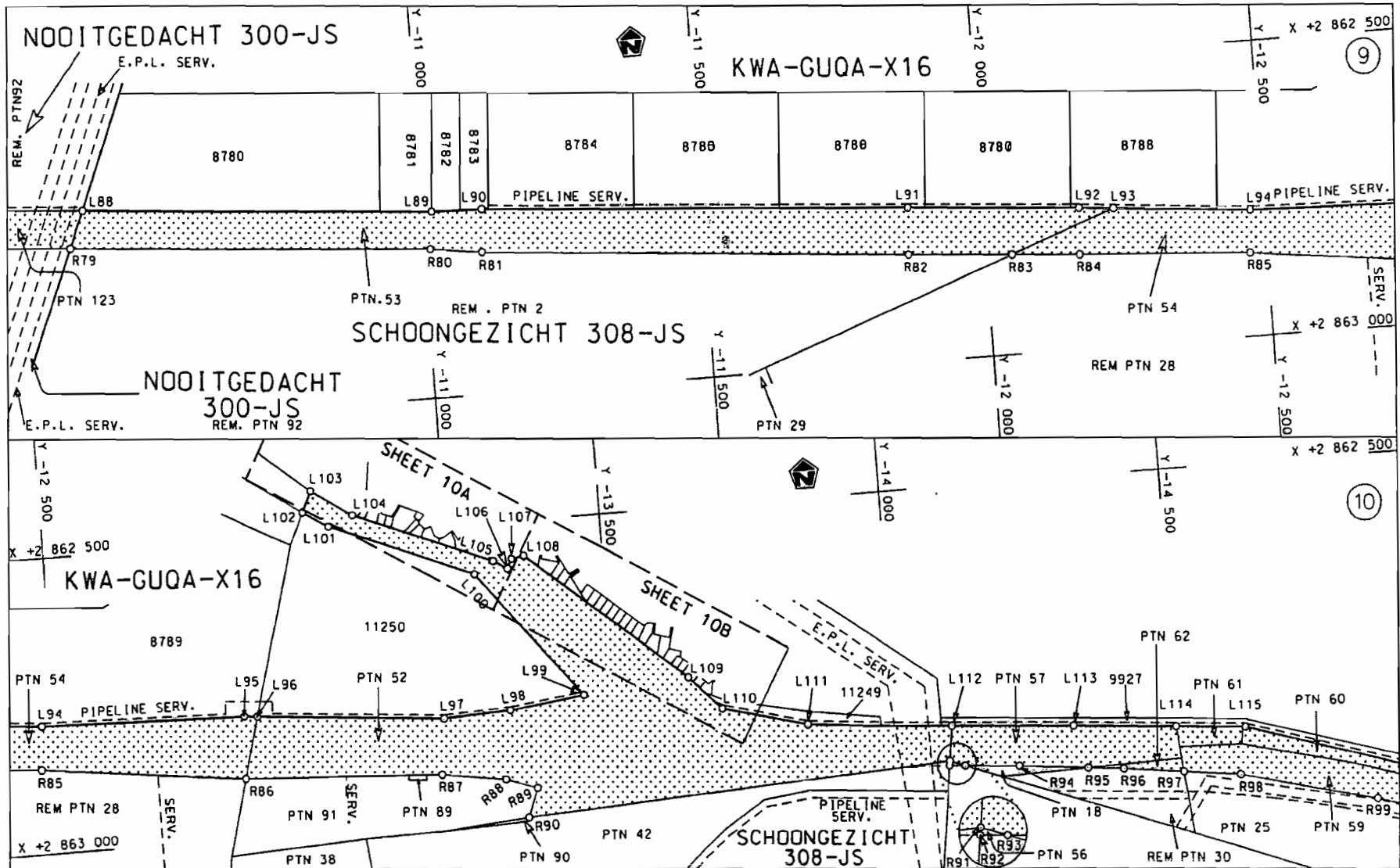



| | | | | | | |
|--|---|--|--|------------------------------------|---|-------------------------|
| <p>Die Suid Afrikaanse Nasionale Padagentskap Beperk The South African National Roads Agency Limited</p> | <p>Die figuur getoon The figure shown</p> |  | <p>stel die padreserwe voor van 'n gedeelte represents the road reserve of a portion van Nasionale Roete of National Route</p> <p>N4</p> | <p>Seksie Section</p> <p>3</p> | <p>Vel Sheet</p> <p>3 van of 18</p> | <p>Plan P635/07</p> |
|--|---|--|--|------------------------------------|---|-------------------------|

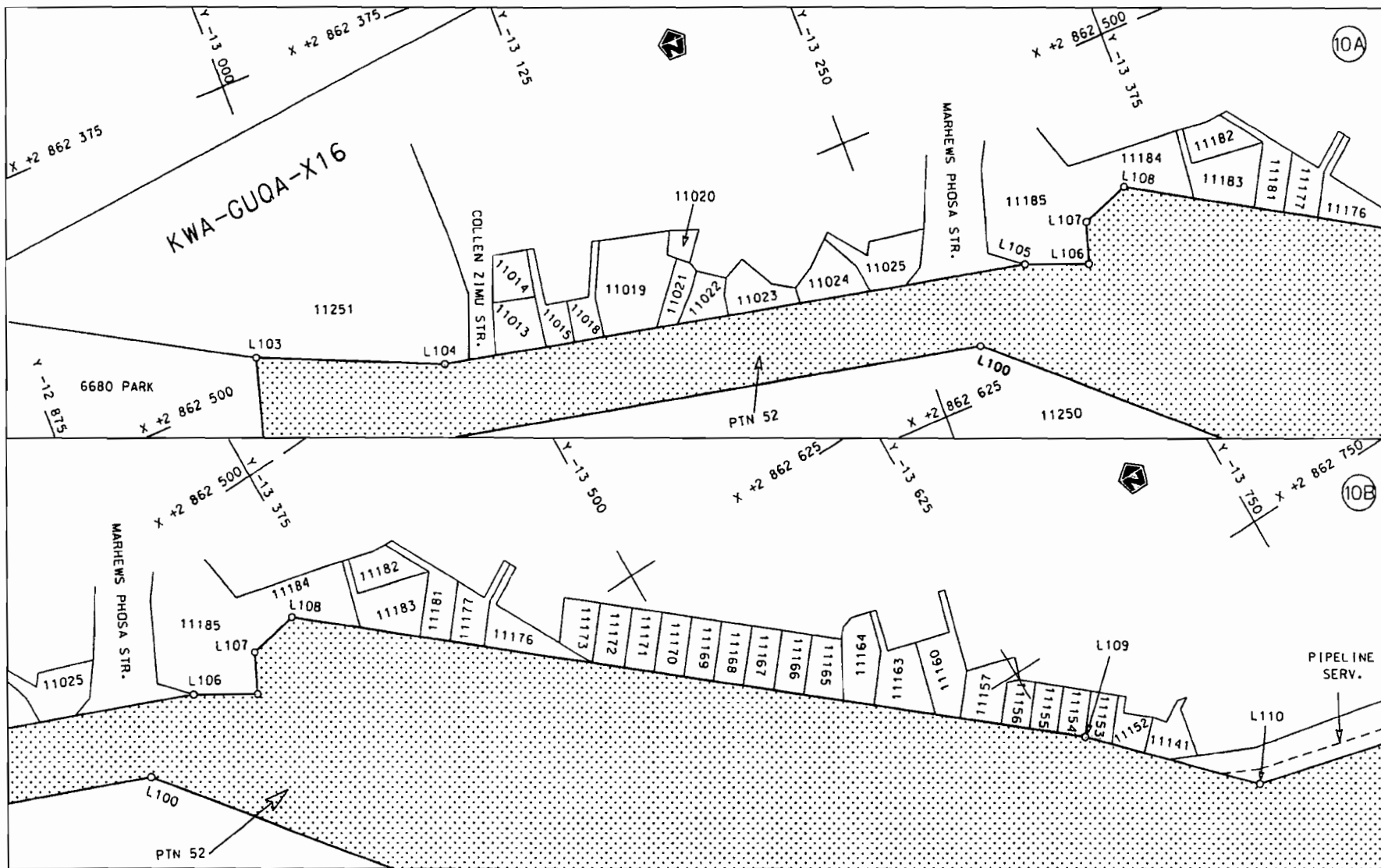
D.O.9.A



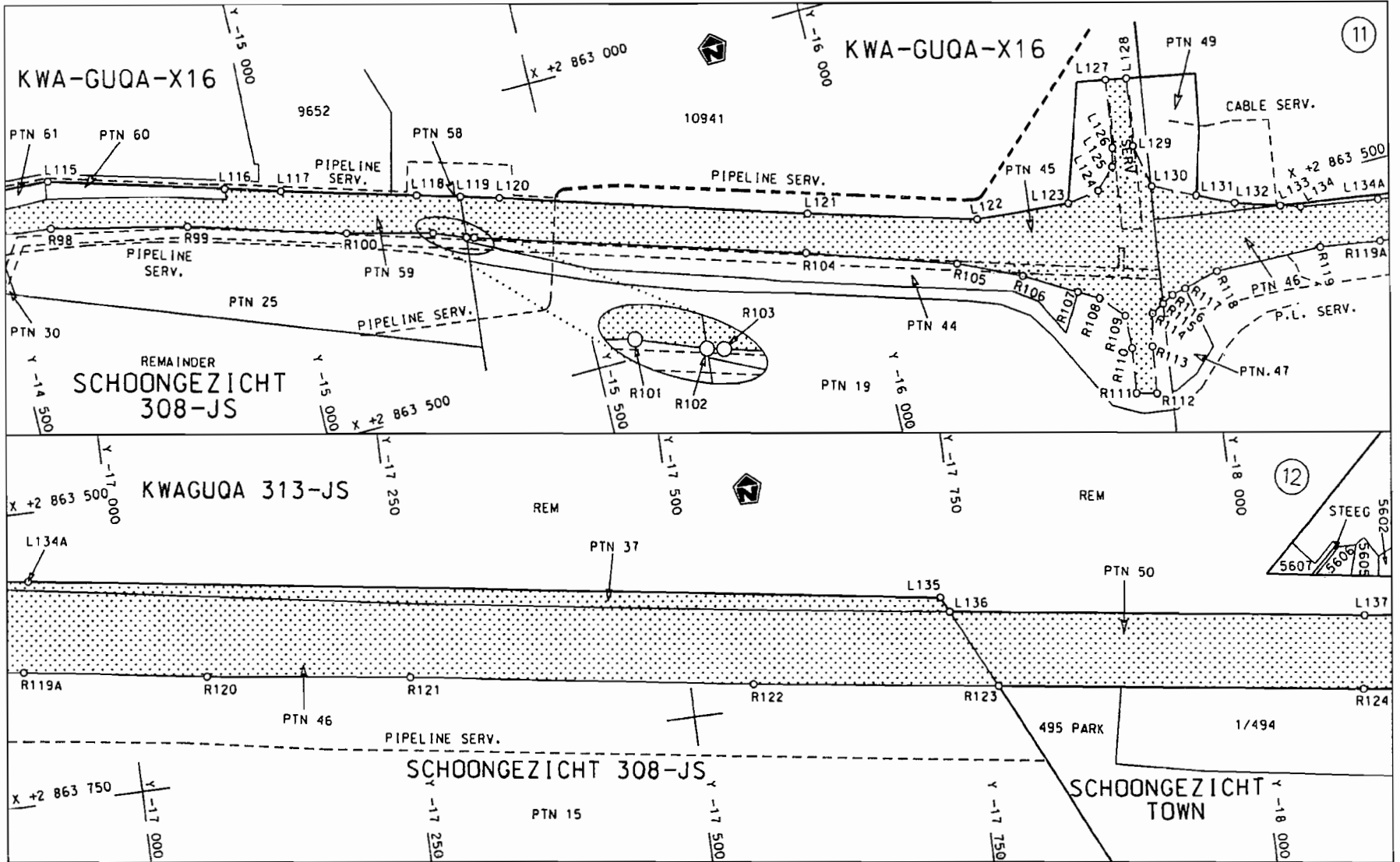
| | | | | |
|--|---|--|--|------------------------------|
| <p>Die Suid Afrikaanse Nasionale Padagentskap Beperk The South African National Roads Agency Limited</p> | <p>Die figuur getoon The figure shown</p> | | <p>stel die padreserwe voor van 'n gedeelte represents the road reserve of a portion van Nasionale Roete N4 of National Route N4</p> | <p>Vel Sheet 4 von of 18</p> |
| | | | <p>Seksie Section 3</p> | <p>Plan P635/07</p> |



| | | | | |
|---|---|--|---|---|
| <p>Die Suid Afrikaanse Nasionale Padogenskop Beperk The South African National Roads Agency Limited</p> | <p>Die figuur getoon The figure shown</p> |  | <p>stel die padreserwe voor van 'n gedeelte represents the road reserve of a portion van Nasionale Roete N4 of National Route</p> | <p>Vel Sheet 5 van of 18 Plan P635/07</p> |
| | | | <p>Seksie Section 3</p> | |

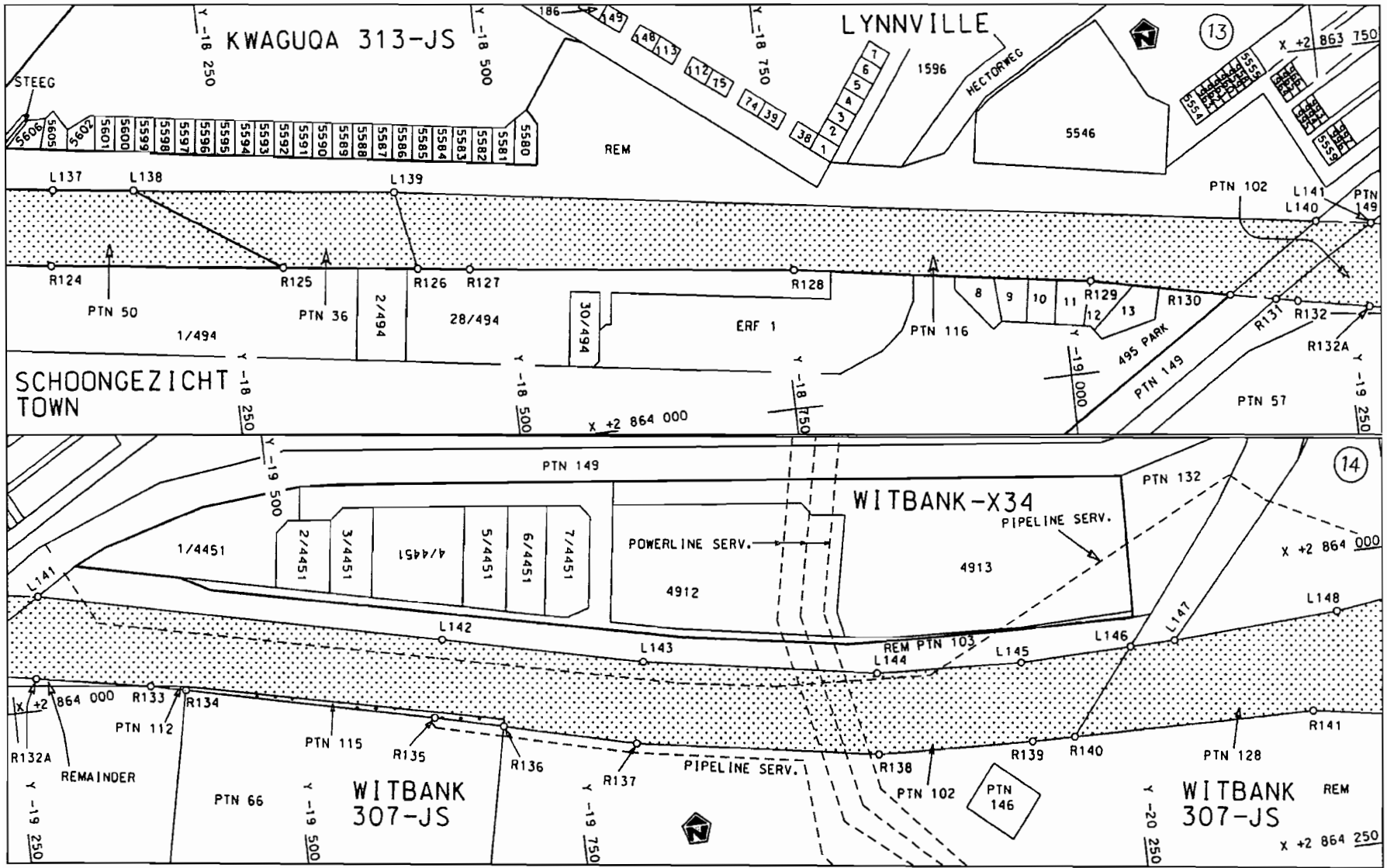


| | | | | |
|--|---|--|--|------------------------------|
| <p>Die Suid Afrikaanse Nasionale Padagentskap Beperk The South African National Roads Agency Limited</p> | <p>Die figuur getoon The figure shown</p> | | <p>steldie padreserwe voor van 'n gedeelte represents the road reserve of a portion van Nasionale Roete N4 of National Route</p> <p>Seksie Section 3</p> | <p>Vel Sheet 6 van of 18</p> |
| | | | <p>Plan P635/07</p> | |

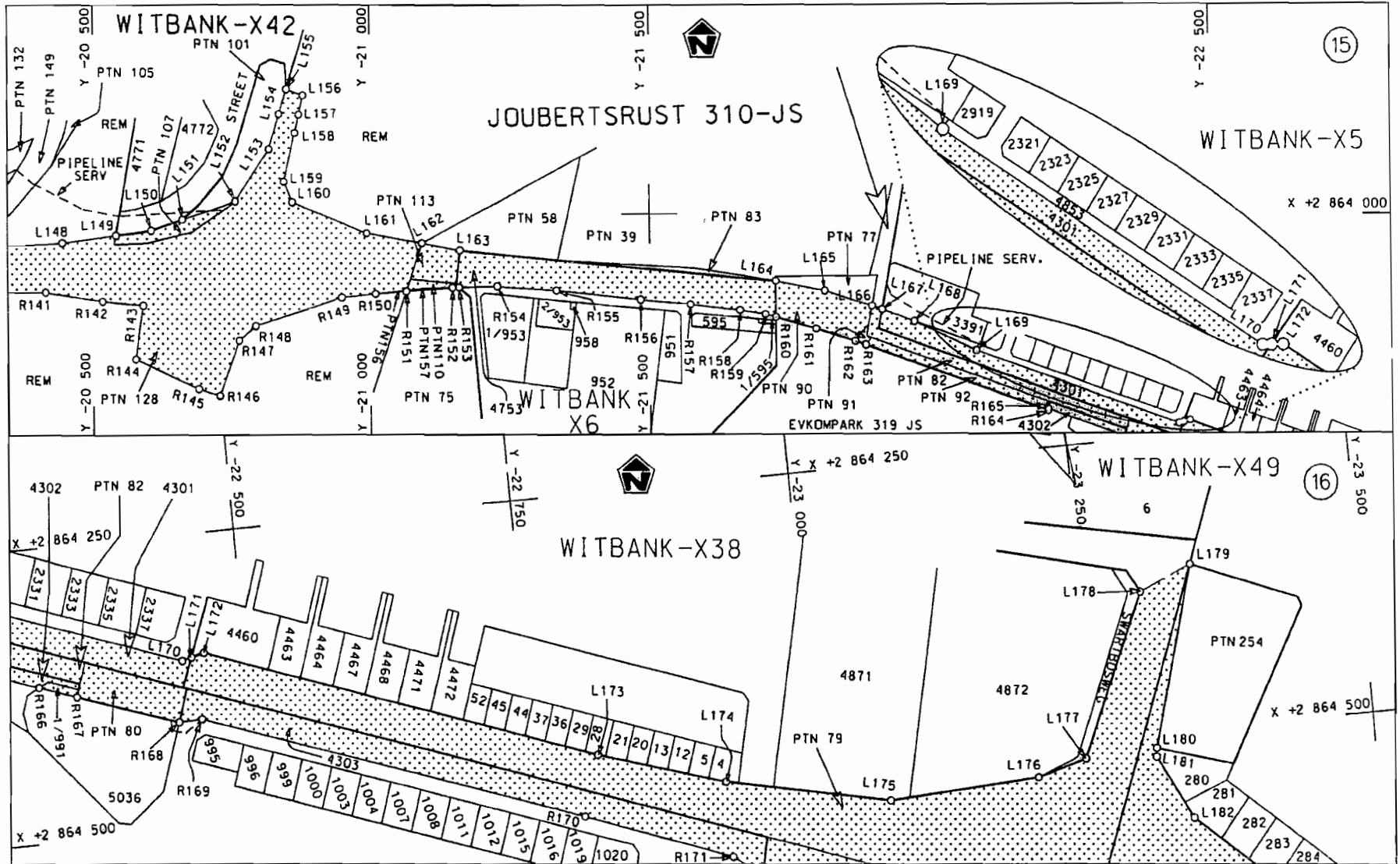


| | | | |
|--|---|---|---|
| <p>Die Suid Afrikaanse Nasionale Padagentskap Beperk The South African National Roads Agency Limited</p> | <p>Die figuur getoon The figure shown</p> <div style="border: 1px solid black; width: 50px; height: 30px; background-color: #cccccc; margin: 5px 0;"></div> | <p>steldie padreserwe voor van 'n gedeelte represents the road reserve of a portion van Nasionale Roete N4 of National Route N4</p> <p>Seksie Section 3</p> | <p>Vel Sheet 7 van of 18 Plan P635/07</p> |
|--|---|---|---|

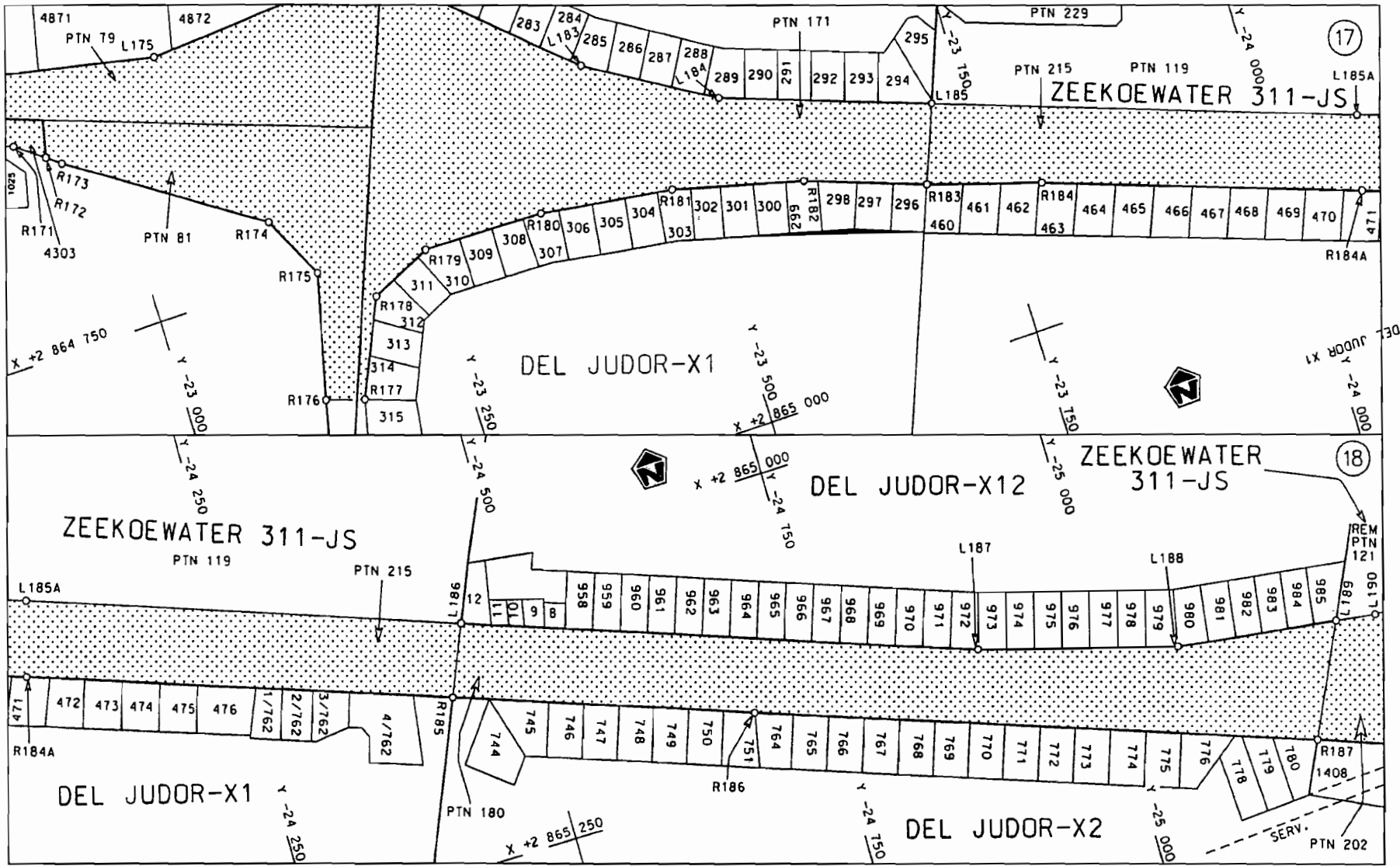
D.O.9.A

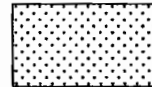


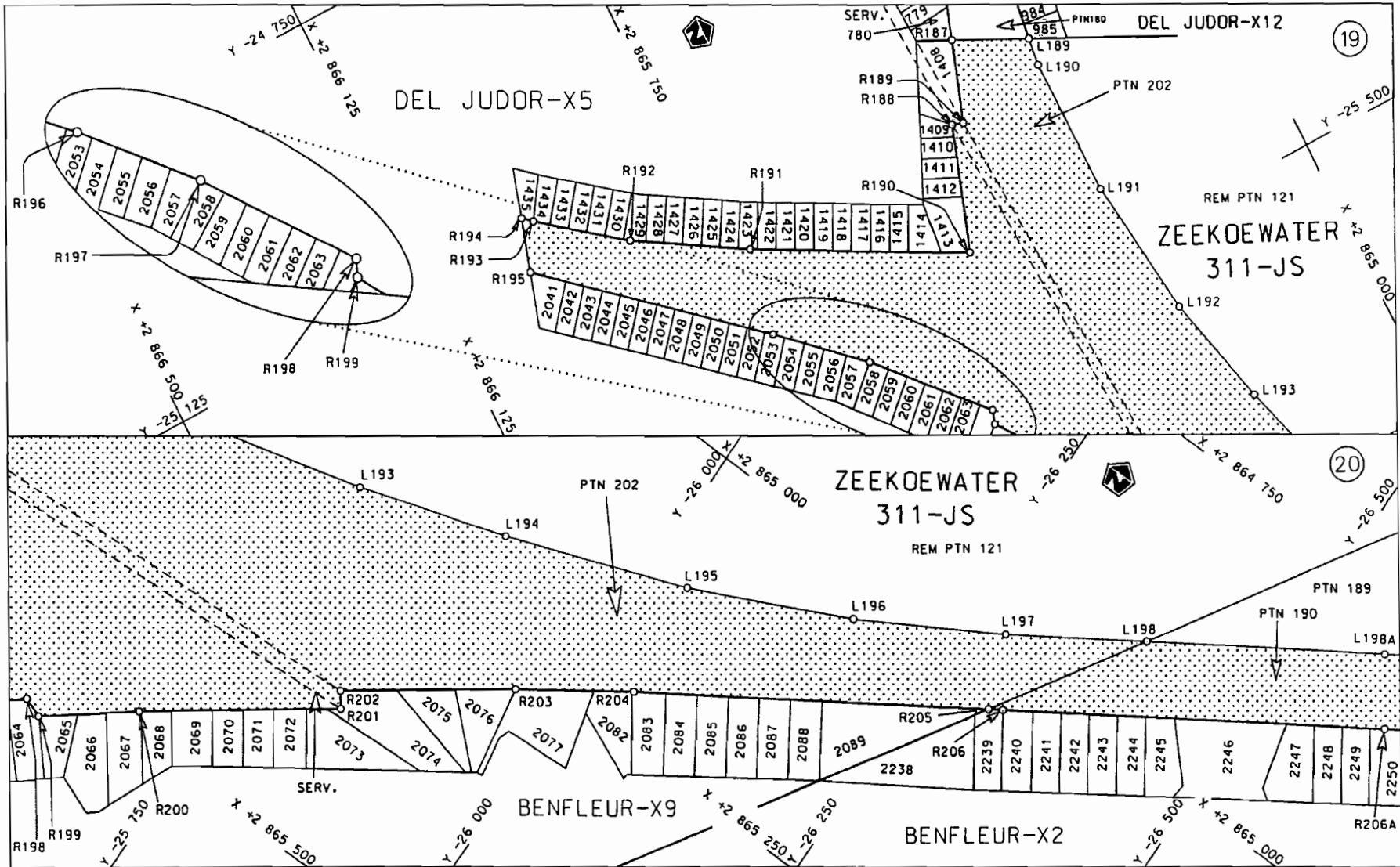
| | | | |
|--|--|---|--|
| <p>Die Suid Afrikaanse Nasionale Padagentskap Beperk The South African National Roads Agency Limited</p> | <p>Die figuur getoon The figure shown</p> <div style="border: 1px solid black; width: 50px; height: 20px; background-color: #cccccc; margin: 10px 0;"></div> | <p>steldie padreserwe voor van 'n gedeelte represents the road reserve of a portion van Nasionale Roete N4 of National Route N4</p> <p>Seksie 3 Section 3</p> | <p>Vel Sheet 8 van of 18</p> <p>Plan P635/07</p> |
|--|--|---|--|



| | | | |
|--|--------------------------|---|---------------------------|
| <p>Die Suid Afrikaanse Nasionale Padagentskap Beperk</p> | <p>Die figuur getoon</p> | <p>steldie podreserwe voor van 'n gedeelte</p> | <p>Vel Sheet 9 van 18</p> |
| <p>The South African National Roads Agency Limited</p> | <p>The figure shown</p> | <p>represents the road reserve of a portion van Nasionale Roete N4 Seksie Section 3 of National Route</p> | <p>Plan P635/07</p> |



| | | | |
|--|--|--|--|
| <p>Die Suid Afrikaanse Nasionale Padagentskop Beperk The South African National Roads Agency Limited</p> | <p>Die figuur getoon The figure shown</p>  | <p>steldie padreserwe voor van 'n gedeelte represents the road reserve of a portion of Nasionale Roete N4 of National Route N4</p> <p>Seksie 3</p> | <p>Vel Sheet 10 of 18 Plan P635/07</p> |
|--|--|--|--|



Die Suid Afrikaanse Nasionale Padogentskop Beperk
The South African National Roads Agency Limited

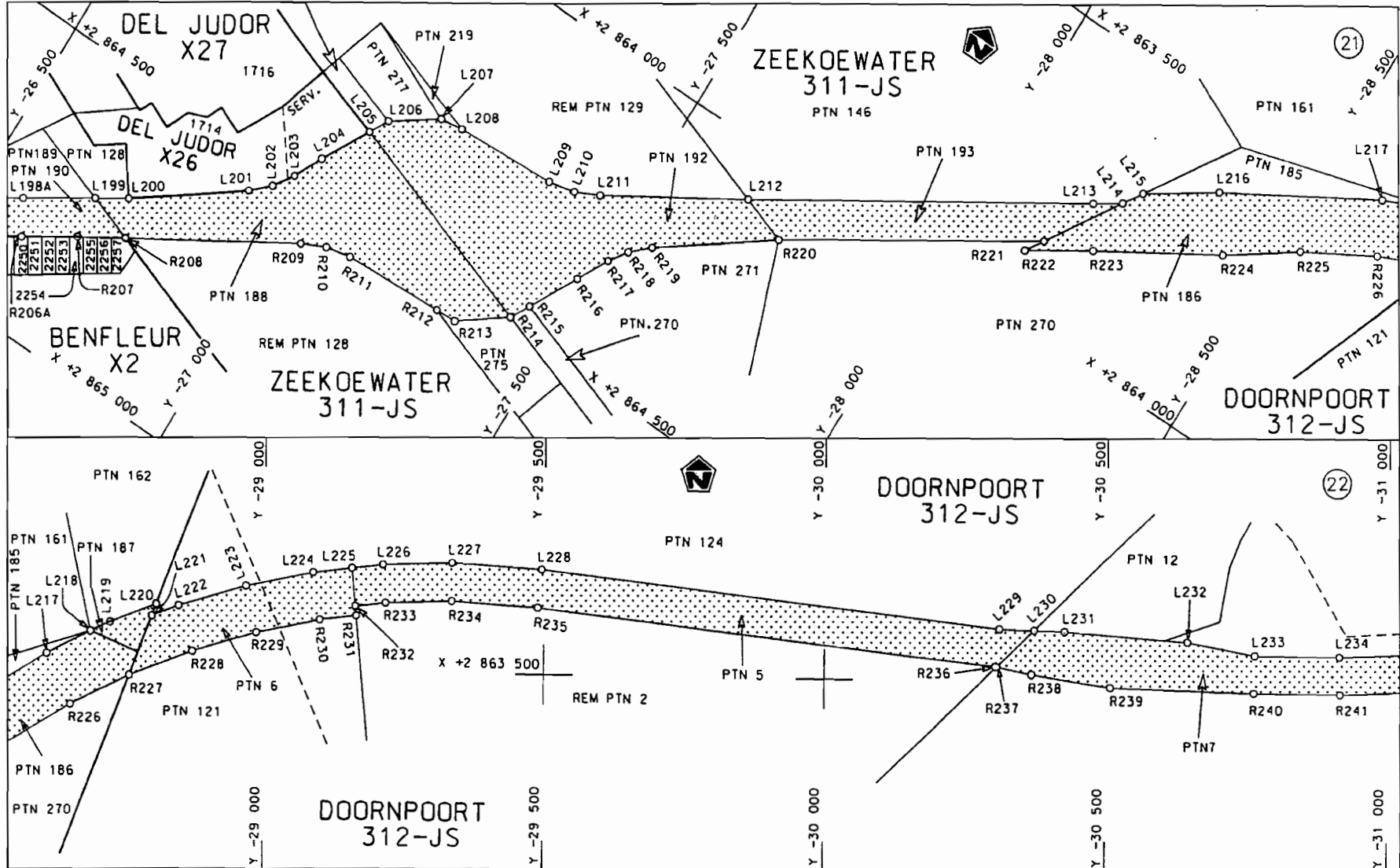
Die figuur getoon
The figure shown

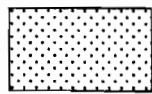


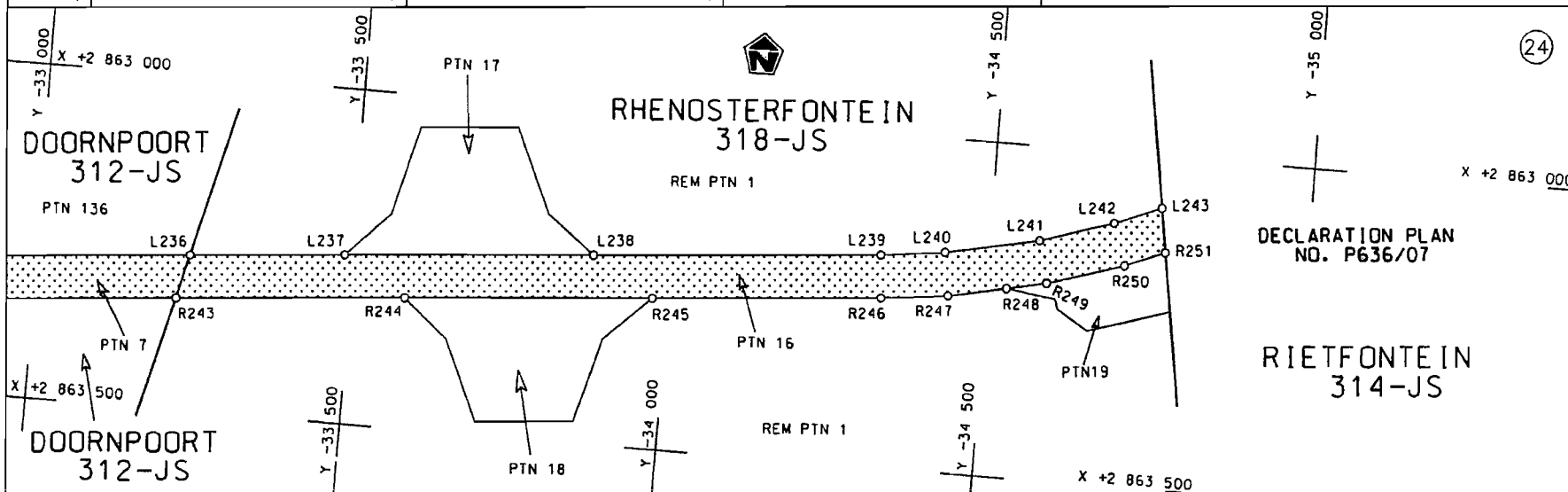
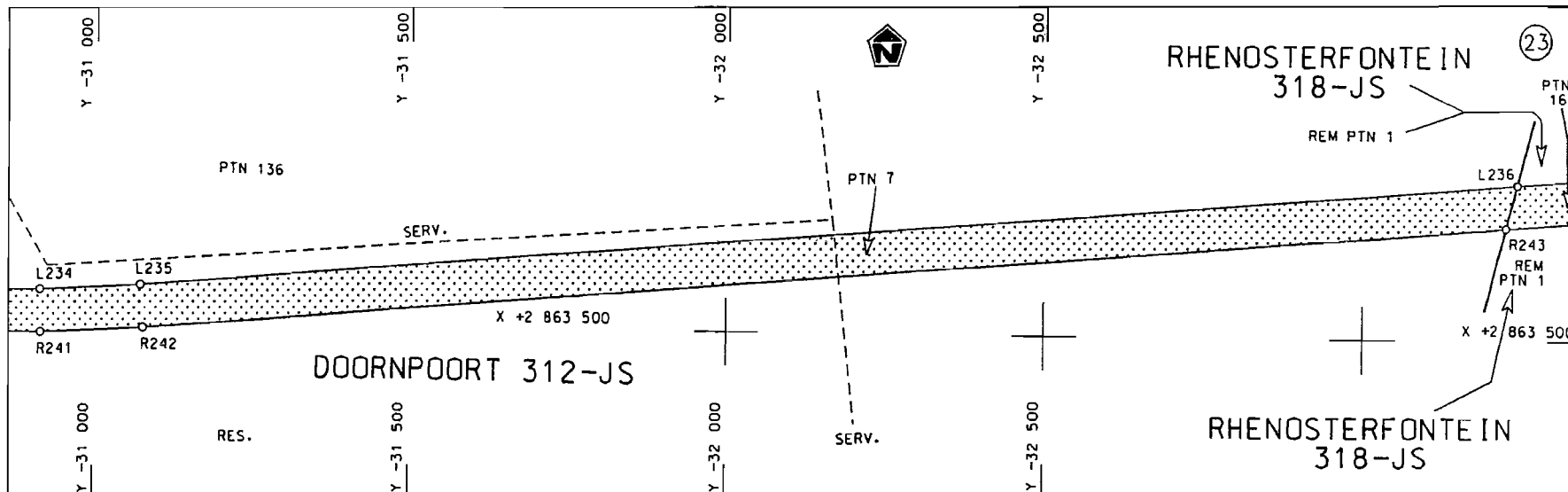
steldie podreserwe voor van 'n gedeelte
represents the road reserve of a portion
von Nasionale Roete N4 Seksie 3
of National Route


Vel Sheet 11 van 18
Plan P635/07

D.O.9.A



| | | | | |
|--|--------------------------|--|---|---------------------------------------|
| <p>Die Suid Afrikaanse Nasionale Padagentskap Beperk</p> | <p>Die figuur getoon</p> |  | <p>stel die padreserwe voor van 'n gedeelte represents the road reserve of a portion van Nasionale Roete N4 of National Route</p> | <p>Vel Sheet 12 van of 18</p> |
| <p>The South African National Roads Agency Limited</p> | <p>The figure shown</p> | | <p>N4 Seksie 3 of National Route Section</p> | <p>Plan P635/07</p> |



| | | | | |
|--|---|--|--|-------------------------------|
| <p>Die Suid Afrikaanse Nasionale Padagentskap Beperk The South African National Roads Agency Limited</p> | <p>Die figuur getoon The figure shown</p> |  | <p>steldie padreserwe voor van 'n gedeelte represents the road reserve of a portion van Nasionale Roete N4 Seksie Section of National Route N4 Section</p> | <p>Vel Sheet 13 van of 18</p> |
| | | | | <p>Plan P635/07</p> |

| PADRESERWE KOÖRDINATE | | | | / | ROAD RESERVE CO-ORDINATES | | | |
|---------------------------|-----------|-------|--------|-----|----------------------------|-------|--------|--|
| LINKERKANT/LEFT HAND SIDE | | | | | REGTERKANT/RIGHT HAND SIDE | | | |
| | Y | X | WG | 29° | Y | X | | |
| L1 | 5 920.25 | 2 863 | 222.61 | R1 | 5 935.05 | 2 863 | 291.06 | |
| L2 | 5 875.37 | 2 863 | 238.96 | R2 | 5 900.03 | 2 863 | 304.48 | |
| L3 | 5 818.97 | 2 863 | 258.46 | R3 | 5 840.10 | 2 863 | 325.14 | |
| L4 | 5 762.17 | 2 863 | 274.96 | R4 | 5 718.84 | 2 863 | 357.05 | |
| L5 | 5 704.47 | 2 863 | 288.66 | R5 | 5 657.11 | 2 863 | 368.56 | |
| L6 | 5 646.37 | 2 863 | 299.46 | R6 | 5 594.72 | 2 863 | 375.26 | |
| L7 | 5 587.87 | 2 863 | 308.86 | R7 | 5 532.52 | 2 863 | 378.78 | |
| L8 | 5 531.62 | 2 863 | 315.14 | R8 | 5 469.84 | 2 863 | 380.98 | |
| L9 | 5 472.04 | 2 863 | 317.06 | R9 | 5 407.20 | 2 863 | 379.82 | |
| L10 | 5 414.55 | 2 863 | 316.31 | R10 | 5 344.80 | 2 863 | 375.53 | |
| L11 | 5 353.71 | 2 863 | 312.30 | R11 | 5 282.87 | 2 863 | 368.12 | |
| L12 | 5 291.80 | 2 863 | 305.25 | R12 | 5 221.34 | 2 863 | 357.86 | |
| L13 | 5 233.43 | 2 863 | 295.26 | R13 | 5 160.27 | 2 863 | 344.34 | |
| L14 | 5 175.31 | 2 863 | 282.60 | R14 | 5 072.18 | 2 863 | 319.09 | |
| L15 | 5 089.78 | 2 863 | 257.92 | R15 | 4 792.39 | 2 863 | 230.66 | |
| L16 | 4 873.35 | 2 863 | 187.44 | R16 | 4 791.76 | 2 863 | 227.74 | |
| L17 | 4 776.20 | 2 863 | 155.76 | R17 | 4 546.03 | 2 863 | 147.61 | |
| L18 | 4 530.47 | 2 863 | 075.63 | R18 | 4 287.64 | 2 863 | 063.35 | |
| L19 | 4 307.36 | 2 863 | 002.88 | R19 | 4 170.23 | 2 863 | 030.10 | |
| L20 | 4 194.36 | 2 862 | 956.17 | R20 | 4 054.06 | 2 862 | 990.78 | |
| L21 | 4 046.50 | 2 862 | 917.74 | R21 | 4 026.70 | 2 862 | 978.16 | |
| L22 | 4 030.08 | 2 862 | 912.40 | R22 | 3 736.65 | 2 862 | 883.60 | |
| L23 | 3 365.09 | 2 862 | 695.50 | R23 | 3 274.06 | 2 862 | 739.73 | |
| L24 | 3 173.84 | 2 862 | 618.79 | R24 | 3 159.75 | 2 862 | 713.33 | |
| L25 | 3 058.83 | 2 862 | 557.27 | R25 | 3 006.43 | 2 862 | 704.97 | |
| L26 | 2 896.55 | 2 862 | 442.25 | R26 | 2 943.60 | 2 862 | 701.45 | |
| L27 | 2 884.32 | 2 862 | 426.44 | R27 | 2 933.43 | 2 862 | 711.24 | |
| L28 | 2 882.39 | 2 862 | 417.38 | R28 | 2 952.08 | 2 862 | 839.73 | |
| L29 | 2 836.62 | 2 862 | 195.70 | R29 | 2 914.81 | 2 862 | 846.14 | |
| L30 | 2 803.84 | 2 862 | 197.37 | R30 | 2 889.02 | 2 862 | 719.15 | |
| L31 | 2 839.17 | 2 862 | 434.64 | R31 | 2 876.88 | 2 862 | 702.73 | |
| L32 | 2 829.69 | 2 862 | 443.81 | R32 | 2 725.22 | 2 862 | 595.17 | |
| L33 | 2 736.08 | 2 862 | 436.41 | R33 | 2 677.81 | 2 862 | 570.32 | |
| L34 | 2 559.18 | 2 862 | 422.46 | R34 | 2 579.85 | 2 862 | 518.81 | |
| L35 | 2 432.09 | 2 862 | 396.18 | R35 | 2 418.17 | 2 862 | 464.02 | |
| L36 | 2 385.77 | 2 862 | 388.48 | R36 | 2 374.19 | 2 862 | 455.96 | |
| L37 | 2 339.45 | 2 862 | 382.13 | R37 | 2 330.01 | 2 862 | 449.07 | |
| L38 | 2 292.95 | 2 862 | 377.70 | R38 | 2 285.52 | 2 862 | 443.49 | |
| L39 | 2 244.70 | 2 862 | 374.73 | R39 | 2 240.88 | 2 862 | 439.28 | |
| L40 | 2 199.40 | 2 862 | 372.91 | R40 | 2 229.51 | 2 862 | 438.55 | |
| L41 | 2 152.77 | 2 862 | 371.35 | R41 | 2 196.17 | 2 862 | 436.40 | |
| L42 | 2 124.71 | 2 862 | 371.11 | R42 | 2 151.48 | 2 862 | 434.85 | |
| L43 | 1 860.81 | 2 862 | 370.81 | R43 | 2 124.65 | 2 862 | 434.57 | |
| L44 | 1 551.43 | 2 862 | 370.45 | R44 | 1 534.62 | 2 862 | 434.02 | |
| L45 | 1 531.95 | 2 862 | 370.43 | R45 | 1 514.02 | 2 862 | 434.00 | |
| L46 | 889.38 | 2 862 | 369.82 | R46 | 909.30 | 2 862 | 433.43 | |
| L47 | 617.26 | 2 862 | 369.27 | R47 | 874.82 | 2 862 | 433.38 | |
| L48 | 368.79 | 2 862 | 362.84 | R48 | 617.08 | 2 862 | 432.87 | |
| L49 | 311.41 | 2 862 | 361.03 | R49 | 312.27 | 2 862 | 440.23 | |
| L50 | 7.07 | 2 862 | 368.49 | R50 | 7.03 | 2 862 | 432.24 | |
| L51 | -1 134.02 | 2 862 | 367.66 | R51 | -1 021.33 | 2 862 | 431.23 | |

| | | | | |
|-------|----|-----|----|---------|
| Vel | 14 | Van | 18 | P635/07 |
| Sheet | | of | | |

| PADRESERWE KOÖRDINATE | | | | / | ROAD RESERVE CO-ORDINATES | | | |
|---------------------------|------------|--------------|----|------|----------------------------|--------------|--|--|
| LINKERKANT/LEFT HAND SIDE | | | | | REGTERKANT/RIGHT HAND SIDE | | | |
| | Y | X | WG | 29° | Y | X | | |
| L52 | -2 576.32 | 2 862 365.64 | | R52 | -5 008.43 | 2 862 426.63 | | |
| L53 | -3 384.69 | 2 862 364.64 | | R53 | -5 701.57 | 2 862 425.83 | | |
| L54 | -6 041.20 | 2 862 361.77 | | R54 | -6 048.08 | 2 862 425.52 | | |
| L55 | -6 392.76 | 2 862 361.22 | | R55 | -6 392.73 | 2 862 424.81 | | |
| L56 | -6 482.86 | 2 862 361.16 | | R56 | -6 571.01 | 2 862 427.02 | | |
| L57 | -6 573.27 | 2 862 363.56 | | R57 | -6 660.01 | 2 862 431.01 | | |
| L58 | -6 663.43 | 2 862 367.50 | | R58 | -6 998.03 | 2 862 455.64 | | |
| L59 | -6 753.64 | 2 862 374.15 | | R59 | -7 297.96 | 2 862 490.46 | | |
| L60 | -7 002.75 | 2 862 392.22 | | R60 | -7 417.36 | 2 862 527.58 | | |
| L61 | -7 329.04 | 2 862 397.63 | | R61 | -7 534.35 | 2 862 607.43 | | |
| L62 | -7 458.17 | 2 862 368.70 | | R62 | -7 597.79 | 2 862 667.43 | | |
| L63 | -7 728.75 | 2 862 242.09 | | R63 | -7 655.85 | 2 862 723.40 | | |
| L64 | -7 787.97 | 2 862 214.25 | | R64 | -7 663.40 | 2 862 752.18 | | |
| L65 | -7 804.37 | 2 862 194.18 | | R65 | -7 637.90 | 2 862 871.59 | | |
| L66 | -7 838.76 | 2 862 076.93 | | R66 | -7 673.35 | 2 862 880.46 | | |
| L67 | -7 874.18 | 2 862 086.20 | | R67 | -7 707.64 | 2 862 763.48 | | |
| L68 | -7 848.71 | 2 862 205.36 | | R68 | -7 723.99 | 2 862 743.46 | | |
| L69 | -7 853.97 | 2 862 234.05 | | R69 | -7 742.70 | 2 862 735.94 | | |
| L70 | -7 904.49 | 2 862 281.23 | | R70 | -7 808.68 | 2 862 702.79 | | |
| L71 | -7 979.18 | 2 862 351.39 | | R71 | -8 053.58 | 2 862 588.39 | | |
| L72 | -8 095.28 | 2 862 432.69 | | R72 | -8 182.78 | 2 862 559.59 | | |
| L73 | -8 213.48 | 2 862 470.39 | | R73 | -8 365.68 | 2 862 555.09 | | |
| L74 | -8 370.28 | 2 862 491.49 | | R74 | -8 803.28 | 2 862 587.20 | | |
| L75 | -8 715.48 | 2 862 516.60 | | R75 | -9 522.00 | 2 862 639.92 | | |
| L76 | -8 736.19 | 2 862 518.10 | | R76 | -9 625.00 | 2 862 648.42 | | |
| L77 | -8 755.09 | 2 862 397.30 | | R77 | -9 779.61 | 2 862 660.12 | | |
| L78 | -8 764.19 | 2 862 397.90 | | R78 | -9 923.41 | 2 862 668.92 | | |
| L79 | -8 745.39 | 2 862 518.70 | | R79 | -10 364.11 | 2 862 700.72 | | |
| L80 | -9 526.70 | 2 862 575.52 | | R80 | -11 010.22 | 2 862 747.35 | | |
| L81 | -9 630.20 | 2 862 581.82 | | R81 | -11 102.62 | 2 862 758.65 | | |
| L82 | -9 784.21 | 2 862 593.32 | | R82 | -11 861.71 | 2 862 817.28 | | |
| L83 | -9 927.71 | 2 862 604.72 | | R83 | -12 046.19 | 2 862 830.28 | | |
| L84 | -10 150.41 | 2 862 620.36 | | R84 | -12 166.71 | 2 862 838.78 | | |
| L85 | -10 076.31 | 2 862 535.42 | | R85 | -12 469.92 | 2 862 857.78 | | |
| L86 | -10 083.21 | 2 862 529.42 | | R86 | -12 835.11 | 2 862 899.59 | | |
| L87 | -10 162.91 | 2 862 621.73 | | R87 | -13 185.11 | 2 862 919.00 | | |
| L88 | -10 390.51 | 2 862 638.22 | | R88 | -13 299.11 | 2 862 935.70 | | |
| L89 | -11 017.02 | 2 862 683.75 | | R89 | -13 354.21 | 2 862 954.40 | | |
| L90 | -11 107.22 | 2 862 685.75 | | R90 | -13 334.81 | 2 863 002.10 | | |
| L91 | -11 866.31 | 2 862 737.38 | | R91 | -14 090.75 | 2 862 963.98 | | |
| L92 | -12 171.21 | 2 862 759.58 | | R92 | -14 089.58 | 2 862 971.46 | | |
| L93 | -12 231.81 | 2 862 764.62 | | R93 | -14 117.14 | 2 862 973.71 | | |
| L94 | -12 475.61 | 2 862 784.89 | | R94 | -14 213.63 | 2 862 981.59 | | |
| L95 | -12 840.11 | 2 862 795.79 | | R95 | -14 335.90 | 2 862 993.88 | | |
| L96 | -12 864.25 | 2 862 797.91 | | R96 | -14 398.00 | 2 863 000.12 | | |
| L97 | -13 196.22 | 2 862 826.71 | | R97 | -14 504.23 | 2 863 012.81 | | |
| L98 | -13 315.92 | 2 862 821.41 | | R98 | -14 605.51 | 2 863 024.91 | | |
| L99 | -13 448.82 | 2 862 804.71 | | R99 | -14 843.90 | 2 863 082.34 | | |
| L100 | -13 270.32 | 2 862 586.11 | | R100 | -15 120.66 | 2 863 165.48 | | |
| L101 | -13 016.02 | 2 862 485.21 | | R101 | -15 269.05 | 2 863 203.32 | | |
| L102 | -12 971.82 | 2 862 458.21 | | R102 | -15 325.28 | 2 863 225.27 | | |

| | | | | |
|-------|----|-----|----|---------|
| Vel | 15 | Van | 18 | P635/07 |
| Sheet | | of | | |

| PADRESERWE KOÖRDINATE | | | | / | ROAD RESERVE CO-ORDINATES | | | |
|---------------------------|------------|--------------|----|------|----------------------------|--------------|--|--|
| LINKERKANT/LEFT HAND SIDE | | | | | REGTERKANT/RIGHT HAND SIDE | | | |
| | Y | X | WG | 29° | Y | X | | |
| L103 | -12 988.62 | 2 862 423.01 | | R103 | -15 338.83 | 2 863 229.14 | | |
| L104 | -13 060.32 | 2 862 469.31 | | R104 | -15 908.44 | 2 863 401.53 | | |
| L105 | -13 305.22 | 2 862 566.11 | | R105 | -16 165.84 | 2 863 485.83 | | |
| L106 | -13 329.82 | 2 862 580.71 | | R106 | -16 273.94 | 2 863 535.53 | | |
| L107 | -13 338.12 | 2 862 564.71 | | R107 | -16 362.84 | 2 863 586.23 | | |
| L108 | -13 360.42 | 2 862 560.71 | | R108 | -16 397.45 | 2 863 605.97 | | |
| L109 | -13 637.32 | 2 862 789.02 | | R109 | -16 434.57 | 2 863 646.00 | | |
| L110 | -13 693.72 | 2 862 846.32 | | R110 | -16 432.75 | 2 863 702.99 | | |
| L111 | -13 843.30 | 2 862 884.22 | | R111 | -16 421.04 | 2 863 779.04 | | |
| L112 | -14 098.91 | 2 862 905.61 | | R112 | -16 456.14 | 2 863 788.23 | | |
| L113 | -14 315.03 | 2 862 921.97 | | R113 | -16 468.44 | 2 863 709.09 | | |
| L114 | -14 496.15 | 2 862 936.64 | | R114 | -16 482.70 | 2 863 654.17 | | |
| L115 | -14 620.19 | 2 862 946.69 | | R115 | -16 504.62 | 2 863 642.99 | | |
| L116 | -14 924.82 | 2 863 037.41 | | R116 | -16 524.74 | 2 863 632.73 | | |
| L117 | -15 023.27 | 2 863 066.83 | | R117 | -16 549.44 | 2 863 627.24 | | |
| L118 | -15 257.44 | 2 863 134.18 | | R118 | -16 611.14 | 2 863 613.24 | | |
| L119 | -15 332.31 | 2 863 155.67 | | R119 | -16 800.74 | 2 863 619.24 | | |
| L120 | -15 399.89 | 2 863 175.13 | | R120 | -17 070.55 | 2 863 660.23 | | |
| L121 | -15 928.17 | 2 863 337.23 | | R121 | -17 252.15 | 2 863 684.33 | | |
| L122 | -16 219.77 | 2 863 421.84 | | R122 | -17 555.85 | 2 863 728.74 | | |
| L123 | -16 383.74 | 2 863 435.90 | | R123 | -17 773.35 | 2 863 757.94 | | |
| L124 | -16 441.07 | 2 863 428.46 | | R124 | -18 095.96 | 2 863 801.52 | | |
| L125 | -16 475.45 | 2 863 395.97 | | R125 | -18 304.34 | 2 863 827.34 | | |
| L126 | -16 484.07 | 2 863 365.19 | | R126 | -18 425.80 | 2 863 842.40 | | |
| L127 | -16 501.22 | 2 863 250.22 | | R127 | -18 472.30 | 2 863 848.16 | | |
| L128 | -16 537.91 | 2 863 256.73 | | R128 | -18 762.79 | 2 863 882.34 | | |
| L129 | -16 520.62 | 2 863 370.89 | | R129 | -19 026.73 | 2 863 922.22 | | |
| L130 | -16 535.89 | 2 863 444.59 | | R130 | -19 149.17 | 2 863 948.15 | | |
| L131 | -16 608.24 | 2 863 479.04 | | R131 | -19 189.65 | 2 863 956.37 | | |
| L132 | -16 671.04 | 2 863 508.44 | | R132 | -19 209.27 | 2 863 960.37 | | |
| L133 | -16 749.24 | 2 863 533.24 | | R133 | -19 375.13 | 2 863 990.75 | | |
| L134 | -16 784.04 | 2 863 544.04 | | R134 | -19 406.00 | 2 863 997.72 | | |
| L135 | -17 731.97 | 2 863 675.53 | | R135 | -19 627.82 | 2 864 047.73 | | |
| L136 | -17 738.65 | 2 863 688.74 | | R136 | -19 688.36 | 2 864 062.10 | | |
| L137 | -18 105.14 | 2 863 738.42 | | R137 | -19 806.11 | 2 864 090.16 | | |
| L138 | -18 177.46 | 2 863 747.20 | | R138 | -20 021.60 | 2 864 124.19 | | |
| L139 | -18 412.29 | 2 863 775.72 | | R139 | -20 159.79 | 2 864 129.33 | | |
| L140 | -19 233.89 | 2 863 895.06 | | R140 | -20 198.55 | 2 864 129.74 | | |
| L141 | -19 282.72 | 2 863 902.15 | | R141 | -20 413.52 | 2 864 132.18 | | |
| L142 | -19 642.33 | 2 863 981.25 | | R142 | -20 516.79 | 2 864 147.71 | | |
| L143 | -19 820.12 | 2 864 020.86 | | R143 | -20 589.77 | 2 864 154.33 | | |
| L144 | -20 028.15 | 2 864 054.71 | | R144 | -20 575.98 | 2 864 246.31 | | |
| L145 | -20 157.65 | 2 864 060.66 | | R145 | -20 689.47 | 2 864 296.73 | | |
| L146 | -20 257.05 | 2 864 058.17 | | R146 | -20 726.87 | 2 864 308.21 | | |
| L147 | -20 296.71 | 2 864 057.26 | | R147 | -20 762.69 | 2 864 214.32 | | |
| L148 | -20 444.88 | 2 864 049.26 | | R148 | -20 792.88 | 2 864 189.84 | | |
| L149 | -20 541.69 | 2 864 036.55 | | R149 | -20 947.92 | 2 864 140.75 | | |
| L150 | -20 605.08 | 2 864 028.33 | | R150 | -21 009.13 | 2 864 134.61 | | |
| L151 | -20 661.19 | 2 864 009.34 | | R151 | -21 063.70 | 2 864 130.59 | | |
| L152 | -20 756.44 | 2 863 978.63 | | R152 | -21 146.23 | 2 864 124.44 | | |
| L153 | -20 817.58 | 2 863 890.66 | | R153 | -21 158.28 | 2 864 124.13 | | |

| | | | | |
|-------|----|-----|----|---------|
| Vel | 16 | Van | 18 | P635/07 |
| Sheet | | of | | |

| PADRESERWE KOÖRDINATE | | | | / | ROAD RESERVE CO-ORDINATES | | | |
|---------------------------|-----|--------|-------|--------|----------------------------|-----|--------|--------------|
| LINKERKANT/LEFT HAND SIDE | | | | | REGTERKANT/RIGHT HAND SIDE | | | |
| | Y | X | WG | 29° | Y | X | | |
| L154 | -20 | 836.37 | 2 863 | 831.11 | R154 | -21 | 226.12 | 2 864 122.20 |
| L155 | -20 | 849.87 | 2 863 | 788.33 | R155 | -21 | 332.46 | 2 864 128.82 |
| L156 | -20 | 879.86 | 2 863 | 798.42 | R156 | -21 | 483.55 | 2 864 144.33 |
| L157 | -20 | 872.05 | 2 863 | 831.96 | R157 | -21 | 572.61 | 2 864 151.99 |
| L158 | -20 | 864.80 | 2 863 | 863.13 | R158 | -21 | 660.69 | 2 864 162.36 |
| L159 | -20 | 844.93 | 2 863 | 945.64 | R159 | -21 | 706.10 | 2 864 169.37 |
| L160 | -20 | 860.21 | 2 863 | 979.74 | R160 | -21 | 725.11 | 2 864 174.61 |
| L161 | -20 | 993.79 | 2 864 | 032.61 | R161 | -21 | 796.68 | 2 864 194.35 |
| L162 | -21 | 091.95 | 2 864 | 049.55 | R162 | -21 | 866.31 | 2 864 215.25 |
| L163 | -21 | 159.86 | 2 864 | 061.53 | R163 | -21 | 885.50 | 2 864 221.89 |
| L164 | -21 | 724.76 | 2 864 | 112.82 | R164 | -22 | 210.29 | 2 864 334.24 |
| L165 | -21 | 812.01 | 2 864 | 129.43 | R165 | -22 | 210.75 | 2 864 332.13 |
| L166 | -21 | 896.92 | 2 864 | 154.92 | R166 | -22 | 312.67 | 2 864 366.68 |
| L167 | -21 | 915.03 | 2 864 | 161.28 | R167 | -22 | 346.18 | 2 864 378.05 |
| L168 | -21 | 973.05 | 2 864 | 181.36 | R168 | -22 | 435.67 | 2 864 408.39 |
| L169 | -22 | 083.47 | 2 864 | 231.32 | R169 | -22 | 456.21 | 2 864 407.73 |
| L170 | -22 | 443.45 | 2 864 | 356.52 | R170 | -22 | 790.66 | 2 864 522.58 |
| L171 | -22 | 451.91 | 2 864 | 354.34 | R171 | -22 | 919.25 | 2 864 568.96 |
| L172 | -22 | 463.27 | 2 864 | 351.41 | R172 | -22 | 943.83 | 2 864 586.52 |
| L173 | -22 | 807.23 | 2 864 | 471.63 | R173 | -22 | 956.45 | 2 864 595.53 |
| L174 | -22 | 918.89 | 2 864 | 505.05 | R174 | -23 | 119.41 | 2 864 700.06 |
| L175 | -23 | 063.91 | 2 864 | 534.36 | R175 | -23 | 148.73 | 2 864 754.13 |
| L176 | -23 | 196.98 | 2 864 | 527.53 | R176 | -23 | 122.74 | 2 864 859.15 |
| L177 | -23 | 241.03 | 2 864 | 515.68 | R177 | -23 | 156.33 | 2 864 869.47 |
| L178 | -23 | 302.64 | 2 864 | 379.10 | R178 | -23 | 193.54 | 2 864 789.22 |
| L179 | -23 | 349.03 | 2 864 | 360.04 | R179 | -23 | 247.80 | 2 864 765.47 |
| L180 | -23 | 304.47 | 2 864 | 512.55 | R180 | -23 | 356.64 | 2 864 768.31 |
| L181 | -23 | 303.63 | 2 864 | 519.93 | R181 | -23 | 475.35 | 2 864 785.69 |
| L182 | -23 | 332.05 | 2 864 | 574.46 | R182 | -23 | 590.81 | 2 864 815.04 |
| L183 | -23 | 429.75 | 2 864 | 659.22 | R183 | -23 | 694.46 | 2 864 851.14 |
| L184 | -23 | 539.61 | 2 864 | 723.84 | R184 | -23 | 793.87 | 2 864 881.51 |
| L185 | -23 | 720.05 | 2 864 | 786.69 | R185 | -24 | 428.77 | 2 865 102.87 |
| L186 | -24 | 454.37 | 2 865 | 044.50 | R186 | -24 | 685.79 | 2 865 192.39 |
| L187 | -24 | 893.54 | 2 865 | 197.40 | R187 | -25 | 163.84 | 2 865 358.42 |
| L188 | -25 | 066.19 | 2 865 | 245.98 | R188 | -25 | 265.83 | 2 865 394.50 |
| L189 | -25 | 209.35 | 2 865 | 265.59 | R189 | -25 | 260.84 | 2 865 408.90 |
| L190 | -25 | 244.76 | 2 865 | 270.34 | R190 | -25 | 416.48 | 2 865 463.06 |
| L191 | -25 | 424.82 | 2 865 | 270.84 | R191 | -25 | 279.12 | 2 865 721.88 |
| L192 | -25 | 603.34 | 2 865 | 247.36 | R192 | -25 | 195.90 | 2 865 861.41 |
| L193 | -25 | 748.11 | 2 865 | 209.96 | R193 | -25 | 115.12 | 2 865 965.20 |
| L194 | -25 | 877.60 | 2 865 | 168.68 | R194 | -25 | 104.57 | 2 865 977.65 |
| L195 | -26 | 034.41 | 2 865 | 110.33 | R195 | -25 | 170.32 | 2 865 998.54 |
| L196 | -26 | 169.98 | 2 865 | 045.12 | R196 | -25 | 387.99 | 2 865 743.72 |
| L197 | -26 | 287.25 | 2 864 | 977.21 | R197 | -25 | 477.29 | 2 865 646.51 |
| L198 | -26 | 392.33 | 2 864 | 909.78 | R198 | -25 | 606.60 | 2 865 528.51 |
| L199 | -26 | 685.50 | 2 864 | 721.65 | R199 | -25 | 623.73 | 2 865 534.48 |
| L200 | -26 | 735.95 | 2 864 | 689.29 | R200 | -25 | 694.64 | 2 865 479.16 |
| L201 | -26 | 908.71 | 2 864 | 562.15 | R201 | -25 | 841.08 | 2 865 372.51 |
| L202 | -26 | 940.33 | 2 864 | 531.98 | R202 | -25 | 832.10 | 2 865 360.18 |
| L203 | -26 | 965.37 | 2 864 | 495.97 | R203 | -25 | 958.02 | 2 865 268.51 |
| L204 | -26 | 991.66 | 2 864 | 444.52 | R204 | -26 | 044.88 | 2 865 209.07 |

Vel 17 Van 18
Sheet of

P635/07

| PADRESERWE KOÖRDINATE | | | | / | ROAD RESERVE CO-ORDINATES | | | |
|---------------------------|------------|-------|--------|------|----------------------------|-------|--------|--|
| LINKERKANT/LEFT HAND SIDE | | | | | REGTERKANT/RIGHT HAND SIDE | | | |
| | Y | X | WG | 29° | Y | X | | |
| L205 | -27 037.46 | 2 864 | 360.11 | R205 | -26 310.82 | 2 865 | 037.76 | |
| L206 | -27 055.73 | 2 864 | 326.43 | R206 | -26 321.60 | 2 865 | 030.74 | |
| L207 | -27 133.46 | 2 864 | 271.52 | R207 | -26 693.40 | 2 864 | 792.29 | |
| L208 | -27 173.87 | 2 864 | 265.73 | R208 | -26 766.51 | 2 864 | 748.19 | |
| L209 | -27 351.26 | 2 864 | 256.83 | R209 | -27 036.71 | 2 864 | 585.16 | |
| L210 | -27 397.94 | 2 864 | 246.76 | R210 | -27 079.05 | 2 864 | 565.12 | |
| L211 | -27 439.95 | 2 864 | 226.85 | R211 | -27 123.06 | 2 864 | 556.00 | |
| L212 | -27 665.32 | 2 864 | 089.18 | R212 | -27 300.83 | 2 864 | 545.99 | |
| L213 | -28 183.91 | 2 863 | 760.75 | R213 | -27 338.03 | 2 864 | 543.98 | |
| L214 | -28 227.09 | 2 863 | 731.85 | R214 | -27 416.84 | 2 864 | 484.77 | |
| L215 | -28 248.28 | 2 863 | 698.50 | R215 | -27 435.30 | 2 864 | 451.11 | |
| L216 | -28 359.78 | 2 863 | 623.60 | R216 | -27 481.41 | 2 864 | 366.87 | |
| L217 | -28 610.77 | 2 863 | 476.50 | R217 | -27 511.57 | 2 864 | 311.76 | |
| L218 | -28 689.67 | 2 863 | 439.30 | R218 | -27 534.11 | 2 864 | 279.54 | |
| L219 | -28 724.47 | 2 863 | 423.40 | R219 | -27 565.77 | 2 864 | 250.05 | |
| L220 | -28 807.07 | 2 863 | 392.81 | R220 | -27 748.41 | 2 864 | 116.48 | |
| L221 | -28 799.19 | 2 863 | 412.50 | R221 | -28 144.38 | 2 863 | 862.04 | |
| L222 | -28 847.27 | 2 863 | 394.51 | R222 | -28 124.58 | 2 863 | 893.20 | |
| L223 | -28 966.97 | 2 863 | 360.61 | R223 | -28 226.77 | 2 863 | 827.60 | |
| L224 | -29 089.07 | 2 863 | 336.41 | R224 | -28 422.27 | 2 863 | 709.60 | |
| L225 | -29 158.07 | 2 863 | 328.31 | R225 | -28 534.78 | 2 863 | 629.90 | |
| L226 | -29 212.67 | 2 863 | 321.91 | R226 | -28 654.38 | 2 863 | 561.01 | |
| L227 | -29 336.97 | 2 863 | 317.51 | R227 | -28 759.38 | 2 863 | 512.01 | |
| L228 | -29 495.17 | 2 863 | 325.91 | R228 | -28 871.87 | 2 863 | 469.91 | |
| L229 | -30 309.97 | 2 863 | 411.92 | R229 | -28 985.57 | 2 863 | 437.81 | |
| L230 | -30 371.57 | 2 863 | 413.32 | R230 | -29 101.37 | 2 863 | 414.81 | |
| L231 | -30 425.37 | 2 863 | 414.52 | R231 | -29 165.97 | 2 863 | 407.31 | |
| L232 | -30 642.77 | 2 863 | 429.13 | R232 | -29 164.40 | 2 863 | 391.61 | |
| L233 | -30 762.17 | 2 863 | 449.53 | R233 | -29 217.57 | 2 863 | 385.41 | |
| L234 | -30 912.77 | 2 863 | 449.33 | R234 | -29 336.77 | 2 863 | 381.11 | |
| L235 | -31 071.47 | 2 863 | 440.83 | R235 | -29 488.47 | 2 863 | 389.41 | |
| L236 | -33 243.07 | 2 863 | 267.33 | R236 | -30 303.27 | 2 863 | 475.22 | |
| L237 | -33 487.82 | 2 863 | 247.94 | R237 | -30 305.37 | 2 863 | 475.52 | |
| L238 | -33 878.92 | 2 863 | 216.93 | R238 | -30 367.67 | 2 863 | 487.82 | |
| L239 | -34 330.34 | 2 863 | 181.15 | R239 | -30 507.37 | 2 863 | 507.22 | |
| L240 | -34 431.44 | 2 863 | 169.35 | R240 | -30 760.67 | 2 863 | 512.93 | |
| L241 | -34 577.74 | 2 863 | 140.35 | R241 | -30 914.47 | 2 863 | 512.93 | |
| L242 | -34 692.14 | 2 863 | 106.56 | R242 | -31 076.57 | 2 863 | 504.33 | |
| L243 | -34 765.54 | 2 863 | 078.36 | R243 | -33 225.57 | 2 863 | 332.63 | |
| | | | | R244 | -33 587.81 | 2 863 | 303.89 | |
| | | | | R245 | -33 976.82 | 2 863 | 273.02 | |
| | | | | R246 | -34 335.44 | 2 863 | 244.55 | |
| | | | | R247 | -34 440.94 | 2 863 | 232.85 | |
| | | | | R248 | -34 530.96 | 2 863 | 214.72 | |
| | | | | R249 | -34 593.50 | 2 863 | 202.09 | |
| | | | | R250 | -34 712.72 | 2 863 | 166.92 | |
| | | | | R251 | -34 775.81 | 2 863 | 142.64 | |

| | | | | |
|-------|----|-----|----|---------|
| Vel | 18 | Van | 18 | P635/07 |
| Sheet | | of | | |