

Government Gazette Staatskoerant

REPUBLIC OF SOUTH AFRICA
REPUBLIEK VAN SUID-AFRIKA

Vol. 513

Pretoria, 7 March
Maart 2008

No. 30839

CONTENTS**INHOUD**

No.	Page No.	Gazette No.	No.	Bladsy No.	Koerant No.
GOVERNMENT NOTICE			GOEWERMENTSKENNISGEWING		
Transport, Department of			Vervoer, Departement van		
<i>Government Notice</i>			<i>Goewermentskennisgewing</i>		
262			262		
South African National Roads Agency Limited and the National Roads Act (7/1998): The South African National Roads Agency Limited: Declaration amendment of National Road N1 Section 17: Amendment of Declaration No. 124 of 1985 and 2360 of 1987			Suid-Afrikaanse Nasionale Padagentskap Beperk en die Nasionale Paaie Wet (7/1998): Die Suid-Afrikaanse Nasionale Padagentskap Beperk: Verklaring wysiging van Nasionale Pad N1 Seksie 17: Wysiging van Verklarings No. 124 van 1985 en 2360 van 1987		
	2	30839		3	30839

**GOVERNMENT NOTICE
GOEWERMENTSKENNISGEWING**

**DEPARTMENT OF TRANSPORT
DEPARTEMENT VAN VERVOER**

No. 262

7 March 2008

**THE SOUTH AFRICAN NATIONAL ROADS
AGENCY LIMITED**

Registration No: 98/09584/06

DECLARATION AMENDMENT OF NATIONAL ROAD N1 SECTION 17

AMENDMENT OF DECLARATIONS NO. 124 OF 1985 AND 2360 OF 1987 .

By virtue of section 40 (1)(b) of the South African National Roads Agency Limited and the National Roads Act, 1998 (Act No. 7 of 1998), I hereby amend the following declarations by substituting **(I)** the whole of Declaration No. 124 of 1985 and **(II)** Declaration No. 2360 of 1987 sheet 1 of Plan No. P220/73, with the subjoined sheets 1 to 13 of Plan No. P615/07.

(National Road N1 Section 17: La Porte Vase – Nooitgedacht)

J. Radtke

MINISTER OF TRANSPORT

No. 262

7 Maart 2008

DIE SUID-AFRIKAANSE NASIONALE PADAGENTSKAP BEPERK


Registrasie No: 98/09584/06

VERKLARING WYSIGING VAN NASIONALE PAD N1 SEKSIE 17.

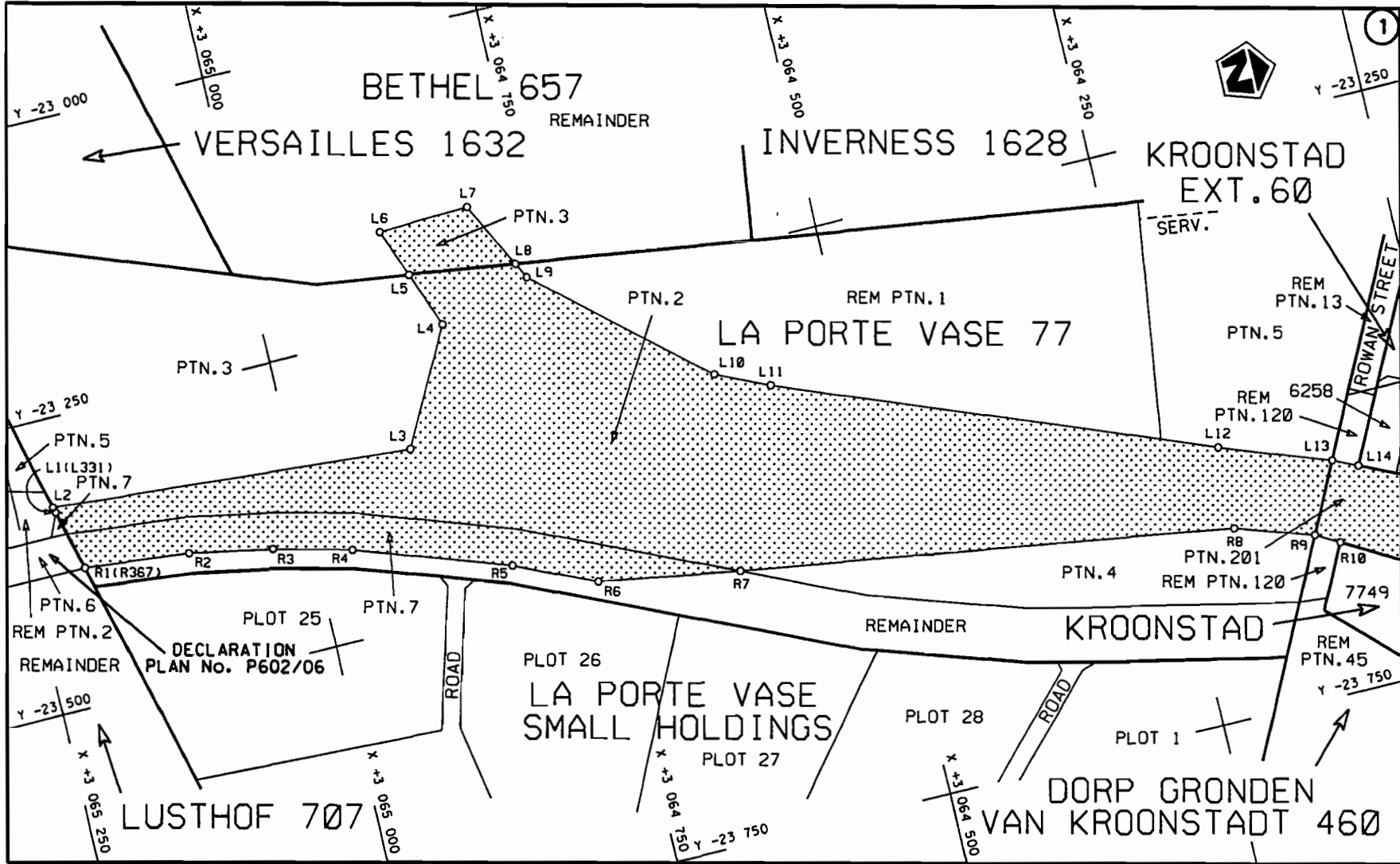
WYSIGING VAN VERKLARINGS NO. 124 VAN 1985 EN 2360 VAN 1987.


Kragtens Artikel 40(1)(b) van die Suid Afrikaanse Nasionale Padagentskap Beperk en die Nasionale Paaie Wet, 1998 (Wet No.7 van 1998), wysig ek hiermee die volgende verklarings deur (I) Verklaring no. 124 van 1985 in sy geheel en (II) Verklaring no.2360 van 1987 vel 1 van Plan no.P220/73, te vervang met meegaande velle 1 tot 13 van Plan no. P615/07.

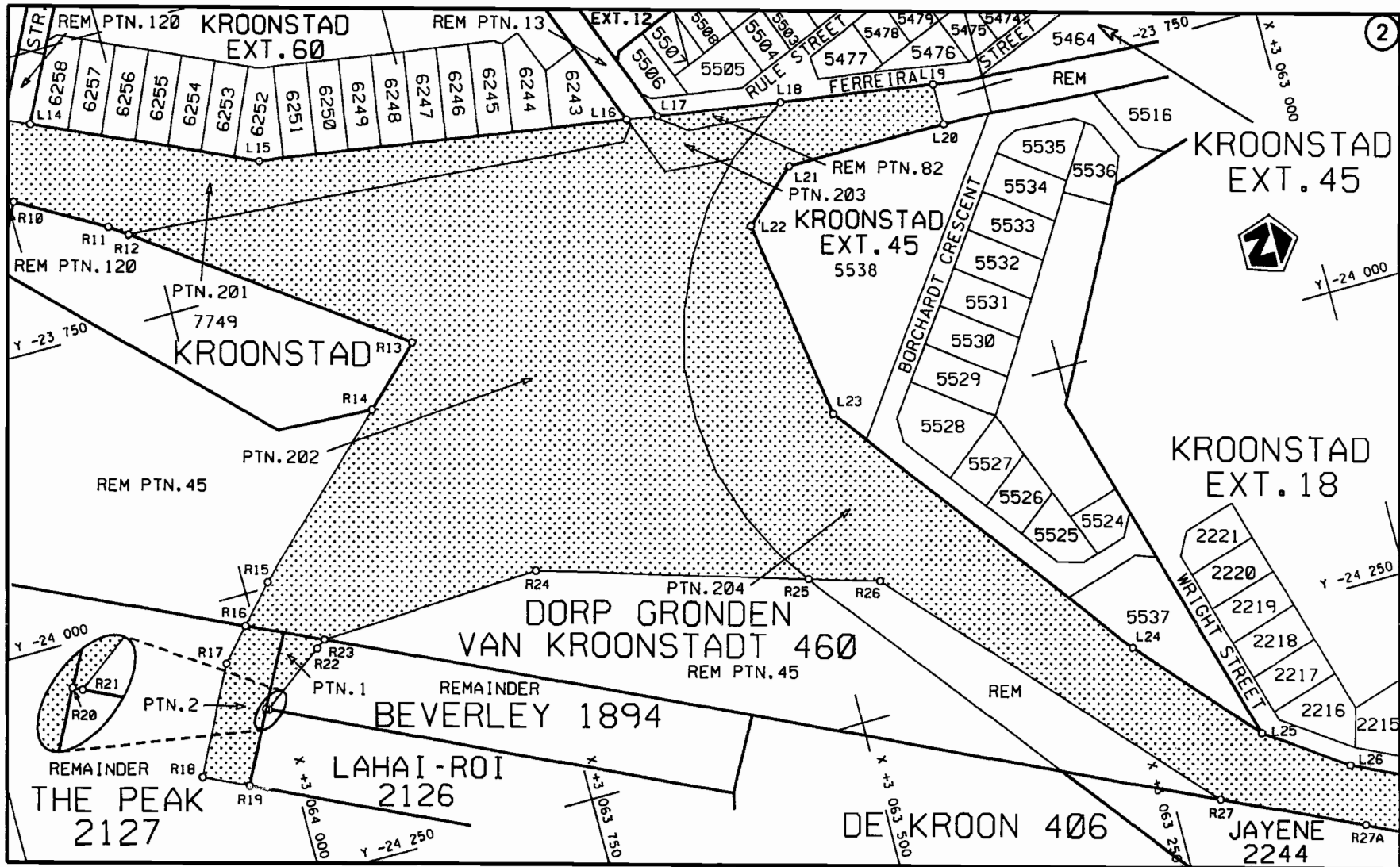
(Nasionale Pad N1 Seksie 17: La Porte Vase – Nooitgedacht)



MINISTER VAN VERVOER

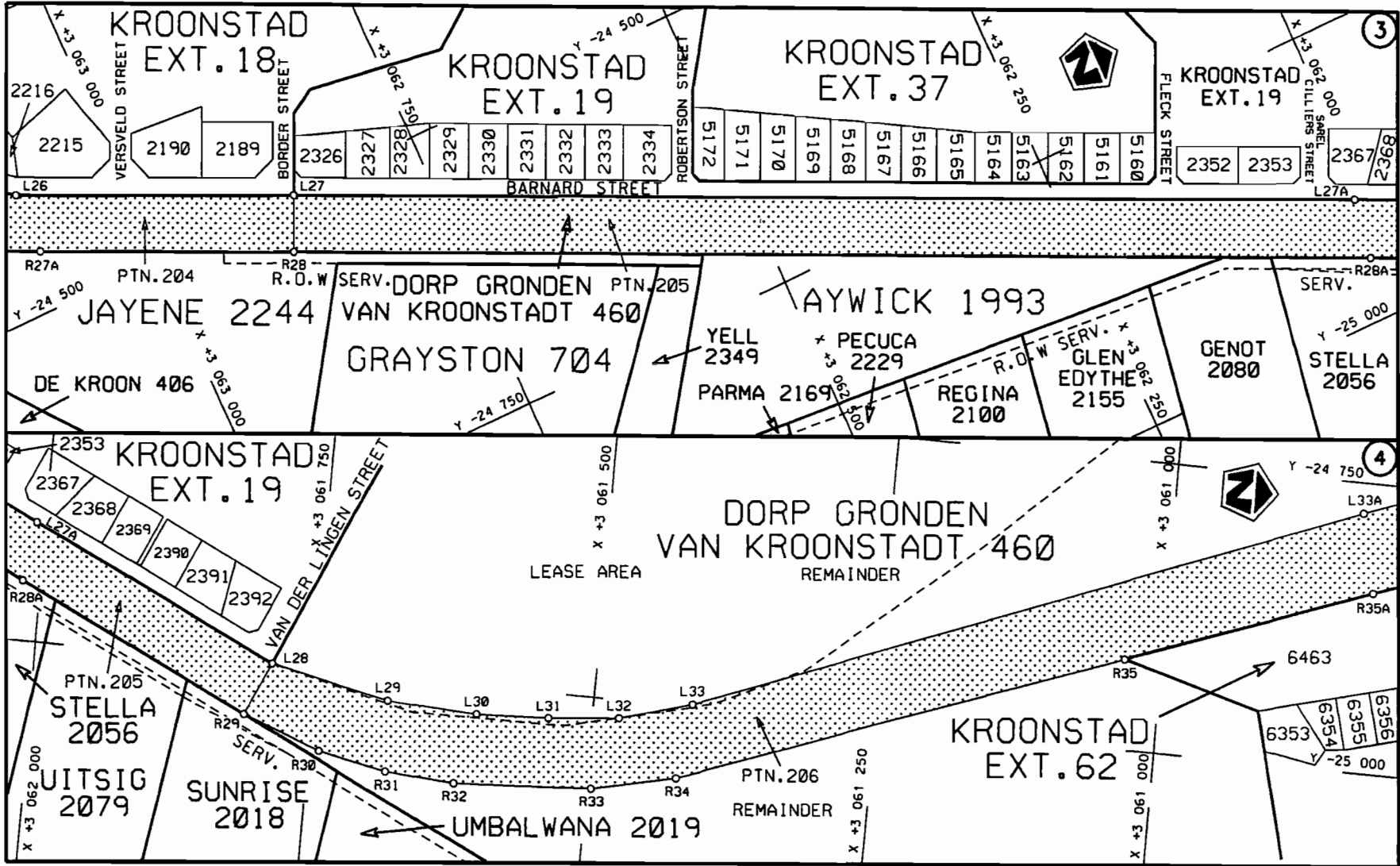


<p>Die Suid Afrikaanse Nasionale Padagentskap Beperk The South African National Roads Agency Limited</p>	<p>Die figuur getoon The figure shown</p>	<p></p> <p>steldie padreserwe voor van 'n gedeelte represents the road reserve of a portion van Nasionale Roete N1 of National Route N1</p>	<p>Vel Sheet 1 van 13 of 13</p>
<p>Seksie Section 17</p>			<p>Plan P615/07</p>

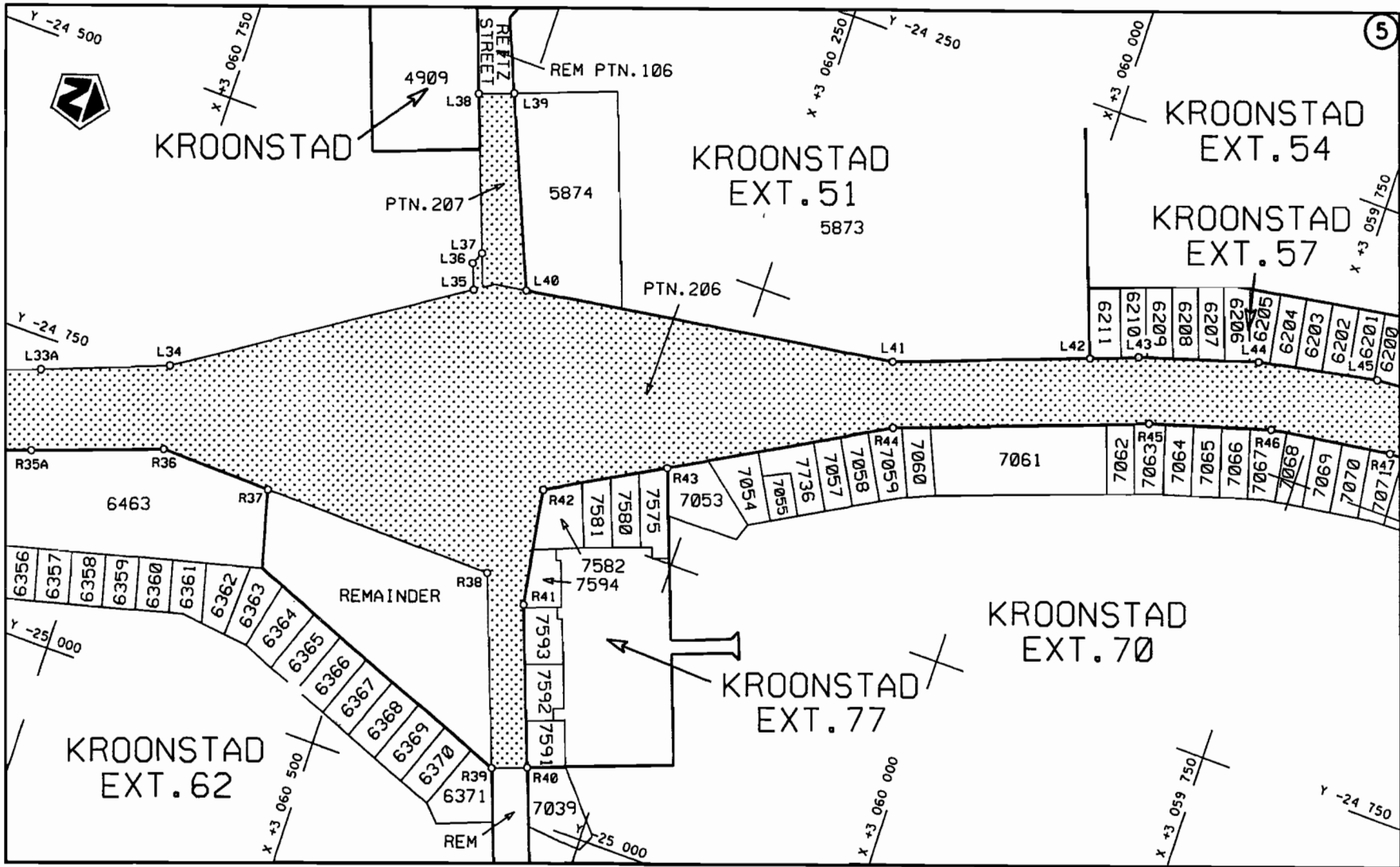


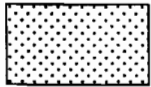
2

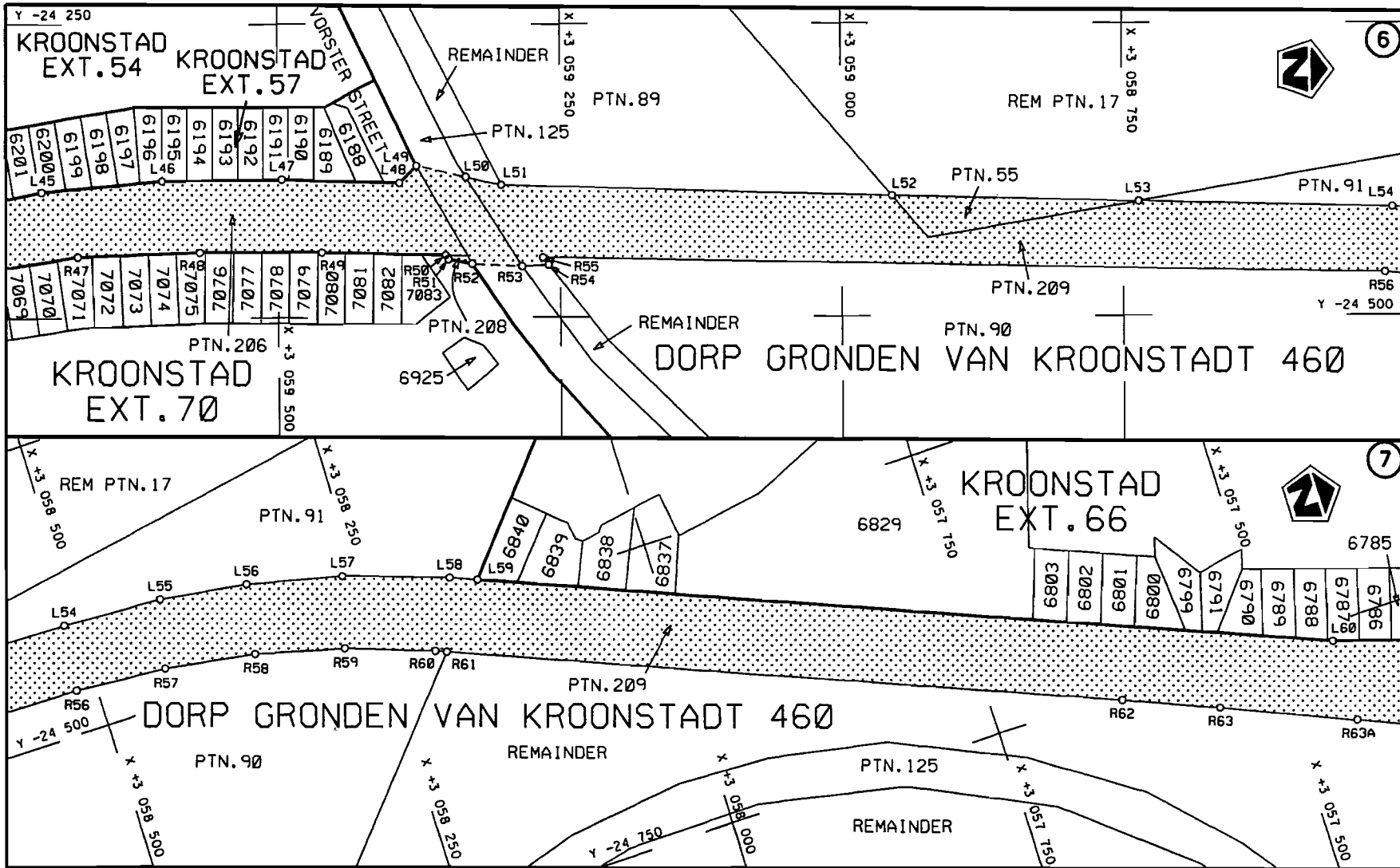
<p>Die Suid Afrikaanse Nasionale Padogentskap Beperk</p>	<p>Die figuur getoon</p>	<p>steldie padreserve voor van 'n gedeelte</p>	<p>Vel Sheet 2 van 13</p>
<p>The South African National Roads Agency Limited</p>	<p>The figure shown</p>	<p>represents the road reserve of a portion van Nasionale Roete N1 Seksie 17 of National Route</p>	<p>Plan P615/07</p>



<p>Die Suid Afrikaanse Nasionale Padagentskap Beperk The South African National Roads Agency Limited</p>	<p>Die figuur getoon The figure shown</p>		<p>stel die padreserwe voor van 'n gedeelte represents the road reserve of a portion van Nasionale Roete N1 Seksie of National Route 17 Section</p>	<p>Vel Sheet 3 van 13 Plan P615/07</p>
--	---	--	---	--

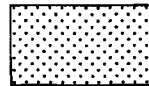


Die Suid Afrikaanse Nasionale Padagentskap Beperk The South African National Roads Agency Limited	Die figuur getoon The figure shown	 steldie padreserwe voor van 'n gedeelte represents the road reserve of a portion van Nasionale Roete of National Route	Vel Sheet 4 von of 13 Plan P615/07
		N1 Seksie 17 Section	



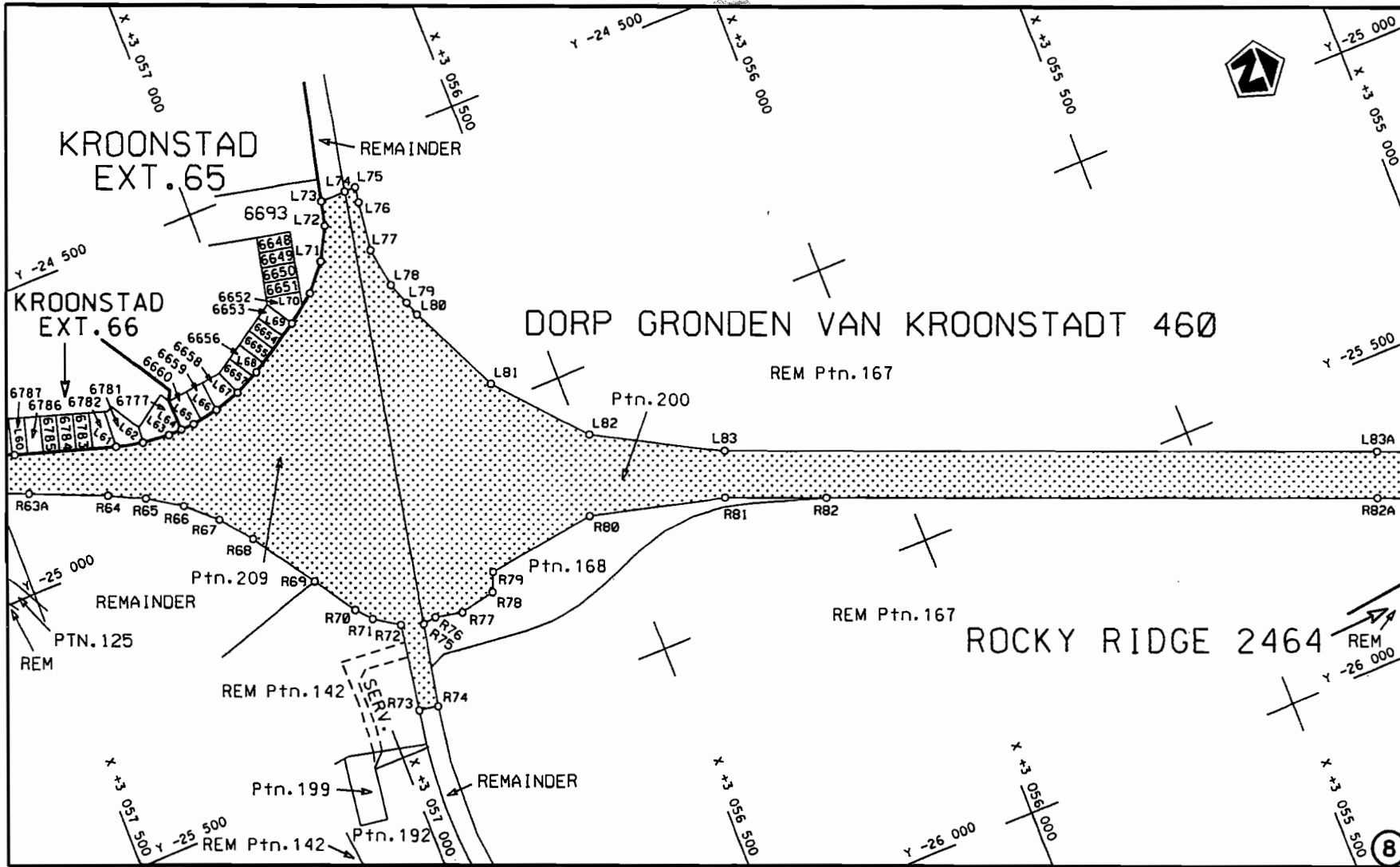
Die Suid Afrikaanse Nasionale Padagentskap Beperk
 The South African National Roads Agency Limited


Die figuur getoon
 The figure shown

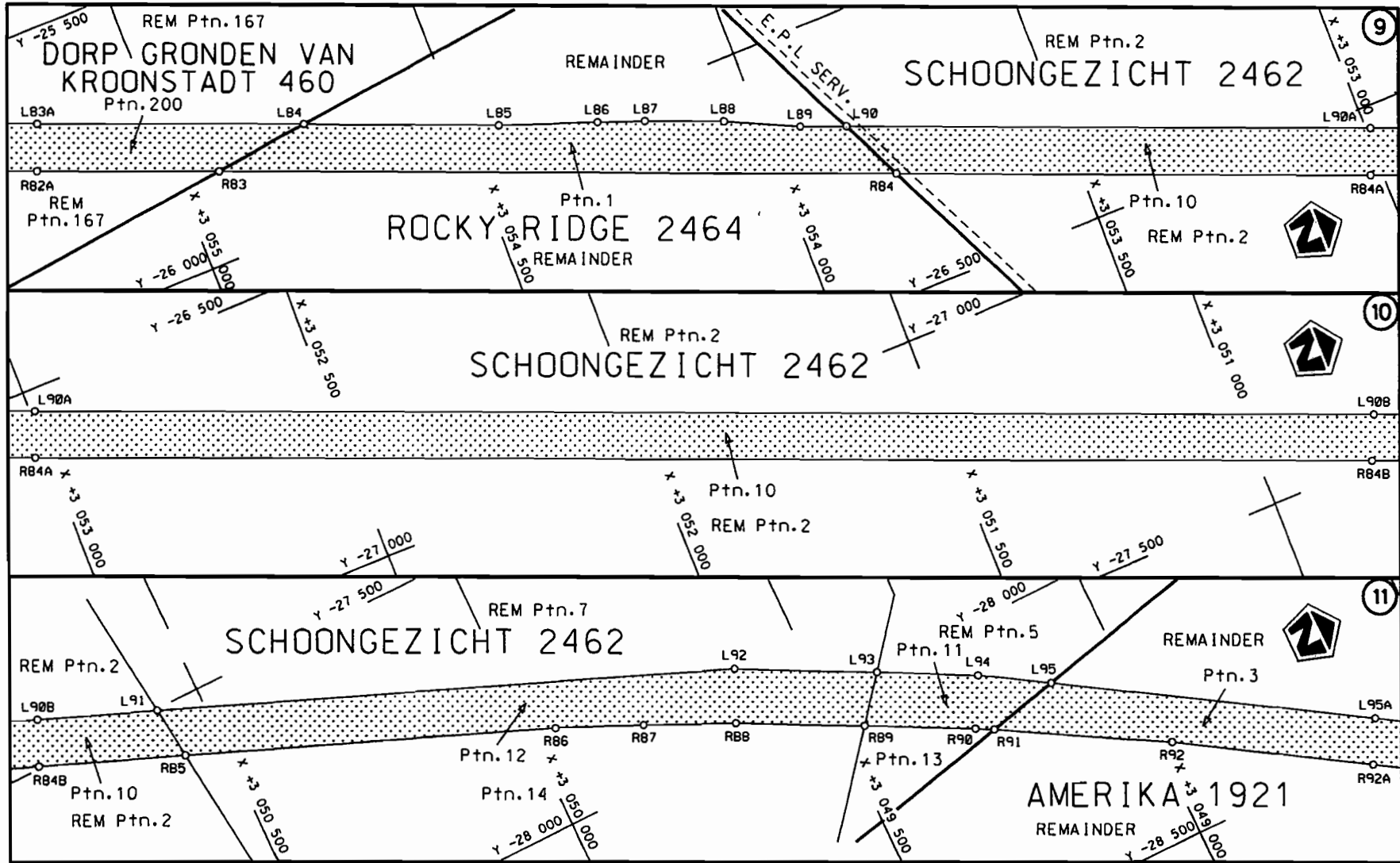


steldie podreserwe voor van 'n gedeelte
 represents the road reserve of a portion
 van Nasionale Roete N1 Seksie 17
 of National Route Section

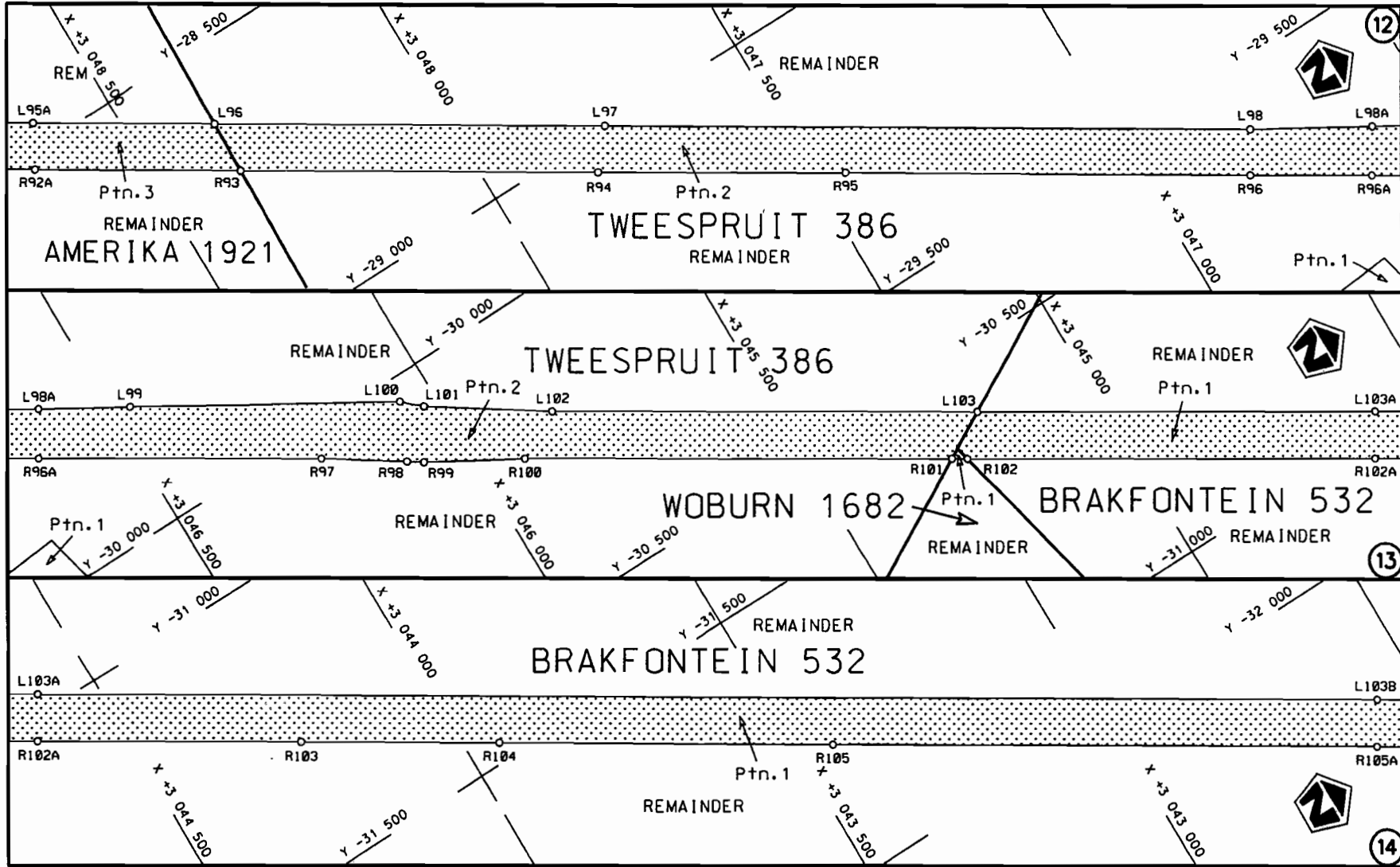
Vel Sheet 5 van 13
 Plan P615/07

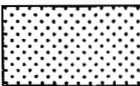


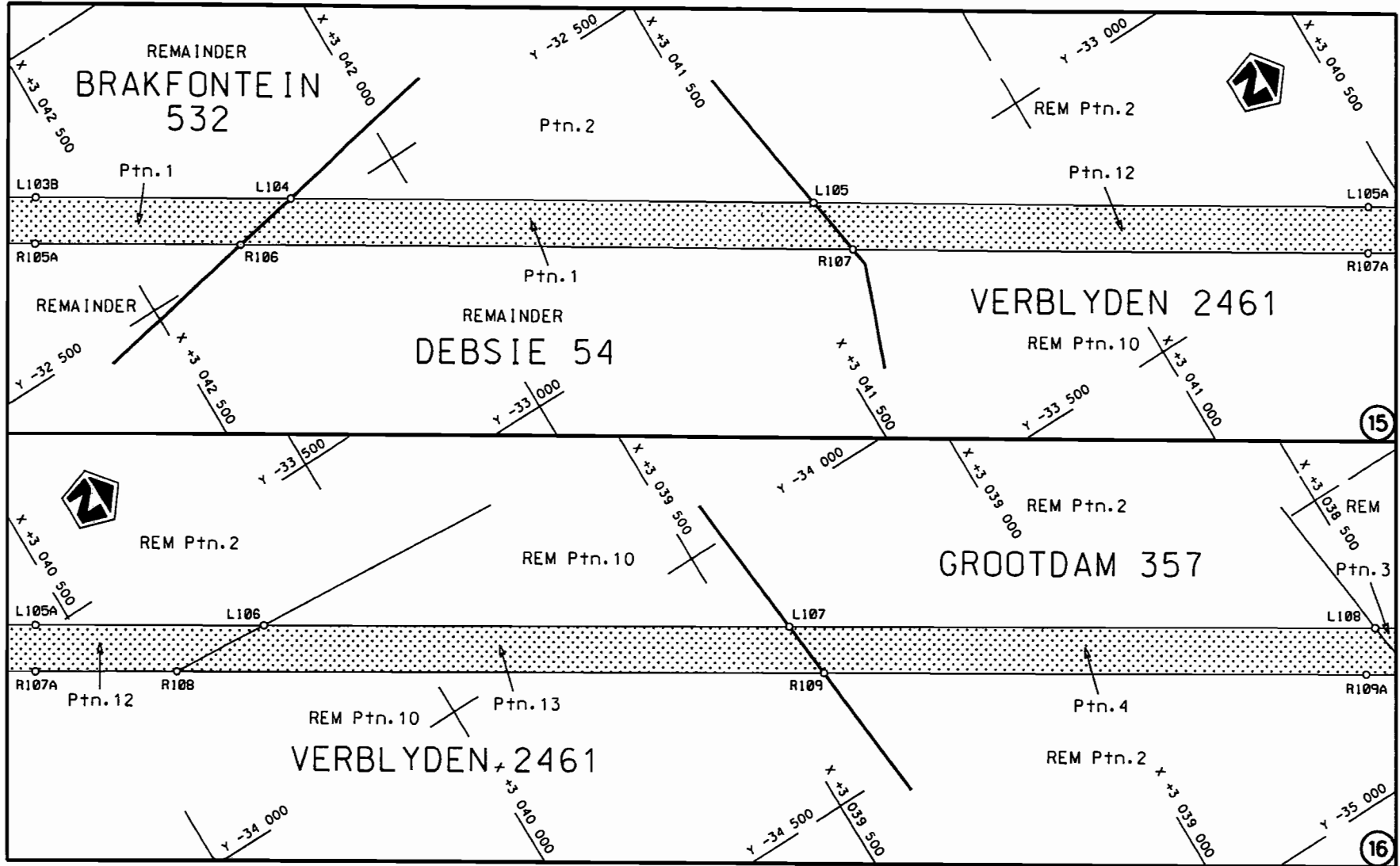
Die Suid Afrikaanse Nasionale Padagentskap Beperk The South African National Roads Agency Limited	Die figuur getoon The figure shown	 steldie padreserwe voor van 'n gedeelte represents the road reserve of a portion van Nasionale Roete of National Route	Vel Sheet 6 van of 13
N1 Seksie of National Route Section 17			Plan P615/07



<p>Die Suid Afrikaanse Nasionale Padagentskap Beperk</p>	<p>Die figuur getoon</p>	<p>steldie padreserwe voor van 'n gedeelte represents the road reserve of a portion</p>	<p>Vel Sheet 7 van of 13</p>
<p>The South African National Roads Agency Limited</p>	<p>The figure shown</p>	<p>of National Route N1 Seksie Section 17</p>	<p>Plan P615/07</p>



Die Suid Afrikaanse Nasionale Padagentskap Beperk The South African National Roads Agency Limited	Die figuur getoon The figure shown		steldie padreserwe voor van 'n gedeelte represents the road reserve of a portion van Nasionale Roete N1 of National Route N1 Seksie Section 17	Vel Sheet 8 van of 13 Plan P615/07
--	---------------------------------------	--	--	---------------------------------------



<p>Die Suid Afrikaanse Nasionale Padogentskap Beperk The South African National Roads Agency Limited</p>	<p>Die figuur getoon The figure shown</p>		<p>steldie padreserwe voor van 'n gedeelte represents the road reserve of a portion van Nasionale Raete N1 Sektie of National Route 17</p>	<p>Vel Sheet 9 van 13</p>
				<p>Plan P615/07</p>

PADRESERWE KOÖRDINATE				/	ROAD RESERVE CO-ORDINATES			
LINKERKANT/LEFT HAND SIDE					REGTERKANT/RIGHT HAND SIDE			
	Y	X	WG 27°		Y	X		
L1	-23 330.380	3 065 214.940		R1	-23 382.260	3 065 201.220		
L2	-23 325.246	3 065 216.344		R2	-23 391.970	3 065 108.280		
L3	-23 350.540	3 064 895.809		R3	-23 405.820	3 065 034.840		
L4	-23 254.623	3 064 843.173		R4	-23 422.930	3 064 965.930		
L5	-23 206.450	3 064 861.910		R5	-23 468.910	3 064 831.580		
L6	-23 164.760	3 064 878.330		R6	-23 500.140	3 064 760.490		
L7	-23 162.240	3 064 798.500		R7	-23 520.620	3 064 636.210		
L8	-23 219.550	3 064 767.680		R8	-23 587.392	3 064 199.891		
L9	-23 232.867	3 064 760.651		R9	-23 610.070	3 064 131.650		
L10	-23 351.837	3 064 618.492		R10	-23 621.370	3 064 111.090		
L11	-23 372.615	3 064 571.733		R11	-23 663.620	3 064 035.230		
L12	-23 516.645	3 064 197.180		R12	-23 674.680	3 064 019.490		
L13	-23 550.980	3 064 101.160		R13	-23 829.610	3 063 799.250		
L14	-23 560.650	3 064 079.600		R14	-23 876.110	3 063 848.910		
L15	-23 644.630	3 063 890.070		R15	-23 995.490	3 063 978.020		
L16	-23 694.990	3 063 565.020		R16	-24 026.720	3 064 007.640		
L17	-23 699.140	3 063 537.870		R17	-24 053.920	3 064 032.950		
L18	-23 715.620	3 063 429.600		R18	-24 141.780	3 064 078.910		
L19	-23 736.260	3 063 293.740		R19	-24 159.710	3 064 040.420		
L20	-23 771.970	3 063 293.740		R20	-24 100.680	3 064 008.660		
L21	-23 771.350	3 063 436.590		R21	-24 101.970	3 064 005.880		
L22	-23 811.840	3 063 483.070		R22	-24 062.530	3 063 951.070		
L23	-23 985.710	3 063 454.200		R23	-24 056.720	3 063 942.610		
L24	-24 250.340	3 063 250.680		R24	-24 047.850	3 063 745.920		
L25	-24 350.640	3 063 159.100		R25	-24 118.090	3 063 513.650		
L26	-24 397.580	3 063 090.910		R26	-24 136.620	3 063 452.350		
L27	-24 500.990	3 062 866.720		R27	-24 395.770	3 063 209.330		
L28	-24 998.330	3 061 788.740		R28	-24 545.080	3 062 887.030		
L29	-25 020.230	3 061 682.390		R29	-25 044.060	3 061 809.920		
L30	-25 024.390	3 061 603.300		R30	-25 069.050	3 061 740.470		
L31	-25 021.480	3 061 539.090		R31	-25 080.580	3 061 679.280		
L32	-25 015.700	3 061 476.520		R32	-25 085.040	3 061 618.330		
L33	-24 997.430	3 061 412.550		R33	-25 077.870	3 061 496.040		
L34	-24 736.000	3 060 725.380		R34	-25 061.640	3 061 421.670		
L35	-24 585.170	3 060 492.200		R35	-24 921.860	3 061 033.180		
L36	-24 563.640	3 060 500.390		R36	-24 805.260	3 060 707.300		
L37	-24 552.690	3 060 495.470		R37	-24 807.020	3 060 607.800		
L38	-24 423.410	3 060 543.090		R38	-24 810.550	3 060 402.260		
L39	-24 412.540	3 060 513.550		R39	-24 967.960	3 060 344.170		
L40	-24 570.100	3 060 447.880		R40	-24 956.870	3 060 314.100		
L41	-24 520.050	3 060 119.870		R41	-24 825.550	3 060 362.620		
L42	-24 459.220	3 059 956.170		R42	-24 726.690	3 060 378.060		
L43	-24 444.050	3 059 915.540		R43	-24 672.720	3 060 280.470		
L44	-24 412.640	3 059 813.810		R44	-24 573.410	3 060 101.210		
L45	-24 392.570	3 059 709.170		R45	-24 494.790	3 059 888.120		
L46	-24 383.240	3 059 603.040		R46	-24 463.740	3 059 784.550		
L47	-24 382.350	3 059 496.460		R47	-24 448.210	3 059 677.860		
L48	-24 385.170	3 059 391.930		R48	-24 444.480	3 059 569.610		
L49	-24 370.750	3 059 376.740		R49	-24 444.560	3 059 461.210		
L50	-24 380.280	3 059 333.870		R50	-24 447.310	3 059 351.740		
L51	-24 387.300	3 059 302.310		R51	-24 450.830	3 059 349.220		
					Vel 11	Van 13	P615/07	
					Sheet	of		

PADRESERWE KOÖRDINATE				/	ROAD RESERVE CO-ORDINATES			
LINKERKANT/LEFT HAND SIDE					REGTERKANT/RIGHT HAND SIDE			
	Y	X	WG	27°	Y	X		
L52	-24 397.230	3 058 954.780		R52	-24 454.450	3 059 328.490		
L53	-24 402.100	3 058 735.890		R53	-24 456.810	3 059 284.060		
L54	-24 407.410	3 058 510.820		R54	-24 455.370	3 059 260.530		
L55	-24 412.010	3 058 423.330		R55	-24 449.200	3 059 265.590		
L56	-24 423.350	3 058 346.230		R56	-24 463.640	3 058 517.710		
L57	-24 442.950	3 058 262.300		R57	-24 469.610	3 058 437.180		
L58	-24 473.420	3 058 172.940		R58	-24 482.340	3 058 357.390		
L59	-24 482.440	3 058 150.420		R59	-24 502.350	3 058 279.300		
L60	-24 765.280	3 057 443.800		R60	-24 529.240	3 058 204.070		
L61	-24 818.720	3 057 271.230		R61	-24 532.880	3 058 194.960		
L62	-24 830.490	3 057 224.640		R62	-24 756.070	3 057 637.340		
L63	-24 835.830	3 057 176.780		R63	-24 789.220	3 057 556.840		
L64	-24 835.340	3 057 152.790		R64	-24 890.480	3 057 315.770		
L65	-24 834.700	3 057 128.660		R65	-24 920.630	3 057 255.510		
L66	-24 827.430	3 057 081.060		R66	-24 958.030	3 057 197.670		
L67	-24 813.460	3 057 035.020		R67	-25 003.570	3 057 147.100		
L68	-24 793.400	3 056 990.710		R68	-25 057.160	3 057 103.670		
L69	-24 740.220	3 056 899.980		R69	-25 165.130	3 057 030.080		
L70	-24 702.980	3 056 851.450		R70	-25 236.060	3 056 982.060		
L71	-24 659.720	3 056 813.820		R71	-25 261.500	3 056 959.390		
L72	-24 606.020	3 056 784.640		R72	-25 289.060	3 056 917.220		
L73	-24 564.930	3 056 774.680		R73	-25 435.550	3 056 942.240		
L74	-24 564.940	3 056 729.510		R74	-25 442.180	3 056 908.760		
L75	-24 564.850	3 056 709.740		R75	-25 302.880	3 056 879.260		
L76	-24 591.100	3 056 713.950		R76	-25 299.950	3 056 856.320		
L77	-24 674.480	3 056 725.060		R77	-25 309.770	3 056 808.790		
L78	-24 742.630	3 056 714.220		R78	-25 297.780	3 056 746.600		
L79	-24 780.720	3 056 699.950		R79	-25 265.940	3 056 732.730		
L80	-24 806.490	3 056 690.470		R80	-25 240.770	3 056 536.690		
L81	-24 965.200	3 056 614.550		R81	-25 299.290	3 056 301.600		
L82	-25 110.770	3 056 484.520		R82	-25 366.070	3 056 134.650		
L83	-25 225.140	3 056 272.040		R83	-25 849.200	3 054 927.220		
L84	-25 830.850	3 054 757.140		R84	-26 297.770	3 053 805.840		
L85	-25 960.230	3 054 434.460		R85	-27 593.280	3 050 568.140		
L86	-26 020.470	3 054 269.050		R86	-27 838.740	3 049 953.990		
L87	-26 049.670	3 054 189.150		R87	-27 902.570	3 049 809.710		
L88	-26 101.620	3 054 059.150		R88	-27 970.650	3 049 661.290		
L89	-26 160.130	3 053 934.770		R89	-28 075.160	3 049 456.340		
L90	-26 190.700	3 053 858.380		R90	-28 164.480	3 049 281.270		
L91	-27 502.720	3 050 579.250		R91	-28 181.120	3 049 252.050		
L92	-27 885.800	3 049 622.140		R92	-28 338.950	3 048 975.800		
L93	-28 002.070	3 049 395.850		R93	-28 721.880	3 048 360.370		
L94	-28 084.060	3 049 236.500		R94	-29 057.130	3 047 820.910		
L95	-28 153.370	3 049 124.700		R95	-29 288.110	3 047 447.100		
L96	-28 629.420	3 048 358.400		R96	-29 668.460	3 046 836.610		
L97	-28 995.480	3 047 768.880		R97	-30 048.640	3 046 226.750		
L98	-29 601.390	3 046 795.510		R98	-30 133.340	3 046 100.260		
L99	-29 793.810	3 046 469.890		R99	-30 150.640	3 046 076.250		
L100	-30 040.180	3 046 056.700		R100	-30 238.490	3 045 921.580		
L101	-30 070.100	3 046 025.460		R101	-30 639.600	3 045 276.300		
L102	-30 196.400	3 045 837.120		R102	-30 654.310	3 045 252.870		

Vel	12	Van	13	P615/07
Sheet		of		

PADRESERWE KOÖRDINATE				/	ROAD RESERVE CO-ORDINATES			
LINKERKANT/LEFT HAND SIDE					REGTERKANT/RIGHT HAND SIDE			
	Y	X	WG	27°	Y	X		
L103	-30 595.940	3 045	195.220	R103	-31 283.230	3 044	241.150	
L104	-32 463.440	3 042	191.690	R104	-31 467.840	3 043	943.340	
L105	-32 956.660	3 041	398.300	R105	-31 780.830	3 043	440.880	
L106	-33 695.530	3 040	210.450	R106	-32 484.610	3 042	309.100	
L107	-34 190.680	3 039	413.730	R107	-33 062.020	3 041	380.750	
L108	-34 743.360	3 038	524.790	R108	-33 680.950	3 040	385.060	
L109	-35 263.120	3 037	688.950	R109	-34 291.170	3 039	403.510	
L110	-35 429.290	3 037	421.720	R110	-34 845.530	3 038	511.880	
L111	-35 579.860	3 037	162.340	R111	-35 365.260	3 037	676.400	
L112	-35 686.950	3 036	856.560	R112	-35 497.150	3 037	463.940	
L113	-35 585.480	3 036	766.700	R113	-35 664.180	3 037	214.350	
L114	-35 555.690	3 036	636.430	R114	-35 865.470	3 037	013.850	
L115	-35 580.680	3 036	625.350	R115	-35 917.890	3 036	971.860	
L116	-35 589.700	3 036	612.700	R116	-36 079.760	3 037	101.260	
L117	-35 737.550	3 036	737.750	R117	-36 102.030	3 037	079.330	
L118	-35 943.710	3 036	564.020	R118	-36 116.310	3 037	060.560	
L119	-36 115.540	3 036	317.820	R119	-35 957.030	3 036	914.630	
L120	-37 222.280	3 034	538.060	R120	-35 970.870	3 036	863.730	
				R121	-36 038.870	3 036	622.660	
				R122	-36 183.510	3 036	360.040	
				R123	-37 184.220	3 034	750.790	
				R124	-37 293.060	3 034	575.750	

Vel	13	Van	13	P615/07
Sheet		of		