

Government Gazette Staatskoerant

REPUBLIC OF SOUTH AFRICA
REPUBLIEK VAN SUID-AFRIKA

Vol. 513

Pretoria, 7 March
Maart 2008

No. 30843

CONTENTS**INHOUD**

<i>No.</i>	<i>Page No.</i>	<i>Gazette No.</i>	<i>No.</i>	<i>Bladsy No.</i>	<i>Koerant No.</i>
GOVERNMENT NOTICE			GOEWERMENTSKENNISGEWING		
Transport, Department of			Vervoer, Departement van		
<i>Government Notice</i>			<i>Goewermentskennisgewing</i>		
266			266		
South African National Roads Agency Limited and the National Roads Act (7/1998): The South African National Roads Agency Limited: Declaration amendment of National Road N2 Section 2: Amendment of Declaration No. 543 2003	3	30843	Suid-Afrikaanse Nasionale Padagentskap Beperk en die Nasionale Paaie Wet (7/1998): Die Suid-Afrikaanse Nasionale Padagentskap Beperk: Verklaring wysiging van Nasionale Pad N2 Seksie 2: Wysiging van Verklaring No. 543 van 2003	4	30843

**GOVERNMENT NOTICE
GOEWERMENTSKENNISGEWING**

**DEPARTMENT OF TRANSPORT
DEPARTEMENT VAN VERVOER**

No. 266

7 March 2008

**THE SOUTH AFRICAN NATIONAL ROADS
AGENCY LIMITED**

Registration No: 98/09584/06

DECLARATION AMENDMENT OF NATIONAL ROAD N2 SECTION 2

AMENDMENT OF DECLARATION NO. 543 OF 2003

By virtue of section 40 (1)(b) of the South African National Roads Agency Limited and the National Roads Act, 1998 (Act No. 7 of 1998), I hereby amend Declaration No. 543 of 2003 by substituting the section of the descriptive declaration from Bot River up to Caledon, with the subjoined sheets 1 to 10 of Plan No. P609/06.

[National Road N2 Section 2: Bot River – Caledon (22km)]



MINISTER OF TRANSPORT

No. 266

7 Maart 2008

DIE SUID-AFRIKAANSE NASIONALE PADAGENTSKAP BEPERK

Registrasie No: 98/09584/06

VERKLARING WYSIGING VAN NASIONALE PAD N2 SEKSIE 2.

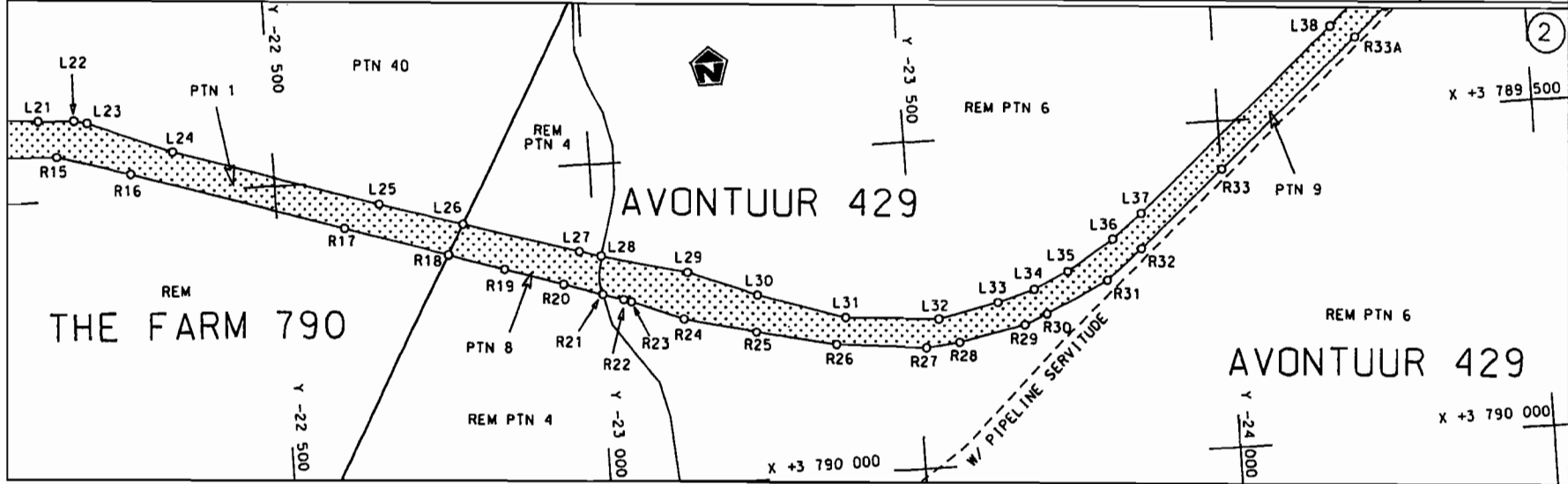
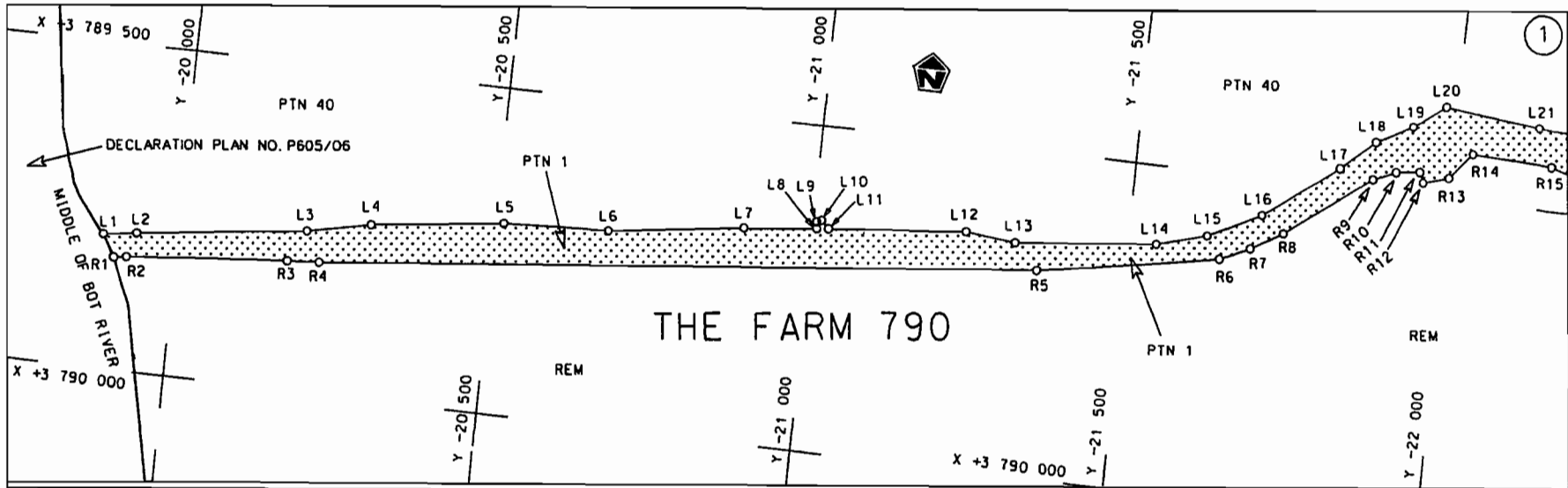
WYSIGING VAN VERKLARING NO. 543 VAN 2003

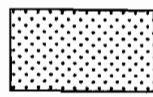
Kragtens Artikel 40(1)(b) van die Suid Afrikaanse Nasionale Padagentskap Beperk en die Nasionale Paaie Wet, 1998 (Wet No.7 van 1998), wysig ek hiermee Verklaring no. 543 van 2003, deur die gedeelte van die beskrywende verklaring vanaf Botrivier tot by Caledon, te vervang met meegaande velle 1 tot 10 van Plan no. P609/06.

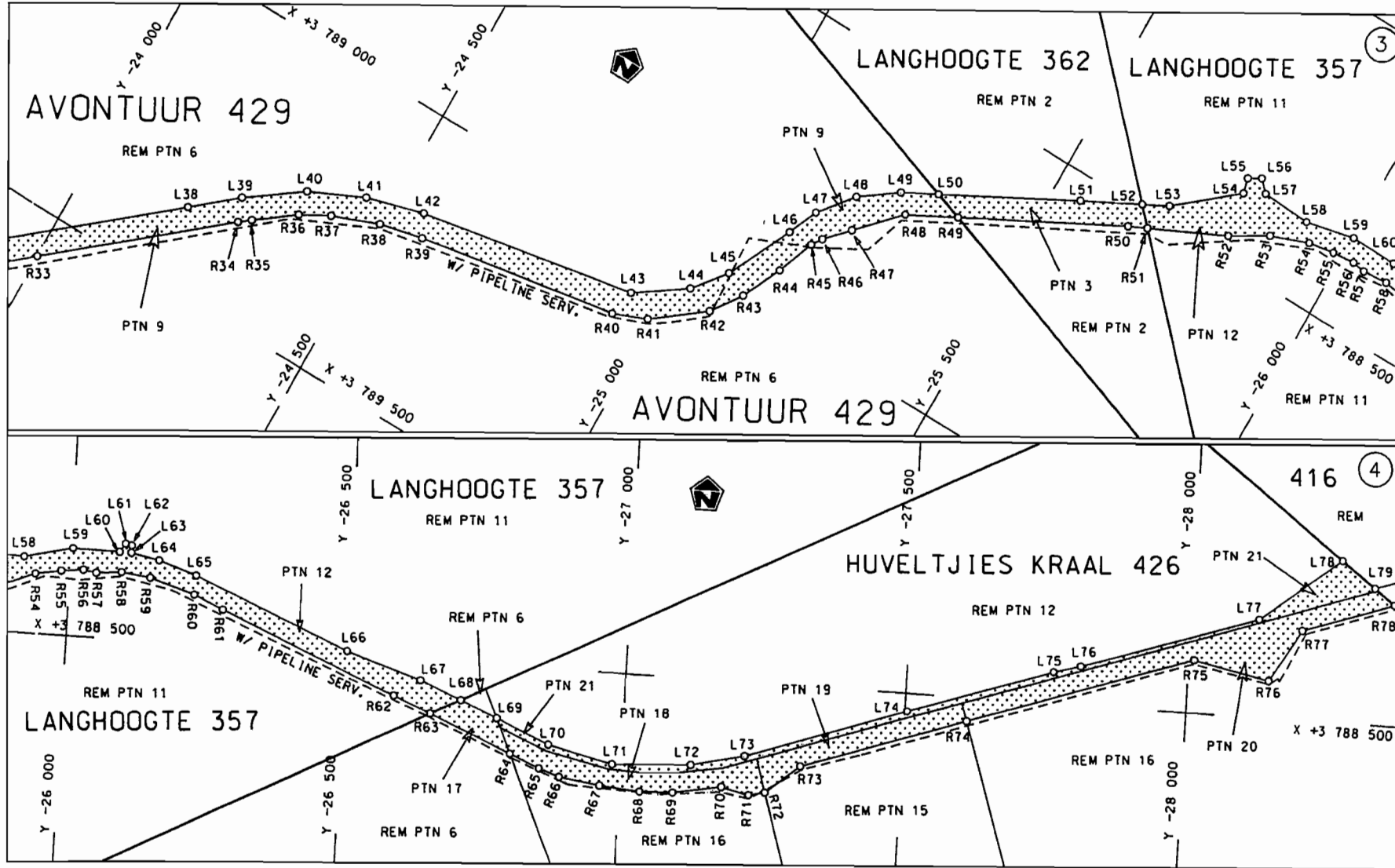
[Nasionale Pad N2 Seksie 2: Botrivier – Caledon (22km)]




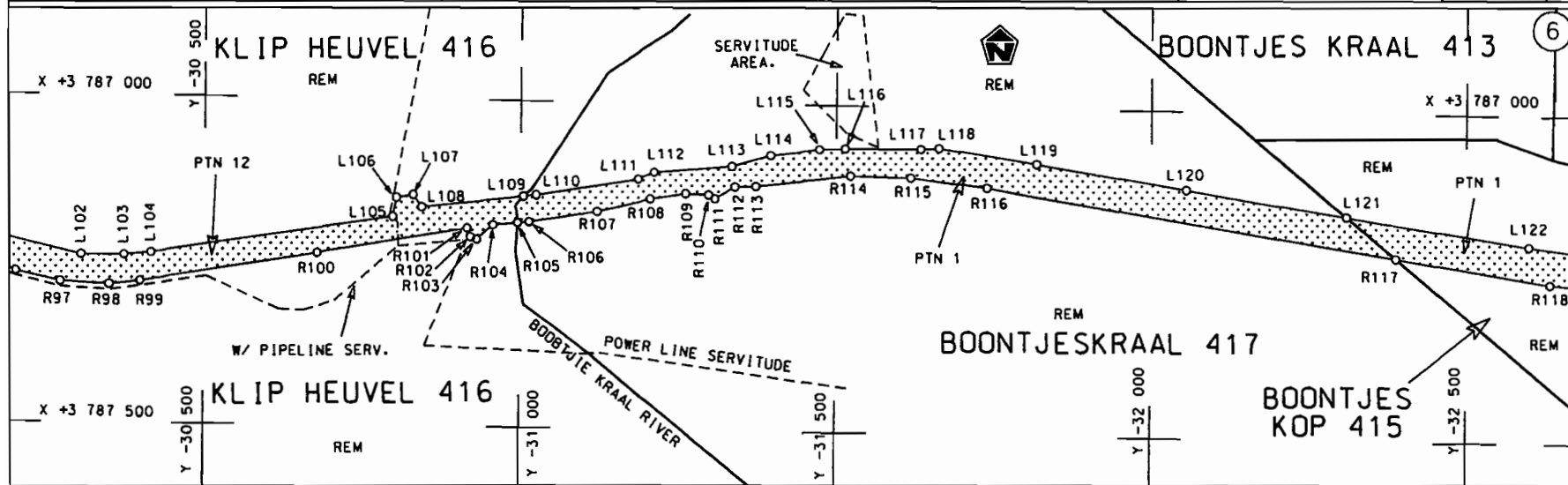
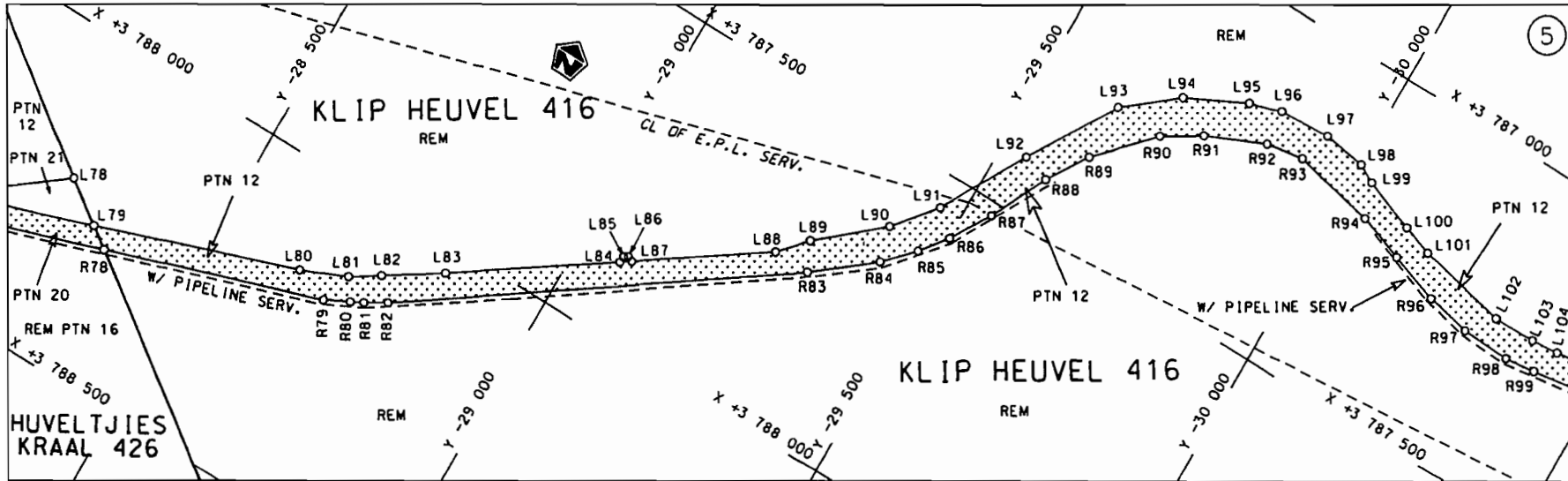
MINISTER VAN VERVOER



Die Suid Afrikaanse Nasionale Padagentskap Beperk The South African National Roads Agency Limited	Die figuur getoon The figure shown	 steldie padreserwe voor van 'n gedeelte represents the road reserve of a portion van Nasionale Roete N2 Sektie of National Route Section	Vel Sheet 1 van 10 of 10 Plan P609/06
--	---------------------------------------	--	--

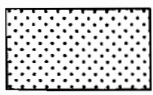


<p>Die Suid Afrikaanse Nasionale Padagentskap Beperk The South African National Roads Agency Limited</p>	<p>Die figuur getoon The figure shown</p>		<p>steldie podreserve voor van 'n gedeelte represents the road reserve of a portion van Nasionale Roete N2 Seksie of National Route Section 2</p>	<p>Vel Sheet 2 van of 10</p>
				<p>Plan P609/06</p>



Die Suid Afrikaanse Nasionale Podagentskap Beperk
The South African National Roads Agency Limited

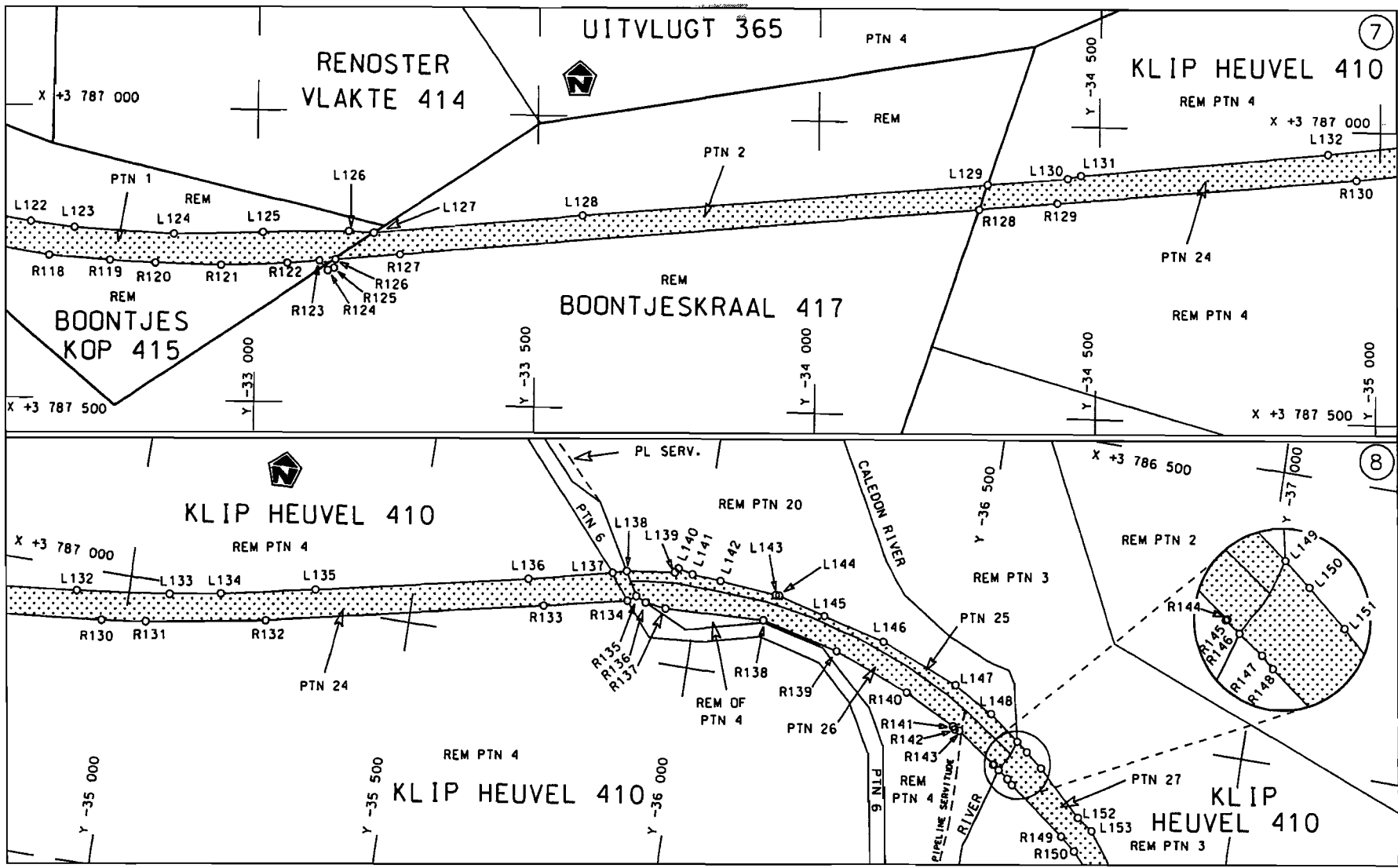
Die figuur getoon
The figure shown



steldie padreserwe voor van 'n gedeelte
represents the road reserve of a portion
van Nasionale Roete N2 Seksie
of National Route N2 Section

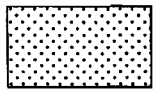
2

Vel Sheet 3 van 10
Plan P609/06



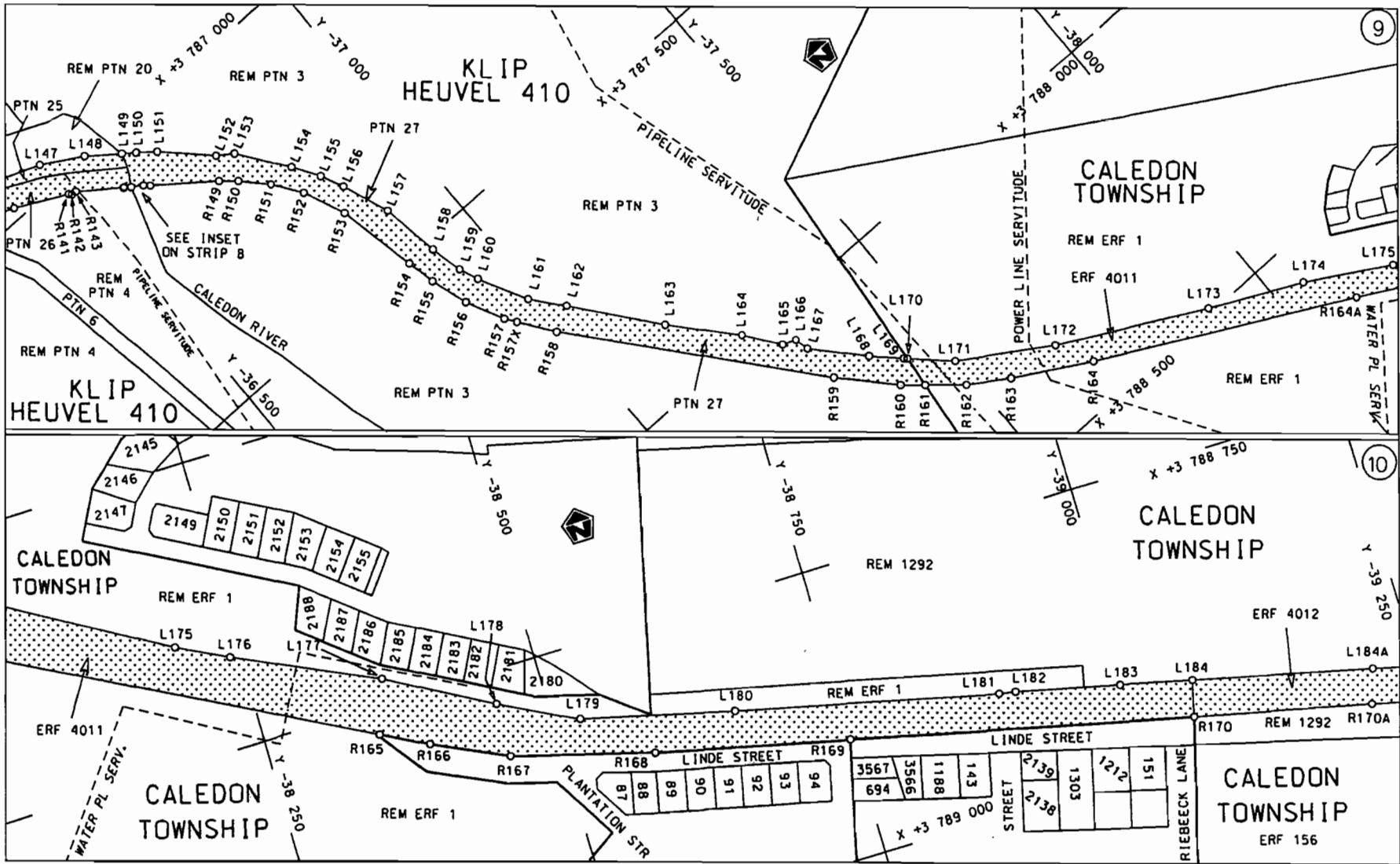
Die Suid Afrikaanse Nasionale Padogenskap Beperk
 The South African National Roads Agency Limited

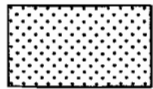
Die figuur getaan
 The figure shown

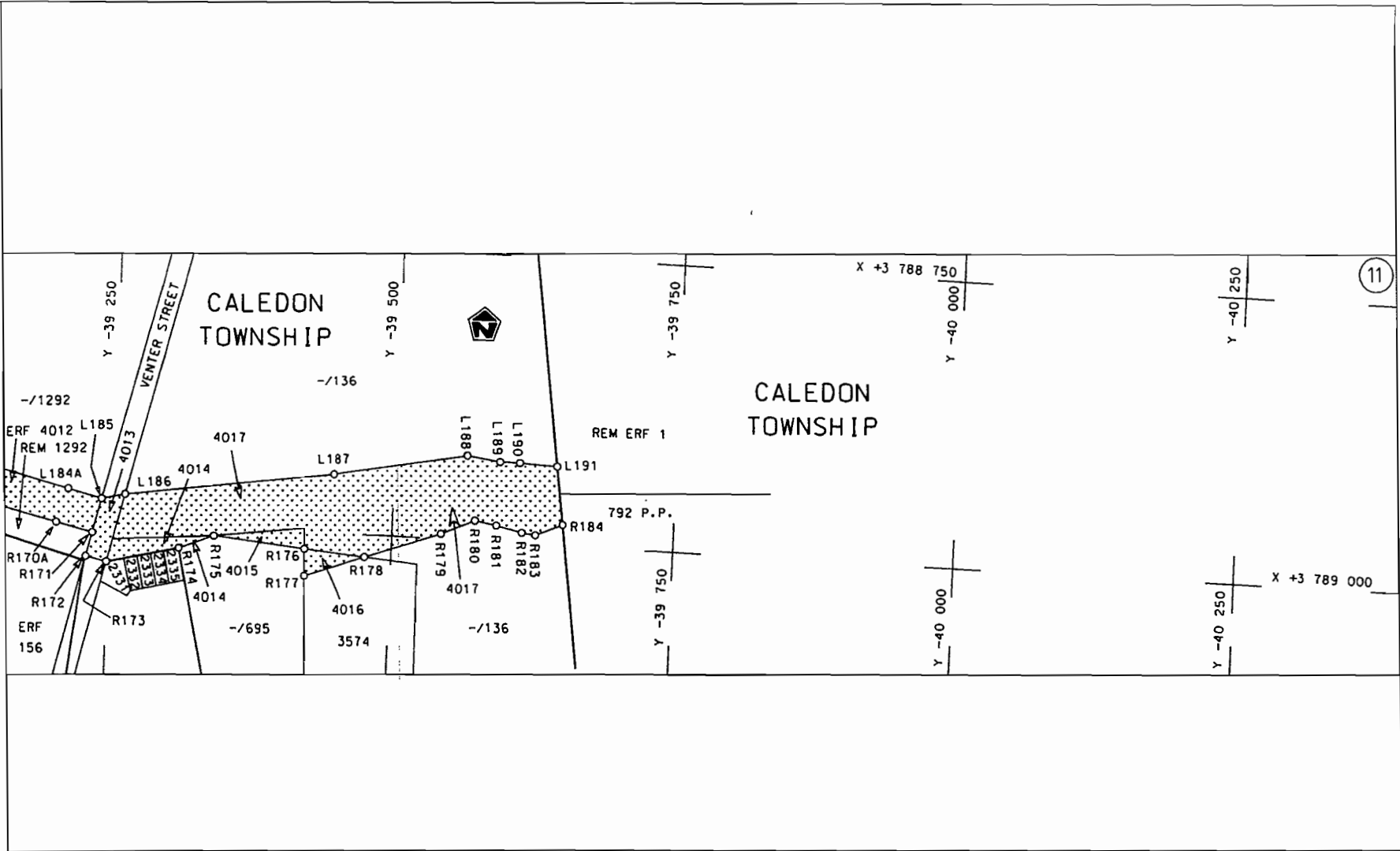


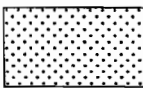
steldie padreserwe voor van 'n gedeelte
 represents the road reserve of a portion
 van Nasionale Roete N2 Seksie
 of National Route 2 Section

Vel Sheet 4 van 10
 Plon P609/06



<p>Die Suid Afrikaanse Nasionale Padagentskap Beperk The South African National Roads Agency Limited</p>	<p>Die figuur getoon The figure shown</p> 	<p>steldie padreserwe voor van 'n gedeelte represents the road reserve of a portion van Nasionale Roete N2 Seksie 2 of National Route</p>	<p>Vel Sheet 5 van 10 Plan P609/06</p>
--	--	---	--



<p>Die Suid Afrikaanse Nasionale Padagentskap Beperk The South African National Roads Agency Limited</p>	<p>Die figuur getoon The figure shown</p>	 <p>steldie padreserwe voor van 'n gedeelte represents the road reserve of a portion von Nasionale Roete N2 Seksie of National Route 2 Section</p>	<p>Vel Sheet 6 van of 10 Plan P609/06</p>
--	---	--	---

PADRESERWE KOÖRDINATE / ROAD RESERVE CO-ORDINATES						
LINKERKANT/LEFT HAND SIDE				REGTERKANT/RIGHT HAND SIDE		
	Y	X	WG 19°		Y	X
L1	- 19 882.922	3 789 795.721		R1	- 19 902.322	3 789 829.057
L2	- 19 935.139	3 789 788.041		R2	- 19 922.303	3 789 825.760
L3	- 20 205.019	3 789 753.747		R3	- 20 177.578	3 789 802.662
L4	- 20 305.216	3 789 732.885		R4	- 20 229.616	3 789 799.129
L5	- 20 512.356	3 789 707.412		R5	- 21 361.182	3 789 682.377
L6	- 20 679.386	3 789 699.389		R6	- 21 646.677	3 789 632.508
L7	- 20 891.671	3 789 671.239		R7	- 21 693.731	3 789 610.588
L8	- 21 006.024	3 789 658.413		R8	- 21 744.025	3 789 581.460
L9	- 21 005.174	3 789 648.167		R9	- 21 876.216	3 789 483.423
L10	- 21 012.700	3 789 645.053		R10	- 21 911.362	3 789 467.847
L11	- 21 024.740	3 789 656.643		R11	- 21 948.750	3 789 463.626
L12	- 21 243.847	3 789 636.260		R12	- 21 955.401	3 789 479.249
L13	- 21 322.888	3 789 644.564		R13	- 21 996.122	3 789 467.741
L14	- 21 544.496	3 789 620.780		R14	- 22 031.296	3 789 428.045
L15	- 21 623.897	3 789 598.946		R15	- 22 157.765	3 789 433.152
L16	- 21 707.045	3 789 557.254		R16	- 22 272.302	3 789 466.147
L17	- 21 823.107	3 789 472.536		R17	- 22 607.428	3 789 572.691
L18	- 21 875.850	3 789 426.541		R18	- 22 767.348	3 789 624.130
L19	- 21 931.625	3 789 395.970		R19	- 22 853.876	3 789 651.963
L20	- 21 981.204	3 789 359.709		R20	- 22 946.445	3 789 681.458
L21	- 22 132.396	3 789 376.369		R21	- 23 007.759	3 789 700.377
L22	- 22 189.184	3 789 379.514		R22	- 23 040.210	3 789 710.539
L23	- 22 209.838	3 789 384.317		R23	- 23 052.315	3 789 714.832
L24	- 22 340.792	3 789 437.015		R24	- 23 133.654	3 789 746.511
L25	- 22 664.536	3 789 539.113		R25	- 23 246.385	3 789 774.032
L26	- 22 793.885	3 789 578.392		R26	- 23 371.366	3 789 801.618
L27	- 22 974.277	3 789 633.173		R27	- 23 514.692	3 789 816.298
L28	- 23 008.908	3 789 641.792		R28	- 23 568.106	3 789 811.762
L29	- 23 144.157	3 789 675.966		R29	- 23 673.246	3 789 791.640
L30	- 23 251.988	3 789 717.575		R30	- 23 708.942	3 789 777.329
L31	- 23 388.488	3 789 761.177		R31	- 23 807.934	3 789 732.104
L32	- 23 537.510	3 789 773.354		R32	- 23 864.978	3 789 687.675
L33	- 23 633.347	3 789 754.748		R33	- 24 000.708	3 789 574.090
L34	- 23 692.034	3 789 738.350		R34	- 24 278.021	3 789 342.455
L35	- 23 746.056	3 789 714.261		R35	- 24 297.672	3 789 327.240
L36	- 23 820.658	3 789 669.657		R36	- 24 365.132	3 789 276.871
L37	- 23 868.581	3 789 632.911		R37	- 24 415.769	3 789 248.972
L38	- 24 188.683	3 789 366.079		R38	- 24 498.701	3 789 216.022
L39	- 24 263.420	3 789 302.634		R39	- 24 574.778	3 789 198.632
L40	- 24 358.130	3 789 234.552		R40	- 24 931.405	3 789 135.662
L41	- 24 455.375	3 789 188.927		R41	- 24 990.950	3 789 111.338
L42	- 24 555.580	3 789 161.041		R42	- 25 078.958	3 789 043.220
L43	- 24 942.876	3 789 088.271		R43	- 25 116.247	3 788 990.743
L44	- 25 029.997	3 789 027.844		R44	- 25 150.343	3 788 920.956
L45	- 25 075.380	3 788 970.848		R45	- 25 177.165	3 788 853.945
L46	- 25 132.664	3 788 855.405		R46	- 25 189.642	3 788 835.524
L47	- 25 156.596	3 788 802.464		R47	- 25 227.207	3 788 795.507
L48	- 25 205.331	3 788 741.744		R48	- 25 295.540	3 788 723.943
L49	- 25 269.691	3 788 694.644		R49	- 25 378.651	3 788 680.030
L50	- 25 328.719	3 788 663.052		R50	- 25 646.927	3 788 538.281
L51	- 25 551.527	3 788 543.802		R51	- 25 678.870	3 788 522.997

Vel	7	Van	10	P609/06
Sheet		of		

PADRESERWE KOÖRDINATE / ROAD RESERVE CO-ORDINATES					
LINKERKANT/LEFT HAND SIDE			REGTERKANT/RIGHT HAND SIDE		
	Y	X	WG 19°		
L52	- 25 650.014	3 788 492.533	R52	- 25 808.578	3 788 460.933
L53	- 25 693.156	3 788 470.074	R53	- 25 872.172	3 788 422.848
L54	- 25 794.704	3 788 383.945	R54	- 25 939.184	3 788 397.434
L55	- 25 788.110	3 788 358.005	R55	- 25 985.035	3 788 389.771
L56	- 25 809.624	3 788 345.310	R56	- 26 023.950	3 788 385.736
L57	- 25 828.892	3 788 364.730	R57	- 26 047.328	3 788 389.424
L58	- 25 916.774	3 788 369.279	R58	- 26 091.740	3 788 385.292
L59	- 26 003.480	3 788 349.408	R59	- 26 143.171	3 788 391.839
L60	- 26 086.284	3 788 350.578	R60	- 26 223.214	3 788 415.891
L61	- 26 096.269	3 788 335.858	R61	- 26 275.858	3 788 437.834
L62	- 26 107.141	3 788 338.297	R62	- 26 589.150	3 788 565.528
L63	- 26 107.285	3 788 351.012	R63	- 26 654.792	3 788 592.181
L64	- 26 156.996	3 788 360.755	R64	- 26 800.384	3 788 651.295
L65	- 26 224.391	3 788 382.745	R65	- 26 853.926	3 788 673.035
L66	- 26 501.894	3 788 493.587	R66	- 26 890.288	3 788 685.207
L67	- 26 634.607	3 788 535.808	R67	- 26 963.735	3 788 694.966
L68	- 26 707.202	3 788 565.454	R68	- 27 036.254	3 788 700.567
L69	- 26 773.230	3 788 592.420	R69	- 27 095.311	3 788 698.289
L70	- 26 868.057	3 788 631.146	R70	- 27 180.708	3 788 682.468
L71	- 26 984.127	3 788 657.426	R71	- 27 229.096	3 788 693.517
L72	- 27 124.659	3 788 649.049	R72	- 27 258.156	3 788 687.154
L73	- 27 218.511	3 788 627.043	R73	- 27 318.630	3 788 638.382
L74	- 27 504.149	3 788 531.164	R74	- 27 610.604	3 788 540.911
L75	- 27 760.122	3 788 445.683	R75	- 28 009.338	3 788 407.798
L76	- 27 807.827	3 788 432.361	R76	- 28 143.167	3 788 435.670
L77	- 28 120.245	3 788 330.570	R77	- 28 198.283	3 788 344.468
L78	- 28 263.224	3 788 219.273	R78	- 28 360.500	3 788 290.221
L79	- 28 328.290	3 788 266.730	R79	- 28 699.643	3 788 176.050
L80	- 28 643.010	3 788 156.149	R80	- 28 737.269	3 788 156.960
L81	- 28 715.267	3 788 125.268	R81	- 28 756.054	3 788 147.150
L82	- 28 759.322	3 788 096.621	R82	- 28 789.117	3 788 127.388
L83	- 28 843.977	3 788 041.525	R83	- 29 333.666	3 787 746.343
L84	- 29 071.297	3 787 885.296	R84	- 29 423.859	3 787 673.472
L85	- 29 072.081	3 787 875.645	R85	- 29 467.390	3 787 627.431
L86	- 29 078.526	3 787 871.393	R86	- 29 500.781	3 787 585.054
L87	- 29 087.184	3 787 874.634	R87	- 29 540.911	3 787 520.820
L88	- 29 274.597	3 787 745.175	R88	- 29 585.358	3 787 428.148
L89	- 29 312.927	3 787 702.890	R89	- 29 626.516	3 787 363.616
L90	- 29 409.136	3 787 619.199	R90	- 29 707.124	3 787 278.388
L91	- 29 464.288	3 787 551.237	R91	- 29 766.830	3 787 241.423
L92	- 29 541.649	3 787 414.853	R92	- 29 859.141	3 787 200.524
L93	- 29 627.081	3 787 274.139	R93	- 29 919.042	3 787 191.023
L94	- 29 708.438	3 787 208.059	R94	- 30 050.543	3 787 218.318
L95	- 29 802.446	3 787 160.601	R95	- 30 123.754	3 787 243.679
L96	- 29 854.413	3 787 144.911	R96	- 30 202.064	3 787 270.271
L97	- 29 936.397	3 787 140.766	R97	- 30 273.557	3 787 285.035
L98	- 30 003.242	3 787 150.958	R98	- 30 350.523	3 787 288.403
L99	- 30 031.760	3 787 165.589	R99	- 30 398.351	3 787 282.837
L100	- 30 114.325	3 787 196.916	R100	- 30 680.982	3 787 236.738
L101	- 30 161.941	3 787 212.859	R101	- 30 917.371	3 787 195.934
L102	- 30 306.119	3 787 243.783	R102	- 30 922.044	3 787 209.195

Vel	8	Van	10	P609/06
Sheet		of		

PADRESERWE KOÖRDINATE / ROAD RESERVE CO-ORDINATES						
LINKERKANT/LEFT HAND SIDE				REGTERKANT/RIGHT HAND SIDE		
	Y	X	WG 19°		Y	X
L103	- 30 372.511	3 787 243.358		R103	- 30 931.844	3 787 212.728
L104	- 30 415.235	3 787 239.098		R104	- 30 957.319	3 787 190.938
L105	- 30 800.518	3 787 180.151		R105	- 30 995.760	3 787 187.040
L106	- 30 806.202	3 787 151.034		R106	- 31 013.532	3 787 185.238
L107	- 30 832.306	3 787 146.408		R107	- 31 122.573	3 787 167.569
L108	- 30 846.072	3 787 164.824		R108	- 31 206.491	3 787 147.731
L109	- 31 004.438	3 787 146.591		R109	- 31 262.934	3 787 138.817
L110	- 31 024.605	3 787 144.269		R110	- 31 299.148	3 787 139.955
L111	- 31 187.385	3 787 117.489		R111	- 31 309.316	3 787 145.424
L112	- 31 212.655	3 787 107.044		R112	- 31 340.774	3 787 127.277
L113	- 31 335.877	3 787 095.860		R113	- 31 373.766	3 787 125.819
L114	- 31 396.543	3 787 078.077		R114	- 31 522.261	3 787 107.375
L115	- 31 473.700	3 787 068.036		R115	- 31 618.417	3 787 108.864
L116	- 31 514.196	3 787 066.090		R116	- 31 740.831	3 787 122.506
L117	- 31 634.704	3 787 064.558		R117	- 32 389.300	3 787 219.928
L118	- 31 663.903	3 787 062.533		R118	- 32 633.057	3 787 256.550
L119	- 31 819.380	3 787 084.471		R119	- 32 741.546	3 787 263.080
L120	- 32 056.354	3 787 120.119		R120	- 32 821.768	3 787 267.052
L121	- 32 311.220	3 787 157.580		R121	- 32 938.440	3 787 268.107
L122	- 32 599.079	3 787 199.453		R122	- 33 056.076	3 787 263.243
L123	- 32 677.084	3 787 208.257		R123	- 33 113.607	3 787 257.749
L124	- 32 852.811	3 787 216.406		R124	- 33 129.071	3 787 273.874
L125	- 33 011.333	3 787 210.122		R125	- 33 140.554	3 787 269.625
L126	- 33 166.723	3 787 206.037		R126	- 33 142.904	3 787 255.219
L127	- 33 211.066	3 787 207.885		R127	- 33 258.276	3 787 244.091
L128	- 33 581.224	3 787 171.531		R128	- 34 287.603	3 787 145.537
L129	- 34 302.248	3 787 102.630		R129	- 34 426.602	3 787 132.228
L130	- 34 444.857	3 787 089.004		R130	- 34 958.936	3 787 081.332
L131	- 34 467.817	3 787 083.074		R131	- 35 036.416	3 787 072.209
L132	- 34 907.801	3 787 038.690		R132	- 35 246.225	3 787 036.552
L133	- 35 070.217	3 787 019.732		R133	- 35 732.029	3 786 934.046
L134	- 35 160.435	3 787 004.167		R134	- 35 878.928	3 786 902.627
L135	- 35 326.360	3 786 971.413		R135	- 35 893.261	3 786 892.486
L136	- 35 698.605	3 786 893.617		R136	- 35 911.593	3 786 900.556
L137	- 35 845.456	3 786 860.338		R137	- 35 947.672	3 786 905.086
L138	- 35 870.125	3 786 853.378		R138	- 36 121.855	3 786 897.620
L139	- 35 954.780	3 786 841.729		R139	- 36 258.990	3 786 929.424
L140	- 35 960.439	3 786 834.048		R140	- 36 393.754	3 786 980.155
L141	- 35 985.980	3 786 839.983		R141	- 36 483.872	3 787 025.094
L142	- 36 037.062	3 786 843.296		R142	- 36 487.609	3 787 029.453
L143	- 36 137.381	3 786 851.818		R143	- 36 496.288	3 787 030.385
L144	- 36 143.271	3 786 851.576		R144	- 36 565.962	3 787 079.287
L145	- 36 228.739	3 786 872.790		R145	- 36 564.958	3 787 080.026
L146	- 36 339.620	3 786 900.572		R146	- 36 575.876	3 787 087.686
L147	- 36 477.662	3 786 953.653		R147	- 36 593.705	3 787 100.195
L148	- 36 547.848	3 786 993.774		R148	- 36 602.835	3 787 108.489
L149	- 36 600.642	3 787 033.404		R149	- 36 702.566	3 787 182.085
L150	- 36 620.472	3 787 048.741		R150	- 36 729.075	3 787 204.364
L151	- 36 649.630	3 787 072.563		R151	- 36 769.656	3 787 246.748
L152	- 36 726.741	3 787 145.776		R152	- 36 804.656	3 787 296.614
L153	- 36 754.055	3 787 164.264		R153	- 36 836.184	3 787 369.357

Vel	9	Van	10	P609/06
Sheet		of		

PADRESERWE KOÖRDINATE / ROAD RESERVE CO-ORDINATES					
LINKERKANT/LEFT HAND SIDE			REGTERKANT/RIGHT HAND SIDE		
	Y	X	WG 19°	Y	X
L154	- 36 817.079	3 787 248.779	R154	- 36 866.220	3 787 509.722
L155	- 36 845.956	3 787 293.889	R155	- 36 877.062	3 787 559.463
L156	- 36 864.812	3 787 333.637	R156	- 36 898.734	3 787 625.017
L157	- 36 896.485	3 787 415.850	R157	- 36 932.557	3 787 691.141
L158	- 36 913.406	3 787 519.098	R158	- 36 989.297	3 787 768.049
L159	- 36 926.891	3 787 575.829	R159	- 37 313.698	3 788 148.527
L160	- 36 940.770	3 787 608.684	R160	- 37 394.902	3 788 235.147
L161	- 36 986.755	3 787 692.889	R161	- 37 428.395	3 788 263.257
L162	- 37 031.128	3 787 746.311	R162	- 37 485.175	3 788 310.912
L163	- 37 143.427	3 787 884.442	R163	- 37 552.789	3 788 354.784
L164	- 37 236.043	3 787 986.761	R164	- 37 682.484	3 788 426.742
L165	- 37 281.040	3 788 046.387	R165	- 38 349.385	3 788 773.888
L166	- 37 304.401	3 788 055.792	R166	- 38 389.506	3 788 794.865
L167	- 37 310.284	3 788 080.127	R167	- 38 455.049	3 788 825.156
L168	- 37 384.450	3 788 160.756	R168	- 38 578.854	3 788 859.622
L169	- 37 428.900	3 788 203.956	R169	- 38 748.669	3 788 899.236
L170	- 37 433.661	3 788 208.412	R170	- 39 046.809	3 788 968.664
L171	- 37 496.323	3 788 267.061	R171	- 39 234.511	3 789 011.280
L172	- 37 649.384	3 788 362.127	R172	- 39 229.480	3 789 032.124
L173	- 37 897.473	3 788 491.448	R173	- 39 247.956	3 789 035.820
L174	- 38 055.233	3 788 568.519	R174	- 39 311.574	3 789 020.681
L175	- 38 196.758	3 788 649.409	R175	- 39 342.096	3 789 008.423
L176	- 38 241.822	3 788 672.025	R176	- 39 422.660	3 789 015.180
L177	- 38 365.451	3 788 728.908	R177	- 39 423.589	3 789 038.484
L178	- 38 456.211	3 788 778.905	R178	- 39 476.914	3 789 019.388
L179	- 38 523.398	3 788 812.807	R179	- 39 543.425	3 788 995.571
L180	- 38 657.352	3 788 846.089	R180	- 39 573.239	3 788 982.413
L181	- 38 887.550	3 788 899.857	R181	- 39 592.564	3 788 985.524
L182	- 38 901.802	3 788 902.338	R182	- 39 615.447	3 788 990.577
L183	- 38 992.140	3 788 923.050	R183	- 39 627.313	3 788 992.038
L184	- 39 054.603	3 788 937.868	R184	- 39 650.988	3 788 981.795
L185	- 39 241.636	3 788 981.752	R157X	- 36 946.260	3 787 709.810
L186	- 39 262.160	3 788 976.801			
L187	- 39 446.557	3 788 949.695			
L188	- 39 564.120	3 788 926.759			
L189	- 39 593.809	3 788 930.620			
L190	- 39 611.357	3 788 930.387			
L191	- 39 644.072	3 788 931.852			

Vel 10 Van 10
Sheet of

P609/06