

Government Gazette Staatskoerant

REPUBLIC OF SOUTH AFRICA
REPUBLIEK VAN SUID-AFRIKA

Vol. 513

Pretoria, 25 March
Maart 2008

No. 30897

CONTENTS

<i>No.</i>	<i>Page No.</i>	<i>Gazette No.</i>
GOVERNMENT NOTICE		
Transport, Department of		
<i>Government Notice</i>		
318 South African National Roads Agency Limited and the National Roads Act (7/1998): The South African National Roads Agency Limited: Declaration Amendment of National Road N2 Section 4: Amendment of Declaration No. 543 of 2003	3	30897

INHOUD

<i>No.</i>	<i>Bladsy No.</i>	<i>Koerant No.</i>
GOEWERMENTSKENNISGEWING		
Vervoer, Departement van		
<i>Goewermentskennisgewing</i>		
318 Suid-Afrikaanse Nasionale Padagentskap Beperk en die Nasionale Paaie Wet (7/1998): Verklaring Wysiging van Nasionale Pad N2 Seksie 4: Wysiging van Verklaring No. 543 van 2003.....	4	30897

**GOVERNMENT NOTICE
GOEWERMENTSKENNISGEWING**

**DEPARTMENT OF TRANSPORT
DEPARTEMENT VAN VERVOER**

No. 318

25 March 2008

**THE SOUTH AFRICAN NATIONAL ROADS
AGENCY LIMITED**

Registration No: 98/09584/06

DECLARATION AMENDMENT OF NATIONAL ROAD N2 SECTION 4

AMENDMENT OF DECLARATION NO. 543 OF 2003

By virtue of section 40 (1)(b) of the South African National Roads Agency Limited and the National Roads Act, 1998 (Act No. 7 of 1998), I hereby amend Declaration No. 543 of 2003 by substituting the section of the descriptive declaration from Riviersonderend up to Swellendam, with the subjoined sheets 1 to 27 of Plan No. P638/08.

(National Road N2 Section 4: Riviersonderend – Swellendam)



MINISTER OF TRANSPORT

No. 318

25 Maart 2008

**DIE SUID-AFRIKAANSE NASIONALE
PADAGENTSKAP BEPERK**

Registrasie No: 98/09584/06

VERKLARING WYSIGING VAN NASIONALE PAD N2 SEKSIE 4.

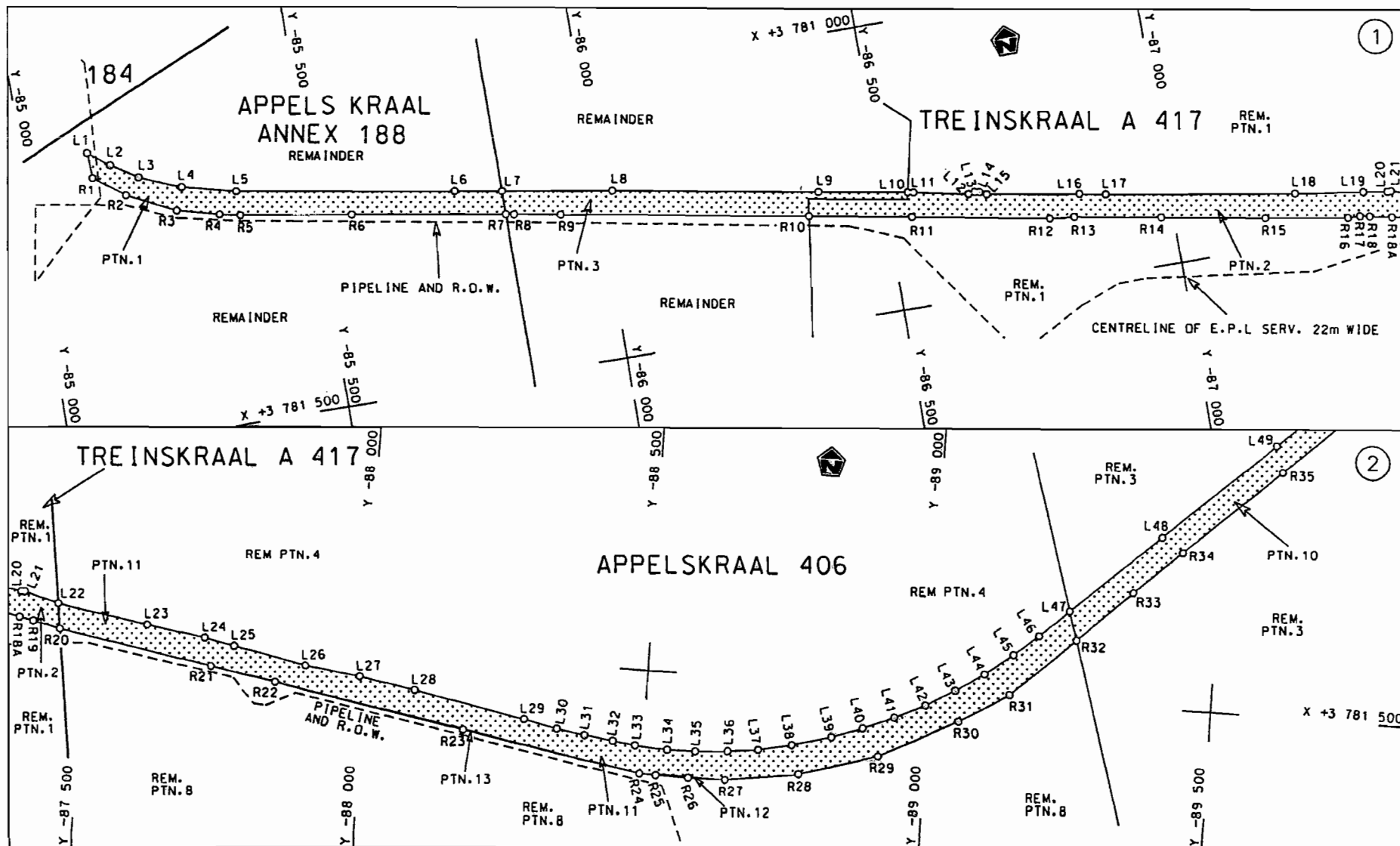
WYSIGING VAN VERKLARING NO. 543 VAN 2003

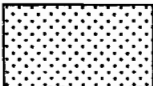
Kragtens Artikel 40(1)(b) van die Suid-Afrikaanse Nasionale Padagentskap Beperk en die Nasionale Paaie Wet, 1998 (Wet No.7 van 1998), wysig ek hiermee Verklaring no. 543 van 2003, deur die gedeelte van die beskrywende verklaring vanaf Riviersonderend tot by Swellendam, te vervang met meegaande velle 1 tot 27 van Plan no. P638/08.

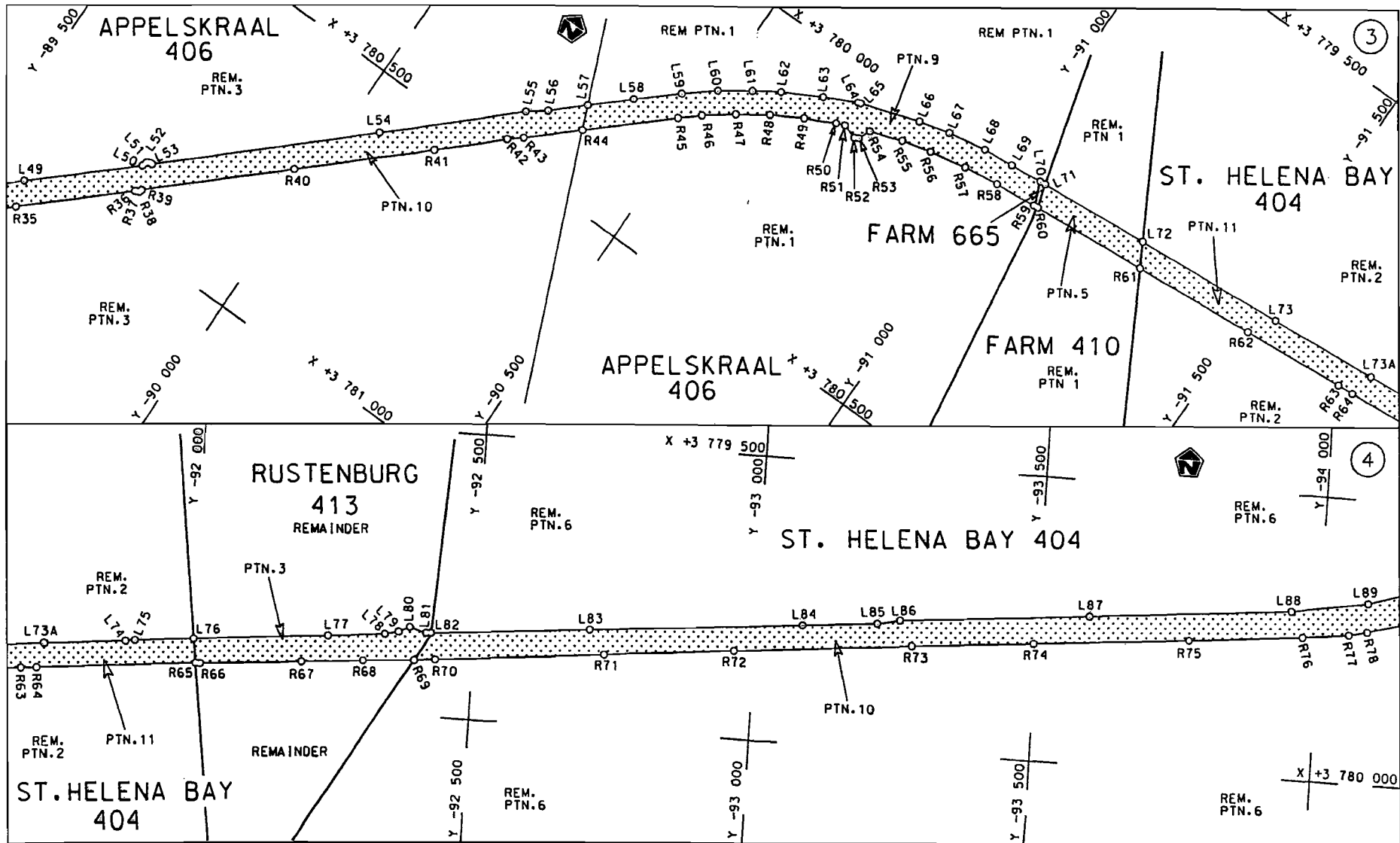
(Nasionale Pad N2 Seksie 4: Riviersonderend – Swellendam)



MINISTER VAN VERVOER

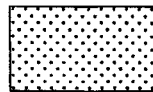


<p>Die Suid Afrikaanse Nasionale Padagentskop Beperk</p> <p>The South African National Roads Agency Limited</p>	<p>Die figuur getoon</p> <p>The figure shown</p> 	<p>steldie padreserwe voor van 'n gedeelte</p> <p>represents the road reserve of a portion</p> <p>van Nasionale Roete of National Route</p> <p>N2</p> <p>Seksie Section</p> <p>4</p>	<p>Vel Sheet 1 van of 27</p> <p>Plan P638/08</p>
---	---	--	--



Die Suid Afrikaanse Nasionale Padagentskap Beperk
The South African National Roads Agency Limited

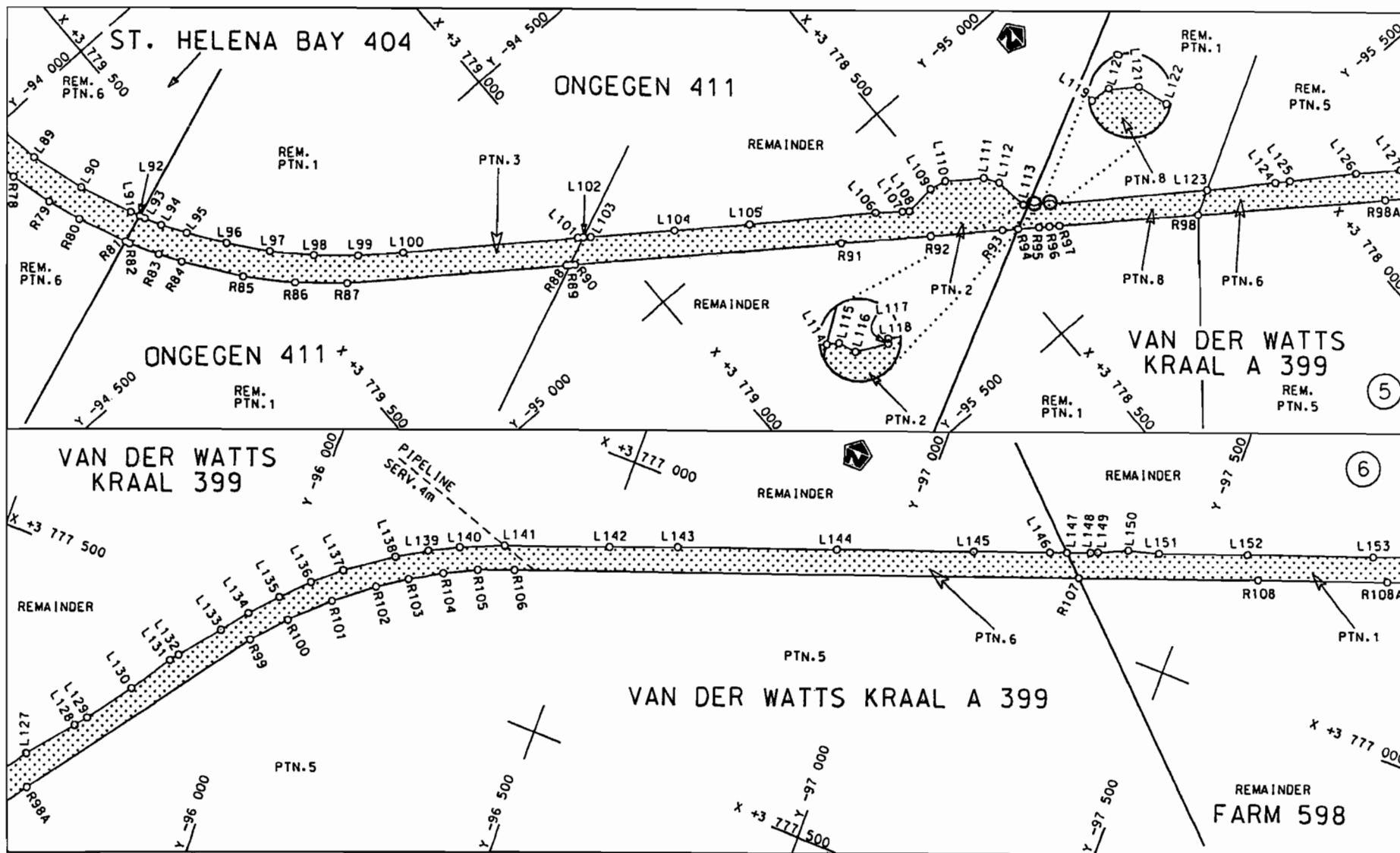
Die figuur getoon
The figure shown



steldie padreserwe voor van 'n gedeelte
represents the road reserve of a portion
van Nasionale Roete N2 Seksie 4
of National Route N2 Section 4

Vel
Sheet 2 van
of 27
Plan P638/08

D.O.9.A



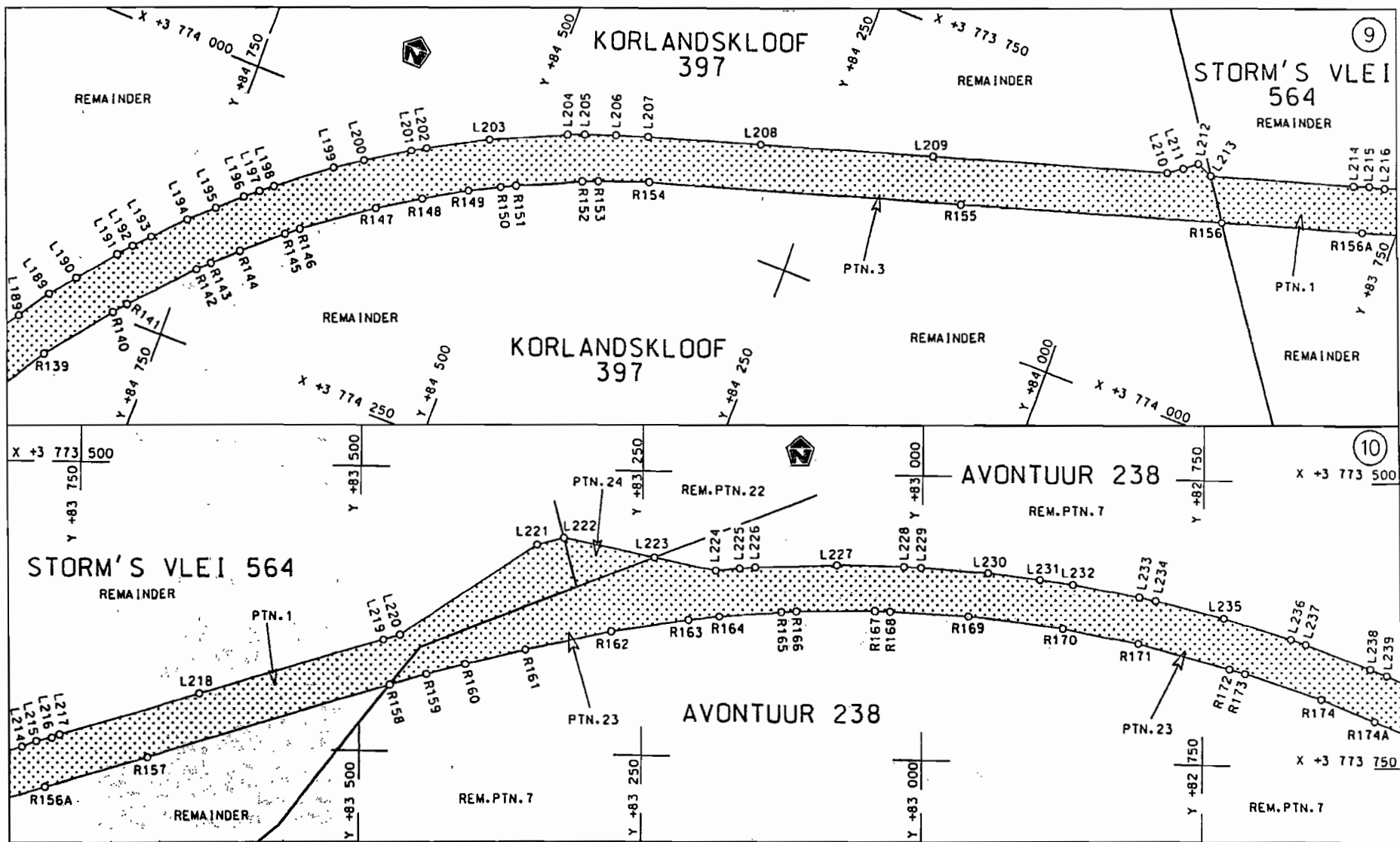
Die Suid Afrikaanse Nasionale Padagentskap Beperk
The South African National Roads Agency Limited

Die figuur getoon
The figure shown



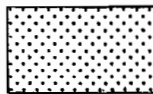
steldie padreserwe voor van 'n gedeelte
represents the road reserve of a portion
van Nasionale Roete N2
of National Route N2
Seksie 4
Section 4

Vel
Sheet 3 van 27
Plan P638/08



Die Suid Afrikaanse Nasionale Padagentskap Beperk
The South African National Roads Agency Limited

Die figuur getoon
The figure shown



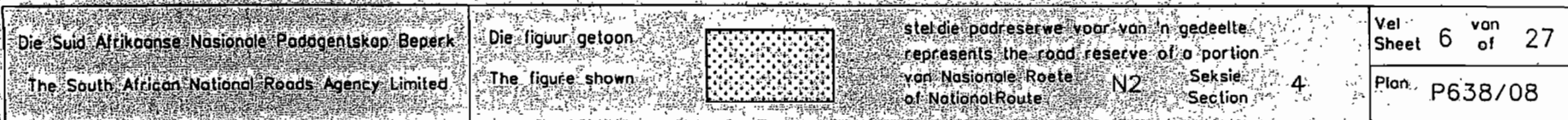
steldie padreserwe voor: van 'n gedeelte
represents the road reserve of a portion
van Nasionale Roete
of National Route

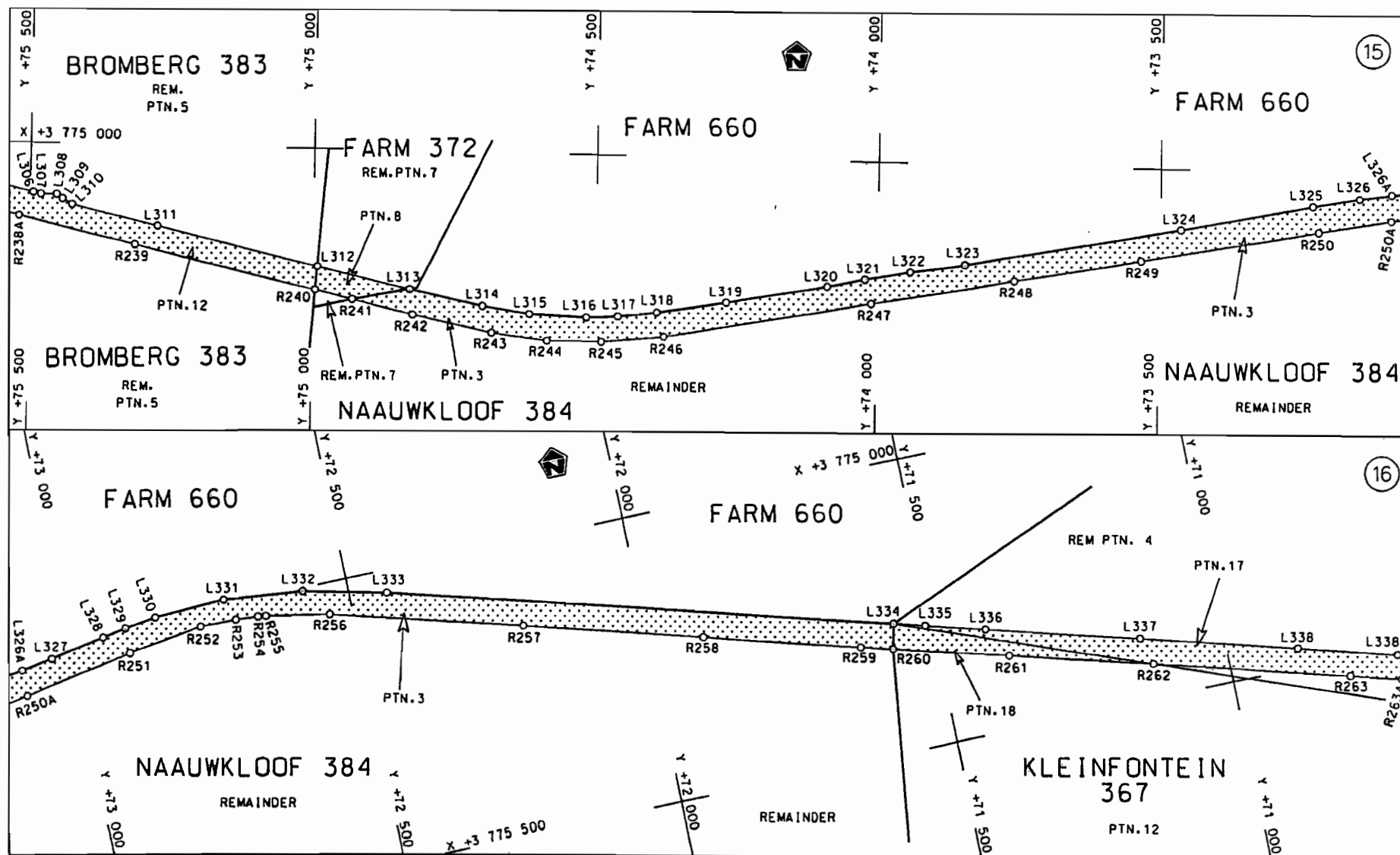
N2 Seksie Section 4

Vel Sheet 5 van of 27

Plan P638/08

D.O.9.A





Die Suid Afrikaanse Nasionale Padagentskap Beperk

The South African National Roads Agency Limited

Die figuur getoon

The figure shown

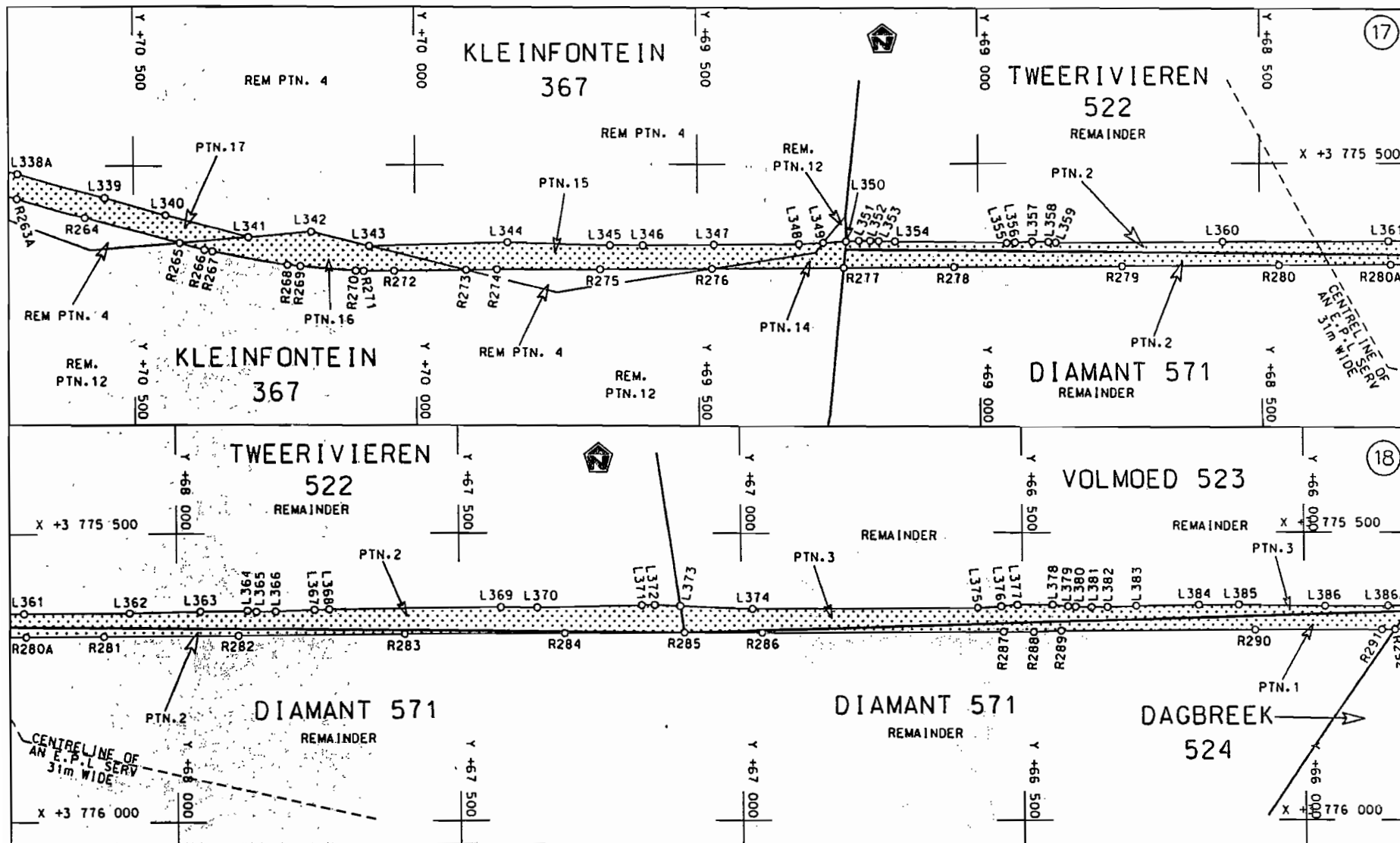


steldie padreserwe voor van 'n gedeelte
represents the road reserve of a portion
van Nasionale Roete N2
of National Route

Seksie
Section 4

Vel
Sheet 8 van
of 27

Plan
P638/08



Die Suid Afrikaanse Nasionale Padagentskap Beperk
The South African National Roads Agency Limited

Die figuur getoon
The figure shown

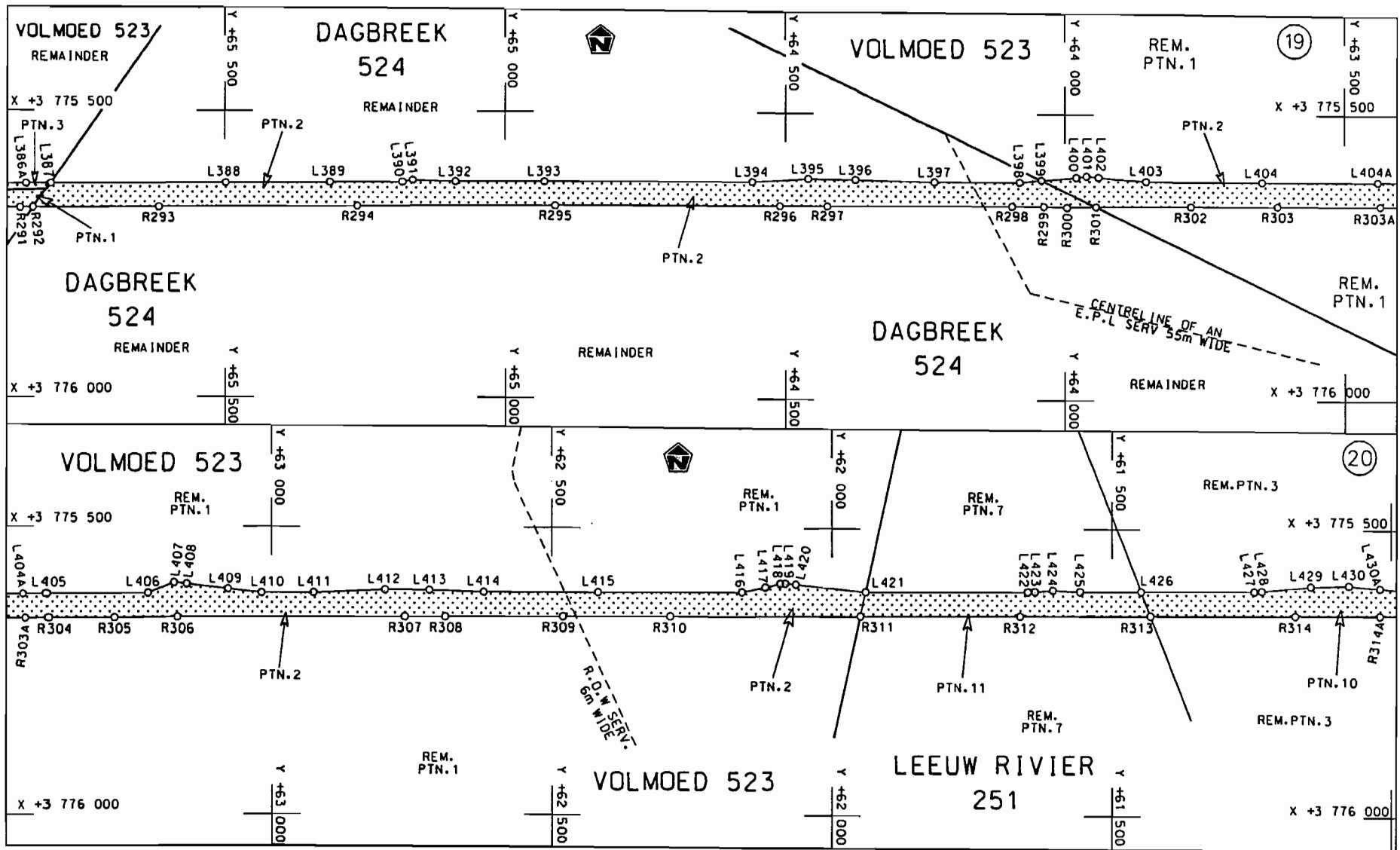


steldie padreserwe voor van 'n gedeelte
represents the road reserve of a portion
van Nasionale Roete N2
of National Route N2

Seksie 4
Section 4

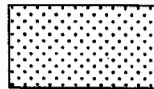
Vel Sheet 9 von 27

Plan P638/08



Die Suid Afrikaanse Nasionale Padagentskap Beperk
The South African National Roads Agency Limited

Die figuur getoon
The figure shown



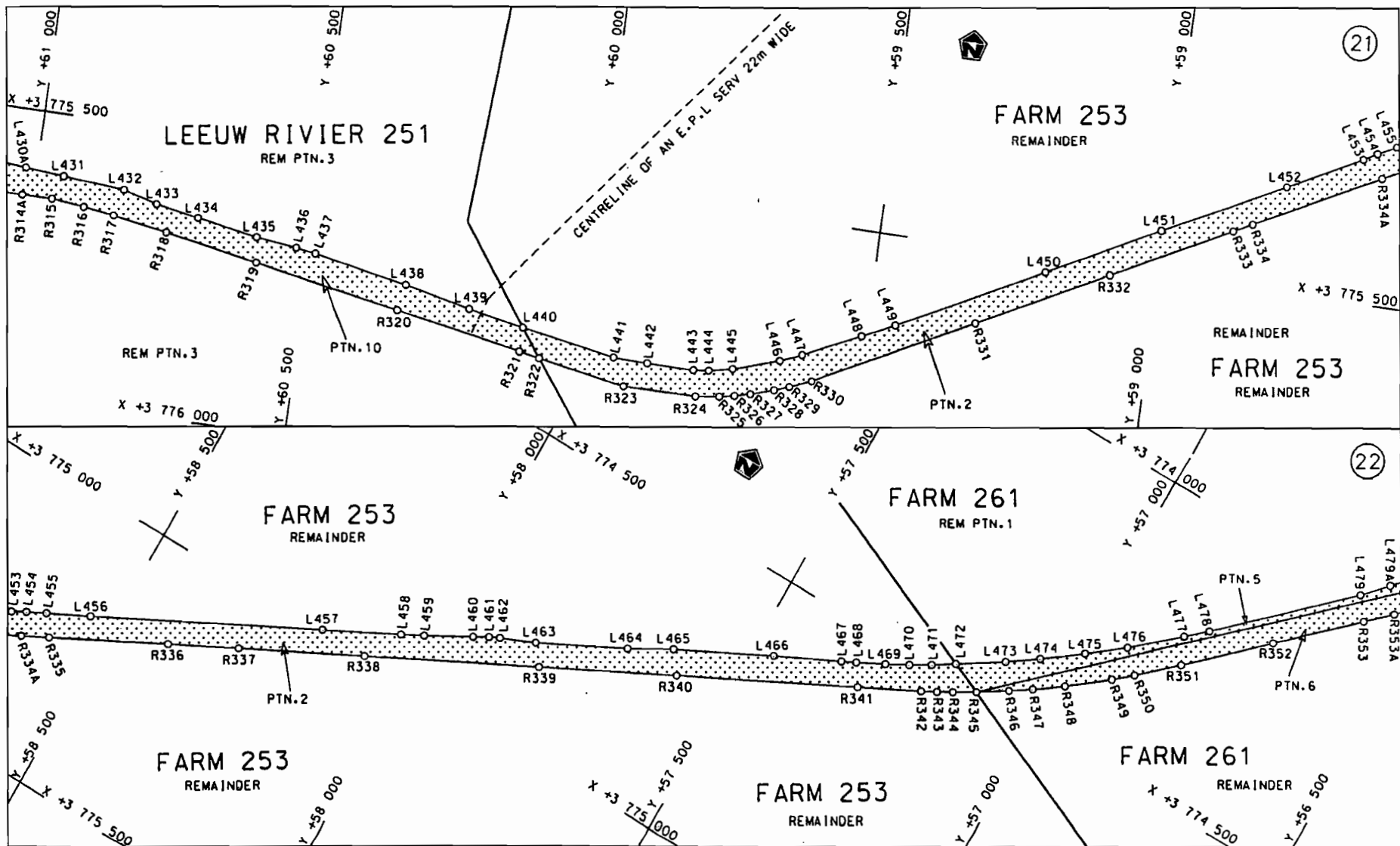
steldie padreserwe voor van 'n gedeelte
represents the road reserve of a portion
van Nasionale Roete N2
of National Route N2
Seksie
Section

4

Vel
Sheet 10 van 27

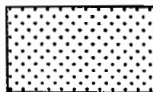
Plan
P638/08

D.O.9.A



Die Suid Afrikaanse Nasionale Podagentskap Beperk
The South African National Roads Agency Limited

Die figuur getoon
The figure shown



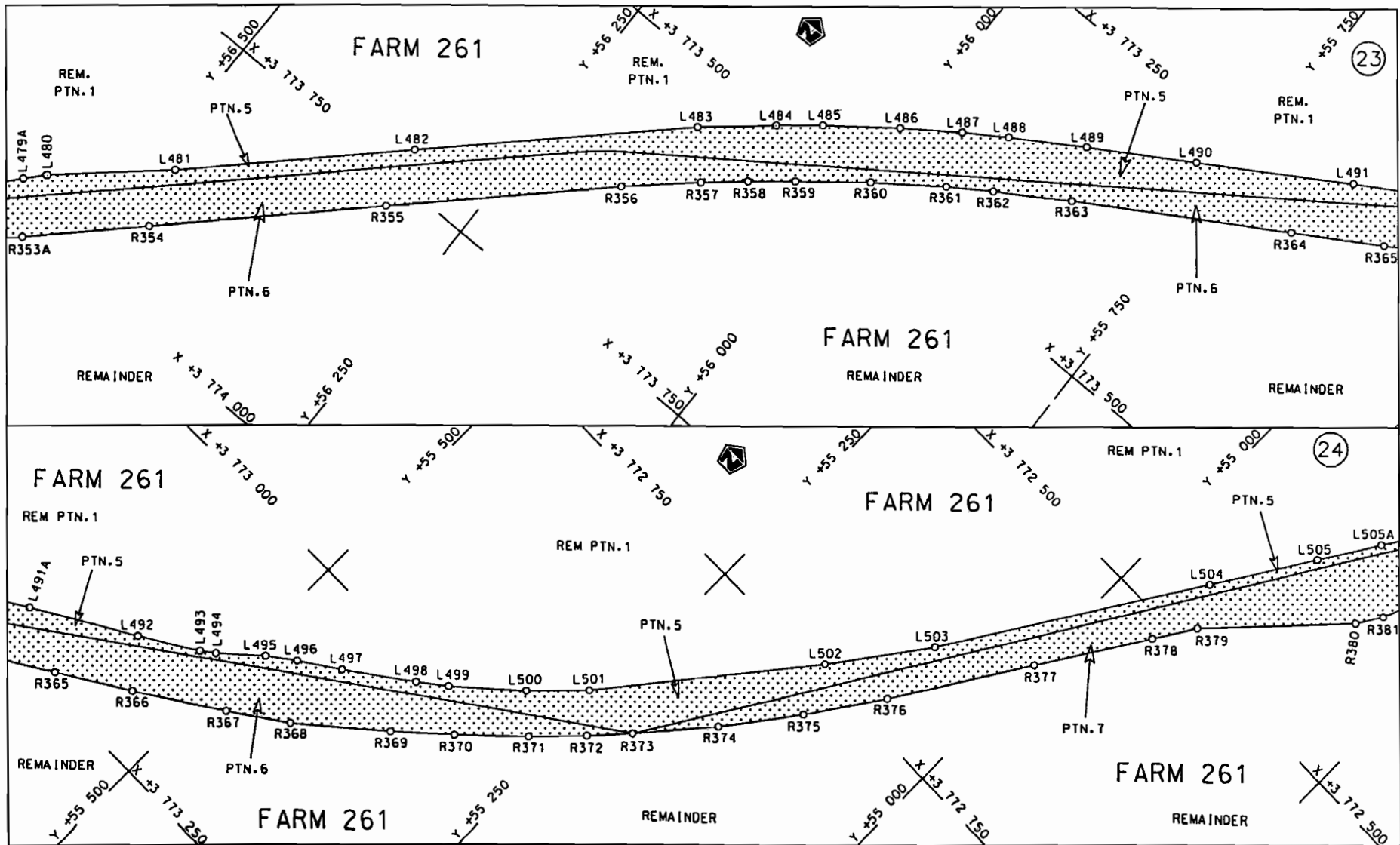
stel die padreserwe voor van 'n gedeelte
represents the road reserve of a portion
van Nasionale Roete N2
of National Route

Seksie 4

Vel Sheet 11 van 27

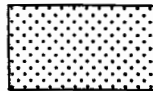
Plan P638/08

D.O.9.A



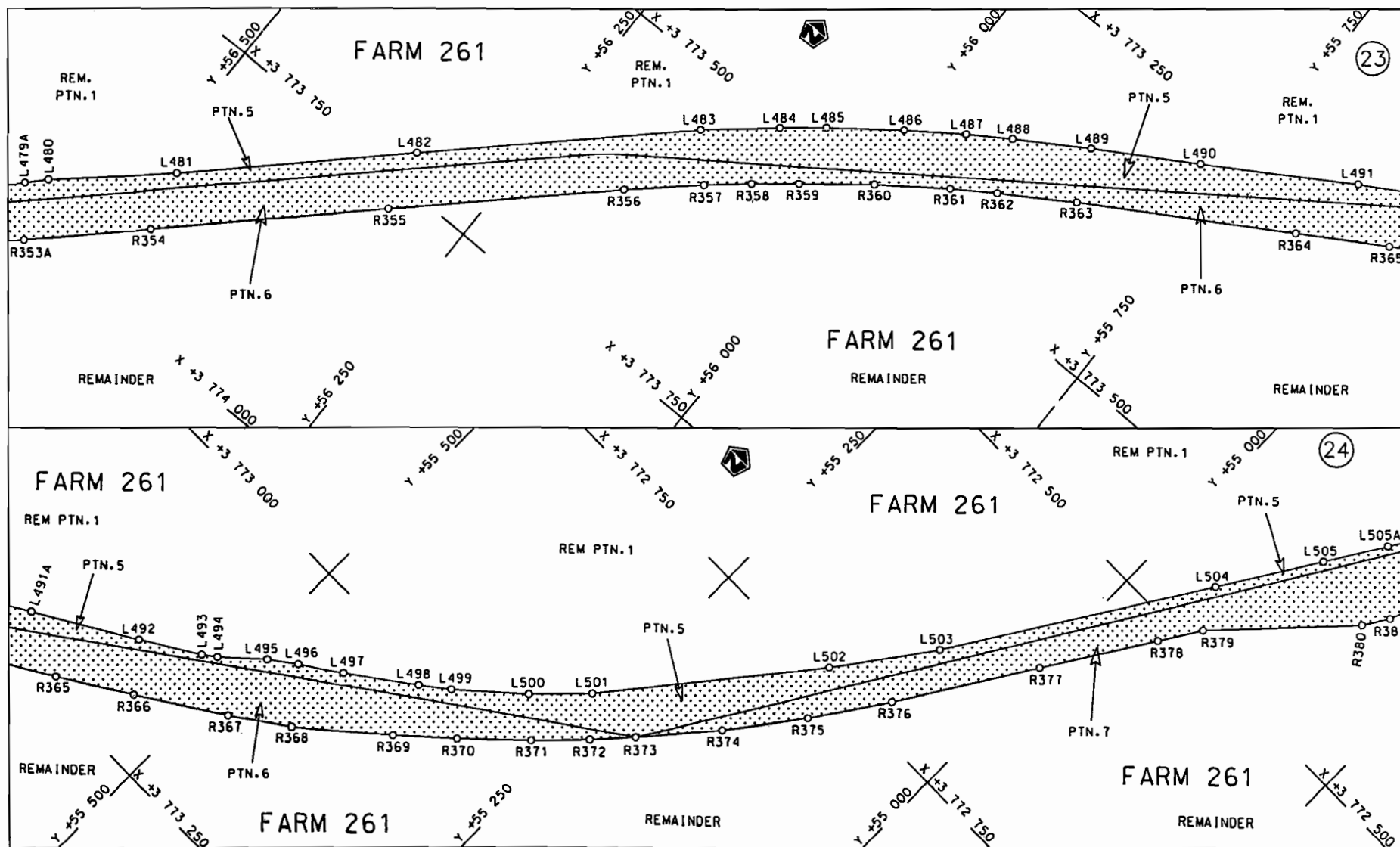
Die Suid Afrikaanse Nasionale Padagentskop Beperk
The South African National Roads Agency Limited

Die figuur getoon
The figure shown



stel die padreserwe voor van 'n gedeelte
represents the road reserve of a portion
van Nasionale Roete N2 Seksie
of National Route of National Route Section 4

Vel Sheet 12 van 27
Plan P638/08



Die Suid Afrikaanse Nasionale Padagentskap Beperk
The South African National Roads Agency Limited

Die figuur getoon
The figure shown



stel die padreserwe voor van 'n gedeelte
represents the road reserve of a portion
van Nasionale Roete N2
of National Route

N2

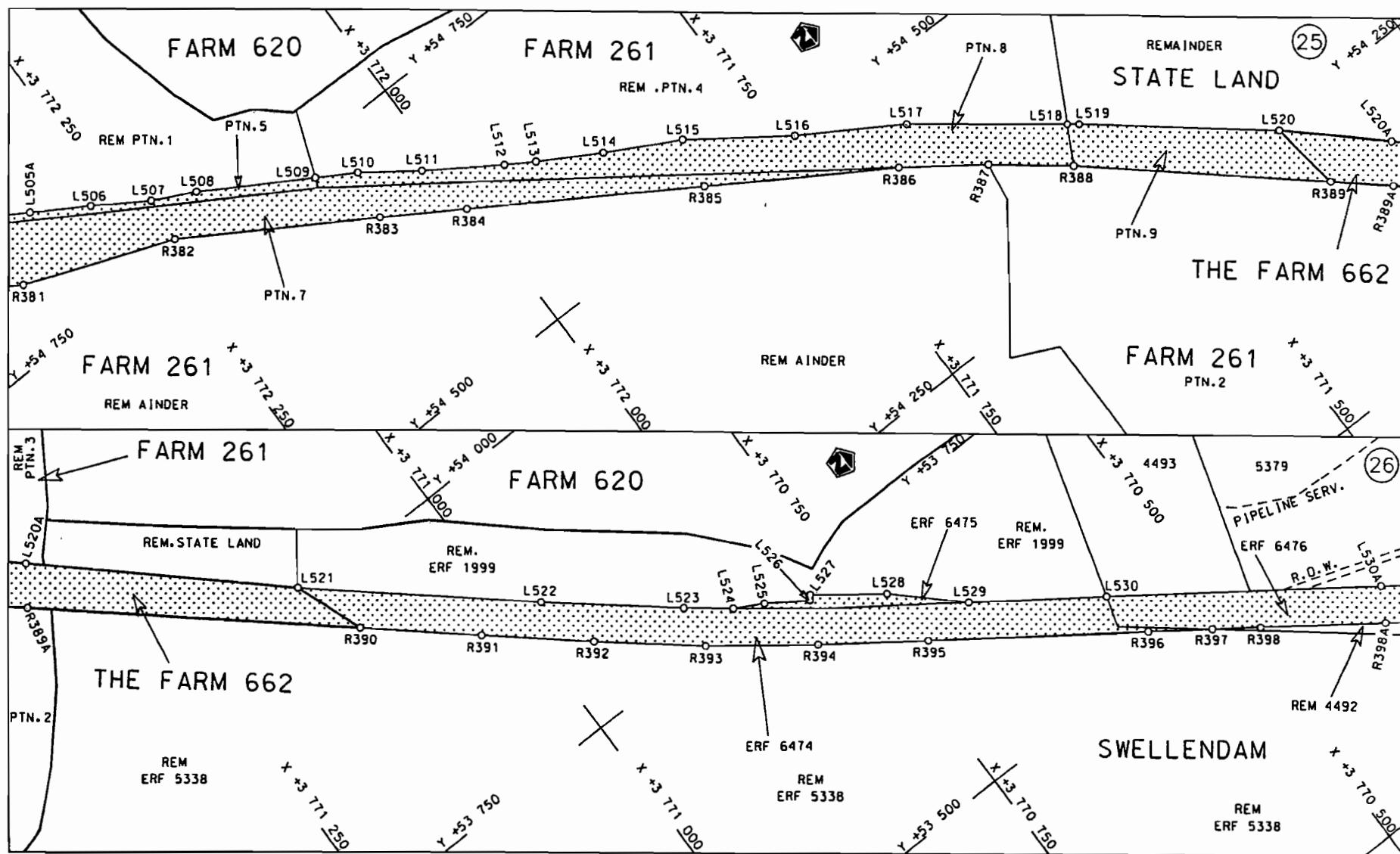
Seksie
Section

4

Vel
Sheet 12 van of 27

Plan P638/08

D.O.9.A

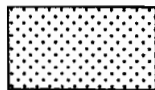


Die Suid Afrikaanse Nasionale Padogenskap Beperk

The South African National Roads Agency Limited

Die figuur getoon

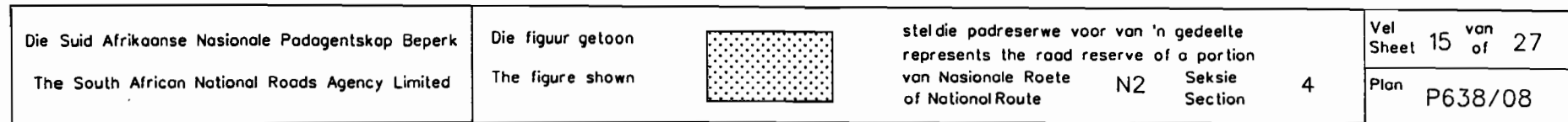
The figure shown

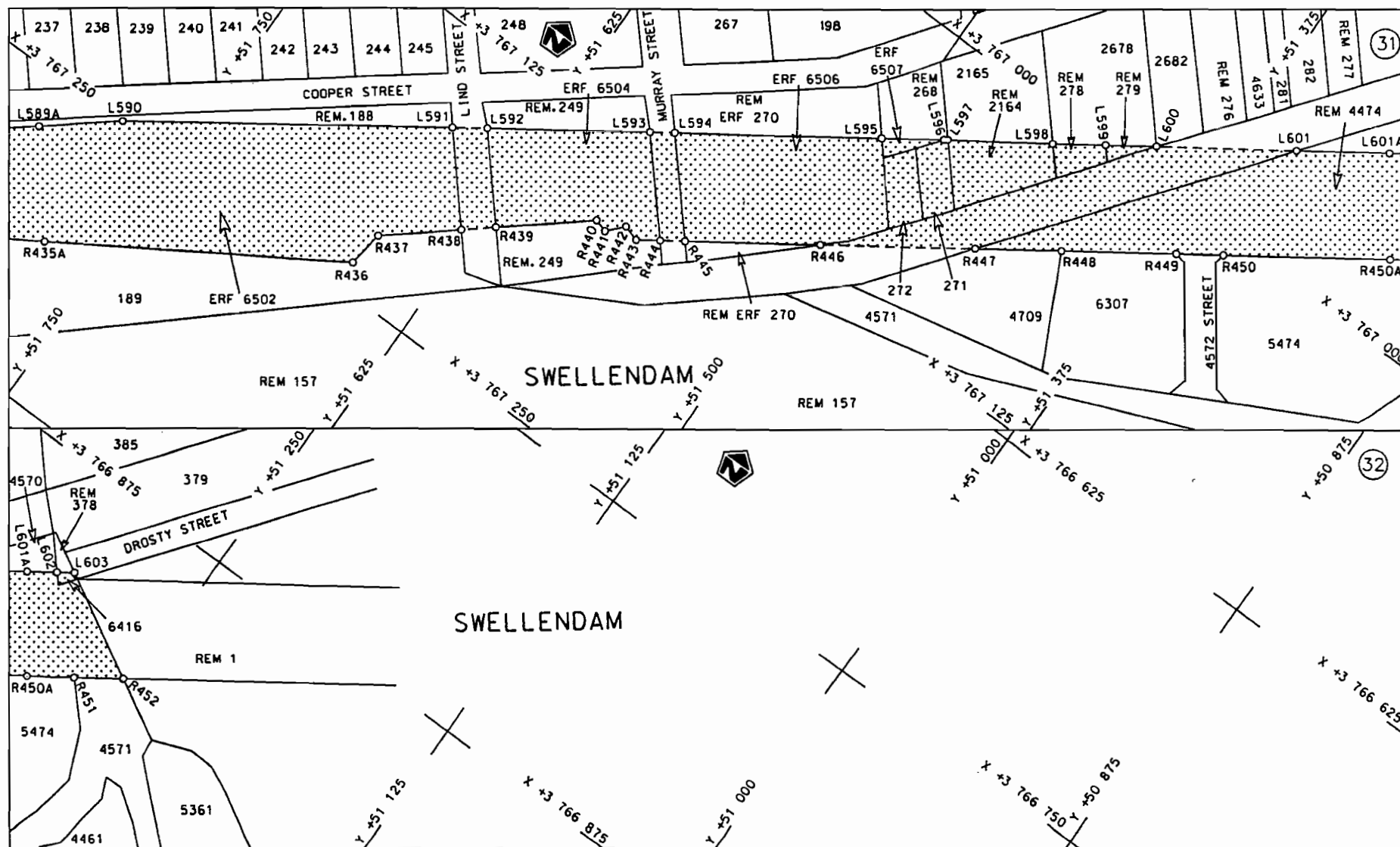


steldie padreserwe voor van 'n gedeelte
represents the road reserve of a portion
van Nasionale Roete N2 Seksie
of National Route Section 4

Vel
Sheet 13 of 27Plan
P638/08

D.O.9.A





Die Suid Afrikaanse Nasionale Padagentskap Beperk
The South African National Roads Agency Limited

Die figuur getoon
The figure shown



steldie padreserwe voor van 'n gedeelte
represents the road reserve of a portion
van Nasionale Roete N2
of National Route

N2

Seksie
Section

4

Vel
Sheet 16 van 27

Plan P638/08

D.O.9.A

PADRESERWE KOÖRDINATE					/ ROAD RESERVE CO-ORDINATES				
LINKERKANT/LEFT HAND SIDE					REGTERKANT/RIGHT HAND SIDE				
	Y	X	WG	19°		Y	X		
L1	-85 116.877	3 780	986.561		R1	-85 119.070	3 781	031.351	
L2	-85 152.886	3 781	015.001		R2	-85 171.788	3 781	072.171	
L3	-85 199.352	3 781	044.637		R3	-85 256.262	3 781	114.013	
L4	-85 271.642	3 781	074.838		R4	-85 330.016	3 781	133.772	
L5	-85 366.683	3 781	098.535		R5	-85 366.634	3 781	141.320	
L6	-85 747.991	3 781	164.568		R6	-85 562.548	3 781	173.885	
L7	-85 831.442	3 781	178.466		R7	-85 831.405	3 781	219.612	
L8	-86 024.359	3 781	210.332		R8	-85 845.810	3 781	222.535	
L9	-86 385.665	3 781	272.763		R9	-85 927.722	3 781	236.922	
L10	-86 541.791	3 781	299.807		R10	-86 361.532	3 781	312.497	
L11	-86 551.898	3 781	301.576		R11	-86 541.653	3 781	343.582	
L12	-86 646.942	3 781	320.532		R12	-86 781.987	3 781	386.730	
L13	-86 658.253	3 781	318.553		R13	-86 825.720	3 781	392.058	
L14	-86 666.517	3 781	319.945		R14	-86 977.640	3 781	418.339	
L15	-86 678.969	3 781	326.070		R15	-87 158.791	3 781	449.985	
L16	-86 841.807	3 781	353.586		R16	-87 303.991	3 781	474.675	
L17	-86 888.150	3 781	361.976		R17	-87 325.721	3 781	475.401	
L18	-87 217.843	3 781	416.697		R18	-87 342.793	3 781	478.496	
L19	-87 338.897	3 781	434.392		R19	-87 406.213	3 781	490.771	
L20	-87 381.369	3 781	440.756		R20	-87 455.441	3 781	501.548	
L21	-87 387.883	3 781	440.644		R21	-87 726.433	3 781	548.157	
L22	-87 449.546	3 781	457.835		R22	-87 842.753	3 781	568.601	
L23	-87 609.126	3 781	483.707		R23	-88 180.123	3 781	627.663	
L24	-87 711.941	3 781	499.695		R24	-88 496.531	3 781	680.594	
L25	-87 766.087	3 781	510.038		R25	-88 525.416	3 781	681.110	
L26	-87 895.135	3 781	535.282		R26	-88 583.054	3 781	681.750	
L27	-87 992.303	3 781	547.468		R27	-88 648.109	3 781	680.005	
L28	-88 090.767	3 781	564.451		R28	-88 778.055	3 781	660.978	
L29	-88 287.097	3 781	601.375		R29	-88 917.876	3 781	619.352	
L30	-88 346.871	3 781	613.449		R30	-89 055.807	3 781	548.572	
L31	-88 396.089	3 781	620.645		R31	-89 142.264	3 781	495.586	
L32	-88 446.200	3 781	627.168		R32	-89 254.841	3 781	391.525	
L33	-88 485.277	3 781	631.725		R33	-89 349.917	3 781	300.762	
L34	-88 542.732	3 781	635.562		R34	-89 433.075	3 781	224.048	
L35	-88 592.525	3 781	634.297		R35	-89 598.942	3 781	071.102	
L36	-88 649.494	3 781	629.763		R36	-89 756.454	3 780	926.002	
L37	-88 703.653	3 781	623.174		R37	-89 758.024	3 780	925.503	
L38	-88 763.274	3 781	610.390		R38	-89 764.168	3 780	922.313	
L39	-88 832.999	3 781	591.903		R39	-89 765.389	3 780	917.686	
L40	-88 888.351	3 781	572.905		R40	-89 966.645	3 780	732.436	
L41	-88 942.338	3 781	550.089		R41	-90 152.047	3 780	561.098	
L42	-88 995.376	3 781	524.134		R42	-90 247.467	3 780	471.111	
L43	-89 046.494	3 781	495.070		R43	-90 270.206	3 780	451.973	
L44	-89 095.604	3 781	462.387		R44	-90 347.616	3 780	380.757	
L45	-89 144.586	3 781	424.940		R45	-90 473.733	3 780	264.696	
L46	-89 187.452	3 781	388.324		R46	-90 506.075	3 780	236.305	
L47	-89 239.628	3 781	341.548		R47	-90 554.040	3 780	198.748	
L48	-89 394.458	3 781	200.057		R48	-90 604.340	3 780	164.517	
L49	-89 585.513	3 781	025.540		R49	-90 657.265	3 780	133.618	
L50	-89 742.133	3 780	882.574		R50	-90 709.090	3 780	107.839	
L51	-89 745.220	3 780	874.083		R51	-90 724.145	3 780	101.603	
					Vel	17	Van	27	P638/08
					Sheet		of		

PADRESERWE KOÖRDINATE				/	ROAD RESERVE CO-ORDINATES			
LINKERKANT/LEFT HAND SIDE					REGTERKANT/RIGHT HAND SIDE			
	Y	X	WG	19°		Y	X	
L52	-89 751.476	3 780 870.725			R52	-90 749.721	3 780 110.185	
L53	-89 754.963	3 780 870.933			R53	-90 756.843	3 780 106.084	
L54	-90 055.658	3 780 592.275			R54	-90 765.739	3 780 084.424	
L55	-90 247.054	3 780 412.592			R55	-90 822.888	3 780 064.620	
L56	-90 278.501	3 780 388.004			R56	-90 874.439	3 780 050.768	
L57	-90 330.274	3 780 339.879			R57	-90 940.072	3 780 037.421	
L58	-90 390.573	3 780 283.811			R58	-91 003.457	3 780 028.611	
L59	-90 454.342	3 780 225.269			R59	-91 081.904	3 780 021.327	
L60	-90 504.231	3 780 183.429			R60	-91 083.688	3 780 021.162	
L61	-90 554.355	3 780 146.944			R61	-91 294.717	3 780 001.263	
L62	-90 597.149	3 780 119.578			R62	-91 514.784	3 779 980.590	
L63	-90 663.344	3 780 083.208			R63	-91 699.240	3 779 963.171	
L64	-90 719.822	3 780 055.779			R64	-91 727.566	3 779 960.595	
L65	-90 724.644	3 780 054.164			R65	-92 009.209	3 779 934.068	
L66	-90 828.426	3 780 018.810			R66	-92 017.361	3 779 934.018	
L67	-90 882.569	3 780 004.889			R67	-92 196.400	3 779 919.013	
L68	-90 951.347	3 779 992.384			R68	-92 306.057	3 779 909.529	
L69	-91 005.759	3 779 986.149			R69	-92 397.251	3 779 902.054	
L70	-91 067.736	3 779 980.262			R70	-92 434.318	3 779 898.960	
L71	-91 072.446	3 779 979.814			R71	-92 733.418	3 779 868.244	
L72	-91 272.361	3 779 961.057			R72	-92 964.033	3 779 844.747	
L73	-91 543.196	3 779 935.799			R73	-93 280.366	3 779 814.069	
L74	-91 881.911	3 779 904.149			R74	-93 495.518	3 779 794.180	
L75	-91 898.503	3 779 901.633			R75	-93 770.891	3 779 769.170	
L76	-92 003.504	3 779 891.908			R76	-93 972.218	3 779 749.010	
L77	-92 240.589	3 779 869.989			R77	-94 053.727	3 779 739.144	
L78	-92 343.759	3 779 860.268			R78	-94 085.825	3 779 731.422	
L79	-92 367.869	3 779 854.360			R79	-94 160.010	3 779 711.511	
L80	-92 386.111	3 779 844.755			R80	-94 218.528	3 779 691.293	
L81	-92 415.530	3 779 853.773			R81	-94 301.293	3 779 654.127	
L82	-92 424.498	3 779 852.919			R82	-94 308.599	3 779 650.840	
L83	-92 705.618	3 779 826.641			R83	-94 356.349	3 779 624.250	
L84	-93 083.496	3 779 791.197			R84	-94 392.768	3 779 601.719	
L85	-93 216.308	3 779 778.647			R85	-94 482.181	3 779 535.617	
L86	-93 256.671	3 779 770.696			R86	-94 549.940	3 779 473.062	
L87	-93 591.362	3 779 739.317			R87	-94 611.237	3 779 403.378	
L88	-93 949.633	3 779 705.138			R88	-94 840.466	3 779 089.795	
L89	-94 084.486	3 779 681.335			R89	-94 844.381	3 779 084.490	
L90	-94 178.437	3 779 652.150			R90	-94 849.590	3 779 077.441	
L91	-94 268.437	3 779 613.746			R91	-95 128.622	3 778 694.268	
L92	-94 284.131	3 779 606.542			R92	-95 221.808	3 778 565.767	
L93	-94 292.862	3 779 602.532			R93	-95 297.118	3 778 462.410	
L94	-94 321.270	3 779 588.595			R94	-95 313.576	3 778 439.708	
L95	-94 361.171	3 779 562.922			R95	-95 335.068	3 778 410.213	
L96	-94 420.124	3 779 520.498			R96	-95 345.775	3 778 395.159	
L97	-94 479.693	3 779 471.665			R97	-95 356.291	3 778 380.672	
L98	-94 536.495	3 779 416.527			R98	-95 501.448	3 778 181.684	
L99	-94 588.050	3 779 357.585			R99	-95 975.096	3 777 531.564	
L100	-94 635.961	3 779 293.680			R100	-96 024.590	3 777 475.751	
L101	-94 817.704	3 779 043.730			R101	-96 087.023	3 777 416.501	
L102	-94 824.073	3 779 035.673			R102	-96 150.528	3 777 365.814	
					Vel 18	Van 27	P638/08	
					Sheet	of		

PADRESERWE KOÖRDINATE					/ ROAD RESERVE CO-ORDINATES				
LINKERKANT/LEFT HAND SIDE					REGTERKANT/RIGHT HAND SIDE				
	Y	X	WG	19°		Y	X		
L103	-94 832.176	3 779 025.419			R103	-96 199.372	3 777 332.954		
L104	-94 919.754	3 778 904.920			R104	-96 252.313	3 777 302.304		
L105	-94 998.276	3 778 796.356			R105	-96 306.833	3 777 274.795		
L106	-95 127.529	3 778 614.260			R106	-96 367.940	3 777 251.097		
L107	-95 157.098	3 778 576.331			R107	-97 303.894	3 776 900.446		
L108	-95 164.544	3 778 566.395			R108	-97 601.799	3 776 789.035		
L109	-95 159.756	3 778 512.120			R109	-97 883.676	3 776 683.010		
L110	-95 166.118	3 778 483.479			R110	-97 983.612	3 776 646.018		
L111	-95 207.098	3 778 428.260			R111	-98 079.868	3 776 609.984		
L112	-95 230.854	3 778 412.872			R112	-98 157.405	3 776 577.805		
L113	-95 287.173	3 778 405.354			R113	-98 233.500	3 776 541.117		
L114	-95 292.941	3 778 397.335			R114	-98 294.880	3 776 508.091		
L115	-95 295.048	3 778 394.456			R115	-98 306.867	3 776 501.204		
L116	-95 299.917	3 778 392.511			R116	-98 365.773	3 776 464.809		
L117	-95 304.185	3 778 383.993			R117	-98 436.116	3 776 416.366		
L118	-95 303.163	3 778 383.042			R118	-98 502.792	3 776 365.230		
L119	-95 308.003	3 778 375.446			R119	-98 562.309	3 776 314.453		
L120	-95 308.557	3 778 369.665			R120	-98 612.744	3 776 266.250		
L121	-95 313.303	3 778 363.247			R121	-98 622.534	3 776 256.620		
L122	-95 322.601	3 778 359.873			R122	-98 670.605	3 776 206.039		
L123	-95 479.273	3 778 140.851			R123	-98 680.770	3 776 194.666		
L124	-95 548.956	3 778 040.835			R124	-98 725.914	3 776 141.848		
L125	-95 563.427	3 778 019.494			R125	-98 776.954	3 776 075.472		
L126	-95 629.559	3 777 920.989			R126	-98 817.508	3 776 016.953		
L127	-95 676.299	3 777 857.151			R127	-98 825.229	3 776 005.272		
L128	-95 738.356	3 777 780.850			R128	-98 861.733	3 775 946.183		
L129	-95 754.025	3 777 761.173			R129	-98 903.883	3 775 872.091		
L130	-95 809.083	3 777 685.205			R130	-99 013.403	3 775 682.763		
L131	-95 855.375	3 777 615.657			R131	-99 091.585	3 775 547.643		
L132	-95 866.592	3 777 601.644			R132	-99 139.468	3 775 464.232		
L133	-95 921.091	3 777 534.317							
L134	-95 955.916	3 777 489.490							
L135	-95 996.298	3 777 443.841							
L136	-96 040.490	3 777 400.317							
L137	-96 086.434	3 777 360.758							
L138	-96 163.921	3 777 305.544							
L139	-96 213.616	3 777 275.180							
L140	-96 263.252	3 777 249.377							
L141	-96 336.352	3 777 217.961							
L142	-96 510.243	3 777 152.862							
L143	-96 622.995	3 777 108.540							
L144	-96 887.417	3 777 009.636							
L145	-97 113.906	3 776 924.852							
L146	-97 240.317	3 776 877.627							
L147	-97 268.623	3 776 866.919							
L148	-97 307.167	3 776 852.330							
L149	-97 319.187	3 776 846.824							
L150	-97 368.118	3 776 824.828							
L151	-97 421.194	3 776 809.803							
L152	-97 568.073	3 776 754.747							
L153	-97 777.098	3 776 676.602							
					Vel	19	Van	27	P638/08
					Sheet		of		

PADRESERWE KOÖRDINATE				/	ROAD RESERVE CO-ORDINATES			
LINKERKANT/LEFT HAND SIDE					REGTERKANT/RIGHT HAND SIDE			
	Y	X	WG 19°			Y	X	
L154	-97	949.429	3 776	612.051				
L155	-98	041.765	3 776	577.551				
L156	-98	108.198	3 776	551.066				
L157	-98	171.343	3 776	520.356				
L158	-98	234.640	3 776	487.998				
L159	-98	355.949	3 776	417.857				
L160	-98	403.016	3 776	387.381				
L161	-98	418.677	3 776	378.498				
L162	-98	460.143	3 776	344.760				
L163	-98	487.878	3 776	322.848				
L164	-98	507.525	3 776	306.349				
L165	-98	569.643	3 776	249.463				
L166	-98	610.353	3 776	209.011				
L167	-98	619.889	3 776	199.105				
L168	-98	666.326	3 776	148.193				
L169	-98	703.616	3 776	103.683				
L170	-98	712.228	3 776	092.949				
L171	-98	746.266	3 776	048.476				
L172	-98	786.793	3 775	990.806				
L173	-98	824.949	3 775	930.670				
L174	-98	875.258	3 775	843.905				
L175	-98	981.142	3 775	659.927				
L176	-99	107.056	3 775	441.472				
WG 21°								
L176	85	446.020	3 775	307.780	R132	85	413.170	3 775 329.900
L177	85	291.560	3 775	026.710	R133	85	263.820	3 775 058.520
L178	85	169.880	3 774	805.580	R134	85	114.830	3 774 787.760
L179	85	060.620	3 774	607.130	R135	85	022.990	3 774 619.990
L180	85	020.130	3 774	533.780	R136	84	963.720	3 774 512.910
L181	84	991.970	3 774	471.460	R137	84	886.030	3 774 373.050
L182	84	986.190	3 774	462.220	R138	84	871.160	3 774 349.210
L183	84	971.350	3 774	443.520	R139	84	840.100	3 774 302.170
L184	84	965.430	3 774	428.880	R140	84	796.330	3 774 246.670
L185	84	943.580	3 774	393.920	R141	84	787.160	3 774 235.810
L186	84	923.050	3 774	357.440	R142	84	739.460	3 774 185.180
L187	84	894.790	3 774	309.410	R143	84	729.430	3 774 175.547
L188	84	887.150	3 774	297.780	R144	84	708.530	3 774 156.530
L189	84	854.280	3 774	251.600	R145	84	676.080	3 774 128.030
L190	84	836.920	3 774	229.950	R146	84	664.900	3 774 119.480
L191	84	810.310	3 774	197.970	R147	84	608.110	3 774 078.210
L192	84	800.180	3 774	186.570	R148	84	572.960	3 774 056.340
L193	84	787.470	3 774	172.910	R149	84	536.930	3 774 035.460
L194	84	762.060	3 774	147.590	R150	84	511.120	3 774 022.130
L195	84	741.990	3 774	128.890	R151	84	498.510	3 774 016.020
L196	84	721.970	3 774	110.820	R152	84	444.830	3 773 991.920
L197	84	710.450	3 774	101.270	R153	84	431.670	3 773 986.590
L198	84	699.770	3 774	092.680	R154	84	389.110	3 773 971.100
L199	84	654.970	3 774	058.800	R155	84	122.190	3 773 889.630
L200	84	632.190	3 774	043.350	R156	83	898.820	3 773 821.710
L201	84	596.430	3 774	020.740	R157	83	690.040	3 773 758.030
					Vel	20	Van	27
					Sheet		of	P638/08

PADRESERWE KOÖRDINATE				/	ROAD RESERVE CO-ORDINATES			
LINKERKANT/LEFT HAND SIDE					REGTERKANT/RIGHT HAND SIDE			
	Y	X	WG	21°		Y	X	
L202	84 584.780	3 774 013.850			R158	83 473.760	3 773 692.080	
L203	84 535.090	3 773 987.020			R159	83 441.800	3 773 682.320	
L204	84 471.690	3 773 958.100			R160	83 407.220	3 773 673.040	
L205	84 457.470	3 773 952.750			R161	83 353.490	3 773 659.210	
L206	84 431.180	3 773 943.440			R162	83 277.600	3 773 641.960	
L207	84 403.990	3 773 934.440			R163	83 208.760	3 773 630.470	
L208	84 307.720	3 773 904.820			R164	83 181.350	3 773 627.130	
L209	84 159.930	3 773 859.800			R165	83 126.300	3 773 621.960	
L210	83 959.630	3 773 798.730			R166	83 112.730	3 773 621.070	
L211	83 947.650	3 773 790.130			R167	83 042.320	3 773 619.730	
L212	83 936.770	3 773 781.430			R168	83 028.680	3 773 619.990	
L213	83 922.440	3 773 787.280			R169	82 959.010	3 773 622.800	
L214	83 800.660	3 773 750.100			R170	82 874.550	3 773 632.200	
L215	83 787.410	3 773 745.320			R171	82 807.310	3 773 644.610	
L216	83 773.730	3 773 742.230			R172	82 725.830	3 773 665.420	
L217	83 767.030	3 773 739.260			R173	82 712.440	3 773 669.250	
L218	83 643.570	3 773 702.110			R174	82 644.490	3 773 690.490	
L219	83 479.520	3 773 652.350			R175	82 566.630	3 773 720.970	
L220	83 465.170	3 773 647.850			R176	82 465.720	3 773 768.320	
L221	83 343.770	3 773 566.560			R177	82 283.160	3 773 855.040	
L222	83 320.080	3 773 560.080			R178	82 107.640	3 773 938.150	
L223	83 239.690	3 773 576.010			R179	81 817.320	3 774 075.760	
L224	83 184.800	3 773 586.640			R180	81 648.400	3 774 155.420	
L225	83 163.640	3 773 584.310			R181	81 589.940	3 774 183.310	
L226	83 149.780	3 773 583.070			R182	81 418.820	3 774 265.010	
L227	83 076.530	3 773 579.780			R183	81 339.410	3 774 300.600	
L228	83 016.590	3 773 580.220			R184	81 326.420	3 774 306.010	
L229	83 001.410	3 773 580.710			R185	81 284.500	3 774 322.340	
L230	82 941.340	3 773 584.620			R186	81 279.830	3 774 324.160	
L231	82 895.070	3 773 589.690			R187	81 263.530	3 774 330.130	
L232	82 865.730	3 773 593.460			R188	81 244.380	3 774 336.450	
L233	82 806.740	3 773 603.860			R189	81 171.520	3 774 358.220	
L234	82 792.080	3 773 606.880			R190	81 158.020	3 774 361.590	
L235	82 731.420	3 773 621.130			R191	81 103.280	3 774 374.010	
L236	82 672.150	3 773 638.480			R192	81 074.380	3 774 379.380	
L237	82 658.440	3 773 642.840			R193	81 045.330	3 774 384.330	
L238	82 601.150	3 773 663.180			R194	81 031.450	3 774 386.410	
L239	82 586.370	3 773 669.110			R195	81 017.540	3 774 388.170	
L240	82 544.410	3 773 686.570			R196	80 989.940	3 774 391.000	
L241	82 530.730	3 773 692.550			R197	80 948.680	3 774 394.830	
L242	82 434.070	3 773 738.750			R198	80 860.800	3 774 401.380	
L243	82 288.770	3 773 807.690			R199	80 837.330	3 774 402.540	
L244	82 261.010	3 773 818.700			R200	80 721.690	3 774 411.640	
L245	82 150.550	3 773 871.390			R201	80 553.430	3 774 423.780	
L246	82 140.130	3 773 877.950			R202	80 489.050	3 774 428.270	
L247	82 127.050	3 773 884.590			R203	80 440.290	3 774 431.670	
L248	81 881.200	3 774 001.280			R204	80 291.500	3 774 442.250	
L249	81 617.620	3 774 126.440			R205	79 974.760	3 774 464.670	
L250	81 362.520	3 774 247.450			R206	79 652.800	3 774 487.500	
L251	81 291.880	3 774 277.790			R207	79 290.000	3 774 513.440	
L252	81 275.230	3 774 283.860			R208	79 220.460	3 774 518.770	
				Vel	21	Van	27	P638/08
				Sheet		of		

PADRESERWE KOÖRDINATE				/	ROAD RESERVE CO-ORDINATES			
LINKERKANT/LEFT HAND SIDE					REGTERKANT/RIGHT HAND SIDE			
	Y	X	WG	21°		Y	X	
L253	81 266.100	3 774 287.190			R209	79 151.490	3 774 526.980	
L254	81 211.730	3 774 305.880			R210	79 138.030	3 774 529.170	
L255	81 157.920	3 774 321.160			R211	79 125.980	3 774 531.400	
L256	81 130.590	3 774 328.020			R212	79 100.980	3 774 563.140	
L257	81 093.170	3 774 335.700			R213	79 016.880	3 774 556.200	
L258	80 994.730	3 774 351.450			R214	78 976.890	3 774 563.290	
L259	80 952.810	3 774 355.430			R215	78 774.070	3 774 613.060	
L260	80 938.790	3 774 356.610			R216	78 567.450	3 774 663.720	
L261	80 720.640	3 774 371.850			R217	78 447.050	3 774 693.190	
L262	80 502.290	3 774 387.560			R218	78 243.090	3 774 743.500	
L263	80 353.740	3 774 397.880			R219	78 046.150	3 774 792.450	
L264	80 062.180	3 774 418.420			R220	78 038.140	3 774 800.400	
L265	79 859.740	3 774 432.970			R221	78 022.590	3 774 799.980	
L266	79 474.940	3 774 460.260			R222	78 015.450	3 774 799.780	
L267	79 244.950	3 774 476.510			R223	77 896.670	3 774 829.090	
L268	79 200.760	3 774 480.070			R224	77 816.670	3 774 841.880	
L269	79 186.330	3 774 481.540			R225	77 802.440	3 774 843.610	
L270	79 119.380	3 774 490.500			R226	77 745.120	3 774 849.960	
L271	79 005.540	3 774 506.360			R227	77 717.390	3 774 852.170	
L272	78 956.750	3 774 520.610			R228	77 548.600	3 774 862.210	
L273	78 921.580	3 774 535.100			R229	77 380.830	3 774 871.510	
L274	78 904.440	3 774 540.340			R230	77 156.900	3 774 884.510	
L275	78 696.140	3 774 591.660			R231	76 939.550	3 774 897.160	
L276	78 555.660	3 774 626.230			R232	76 743.180	3 774 908.620	
L277	78 533.330	3 774 631.660			R233	76 533.530	3 774 920.640	
L278	78 211.250	3 774 711.110			R234	76 491.560	3 774 923.680	
L279	78 106.150	3 774 737.450			R235	76 420.440	3 774 929.600	
L280	78 078.520	3 774 744.100			R236	76 295.640	3 774 950.540	
L281	77 975.410	3 774 769.180			R237	75 953.930	3 775 027.860	
L282	77 871.120	3 774 791.600			R238	75 601.450	3 775 107.460	
L283	77 857.140	3 774 794.020			R239	75 315.010	3 775 172.360	
L284	77 802.940	3 774 801.140			R240	74 995.860	3 775 244.600	
L285	77 775.030	3 774 804.490			R241	74 929.720	3 775 259.590	
L286	77 680.830	3 774 814.440			R242	74 821.560	3 775 284.110	
L287	77 531.580	3 774 822.880			R243	74 682.710	3 775 312.170	
L288	77 255.450	3 774 839.240			R244	74 584.330	3 775 323.890	
L289	76 939.440	3 774 857.610			R245	74 488.120	3 775 323.450	
L290	76 673.920	3 774 869.710			R246	74 377.300	3 775 311.660	
L291	76 562.290	3 774 876.210			R247	74 009.800	3 775 245.850	
L292	76 491.390	3 774 881.550			R248	73 756.110	3 775 200.290	
L293	76 439.010	3 774 886.320			R249	73 533.830	3 775 160.310	
L294	76 397.800	3 774 891.770			R250	73 218.710	3 775 103.830	
L295	76 349.390	3 774 898.660			R251	72 899.100	3 775 046.650	
L296	76 319.680	3 774 900.670			R252	72 767.500	3 775 028.330	
L297	76 287.160	3 774 910.430			R253	72 703.490	3 775 029.400	
L298	76 246.970	3 774 917.940			R254	72 664.000	3 775 032.240	
L299	76 088.190	3 774 953.840			R255	72 650.340	3 775 034.160	
L300	75 923.120	3 774 987.080			R256	72 540.430	3 775 054.340	
L301	75 712.390	3 775 035.400			R257	72 209.690	3 775 144.610	
L302	75 692.450	3 775 038.800			R258	71 902.040	3 775 229.760	
L303	75 670.920	3 775 041.630			R259	71 631.890	3 775 304.610	
					Vel	22	Van	27
					Sheet		of	
					P638/08			

PADRESERWE KOÖRDINATE					/ ROAD RESERVE CO-ORDINATES				
LINKERKANT/LEFT HAND SIDE					REGTERKANT/RIGHT HAND SIDE				
	Y	X	WG	21°		Y	X		
L304	75 659.140	3 775 046.160			R260	71 576.910	3 775 319.510		
L305	75 643.600	3 775 051.360			R261	71 377.520	3 775 373.580		
L306	75 494.730	3 775 085.960			R262	71 131.570	3 775 440.800		
L307	75 481.110	3 775 088.830			R263	70 793.970	3 775 533.200		
L308	75 453.590	3 775 088.710			R264	70 587.320	3 775 589.970		
L309	75 442.780	3 775 096.080			R265	70 418.810	3 775 635.750		
L310	75 425.990	3 775 105.490			R266	70 374.390	3 775 647.780		
L311	75 275.210	3 775 139.690			R267	70 360.500	3 775 650.570		
L312	74 992.540	3 775 203.610			R268	70 227.500	3 775 674.210		
L313	74 827.080	3 775 240.410			R269	70 204.060	3 775 676.400		
L314	74 699.190	3 775 266.680			R270	70 105.440	3 775 684.600		
L315	74 615.790	3 775 278.540			R271	70 091.690	3 775 685.170		
L316	74 515.100	3 775 281.880			R272	70 038.750	3 775 685.590		
L317	74 459.720	3 775 278.900			R273	69 911.450	3 775 684.140		
L318	74 390.360	3 775 270.320			R274	69 856.300	3 775 683.510		
L319	74 266.800	3 775 250.170			R275	69 673.070	3 775 683.780		
L320	74 088.080	3 775 217.690			R276	69 475.730	3 775 683.220		
L321	74 021.430	3 775 203.880			R277	69 239.950	3 775 681.730		
L322	73 941.760	3 775 189.000			R278	69 044.260	3 775 681.310		
L323	73 845.120	3 775 173.990			R279	68 745.610	3 775 680.070		
L324	73 463.700	3 775 105.270			R280	68 466.330	3 775 678.470		
L325	73 230.020	3 775 059.210			R281	68 129.970	3 775 677.130		
L326	73 147.270	3 775 044.380			R282	67 890.520	3 775 676.570		
L327	73 035.140	3 775 027.380			R283	67 597.080	3 775 674.800		
L328	72 939.700	3 775 010.240			R284	67 313.400	3 775 673.930		
L329	72 898.280	3 775 003.120			R285	67 101.850	3 775 673.020		
L330	72 842.950	3 774 995.800			R286	66 963.210	3 775 673.090		
L331	72 717.430	3 774 991.610			R287	66 534.330	3 775 671.780		
L332	72 578.940	3 775 005.590			R288	66 481.130	3 775 672.590		
L333	72 433.140	3 775 039.130			R289	66 432.500	3 775 670.460		
L334	71 566.650	3 775 276.780			R290	66 088.360	3 775 669.070		
L335	71 512.780	3 775 291.550			R291	65 862.430	3 775 668.500		
L336	71 409.500	3 775 320.420			R292	65 838.940	3 775 668.290		
L337	71 146.090	3 775 392.830			R293	65 617.960	3 775 667.350		
L338	70 875.900	3 775 467.270			R294	65 264.300	3 775 666.070		
L339	70 551.570	3 775 556.230			R295	64 911.070	3 775 664.830		
L340	70 443.930	3 775 585.930			R296	64 510.160	3 775 663.250		
L341	70 296.080	3 775 625.650			R297	64 424.600	3 775 663.120		
L342	70 183.570	3 775 616.390			R298	64 094.400	3 775 661.510		
L343	70 081.610	3 775 641.770			R299	64 037.630	3 775 661.530		
L344	69 836.880	3 775 636.310			R300	63 996.490	3 775 662.850		
L345	69 655.570	3 775 641.820			R301	63 945.260	3 775 661.780		
L346	69 597.420	3 775 642.300			R302	63 776.010	3 775 660.720		
L347	69 471.600	3 775 641.470			R303	63 620.970	3 775 660.140		
L348	69 320.100	3 775 640.540			R304	63 396.350	3 775 658.750		
L349	69 276.270	3 775 638.500			R305	63 279.870	3 775 658.580		
L350	69 235.200	3 775 636.140			R306	63 168.290	3 775 657.590		
L351	69 212.650	3 775 634.720			R307	62 762.000	3 775 656.270		
L352	69 192.980	3 775 635.010			R308	62 690.790	3 775 656.160		
L353	69 178.060	3 775 635.580			R309	62 480.360	3 775 654.960		
L354	69 148.760	3 775 636.360			R310	62 289.350	3 775 654.310		
					Vel 23 Van 27 P638/08				
					Sheet of				

PADRESERWE KOÖRDINATE				/	ROAD RESERVE CO-ORDINATES			
LINKERKANT/LEFT HAND SIDE					REGTERKANT/RIGHT HAND SIDE			
	Y	X	WG	21°		Y	X	
L355	68 949.400	3 775 639.210			R311	61 949.010	3 775 652.900	
L356	68 935.010	3 775 638.630			R312	61 663.690	3 775 651.750	
L357	68 904.500	3 775 636.990			R313	61 430.720	3 775 650.910	
L358	68 875.710	3 775 637.640			R314	61 172.430	3 775 649.900	
L359	68 862.740	3 775 639.100			R315	60 966.490	3 775 649.070	
L360	68 565.580	3 775 637.750			R316	60 909.200	3 775 655.060	
L361	68 270.370	3 775 636.680			R317	60 854.380	3 775 662.860	
L362	68 084.630	3 775 636.620			R318	60 758.450	3 775 679.700	
L363	67 958.200	3 775 633.990			R319	60 592.520	3 775 709.330	
L364	67 874.650	3 775 632.990			R320	60 332.230	3 775 755.470	
L365	67 858.880	3 775 634.990			R321	60 108.480	3 775 795.260	
L366	67 824.940	3 775 634.720			R322	60 071.700	3 775 801.700	
L367	67 755.210	3 775 631.970			R323	59 916.350	3 775 828.860	
L368	67 728.830	3 775 631.230			R324	59 787.850	3 775 828.120	
L369	67 426.360	3 775 628.250			R325	59 746.220	3 775 822.180	
L370	67 361.540	3 775 628.730			R326	59 719.210	3 775 817.040	
L371	67 176.750	3 775 624.810			R327	59 691.620	3 775 809.920	
L372	67 154.090	3 775 624.540			R328	59 650.780	3 775 797.150	
L373	67 108.720	3 775 626.530			R329	59 624.420	3 775 787.700	
L374	66 980.270	3 775 631.260			R330	59 585.600	3 775 771.700	
L375	66 580.110	3 775 629.860			R331	59 310.800	3 775 630.730	
L376	66 538.060	3 775 627.370			R332	59 085.590	3 775 514.380	
L377	66 509.760	3 775 624.480			R333	58 878.890	3 775 408.400	
L378	66 447.150	3 775 624.480			R334	58 846.110	3 775 391.890	
L379	66 420.010	3 775 627.420			R335	58 583.410	3 775 256.260	
L380	66 406.490	3 775 628.230			R336	58 397.060	3 775 159.890	
L381	66 378.570	3 775 629.070			R337	58 284.720	3 775 102.550	
L382	66 350.370	3 775 628.690			R338	58 084.590	3 774 999.560	
L383	66 299.300	3 775 626.510			R339	57 809.540	3 774 858.360	
L384	66 188.030	3 775 625.060			R340	57 592.040	3 774 746.080	
L385	66 116.850	3 775 624.750			R341	57 304.020	3 774 598.170	
L386	65 963.120	3 775 626.980			R342	57 203.600	3 774 546.510	
L387	65 809.270	3 775 626.460			R343	57 178.890	3 774 533.180	
L388	65 498.400	3 775 625.160			R344	57 154.630	3 774 519.320	
L389	65 313.580	3 775 624.310			R345	57 118.620	3 774 497.960	
L390	65 182.910	3 775 623.890			R346	57 069.490	3 774 466.250	
L391	65 165.040	3 775 620.460			R347	57 034.980	3 774 442.400	
L392	65 089.150	3 775 623.020			R348	56 988.330	3 774 408.480	
L393	64 930.050	3 775 622.800			R349	56 922.970	3 774 356.020	
L394	64 558.920	3 775 621.230			R350	56 891.780	3 774 328.860	
L395	64 459.060	3 775 614.980			R351	56 829.690	3 774 270.980	
L396	64 374.670	3 775 616.330			R352	56 709.170	3 774 154.760	
L397	64 233.850	3 775 619.650			R353	56 589.120	3 774 038.700	
L398	64 081.120	3 775 619.240			R354	56 468.060	3 773 921.780	
L399	64 042.020	3 775 615.820			R355	56 315.440	3 773 774.520	
L400	63 980.060	3 775 610.390			R356	56 164.460	3 773 629.030	
L401	63 962.080	3 775 608.050			R357	56 111.880	3 773 580.710	
L402	63 940.960	3 775 609.980			R358	56 080.340	3 773 553.240	
L403	63 855.630	3 775 617.060			R359	56 047.730	3 773 526.460	
L404	63 649.110	3 775 617.680			R360	55 995.050	3 773 484.330	
L405	63 399.830	3 775 616.460			R361	55 940.500	3 773 444.260	
					Vel	24	Van	27
					Sheet		of	P638/08

PADRESERWE KOÖRDINATE				/	ROAD RESERVE CO-ORDINATES			
LINKERKANT/LEFT HAND SIDE					REGTERKANT/RIGHT HAND SIDE			
	Y	X	WG	21°		Y	X	
L406	63 220.710	3 775 615.670			R362	55 905.310	3 773 420.430	
L407	63 174.700	3 775 597.850			R363	55 845.900	3 773 382.230	
L408	63 151.640	3 775 600.120			R364	55 678.160	3 773 279.410	
L409	63 078.140	3 775 608.450			R365	55 606.770	3 773 235.660	
L410	63 018.010	3 775 614.920			R366	55 547.050	3 773 198.260	
L411	62 925.600	3 775 614.480			R367	55 475.670	3 773 151.240	
L412	62 797.020	3 775 609.220			R368	55 428.570	3 773 118.300	
L413	62 718.830	3 775 609.770			R369	55 360.430	3 773 059.640	
L414	62 622.130	3 775 612.970			R370	55 318.620	3 773 021.530	
L415	62 418.070	3 775 612.350			R371	55 271.090	3 772 975.280	
L416	62 160.850	3 775 611.340			R372	55 235.570	3 772 937.890	
L417	62 119.290	3 775 602.990			R373	55 208.440	3 772 907.360	
L418	62 092.670	3 775 596.860			R374	55 159.070	3 772 848.140	
L419	62 083.760	3 775 596.400			R375	55 113.670	3 772 786.690	
L420	62 064.930	3 775 597.930			R376	55 071.050	3 772 723.350	
L421	61 939.500	3 775 610.520			R377	54 999.870	3 772 608.720	
L422	61 649.710	3 775 609.300			R378	54 943.160	3 772 517.550	
L423	61 636.790	3 775 608.800			R379	54 921.640	3 772 482.720	
L424	61 604.700	3 775 606.280			R380	54 825.980	3 772 378.750	
L425	61 556.670	3 775 608.690			R381	54 812.380	3 772 356.970	
L426	61 447.640	3 775 608.420			R382	54 762.330	3 772 226.960	
L427	61 246.430	3 775 607.560			R383	54 665.750	3 772 070.850	
L428	61 232.890	3 775 606.780			R384	54 624.720	3 772 005.390	
L429	61 144.250	3 775 598.490			R385	54 512.490	3 771 825.320	
L430	61 076.120	3 775 596.660			R386	54 421.000	3 771 678.090	
L431	60 951.520	3 775 607.140			R387	54 374.610	3 771 612.800	
L432	60 842.320	3 775 615.740			R388	54 327.740	3 771 552.990	
L433	60 782.300	3 775 633.170			R389	54 178.760	3 771 380.170	
L434	60 705.400	3 775 647.150			R390	53 949.060	3 771 115.880	
L435	60 598.090	3 775 665.920			R391	53 878.000	3 771 034.120	
L436	60 524.480	3 775 673.900			R392	53 813.270	3 770 958.347	
L437	60 488.760	3 775 678.510			R393	53 749.860	3 770 881.680	
L438	60 323.580	3 775 710.160			R394	53 690.550	3 770 801.520	
L439	60 207.580	3 775 735.460			R395	53 633.670	3 770 721.750	
L440	60 107.590	3 775 753.790			R396	53 520.840	3 770 561.450	
L441	59 940.770	3 775 781.460			R397	53 488.250	3 770 515.140	
L442	59 879.830	3 775 782.950			R398	53 463.590	3 770 480.110	
L443	59 797.610	3 775 782.950			R399	53 292.340	3 770 236.430	
L444	59 770.970	3 775 779.980			R400	53 240.330	3 770 162.690	
L445	59 728.810	3 775 770.800			R401	53 235.130	3 770 155.320	
L446	59 647.730	3 775 744.680			R402	53 170.380	3 770 061.120	
L447	59 608.700	3 775 729.160			R403	53 143.070	3 770 025.570	
L448	59 507.680	3 775 681.910			R404	53 057.920	3 769 959.480	
L449	59 450.570	3 775 654.630			R405	52 990.070	3 769 878.760	
L450	59 199.250	3 775 525.590			R406	52 915.860	3 769 775.170	
L451	59 004.410	3 775 425.420			R407	52 852.740	3 769 661.060	
L452	58 794.800	3 775 318.600			R408	52 836.020	3 769 620.200	
L453	58 665.070	3 775 251.450			R409	52 851.670	3 769 587.060	
L454	58 641.530	3 775 238.220			R410	52 814.030	3 769 515.850	
L455	58 609.380	3 775 221.710			R411	52 784.570	3 769 448.810	
L456	58 539.690	3 775 187.100			R412	52 762.370	3 769 398.170	
				Vel	25	Van	27	P638/08
				Sheet		of		

PADRESERWE KOÖRDINATE				/	ROAD RESERVE CO-ORDINATES			
LINKERKANT/LEFT HAND SIDE					REGTERKANT/RIGHT HAND SIDE			
	Y	X	WG 21°			Y	X	
L457	58 171.690	3 774 997.610		R413	52 749.830	3 769 363.710		
L458	58 048.430	3 774 934.370		R414	52 719.580	3 769 278.450		
L459	58 013.270	3 774 915.730		R415	52 676.670	3 769 133.810		
L460	57 938.010	3 774 873.510		R416	52 622.630	3 769 146.690		
L461	57 913.000	3 774 859.130		R417	52 549.410	3 769 057.240		
L462	57 895.520	3 774 850.600		R418	52 590.890	3 769 020.680		
L463	57 835.940	3 774 824.680		R419	52 638.620	3 769 006.660		
L464	57 690.270	3 774 750.000		R420	52 551.790	3 768 714.890		
L465	57 619.960	3 774 709.260		R421	52 474.630	3 768 457.160		
L466	57 461.600	3 774 627.490		R422	52 431.552	3 768 378.318		
L467	57 351.400	3 774 573.570		R423	52 357.321	3 768 188.833		
L468	57 327.820	3 774 561.540		R424	52 352.709	3 768 177.120		
L469	57 282.300	3 774 537.990		R425	52 329.430	3 768 121.400		
L470	57 244.658	3 774 516.840		R426	52 262.030	3 767 996.850		
L471	57 210.930	3 774 496.920		R427	52 127.860	3 767 809.980		
L472	57 175.130	3 774 473.630		R428	51 998.530	3 767 601.190		
L473	57 100.370	3 774 425.070		R429	51 973.130	3 767 557.120		
L474	57 050.680	3 774 389.450		R430	51 966.483	3 767 542.250		
L475	56 986.540	3 774 340.950		R431	51 961.914	3 767 533.717		
L476	56 927.060	3 774 293.420		R432	51 933.729	3 767 481.091		
L477	56 850.640	3 774 225.160		R433	51 911.170	3 767 439.530		
L478	56 817.210	3 774 194.190		R434	51 877.120	3 767 384.200		
L479	56 617.460	3 774 001.140		R435	51 829.470	3 767 344.850		
L480	56 565.820	3 773 944.460		R436	51 659.730	3 767 238.030		
L481	56 480.420	3 773 869.100		R437	51 657.590	3 767 222.190		
L482	56 326.780	3 773 720.900		R438	51 629.320	3 767 198.420		
L483	56 144.460	3 773 545.300		R439	51 617.480	3 767 188.460		
L484	56 091.760	3 773 499.530		R440	51 583.220	3 767 159.660		
L485	56 059.230	3 773 472.900		R441	51 577.580	3 767 161.280		
L486	56 004.400	3 773 430.910		R442	51 571.100	3 767 154.190		
L487	55 959.020	3 773 398.450		R443	51 564.100	3 767 156.220		
L488	55 924.370	3 773 375.290		R444	51 555.460	3 767 150.200		
L489	55 865.290	3 773 337.740		R445	51 546.440	3 767 143.940		
L490	55 781.870	3 773 286.420		R446	51 497.110	3 767 109.630		
L491	55 662.220	3 773 211.080		R447	51 440.576	3 767 070.448		
L492	55 577.930	3 773 160.990		R448	51 409.027	3 767 048.588		
L493	55 529.460	3 773 130.410		R449	51 367.357	3 767 019.708		
L494	55 518.320	3 773 121.960		R450	51 350.227	3 767 007.838		
L495	55 485.740	3 773 092.310		R451	51 272.144	3 766 953.738		
L496	55 463.250	3 773 075.440		R452	51 254.190	3 766 941.290		
L497	55 429.350	3 773 052.380						
L498	55 375.530	3 773 013.110						
L499	55 352.440	3 772 995.170						
L500	55 301.080	3 772 948.570						
L501	55 262.200	3 772 908.270						
L502	55 131.360	3 772 741.770						
L503	55 073.470	3 772 661.040						
L504	54 940.830	3 772 447.750						
L505	54 888.700	3 772 363.640						
L506	54 830.560	3 772 268.410						
L507	54 801.580	3 772 223.210						
					LINKERKANT/LEFT HAND SIDE			
				L508	54 783.040	3 772 186.230		
				L509	54 728.760	3 772 095.970		
				L510	54 709.070	3 772 063.240		
				L511	54 675.350	3 772 016.570		
				L512	54 634.880	3 771 955.130		
				L513	54 619.940	3 771 931.090		
				L514	54 590.070	3 771 879.390		
				L515	54 556.130	3 771 816.210		
				L516	54 498.690	3 771 734.900		
					Vel 26	Van 27	P638/08	
					Sheet	of		

PADRESERWE KOÖRDINATE				/	ROAD RESERVE CO-ORDINATES			
LINKERKANT/LEFT HAND SIDE					LINKERKANT/LEFT HAND SIDE			
			WG 21°			Y	X	
L517	54	446.290	3 771 649.660		L568	52	230.230	3 767 860.170
L518	54	359.500	3 771 535.600		L569	52	224.280	3 767 849.880
L519	54	353.250	3 771 527.380		L570	52	214.900	3 767 833.660
L520	54	241.490	3 771 389.900		L571	52	208.070	3 767 819.120
L521	54	010.160	3 771 138.680		L572	52	186.170	3 767 773.680
L522	53	868.220	3 770 974.480		L573	52	169.880	3 767 747.380
L523	53	787.520	3 770 877.080		L574	52	162.450	3 767 736.620
L524	53	760.590	3 770 842.080		L575	52	152.760	3 767 720.740
L525	53	747.330	3 770 817.280		L576	52	143.080	3 767 704.860
L526	53	726.030	3 770 783.200		L577	52	133.510	3 767 689.160
L527	53	727.720	3 770 781.160		L578	52	102.360	3 767 643.270
L528	53	688.100	3 770 725.970		L579	52	071.200	3 767 597.370
L529	53	637.810	3 770 672.590		L580	52	040.050	3 767 551.470
L530	53	567.580	3 770 572.280		L581	52	028.720	3 767 534.830
L531	53	262.320	3 770 138.350		L582	52	010.032	3 767 504.658
L532	53	230.080	3 770 088.140		L583	52	004.991	3 767 496.535
L533	53	225.870	3 770 058.640		L584	51	979.466	3 767 455.433
L534	53	206.670	3 770 031.230		L585	51	973.650	3 767 446.560
L535	53	116.540	3 769 903.340		L586	51	945.810	3 767 399.530
L536	53	019.470	3 769 765.290		L587	51	940.790	3 767 391.050
L537	52	981.910	3 769 711.780		L588	51	913.030	3 767 356.980
L538	52	950.540	3 769 664.600		L589	51	905.580	3 767 350.980
L539	52	930.060	3 769 631.230		L590	51	778.640	3 767 248.480
L540	52	910.500	3 769 598.080		L591	51	658.560	3 767 164.820
L541	52	890.360	3 769 562.160		L592	51	645.810	3 767 155.920
L542	52	832.130	3 769 443.190		L593	51	586.610	3 767 114.660
L543	52	814.140	3 769 399.360		L594	51	577.640	3 767 108.440
L544	52	796.260	3 769 355.770		L595	51	502.280	3 767 056.110
L545	52	770.060	3 769 281.410		L596	51	479.590	3 767 040.350
L546	52	746.990	3 769 206.130		L597	51	478.068	3 767 039.330
L547	52	737.120	3 769 172.940		L598	51	439.344	3 767 013.187
L548	52	727.260	3 769 139.750		L599	51	420.068	3 766 999.862
L549	52	707.480	3 769 073.390		L600	51	401.569	3 766 987.072
L550	52	669.740	3 768 946.900		L601	51	350.130	3 766 951.992
L551	52	606.950	3 768 735.980		L602	51	305.331	3 766 920.941
L552	52	582.670	3 768 654.650		L603	51	299.039	3 766 916.552
L553	52	563.140	3 768 589.210					
L554	52	550.150	3 768 545.610					
L555	52	530.060	3 768 475.490					
L556	52	526.530	3 768 463.170					
L557	52	514.110	3 768 426.170					
L558	52	477.260	3 768 309.660					
L559	52	461.060	3 768 266.640					
L560	52	440.950	3 768 223.960					
L561	52	409.940	3 768 162.430					
L562	52	404.230	3 768 151.200					
L563	52	358.540	3 768 062.490					
L564	52	331.740	3 768 020.260					
L565	52	305.710	3 767 980.370					
L566	52	280.410	3 767 940.630					
L567	52	255.396	3 767 900.490					
					Vel	27	Van	27
					Sheet		of	
					P638/08			