

Government Gazette Staatskoerant

REPUBLIC OF SOUTH AFRICA
REPUBLIEK VAN SUID-AFRIKA

Vol. 517

Pretoria, 28 July
Julie 2008

No. 31276

CONTENTS**INHOUD**

<i>No.</i>	<i>Page No.</i>	<i>Gazette No.</i>	<i>No.</i>	<i>Bladsy No.</i>	<i>Koerant No.</i>
GOVERNMENT NOTICE			GOEWERMENTSKENNISGEWING		
Transport, Department of			Vervoer, Departement van		
<i>Government Notice</i>			<i>Goewermentskennisgewing</i>		
803			803		
South African National Road Agency Limited and the National Roads Act (7/1998): The South African National Roads Agency Limited: Declaration amendment of National Road N14 Section 9: Amendment of Declaration No. 217 of 2006.....	3	31276	Suid-Afrikaanse Nasionale Padagentskap Beperk en die Nasionale Paaie Wet (7/1998): Die Suid-Afrikaanse Nasionale Padagentskap Beperk: Verklaring wysiging van Nasionale Pad N14 Seksie 9: Wysiging van Verklaring No. 217 van 2006	4	31276

**GOVERNMENT NOTICE
GOEWERMENSKENNISGEWING**

**DEPARTMENT OF TRANSPORT
DEPARTEMENT VAN VERVOER**

No. 803

28 July 2008

**THE SOUTH AFRICAN NATIONAL ROADS
AGENCY LIMITED**

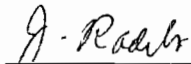
Registration No: 98/09584/06

DECLARATION AMENDMENT OF NATIONAL ROAD N14 SECTION 9

AMENDMENT OF DECLARATION NO. 217 OF 2006

By virtue of section 40 (1)(b) of the South African National Roads Agency Limited and the National Roads Act, 1998 (Act No. 7 of 1998), I hereby amend Declaration No. 217 of 2006 by substituting the Annexure paragraphs 2 and 3, with the subjoined sheets 1 to 22 of Plan No. P642/08.

(National Road N14 Section 9: Vryburg - Delareyville)



MINISTER OF TRANSPORT

No. 803

28 Julie 2008

**DIE SUID-AFRIKAANSE NASIONALE
PADAGENTSKAP BEPERK**

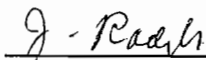
Registrasie No: 98/09584/06

VERKLARING WYSIGING VAN NASIONALE PAD N14 SEKSIE 9.

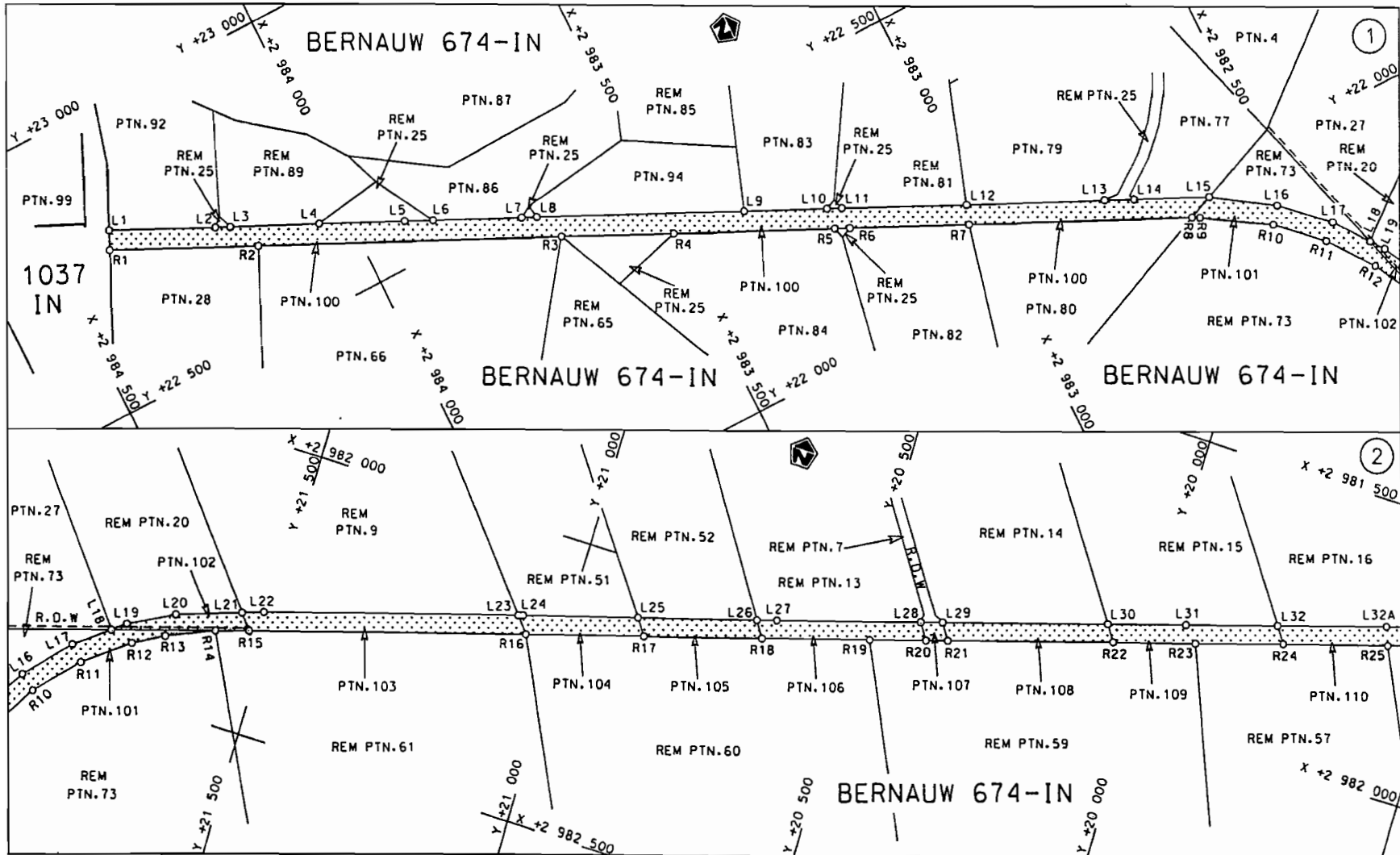
WYSIGING VAN VERKLARING NO. 217 VAN 2006

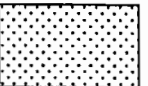
Kragtens Artikel 40(1)(b) van die Suid-Afrikaanse Nasionale Padagentskap Beperk en die Nasionale Paaie Wet, 1998 (Wet No.7 van 1998), wysig ek hiermee Verklaring No. 217 van 2006 deur die Bylae paragrawe 2 en 3, te vervang met meegaande velle 1 tot 22 van Plan No. P642/08.

(Nasionale Pad N14 Seksie 9 Vryburg - Delareyville)

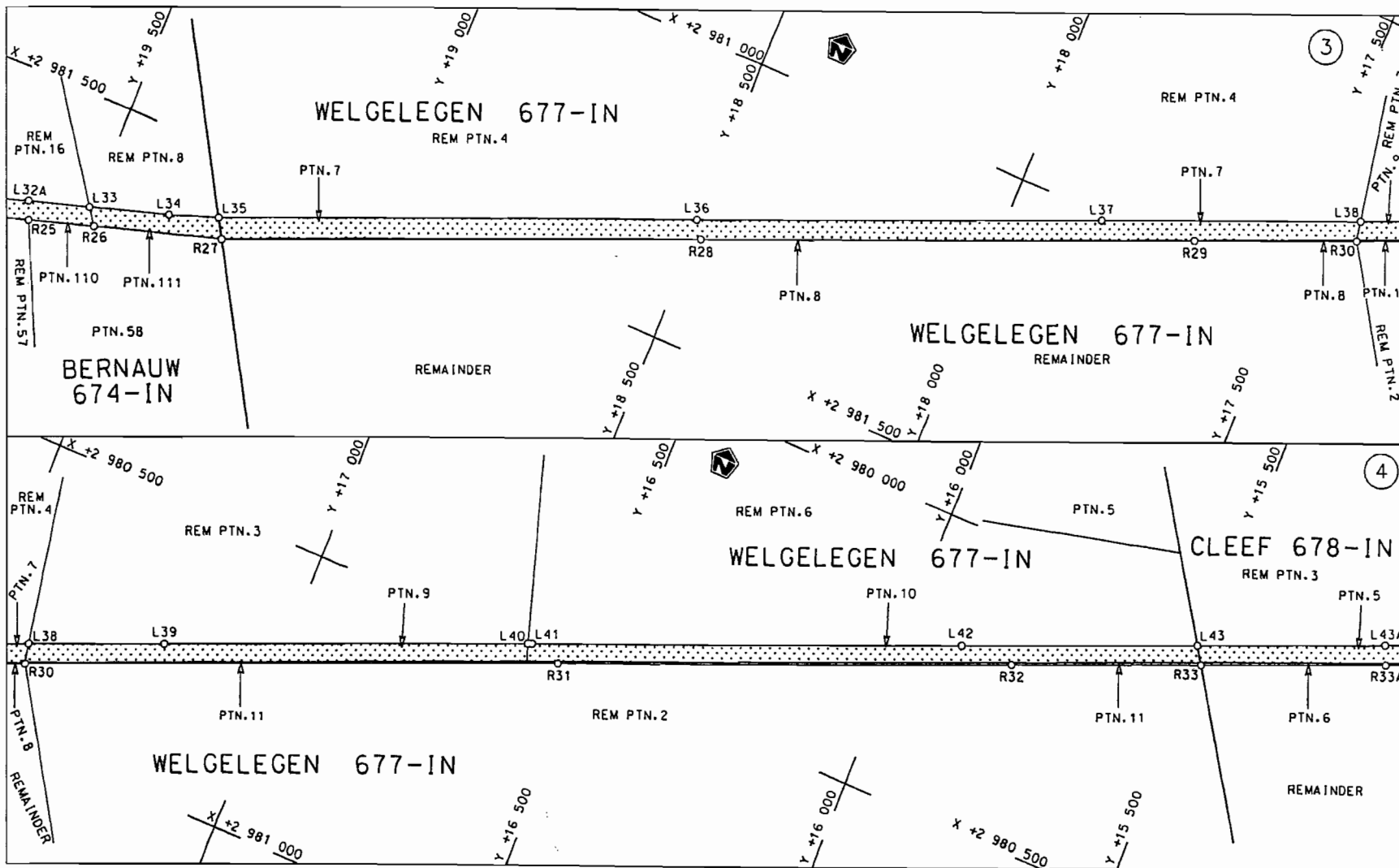



MINISTER VAN VERVOER

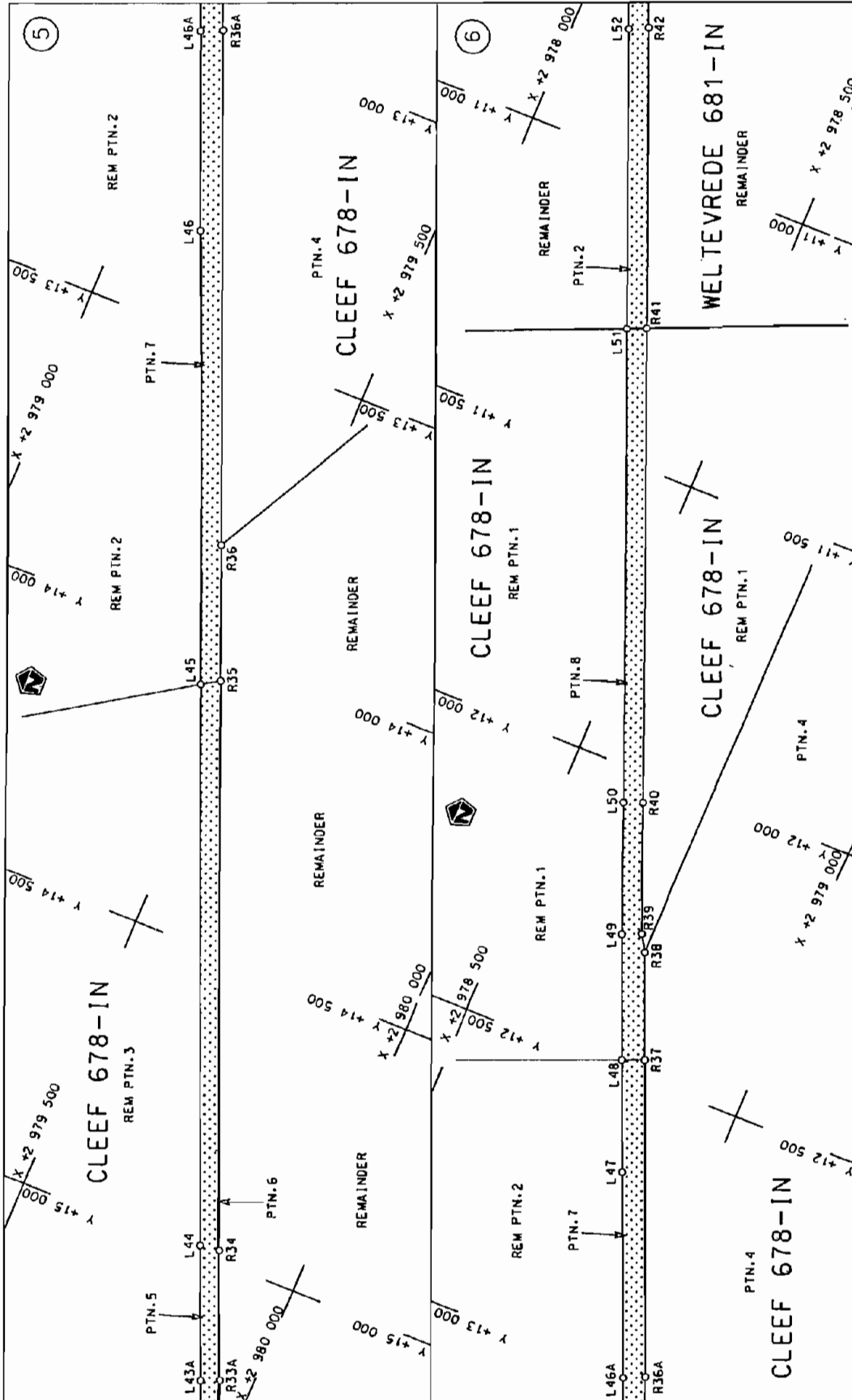


Die Suid Afrikaanse Nasionale Padagentskop Beperk The South African National Roads Agency Limited	Die figuur getoon The figure shown		steldie padreserwe voor van 'n gedeelte represents the road reserve of a portion van Nasionale Roete N14 Seksie 9 of National Route	Vel Sheet 1 van 22 of of
				Plan P642/08

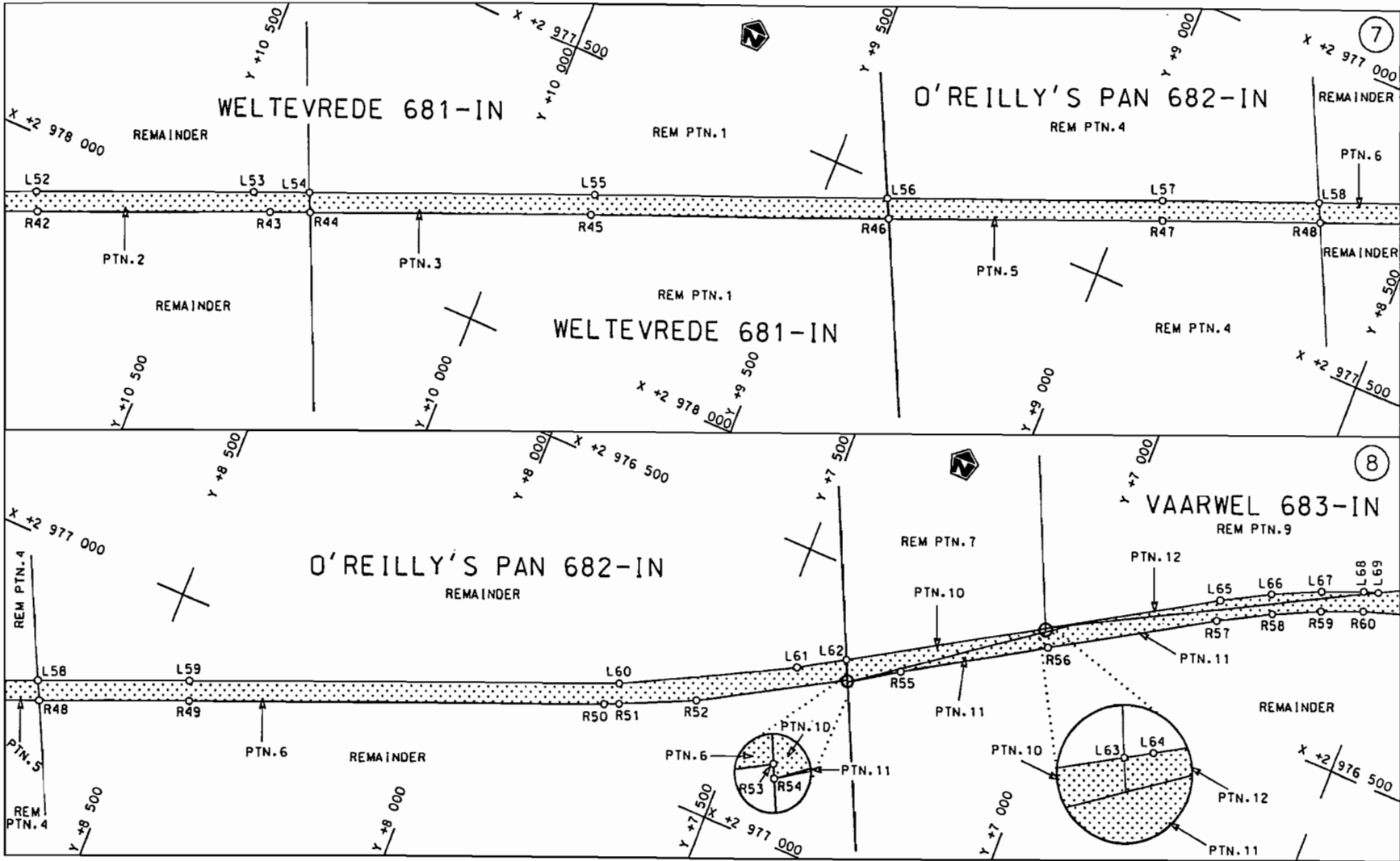
D.O.9.A




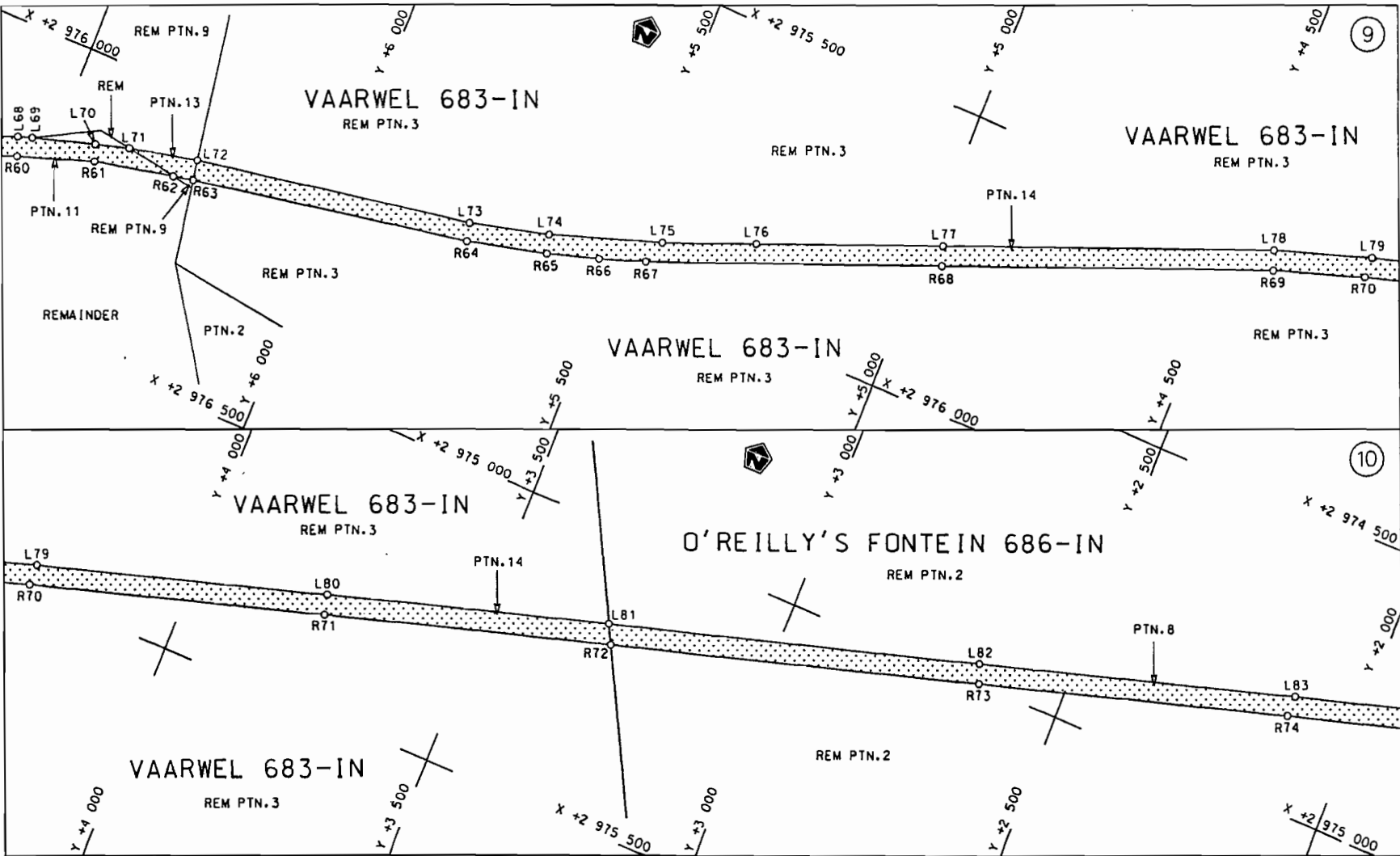
<p>Die Suid Afrikaanse Nasionale Padagentskap Beperk The South African National Roads Agency Limited</p>	<p>Die figuur getoon The figure shown</p>		<p>steldie padreserwe voor van 'n gedeelte represents the road reserve of a portion van Nasionale Roete N14 Seksie 9 of National Route Section</p>	<p>Vel Sheet 2 van 22 of</p>
				<p>Plan P642/08</p>

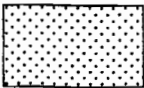


Die Suid Afrikaanse Nasionale Padogenitenskap Beperk The South African National Roads Agency Limited	Die figuur getoon The figure shown	Stel die padreserwe voor van 'n gedeelte represents the road reserve of a portion van Nasionale Roete N14 of National Route N14 Section	9	Plan P642/08
		Vel Sheet 3 of 22	D.O.9.A	

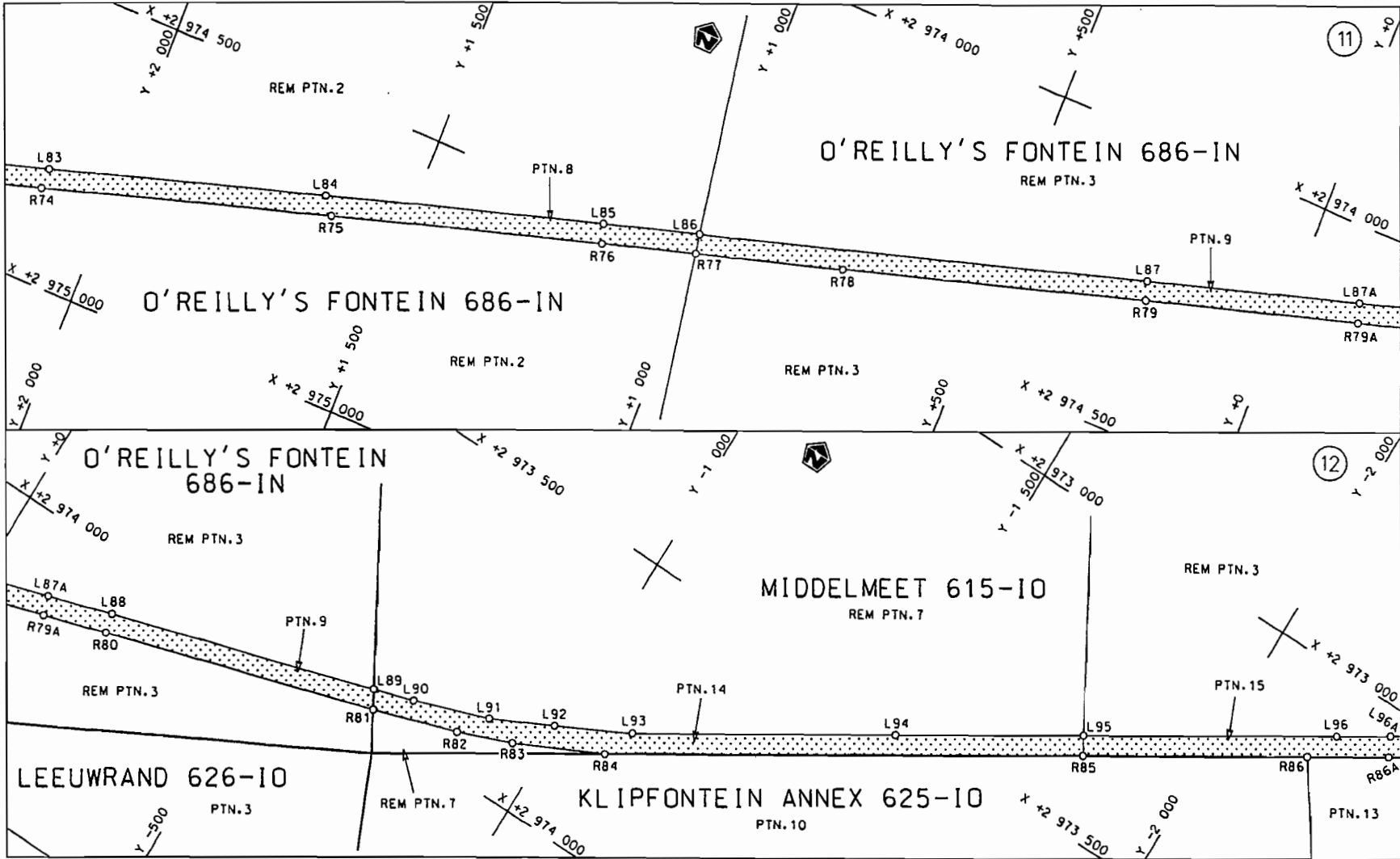


<p>Die Suid Afrikaanse Nasionale Padagentskap Beperk The South African National Roads Agency Limited</p>	<p>Die figuur getoon The figure shown</p>	<p></p> <p>steldie padreserwe voor van 'n gedeelte represents the road reserve of a portion van Nasionale Roete N14 of National Route N14</p> <p>Seksie 9</p>	<p>Vel Sheet 4 van of 22 Plan P642/08</p>
--	---	---	---

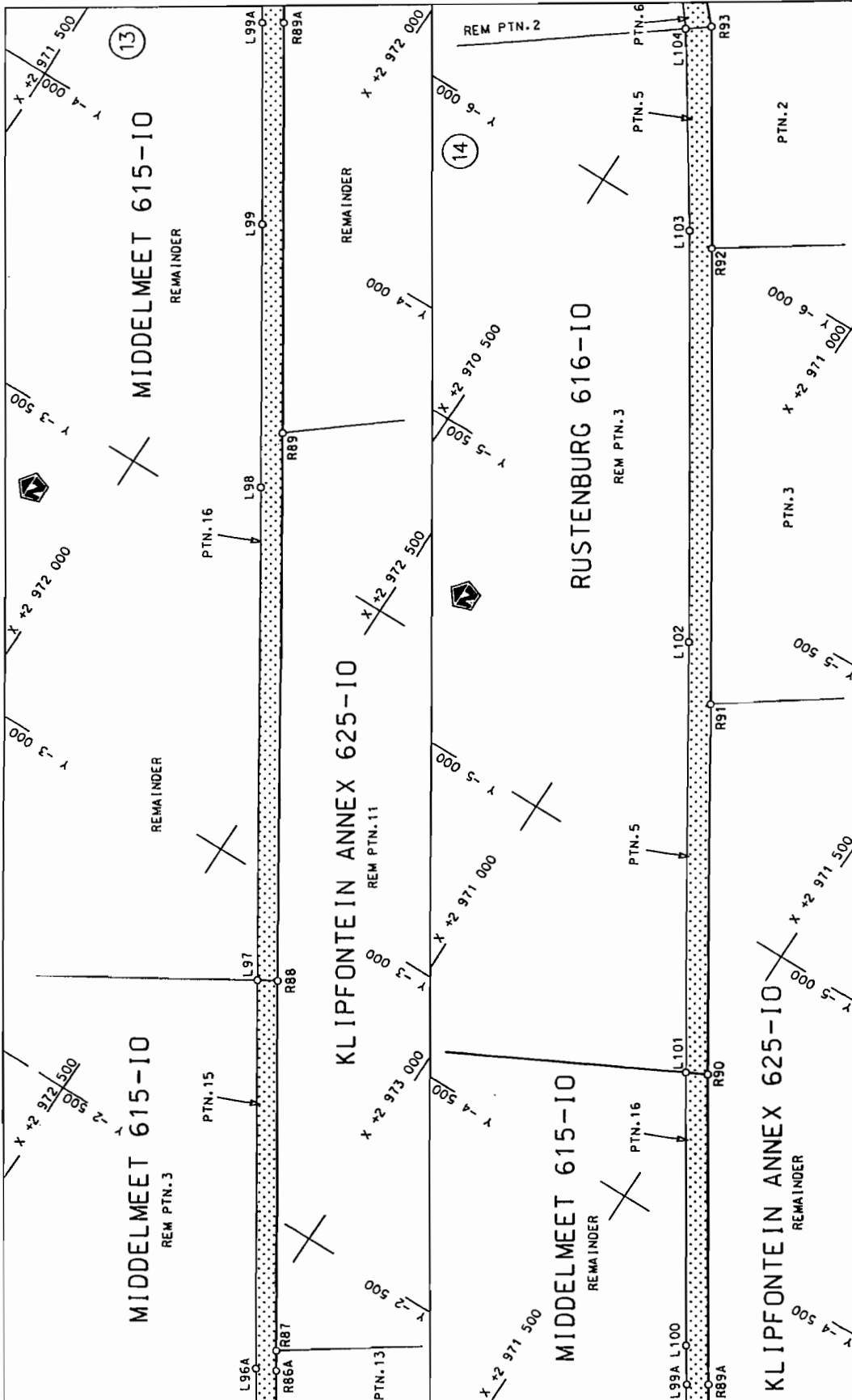


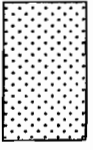
Die Suid Afrikaanse Nasionale Padagentskap Beperk The South African National Roads Agency Limited	Die figuur getoon The figure shown		steldie padreserwe voor van 'n gedeelte represents the road reserve of a portion van Nasionale Roete N14 Seksie of National Route Section 9	Vel Sheet 5 van 22 Plan P642/08
--	---------------------------------------	--	--	------------------------------------

D.O.9.A

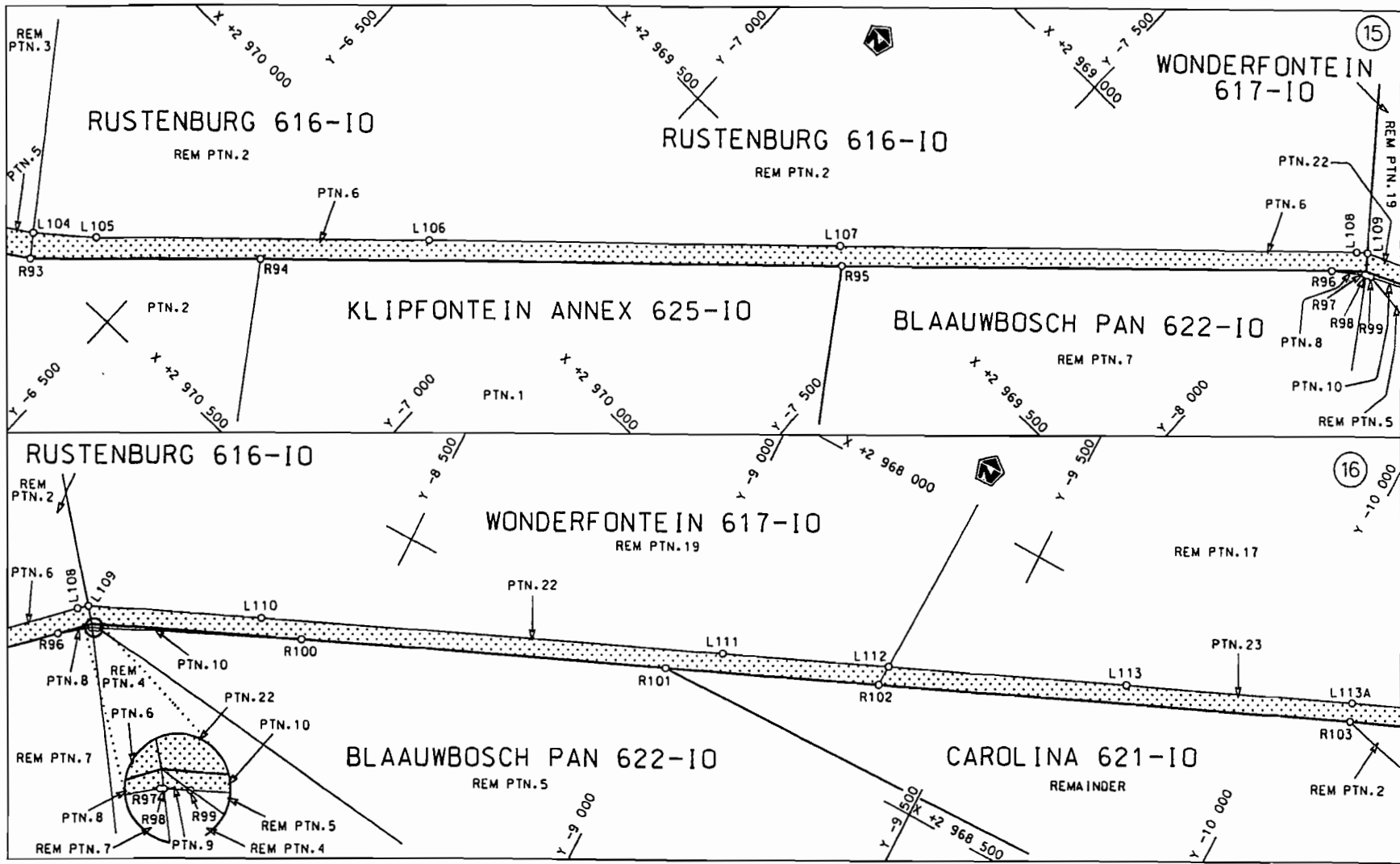


<p>Die Suid Afrikaanse Nasionale Padogenskap Beperk The South African National Roads Agency Limited</p>	<p>Die figuur getoon The figure shown</p>		<p>steldie podreserwe voor van 'n gedeelte represents the road reserve of a portion van Nasionale Roete N14 Sektie 9 of National Route Section</p>	<p>Vel Sheet 6 van 22 Plan P642/08</p>
---	---	--	--	--



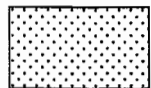
Die Suid-Afrikaanse Nasionale Padagentskap Beperk The South African National Roads Agency Limited	Die figuur getoon The figure shown		steldie padreserwe voor van 'n gedeelte represents the road reserve of a portion van Nasionale Roete N14 of National Route Section	Vel Sheet	van of	22
				Plan	P642/08	

D.O.9.A



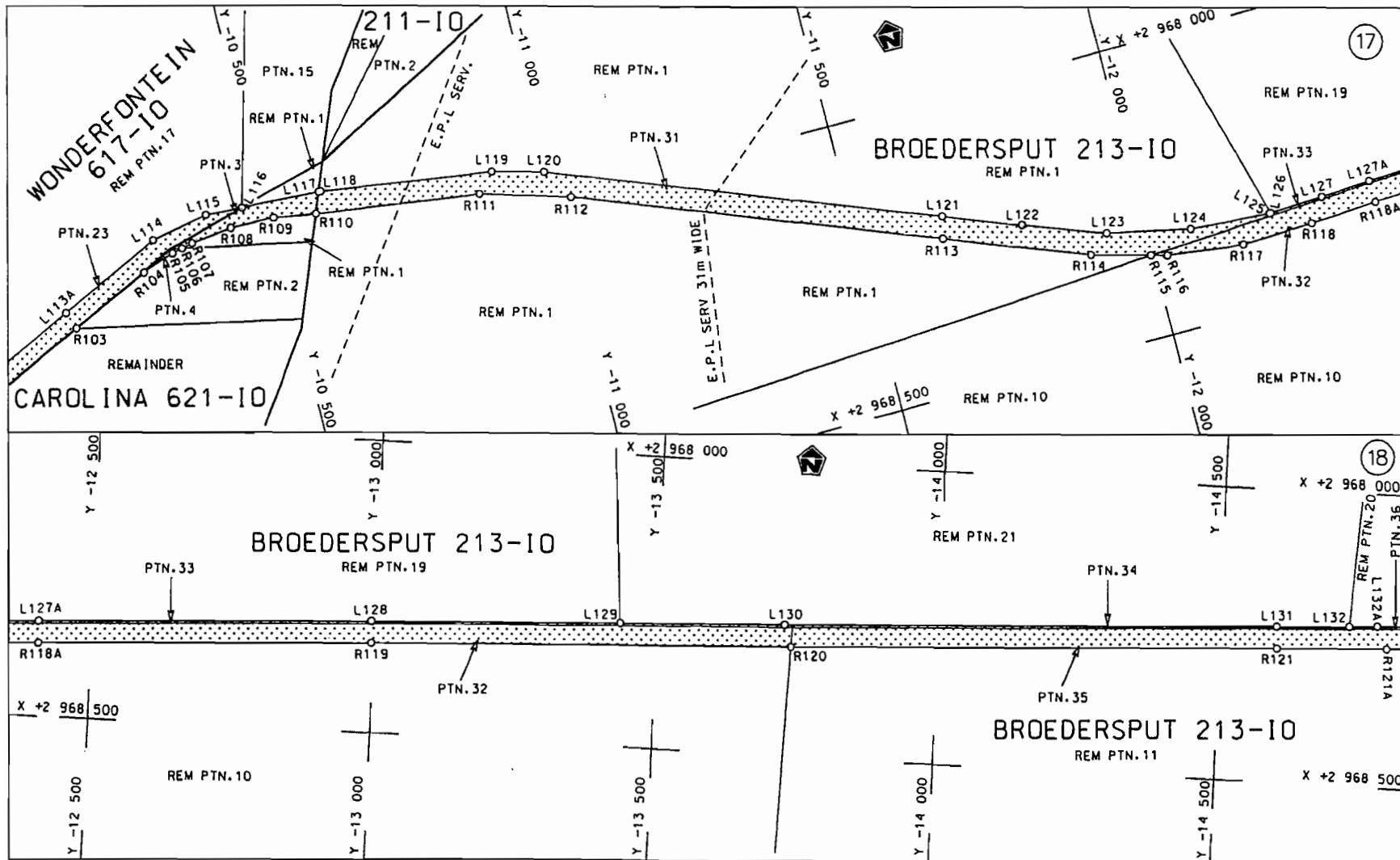
Die Suid Afrikaanse Nasionale Padagentskap Beperk
The South African National Roads Agency Limited

Die figuur getoon
The figure shown



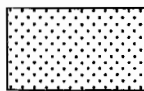
steldie padreserwe voor van 'n gedeelte
represents the road reserve of a portion
van Nasionale Roete N14 Sektie 9
of National Route Section

Vel Sheet 8 van 22
Plan P642/08



Die Suid Afrikaanse Nasionale Padagentskap Beperk
The South African National Roads Agency Limited

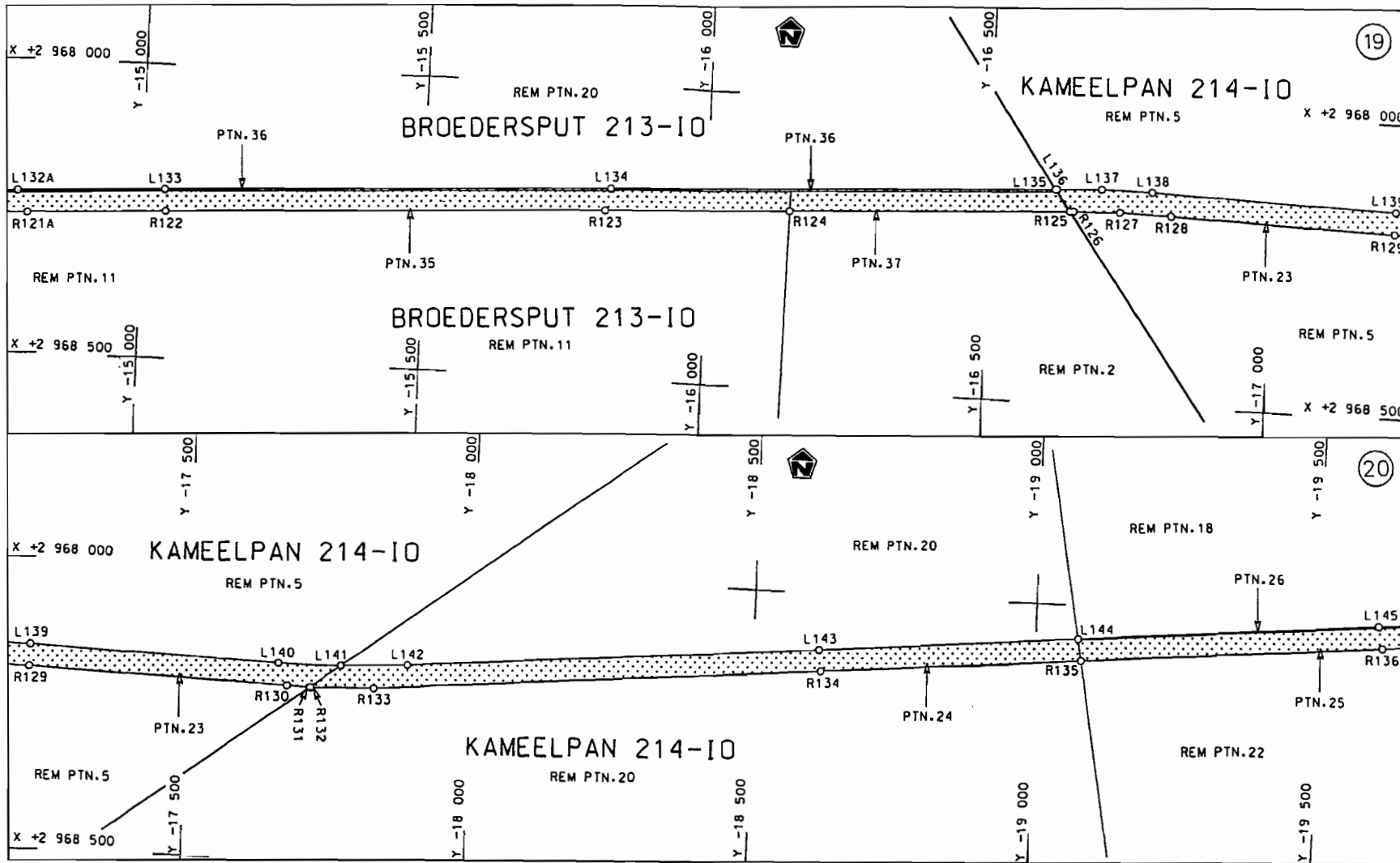
Die figuur getoon
The figure shown



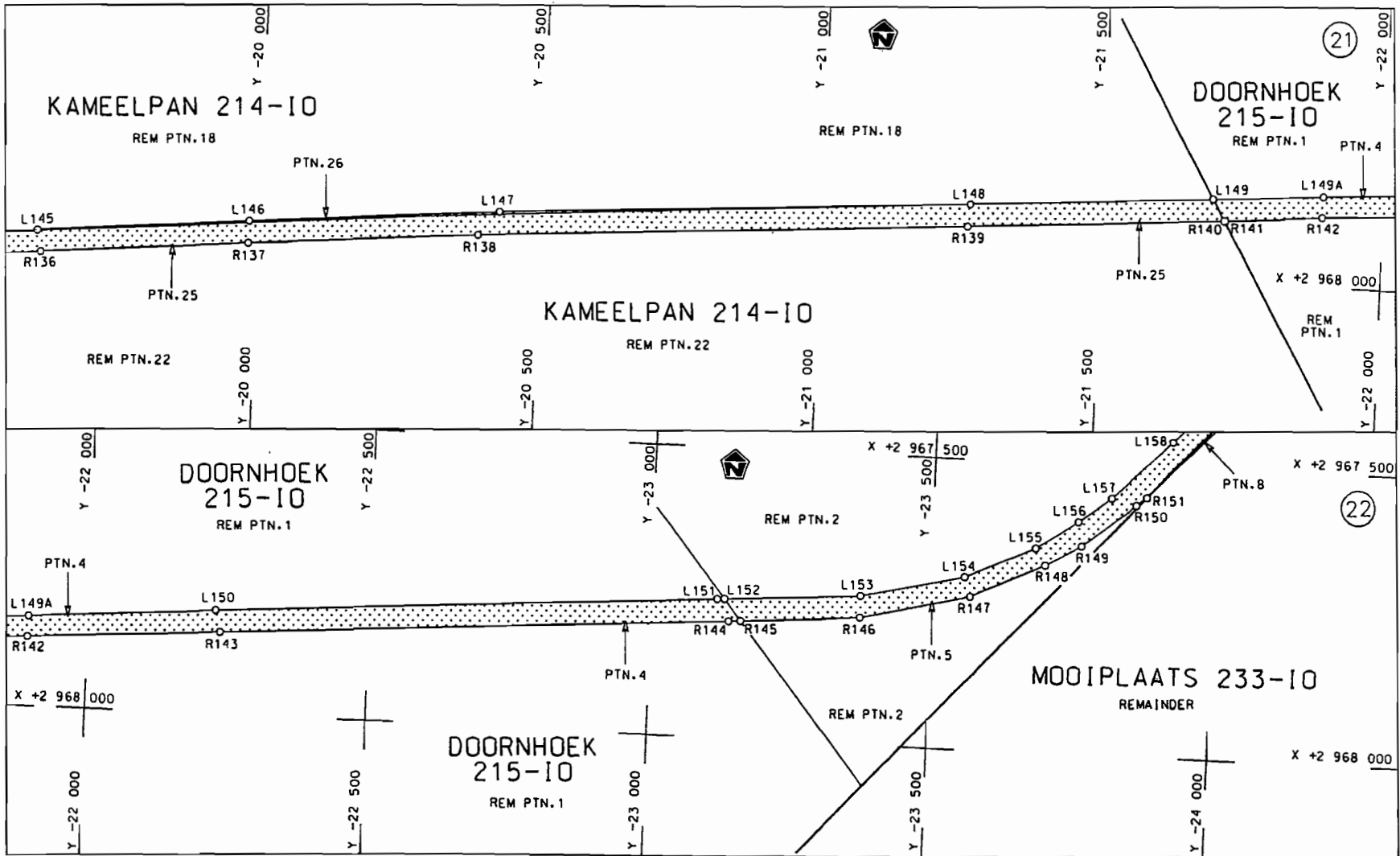
steldie podreserwe voor van 'n gedeelte
represents the road reserve of a portion
van Nasionale Roete N14 Seksie
of National Route Section 9

Vel Sheet 9 van 22
Plan P642/08

D.O.9.A

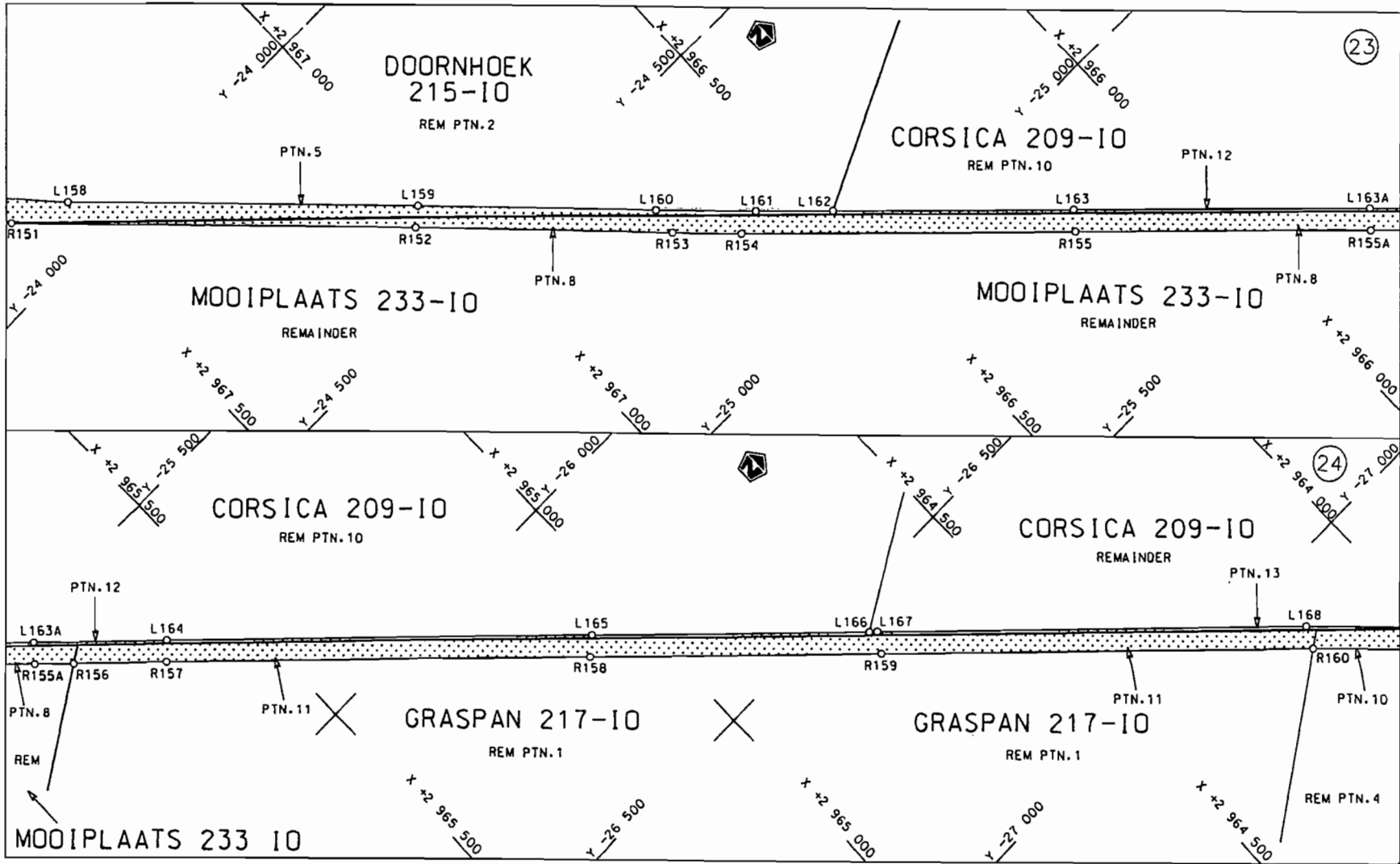


<p>Die Suid Afrikaanse Nasionale Padagentskop Beperk The South African National Roads Agency Limited</p>	<p>Die figuur getoon The figure shown</p>		<p>steldie padreserwe voor van 'n gedeelte represents the road reserve of a portion van Nasionale Roete N14 of National Route N14</p> <p>Seksie Section</p> <p>9</p>	<p>Vel Sheet 10 van of 22</p> <p>Plan P642/08</p>
--	---	--	--	---

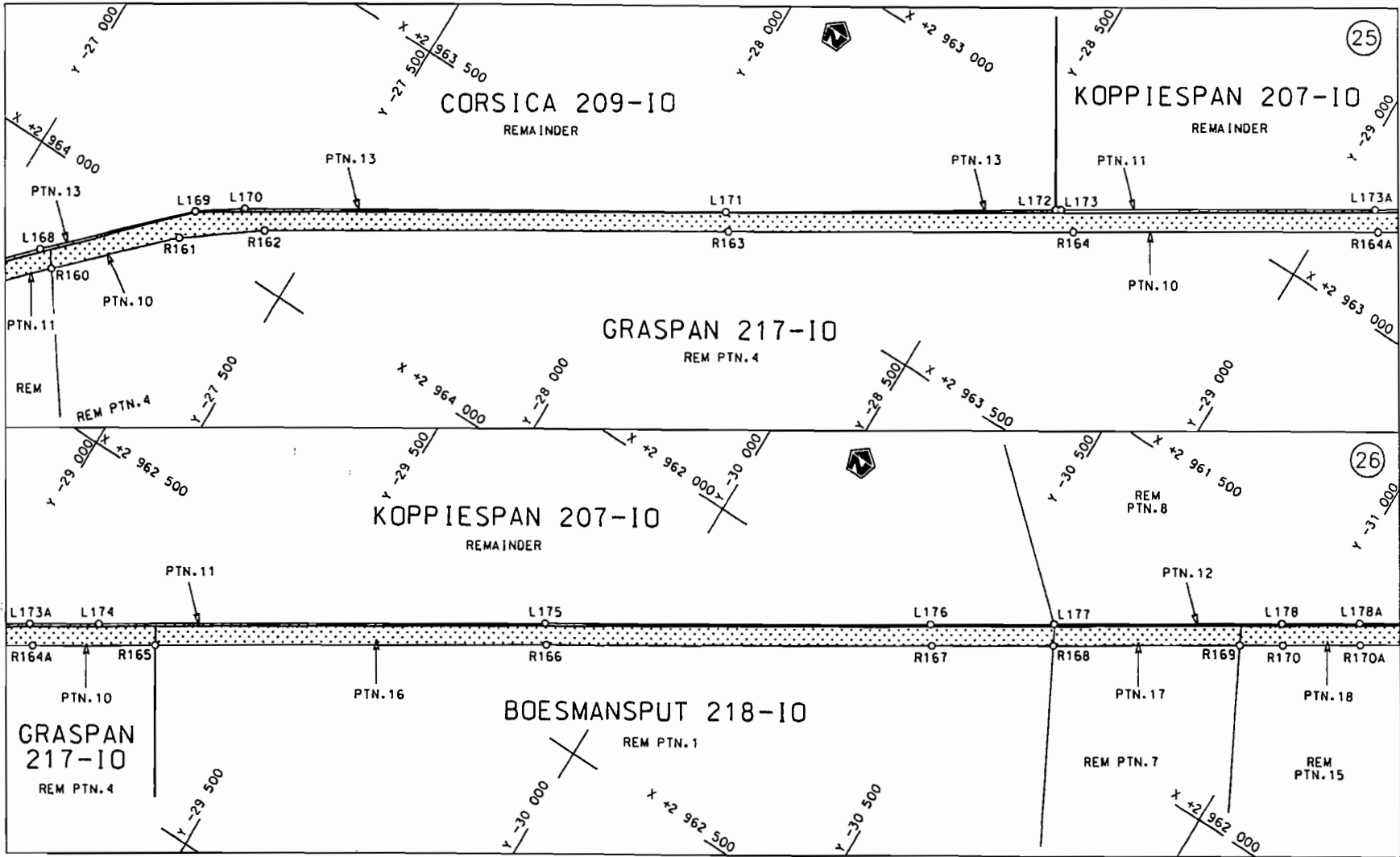


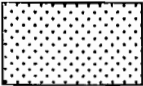
Die Suid Afrikaanse Nasionale Padagentskap Beperk	Die figuur getoon		steldie padreserve voor van 'n gedeelte represents the road reserve of a portion van Nasionale Roete N14 of National Route N14	Vel Sheet 11 van of 22
The South African National Roads Agency Limited	The figure shown		N14 Seksie Section 9	Plan P642/08

D.O.9.A

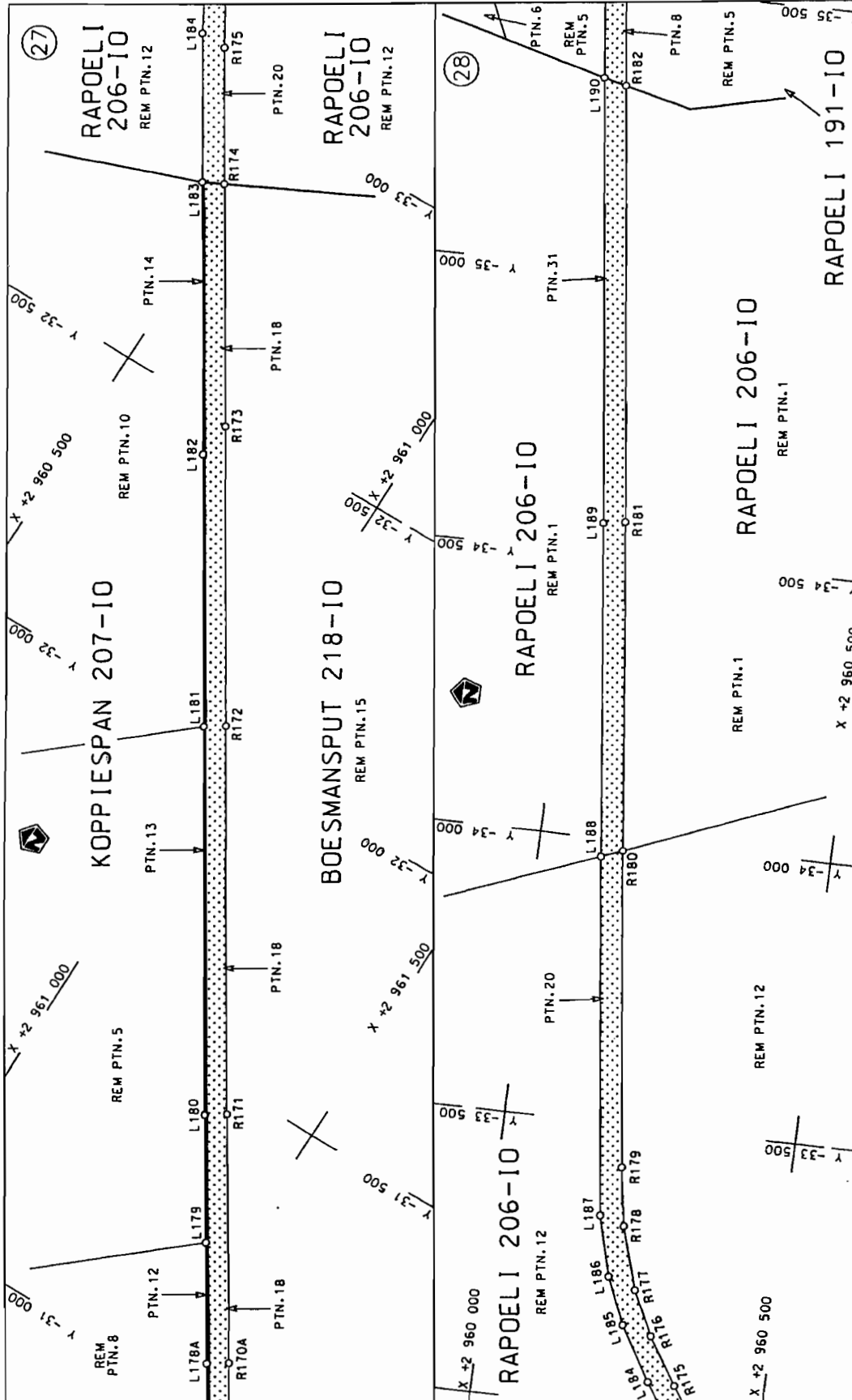



<p>Die Suid Afrikaanse Nasionale Padagentskap Beperk The South African National Roads Agency Limited</p>	<p>Die figuur getoon The figure shown</p>		<p>steldie padreserve voor van 'n gedeelte represents the road reserve of a portion van Nasionale Roete N14 Seksie of National Route N14 Section</p>	<p>Vel Sheet 12 van of 22 Plan P642/08</p>
--	---	--	--	--



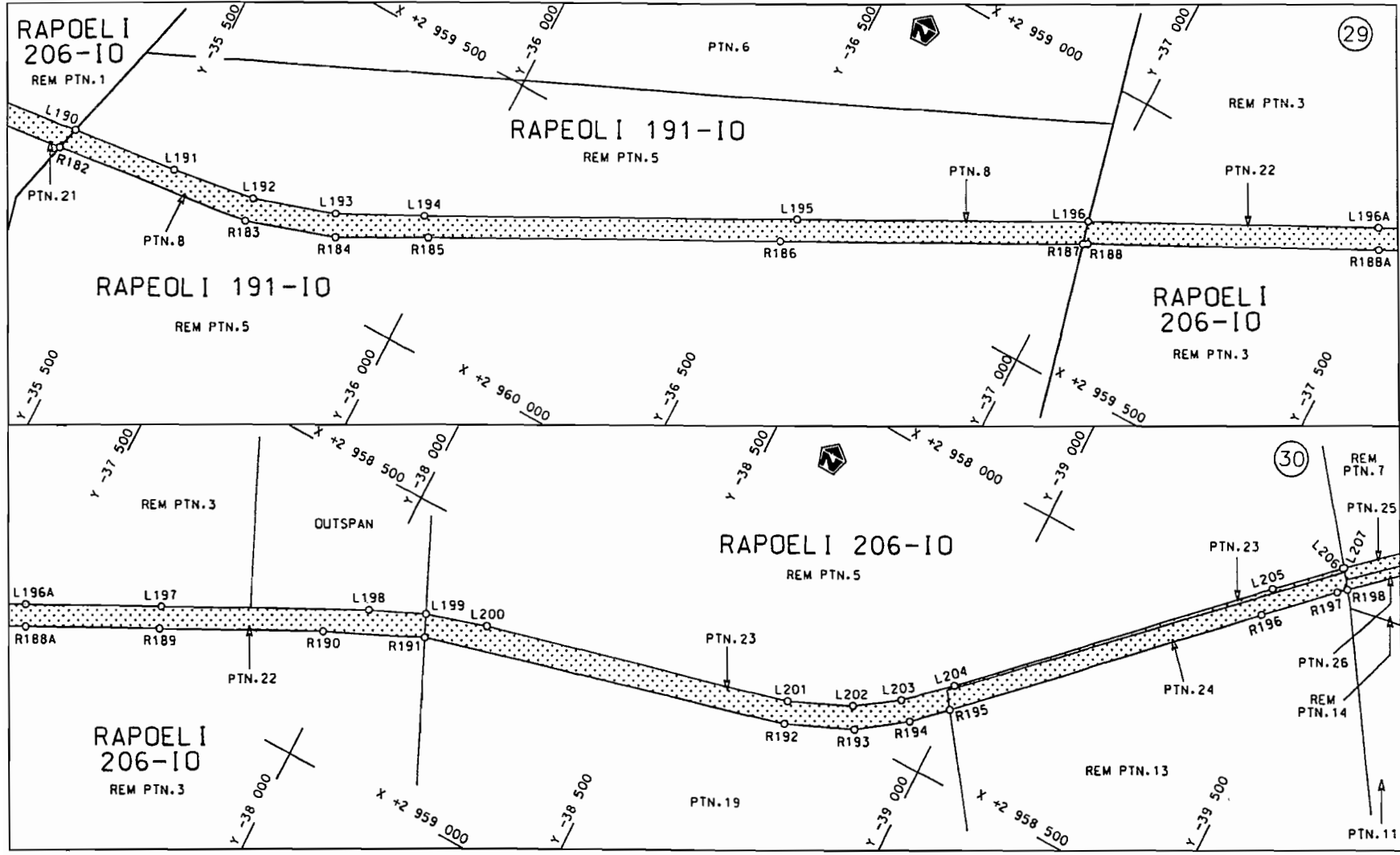
<p>Die Suid Afrikaanse Nasionale Padagentskap Beperk The South African National Roads Agency Limited</p>	<p>Die figuur getoon The figure shown</p> 	<p>steldie padreserwe voor van 'n gedeelte represents the road reserve of a portion van Nasionale Roete N14 Sektie 9 of National Route Section 9</p>	<p>Vel Sheet 13 van 22 Plan P642/08</p>
--	--	--	---


D.O.9.A



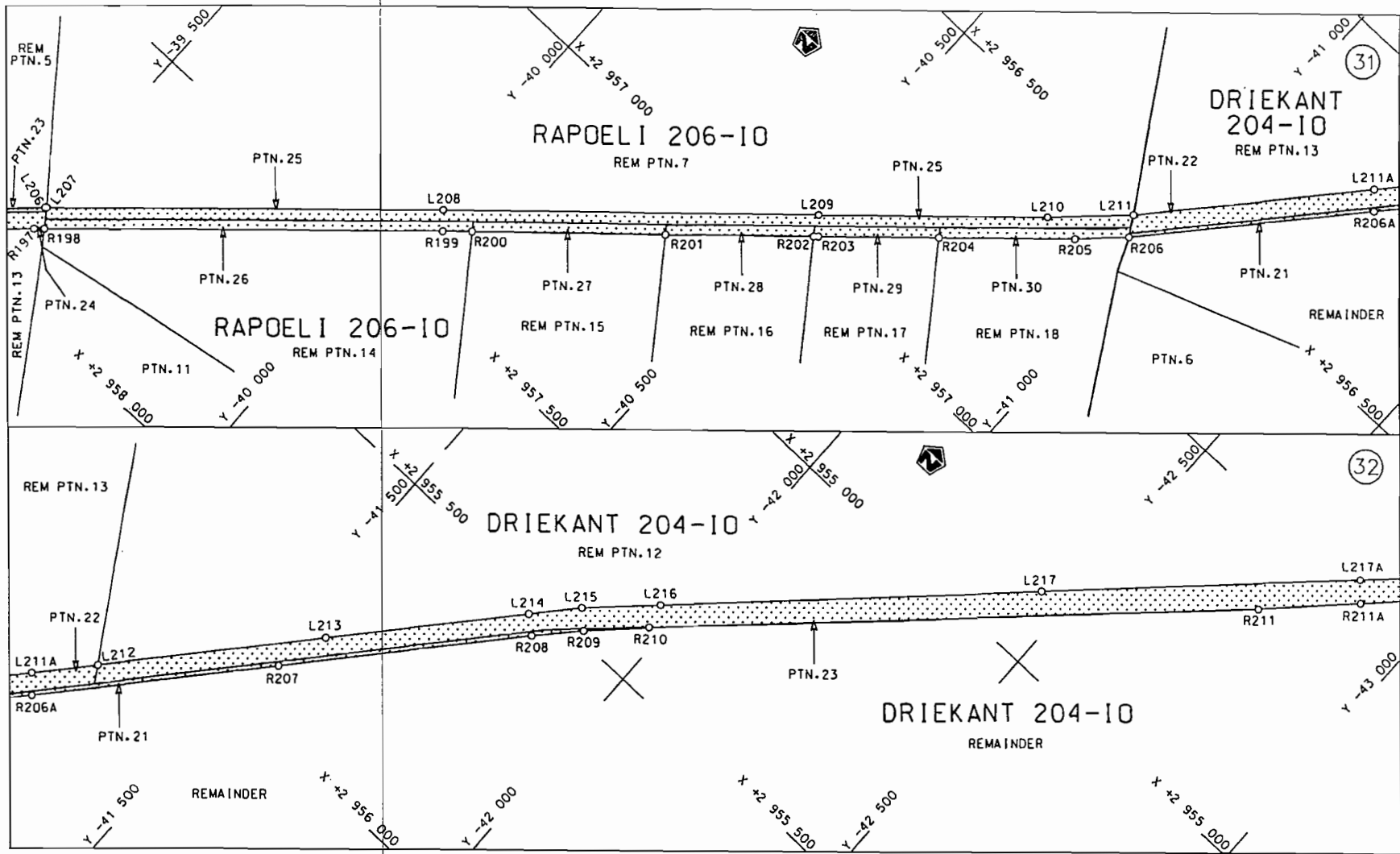
Die Suid Afrikaanse Nasionale Padagentskap Beperk The South African National Roads Agency Limited	Die figuur getoon The figure shown		steldie padreserwe voor van 'n gedeelte represents the road reserve of a portion van Nasionale Roete N14 of National Route N14 Section	Vel Sheet 14 of 22
				Plan P642/08


D.O.9.A

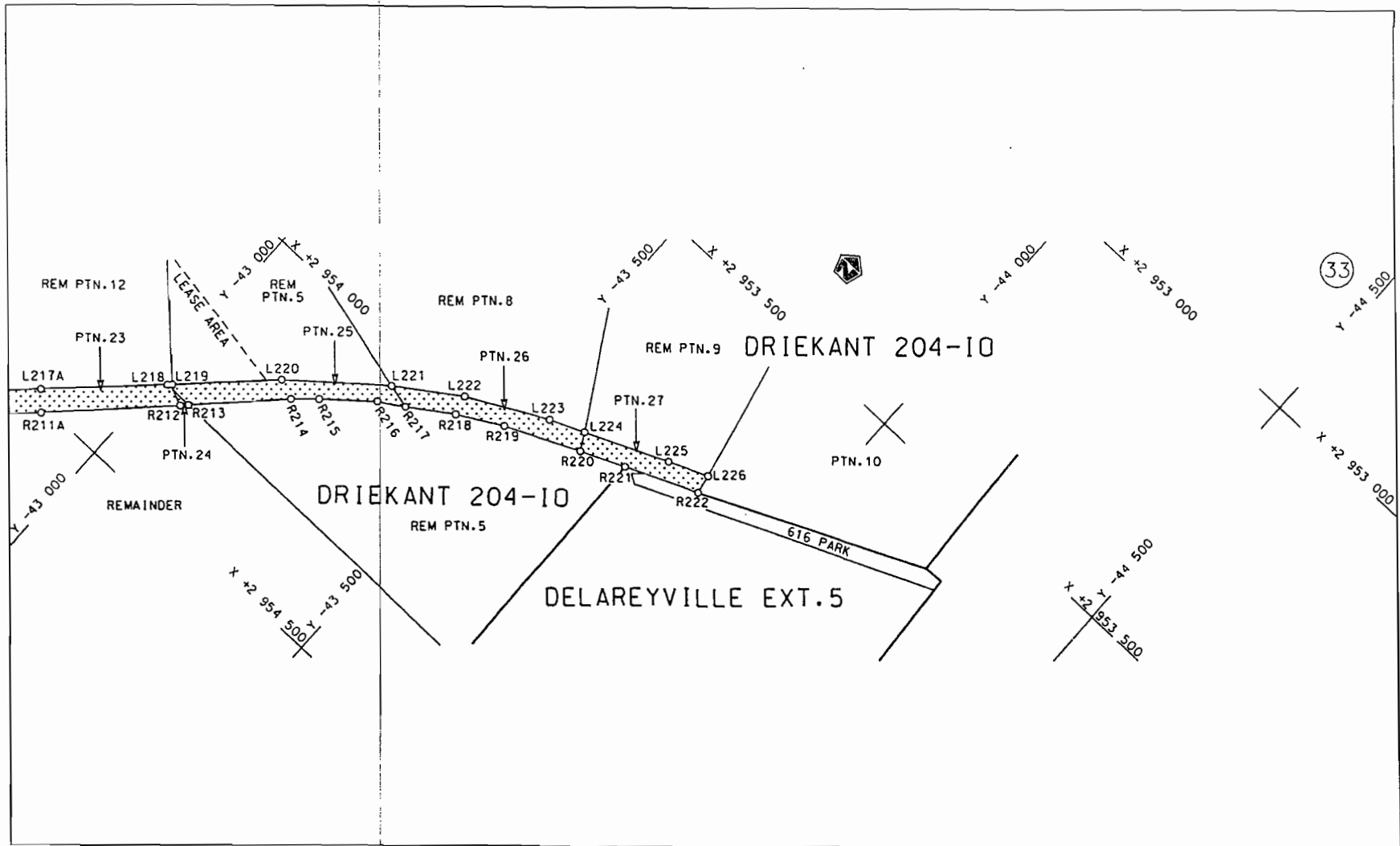


<p>Die Suid Afrikaanse Nasionale Padagentskap Beperk The South African National Roads Agency Limited</p>	<p>Die figuur getoon The figure shown</p> 	<p>steldie padreserwe voor van 'n gedeelte represents the road reserve of a portion van Nasionale Roete N14 Sektie of National Route N14 Section 9</p>	<p>Vel Sheet 15 van 22 Plan P642/08</p>
--	--	--	---

D.O.9.A

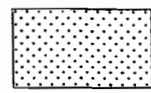


<p>Die Suid Afrikaanse Nasionale Padagentskap Beprek The South African National Roads Agency Limited</p>	<p>Die figuur getoon The figure shown</p>		<p>steldie padreserwe voor van 'n gedeelte represents the road reserve of a portion van Nasionale Roete N14 of National Route N14</p> <p>Seksie 9 Section 9</p>	<p>Vel Sheet 16 van 22 Plan P642/08</p>
--	---	--	---	---



Die Suid Afrikaanse Nasionale Padogenskap Beperk
 The South African National Roads Agency Limited

Die figuur getoon
 The figure shown



stel die padreserwe voor van 'n gedeelte
 represents the road reserve of a portion
 van Nasionale Roete N14 Sektie
 of National Route Section 9

Vel Sheet 17 van 22
 Plan P642/08

D.O.9.A

PADRESERWE KOÖRDINATE / ROAD RESERVE CO-ORDINATES						
LINKERKANT/LEFT HAND SIDE			REGTERKANT/RIGHT HAND SIDE			
	Y	X	WG 25°		Y	X
L1	22 796.550	2 984	390.040	R1	22 765.770	2 984 404.500
L2	22 715.324	2 984	218.767	R2	22 652.236	2 984 164.620
L3	22 704.044	2 984	194.678	R3	22 424.490	2 983 676.670
L4	22 638.080	2 984	051.560	R4	22 339.400	2 983 496.250
L5	22 573.580	2 983	914.140	R5	22 218.020	2 983 235.910
L6	22 552.150	2 983	868.270	R6	22 206.380	2 983 211.120
L7	22 485.210	2 983	125.180	R7	22 116.530	2 983 019.170
L8	22 473.840	2 983	100.780	R8	21 947.890	2 982 659.210
L9	22 317.990	2 983	367.560	R9	21 940.880	2 982 646.700
L10	22 254.930	2 983	232.960	R10	21 872.120	2 982 536.610
L11	22 243.630	2 983	208.490	R11	21 804.610	2 982 465.070
L12	22 148.560	2 983	007.420	R12	21 727.260	2 982 406.630
L13	22 044.770	2 982	785.690	R13	21 674.660	2 982 377.260
L14	22 022.310	2 982	737.940	R14	21 591.460	2 982 342.460
L15	21 965.200	2 982	616.040	R15	21 533.750	2 982 325.090
L16	21 898.210	2 982	515.740	R16	21 063.190	2 982 183.500
L17	21 828.060	2 982	440.280	R17	20 863.220	2 982 123.210
L18	21 768.920	2 982	395.850	R18	20 663.140	2 982 062.890
L19	21 745.490	2 982	377.740	R19	20 477.210	2 982 006.840
L20	21 667.380	2 982	336.840	R20	20 381.650	2 981 978.030
L21	21 555.140	2 982	298.780	R21	20 344.720	2 981 966.890
L22	21 514.455	2 982	286.283	R22	20 063.930	2 981 882.240
L23	21 085.720	2 982	156.440	R23	19 922.516	2 981 840.578
L24	21 077.590	2 982	154.000	R24	19 774.090	2 981 794.860
L25	20 882.781	2 982	107.508	R25	19 595.173	2 981 741.955
L26	20 680.690	2 982	035.710	R26	19 484.540	2 981 707.570
L27	20 646.790	2 982	025.610	R27	19 268.890	2 981 642.550
L28	20 399.500	2 981	951.070	R28	18 487.550	2 981 315.910
L29	20 362.500	2 981	939.920	R29	17 680.020	2 980 979.780
L30	20 082.080	2 981	855.400	R30	17 415.040	2 980 869.390
L31	19 948.060	2 981	815.000	R31	16 546.310	2 980 507.680
L32	19 792.760	2 981	767.870	R32	15 804.380	2 980 198.470
L33	19 503.890	2 981	680.190	R33	15 495.170	2 980 069.710
L34	19 370.260	2 981	639.640	R34	14 981.840	2 979 855.950
L35	19 287.490	2 981	610.870	R35	14 052.570	2 979 470.160
L36	18 506.500	2 981	288.260	R36	13 827.380	2 979 377.260
L37	17 845.090	2 981	011.510	R37	12 467.040	2 978 816.080
L38	17 421.560	2 980	836.020	R38	12 292.410	2 978 744.040
L39	17 201.080	2 980	744.660	R39	12 264.310	2 978 726.490
L40	16 607.870	2 980	497.760	R40	12 049.000	2 978 638.460
L41	16 601.470	2 980	495.100	R41	11 270.290	2 978 322.660
L42	15 897.640	2 980	201.900	R42	10 778.060	2 978 122.610
L43	15 513.340	2 980	041.810	R43	10 395.960	2 977 967.310
L44	14 986.080	2 979	822.180	R44	10 330.210	2 977 940.600
L45	14 071.250	2 979	441.170	R45	9 868.760	2 977 753.160
L46	13 327.770	2 979	131.350	R46	9 377.600	2 977 553.670
L47	12 664.870	2 978	855.480	R47	8 926.160	2 977 370.300
L48	12 481.930	2 978	779.490	R48	8 667.000	2 977 265.260
L49	12 277.920	2 978	694.750	R49	8 420.690	2 977 165.440
L50	12 061.390	2 978	607.010	R50	7 738.920	2 976 887.890
L51	11 283.670	2 978	291.150	R51	7 714.350	2 976 877.040

Vel	18	Van	22	P642/08
Sheet		of		

PADRESERWE KOÖRDINATE / ROAD RESERVE CO-ORDINATES						
LINKERKANT/LEFT HAND SIDE				REGTERKANT/RIGHT HAND SIDE		
	Y	X	WG 25°		Y	X
L52	10 792.670	2 978 091.750		R52	7 590.310	2 976 818.090
L53	10 435.770	2 977 946.710		R53	7 353.650	2 976 682.570
L54	10 343.780	2 977 909.340		R54	7 352.230	2 976 685.620
L55	9 875.420	2 977 719.060		R55	7 271.490	2 976 632.390
L56	9 392.500	2 977 522.530		R56	7 044.860	2 976 494.330
L57	8 939.070	2 977 338.890		R57	6 786.510	2 976 337.070
L58	8 681.680	2 977 234.400		R58	6 699.410	2 976 288.480
L59	8 433.110	2 977 133.480		R59	6 621.020	2 976 250.810
L60	7 726.940	2 976 844.710		R60	6 550.660	2 976 221.470
L61	7 445.370	2 976 697.240		R61	6 419.970	2 976 177.650
L62	7 368.480	2 976 650.750		R62	6 281.670	2 976 147.250
L63	7 061.110	2 976 464.900		R63	6 246.720	2 976 139.570
L64	7 055.040	2 976 461.230		R64	5 760.040	2 976 049.580
L65	6 793.790	2 976 302.280		R65	5 620.120	2 976 013.490
L66	6 713.500	2 976 257.570		R66	5 531.240	2 975 986.170
L67	6 623.012	2 976 218.765		R67	5 453.410	2 975 958.790
L68	6 562.200	2 976 189.530		R68	4 965.050	2 975 761.560
L69	6 537.600	2 976 181.330		R69	4 420.140	2 975 542.480
L70	6 429.700	2 976 145.370		R70	4 263.860	2 975 490.550
L71	6 372.350	2 976 132.470		R71	3 761.030	2 975 337.910
L72	6 252.700	2 976 105.560		R72	3 273.460	2 975 189.910
L73	5 767.540	2 976 018.830		R73	2 646.340	2 974 999.260
L74	5 628.900	2 975 981.880		R74	2 120.460	2 974 839.540
L75	5 438.740	2 975 917.290		R75	1 626.198	2 974 703.429
L76	5 284.150	2 975 854.530		R76	1 165.460	2 974 549.630
L77	4 967.451	2 975 729.437		R77	1 005.960	2 974 501.270
L78	4 431.840	2 975 509.990		R78	753.210	2 974 424.620
L79	4 264.680	2 975 455.140		R79	236.680	2 974 267.780
L80	3 769.530	2 975 304.580		R80	- 236.380	2 974 124.110
L81	3 290.320	2 975 157.710		R81	- 706.730	2 973 981.270
L82	2 658.140	2 974 967.010		R82	- 852.060	2 973 934.310
L83	2 120.190	2 974 804.010		R83	- 945.180	2 973 896.430
L84	1 648.120	2 974 660.850		R84	-1 094.030	2 973 823.360
L85	1 175.510	2 974 517.290		R85	-1 812.560	2 973 368.760
L86	1 011.640	2 974 467.690		R86	-2 149.389	2 973 156.769
L87	246.610	2 974 236.080		R87	-2 303.686	2 973 059.210
L88	- 228.470	2 974 091.470		R88	-2 856.170	2 972 708.490
L89	- 689.460	2 973 951.480		R89	-3 679.323	2 972 189.427
L90	- 758.650	2 973 930.480		R90	-4 757.980	2 971 505.260
L91	- 888.180	2 973 883.910		R91	-5 313.380	2 971 156.331
L92	- 993.310	2 973 831.160		R92	-5 995.747	2 970 723.627
L93	-1 116.350	2 973 767.670		R93	-6 326.870	2 970 513.610
L94	-1 513.050	2 973 516.940		R94	-6 626.159	2 970 235.333
L95	-1 795.040	2 973 338.580		R95	-7 382.789	2 969 530.510
L96	-2 176.270	2 973 097.450		R96	-8 019.880	2 968 935.960
L97	-2 837.810	2 972 678.020		R97	-8 068.270	2 968 898.990
L98	-3 576.820	2 972 209.650		R98	-8 069.500	2 968 898.430
L99	-3 972.660	2 971 959.890		R99	-8 077.990	2 968 894.520
L100	-4 332.680	2 971 730.610		R100	-8 406.220	2 968 743.320
L101	-4 740.810	2 971 471.850		R101	-9 000.080	2 968 482.400
L102	-5 386.020	2 971 064.820		R102	-9 349.340	2 968 328.230

Vel	19	Van	22	P642/08
Sheet		of		

PADRESERWE KOÖRDINATE / ROAD RESERVE CO-ORDINATES					
LINKERKANT/LEFT HAND SIDE			REGTERKANT/RIGHT HAND SIDE		
	Y	X	WG 25°		X
L103	-6 002.380	2 970	674.350	R103	-10 120.120 2 967 988.990
L104	-6 300.730	2 970	478.260	R104	-10 260.500 2 967 928.490
L105	-6 387.170	2 970	407.530	R105	-10 318.740 2 967 910.430
L106	-6 820.890	2 970	006.190	R106	-10 337.240 2 967 906.410
L107	-7 357.560	2 969	507.690	R107	-10 357.190 2 967 902.080
L108	-8 031.150	2 968	881.880	R108	-10 429.930 2 967 894.690
L109	-8 046.290	2 968	869.290	R109	-10 508.710 2 967 898.430
L110	-8 326.680	2 968	744.660	R110	-10 581.490 2 967 910.690
L111	-9 078.970	2 968	412.230	R111	-10 870.772 2 967 952.613
L112	-9 350.530	2 968	292.710	R112	-11 026.978 2 967 998.491
L113	-9 738.700	2 968	121.870	R113	-11 647.009 2 968 236.765
L114	-10 291.020	2 967	879.430	R114	-11 894.620 2 968 331.926
L115	-10 392.920	2 967	861.790	R115	-11 998.007 2 968 360.547
L116	-10 458.800	2 967	866.610	R116	-12 025.526 2 968 368.165
L117	-10 596.130	2 967	875.530	R117	-12 160.051 2 968 384.848
L118	-10 600.253	2 967	875.877	R118	-12 288.047 2 968 380.897
L119	-10 901.864	2 967	920.817	R119	-12 995.800 2 968 347.250
L120	-10 992.434	2 967	944.855	R120	-13 740.045 2 968 312.355
L121	-11 655.418	2 968	200.064	R121	-14 601.954 2 968 271.769
L122	-11 789.035	2 968	251.222	R122	-15 042.966 2 968 250.992
L123	-11 931.584	2 968	303.298	R123	-15 819.879 2 968 214.228
L124	-12 077.416	2 968	335.188	R124	-16 146.330 2 968 198.888
L125	-12 218.899	2 968	345.273	R125	-16 643.332 2 968 175.534
L126	-12 221.304	2 968	345.184	R126	-16 650.763 2 968 175.185
L127	-12 316.872	2 968	341.632	R127	-16 732.007 2 968 173.586
L128	-12 994.074	2 968	309.740	R128	-16 822.854 2 968 175.427
L129	-13 435.598	2 968	288.831	R129	-17 218.970 2 968 187.995
L130	-13 727.298	2 968	275.017	R130	-17 675.984 2 968 202.556
L131	-14 600.312	2 968	234.151	R131	-17 716.817 2 968 203.965
L132	-14 729.731	2 968	228.052	R132	-17 718.205 2 968 204.013
L133	-15 040.316	2 968	213.417	R133	-17 829.793 2 968 201.458
L134	-15 828.593	2 968	176.216	R134	-18 619.755 2 968 134.152
L135	-16 616.837	2 968	138.732	R135	-19 080.620 2 968 095.167
L136	-16 619.273	2 968	138.616	R136	-19 612.568 2 968 050.168
L137	-16 698.322	2 968	134.915	R137	-19 982.926 2 968 018.343
L138	-16 787.594	2 968	136.406	R138	-20 389.247 2 967 984.289
L139	-17 219.887	2 968	150.354	R139	-21 262.504 2 967 925.035
L140	-17 659.866	2 968	164.386	R140	-21 719.077 2 967 894.161
L141	-17 770.827	2 968	164.759	R141	-21 720.683 2 967 894.052
L142	-17 888.302	2 968	158.342	R142	-21 892.992 2 967 880.218
L143	-18 615.062	2 968	096.798	R143	-22 236.875 2 967 859.234
L144	-19 074.018	2 968	057.956	R144	-23 139.701 2 967 798.277
L145	-19 605.427	2 968	012.982	R145	-23 160.845 2 967 796.715
L146	-19 983.243	2 967	980.686	R146	-23 374.057 2 967 780.969
L147	-20 425.937	2 967	942.956	R147	-23 569.285 2 967 736.486
L148	-21 265.953	2 967	887.279	R148	-23 700.860 2 967 677.549
L149	-21 697.840	2 967	857.991	R149	-23 764.368 2 967 641.875
L150	-22 227.331	2 967	822.210	R150	-23 859.557 2 967 568.417
L151	-23 117.898	2 967	761.744	R151	-23 877.841 2 967 554.307
L152	-23 131.012	2 967	760.868	R152	-24 385.072 2 967 044.751
L153	-23 373.626	2 967	744.669	R153	-24 706.657 2 966 721.077

Vel	20	Van	22	P642/08
Sheet		of		

PADRESERWE KOÖRDINATE / ROAD RESERVE CO-ORDINATES							
LINKERKANT/LEFT HAND SIDE				REGTERKANT/RIGHT HAND SIDE			
	Y	X	WG 25°		Y	X	
L154	-23	558.537	2 967	103.155	R154	-24792.783	2966633.519
L155	-23	683.130	2 967	649.179	R155	-25202.527	2966202.040
L156	-23	757.164	2 967	600.017	R156	-25611.937	2965771.438
L157	-23	815.067	2 967	557.007	R157	-25725.296	2965652.211
L158	-23	922.284	2 967	456.701	R158	-26244.581	2965106.385
L159	-24	360.974	2 967	015.622	R159	-26602.362	2964729.862
L160	-24	658.945	2 966	115.353	R160	-27130.513	2964174.688
L161	-24	783.007	2 966	588.388	R161	-27293.697	2964008.254
L162	-24	878.192	2 966	488.428	R162	-27416.795	2963916.708
L163	-25	173.793	2 966	177.997	R163	-28111.906	2963476.065
L164	-25	698.693	2 965	625.911	R164	-28631.489	2963146.932
L165	-26	219.514	2 965	077.944	R165	-29273.804	2962739.810
L166	-26	560.634	2 964	719.018	R166	-29860.581	2962367.726
L167	-26	570.398	2 964	708.745	R167	-30440.176	2962000.621
L168	-27	095.233	2 964	156.795	R168	-30622.382	2961885.082
L169	-27	293.795	2 963	954.630	R169	-30901.930	2961707.818
L170	-27	366.783	2 963	903.611	R170	-30966.005	2961667.188
L171	-28	090.430	2 963	449.842	R171	-31455.024	2961357.510
L172	-28	584.822	2 963	131.681	R172	-32036.012	2960989.202
L173	-28	593.178	2 963	126.304	R173	-32484.737	2960705.126
L174	-29	169.165	2 962	761.269	R174	-32847.401	2960475.247
L175	-29	838.856	2 962	337.014	R175	-33050.500	2960346.510
L176	-30	418.575	2 961	970.247	R176	-33134.303	2960295.869
L177	-30	603.728	2 961	852.614	R177	-33212.216	2960259.248
L178	-30	944.820	2 961	635.909	R178	-33321.839	2960226.974
L179	-31	242.762	2 961	447.249	R179	-33425.099	2960211.231
L180	-31	434.002	2 961	326.154	R180	-33981.618	2960144.601
L181	-32	015.315	2 960	957.800	R181	-34561.493	2960075.594
L182	-32	423.430	2 960	699.193	R182	-35325.907	2959983.941
L183	-32	830.552	2 960	441.349	R183	-35678.752	2959940.645
L184	-33	052.204	2 960	300.970	R184	-35833.002	2959889.625
L185	-33	157.212	2 960	245.547	R185	-35978.607	2959812.476
L186	-33	230.827	2 960	211.822	R186	-36532.646	2959519.807
L187	-33	336.418	2 960	184.067	R187	-37011.323	2959267.087
L188	-33	967.219	2 960	108.519	R188	-37019.218	2959262.919
L189	-34	555.470	2 960	038.357	R189	-37693.184	2958918.968
L190	-35	336.163	2 959	945.046	R190	-37953.835	2958786.048
L191	-35	523.740	2 959	922.668	R191	-38117.900	2958710.980
L192	-35	672.921	2 959	899.176	R192	-38750.180	2958539.740
L193	-35	813.886	2 959	853.122	R193	-38865.910	2958489.010
L194	-35	954.765	2 959	782.682	R194	-38947.320	2958429.420
L195	-36	541.610	2 959	472.369	R195	-39000.470	2958379.400
L196	-37	002.182	2 959	228.833	R196	-39414.194	2957975.352
L197	-37	678.459	2 958	884.025	R197	-39514.931	2957877.675
L198	-38	008.420	2 958	715.512	R198	-39528.762	2957865.091
L199	-38	101.262	2 958	674.798	R199	-40051.161	2957389.810
L200	-38	205.566	2 958	641.926	R200	-40089.999	2957354.498
L201	-38	737.273	2 958	502.959	R201	-40345.284	2957122.389
L202	-38	844.622	2 958	454.301	R202	-40541.443	2956944.037
L203	-38	916.913	2 958	404.477	R203	-40547.904	2956938.163
L204	-38	988.383	2 958	338.819	R204	-40706.961	2956793.670

Vel	21	Van	22	P642/08
Sheet		of		

PADRESERWE KOÖRDINATE / ROAD RESERVE CO-ORDINATES						
LINKERKANT/LEFT HAND SIDE				REGTERKANT/RIGHT HAND SIDE		
	Y	X	WG 25°		Y	X
L205	-39 410.690	2 957	926.387	R205	-40 886.830	2 956 630.270
L206	-39 504.547	2 957	835.983	R206	-40 955.170	2 956 562.243
L207	-39 506.393	2 957	834.305	R207	-41 533.016	2 955 898.234
L208	-40 026.497	2 957	361.291	R208	-41 831.396	2 955 555.687
L209	-40 522.669	2 956	909.982	R209	-41 893.618	2 955 486.373
L210	-40 825.214	2 956	634.988	R210	-41 974.960	2 955 402.513
L211	-40 934.673	2 956	527.381	R211	-42 755.709	2 954 642.804
L212	-41 295.080	2 956	113.758	R212	-43 056.580	2 954 334.990
L213	-41 564.275	2 955	804.816	R213	-43 066.811	2 954 324.312
L214	-41 802.491	2 955	531.213	R214	-43 194.221	2 954 191.327
L215	-41 864.754	2 955	459.200	R215	-43 231.041	2 954 157.545
L216	-41 963.935	2 955	359.691	R216	-43 309.334	2 954 090.530
L217	-42 449.959	2 954	880.887	R217	-43 351.606	2 954 063.182
L218	-43 015.276	2 954	323.831	R218	-43 426.250	2 954 012.500
L219	-43 021.712	2 954	317.304	R219	-43 503.800	2 953 968.010
L220	-43 159.424	2 954	177.647	R220	-43 632.760	2 953 908.050
L221	-43 309.297	2 954	052.759	R221	-43 710.397	2 953 873.843
L222	-43 417.259	2 953	978.466	R222	-43 836.395	2 953 818.327
L223	-43 554.834	2 953	904.618			
L224	-43 615.978	2 953	877.856			
L225	-43 761.552	2 953	814.141			
L226	-43 829.896	2 953	784.250			

Vel	22	Van	22
Sheet		of	

P642/08