

Government Gazette Staatskoerant

REPUBLIC OF SOUTH AFRICA
REPUBLIEK VAN SUID-AFRIKA

Vol. 519

Pretoria, 22 September 2008

No. 31424

CONTENTS**INHOUD**

<i>No.</i>	<i>Page No.</i>	<i>Gazette No.</i>	<i>No.</i>	<i>Bladsy No.</i>	<i>Koerant No.</i>
GOVERNMENT NOTICE			GOEWERMENTSKENNISGEWING		
Transport, Department of			Vervoer, Departement van		
<i>Government Notice</i>			<i>Goewermentskennisgewing</i>		
980			980		
South African National Roads Agency Limited and the National Roads Act (7/1998): The South African National Roads Agency Limited: Declaration amendment of National Road N4 Section 8X.....	3	31424	Suid-Afrikaanse Nasionale Padagentskap Beperk en die Nasionale Paaie Wet (7/1998): Die Suid-Afrikaanse Nasionale Padagentskap Beperk: Verklaring wysiging van Nasionale Pad N4 Seksie 8X...	4	31424

**GOVERNMENT NOTICE
GOEWERMENTSKENNISGEWING**

**DEPARTMENT OF TRANSPORT
DEPARTEMENT VAN VERVOER**

No. 980

22 September 2008

**THE SOUTH AFRICAN NATIONAL ROADS
AGENCY LIMITED**

Registration No: 98/09584/06

DECLARATION AMENDMENT OF NATIONAL ROAD N4 SECTION 8X

AMENDMENT OF DECLARATION NO. 652 OF 1997.

By virtue of section 40 (1)(b) of the South African National Roads Agency Limited and the National Roads Act, 1998 (Act No. 7 of 1998), I hereby amend Declaration No. 652 of 1997 by substituting it, with the subjoined sheets 1 to 21 of Plan No. P640/08.

(National Road N4 Section 8X: Kaapmuiden – Komatipoort)



MINISTER OF TRANSPORT

No. 980

22 September 2008

**DIE SUID-AFRIKAANSE NASIONALE
PADAGENTSKAP BEPERK**

Registrasie No: 98/09584/06

VERKLARING WYSIGING VAN NASIONALE PAD N4 SEKSIE 8X

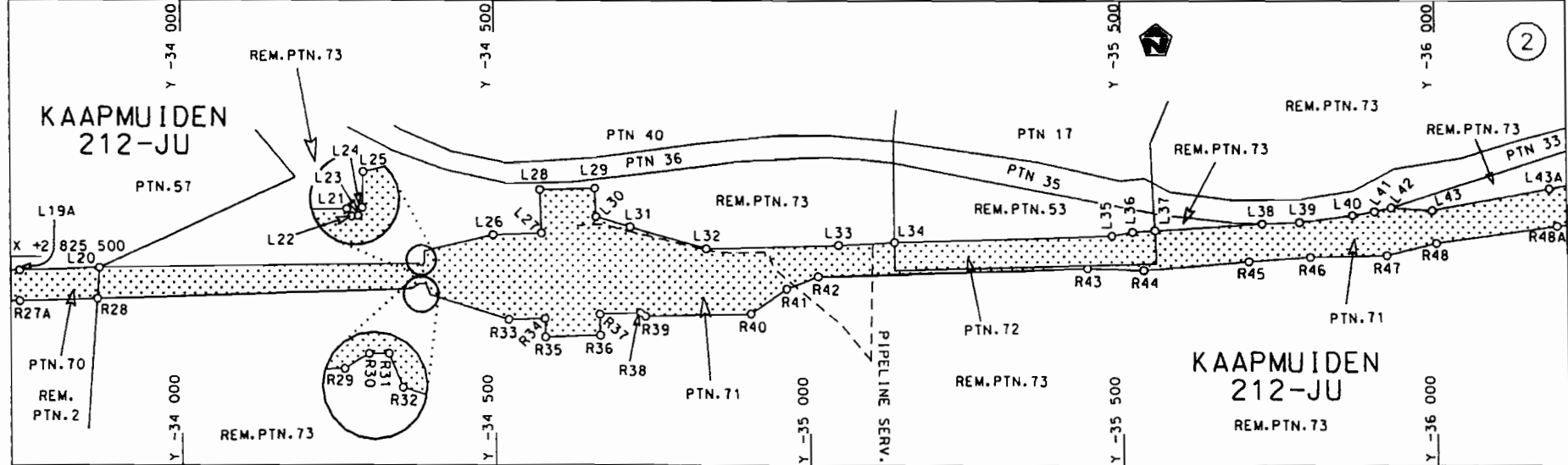
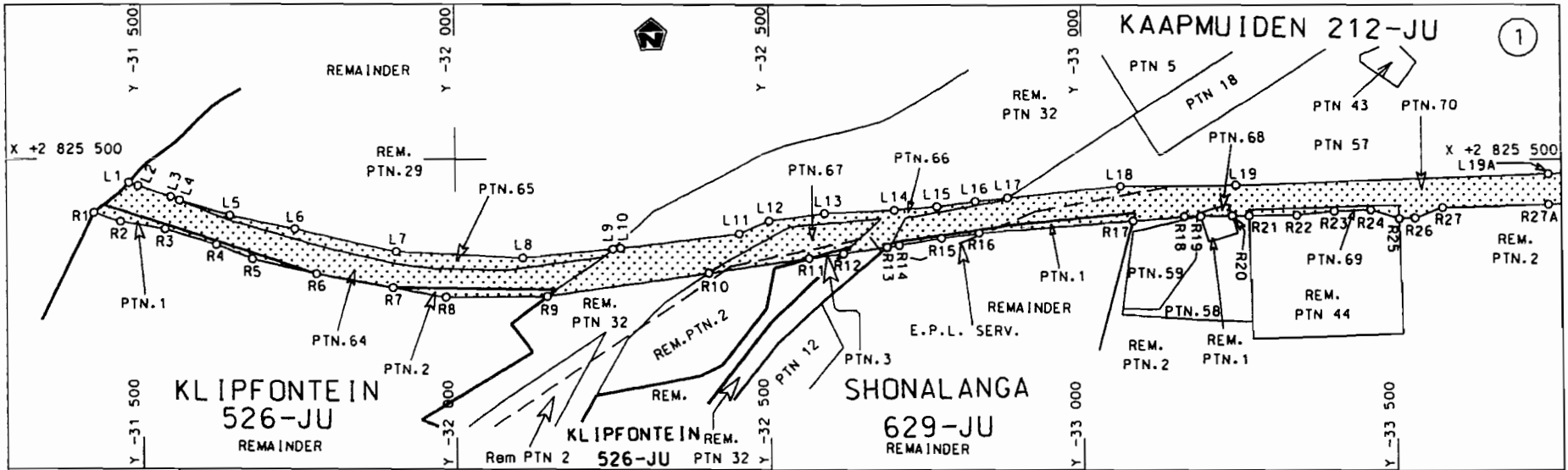
WYSIGING VAN VERKLARING NO'S. 652 VAN 1997

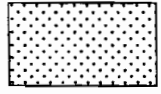
Kragtens Artikel 40(1)(b) van die Suid-Afrikaanse Nasionale Padagentskap Beperk en die Nasionale Paaie Wet, 1998 (Wet No.7 van 1998), wysig ek hiermee Verklaring 652 van 1997 deur dit te vervang, met meegaande velle 1 tot 21 van Plan no. P640/08.

(Nasionale Pad N4 Seksie 8X: Kaapmuiden – Komatipoort)

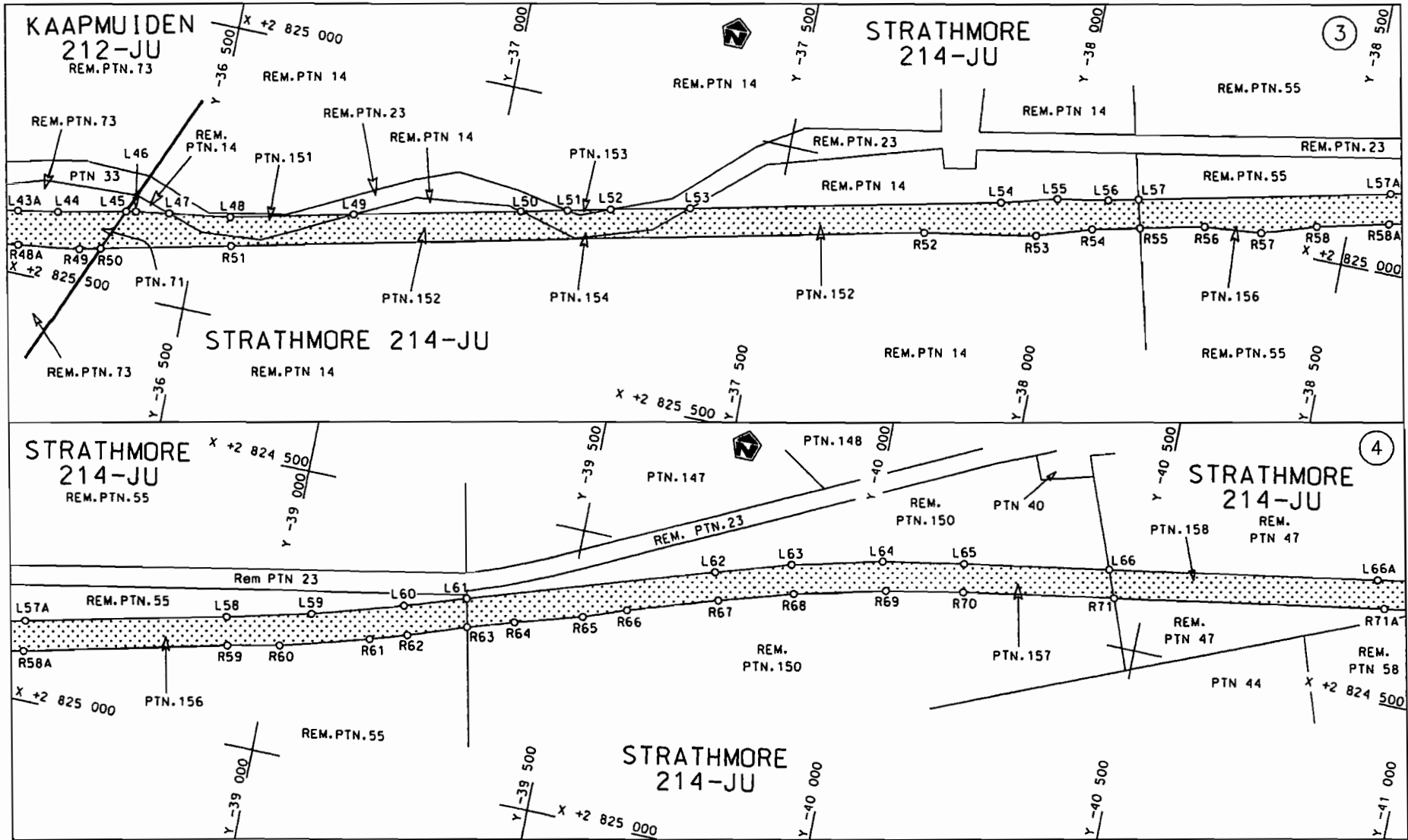



MINISTER VAN VERVOER

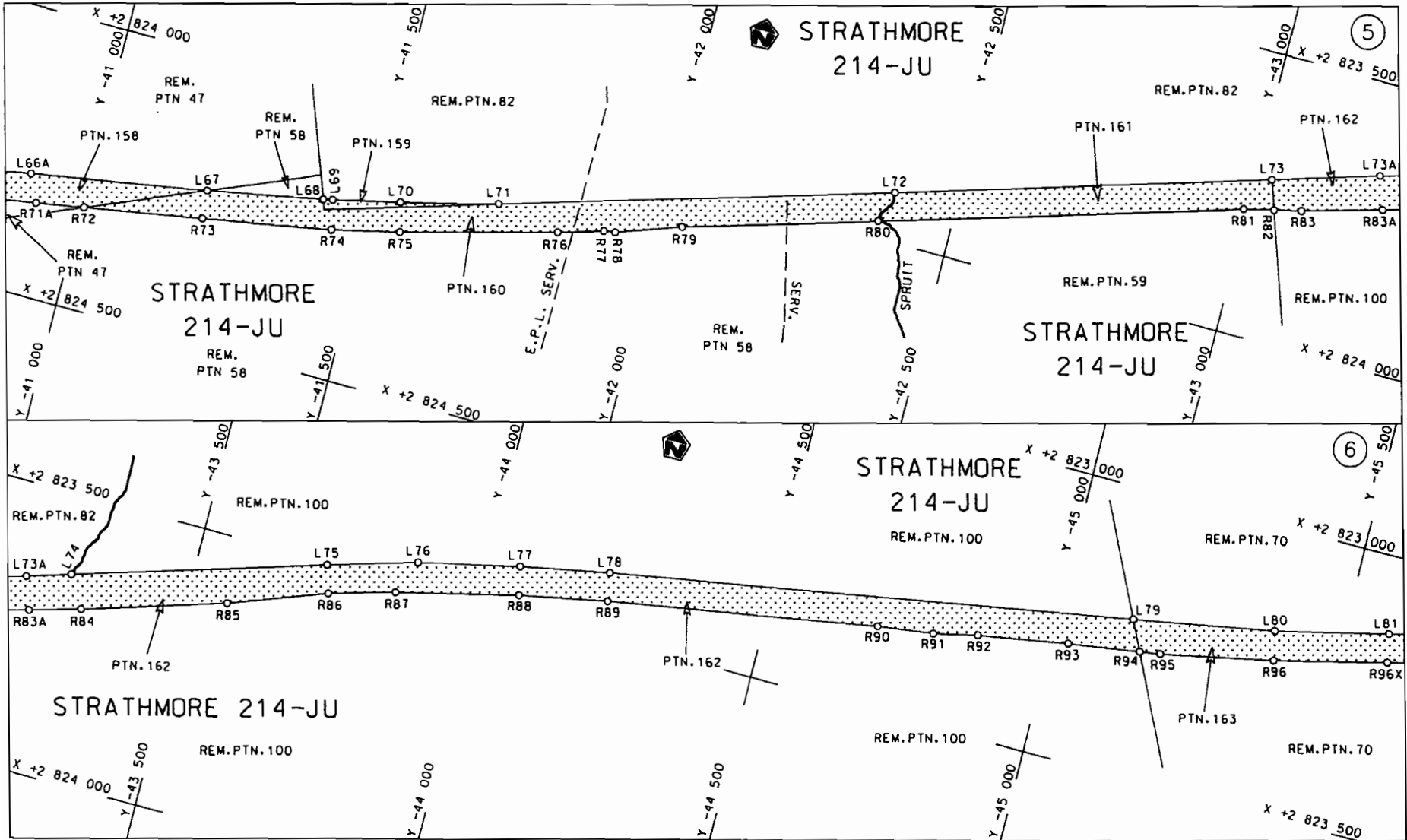


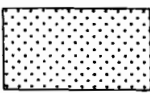
Die Suid Afrikaanse Nasionale Padagentskap Beperk The South African National Roads Agency Limited	Die figuur getoon The figure shown		steldie padreserwe voor van 'n gedeelte represents the road reserve of a portion van Nasionale Roete N4 of National Route N4	Vel Sheet 1 van 21 of	Plan P640/08	8x	Seksie Section
------------------------------------------------------------------------------------------------------	---------------------------------------	--------------------------------------------------------------------------------------	---------------------------------------------------------------------------------------------------------------------------------------	--------------------------	--------------	----	----------------

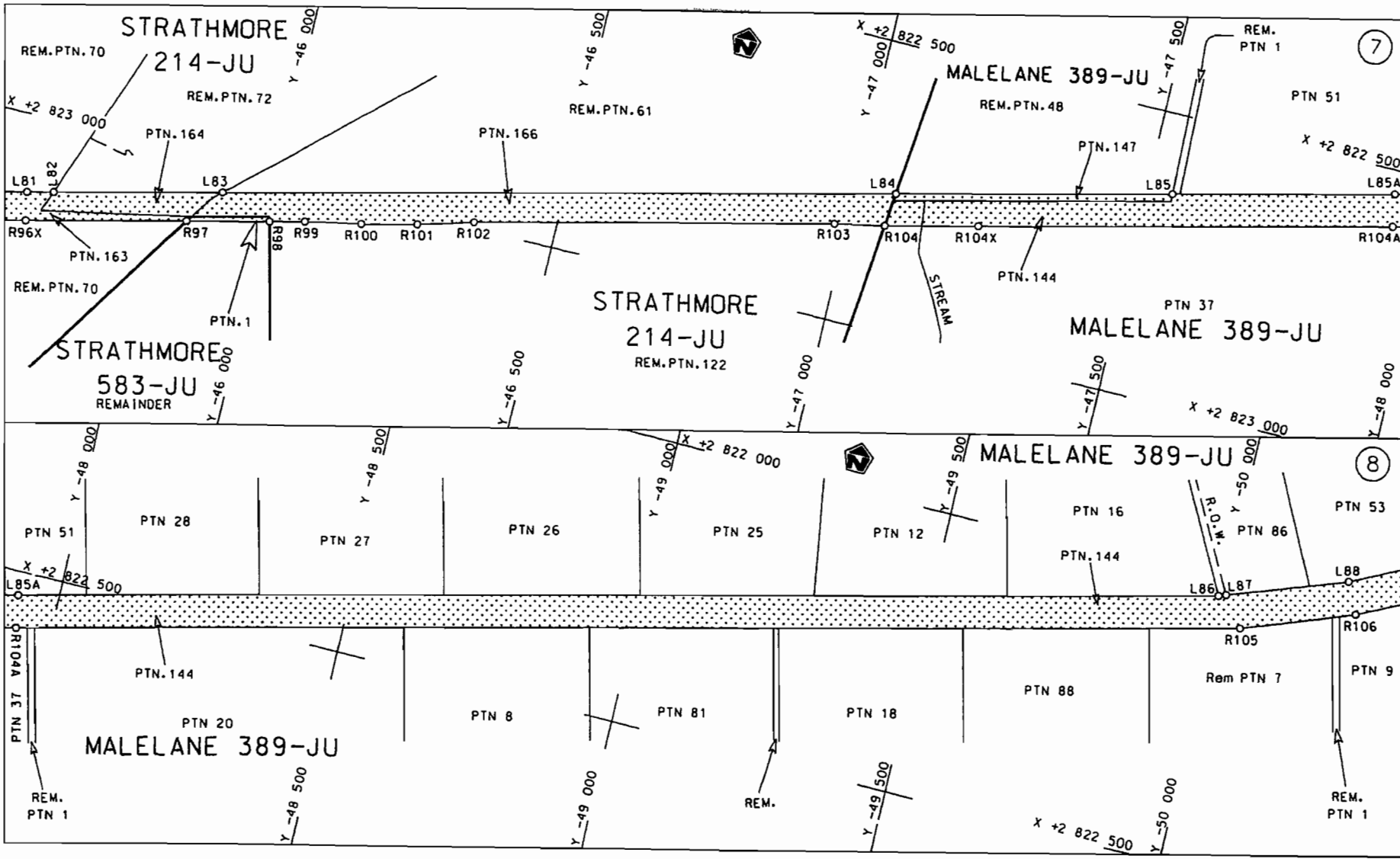
D.O.9.A




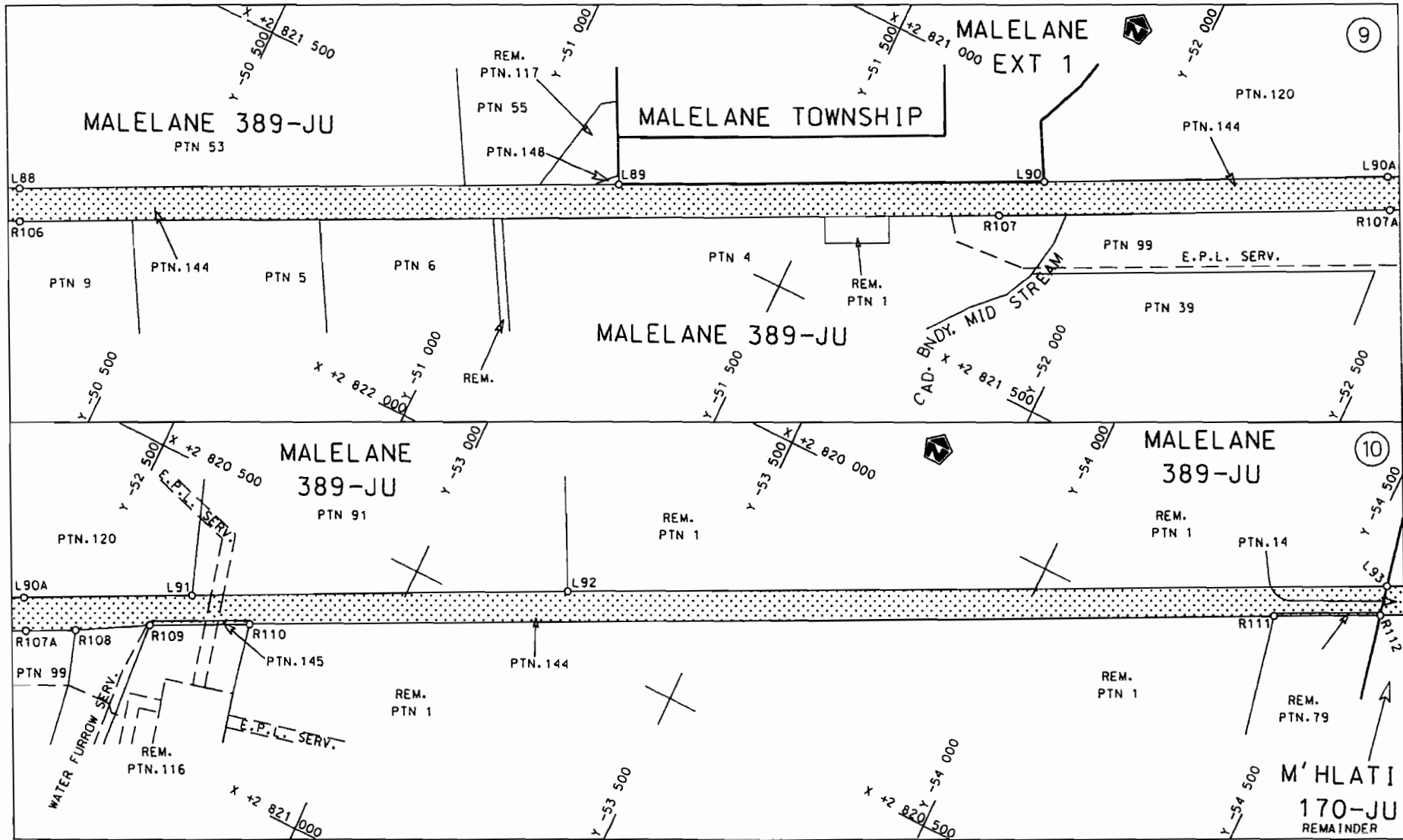
<p>Die Suid Afrikaanse Nasionale Padogenskap Beperk The South African National Roads Agency Limited</p>	<p>Die figuur getoon The figure shown</p> 	<p>steldie padreserwe voor van 'n gedeelte represents the rood reserve of a portion van Nasionale Roete N4 of National Route N4</p> <p>Seksie Section 8x</p>	<p>Vel Sheet 2 van 21 of of</p> <p>Plan P640/08</p>
-------------------------------------------------------------------------------------------------------------	------------------------------------------------------------------------------------------------------------------------------------	--------------------------------------------------------------------------------------------------------------------------------------------------------------------------	---------------------------------------------------------




<p>Die Suid Afrikaanse Nasionale Padogentskap Beperk The South African National Roads Agency Limited</p>	<p>Die figuur getoon The figure shown</p> <div style="text-align: center;">  </div>	<p>stel die padreserwe voor van 'n gedeelte represents the road reserve of a portion van Nasionale Roete N4 of National Route</p> <p style="text-align: right;">Seksie Section 8x</p>	<p>Vel Sheet 3 van of 21 Plan P640/08</p>
--------------------------------------------------------------------------------------------------------------	-----------------------------------------------------------------------------------------------------------------------------------------------------------------------------	---------------------------------------------------------------------------------------------------------------------------------------------------------------------------------------------------	-----------------------------------------------

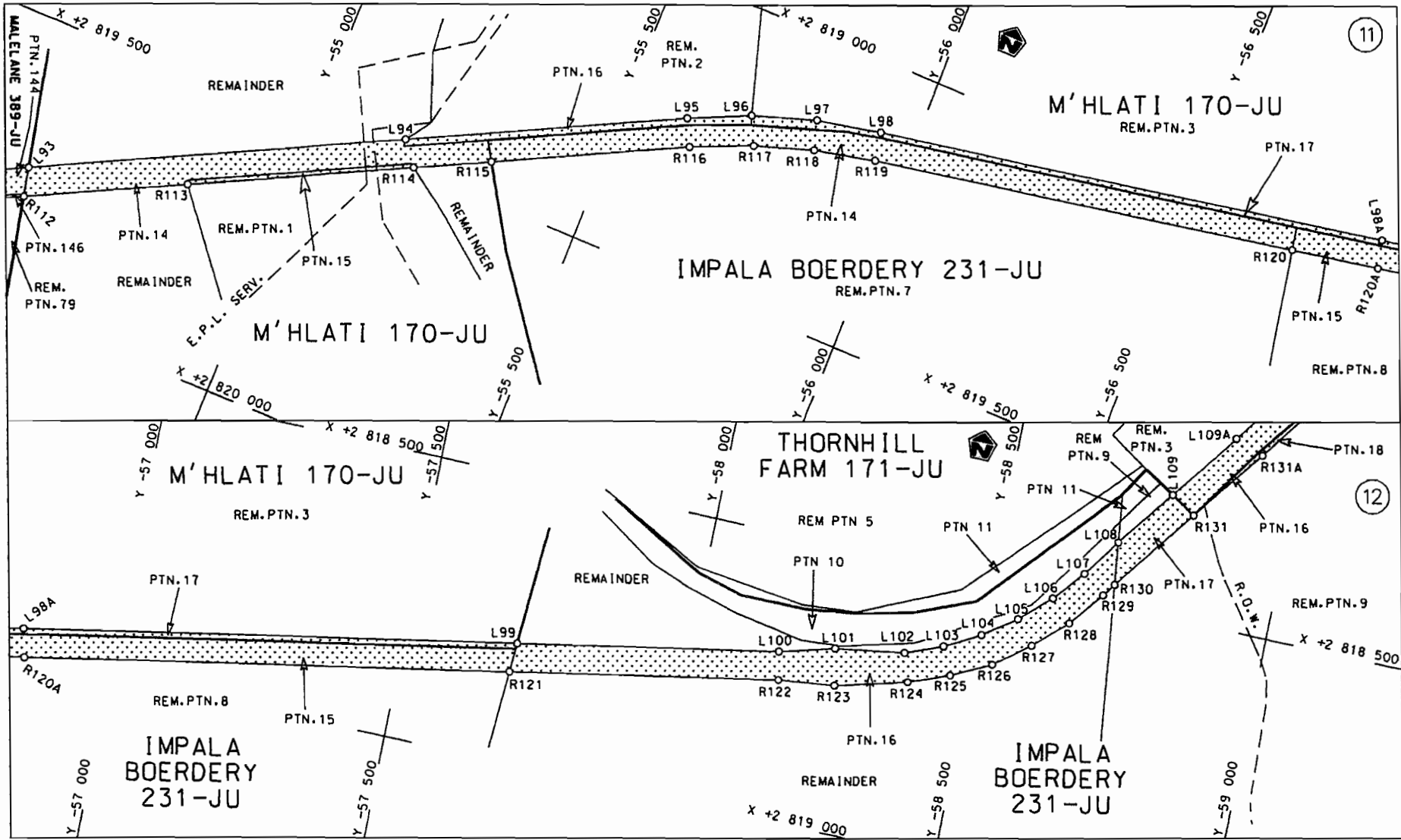



<p>Die Suid Afrikaanse Nasionale Padagentskap Beperk The South African National Roads Agency Limited</p>	<p>Die figuur getoon The figure shown</p>	 <p>steldie padreserwe voor van 'n gedeelte represents the road reserve of a portion van Nasionale Roete N4 Seksie of National Route Section 8x</p>	<p>Vel Sheet 4 van of 21 Plan P640/08</p>
--------------------------------------------------------------------------------------------------------------	-----------------------------------------------	-----------------------------------------------------------------------------------------------------------------------------------------------------------------------------------------------------------------------------------------------------	-----------------------------------------------

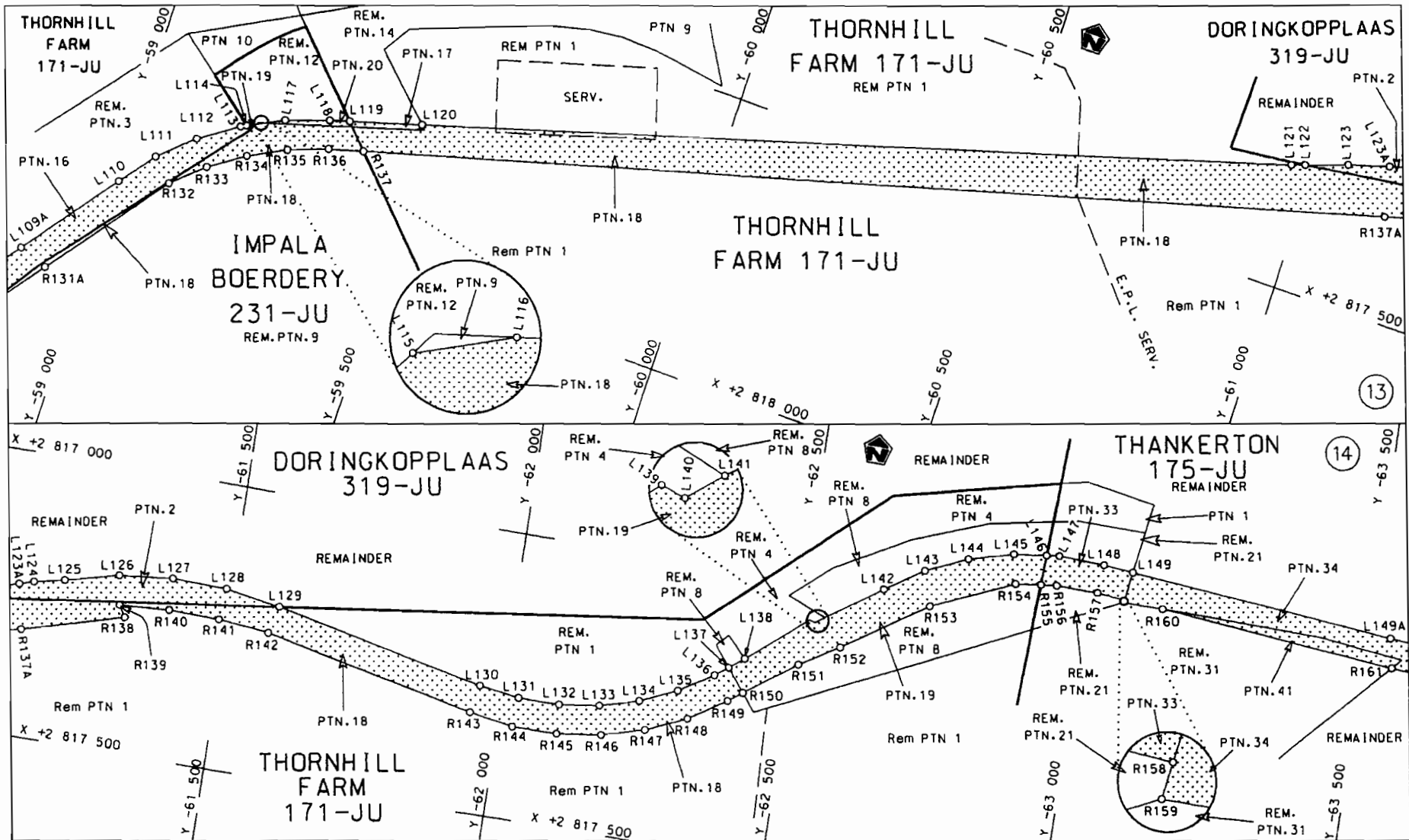


Die Suid Afrikaanse Nasionale Padagentskap Beperk The South African National Roads Agency Limited	Die figuur getoon The figure shown	 stel die padreserwe voor van 'n gedeelte represents the road reserve of a portion van Nasionale Roete N4 of National Route N4 Seksie 8x Section	Vel 5 van 21 Sheet of Plan P640/08
------------------------------------------------------------------------------------------------------	---------------------------------------	-----------------------------------------------------------------------------------------------------------------------------------------------------------------------------------------------------------------------------------------------------	------------------------------------------

D.O.G.A

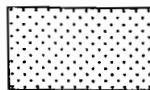


<p>Die Suid Afrikaanse Nasionale Padagentskap Beperk The South African National Roads Agency Limited</p>	<p>Die figuur getoon The figure shown</p>		<p>stel die padreserwe voor van 'n gedeelte represents the road reserve of a portion van Nasionale Roete N4 of National Route N4</p> <p>Seksie Section 8x</p>	<p>Vel Sheet 6 van of 21</p>
				<p>Plan P640/08</p>



Die Suid Afrikaanse Nasionale Padagentskap Beperk
The South African National Roads Agency Limited

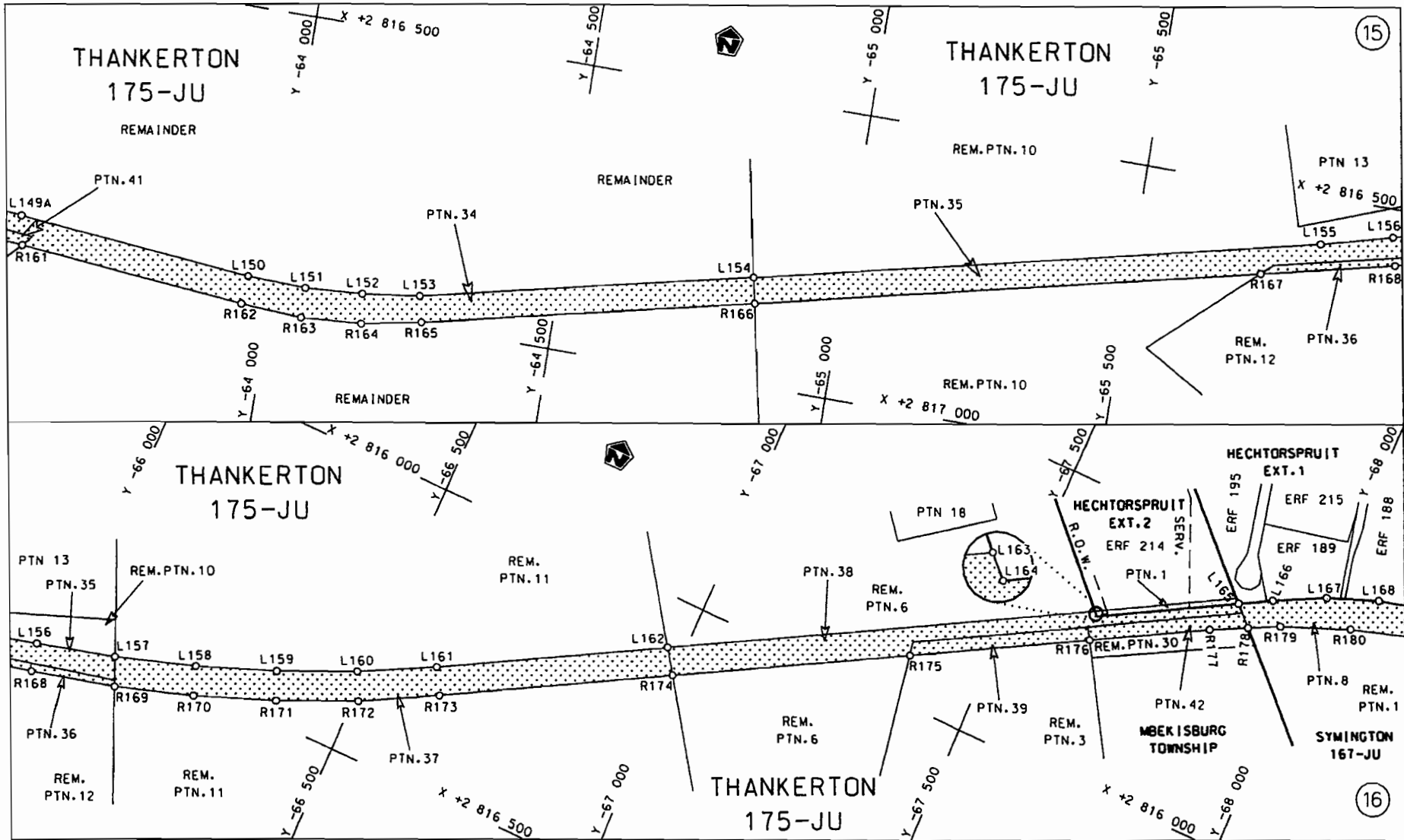
Die figuur getoon
The figure shown



steldie padreserwe voor van 'n gedeelte
represents the road reserve of a portion
van Nasionale Roete N4 Seksie
of National Route N4 Section

Vel
Sheet 7 von
of 21
Plon P640/08

D.O.9.A



Die Suid Afrikaanse Nasionale Padagentskap Beperk
The South African National Roads Agency Limited

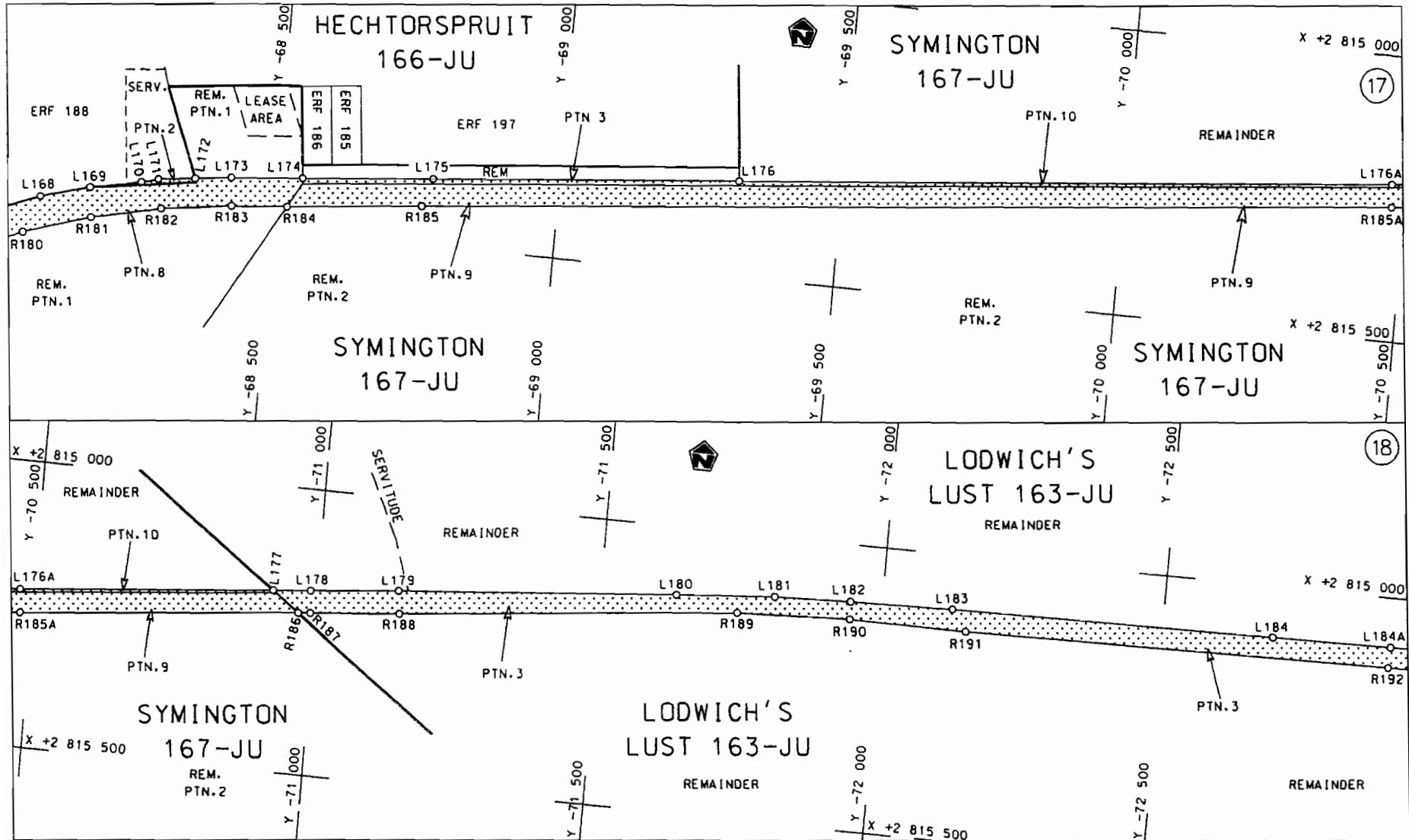
Die figuur getoon
The figure shown



stel die padreserve voor van 'n gedeelte
represents the road reserve of a portion
van Nasionale Roete N4 Seksie Section 8x
of National Route

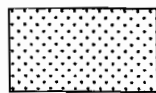
Vel Sheet 8 van of 21

Plan P640/08



Die Suid Afrikaanse Nasionale Padagentskap Beperk
The South African National Roads Agency Limited

Die figuur getoon
The figure shown



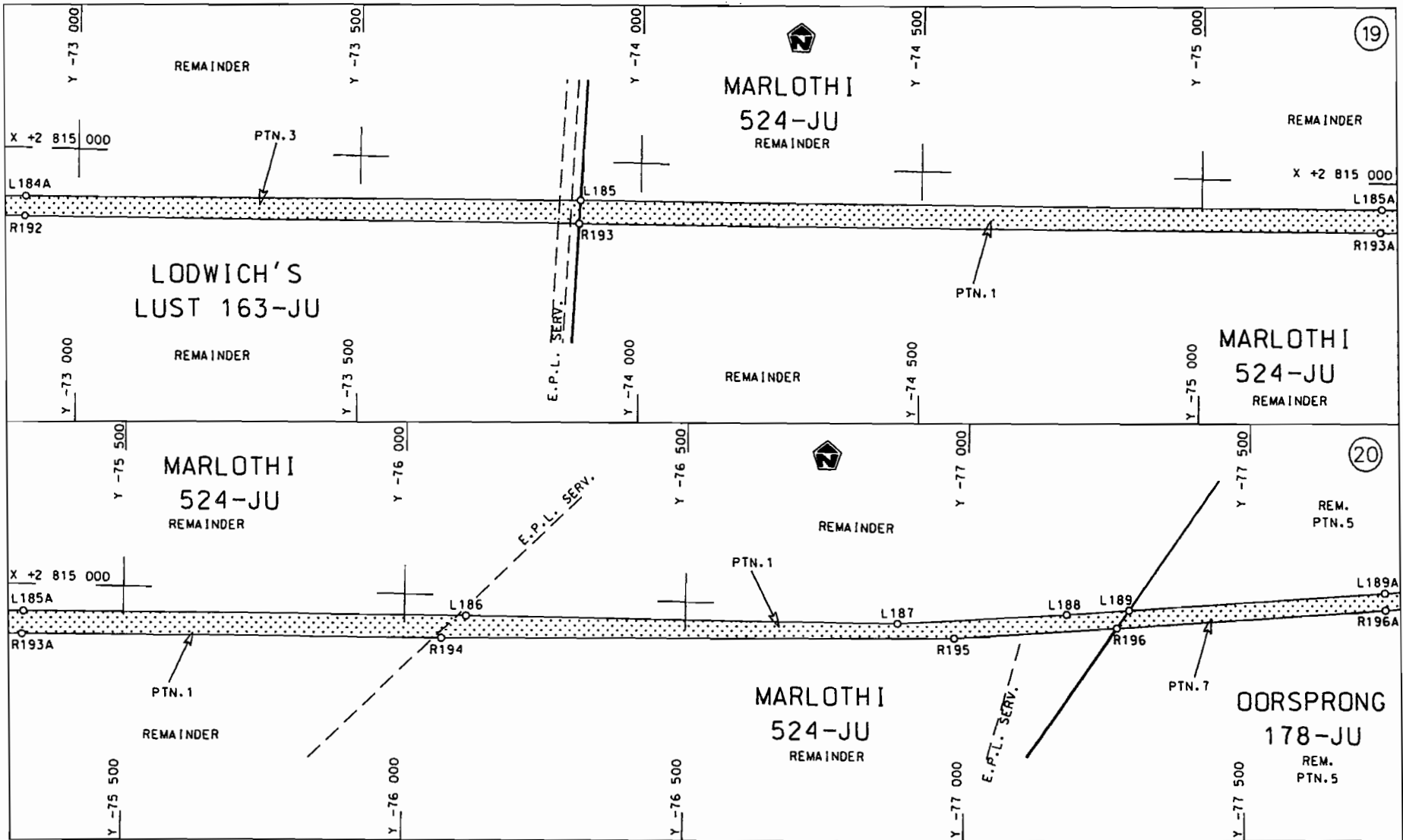
steldie padreserwe voor van 'n gedeelte
represents the road reserve of a portion
von Nasionale Roete N4 Seksie
of National Route N4 Section

8x

Vel
Sheet 9 van
of 21

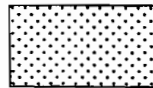
Plan
P640/08

D.O.9.A



Die Suid Afrikaanse Nasionale Padagentskap Beperk
The South African National Roads Agency Limited

Die figuur getoon
The figure shown

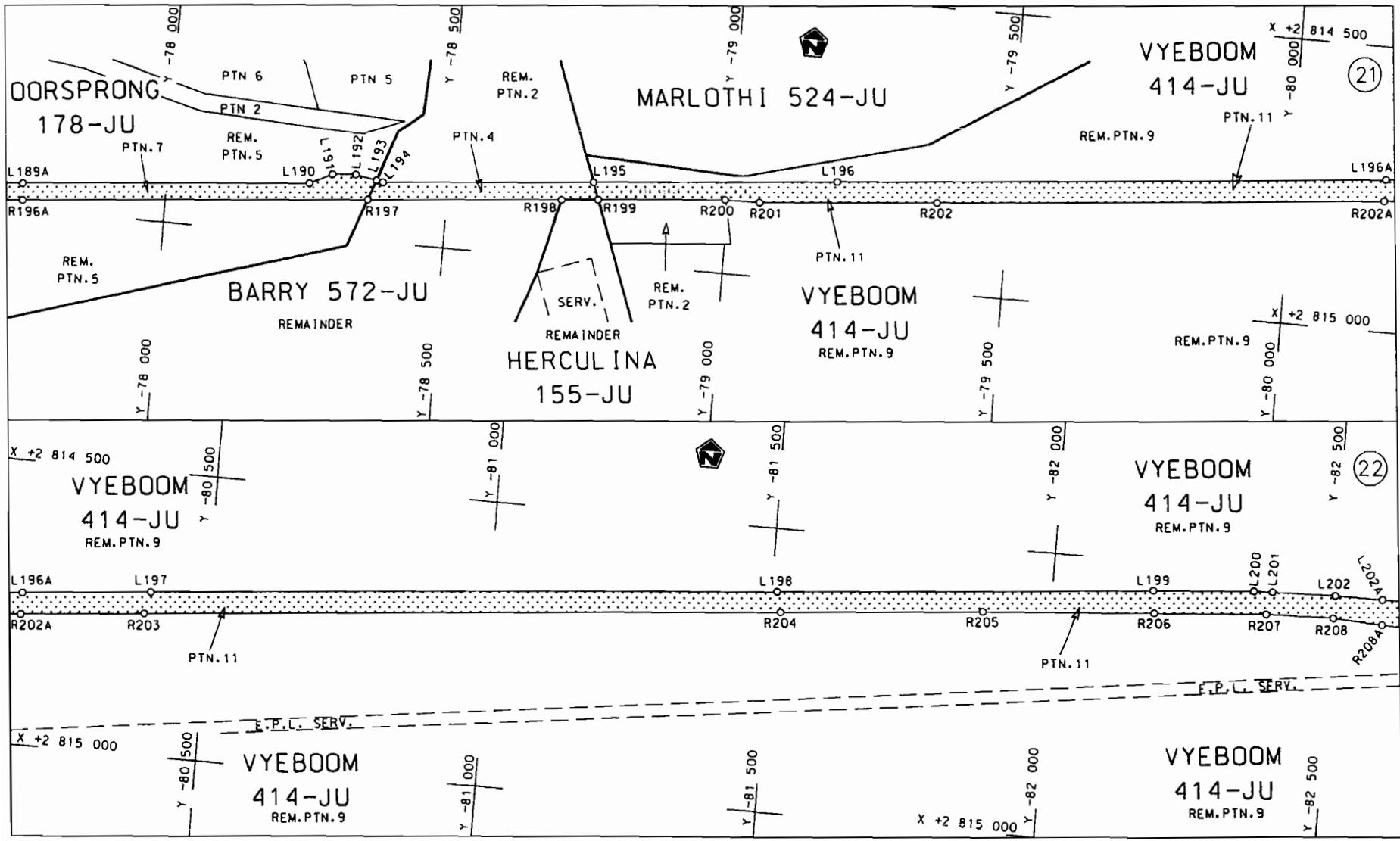


steldie padreserwe voor van 'n gedeelte
represents the road reserve of a portion
van Nasionale Roete N4
of National Route N4

Seksie 8x
Section

Vel 10 van
Sheet 10 of 21

Plan P640/08

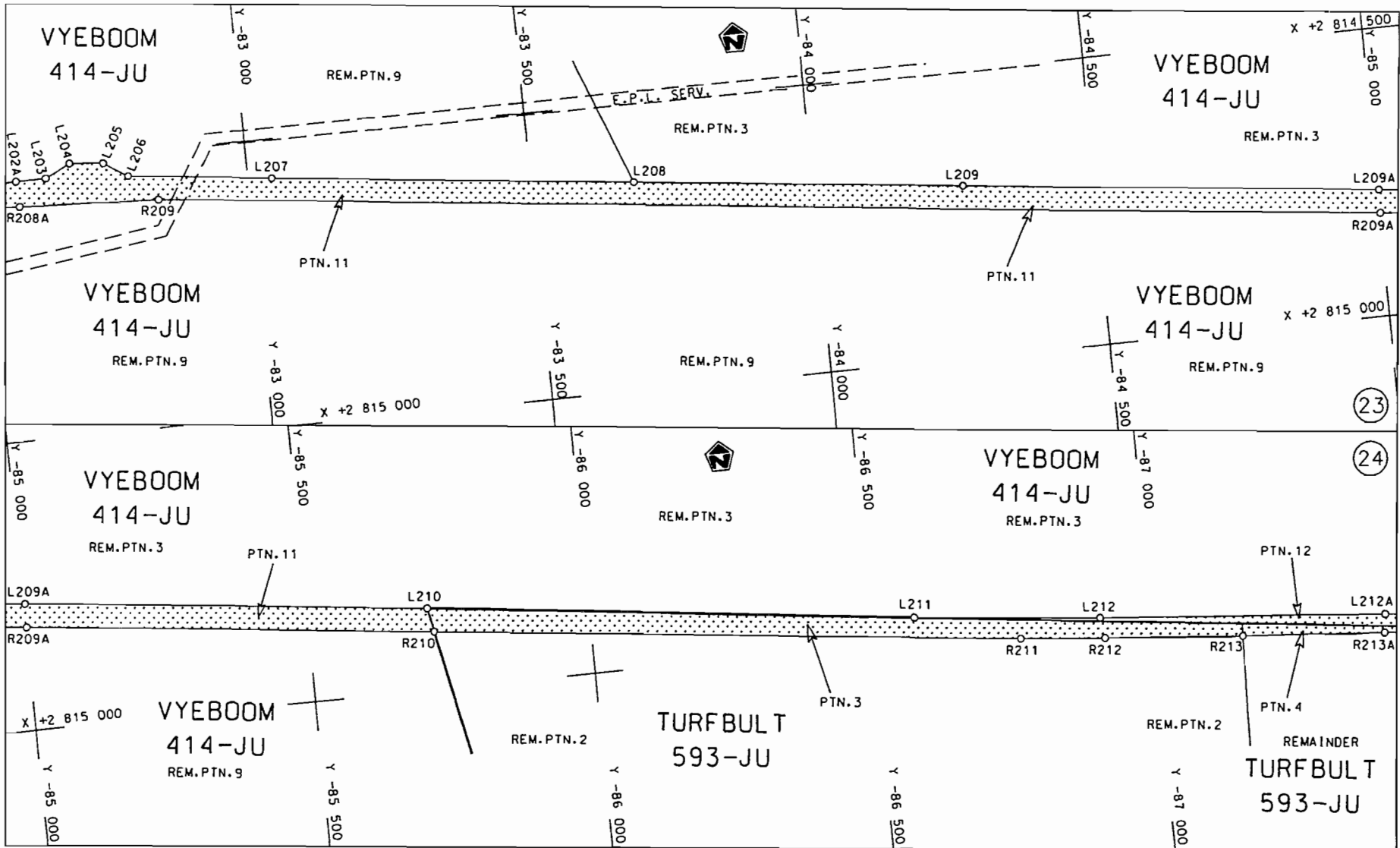


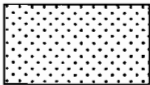
<p>Die Suid Afrikaanse Nasionale Padagentskap Beperk The South African National Roads Agency Limited</p>	<p>Die figuur getoon The figure shown</p>	<p>steldie padreserwe voor van 'n gedeelte represents the road reserve of a portion von Nasionale Roete N4 Seksie of National Route Section</p>	<p>Vel Sheet 11 van of 21 Plan P640/08</p>
--------------------------------------------------------------------------------------------------------------	-----------------------------------------------	-------------------------------------------------------------------------------------------------------------------------------------------------------------	------------------------------------------------

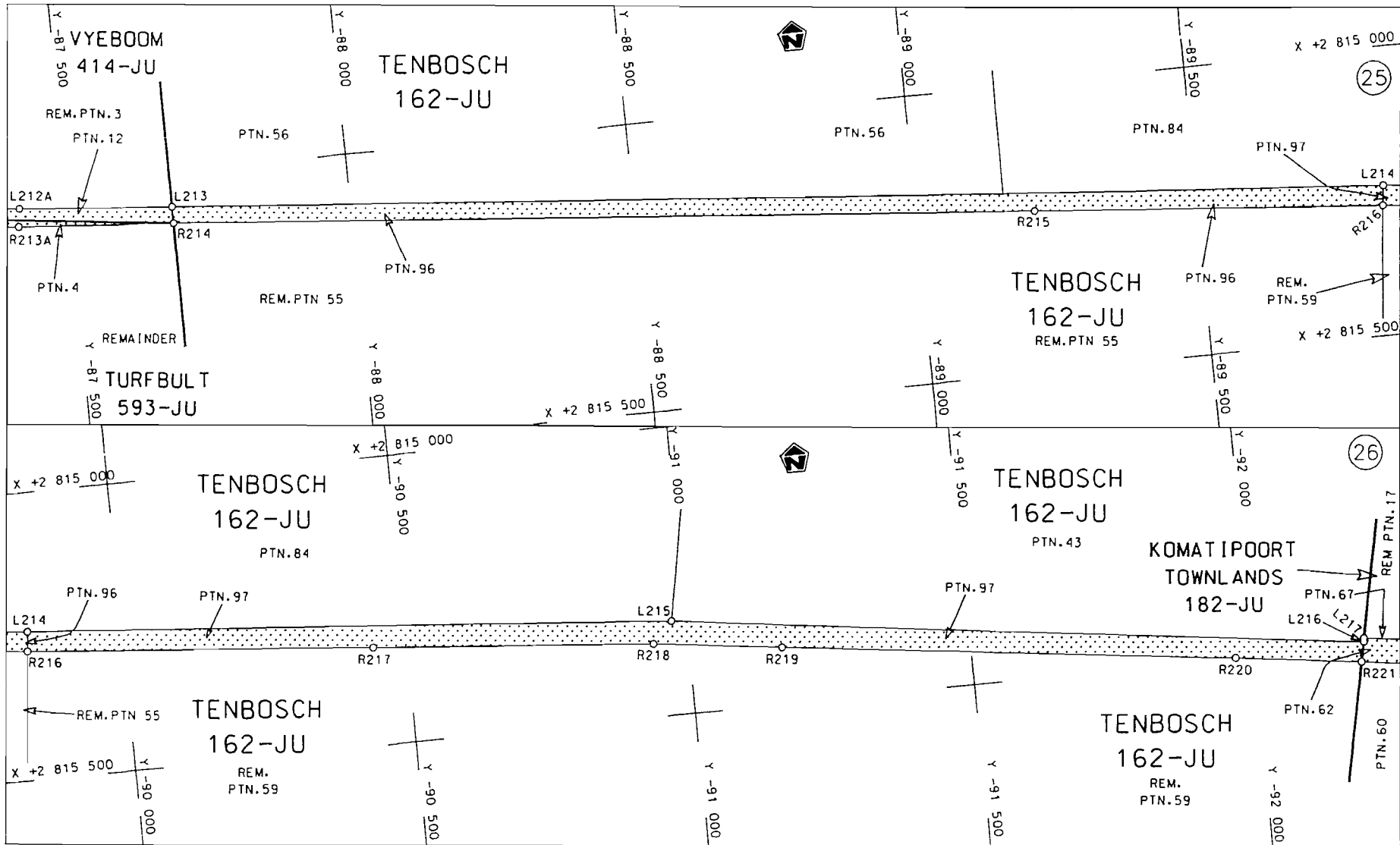
STAATSKOERANT, 22 SEPTEMBER 2008

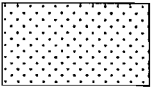
No. 31424 15

D.O.9.A

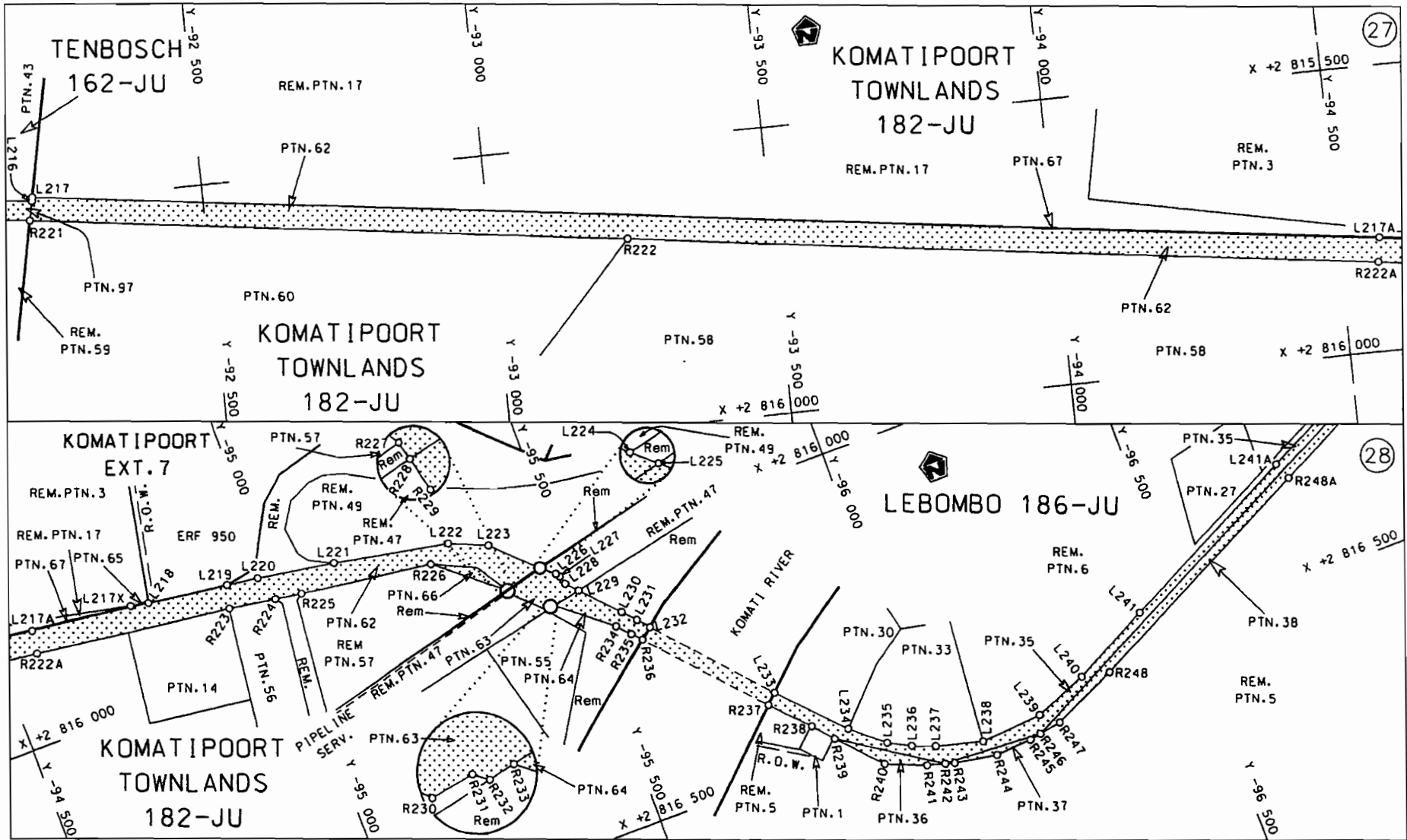


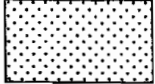
<p>Die Suid Afrikaanse Nasionale Padogentskop Beperk The South African National Roads Agency Limited</p>	<p>Die figuur getoon The figure shown</p>	<p></p> <p>steldie padreserwe voor van 'n gedeelte represents the road reserve of a portion van Nasionale Roete N4 Seksie of National Route Section 8x</p>	<p>Vel Sheet 12 van of 21 Plan P640/08</p>
--------------------------------------------------------------------------------------------------------------	-----------------------------------------------	------------------------------------------------------------------------------------------------------------------------------------------------------------------------------------------------------------------------------------------------------------	------------------------------------------------

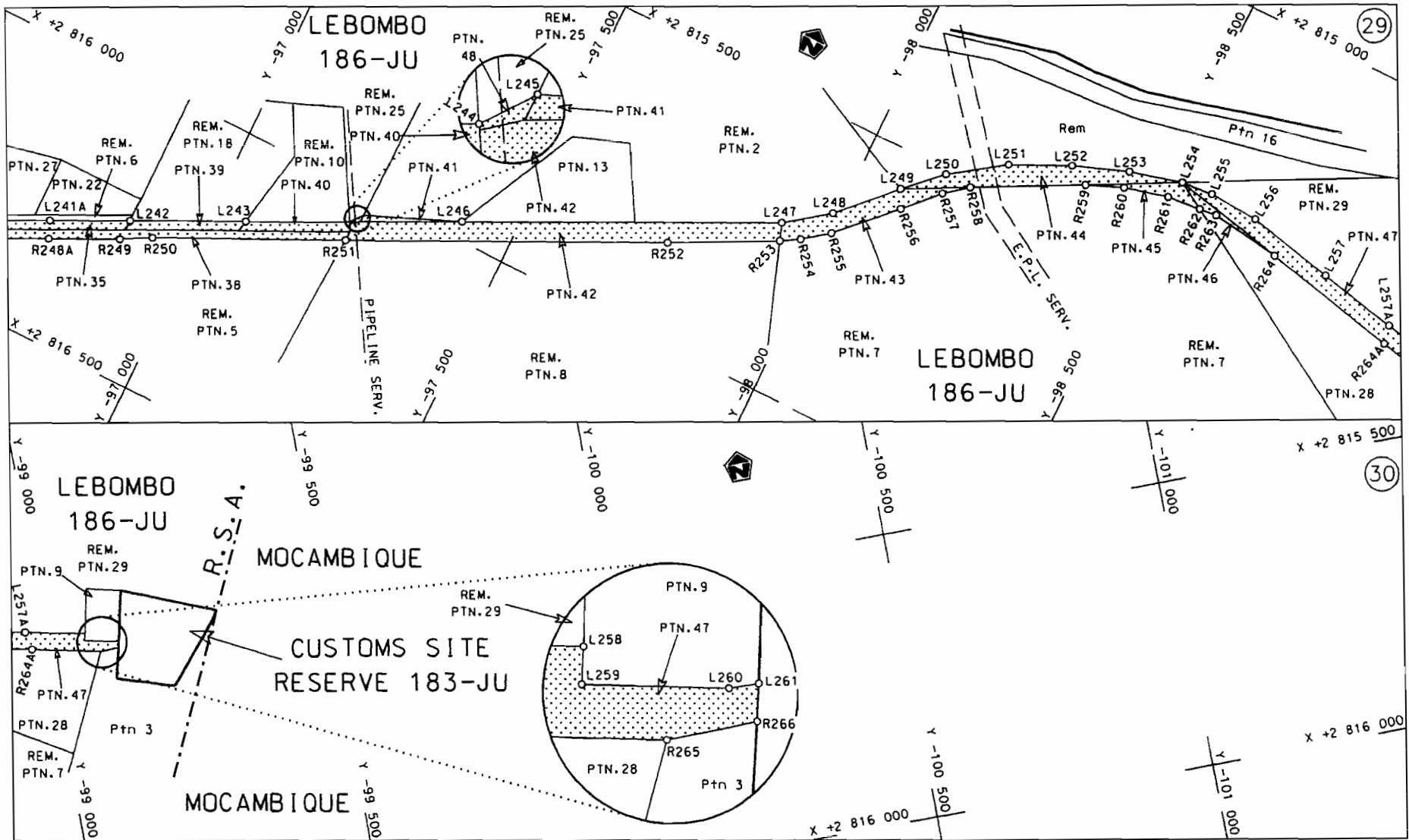



<p>Die Suid Afrikaanse Nasionale Padagentskap Beperk The South African National Roads Agency Limited</p>	<p>Die figuur getoon The figure shown</p>	<p></p> <p>steldie padreserwe voor van 'n gedeelte represents the road reserve of a portion van Nasionale Roete N4 Sektie of National Route N4 Section</p>	<p>Vel Sheet 13 van of 21 Plan P640/08</p>
--------------------------------------------------------------------------------------------------------------	-----------------------------------------------	------------------------------------------------------------------------------------------------------------------------------------------------------------------------------------------------------------------------------------------------------------	------------------------------------------------

D.O.9.A



<p>Die Suid Afrikaanse Nasionale Padagentskap Beperk The South African National Roads Agency Limited</p>	<p>Die figuur getoon The figure shown</p> 	<p>steldie padreserwe voor van 'n gedeelte represents the road reserve of a portion van Nasionale Roete N4 Seksie of National Route Section</p>	<p>Vel Sheet 14 van 21 Plan P640/08</p>
--------------------------------------------------------------------------------------------------------------	------------------------------------------------------------------------------------------------------------------------------------	-------------------------------------------------------------------------------------------------------------------------------------------------------------	---------------------------------------------



<p>Die Suid Afrikaanse Nasionale Padagentskap Beperk The South African National Roads Agency Limited</p>	<p>Die figuur getoon The figure shown</p> 	<p>steldie podreserve voor van 'n gedeelte represents the road reserve of a portion van Nasionale Roete N4 of National Route N4</p> <p>Seksie Section</p> <p>8x</p>	<p>Vel Sheet</p> <p>15 van of 21</p> <p>Plan P640/08</p>
--------------------------------------------------------------------------------------------------------------	------------------------------------------------------------------------------------------------------------------------------------	-------------------------------------------------------------------------------------------------------------------------------------------------------------------------------------	----------------------------------------------------------------------

D.O.9.A

PADRESERWE KOÖRDINATE				/	ROAD RESERVE CO-ORDINATES			
LINKERKANT/LEFT HAND SIDE					REGTERKANT/RIGHT HAND SIDE			
	Y	X	WG	31°	Y	X		
L1	-31 478.855	2 825 536.478		R1	-31 422.590	2 825 583.660		
L2	-31 493.750	2 825 541.600		R2	-31 465.040	2 825 597.740		
L3	-31 544.530	2 825 559.060		R3	-31 535.280	2 825 609.760		
L4	-31 558.880	2 825 564.740		R4	-31 617.780	2 825 634.070		
L5	-31 639.510	2 825 588.310		R5	-31 675.310	2 825 656.830		
L6	-31 743.040	2 825 608.960		R6	-31 777.200	2 825 678.920		
L7	-31 905.090	2 825 644.400		R7	-31 899.770	2 825 700.980		
L8	-32 106.280	2 825 654.120		R8	-31 984.490	2 825 715.670		
L9	-32 250.050	2 825 639.760		R9	-32 144.840	2 825 714.010		
L10	-32 262.540	2 825 638.500		R10	-32 401.790	2 825 677.210		
L11	-32 450.870	2 825 615.510		R11	-32 562.690	2 825 654.050		
L12	-32 498.590	2 825 595.450		R12	-32 617.375	2 825 646.183		
L13	-32 587.740	2 825 583.270		R13	-32 686.280	2 825 636.270		
L14	-32 698.050	2 825 578.000		R14	-32 705.790	2 825 633.390		
L15	-32 766.540	2 825 572.490		R15	-32 773.450	2 825 621.990		
L16	-32 827.820	2 825 564.170		R16	-32 833.950	2 825 614.040		
L17	-32 879.950	2 825 558.860		R17	-33 081.450	2 825 595.080		
L18	-33 061.420	2 825 540.330		R18	-33 162.920	2 825 587.920		
L19	-33 244.440	2 825 538.380		R19	-33 189.110	2 825 587.540		
L20	-33 869.730	2 825 516.720		R20	-33 238.240	2 825 586.850		
L21	-34 379.180	2 825 510.050		R21	-33 264.220	2 825 586.480		
L22	-34 381.860	2 825 513.940		R22	-33 341.180	2 825 585.440		
L23	-34 385.320	2 825 513.780		R23	-33 401.020	2 825 579.590		
L24	-34 387.500	2 825 509.390		R24	-33 459.670	2 825 577.540		
L25	-34 388.040	2 825 490.610		R25	-33 505.240	2 825 591.390		
L26	-34 497.340	2 825 464.860		R26	-33 530.070	2 825 590.430		
L27	-34 574.220	2 825 462.130		R27	-33 574.630	2 825 574.070		
L28	-34 572.320	2 825 393.880		R28	-33 866.100	2 825 565.250		
L29	-34 659.790	2 825 391.260		R29	-34 366.580	2 825 549.770		
L30	-34 661.280	2 825 436.290		R30	-34 379.630	2 825 541.910		
L31	-34 715.470	2 825 452.200		R31	-34 390.130	2 825 541.810		
L32	-34 835.320	2 825 486.810		R32	-34 397.530	2 825 559.500		
L33	-35 047.110	2 825 480.620		R33	-34 521.310	2 825 598.140		
L34	-35 135.440	2 825 476.110		R34	-34 578.760	2 825 596.970		
L35	-35 484.250	2 825 465.490		R35	-34 579.360	2 825 625.660		
L36	-35 517.400	2 825 459.350		R36	-34 666.930	2 825 622.780		
L37	-35 552.930	2 825 457.080		R37	-34 666.230	2 825 589.770		
L38	-35 722.360	2 825 446.350		R38	-34 730.610	2 825 587.390		
L39	-35 782.200	2 825 444.050		R39	-34 738.570	2 825 592.990		
L40	-35 866.810	2 825 433.000		R40	-34 906.030	2 825 588.670		
L41	-35 902.330	2 825 427.190		R41	-34 963.580	2 825 549.290		
L42	-35 928.800	2 825 421.220		R42	-35 014.320	2 825 529.940		
L43	-35 994.460	2 825 425.790		R43	-35 444.330	2 825 516.710		
L44	-36 249.030	2 825 379.710		R44	-35 534.770	2 825 519.710		
L45	-36 367.910	2 825 354.870		R45	-35 700.730	2 825 505.620		
L46	-36 385.140	2 825 351.290		R46	-35 799.060	2 825 498.860		
L47	-36 443.890	2 825 342.550		R47	-35 921.390	2 825 496.270		
L48	-36 550.020	2 825 326.750		R48	-36 000.850	2 825 477.380		
L49	-36 763.580	2 825 277.380		R49	-36 299.540	2 825 435.740		
L50	-37 054.670	2 825 210.100		R50	-36 336.340	2 825 427.360		
L51	-37 134.030	2 825 191.750		R51	-36 561.330	2 825 375.700		

Vel	16	Van	21	P640/08
Sheet		of		

PADRESERWE KOÖRDINATE				/	ROAD RESERVE CO-ORDINATES				
LINKERKANT/LEFT HAND SIDE					REGTERKANT/RIGHT HAND SIDE				
	Y	X	WG	31°	Y	X			
L52	-37	208.700	2 825	174.490	R52	-37	762.380	2 825	097.860
L53	-37	346.550	2 825	142.630	R53	-37	959.320	2 825	061.510
L54	-37	887.550	2 825	017.570	R54	-38	054.640	2 825	030.240
L55	-37	984.080	2 824	991.180	R55	-38	138.160	2 825	010.890
L56	-38	072.690	2 824	974.730	R56	-38	249.520	2 824	985.180
L57	-38	125.870	2 824	962.420	R57	-38	349.800	2 824	975.260
L58	-38	909.030	2 824	781.230	R58	-38	445.250	2 824	943.980
L59	-39	054.530	2 824	744.180	R59	-38	920.260	2 824	829.950
L60	-39	214.570	2 824	695.610	R60	-39	010.600	2 824	810.840
L61	-39	321.470	2 824	660.310	R61	-39	165.270	2 824	765.910
L62	-39	741.960	2 824	521.540	R62	-39	230.860	2 824	744.950
L63	-39	872.960	2 824	479.550	R63	-39	332.060	2 824	708.950
L64	-40	029.630	2 824	440.140	R64	-39	412.430	2 824	682.940
L65	-40	173.460	2 824	413.690	R65	-39	527.350	2 824	648.190
L66	-40	427.680	2 824	369.730	R66	-39	602.360	2 824	620.260
L67	-41	207.790	2 824	234.660	R67	-39	757.480	2 824	569.070
L68	-41	411.080	2 824	194.640	R68	-39	886.890	2 824	529.630
L69	-41	427.890	2 824	191.330	R69	-40	045.610	2 824	489.860
L70	-41	543.600	2 824	164.240	R70	-40	181.900	2 824	462.990
L71	-41	712.490	2 824	121.170	R71	-40	445.900	2 824	417.350
L72	-42	387.630	2 823	914.830	R72	-41	004.180	2 824	320.720
L73	-43	030.480	2 823	718.120	R73	-41	212.270	2 824	284.710
L74	-43	290.350	2 823	638.710	R74	-41	438.710	2 824	242.250
L75	-43	725.720	2 823	504.940	R75	-41	556.070	2 824	214.750
L76	-43	879.400	2 823	459.200	R76	-41	826.190	2 824	141.310
L77	-44	056.070	2 823	419.090	R77	-41	904.230	2 824	117.560
L78	-44	212.010	2 823	388.790	R78	-41	924.480	2 824	114.400
L79	-45	131.240	2 823	225.740	R79	-42	037.500	2 824	073.550
L80	-45	380.820	2 823	181.360	R80	-42	371.550	2 823	971.390
L81	-45	577.440	2 823	134.330	R81	-42	993.780	2 823	781.080
L82	-45	622.820	2 823	122.990	R82	-43	047.520	2 823	768.530
L83	-45	913.800	2 823	050.100	R83	-43	094.950	2 823	757.320
L84	-47	070.515	2 822	757.326	R84	-43	322.090	2 823	693.090
L85	-47	546.580	2 822	637.440	R85	-43	570.510	2 823	616.090
L86	-49	993.540	2 822	022.740	R86	-43	740.060	2 823	552.720
L87	-50	006.080	2 822	017.900	R87	-43	853.930	2 823	519.770
L88	-50	212.220	2 821	942.950	R88	-44	066.350	2 823	467.980
L89	-51	166.850	2 821	466.480	R89	-44	220.650	2 823	437.960
L90	-51	845.150	2 821	127.350	R90	-44	695.250	2 823	355.340
L91	-52	660.530	2 820	714.310	R91	-44	794.480	2 823	342.090
L92	-53	254.920	2 820	412.430	R92	-44	872.610	2 823	324.400
L93	-54	559.630	2 819	758.230	R93	-45	030.240	2 823	296.980
L94	-55	161.600	2 819	454.890	R94	-45	156.360	2 823	278.200
L95	-55	610.250	2 819	228.820	R95	-45	192.210	2 823	272.820
L96	-55	714.480	2 819	179.820	R96	-45	391.640	2 823	232.150
L97	-55	824.990	2 819	142.770	R96X	-45	589.970	2 823	184.200
L98	-55	937.510	2 819	118.430	R97	-45	864.330	2 823	114.640
L99	-57	698.140	2 818	789.820	R98	-46	005.380	2 823	079.640
L100	-58	155.990	2 818	704.390	R99	-46	065.840	2 823	064.550
L101	-58	252.600	2 818	678.210	R100	-46	164.100	2 823	044.020
L102	-58	374.570	2 818	659.110	R101	-46	261.070	2 823	019.650

Vel	17	Van	21	P640/08
Sheet		of		

PADRESERWE KOÖRDINATE				ROAD RESERVE CO-ORDINATES			
LINKERKANT/LEFT HAND SIDE				REGTERKANT/RIGHT HAND SIDE			
	Y	X	WG 31°			X	
L103	-58 440.860	2 818 633.380		R102	-46 357.070	2 822 991.380	
L104	-58 503.500	2 818 599.640		R103	-46 977.770	2 822 835.280	
L105	-58 561.250	2 818 558.640		R104	-47 064.900	2 822 814.420	
L106	-58 614.160	2 818 510.170		R104X	-47 231.210	2 822 783.040	
L107	-58 660.110	2 818 456.220		R105	-50 042.940	2 822 068.760	
L108	-58 708.220	2 818 389.440		R106	-50 237.460	2 821 995.630	
L109	-58 786.390	2 818 287.490		R107	-51 798.580	2 821 215.620	
L110	-59 002.970	2 818 000.010		R108	-52 498.690	2 820 860.750	
L111	-59 052.250	2 817 938.110		R109	-52 614.440	2 820 794.470	
L112	-59 111.410	2 817 884.500		R110	-52 772.910	2 820 714.600	
L113	-59 176.910	2 817 838.840		R111	-54 401.900	2 819 893.660	
L114	-59 186.830	2 817 833.650		R112	-54 570.640	2 819 808.630	
L115	-59 202.170	2 817 825.630		R113	-54 832.800	2 819 676.510	
L116	-59 217.630	2 817 817.550		R114	-55 192.770	2 819 495.100	
L117	-59 247.890	2 817 801.860		R115	-55 316.260	2 819 432.860	
L118	-59 323.360	2 817 776.080		R116	-55 632.730	2 819 273.480	
L119	-59 357.290	2 817 765.910		R117	-55 737.180	2 819 227.000	
L120	-59 479.330	2 817 729.460		R118	-55 839.500	2 819 192.760	
L121	-60 961.260	2 817 286.870		R119	-55 946.430	2 819 167.590	
L122	-60 984.160	2 817 279.020		R120	-56 692.630	2 819 028.363	
L123	-61 056.150	2 817 254.390		R121	-57 694.600	2 818 841.340	
L124	-61 151.960	2 817 225.800		R122	-58 165.170	2 818 753.540	
L125	-61 204.990	2 817 214.100		R123	-58 264.520	2 818 742.110	
L126	-61 298.810	2 817 190.260		R124	-58 390.340	2 818 708.690	
L127	-61 394.680	2 817 180.260		R125	-58 462.650	2 818 680.600	
L128	-61 491.080	2 817 182.200		R126	-58 532.560	2 818 646.360	
L129	-61 588.120	2 817 198.520		R127	-58 594.190	2 818 598.870	
L130	-61 959.300	2 817 276.160		R128	-58 651.170	2 818 546.500	
L131	-62 030.160	2 817 285.950		R129	-58 699.860	2 818 486.230	
L132	-62 101.660	2 817 285.790		R130	-58 716.770	2 818 463.910	
L133	-62 172.460	2 817 275.750		R131	-58 829.840	2 818 314.710	
L134	-62 241.180	2 817 256.000		R132	-59 089.550	2 817 974.340	
L135	-62 306.490	2 817 226.910		R133	-59 143.810	2 817 925.180	
L136	-62 366.890	2 817 189.230		R134	-59 204.110	2 817 883.280	
L137	-62 389.780	2 817 171.530		R135	-59 268.530	2 817 849.620	
L138	-62 415.480	2 817 151.840		R136	-59 337.680	2 817 823.990	
L139	-62 518.950	2 817 066.280		R137	-59 396.940	2 817 807.150	
L140	-62 529.280	2 817 069.930		R138	-61 319.550	2 817 261.910	
L141	-62 544.210	2 817 058.180		R139	-61 307.180	2 817 241.570	
L142	-62 640.210	2 816 991.120		R140	-61 396.810	2 817 236.230	
L143	-62 707.650	2 816 946.820		R141	-61 486.250	2 817 238.030	
L144	-62 781.670	2 816 914.320		R142	-61 575.830	2 817 246.940	
L145	-62 859.540	2 816 892.770		R143	-61 948.720	2 817 325.040	
L146	-62 917.300	2 816 885.300		R144	-62 026.670	2 817 337.830	
L147	-62 939.460	2 816 882.450		R145	-62 105.390	2 817 337.650	
L148	-63 020.290	2 816 885.600		R146	-62 183.310	2 817 326.590	
L149	-63 072.510	2 816 890.130		R147	-62 258.980	2 817 304.860	
L150	-63 954.970	2 816 966.050		R148	-62 330.900	2 817 272.810	
L151	-64 057.660	2 816 969.440		R149	-62 396.520	2 817 229.540	
L152	-64 159.470	2 816 962.170		R150	-62 421.440	2 817 211.310	
L153	-64 261.210	2 816 948.290		R151	-62 510.920	2 817 146.560	

Vel	18	Van	21	P640/08
Sheet		of		

PADRESERWE KOÖRDINATE				ROAD RESERVE CO-ORDINATES					
LINKERKANT/LEFT HAND SIDE				REGTERKANT/RIGHT HAND SIDE					
	Y	X	WG 31°			X			
L154	-64	840.110	2 816	813.290	R152	-62	579.200	2 817	104.480
L155	-65	824.900	2 816	583.640	R153	-62	725.910	2 817	007.480
L156	-65	950.210	2 816	549.600	R154	-62	869.830	2 816	943.720
L157	-66	085.790	2 816	513.800	R155	-62	914.840	2 816	937.920
L158	-66	223.450	2 816	468.950	R156	-62	942.410	2 816	934.370
L159	-66	356.440	2 816	416.880	R157	-63	016.030	2 816	935.420
L160	-66	486.250	2 816	357.150	R158	-63	064.940	2 816	939.670
L161	-66	612.230	2 816	290.350	R159	-63	064.152	2 816	944.828
L162	-66	969.850	2 816	086.670	R160	-63	133.914	2 816	945.603
L163	-67	633.750	2 815	708.520	R161	-63	551.530	2 816	981.540
L164	-67	640.810	2 815	715.750	R162	-63	950.700	2 817	015.880
L165	-67	860.770	2 815	590.250	R163	-64	058.330	2 817	021.460
L166	-67	913.490	2 815	560.320	R164	-64	165.880	2 817	013.720
L167	-67	998.640	2 815	515.880	R165	-64	271.590	2 816	992.840
L168	-68	085.550	2 815	481.590	R166	-64	849.170	2 816	857.990
L169	-68	172.530	2 815	457.230	R167	-65	727.550	2 816	652.920
L170	-68	261.580	2 815	439.530	R168	-65	961.550	2 816	598.290
L171	-68	291.200	2 815	431.840	R169	-66	106.700	2 816	562.070
L172	-68	356.670	2 815	423.880	R170	-66	240.990	2 816	517.890
L173	-68	419.830	2 815	416.200	R171	-66	376.680	2 816	464.750
L174	-68	546.180	2 815	404.320	R172	-66	509.350	2 816	403.760
L175	-68	775.940	2 815	382.710	R173	-66	636.990	2 816	333.620
L176	-69	317.580	2 815	332.450	R174	-66	998.100	2 816	127.990
L177	-70	921.720	2 815	183.600	R175	-67	366.400	2 815	918.270
L178	-70	988.410	2 815	177.400	R176	-67	645.760	2 815	759.190
L179	-71	143.810	2 815	162.160	R177	-67	832.690	2 815	652.740
L180	-71	634.920	2 815	119.900	R178	-67	892.690	2 815	621.870
L181	-71	808.280	2 815	105.760	R179	-67	944.090	2 815	595.440
L182	-71	943.220	2 815	101.200	R180	-68	059.440	2 815	547.950
L183	-72	124.780	2 815	095.940	R181	-68	178.660	2 815	510.350
L184	-72	695.200	2 815	089.090	R182	-68	300.630	2 815	482.960
L185	-73	892.050	2 815	068.230	R183	-68	424.500	2 815	465.980
L186	-76	108.550	2 815	034.810	R184	-68	522.600	2 815	456.810
L187	-76	877.910	2 815	027.900	R185	-68	760.620	2 815	432.500
L188	-77	178.710	2 815	004.380	R186	-70	968.870	2 815	218.160
L189	-77	290.620	2 814	994.340	R187	-70	990.910	2 815	216.010
L190	-78	255.290	2 814	907.820	R188	-71	148.140	2 815	201.570
L191	-78	295.780	2 814	888.370	R189	-71	744.210	2 815	140.140
L192	-78	336.480	2 814	884.860	R190	-71	944.690	2 815	131.660
L193	-78	373.800	2 814	892.500	R191	-72	151.690	2 815	132.610
L194	-78	385.290	2 814	894.860	R192	-72	904.760	2 815	120.720
L195	-78	758.490	2 814	860.960	R193	-73	890.160	2 815	108.980
L196	-79	192.630	2 814	821.510	R194	-76	065.370	2 815	075.500
L197	-80	397.640	2 814	711.460	R195	-76	978.320	2 815	051.530
L198	-81	509.580	2 814	610.910	R196	-77	268.720	2 815	026.540
L199	-82	179.500	2 814	550.270	R197	-78	361.290	2 814	927.360
L200	-82	357.420	2 814	535.730	R198	-78	703.830	2 814	896.600
L201	-82	390.700	2 814	534.220	R199	-78	769.400	2 814	890.820
L202	-82	503.400	2 814	530.770	R200	-78	995.030	2 814	870.700
L203	-82	641.860	2 814	530.310	R201	-79	056.540	2 814	870.180
L204	-82	685.870	2 814	508.400	R202	-79	372.780	2 814	842.280

Vel	19	Van	21	P640/08
Sheet		of		

PADRESERWE KOÖRDINATE				/ ROAD RESERVE CO-ORDINATES			
LINKERKANT/LEFT HAND SIDE				REGTERKANT/RIGHT HAND SIDE			
	Y	X	WG 31°		X		
L205	-82 745.870	2 814	513.170	R203	-80 388.490	2 814	750.550
L206	-82 788.630	2 814	539.870	R204	-81 518.440	2 814	646.360
L207	-83 041.560	2 814	568.450	R205	-81 878.550	2 814	613.160
L208	-83 680.520	2 814	638.980	R206	-82 184.080	2 814	589.740
L209	-84 265.470	2 814	700.660	R207	-82 381.780	2 814	574.280
L210	-85 714.720	2 814	859.130	R208	-82 502.320	2 814	570.720
L211	-86 577.150	2 814	959.810	R209	-82 838.030	2 814	586.170
L212	-86 908.150	2 814	992.620	R210	-85 723.554	2 814	900.739
L213	-87 684.200	2 815	060.190	R211	-86 764.110	2 815	014.760
L214	-89 834.410	2 815	241.470	R212	-86 913.880	2 815	028.300
L215	-90 973.710	2 815	336.570	R213	-87 158.440	2 815	049.420
L216	-92 199.330	2 815	497.720	R214	-87 684.050	2 815	089.030
L217	-92 200.510	2 815	491.130	R215	-89 212.530	2 815	220.310
L217X	-94 751.490	2 815	823.780	R216	-89 831.020	2 815	275.500
L218	-94 782.800	2 815	830.210	R217	-90 441.180	2 815	330.100
L219	-94 925.000	2 815	849.000	R218	-90 937.620	2 815	373.310
L220	-94 979.670	2 815	856.470	R219	-91 167.270	2 815	401.670
L221	-95 115.682	2 815	878.268	R220	-91 967.110	2 815	501.930
L222	-95 319.450	2 815	916.836	R221	-92 191.810	2 815	531.550
L223	-95 385.598	2 815	944.529	R222	-93 241.910	2 815	669.930
L224	-95 455.119	2 816	012.259	R223	-94 913.966	2 815	889.291
L225	-95 457.793	2 816	014.558	R224	-94 995.767	2 815	901.451
L226	-95 479.120	2 816	032.890	R225	-95 042.507	2 815	908.180
L227	-95 483.870	2 816	039.470	R226	-95 276.968	2 815	940.240
L228	-95 488.170	2 816	054.260	R227	-95 387.959	2 816	028.790
L229	-95 506.400	2 816	073.650	R228	-95 388.582	2 816	031.419
L230	-95 564.660	2 816	135.510	R229	-95 389.740	2 816	036.300
L231	-95 584.940	2 816	157.620	R230	-95 439.650	2 816	084.660
L232	-95 602.632	2 816	176.908	R231	-95 448.770	2 816	083.120
L233	-95 770.562	2 816	361.332	R232	-95 451.700	2 816	085.280
L234	-95 871.020	2 816	465.850	R233	-95 457.240	2 816	084.090
L235	-95 926.840	2 816	512.450	R234	-95 546.750	2 816	155.010
L236	-95 966.290	2 816	532.820	R235	-95 567.230	2 816	176.930
L237	-96 006.220	2 816	548.480	R236	-95 582.277	2 816	193.035
L238	-96 088.060	2 816	569.710	R237	-95 752.500	2 816	378.019
L239	-96 198.790	2 816	561.160	R238	-95 812.000	2 816	439.020
L240	-96 292.700	2 816	524.380	R239	-95 842.070	2 816	473.680
L241	-96 429.950	2 816	455.700	R240	-95 909.360	2 816	545.420
L242	-96 878.550	2 816	232.980	R241	-95 979.790	2 816	574.090
L243	-97 062.610	2 816	141.800	R242	-96 011.050	2 816	582.810
L244	-97 228.990	2 816	059.200	R243	-96 027.410	2 816	587.510
L245	-97 245.780	2 816	036.800	R244	-96 102.480	2 816	600.620
L246	-97 406.616	2 815	968.730	R245	-96 167.610	2 816	596.010
L247	-97 916.480	2 815	714.740	R246	-96 188.030	2 816	592.260
L248	-97 991.240	2 815	658.500	R247	-96 227.340	2 816	585.350
L249	-98 079.630	2 815	566.920	R248	-96 342.350	2 816	534.300
L250	-98 141.340	2 815	507.740	R249	-96 876.370	2 816	270.380
L251	-98 233.090	2 815	441.810	R250	-96 926.400	2 816	242.890
L252	-98 335.130	2 815	392.540	R251	-97 236.750	2 816	090.980
L253	-98 431.560	2 815	356.440	R252	-97 749.360	2 815	838.260
L254	-98 524.480	2 815	331.500	R253	-97 927.250	2 815	745.240

Vel	20	Van	21	P640/08
Sheet		of		

PADRESERWE KOÖRDINATE				/	ROAD RESERVE CO-ORDINATES			
LINKERKANT/LEFT HAND SIDE					REGTERKANT/RIGHT HAND SIDE			
	Y	X	WG	31°		X		
L255	-98 580.030	2 815 326.660		R254	-97 959.540	2 815 725.620		
L256	-98 667.880	2 815 332.150		R255	-98 004.200	2 815 691.150		
L257	-98 824.000	2 815 364.360		R256	-98 095.160	2 815 598.300		
L258	-99 069.000	2 815 414.090		R257	-98 150.450	2 815 540.530		
L259	-99 066.010	2 815 426.490		R258	-98 189.710	2 815 508.670		
L260	-99 115.660	2 815 436.750		R259	-98 371.690	2 815 412.340		
L261	-99 126.150	2 815 437.000		R260	-98 435.210	2 815 385.770		
				R261	-98 512.630	2 815 365.460		
				R262	-98 572.610	2 815 359.730		
				R263	-98 602.890	2 815 356.830		
				R264	-98 727.120	2 815 373.910		
				R265	-99 091.230	2 815 450.170		
				R266	-99 123.150	2 815 449.500		