

Government Gazette Staatskoerant

REPUBLIC OF SOUTH AFRICA
REPUBLIEK VAN SUID-AFRIKA

Vol. 519

Pretoria, 22 September 2008

No. 31427

CONTENTS**INHOUD**

<i>No.</i>	<i>Page No.</i>	<i>Gazette No.</i>	<i>No.</i>	<i>Bladsy No.</i>	<i>Koerant No.</i>
GOVERNMENT NOTICE			GOEWERMENTSKENNISGEWING		
Transport, Department of			Vervoer, Departement van		
<i>Government Notice</i>			<i>Goewermentskennisgewing</i>		
983			983		
South African National Roads Agency Limited and the National Roads Act (7/1998): The South African National Roads Agency Limited: Declaration amendment of National Road N8 Section 8			Suid-Afrikaanse Nasionale Padagentskap Beperk en die Nasionale Paaie Wet (7/1998): Die Suid-Afrikaanse Nasionale Padagentskap Beperk: Verklaring wysiging van Nasionale Pad N8 Seksie 8		
	3	31427		4	31427

**GOVERNMENT NOTICE
GOEWERMENTSKENNISGEWING**

**DEPARTMENT OF TRANSPORT
DEPARTEMENT VAN VERVOER**

No. 983

22 September 2008

**THE SOUTH AFRICAN NATIONAL ROADS
AGENCY LIMITED**

Registration No: 98/09584/06

DECLARATION AMENDMENT OF NATIONAL ROAD N8 SECTION 8

AMENDMENT OF DECLARATION No. 284 OF 2006

By virtue of section 40 (1)(b) of the South African National Roads Agency Limited and the National Roads Act, 1998 (Act No. 7 of 1998), I hereby amend Declaration No. 284 of 2006 by substituting the section of the descriptive declaration from Campbell to Kimberley, with the subjoined sheets 1 to 19 of Plan No. P663/08.

(National Road N8 Section 8: Campbell - Kimberley)



MINISTER OF TRANSPORT

No. 983

22 September 2008

DIE SUID-AFRIKAANSE NASIONALE PADAGENTSKAP BEPERK


Registrasie No: 98/09584/06

VERKLARING WYSIGING VAN NASIONALE PAD N8 SEKSIE 8.

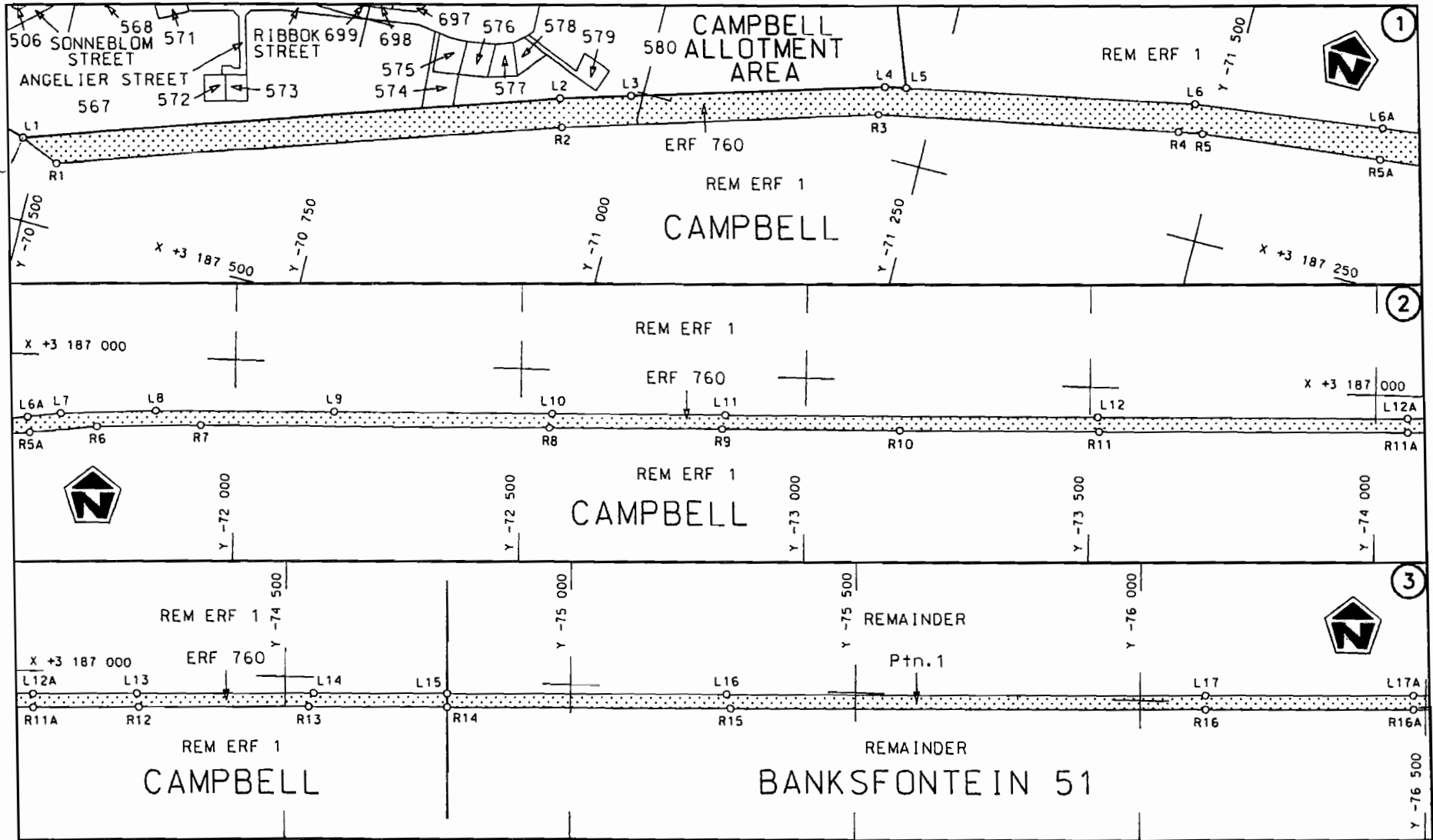
WYSIGING VAN VERKLARING NO. 284 VAN 2006.

Kragtens Artikel 40(1)(b) van die Suid-Afrikaanse Nasionale Padagentskap Beperk en die Nasionale Paaie Wet, 1998 (Wet No.7 van 1998), wysig ek hiermee Verklaring no. 284 van 2006 deur die gedeelte van die beskrywende verklaring vanaf Campbell tot by Kimberley, te vervang met meegaande velle 1 tot 19 van Plan no. P663/08.

(Nasionale Pad N8 Seksie 8: Campbell - Kimberley)



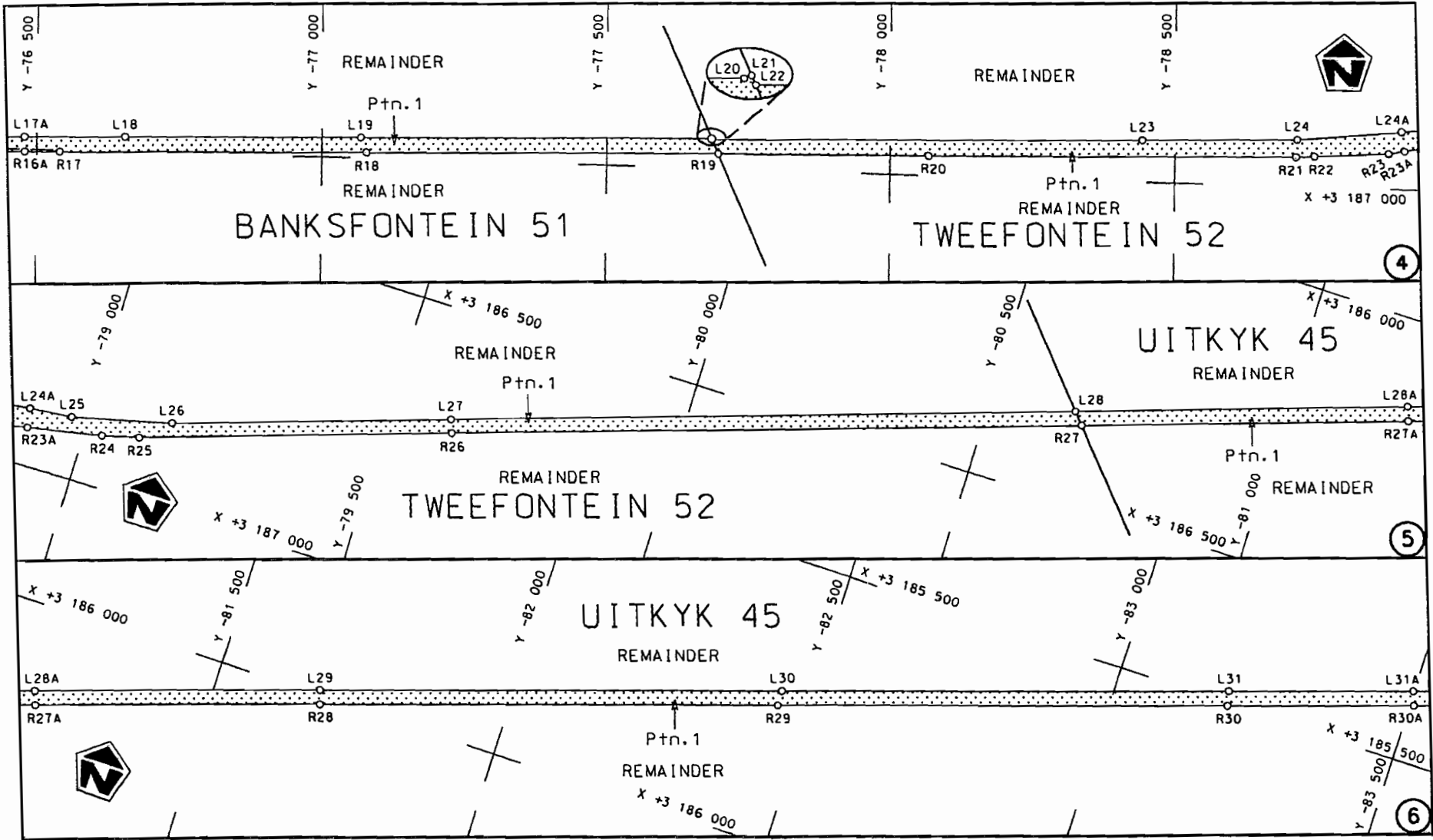
MINISTER VAN VERVOER

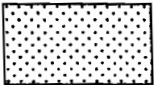


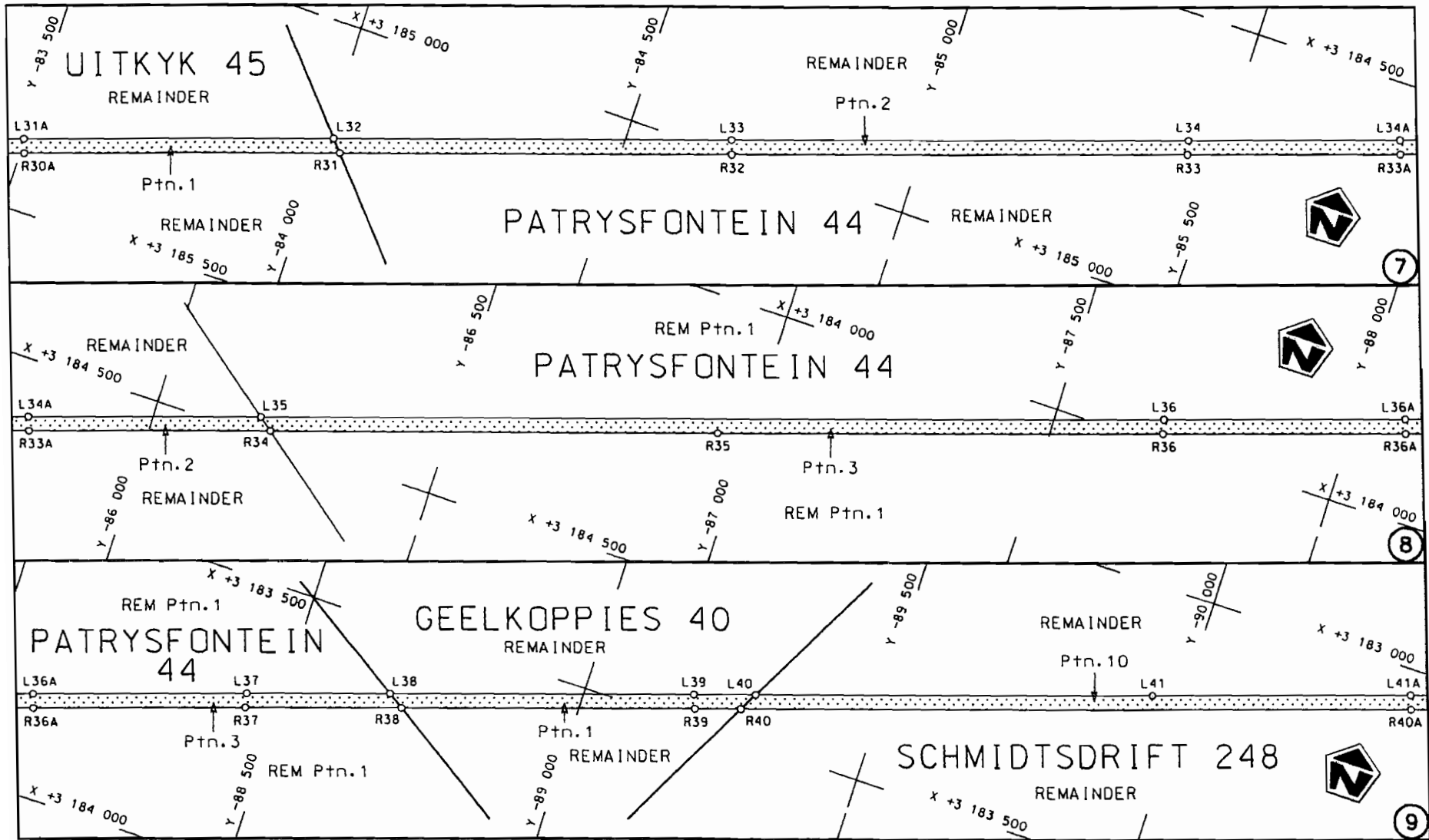
<p>Die Suid Afrikaanse Nasionale Padagentskap Beperk The South African National Roads Agency Limited</p>	<p>Die figuur getoon The figure shown</p>	<p>steldie padreserwe voor van 'n gedeelte represents the road reserve of a portion van Nasionale Roete of National Route</p>	<p>Vel Sheet 1 von of 19</p> <p>Plan P663/08</p>
<p>NB Seksie Section 8</p>			

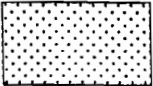
STAATSKOERANT, 22 SEPTEMBER 2008

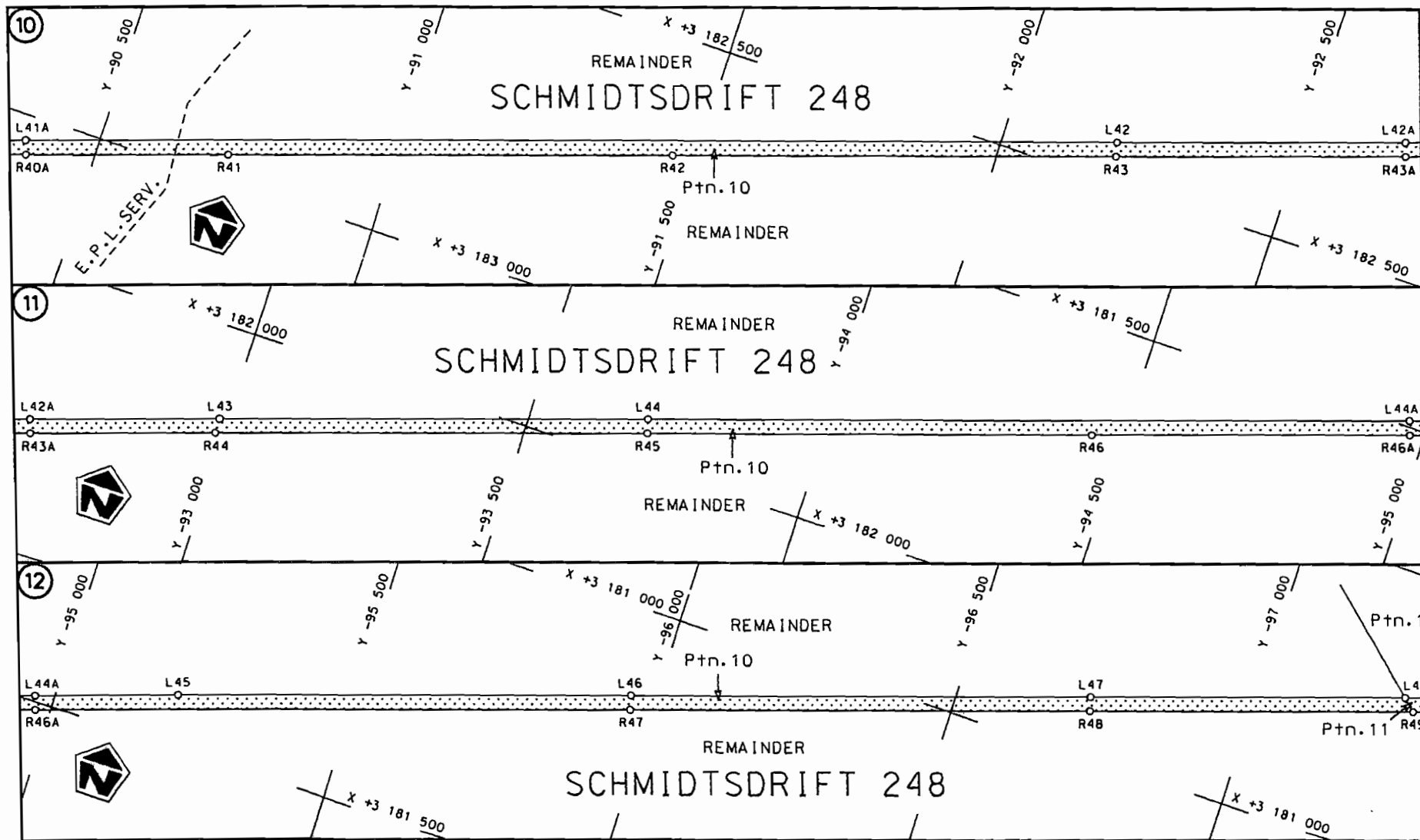
No. 31427 5

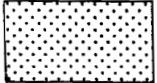


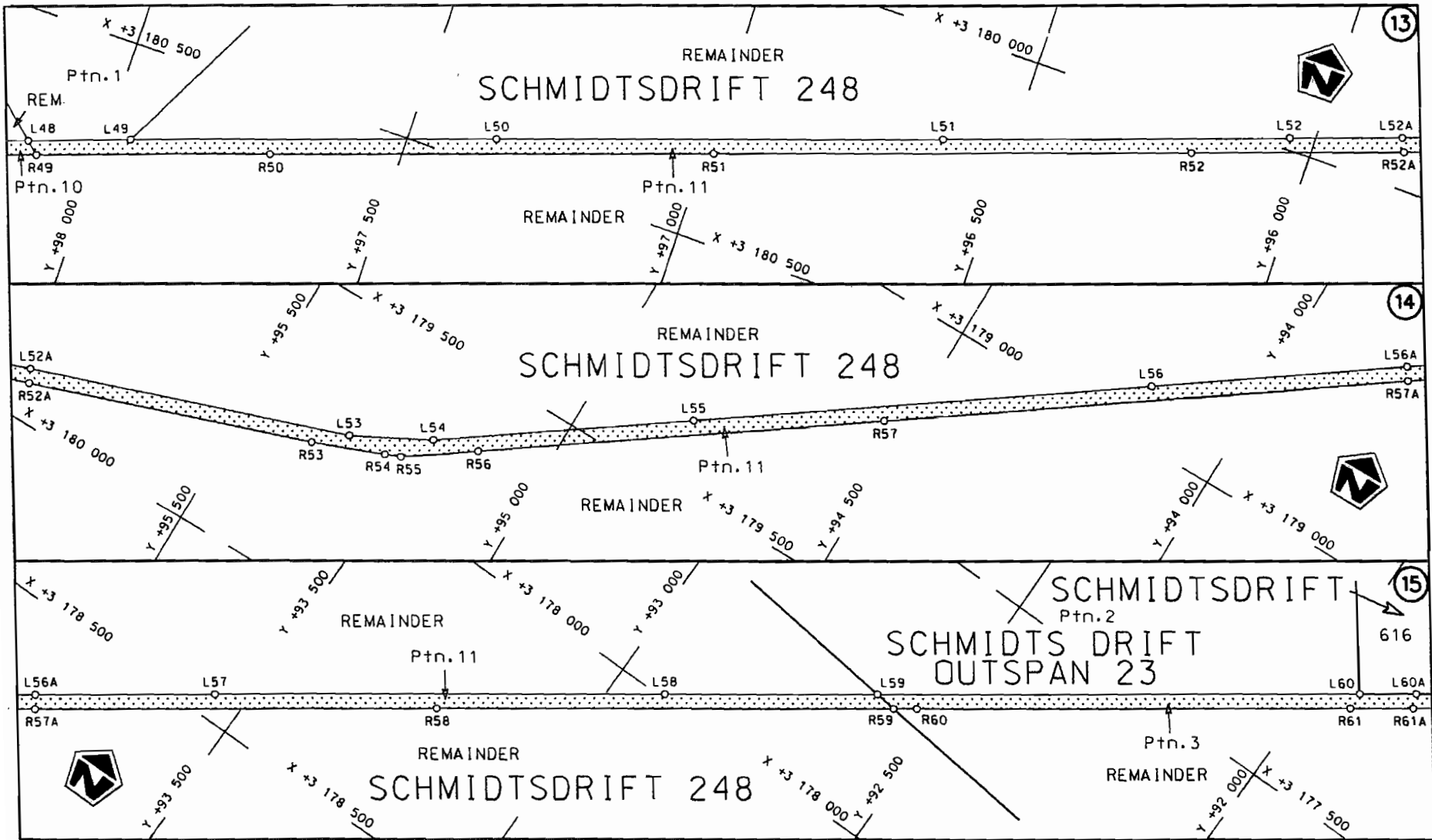
<p>Die Suid Afrikaanse Nasionale Padagentskap Beperk The South African National Roads Agency Limited</p>	<p>Die figuur getoon The figure shown</p> 	<p>steldie padreserwe voor van 'n gedeelte represents the road reserve of a portion van Nasionale Roete N8 Seksie Section of National Route 8</p>	<p>Vel Sheet 2 van 19 Plan P663/08</p>
--	--	---	--



Die Suid Afrikaanse Nasionale Padagentskap Beperk The South African National Roads Agency Limited	Die figuur getoon The figure shown	 stel die padreserwe voor van 'n gedeelte represents the road reserve of a portion van Nasionale Roete N8 Seksie of National Route Section	Vel Sheet 3 van 19 Plan P663/08
--	---------------------------------------	---	------------------------------------



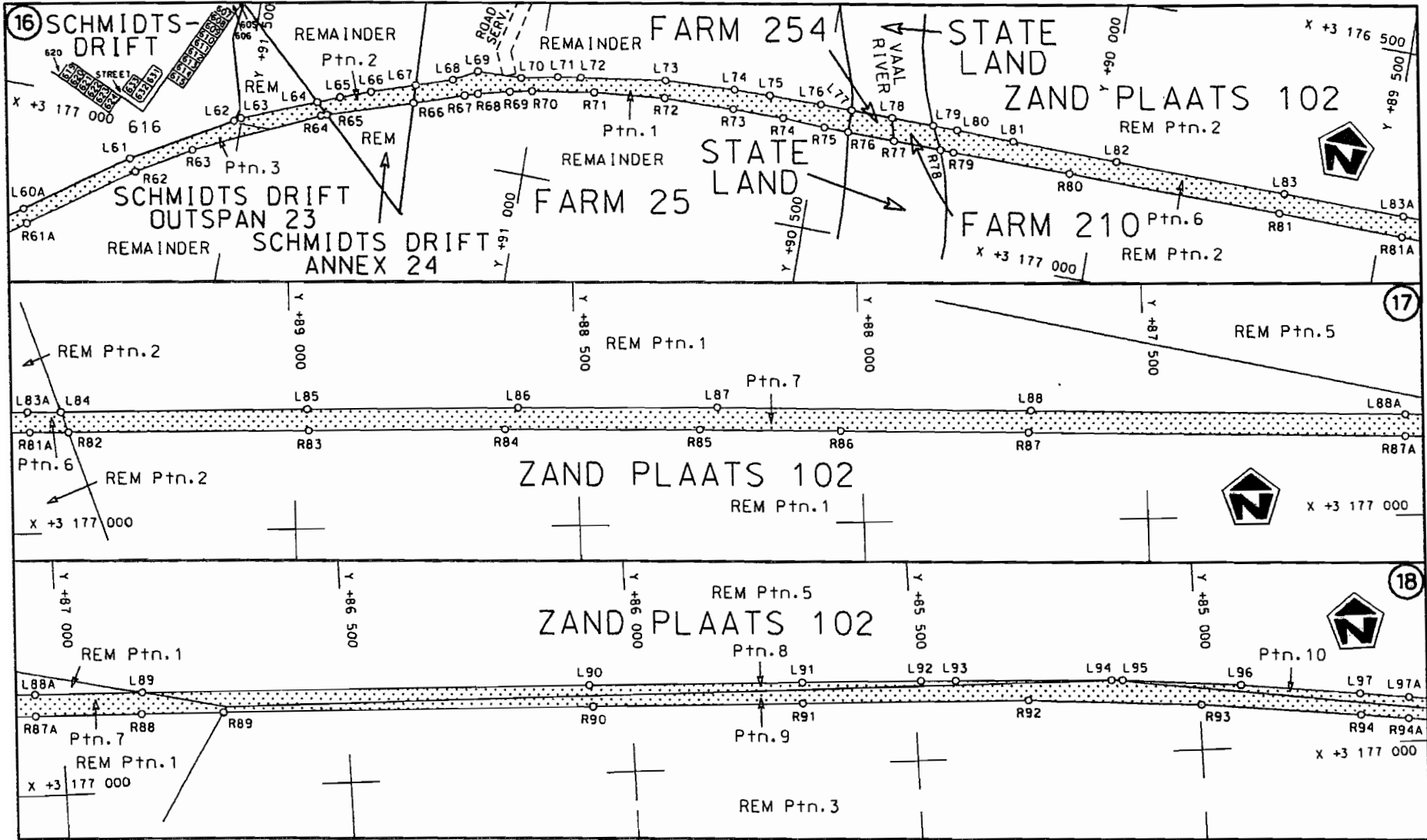
<p>Die Suid Afrikaanse Nasionale Padagentskap Beperk The South African National Roads Agency Limited</p>	<p>Die figuur getoon The figure shown</p> 	<p>steldie padreserwe voor van 'n gedeelte represents the road reserve of a portion van Nasionale Roete N8 of National Route N8</p> <p>Seksie 8 Section 8</p>	<p>Vel Sheet 4 van of 19 Plan P663/08</p>
--	--	---	---




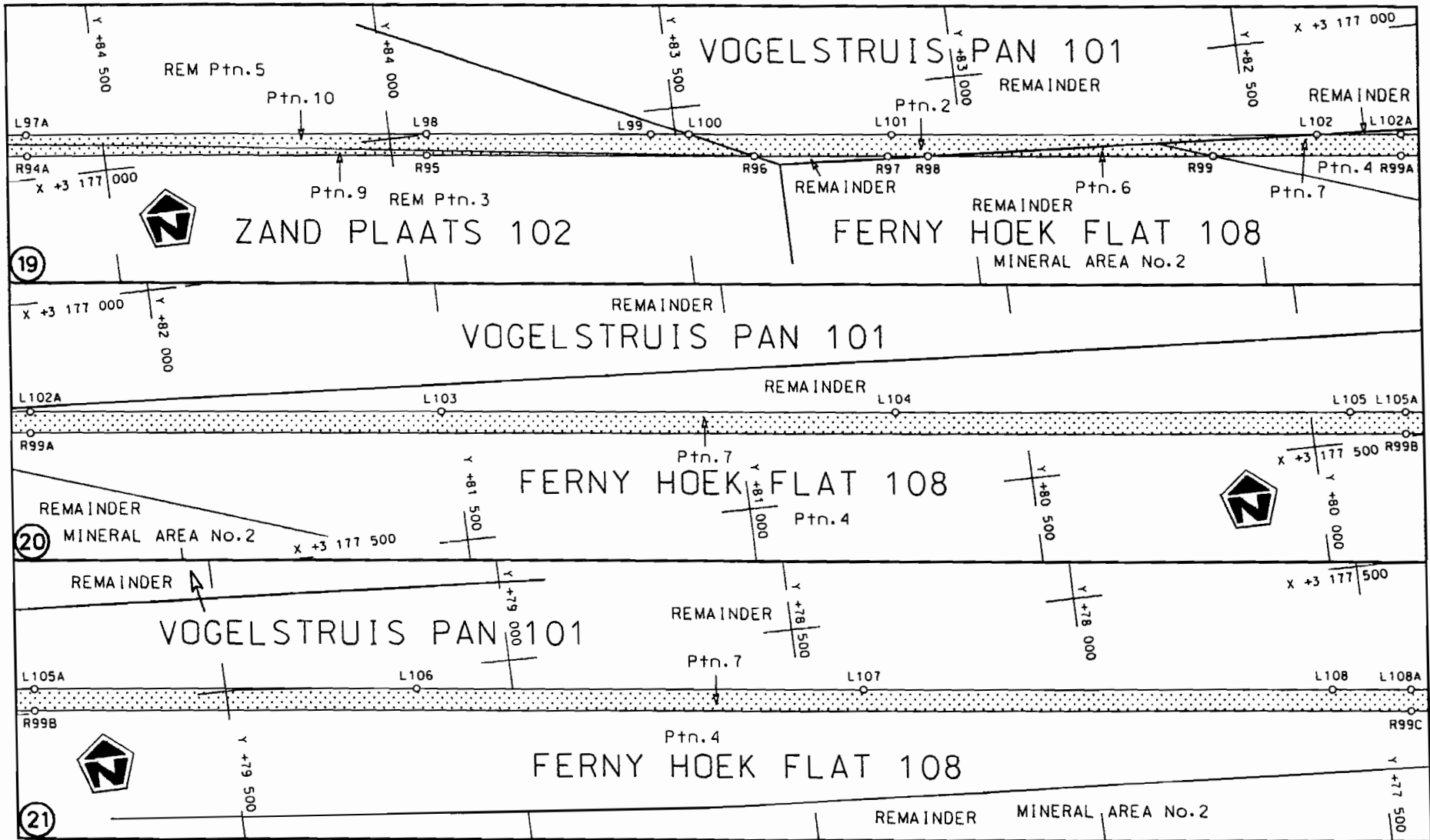
STAATSKOERANT, 22 SEPTEMBER 2008

No. 31427 9

<p>Die Suid Afrikaanse Nasionale Padagentskap Beperk The South African National Roads Agency Limited</p>	<p>Die figuur getoon The figure shown</p> <div style="border: 1px solid black; width: 50px; height: 30px; background-color: #cccccc; margin: 5px 0;"></div>	<p>steldie padreserwe voor van 'n gedeelte represents the road reserve of a portion van Nasionale Roete N8 Seksie of National Route N8 Section</p>	<p>Vel Sheet 5 van of 19 Plan P663/08</p>
--	---	--	---

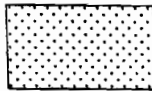


<p>Die Suid Afrikaanse Nasionale Padagentskap Beperk The South African National Roads Agency Limited</p>	<p>Die figuur getoon The figure shown</p> 	<p>steldie padreserwe voor van 'n gedeelte represents the road reserve of a portion van Nasionale Roete N8 of National Route N8</p> <p>Seksie Section</p> <p>8</p>	<p>Vel Sheet</p> <p>6 van of 19</p> <p>Plan P663/08</p>
--	--	--	---



Die Suid Afrikaanse Nasionale Padagentskap Beperk
The South African National Roads Agency Limited

Die figuur getoon
The figure shown



steldie padreserwe voor van 'n gedeelte
represents the road reserve of a portion
van Nasionale Roete N8 Sektie
of National Route Section

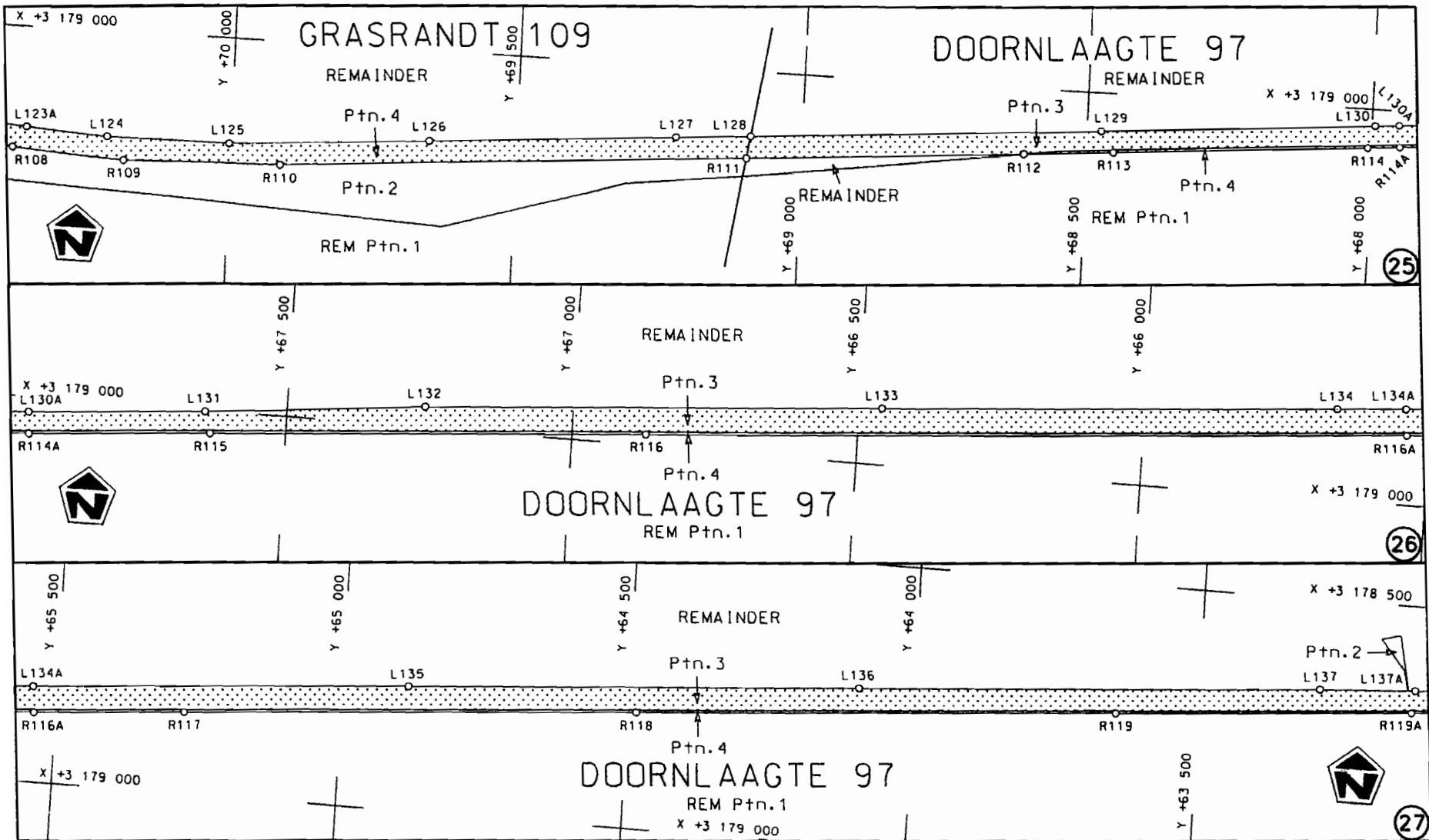
N8

Sektie
Section

8

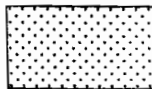
Vel
Sheet 7 van
of 19

Plan P663/08



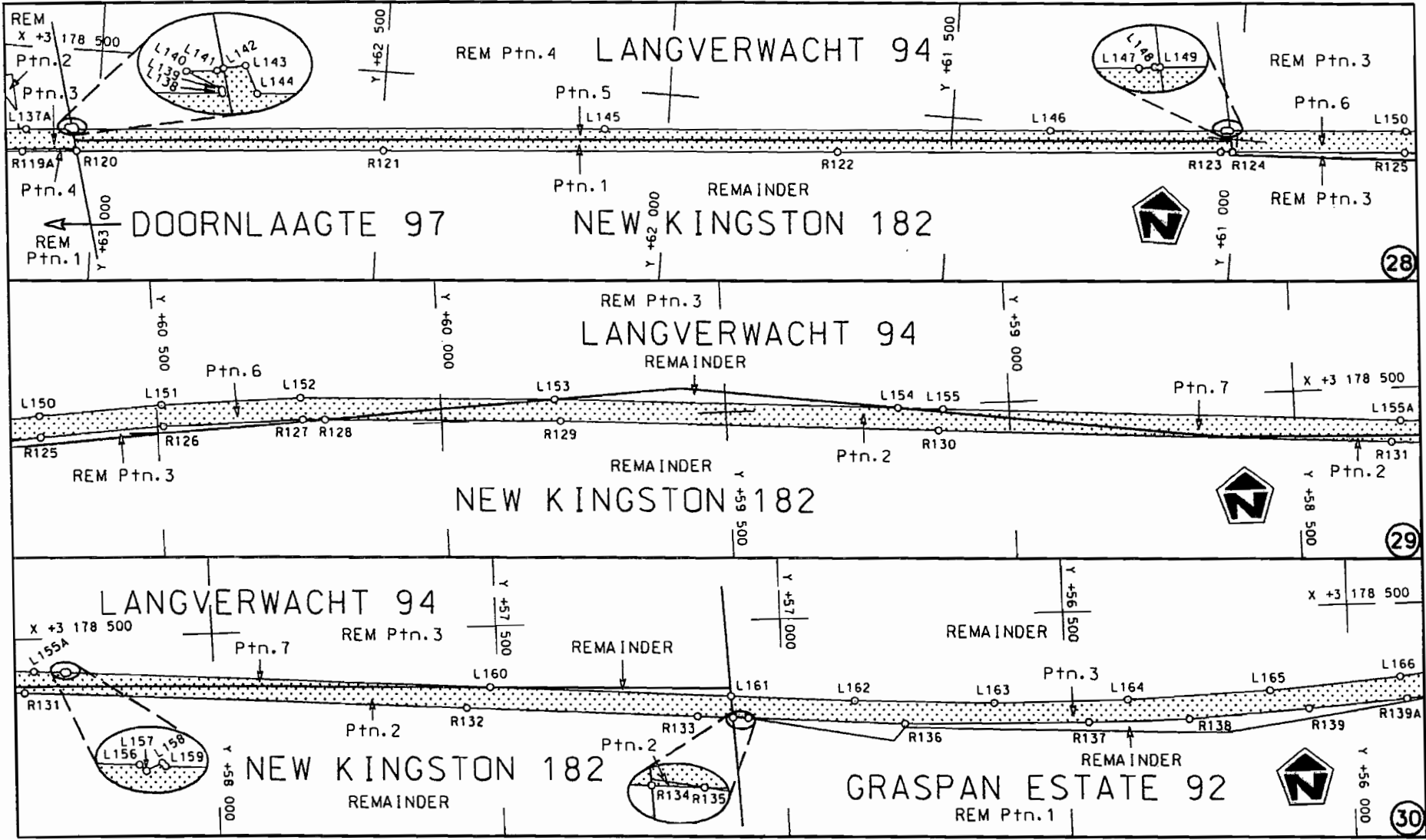
Die Suid Afrikaanse Nasionale Padagenskap Beperk
The South African National Roads Agency Limited

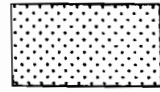
Die figuur getoon
The figure shown

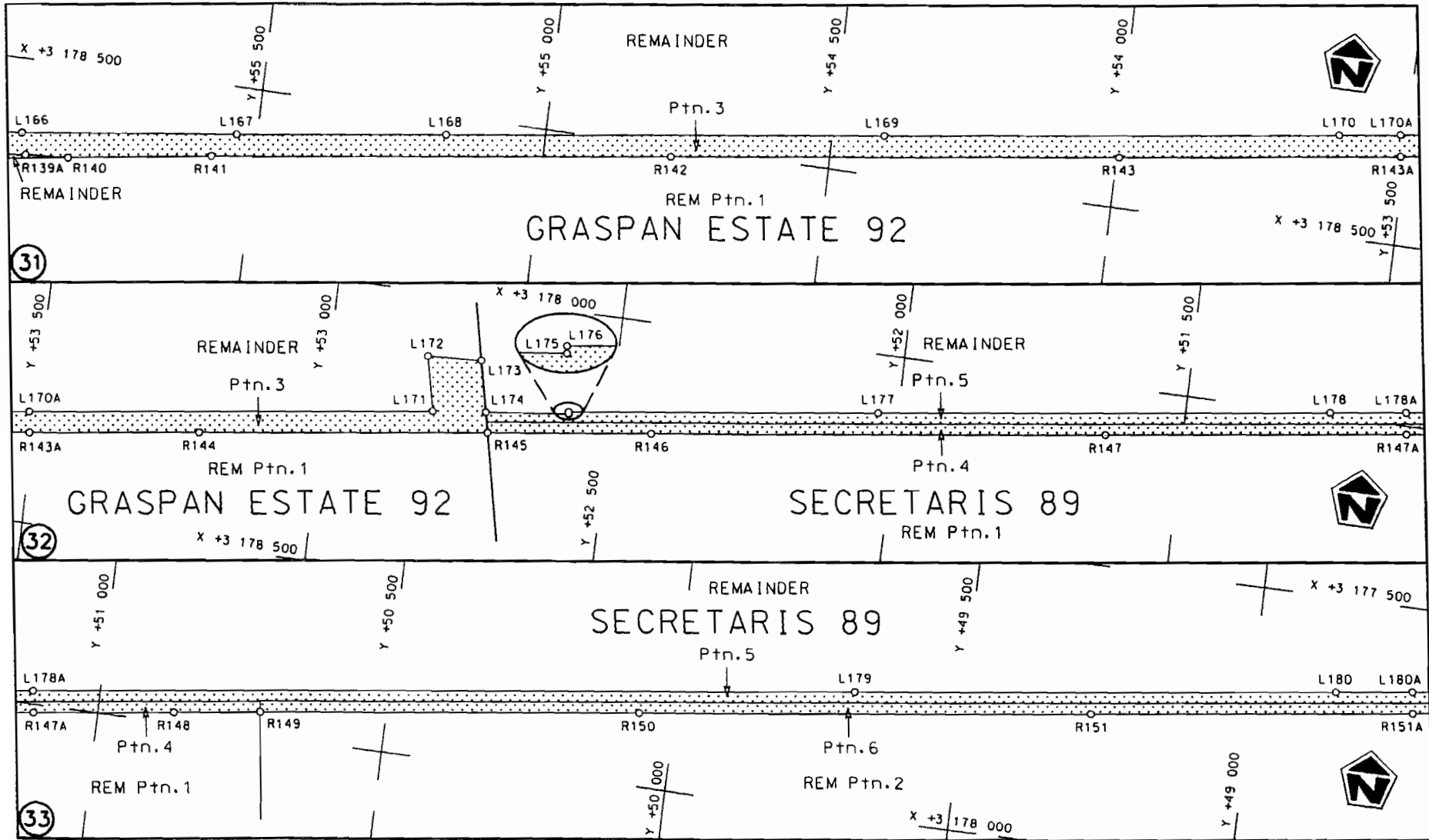


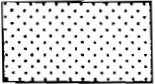
steldie padreserwe voor van 'n gedeelte
represents the road reserve of a portion
van Nasionale Roete N8 Seksie Section 8
of National Route

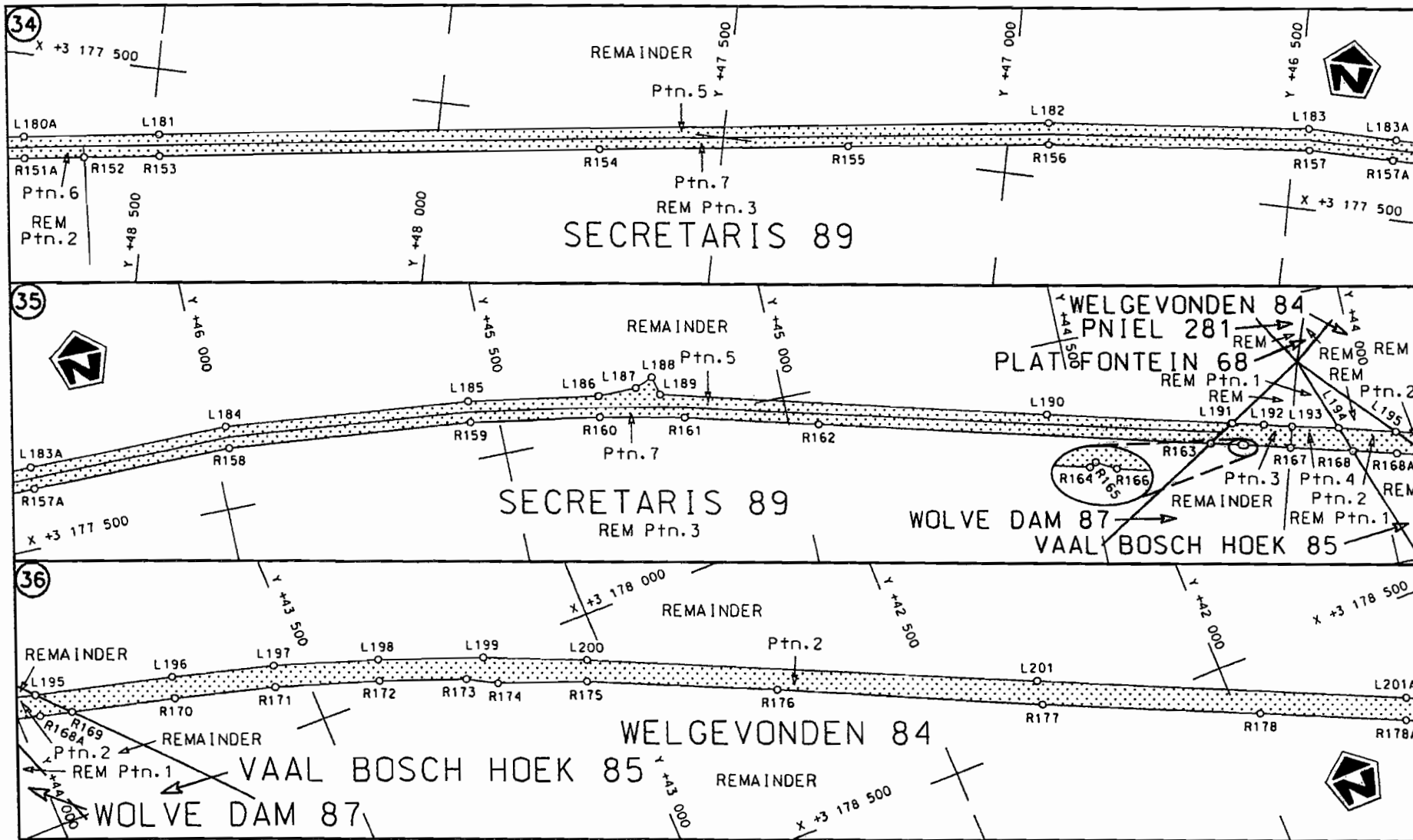
Vel Sheet 9 van of 19
Plan P663/08



<p>Die Suid Afrikaanse Nasionale Padagentskap Beperk The South African National Roads Agency Limited</p>	<p>Die figuur getoon The figure shown</p> 	<p>steldie padreserwe voor van 'n gedeelte represents the road reserve of a portion van Nasionale Roete N8 of National Route</p> <p>Seksie Section 8</p>	<p>Vel Sheet 10 van of 19 Plan P663/08</p>
--	--	--	--

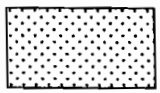


Die Suid Afrikaanse Nasionale Padagentskap Beperk The South African National Roads Agency Limited	Die figuur getoon The figure shown	 steldie padreserwe voor van 'n gedeelte represents the road reserve of a portion van Nasionale Roete N8 of National Route N8 Seksie 8 Section 8	Vel 11 van 19 Sheet of of Plan P663/08
--	---------------------------------------	---	--



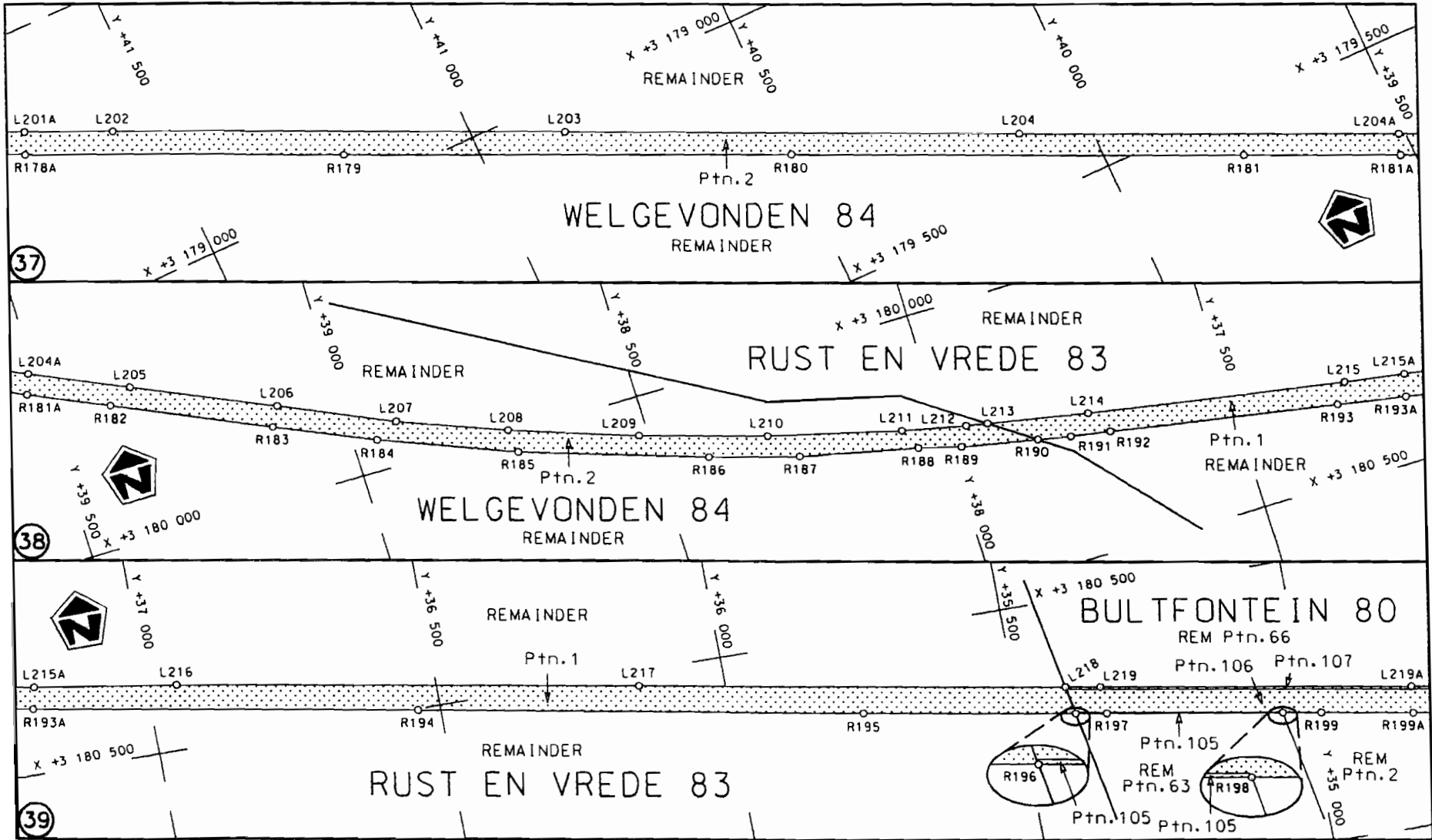
Die Suid Afrikaanse Nasionale Padagentskap Beperk
The South African National Roads Agency Limited

Die figuur getoon
The figure shown



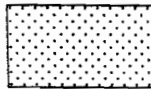
steldie podreserve voor van 'n gedeelte
represents the road reserve of a portion
von Nasionale Roete of National Route
N8 Seksie Section 8

Vel Sheet 12 van of 19
Plan P663/08



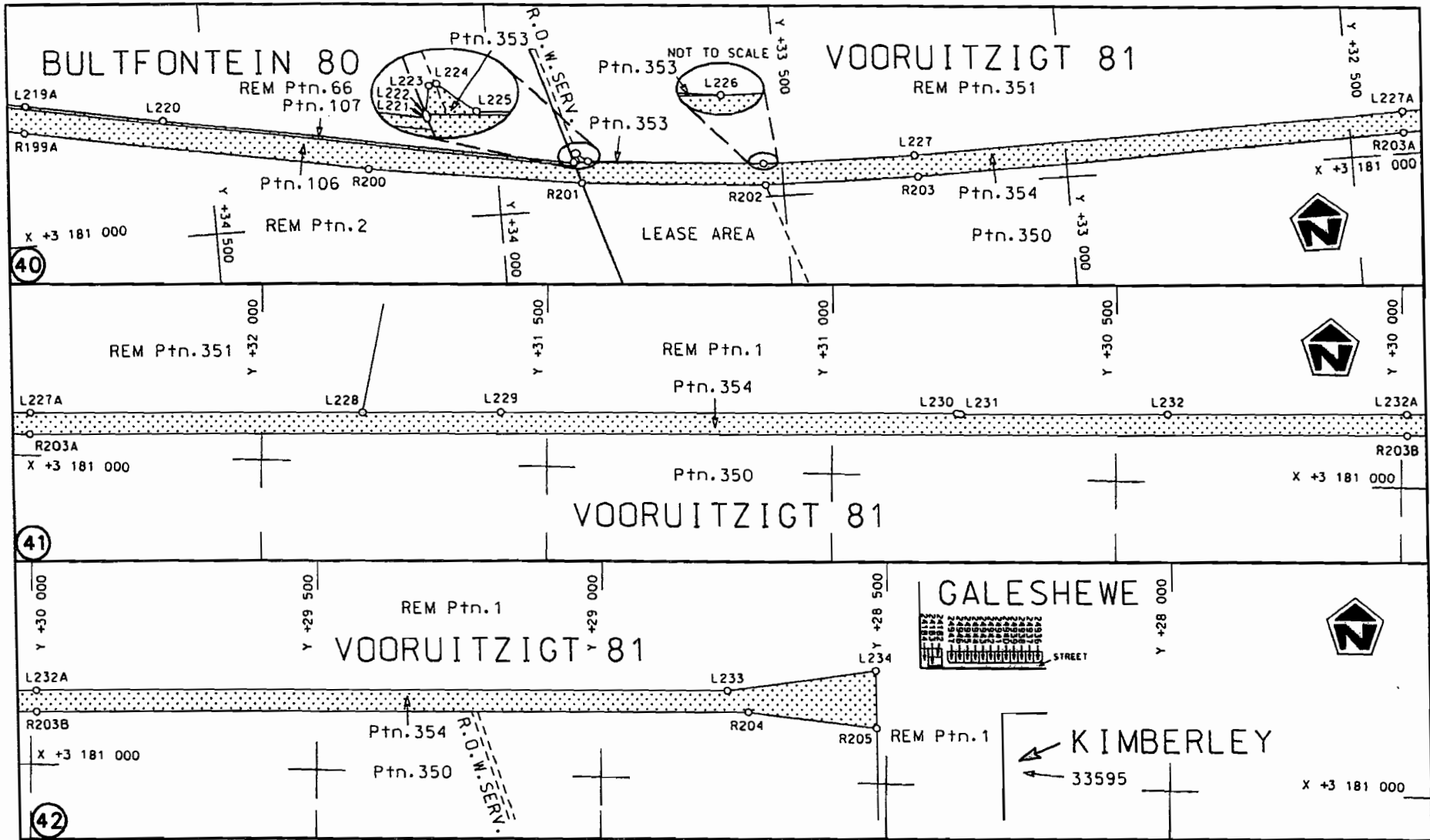
Die Suid Afrikaanse Nasionale Padagentskap Beperk
The South African National Roads Agency Limited

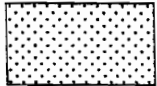
Die figuur getoon
The figure shown



stel die padreserwe voor van 'n gedeelte
represents the road reserve of a portion
van Nasionale Roete N8 Sektie Section 8
of National Route

Vel Sheet 13 van of 19
Plan P663/08



<p>Die Suid Afrikaanse Nasionale Padagentskap Beperk The South African National Roads Agency Limited</p>	<p>Die figuur getoon The figure shown</p> 	<p>steldie padreserwe voor van 'n gedeelte represents the raad reserve of a portion van Nasionale Roete of National Route</p> <p>N8 Seksie 8 Section</p>	<p>Vel Sheet 14 of 19</p> <p>Plan P663/08</p>
--	--	--	---

PADRESERWE KOÖRDINATE				/	ROAD RESERVE CO-ORDINATES			
LINKERKANT/LEFT HAND SIDE					REGTERKANT/RIGHT HAND SIDE			
	Y	X	WG	23°	Y	X		
L1	-70 483.490	3 187 428.220		R1	-70 518.070	3 187 442.780		
L2	-70 931.010	3 187 272.980		R2	-70 938.920	3 187 297.460		
L3	-70 989.970	3 187 254.840		R3	-71 204.490	3 187 214.060		
L4	-71 204.050	3 187 189.090		R4	-71 463.330	3 187 160.860		
L5	-71 222.380	3 187 185.210		R5	-71 483.860	3 187 157.120		
L6	-71 471.350	3 187 133.090		R6	-71 758.290	3 187 125.640		
L7	-71 694.310	3 187 104.250		R7	-71 939.910	3 187 118.110		
L8	-71 860.100	3 187 095.280		R8	-72 551.490	3 187 103.130		
L9	-72 173.910	3 187 086.980		R9	-72 853.190	3 187 095.510		
L10	-72 555.800	3 187 077.820		R10	-73 165.880	3 187 088.400		
L11	-72 858.310	3 187 070.020		R11	-73 516.890	3 187 079.450		
L12	-73 514.160	3 187 053.560		R12	-74 243.590	3 187 059.480		
L13	-74 240.060	3 187 035.690		R13	-74 541.300	3 187 051.840		
L14	-74 549.920	3 187 028.150		R14	-74 782.230	3 187 046.150		
L15	-74 782.010	3 187 022.290		R15	-75 279.260	3 187 034.400		
L16	-75 272.290	3 187 009.890		R16	-76 114.130	3 187 013.770		
L17	-76 113.820	3 186 988.770		R17	-76 538.570	3 187 003.090		
L18	-76 654.000	3 186 974.640		R18	-77 077.810	3 186 990.100		
L19	-77 067.730	3 186 964.780		R19	-77 695.700	3 186 973.280		
L20	-77 682.600	3 186 947.880		R20	-78 067.430	3 186 964.960		
L21	-77 684.080	3 186 947.250		R21	-78 712.730	3 186 948.440		
L22	-77 684.920	3 186 949.140		R22	-78 745.190	3 186 946.620		
L23	-78 442.210	3 186 926.220		R23	-78 876.040	3 186 938.420		
L24	-78 714.550	3 186 917.810		R24	-79 031.530	3 186 908.160		
L25	-78 970.600	3 186 891.770		R25	-79 095.040	3 186 891.700		
L26	-79 142.700	3 186 848.840		R26	-79 616.150	3 186 715.560		
L27	-79 607.280	3 186 691.770		R27	-80 667.280	3 186 359.940		
L28	-80 649.610	3 186 339.090		R28	-81 684.330	3 186 015.700		
L29	-81 677.220	3 185 991.410		R29	-82 447.010	3 185 757.360		
L30	-82 446.430	3 185 730.910		R30	-83 196.790	3 185 504.040		
L31	-83 191.400	3 185 478.750		R31	-84 032.510	3 185 220.670		
L32	-84 014.640	3 185 199.970		R32	-84 685.190	3 184 999.710		
L33	-84 677.190	3 184 975.490		R33	-85 446.460	3 184 741.650		
L34	-85 440.370	3 184 716.990		R34	-86 202.260	3 184 485.240		
L35	-86 178.970	3 184 466.970		R35	-86 946.650	3 184 233.580		
L36	-87 682.850	3 183 957.290		R36	-87 688.650	3 183 981.980		
L37	-88 440.590	3 183 700.310		R37	-88 445.680	3 183 725.370		
L38	-88 678.580	3 183 619.820		R38	-88 705.430	3 183 637.520		
L39	-89 183.560	3 183 449.040		R39	-89 192.970	3 183 472.640		
L40	-89 286.840	3 183 414.060		R40	-89 270.000	3 183 446.530		
L41	-89 947.160	3 183 190.390		R41	-90 720.660	3 182 954.990		
L42	-92 192.630	3 182 429.330		R42	-91 460.490	3 182 704.130		
L43	-92 986.080	3 182 160.530		R43	-92 198.470	3 182 454.050		
L44	-93 698.860	3 181 919.100		R44	-92 987.070	3 182 187.020		
L45	-95 203.720	3 181 409.650		R45	-93 705.620	3 181 943.470		
L46	-95 957.740	3 181 154.130		R46	-94 446.550	3 181 692.680		
L47	-96 724.150	3 180 894.610		R47	-95 963.930	3 181 178.800		
L48	-97 246.860	3 180 717.710		R48	-96 730.610	3 180 918.990		
				R49	-97 268.240	3 180 737.260		

Vel	15	Van	19	P663/08
Sheet		of		

PADRESERWE KOÖRDINATE				/	ROAD RESERVE CO-ORDINATES			
LINKERKANT/LEFT HAND SIDE					REGTERKANT/RIGHT HAND SIDE			
	Y	X	WG	25°	Y	X		
L48	98 124.370	3 180	725.070	R49	98 102.660	3 180	744.260	
L49	97 956.210	3 180	664.950	R50	97 717.290	3 180	606.650	
L50	97 353.420	3 180	448.950	R51	96 986.150	3 180	344.100	
L51	96 614.820	3 180	184.240	R52	96 195.360	3 180	060.610	
L52	96 042.540	3 179	978.900	R53	95 371.070	3 179	764.780	
L53	95 320.490	3 179	719.870	R54	95 251.320	3 179	715.790	
L54	95 193.200	3 179	650.260	R55	95 225.600	3 179	704.880	
L55	94 822.340	3 179	380.370	R56	95 116.570	3 179	626.020	
L56	94 168.240	3 178	904.290	R57	94 536.550	3 179	203.850	
L57	93 552.110	3 178	456.090	R58	93 224.260	3 178	248.930	
L58	92 915.620	3 177	992.890	R59	92 574.910	3 177	776.210	
L59	92 612.090	3 177	772.150	R60	92 542.380	3 177	752.530	
L60	91 930.410	3 177	275.660	R61	91 929.280	3 177	306.450	
L61	91 682.870	3 177	095.750	R62	91 669.890	3 177	117.430	
L62	91 513.390	3 176	997.210	R63	91 577.460	3 177	061.530	
L63	91 501.620	3 176	990.470	R64	91 363.890	3 176	961.140	
L64	91 374.050	3 176	938.570	R65	91 353.840	3 176	957.770	
L65	91 336.490	3 176	923.280	R66	91 207.750	3 176	908.760	
L66	91 284.670	3 176	903.970	R67	91 122.850	3 176	880.270	
L67	91 209.110	3 176	878.000	R68	91 100.330	3 176	873.300	
L68	91 147.580	3 176	856.850	R69	91 045.960	3 176	859.460	
L69	91 107.100	3 176	833.870	R70	91 007.010	3 176	851.210	
L70	91 030.260	3 176	831.750	R71	90 898.910	3 176	833.000	
L71	90 966.240	3 176	817.810	R72	90 777.360	3 176	819.780	
L72	90 926.010	3 176	811.310	R73	90 655.550	3 176	816.290	
L73	90 780.660	3 176	789.410	R74	90 565.950	3 176	815.080	
L74	90 658.770	3 176	782.400	R75	90 491.310	3 176	818.080	
L75	90 595.290	3 176	780.220	R76	90 447.990	3 176	818.444	
L76	90 503.960	3 176	779.240	R77	90 365.217	3 176	819.140	
L77	90 448.547	3 176	779.260	R78	90 282.563	3 176	819.834	
L78	90 375.516	3 176	779.287	R79	90 259.280	3 176	820.030	
L79	90 302.562	3 176	779.314	R80	90 053.160	3 176	819.610	
L80	90 259.850	3 176	779.330	R81	89 679.880	3 176	821.550	
L81	90 160.470	3 176	781.150	R82	89 393.700	3 176	823.380	
L82	89 974.330	3 176	783.950	R83	88 972.170	3 176	826.970	
L83	89 676.800	3 176	785.920	R84	88 628.430	3 176	828.800	
L84	89 405.790	3 176	787.140	R85	88 286.610	3 176	833.170	
L85	88 974.010	3 176	789.070	R86	88 037.040	3 176	838.230	
L86	88 604.310	3 176	791.520	R87	87 706.910	3 176	844.980	
L87	88 254.800	3 176	794.980	R88	86 862.160	3 176	864.460	
L88	87 701.910	3 176	807.400	R89	86 717.810	3 176	867.750	
L89	86 859.140	3 176	826.500	R90	86 066.680	3 176	882.600	
L90	86 071.170	3 176	844.380	R91	85 698.810	3 176	890.660	
L91	85 697.500	3 176	853.500	R92	85 301.290	3 176	900.270	
L92	85 487.350	3 176	859.160	R93	84 996.520	3 176	919.850	
L93	85 426.230	3 176	860.890	R94	84 718.270	3 176	949.320	
L94	85 152.200	3 176	870.770	R95	83 939.580	3 177	036.310	
L95	85 132.720	3 176	871.430	R96	83 366.280	3 177	100.430	
L96	84 926.590	3 176	888.330	R97	83 132.600	3 177	126.810	
L97	84 717.550	3 176	911.160	R98	83 062.250	3 177	134.660	
L98	83 935.310	3 176	998.660	R99	82 563.970	3 177	190.160	

Vel	16	Van	19	P663/08
Sheet		of		

PADRESERWE KOÖRDINATE				/	ROAD RESERVE CO-ORDINATES			
LINKERKANT/LEFT HAND SIDE					REGTERKANT/RIGHT HAND SIDE			
	Y	X	WG	25°	Y	X		
L99	83 543.050	3 177 042.170		R100	74 600.880	3 178 081.080		
L100	83 476.730	3 177 049.650		R101	73 461.990	3 178 209.130		
L101	83 121.330	3 177 089.750		R102	73 187.680	3 178 256.990		
L102	82 379.320	3 177 172.890		R103	72 919.000	3 178 339.040		
L103	81 517.260	3 177 269.230		R104	72 396.730	3 178 534.030		
L104	80 723.060	3 177 358.060		R105	71 402.850	3 178 906.310		
L105	79 929.980	3 177 446.540		R106	70 900.210	3 179 094.560		
L106	79 169.050	3 177 531.930		R107	70 597.660	3 179 179.430		
L107	78 387.740	3 177 619.430		R108	70 383.190	3 179 213.500		
L108	77 570.010	3 177 710.760		R109	70 185.980	3 179 226.990		
L109	76 803.600	3 177 796.450		R110	69 912.330	3 179 217.490		
L110	76 010.200	3 177 885.550		R111	69 096.360	3 179 154.130		
L111	74 662.800	3 178 040.830		R112	68 608.730	3 179 115.960		
L112	74 482.260	3 178 056.580		R113	68 451.900	3 179 103.690		
L113	73 791.280	3 178 134.040		R114	68 006.060	3 179 069.220		
L114	73 319.320	3 178 190.920		R115	67 632.760	3 179 039.890		
L115	73 050.430	3 178 254.670		R116	66 870.520	3 178 980.880		
L116	72 857.270	3 178 321.500		R117	65 274.990	3 178 856.180		
L117	72 683.940	3 178 386.450		R118	64 485.050	3 178 794.270		
L118	72 375.630	3 178 501.880		R119	63 646.020	3 178 728.360		
L119	71 924.980	3 178 670.600		R120	63 033.810	3 178 680.590		
L120	71 406.720	3 178 865.100		R121	62 496.480	3 178 638.650		
L121	71 130.830	3 178 968.630		R122	61 700.280	3 178 576.690		
L122	70 815.070	3 179 083.210		R123	61 026.650	3 178 523.810		
L123	70 407.580	3 179 172.810		R124	61 006.600	3 178 522.290		
L124	70 216.170	3 179 186.550		R125	60 705.020	3 178 499.320		
L125	70 002.900	3 179 186.230		R126	60 490.100	3 178 488.670		
L126	69 652.830	3 179 159.380		R127	60 245.050	3 178 485.680		
L127	69 221.010	3 179 125.580		R128	60 205.630	3 178 487.370		
L128	69 090.600	3 179 115.470		R129	59 790.890	3 178 505.130		
L129	68 474.710	3 179 067.720		R130	59 125.680	3 178 546.150		
L130	67 994.300	3 179 029.910		R131	58 331.320	3 178 595.460		
L131	67 643.080	3 179 002.790		R132	57 556.580	3 178 642.930		
L132	67 258.810	3 178 963.740		R133	57 150.870	3 178 667.940		
L133	66 459.030	3 178 901.820		R134	57 089.310	3 178 671.590		
L134	65 662.540	3 178 840.420		R135	57 062.650	3 178 673.170		
L135	64 884.520	3 178 780.750		R136	56 785.210	3 178 689.590		
L136	64 097.600	3 178 720.360		R137	56 462.000	3 178 695.480		
L137	63 291.350	3 178 658.630		R138	56 284.180	3 178 694.280		
L138	63 044.350	3 178 643.550		R139	56 073.890	3 178 681.560		
L139	63 044.500	3 178 642.950		R140	55 825.000	3 178 663.290		
L140	63 050.870	3 178 640.110		R141	55 576.000	3 178 628.030		
L141	63 045.570	3 178 639.670		R142	54 778.090	3 178 517.710		
L142	63 044.450	3 178 639.130		R143	53 995.460	3 178 410.320		
L143	63 040.560	3 178 638.280		R144	53 210.950	3 178 302.410		
L144	63 038.220	3 178 643.100		R145	52 712.010	3 178 233.700		
L145	62 110.700	3 178 570.730		R146	52 426.450	3 178 195.120		
L146	61 328.680	3 178 509.490		R147	51 634.860	3 178 086.490		
L147	61 022.550	3 178 486.160		R148	50 868.140	3 177 980.970		
L148	61 015.740	3 178 485.090		R149	50 718.000	3 177 960.380		
L149	61 013.230	3 178 484.960		R150	50 060.810	3 177 870.250		

Vel 17 Van 19
Sheet of

P663/08

PADRESERWE KOÖRDINATE				/ ROAD RESERVE CO-ORDINATES		
LINKERKANT/LEFT HAND SIDE				REGTERKANT/RIGHT HAND SIDE		
	Y	X	WG	25°	Y	X
L150	60 705.470	3 178 461.310		R151	49 274.620	3 177 762.120
L151	60 491.590	3 178 450.800		R152	48 613.050	3 177 671.350
L152	60 247.180	3 178 447.880		R153	48 482.370	3 177 653.420
L153	59 799.610	3 178 467.040		R154	47 714.160	3 177 548.230
L154	59 195.130	3 178 504.040		R155	47 279.290	3 177 487.960
L155	59 115.640	3 178 508.900		R156	46 928.340	3 177 440.540
L156	58 261.760	3 178 561.650		R157	46 472.220	3 177 395.400
L157	58 260.120	3 178 563.210		R158	45 974.270	3 177 394.860
L158	58 256.100	3 178 561.250		R159	45 549.990	3 177 434.780
L159	58 255.260	3 178 562.180		R160	45 324.190	3 177 471.000
L160	57 514.360	3 178 607.810		R161	45 178.470	3 177 500.970
L161	57 090.930	3 178 633.940		R162	44 948.040	3 177 559.500
L162	56 872.810	3 178 647.400		R163	44 278.720	3 177 729.250
L163	56 626.360	3 178 657.500		R164	44 226.120	3 177 742.590
L164	56 391.810	3 178 657.900		R165	44 224.580	3 177 741.700
L165	56 140.720	3 178 648.440		R166	44 220.140	3 177 744.160
L166	55 910.410	3 178 629.970		R167	44 142.160	3 177 764.190
L167	55 536.280	3 178 583.880		R168	44 035.370	3 177 791.620
L168	55 174.470	3 178 534.310		R169	43 907.620	3 177 824.440
L169	54 409.040	3 178 429.300		R170	43 731.120	3 177 869.770
L170	53 618.240	3 178 320.610		R171	43 557.260	3 177 918.350
L171	52 812.170	3 178 209.560		R172	43 383.680	3 177 974.810
L172	52 831.910	3 178 113.830		R173	43 241.420	3 178 027.960
L173	52 737.830	3 178 108.920		R174	43 191.960	3 178 055.200
L174	52 719.350	3 178 198.210		R175	43 044.730	3 178 110.340
L175	52 573.280	3 178 180.840		R176	42 738.010	3 178 247.120
L176	52 573.760	3 178 177.100		R177	42 312.400	3 178 443.310
L177	52 034.270	3 178 103.070		R178	41 963.210	3 178 598.980
L178	51 249.770	3 177 995.210		R179	41 217.190	3 178 936.480
L179	49 688.530	3 177 780.810		R180	40 499.750	3 179 254.830
L180	48 854.510	3 177 666.500		R181	39 774.550	3 179 581.190
L181	48 486.750	3 177 615.920		R182	39 389.420	3 179 754.430
L182	46 932.700	3 177 402.960		R183	39 125.670	3 179 871.410
L183	46 477.230	3 177 357.580		R184	38 958.360	3 179 945.480
L184	45 972.360	3 177 356.980		R185	38 726.970	3 180 035.290
L185	45 546.260	3 177 397.180		R186	38 410.060	3 180 138.490
L186	45 318.240	3 177 433.860		R187	38 255.810	3 180 182.850
L187	45 251.720	3 177 433.460		R188	38 050.920	3 180 227.310
L188	45 220.010	3 177 420.080		R189	37 978.060	3 180 246.850
L189	45 212.270	3 177 452.520		R190	37 845.360	3 180 272.700
L190	44 549.750	3 177 622.330		R191	37 788.420	3 180 283.790
L191	44 234.100	3 177 702.010		R192	37 719.310	3 180 295.250
L192	44 179.800	3 177 715.720		R193	37 323.020	3 180 363.750
L193	44 131.230	3 177 728.190		R194	36 539.160	3 180 502.030
L194	44 051.590	3 177 746.980		R195	35 769.250	3 180 638.830
L195	43 954.850	3 177 773.490		R196	35 402.670	3 180 702.240
L196	43 721.460	3 177 833.440		R197	35 349.130	3 180 711.500
L197	43 545.730	3 177 882.290		R198	35 045.490	3 180 763.120
L198	43 371.400	3 177 939.170		R199	34 978.830	3 180 774.450
L199	43 199.170	3 178 003.600		R200	34 224.200	3 180 905.310
L200	43 030.360	3 178 075.530		R201	33 851.650	3 180 955.050

Vel 18 Van 19
Sheet of

P663/08

PADRESERWE KOÖRDINATE				/	ROAD RESERVE CO-ORDINATES		
LINKERKANT/LEFT HAND SIDE					REGTERKANT/RIGHT HAND SIDE		
	Y	X	WG	25°	Y	X	
L201	42 305.160	3 178 401.720		R202	33 530.910	3 180 979.170	
L202	41 571.290	3 178 731.920		R203	33 261.340	3 180 982.680	
L203	40 846.760	3 179 057.650		R204	28 742.100	3 180 878.560	
L204	40 118.940	3 179 385.630		R205	28 517.430	3 180 901.300	
L205	39 346.570	3 179 733.190					
L206	39 107.270	3 179 838.650					
L207	38 916.340	3 179 922.710					
L208	38 732.660	3 179 993.560					
L209	38 516.560	3 180 067.900					
L210	38 298.580	3 180 132.440					
L211	38 069.460	3 180 190.310					
L212	37 959.050	3 180 213.360					
L213	37 922.010	3 180 220.240					
L214	37 746.680	3 180 252.800					
L215	37 299.540	3 180 330.180					
L216	36 947.780	3 180 385.720					
L217	36 149.950	3 180 525.700					
L218	35 411.760	3 180 653.020					
L219	35 351.620	3 180 663.390					
L220	34 576.650	3 180 796.510					
L221	33 862.950	3 180 918.590					
L222	33 863.450	3 180 916.970					
L223	33 860.750	3 180 902.920					
L224	33 856.990	3 180 902.160					
L225	33 838.230	3 180 917.120					
L226	33 531.420	3 180 941.100					
L227	33 264.870	3 180 944.880					
L228	31 824.030	3 180 912.030					
L229	31 582.050	3 180 905.290					
L230	30 778.970	3 180 887.210					
L231	30 771.630	3 180 887.970					
L232	30 409.840	3 180 880.040					
L233	28 779.360	3 180 841.870					
L234	28 519.600	3 180 800.240					

Vel 19 Van 19
Sheet of

P663/08