

# Government Gazette Staatskoerant

REPUBLIC OF SOUTH AFRICA  
REPUBLIEK VAN SUID-AFRIKA

Vol. 522

Pretoria, 17 December 2008  
Desember

No. 31697

**CONTENTS****INHOUD**

<i>No.</i>	<i>Page No.</i>	<i>Gazette No.</i>	<i>No.</i>	<i>Bladsy No.</i>	<i>Koerant No.</i>
<b>GOVERNMENT NOTICE</b>			<b>GOEWERMENTSKENNISGEWING</b>		
<b>Transport, Department of</b>			<b>Vervoer, Departement van</b>		
<i>Government Notice</i>			<i>Goewermentskennisgewing</i>		
1348			1348		
South African National Roads Agency Limited and the National Roads Act (7/1998): The South African National Roads Agency Limited: Declaration amendment of National Road N12 Section 8: Amendment of Declaration No. 631 of 2005 .....	3	31697	Suid-Afrikaanse Nasionale Padagentskap Beperk en die Nasionale Paaie Wet (7/1998): Die Suid-Afrikaanse Nasionale Padagentskap Beperk: Verklaring wysiging van Nasionale Pad N12 Seksie 8: Wysiging van Verklaring No. 631 van 2005 .....	4	31697

---

**GOVERNMENT NOTICE  
GOEWERMENTSKENNISGEWING**

---

**DEPARTMENT OF TRANSPORT  
DEPARTEMENT VAN VERVOER**

**No. 1348**

**17 December 2008**

**THE SOUTH AFRICAN NATIONAL ROADS  
AGENCY LIMITED**


Registration No: 98/09584/06

**DECLARATION AMENDMENT OF NATIONAL ROAD N12 SECTION 8**

AMENDMENT OF DECLARATION No. 631OF 2005

By virtue of section 40 (1)(b) of the South African National Roads Agency Limited and the National Roads Act, 1998 (Act No. 7 of 1998), I hereby amend Declaration No. 631 of 2005, by substituting the descriptive section of the route from Strydenburg up to Hopetown, with the subjoined sheets 1 to 11 of Plan No. P698/08.

**(National Road N12 Section 8: Strydenburg – Hopetown)**



**MINISTER OF TRANSPORT**

No. 1348

17 Desember 2008

**DIE SUID-AFRIKAANSE NASIONALE  
PADAGENTSKAP BEPERK**

Registrasie No: 98/09584/06

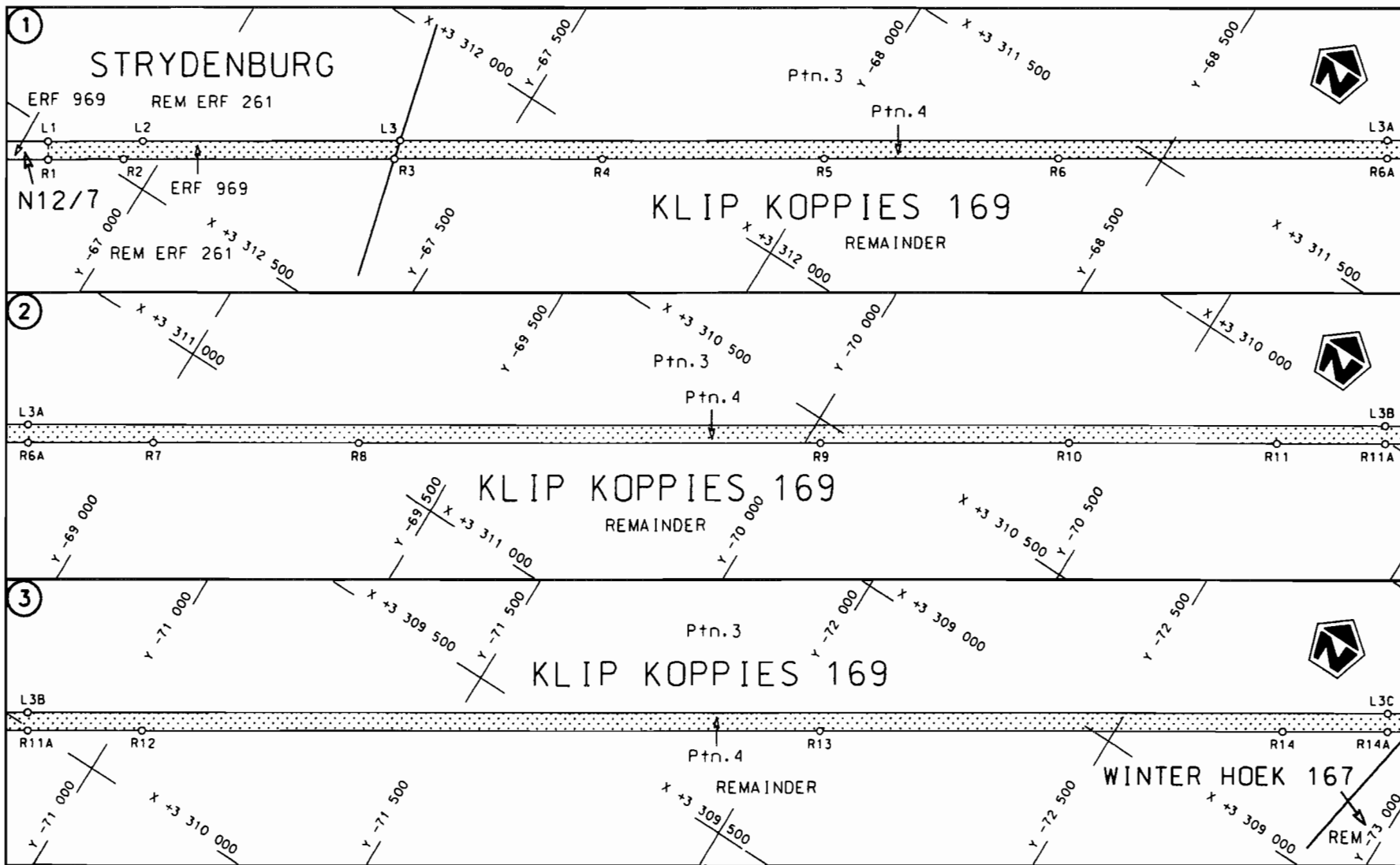
**VERKLARING WYSIGING VAN NASIONALE PAD N12 SEKSIE 8.**

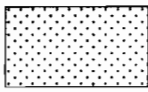
WYSIGING VAN VERKLARING NO. 631 VAN 2005

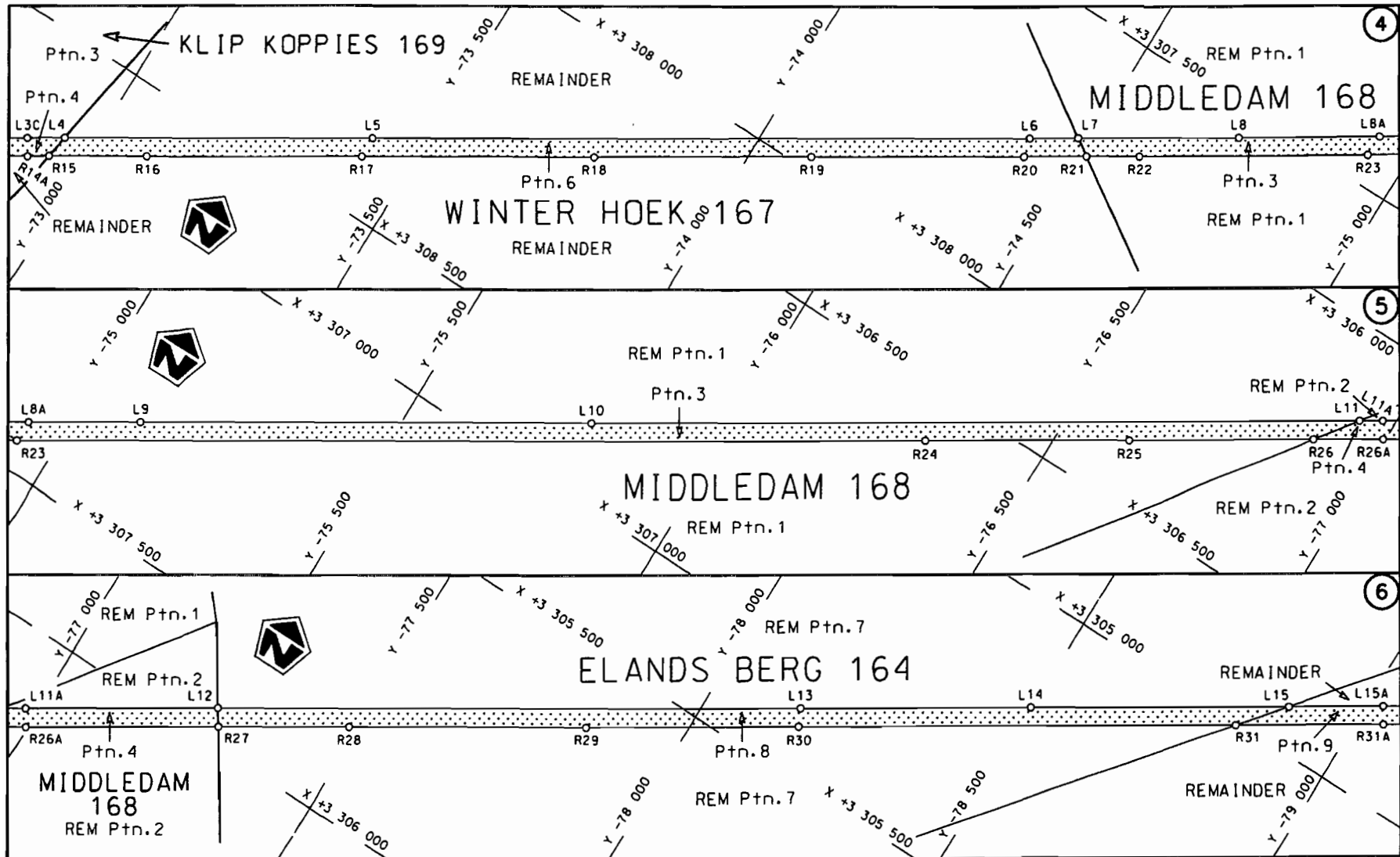
Kragtens Artikel 40(1)(b) van die Suid-Afrikaanse Nasionale Padagentskap Beperk en die Nasionale Paaie Wet, 1998 (Wet No.7 van 1998), wysig ek hiermee Verklaring no.631 van 2005, deur die beskrywende gedeelte van die roete vanaf Strydenburg tot by Hopetown, te vervang met meegaande velle 1 tot 11 van Plan no. P698/08.


**(Nasionale Pad N12 Seksie 8: Strydenburg – Hopetown)**

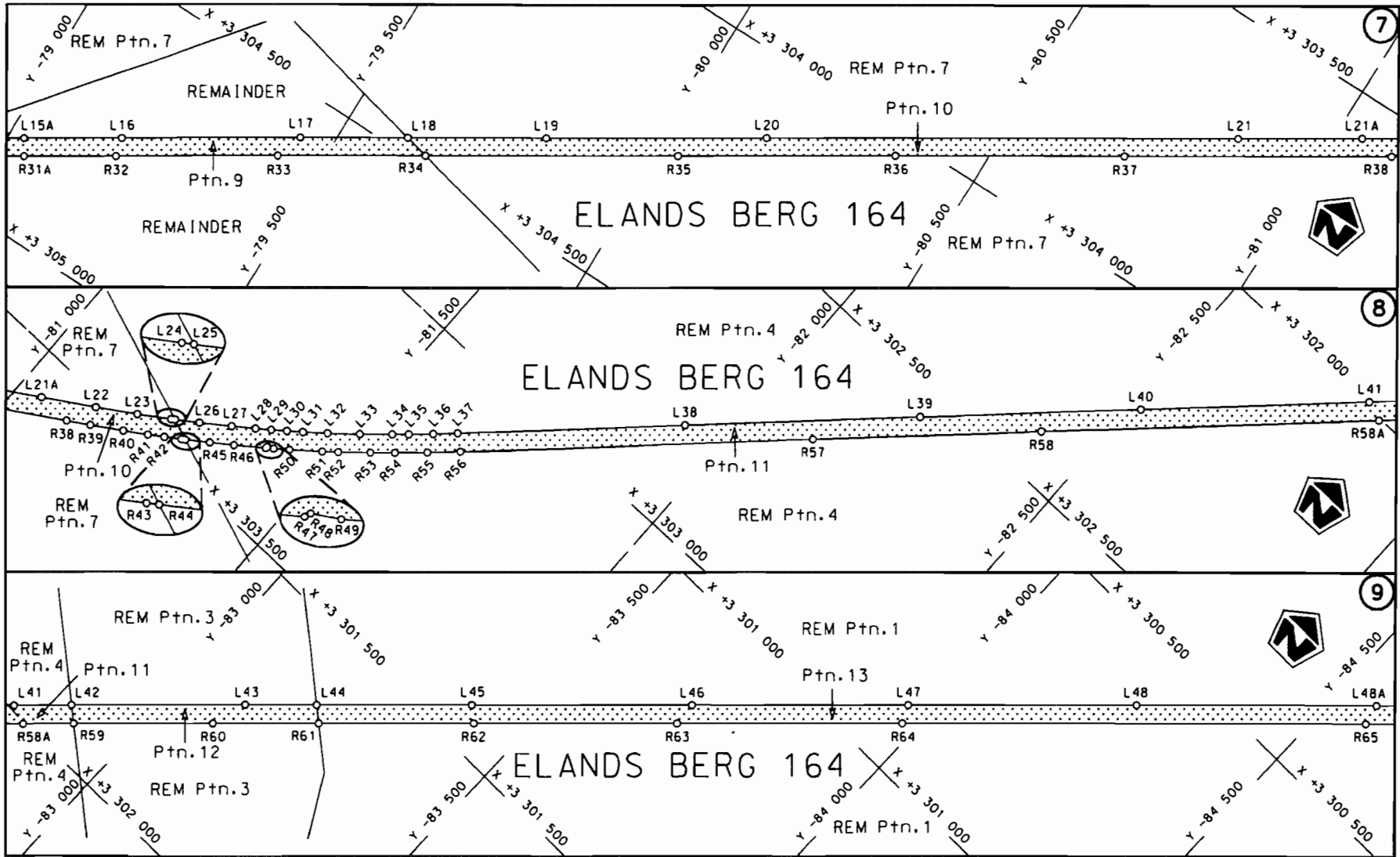
  
**MINISTER VAN VERVOER**




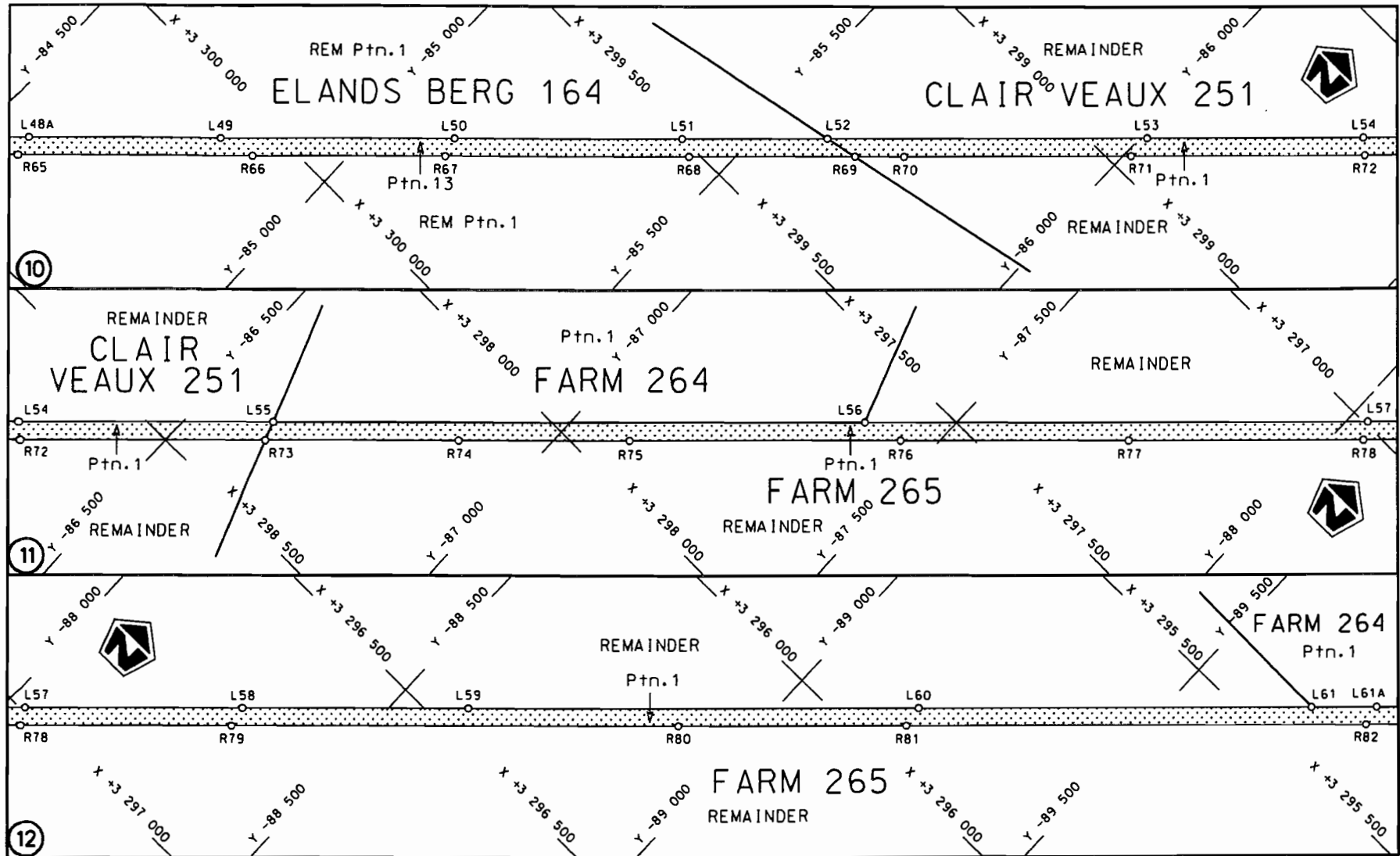
<p>Die Suid Afrikaanse Nasionale Padogentskap Beperk The South African National Roads Agency Limited</p>	<p>Die figuur getoon The figure shown</p> 	<p>steldie padreserwe voor van 'n gedeelte represents the road reserve of a portion van Nasionale Roete N12 Seksie of National Route Section 8</p>	<p>Vel Sheet 1 van of 11 Plan P698/08</p>
--	--	--	---

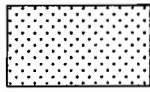


<p>Die Suid Afrikaanse Nasionale Padagentskap Beperk The South African National Roads Agency Limited</p>	<p>Die figuur getoon The figure shown</p>		<p>steldie padreserwe voor van 'n gedeelte represents the road reserve of a portion van Nasionale Roete N12 of National Route N12</p> <p>Seksie Section 8</p>	<p>Vel Sheet 2 of 11 Plan P698/08</p>
--	---	--	---	---

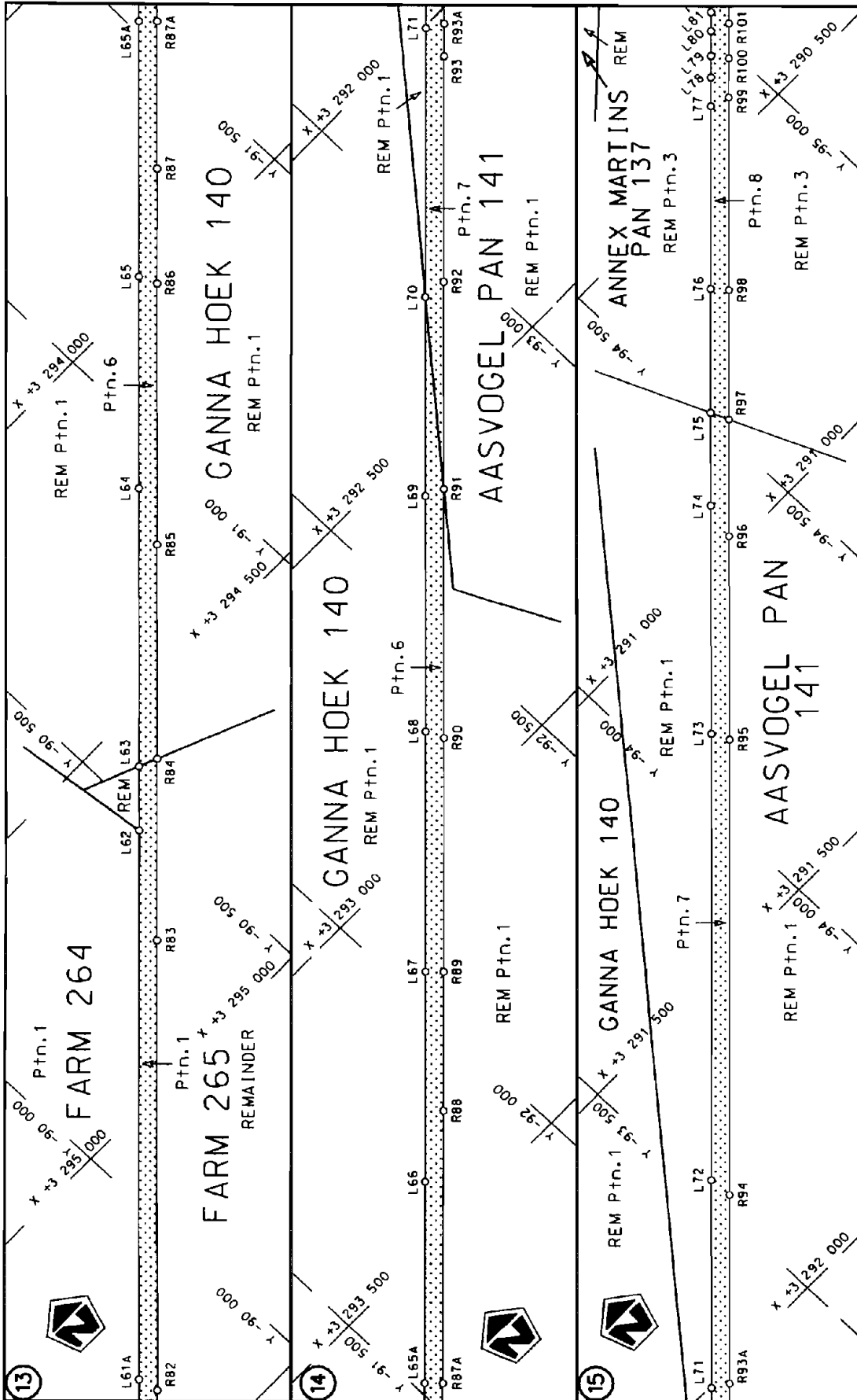


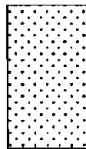
<p>Die Suid Afrikaanse Nasionale Padagentskap Beperk The South African National Roads Agency Limited</p>	<p>Die figuur getoon The figure shown</p>		<p>steldie padreserwe voor van 'n gedeelte represents the road reserve of a portion van Nasionale Roete N12 Seksie of National Route Section</p>	<p>Vel Sheet 3 van of 11 Plan P698/08</p>
--	---	--	--	---

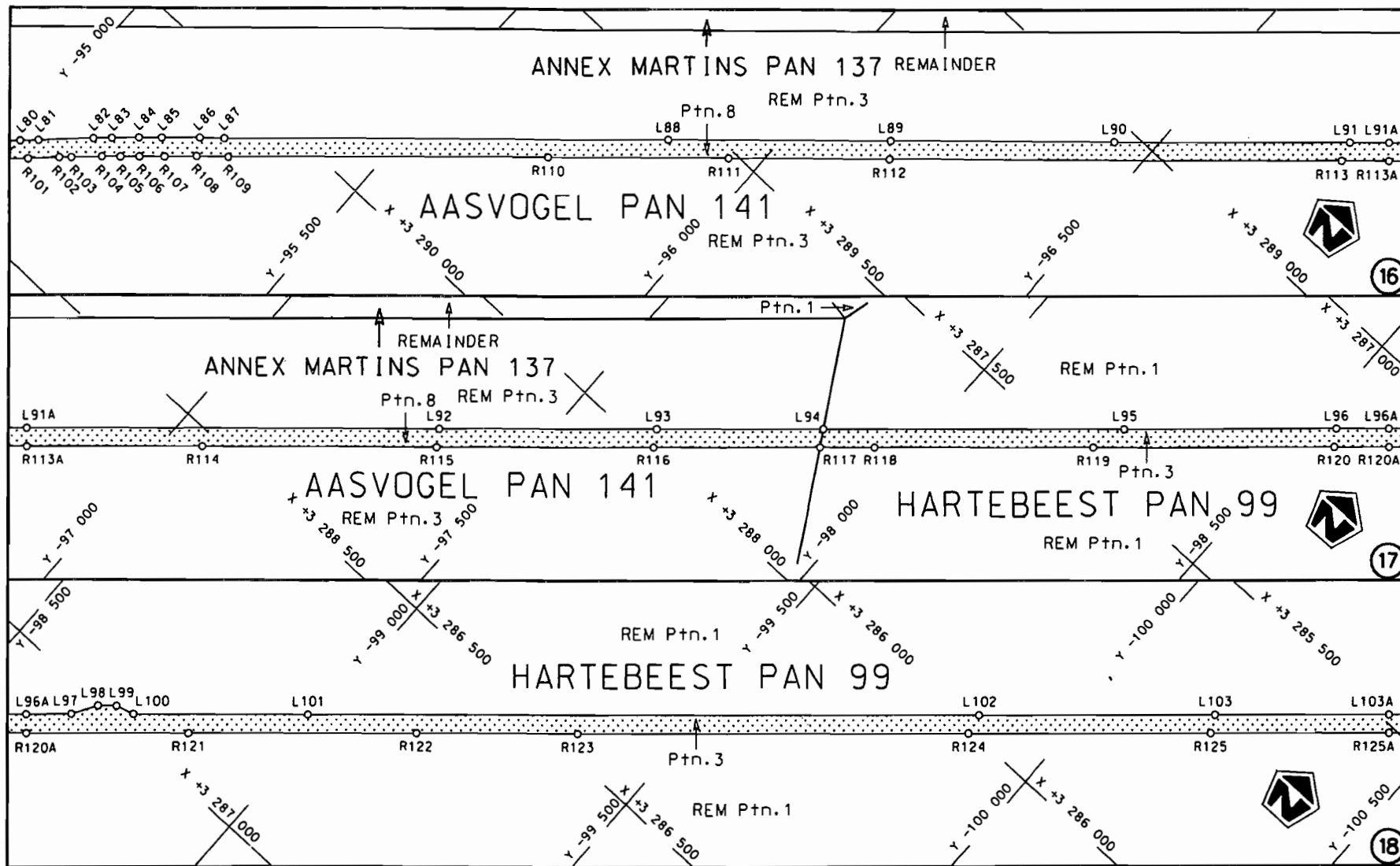



<p>Die Suid Afrikaanse Nasionale Padagentskap Beperk The South African National Roads Agency Limited</p>	<p>Die figuur getoon The figure shown</p>	 <p>stel die padreserwe voor van 'n gedeelte represents the road reserve of a portion van Nasionale Roete N12 of National Route</p>	<p>Vel Sheet 4 van 11 of of</p> <p>Plan P698/08</p>
--	---	---	---

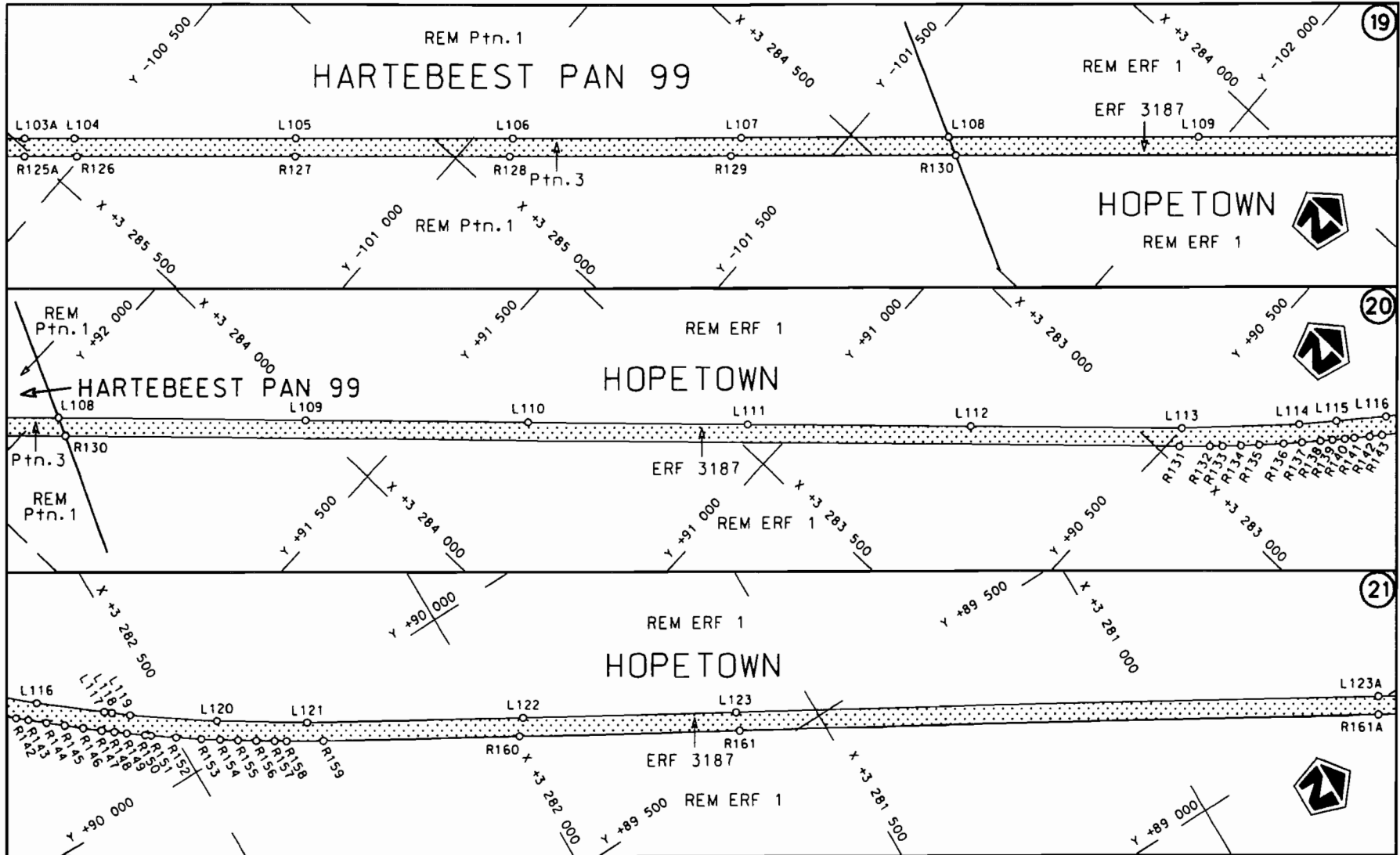





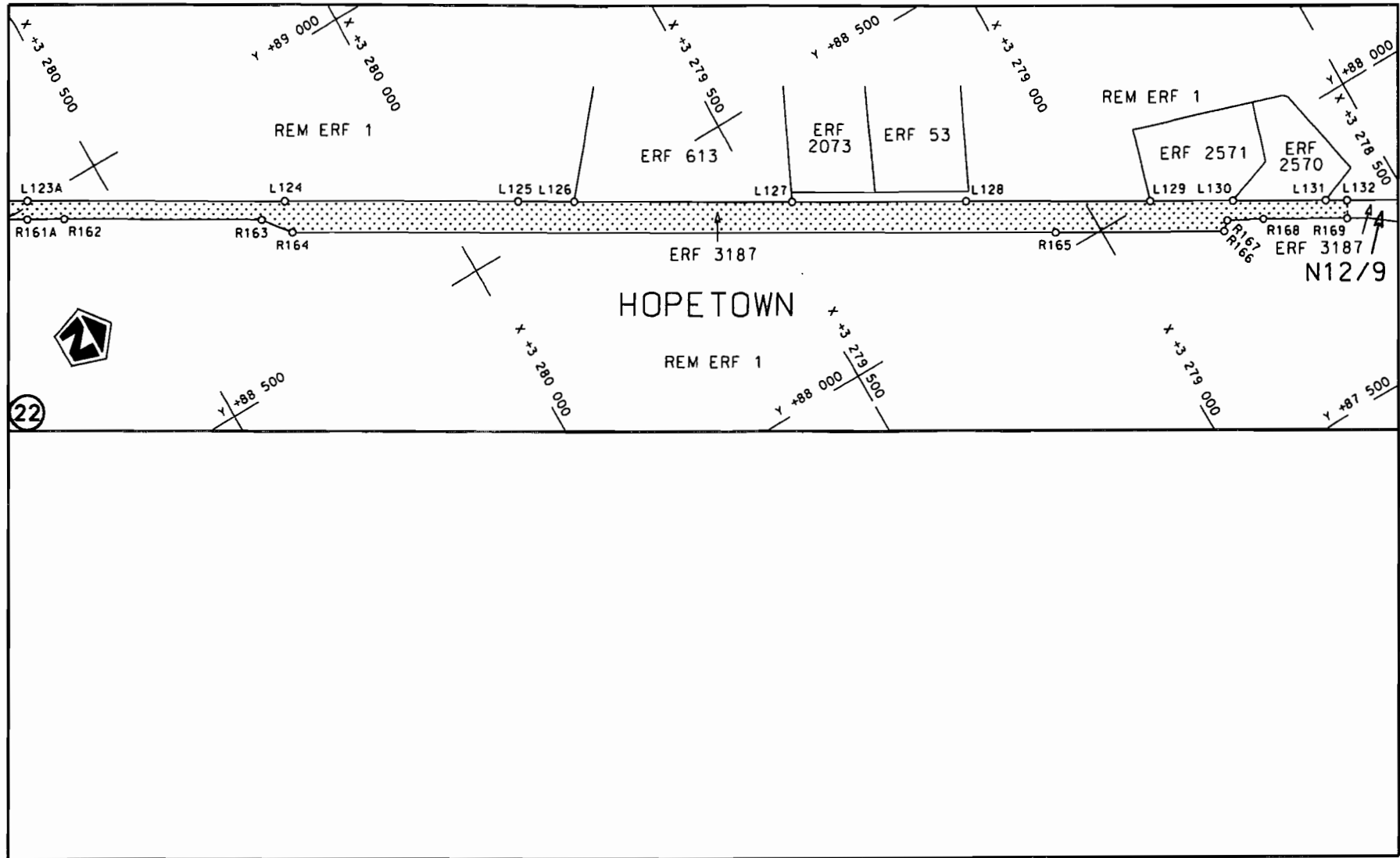
Die Suid Afrikaanse Nasionale Podogentskap Beperk The South African National Roads Agency Limited	Die figuur getoon The figure shown	 steldie padreserwe voor van 'n gedeelte represents the road reserve of a portion van Nasionale Roete N12 of National Route	Vel Sheet	von 5	of 11
			Plan	P698/08	




<p>Die Suid Afrikaanse Nasionale Padagentskap Beperk</p>	<p>Die figuur getoon</p>		<p>steldie padreserwe voor van 'n gedeelte represents the road reserve of a portion van Nasionale Roete N12 Seksie Section of National Route N12 Seksie Section 8</p>	<p>Vel Sheet 6 van of 11</p>
<p>The South African National Roads Agency Limited</p>	<p>The figure shown</p>			<p>Plan P698/08</p>



<p>Die Suid Afrikaanse Nasionale Padagentskap Beperk The South African National Roads Agency Limited</p>	<p>Die figuur getoon The figure shown</p> 	<p>steldie padreserwe voor van 'n gedeelte represents the road reserve of a portion van Nasionale Roete N12 Sektie of National Route N12 Section</p>	<p>Vel Sheet 7 van 11 Plan P698/08</p>
--	--	--	--



<p>Die Suid Afrikaanse Nasionale Padagentskap Beperk The South African National Roads Agency Limited</p>	<p>Die figuur getoon The figure shown</p>		<p>steldie padreserwe voor van 'n gedeelte represents the road reserve of a portion van Nasionale Raete N12 Seksie Section of National Route 8</p>	<p>Vel Sheet 8 van of 11 Plan P698/08</p>
--	---	--	--	---

PADRESERWE KOÖRDINATE				/	ROAD RESERVE CO-ORDINATES			
LINKERKANT/LEFT HAND SIDE					REGTERKANT/RIGHT HAND SIDE			
	Y	X	WG	23°	Y	X		
L1	-66 813.731	3 312	517.936	R1	-66 830.422	3 312	544.500	
L2	-66 956.040	3 312	428.520	R2	-66 943.880	3 312	473.170	
L3	-67 343.130	3 312	184.930	R3	-67 351.360	3 312	217.110	
L4	-72 949.660	3 308	659.810	R4	-67 662.640	3 312	021.210	
L5	-73 415.500	3 308	366.780	R5	-67 994.470	3 311	812.560	
L6	-74 407.500	3 307	743.100	R6	-68 343.530	3 311	592.900	
L7	-74 480.660	3 307	697.040	R7	-69 022.480	3 311	165.870	
L8	-74 723.270	3 307	544.300	R8	-69 332.290	3 310	971.080	
L9	-75 105.460	3 307	304.150	R9	-70 023.990	3 310	535.940	
L10	-75 786.500	3 306	875.820	R10	-70 395.220	3 310	302.480	
L11	-76 944.580	3 306	147.680	R11	-70 706.300	3 310	107.130	
L12	-77 270.910	3 305	942.480	R12	-71 040.130	3 309	897.360	
L13	-78 151.080	3 305	388.730	R13	-72 058.750	3 309	257.180	
L14	-78 497.420	3 305	171.050	R14	-72 751.670	3 308	821.490	
L15	-78 885.050	3 304	927.190	R15	-72 942.210	3 308	701.600	
L16	-79 174.400	3 304	745.040	R16	-73 090.520	3 308	608.280	
L17	-79 445.090	3 304	574.500	R17	-73 415.670	3 308	403.830	
L18	-79 607.090	3 304	472.560	R18	-73 765.900	3 308	183.310	
L19	-79 815.500	3 304	341.430	R19	-74 094.980	3 307	976.450	
L20	-80 147.830	3 304	132.490	R20	-74 415.640	3 307	775.180	
L21	-80 856.560	3 303	686.580	R21	-74 509.660	3 307	715.990	
L22	-81 128.420	3 303	515.480	R22	-74 588.730	3 307	666.210	
L23	-81 189.910	3 303	475.860	R23	-74 934.210	3 307	448.870	
L24	-81 239.310	3 303	442.630	R24	-76 307.260	3 306	585.860	
L25	-81 245.250	3 303	438.450	R25	-76 613.260	3 306	393.650	
L26	-81 281.110	3 303	413.220	R26	-76 891.730	3 306	218.610	
L27	-81 327.990	3 303	379.040	R27	-77 288.430	3 305	969.070	
L28	-81 362.680	3 303	352.970	R28	-77 485.780	3 305	844.610	
L29	-81 385.500	3 303	335.230	R29	-77 843.820	3 305	619.110	
L30	-81 408.260	3 303	317.390	R30	-78 164.680	3 305	417.270	
L31	-81 430.900	3 303	299.260	R31	-78 822.130	3 305	003.980	
L32	-81 464.370	3 303	271.780	R32	-79 182.380	3 304	777.250	
L33	-81 508.690	3 303	234.040	R33	-79 426.850	3 304	623.010	
L34	-81 552.010	3 303	195.670	R34	-79 650.610	3 304	482.060	
L35	-81 573.570	3 303	176.060	R35	-80 031.350	3 304	242.390	
L36	-81 605.570	3 303	146.270	R36	-80 359.280	3 304	036.050	
L37	-81 637.160	3 303	116.220	R37	-80 702.800	3 303	820.330	
L38	-81 929.800	3 302	835.330	R38	-81 104.360	3 303	567.650	
L39	-82 232.980	3 302	544.450	R39	-81 140.950	3 303	544.510	
L40	-82 515.460	3 302	273.190	R40	-81 190.180	3 303	513.180	
L41	-82 808.950	3 301	991.990	R41	-81 226.620	3 303	489.280	
L42	-82 884.320	3 301	919.670	R42	-81 250.820	3 303	472.760	
L43	-83 106.420	3 301	706.670	R43	-81 275.350	3 303	455.700	
L44	-83 199.690	3 301	617.380	R44	-81 281.470	3 303	451.320	
L45	-83 399.560	3 301	426.040	R45	-81 317.190	3 303	425.790	
L46	-83 683.980	3 301	153.900	R46	-81 352.360	3 303	400.030	
L47	-83 963.100	3 300	886.430	R47	-81 398.760	3 303	364.940	
L48	-84 255.980	3 300	605.650	R48	-81 399.600	3 303	362.430	
L49	-84 812.470	3 300	072.430	R49	-81 410.180	3 303	356.040	
L50	-85 115.910	3 299	782.000	R50	-81 433.040	3 303	338.020	
L51	-85 409.600	3 299	500.770	R51	-81 478.150	3 303	301.490	

Vel	9	Van	11	P698/08
Sheet		of		

PADRESERWE KOÖRDINATE				/	ROAD RESERVE CO-ORDINATES			
LINKERKANT/LEFT HAND SIDE					REGTERKANT/RIGHT HAND SIDE			
	Y	X	WG	23°	Y	X		
L52	-85 596.820	3 299 321.240		R52	-81 500.380	3 303 283.010		
L53	-86 009.480	3 298 925.660		R53	-81 544.080	3 303 245.050		
L54	-86 287.490	3 298 659.450		R54	-81 576.520	3 303 216.080		
L55	-86 615.460	3 298 345.590		R55	-81 619.240	3 303 176.820		
L56	-87 380.750	3 297 612.980		R56	-81 661.700	3 303 136.540		
L57	-88 028.480	3 296 994.600		R57	-82 115.420	3 302 700.890		
L58	-88 309.420	3 296 726.500		R58	-82 409.440	3 302 418.840		
L59	-88 602.950	3 296 446.080		R59	-82 908.930	3 301 939.830		
L60	-89 184.530	3 295 890.800		R60	-83 086.290	3 301 769.950		
L61	-89 688.430	3 295 410.160		R61	-83 224.150	3 301 637.770		
L62	-90 480.110	3 294 654.410		R62	-83 423.620	3 301 446.530		
L63	-90 562.150	3 294 576.050		R63	-83 686.550	3 301 194.750		
L64	-90 918.180	3 294 236.000		R64	-83 977.220	3 300 916.250		
L65	-91 189.680	3 293 976.870		R65	-84 573.020	3 300 345.220		
L66	-91 774.820	3 293 418.120		R66	-84 875.060	3 300 055.700		
L67	-92 045.760	3 293 159.500		R67	-85 126.080	3 299 815.830		
L68	-92 354.800	3 292 864.270		R68	-85 440.330	3 299 514.770		
L69	-92 656.770	3 292 575.950		R69	-85 654.640	3 299 309.700		
L70	-92 912.460	3 292 331.730		R70	-85 718.500	3 299 248.600		
L71	-93 256.690	3 292 003.350		R71	-86 010.770	3 298 968.270		
L72	-93 523.510	3 291 748.710		R72	-86 311.170	3 298 680.310		
L73	-94 098.480	3 291 199.760		R73	-86 627.240	3 298 377.930		
L74	-94 391.750	3 290 919.810		R74	-86 878.640	3 298 137.410		
L75	-94 510.080	3 290 806.750		R75	-87 098.810	3 297 926.110		
L76	-94 670.240	3 290 653.710		R76	-87 448.980	3 297 591.040		
L77	-94 903.710	3 290 430.880		R77	-87 742.780	3 297 310.520		
L78	-94 941.260	3 290 394.980		R78	-88 044.420	3 297 022.700		
L79	-94 968.900	3 290 368.530		R79	-88 317.120	3 296 762.410		
L80	-95 000.720	3 290 338.160		R80	-88 895.780	3 296 209.710		
L81	-95 024.590	3 290 315.290		R81	-89 190.300	3 295 928.810		
L82	-95 096.320	3 290 246.730		R82	-89 780.440	3 295 365.770		
L83	-95 120.180	3 290 224.140		R83	-90 359.130	3 294 813.042		
L84	-95 154.900	3 290 191.410		R84	-90 593.610	3 294 589.280		
L85	-95 184.480	3 290 164.330		R85	-90 867.920	3 294 327.310		
L86	-95 233.350	3 290 120.210		R86	-91 202.810	3 294 007.790		
L87	-95 265.970	3 290 090.720		R87	-91 349 580	3 293 867.550		
L88	-95 851.960	3 289 561.890		R88	-91 889.220	3 293 352.260		
L89	-96 145.190	3 289 298.080		R89	-92 067.100	3 293 182.210		
L90	-96 439.770	3 289 034.230		R90	-92 368.270	3 292 895.100		
L91	-96 751.050	3 288 755.600		R91	-92 687.720	3 292 590.180		
L92	-97 349.800	3 288 219.440		R92	-92 953.940	3 292 335.810		
L93	-97 637.820	3 287 961.350		R93	-93 242.900	3 292 059.920		
L94	-97 857.390	3 287 764.790		R94	-93 525.990	3 291 789.530		
L95	-98 254.020	3 287 409.820		R95	-94 112.780	3 291 229.700		
L96	-98 533.280	3 287 159.940		R96	-94 374.300	3 290 979.980		
L97	-98 663.790	3 287 043.030		R97	-94 523.350	3 290 837.570		
L98	-98 689.950	3 287 000.470		R98	-94 690.420	3 290 677.950		
L99	-98 714.850	3 286 978.840		R99	-94 936.570	3 290 442.330		
L100	-98 746.350	3 286 969.010		R100	-94 987.530	3 290 393.610		
L101	-98 976.160	3 286 763.750		R101	-95 031.780	3 290 351.270		
L102	-99 863.090	3 285 970.380		R102	-95 072.470	3 290 312.610		

Vel	10	Van	11	P698/08
Sheet		of		

PADRESERWE KOÖRDINATE				/	ROAD RESERVE CO-ORDINATES				
LINKERKANT/LEFT HAND SIDE					REGTERKANT/RIGHT HAND SIDE				
	Y	X	WG	23°	Y	X			
L103	-100	175.130	3 285	691.440	R103	-95	088.520	3 290	297.700
L104	-100	469.620	3 285	427.960	R104	-95	128.260	3 290	259.920
L105	-100	765.310	3 285	163.550	R105	-95	152.530	3 290	237.820
L106	-101	053.160	3 284	906.030	R106	-95	177.030	3 290	215.160
L107	-101	358.070	3 284	633.430	R107	-95	209.500	3 290	185.360
L108	-101	633.330	3 284	387.420	R108	-95	250.540	3 290	147.600
			WG 25°		R109	-95	292.350	3 290	109.840
L108	91	972.770	3 284	303.940	R110	-95	412.660	3 289	727.870
L109	91	647.390	3 284	003.860	R111	-95	951.680	3 289	513.560
L110	91	356.790	3 283	735.450	R112	-96	164.740	3 289	322.770
L111	91	067.610	3 283	468.470	R113	-96	761.260	3 288	788.750
L112	90	775.850	3 283	199.220	R114	-97	055.770	3 288	524.820
L113	90	500.960	3 282	944.930	R115	-97	367.210	3 288	246.060
L114	90	351.960	3 282	795.630	R116	-97	654.360	3 287	988.790
L115	90	307.380	3 282	745.900	R117	-97	873.630	3 287	792.070
L116	90	248.910	3 282	680.220	R118	-97	945.730	3 287	727.390
L117	90	173.770	3 282	585.530	R119	-98	234.000	3 287	469.980
L118	90	165.720	3 282	575.330	R120	-98	551.210	3 287	186.130
L119	90	145.170	3 282	549.370	R121	-98	838.650	3 286	929.100
L120	90	054.780	3 282	422.200	R122	-99	141.770	3 286	657.620
L121	89	967.310	3 282	284.590	R123	-99	354.940	3 286	467.030
L122	89	774.580	3 281	953.260	R124	-99	870.050	3 286	006.060
L123	89	582.570	3 281	622.920	R125	-100	190.100	3 285	720.090
L124	88	776.510	3 280	234.900	R126	-100	493.620	3 285	448.840
L125	88	567.220	3 279	874.860	R127	-100	785.510	3 285	187.720
L126	88	516.510	3 279	787.880	R128	-101	070.010	3 284	933.330
L127	88	319.180	3 279	450.820	R129	-101	365.070	3 284	669.400
L128	88	164.580	3 279	182.610	R130	-101	663.880	3 284	402.720
L129	87	999.910	3 278	899.240				WG 25°	
L130	87	925.810	3 278	772.050	R130	91	941.970	3 284	318.710
L131	87	841.970	3 278	628.090	R131	90	482.230	3 282	970.730
L132	87	822.471	3 278	594.652	R132	90	442.680	3 282	933.350
					R133	90	426.470	3 282	917.720
R152	90	070.050	3 282	499.600	R134	90	403.090	3 282	894.400
R153	90	043.890	3 282	462.200	R135	90	379.920	3 282	870.790
R154	90	024.880	3 282	434.040	R136	90	349.450	3 282	839.240
R155	90	007.060	3 282	406.990	R137	90	326.740	3 282	815.100
R156	89	989.100	3 282	379.320	R138	90	304.460	3 282	790.760
R157	89	971.260	3 282	351.000	R139	90	289.810	3 282	774.570
R158	89	959.870	3 282	332.710	R140	90	275.200	3 282	758.190
R159	89	925.740	3 282	276.400	R141	90	264.010	3 282	745.480
R160	89	750.920	3 281	975.060	R142	90	246.210	3 282	724.960
R161	89	552.280	3 281	633.550	R143	90	231.960	3 282	708.330
R162	88	947.280	3 280	591.770	R144	90	210.790	3 282	683.110
R163	88	769.970	3 280	287.370	R145	90	189.920	3 282	657.800
R164	88	723.150	3 280	250.240	R146	90	169.300	3 282	632.010
R165	88	037.190	3 279	071.390	R147	90	148.970	3 282	606.110
R166	87	888.150	3 278	812.160	R148	90	135.560	3 282	588.600
R167	87	901.320	3 278	798.290	R149	90	121.920	3 282	570.530
R168	87	871.370	3 278	741.320	R150	90	102.330	3 282	544.210
R169	87	795.365	3 278	610.459	R151	90	095.950	3 282	535.530

Vel	11	Van	11	P698/08
Sheet		of		