

# Government Gazette Staatskoerant

REPUBLIC OF SOUTH AFRICA  
REPUBLIEK VAN SUID-AFRIKA

Vol. 522

Pretoria, 17 December  
Desember 2008

No. 31700

**CONTENTS****INHOUD**

<i>No.</i>	<i>Page No.</i>	<i>Gazette No.</i>	<i>No.</i>	<i>Bladsy No.</i>	<i>Koerant No.</i>
<b>GOVERNMENT NOTICE</b>			<b>GOEWERMENSKENNISGEWING</b>		
<b>Transport, Department of</b>			<b>Vervoer, Departement van</b>		
<i>Government Notice</i>			<i>Goewermentskennisgewing</i>		
1351		South African National Roads Agency Limited and the National Roads Act (7/1998): The South African National Roads Agency Limited: Declaration amendment of National Road R61 Section 1: Amendment of Declaration No. 545 of 2003 .....	3	31700	
					1351 Suid-Afrikaanse Nasionale Padagentskap Beperk en die Nasionale Paaie Wet (7/1998): Die Suid-Afrikaanse Nasionale Padagentskap Beperk: Verklaring wysiging van Nasionale Pad R61 Seksie 1: Wysiging van Verklaring No. 545 van 2003 .....
				4	31700

---

**GOVERNMENT NOTICE  
GOEWERMENTSKENNISGEWING**

---

**DEPARTMENT OF TRANSPORT  
DEPARTEMENT VAN VERVOER**

**No. 1351**

**17 December 2008**

**THE SOUTH AFRICAN NATIONAL ROADS  
AGENCY LIMITED**

**Registration No: 98/09584/06**

**DECLARATION AMENDMENT OF NATIONAL ROAD R61 SECTION 1**

AMENDMENT OF DECLARATION NO. 545 OF 2003

By virtue of section 40 (1)(b) of the South African National Roads Agency Limited and the National Roads Act, 1998 (Act No. 7 of 1998), I hereby amend Declaration No. 545 of 2003, by substituting it, with the subjoined sheets 1 to 21 of Plan No. P695/08.

**(National Road R61 Section 1: Western Cape/Eastern Cape Provincial Border – Aberdeen )**

  
\_\_\_\_\_  
**MINISTER OF TRANSPORT**

No. 1351

17 Desember 2008

**DIE SUID-AFRIKAANSE NASIONALE  
PADAGENTSKAP BEPERK**

Registrasie No: 98/09584/06

**VERKLARING WYSIGING VAN NASIONALE PAD R61 SEKSIE 1**

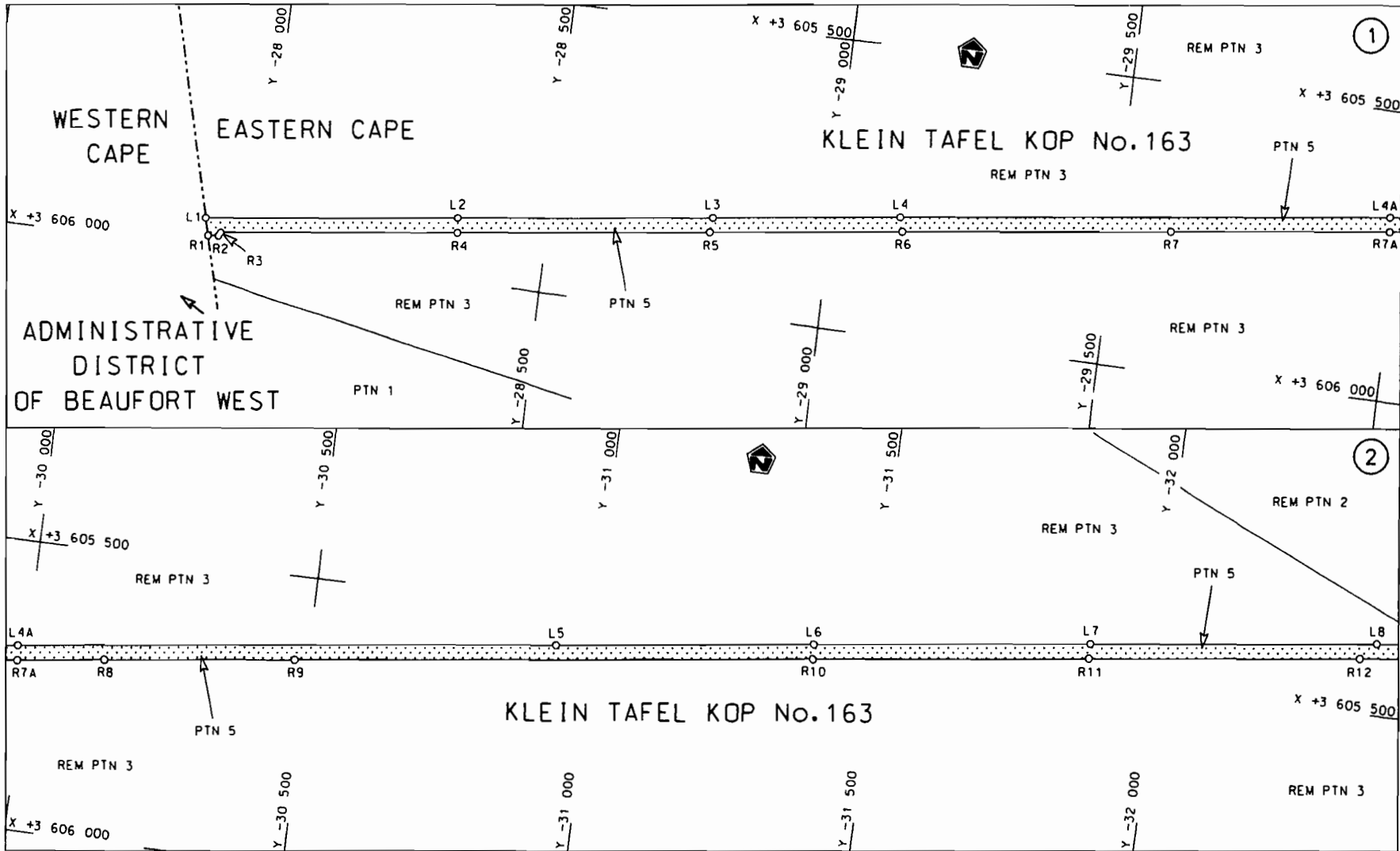
WYSIGING VAN VERKLARING NO. 545 VAN 2003


Kragtens Artikel 40(1)(b) van die Suid-Afrikaanse Nasionale Padagentskap Beperk en die Nasionale Paaie Wet, 1998 (Wet No.7 van 1998), wysig ek hiermee Verklaring no. 545 van 2003, deur dit, te vervang met meegaande velle 1 tot 21 van Plan no. P695/08.

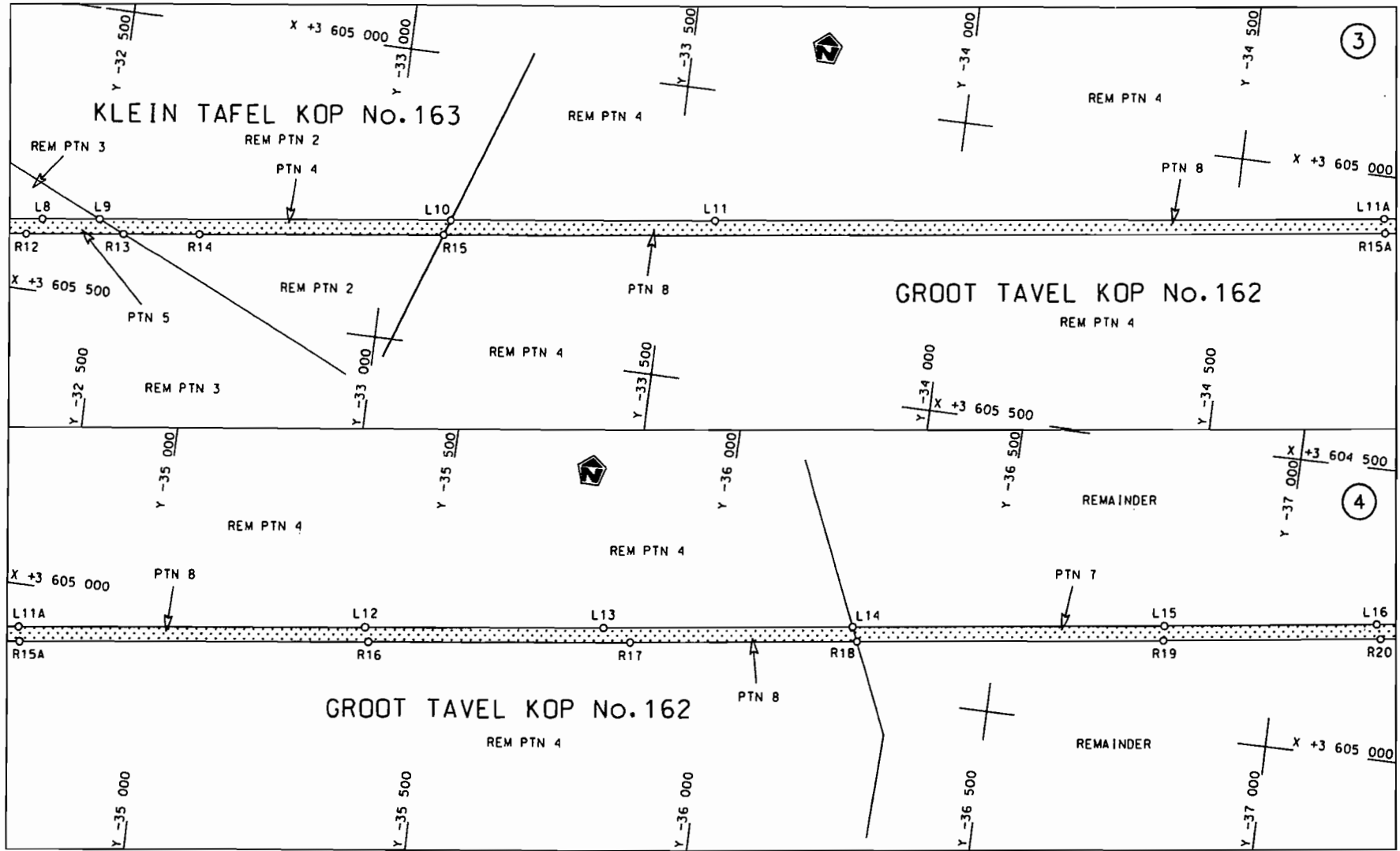
**(Nasionale Pad R61 Seksie 1: Wes Kaap/Oos Kaap Provinsiale Grens – Aberdeen)**




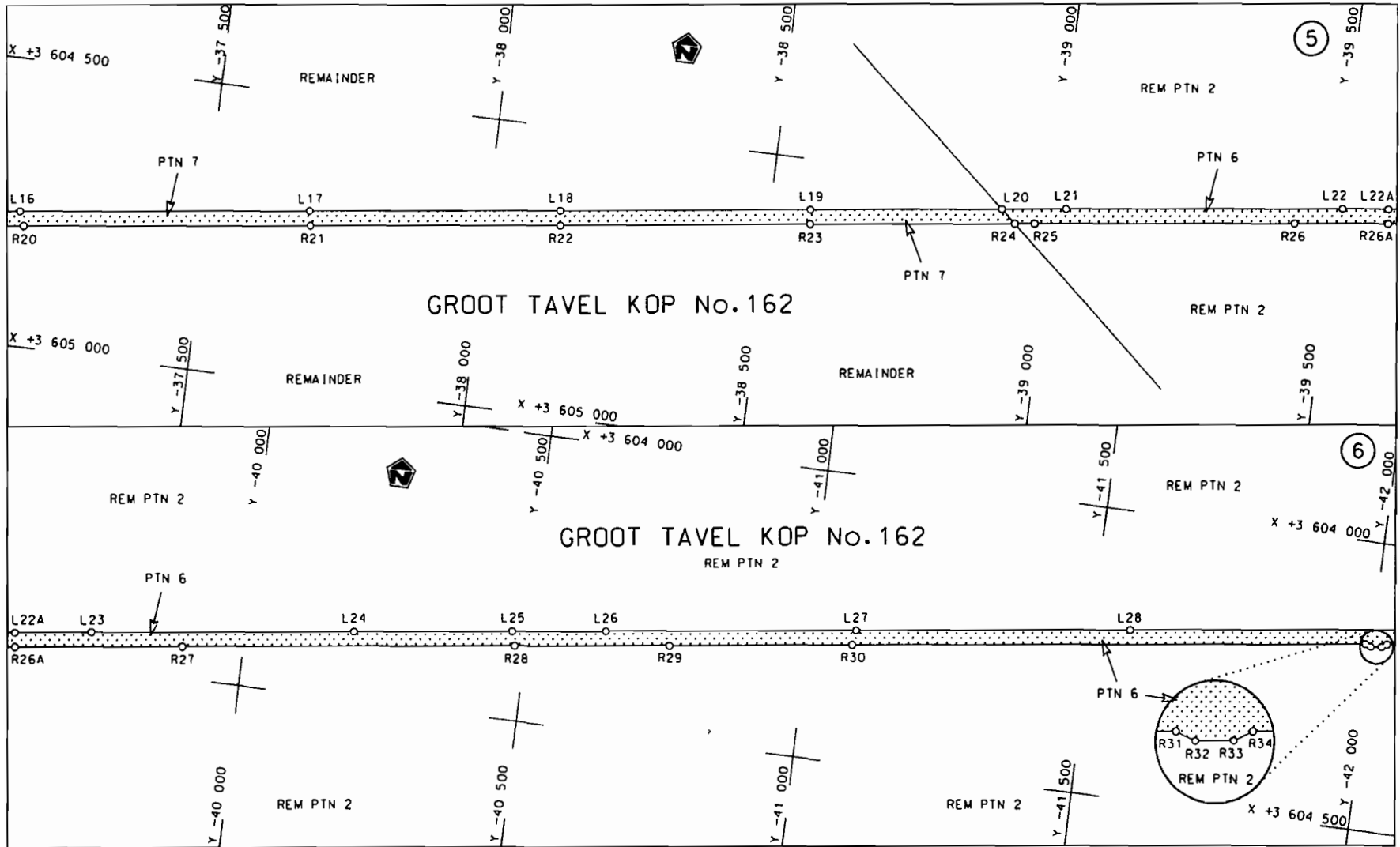
**MINISTER VAN VERVOER**

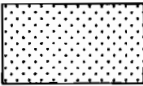


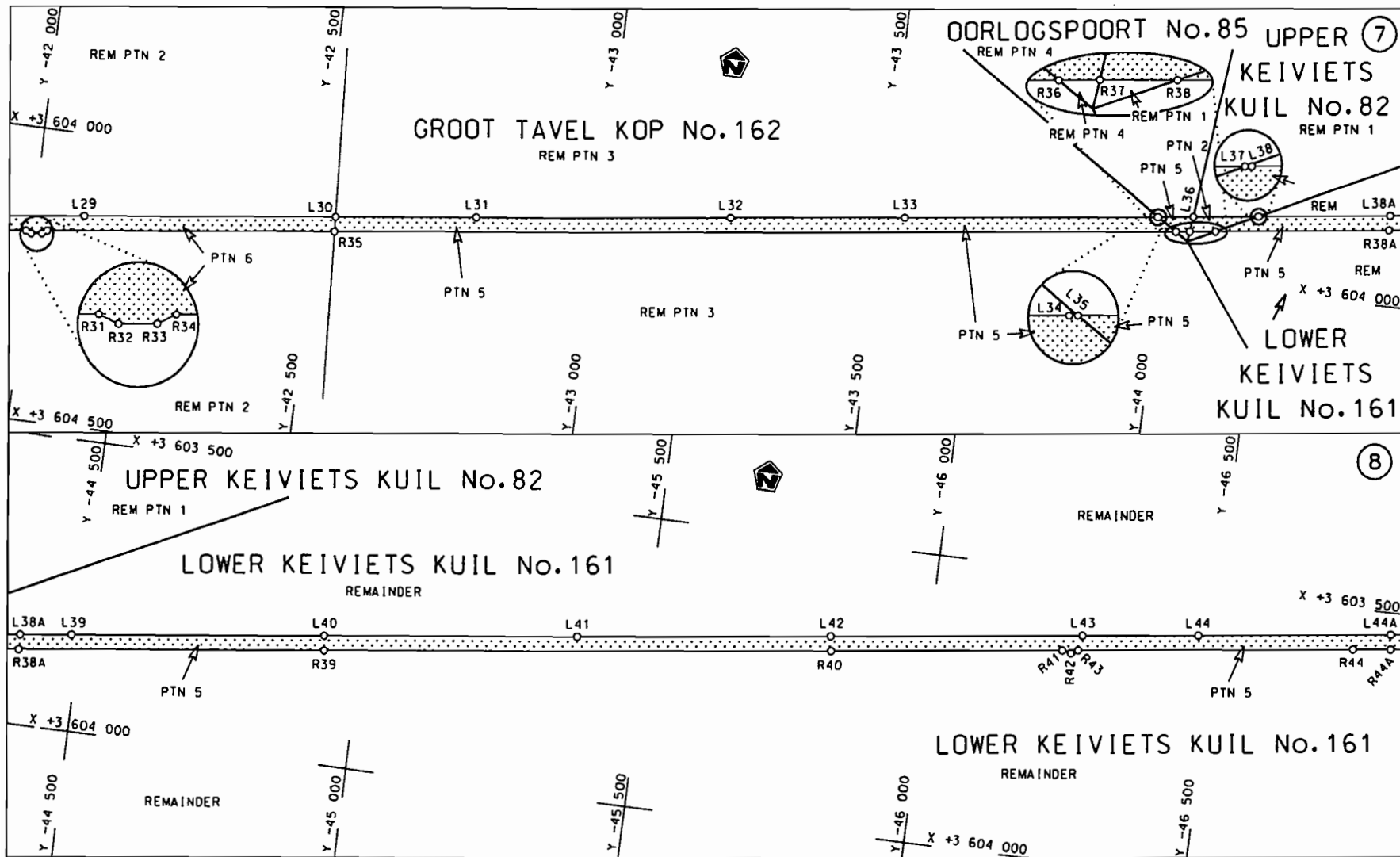
Die Suid Afrikaanse Nasionale Padagentskap Beperk The South African National Roads Agency Limited	Die figuur getoon The figure shown		steldie padreserwe voor van 'n gedeelte represents the road reserve of a portion van Nasionale Roete R61 of National Route R61 Seksie Section 1	Vel Sheet 1 of 21 Plan P695/08
--	---------------------------------------	--	---	-----------------------------------




<p>Die Suid Afrikaanse Nasionale Padagentskap Beperk The South African National Roads Agency Limited</p>	<p>Die figuur getoon The figure shown</p> 	<p>steldie padreserwe voor van 'n gedeelte represents the road reserve of a portion van Nasionale Roete of National Route</p> <p>R61 Seksie Section</p> <p>1</p>	<p>Vel Sheet 2 van of 21</p> <p>Plan P695/08</p>
--	--	--	--

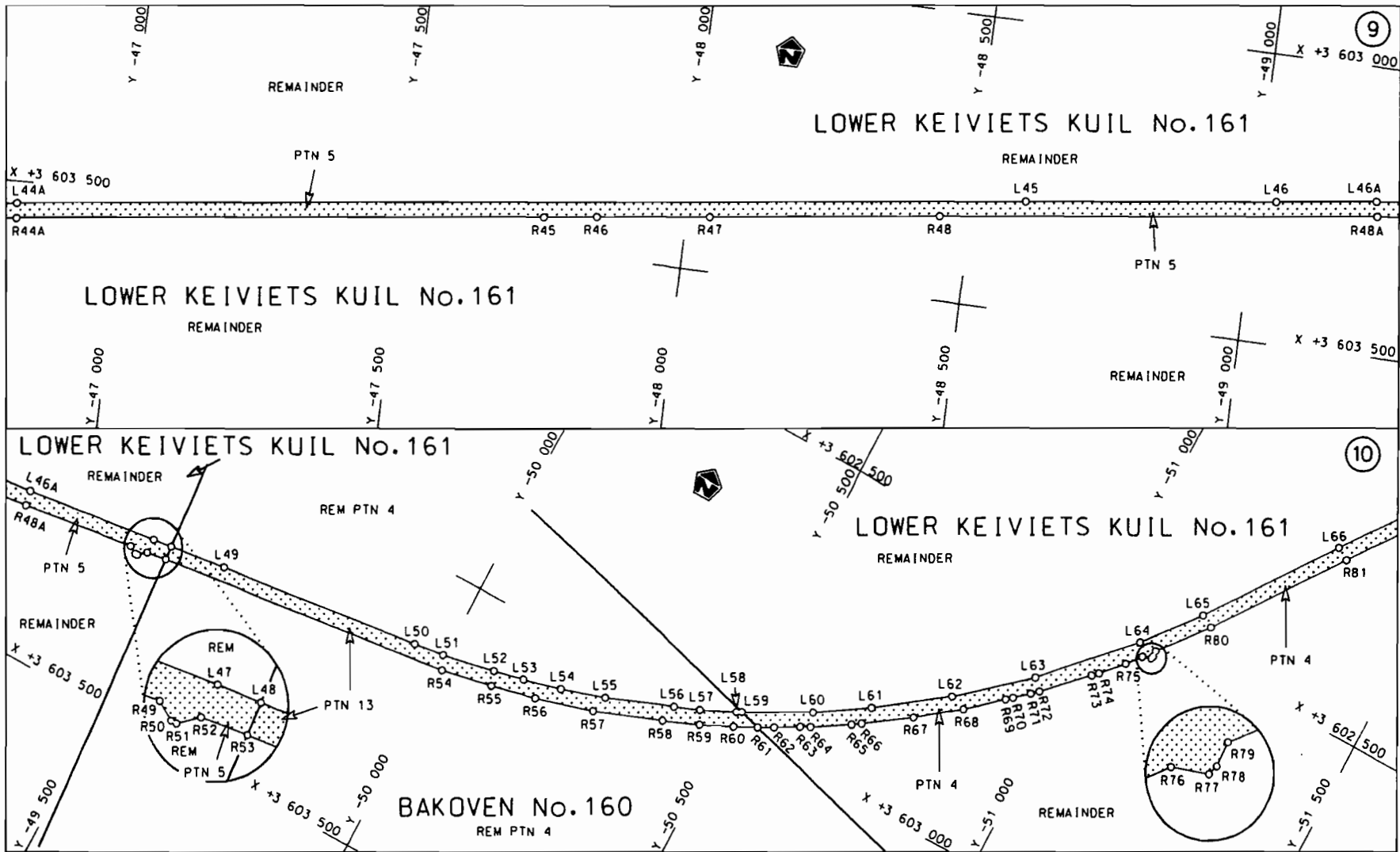


<p>Die Suid Afrikaanse Nasionale Padagentskap Beperk The South African National Roads Agency Limited</p>	<p>Die figuur getoon The figure shown</p>	 <p>steldie padreserwe voor van 'n gedeelte represents the road reserve of a portion van Nasionale Roete R61 of National Route</p>	<p>Vel Sheet 3 van of 21 Plan P695/08</p>
<p>Seksie Section 1</p>			<p>1</p>



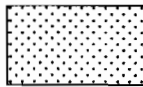
<p>Die Suid Afrikaanse Nasionale Padagentskap Beperk The South African National Roads Agency Limited</p>	<p>Die figuur getoon The figure shown</p> 	<p>steldie padreserwe voor van 'n gedeelte represents the road reserve of a portion van Nasionale Roete R61 Seksie of National Route Section 1</p>	<p>Vel Sheet 4 van 21 Plan P695/08</p>
--	--	--	--





Die Suid Afrikaanse Nasionale Padagentskap Beperk  
 The South African National Roads Agency Limited

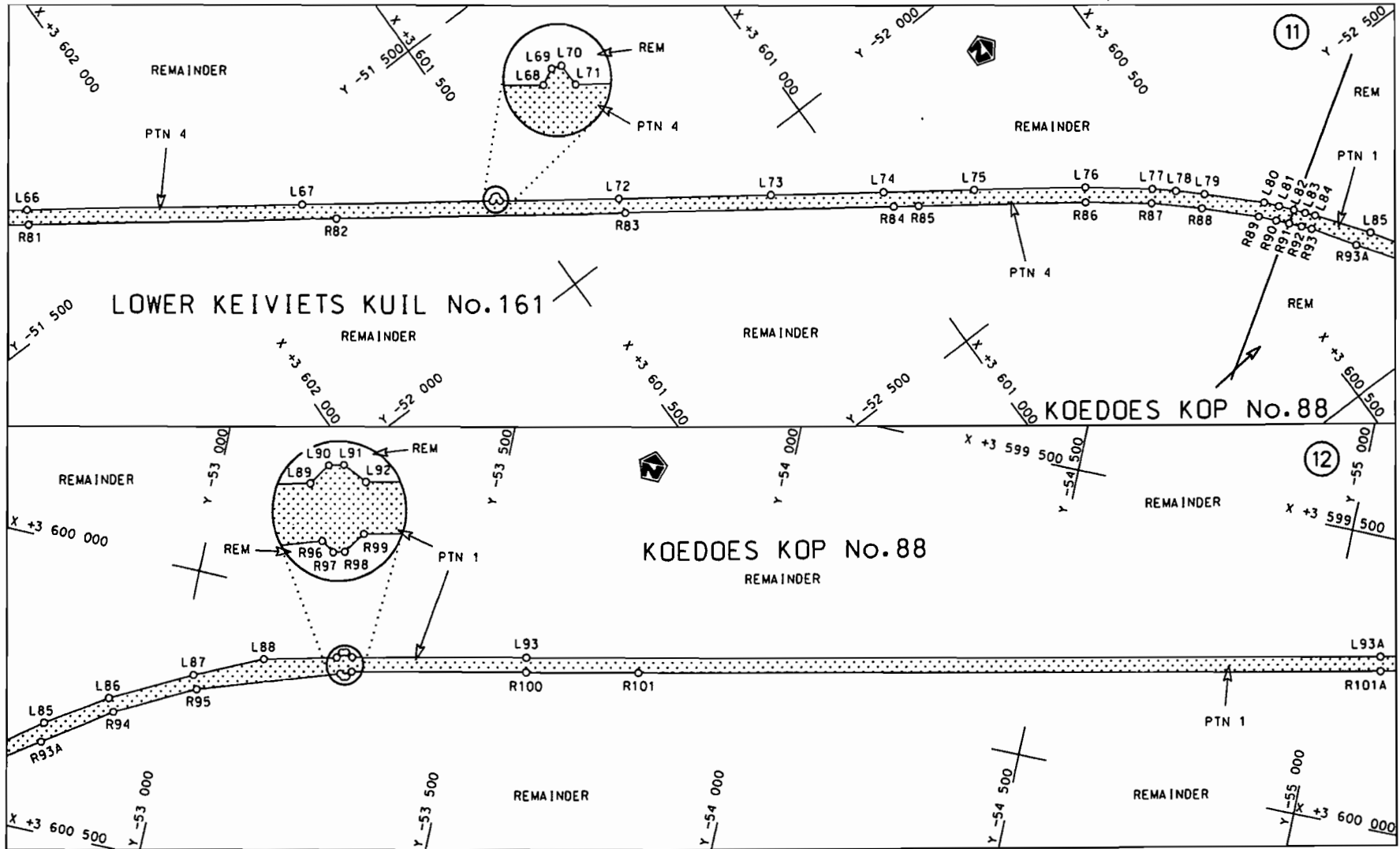
Die figuur getoon  
 The figure shown

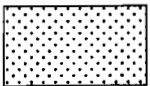


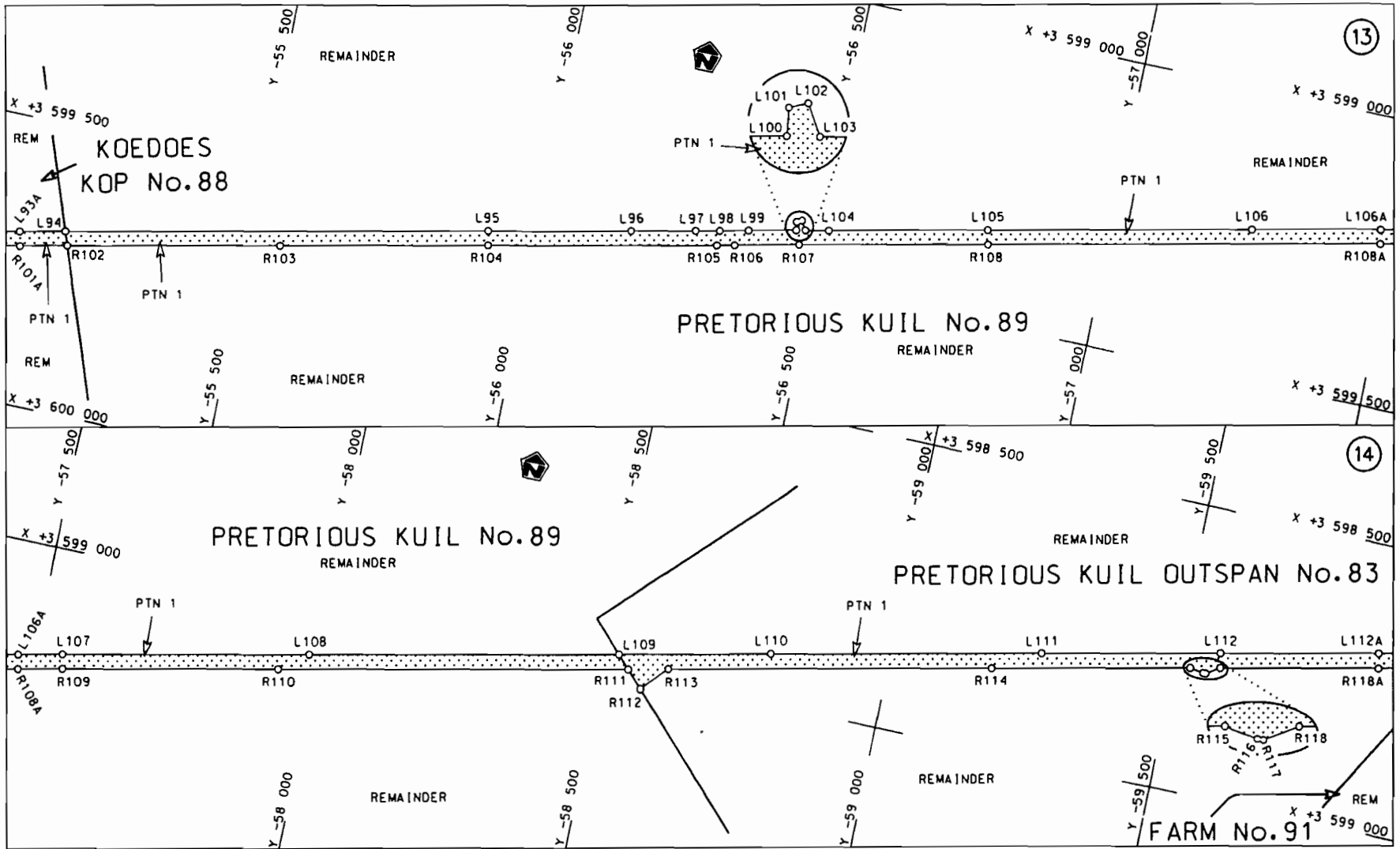
steldie padreserwe voor van 'n gedeelte  
 represents the road reserve of a portion  
 van Nasionale Roete R61 Seksie  
 of National Route R61 Section

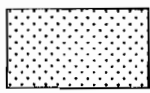
1

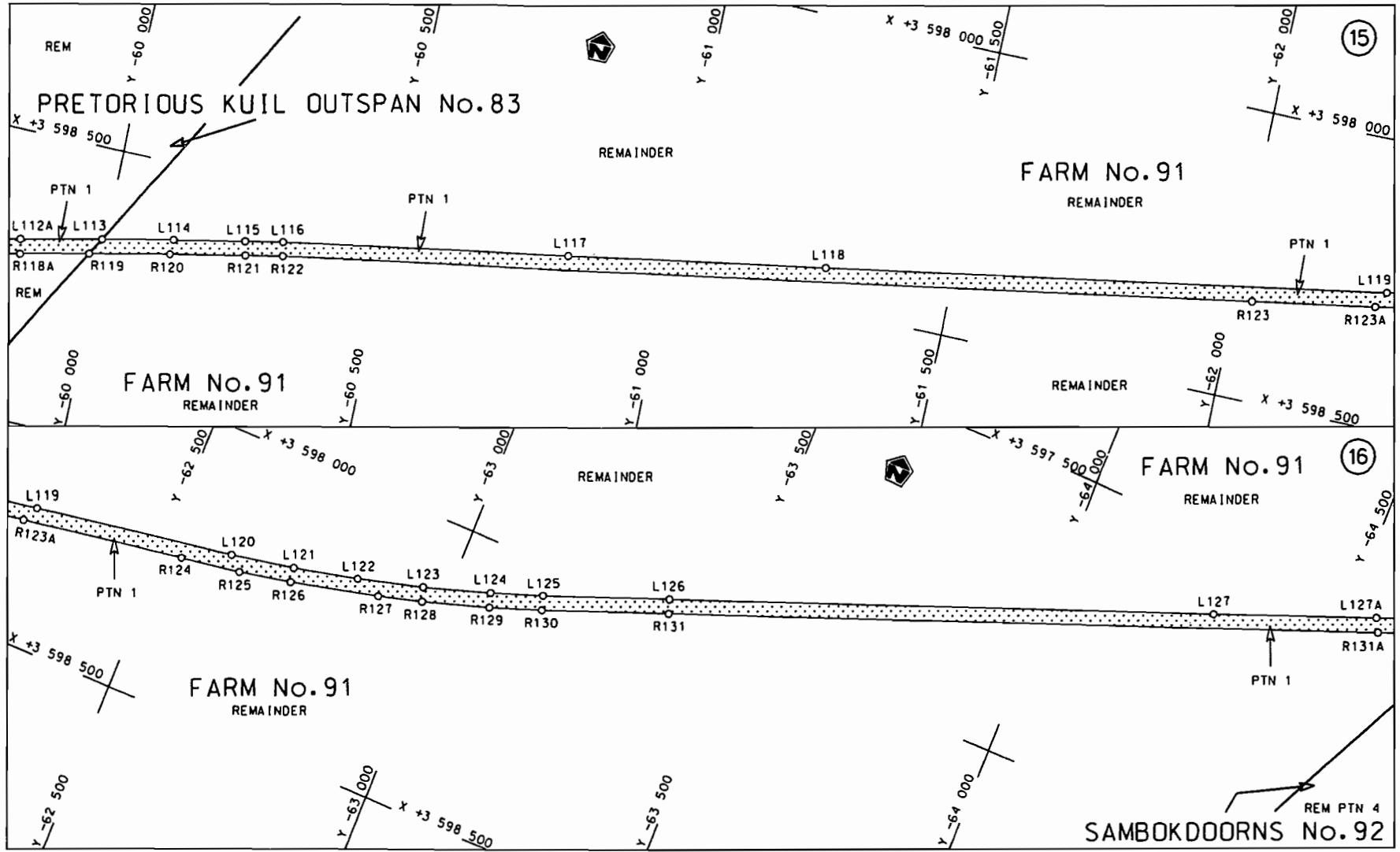
Vel Sheet 5 van 21  
 Plan P695/08




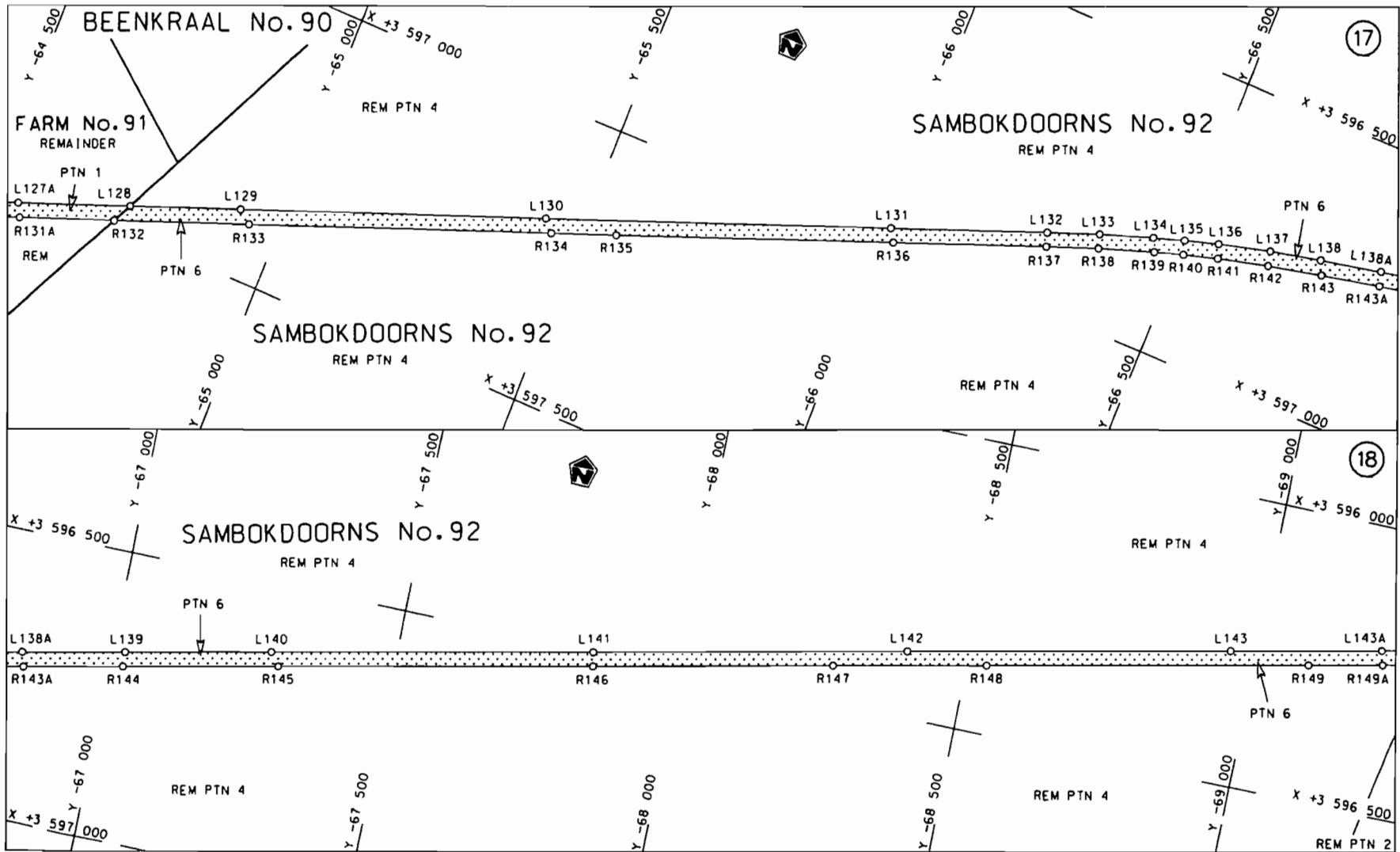
<p>Die Suid Afrikaanse Nasionale Padagentskap Beperk The South African National Roads Agency Limited</p>	<p>Die figuur getoon The figure shown</p> 	<p>steldie padreserwe voor van 'n gedeelte represents the road reserve of a portion van Nasionale Roete R61 Seksie of National Route Section 1</p>	<p>Vel Sheet 6 van 21 Plan P695/08</p>
--	--	--	--



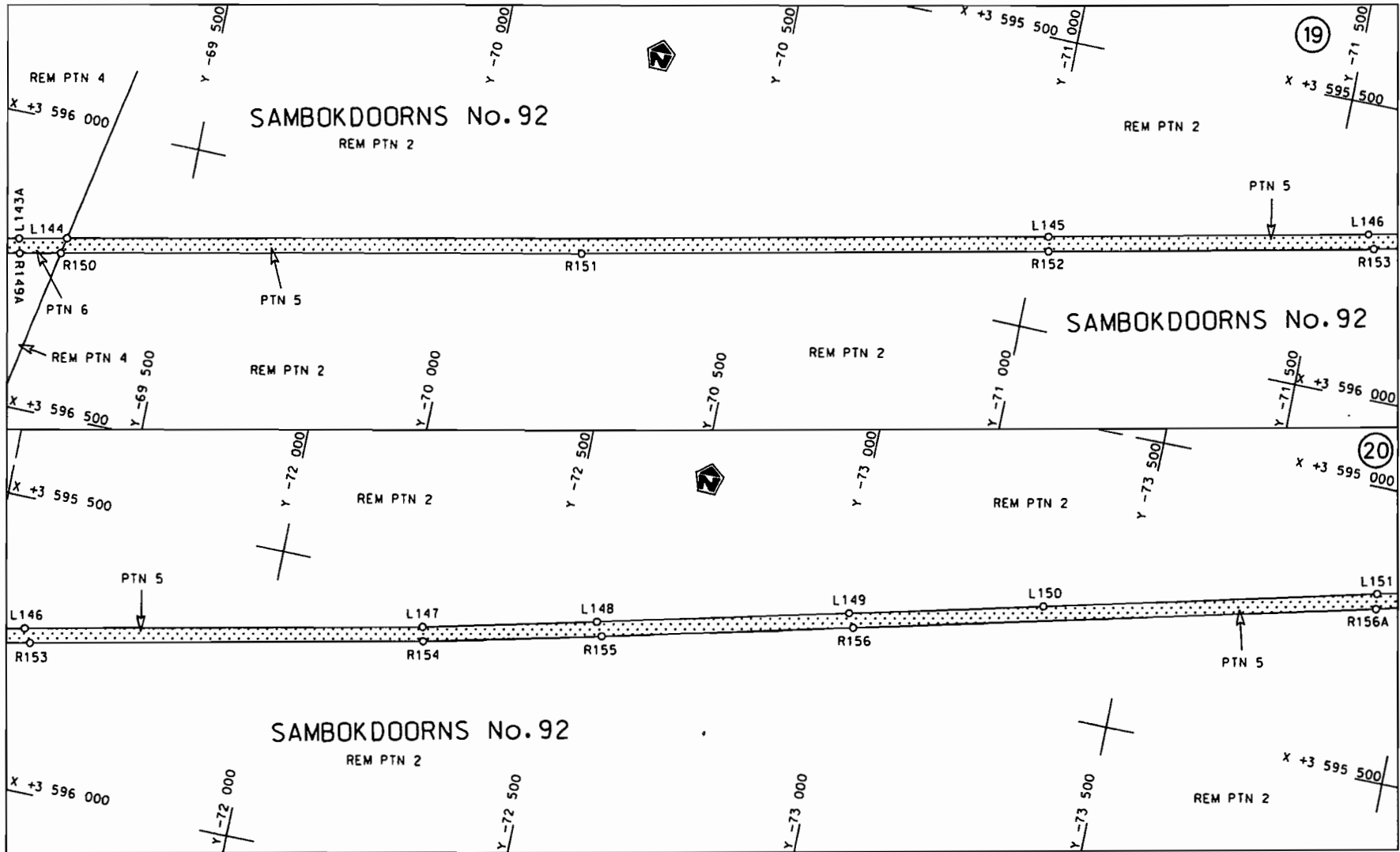
<p>Die Suid Afrikaanse Nasionale Padogenskap Beperk The South African National Roads Agency Limited</p>	<p>Die figuur getoon The figure shown</p> 	<p>steldie podreserve voor van 'n gedeelte represents the road reserve of a portion von Nasionale Roete R61 Sektie 1 of National Route R61 Section 1</p>	<p>Vel Sheet 7 van 21 Plan P695/08</p>
---	--	--	--

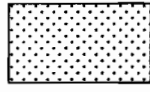


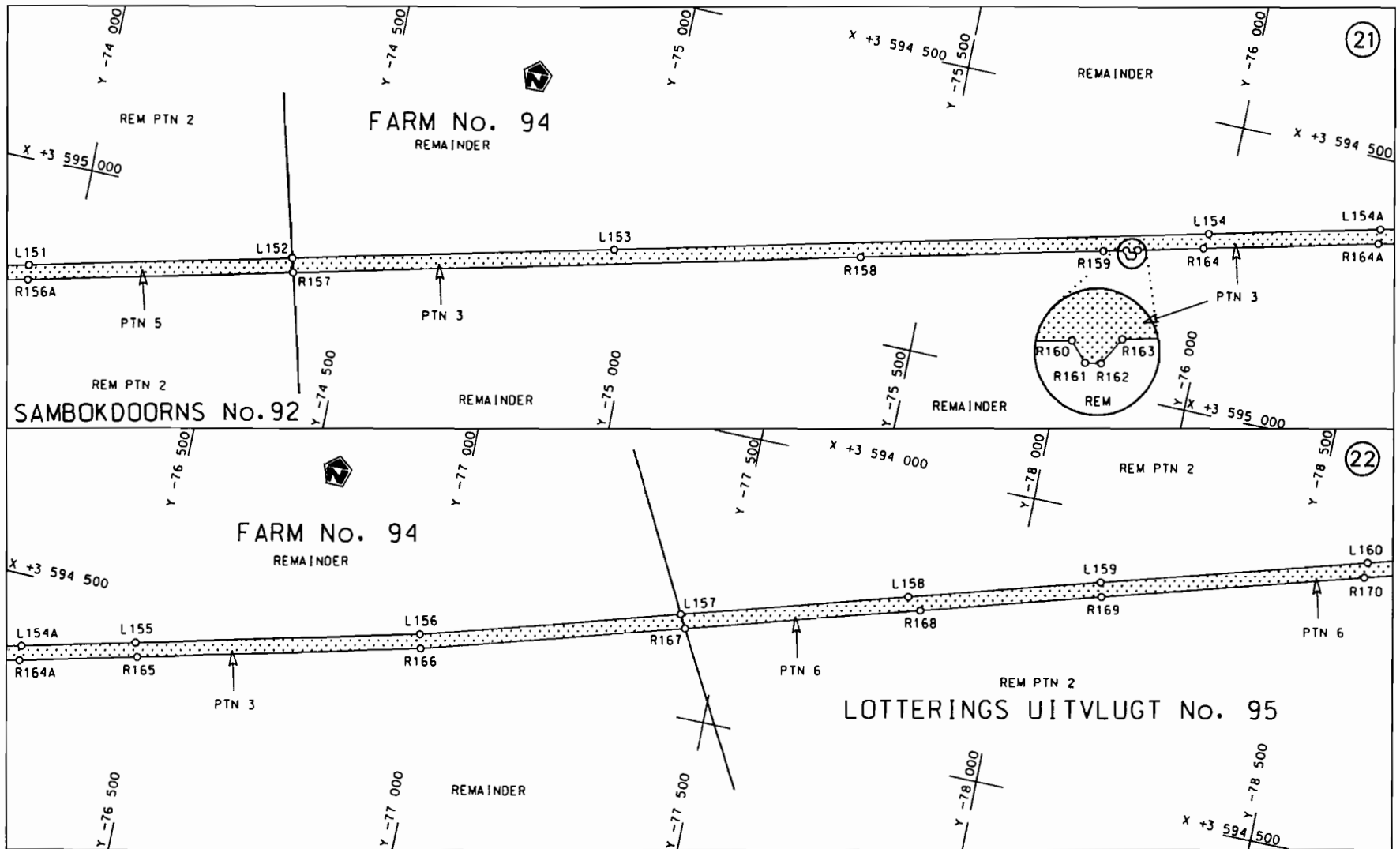
<p>Die Suid Afrikaanse Nasionale Padagentskop Beperk</p>	<p>Die figuur getoon</p>		<p>steldie padreserwe voor van 'n gedeelte represents the road reserve of a portion van Nasionale Roete R61 Seksie of National Route Section 1</p>	<p>Vel Sheet 8 van of 21</p>
<p>The South African National Roads Agency Limited</p>	<p>The figure shown</p>		<p>1</p>	<p>Plan P695/08</p>

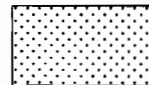


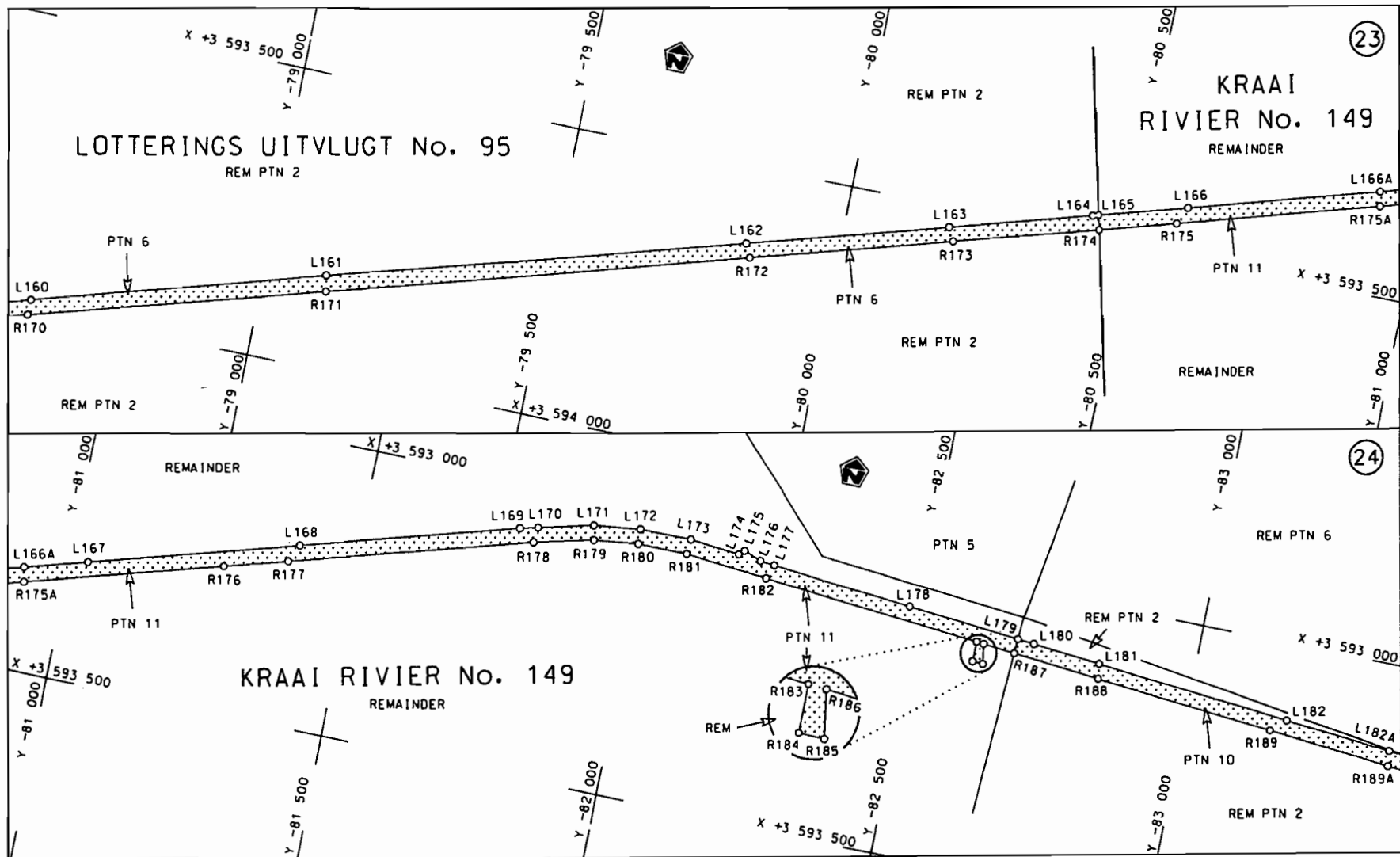
<p>Die Suid Afrikaanse Nasionale Padagentskap Beperk</p>	<p>Die figuur getoon</p>	<p>steldie padreserwe voor van 'n gedeelte</p>	<p>Vel Sheet 9 van 21</p>
<p>The South African National Roads Agency Limited</p>	<p>The figure shown</p>	<p>represents the road reserve of a portion van Nasionale Roete R61 Seksie of National Route Section 1</p>	<p>Plan P695/08</p>

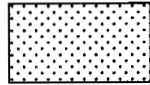


<p>Die Suid Afrikaanse Nasionale Padagentskap Beperk The South African National Roads Agency Limited</p>	<p>Die figuur getoon The figure shown</p> 	<p>steldie padreserwe voor van 'n gedeelte represents the road reserve of a portion van Nasionale Raete R61 Sektie of National Route R61 Section 1</p>	<p>Vel Sheet 10 van 21 Plan P695/08</p>
--	--	--	---

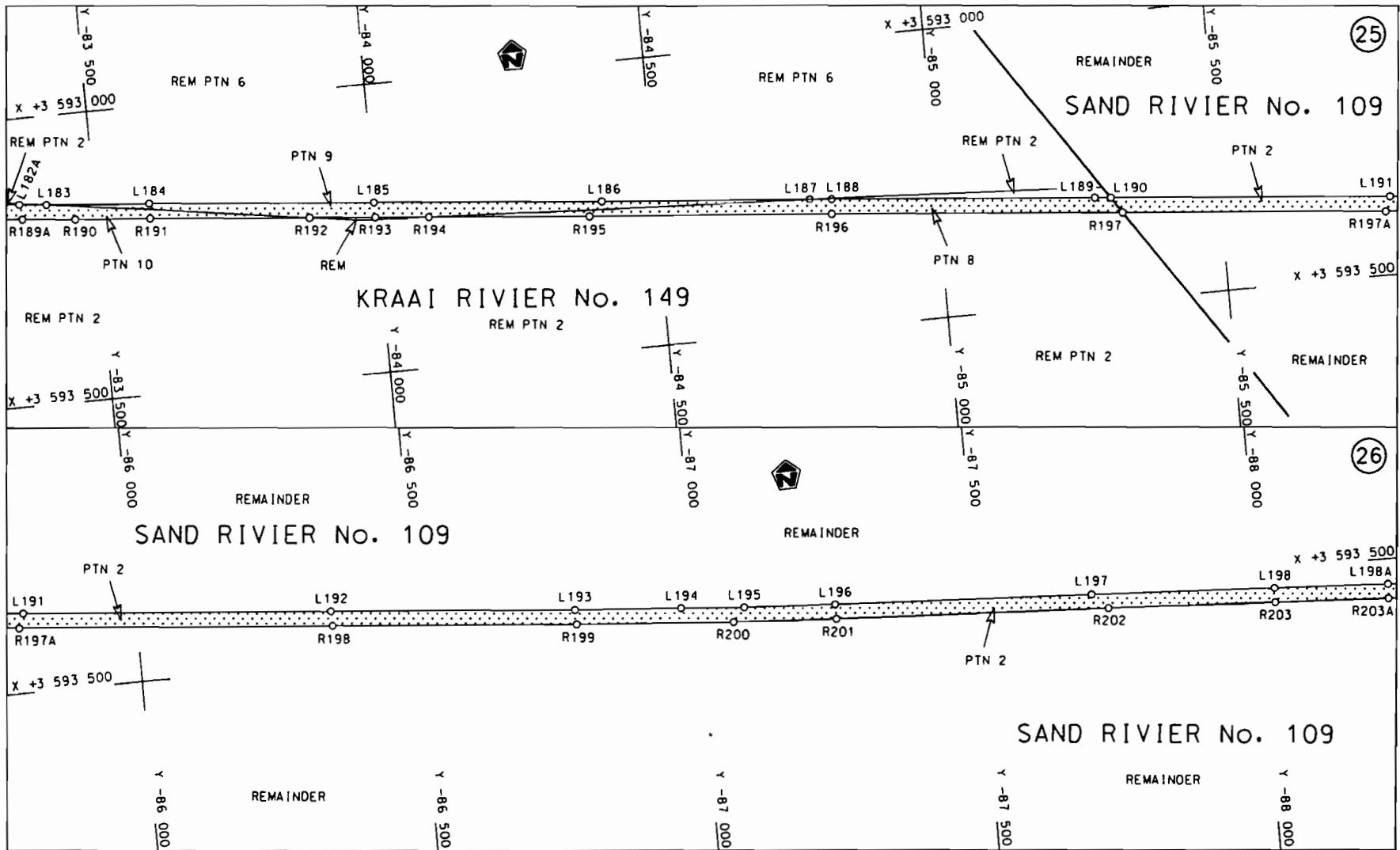


<p>Die Suid Afrikaanse Nasionale Padogenskap Beperk The South African National Roads Agency Limited</p>	<p>Die figuur getoon The figure shown</p> 	<p>steldie padreserwe voor van 'n gedeelte represents the road reserve of a portion van Nasionale Roete R61 Seksie 1 of National Route R61 Section 1</p>	<p>Vel Sheet 11 van 21 Plan P695/08</p>
---	--	--	---



<p>Die Suid Afrikaanse Nasionale Padagentskap Beperk The South African National Roads Agency Limited</p>	<p>Die figuur getoon The figure shown</p>		<p>steldie padreserwe voor van 'n gedeelte represents the road reserve of a portion van Nasionale Roete R61 Seksie of National Route Section 1</p>	<p>Vel Sheet 12 of 21</p>
				<p>Plan P695/08</p>





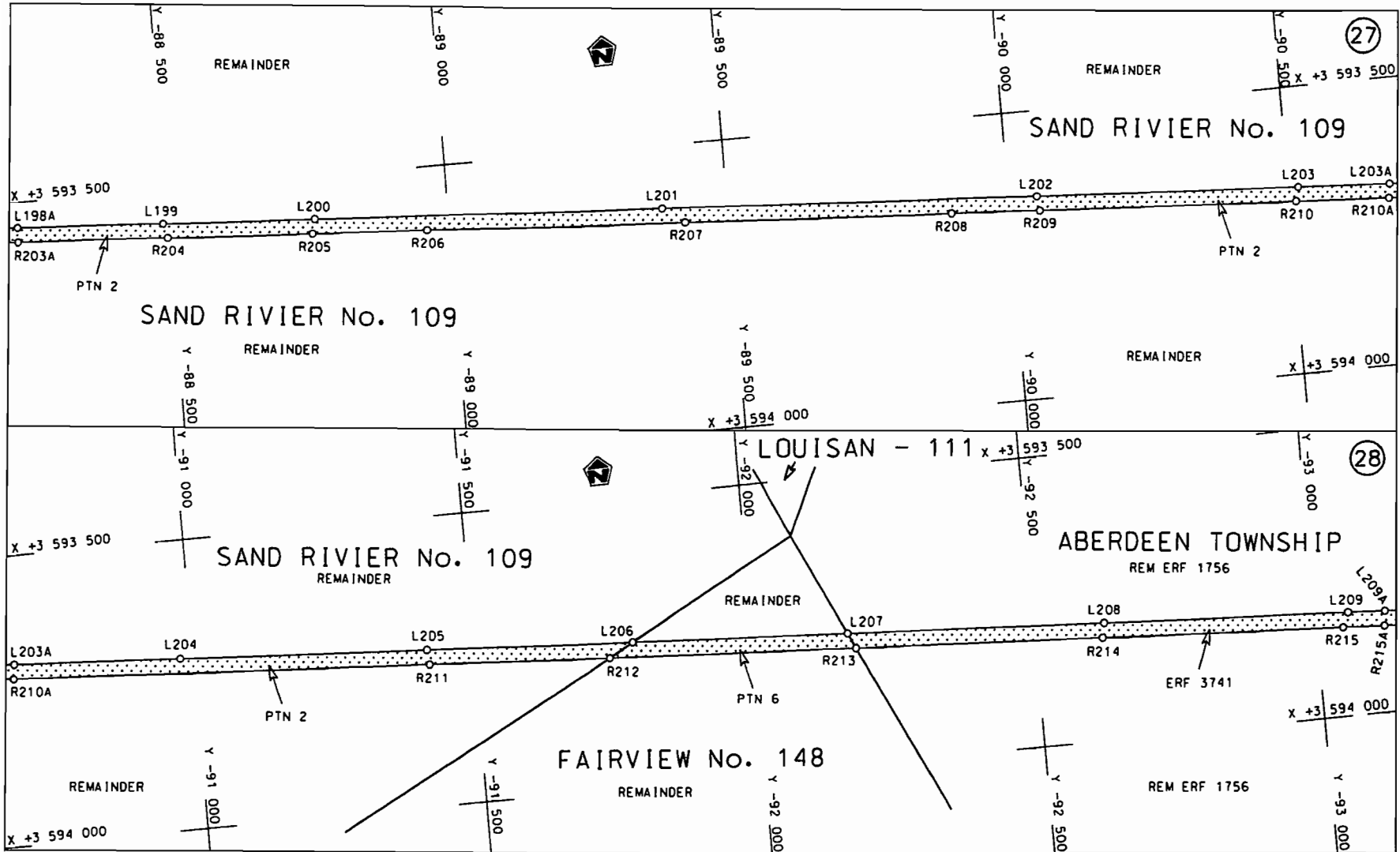
Die Suid Afrikaanse Nasionale Padagentskap Beperk  
The South African National Roads Agency Limited

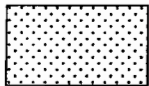
Die figuur getoon  
The figure shown

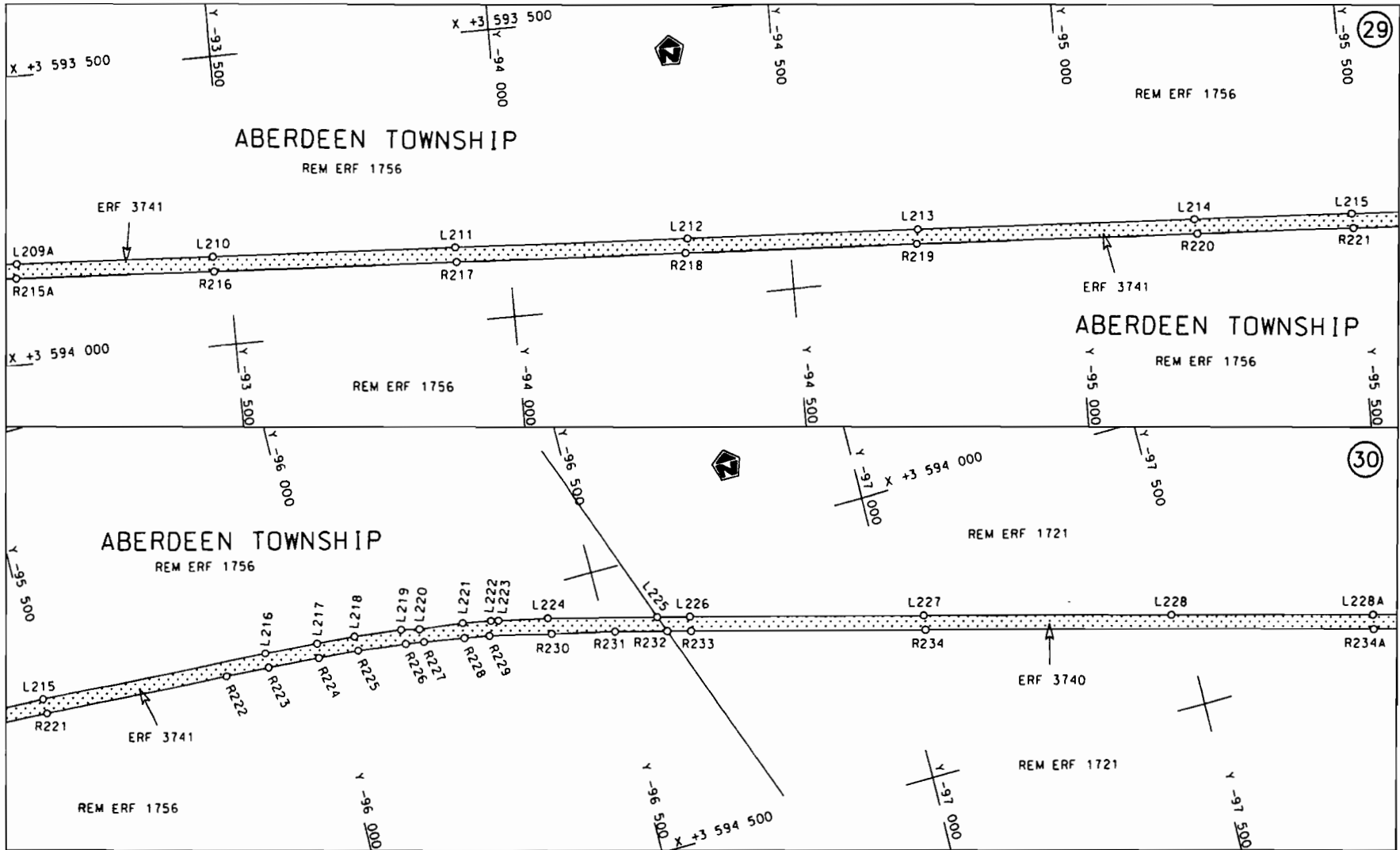



steldie podreserwe voor van 'n gedeelte  
represents the road reserve of a portion  
von Nasionale Roete R61 Seksie 1  
of National Route R61 Section 1

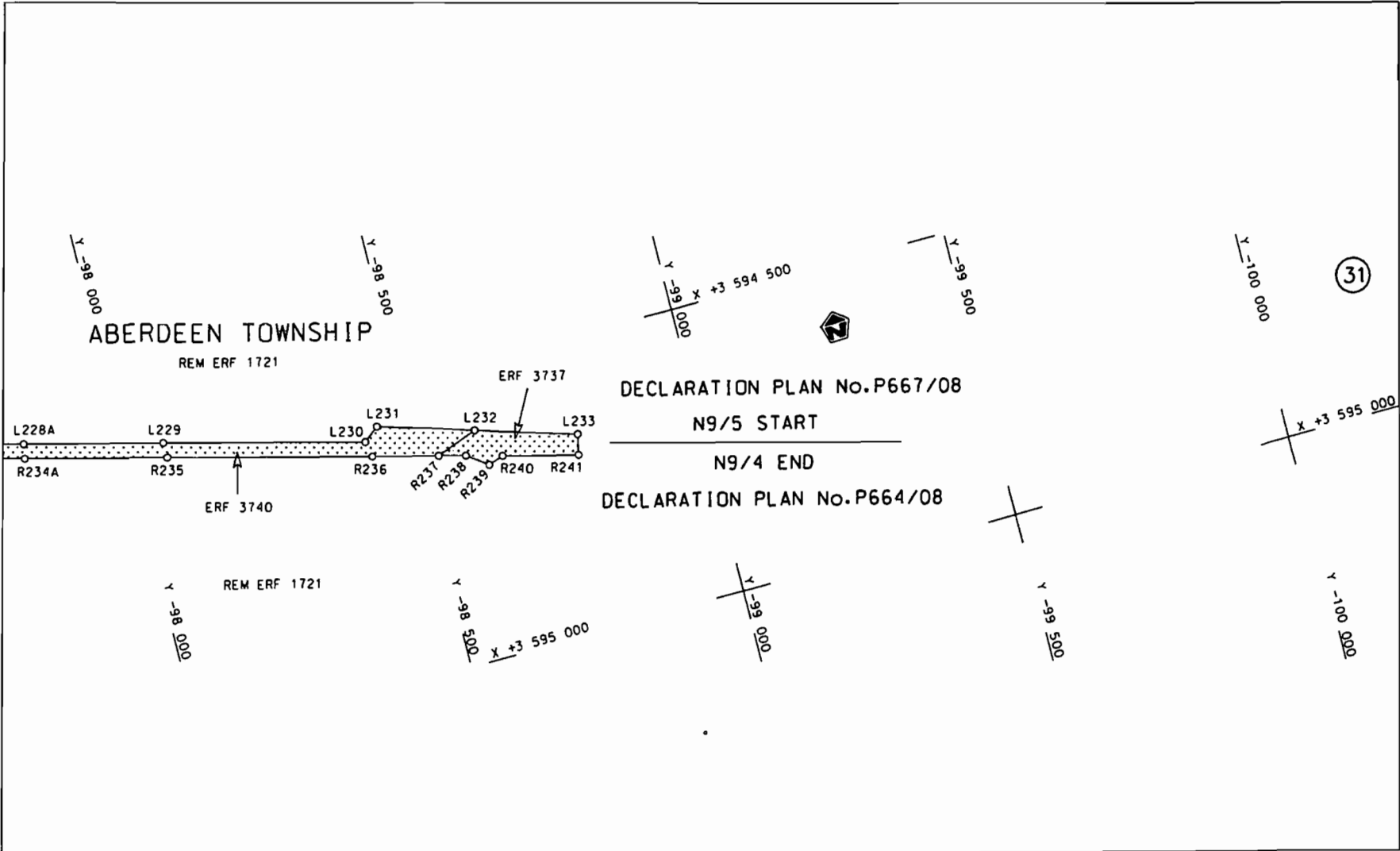
Vel Sheet 13 van af 21  
Plan P695/08



<p>Die Suid Afrikaanse Nasionale Padagentskap Beperk The South African National Roads Agency Limited</p>	<p>Die figuur getoon The figure shown</p> 	<p>steldie padreserwe voor van 'n gedeelte represents the rood reserve of a portion van Nasionale Roete R61 Seksie of National Route Section 1</p>	<p>Vel Sheet 14 van 21 Plan P695/08</p>
--	--	--	---

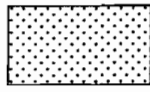


<p>Die Suid Afrikaanse Nasionale Padagentskap Beperk The South African National Roads Agency Limited</p>	<p>Die figuur getoon The figure shown</p>		<p>steldie padreserwe voor van 'n gedeelte represents the road reserve of a portion van Nasionale Roete R61 Seksie of National Route R61 Section 1</p>	<p>Vel Sheet 15 van of 21 Plan P695/08</p>
--	---	--	--	--



Die Suid Afrikaanse Nasionale Padagentskap Beperk  
 The South African National Roads Agency Limited

Die figuur getoon  
 The figure shown



steldie padreserwe voor van 'n gedeelte  
 represents the road reserve of a portion  
 van Nasionale Roete R61 Seksie  
 of National Route Section 1

Vel Sheet 16 van of 21  
 Plan P695/08

PADRESERWE KOÖRDINATE / ROAD RESERVE CO-ORDINATES									
LINKERKANT/LEFT HAND SIDE				REGTERKANT/RIGHT HAND SIDE					
	Y	X	WG 23°		Y	X			
L1	-27	893.700	3 605	948.310	R1	-27	901.550	3 605	977.910
L2	-28	340.790	3 605	891.370	R2	-27	920.250	3 605	976.190
L3	-28	791.130	3 605	834.090	R3	-27	923.750	3 605	969.950
L4	-29	122.600	3 605	791.760	R4	-28	343.270	3 605	916.670
L5	-30	935.150	3 605	560.800	R5	-28	788.910	3 605	859.640
L6	-31	390.800	3 605	502.670	R6	-29	129.150	3 605	816.390
L7	-31	879.080	3 605	440.510	R7	-29	601.330	3 605	756.140
L8	-32	384.100	3 605	375.870	R8	-30	137.750	3 605	687.810
L9	-32	485.670	3 605	362.960	R9	-30	476.580	3 605	644.500
L10	-33	108.630	3 605	283.780	R10	-31	392.660	3 605	527.900
L11	-33	578.380	3 605	223.930	R11	-31	879.840	3 605	465.840
L12	-35	379.800	3 604	994.550	R12	-32	357.980	3 605	404.820
L13	-35	803.110	3 604	940.580	R13	-32	530.900	3 605	382.840
L14	-36	243.240	3 604	884.220	R14	-32	664.070	3 605	365.920
L15	-36	795.930	3 604	813.960	R15	-33	098.900	3 605	310.460
L16	-37	169.820	3 604	766.380	R16	-35	388.620	3 605	018.690
L17	-37	684.500	3 604	700.760	R17	-35	854.250	3 604	959.530
L18	-38	128.110	3 604	644.280	R18	-36	253.890	3 604	908.440
L19	-38	571.980	3 604	587.720	R19	-36	797.530	3 604	839.240
L20	-38	909.330	3 604	544.690	R20	-37	179.720	3 604	790.690
L21	-39	021.870	3 604	530.330	R21	-37	689.340	3 604	725.730
L22	-39	510.590	3 604	468.060	R22	-38	131.670	3 604	669.270
L23	-39	725.890	3 604	440.740	R23	-38	574.930	3 604	612.760
L24	-40	193.870	3 604	381.180	R24	-38	935.380	3 604	566.860
L25	-40	473.530	3 604	345.400	R25	-38	970.330	3 604	562.410
L26	-40	639.600	3 604	324.100	R26	-39	430.300	3 604	503.710
L27	-41	084.840	3 604	267.410	R27	-39	890.260	3 604	445.200
L28	-41	568.650	3 604	205.660	R28	-40	480.720	3 604	369.890
L29	-42	088.790	3 604	139.500	R29	-40	755.760	3 604	334.850
L30	-42	532.630	3 604	082.980	R30	-41	080.920	3 604	293.310
L31	-42	780.780	3 604	051.420	R31	-41	989.110	3 604	177.520
L32	-43	230.380	3 603	993.890	R32	-41	999.210	3 604	180.950
L33	-43	537.950	3 603	954.910	R33	-42	018.110	3 604	178.410
L34	-43	983.820	3 603	897.920	R34	-42	027.080	3 604	172.680
L35	-43	985.660	3 603	897.680	R35	-42	534.110	3 604	108.160
L36	-44	046.090	3 603	890.010	R36	-44	019.110	3 603	918.970
L37	-44	160.670	3 603	875.370	R37	-44	043.130	3 603	915.910
L38	-44	162.620	3 603	875.120	R38	-44	088.660	3 603	910.110
L39	-44	484.800	3 603	834.220	R39	-44	934.750	3 603	802.260
L40	-44	931.570	3 603	777.330	R40	-45	830.000	3 603	688.380
L41	-45	378.400	3 603	720.320	R41	-46	237.660	3 603	636.370
L42	-45	826.070	3 603	663.370	R42	-46	253.580	3 603	639.200
L43	-46	269.790	3 603	606.850	R43	-46	265.540	3 603	632.790
L44	-46	471.590	3 603	581.100	R44	-46	747.710	3 603	571.290
L45	-48	594.960	3 603	310.550	R45	-47	748.610	3 603	443.830
L46	-49	036.260	3 603	254.210	R46	-47	841.760	3 603	431.890
L47	-49	445.420	3 603	202.080	R47	-48	041.400	3 603	406.420
L48	-49	478.800	3 603	197.870	R48	-48	447.070	3 603	354.760
L49	-49	579.170	3 603	185.150	R49	-49	413.820	3 603	231.510
L50	-49	941.820	3 603	138.740	R50	-49	427.230	3 603	239.500
L51	-49	995.890	3 603	131.800	R51	-49	431.610	3 603	239.360

PADRESERWE KOÖRDINATE / ROAD RESERVE CO-ORDINATES											
LINKERKANT/LEFT HAND SIDE						REGTERKANT/RIGHT HAND SIDE					
	Y		X	WG 23°		Y		X			
L52	-50	092.769	3	603	113.181	R52	-49	445.400	3	603	227.440
L53	-50	142.050	3	603	100.780	R53	-49	480.480	3	603	222.090
L54	-50	207.840	3	603	082.760	R54	-50	006.650	3	603	155.860
L55	-50	284.430	3	603	059.000	R55	-50	096.320	3	603	137.640
L56	-50	399.990	3	603	013.950	R56	-50	175.150	3	603	118.330
L57	-50	443.740	3	602	996.820	R57	-50	275.780	3	603	089.200
L58	-50	504.888	3	602	970.346	R58	-50	393.460	3	603	045.300
L59	-50	511.011	3	602	970.377	R59	-50	454.820	3	603	019.230
L60	-50	623.010	3	602	905.170	R60	-50	509.690	3	602	993.330
L61	-50	711.650	3	602	848.720	R61	-50	547.640	3	602	974.250
L62	-50	828.890	3	602	763.830	R62	-50	573.610	3	602	970.694
L63	-50	943.780	3	602	665.170	R63	-50	614.200	3	602	938.160
L64	-51	077.940	3	602	523.330	R64	-50	630.710	3	602	928.900
L65	-51	155.480	3	602	429.560	R65	-50	693.120	3	602	890.840
L66	-51	312.150	3	602	210.720	R66	-50	708.410	3	602	880.710
L67	-51	597.810	3	601	811.640	R67	-50	785.530	3	602	827.920
L68	-51	797.080	3	601	533.510	R68	-50	856.920	3	602	773.240
L69	-51	793.870	3	601	526.920	R69	-50	915.190	3	602	722.730
L70	-51	795.390	3	601	522.870	R70	-50	925.420	3	602	713.850
L71	-51	804.960	3	601	522.540	R71	-50	949.490	3	602	692.960
L72	-51	929.610	3	601	348.510	R72	-50	961.330	3	602	682.770
L73	-52	087.957	3	601	130.106	R73	-51	029.860	3	602	614.990
L74	-52	204.780	3	600	964.340	R74	-51	039.600	3	602	605.390
L75	-52	299.310	3	600	831.990	R75	-51	073.470	3	602	568.350
L76	-52	414.750	3	600	670.870	R76	-51	093.860	3	602	543.520
L77	-52	489.740	3	600	575.980	R77	-51	109.220	3	602	538.540
L78	-52	517.300	3	600	544.740	R78	-51	110.570	3	602	534.350
L79	-52	552.490	3	600	507.280	R79	-51	110.080	3	602	523.700
L80	-52	628.510	3	600	431.350	R80	-51	177.600	3	602	441.260
L81	-52	649.750	3	600	414.170	R81	-51	334.040	3	602	223.350
L82	-52	671.175	3	600	396.839	R82	-51	665.137	3	601	775.663
L83	-52	687.540	3	600	383.600	R83	-51	956.400	3	601	354.080
L84	-52	701.650	3	600	372.190	R84	-52	235.340	3	600	964.520
L85	-52	784.620	3	600	311.580	R85	-52	261.170	3	600	928.500
L86	-52	889.250	3	600	246.030	R86	-52	435.610	3	600	685.680
L87	-53	027.690	3	600	175.660	R87	-52	508.650	3	600	591.690
L88	-53	143.940	3	600	122.330	R88	-52	569.430	3	600	525.690
L89	-53	272.610	3	600	091.930	R89	-52	642.310	3	600	453.720
L90	-53	280.010	3	600	081.380	R90	-52	666.760	3	600	433.130
L91	-53	287.650	3	600	079.540	R91	-52	684.852	3	600	417.900
L92	-53	300.200	3	600	085.280	R92	-52	702.450	3	600	403.090
L93	-53	604.560	3	600	020.040	R93	-52	716.650	3	600	391.130
L94	-55	173.040	3	599	685.040	R94	-52	902.250	3	600	267.550
L95	-55	913.260	3	599	526.940	R95	-53	038.380	3	600	198.370
L96	-56	163.790	3	599	473.890	R96	-53	284.500	3	600	117.510
L97	-56	276.650	3	599	449.520	R97	-53	291.230	3	600	121.660
L98	-56	318.890	3	599	440.880	R98	-53	297.110	3	600	120.090
L99	-56	375.388	3	599	430.155	R99	-53	304.610	3	600	109.710
L100	-56	452.640	3	599	412.260	R100	-53	609.450	3	600	044.620
L101	-56	450.730	3	599	398.290	R101	-53	807.020	3	600	002.540
L102	-56	459.860	3	599	394.030	R102	-55	181.550	3	599	708.820

Vel	18	Van	21	P695/08
Sheet		of		

PADRESERWE KOÖRDINATE / ROAD RESERVE CO-ORDINATES

LINKERKANT/LEFT HAND SIDE				REGTERKANT/RIGHT HAND SIDE			
	Y	X	WG 23°		Y	X	
L103	-56 469.010	3 599 408.960		R103	-55 555.930	3 599 628.910	
L104	-56 509.950	3 599 400.090		R104	-55 917.910	3 599 551.530	
L105	-56 786.420	3 599 340.860		R105	-56 318.930	3 599 466.710	
L106	-57 247.060	3 599 242.240		R106	-56 350.000	3 599 460.280	
L107	-57 549.720	3 599 177.760		R107	-56 462.780	3 599 435.810	
L108	-57 982.630	3 599 085.800		R108	-56 791.930	3 599 365.220	
L109	-58 523.980	3 598 970.320		R109	-57 554.660	3 599 202.180	
L110	-58 789.990	3 598 913.060		R110	-57 943.231	3 599 121.976	
L111	-59 262.510	3 598 812.240		R111	-58 545.510	3 598 992.380	
L112	-59 575.040	3 598 745.580		R112	-58 573.970	3 599 021.520	
L113	-59 994.730	3 598 655.880		R113	-58 615.670	3 598 976.270	
L114	-60 119.170	3 598 629.490		R114	-59 180.690	3 598 855.660	
L115	-60 244.990	3 598 604.350		R115	-59 527.060	3 598 781.660	
L116	-60 311.780	3 598 591.910		R116	-59 551.810	3 598 785.330	
L117	-60 817.330	3 598 506.260		R117	-59 556.310	3 598 785.190	
L118	-61 273.630	3 598 429.330		R118	-59 579.730	3 598 770.530	
L119	-62 263.570	3 598 263.010		R119	-59 977.380	3 598 685.480	
L120	-62 614.970	3 598 203.660		R120	-60 118.100	3 598 655.510	
L121	-62 726.200	3 598 181.700		R121	-60 250.720	3 598 628.700	
L122	-62 840.890	3 598 154.600		R122	-60 316.550	3 598 616.180	
L123	-62 955.370	3 598 122.800		R123	-62 030.660	3 598 327.600	
L124	-63 070.090	3 598 086.020		R124	-62 533.530	3 598 243.140	
L125	-63 158.290	3 598 054.210		R125	-62 647.201	3 598 225.541	
L126	-63 369.920	3 597 973.860		R126	-62 730.450	3 598 206.680	
L127	-64 278.790	3 597 628.510		R127	-62 886.420	3 598 168.600	
L128	-64 736.870	3 597 453.550		R128	-62 963.230	3 598 146.760	
L129	-64 922.600	3 597 383.270		R129	-63 077.790	3 598 110.130	
L130	-65 433.160	3 597 189.800		R130	-63 165.810	3 598 078.190	
L131	-66 008.400	3 596 971.310		R131	-63 378.440	3 597 997.500	
L132	-66 268.100	3 596 872.580		R132	-64 720.100	3 597 487.590	
L133	-66 355.030	3 596 839.890		R133	-64 946.480	3 597 401.250	
L134	-66 446.030	3 596 808.970		R134	-65 452.000	3 597 209.400	
L135	-66 498.900	3 596 792.490		R135	-65 560.280	3 597 168.370	
L136	-66 557.150	3 596 775.530		R136	-66 021.770	3 596 993.030	
L137	-66 647.470	3 596 751.680		R137	-66 275.830	3 596 896.420	
L138	-66 737.580	3 596 731.320		R138	-66 362.660	3 596 863.900	
L139	-67 022.520	3 596 671.790		R139	-66 456.950	3 596 831.650	
L140	-67 280.680	3 596 617.940		R140	-66 506.500	3 596 816.300	
L141	-67 842.770	3 596 500.940		R141	-66 565.340	3 596 799.190	
L142	-68 391.210	3 596 386.920		R142	-66 653.170	3 596 776.130	
L143	-68 954.220	3 596 269.560		R143	-66 748.620	3 596 754.630	
L144	-69 303.330	3 596 196.900		R144	-67 023.920	3 596 697.040	
L145	-71 019.080	3 595 839.560		R145	-67 297.780	3 596 639.980	
L146	-71 576.170	3 595 722.410		R146	-67 847.310	3 596 525.350	
L147	-72 271.240	3 595 575.390		R147	-68 267.570	3 596 437.950	
L148	-72 574.170	3 595 503.370		R148	-68 534.710	3 596 382.460	
L149	-73 011.950	3 595 399.110		R149	-69 097.320	3 596 265.300	
L150	-73 348.760	3 595 318.750		R150	-69 298.110	3 596 223.540	
L151	-73 925.540	3 595 180.940		R151	-70 208.160	3 596 034.370	
L152	-74 385.800	3 595 071.450		R152	-71 024.290	3 595 864.040	
L153	-74 945.290	3 594 937.980		R153	-71 590.660	3 595 745.110	

PADRESERWE KOÖRDINATE / ROAD RESERVE CO-ORDINATES					
LINKERKANT/LEFT HAND SIDE			REGTERKANT/RIGHT HAND SIDE		
	Y	X	WG 23°	Y	X
L154	-75 978.640	3 594 691.680	R154	-72 277.030	3 595 599.720
L155	-76 473.730	3 594 573.530	R155	-72 587.090	3 595 526.150
L156	-76 971.270	3 594 454.020	R156	-73 024.060	3 595 422.150
L157	-77 421.520	3 594 324.690	R157	-74 392.270	3 595 095.600
L158	-77 813.990	3 594 212.100	R158	-75 379.620	3 594 860.160
L159	-78 144.510	3 594 117.740	R159	-75 800.130	3 594 760.130
L160	-78 604.490	3 593 985.990	R160	-75 840.100	3 594 750.680
L161	-79 111.070	3 593 838.350	R161	-75 847.240	3 594 758.320
L162	-79 833.780	3 593 632.740	R162	-75 853.750	3 594 757.230
L163	-80 181.550	3 593 533.260	R163	-75 860.370	3 594 745.800
L164	-80 437.740	3 593 459.710	R164	-75 974.390	3 594 718.480
L165	-80 438.770	3 593 459.420	R165	-76 481.770	3 594 597.490
L166	-80 592.010	3 593 416.010	R166	-76 977.420	3 594 478.040
L167	-81 031.590	3 593 290.010	R167	-77 434.020	3 594 346.770
L168	-81 395.550	3 593 185.460	R168	-77 839.900	3 594 230.910
L169	-81 774.240	3 593 077.090	R169	-78 151.270	3 594 141.820
L170	-81 806.050	3 593 069.150	R170	-78 603.730	3 594 012.140
L171	-81 901.980	3 593 045.250	R171	-79 116.220	3 593 865.640
L172	-81 985.090	3 593 035.490	R172	-79 845.120	3 593 655.540
L173	-82 077.230	3 593 034.670	R173	-80 193.410	3 593 555.780
L174	-82 166.160	3 593 042.260	R174	-80 444.800	3 593 483.950
L175	-82 174.990	3 593 034.170	R175	-80 577.920	3 593 445.870
L176	-82 206.400	3 593 045.740	R176	-81 269.390	3 593 247.850
L177	-82 232.070	3 593 048.150	R177	-81 380.860	3 593 216.040
L178	-82 481.750	3 593 070.240	R178	-81 803.100	3 593 095.220
L179	-82 682.120	3 593 087.880	R179	-81 907.080	3 593 070.010
L180	-82 711.210	3 593 090.530	R180	-81 986.240	3 593 060.610
L181	-82 832.180	3 593 101.340	R181	-82 074.600	3 593 060.010
L182	-83 178.380	3 593 132.000	R182	-82 222.150	3 593 072.690
L183	-83 415.070	3 593 153.020	R183	-82 610.020	3 593 107.060
L184	-83 596.410	3 593 169.120	R184	-82 609.980	3 593 141.650
L185	-83 998.240	3 593 204.540	R185	-82 628.890	3 593 142.260
L186	-84 403.210	3 593 240.390	R186	-82 623.430	3 593 108.040
L187	-84 773.600	3 593 273.230	R187	-82 680.430	3 593 113.160
L188	-84 812.820	3 593 276.710	R188	-82 835.190	3 593 127.080
L189	-85 277.960	3 593 317.640	R189	-83 152.170	3 593 154.970
L190	-85 306.350	3 593 320.170	R190	-83 463.670	3 593 182.720
L191	-85 801.070	3 593 364.170	R191	-83 595.740	3 593 194.400
L192	-86 348.680	3 593 412.550	R192	-83 881.460	3 593 219.580
L193	-86 783.010	3 593 451.160	R193	-83 998.370	3 593 229.880
L194	-86 972.700	3 593 466.720	R194	-84 094.100	3 593 238.350
L195	-87 085.220	3 593 475.930	R195	-84 379.290	3 593 263.580
L196	-87 247.260	3 593 486.580	R196	-84 810.740	3 593 301.840
L197	-87 702.780	3 593 512.810	R197	-85 324.900	3 593 347.160
L198	-88 029.550	3 593 531.790	R198	-86 349.140	3 593 437.880
L199	-88 490.520	3 593 558.380	R199	-86 783.520	3 593 476.250
L200	-88 760.020	3 593 573.890	R200	-87 063.630	3 593 499.380
L201	-89 383.500	3 593 609.960	R201	-87 247.050	3 593 511.710
L202	-90 050.680	3 593 648.440	R202	-87 730.680	3 593 539.610
L203	-90 517.900	3 593 675.540	R203	-88 028.930	3 593 556.740
L204	-90 977.320	3 593 701.990	R204	-88 496.750	3 593 583.840

Vel	20	Van	21	P695/08
Sheet		of		



## PADRESERWE KOÖRDINATE / ROAD RESERVE CO-ORDINATES

## LINKERKANT/LEFT HAND SIDE

## REGTERKANT/RIGHT HAND SIDE

	Y	X	WG 23°		Y	X
L205	-91 417.880	3 593	727.390	R205	-88 753.830	3 593 598.880
L206	-91 785.680	3 593	748.730	R206	-88 960.000	3 593 610.570
L207	-92 168.250	3 593	770.730	R207	-89 422.740	3 593 637.190
L208	-92 624.980	3 593	797.110	R208	-89 896.830	3 593 664.600
L209	-93 058.490	3 593	822.060	R209	-90 053.940	3 593 673.500
L210	-93 472.570	3 593	845.900	R210	-90 511.930	3 593 700.210
L211	-93 905.780	3 593	870.940	R211	-91 420.340	3 593 752.670
L212	-94 319.430	3 593	894.790	R212	-91 742.410	3 593 771.170
L213	-94 729.720	3 593	918.480	R213	-92 180.910	3 593 796.840
L214	-95 219.580	3 593	946.950	R214	-92 619.830	3 593 822.120
L215	-95 498.750	3 593	962.820	R215	-93 047.610	3 593 846.510
L216	-95 903.390	3 593	986.290	R216	-93 472.590	3 593 871.570
L217	-95 997.670	3 593	993.590	R217	-93 906.010	3 593 896.500
L218	-96 065.780	3 593	998.950	R218	-94 313.660	3 593 919.660
L219	-96 148.810	3 594	008.830	R219	-94 725.770	3 593 943.450
L220	-96 180.460	3 594	016.400	R220	-95 222.560	3 593 972.210
L221	-96 256.750	3 594	025.410	R221	-95 499.380	3 593 988.350
L222	-96 305.920	3 594	034.390	R222	-95 824.830	3 594 007.190
L223	-96 319.130	3 594	037.320	R223	-95 903.060	3 594 011.470
L224	-96 405.703	3 594	064.661	R224	-95 994.220	3 594 018.810
L225	-96 595.470	3 594	103.930	R225	-96 066.020	3 594 024.260
L226	-96 651.810	3 594	118.300	R226	-96 150.800	3 594 034.480
L227	-97 055.790	3 594	223.790	R227	-96 182.730	3 594 039.520
L228	-97 481.990	3 594	335.140	R228	-96 252.845	3 594 063.193
L229	-98 066.550	3 594	487.680	R229	-96 296.773	3 594 063.615
L230	-98 416.540	3 594	579.230	R230	-96 405.250	3 594 083.660
L231	-98 443.080	3 594	558.610	R231	-96 516.120	3 594 108.900
L232	-98 608.750	3 594	609.770	R232	-96 606.460	3 594 132.460
L233	-98 784.656	3 594	663.566	R233	-96 647.410	3 594 143.140
				R234	-97 052.570	3 594 248.930
				R235	-98 066.650	3 594 514.150
				R236	-98 421.930	3 594 606.540
				R237	-98 535.700	3 594 636.050
				R238	-98 582.366	3 594 648.102
				R239	-98 618.581	3 594 674.346
				R240	-98 645.782	3 594 665.014
				R241	-98 776.743	3 594 698.315

Vel	21	Van	21	P695/08
Sheet		of		