

Government Gazette Staatskoerant

REPUBLIC OF SOUTH AFRICA
REPUBLIEK VAN SUID-AFRIKA

Vol. 522

Pretoria, 17 December
Desember 2008

No. 31702

CONTENTS**INHOUD**

<i>No.</i>	<i>Page No.</i>	<i>Gazette No.</i>	<i>No.</i>	<i>Bladsy No.</i>	<i>Koerant No.</i>
GOVERNMENT NOTICE			GOEWERMENSKENNISGEWING		
Transport, Department of			Vervoer, Departement van		
<i>Government Notice</i>			<i>Goewermentskennisgewing</i>		
1353			1353		
South African National Roads Agency Limited and the National Roads Act (7/1998): The South African National Roads Agency Limited: Declaration amendment of National Road N6 Section 6: Amendment of Declaration No. 1322 of 1989	3	31702	Suid-Afrikaanse Nasionale Padagentskap Beperk en die Nasionale Paaie Wet (7/1998): Die Suid-Afrikaanse Nasionale Padagentskap Beperk: Verklaring wysiging van Nasionale Pad N6 Seksie 6: Wysiging van Verklaring No. 1322 van 1989	4	31702

**GOVERNMENT NOTICE
GOEWERMENTSKENNISGEWING**

**DEPARTMENT OF TRANSPORT
DEPARTEMENT VAN VERVOER**

No. 1353

17 December 2008

**THE SOUTH AFRICAN NATIONAL ROADS
AGENCY LIMITED**

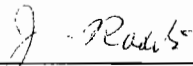
Registration No: 98/09584/06

DECLARATION AMENDMENT OF NATIONAL ROAD N6 SECTION 6

AMENDMENT OF DECLARATION NO. 1322 OF 1989

By virtue of section 40 (1)(b) of the South African National Roads Agency Limited and the National Roads Act, 1998 (Act No. 7 of 1998), I hereby amend Declaration No. 1322 of 1989 by substituting Paragraph 8, with the subjoined sheets 1 to 25 of Plan No. P681/08.

(National Road N6 Section 6: Aliwal North - Smithfield)



MINISTER OF TRANSPORT

No. 1353

17 Desember 2008

**DIE SUID-AFRIKAANSE NASIONALE
PADAGENTSKAP BEPERK**

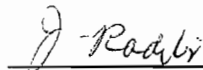
Registrasie No: 98/09584/06

VERKLARING WYSIGING VAN NASIONALE PAD N6 SEKSIE 6.

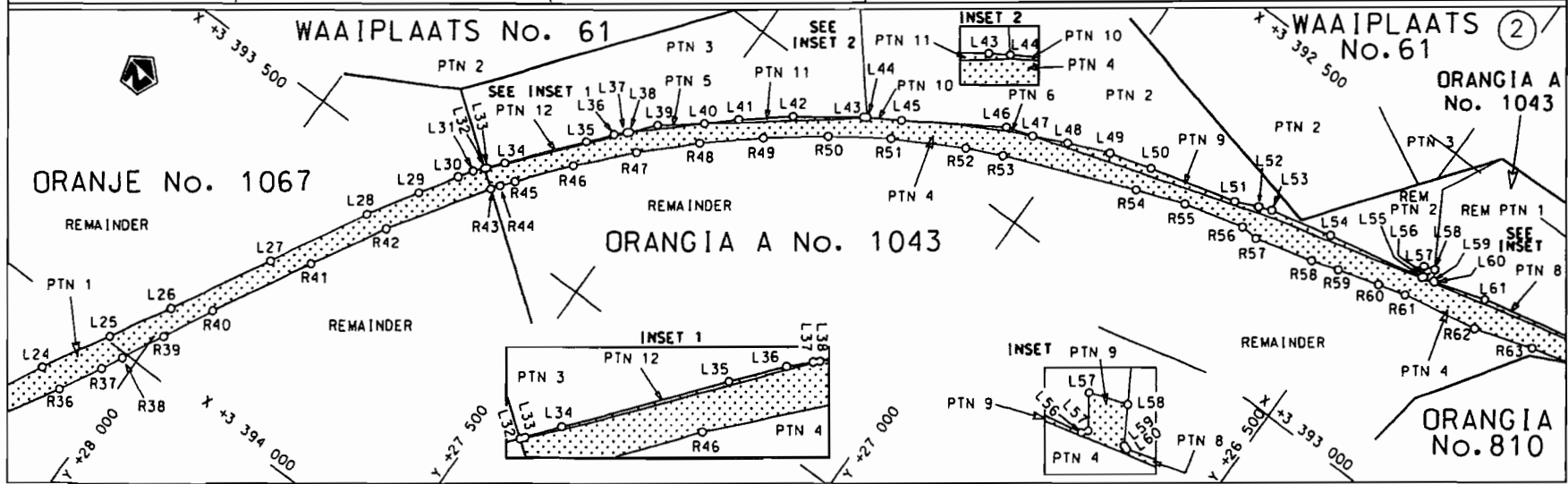
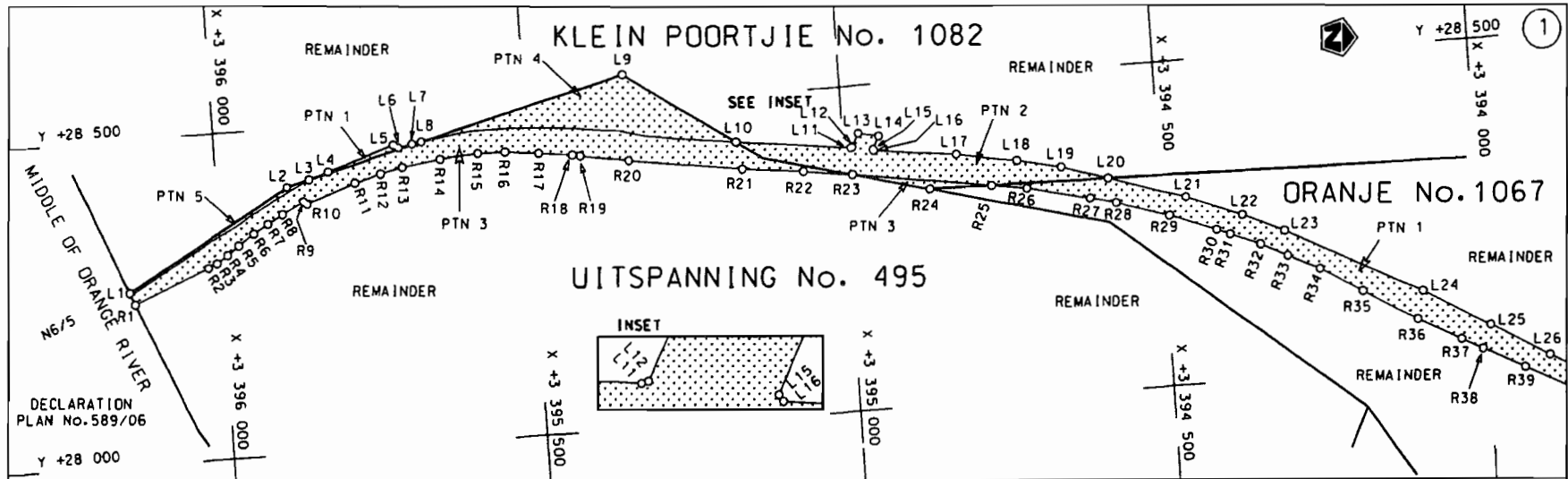
WYSIGING VAN VERKLARING NO. 1322 VAN 1989

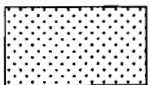
Kragtens Artikel 40(1)(b) van die Suid-Afrikaanse Nasionale Padagentskap Beperk en die Nasionale Paaie Wet, 1998 (Wet no.7 van 1998), wysig ek hiermee Verklaring no. 1322 van 1989 deur paragraaf 8, te vervang met meegaande velle 1 tot 25 van Plan no. P681/08.

(Nasionale Pad N6 Seksie 6: Aliwal Noord - Smithfield)

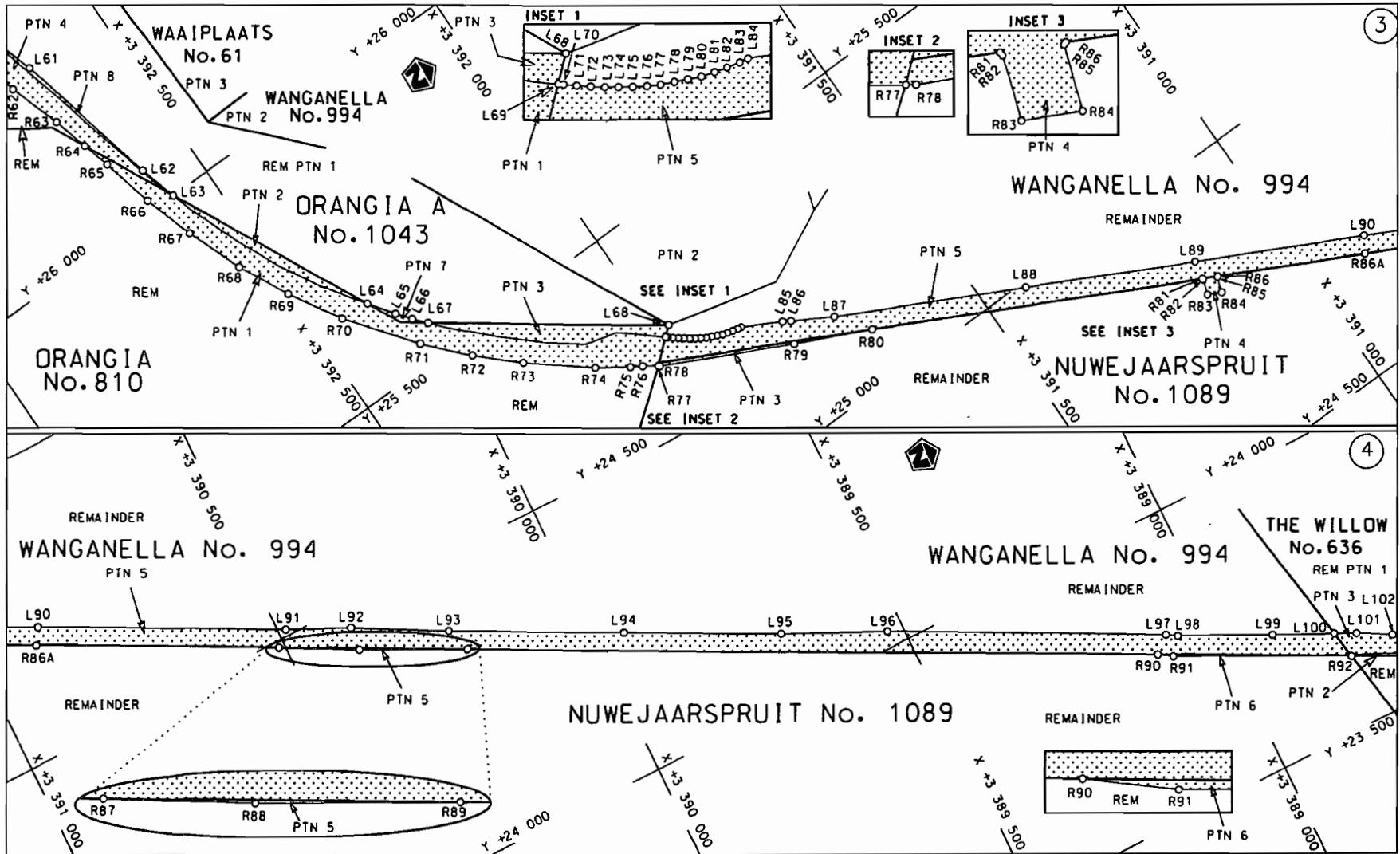



MINISTER VAN VERVOER

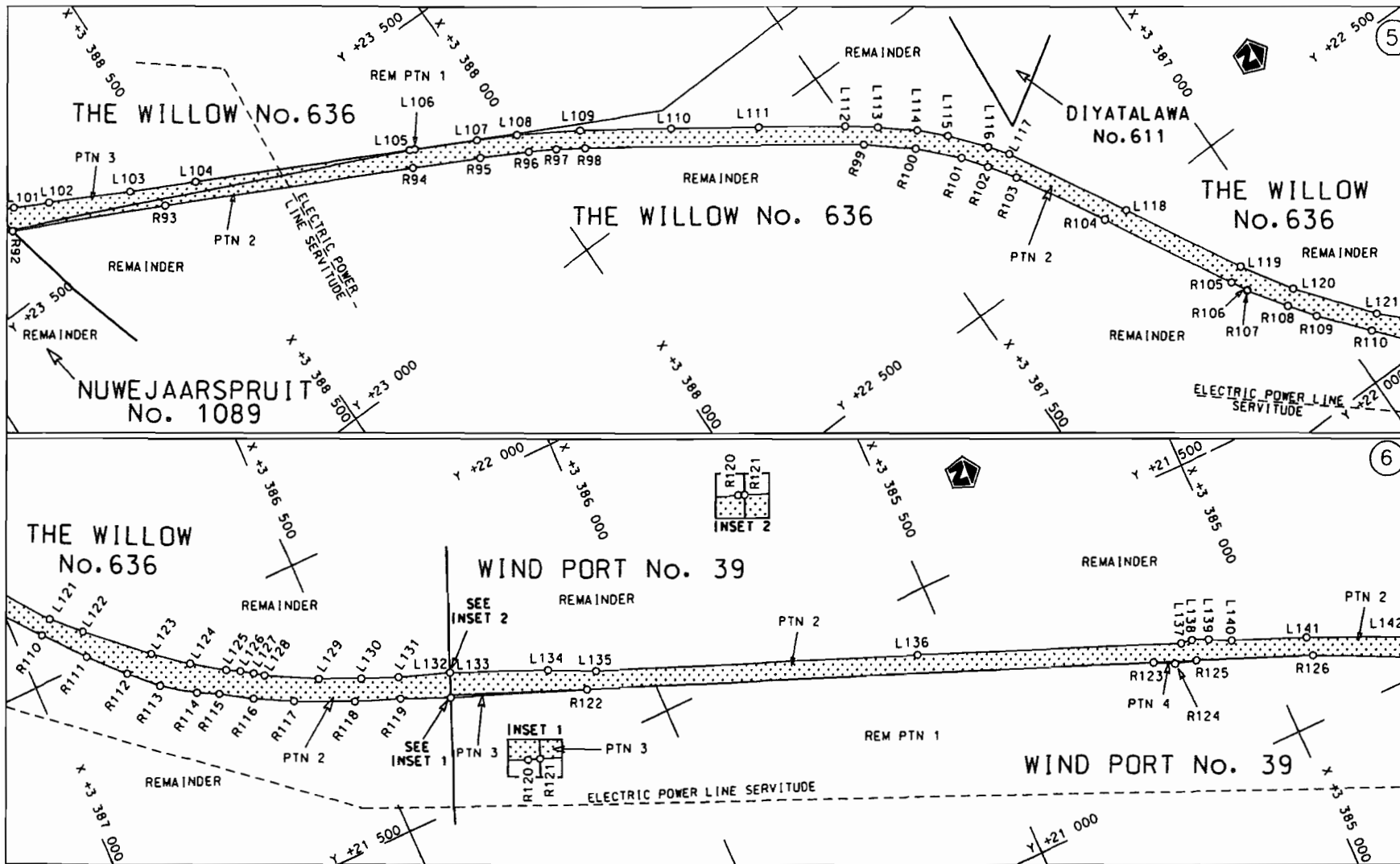



Die Suid Afrikaanse Nasionale Padagentskap Beperk The South African National Roads Agency Limited	Die figuur getoon The figure shown		steldie padreserwe voor van 'n gedeelte represents the road reserve of a portion van Nasionale Roete N6 Seksie 6 of National Route N6 Section 6	Vel Sheet 1 of 25 Plan P681/08
--	---------------------------------------	--	--	-----------------------------------

D.O.9.A

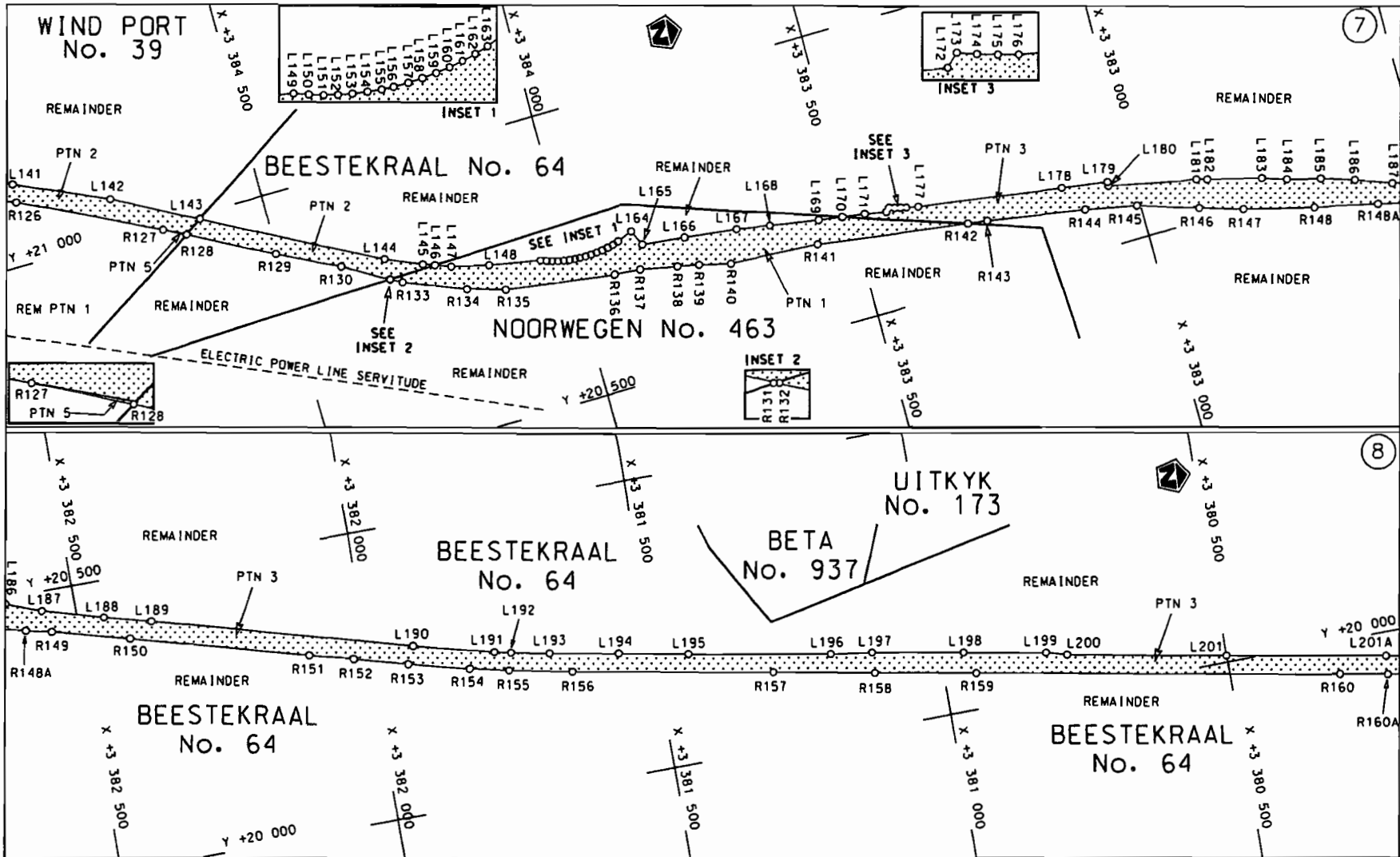


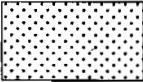
Die Suid Afrikaanse Nasionale Padagentskop Beperk	Die figuur getoon		steldie padreserwe voor van 'n gedeelte represents the road reserve of a portion van Nasionale Roete N6 Seksie 6 of National Route Section 6	Vel Sheet 2 van of 25
The South African National Roads Agency Limited	The figure shown		Plan P681/08	

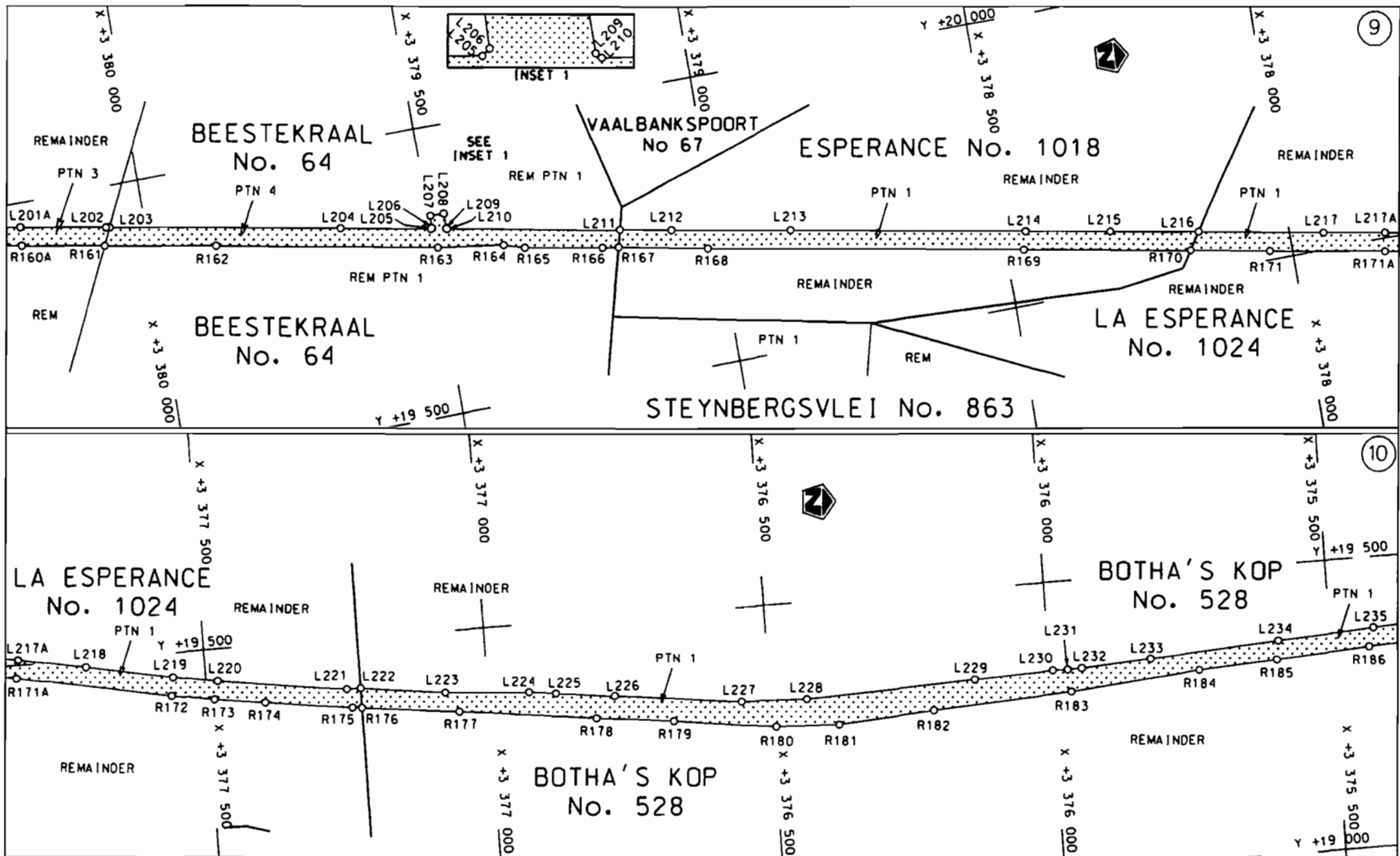



<p>Die Suid Afrikaanse Nasionale Padogentskap Beperk The South African National Roads Agency Limited</p>	<p>Die figuur getoon The figure shown</p> 	<p>steldie padreserwe voor van 'n gedeelte represents the road reserve of a portion van Nasionale Roete N6 of National Route</p> <p>Seksie Section 6</p>	<p>Vel Sheet 3 van of 25 Plan P681/08</p>
--	--	--	---

D.O.9.A

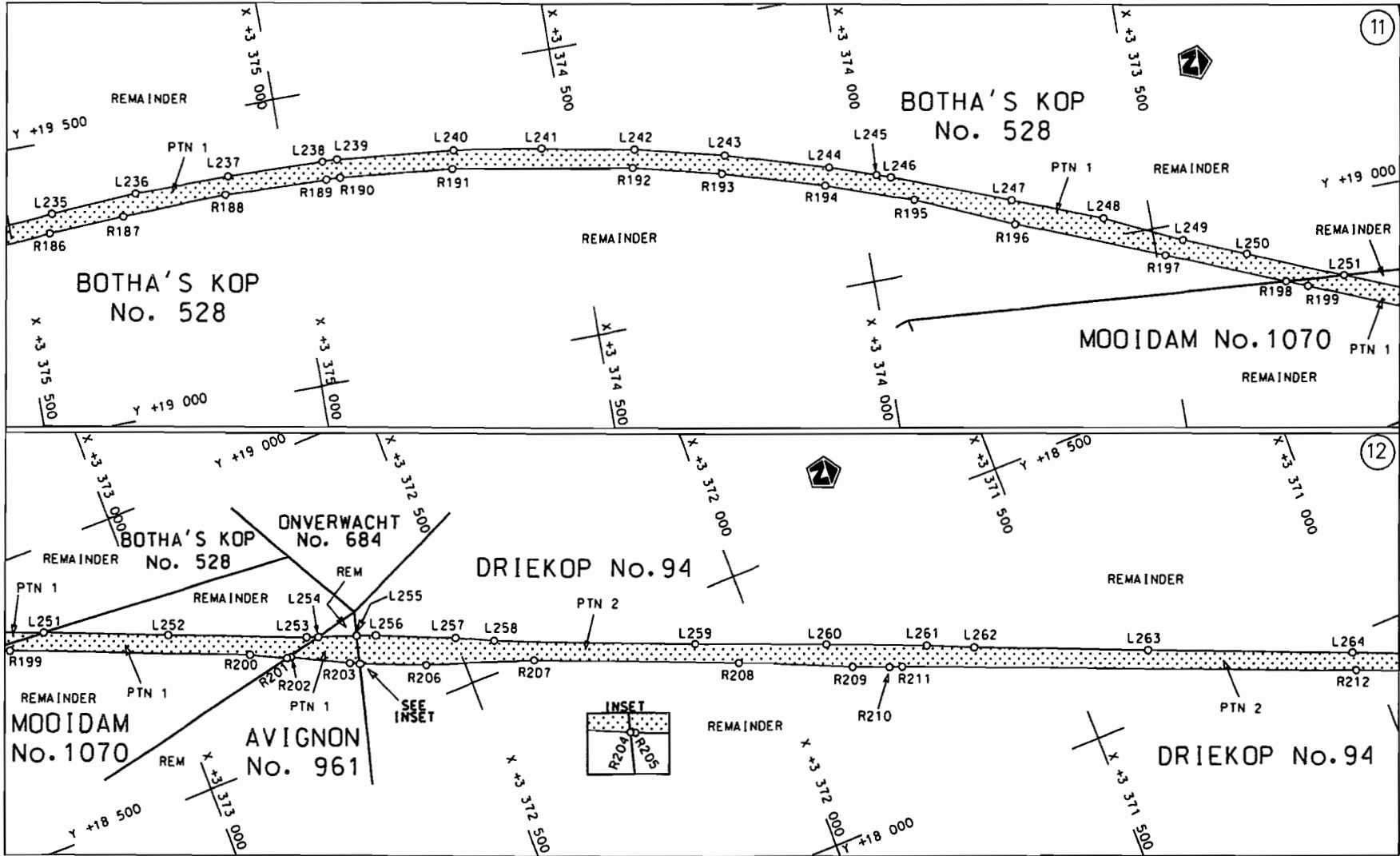


<p>Die Suid Afrikaanse Nasionale Padagentskap Beperk The South African National Roads Agency Limited</p>	<p>Die figuur getoon The figure shown</p> 	<p>steldie padreserwe voor van 'n gedeelte represents the road reserve of a portion van Nasionale Roete N6 of National Route N6</p> <p>Seksie Section 6</p>	<p>Vel Sheet 4 van of 25 Plan P681/08</p>
--	--	---	---

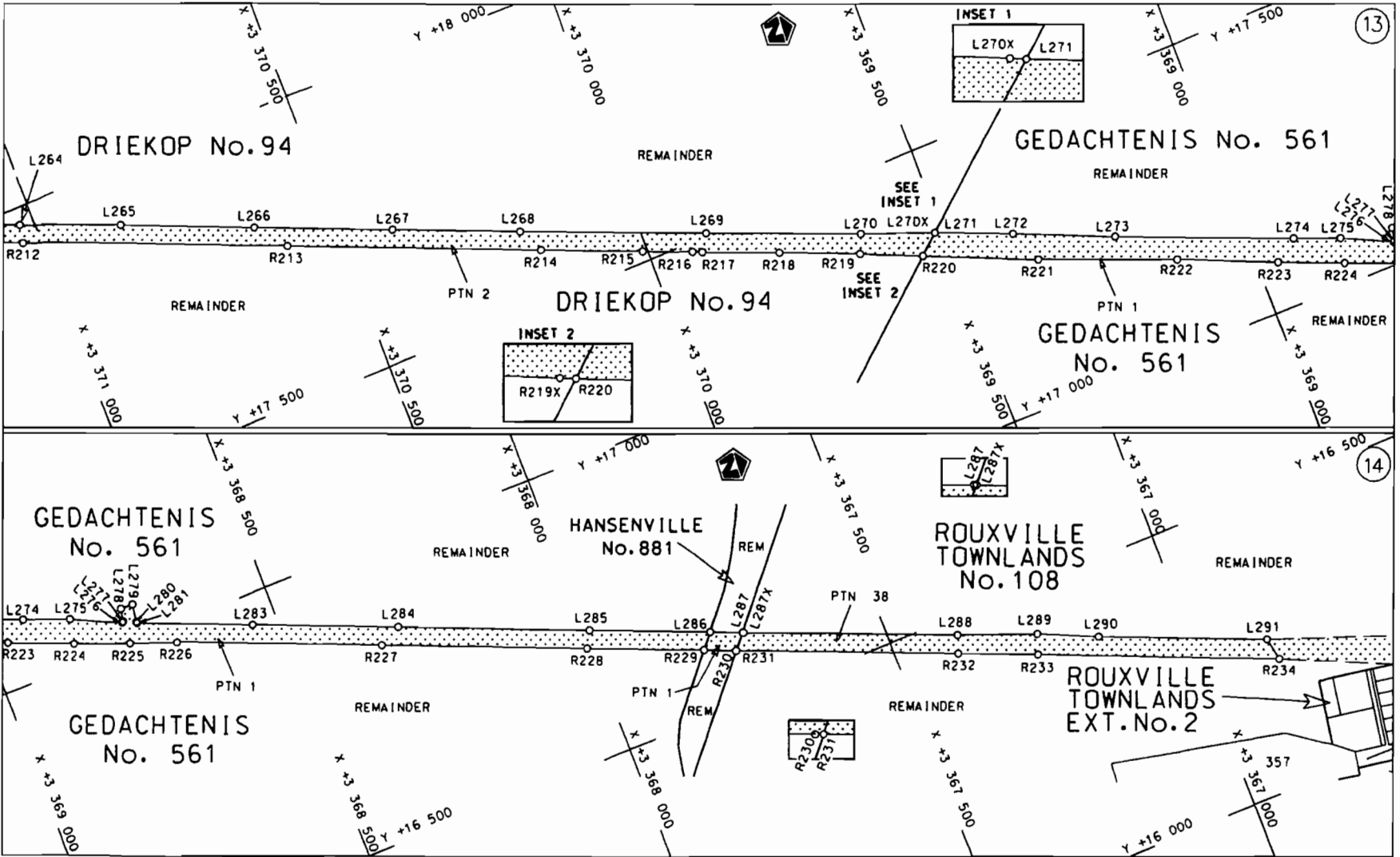


Die Suid Afrikaanse Nasionale Padagentskap Beperk The South African National Roads Agency Limited	Die figuur getoon The figure shown		steldie padreserwe voor van 'n gedeelte represents the road reserve of a portion van Nasionale Roete N6 Seksie 6 of National Route	Vel Sheet 5 van of 25 Plan P681/08
--	---------------------------------------	--	---	---------------------------------------

D.O.9.A

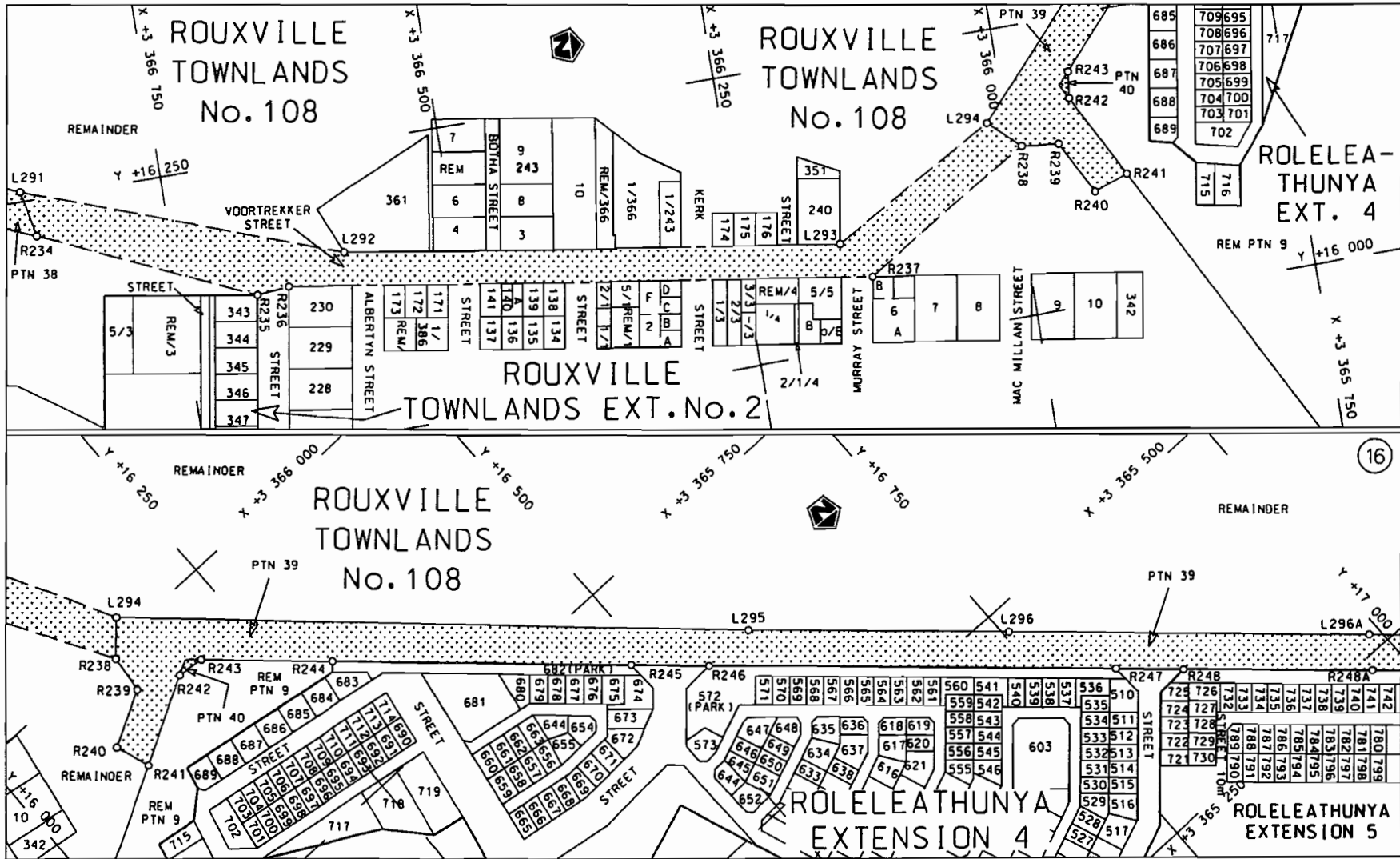


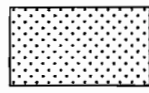
<p>Die Suid Afrikaanse Nasionale Padagentskop Beperk The South African National Roads Agency Limited</p>	<p>Die figuur getoon The figure shown</p> <div style="border: 1px solid black; width: 50px; height: 30px; background-color: #e0e0e0; margin: 10px 0;"></div>	<p>steldie padreserwe voor van 'n gedeelte represents the road reserve of a portion van Nasionale Roete of National Route</p> <p style="text-align: right;">N6 Seksie 6</p>	<p>Vel Sheet 6 van of 25</p> <p>Plan P681/08</p>
--	--	---	--

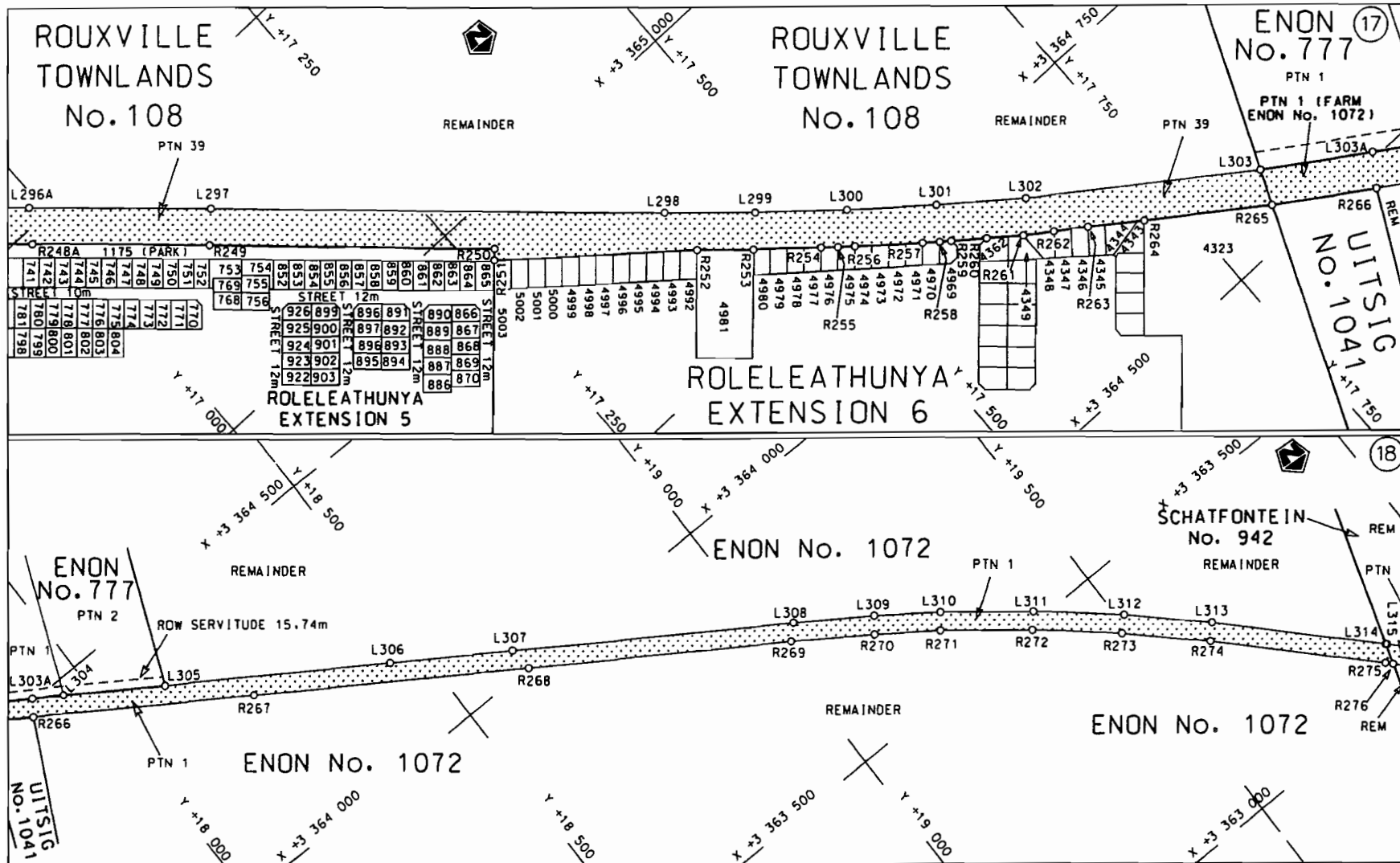


<p>Die Suid Afrikaanse Nasionale Padagentskap Beperk The South African National Roads Agency Limited</p>	<p>Die figuur getoon The figure shown</p>		<p>steldie padreserwe voor van 'n gedeelte represents the road reserve of a portion van Nasionale Roete N6 Seksie 6 of National Route Section 6</p>	<p>Vel Sheet 7 van of 25</p>
				<p>Plan P681/08</p>

D.O.9.A

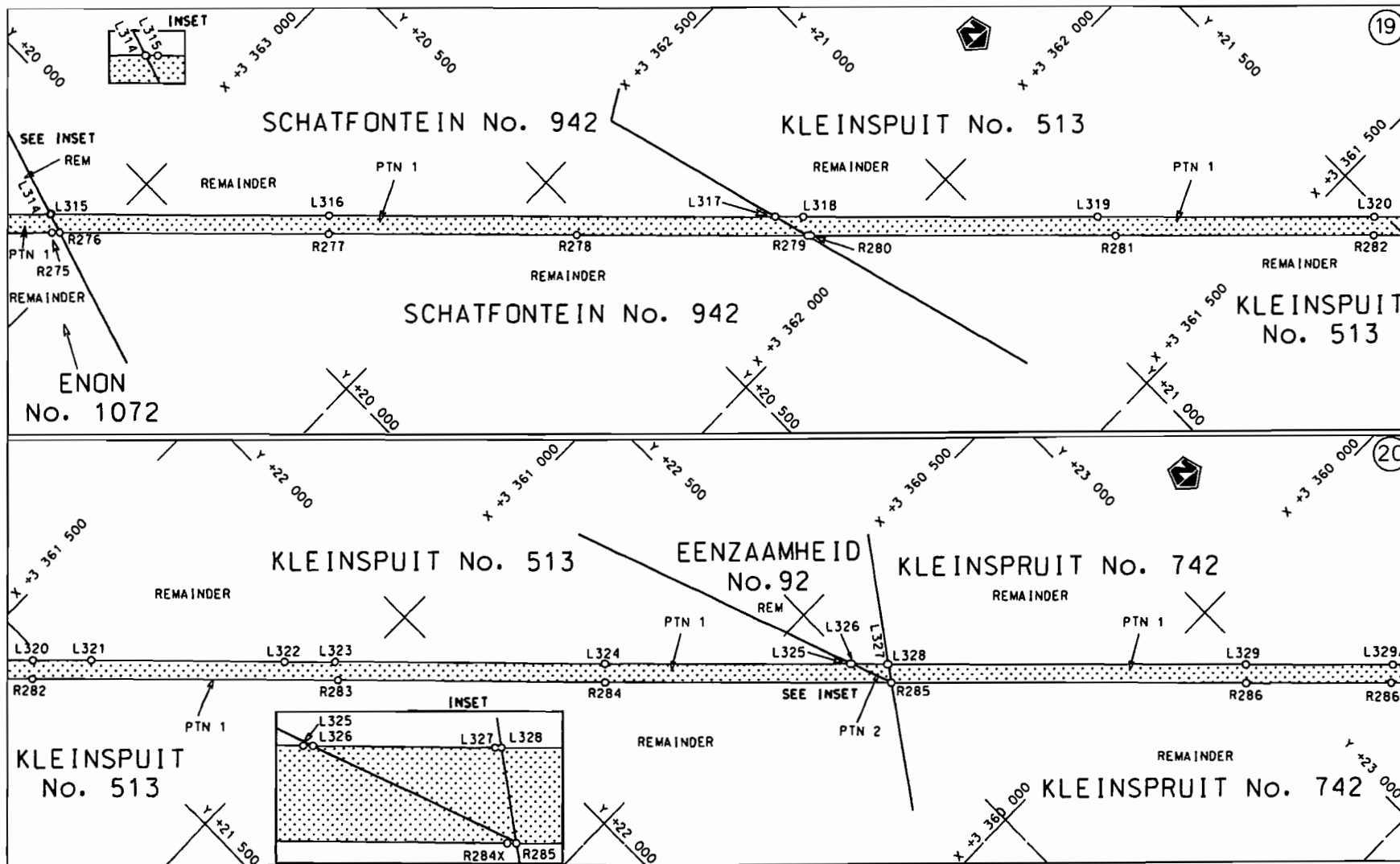



<p>Die Suid Afrikaanse Nasionale Podagentskap Beperk The South African National Roads Agency Limited</p>	<p>Die figuur getoon The figure shown</p>		<p>steldie padreserwe voor van 'n gedeelte represents the road reserve of a portion van Nasionale Roete of National Route</p> <p>N6</p> <p>Seksie Section</p> <p>6</p>	<p>Vel Sheet</p> <p>8 van of 25</p> <p>Plan P681/08</p>
--	---	--	--	---

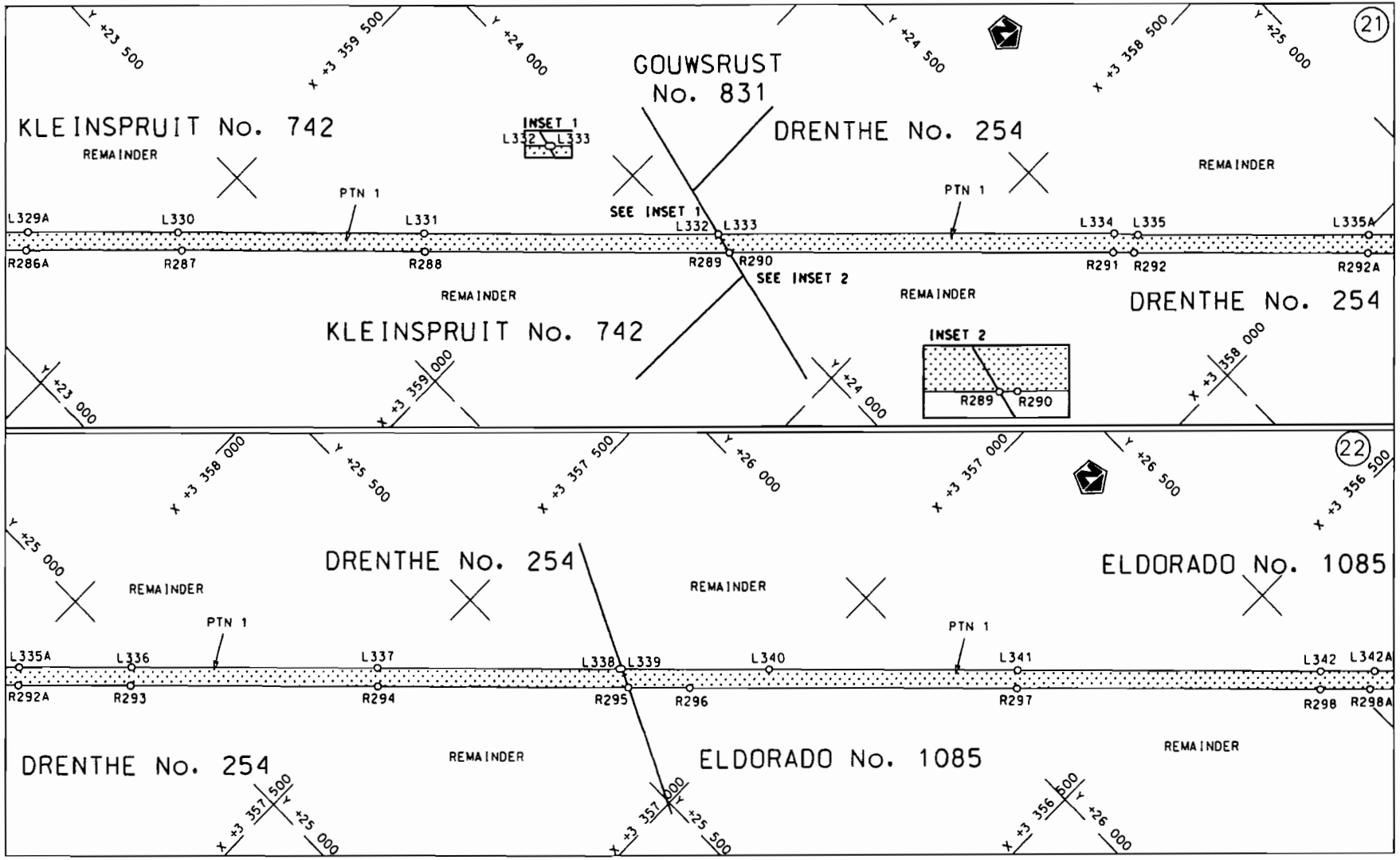


Die Suid Afrikaanse Nasionale Padagentskap Beperk	Die figuur getoon	steldie padreserwe voor van 'n gedeelte	Vel Sheet 9 van 25
The South African National Roads Agency Limited	The figure shown	represents the road reserve of a portion von Nasionale Roete N6 of National Route	Plan P681/08

D.O.9.A




<p>Die Suid Afrikaanse Nasionale Padogentskap Beperk The South African National Roads Agency Limited</p>	<p>Die figuur getoon The figure shown</p> 	<p>steldie podreserve voor van 'n gedeelte represents the road reserve of a portion van Nasionale Roete N6 of National Route N6</p> <p>Seksie 6 Section 6</p>	<p>Vel 10 van 25 Sheet 10 of 25</p> <p>Plan P681/08</p>
--	--	---	---

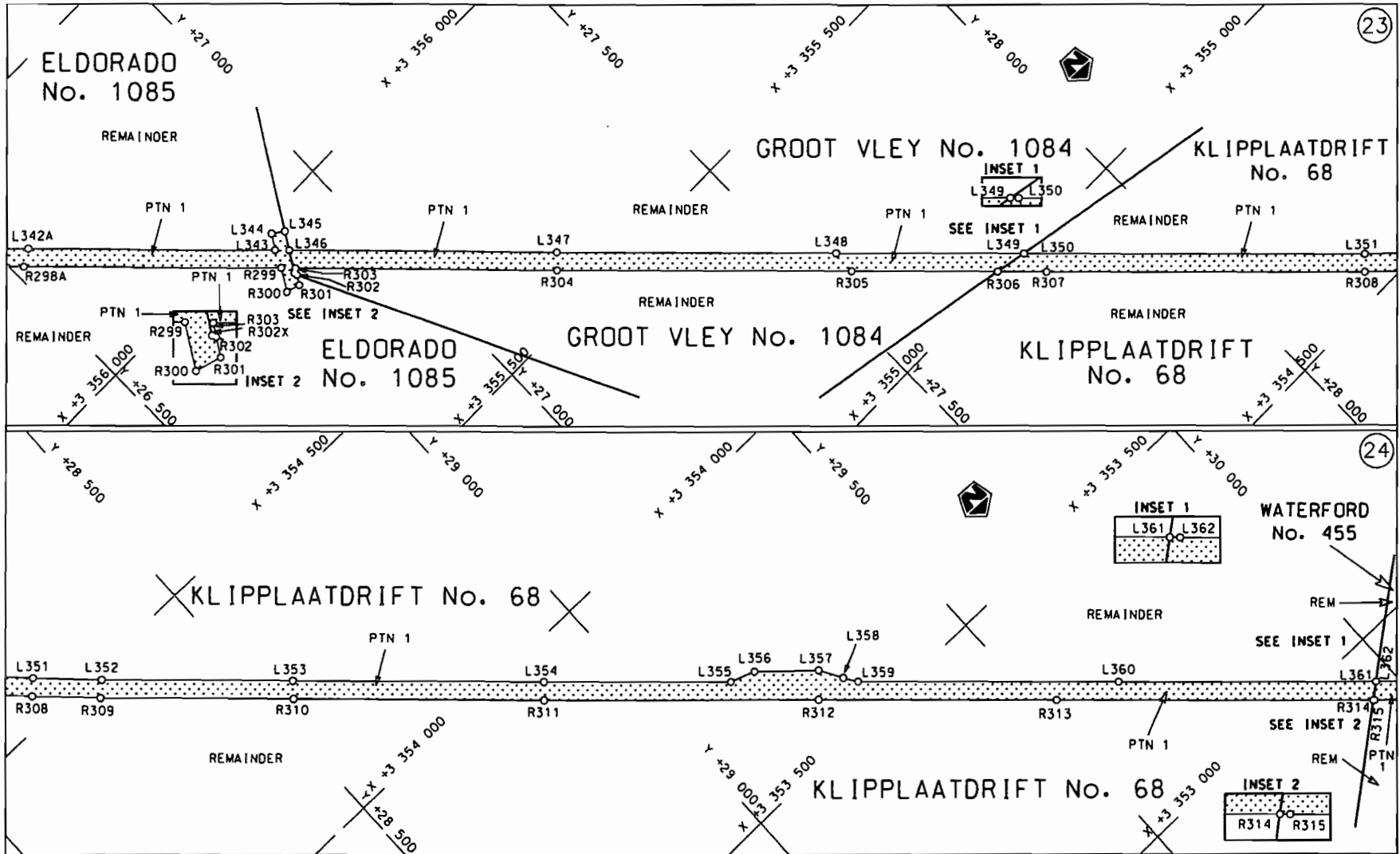


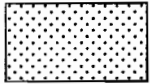
STAATSKOERANT, 17 DESEMBER 2008

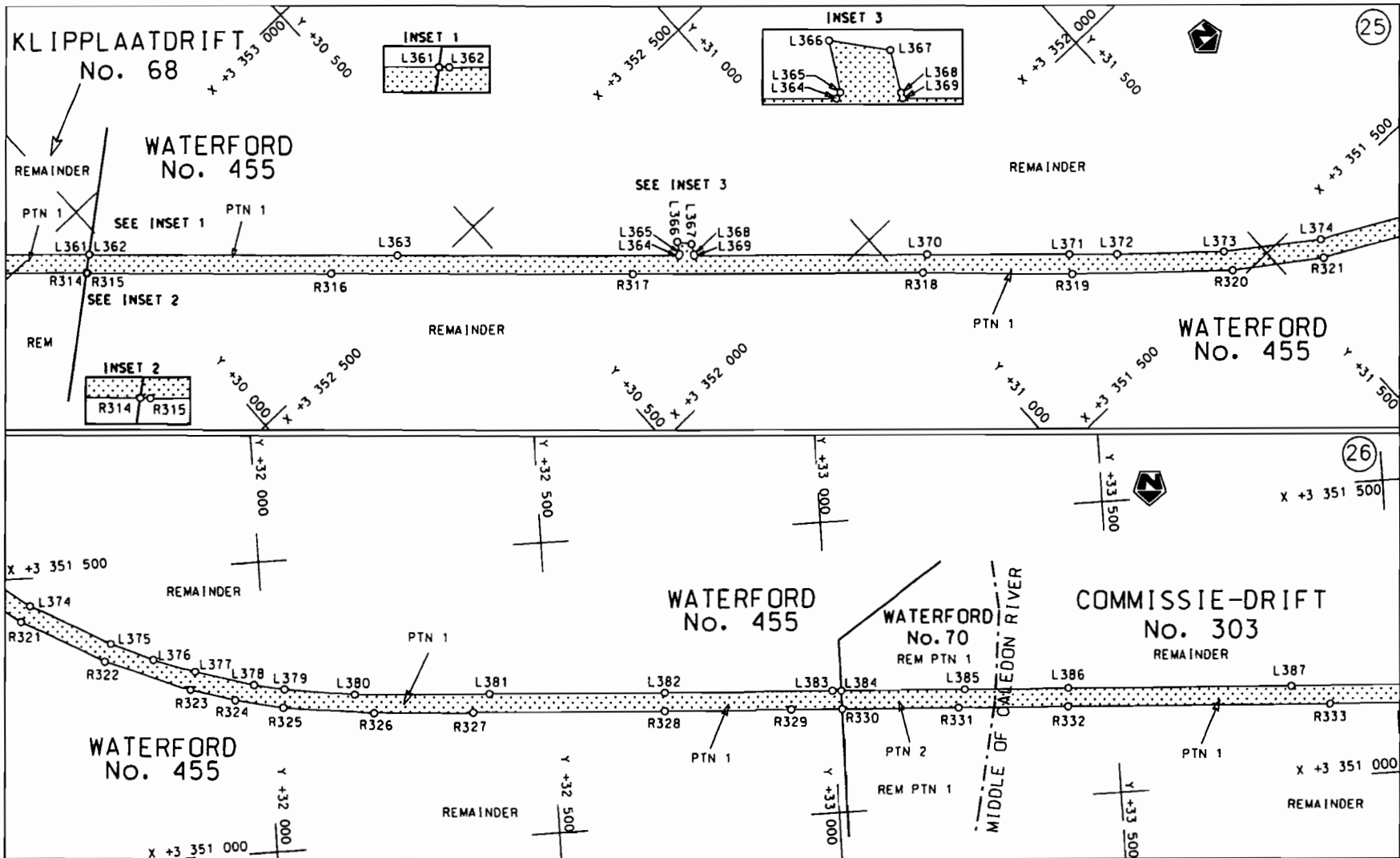
No. 31702 15


Die Suid Afrikaanse Nasionale Padagentskap Beperk The South African National Roads Agency Limited	Die figuur getoon The figure shown		steldie padreserwe voor van 'n gedeelte represents the road reserve of a portion van Nasionale Roete N6 Seksie 6 of National Route Section	Vel Sheet 11 van of 25 Plan P681/08
--	---------------------------------------	--	---	--

D.O.9.A

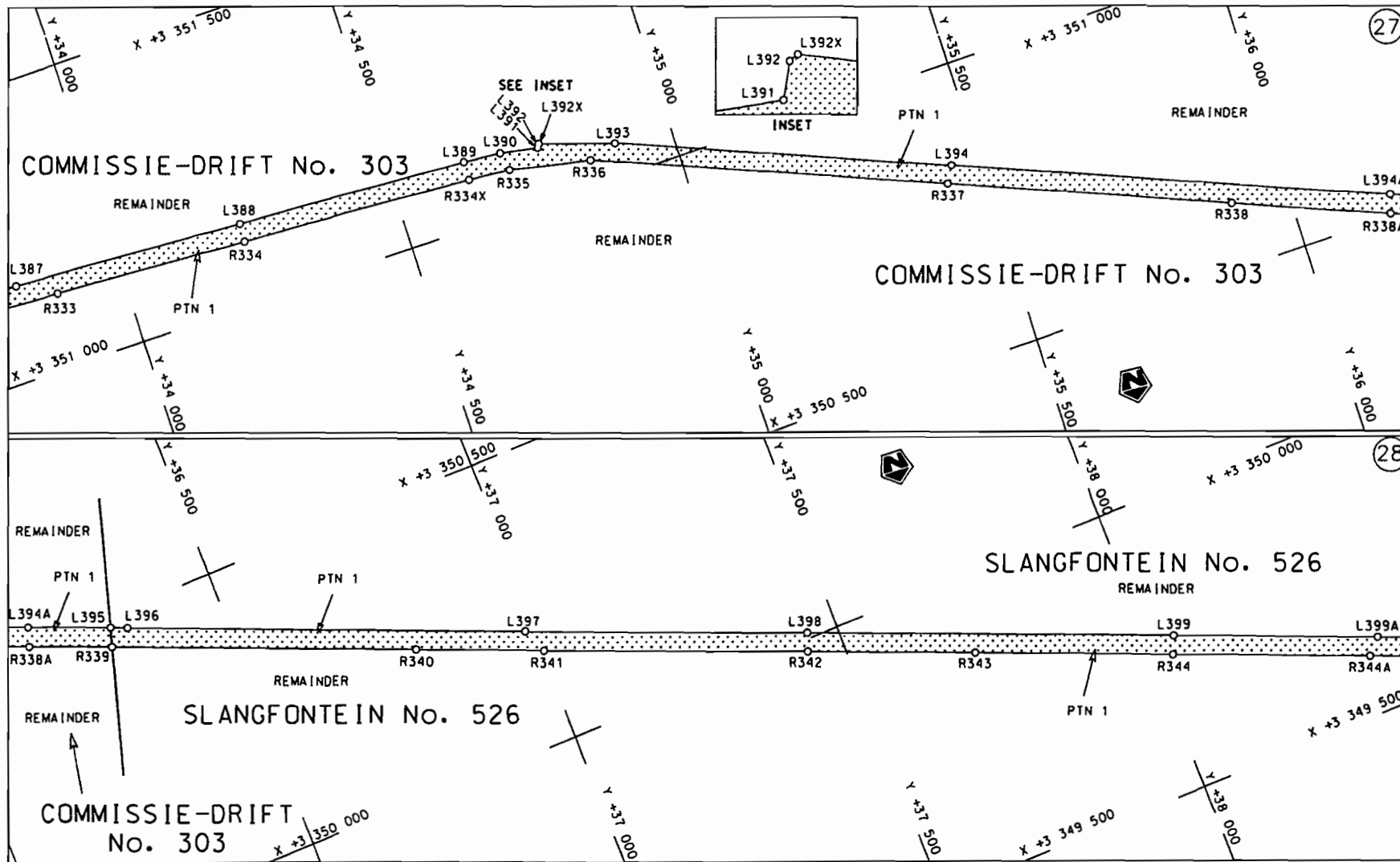



<p>Die Suid Afrikaanse Nasionale Padagentskap Beperk The South African National Roads Agency Limited</p>	<p>Die figuur getoon The figure shown</p> 	<p>steldie padreserwe voor van 'n gedeelte represents the road reserve of a portion van Nasionale Roete N6 Seksie of National Route N6 Section 6</p>	<p>Vel Sheet 12 van of 25 Plan P681/08</p>
--	--	--	--

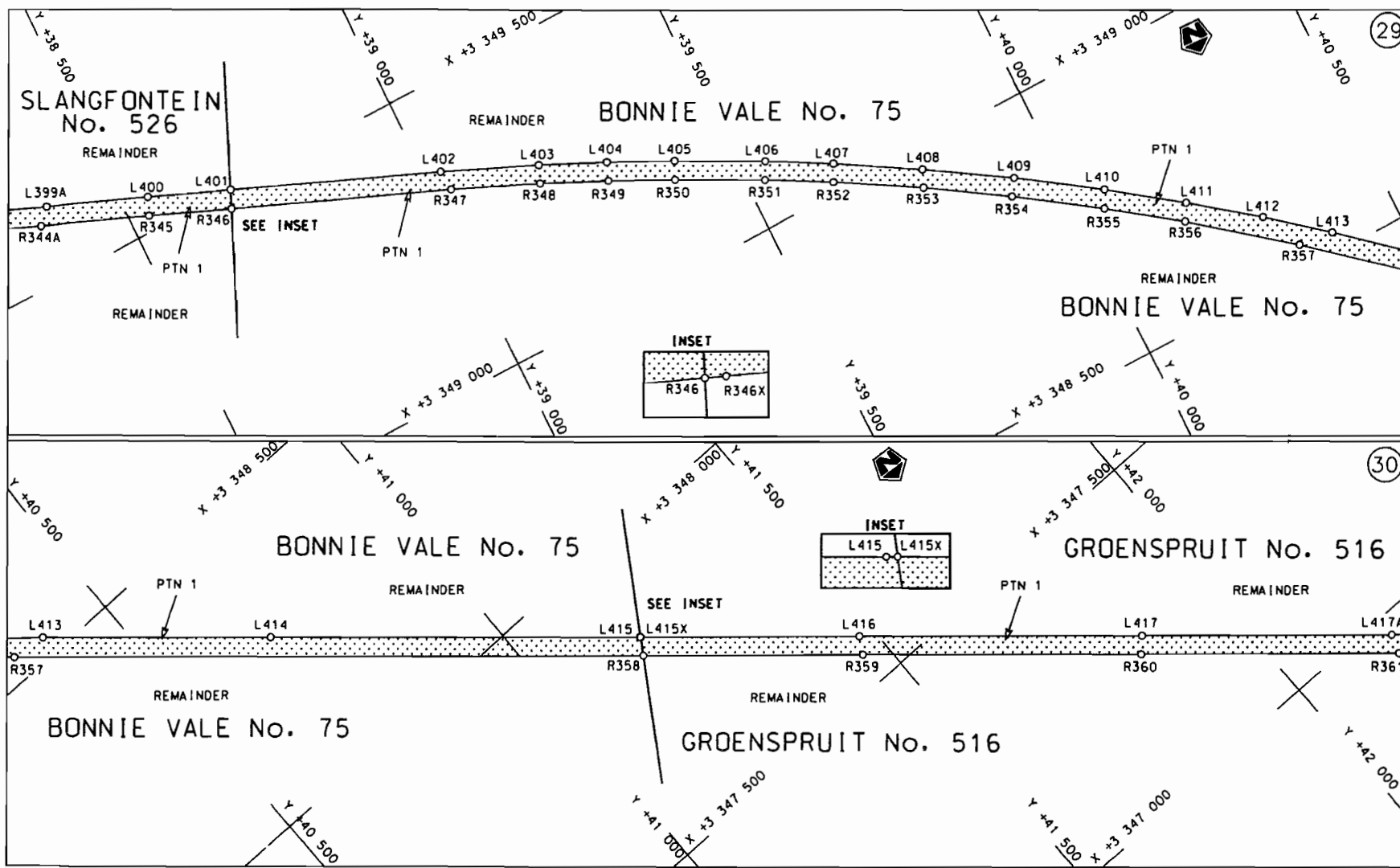



Die Suid Afrikaanse Nasionale Podagentskap Beperk The South African National Roads Agency Limited	Die figuur getoon The figure shown		steldie podreserwe voor van 'n gedeelte represents the road reserve of a portion van Nasionale Roete N6 Seksie 6 of National Route N6 Section 6	Vel Sheet 13 van 25 Plan P681/08
--	---------------------------------------	--	--	-------------------------------------

D.O.9.A

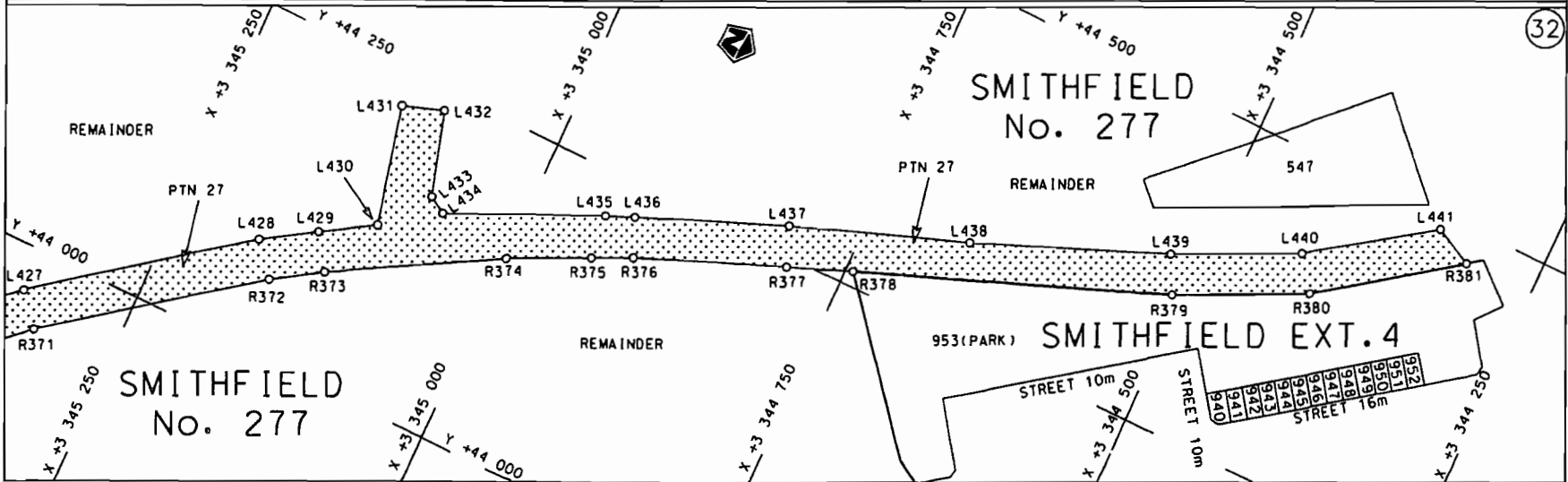
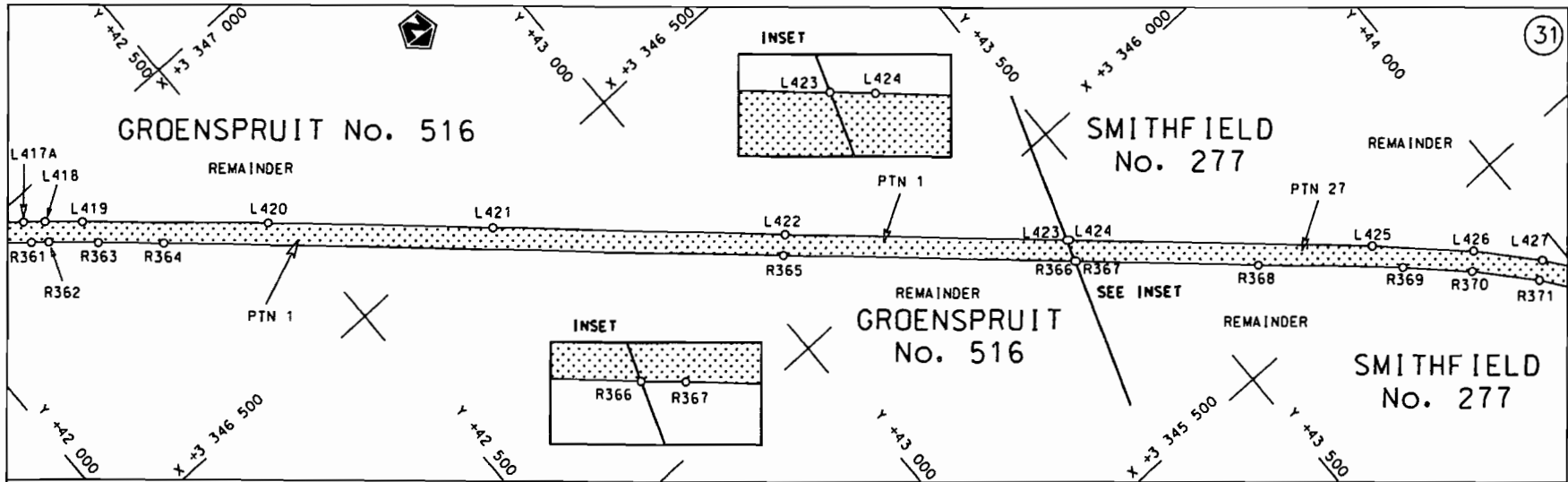


<p>Die Suid Afrikaanse Nasionale Padogentskop Beperk The South African National Roads Agency Limited</p>	<p>Die figuur getoon The figure shown</p> 	<p>steldie padreserwe voor van 'n gedeelte represents the rood reserve of a portion van Nasionale Roete N6 of National Route N6</p> <p>Seksie Section 6</p>	<p>Vel Sheet 14 van of 25 Plan P681/08</p>
--	--	---	--



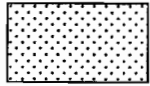
Die Suid Afrikaanse Nasionale Padagentskap Beperk	Die figuur getoon	 steldie padreserwe voor van 'n gedeelte represents the road reserve of a portion van Nasionale Roete N6 Seksie 6 of National Route	Vel Sheet 15 van 25
The South African National Roads Agency Limited	The figure shown		Plan P681/08

D.O.9.A



Die Suid Afrikaanse Nasionale Padagentskap Beperk
The South African National Roads Agency Limited

Die figuur getoon
The figure shown



steldie padreserwe voor van 'n gedeelte
represents the road reserve of a portion
van Nasionale Route N6 Seksie 6
of National Route N6 Section 6

Vel Sheet 16 van 25
Plan P681/08

PADRESERWE KOÖRDINATE / ROAD RESERVE CO-ORDINATES						
LINKERKANT/LEFT HAND SIDE			REGTERKANT/RIGHT HAND SIDE			
	Y	X	WG 27°	Y	X	
L1	28 264.492	3 396 147.591		R1	28 246.057	3 396 139.732
L2	28 409.650	3 395 886.500		R2	28 294.075	3 396 020.440
L3	28 418.640	3 395 850.280		R3	28 300.060	3 396 006.120
L4	28 428.940	3 395 820.110		R4	28 311.650	3 395 988.770
L5	28 462.120	3 395 713.170		R5	28 324.980	3 395 969.960
L6	28 457.450	3 395 705.140		R6	28 341.590	3 395 944.620
L7	28 461.600	3 395 683.520		R7	28 355.030	3 395 921.300
L8	28 463.870	3 395 668.120		R8	28 368.420	3 395 896.300
L9	28 544.750	3 395 342.370		R9	28 385.440	3 395 861.430
L10	28 427.760	3 395 169.160		R10	28 381.000	3 395 855.890
L11	28 404.620	3 394 987.490		R11	28 409.050	3 395 778.370
L12	28 405.020	3 394 985.640		R12	28 419.410	3 395 736.470
L13	28 425.780	3 394 974.410		R13	28 427.080	3 395 701.010
L14	28 419.180	3 394 942.100		R14	28 435.330	3 395 639.450
L15	28 399.090	3 394 952.420		R15	28 439.580	3 395 578.950
L16	28 397.410	3 394 951.400		R16	28 439.040	3 395 535.620
L17	28 381.210	3 394 820.590		R17	28 432.950	3 395 482.890
L18	28 364.250	3 394 724.400		R18	28 426.970	3 395 430.370
L19	28 349.740	3 394 655.270		R19	28 424.620	3 395 417.890
L20	28 326.830	3 394 582.190		R20	28 411.820	3 395 341.520
L21	28 288.740	3 394 460.720		R21	28 385.750	3 395 162.080
L22	28 255.190	3 394 373.560		R22	28 374.340	3 395 065.600
L23	28 225.510	3 394 308.070		R23	28 363.220	3 394 987.890
L24	28 117.040	3 394 095.990		R24	28 331.660	3 394 866.250
L25	28 057.330	3 393 993.080		R25	28 329.970	3 394 766.860
L26	28 003.930	3 393 901.680		R26	28 320.800	3 394 711.370
L27	27 919.440	3 393 749.260		R27	28 298.050	3 394 611.930
L28	27 838.680	3 393 600.270		R28	28 288.170	3 394 571.550
L29	27 792.060	3 393 524.260		R29	28 262.140	3 394 488.810
L30	27 755.450	3 393 467.000		R30	28 234.840	3 394 415.700
L31	27 741.690	3 393 445.600		R31	28 226.280	3 394 394.410
L32	27 729.410	3 393 431.390		R32	28 207.180	3 394 347.940
L33	27 727.020	3 393 428.630		R33	28 187.200	3 394 305.860
L34	27 709.150	3 393 405.450		R34	28 163.480	3 394 255.720
L35	27 625.740	3 393 302.320		R35	28 124.090	3 394 189.820
L36	27 596.420	3 393 267.390		R36	28 074.240	3 394 106.640
L37	27 582.040	3 393 252.720		R37	28 038.990	3 394 040.620
L38	27 578.240	3 393 249.190		R38	28 021.610	3 394 007.670
L39	27 549.190	3 393 213.790		R39	27 987.780	3 393 942.510
L40	27 490.720	3 393 167.870		R40	27 948.410	3 393 866.070
L41	27 450.390	3 393 130.400		R41	27 864.510	3 393 714.820
L42	27 383.420	3 393 075.260		R42	27 800.440	3 393 600.560
L43	27 292.360	3 393 010.100		R43	27 702.860	3 393 450.950
L44	27 287.650	3 393 007.200		R44	27 694.006	3 393 438.280
L45	27 240.910	3 392 978.390		R45	27 679.260	3 393 418.870
L46	27 099.130	3 392 887.750		R46	27 619.850	3 393 344.690
L47	27 057.030	3 392 874.240		R47	27 551.190	3 393 268.630
L48	27 006.010	3 392 850.00		R48	27 478.450	3 393 197.340
L49	26 942.090	3 392 823.330		R49	27 401.660	3 393 129.860
L50	26 875.980	3 392 803.680		R50	27 320.440	3 393 067.180
L51	26 738.420	3 392 766.110		R51	27 237.190	3 393 011.260

Vel	17	Van	25	P681/08
Sheet		of		

PADRESERWE KOÖRDINATE / ROAD RESERVE CO-ORDINATES					
LINKERKANT/LEFT HAND SIDE			REGTERKANT/RIGHT HAND SIDE		
	Y	X	WG 27°	Y	X
L52	26 702.350	3 392 750.920	R52	27 131.720	3 392 953.040
L53	26 682.600	3 392 742.330	R53	27 077.090	3 392 926.570
L54	26 583.640	3 392 718.470	R54	26 875.320	3 392 844.610
L55	26 428.850	3 392 686.110	R55	26 799.500	3 392 816.360
L56	26 426.810	3 392 683.770	R56	26 704.690	3 392 790.910
L57	26 436.240	3 392 670.280	R57	26 676.960	3 392 792.870
L58	26 419.470	3 392 664.340	R58	26 585.160	3 392 767.780
L59	26 410.370	3 392 679.520	R59	26 541.810	3 392 754.630
L60	26 408.530	3 392 680.030	R60	26 476.830	3 392 734.700
L61	26 328.560	3 392 654.470	R61	26 434.005	3 392 722.750
L62	26 067.770	3 392 592.340	R62	26 315.700	3 392 699.690
L63	26 001.460	3 392 572.690	R63	26 224.110	3 392 669.590
L64	25 647.480	3 392 397.110	R64	26 161.700	3 392 652.180
L65	25 604.810	3 392 366.110	R65	26 111.920	3 392 638.280
L66	25 580.570	3 392 346.910	R66	26 020.390	3 392 615.470
L67	25 558.740	3 392 328.060	R67	25 930.420	3 392 586.770
L68	25 307.720	3 391 980.580	R68	25 831.550	3 392 547.410
L69	25 293.620	3 391 997.350	R69	25 742.630	3 392 502.380
L70	25 291.120	3 391 994.360	R70	25 651.660	3 392 447.940
L71	25 285.170	3 391 987.090	R71	25 537.130	3 392 359.990
L72	25 278.920	3 391 979.330	R72	25 466.720	3 392 295.950
L73	25 272.730	3 391 971.440	R73	25 404.640	3 392 228.370
L74	25 266.750	3 391 963.620	R74	25 323.550	3 392 128.290
L75	25 261.030	3 391 955.430	R75	25 287.840	3 392 077.620
L76	25 255.680	3 391 946.990	R76	25 276.820	3 392 059.260
L77	25 250.790	3 391 938.400	R77	25 260.910	3 392 036.250
L78	25 246.560	3 391 929.230	R78	25 259.500	3 392 034.200
L79	25 242.270	3 391 920.310	R79	25 149.770	3 391 815.970
L80	25 238.170	3 391 911.330	R80	25 089.170	3 391 687.490
L81	25 235.180	3 391 901.770	R81	24 819.660	3 391 159.370
L82	25 232.420	3 391 892.390	R82	24 817.940	3 391 159.160
L83	25 229.950	3 391 882.770	R83	24 791.987	3 391 167.886
L84	25 228.790	3 391 876.390	R84	24 780.360	3 391 145.010
L85	25 193.500	3 391 811.210	R85	24 806.570	3 391 135.950
L86	25 185.440	3 391 798.140	R86	24 807.060	3 391 134.680
L87	25 146.260	3 391 730.090	R87	24 488.690	3 390 510.820
L88	24 989.950	3 391 423.160	R88	24 420.870	3 390 384.840
L89	24 851.850	3 391 153.100	R89	24 336.290	3 390 212.170
L90	24 713.000	3 390 881.560	R90	23 777.050	3 389 116.300
L91	24 511.130	3 390 486.290	R91	23 762.120	3 389 093.050
L92	24 460.980	3 390 381.010	R92	23 618.630	3 388 808.270
L93	24 379.400	3 390 227.900	R93	23 494.090	3 388 561.080
L94	24 237.190	3 389 949.660	R94	23 292.670	3 388 167.210
L95	24 109.520	3 389 699.280	R95	23 238.200	3 388 061.630
L96	24 028.330	3 389 527.540	R96	23 197.090	3 387 985.830
L97	23 801.060	3 389 087.980	R97	23 172.270	3 387 943.390
L98	23 789.630	3 389 069.890	R98	23 143.960	3 387 900.510
L99	23 714.950	3 388 917.440	R99	22 859.720	3 387 495.860
L100	23 667.150	3 388 818.420	R100	22 800.390	3 387 426.230
L101	23 649.930	3 388 782.750	R101	22 740.290	3 387 369.770
L102	23 619.320	3 388 727.00	R102	22 701.170	3 387 340.960

Vel	18	Van	25	P681/08
Sheet		of		

PADRESERWE KOÖRDINATE / ROAD RESERVE CO-ORDINATES					
LINKERKANT/LEFT HAND SIDE			REGTERKANT/RIGHT HAND SIDE		
	Y	X	WG 27°	Y	X
L103	23 549.940	3 388 597.350	R103	22 657.230	3 387 310.580
L104	23 496.840	3 388 493.630	R104	22 507.010	3 387 225.890
L105	23 321.080	3 388 154.220	R105	22 288.660	3 387 105.260
L106	23 316.720	3 388 145.810	R106	22 261.680	3 387 089.790
L107	23 266.220	3 388 048.430	R107	22 260.730	3 387 091.190
L108	23 232.720	3 387 985.810	R108	22 198.220	3 387 048.210
L109	23 173.850	3 387 889.760	R109	22 154.860	3 387 017.260
L110	23 082.190	3 387 757.480	R110	22 076.830	3 386 952.920
L111	22 993.020	3 387 629.920	R111	22 009.790	3 386 895.540
L112	22 904.630	3 387 504.590	R112	21 953.290	3 386 840.850
L113	22 869.400	3 387 457.860	R113	21 911.000	3 386 796.360
L114	22 824.240	3 387 405.560	R114	21 872.420	3 386 742.580
L115	22 785.070	3 387 367.030	R115	21 854.040	3 386 707.260
L116	22 728.630	3 387 321.040	R116	21 821.690	3 386 655.420
L117	22 697.440	3 387 297.690	R117	21 788.520	3 386 592.810
L118	22 497.810	3 387 185.150	R118	21 742.790	3 386 495.200
L119	22 301.400	3 387 076.410	R119	21 713.880	3 386 419.540
L120	22 216.820	3 387 023.250	R120	21 679.250	3 386 339.100
L121	22 095.720	3 386 929.000	R121	21 679.160	3 386 338.850
L122	22 051.760	3 386 884.070	R122	21 592.220	3 386 113.330
L123	21 966.870	3 386 787.510	R123	21 214.260	3 385 183.650
L124	21 922.320	3 386 732.570	R124	21 196.830	3 385 149.860
L125	21 885.940	3 386 679.190	R125	21 185.510	3 385 112.940
L126	21 873.990	3 386 657.270	R126	21 108.330	3 384 923.090
L127	21 860.960	3 386 637.200	R127	20 992.840	3 384 685.670
L128	21 849.610	3 386 621.300	R128	20 972.890	3 384 647.590
L129	21 805.110	3 386 536.960	R129	20 896.810	3 384 502.370
L130	21 773.700	3 386 468.930	R130	20 843.030	3 384 396.620
L131	21 748.660	3 386 407.850	R131	20 799.080	3 384 320.120
L132	21 718.870	3 386 322.830	R132	20 798.650	3 384 319.370
L133	21 718.630	3 386 322.260	R133	20 788.280	3 384 299.700
L134	21 650.900	3 386 163.300	R134	20 746.360	3 384 193.200
L135	21 614.030	3 386 085.760	R135	20 725.950	3 384 126.630
L136	21 399.480	3 385 556.980	R136	20 697.590	3 383 931.520
L137	21 223.840	3 385 125.640	R137	20 693.100	3 383 886.150
L138	21 220.870	3 385 105.980	R138	20 680.350	3 383 821.310
L139	21 208.690	3 385 078.560	R139	20 672.650	3 383 783.120
L140	21 190.280	3 385 042.200	R140	20 659.020	3 383 727.910
L141	21 140.590	3 384 920.720	R141	20 648.040	3 383 569.700
L142	21 068.040	3 384 760.850	R142	20 608.680	3 383 304.030
L143	20 991.960	3 384 616.750	R143	20 603.590	3 383 269.680
L144	20 835.170	3 384 319.800	R144	20 573.550	3 383 095.880
L145	20 808.340	3 384 257.380	R145	20 555.410	3 383 005.800
L146	20 801.100	3 384 237.470	R146	20 520.730	3 382 900.770
L147	20 791.170	3 384 210.130	R147	20 497.210	3 382 826.010
L148	20 774.300	3 384 143.990	R148	20 465.710	3 382 703.550
L149	20 757.710	3 384 052.540	R149	20 428.300	3 382 548.250
L150	20 753.990	3 384 042.190	R150	20 392.090	3 382 414.080
L151	20 750.720	3 384 032.120	R151	20 307.430	3 382 103.770
L152	20 747.930	3 384 022.150	R152	20 286.340	3 382 027.010
L153	20 745.870	3 384 012.090	R153	20 261.160	3 381 934.680

Vel	19	Van	25	P681/08
Sheet		of		

PADRESERWE KOÖRDINATE / ROAD RESERVE CO-ORDINATES					
LINKERKANT/LEFT HAND SIDE			REGTERKANT/RIGHT HAND SIDE		
	Y	X	WG 27°	Y	X
L154	20 744.300	3 384 001.660	R154	20 234.380	3 381 828.940
L155	20 743.070	3 383 991.540	R155	20 218.710	3 381 759.980
L156	20 742.520	3 383 982.880	R156	20 196.740	3 381 647.710
L157	20 742.290	3 383 972.180	R157	20 129.750	3 381 297.070
L158	20 742.650	3 383 961.770	R158	20 095.870	3 381 119.180
L159	20 743.410	3 383 951.520	R159	20 062.460	3 380 943.100
L160	20 744.630	3 383 941.150	R160	19 942.660	3 380 307.820
L161	20 746.520	3 383 930.840	R161	19 899.390	3 380 077.660
L162	20 748.490	3 383 920.730	R162	19 862.640	3 379 882.170
L163	20 751.240	3 383 910.700	R163	19 789.240	3 379 493.320
L164	20 761.080	3 383 883.780	R164	19 772.030	3 379 377.940
L165	20 734.180	3 383 870.940	R165	19 761.120	3 379 341.900
L166	20 725.550	3 383 795.380	R166	19 736.730	3 379 204.920
L167	20 714.130	3 383 701.970	R167	19 731.300	3 379 176.990
L168	20 702.690	3 383 643.230	R168	19 701.060	3 379 021.330
L169	20 687.760	3 383 556.490	R169	19 596.460	3 378 468.580
L170	20 681.620	3 383 514.920	R170	19 541.240	3 378 176.590
L171	20 675.650	3 383 474.540	R171	19 515.300	3 378 039.510
L172	20 668.630	3 383 436.880	R172	19 425.770	3 377 562.910
L173	20 674.490	3 383 430.490	R173	19 412.750	3 377 486.930
L174	20 671.180	3 383 421.120	R174	19 400.580	3 377 396.590
L175	20 668.030	3 383 411.140	R175	19 379.130	3 377 243.160
L176	20 665.300	3 383 401.070	R176	19 377.310	3 377 226.470
L177	20 660.970	3 383 380.670	R177	19 358.330	3 377 053.340
L178	20 622.190	3 383 125.990	R178	19 328.510	3 376 810.830
L179	20 609.810	3 383 044.660	R179	19 312.510	3 376 674.070
L180	20 602.570	3 383 045.090	R180	19 288.000	3 376 493.040
L181	20 570.580	3 382 891.880	R181	19 283.340	3 376 381.250
L182	20 565.160	3 382 873.220	R182	19 293.770	3 376 210.790
L183	20 541.040	3 382 779.530	R183	19 307.380	3 375 964.900
L184	20 526.910	3 382 737.240	R184	19 326.930	3 375 734.630
L185	20 511.710	3 382 679.040	R185	19 334.480	3 375 597.200
L186	20 491.640	3 382 621.070	R186	19 344.100	3 375 431.490
L187	20 467.850	3 382 559.260	R187	19 349.660	3 375 298.230
L188	20 436.950	3 382 452.480	R188	19 354.400	3 375 112.550
L189	20 415.600	3 382 372.140	R189	19 347.290	3 374 929.190
L190	20 290.560	3 381 920.330	R190	19 345.760	3 374 903.830
L191	20 254.320	3 381 780.010	R191	19 326.200	3 374 707.370
L192	20 248.110	3 381 750.940	R192	19 270.040	3 374 390.070
L193	20 234.830	3 381 682.580	R193	19 231.780	3 374 235.440
L194	20 211.990	3 381 561.450	R194	19 177.890	3 374 057.260
L195	20 188.980	3 381 440.610	R195	19 124.090	3 373 905.680
L196	20 141.730	3 381 190.220	R196	19 051.540	3 373 737.740
L197	20 131.360	3 381 117.580	R197	18 951.400	3 373 484.780
L198	20 101.210	3 380 958.360	R198	18 867.670	3 373 281.140
L199	20 074.040	3 380 813.870	R199	18 852.750	3 373 244.850
L200	20 063.860	3 380 777.680	R200	18 689.740	3 372 849.560
L201	20 011.110	3 380 500.230	R201	18 660.340	3 372 789.720
L202	19 930.140	3 380 069.860	R202	18 659.444	3 372 782.129
L203	19 928.870	3 380 063.120	R203	18 610.370	3 372 688.010
L204	19 852.730	3 379 658.700			

Vel 20
Sheet of

Van 25
of

P681/08

PADRESERWE KOÖRDINATE / ROAD RESERVE CO-ORDINATES					
LINKERKANT/LEFT HAND SIDE			REGTERKANT/RIGHT HAND SIDE		
	Y	X	WG 27°	Y	X
L204	19 852.730	3 379 658.700		R204	18 603.020 3 372 672.240
L205	19 822.950	3 379 499.800		R205	18 602.590 3 372 671.330
L206	19 824.320	3 379 497.790		R206	18 558.970 3 372 564.660
L207	19 845.140	3 379 497.000		R207	18 496.580 3 372 382.240
L208	19 844.440	3 379 472.610		R208	18 358.070 3 372 045.600
L209	19 818.800	3 379 472.920		R209	18 275.680 3 371 859.000
L210	19 817.540	3 379 471.650		R210	18 251.220 3 371 798.290
L211	19 760.520	3 379 169.180		R211	18 242.920 3 371 777.320
L212	19 743.600	3 379 079.370		R212	17 939.690 3 371 030.990
L213	19 704.440	3 378 871.320		R213	17 759.120 3 370 592.570
L214	19 627.090	3 378 459.760		R214	17 587.660 3 370 177.370
L215	19 599.370	3 378 312.400		R215	17 517.700 3 370 008.580
L216	19 570.090	3 378 156.970		R216	17 483.810 3 369 926.340
L217	19 529.380	3 377 940.840		R217	17 476.710 3 369 910.130
L218	19 486.420	3 377 712.230		R218	17 424.570 3 369 782.870
L219	19 457.500	3 377 558.050		R219	17 368.900 3 369 649.560
L220	19 444.100	3 377 479.020		R219X	17 324.010 3 369 547.090
L221	19 412.240	3 377 251.200		R220	17 323.990 3 369 547.040
L222	19 411.780	3 377 226.340		R221	17 243.070 3 369 359.120
L223	19 393.260	3 377 075.880		R222	17 151.680 3 369 128.850
L224	19 382.640	3 376 927.880		R223	17 081.130 3 368 964.300
L225	19 376.870	3 376 879.870		R224	17 035.700 3 368 855.270
L226	19 363.850	3 376 775.610		R225	16 998.810 3 368 760.510
L227	19 336.470	3 376 551.600		R226	16 970.330 3 368 681.380
L228	19 331.170	3 376 435.580		R227	16 831.350 3 368 344.450
L229	19 341.710	3 376 134.350		R228	16 692.260 3 368 007.030
L230	19 346.630	3 375 995.070		R229	16 612.190 3 367 813.480
L231	19 345.950	3 375 968.700		R230	16 589.950 3 367 759.730
L232	19 346.570	3 375 943.830		R231	16 590.220 3 367 760.390
L233	19 353.470	3 375 820.250		R232	16 438.830 3 367 394.050
L234	19 366.790	3 375 591.800		R233	16 385.010 3 367 263.710
L235	19 376.570	3 375 421.720		R234	16 218.920 3 366 866.960
L236	19 384.780	3 375 269.850		R235	16 135.697 3 366 681.728
L237	19 385.520	3 375 102.220		R236	16 138.044 3 366 652.620
L238	19 379.350	3 374 930.490		R237	16 057.492 3 366 139.359
L239	19 377.590	3 374 904.080		R238	16 145.420 3 365 989.320
L240	19 357.600	3 374 699.660		R239	16 141.500 3 365 956.930
L241	19 333.500	3 374 544.000		R240	16 095.220 3 365 931.860
L242	19 300.840	3 374 381.320		R241	16 105.810 3 365 901.730
L243	19 262.300	3 374 224.820		R242	16 178.580 3 365 941.140
L244	19 207.660	3 374 044.840		R243	16 201.550 3 365 938.360
L245	19 179.760	3 373 963.540		R244	16 288.095 3 365 859.783
L246	19 171.490	3 373 939.310		R245	16 484.685 3 365 681.280
L247	19 093.130	3 373 736.160		R246	16 536.423 3 365 634.302
L248	19 032.750	3 373 581.510		R247	16 803.848 3 365 391.480
L249	18 971.210	3 373 449.680		R248	16 848.177 3 365 351.230
L250	18 926.610	3 373 342.160		R249	17 089.290 3 365 132.300
L251	18 859.190	3 373 178.340		R250	17 275.110 3 364 962.290
L252	18 775.190	3 372 974.230		R251	17 268.390 3 364 954.880
L253	18 680.840	3 372 743.760		R252	17 408.660 3 364 841.590
L254	18 673.480	3 372 723.770		R253	17 446.150 3 364 808.500

Vel	21	Van	25	P681/08
Sheet		of		

PADRESERWE KOÖRDINATE / ROAD RESERVE CO-ORDINATES						
LINKERKANT/LEFT HAND SIDE				REGTERKANT/RIGHT HAND SIDE		
	Y	X	WG 27°		Y	X
L254	18 673.480	3 372 723.770		R254	17 491.720	3 364 769.500
L255	18 649.780	3 372 659.330		R255	17 503.210	3 364 759.820
L256	18 638.270	3 372 628.040		R256	17 514.760	3 364 750.240
L257	18 583.540	3 372 499.200		R257	17 561.220	3 364 712.240
L258	18 553.360	3 372 436.710		R258	17 572.960	3 364 702.850
L259	18 416.720	3 372 105.440		R259	17 581.004	3 364 696.720
L260	18 329.080	3 371 888.370		R260	17 605.926	3 364 677.731
L261	18 260.950	3 371 723.150		R261	17 631.480	3 364 658.260
L262	18 227.480	3 371 646.490		R262	17 653.560	3 364 642.720
L263	18 109.760	3 371 361.580		R263	17 678.500	3 364 625.630
L264	17 971.040	3 371 025.230		R264	17 719.487	3 364 596.636
L265	17 901.970	3 370 857.390		R265	17 813.320	3 364 530.260
L266	17 810.400	3 370 635.490		R266	17 891.030	3 364 479.390
L267	17 716.790	3 370 408.650		R267	18 222.250	3 364 263.520
L268	17 631.190	3 370 200.560		R268	18 630.080	3 363 998.580
L269	17 504.830	3 369 892.090		R269	19 024.400	3 363 743.000
L270	17 400.090	3 369 635.530		R270	19 147.800	3 363 660.060
L270X	17 353.210	3 369 512.710		R271	19 242.520	3 363 592.490
L271	17 353.120	3 369 512.490		R272	19 369.720	3 363 492.810
L272	17 300.600	3 369 384.730		R273	19 489.700	3 363 389.780
L273	17 228.950	3 369 218.580		R274	19 605.270	3 363 280.810
L274	17 108.460	3 368 924.000		R275	19 823.630	3 363 059.390
L275	17 078.120	3 368 846.670		R276	19 833.420	3 363 049.430
L276	17 037.370	3 368 759.970		R277	20 166.970	3 362 710.010
L277	17 038.420	3 368 758.120		R278	20 474.880	3 362 397.260
L278	17 060.260	3 368 754.210		R279	20 765.190	3 362 101.190
L279	17 059.450	3 368 732.030		R280	20 760.750	3 362 105.710
L280	17 029.070	3 368 736.640		R281	21 142.220	3 361 717.740
L281	17 027.130	3 368 735.670		R282	21 462.550	3 361 392.250
L282	16 615.220	3 367 737.810		R283	21 842.020	3 361 006.240
L283	16 948.050	3 368 543.700		R284	22 172.700	3 360 669.840
L284	16 849.740	3 368 305.520		R284X	22 527.100	3 360 309.170
L285	16 720.310	3 367 991.640		R285	22 527.300	3 360 308.960
L286	16 637.520	3 367 791.660		R286	22 965.530	3 359 863.570
L287	16 614.490	3 367 736.040		R287	23 341.610	3 359 481.590
L288	16 469.390	3 367 383.500		R288	23 646.400	3 359 171.090
L289	16 418.750	3 367 251.950		R289	24 027.010	3 358 783.250
L290	16 374.270	3 367 152.740		R290	24 027.430	3 358 782.850
L291	16 258.460	3 366 875.030		R291	24 508.130	3 358 295.280
L292	16 158.361	3 366 598.857		R292	24 534.240	3 358 268.780
L293	16 089.988	3 366 163.636		R293	24 966.480	3 357 827.640
L294	16 169.960	3 366 016.340		R294	25 277.040	3 357 511.940
L295	16 583.070	3 365 634.360		R295	25 590.970	3 357 192.720
L296	16 754.960	3 365 478.440		R296	25 667.810	3 357 114.600
L297	17 111.080	3 365 154.860		R297	26 078.010	3 356 697.310
L298	17 408.510	3 364 884.690		R298	26 456.930	3 356 312.020
L299	17 468.510	3 364 831.200		R299	26 841.060	3 355 921.910
L300	17 530.480	3 364 778.250		R300	26 818.210	3 355 884.850
L301	17 592.100	3 364 728.470		R301	26 842.260	3 355 877.580
L302	17 654.500	3 364 680.530		R302	26 851.930	3 355 892.990
L303	17 825.480	3 364 559.590		R302X	26 850.160	3 355 896.650

Vel	22	Van	25	P681/08
Sheet		of		

PADRESERWE KOÖRDINATE / ROAD RESERVE CO-ORDINATES						
LINKERKANT/LEFT HAND SIDE			REGTERKANT/RIGHT HAND SIDE			
	Y	X	WG 27°	Y	X	
L304	17 955.730	3 364 474.460		R303	26 858.480	3 355 903.440
L305	18 108.910	3 364 374.930		R304	27 185.700	3 355 570.690
L306	18 444.740	3 364 157.050		R305	27 554.860	3 355 195.560
L307	18 626.740	3 364 039.080		R306	27 736.750	3 355 010.160
L308	19 047.340	3 363 765.390		R307	27 797.720	3 354 948.020
L309	19 167.260	3 363 685.530		R308	28 196.240	3 354 543.910
L310	19 262.070	3 363 617.190		R309	28 283.820	3 354 458.930
L311	19 390.770	3 363 516.700		R310	28 536.160	3 354 223.260
L312	19 512.430	3 363 412.610		R311	28 862.190	3 353 918.480
L313	19 627.240	3 363 303.990		R312	29 220.570	3 353 584.780
L314	19 844.240	3 363 084.000		R313	29 530.030	3 353 295.300
L315	19 845.520	3 363 082.700		R314	29 942.060	3 352 910.070
L316	20 190.070	3 362 731.800		R315	29 943.590	3 352 908.640
L317	20 743.720	3 362 169.130		R316	30 261.180	3 352 611.960
L318	20 778.600	3 362 133.670		R317	30 652.980	3 352 246.240
L319	21 142.770	3 361 763.170		R318	31 031.700	3 351 893.180
L320	21 485.940	3 361 413.880		R319	31 222.180	3 351 711.250
L321	21 558.940	3 361 340.040		R320	31 435.550	3 351 519.860
L322	21 797.360	3 361 095.940		R321	31 568.210	3 351 425.920
L323	21 861.090	3 361 031.970		R322	31 713.530	3 351 347.410
L324	22 195.460	3 360 692.290		R323	31 862.860	3 351 289.280
L325	22 498.860	3 360 383.550		R324	31 942.320	3 351 265.940
L326	22 501.210	3 360 381.140		R325	32 027.430	3 351 247.620
L327	22 544.600	3 360 336.720		R326	32 185.380	3 351 227.540
L328	22 546.200	3 360 335.090		R327	32 360.870	3 351 216.880
L329	22 988.150	3 359 886.480		R328	32 701.110	3 351 196.450
L330	23 358.670	3 359 508.430		R329	32 926.960	3 351 182.750
L331	23 667.510	3 359 194.050		R330	33 017.290	3 351 177.300
L332	24 035.800	3 358 819.860		R331	33 223.960	3 351 164.830
L333	24 035.940	3 358 819.710		R332	33 416.260	3 351 153.220
L334	24 532.770	3 358 317.170		R333	33 881.480	3 351 125.040
L335	24 560.860	3 358 285.470		R334	34 222.010	3 351 104.840
L336	24 990.570	3 357 849.070		R334X	34 631.070	3 351 080.030
L337	25 298.990	3 357 535.090		R335	34 704.650	3 351 072.810
L338	25 602.320	3 357 227.030		R336	34 848.520	3 351 043.670
L339	25 605.821	3 357 223.907		R337	35 434.870	3 350 802.950
L340	25 789.430	3 357 036.340		R338	35 900.190	3 350 610.370
L341	26 101.500	3 356 718.750		R339	36 297.020	3 350 447.920
L342	26 479.490	3 356 334.220		R340	36 793.770	3 350 244.210
L343	26 855.550	3 355 951.820		R341	37 003.310	3 350 157.980
L344	26 871.300	3 355 976.760		R342	37 436.680	3 349 980.160
L345	26 890.850	3 355 962.600		R343	37 710.760	3 349 867.230
L346	26 873.150	3 355 933.910		R344	38 034.000	3 349 733.570
L347	27 207.750	3 355 593.620		R345	38 533.960	3 349 525.600
L348	27 557.740	3 355 237.310		R346	38 670.220	3 349 468.760
L349	27 792.040	3 354 999.690		R346X	38 670.400	3 349 468.680
L350	27 792.510	3 354 999.210		R347	39 030.300	3 349 318.900
L351	28 218.920	3 354 565.980		R348	39 175.560	3 349 255.720
L352	28 306.810	3 354 480.530		R349	39 285.040	3 349 204.230
L353	28 556.720	3 354 247.350		R350	39 390.750	3 349 151.040
L354	28 883.570	3 353 942.280		R351	39 531.470	3 349 076.600

Vel	23	Van	25	P681/08
Sheet		of		

PADRESERWE KOÖRDINATE / ROAD RESERVE CO-ORDINATES					
LINKERKANT/LEFT HAND SIDE			REGTERKANT/RIGHT HAND SIDE		
	Y	X	WG 27°		X
L355	29 126.880	3 353 715.440	R352	39 636.690	3 349 017.470
L356	29 169.830	3 353 699.240	R353	39 774.760	3 348 934.340
L357	29 255.330	3 353 622.010	R354	39 906.930	3 348 848.490
L358	29 278.680	3 353 582.470	R355	40 042.010	3 348 755.540
L359	29 293.800	3 353 559.380	R356	40 159.150	3 348 670.100
L360	29 632.030	3 353 243.380	R357	40 321.450	3 348 541.410
L361	29 967.380	3 352 930.290	R358	41 165.020	3 347 810.050
L362	29 967.580	3 352 930.100	R359	41 458.630	3 347 555.080
L363	30 368.470	3 352 555.470	R360	41 829.720	3 347 231.440
L364	30 734.610	3 352 213.360	R361	42 173.420	3 346 932.750
L365	30 737.510	3 352 214.120	R362	42 195.090	3 346 914.900
L366	30 748.470	3 352 232.730	R363	42 254.160	3 346 862.140
L367	30 764.530	3 352 212.640	R364	42 332.280	3 346 794.710
L368	30 755.740	3 352 196.750	R365	43 064.320	3 346 133.550
L369	30 754.710	3 352 194.560	R366	43 406.940	3 345 822.890
L370	31 058.530	3 351 911.130	R367	43 408.600	3 345 821.380
L371	31 241.430	3 351 739.420	R368	43 621.840	3 345 627.220
L372	31 303.510	3 351 682.170	R369	43 793.190	3 345 471.910
L373	31 445.970	3 351 554.130	R370	43 871.480	3 345 394.800
L374	31 585.750	3 351 452.350	R371	43 942.950	3 345 314.330
L375	31 726.130	3 351 376.730	R372	44 057.150	3 345 161.870
L376	31 799.960	3 351 345.040	R373	44 081.630	3 345 124.210
L377	31 873.360	3 351 319.140	R374	44 152.390	3 344 998.610
L378	31 977.880	3 351 290.090	R375	44 181.970	3 344 937.620
L379	32 031.300	3 351 279.120	R376	44 196.790	3 344 907.170
L380	32 153.290	3 351 261.340	R377	44 242.500	3 344 793.510
L381	32 391.380	3 351 247.000	R378	44 261.280	3 344 744.060
L382	32 703.320	3 351 227.880	R379	44 352.070	3 344 507.380
L383	33 002.270	3 351 209.830	R380	44 399.830	3 344 408.990
L384	33 017.780	3 351 208.900	R381	44 473.920	3 344 306.020
L385	33 236.990	3 351 195.700			
L386	33 418.750	3 351 184.750			
L387	33 815.300	3 351 160.890			
L388	34 223.800	3 351 136.240			
L389	34 632.120	3 351 111.770			
L390	34 697.870	3 351 105.390			
L391	34 764.840	3 351 093.610			
L392	34 767.800	3 351 099.260			
L392X	34 769.420	3 351 099.850			
L393	34 898.850	3 351 057.310			
L394	35 451.150	3 350 830.370			
L395	36 306.760	3 350 479.390			
L396	36 334.180	3 350 467.730			
L397	36 984.030	3 350 200.570			
L398	37 447.580	3 350 010.080			
L399	38 046.960	3 349 763.120			
L400	38 546.680	3 349 554.930			
L401	38 683.490	3 349 498.140			
L402	39 028.200	3 349 354.580			
L403	39 188.120	3 349 284.880			
L404	39 297.220	3 349 233.790			

Vel	24	Van	25	P681/08
Sheet		of		

PADRESERWE KOÖRDINATE / ROAD RESERVE CO-ORDINATES						
LINKERKANT/LEFT HAND SIDE				REGTERKANT/RIGHT HAND SIDE		
	Y	X	WG 27°	Y	X	
L405	39 404.810	3 349 179.990				
L406	39 546.660	3 349 104.860				
L407	39 651.200	3 349 045.650				
L408	39 787.340	3 348 963.120				
L409	39 924.640	3 348 874.950				
L410	40 056.920	3 348 783.930				
L411	40 175.300	3 348 697.420				
L412	40 285.900	3 348 612.540				
L413	40 381.660	3 348 533.650				
L414	40 688.660	3 348 266.930				
L415	41 181.760	3 347 837.850				
L415X	41 182.380	3 347 837.320				
L416	41 474.850	3 347 582.980				
L417	41 851.750	3 347 254.790				
L418	42 210.680	3 346 942.430				
L419	42 255.750	3 346 902.990				
L420	42 477.120	3 346 709.610				
L421	42 741.240	3 346 470.180				
L422	43 087.180	3 346 156.020				
L423	43 418.300	3 345 855.350				
L424	43 421.770	3 345 852.190				
L425	43 777.700	3 345 528.860				
L426	43 893.980	3 345 417.030				
L427	43 966.830	3 345 334.690				
L428	44 081.630	3 345 182.240				
L429	44 107.480	3 345 141.960				
L430	44 132.260	3 345 101.060				
L431	44 224.210	3 345 123.420				
L432	44 235.360	3 345 091.930				
L433	44 170.600	3 345 072.060				
L434	44 162.550	3 345 058.880				
L435	44 216.350	3 344 941.410				
L436	44 225.640	3 344 919.600				
L437	44 271.940	3 344 805.350				
L438	44 320.830	3 344 669.720				
L439	44 380.200	3 344 521.550				
L440	44 425.620	3 344 427.780				
L441	44 489.110	3 344 336.040				

Vel	25	Van	25	P681/08
Sheet		of		