

Government Gazette Staatskoerant

REPUBLIC OF SOUTH AFRICA
REPUBLIEK VAN SUID-AFRIKA

Vol. 522

Pretoria, 17 December
Desember 2008

No. 31703

CONTENTS**INHOUD**

<i>No.</i>	<i>Page No.</i>	<i>Gazette No.</i>	<i>No.</i>	<i>Bladsy No.</i>	<i>Koerant No.</i>
GOVERNMENT NOTICE			GOEWERMENTSKENNISGEWING		
Transport, Department of			Vervoer, Departement van		
<i>Government Notice</i>			<i>Goewermentskennisgewing</i>		
1354			1354		
South African National Roads Agency Limited and the National Roads Act (7/1998): The South African National Roads Agency Limited: Declaration amendment of National Road N10 Section 12: Amendment of Declaration No. 630 of 2005	3	31703	Suid-Afrikaanse Nasionale Padagentskap Beperk en die Nasionale Paaie Wet (7/1998): Die Suid-Afrikaanse Nasionale Padagentskap Beperk: Verklaring wysiging van Nasionale Pad N10 Seksie 12: Wysiging van Verklaring No. 630 van 2005	4	31703

**GOVERNMENT NOTICE
GOEWERMENTSKENNISGEWING**

**DEPARTMENT OF TRANSPORT
DEPARTEMENT VAN VERVOER**

No. 1354

17 December 2008

**THE SOUTH AFRICAN NATIONAL ROADS
AGENCY LIMITED**

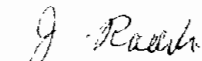
Registration No: 98/09584/06

DECLARATION AMENDMENT OF NATIONAL ROAD N10 SECTION 12

AMENDMENT OF DECLARATION NO. 630 OF 2005

By virtue of section 40 (1)(b) of the South African National Roads Agency Limited and the National Roads Act, 1998 (Act No. 7 of 1998), I hereby amend Declaration No. 630 of 2005 by substituting the section of the descriptive declaration from Upington up to the Northern Cape/Botswana International border, with the subjoined sheets 1 to 27 of Plan No. P673/08.

(National Road N10 Section 12: Upington – Northern Cape/Botswana International Border)



MINISTER OF TRANSPORT

No. 1354

17 Desember 2008

**DIE SUID-AFRIKAANSE NASIONALE
PADAGENTSKAP BEPERK**

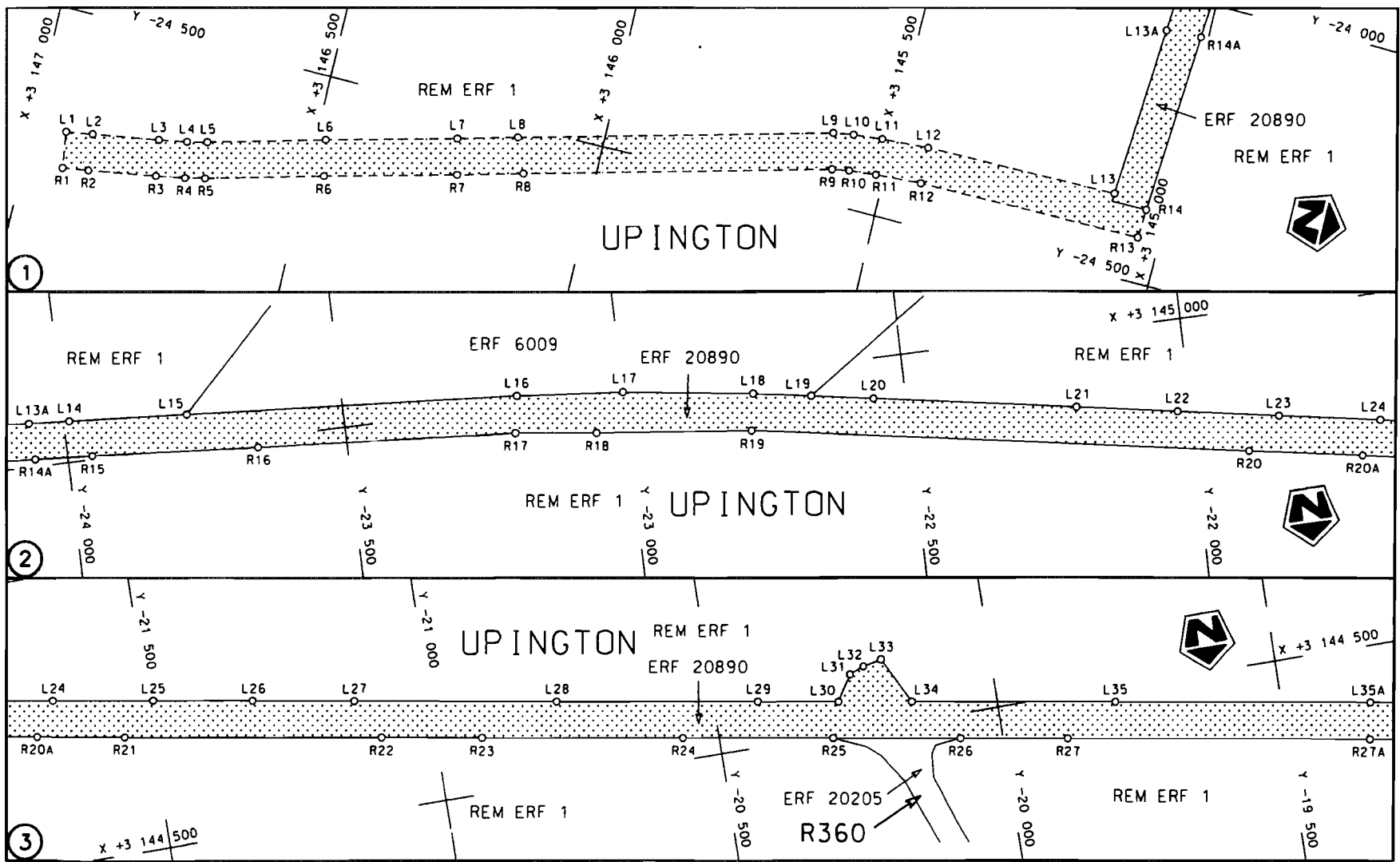
Registrasie No: 98/09584/06


VERKLARING WYSIGING VAN NASIONALE PAD N10 SEKSIE 12.

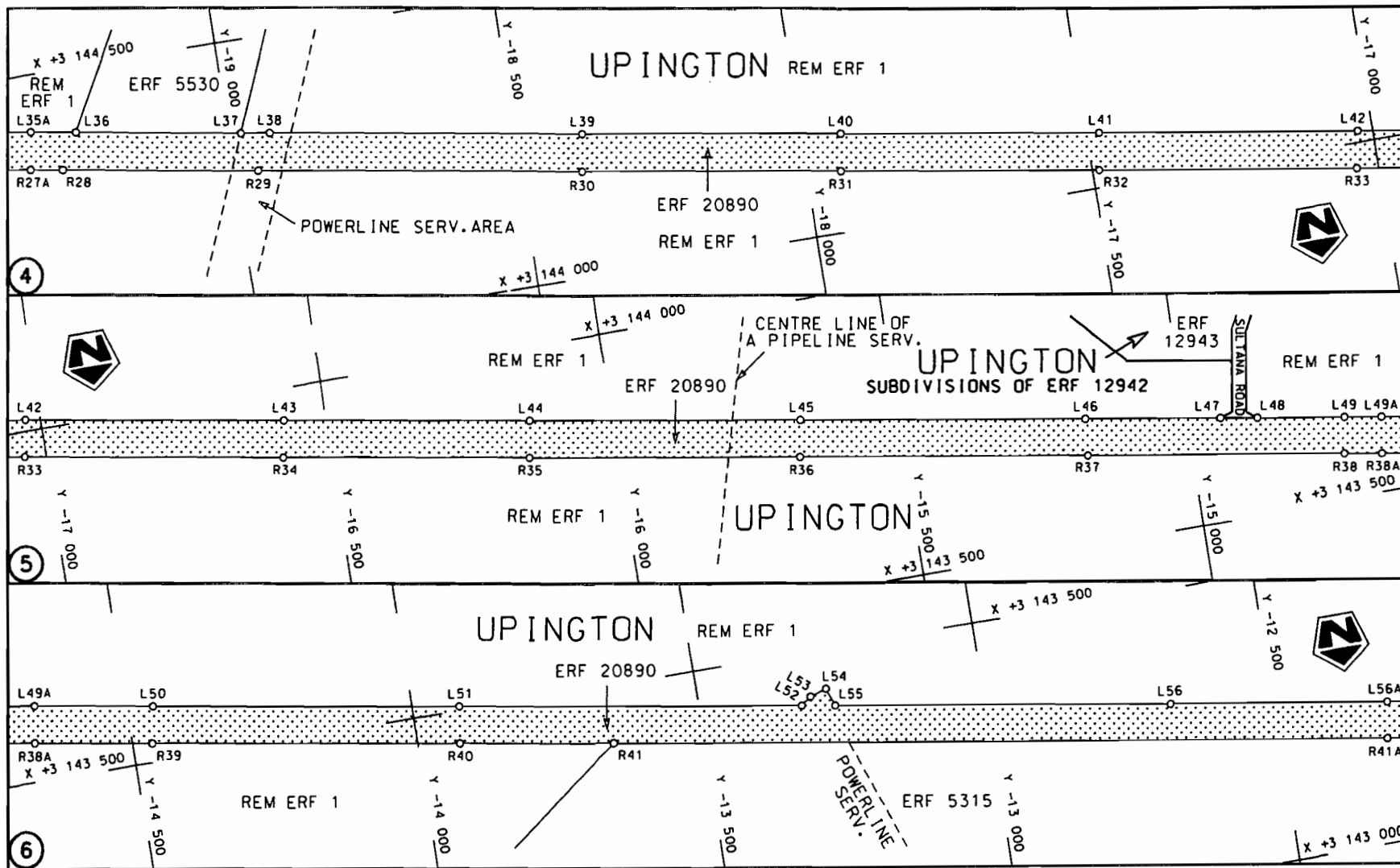
WYSIGING VAN VERKLARING NO. 630 VAN 2005

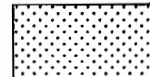
Kragtens Artikel 40(1)(b) van die Suid-Afrikaanse Nasionale Padagentskap Beperk en die Nasionale Paaie Wet, 1998 (Wet No.7 van 1998), wysig ek hiermee Verklaring no. 630 van 2005, deur die gedeelte van die beskrywende verklaring vanaf Upington tot by die Noord Kaap/Botswana Internasionale grens, te vervang met meegaande velle 1 tot 27 van Plan no. P673/08.

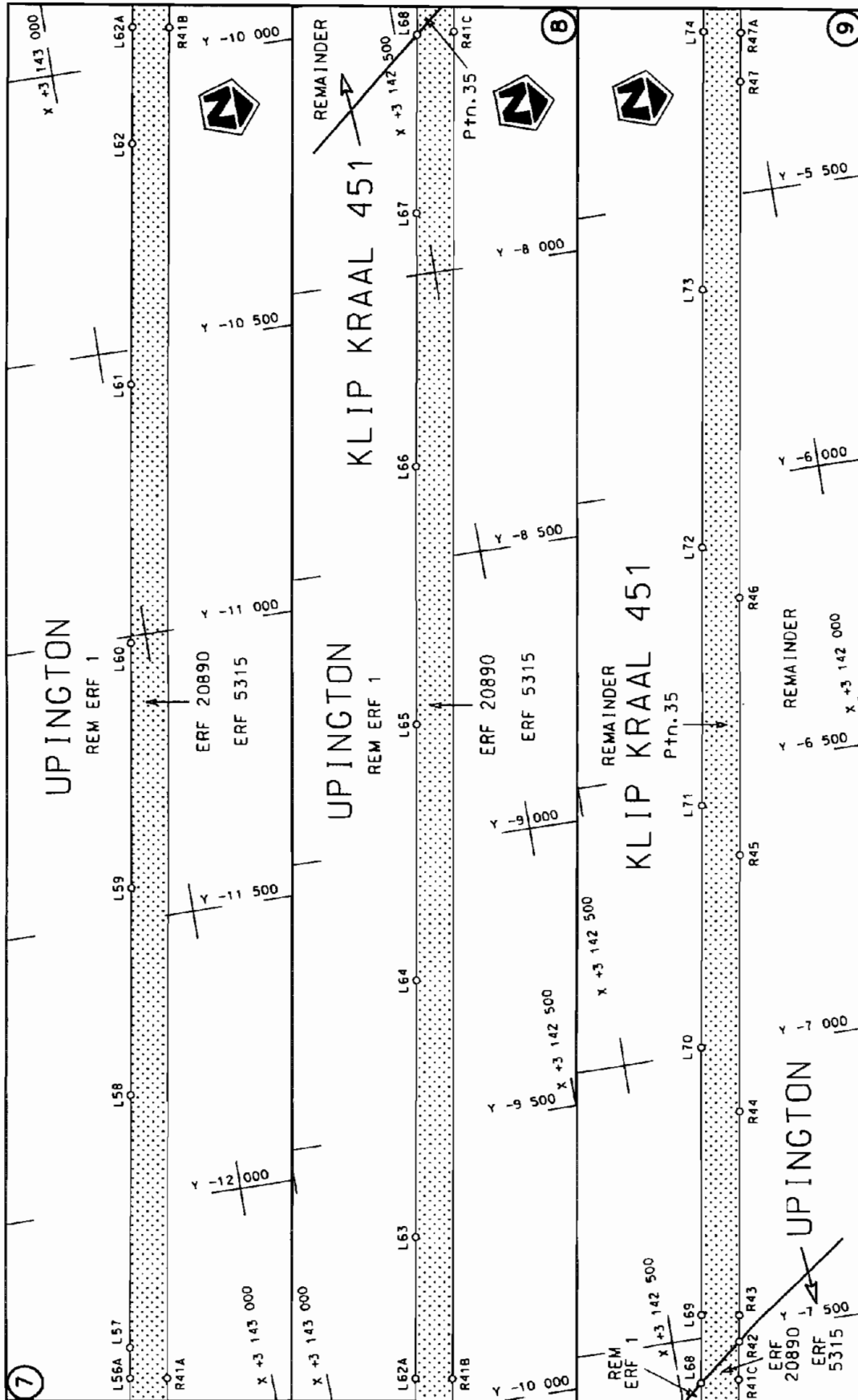
(Nasionale Pad N10 Seksie 12: Upington – Noord Kaap/Botswana Internasionale Grens)
MINISTER VAN VERVOER



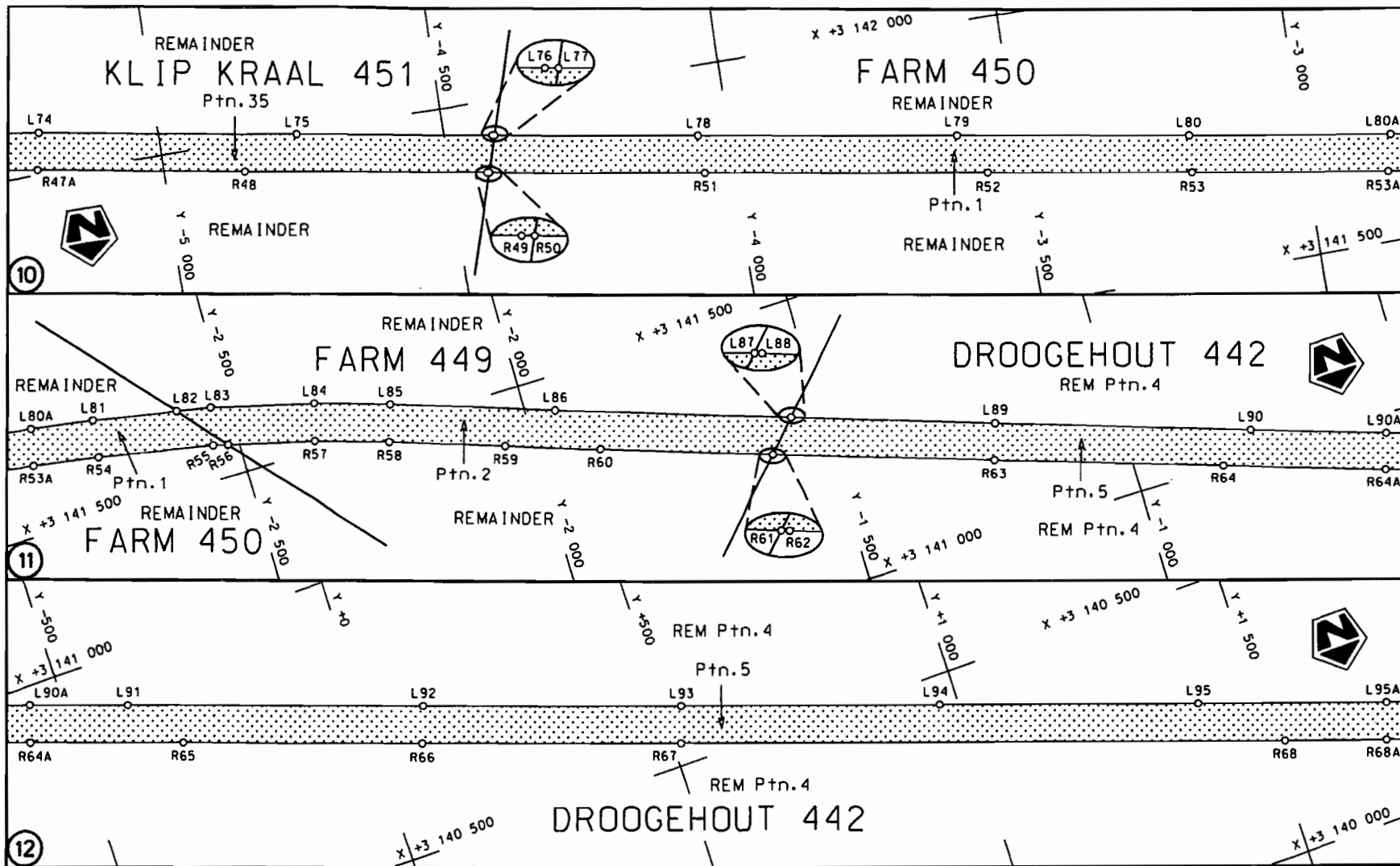
Die Suid Afrikaanse Nasionale Padogentskap Beperk	Die figuur getoon	 steldie padreserwe voor van 'n gedeelte represents the road reserve of a portion van Nasionale Roete N10 Sektie 12 of National Route	Vel Sheet 1 van 27
The South African National Roads Agency Limited	The figure shown		Plan P673/08




<p>Die Suid Afrikaanse Nasionale Padagentskap Beperk The South African National Roads Agency Limited</p>	<p>Die figuur getoon The figure shown</p>	<p></p> <p>steldie padreserwe voor van 'n gedeelte represents the road reserve of a portion von Nasionale Roete N10 Seksie of National Route Section</p>	<p>Vel Sheet 2 van 27 of of 27</p> <p>Plan P673/08</p>
--	---	--	--

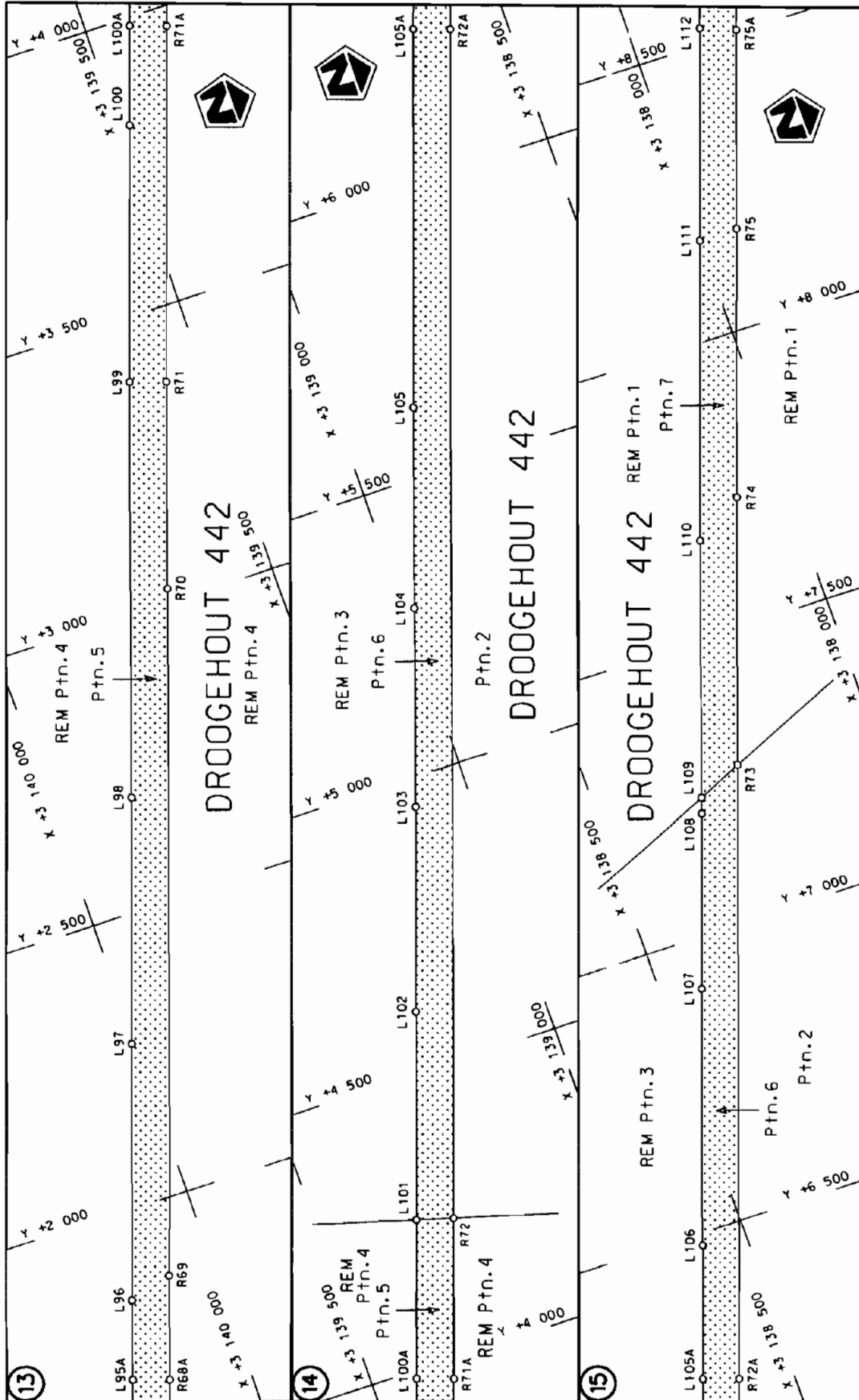



<p>Die Suid Afrikaanse Nasionale Padagentskap Beperk The South African National Roads Agency Limited</p>	<p>Die figuur getoon The figure shown</p>	<p>steldie padreserwe voor van 'n gedeelte represents the road reserve of a portion van Nasionale Raete N10 Seksie of National Route Section</p>	<p>Vel Sheet 3 of 27</p>
		<p>12</p>	<p>Plan P673/08</p>

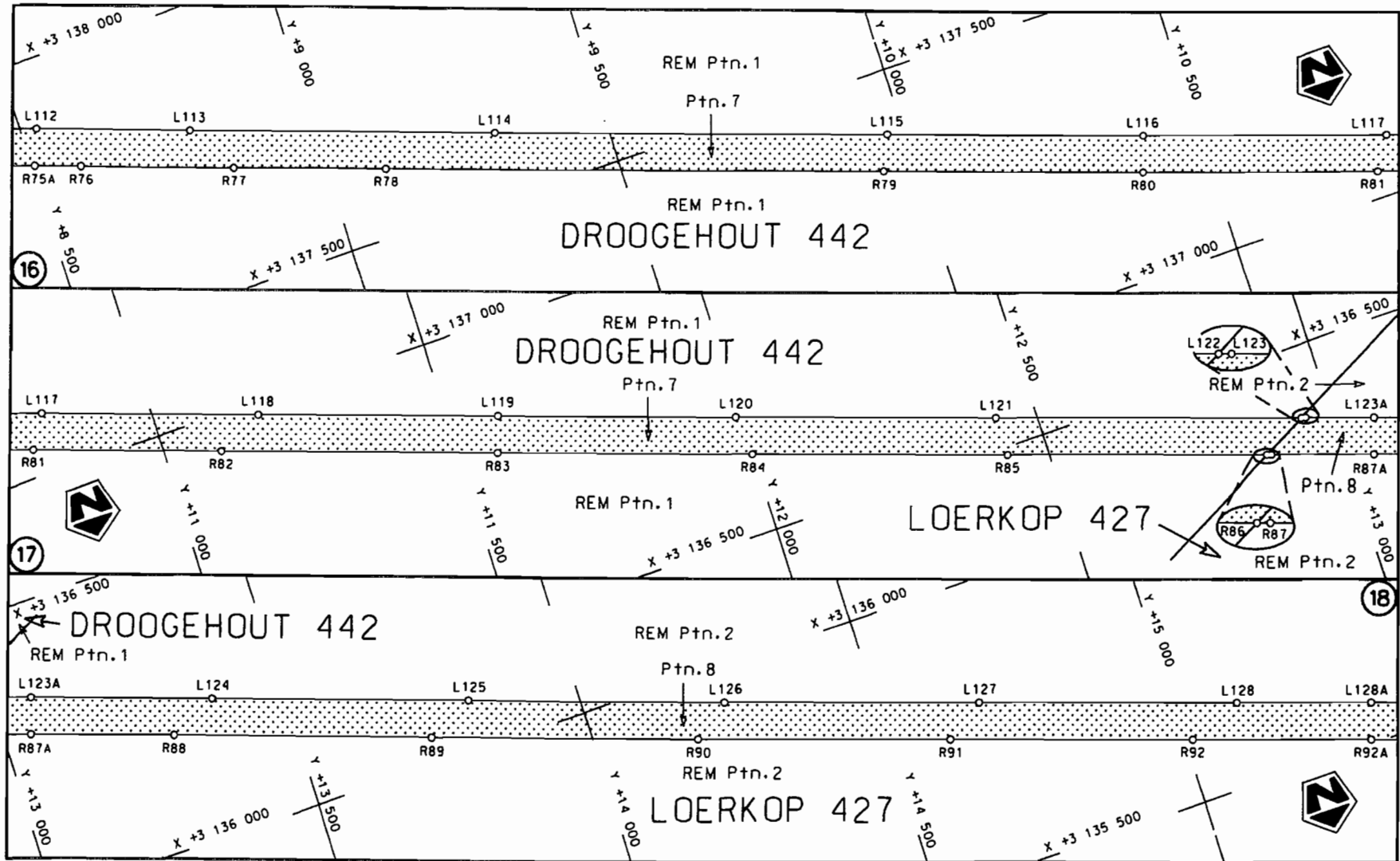


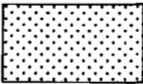
<p>Die Suid Afrikaanse Nasionale Padagentskap Beperk The South African National Roads Agency Limited</p>	<p>Die figuur getoon The figure shown</p>	<p></p> <p>steldie padreserve voor van 'n gedeelte represents the road reserve of a portion van Nasionale Roete N10 Seksie of National Route Section</p>	<p>Vel Sheet 4 van of 27 Plan P673/08</p>
--	---	--	---

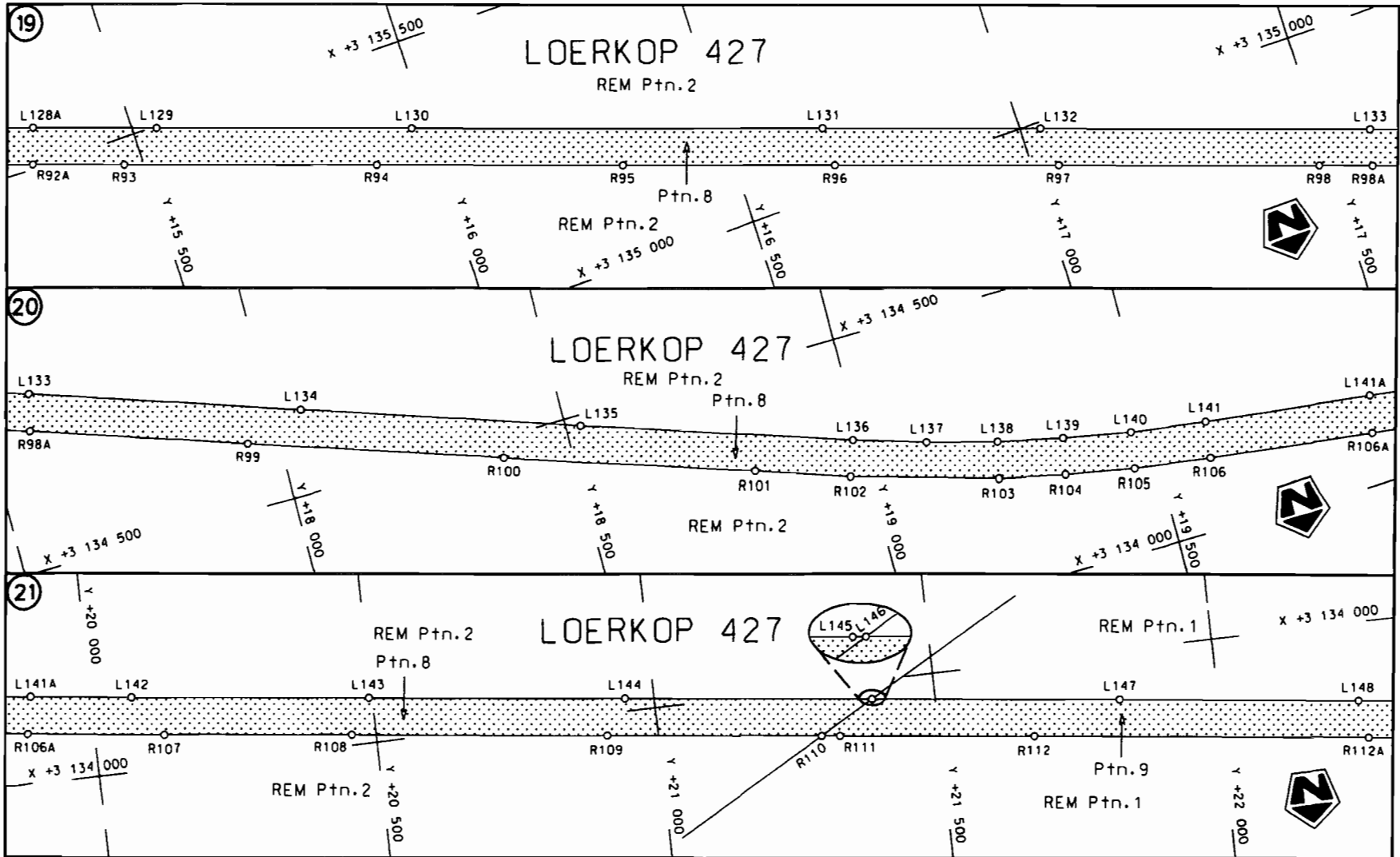
12

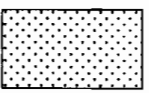


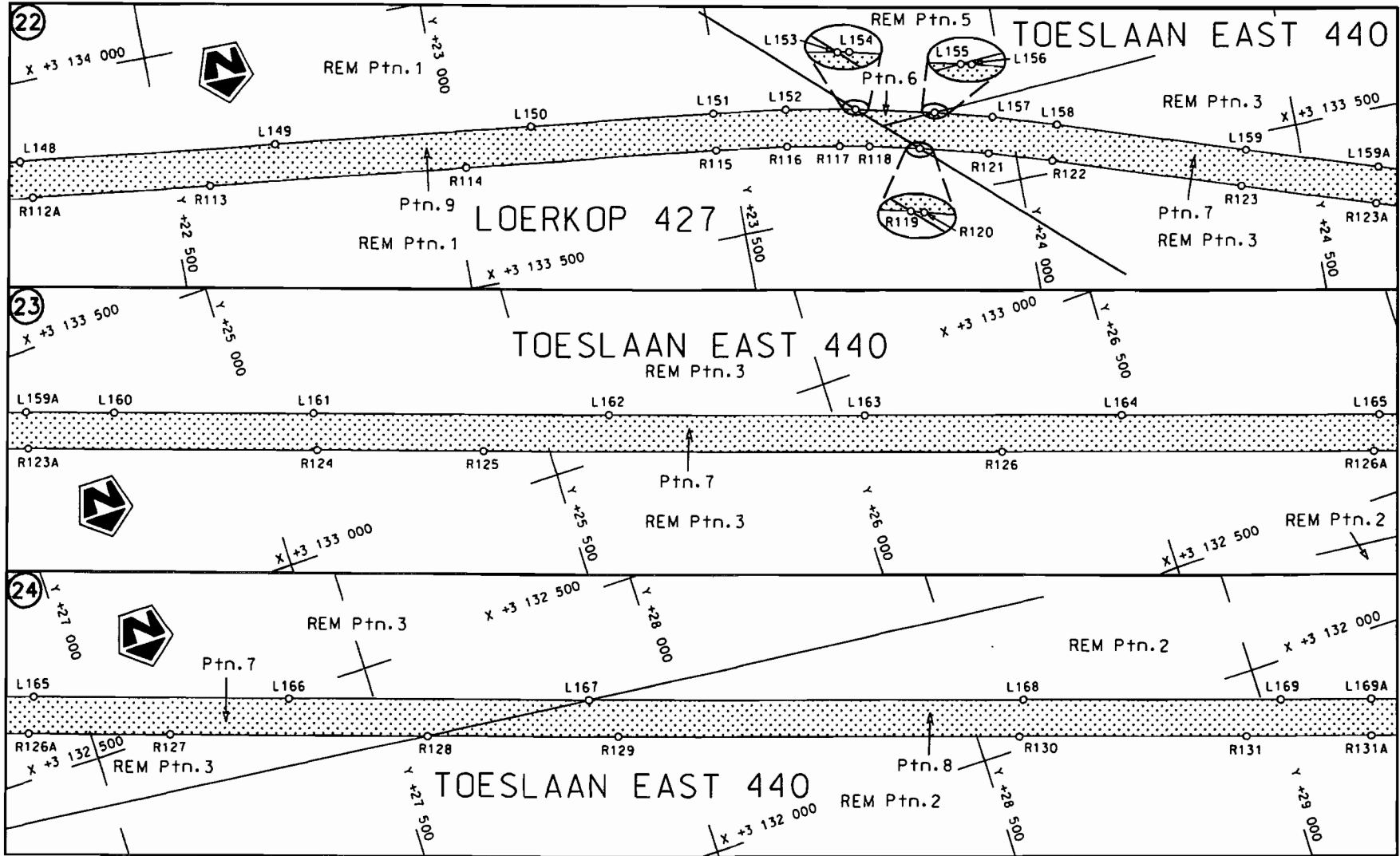
Die Suid Afrikaanse Nasionale Podogentskop Beperk The South African National Roads Agency Limited	Die figuur getoon The figure shown		steldie padreserwe voor van 'n gedeelte represents the road reserve of a portion van Nasionale Roete N10 of National Route
Vel Sheet 5 of 27	12	12	Plan P673/08

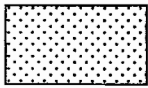


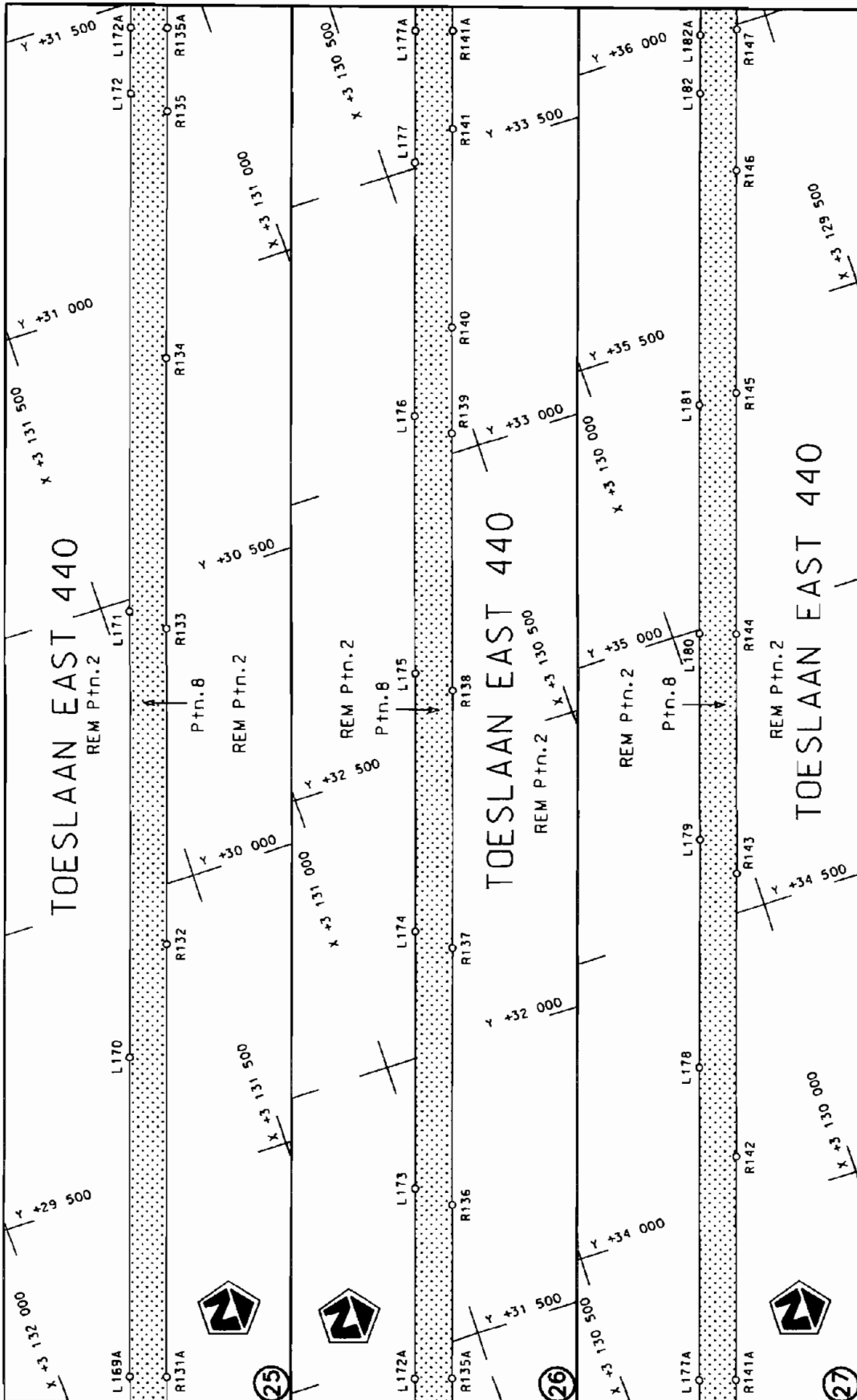
<p>Die Suid Afrikaanse Nasionale Padogentskap Beperk The South African National Roads Agency Limited</p>	<p>Die figuur getoon The figure shown</p> 	<p>steldie padreserwe vaar van 'n gedeelte represents the road reserve of a portion van Nasionale Roete of National Route</p> <p>N10 Seksie 12 Section</p>	<p>Vel Sheet 6 van of 27 Plan P673/08</p>
--	--	---	---

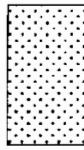


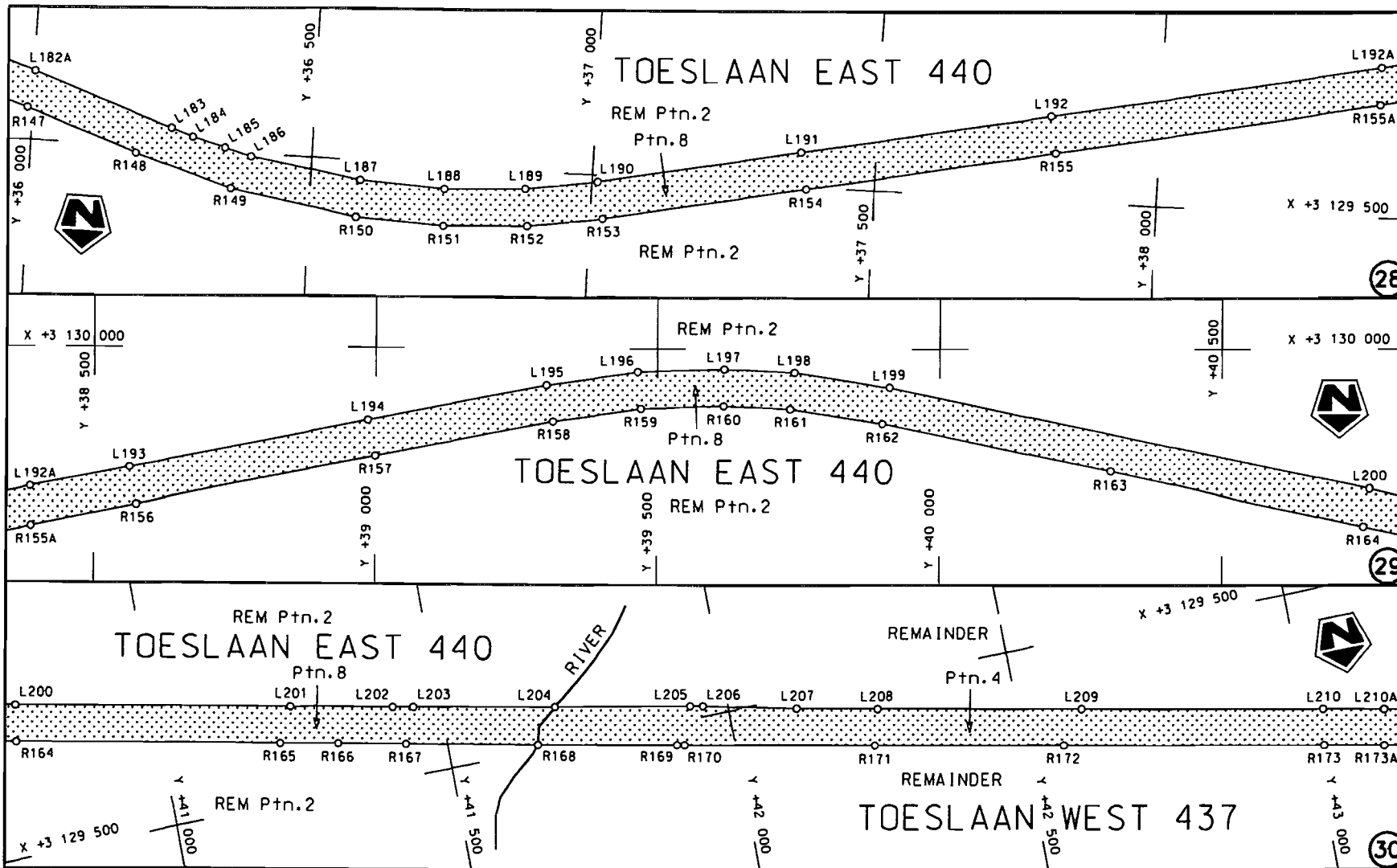
<p>Die Suid Afrikaanse Nasionale Padagentskap Beperk The South African National Roads Agency Limited</p>	<p>Die figuur getoon The figure shown</p> 	<p>steldie padreserwe voor van 'n gedeelte represents the road reserve of a portion van Nasionale Roete N10 of National Route N10</p> <p>Seksie 12</p>	<p>Vel Sheet 7 van of 27 Plan P673/08</p>
--	--	--	---

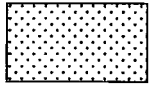


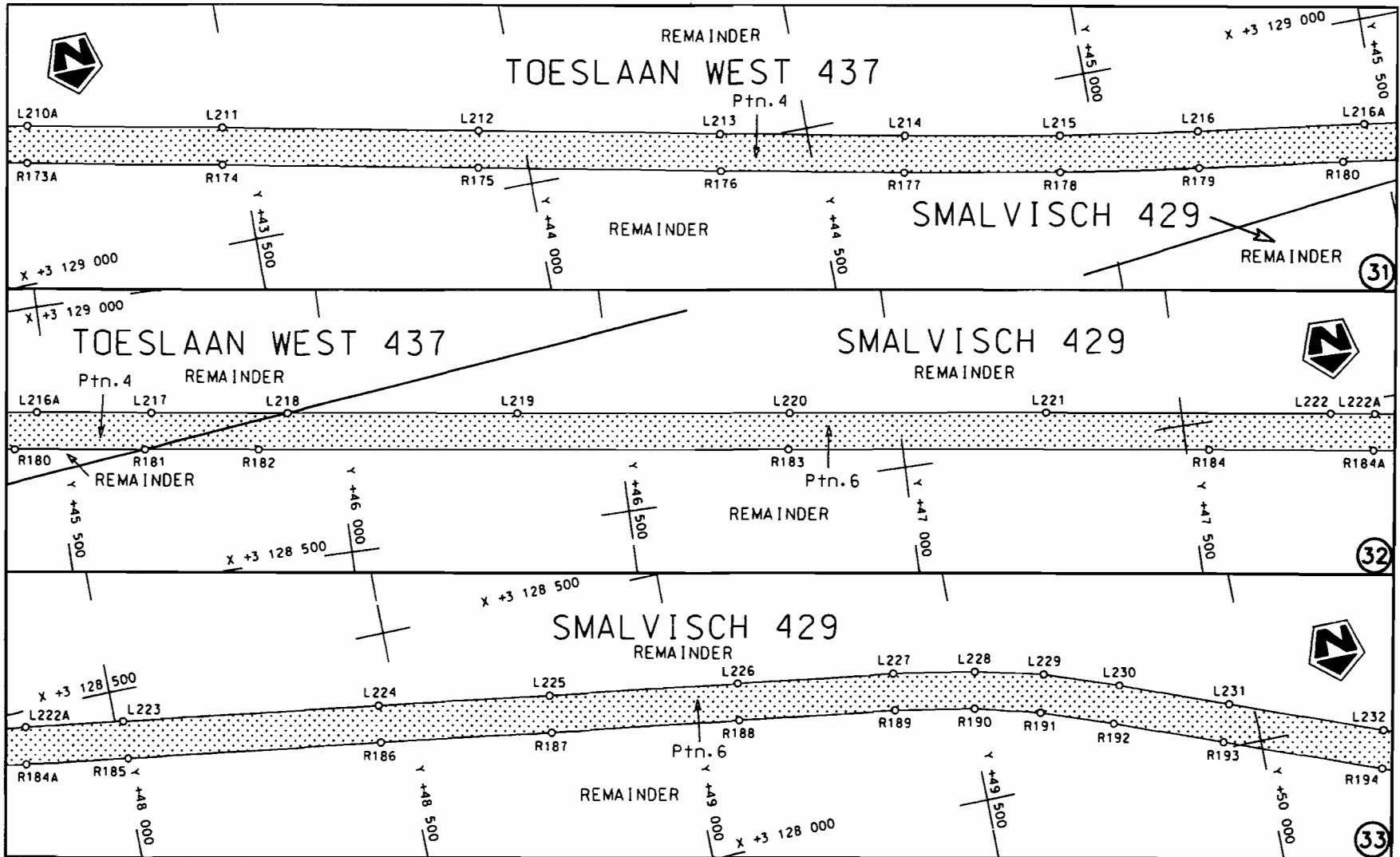
<p>Die Suid Afrikaanse Nasionale Padagentskap Beperk The South African National Roads Agency Limited</p>	<p>Die figuur getoon The figure shown</p>		<p>steldie padreserwe voor van 'n gedeelte represents the road reserve of a portion von Nasionale Roete of National Route</p>	<p>12</p>	<p>Vel Sheet 8 van of 27</p>
					<p>Plan P673/08</p>



Die Suid Afrikaanse Nasionale Padagentskap Beperk The South African National Roads Agency Limited	Die figuur getoon The figure shown		steldie padreserwe voor van 'n gedeelte represents the road reserve of a portion van Nasionale Roete N10 of National Route	
			12	Section
Plan P673/08		Sheet 9 of 27	Vel 27	of 27

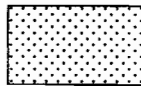


<p>Die Suid Afrikaanse Nasionale Podagentskap Beperk The South African National Roads Agency Limited</p>	<p>Die figuur getoon The figure shown</p> 	<p>stel die podreserwe voor van 'n gedeelte represents the road reserve of a portion van Nasionale Roete N10 of National Route</p> <p>Seksie Section</p> <p>12</p>	<p>Vel Sheet 10 van of 27</p> <p>Plan P673/08</p>
--	--	--	---



Die Suid Afrikaanse Nasionale Padagentskap Beperk
The South African National Roads Agency Limited

Die figuur getoon
The figure shown

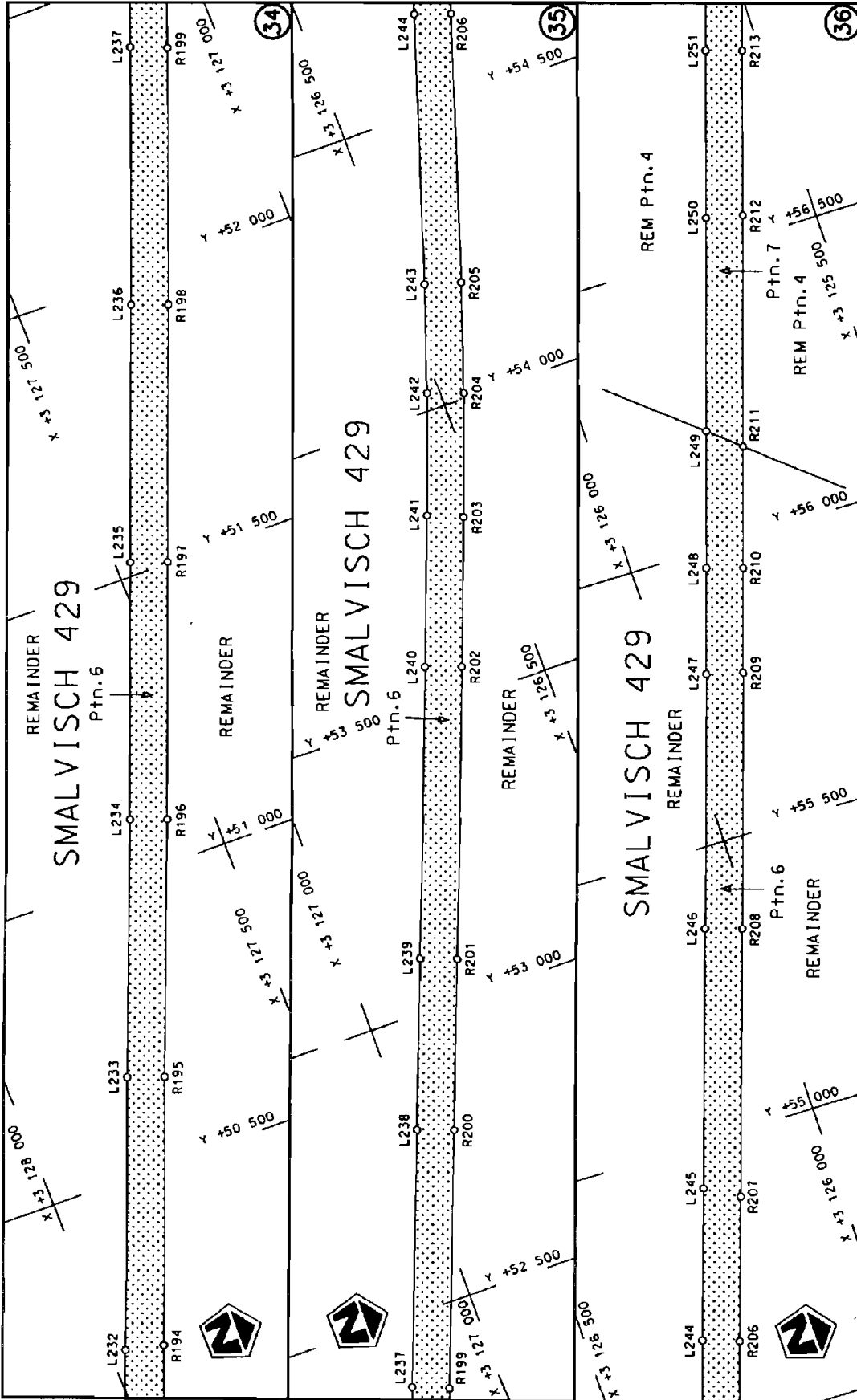


steldie padreserwe voor van 'n gedeelte
represents the road reserve of a portion
van Nasionale Roete N10 Seksie
of National Route Section

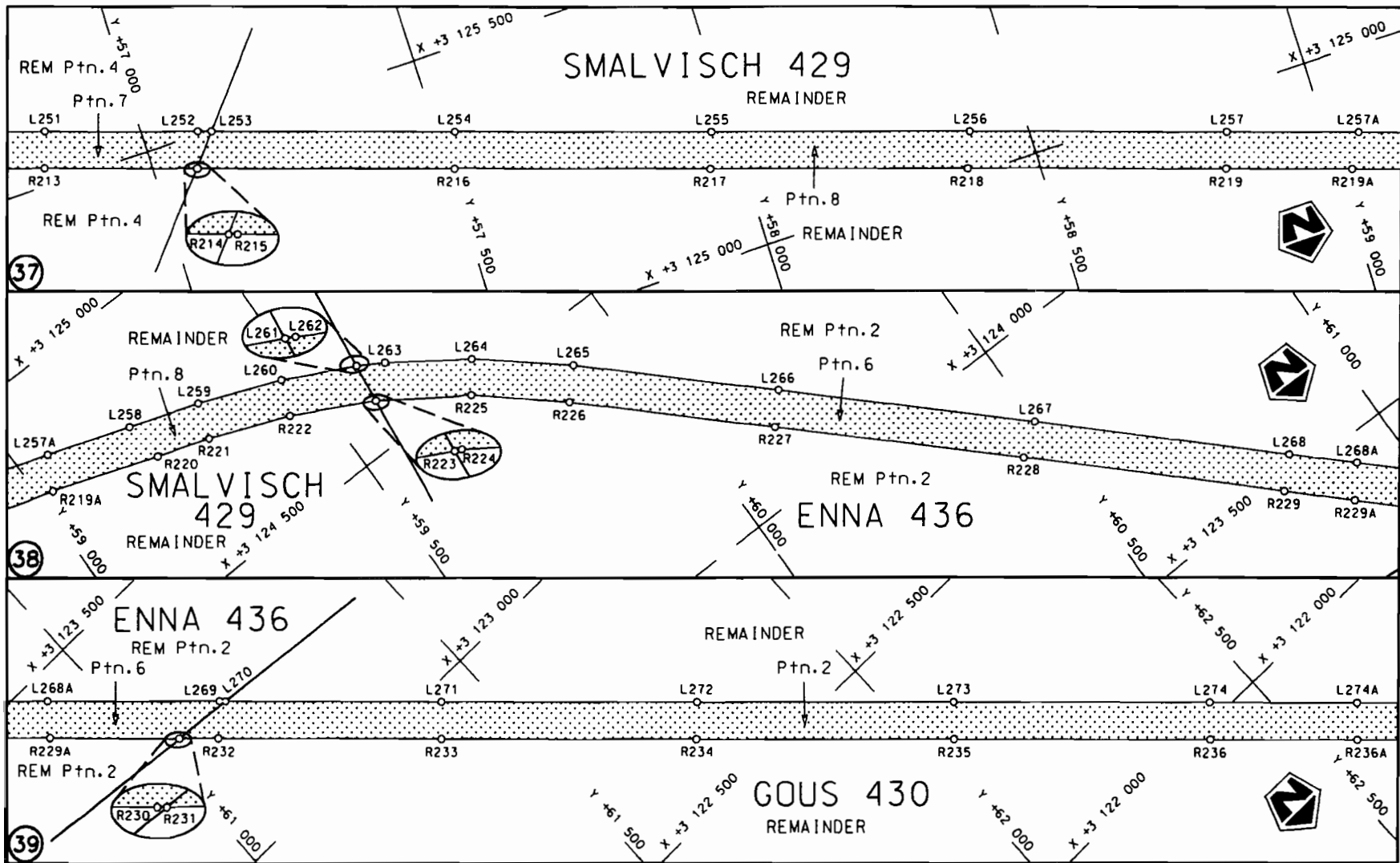
12

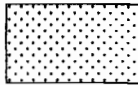
Vel
Sheet 11 van
of 27

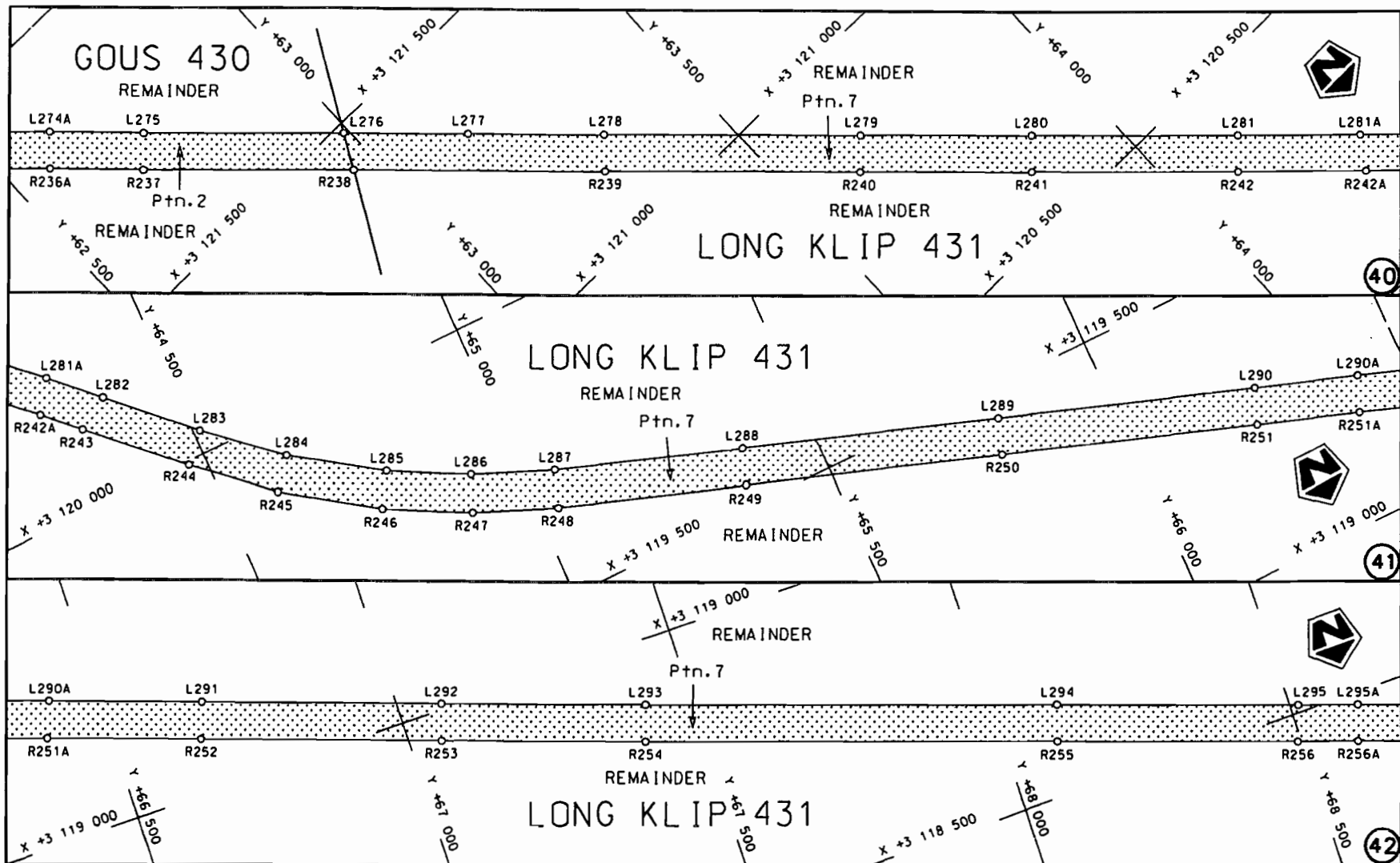
Plan P673/08

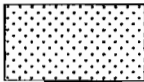


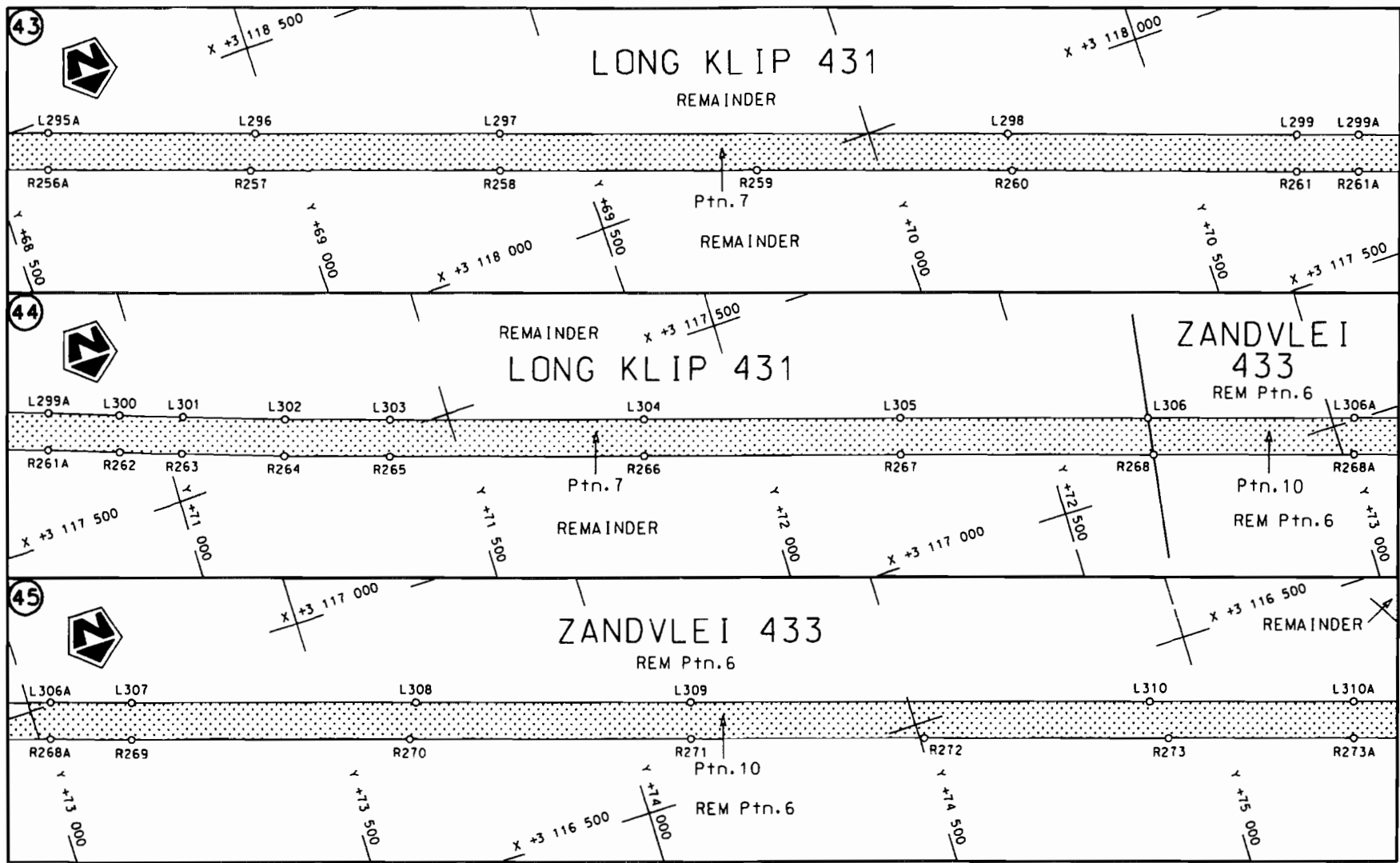
<p>Die Suid Afrikaanse Nasionale Podagtieskop Beperk The South African National Roads Agency Limited</p>	<p>Die figuur getoon The figure shown</p>	<p>stelt die padreserwe voor van 'n gedeelte represents the road reserve of a portion van Nasionale Roete N10 of National Route</p>	<p>Vel Sheet 12 of 27</p>	<p>Seksie N10</p>	<p>Section 12</p>
			<p>Plan P673/08</p>		



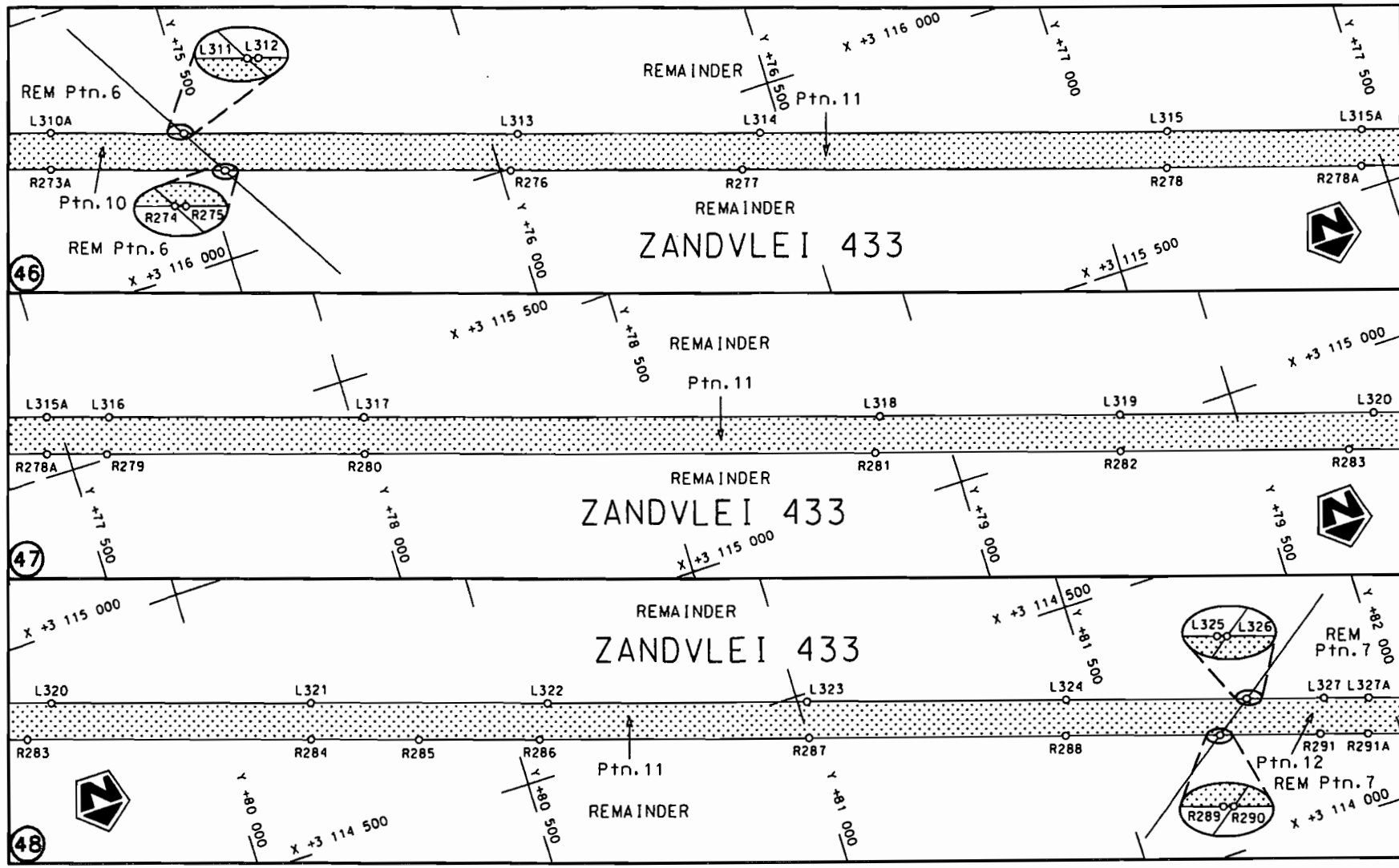
Die Suid Afrikaanse Nasionale Padogentskop Beperk The South African National Roads Agency Limited	Die figuur getoon The figure shown	 steldie padreserwe voor van 'n gedeelte represents the road reserve of a portion van Nasionale Roete N10 Seksie 12 of National Route	Vel Sheet 13 van of 27 Plan P673/08
--	---------------------------------------	--	--

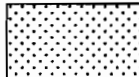


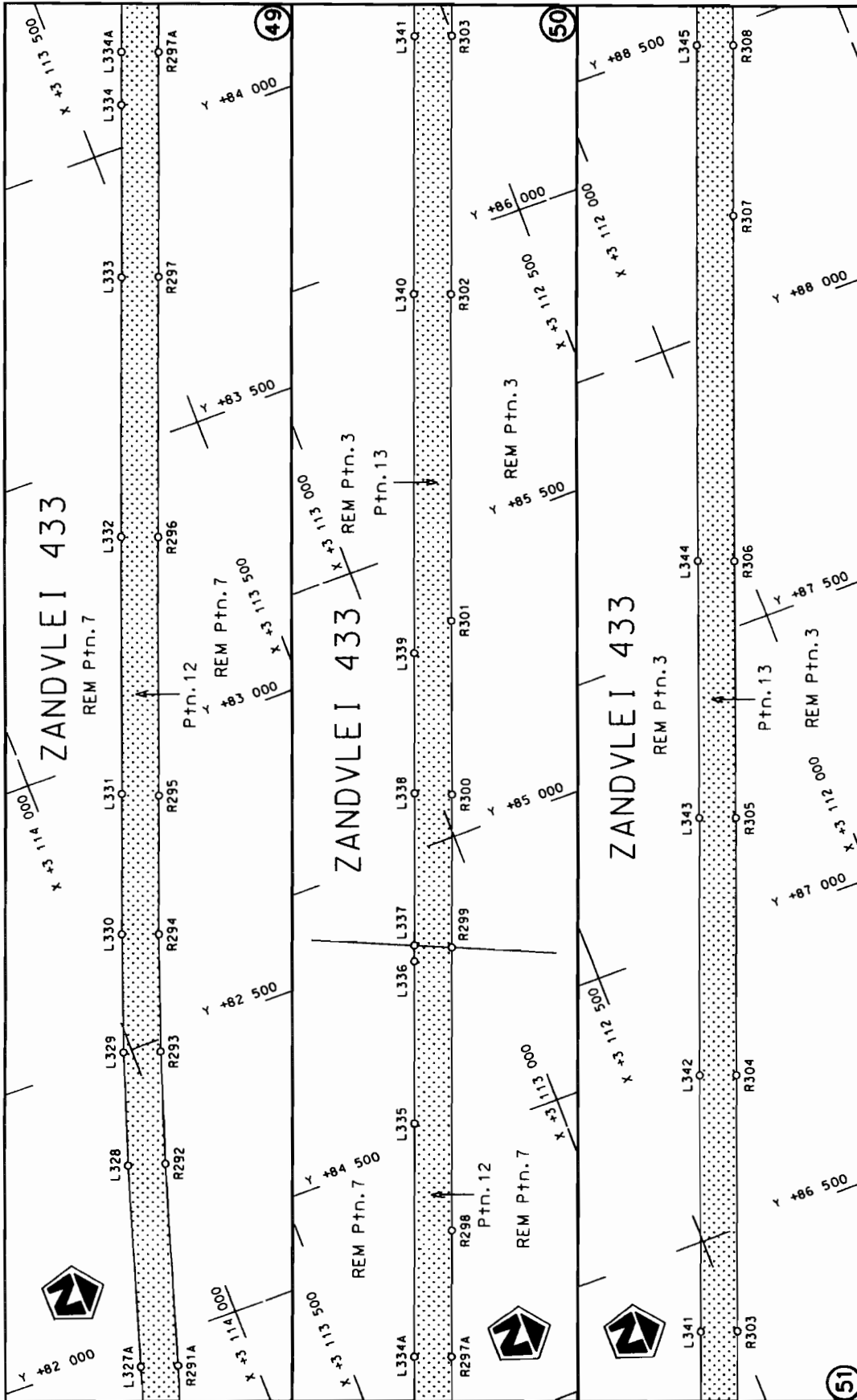
<p>Die Suid Afrikaanse Nasionale Padogenskap Beperk The South African National Roads Agency Limited</p>	<p>Die figuur getoon The figure shown</p> 	<p>steldie padreserwe voor van 'n gedeelte represents the road reserve of a portion van Nasionale Roete N10 Seksie of National Route N10 Section 12</p>	<p>Vel Sheet 14 van 27 Plan P673/08</p>
---	--	---	---

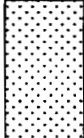


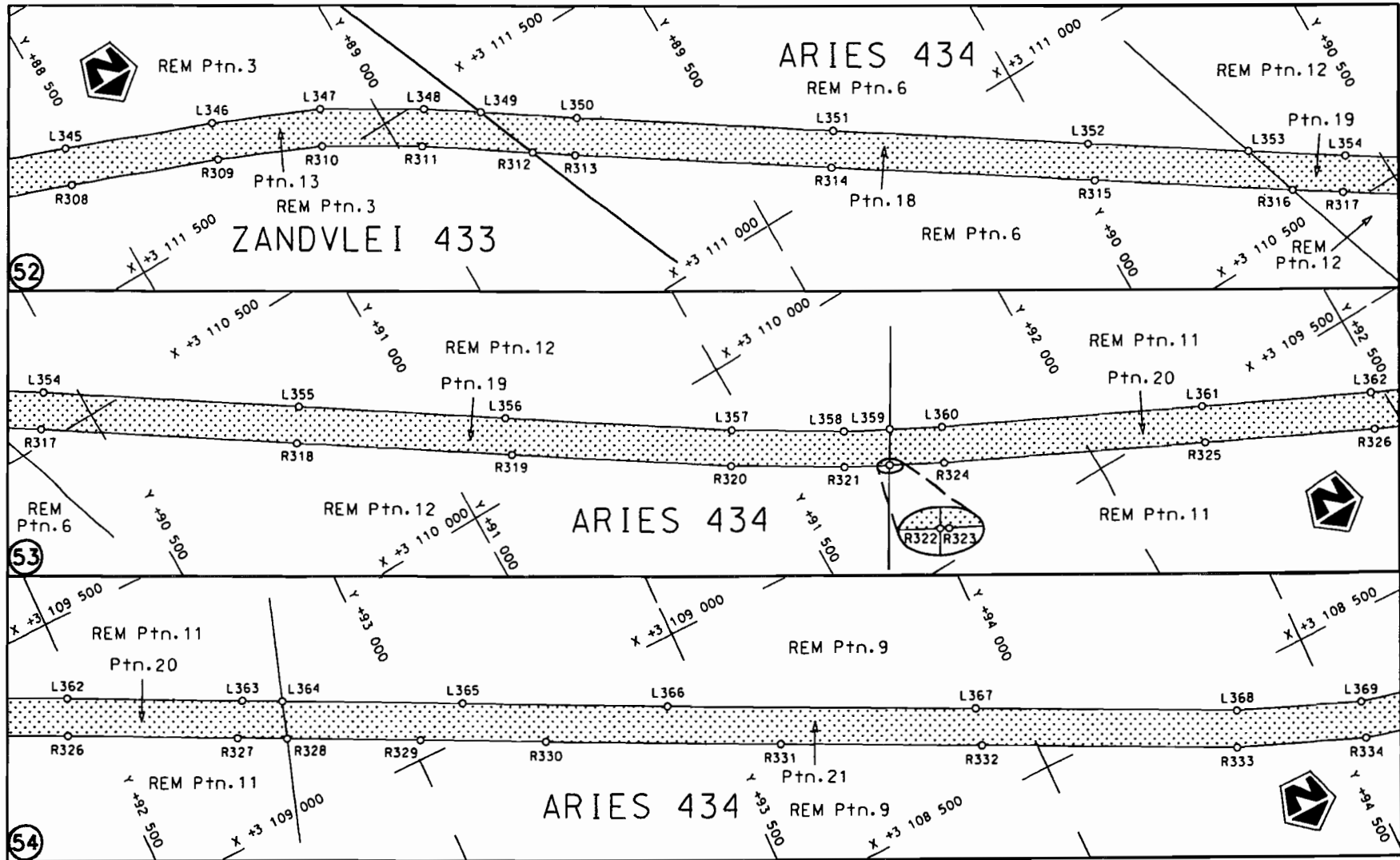
Die Suid Afrikaanse Nasionale Padogentskap Beperk	Die figuur getoon	steldie padreserwe voor van 'n gedeelte	Vel Sheet 15 van 27
The South African National Roads Agency Limited	The figure shown	represents the road reserve of a portion van Nasionale Roete N10	Plan P673/08
		Seksie Section 12	

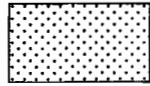


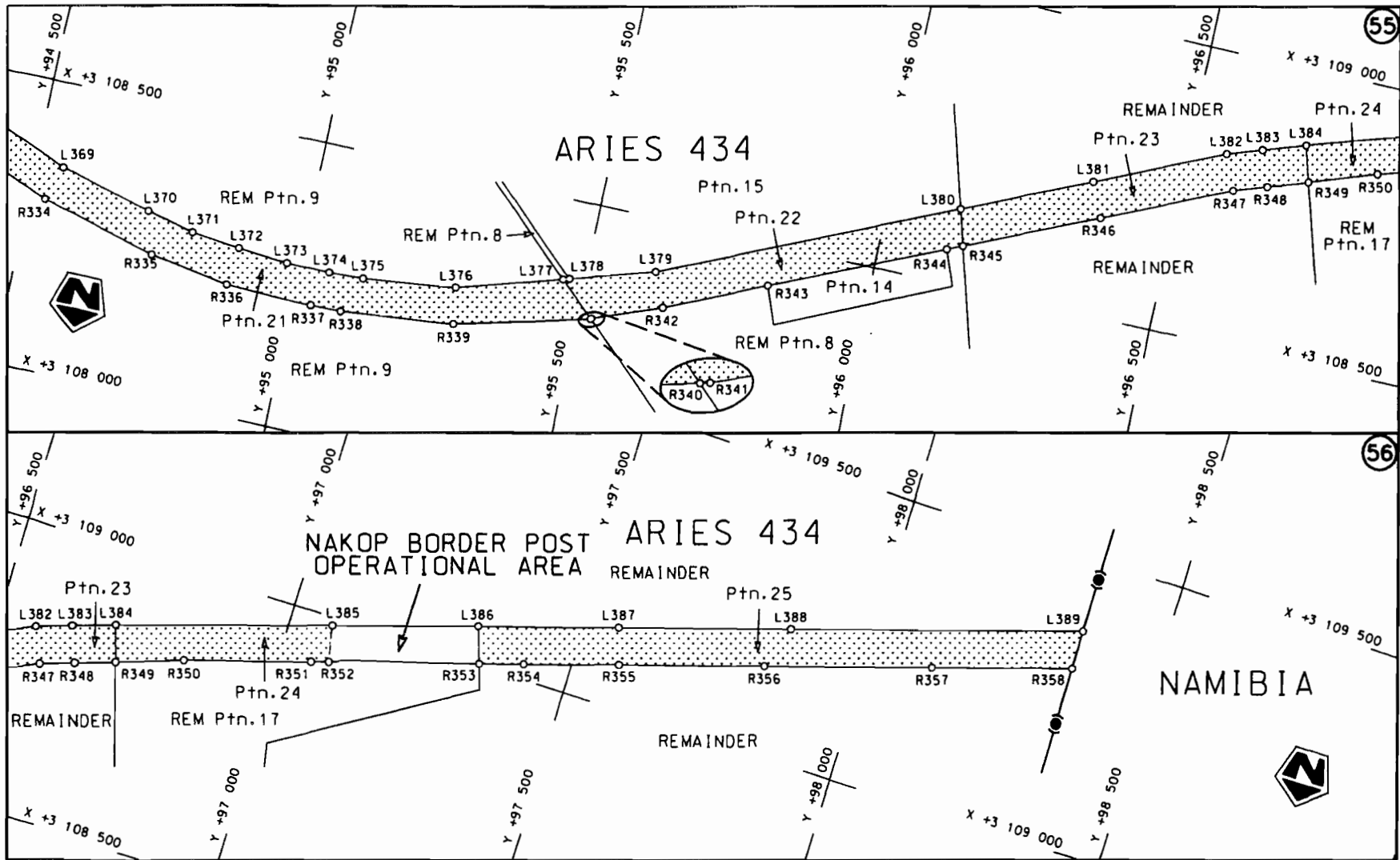
<p>Die Suid Afrikaanse Nasionale Padogentskap Beperk The South African National Roads Agency Limited</p>	<p>Die figuur getoon The figure shown</p> 	<p>steldie padreserve voor van 'n gedeelte represents the road reserve of a portion van Nasionale Roete N10 Seksie of National Route N10 Section</p>	<p>Vel van Sheet 16 of 27</p>
<p>12</p>			<p>Plan P673/08</p>



<p>Die Suid Afrikaanse Nasionale Padagentskap Beperk The South African National Roads Agency Limited</p>	<p>Die figuur getoon The figure shown</p> 	<p>steldie padreserwe voor van 'n gedeelte represents the road reserve of a portion van Nasionale Roete N10 of National Route</p> <p>Seksie Section</p> <p>12</p>	<p>Vel Sheet</p> <p>van of</p> <p>17 27</p> <p>Plan P673/08</p>
--	---	---	---



<p>Die Suid Afrikaanse Nasionale Padagentskap Beperk The South African National Roads Agency Limited</p>	<p>Die figuur getoon The figure shown</p> 	<p>steldie padreserwe voor van 'n gedeelte represents the road reserve of a portion van Nasionale Roete N10 of National Route</p> <p>Seksie 12 Section</p>	<p>Vel 18 van 27 Sheet of</p> <p>Plan P673/08</p>
--	--	--	---



Die Suid Afrikaanse Nasionale Padogentskap Beperk The South African National Roads Agency Limited	Die figuur getoon The figure shown		steldie podreserve voor van 'n gedeelte represents the road reserve of a portion van Nasionale Roete N10 Seksie of National Route 12 Section	Vel Sheet 19 van of 27
			Plan P673/08	

PADRESERWE KOÖRDINATE				/	ROAD RESERVE CO-ORDINATES			
LINKERKANT/LEFT HAND SIDE					REGTERKANT/RIGHT HAND SIDE			
			WG	21°		Y		X
L1	-24	707.668	3 146	938.194	R1	-24	770.042	3 146 929.337
L2	-24	700.894	3 146	891.132	R2	-24	763.526	3 146 883.787
L3	-24	681.481	3 146	772.780	R3	-24	743.722	3 146 762.872
L4	-24	672.158	3 146	723.113	R4	-24	734.048	3 146 711.338
L5	-24	663.435	3 146	687.131	R5	-24	725.646	3 146 675.961
L6	-24	607.920	3 146	482.462	R6	-24	669.866	3 146 470.314
L7	-24	548.816	3 146	255.431	R7	-24	610.113	3 146 240.825
L8	-24	520.551	3 146	152.120	R8	-24	579.184	3 146 127.168
L9	-24	378.486	3 145	606.506	R9	-24	440.174	3 145 593.538
L10	-24	372.462	3 145	570.672	R10	-24	435.025	3 145 563.139
L11	-24	367.637	3 145	518.698	R11	-24	430.510	3 145 514.647
L12	-24	363.194	3 145	436.097	R12	-24	426.147	3 145 433.517
L13	-24	359.823	3 145	096.890	R13	-24	422.482	3 145 038.388
L14	-23	990.080	3 145	071.130	R14	-24	373.330	3 145 034.940
L15	-23	778.980	3 145	056.700	R15	-23	956.740	3 145 005.720
L16	-23	190.080	3 145	015.840	R16	-23	657.100	3 144 984.490
L17	-23	000.200	3 144	998.250	R17	-23	200.570	3 144 952.480
L18	-22	769.580	3 144	966.250	R18	-23	055.720	3 144 934.640
L19	-22	667.460	3 144	949.320	R19	-22	779.970	3 144 903.330
L20	-22	557.180	3 144	931.020	R20	-21	904.500	3 144 758.930
L21	-22	201.150	3 144	872.140	R21	-21	549.970	3 144 700.670
L22	-22	022.990	3 144	842.830	R22	-21	096.630	3 144 625.720
L23	-21	845.300	3 144	813.340	R23	-20	919.840	3 144 596.610
L24	-21	667.670	3 144	784.180	R24	-20	564.640	3 144 538.350
L25	-21	489.270	3 144	755.250	R25	-20	299.680	3 144 494.680
L26	-21	312.070	3 144	725.580	R26	-20	074.490	3 144 457.300
L27	-21	134.000	3 144	695.880	R27	-19	886.270	3 144 426.210
L28	-20	778.050	3 144	637.770	R28	-19	297.530	3 144 328.960
L29	-20	422.040	3 144	578.610	R29	-18	958.290	3 144 273.250
L30	-20	279.920	3 144	555.040	R30	-18	390.580	3 144 179.750
L31	-20	252.050	3 144	598.900	R31	-17	938.980	3 144 105.240
L32	-20	225.930	3 144	608.810	R32	-17	487.910	3 144 030.950
L33	-20	192.600	3 144	615.520	R33	-17	038.170	3 143 956.900
L34	-20	149.880	3 144	533.960	R34	-16	587.280	3 143 882.430
L35	-19	792.930	3 144	475.100	R35	-16	156.630	3 143 811.520
L36	-19	264.450	3 144	388.250	R36	-15	684.510	3 143 733.580
L37	-18	978.370	3 144	340.910	R37	-15	182.540	3 143 651.090
L38	-18	928.030	3 144	332.730	R38	-14	736.090	3 143 577.480
L39	-18	380.350	3 144	242.530	R39	-14	467.220	3 143 532.930
L40	-17	929.260	3 144	168.250	R40	-13	927.680	3 143 444.020
L41	-17	478.100	3 144	093.730	R41	-13	658.430	3 143 400.020
L42	-17	026.540	3 144	019.580	R42	-7	516.230	3 142 387.090
L43	-16	575.730	3 143	945.060	R43	-7	469.940	3 142 379.490
L44	-16	145.970	3 143	874.300	R44	-7	111.770	3 142 320.310
L45	-15	673.280	3 143	796.350	R45	-6	661.530	3 142 246.210
L46	-15	176.270	3 143	714.440	R46	-6	209.530	3 142 171.730
L47	-14	940.530	3 143	675.740	R47	-5	303.990	3 142 022.680
L48	-14	876.360	3 143	665.120	R48	-4	857.010	3 141 948.830
L49	-14	725.360	3 143	640.010	R49	-4	434.620	3 141 878.860
L50	-14	455.420	3 143	595.540	R50	-4	430.760	3 141 878.230
L51	-13	918.370	3 143	506.990	R51	-4	053.160	3 141 815.920

Vel	20	Van	27	P673/08
Sheet		of		

PADRESERWE KOÖRDINATE				ROAD RESERVE CO-ORDINATES				
LINKERKANT/LEFT HAND SIDE				REGTERKANT/RIGHT HAND SIDE				
	Y	X	WG	21°	Y	X		
L52	-13	321.270	3 143	408.720	R52	-3	558.800 3 141	734.720
L53	-13	303.480	3 143	421.720	R53	-3	203.300 3 141	676.060
L54	-13	274.220	3 143	430.490	R54	-2	746.060 3 141	600.420
L55	-13	262.410	3 143	398.930	R55	-2	545.280 3 141	560.690
L56	-12	678.800	3 143	302.570	R56	-2	519.800 3 141	554.000
L57	-12	248.990	3 143	232.080	R57	-2	370.540 3 141	514.840
L58	-11	805.100	3 143	158.640	R58	-2	245.250 3 141	475.230
L59	-11	441.740	3 143	098.460	R59	-2	051.130 3 141	408.940
L60	-11	011.810	3 143	027.540	R60	-1	891.010 3 141	354.290
L61	-10	560.900	3 142	953.410	R61	-1	601.130 3 141	254.990
L62	-10	139.770	3 142	883.960	R62	-1	600.920 3 141	254.920
L63	-9	688.540	3 142	809.650	R63	-1	230.940 3 141	130.080
L64	-9	237.260	3 142	735.510	R64		-848.560 3 141	000.570
L65	-8	786.570	3 142	661.080	R65		-321.420 3 140	820.990
L66	-8	335.480	3 142	586.730	R66		79.810 3 140	684.560
L67	-7	890.590	3 142	513.420	R67		513.780 3 140	537.190
L68	-7	580.020	3 142	462.210	R68	1	521.930 3 140	194.350
L69	-7	458.930	3 142	442.240	R69	1	866.220 3 140	077.550
L70	-6	989.980	3 142	364.950	R70	3	024.640 3 139	683.800
L71	-6	563.500	3 142	294.560	R71	3	370.780 3 139	566.250
L72	-6	109.960	3 142	219.760	R72	4	235.560 3 139	272.120
L73	-5	658.870	3 142	145.350	R73	7	268.770 3 138	241.410
L74	-5	206.780	3 142	070.990	R74	7	719.550 3 138	087.790
L75	-4	756.390	3 141	996.660	R75	8	172.140 3 137	933.980
L76	-4	415.400	3 141	940.360	R76	8	584.690 3 137	793.720
L77	-4	411.360	3 141	939.690	R77	8	843.360 3 137	705.850
L78	-4	055.320	3 141	880.990	R78	9	101.680 3 137	618.140
L79	-3	602.300	3 141	806.340	R79	9	945.120 3 137	331.490
L80	-3	198.280	3 141	739.650	R80	10	382.990 3 137	182.650
L81	-2	737.170	3 141	663.700	R81	10	780.090 3 137	047.920
L82	-2	591.160	3 141	635.100	R82	11	099.380 3 136	939.200
L83	-2	530.790	3 141	623.270	R83	11	566.590 3 136	780.150
L84	-2	352.640	3 141	575.930	R84	11	999.040 3 136	633.250
L85	-2	224.680	3 141	535.550	R85	12	429.910 3 136	486.810
L86	-1	947.170	3 141	441.080	R86	12	868.790 3 136	337.820
L87	-1	551.850	3 141	306.640	R87	12	876.290 3 136	335.280
L88	-1	551.370	3 141	306.480	R88	13	290.570 3 136	194.430
L89	-1	211.120	3 141	190.630	R89	13	727.600 3 136	045.850
L90		-784.180	3 141	045.740	R90	14	178.950 3 135	892.250
L91		-394.030	3 140	913.220	R91	14	604.670 3 135	747.420
L92		101.910	3 140	744.290	R92	15	013.570 3 135	608.510
L93		534.370	3 140	597.310	R93	15	467.060 3 135	454.380
L94		967.570	3 140	450.160	R94	15	895.710 3 135	308.640
L95	1	397.620	3 140	304.200	R95	16	311.430 3 135	167.200
L96	1	845.570	3 140	151.830	R96	16	670.220 3 135	045.270
L97	2	278.880	3 140	004.540	R97	17	045.740 3 134	917.830
L98	2	693.640	3 139	863.530	R98	17	483.370 3 134	769.230
L99	3	390.880	3 139	626.510	R99	17	944.570 3 134	612.410
L100	3	820.220	3 139	480.670	R100	18	377.710 3 134	464.900
L101	4	253.140	3 139	333.410	R101	18	803.930 3 134	320.070
L102	4	603.720	3 139	214.160	R102	18	967.090 3 134	264.680

Vel	21	Van	27	P673/08
Sheet		of		

PADRESERWE KOÖRDINATE				/ ROAD RESERVE CO-ORDINATES		
LINKERKANT/LEFT HAND SIDE				REGTERKANT/RIGHT HAND SIDE		
	Y	X	WG 21°		Y	X
L103	4 949.590	3 139 096.610		R103	19 219.700	3 134 190.480
L104	5 284.280	3 138 982.850		R104	19 335.100	3 134 164.370
L105	5 620.220	3 138 868.670		R105	19 456.500	3 134 141.500
L106	6 479.020	3 138 576.730		R106	19 591.550	3 134 122.400
L107	6 911.370	3 138 429.840		R107	20 122.520	3 134 057.940
L108	7 207.730	3 138 329.080		R108	20 456.790	3 134 017.680
L109	7 234.380	3 138 320.030		R109	20 910.140	3 133 962.780
L110	7 668.120	3 138 172.710		R110	21 291.480	3 133 916.620
L111	8 172.420	3 138 001.280		R111	21 324.070	3 133 912.680
L112	8 528.260	3 137 880.270		R112	21 666.830	3 133 871.230
L113	8 788.610	3 137 791.610		R113	22 574.480	3 133 761.450
L114	9 304.100	3 137 616.080		R114	23 028.840	3 133 706.590
L115	9 971.040	3 137 389.930		R115	23 475.500	3 133 652.630
L116	10 403.010	3 137 243.000		R116	23 601.740	3 133 634.570
L117	10 814.440	3 137 102.810		R117	23 694.610	3 133 618.020
L118	11 181.750	3 136 978.070		R118	23 747.030	3 133 607.910
L119	11 587.270	3 136 840.530		R119	23 833.680	3 133 587.060
L120	11 991.170	3 136 703.200		R120	23 833.820	3 133 587.020
L121	12 430.400	3 136 553.890		R121	23 951.700	3 133 555.150
L122	12 946.890	3 136 378.330		R122	24 062.400	3 133 520.900
L123	12 954.260	3 136 375.820		R123	24 385.550	3 133 413.220
L124	13 375.810	3 136 232.540		R124	25 105.520	3 133 174.090
L125	13 809.630	3 136 085.040		R125	25 385.540	3 133 080.950
L126	14 243.970	3 135 937.300		R126	26 265.360	3 132 788.300
L127	14 673.300	3 135 791.340		R127	27 132.860	3 132 499.920
L128	15 108.460	3 135 643.600		R128	27 569.940	3 132 354.570
L129	15 541.170	3 135 496.420		R129	27 895.360	3 132 246.630
L130	15 974.670	3 135 348.870		R130	28 572.640	3 132 021.210
L131	16 669.230	3 135 113.060		R131	28 955.440	3 131 893.930
L132	17 034.290	3 134 988.760		R132	29 897.550	3 131 580.870
L133	17 589.250	3 134 800.090		R133	30 430.530	3 131 403.590
L134	18 051.630	3 134 642.940		R134	30 883.670	3 131 252.880
L135	18 525.990	3 134 481.660		R135	31 298.230	3 131 115.140
L136	18 987.890	3 134 324.670		R136	31 732.120	3 130 970.970
L137	19 112.580	3 134 285.120		R137	32 166.060	3 130 826.640
L138	19 233.940	3 134 252.440		R138	32 600.000	3 130 682.270
L139	19 347.460	3 134 226.720		R139	33 033.990	3 130 538.210
L140	19 466.600	3 134 204.270		R140	33 211.940	3 130 478.770
L141	19 599.700	3 134 185.320		R141	33 546.330	3 130 367.590
L142	20 072.470	3 134 128.290		R142	34 091.180	3 130 186.230
L143	20 494.840	3 134 077.120		R143	34 567.500	3 130 027.730
L144	20 948.950	3 134 022.240		R144	34 972.150	3 129 893.340
L145	21 388.530	3 133 969.190		R145	35 378.280	3 129 758.220
L146	21 388.820	3 133 969.160		R146	35 753.720	3 129 633.500
L147	21 825.770	3 133 916.320		R147	35 991.530	3 129 554.540
L148	22 249.460	3 133 864.960		R148	36 187.950	3 129 489.500
L149	22 702.390	3 133 810.140		R149	36 359.300	3 129 438.890
L150	23 157.390	3 133 755.210		R150	36 583.870	3 129 402.840
L151	23 482.820	3 133 715.910		R151	36 740.040	3 129 397.230
L152	23 611.440	3 133 697.560		R152	36 889.400	3 129 405.940
L153	23 734.610	3 133 675.390		R153	37 021.900	3 129 425.730

Vel	22	Van	27	P673/08
Sheet		of		

PADRESERWE KOÖRDINATE				/	ROAD RESERVE CO-ORDINATES			
LINKERKANT/LEFT HAND SIDE					REGTERKANT/RIGHT HAND SIDE			
	Y	X	WG	21°	Y	X		
L154	23 734.870	3 133 675.350		R154	37 379.090	3 129 495.650		
L155	23 870.930	3 133 643.060		R155	37 818.360	3 129 581.610		
L156	23 871.280	3 133 642.980		R156	38 575.250	3 129 729.980		
L157	23 970.590	3 133 616.060		R157	38 998.620	3 129 812.900		
L158	24 082.440	3 133 581.240		R158	39 316.370	3 129 874.580		
L159	24 404.990	3 133 473.660		R159	39 470.370	3 129 896.630		
L160	24 780.860	3 133 349.090		R160	39 617.350	3 129 902.390		
L161	25 119.450	3 133 236.560		R161	39 734.600	3 129 896.270		
L162	25 620.570	3 133 069.950		R162	39 898.390	3 129 871.810		
L163	26 054.370	3 132 925.660		R163	40 301.380	3 129 789.180		
L164	26 487.980	3 132 781.610		R164	40 748.560	3 129 697.120		
L165	26 922.940	3 132 636.880		R165	41 207.630	3 129 602.130		
L166	27 356.030	3 132 492.870		R166	41 309.700	3 129 581.120		
L167	27 865.650	3 132 323.400		R167	41 427.370	3 129 556.900		
L168	28 599.650	3 132 079.300		R168	41 657.913	3 129 509.447		
L169	29 033.260	3 131 935.160		R169	41 898.510	3 129 459.920		
L170	29 726.530	3 131 704.560		R170	41 911.850	3 129 457.170		
L171	30 479.510	3 131 454.320		R171	42 240.810	3 129 389.370		
L172	31 347.530	3 131 165.680		R172	42 568.030	3 129 321.760		
L173	31 780.610	3 131 021.650		R173	43 017.830	3 129 229.460		
L174	32 214.440	3 130 877.510		R174	43 464.680	3 129 137.130		
L175	32 649.260	3 130 733.010		R175	43 911.880	3 129 045.220		
L176	33 082.770	3 130 588.810		R176	44 337.040	3 128 957.400		
L177	33 509.600	3 130 446.890		R177	44 657.790	3 128 891.190		
L178	34 260.000	3 130 197.250		R178	44 928.780	3 128 839.690		
L179	34 644.920	3 130 069.480		R179	45 174.000	3 128 800.270		
L180	34 993.060	3 129 953.630		R180	45 426.120	3 128 763.040		
L181	35 377.740	3 129 825.800		R181	45 658.360	3 128 728.930		
L182	35 903.510	3 129 650.600		R182	45 861.400	3 128 699.110		
L183	36 248.670	3 129 535.140		R183	46 797.550	3 128 561.530		
L184	36 286.860	3 129 522.390		R184	47 540.410	3 128 452.050		
L185	36 345.310	3 129 507.350		R185	48 010.440	3 128 383.060		
L186	36 392.240	3 129 495.190		R186	48 457.670	3 128 317.290		
L187	36 588.000	3 129 466.180		R187	48 760.150	3 128 272.610		
L188	36 738.570	3 129 460.230		R188	49 093.900	3 128 223.350		
L189	36 882.780	3 129 469.130		R189	49 370.890	3 128 182.790		
L190	37 009.780	3 129 488.420		R190	49 509.730	3 128 156.890		
L191	37 366.710	3 129 558.290		R191	49 623.170	3 128 125.650		
L192	37 807.070	3 129 644.400		R192	49 746.470	3 128 081.580		
L193	38 563.120	3 129 792.560		R193	49 934.780	3 128 010.460		
L194	38 985.630	3 129 875.200		R194	50 201.240	3 127 909.650		
L195	39 303.560	3 129 937.280		R195	50 648.020	3 127 740.900		
L196	39 464.650	3 129 960.160		R196	51 074.860	3 127 578.000		
L197	39 618.210	3 129 965.840		R197	51 502.750	3 127 414.570		
L198	39 741.850	3 129 959.460		R198	51 929.160	3 127 252.050		
L199	39 911.110	3 129 934.220		R199	52 355.010	3 127 089.410		
L200	40 759.680	3 129 759.320		R200	52 783.760	3 126 925.680		
L201	41 237.940	3 129 660.920		R201	53 068.080	3 126 817.260		
L202	41 416.670	3 129 624.110		R202	53 553.650	3 126 631.980		
L203	41 452.570	3 129 617.010		R203	53 803.160	3 126 536.650		
L204	41 700.290	3 129 568.018		R204	54 009.440	3 126 460.850		

Vel	23	Van	27	P673/08
Sheet		of		

PADRESERWE KOÖRDINATE				/	ROAD RESERVE CO-ORDINATES			
LINKERKANT/LEFT HAND SIDE					REGTERKANT/RIGHT HAND SIDE			
	Y	X	WG	21°	Y	X		
L205	41 934.970	3 129 521.610		R205	54 193.640	3 126 397.520		
L206	41 957.330	3 129 517.190		R206	54 645.390	3 126 248.250		
L207	42 117.770	3 129 479.710		R207	54 888.370	3 126 167.730		
L208	42 258.290	3 129 450.830		R208	55 340.340	3 126 018.100		
L209	42 610.790	3 129 378.000		R209	55 772.500	3 125 875.090		
L210	43 028.840	3 129 291.950		R210	55 949.100	3 125 816.630		
L211	43 476.670	3 129 199.680		R211	56 154.580	3 125 748.680		
L212	43 924.290	3 129 107.310		R212	56 541.180	3 125 620.830		
L213	44 347.490	3 129 020.410		R213	56 816.410	3 125 529.690		
L214	44 670.760	3 128 953.440		R214	57 074.540	3 125 444.200		
L215	44 939.840	3 128 902.210		R215	57 076.270	3 125 443.630		
L216	45 183.420	3 128 862.960		R216	57 510.610	3 125 300.030		
L217	45 678.670	3 128 790.350		R217	57 944.290	3 125 156.440		
L218	45 920.670	3 128 754.720		R218	58 377.190	3 125 012.960		
L219	46 326.070	3 128 695.030		R219	58 813.040	3 124 869.020		
L220	46 808.650	3 128 624.050		R220	59 211.370	3 124 737.170		
L221	47 260.610	3 128 557.600		R221	59 303.000	3 124 706.850		
L222	47 762.360	3 128 483.830		R222	59 443.830	3 124 652.160		
L223	48 014.280	3 128 446.690		R223	59 581.060	3 124 581.900		
L224	48 466.930	3 128 379.940		R224	59 581.490	3 124 581.690		
L225	48 769.550	3 128 335.440		R225	59 722.690	3 124 488.170		
L226	49 104.540	3 128 286.090		R226	59 858.100	3 124 374.010		
L227	49 380.130	3 128 245.770		R227	60 125.090	3 124 120.490		
L228	49 522.680	3 128 219.490		R228	60 446.770	3 123 814.840		
L229	49 642.090	3 128 189.540		R229	60 786.450	3 123 492.140		
L230	49 769.780	3 128 144.060		R230	61 044.810	3 123 246.660		
L231	49 957.960	3 128 072.240		R231	61 045.320	3 123 246.170		
L232	50 216.190	3 127 973.770		R232	61 095.410	3 123 198.490		
L233	50 670.110	3 127 800.500		R233	61 383.190	3 122 924.930		
L234	51 097.370	3 127 637.440		R234	61 713.710	3 122 610.750		
L235	51 524.420	3 127 474.520		R235	62 046.350	3 122 294.680		
L236	51 951.470	3 127 311.560		R236	62 377.890	3 121 979.460		
L237	52 378.980	3 127 148.430		R237	62 686.310	3 121 686.360		
L238	52 806.050	3 126 985.430		R238	62 960.120	3 121 426.240		
L239	53 090.550	3 126 876.770		R239	63 284.560	3 121 118.010		
L240	53 574.950	3 126 691.700		R240	63 614.620	3 120 804.130		
L241	53 827.390	3 126 595.030		R241	63 835.820	3 120 593.950		
L242	54 030.950	3 126 520.710		R242	64 101.210	3 120 341.720		
L243	54 212.650	3 126 458.480		R243	64 325.470	3 120 128.830		
L244	54 666.530	3 126 308.230		R244	64 468.440	3 119 992.850		
L245	54 921.750	3 126 223.720		R245	64 595.260	3 119 884.440		
L246	55 360.330	3 126 078.560		R246	64 751.370	3 119 779.090		
L247	55 789.870	3 125 936.290		R247	64 892.900	3 119 704.960		
L248	55 968.500	3 125 877.330		R248	65 036.590	3 119 647.190		
L249	56 199.540	3 125 800.850		R249	65 353.840	3 119 537.600		
L250	56 556.450	3 125 682.710		R250	65 786.140	3 119 388.190		
L251	56 836.910	3 125 589.810		R251	66 216.710	3 119 239.470		
L252	57 096.080	3 125 504.180		R252	66 649.280	3 119 089.990		
L253	57 119.610	3 125 496.390		R253	67 055.430	3 118 949.680		
L254	57 531.020	3 125 360.180		R254	67 399.060	3 118 831.040		
L255	57 965.900	3 125 216.230		R255	68 090.750	3 118 591.980		

Vel	24	Van	27	P673/08
Sheet		of		

PADRESERWE KOÖRDINATE				/	ROAD RESERVE CO-ORDINATES			
LINKERKANT/LEFT HAND SIDE					REGTERKANT/RIGHT HAND SIDE			
	Y	X	WG	21°	Y	X		
L256	58 400.190	3 125 072.620		R256	68 493.120	3 118 452.940		
L257	58 833.330	3 124 929.240		R257	68 938.600	3 118 298.980		
L258	59 201.790	3 124 807.290		R258	69 358.540	3 118 153.900		
L259	59 323.330	3 124 767.230		R259	69 791.530	3 118 004.370		
L260	59 468.800	3 124 710.610		R260	70 220.280	3 117 856.340		
L261	59 588.780	3 124 650.530		R261	70 697.930	3 117 690.930		
L262	59 588.980	3 124 650.430		R262	70 922.290	3 117 613.360		
L263	59 633.090	3 124 624.980		R263	71 027.680	3 117 577.090		
L264	59 759.960	3 124 537.550		R264	71 202.450	3 117 517.920		
L265	59 901.640	3 124 420.680		R265	71 379.650	3 117 460.590		
L266	60 167.850	3 124 167.980		R266	71 813.280	3 117 324.090		
L267	60 499.860	3 123 852.270		R267	72 250.250	3 117 186.100		
L268	60 830.380	3 123 537.970		R268	72 679.390	3 117 050.610		
L269	61 140.920	3 123 243.080		R269	73 157.040	3 116 899.810		
L270	61 148.830	3 123 235.550		R270	73 630.300	3 116 750.380		
L271	61 427.310	3 122 970.760		R271	74 109.890	3 116 599.040		
L272	61 758.520	3 122 655.890		R272	74 507.780	3 116 473.380		
L273	62 089.710	3 122 341.090		R273	74 923.390	3 116 342.150		
L274	62 420.730	3 122 026.640		R274	75 533.750	3 116 149.340		
L275	62 730.350	3 121 732.090		R275	75 535.890	3 116 148.660		
L276	62 991.030	3 121 484.580		R276	76 018.090	3 115 996.690		
L277	63 150.270	3 121 333.380		R277	76 413.340	3 115 871.750		
L278	63 326.810	3 121 165.600		R278	77 132.180	3 115 644.760		
L279	63 658.760	3 120 850.010		R279	77 565.270	3 115 507.980		
L280	63 879.330	3 120 640.380		R280	78 004.080	3 115 369.450		
L281	64 144.610	3 120 388.260		R281	78 870.380	3 115 096.400		
L282	64 380.640	3 120 163.820		R282	79 284.180	3 114 965.750		
L283	64 512.080	3 120 038.890		R283	79 672.300	3 114 843.060		
L284	64 635.370	3 119 933.880		R284	80 155.770	3 114 690.400		
L285	64 784.770	3 119 833.130		R285	80 338.220	3 114 632.790		
L286	64 917.240	3 119 763.580		R286	80 542.630	3 114 568.200		
L287	65 057.470	3 119 707.230		R287	81 000.450	3 114 423.840		
L288	65 374.370	3 119 597.780		R288	81 433.350	3 114 287.360		
L289	65 807.140	3 119 448.270		R289	81 694.250	3 114 204.990		
L290	66 239.580	3 119 298.890		R290	81 694.900	3 114 204.780		
L291	66 671.460	3 119 149.690		R291	81 863.690	3 114 151.500		
L292	67 075.770	3 119 010.010		R292	82 289.930	3 114 016.790		
L293	67 419.930	3 118 891.030		R293	82 478.880	3 113 954.430		
L294	68 110.780	3 118 652.370		R294	82 673.610	3 113 883.930		
L295	68 514.730	3 118 512.810		R295	82 904.470	3 113 796.670		
L296	68 967.030	3 118 356.560		R296	83 333.950	3 113 634.210		
L297	69 378.740	3 118 214.150		R297	83 762.830	3 113 471.700		
L298	70 233.300	3 117 919.000		R298	84 346.280	3 113 250.780		
L299	70 718.150	3 117 751.430		R299	84 816.390	3 113 072.960		
L300	70 941.080	3 117 674.240		R300	85 071.020	3 112 976.860		
L301	71 048.870	3 117 636.990		R301	85 359.570	3 112 867.640		
L302	71 222.900	3 117 578.250		R302	85 899.870	3 112 663.360		
L303	71 399.530	3 117 521.100		R303	86 328.500	3 112 501.270		
L304	71 832.360	3 117 384.670		R304	86 755.130	3 112 340.000		
L305	72 268.940	3 117 246.900		R305	87 182.840	3 112 178.260		
L306	72 688.940	3 117 114.270		R306	87 610.210	3 112 016.670		

Van	25	Van	27	P673/08
Sheet		of		

PADRESERWE KOÖRDINATE				/	ROAD RESERVE CO-ORDINATES				
LINKERKANT/LEFT HAND SIDE					REGTERKANT/RIGHT HAND SIDE				
	Y	X	WG	21°	Y	X			
L307	73 176.620	3 116 960.270		R307	88 183.830	3 111 799.480			
L308	73 659.910	3 116 807.610		R308	88 465.990	3 111 692.910			
L309	74 129.000	3 116 659.680		R309	88 712.660	3 111 599.770			
L310	74 910.610	3 116 412.820		R310	88 884.270	3 111 523.120			
L311	75 482.080	3 116 232.610		R311	89 036.750	3 111 433.440			
L312	75 484.200	3 116 231.940		R312	89 201.940	3 111 323.690			
L313	76 048.690	3 116 053.540		R313	89 266.270	3 111 280.950			
L314	76 462.100	3 115 922.920		R314	89 647.680	3 111 028.530			
L315	77 151.780	3 115 705.150		R315	90 039.900	3 110 769.220			
L316	77 588.360	3 115 567.340		R316	90 334.570	3 110 573.400			
L317	78 022.020	3 115 430.490		R317	90 409.920	3 110 523.320			
L318	78 897.210	3 115 154.370		R318	90 790.920	3 110 270.990			
L319	79 302.540	3 115 026.520		R319	91 111.030	3 110 058.980			
L320	79 733.110	3 114 890.560		R320	91 437.750	3 109 842.180			
L321	80 174.610	3 114 751.260		R321	91 609.880	3 109 736.230			
L322	80 576.130	3 114 624.370		R322	91 680.690	3 109 698.150			
L323	81 016.490	3 114 485.520		R323	91 681.210	3 109 697.870			
L324	81 453.700	3 114 347.390		R324	91 765.830	3 109 652.870			
L325	81 758.920	3 114 251.150		R325	92 183.500	3 109 445.150			
L326	81 759.870	3 114 250.840		R326	92 453.710	3 109 310.470			
L327	81 889.410	3 114 209.830		R327	92 723.910	3 109 175.830			
L328	82 309.600	3 114 077.370		R328	92 803.160	3 109 136.340			
L329	82 499.760	3 114 014.380		R329	93 015.910	3 109 030.350			
L330	82 696.210	3 113 943.250		R330	93 217.280	3 108 930.390			
L331	82 929.790	3 113 854.940		R331	93 591.910	3 108 743.680			
L332	83 356.500	3 113 693.360		R332	93 911.010	3 108 584.971			
L333	83 784.230	3 113 531.530		R333	94 316.910	3 108 382.780			
L334	84 070.000	3 113 423.470		R334	94 529.500	3 108 296.450			
L335	84 547.280	3 113 242.930		R335	94 734.310	3 108 244.150			
L336	84 816.140	3 113 141.370		R336	94 878.960	3 108 222.780			
L337	84 842.220	3 113 131.510		R337	95 033.410	3 108 219.740			
L338	85 095.420	3 113 035.710		R338	95 087.180	3 108 221.040			
L339	85 328.550	3 112 947.370		R339	95 287.900	3 108 242.730			
L340	85 922.310	3 112 722.880		R340	95 524.440	3 108 304.870			
L341	86 350.000	3 112 561.260		R341	95 525.420	3 108 305.130			
L342	86 777.590	3 112 399.520		R342	95 645.450	3 108 350.800			
L343	87 205.110	3 112 237.870		R343	95 821.560	3 108 428.510			
L344	87 632.940	3 112 076.040		R344	96 118.510	3 108 558.710			
L345	88 488.160	3 111 752.500		R345	96 145.250	3 108 570.410			
L346	88 735.030	3 111 659.190		R346	96 372.770	3 108 669.930			
L347	88 913.550	3 111 579.600		R347	96 593.240	3 108 766.810			
L348	89 071.730	3 111 486.670		R348	96 651.240	3 108 786.580			
L349	89 155.870	3 111 430.910		R349	96 720.800	3 108 809.980			
L350	89 301.620	3 111 334.320		R350	96 837.130	3 108 849.120			
L351	89 682.650	3 111 081.710		R351	97 056.390	3 108 915.270			
L352	90 061.990	3 110 830.310		R352	97 086.578	3 108 924.359			
L353	90 301.180	3 110 671.920		R353	97 342.210	3 109 001.360			
L354	90 445.730	3 110 575.950		R354	97 418.260	3 109 024.900			
L355	90 826.040	3 110 323.970		R355	97 580.090	3 109 073.940			
L356	91 133.250	3 110 120.270		R356	97 830.180	3 109 149.570			
L357	91 470.880	3 109 896.460		R357	98 115.790	3 109 236.070			
					Vel	26	Van	27	P673/08
					Sheet		of		

PADRESERWE KOÖRDINATE				/	ROAD RESERVE CO-ORDINATES		
LINKERKANT/LEFT HAND SIDE					REGTERKANT/RIGHT HAND SIDE		
	Y	X	WG	21°	Y	X	
L358	91 641.410	3 109 791.480		R358	98 354.730	3 109 308.330	
L359	91 713.590	3 109 752.910					
L360	91 794.840	3 109 709.480					
L361	92 211.140	3 109 502.400					
L362	92 480.270	3 109 368.450					
L363	92 759.260	3 109 229.560					
L364	92 823.370	3 109 197.650					
L365	93 110.330	3 109 054.800					
L366	93 438.910	3 108 891.220					
L367	93 929.010	3 108 647.380					
L368	94 344.600	3 108 440.350					
L369	94 549.400	3 108 356.230					
L370	94 712.510	3 108 316.200					
L371	94 798.520	3 108 297.590					
L372	94 887.460	3 108 289.770					
L373	94 976.570	3 108 283.290					
L374	95 053.520	3 108 282.690					
L375	95 113.420	3 108 285.360					
L376	95 278.020	3 108 305.320					
L377	95 461.850	3 108 361.470					
L378	95 472.970	3 108 364.860					
L379	95 620.080	3 108 409.190					
L380	96 127.380	3 108 631.600					
L381	96 347.190	3 108 728.350					
L382	96 568.050	3 108 825.730					
L383	96 629.050	3 108 846.220					
L384	96 702.610	3 108 870.690					
L385	97 074.527	3 108 985.668					
L386	97 322.150	3 109 062.220					
L387	97 561.060	3 109 134.560					
L388	97 857.200	3 109 224.010					
L389	98 354.190	3 109 374.820					