

Government Gazette Staatskoerant

REPUBLIC OF SOUTH AFRICA
REPUBLIEK VAN SUID-AFRIKA

Vol. 522

Pretoria, 17 December
Desember 2008

No. 31705

CONTENTS**INHOUD**

<i>No.</i>	<i>Page No.</i>	<i>Gazette No.</i>	<i>No.</i>	<i>Bladsy No.</i>	<i>Koerant No.</i>
GOVERNMENT NOTICE			GOEWERMENTSKENNISGEWING		
Transport, Department of			Vervoer, Departement van		
<i>Government Notice</i>			<i>Goewermentskennisgewing</i>		
1356			1356		
South African National Roads Agency Limited and the National Roads Act (7/1998): The South African National Roads Agency Limited: Declaration amendment of National Road N4 Section 7X: Amendment of Declaration No's. 188 of 1985, 2014 of 1990, 651 of 1997 and 652 of 1997	3	31705	Suid-Afrikaanse Nasionale Padagentskap Beperk en die Nasionale Paaie Wet (7/1998): Die Suid-Afrikaanse Nasionale Padagentskap Beperk: Verklaring wysiging van Nasionale Pad N4 Seksie 7X: Wysiging van Verklaring No's. 188 van 1985, 2014 van 1990, 651 van 1997 en 652 van 1997	4	31705

**GOVERNMENT NOTICE
GOEWERMENTSKENNISGEWING**

**DEPARTMENT OF TRANSPORT
DEPARTEMENT VAN VERVOER**

No. 1356

17 December 2008

**THE SOUTH AFRICAN NATIONAL ROADS
AGENCY LIMITED**

Registration No: 98/09584/06

DECLARATION AMENDMENT OF NATIONAL ROAD N4 SECTION 7X

AMENDMENT OF DECLARATION NO'S. 188 OF 1985, 2014 OF 1990, 651 OF 1997 AND 652 OF 1997

By virtue of section 40 (1)(b) of the South African National Roads Agency Limited and the National Roads Act, 1998 (Act No. 7 of 1998), I hereby amend the following declarations by substituting **(I)** Declaration No. 188 of 1985, **(II)** Declaration No. 2014 of 1990, **(III)** Declaration No. 651 of 1997 and **(IV)** Declaration No. 652 of 1997, sheets 1 to 8 of Plan No. P403/96, sheets 1 to 5 of Plan No. P404/96 and sheets 1 to 16 of Plan No. P405/96, with the subjoined sheets 1 to 30 of Plan No. P662/08.

(National Road N4 Section 7X: Grootgeluk – Kaapmuiden)



MINISTER OF TRANSPORT

No. 1356

17 Desember 2008

DIE SUID-AFRIKAANSE NASIONALE PADAGENTSAP BEPERK

Registrasie No: 98/09584/06

VERKLARING WYSIGING VAN NASIONALE PAD N4 SEKSIE 7X

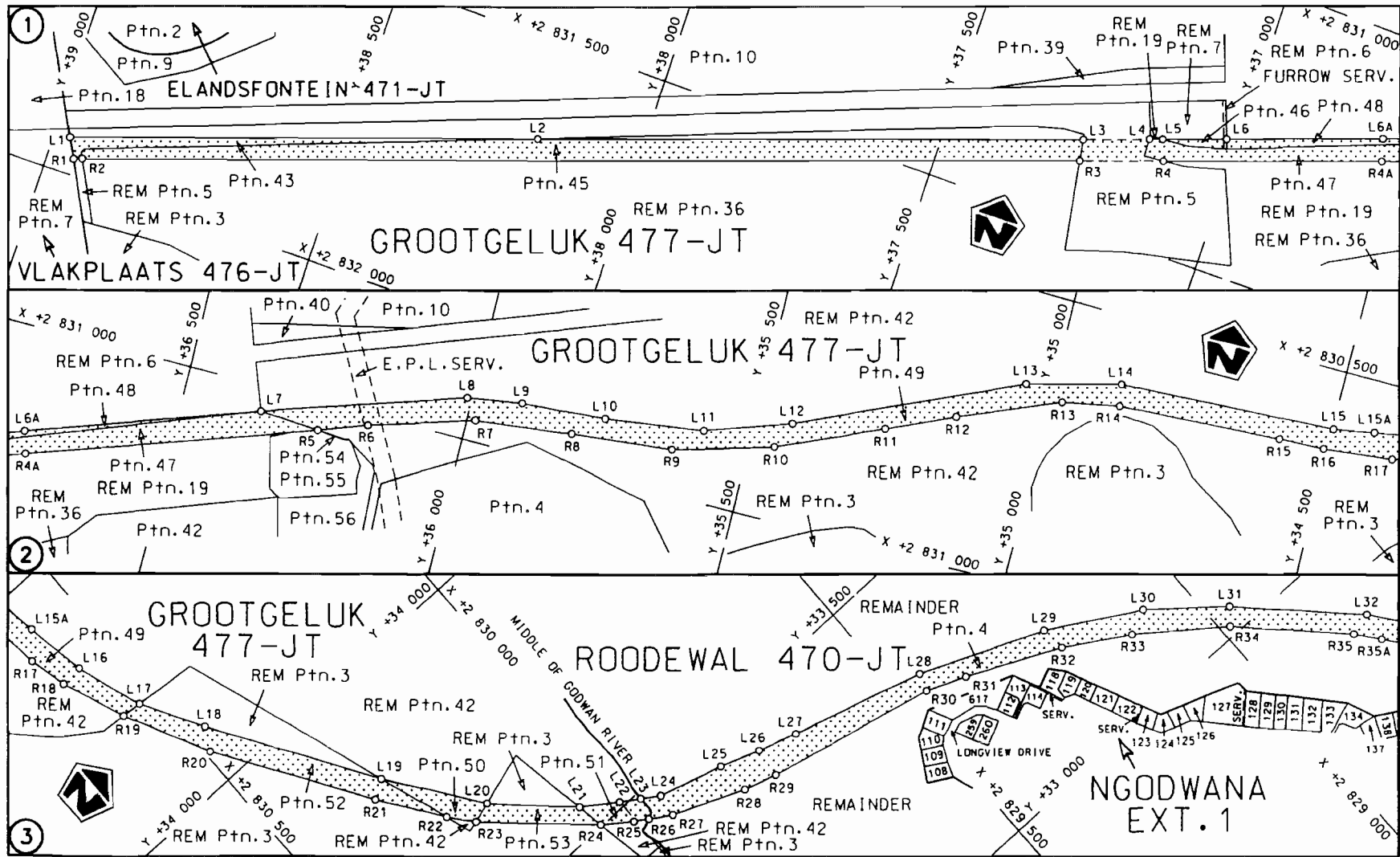
WYSIGING VAN VERKLARING NO'S. 188 VAN 1985, 2014 VAN 1990, 651 VAN 1997 EN 652 VAN 1997


Kragtens Artikel 40(1)(b) van die Suid-Afrikaanse Nasionale Padagentskap Beperk en die Nasionale Paaie Wet, 1998 (Wet No.7 van 1998), wysig ek hiermee die volgende verklarings deur (I) Verklaring no. 188 van 1985, (II) Verklaring no. 2014 van 1990, (III) Verklaring no. 651 van 1997 en (IV) Verklaring no. 652 van 1997, velle 1 tot 8 van Plan no. P403/96, velle 1 tot 5 van Plan no. P404/96 en velle 1 tot 16 van Plan no. P405/96, te vervang, met meegaande velle 1 tot 30 van Plan no. P662/08.

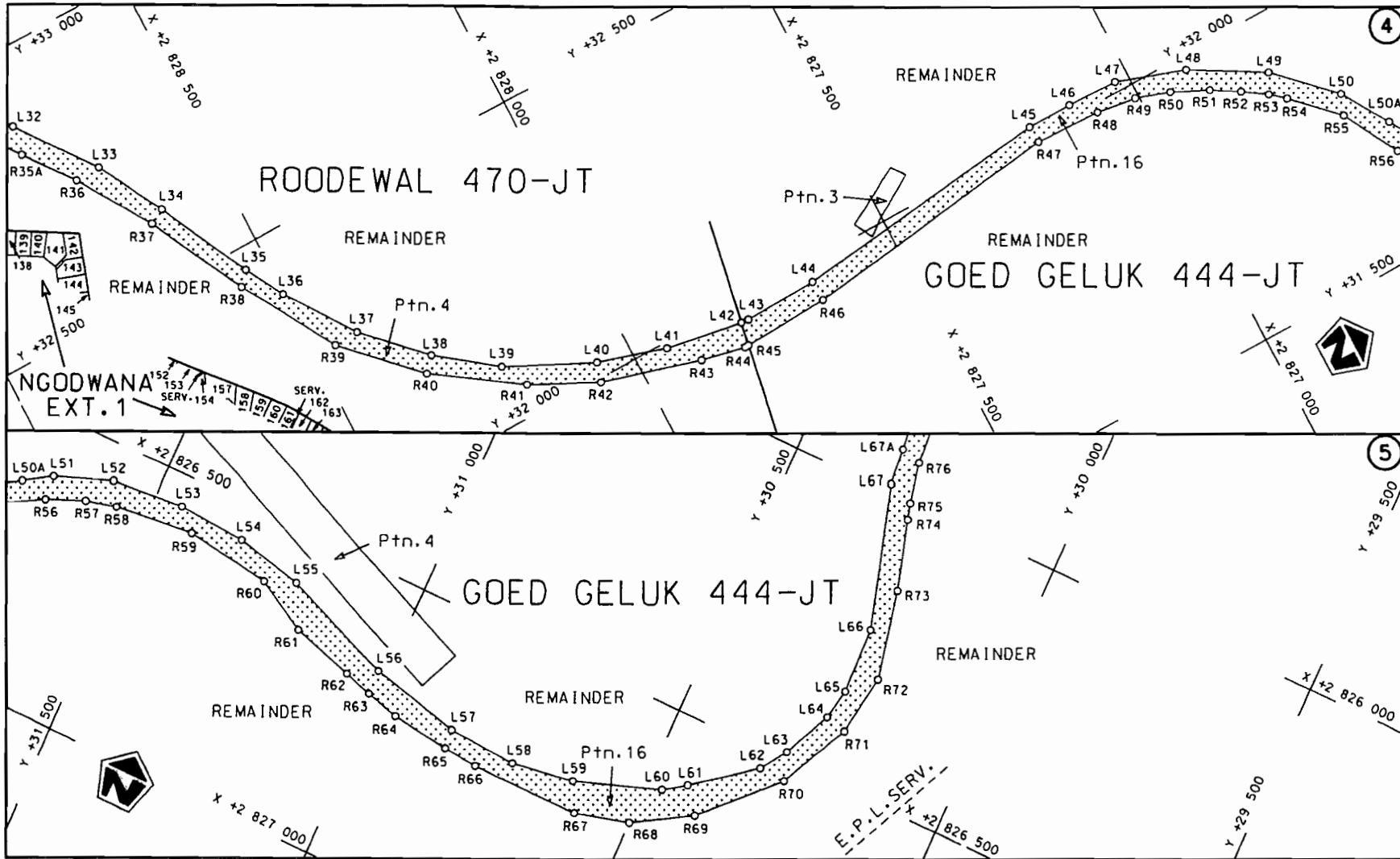
(Nasionale Pad N4 Seksie 7X: Grootgeluk – Kaapmuiden)




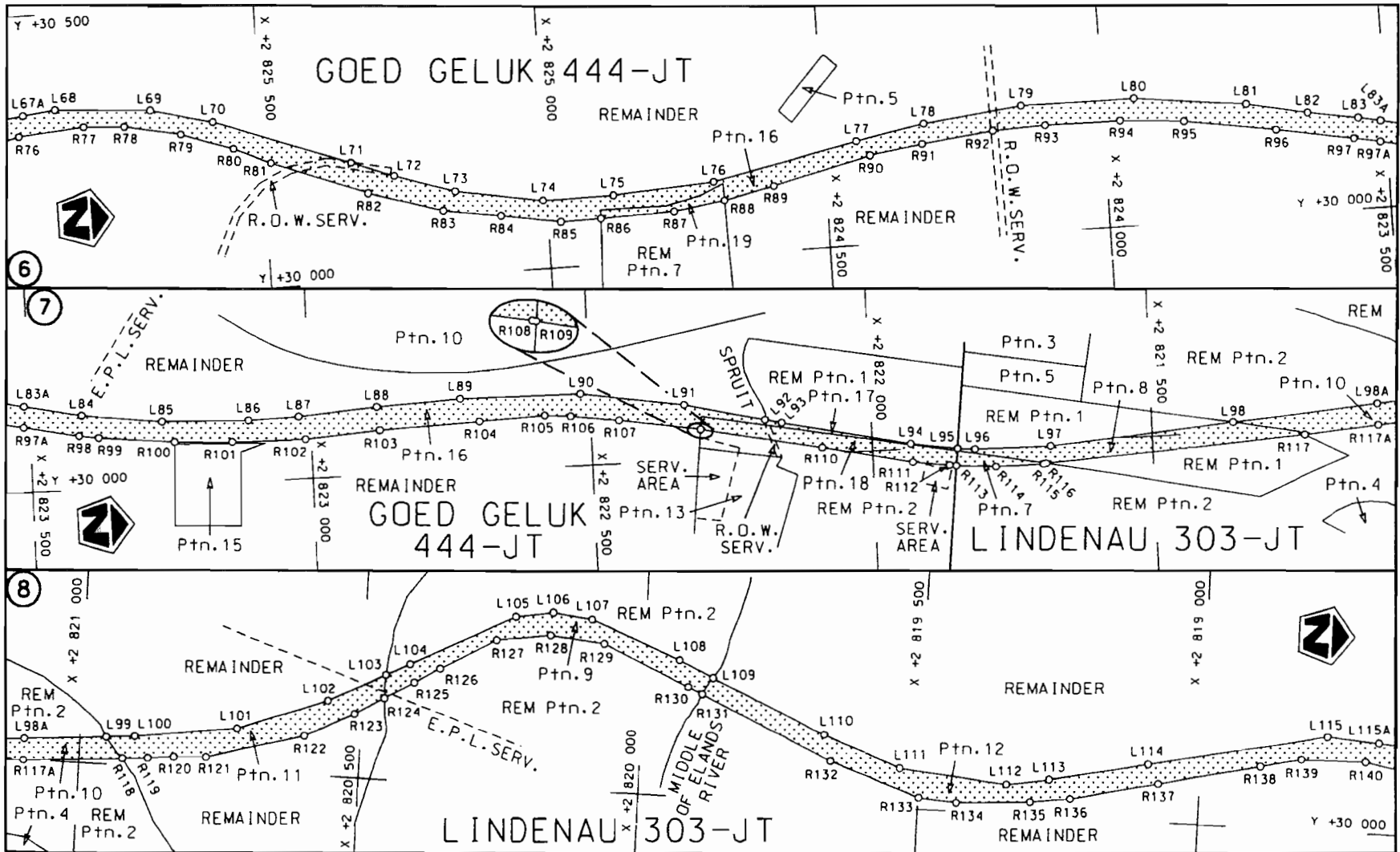
MINISTER VAN VERVOER



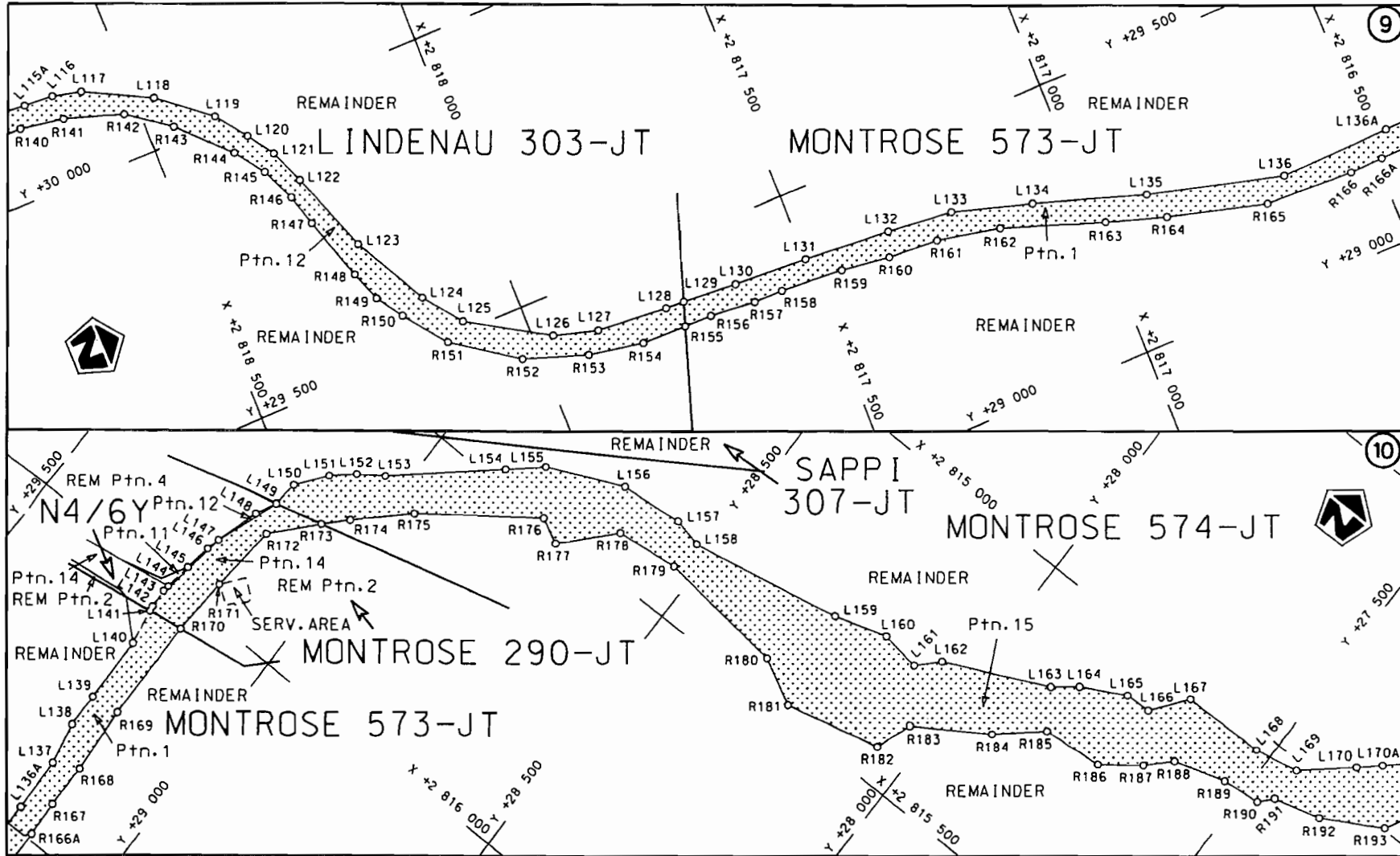
<p>Die Suid Afrikaanse Nasionale Padogentskap Beperk The South African National Roads Agency Limited</p>	<p>Die figuur getoon The figure shown</p>		<p>steldie padreserwe voor van 'n gedeelte represents the road reserve of a portion van Nasionale Roete N4 of National Route N4</p> <p>Seksie 7X</p>	<p>Vel Sheet 1 von of 30 Plan P662/08</p>
--	---	--	--	---



Die Suid Afrikaanse Nasionale Padogenskap Beperk The South African National Roads Agency Limited	Die figuur getoon The figure shown		steldie padreserwe voor van 'n gedeelte represents the road reserve of a portion van Nasionale Roete N4 Seksie of National Route Section	Vel Sheet 2 van of 30 Plan P662/08
			7X	

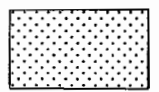


<p>Die Suid Afrikaanse Nasionale Podagentskap Beperk The South African National Roads Agency Limited</p>	<p>Die figuur getoon The figure shown</p>		<p>steldie padreserwe voor van 'n gedeelte represents the road reserve of a portion van Nasionale Roete of Notional Route</p> <p>N4 Seksie Section</p> <p>7X</p>	<p>Vel Sheet 3 von of 30</p> <p>Plan P662/08</p>
--	---	--	---	--



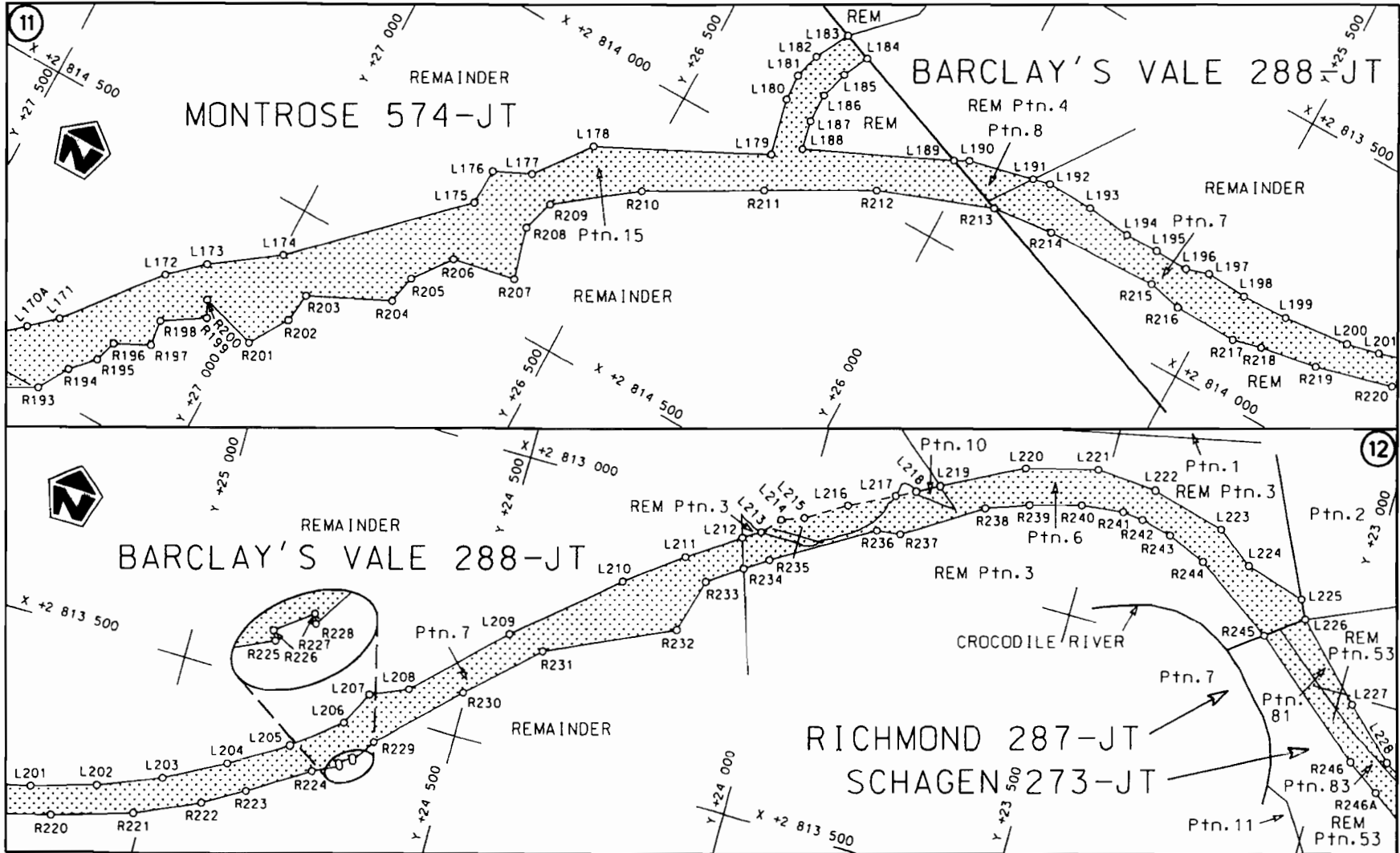
Die Suid Afrikaanse Nasionale Padagentskap Beperk
 The South African National Roads Agency Limited

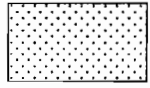
Die figuur getoon
 The figure shown

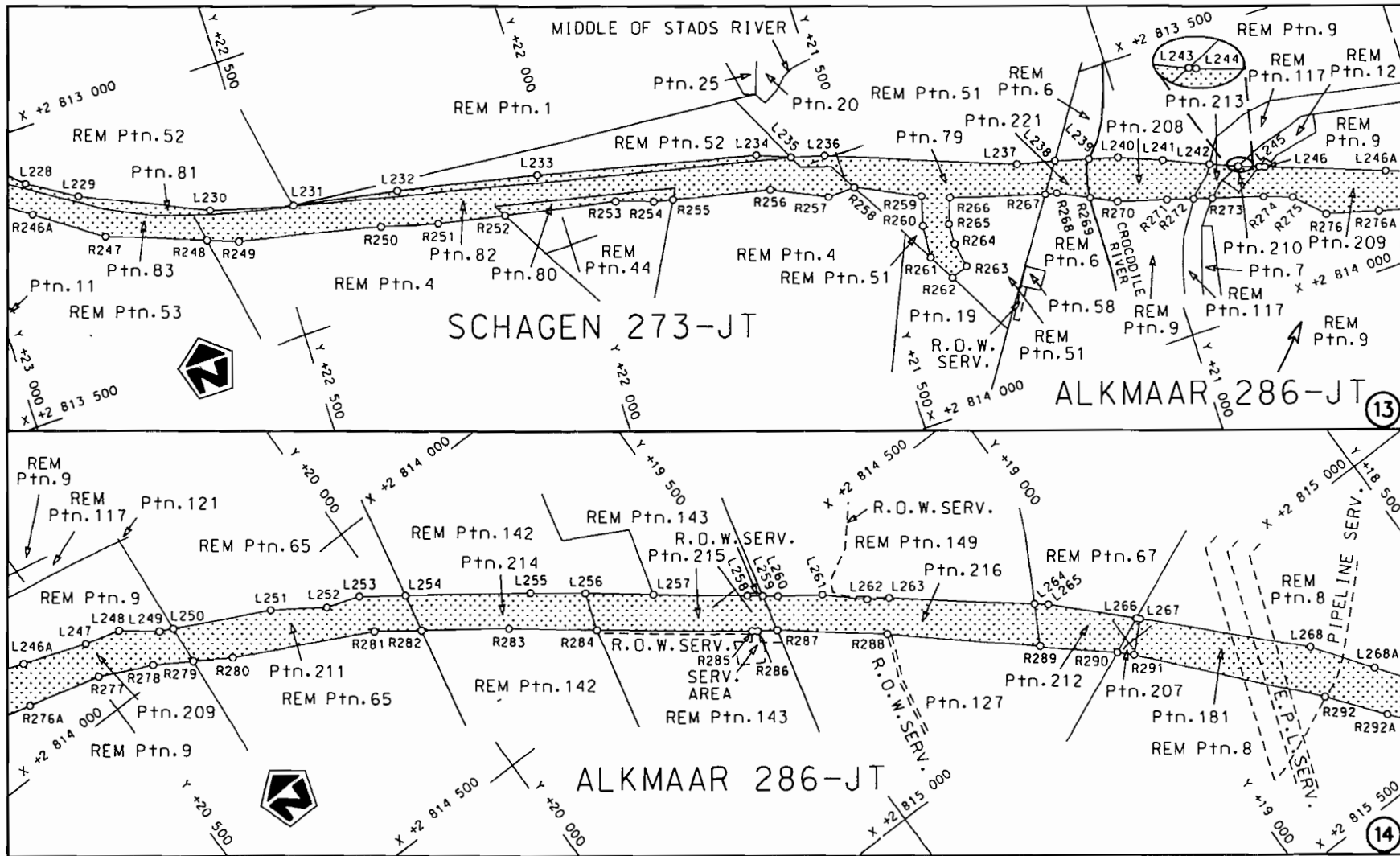


steldie padreserwe voor van 'n gedeelte
 represents the road reserve of a portion
 van Nasionale Roete N4 Seksie 7X
 of National Route

Vel Sheet 4 van of 30
 Plan P662/08



<p>Die Suid Afrikaanse Nasionale Padogentskap Beperk The South African National Roads Agency Limited</p>	<p>Die figuur getoon The figure shown</p> 	<p>steldie podreserwe voor van 'n gedeelte represents the road reserve of a portion van Nasionale Roete N4 of National Route N4</p> <p>Seksie 7X Section</p>	<p>Vel 5 van 30 Sheet of 30</p> <p>Plan P662/08</p>
--	--	--	---



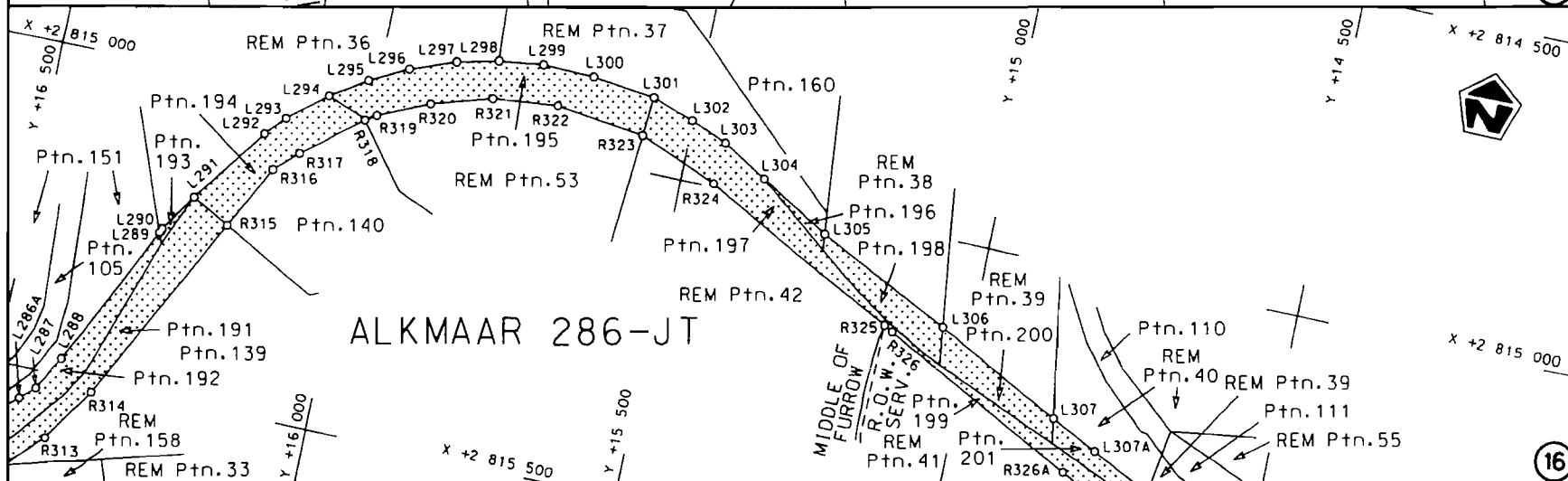
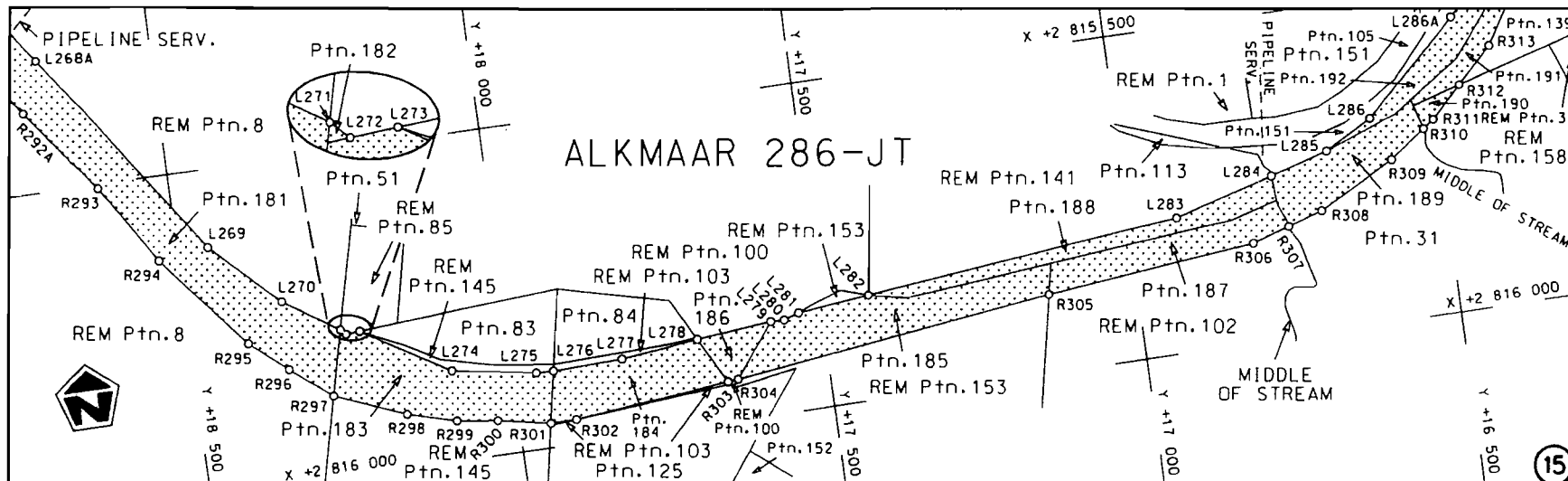
Die Suid Afrikaanse Nasionale Padogenskap Beperk
The South African National Roads Agency Limited

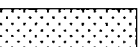
Die figuur getoon
The figure shown

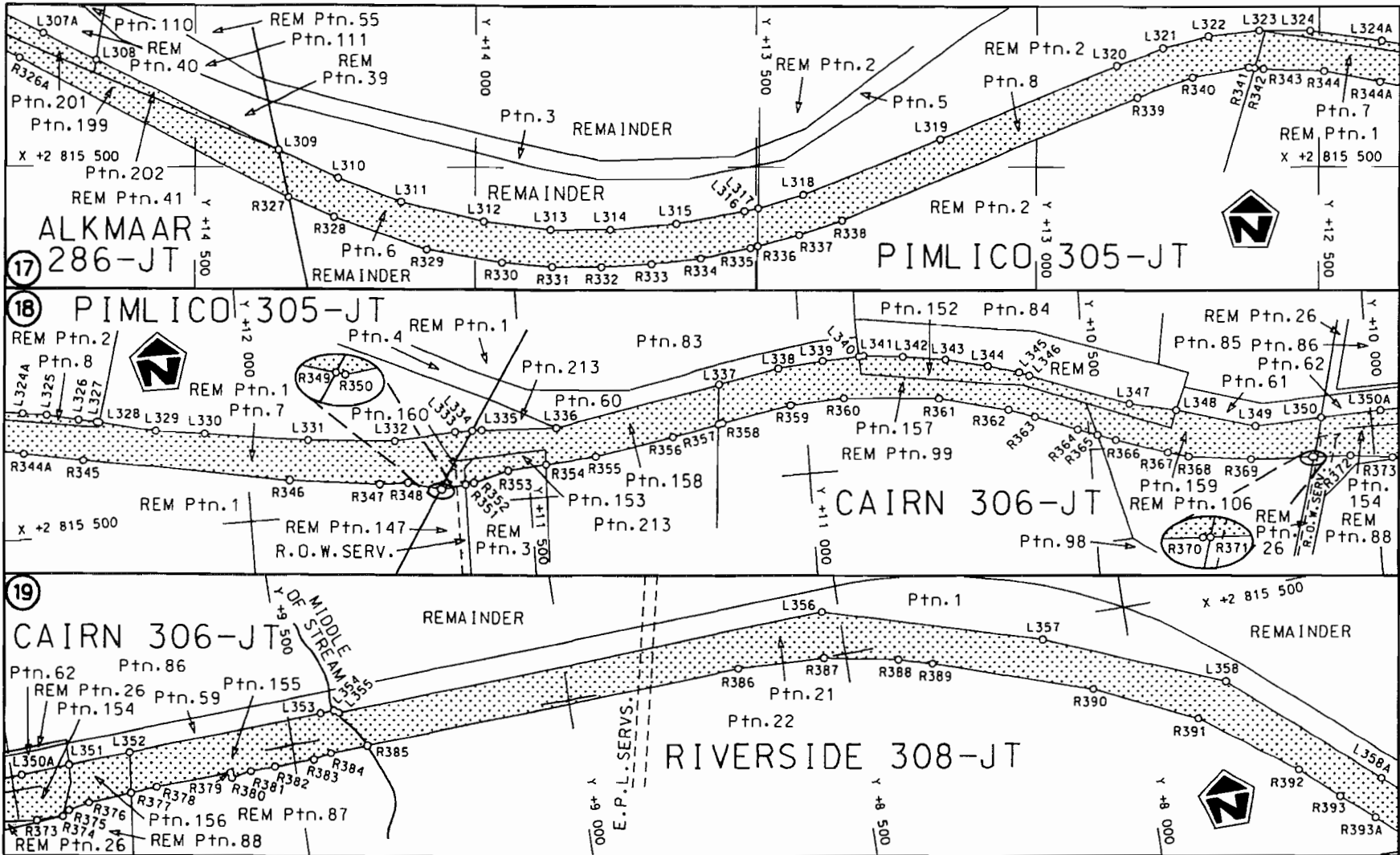


steldie padreserwe voor van 'n gedeelte
represents the road reserve of a portion
von Nasionale Roete N4 Seksie 7X
of National Route

Vel Sheet 6 van 30
Plan P662/08




<p>Die Suid Afrikaanse Nasionale Padagentskap Beperk The South African National Roads Agency Limited</p>	<p>Die figuur getoon The figure shown</p>		<p>steldie padreserwe voor van 'n gedeelte represents the road reserve of a portion van Nasionale Roete N4 Sektie of National Route 7X</p>	<p>Vel Sheet 7 van 30 of of</p>
			<p>Plan P662/08</p>	<p>Plan P662/08</p>



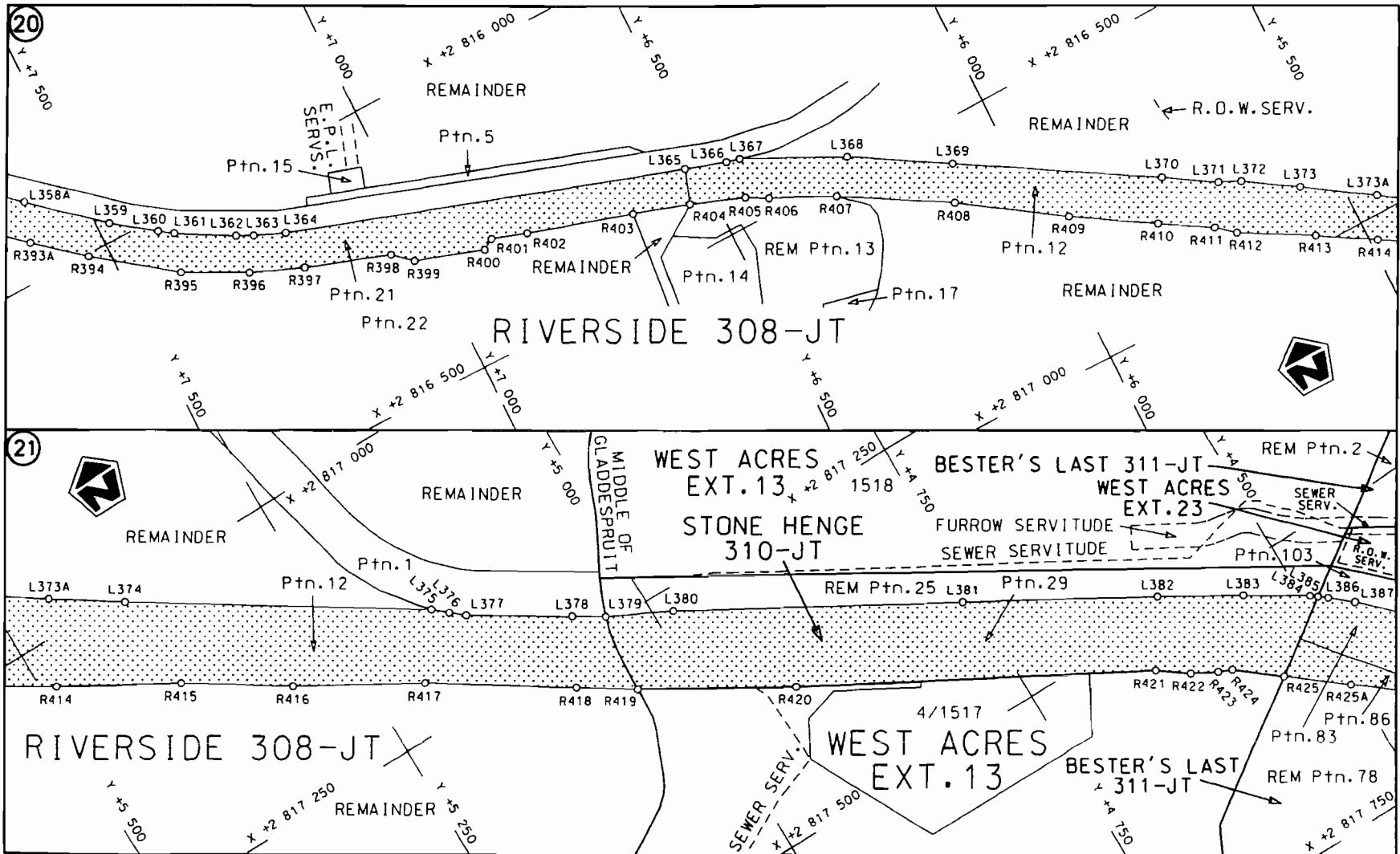
Die Suid Afrikaanse Nasionale Padagentskap Beperk
The South African National Roads Agency Limited

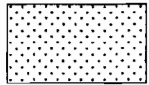
Die figuur getoon
The figure shown

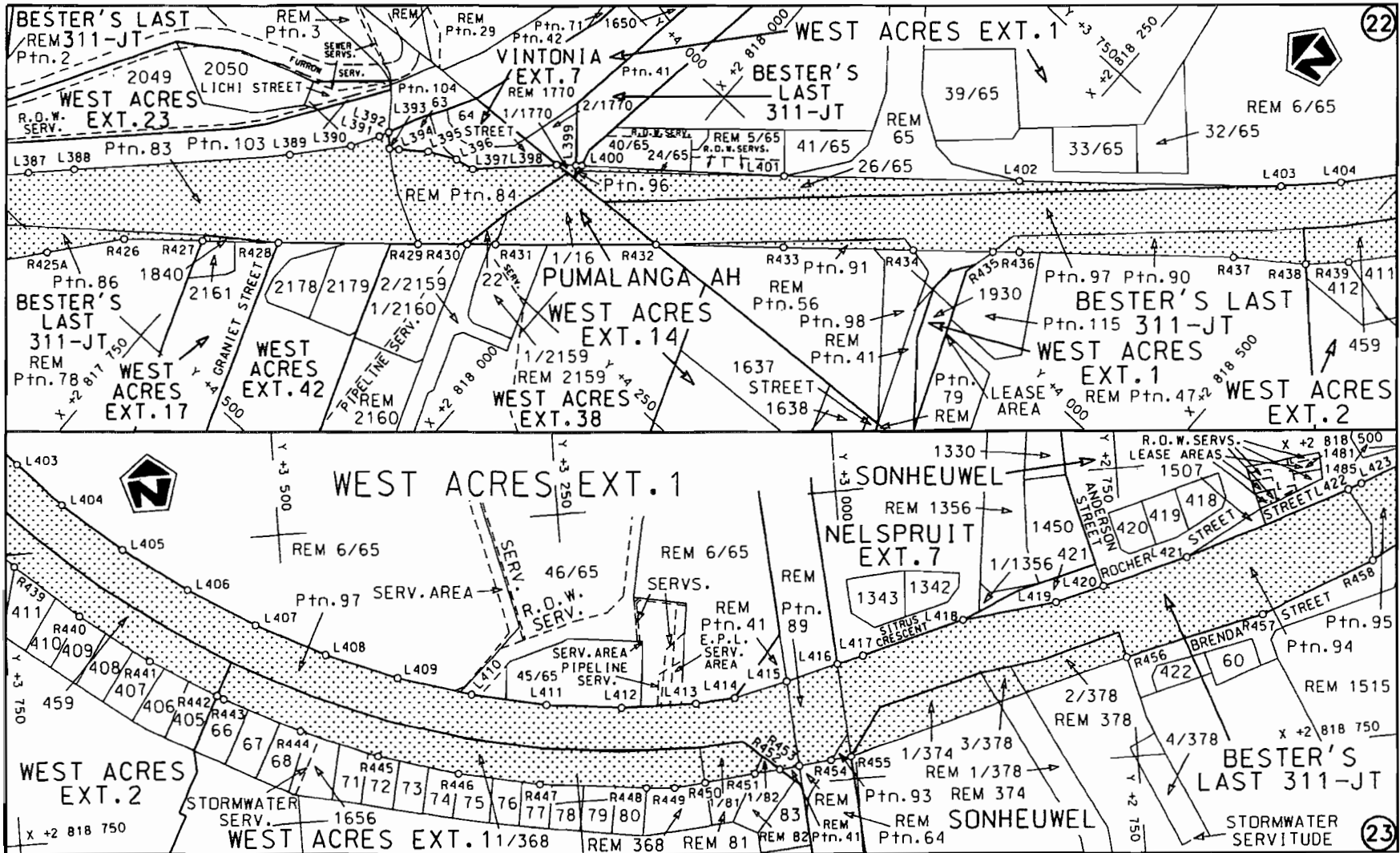



steldie padreserwe voor van 'n gedeelte
represents the road reserve of a portion
van Nasionale Roete N4 Seksie 7X
of National Route N4 Section 7X

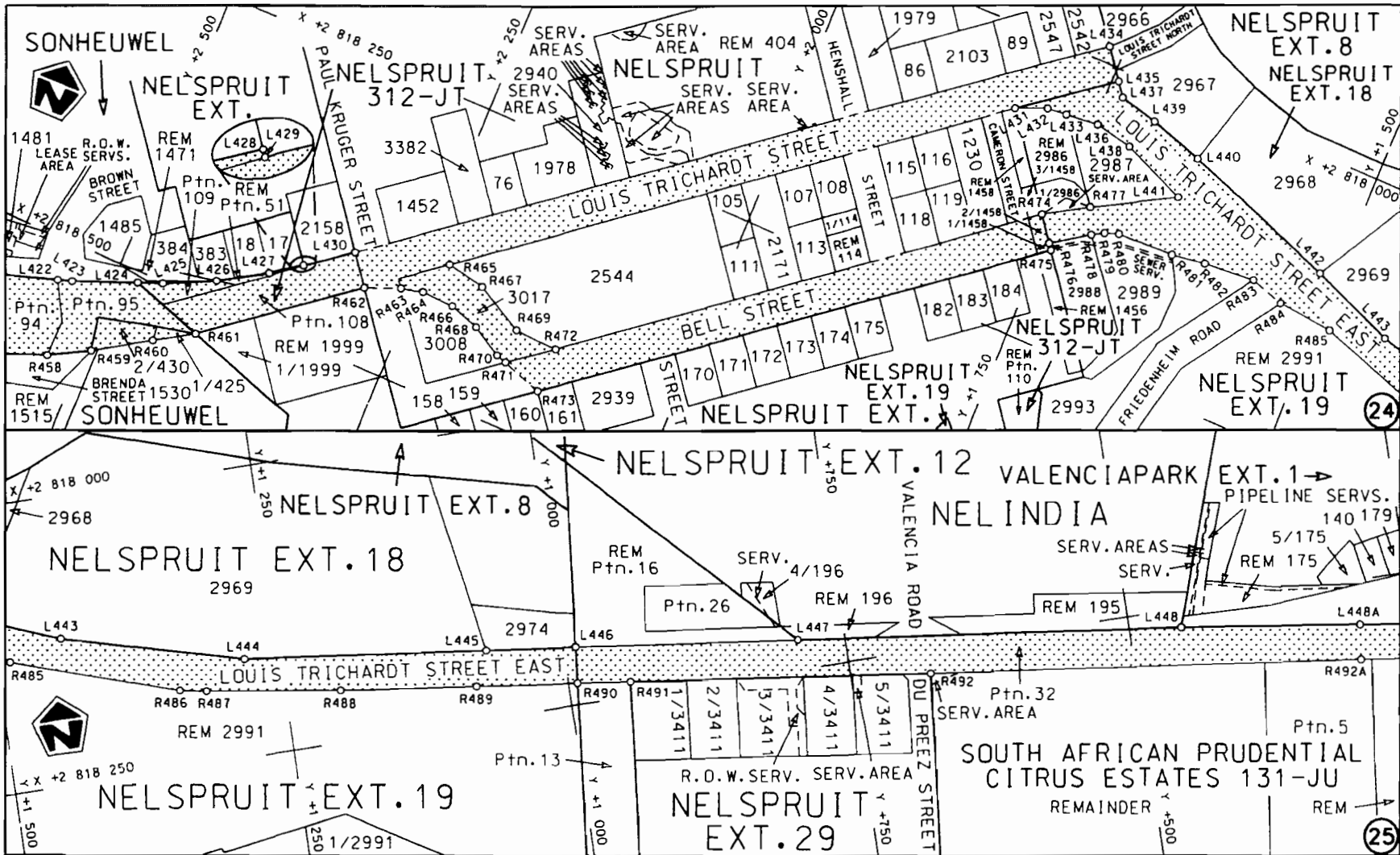
Vel Sheet 8 van 30
Plan P662/08



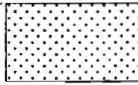
Die Suid Afrikaanse Nasionale Padagentskap Beperk The South African National Roads Agency Limited	Die figuur getoon The figure shown	 steldie padreserwe voor van 'n gedeelte represents the road reserve of a portion van Nasionale Roete N4 Seksie 7X of National Route	Vel Sheet 9 van of 30 Plan P662/08
--	---------------------------------------	---	---------------------------------------



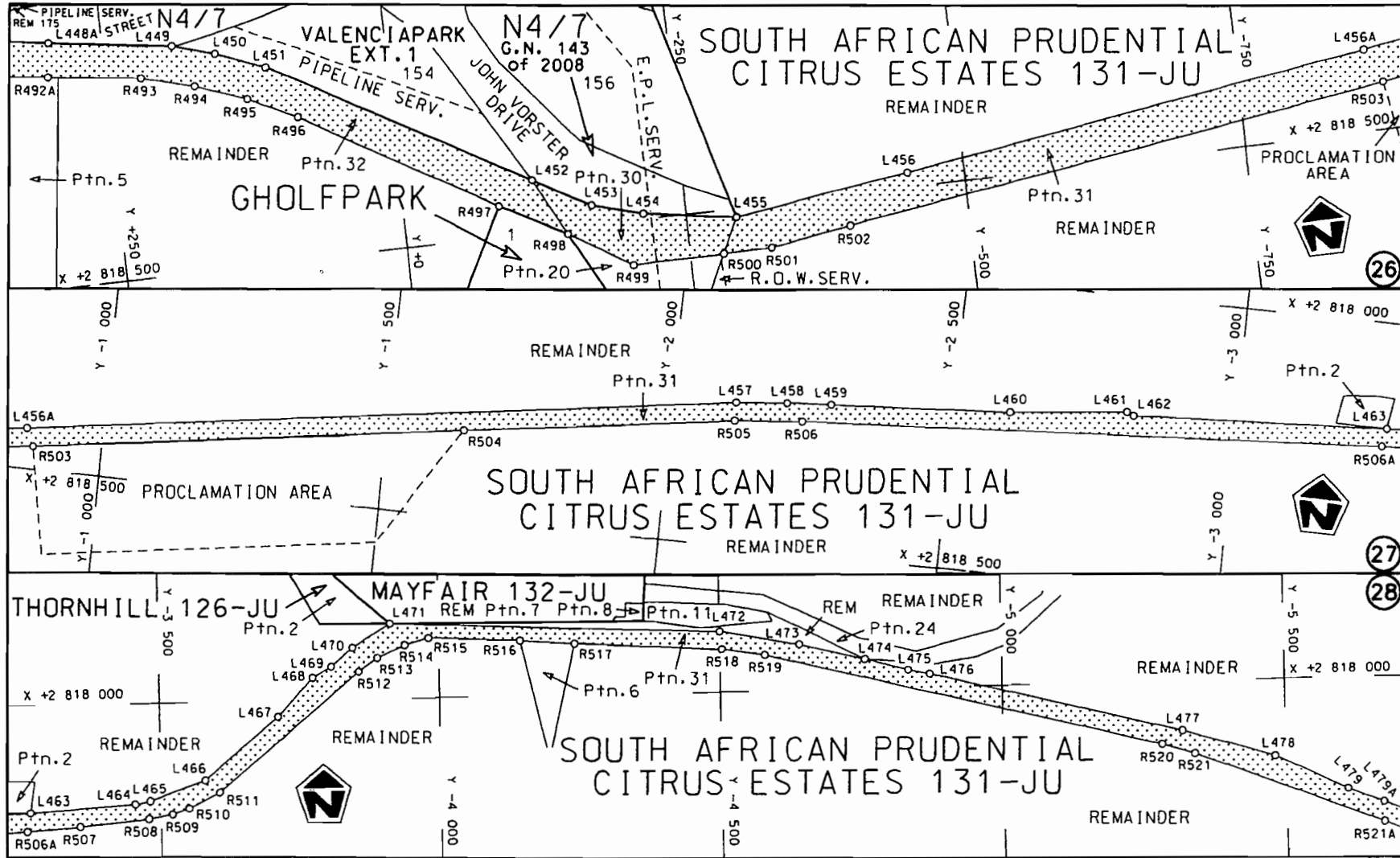
<p>Die Suid Afrikaanse Nasionale Padagentskap Beperk The South African National Roads Agency Limited</p>	<p>Die figuur getoon The figure shown</p>	<p> steldie padreserwe voor van 'n gedeelte represents the road reserve of a portion van Nasionale Roete N4 Seksie 7X of National Route</p>	<p>Vel 10 van 30 Sheet of 30</p>
			<p>Plan P662/08</p>



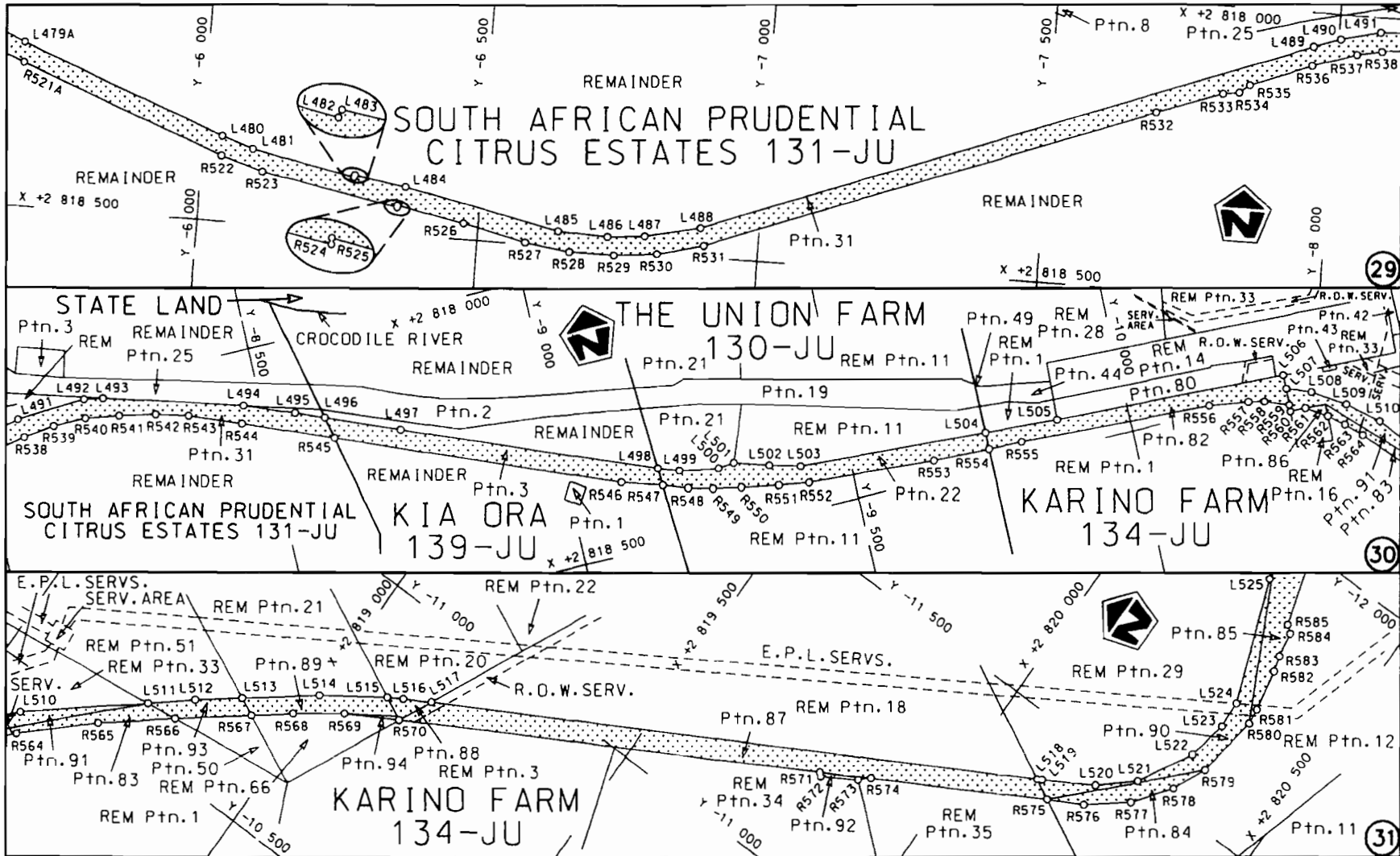
STATSKOERANT, 17 DESEMBER 2008


<p>Die Suid Afrikaanse Nasionale Padagentskap Beperk The South African National Roads Agency Limited</p>	<p>Die figuur getoon The figure shown</p> 	<p>steldie padreserwe voor van 'n gedeelte represents the road reserve of a portion van Nasionale Roete N4 Seksie 7X of National Route</p>	<p>Vel Sheet 11 van of 30 Plan P622/08</p>
--	--	--	--

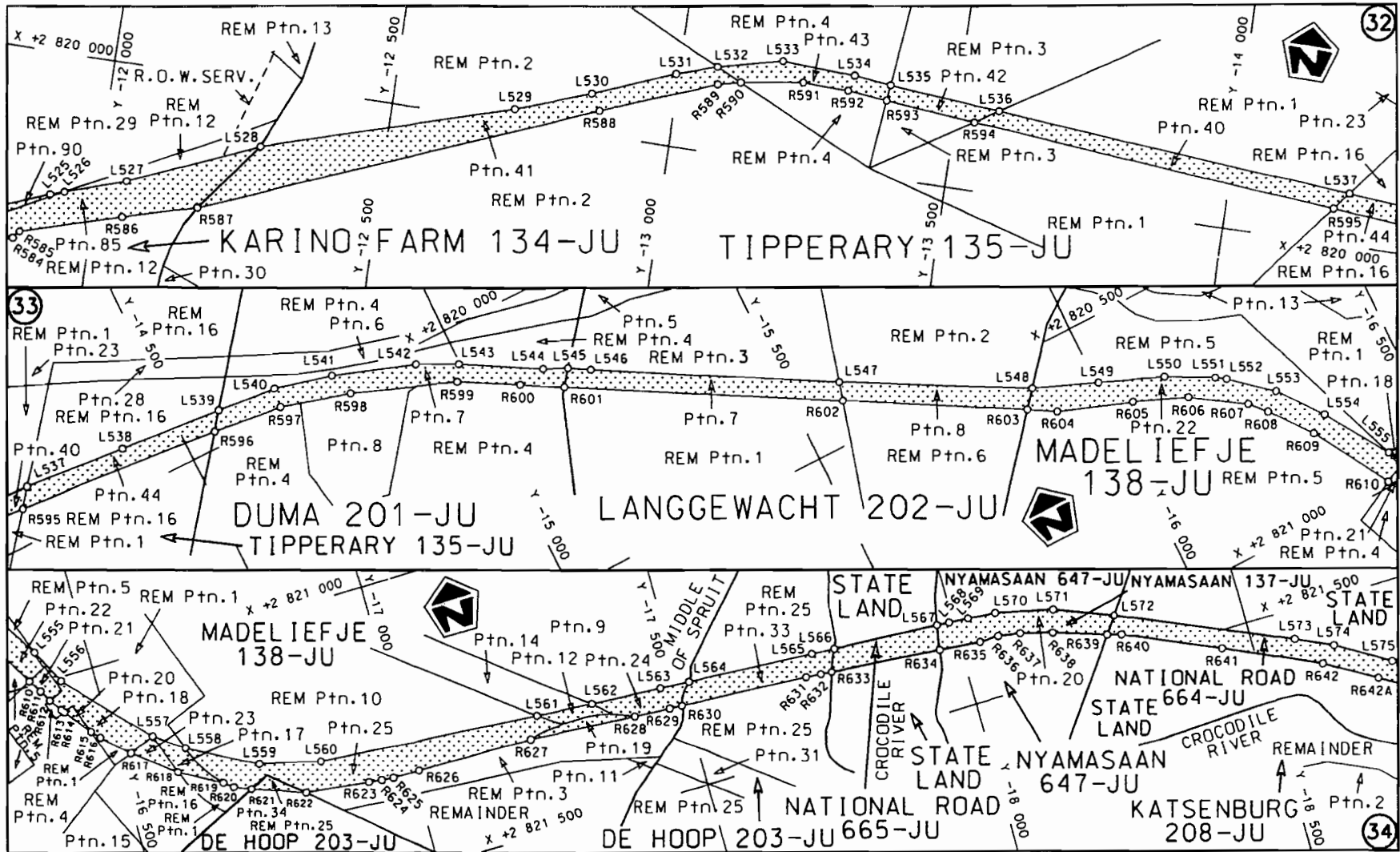
No. 31705 15




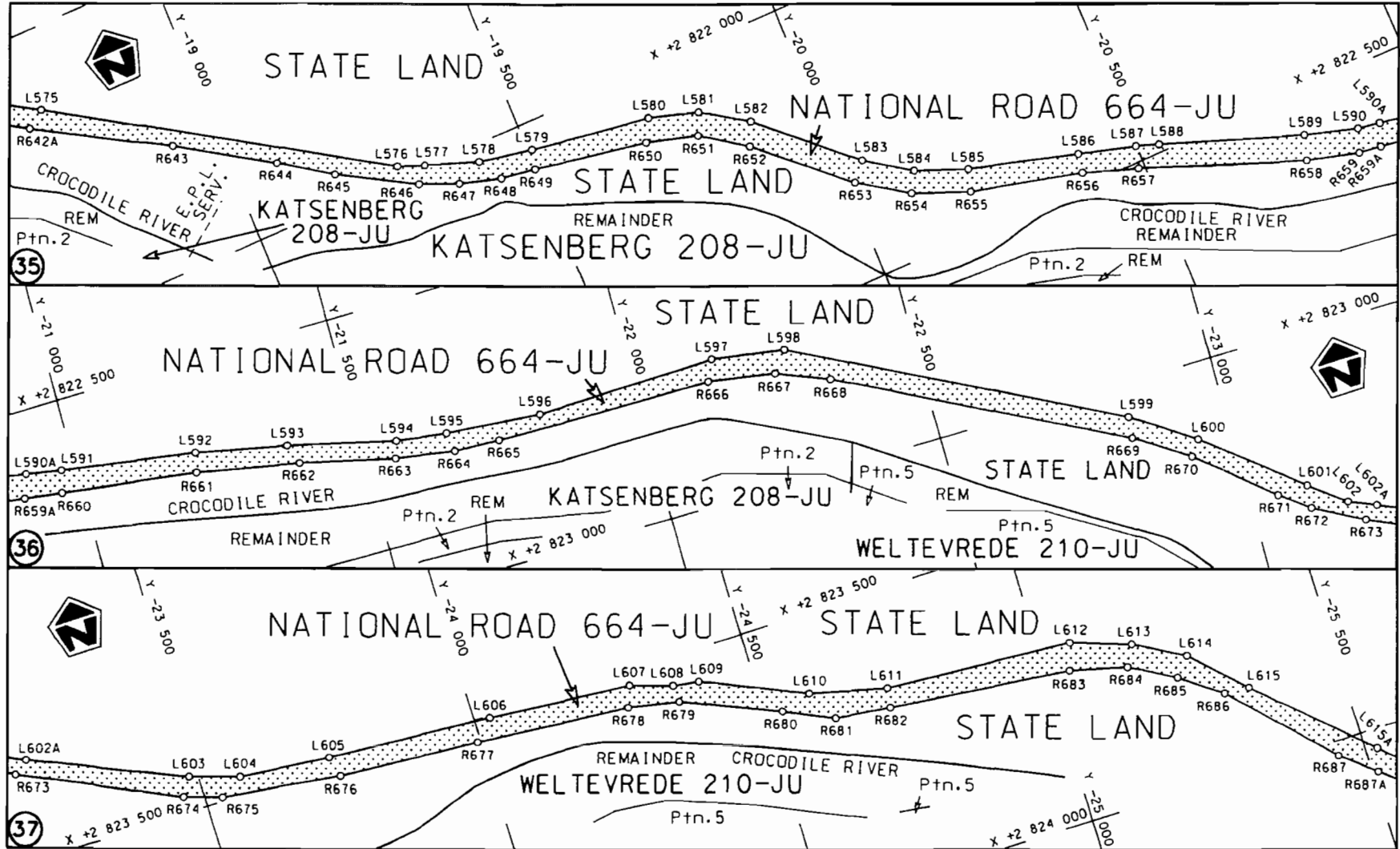
<p>Die Suid Afrikaanse Nasionale Padagentskap Beperk The South African National Roads Agency Limited</p>	<p>Die figuur getoon The figure shown</p>		<p>steldie padreserwe voor van 'n gedeelte represents the road reserve of a portion van Nasionale Roete N4 of National Route N4</p>	<p>Vel Sheet 12 von of 30</p>
			<p>Seksie Section 7X</p>	<p>Plan P662/08</p>

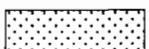


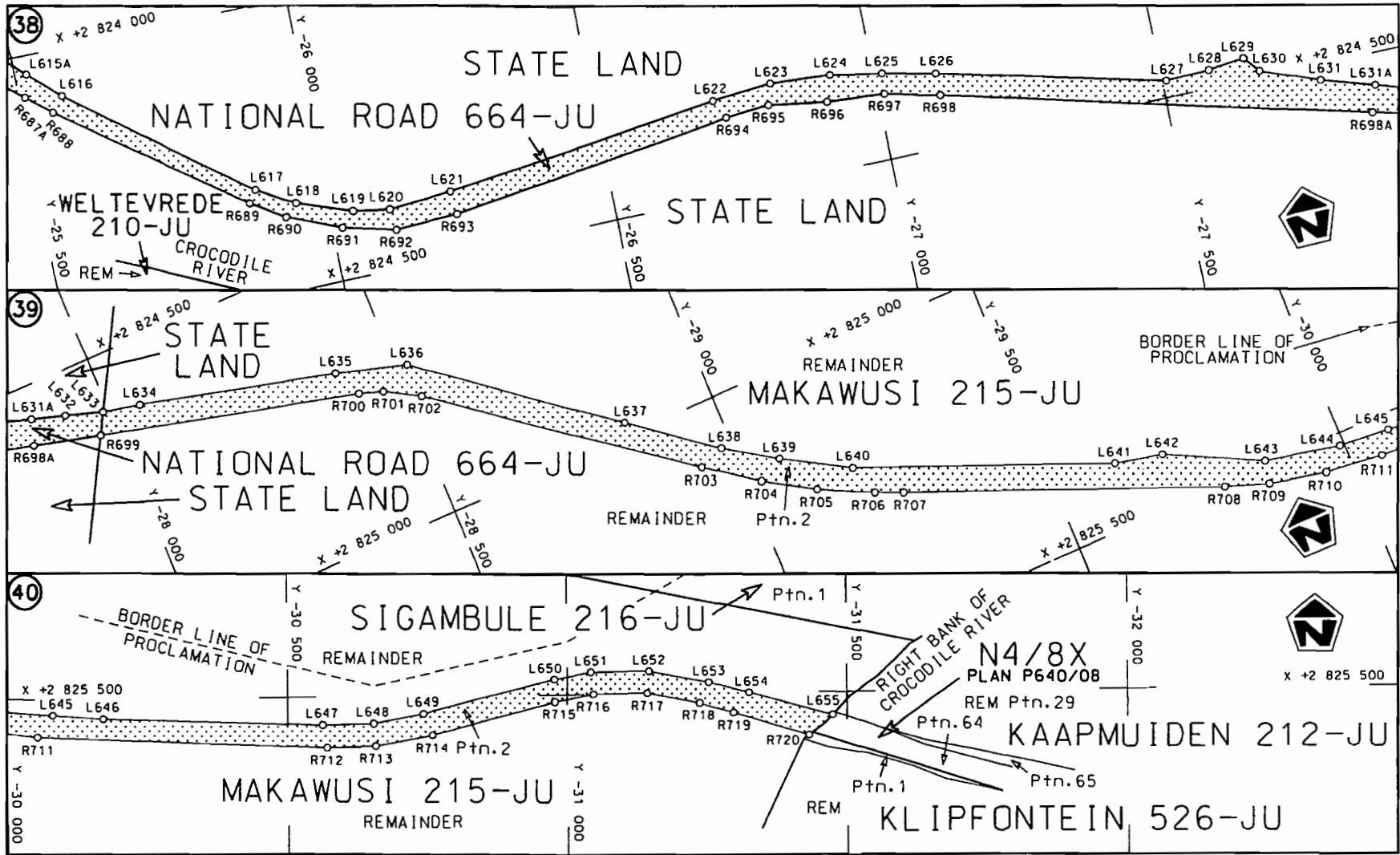
Die Suid Afrikaanse Nasionale Padagentskap Beperk	Die figuur getoon		steldie padreserwe voor van 'n gedeelte	Vel Sheet 13 van 30
The South African National Roads Agency Limited	The figure shown		represents the road reserve of a portion von Nasionale Roete N4 Seksie 7X	Plan P662/08

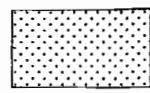


<p>Die Suid Afrikaanse Nasionale Podagentskap Beperk The South African National Roads Agency Limited</p>	<p>Die figuur getoon The figure shown</p>		<p>steldie padreserwe voor van 'n gedeelte represents the road reserve of a portion van Nasionale Roete N4 of National Route N4</p> <p>Seksie 7X Section</p>	<p>Vel 14 van 30 Sheet of</p> <p>Plan P662/08</p>
--	---	--	--	---



Die Suid Afrikaanse Nasionale Podagentskop Beperk	Die figuur getoon		steldie padreserwe voor van 'n gedeelte	Vel Sheet 15 van 30
The South African National Roads Agency Limited	The figure shown		represents the road reserve of a portion van Nasionale Roete N4 Seksie 7X of National Route	Plan P662/08



<p>Die Suid Afrikaanse Nasionale Padagentskap Beperk The South African National Roads Agency Limited</p>	<p>Die figuur getoon The figure shown</p> 	<p>steldie padreserwe voor van 'n gedeelte represents the road reserve of a portion van Nasionale Roete of National Route N4</p> <p>Seksie Section 7X</p>	<p>Vel Sheet 16 van of 30 Plan P662/08</p>
--	--	---	--

PADRESERWE KOÖRDINATE				/	ROAD RESERVE CO-ORDINATES			
LINKERKANT/LEFT HAND SIDE					REGTERKANT/RIGHT HAND SIDE			
	Y	X	WG	31°	Y	X		
L1	38 971.790	2 831 938.310		R1	38 953.960	2 831 971.710		
L2	38 182.980	2 831 668.150		R2	38 939.030	2 831 966.260		
L3	37 261.850	2 831 354.390		R3	37 255.760	2 831 390.750		
L4	37 150.430	2 831 315.410		R4	37 114.340	2 831 342.680		
L5	37 127.890	2 831 307.640		R5	36 253.040	2 831 049.680		
L6	37 021.200	2 831 270.870		R6	36 166.940	2 831 018.660		
L7	36 359.040	2 831 042.620		R7	35 985.340	2 830 963.600		
L8	36 008.510	2 830 929.720		R8	35 812.180	2 830 942.860		
L9	35 911.550	2 830 913.870		R9	35 631.630	2 830 924.490		
L10	35 760.210	2 830 903.020		R10	35 456.650	2 830 875.660		
L11	35 584.800	2 830 878.860		R11	35 271.520	2 830 796.710		
L12	35 435.290	2 830 828.810		R12	35 152.870	2 830 744.860		
L13	35 047.380	2 830 659.760		R13	34 977.530	2 830 674.400		
L14	34 882.760	2 830 618.030		R14	34 876.670	2 830 655.360		
L15	34 498.510	2 830 600.440		R15	34 587.610	2 830 640.150		
L16	34 320.240	2 830 569.990		R16	34 507.280	2 830 637.970		
L17	34 202.620	2 830 531.320		R17	34 384.840	2 830 624.980		
L18	34 096.300	2 830 469.950		R18	34 317.980	2 830 608.500		
L19	33 819.880	2 830 292.370		R19	34 205.810	2 830 565.560		
L20	33 666.200	2 830 180.280		R20	34 057.860	2 830 491.300		
L21	33 550.560	2 830 060.670		R21	33 800.870	2 830 323.820		
L22	33 509.810	2 830 000.730		R22	33 695.830	2 830 249.750		
L23	33 489.018	2 829 968.627		R23	33 655.880	2 830 215.810		
L24	33 469.150	2 829 937.950		R24	33 503.360	2 830 052.010		
L25	33 435.020	2 829 824.760		R25	33 468.040	2 830 003.530		
L26	33 410.860	2 829 756.110		R26	33 453.828	2 829 980.615		
L27	33 389.210	2 829 688.520		R27	33 430.790	2 829 943.470		
L28	33 319.090	2 829 452.000		R28	33 377.180	2 829 818.830		
L29	33 229.670	2 829 236.150		R29	33 359.520	2 829 761.950		
L30	33 139.990	2 829 080.220		R30	33 288.630	2 829 462.600		
L31	33 042.840	2 828 961.490		R31	33 260.860	2 829 393.690		
L32	32 871.080	2 828 787.750		R32	33 186.460	2 829 232.820		
L33	32 737.350	2 828 685.020		R33	33 121.090	2 829 122.810		
L34	32 622.710	2 828 621.670		R34	33 016.130	2 828 983.500		
L35	32 461.880	2 828 539.720		R35	32 860.750	2 828 827.370		
L36	32 393.480	2 828 501.120		R36	32 735.770	2 828 730.270		
L37	32 272.850	2 828 413.930		R37	32 609.400	2 828 648.440		
L38	32 176.450	2 828 317.710		R38	32 439.670	2 828 560.120		
L39	32 100.930	2 828 217.520		R39	32 271.860	2 828 459.290		
L40	32 027.180	2 828 063.190		R40	32 152.180	2 828 340.010		
L41	31 989.620	2 827 941.360		R41	32 051.460	2 828 192.320		
L42	31 966.470	2 827 804.310		R42	31 992.840	2 828 073.570		
L43	31 965.030	2 827 790.910		R43	31 942.770	2 827 896.920		
L44	31 967.970	2 827 659.260		R44	31 925.910	2 827 818.450		
L45	32 019.790	2 827 196.220		R45	31 926.150	2 827 811.510		
L46	32 020.110	2 827 115.870		R46	31 931.490	2 827 657.540		
L47	32 017.430	2 827 025.690		R47	31 989.990	2 827 194.100		
L48	31 975.760	2 826 904.730		R48	31 984.840	2 827 077.780		
L49	31 902.740	2 826 779.660		R49	31 975.040	2 827 007.130		
L50	31 808.840	2 826 683.920		R50	31 954.900	2 826 947.240		
L51	31 676.230	2 826 600.980		R51	31 924.620	2 826 884.380		

Vel	17	Van	30	P662/08
Sheet		of		

PADRESERWE KOÖRDINATE				/	ROAD RESERVE CO-ORDINATES				
LINKERKANT/LEFT HAND SIDE					REGTERKANT/RIGHT HAND SIDE				
	Y	X	WG	31°	Y	X			
L52	31 577.070	2 826 563.060		R52	31 895.920	2 826 838.050			
L53	31 450.490	2 826 550.770		R53	31 868.390	2 826 797.240			
L54	31 331.000	2 826 559.250		R54	31 847.000	2 826 772.240			
L55	31 211.640	2 826 585.330		R55	31 773.290	2 826 697.330			
L56	31 013.670	2 826 662.950		R56	31 673.840	2 826 641.470			
L57	30 853.650	2 826 701.530		R57	31 607.890	2 826 613.580			
L58	30 732.550	2 826 707.450		R58	31 554.510	2 826 600.020			
L59	30 621.760	2 826 688.980		R59	31 415.420	2 826 585.390			
L60	30 470.820	2 826 635.650		R60	31 265.320	2 826 607.210			
L61	30 432.720	2 826 609.750		R61	31 174.200	2 826 657.770			
L62	30 328.040	2 826 529.920		R62	31 062.260	2 826 690.890			
L63	30 296.380	2 826 484.900		R63	31 011.730	2 826 706.240			
L64	30 255.050	2 826 401.230		R64	30 953.420	2 826 722.240			
L65	30 245.160	2 826 347.180		R65	30 850.730	2 826 734.530			
L66	30 250.410	2 826 229.960		R66	30 790.260	2 826 739.650			
L67	30 323.480	2 825 985.810		R67	30 596.500	2 826 737.500			
L68	30 335.320	2 825 865.930		R68	30 499.950	2 826 710.830			
L69	30 322.870	2 825 698.170		R69	30 399.750	2 826 651.450			
L70	30 295.840	2 825 586.500		R70	30 280.210	2 826 531.990			
L71	30 207.680	2 825 345.030		R71	30 217.620	2 826 410.090			
L72	30 179.110	2 825 270.430		R72	30 201.800	2 826 303.980			
L73	30 144.360	2 825 164.280		R73	30 236.420	2 826 148.330			
L74	30 118.230	2 825 006.760		R74	30 271.590	2 826 028.540			
L75	30 118.400	2 824 881.840		R75	30 279.620	2 826 000.720			
L76	30 129.120	2 824 700.620		R76	30 293.610	2 825 933.550			
L77	30 181.590	2 824 442.130		R77	30 301.910	2 825 817.760			
L78	30 203.670	2 824 320.750		R78	30 297.890	2 825 746.040			
L79	30 222.060	2 824 144.660		R79	30 277.770	2 825 645.960			
L80	30 220.470	2 823 944.320		R80	30 246.250	2 825 552.680			
L81	30 196.780	2 823 746.820		R81	30 217.210	2 825 486.910			
L82	30 174.470	2 823 638.030		R82	30 151.690	2 825 318.090			
L83	30 159.040	2 823 548.610		R83	30 112.080	2 825 187.710			
L84	30 130.670	2 823 408.420		R84	30 096.500	2 825 084.920			
L85	30 113.700	2 823 266.600		R85	30 079.410	2 824 977.250			
L86	30 108.640	2 823 110.250		R86	30 079.860	2 824 906.400			
L87	30 111.140	2 823 020.740		R87	30 082.500	2 824 774.840			
L88	30 120.810	2 822 881.180		R88	30 095.280	2 824 682.910			
L89	30 128.300	2 822 733.310		R89	30 113.680	2 824 593.970			
L90	30 126.640	2 822 516.470		R90	30 155.110	2 824 419.760			
L91	30 097.750	2 822 332.220		R91	30 168.360	2 824 325.520			
L92	30 064.082	2 822 188.829		R92	30 181.780	2 824 197.540			
L93	30 057.160	2 822 159.350		R93	30 185.500	2 824 103.750			
L94	30 008.870	2 821 931.190		R94	30 184.570	2 823 970.940			
L95	29 996.050	2 821 848.050		R95	30 175.140	2 823 857.970			
L96	29 993.150	2 821 817.010		R96	30 148.470	2 823 696.040			
L97	29 991.860	2 821 681.000		R97	30 123.500	2 823 557.920			
L98	30 016.950	2 821 356.240		R98	30 095.660	2 823 414.400			
L99	30 048.069	2 820 953.421		R99	30 090.680	2 823 379.620			
L100	30 051.920	2 820 903.570		R100	30 077.310	2 823 245.400			
L101	30 074.850	2 820 720.440		R101	30 072.350	2 823 141.130			
L102	30 132.770	2 820 560.890		R102	30 071.130	2 823 010.360			
					Vel	18	Van	30	P662/08
					Sheet		of		

PADRESERWE KOÖRDINATE				ROAD RESERVE CO-ORDINATES			
LINKERKANT/LEFT HAND SIDE				REGTERKANT/RIGHT HAND SIDE			
	Y	X	WG 31°		Y	X	
L103	30 183.676	2 820 460.562		R103	30 080.010	2 822 877.660	
L104	30 204.830	2 820 418.870		R104	30 086.980	2 822 700.320	
L105	30 296.960	2 820 234.250		R105	30 092.030	2 822 581.630	
L106	30 307.750	2 820 166.710		R106	30 088.370	2 822 535.560	
L107	30 299.830	2 820 097.710		R107	30 076.810	2 822 449.800	
L108	30 238.460	2 819 937.730		R108	30 053.420	2 822 304.580	
L109	30 211.128	2 819 875.912		R109	30 053.390	2 822 304.430	
L110	30 120.960	2 819 671.970		R110	30 010.280	2 822 088.330	
L111	30 070.250	2 819 535.410		R111	29 975.220	2 821 928.930	
L112	30 051.780	2 819 342.540		R112	29 966.250	2 821 863.680	
L113	30 063.850	2 819 266.460		R113	29 964.280	2 821 851.620	
L114	30 100.460	2 819 092.780		R114	29 958.970	2 821 780.480	
L115	30 164.390	2 818 775.800		R115	29 959.470	2 821 695.010	
L116	30 155.020	2 818 631.760		R116	29 960.480	2 821 689.850	
L117	30 142.590	2 818 581.120		R117	29 989.230	2 821 229.060	
L118	30 084.380	2 818 467.090		R118	30 011.772	2 820 923.278	
L119	30 012.610	2 818 378.500		R119	30 015.080	2 820 878.400	
L120	29 960.430	2 818 338.070		R120	30 019.330	2 820 832.080	
L121	29 914.390	2 818 306.130		R121	30 021.590	2 820 773.600	
L122	29 853.780	2 818 281.200		R122	30 068.600	2 820 599.840	
L123	29 711.160	2 818 226.710		R123	30 111.940	2 820 512.300	
L124	29 582.500	2 818 156.370		R124	30 142.785	2 820 461.170	
L125	29 517.250	2 818 104.530		R125	30 173.630	2 820 410.040	
L126	29 433.560	2 817 965.360		R126	30 199.980	2 820 365.730	
L127	29 411.560	2 817 888.700		R127	30 254.570	2 820 267.180	
L128	29 399.560	2 817 762.000		R128	30 268.670	2 820 169.490	
L129	29 397.940	2 817 728.710		R129	30 259.130	2 820 073.670	
L130	29 389.860	2 817 631.080		R130	30 192.910	2 819 919.630	
L131	29 381.930	2 817 499.030		R131	30 181.432	2 819 894.091	
L132	29 370.060	2 817 346.290		R132	30 075.570	2 819 658.530	
L133	29 357.110	2 817 230.150		R133	30 020.690	2 819 499.160	
L134	29 315.040	2 817 089.540		R134	30 015.170	2 819 431.380	
L135	29 251.430	2 816 897.150		R135	30 023.260	2 819 298.810	
L136	29 188.430	2 816 659.770		R136	30 032.550	2 819 227.410	
L137	29 195.640	2 816 369.570		R137	30 067.250	2 819 073.370	
L138	29 208.750	2 816 296.980		R138	30 107.020	2 818 893.750	
L139	29 208.920	2 816 237.290		R139	30 122.570	2 818 820.220	
L140	29 210.240	2 816 120.960		R140	30 124.420	2 818 705.760	
L141	29 221.259	2 816 058.008		R141	30 110.590	2 818 628.360	
L142	29 222.882	2 816 048.740		R142	30 077.560	2 818 526.340	
L143	29 224.152	2 816 015.830		R143	30 024.650	2 818 452.990	
L144	29 222.314	2 816 004.113		R144	29 942.900	2 818 370.540	
L145	29 214.840	2 815 956.460		R145	29 890.910	2 818 333.480	
L146	29 207.400	2 815 909.040		R146	29 831.610	2 818 306.580	
L147	29 201.500	2 815 885.170		R147	29 776.130	2 818 290.380	
L148	29 178.680	2 815 808.300		R148	29 664.740	2 818 251.980	
L149	29 160.040	2 815 772.240		R149	29 612.510	2 818 232.330	
L150	29 154.700	2 815 728.870		R150	29 567.030	2 818 200.900	
L151	29 115.120	2 815 676.350		R151	29 494.100	2 818 143.240	
L152	29 078.120	2 815 643.500		R152	29 416.440	2 818 031.160	
L153	29 036.830	2 815 615.140		R153	29 378.770	2 817 920.400	

Vel	19	Van	30	P662/08
Sheet		of		

PADRESERWE KOÖRDINATE				/	ROAD RESERVE CO-ORDINATES			
LINKERKANT/LEFT HAND SIDE					REGTERKANT/RIGHT HAND SIDE			
	Y	X	WG	31°	Y	X		
L154	28 875.610	2 815 472.130		R154	29 359.690	2 817 822.320		
L155	28 822.690	2 815 424.350		R155	29 357.910	2 817 742.210		
L156	28 689.950	2 815 365.260		R156	29 356.600	2 817 692.590		
L157	28 579.930	2 815 351.820		R157	29 348.290	2 817 610.920		
L158	28 528.680	2 815 362.910		R158	29 347.510	2 817 559.040		
L159	28 256.530	2 815 309.220		R159	29 339.770	2 817 447.910		
L160	28 163.560	2 815 281.100		R160	29 328.210	2 817 361.250		
L161	28 094.000	2 815 290.560		R161	29 322.120	2 817 272.040		
L162	28 059.180	2 815 254.460		R162	29 297.700	2 817 159.330		
L163	27 878.430	2 815 168.830		R163	29 235.310	2 816 982.800		
L164	27 838.750	2 815 137.100		R164	29 201.730	2 816 878.810		
L165	27 763.540	2 815 096.660		R165	29 154.430	2 816 705.770		
L166	27 718.560	2 815 094.500		R166	29 148.070	2 816 548.610		
L167	27 671.740	2 815 033.610		R167	29 152.060	2 816 426.100		
L168	27 526.080	2 815 030.850		R168	29 151.830	2 816 347.920		
L169	27 448.470	2 815 014.540		R169	29 158.350	2 816 231.560		
L170	27 368.610	2 814 945.460		R170	29 159.040	2 816 048.610		
L171	27 289.860	2 814 874.170		R171	29 152.620	2 815 945.080		
L172	27 162.180	2 814 717.820		R172	29 141.720	2 815 824.210		
L173	27 106.190	2 814 665.130		R173	29 075.550	2 815 749.880		
L174	26 994.450	2 814 584.690		R174	29 038.850	2 815 712.050		
L175	26 740.430	2 814 340.590		R175	28 956.800	2 815 632.850		
L176	26 738.650	2 814 276.470		R176	28 771.020	2 815 495.600		
L177	26 675.430	2 814 246.570		R177	28 727.360	2 815 517.460		
L178	26 602.530	2 814 151.410		R178	28 648.300	2 815 431.890		
L179	26 316.790	2 814 010.800		R179	28 536.670	2 815 418.360		
L180	26 339.780	2 813 914.300		R180	28 306.860	2 815 441.120		
L181	26 342.510	2 813 867.770		R181	28 227.560	2 815 482.120		
L182	26 330.060	2 813 822.610		R182	28 059.250	2 815 440.880		
L183	26 298.300	2 813 763.700		R183	28 035.820	2 815 377.020		
L184	26 249.100	2 813 781.690		R184	27 911.060	2 815 297.830		
L185	26 270.980	2 813 826.540		R185	27 837.190	2 815 232.980		
L186	26 284.660	2 813 875.870		R186	27 731.520	2 815 222.590		
L187	26 284.080	2 813 926.700		R187	27 667.670	2 815 174.000		
L188	26 272.970	2 813 976.290		R188	27 628.720	2 815 134.750		
L189	26 026.160	2 813 862.920		R189	27 537.870	2 815 107.630		
L190	26 001.520	2 813 849.850		R190	27 469.970	2 815 100.500		
L191	25 886.730	2 813 823.700		R191	27 448.950	2 815 076.910		
L192	25 856.270	2 813 816.760		R192	27 366.310	2 815 055.110		
L193	25 773.470	2 813 819.010		R193	27 265.380	2 814 996.900		
L194	25 693.840	2 813 828.070		R194	27 233.610	2 814 942.430		
L195	25 633.880	2 813 826.800		R195	27 197.500	2 814 903.640		
L196	25 573.540	2 813 829.210		R196	27 185.480	2 814 865.900		
L197	25 533.460	2 813 817.160		R197	27 126.250	2 814 836.230		
L198	25 459.760	2 813 821.530		R198	27 131.440	2 814 791.930		
L199	25 377.100	2 813 817.720		R199	27 061.520	2 814 746.810		
L200	25 260.400	2 813 804.420		R200	27 075.960	2 814 719.240		
L201	25 202.950	2 813 791.250		R201	26 975.410	2 814 747.230		
L202	25 090.270	2 813 757.350		R202	26 932.040	2 814 679.140		
L203	24 981.730	2 813 712.980		R203	26 925.200	2 814 627.800		
L204	24 877.740	2 813 657.850		R204	26 785.950	2 814 560.470		
					Vel 20	Van 30	P662/08	
					Sheet	of		

PADRESERWE KOÖRDINATE				/	ROAD RESERVE CO-ORDINATES			
LINKERKANT/LEFT HAND SIDE					REGTERKANT/RIGHT HAND SIDE			
	Y	X	WG	31°	Y	X		
L205	24 777.870	2 813 596.440			R205	26 774.940	2 814 510.650	
L206	24 695.610	2 813 532.450			R206	26 725.650	2 814 444.080	
L207	24 664.970	2 813 472.870			R207	26 613.930	2 814 422.220	
L208	24 599.750	2 813 444.450			R208	26 638.710	2 814 333.300	
L209	24 453.200	2 813 303.720			R209	26 621.280	2 814 277.770	
L210	24 282.990	2 813 161.320			R210	26 488.240	2 814 178.360	
L211	24 185.450	2 813 089.600			R211	26 297.120	2 814 072.550	
L212	24 096.580	2 813 029.880			R212	26 121.530	2 813 975.740	
L213	24 067.780	2 813 011.550			R213	25 922.210	2 813 901.320	
L214	24 039.200	2 812 981.153			R214	25 813.240	2 813 889.110	
L215	24 000.480	2 812 966.963			R215	25 613.860	2 813 881.960	
L216	23 931.480	2 812 925.003			R216	25 553.930	2 813 894.330	
L217	23 853.694	2 812 885.513			R217	25 441.430	2 813 895.650	
L218	23 820.440	2 812 868.630			R218	25 390.750	2 813 882.840	
L219	23 781.430	2 812 848.830			R219	25 289.840	2 813 865.040	
L220	23 642.590	2 812 778.360			R220	25 154.830	2 813 830.160	
L221	23 518.500	2 812 745.960			R221	25 015.330	2 813 785.890	
L222	23 411.300	2 812 751.120			R222	24 903.380	2 813 735.880	
L223	23 280.580	2 812 784.280			R223	24 832.850	2 813 694.590	
L224	23 215.570	2 812 832.120			R224	24 728.970	2 813 629.250	
L225	23 110.050	2 812 862.020			R225	24 683.040	2 813 607.760	
L226	23 094.400	2 812 894.040			R226	24 685.700	2 813 602.300	
L227	22 974.750	2 813 013.280			R227	24 664.710	2 813 586.390	
L228	22 887.490	2 813 094.730			R228	24 662.550	2 813 591.950	
L229	22 803.940	2 813 146.080			R229	24 635.260	2 813 550.140	
L230	22 591.790	2 813 241.190			R230	24 505.180	2 813 423.950	
L231	22 449.540	2 813 280.810			R231	24 388.510	2 813 316.440	
L232	22 263.330	2 813 314.000			R232	24 166.310	2 813 215.250	
L233	22 018.920	2 813 364.730			R233	24 138.950	2 813 120.810	
L234	21 637.020	2 813 456.160			R234	24 079.830	2 813 081.080	
L235	21 579.750	2 813 478.960			R235	24 040.190	2 813 054.450	
L236	21 521.360	2 813 494.960			R236	23 869.960	2 812 952.830	
L237	21 202.710	2 813 618.100			R237	23 827.810	2 812 947.550	
L238	21 136.880	2 813 633.670			R238	23 693.330	2 812 862.780	
L239	21 078.296	2 813 649.394			R239	23 619.630	2 812 835.850	
L240	21 028.350	2 813 662.800			R240	23 530.310	2 812 811.070	
L241	20 954.010	2 813 693.080			R241	23 456.590	2 812 802.390	
L242	20 878.010	2 813 725.860			R242	23 419.440	2 812 806.020	
L243	20 832.130	2 813 745.110			R243	23 365.090	2 812 819.110	
L244	20 830.970	2 813 745.600			R244	23 296.250	2 812 847.460	
L245	20 796.930	2 813 757.600			R245	23 157.200	2 812 940.490	
L246	20 787.400	2 813 760.960			R246	22 950.170	2 813 111.200	
L247	20 475.920	2 813 876.960			R247	22 780.870	2 813 228.020	
L248	20 415.740	2 813 893.990			R248	22 613.160	2 813 289.410	
L249	20 360.190	2 813 938.230			R249	22 560.660	2 813 308.630	
L250	20 337.790	2 813 949.340			R250	22 310.680	2 813 365.390	
L251	20 180.930	2 814 027.160			R251	22 213.180	2 813 392.420	
L252	20 097.970	2 814 084.670			R252	22 096.780	2 813 415.370	
L253	20 038.740	2 814 105.120			R253	21 901.590	2 813 453.870	
L254	19 972.830	2 814 152.830			R254	21 836.680	2 813 476.120	
L255	19 793.430	2 814 282.690			R255	21 802.850	2 813 483.690	

Vel	21	Van	30	P662/08
Sheet		of		

PADRESERWE KOÖRDINATE				/	ROAD RESERVE CO-ORDINATES			
LINKERKANT/LEFT HAND SIDE					REGTERKANT/RIGHT HAND SIDE			
	Y	X	WG	31°	Y	X		
L256	19 715.980	2 814 343.040		R256	21 632.820	2 813 521.720		
L257	19 620.570	2 814 418.250		R257	21 537.480	2 813 566.930		
L258	19 489.030	2 814 521.520		R258	21 488.400	2 813 564.940		
L259	19 467.610	2 814 538.500		R259	21 380.410	2 813 617.960		
L260	19 446.450	2 814 555.320		R260	21 394.630	2 813 669.170		
L261	19 380.950	2 814 601.590		R261	21 398.430	2 813 724.880		
L262	19 323.110	2 814 657.240		R262	21 373.000	2 813 770.090		
L263	19 290.460	2 814 678.800		R263	21 343.140	2 813 759.440		
L264	19 092.510	2 814 843.350		R264	21 351.090	2 813 716.080		
L265	19 073.370	2 814 859.260		R265	21 350.070	2 813 680.830		
L266	18 963.010	2 814 973.000		R266	21 333.960	2 813 636.500		
L267	18 958.070	2 814 978.090		R267	21 171.740	2 813 684.880		
L268	18 750.240	2 815 199.720		R268	21 151.380	2 813 689.250		
L269	18 451.730	2 815 619.900		R269	21 097.967	2 813 715.478		
L270	18 345.820	2 815 717.590		R270	21 053.690	2 813 737.220		
L271	18 259.980	2 815 773.020		R271	20 969.090	2 813 762.480		
L272	18 251.650	2 815 780.890		R272	20 924.380	2 813 775.830		
L273	18 229.603	2 815 779.471		R273	20 892.700	2 813 785.300		
L274	18 093.520	2 815 859.740		R274	20 806.720	2 813 810.980		
L275	17 962.360	2 815 881.410		R275	20 758.640	2 813 828.000		
L276	17 935.100	2 815 882.300		R276	20 711.050	2 813 876.670		
L277	17 824.680	2 815 879.560		R277	20 492.020	2 813 934.970		
L278	17 702.610	2 815 866.850		R278	20 403.690	2 813 977.080		
L279	17 582.400	2 815 857.090		R279	20 343.780	2 814 014.530		
L280	17 560.670	2 815 857.870		R280	20 284.750	2 814 051.430		
L281	17 536.640	2 815 850.370		R281	20 054.660	2 814 169.450		
L282	17 424.130	2 815 839.480		R282	19 986.850	2 814 218.680		
L283	16 924.110	2 815 794.790		R283	19 862.290	2 814 309.110		
L284	16 767.440	2 815 751.306		R284	19 738.540	2 814 406.810		
L285	16 676.190	2 815 725.980		R285	19 519.650	2 814 576.080		
L286	16 602.250	2 815 686.260		R286	19 511.810	2 814 582.010		
L287	16 431.020	2 815 527.290		R287	19 483.340	2 814 601.750		
L288	16 401.080	2 815 474.110		R288	19 330.840	2 814 726.780		
L289	16 290.600	2 815 252.910		R289	19 128.960	2 814 907.390		
L290	16 287.180	2 815 246.050		R290	19 026.430	2 814 999.170		
L291	16 247.970	2 815 188.430		R291	19 004.760	2 815 020.530		
L292	16 159.120	2 815 070.120		R292	18 781.300	2 815 284.940		
L293	16 130.090	2 815 039.010		R293	18 611.700	2 815 506.450		
L294	16 070.950	2 814 990.510		R294	18 530.920	2 815 629.230		
L295	16 014.390	2 814 954.140		R295	18 407.960	2 815 772.960		
L296	15 955.190	2 814 923.920		R296	18 348.550	2 815 821.470		
L297	15 883.980	2 814 897.760		R297	18 284.720	2 815 871.780		
L298	15 819.240	2 814 882.270		R298	18 173.230	2 815 916.660		
L299	15 749.410	2 814 872.800		R299	18 096.640	2 815 938.080		
L300	15 667.160	2 814 873.100		R300	18 032.990	2 815 946.650		
L301	15 567.900	2 814 884.370		R301	17 950.560	2 815 962.430		
L302	15 500.870	2 814 906.890		R302	17 909.120	2 815 962.120		
L303	15 441.960	2 814 929.760		R303	17 662.830	2 815 937.880		
L304	15 369.610	2 814 970.130		R304	17 646.265	2 815 936.606		
L305	15 258.208	2 815 032.255		R305	17 140.490	2 815 880.030		
L306	15 046.320	2 815 133.560		R306	16 810.100	2 815 849.820		
					Vel 22	Van 30	P662/08	
					Sheet	of		

PADRESERWE KOÖRDINATE				/	ROAD RESERVE CO-ORDINATES			
LINKERKANT/LEFT HAND SIDE					REGTERKANT/RIGHT HAND SIDE			
	Y	X	WG	31°	Y	X		
L307	14 844.550	2 815 234.920		R307	16 751.070	2 815 832.421		
L308	14 674.730	2 815 316.400		R308	16 696.170	2 815 816.240		
L309	14 352.690	2 815 470.910		R309	16 576.630	2 815 753.800		
L310	14 244.510	2 815 519.330		R310	16 520.510	2 815 714.248		
L311	14 131.550	2 815 560.660		R311	16 503.500	2 815 702.260		
L312	13 985.060	2 815 594.400		R312	16 455.780	2 815 655.120		
L313	13 866.270	2 815 607.240		R313	16 400.670	2 815 600.680		
L314	13 759.960	2 815 607.950		R314	16 345.670	2 815 514.920		
L315	13 641.610	2 815 597.920		R315	16 187.750	2 815 219.200		
L316	13 520.480	2 815 576.850		R316	16 134.450	2 815 120.790		
L317	13 495.730	2 815 571.810		R317	16 097.780	2 815 087.720		
L318	13 415.280	2 815 548.150		R318	16 007.300	2 815 015.670		
L319	13 171.640	2 815 452.530		R319	15 990.290	2 815 004.710		
L320	12 858.310	2 815 325.600		R320	15 911.100	2 814 968.950		
L321	12 775.230	2 815 295.540		R321	15 816.780	2 814 940.300		
L322	12 694.720	2 815 274.830		R322	15 714.040	2 814 928.940		
L323	12 605.360	2 815 265.030		R323	15 573.254	2 814 946.021		
L324	12 515.630	2 815 266.390		R324	15 447.370	2 814 994.630		
L325	12 346.240	2 815 289.960		R325	15 136.800	2 815 149.930		
L326	12 289.810	2 815 302.950		R326	15 123.040	2 815 157.410		
L327	12 257.920	2 815 309.130		R327	14 334.600	2 815 553.120		
L328	12 252.990	2 815 310.280		R328	14 252.150	2 815 587.370		
L329	12 156.700	2 815 332.650		R329	14 085.250	2 815 642.840		
L330	12 069.810	2 815 343.990		R330	13 952.070	2 815 665.530		
L331	11 888.360	2 815 370.360		R331	13 863.060	2 815 672.080		
L332	11 732.030	2 815 384.590		R332	13 775.090	2 815 672.950		
L333	11 624.180	2 815 377.440		R333	13 685.870	2 815 668.040		
L334	11 593.650	2 815 377.850		R334	13 597.640	2 815 657.800		
L335	11 576.980	2 815 378.130		R335	13 509.180	2 815 640.630		
L336	11 444.812	2 815 384.140		R336	13 496.580	2 815 637.320		
L337	11 149.200	2 815 333.240		R337	13 422.530	2 815 617.830		
L338	11 042.219	2 815 314.731		R338	13 345.960	2 815 592.450		
L339	10 962.110	2 815 308.112		R339	12 821.270	2 815 380.090		
L340	10 897.060	2 815 305.512		R340	12 723.100	2 815 346.130		
L341	10 888.590	2 815 305.310		R341	12 624.370	2 815 328.430		
L342	10 819.240	2 815 312.560		R342	12 613.860	2 815 329.480		
L343	10 743.670	2 815 323.880		R343	12 598.270	2 815 331.030		
L344	10 669.150	2 815 340.950		R344	12 491.250	2 815 335.830		
L345	10 614.810	2 815 356.820		R345	12 287.390	2 815 374.850		
L346	10 597.220	2 815 363.780		R346	11 926.450	2 815 436.340		
L347	10 423.910	2 815 426.290		R347	11 764.550	2 815 455.400		
L348	10 340.867	2 815 444.703		R348	11 713.760	2 815 457.050		
L349	10 204.357	2 815 482.573		R349	11 656.430	2 815 472.790		
L350	10 087.470	2 815 478.230		R350	11 654.060	2 815 473.460		
L351	9 894.980	2 815 470.860		R351	11 612.560	2 815 468.720		
L352	9 785.070	2 815 466.670		R352	11 597.450	2 815 467.000		
L353	9 440.390	2 815 453.510		R353	11 535.420	2 815 452.580		
L354	9 415.453	2 815 452.558		R354	11 467.930	2 815 447.490		
L355	9 406.960	2 815 457.920		R355	11 378.650	2 815 440.750		
L356	8 529.740	2 815 421.810		R356	11 238.230	2 815 416.830		
L357	8 149.250	2 815 533.570		R357	11 155.790	2 815 401.750		

Vel	23	Van	30	P662/08
Sheet		of		

PADRESERWE KOÖRDINATE				/	ROAD RESERVE CO-ORDINATES			
LINKERKANT/LEFT HAND SIDE					REGTERKANT/RIGHT HAND SIDE			
	Y	X	WG	31°	Y	X		
L358	7 839.920	2 815 656.610		R358	11 148.530	2 815 400.420		
L359	7 477.670	2 815 970.080		R359	11 024.980	2 815 379.820		
L360	7 407.550	2 816 022.040		R360	10 929.260	2 815 375.010		
L361	7 383.440	2 816 038.060		R361	10 760.530	2 815 389.770		
L362	7 287.190	2 816 092.370		R362	10 638.030	2 815 419.530		
L363	7 258.530	2 816 106.340		R363	10 592.440	2 815 435.560		
L364	7 206.060	2 816 129.020		R364	10 519.010	2 815 463.080		
L365	6 522.670	2 816 360.170		R365	10 485.130	2 815 475.150		
L366	6 451.939	2 816 384.113		R366	10 453.270	2 815 486.500		
L367	6 428.389	2 816 390.073		R367	10 361.950	2 815 516.730		
L368	6 256.570	2 816 475.714		R368	10 326.190	2 815 526.980		
L369	6 096.840	2 816 573.745		R369	10 216.870	2 815 540.270		
L370	5 776.327	2 816 766.557		R370	10 109.520	2 815 545.460		
L371	5 691.988	2 816 820.318		R371	10 105.720	2 815 545.620		
L372	5 655.418	2 816 837.258		R372	10 041.560	2 815 548.360		
L373	5 567.368	2 816 894.508		R373	9 967.700	2 815 557.240		
L374	5 396.599	2 817 008.089		R374	9 920.480	2 815 557.690		
L375	5 167.590	2 817 155.920		R375	9 907.800	2 815 549.340		
L376	5 155.800	2 817 166.420		R376	9 870.520	2 815 541.330		
L377	5 144.050	2 817 175.900		R377	9 793.600	2 815 536.930		
L378	5 063.450	2 817 226.134		R378	9 748.980	2 815 534.380		
L379	5 037.690	2 817 242.184		R379	9 615.110	2 815 529.420		
L380	4 983.190	2 817 269.711		R380	9 613.680	2 815 538.620		
L381	4 759.551	2 817 398.102		R381	9 579.340	2 815 532.230		
L382	4 608.802	2 817 485.052		R382	9 536.170	2 815 530.830		
L383	4 543.612	2 817 523.543		R383	9 465.220	2 815 530.810		
L384	4 493.438	2 817 554.776		R384	9 432.620	2 815 524.680		
L385	4 487.598	2 817 559.166		R385	9 366.075	2 815 522.032		
L386	4 480.188	2 817 564.746		R386	8 692.980	2 815 495.250		
L387	4 462.028	2 817 580.236		R387	8 539.090	2 815 501.240		
L388	4 432.198	2 817 609.066		R388	8 408.680	2 815 525.790		
L389	4 295.453	2 817 742.654		R389	8 349.810	2 815 542.480		
L390	4 252.953	2 817 778.704		R390	8 075.100	2 815 632.370		
L391	4 229.893	2 817 791.904		R391	7 898.240	2 815 713.770		
L392	4 221.688	2 817 795.617		R392	7 737.880	2 815 829.630		
L393	4 231.936	2 817 805.638		R393	7 673.310	2 815 887.540		
L394	4 226.790	2 817 812.400		R394	7 536.490	2 816 004.610		
L395	4 210.830	2 817 833.370		R395	7 403.530	2 816 103.490		
L396	4 199.180	2 817 856.440		R396	7 294.680	2 816 160.200		
L397	4 195.780	2 817 872.838		R397	7 203.800	2 816 197.940		
L398	4 142.524	2 817 925.875		R398	7 056.490	2 816 249.130		
L399	4 131.685	2 817 939.344		R399	7 024.740	2 816 277.920		
L400	4 128.238	2 817 943.630		R400	6 905.980	2 816 317.820		
L401	4 014.469	2 818 085.081		R401	6 886.290	2 816 306.450		
L402	3 878.646	2 818 244.640		R402	6 824.830	2 816 327.420		
L403	3 727.283	2 818 421.364		R403	6 640.880	2 816 385.460		
L404	3 689.411	2 818 459.195		R404	6 542.380	2 816 418.650		
L405	3 638.441	2 818 503.105		R405	6 449.908	2 816 454.476		
L406	3 583.938	2 818 542.508		R406	6 412.908	2 816 474.846		
L407	3 526.298	2 818 577.149		R407	6 304.148	2 816 528.167		
L408	3 465.948	2 818 606.729		R408	6 123.810	2 816 635.435		
					Vel 24	Van 30	P662/08	
					Sheet	of		

PADRESERWE KOÖRDINATE				/	ROAD RESERVE CO-ORDINATES			
LINKERKANT/LEFT HAND SIDE					REGTERKANT/RIGHT HAND SIDE			
	Y	X	WG	31°	Y	X		
L409	3 403.278	2 818	631.100	R409	5 954.407	2 816	749.736	
L410	3 338.771	2 818	650.571	R410	5 818.658	2 816	834.427	
L411	3 272.731	2 818	663.951	R411	5 733.248	2 816	886.587	
L412	3 205.960	2 818	671.761	R412	5 702.438	2 816	912.757	
L413	3 138.863	2 818	673.394	R413	5 580.608	2 816	981.718	
L414	3 104.023	2 818	671.544	R414	5 486.649	2 817	039.108	
L415	3 056.623	2 818	661.064	R415	5 391.179	2 817	093.879	
L416	3 010.172	2 818	649.722	R416	5 307.399	2 817	148.509	
L417	2 986.788	2 818	644.656	R417	5 205.690	2 817	207.240	
L418	2 895.913	2 818	621.253	R418	5 092.500	2 817	280.774	
L419	2 812.332	2 818	612.736	R419	5 046.025	2 817	310.962	
L420	2 769.344	2 818	601.685	R420	4 924.091	2 817	383.521	
L421	2 692.895	2 818	582.599	R421	4 643.652	2 817	538.742	
L422	2 545.807	2 818	534.508	R422	4 618.562	2 817	556.892	
L423	2 533.975	2 818	530.605	R423	4 597.402	2 817	568.592	
L424	2 479.969	2 818	509.591	R424	4 585.712	2 817	573.643	
L425	2 459.436	2 818	501.548	R425	4 549.602	2 817	602.173	
L426	2 416.166	2 818	480.379	R426	4 447.583	2 817	682.763	
L427	2 374.873	2 818	455.330	R427	4 402.543	2 817	735.363	
L428	2 349.267	2 818	437.183	R428	4 359.183	2 817	786.334	
L429	2 348.914	2 818	437.639	R429	4 276.557	2 817	880.151	
L430	2 311.391	2 818	409.469	R430	4 247.878	2 817	912.719	
L431	1 819.014	2 818	068.350	R431	4 231.048	2 817	931.629	
L432	1 792.294	2 818	057.140	R432	4 135.049	2 818	039.110	
L433	1 775.087	2 818	055.395	R433	4 060.979	2 818	126.140	
L434	1 763.553	2 817	985.640	R434	3 985.822	2 818	214.442	
L435	1 744.290	2 818	010.538	R435	3 940.102	2 818	268.142	
L436	1 746.543	2 818	052.501	R436	3 924.862	2 818	286.052	
L437	1 735.383	2 818	022.050	R437	3 801.063	2 818	431.503	
L438	1 713.253	2 818	058.841	R438	3 763.494	2 818	483.445	
L439	1 701.113	2 818	030.641	R439	3 736.625	2 818	510.390	
L440	1 653.353	2 818	045.251	R440	3 681.250	2 818	558.062	
L441	1 656.223	2 818	082.851	R441	3 621.958	2 818	600.898	
L442	1 514.963	2 818	093.942	R442	3 565.001	2 818	634.659	
L443	1 439.463	2 818	123.102	R443	3 559.417	2 818	638.007	
L444	1 281.462	2 818	165.103	R444	3 493.810	2 818	670.177	
L445	1 068.236	2 818	190.791	R445	3 425.653	2 818	696.693	
L446	988.784	2 818	200.040	R446	3 355.548	2 818	717.328	
L447	791.954	2 818	224.498	R447	3 283.916	2 818	731.934	
L448	454.296	2 818	266.454	R448	3 188.864	2 818	743.017	
L449	189.156	2 818	303.614	R449	3 163.589	2 818	744.807	
L450	152.006	2 818	314.474	R450	3 136.038	2 818	742.182	
L451	108.797	2 818	331.352	R451	3 091.392	2 818	737.927	
L452	-116.834	2 818	454.915	R452	3 068.889	2 818	736.038	
L453	-167.223	2 818	482.505	R453	3 051.214	2 818	734.554	
L454	-212.063	2 818	494.895	R454	3 022.154	2 818	731.784	
L455	-294.273	2 818	507.675	R455	3 004.194	2 818	730.075	
L456	-450.372	2 818	487.025	R456	2 753.283	2 818	664.206	
L457	-2 114.065	2 818	254.136	R457	2 630.074	2 818	637.652	
L458	-2 203.875	2 818	246.156	R458	2 529.027	2 818	598.409	
L459	-2 283.205	2 818	241.574	R459	2 495.013	2 818	579.615	

Vel 25 Van 30 P662/08
Sheet of

PADRESERWE KOÖRDINATE				ROAD RESERVE CO-ORDINATES			
LINKERKANT/LEFT HAND SIDE				REGTERKANT/RIGHT HAND SIDE			
	Y	X	WG	31°	Y	X	
L460	-2 600.030	2 818 222.450		R460	2 448.377	2 818 550.376	
L461	-2 807.660	2 818 200.660		R461	2 415.742	2 818 529.890	
L462	-2 820.160	2 818 206.000		R462	2 292.201	2 818 434.279	
L463	-3 267.760	2 818 183.410		R463	2 262.020	2 818 421.954	
L464	-3 455.270	2 818 171.770		R464	2 242.469	2 818 417.510	
L465	-3 481.820	2 818 167.290		R465	2 230.282	2 818 386.396	
L466	-3 579.140	2 818 133.940		R466	2 214.268	2 818 418.590	
L467	-3 710.690	2 818 027.010		R467	2 196.451	2 818 393.030	
L468	-3 773.580	2 817 961.350		R468	2 187.708	2 818 427.266	
L469	-3 807.910	2 817 941.910		R469	2 153.482	2 818 415.380	
L470	-3 847.640	2 817 909.570		R470	2 161.278	2 818 442.508	
L471	-3 914.790	2 817 869.040		R471	2 151.839	2 818 445.290	
L472	-4 500.710	2 817 894.150		R472	2 115.230	2 818 416.971	
L473	-4 641.090	2 817 920.880		R473	2 115.494	2 818 456.982	
L474	-4 758.550	2 817 949.120		R474	1 761.240	2 818 143.060	
L475	-4 835.690	2 817 969.110		R475	1 741.909	2 818 167.973	
L476	-4 873.730	2 817 977.180		R476	1 745.804	2 818 162.971	
L477	-5 319.050	2 818 085.780		R477	1 724.613	2 818 120.631	
L478	-5 481.260	2 818 132.730		R478	1 714.553	2 818 141.821	
L479	-5 609.640	2 818 191.980		R479	1 704.293	2 818 135.831	
L480	-6 033.840	2 818 351.520		R480	1 692.343	2 818 131.451	
L481	-6 089.800	2 818 369.620		R481	1 642.083	2 818 129.882	
L482	-6 273.750	2 818 405.340		R482	1 612.483	2 818 125.542	
L483	-6 275.300	2 818 401.410		R483	1 567.653	2 818 122.232	
L484	-6 366.800	2 818 415.360		R484	1 537.553	2 818 131.292	
L485	-6 642.230	2 818 472.470		R485	1 487.503	2 818 136.122	
L486	-6 730.130	2 818 476.590		R486	1 342.993	2 818 183.183	
L487	-6 796.980	2 818 470.610		R487	1 319.483	2 818 187.583	
L488	-6 895.120	2 818 449.000		R488	1 200.812	2 818 205.384	
L489	-7 956.490	2 818 058.640		R489	1 081.476	2 818 220.311	
L490	-8 003.390	2 818 042.340		R490	991.946	2 818 231.380	
L491	-8 073.820	2 818 025.890		R491	945.046	2 818 237.390	
L492	-8 196.460	2 818 019.230		R492	680.076	2 818 271.354	
L493	-8 230.350	2 818 025.150		R493	219.056	2 818 328.314	
L494	-8 469.650	2 818 094.000		R494	172.686	2 818 340.314	
L495	-8 556.620	2 818 127.660		R495	127.607	2 818 356.762	
L496	-8 605.940	2 818 147.370		R496	84.687	2 818 377.932	
L497	-8 733.070	2 818 198.170		R497	-84.654	2 818 473.655	
L498	-9 163.260	2 818 368.860		R498	-143.714	2 818 504.165	
L499	-9 199.590	2 818 381.310		R499	-198.803	2 818 537.645	
L500	-9 268.270	2 818 394.010		R500	-279.643	2 818 537.245	
L501	-9 296.870	2 818 390.870		R501	-322.343	2 818 537.025	
L502	-9 357.500	2 818 409.740		R502	-394.752	2 818 526.595	
L503	-9 411.050	2 818 424.030		R503	-877.089	2 818 459.445	
L504	-9 745.420	2 818 442.850		R504	-1 636.178	2 818 352.203	
L505	-9 874.480	2 818 450.840		R505	-2 115.005	2 818 285.696	
L506	-10 280.508	2 818 467.033		R506	-2 234.155	2 818 275.796	
L507	-10 280.360	2 818 491.280		R507	-3 357.170	2 818 208.590	
L508	-10 322.360	2 818 508.400		R508	-3 478.930	2 818 197.730	
L509	-10 377.730	2 818 543.090		R509	-3 520.160	2 818 191.320	
L510	-10 429.150	2 818 584.750		R510	-3 549.640	2 818 181.450	

Vel	26	Van	30	P662/08
Sheet		of		

PADRESERWE KOÖRDINATE				/	ROAD RESERVE CO-ORDINATES			
LINKERKANT/LEFT HAND SIDE					REGTERKANT/RIGHT HAND SIDE			
	Y	X	WG	31°	Y	X		
L511	-10 574.790	2 818 760.620		R511	-3 604.590	2 818 155.680		
L512	-10 628.910	2 818 824.400		R512	-3 857.940	2 817 951.400		
L513	-10 680.364	2 818 889.338		R513	-3 890.980	2 817 929.040		
L514	-10 764.710	2 818 998.160		R514	-3 940.060	2 817 907.010		
L515	-10 833.650	2 819 098.490		R515	-3 982.070	2 817 895.190		
L516	-10 848.280	2 819 122.700		R516	-4 144.770	2 817 903.140		
L517	-10 872.670	2 819 166.770		R517	-4 242.060	2 817 909.560		
L518	-11 398.970	2 820 117.770		R518	-4 504.090	2 817 925.250		
L519	-11 403.120	2 820 125.260		R519	-4 579.720	2 817 937.330		
L520	-11 451.150	2 820 207.530		R520	-5 282.800	2 818 109.040		
L521	-11 501.010	2 820 263.300		R521	-5 340.470	2 818 125.370		
L522	-11 593.940	2 820 315.530		R522	-6 034.740	2 818 385.310		
L523	-11 664.120	2 820 328.970		R523	-6 110.050	2 818 407.350		
L524	-11 711.950	2 820 326.580		R524	-6 354.350	2 818 452.050		
L525	-11 919.700	2 820 247.670		R525	-6 354.340	2 818 448.810		
L526	-11 944.470	2 820 239.550		R526	-6 473.920	2 818 472.150		
L527	-12 050.960	2 820 204.630		R527	-6 585.000	2 818 496.450		
L528	-12 276.850	2 820 108.730		R528	-6 664.630	2 818 506.810		
L529	-12 718.060	2 819 976.780		R529	-6 744.010	2 818 507.760		
L530	-12 849.770	2 819 930.370		R530	-6 821.370	2 818 499.720		
L531	-12 994.700	2 819 874.680		R531	-6 903.510	2 818 479.090		
L532	-13 066.810	2 819 852.300		R532	-7 688.180	2 818 191.130		
L533	-13 180.690	2 819 825.640		R533	-7 803.220	2 818 150.730		
L534	-13 311.620	2 819 831.800		R534	-7 831.820	2 818 146.580		
L535	-13 377.670	2 819 838.080		R535	-7 848.890	2 818 132.260		
L536	-13 576.590	2 819 855.200		R536	-7 955.730	2 818 091.720		
L537	-14 213.290	2 819 909.020		R537	-8 033.800	2 818 066.560		
L538	-14 395.390	2 819 924.950		R538	-8 077.740	2 818 058.250		
L539	-14 577.930	2 819 942.580		R539	-8 133.720	2 818 051.760		
L540	-14 682.690	2 819 953.060		R540	-8 191.630	2 818 051.410		
L541	-14 785.530	2 819 979.510		R541	-8 251.920	2 818 060.810		
L542	-14 928.950	2 820 029.000		R542	-8 314.620	2 818 073.840		
L543	-14 997.580	2 820 063.310		R543	-8 371.060	2 818 089.310		
L544	-15 128.940	2 820 137.260		R544	-8 459.920	2 818 123.540		
L545	-15 168.356	2 820 156.588		R545	-8 614.860	2 818 185.440		
L546	-15 203.330	2 820 177.220		R546	-9 093.460	2 818 377.300		
L547	-15 591.362	2 820 396.820		R547	-9 165.390	2 818 399.240		
L548	-15 894.660	2 820 562.480		R548	-9 208.370	2 818 413.900		
L549	-16 004.150	2 820 606.330		R549	-9 251.230	2 818 424.940		
L550	-16 113.680	2 820 650.710		R550	-9 301.010	2 818 435.330		
L551	-16 193.750	2 820 692.570		R551	-9 366.170	2 818 447.210		
L552	-16 210.610	2 820 703.690		R552	-9 419.430	2 818 455.190		
L553	-16 279.070	2 820 762.560		R553	-9 645.580	2 818 469.080		
L554	-16 337.550	2 820 837.300		R554	-9 745.350	2 818 472.090		
L555	-16 408.560	2 820 946.790		R555	-9 804.040	2 818 473.860		
L556	-16 440.230	2 821 007.190		R556	-10 141.710	2 818 489.270		
L557	-16 570.350	2 821 143.650		R557	-10 210.700	2 818 498.740		
L558	-16 621.544	2 821 179.592		R558	-10 238.180	2 818 504.630		
L559	-16 739.260	2 821 241.880		R559	-10 279.160	2 818 520.100		
L560	-16 845.560	2 821 268.710		R560	-10 278.660	2 818 532.020		
L561	-17 240.697	2 821 298.713		R561	-10 305.600	2 818 533.140		
				Vel	27	Van	30	P662/08
				Sheet		of		

PADRESERWE KOÖRDINATE				/	ROAD RESERVE CO-ORDINATES			
LINKERKANT/LEFT HAND SIDE					REGTERKANT/RIGHT HAND SIDE			
	Y	X	WG	31°	Y	X		
L562	-17 339.480	2 821 306.180		R562	-10 341.370	2 818 555.350		
L563	-17 464.890	2 821 314.680		R563	-10 366.960	2 818 576.360		
L564	-17 517.142	2 821 318.314		R564	-10 394.080	2 818 601.260		
L565	-17 741.520	2 821 333.920		R565	-10 494.910	2 818 709.380		
L566	-17 782.710	2 821 336.785		R566	-10 581.570	2 818 814.550		
L567	-17 970.812	2 821 349.875		R567	-10 665.909	2 818 920.487		
L568	-17 992.730	2 821 351.400		R568	-10 711.760	2 818 978.880		
L569	-18 027.150	2 821 353.800		R569	-10 765.730	2 819 052.850		
L570	-18 076.260	2 821 359.110		R570	-10 814.124	2 819 138.161		
L571	-18 176.720	2 821 381.950		R571	-11 181.980	2 819 796.420		
L572	-18 278.120	2 821 421.860		R572	-11 176.850	2 819 802.210		
L573	-18 574.700	2 821 551.360		R573	-11 212.120	2 819 859.870		
L574	-18 637.970	2 821 582.510		R574	-11 227.030	2 819 876.980		
L575	-18 729.180	2 821 635.680		R575	-11 381.059	2 820 151.940		
L576	-19 274.550	2 821 978.760		R576	-11 411.870	2 820 209.670		
L577	-19 320.170	2 821 997.130		R577	-11 464.340	2 820 274.600		
L578	-19 411.880	2 822 029.720		R578	-11 527.390	2 820 322.310		
L579	-19 507.010	2 822 047.290		R579	-11 585.807	2 820 349.238		
L580	-19 720.140	2 822 080.150		R580	-11 696.280	2 820 365.190		
L581	-19 806.830	2 822 106.370		R581	-11 724.030	2 820 361.980		
L582	-19 886.130	2 822 159.480		R582	-11 795.130	2 820 347.690		
L583	-20 040.760	2 822 301.080		R583	-11 821.720	2 820 339.600		
L584	-20 119.360	2 822 354.680		R584	-11 864.560	2 820 332.140		
L585	-20 209.140	2 822 390.380		R585	-11 874.820	2 820 319.290		
L586	-20 399.420	2 822 443.860		R586	-12 052.270	2 820 267.420		
L587	-20 498.870	2 822 472.270		R587	-12 182.700	2 820 231.200		
L588	-20 537.730	2 822 486.540		R588	-12 867.710	2 819 957.730		
L589	-20 780.920	2 822 575.110		R589	-13 071.580	2 819 881.980		
L590	-20 872.160	2 822 602.360		R590	-13 111.800	2 819 873.000		
L591	-20 974.490	2 822 620.290		R591	-13 222.070	2 819 856.650		
L592	-21 213.090	2 822 655.970		R592	-13 303.930	2 819 859.030		
L593	-21 373.400	2 822 688.990		R593	-13 374.400	2 819 865.770		
L594	-21 563.690	2 822 734.870		R594	-13 535.540	2 819 880.250		
L595	-21 653.420	2 822 747.200		R595	-14 189.270	2 819 938.970		
L596	-21 823.180	2 822 760.380		R596	-14 555.200	2 819 971.850		
L597	-22 144.550	2 822 755.480		R597	-14 677.830	2 819 986.860		
L598	-22 273.740	2 822 775.630		R598	-14 802.050	2 820 022.290		
L599	-22 832.700	2 823 057.450		R599	-14 981.350	2 820 089.560		
L600	-22 940.440	2 823 129.910		R600	-15 079.570	2 820 143.560		
L601	-23 105.700	2 823 260.110		R601	-15 147.950	2 820 183.180		
L602	-23 167.050	2 823 306.400		R602	-15 582.870	2 820 428.820		
L603	-23 484.330	2 823 441.210		R603	-15 870.470	2 820 591.330		
L604	-23 571.400	2 823 468.420		R604	-15 916.250	2 820 618.220		
L605	-23 731.990	2 823 484.460		R605	-16 044.210	2 820 664.210		
L606	-24 027.560	2 823 503.580		R606	-16 136.040	2 820 701.670		
L607	-24 282.880	2 823 523.720		R607	-16 225.200	2 820 759.720		
L608	-24 357.420	2 823 547.720		R608	-16 250.630	2 820 787.170		
L609	-24 403.680	2 823 554.830		R609	-16 305.690	2 820 857.210		
L610	-24 585.230	2 823 634.950		R610	-16 385.620	2 820 991.920		
L611	-24 720.520	2 823 668.200		R611	-16 400.190	2 821 014.160		
L612	-25 055.190	2 823 691.820		R612	-16 411.740	2 821 033.770		
				Vel	28	Van	30	P662/08
				Sheet		of		

PADRESERWE KOÖRDINATE				ROAD RESERVE CO-ORDINATES			
LINKERKANT/LEFT HAND SIDE				REGTERKANT/RIGHT HAND SIDE			
	Y	X	WG 31°		Y	X	
L613	-25 159.380	2 823	727.500	R613	-16 426.810	2 821	054.920
L614	-25 246.900	2 823	776.440	R614	-16 431.200	2 821	060.230
L615	-25 335.330	2 823	862.790	R615	-16 467.300	2 821	105.570
L616	-25 576.460	2 824	084.380	R616	-16 480.740	2 821	119.880
L617	-25 879.220	2 824	313.850	R617	-16 525.350	2 821	160.860
L618	-25 944.150	2 824	352.240	R618	-16 597.340	2 821	216.320
L619	-26 041.560	2 824	386.560	R619	-16 669.230	2 821	255.770
L620	-26 105.440	2 824	397.370	R620	-16 684.890	2 821	268.400
L621	-26 218.480	2 824	390.420	R621	-16 713.670	2 821	280.610
L622	-26 710.350	2 824	334.700	R622	-16 805.020	2 821	314.190
L623	-26 816.670	2 824	327.540	R623	-16 919.600	2 821	326.900
L624	-26 924.110	2 824	334.760	R624	-16 942.830	2 821	329.530
L625	-27 014.420	2 824	351.420	R625	-16 964.100	2 821	331.220
L626	-27 108.420	2 824	371.510	R626	-17 011.670	2 821	332.400
L627	-27 506.650	2 824	470.510	R627	-17 218.190	2 821	335.120
L628	-27 584.640	2 824	467.770	R628	-17 407.350	2 821	348.810
L629	-27 648.680	2 824	459.990	R629	-17 471.300	2 821	353.080
L630	-27 672.120	2 824	488.260	R630	-17 493.776	2 821	354.580
L631	-27 774.760	2 824	528.140	R631	-17 720.060	2 821	369.680
L632	-27 925.820	2 824	575.700	R632	-17 747.230	2 821	372.150
L633	-27 990.200	2 824	596.050	R633	-17 766.790	2 821	373.928
L634	-28 054.720	2 824	610.030	R634	-17 963.548	2 821	391.789
L635	-28 396.940	2 824	696.670	R635	-18 036.810	2 821	398.440
L636	-28 519.610	2 824	732.840	R636	-18 070.470	2 821	398.690
L637	-28 838.000	2 824	979.020	R637	-18 109.160	2 821	404.990
L638	-28 979.910	2 825	089.580	R638	-18 164.840	2 821	420.140
L639	-29 067.610	2 825	148.170	R639	-18 257.130	2 821	450.080
L640	-29 181.480	2 825	214.540	R640	-18 281.890	2 821	456.920
L641	-29 613.580	2 825	392.430	R641	-18 446.660	2 821	530.000
L642	-29 696.670	2 825	411.480	R642	-18 610.300	2 821	605.600
L643	-29 859.920	2 825	493.750	R643	-18 919.580	2 821	787.500
L644	-29 991.860	2 825	521.610	R644	-19 079.310	2 821	888.160
L645	-30 082.080	2 825	528.850	R645	-19 165.860	2 821	947.950
L646	-30 171.560	2 825	535.700	R646	-19 298.060	2 822	022.720
L647	-30 561.900	2 825	549.750	R647	-19 364.710	2 822	051.300
L648	-30 653.120	2 825	547.970	R648	-19 436.910	2 822	072.080
L649	-30 742.090	2 825	531.260	R649	-19 498.780	2 822	080.840
L650	-30 977.550	2 825	471.640	R650	-19 699.470	2 822	117.480
L651	-31 041.970	2 825	459.910	R651	-19 789.760	2 822	143.240
L652	-31 145.860	2 825	458.960	R652	-19 867.430	2 822	198.370
L653	-31 252.960	2 825	479.760	R653	-20 013.740	2 822	331.780
L654	-31 325.250	2 825	499.680	R654	-20 099.630	2 822	389.030
L655	-31 474.771	2 825	540.881	R655	-20 197.740	2 822	428.410
				R656	-20 393.330	2 822	477.550
				R657	-20 488.130	2 822	510.670
				R658	-20 767.900	2 822	617.300
				R659	-20 858.210	2 822	642.250
				R660	-20 965.600	2 822	656.740
				R661	-21 205.470	2 822	690.640
				R662	-21 386.240	2 822	725.030
				R663	-21 553.850	2 822	764.510
	Vel	29	Van	30	P662/08		
	Sheet		of				

PADRESERWE KOÖRDINATE				/	ROAD RESERVE CO-ORDINATES				
LINKERKANT/LEFT HAND SIDE					REGTERKANT/RIGHT HAND SIDE				
Y	X	WG	31°		Y	X			
					R664	-21 659.550	2 822	781.630	
					R665	-21 740.230	2 822	784.510	
					R666	-22 128.330	2 822	790.600	
					R667	-22 246.910	2 822	810.160	
					R668	-22 339.260	2 822	847.640	
					R669	-22 828.750	2 823	094.600	
					R670	-22 921.870	2 823	156.300	
					R671	-23 051.320	2 823	260.680	
					R672	-23 102.280	2 823	299.780	
					R673	-23 189.340	2 823	345.610	
					R674	-23 464.440	2 823	471.530	
					R675	-23 530.280	2 823	492.740	
					R676	-23 741.990	2 823	521.010	
					R677	-23 993.840	2 823	538.140	
					R678	-24 268.890	2 823	560.630	
					R679	-24 359.350	2 823	578.200	
					R680	-24 530.240	2 823	651.040	
					R681	-24 616.980	2 823	690.870	
					R682	-24 715.300	2 823	702.900	
					R683	-25 040.420	2 823	737.800	
					R684	-25 140.810	2 823	762.740	
					R685	-25 220.000	2 823	807.940	
					R686	-25 291.560	2 823	859.880	
					R687	-25 451.210	2 824	025.420	
					R688	-25 555.120	2 824	108.910	
					R689	-25 864.180	2 824	334.100	
					R690	-25 922.230	2 824	371.490	
					R691	-26 017.380	2 824	410.680	
					R692	-26 110.040	2 824	433.920	
					R693	-26 221.970	2 824	430.730	
					R694	-26 727.880	2 824	368.500	
					R695	-26 805.830	2 824	363.230	
					R696	-26 909.960	2 824	379.750	
					R697	-27 011.250	2 824	387.610	
					R698	-27 108.730	2 824	410.710	
					R699	-27 970.050	2 824	632.330	
					R700	-28 421.500	2 824	745.690	
					R701	-28 462.800	2 824	759.370	
					R702	-28 522.560	2 824	793.600	
					R703	-28 934.190	2 825	106.190	
					R704	-29 024.110	2 825	169.690	
					R705	-29 110.600	2 825	221.530	
					R706	-29 201.890	2 825	266.920	
					R707	-29 248.990	2 825	286.890	
					R708	-29 778.340	2 825	504.060	
R715	-30 978.240	2 825	512.120		R709	-29 853.160	2 825	530.190	
R716	-31 046.430	2 825	499.760		R710	-29 952.390	2 825	554.360	
R717	-31 142.370	2 825	498.600		R711	-30 054.080	2 825	566.880	
R718	-31 236.460	2 825	516.640		R712	-30 570.020	2 825	590.050	
R719	-31 297.710	2 825	535.380		R713	-30 656.520	2 825	587.850	
R720	-31 432.134	2 825	576.508		R714	-30 757.950	2 825	569.750	
					Vel	30	Van	30	P662/08
					Sheet		of		