

# Government Gazette Staatskoerant

REPUBLIC OF SOUTH AFRICA  
REPUBLIEK VAN SUID-AFRIKA

Vol. 524

Pretoria, 26 February  
Februarie 2009

**No. 31917**

**CONTENTS****INHOUD**

<i>No.</i>	<i>Page No.</i>	<i>Gazette No.</i>	<i>No.</i>	<i>Bladsy No.</i>	<i>Koerant No.</i>
<b>GOVERNMENT NOTICE</b>			<b>GOEWERMENTSKENNISGEWING</b>		
<b>Transport, Department of</b>			<b>Vervoer, Departement van</b>		
<i>Government Notice</i>			<i>Goewermentskennisgewing</i>		
172			172		
South African National Roads Agency Limited and the National Roads Act (7/1998): The South African National Roads Agency Limited: Declaration amendment of National Road N2 Section 15: Amendment of Declaration Nos. 676 of 2000, 1425 of 1990, 2036 of 1990, 203 of 1982 and 214 of 1985.....			Suid-Afrikaanse Nasionale Padagentskap Beperk en die Nasionale Paaie Wet (7/1998): Die Suid-Afrikaanse Nasionale Padagentskap Beperk: Verklaring wysiging van Nasionale Pad N2 Seksie 150: Wysiging van Verklaring Nos. 676 van 2000, 1425 van 1990, 2036 van 1990, 203 van 1982 en 214 van 1985 .....		
	3	31917		4	31917

---

## GOVERNMENT NOTICE

---

### DEPARTMENT OF TRANSPORT

No. 172

26 February 2009

## THE SOUTH AFRICAN NATIONAL ROADS AGENCY LIMITED

Registration No: 98/09584/06

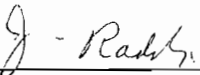
---

### DECLARATION AMENDMENT OF NATIONAL ROAD N2 SECTION 15

AMENDMENT OF DECLARATION NO'S. 676 OF 2000, 1425 OF 1990, 2036 OF 1990, 203 OF 1982  
AND 214 OF 1985

By virtue of section 40 (1)(b) of the South African National Roads Agency Limited and the National Roads Act, 1998 (Act No. 7 of 1998), I hereby amend the following declarations by substituting (I) Declaration No. 676 of 2000 Schedule paragraph (I) the section from the former Ciskei border to the end of paragraph, (II) Declaration No. 1425 of 1990 entirety, (III) Declaration No. 2036 of 1990 entirety, (IV) Declaration No. 203 of 1982 entirety and (V) Declaration No. 214 of 1985 the section from point L79 and a point between points R64 and R65 up to the end, with the subjoined sheets 1 to 22 of Plan No.P692/08, including only the roadway and shoulders (surfaced or gravel) but excluding kerbs, channels, sidewalks and parking areas through the township of King Williamstown

(National Road N2 Section 15: King Williamstown – Mdantsane Interchange)

  
\_\_\_\_\_  
MINISTER OF TRANSPORT

---

**GOEWERMENSKENNISGEWING**

---

**DEPARTEMENT VAN VERVOER****No. 172****26 Februarie 2009****DIE SUID-AFRIKAANSE NASIONALE  
PADAGENTSAP BEPERK**Registrasie No: 98/09584/06

---

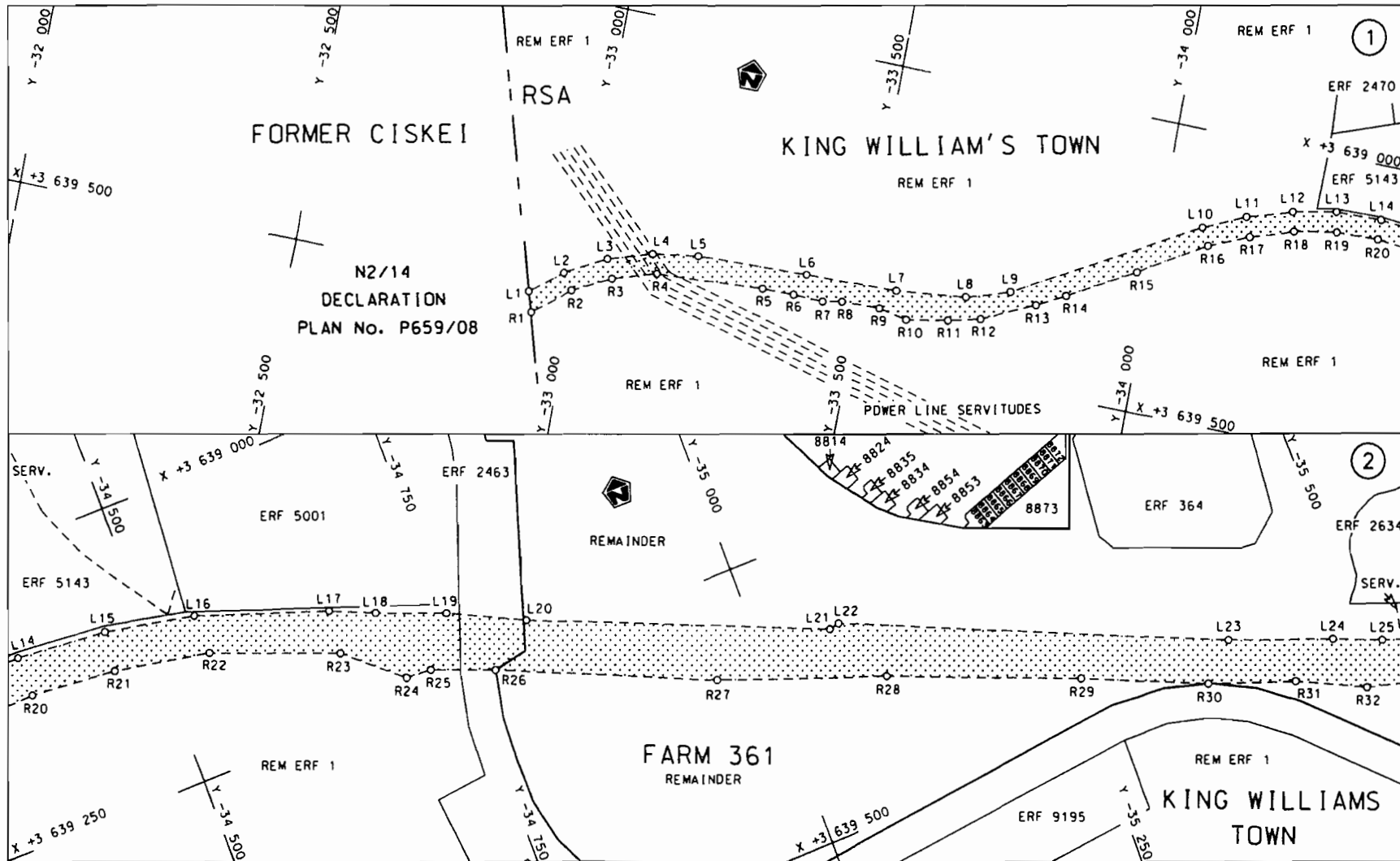
**VERKLARING WYSIGING VAN NASIONALE PAD N2 SEKSIE 150.**


WYSIGING VAN VERKLARING NO'S. 676 VAN 2000, 1425 VAN 1990, 2036 VAN 1990, 203 VAN 1982  
EN 214 VAN 1985

Kragtens Artikel 40(1)(b) van die Suid Afrikaanse Nasionale Padagentskap Beperk en die Nasionale Paaie Wet, 1998 (Wet No.7 van 1998), wysig ek hiermee die volgende verklarings deur (I) Verklaring no. 676 van 2000 Skedule paragraaf (I) die gedeelte vanaf die voorheen die Ciskei grens tot einde van paragraaf, (II) Verklaring no. 1425 van 1990 in geheel, (III) Verklaring 2036 van 1990 in geheel, (IV) Verklaring no. 203 van 1982 in geheel en (V) Verklaring no. 214 van 1985 die gedeelte vanaf punt L79 en 'n punt tussen punte R64 en R65 tot die end, te vervang met meegaande velle 1 tot 22 van Plan no. P692/08, insluitende sleg die padbaan en skouers (geplavei of grond) maar uitsluitende randstene, kanale, sypaadjies en parkeer areas deur die dorpsgebied van King Williamstown

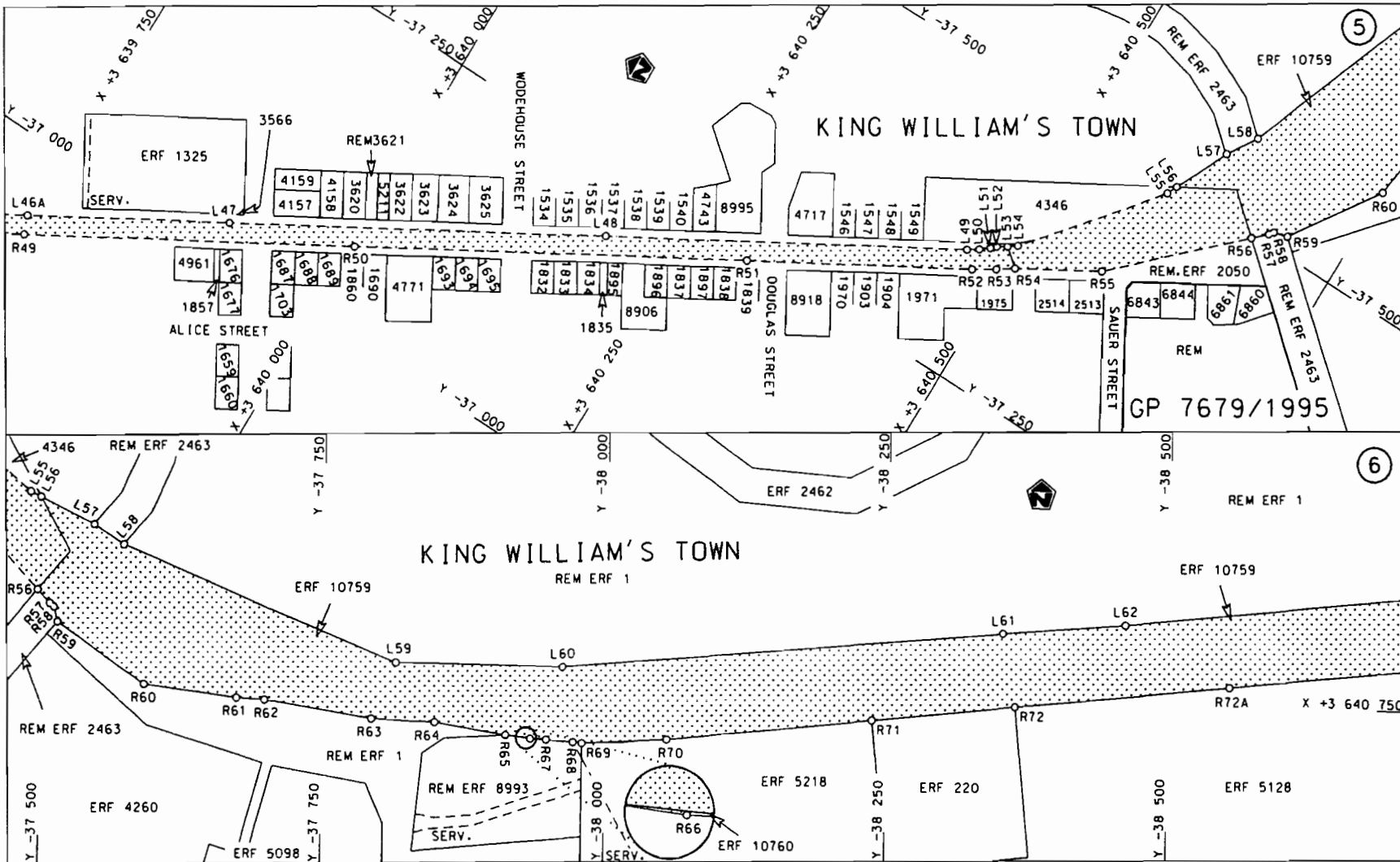
**(Nasionale Pad N2 Seksie 15: King Williamstown – Mdantsane Wisselaar)**

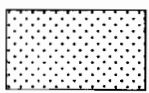
  
\_\_\_\_\_  
MINISTER VAN VERVOER

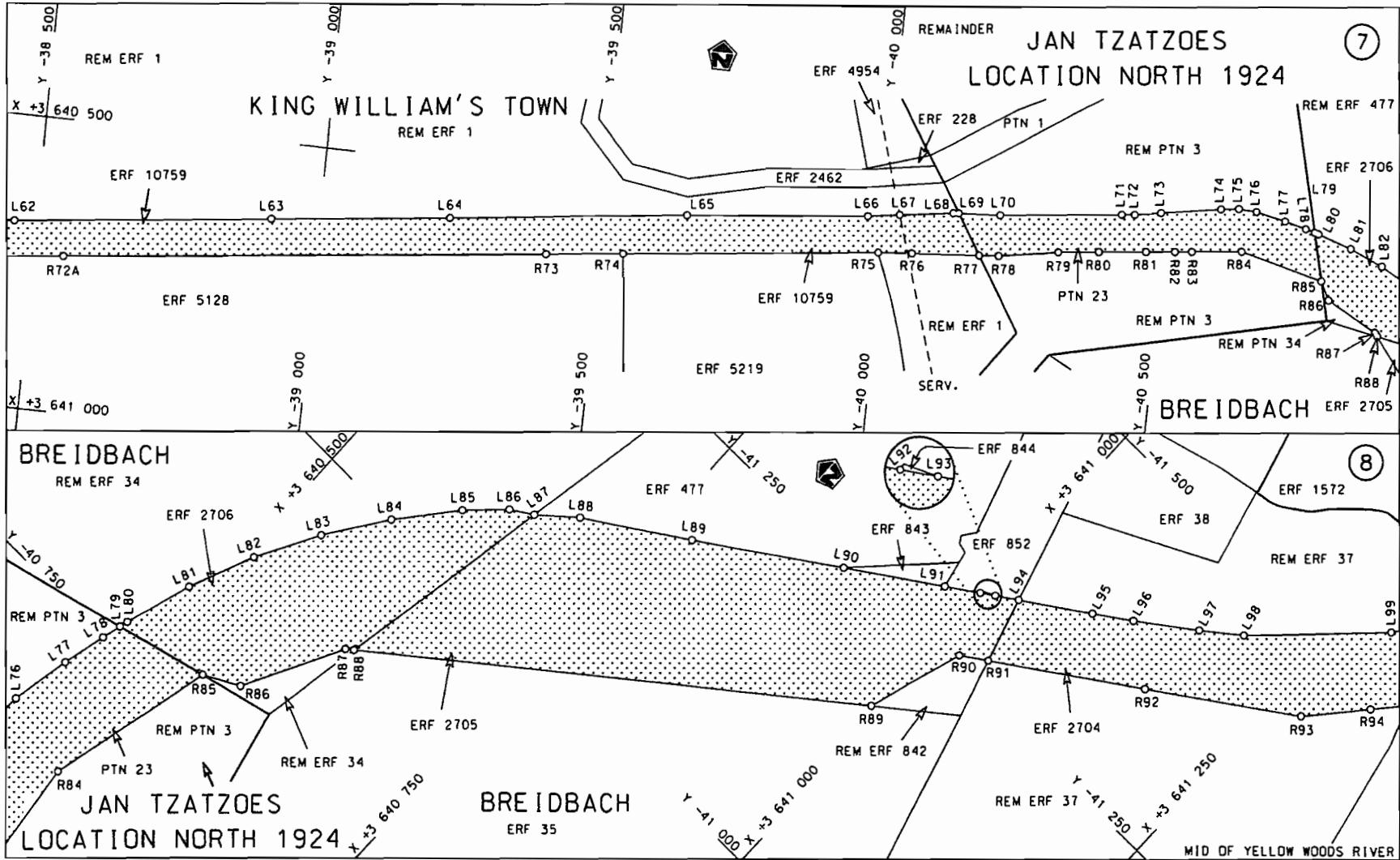


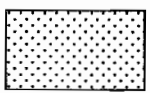
Die Suid Afrikaanse Nasionale Padogentskap Beperk The South African National Roads Agency Limited	Die figuur getoon The figure shown		steldie padreserwe voor van 'n gedeelte represents the road reserve of a portion van Nasionale Roete N2 Sektie 15 of National Route N2 Section 15	Vel Sheet 1 van 22 Plan P692/08
------------------------------------------------------------------------------------------------------	---------------------------------------	--------------------------------------------------------------------------------------	------------------------------------------------------------------------------------------------------------------------------------------------------------	------------------------------------



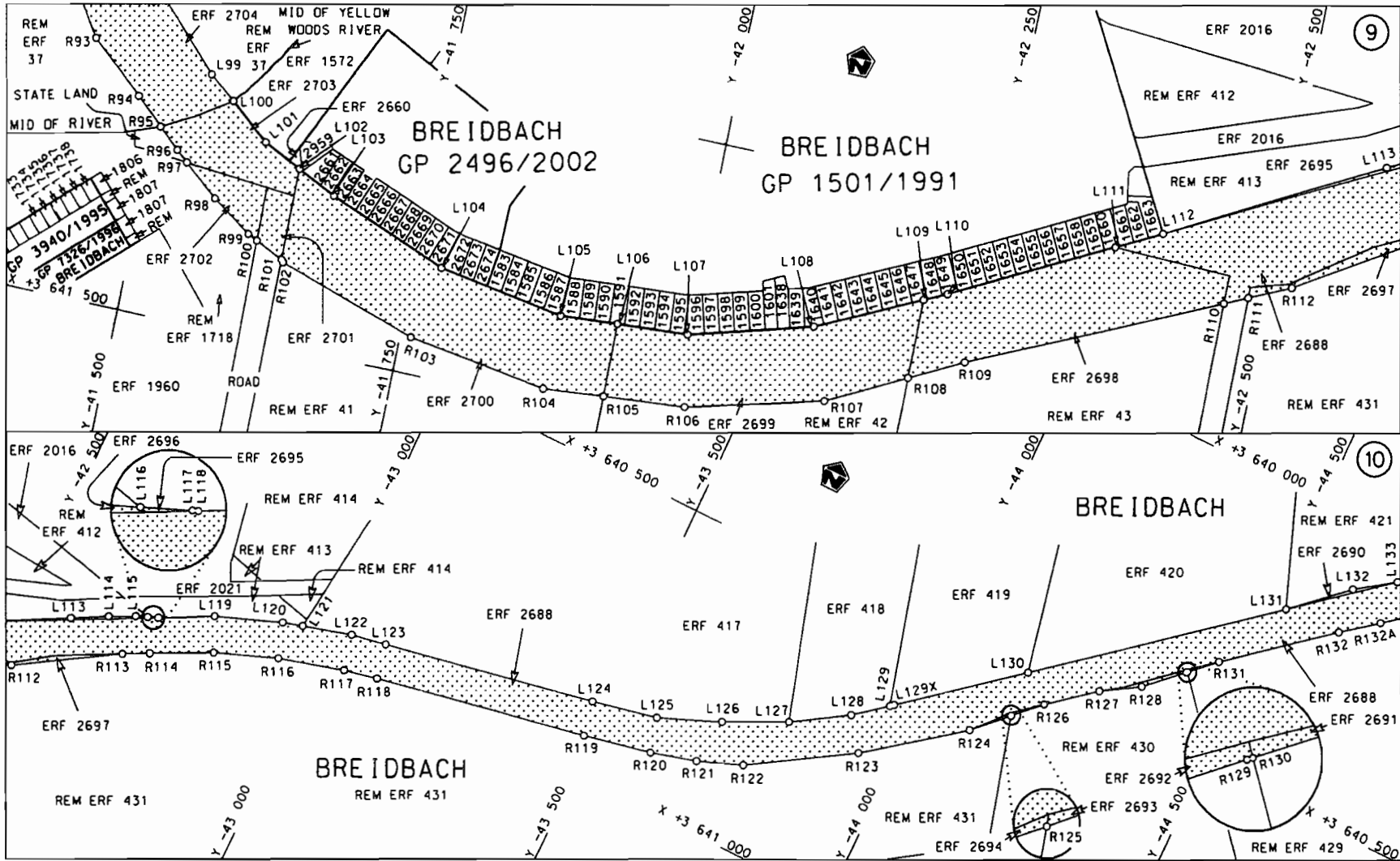


<p>Die Suid Afrikaanse Nasionale Padagentskap Beperk The South African National Roads Agency Limited</p>	<p>Die figuur getoon The figure shown</p> 	<p>steldie podreserwe voor van 'n gedeelte represents the road reserve of a portion van Nasionale Roete N2 Seksie Section 15 of National Route</p>	<p>Vel Sheet 3 van of 22 Plan P692/08</p>
--------------------------------------------------------------------------------------------------------------	------------------------------------------------------------------------------------------------------------------------------------	----------------------------------------------------------------------------------------------------------------------------------------------------------------	-----------------------------------------------



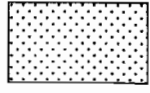
<p>Die Suid Afrikaanse Nasionale Padagentskap Beperk The South African National Roads Agency Limited</p>	<p>Die figuur getoon The figure shown</p> 	<p>steldie padreserwe voor van 'n gedeelte represents the road reserve of a portion van Nasionale Roete of National Route</p> <p>N2      Seksie Section      15</p>	<p>Vel Sheet 4 van of 22 Plan P692/08</p>
--------------------------------------------------------------------------------------------------------------	------------------------------------------------------------------------------------------------------------------------------------	---------------------------------------------------------------------------------------------------------------------------------------------------------------------------------	-----------------------------------------------





Die Suid Afrikaanse Nasionale Padagentskap Beperk  
 The South African National Roads Agency Limited

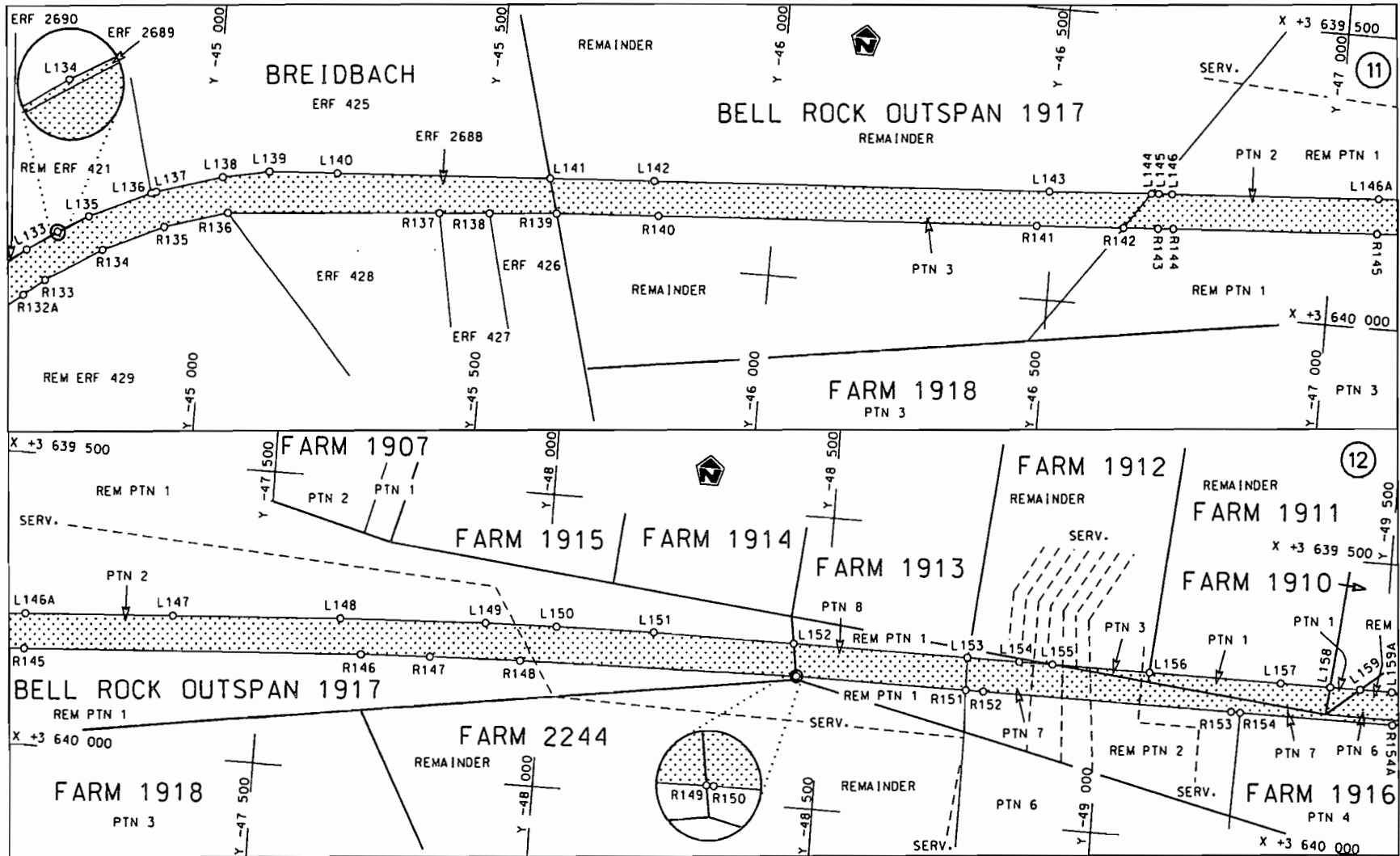
Die figuur getoon  
 The figure shown




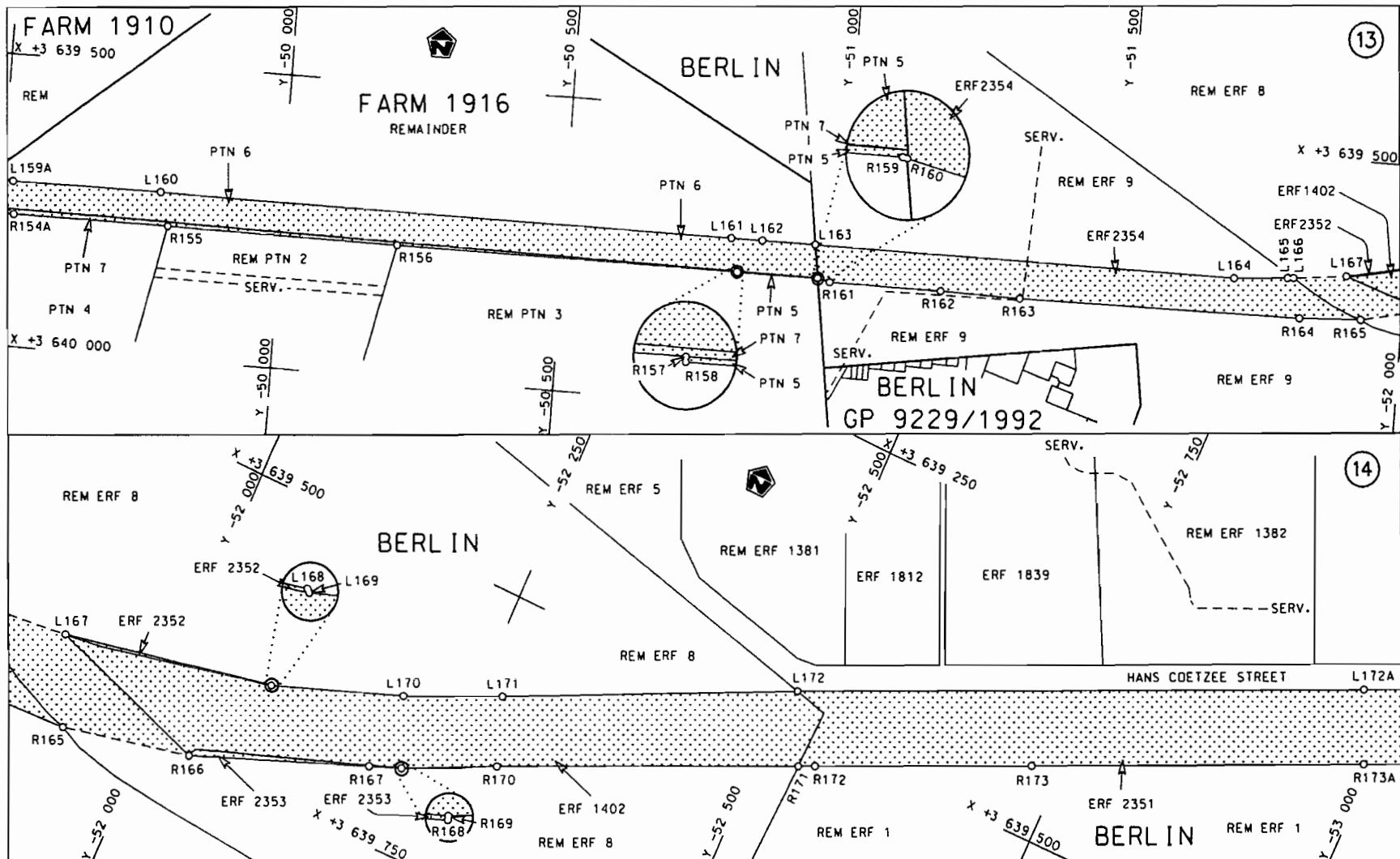
steldie padreserwe voor van 'n gedeelte  
 represents the road reserve of a portion  
 van Nasionale Roete N2  
 of National Route N2

Seksie 15  
 Section 15

Vel Sheet 5 van 22  
 Plan P692/08

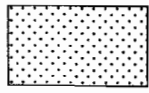


<p>Die Suid Afrikaanse Nasionale Padagentskap Beperk The South African National Roads Agency Limited</p>	<p>Die figuur getoon The figure shown</p>		<p>steldie padreserwe voor van 'n gedeelte represents the road reserve of a portion van Nasionale Roete of National Route</p> <p>N2      Seksie      15</p>	<p>Vel      van Sheet   6      of   22</p> <p>Plan      P692/08</p>
--------------------------------------------------------------------------------------------------------------	-----------------------------------------------	--------------------------------------------------------------------------------------	-------------------------------------------------------------------------------------------------------------------------------------------------------------------------	-------------------------------------------------------------------------



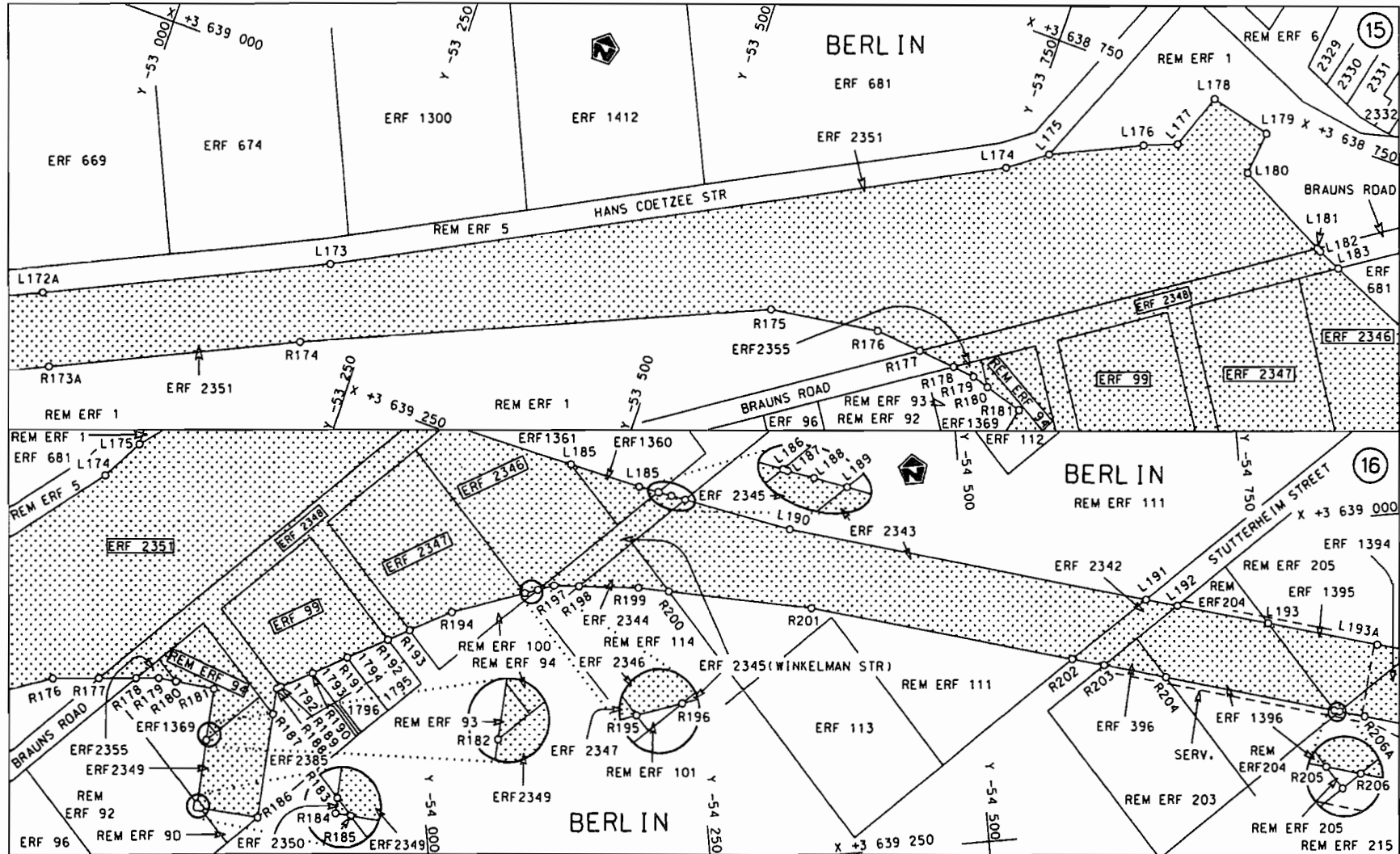
Die Suid Afrikaanse Nasionale Padogentskap Beperk  
 The South African National Roads Agency Limited


Die figuur getoon  
 The figure shown

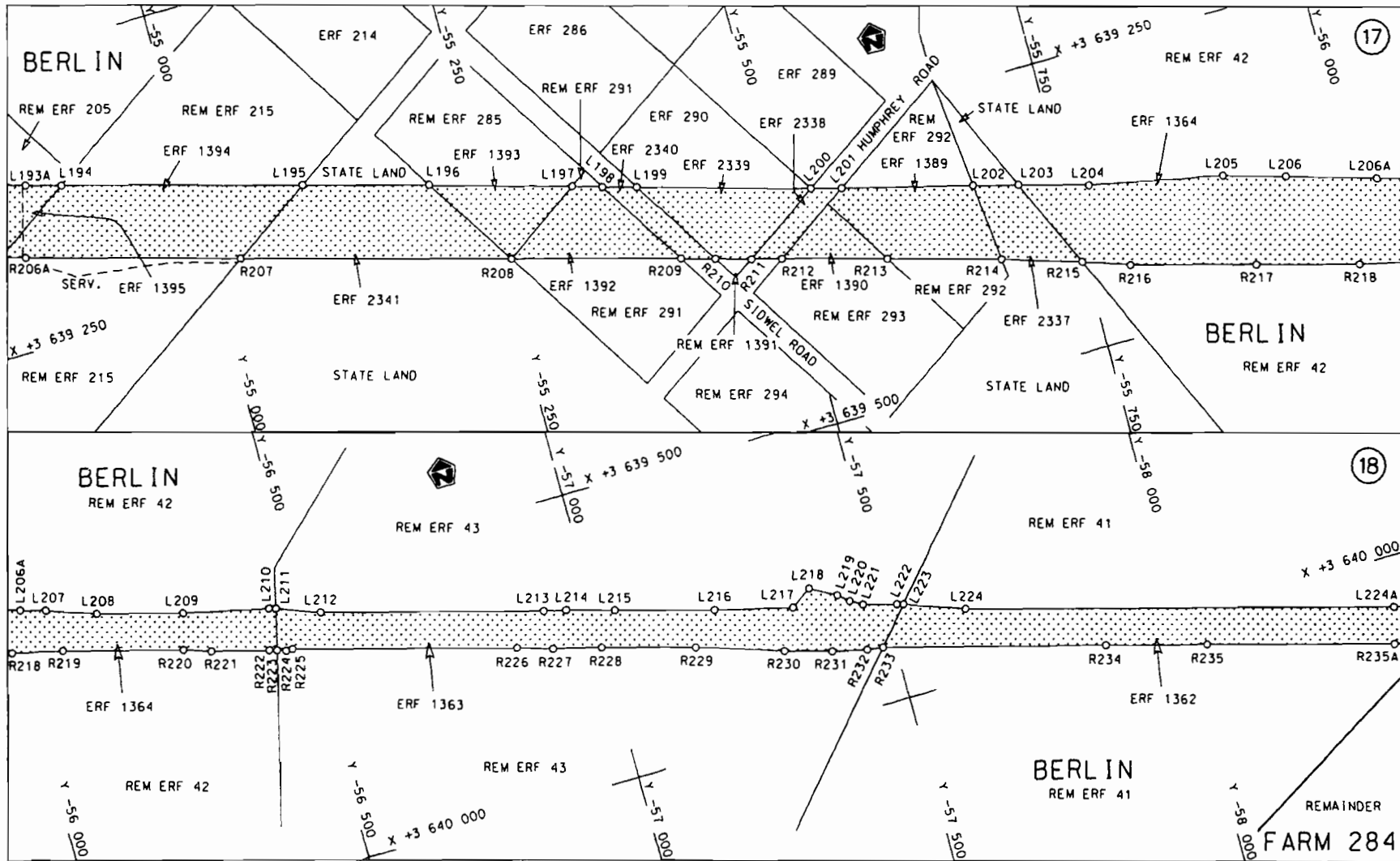


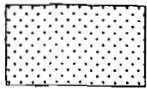
steldie padreserwe voor van 'n gedeelte  
 represents the road reserve of a portion  
 van Nasionale Roete N2 Seksie Section  
 of National Route 15

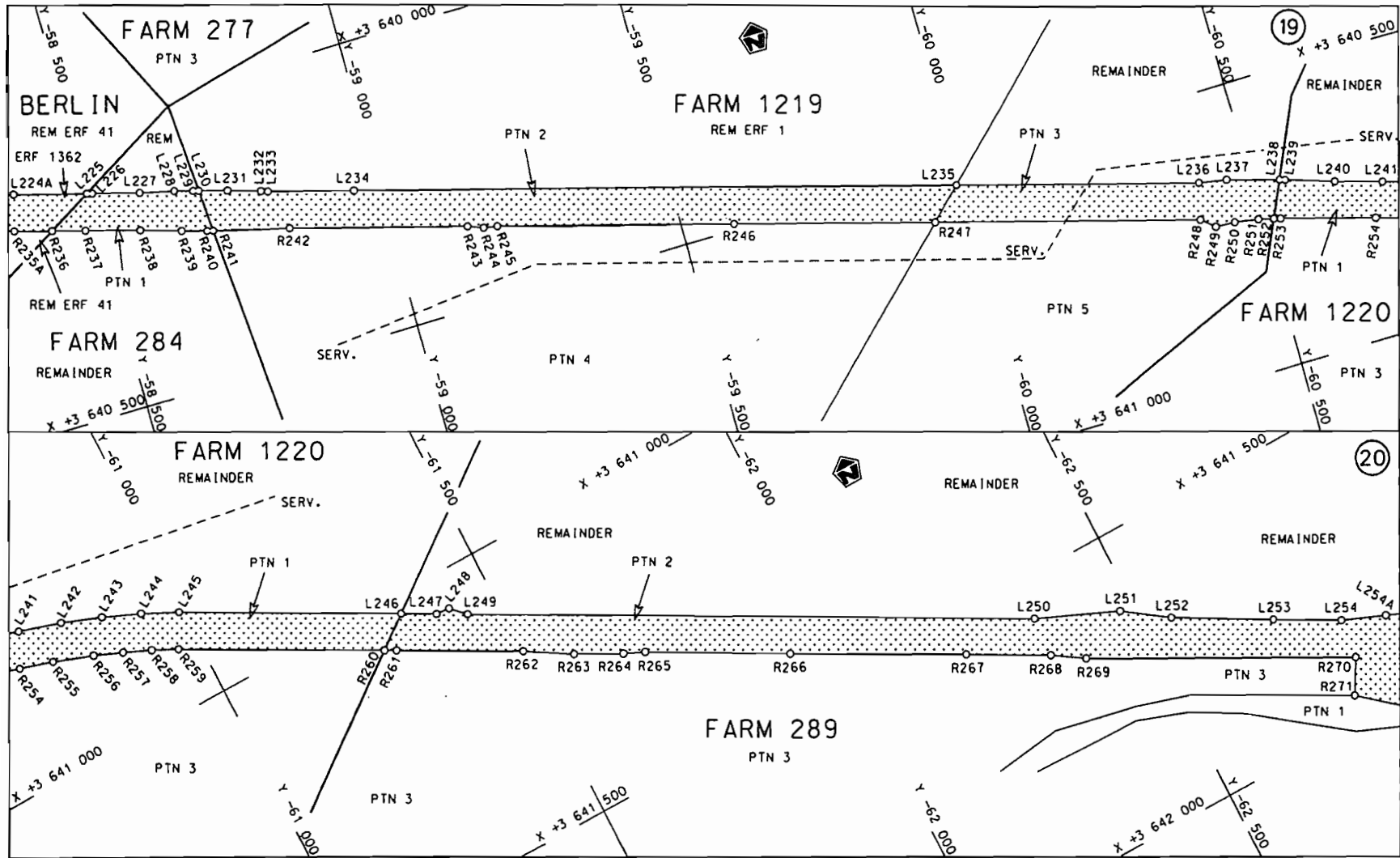
Vel Sheet 7 van of 22  
 Plan P692/08

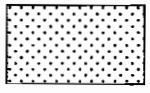


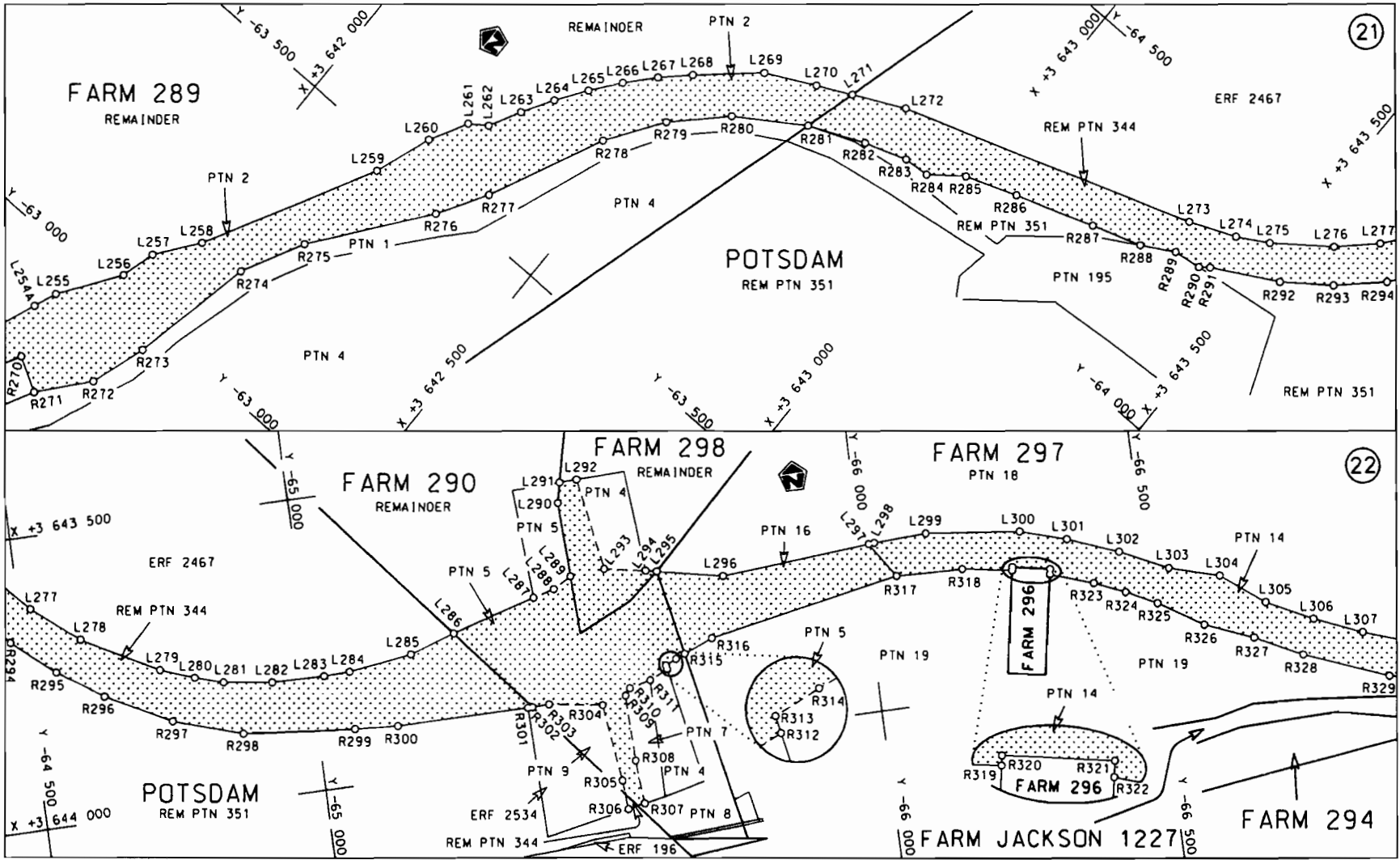
<p>Die Suid Afrikaanse Nasionale Padogentskop Beperk The South African National Roads Agency Limited</p>	<p>Die figuur getoon The figure shown</p> 	<p>stel die padreserwe voor van 'n gedeelte represents the road reserve of a portion von Nasionale Roete N2 of National Route</p> <p>Seksie 15 Section</p>	<p>Vel Sheet 8 von of 22 Plan P692/08</p>
--------------------------------------------------------------------------------------------------------------	------------------------------------------------------------------------------------------------------------------------------------	----------------------------------------------------------------------------------------------------------------------------------------------------------------------------	-----------------------------------------------




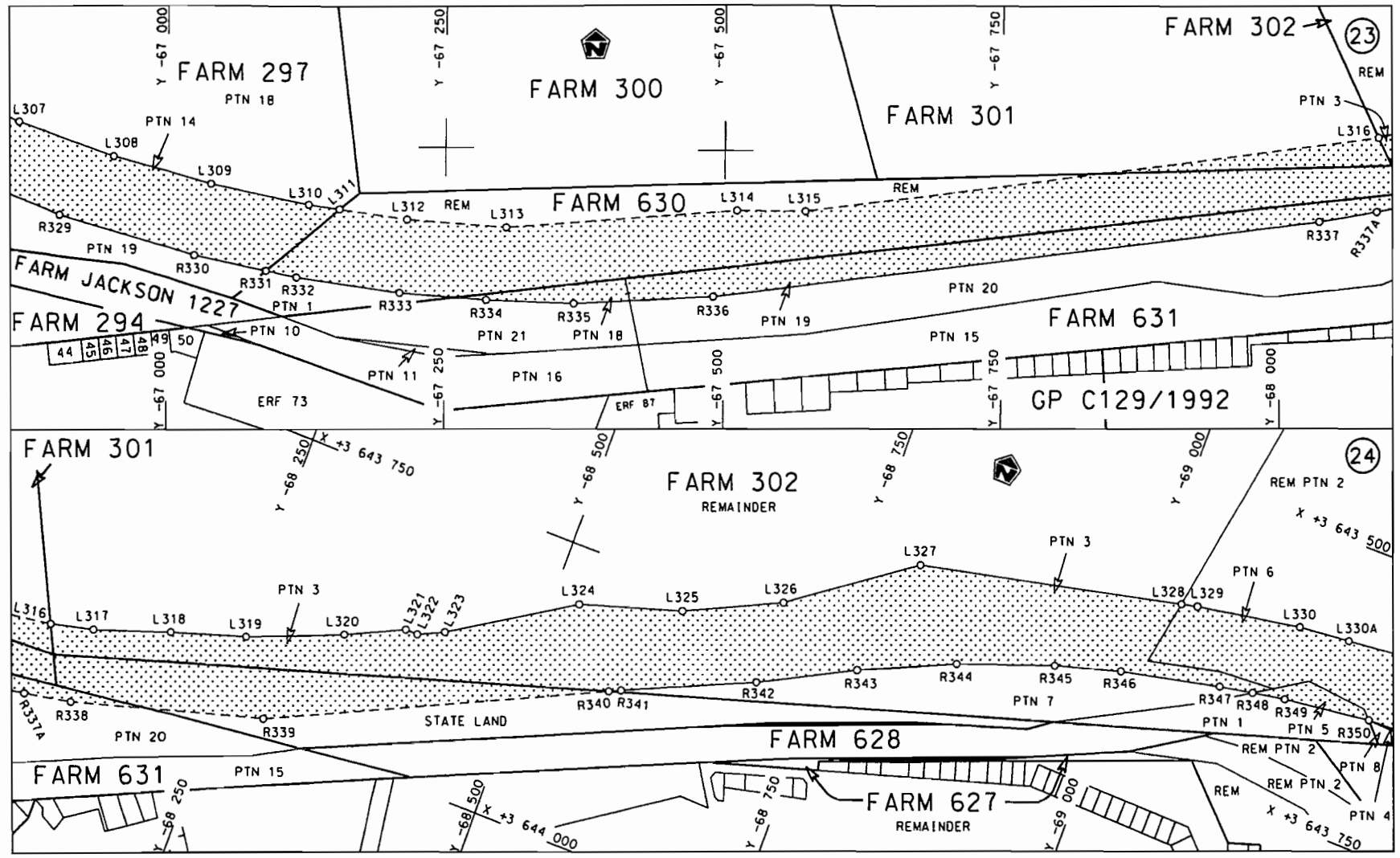
Die Suid Afrikaanse Nasionale Padagentskap Beperk The South African National Roads Agency Limited	Die figuur getoon The figure shown		steldie padreserwe voor van 'n gedeelte represents the road reserve of a portion van Nasionale Roete N2 of National Route N2 Seksie 15 Section 15	Vel 9 van 22 Sheet of	Plan P692/08
------------------------------------------------------------------------------------------------------	---------------------------------------	--------------------------------------------------------------------------------------	------------------------------------------------------------------------------------------------------------------------------------------------------------------	--------------------------	--------------



<p>Die Suid Afrikaanse Nasionale Padagentskap Beperk The South African National Roads Agency Limited</p>	<p>Die figuur getoon The figure shown</p> 	<p>steldie podreserwe voor van 'n gedeelte represents the road reserve of a portion von Nasionale Roete of National Route</p> <p>N2      Seksie      15 Section</p>	<p>Vel Sheet 10 van of 22</p> <p>Plan P692/08</p>
--------------------------------------------------------------------------------------------------------------	------------------------------------------------------------------------------------------------------------------------------------	-------------------------------------------------------------------------------------------------------------------------------------------------------------------------------------	---------------------------------------------------------------

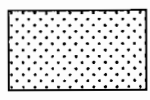


Die Suid Afrikaanse Nasionale Podagentskap Beperk The South African National Roads Agency Limited	Die figuur getoon The figure shown		steldie podreserwe voor van 'n gedeelte represents the road reserve of a portion van Nasionale Roete N2 of National Route N2	Vel Sheet 11 van 22 Plon P692/08
			Seksie 15	



Die Suid Afrikaanse Nasionale Padogenskap Beperk  
 The South African National Roads Agency Limited

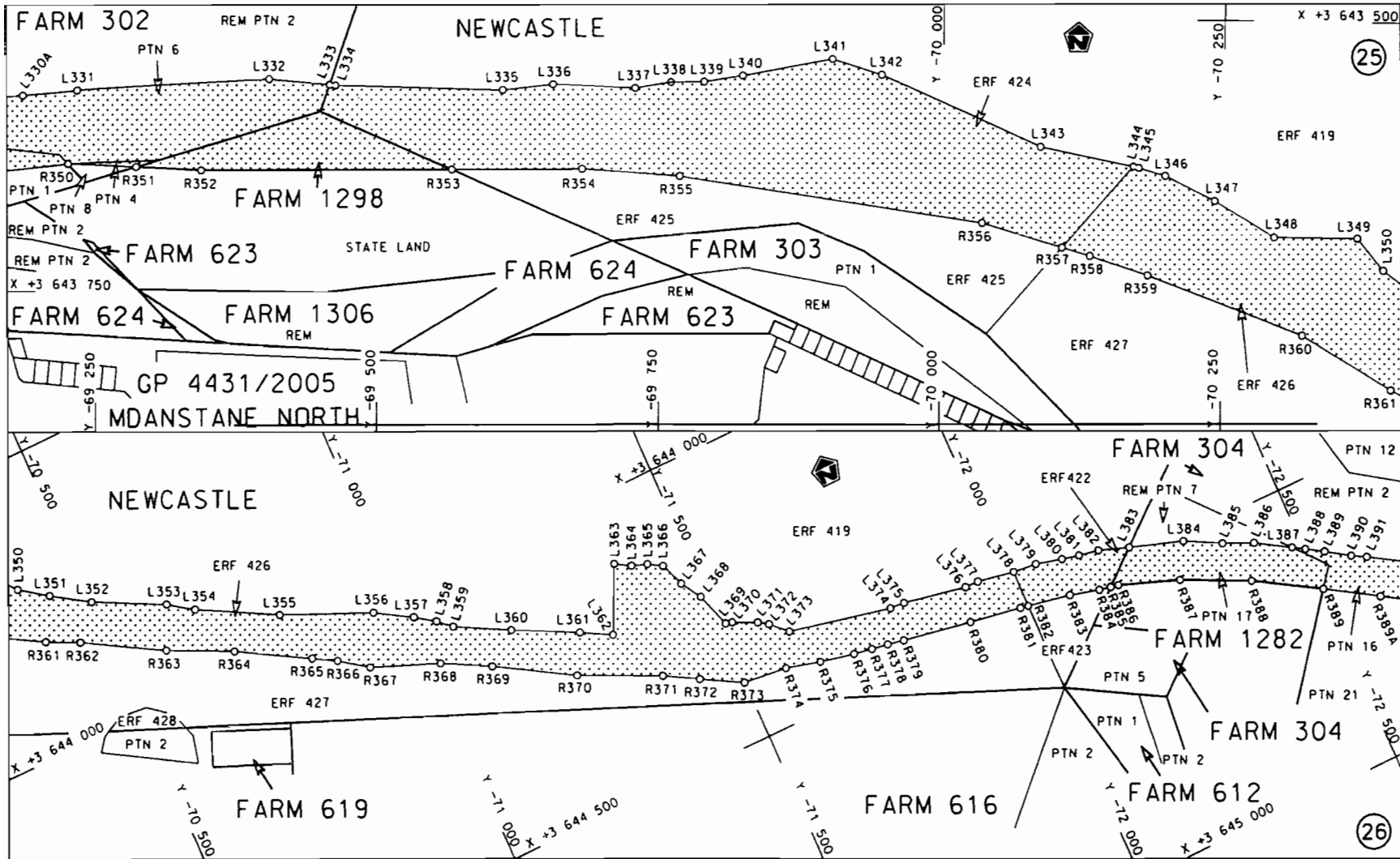
Die figuur getoon  
 The figure shown




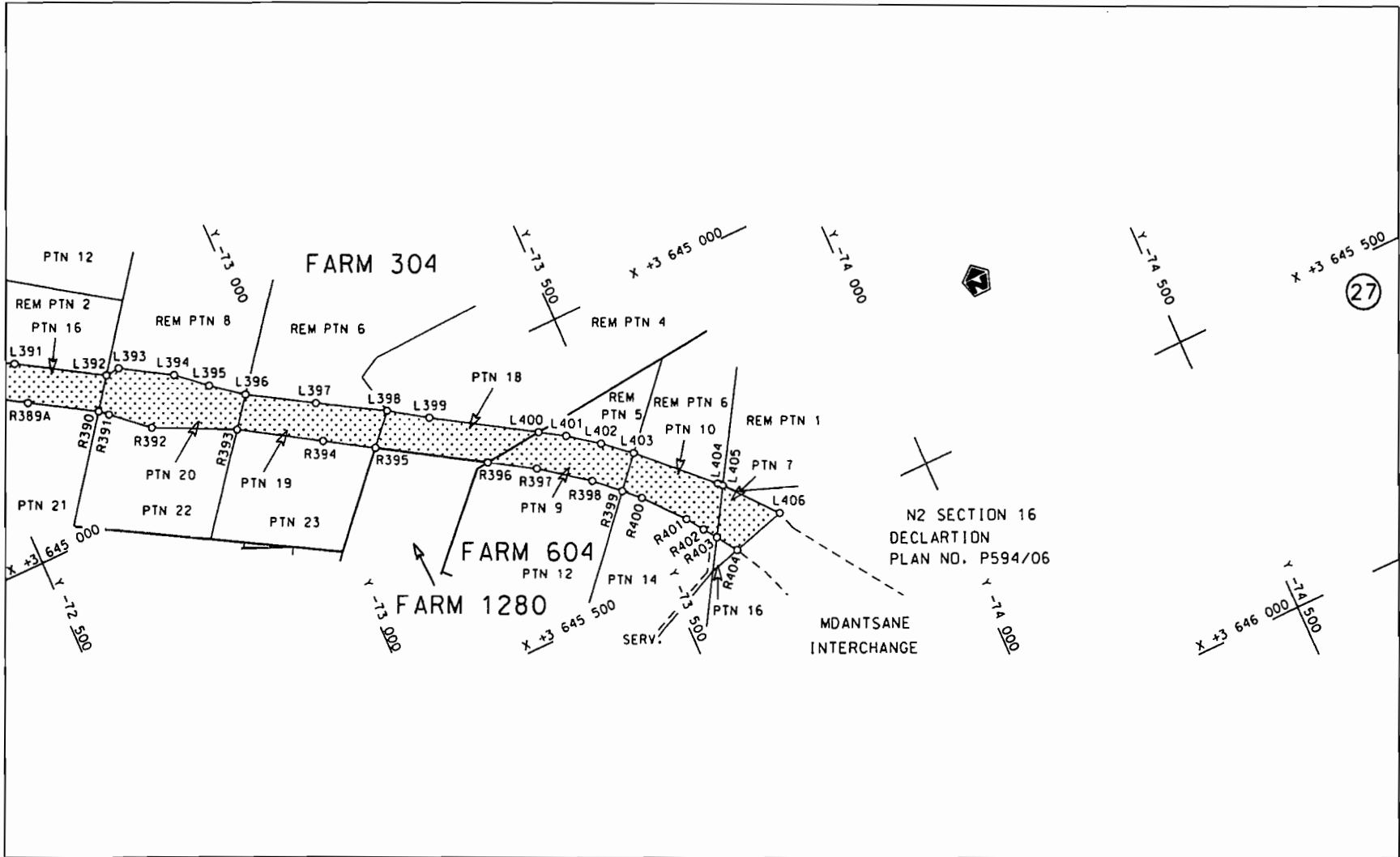
steldie padreserwe voor van 'n gedeelte  
 represents the road reserve of a portion  
 van Nasionale Roete N2  
 of National Route N2  
 Seksie Section 15

Vel Sheet 12 of 22  
 Plan P692/08





Die Suid Afrikaanse Nasionale Padagentskap Beperk The South African National Roads Agency Limited	Die figuur getoon The figure shown		Vel Sheet 13 of 22 Plan P692/08
steldie podreserwe voor van 'n gedeelte represents the road reserve of a portion van Nasionale Roete of National Route N2 Seksie Section 15			



Die Suid Afrikaanse Nasionale Padogentskop Beperk  
The South African National Roads Agency Limited

Die figuur getoon  
The figure shown



st die podreserwe voor van 'n gedeelte  
represents the road reserve of a portion  
van Nasionale Roete N2 Seksie  
of National Route Section 15

Vel Sheet 14 of 22  
Plan P692/08

PADRESERWE KOÖRDINATE / ROAD RESERVE CO-ORDINATES											
LINKERKANT/LEFT HAND SIDE					REGTERKANT/RIGHT HAND SIDE						
	Y		X	WG 27°		Y		X			
L1	-32	917.100	3	639	507.900	R1	-32	927.650	3	639	542.400
L2	-32	975.417	3	639	462.597	R2	-32	994.644	3	639	489.715
L3	-33	046.764	3	639	424.671	R3	-33	061.460	3	639	456.459
L4	-33	123.844	3	639	400.428	R4	-33	137.767	3	639	432.595
L5	-33	203.611	3	639	387.828	R5	-33	326.429	3	639	421.213
L6	-33	398.409	3	639	382.623	R6	-33	382.116	3	639	420.263
L7	-33	562.154	3	639	378.144	R7	-33	435.698	3	639	421.522
L8	-33	684.468	3	639	364.127	R8	-33	469.987	3	639	414.769
L9	-33	760.911	3	639	340.928	R9	-33	537.917	3	639	413.560
L10	-34	074.635	3	639	166.129	R10	-33	588.324	3	639	423.113
L11	-34	148.239	3	639	132.935	R11	-33	661.041	3	639	409.563
L12	-34	226.737	3	639	109.407	R12	-33	717.050	3	639	395.957
L13	-34	313.993	3	639	094.460	R13	-33	809.008	3	639	353.911
L14	-34	384.350	3	639	091.931	R14	-33	858.596	3	639	327.943
L15	-34	464.346	3	639	098.743	R15	-33	974.666	3	639	263.595
L16	-34	543.089	3	639	114.868	R16	-34	090.189	3	639	194.813
L17	-34	656.548	3	639	154.685	R17	-34	160.220	3	639	165.765
L18	-34	694.392	3	639	171.086	R18	-34	234.698	3	639	142.217
L19	-34	752.093	3	639	194.055	R19	-34	313.874	3	639	128.616
L20	-34	815.505	3	639	225.185	R20	-34	384.944	3	639	125.950
L21	-35	064.302	3	639	329.668	R21	-34	460.499	3	639	132.859
L22	-35	073.210	3	639	327.935	R22	-34	544.267	3	639	149.428
L23	-35	390.836	3	639	467.143	R23	-34	652.801	3	639	192.208
L24	-35	477.508	3	639	499.990	R24	-34	699.627	3	639	232.547
L25	-35	518.159	3	639	516.687	R25	-34	721.760	3	639	234.393
L26	-35	554.083	3	639	529.196	R26	-34	774.720	3	639	255.026
L27	-35	565.613	3	639	532.665	R27	-34	954.717	3	639	334.098
L28	-35	586.250	3	639	537.587	R28	-35	097.050	3	639	385.667
L29	-35	604.070	3	639	540.765	R29	-35	256.462	3	639	449.718
L30	-35	627.775	3	639	543.485	R30	-35	360.495	3	639	495.093
L31	-35	660.738	3	639	545.100	R31	-35	433.034	3	639	521.376
L32	-35	676.255	3	639	551.405	R32	-35	490.684	3	639	549.175
L33	-35	716.815	3	639	552.092	R33	-35	605.039	3	639	579.372
L34	-35	904.034	3	639	512.822	R34	-35	666.540	3	639	584.047
L35	-35	904.249	3	639	510.637	R35	-35	675.087	3	639	580.209
L36	-36	066.666	3	639	430.636	R36	-35	715.427	3	639	580.673
L37	-36	147.571	3	639	390.832	R37	-35	899.181	3	639	528.900
L38	-36	228.708	3	639	350.247	R38	-35	899.729	3	639	529.866
L39	-36	254.461	3	639	335.642	R39	-36	125.988	3	639	418.236
L40	-36	286.909	3	639	319.890	R40	-36	156.960	3	639	404.035
L41	-36	401.335	3	639	264.191	R41	-36	237.236	3	639	364.689
L42	-36	418.875	3	639	255.731	R42	-36	258.838	3	639	354.043
L43	-36	605.717	3	639	165.246	R43	-36	419.888	3	639	275.376
L44	-36	705.595	3	639	338.472	R44	-36	429.996	3	639	269.584
L45	-36	801.828	3	639	505.368	R45	-36	593.397	3	639	190.096
L46	-36	821.502	3	639	539.413	R46	-36	598.556	3	639	189.526
L47	-37	027.491	3	639	896.857	R47	-36	602.718	3	639	193.004
L48	-37	193.755	3	640	185.193	R48	-36	715.035	3	639	387.866
L49	-37	353.972	3	640	463.006	R49	-36	922.699	3	639	748.015
L50	-37	360.022	3	640	472.045	R50	-37	068.817	3	640	001.506
L51	-37	367.245	3	640	480.670	R51	-37	242.304	3	640	302.367

PADRESERWE KOÖRDINATE / ROAD RESERVE CO-ORDINATES									
LINKERKANT/LEFT HAND SIDE					REGTERKANT/RIGHT HAND SIDE				
	Y	X	WG 27°		Y	X			
L52	-37 370.161	3 640	484.451	R52	-37 342.261	3 640	475.599		
L53	-37 375.261	3 640	492.598	R53	-37 353.771	3 640	494.195		
L54	-37 380.832	3 640	500.092	R54	-37 363.154	3 640	508.034		
L55	-37 488.922	3 640	588.707	R55	-37 401.945	3 640	574.242		
L56	-37 498.030	3 640	592.990	R56	-37 496.300	3 640	672.090		
L57	-37 545.450	3 640	615.510	R57	-37 507.220	3 640	683.410		
L58	-37 571.370	3 640	632.260	R58	-37 511.110	3 640	686.530		
L59	-37 813.920	3 640	727.610	R59	-37 514.230	3 640	698.820		
L60	-37 961.790	3 640	728.400	R60	-37 590.880	3 640	750.720		
L61	-38 352.360	3 640	691.990	R61	-37 673.670	3 640	760.370		
L62	-38 460.840	3 640	682.150	R62	-37 699.320	3 640	761.370		
L63	-38 913.280	3 640	632.370	R63	-37 793.360	3 640	775.440		
L64	-39 228.570	3 640	597.580	R64	-37 848.500	3 640	777.580		
L65	-39 648.130	3 640	548.850	R65	-37 911.680	3 640	787.100		
L66	-39 969.470	3 640	516.020	R66	-37 933.830	3 640	789.740		
L67	-40 026.350	3 640	507.660	R67	-37 948.150	3 640	790.130		
L68	-40 120.510	3 640	494.660	R68	-37 971.960	3 640	792.110		
L69	-40 130.370	3 640	494.110	R69	-37 979.940	3 640	792.780		
L70	-40 205.010	3 640	489.910	R70	-38 055.170	3 640	787.730		
L71	-40 420.930	3 640	466.430	R71	-38 237.480	3 640	767.780		
L72	-40 443.790	3 640	463.970	R72	-38 364.130	3 640	753.960		
L73	-40 490.160	3 640	455.980	R73	-39 406.260	3 640	641.180		
L74	-40 594.810	3 640	438.830	R74	-39 541.960	3 640	626.130		
L75	-40 626.660	3 640	435.010	R75	-39 994.410	3 640	575.880		
L76	-40 658.380	3 640	436.800	R76	-40 055.080	3 640	570.730		
L77	-40 711.030	3 640	447.920	R77	-40 174.280	3 640	562.030		
L78	-40 749.290	3 640	457.440	R78	-40 209.340	3 640	559.470		
L79	-40 766.120	3 640	461.860	R79	-40 315.110	3 640	541.930		
L80	-40 773.410	3 640	463.780	R80	-40 387.240	3 640	534.140		
L81	-40 832.830	3 640	482.400	R81	-40 470.610	3 640	525.100		
L82	-40 890.870	3 640	506.850	R82	-40 521.350	3 640	519.840		
L83	-40 946.060	3 640	537.530	R83	-40 551.080	3 640	516.640		
L84	-40 998.380	3 640	573.560	R84	-40 639.000	3 640	507.340		
L85	-41 047.410	3 640	613.590	R85	-40 786.360	3 640	543.120		
L86	-41 076.990	3 640	643.850	R86	-40 802.570	3 640	574.050		
L87	-41 089.030	3 640	663.090	R87	-40 890.410	3 640	620.410		
L88	-41 115.190	3 640	694.320	R88	-40 895.070	3 640	626.470		
L89	-41 169.720	3 640	779.520	R89	-41 177.130	3 640	993.020		
L90	-41 245.690	3 640	894.000	R90	-41 262.270	3 641	020.110		
L91	-41 296.320	3 640	970.260	R91	-41 277.020	3 641	042.260		
L92	-41 314.190	3 640	997.260	R92	-41 355.660	3 641	160.350		
L93	-41 321.770	3 641	008.530	R93	-41 433.860	3 641	277.270		
L94	-41 333.520	3 641	026.400	R94	-41 480.820	3 641	318.170		
L95	-41 370.430	3 641	082.310	R95	-41 505.250	3 641	339.437		
L96	-41 390.790	3 641	112.830	R96	-41 524.180	3 641	355.920		
L97	-41 424.830	3 641	160.750	R97	-41 534.790	3 641	364.450		
L98	-41 448.820	3 641	192.600	R98	-41 565.680	3 641	389.300		
L99	-41 541.080	3 641	286.450	R99	-41 601.490	3 641	412.430		
L100	-41 564.705	3 641	304.701	R100	-41 610.410	3 641	416.460		
L101	-41 600.790	3 641	332.580	R101	-41 635.150	3 641	427.640		
L102	-41 634.310	3 641	348.560	R102	-41 636.920	3 641	429.790		

Vel  
Sheet

16

Van  
of

22

P692/08

PADRESERWE KOÖRDINATE / ROAD RESERVE CO-ORDINATES											
LINKERKANT/LEFT HAND SIDE					REGTERKANT/RIGHT HAND SIDE						
	Y		X	WG 27°		Y		X			
L103	-41	668.850	3	641	365.010	R103	-41	759.660	3	641	468.580
L104	-41	774.240	3	641	405.540	R104	-41	884.110	3	641	487.060
L105	-41	886.400	3	641	423.280	R105	-41	937.560	3	641	482.570
L106	-41	937.100	3	641	419.790	R106	-42	009.960	3	641	476.490
L107	-41	999.950	3	641	415.460	R107	-42	130.900	3	641	445.620
L108	-42	108.730	3	641	385.620	R108	-42	199.720	3	641	410.900
L109	-42	199.530	3	641	343.180	R109	-42	246.090	3	641	387.510
L110	-42	219.080	3	641	334.050	R110	-42	461.930	3	641	290.810
L111	-42	356.860	3	641	263.860	R111	-42	482.330	3	641	281.670
L112	-42	396.470	3	641	243.670	R112	-42	519.120	3	641	265.190
L113	-42	579.960	3	641	146.870	R113	-42	687.230	3	641	162.800
L114	-42	638.160	3	641	115.770	R114	-42	730.410	3	641	140.800
L115	-42	681.060	3	641	094.740	R115	-42	833.430	3	641	090.680
L116	-42	700.620	3	641	086.820	R116	-42	942.630	3	641	048.640
L117	-42	717.890	3	641	079.820	R117	-43	055.570	3	641	017.450
L118	-42	718.940	3	641	079.400	R118	-43	113.430	3	641	005.500
L119	-42	808.360	3	641	034.000	R119	-43	486.840	3	640	934.160
L120	-42	923.350	3	640	990.260	R120	-43	606.170	3	640	909.160
L121	-42	957.410	3	640	980.650	R121	-43	685.980	3	640	886.720
L122	-43	041.710	3	640	957.040	R122	-43	763.340	3	640	856.490
L123	-43	101.830	3	640	946.600	R123	-43	939.790	3	640	748.240
L124	-43	475.560	3	640	875.250	R124	-44	100.470	3	640	627.050
L125	-43	590.220	3	640	850.240	R125	-44	156.670	3	640	573.140
L126	-43	697.160	3	640	806.020	R126	-44	201.290	3	640	530.330
L127	-43	804.550	3	640	754.370	R127	-44	279.740	3	640	467.050
L128	-43	900.130	3	640	695.500	R128	-44	344.100	3	640	427.520
L129	-43	955.490	3	640	651.520	R129	-44	405.940	3	640	370.290
L129X	-43	961.920	3	640	646.520	R130	-44	406.840	3	640	369.460
L130	-44	152.060	3	640	492.970	R131	-44	450.500	3	640	329.290
L131	-44	520.540	3	640	195.780	R132	-44	622.250	3	640	190.720
L132	-44	612.900	3	640	114.040	R133	-44	715.490	3	640	117.950
L133	-44	679.410	3	640	067.610	R134	-44	814.000	3	640	056.770
L134	-44	731.320	3	640	033.070	R135	-44	919.690	3	640	009.050
L135	-44	784.800	3	640	002.060	R136	-45	030.790	3	639	975.740
L136	-44	892.610	3	639	953.580	R137	-45	406.140	3	639	944.490
L137	-44	897.950	3	639	951.040	R138	-45	494.430	3	639	937.160
L138	-45	016.930	3	639	915.340	R139	-45	614.020	3	639	927.200
L139	-45	098.131	3	639	912.290	R140	-45	796.310	3	639	915.650
L140	-45	228.726	3	639	891.642	R141	-46	470.540	3	639	873.940
L141	-45	597.760	3	639	868.080	R142	-46	624.750	3	639	864.160
L142	-45	783.710	3	639	856.550	R143	-46	687.460	3	639	860.180
L143	-46	488.510	3	639	812.930	R144	-46	714.880	3	639	858.370
L144	-46	670.880	3	639	801.260	R145	-47	077.480	3	639	836.150
L145	-46	684.080	3	639	800.410	R146	-47	677.420	3	639	799.190
L146	-46	707.980	3	639	799.190	R147	-47	800.400	3	639	793.350
L147	-47	338.880	3	639	760.040	R148	-47	961.580	3	639	787.180
L148	-47	636.610	3	639	741.040	R149	-48	454.390	3	639	774.890
L149	-47	894.770	3	639	728.280	R150	-48	454.800	3	639	774.880
L150	-48	021.480	3	639	724.400	R151	-48	758.900	3	639	774.840
L151	-48	195.890	3	639	720.210	R152	-48	790.370	3	639	774.840

Vel Sheet	17	Van of	22	P692/08
--------------	----	-----------	----	---------

PADRESERWE KOÖRDINATE / ROAD RESERVE CO-ORDINATES						
LINKERKANT/LEFT HAND SIDE				REGTERKANT/RIGHT HAND SIDE		
	Y	X	WG 27°		Y	X
L152	-48 445.800	3 639 719.650		R153	-49 235.370	3 639 774.370
L153	-48 757.430	3 639 718.940		R154	-49 251.870	3 639 774.760
L154	-48 850.740	3 639 718.880		R155	-49 797.280	3 639 774.320
L155	-48 910.480	3 639 718.750		R156	-50 206.630	3 639 774.240
L156	-49 084.850	3 639 718.580		R157	-50 812.640	3 639 773.100
L157	-49 320.370	3 639 718.340		R158	-50 812.640	3 639 773.730
L158	-49 409.190	3 639 718.290		R159	-50 957.410	3 639 773.320
L159	-49 462.000	3 639 718.220		R160	-50 957.730	3 639 773.390
L160	-49 780.640	3 639 717.950		R161	-50 979.150	3 639 778.450
L161	-50 798.600	3 639 716.750		R162	-51 178.220	3 639 778.470
L162	-50 853.440	3 639 716.830		R163	-51 319.340	3 639 780.740
L163	-50 949.350	3 639 716.730		R164	-51 818.940	3 639 776.150
L164	-51 696.690	3 639 715.940		R165	-51 928.600	3 639 770.340
L165	-51 798.180	3 639 708.390		R166	-52 040.400	3 639 745.920
L166	-51 803.100	3 639 707.770		R167	-52 189.890	3 639 687.030
L167	-51 897.660	3 639 697.550		R168	-52 216.330	3 639 677.040
L168	-52 082.580	3 639 660.270		R169	-52 216.240	3 639 676.780
L169	-52 082.890	3 639 660.550		R170	-52 291.974	3 639 640.542
L170	-52 192.296	3 639 620.163		R171	-52 535.800	3 639 527.650
L171	-52 271.844	3 639 584.383		R172	-52 549.560	3 639 521.260
L172	-52 508.710	3 639 469.820		R173	-52 724.840	3 639 440.150
L173	-53 200.330	3 639 149.390		R174	-53 196.790	3 639 221.130
L174	-53 741.560	3 638 869.580		R175	-53 583.420	3 639 054.660
L175	-53 774.060	3 638 845.580		R176	-53 679.440	3 639 039.890
L176	-53 850.530	3 638 809.790		R177	-53 720.600	3 639 043.250
L177	-53 878.980	3 638 798.820		R178	-53 753.610	3 639 046.120
L178	-53 897.210	3 638 751.120		R179	-53 773.550	3 639 047.860
L179	-53 950.570	3 638 763.950		R180	-53 788.530	3 639 052.090
L180	-53 946.070	3 638 801.740		R181	-53 821.549	3 639 061.388
L181	-54 026.230	3 638 841.680		R182	-53 811.110	3 639 104.600
L182	-54 029.580	3 638 843.350		R183	-53 798.120	3 639 158.310
L183	-54 049.330	3 638 851.540		R184	-53 797.470	3 639 161.370
L184	-54 155.000	3 638 895.350		R185	-53 800.660	3 639 162.170
L185	-54 213.962	3 638 919.736		R186	-53 850.780	3 639 174.790
L186	-54 230.560	3 638 925.850		R187	-53 872.040	3 639 087.620
L187	-54 231.040	3 638 926.270		R188	-53 877.370	3 639 065.810
L188	-54 242.000	3 638 930.040		R189	-53 881.060	3 639 064.600
L189	-54 253.940	3 638 934.410		R190	-53 910.088	3 639 055.107
L190	-54 344.890	3 638 967.650		R191	-53 942.617	3 639 044.517
L191	-54 657.330	3 639 054.660		R192	-53 980.170	3 639 032.340
L192	-54 684.930	3 639 062.350		R193	-54 000.120	3 639 025.960
L193	-54 764.336	3 639 084.361		R194	-54 039.040	3 639 013.510
L194	-54 891.060	3 639 119.540		R195	-54 105.060	3 639 002.520
L195	-55 097.210	3 639 176.760		R196	-54 116.660	3 639 000.590
L196	-55 205.500	3 639 206.860		R197	-54 131.320	3 638 998.150
L197	-55 327.558	3 639 241.885		R198	-54 153.080	3 639 000.590
L198	-55 353.640	3 639 249.370		R199	-54 205.870	3 639 006.520
L199	-55 383.290	3 639 257.890		R200	-54 232.500	3 639 011.870
L200	-55 531.440	3 639 300.550		R201	-54 358.660	3 639 037.200
L201	-55 557.840	3 639 307.320		R202	-54 591.151	3 639 100.369
L202	-55 671.464	3 639 336.551		R203	-54 615.380	3 639 107.970

Vel	18	Van	22	P692/08
Sheet		of		

PADRESERWE KOÖRDINATE / ROAD RESERVE CO-ORDINATES						
LINKERKANT/LEFT HAND SIDE				REGTERKANT/RIGHT HAND SIDE		
	Y	X	WG 27°		Y	X
L203	-55 710.560	3 639	346.600	R204	-54 669.368	3 639 122.961
L204	-55 771.005	3 639	363.343	R205	-54 816.506	3 639 163.879
L205	-55 888.665	3 639	387.502	R206	-54 821.406	3 639 165.249
L206	-55 942.305	3 639	402.682	R207	-55 027.450	3 639 222.580
L207	-56 064.616	3 639	439.081	R208	-55 258.850	3 639 286.940
L208	-56 150.256	3 639	468.820	R209	-55 404.780	3 639 327.570
L209	-56 297.076	3 639	509.609	R210	-55 434.200	3 639 335.740
L210	-56 446.526	3 639	543.708	R211	-55 464.710	3 639 344.210
L211	-56 458.086	3 639	547.897	R212	-55 490.540	3 639 351.380
L212	-56 532.927	3 639	575.057	R213	-55 581.205	3 639 376.551
L213	-56 914.277	3 639	680.934	R214	-55 679.304	3 639 403.840
L214	-56 953.037	3 639	690.643	R215	-55 747.720	3 639 425.200
L215	-57 036.968	3 639	714.583	R216	-55 788.645	3 639 438.963
L216	-57 208.138	3 639	762.591	R217	-55 897.016	3 639 468.732
L217	-57 342.448	3 639	795.730	R218	-55 985.596	3 639 492.781
L218	-57 378.778	3 639	773.100	R219	-56 075.116	3 639 513.401
L219	-57 423.809	3 639	797.150	R220	-56 280.466	3 639 570.309
L220	-57 442.349	3 639	812.870	R221	-56 327.916	3 639 585.829
L221	-57 463.459	3 639	825.219	R222	-56 427.237	3 639 612.728
L222	-57 526.969	3 639	841.569	R223	-56 440.267	3 639 617.118
L223	-57 533.479	3 639	843.939	R224	-56 455.587	3 639 622.267
L224	-57 637.679	3 639	881.868	R225	-56 467.347	3 639 622.157
L225	-58 498.595	3 640	120.481	R226	-56 850.457	3 639 728.494
L226	-58 508.375	3 640	123.191	R227	-56 912.168	3 639 747.834
L227	-58 588.845	3 640	145.651	R228	-56 996.528	3 639 769.093
L228	-58 648.236	3 640	159.680	R229	-57 157.938	3 639 814.802
L229	-58 682.706	3 640	169.100	R230	-57 306.938	3 639 862.861
L230	-58 690.666	3 640	171.351	R231	-57 388.719	3 639 887.270
L231	-58 739.927	3 640	185.270	R232	-57 449.429	3 639 901.269
L232	-58 796.557	3 640	202.480	R233	-57 478.049	3 639 904.739
L233	-58 808.377	3 640	206.640	R234	-57 861.371	3 640 009.176
L234	-58 955.717	3 640	247.818	R235	-58 036.492	3 640 057.755
L235	-59 990.870	3 640	534.790	R236	-58 421.655	3 640 164.712
L236	-60 409.640	3 640	650.876	R237	-58 478.705	3 640 180.552
L237	-60 458.720	3 640	659.636	R238	-58 572.106	3 640 207.441
L238	-60 549.580	3 640	685.865	R239	-58 642.216	3 640 228.580
L239	-60 555.210	3 640	687.485	R240	-58 692.487	3 640 243.130
L240	-60 644.130	3 640	715.914	R241	-58 696.697	3 640 244.200
L241	-60 725.430	3 640	739.544	R242	-58 828.137	3 640 277.519
L242	-60 799.070	3 640	762.163	R243	-59 132.369	3 640 361.927
L243	-60 868.010	3 640	787.453	R244	-59 159.749	3 640 372.186
L244	-60 931.870	3 640	814.582	R245	-59 184.179	3 640 376.386
L245	-60 992.600	3 640	843.802	R246	-59 592.210	3 640 489.603
L246	-61 340.309	3 641	031.343	R247	-59 936.881	3 640 585.470
L247	-61 395.850	3 641	061.328	R248	-60 394.721	3 640 712.826
L248	-61 419.530	3 641	063.218	R249	-60 418.011	3 640 731.816
L249	-61 444.020	3 641	087.438	R250	-60 452.391	3 640 733.946
L250	-62 335.033	3 641	568.681	R251	-60 494.521	3 640 740.865
L251	-62 475.683	3 641	628.670	R252	-60 521.121	3 640 747.615
L252	-62 551.173	3 641	681.979	R253	-60 533.221	3 640 750.685
L253	-62 710.663	3 641	770.748	R254	-60 697.151	3 640 796.294

Vel  
Sheet

19

Van  
of

22

P692/08

PADRESERWE KOÖRDINATE / ROAD RESERVE CO-ORDINATES					
LINKERKANT/LEFT HAND SIDE			REGTERKANT/RIGHT HAND SIDE		
	Y	X	WG 27°	Y	X
L254	-62 817.632	3 641 829.147	R255	-60 755.101	3 640 813.883
L255	-62 930.962	3 641 874.716	R256	-60 824.321	3 640 838.233
L256	-63 032.872	3 641 945.386	R257	-60 872.541	3 640 857.952
L257	-63 092.872	3 641 962.075	R258	-60 918.981	3 640 878.512
L258	-63 166.612	3 642 017.135	R259	-60 961.741	3 640 899.532
L259	-63 461.522	3 642 176.332	R260	-61 284.151	3 641 073.169
L260	-63 562.041	3 642 212.671	R261	-61 303.221	3 641 083.439
L261	-63 628.131	3 642 248.021	R262	-61 502.140	3 641 190.477
L262	-63 649.112	3 642 278.201	R263	-61 579.470	3 641 236.917
L263	-63 703.290	3 642 306.997	R264	-61 657.710	3 641 277.566
L264	-63 756.915	3 642 339.121	R265	-61 693.220	3 641 293.606
L265	-63 809.265	3 642 374.860	R266	-61 921.300	3 641 417.764
L266	-63 858.755	3 642 413.750	R267	-62 197.264	3 641 565.702
L267	-63 905.905	3 642 456.299	R268	-62 331.054	3 641 638.031
L268	-63 949.575	3 642 500.999	R269	-62 383.744	3 641 672.080
L269	-64 034.416	3 642 595.328	R270	-62 810.103	3 641 896.897
L270	-64 077.964	3 642 680.180	R271	-62 778.033	3 641 953.637
L271	-64 107.375	3 642 739.729	R272	-62 859.483	3 642 021.266
L272	-64 151.366	3 642 828.648	R273	-62 956.843	3 642 053.746
L273	-64 330.224	3 643 339.043	R274	-63 173.593	3 642 102.074
L274	-64 364.675	3 643 419.892	R275	-63 282.752	3 642 158.313
L275	-64 395.075	3 643 472.691	R276	-63 473.783	3 642 303.742
L276	-64 463.597	3 643 564.160	R277	-63 558.852	3 642 354.518
L277	-64 520.877	3 643 623.259	R278	-63 760.032	3 642 449.975
L278	-64 600.198	3 643 686.197	R279	-63 857.113	3 642 516.764
L279	-64 734.088	3 643 756.587	R280	-63 940.444	3 642 599.122
L280	-64 794.298	3 643 778.406	R281	-64 015.585	3 642 712.961
L281	-64 844.198	3 643 793.095	R282	-64 058.986	3 642 810.709
L282	-64 931.187	3 643 805.124	R283	-64 085.407	3 642 885.079
L283	-65 023.146	3 643 806.703	R284	-64 089.198	3 642 929.628
L284	-65 069.326	3 643 805.442	R285	-64 132.739	3 642 985.717
L285	-65 181.484	3 643 790.630	R286	-64 166.720	3 643 075.026
L286	-65 261.193	3 643 765.629	R287	-64 213.842	3 643 211.545
L287	-65 409.841	3 643 724.527	R288	-64 242.793	3 643 297.954
L288	-65 447.285	3 643 723.223	R289	-64 274.514	3 643 353.743
L289	-65 479.711	3 643 697.235	R290	-64 281.505	3 643 402.463
L290	-65 480.368	3 643 570.067	R291	-64 294.085	3 643 418.563
L291	-65 482.676	3 643 535.038	R292	-64 354.927	3 643 529.861
L292	-65 513.168	3 643 534.157	R293	-64 412.058	3 643 606.520
L293	-65 540.980	3 643 692.615	R294	-64 477.438	3 643 675.119
L294	-65 614.128	3 643 705.835	R295	-64 551.419	3 643 736.057
L295	-65 633.630	3 643 724.461	R296	-64 629.910	3 643 788.369
L296	-65 749.977	3 643 733.372	R297	-64 745.190	3 643 846.916
L297	-66 014.750	3 643 727.005	R298	-64 868.179	3 643 884.754
L298	-66 020.977	3 643 727.047	R299	-65 065.728	3 643 903.961
L299	-66 119.173	3 643 710.487	R300	-65 141.927	3 643 909.110
L300	-66 286.702	3 643 730.105	R301	-65 374.245	3 643 909.346
L301	-66 367.471	3 643 753.983	R302	-65 382.714	3 643 909.306
L302	-66 455.941	3 643 787.472	R303	-65 412.294	3 643 908.414
L303	-66 540.191	3 643 827.370	R304	-65 506.403	3 643 922.763
L304	-66 629.451	3 643 852.628	R305	-65 524.274	3 644 055.131

Vel 20  
Sheet of

Van 22

P692/08



PADRESERWE KOÖRDINATE / ROAD RESERVE CO-ORDINATES											
LINKERKANT/LEFT HAND SIDE						REGTERKANT/RIGHT HAND SIDE					
	Y		X	WG 27°		Y		X			
L305	-66	704.091	3	643	908.787	R306	-65	528.385	3	644	104.961
L306	-66	785.351	3	643	948.305	R307	-65	558.576	3	644	099.475
L307	-66	867.931	3	643	982.313	R308	-65	552.414	3	644	024.741
L308	-66	952.541	3	644	010.912	R309	-65	549.362	3	643	912.272
L309	-67	039.100	3	644	033.970	R310	-65	558.982	3	643	900.782
L310	-67	126.650	3	644	051.329	R311	-65	596.992	3	643	891.733
L311	-67	155.030	3	644	055.128	R312	-65	629.381	3	643	877.323
L312	-67	215.358	3	644	063.052	R313	-65	627.991	3	643	870.372
L313	-67	304.687	3	644	068.900	R314	-65	647.401	3	643	861.822
L314	-67	511.114	3	644	051.887	R315	-65	664.011	3	643	855.202
L315	-67	572.633	3	644	051.906	R316	-65	715.410	3	643	835.472
L316	-68	087.310	3	643	981.655	R317	-66	057.225	3	643	775.328
L317	-68	124.680	3	643	972.764	R318	-66	175.924	3	643	779.576
L318	-68	189.230	3	643	950.864	R319	-66	264.233	3	643	794.054
L319	-68	253.900	3	643	930.493	R320	-66	265.273	3	643	788.354
L320	-68	336.410	3	643	897.283	R321	-66	331.173	3	643	800.383
L321	-68	386.209	3	643	873.852	R322	-66	329.483	3	643	809.613
L322	-68	397.149	3	643	874.032	R323	-66	404.003	3	643	834.802
L323	-68	419.799	3	643	863.342	R324	-66	458.183	3	643	857.731
L324	-68	523.919	3	643	798.251	R325	-66	512.233	3	643	884.270
L325	-68	612.139	3	643	770.920	R326	-66	590.313	3	643	931.848
L326	-68	694.524	3	643	745.307	R327	-66	675.593	3	643	965.486
L327	-68	798.109	3	643	657.609	R328	-66	759.023	3	644	005.905
L328	-69	029.603	3	643	605.222	R329	-66	904.392	3	644	062.222
L329	-69	043.783	3	643	602.012	R330	-67	035.956	3	644	095.748
L330	-69	136.263	3	643	585.761	R331	-67	088.731	3	644	108.489
L331	-69	229.882	3	643	576.460	R332	-67	116.222	3	644	113.912
L332	-69	401.091	3	643	564.159	R333	-67	209.139	3	644	126.101
L333	-69	454.660	3	643	568.238	R334	-67	286.988	3	644	131.390
L334	-69	460.070	3	643	568.648	R335	-67	365.407	3	644	133.589
L335	-69	607.389	3	643	570.036	R336	-67	490.016	3	644	126.127
L336	-69	652.318	3	643	564.296	R337	-68	034.788	3	644	055.109
L337	-69	725.218	3	643	566.625	R338	-68	127.536	3	644	038.428
L338	-69	757.277	3	643	560.885	R339	-68	293.483	3	643	991.446
L339	-69	786.777	3	643	559.984	R340	-68	574.809	3	643	859.320
L340	-69	821.067	3	643	554.124	R341	-68	596.718	3	643	854.654
L341	-69	901.066	3	643	538.843	R342	-68	696.059	3	643	804.639
L342	-69	945.236	3	643	551.693	R343	-68	776.996	3	643	762.413
L343	-70	086.800	3	643	611.128	R344	-68	858.866	3	643	725.613
L344	-70	169.699	3	643	626.396	R345	-68	942.525	3	643	695.212
L345	-70	171.969	3	643	626.816	R346	-68	999.754	3	643	678.492
L346	-70	198.209	3	643	634.106	R347	-69	086.744	3	643	659.611
L347	-70	242.579	3	643	654.915	R348	-69	116.083	3	643	654.341
L348	-70	295.800	3	643	685.224	R349	-69	145.293	3	643	649.100
L349	-70	370.319	3	643	684.943	R350	-69	222.683	3	643	639.360
L350	-70	393.949	3	643	712.342	R351	-69	282.882	3	643	641.779
L351	-70	440.896	3	643	757.626	R352	-69	340.919	3	643	643.513
L352	-70	504.080	3	643	786.470	R353	-69	562.940	3	643	639.066
L353	-70	622.820	3	643	846.107	R354	-69	678.819	3	643	636.735
L354	-70	665.030	3	643	875.276	R355	-69	766.158	3	643	641.604
L355	-70	799.291	3	643	947.603	R356	-70	035.591	3	643	677.248

PADRESERWE KOÖRDINATE / ROAD RESERVE CO-ORDINATES									
LINKERKANT/LEFT HAND SIDE					REGTERKANT/RIGHT HAND SIDE				
	Y	X	WG 27°		Y	X			
L356	-70	951.541	3 644	013.940	R357	-70	106.981	3 643	696.927
L357	-71	012.341	3 644	050.438	R358	-70	131.881	3 643	703.766
L358	-71	045.331	3 644	073.427	R359	-70	183.801	3 643	719.645
L359	-71	067.921	3 644	093.687	R360	-70	322.281	3 643	768.622
L360	-71	159.221	3 644	142.855	R361	-70	401.871	3 643	813.891
L361	-71	268.481	3 644	197.642	R362	-70	457.101	3 643	840.520
L362	-71	320.502	3 644	226.481	R363	-70	589.562	3 643	916.407
L363	-71	373.349	3 644	118.101	R364	-70	699.002	3 643	969.534
L364	-71	399.769	3 644	134.021	R365	-70	820.092	3 644	038.851
L365	-71	426.939	3 644	143.750	R366	-70	859.652	3 644	061.511
L366	-71	451.359	3 644	158.060	R367	-70	907.432	3 644	096.079
L367	-71	467.910	3 644	198.839	R368	-71	021.672	3 644	141.447
L368	-71	490.270	3 644	233.608	R369	-71	102.442	3 644	184.525
L369	-71	511.035	3 644	293.363	R370	-71	233.483	3 644	262.452
L370	-71	518.395	3 644	294.923	R371	-71	372.453	3 644	327.789
L371	-71	563.314	3 644	315.382	R372	-71	429.663	3 644	360.047
L372	-71	580.225	3 644	326.372	R373	-71	499.217	3 644	398.782
L373	-71	608.065	3 644	353.291	R374	-71	576.256	3 644	407.361
L374	-71	789.244	3 644	393.538	R375	-71	636.946	3 644	423.469
L375	-71	815.083	3 644	395.127	R376	-71	697.535	3 644	436.488
L376	-71	925.143	3 644	416.685	R377	-71	730.135	3 644	442.318
L377	-71	948.733	3 644	417.195	R378	-71	759.295	3 644	447.017
L378	-72	013.092	3 644	428.994	R379	-71	788.095	3 644	452.797
L379	-72	055.002	3 644	433.503	R380	-71	908.074	3 644	474.165
L380	-72	100.842	3 644	445.352	R381	-71	998.483	3 644	489.593
L381	-72	130.791	3 644	452.401	R382	-72	012.913	3 644	492.403
L382	-72	166.181	3 644	459.091	R383	-72	087.943	3 644	506.781
L383	-72	218.121	3 644	477.510	R384	-72	139.393	3 644	520.640
L384	-72	310.281	3 644	508.388	R385	-72	159.912	3 644	525.060
L385	-72	372.156	3 644	541.400	R386	-72	173.772	3 644	527.810
L386	-72	423.020	3 644	563.905	R387	-72	276.982	3 644	566.087
L387	-72	481.860	3 644	599.474	R388	-72	391.692	3 644	620.625
L388	-72	502.630	3 644	612.033	R389	-72	503.462	3 644	687.072
L389	-72	532.270	3 644	630.352	R390	-72	698.851	3 644	806.701
L390	-72	571.921	3 644	656.461	R391	-72	713.371	3 644	819.060
L391	-72	596.551	3 644	669.941	R392	-72	772.801	3 644	871.039
L392	-72	737.369	3 644	755.981	R393	-72	909.511	3 644	936.926
L393	-72	761.799	3 644	753.971	R394	-73	039.731	3 645	017.773
L394	-72	847.809	3 644	805.469	R395	-73	119.681	3 645	067.281
L395	-72	896.179	3 644	847.747	R396	-73	291.161	3 645	173.287
L396	-72	948.289	3 644	888.136	R397	-73	365.911	3 645	219.136
L397	-73	054.820	3 644	953.124	R398	-73	446.361	3 645	279.514
L398	-73	164.800	3 645	018.071	R399	-73	488.041	3 645	317.843
L399	-73	228.660	3 645	060.450	R400	-73	515.122	3 645	342.752
L400	-73	394.420	3 645	163.656	R401	-73	572.752	3 645	408.430
L401	-73	436.320	3 645	189.745	R402	-73	593.413	3 645	437.230
L402	-73	487.200	3 645	227.524	R403	-73	609.593	3 645	459.399
L403	-73	534.090	3 645	266.753	R404	-73	633.620	3 645	494.170
L404	-73	653.961	3 645	381.420					
L405	-73	656.181	3 645	383.830					
L406	-73	728.680	3 645	468.210					

Vel	22	Van	22	P692/08
Sheet		of		