

Government Gazette Staatskoerant

REPUBLIC OF SOUTH AFRICA
REPUBLIEK VAN SUID-AFRIKA

Vol. 524

Pretoria, 26 February
Februarie 2009

No. 31918

CONTENTS**INHOUD**

<i>No.</i>	<i>Page No.</i>	<i>Gazette No.</i>	<i>No.</i>	<i>Bladsy No.</i>	<i>Koerant No.</i>
GOVERNMENT NOTICE			GOEWERMENSKENNISGEWING		
Transport, Department of			Vervoer, Departement van		
<i>Government Notice</i>			<i>Goewermentskennisgewing</i>		
173			173		
South African National Roads Agency Limited and the National Roads Act (7/1998): The South African National Roads Agency Limited: Declaration amendment of National Road N17 Section 1: Amendment of Declaration No. 2400 of 1989			Suid-Afrikaanse Nasionale Padagentskap Beperk en die Nasionale Paaie Wet (7/1998): Die Suid-Afrikaanse Nasionale Padagentskap Beperk: Verklaring wysiging van Nasionale Pad N17 Seksie 1: Wysiging van Verklaring No. 2400 van 1989		
	3	31918		4	31918

GOVERNMENT NOTICE

DEPARTMENT OF TRANSPORT

No. 173

26 February 2009

THE SOUTH AFRICAN NATIONAL ROADS AGENCY LIMITED

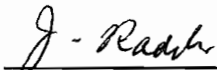
Registration No: 98/09584/06

DECLARATION AMENDMENT OF NATIONAL ROAD N17 SECTION 1

AMENDMENT OF DECLARATION NO. 2400 OF 1989

By virtue of section 40(1)(b) of the South African National Roads Agency Limited and the National Roads Act, 1998 (Act No. 7 of 1998), I hereby amend Declaration No. 2400 of 1989 by substituting sheets 5, 6 and 9 thereof, with the subjoined sheets 5A, 6A and 9A of Plan No. P376/89.

(National Road N17 Section 1: Regents Park Extension 7 – Elands Interchange)



MINISTER OF TRANSPORT

GOEWERMENTSKENNISGEWING

DEPARTEMENT VAN VERVOER

No. 173

26 Februarie 2009

DIE SUID-AFRIKAANSE NASIONALE PADAGENTSKAP BEPERK

Registrasie No: 98/09584/06

VERKLARING WYSIGING VAN NASIONALE PAD N17 SEKSIE 1.

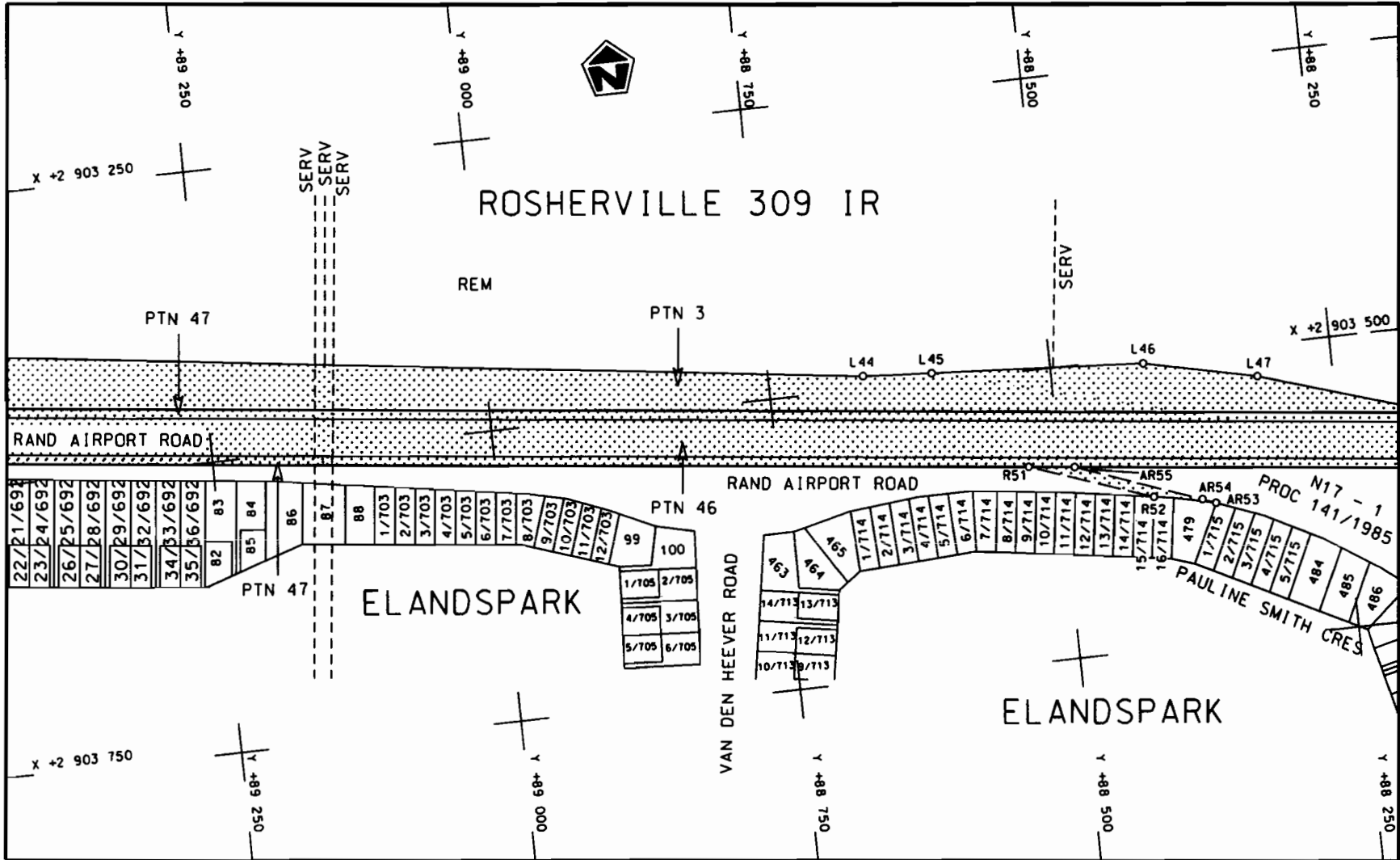
WYSIGING VAN VERKLARING NO. 2400 VAN 1989

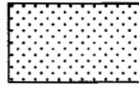
Kragtens Artikel 40(1)(b) van die Suid-Afrikaanse Nasionale Padagentskap Beperk en die Nasionale Paaie Wet, 1998 (Wet no.7 van 1998), wysig ek hiermee Verklaring no. 2400 van 1989 deur velle 5, 6 en 9 daarvan, te vervang met meegaande velle 5A, 6A en 9A van Plan no. P376/89.

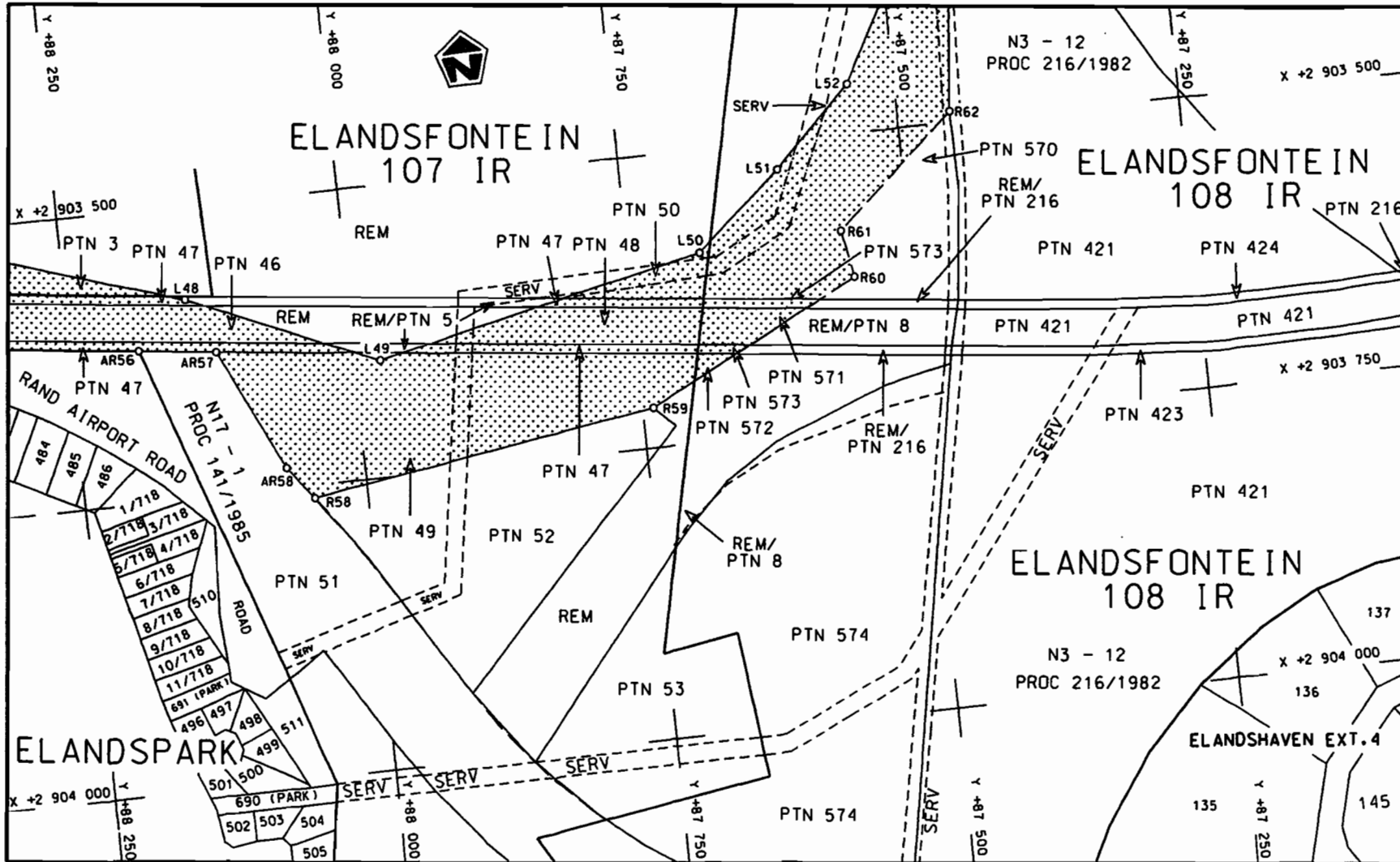
(Nasionale Pad N17 Seksie 1: Regents Park Uitbreiding 7 - Elandswisselaar)

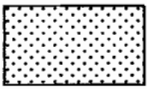


MINISTER VAN VERVOER



<p>Die Suid Afrikaanse Nasionale Padagentskap Beperk The South African National Roads Agency Limited</p>	<p>Die figuur getoon The figure shown</p>	<p></p> <p>steldie podreserwe voor van 'n gedeelte represents the road reserve of a portion van Nasionale Roete N17 Seksie of National Route Section 1</p>	<p>Vel Sheet 5A van of 9 Plan 376/89</p>
--	---	--	--



<p>Die Suid Afrikaanse Nasionale Padagentskap Beperk The South African National Roads Agency Limited</p>	<p>Die figuur getoon The figure shown</p>		<p>steldie padreserwe voor van 'n gedeelte represents the road reserve of a portion van Nasionale Roete N17 of National Route Section 1</p>	<p>Vel Sheet 6A van 9 of 9 Plan 376/89</p>
--	---	---	---	--

PADRESERWE KOÖRDINATE / ROAD RESERVE CO-ORDINATES									
LINKERKANT/LEFT HAND SIDE				REGTERKANT/RIGHT HAND SIDE					
	Y	X	Lo 29°		Y	X			
L21	91	846.300	2 902	852.610	R25	91	919.560	2 902	990.140
L22	91	760.720	2 902	845.890	R26	91	867.640	2 902	974.220
L23	91	674.710	2 902	847.980	R27	91	824.550	2 902	965.810
L24	91	646.960	2 902	851.990	R28	91	795.910	2 902	963.270
L25	91	569.650	2 902	866.540	R29	91	741.410	2 902	960.970
L26	91	319.670	2 902	933.400	R30	91	675.950	2 902	968.440
L27	91	145.480	2 902	961.970	R31	91	576.280	2 902	979.430
L28	90	944.160	2 902	980.790	R32	91	400.810	2 903	023.550
L29	90	819.340	2 902	952.970	R33	91	279.870	2 903	044.420
L30	90	649.750	2 902	966.570	R34	90	894.690	2 903	078.780
L31	90	569.420	2 902	961.210	R35	90	844.450	2 903	075.320
L32	90	449.550	2 902	966.810	R36	90	615.030	2 903	092.230
L33	90	433.580	2 902	960.190	R37	90	579.100	2 903	138.640
L34	90	376.020	2 902	960.250	R38	90	556.240	2 903	123.170
L35	90	361.590	2 902	947.720	R39	90	478.420	2 903	134.260
L36	90	386.910	2 902	905.910	R40	90	417.620	2 903	157.140
L37	90	439.360	2 902	858.530	R41	90	337.420	2 903	154.140
L38	90	402.180	2 902	812.650	R42	90	211.040	2 903	172.340
L39	90	192.630	2 902	947.890	R43	90	151.990	2 903	188.100
L40	90	106.570	2 902	994.660	R44	90	115.010	2 903	205.500
L41	90	014.120	2 903	019.290	R45	90	036.640	2 903	294.110
L42	89	916.890	2 903	034.600	R46	89	988.640	2 903	255.670
L43	89	631.180	2 903	065.850	R47	90	034.100	2 903	187.400
L44	88	638.790	2 903	193.870	R48	90	006.180	2 903	152.760
L45	88	578.800	2 903	197.820	R49	89	937.420	2 903	141.580
L46	88	390.300	2 903	209.640	R50	89	706.800	2 903	153.790
L47	88	290.510	2 903	231.360	R51	88	500.790	2 903	286.860
L48	88	117.590	2 903	284.400	R52	88	392.820	2 903	324.370
L49	87	950.100	2 903	354.300	AR53	88	042.640	2 903	437.470
L50	87	658.980	2 903	292.820	AR54	88	094.450	2 903	331.740
L51	87	583.020	2 903	228.950	AR55	88	162.590	2 903	324.220
L52	87	513.820	2 903	162.820	AR56	88	460.160	2 903	291.500
L53	87	467.580	2 903	078.410	AR57	88	350.660	2 903	330.920
L54	87	443.940	2 902	983.990	R58	88	019.650	2 903	465.620
L55	87	366.140	2 902	504.260	AR58	88	338.700	2 903	335.420
					R59	87	713.340	2 903	420.460
					R60	87	524.380	2 903	327.680
					R61	87	532.190	2 903	287.330
					R62	87	426.460	2 903	195.290
					R63	87	288.740	3 903	081.990
					R64	87	258.670	2 903	034.980
					R65	87	232.510	2 902	971.230
					R66	87	229.840	2 902	902.230
					R67	87	246.910	2 902	837.600
					R68	87	290.760	2 902	744.920
					R69	87	307.420	2 902	670.540
					R70	87	301.530	3 902	465.350

Vel
Sheet9A
Van 9
of

P376/89