

# Government Gazette Staatskoerant

REPUBLIC OF SOUTH AFRICA  
REPUBLIEK VAN SUID-AFRIKA

Vol. 524

Pretoria, 26 February  
Februarie 2009

No. 31920

**CONTENTS****INHOUD**

<i>No.</i>	<i>Page No.</i>	<i>Gazette No.</i>	<i>No.</i>	<i>Bladsy No.</i>	<i>Koerant No.</i>
<b>GOVERNMENT NOTICE</b>			<b>GOEWERMENSKENNISGEWING</b>		
<b>Transport, Department of</b>			<b>Vervoer, Departement van</b>		
<i>Government Notice</i>			<i>Goewermentskennisgewing</i>		
175			175		
South African National Roads Agency Limited and the National Roads Act (7/1998): The South African National Roads Agency Limited: Declaration amendment of National Road N2 Section 32: Amendment of Declaration No. 1352 of 2003 .....	3	31920	Suid-Afrikaanse Nasionale Padagentskap Beperk en die Nasionale Paaie Wet (7/1998): Die Suid-Afrikaanse Nasionale Padagentskap Beperk: Verklaring wysiging van Nasionale Pad N2 Seksie 32: Wysiging van Verklaring No. 1352 van 2003 .....	4	31920

---

**GOVERNMENT NOTICE**

---

**DEPARTMENT OF TRANSPORT**

No. 175

26 February 2009

**THE SOUTH AFRICAN NATIONAL ROADS  
AGENCY LIMITED**Registration No: 98/09584/06

---

**DECLARATION AMENDMENT OF NATIONAL ROAD N2 SECTION 32**

AMENDMENT OF DECLARATION NO. 1352 of 2003.

By virtue of section 40 (1)(b) of the South African National Roads Agency Limited and the National Roads Act, 1998 (Act No. 7 of 1998), I hereby amend Declaration No. 1352 of 2003 by substituting it, with the subjoined sheets 1 to 25 of plan P686/08 including the roadway, kerbs and shoulders (surfaced or gravel) but excluding service roads, parking areas and other road infrastructure not related to National Roads, through the township of Pongola (from points L176 & R176 up to points L177 & R177).

**(National Road N2 Section 32: Pongola River – Kwa-Zulu Natal/Mpumalanga Provincial Border)**



---

**MINISTER OF TRANSPORT**

---

## GOEWERMENTSKENNISGEWING

---

### DEPARTEMENT VAN VERVOER

No. 175

26 Februarie 2009

## DIE SUID-AFRIKAANSE NASIONALE PADAGENTSKAP BEPERK

Registrasie No: 98/09584/06

---

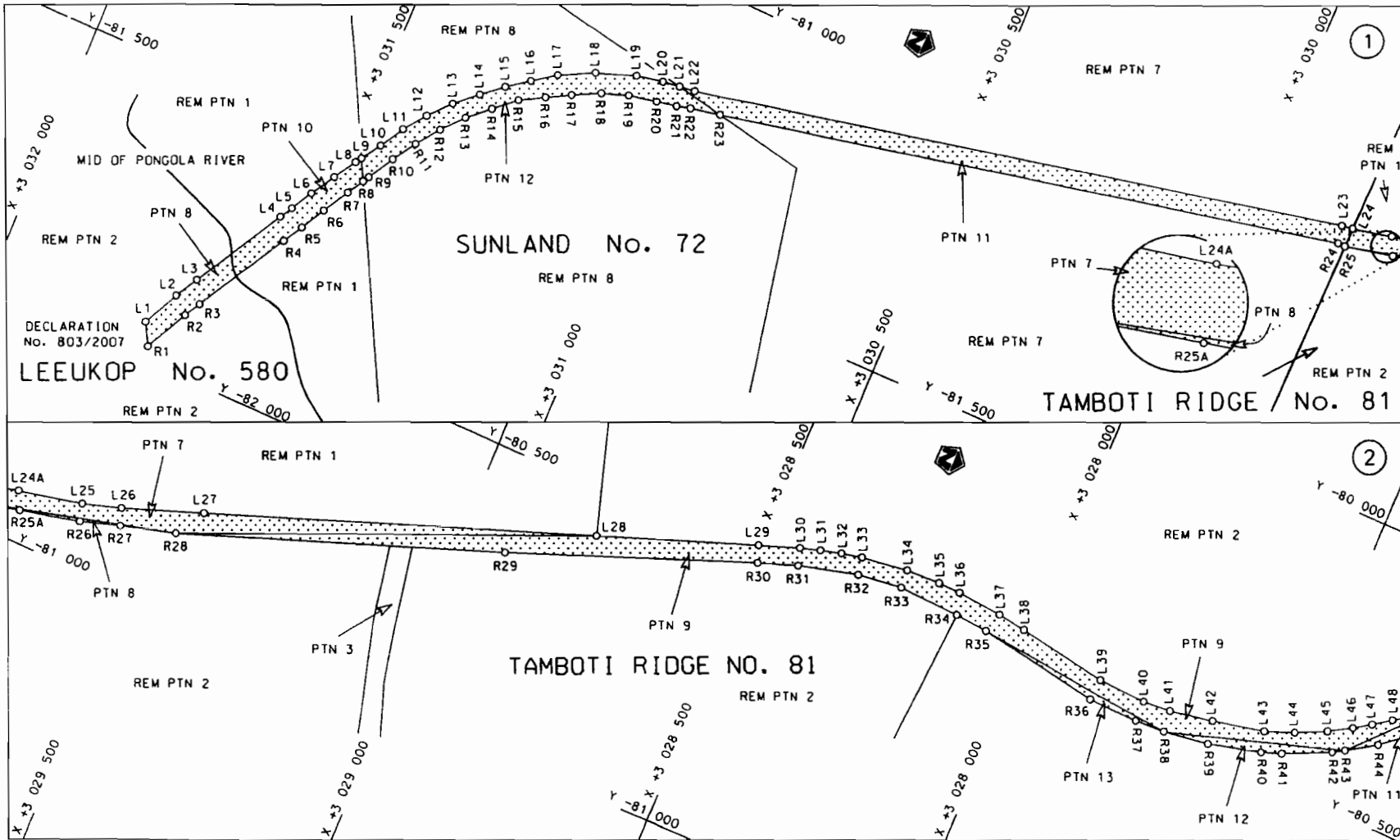
### VERKLARING WYSIGING VAN NASIONALE PAD N2 SEKSIE 32.

WYSIGING VAN VERKLARING NO. 1352 VAN 2003.

Kragtens Artikel 40(1)(b) van die Suid-Afrikaanse Nasionale Padagentskap Beperk en die Nasionale Paaie Wet, 1998 (Wet No.7 van 1998), wysig ek hiermee Verklaring no. 1352 van 2003, deur dit, te vervang met meegaande velle 1 tot 25 van plan P686/08 deur die dorpsgronde van Pongola (vanaf punte L176 & R176 tot L177 & R177). insluitende die padbaan, randstene en skouers (geplavlei of grond), maar uitsluitende dienspaaie, parkeerareas en ander pad infrastruktuur nie verwant aan Nasionale Paaie nie.

**(Nasionale Pad N2 Seksie 32: Pongolarivier – Kwa-Zulu Natal/Mpumalanga Provinsiale Grens)**

  
\_\_\_\_\_  
MINISTER VAN VERVOER



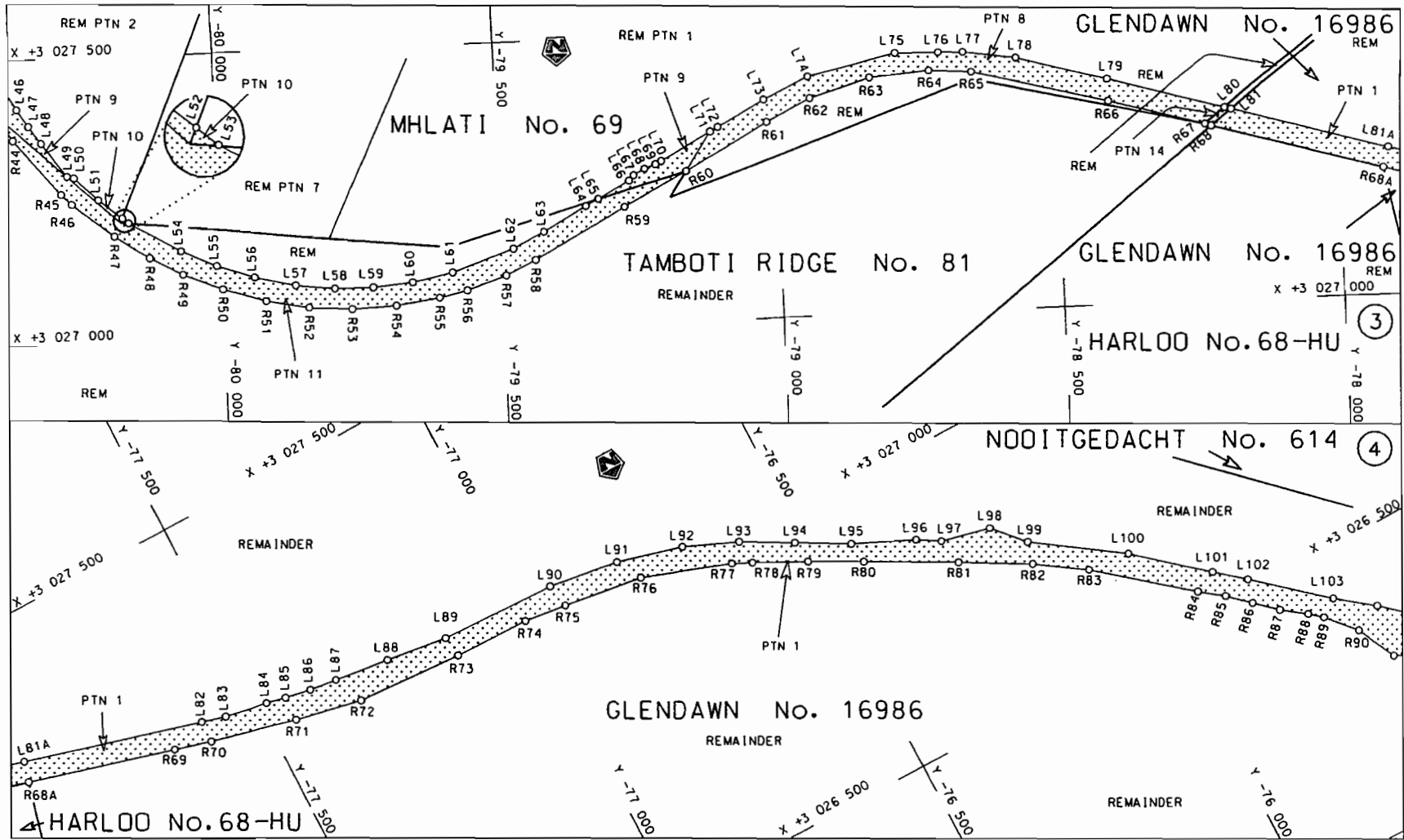
Die Suid Afrikaanse Nasionale Padagentskap Beperk  
 The South African National Roads Agency Limited

Die figuur getoon  
 The figure shown



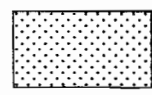
steidie padreserve voor van 'n gedeelte  
 represents the road reserve of a portion  
 van Nasionale Roete N2  
 of National Route N2  
 Seksie 32  
 Section

Vel 1 van 25  
 Sheet of  
 Plan P686/08



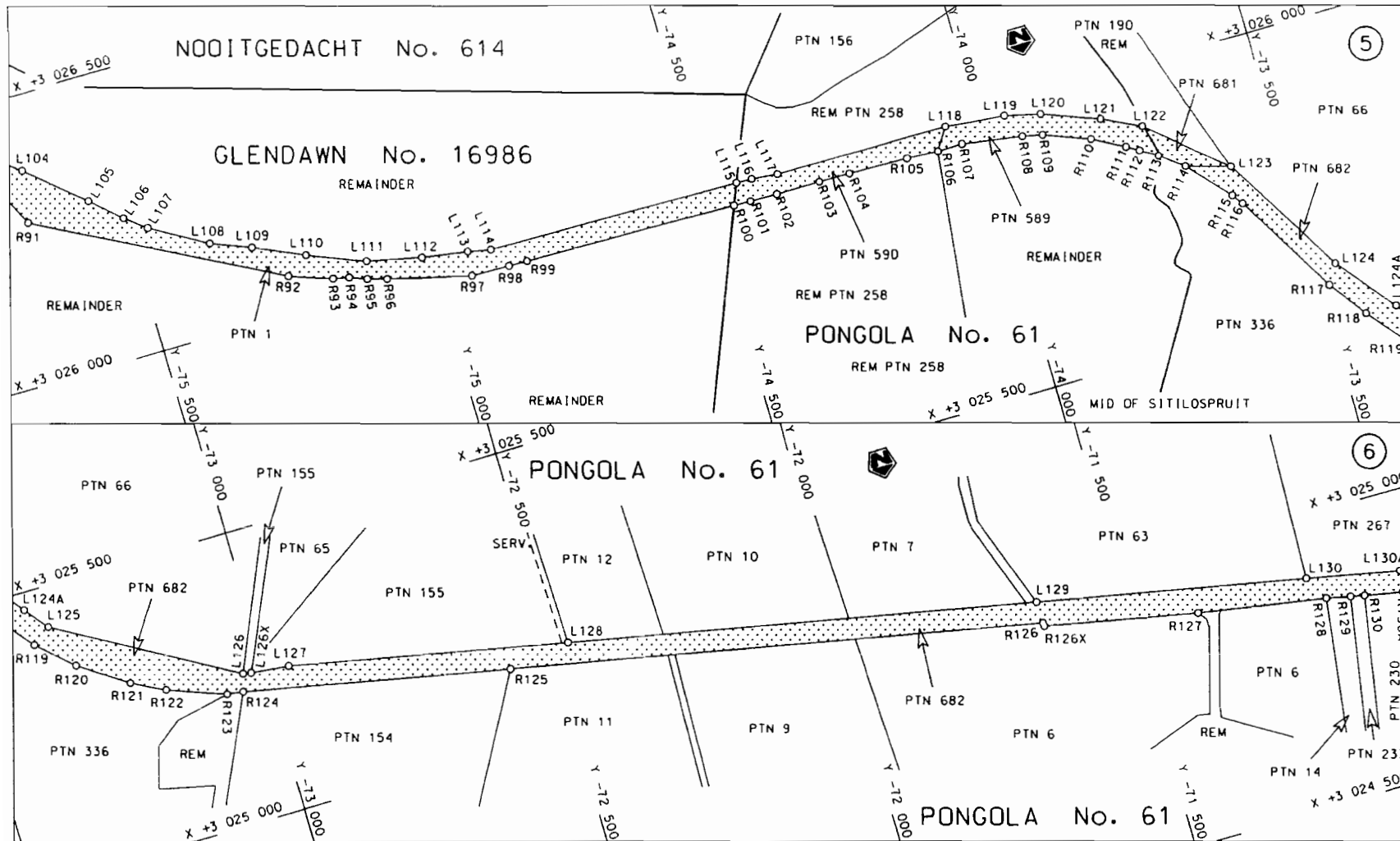
Die Suid Afrikaanse Nasionale Padagentskap Beperk  
The South African National Roads Agency Limited


Die figuur getoon  
The figure shown

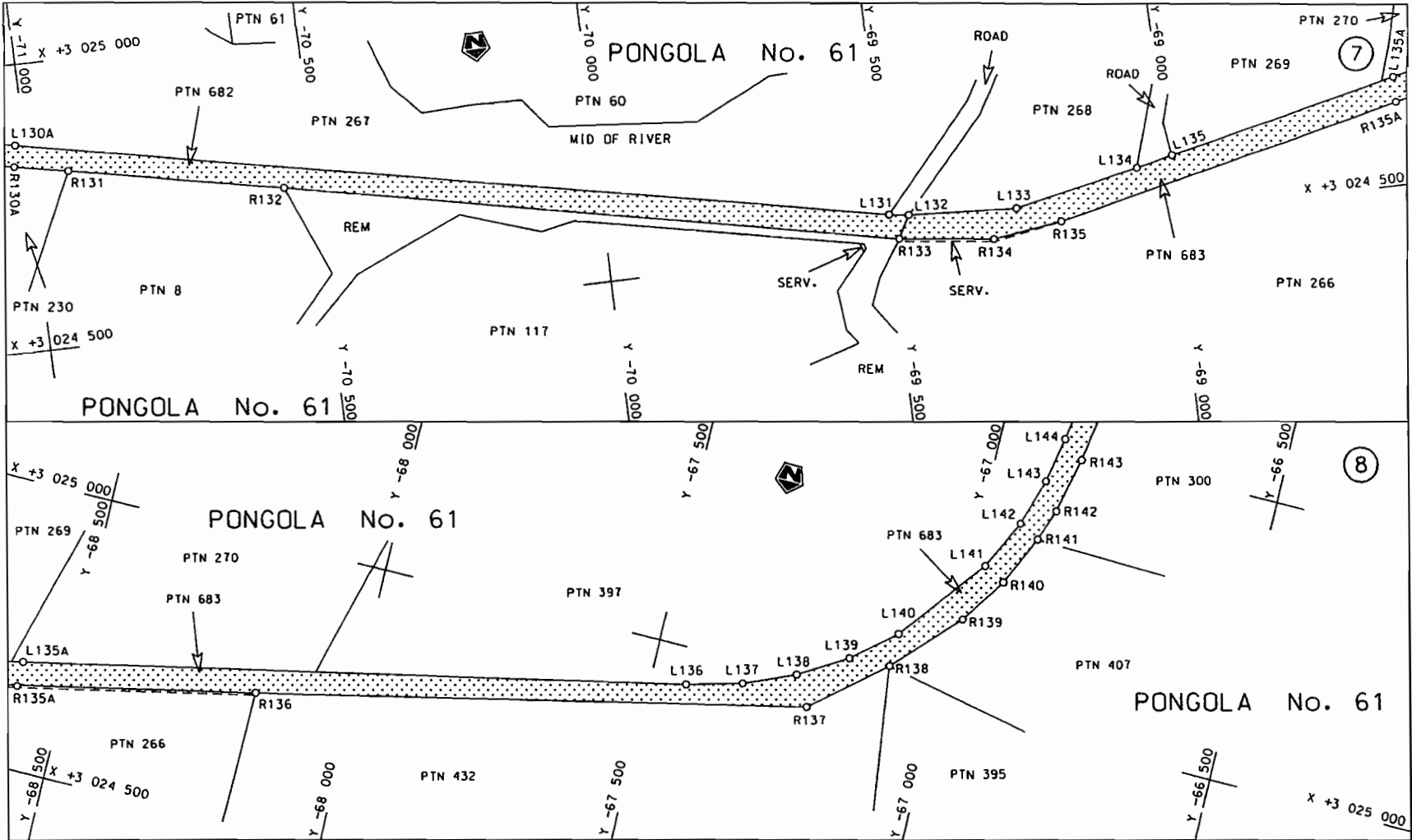


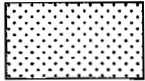
steldie padreserwe voor van 'n gedeelte  
represents the road reserve of a portion  
von Nasionale Roete  
of National Route N2 Seksie  
Section 32

Vel  
Sheet 2 von  
of 25  
Plan P686/08

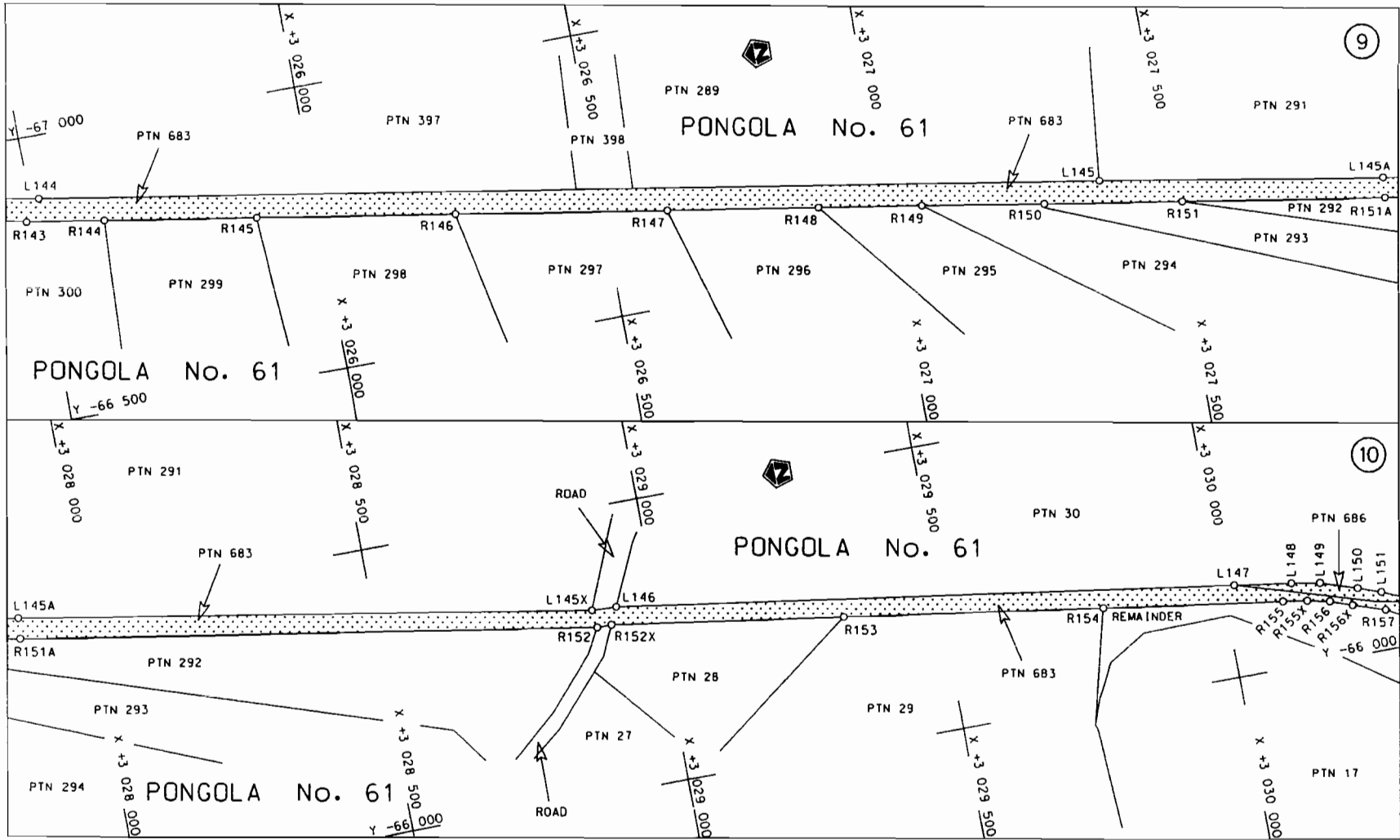



<p>Die Suid Afrikaanse Nasionale Padagentskap Beperk The South African National Roads Agency Limited</p>	<p>Die figuur getoon The figure shown</p> 	<p>stel die padreserwe voor van 'n gedeelte represents the road reserve of a portion van Nasionale Roete N2 of National Route N2</p> <p>Seksie 32</p>	<p>Vel Sheet 3 van 25 Plan P686/08</p>
--	--	---	--

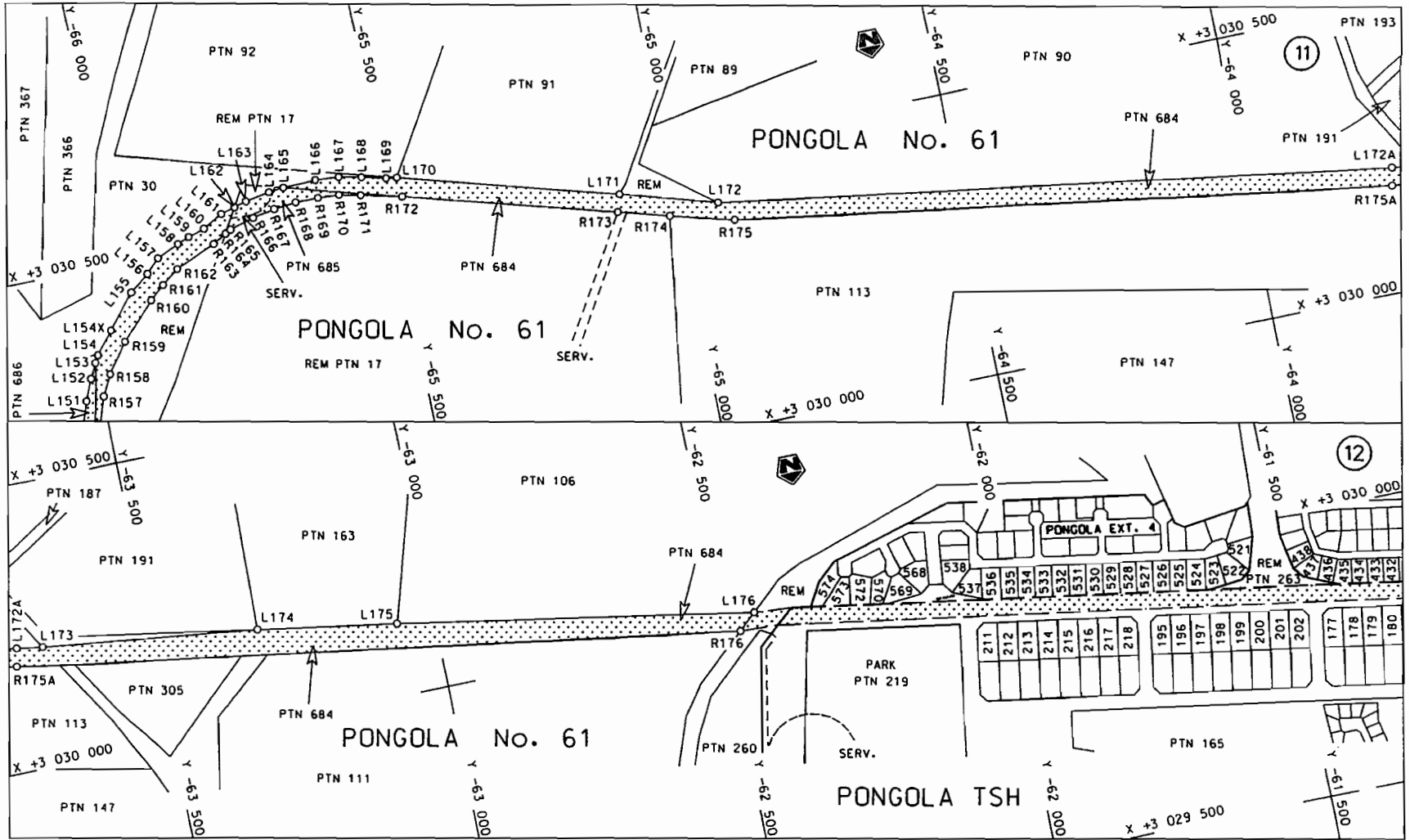


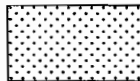
<p>Die Suid Afrikaanse Nasionale Padagentskap Beperk The South African National Roads Agency Limited</p>	<p>Die figuur getoon The figure shown</p>		<p>steldie padreserwe voor van 'n gedeelte represents the road reserve of a portion van Nasionale Roete N2 of National Route N2</p>	<p>Vel Sheet 4 van 25 Plan P686/08</p>
--	---	--	---	--

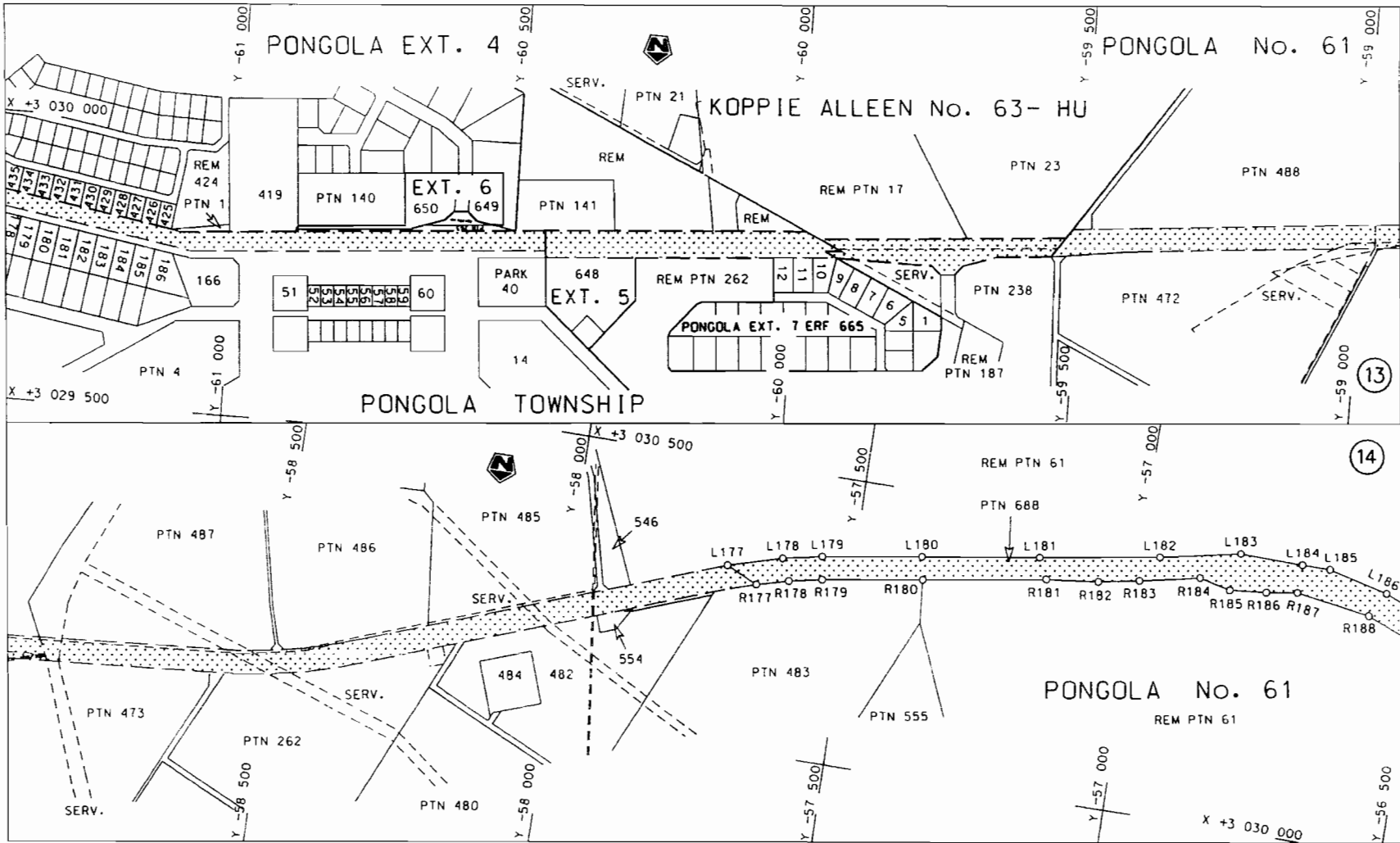





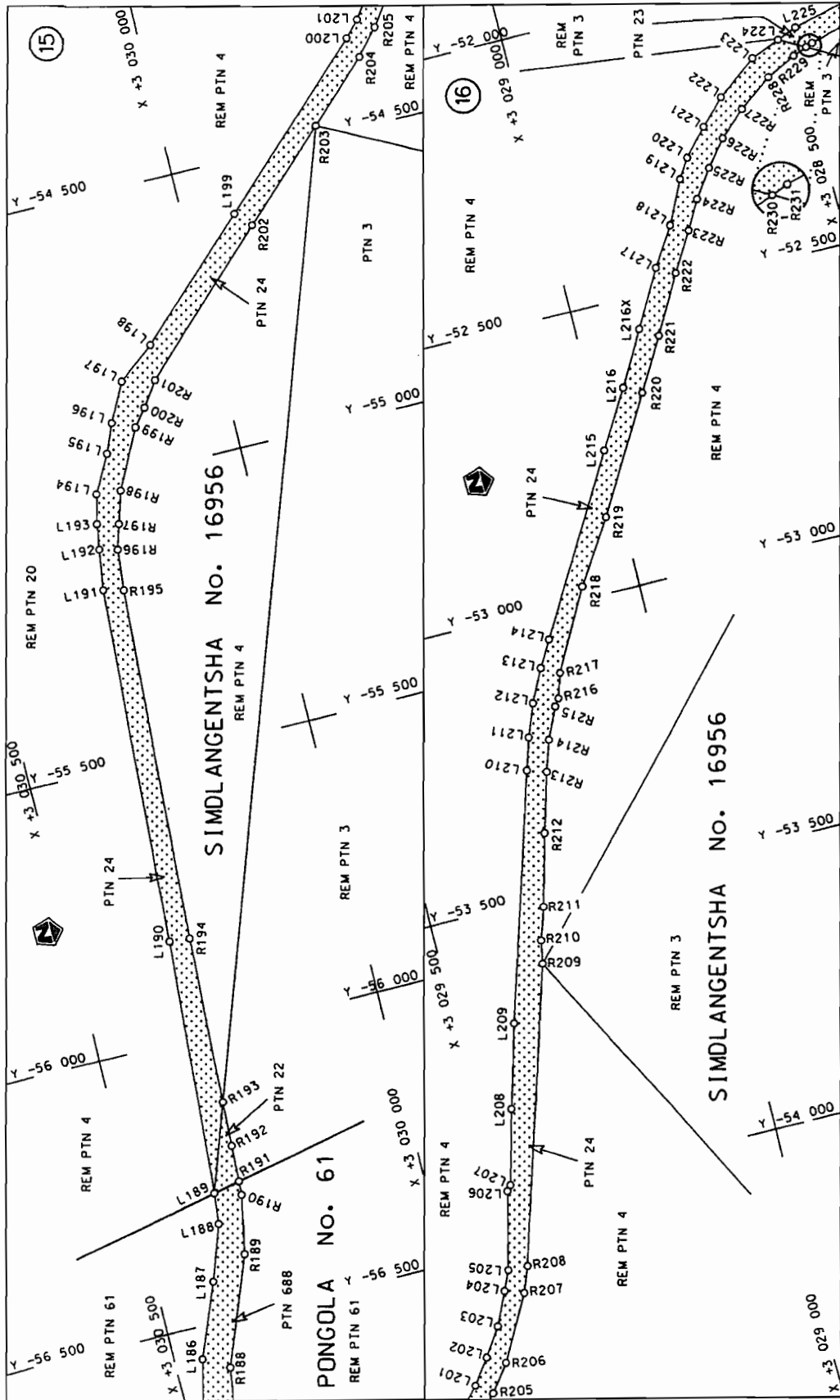
<p>Die Suid Afrikaanse Nasionale Padagentskap Beperk The South African National Roads Agency Limited</p>	<p>Die figuur getoon The figure shown</p>		<p>steldie podreserwe voor van 'n gedeelte represents the road reserve of a portion van Nasionale Roete N2 Seksie 32 of National Route</p>	<p>Vel Sheet 5 van of 25 Plan P686/08</p>
--	---	--	--	---




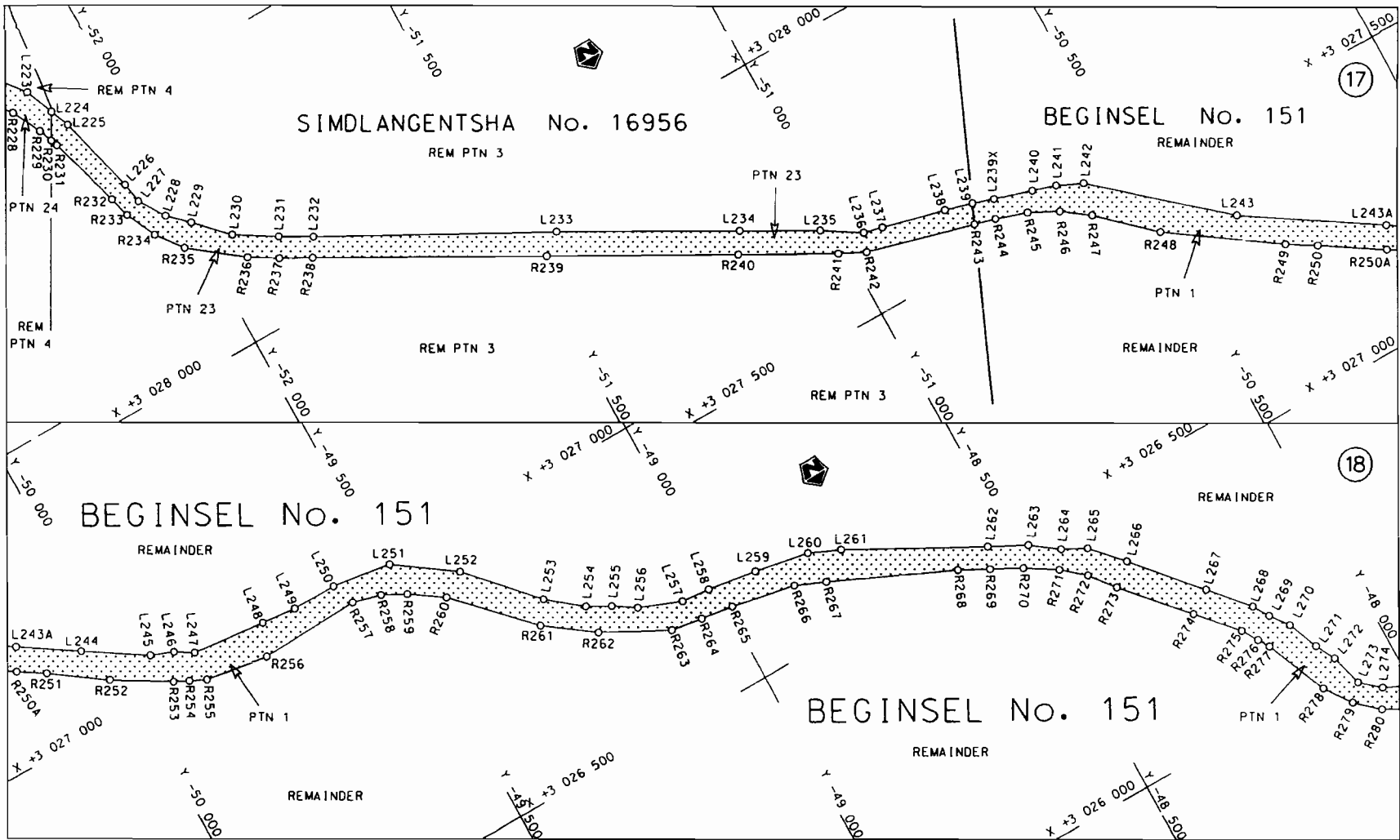
<p>Die Suid Afrikaanse Nasionale Padagentskop Beperk The South African National Roads Agency Limited</p>	<p>Die figuur getoon The figure shown</p> 	<p>stel die padreserwe voor van 'n gedeelte represents the road reserve of a portion von Nasionale Roete N2 Sektie 32 of National Route Section</p>	<p>Vel Sheet 6 van 25 Plan P686/08</p>
--	--	---	--




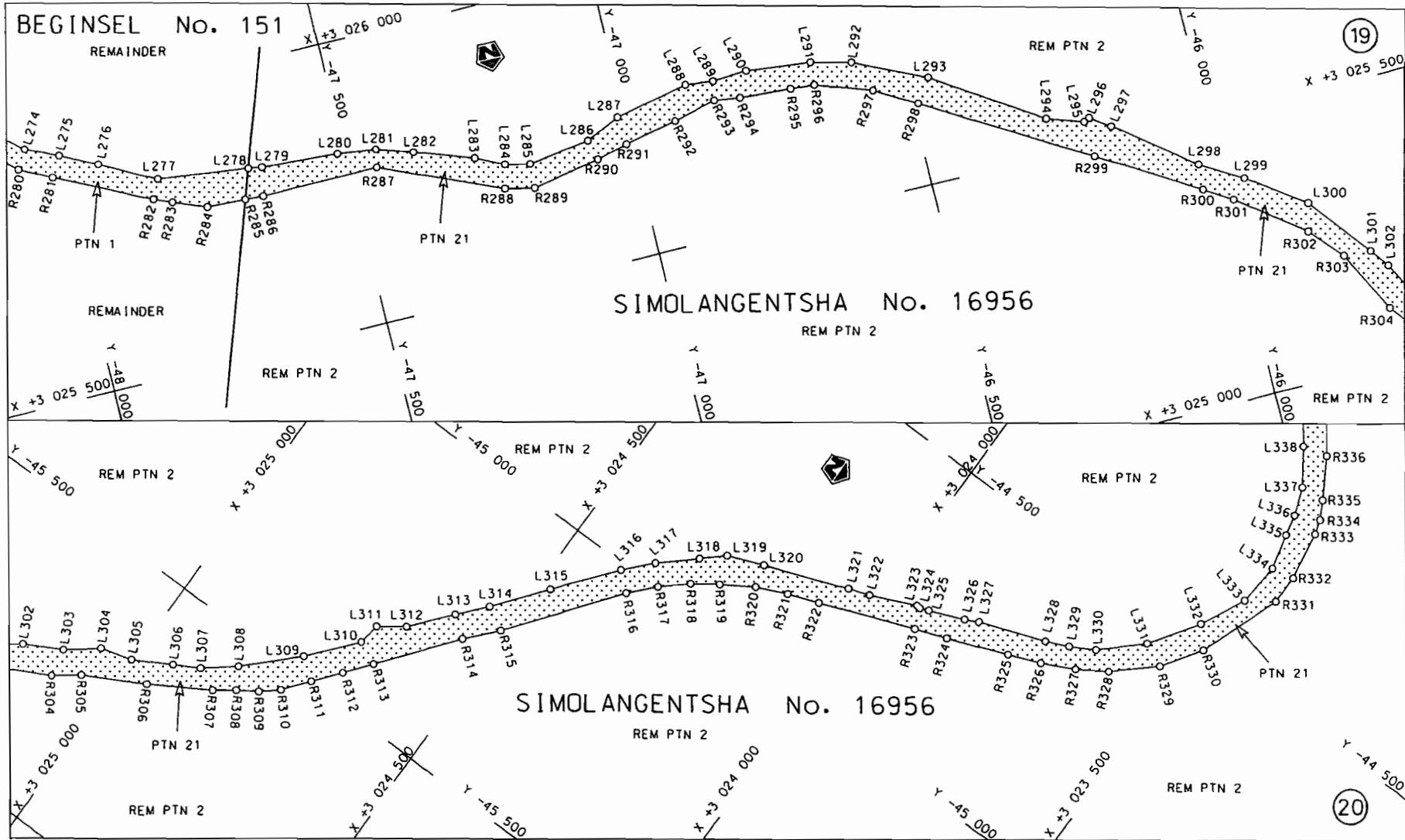
<p>Die Suid Afrikaanse Nasionale Podagentskap Beperk The South African National Roads Agency Limited</p>	<p>Die figuur getoon The figure shown</p> 	<p>steldie padreserwe voor van 'n gedeelte represents the road reserve of a portion van Nasionale Roete of National Route N2</p> <p>Seksie Section 32</p>	<p>Vel Sheet 7 van of 25 Plan P686/08</p>
--	--	---	---




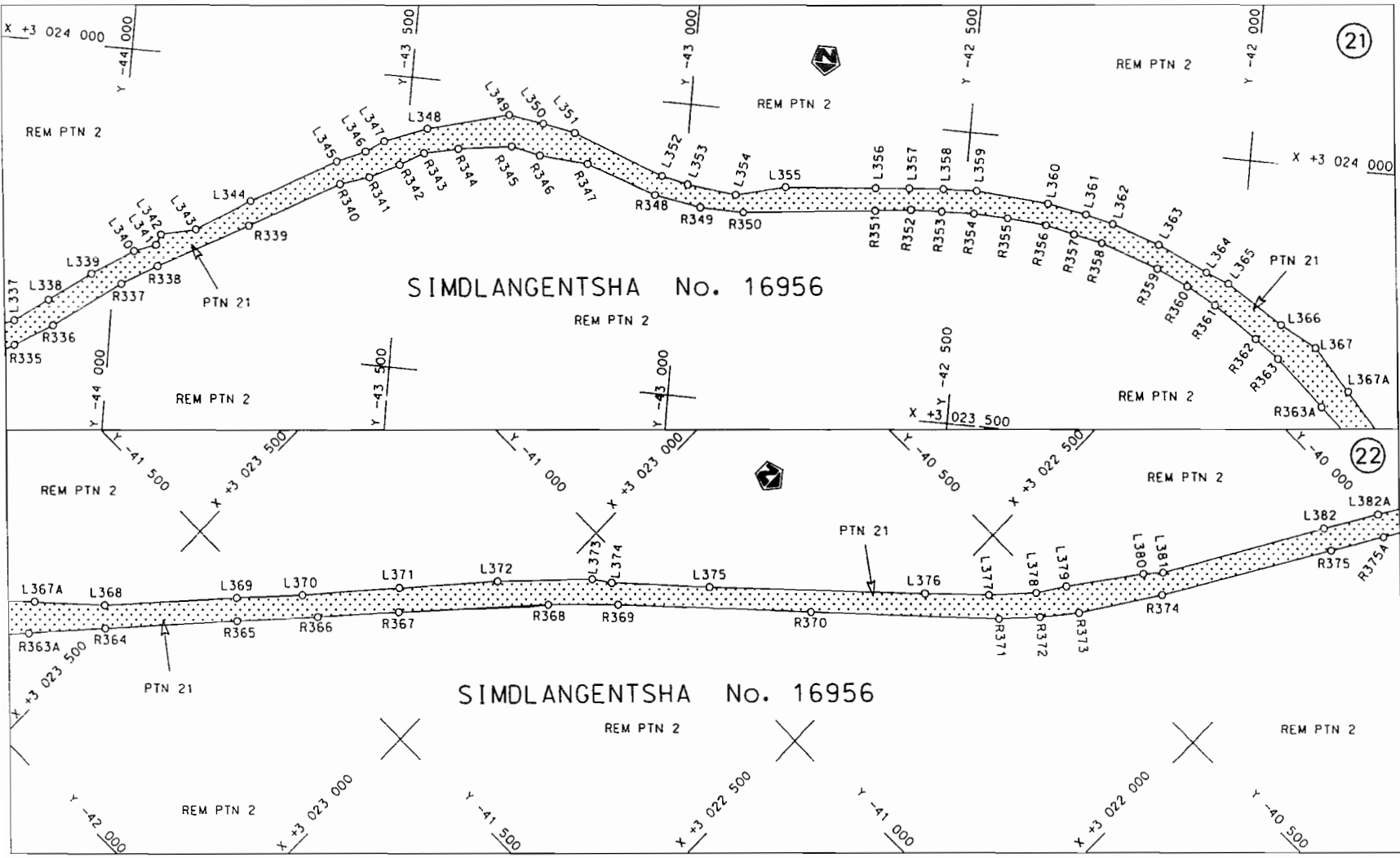
Die Suid Afrikaanse Nasionale Padagentskap Beperk The South African National Roads Agency Limited	Die figuur getoon The figure shown		steldie podreserwe voor van 'n gedeelte represents the road reserve of a portion van Nasionale Roete N2 of National Route	Vel Sheet 8 of 25 Plan P686/08
--	---------------------------------------	---	--	-----------------------------------




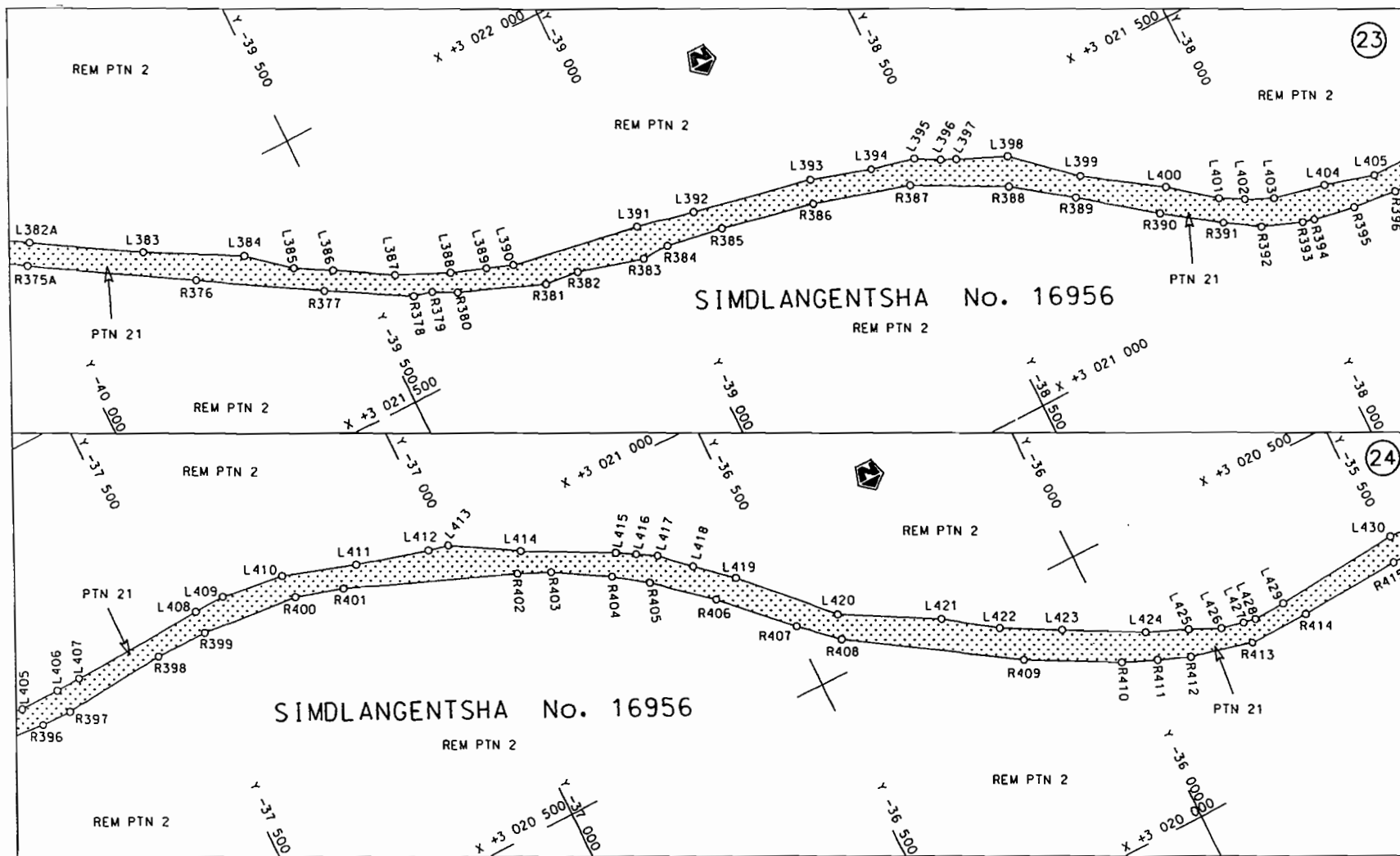
<p>Die Suid Afrikaanse Nasionale Padogentskap Beperk The South African National Roads Agency Limited</p>	<p>Die figuur getoon The figure shown</p> 	<p>steldie padreserwe voor van 'n gedeelte represents the road reserve of a portion van Nasionale Roete N2 Seksie 32 of National Route</p>	<p>Vel Sheet 9 van of 25 Plan P686/08</p>
--	--	--	---




<p>Die Suid Afrikaanse Nasionale Padagentskap Beperk The South African National Roads Agency Limited</p>	<p>Die figuur getoon The figure shown</p> 	<p>steldie padreserwe voor van 'n gedeelte represents the road reserve of a portion van Nasionale Roete N2 of National Route N2</p> <p>Seksie Section 32</p>	<p>Vel Sheet 10 van of 25 Plan P686/08</p>
--	--	--	--

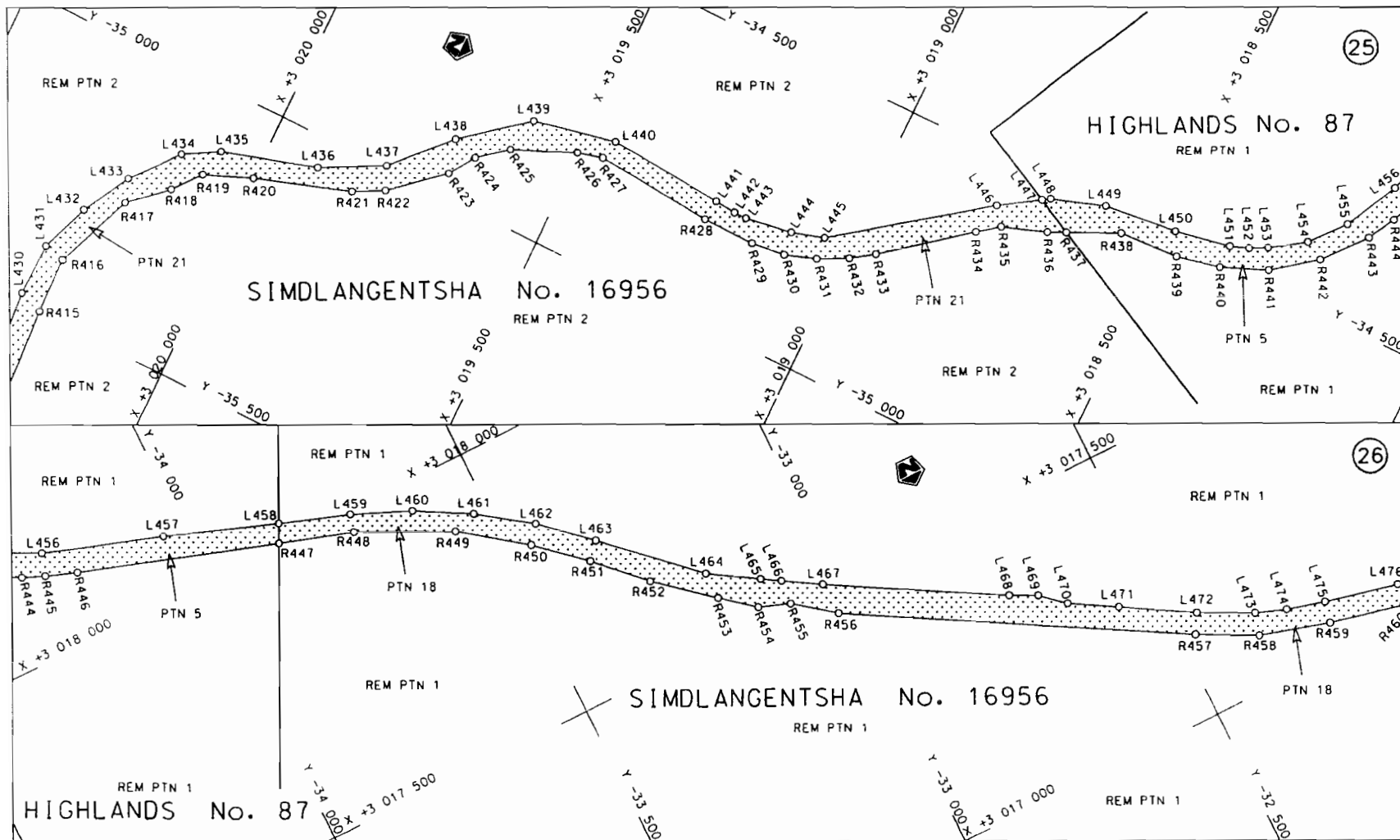


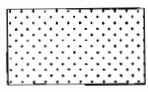
<p>Die Suid Afrikaanse Nasionale Padagentskap Beperk The South African National Roads Agency Limited</p>	<p>Die figuur getoon The figure shown</p> 	<p>steldie padreserwe voor van 'n gedeelte represents the road reserve of a portion van Nasionale Roete of National Route</p> <p>N2</p> <p>Seksie Section</p> <p>32</p>	<p>Vel Sheet</p> <p>11 of</p> <p>25</p> <p>Plan P686/08</p>
--	--	---	---

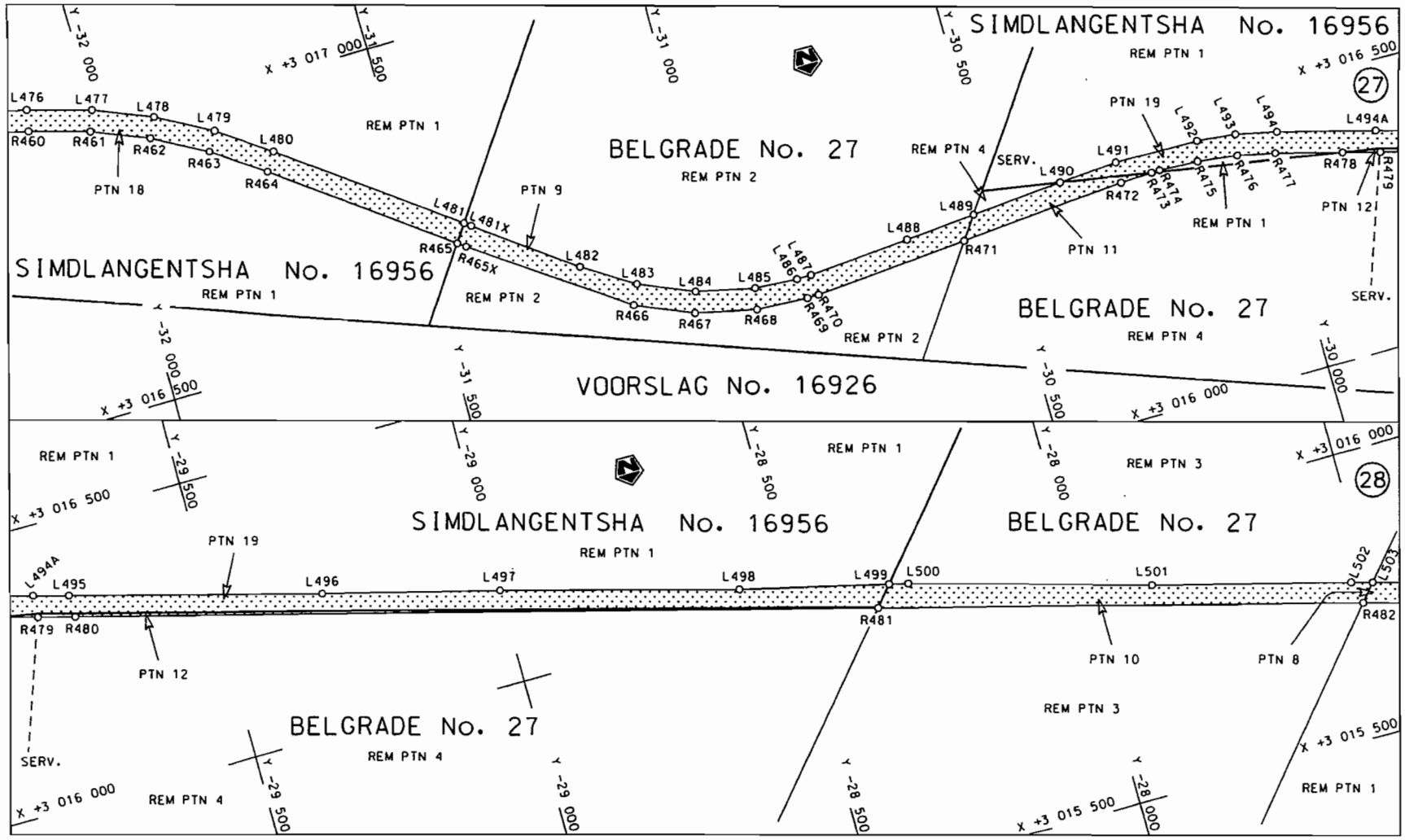


<p>Die Suid Afrikaanse Nasionale Padagentskop Beperk The South African National Roads Agency Limited</p>	<p>Die figuur getoon The figure shown</p>	<p></p> <p>steldie podreserve voor van 'n gedeelte represents the road reserve of a portion van Nasionale Roete N2 Seksie 32 of National Route</p>	<p>Vel Sheet 12 van 25 Plan P686/08</p>
--	---	--	---



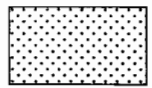


<p>Die Suid Afrikaanse Nasionale Padogentskap Beperk The South African National Roads Agency Limited</p>	<p>Die figuur getoon The figure shown</p> 	<p>steldie padreserve voor van 'n gedeelte represents the road reserve of a portion van Nasionale Roete N2 of National Route</p> <p>Seksie 32</p>	<p>Vel 13 van 25 Sheet of</p> <p>Plan P686/08</p>
--	--	---	---



Die Suid Afrikaanse Nasionale Padagentskop Beperk  
The South African National Roads Agency Limited

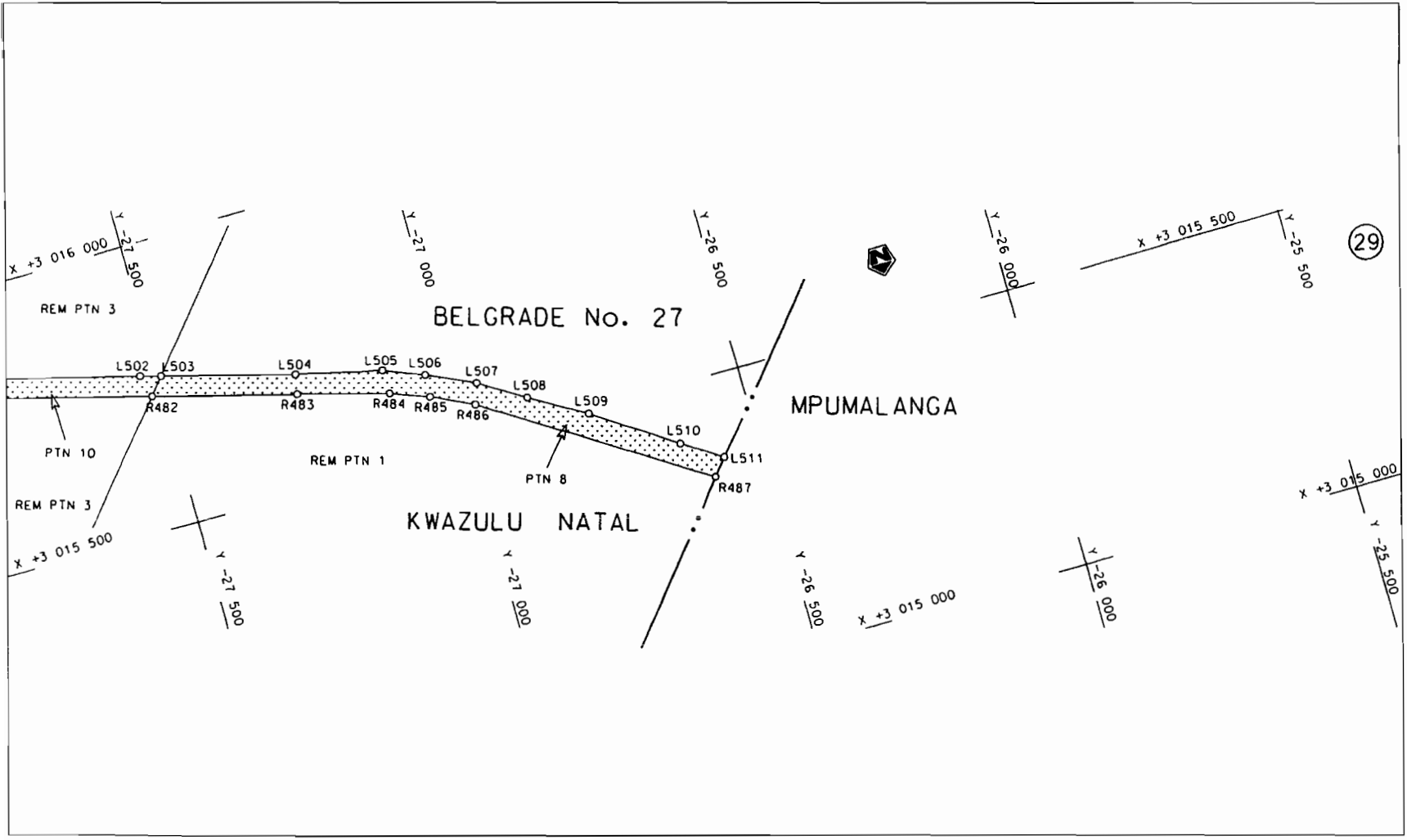
Die figuur getoon  
The figure shown




steldie padreserwe voor van 'n gedeelte  
represents the road reserve of a portion  
van Nasionale Roete N2  
of National Route N2

Seksie 32

Vel 14 van 25  
Sheet of  
Plan P686/08



<p>Die Suid Afrikaanse Nasionale Padagentskap Beperk The South African National Roads Agency Limited</p>	<p>Die figuur getoon The figure shown</p>		<p>steldie podreserwe voor van 'n gedeelte represents the road reserve of a portion van Nasionale Roete N2 Seksie of National Route Section 32</p>	<p>Vel Sheet 15 van of 25 Plan P686/08</p>
--	---	--	--	--

PADRESERWE KOÖRDINATE / ROAD RESERVE CO-ORDINATES						
LINKERKANT/LEFT HAND SIDE			REGTERKANT/RIGHT HAND SIDE			
	Y	X	WG 31°		Y	X
L1	-81 936.210	3 031	719.130	R1	-81 973.920	3 031 698.630
L2	-81 873.410	3 031	686.900	R2	-81 897.990	3 031 659.110
L3	-81 833.660	3 031	663.800	R3	-81 870.350	3 031 642.910
L4	-81 672.870	3 031	570.350	R4	-81 709.230	3 031 548.430
L5	-81 651.130	3 031	557.720	R5	-81 674.960	3 031 528.330
L6	-81 613.690	3 031	536.830	R6	-81 632.480	3 031 504.950
L7	-81 571.350	3 031	510.910	R7	-81 586.550	3 031 478.300
L8	-81 528.900	3 031	484.960	R8	-81 557.780	3 031 461.460
L9	-81 521.520	3 031	480.150	R9	-81 547.050	3 031 455.180
L10	-81 487.620	3 031	458.070	R10	-81 501.110	3 031 429.120
L11	-81 445.810	3 031	432.850	R11	-81 460.150	3 031 402.610
L12	-81 407.190	3 031	404.010	R12	-81 420.510	3 031 372.850
L13	-81 369.480	3 031	370.660	R13	-81 382.930	3 031 339.990
L14	-81 335.330	3 031	332.940	R14	-81 349.960	3 031 302.270
L15	-81 304.780	3 031	295.920	R15	-81 316.700	3 031 264.650
L16	-81 276.800	3 031	257.790	R16	-81 292.330	3 031 222.060
L17	-81 248.120	3 031	217.770	R17	-81 270.250	3 031 181.180
L18	-81 217.850	3 031	157.700	R18	-81 246.450	3 031 134.140
L19	-81 193.800	3 031	089.220	R19	-81 230.830	3 031 088.100
L20	-81 184.820	3 031	042.680	R20	-81 221.440	3 031 038.940
L21	-81 180.800	3 031	012.690	R21	-81 214.590	3 031 003.970
L22	-81 177.130	3 030	985.330	R22	-81 208.180	3 030 979.950
L23	-80 932.610	3 029	837.440	R23	-81 196.910	3 030 927.060
L24	-80 929.520	3 029	817.770	R24	-80 963.580	3 029 831.720
L25	-80 890.260	3 029	637.190	R25	-80 963.850	3 029 818.570
L26	-80 869.430	3 029	570.020	R26	-80 920.730	3 029 629.160
L27	-80 819.360	3 029	432.170	R27	-80 899.280	3 029 559.980
L28	-80 578.680	3 028	776.510	R28	-80 872.200	3 029 464.380
L29	-80 478.732	3 028	521.944	R29	-80 670.320	3 028 914.890
L30	-80 453.470	3 028	436.200	R30	-80 508.410	3 028 496.120
L31	-80 442.540	3 028	400.850	R31	-80 483.570	3 028 426.830
L32	-80 432.770	3 028	364.540	R32	-80 456.000	3 028 322.720
L33	-80 425.040	3 028	328.820	R33	-80 445.680	3 028 244.010
L34	-80 414.210	3 028	246.230	R34	-80 451.390	3 028 136.010
L35	-80 412.330	3 028	186.650	R35	-80 456.870	3 028 077.620
L36	-80 413.200	3 028	147.080	R36	-80 490.570	3 027 860.020
L37	-80 420.800	3 028	066.980	R37	-80 493.270	3 027 771.470
L38	-80 428.290	3 028	016.140	R38	-80 490.600	3 027 718.370
L39	-80 452.980	3 027	856.420	R39	-80 479.340	3 027 638.550
L40	-80 456.570	3 027	771.810	R40	-80 455.550	3 027 547.200
L41	-80 453.000	3 027	722.470	R41	-80 442.920	3 027 512.440
L42	-80 439.310	3 027	646.800	R42	-80 404.440	3 027 430.200
L43	-80 419.600	3 027	556.370	R43	-80 392.700	3 027 410.740
L44	-80 399.570	3 027	505.430	R44	-80 359.670	3 027 359.490
L45	-80 374.020	3 027	452.580	R45	-80 277.800	3 027 261.870
L46	-80 350.750	3 027	413.170	R46	-80 259.580	3 027 243.220
L47	-80 331.010	3 027	383.290	R47	-80 186.980	3 027 185.560
L48	-80 309.430	3 027	352.980	R48	-80 126.810	3 027 145.060
L49	-80 265.790	3 027	293.340	R49	-80 068.640	3 027 113.960
L50	-80 253.910	3 027	290.220	R50	-79 998.510	3 027 086.170
L51	-80 212.580	3 027	250.030	R51	-79 923.140	3 027 063.490

Vel	16	Van	25	P686/08
Sheet		of		

PADRESERWE KOÖRDINATE / ROAD RESERVE CO-ORDINATES											
LINKERKANT/LEFT HAND SIDE					REGTERKANT/RIGHT HAND SIDE						
	Y		X	WG 31°		Y		X			
L52	-80	171.450	3	027	216.360	R52	-79	846.680	3	027	050.030
L53	-80	160.680	3	027	207.540	R53	-79	768.570	3	027	044.490
L54	-80	070.650	3	027	155.110	R54	-79	690.080	3	027	047.280
L55	-80	007.630	3	027	127.050	R55	-79	613.260	3	027	058.250
L56	-79	941.540	3	027	105.170	R56	-79	563.200	3	027	069.210
L57	-79	869.100	3	027	089.840	R57	-79	492.740	3	027	092.500
L58	-79	798.460	3	027	081.750	R58	-79	438.990	3	027	117.530
L59	-79	729.640	3	027	080.970	R59	-79	274.940	3	027	203.580
L60	-79	659.420	3	027	086.940	R60	-79	162.130	3	027	262.720
L61	-79	588.230	3	027	101.390	R61	-79	016.290	3	027	343.270
L62	-79	477.850	3	027	138.790	R62	-78	936.530	3	027	381.760
L63	-79	422.020	3	027	165.890	R63	-78	827.720	3	027	412.870
L64	-79	344.880	3	027	207.730	R64	-78	722.300	3	027	421.620
L65	-79	321.910	3	027	219.730	R65	-78	647.030	3	027	416.250
L66	-79	264.830	3	027	249.530	R66	-78	406.300	3	027	356.300
L67	-79	256.290	3	027	258.930	R67	-78	235.150	3	027	310.170
L68	-79	236.340	3	027	269.500	R68	-78	224.110	3	027	306.260
L69	-79	216.350	3	027	276.790	R69	-77	665.830	3	027	152.710
L70	-79	209.890	3	027	279.770	R70	-77	600.890	3	027	134.550
L71	-79	116.860	3	027	330.290	R71	-77	450.350	3	027	096.530
L72	-79	103.190	3	027	337.710	R72	-77	330.170	3	027	071.580
L73	-79	020.200	3	027	382.530	R73	-77	141.620	3	027	060.530
L74	-78	938.800	3	027	418.960	R74	-77	006.720	3	027	057.190
L75	-78	780.870	3	027	454.240	R75	-76	930.290	3	027	047.790
L76	-78	705.110	3	027	452.900	R76	-76	787.290	3	027	026.310
L77	-78	661.230	3	027	451.760	R77	-76	632.480	3	026	972.980
L78	-78	567.870	3	027	438.230	R78	-76	599.930	3	026	957.290
L79	-78	406.780	3	027	394.370	R79	-76	510.370	3	026	912.160
L80	-78	199.220	3	027	337.380	R80	-76	422.160	3	026	865.220
L81	-78	187.780	3	027	334.240	R81	-76	274.190	3	026	785.440
L82	-77	599.800	3	027	172.810	R82	-76	159.900	3	026	721.080
L83	-77	557.760	3	027	161.220	R83	-76	076.970	3	026	665.240
L84	-77	483.450	3	027	147.500	R84	-75	922.410	3	026	539.970
L85	-77	448.710	3	027	140.010	R85	-75	882.850	3	026	509.950
L86	-77	402.950	3	027	131.000	R86	-75	846.040	3	026	476.750
L87	-77	353.650	3	027	124.530	R87	-75	809.240	3	026	443.740
L88	-77	255.660	3	027	112.090	R88	-75	768.390	3	026	414.090
L89	-77	146.730	3	027	097.680	R89	-75	746.560	3	026	395.770
L90	-76	938.850	3	027	089.730	R90	-75	702.290	3	026	346.460
L91	-76	812.280	3	027	071.000	R91	-75	668.260	3	026	278.260
L92	-76	695.630	3	027	039.690	R92	-75	250.270	3	026	061.780
L93	-76	603.350	3	027	000.970	R93	-75	175.560	3	026	036.000
L94	-76	515.750	3	026	952.550	R94	-75	147.840	3	026	030.050
L95	-76	427.140	3	026	903.400	R95	-75	117.930	3	026	018.760
L96	-76	321.890	3	026	855.950	R96	-75	084.290	3	026	008.910
L97	-76	283.520	3	026	832.680	R97	-74	938.860	3	025	972.410
L98	-76	196.600	3	026	812.830	R98	-74	870.730	3	025	970.310
L99	-76	149.380	3	026	759.600	R99	-74	837.500	3	025	969.260
L100	-76	000.290	3	026	657.250	R100	-74	456.820	3	025	959.540
L101	-75	883.000	3	026	558.060	R101	-74	427.330	3	025	958.790
L102	-75	834.090	3	026	517.010	R102	-74	378.560	3	025	958.110

Vel	17	Van	25	P686/08
Sheet		of		

PADRESERWE KOÖRDINATE / ROAD RESERVE CO-ORDINATES						
LINKERKANT/LEFT HAND SIDE				REGTERKANT/RIGHT HAND SIDE		
	Y	X	WG 31°		Y	X
L103	-75 716.130	3 026	417.020	R103	-74 298.830	3 025 957.530
L104	-75 652.860	3 026	368.910	R104	-74 243.440	3 025 957.100
L105	-75 554.210	3 026	284.940	R105	-74 137.660	3 025 954.700
L106	-75 503.210	3 026	238.900	R106	-74 082.860	3 025 951.740
L107	-75 466.560	3 026	210.890	R107	-74 038.850	3 025 952.490
L108	-75 369.590	3 026	155.010	R108	-73 932.750	3 025 935.620
L109	-75 299.200	3 026	127.240	R109	-73 897.600	3 025 928.100
L110	-75 210.240	3 026	087.970	R110	-73 816.560	3 025 896.790
L111	-75 110.640	3 026	048.470	R111	-73 760.370	3 025 866.690
L112	-75 014.700	3 026	027.160	R112	-73 738.980	3 025 853.740
L113	-74 934.580	3 026	014.480	R113	-73 708.890	3 025 835.520
L114	-74 893.860	3 026	006.080	R114	-73 667.960	3 025 804.360
L115	-74 441.740	3 025	996.420	R115	-73 603.730	3 025 731.790
L116	-74 414.190	3 025	995.830	R116	-73 590.220	3 025 713.100
L117	-74 367.580	3 025	991.580	R117	-73 483.430	3 025 535.320
L118	-74 058.500	3 025	990.000	R118	-73 433.920	3 025 470.230
L119	-73 952.930	3 025	979.360	R119	-73 379.870	3 025 406.860
L120	-73 890.810	3 025	964.460	R120	-73 318.270	3 025 352.120
L121	-73 790.230	3 025	926.420	R121	-73 234.500	3 025 296.490
L122	-73 722.330	3 025	893.480	R122	-73 177.730	3 025 267.670
L123	-73 591.640	3 025	781.580	R123	-73 076.070	3 025 230.750
L124	-73 462.520	3 025	568.110	R124	-73 047.320	3 025 227.010
L125	-73 347.020	3 025	430.140	R125	-72 580.860	3 025 133.960
L126	-73 038.800	3 025	257.450	R126	-71 651.670	3 024 949.680
L127	-72 956.380	3 025	247.470	R126X	-71 650.830	3 024 943.380
L128	-72 469.450	3 025	149.510	R127	-71 380.960	3 024 889.440
L129	-71 652.590	3 024	987.230	R128	-71 157.090	3 024 851.480
L130	-71 181.620	3 024	894.090	R129	-71 114.590	3 024 842.270
L131	-69 496.210	3 024	557.100	R130	-71 089.890	3 024 837.170
L132	-69 462.130	3 024	552.180	R131	-70 930.800	3 024 806.370
L133	-69 274.624	3 024	540.859	R132	-70 556.500	3 024 732.140
L134	-69 052.680	3 024	585.730	R133	-69 483.700	3 024 512.660
L135	-68 988.250	3 024	599.920	R134	-69 318.540	3 024 492.280
L136	-67 436.990	3 024	936.140	R135	-69 196.260	3 024 508.780
L137	-67 340.810	3 024	962.270	R136	-68 173.820	3 024 735.330
L138	-67 251.180	3 025	000.430	R137	-67 220.410	3 024 950.110
L139	-67 167.370	3 025	051.400	R138	-67 094.460	3 025 055.780
L140	-67 092.050	3 025	113.640	R139	-66 988.800	3 025 165.470
L141	-66 972.550	3 025	266.280	R140	-66 934.940	3 025 245.820
L142	-66 930.440	3 025	353.740	R141	-66 894.130	3 025 333.710
L143	-66 903.880	3 025	436.630	R142	-66 873.580	3 025 390.270
L144	-66 887.940	3 025	515.550	R143	-66 851.690	3 025 486.930
L145	-66 579.010	3 027	380.990	R144	-66 829.680	3 025 622.010
L146	-66 320.980	3 028	929.420	R145	-66 785.080	3 025 891.690
L147	-66 159.090	3 030	020.750	R146	-66 727.240	3 026 240.190
L148	-66 144.090	3 030	121.540	R147	-66 665.130	3 026 613.100
L149	-66 135.450	3 030	171.930	R148	-66 621.820	3 026 879.920
L150	-66 114.750	3 030	235.630	R149	-66 592.130	3 027 061.150
L151	-66 100.539	3 030	283.434	R150	-66 555.710	3 027 277.700
L152	-66 084.870	3 030	312.140	R151	-66 515.790	3 027 519.110
L153	-66 071.470	3 030	337.350	R152	-66 291.460	3 028 889.660

Vel	18	Van	25	P686/08
Sheet		of		

PADRESERWE KOÖRDINATE / ROAD RESERVE CO-ORDINATES									
LINKERKANT/LEFT HAND SIDE					REGTERKANT/RIGHT HAND SIDE				
	Y	X	WG	31°		Y	X		
L154	-66 064.190	3 030	349.840		R153	-66 230.300	3 029	326.170	
L155	-65 983.580	3 030	445.670		R154	-66 162.380	3 029	783.990	
L156	-65 949.620	3 030	471.710		R155	-66 115.630	3 030	100.840	
L157	-65 925.000	3 030	495.350		R156	-66 100.660	3 030	183.200	
L158	-65 884.990	3 030	513.030		R157	-66 068.660	3 030	283.263	
L159	-65 863.160	3 030	521.640		R158	-66 049.500	3 030	313.270	
L160	-65 833.080	3 030	530.170		R159	-66 011.650	3 030	363.510	
L161	-65 798.320	3 030	549.210		R160	-65 952.220	3 030	425.450	
L162	-65 773.080	3 030	556.200		R161	-65 925.480	3 030	447.930	
L163	-65 751.110	3 030	562.210		R162	-65 895.080	3 030	470.360	
L164	-65 707.940	3 030	570.070		R163	-65 821.750	3 030	500.900	
L165	-65 680.820	3 030	572.680		R164	-65 797.940	3 030	514.440	
L166	-65 622.150	3 030	574.450		R165	-65 790.360	3 030	518.650	
L167	-65 579.310	3 030	571.310		R166	-65 744.830	3 030	531.470	
L168	-65 539.670	3 030	562.790		R167	-65 704.610	3 030	538.850	
L169	-65 496.630	3 030	552.290		R168	-65 664.650	3 030	542.760	
L170	-65 477.910	3 030	549.490		R169	-65 623.690	3 030	542.950	
L171	-65 096.170	3 030	442.610		R170	-65 585.180	3 030	540.740	
L172	-64 925.690	3 030	392.940		R171	-65 547.360	3 030	532.180	
L173	-63 693.940	3 030	209.590		R172	-65 475.170	3 030	515.200	
L174	-63 313.870	3 030	164.870		R173	-65 105.470	3 030	412.400	
L175	-63 066.400	3 030	125.460		R174	-65 015.540	3 030	387.020	
L176	-62 439.960	3 030	019.500		R175	-64 903.120	3 030	357.610	
L177	-57 721.270	3 030	315.290		R176	-62 470.230	3 029	992.150	
L178	-57 625.930	3 030	342.500		R177	-57 665.970	3 030	290.400	
L179	-57 556.820	3 030	356.990		R178	-57 609.690	3 030	305.440	
L180	-57 382.150	3 030	384.840		R179	-57 551.330	3 030	317.350	
L181	-57 176.630	3 030	416.070		R180	-57 374.810	3 030	345.580	
L182	-56 965.430	3 030	450.510		R181	-57 159.810	3 030	380.520	
L183	-56 823.340	3 030	479.450		R182	-57 068.130	3 030	391.000	
L184	-56 712.570	3 030	476.920		R183	-56 995.840	3 030	404.340	
L185	-56 663.200	3 030	476.820		R184	-56 888.960	3 030	426.240	
L186	-56 557.830	3 030	451.790		R185	-56 833.320	3 030	413.470	
L187	-56 429.340	3 030	400.870		R186	-56 768.760	3 030	419.940	
L188	-56 331.950	3 030	367.320		R187	-56 714.270	3 030	428.160	
L189	-56 277.590	3 030	361.970		R188	-56 583.830	3 030	408.690	
L190	-55 824.160	3 030	330.250		R189	-56 395.780	3 030	336.500	
L191	-55 186.960	3 030	292.120		R190	-56 291.790	3 030	316.840	
L192	-55 114.760	3 030	282.240		R191	-56 267.710	3 030	315.660	
L193	-55 069.760	3 030	275.510		R192	-56 203.390	3 030	312.520	
L194	-55 017.580	3 030	263.670		R193	-56 124.670	3 030	308.790	
L195	-54 953.419	3 030	228.677		R194	-55 827.470	3 030	294.700	
L196	-54 902.780	3 030	207.500		R195	-55 195.760	3 030	257.290	
L197	-54 835.860	3 030	173.180		R196	-55 122.640	3 030	250.680	
L198	-54 785.490	3 030	108.850		R197	-55 078.960	3 030	237.920	
L199	-54 594.020	3 029	910.790		R198	-55 021.493	3 030	228.981	
L200	-54 338.640	3 029	646.380		R199	-54 920.210	3 030	168.740	
L201	-54 310.610	3 029	620.930		R200	-54 890.070	3 030	145.370	
L202	-54 266.900	3 029	589.260		R201	-54 847.480	3 030	115.540	
L203	-54 217.790	3 029	557.520		R202	-54 621.360	3 029	885.590	
L204	-54 160.460	3 029	531.010		R203	-54 476.930	3 029	735.730	

Vel	19	Van	25	P686/08
Sheet		of		

PADRESERWE KOÖRDINATE / ROAD RESERVE CO-ORDINATES						
LINKERKANT/LEFT HAND SIDE				REGTERKANT/RIGHT HAND SIDE		
	Y	X	WG 31°		Y	X
L205	-54 126.450	3 029	515.510	R204	-54 376.620	3 029 632.280
L206	-53 989.600	3 029	483.190	R205	-54 331.560	3 029 593.820
L207	-53 982.770	3 029	475.810	R206	-54 284.310	3 029 559.230
L208	-53 850.850	3 029	441.640	R207	-54 172.470	3 029 498.070
L209	-53 703.020	3 029	399.740	R208	-54 127.380	3 029 480.990
L210	-53 270.630	3 029	269.150	R209	-53 613.150	3 029 326.500
L211	-53 214.380	3 029	251.900	R210	-53 572.330	3 029 318.970
L212	-53 157.310	3 029	230.190	R211	-53 514.800	3 029 300.430
L213	-53 100.530	3 029	202.280	R212	-53 387.090	3 029 266.587
L214	-53 054.890	3 029	176.420	R213	-53 281.320	3 029 236.330
L215	-52 760.914	3 029	002.519	R214	-53 226.670	3 029 218.930
L216	-52 652.440	3 028	943.050	R215	-53 172.380	3 029 194.260
L217	-52 460.270	3 028	836.110	R216	-53 159.760	3 029 185.390
L218	-52 392.560	3 028	793.620	R217	-53 116.970	3 029 171.770
L219	-52 317.380	3 028	756.710	R218	-52 976.970	3 029 097.010
L220	-52 283.610	3 028	735.050	R219	-52 866.860	3 029 027.640
L221	-52 237.480	3 028	693.700	R220	-52 669.440	3 028 913.180
L222	-52 193.910	3 028	650.780	R221	-52 579.420	3 028 859.860
L223	-52 140.340	3 028	580.430	R222	-52 477.820	3 028 804.480
L224	-52 119.140	3 028	529.420	R223	-52 409.810	3 028 763.380
L225	-52 104.840	3 028	495.010	R224	-52 358.870	3 028 735.200
L226	-52 068.447	3 028	369.246	R225	-52 310.690	3 028 701.590
L227	-52 062.020	3 028	317.300	R226	-52 265.870	3 028 665.600
L228	-52 032.550	3 028	271.840	R227	-52 223.260	3 028 619.800
L229	-51 997.990	3 028	239.030	R228	-52 179.730	3 028 561.390
L230	-51 944.110	3 028	184.660	R229	-52 153.680	3 028 509.970
L231	-51 872.240	3 028	141.200	R230	-52 143.940	3 028 485.770
L232	-51 818.860	3 028	110.960	R231	-52 139.120	3 028 473.780
L233	-51 435.980	3 027	906.940	R232	-52 101.780	3 028 343.290
L234	-51 151.160	3 027	749.910	R233	-52 091.810	3 028 306.460
L235	-51 023.760	3 027	679.670	R234	-52 065.790	3 028 252.320
L236	-50 958.130	3 027	638.600	R235	-52 030.390	3 028 206.220
L237	-50 924.710	3 027	630.650	R236	-51 939.060	3 028 136.940
L238	-50 813.760	3 027	603.730	R237	-51 889.800	3 028 107.510
L239	-50 765.340	3 027	590.410	R238	-51 837.970	3 028 079.630
L240	-50 661.020	3 027	557.440	R239	-51 472.350	3 027 878.380
L241	-50 619.910	3 027	544.940	R240	-51 173.730	3 027 714.800
L242	-50 574.970	3 027	524.430	R241	-51 015.150	3 027 628.480
L243	-50 363.840	3 027	342.110	R242	-50 970.380	3 027 606.470
L244	-50 041.590	3 027	134.480	R243	-50 780.190	3 027 556.300
L245	-49 937.910	3 027	068.440	R244	-50 742.840	3 027 546.440
L246	-49 897.910	3 027	053.060	R245	-50 687.340	3 027 528.070
L247	-49 866.410	3 027	033.830	R246	-50 636.370	3 027 501.800
L248	-49 733.920	3 027	018.470	R247	-50 589.200	3 027 467.680
L249	-49 672.170	3 027	012.350	R248	-50 496.010	3 027 381.920
L250	-49 592.900	3 027	012.360	R249	-50 313.100	3 027 255.670
L251	-49 487.070	3 026	997.310	R250	-50 263.730	3 027 225.800
L252	-49 384.470	3 026	924.920	R251	-50 113.190	3 027 130.690
L253	-49 277.620	3 026	809.770	R252	-50 021.470	3 027 066.560
L254	-49 217.620	3 026	761.910	R253	-49 924.030	3 027 008.580
L255	-49 176.780	3 026	739.840	R254	-49 898.590	3 026 996.320

Vel	20	Van	25	P686/08
Sheet		of		



PADRESERWE KOÖRDINATE / ROAD RESERVE CO-ORDINATES						
LINKERKANT/LEFT HAND SIDE				REGTERKANT/RIGHT HAND SIDE		
	Y	X	WG 31°		Y	X
L256	-49 137.320	3 026	714.370	R255	-49 870.320	3 026 982.810
L257	-49 063.330	3 026	685.970	R256	-49 756.030	3 026 964.420
L258	-49 012.780	3 026	681.420	R257	-49 577.030	3 026 970.880
L259	-48 924.850	3 026	668.650	R258	-49 526.800	3 026 957.930
L260	-48 825.570	3 026	650.360	R259	-49 485.170	3 026 936.550
L261	-48 770.690	3 026	626.260	R260	-49 427.570	3 026 897.590
L262	-48 542.007	3 026	507.971	R261	-49 305.050	3 026 772.650
L263	-48 477.610	3 026	471.400	R262	-49 220.240	3 026 711.500
L264	-48 430.260	3 026	436.720	R263	-49 104.320	3 026 651.330
L265	-48 388.340	3 026	415.050	R264	-49 048.650	3 026 643.170
L266	-48 337.580	3 026	360.310	R265	-48 990.940	3 026 635.030
L267	-48 239.180	3 026	247.520	R266	-48 875.310	3 026 612.170
L268	-48 182.030	3 026	181.800	R267	-48 821.850	3 026 589.660
L269	-48 164.760	3 026	153.670	R268	-48 609.006	3 026 508.235
L270	-48 140.050	3 026	121.580	R269	-48 558.230	3 026 467.800
L271	-48 117.760	3 026	067.670	R270	-48 505.250	3 026 440.140
L272	-48 099.190	3 026	033.030	R271	-48 451.010	3 026 406.510
L273	-48 082.170	3 025	976.600	R272	-48 411.380	3 026 372.840
L274	-48 048.360	3 025	947.200	R273	-48 376.490	3 026 328.940
L275	-47 992.940	3 025	921.240	R274	-48 279.320	3 026 221.440
L276	-47 929.610	3 025	889.640	R275	-48 220.170	3 026 154.710
L277	-47 833.800	3 025	839.930	R276	-48 202.670	3 026 126.980
L278	-47 673.110	3 025	819.820	R277	-48 190.490	3 026 107.510
L279	-47 649.270	3 025	816.170	R278	-48 142.210	3 025 997.950
L280	-47 514.180	3 025	806.590	R279	-48 107.970	3 025 950.540
L281	-47 444.690	3 025	797.770	R280	-48 067.880	3 025 914.920
L282	-47 380.880	3 025	777.120	R281	-48 013.300	3 025 886.440
L283	-47 277.760	3 025	740.350	R282	-47 849.780	3 025 807.050
L284	-47 228.580	3 025	717.060	R283	-47 826.867	3 025 794.123
L285	-47 184.580	3 025	706.870	R284	-47 760.430	3 025 771.570
L286	-47 074.910	3 025	721.900	R285	-47 691.680	3 025 768.180
L287	-47 013.870	3 025	748.640	R286	-47 659.520	3 025 766.600
L288	-46 882.260	3 025	774.470	R287	-47 450.870	3 025 766.660
L289	-46 832.910	3 025	768.530	R288	-47 238.820	3 025 675.490
L290	-46 771.470	3 025	772.440	R289	-47 186.990	3 025 663.820
L291	-46 657.770	3 025	760.390	R290	-47 066.460	3 025 685.480
L292	-46 587.260	3 025	742.190	R291	-47 009.610	3 025 699.310
L293	-46 460.680	3 025	683.960	R292	-46 915.230	3 025 717.670
L294	-46 276.280	3 025	563.810	R293	-46 838.960	3 025 735.370
L295	-46 212.460	3 025	542.660	R294	-46 793.400	3 025 729.170
L296	-46 202.370	3 025	547.210	R295	-46 703.660	3 025 723.050
L297	-46 178.632	3 025	523.469	R296	-46 661.160	3 025 719.730
L298	-46 033.470	3 025	421.170	R297	-46 561.950	3 025 684.740
L299	-45 960.080	3 025	378.430	R298	-46 488.820	3 025 644.210
L300	-45 860.980	3 025	308.560	R299	-46 209.300	3 025 479.030
L301	-45 774.020	3 025	202.130	R300	-46 036.310	3 025 376.030
L302	-45 749.570	3 025	170.440	R301	-45 987.450	3 025 345.920
L303	-45 715.570	3 025	107.800	R302	-45 873.160	3 025 260.900
L304	-45 673.440	3 025	056.010	R303	-45 821.800	3 025 205.350
L305	-45 657.350	3 025	000.980	R304	-45 765.420	3 025 097.380
L306	-45 620.770	3 024	936.720	R305	-45 732.950	3 025 055.920

Vel	21	Van	25	P686/08
Sheet		of		

PADRESERWE KOÖRDINATE / ROAD RESERVE CO-ORDINATES						
LINKERKANT/LEFT HAND SIDE				REGTERKANT/RIGHT HAND SIDE		
	Y	X	WG 31°		Y	X
L307	-45 596.320	3 024	893.340	R306	-45 676.220	3 024 953.290
L308	-45 553.460	3 024	842.040	R307	-45 615.710	3 024 853.300
L309	-45 470.420	3 024	760.310	R308	-45 590.140	3 024 819.780
L310	-45 388.000	3 024	692.770	R309	-45 568.020	3 024 786.560
L311	-45 349.130	3 024	686.830	R310	-45 542.600	3 024 757.370
L312	-45 317.361	3 024	648.833	R311	-45 498.360	3 024 723.070
L313	-45 248.490	3 024	587.080	R312	-45 452.120	3 024 687.600
L314	-45 201.030	3 024	546.580	R313	-45 406.410	3 024 652.230
L315	-45 111.580	3 024	478.280	R314	-45 275.420	3 024 551.110
L316	-45 009.530	3 024	397.590	R315	-45 222.950	3 024 505.550
L317	-44 962.890	3 024	355.110	R316	-45 036.930	3 024 366.080
L318	-44 909.260	3 024	296.740	R317	-44 993.690	3 024 327.010
L319	-44 875.700	3 024	260.000	R318	-44 954.050	3 024 283.890
L320	-44 850.330	3 024	198.700	R319	-44 924.310	3 024 240.990
L321	-44 794.300	3 024	054.520	R320	-44 890.020	3 024 187.900
L322	-44 780.810	3 024	017.820	R321	-44 865.960	3 024 135.870
L323	-44 744.330	3 023	939.050	R322	-44 845.580	3 024 082.560
L324	-44 744.750	3 023	932.000	R323	-44 779.570	3 023 917.590
L325	-44 738.510	3 023	917.140	R324	-44 758.700	3 023 862.710
L326	-44 713.250	3 023	857.180	R325	-44 717.850	3 023 758.860
L327	-44 701.730	3 023	834.190	R326	-44 695.690	3 023 703.760
L328	-44 659.330	3 023	720.300	R327	-44 667.510	3 023 648.170
L329	-44 641.570	3 023	681.190	R328	-44 635.430	3 023 598.840
L330	-44 618.020	3 023	640.050	R329	-44 573.960	3 023 531.550
L331	-44 554.970	3 023	573.640	R330	-44 504.130	3 023 486.270
L332	-44 469.430	3 023	516.680	R331	-44 358.320	3 023 433.020
L333	-44 389.590	3 023	478.900	R332	-44 306.710	3 023 433.110
L334	-44 314.910	3 023	471.800	R333	-44 221.900	3 023 447.540
L335	-44 253.930	3 023	487.560	R334	-44 196.770	3 023 455.200
L336	-44 217.510	3 023	495.910	R335	-44 166.010	3 023 472.210
L337	-44 169.500	3 023	514.010	R336	-44 099.700	3 023 512.310
L338	-44 111.140	3 023	554.790	R337	-43 985.570	3 023 594.560
L339	-44 039.890	3 023	606.400	R338	-43 924.260	3 023 630.740
L340	-43 967.520	3 023	652.540	R339	-43 766.200	3 023 716.370
L341	-43 929.790	3 023	666.980	R340	-43 611.930	3 023 803.650
L342	-43 922.650	3 023	685.960	R341	-43 561.340	3 023 820.090
L343	-43 861.400	3 023	700.700	R342	-43 509.440	3 023 846.950
L344	-43 766.580	3 023	759.310	R343	-43 467.810	3 023 871.010
L345	-43 620.770	3 023	841.970	R344	-43 408.140	3 023 884.210
L346	-43 571.670	3 023	863.570	R345	-43 312.310	3 023 897.370
L347	-43 540.410	3 023	884.590	R346	-43 261.150	3 023 886.960
L348	-43 465.590	3 023	913.170	R347	-43 174.630	3 023 880.490
L349	-43 321.370	3 023	950.840	R348	-43 050.420	3 023 839.020
L350	-43 259.670	3 023	941.750	R349	-42 968.620	3 023 825.700
L351	-43 201.960	3 023	930.980	R350	-42 891.770	3 023 824.630
L352	-43 040.900	3 023	872.630	R351	-42 655.720	3 023 850.580
L353	-42 994.260	3 023	862.640	R352	-42 593.600	3 023 857.890
L354	-42 907.910	3 023	853.350	R353	-42 539.290	3 023 859.900
L355	-42 818.450	3 023	875.380	R354	-42 481.740	3 023 862.340
L356	-42 658.340	3 023	889.220	R355	-42 421.490	3 023 859.760
L357	-42 599.190	3 023	894.480	R356	-42 351.660	3 023 853.970

Vel	22	Van	25	P686/08
Sheet		of		

PADRESERWE KOÖRDINATE / ROAD RESERVE CO-ORDINATES											
LINKERKANT/LEFT HAND SIDE					REGTERKANT/RIGHT HAND SIDE						
	Y		X	WG 31°		Y		X			
L358	-42	539.570	3	023	899.180	R357	-42	300.910	3	023	843.450
L359	-42	479.970	3	023	901.600	R358	-42	251.010	3	023	833.020
L360	-42	351.420	3	023	891.640	R359	-42	148.230	3	023	798.460
L361	-42	282.740	3	023	879.780	R360	-42	093.400	3	023	773.420
L362	-42	234.290	3	023	867.620	R361	-42	042.360	3	023	745.310
L363	-42	149.140	3	023	839.750	R362	-41	965.530	3	023	695.420
L364	-42	062.130	3	023	800.310	R363	-41	923.160	3	023	665.810
L365	-42	021.640	3	023	784.840	R364	-41	737.990	3	023	502.580
L366	-41	922.790	3	023	723.770	R365	-41	561.240	3	023	345.480
L367	-41	858.610	3	023	690.610	R366	-41	454.330	3	023	249.610
L368	-41	710.640	3	023	530.950	R367	-41	346.950	3	023	154.540
L369	-41	533.620	3	023	373.640	R368	-41	148.160	3	022	974.980
L370	-41	447.390	3	023	294.890	R369	-41	059.060	3	022	886.770
L371	-41	317.170	3	023	182.720	R370	-40	821.770	3	022	634.610
L372	-41	184.270	3	023	066.650	R371	-40	594.080	3	022	392.450
L373	-41	061.460	3	022	949.770	R372	-40	539.550	3	022	342.860
L374	-41	040.840	3	022	920.990	R373	-40	485.180	3	022	298.930
L375	-40	922.410	3	022	793.520	R374	-40	358.260	3	022	216.110
L376	-40	656.630	3	022	515.020	R375	-40	091.970	3	022	058.220
L377	-40	577.710	3	022	433.280	R376	-39	753.250	3	021	857.090
L378	-40	515.190	3	022	376.660	R377	-39	556.740	3	021	740.160
L379	-40	469.100	3	022	346.490	R378	-39	420.160	3	021	662.970
L380	-40	356.380	3	022	264.790	R379	-39	387.720	3	021	655.070
L381	-40	330.020	3	022	241.670	R380	-39	347.280	3	021	633.740
L382	-40	073.850	3	022	093.820	R381	-39	197.990	3	021	576.450
L383	-39	816.680	3	021	941.360	R382	-39	137.690	3	021	570.180
L384	-39	657.790	3	021	857.020	R383	-39	022.410	3	021	537.620
L385	-39	593.479	3	021	799.147	R384	-38	973.970	3	021	539.160
L386	-39	526.810	3	021	764.100	R385	-38	873.360	3	021	522.880
L387	-39	432.980	3	021	709.730	R386	-38	708.140	3	021	489.220
L388	-39	342.940	3	021	669.540	R387	-38	538.770	3	021	441.030
L389	-39	281.550	3	021	647.200	R388	-38	382.690	3	021	361.720
L390	-39	235.070	3	021	630.760	R389	-38	284.820	3	021	292.430
L391	-39	007.740	3	021	591.830	R390	-38	163.230	3	021	202.790
L392	-38	905.830	3	021	570.720	R391	-38	070.650	3	021	137.820
L393	-38	693.880	3	021	528.140	R392	-38	013.320	3	021	102.440
L394	-38	587.630	3	021	496.140	R393	-37	945.936	3	021	077.078
L395	-38	511.270	3	021	478.570	R394	-37	922.670	3	021	072.410
L396	-38	470.430	3	021	456.350	R395	-37	850.800	3	021	060.310
L397	-38	445.020	3	021	445.260	R396	-37	773.130	3	021	052.500
L398	-38	360.970	3	021	409.340	R397	-37	719.730	3	021	051.950
L399	-38	261.050	3	021	321.790	R398	-37	537.340	3	021	068.890
L400	-38	133.480	3	021	238.570	R399	-37	444.140	3	021	068.170
L401	-38	058.700	3	021	179.460	R400	-37	272.120	3	021	052.050
L402	-38	018.360	3	021	157.370	R401	-37	187.840	3	021	026.390
L403	-37	970.780	3	021	136.770	R402	-36	898.775	3	020	927.111
L404	-37	879.770	3	021	117.280	R403	-36	843.710	3	020	888.220
L405	-37	794.010	3	021	093.290	R404	-36	750.410	3	020	832.860
L406	-37	723.190	3	021	094.130	R405	-36	694.710	3	020	793.190
L407	-37	680.090	3	021	095.820	R406	-36	602.120	3	020	715.660
L408	-37	442.100	3	021	107.820	R407	-36	494.770	3	020	610.710

PADRESERWE KOÖRDINATE / ROAD RESERVE CO-ORDINATES						
LINKERKANT/LEFT HAND SIDE			REGTERKANT/RIGHT HAND SIDE			
	Y	X	WG 31°		Y	X
L409	-37 387.640	3 021	109.350	R408	-36 432.550	3 020 555.650
L410	-37 276.680	3 021	094.990	R409	-36 159.110	3 020 380.050
L411	-37 149.370	3 021	053.160	R410	-36 005.710	3 020 299.590
L412	-37 024.050	3 021	019.290	R411	-35 947.090	3 020 275.000
L413	-36 989.110	3 021	011.270	R412	-35 892.240	3 020 253.770
L414	-36 875.570	3 020	944.560	R413	-35 783.200	3 020 227.420
L415	-36 725.570	3 020	866.540	R414	-35 674.720	3 020 229.680
L416	-36 694.300	3 020	848.270	R415	-35 495.900	3 020 239.710
L417	-36 661.370	3 020	828.660	R416	-35 397.720	3 020 242.450
L418	-36 612.940	3 020	784.940	R417	-35 259.650	3 020 186.390
L419	-36 553.780	3 020	733.380	R418	-35 203.420	3 020 123.230
L420	-36 419.230	3 020	597.130	R419	-35 155.760	3 020 083.190
L421	-36 257.880	3 020	507.990	R420	-35 121.140	3 019 998.980
L422	-36 171.890	3 020	448.160	R421	-35 065.200	3 019 833.770
L423	-36 074.450	3 020	395.830	R422	-35 037.550	3 019 781.560
L424	-35 943.620	3 020	327.250	R423	-34 961.190	3 019 692.870
L425	-35 874.070	3 020	298.080	R424	-34 915.330	3 019 662.750
L426	-35 820.750	3 020	273.670	R425	-34 873.810	3 019 611.890
L427	-35 781.340	3 020	264.830	R426	-34 826.740	3 019 502.490
L428	-35 759.220	3 020	261.840	R427	-34 815.400	3 019 458.200
L429	-35 702.890	3 020	263.960	R428	-34 831.620	3 019 249.130
L430	-35 480.880	3 020	281.760	R429	-34 832.070	3 019 156.350
L431	-35 388.680	3 020	278.850	R430	-34 825.010	3 019 096.250
L432	-35 302.860	3 020	246.660	R431	-34 805.660	3 019 041.550
L433	-35 219.440	3 020	199.660	R432	-34 779.370	3 018 989.810
L434	-35 140.150	3 020	133.010	R433	-34 752.120	3 018 950.550
L435	-35 104.200	3 020	070.970	R434	-34 652.590	3 018 808.996
L436	-35 054.030	3 019	905.690	R435	-34 612.080	3 018 772.010
L437	-34 997.600	3 019	798.190	R436	-34 583.930	3 018 694.230
L438	-34 900.440	3 019	708.220	R437	-34 569.460	3 018 663.560
L439	-34 809.900	3 019	596.970	R438	-34 528.300	3 018 576.270
L440	-34 779.380	3 019	450.750	R439	-34 521.270	3 018 470.700
L441	-34 794.590	3 019	244.970	R440	-34 504.240	3 018 393.890
L442	-34 798.050	3 019	207.210	R441	-34 470.680	3 018 313.730
L443	-34 798.080	3 019	184.420	R442	-34 413.340	3 018 238.750
L444	-34 784.340	3 019	101.910	R443	-34 341.360	3 018 178.320
L445	-34 766.490	3 019	044.470	R444	-34 294.400	3 018 151.990
L446	-34 582.250	3 018	795.140	R445	-34 256.070	3 018 135.930
L447	-34 537.870	3 018	727.270	R446	-34 203.260	3 018 117.170
L448	-34 529.120	3 018	713.890	R447	-33 857.790	3 018 003.360
L449	-34 497.840	3 018	620.830	R448	-33 731.230	3 017 962.550
L450	-34 482.790	3 018	491.340	R449	-33 568.820	3 017 883.830
L451	-34 463.460	3 018	393.350	R450	-33 457.890	3 017 802.900
L452	-34 451.400	3 018	361.580	R451	-33 376.840	3 017 730.830
L453	-34 435.690	3 018	331.500	R452	-33 297.600	3 017 652.800
L454	-34 395.290	3 018	271.760	R453	-33 202.380	3 017 573.870
L455	-34 336.910	3 018	221.920	R454	-33 145.570	3 017 527.640
L456	-34 243.820	3 018	174.580	R455	-33 091.330	3 017 507.860
L457	-34 038.630	3 018	105.930	R456	-33 021.990	3 017 455.110
L458	-33 842.380	3 018	034.430	R457	-32 472.670	3 017 142.510
L459	-33 723.040	3 017	993.310	R458	-32 371.740	3 017 090.600

Vel	24	Van	25	P686/08
Sheet		of		

PADRESERWE KOÖRDINATE / ROAD RESERVE CO-ORDINATES							
LINKERKANT/LEFT HAND SIDE				REGTERKANT/RIGHT HAND SIDE			
	Y	X	WG 31°		Y	X	
L460	-33 621.700	3 017 950.180		R459	-32 249.020	3 017 054.040	
L461	-33 525.860	3 017 897.130		R460	-32 119.720	3 017 023.960	
L462	-33 434.370	3 017 832.490		R461	-32 015.230	3 016 994.340	
L463	-33 352.020	3 017 758.850		R462	-31 915.510	3 016 954.220	
L464	-33 202.950	3 017 621.190		R463	-31 819.670	3 016 903.170	
L465	-33 119.830	3 017 569.760		R464	-31 729.820	3 016 842.230	
L466	-33 088.270	3 017 550.390		R465	-31 437.590	3 016 628.770	
L467	-33 025.020	3 017 512.220		R466	-31 164.090	3 016 438.660	
L468	-32 737.560	3 017 349.100		R467	-31 062.000	3 016 395.810	
L469	-32 691.480	3 017 326.110		R468	-30 953.420	3 016 371.980	
L470	-32 650.650	3 017 290.400		R469	-30 861.360	3 016 366.760	
L471	-32 572.800	3 017 244.970		R470	-30 840.760	3 016 367.190	
L472	-32 453.950	3 017 175.050		R471	-30 563.820	3 016 388.870	
L473	-32 361.240	3 017 128.540		R472	-30 267.300	3 016 412.070	
L474	-32 308.270	3 017 109.040		R473	-30 210.300	3 016 414.450	
L475	-32 240.670	3 017 090.470		R474	-30 195.390	3 016 415.080	
L476	-32 112.560	3 017 060.870		R475	-30 125.810	3 016 412.060	
L477	-32 002.380	3 017 029.710		R476	-30 054.000	3 016 402.820	
L478	-31 899.200	3 016 988.190		R477	-29 987.670	3 016 388.560	
L479	-31 800.990	3 016 935.760		R478	-29 871.430	3 016 357.550	
L480	-31 709.680	3 016 874.220		R479	-29 806.800	3 016 340.320	
L481	-31 415.710	3 016 659.570		R480	-29 743.050	3 016 323.650	
L482	-31 237.500	3 016 529.140		R481	-28 356.930	3 015 956.190	
L483	-31 148.410	3 016 472.820		R482	-27 518.930	3 015 734.360	
L484	-31 050.870	3 016 431.810		R483	-27 268.790	3 015 667.720	
L485	-30 946.460	3 016 408.930		R484	-27 110.720	3 015 624.050	
L486	-30 869.930	3 016 403.940		R485	-27 043.010	3 015 599.400	
L487	-30 844.200	3 016 404.360		R486	-26 968.090	3 015 563.910	
L488	-30 662.600	3 016 418.620		R487	-26 591.530	3 015 325.720	
L489	-30 535.380	3 016 428.580					
L490	-30 371.050	3 016 441.440					
L491	-30 266.760	3 016 449.610					
L492	-30 117.420	3 016 447.090					
L493	-30 047.690	3 016 439.790					
L494	-29 975.050	3 016 424.030					
L495	-29 743.980	3 016 362.620					
L496	-29 307.230	3 016 244.830					
L497	-28 998.070	3 016 165.110					
L498	-28 586.160	3 016 053.240					
L499	-28 326.710	3 015 991.130					
L500	-28 293.220	3 015 983.110					
L501	-27 874.950	3 015 864.840					
L502	-27 529.810	3 015 774.290					
L503	-27 493.080	3 015 764.410					
L504	-27 261.980	3 015 702.270					
L505	-27 112.080	3 015 666.720					
L506	-27 040.530	3 015 638.940					
L507	-26 955.060	3 015 599.750					
L508	-26 875.990	3 015 550.460					
L509	-26 778.850	3 015 493.970					
L510	-26 635.860	3 015 399.190					

LINKERKANT/LEFT HAND SIDE			
	Y	X	
L511	-26 566.849	3 015 360.144	

Vel	25	Van	25	P686/08
Sheet		of		