

**REPUBLIC OF SOUTH AFRICA
REPUBLIEK VAN SUID-AFRIKA**

Vol. 524

**Pretoria, 26 February
Februarie 2009**

No. 31921

CONTENTS**INHOUD**

<i>No.</i>	<i>Page No.</i>	<i>Gazette No.</i>	<i>No.</i>	<i>Bladsy No.</i>	<i>Koerant No.</i>
GOVERNMENT NOTICE			GOEWERMENSKENNISGEWING		
Transport, Department of			Vervoer, Departement van		
<i>Government Notice</i>			<i>Goewermentskennisgewing</i>		
176			176		
South African National Roads Agency Limited and the National Roads Act (7/1998): The South African National Roads Agency Limited: Declaration amendment of National Road R22 Section 4: Amendment of Declaration No. 1350 of 2003	3	31921	Suid-Afrikaanse Nasionale Padagentskap Beperk en die Nasionale Paaie Wet (7/1998): Die Suid-Afrikaanse Nasionale Padagentskap Beperk: Verklaring wysiging van Nasionale Pad R22 Seksie 4: Wysiging van Verklaring No. 1350 van 2003	4	31921

GOVERNMENT NOTICE

DEPARTMENT OF TRANSPORT

No. 176

26 February 2009

**THE SOUTH AFRICAN NATIONAL ROADS
AGENCY LIMITED**Registration No: 98/09584/06

DECLARATION AMENDMENT OF NATIONAL ROAD R22 SECTION 4

AMENDMENT OF DECLARATION NO. 1350 OF 2003

By virtue of section 40(1)(b) of the South African National Roads Agency Limited and the National Roads Act, 1998 (Act No. 7 of 1998), I hereby amend Declaration No. 1350 of 2003 by substituting the section from the Mseleni River up to Phelindaba, with the subjoined sheets 1 to 8 of Plan No. P722/08.

(National Road R22 Section 4: Mseleni River – Phelindaba)



MINISTER OF TRANSPORT

GOEWERMENTSKENNISGEWING

DEPARTEMENT VAN VERVOER

No. 176

26 Februarie 2009

DIE SUID-AFRIKAANSE NASIONALE PADAGENTSKAP BEPERK

Registrasie No: 98/09584/06

VERKLARING WYSIGING VAN NASIONALE PAD R22 SEKSIE 4.

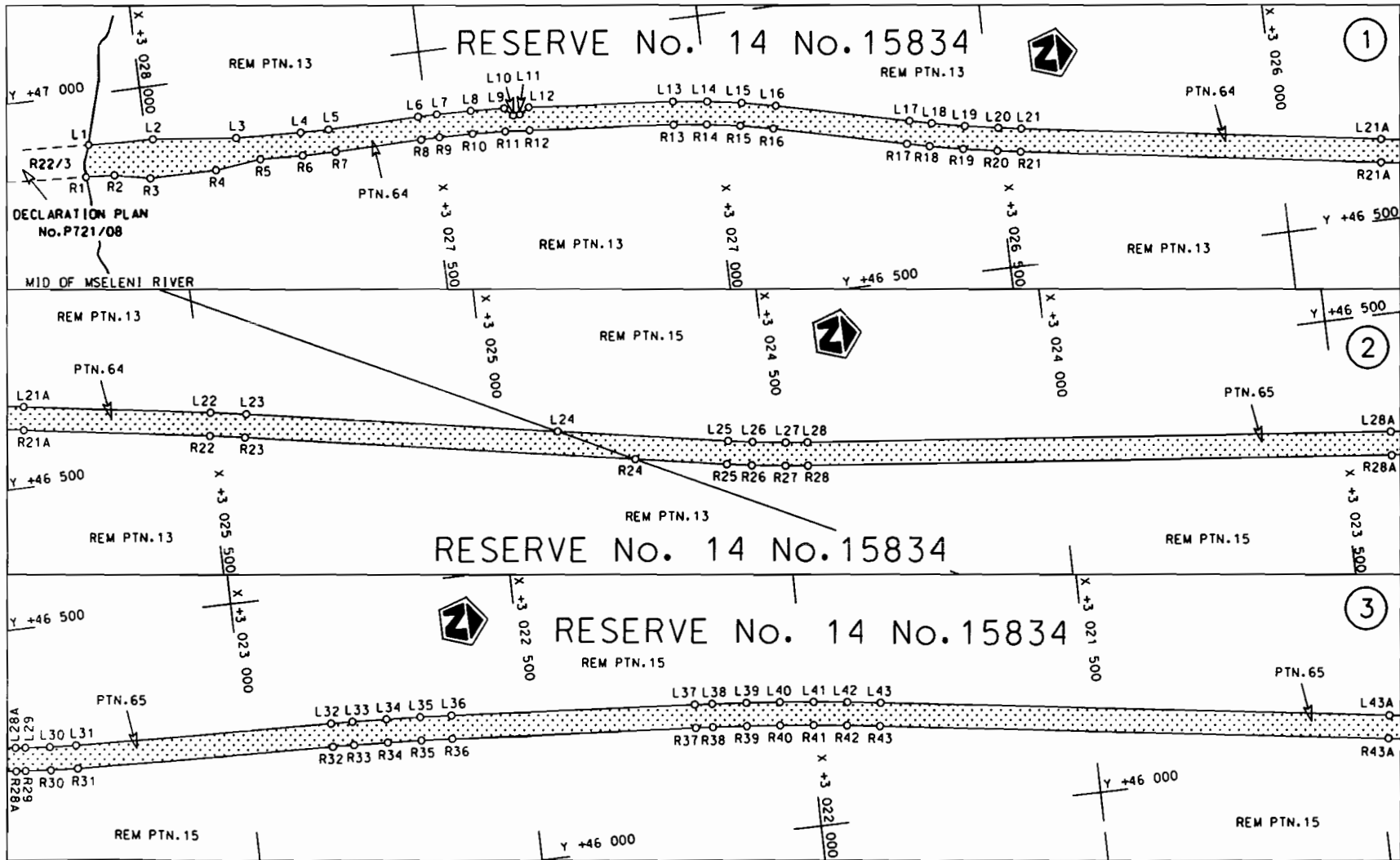
WYSIGING VAN VERKLARING NO. 1350 VAN 2003


Kragtens Artikel 40(1)(b) van die Suid-Afrikaanse Nasionale Padagentskap Beperk en die Nasionale Paaie Wet, 1998 (Wet no.7 van 1998), wysig ek hiermee Verklaring no. 1350 van 2003, deur die gedeelte vanaf die Mselenirivier tot by Phelindaba, te vervang met meegaande velle 1 tot 8 van Plan no. P722/08

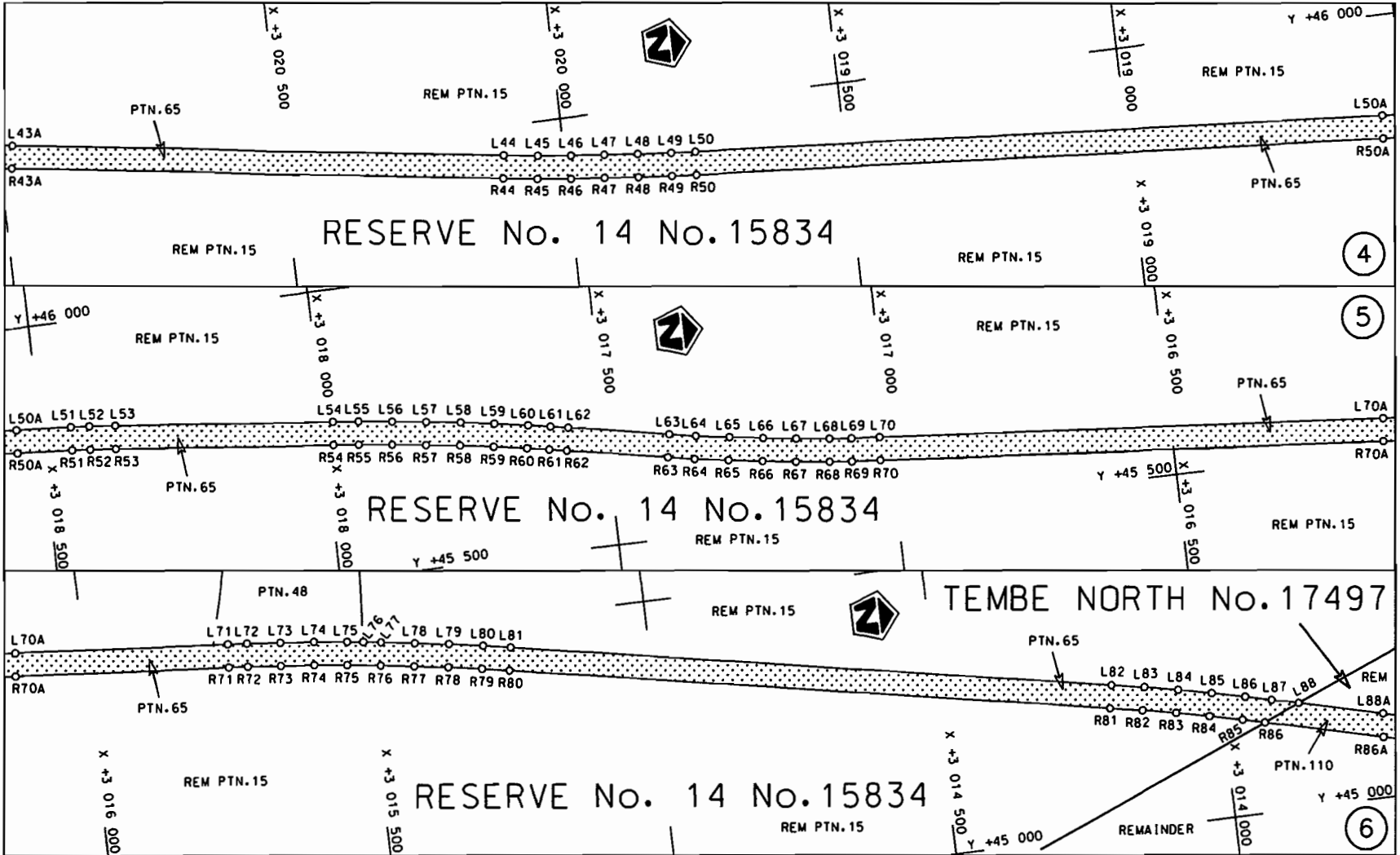
(Nasionale Pad R22 Seksie 4: Mselenirivier – Phelindaba)

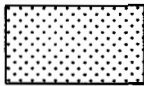


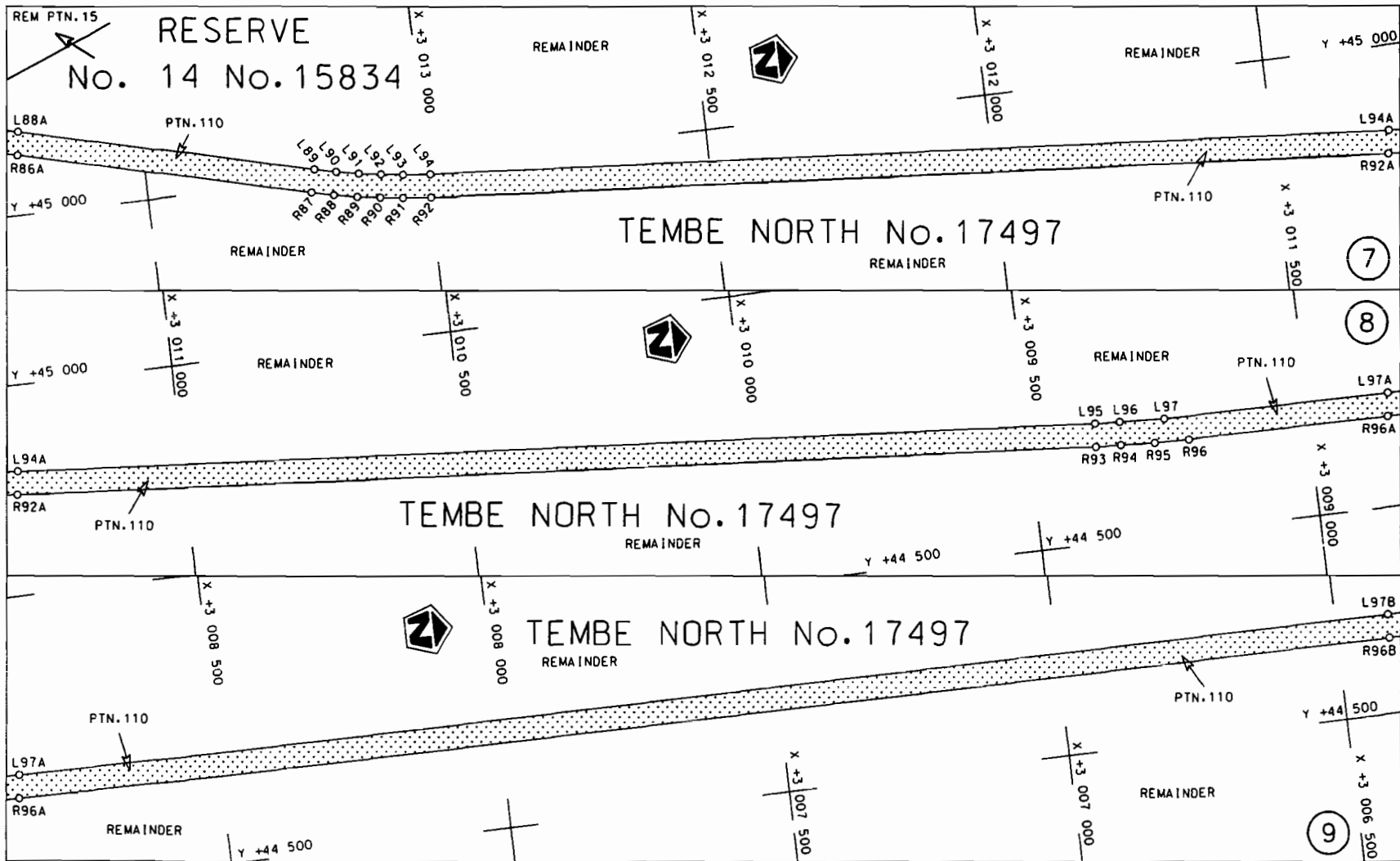
MINISTER VAN VERVOER

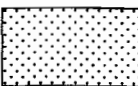


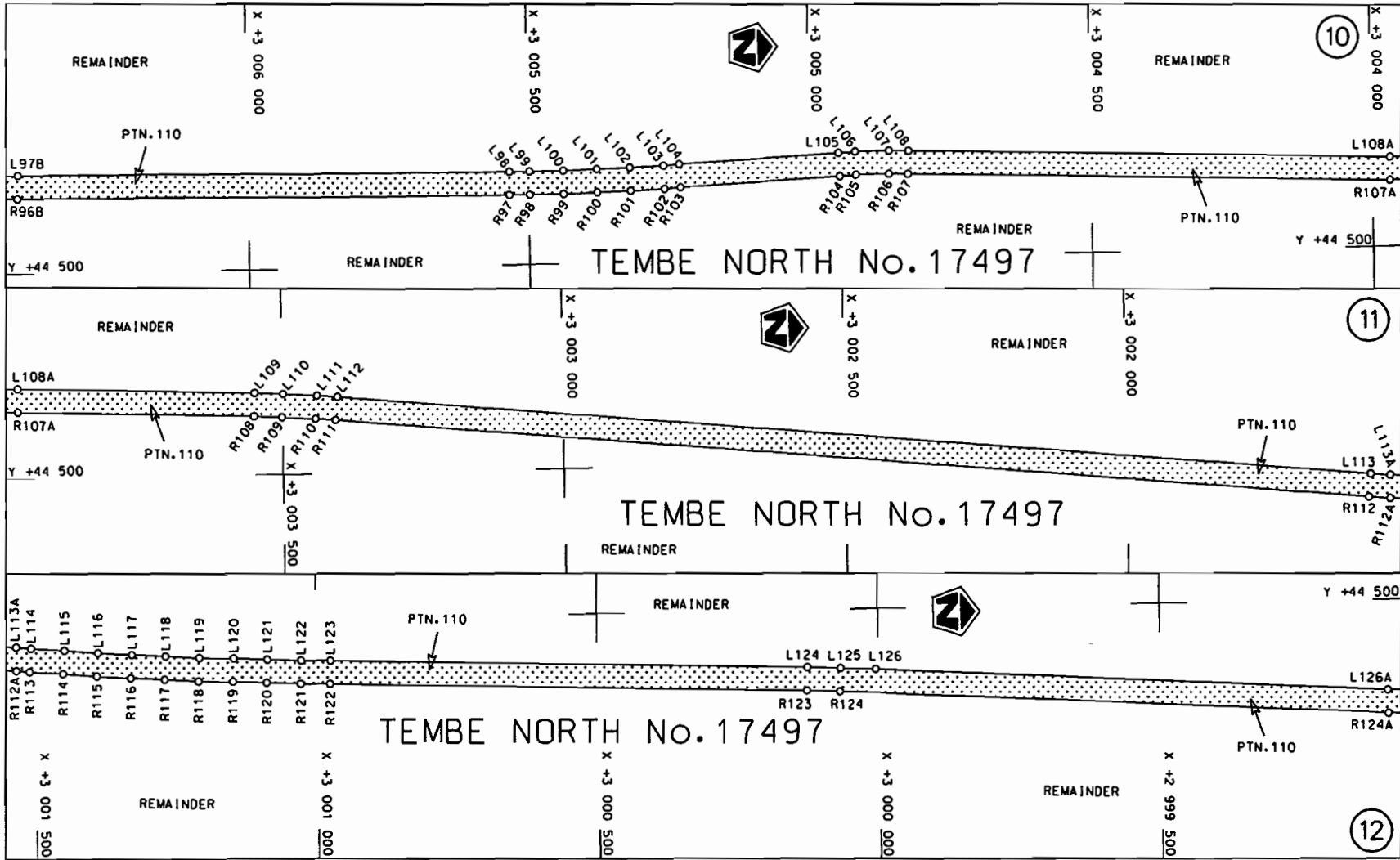
<p>Die Suid Afrikaanse Nasionale Padagentskap Beperk The South African National Roads Agency Limited</p>	<p>Die figuur getoon The figure shown</p>		<p>steldie padreserwe voor van 'n gedeelte represents the road reserve of a portion van Nasionale Raete R22 Seksie of National Route R22 Section 4</p>	<p>Vel Sheet 1 van of 8</p>
				<p>Plan P722/08</p>



<p>Die Suid Afrikaanse Nasionale Padagentskap Beperk The South African National Roads Agency Limited</p>	<p>Die figuur getoon The figure shown</p> 	<p>steldie padreserwe voor van 'n gedeelte represents the road reserve of a portion van Nasionale Roete of National Route</p> <p>R22 Seksie 4 Section</p>	<p>Vel Sheet 2 van 8 of 8</p> <p>Plan P722/08</p>
--------------------------------------------------------------------------------------------------------------	------------------------------------------------------------------------------------------------------------------------------------	------------------------------------------------------------------------------------------------------------------------------------------------------------------------------------------------------	-----------------------------------------------------------

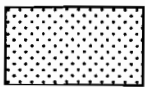


Die Suid Afrikaanse Nasionale Padagentskap Beperk The South African National Roads Agency Limited	Die figuur getoon The figure shown	 steldie padreserwe voor van 'n gedeelte represents the road reserve of a portion von Nasionale Roete R22 Seksie of National Route 4 Section	Vel Sheet 3 von of 8 Plon P722/08
------------------------------------------------------------------------------------------------------	---------------------------------------	-------------------------------------------------------------------------------------------------------------------------------------------------------------------------------------------------------------------------------------------	--------------------------------------



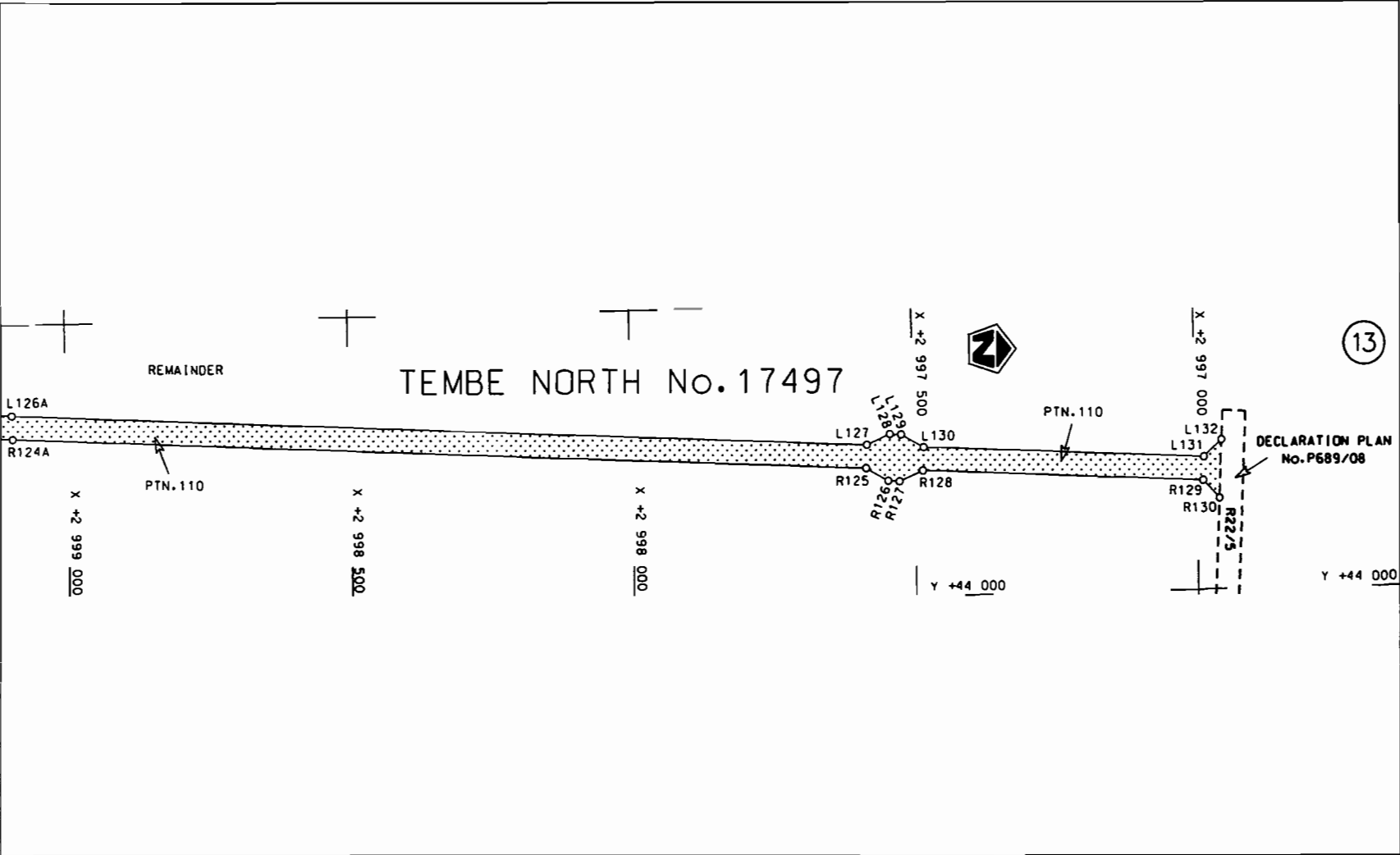
Die Suid Afrikaanse Nasionale Padagentskap Beperk
 The South African National Roads Agency Limited

Die figuur getoon
 The figure shown



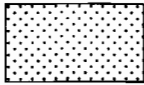
stel die padreserwe voor van 'n gedeelte
 represents the road reserve of a portion
 van Nasionale Roete R22 Seksie
 of National Route R22 Section 4

Vel Sheet 4 van of 8
 Plan P722/08



Die Suid Afrikaanse Nasionale Padagentskap Beperk
The South African National Roads Agency Limited

Die figuur getoon
The figure shown



steldie padreserwe voor van 'n gedeelte
represents the road reserve of a portion
van Nasionale Roete R22 Seksie
of National Route R22 Section
4

Vel Sheet 5 van of 8
Plan P722/08

PADRESERWE KOÖRDINATE / ROAD RESERVE CO-ORDINATES						
LINKERKANT/LEFT HAND SIDE				REGTERKANT/RIGHT HAND SIDE		
	Y	X	WG 33°		Y	X
L1	46 912.720	3 028	101.830	R1	46 858.146	3 028 113.371
L2	46 907.540	3 027	987.820	R2	46 855.470	3 028 062.420
L3	46 891.380	3 027	840.790	R3	46 841.070	3 028 000.650
L4	46 886.690	3 027	724.730	R4	46 840.400	3 027 882.890
L5	46 885.950	3 027	674.810	R5	46 849.800	3 027 802.440
L6	46 887.630	3 027	514.740	R6	46 846.720	3 027 726.350
L7	46 887.710	3 027	481.600	R7	46 846.040	3 027 667.180
L8	46 886.450	3 027	421.010	R8	46 847.640	3 027 514.310
L9	46 883.370	3 027	360.490	R9	46 847.710	3 027 481.830
L10	46 869.180	3 027	345.430	R10	46 846.470	3 027 422.450
L11	46 869.400	3 027	333.770	R11	46 843.450	3 027 363.120
L12	46 879.960	3 027	316.250	R12	46 840.110	3 027 319.760
L13	46 857.510	3 027	061.260	R13	46 817.660	3 027 064.770
L14	46 850.690	3 027	000.600	R14	46 811.060	3 027 006.020
L15	46 840.990	3 026	940.420	R15	46 801.660	3 026 947.730
L16	46 828.370	3 026	880.610	R16	46 789.440	3 026 889.810
L17	46 773.250	3 026	647.340	R17	46 734.320	3 026 656.540
L18	46 764.400	3 026	608.520	R18	46 725.330	3 026 617.090
L19	46 752.350	3 026	550.230	R19	46 713.080	3 026 557.860
L20	46 741.690	3 026	491.670	R20	46 702.250	3 026 498.360
L21	46 735.230	3 026	451.650	R21	46 695.700	3 026 457.690
L22	46 588.120	3 025	488.930	R22	46 548.580	3 025 494.970
L23	46 577.840	3 025	426.830	R23	46 538.460	3 025 433.850
L24	46 480.120	3 024	879.340	R24	46 416.020	3 024 747.810
L25	46 426.890	3 024	581.070	R25	46 387.510	3 024 588.100
L26	46 419.760	3 024	538.440	R26	46 380.240	3 024 544.600
L27	46 411.490	3 024	479.620	R27	46 371.800	3 024 484.600
L28	46 407.000	3 024	440.760	R28	46 367.220	3 024 444.960
L29	46 296.320	3 023	390.830	R29	46 256.540	3 023 395.020
L30	46 292.490	3 023	346.970	R30	46 252.590	3 023 349.740
L31	46 290.150	3 023	300.390	R31	46 250.170	3 023 301.640
L32	46 275.900	3 022	845.520	R32	46 235.920	3 022 846.770
L33	46 274.580	3 022	807.890	R33	46 234.610	3 022 809.440
L34	46 271.880	3 022	747.710	R34	46 231.930	3 022 749.740
L35	46 268.460	3 022	687.570	R35	46 228.540	3 022 690.080
L36	46 264.720	3 022	632.790	R36	46 224.830	3 022 635.740
L37	46 232.700	3 022	199.460	R37	46 192.810	3 022 202.410
L38	46 230.330	3 022	168.630	R38	46 190.460	3 022 171.820
L39	46 225.160	3 022	108.610	R39	46 185.330	3 022 112.280
L40	46 219.270	3 022	048.660	R40	46 179.490	3 022 052.810
L41	46 212.660	3 021	988.780	R41	46 172.930	3 021 993.410
L42	46 205.340	3 021	928.990	R42	46 165.660	3 021 934.090
L43	46 197.340	3 021	869.610	R43	46 157.730	3 021 875.190
L44	45 949.330	3 020	107.680	R44	45 909.720	3 020 113.260
L45	45 941.220	3 020	047.440	R45	45 901.550	3 020 052.530
L46	45 933.970	3 019	988.120	R46	45 894.240	3 019 992.740
L47	45 927.430	3 019	928.720	R47	45 887.650	3 019 932.860
L48	45 921.610	3 019	869.250	R48	45 881.770	3 019 872.910
L49	45 916.500	3 019	809.710	R49	45 876.620	3 019 812.890
L50	45 913.280	3 019	767.050	R50	45 873.380	3 019 769.890
L51	45 819.240	3 018	445.700	R51	45 779.340	3 018 448.540

Vel	6	Van	8	P722/08
Sheet		of		

PADRESERWE KOÖRDINATE / ROAD RESERVE CO-ORDINATES											
LINKERKANT/LEFT HAND SIDE					REGTERKANT/RIGHT HAND SIDE						
	Y		X	WG 33°		Y		X			
L52	45	816.720	3	018	413.190	R52	45	776.860	3	018	416.540
L53	45	812.420	3	018	367.130	R53	45	772.620	3	018	371.220
L54	45	772.750	3	017	980.960	R54	45	732.960	3	017	985.050
L55	45	767.840	3	017	935.140	R55	45	728.080	3	017	939.590
L56	45	760.770	3	017	875.310	R56	45	721.080	3	017	880.240
L57	45	752.990	3	017	815.580	R57	45	713.360	3	017	820.980
L58	45	744.500	3	017	755.940	R58	45	704.930	3	017	761.820
L59	45	735.280	3	017	696.410	R59	45	695.790	3	017	702.760
L60	45	725.360	3	017	636.990	R60	45	685.940	3	017	643.820
L61	45	718.340	3	017	597.450	R61	45	678.990	3	017	604.590
L62	45	712.530	3	017	566.000	R62	45	673.220	3	017	573.400
L63	45	679.080	3	017	388.130	R63	45	639.770	3	017	395.520
L64	45	670.700	3	017	341.980	R64	45	631.300	3	017	348.880
L65	45	660.880	3	017	283.110	R65	45	621.380	3	017	289.380
L66	45	652.000	3	017	224.100	R66	45	612.400	3	017	229.730
L67	45	644.070	3	017	164.950	R67	45	604.390	3	017	169.950
L68	45	637.090	3	017	105.680	R68	45	597.320	3	017	110.040
L69	45	632.960	3	017	066.110	R69	45	593.150	3	017	070.050
L70	45	628.350	3	017	016.110	R70	45	588.490	3	017	019.510
L71	45	519.820	3	015	745.190	R71	45	479.960	3	015	748.590
L72	45	516.800	3	015	711.220	R72	45	476.970	3	015	714.890
L73	45	510.900	3	015	651.270	R73	45	471.120	3	015	655.420
L74	45	504.290	3	015	591.390	R74	45	464.560	3	015	596.020
L75	45	496.960	3	015	531.600	R75	45	457.290	3	015	536.710
L76	45	493.140	3	015	503.300	R76	45	449.300	3	015	477.490
L77	45	488.910	3	015	471.900	R77	45	440.610	3	015	418.360
L78	45	480.150	3	015	412.300	R78	45	431.210	3	015	359.350
L79	45	470.670	3	015	352.820	R79	45	421.100	3	015	300.450
L80	45	460.480	3	015	293.440	R80	45	412.320	3	015	252.440
L81	45	451.630	3	015	245.060	R81	45	214.230	3	014	198.480
L82	45	253.540	3	014	191.090	R82	45	203.120	3	014	141.200
L83	45	242.340	3	014	133.350	R83	45	191.040	3	014	082.670
L84	45	230.160	3	014	074.360	R84	45	178.260	3	014	024.300
L85	45	217.280	3	014	015.510	R85	45	164.780	3	013	966.080
L86	45	203.700	3	013	956.820	R86	45	155.381	3	013	927.223
L87	45	192.420	3	013	910.390	R87	44	977.100	3	013	208.090
L88	45	180.680	3	013	863.030	R88	44	968.180	3	013	169.560
L89	45	015.920	3	013	198.460	R89	44	960.270	3	013	129.700
L90	45	007.280	3	013	161.150	R90	44	953.640	3	013	089.600
L91	44	999.620	3	013	122.540	R91	44	948.290	3	013	049.320
L92	44	993.200	3	013	083.710	R92	44	943.510	3	012	999.760
L93	44	988.030	3	013	044.690	R93	44	665.760	3	009	384.200
L94	44	983.390	3	012	996.700	R94	44	662.710	3	009	339.180
L95	44	705.640	3	009	381.140	R95	44	659.880	3	009	278.770
L96	44	702.640	3	009	336.830	R96	44	658.500	3	009	217.600
L97	44	698.920	3	009	257.282	R97	44	619.920	3	005	534.460
L98	44	659.910	3	005	534.040	R98	44	619.670	3	005	498.360
L99	44	659.670	3	005	498.220	R99	44	619.830	3	005	438.120
L100	44	659.830	3	005	438.460	R100	44	620.720	3	005	377.880
L101	44	660.710	3	005	378.710	R101	44	622.330	3	005	317.660
L102	44	662.300	3	005	318.970	R102	44	624.660	3	005	257.470

Vel
Sheet

7

Van

8

of

P722/08

PADRESERWE KOÖRDINATE / ROAD RESERVE CO-ORDINATES					
LINKERKANT/LEFT HAND SIDE			REGTERKANT/RIGHT HAND SIDE		
	Y	X	WG 33°		
L103	44 664.620	3 005 259.260		R103	44 626.000 3 005 229.220
L104	44 665.950	3 005 231.240		R104	44 640.230 3 004 946.790
L105	44 680.180	3 004 948.810		R105	44 641.400 3 004 918.160
L106	44 681.380	3 004 919.400		R106	44 642.050 3 004 858.970
L107	44 682.050	3 004 858.610		R107	44 641.350 3 004 825.080
L108	44 681.330	3 004 823.800		R108	44 600.660 3 003 550.570
L109	44 640.640	3 003 549.300		R109	44 598.560 3 003 500.530
L110	44 638.500	3 003 498.450		R110	44 594.740 3 003 441.140
L111	44 634.630	3 003 438.100		R111	44 591.670 3 003 404.440
L112	44 631.510	3 003 400.810		R112	44 424.350 3 001 569.930
L113	44 464.180	3 001 566.300		R113	44 419.000 3 001 509.290
L114	44 458.860	3 001 505.900		R114	44 414.090 3 001 449.370
L115	44 453.960	3 001 446.220		R115	44 409.530 3 001 389.420
L116	44 449.420	3 001 386.510		R116	44 405.330 3 001 329.450
L117	44 445.240	3 001 326.780		R117	44 401.490 3 001 269.450
L118	44 441.420	3 001 267.020		R118	44 398.010 3 001 209.430
L119	44 437.950	3 001 207.240		R119	44 394.900 3 001 149.390
L120	44 434.850	3 001 147.440		R120	44 392.140 3 001 089.340
L121	44 432.100	3 001 087.620		R121	44 389.740 3 001 029.260
L122	44 429.710	3 001 027.790		R122	44 387.910 3 000 975.730
L123	44 427.890	3 000 974.470		R123	44 361.180 3 000 128.530
L124	44 401.160	3 000 127.270		R124	44 358.980 3 000 069.890
L125	44 398.950	3 000 068.160		R125	44 220.450 2 997 584.920
L126	44 395.830	3 000 005.350		R126	44 198.250 2 997 546.100
L127	44 260.390	2 997 582.690		R127	44 197.130 2 997 526.130
L128	44 278.120	2 997 541.640		R128	44 214.870 2 997 485.080
L129	44 277.010	2 997 521.670		R129	44 187.070 2 996 987.930
L130	44 254.800	2 997 482.850		R130	44 155.220 2 996 959.500
L131	44 227.010	2 996 985.630			
L132	44 255.080	2 996 954.170			

Vel
Sheet

8

Van
of

8

P722/08