

Government Gazette
REPUBLIC OF SOUTH AFRICA
REPUBLIEK VAN SUID-AFRIKA

Vol. 524

Pretoria, 27 February 2009
Februarie

No. 31935

CONTENTS**INHOUD**

<i>No.</i>	<i>Page No.</i>	<i>Gazette No.</i>	<i>No.</i>	<i>Bladsy No.</i>	<i>Koerant No.</i>
GOVERNMENT NOTICE			GOEWERMENTSKENNISGEWING		
Transport, Department of			Vervoer, Departement van		
<i>Government Notice</i>			<i>Goewermentskennisgewing</i>		
183			183		
South African National Roads Agency Limited and the National Roads Act (7/1998): The South African National Roads Agency Limited: Declaration amendment of National Road N6 Section 3: Amendment of Declaration No. 2136 of 1992	3	31935	Suid-Afrikaanse Nasionale Padagentskap Beperk en die Nasionale Paaie Wet (7/1998): Die Suid-Afrikaanse Nasionale Padagentskap Beperk: Verklaring wysiging van Nasionale Pad N6 Seksie 3: Wysiging van Verklaring No. 2136 van 1992	4	31935

GOVERNMENT NOTICE

DEPARTMENT OF TRANSPORT

No. 183

27 February 2009

THE SOUTH AFRICAN NATIONAL ROADS AGENCY LIMITED

Registration No: 98/09584/06

DECLARATION AMENDMENT OF NATIONAL ROAD N6 SECTION 3

AMENDMENT OF DECLARATION NO. 2136 OF 1992

By virtue of Section 40(1)(b) of The South African National Roads Agency Limited and National Roads Act, 1998 (Act No. 7 of 1998) I hereby amend Declaration No. 2136 of 1992 Schedule A paragraph 6, by substituting the section from Cathcart up to Queenstown, with the subjoined sheets 1 to 21 of Plan No. P649/08.

(National Road N6 Section 3: Cathcart – Queenstown)



MINISTER OF TRANSPORT

GOEWERMENTSKENNISGEWING

DEPARTEMENT VAN VERVOER

No. 183

27 Februarie 2009

DIE SUID-AFRIKAANSE NASIONALE PADAGENTSKAP BEPERK

Registrasie No: 98/09584/06

VERKLARING WYSIGING VAN NASIONALE PAD N6 SEKSIE 3.

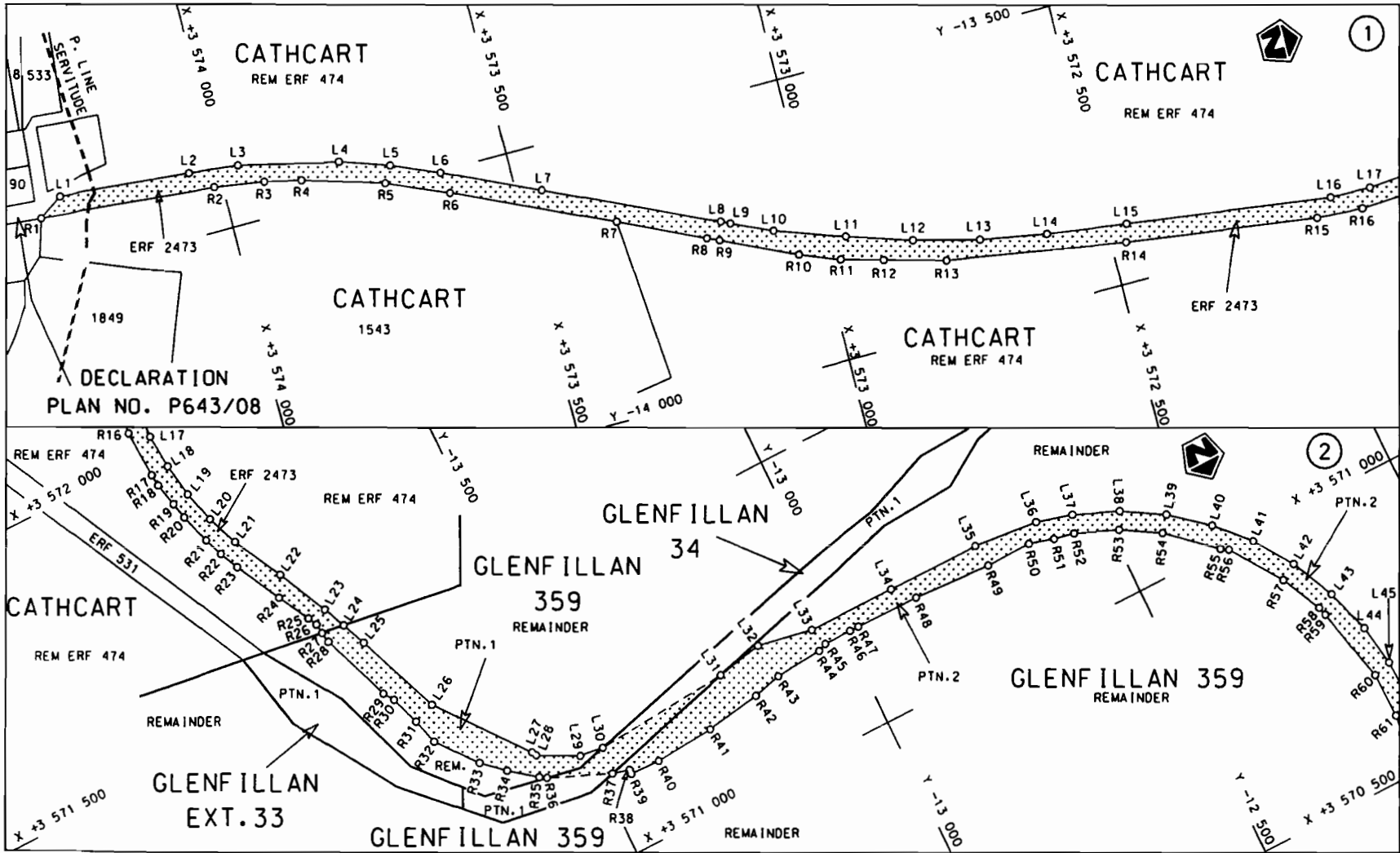
WYSIGING VAN VERKLARING NO. 2136 van 1992


Kragtens artikel 40 (1)(b) van die Suid-Afrikaanse Nasionale Padagentskap Beperk en Nasionale Paaie Wet (Wet no. 7 van 1998), wysig ek hiermee Verklaring no. 2136 van 1992 Skedule A paragraaf 6 deur die gedeelte vanaf Cathcart tot by Queenstown, te vervang met meegaande velle 1 tot 21 van Plan no. P649/08.

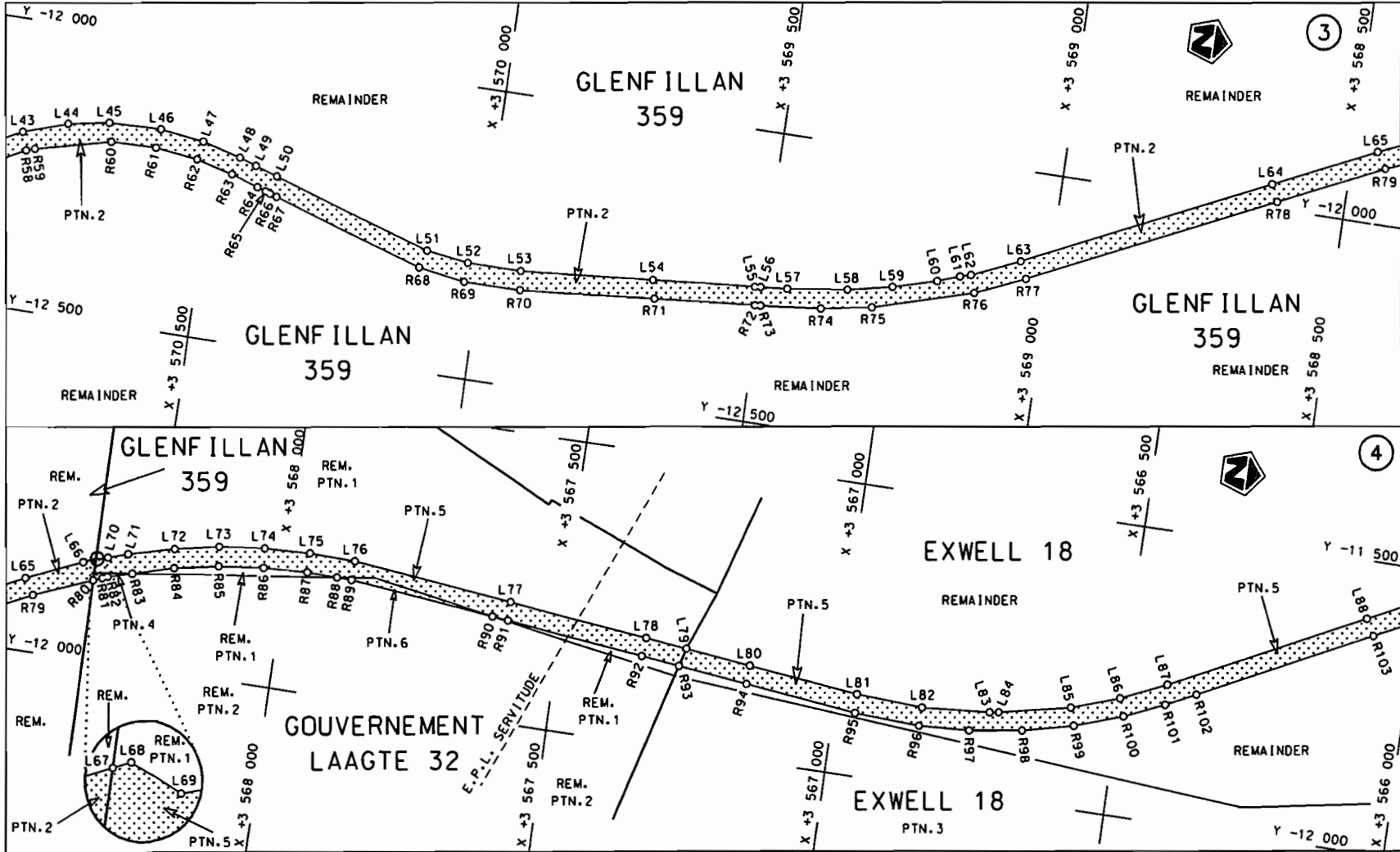
(Nasionale Pad N6 Seksie 3: Cathcart – Queenstown)



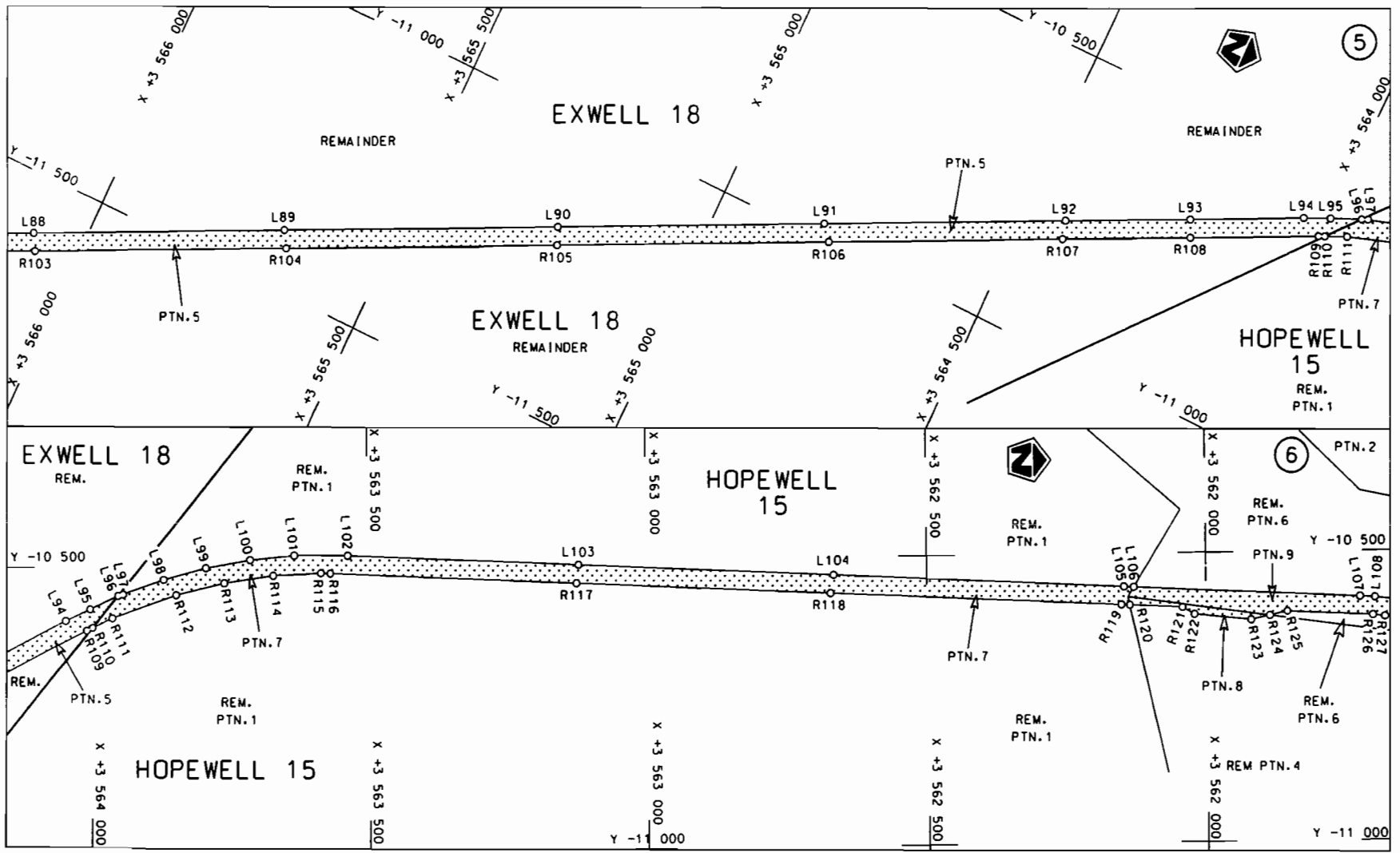
MINISTER VAN VERVOER

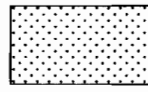


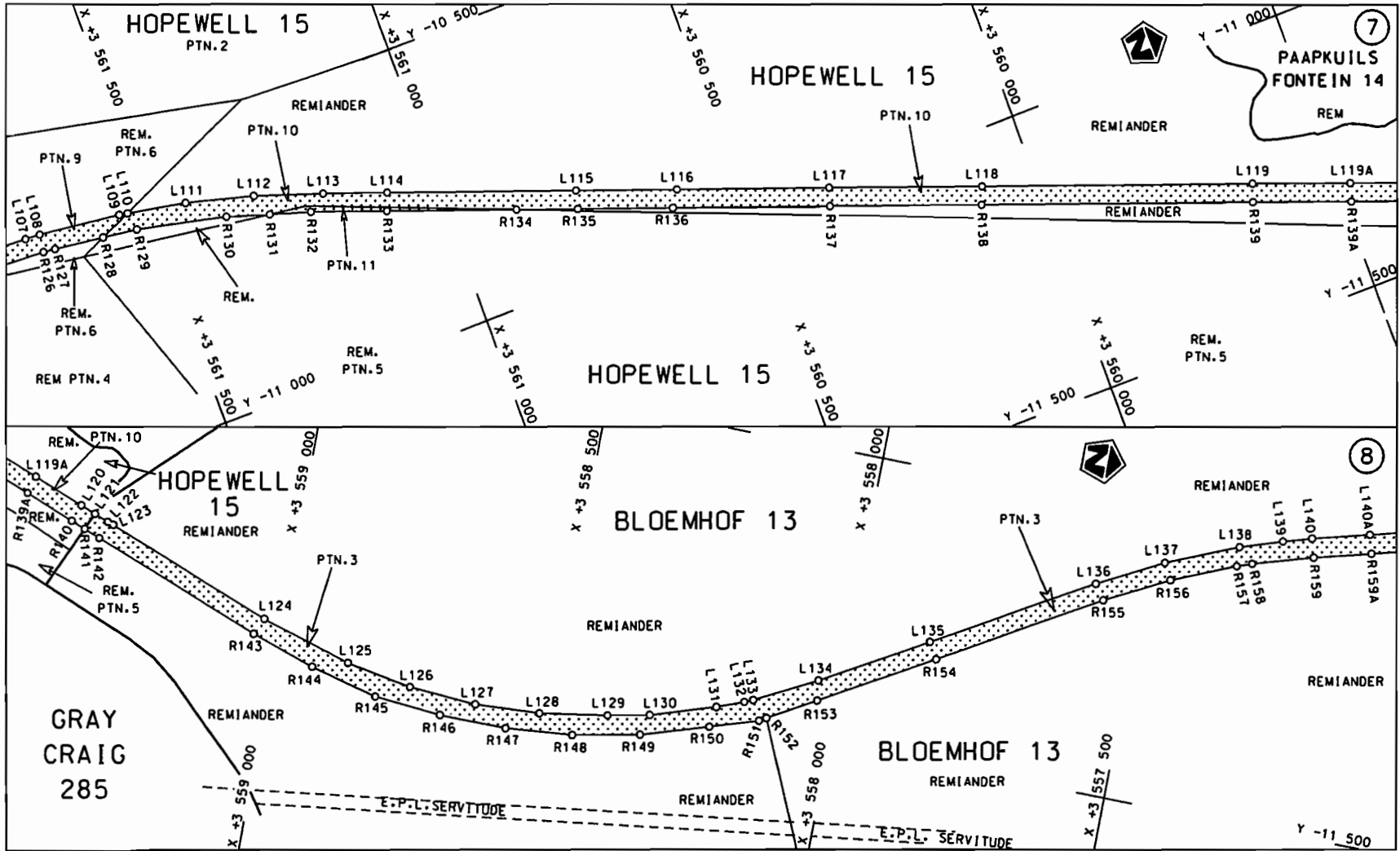
<p>Die Suid Afrikaanse Nasionale Padogentskap Beperk The South African National Roads Agency Limited</p>	<p>Die figuur getoon The figure shown</p> <div style="text-align: center;">  </div>	<p>steldie padreserwe voor van 'n gedeelte represents the road reserve of a portion van Nasionale Roete N6 Seksie 3 of National Route N6 Section 3</p>	<p>Vel Sheet 1 van of 21 Plan P649/08</p>
--	---	--	---

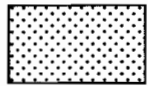


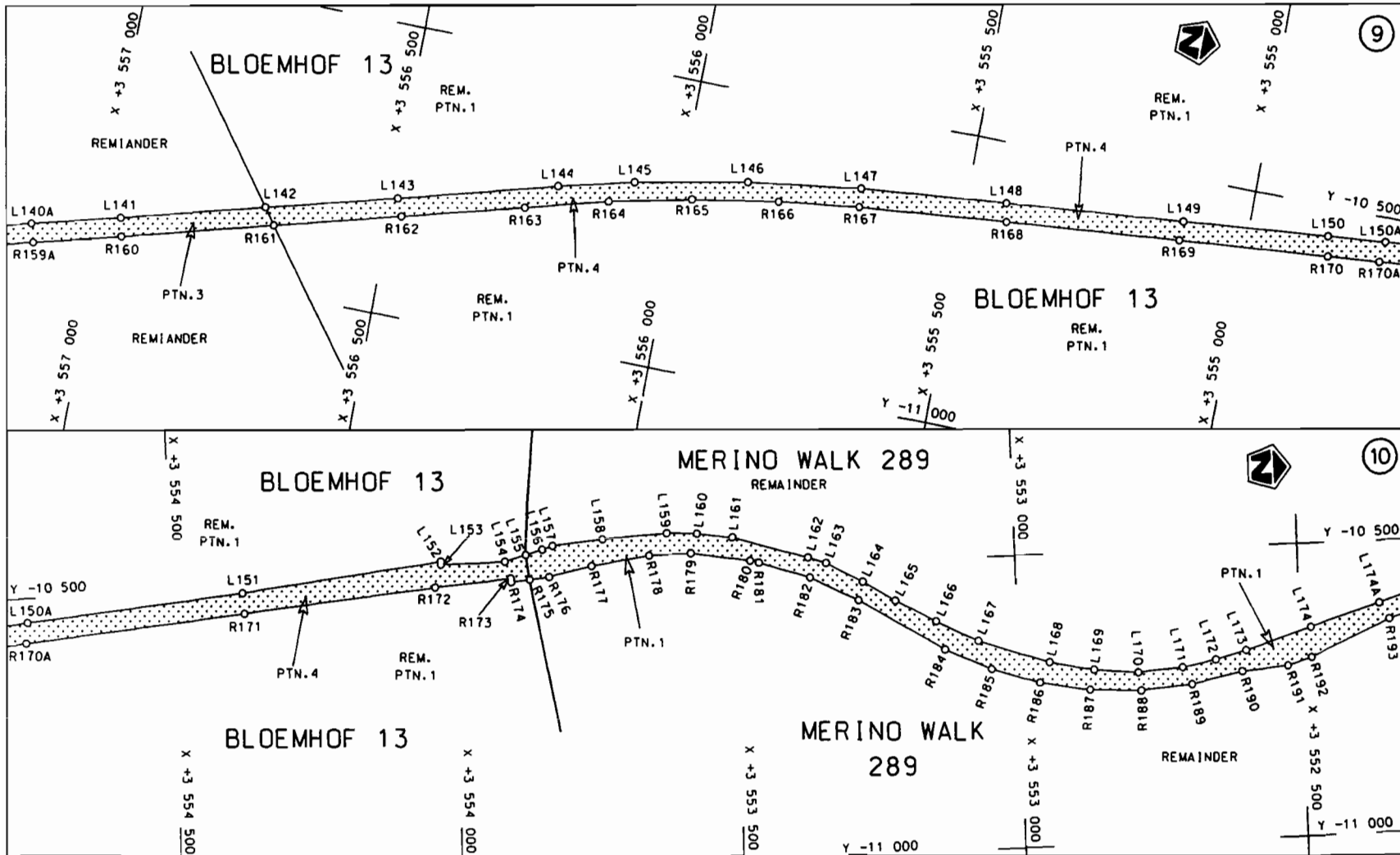
<p>Die Suid Afrikaanse Nasionale Padagentskap Beperk The South African National Roads Agency Limited</p>	<p>Die figuur getoon The figure shown</p>		<p>steldie padreserwe voor van 'n gedeelte represents the road reserve of a portion van Nasionale Rood of National Route N6</p> <p>Seksie Section 3</p>	<p>Vel Sheet 2 van of 21</p> <p>Plan P649/08</p>
--	---	--	---	--




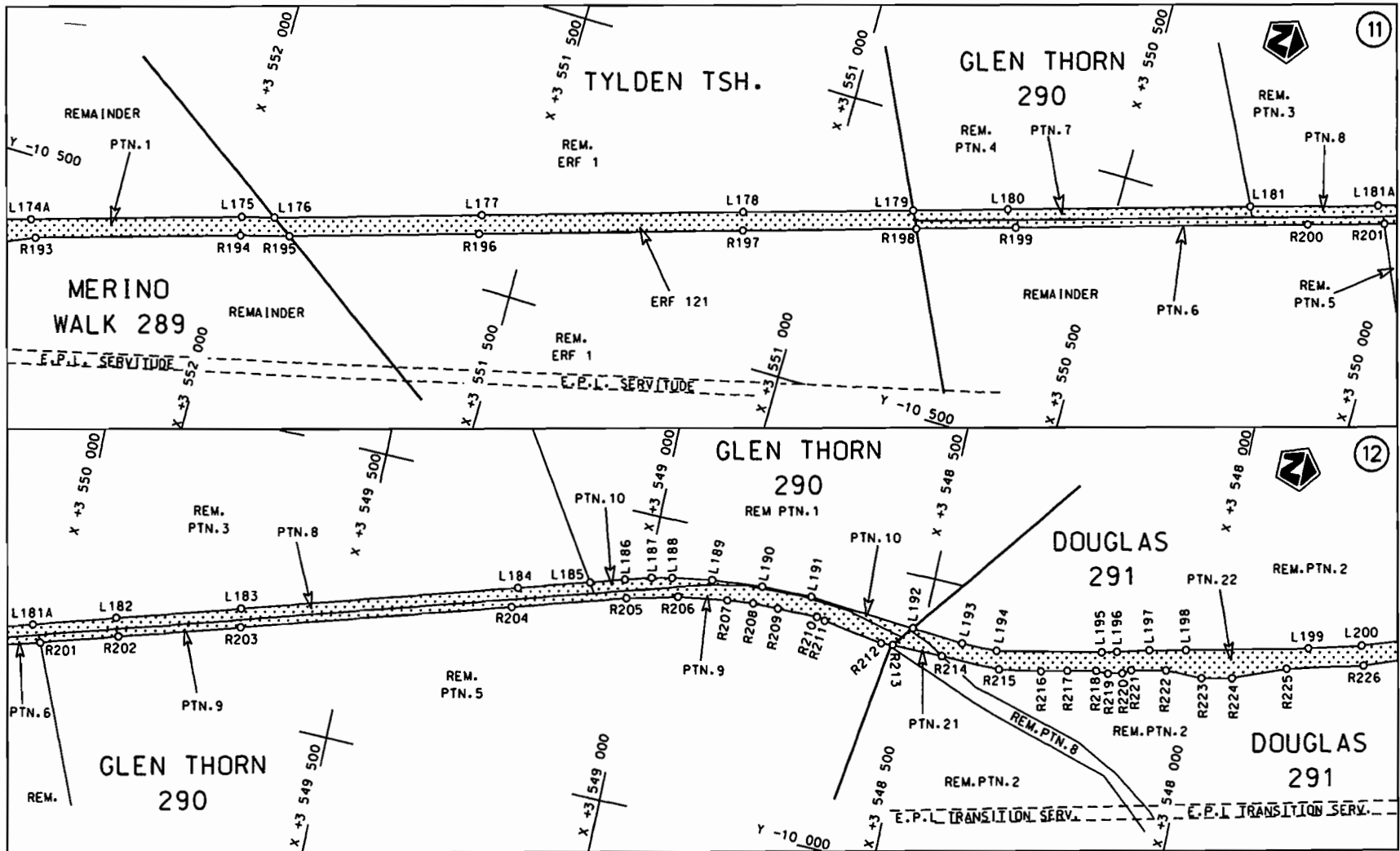
<p>Die Suid Afrikaanse Nasionale Padagentskap Beperk The South African National Roads Agency Limited</p>	<p>Die figuur getoon The figure shown</p> 	<p>steldie podereserve voor van 'n gedeelte represents the road reserve of a portion van Nasionale Roete N6 Seksie Section 3 of National Route</p>	<p>Vel Sheet 3 van of 21 Plan P649/08</p>
--	--	--	---




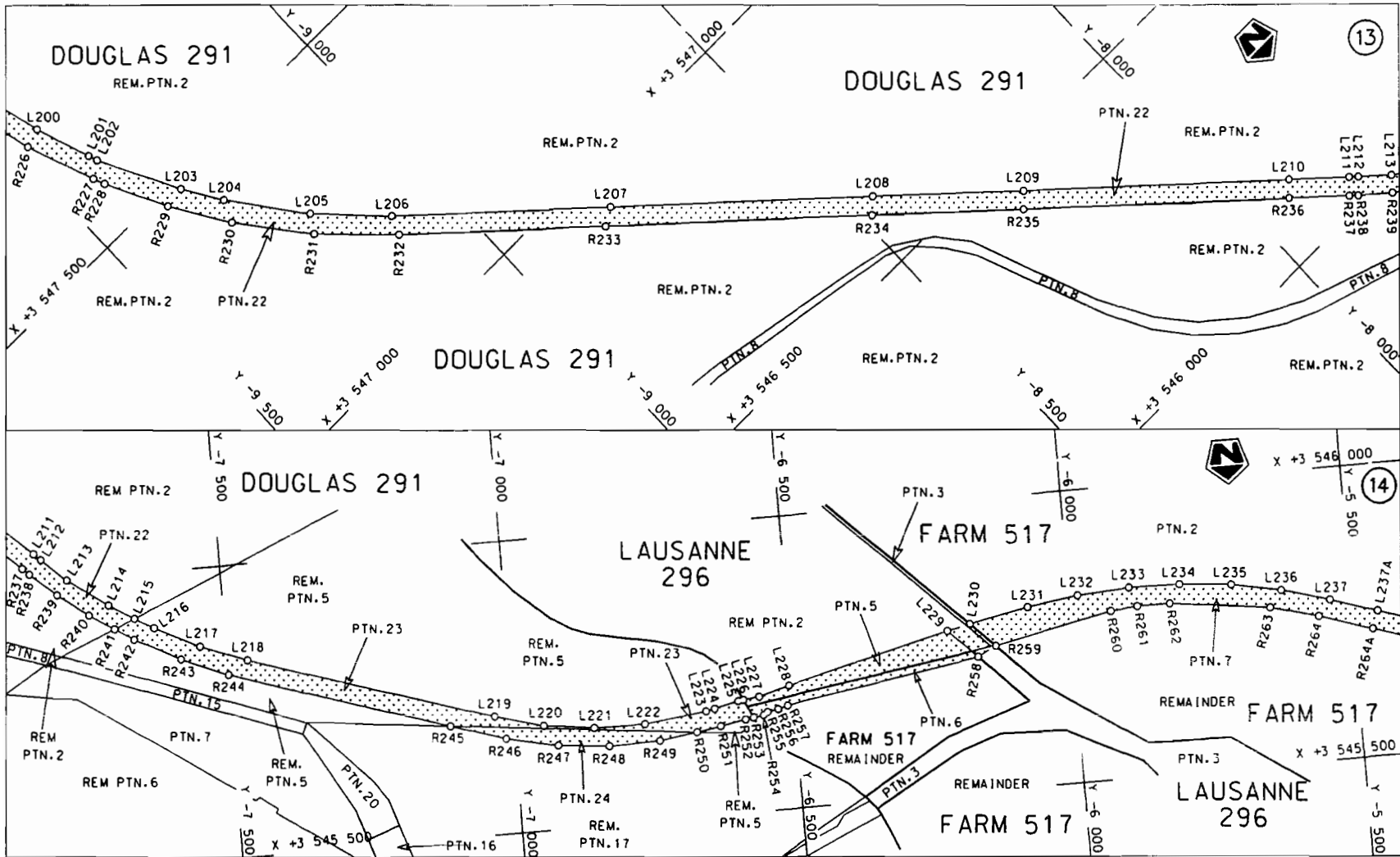
<p>Die Suid Afrikaanse Nasionale Padagentskap Beperk The South African National Roads Agency Limited</p>	<p>Die figuur getoon The figure shown</p> 	<p>steldie padreserwe voor van 'n gedeelte represents the road reserve of a portion van Nasionale Roete N6 of National Route N6</p> <p>Seksie Section 3</p>	<p>Vel Sheet 4 of 21 Plan P649/08</p>
--	--	---	---



<p>Die Suid Afrikaanse Nasionale Padagentskop Beperk The South African National Roads Agency Limited</p>	<p>Die figuur getoon The figure shown</p>		<p>steldie padreserwe voor van 'n gedeelte represents the road reserve of a portion van Nasionale Roete N6 of National Route N6</p> <p>Seksie Section 3</p>	<p>Vel Sheet 5 van 21 Plan P649/08</p>
--	---	--	---	--



<p>Die Suid Afrikaanse Nasionale Padagentskap Beperk The South African National Roads Agency Limited</p>	<p>Die figuur getoon The figure shown</p> 	<p>steldie padreserwe voor van 'n gedeelte represents the road reserve of a portion van Nasionale Roete N6 Sektie 3 of National Route N6 Section 3</p>	<p>Vel Sheet 6 van 21 Plan P649/08</p>
--	--	--	--



Die Suid Afrikaanse Nasionale Padagentskap Beperk
The South African National Roads Agency Limited

Die figuur getoon
The figure shown

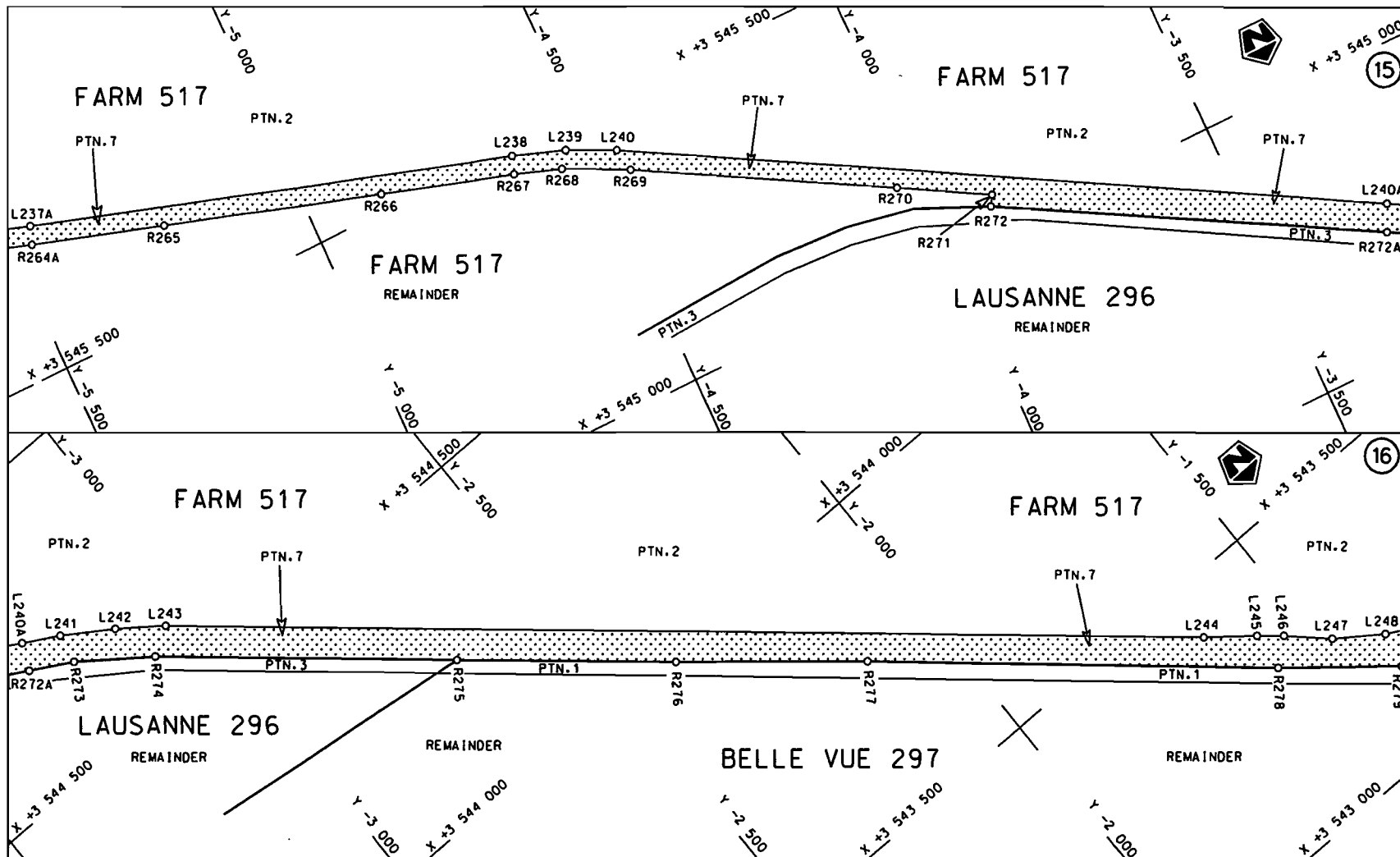


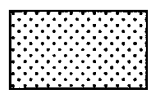
steldie podereserwe voor van 'n gedeelte
represents the rood reserve of a portion
van Nasionale Roete N6 Seksie
of National Route N6 Section

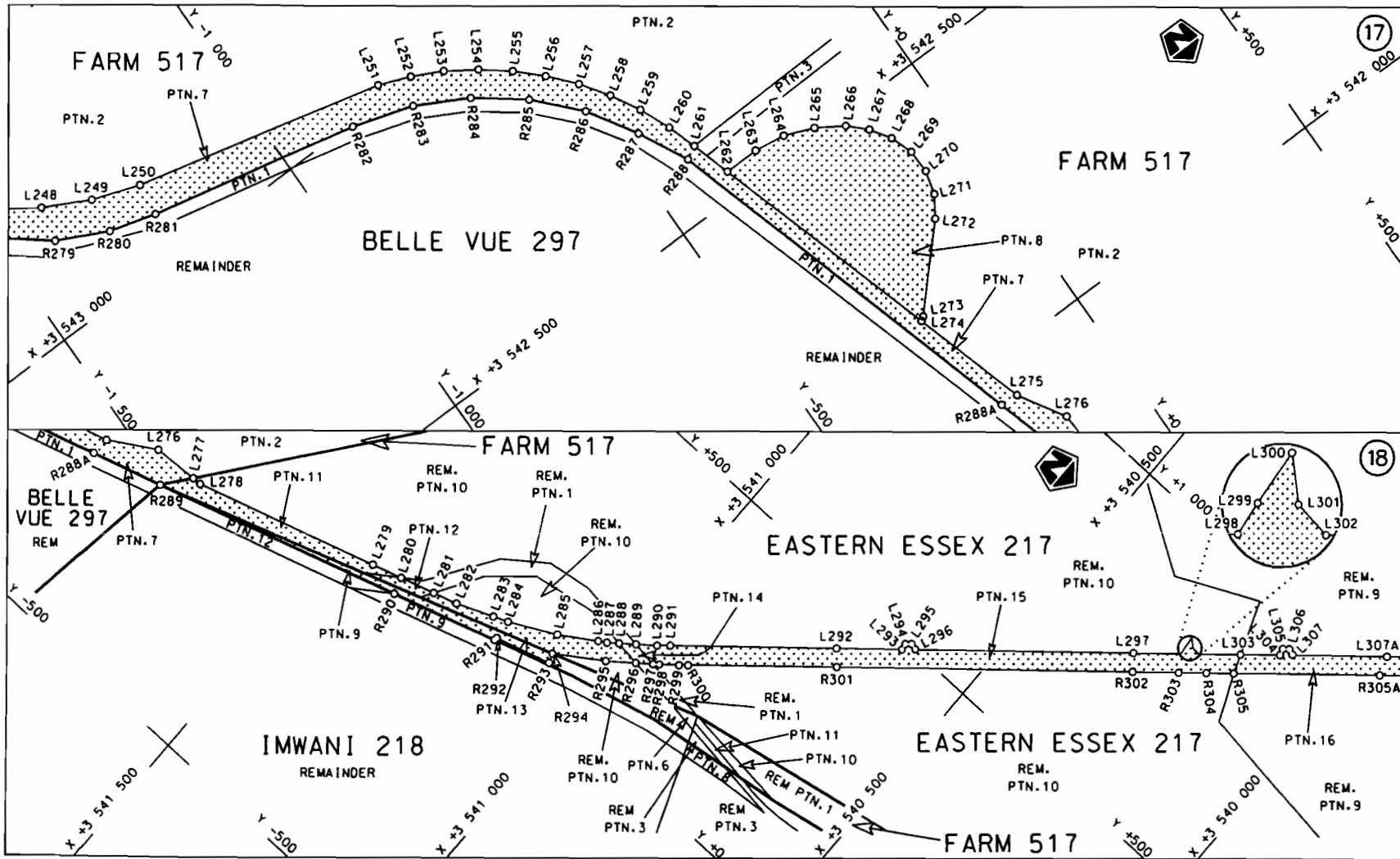
N6 Seksie 3


Vel 7 van 21
Sheet of

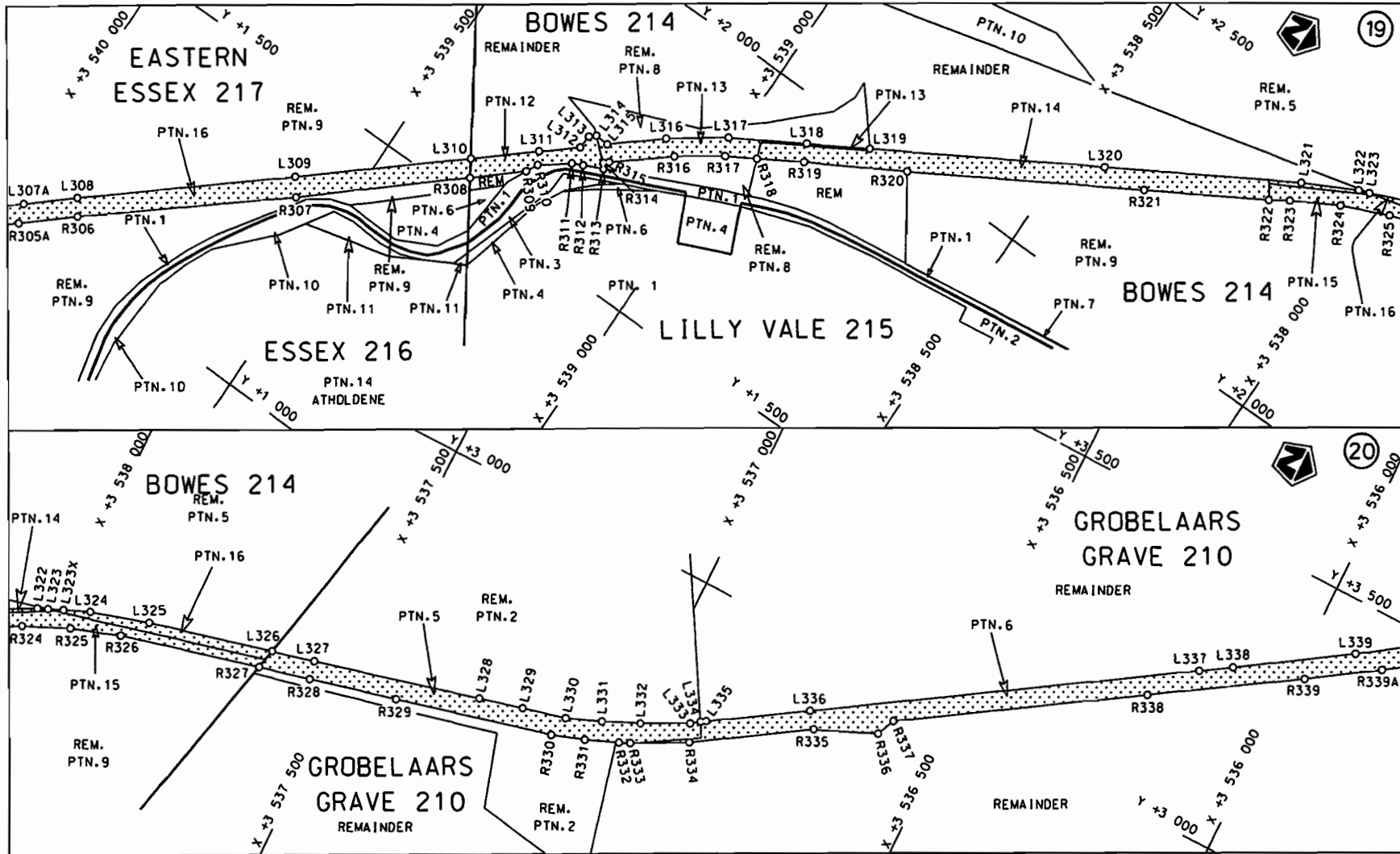
Plan P649/08

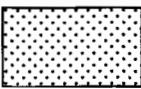


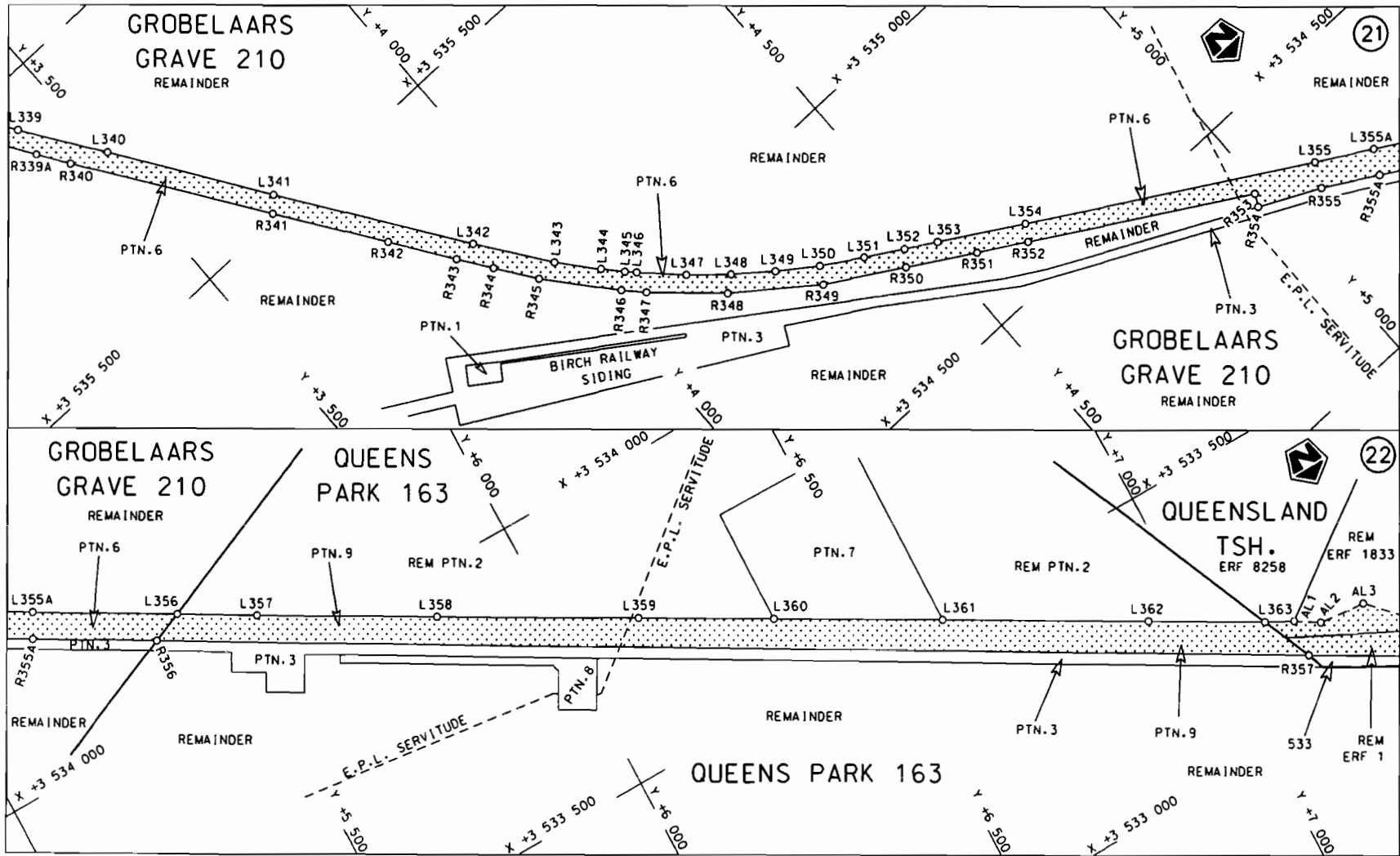
<p>Die Suid Afrikaanse Nasionale Podagentskop Beperk The South African National Roads Agency Limited</p>	<p>Die figuur getoon The figure shown</p>		<p>steldie padreserwe voor van 'n gedeelte represents the road reserve of a portion van Nasionale Roete N6 of National Route N6</p> <p>Seksie 3 Section 3</p>	<p>Vel Sheet 8 van of 21</p> <p>Plan P649/08</p>
--	---	--	---	--

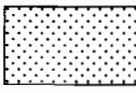


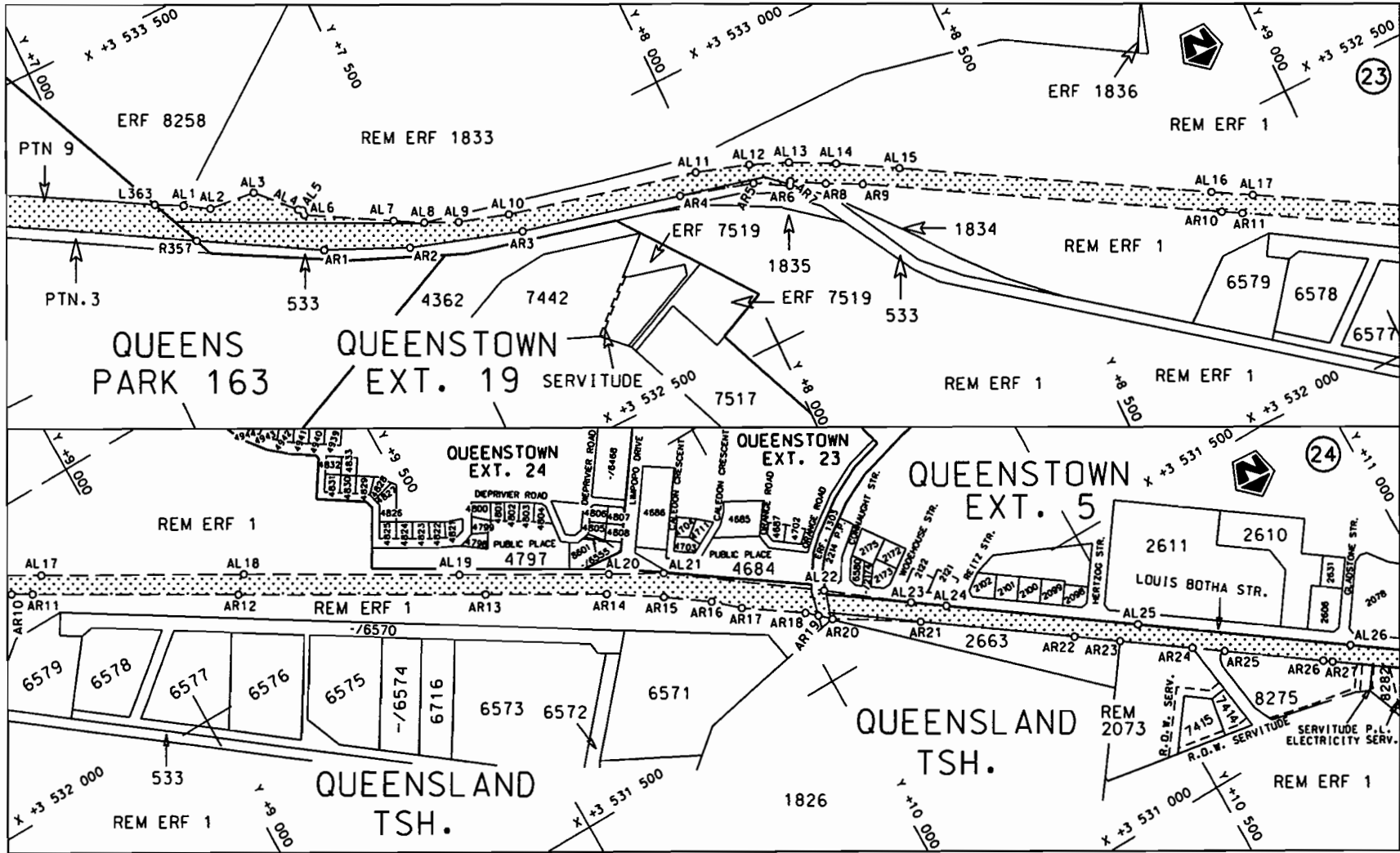
Die Suid Afrikaanse Nasionale Padagentskap Beperk The South African National Roads Agency Limited	Die figuur getoon The figure shown		Vel Sheet 9 van 21 Plan P649/08
steldie padreserwe voor van 'n gedeelte represents the road reserve of a portion van Nasionale Roete N6 Seksie of National Route Section 3			3

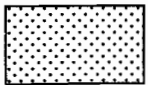


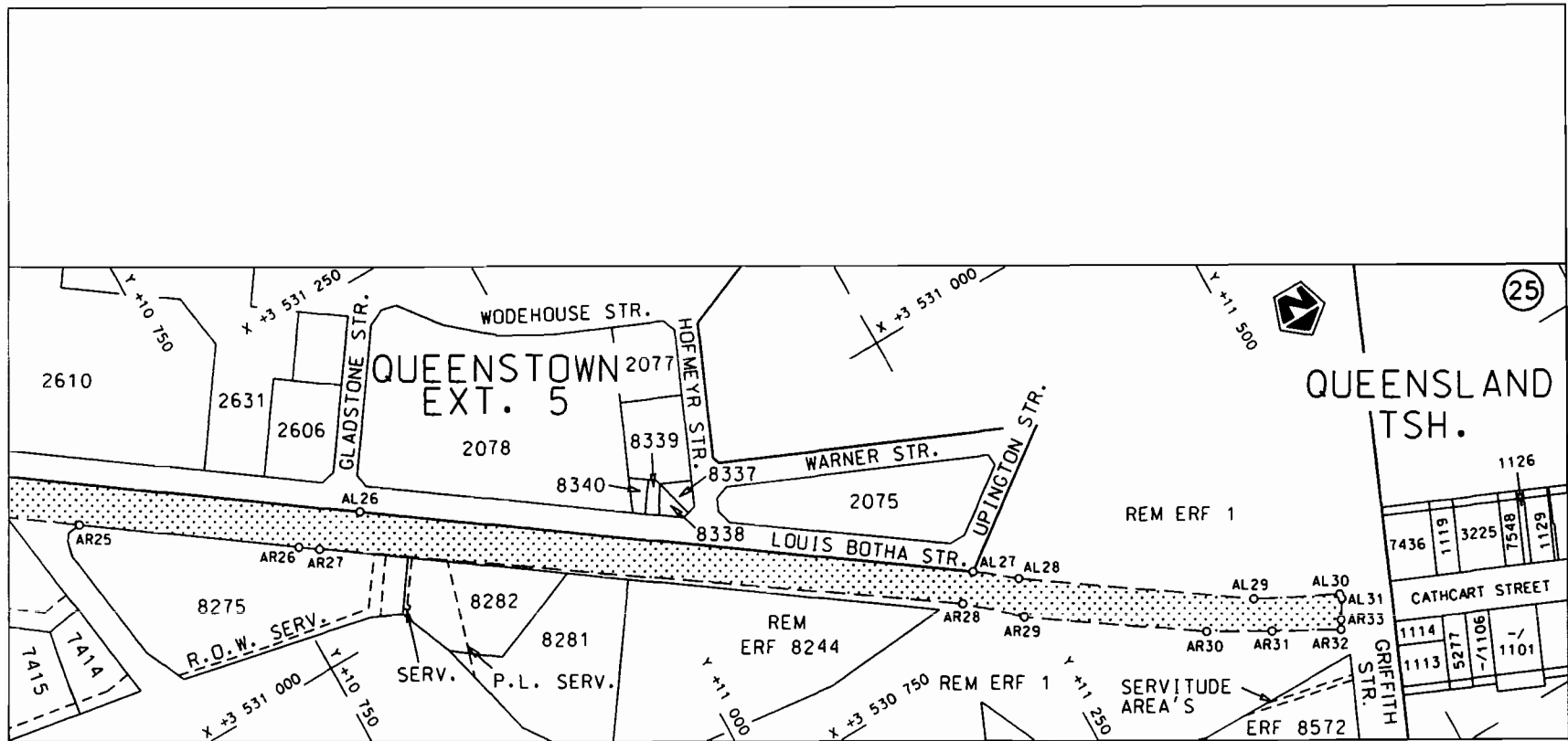
<p>Die Suid Afrikaanse Nasionale Padagentskap Beperk The South African National Roads Agency Limited</p>	<p>Die figuur getoon The figure shown</p> 	<p>steldie padreserwe voor van 'n gedeelte represents the road reserve of a portion van Nasionale Roete N6 of National Route N6</p> <p>Seksie 3 Section 3</p>	<p>Vel Sheet 10 van 21 Plan P649/08</p>
--	--	---	---



Die Suid Afrikaanse Nasionale Padogentskap Beperk The South African National Roads Agency Limited	Die figuur getoon The figure shown		steldie podreserwe voor van 'n gedeelte represents the road reserve of a portion von Nasionale Roete N6 Sektie 3 of National Route N6 Section 3	Vel Sheet 11 van of 21 Plan P649/08
--	---------------------------------------	--	--	--



<p>Suid-Afrikaanse Padagentskap Bpk. South African National Roads Agency Ltd.</p>	<p>Die figuur getoon The figure shown</p> 	<p>steldie podreserwe voor van 'n gedeelte represents the rood reserve of a portion van Nasionale Roete N6 Seksie 3 of National Route N6 Section 3</p>	<p>Vel 12 van 21 Sheet 12 of 21 P P649/08</p>
---	--	--	---



Suid-Afrikaanse Padagentskap Bpk. South African National Roads Agency Ltd.	Die figuur getoon The figure shown		steldie padreserwe voor van 'n gedeelte represents the road reserve of a portion van Nasionale Roete N6 of National Route N6	Sektie Section 3	Vel Sheet 13 of 21	P P649/08
---	---------------------------------------	--	---	------------------------	--------------------------	-----------

PADRESERWE KOÖRDINATE				/	ROAD RESERVE CO-ORDINATES			
LINKERKANT/LEFT HAND SIDE					REGTERKANT/RIGHT HAND SIDE			
	Y	X	WG	27°		Y	X	
L1	-13 367.700	3 574 284.930			R1	-13 395.730	3 574 327.750	
L2	-13 388.590	3 574 053.540			R2	-13 424.300	3 574 015.480	
L3	-13 398.750	3 573 964.440			R3	-13 437.920	3 573 925.540	
L4	-13 438.380	3 573 789.420			R4	-13 451.930	3 573 861.070	
L5	-13 467.370	3 573 703.270			R5	-13 494.890	3 573 719.360	
L6	-13 501.830	3 573 620.510			R6	-13 539.750	3 573 612.810	
L7	-13 577.030	3 573 454.970			R7	-13 664.050	3 573 340.330	
L8	-13 711.670	3 573 160.040			R8	-13 732.640	3 573 190.860	
L9	-13 719.280	3 573 144.140			R9	-13 742.550	3 573 170.270	
L10	-13 750.870	3 573 072.660			R10	-13 802.170	3 573 039.560	
L11	-13 793.330	3 572 951.610			R11	-13 829.370	3 572 970.200	
L12	-13 830.060	3 572 837.560			R12	-13 849.800	3 572 896.430	
L13	-13 860.110	3 572 722.070			R13	-13 879.030	3 572 788.510	
L14	-13 880.690	3 572 604.330			R14	-13 930.640	3 572 473.830	
L15	-13 899.770	3 572 464.950			R15	-13 977.430	3 572 132.450	
L16	-13 949.440	3 572 099.540			R16	-13 983.080	3 572 050.170	
L17	-13 951.620	3 572 028.110			R17	-13 978.810	3 571 967.690	
L18	-13 946.750	3 571 968.570			R18	-13 976.780	3 571 946.840	
L19	-13 936.380	3 571 909.730			R19	-13 966.740	3 571 905.700	
L20	-13 919.740	3 571 852.480			R20	-13 959.560	3 571 876.730	
L21	-13 896.930	3 571 797.350			R21	-13 942.590	3 571 823.440	
L22	-13 849.210	3 571 710.950			R22	-13 929.100	3 571 790.240	
L23	-13 806.020	3 571 622.470			R23	-13 912.790	3 571 756.900	
L24	-13 788.900	3 571 583.060			R24	-13 868.760	3 571 676.650	
L25	-13 770.380	3 571 540.410			R25	-13 838.750	3 571 621.970	
L26	-13 709.650	3 571 391.580			R26	-13 830.410	3 571 606.210	
L27	-13 588.920	3 571 239.210			R27	-13 827.950	3 571 588.640	
L28	-13 584.220	3 571 231.130			R28	-13 825.290	3 571 569.660	
L29	-13 514.670	3 571 195.280			R29	-13 778.200	3 571 446.740	
L30	-13 473.240	3 571 189.200			R30	-13 765.960	3 571 428.830	
L31	-13 229.230	3 571 205.740			R31	-13 747.630	3 571 377.950	
L32	-13 146.620	3 571 220.880			R32	-13 734.860	3 571 333.380	
L33	-13 049.410	3 571 202.500			R33	-13 679.580	3 571 264.050	
L34	-12 892.280	3 571 201.230			R34	-13 642.140	3 571 230.620	
L35	-12 725.220	3 571 199.990			R35	-13 596.160	3 571 195.290	
L36	-12 610.010	3 571 188.170			R36	-13 584.320	3 571 187.990	
L37	-12 546.680	3 571 171.040			R37	-13 477.590	3 571 142.000	
L38	-12 470.390	3 571 139.180			R38	-13 447.370	3 571 134.140	
L39	-12 398.500	3 571 096.360			R39	-13 447.610	3 571 126.320	
L40	-12 332.840	3 571 042.590			R40	-13 393.760	3 571 124.330	
L41	-12 280.020	3 570 985.030			R41	-13 286.590	3 571 131.490	
L42	-12 233.380	3 570 917.760			R42	-13 188.130	3 571 145.820	
L43	-12 195.730	3 570 840.890			R43	-13 137.780	3 571 158.000	
L44	-12 170.380	3 570 762.210			R44	-13 053.790	3 571 164.570	
L45	-12 157.810	3 570 690.120			R45	-13 038.650	3 571 170.490	
L46	-12 154.990	3 570 599.330			R46	-12 989.670	3 571 170.210	
L47	-12 164.200	3 570 521.170			R47	-12 973.190	3 571 170.090	
L48	-12 181.710	3 570 453.160			R48	-12 858.810	3 571 168.580	
L49	-12 191.610	3 570 422.820			R49	-12 719.610	3 571 159.660	
L50	-12 203.970	3 570 383.220			R50	-12 638.300	3 571 160.670	
L51	-12 291.090	3 570 099.580			R51	-12 594.810	3 571 148.280	

Vel	14	Van	21	P649/08
Sheet		of		

PADRESERWE KOÖRDINATE				/	ROAD RESERVE CO-ORDINATES						
LINKERKANT/LEFT HAND SIDE					REGTERKANT/RIGHT HAND SIDE						
	Y	X	WG	27°		Y	X				
L52	-12	301.080	3	570	024.010	R52	-12	558.390	3	571	140.860
L53	-12	301.160	3	569	929.360	R53	-12	485.630	3	571	110.610
L54	-12	282.420	3	569	694.030	R54	-12	418.840	3	571	070.900
L55	-12	266.890	3	569	508.490	R55	-12	337.800	3	570	999.910
L56	-12	266.480	3	569	504.000	R56	-12	325.340	3	570	991.200
L57	-12	262.400	3	569	455.840	R57	-12	262.110	3	570	901.360
L58	-12	248.510	3	569	349.900	R58	-12	226.610	3	570	830.280
L59	-12	232.180	3	569	272.120	R59	-12	221.840	3	570	814.890
L60	-12	210.520	3	569	195.800	R60	-12	189.820	3	570	682.010
L61	-12	196.810	3	569	157.300	R61	-12	187.920	3	570	603.350
L62	-12	191.350	3	569	138.410	R62	-12	196.080	3	570	527.790
L63	-12	155.360	3	569	053.890	R63	-12	212.240	3	570	462.950
L64	-11	958.560	3	568	633.110	R64	-12	227.440	3	570	414.930
L65	-11	875.710	3	568	455.800	R65	-12	232.670	3	570	398.440
L66	-11	833.740	3	568	357.310	R66	-12	233.780	3	570	394.030
L67	-11	823.920	3	568	335.740	R67	-12	237.170	3	570	383.890
L68	-11	823.390	3	568	334.580	R68	-12	321.780	3	570	109.410
L69	-11	824.970	3	568	331.030	R69	-12	334.390	3	570	025.940
L70	-11	819.660	3	568	314.940	R70	-12	333.880	3	569	925.690
L71	-11	808.630	3	568	280.490	R71	-12	313.770	3	569	686.660
L72	-11	788.500	3	568	201.080	R72	-12	298.330	3	569	505.800
L73	-11	773.050	3	568	122.810	R73	-12	298.130	3	569	501.480
L74	-11	763.920	3	568	042.290	R74	-12	287.520	3	569	392.040
L75	-11	760.500	3	567	960.300	R75	-12	272.260	3	569	302.580
L76	-11	762.020	3	567	878.720	R76	-12	221.160	3	569	128.380
L77	-11	791.520	3	567	595.080	R77	-12	183.730	3	569	039.990
L78	-11	818.030	3	567	347.020	R78	-11	987.560	3	568	619.940
L79	-11	825.830	3	567	273.780	R79	-11	902.580	3	568	438.160
L80	-11	838.210	3	567	157.650	R80	-11	861.870	3	568	335.470
L81	-11	859.230	3	566	962.400	R81	-11	853.690	3	568	314.850
L82	-11	865.280	3	566	845.850	R82	-11	852.220	3	568	310.810
L83	-11	855.940	3	566	726.460	R83	-11	840.600	3	568	268.400
L84	-11	853.400	3	566	710.560	R84	-11	821.140	3	568	197.390
L85	-11	826.500	3	566	584.040	R85	-11	806.480	3	568	118.900
L86	-11	797.980	3	566	499.990	R86	-11	797.460	3	568	039.440
L87	-11	762.750	3	566	421.370	R87	-11	793.380	3	567	960.390
L88	-11	599.300	3	566	088.120	R88	-11	794.380	3	567	906.290
L89	-11	400.060	3	565	683.640	R89	-11	794.870	3	567	879.940
L90	-11	183.650	3	565	243.620	R90	-11	820.740	3	567	622.980
L91	-10	972.560	3	564	815.430	R91	-11	823.530	3	567	595.260
L92	-10	781.570	3	564	427.660	R92	-11	849.820	3	567	350.190
L93	-10	683.720	3	564	227.650	R93	-11	857.060	3	567	282.580
L94	-10	593.080	3	564	044.080	R94	-11	870.280	3	567	159.180
L95	-10	573.190	3	564	000.340	R95	-11	891.680	3	566	961.040
L96	-10	550.650	3	563	949.760	R96	-11	897.100	3	566	846.910
L97	-10	549.370	3	563	946.890	R97	-11	892.050	3	566	758.300
L98	-10	523.840	3	563	868.410	R98	-11	878.310	3	566	664.600
L99	-10	504.730	3	563	792.180	R99	-11	856.710	3	566	574.480
L100	-10	491.670	3	563	711.790	R100	-11	827.930	3	566	489.540
L101	-10	485.000	3	563	630.920	R101	-11	797.480	3	566	420.040
L102	-10	486.320	3	563	535.620	R102	-11	772.200	3	566	368.510

Vel	15	Van	21	P649/08
Sheet		of		

PADRESERWE KOÖRDINATE				/	ROAD RESERVE CO-ORDINATES			
LINKERKANT/LEFT HAND SIDE					REGTERKANT/RIGHT HAND SIDE			
	Y	X	WG	27°	Y	X		
L103	-10 507.330	3 563	121.740	R103	-11 626.800	3 566	072.420	
L104	-10 530.730	3 562	665.510	R104	-11 427.420	3 565	666.930	
L105	-10 557.450	3 562	146.250	R105	-11 212.810	3 565	231.140	
L106	-10 558.370	3 562	128.490	R106	-10 997.900	3 564	794.640	
L107	-10 579.440	3 561	723.510	R107	-10 812.740	3 564	418.630	
L108	-10 581.010	3 561	696.910	R108	-10 712.130	3 564	213.910	
L109	-10 598.970	3 561	552.530	R109	-10 610.210	3 564	006.610	
L110	-10 601.790	3 561	537.460	R110	-10 605.530	3 563	996.300	
L111	-10 621.160	3 561	433.720	R111	-10 589.270	3 563	960.440	
L112	-10 651.130	3 561	315.460	R112	-10 550.520	3 563	846.460	
L113	-10 691.060	3 561	197.960	R113	-10 531.090	3 563	758.860	
L114	-10 730.570	3 561	089.040	R114	-10 519.420	3 563	669.780	
L115	-10 846.300	3 560	771.930	R115	-10 515.910	3 563	583.800	
L116	-10 907.970	3 560	603.190	R116	-10 516.740	3 563	566.900	
L117	-11 000.650	3 560	349.030	R117	-10 539.130	3 563	125.500	
L118	-11 093.840	3 560	094.060	R118	-10 562.180	3 562	671.280	
L119	-11 259.000	3 559	641.360	R119	-10 588.600	3 562	151.120	
L120	-11 351.440	3 559	388.500	R120	-10 589.380	3 562	135.940	
L121	-11 361.230	3 559	361.700	R121	-10 594.190	3 562	042.420	
L122	-11 370.330	3 559	336.790	R122	-10 606.440	3 562	020.860	
L123	-11 372.690	3 559	330.270	R123	-10 617.530	3 561	919.370	
L124	-11 481.820	3 559	030.970	R124	-10 610.390	3 561	885.480	
L125	-11 527.740	3 558	868.800	R125	-10 603.670	3 561	853.630	
L126	-11 547.450	3 558	752.460	R126	-10 611.630	3 561	701.030	
L127	-11 554.510	3 558	631.300	R127	-10 614.180	3 561	679.810	
L128	-11 547.820	3 558	515.700	R128	-10 625.700	3 561	592.230	
L129	-11 528.940	3 558	397.010	R129	-10 633.650	3 561	531.810	
L130	-11 514.050	3 558	323.010	R130	-10 668.220	3 561	373.670	
L131	-11 477.860	3 558	208.310	R131	-10 691.100	3 561	299.910	
L132	-11 459.750	3 558	160.320	R132	-10 712.900	3 561	229.610	
L133	-11 453.410	3 558	145.270	R133	-10 760.270	3 561	100.610	
L134	-11 398.550	3 558	038.880	R134	-10 839.760	3 560	882.930	
L135	-11 295.190	3 557	857.390	R135	-10 877.280	3 560	780.170	
L136	-11 140.060	3 557	584.770	R136	-10 935.310	3 560	621.020	
L137	-11 081.220	3 557	471.880	R137	-11 031.090	3 560	358.730	
L138	-11 029.560	3 557	346.980	R138	-11 123.260	3 560	105.870	
L139	-11 005.110	3 557	272.660	R139	-11 289.100	3 559	651.960	
L140	-10 990.140	3 557	222.410	R140	-11 380.990	3 559	400.130	
L141	-10 923.750	3 556	969.040	R141	-11 390.162	3 559	375.005	
L142	-10 858.380	3 556	719.010	R142	-11 400.830	3 559	347.260	
L143	-10 798.830	3 556	491.240	R143	-11 511.210	3 559	044.860	
L144	-10 724.670	3 556	214.720	R144	-11 547.360	3 558	931.760	
L145	-10 692.700	3 556	083.250	R145	-11 575.460	3 558	809.800	
L146	-10 654.470	3 555	885.650	R146	-11 584.890	3 558	690.500	
L147	-10 627.560	3 555	686.790	R147	-11 585.600	3 558	571.000	
L148	-10 603.460	3 555	429.100	R148	-11 574.590	3 558	451.510	
L149	-10 574.730	3 555	115.330	R149	-11 551.500	3 558	333.830	
L150	-10 551.180	3 554	857.980	R150	-11 513.780	3 558	214.240	
L151	-10 505.860	3 554	372.390	R151	-11 486.710	3 558	128.410	
L152	-10 466.960	3 554	018.300	R152	-11 479.550	3 558	116.630	
L153	-10 472.480	3 554	018.290	R153	-11 432.910	3 558	034.450	

Vel	16	Van	21	P649/08
Sheet		of		

PADRESERWE KOÖRDINATE				/	ROAD RESERVE CO-ORDINATES			
LINKERKANT/LEFT HAND SIDE					REGTERKANT/RIGHT HAND SIDE			
	Y	X	WG	27°		Y	X	
L154	-10 471.980	3 553 904.370			R154	-11 322.440	3 557 840.720	
L155	-10 461.750	3 553 866.720			R155	-11 165.560	3 557 566.480	
L156	-10 453.580	3 553 836.650			R156	-11 108.600	3 557 456.400	
L157	-10 448.420	3 553 817.650			R157	-11 062.860	3 557 345.500	
L158	-10 440.780	3 553 728.810			R158	-11 053.450	3 557 319.330	
L159	-10 435.400	3 553 614.750			R159	-11 021.820	3 557 213.180	
L160	-10 438.770	3 553 561.410			R160	-10 955.380	3 556 961.860	
L161	-10 447.770	3 553 498.550			R161	-10 885.770	3 556 697.990	
L162	-10 487.930	3 553 366.470			R162	-10 828.080	3 556 479.340	
L163	-10 498.370	3 553 334.740			R163	-10 771.720	3 556 266.750	
L164	-10 533.420	3 553 271.180			R164	-10 733.560	3 556 121.920	
L165	-10 567.730	3 553 215.230			R165	-10 702.560	3 555 977.320	
L166	-10 606.310	3 553 144.890			R166	-10 676.820	3 555 825.230	
L167	-10 643.100	3 553 071.590			R167	-10 659.560	3 555 684.080	
L168	-10 684.670	3 552 944.800			R168	-10 635.060	3 555 423.070	
L169	-10 700.920	3 552 866.620			R169	-10 607.890	3 555 116.570	
L170	-10 707.980	3 552 789.080			R170	-10 585.320	3 554 851.820	
L171	-10 702.800	3 552 710.460			R171	-10 541.110	3 554 370.470	
L172	-10 692.780	3 552 651.830			R172	-10 510.870	3 554 030.420	
L173	-10 678.460	3 552 597.630			R173	-10 500.870	3 553 895.030	
L174	-10 643.410	3 552 480.050			R174	-10 507.360	3 553 894.580	
L175	-10 499.510	3 551 996.540			R175	-10 504.363	3 553 861.388	
L176	-10 483.030	3 551 941.150			R176	-10 501.150	3 553 825.800	
L177	-10 377.340	3 551 585.910			R177	-10 485.860	3 553 749.570	
L178	-10 244.350	3 551 138.040			R178	-10 472.550	3 553 647.840	
L179	-10 158.250	3 550 848.450			R179	-10 471.910	3 553 573.700	
L180	-10 110.520	3 550 687.910			R180	-10 488.950	3 553 468.730	
L181	-9 987.030	3 550 273.260			R181	-10 492.760	3 553 452.950	
L182	-9 879.350	3 549 910.940			R182	-10 522.190	3 553 364.380	
L183	-9 815.560	3 549 697.350			R183	-10 564.690	3 553 279.610	
L184	-9 674.350	3 549 222.070			R184	-10 654.860	3 553 130.920	
L185	-9 637.360	3 549 097.480			R185	-10 692.020	3 553 049.260	
L186	-9 619.580	3 549 037.620			R186	-10 718.960	3 552 963.460	
L187	-9 606.030	3 548 992.230			R187	-10 734.730	3 552 874.960	
L188	-9 598.730	3 548 956.750			R188	-10 739.240	3 552 785.130	
L189	-9 586.790	3 548 886.280			R189	-10 732.400	3 552 695.340	
L190	-9 578.590	3 548 796.670			R190	-10 714.150	3 552 605.900	
L191	-9 577.020	3 548 706.800			R191	-10 707.890	3 552 523.890	
L192	-9 590.920	3 548 519.870			R192	-10 695.050	3 552 480.480	
L193	-9 597.410	3 548 429.640			R193	-10 635.090	3 552 340.260	
L194	-9 597.370	3 548 366.880			R194	-10 530.930	3 551 990.150	
L195	-9 558.200	3 548 181.860			R195	-10 506.150	3 551 906.830	
L196	-9 552.180	3 548 155.420			R196	-10 409.460	3 551 581.700	
L197	-9 536.570	3 548 099.670			R197	-10 275.160	3 551 130.110	
L198	-9 522.540	3 548 035.750			R198	-10 187.170	3 550 834.550	
L199	-9 473.110	3 547 825.240			R199	-10 136.910	3 550 665.740	
L200	-9 447.750	3 547 732.350			R200	-9 988.560	3 550 167.060	
L201	-9 414.090	3 547 635.180			R201	-9 949.270	3 550 034.790	
L202	-9 408.680	3 547 619.960			R202	-9 909.340	3 549 900.350	
L203	-9 335.850	3 547 481.210			R203	-9 847.180	3 549 691.100	
L204	-9 293.480	3 547 414.090			R204	-9 709.160	3 549 226.060	

Van	17	Van	21	P649/08
Sheet		of		

PADRESERWE KOÖRDINATE				/	ROAD RESERVE CO-ORDINATES			
LINKERKANT/LEFT HAND SIDE					REGTERKANT/RIGHT HAND SIDE			
	Y	X	WG	27°	Y	X		
L205	-9 197.620	3 547 288.550		R205	-9 650.360	3 549 027.970		
L206	-9 096.880	3 547 185.460		R206	-9 628.370	3 548 939.230		
L207	-8 806.960	3 546 926.590		R207	-9 614.770	3 548 852.270		
L208	-8 459.170	3 546 614.630		R208	-9 610.320	3 548 805.580		
L209	-8 259.940	3 546 434.610		R209	-9 609.380	3 548 761.480		
L210	-7 909.470	3 546 120.500		R210	-9 608.710	3 548 689.600		
L211	-7 828.180	3 546 047.950		R211	-9 611.960	3 548 674.470		
L212	-7 815.880	3 546 037.070		R212	-9 628.010	3 548 568.570		
L213	-7 772.280	3 545 997.860		R213	-9 626.560	3 548 547.860		
L214	-7 703.170	3 545 949.470		R214	-9 626.880	3 548 459.510		
L215	-7 659.040	3 545 923.360		R215	-9 627.500	3 548 355.630		
L216	-7 626.340	3 545 903.830		R216	-9 613.980	3 548 281.700		
L217	-7 546.680	3 545 866.030		R217	-9 603.190	3 548 234.890		
L218	-7 462.870	3 545 835.370		R218	-9 591.670	3 548 184.600		
L219	-7 033.620	3 545 702.230		R219	-9 592.150	3 548 163.290		
L220	-6 946.980	3 545 679.510		R220	-9 586.340	3 548 138.430		
L221	-6 858.330	3 545 667.700		R221	-9 577.800	3 548 123.970		
L222	-6 768.660	3 545 666.340		R222	-9 563.940	3 548 062.920		
L223	-6 659.080	3 545 679.240		R223	-9 563.720	3 547 998.490		
L224	-6 643.160	3 545 682.080		R224	-9 551.940	3 547 946.260		
L225	-6 598.580	3 545 691.480		R225	-9 515.170	3 547 855.550		
L226	-6 590.494	3 545 692.416		R226	-9 480.740	3 547 721.680		
L227	-6 562.050	3 545 695.710		R227	-9 435.270	3 547 601.660		
L228	-6 507.040	3 545 710.320		R228	-9 427.130	3 547 581.760		
L229	-6 220.490	3 545 779.210		R229	-9 373.620	3 547 476.690		
L230	-6 179.570	3 545 786.980		R230	-9 309.900	3 547 375.840		
L231	-6 073.910	3 545 807.350		R231	-9 216.860	3 547 258.580		
L232	-5 984.470	3 545 819.300		R232	-9 109.790	3 547 153.330		
L233	-5 893.950	3 545 824.530		R233	-8 836.050	3 546 908.390		
L234	-5 803.850	3 545 822.880		R234	-8 482.750	3 546 592.380		
L235	-5 713.020	3 545 814.190		R235	-8 282.380	3 546 412.210		
L236	-5 624.680	3 545 797.530		R236	-7 931.630	3 546 097.440		
L237	-5 538.210	3 545 773.320		R237	-7 850.130	3 546 024.550		
L238	-4 628.460	3 545 486.590		R238	-7 838.110	3 546 013.670		
L239	-4 538.580	3 545 453.980		R239	-7 791.880	3 545 974.850		
L240	-4 457.380	3 545 415.230		R240	-7 738.740	3 545 935.110		
L241	-3 206.020	3 544 713.710		R241	-7 695.870	3 545 908.290		
L242	-3 122.950	3 544 660.100		R242	-7 662.890	3 545 887.650		
L243	-3 051.080	3 544 606.390		R243	-7 582.420	3 545 846.920		
L244	-1 651.070	3 543 409.990		R244	-7 499.440	3 545 813.360		
L245	-1 576.790	3 543 351.400		R245	-7 112.690	3 545 692.820		
L246	-1 540.550	3 543 321.050		R246	-7 016.030	3 545 662.700		
L247	-1 478.030	3 543 262.520		R247	-6 923.740	3 545 643.050		
L248	-1 400.670	3 543 208.490		R248	-6 834.220	3 545 634.510		
L249	-1 320.210	3 543 166.780		R249	-6 744.410	3 545 635.790		
L250	-1 235.200	3 543 136.450		R250	-6 677.750	3 545 645.140		
L251	- 789.050	3 543 026.200		R251	-6 634.990	3 545 651.140		
L252	- 733.380	3 543 003.990		R252	-6 589.670	3 545 658.850		
L253	- 680.120	3 542 977.520		R253	-6 575.077	3 545 661.051		
L254	- 629.870	3 542 944.100		R254	-6 556.990	3 545 663.780		
L255	- 582.940	3 542 906.550		R255	-6 549.370	3 545 668.250		

Vel	18	Van	21	P649/08
Sheet		of		

PADRESERWE KOÖRDINATE				/	ROAD RESERVE CO-ORDINATES			
LINKERKANT/LEFT HAND SIDE					REGTERKANT/RIGHT HAND SIDE			
	Y	X	WG	27°		Y	X	
L256	- 540.390	3 542	865.140	R256	-6	529.740	3 545	671.730
L257	- 500.830	3 542	819.400	R257	-6	512.110	3 545	676.530
L258	- 466.450	3 542	770.160	R258	-6	169.390	3 545	730.000
L259	- 437.130	3 542	718.110	R259	-6	136.580	3 545	746.010
L260	- 413.110	3 542	663.100	R260	-5	928.260	3 545	787.750
L261	- 395.550	3 542	610.970	R261	-5	881.990	3 545	791.580
L262	- 373.598	3 542	540.710	R262	-5	823.730	3 545	791.560
L263	- 312.030	3 542	540.710	R263	-5	646.800	3 545	769.520
L264	- 256.900	3 542	532.110	R264	-5	560.430	3 545	746.810
L265	- 205.030	3 542	511.220	R265	-5	238.820	3 545	645.650
L266	- 157.790	3 542	481.350	R266	-4	866.620	3 545	528.410
L267	- 127.890	3 542	451.750	R267	-4	638.760	3 545	456.510
L268	- 104.880	3 542	416.770	R268	-4	558.480	3 545	427.880
L269	-90.330	3 542	377.350	R269	-4	449.860	3 545	374.460
L270	-89.020	3 542	335.480	R270	-4	038.160	3 545	143.660
L271	- 100.110	3 542	294.790	R271	-3	891.380	3 545	061.370
L272	- 123.350	3 542	259.770	R272	-3	901.860	3 545	044.220
L273	- 238.930	3 542	136.610	R273	-3	215.440	3 544	663.630
L274	- 245.862	3 542	131.885	R274	-3	098.800	3 544	577.750
L275	- 182.640	3 541	929.540	R275	-2	690.220	3 544	228.500
L276	- 133.520	3 541	848.670	R276	-2	395.450	3 543	976.740
L277	- 128.580	3 541	769.500	R277	-2	134.400	3 543	759.830
L278	- 127.720	3 541	753.750	R278	-1	583.250	3 543	285.380
L279	-26.620	3 541	430.360	R279	-1	413.650	3 543	147.530
L280	-10.190	3 541	377.870	R280	-1	325.170	3 543	104.170
L281	8.820	3 541	317.180	R281	-1	242.120	3 543	079.980
L282	21.990	3 541	275.080	R282	-	867.420	3 542	994.480
L283	47.730	3 541	212.280	R283	-	759.500	3 542	960.660
L284	57.940	3 541	186.940	R284	-	669.100	3 542	912.170
L285	99.290	3 541	107.110	R285	-	588.000	3 542	849.480
L286	139.150	3 541	045.000	R286	-	518.320	3 542	773.950
L287	147.610	3 541	031.450	R287	-	463.750	3 542	687.010
L288	161.030	3 541	014.350	R288	-	418.340	3 542	599.120
L289	179.950	3 540	990.240	R289	-	176.540	3 541	806.410
L290	203.160	3 540	960.660	R290	-38.740		3 541	368.770
L291	218.760	3 540	943.010	R291	19.020		3 541	184.490
L292	410.040	3 540	718.630	R292	24.280		3 541	183.270
L293	488.870	3 540	626.470	R293	53.720		3 541	086.010
L294	497.720	3 540	628.420	R294	69.530		3 541	091.960
L295	502.520	3 540	622.870	R295	122.710		3 541	012.220
L296	499.350	3 540	614.270	R296	155.790		3 540	969.580
L297	750.980	3 540	319.820	R297	174.690		3 540	945.220
L298	806.800	3 540	254.520	R298	178.450		3 540	940.370
L299	819.350	3 540	256.200	R299	193.810		3 540	922.230
L300	840.050	3 540	258.540	R300	204.570		3 540	909.840
L301	828.310	3 540	245.270	R301	386.320		3 540	697.310
L302	826.850	3 540	231.120	R302	725.830		3 540	299.720
L303	875.350	3 540	174.410	R303	779.700		3 540	236.480
L304	924.290	3 540	117.180	R304	811.680		3 540	199.150
L305	932.900	3 540	119.280	R305	843.130		3 540	162.410
L306	937.450	3 540	113.600	R306	1 081.100		3 539	884.380

Vel	19	Van	21	P649/08
Sheet		of		

PADRESERWE KOÖRDINATE				/	ROAD RESERVE CO-ORDINATES			
LINKERKANT/LEFT HAND SIDE					REGTERKANT/RIGHT HAND SIDE			
	Y	X	WG	27°	Y	X		
L307	934.530	3 540	105.100	R307	1 331.530	3 539	586.500	
L308	1 107.150	3 539	903.090	R308	1 536.910	3 539	349.760	
L309	1 359.850	3 539	607.410	R309	1 603.220	3 539	273.330	
L310	1 564.620	3 539	367.510	R310	1 623.380	3 539	263.130	
L311	1 644.030	3 539	274.470	R311	1 660.450	3 539	215.220	
L312	1 691.420	3 539	218.650	R312	1 668.970	3 539	196.920	
L313	1 715.230	3 539	216.580	R313	1 684.790	3 539	163.040	
L314	1 724.000	3 539	206.200	R314	1 691.620	3 539	170.560	
L315	1 722.850	3 539	181.990	R315	1 698.910	3 539	162.070	
L316	1 791.460	3 539	101.070	R316	1 774.570	3 539	071.750	
L317	1 855.990	3 539	011.210	R317	1 826.480	3 538	998.010	
L318	1 926.340	3 538	892.170	R318	1 855.040	3 538	949.810	
L319	1 983.810	3 538	794.990	R319	1 897.750	3 538	877.710	
L320	2 196.460	3 538	435.260	R320	1 989.870	3 538	717.940	
L321	2 373.900	3 538	134.760	R321	2 204.170	3 538	355.570	
L322	2 421.060	3 538	044.800	R322	2 315.920	3 538	164.890	
L323	2 428.740	3 538	027.000	R323	2 337.140	3 538	134.070	
L323X	2 439.900	3 538	001.110	R324	2 381.410	3 538	055.940	
L324	2 459.080	3 537	956.530	R325	2 417.460	3 537	975.810	
L325	2 489.520	3 537	854.110	R326	2 447.320	3 537	889.860	
L326	2 544.610	3 537	638.820	R327	2 509.600	3 537	647.240	
L327	2 563.830	3 537	563.700	R328	2 532.720	3 537	557.180	
L328	2 640.850	3 537	271.780	R329	2 572.800	3 537	402.030	
L329	2 660.420	3 537	194.770	R330	2 643.070	3 537	129.230	
L330	2 680.030	3 537	119.600	R331	2 662.310	3 537	072.650	
L331	2 703.640	3 537	059.660	R332	2 685.220	3 537	015.540	
L332	2 732.200	3 536	996.730	R333	2 693.420	3 536	997.210	
L333	2 775.440	3 536	913.710	R334	2 742.840	3 536	903.570	
L334	2 783.150	3 536	901.950	R335	2 862.640	3 536	716.980	
L335	2 785.190	3 536	898.830	R336	2 908.480	3 536	611.300	
L336	2 887.940	3 536	737.250	R337	2 939.960	3 536	596.820	
L337	3 263.840	3 536	152.570	R338	3 185.200	3 536	215.680	
L338	3 296.340	3 536	101.790	R339	3 336.200	3 535	980.490	
L339	3 415.490	3 535	919.830	R340	3 447.140	3 535	814.220	
L340	3 509.610	3 535	783.900	R341	3 659.260	3 535	509.110	
L341	3 682.140	3 535	532.440	R342	3 780.770	3 535	334.830	
L342	3 891.730	3 535	231.750	R343	3 852.170	3 535	231.430	
L343	3 978.140	3 535	112.080	R344	3 890.970	3 535	176.590	
L344	4 032.160	3 535	047.550	R345	3 939.020	3 535	109.210	
L345	4 060.640	3 535	015.990	R346	4 034.650	3 534	996.450	
L346	4 075.550	3 535	000.960	R347	4 066.030	3 534	963.610	
L347	4 139.710	3 534	938.120	R348	4 173.300	3 534	865.710	
L348	4 199.390	3 534	886.150	R349	4 309.060	3 534	764.550	
L349	4 261.960	3 534	837.450	R350	4 438.380	3 534	688.110	
L350	4 325.890	3 534	792.870	R351	4 550.120	3 534	622.220	
L351	4 394.270	3 534	750.410	R352	4 630.240	3 534	575.670	
L352	4 457.460	3 534	713.250	R353	4 986.490	3 534	368.310	
L353	4 509.470	3 534	683.130	R354	4 975.550	3 534	347.700	
L354	4 647.490	3 534	602.210	R355	5 081.810	3 534	296.350	
L355	5 102.640	3 534	337.520	R356	5 364.520	3 534	133.950	
L356	5 418.150	3 534	156.360	R357	7 143.710	3 533	112.340	

Vel	20	Van	21	P649/08
Sheet		of		

PADRESERWE KOÖRDINATE					ROAD RESERVE CO-ORDINATES						
LINKERKANT/LEFT HAND SIDE					REGTERKANT/RIGHT HAND SIDE						
					WG 27°	Y	X				
L357	5	542.030	3	534	085.230	AR1	7	340.760	3	532	999.150
L358	5	822.520	3	533	926.120	AR2	7	480.840	3	532	935.290
L359	6	133.780	3	533	749.550	AR3	7	674.510	3	532	872.670
L360	6	344.350	3	533	630.560	AR4	7	952.627	3	532	805.142
L361	6	604.450	3	533	483.100	AR5	8	080.977	3	532	767.707
L362	6	922.610	3	533	302.380	AR6	8	136.968	3	532	735.976
L363	7	103.190	3	533	200.200	AR7	8	141.018	3	532	742.246
AL1	7	148.920	3	533	176.630	AR8	8	195.908	3	532	711.206
AL2	7	189.817	3	533	151.069	AR9	8	254.468	3	532	681.636
AL3	7	270.667	3	533	142.568	AR10	8	808.345	3	532	361.853
AL4	7	329.209	3	533	081.948	AR11	8	840.535	3	532	343.424
AL5	7	335.553	3	533	077.371	AR12	9	157.027	3	532	159.998
AL6	7	335.133	3	533	068.901	AR13	9	539.807	3	531	939.023
AL7	7	474.794	3	532	989.360	AR14	9	726.867	3	531	831.223
AL8	7	522.788	3	532	962.849	AR15	9	811.917	3	531	775.873
AL9	7	578.885	3	532	936.720	AR16	9	882.037	3	531	726.263
AL10	7	665.025	3	532	909.469	AR17	9	924.017	3	531	689.443
AL11	7	995.267	3	532	829.637	AR18	10	017.247	3	531	625.833
AL12	8	088.087	3	532	799.647	AR19	10	035.055	3	531	610.196
AL13	8	152.738	3	532	772.867	AR20	10	054.077	3	531	592.353
AL14	8	227.448	3	532	734.217	AR21	10	186.043	3	531	510.867
AL15	8	324.278	3	532	678.547	AR22	10	411.271	3	531	351.141
AL16	8	806.635	3	532	400.233	AR23	10	477.590	3	531	304.110
AL17	8	870.335	3	532	363.624	AR24	10	582.940	3	531	229.620
AL18	9	183.077	3	532	185.818	AR25	10	629.870	3	531	196.270
AL19	9	516.417	3	531	991.663	AR26	10	774.192	3	531	093.750
AL20	9	747.027	3	531	859.323	AR27	10	787.762	3	531	084.110
AL21	9	832.197	3	531	811.883	AR28	11	209.333	3	530	792.378
AL22	10	065.437	3	531	642.373	AR29	11	246.243	3	530	759.229
AL23	10	188.207	3	531	548.017	AR30	11	366.883	3	530	676.670
AL24	10	239.279	3	531	511.753	AR31	11	411.904	3	530	651.410
AL25	10	519.187	3	531	313.201	AR32	11	459.373	3	530	624.770
AL26	10	829.628	3	531	092.990	AR33	11	463.233	3	530	631.300
AL27	11	228.740	3	530	809.880						
AL28	11	257.282	3	530	786.968						
AL29	11	411.833	3	530	679.910						
AL30	11	471.973	3	530	649.110						
AL31	11	471.863	3	530	644.950						