

Government Gazette Rykskoerant

REPUBLIC OF SOUTH AFRICA
REPUBLIEK VAN SUID-AFRIKA

Vol. 524

Pretoria, 27 February
Februarie 2009

No. 31937

CONTENTS**INHOUD**

<i>No.</i>	<i>Page No.</i>	<i>Gazette No.</i>	<i>No.</i>	<i>Bladsy No.</i>	<i>Koerant No.</i>
GOVERNMENT NOTICE			GOEWERMENTSKENNISGEWING		
Transport, Department of			Vervoer, Departement van		
<i>Government Notice</i>			<i>Goewermentskennisgewing</i>		
185			185		
South African National Roads Agency Limited and the National Roads Act (7/1998): The South African National Roads Agency Limited: Declaration amendment of National Road N4 Section 6X: Amendment of Declaration No. 652 of 1997			Suid-Afrikaanse Nasionale Padagentskap Beperk en die Nasionale Paaie Wet (7/1998): Die Suid-Afrikaanse Nasionale Padagentskap Beperk: Verklaring wysiging van Nasionale Pad N4 Seksie 6X: Wysiging van Verklaring No. 652 van 1997		
	3	31937		4	31937

GOVERNMENT NOTICE

DEPARTMENT OF TRANSPORT**No. 185****27 February 2009****THE SOUTH AFRICAN NATIONAL ROADS
AGENCY LIMITED**Registration No: 98/09584/06

DECLARATION AMENDMENT OF NATIONAL ROAD N4 SECTION 6X

AMENDMENT OF DECLARATION NO. 652 OF 1997

By virtue of section 40 (1)(b) of the South African National Roads Agency Limited and the National Roads Act, 1998 (Act No. 7 of 1998), I hereby amend Declaration No. 652 of 1997 by substituting sheets 1 to 16 of Plan No. P402/96, with the subjoined sheets 1 to 16 of Plan No. P718/08.

(National Road N4 Section 6X: Schoongezigt – Grootgeluk)

MINISTER OF TRANSPORT

GOEWERMENTSKENNISGEWING

DEPARTEMENT VAN VERVOER

No. 185

27 Februarie 2009

DIE SUID-AFRIKAANSE NASIONALE PADAGENTSKAP BEPERK

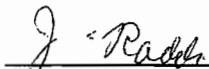
Registrasie No: 98/09584/06

VERKLARING WYSIGING VAN NASIONALE PAD N4 SEKSIE 6X

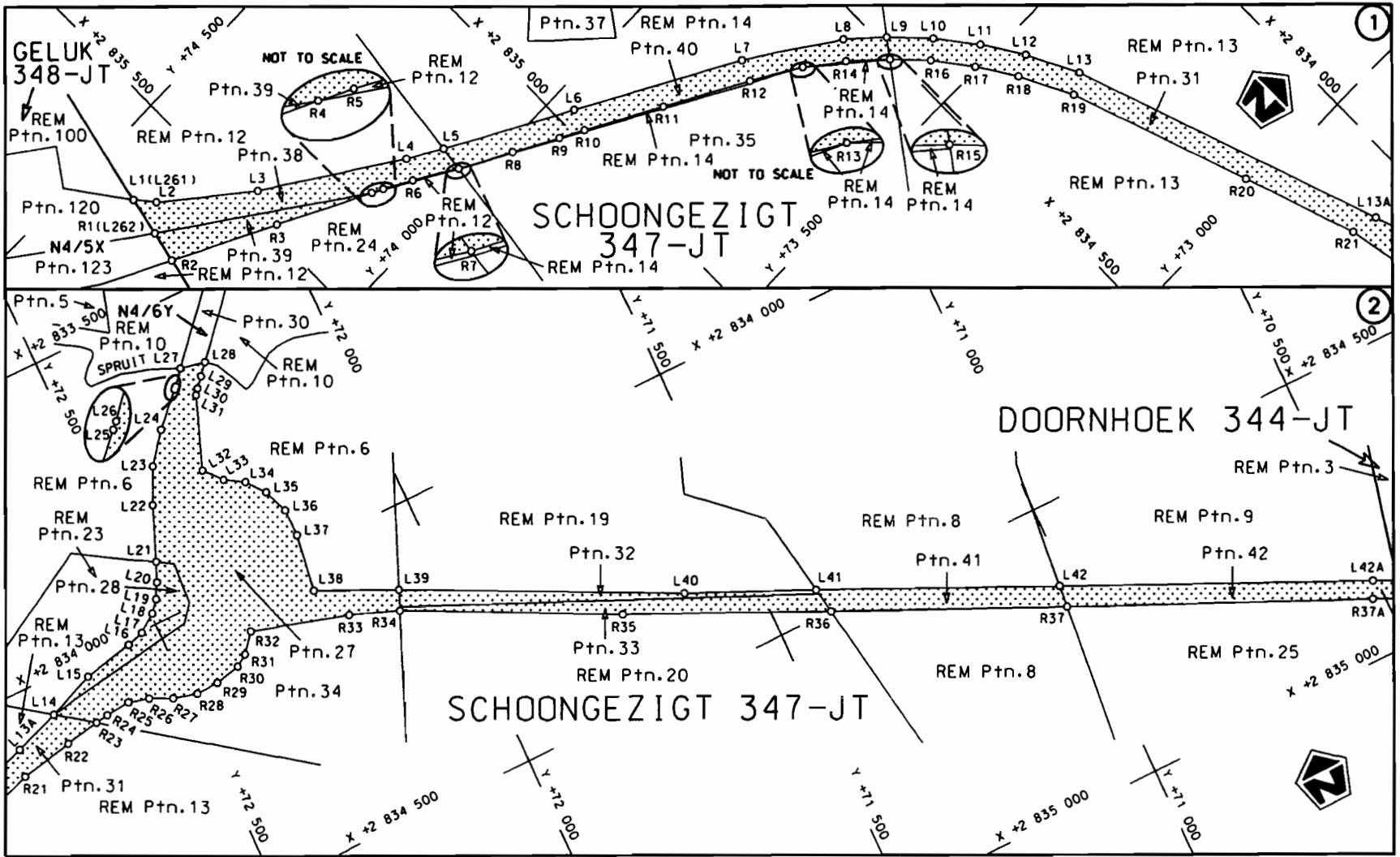
WYSIGING VAN VERKLARING NO. 652 VAN 1997


Kragtens Artikel 40(1)(b) van die Suid-Afrikaanse Nasionale Padagentskap Beperk en die Nasionale Paaie Wet, 1998 (Wet no.7 van 1998), wysig ek hiermee Verklaring no. 652 van 1997 deur velle 1 tot 16 van Plan no. P402/96, te vervang, met meegaande velle 1 tot 16 van Plan no. P718/08.

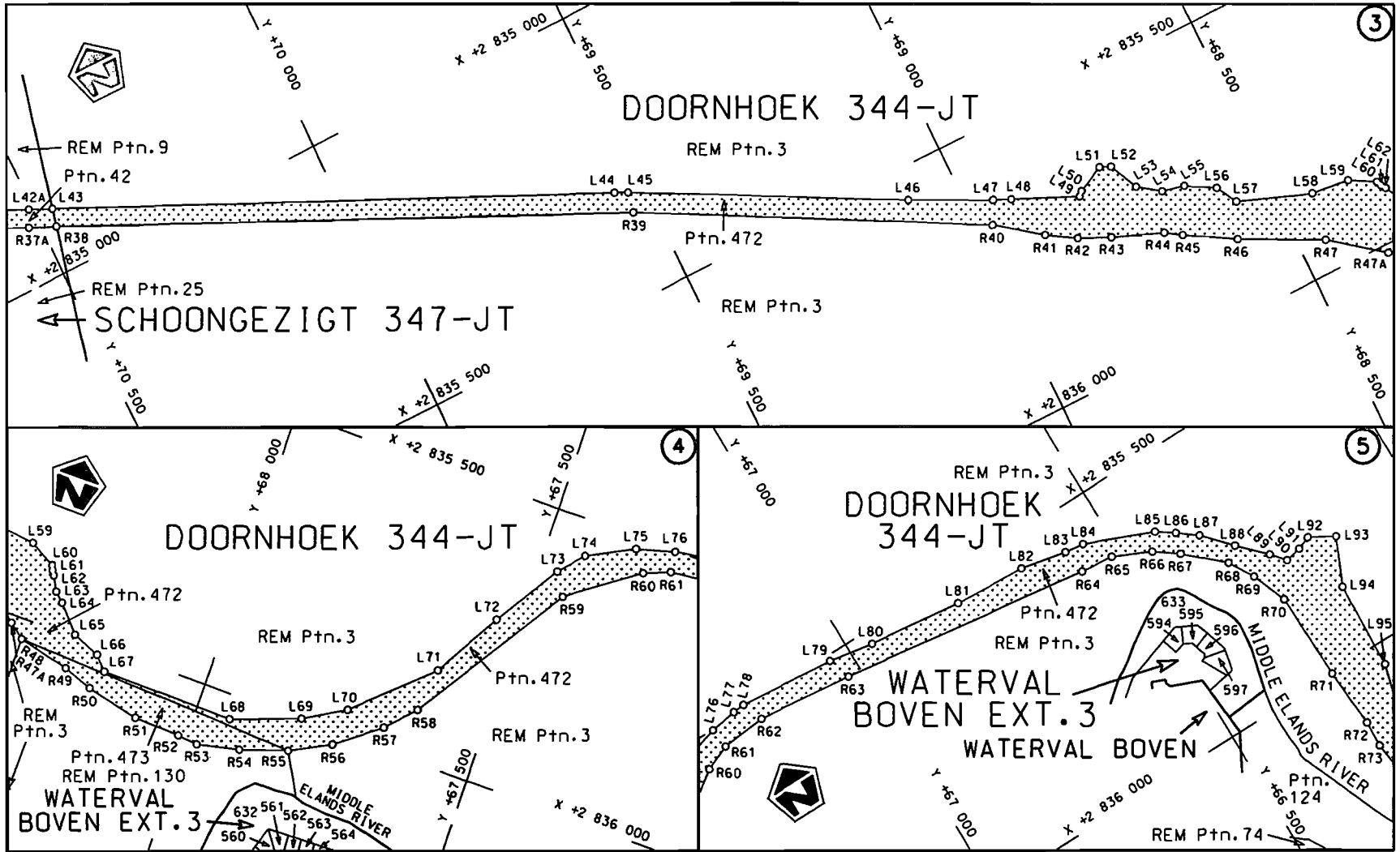
(Nasionale Pad N4 Seksie 6X: Schoongezigt – Grootgeluk)

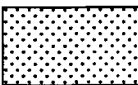


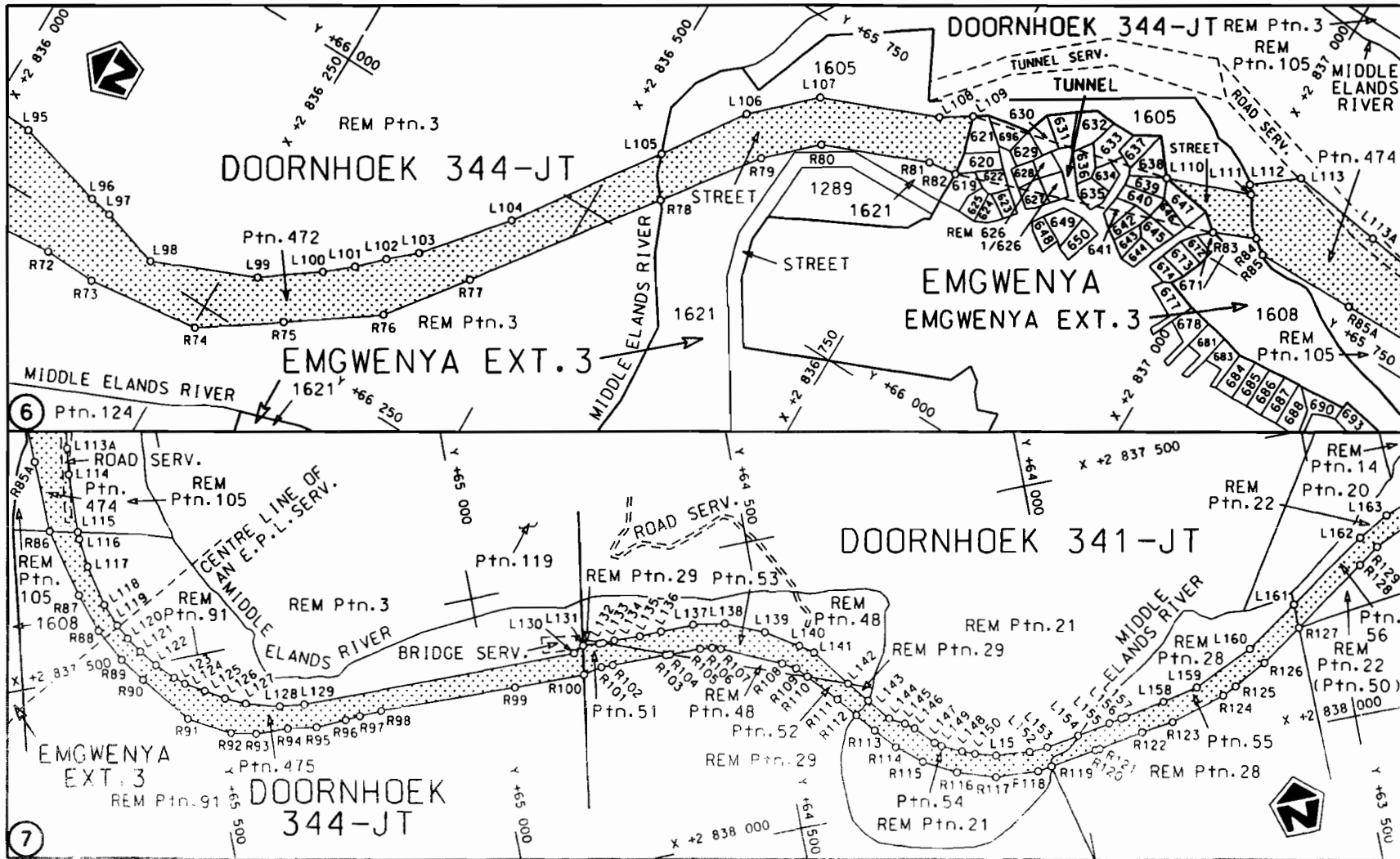
MINISTER VAN VERVOER

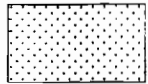


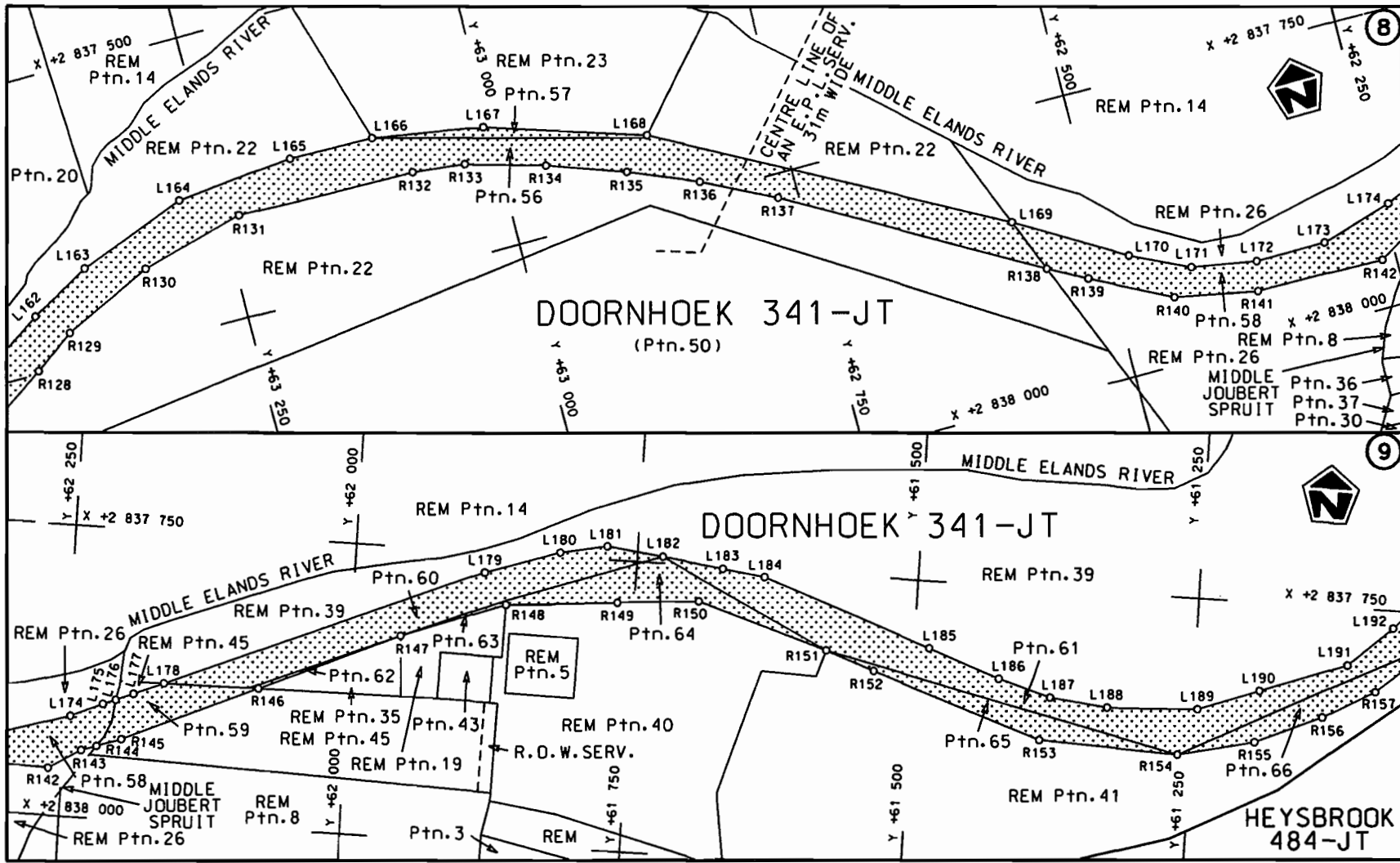
Die Suid Afrikaanse Nasionale Padogentskap Beperk The South African National Roads Agency Limited	Die figuur getoon The figure shown		steldie padreserve voor van 'n gedeelte represents the road reserve of a portion van Nasionale Roete N4 Seksie of National Route Section 6X	Vel Sheet 1 van 16 Plan P718/08
--	---------------------------------------	--	--	------------------------------------

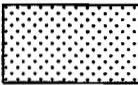


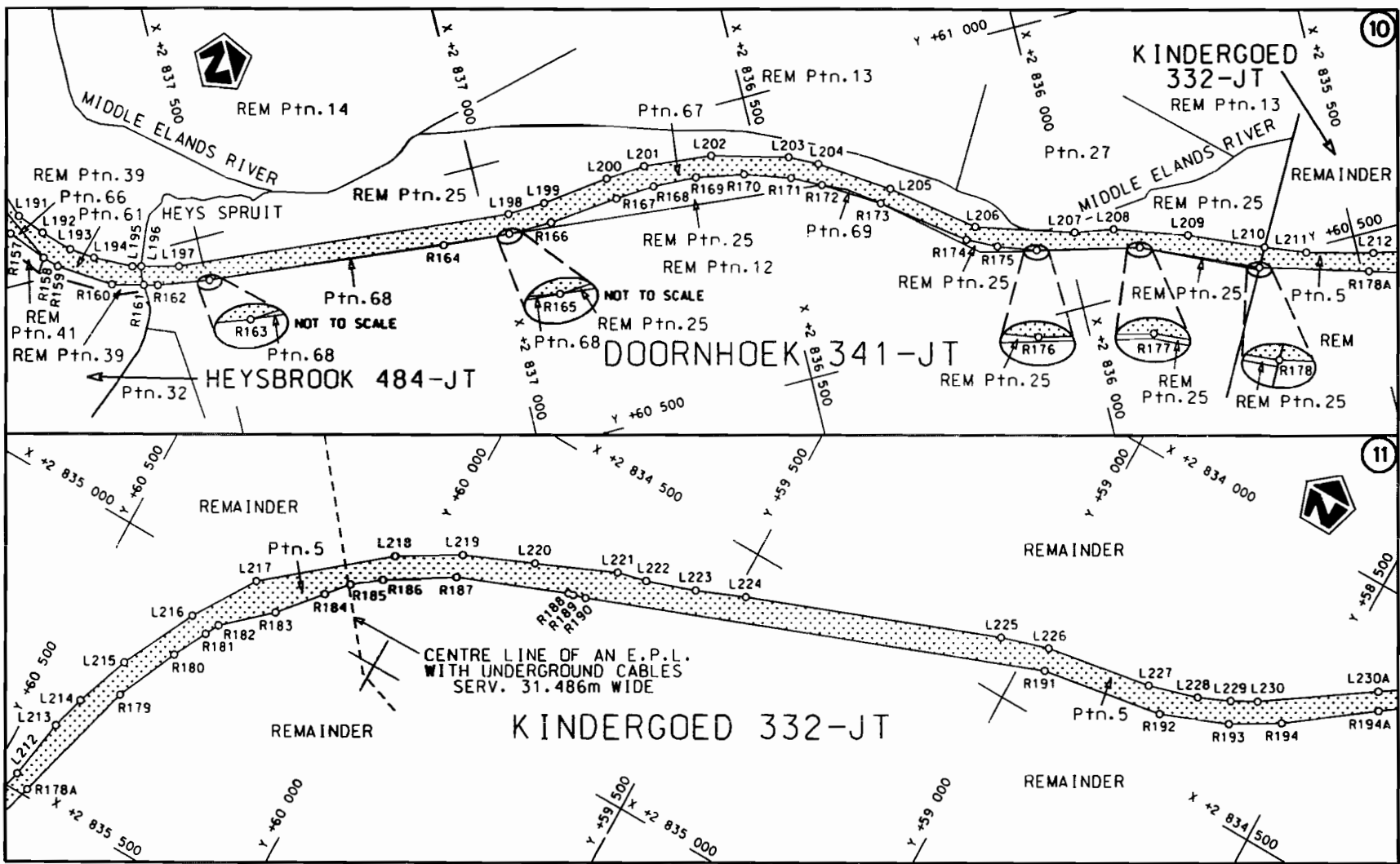
<p>Die Suid Afrikaanse Nasionale Padagentskap Beperk The South African National Roads Agency Limited</p>	<p>Die figuur getoon The figure shown</p> 	<p>steldie podreserwe voor van 'n gedeelte represents the road reserve of a portion van Nasionale Raete N4 Seksie of National Route N4 Section 6X</p>	<p>Vel Sheet 2 of 16 Plan P718/08</p>
--	--	---	---

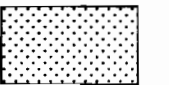


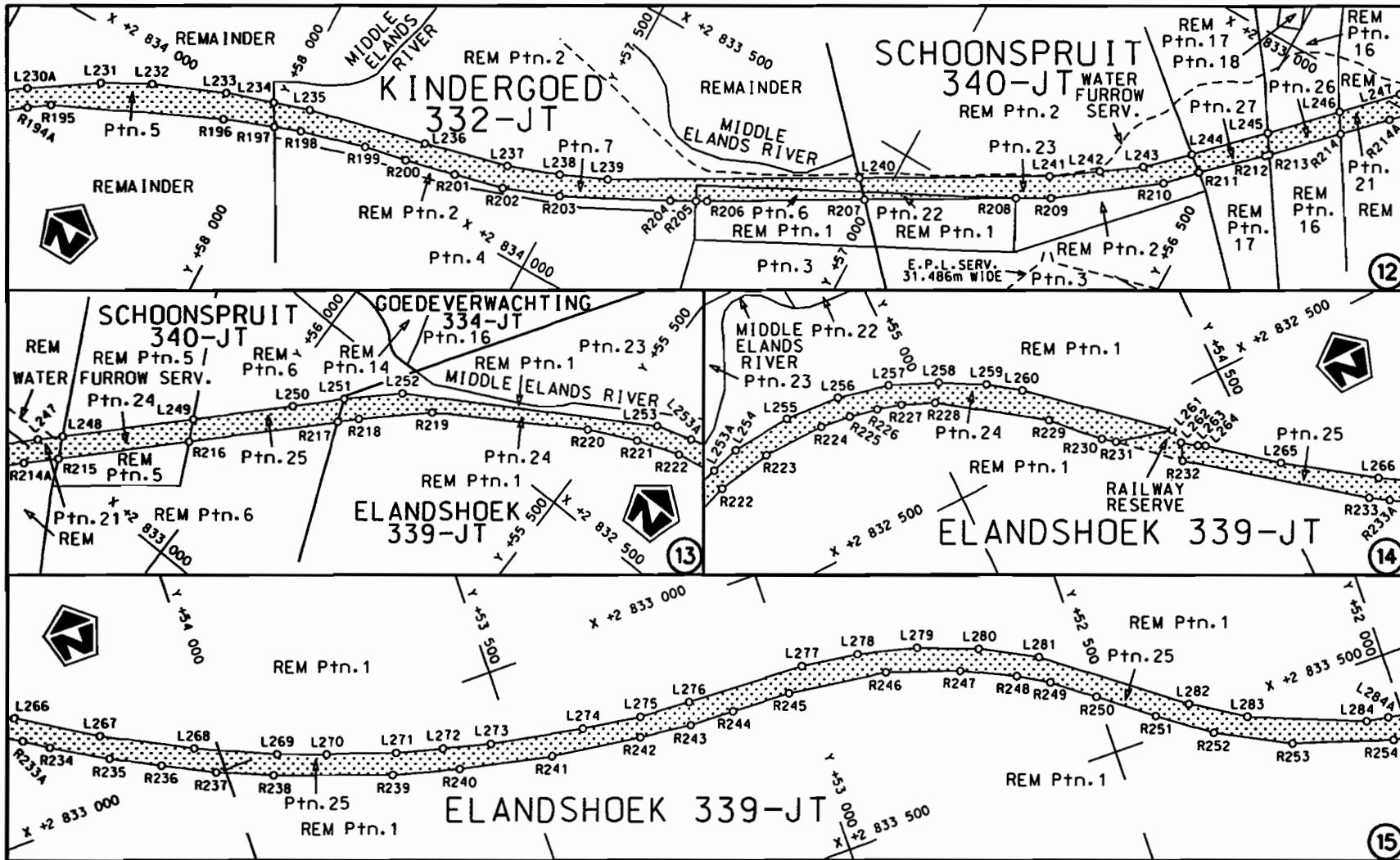
Die Suid Afrikaanse Nasionale Padagentskap Beperk The South African National Roads Agency Limited	Die figuur getoon The figure shown	 steldie padreserwe voor van 'n gedeelte represents the road reserve of a portion van Nasionale Roete N4 Seksie Section of National Route 6X	Vel Sheet 3 van of 16 Plan P718/08
--	---------------------------------------	---	---------------------------------------

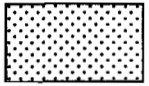


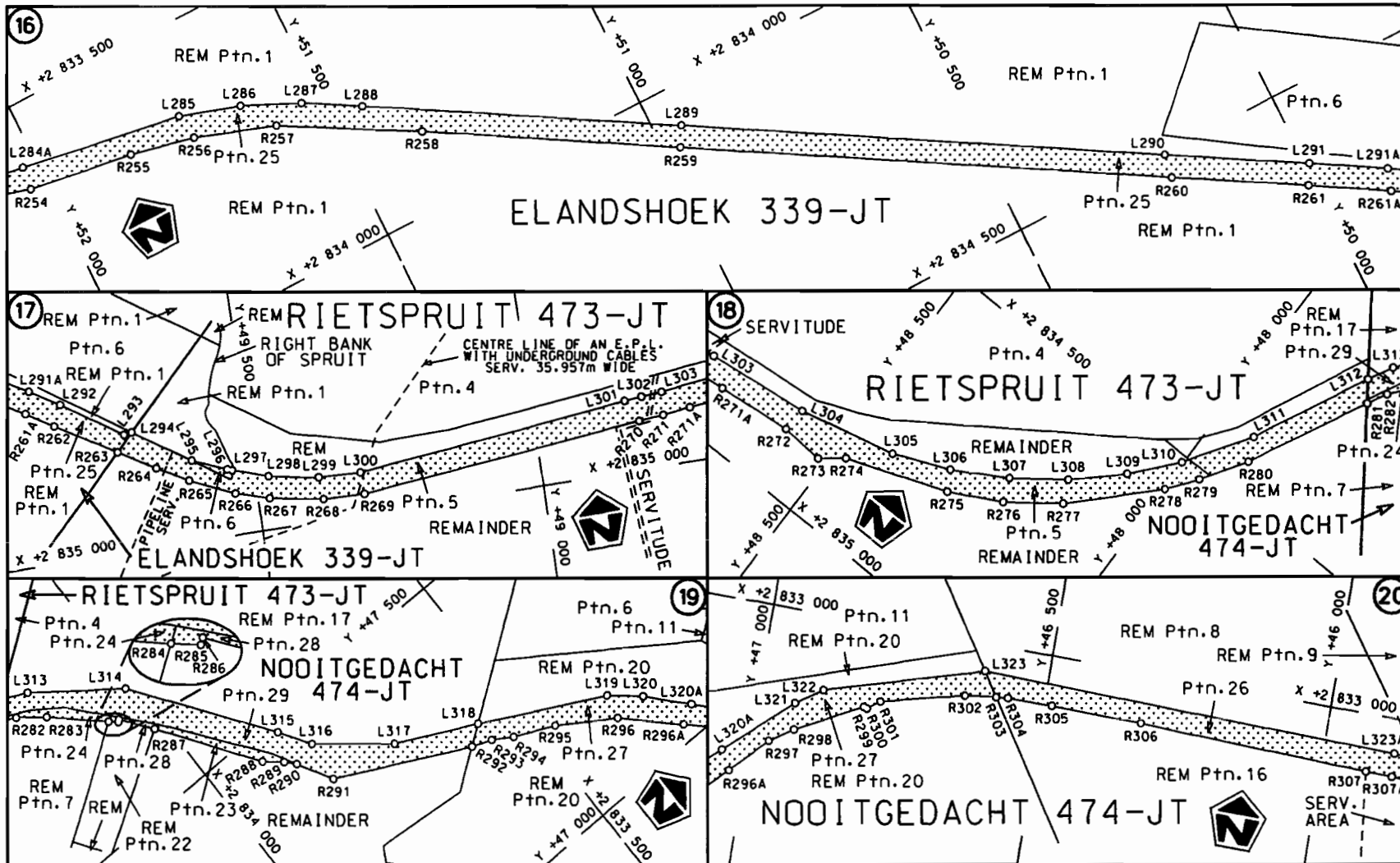
<p>Die Suid Afrikaanse Nasionale Padagentskop Beperk The South African National Roads Agency Limited</p>	<p>Die figuur getoon The figure shown</p> 	<p>steldie padreserwe voor van 'n gedeelte represents the road reserve of a portion van Nasionale Roete N4 of National Route N4</p> <p>Seksie 6X Section</p>	<p>Vel Sheet 4 van of 16 Plan P718/08</p>
--	--	--	---

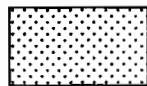


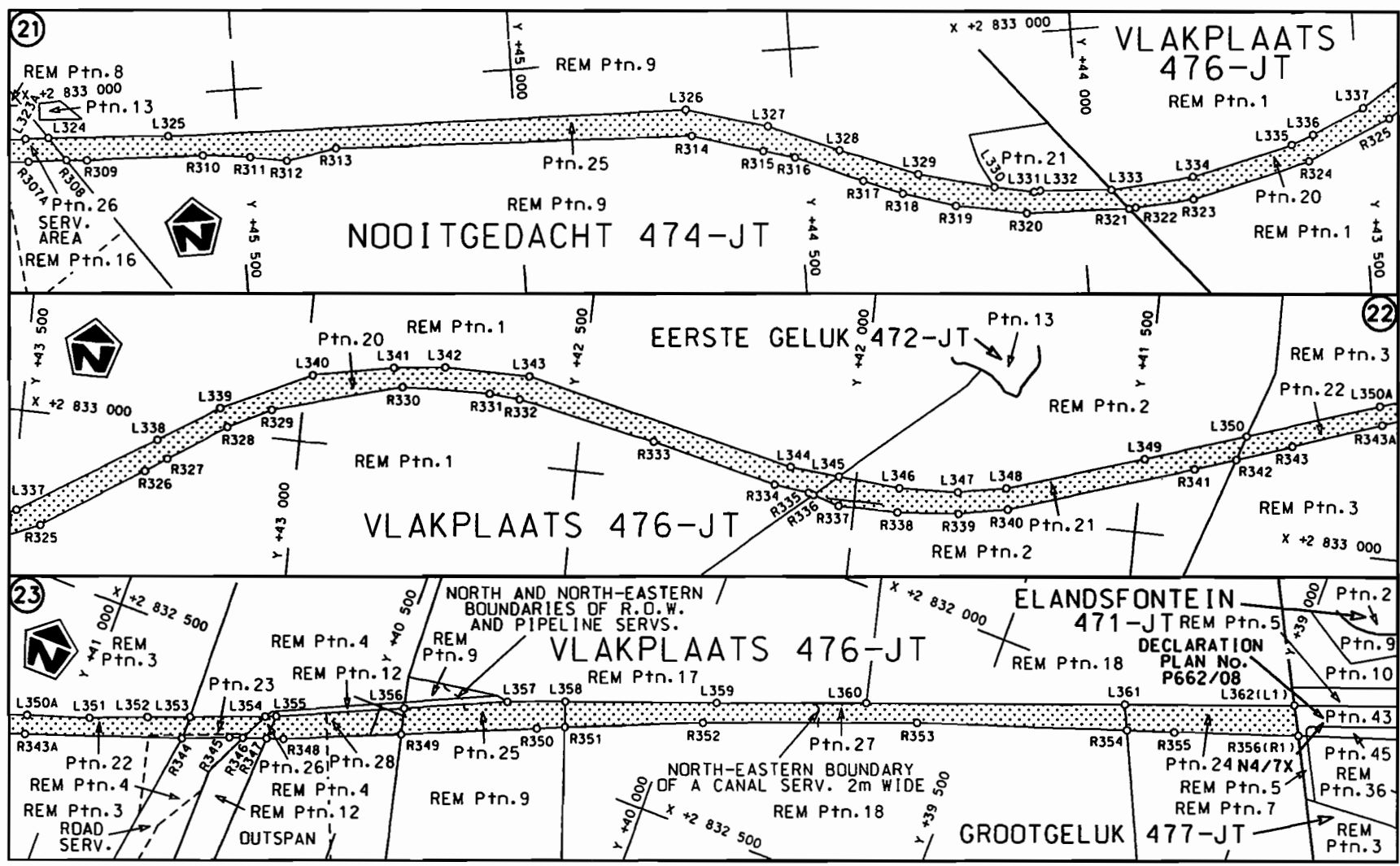
<p>Die Suid Afrikaanse Nasionale Padagentskap Beperk</p>	<p>Die figuur getoon</p>		<p>steldie padreserwe voor van 'n gedeelte represents the road reserve of a portion van Nasionale Roete N4 Seksie 6X</p>	<p>Vel Sheet 5 van 16</p>
<p>The South African National Roads Agency Limited</p>	<p>The figure shown</p>		<p>of National Route N4 Seksie 6X</p>	<p>Plan P718/08</p>



<p>Die Suid Afrikaanse Nasionale Padogentskap Beperk The South African National Roads Agency Limited</p>	<p>Die figuur getoon The figure shown</p> 	<p>steldie padreserwe voor van 'n gedeelte represents the road reserve of a portion van Nasionale Roete N4 Seksie of National Route N4 Section 6X</p>	<p>Vel van Sheet 6 van 16 Plan P718/08</p>
--	--	---	--



<p>Die Suid Afrikaanse Nasionale Padagentskap Beperk The South African National Roads Agency Limited</p>	<p>Die figuur getoon The figure shown</p>		<p>Vel Sheet 7 van 16 Plan P718/08</p>
<p>steldie padreserwe voor van 'n gedeelte represents the road reserve of a portion van Nasionale Roete N4 Seksie 6X of National Route N4 Section 6X</p>			



<p>Die Suid Afrikaanse Nasionale Padagentskap Beperk The South African National Roads Agency Limited</p>	<p>Die figuur getoon The figure shown</p>		<p>steldie padreserwe voor van 'n gedeelte represents the road reserve of a portion van Nasionale Roete N4 Seksie of Notional Route Section 6X</p>	<p>Vel Sheet 8 van of 16 Plan P718/08</p>
--	---	--	--	---

PADRESERWE KOÖRDINATE				/	ROAD RESERVE CO-ORDINATES			
LINKERKANT/LEFT HAND SIDE					REGTERKANT/RIGHT HAND SIDE			
	Y	X	WG	31°	Y	X		
L1	74 406.770	2 835 637.850		R1	74 338.380	2 835 652.220		
L2	74 374.360	2 835 612.170		R2	74 283.670	2 835 663.720		
L3	74 258.790	2 835 468.010		R3	74 193.110	2 835 485.180		
L4	74 110.640	2 835 241.060		R4	74 112.310	2 835 326.850		
L5	74 075.840	2 835 182.700		R5	74 102.400	2 835 307.030		
L6	73 958.330	2 834 969.270		R6	74 075.980	2 835 159.280		
L7	73 809.470	2 834 696.410		R7	74 032.910	2 835 188.120		
L8	73 705.430	2 834 543.590		R8	73 985.350	2 835 099.970		
L9	73 652.820	2 834 485.600		R9	73 943.170	2 835 022.770		
L10	73 591.830	2 834 428.020		R10	73 920.680	2 834 981.570		
L11	73 525.750	2 834 376.550		R11	73 850.440	2 834 852.750		
L12	73 455.860	2 834 332.280		R12	73 773.780	2 834 711.990		
L13	73 366.110	2 834 286.650		R13	73 723.090	2 834 629.800		
L14	72 732.420	2 834 061.170		R14	73 675.060	2 834 567.470		
L15	72 648.440	2 834 029.180		R15	73 621.370	2 834 508.900		
L16	72 558.360	2 834 010.510		R16	73 567.990	2 834 458.420		
L17	72 528.930	2 834 002.380		R17	73 505.090	2 834 410.390		
L18	72 497.480	2 833 980.560		R18	73 438.570	2 834 367.870		
L19	72 480.720	2 833 961.250		R19	73 346.010	2 834 321.060		
L20	72 466.780	2 833 935.850		R20	73 025.400	2 834 206.300		
L21	72 452.710	2 833 903.070		R21	72 824.480	2 834 136.460		
L22	72 416.240	2 833 812.230		R22	72 730.810	2 834 117.500		
L23	72 386.980	2 833 751.540		R23	72 668.490	2 834 107.230		
L24	72 346.110	2 833 700.640		R24	72 645.430	2 834 103.620		
L25	72 294.480	2 833 647.990		R25	72 601.400	2 834 099.870		
L26	72 290.880	2 833 644.320		R26	72 565.730	2 834 110.600		
L27	72 269.321	2 833 619.541		R27	72 526.570	2 834 128.430		
L28	72 224.980	2 833 628.490		R28	72 484.480	2 834 139.410		
L29	72 242.010	2 833 647.370		R29	72 444.480	2 834 138.440		
L30	72 256.690	2 833 663.660		R30	72 398.020	2 834 129.260		
L31	72 264.100	2 833 673.050		R31	72 376.930	2 834 116.270		
L32	72 309.900	2 833 795.630		R32	72 350.360	2 834 084.980		
L33	72 282.730	2 833 827.110		R33	72 179.510	2 834 135.130		
L34	72 247.800	2 833 848.070		R34	72 093.990	2 834 167.810		
L35	72 221.490	2 833 879.880		R35	71 738.420	2 834 345.220		
L36	72 204.070	2 833 923.640		R36	71 401.830	2 834 501.490		
L37	72 203.960	2 833 971.030		R37	71 018.610	2 834 676.750		
L38	72 217.920	2 834 070.410		R38	70 475.220	2 834 921.450		
L39	72 079.980	2 834 134.500		R39	69 535.910	2 835 358.060		
L40	71 623.940	2 834 360.100		R40	68 973.320	2 835 660.220		
L41	71 410.210	2 834 456.150		R41	68 896.360	2 835 717.220		
L42	71 015.070	2 834 639.030		R42	68 846.090	2 835 747.500		
L43	70 467.980	2 834 890.460		R43	68 791.910	2 835 773.280		
L44	69 551.260	2 835 312.360		R44	68 704.970	2 835 806.880		
L45	69 529.140	2 835 322.760		R45	68 677.130	2 835 824.880		
L46	69 088.100	2 835 555.610		R46	68 593.220	2 835 874.640		
L47	68 953.420	2 835 621.620		R47	68 452.650	2 835 945.120		
L48	68 923.330	2 835 635.210		R48	68 334.640	2 836 034.350		
L49	68 810.940	2 835 684.190		R49	68 242.470	2 836 055.860		
L50	68 803.850	2 835 677.200		R50	68 190.340	2 836 073.850		
L51	68 756.910	2 835 654.960		R51	68 098.040	2 836 095.250		

Vel	9	Van	16	P718/08
Sheet		of		

PADRESERWE KOÖRDINATE				/	ROAD RESERVE CO-ORDINATES			
LINKERKANT/LEFT HAND SIDE					REGTERKANT/RIGHT HAND SIDE			
	Y	X	WG	31°	Y	X		
L52	68 737.930	2 835 663.270		R52	68 015.580	2 836 099.370		
L53	68 714.220	2 835 713.760		R53	67 979.300	2 836 102.770		
L54	68 676.280	2 835 740.870		R54	67 903.770	2 836 085.400		
L55	68 636.750	2 835 749.610		R55	67 819.530	2 836 057.750		
L56	68 587.210	2 835 778.790		R56	67 746.470	2 836 020.060		
L57	68 566.380	2 835 815.230		R57	67 669.910	2 835 962.400		
L58	68 438.380	2 835 862.620		R58	67 623.200	2 835 913.120		
L59	68 370.570	2 835 870.260		R59	67 442.320	2 835 641.390		
L60	68 325.280	2 835 895.260		R60	67 319.850	2 835 554.900		
L61	68 321.540	2 835 903.640		R61	67 274.130	2 835 536.810		
L62	68 315.870	2 835 911.500		R62	67 194.790	2 835 529.930		
L63	68 302.320	2 835 936.510		R63	67 024.810	2 835 549.960		
L64	68 285.770	2 835 950.920		R64	66 574.290	2 835 615.320		
L65	68 245.690	2 835 995.460		R65	66 516.640	2 835 622.070		
L66	68 197.070	2 836 014.770		R66	66 450.900	2 835 652.180		
L67	68 175.830	2 836 038.240		R67	66 410.320	2 835 681.760		
L68	67 938.000	2 836 041.850		R68	66 346.650	2 835 740.160		
L69	67 815.070	2 835 997.120		R69	66 320.530	2 835 784.320		
L70	67 740.600	2 835 954.310		R70	66 295.510	2 835 846.100		
L71	67 612.270	2 835 836.700		R71	66 290.520	2 836 001.010		
L72	67 542.110	2 835 719.050		R72	66 281.730	2 836 105.990		
L73	67 466.320	2 835 603.460		R73	66 283.430	2 836 151.700		
L74	67 427.750	2 835 561.840		R74	66 270.020	2 836 252.020		
L75	67 345.270	2 835 519.560		R75	66 223.760	2 836 318.580		
L76	67 278.490	2 835 501.210		R76	66 172.590	2 836 390.680		
L77	67 230.310	2 835 494.550		R77	66 106.390	2 836 441.000		
L78	67 209.080	2 835 492.790		R78	65 959.738	2 836 550.798		
L79	67 038.380	2 835 509.780		R79	65 882.414	2 836 608.692		
L80	66 958.800	2 835 523.910		R80	65 845.074	2 836 648.202		
L81	66 792.040	2 835 544.880		R81	65 808.415	2 836 737.693		
L82	66 664.470	2 835 553.980		R82	65 805.025	2 836 762.154		
L83	66 582.120	2 835 571.330		R83	65 729.897	2 836 982.246		
L84	66 547.870	2 835 576.000		R84	65 714.162	2 837 018.278		
L85	66 428.630	2 835 625.470		R85	65 723.331	2 837 030.286		
L86	66 398.220	2 835 646.620		R86	65 719.050	2 837 241.360		
L87	66 364.880	2 835 672.250		R87	65 689.210	2 837 359.770		
L88	66 320.980	2 835 721.070		R88	65 666.580	2 837 426.120		
L89	66 276.530	2 835 766.400		R89	65 635.760	2 837 482.690		
L90	66 255.540	2 835 791.040		R90	65 604.550	2 837 523.740		
L91	66 226.200	2 835 785.870		R91	65 538.530	2 837 604.960		
L92	66 203.110	2 835 777.420		R92	65 466.280	2 837 642.940		
L93	66 158.700	2 835 802.880		R93	65 420.760	2 837 652.740		
L94	66 195.070	2 835 883.420		R94	65 363.400	2 837 655.850		
L95	66 201.070	2 836 036.790		R95	65 313.100	2 837 663.110		
L96	66 222.660	2 836 115.790		R96	65 260.530	2 837 660.740		
L97	66 226.360	2 836 135.690		R97	65 234.330	2 837 658.740		
L98	66 241.790	2 836 187.920		R98	65 195.570	2 837 657.500		
L99	66 203.100	2 836 278.330		R99	64 953.590	2 837 664.320		
L100	66 168.900	2 836 325.470		R100	64 827.050	2 837 666.860		
L101	66 150.090	2 836 347.540		R101	64 794.850	2 837 660.750		
L102	66 130.410	2 836 368.020		R102	64 774.430	2 837 660.870		
				Vel	10	Van	16	P718/08
				Sheet		of		

PADRESERWE KOÖRDINATE				/	ROAD RESERVE CO-ORDINATES			
LINKERKANT/LEFT HAND SIDE					REGTERKANT/RIGHT HAND SIDE			
	Y	X	WG	31°	Y	X		
L103	66 110.610	2 836 390.180		R103	64 678.500	2 837 661.630		
L104	66 043.700	2 836 446.400		R104	64 671.140	2 837 661.890		
L105	65 925.127	2 836 530.858		R105	64 616.710	2 837 663.800		
L106	65 856.453	2 836 577.922		R106	64 595.380	2 837 666.060		
L107	65 810.883	2 836 626.143		R107	64 580.320	2 837 670.980		
L108	65 770.414	2 836 724.944		R108	64 478.250	2 837 716.100		
L109	65 754.164	2 836 749.554		R109	64 455.670	2 837 729.560		
L110	65 711.286	2 836 922.956		R110	64 438.970	2 837 747.380		
L111	65 684.261	2 836 994.485		R111	64 394.470	2 837 795.600		
L112	65 677.572	2 836 989.204		R112	64 366.673	2 837 828.393		
L113	65 649.100	2 837 025.340		R113	64 339.730	2 837 860.180		
L114	65 666.650	2 837 151.490		R114	64 309.160	2 837 895.120		
L115	65 670.110	2 837 252.570		R115	64 266.840	2 837 929.460		
L116	65 669.950	2 837 265.260		R116	64 211.650	2 837 958.620		
L117	65 664.120	2 837 314.200		R117	64 145.590	2 837 979.610		
L118	65 647.820	2 837 384.380		R118	64 069.720	2 837 984.910		
L119	65 631.880	2 837 423.000		R119	64 045.041	2 837 980.973		
L120	65 618.350	2 837 448.750		R120	63 963.850	2 837 968.020		
L121	65 600.130	2 837 474.830		R121	63 955.340	2 837 967.670		
L122	65 577.150	2 837 503.250		R122	63 877.650	2 837 954.270		
L123	65 549.100	2 837 530.840		R123	63 821.900	2 837 947.150		
L124	65 532.120	2 837 544.750		R124	63 725.220	2 837 920.260		
L125	65 499.460	2 837 563.180		R125	63 700.360	2 837 909.000		
L126	65 465.860	2 837 582.580		R126	63 641.490	2 837 879.110		
L127	65 430.420	2 837 598.390		R127	63 569.630	2 837 831.790		
L128	65 370.060	2 837 615.520		R128	63 441.790	2 837 747.590		
L129	65 326.790	2 837 620.410		R129	63 406.570	2 837 722.510		
L130	64 837.450	2 837 627.260		R130	63 327.460	2 837 686.490		
L131	64 819.200	2 837 617.640		R131	63 235.570	2 837 663.160		
L132	64 791.080	2 837 620.610		R132	63 075.760	2 837 666.160		
L133	64 783.510	2 837 620.510		R133	63 029.070	2 837 671.420		
L134	64 763.600	2 837 619.940		R134	62 960.090	2 837 690.660		
L135	64 718.030	2 837 621.250		R135	62 891.660	2 837 714.580		
L136	64 679.200	2 837 620.510		R136	62 831.060	2 837 739.030		
L137	64 621.050	2 837 620.540		R137	62 767.650	2 837 770.380		
L138	64 564.960	2 837 629.580		R138	62 552.030	2 837 890.480		
L139	64 498.210	2 837 657.590		R139	62 518.760	2 837 907.870		
L140	64 442.900	2 837 692.880		R140	62 448.980	2 837 942.810		
L141	64 419.750	2 837 709.110		R141	62 375.800	2 837 956.990		
L142	64 370.660	2 837 772.540		R142	62 262.320	2 837 959.010		
L143	64 341.500	2 837 807.811		R143	62 233.720	2 837 942.110		
L144	64 310.870	2 837 844.860		R144	62 220.330	2 837 937.727		
L145	64 285.370	2 837 859.560		R145	62 198.740	2 837 930.660		
L146	64 270.030	2 837 870.570		R146	62 079.870	2 837 879.890		
L147	64 240.460	2 837 901.580		R147	61 955.700	2 837 826.730		
L148	64 229.420	2 837 909.170		R148	61 864.050	2 837 794.150		
L149	64 196.100	2 837 925.030		R149	61 765.310	2 837 786.260		
L150	64 174.330	2 837 933.480		R150	61 693.000	2 837 780.320		
L151	64 138.400	2 837 943.290		R151	61 578.230	2 837 815.640		
L152	64 078.620	2 837 949.440		R152	61 535.240	2 837 830.680		
L153	64 046.270	2 837 947.530		R153	61 383.720	2 837 880.380		

Vel	11	Van	16	P718/08
Sheet		of		

PADRESERWE KOÖRDINATE				/	ROAD RESERVE CO-ORDINATES			
LINKERKANT/LEFT HAND SIDE					REGTERKANT/RIGHT HAND SIDE			
	Y	X	WG	31°	Y	X		
L154	63 988.801	2 837 938.079		R154	61 261.120	2 837 885.180		
L155	63 930.550	2 837 928.500		R155	61 193.210	2 837 870.410		
L156	63 908.910	2 837 924.350		R156	61 134.190	2 837 845.620		
L157	63 900.400	2 837 922.990		R157	61 089.130	2 837 820.600		
L158	63 831.110	2 837 910.100		R158	61 034.620	2 837 773.750		
L159	63 768.740	2 837 896.970		R159	61 014.230	2 837 752.950		
L160	63 662.690	2 837 850.930		R160	60 960.700	2 837 667.610		
L161	63 570.610	2 837 791.080		R161	60 946.067	2 837 612.397		
L162	63 432.760	2 837 701.480		R162	60 939.530	2 837 587.730		
L163	63 379.640	2 837 672.480		R163	60 925.260	2 837 495.150		
L164	63 283.660	2 837 637.440		R164	60 883.060	2 837 079.770		
L165	63 179.280	2 837 626.860		R165	60 873.900	2 836 962.820		
L166	63 103.140	2 837 628.420		R166	60 874.120	2 836 884.860		
L167	63 005.470	2 837 644.430		R167	60 885.740	2 836 762.390		
L168	62 866.180	2 837 688.660		R168	60 889.990	2 836 692.880		
L169	62 571.770	2 837 843.940		R169	60 886.290	2 836 615.170		
L170	62 479.040	2 837 897.560		R170	60 870.570	2 836 530.470		
L171	62 427.620	2 837 921.710		R171	60 843.210	2 836 450.760		
L172	62 370.330	2 837 931.770		R172	60 818.310	2 836 400.080		
L173	62 307.810	2 837 932.090		R173	60 762.200	2 836 306.120		
L174	62 245.100	2 837 913.330		R174	60 664.160	2 836 173.620		
L175	62 216.780	2 837 901.420		R175	60 639.210	2 836 122.170		
L176	62 205.885	2 837 897.228		R176	60 615.790	2 836 055.600		
L177	62 190.220	2 837 891.200		R177	60 575.530	2 835 876.820		
L178	62 164.030	2 837 880.700		R178	60 489.130	2 835 677.050		
L179	61 884.650	2 837 767.560		R179	60 370.150	2 835 265.440		
L180	61 818.890	2 837 746.360		R180	60 319.230	2 835 157.790		
L181	61 777.350	2 837 738.450		R181	60 287.180	2 835 098.940		
L182	61 727.260	2 837 744.410		R182	60 274.040	2 835 075.010		
L183	61 673.540	2 837 751.190		R183	60 194.630	2 835 004.630		
L184	61 636.360	2 837 756.040		R184	60 134.710	2 834 934.680		
L185	61 486.560	2 837 807.700		R185	60 103.910	2 834 898.200		
L186	61 422.750	2 837 830.030		R186	60 058.370	2 834 863.890		
L187	61 376.320	2 837 843.480		R187	59 949.290	2 834 797.070		
L188	61 325.760	2 837 848.880		R188	59 762.100	2 834 723.460		
L189	61 245.530	2 837 845.150		R189	59 752.500	2 834 721.690		
L190	61 191.390	2 837 826.180		R190	59 731.140	2 834 715.540		
L191	61 114.910	2 837 799.240		R191	58 955.870	2 834 423.240		
L192	61 076.910	2 837 765.050		R192	58 741.750	2 834 387.870		
L193	61 037.630	2 837 724.890		R193	58 625.550	2 834 342.460		
L194	61 013.060	2 837 687.340		R194	58 542.980	2 834 294.610		
L195	60 981.940	2 837 624.360		R195	58 367.830	2 834 166.840		
L196	60 978.134	2 837 608.909		R196	58 089.590	2 834 038.150		
L197	60 961.890	2 837 542.960		R197	58 003.960	2 834 005.350		
L198	60 907.360	2 836 955.860		R198	57 958.640	2 833 988.170		
L199	60 909.920	2 836 888.670		R199	57 843.190	2 833 954.850		
L200	60 923.340	2 836 770.710		R200	57 768.660	2 833 939.100		
L201	60 927.950	2 836 700.740		R201	57 681.090	2 833 918.780		
L202	60 915.980	2 836 579.280		R202	57 596.360	2 833 897.740		
L203	60 879.320	2 836 446.120		R203	57 501.590	2 833 861.220		
L204	60 854.870	2 836 397.290		R204	57 325.790	2 833 771.730		

Vel	12	Van	16	P718/08
Sheet		of		

PADRESERWE KOÖRDINATE				ROAD RESERVE CO-ORDINATES			
LINKERKANT/LEFT HAND SIDE				REGTERKANT/RIGHT HAND SIDE			
	Y	X	WG 31°		Y	X	
L205	60 782.050	2 836 283.600		R205	57 285.690	2 833 749.690	
L206	60 681.770	2 836 153.000		R206	57 268.420	2 833 740.200	
L207	60 629.090	2 835 982.990		R207	57 028.120	2 833 602.290	
L208	60 617.400	2 835 914.400		R208	56 793.250	2 833 467.920	
L209	60 574.750	2 835 788.300		R209	56 739.530	2 833 437.620	
L210	60 520.530	2 835 659.490		R210	56 580.130	2 833 318.230	
L211	60 493.740	2 835 589.230		R211	56 534.760	2 833 272.190	
L212	60 463.230	2 835 473.080		R212	56 446.600	2 833 189.850	
L213	60 443.690	2 835 367.200		R213	56 441.470	2 833 184.670	
L214	60 427.070	2 835 308.810		R214	56 348.720	2 833 091.650	
L215	60 390.790	2 835 213.520		R215	56 241.890	2 832 983.960	
L216	60 323.540	2 835 083.640		R216	56 078.010	2 832 818.250	
L217	60 250.780	2 834 974.580		R217	55 887.660	2 832 626.340	
L218	60 059.870	2 834 818.030		R218	55 860.760	2 832 599.220	
L219	59 958.270	2 834 758.180		R219	55 764.810	2 832 509.140	
L220	59 839.050	2 834 707.950		R220	55 530.160	2 832 363.740	
L221	59 703.170	2 834 649.810		R221	55 449.320	2 832 324.540	
L222	59 651.710	2 834 637.460		R222	55 375.170	2 832 297.990	
L223	59 566.210	2 834 608.060		R223	55 280.310	2 832 280.560	
L224	59 482.810	2 834 574.130		R224	55 171.770	2 832 278.810	
L225	59 051.570	2 834 411.460		R225	55 118.760	2 832 285.060	
L226	58 968.260	2 834 386.160		R226	55 069.780	2 832 295.810	
L227	58 782.500	2 834 354.830		R227	55 027.350	2 832 307.560	
L228	58 696.430	2 834 329.860		R228	54 971.400	2 832 330.610	
L229	58 642.000	2 834 306.280		R229	54 802.750	2 832 446.880	
L230	58 598.900	2 834 283.320		R230	54 734.130	2 832 516.820	
L231	58 310.290	2 834 090.320		R231	54 714.130	2 832 531.850	
L232	58 230.390	2 834 048.350		R232	54 622.750	2 832 612.940	
L233	58 107.000	2 833 996.300		R233	54 354.810	2 832 815.100	
L234	58 024.960	2 833 969.040		R234	54 281.870	2 832 860.800	
L235	57 962.000	2 833 948.110		R235	54 188.470	2 832 913.080	
L236	57 752.950	2 833 897.310		R236	54 106.100	2 832 955.530	
L237	57 607.920	2 833 860.440		R237	54 016.950	2 832 998.870	
L238	57 519.820	2 833 828.970		R238	53 922.090	2 833 038.120	
L239	57 441.560	2 833 793.920		R239	53 719.050	2 833 109.170	
L240	57 054.340	2 833 574.430		R240	53 603.670	2 833 139.360	
L241	56 760.210	2 833 405.880		R241	53 443.480	2 833 173.120	
L242	56 687.700	2 833 355.830		R242	53 284.930	2 833 194.940	
L243	56 625.220	2 833 311.370		R243	53 193.240	2 833 205.920	
L244	56 560.620	2 833 250.590		R244	53 114.570	2 833 208.080	
L245	56 462.100	2 833 153.100		R245	53 011.870	2 833 211.960	
L246	56 368.720	2 833 059.410		R246	52 838.000	2 833 235.290	
L247	56 291.110	2 832 980.760		R247	52 711.610	2 833 276.850	
L248	56 259.630	2 832 948.930		R248	52 619.800	2 833 319.630	
L249	56 095.820	2 832 783.280		R249	52 567.450	2 833 349.240	
L250	55 969.400	2 832 655.440		R250	52 499.980	2 833 399.550	
L251	55 902.740	2 832 587.960		R251	52 412.540	2 833 465.230	
L252	55 826.660	2 832 515.950		R252	52 325.520	2 833 526.980	
L253	55 436.310	2 832 282.950		R253	52 200.690	2 833 589.960	
L254	55 324.520	2 832 248.670		R254	52 029.780	2 833 643.810	
L255	55 220.250	2 832 239.950		R255	51 843.680	2 833 671.360	

PADRESERWE KOÖRDINATE				/	ROAD RESERVE CO-ORDINATES			
LINKERKANT/LEFT HAND SIDE					REGTERKANT/RIGHT HAND SIDE			
	Y	X	WG	31°	Y	X		
L256	55 123.660	2 832	246.510	R256	51 731.130	2 833	696.630	
L257	55 033.090	2 832	267.410	R257	51 590.020	2 833	744.220	
L258	54 950.150	2 832	302.370	R258	51 366.050	2 833	869.660	
L259	54 874.770	2 832	343.240	R259	50 970.470	2 834	101.970	
L260	54 822.420	2 832	380.120	R260	50 221.730	2 834	541.430	
L261	54 615.730	2 832	556.610	R261	50 011.890	2 834	664.310	
L262	54 611.410	2 832	583.110	R262	49 839.190	2 834	766.610	
L263	54 587.450	2 832	601.430	R263	49 734.950	2 834	827.290	
L264	54 575.330	2 832	607.700	R264	49 670.830	2 834	864.600	
L265	54 469.070	2 832	691.890	R265	49 617.100	2 834	894.840	
L266	54 324.770	2 832	791.530	R266	49 538.620	2 834	928.670	
L267	54 192.040	2 832	870.930	R267	49 479.130	2 834	946.550	
L268	54 041.000	2 832	947.040	R268	49 385.550	2 834	963.020	
L269	53 904.070	2 833	005.940	R269	49 313.380	2 834	964.660	
L270	53 819.370	2 833	035.780	R270	48 814.390	2 834	917.160	
L271	53 700.450	2 833	075.470	R271	48 770.390	2 834	913.210	
L272	53 619.520	2 833	096.180	R272	48 590.520	2 834	895.470	
L273	53 538.280	2 833	116.950	R273	48 515.620	2 834	900.440	
L274	53 376.680	2 833	146.610	R274	48 476.620	2 834	870.530	
L275	53 273.040	2 833	161.830	R275	48 299.620	2 834	805.330	
L276	53 182.610	2 833	167.540	R276	48 210.680	2 834	759.270	
L277	52 974.900	2 833	175.450	R277	48 125.270	2 834	696.830	
L278	52 874.890	2 833	188.820	R278	47 999.020	2 834	567.030	
L279	52 771.320	2 833	214.060	R279	47 959.960	2 834	516.630	
L280	52 667.800	2 833	252.550	R280	47 909.480	2 834	438.700	
L281	52 571.870	2 833	301.670	R281	47 804.780	2 834	232.450	
L282	52 350.270	2 833	465.160	R282	47 787.540	2 834	198.890	
L283	52 260.270	2 833	520.670	R283	47 753.440	2 834	155.980	
L284	52 064.000	2 833	598.000	R284	47 678.090	2 834	075.830	
L285	51 738.510	2 833	652.140	R285	47 666.490	2 834	062.620	
L286	51 632.320	2 833	684.840	R286	47 669.030	2 834	059.120	
L287	51 532.900	2 833	729.150	R287	47 616.600	2 834	019.730	
L288	51 440.390	2 833	782.520	R288	47 452.100	2 833	907.030	
L289	50 951.380	2 834	069.210	R289	47 427.120	2 833	877.410	
L290	50 215.100	2 834	501.270	R290	47 410.650	2 833	862.300	
L291	49 993.370	2 834	631.410	R291	47 349.630	2 833	828.640	
L292	49 823.530	2 834	731.760	R292	47 238.240	2 833	605.940	
L293	49 718.920	2 834	799.660	R293	47 225.290	2 833	571.910	
L294	49 704.700	2 834	797.610	R294	47 205.010	2 833	538.120	
L295	49 607.130	2 834	861.610	R295	47 172.730	2 833	469.340	
L296	49 546.510	2 834	885.810	R296	47 111.590	2 833	374.790	
L297	49 537.940	2 834	888.616	R297	46 968.590	2 833	230.180	
L298	49 475.510	2 834	909.060	R298	46 927.960	2 833	203.150	
L299	49 388.310	2 834	924.750	R299	46 813.790	2 833	143.880	
L300	49 314.530	2 834	927.560	R300	46 807.750	2 833	145.550	
L301	48 834.880	2 834	879.500	R301	46 786.160	2 833	129.390	
L302	48 804.100	2 834	876.830	R302	46 640.590	2 833	093.100	
L303	48 767.080	2 834	873.960	R303	46 585.800	2 833	086.890	
L304	48 586.960	2 834	853.490	R304	46 565.080	2 833	084.540	
L305	48 416.150	2 834	813.260	R305	46 486.810	2 833	084.520	
L306	48 318.420	2 834	772.230	R306	46 327.150	2 833	085.970	

Vel	14	Van	16	P718/08
Sheet		of		

PADRESERWE KOÖRDINATE				/	ROAD RESERVE CO-ORDINATES			
LINKERKANT/LEFT HAND SIDE					REGTERKANT/RIGHT HAND SIDE			
	Y	X	WG	31°	Y	X		
L307	48 227.530	2 834 720.480		R307	45 920.180	2 833 097.510		
L308	48 143.820	2 834 659.090		R308	45 806.990	2 833 100.040		
L309	48 067.830	2 834 587.900		R309	45 770.650	2 833 103.090		
L310	48 002.670	2 834 511.620		R310	45 564.080	2 833 108.370		
L311	47 927.890	2 834 399.700		R311	45 479.070	2 833 117.900		
L312	47 828.810	2 834 198.640		R312	45 413.130	2 833 128.530		
L313	47 807.250	2 834 156.430		R313	45 322.150	2 833 113.950		
L314	47 702.410	2 834 016.480		R314	44 684.560	2 833 138.050		
L315	47 473.480	2 833 853.850		R315	44 559.540	2 833 173.650		
L316	47 420.070	2 833 819.890		R316	44 503.960	2 833 188.200		
L317	47 327.750	2 833 707.560		R317	44 385.100	2 833 237.450		
L318	47 261.840	2 833 572.890		R318	44 316.710	2 833 263.920		
L319	47 153.320	2 833 364.690		R319	44 224.570	2 833 290.880		
L320	47 111.850	2 833 316.300		R320	44 099.950	2 833 312.570		
L321	46 934.090	2 833 158.340		R321	43 918.450	2 833 316.880		
L322	46 888.870	2 833 127.680		R322	43 906.600	2 833 315.600		
L323	46 613.000	2 833 046.450		R323	43 804.610	2 833 308.840		
L324	45 836.480	2 833 059.670		R324	43 595.000	2 833 258.060		
L325	45 623.990	2 833 071.570		R325	43 446.480	2 833 194.140		
L326	44 692.380	2 833 092.290		R326	43 271.270	2 833 081.720		
L327	44 548.190	2 833 131.470		R327	43 234.080	2 833 056.140		
L328	44 423.970	2 833 181.070		R328	43 132.440	2 832 990.210		
L329	44 287.350	2 833 232.270		R329	43 055.490	2 832 951.620		
L330	44 154.460	2 833 263.980		R330	42 823.750	2 832 887.440		
L331	44 084.140	2 833 276.770		R331	42 667.900	2 832 882.710		
L332	44 072.980	2 833 275.270		R332	42 613.850	2 832 886.700		
L333	43 947.480	2 833 282.540		R333	42 366.570	2 832 935.030		
L334	43 803.130	2 833 269.880		R334	42 143.960	2 832 986.660		
L335	43 624.240	2 833 227.540		R335	42 083.390	2 832 994.100		
L336	43 584.320	2 833 213.260		R336	42 074.320	2 832 996.770		
L337	43 492.020	2 833 172.770		R337	42 027.580	2 833 010.780		
L338	43 255.590	2 833 025.430		R338	41 921.810	2 833 011.180		
L339	43 148.750	2 832 958.820		R339	41 814.530	2 833 001.760		
L340	42 987.180	2 832 883.900		R340	41 728.270	2 832 985.700		
L341	42 842.190	2 832 855.860		R341	41 406.850	2 832 881.780		
L342	42 751.540	2 832 846.110		R342	41 335.900	2 832 857.480		
L343	42 600.310	2 832 845.470		R343	41 238.770	2 832 824.140		
L344	42 119.130	2 832 953.120		R344	40 817.800	2 832 678.050		
L345	42 032.020	2 832 960.240		R345	40 738.350	2 832 646.690		
L346	41 922.450	2 832 969.190		R346	40 715.200	2 832 638.590		
L347	41 819.530	2 832 964.710		R347	40 674.720	2 832 624.240		
L348	41 734.230	2 832 949.430		R348	40 645.640	2 832 613.940		
L349	41 496.020	2 832 872.620		R349	40 448.830	2 832 530.940		
L350	41 321.360	2 832 814.670		R350	40 225.620	2 832 437.210		
L351	40 983.560	2 832 702.610		R351	40 178.520	2 832 416.780		
L352	40 887.820	2 832 665.780		R352	39 950.610	2 832 323.010		
L353	40 817.130	2 832 638.420		R353	39 593.620	2 832 188.410		
L354	40 690.220	2 832 589.770		R354	39 240.300	2 832 069.400		
L355	40 671.740	2 832 582.120		R355	39 161.940	2 832 043.000		
L356	40 459.190	2 832 487.040		R356	38 953.690	2 831 971.430		
L357	40 291.020	2 832 411.810						

Vel	15	Van	16	P718/08
Sheet		of		

PADRESERWE KOÖRDINATE				/	ROAD RESERVE CO-ORDINATES		
LINKERKANT/LEFT HAND SIDE					REGTERKANT/RIGHT HAND SIDE		
	Y	X	WG	31°	Y	X	
L358	40 193.060	2 832 375.230					
L359	39 939.710	2 832 282.110					
L360	39 689.230	2 832 188.700					
L361	39 259.210	2 832 028.890					
L362	38 978.570	2 831 924.790					

Vel	16	Van	16	P718/08
Sheet		of		