

**Government Gazette**  
**GOVERNMENT GAZETTE**

**REPUBLIC OF SOUTH AFRICA**  
**REPUBLIEK VAN SUID-AFRIKA**

**Vol. 524**

**Pretoria, 27 February 2009**  
**Februarie 2009**

**No. 31938**

**CONTENTS****INHOUD**

| <i>No.</i>   | <i>Page<br/>No.</i> | <i>Gazette<br/>No.</i> | <i>No.</i>   | <i>Bladsy<br/>No.</i> | <i>Koerant<br/>No.</i> |
|--|---------------------|------------------------|--|-----------------------|------------------------|
| <b>GOVERNMENT NOTICE</b>   |                     |                        | <b>GOEWERMENSKENNISGEWING</b>  |                       |                        |
| <b>Transport, Department of</b>  |                     |                        | <b>Vervoer, Departement van</b>  |                       |                        |
| <i>Government Notice</i>   |                     |                        | <i>Goewermentskennisgewing</i>   |                       |                        |
| 186  |                     |                        | 186  |                       |                        |
| South African National Roads Agency Limited and the National Roads Act (7/1998): The South African National Roads Agency Limited: Declaration amendment of National Road N4 Section 6Y: Amendment of Declaration No. 650 of 1997 ..... |                     |                        | Suid-Afrikaanse Nasionale Padagentskap Beperk en die Nasionale Paaie Wet (7/1998): Die Suid-Afrikaanse Nasionale Padagentskap Beperk: Verklaring wysiging van Nasionale Pad N4 Seksie 6Y: Wysiging van Verklaring No. 650 van 1997 ..... |                       |                        |
|  | 3                   | 31938                  |  | 4                     | 31938                  |

---

**GOVERNMENT NOTICE**

---

**DEPARTMENT OF TRANSPORT****No. 186****27 February 2009****THE SOUTH AFRICAN NATIONAL ROADS  
AGENCY LIMITED**Registration No: 98/09584/06

---

**DECLARATION AMENDMENT OF NATIONAL ROAD N4 SECTION 6Y**

AMENDMENT OF DECLARATION NO. 650 OF 1997

By virtue of Section 40(1)(b) of the South African National Roads Agency Limited and the National Roads Act, 1998 (Act No. 7 of 1998), I hereby amend Declaration No. 650 of 1997 sheets 1 to 19 by substituting it with the subjoined sheets 1 to 17 of Plan No. P724/08.

**(National Road N4 Section 6Y: Schoongezigt – Montrose)**

---

**MINISTER OF TRANSPORT**

---

## GOEWERMENSKENNISGEWING

---

### DEPARTEMENT VAN VERVOER

No. 186

27 Februarie 2009

## DIE SUID-AFRIKAANSE NASIONALE PADAGENTSKAP BEPERK

Registrasie No: 98/09584/06

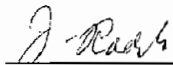
---

### VERKLARING WYSIGING VAN NASIONALE PAD N4 SEKSIE 6Y

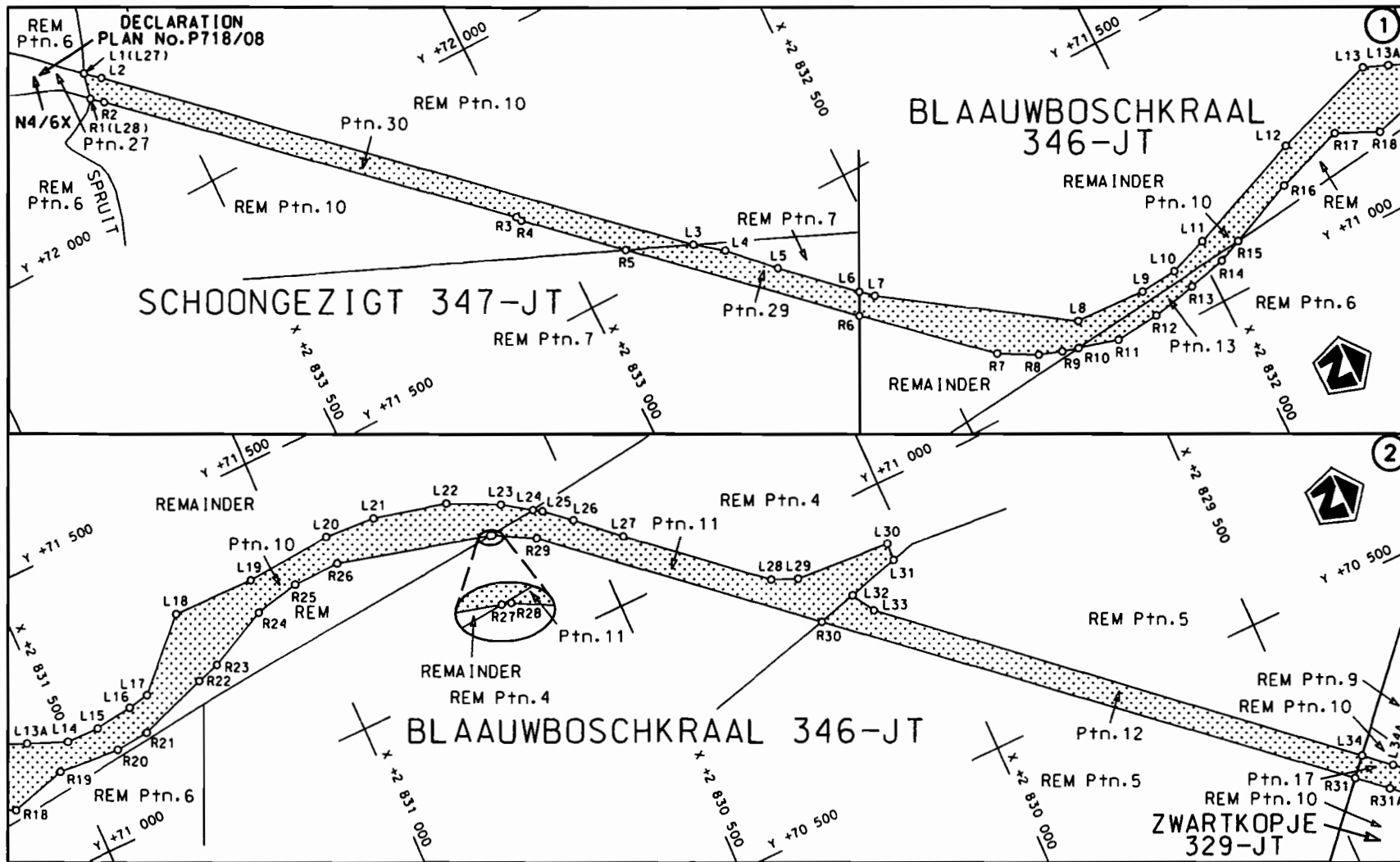
WYSIGING VAN VERKLARING NO. 650 VAN 1997

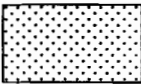
Kragtens Artikel 40(1)(b) van die Suid-Afrikaanse Nasionale Padagentskap Beperk en die Nasionale Paaie Wet, 1998 (Wet no.7 van 1998), wysig ek hiermee Verklaring no. 6750 van 1997 velle 1 tot 19 deur dit te vervang met meegaande velle 1 tot 17 van Plan no. P724/08.

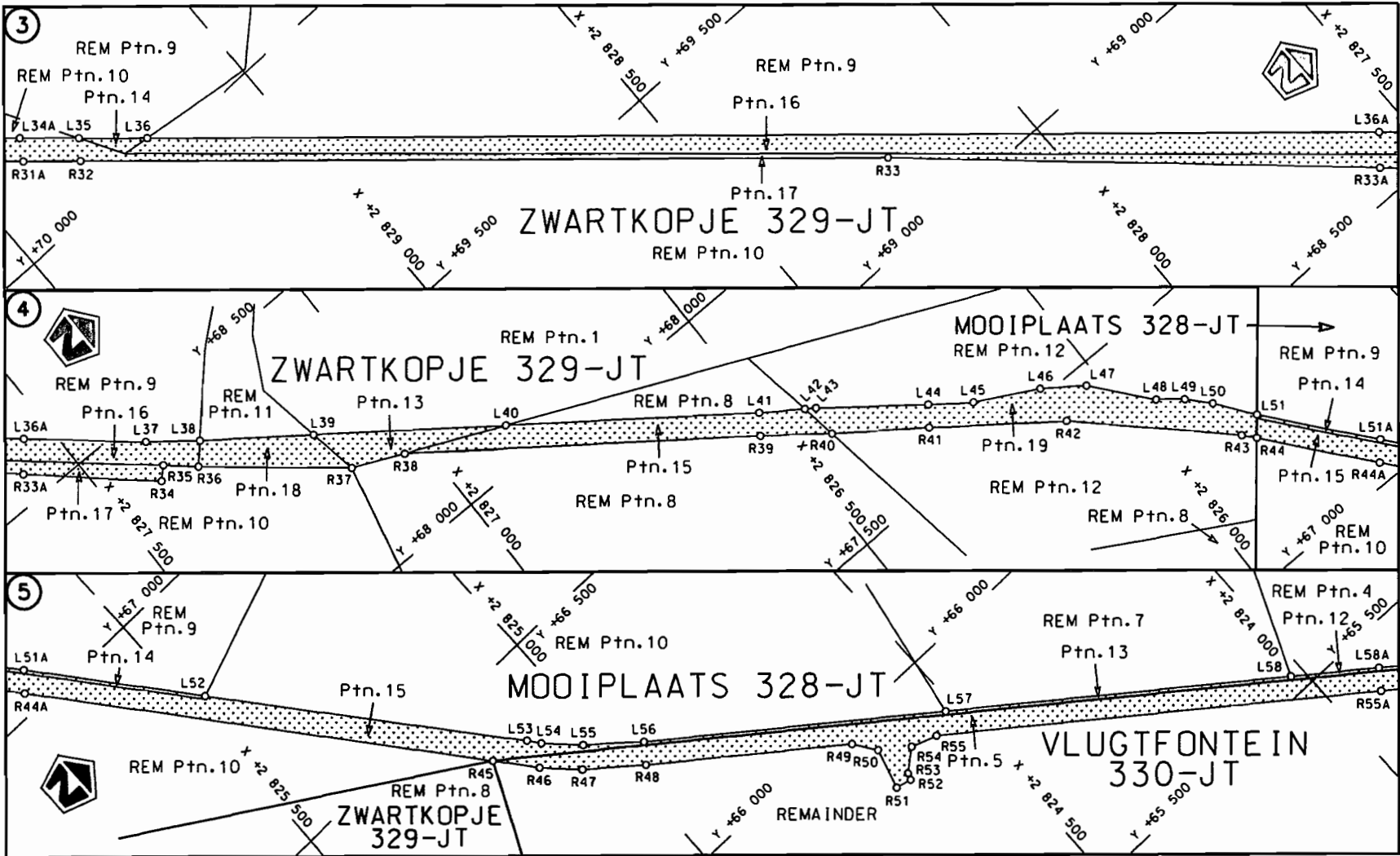
(Nasionale Pad N4 Seksie 6Y: Schoongezigt – Montrose)



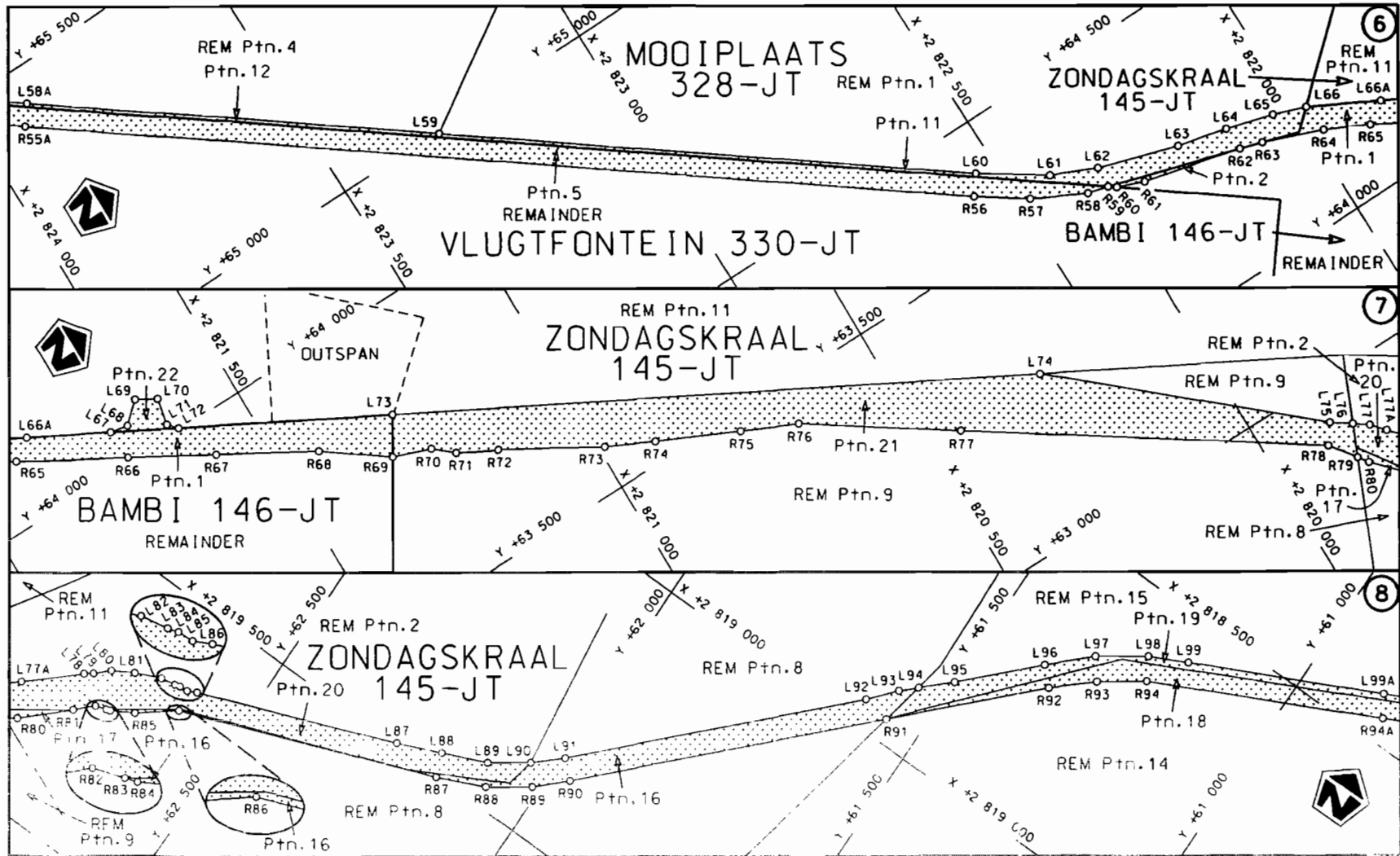
MINISTER VAN VERVOER




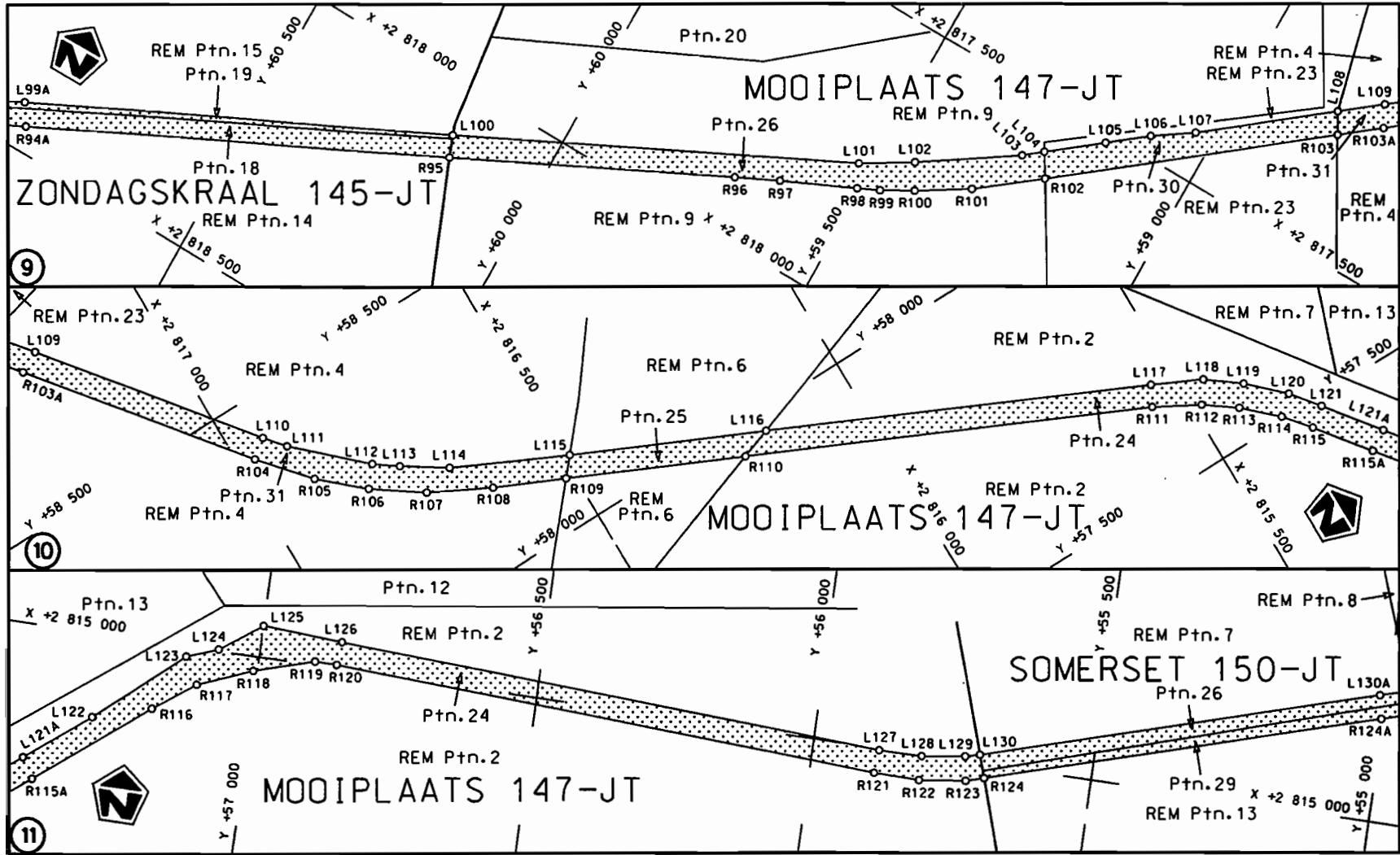
|  |   |  |  |   |
|--|---|--|--|---|
| <p>Die Suid Afrikaanse Nasionale Podagentskap Beperk<br/>The South African National Roads Agency Limited</p> | <p>Die figuur getoon<br/>The figure shown</p> |  | <p>steldie padreserwe voor van 'n gedeelte<br/>represents the road reserve of a portion<br/>van Nasionale Roete N4 Seksie<br/>of National Route Section 6Y</p> | <p>Vel Sheet 1 van of 17<br/>Plan P724/08</p> |
|--|---|--|--|---|

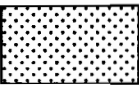


|  |   |  |  |  |
|--|---|--|--|--|
| <p>Die Suid Afrikaanse Nasionale Padagentskap Beperk<br/>The South African National Roads Agency Limited</p> | <p>Die figuur getoon<br/>The figure shown</p> |  | <p>steldie padreserwe voor van 'n gedeelte<br/>represents the road reserve of a portion<br/>van Nasionale Roete N4 Seksie 6Y<br/>of National Route</p> | <p>Vel Sheet 2 van 17<br/>Plan P724/08</p> |
|--|---|--|--|--|

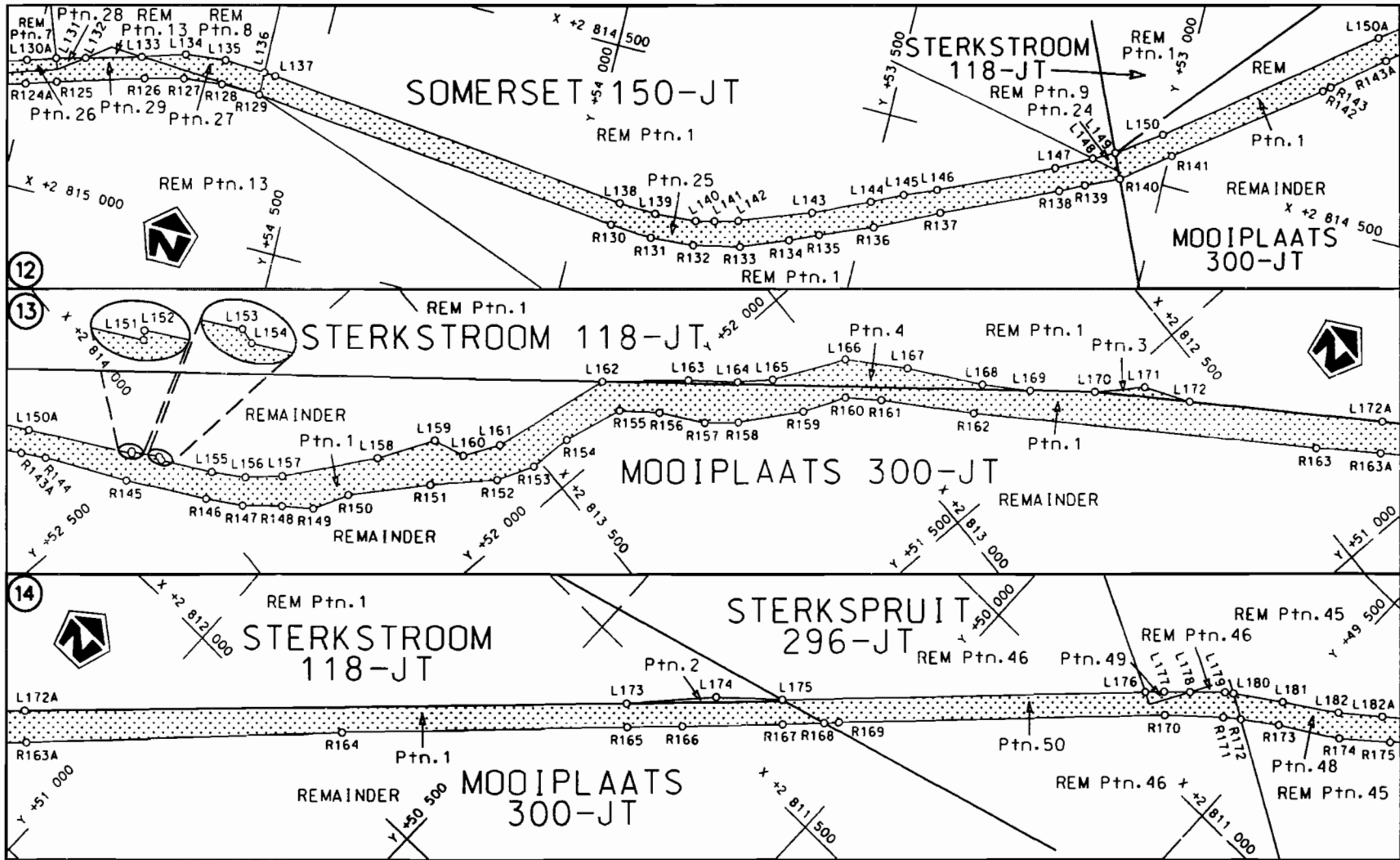


|  |                                       |  |  |                                    |
|--|---------------------------------------|--|--|------------------------------------|
| Die Suid Afrikaanse Nasionale Padagentskap Beperk<br>The South African National Roads Agency Limited | Die figuur getoon<br>The figure shown |  | sterdie padreserwe voor van 'n gedeelte<br>represents the road reserve of a portion<br>van Nasionale Roete N4 Seksie<br>of National Route Section 6Y | Vel Sheet 3 van 17<br>Plan P724/08 |
|--|---------------------------------------|--|--|------------------------------------|



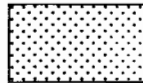
|   |  |   |  |
|---|--|---|--|
| <p>Die Suid Afrikaanse Nasionale Padogenskop Beperk<br/>The South African National Roads Agency Limited</p> | <p>Die figuur getoon<br/>The figure shown</p>  | <p>steldie podreserwe voor van 'n gedeelte<br/>represents the rood reserve of a portion<br/>van Nasionale Roete N4 Sektie<br/>of National Route Section</p> <p>6Y</p> | <p>Vel Sheet 4 van 17<br/>Plan P724/08</p> |
|---|--|---|--|





Die Suid Afrikaanse Nasionale Padagentskap Beperk  
The South African National Roads Agency Limited

Die figuur getoon  
The figure shown



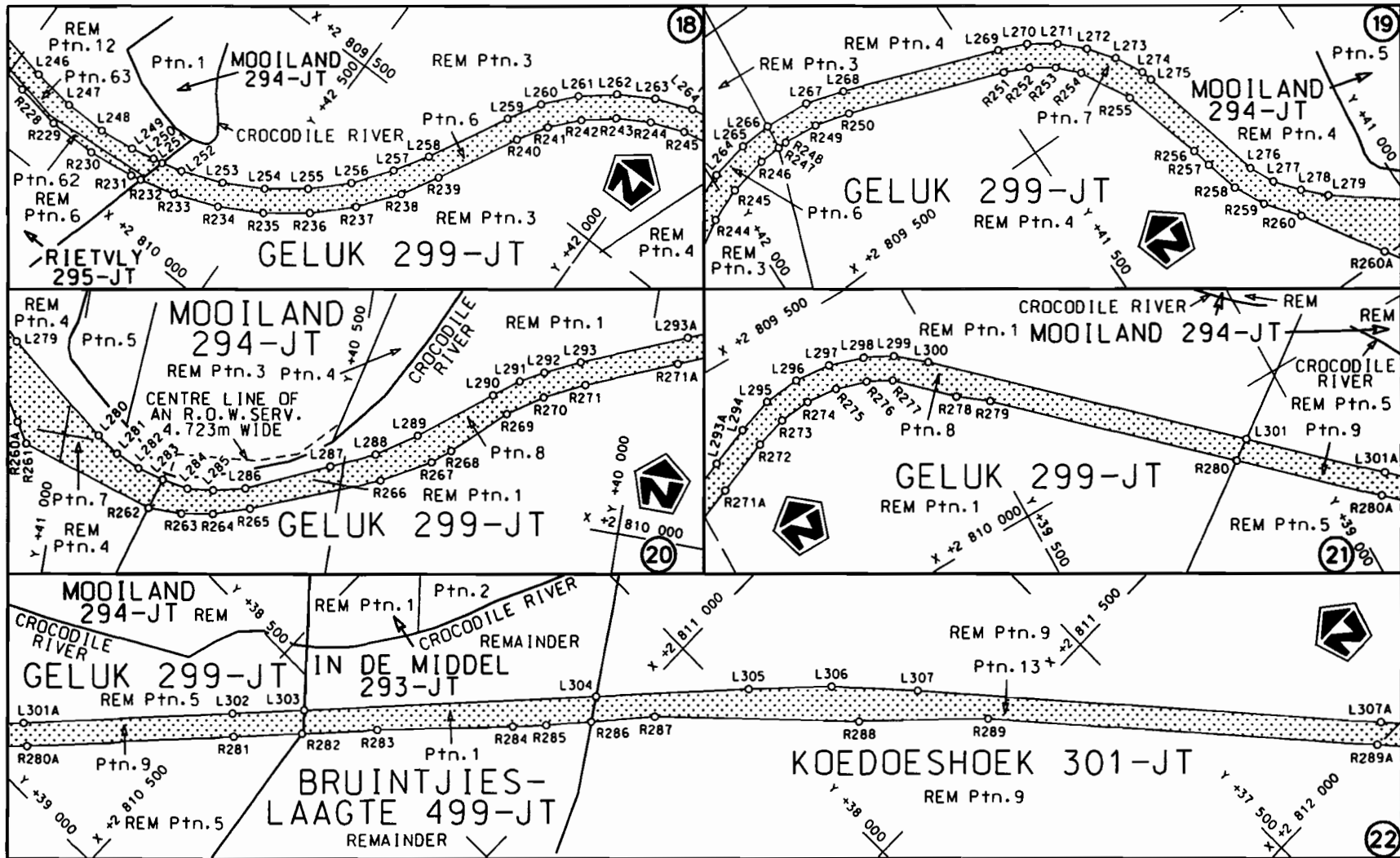
steldie padreserwe voor van 'n gedeelte  
represents the road reserve of a portion  
van Nasionale Roete N4  
of National Route N4


Seksie 6Y

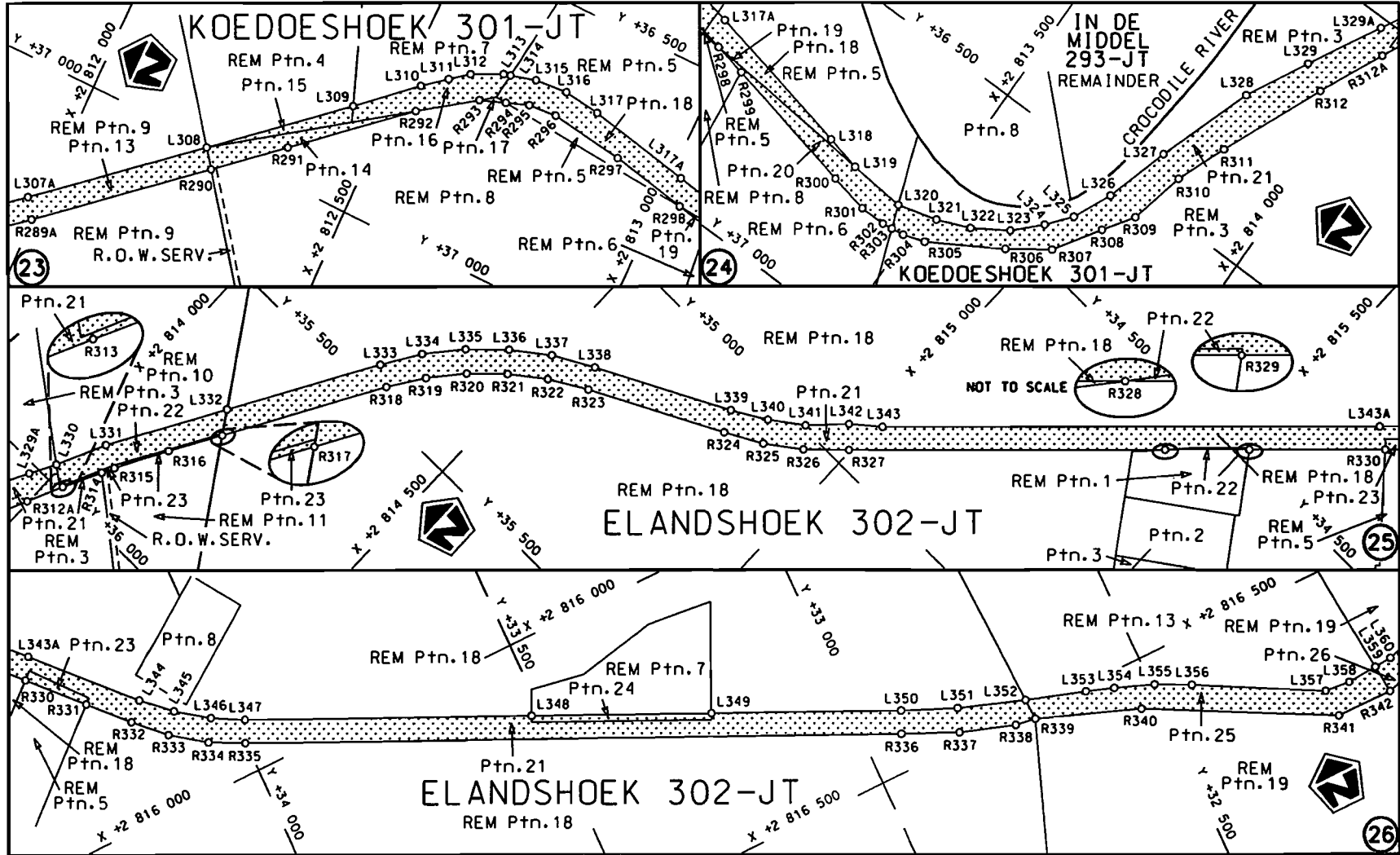
Vel Sheet 5 van 17

Plan P724/08

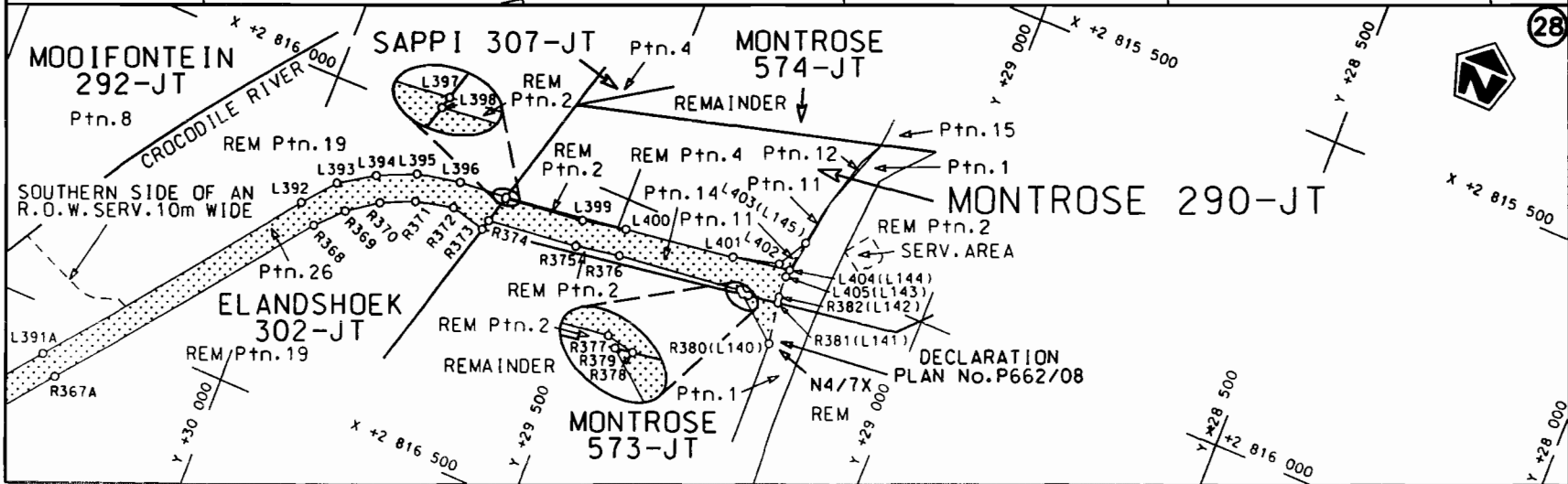
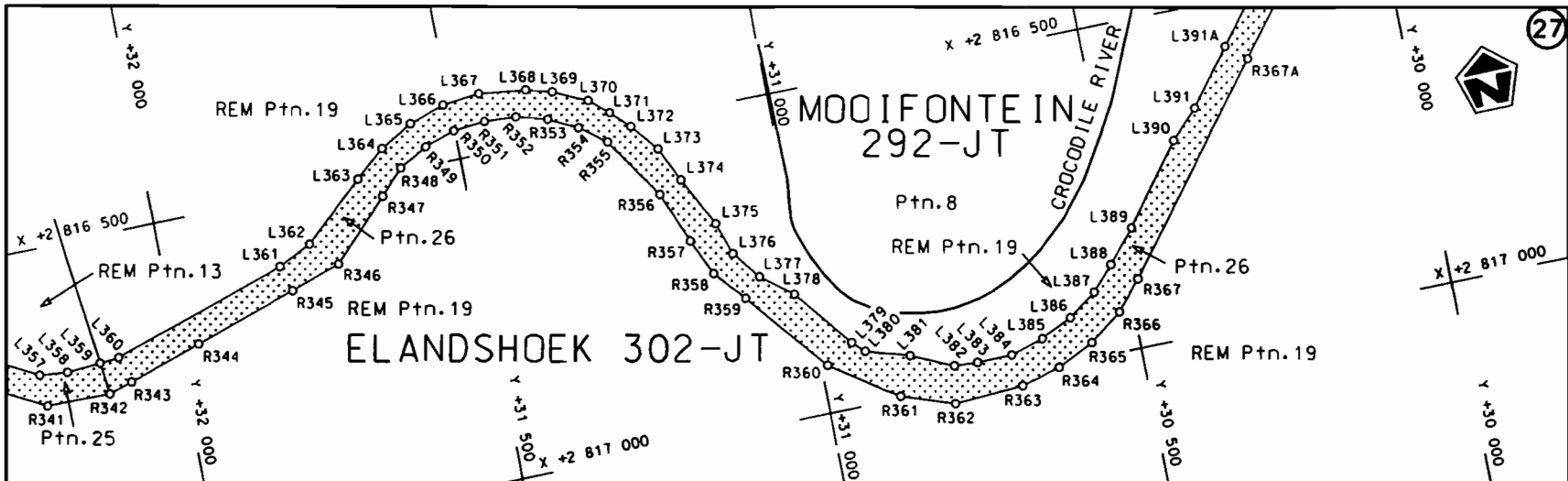





|  |  |  |  |
|--|--|--|--|
| <p>Die Suid Afrikaanse Nasionale Padagentskap Beperk<br/>The South African National Roads Agency Limited</p> | <p>Die figuur getoon<br/>The figure shown</p>  | <p>stel die padreserwe voor van 'n gedeelte<br/>represents the road reserve of a portion<br/>van Nasionale Raete<br/>of National Route</p> <p>N4      Seksie      6Y<br/>Section</p> | <p>Vel<br/>Sheet 7 van<br/>of 17</p> <p>Plan P724/08</p> |
|--|--|--|--|



|  |   |  |  |
|--|---|--|--|
| <p>Die Suid Afrikaanse Nasionale Padagentskap Beperk<br/>The South African National Roads Agency Limited</p> | <p>Die figuur getoon<br/>The figure shown</p> | <p>steldie padreserwe voor van 'n gedeelte<br/>represents the road reserve of a portion<br/>van Nasionale Roete N4 Seksie 6Y<br/>of National Route Section</p> | <p>Vel Sheet 8 van 17<br/>Plan P724/08</p> |
|--|---|--|--|



|   |                   |  |  |                    |
|---|-------------------|--|--|--------------------|
| Die Suid Afrikaanse Nasionale Padagentskap Beperk | Die figuur getoon |  | steldie padreserwe voor van 'n gedeelte  | Vel Sheet 9 van 17 |
| The South African National Roads Agency Limited   | The figure shown  |  | represents the road reserve of a portion<br>van Nasionale Roete N4 Seksie Section 6Y | Plan P724/08       |

| PADRESERWE KOÖRDINATE     |            |               |    | /   | ROAD RESERVE CO-ORDINATES  |               |  |  |
|---------------------------|------------|---------------|----|-----|----------------------------|---------------|--|--|
| LINKERKANT/LEFT HAND SIDE |            |               |    |     | REGTERKANT/RIGHT HAND SIDE |               |  |  |
|                           | Y          | X             | WG | 31° | Y                          | X             |  |  |
| L1                        | 72 269.321 | 2 833 619.541 |    | R1  | 72 224.980                 | 2 833 628.490 |  |  |
| L2                        | 72 247.770 | 2 833 594.770 |    | R2  | 72 207.950                 | 2 833 609.610 |  |  |
| L3                        | 71 514.990 | 2 832 791.710 |    | R3  | 71 700.280                 | 2 833 048.570 |  |  |
| L4                        | 71 480.460 | 2 832 746.210 |    | R4  | 71 690.690                 | 2 833 043.780 |  |  |
| L5                        | 71 410.460 | 2 832 676.920 |    | R5  | 71 561.270                 | 2 832 901.720 |  |  |
| L6                        | 71 309.060 | 2 832 566.330 |    | R6  | 71 272.190                 | 2 832 585.040 |  |  |
| L7                        | 71 289.760 | 2 832 545.170 |    | R7  | 71 103.980                 | 2 832 399.560 |  |  |
| L8                        | 71 088.350 | 2 832 245.630 |    | R8  | 71 068.740                 | 2 832 334.510 |  |  |
| L9                        | 71 081.260 | 2 832 121.380 |    | R9  | 71 054.800                 | 2 832 294.370 |  |  |
| L10                       | 71 086.560 | 2 832 054.940 |    | R10 | 71 046.820                 | 2 832 266.450 |  |  |
| L11                       | 71 108.750 | 2 831 987.020 |    | R11 | 71 027.040                 | 2 832 197.250 |  |  |
| L12                       | 71 187.810 | 2 831 780.320 |    | R12 | 71 033.390                 | 2 832 117.820 |  |  |
| L13                       | 71 245.700 | 2 831 597.170 |    | R13 | 71 048.400                 | 2 832 039.060 |  |  |
| L14                       | 71 201.600 | 2 831 488.380 |    | R14 | 71 063.410                 | 2 831 971.220 |  |  |
| L15                       | 71 200.260 | 2 831 430.400 |    | R15 | 71 080.350                 | 2 831 930.370 |  |  |
| L16                       | 71 208.140 | 2 831 363.670 |    | R16 | 71 128.610                 | 2 831 814.120 |  |  |
| L17                       | 71 215.180 | 2 831 327.260 |    | R17 | 71 166.910                 | 2 831 693.340 |  |  |
| L18                       | 71 319.240 | 2 831 221.870 |    | R18 | 71 132.990                 | 2 831 620.860 |  |  |
| L19                       | 71 315.000 | 2 831 074.900 |    | R19 | 71 160.220                 | 2 831 521.310 |  |  |
| L20                       | 71 326.070 | 2 830 922.690 |    | R20 | 71 151.510                 | 2 831 413.230 |  |  |
| L21                       | 71 320.850 | 2 830 834.280 |    | R21 | 71 157.080                 | 2 831 354.700 |  |  |
| L22                       | 71 290.040 | 2 830 707.660 |    | R22 | 71 198.190                 | 2 831 232.120 |  |  |
| L23                       | 71 247.890 | 2 830 619.920 |    | R23 | 71 209.080                 | 2 831 191.720 |  |  |
| L24                       | 71 215.830 | 2 830 572.560 |    | R24 | 71 258.530                 | 2 831 084.920 |  |  |
| L25                       | 71 206.240 | 2 830 558.380 |    | R25 | 71 275.330                 | 2 831 005.830 |  |  |
| L26                       | 71 169.250 | 2 830 514.670 |    | R26 | 71 277.000                 | 2 830 924.140 |  |  |
| L27                       | 71 106.920 | 2 830 446.240 |    | R27 | 71 207.110                 | 2 830 659.950 |  |  |
| L28                       | 70 929.530 | 2 830 240.980 |    | R28 | 71 206.000                 | 2 830 655.760 |  |  |
| L29                       | 70 910.910 | 2 830 196.940 |    | R29 | 71 168.400                 | 2 830 586.640 |  |  |
| L30                       | 70 898.720 | 2 830 027.770 |    | R30 | 70 826.300                 | 2 830 189.400 |  |  |
| L31                       | 70 868.730 | 2 830 030.000 |    | R31 | 70 186.680                 | 2 829 446.650 |  |  |
| L32                       | 70 844.700 | 2 830 120.290 |    | R32 | 70 078.550                 | 2 829 321.110 |  |  |
| L33                       | 70 804.860 | 2 830 097.480 |    | R33 | 69 134.930                 | 2 828 232.680 |  |  |
| L34                       | 70 216.720 | 2 829 419.340 |    | R34 | 68 384.200                 | 2 827 405.090 |  |  |
| L35                       | 70 110.130 | 2 829 297.360 |    | R35 | 68 403.430                 | 2 827 385.150 |  |  |
| L36                       | 70 031.050 | 2 829 206.750 |    | R36 | 68 361.860                 | 2 827 337.610 |  |  |
| L37                       | 68 454.990 | 2 827 383.910 |    | R37 | 68 184.320                 | 2 827 125.130 |  |  |
| L38                       | 68 395.230 | 2 827 307.020 |    | R38 | 68 144.050                 | 2 827 035.960 |  |  |
| L39                       | 68 272.890 | 2 827 141.460 |    | R39 | 67 765.620                 | 2 826 527.000 |  |  |
| L40                       | 68 067.010 | 2 826 865.330 |    | R40 | 67 688.090                 | 2 826 426.960 |  |  |
| L41                       | 67 797.900 | 2 826 503.240 |    | R41 | 67 586.850                 | 2 826 286.310 |  |  |
| L42                       | 67 751.910 | 2 826 437.350 |    | R42 | 67 441.260                 | 2 826 090.840 |  |  |
| L43                       | 67 740.560 | 2 826 421.080 |    | R43 | 67 225.710                 | 2 825 866.220 |  |  |
| L44                       | 67 618.790 | 2 826 262.410 |    | R44 | 67 204.830                 | 2 825 848.880 |  |  |
| L45                       | 67 571.130 | 2 826 198.240 |    | R45 | 66 381.680                 | 2 825 166.230 |  |  |
| L46                       | 67 513.960 | 2 826 091.140 |    | R46 | 66 316.330                 | 2 825 112.890 |  |  |
| L47                       | 67 466.490 | 2 826 025.050 |    | R47 | 66 262.500                 | 2 825 058.520 |  |  |
| L48                       | 67 370.720 | 2 825 945.780 |    | R48 | 66 192.500                 | 2 824 971.290 |  |  |
| L49                       | 67 338.410 | 2 825 906.190 |    | R49 | 65 971.590                 | 2 824 676.590 |  |  |
| L50                       | 67 301.090 | 2 825 871.480 |    | R50 | 65 932.570                 | 2 824 649.610 |  |  |
| L51                       | 67 236.030 | 2 825 822.920 |    | R51 | 65 862.180                 | 2 824 669.010 |  |  |

|       |    |     |    |         |
|-------|----|-----|----|---------|
| Vel   | 10 | Van | 17 | P724/08 |
| Sheet |    | of  |    |         |

| PADRESERWE KOÖRDINATE     |            |               |    | /    | ROAD RESERVE CO-ORDINATES  |               |  |  |
|---------------------------|------------|---------------|----|------|----------------------------|---------------|--|--|
| LINKERKANT/LEFT HAND SIDE |            |               |    |      | REGTERKANT/RIGHT HAND SIDE |               |  |  |
|                           | Y          | X             | WG | 31°  | Y                          | X             |  |  |
| L52                       | 66 813.410 | 2 825 472.830 |    | R52  | 65 855.600                 | 2 824 641.490 |  |  |
| L53                       | 66 366.170 | 2 825 098.430 |    | R53  | 65 866.900                 | 2 824 637.470 |  |  |
| L54                       | 66 345.160 | 2 825 082.260 |    | R54  | 65 896.570                 | 2 824 601.560 |  |  |
| L55                       | 66 292.900 | 2 825 029.250 |    | R55  | 65 881.080                 | 2 824 555.940 |  |  |
| L56                       | 66 224.490 | 2 824 947.300 |    | R56  | 64 385.100                 | 2 822 560.570 |  |  |
| L57                       | 65 901.140 | 2 824 515.580 |    | R57  | 64 328.100                 | 2 822 478.960 |  |  |
| L58                       | 65 532.040 | 2 824 023.190 |    | R58  | 64 280.680                 | 2 822 388.230 |  |  |
| L59                       | 64 993.170 | 2 823 304.430 |    | R59  | 64 271.160                 | 2 822 352.270 |  |  |
| L60                       | 64 416.870 | 2 822 536.810 |    | R60  | 64 261.870                 | 2 822 339.890 |  |  |
| L61                       | 64 343.600 | 2 822 427.650 |    | R61  | 64 243.560                 | 2 822 292.840 |  |  |
| L62                       | 64 307.980 | 2 822 349.850 |    | R62  | 64 198.970                 | 2 822 119.170 |  |  |
| L63                       | 64 263.090 | 2 822 208.750 |    | R63  | 64 186.870                 | 2 822 080.090 |  |  |
| L64                       | 64 241.130 | 2 822 121.310 |    | R64  | 64 147.020                 | 2 821 976.020 |  |  |
| L65                       | 64 217.600 | 2 822 038.300 |    | R65  | 64 109.100                 | 2 821 902.260 |  |  |
| L66                       | 64 197.100 | 2 821 980.720 |    | R66  | 64 008.660                 | 2 821 726.580 |  |  |
| L67                       | 64 062.430 | 2 821 730.270 |    | R67  | 63 930.140                 | 2 821 588.940 |  |  |
| L68                       | 64 055.890 | 2 821 698.500 |    | R68  | 63 838.220                 | 2 821 428.990 |  |  |
| L69                       | 64 087.500 | 2 821 663.100 |    | R69  | 63 760.370                 | 2 821 322.880 |  |  |
| L70                       | 64 067.630 | 2 821 628.420 |    | R70  | 63 735.900                 | 2 821 256.010 |  |  |
| L71                       | 64 020.950 | 2 821 637.570 |    | R71  | 63 706.550                 | 2 821 221.530 |  |  |
| L72                       | 64 004.650 | 2 821 622.820 |    | R72  | 63 671.210                 | 2 821 154.970 |  |  |
| L73                       | 63 822.800 | 2 821 284.620 |    | R73  | 63 574.860                 | 2 820 988.970 |  |  |
| L74                       | 63 274.800 | 2 820 265.490 |    | R74  | 63 534.540                 | 2 820 907.200 |  |  |
| L75                       | 62 933.140 | 2 819 873.110 |    | R75  | 63 470.520                 | 2 820 769.370 |  |  |
| L76                       | 62 909.410 | 2 819 840.280 |    | R76  | 63 427.240                 | 2 820 675.940 |  |  |
| L77                       | 62 891.840 | 2 819 815.850 |    | R77  | 63 265.150                 | 2 820 436.550 |  |  |
| L78                       | 62 783.730 | 2 819 719.440 |    | R78  | 62 900.570                 | 2 819 896.130 |  |  |
| L79                       | 62 769.570 | 2 819 709.040 |    | R79  | 62 855.490                 | 2 819 863.760 |  |  |
| L80                       | 62 745.810 | 2 819 685.840 |    | R80  | 62 837.990                 | 2 819 851.190 |  |  |
| L81                       | 62 709.210 | 2 819 665.140 |    | R81  | 62 764.180                 | 2 819 781.090 |  |  |
| L82                       | 62 665.350 | 2 819 645.520 |    | R82  | 62 734.590                 | 2 819 752.980 |  |  |
| L83                       | 62 640.010 | 2 819 640.710 |    | R83  | 62 715.210                 | 2 819 746.430 |  |  |
| L84                       | 62 630.290 | 2 819 637.660 |    | R84  | 62 707.720                 | 2 819 743.890 |  |  |
| L85                       | 62 615.380 | 2 819 636.570 |    | R85  | 62 669.110                 | 2 819 721.860 |  |  |
| L86                       | 62 599.180 | 2 819 628.360 |    | R86  | 62 607.780                 | 2 819 673.080 |  |  |
| L87                       | 62 255.700 | 2 819 495.130 |    | R87  | 62 164.440                 | 2 819 502.660 |  |  |
| L88                       | 62 180.020 | 2 819 462.630 |    | R88  | 62 081.760                 | 2 819 464.820 |  |  |
| L89                       | 62 103.020 | 2 819 428.650 |    | R89  | 62 013.330                 | 2 819 417.720 |  |  |
| L90                       | 62 039.870 | 2 819 385.110 |    | R90  | 61 963.990                 | 2 819 370.270 |  |  |
| L91                       | 61 993.340 | 2 819 343.070 |    | R91  | 61 562.970                 | 2 818 960.780 |  |  |
| L92                       | 61 611.960 | 2 818 953.510 |    | R92  | 61 358.410                 | 2 818 751.860 |  |  |
| L93                       | 61 572.770 | 2 818 907.870 |    | R93  | 61 294.720                 | 2 818 695.190 |  |  |
| L94                       | 61 546.950 | 2 818 883.520 |    | R94  | 61 222.980                 | 2 818 643.830 |  |  |
| L95                       | 61 499.930 | 2 818 839.210 |    | R95  | 60 161.900                 | 2 818 123.570 |  |  |
| L96                       | 61 386.300 | 2 818 723.180 |    | R96  | 59 704.400                 | 2 817 898.680 |  |  |
| L97                       | 61 321.430 | 2 818 660.550 |    | R97  | 59 631.670                 | 2 817 863.790 |  |  |
| L98                       | 61 244.680 | 2 818 606.770 |    | R98  | 59 505.560                 | 2 817 805.580 |  |  |
| L99                       | 61 179.950 | 2 818 574.480 |    | R99  | 59 468.470                 | 2 817 788.080 |  |  |
| L100                      | 60 176.200 | 2 818 087.030 |    | R100 | 59 414.210                 | 2 817 757.080 |  |  |
| L101                      | 59 524.460 | 2 817 766.780 |    | R101 | 59 328.090                 | 2 817 703.290 |  |  |
| L102                      | 59 438.280 | 2 817 714.170 |    | R102 | 59 224.920                 | 2 817 623.260 |  |  |

|       |    |     |    |         |
|-------|----|-----|----|---------|
| Vel   | 11 | Van | 17 | P724/08 |
| Sheet |    | of  |    |         |

| PADRESERWE KOÖRDINATE     |            |               |    | /   | ROAD RESERVE CO-ORDINATES  |            |               |    |         |
|---------------------------|------------|---------------|----|-----|----------------------------|------------|---------------|----|---------|
| LINKERKANT/LEFT HAND SIDE |            |               |    |     | REGTERKANT/RIGHT HAND SIDE |            |               |    |         |
|                           | Y          | X             | WG | 31° | Y                          | X          |               |    |         |
| L103                      | 59 279.820 | 2 817 608.370 |    |     | R103                       | 58 811.960 | 2 817 295.780 |    |         |
| L104                      | 59 249.130 | 2 817 583.550 |    |     | R104                       | 58 403.640 | 2 816 971.410 |    |         |
| L105                      | 59 163.040 | 2 817 515.240 |    |     | R105                       | 58 318.780 | 2 816 897.720 |    |         |
| L106                      | 59 099.850 | 2 817 465.050 |    |     | R106                       | 58 252.300 | 2 816 823.010 |    |         |
| L107                      | 59 033.550 | 2 817 420.180 |    |     | R107                       | 58 193.210 | 2 816 739.390 |    |         |
| L108                      | 58 831.850 | 2 817 260.560 |    |     | R108                       | 58 139.320 | 2 816 635.660 |    |         |
| L109                      | 58 766.540 | 2 817 208.430 |    |     | R109                       | 58 083.750 | 2 816 515.250 |    |         |
| L110                      | 58 427.780 | 2 816 939.570 |    |     | R110                       | 57 948.750 | 2 816 223.060 |    |         |
| L111                      | 58 392.890 | 2 816 910.090 |    |     | R111                       | 57 642.560 | 2 815 560.830 |    |         |
| L112                      | 58 285.890 | 2 816 795.090 |    |     | R112                       | 57 599.850 | 2 815 483.760 |    |         |
| L113                      | 58 257.220 | 2 816 755.710 |    |     | R113                       | 57 560.030 | 2 815 429.360 |    |         |
| L114                      | 58 208.850 | 2 816 682.600 |    |     | R114                       | 57 507.100 | 2 815 372.640 |    |         |
| L115                      | 58 114.890 | 2 816 488.350 |    |     | R115                       | 57 461.890 | 2 815 334.830 |    |         |
| L116                      | 57 967.340 | 2 816 168.450 |    |     | R116                       | 57 177.210 | 2 815 114.740 |    |         |
| L117                      | 57 676.780 | 2 815 542.800 |    |     | R117                       | 57 103.720 | 2 815 062.650 |    |         |
| L118                      | 57 635.840 | 2 815 458.330 |    |     | R118                       | 57 007.430 | 2 815 025.150 |    |         |
| L119                      | 57 591.810 | 2 815 400.640 |    |     | R119                       | 56 899.540 | 2 814 993.470 |    |         |
| L120                      | 57 534.490 | 2 815 340.890 |    |     | R120                       | 56 859.650 | 2 814 993.670 |    |         |
| L121                      | 57 485.640 | 2 815 301.830 |    |     | R121                       | 55 884.520 | 2 815 042.660 |    |         |
| L122                      | 57 280.210 | 2 815 143.940 |    |     | R122                       | 55 802.460 | 2 815 043.580 |    |         |
| L123                      | 57 129.210 | 2 815 017.080 |    |     | R123                       | 55 720.400 | 2 815 033.020 |    |         |
| L124                      | 57 073.200 | 2 814 996.900 |    |     | R124                       | 55 688.710 | 2 815 024.030 |    |         |
| L125                      | 56 999.910 | 2 814 945.540 |    |     | R125                       | 54 950.370 | 2 814 805.560 |    |         |
| L126                      | 56 855.620 | 2 814 953.530 |    |     | R126                       | 54 800.210 | 2 814 760.990 |    |         |
| L127                      | 55 880.720 | 2 815 002.740 |    |     | R127                       | 54 732.210 | 2 814 745.050 |    |         |
| L128                      | 55 803.610 | 2 815 001.850 |    |     | R128                       | 54 663.040 | 2 814 737.490 |    |         |
| L129                      | 55 727.220 | 2 814 991.250 |    |     | R129                       | 54 592.310 | 2 814 738.720 |    |         |
| L130                      | 55 701.680 | 2 814 984.930 |    |     | R130                       | 53 937.470 | 2 814 804.460 |    |         |
| L131                      | 54 961.350 | 2 814 766.220 |    |     | R131                       | 53 862.080 | 2 814 809.620 |    |         |
| L132                      | 54 911.140 | 2 814 752.820 |    |     | R132                       | 53 785.670 | 2 814 803.520 |    |         |
| L133                      | 54 814.130 | 2 814 726.160 |    |     | R133                       | 53 703.710 | 2 814 786.010 |    |         |
| L134                      | 54 739.410 | 2 814 703.720 |    |     | R134                       | 53 621.120 | 2 814 753.760 |    |         |
| L135                      | 54 667.080 | 2 814 695.620 |    |     | R135                       | 53 571.570 | 2 814 731.620 |    |         |
| L136                      | 54 592.650 | 2 814 698.880 |    |     | R136                       | 53 480.360 | 2 814 695.270 |    |         |
| L137                      | 54 572.540 | 2 814 699.770 |    |     | R137                       | 53 372.300 | 2 814 642.700 |    |         |
| L138                      | 53 931.250 | 2 814 764.920 |    |     | R138                       | 53 175.850 | 2 814 554.780 |    |         |
| L139                      | 53 864.750 | 2 814 767.690 |    |     | R139                       | 53 133.320 | 2 814 533.980 |    |         |
| L140                      | 53 791.630 | 2 814 761.910 |    |     | R140                       | 53 075.930 | 2 814 507.700 |    |         |
| L141                      | 53 759.240 | 2 814 754.080 |    |     | R141                       | 52 995.130 | 2 814 447.340 |    |         |
| L142                      | 53 717.890 | 2 814 743.200 |    |     | R142                       | 52 758.710 | 2 814 272.130 |    |         |
| L143                      | 53 593.170 | 2 814 697.460 |    |     | R143                       | 52 746.870 | 2 814 263.340 |    |         |
| L144                      | 53 496.220 | 2 814 654.230 |    |     | R144                       | 52 629.550 | 2 814 166.980 |    |         |
| L145                      | 53 442.480 | 2 814 627.900 |    |     | R145                       | 52 507.240 | 2 814 081.850 |    |         |
| L146                      | 53 387.050 | 2 814 605.480 |    |     | R146                       | 52 391.390 | 2 813 993.030 |    |         |
| L147                      | 53 192.360 | 2 814 518.290 |    |     | R147                       | 52 340.060 | 2 813 949.620 |    |         |
| L148                      | 53 130.750 | 2 814 485.610 |    |     | R148                       | 52 292.970 | 2 813 895.820 |    |         |
| L149                      | 53 094.600 | 2 814 466.440 |    |     | R149                       | 52 254.670 | 2 813 856.640 |    |         |
| L150                      | 53 019.510 | 2 814 415.570 |    |     | R150                       | 52 232.540 | 2 813 794.770 |    |         |
| L151                      | 52 536.480 | 2 814 044.770 |    |     | R151                       | 52 154.880 | 2 813 674.210 |    |         |
| L152                      | 52 539.410 | 2 814 041.900 |    |     | R152                       | 52 085.710 | 2 813 579.590 |    |         |
| L153                      | 52 501.240 | 2 814 011.720 |    |     | R153                       | 52 061.640 | 2 813 514.690 |    |         |
|                           |            |               |    |     | Vel                        | 12         | Van           | 17 | P724/08 |
|                           |            |               |    |     | Sheet                      |            | of            |    |         |



| PADRESERWE KOÖRDINATE     |            |       |         | /    | ROAD RESERVE CO-ORDINATES  |       |         |  |
|---------------------------|------------|-------|---------|------|----------------------------|-------|---------|--|
| LINKERKANT/LEFT HAND SIDE |            |       |         |      | REGTERKANT/RIGHT HAND SIDE |       |         |  |
|                           | Y          | X     | WG      | 31°  | Y                          | X     |         |  |
| L154                      | 52 493.660 | 2 814 | 012.470 | R154 | 52 058.290                 | 2 813 | 440.870 |  |
| L155                      | 52 420.120 | 2 813 | 955.640 | R155 | 52 036.510                 | 2 813 | 336.280 |  |
| L156                      | 52 373.760 | 2 813 | 914.500 | R156 | 51 986.930                 | 2 813 | 284.030 |  |
| L157                      | 52 331.990 | 2 813 | 862.210 | R157 | 51 922.040                 | 2 813 | 233.550 |  |
| L158                      | 52 248.430 | 2 813 | 715.000 | R158 | 51 883.670                 | 2 813 | 186.800 |  |
| L159                      | 52 208.100 | 2 813 | 619.400 | R159 | 51 822.870                 | 2 813 | 086.220 |  |
| L160                      | 52 155.650 | 2 813 | 598.330 | R160 | 51 792.560                 | 2 813 | 013.520 |  |
| L161                      | 52 128.460 | 2 813 | 537.190 | R161 | 51 748.180                 | 2 812 | 967.220 |  |
| L162                      | 52 094.110 | 2 813 | 327.520 | R162 | 51 625.770                 | 2 812 | 857.010 |  |
| L163                      | 51 996.540 | 2 813 | 208.700 | R163 | 51 184.650                 | 2 812 | 426.640 |  |
| L164                      | 51 937.450 | 2 813 | 143.150 | R164 | 50 707.540                 | 2 811 | 945.300 |  |
| L165                      | 51 899.750 | 2 813 | 092.820 | R165 | 50 349.290                 | 2 811 | 593.870 |  |
| L166                      | 51 842.820 | 2 812 | 971.520 | R166 | 50 278.080                 | 2 811 | 525.480 |  |
| L167                      | 51 760.430 | 2 812 | 896.600 | R167 | 50 150.000                 | 2 811 | 399.980 |  |
| L168                      | 51 653.580 | 2 812 | 813.350 | R168 | 50 098.230                 | 2 811 | 347.080 |  |
| L169                      | 51 590.410 | 2 812 | 754.130 | R169 | 50 079.940                 | 2 811 | 328.390 |  |
| L170                      | 51 514.050 | 2 812 | 667.200 | R170 | 49 666.970                 | 2 810 | 920.990 |  |
| L171                      | 51 463.130 | 2 812 | 595.170 | R171 | 49 588.510                 | 2 810 | 851.280 |  |
| L172                      | 51 391.890 | 2 812 | 548.730 | R172 | 49 562.860                 | 2 810 | 832.960 |  |
| L173                      | 50 377.650 | 2 811 | 565.040 | R173 | 49 506.720                 | 2 810 | 792.860 |  |
| L174                      | 50 268.990 | 2 811 | 447.350 | R174 | 49 411.760                 | 2 810 | 735.460 |  |
| L175                      | 50 179.400 | 2 811 | 369.450 | R175 | 49 342.030                 | 2 810 | 678.050 |  |
| L176                      | 49 719.340 | 2 810 | 916.360 | R176 | 49 316.440                 | 2 810 | 653.510 |  |
| L177                      | 49 695.090 | 2 810 | 892.470 | R177 | 49 262.070                 | 2 810 | 591.940 |  |
| L178                      | 49 660.900 | 2 810 | 860.460 | R178 | 48 687.950                 | 2 809 | 882.060 |  |
| L179                      | 49 615.460 | 2 810 | 817.920 | R179 | 48 629.280                 | 2 809 | 804.920 |  |
| L180                      | 49 602.800 | 2 810 | 809.600 | R180 | 48 578.250                 | 2 809 | 714.710 |  |
| L181                      | 49 528.380 | 2 810 | 759.160 | R181 | 48 522.890                 | 2 809 | 608.640 |  |
| L182                      | 49 443.120 | 2 810 | 704.410 | R182 | 48 464.370                 | 2 809 | 496.620 |  |
| L183                      | 49 342.260 | 2 810 | 623.610 | R183 | 48 422.310                 | 2 809 | 428.080 |  |
| L184                      | 49 299.980 | 2 810 | 575.420 | R184 | 48 369.870                 | 2 809 | 364.790 |  |
| L185                      | 48 720.340 | 2 809 | 858.490 | R185 | 48 309.070                 | 2 809 | 309.610 |  |
| L186                      | 48 656.260 | 2 809 | 769.590 | R186 | 48 235.570                 | 2 809 | 260.510 |  |
| L187                      | 48 613.620 | 2 809 | 696.150 | R187 | 47 898.190                 | 2 809 | 070.590 |  |
| L188                      | 48 558.740 | 2 809 | 590.950 | R188 | 47 833.640                 | 2 809 | 039.920 |  |
| L189                      | 48 499.800 | 2 809 | 478.090 | R189 | 47 781.370                 | 2 809 | 010.500 |  |
| L190                      | 48 456.440 | 2 809 | 403.770 | R190 | 47 731.510                 | 2 808 | 976.670 |  |
| L191                      | 48 400.220 | 2 809 | 335.760 | R191 | 47 522.150                 | 2 808 | 858.800 |  |
| L192                      | 48 335.000 | 2 809 | 276.600 | R192 | 47 461.660                 | 2 808 | 829.180 |  |
| L193                      | 48 255.230 | 2 809 | 225.690 | R193 | 47 397.910                 | 2 808 | 806.770 |  |
| L194                      | 47 920.140 | 2 809 | 035.610 | R194 | 47 331.850                 | 2 808 | 791.990 |  |
| L195                      | 47 791.230 | 2 808 | 962.630 | R195 | 47 264.630                 | 2 808 | 785.020 |  |
| L196                      | 47 751.140 | 2 808 | 941.830 | R196 | 47 191.110                 | 2 808 | 786.360 |  |
| L197                      | 47 541.820 | 2 808 | 823.930 | R197 | 46 914.000                 | 2 808 | 810.300 |  |
| L198                      | 47 477.040 | 2 808 | 792.320 | R198 | 46 624.170                 | 2 808 | 838.010 |  |
| L199                      | 47 410.210 | 2 808 | 763.480 | R199 | 46 589.180                 | 2 808 | 840.350 |  |
| L200                      | 47 338.660 | 2 808 | 750.550 | R200 | 46 404.050                 | 2 808 | 852.830 |  |
| L201                      | 47 266.500 | 2 808 | 743.050 | R201 | 46 374.110                 | 2 808 | 854.850 |  |
| L202                      | 47 187.790 | 2 808 | 746.530 | R202 | 46 219.940                 | 2 808 | 866.360 |  |
| L203                      | 46 835.080 | 2 808 | 775.540 | R203 | 46 102.230                 | 2 808 | 876.120 |  |
| L204                      | 46 593.860 | 2 808 | 795.490 | R204 | 45 880.720                 | 2 808 | 894.360 |  |

|       |    |     |    |         |
|-------|----|-----|----|---------|
| Vel   | 13 | Van | 17 | P724/08 |
| Sheet |    | of  |    |         |

| PADRESERWE KOÖRDINATE     |            |               |    | /    | ROAD RESERVE CO-ORDINATES  |               |  |  |
|---------------------------|------------|---------------|----|------|----------------------------|---------------|--|--|
| LINKERKANT/LEFT HAND SIDE |            |               |    |      | REGTERKANT/RIGHT HAND SIDE |               |  |  |
|                           | Y          | X             | WG | 31°  | Y                          | X             |  |  |
| L205                      | 46 582.660 | 2 808 796.420 |    | R205 | 45 800.380                 | 2 808 906.610 |  |  |
| L206                      | 46 403.280 | 2 808 811.200 |    | R206 | 45 721.720                 | 2 808 930.130 |  |  |
| L207                      | 46 371.350 | 2 808 813.750 |    | R207 | 45 634.860                 | 2 808 970.950 |  |  |
| L208                      | 46 216.390 | 2 808 826.580 |    | R208 | 45 529.570                 | 2 809 029.000 |  |  |
| L209                      | 46 091.780 | 2 808 836.790 |    | R209 | 45 404.220                 | 2 809 097.930 |  |  |
| L210                      | 45 877.390 | 2 808 854.500 |    | R210 | 45 283.440                 | 2 809 164.330 |  |  |
| L211                      | 45 791.220 | 2 808 865.650 |    | R211 | 45 225.000                 | 2 809 203.320 |  |  |
| L212                      | 45 706.870 | 2 808 890.820 |    | R212 | 45 057.790                 | 2 809 294.140 |  |  |
| L213                      | 45 629.500 | 2 808 928.020 |    | R213 | 44 984.550                 | 2 809 328.600 |  |  |
| L214                      | 45 522.970 | 2 808 986.930 |    | R214 | 44 885.400                 | 2 809 380.870 |  |  |
| L215                      | 45 391.660 | 2 809 059.120 |    | R215 | 44 777.330                 | 2 809 418.610 |  |  |
| L216                      | 45 264.190 | 2 809 129.260 |    | R216 | 44 734.800                 | 2 809 437.810 |  |  |
| L217                      | 45 198.040 | 2 809 153.480 |    | R217 | 44 676.210                 | 2 809 451.760 |  |  |
| L218                      | 45 150.360 | 2 809 191.940 |    | R218 | 44 529.940                 | 2 809 498.380 |  |  |
| L219                      | 45 033.340 | 2 809 256.170 |    | R219 | 44 461.970                 | 2 809 536.740 |  |  |
| L220                      | 44 965.300 | 2 809 293.590 |    | R220 | 44 391.240                 | 2 809 559.810 |  |  |
| L221                      | 44 869.130 | 2 809 340.840 |    | R221 | 44 357.430                 | 2 809 570.840 |  |  |
| L222                      | 44 764.780 | 2 809 380.670 |    | R222 | 44 258.080                 | 2 809 588.690 |  |  |
| L223                      | 44 445.150 | 2 809 485.280 |    | R223 | 43 949.580                 | 2 809 689.770 |  |  |
| L224                      | 44 377.240 | 2 809 495.870 |    | R224 | 43 921.670                 | 2 809 698.530 |  |  |
| L225                      | 44 335.040 | 2 809 502.470 |    | R225 | 43 838.350                 | 2 809 724.680 |  |  |
| L226                      | 44 311.190 | 2 809 525.980 |    | R226 | 43 719.010                 | 2 809 750.420 |  |  |
| L227                      | 44 241.920 | 2 809 539.220 |    | R227 | 43 653.460                 | 2 809 763.600 |  |  |
| L228                      | 44 148.370 | 2 809 575.090 |    | R228 | 42 963.430                 | 2 809 902.350 |  |  |
| L229                      | 44 128.840 | 2 809 584.160 |    | R229 | 42 883.360                 | 2 809 915.220 |  |  |
| L230                      | 44 093.590 | 2 809 600.520 |    | R230 | 42 800.550                 | 2 809 915.620 |  |  |
| L231                      | 43 976.170 | 2 809 638.960 |    | R231 | 42 718.370                 | 2 809 905.240 |  |  |
| L232                      | 43 937.100 | 2 809 651.740 |    | R232 | 42 700.280                 | 2 809 900.490 |  |  |
| L233                      | 43 885.420 | 2 809 652.790 |    | R233 | 42 638.220                 | 2 809 884.190 |  |  |
| L234                      | 43 871.390 | 2 809 608.180 |    | R234 | 42 561.610                 | 2 809 852.970 |  |  |
| L235                      | 43 871.530 | 2 809 598.180 |    | R235 | 42 489.670                 | 2 809 811.950 |  |  |
| L236                      | 43 841.370 | 2 809 597.210 |    | R236 | 42 423.640                 | 2 809 761.890 |  |  |
| L237                      | 43 841.090 | 2 809 607.060 |    | R237 | 42 364.750                 | 2 809 703.700 |  |  |
| L238                      | 43 823.730 | 2 809 669.580 |    | R238 | 42 313.940                 | 2 809 638.330 |  |  |
| L239                      | 43 783.480 | 2 809 695.230 |    | R239 | 42 278.910                 | 2 809 575.870 |  |  |
| L240                      | 43 711.120 | 2 809 711.180 |    | R240 | 42 207.660                 | 2 809 439.820 |  |  |
| L241                      | 43 662.060 | 2 809 721.030 |    | R241 | 42 176.370                 | 2 809 389.730 |  |  |
| L242                      | 43 605.090 | 2 809 732.480 |    | R242 | 42 135.870                 | 2 809 343.140 |  |  |
| L243                      | 43 529.530 | 2 809 747.700 |    | R243 | 42 088.530                 | 2 809 303.610 |  |  |
| L244                      | 43 351.820 | 2 809 778.570 |    | R244 | 42 035.310                 | 2 809 272.070 |  |  |
| L245                      | 43 290.350 | 2 809 795.850 |    | R245 | 41 977.950                 | 2 809 249.410 |  |  |
| L246                      | 42 955.540 | 2 809 863.140 |    | R246 | 41 910.800                 | 2 809 235.770 |  |  |
| L247                      | 42 880.530 | 2 809 872.940 |    | R247 | 41 871.710                 | 2 809 233.770 |  |  |
| L248                      | 42 808.220 | 2 809 874.240 |    | R248 | 41 856.000                 | 2 809 232.970 |  |  |
| L249                      | 42 745.410 | 2 809 867.110 |    | R249 | 41 794.630                 | 2 809 239.440 |  |  |
| L250                      | 42 703.980 | 2 809 857.770 |    | R250 | 41 733.290                 | 2 809 256.250 |  |  |
| L251                      | 42 687.350 | 2 809 854.550 |    | R251 | 41 466.580                 | 2 809 353.610 |  |  |
| L252                      | 42 651.540 | 2 809 844.380 |    | R252 | 41 424.930                 | 2 809 372.740 |  |  |
| L253                      | 42 579.970 | 2 809 815.180 |    | R253 | 41 386.300                 | 2 809 398.860 |  |  |
| L254                      | 42 512.780 | 2 809 776.900 |    | R254 | 41 353.740                 | 2 809 432.150 |  |  |
| L255                      | 42 451.120 | 2 809 730.170 |    | R255 | 41 308.140                 | 2 809 516.990 |  |  |

|       |    |     |    |         |
|-------|----|-----|----|---------|
| Vel   | 14 | Van | 17 | P724/08 |
| Sheet |    | of  |    |         |

| PADRESERWE KOÖRDINATE     |            |               |    | /    | ROAD RESERVE CO-ORDINATES  |               |  |  |
|---------------------------|------------|---------------|----|------|----------------------------|---------------|--|--|
| LINKERKANT/LEFT HAND SIDE |            |               |    |      | REGTERKANT/RIGHT HAND SIDE |               |  |  |
|                           | Y          | X             | WG | 31°  | Y                          | X             |  |  |
| L256                      | 42 396.150 | 2 809 675.830 |    | R256 | 41 265.890                 | 2 809 658.650 |  |  |
| L257                      | 42 349.530 | 2 809 614.210 |    | R257 | 41 258.710                 | 2 809 693.110 |  |  |
| L258                      | 42 314.330 | 2 809 557.320 |    | R258 | 41 242.980                 | 2 809 751.720 |  |  |
| L259                      | 42 243.100 | 2 809 421.230 |    | R259 | 41 216.240                 | 2 809 804.040 |  |  |
| L260                      | 42 210.190 | 2 809 364.800 |    | R260 | 41 173.320                 | 2 809 858.500 |  |  |
| L261                      | 42 165.280 | 2 809 313.100 |    | R261 | 41 065.340                 | 2 810 027.450 |  |  |
| L262                      | 42 112.720 | 2 809 269.300 |    | R262 | 40 832.030                 | 2 810 099.610 |  |  |
| L263                      | 42 053.800 | 2 809 234.420 |    | R263 | 40 772.500                 | 2 810 098.890 |  |  |
| L264                      | 41 990.180 | 2 809 209.340 |    | R264 | 40 716.270                 | 2 810 089.610 |  |  |
| L265                      | 41 923.300 | 2 809 194.720 |    | R265 | 40 651.820                 | 2 810 068.800 |  |  |
| L266                      | 41 866.990 | 2 809 191.650 |    | R266 | 40 431.280                 | 2 809 981.550 |  |  |
| L267                      | 41 786.930 | 2 809 198.200 |    | R267 | 40 347.260                 | 2 809 934.800 |  |  |
| L268                      | 41 719.580 | 2 809 218.720 |    | R268 | 40 316.740                 | 2 809 909.610 |  |  |
| L269                      | 41 452.810 | 2 809 316.030 |    | R269 | 40 231.140                 | 2 809 830.110 |  |  |
| L270                      | 41 404.380 | 2 809 336.140 |    | R270 | 40 170.860                 | 2 809 790.450 |  |  |
| L271                      | 41 359.970 | 2 809 366.130 |    | R271 | 40 101.040                 | 2 809 756.600 |  |  |
| L272                      | 41 321.110 | 2 809 402.920 |    | R272 | 39 852.360                 | 2 809 655.560 |  |  |
| L273                      | 41 288.730 | 2 809 445.620 |    | R273 | 39 797.430                 | 2 809 639.400 |  |  |
| L274                      | 41 263.800 | 2 809 493.030 |    | R274 | 39 741.680                 | 2 809 634.390 |  |  |
| L275                      | 41 258.370 | 2 809 512.600 |    | R275 | 39 686.090                 | 2 809 640.430 |  |  |
| L276                      | 41 201.360 | 2 809 739.570 |    | R276 | 39 632.570                 | 2 809 657.060 |  |  |
| L277                      | 41 180.640 | 2 809 781.760 |    | R277 | 39 591.180                 | 2 809 678.700 |  |  |
| L278                      | 41 148.290 | 2 809 821.590 |    | R278 | 39 507.080                 | 2 809 758.480 |  |  |
| L279                      | 41 112.570 | 2 809 857.510 |    | R279 | 39 459.110                 | 2 809 795.050 |  |  |
| L280                      | 40 942.140 | 2 809 991.260 |    | R280 | 39 130.370                 | 2 810 101.650 |  |  |
| L281                      | 40 903.970 | 2 810 016.500 |    | R281 | 38 666.430                 | 2 810 534.490 |  |  |
| L282                      | 40 861.380 | 2 810 035.420 |    | R282 | 38 576.460                 | 2 810 618.460 |  |  |
| L283                      | 40 815.500 | 2 810 047.270 |    | R283 | 38 479.240                 | 2 810 709.130 |  |  |
| L284                      | 40 769.180 | 2 810 054.770 |    | R284 | 38 307.140                 | 2 810 876.490 |  |  |
| L285                      | 40 722.950 | 2 810 049.310 |    | R285 | 38 263.280                 | 2 810 917.460 |  |  |
| L286                      | 40 666.040 | 2 810 035.890 |    | R286 | 38 202.730                 | 2 810 971.080 |  |  |
| L287                      | 40 522.460 | 2 809 972.080 |    | R287 | 38 118.340                 | 2 811 045.830 |  |  |
| L288                      | 40 447.140 | 2 809 938.860 |    | R288 | 37 868.590                 | 2 811 312.090 |  |  |
| L289                      | 40 379.560 | 2 809 893.920 |    | R289 | 37 705.670                 | 2 811 472.600 |  |  |
| L290                      | 40 261.030 | 2 809 802.600 |    | R290 | 37 038.000                 | 2 812 250.020 |  |  |
| L291                      | 40 217.740 | 2 809 770.720 |    | R291 | 36 944.040                 | 2 812 359.420 |  |  |
| L292                      | 40 177.060 | 2 809 748.270 |    | R292 | 36 787.870                 | 2 812 540.590 |  |  |
| L293                      | 40 116.090 | 2 809 719.490 |    | R293 | 36 722.430                 | 2 812 634.170 |  |  |
| L294                      | 39 867.430 | 2 809 618.500 |    | R294 | 36 706.240                 | 2 812 678.790 |  |  |
| L295                      | 39 805.290 | 2 809 598.030 |    | R295 | 36 691.750                 | 2 812 718.450 |  |  |
| L296                      | 39 741.300 | 2 809 592.330 |    | R296 | 36 687.680                 | 2 812 769.210 |  |  |
| L297                      | 39 676.960 | 2 809 598.900 |    | R297 | 36 705.900                 | 2 812 900.810 |  |  |
| L298                      | 39 616.190 | 2 809 618.490 |    | R298 | 36 733.820                 | 2 813 036.380 |  |  |
| L299                      | 39 568.730 | 2 809 643.290 |    | R299 | 36 745.510                 | 2 813 094.160 |  |  |
| L300                      | 39 521.290 | 2 809 682.220 |    | R300 | 36 795.770                 | 2 813 338.090 |  |  |
| L301                      | 39 097.240 | 2 810 077.920 |    | R301 | 36 808.710                 | 2 813 407.000 |  |  |
| L302                      | 38 639.140 | 2 810 505.320 |    | R302 | 36 808.550                 | 2 813 452.240 |  |  |
| L303                      | 38 544.660 | 2 810 593.410 |    | R303 | 36 805.970                 | 2 813 470.040 |  |  |
| L304                      | 38 165.860 | 2 810 946.830 |    | R304 | 36 802.760                 | 2 813 492.180 |  |  |
| L305                      | 37 968.100 | 2 811 131.360 |    | R305 | 36 790.150                 | 2 813 530.260 |  |  |
| L306                      | 37 860.280 | 2 811 234.760 |    | R306 | 36 716.820                 | 2 813 652.150 |  |  |

|       |    |     |    |         |
|-------|----|-----|----|---------|
| Vel   | 15 | Van | 17 | P724/08 |
| Sheet |    | of  |    |         |

| PADRESERWE KOÖRDINATE     |            |       |         | /    | ROAD RESERVE CO-ORDINATES  |       |         |  |
|---------------------------|------------|-------|---------|------|----------------------------|-------|---------|--|
| LINKERKANT/LEFT HAND SIDE |            |       |         |      | REGTERKANT/RIGHT HAND SIDE |       |         |  |
|                           | Y          | X     | WG      | 31°  | Y                          | X     |         |  |
| L307                      | 37 758.590 | 2 811 | 349.630 | R307 | 36 669.120                 | 2 813 | 719.580 |  |
| L308                      | 37 007.390 | 2 812 | 226.640 | R308 | 36 589.430                 | 2 813 | 771.260 |  |
| L309                      | 36 828.000 | 2 812 | 436.400 | R309 | 36 537.700                 | 2 813 | 805.840 |  |
| L310                      | 36 744.560 | 2 812 | 530.070 | R310 | 36 439.260                 | 2 813 | 829.000 |  |
| L311                      | 36 713.050 | 2 812 | 569.210 | R311 | 36 350.980                 | 2 813 | 864.260 |  |
| L312                      | 36 688.390 | 2 812 | 600.730 | R312 | 36 168.660                 | 2 813 | 943.540 |  |
| L313                      | 36 663.210 | 2 812 | 653.920 | R313 | 35 991.270                 | 2 814 | 027.130 |  |
| L314                      | 36 659.940 | 2 812 | 666.080 | R314 | 35 925.090                 | 2 814 | 060.150 |  |
| L315                      | 36 647.800 | 2 812 | 710.740 | R315 | 35 903.710                 | 2 814 | 070.830 |  |
| L316                      | 36 642.760 | 2 812 | 769.340 | R316 | 35 815.950                 | 2 814 | 119.640 |  |
| L317                      | 36 651.500 | 2 812 | 834.650 | R317 | 35 729.540                 | 2 814 | 170.450 |  |
| L318                      | 36 745.500 | 2 813 | 291.960 | R318 | 35 463.110                 | 2 814 | 327.020 |  |
| L319                      | 36 758.340 | 2 813 | 354.620 | R319 | 35 403.150                 | 2 814 | 367.000 |  |
| L320                      | 36 766.100 | 2 813 | 455.420 | R320 | 35 347.610                 | 2 814 | 413.870 |  |
| L321                      | 36 747.080 | 2 813 | 524.690 | R321 | 35 297.800                 | 2 814 | 466.800 |  |
| L322                      | 36 723.330 | 2 813 | 581.370 | R322 | 35 254.330                 | 2 814 | 525.040 |  |
| L323                      | 36 685.930 | 2 813 | 640.660 | R323 | 35 216.440                 | 2 814 | 590.420 |  |
| L324                      | 36 641.960 | 2 813 | 683.840 | R324 | 35 103.000                 | 2 814 | 815.860 |  |
| L325                      | 36 600.440 | 2 813 | 717.840 | R325 | 35 069.150                 | 2 814 | 879.200 |  |
| L326                      | 36 532.850 | 2 813 | 748.590 | R326 | 35 026.930                 | 2 814 | 937.940 |  |
| L327                      | 36 420.640 | 2 813 | 782.470 | R327 | 34 970.730                 | 2 814 | 997.500 |  |
| L328                      | 36 251.750 | 2 813 | 841.510 | R328 | 34 583.020                 | 2 815 | 399.890 |  |
| L329                      | 36 143.320 | 2 813 | 897.720 | R329 | 34 479.300                 | 2 815 | 507.490 |  |
| L330                      | 35 971.060 | 2 813 | 991.930 | R330 | 34 311.540                 | 2 815 | 681.700 |  |
| L331                      | 35 885.390 | 2 814 | 032.240 | R331 | 34 230.160                 | 2 815 | 766.130 |  |
| L332                      | 35 691.250 | 2 814 | 145.560 | R332 | 34 170.060                 | 2 815 | 828.500 |  |
| L333                      | 35 442.860 | 2 814 | 292.550 | R333 | 34 120.870                 | 2 815 | 876.290 |  |
| L334                      | 35 377.900 | 2 814 | 333.420 | R334 | 34 061.410                 | 2 815 | 918.340 |  |
| L335                      | 35 318.740 | 2 814 | 383.390 | R335 | 34 001.750                 | 2 815 | 947.860 |  |
| L336                      | 35 265.640 | 2 814 | 439.800 | R336 | 32 934.170                 | 2 816 | 437.480 |  |
| L337                      | 35 219.290 | 2 814 | 501.860 | R337 | 32 840.240                 | 2 816 | 479.210 |  |
| L338                      | 35 180.710 | 2 814 | 572.460 | R338 | 32 745.200                 | 2 816 | 510.150 |  |
| L339                      | 35 067.200 | 2 814 | 797.870 | R339 | 32 709.800                 | 2 816 | 515.180 |  |
| L340                      | 35 033.780 | 2 814 | 856.510 | R340 | 32 533.140                 | 2 816 | 579.970 |  |
| L341                      | 34 994.160 | 2 814 | 911.670 | R341 | 32 221.210                 | 2 816 | 740.520 |  |
| L342                      | 34 938.300 | 2 814 | 966.300 | R342 | 32 120.810                 | 2 816 | 741.360 |  |
| L343                      | 34 900.300 | 2 815 | 012.900 | R343 | 32 083.050                 | 2 816 | 731.300 |  |
| L344                      | 34 141.320 | 2 815 | 800.730 | R344 | 31 965.940                 | 2 816 | 695.190 |  |
| L345                      | 34 094.440 | 2 815 | 843.660 | R345 | 31 801.240                 | 2 816 | 645.610 |  |
| L346                      | 34 039.450 | 2 815 | 882.510 | R346 | 31 720.810                 | 2 816 | 619.910 |  |
| L347                      | 33 985.090 | 2 815 | 911.500 | R347 | 31 632.000                 | 2 816 | 531.780 |  |
| L348                      | 33 517.420 | 2 816 | 126.040 | R348 | 31 595.600                 | 2 816 | 494.660 |  |
| L349                      | 33 224.880 | 2 816 | 260.260 | R349 | 31 550.440                 | 2 816 | 470.840 |  |
| L350                      | 32 917.540 | 2 816 | 401.210 | R350 | 31 501.670                 | 2 816 | 455.810 |  |
| L351                      | 32 825.230 | 2 816 | 440.020 | R351 | 31 450.750                 | 2 816 | 451.170 |  |
| L352                      | 32 711.410 | 2 816 | 478.920 | R352 | 31 399.800                 | 2 816 | 454.230 |  |
| L353                      | 32 608.360 | 2 816 | 511.150 | R353 | 31 350.490                 | 2 816 | 468.140 |  |
| L354                      | 32 560.770 | 2 816 | 527.170 | R354 | 31 304.720                 | 2 816 | 490.870 |  |
| L355                      | 32 494.220 | 2 816 | 552.050 | R355 | 31 264.040                 | 2 816 | 521.850 |  |
| L356                      | 32 434.780 | 2 816 | 580.910 | R356 | 31 197.550                 | 2 816 | 617.480 |  |
| L357                      | 32 224.540 | 2 816 | 691.880 | R357 | 31 164.810                 | 2 816 | 696.990 |  |

|       |    |     |    |         |
|-------|----|-----|----|---------|
| Vel   | 16 | Van | 17 | P724/08 |
| Sheet |    | of  |    |         |

| PADRESERWE KOÖRDINATE     |            |               |    | /    | ROAD RESERVE CO-ORDINATES  |               |  |  |
|---------------------------|------------|---------------|----|------|----------------------------|---------------|--|--|
| LINKERKANT/LEFT HAND SIDE |            |               |    |      | REGTERKANT/RIGHT HAND SIDE |               |  |  |
|                           | Y          | X             | WG | 31°  | Y                          | X             |  |  |
| L358                      | 32 179.530 | 2 816 696.190 |    | R358 | 31 138.640                 | 2 816 753.130 |  |  |
| L359                      | 32 126.550 | 2 816 692.300 |    | R359 | 31 096.540                 | 2 816 801.070 |  |  |
| L360                      | 32 095.820 | 2 816 690.040 |    | R360 | 30 989.390                 | 2 816 927.370 |  |  |
| L361                      | 31 813.750 | 2 816 605.510 |    | R361 | 30 885.770                 | 2 816 997.270 |  |  |
| L362                      | 31 760.100 | 2 816 580.970 |    | R362 | 30 802.840                 | 2 817 025.300 |  |  |
| L363                      | 31 664.980 | 2 816 498.310 |    | R363 | 30 694.900                 | 2 817 018.990 |  |  |
| L364                      | 31 618.710 | 2 816 459.600 |    | R364 | 30 632.580                 | 2 817 003.710 |  |  |
| L365                      | 31 566.900 | 2 816 430.950 |    | R365 | 30 574.500                 | 2 816 976.770 |  |  |
| L366                      | 31 510.260 | 2 816 413.590 |    | R366 | 30 522.530                 | 2 816 939.180 |  |  |
| L367                      | 31 451.310 | 2 816 407.300 |    | R367 | 30 483.650                 | 2 816 895.360 |  |  |
| L368                      | 31 376.310 | 2 816 416.490 |    | R368 | 29 949.550                 | 2 816 225.140 |  |  |
| L369                      | 31 335.100 | 2 816 427.970 |    | R369 | 29 911.950                 | 2 816 185.980 |  |  |
| L370                      | 31 281.440 | 2 816 453.430 |    | R370 | 29 866.150                 | 2 816 153.590 |  |  |
| L371                      | 31 251.490 | 2 816 478.250 |    | R371 | 29 815.060                 | 2 816 130.510 |  |  |
| L372                      | 31 222.360 | 2 816 505.840 |    | R372 | 29 755.070                 | 2 816 116.970 |  |  |
| L373                      | 31 186.890 | 2 816 548.310 |    | R373 | 29 700.640                 | 2 816 130.410 |  |  |
| L374                      | 31 160.540 | 2 816 602.300 |    | R374 | 29 695.890                 | 2 816 114.260 |  |  |
| L375                      | 31 120.410 | 2 816 678.720 |    | R375 | 29 551.830                 | 2 816 097.260 |  |  |
| L376                      | 31 102.610 | 2 816 729.710 |    | R376 | 29 481.730                 | 2 816 085.180 |  |  |
| L377                      | 31 067.810 | 2 816 773.280 |    | R377 | 29 284.110                 | 2 816 062.080 |  |  |
| L378                      | 31 019.390 | 2 816 810.250 |    | R378 | 29 268.740                 | 2 816 065.180 |  |  |
| L379                      | 30 945.140 | 2 816 900.770 |    | R379 | 29 278.400                 | 2 816 066.640 |  |  |
| L380                      | 30 926.720 | 2 816 917.990 |    | R380 | 29 210.240                 | 2 816 120.960 |  |  |
| L381                      | 30 858.730 | 2 816 939.160 |    | R381 | 29 221.259                 | 2 816 058.008 |  |  |
| L382                      | 30 792.670 | 2 816 968.250 |    | R382 | 29 222.882                 | 2 816 048.740 |  |  |
| L383                      | 30 756.490 | 2 816 970.230 |    |      |                            |               |  |  |
| L384                      | 30 702.120 | 2 816 969.570 |    |      |                            |               |  |  |
| L385                      | 30 649.850 | 2 816 954.600 |    |      |                            |               |  |  |
| L386                      | 30 600.170 | 2 816 932.710 |    |      |                            |               |  |  |
| L387                      | 30 555.470 | 2 816 901.650 |    |      |                            |               |  |  |
| L388                      | 30 521.160 | 2 816 865.480 |    |      |                            |               |  |  |
| L389                      | 30 478.270 | 2 816 816.450 |    |      |                            |               |  |  |
| L390                      | 30 386.380 | 2 816 697.870 |    |      |                            |               |  |  |
| L391                      | 30 343.500 | 2 816 655.280 |    |      |                            |               |  |  |
| L392                      | 29 980.880 | 2 816 200.130 |    |      |                            |               |  |  |
| L393                      | 29 939.730 | 2 816 151.190 |    |      |                            |               |  |  |
| L394                      | 29 887.010 | 2 816 117.110 |    |      |                            |               |  |  |
| L395                      | 29 828.550 | 2 816 090.760 |    |      |                            |               |  |  |
| L396                      | 29 759.710 | 2 816 077.260 |    |      |                            |               |  |  |
| L397                      | 29 682.960 | 2 816 070.230 |    |      |                            |               |  |  |
| L398                      | 29 683.640 | 2 816 072.590 |    |      |                            |               |  |  |
| L399                      | 29 556.360 | 2 816 057.680 |    |      |                            |               |  |  |
| L400                      | 29 487.310 | 2 816 044.140 |    |      |                            |               |  |  |
| L401                      | 29 313.590 | 2 816 019.570 |    |      |                            |               |  |  |
| L402                      | 29 240.830 | 2 816 001.580 |    |      |                            |               |  |  |
| L403                      | 29 214.840 | 2 815 956.460 |    |      |                            |               |  |  |
| L404                      | 29 222.314 | 2 816 004.113 |    |      |                            |               |  |  |
| L405                      | 29 224.152 | 2 816 015.830 |    |      |                            |               |  |  |