

**Government Gazette  
GOVERNMENT GAZETTE  
REPUBLIC OF SOUTH AFRICA  
REPUBLIEK VAN SUID-AFRIKA**

**REPUBLIC OF SOUTH AFRICA  
REPUBLIEK VAN SUID-AFRIKA**

**Vol. 524**

**Pretoria, 27 February  
Februarie 2009**

**No. 31940**

**CONTENTS****INHOUD**

<i>No.</i>	<i>Page No.</i>	<i>Gazette No.</i>	<i>No.</i>	<i>Bladsy No.</i>	<i>Koerant No.</i>
<b>GOVERNMENT NOTICE</b>			<b>GOEWERMENTSKENNISGEWING</b>		
<b>Transport, Department of</b>			<b>Vervoer, Departement van</b>		
<i>Government Notice</i>			<i>Goewermentskennisgewing</i>		
188			188		
South African National Roads Agency Limited and the National Roads Act (7/1998): The South African National Roads Agency Limited: Declaration amendment of National Road N14 Section 11: Amendment of Declaration No. 217 of 2006 .....	3	31940	Suid-Afrikaanse Nasionale Padagentskap Beperk en die Nasionale Paaie Wet (7/1998): Die Suid-Afrikaanse Nasionale Padagentskap Beperk: Verklaring wysiging van Nasionale Pad N14 Seksie 11: Wysiging van Verklaring No. 217 van 2006 .....	4	31940

---

**GOVERNMENT NOTICE**

---

**DEPARTMENT OF TRANSPORT****No. 188****27 February 2009****THE SOUTH AFRICAN NATIONAL ROADS  
AGENCY LIMITED****Registration No: 98/09584/06**

---

**DECLARATION AMENDMENT OF NATIONAL ROAD N14 SECTION 11****AMENDMENT OF DECLARATION NO. 217 OF 2006**

By virtue of section 40 (1)(b) of the South African National Roads Agency Limited and the National Roads Act, 1998 (Act No. 7 of 1998), I hereby amend Declaration No. 217 of 2006 by substituting the Annexure paragraphs (V) to (IX), with the subjoined sheets 1 to 14 of Plan No. P670/08.

**(National Road N14 Section 11: Sannieshof - Coligny)**

  
\_\_\_\_\_  
**MINISTER OF TRANSPORT**

**GOEWERMENTSKENNISGEWING**

---

**DEPARTEMENT VAN VERVOER**

No. 188

27 Februarie 2009

**DIE SUID-AFRIKAANSE NASIONALE  
PADAGENTSKAP BEPERK**

Registrasie No: 98/09584/06

---

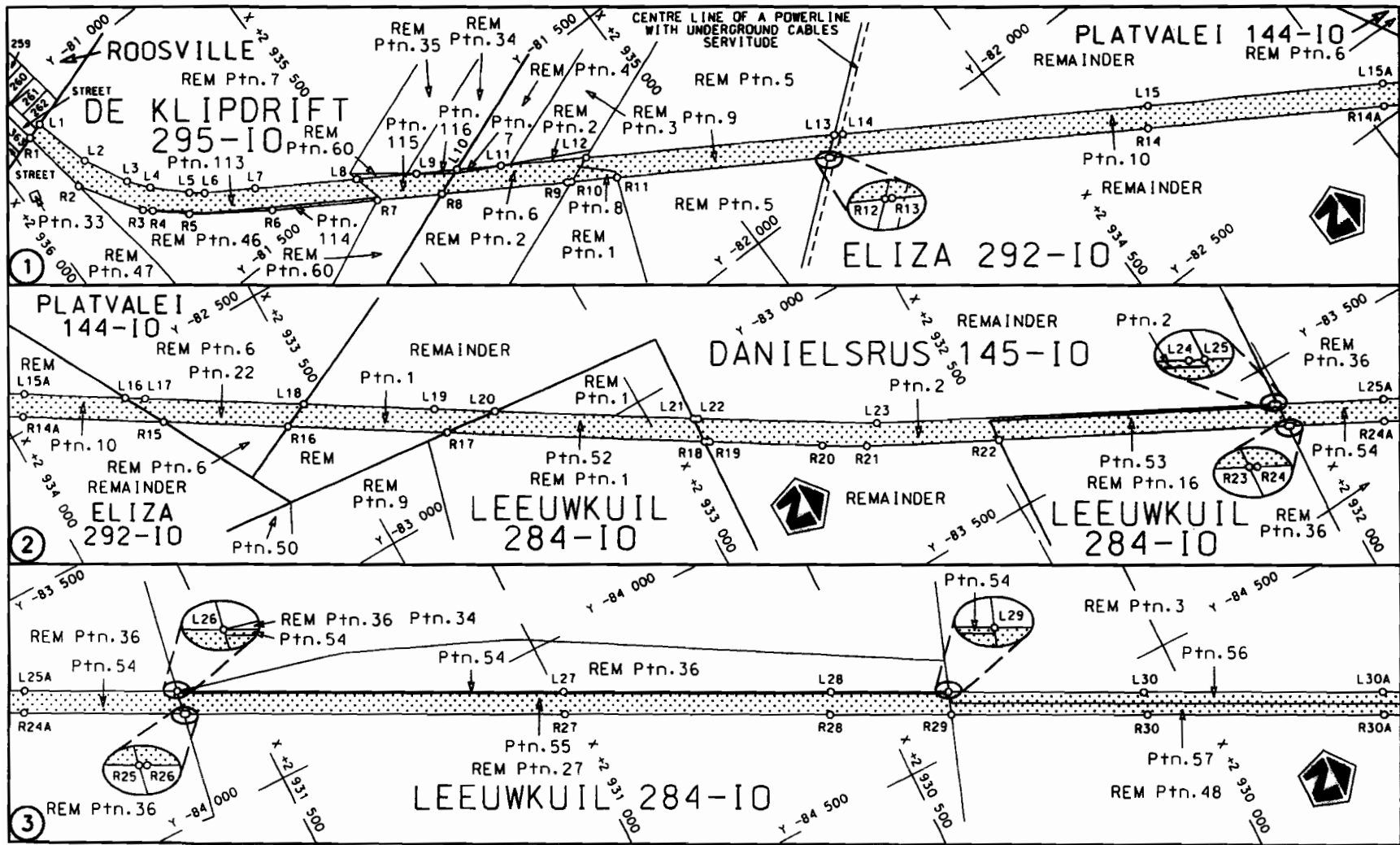
**VERKLARING WYSIGING VAN NASIONALE PAD N14 SEKSIE 11.**


**WYSIGING VAN VERKLARING NO. 217 VAN 2006**

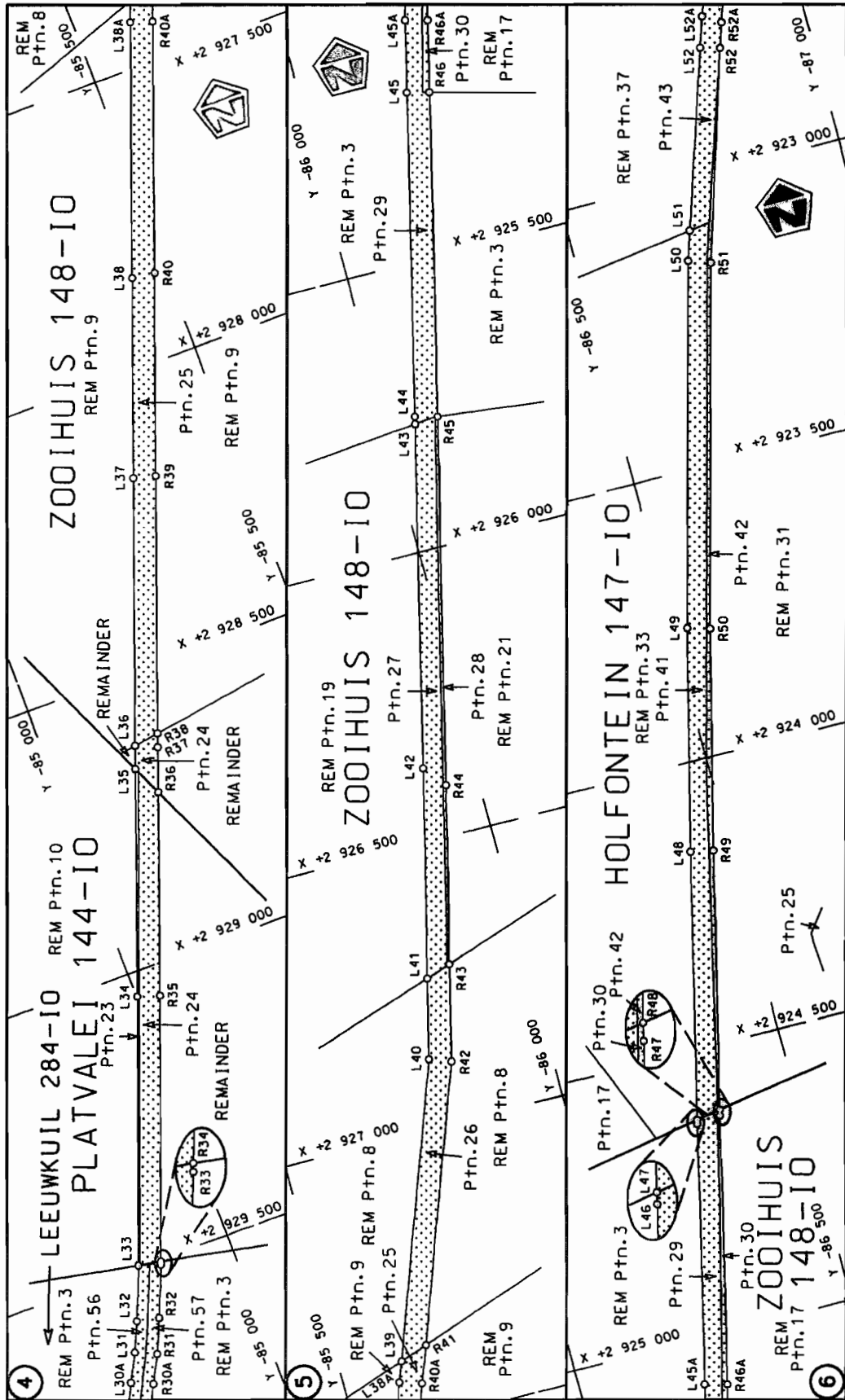
Kragtens Artikel 40(1)(b) van die Suid-Afrikaanse Nasionale Padagentskap Beperk en die Nasionale Paale Wet, 1998 (Wet No.7 van 1998), wysig ek hiermee Verklaring no. 217 van 2006 deur die Bylae paragrawe (V) tot (IX), te vervang met meegaande velle 1 tot 14 van Plan No. P670/08.

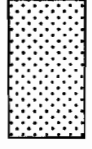
(Nasionale Pad N14 Seksie 11 Sannieshof - Colligny)

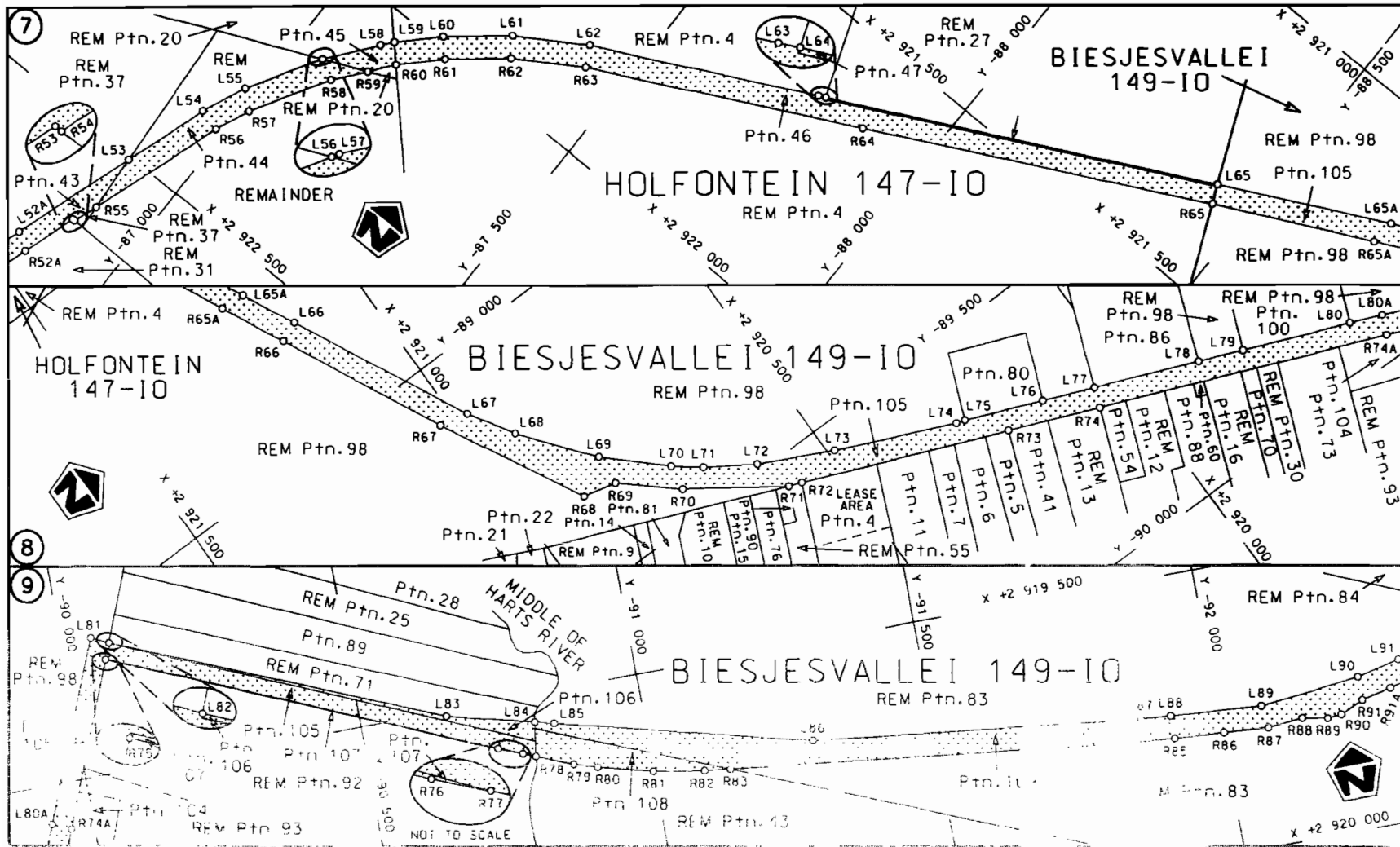
  
\_\_\_\_\_  
MINISTER VAN VERVOER

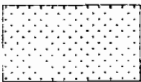


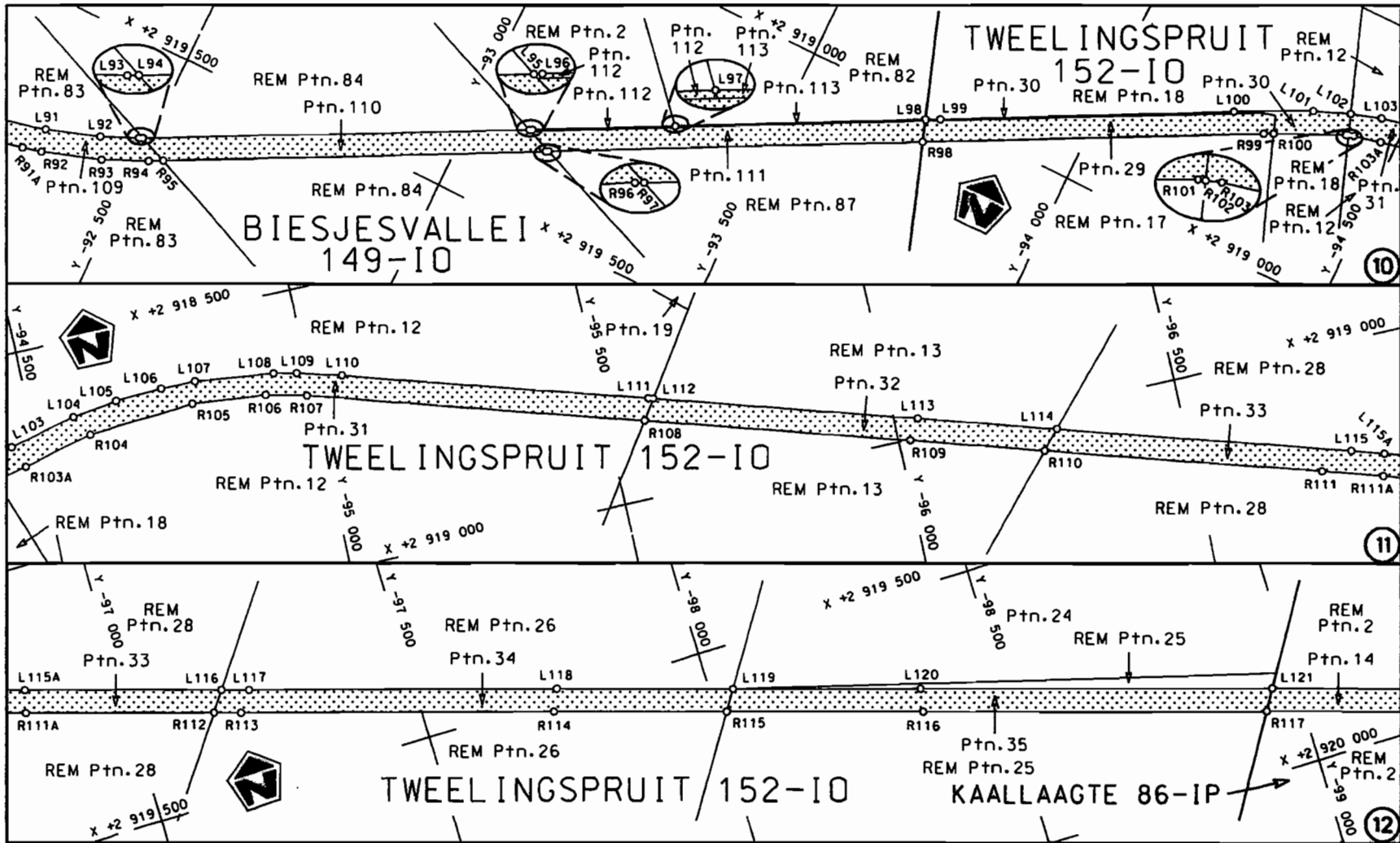
Die Suid Afrikaanse Nasionale Padagentskap Beperk The South African National Roads Agency Limited	Die figuur getoon The figure shown	 steldie padreserwe voor van 'n gedeelte represents the road reserve of a portion van Nasionale Roete N14 Seksie of National Route 11 Section	Vel Sheet 1 van 14 of of Plan P670/08
--	---------------------------------------	--	---

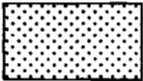


Die Suid Afrikaanse Nasionale Padagentskop Beperk The South African National Roads Agency Limited	Die figuur getoon The figure shown	 stielie padreserwe voor van 'n gedeelte represents the road reserve of a portion van Nasionale Roete N14 of National Route N14	Vel Sheet 2 of 14
			Plan P670/08

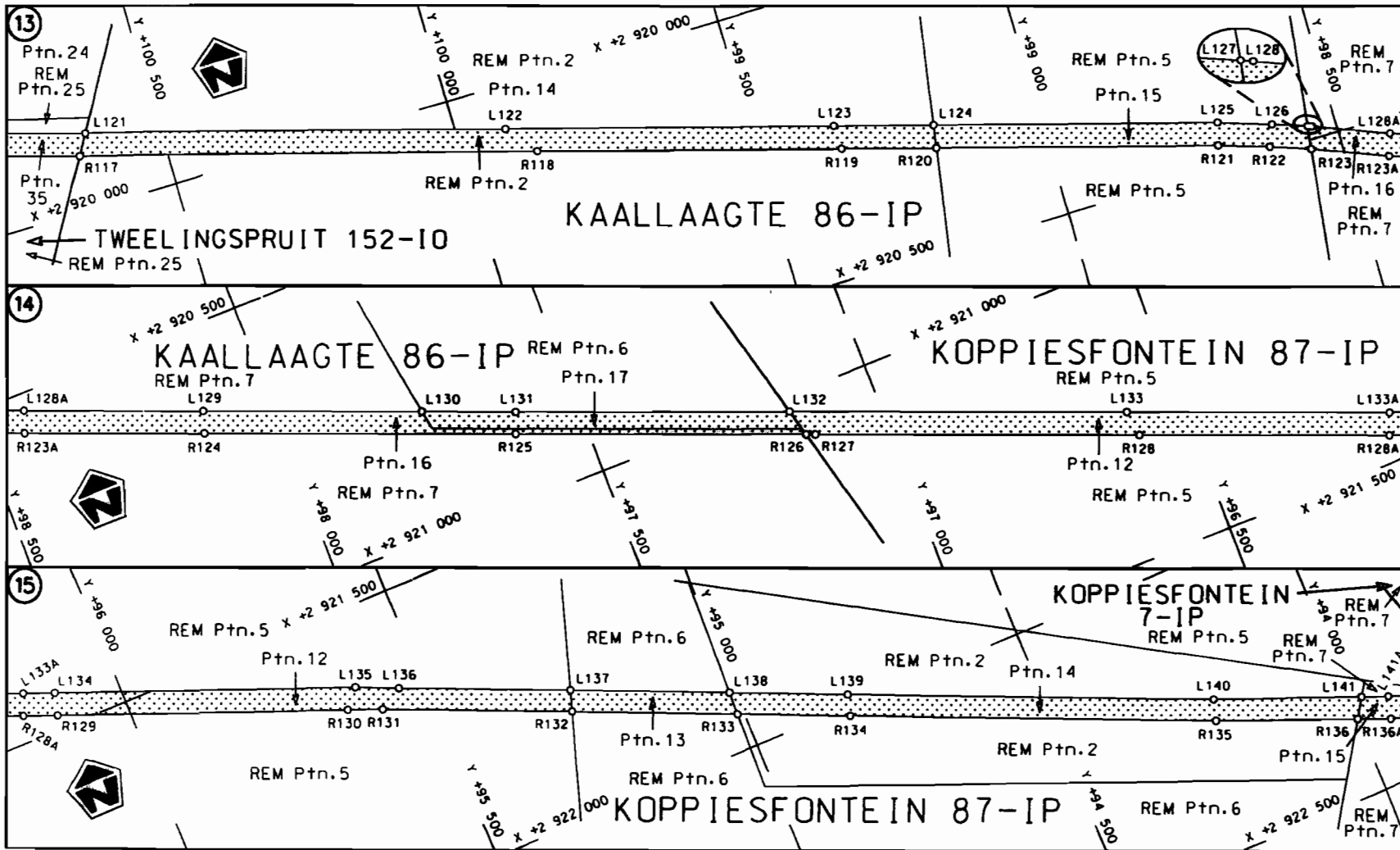


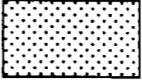
Die Suid Afrikaanse Nasionale Paaqentskap Beperk The South African National Roads Agency Limited	Die figuur getoon The figure shown	 steldie padreserwe voor van represents the road reserve van Nasionale Roete N14 of National Route N14	gedeelte a portion van Nasionale Roete N14 of National Route N14 Seksie Section 11 Vel Sheet 3 van of 14 Plan P670/08
---	---------------------------------------	---	---

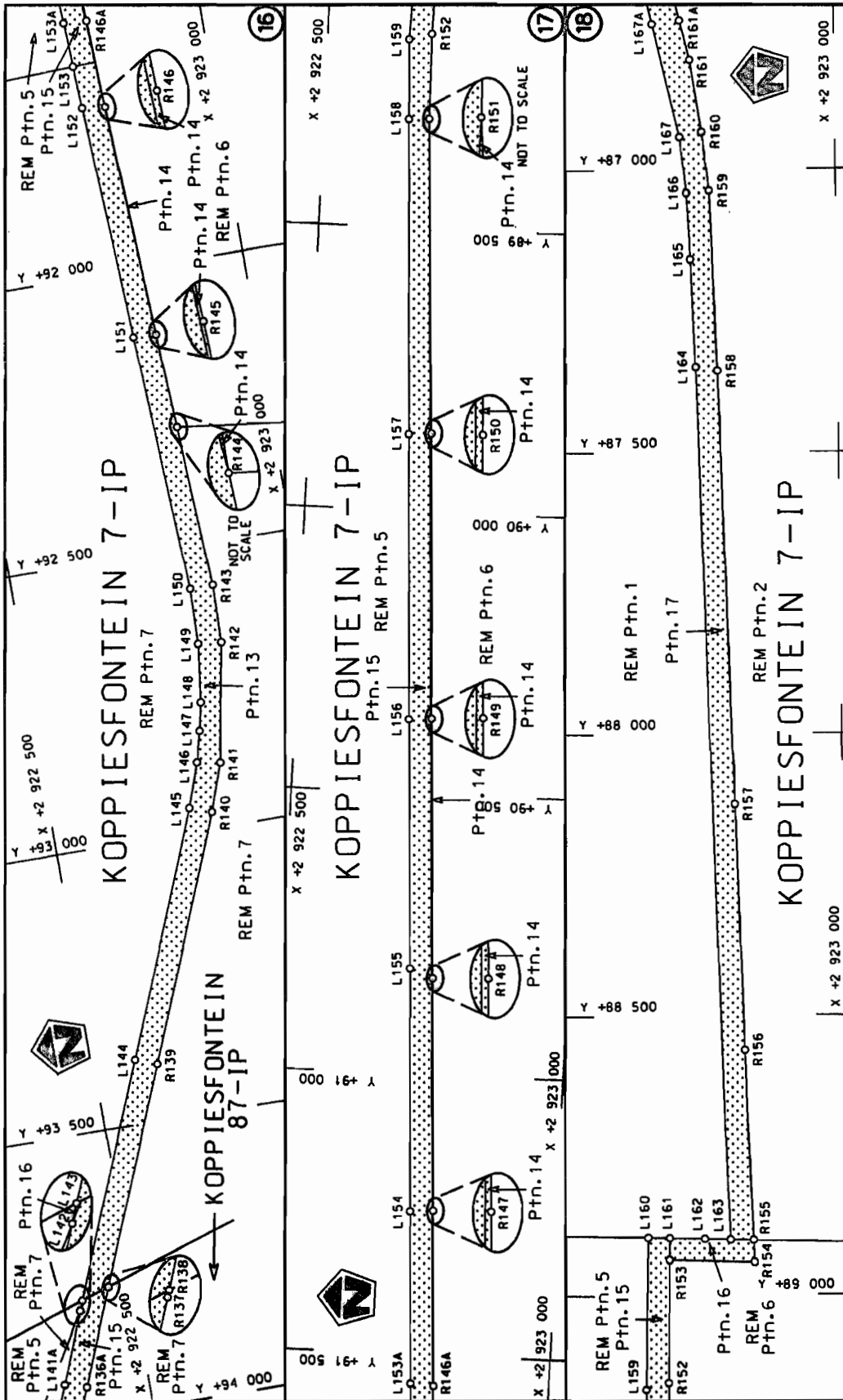



<p>Die Suid Afrikaanse Nasionale Padagentskap Beperk The South African National Roads Agency Limited</p>	<p>Die figuur getoon The figure shown</p> 	<p>steldie padreserwe voor van 'n gedeelte represents the road reserve of a portion van Nasionale Roete N14 Seksie of National Route Section 11</p>	<p>Vel Sheet 4 van of 14 Plan P670/08</p>
--	--	---	---

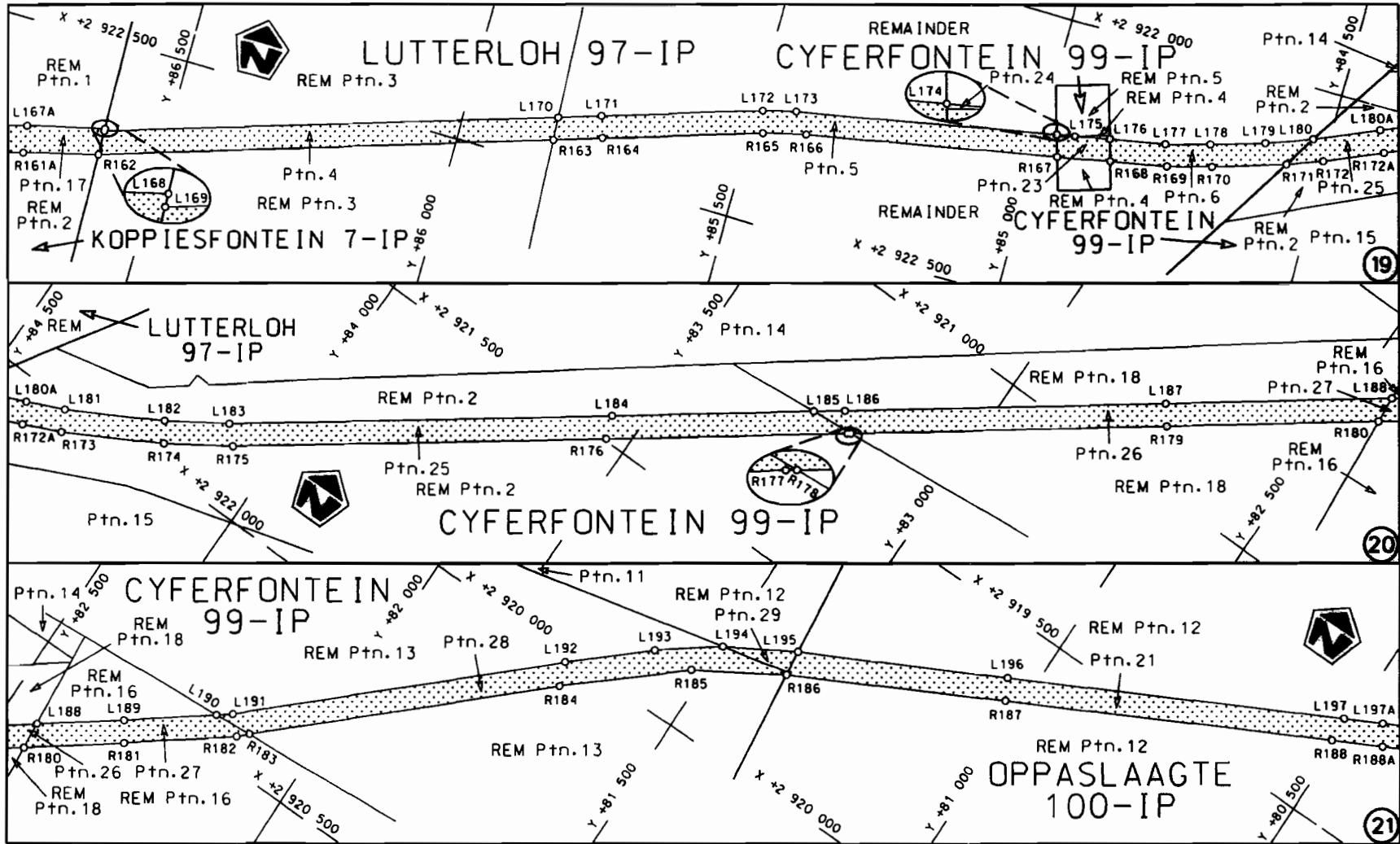


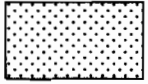


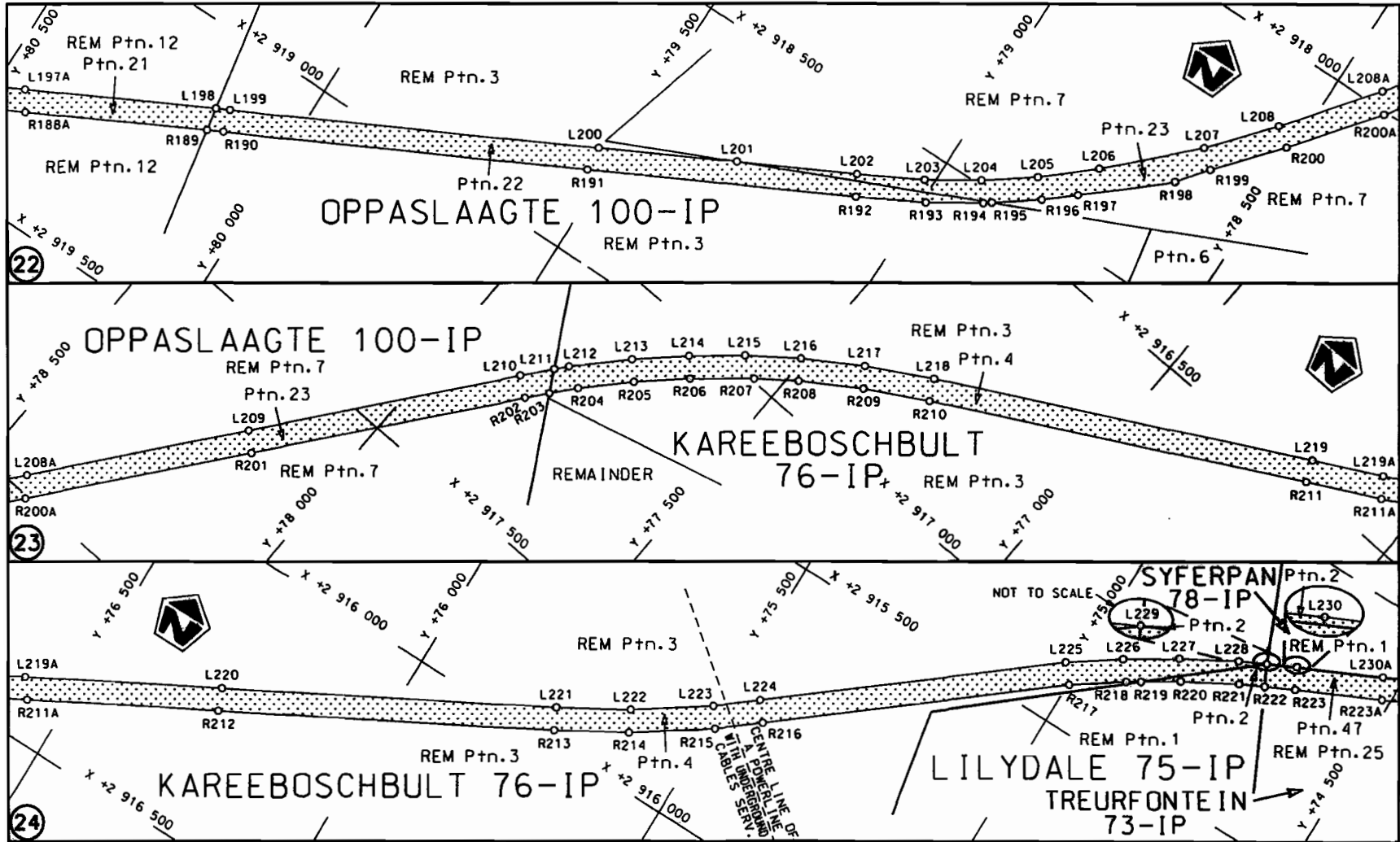
<p>Die Suid Afrikaanse Nasionale Padagentskap Beperk The South African National Roads Agency Limited</p>	<p>Die figuur getoon The figure shown</p> 	<p>steldie podreserwe voor van 'n gedeelte represents the road reserve of a portion van Nasionale Roete N14 Sektie 11 of National Route Section</p>	<p>Vel Sheet 5 van of 14 Plan P670/08</p>
--	--	---	---




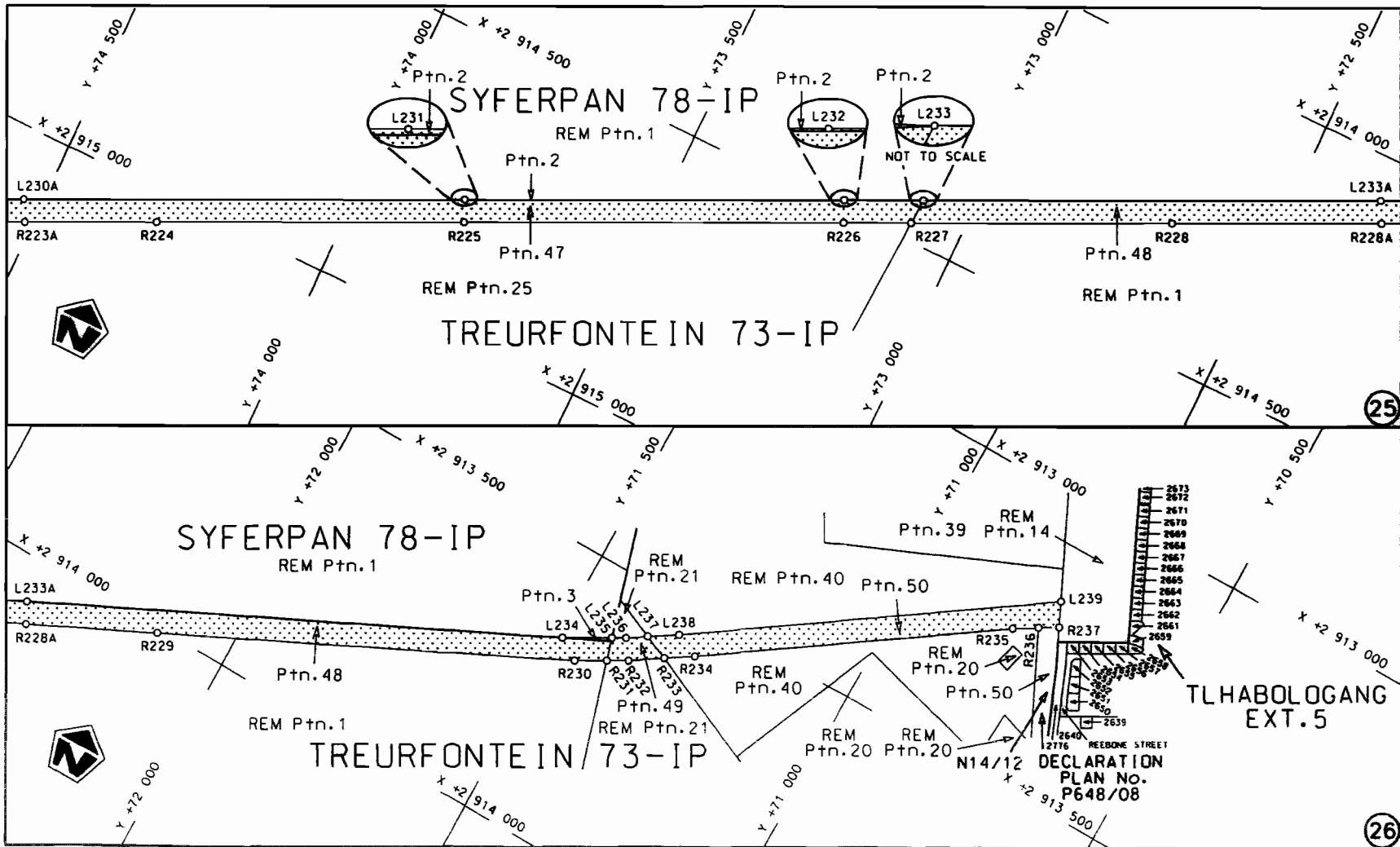
Die Suid-Afrikaanse Nasionale Padagentskap Beperk The South African National Roads Agency Limited	Die figuur getoon The figure shown		stelt die podreserwe voor van 'n gedeelte represents the road reserve of a portion	
			van Nasionale Roete N14 of National Route	Seksie Section
			11	
			Vel Sheet 6 of 14 Plan P670/08	

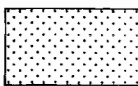


<p>Die Suid Afrikaanse Nasionale Padogenskap Beperk The South African National Roads Agency Limited</p>	<p>Die figuur getoon The figure shown</p> 	<p>steldie padreserwe voor van 'n gedeelte represents the road reserve of a portion van Nasionale Roete N14 Seksie of National Route Section 11</p>	<p>Vel Sheet 7 van of 14 Plan P670/08</p>
---	--	---	---



<p>Die Suid Afrikaanse Nasionale Padagentskop Beperk The South African National Roads Agency Limited</p>	<p>Die figuur getoon The figure shown</p> 	<p>steldie padreserwe voor van 'n gedeelte represents the road reserve of a portion van Nasionale Roete N14 of National Route N14</p> <p>Seksie 11 Section 11</p>	<p>Vel 8 van 14 Sheet 8 of 14</p> <p>Plan P670/08</p>
--	--	---	---



<p>Die Suid Afrikaanse Nasionale Padagentskap Beperk The South African National Roads Agency Limited</p>	<p>Die figuur getoon The figure shown</p> 	<p>steldie padreserwe voor van 'n gedeelte represents the road reserve of a portion van Nasionale Roete N14 of National Route N14</p> <p>Seksie Section 11</p>	<p>Vel Sheet 9 van of 14 Plan P670/08</p>
--	--	--	---

PADRESERWE KOÖRDINATE				/	ROAD RESERVE CO-ORDINATES			
LINKERKANT/LEFT HAND SIDE					REGTERKANT/RIGHT HAND SIDE			
	Y	X	WG	25°	Y	X		
L1	-81 059.810	2 935 896.330		R1	-81 068.780	2 935 924.430		
L2	-81 159.080	2 935 870.890		R2	-81 188.360	2 935 906.570		
L3	-81 233.790	2 935 831.280		R3	-81 291.600	2 935 840.040		
L4	-81 268.470	2 935 805.550		R4	-81 303.470	2 935 827.100		
L5	-81 318.190	2 935 755.840		R5	-81 348.010	2 935 778.750		
L6	-81 334.680	2 935 734.450		R6	-81 432.130	2 935 654.870		
L7	-81 383.530	2 935 656.120		R7	-81 530.730	2 935 495.210		
L8	-81 479.050	2 935 502.100		R8	-81 591.070	2 935 397.500		
L9	-81 535.160	2 935 411.620		R9	-81 708.260	2 935 207.740		
L10	-81 573.040	2 935 350.550		R10	-81 712.370	2 935 201.100		
L11	-81 614.250	2 935 284.100		R11	-81 755.200	2 935 131.890		
L12	-81 694.370	2 935 154.900		R12	-81 954.300	2 934 810.260		
L13	-81 928.140	2 934 778.030		R13	-81 956.530	2 934 806.650		
L14	-81 936.080	2 934 765.220		R14	-82 255.050	2 934 325.610		
L15	-82 222.950	2 934 301.420		R15	-82 611.120	2 933 751.020		
L16	-82 539.870	2 933 790.000		R16	-82 728.950	2 933 560.940		
L17	-82 558.770	2 933 759.500		R17	-82 877.800	2 933 320.840		
L18	-82 708.820	2 933 517.260		R18	-83 118.650	2 932 931.130		
L19	-82 830.990	2 933 320.030		R19	-83 123.850	2 932 922.730		
L20	-82 887.500	2 933 228.960		R20	-83 229.250	2 932 752.750		
L21	-83 073.950	2 932 928.480		R21	-83 268.950	2 932 684.810		
L22	-83 078.600	2 932 921.000		R22	-83 376.460	2 932 474.130		
L23	-83 242.610	2 932 649.430		R23	-83 610.380	2 932 015.700		
L24	-83 564.100	2 932 021.550		R24	-83 612.510	2 932 011.520		
L25	-83 568.340	2 932 013.200		R25	-83 818.600	2 931 608.100		
L26	-83 778.280	2 931 600.830		R26	-83 820.780	2 931 603.790		
L27	-84 089.750	2 930 987.750		R27	-84 125.720	2 931 003.370		
L28	-84 305.390	2 930 562.830		R28	-84 340.350	2 930 582.240		
L29	-84 400.790	2 930 375.360		R29	-84 438.420	2 930 388.960		
L30	-84 557.860	2 930 066.670		R30	-84 595.770	2 930 078.830		
L31	-84 775.090	2 929 637.650		R31	-84 811.300	2 929 654.200		
L32	-84 798.080	2 929 587.360		R32	-84 837.040	2 929 595.990		
L33	-84 835.450	2 929 495.670		R33	-84 873.090	2 929 508.420		
L34	-85 001.390	2 929 043.500		R34	-84 874.840	2 929 503.640		
L35	-85 140.400	2 928 662.930		R35	-85 039.300	2 929 055.880		
L36	-85 154.740	2 928 623.840		R36	-85 163.680	2 928 715.580		
L37	-85 317.510	2 928 180.230		R37	-85 191.250	2 928 640.120		
L38	-85 439.660	2 927 847.010		R38	-85 199.790	2 928 616.810		
L39	-85 608.700	2 927 386.190		R39	-85 355.880	2 928 190.300		
L40	-85 789.940	2 926 876.570		R40	-85 479.980	2 927 852.130		
L41	-85 823.830	2 926 734.950		R41	-85 657.000	2 927 368.850		
L42	-85 910.880	2 926 371.250		R42	-85 827.630	2 926 889.960		
L43	-86 050.410	2 925 777.820		R43	-85 868.330	2 926 719.690		
L44	-86 053.520	2 925 764.590		R44	-85 942.330	2 926 410.160		
L45	-86 184.060	2 925 207.140		R45	-86 091.710	2 925 774.680		
L46	-86 319.690	2 924 630.030		R46	-86 222.570	2 925 216.820		
L47	-86 321.300	2 924 623.190		R47	-86 361.460	2 924 626.180		
L48	-86 431.140	2 924 155.120		R48	-86 363.940	2 924 615.650		
L49	-86 526.150	2 923 769.430		R49	-86 470.370	2 924 162.810		
L50	-86 691.180	2 923 141.870		R50	-86 564.530	2 923 780.640		
L51	-86 707.820	2 923 090.140		R51	-86 728.840	2 923 154.900		
					Ve1 10 Van 14		P670/08	
					Sheet of			

PADRESERWE KOÖRDINATE				/	ROAD RESERVE CO-ORDINATES			
LINKERKANT/LEFT HAND SIDE					REGTERKANT/RIGHT HAND SIDE			
	Y	X	WG	25°	Y	X		
L52	-86 806.980	2 922	781.860	R52	-86 840.370	2 922	791.160	
L53	-86 897.680	2 922	506.510	R53	-86 886.060	2 922	651.220	
L54	-86 946.300	2 922	358.900	R54	-86 890.900	2 922	651.200	
L55	-86 980.290	2 922	279.470	R55	-86 905.130	2 922	608.360	
L56	-87 055.200	2 922	151.860	R56	-86 984.820	2 922	368.490	
L57	-87 055.450	2 922	151.430	R57	-87 010.910	2 922	306.580	
L58	-87 120.470	2 922	066.600	R58	-87 090.370	2 922	170.440	
L59	-87 137.020	2 922	047.410	R59	-87 132.480	2 922	116.910	
L60	-87 198.710	2 921	984.340	R60	-87 164.500	2 922	076.280	
L61	-87 293.640	2 921	905.430	R61	-87 226.290	2 922	012.960	
L62	-87 411.510	2 921	830.900	R62	-87 316.380	2 921	938.160	
L63	-87 782.130	2 921	644.450	R63	-87 430.440	2 921	865.890	
L64	-87 793.830	2 921	638.570	R64	-87 879.270	2 921	638.900	
L65	-88 426.630	2 921	320.780	R65	-88 440.840	2 921	352.920	
L66	-88 799.780	2 921	133.730	R66	-88 814.900	2 921	168.720	
L67	-89 110.480	2 920	976.740	R67	-89 099.240	2 921	027.700	
L68	-89 189.020	2 920	928.980	R68	-89 350.810	2 920	893.990	
L69	-89 310.920	2 920	832.030	R69	-89 365.270	2 920	835.300	
L70	-89 399.170	2 920	737.500	R70	-89 444.060	2 920	744.720	
L71	-89 435.200	2 920	692.710	R71	-89 550.460	2 920	590.350	
L72	-89 486.420	2 920	612.380	R72	-89 559.440	2 920	568.370	
L73	-89 547.780	2 920	487.860	R73	-89 701.520	2 920	218.200	
L74	-89 636.190	2 920	285.390	R74	-89 763.020	2 920	064.710	
L75	-89 640.940	2 920	270.010	R75	-90 072.430	2 919	300.920	
L76	-89 694.210	2 920	138.690	R76	-90 733.790	2 919	582.390	
L77	-89 729.410	2 920	051.830	R77	-90 775.350	2 919	598.900	
L78	-89 800.370	2 919	876.680	R78	-90 797.349	2 919	607.706	
L79	-89 830.660	2 919	802.840	R79	-90 861.510	2 919	633.390	
L80	-89 903.410	2 919	622.340	R80	-90 902.760	2 919	646.990	
L81	-90 053.110	2 919	258.470	R81	-90 998.690	2 919	671.730	
L82	-90 083.690	2 919	273.120	R82	-91 088.990	2 919	687.970	
L83	-90 654.390	2 919	509.510	R83	-91 134.710	2 919	693.400	
L84	-90 806.458	2 919	548.562	R84	-91 842.230	2 919	777.360	
L85	-90 840.330	2 919	557.260	R85	-91 916.080	2 919	783.250	
L86	-91 286.360	2 919	671.080	R86	-92 002.490	2 919	789.670	
L87	-91 862.750	2 919	739.350	R87	-92 080.320	2 919	795.140	
L88	-91 916.530	2 919	743.690	R88	-92 141.760	2 919	789.030	
L89	-92 075.030	2 919	755.740	R89	-92 186.290	2 919	798.420	
L90	-92 252.110	2 919	737.260	R90	-92 211.410	2 919	796.100	
L91	-92 328.500	2 919	719.650	R91	-92 252.440	2 919	778.170	
L92	-92 421.300	2 919	688.090	R92	-92 339.060	2 919	758.160	
L93	-92 484.760	2 919	661.030	R93	-92 440.850	2 919	723.730	
L94	-92 490.740	2 919	657.940	R94	-92 516.970	2 919	689.720	
L95	-93 103.150	2 919	341.750	R95	-92 539.410	2 919	678.070	
L96	-93 107.720	2 919	339.390	R96	-93 145.780	2 919	363.190	
L97	-93 332.370	2 919	222.970	R97	-93 150.590	2 919	360.700	
L98	-93 728.500	2 919	017.660	R98	-93 741.370	2 919	055.020	
L99	-93 751.610	2 919	005.690	R99	-94 279.020	2 918	777.480	
L100	-94 214.660	2 918	765.720	R100	-94 294.980	2 918	770.000	
L101	-94 341.010	2 918	702.770	R101	-94 412.520	2 918	714.910	
L102	-94 403.850	2 918	677.910	R102	-94 416.750	2 918	713.410	

Van	11	Van	14	P670/08
Sheet		of		





PADRESERWE KOÖRDINATE				/	ROAD RESERVE CO-ORDINATES			
LINKERKANT/LEFT HAND SIDE					REGTERKANT/RIGHT HAND SIDE			
	Y	X	WG	27°	Y	X		
L148	92 775.800	2 922 794.040		R148	90 826.140	2 922 763.070		
L149	92 672.480	2 922 807.130		R149	90 366.500	2 922 740.230		
L150	92 574.610	2 922 809.760		R150	89 861.560	2 922 714.960		
L151	92 118.350	2 922 787.250		R151	89 306.900	2 922 684.820		
L152	91 705.290	2 922 766.800		R152	89 156.520	2 922 681.990		
L153	91 630.240	2 922 763.050		R153	88 937.760	2 922 686.820		
L154	91 247.300	2 922 743.950		R154	88 942.300	2 922 835.000		
L155	90 810.610	2 922 722.330		R155	88 904.250	2 922 833.940		
L156	90 369.540	2 922 700.400		R156	88 562.380	2 922 824.440		
L157	89 864.430	2 922 675.240		R157	88 125.120	2 922 812.370		
L158	89 309.020	2 922 649.270		R158	87 355.230	2 922 791.210		
L159	89 168.030	2 922 642.730		R159	87 037.410	2 922 780.170		
L160	88 898.610	2 922 650.260		R160	86 934.590	2 922 768.960		
L161	88 899.730	2 922 687.660		R161	86 807.300	2 922 749.220		
L162	88 901.580	2 922 748.970		R162	86 608.700	2 922 699.890		
L163	88 902.980	2 922 793.680		R163	85 834.000	2 922 454.750		
L164	87 348.700	2 922 753.630		R164	85 751.020	2 922 428.490		
L165	87 159.920	2 922 746.360		R165	85 476.300	2 922 342.340		
L166	87 041.710	2 922 740.570		R166	85 401.130	2 922 324.490		
L167	86 943.380	2 922 730.400		R167	84 960.100	2 922 240.690		
L168	86 609.760	2 922 653.510		R168	84 866.860	2 922 222.970		
L169	86 609.670	2 922 657.490		R169	84 767.910	2 922 204.170		
L170	85 836.100	2 922 414.100		R170	84 691.020	2 922 184.400		
L171	85 762.800	2 922 391.040		R171	84 563.450	2 922 143.870		
L172	85 486.920	2 922 303.950		R172	84 500.530	2 922 121.160		
L173	85 428.980	2 922 289.770		R173	84 336.900	2 922 048.900		
L174	84 971.320	2 922 203.120		R174	84 176.680	2 921 960.310		
L175	84 939.430	2 922 197.080		R175	84 073.320	2 921 892.120		
L176	84 878.070	2 922 185.460		R176	83 537.990	2 921 496.860		
L177	84 781.450	2 922 167.170		R177	83 191.720	2 921 239.710		
L178	84 704.660	2 922 146.920		R178	83 186.350	2 921 235.720		
L179	84 610.180	2 922 118.140		R179	82 735.340	2 920 901.150		
L180	84 528.230	2 922 088.660		R180	82 432.320	2 920 676.360		
L181	84 354.650	2 922 013.230		R181	82 289.770	2 920 570.620		
L182	84 198.920	2 921 927.300		R182	82 130.210	2 920 448.570		
L183	84 101.640	2 921 863.680		R183	82 112.960	2 920 432.650		
L184	83 552.920	2 921 457.860		R184	81 702.050	2 920 053.500		
L185	83 263.190	2 921 243.040		R185	81 523.640	2 919 899.290		
L186	83 218.580	2 921 209.960		R186	81 377.370	2 919 811.210		
L187	82 760.030	2 920 869.850		R187	81 029.490	2 919 630.460		
L188	82 436.510	2 920 629.700		R188	80 509.220	2 919 362.780		
L189	82 312.220	2 920 537.430		R189	80 139.880	2 919 172.160		
L190	82 180.860	2 920 437.340		R190	80 113.750	2 919 158.670		
L191	82 157.750	2 920 419.730		R191	79 528.780	2 918 857.450		
L192	81 716.880	2 920 013.230		R192	79 101.610	2 918 636.970		
L193	81 597.240	2 919 907.030		R193	78 993.190	2 918 577.580		
L194	81 499.280	2 919 833.520		R194	78 907.520	2 918 523.550		
L195	81 382.430	2 919 766.100		R195	78 895.310	2 918 514.500		
L196	81 048.630	2 919 595.550		R196	78 824.060	2 918 461.660		
L197	80 512.200	2 919 319.350		R197	78 774.460	2 918 419.600		
L198	80 146.990	2 919 131.330		R198	78 643.620	2 918 307.080		

PADRESERWE KOÖRDINATE				/	ROAD RESERVE CO-ORDINATES			
LINKERKANT/LEFT HAND SIDE					REGTERKANT/RIGHT HAND SIDE			
	Y	X	WG	27°	Y	X		
L199	80 124.630	2 919 119.820		R199	78 603.440	2 918 255.620		
L200	79 532.750	2 918 814.860		R200	78 513.010	2 918 149.670		
L201	79 313.040	2 918 701.270		R201	78 143.980	2 917 680.620		
L202	79 121.760	2 918 602.370		R202	77 833.600	2 917 286.880		
L203	79 016.510	2 918 545.020		R203	77 805.250	2 917 252.310		
L204	78 931.680	2 918 491.830		R204	77 772.330	2 917 212.140		
L205	78 851.060	2 918 432.270		R205	77 704.540	2 917 139.200		
L206	78 768.150	2 918 359.620		R206	77 632.820	2 917 070.090		
L207	78 633.380	2 918 229.240		R207	77 545.060	2 916 995.370		
L208	78 544.800	2 918 125.590		R208	77 482.280	2 916 946.540		
L209	78 173.580	2 917 653.840		R209	77 385.880	2 916 881.460		
L210	77 865.770	2 917 262.750		R210	77 283.590	2 916 821.400		
L211	77 826.510	2 917 214.580		R211	76 686.850	2 916 496.220		
L212	77 809.470	2 917 193.680		R212	76 265.230	2 916 266.600		
L213	77 733.050	2 917 111.200		R213	75 733.240	2 915 977.030		
L214	77 660.130	2 917 040.830		R214	75 618.340	2 915 910.180		
L215	77 583.900	2 916 974.970		R215	75 492.420	2 915 823.130		
L216	77 504.870	2 916 913.610		R216	75 424.070	2 915 769.720		
L217	77 409.850	2 916 849.490		R217	74 997.730	2 915 425.460		
L218	77 303.080	2 916 786.490		R218	74 914.570	2 915 367.380		
L219	76 703.560	2 916 459.880		R219	74 892.480	2 915 353.590		
L220	76 280.410	2 916 229.510		R220	74 833.300	2 915 316.640		
L221	75 751.100	2 915 941.040		R221	74 744.350	2 915 266.420		
L222	75 636.680	2 915 874.660		R222	74 703.950	2 915 246.280		
L223	75 515.910	2 915 790.780		R223	74 655.510	2 915 222.120		
L224	75 449.100	2 915 738.640		R224	74 302.720	2 915 052.740		
L225	75 023.490	2 915 395.070		R225	73 805.460	2 914 813.880		
L226	74 940.020	2 915 336.670		R226	73 196.100	2 914 521.570		
L227	74 856.510	2 915 284.280		R227	73 088.550	2 914 469.990		
L228	74 765.820	2 915 232.830		R228	72 672.140	2 914 270.290		
L229	74 721.330	2 915 210.560		R229	72 127.670	2 914 008.710		
L230	74 673.340	2 915 186.470		R230	71 452.590	2 913 683.310		
L231	73 821.790	2 914 777.670		R231	71 402.970	2 913 655.020		
L232	73 212.540	2 914 485.400		R232	71 369.830	2 913 636.070		
L233	73 086.140	2 914 425.040		R233	71 316.720	2 913 601.700		
L234	71 490.860	2 913 658.690		R234	71 270.360	2 913 571.710		
L235	71 414.740	2 913 615.650		R235	70 803.860	2 913 252.040		
L236	71 393.140	2 913 603.440		R236	70 764.400	2 913 228.600		
L237	71 360.640	2 913 582.720		R237	70 732.829	2 913 209.846		
L238	71 313.460	2 913 552.650						
L239	70 752.150	2 913 169.100						

Vel	14	Van	14	P670/08
Sheet		of		