

# Government Gazette Staatskoerant

REPUBLIC OF SOUTH AFRICA  
REPUBLIEK VAN SUID-AFRIKA

Vol. 525

Pretoria, 2 March  
Maart 2009

**No. 31941**

**CONTENTS****INHOUD**

<i>No.</i>	<i>Page No.</i>	<i>Gazette No.</i>	<i>No.</i>	<i>Bladsy No.</i>	<i>Koerant No.</i>
<b>GOVERNMENT NOTICE</b>			<b>GOEWERMENSKENNISGEWING</b>		
<b>Transport, Department of</b>			<b>Vervoer, Departement van</b>		
<i>Government Notice</i>			<i>Goewermentskennisgewing</i>		
189			189		
South African National Roads Agency Limited and the National Roads Act (7/1998): The South African National Roads Agency Limited: Declaration amendment of National Road N14 Section 10: Amendment of Declaration No. 217 of 2006.....	3	31941	Suid-Afrikaanse Nasionale Padagentskap Beperk en die Nasionale Paaie Wet (7/1998): Die Suid-Afrikaanse Nasionale Padagentskap Beperk: Verklaring wysiging van Nasionale Pad N14 Seksie 10: Wysiging van Verklaring No. 217 van 2006 .....	4	31941

---

## GOVERNMENT NOTICE

---

### DEPARTMENT OF TRANSPORT

No. 189

2 March 2009

## THE SOUTH AFRICAN NATIONAL ROADS AGENCY LIMITED

Registration No: 98/09584/06

---

### DECLARATION AMENDMENT OF NATIONAL ROAD N14 SECTION 10

AMENDMENT OF DECLARATION NO. 217 OF 2006

By virtue of section 40 (1)(b) of the South African National Roads Agency Limited and the National Roads Act, 1998 (Act No. 7 of 1998), I hereby amend Declaration No. 217 of 2006 by substituting the Annexure paragraph (IV), with the subjoined sheets 1 to 9 of Plan No. P717/08.

(National Road N14 Section 10: Delareyville - Sannieshof)

---

MINISTER OF TRANSPORT

---

## GOEWERMENSKENNISGEWING

---

### DEPARTEMENT VAN VERVOER

No. 189

2 Maart 2009

## DIE SUID-AFRIKAANSE NASIONALE PADAGENTSKAP BEPERK

Registrasie No: 98/09584/06

---

### VERKLARING WYSIGING VAN NASIONALE PAD N14 SEKSIE 10.

WYSIGING VAN VERKLARING NO. 217 VAN 2006

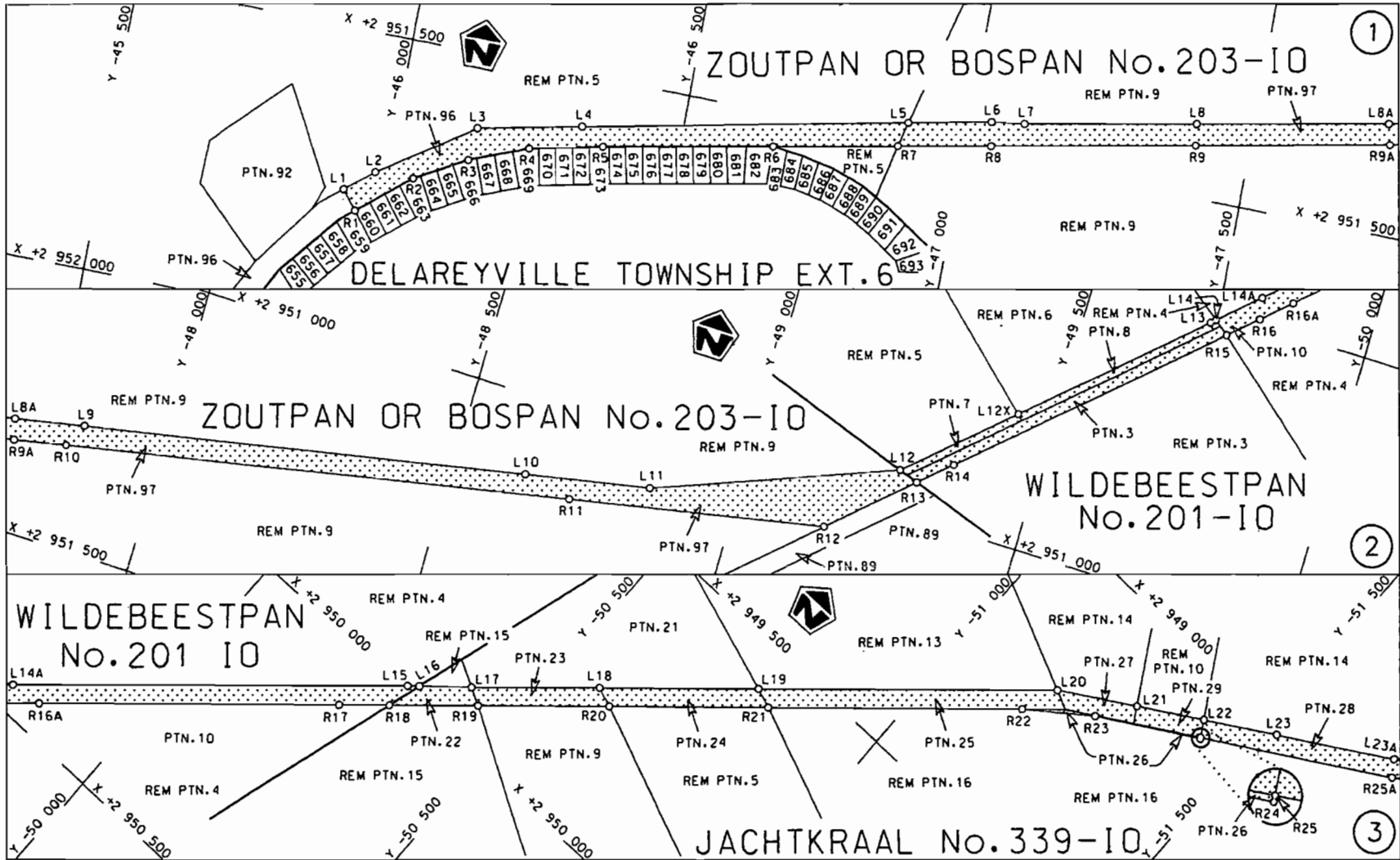
Kragtens Artikel 40(1)(b) van die Suid-Afrikaanse Nasionale Padagentskap Beperk en die Nasionale Paaie Wet, 1998 (Wet no.7 van 1998), wysig ek hiermee Verklaring no. 217 van 2006 deur die Bylae paragraaf (IV), te vervang met meegaande velle 1 tot 9 van Plan no. P717/08.

(Nasionale Pad N14 Seksie 10 Delareyville - Sannieshof)

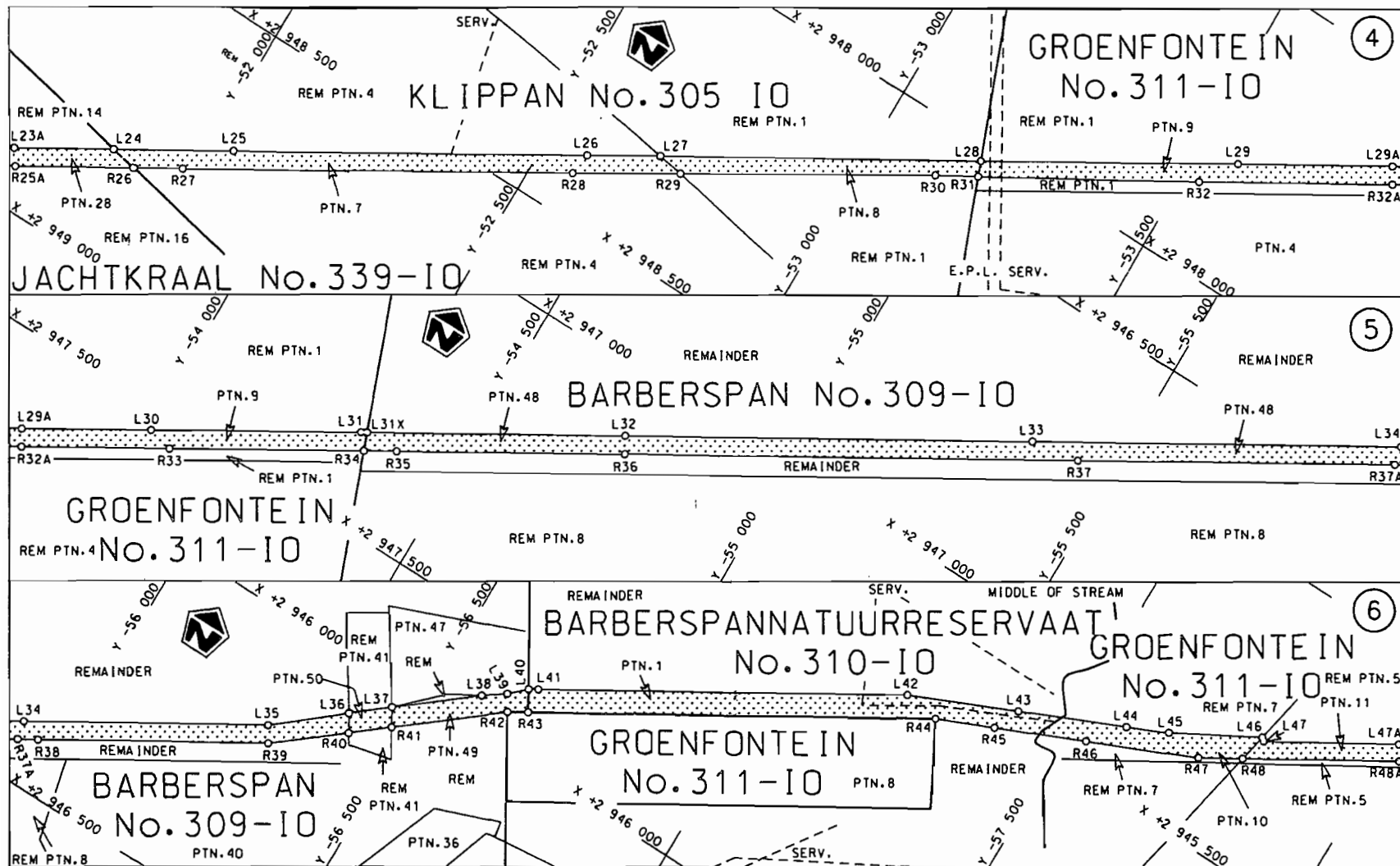
  


---

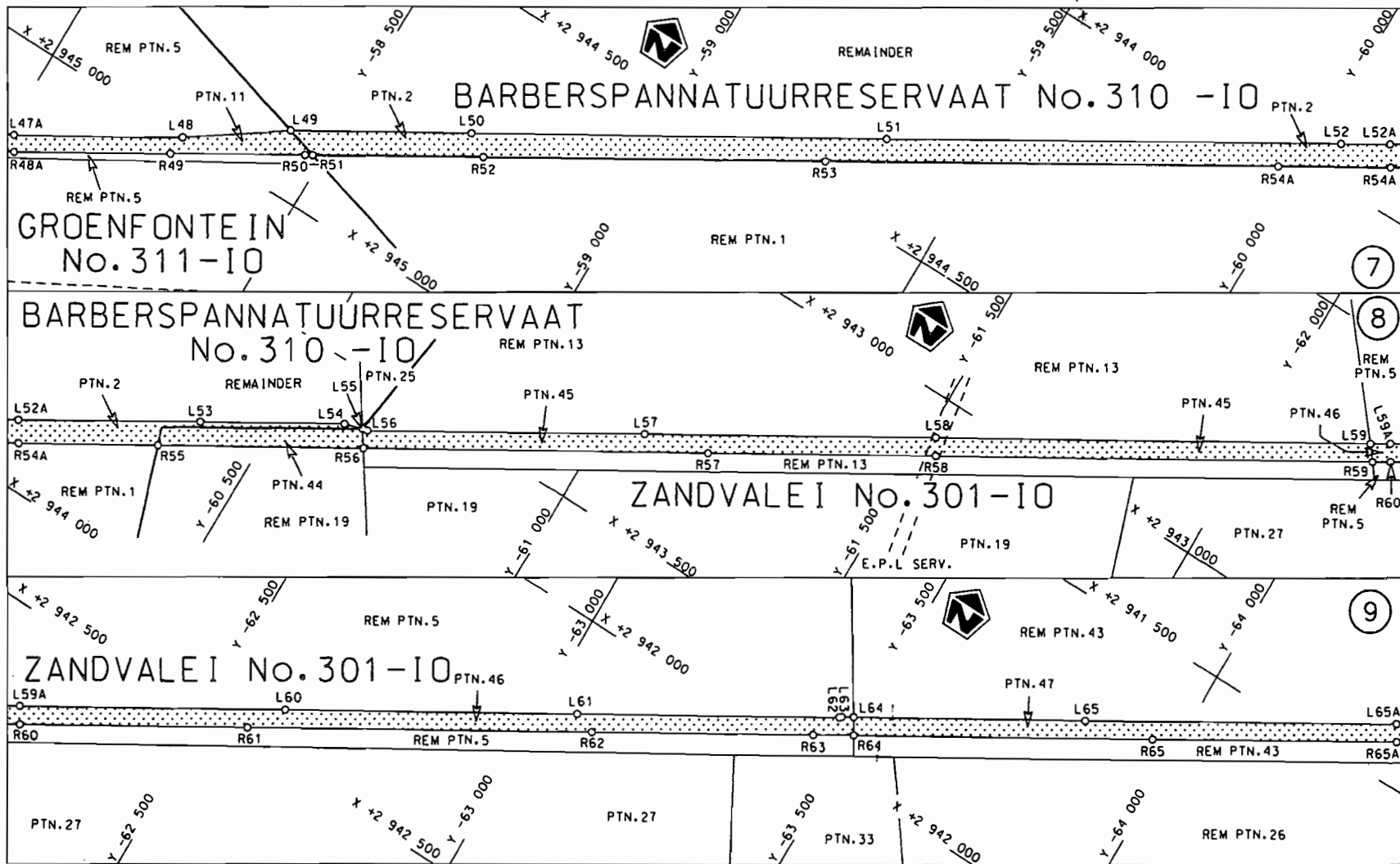
MINISTER VAN VERVOER



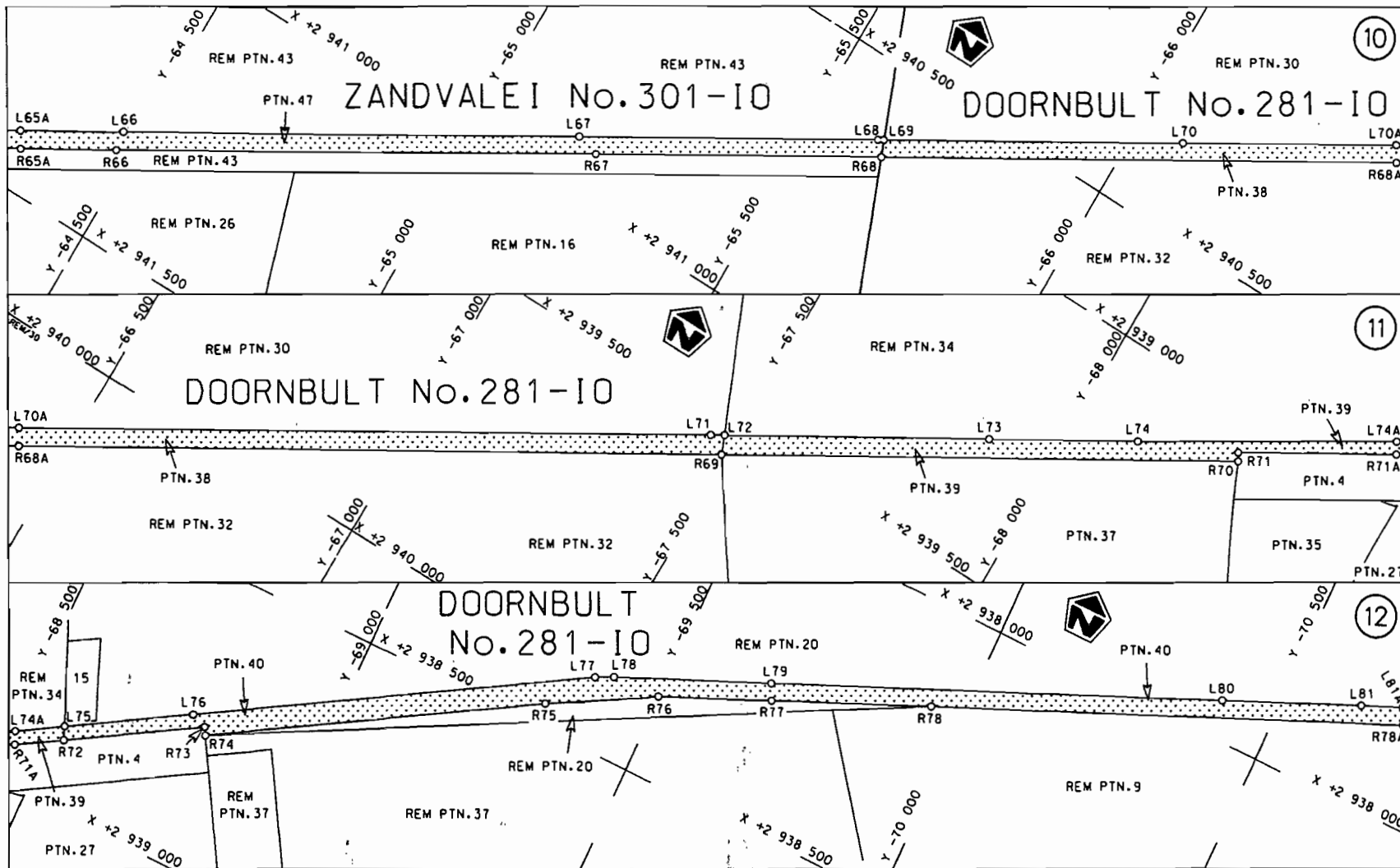
<p>Die Suid Afrikaanse Nasionale Padogenskap Beperk The South African National Roads Agency Limited</p>	<p>Die figuur getoon The figure shown</p>		<p>steldie padreserwe voor van 'n gedeelte represents the road reserve of a portion van Nasionale Roete N14 Seksie 10 of National Route</p>	<p>Vel Sheet 1 van 9 Plan P717/08</p>
---	---	--	---	---



<p>Die Suid Afrikaanse Nasionale Padagentskap Beperk The South African National Roads Agency Limited</p>	<p>Die figuur getoon The figure shown</p>		<p>steldie padreserwe voor van 'n gedeelte represents the road reserve of a portion van Nasionale Roete N14 Sektie 10 of National Route Section 10</p>	<p>Vel Sheet 2 van 9 of 9 Plan P717/08</p>
--	---	--	--	--

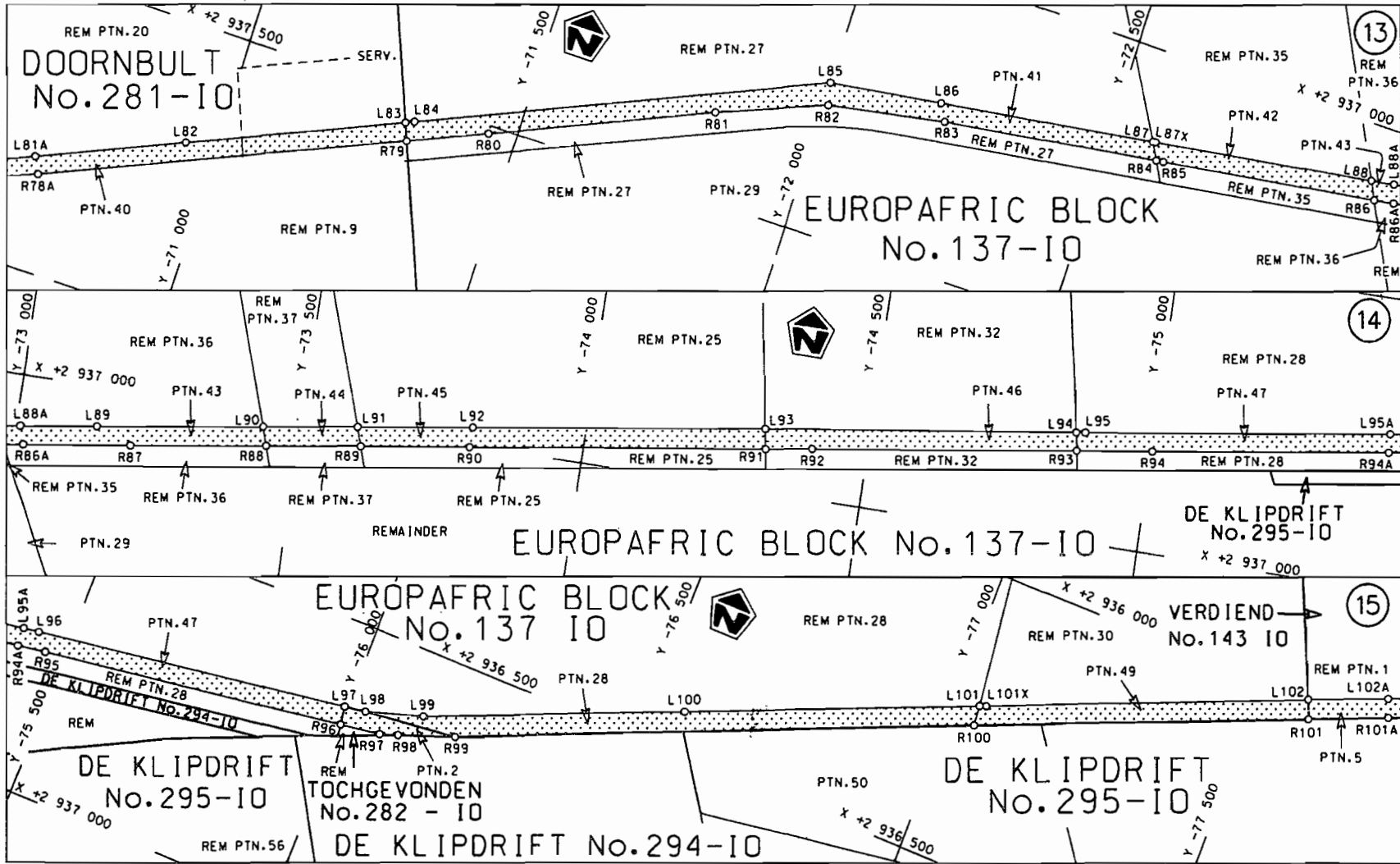


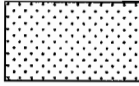
Die Suid Afrikaanse Nasionale Padogenskop Beperk	Die figuur getoon	stel die padreserwe voor van 'n gedeelte	Vel Sheet 3 van 9
The South African National Roads Agency Limited	The figure shown	represents the road reserve of a portion van Nasionale Roete N14 Seksie 10 of National Route Section	Plan P717/08

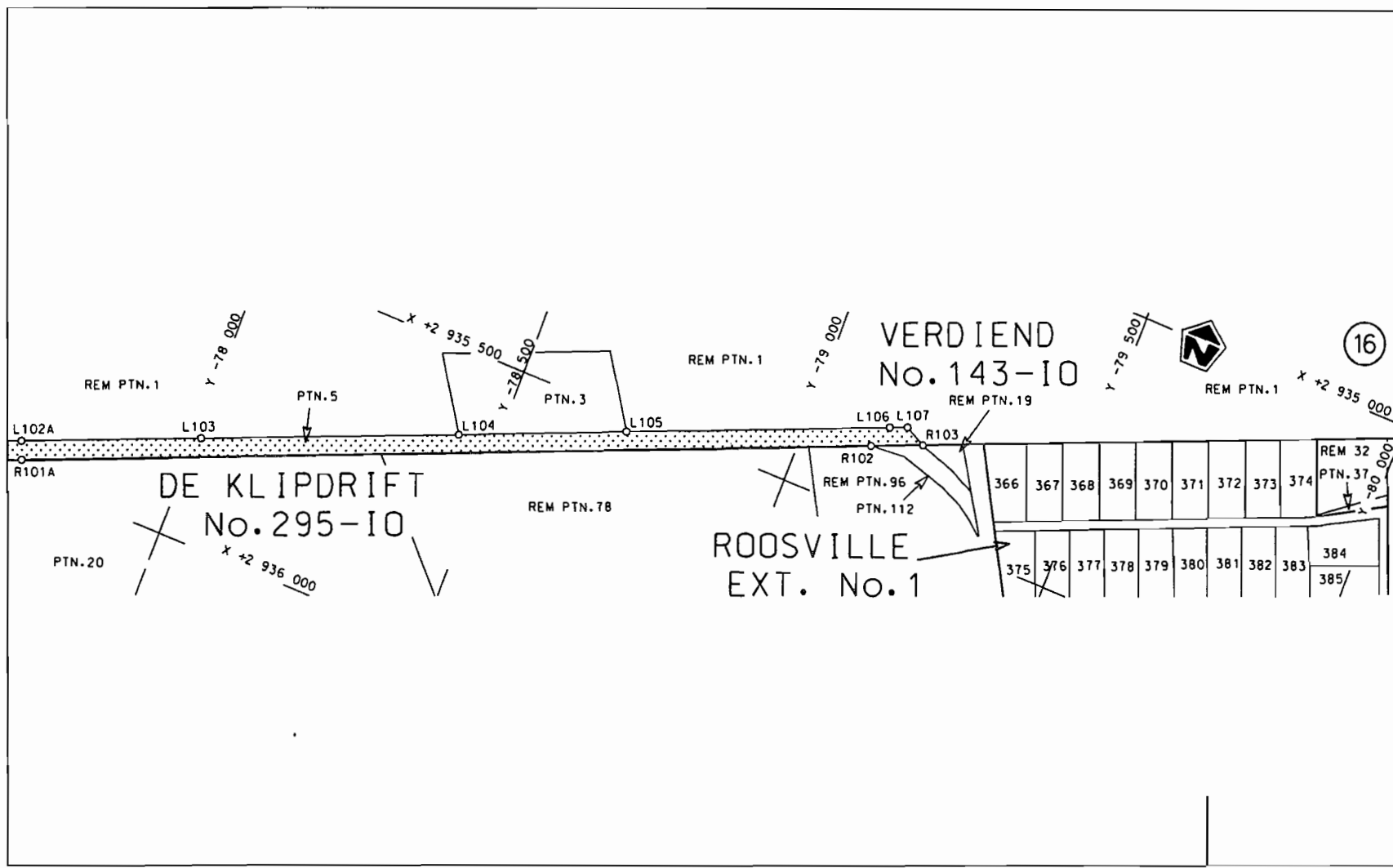



<p>Die Suid Afrikaanse Nasionale Padogentskap Beperk The South African National Roads Agency Limited</p>	<p>Die figuur getoon The figure shown</p>		<p>steldie padreserwe voor van 'n gedeelte represents the road reserve of a portion van Nasionale Roete N14 Seksie 10 of National Route N14 Section 10</p>	<p>Vel Sheet 4 van of 9 Plan P717/08</p>
--	---	--	--	--





<p>Die Suid Afrikaanse Nasionale Padagentskap Beperk The South African National Roads Agency Limited</p>	<p>Die figuur getoon The figure shown</p> 	<p>stel die padreserwe voor van 'n gedeelte represents the road reserve of a portion von Nasionale Roete N14 Sektie of National Route Section</p>	<p>Vel Sheet 5 van 9 Plan P717/08</p>
--	--	---	---



Die Suid Afrikaanse Nasionale Padagentskap Beperk The South African National Roads Agency Limited	Die figuur getoon The figure shown		steldie padreserwe voor van 'n gedeelte represents the raad reserve of a portion van Nasionale Roete N14 of National Route	Vei Sheet 6 van of 9
10 Seksie Section				Plan P717/08

PADRESERWE KOÖRDINATE / ROAD RESERVE CO-ORDINATES						
LINKERKANT/LEFT HAND SIDE			REGTERKANT/RIGHT HAND SIDE			
	Y	X	WG 25°		Y	X
L1	-45 927.960	2 951 776.070		R1	-45 954.350	2 951 808.490
L2	-45 977.190	2 951 736.490		R2	-46 045.920	2 951 733.940
L3	-46 140.340	2 951 627.510		R3	-46 134.430	2 951 684.060
L4	-46 322.060	2 951 589.340		R4	-46 236.980	2 951 643.980
L5	-46 893.680	2 951 470.790		R5	-46 364.700	2 951 615.640
L6	-47 038.850	2 951 440.680		R6	-46 661.890	2 951 556.900
L7	-47 096.880	2 951 433.030		R7	-46 882.480	2 951 513.230
L8	-47 398.530	2 951 373.930		R8	-47 045.670	2 951 480.930
L9	-47 854.710	2 951 284.310		R9	-47 403.770	2 951 410.290
L10	-48 627.940	2 951 133.240		R10	-47 832.710	2 951 325.510
L11	-48 846.040	2 951 090.670		R11	-48 714.560	2 951 151.380
L12	-49 264.820	2 950 929.060		R12	-49 162.230	2 951 062.940
L12X	-49 437.750	2 950 774.970		R13	-49 299.450	2 950 940.620
L13	-49 723.200	2 950 520.620		R14	-49 353.710	2 950 892.230
L14	-49 728.200	2 950 516.130		R15	-49 753.570	2 950 535.690
L15	-50 317.120	2 949 987.770		R16	-49 802.130	2 950 492.390
L16	-50 332.970	2 949 974.140		R17	-50 248.580	2 950 093.750
L17	-50 402.350	2 949 914.460		R18	-50 315.150	2 950 034.370
L18	-50 571.710	2 949 763.010		R19	-50 431.910	2 949 930.210
L19	-50 782.530	2 949 574.480		R20	-50 605.580	2 949 775.290
L20	-51 181.230	2 949 217.520		R21	-50 816.840	2 949 586.840
L21	-51 304.190	2 949 143.560		R22	-51 156.060	2 949 284.260
L22	-51 408.690	2 949 080.690		R23	-51 260.140	2 949 206.020
L23	-51 522.160	2 949 012.430		R24	-51 425.520	2 949 108.840
L24	-51 856.010	2 948 813.940		R25	-51 424.530	2 949 107.100
L25	-52 037.610	2 948 705.960		R26	-51 902.020	2 948 822.990
L26	-52 575.370	2 948 385.800		R27	-51 976.320	2 948 778.780
L27	-52 687.090	2 948 319.320		R28	-52 569.670	2 948 425.730
L28	-53 177.770	2 948 027.350		R29	-52 733.280	2 948 326.550
L29	-53 571.630	2 947 792.880		R30	-53 121.320	2 948 091.320
L30	-54 003.600	2 947 535.870		R31	-53 187.690	2 948 052.850
L31	-54 330.930	2 947 340.940		R32	-53 528.210	2 947 855.450
L31X	-54 333.870	2 947 339.190		R33	-54 048.460	2 947 545.780
L32	-54 725.660	2 947 106.120		R34	-54 345.470	2 947 369.000
L33	-55 349.130	2 946 735.450		R35	-54 394.880	2 947 339.600
L34	-55 914.240	2 946 399.150		R36	-54 741.430	2 947 133.290
L35	-56 284.660	2 946 178.480		R37	-55 434.910	2 946 720.910
L36	-56 396.350	2 946 085.110		R38	-55 951.960	2 946 413.060
L37	-56 455.000	2 946 037.450		R39	-56 301.370	2 946 205.180
L38	-56 578.570	2 945 937.050		R40	-56 413.770	2 946 114.410
L39	-56 615.650	2 945 911.670		R41	-56 472.540	2 946 066.950
L40	-56 643.340	2 945 885.080		R42	-56 632.310	2 945 937.940
L41	-56 657.960	2 945 876.280		R43	-56 663.580	2 945 919.240
L42	-57 222.460	2 945 540.400		R44	-57 286.490	2 945 548.540
L43	-57 405.580	2 945 459.910		R45	-57 384.340	2 945 506.140
L44	-57 583.460	2 945 381.730		R46	-57 535.200	2 945 440.770
L45	-57 653.740	2 945 350.840		R47	-57 720.350	2 945 360.540
L46	-57 799.230	2 945 270.070		R48	-57 788.210	2 945 320.190
L47	-57 805.240	2 945 274.860		R49	-58 266.630	2 945 035.500
L48	-58 271.230	2 945 001.360		R50	-58 470.390	2 944 914.200
L49	-58 428.060	2 944 891.890		R51	-58 482.100	2 944 907.230

Vel	7	Van	9	P717/08
Sheet		of		

PADRESERWE KOÖRDINATE / ROAD RESERVE CO-ORDINATES						
LINKERKANT/LEFT HAND SIDE				REGTERKANT/RIGHT HAND SIDE		
	Y	X	WG 25°		Y	X
L50	-58 702.550	2 944	729.820	R52	-58 741.190	2 944 753.030
L51	-59 338.540	2 944	352.130	R53	-59 263.950	2 944 441.930
L52	-60 035.820	2 943	936.140	R54	-59 960.140	2 944 027.770
L53	-60 387.780	2 943	725.660	R55	-60 344.210	2 943 799.190
L54	-60 605.500	2 943	595.420	R56	-60 655.490	2 943 613.930
L55	-60 636.770	2 943	586.020	R57	-61 182.430	2 943 300.690
L56	-60 646.290	2 943	584.580	R58	-61 530.570	2 943 093.680
L57	-61 068.590	2 943	332.380	R59	-62 200.300	2 942 695.500
L58	-61 514.700	2 943	066.770	R60	-62 227.770	2 942 679.170
L59	-62 181.060	2 942	670.500	R61	-62 575.010	2 942 472.560
L60	-62 616.160	2 942	412.210	R62	-63 097.470	2 942 161.880
L61	-63 059.220	2 942	149.100	R63	-63 435.770	2 941 960.410
L62	-63 460.310	2 941	910.500	R64	-63 497.690	2 941 923.600
L63	-63 463.530	2 941	907.710	R65	-63 956.310	2 941 650.890
L64	-63 481.810	2 941	896.870	R66	-64 473.850	2 941 343.060
L65	-63 836.710	2 941	686.320	R67	-65 201.480	2 940 910.630
L66	-64 468.700	2 941	310.210	R68	-65 637.120	2 940 651.560
L67	-65 161.150	2 940	899.290	R69	-67 490.950	2 939 549.530
L68	-65 621.210	2 940	625.560	R70	-68 280.190	2 939 080.360
L69	-65 625.670	2 940	622.910	R71	-68 272.640	2 939 067.640
L70	-66 082.840	2 940	351.300	R72	-68 584.080	2 938 882.370
L71	-67 456.870	2 939	530.830	R73	-68 796.530	2 938 755.990
L72	-67 478.320	2 939	518.120	R74	-68 803.940	2 938 768.490
L73	-67 883.700	2 939	278.060	R75	-69 322.980	2 938 460.370
L74	-68 111.500	2 939	142.960	R76	-69 498.850	2 938 362.800
L75	-68 575.260	2 938	860.610	R77	-69 681.750	2 938 281.770
L76	-68 769.090	2 938	745.590	R78	-69 942.270	2 938 168.160
L77	-69 382.860	2 938	381.230	R79	-71 316.510	2 937 572.420
L78	-69 413.280	2 938	366.130	R80	-71 450.740	2 937 514.060
L79	-69 669.190	2 938	255.130	R81	-71 820.640	2 937 353.120
L80	-70 404.500	2 937	935.290	R82	-72 008.200	2 937 278.920
L81	-70 631.720	2 937	836.110	R83	-72 214.800	2 937 238.710
L82	-70 944.920	2 937	699.850	R84	-72 591.780	2 937 182.560
L83	-71 304.570	2 937	543.320	R85	-72 604.300	2 937 180.690
L84	-71 319.120	2 937	536.990	R86	-72 983.180	2 937 124.380
L85	-71 999.810	2 937	241.410	R87	-73 203.590	2 937 091.630
L86	-72 199.000	2 937	211.130	R88	-73 445.010	2 937 055.710
L87	-72 575.880	2 937	153.760	R89	-73 609.220	2 937 031.280
L87X	-72 580.900	2 937	153.000	R90	-73 801.190	2 937 002.710
L88	-72 967.940	2 937	094.370	R91	-74 320.480	2 936 925.500
L89	-73 140.040	2 937	068.300	R92	-74 402.440	2 936 913.320
L90	-73 434.730	2 937	023.840	R93	-74 868.940	2 936 844.120
L91	-73 598.840	2 936	999.080	R94	-75 001.740	2 936 824.420
L92	-73 801.940	2 936	968.440	R95	-75 467.140	2 936 755.240
L93	-74 314.530	2 936	891.170	R96	-76 000.280	2 936 675.960
L94	-74 863.530	2 936	813.070	R97	-76 070.340	2 936 665.540
L95	-74 879.170	2 936	810.840	R98	-76 101.690	2 936 654.720
L96	-75 444.000	2 936	727.200	R99	-76 197.000	2 936 619.770
L97	-75 995.610	2 936	644.610	R100	-77 047.070	2 936 258.390
L98	-76 032.600	2 936	639.130	R101	-77 596.500	2 936 028.040
L99	-76 131.530	2 936	607.820	R102	-79 123.790	2 935 387.750

Vel	8	Van	9	P717/08
Sheet		of		

PADRESERWE KOÖRDINATE / ROAD RESERVE CO-ORDINATES						
LINKERKANT/LEFT HAND SIDE				REGTERKANT/RIGHT HAND SIDE		
	Y	X	WG 25°		Y	X
L100	-76 559.030	2 936	428.470	R103	-79 209.590	2 935 351.780
L101	-77 043.510	2 936	224.000			
L101X	-77 045.010	2 936	223.370			
L102	-77 583.460	2 935	996.810			
L103	-78 008.220	2 935	820.030			
L104	-78 432.370	2 935	643.300			
L105	-78 707.880	2 935	527.700			
L106	-79 143.740	2 935	345.580			
L107	-79 173.170	2 935	333.360			

Vel	9	Van	9	P717/08
Sheet		of		