

Government Gazette Staatskoerant

REPUBLIC OF SOUTH AFRICA
REPUBLIEK VAN SUID-AFRIKA

Vol. 525

Pretoria, 2 March
Maart 2009

No. 31942

CONTENTS**INHOUD**

<i>No.</i>	<i>Page No.</i>	<i>Gazette No.</i>	<i>No.</i>	<i>Bladsy No.</i>	<i>Koerant No.</i>
GOVERNMENT NOTICE			GOEWERMENSKENNISGEWING		
Transport, Department of			Vervoer, Departement van		
<i>Government Notice</i>			<i>Goewermentskennisgewing</i>		
190			190		
South African National Roads Agency Limited and the National Roads Act (7/1998): The South African National Roads Agency Limited: Declaration amendment of National Road R510 Section 2: Amendment of Declaration No. 1230 of 2004.....	3	31942	Suid-Afrikaanse Nasionale Padagentskap Beperk en die Nasionale Paaie Wet (7/1998): Die Suid-Afrikaanse Nasionale Padagentskap Beperk: Verklaring wysiging van Nasionale Pad R510 Seksie 2: Wysiging van Verklaring No. 1230 van 2004	4	31942

GOVERNMENT NOTICE

DEPARTMENT OF TRANSPORT**No. 190****2 March 2009****THE SOUTH AFRICAN NATIONAL ROADS
AGENCY LIMITED**Registration No: 98/09584/06

DECLARATION AMENDMENT OF NATIONAL ROAD R510 SECTION 2

AMENDMENT OF DECLARATION No. 1230 OF 2004

By virtue of section 40 (1)(b) of the South African National Roads Agency Limited and the National Roads Act, 1998 (Act No. 7 of 1998), I hereby amend Declaration No. 1230 of 2004, by substituting the descriptive section from Northam up to Thabazimbi in paragraph (l) of the annexure thereto with the subjoined sheets 1 to 11 of Plan P704/08

(National Road R510 Section 2: Northam – Thabazimbi)

MINISTER OF TRANSPORT

GOEWERMENTSKENNISGEWING

DEPARTEMENT VAN VERVOER

No. 190

2 Maart 2009

DIE SUID-AFRIKAANSE NASIONALE PADAGENTSKAP BEPERK

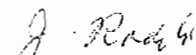
Registrasie No: 98/09584/06

VERKLARING WYSIGING VAN NASIONALE PAD R510 SEKSIE 2.

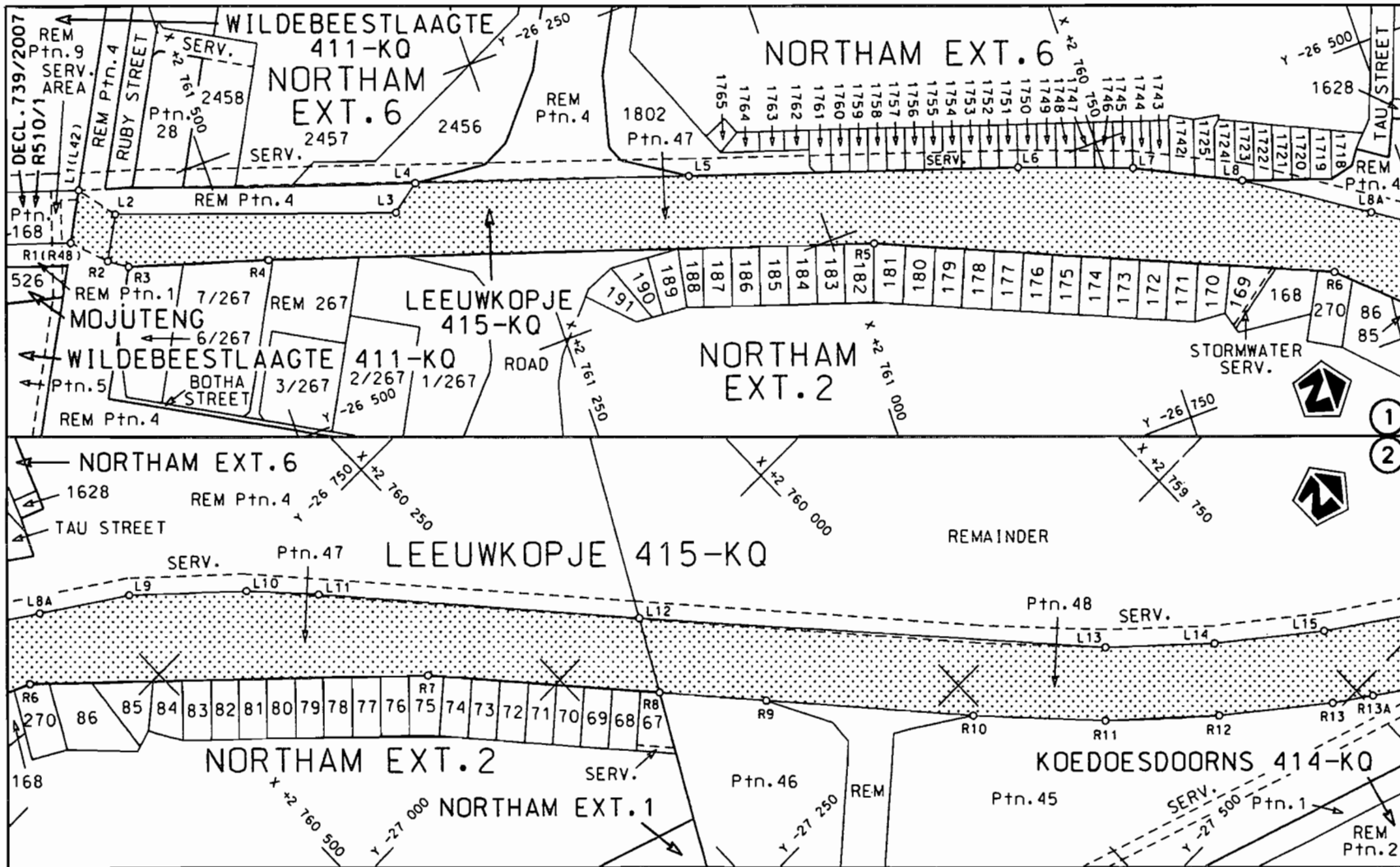
WYSIGING VAN VERKLARING NO. 1230 VAN 2004

Kragtens Artikel 40(1)(b) van die Suid-Afrikaanse Nasionale Padagentskap Beperk en die Nasionale Paaie Wet, 1998 (Wet No. 7 van 1998), wysig ek hiermee Verklaring no.1230 van 2004, deur die beskrywende gedeelte vanaf Northam tot by Thabazimbi in paragaaf (I) van die bylae daartoe te vervang met meegaande velle 1 tot 11 van Plan No. P704/08.

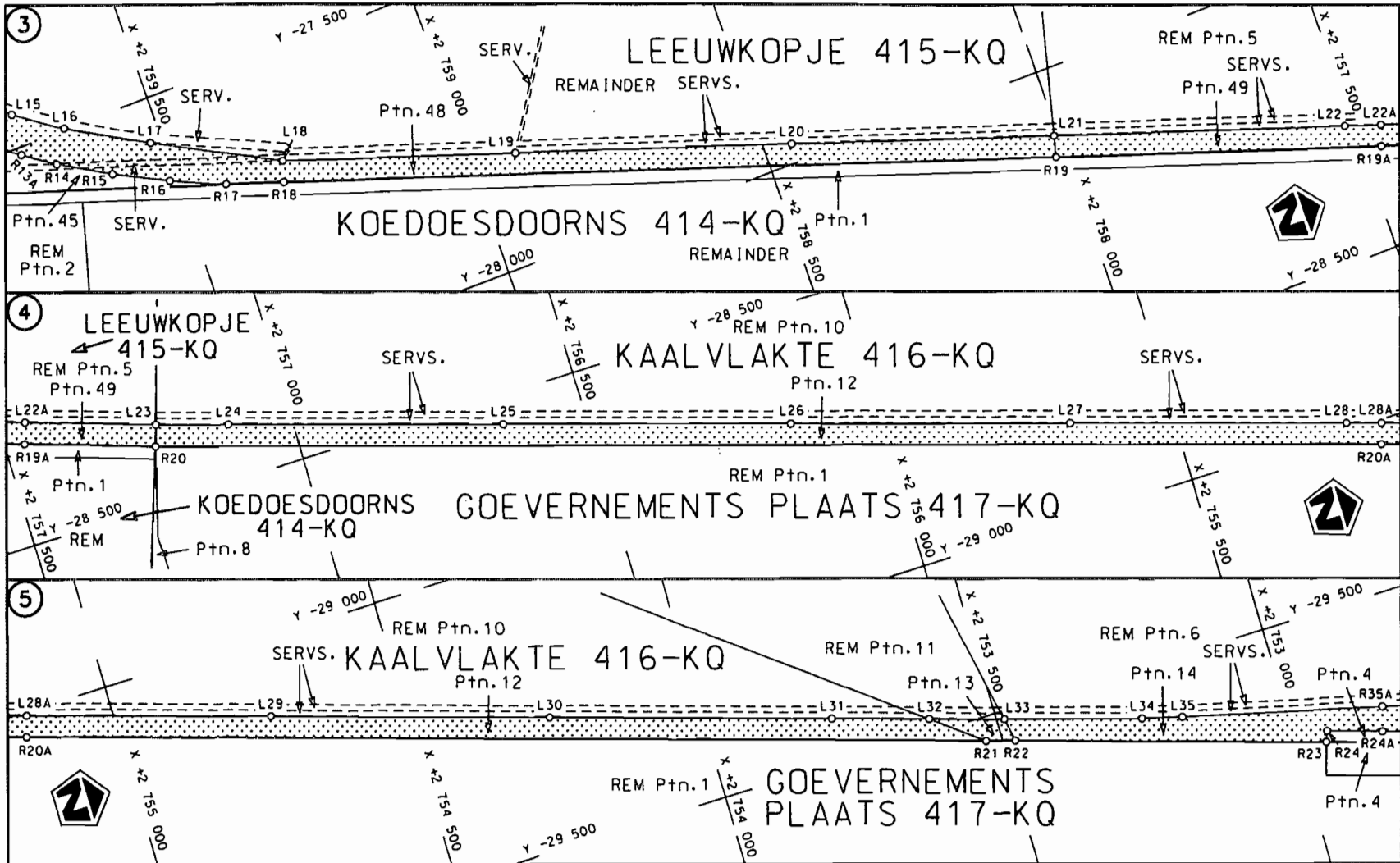
(Nasionale Pad R510 Seksie 2: Northam – Thabazimbi)



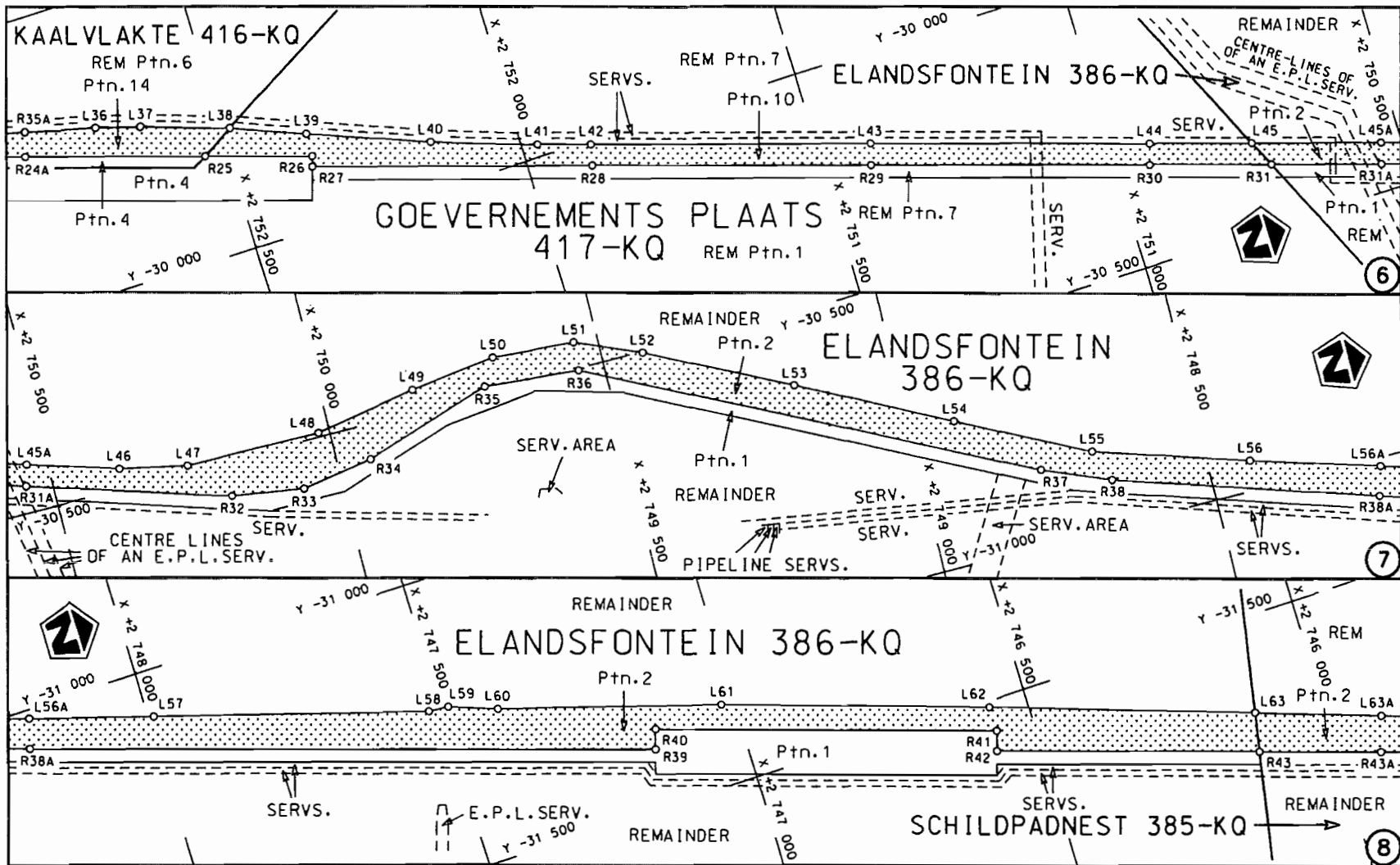
MINISTER VAN VERVOER

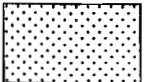


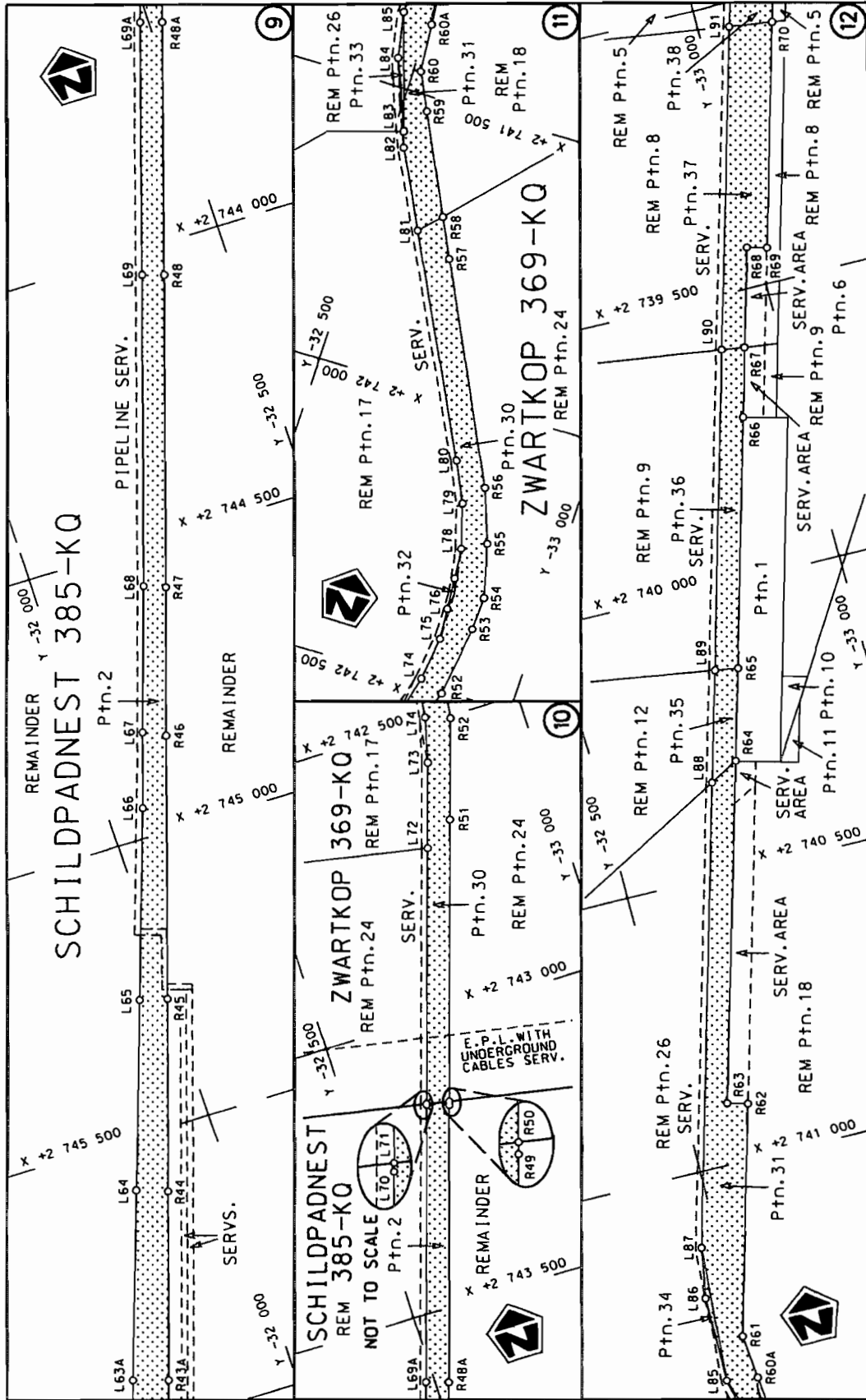
<p>Die Suid Afrikaanse Nasionale Padagentskap Beperk The South African National Roads Agency Limited</p>	<p>Die figuur getoon The figure shown</p>		<p>steldie padreserwe voor van 'n gedeelte represents the road reserve of a portion van Nasionale Roete R510 Seksie of National Route Section</p>	<p>Vel Sheet 1 van of 11</p>
			<p>2</p>	<p>Plan P704/08</p>



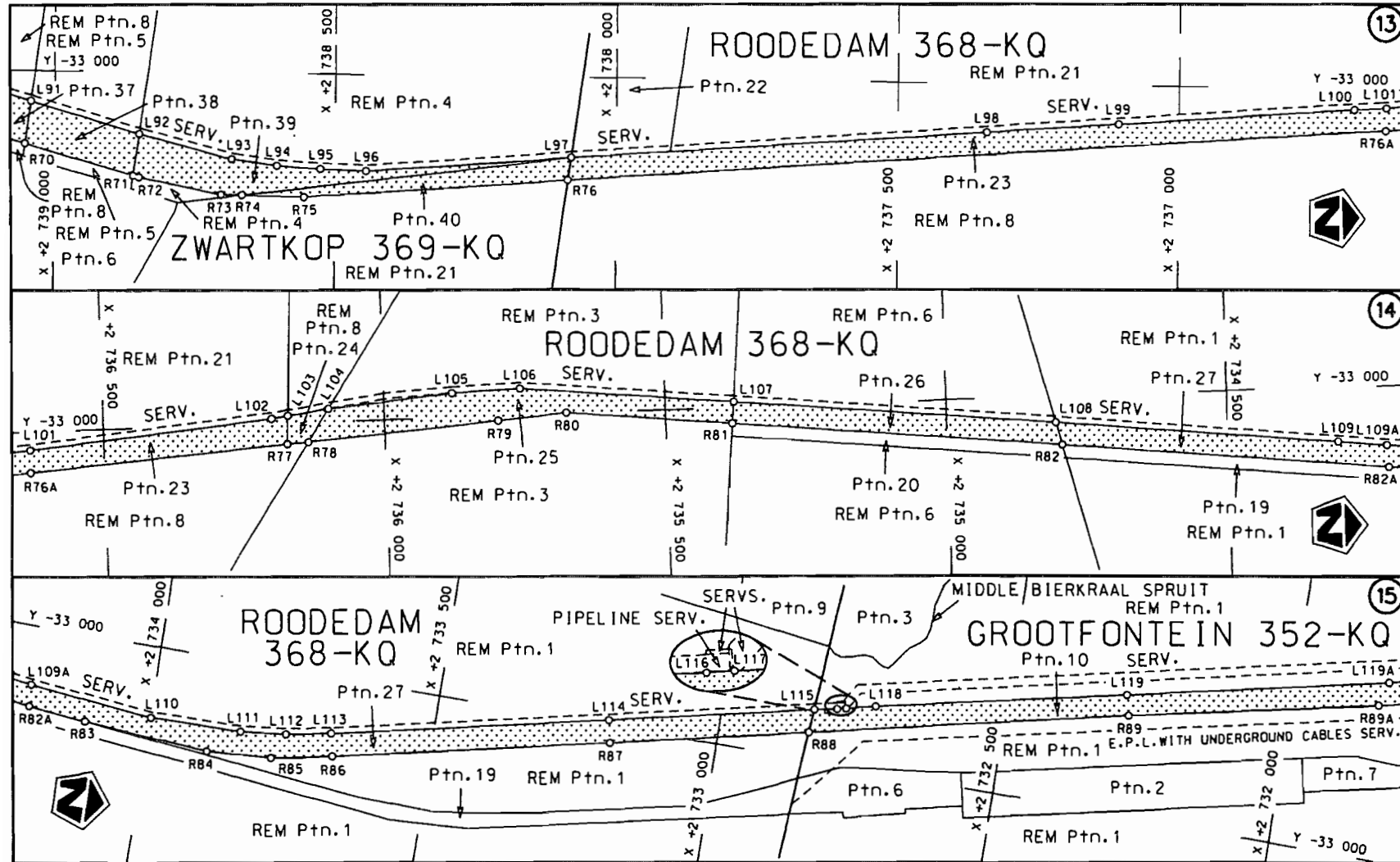
<p>Die Suid Afrikaanse Nasionale Padagentskap Beperk</p>	<p>Die figuur getoon</p>		<p>steldie padreserwe voor van 'n gedeelte represents the road reserve of a portion van Nasionale Roete R510 Seksie of National Route Section</p>	<p>Vel Sheet 2 van 11 of</p>
<p>The South African National Roads Agency Limited</p>	<p>The figure shown</p>		<p>2</p>	<p>Plan P704/08</p>




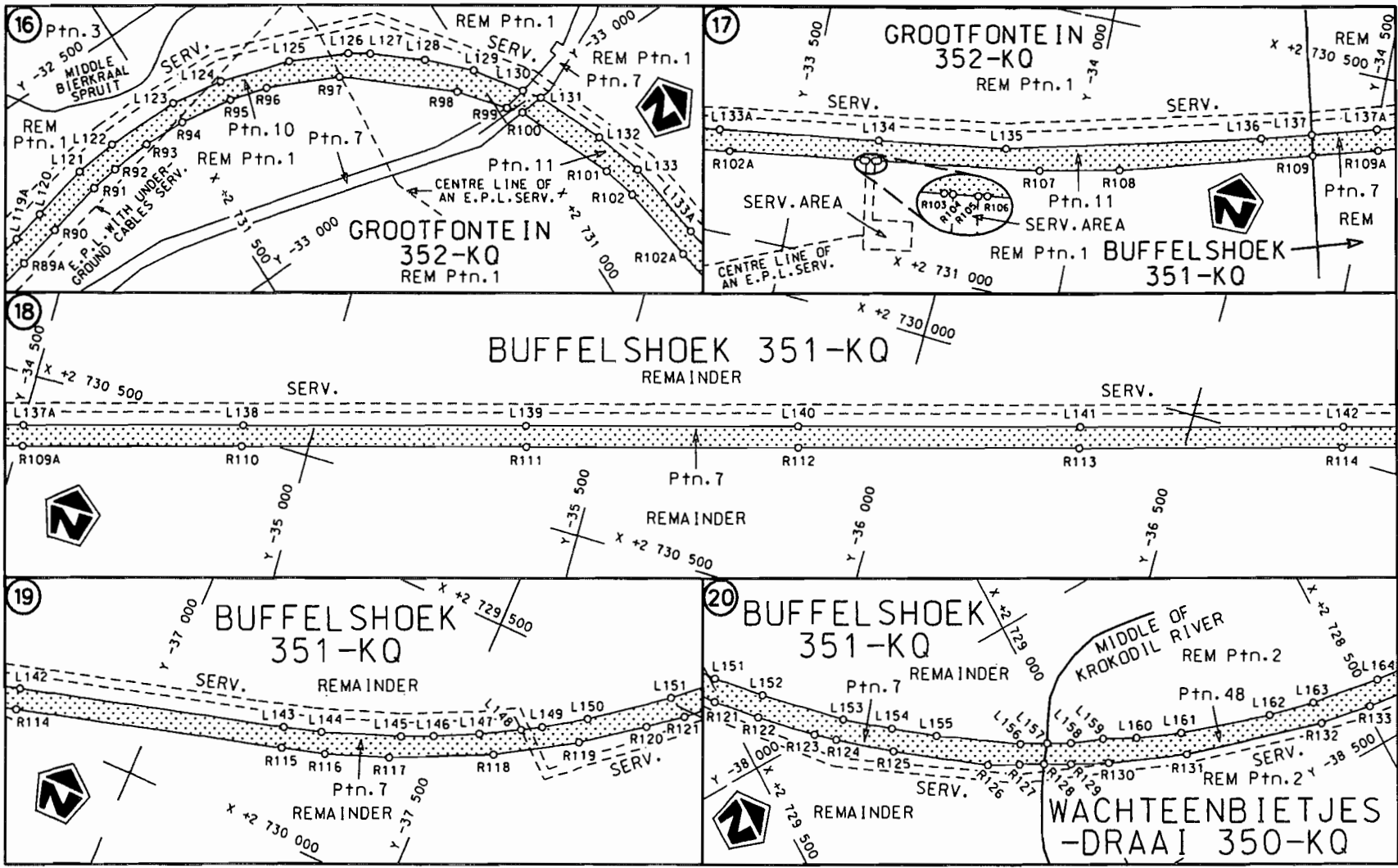
Die Suid Afrikaanse Nasionale Padogentskap Beperk The South African National Roads Agency Limited	Die figuur getoon The figure shown	 steldie padreserwe voor van 'n gedeelte represents the road reserve of a portion van Nasionale Roete R510 Seksie of National Route R510 Section	Vel Sheet 3 van 11 of
2			Plan P704/08



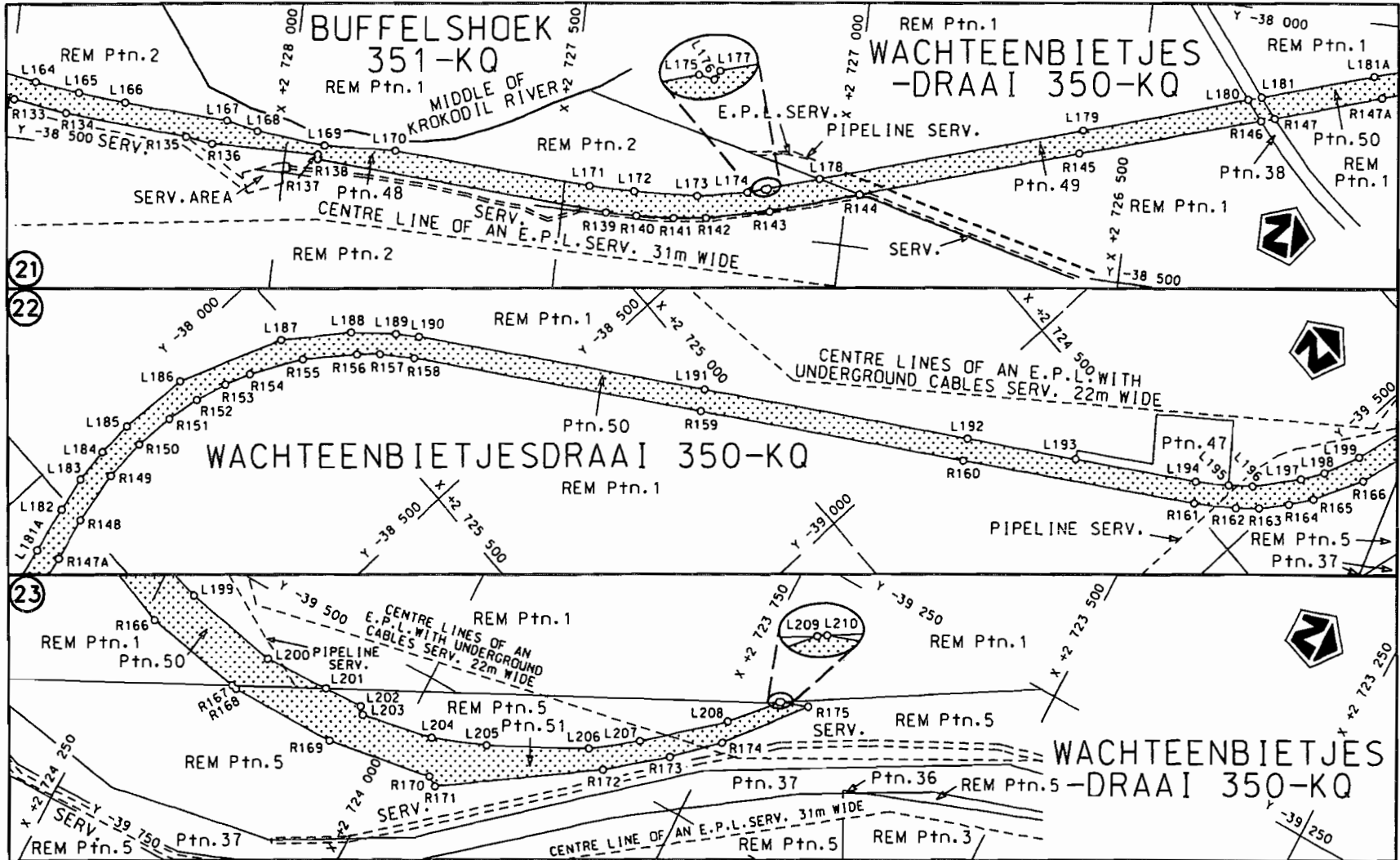
<p>Die Suid Afrikaanse Nasionale Padagentskap Beperk The South African National Roads Agency Limited</p>	<p>Die figuur getoon The figure shown</p>	<p>stelt die padreserwe voor 'n gedeelte represents the road reserve of a portion van Nasionale Roete R510 of National Route R510</p>	<p>Vel Sheet 4 of 11</p>
<p>Die figuur getoon The figure shown</p>		<p>Seksie R510</p>	<p>Plan P704/08</p>
<p>Die figuur getoon The figure shown</p>		<p>2</p>	<p>Section P704/08</p>




Die Suid Afrikaanse Nasionale Padagentskap Beperk The South African National Roads Agency Limited	Die figuur getoon The figure shown		steldie padreserwe voor van 'n gedeelte represents the road reserve of a portion van Nasionale Roete of National Route R510 Seksie Section 2	Vel Sheet 5 van of 11 Plan P704/08
--	---------------------------------------	--	---	--



<p>Die Suid Afrikaanse Nasionale Padagentskop Beperk The South African National Roads Agency Limited</p>	<p>Die figuur getoon The figure shown</p>		<p>steldie padreserwe voor van 'n gedeelte represents the road reserve of a portion von Nasionale Roete R510 Seksie 2 of Notional Route</p>	<p>Vel Sheet 6 van 11 of 11 Ploin P704/08</p>
--	---	--	---	---



Die Suid Afrikaanse Nasionale Padagentskap Beperk The South African National Roads Agency Limited	Die figuur getoon The figure shown		steldie podreserwe voor van 'n gedeelte represents the road reserve of a portion van Nasionale Roete R510 Seksie Section 2 of National Route	Vel Sheet 7 von of 11 Plan P704/08
--	---------------------------------------	--	---	---------------------------------------

PADRESERWE KOÖRDINATE				ROAD RESERVE CO-ORDINATES			
LINKERKANT/LEFT HAND SIDE				REGTERKANT/RIGHT HAND SIDE			
	Y	X	WG 29°		Y	X	
L1	-26 235.240	2 761 611.590		R1	-26 275.340	2 761 633.590	
L2	-26 265.660	2 761 587.860		R2	-26 301.180	2 761 607.740	
L3	-26 347.720	2 761 353.880		R3	-26 311.930	2 761 592.110	
L4	-26 329.670	2 761 329.290		R4	-26 347.900	2 761 473.300	
L5	-26 405.740	2 761 099.030		R5	-26 515.510	2 760 964.180	
L6	-26 496.820	2 760 822.410		R6	-26 676.240	2 760 587.770	
L7	-26 531.930	2 760 725.850		R7	-26 916.320	2 760 330.600	
L8	-26 574.880	2 760 638.230		R8	-27 069.620	2 760 193.930	
L9	-26 683.710	2 760 471.920		R9	-27 140.350	2 760 131.040	
L10	-26 753.400	2 760 395.120		R10	-27 277.430	2 760 008.730	
L11	-26 800.160	2 760 351.170		R11	-27 362.490	2 759 927.500	
L12	-27 012.010	2 760 162.510		R12	-27 429.900	2 759 851.990	
L13	-27 318.010	2 759 883.620		R13	-27 492.390	2 759 772.400	
L14	-27 383.310	2 759 811.660		R14	-27 549.810	2 759 688.770	
L15	-27 443.180	2 759 734.930		R15	-27 600.830	2 759 601.740	
L16	-27 497.270	2 759 655.260		R16	-27 646.390	2 759 510.650	
L17	-27 573.760	2 759 520.260		R17	-27 686.820	2 759 418.070	
L18	-27 683.610	2 759 311.100		R18	-27 718.830	2 759 321.640	
L19	-27 812.590	2 758 919.040		R19	-28 148.140	2 758 016.650	
L20	-27 966.590	2 758 450.740		R20	-28 402.170	2 757 244.480	
L21	-28 112.350	2 758 007.410		R21	-29 540.700	2 753 528.100	
L22	-28 274.440	2 757 513.920		R22	-29 556.130	2 753 477.740	
L23	-28 366.480	2 757 233.030		R23	-29 718.560	2 752 947.540	
L24	-28 404.800	2 757 109.630		R24	-29 700.480	2 752 940.960	
L25	-28 547.480	2 756 643.750		R25	-29 822.640	2 752 540.900	
L26	-28 697.960	2 756 153.520		R26	-29 878.680	2 752 358.630	
L27	-28 843.490	2 755 678.650		R27	-29 896.110	2 752 363.970	
L28	-28 988.220	2 755 206.900		R28	-30 042.020	2 751 889.170	
L29	-29 132.920	2 754 732.850		R29	-30 188.020	2 751 416.050	
L30	-29 277.920	2 754 260.500		R30	-30 332.930	2 750 940.250	
L31	-29 425.190	2 753 778.740		R31	-30 396.370	2 750 733.570	
L32	-29 475.880	2 753 613.890		R32	-30 561.090	2 750 195.240	
L33	-29 515.090	2 753 486.220		R33	-30 579.760	2 750 068.270	
L34	-29 583.840	2 753 251.200		R34	-30 559.920	2 749 940.680	
L35	-29 602.820	2 753 181.180		R35	-30 488.770	2 749 714.850	
L36	-29 718.690	2 752 712.140		R36	-30 503.830	2 749 545.710	
L37	-29 740.840	2 752 635.420		R37	-30 872.990	2 748 789.950	
L38	-29 790.640	2 752 483.940		R38	-30 920.290	2 748 671.630	
L39	-29 839.000	2 752 357.080		R39	-31 401.190	2 747 157.790	
L40	-29 917.570	2 752 150.450		R40	-31 368.170	2 747 147.200	
L41	-29 978.480	2 751 972.040		R41	-31 552.600	2 746 566.330	
L42	-30 006.640	2 751 880.870		R42	-31 585.860	2 746 576.640	
L43	-30 151.940	2 751 405.790		R43	-31 726.990	2 746 132.190	
L44	-30 297.850	2 750 929.340		R44	-31 893.190	2 745 607.930	
L45	-30 350.990	2 750 755.990		R45	-31 997.000	2 745 282.540	
L46	-30 466.110	2 750 378.060		R46	-32 138.380	2 744 837.250	
L47	-30 490.210	2 750 258.890		R47	-32 218.060	2 744 585.170	
L48	-30 493.200	2 750 019.540		R48	-32 386.740	2 744 055.000	
L49	-30 463.150	2 749 839.620		R49	-32 671.060	2 743 159.110	
L50	-30 443.410	2 749 688.500		R50	-32 673.230	2 743 152.280	
L51	-30 454.230	2 749 542.370		R51	-32 824.320	2 742 676.990	

Vel	8	Van	11	P704/08
Sheet		of		

PADRESERWE KOÖRDINATE				/	ROAD RESERVE CO-ORDINATES			
LINKERKANT/LEFT HAND SIDE					REGTERKANT/RIGHT HAND SIDE			
	Y	X	WG	29°	Y	X		
L52	-30 501.800	2 749 427.060		R52	-32 878.970	2 742 504.430		
L53	-30 623.380	2 749 181.120		R53	-32 895.330	2 742 380.990		
L54	-30 753.470	2 748 918.850		R54	-32 897.350	2 742 321.840		
L55	-30 864.150	2 748 693.880		R55	-32 873.410	2 742 227.560		
L56	-30 948.460	2 748 425.710		R56	-32 839.570	2 742 134.700		
L57	-31 078.320	2 747 990.400		R57	-32 658.720	2 741 764.110		
L58	-31 217.630	2 747 522.170		R58	-32 625.470	2 741 695.310		
L59	-31 220.290	2 747 486.720		R59	-32 544.040	2 741 526.780		
L60	-31 249.620	2 747 405.060		R60	-32 512.800	2 741 462.370		
L61	-31 363.270	2 747 022.790		R61	-32 497.900	2 741 298.720		
L62	-31 510.450	2 746 566.850		R62	-32 608.850	2 740 901.610		
L63	-31 661.160	2 746 119.790		R63	-32 575.100	2 740 892.190		
L64	-31 841.700	2 745 589.130		R64	-32 738.740	2 740 308.010		
L65	-31 950.270	2 745 269.590		R65	-32 782.950	2 740 149.820		
L66	-32 060.080	2 744 947.470		R66	-32 902.830	2 739 720.850		
L67	-32 101.410	2 744 818.900		R67	-32 936.480	2 739 600.670		
L68	-32 181.730	2 744 571.080		R68	-32 984.580	2 739 428.830		
L69	-32 350.160	2 744 042.690		R69	-33 017.840	2 739 438.130		
L70	-32 634.700	2 743 146.840		R70	-33 125.590	2 739 052.280		
L71	-32 635.220	2 743 145.220		R71	-33 179.080	2 738 859.770		
L72	-32 772.150	2 742 714.700		R72	-33 181.590	2 738 849.690		
L73	-32 818.240	2 742 568.740		R73	-33 209.580	2 738 703.030		
L74	-32 838.470	2 742 490.410		R74	-33 210.070	2 738 665.010		
L75	-32 847.650	2 742 413.560		R75	-33 211.530	2 738 554.750		
L76	-32 843.300	2 742 358.950		R76	-33 177.460	2 738 086.220		
L77	-32 838.560	2 742 303.610		R77	-33 035.460	2 736 173.010		
L78	-32 833.880	2 742 249.130		R78	-33 033.170	2 736 135.700		
L79	-32 811.190	2 742 172.380		R79	-33 008.300	2 735 800.090		
L80	-32 778.160	2 742 103.080		R80	-32 999.210	2 735 676.450		
L81	-32 592.180	2 741 732.070		R81	-33 027.240	2 735 382.180		
L82	-32 525.310	2 741 598.590		R82	-33 083.040	2 734 796.290		
L83	-32 516.750	2 741 571.680		R83	-33 147.820	2 734 112.940		
L84	-32 468.440	2 741 450.180		R84	-33 162.660	2 733 891.360		
L85	-32 452.410	2 741 369.340		R85	-33 154.750	2 733 775.650		
L86	-32 453.840	2 741 217.820		R86	-33 134.330	2 733 668.940		
L87	-32 468.970	2 741 129.820		R87	-33 029.240	2 733 185.920		
L88	-32 690.420	2 740 335.210		R88	-32 953.230	2 732 840.690		
L89	-32 744.110	2 740 143.660		R89	-32 828.940	2 732 281.760		
L90	-32 897.860	2 739 595.210		R90	-32 720.100	2 731 767.570		
L91	-33 053.030	2 739 041.980		R91	-32 699.360	2 731 669.740		
L92	-33 107.020	2 738 849.550		R92	-32 691.940	2 731 620.590		
L93	-33 148.490	2 738 684.190		R93	-32 686.840	2 731 551.640		
L94	-33 158.260	2 738 603.270		R94	-32 691.160	2 731 478.620		
L95	-33 163.570	2 738 525.830		R95	-32 707.720	2 731 385.860		
L96	-33 165.510	2 738 445.010		R96	-32 726.520	2 731 320.590		
L97	-33 138.310	2 738 080.560		R97	-32 783.500	2 731 201.230		
L98	-33 083.750	2 737 343.260		R98	-32 920.440	2 731 042.260		
L99	-33 066.560	2 737 108.710		R99	-32 992.030	2 730 984.740		
L100	-33 035.560	2 736 687.400		R100	-33 013.260	2 730 966.100		
L101	-33 031.210	2 736 631.120		R101	-33 180.200	2 730 895.980		
L102	-32 991.490	2 736 199.430		R102	-33 239.010	2 730 880.390		

Vel	9	Van	11	P704/08
Sheet		of		

PADRESERWE KOÖRDINATE				/	ROAD RESERVE CO-ORDINATES			
LINKERKANT/LEFT HAND SIDE					REGTERKANT/RIGHT HAND SIDE			
	Y	X	WG	29°	Y	X		
L103	-32 987.420	2 736	170.590	R103	-33 612.280	2 730	825.200	
L104	-32 978.230	2 736	098.320	R104	-33 617.500	2 730	824.770	
L105	-32 958.470	2 735	880.740	R105	-33 632.360	2 730	822.610	
L106	-32 954.970	2 735	759.500	R106	-33 637.800	2 730	821.510	
L107	-32 990.520	2 735	378.840	R107	-33 924.600	2 730	778.810	
L108	-33 044.700	2 734	806.790	R108	-34 063.640	2 730	748.820	
L109	-33 092.720	2 734	303.460	R109	-34 396.680	2 730	654.630	
L110	-33 121.660	2 733	998.860	R110	-34 883.320	2 730	516.770	
L111	-33 119.400	2 733	836.570	R111	-35 369.890	2 730	379.030	
L112	-33 110.230	2 733	756.280	R112	-35 837.750	2 730	246.590	
L113	-33 095.680	2 733	677.070	R113	-36 320.610	2 730	109.650	
L114	-32 991.060	2 733	194.170	R114	-36 772.220	2 729	981.720	
L115	-32 912.960	2 732	837.360	R115	-37 230.200	2 729	850.440	
L116	-32 905.040	2 732	797.440	R116	-37 305.500	2 729	828.030	
L117	-32 901.220	2 732	781.560	R117	-37 412.410	2 729	788.090	
L118	-32 889.380	2 732	729.130	R118	-37 578.540	2 729	708.230	
L119	-32 794.380	2 732	290.460	R119	-37 709.830	2 729	627.820	
L120	-32 682.100	2 731	774.530	R120	-37 808.680	2 729	554.440	
L121	-32 661.540	2 731	675.140	R121	-37 864.010	2 729	511.560	
L122	-32 653.410	2 731	601.490	R122	-37 925.300	2 729	455.390	
L123	-32 655.510	2 731	474.180	R123	-37 999.640	2 729	381.880	
L124	-32 671.400	2 731	382.930	R124	-38 025.920	2 729	351.320	
L125	-32 712.400	2 731	262.250	R125	-38 092.020	2 729	271.870	
L126	-32 759.420	2 731	166.180	R126	-38 192.640	2 729	137.090	
L127	-32 781.720	2 731	134.630	R127	-38 219.290	2 729	085.880	
L128	-32 843.730	2 731	060.540	R128	-38 239.934	2 729	047.732	
L129	-32 906.080	2 730	998.030	R129	-38 262.760	2 729	005.550	
L130	-32 982.960	2 730	944.540	R130	-38 293.840	2 728	946.240	
L131	-33 010.510	2 730	924.790	R131	-38 347.800	2 728	817.810	
L132	-33 124.140	2 730	874.670	R132	-38 417.090	2 728	581.410	
L133	-33 208.270	2 730	848.190	R133	-38 433.710	2 728	491.100	
L134	-33 631.840	2 730	786.720	R134	-38 445.670	2 728	398.530	
L135	-33 856.230	2 730	753.410	R135	-38 460.410	2 728	179.840	
L136	-34 299.600	2 730	644.640	R136	-38 466.350	2 728	132.020	
L137	-34 387.540	2 730	619.710	R137	-38 461.090	2 727	942.730	
L138	-34 875.560	2 730	481.050	R138	-38 469.810	2 727	941.760	
L139	-35 358.650	2 730	344.110	R139	-38 496.360	2 727	420.940	
L140	-35 826.560	2 730	211.140	R140	-38 495.370	2 727	366.740	
L141	-36 312.030	2 730	073.620	R141	-38 490.940	2 727	300.460	
L142	-36 764.090	2 729	946.280	R142	-38 483.480	2 727	242.700	
L143	-37 219.600	2 729	816.560	R143	-38 458.790	2 727	131.210	
L144	-37 284.730	2 729	796.470	R144	-38 409.390	2 726	976.610	
L145	-37 416.450	2 729	746.380	R145	-38 289.080	2 726	595.560	
L146	-37 468.830	2 729	722.970	R146	-38 191.040	2 726	281.700	
L147	-37 541.390	2 729	686.230	R147	-38 183.970	2 726	257.820	
L148	-37 605.790	2 729	650.300	R148	-38 102.510	2 726	001.910	
L149	-37 638.630	2 729	630.220	R149	-38 081.430	2 725	910.310	
L150	-37 707.770	2 729	584.940	R150	-38 075.260	2 725	837.110	
L151	-37 829.020	2 729	491.870	R151	-38 078.730	2 725	767.140	
L152	-37 895.640	2 729	430.720	R152	-38 087.460	2 725	708.120	
L153	-38 001.520	2 729	323.290	R153	-38 101.650	2 725	652.710	

Vel 10 Van 11
Sheet of

P704/08

PADRESERWE KOÖRDINATE				/	ROAD RESERVE CO-ORDINATES			
LINKERKANT/LEFT HAND SIDE					REGTERKANT/RIGHT HAND SIDE			
	Y	X	WG	29°	Y	X		
L154	-38 056.880	2 729 255.730		R154	-38 118.120	2 725 607.010		
L155	-38 104.900	2 729 192.520		R155	-38 161.540	2 725 520.440		
L156	-38 189.330	2 729 067.730		R156	-38 219.010	2 725 443.400		
L157	-38 211.442	2 729 025.867		R157	-38 245.900	2 725 412.880		
L158	-38 231.260	2 728 988.350		R158	-38 290.890	2 725 372.010		
L159	-38 252.800	2 728 935.300		R159	-38 698.420	2 725 049.330		
L160	-38 279.640	2 728 882.550		R160	-39 072.880	2 724 754.180		
L161	-38 310.740	2 728 809.050		R161	-39 401.280	2 724 492.770		
L162	-38 359.920	2 728 656.670		R162	-39 457.110	2 724 442.390		
L163	-38 379.140	2 728 577.460		R163	-39 484.670	2 724 410.830		
L164	-38 400.200	2 728 457.460		R164	-39 515.370	2 724 366.850		
L165	-38 409.070	2 728 379.450		R165	-39 536.880	2 724 328.160		
L166	-38 414.880	2 728 296.220		R166	-39 572.400	2 724 240.620		
L167	-38 423.250	2 728 110.130		R167	-39 589.180	2 724 152.230		
L168	-38 434.380	2 728 053.150		R168	-39 590.080	2 724 147.490		
L169	-38 444.510	2 727 932.990		R169	-39 590.080	2 724 054.050		
L170	-38 437.530	2 727 807.350		R170	-39 575.640	2 723 961.860		
L171	-38 455.040	2 727 455.470		R171	-39 580.820	2 723 953.270		
L172	-38 454.300	2 727 375.620		R172	-39 496.800	2 723 827.590		
L173	-38 448.170	2 727 263.230		R173	-39 459.210	2 723 780.300		
L174	-38 430.950	2 727 174.550		R174	-39 425.970	2 723 744.440		
L175	-38 421.400	2 727 144.370		R175	-39 362.720	2 723 691.080		
L176	-38 422.040	2 727 140.280						
L177	-38 419.760	2 727 139.060						
L178	-38 392.010	2 727 050.370						
L179	-38 248.760	2 726 593.930						
L180	-38 158.130	2 726 309.110						
L181	-38 151.030	2 726 285.550						
L182	-38 066.030	2 726 014.160						
L183	-38 050.740	2 725 955.020						
L184	-38 041.260	2 725 894.010						
L185	-38 037.520	2 725 832.910						
L186	-38 043.370	2 725 709.420						
L187	-38 111.400	2 725 526.770						
L188	-38 183.260	2 725 425.810						
L189	-38 238.310	2 725 368.030						
L190	-38 268.750	2 725 340.990						
L191	-38 675.220	2 725 019.440						
L192	-39 049.880	2 724 723.290						
L193	-39 204.920	2 724 601.210						
L194	-39 375.250	2 724 466.120						
L195	-39 419.330	2 724 426.020						
L196	-39 448.790	2 724 394.940						
L197	-39 497.020	2 724 322.170						
L198	-39 516.720	2 724 283.830						
L199	-39 537.290	2 724 218.980		L205	-39 527.770	2 723 929.030		
L200	-39 553.390	2 724 134.690		L206	-39 487.030	2 723 846.900		
L201	-39 552.110	2 724 077.510		L207	-39 459.720	2 723 809.950		
L202	-39 551.110	2 724 043.530		L208	-39 407.660	2 723 748.450		
L203	-39 556.490	2 724 038.510		L209	-39 371.580	2 723 715.440		
L204	-39 545.300	2 723 975.490		L210	-39 370.710	2 723 713.990		
				Vel	11	Van	11	
				Sheet		of		
							P704/08	