

# Government Gazette Staatskoerant

REPUBLIC OF SOUTH AFRICA  
REPUBLIEK VAN SUID-AFRIKA

Vol. 525

Pretoria, 2 March  
Maart 2009

No. 31943

**CONTENTS****INHOUD**

<i>No.</i>	<i>Page No.</i>	<i>Gazette No.</i>	<i>No.</i>	<i>Bladsy No.</i>	<i>Koerant No.</i>
<b>GOVERNMENT NOTICE</b>			<b>GOEWERMENTSKENNISGEWING</b>		
<b>Transport, Department of</b>			<b>Vervoer, Departement van</b>		
<i>Government Notice</i>			<i>Goewermentskennisgewing</i>		
191			191		
South African National Roads Agency Limited and the National Roads Act (7/1998): The South African National Roads Agency Limited: Declaration amendment of National Road R61 Section 1: Amendment of Declaration No. 545 of 2003 .....	3	31943	Suid-Afrikaanse Nasionale Padagentskap Beperk en die Nasionale Paaie Wet (7/1998): Die Suid-Afrikaanse Nasionale Padagentskap Beperk: Verklaring wysiging van Nasionale Pad R61 Seksie 1: Wysiging van Verklaring No. 545 van 2003 .....	4	31943

---

**GOVERNMENT NOTICE**

---

**DEPARTMENT OF TRANSPORT****No. 191****2 March 2009****THE SOUTH AFRICAN NATIONAL ROADS  
AGENCY LIMITED**Registration No: 98/09584/06

---

**DECLARATION AMENDMENT OF NATIONAL ROAD R61 SECTION 1**

AMENDMENT OF DECLARATION NO. 545 OF 2003

By virtue of section 40 (1)(b) of the South African National Roads Agency Limited and the National Roads Act, 1998 (Act No. 7 of 1998), I hereby amend Declaration No. 545 of 2003, by substituting it, with the subjoined sheets 1 to 21 of Plan No. P695/08.

(National Road R61 Section 1: Western Cape/Eastern Cape Provincial Border – Aberdeen )

  
MINISTER OF TRANSPORT

---

## GOEWERMENSKENNISGEWING

---

### DEPARTEMENT VAN VERVOER

No. 191

2 Maart 2009

## DIE SUID-AFRIKAANSE NASIONALE PADAGENTSKAP BEPERK

Registrasie No: 98/09584/06

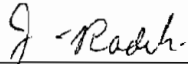
---

### VERKLARING WYSIGING VAN NASIONALE PAD R61 SEKSIE 1

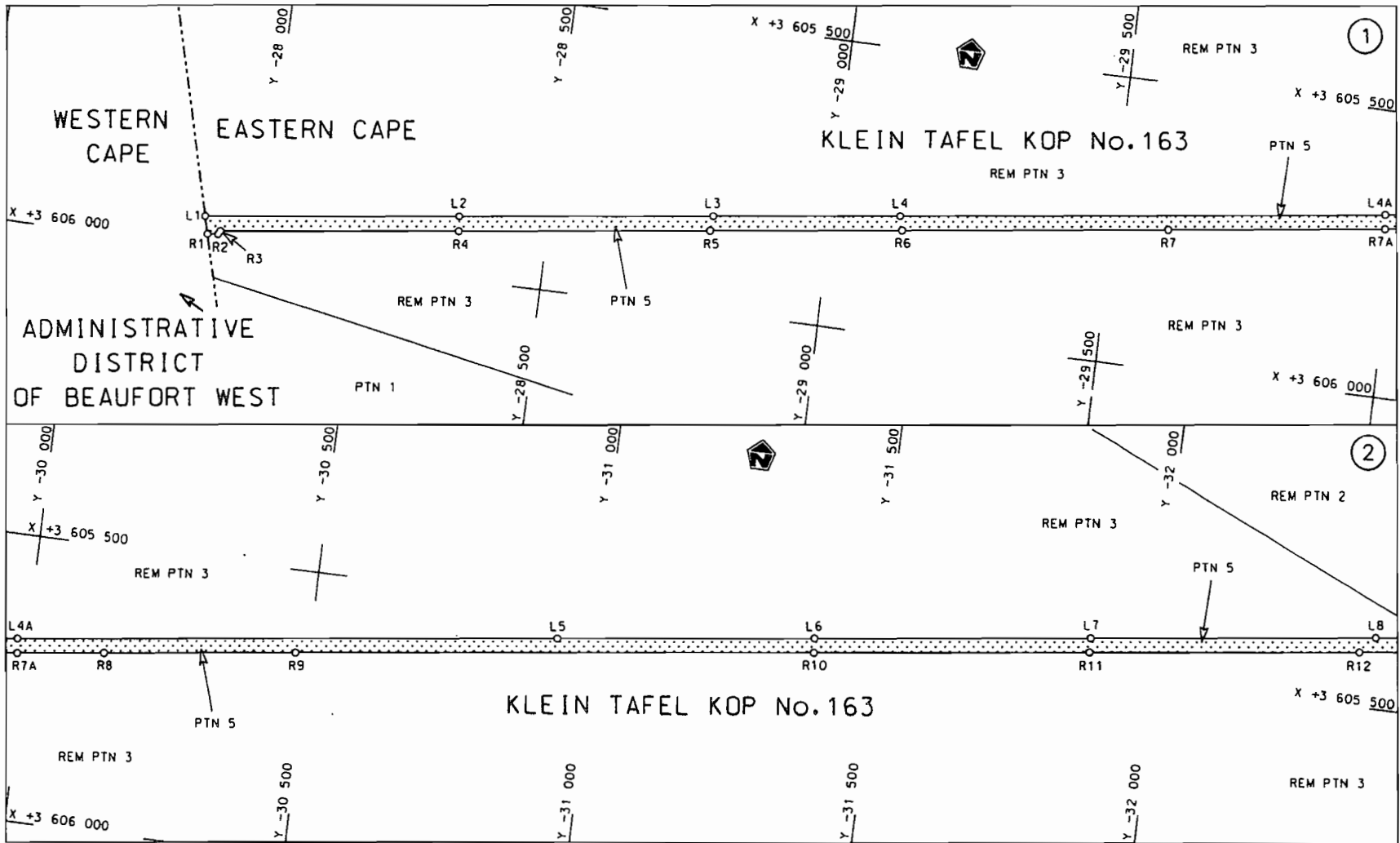
WYSIGING VAN VERKLARING NO. 545 VAN 2003

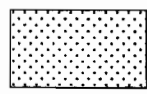
Kragtens Artikel 40(1)(b) van die Suid-Afrikaanse Nasionale Padagentskap Beperk en die Nasionale Paaie Wet, 1998 (Wet No.7 van 1998), wysig ek hiermee Verklaring no. 545 van 2003, deur dit, te vervang met meegaande velle 1 tot 21 van Plan no. P695/08.

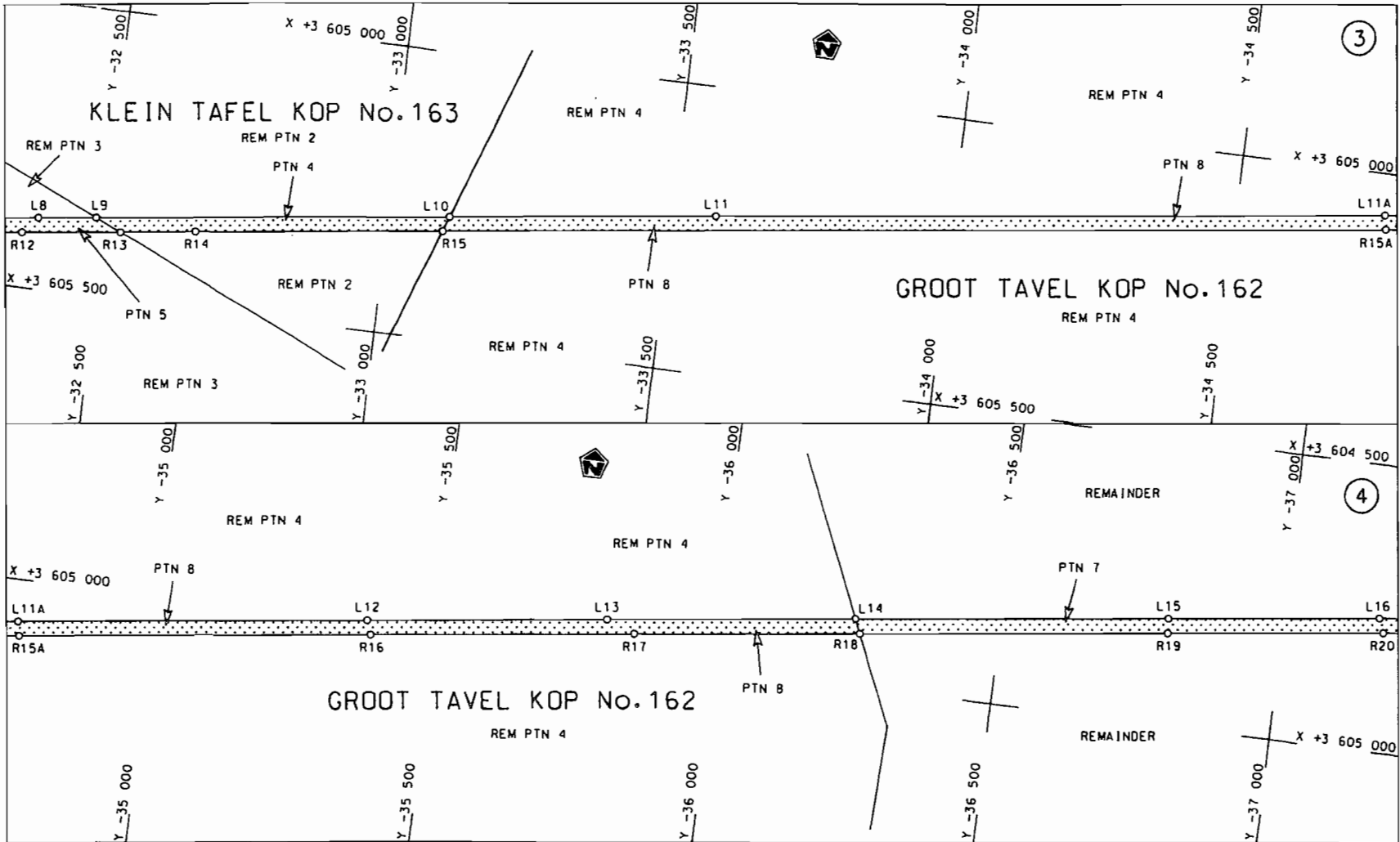
(Nasionale Pad R61 Seksie 1: Wes Kaap/Oos Kaap Provinsiale Grens – Aberdeen)



MINISTER VAN VERVOER

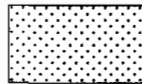


Die Suid Afrikaanse Nasionale Padagentskap Beperk The South African National Roads Agency Limited	Die figuur getoon The figure shown		steldie padreserwe voor van 'n gedeelte represents the road reserve of a portion van Nasionale Roete R61 Seksie of National Route R61 Section 1	Vel Sheet 1 van of 21
				Plan P695/08



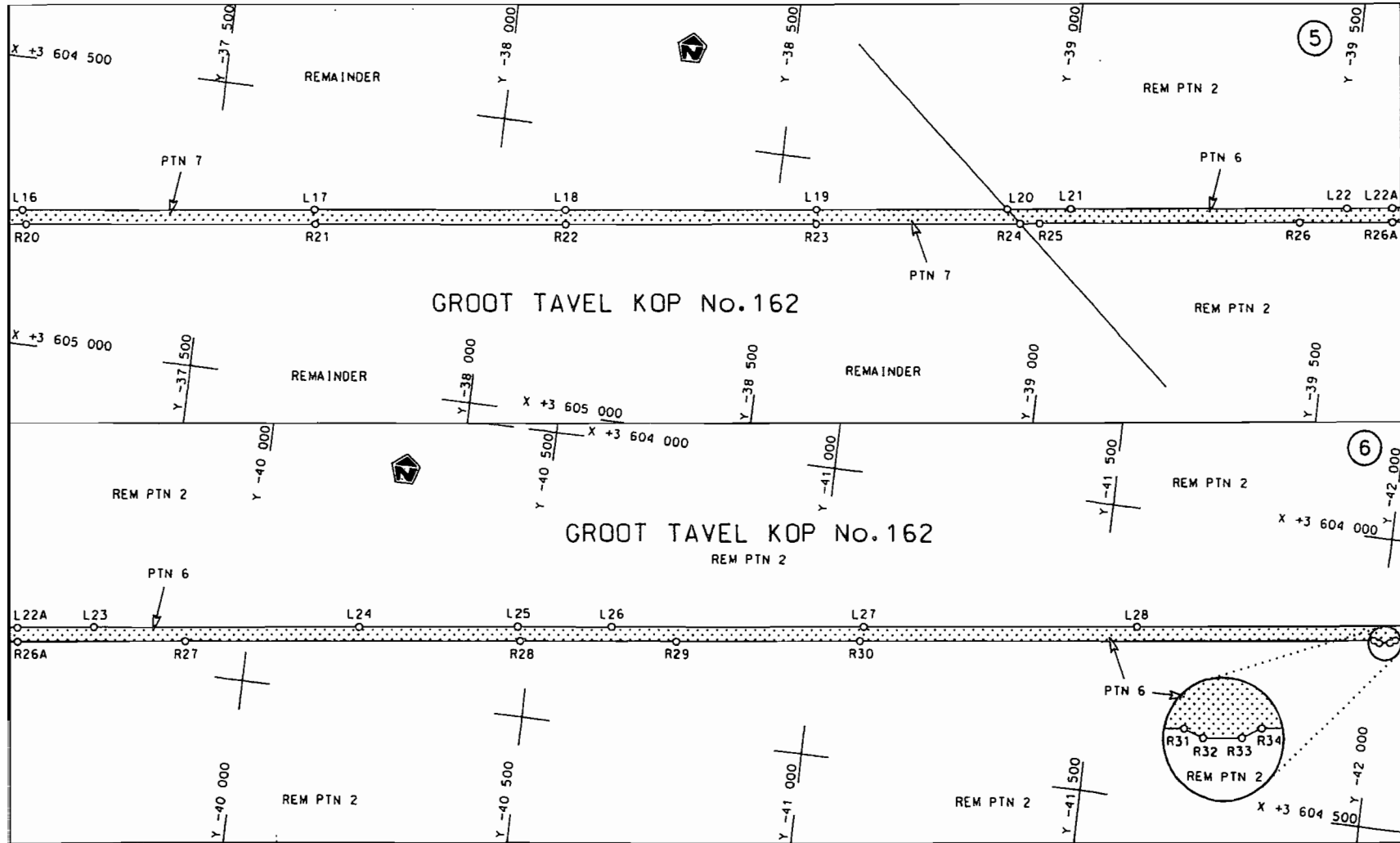
Die Suid Afrikaanse Nasionale Padagentskop Beperk  
The South African National Roads Agency Limited

Die figuur getoon  
The figure shown



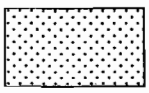
steldie podreserve voor van 'n gedeelte  
represents the road reserve of a portion  
van Nasionale Roete R61 Sektie 1  
of National Route R61 Section 1

Vel  
Sheet 2 von  
of 21  
Plan P695/08



Die Suid Afrikaanse Nasionale Padagentskap Beperk  
The South African National Roads Agency Limited

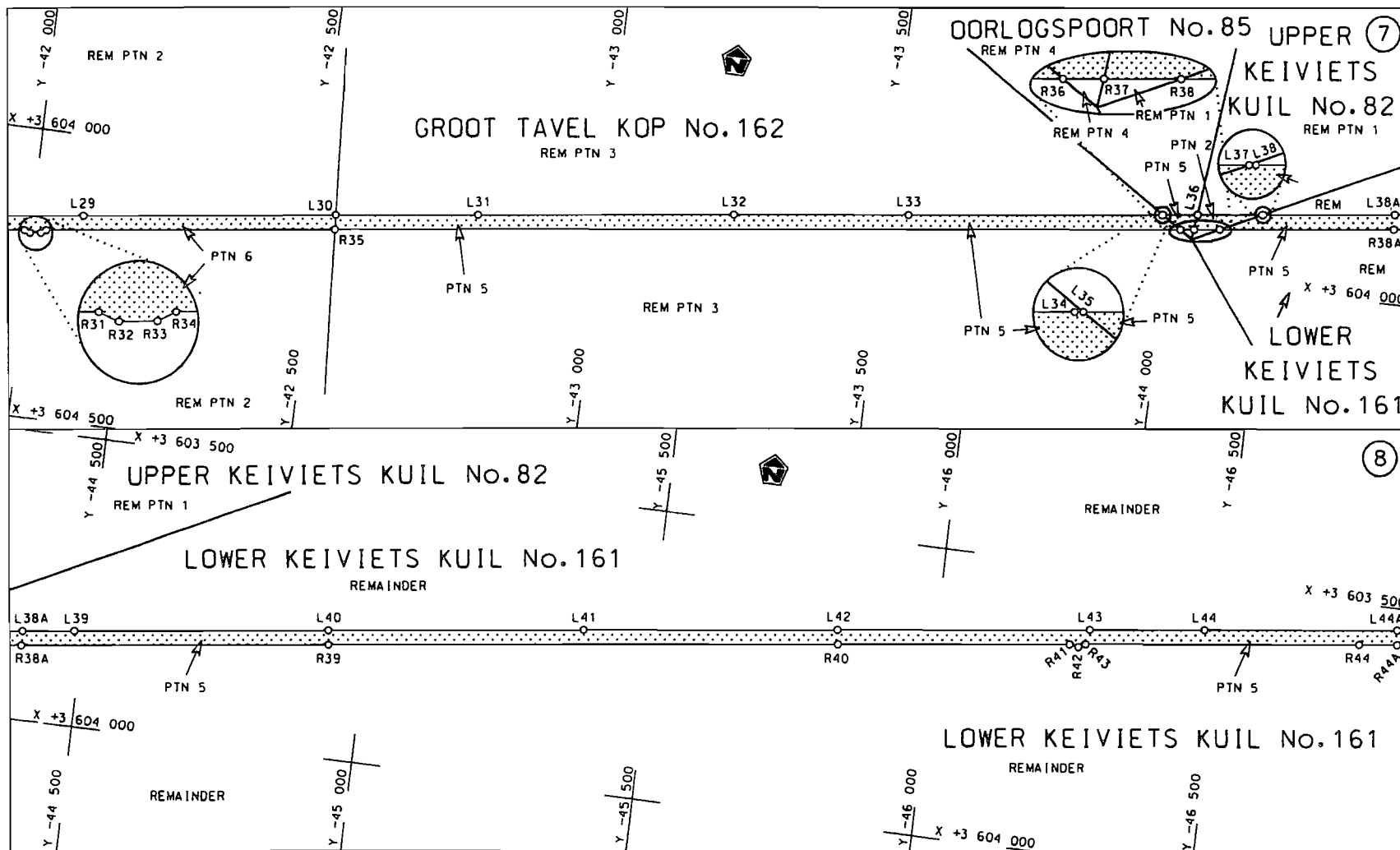
Die figuur getoon  
The figure shown

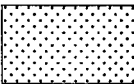


steldie padreserwe voor van 'n gedeelte  
represents the road reserve of a portion  
van Nasionale Roete R61 Sektie  
of National Route R61 Section

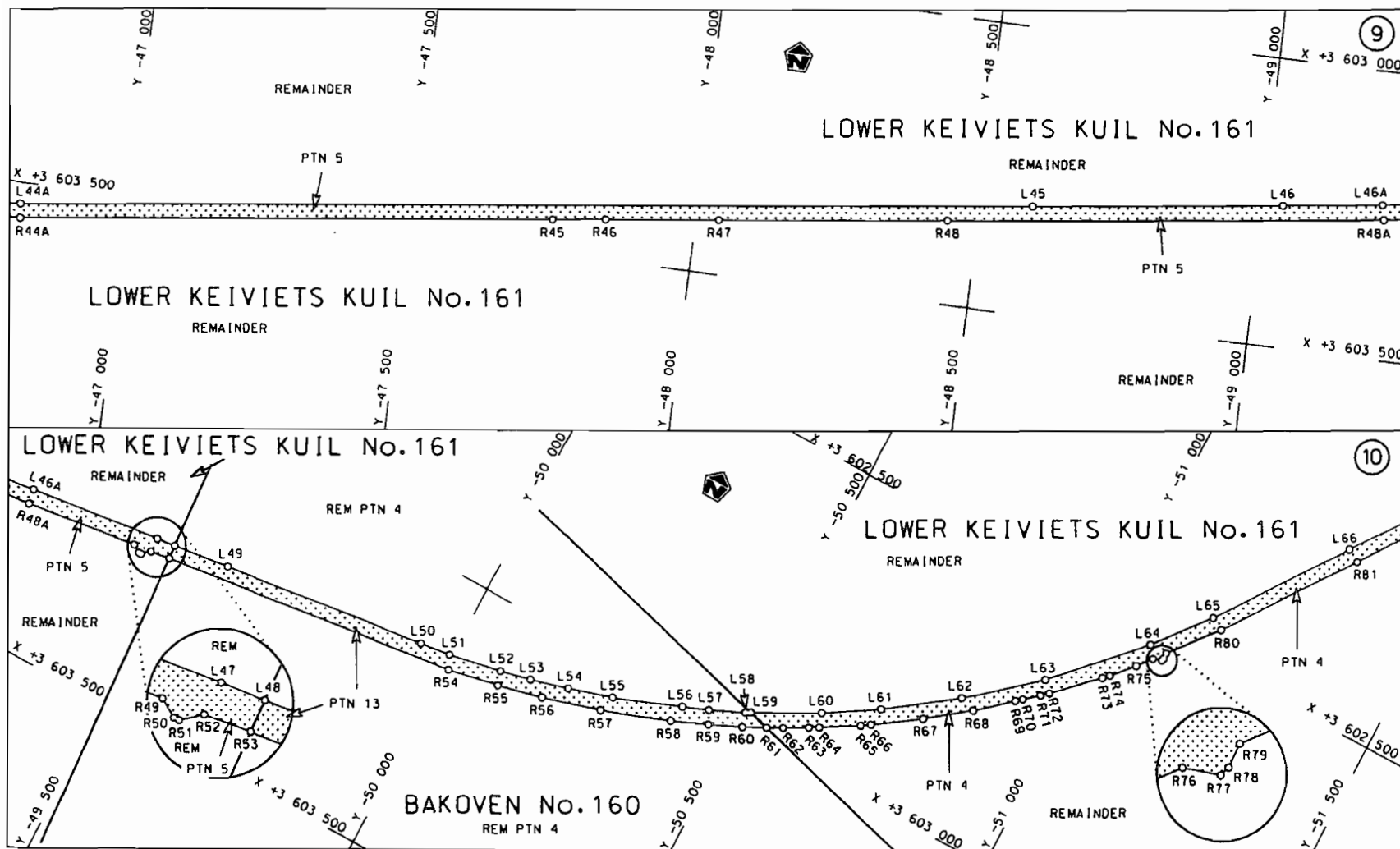
1


Vel Sheet 3 van of 21  
Plan P695/08

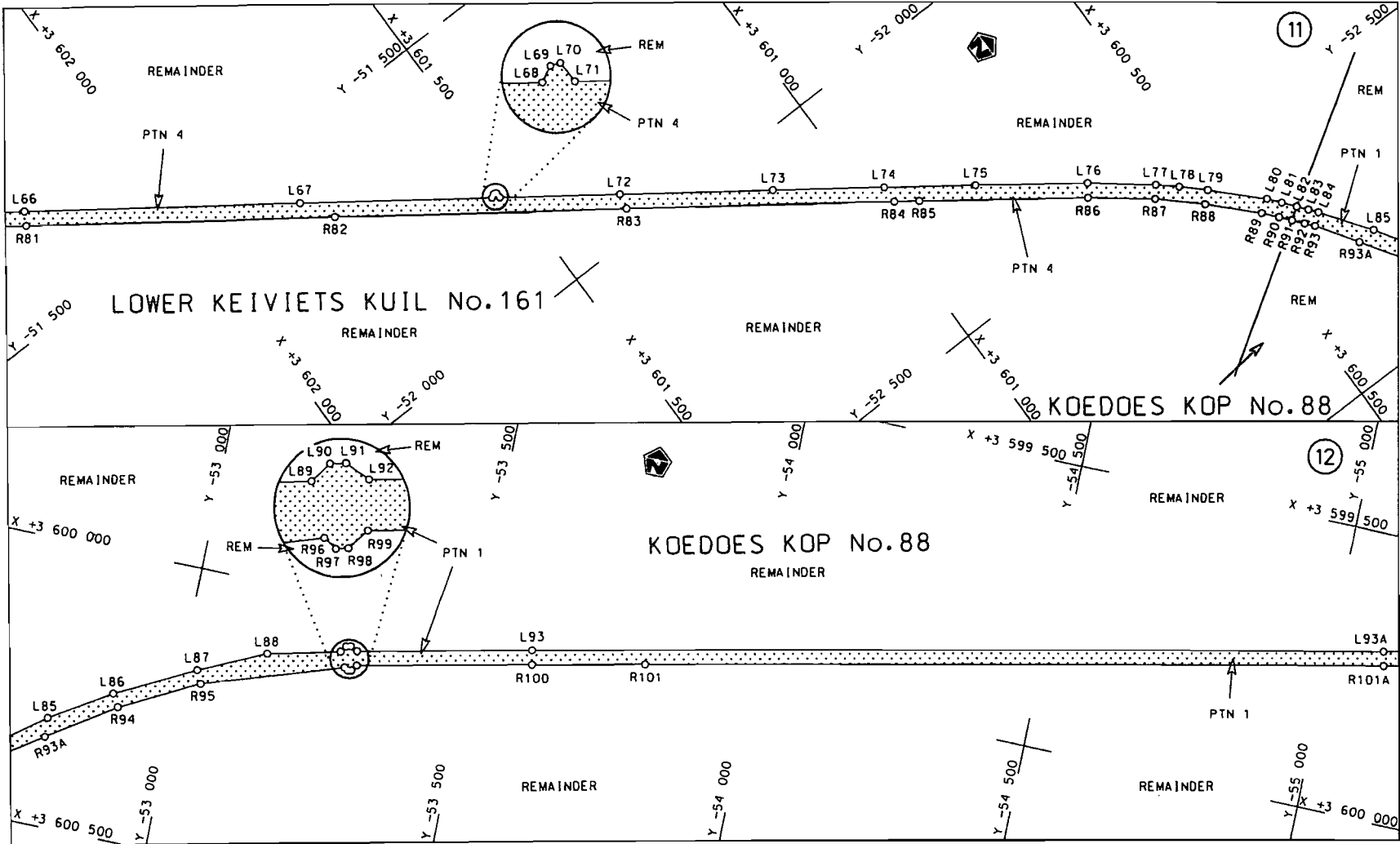


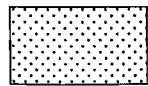
<p>Die Suid Afrikaanse Nasionale Podagentskap Beperk The South African National Roads Agency Limited</p>	<p>Die figuur getoon The figure shown</p>		<p>steldie podreserwe voor van 'n gedeelte represents the road reserve of a portion van Nasionale Roete R61 Seksie of National Route Section 1</p>	<p>Vel Sheet 4 van 21 Plan P695/08</p>
--	---	--	--	--

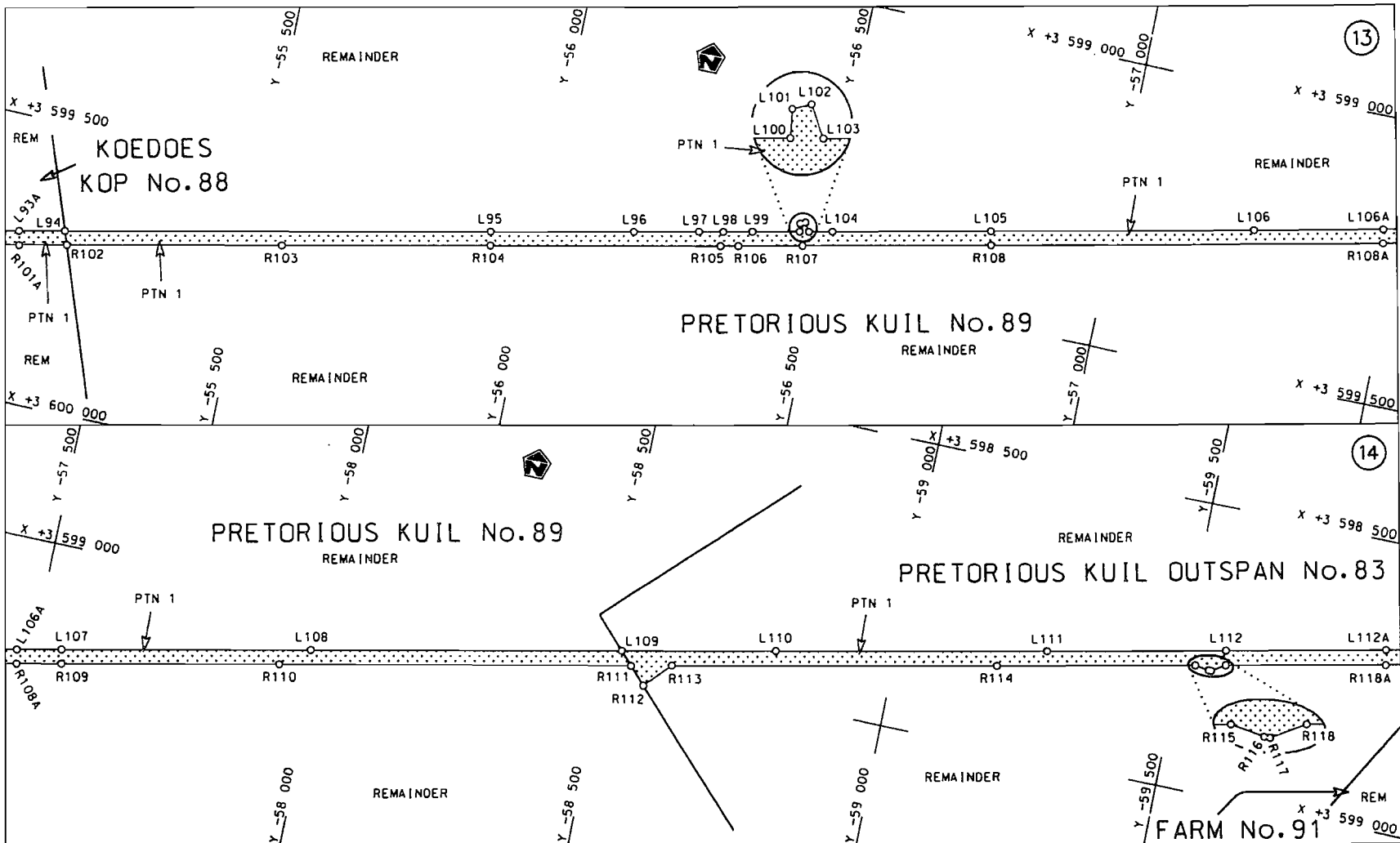




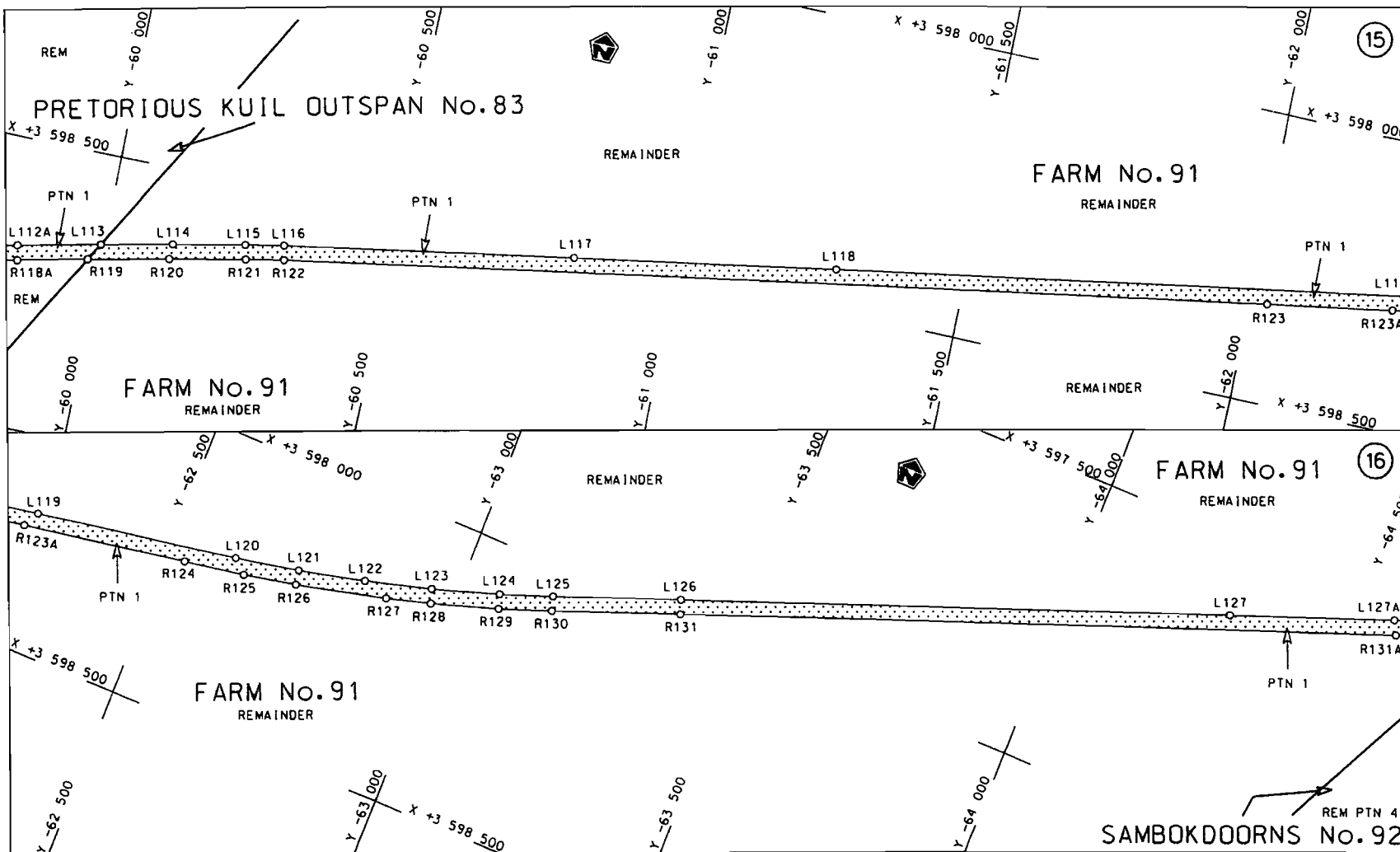
<p>Die Suid Afrikaanse Nasionale Padagentskap Beperk The South African National Roads Agency Limited</p>	<p>Die figuur getoon The figure shown</p>		<p>steldie padreserve voor van 'n gedeelte represents the road reserve of a portion van Nasionale Roete R61 Seksie of National Route Section 1</p>	<p>Vel Sheet 5 van of 21 Plan P695/08</p>
--	---	--	--	---



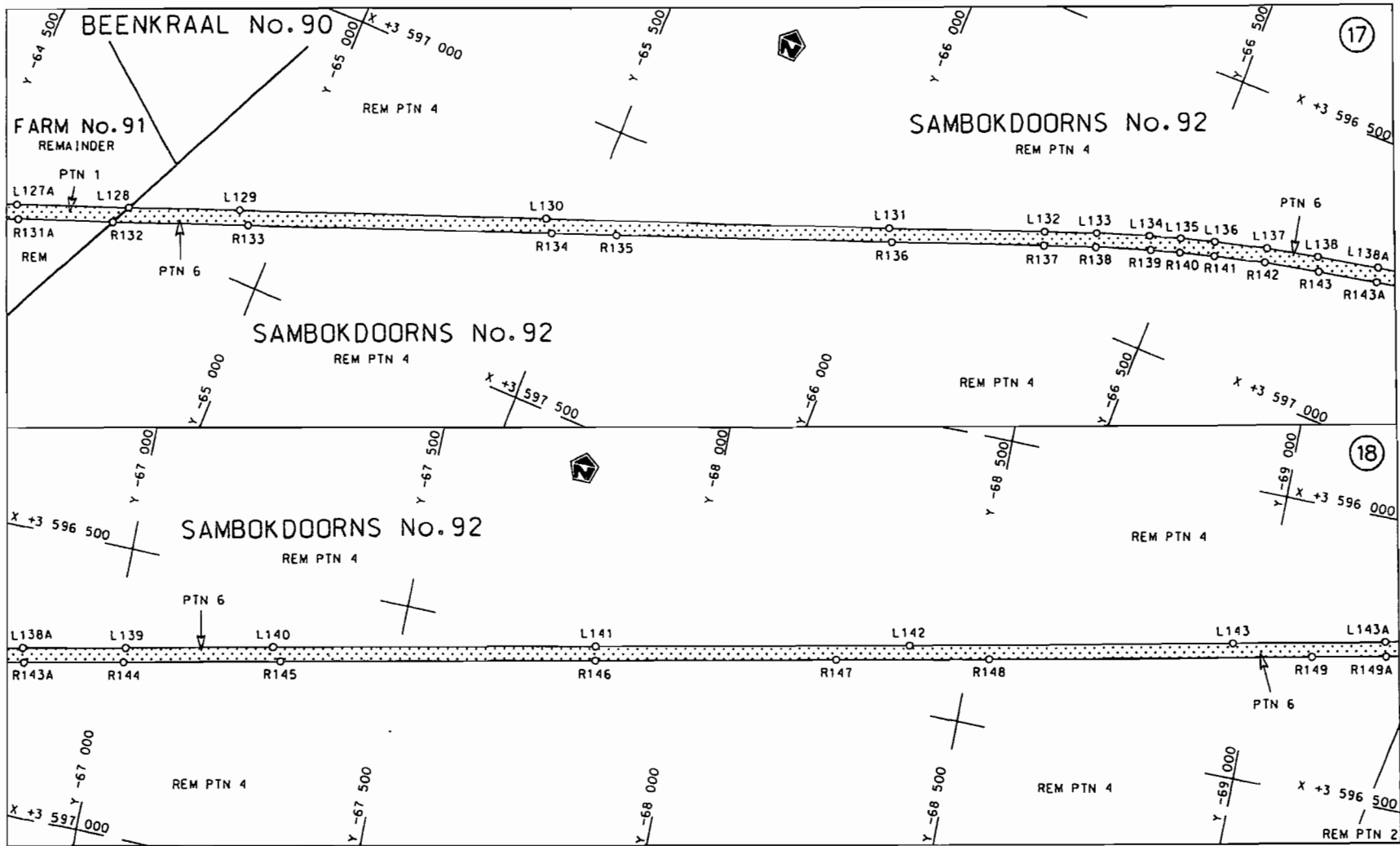
<p>Die Suid Afrikaanse Nasionale Padagentskap Beperk The South African National Roads Agency Limited</p>	<p>Die figuur getoon The figure shown</p> 	<p>steldie padreserwe voor van 'n gedeelte represents the road reserve of a portion van Nasionale Roete R61 of National Route R61</p> <p>Seksie 1 Section 1</p>	<p>Vel 6 van 21 Sheet 6 of 21</p> <p>Plan P695/08</p>
--	--	---	---




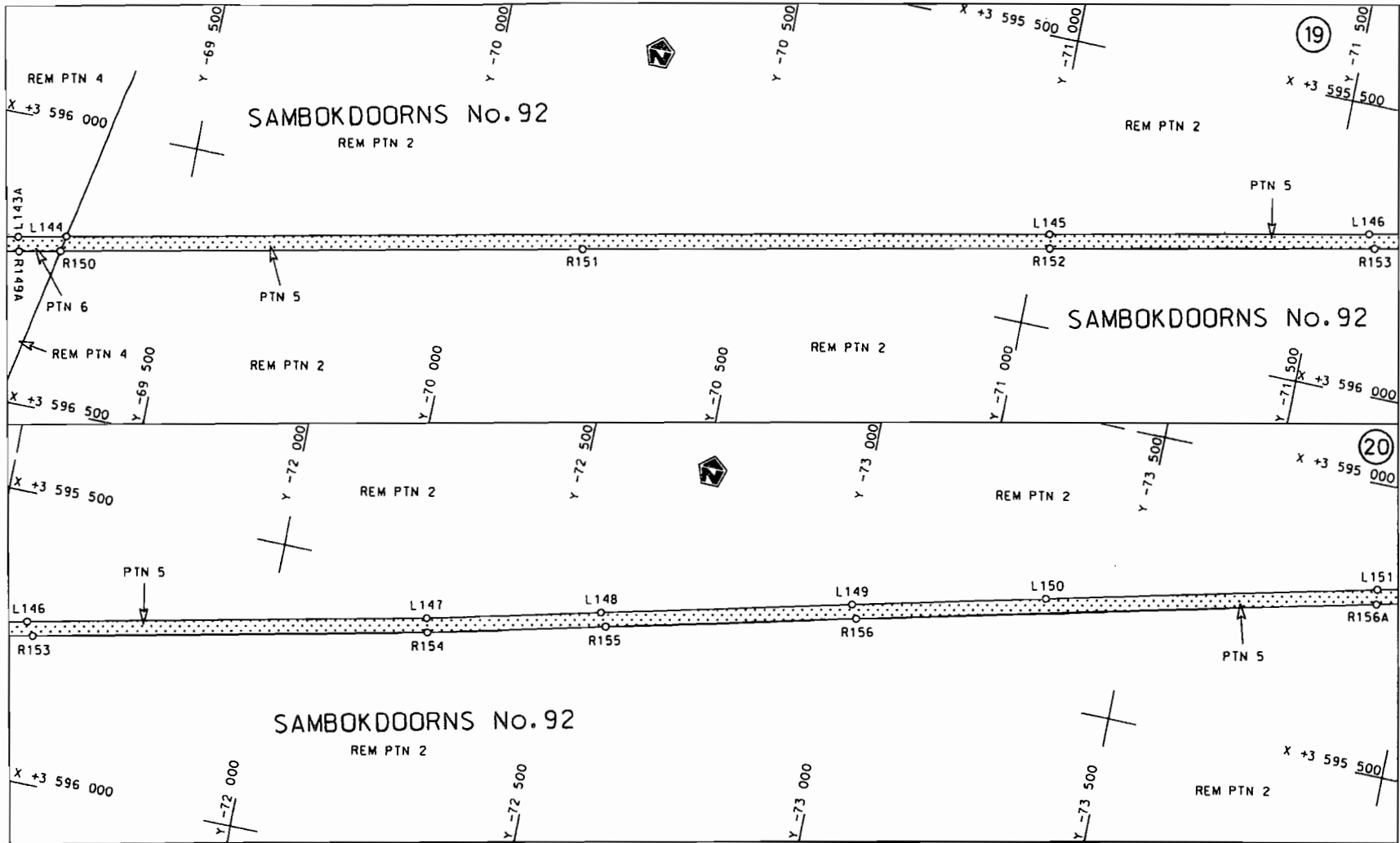
<p>Die Suid Afrikaanse Nasionale Padagentskop Beperk The South African National Roads Agency Limited</p>	<p>Die figuur getoon The figure shown</p>		<p>stel die padreserwe voor van 'n gedeelte represents the road reserve of a portion van Nasionale Roete R61 Seksie of National Route Section 1</p>	<p>Vel Sheet 7 van 21 of of Plan P695/08</p>
--	---	--	---	--

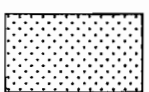


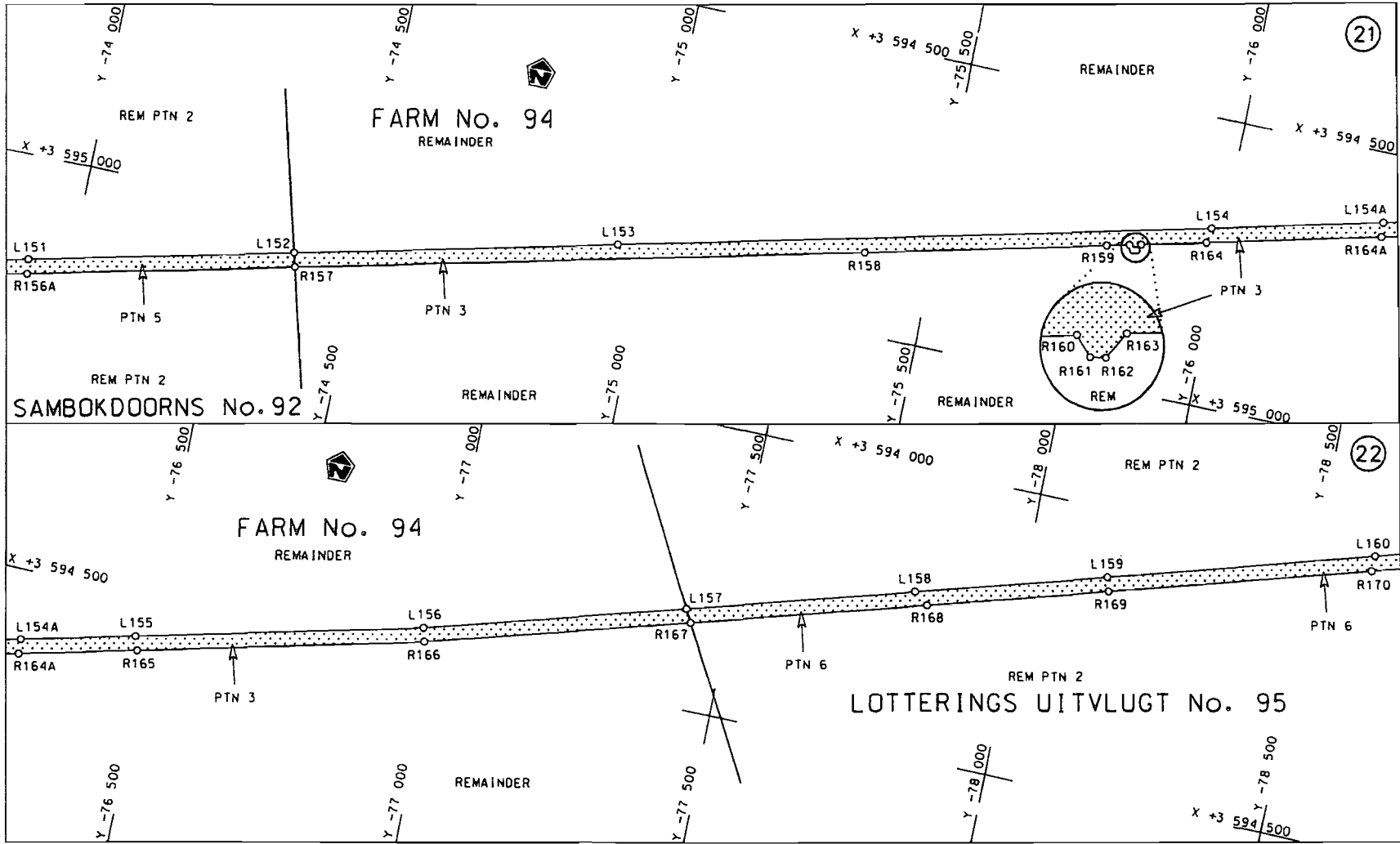
<p>Die Suid Afrikaanse Nasionale Padagentskop Beperk The South African National Roads Agency Limited</p>	<p>Die figuur getoon The figure shown</p>		<p>steldie padreserwe voor van 'n gedeelte represents the road reserve of a portion van Nasionale Roete R61 Seksie of National Route Section</p>	<p>Vel Sheet 8 van 21 of of Plan P695/08</p>
--	---	--	--	--

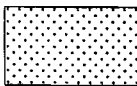


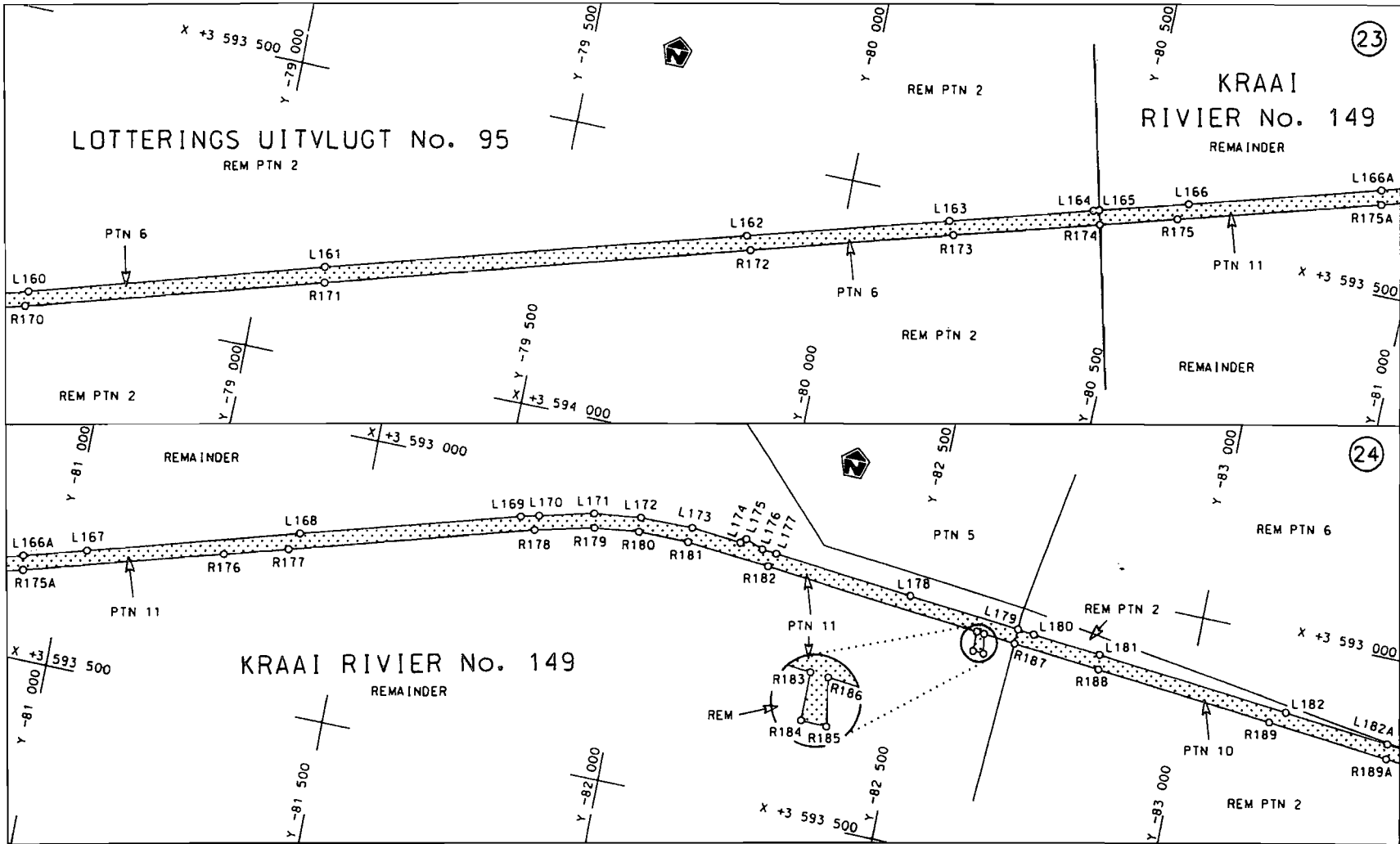
<p>Die Suid Afrikaanse Nasionale Padagentskap Beperk The South African National Roads Agency Limited</p>	<p>Die figuur getoon The figure shown</p>		<p>stel die padreserwe voor van 'n gedeelte represents the road reserve of a portion van Nasionale Roete R61 Seksie 1 of National Route Section</p>	<p>Vel Sheet 9 van of 21 Plan P695/08</p>
--	---	--	---	---

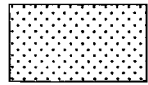


<p>Die Suid Afrikaanse Nasionale Padagentskop Beperk The South African National Roads Agency Limited</p>	<p>Die figuur getoon The figure shown</p>		<p>steldie padreserwe voor van 'n gedeelte represents the road reserve of a portion van Nasionale Roete R61 Sektie of National Route R61 Section</p>	<p>Vel Sheet 10 van 21 of 21 Plan P695/08</p>
--	---	--	--	---

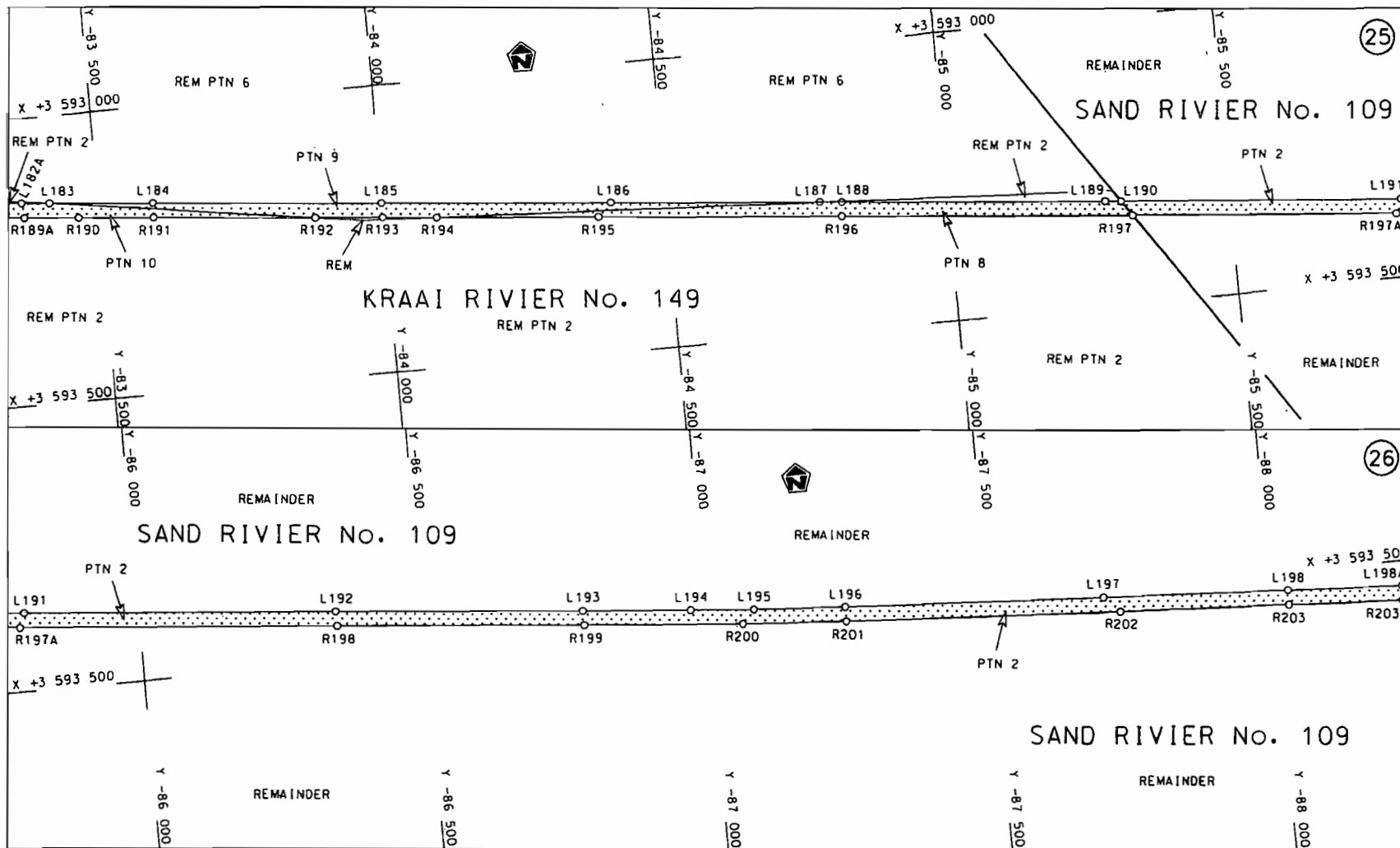



Die Suid Afrikaanse Nasionale Padogenskap Beperk	Die figuur getoon		steldie padreserwe voor van 'n gedeelte	Vel Sheet 11 van of 21
The South African National Roads Agency Limited	The figure shown		represents the road reserve of a portion van Nasionale Roete R61 Seksie 1 of National Route Section	Plan P695/08

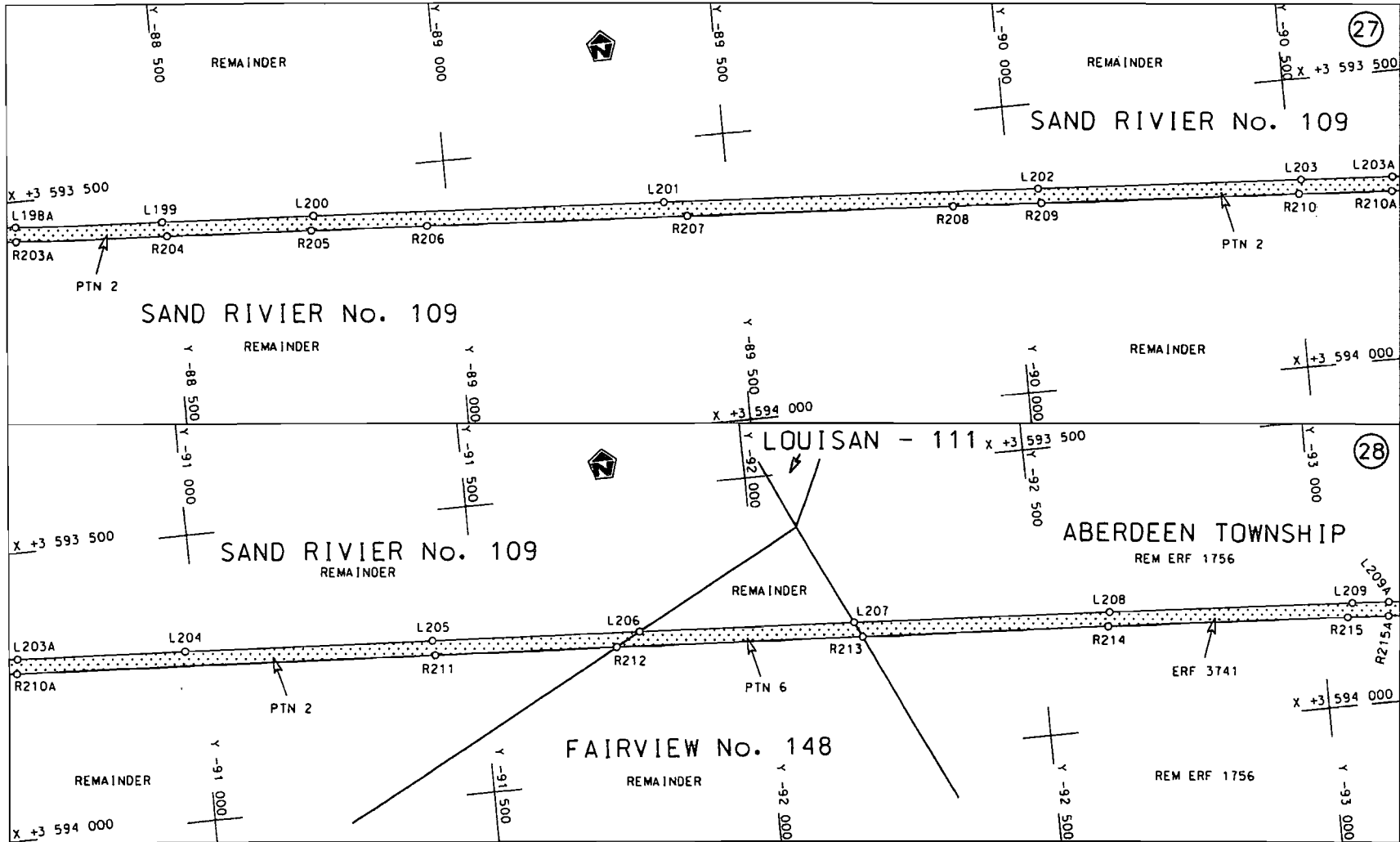


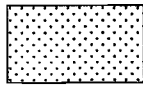
<p>Die Suid Afrikaanse Nasionale Padagentskop Beperk The South African National Roads Agency Limited</p>	<p>Die figuur getoon The figure shown</p> 	<p>steldie padreserve voor van 'n gedeelte represents the road reserve of a portion van Nasionale Roete R61 of National Route R61</p> <p>Seksie 1 Section 1</p>	<p>Vel 12 van 21 Sheet 12 of 21</p> <p>Plan P695/08</p>
--	--	---	---

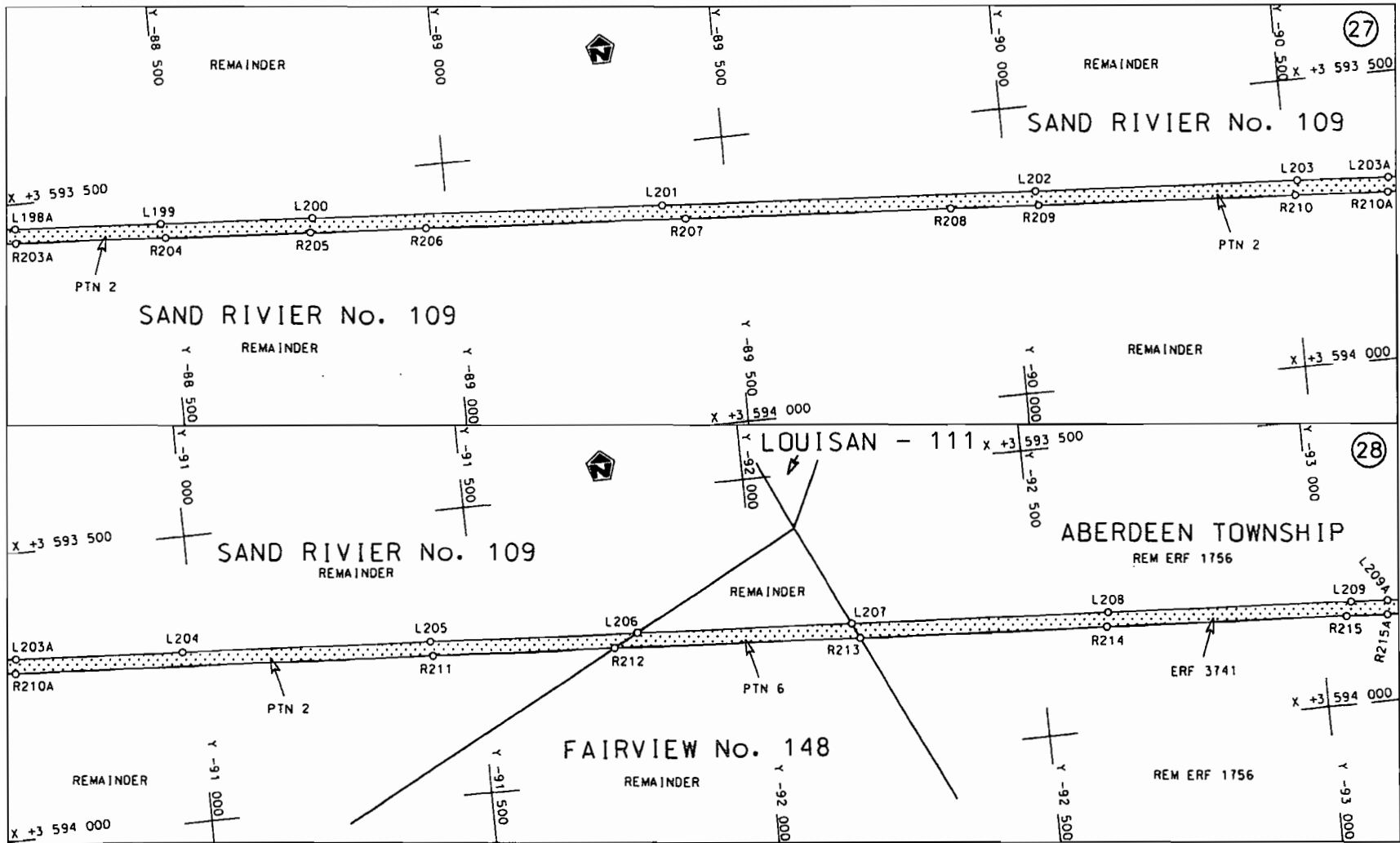




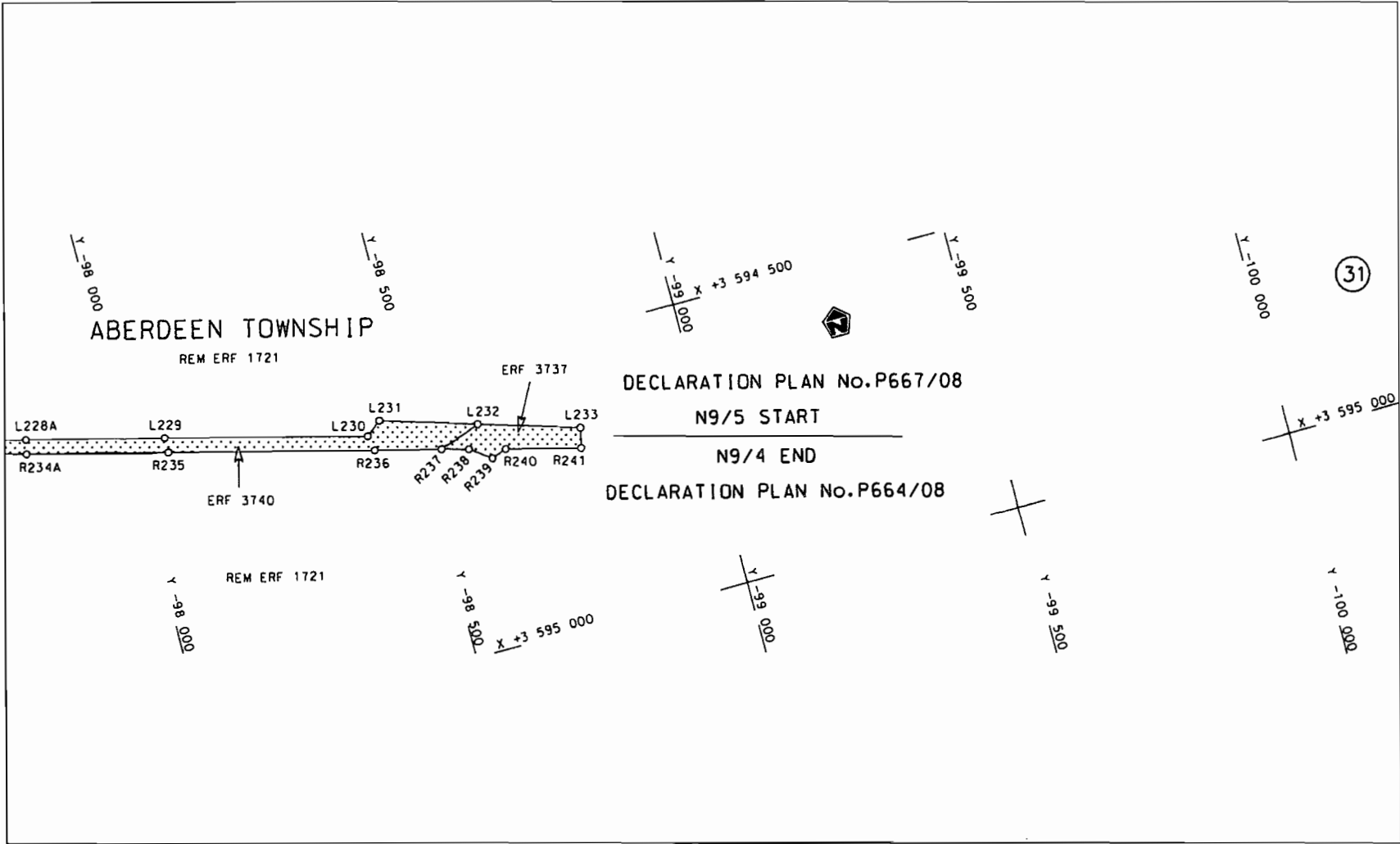
<p>Die Suid Afrikaanse Nasionale Padagentskop Beperk The South African National Roads Agency Limited</p>	<p>Die figuur getoon The figure shown</p> 	<p>steldie padreserwe voor van 'n gedeelte represents the road reserve of a portion van Nasionale Roete of National Route R61 Seksie Section 1</p>	<p>Vel Sheet 13 van of 21 Plan P695/08</p>
--	--	--	--




<p>Die Suid Afrikaanse Nasionale Padagentskap Beperk The South African National Roads Agency Limited</p>	<p>Die figuur getoon The figure shown</p>		<p>stiedie padreserwe voor van 'n gedeelte represents the road reserve of a portion van Nasionale Roete R61 Seksie of National Route R61 Section 1</p>	<p>Vel Sheet 14 van 21 Plan P695/08</p>
--	---	--	--	---



<p>Die Suid Afrikaanse Nasionale Padogentskap Beperk The South African National Roads Agency Limited</p>	<p>Die figuur getoon The figure shown</p>	<p>stel die padreserwe voor van 'n gedeelte represents the road reserve of a portion van Nasionale Roete R61 of National Route</p> <p>Seksie 1 Section</p>	<p>Vel Sheet 14 van 21 of Plan P695/08</p>
--	---	--	--



<p>Die Suid Afrikaanse Nasionale Padagentskap Beperk The South African National Roads Agency Limited</p>	<p>Die figuur getoon The figure shown</p>		<p>steldie padreserwe voor van 'n gedeelte represents the road reserve of a portion von Nasionale Roete R61 Sektie of National Route Section 1</p>	<p>Vel Sheet 16 van of 21 Plan P695/08</p>
--	---	--	--	--

PADRESERWE KOÖRDINATE / ROAD RESERVE CO-ORDINATES											
LINKERKANT/LEFT HAND SIDE					REGTERKANT/RIGHT HAND SIDE						
	Y		X	WG 23°		Y		X			
L1	-27	893.700	3	605	948.310	R1	-27	901.550	3	605	977.910
L2	-28	340.790	3	605	891.370	R2	-27	920.250	3	605	976.190
L3	-28	791.130	3	605	834.090	R3	-27	923.750	3	605	969.950
L4	-29	122.600	3	605	791.760	R4	-28	343.270	3	605	916.670
L5	-30	935.150	3	605	560.800	R5	-28	788.910	3	605	859.640
L6	-31	390.800	3	605	502.670	R6	-29	129.150	3	605	816.390
L7	-31	879.080	3	605	440.510	R7	-29	601.330	3	605	756.140
L8	-32	384.100	3	605	375.870	R8	-30	137.750	3	605	687.810
L9	-32	485.670	3	605	362.960	R9	-30	476.580	3	605	644.500
L10	-33	108.630	3	605	283.780	R10	-31	392.660	3	605	527.900
L11	-33	578.380	3	605	223.930	R11	-31	879.840	3	605	465.840
L12	-35	379.800	3	604	994.550	R12	-32	357.980	3	605	404.820
L13	-35	803.110	3	604	940.580	R13	-32	530.900	3	605	382.840
L14	-36	243.240	3	604	884.220	R14	-32	664.070	3	605	365.920
L15	-36	795.930	3	604	813.960	R15	-33	098.900	3	605	310.460
L16	-37	169.820	3	604	766.380	R16	-35	388.620	3	605	018.690
L17	-37	684.500	3	604	700.760	R17	-35	854.250	3	604	959.530
L18	-38	128.110	3	604	644.280	R18	-36	253.890	3	604	908.440
L19	-38	571.980	3	604	587.720	R19	-36	797.530	3	604	839.240
L20	-38	909.330	3	604	544.690	R20	-37	179.720	3	604	790.690
L21	-39	021.870	3	604	530.330	R21	-37	689.340	3	604	725.730
L22	-39	510.590	3	604	468.060	R22	-38	131.670	3	604	669.270
L23	-39	725.890	3	604	440.740	R23	-38	574.930	3	604	612.760
L24	-40	193.870	3	604	381.180	R24	-38	935.380	3	604	566.860
L25	-40	473.530	3	604	345.400	R25	-38	970.330	3	604	562.410
L26	-40	639.600	3	604	324.100	R26	-39	430.300	3	604	503.710
L27	-41	084.840	3	604	267.410	R27	-39	890.260	3	604	445.200
L28	-41	568.650	3	604	205.660	R28	-40	480.720	3	604	369.890
L29	-42	088.790	3	604	139.500	R29	-40	755.760	3	604	334.850
L30	-42	532.630	3	604	082.980	R30	-41	080.920	3	604	293.310
L31	-42	780.780	3	604	051.420	R31	-41	989.110	3	604	177.520
L32	-43	230.380	3	603	993.890	R32	-41	999.210	3	604	180.950
L33	-43	537.950	3	603	954.910	R33	-42	018.110	3	604	178.410
L34	-43	983.820	3	603	897.920	R34	-42	027.080	3	604	172.680
L35	-43	985.660	3	603	897.680	R35	-42	534.110	3	604	108.160
L36	-44	046.090	3	603	890.010	R36	-44	019.110	3	603	918.970
L37	-44	160.670	3	603	875.370	R37	-44	043.130	3	603	915.910
L38	-44	162.620	3	603	875.120	R38	-44	088.660	3	603	910.110
L39	-44	484.800	3	603	834.220	R39	-44	934.750	3	603	802.260
L40	-44	931.570	3	603	777.330	R40	-45	830.000	3	603	688.380
L41	-45	378.400	3	603	720.320	R41	-46	237.660	3	603	636.370
L42	-45	826.070	3	603	663.370	R42	-46	253.580	3	603	639.200
L43	-46	269.790	3	603	606.850	R43	-46	265.540	3	603	632.790
L44	-46	471.590	3	603	581.100	R44	-46	747.710	3	603	571.290
L45	-48	594.960	3	603	310.550	R45	-47	748.610	3	603	443.830
L46	-49	036.260	3	603	254.210	R46	-47	841.760	3	603	431.890
L47	-49	445.420	3	603	202.080	R47	-48	041.400	3	603	406.420
L48	-49	478.800	3	603	197.870	R48	-48	447.070	3	603	354.760
L49	-49	579.170	3	603	185.150	R49	-49	413.820	3	603	231.510
L50	-49	941.820	3	603	138.740	R50	-49	427.230	3	603	239.500
L51	-49	995.890	3	603	131.800	R51	-49	431.610	3	603	239.360

PADRESERWE KOÖRDINATE / ROAD RESERVE CO-ORDINATES					
LINKERKANT/LEFT HAND SIDE			REGTERKANT/RIGHT HAND SIDE		
	Y	X	WG 23°		X
L52	-50 092.769	3 603	113.181	R52	-49 445.400 3 603 227.440
L53	-50 142.050	3 603	100.780	R53	-49 480.480 3 603 222.090
L54	-50 207.840	3 603	082.760	R54	-50 006.650 3 603 155.860
L55	-50 284.430	3 603	059.000	R55	-50 096.320 3 603 137.640
L56	-50 399.990	3 603	013.950	R56	-50 175.150 3 603 118.330
L57	-50 443.740	3 602	996.820	R57	-50 275.780 3 603 089.200
L58	-50 504.888	3 602	970.346	R58	-50 393.460 3 603 045.300
L59	-50 511.011	3 602	970.377	R59	-50 454.820 3 603 019.230
L60	-50 623.010	3 602	905.170	R60	-50 509.690 3 602 993.330
L61	-50 711.650	3 602	848.720	R61	-50 547.640 3 602 974.250
L62	-50 828.890	3 602	763.830	R62	-50 573.610 3 602 970.694
L63	-50 943.780	3 602	665.170	R63	-50 614.200 3 602 938.160
L64	-51 077.940	3 602	523.330	R64	-50 630.710 3 602 928.900
L65	-51 155.480	3 602	429.560	R65	-50 693.120 3 602 890.840
L66	-51 312.150	3 602	210.720	R66	-50 708.410 3 602 880.710
L67	-51 597.810	3 601	811.640	R67	-50 785.530 3 602 827.920
L68	-51 797.080	3 601	533.510	R68	-50 856.920 3 602 773.240
L69	-51 793.870	3 601	526.920	R69	-50 915.190 3 602 722.730
L70	-51 795.390	3 601	522.870	R70	-50 925.420 3 602 713.850
L71	-51 804.960	3 601	522.540	R71	-50 949.490 3 602 692.960
L72	-51 929.610	3 601	348.510	R72	-50 961.330 3 602 682.770
L73	-52 087.957	3 601	130.106	R73	-51 029.860 3 602 614.990
L74	-52 204.780	3 600	964.340	R74	-51 039.600 3 602 605.390
L75	-52 299.310	3 600	831.990	R75	-51 073.470 3 602 568.350
L76	-52 414.750	3 600	670.870	R76	-51 093.860 3 602 543.520
L77	-52 489.740	3 600	575.980	R77	-51 109.220 3 602 538.540
L78	-52 517.300	3 600	544.740	R78	-51 110.570 3 602 534.350
L79	-52 552.490	3 600	507.280	R79	-51 110.080 3 602 523.700
L80	-52 628.510	3 600	431.350	R80	-51 177.600 3 602 441.260
L81	-52 649.750	3 600	414.170	R81	-51 334.040 3 602 223.350
L82	-52 671.175	3 600	396.839	R82	-51 665.137 3 601 775.663
L83	-52 687.540	3 600	383.600	R83	-51 956.400 3 601 354.080
L84	-52 701.650	3 600	372.190	R84	-52 235.340 3 600 964.520
L85	-52 784.620	3 600	311.580	R85	-52 261.170 3 600 928.500
L86	-52 889.250	3 600	246.030	R86	-52 435.610 3 600 685.680
L87	-53 027.690	3 600	175.660	R87	-52 508.650 3 600 591.690
L88	-53 143.940	3 600	122.330	R88	-52 569.430 3 600 525.690
L89	-53 272.610	3 600	091.930	R89	-52 642.310 3 600 453.720
L90	-53 280.010	3 600	081.380	R90	-52 666.760 3 600 433.130
L91	-53 287.650	3 600	079.540	R91	-52 684.852 3 600 417.900
L92	-53 300.200	3 600	085.280	R92	-52 702.450 3 600 403.090
L93	-53 604.560	3 600	020.040	R93	-52 716.650 3 600 391.130
L94	-55 173.040	3 599	685.040	R94	-52 902.250 3 600 267.550
L95	-55 913.260	3 599	526.940	R95	-53 038.380 3 600 198.370
L96	-56 163.790	3 599	473.890	R96	-53 284.500 3 600 117.510
L97	-56 276.650	3 599	449.520	R97	-53 291.230 3 600 121.660
L98	-56 318.890	3 599	440.880	R98	-53 297.110 3 600 120.090
L99	-56 375.388	3 599	430.155	R99	-53 304.610 3 600 109.710
L100	-56 452.640	3 599	412.260	R100	-53 609.450 3 600 044.620
L101	-56 450.730	3 599	398.290	R101	-53 807.020 3 600 002.540
L102	-56 459.860	3 599	394.030	R102	-55 181.550 3 599 708.820

Vel 18 Van 21  
Sheet of

P695/08

PADRESERWE KOÖRDINATE / ROAD RESERVE CO-ORDINATES					
LINKERKANT/LEFT HAND SIDE			REGTERKANT/RIGHT HAND SIDE		
	Y	X	WG 23°	Y	X
L103	-56 469.010	3 599 408.960	R103	-55 555.930	3 599 628.910
L104	-56 509.950	3 599 400.090	R104	-55 917.910	3 599 551.530
L105	-56 786.420	3 599 340.860	R105	-56 318.930	3 599 466.710
L106	-57 247.060	3 599 242.240	R106	-56 350.000	3 599 460.280
L107	-57 549.720	3 599 177.760	R107	-56 462.780	3 599 435.810
L108	-57 982.630	3 599 085.800	R108	-56 791.930	3 599 365.220
L109	-58 523.980	3 598 970.320	R109	-57 554.660	3 599 202.180
L110	-58 789.990	3 598 913.060	R110	-57 943.231	3 599 121.976
L111	-59 262.510	3 598 812.240	R111	-58 545.510	3 598 992.380
L112	-59 575.040	3 598 745.580	R112	-58 573.970	3 599 021.520
L113	-59 994.730	3 598 655.880	R113	-58 615.670	3 598 976.270
L114	-60 119.170	3 598 629.490	R114	-59 180.690	3 598 855.660
L115	-60 244.990	3 598 604.350	R115	-59 527.060	3 598 781.660
L116	-60 311.780	3 598 591.910	R116	-59 551.810	3 598 785.330
L117	-60 817.330	3 598 506.260	R117	-59 556.310	3 598 785.190
L118	-61 273.630	3 598 429.330	R118	-59 579.730	3 598 770.530
L119	-62 263.570	3 598 263.010	R119	-59 977.380	3 598 685.480
L120	-62 614.970	3 598 203.660	R120	-60 118.100	3 598 655.510
L121	-62 726.200	3 598 181.700	R121	-60 250.720	3 598 628.700
L122	-62 840.890	3 598 154.600	R122	-60 316.550	3 598 616.180
L123	-62 955.370	3 598 122.800	R123	-62 030.660	3 598 327.600
L124	-63 070.090	3 598 086.020	R124	-62 533.530	3 598 243.140
L125	-63 158.290	3 598 054.210	R125	-62 647.201	3 598 225.541
L126	-63 369.920	3 597 973.860	R126	-62 730.450	3 598 206.680
L127	-64 278.790	3 597 628.510	R127	-62 886.420	3 598 168.600
L128	-64 736.870	3 597 453.550	R128	-62 963.230	3 598 146.760
L129	-64 922.600	3 597 383.270	R129	-63 077.790	3 598 110.130
L130	-65 433.160	3 597 189.800	R130	-63 165.810	3 598 078.190
L131	-66 008.400	3 596 971.310	R131	-63 378.440	3 597 997.500
L132	-66 268.100	3 596 872.580	R132	-64 720.100	3 597 487.590
L133	-66 355.030	3 596 839.890	R133	-64 946.480	3 597 401.250
L134	-66 446.030	3 596 808.970	R134	-65 452.000	3 597 209.400
L135	-66 498.900	3 596 792.490	R135	-65 560.280	3 597 168.370
L136	-66 557.150	3 596 775.530	R136	-66 021.770	3 596 993.030
L137	-66 647.470	3 596 751.680	R137	-66 275.830	3 596 896.420
L138	-66 737.580	3 596 731.320	R138	-66 362.660	3 596 863.900
L139	-67 022.520	3 596 671.790	R139	-66 456.950	3 596 831.650
L140	-67 280.680	3 596 617.940	R140	-66 506.500	3 596 816.300
L141	-67 842.770	3 596 500.940	R141	-66 565.340	3 596 799.190
L142	-68 391.210	3 596 386.920	R142	-66 653.170	3 596 776.130
L143	-68 954.220	3 596 269.560	R143	-66 748.620	3 596 754.630
L144	-69 303.330	3 596 196.900	R144	-67 023.920	3 596 697.040
L145	-71 019.080	3 595 839.560	R145	-67 297.780	3 596 639.980
L146	-71 576.170	3 595 722.410	R146	-67 847.310	3 596 525.350
L147	-72 271.240	3 595 575.390	R147	-68 267.570	3 596 437.950
L148	-72 574.170	3 595 503.370	R148	-68 534.710	3 596 382.460
L149	-73 011.950	3 595 399.110	R149	-69 097.320	3 596 265.300
L150	-73 348.760	3 595 318.750	R150	-69 298.110	3 596 223.540
L151	-73 925.540	3 595 180.940	R151	-70 208.160	3 596 034.370
L152	-74 385.800	3 595 071.450	R152	-71 024.290	3 595 864.040
L153	-74 945.290	3 594 937.980	R153	-71 590.660	3 595 745.110

Vel	19	Van	21	P695/08
Sheet		of		

PADRESERWE KOÖRDINATE / ROAD RESERVE CO-ORDINATES							
LINKERKANT/LEFT HAND SIDE				REGTERKANT/RIGHT HAND SIDE			
	Y	X	WG 23°		Y	X	
L154	-75	978.640	3 594 691.680	R154	-72	277.030	3 595 599.720
L155	-76	473.730	3 594 573.530	R155	-72	587.090	3 595 526.150
L156	-76	971.270	3 594 454.020	R156	-73	024.060	3 595 422.150
L157	-77	421.520	3 594 324.690	R157	-74	392.270	3 595 095.600
L158	-77	813.990	3 594 212.100	R158	-75	379.620	3 594 860.160
L159	-78	144.510	3 594 117.740	R159	-75	800.130	3 594 760.130
L160	-78	604.490	3 593 985.990	R160	-75	840.100	3 594 750.680
L161	-79	111.070	3 593 838.350	R161	-75	847.240	3 594 758.320
L162	-79	833.780	3 593 632.740	R162	-75	853.750	3 594 757.230
L163	-80	181.550	3 593 533.260	R163	-75	860.370	3 594 745.800
L164	-80	437.740	3 593 459.710	R164	-75	974.390	3 594 718.480
L165	-80	438.770	3 593 459.420	R165	-76	481.770	3 594 597.490
L166	-80	592.010	3 593 416.010	R166	-76	977.420	3 594 478.040
L167	-81	031.590	3 593 290.010	R167	-77	434.020	3 594 346.770
L168	-81	395.550	3 593 185.460	R168	-77	839.900	3 594 230.910
L169	-81	774.240	3 593 077.090	R169	-78	151.270	3 594 141.820
L170	-81	806.050	3 593 069.150	R170	-78	603.730	3 594 012.140
L171	-81	901.980	3 593 045.250	R171	-79	116.220	3 593 865.640
L172	-81	985.090	3 593 035.490	R172	-79	845.120	3 593 655.540
L173	-82	077.230	3 593 034.670	R173	-80	193.410	3 593 555.780
L174	-82	166.160	3 593 042.260	R174	-80	444.800	3 593 483.950
L175	-82	174.990	3 593 034.170	R175	-80	577.920	3 593 445.870
L176	-82	206.400	3 593 045.740	R176	-81	269.390	3 593 247.850
L177	-82	232.070	3 593 048.150	R177	-81	380.860	3 593 216.040
L178	-82	481.750	3 593 070.240	R178	-81	803.100	3 593 095.220
L179	-82	682.120	3 593 087.880	R179	-81	907.080	3 593 070.010
L180	-82	711.210	3 593 090.530	R180	-81	986.240	3 593 060.610
L181	-82	832.180	3 593 101.340	R181	-82	074.600	3 593 060.010
L182	-83	178.380	3 593 132.000	R182	-82	222.150	3 593 072.690
L183	-83	415.070	3 593 153.020	R183	-82	610.020	3 593 107.060
L184	-83	596.410	3 593 169.120	R184	-82	609.980	3 593 141.650
L185	-83	998.240	3 593 204.540	R185	-82	628.890	3 593 142.260
L186	-84	403.210	3 593 240.390	R186	-82	623.430	3 593 108.040
L187	-84	773.600	3 593 273.230	R187	-82	680.430	3 593 113.160
L188	-84	812.820	3 593 276.710	R188	-82	835.190	3 593 127.080
L189	-85	277.960	3 593 317.640	R189	-83	152.170	3 593 154.970
L190	-85	306.350	3 593 320.170	R190	-83	463.670	3 593 182.720
L191	-85	801.070	3 593 364.170	R191	-83	595.740	3 593 194.400
L192	-86	348.680	3 593 412.550	R192	-83	881.460	3 593 219.580
L193	-86	783.010	3 593 451.160	R193	-83	998.370	3 593 229.880
L194	-86	972.700	3 593 466.720	R194	-84	094.100	3 593 238.350
L195	-87	085.220	3 593 475.930	R195	-84	379.290	3 593 263.580
L196	-87	247.260	3 593 486.580	R196	-84	810.740	3 593 301.840
L197	-87	702.780	3 593 512.810	R197	-85	324.900	3 593 347.160
L198	-88	029.550	3 593 531.790	R198	-86	349.140	3 593 437.880
L199	-88	490.520	3 593 558.380	R199	-86	783.520	3 593 476.250
L200	-88	760.020	3 593 573.890	R200	-87	063.630	3 593 499.380
L201	-89	383.500	3 593 609.960	R201	-87	247.050	3 593 511.710
L202	-90	050.680	3 593 648.440	R202	-87	730.680	3 593 539.610
L203	-90	517.900	3 593 675.540	R203	-88	028.930	3 593 556.740
L204	-90	977.320	3 593 701.990	R204	-88	496.750	3 593 583.840



PADRESERWE KOÖRDINATE / ROAD RESERVE CO-ORDINATES						
LINKERKANT/LEFT HAND SIDE				REGTERKANT/RIGHT HAND SIDE		
	Y	X	WG 23°		Y	X
L205	-91 417.880	3 593	727.390	R205	-88 753.830	3 593 598.880
L206	-91 785.680	3 593	748.730	R206	-88 960.000	3 593 610.570
L207	-92 168.250	3 593	770.730	R207	-89 422.740	3 593 637.190
L208	-92 624.980	3 593	797.110	R208	-89 896.830	3 593 664.600
L209	-93 058.490	3 593	822.060	R209	-90 053.940	3 593 673.500
L210	-93 472.570	3 593	845.900	R210	-90 511.930	3 593 700.210
L211	-93 905.780	3 593	870.940	R211	-91 420.340	3 593 752.670
L212	-94 319.430	3 593	894.790	R212	-91 742.410	3 593 771.170
L213	-94 729.720	3 593	918.480	R213	-92 180.910	3 593 796.840
L214	-95 219.580	3 593	946.950	R214	-92 619.830	3 593 822.120
L215	-95 498.750	3 593	962.820	R215	-93 047.610	3 593 846.510
L216	-95 903.390	3 593	986.290	R216	-93 472.590	3 593 871.570
L217	-95 997.670	3 593	993.590	R217	-93 906.010	3 593 896.500
L218	-96 065.780	3 593	998.950	R218	-94 313.660	3 593 919.660
L219	-96 148.810	3 594	008.830	R219	-94 725.770	3 593 943.450
L220	-96 180.460	3 594	016.400	R220	-95 222.560	3 593 972.210
L221	-96 256.750	3 594	025.410	R221	-95 499.380	3 593 988.350
L222	-96 305.920	3 594	034.390	R222	-95 824.830	3 594 007.190
L223	-96 319.130	3 594	037.320	R223	-95 903.060	3 594 011.470
L224	-96 405.703	3 594	064.661	R224	-95 994.220	3 594 018.810
L225	-96 595.470	3 594	103.930	R225	-96 066.020	3 594 024.260
L226	-96 651.810	3 594	118.300	R226	-96 150.800	3 594 034.480
L227	-97 055.790	3 594	223.790	R227	-96 182.730	3 594 039.520
L228	-97 481.990	3 594	335.140	R228	-96 252.845	3 594 063.193
L229	-98 066.550	3 594	487.680	R229	-96 296.773	3 594 063.615
L230	-98 416.540	3 594	579.230	R230	-96 405.250	3 594 083.660
L231	-98 443.080	3 594	558.610	R231	-96 516.120	3 594 108.900
L232	-98 608.750	3 594	609.770	R232	-96 606.460	3 594 132.460
L233	-98 784.656	3 594	663.566	R233	-96 647.410	3 594 143.140
				R234	-97 052.570	3 594 248.930
				R235	-98 066.650	3 594 514.150
				R236	-98 421.930	3 594 606.540
				R237	-98 535.700	3 594 636.050
				R238	-98 582.366	3 594 648.102
				R239	-98 618.581	3 594 674.346
				R240	-98 645.782	3 594 665.014
				R241	-98 776.743	3 594 698.315

Vel	21	Van	21	P695/08
Sheet		of		