

# Government Gazette Staatskoerant

REPUBLIC OF SOUTH AFRICA  
REPUBLIEK VAN SUID-AFRIKA

Vol. 525

Pretoria, 2 March  
Maart 2009

No. 31944

**CONTENTS****INHOUD**

<i>No.</i>	<i>Page No.</i>	<i>Gazette No.</i>	<i>No.</i>	<i>Bladsy No.</i>	<i>Koerant No.</i>
<b>GOVERNMENT NOTICE</b>			<b>GOEWERMENSKENNISGEWING</b>		
<b>Transport, Department of</b>			<b>Vervoer, Departement van</b>		
<i>Government Notice</i>			<i>Goewermentskennisgewing</i>		
192			192		
South African National Roads Agency Limited and the National Roads Act (7/1998): The South African National Roads Agency Limited: Declaration amendment of National Road N8 Section 11: Amendment of Declaration No. 549 of 2003 .....	3	31944	Suid-Afrikaanse Nasionale Padagentskap Beperk en die Nasionale Paaie Wet (7/1998): Die Suid-Afrikaanse Nasionale Padagentskap Beperk: Verklaring wysiging van Nasionale Pad N8 Seksie 11: Wysiging van Verklaring No. 549 van 2003 .....	4	31944

---

**GOVERNMENT NOTICE**

---

**DEPARTMENT OF TRANSPORT****No. 192****2 March 2009****THE SOUTH AFRICAN NATIONAL ROADS  
AGENCY LIMITED**Registration No: 98/09584/06

---

**DECLARATION AMENDMENT OF NATIONAL ROAD N8 SECTION 11**

AMENDMENT OF DECLARATION NO. 549 OF 2003

By virtue of section 40 (1)(b) of the South African National Roads Agency Limited and the National Roads Act, 1998 (Act No. 7 of 1998), I hereby amend Declaration No. 549 of 2003 by substituting the Annexure paragraph (I), with the subjoined sheets 1 to 20 of Plan No. P713/08.

(National Road N8 Section 11: Bloemfontein - Thaba Nchu)

  
\_\_\_\_\_  
MINISTER OF TRANSPORT

---

## GOEWERMENSKENNISGEWING

---

### DEPARTEMENT VAN VERVOER

No. 192

2 Maart 2009

## DIE SUID-AFRIKAANSE NASIONALE PADAGENTSKAP BEPERK

Registrasie No: 98/09584/06

---

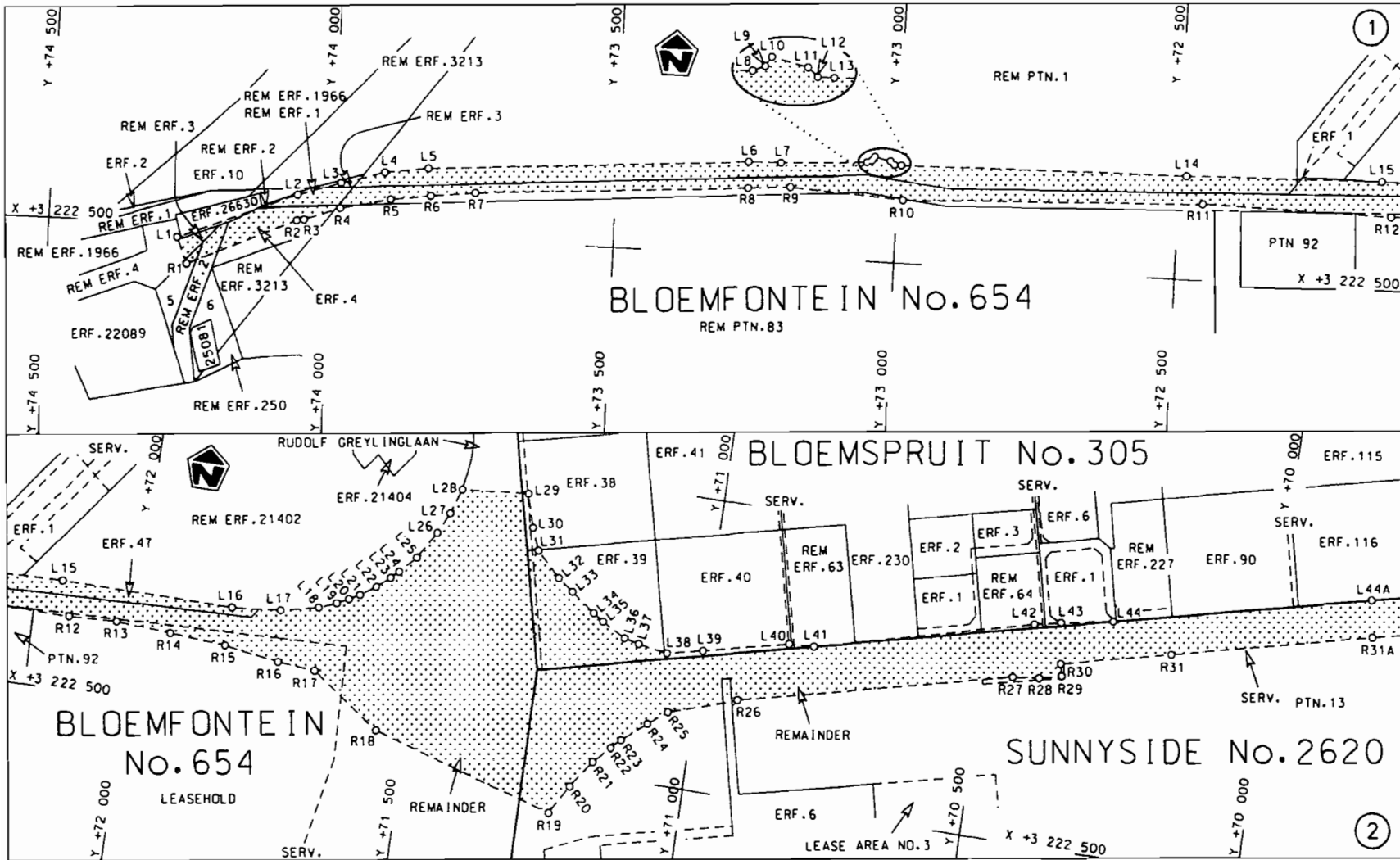
### VERKLARING WYSIGING VAN NASIONALE PAD N8 SEKSIE 11.

WYSIGING VAN VERKLARING NO. 549 VAN 2003

Kragtens Artikel 40(1)(b) van die Suid-Afrikaanse Nasionale Padagentskap Beperk en die Nasionale Paaie Wet, 1998 (Wet No.7 van 1998), wysig ek hiermee Verklaring no. 549 van 2003 deur die Bylae paragraaf (I), te vervang met meegaande velle 1 tot 20 van Plan No. P713/08.

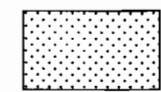
(Nasionale Pad N8 Seksie 11 Bloemfontein - Thaba Nchu)

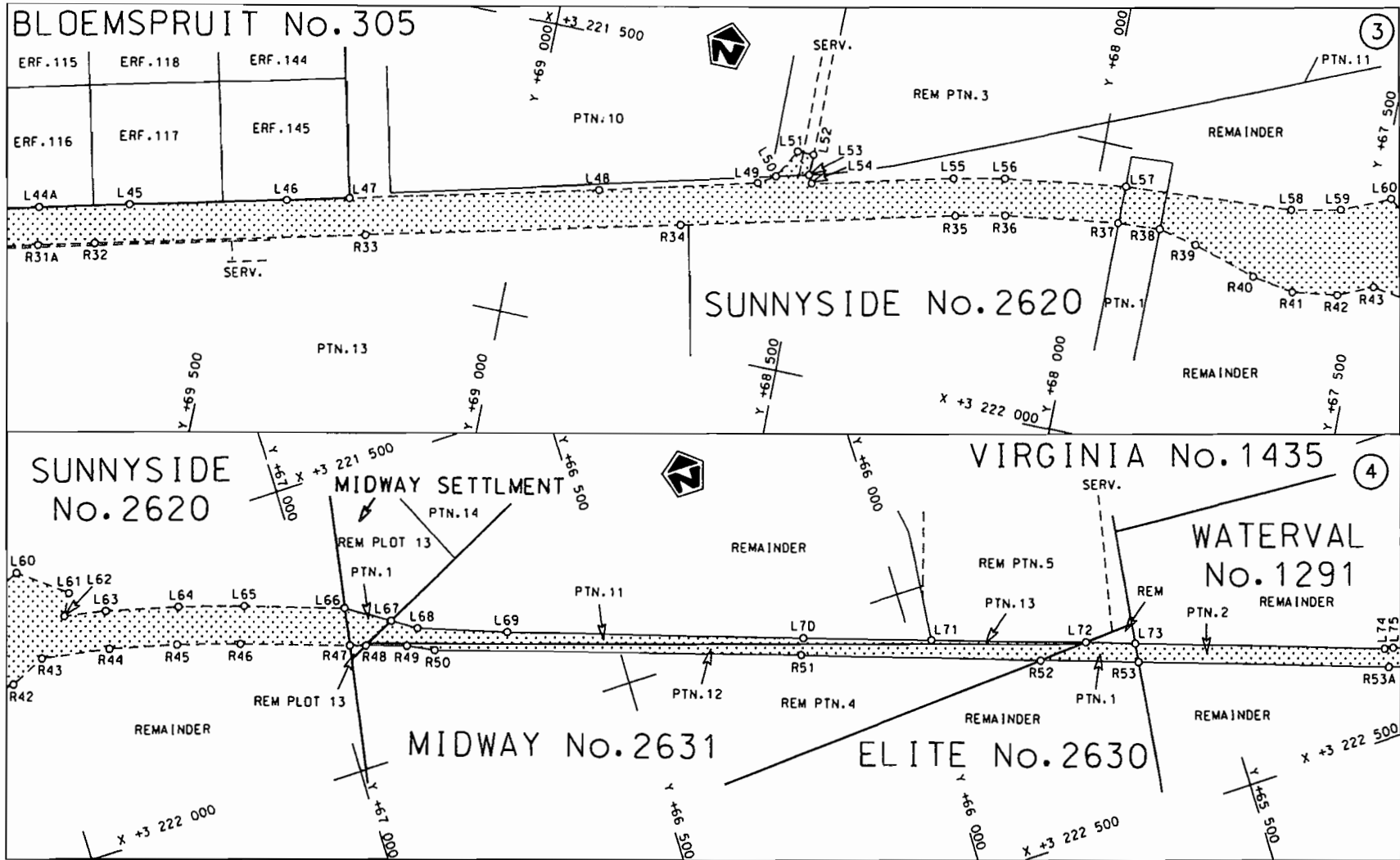
  
\_\_\_\_\_  
MINISTER VAN VERVOER



STATSKOERANT, 2 MAART 2009

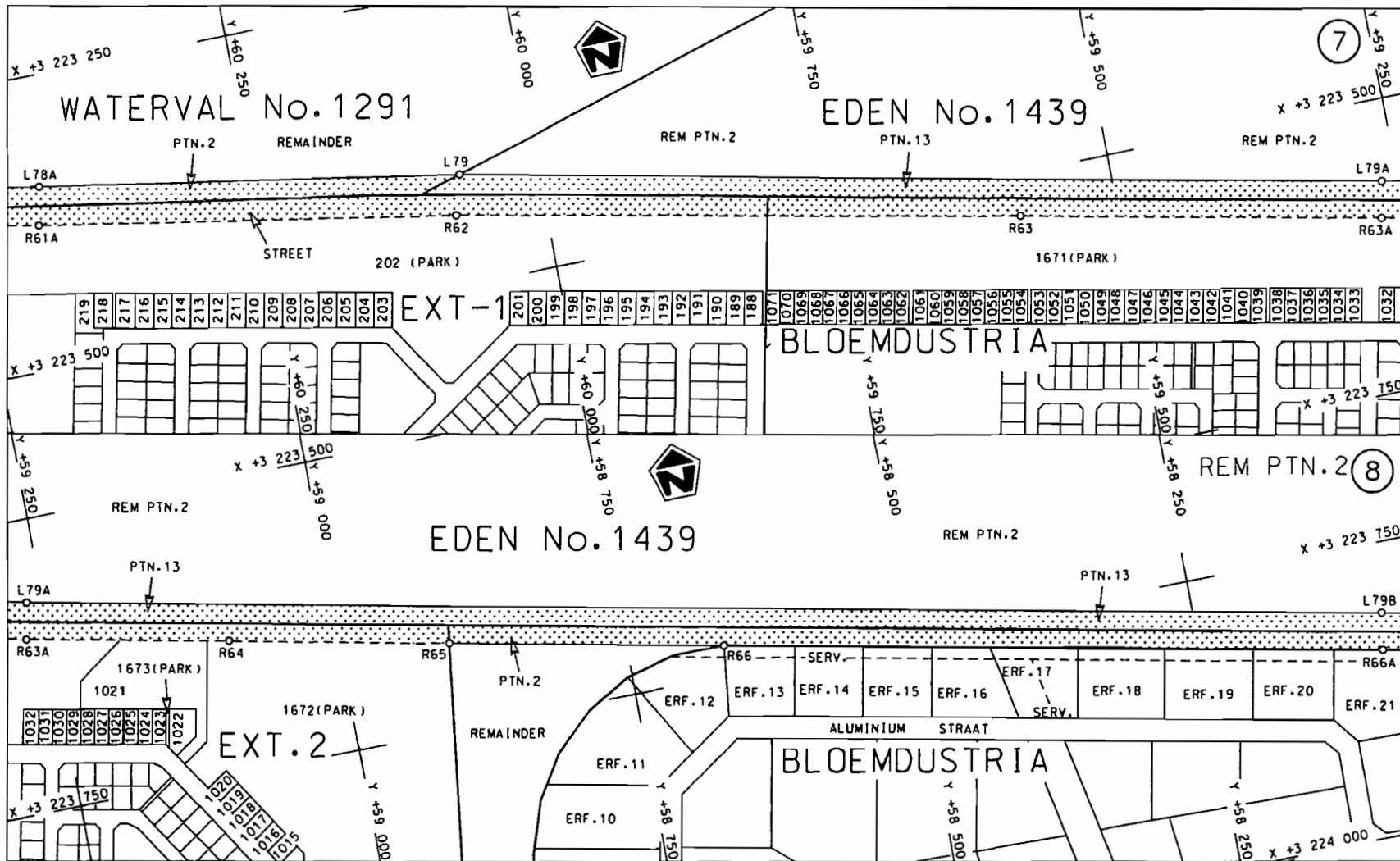
No. 31944 5

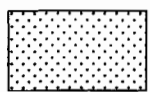
<p>Die Suid Afrikaanse Nasionale Padagentskap Beperk The South African National Roads Agency Limited</p>	<p>Die figuur getoon The figure shown</p> 	<p>steldie padreserwe voor van 'n gedeelte represents the road reserve of a portion van Nasionale Roete NB Seksie 11 of National Route NB Section 11</p>	<p>Vel Sheet 1 van 20 Plan P713/08</p>
--	--	--	--



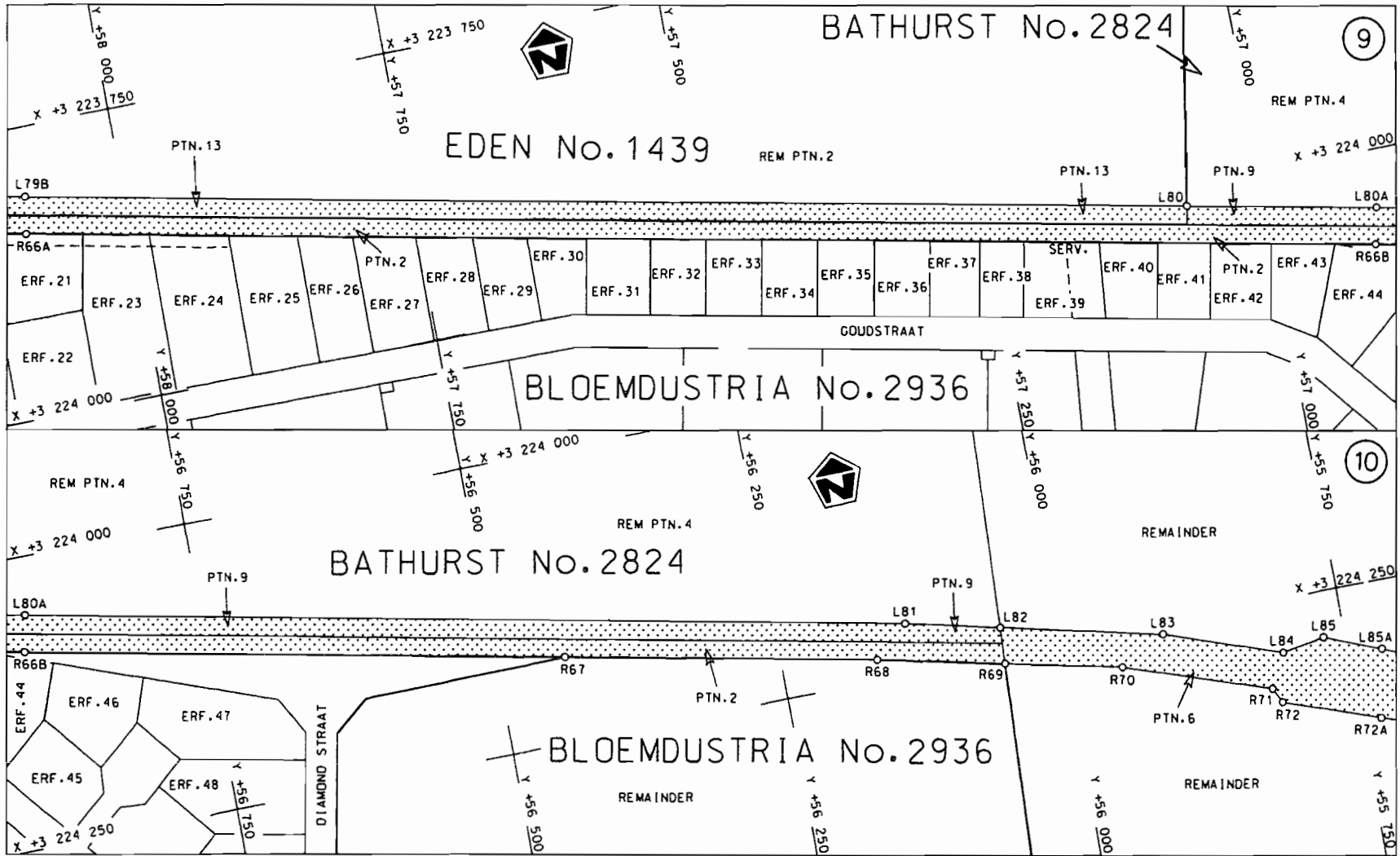
<p>Die Suid Afrikaanse Nasionale Padagentskap Beperk</p>	<p>Die figuur getoon</p>		<p>stel die padreserwe voor van 'n gedeelte represents the road reserve of a portion van Nasionale Roete N8 Seksie 11 of National Route</p>	<p>Vel Sheet 2 van of 20</p>
<p>The South African National Roads Agency Limited</p>	<p>The figure shown</p>			<p>Plan P713/08</p>




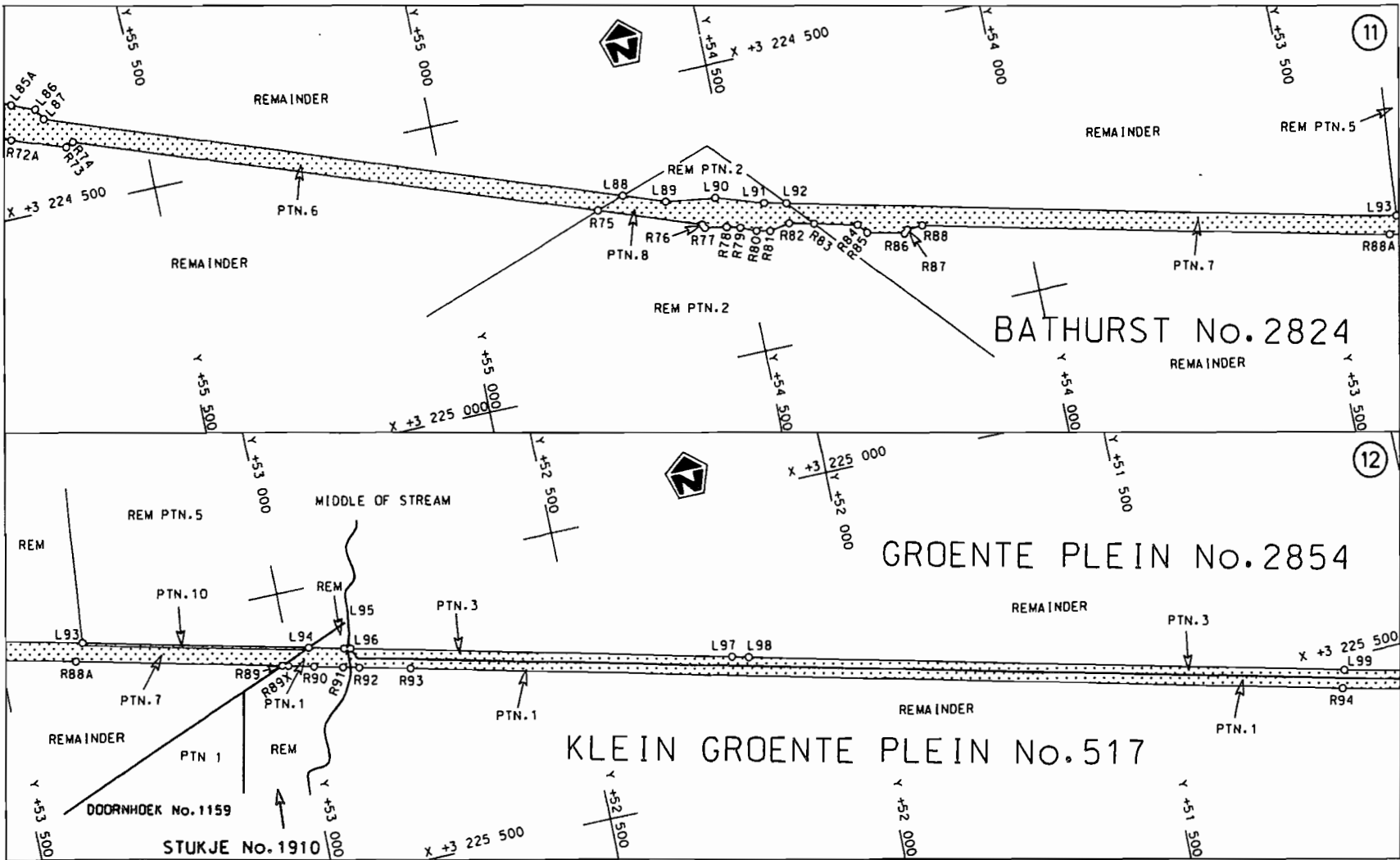


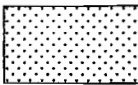
<p>Die Suid Afrikaanse Nasionale Padagentskap Beperk The South African National Roads Agency Limited</p>	<p>Die figuur getoon The figure shown</p> 	<p>steldie padreserwe voor van 'n gedeelte represents the road reserve of a portion van Nasionale Roete N8 Sektie 11 of National Route Section</p>	<p>Vel Sheet 4 van of 20 Plan P713/08</p>
--	--	--	---

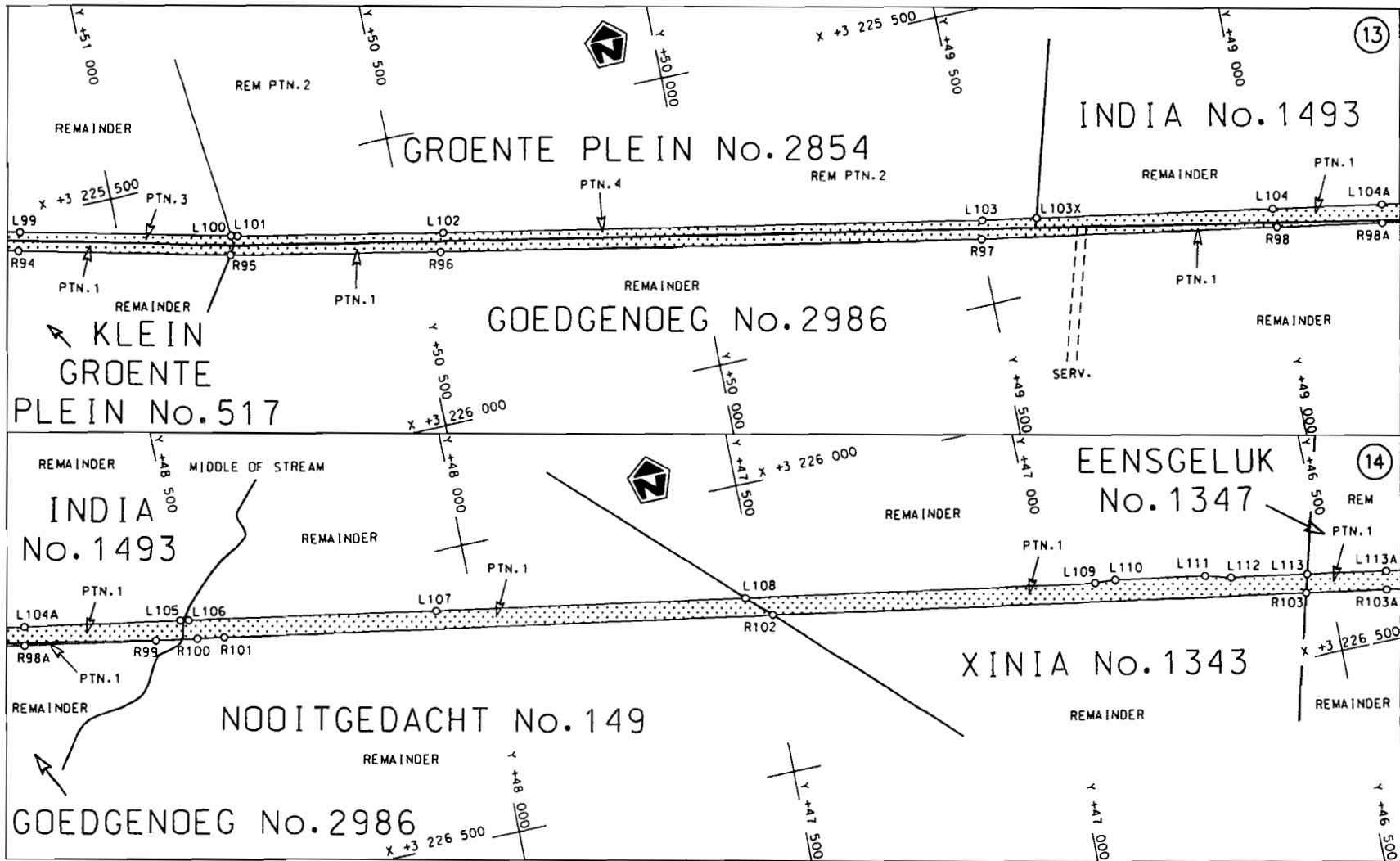


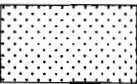


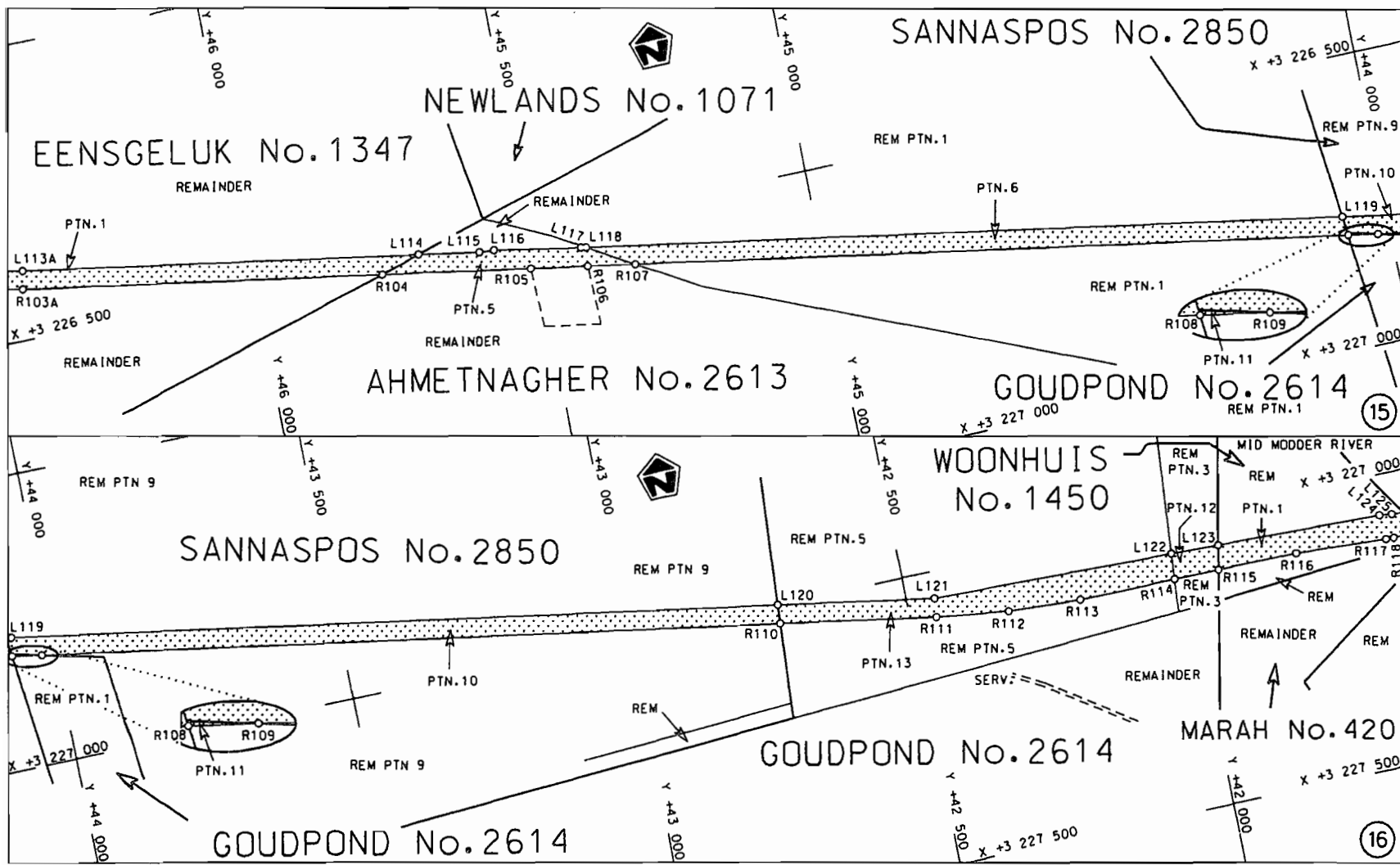
Die Suid Afrikaanse Nasionale Padagentskap Beperk The South African National Roads Agency Limited	Die figuur getoon The figure shown		steldie podreserwe voor van 'n gedeelte represents the road reserve of a portion van Nasionale Roete of National Route N8 Seksie Section 11	Vel Sheet 5 van of 20 Plan P713/08
--	---------------------------------------	--	---	---



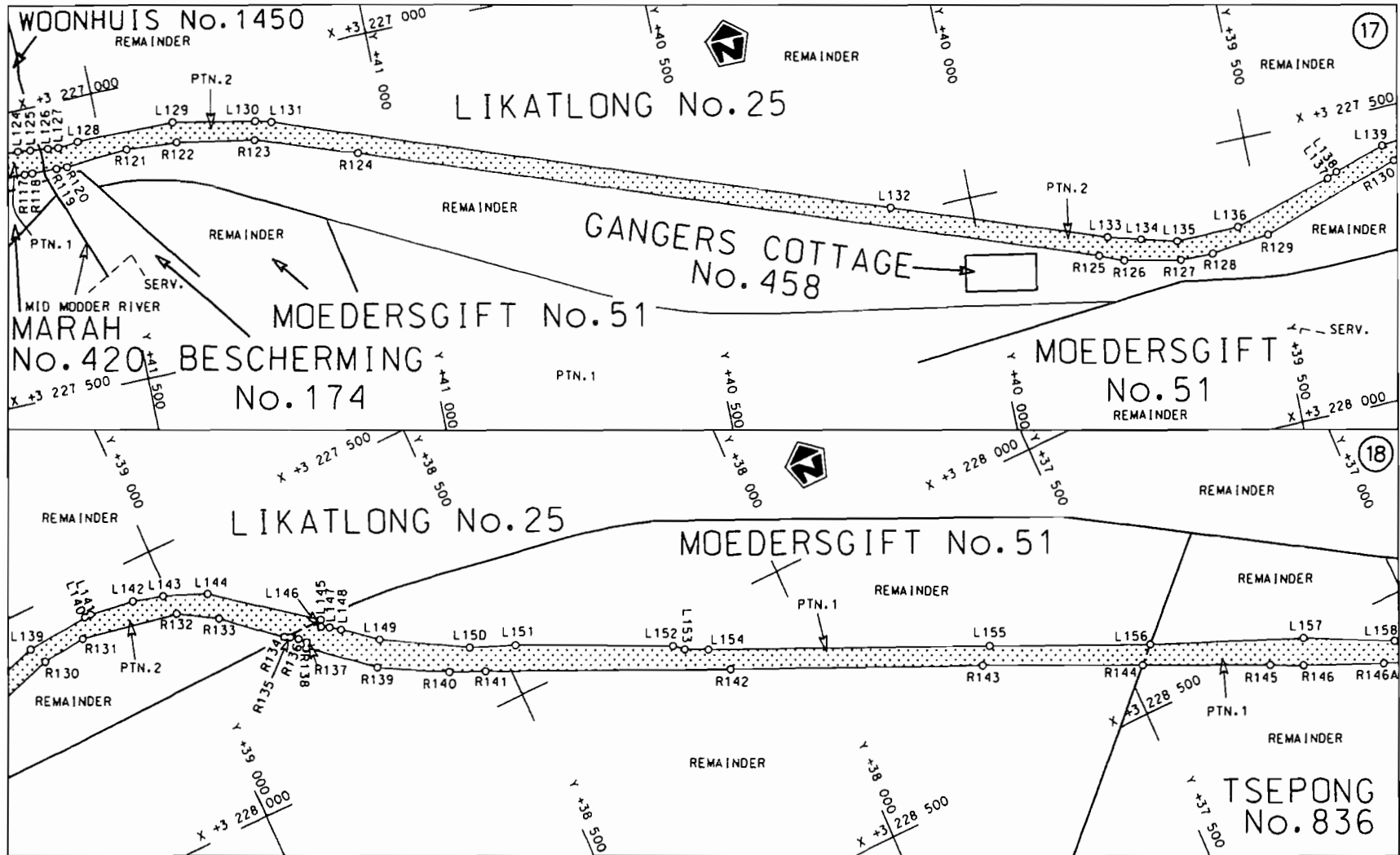
<p>Die Suid Afrikaanse Nasionale Padagentskap Beperk The South African National Roads Agency Limited</p>	<p>Die figuur getoon The figure shown</p>		<p>steldie padreserwe voor van 'n gedeelte represents the road reserve of a portion van Nasionale Roete N8 of National Route N8</p>	<p>Vel Sheet 6 van of 20</p>
			<p>Seksie Section 11</p>	<p>Plan P713/08</p>

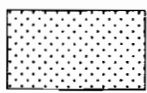


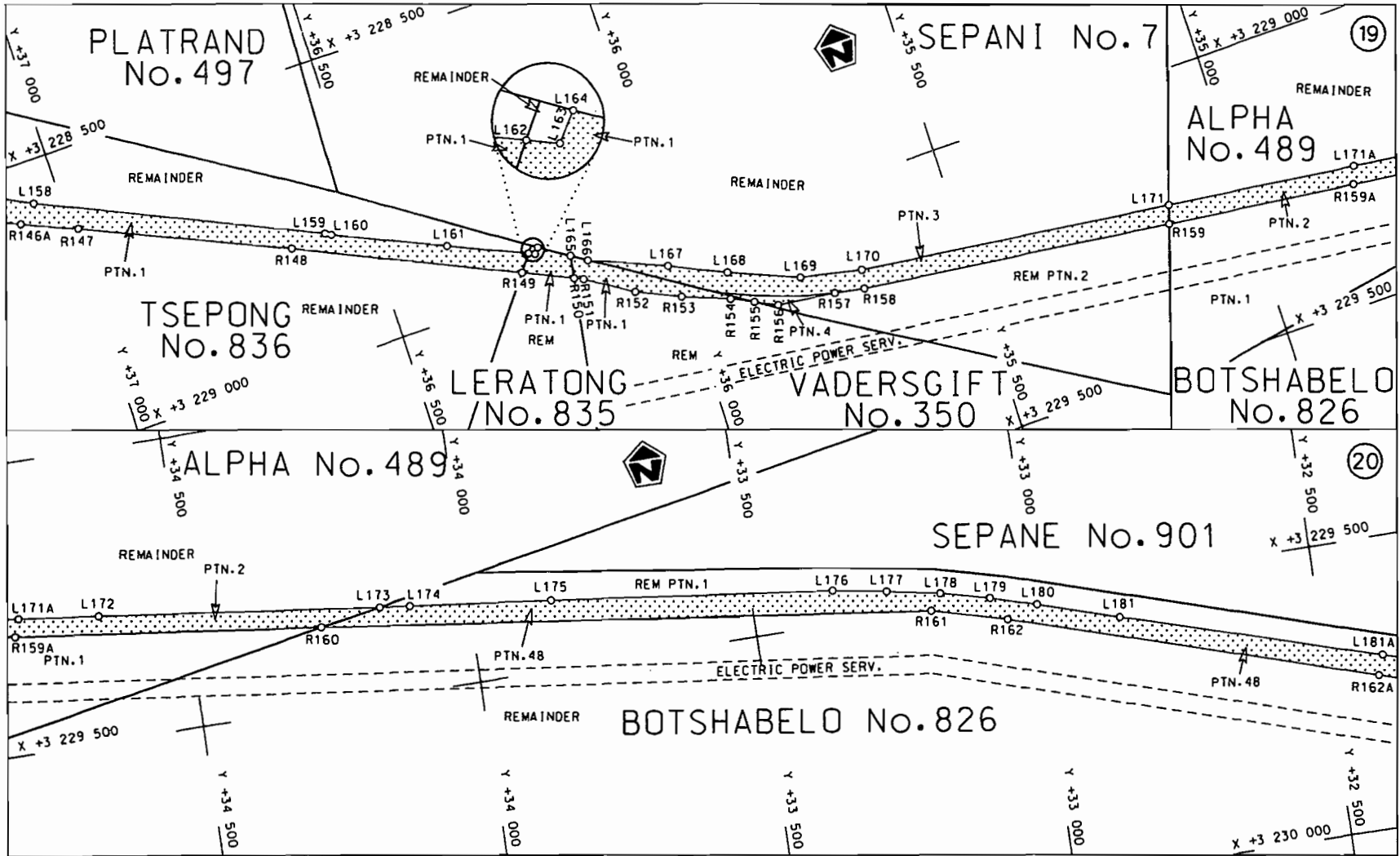
<p>Die Suid Afrikaanse Nasionale Padagentskap Beperk The South African National Roads Agency Limited</p>	<p>Die figuur getoon The figure shown</p>		<p>stel die padreserwe voor van 'n gedeelte represents the road reserve of a portion van Nasionale Roete N8 Seksie 11 of National Route N8 Section 11</p>	<p>Vel Sheet 7 van 20 of 20</p>
				<p>Plan P713/08</p>



<p>Die Suid Afrikaanse Nasionale Padagentskop Beperk The South African National Roads Agency Limited</p>	<p>Die figuur getoon The figure shown</p>		<p>steldie padreserve voor van 'n gedeelte represents the road reserve of a portion van Nasionale Roete N8 of National Route N8</p> <p>Seksie 11 Section</p>	<p>Vel Sheet 8 van of 20 Plan P713/08</p>
--	---	--	--	---

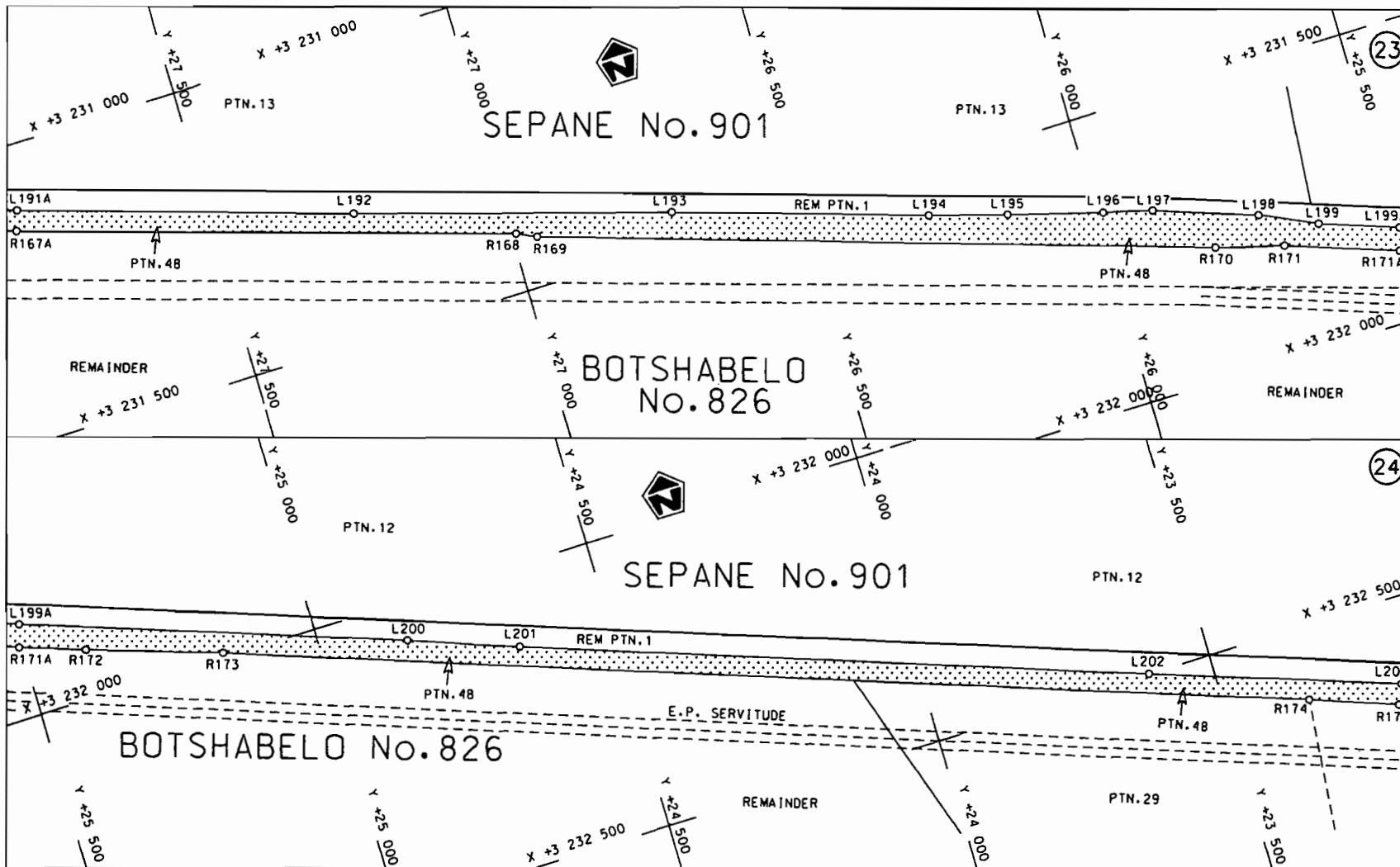


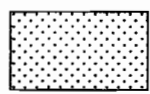
<p>Die Suid Afrikaanse Nasionale Padagentskap Beperk The South African National Roads Agency Limited</p>	<p>Die figuur getoon The figure shown</p>		<p>steldie padreserwe voor van 'n gedeelte represents the road reserve of a portion van Nasionale Roete N8 of National Route N8</p> <p>Seksie Section 11</p>	<p>Vel Sheet 9 van of 20 Plan P713/08</p>
--	---	--	--	---



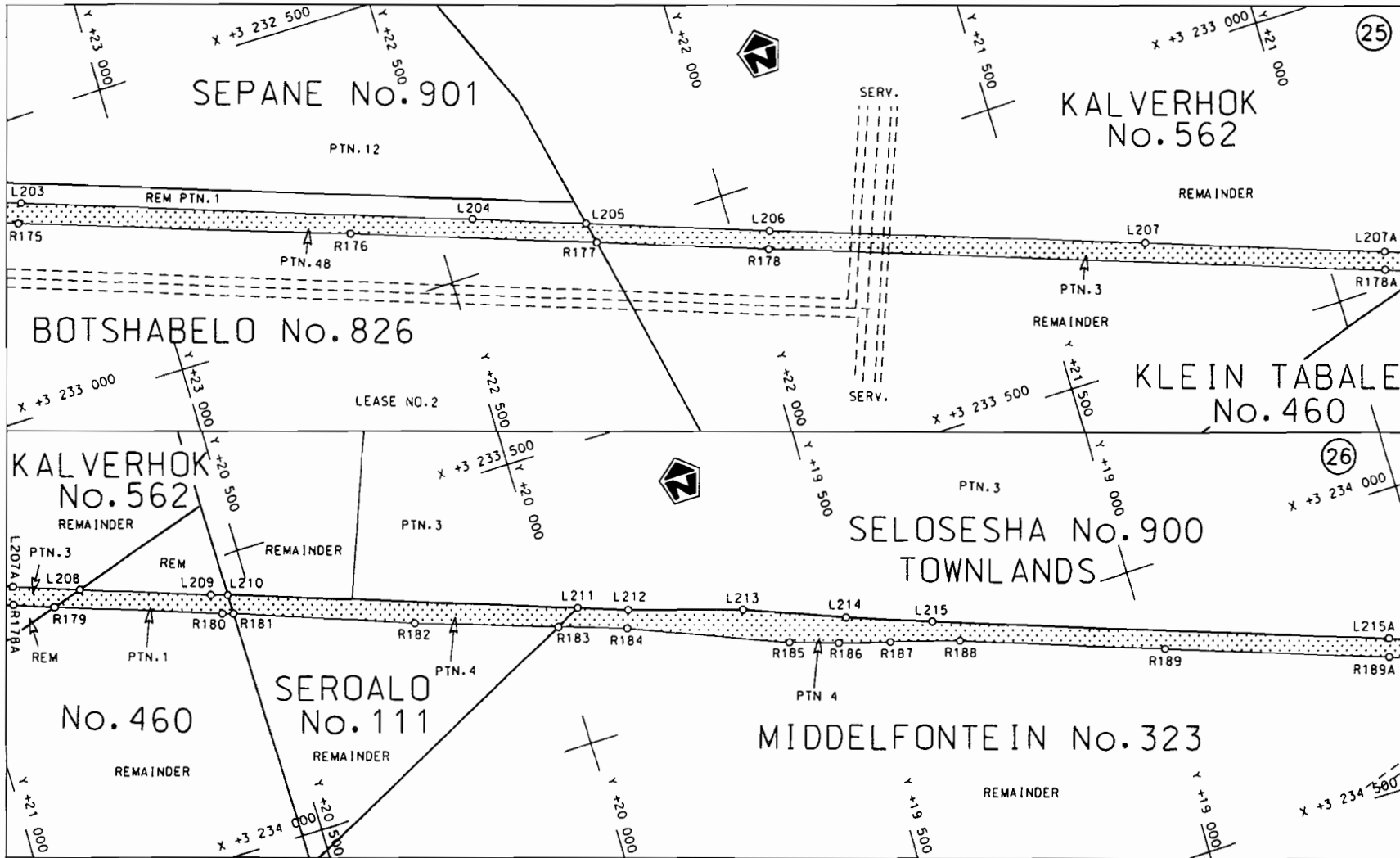
<p>Die Suid Afrikaanse Nasionale Padagentskap Beperk The South African National Roads Agency Limited</p>	<p>Die figuur getoon The figure shown</p>	<p>steldie padreserwe voor van 'n gedeelte represents the road reserve of a portion van Nasionale Roete N8 of National Route Section</p>	<p>Vel Sheet 10 van of 20 Plan P713/08</p>
		<p>11</p>	






<p>Die Suid Afrikaanse Nasionale Padogenskop Beperk The South African National Roads Agency Limited</p>	<p>Die figuur getoon The figure shown</p>		<p>stel die padreserwe voor van 'n gedeelte represents the road reserve of a portion van Nasionale Roete N8 of National Route</p>	<p>Vel Sheet 12 van of 20</p>
			<p>Seksie 11</p>	<p>Plan P713/08</p>

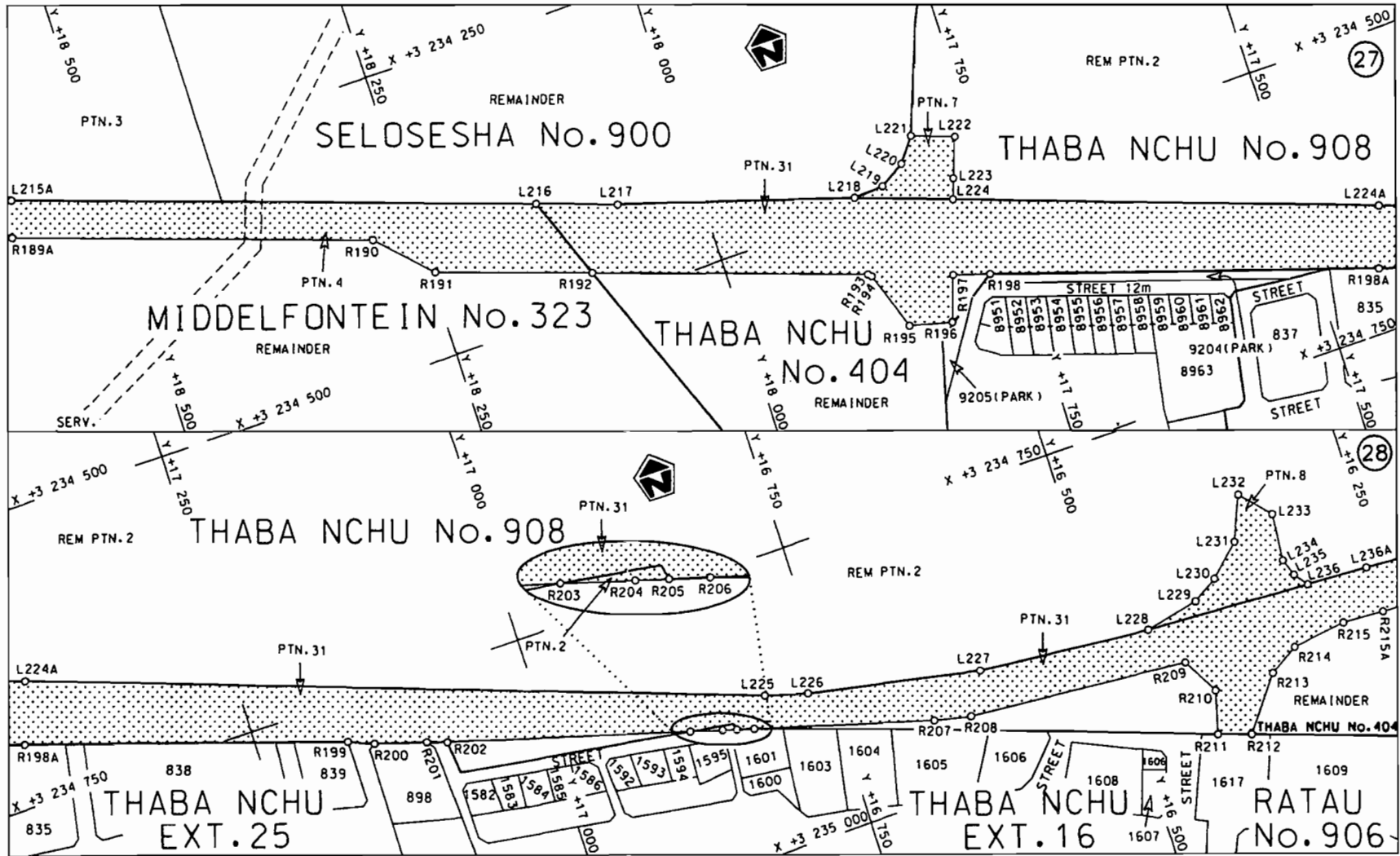




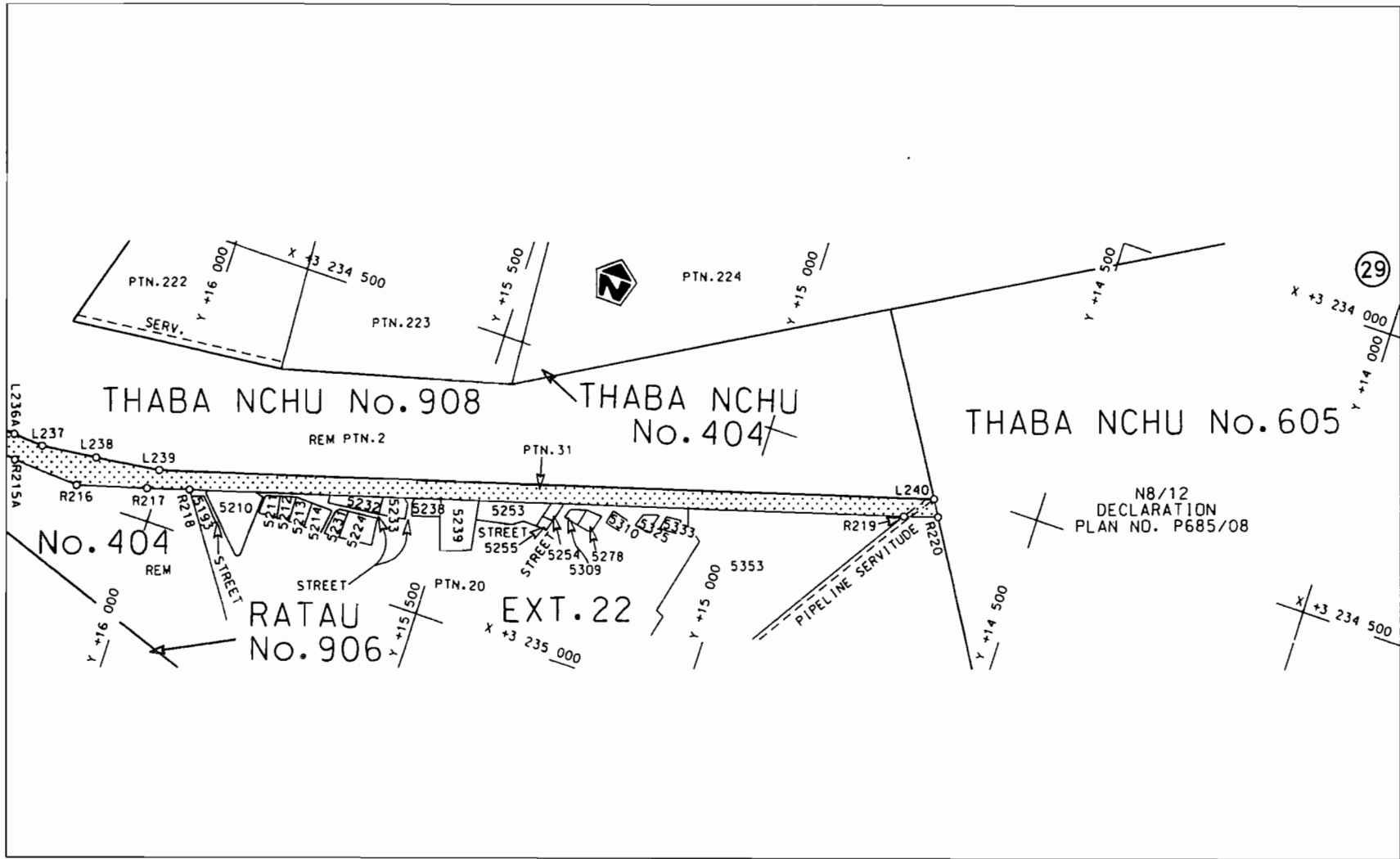
STAATSKOERANT, 2 MAART 2009

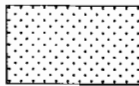
No. 31944 17

Die Suid Afrikaanse Nasionale Padogenskop Beperk The South African National Roads Agency Limited	Die figuur getoon The figure shown		steldie padreserwe voor van 'n gedeelte represents the road reserve of a portion van Nasionale Roete of National Route N8 Seksie Section 11	Vel Sheet 13 of 20
				Plon P713/08



<p>Die Suid Afrikaanse Nasionale Padagentskap Beperk</p>	<p>Die figuur getoon</p>		<p>steldie padreserwe voor van 'n gedeelte represents the road reserve of a portion van Nasionale Roete N8 Seksie 11 of National Route Section</p>	<p>Vel Sheet 14 van 20 of of</p>
<p>The South African National Roads Agency Limited</p>	<p>The figure shown</p>		<p>11</p>	<p>Plan P713/08</p>



<p>Die Suid Afrikaanse Nasionale Padagentskap Beperk The South African National Roads Agency Limited</p>	<p>Die figuur getoon The figure shown</p> 	<p>steldie padreserwe voor van 'n gedeelte represents the road reserve of a portion van Nasionale Roete of National Route</p> <p>N8      Seksie      11             Section</p>	<p>Vel Sheet 15 van of 20 Plan P713/08</p>
--	--	---	--

PADRESERWE KOÖRDINATE / ROAD RESERVE CO-ORDINATES									
LINKERKANT/LEFT HAND SIDE					REGTERKANT/RIGHT HAND SIDE				
	Y	X	WG 27°		Y	X			
L1	74 270.970	3 222 522.060		R1	74 251.461	3 222 566.028			
L2	74 061.080	3 222 438.380		R2	74 060.467	3 222 482.265			
L3	73 986.610	3 222 413.900		R3	74 047.720	3 222 480.053			
L4	73 910.170	3 222 392.300		R4	73 985.610	3 222 456.916			
L5	73 832.920	3 222 381.030		R5	73 897.562	3 222 438.132			
L6	73 265.970	3 222 341.040		R6	73 826.226	3 222 427.997			
L7	73 208.920	3 222 339.730		R7	73 747.892	3 222 418.642			
L8	73 056.180	3 222 331.010		R8	73 264.643	3 222 386.296			
L9	73 047.120	3 222 327.200		R9	73 190.013	3 222 380.826			
L10	73 042.430	3 222 320.350		R10	72 988.859	3 222 392.254			
L11	73 014.650	3 222 326.390		R11	72 454.862	3 222 370.400			
L12	73 006.980	3 222 333.000		R12	72 120.187	3 222 374.039			
L13	72 994.350	3 222 332.840		R13	72 034.711	3 222 369.376			
L14	72 487.100	3 222 323.440		R14	71 936.387	3 222 375.083			
L15	72 139.680	3 222 314.670		R15	71 836.351	3 222 380.409			
L16	71 833.710	3 222 314.160		R16	71 739.866	3 222 394.584			
L17	71 748.970	3 222 306.440		R17	71 675.051	3 222 399.554			
L18	71 684.040	3 222 291.440		R18	71 553.245	3 222 483.625			
L19	71 653.550	3 222 279.230		R19	71 229.610	3 222 576.254			
L20	71 633.510	3 222 269.110		R20	71 199.079	3 222 525.766			
L21	71 615.360	3 222 258.730		R21	71 165.141	3 222 478.679			
L22	71 588.940	3 222 240.930		R22	71 137.179	3 222 449.954			
L23	71 566.070	3 222 221.960		R23	71 120.487	3 222 434.532			
L24	71 552.700	3 222 209.240		R24	71 078.055	3 222 399.599			
L25	71 525.370	3 222 180.670		R25	71 044.942	3 222 373.673			
L26	71 495.300	3 222 132.700		R26	70 925.645	3 222 334.686			
L27	71 478.250	3 222 095.700		R27	70 447.149	3 222 220.813			
L28	71 463.130	3 222 051.760		R28	70 400.950	3 222 214.837			
L29	71 345.730	3 222 041.310		R29	70 361.805	3 222 205.256			
L30	71 329.030	3 222 098.260		R30	70 366.484	3 222 184.990			
L31	71 314.120	3 222 136.120		R31	70 173.742	3 222 138.911			
L32	71 271.480	3 222 176.520		R32	69 726.226	3 222 032.065			
L33	71 243.700	3 222 196.410		R33	69 259.354	3 221 920.898			
L34	71 201.550	3 222 226.710		R34	68 714.826	3 221 790.953			
L35	71 182.950	3 222 238.760		R35	68 237.093	3 221 677.128			
L36	71 140.510	3 222 261.780		R36	68 150.366	3 221 658.273			
L37	71 113.740	3 222 267.520		R37	67 949.694	3 221 630.591			
L38	71 061.710	3 222 275.120		R38	67 875.605	3 221 625.361			
L39	70 999.290	3 222 260.530		R39	67 807.881	3 221 639.235			
L40	70 849.170	3 222 226.160		R40	67 697.236	3 221 672.718			
L41	70 804.750	3 222 223.420		R41	67 622.981	3 221 684.568			
L42	70 422.520	3 222 125.810		R42	67 542.631	3 221 673.185			
L43	70 376.440	3 222 115.470		R43	67 481.486	3 221 647.100			
L44	70 286.140	3 222 099.770		R44	67 362.699	3 221 667.088			
L45	69 681.060	3 221 955.790		R45	67 247.884	3 221 695.210			
L46	69 409.090	3 221 890.870		R46	67 140.217	3 221 728.204			
L47	69 299.960	3 221 864.790		R47	66 953.720	3 221 789.330			
L48	68 868.980	3 221 761.840		R48	66 926.680	3 221 798.190			
L49	68 595.820	3 221 692.920		R49	66 858.570	3 221 820.520			
L50	68 565.520	3 221 675.010		R50	66 814.160	3 221 842.070			
L51	68 535.560	3 221 625.380		R51	66 194.700	3 222 047.210			

Vel	16	Van	20	P713/08
Sheet		of		

PADRESERWE KOÖRDINATE / ROAD RESERVE CO-ORDINATES											
LINKERKANT/LEFT HAND SIDE						REGTERKANT/RIGHT HAND SIDE					
	Y		X	WG 27°		Y		X			
L52	68	506.370	3	221	625.180	R52	65	790.240	3	222	184.240
L53	68	507.370	3	221	660.600	R53	65	624.340	3	222	240.410
L54	68	500.310	3	221	673.830	R54	64	421.720	3	222	649.250
L55	68	252.990	3	221	614.890	R55	64	122.940	3	222	748.830
L56	68	163.330	3	221	595.750	R56	64	078.050	3	222	764.170
L57	67	948.490	3	221	566.060	R57	63	958.620	3	222	791.580
L58	67	652.320	3	221	546.900	R58	63	439.930	3	222	877.960
L59	67	564.890	3	221	528.800	R59	60	592.020	3	223	350.290
L60	67	479.920	3	221	493.350	R60	60	562.040	3	223	356.290
L61	67	401.530	3	221	555.140	R61	60	537.091	3	223	360.039
L62	67	421.220	3	221	590.100	R62	60	079.264	3	223	439.595
L63	67	348.830	3	221	603.730	R63	59	586.727	3	223	536.558
L64	67	225.630	3	221	634.500	R64	59	095.775	3	223	636.447
L65	67	113.630	3	221	668.770	R65	58	904.610	3	223	675.760
L66	66	942.780	3	221	726.190	R66	58	665.351	3	223	724.384
L67	66	871.810	3	221	771.610	R67	56	439.030	3	224	176.830
L68	66	831.820	3	221	797.210	R68	56	165.780	3	224	232.270
L69	66	681.790	3	221	851.210	R69	56	053.350	3	224	257.310
L70	66	182.420	3	222	020.710	R70	55	950.280	3	224	280.270
L71	65	965.540	3	222	092.850	R71	55	822.160	3	224	324.260
L72	65	704.440	3	222	179.700	R72	55	815.490	3	224	337.300
L73	65	620.340	3	222	208.360	R73	55	638.490	3	224	399.940
L74	65	200.200	3	222	351.530	R74	55	625.110	3	224	393.560
L75	65	185.270	3	222	355.380	R75	54	740.500	3	224	703.190
L76	64	068.470	3	222	733.810	R76	54	563.540	3	224	765.030
L77	63	987.150	3	222	753.900	R77	54	560.230	3	224	771.480
L78	60	536.390	3	223	326.960	R78	54	522.460	3	224	778.690
L79	60	069.650	3	223	405.950	R79	54	498.850	3	224	784.900
L80	57	069.030	3	224	016.480	R80	54	472.130	3	224	795.980
L81	56	135.360	3	224	206.270	R81	54	448.440	3	224	801.300
L82	56	051.830	3	224	225.940	R82	54	412.460	3	224	795.040
L83	55	909.350	3	224	259.500	R83	54	368.920	3	224	805.280
L84	55	806.570	3	224	295.610	R84	54	293.410	3	224	823.030
L85	55	768.870	3	224	289.670	R85	54	279.140	3	224	839.850
L86	55	679.220	3	224	325.310	R86	54	214.340	3	224	855.740
L87	55	667.890	3	224	344.360	R87	54	207.860	3	224	850.410
L88	54	692.030	3	224	687.560	R88	54	180.470	3	224	848.740
L89	54	619.580	3	224	713.090	R89	53	015.590	3	225	122.190
L90	54	531.960	3	224	725.740	R89X	53	011.240	3	225	123.220
L91	54	449.010	3	224	752.260	R90	52	959.760	3	225	135.430
L92	54	410.090	3	224	760.650	R91	52	909.420	3	225	147.250
L93	53	351.500	3	225	010.340	R92	52	881.540	3	225	153.790
L94	52	962.680	3	225	101.530	R93	52	791.640	3	225	174.900
L95	52	901.160	3	225	115.970	R94	51	176.900	3	225	552.610
L96	52	889.860	3	225	118.620	R95	50	811.270	3	225	636.820
L97	52	229.730	3	225	273.480	R96	50	446.710	3	225	707.980
L98	52	200.870	3	225	280.440	R97	49	498.240	3	225	888.200
L99	51	167.380	3	225	522.400	R98	48	977.010	3	225	978.160
L100	50	803.240	3	225	605.600	R99	48	563.150	3	226	049.120
L101	50	791.660	3	225	608.250	R100	48	490.640	3	226	061.340
L102	50	435.400	3	225	677.860	R101	48	443.900	3	226	069.200

Vel 17 Van 20  
Sheet of

P713/08

PADRESERWE KOÖRDINATE / ROAD RESERVE CO-ORDINATES						
LINKERKANT/LEFT HAND SIDE				REGTERKANT/RIGHT HAND SIDE		
	Y	X	WG 27°		Y	X
L103	49 490.600	3 225	856.920	R102	47 481.580	3 226 231.210
L103X	49 394.480	3 225	873.550	R103	46 542.080	3 226 389.390
L104	48 978.520	3 225	945.540	R104	45 774.510	3 226 518.620
L105	48 514.250	3 226	024.620	R105	45 512.240	3 226 563.150
L106	48 499.290	3 226	027.170	R106	45 413.630	3 226 579.730
L107	48 067.410	3 226	100.740	R107	45 329.350	3 226 593.560
L108	47 523.210	3 226	192.110	R108	44 074.770	3 226 804.790
L109	46 906.850	3 226	295.600	R109	44 022.730	3 226 813.550
L110	46 869.920	3 226	297.570	R110	42 729.070	3 227 031.350
L111	46 712.540	3 226	323.920	R111	42 454.390	3 227 077.590
L112	46 668.410	3 226	335.770	R112	42 325.350	3 227 094.570
L113	46 533.600	3 226	358.510	R113	42 196.000	3 227 101.670
L114	45 703.260	3 226	498.590	R114	42 023.740	3 227 102.450
L115	45 595.270	3 226	516.810	R115	41 943.500	3 227 102.810
L116	45 569.050	3 226	519.570	R116	41 802.460	3 227 103.450
L117	45 418.910	3 226	546.370	R117	41 642.110	3 227 111.780
L118	45 409.540	3 226	547.950	R118	41 628.230	3 227 112.190
L119	44 078.460	3 226	771.840	R119	41 584.780	3 227 113.510
L120	42 726.940	3 226	999.170	R120	41 567.210	3 227 114.040
L121	42 450.670	3 227	045.630	R121	41 457.070	3 227 106.810
L122	42 020.260	3 227	058.500	R122	41 367.050	3 227 113.310
L123	41 935.170	3 227	061.050	R123	41 229.260	3 227 137.430
L124	41 645.320	3 227	069.710	R124	41 054.910	3 227 197.550
L125	41 623.390	3 227	072.430	R125	39 795.380	3 227 644.110
L126	41 592.520	3 227	076.250	R126	39 753.190	3 227 661.640
L127	41 574.100	3 227	078.530	R127	39 653.220	3 227 681.750
L128	41 539.330	3 227	075.130	R128	39 595.520	3 227 683.390
L129	41 367.240	3 227	077.830	R129	39 492.470	3 227 670.930
L130	41 221.650	3 227	105.860	R130	39 245.390	3 227 594.280
L131	41 194.250	3 227	113.820	R131	39 169.540	3 227 586.210
L132	40 143.360	3 227	486.530	R132	38 999.520	3 227 617.860
L133	39 773.620	3 227	615.380	R133	38 934.510	3 227 656.810
L134	39 715.960	3 227	632.000	R134	38 840.870	3 227 735.800
L135	39 652.800	3 227	648.520	R135	38 835.160	3 227 737.650
L136	39 542.190	3 227	647.280	R136	38 820.800	3 227 747.740
L137	39 367.170	3 227	599.700	R137	38 809.060	3 227 760.460
L138	39 349.550	3 227	591.570	R138	38 815.260	3 227 765.910
L139	39 259.950	3 227	564.640	R139	38 714.010	3 227 850.440
L140	39 148.020	3 227	554.340	R140	38 601.610	3 227 911.010
L141	39 142.740	3 227	554.510	R141	38 542.820	3 227 936.270
L142	39 061.290	3 227	565.730	R142	38 144.550	3 228 117.150
L143	39 008.290	3 227	580.170	R143	37 730.940	3 228 301.510
L144	38 935.300	3 227	610.520	R144	37 471.810	3 228 421.130
L145	38 770.640	3 227	734.330	R145	37 265.310	3 228 516.460
L146	38 775.420	3 227	745.370	R146	37 211.830	3 228 542.540
L147	38 761.820	3 227	752.710	R147	36 986.380	3 228 640.080
L148	38 744.680	3 227	764.840	R148	36 637.590	3 228 794.630
L149	38 689.990	3 227	809.050	R149	36 263.620	3 228 964.050
L150	38 550.750	3 227	888.180	R150	36 179.030	3 229 002.380
L151	38 475.020	3 227	918.450	R151	36 163.380	3 229 009.470
L152	38 220.290	3 228	037.950	R152	36 083.380	3 229 059.770

Vel	18	Van	20	P713/08
Sheet		of		

PADRESERWE KOÖRDINATE / ROAD RESERVE CO-ORDINATES					
LINKERKANT/LEFT HAND SIDE			REGTERKANT/RIGHT HAND SIDE		
	Y	X	WG 27°		X
L153	38 203.320	3 228	051.840	R153	36 007.250 3 229 093.640
L154	38 165.900	3 228	070.410	R154	35 924.940 3 229 126.170
L155	37 705.290	3 228	276.350	R155	35 885.970 3 229 144.720
L156	37 444.290	3 228	394.870	R156	35 846.920 3 229 163.310
L157	37 192.270	3 228	500.100	R157	35 744.700 3 229 176.580
L158	37 046.360	3 228	573.230	R158	35 691.980 3 229 186.100
L159	36 572.250	3 228	788.850	R159	35 141.020 3 229 255.310
L160	36 562.890	3 228	794.410	R160	34 263.300 3 229 364.040
L161	36 375.860	3 228	878.190	R161	33 186.000 3 229 503.980
L162	36 242.220	3 228	936.710	R162	33 051.320 3 229 539.110
L163	36 231.320	3 228	941.490	R163	29 369.410 3 230 670.640
L164	36 223.380	3 228	932.400	R164	29 229.840 3 230 718.130
L165	36 172.630	3 228	964.330	R165	29 150.410 3 230 738.340
L166	36 145.530	3 228	981.390	R166	28 148.430 3 231 046.230
L167	36 013.750	3 229	036.290	R166X	28 138.070 3 231 065.770
L168	35 915.750	3 229	081.570	R167	28 004.260 3 231 106.900
L169	35 793.810	3 229	131.260	R167X	27 984.730 3 231 096.540
L170	35 686.170	3 229	154.380	R168	26 992.590 3 231 401.400
L171	35 130.880	3 229	224.290	R169	26 957.840 3 231 417.180
L172	34 653.760	3 229	284.350	R170	25 814.140 3 231 780.820
L173	34 158.100	3 229	345.640	R171	25 696.440 3 231 813.340
L174	34 104.540	3 229	352.260	R172	25 393.570 3 231 918.370
L175	33 854.700	3 229	381.090	R173	25 165.680 3 231 992.640
L176	33 353.120	3 229	443.320	R174	23 353.350 3 232 623.250
L177	33 258.510	3 229	459.150	R175	23 204.060 3 232 676.740
L178	33 165.030	3 229	477.090	R176	22 648.950 3 232 866.550
L179	33 077.010	3 229	498.290	R177	22 234.800 3 233 010.740
L180	32 994.890	3 229	522.510	R178	21 945.840 3 233 111.840
L181	32 853.000	3 229	566.110	R179	20 839.300 3 233 496.800
L182	32 245.880	3 229	748.830	R180	20 557.190 3 233 594.950
L183	31 810.810	3 229	884.550	R181	20 538.380 3 233 601.770
L184	31 699.050	3 229	916.920	R182	20 238.230 3 233 710.610
L185	30 387.540	3 230	319.450	R183	19 995.640 3 233 791.520
L186	30 113.490	3 230	406.010	R184	19 879.770 3 233 830.170
L187	29 774.220	3 230	509.040	R185	19 611.040 3 233 937.850
L188	29 312.810	3 230	651.200	R186	19 526.850 3 233 964.810
L189	28 793.740	3 230	805.320	R187	19 438.160 3 233 989.670
L190	28 463.630	3 230	912.400	R188	19 318.290 3 234 024.630
L191	28 157.030	3 231	005.220	R189	18 973.500 3 234 145.710
L192	27 256.900	3 231	286.620	R190	18 288.590 3 234 383.900
L193	26 718.740	3 231	446.270	R191	18 245.190 3 234 427.310
L194	26 284.510	3 231	581.460	R192	18 112.380 3 234 473.100
L195	26 150.880	3 231	621.220	R193	17 878.960 3 234 553.580
L196	25 987.120	3 231	666.430	R194	17 876.080 3 234 556.370
L197	25 902.120	3 231	689.050	R195	17 857.540 3 234 607.380
L198	25 724.990	3 231	749.980	R196	17 820.080 3 234 616.740
L199	25 627.930	3 231	795.170	R197	17 806.400 3 234 578.860
L200	24 850.640	3 232	065.130	R198	17 775.070 3 234 588.820
L201	24 663.140	3 232	133.040	R199	17 170.420 3 234 785.350
L202	23 610.730	3 232	499.170	R200	17 148.780 3 234 794.660
L203	23 189.130	3 232	644.380	R201	17 104.380 3 234 807.770

Vel	19	Van	20	P713/08
Sheet		of		

PADRESERWE KOÖRDINATE / ROAD RESERVE CO-ORDINATES						
LINKERKANT/LEFT HAND SIDE				REGTERKANT/RIGHT HAND SIDE		
	Y	X	WG 27°		Y	X
L204	22 433.420	3 232	907.280	R202	17 087.090	3 234 813.440
L205	22 242.920	3 232	974.320	R203	16 878.570	3 234 873.890
L206	21 935.080	3 233	082.650	R204	16 851.170	3 234 881.970
L207	21 300.750	3 233	301.280	R205	16 838.920	3 234 885.460
L208	20 787.990	3 233	481.080	R206	16 824.010	3 234 889.720
L209	20 567.450	3 233	558.410	R207	16 667.860	3 234 934.490
L210	20 538.670	3 233	567.590	R208	16 635.490	3 234 941.760
L211	19 953.500	3 233	771.180	R209	16 439.280	3 234 958.590
L212	19 868.880	3 233	800.620	R210	16 421.320	3 234 990.040
L213	19 673.260	3 233	860.220	R211	16 431.340	3 235 026.340
L214	19 501.440	3 233	926.650	R212	16 403.200	3 235 036.040
L215	19 355.900	3 233	979.030	R213	16 368.600	3 234 992.050
L216	18 141.300	3 234	400.940	R214	16 342.490	3 234 976.840
L217	18 072.030	3 234	425.000	R215	16 294.570	3 234 970.920
L218	17 869.250	3 234	487.610	R216	16 137.800	3 234 979.900
L219	17 842.060	3 234	486.710	R217	16 018.120	3 234 945.710
L220	17 819.610	3 234	473.950	R218	15 946.260	3 234 924.310
L221	17 803.810	3 234	453.700	R219	14 726.910	3 234 568.420
L222	17 766.690	3 234	466.920	R220	14 669.330	3 234 550.620
L223	17 779.630	3 234	500.460			
L224	17 785.590	3 234	517.360			
L225	16 806.050	3 234	865.640			
L226	16 768.580	3 234	876.510			
L227	16 615.280	3 234	907.170			
L228	16 461.540	3 234	921.430			
L229	16 413.610	3 234	911.700			
L230	16 391.660	3 234	898.470			
L231	16 364.600	3 234	874.230			
L232	16 348.510	3 234	836.880			
L233	16 325.240	3 234	862.360			
L234	16 328.870	3 234	902.900			
L235	16 323.310	3 234	917.840			
L236	16 314.210	3 234	929.690			
L237	16 215.920	3 234	935.190			
L238	16 119.650	3 234	924.650			
L239	16 007.040	3 234	909.450			
L240	14 685.730	3 234	523.460			

Vel	20	Van	20	P713/08
Sheet		of		