

Government Gazette Staatskoerant

REPUBLIC OF SOUTH AFRICA
REPUBLIEK VAN SUID-AFRIKA

Vol. 525

Pretoria, 2 **March**
Maart 2009

No. 31945

CONTENTS**INHOUD**

<i>No.</i>	<i>Page No.</i>	<i>Gazette No.</i>	<i>No.</i>	<i>Bladsy No.</i>	<i>Koerant No.</i>
GOVERNMENT NOTICE			GOEWERMENSKENNISGEWING		
Transport, Department of			Vervoer, Departement van		
<i>Government Notice</i>			<i>Goewermentskennisgewing</i>		
193			193		
South African National Roads Agency Limited and the National Roads Act (7/1998): The South African National Roads Agency Limited: Declaration amendment of National Road N9 Section 3: Amendment of Declaration No. 544 of 2003			Suid-Afrikaanse Nasionale Padagentskap Beperk en die Nasionale Paaie Wet (7/1998): Die Suid-Afrikaanse Nasionale Padagentskap Beperk: Verklaring wysiging van Nasionale Pad N9 Seksie 3: Wysiging van Verklaring No. 544 van 2003		
	3	31945		4	31945

GOVERNMENT NOTICE

DEPARTMENT OF TRANSPORT**No. 193****2 March 2009****THE SOUTH AFRICAN NATIONAL ROADS
AGENCY LIMITED**Registration No: 98/09584/06

DECLARATION AMENDMENT OF NATIONAL ROAD N9 SECTION 3**AMENDMENT OF DECLARATION NO. 544 OF 2003**

By virtue of section 40 (1)(b) of the South African National Roads Agency Limited and the National Roads Act, 1998 (Act No. 7 of 1998), I hereby amend Declaration No. 544 of 2003, by substituting, the descriptive section from the Western Cape/Eastern Cape Provincial Border up to Willowmore, with the subjoined sheets 1 to 8 of Plan No. P691/08.

(National Road N9 Section 3: Western Cape/Eastern Cape Provincial Border – Willowmore)



MINISTER OF TRANSPORT

GOEWERMENTSKENNISGEWING

DEPARTEMENT VAN VERVOER

No. 193

2 Maart 2009

DIE SUID-AFRIKAANSE NASIONALE PADAGENTSKAP BEPERK

Registrasie No: 98/09584/06

VERKLARING WYSIGING VAN NASIONALE PAD N9 SEKSIE 3

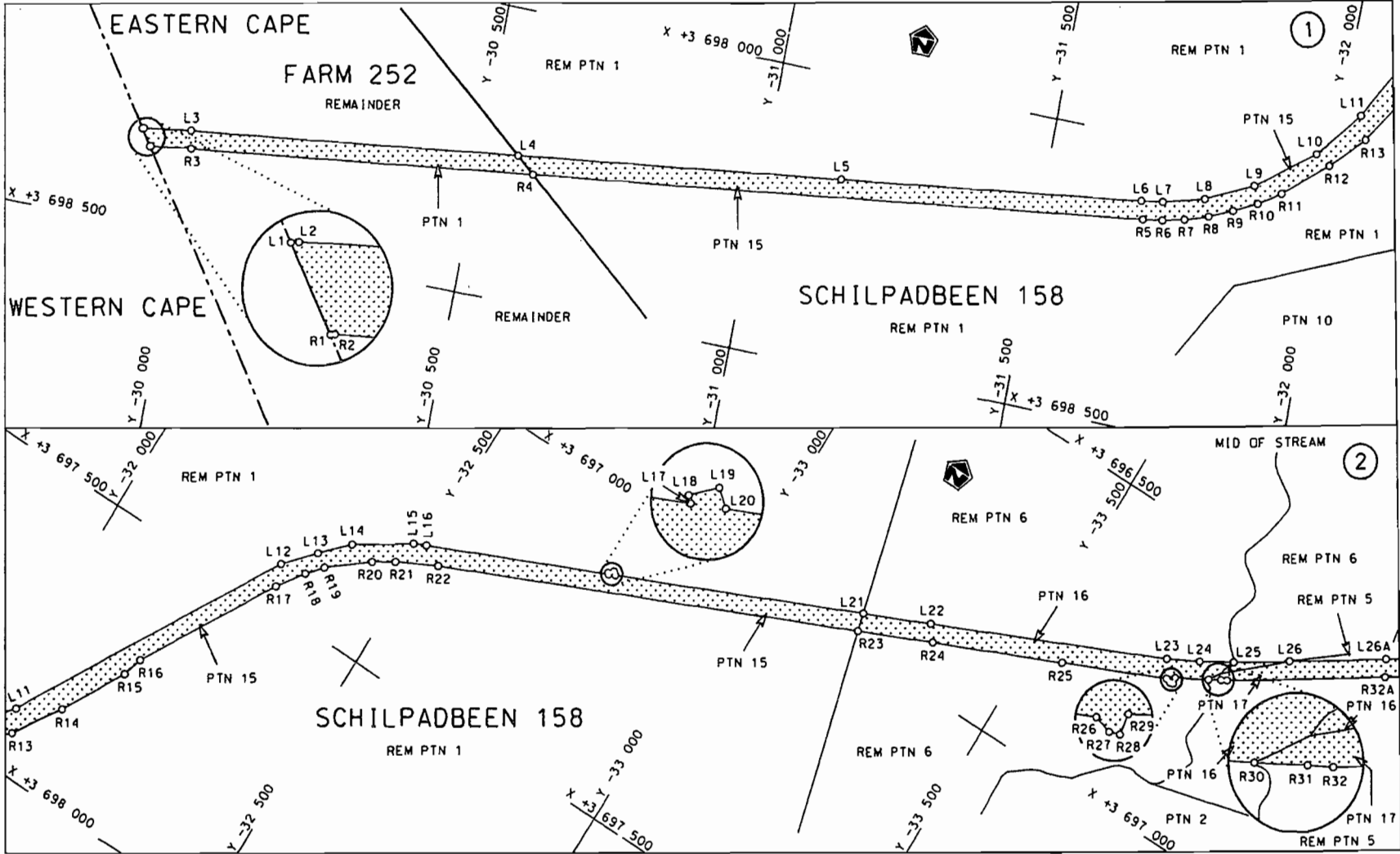
WYSIGING VAN VERKLARING NO. 544 VAN 2003


Kragtens Artikel 40(1)(b) van die Suid-Afrikaanse Nasionale Padagentskap Beperk en die Nasionale Paaie Wet, 1998 (Wet No.7 van 1998), wysig ek hiermee Verklaring no.544 van 2003, deur die beskrywende gedeelte vanaf die Wes Kaap/Oos Kaap Provinsiale Grens tot by Willowmore, te vervang met meegaande velle 1 tot 8 van Plan no. P691/08.

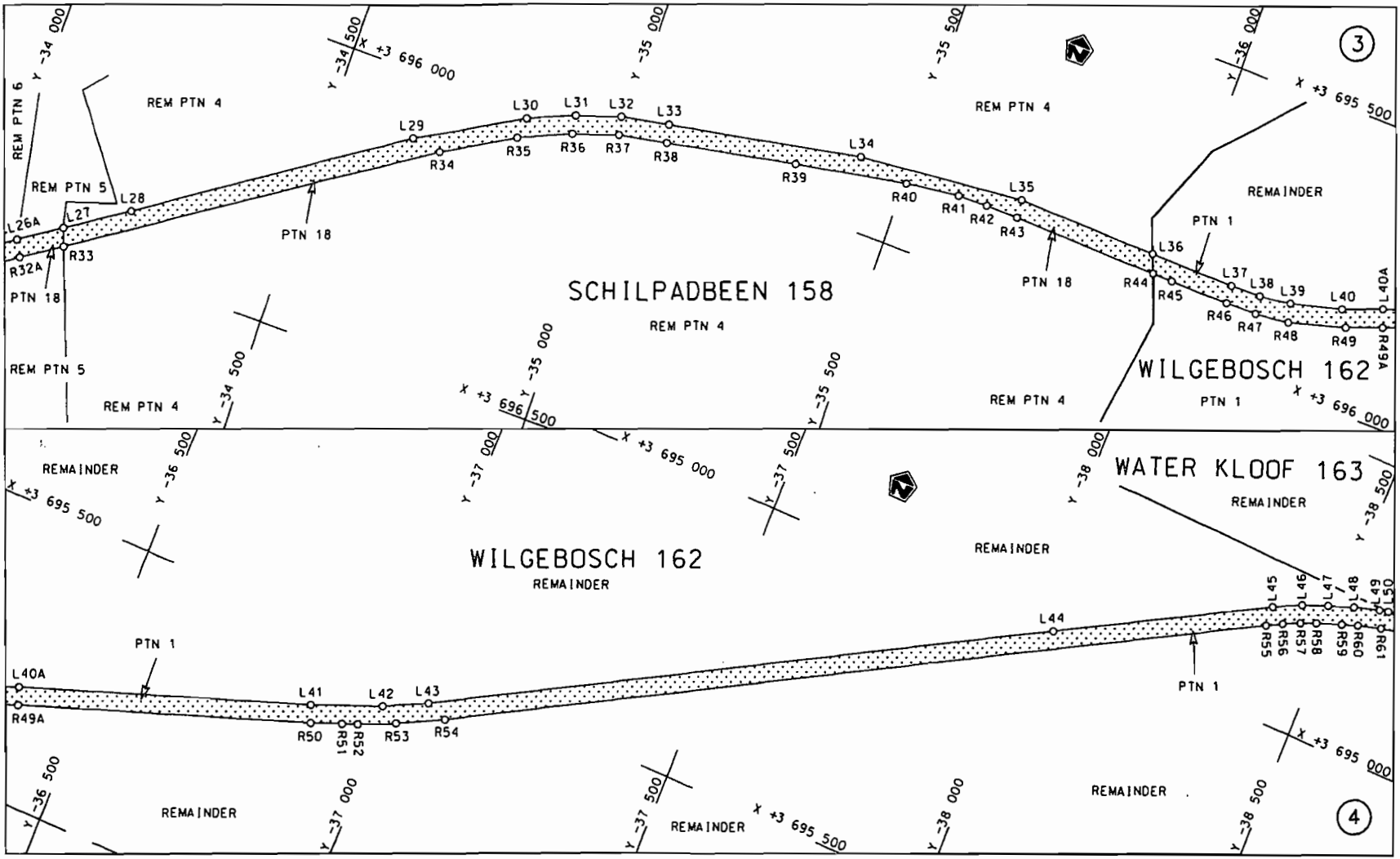
(Nasionale Pad N9 Seksie 3: Wes Kaap/Oos Kaap Provinsiale Grens – Willowmore)



MINISTER VAN VERVOER

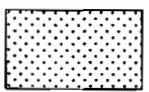


Die Suid Afrikaanse Nasionale Padagentskap Beperk The South African National Roads Agency Limited	Die figuur getoon The figure shown		steldie padreserwe voor van 'n gedeelte represents the road reserve of a portion van Nasionale Roete N9 Seksie 3 of National Route N9 Section 3	Vel Sheet 1 of 8 Plan P691/08
--	---------------------------------------	--	--	----------------------------------



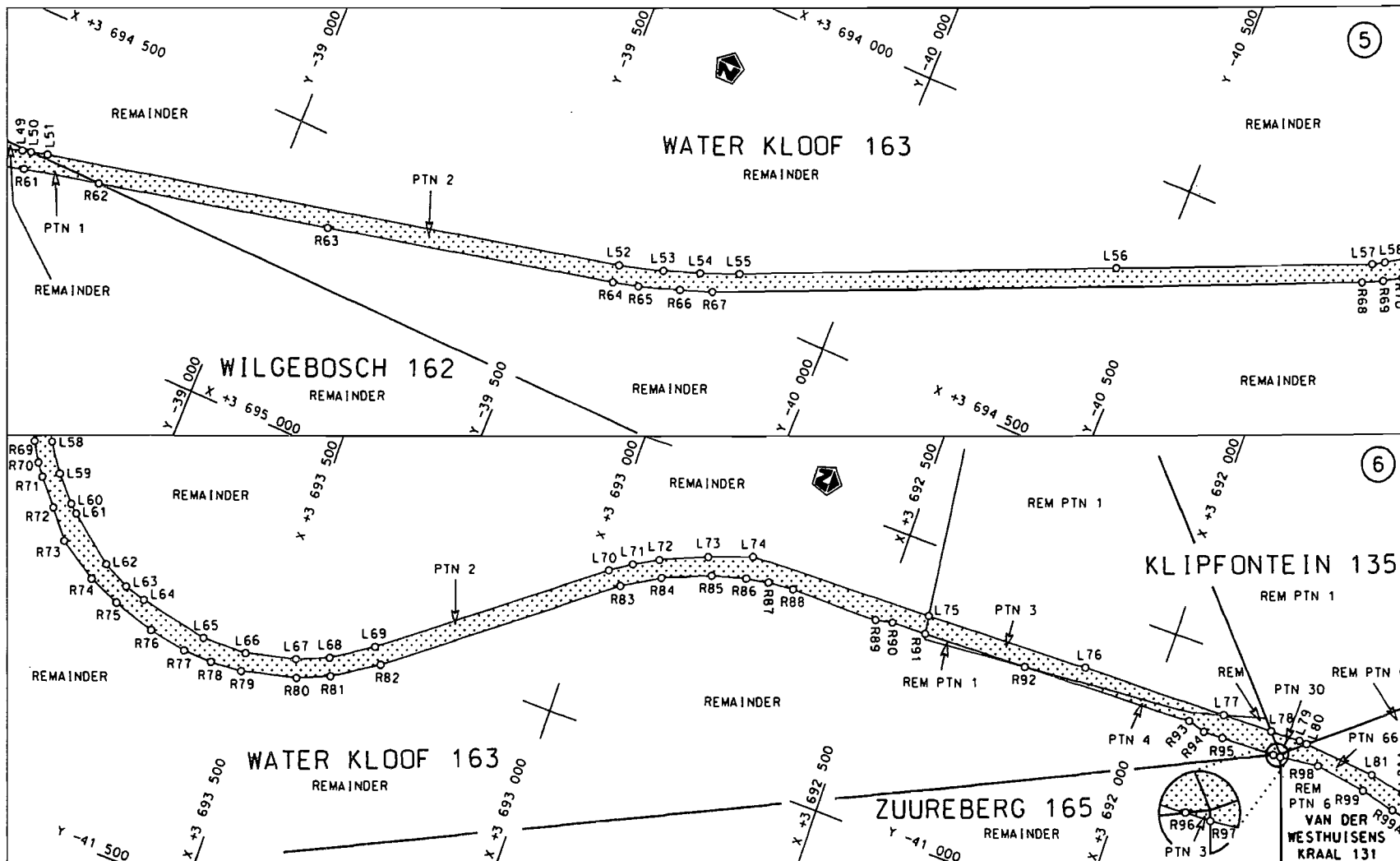
Die Suid Afrikaanse Nasionale Padagentskap Beperk
The South African National Roads Agency Limited

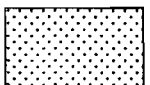
Die figuur getoon
The figure shown

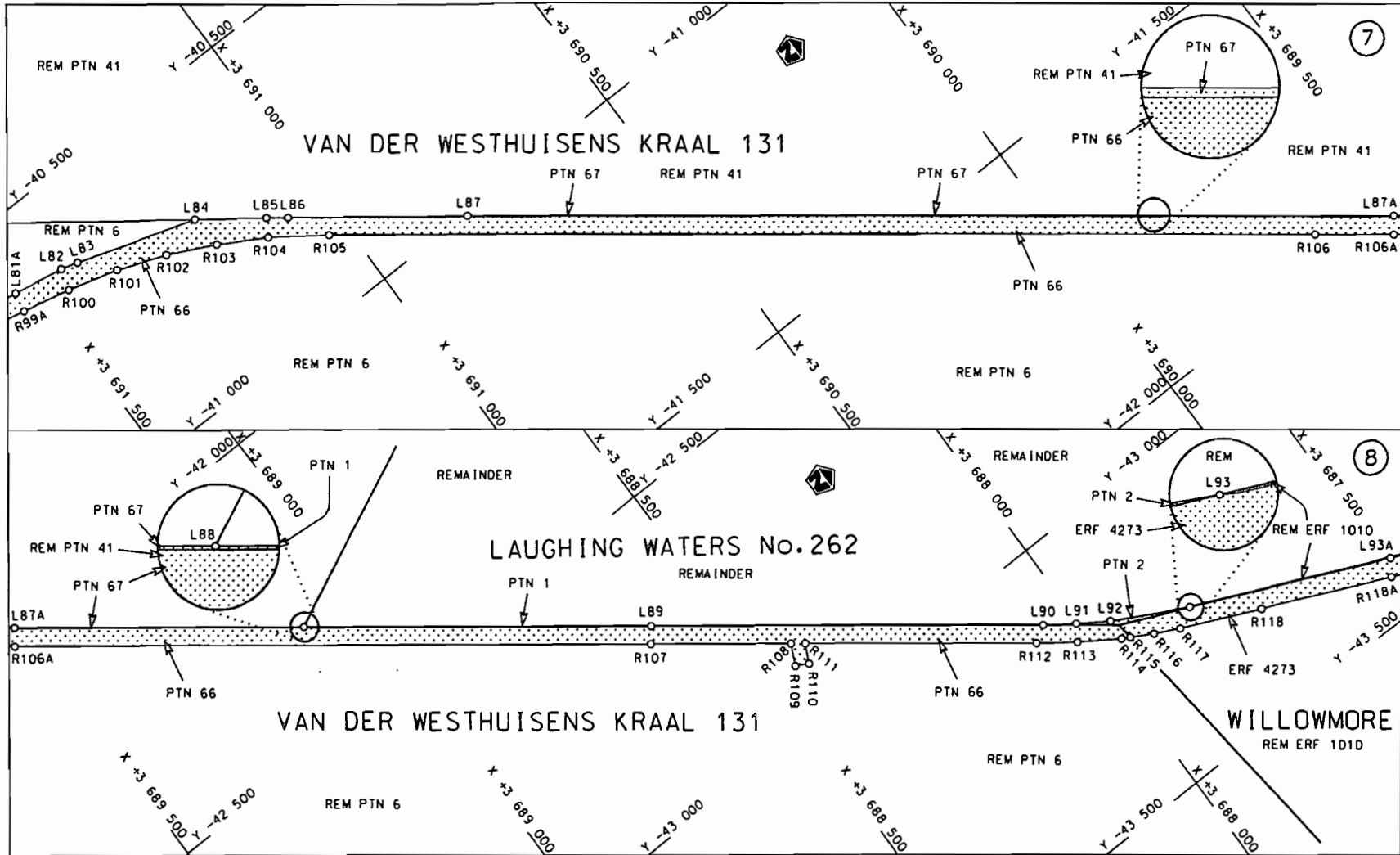


steldie padreserve voor van 'n gedeelte
represents the road reserve of a portion
van Nasionale Roete N9 Seksie Section 3
of National Route

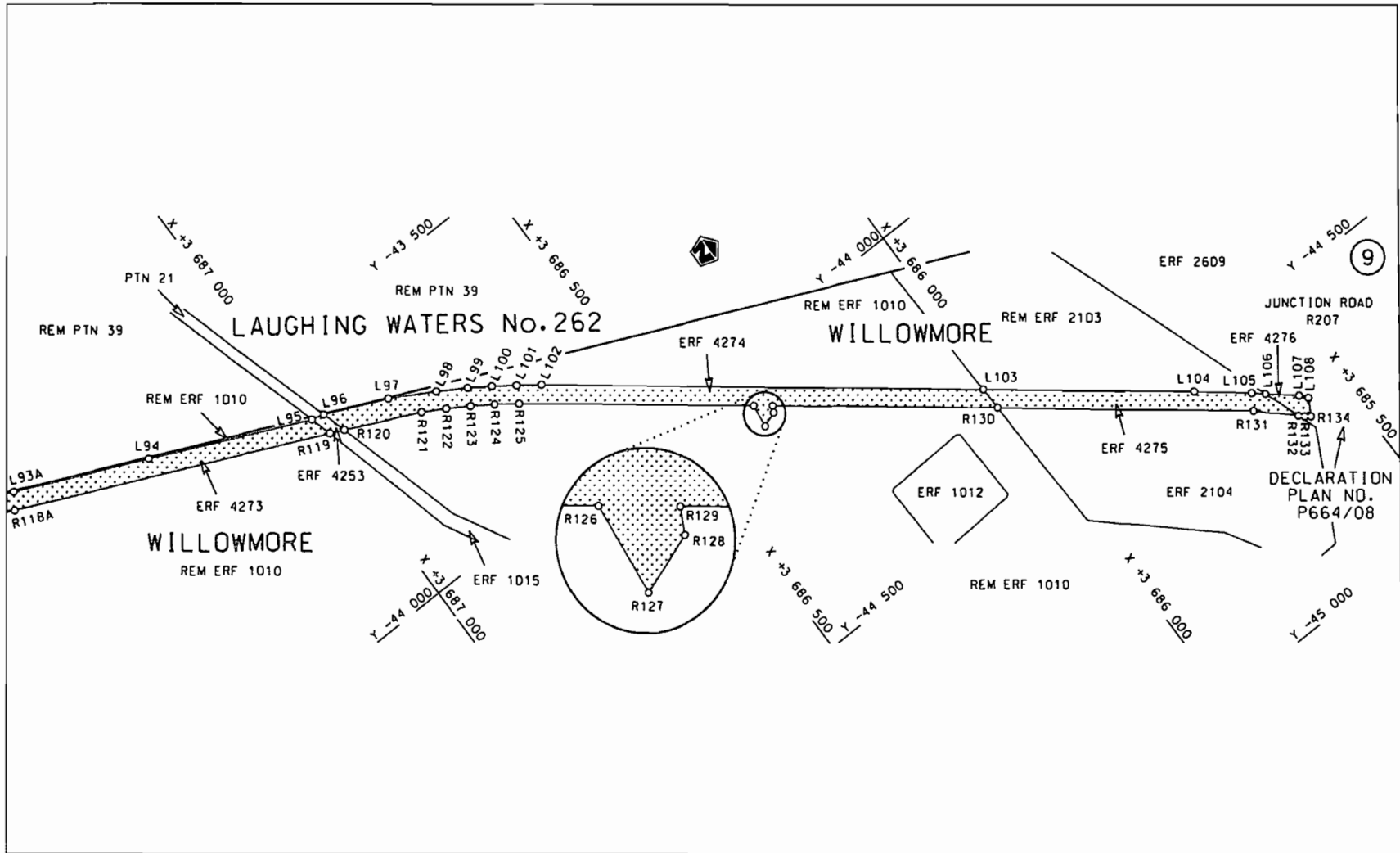
Vel Sheet 2 van 8
of of
Plan P691/08




<p>Die Suid Afrikaanse Nasionale Padagentskop Beperk The South African National Roads Agency Limited</p>	<p>Die figuur getoon The figure shown</p>		<p>steldie podreserve voor van 'n gedeelte represents the road reserve of a portion van Nasionale Roete N9 Seksie of National Route N9 Section</p>	<p>Vel Sheet 3 van 8 of 8 Plan P691/08</p>
			<p>3</p>	



<p>Die Suid Afrikaanse Nasionale Padagentskop Beperk The South African National Roads Agency Limited</p>	<p>Die figuur getoon The figure shown</p>	<p>stel die padreserwe voor van 'n gedeelte represents the road reserve of a portion van Nasionale Roete N9 Sektie 3 of National Route N9 Section 3</p>	<p>Vel Sheet 4 van 8 of of Plan P691/08</p>
--	---	---	---



Die Suid Afrikaanse Nasionale Padogenskop Beperk The South African National Roads Agency Limited	Die figuur getoon The figure shown	 steldie padreserwe voor van 'n gedeelte represents the road reserve of a portion van Nasionale Roete N9 Seksie of National Route Section	Vel Sheet 5 van 8 of Plan P691/08
---	---------------------------------------	--	---

PADRESERWE KOÖRDINATE / ROAD RESERVE CO-ORDINATES						
LINKERKANT/LEFT HAND SIDE				REGTERKANT/RIGHT HAND SIDE		
	Y	X	WG 23°		Y	X
L1	-29 903.860	3 698	332.130	R1	-29 923.030	3 698 359.720
L2	-29 906.550	3 698	331.360	R2	-29 924.470	3 698 359.320
L3	-29 989.370	3 698	319.220	R3	-29 995.480	3 698 349.740
L4	-30 565.150	3 698	248.020	R4	-30 598.370	3 698 275.270
L5	-31 141.200	3 698	176.790	R5	-31 684.380	3 698 141.130
L6	-31 675.840	3 698	110.090	R6	-31 719.500	3 698 135.660
L7	-31 714.310	3 698	104.350	R7	-31 758.020	3 698 126.640
L8	-31 787.510	3 698	084.870	R8	-31 800.030	3 698 113.800
L9	-31 869.490	3 698	045.980	R9	-31 840.580	3 698 095.570
L10	-31 968.500	3 697	971.740	R10	-31 880.880	3 698 075.310
L11	-32 033.790	3 697	892.280	R11	-31 919.020	3 698 050.950
L12	-32 297.890	3 697	428.930	R12	-31 994.680	3 697 987.450
L13	-32 342.180	3 697	377.860	R13	-32 049.830	3 697 931.610
L14	-32 385.290	3 697	333.010	R14	-32 104.010	3 697 849.160
L15	-32 476.370	3 697	273.130	R15	-32 166.360	3 697 737.940
L16	-32 497.060	3 697	263.230	R16	-32 176.350	3 697 702.990
L17	-32 795.770	3 697	130.960	R17	-32 310.640	3 697 466.420
L18	-32 793.730	3 697	128.990	R18	-32 342.350	3 697 419.720
L19	-32 801.360	3 697	121.300	R19	-32 365.400	3 697 393.030
L20	-32 806.900	3 697	125.960	R20	-32 431.850	3 697 338.720
L21	-33 215.680	3 696	943.390	R21	-32 466.610	3 697 316.420
L22	-33 326.350	3 696	893.960	R22	-32 533.980	3 697 281.580
L23	-33 713.900	3 696	719.740	R23	-33 223.940	3 696 974.090
L24	-33 766.140	3 696	691.670	R24	-33 346.740	3 696 919.360
L25	-33 818.020	3 696	661.560	R25	-33 559.040	3 696 825.470
L26	-33 900.020	3 696	607.670	R26	-33 731.610	3 696 748.690
L27	-34 115.460	3 696	466.090	R27	-33 740.640	3 696 751.280
L28	-34 218.560	3 696	398.330	R28	-33 745.830	3 696 749.500
L29	-34 649.560	3 696	110.510	R29	-33 744.300	3 696 738.910
L30	-34 829.860	3 696	011.250	R30	-33 796.380	3 696 709.910
L31	-34 909.670	3 695	978.060	R31	-33 815.540	3 696 699.240
L32	-34 986.830	3 695	953.320	R32	-33 824.880	3 696 694.040
L33	-35 070.420	3 695	936.440	R33	-34 126.650	3 696 495.680
L34	-35 413.370	3 695	874.180	R34	-34 702.430	3 696 117.190
L35	-35 708.260	3 695	847.210	R35	-34 824.910	3 696 047.380
L36	-35 958.980	3 695	854.720	R36	-34 914.620	3 696 008.710
L37	-36 109.540	3 695	859.230	R37	-34 992.880	3 695 983.270
L38	-36 162.880	3 695	858.160	R38	-35 077.100	3 695 967.080
L39	-36 219.460	3 695	851.680	R39	-35 307.950	3 695 924.820
L40	-36 309.100	3 695	828.920	R40	-35 504.630	3 695 890.420
L41	-36 869.330	3 695	631.380	R41	-35 599.390	3 695 878.530
L42	-36 986.990	3 695	584.420	R42	-35 652.830	3 695 877.580
L43	-37 060.550	3 695	548.490	R43	-35 710.410	3 695 878.320
L44	-38 042.230	3 694	999.500	R44	-35 970.990	3 695 886.680
L45	-38 387.560	3 694	807.170	R45	-36 006.590	3 695 887.820
L46	-38 435.790	3 694	783.870	R46	-36 111.070	3 695 890.060
L47	-38 478.610	3 694	766.270	R47	-36 165.800	3 695 889.480
L48	-38 521.790	3 694	750.800	R48	-36 227.130	3 695 883.480
L49	-38 565.880	3 694	737.770	R49	-36 326.110	3 695 855.900
L50	-38 580.950	3 694	734.090	R50	-36 881.050	3 695 660.030
L51	-38 610.090	3 694	726.970	R51	-36 933.200	3 695 640.590

Vel	6	Van	8	P691/08
Sheet		of		

PADRESERWE KOÖRDINATE / ROAD RESERVE CO-ORDINATES						
LINKERKANT/LEFT HAND SIDE				REGTERKANT/RIGHT HAND SIDE		
	Y	X	WG 23°		Y	X
L52	-39 611.990	3 694	508.340	R52	-36 958.730	3 695 630.190
L53	-39 688.190	3 694	486.620	R53	-37 020.100	3 695 603.010
L54	-39 750.150	3 694	465.000	R54	-37 098.650	3 695 562.830
L55	-39 815.000	3 694	438.550	R55	-38 388.800	3 694 841.590
L56	-40 429.620	3 694	170.640	R56	-38 415.890	3 694 827.690
L57	-40 846.570	3 693	990.030	R57	-38 444.930	3 694 813.950
L58	-40 866.900	3 693	979.320	R58	-38 471.150	3 694 802.580
L59	-40 914.380	3 693	948.240	R59	-38 513.350	3 694 786.660
L60	-40 955.670	3 693	911.530	R60	-38 540.850	3 694 777.600
L61	-40 968.080	3 693	897.820	R61	-38 580.860	3 694 765.930
L62	-41 030.960	3 693	818.370	R62	-38 712.960	3 694 736.990
L63	-41 054.770	3 693	772.860	R63	-39 113.520	3 694 649.220
L64	-41 065.770	3 693	735.650	R64	-39 612.800	3 694 539.540
L65	-41 091.400	3 693	615.200	R65	-39 657.300	3 694 527.940
L66	-41 090.430	3 693	536.960	R66	-39 727.880	3 694 505.520
L67	-41 070.120	3 693	449.680	R67	-39 782.680	3 694 485.400
L68	-41 047.360	3 693	394.390	R68	-40 841.270	3 694 025.920
L69	-41 003.020	3 693	325.290	R69	-40 875.800	3 694 009.340
L70	-40 739.420	3 692	982.860	R70	-40 908.360	3 693 990.410
L71	-40 714.770	3 692	946.070	R71	-40 929.630	3 693 975.250
L72	-40 691.120	3 692	904.030	R72	-40 972.380	3 693 938.730
L73	-40 656.930	3 692	824.160	R73	-41 019.470	3 693 902.080
L74	-40 629.640	3 692	750.370	R74	-41 063.560	3 693 834.210
L75	-40 618.080	3 692	422.410	R75	-41 086.520	3 693 779.340
L76	-40 607.850	3 692	132.270	R76	-41 110.290	3 693 706.240
L77	-40 601.430	3 691	875.360	R77	-41 123.060	3 693 639.640
L78	-40 599.250	3 691	788.160	R78	-41 125.590	3 693 589.170
L79	-40 597.930	3 691	735.130	R79	-41 121.790	3 693 533.870
L80	-40 599.080	3 691	721.270	R80	-41 099.890	3 693 438.300
L81	-40 609.530	3 691	595.120	R81	-41 076.480	3 693 382.700
L82	-40 638.020	3 691	444.140	R82	-41 028.390	3 693 305.560
L83	-40 646.740	3 691	414.500	R83	-40 757.550	3 692 954.230
L84	-40 715.570	3 691	203.710	R84	-40 719.390	3 692 890.360
L85	-40 790.370	3 691	101.940	R85	-40 685.280	3 692 807.900
L86	-40 813.130	3 691	071.830	R86	-40 668.840	3 692 749.060
L87	-41 005.520	3 690	817.370	R87	-40 662.450	3 692 710.330
L88	-42 318.210	3 689	100.620	R88	-40 658.860	3 692 665.660
L89	-42 692.920	3 688	611.130	R89	-40 657.560	3 692 509.450
L90	-43 119.680	3 688	052.480	R90	-40 651.280	3 692 479.410
L91	-43 154.050	3 688	004.450	R91	-40 649.090	3 692 418.390
L92	-43 186.970	3 687	964.689	R92	-40 642.470	3 692 233.490
L93	-43 254.520	3 687	826.010	R93	-40 631.560	3 691 929.000
L94	-43 504.480	3 687	266.580	R94	-40 640.100	3 691 898.890
L95	-43 626.610	3 686	996.170	R95	-40 638.920	3 691 864.720
L96	-43 632.210	3 686	974.270	R96	-40 635.700	3 691 770.810
L97	-43 679.630	3 686	867.320	R97	-40 635.260	3 691 758.060
L98	-43 722.860	3 686	791.500	R98	-40 627.480	3 691 689.880
L99	-43 752.180	3 686	743.090	R99	-40 640.070	3 691 601.470
L100	-43 776.400	3 686	706.410	R100	-40 674.180	3 691 454.500
L101	-43 801.810	3 686	670.370	R101	-40 698.910	3 691 366.050
L102	-43 828.290	3 686	635.390	R102	-40 732.650	3 691 281.420

Vel	7	Van	8	P691/08
Sheet		of		

PADRESERWE KOÖRDINATE / ROAD RESERVE CO-ORDINATES						
LINKERKANT/LEFT HAND SIDE				REGTERKANT/RIGHT HAND SIDE		
	Y	X	WG 23°		Y	X
L103	-44 314.260	3 686	016.090	R103	-40 772.750	3 691 199.250
L104	-44 546.590	3 685	720.020	R104	-40 818.830	3 691 119.780
L105	-44 611.260	3 685	640.090	R105	-40 881.250	3 691 031.630
L106	-44 627.470	3 685	621.430	R106	-41 948.070	3 689 637.260
L107	-44 667.610	3 685	575.840	R107	-42 717.250	3 688 630.140
L108	-44 680.850	3 685	565.030	R108	-42 870.760	3 688 429.890
				R109	-42 905.940	3 688 447.290
				R110	-42 917.280	3 688 425.240
				R111	-42 886.140	3 688 409.500
				R112	-43 137.040	3 688 080.870
				R113	-43 180.650	3 688 021.780
				R114	-43 223.010	3 687 964.849
				R115	-43 230.610	3 687 941.860
				R116	-43 251.120	3 687 904.190
				R117	-43 272.880	3 687 861.830
				R118	-43 334.040	3 687 726.360
				R119	-43 664.350	3 686 985.100
				R120	-43 675.140	3 686 961.150
				R121	-43 734.880	3 686 834.380
				R122	-43 756.680	3 686 795.560
				R123	-43 779.670	3 686 758.030
				R124	-43 803.680	3 686 721.700
				R125	-43 829.050	3 686 686.110
				R126	-44 086.540	3 686 357.540
				R127	-44 126.500	3 686 362.280
				R128	-44 117.550	3 686 336.150
				R129	-44 107.270	3 686 330.720
				R130	-44 354.850	3 686 014.600
				R131	-44 637.550	3 685 656.000
				R132	-44 694.010	3 685 597.490
				R133	-44 702.090	3 685 589.370
				R134	-44 708.420	3 685 580.450

Vel	8	Van	8	P691/08
Sheet		of		