

Government Gazette Staatskoerant

REPUBLIC OF SOUTH AFRICA
REPUBLIEK VAN SUID-AFRIKA

Vol. 525

Pretoria, 24 March
Maart 2009

No. 32019

CONTENTS**INHOUD**

<i>No.</i>	<i>Page No.</i>	<i>Gazette No.</i>	<i>No.</i>	<i>Bladsy No.</i>	<i>Koerant No.</i>
GOVERNMENT NOTICE			GOEWERMENTSKENNISGEWING		
Transport, Department of			Vervoer, Departement van		
<i>Government Notice</i>			<i>Goewermentskennisgewing</i>		
299			299		
South African National Roads Agency Limited and the National Roads Act (7/1998): The South African National Roads Agency Limited: Declaration amendment of National Road R22 Section 2: Amendment of Declaration No. 1350 of 2003	3	32019	Suid-Afrikaanse Nasionale Padagentskap Beperk en die Nasionale Paaie Wet (7/1998): Die Suid-Afrikaanse Nasionale Padagentskap Beperk: Verklaring wysiging van Nasionale Pad R22 Seksie 2: Wysiging van Verklaring No. 1350 van 2003	4	32019

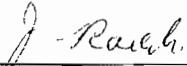
GOVERNMENT NOTICE

DEPARTMENT OF TRANSPORT**No. 299****24 March 2009****THE SOUTH AFRICAN NATIONAL ROADS
AGENCY LIMITED**Registration No: 98/09584/06

DECLARATION AMENDMENT OF NATIONAL ROAD R22 SECTION 2**AMENDMENT OF DECLARATION NO. 1350 OF 2003**

By virtue of section 40 (1)(b) of the South African National Roads Agency Limited and the National Roads Act, 1998 (Act No. 7 of 1998), I hereby amend Declaration No. 1350 of 2003 by substituting the section from the common boundary between Lot H108 and Lot H109 up to the Mkuzi River, with the subjoined sheets 1 to 12 of Plan No. P663/08.

(National Road R22 Section 2: Common boundary between Lot H108 and Lot H109 – Mkuzi River)



MINISTER OF TRANSPORT

GOEWERMENTSKENNISGEWING

DEPARTEMENT VAN VERVOER

No. 299

24 Maart 2009

DIE SUID-AFRIKAANSE NASIONALE PADAGENTSKAP BEPERK

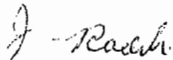
Registrasie No: 98/09584/06

VERKLARING WYSIGING VAN NASIONALE PAD R22 SEKSIE 2.

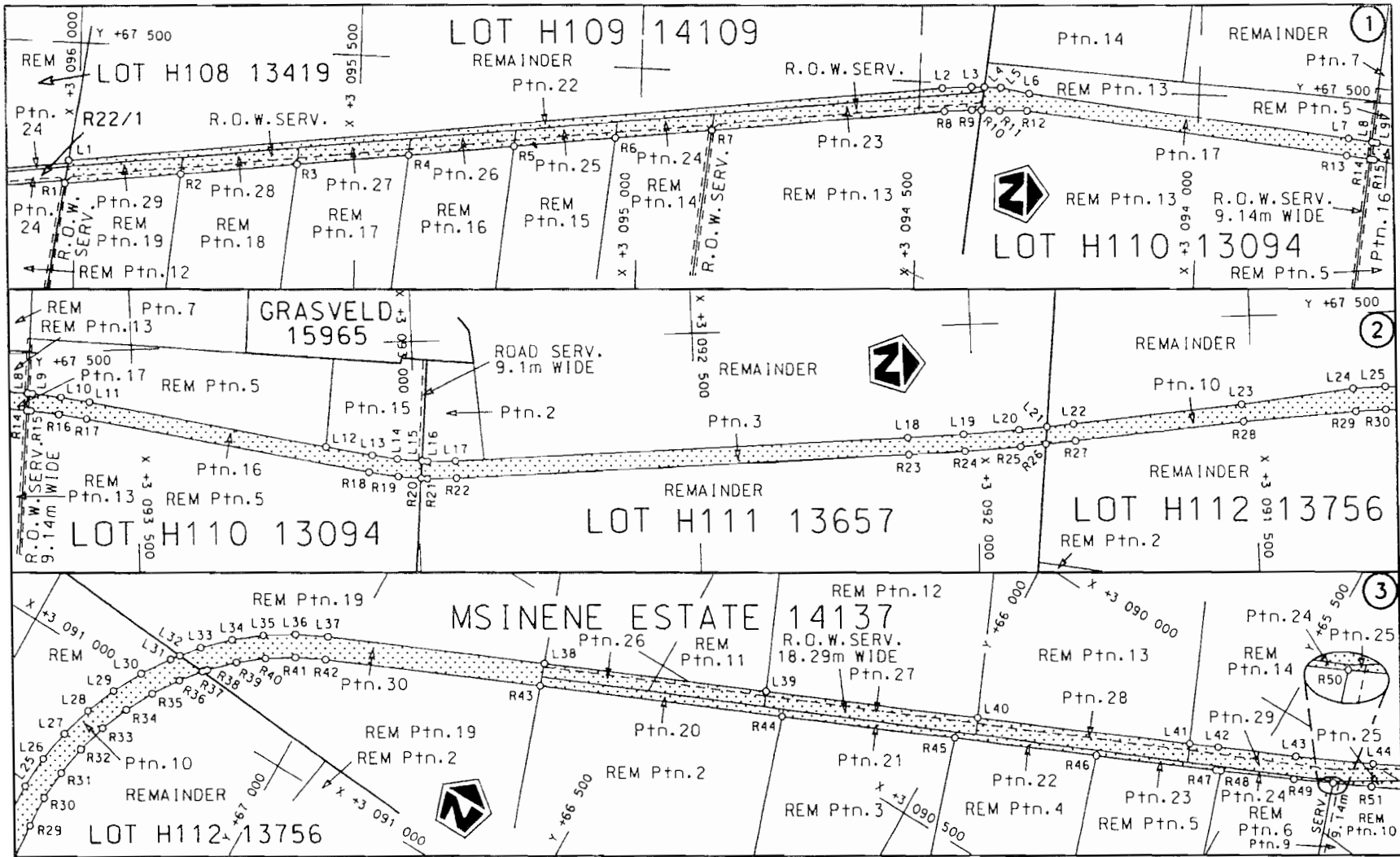
WYSIGING VAN VERKLARING NO. 1350 VAN 2003

Kragtens Artikel 40(1)(b) van die Suid Afrikaanse Nasionale Padagentskap Beperk en die Nasionale Paaie Wet, 1998 (Wet No.7 van 1998), wysig ek hiermee Verklaring no. 1350 van 2003, deur die gedeelte vanaf gemeenskaplike grens tussen Lot H108 en Lot H109 tot by die Mkuzrivier, te vervang met meegaande velle 1 tot 12 van Plan no. P693/08

(Nasionale Pad R22 Seksie 2: Gemeenskaplike grens tussen Lot H108 en Lot H109 – Mkuzirivier)

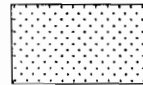


MINISTER VAN VERVOER



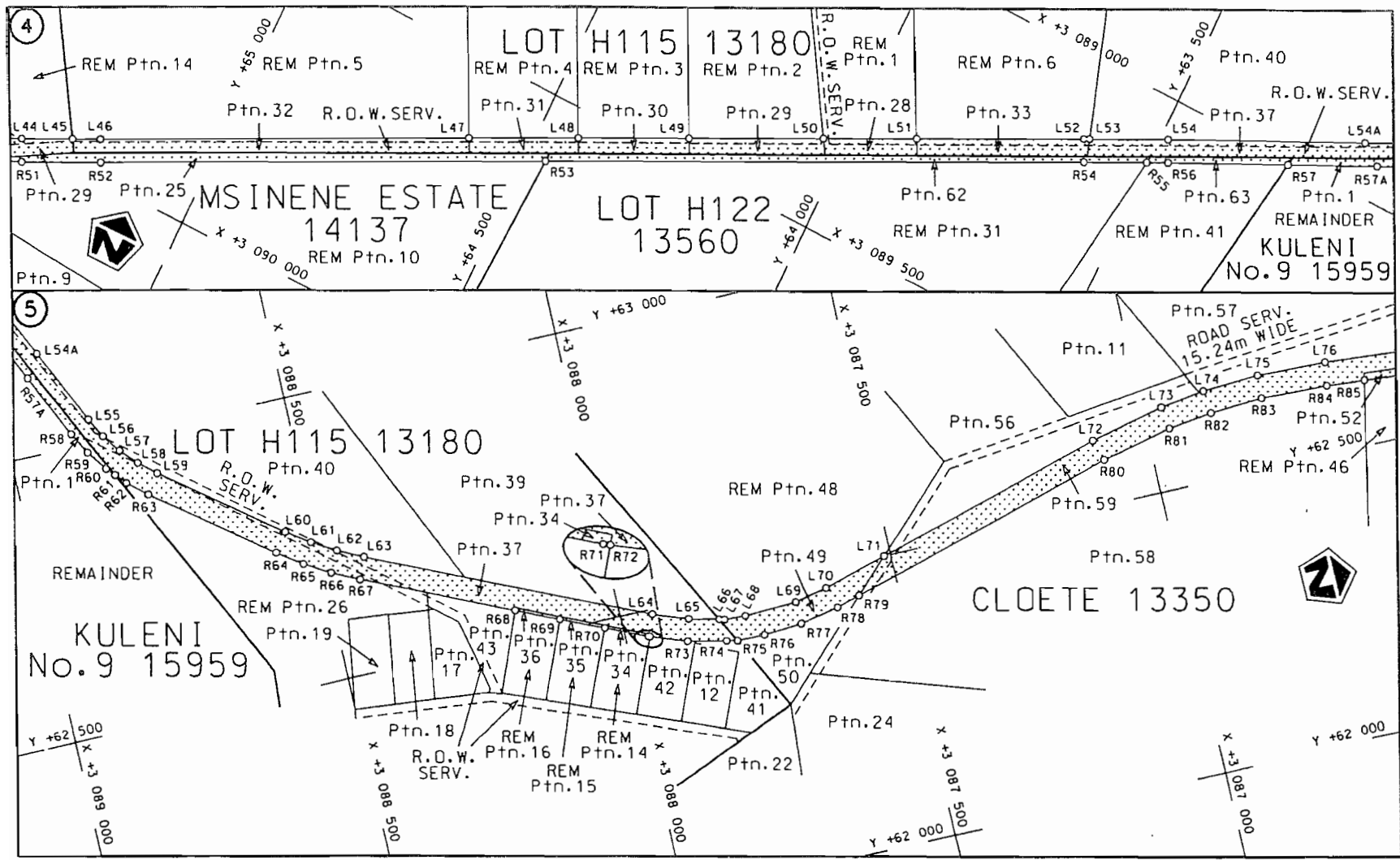
Die Suid Afrikaanse Nasionale Podogentskap Beperk
The South African National Roads Agency Limited

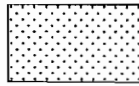
Die figuur getoon
The figure shown

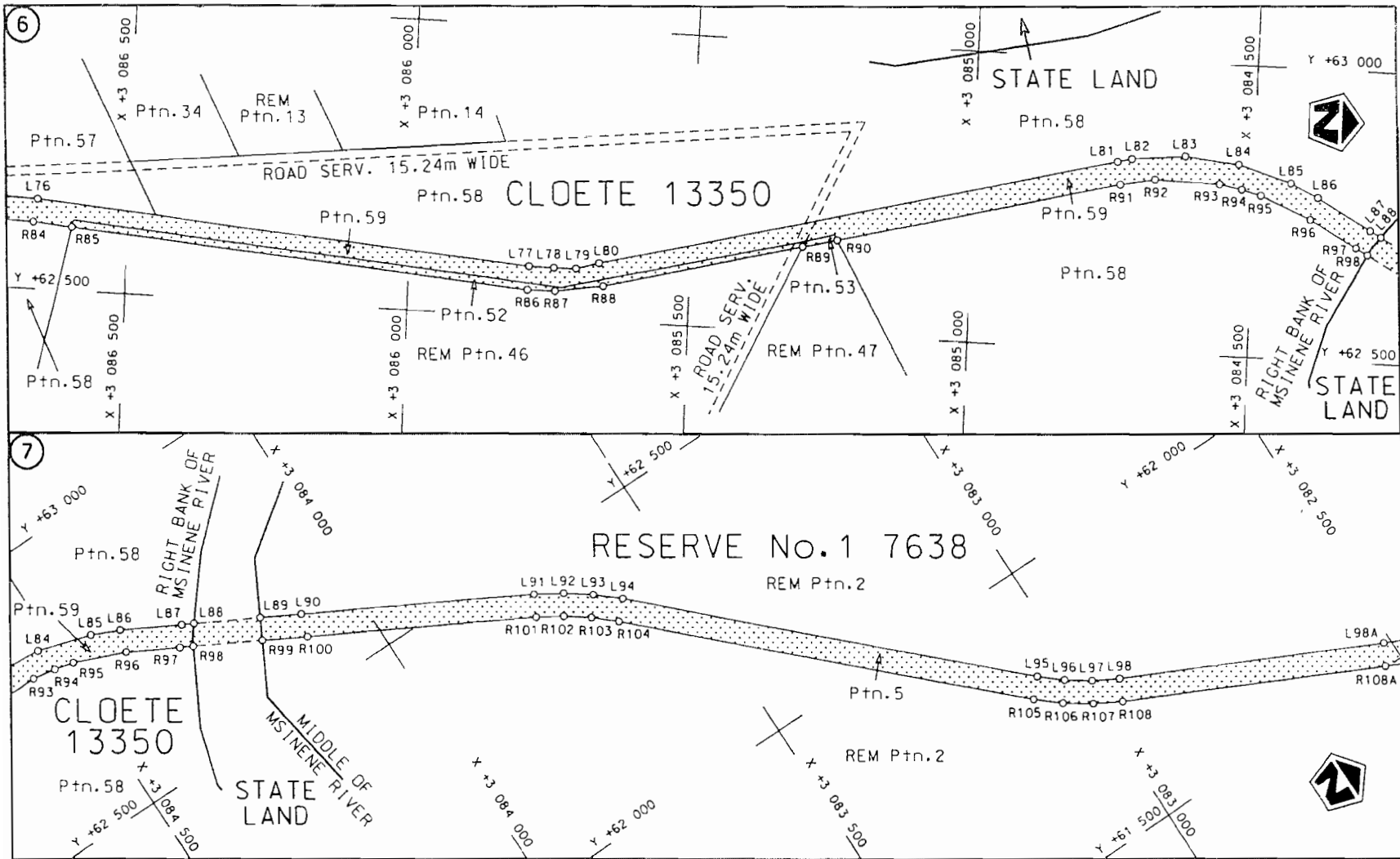


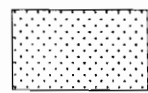
steldie padreserwe voor van 'n gedeelte
represents the road reserve of a portion
von Nasionale Roete R22 Seksie
of National Route Section 2

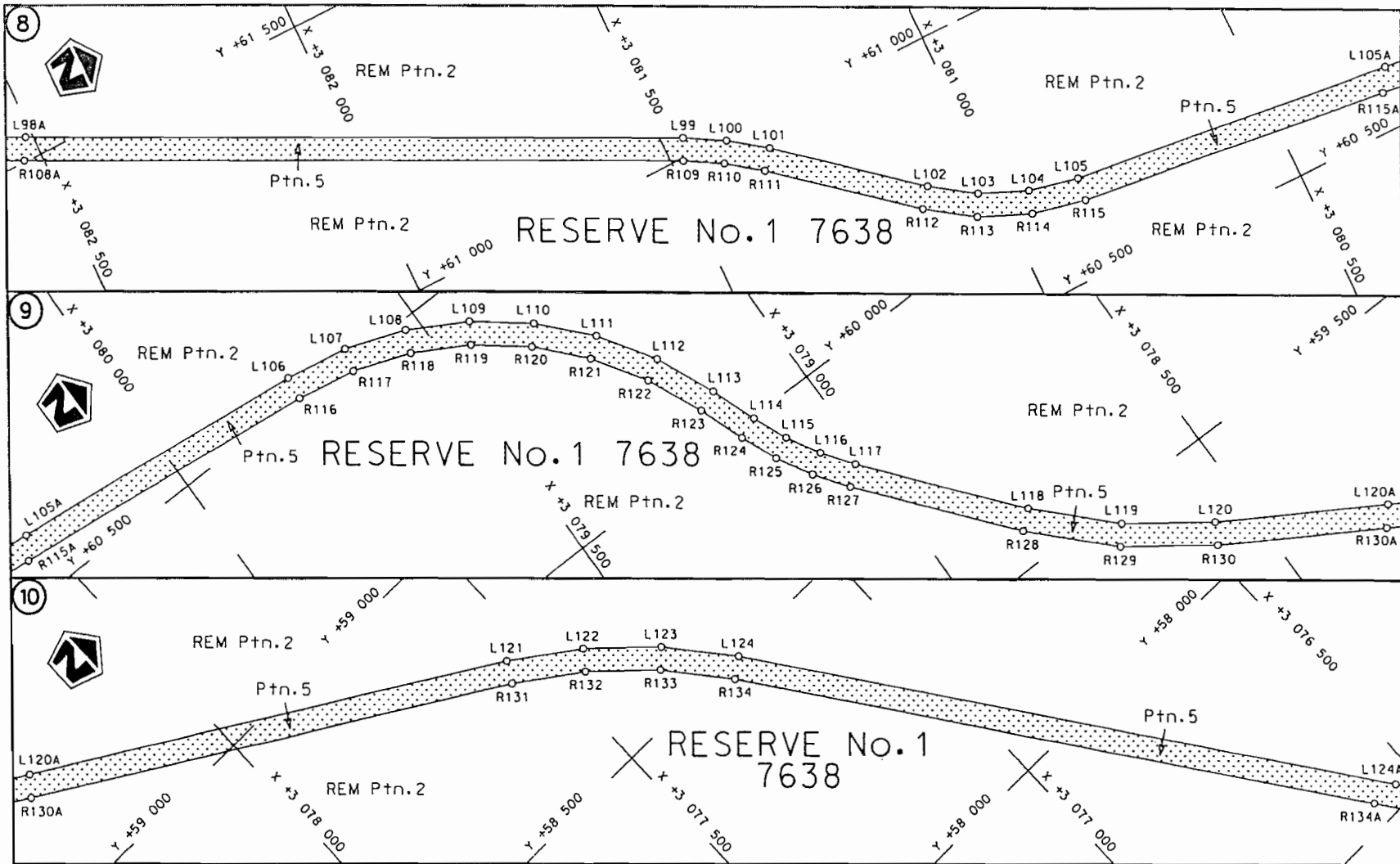
Vel 1 van 12
Sheet of
Plan P693/08



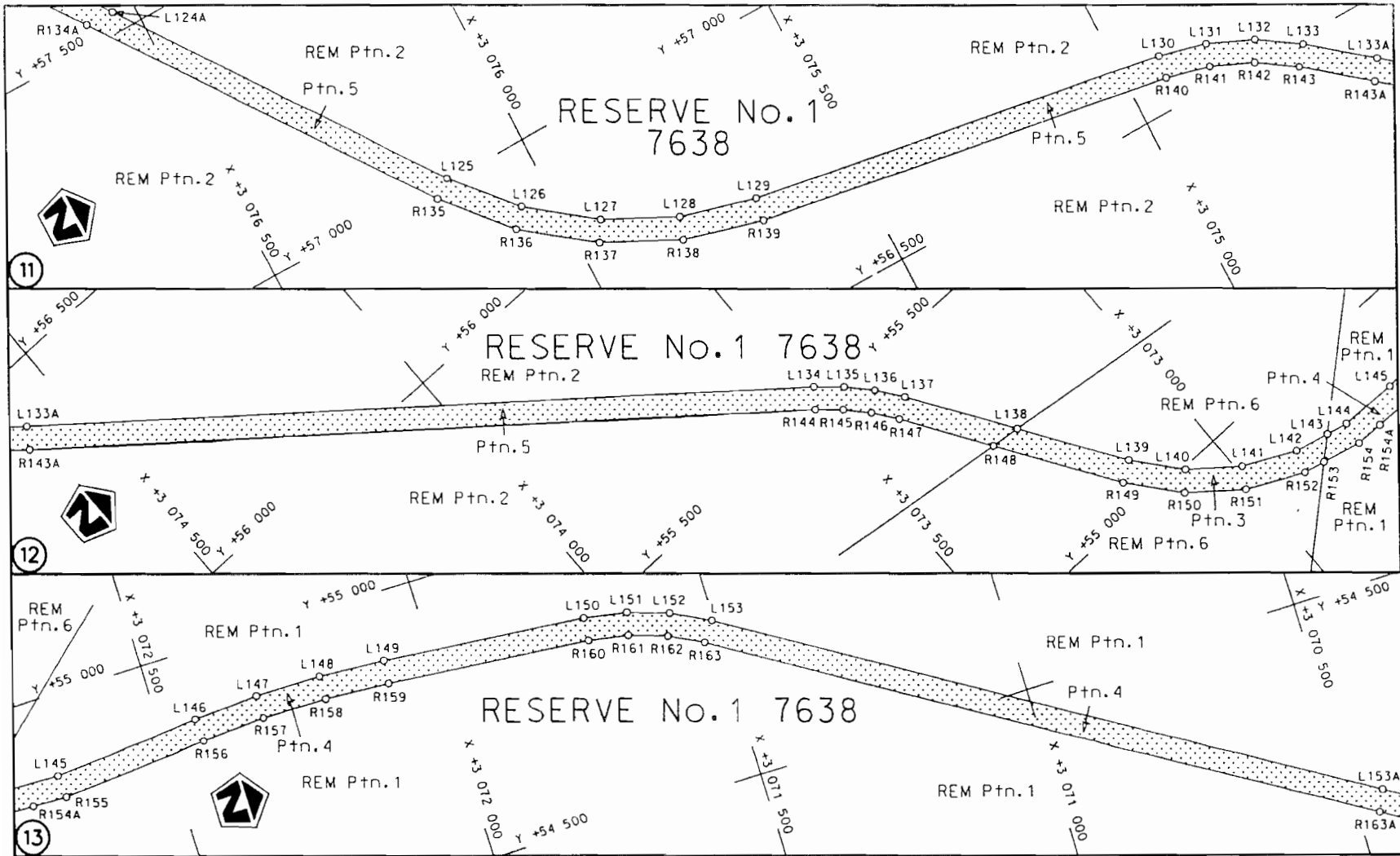
<p>Die Suid Afrikaanse Nasionale Padagentskap Beperk The South African National Roads Agency Limited</p>	<p>Die figuur getoon The figure shown</p>	<p></p> <p>steldie padreserwe voor van 'n gedeelte represents the road reserve of a portion van Nasionale Roete R22 Seksie Section of National Route R22 Seksie Section</p>	<p>Vel Sheet 2 van of 12 Plan P693/08</p>
--	---	---	---

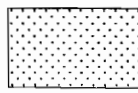


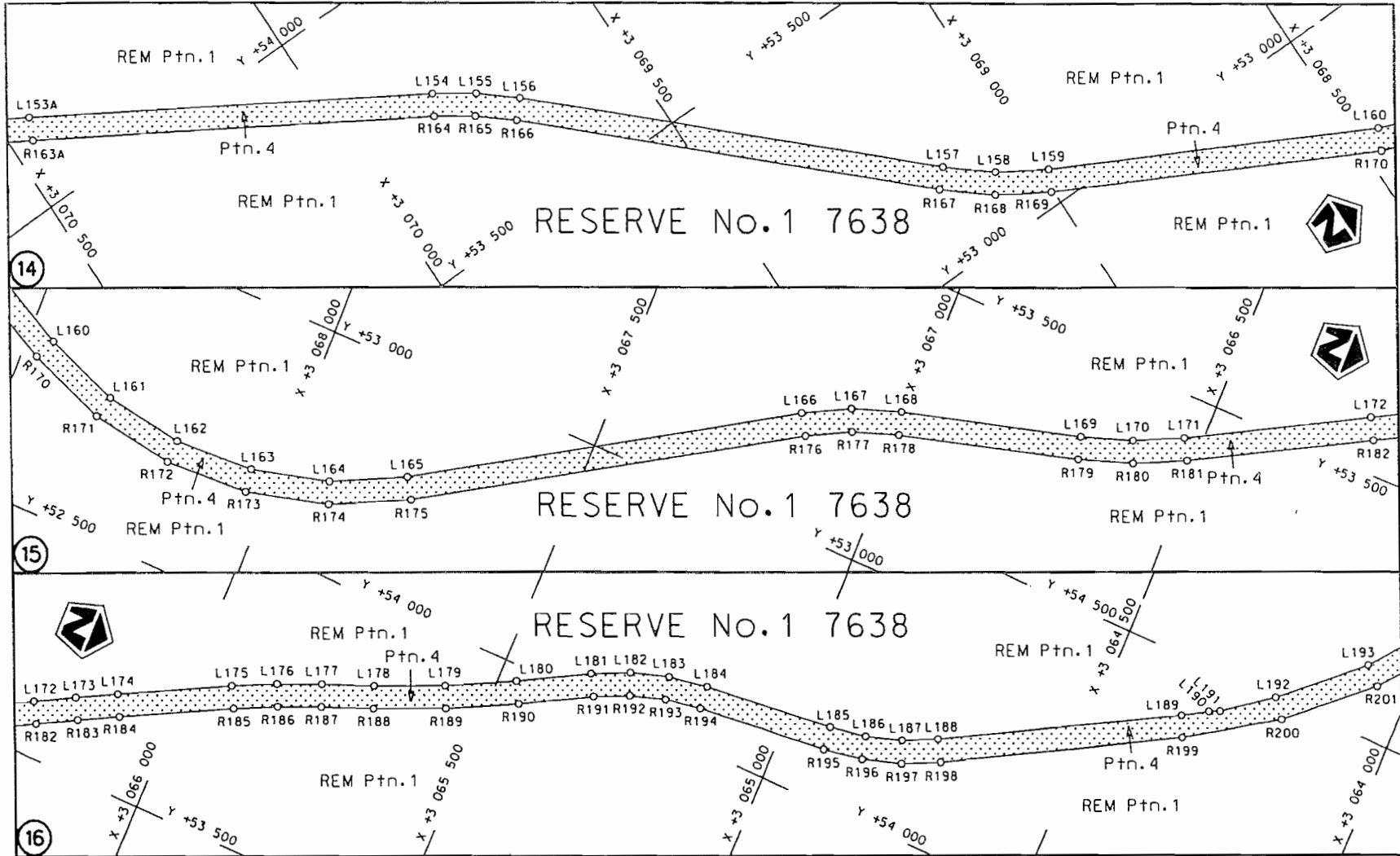
<p>Die Suid Afrikaanse Nasionale Podagentskop Beperk The South African National Roads Agency Limited</p>	<p>Die figuur getoon The figure shown</p> 	<p>steldie padreserwe voor van 'n gedeelte represents the road reserve of a portion van Nasionale Roete R22 Seksie of National Route R22 Section</p> <p>2</p>	<p>Vel Sheet 3 van of 12</p> <p>Plan P693/08</p>
--	--	---	--




<p>Die Suid Afrikaanse Nasionale Padagentskap Beperk The South African National Roads Agency Limited</p>	<p>Die figuur getoon The figure shown</p>		<p>steldie padreserwe voor van 'n gedeelte represents the road reserve of a portion van Nasionale Roete R22 Seksie 2 of National Route R22 Section 2</p>	<p>Vel Sheet 4 van of 12 Plan P693/08</p>
--	---	--	--	---



<p>Die Suid Afrikaanse Nasionale Padogentskop Beperk The South African National Roads Agency Limited</p>	<p>Die figuur getoon The figure shown</p> 	<p>steld die padreserwe voor van 'n gedeelte represents the road reserve of a portion van Nasionale Roete R22 Seksie 2 of National Route R22 Section 2</p>	<p>Vel Sheet 5 van 12 Plan P693/08</p>
--	--	--	--



<p>Die Suid Afrikaanse Nasionale Padagentskap Beperk The South African National Roads Agency Limited</p>	<p>Die figuur getoon The figure shown</p> 	<p>steldie padreserve voor van 'n gedeelte represents the road reserve of a portion van Nasionale Roete R22 Sektie 2 of National Route R22 Section 2</p>	<p>Vel Sheet 6 van 12 Plan P693/08</p>
--	--	--	--

PADRESERWE KOÖRDINATE				/	ROAD RESERVE CO-ORDINATES		
LINKERKANT/LEFT HAND SIDE					REGTERKANT/RIGHT HAND SIDE		
	Y	X	WG	33°	Y	X	
L1	67 293.530	3 096	014.870	R1	67 252.480	3 096	020.570
L2	67 490.640	3 094	460.160	R2	67 278.460	3 095	815.640
L3	67 495.370	3 094	407.980	R3	67 304.860	3 095	607.460
L4	67 495.760	3 094	384.820	R4	67 329.850	3 095	410.340
L5	67 496.250	3 094	355.590	R5	67 353.650	3 095	222.630
L6	67 488.320	3 094	303.740	R6	67 376.400	3 095	043.190
L7	67 435.130	3 093	728.870	R7	67 398.230	3 094	870.990
L8	67 430.470	3 093	687.080	R8	67 450.950	3 094	455.130
L9	67 429.480	3 093	678.280	R9	67 455.420	3 094	405.850
L10	67 421.750	3 093	627.960	R10	67 455.710	3 094	388.890
L11	67 411.930	3 093	578.010	R11	67 456.260	3 094	356.370
L12	67 321.380	3 093	158.840	R12	67 458.440	3 094	306.500
L13	67 303.840	3 093	077.830	R13	67 405.260	3 093	731.630
L14	67 295.950	3 093	033.980	R14	67 400.600	3 093	689.890
L15	67 291.470	3 092	990.050	R15	67 399.750	3 093	682.240
L16	67 290.510	3 092	980.090	R16	67 392.190	3 093	633.120
L17	67 289.680	3 092	930.440	R17	67 382.610	3 093	584.350
L18	67 307.220	3 092	119.500	R18	67 274.560	3 093	084.760
L19	67 310.110	3 092	019.790	R19	67 265.530	3 093	033.550
L20	67 315.260	3 091	920.180	R20	67 261.620	3 092	992.850
L21	67 319.080	3 091	868.870	R21	67 260.560	3 092	981.780
L22	67 322.670	3 091	820.700	R22	67 259.680	3 092	929.800
L23	67 347.280	3 091	520.310	R23	67 277.220	3 092	118.850
L24	67 368.870	3 091	317.960	R24	67 280.140	3 092	018.540
L25	67 370.630	3 091	260.240	R25	67 285.320	3 091	918.330
L26	67 366.420	3 091	202.650	R26	67 288.760	3 091	872.110
L27	67 356.290	3 091	145.790	R27	67 292.770	3 091	818.250
L28	67 340.360	3 091	090.280	R28	67 317.380	3 091	517.860
L29	67 318.810	3 091	036.710	R29	67 329.000	3 091	314.700
L30	67 291.840	3 090	985.640	R30	67 330.640	3 091	261.100
L31	67 259.770	3 090	937.610	R31	67 326.720	3 091	207.620
L32	67 248.400	3 090	923.890	R32	67 317.320	3 091	154.830
L33	67 222.920	3 090	893.150	R33	67 302.530	3 091	103.280
L34	67 181.680	3 090	852.720	R34	67 282.520	3 091	053.530
L35	67 136.500	3 090	816.750	R35	67 257.480	3 091	006.110
L36	67 087.860	3 090	785.620	R36	67 227.690	3 090	961.520
L37	67 036.260	3 090	759.700	R37	67 199.710	3 090	927.750
L38	66 682.940	3 090	604.250	R38	67 193.520	3 090	920.280
L39	66 317.520	3 090	443.480	R39	67 155.190	3 090	882.690
L40	65 968.530	3 090	289.930	R40	67 113.230	3 090	849.290
L41	65 619.490	3 090	136.370	R41	67 068.070	3 090	820.380
L42	65 572.140	3 090	115.540	R42	67 020.150	3 090	796.310
L43	65 444.820	3 090	058.480	R43	66 669.550	3 090	642.060
L44	65 318.810	3 089	998.780	R44	66 270.730	3 090	466.590
L45	65 237.680	3 089	958.210	R45	65 986.000	3 090	341.320
L46	65 192.970	3 089	935.850	R46	65 751.500	3 090	238.150
L47	64 606.700	3 089	637.570	R47	65 556.040	3 090	152.150
L48	64 431.180	3 089	548.270	R48	65 547.730	3 090	148.420
L49	64 255.700	3 089	458.980	R49	65 428.030	3 090	094.790
L50	64 039.160	3 089	348.810	R50	65 364.340	3 090	064.620
L51	63 890.570	3 089	273.210	R51	65 301.350	3 090	034.770

Vel	8	Van	12	P693/08
Sheet		of		

PADRESERWE KOÖRDINATE				/	ROAD RESERVE CO-ORDINATES			
LINKERKANT/LEFT HAND SIDE					REGTERKANT/RIGHT HAND SIDE			
	Y	X	WG	33°	Y	X		
L52	63 621.750	3 089	136.440	R52	65 174.840	3 089	971.510	
L53	63 611.710	3 089	131.410	R53	64 466.060	3 089	610.890	
L54	63 486.160	3 089	068.540	R54	63 603.610	3 089	172.090	
L55	63 040.320	3 088	848.890	R55	63 502.490	3 089	121.440	
L56	63 006.940	3 088	829.920	R56	63 468.480	3 089	104.410	
L57	62 976.030	3 088	807.130	R57	63 276.190	3 089	009.680	
L58	62 948.030	3 088	780.850	R58	63 022.640	3 088	884.760	
L59	62 923.330	3 088	751.450	R59	62 985.140	3 088	863.460	
L60	62 774.070	3 088	550.960	R60	62 950.430	3 088	837.870	
L61	62 746.350	3 088	510.660	R61	62 936.430	3 088	824.730	
L62	62 721.820	3 088	468.330	R62	62 918.980	3 088	808.360	
L63	62 700.620	3 088	424.250	R63	62 891.240	3 088	775.340	
L64	62 491.320	3 087	943.500	R64	62 741.980	3 088	574.850	
L65	62 469.350	3 087	881.930	R65	62 712.540	3 088	532.020	
L66	62 456.450	3 087	828.170	R66	62 686.470	3 088	487.060	
L67	62 454.140	3 087	818.550	R67	62 663.950	3 088	440.220	
L68	62 452.080	3 087	780.200	R68	62 551.080	3 088	180.970	
L69	62 455.580	3 087	685.880	R69	62 518.430	3 088	105.990	
L70	62 467.920	3 087	626.930	R70	62 485.910	3 088	031.280	
L71	62 499.830	3 087	511.890	R71	62 454.650	3 087	959.470	
L72	62 614.540	3 087	098.460	R72	62 453.690	3 087	956.790	
L73	62 643.140	3 086	965.670	R73	62 430.840	3 087	892.770	
L74	62 653.910	3 086	885.830	R74	62 416.340	3 087	823.450	
L75	62 659.070	3 086	785.300	R75	62 412.330	3 087	804.130	
L76	62 654.400	3 086	661.220	R76	62 411.770	3 087	753.870	
L77	62 586.350	3 085	786.640	R77	62 416.540	3 087	684.780	
L78	62 586.130	3 085	742.230	R78	62 430.150	3 087	614.330	
L79	62 586.540	3 085	703.370	R79	62 442.020	3 087	571.720	
L80	62 598.240	3 085	663.070	R80	62 577.440	3 087	085.960	
L81	62 823.370	3 084	744.520	R81	62 604.790	3 086	959.730	
L82	62 829.300	3 084	719.490	R82	62 614.120	3 086	881.150	
L83	62 838.550	3 084	623.940	R83	62 619.490	3 086	787.090	
L84	62 829.970	3 084	527.970	R84	62 615.130	3 086	667.470	
L85	62 802.320	3 084	434.180	R85	62 609.760	3 086	598.990	
L86	62 780.480	3 084	385.300	R86	62 546.220	3 085	788.040	
L87	62 729.010	3 084	289.220	R87	62 546.810	3 085	738.620	
L88	62 718.539	3 084	269.673	R88	62 559.660	3 085	654.190	
L89	62 662.208	3 084	164.505	R89	62 646.630	3 085	300.130	
L90	62 627.970	3 084	100.590	R90	62 661.710	3 085	238.750	
L91	62 432.710	3 083	736.080	R91	62 784.660	3 084	738.210	
L92	62 405.960	3 083	691.050	R92	62 795.840	3 084	677.150	
L93	62 375.370	3 083	648.510	R93	62 794.620	3 084	560.920	
L94	62 341.180	3 083	608.760	R94	62 787.590	3 084	521.030	
L95	61 826.790	3 083	061.280	R95	62 778.920	3 084	486.850	
L96	61 795.240	3 083	024.050	R96	62 742.620	3 084	397.300	
L97	61 767.580	3 082	983.780	R97	62 697.650	3 084	313.630	
L98	61 744.180	3 082	940.930	R98	62 686.291	3 084	292.495	
L99	61 031.620	3 081	462.300	R99	62 627.470	3 084	183.032	
L100	60 994.030	3 081	394.320	R100	62 589.720	3 084	112.780	
L101	60 949.070	3 081	330.940	R101	62 397.470	3 083	755.010	
L102	60 768.070	3 081	104.560	R102	62 372.490	3 083	712.940	

Vel	9	Van	12	P693/08
Sheet		of		

PADRESERWE KOÖRDINATE				/			ROAD RESERVE CO-ORDINATES		
LINKERKANT/LEFT HAND SIDE				REGTERKANT/RIGHT HAND SIDE					
	Y	X	WG	33°	Y	X			
L103	60 718.670	3 081	029.180	R103	62 343.920	3 083	673.220		
L104	60 684.220	3 080	945.900	R104	62 312.040	3 083	636.170		
L105	60 665.950	3 080	857.630	R105	61 797.640	3 083	088.640		
L106	60 543.200	3 079	745.620	R106	61 763.440	3 083	048.340		
L107	60 521.860	3 079	634.070	R107	61 733.480	3 083	004.000		
L108	60 483.240	3 079	527.240	R108	61 708.140	3 082	958.290		
L109	60 428.300	3 079	427.800	R109	60 995.570	3 081	479.640		
L110	60 358.410	3 079	338.270	R110	60 960.180	3 081	415.600		
L111	60 275.300	3 079	260.870	R111	60 917.800	3 081	355.920		
L112	60 181.050	3 079	197.450	R112	60 736.820	3 081	129.520		
L113	60 077.970	3 079	149.650	R113	60 683.300	3 081	047.860		
L114	59 997.850	3 079	120.010	R114	60 645.970	3 080	957.620		
L115	59 937.380	3 079	093.560	R115	60 626.180	3 080	862.020		
L116	59 880.330	3 079	060.420	R116	60 503.440	3 079	750.020		
L117	59 827.380	3 079	021.040	R117	60 483.270	3 079	644.680		
L118	59 584.550	3 078	817.830	R118	60 446.800	3 079	543.750		
L119	59 465.540	3 078	699.500	R119	60 394.920	3 079	449.860		
L120	59 368.480	3 078	562.660	R120	60 328.890	3 079	365.270		
L121	58 772.070	3 077	547.510	R121	60 250.450	3 079	292.180		
L122	58 693.920	3 077	433.090	R122	60 161.410	3 079	232.300		
L123	58 600.940	3 077	330.270	R123	60 064.060	3 079	187.160		
L124	58 494.920	3 077	241.050	R124	59 983.940	3 079	157.150		
L125	57 004.680	3 076	150.780	R125	59 919.330	3 079	129.260		
L126	56 898.940	3 076	056.380	R126	59 858.300	3 079	093.850		
L127	56 813.420	3 075	943.320	R127	59 801.700	3 079	051.730		
L128	56 751.360	3 075	815.860	R128	59 558.890	3 078	848.510		
L129	56 715.100	3 075	678.840	R129	59 435.020	3 078	725.360		
L130	56 592.350	3 074	925.550	R130	59 333.990	3 078	582.910		
L131	56 571.130	3 074	840.860	R131	58 737.580	3 077	567.780		
L132	56 536.050	3 074	760.950	R132	58 662.490	3 077	457.820		
L133	56 488.080	3 074	687.990	R133	58 573.170	3 077	359.080		
L134	55 537.660	3 073	476.150	R134	58 471.300	3 077	273.320		
L135	55 501.690	3 073	434.980	R135	56 981.070	3 076	183.070		
L136	55 461.640	3 073	397.850	R136	56 869.520	3 076	083.480		
L137	55 417.890	3 073	365.080	R137	56 779.350	3 075	964.250		
L138	55 244.240	3 073	248.880	R138	56 713.880	3 075	829.840		
L139	55 074.080	3 073	135.010	R139	56 675.600	3 075	685.280		
L140	54 995.940	3 073	069.810	R140	56 552.860	3 074	931.980		
L141	54 933.320	3 072	989.420	R141	56 533.280	3 074	853.830		
L142	54 889.060	3 072	897.700	R142	56 500.900	3 074	780.040		
L143	54 874.330	3 072	836.730	R143	56 456.640	3 074	712.710		
L144	54 865.150	3 072	798.760	R144	55 506.200	3 073	500.830		
L145	54 862.650	3 072	696.970	R145	55 473.020	3 073	462.830		
L146	54 884.170	3 072	434.670	R146	55 436.010	3 073	428.540		
L147	54 890.350	3 072	317.560	R147	55 395.620	3 073	398.310		
L148	54 889.710	3 072	200.270	R148	55 250.600	3 073	301.260		
L149	54 882.250	3 072	083.230	R149	55 051.800	3 073	168.230		
L150	54 848.650	3 071	721.140	R150	54 967.150	3 073	097.510		
L151	54 835.930	3 071	645.400	R151	54 899.360	3 073	010.540		
L152	54 812.220	3 071	572.400	R152	54 851.410	3 072	911.200		
L153	54 778.020	3 071	503.700	R153	54 842.290	3 072	873.470		

Vel	10	Van	12	P693/08
Sheet		of		

PADRESERWE KOÖRDINATE				/	ROAD RESERVE CO-ORDINATES			
LINKERKANT/LEFT HAND SIDE					REGTERKANT/RIGHT HAND SIDE			
	Y	X	WG	33°	Y	X		
L154	53 781.160	3 069 824.590		R154	54 825.510	3 072 803.980		
L155	53 737.990	3 069 759.980		R155	54 822.770	3 072 693.700		
L156	53 688.230	3 069 700.370		R156	54 844.310	3 072 431.390		
L157	53 167.260	3 069 139.610		R157	54 850.350	3 072 316.610		
L158	53 107.910	3 069 066.120		R158	54 849.720	3 072 201.650		
L159	53 059.340	3 068 985.140		R159	54 842.430	3 072 086.920		
L160	52 789.100	3 068 454.730		R160	54 808.820	3 071 724.810		
L161	52 738.840	3 068 324.180		R161	54 797.090	3 071 654.920		
L162	52 716.370	3 068 186.040		R162	54 775.180	3 071 587.530		
L163	52 722.620	3 068 046.330		R163	54 745.560	3 071 527.430		
L164	52 757.340	3 067 910.790		R164	53 746.760	3 069 845.010		
L165	52 819.030	3 067 785.220		R165	53 705.930	3 069 783.950		
L166	53 198.790	3 067 179.230		R166	53 658.930	3 069 727.580		
L167	53 240.720	3 067 100.210		R167	53 137.950	3 069 166.830		
L168	53 270.870	3 067 016.050		R168	53 075.120	3 069 089.030		
L169	53 357.560	3 066 704.620		R169	53 023.700	3 069 003.290		
L170	53 387.890	3 066 616.440		R170	52 753.430	3 068 472.850		
L171	53 428.530	3 066 532.520		R171	52 700.220	3 068 334.620		
L172	53 592.440	3 066 240.160		R172	52 676.430	3 068 188.430		
L173	53 629.030	3 066 173.990		R173	52 683.060	3 068 040.420		
L174	53 665.000	3 066 107.470		R174	52 719.800	3 067 896.920		
L175	53 760.910	3 065 927.620		R175	52 785.150	3 067 763.990		
L176	53 796.410	3 065 856.730		R176	53 164.940	3 067 157.940		
L177	53 828.190	3 065 784.060		R177	53 204.160	3 067 084.080		
L178	53 863.510	3 065 696.980		R178	53 232.340	3 067 005.280		
L179	53 914.900	3 065 581.270		R179	53 319.030	3 066 693.860		
L180	53 973.590	3 065 469.110		R180	53 350.910	3 066 601.200		
L181	54 039.600	3 065 352.330		R181	53 393.620	3 066 512.990		
L182	54 069.900	3 065 289.040		R182	53 557.510	3 066 220.630		
L183	54 091.410	3 065 222.260		R183	53 593.970	3 066 154.800		
L184	54 103.720	3 065 153.180		R184	53 629.730	3 066 088.620		
L185	54 128.830	3 064 923.290		R185	53 725.620	3 065 908.760		
L186	54 140.280	3 064 859.320		R186	53 760.220	3 065 839.720		
L187	54 160.250	3 064 797.440		R187	53 791.140	3 065 768.970		
L188	54 188.400	3 064 738.840		R188	53 826.430	3 065 681.940		
L189	54 403.130	3 064 356.470		R189	53 878.880	3 065 563.890		
L190	54 429.460	3 064 313.710		R190	53 938.760	3 065 449.420		
L191	54 438.070	3 064 295.860		R191	54 004.790	3 065 332.650		
L192	54 500.670	3 064 215.020		R192	54 032.750	3 065 274.260		
L193	54 619.610	3 064 086.850		R193	54 052.570	3 065 212.580		
L194	54 756.900	3 063 978.500		R194	54 063.950	3 065 148.810		
L195	54 909.250	3 063 892.650		R195	54 089.060	3 064 918.930		
L196	55 073.020	3 063 831.330		R196	54 101.450	3 064 849.610		
L197	55 330.910	3 063 757.010		R197	54 123.100	3 064 782.590		
L198	55 420.680	3 063 741.650		R198	54 153.610	3 064 719.110		
L199	55 511.610	3 063 746.460		R199	54 368.160	3 064 340.310		
L200	55 537.800	3 063 753.870		R200	54 469.370	3 064 190.190		
L201	55 599.200	3 063 771.230		R201	54 592.480	3 064 057.460		
L202	55 679.180	3 063 814.730		R202	54 734.620	3 063 945.280		
L203	55 835.830	3 063 924.080		R203	54 892.380	3 063 856.390		
L204	55 944.610	3 063 983.350		R204	55 061.960	3 063 792.900		

Vel	11	Van	12	P693/08
Sheet		of		

PADRESERWE KOÖRDINATE				/	ROAD RESERVE CO-ORDINATES		
LINKERKANT/LEFT HAND SIDE					REGTERKANT/RIGHT HAND SIDE		
	Y	X	WG	33°	Y	X	
L205	56 063.850	3 064	017.190	R205	55 319.870	3 063	718.560
L206	56 187.570	3 064	024.030	R206	55 418.350	3 063	701.700
L207	56 309.780	3 064	003.450	R207	55 518.160	3 063	707.000
L208	56 424.470	3 063	956.510	R208	55 529.740	3 063	710.280
L209	56 526.040	3 063	885.480	R209	55 614.320	3 063	734.210
L210	56 609.480	3 063	793.880	R210	55 702.100	3 063	781.940
L211	56 670.780	3 063	686.110	R211	55 858.720	3 063	891.290
L212	57 402.500	3 061	984.930	R212	55 959.760	3 063	946.310
L213	57 431.200	3 061	895.400	R213	56 070.430	3 063	977.750
L214	57 442.280	3 061	802.080	R214	56 185.350	3 063	984.080
L215	57 437.150	3 061	732.810	R215	56 298.820	3 063	964.980
L216	57 435.340	3 061	708.330	R216	56 405.340	3 063	921.370
L217	57 410.590	3 061	617.670	R217	56 499.620	3 063	855.450
L218	57 383.460	3 061	532.910	R218	56 577.100	3 063	770.390
L219	57 338.270	3 061	407.390	R219	56 634.000	3 063	670.330
L220	57 328.450	3 061	368.380	R220	57 365.780	3 061	969.070
L221	57 301.350	3 061	293.150	R221	57 392.120	3 061	886.900
L222	57 284.030	3 061	256.860	R222	57 402.290	3 061	801.180
L223	57 274.978	3 061	231.704	R223	57 395.900	3 061	715.110
				R224	57 388.350	3 061	687.420
				R225	57 373.200	3 061	631.830
				R226	57 345.860	3 061	546.520
				R227	57 293.840	3 061	402.130
				R228	57 283.300	3 061	384.680
				R229	57 256.230	3 061	309.370
				R230	57 246.400	3 061	270.410
				R231	57 236.693	3 061	243.515

Vel	12	Van	12	P693/08
Sheet		of		