

Government Gazette Staatskoerant

REPUBLIC OF SOUTH AFRICA
REPUBLIEK VAN SUID-AFRIKA

Vol. 525

Pretoria, 24 March
Maart 2009

No. 32020

CONTENTS**INHOUD**

<i>No.</i>	<i>Page No.</i>	<i>Gazette No.</i>	<i>No.</i>	<i>Bladsy No.</i>	<i>Koerant No.</i>
GOVERNMENT NOTICE			GOEWERMENSKENNISGEWING		
Transport, Department of			Vervoer, Departement van		
<i>Government Notice</i>			<i>Goewermentskennisgewing</i>		
300			300		
South African National Roads Agency Limited and the National Roads Act (7/1998): The South African National Roads Agency Limited: Declaration amendment of National Road N11 Section 13: Amendment of Declaration No. 1227 of 2004	3	32020	Suid-Afrikaanse Nasionale Padagentskap Beperk en die Nasionale Paaie Wet (7/1998): Die Suid-Afrikaanse Nasionale Padagentskap Beperk: Verklaring wysiging van Nasionale Pad N11 Seksie 13: Wysiging van Verklaring No. 1227 van 2004	4	32020

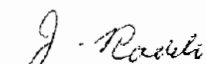
GOVERNMENT NOTICE

DEPARTMENT OF TRANSPORT**No. 300****24 March 2009****THE SOUTH AFRICAN NATIONAL ROADS
AGENCY LIMITED**Registration No: 98/09584/06

DECLARATION AMENDMENT OF NATIONAL ROAD N11 SECTION 13

AMENDMENT OF DECLARATION NO. 1227 OF 2004.

By virtue of section 40 (1)(b) of the South African National Roads Agency Limited and the National Roads Act, 1998 (Act No. 7 of 1998), I hereby amend Declaration NO. 1227 of 2004 Annexure paragraph (II) by substituting it, with the subjoined sheets 1 to 38 of Plan No. P694/08.

(National Road N11 Section 13: Mokopane – Groblersbrug Border Post)

MINISTER OF TRANSPORT

GOEWERMENTSKENNISGEWING

DEPARTEMENT VAN VERVOER

No. 300

24 Maart 2009

DIE SUID-AFRIKAANSE NASIONALE PADAGENTSKAP BEPERK

Registrasie No: 98/09584/06

VERKLARING WYSIGING VAN NASIONALE PAD N11 SEKSIE 13.

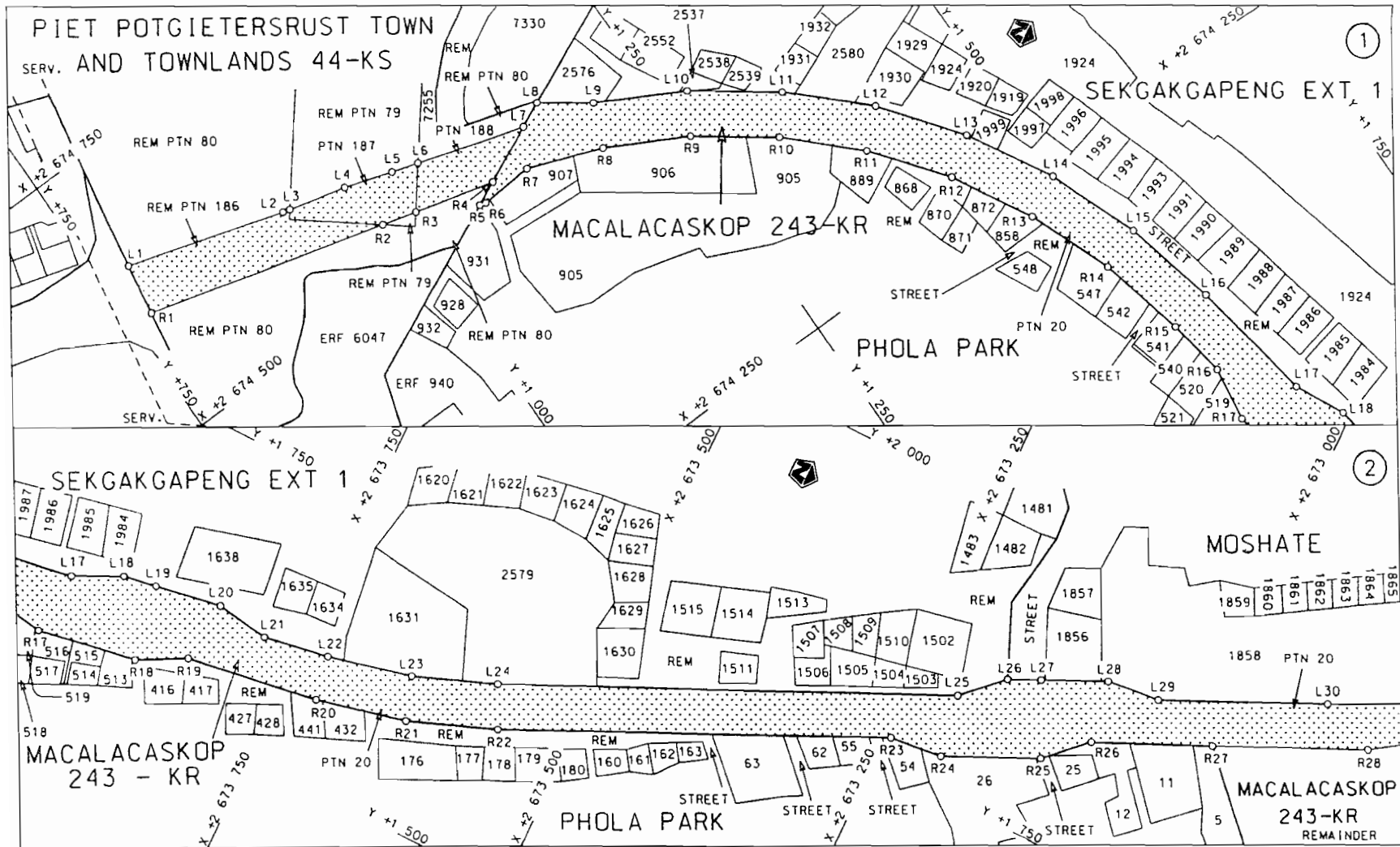
WYSIGING VAN VERKLARING NO. 1227 VAN 2004.

Kragtens Artikel 40(1)(b) van die Suid-Afrikaanse Nasionale Padagentskap Beperk en die Nasionale Paaie Wet, 1998 (Wet No.7 van 1998), wysig ek hiermee Verklaring no. 1227 van 2004 Bylae paragraaf (II) deur dit, te vervang met meegaande velle 1 tot 38 van Plan no. P694/08.

(Nasionale Pad N11 Seksie 13 Mokopane – Groblersbrug Grenspos)



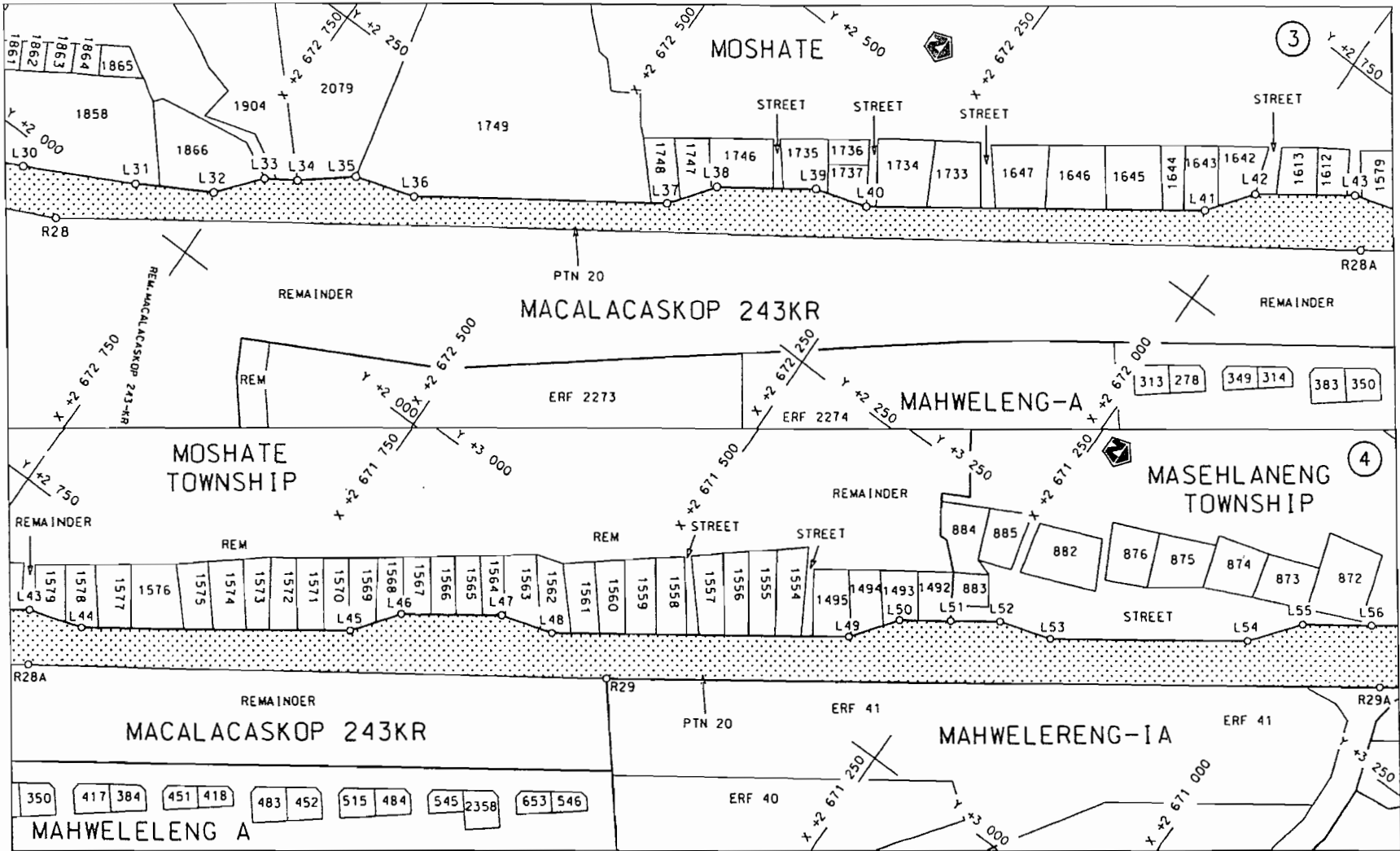
MINISTER VAN VERVOER




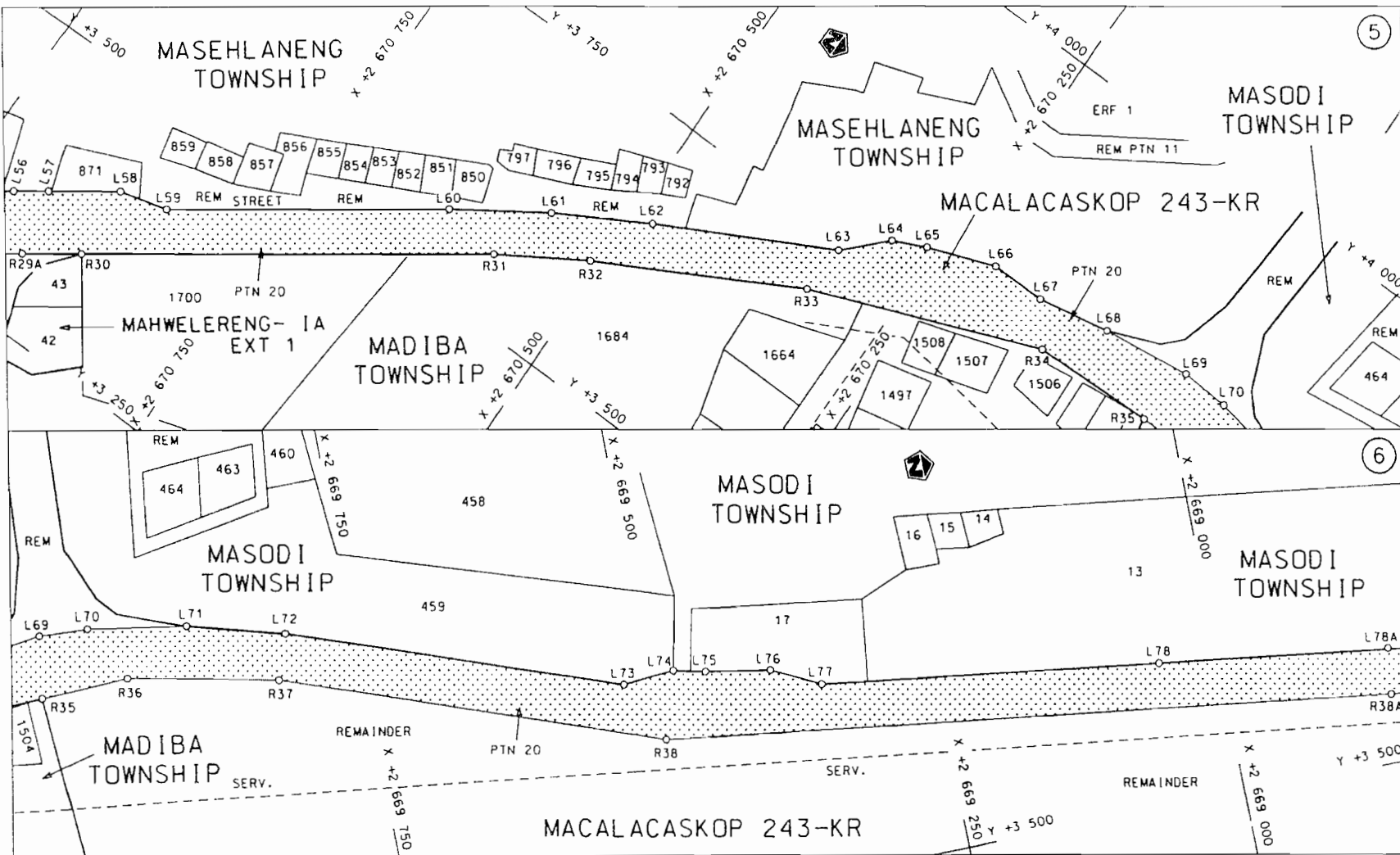
STATSKOERANT. 24 MAART 2009

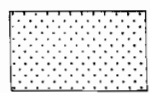
NO. 32020 5

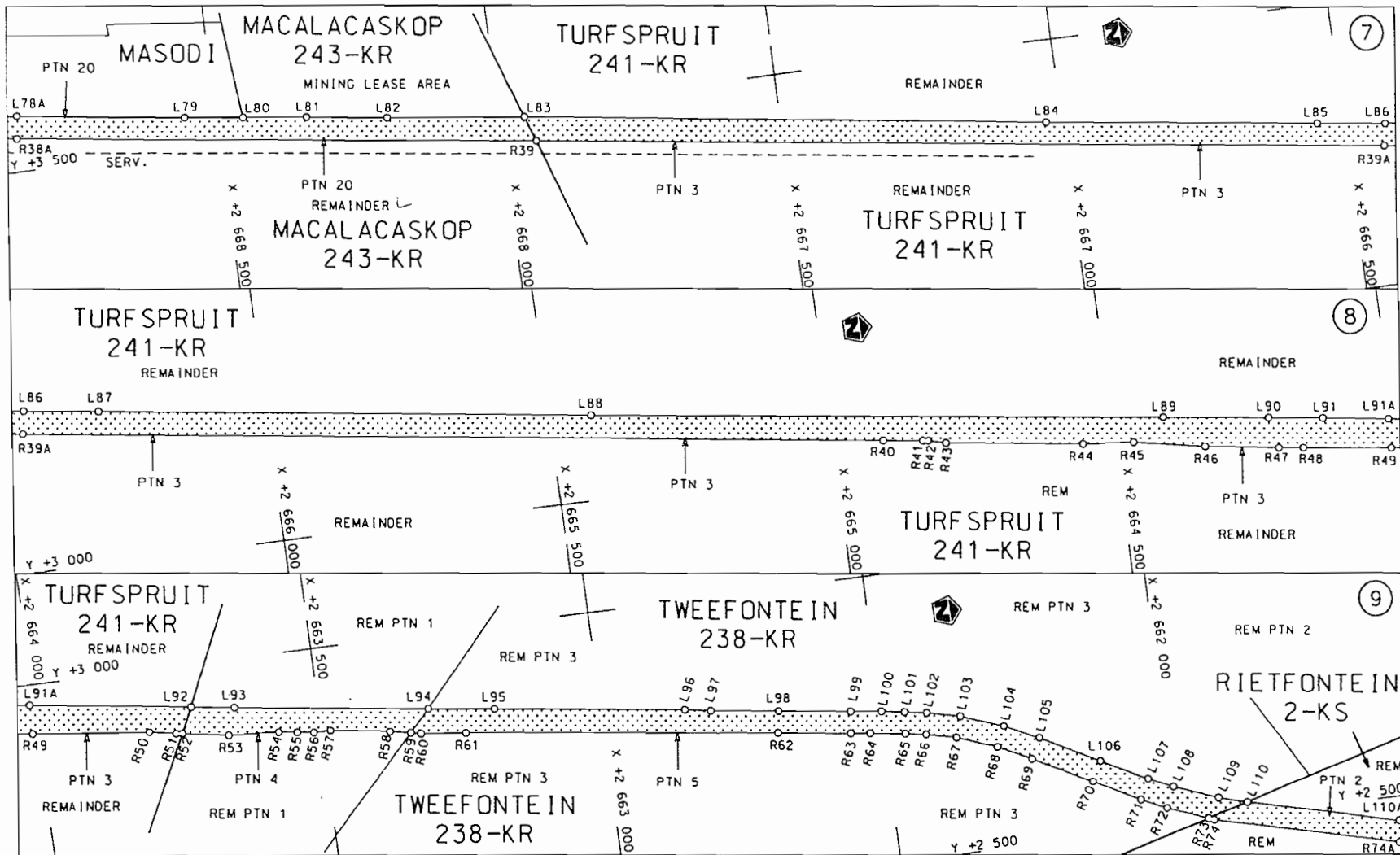
<p>Die Suid Afrikaanse Nasionale Padagentskap Beperk The South African National Roads Agency Limited</p>	<p>Die figuur getoon The figure shown</p>	<p>steldie padreserwe voor van 'n gedeelte represents the road reserve of a portion von Nasionale Roete of National Route</p>	<p>Vel Sheet 1 van of 38</p>
<p>N11 Seksie Section 13</p>			<p>Plan P694/08</p>




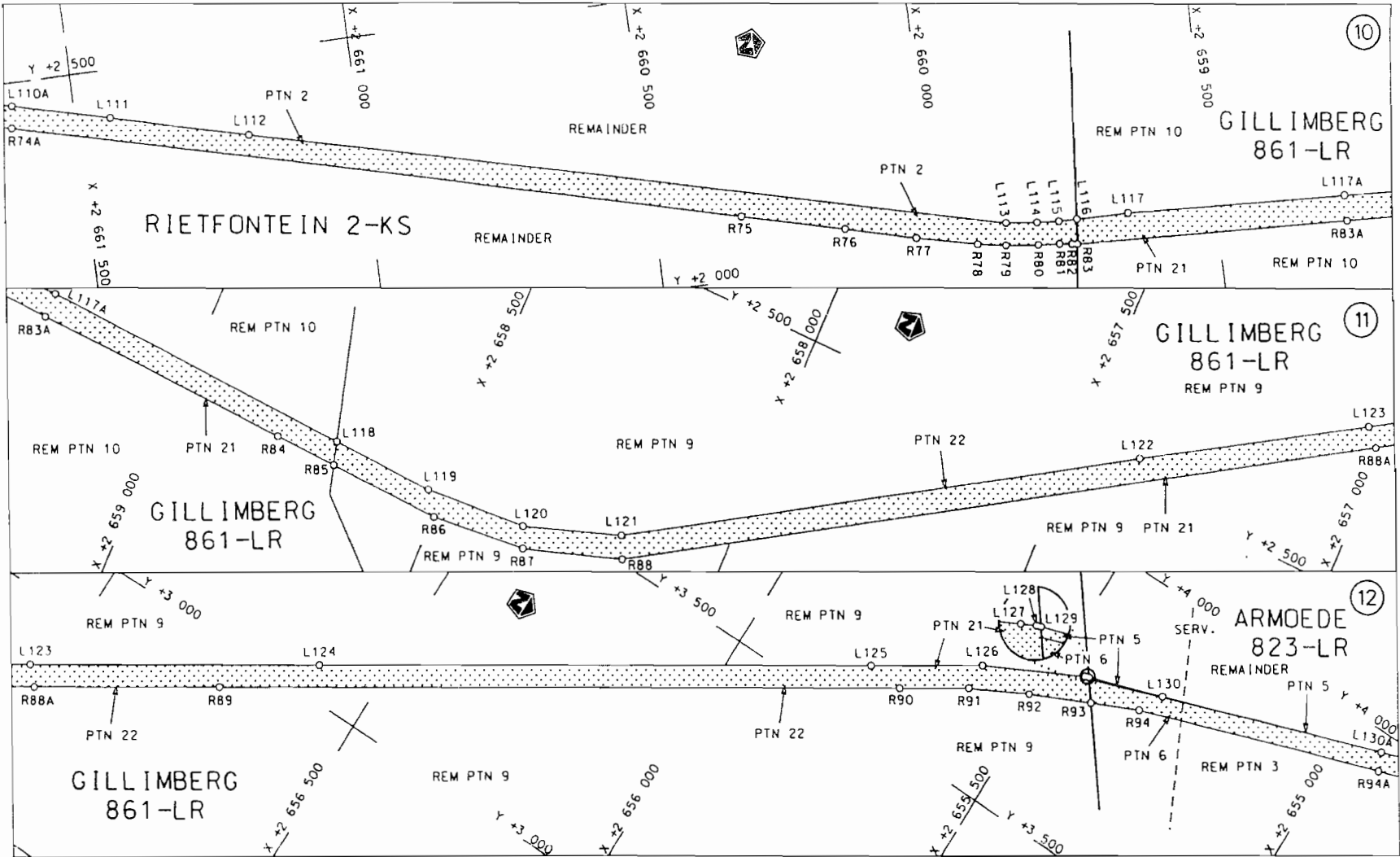
<p>Die Suid Afrikaanse Nasionale Padagentskap Beperk The South African National Roads Agency Limited</p>	<p>Die figuur getoon The figure shown</p>		<p>Vel Sheet 2 van of 38</p>
<p>steldie padreserwe voor van 'n gedeelte represents the road reserve of a portion van Nasionale Roete N11 Seksie of National Route 13 Section</p>			<p>Plan P694/08</p>



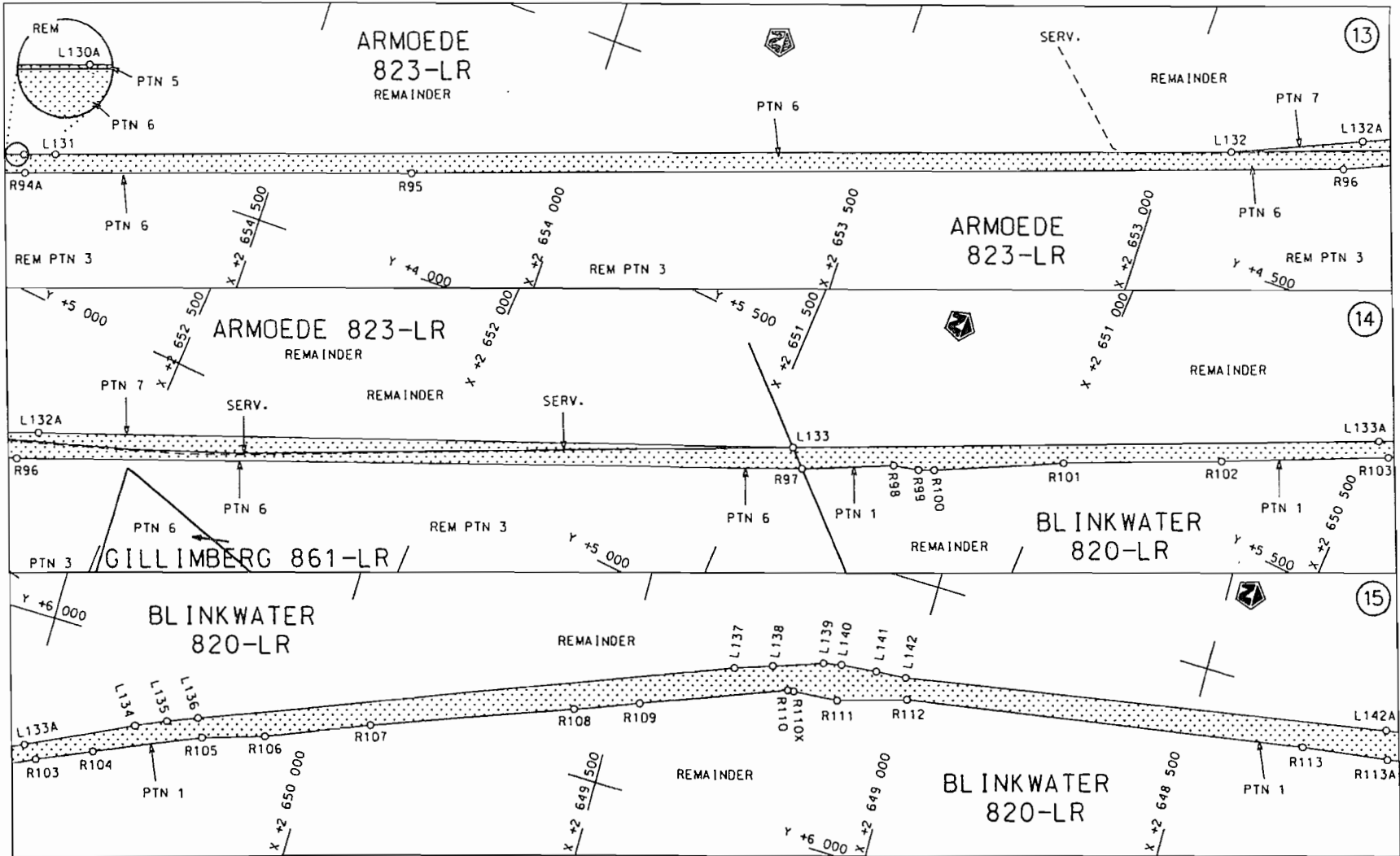
Die Suid Afrikaanse Nasionale Padogenskop Beperk	Die figuur getoon		steldie padreserwe voor van 'n gedeelte	Vel Sheet 3 van 38
The South African National Roads Agency Limited	The figure shown		represents the road reserve of a portion van Nasionale Roete N11 Seksie 13 of National Route	Plan P694/08

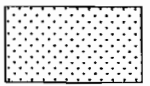


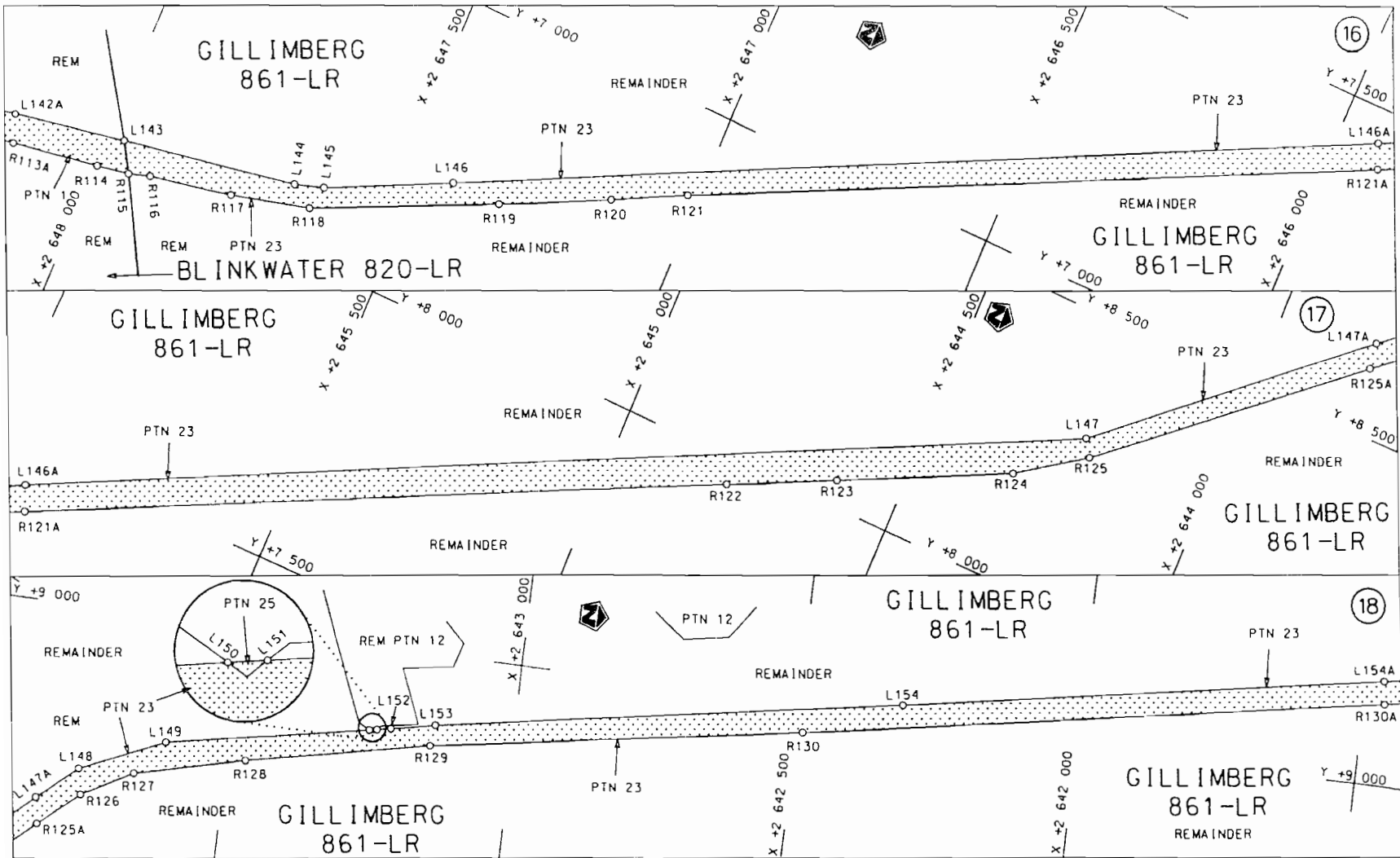
<p>Die Suid Afrikaanse Nasionale Padogentskap Beperk The South African National Roads Agency Limited</p>	<p>Die figuur getoon The figure shown</p>		<p>stel die podreserwe voor van 'n gedeelte represents the road reserve of a portion van Nasionale Roete N11 Seksie 13 of National Route of National Route</p>	<p>Vel van Sheet 4 of 38 Plan P694/08</p>
--	---	--	--	---

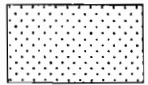


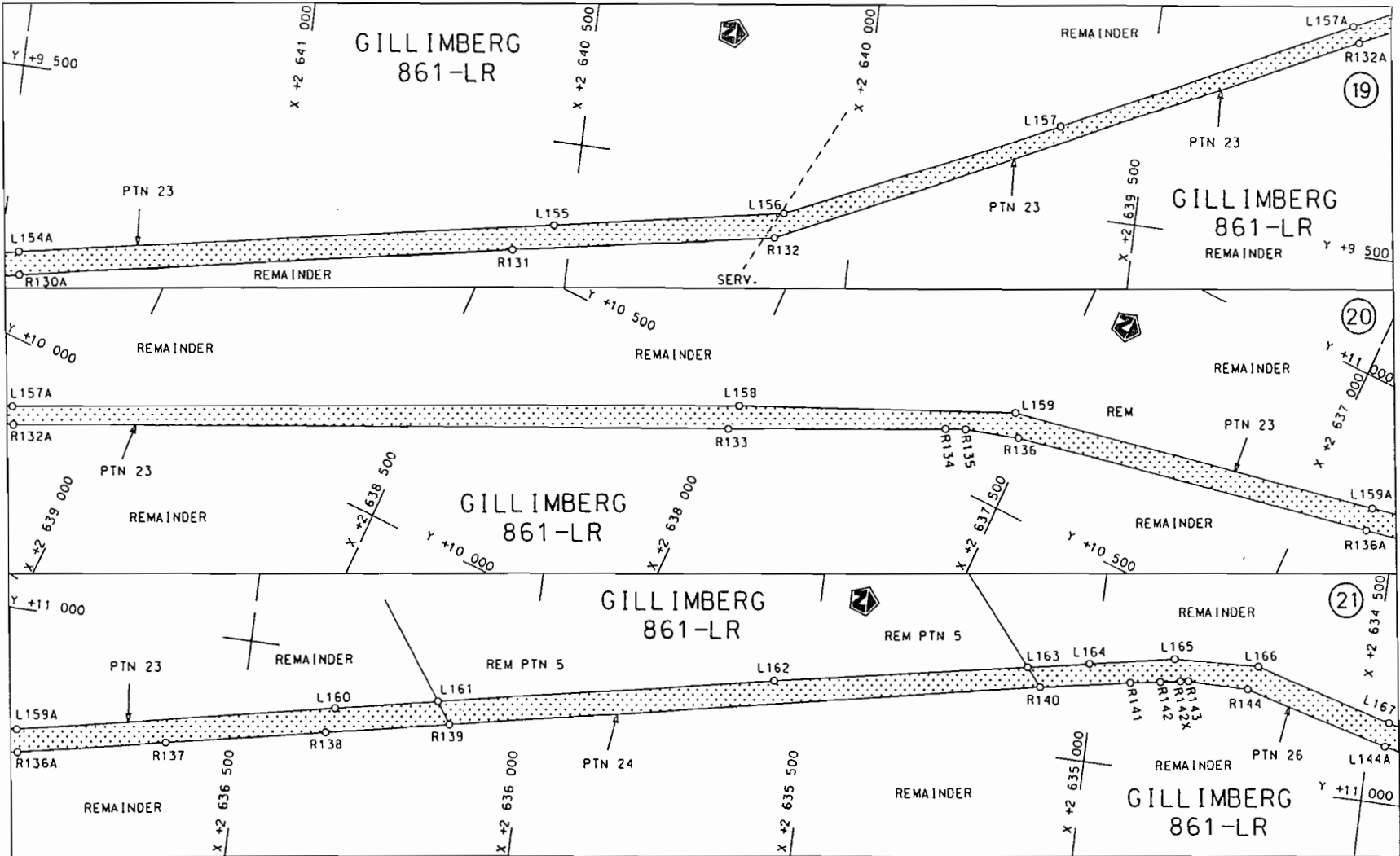
<p>Die Suid Afrikaanse Nasionale Padagentskop Beperk</p>	<p>Die figuur getoon</p>	<p>steldie padreserwe voor van 'n gedeelte</p>	<p>Vel Sheet 5 van 38</p>
<p>The South African National Roads Agency Limited</p>	<p>The figure shown</p>	<p>represents the road reserve of a portion van Nasionale Roete N11 Seksie 13 of National Route</p>	<p>Plan P694/08</p>



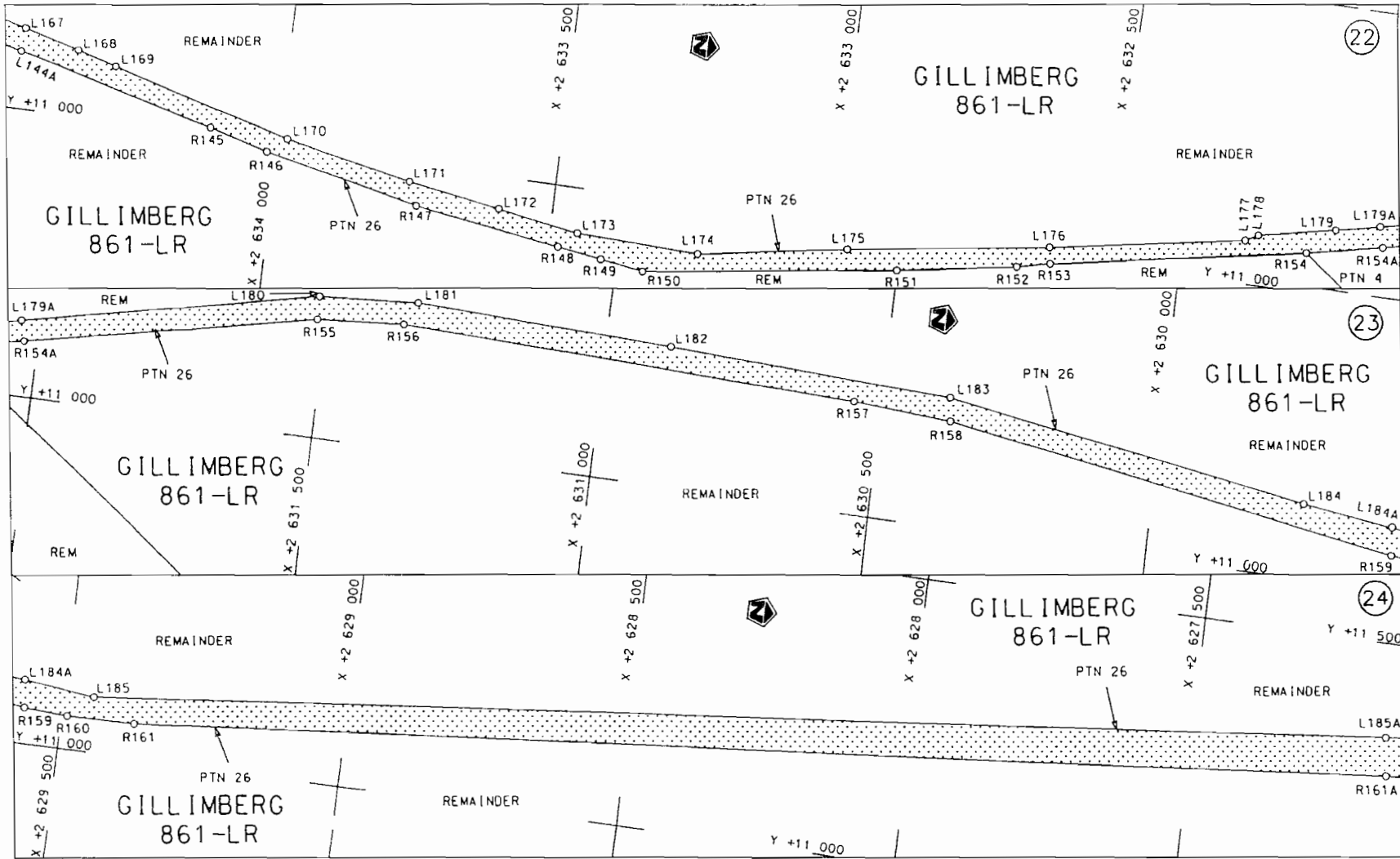
<p>Die Suid Afrikaanse Nasionale Padagentskap Beperk The South African National Roads Agency Limited</p>	<p>Die figuur getoon The figure shown</p>		<p>steldie padreserwe voor van 'n gedeelte represents the road reserve of a portion van Nasionale Roete of National Route N11 Seksie Section 13</p>	<p>Vel Sheet 6 of 38 Plan P694/08</p>
--	---	--	---	---



Die Suid Afrikaanse Nasionale Padagentskap Beperk The South African National Roads Agency Limited	Die figuur getoon The figure shown		steldie padreserwe voor van 'n gedeelte represents the road reserve of a portion van Nasionale Roete N11 Seksie of National Route Section 13	Vel Sheet 7 van of 38
				Plan P694/08

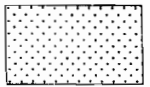


<p>Die Suid Afrikaanse Nasionale Padagentskop Beperk The South African National Roads Agency Limited</p>	<p>Die figuur getoon The figure shown</p>		<p>steldie padreserwe voor van 'n gedeelte represents the road reserve of a portion von Nasionale Roete N11 Sektie of National Route Section 13</p>	<p>Vel Sheet 8 of 38 Plan P694/08</p>
--	---	--	---	---



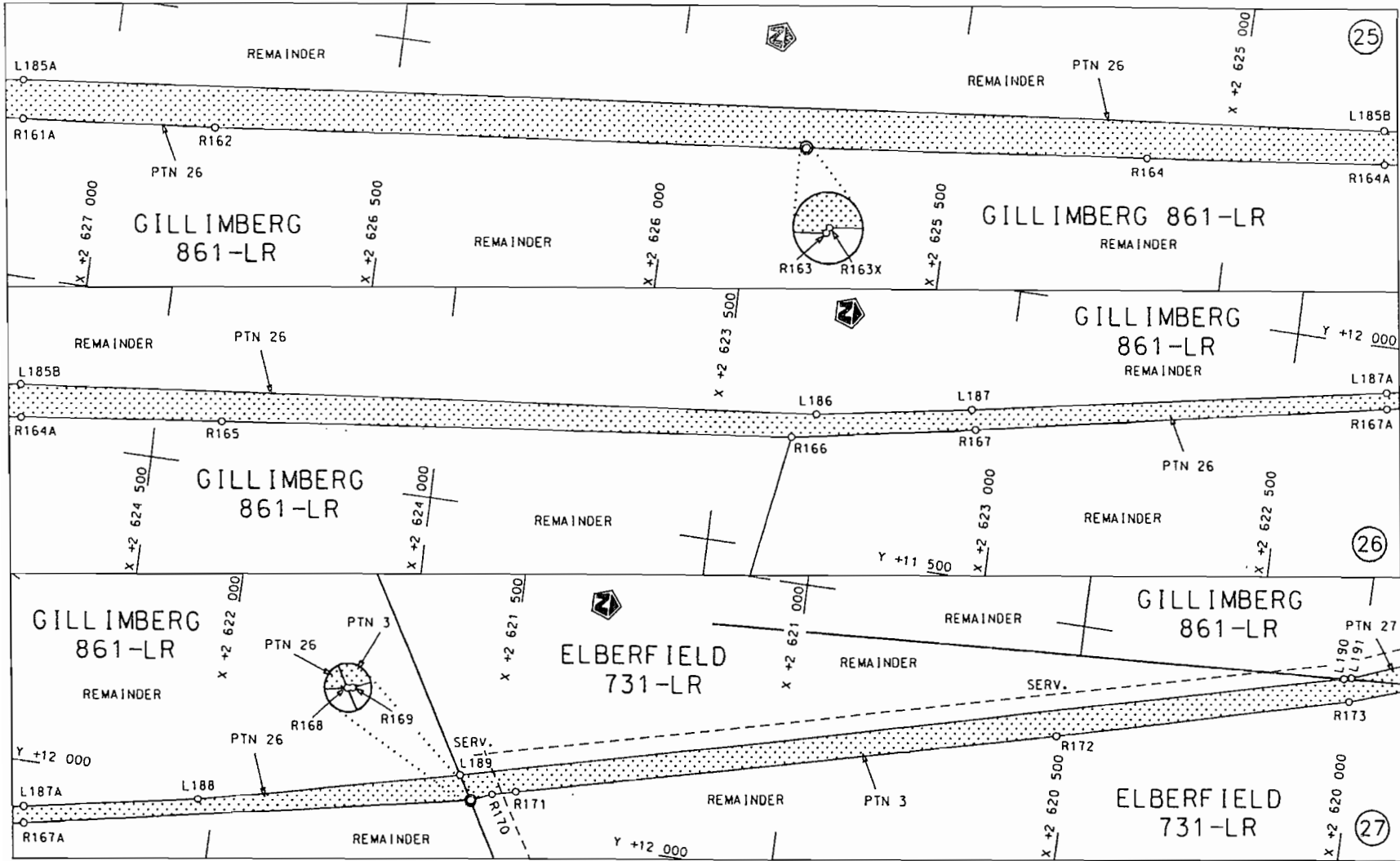
Die Suid Afrikaanse Nasionale Padogenskap Beperk
The South African National Roads Agency Limited


Die figuur getoon
The figure shown

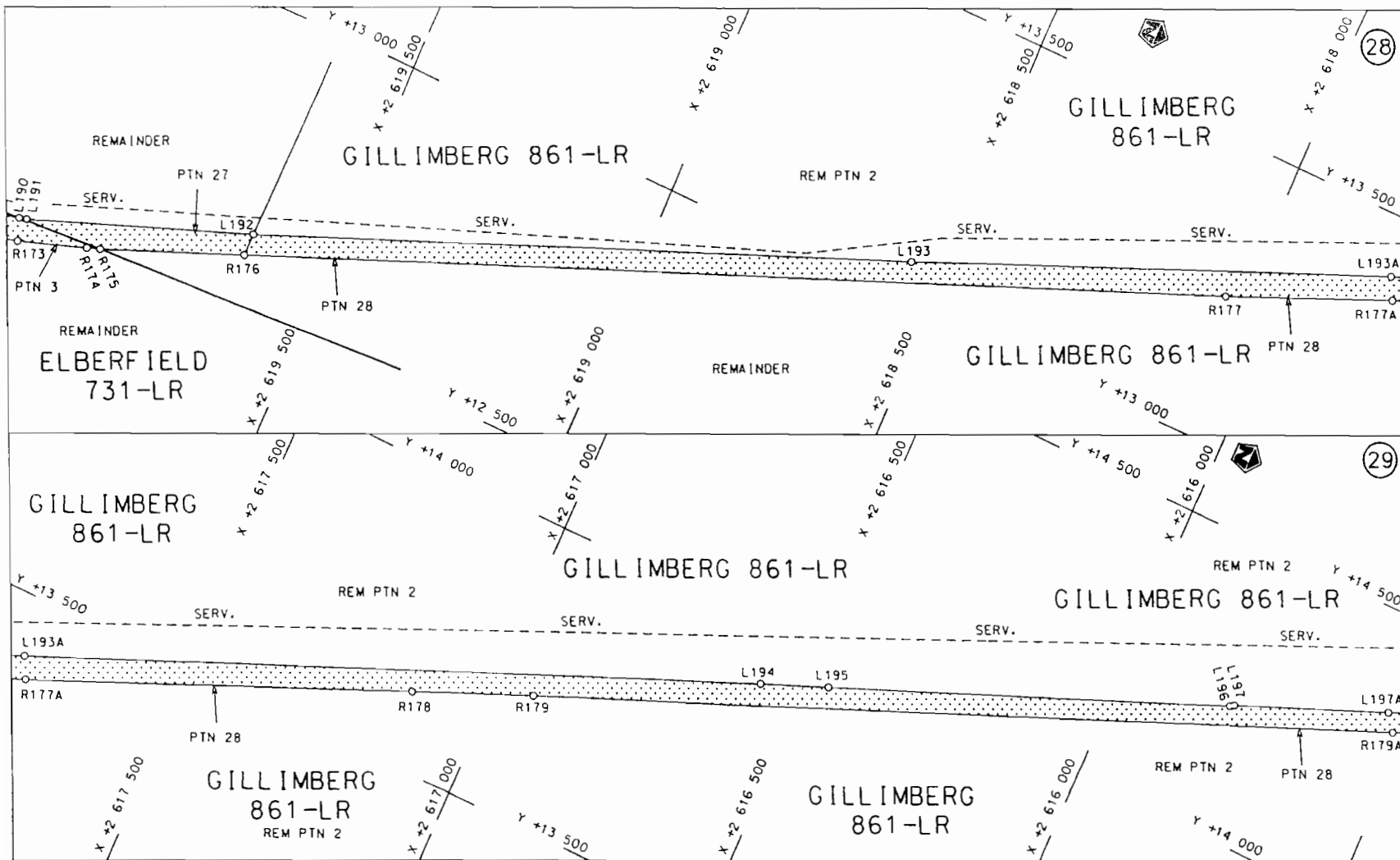



steldie padreserwe voor van 'n gedeelte
represents the road reserve of a portion
von Nasionale Roete N11 Seksie
of National Route 13 Section

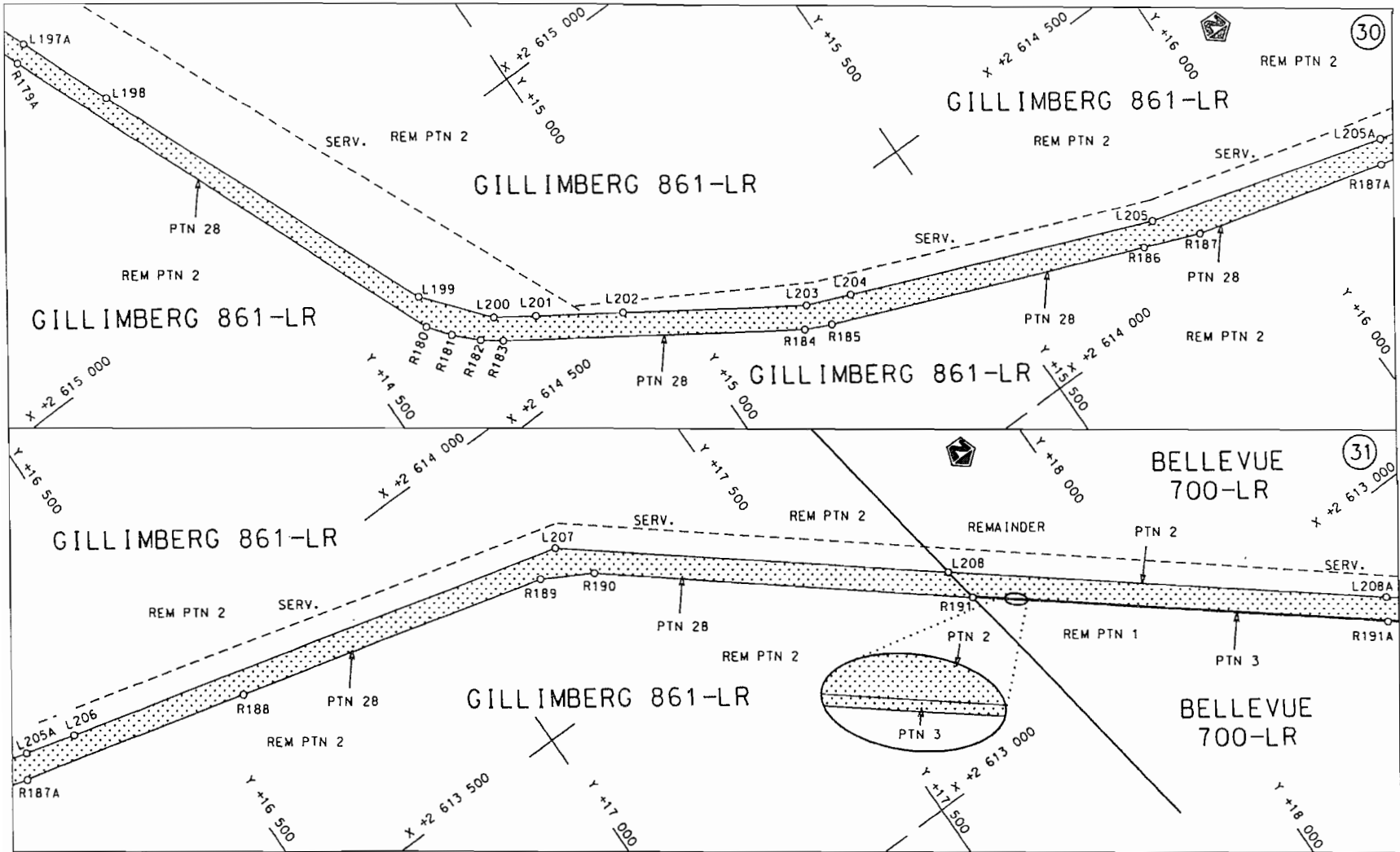
Vel Sheet 9 van 38
Plan P694/08



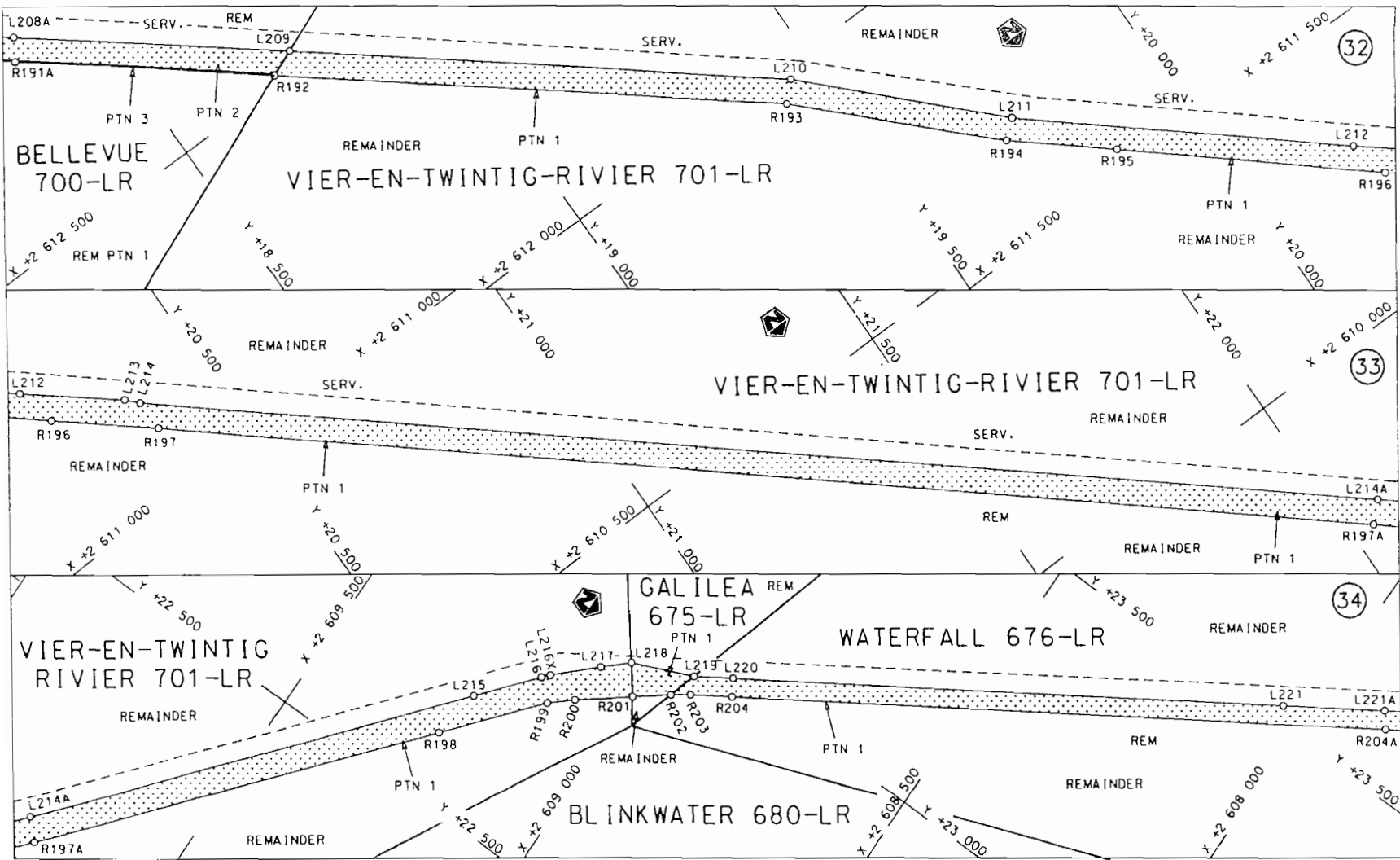
<p>Die Suid Afrikaanse Nasionale Padogentskap Beperk The South African National Roads Agency Limited</p>	<p>Die figuur getoon The figure shown</p>		<p>steldie podreserwe voor van 'n gedeelte represents the road reserve of a portion von Nasionale Roete N11 Seksie Section 13</p>	<p>Vel Sheet 10 van of 38 Plan P694/08</p>
--	---	--	---	--




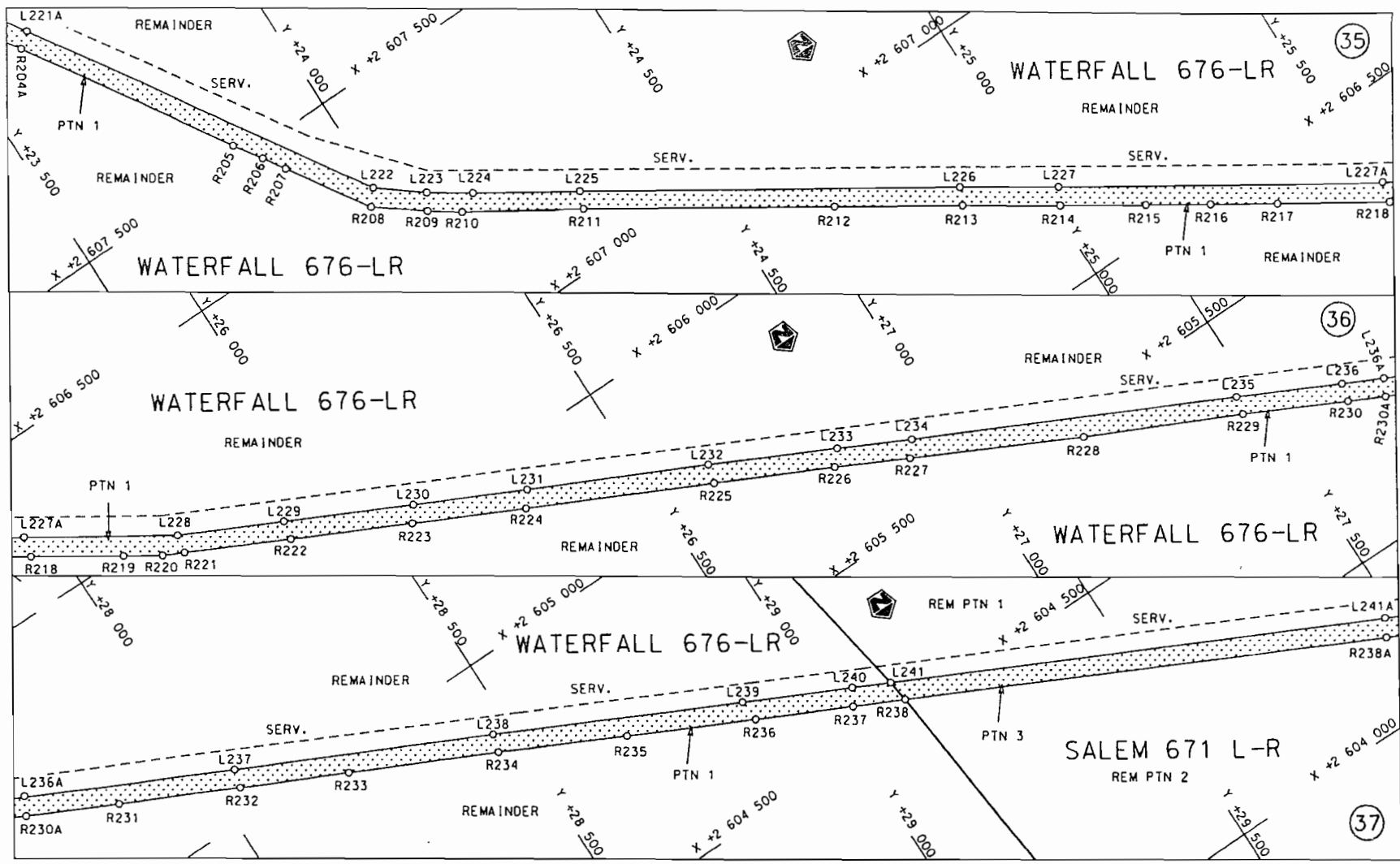
<p>Die Suid Afrikaanse Nasionale Padagentskap Beperk The South African National Roads Agency Limited</p>	<p>Die figuur getoon The figure shown</p> 	<p>stel die padreserwe voor van 'n gedeelte represents the road reserve of a portion van Nasionale Roete N11 Seksie 13 of National Route N11 Section 13</p>	<p>Vel Sheet 11 van 38 Plan P694/08</p>
--	--	---	---




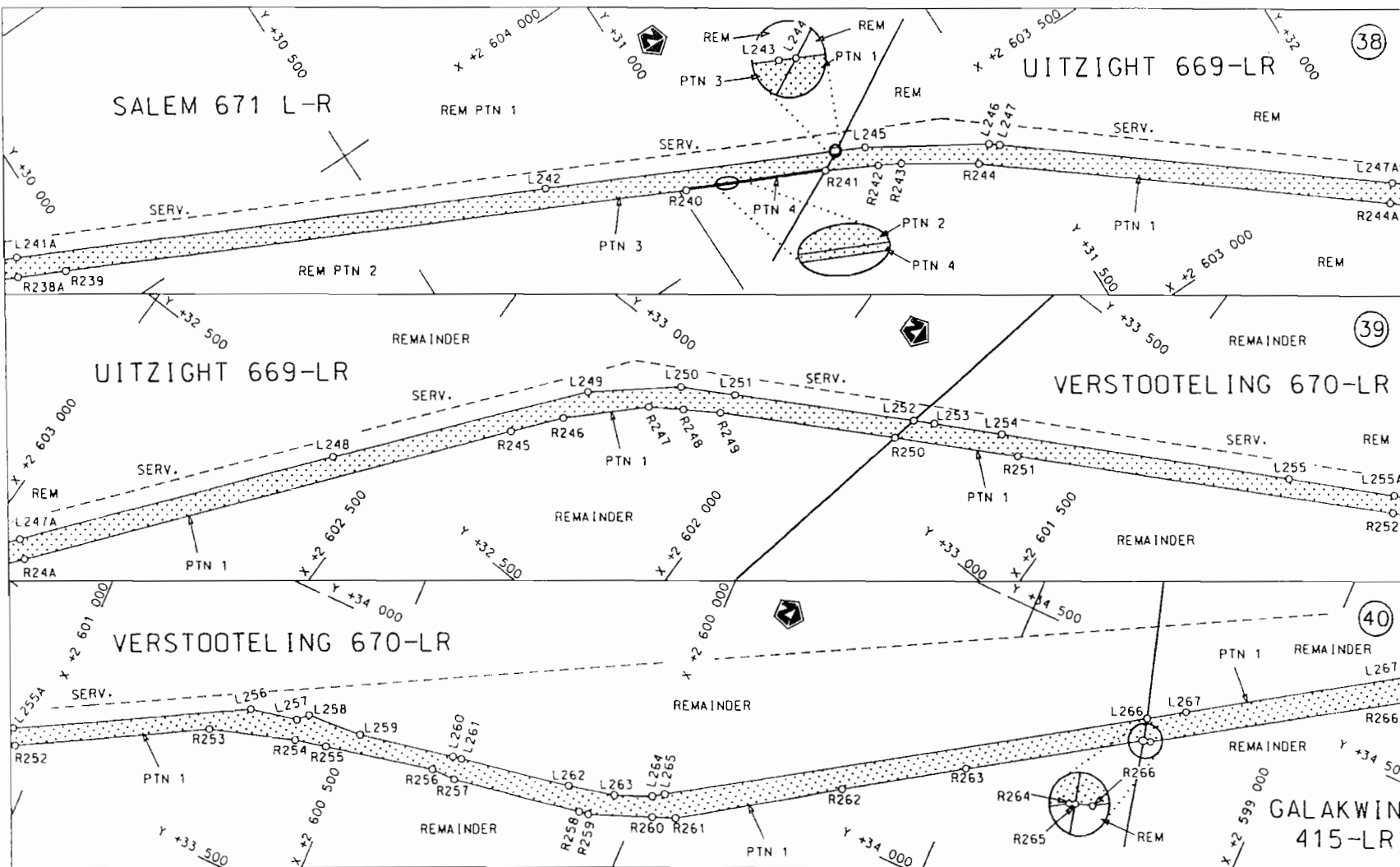
<p>Die Suid Afrikaanse Nasionale Padagentskap Beperk The South African National Roads Agency Limited</p>	<p>Die figuur getoon The figure shown</p>		<p>steldie padreserwe voor van 'n gedeelte represents the road reserve of a portion van Nasionale Roete N11 Sektie of National Route N11 Section</p>	<p>Vel Sheet 12 van 38 of of</p>
			<p>N11 Sektie Section 13</p>	<p>Plan P694/08</p>




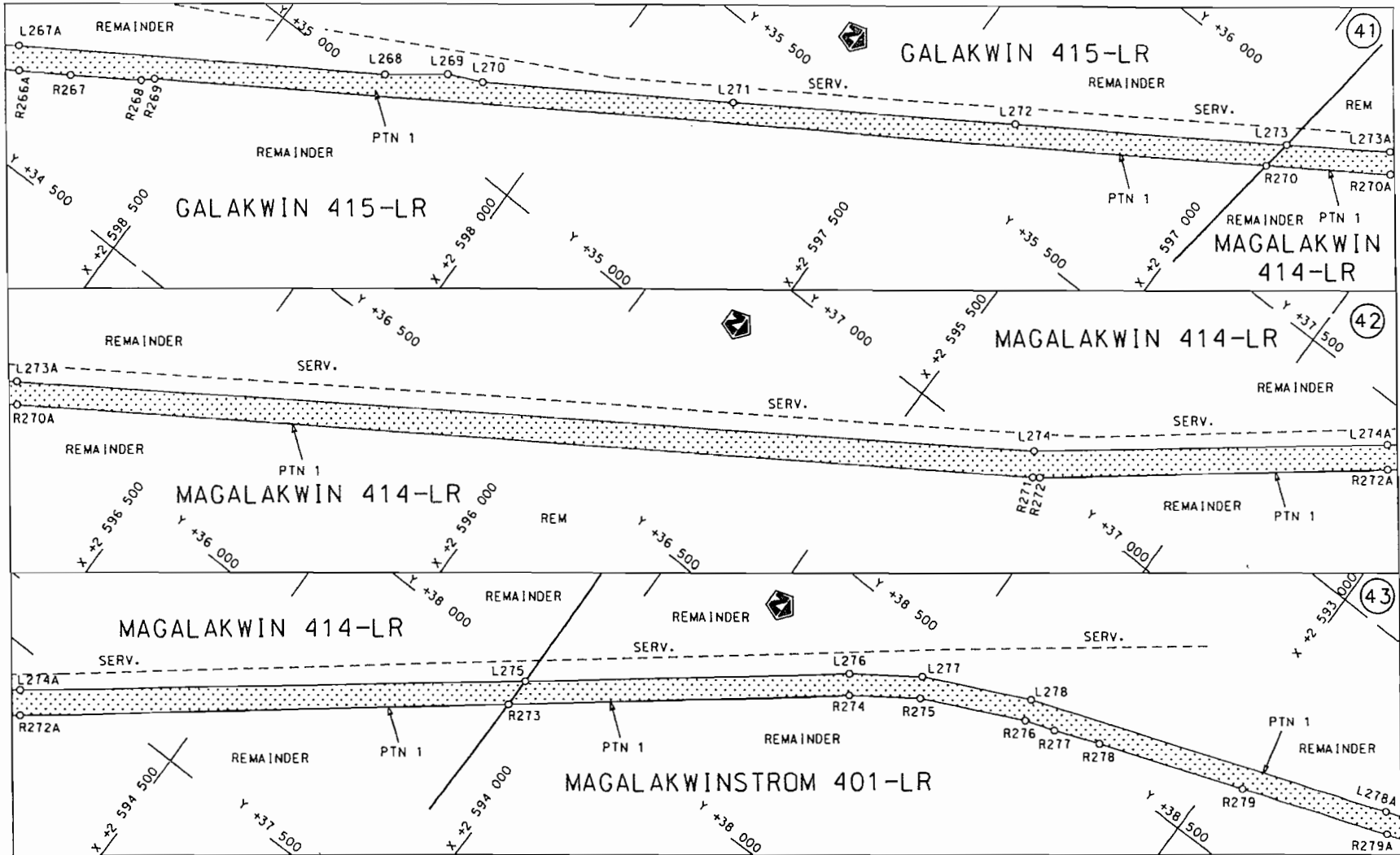
Die Suid Afrikaanse Nasionale Padagentskap Beperk The South African National Roads Agency Limited	Die figuur getoon The figure shown		steldie padreserwe voor van 'n gedeelte represents the road reserve of a portion van Nasionale Roete N11 Sektie 13 of National Route Section 13	Vel 13 van 38 Sheet 13 of 38
			N11 Sektie 13	Plan P694/08

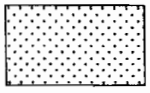


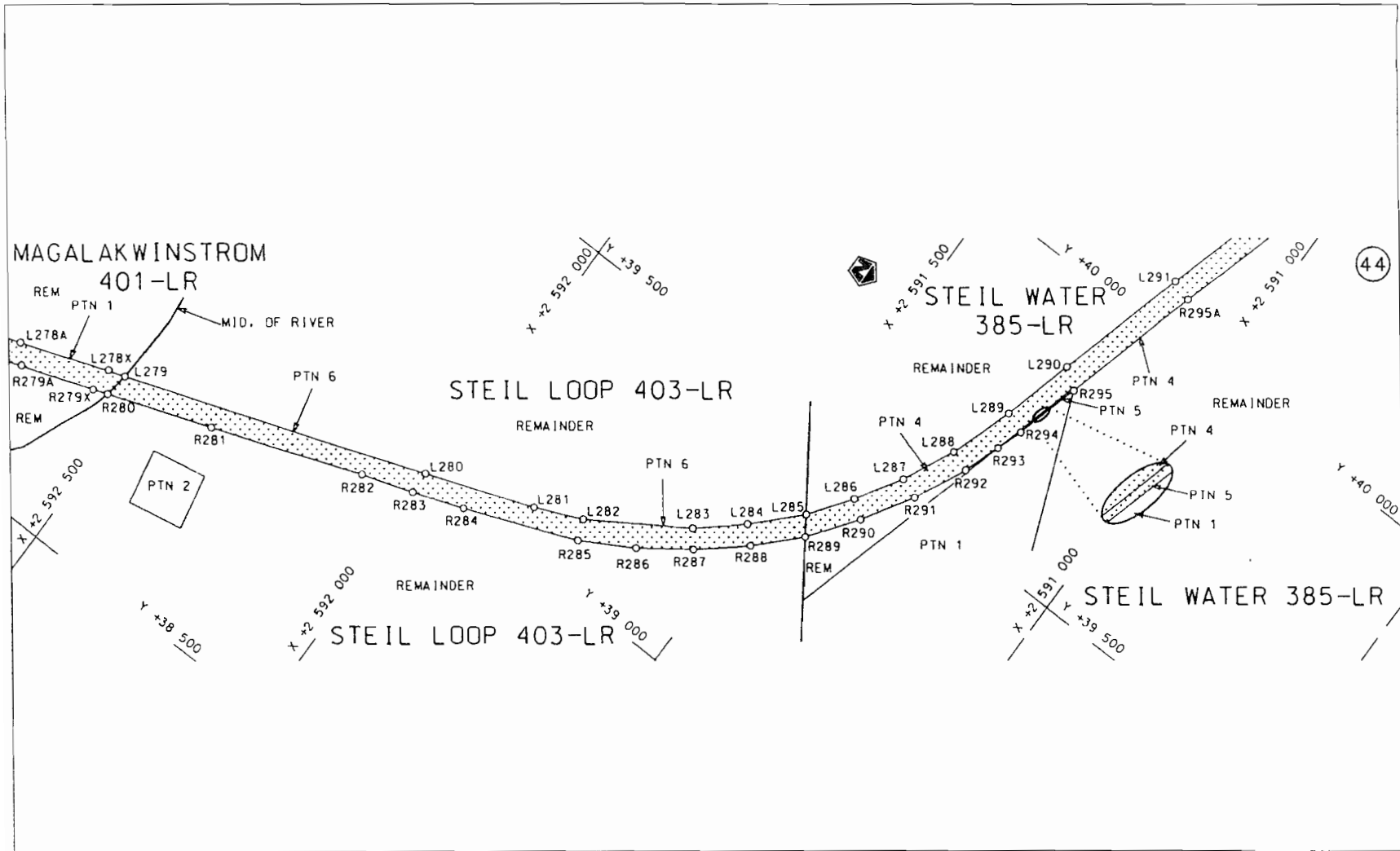
<p>Die Suid Afrikaanse Nasionale Podagentskap Beperk The South African National Roads Agency Limited</p>	<p>Die figuur getoon The figure shown</p>		<p>steldie podreserwe voor van 'n gedeelte represents the road reserve of a portion van Nasionale Roete N11 of National Route N11 Seksie Section</p>	<p>Vel Sheet 14 of 38 Plan P694/08</p>
--	---	--	--	--



Die Suid Afrikaanse Nasionale Padagentskap Beperk The South African National Roads Agency Limited	Die figuur getoon The figure shown		steldie padreserwe voor van 'n gedeelte represents the road reserve of a portion van Nasionale Roete N11 Seksie 13 of National Route Section	Vel Sheet 15 van 38 Plan P694/08
--	---------------------------------------	--	---	-------------------------------------




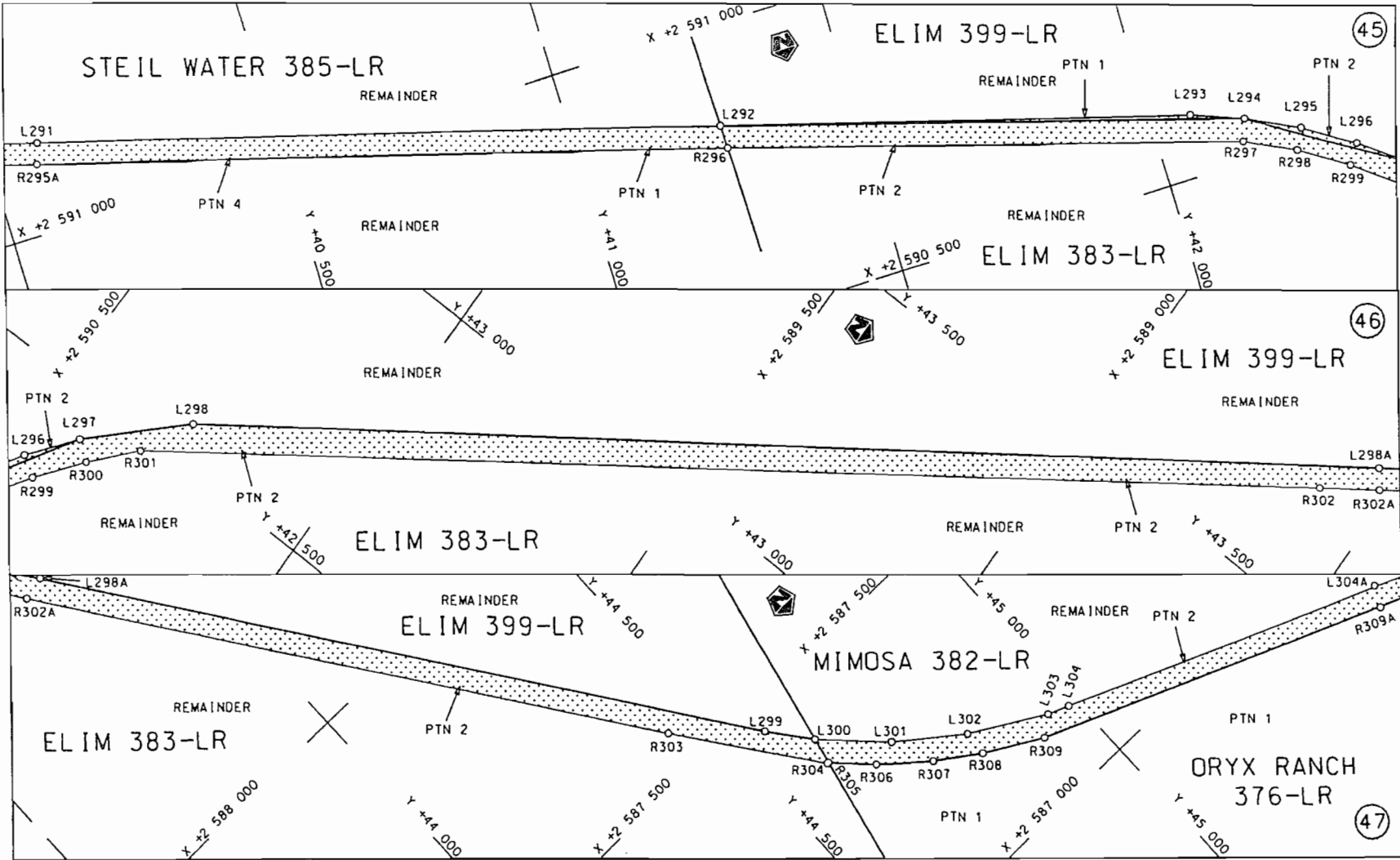
<p>Die Suid Afrikaanse Nasionale Padagentskap Beperk The South African National Roads Agency Limited</p>	<p>Die figuur getoon The figure shown</p>		<p>steldie padreserwe voor van 'n gedeelte represents the road reserve of a portion van Nasionale Roete of National Route N11 Seksie Section 13</p>	<p>Vel Sheet 16 of 38 Plan P694/08</p>
--	---	--	---	--

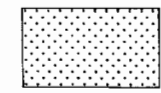


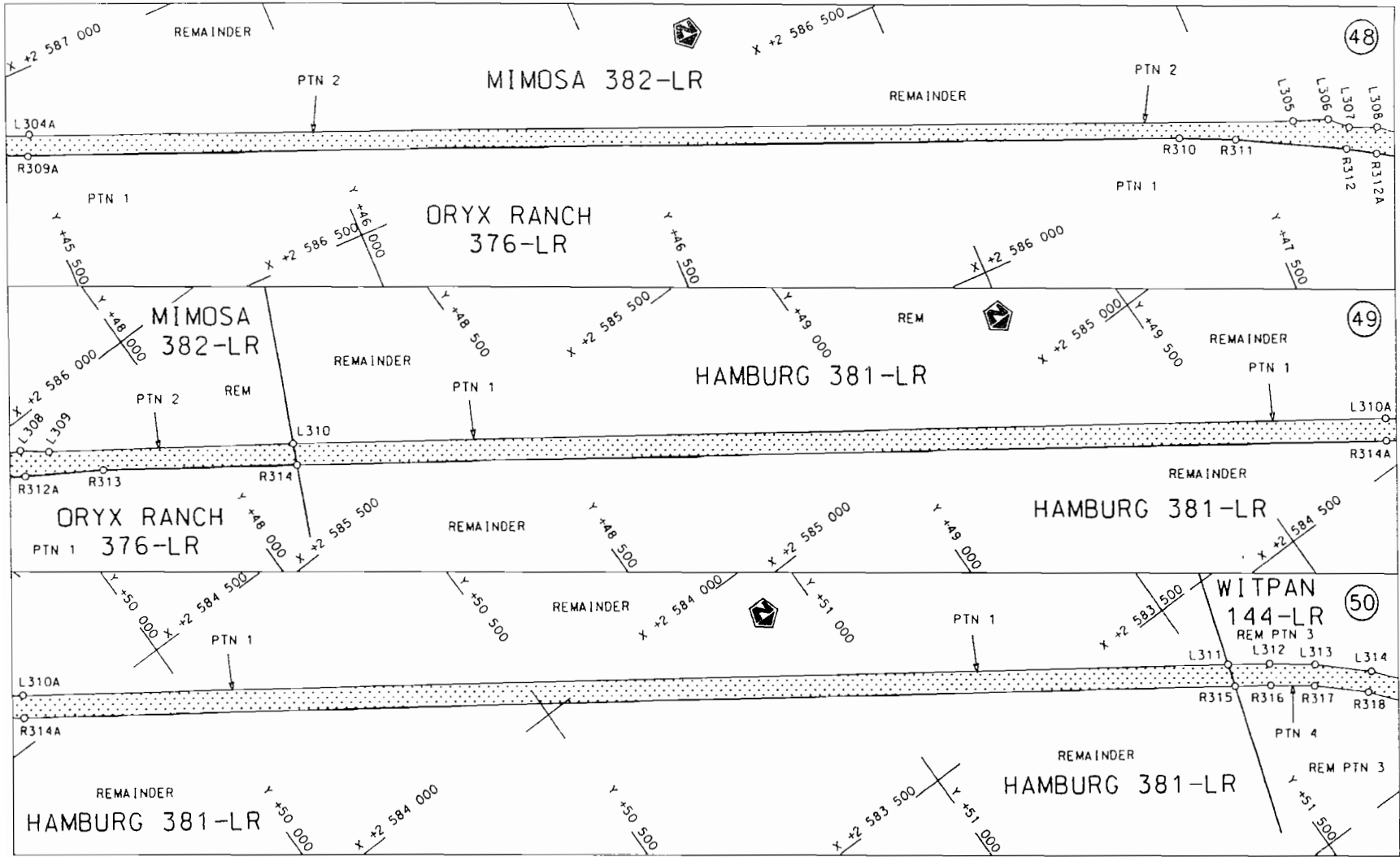
STAATSKOERANT, 24 MAART 2009

NO. 32020 21

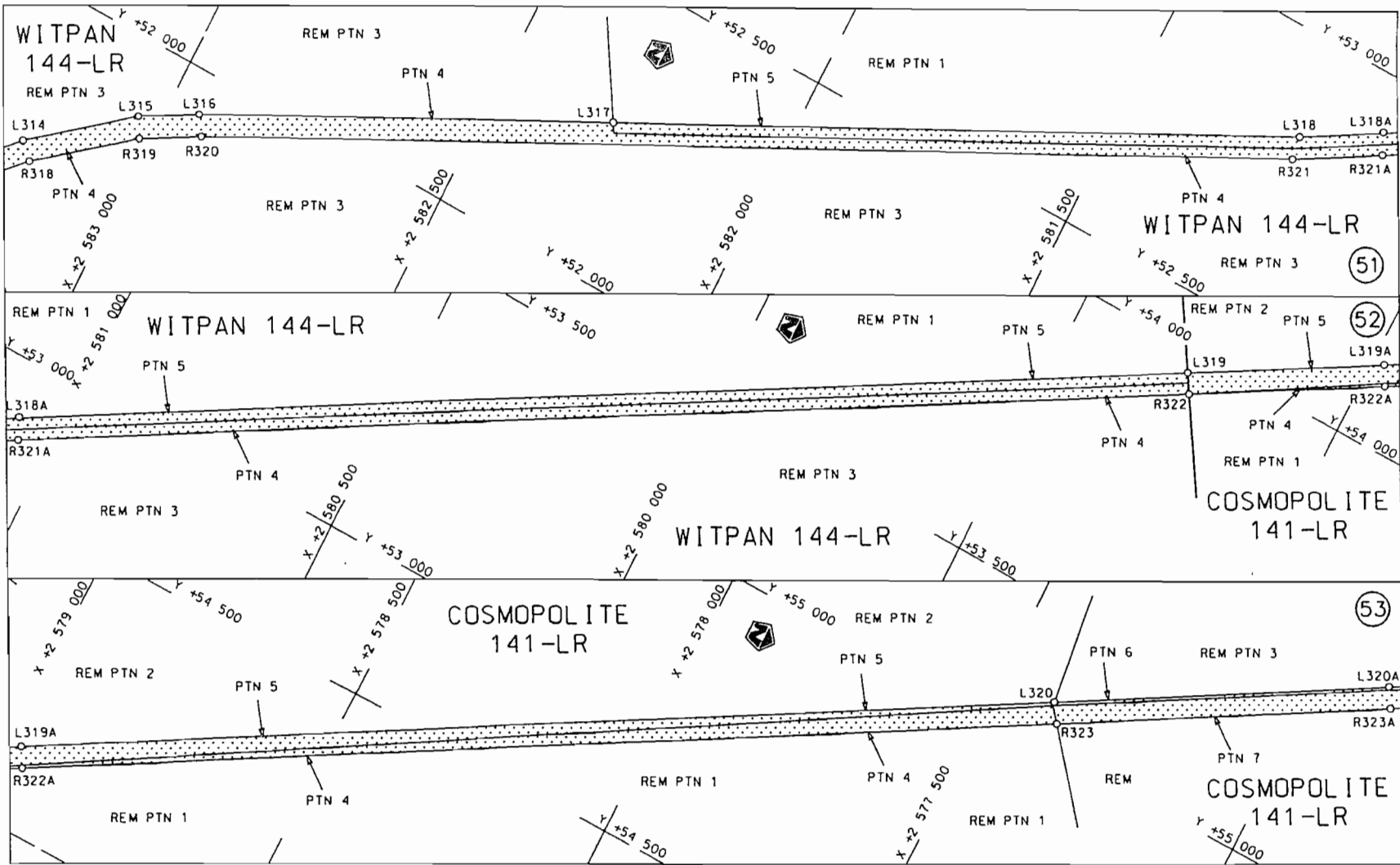
Die Suid Afrikaanse Nasionale Padagentskap Beperk	Die figuur getoon		steldie padreserwe voor van 'n gedeelte represents the road reserve of a portion van Nasionale Roete N11 Seksie Section	Vet Sheet 17 van of 38
The South African National Roads Agency Limited	The figure shown		13	Plan P694/08

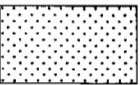


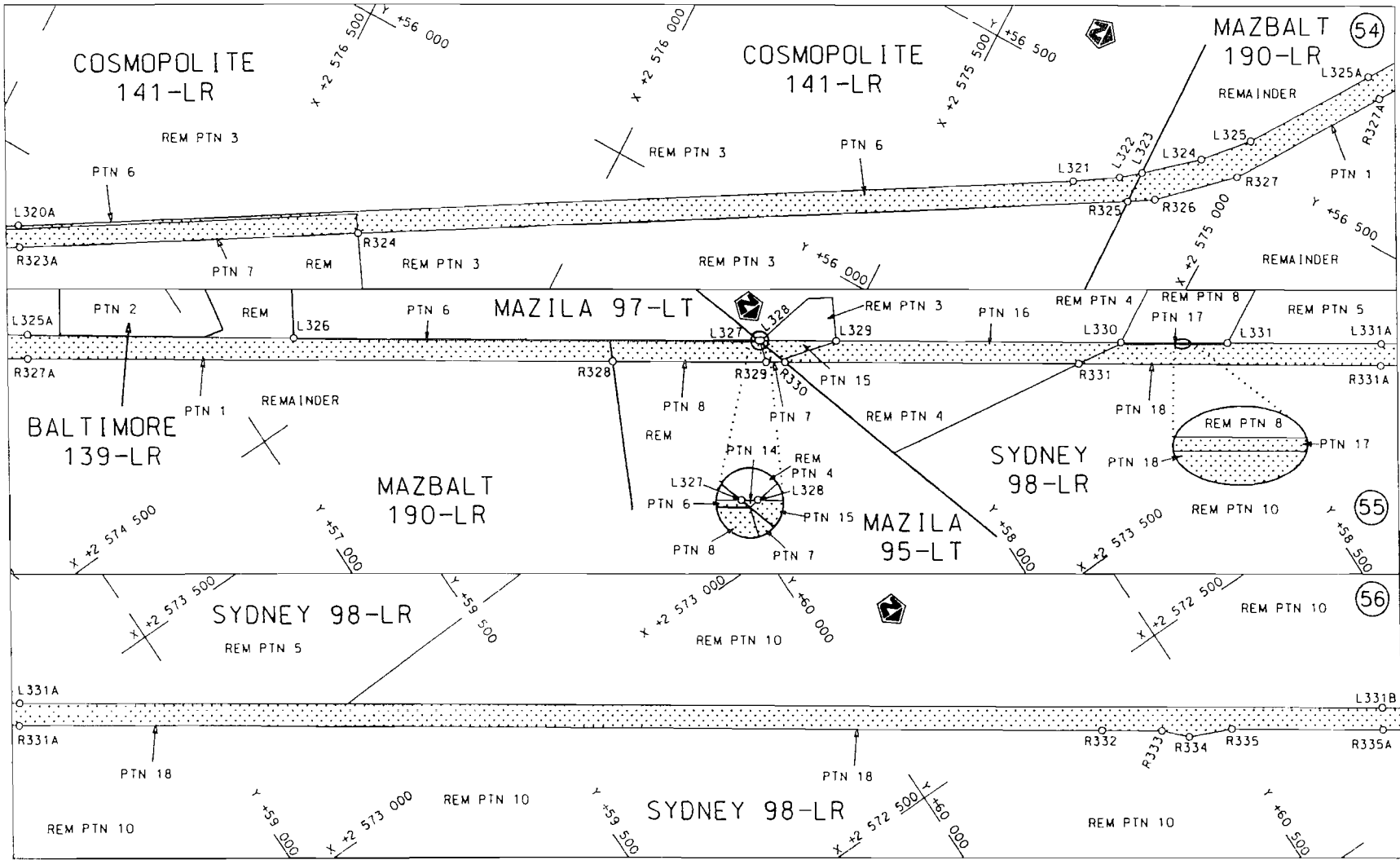
<p>Die Suid Afrikaanse Nasionale Padogentskap Beperk The South African National Roads Agency Limited</p>	<p>Die figuur getoon The figure shown</p> 	<p>steldie padreserwe voor van 'n gedeelte represents the road reserve of a portion van Nasionale Roete N11 of National Route N11</p> <p>Seksie 13 Section 13</p>	<p>Vel Sheet 18 van of 38 Plan P694/08</p>
--	--	---	--

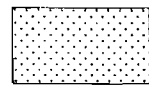


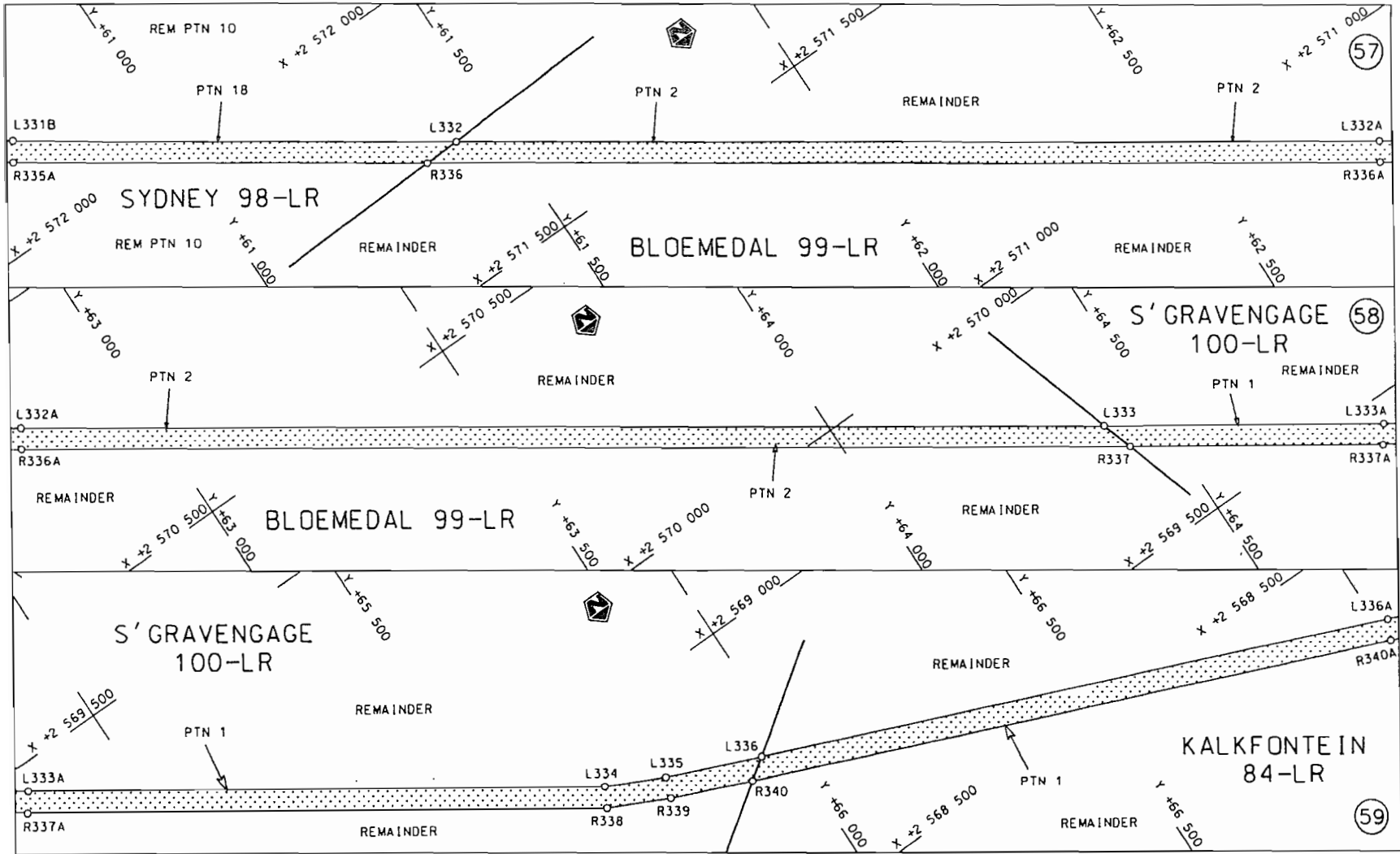
<p>Die Suid Afrikaanse Nasionale Padagentskap Beperk The South African National Roads Agency Limited</p>	<p>Die figuur getoon The figure shown</p>		<p>steldie padreserwe voor van 'n gedeelte represents the road reserve of a portion van Nasionale Roete N11 Seksie 13 of National Route N11 Section 13</p>	<p>Vel Sheet 19 van of 38 Plan P694/08</p>
--	---	--	--	--




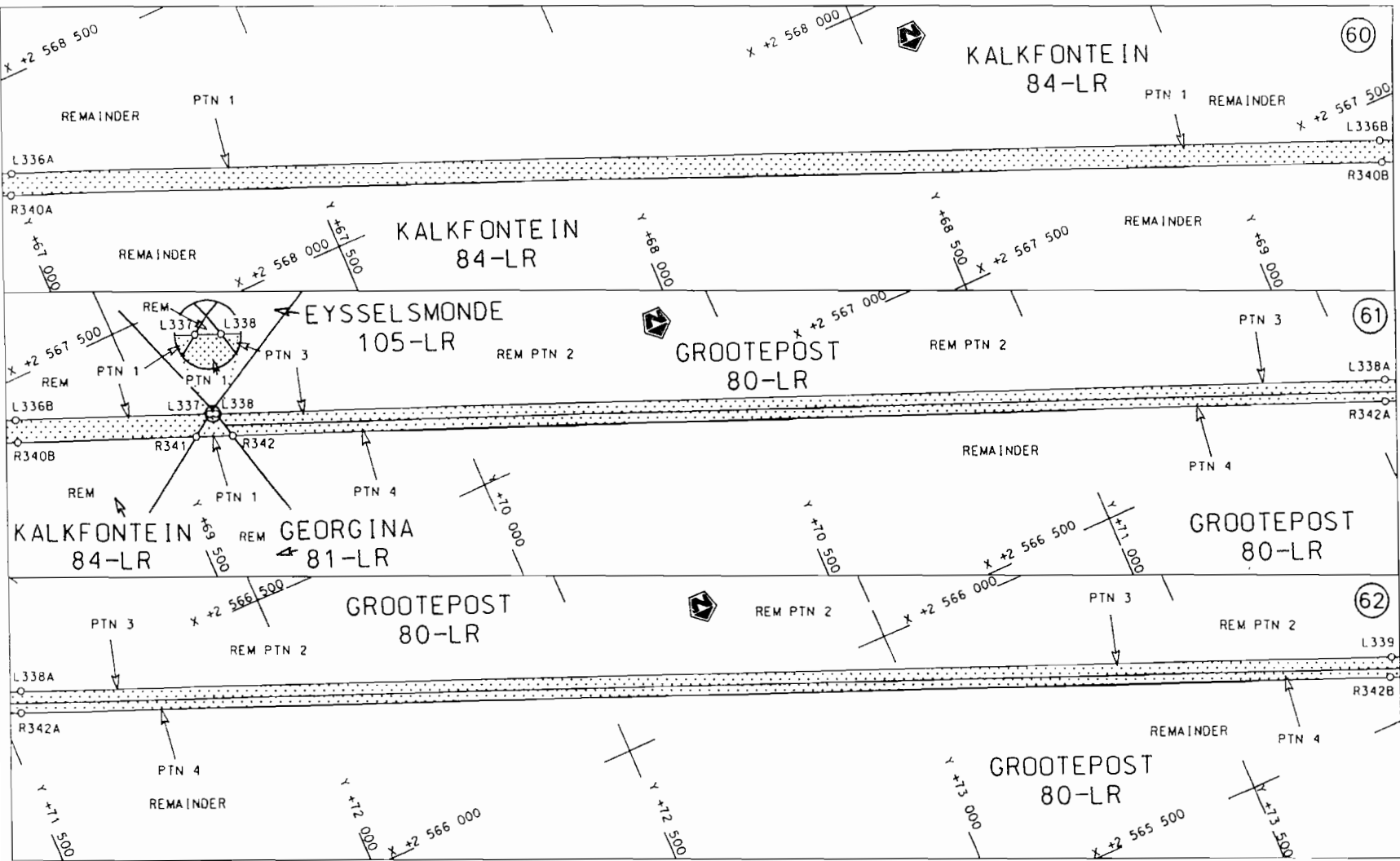
<p>Die Suid Afrikaanse Nasionale Padogentskap Beperk The South African National Roads Agency Limited</p>	<p>Die figuur getoon The figure shown</p>		<p>steldie podreserwe voor van 'n gedeelte represents the road reserve of a portion van Nasionale Roete N11 Seksie of National Route Section</p>	<p>Vel Sheet 20 van of 38</p>
<p>13</p>				<p>Plan P694/08</p>



<p>Die Suid Afrikaanse Nasionale Padagentskap Beperk The South African National Roads Agency Limited</p>	<p>Die figuur getoon The figure shown</p> 	<p>steldie padreserwe voor van 'n gedeelte represents the road reserve of a portion van Nasionale Roete of National Route</p> <p>N11 Seksie 13 Section</p>	<p>Vel Sheet 21 van of 38</p> <p>Plan P694/08</p>
--	--	---	---

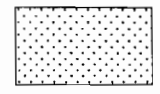


<p>Die Suid Afrikaanse Nasionale Padogentskop Beperk The South African National Roads Agency Limited</p>	<p>Die figuur getoon The figure shown</p>		<p>steldie padreserwe voor van 'n gedeelte represents the road reserve of a portion van Nasionale Roete N11 Seksie 13 of National Route N11 Section 13</p>	<p>Vel Sheet 22 van 38 Plan P694/08</p>
--	---	--	--	---



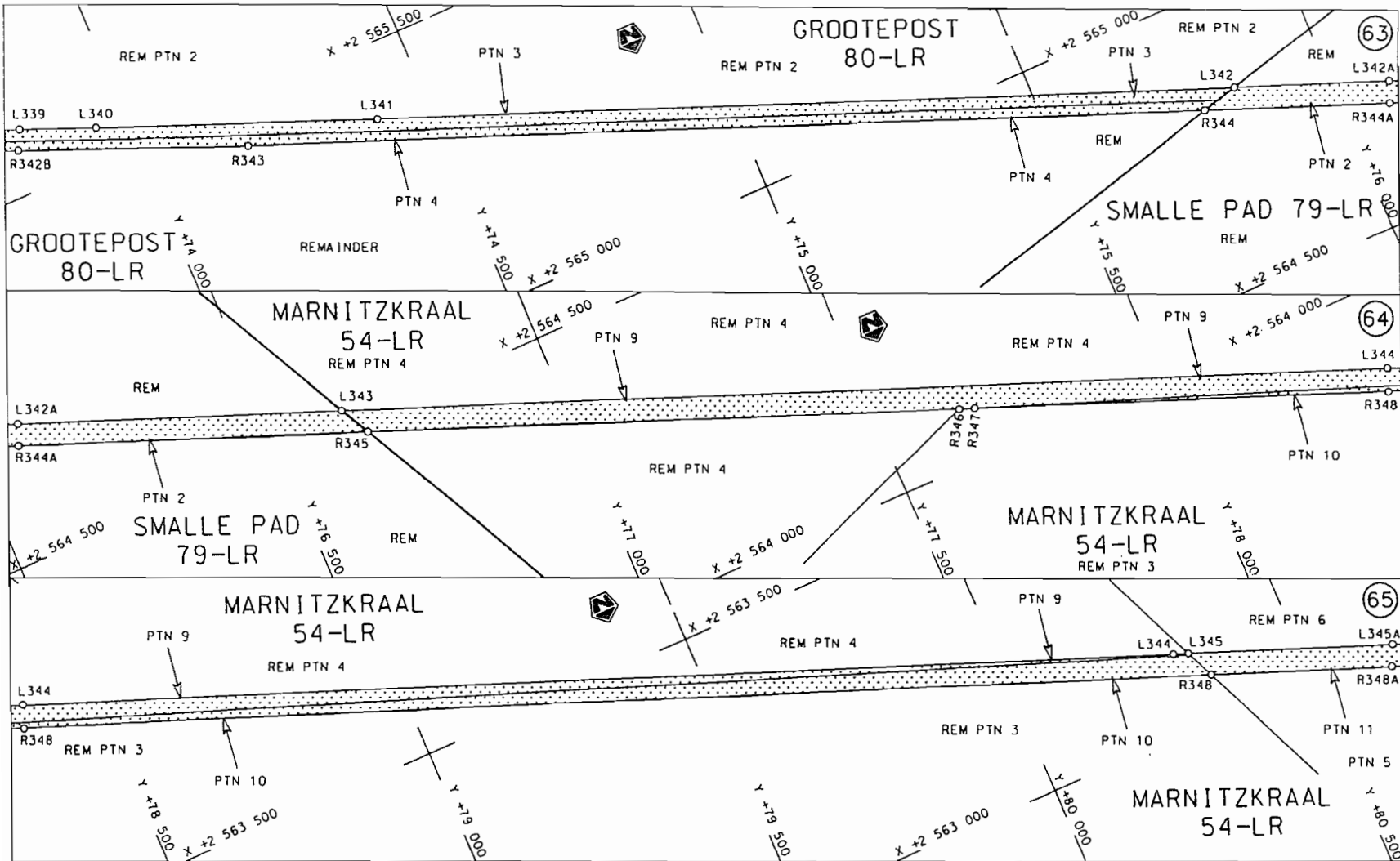
Die Suid Afrikaanse Nasionale Padagentskop Beperk
 The South African National Roads Agency Limited


Die figuur getoon
 The figure shown

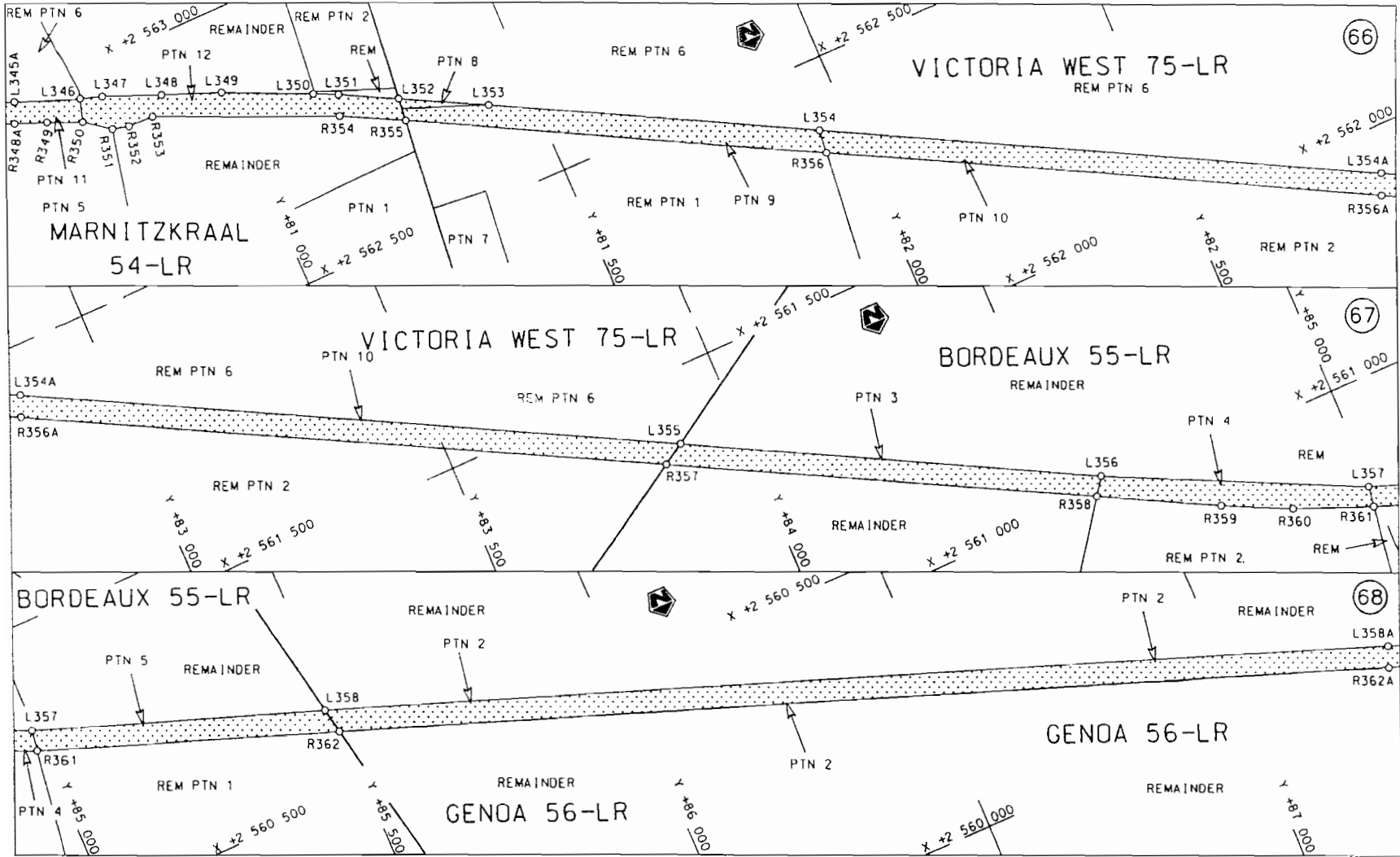


steldie padreserwe voor van 'n gedeelte
 represents the road reserve of a portion
 van Nasionale Roete N11 Seksie 13
 of National Route

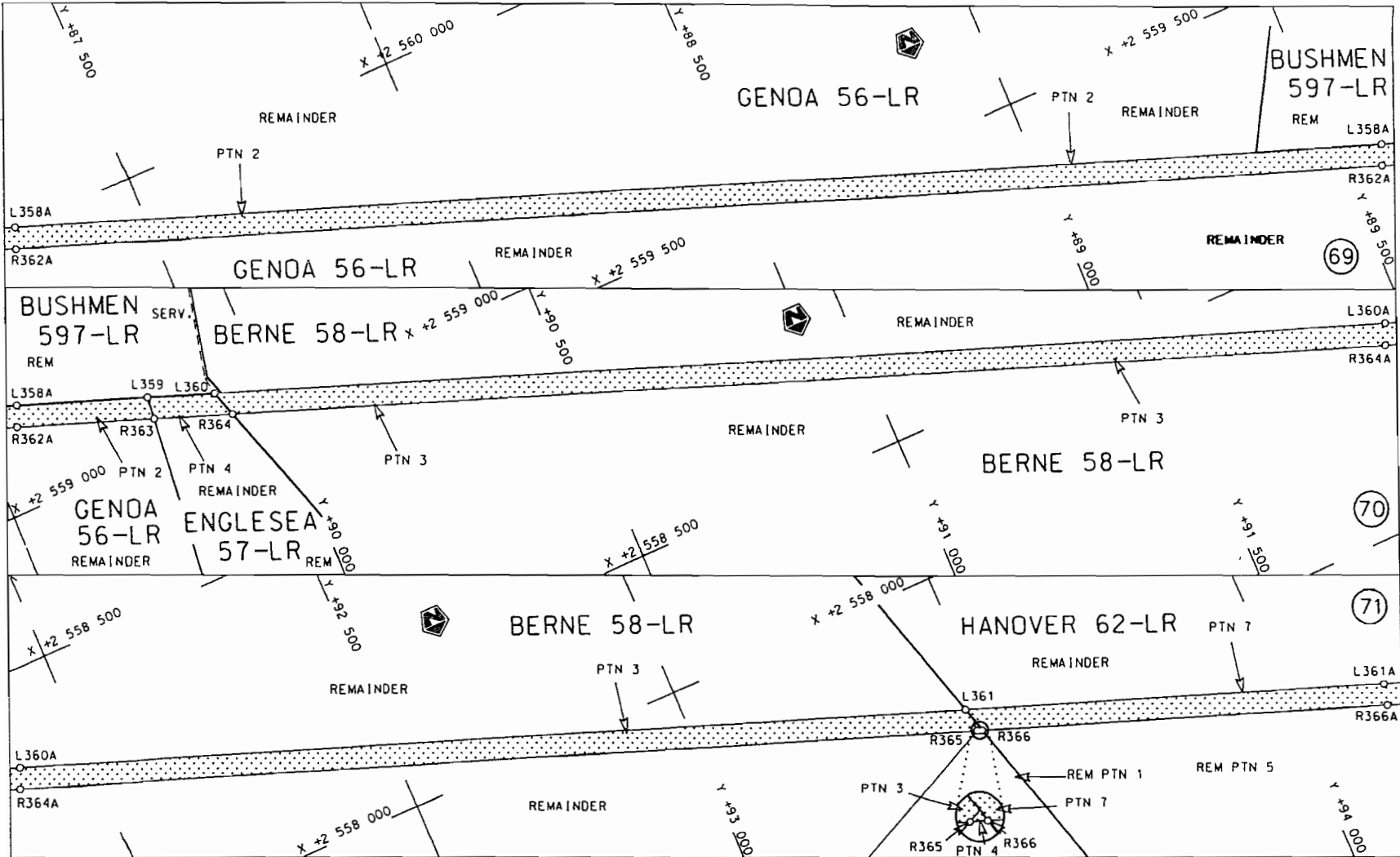
Vel Sheet 23 van 38
 Plan P694/08



<p>Die Suid Afrikaanse Nasionale Padagentskap Beperk</p>	<p>Die figuur getoon</p>	<p>steldie padreserwe voor van 'n gedeelte represents the road reserve of a portion van Nasionale Roete N11 Seksie of National Route 13</p>	<p>Vel Sheet 24 of 38</p>
<p>The South African National Roads Agency Limited</p>	<p>The figure shown</p>		<p>Plan P694/08</p>

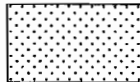


<p>Die Suid Afrikaanse Nasionale Padagentskap Beperk The South African National Roads Agency Limited</p>	<p>Die figuur getoon The figure shown</p>		<p>steldie padreserwe voor van 'n gedeelte represents the road reserve of a portion van Nasionale Roete N11 Seksie 13 of National Route</p>	<p>Vel Sheet 25 von of 38</p>
			<p>Plan P694/08</p>	



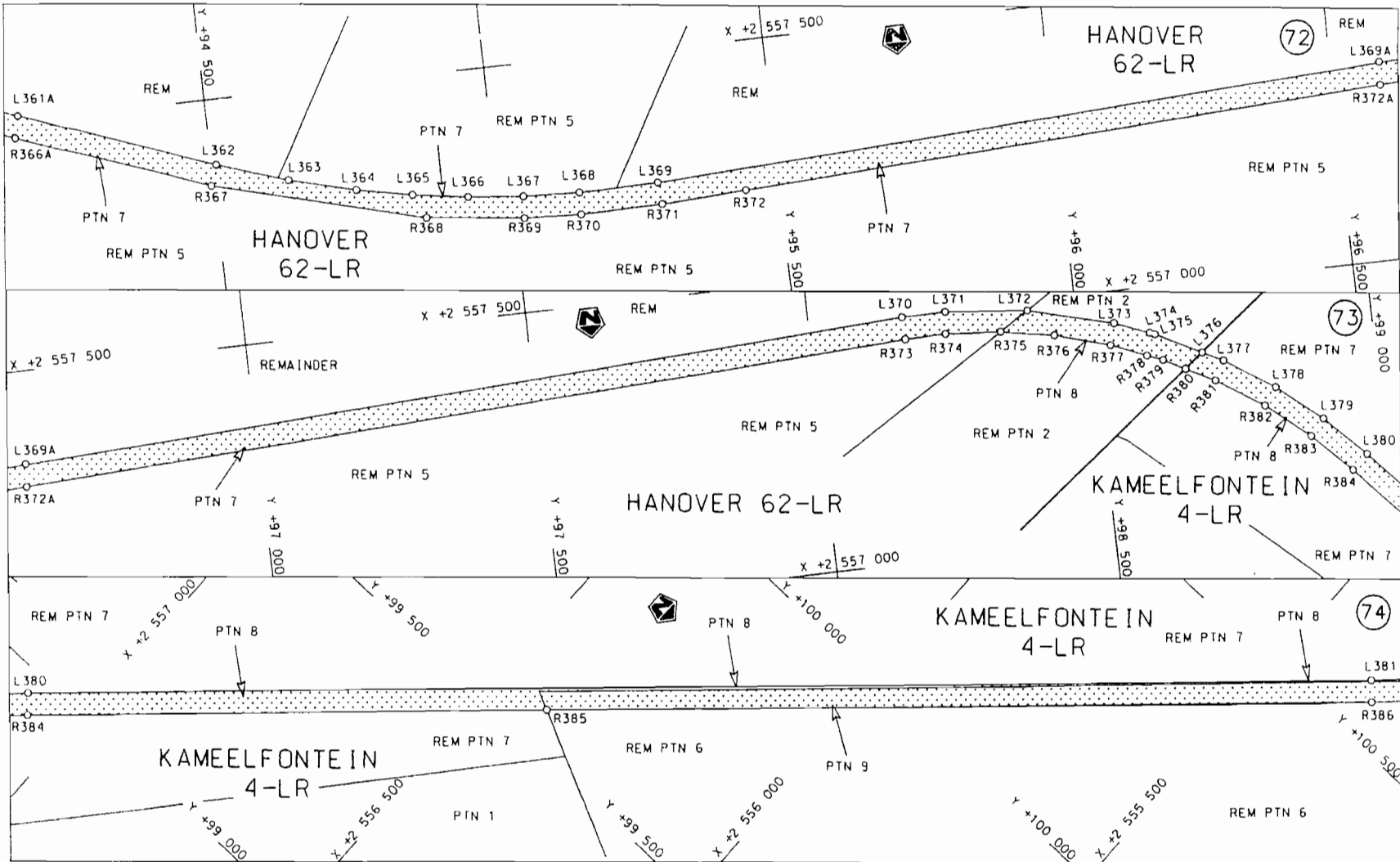
Die Suid Afrikaanse Nasionale Padagentskap Beperk
The South African National Roads Agency Limited

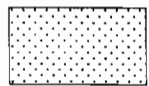
Die figuur getoon
The figure shown

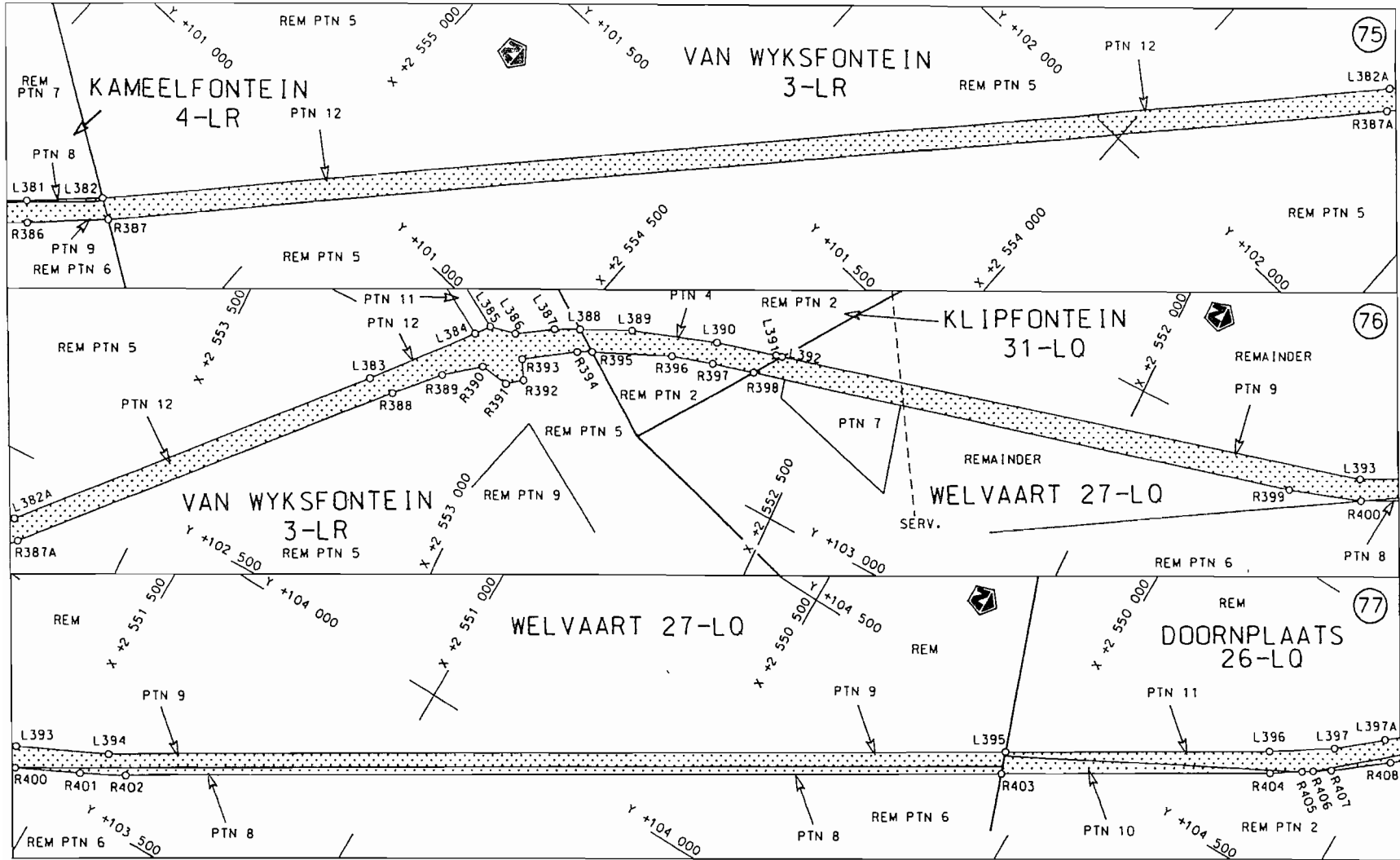


steldie padreserwe voor van 'n gedeelte
represents the road reserve of a portion
van Nasionale Roete N11 Sektie 13
of National Route Section

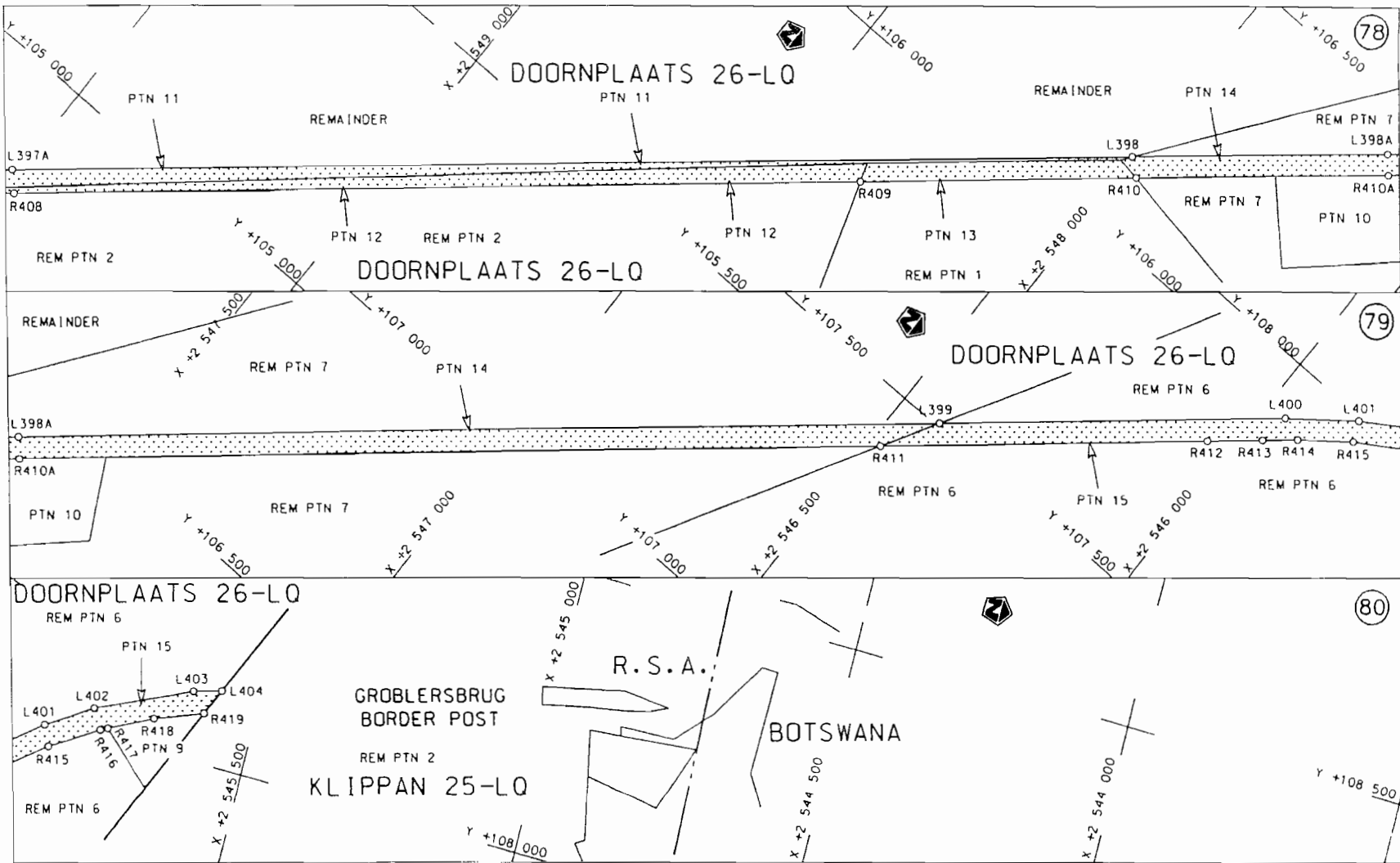
Vel Sheet 26 van of 38
Plan P694/08




Die Suid Afrikaanse Nasionale Padagenskap Beperk The South African National Roads Agency Limited	Die figuur getoon The figure shown		steldie padreserwe voor van 'n gedeelte represents the road reserve of a portion van Nasionale Roete N11 Seksie 13 of National Route Section	Vel Sheet 27 van 38 Plan P694/08
---	---------------------------------------	--	---	-------------------------------------



<p>Die Suid Afrikaanse Nasionale Padagentskop Beperk</p>	<p>Die figuur getoon</p>	<p>steldie padreserwe voor van 'n gedeelte</p>	<p>Vel Sheet 28 van 38</p>
<p>The South African National Roads Agency Limited</p>	<p>The figure shown</p>	<p>represents the road reserve of a portion van Nasionale Roete N11 Seksie Section 13</p>	<p>Plan P694/08</p>



<p>Die Suid Afrikaanse Nasionale Padagentskap Beperk</p>	<p>Die figuur getoon</p>		<p>steldie podreserve voor van 'n gedeelte represents the road reserve of a portion</p>	<p>Vel Sheet 29 von of 38</p>
<p>The South African National Roads Agency Limited</p>	<p>The figure shown</p>		<p>von Nasionale Roete of National Route N11 Seksie Section 13</p>	<p>Plan P694/08</p>

PADRESERWE KOÖRDINATE / ROAD RESERVE CO-ORDINATES					
LINKERKANT/LEFT HAND SIDE			REGTERKANT/RIGHT HAND SIDE		
	Y	X	WG 29°	Y	X
L1	778.050	2 674	649.100	R1	770.380 2 674 603.970
L2	917.650	2 674	607.450	R2	984.240 2 674 547.010
L3	923.930	2 674	605.820	R3	1 015.390 2 674 538.710
L4	975.120	2 674	592.560	R4	1 086.350 2 674 519.810
L5	1 017.470	2 674	578.690	R5	1 065.520 2 674 510.470
L6	1 041.330	2 674	571.450	R6	1 071.020 2 674 508.950
L7	1 136.990	2 674	542.530	R7	1 118.060 2 674 511.370
L8	1 158.780	2 674	552.350	R8	1 183.910 2 674 487.340
L9	1 199.520	2 674	523.500	R9	1 254.400 2 674 450.400
L10	1 274.910	2 674	483.990	R10	1 318.980 2 674 403.900
L11	1 344.010	2 674	434.250	R11	1 376.380 2 674 348.770
L12	1 405.410	2 674	375.270	R12	1 425.440 2 674 286.110
L13	1 457.900	2 674	308.230	R13	1 465.190 2 674 217.160
L14	1 500.430	2 674	234.470	R14	1 494.830 2 674 143.310
L15	1 532.140	2 674	155.450	R15	1 513.780 2 674 066.020
L16	1 552.420	2 674	072.760	R16	1 522.640 2 674 014.400
L17	1 571.400	2 673	962.020	R17	1 515.460 2 673 967.510
L18	1 592.210	2 673	919.920	R18	1 530.670 2 673 878.810
L19	1 597.270	2 673	890.360	R19	1 553.060 2 673 836.990
L20	1 607.440	2 673	831.220	R20	1 571.520 2 673 719.820
L21	1 600.250	2 673	784.330	R21	1 591.030 2 673 639.600
L22	1 610.150	2 673	726.570	R22	1 621.370 2 673 562.820
L23	1 628.390	2 673	651.610	R23	1 774.610 2 673 245.240
L24	1 656.730	2 673	579.860	R24	1 780.440 2 673 198.170
L25	1 834.350	2 673	207.430	R25	1 819.180 2 673 116.930
L26	1 867.260	2 673	173.270	R26	1 852.090 2 673 082.770
L27	1 880.290	2 673	146.150	R27	1 898.260 2 672 984.020
L28	1 906.040	2 673	092.000	R28	1 957.880 2 672 859.030
L29	1 911.950	2 673	044.920	R29	2 913.590 2 671 484.540
L30	1 977.010	2 672	908.500	R30	3 346.500 2 670 878.040
L31	2 022.280	2 672	820.300	R31	3 559.630 2 670 581.570
L32	2 057.540	2 672	759.290	R32	3 604.550 2 670 509.690
L33	2 093.720	2 672	729.640	R33	3 697.750 2 670 338.910
L34	2 109.820	2 672	705.030	R34	3 777.170 2 670 138.700
L35	2 143.370	2 672	664.580	R35	3 781.570 2 670 031.350
L36	2 159.830	2 672	613.050	R36	3 784.200 2 669 954.320
L37	2 288.280	2 672	427.740	R37	3 757.010 2 669 823.840
L38	2 326.630	2 672	399.820	R38	3 642.300 2 669 496.860
L39	2 378.910	2 672	326.570	R39	3 437.820 2 667 939.590
L40	2 392.840	2 672	281.220	R40	3 039.600 2 664 909.080
L41	2 568.750	2 672	034.760	R41	3 030.670 2 664 839.680
L42	2 607.100	2 672	006.850	R42	3 029.370 2 664 829.730
L43	2 659.380	2 671	933.590	R43	3 021.640 2 664 798.770
L44	2 673.317	2 671	902.801	R44	2 989.740 2 664 556.430
L45	2 812.720	2 671	692.920	R45	2 981.540 2 664 465.890
L46	2 851.080	2 671	665.010	R46	2 958.340 2 664 340.690
L47	2 903.360	2 671	591.760	R47	2 939.720 2 664 210.810
L48	2 917.290	2 671	546.410	R48	2 934.050 2 664 166.940
L49	3 072.020	2 671	329.630	R49	2 914.280 2 664 010.490
L50	3 110.370	2 671	301.710	R50	2 890.340 2 663 806.550
L51	3 136.880	2 671	264.510	R51	2 882.080 2 663 759.000

Vel	30	Van	38	P694/08
-----	----	-----	----	---------

PADRESERWE KOÖRDINATE / ROAD RESERVE CO-ORDINATES

LINKERKANT/LEFT HAND SIDE				REGTERKANT/RIGHT HAND SIDE			
	Y	X	WG 29°		Y	X	
L52	3 162.580	2 671	228.510	R52	2 880.710	2 663	747.810
L53	3 176.510	2 671	183.160	R53	2 867.580	2 663	665.830
L54	3 278.690	2 671	039.990	R54	2 862.500	2 663	577.190
L55	3 319.940	2 671	008.010	R55	2 858.180	2 663	544.130
L56	3 355.960	2 670	957.540	R56	2 853.740	2 663	514.520
L57	3 373.970	2 670	932.310	R57	2 853.090	2 663	484.120
L58	3 410.560	2 670	881.030	R58	2 838.160	2 663	379.850
L59	3 422.170	2 670	838.940	R59	2 831.330	2 663	343.290
L60	3 568.170	2 670	636.280	R60	2 827.330	2 663	325.850
L61	3 618.250	2 670	561.260	R61	2 818.720	2 663	246.040
L62	3 663.550	2 670	483.270	R62	2 748.870	2 662	690.310
L63	3 741.970	2 670	335.680	R63	2 731.620	2 662	558.920
L64	3 776.760	2 670	302.060	R64	2 727.170	2 662	524.430
L65	3 790.180	2 670	273.360	R65	2 718.990	2 662	462.060
L66	3 812.650	2 670	214.150	R66	2 712.860	2 662	425.720
L67	3 812.090	2 670	165.150	R67	2 700.480	2 662	372.560
L68	3 824.110	2 670	101.680	R68	2 675.240	2 662	302.620
L69	3 834.720	2 670	023.210	R69	2 647.190	2 662	244.180
L70	3 832.670	2 669	980.820	R70	2 594.130	2 662	141.920
L71	3 818.040	2 669	893.980	R71	2 552.270	2 662	060.990
L72	3 795.100	2 669	810.390	R72	2 531.750	2 662	016.680
L73	3 694.930	2 669	524.880	R73	2 504.880	2 661	945.910
L74	3 698.450	2 669	478.810	R74	2 501.170	2 661	936.120
L75	3 692.320	2 669	450.570	R75	2 108.130	2 660	344.230
L76	3 682.850	2 669	393.570	R76	2 063.140	2 660	160.870
L77	3 662.130	2 669	350.960	R77	2 032.220	2 660	036.930
L78	3 622.930	2 669	052.520	R78	2 007.800	2 659	929.690
L79	3 557.820	2 668	556.780	R79	1 999.380	2 659	879.490
L80	3 544.220	2 668	453.240	R80	1 993.110	2 659	821.480
L81	3 530.510	2 668	341.130	R81	1 990.140	2 659	783.320
L82	3 511.407	2 668	210.977	R82	1 985.940	2 659	754.850
L83	3 481.940	2 667	955.020	R83	1 985.800	2 659	751.510
L84	3 357.940	2 667	027.730	R84	1 949.520	2 658	807.800
L85	3 295.390	2 666	546.960	R85	1 944.980	2 658	697.140
L86	3 279.550	2 666	426.780	R86	1 937.030	2 658	498.580
L87	3 262.810	2 666	295.590	R87	1 952.910	2 658	332.460
L88	3 147.530	2 665	425.520	R88	2 010.330	2 658	164.210
L89	3 017.680	2 664	407.880	R89	2 927.010	2 656	736.200
L90	2 993.380	2 664	221.920	R90	3 589.400	2 655	715.010
L91	2 980.860	2 664	125.030	R91	3 656.570	2 655	611.820
L92	2 924.850	2 663	726.210	R92	3 707.190	2 655	515.260
L93	2 914.330	2 663	649.020	R93	3 754.610	2 655	414.000
L94	2 869.440	2 663	307.000	R94	3 792.080	2 655	334.080
L95	2 853.910	2 663	188.710	R95	4 165.560	2 654	269.450
L96	2 810.590	2 662	852.210	R96	4 729.490	2 652	695.850
L97	2 803.220	2 662	806.480	R97	5 299.400	2 651	413.870
L98	2 786.710	2 662	684.080	R98	5 373.910	2 651	266.370
L99	2 769.970	2 662	554.250	R99	5 385.200	2 651	223.240
L100	2 763.170	2 662	498.920	R100	5 396.520	2 651	197.600
L101	2 757.240	2 662	458.280	R101	5 504.480	2 650	992.250
L102	2 750.970	2 662	419.580	R102	5 625.940	2 650	735.110

Vel 31 Van 38 P694/08

PADRESERWE KOÖRDINATE / ROAD RESERVE CO-ORDINATES							
LINKERKANT/LEFT HAND SIDE				REGTERKANT/RIGHT HAND SIDE			
	Y	X	WG 29°		Y	X	
L103	2 737.460	2 662	361.190	R103	5 756.290	2 650	466.850
L104	2 710.400	2 662	286.640	R104	5 797.900	2 650	373.000
L105	2 681.560	2 662	226.470	R105	5 875.250	2 650	192.170
L106	2 628.200	2 662	123.580	R106	5 909.560	2 650	086.520
L107	2 586.660	2 662	042.860	R107	5 980.830	2 649	911.690
L108	2 566.800	2 662	000.500	R108	6 110.840	2 649	569.970
L109	2 537.950	2 661	923.410	R109	6 153.500	2 649	460.050
L110	2 523.870	2 661	873.700	R110	6 250.710	2 649	210.580
L111	2 416.370	2 661	438.640	R110X	6 251.330	2 649	206.300
L112	2 357.120	2 661	196.740	R111	6 259.550	2 649	120.880
L113	2 037.820	2 659	874.060	R112	6 296.470	2 649	000.990
L114	2 031.790	2 659	818.570	R113	6 418.010	2 648	298.880
L115	2 028.910	2 659	779.340	R114	6 463.350	2 647	998.270
L116	2 028.580	2 659	746.730	R115	6 473.290	2 647	941.790
L117	2 027.620	2 659	653.970	R116	6 485.359	2 647	906.267
L118	1 984.610	2 658	708.390	R117	6 516.290	2 647	760.160
L119	1 976.070	2 658	526.610	R118	6 551.980	2 647	625.770
L120	1 988.550	2 658	347.830	R119	6 697.440	2 647	320.380
L121	2 047.090	2 658	181.810	R120	6 785.610	2 647	141.930
L122	2 555.770	2 657	388.920	R121	6 849.680	2 647	019.060
L123	2 778.250	2 657	038.850	R122	7 955.100	2 644	790.310
L124	3 056.650	2 656	606.580	R123	8 043.030	2 644	612.010
L125	3 594.570	2 655	778.150	R124	8 183.430	2 644	329.720
L126	3 703.080	2 655	612.160	R125	8 264.120	2 644	216.910
L127	3 787.400	2 655	447.770	R126	8 672.970	2 643	750.490
L128	3 790.070	2 655	442.490	R127	8 722.320	2 643	661.230
L129	3 790.560	2 655	441.020	R128	8 771.040	2 643	465.960
L130	3 834.000	2 655	311.520	R129	8 840.470	2 643	145.650
L131	3 986.810	2 654	878.210	R130	8 954.400	2 642	487.440
L132	4 692.210	2 652	894.840	R131	9 302.960	2 640	598.620
L133	5 326.780	2 651	443.690	R132	9 389.010	2 640	136.600
L134	5 860.950	2 650	312.800	R133	10 413.660	2 637	990.750
L135	5 884.420	2 650	260.260	R134	10 584.510	2 637	639.560
L136	5 905.650	2 650	207.980	R135	10 599.440	2 637	606.980
L137	6 261.170	2 649	312.820	R136	10 627.110	2 637	515.630
L138	6 283.710	2 649	247.960	R137	10 807.300	2 636	628.930
L139	6 314.230	2 649	161.920	R138	10 862.960	2 636	349.840
L140	6 320.710	2 649	130.040	R139	10 906.640	2 636	132.880
L141	6 327.420	2 649	066.950	R140	11 115.780	2 635	093.010
L142	6 331.990	2 649	013.370	R141	11 145.280	2 634	934.650
L143	6 522.960	2 647	971.300	R142	11 153.870	2 634	881.500
L144	6 578.290	2 647	665.960	R142X	11 159.860	2 634	846.290
L145	6 594.710	2 647	616.220	R143	11 161.940	2 634	831.770
L146	6 696.600	2 647	409.130	R144	11 162.610	2 634	724.570
L147	8 293.080	2 644	235.740	R145	11 012.990	2 634	121.300
L148	8 717.710	2 643	759.470	R146	10 985.980	2 634	017.570
L149	8 783.890	2 643	611.010	R147	10 929.420	2 633	743.280
L150	8 852.950	2 643	256.700	R148	10 893.950	2 633	483.080
L151	8 855.530	2 643	243.030	R149	10 883.370	2 633	405.830
L152	8 860.160	2 643	218.440	R150	10 873.950	2 633	329.470
L153	8 876.840	2 643	140.100	R151	10 938.480	2 632	879.620

Vel	32	Van	38	P694/08
-----	----	-----	----	---------

PADRESERWE KOÖRDINATE / ROAD RESERVE CO-ORDINATES					
LINKERKANT/LEFT HAND SIDE			REGTERKANT/RIGHT HAND SIDE		
	Y	X	WG 29°	Y	X
L154	9 026.250	2 642 315.760		R152	10 973.980 2 632 666.470
L155	9 356.190	2 640 531.060		R153	10 987.290 2 632 608.360
L156	9 434.170	2 640 124.820		R154	11 068.040 2 632 156.900
L157	9 649.480	2 639 652.700		R155	11 203.290 2 631 515.090
L158	10 457.790	2 637 989.290		R156	11 215.470 2 631 361.760
L159	10 663.480	2 637 538.760		R157	11 193.340 2 630 548.010
L160	10 906.210	2 636 338.570		R158	11 182.540 2 630 374.010
L161	10 942.600	2 636 158.690		R159	11 061.770 2 629 564.550
L162	11 060.940	2 635 566.820		R160	11 057.220 2 629 489.480
L163	11 146.360	2 635 118.770		R161	11 059.360 2 629 371.510
L164	11 167.580	2 635 010.650		R162	11 301.660 2 626 810.650
L165	11 196.190	2 634 860.770		R163	11 415.260 2 625 762.330
L166	11 204.180	2 634 710.180		R163X	11 417.170 2 625 761.460
L167	11 140.610	2 634 467.090		R164	11 485.580 2 625 156.340
L168	11 113.700	2 634 371.370		R165	11 577.120 2 624 383.620
L169	11 095.230	2 634 302.340		R166	11 694.740 2 623 373.800
L170	11 012.250	2 633 984.790		R167	11 753.820 2 623 049.130
L171	10 968.570	2 633 760.320		R168	12 045.170 2 621 547.520
L172	10 945.000	2 633 595.120		R169	12 045.660 2 621 545.320
L173	10 921.570	2 633 452.270		R170	12 061.480 2 621 509.620
L174	10 917.250	2 633 234.920		R171	12 071.870 2 621 468.420
L175	10 961.560	2 632 971.300		R172	12 306.820 2 620 524.690
L176	11 014.570	2 632 612.690		R173	12 439.680 2 620 015.740
L177	11 073.950	2 632 268.180		R174	12 478.770 2 619 901.360
L178	11 085.810	2 632 246.140		R175	12 486.890 2 619 879.040
L179	11 114.200	2 632 109.820		R176	12 584.220 2 619 642.520
L180	11 242.900	2 631 515.750		R177	13 245.300 2 618 029.440
L181	11 255.640	2 631 340.040		R178	13 631.370 2 617 131.110
L182	11 242.480	2 630 884.390		R179	13 716.230 2 616 932.130
L183	11 222.730	2 630 379.140		R180	14 633.700 2 614 738.580
L184	11 127.400	2 629 729.760		R181	14 662.210 2 614 701.340
L185	11 095.708	2 629 449.709		R182	14 699.550 2 614 664.320
L186	11 739.790	2 623 334.720		R183	14 731.810 2 614 639.770
L187	11 787.350	2 623 060.130		R184	15 186.460 2 614 345.760
L188	11 978.070	2 622 027.970		R185	15 231.660 2 614 324.480
L189	12 085.650	2 621 571.790		R186	15 768.240 2 614 109.740
L190	12 477.260	2 620 029.480		R187	15 863.700 2 614 071.750
L191	12 480.730	2 620 016.560		R188	16 597.550 2 613 880.220
L192	12 623.310	2 619 642.110		R189	17 146.940 2 613 737.400
L193	13 066.180	2 618 561.280		R190	17 231.670 2 613 690.180
L194	13 906.270	2 616 575.950		R191	17 761.780 2 613 265.270
L195	13 951.630	2 616 464.390		R192	18 704.990 2 612 515.210
L196	14 224.660	2 615 803.800		R193	19 419.840 2 611 946.810
L197	14 228.080	2 615 800.120		R194	19 704.080 2 611 669.650
L198	14 400.230	2 615 383.380		R195	19 855.440 2 611 543.690
L199	14 652.730	2 614 788.350		R196	20 222.040 2 611 235.770
L200	14 741.407	2 614 685.724		R197	20 370.720 2 611 114.820
L201	14 804.950	2 614 641.030		R198	22 614.450 2 609 247.320
L202	14 936.350	2 614 556.080		R199	22 768.210 2 609 118.600
L203	15 213.140	2 614 377.700		R200	22 801.380 2 609 081.870
L204	15 289.400	2 614 346.860		R201	22 865.760 2 609 000.990

Vel	33	Van	38	P694/08
Sheet		of		

PADRESERWE KOÖRDINATE / ROAD RESERVE CO-ORDINATES									
LINKERKANT/LEFT HAND SIDE					REGTERKANT/RIGHT HAND SIDE				
	Y	X	WG 29°		Y	X			
L205	15 807.400	2 614 138.110		R202	22 908.780	2 608 946.950			
L206	16 311.460	2 613 996.730		R203	22 929.410	2 608 918.420			
L207	17 200.060	2 613 765.340		R204	22 970.250	2 608 855.970			
L208	17 751.820	2 613 325.790		R205	23 820.601	2 607 527.000			
L209	18 751.230	2 612 533.810		R206	23 858.180	2 607 479.790			
L210	19 450.400	2 611 976.760		R207	23 882.020	2 607 442.870			
L211	19 734.320	2 611 695.130		R208	23 972.605	2 607 314.416			
L212	20 203.290	2 611 305.760		R209	24 053.150	2 607 244.060			
L213	20 349.410	2 611 188.840		R210	24 104.420	2 607 208.430			
L214	20 368.810	2 611 168.580		R211	24 290.060	2 607 093.980			
L215	22 702.420	2 609 232.770		R212	24 670.140	2 606 852.440			
L216	22 798.941	2 609 158.423		R213	24 865.040	2 606 728.070			
L216X	22 811.470	2 609 141.550		R214	25 012.620	2 606 632.310			
L217	22 874.690	2 609 076.390		R215	25 141.830	2 606 549.580			
L218	22 912.690	2 609 035.830		R216	25 239.380	2 606 486.880			
L219	22 959.100	2 608 931.410		R217	25 340.840	2 606 422.150			
L220	22 997.670	2 608 872.770		R218	25 510.050	2 606 313.830			
L221	23 532.090	2 608 043.370		R219	25 647.370	2 606 225.130			
L222	23 994.400	2 607 330.030		R220	25 705.780	2 606 187.640			
L223	24 069.400	2 607 271.450		R221	25 741.400	2 606 170.200			
L224	24 138.690	2 607 225.020		R222	25 913.010	2 606 086.260			
L225	24 301.490	2 607 122.550		R223	26 109.520	2 605 989.970			
L226	24 878.470	2 606 756.670		R224	26 295.050	2 605 899.960			
L227	25 027.700	2 606 660.580		R225	26 602.000	2 605 753.070			
L228	25 747.640	2 606 201.940		R226	26 798.660	2 605 656.900			
L229	25 919.510	2 606 118.330		R227	26 920.900	2 605 595.750			
L230	26 128.910	2 606 015.950		R228	27 203.210	2 605 455.680			
L231	26 314.970	2 605 926.020		R229	27 463.630	2 605 332.030			
L232	26 610.520	2 605 784.620		R230	27 634.850	2 605 247.500			
L233	26 820.460	2 605 681.850		R231	27 843.420	2 605 144.900			
L234	26 941.730	2 605 621.410		R232	28 040.250	2 605 049.580			
L235	27 470.890	2 605 363.780		R233	28 216.020	2 604 965.540			
L236	27 642.940	2 605 279.060		R234	28 459.940	2 604 848.180			
L237	28 048.950	2 605 080.760		R235	28 668.290	2 604 746.200			
L238	28 468.920	2 604 879.220		R236	28 877.700	2 604 644.380			
L239	28 874.180	2 604 681.430		R237	29 036.390	2 604 566.720			
L240	29 053.040	2 604 594.530		R238	29 121.600	2 604 525.410			
L241	29 115.850	2 604 563.730		R239	29 979.430	2 604 105.180			
L242	30 766.570	2 603 758.480		R240	30 971.748	2 603 635.782			
L243	31 229.260	2 603 533.300		R241	31 198.210	2 603 513.160			
L244	31 233.750	2 603 531.130		R242	31 281.640	2 603 469.610			
L245	31 279.370	2 603 508.430		R243	31 317.780	2 603 450.180			
L246	31 465.920	2 603 392.680		R244	31 431.690	2 603 374.550			
L247	31 480.800	2 603 380.990		R245	32 700.000	2 602 367.540			
L248	32 474.310	2 602 591.740		R246	32 774.480	2 602 307.060			
L249	32 837.580	2 602 300.200		R247	32 881.220	2 602 199.620			
L250	32 944.080	2 602 175.530		R248	32 914.750	2 602 148.610			
L251	32 991.930	2 602 091.250		R249	32 950.790	2 602 092.840			
L252	33 148.530	2 601 812.130		R250	33 105.210	2 601 821.360			
L253	33 166.088	2 601 794.697		R251	33 211.950	2 601 630.290			
L254	33 225.020	2 601 674.610		R252	33 539.100	2 601 043.320			
					Vel	34	Van	38	P694/08

PADRESERWE KOÖRDINATE / ROAD RESERVE CO-ORDINATES						
LINKERKANT/LEFT HAND SIDE				REGTERKANT/RIGHT HAND SIDE		
	Y	X	WG 29°		Y	X
L255	33 473.700	2 601	224.940	R253	33 706.720	2 600 742.670
L256	33 767.880	2 600	689.040	R254	33 751.600	2 600 597.700
L257	33 784.840	2 600	608.810	R255	33 763.940	2 600 544.020
L258	33 801.040	2 600	592.470	R256	33 804.280	2 600 358.420
L259	33 807.260	2 600	497.970	R257	33 804.390	2 600 316.060
L260	33 839.680	2 600	333.790	R258	33 846.750	2 600 091.030
L261	33 842.360	2 600	318.510	R259	33 849.590	2 600 074.890
L262	33 879.700	2 600	125.670	R260	33 891.750	2 599 970.880
L263	33 898.300	2 600	046.240	R261	33 907.220	2 599 933.120
L264	33 924.630	2 599	984.940	R262	34 076.540	2 599 683.170
L265	33 936.800	2 599	966.420	R263	34 199.700	2 599 498.710
L266	34 413.410	2 599	239.840	R264	34 375.040	2 599 232.660
L267	34 451.580	2 599	181.690	R265	34 375.870	2 599 229.990
L268	35 033.490	2 598	297.850	R266	34 379.400	2 599 218.680
L269	35 101.820	2 598	210.140	R267	34 691.260	2 598 738.990
L270	35 129.000	2 598	152.730	R268	34 759.900	2 598 635.220
L271	35 376.850	2 597	777.110	R269	34 776.970	2 598 617.840
L272	35 657.340	2 597	355.250	R270	35 875.750	2 596 957.070
L273	35 927.650	2 596	949.980	R271	37 003.570	2 595 255.670
L274	37 042.020	2 595	281.210	R272	37 011.730	2 595 243.790
L275	37 994.730	2 594	079.950	R273	37 944.370	2 594 080.000
L276	38 358.730	2 593	627.470	R274	38 328.710	2 593 604.860
L277	38 433.670	2 593	520.640	R275	38 401.510	2 593 500.950
L278	38 520.010	2 593	342.540	R276	38 484.440	2 593 329.340
L278X	38 807.590	2 592	561.350	R277	38 502.400	2 593 276.960
L279	38 815.740	2 592	539.290	R278	38 532.760	2 593 199.570
L280	39 007.760	2 592	018.480	R278X	38 766.980	2 592 562.590
L281	39 079.630	2 591	829.700	R279	38 624.430	2 592 949.660
L282	39 116.280	2 591	747.420	R280	38 773.140	2 592 545.860
L283	39 223.340	2 591	584.310	R281	38 839.940	2 592 366.040
L284	39 288.920	2 591	511.370	R282	38 938.630	2 592 105.750
L285	39 366.570	2 591	437.360	R283	38 968.440	2 592 017.250
L286	39 440.930	2 591	385.640	R284	39 000.740	2 591 928.870
L287	39 522.210	2 591	336.740	R285	39 081.500	2 591 733.060
L288	39 613.820	2 591	293.710	R286	39 134.110	2 591 642.720
L289	39 726.410	2 591	255.370	R287	39 194.500	2 591 561.160
L290	39 853.850	2 591	220.340	R288	39 262.040	2 591 484.680
L291	40 090.630	2 591	154.540	R289	39 334.760	2 591 415.610
L292	41 261.070	2 590	830.850	R290	39 419.040	2 591 354.980
L293	42 071.050	2 590	607.380	R291	39 508.660	2 591 301.750
L294	42 162.570	2 590	574.140	R292	39 601.390	2 591 258.190
L295	42 255.190	2 590	530.570	R293	39 667.600	2 591 235.230
L296	42 343.160	2 590	477.170	R294	39 714.110	2 591 219.130
L297	42 424.230	2 590	416.320	R295	39 828.760	2 591 186.390
L298	42 567.540	2 590	271.230	R296	41 262.050	2 590 790.920
L299	44 558.340	2 587	456.950	R297	42 148.610	2 590 537.810
L300	44 615.270	2 587	384.150	R298	42 237.010	2 590 495.710
L301	44 712.100	2 587	287.560	R299	42 320.380	2 590 442.840
L302	44 820.650	2 587	204.930	R300	42 398.620	2 590 383.680
L303	44 949.670	2 587	131.670	R301	42 472.250	2 590 319.370
L304	44 986.130	2 587	116.600	R302	43 697.310	2 588 607.240

Vel 35 Van 38 P694/08

PADRESERWE KOÖRDINATE / ROAD RESERVE CO-ORDINATES											
LINKERKANT/LEFT HAND SIDE					REGTERKANT/RIGHT HAND SIDE						
	Y	X	WG 29°		Y	X					
L305	47	610.930	2	586	023.970	R303	44	429.460	2	587	572.310
L306	47	669.950	2	586	002.380	R304	44	602.650	2	587	338.910
L307	47	699.240	2	585	975.130	R305	44	605.380	2	587	338.560
L308	47	746.180	2	585	955.790	R306	44	665.390	2	587	277.930
L309	47	786.590	2	585	924.360	R307	44	743.370	2	587	212.540
L310	48	146.480	2	585	682.440	R308	44	817.700	2	587	161.910
L311	51	539.490	2	583	356.280	R309	44	916.730	2	587	105.990
L312	51	600.050	2	583	314.520	R310	47	413.540	2	586	076.610
L313	51	665.860	2	583	265.360	R311	47	503.610	2	586	035.120
L314	51	741.560	2	583	196.330	R312	47	680.080	2	585	943.080
L315	51	872.680	2	583	037.730	R313	47	845.500	2	585	843.040
L316	51	927.860	2	582	943.480	R314	48	129.910	2	585	648.490
L317	52	264.530	2	582	289.390	R315	51	526.940	2	583	318.570
L318	52	826.780	2	581	200.860	R316	51	579.410	2	583	282.890
L319	53	961.030	2	579	280.630	R317	51	642.750	2	583	235.810
L320	55	076.510	2	577	395.870	R318	51	715.580	2	583	169.980
L321	56	344.020	2	575	263.390	R319	51	840.040	2	583	018.580
L322	56	389.600	2	575	194.040	R320	51	896.300	2	582	922.420
L323	56	415.490	2	575	162.440	R321	52	786.840	2	581	194.570
L324	56	486.140	2	575	081.320	R322	53	929.410	2	579	261.120
L325	56	554.820	2	575	019.520	R323	55	045.000	2	577	374.460
L326	57	142.590	2	574	616.810	R324	55	656.670	2	576	344.920
L327	57	828.390	2	574	153.460	R325	56	359.610	2	575	161.420
L328	57	832.860	2	574	150.450	R326	56	385.610	2	575	120.120
L329	57	944.750	2	574	074.930	R327	56	488.890	2	575	011.720
L330	58	366.500	2	573	790.120	R328	57	591.200	2	574	268.270
L331	58	522.620	2	573	684.350	R329	57	818.650	2	574	114.720
L332	61	422.970	2	571	729.980	R330	57	846.790	2	574	095.870
L333	64	412.570	2	569	732.250	R331	58	283.140	2	573	801.170
L334	65	688.370	2	568	887.970	R332	60	330.220	2	572	417.980
L335	65	788.880	2	568	840.730	R333	60	418.600	2	572	357.930
L336	65	951.190	2	568	775.810	R334	60	452.670	2	572	322.310
L337	69	602.840	2	567	305.680	R335	60	522.880	2	572	291.520
L338	69	612.970	2	567	301.550	R336	61	358.900	2	571	727.610
L339	73	818.800	2	565	607.320	R337	64	430.810	2	569	675.370
L340	73	943.670	2	565	556.740	R338	65	670.580	2	568	854.830
L341	74	406.560	2	565	375.110	R339	65	775.350	2	568	805.570
L342	75	836.700	2	564	828.790	R340	65	913.540	2	568	749.720
L343	76	630.820	2	564	525.140	R341	69	564.550	2	567	280.600
L344	80	290.320	2	563	131.640	R342	69	625.150	2	567	256.160
L345	80	315.200	2	563	122.460	R343	74	179.000	2	565	423.760
L346	80	757.160	2	562	954.240	R344	75	772.880	2	564	813.180
L347	80	794.700	2	562	941.820	R345	76	657.900	2	564	474.320
L348	80	892.670	2	562	902.320	R346	77	644.600	2	564	096.930
L349	80	993.000	2	562	864.020	R347	77	670.500	2	564	087.450
L350	81	141.850	2	562	797.170	R348	80	337.520	2	563	073.020
L351	81	182.480	2	562	778.390	R349	80	688.280	2	562	939.740
L352	81	277.310	2	562	729.420	R350	80	744.730	2	562	914.490
L353	81	421.820	2	562	655.190	R351	80	788.060	2	562	882.140
L354	81	948.130	2	562	382.620	R352	80	817.020	2	562	874.870
L355	83	891.890	2	561	385.117	R353	80	862.490	2	562	873.550

Vel	36	Van	38	P694/08
-----	----	-----	----	---------

PADRESERWE KOÖRDINATE / ROAD RESERVE CO-ORDINATES						
LINKERKANT/LEFT HAND SIDE				REGTERKANT/RIGHT HAND SIDE		
	Y	X	WG 29°		Y	X
L356	84 563.110	2 561	028.040	R354	81 168.970	2 562 742.880
L357	84 995.700	2 560	824.090	R355	81 273.190	2 562 689.300
L358	85 487.940	2 560	649.740	R356	81 943.880	2 562 342.440
L359	89 799.180	2 559	096.430	R357	83 853.500	2 561 355.310
L360	89 912.070	2 559	055.460	R358	84 541.850	2 560 999.590
L361	93 467.760	2 557	766.070	R359	84 739.750	2 560 897.400
L362	94 508.330	2 557	388.640	R360	84 855.970	2 560 842.280
L363	94 632.670	2 557	348.040	R361	84 990.360	2 560 789.160
L364	94 750.710	2 557	317.980	R362	85 496.820	2 560 606.810
L365	94 848.530	2 557	298.710	R363	89 795.340	2 559 058.000
L366	94 945.760	2 557	284.450	R364	89 927.160	2 559 010.060
L367	95 044.320	2 557	274.990	R365	93 472.520	2 557 724.290
L368	95 143.330	2 557	270.540	R366	93 481.210	2 557 721.150
L369	95 284.210	2 557	272.640	R367	94 495.490	2 557 353.340
L370	98 167.840	2 557	419.590	R368	94 868.700	2 557 257.140
L371	98 244.720	2 557	420.150	R369	95 041.840	2 557 237.670
L372	98 390.420	2 557	406.630	R370	95 142.420	2 557 232.960
L373	98 541.980	2 557	368.170	R371	95 287.820	2 557 235.210
L374	98 603.330	2 557	345.290	R372	95 439.670	2 557 243.080
L375	98 612.190	2 557	341.650	R373	98 169.220	2 557 382.010
L376	98 691.480	2 557	302.370	R374	98 240.720	2 557 383.050
L377	98 726.800	2 557	284.740	R375	98 338.680	2 557 375.830
L378	98 812.810	2 557	229.260	R376	98 433.710	2 557 359.610
L379	98 892.420	2 557	166.350	R377	98 531.140	2 557 332.200
L380	98 963.290	2 557	097.740	R378	98 593.730	2 557 307.680
L381	100 597.220	2 555	354.790	R379	98 621.340	2 557 296.880
L382	100 690.770	2 555	258.770	R380	98 658.690	2 557 277.760
L383	102 892.140	2 553	242.990	R381	98 708.760	2 557 252.130
L384	103 045.690	2 553	110.140	R382	98 790.130	2 557 199.710
L385	103 068.930	2 553	090.970	R383	98 867.040	2 557 138.830
L386	103 078.460	2 553	045.610	R384	98 934.990	2 557 072.860
L387	103 117.260	2 552	986.380	R385	99 563.250	2 556 402.330
L388	103 137.190	2 552	945.990	R386	100 569.840	2 555 328.990
L389	103 177.280	2 552	862.690	R387	100 670.300	2 555 227.390
L390	103 228.230	2 552	718.900	R388	102 887.270	2 553 196.330
L391	103 256.680	2 552	613.460	R389	102 954.820	2 553 131.400
L392	103 259.240	2 552	602.610	R390	103 000.870	2 553 072.610
L393	103 538.650	2 551	587.310	R391	102 993.280	2 553 022.640
L394	103 612.860	2 551	440.630	R392	103 013.110	2 552 997.200
L395	104 450.660	2 550	076.970	R393	103 044.520	2 553 015.170
L396	104 697.010	2 549	675.370	R394	103 100.300	2 552 933.360
L397	104 762.900	2 549	578.200	R395	103 112.150	2 552 909.890
L398	106 131.160	2 548	004.050	R396	103 169.870	2 552 780.000
L399	107 506.070	2 546	425.270	R397	103 191.830	2 552 709.130
L400	107 911.020	2 545	960.500	R398	103 211.400	2 552 636.640
L401	107 992.370	2 545	858.030	R399	103 464.320	2 551 692.950
L402	108 043.050	2 545	779.940	R400	103 505.880	2 551 569.420
L403	108 116.970	2 545	616.770	R401	103 558.100	2 551 466.210
L404	108 130.760	2 545	568.620	R402	103 596.420	2 551 395.980
				R403	104 414.180	2 550 063.850
				R404	104 664.760	2 549 655.670
				Vel	37	Van 38 P694/08

PADRESERWE KOÖRDINATE / ROAD RESERVE CO-ORDINATES					
LINKERKANT/LEFT HAND SIDE			REGTERKANT/RIGHT HAND SIDE		
Y	X	WG 29°	Y	X	
			R405	104 697.240	2 549 607.690
			R406	104 708.570	2 549 590.950
			R407	104 726.800	2 549 564.030
			R408	104 794.580	2 549 479.220
			R409	105 783.780	2 548 344.190
			R410	106 106.870	2 547 974.410
			R411	107 408.110	2 546 480.120
			R412	107 791.280	2 546 040.670
			R413	107 855.510	2 545 967.060
			R414	107 896.650	2 545 919.910
			R415	107 958.030	2 545 842.380
			R416	108 009.770	2 545 760.080
			R417	108 015.920	2 545 747.940
			R418	108 053.710	2 545 673.210
			R419	108 085.050	2 545 589.250
			Vel	38	Van 38
			P694/08		