

# Government Gazette Staatskoerant

REPUBLIC OF SOUTH AFRICA  
REPUBLIEK VAN SUID-AFRIKA

Vol. 525

Pretoria, 24 March  
Maart 2009

No. 32021

**CONTENTS****INHOUD**

<i>No.</i>	<i>Page No.</i>	<i>Gazette No.</i>	<i>No.</i>	<i>Bladsy No.</i>	<i>Koerant No.</i>
<b>GOVERNMENT NOTICE</b>			<b>GOEWERMENSKENNISGEWING</b>		
<b>Transport, Department of</b>			<b>Vervoer, Departement van</b>		
<i>Government Notice</i>			<i>Goewermentskennisgewing</i>		
301			301		
South African National Roads Agency Limited and the National Roads Act (7/1998): The South African National Roads Agency Limited: Declaration amendment of National Road R37 part of Section 1 and Section 2: Amendment of Declaration No. 727 of 2005 .....	3	32021	Suid-Afrikaanse Nasionale Padagentskap Beperk en die Nasionale Paaie Wet (7/1998): Die Suid-Afrikaanse Nasionale Padagentskap Beperk: Verklaring wysiging van Nasionale Pad R37 gedeelte van Seksie 1 en Seksie 2: Wysiging van Verklaring No. 727 van 2005 .....	4	32021

---

## GOVERNMENT NOTICE

---

**DEPARTMENT OF TRANSPORT**

**No. 301**

**24 March 2009**

**DEPARTMENT OF TRANSPORT**

**THE SOUTH AFRICAN NATIONAL ROADS  
AGENCY LIMITED**

Registration No: 98/09584/06

---

**DECLARATION AMENDMENT OF NATIONAL ROAD R37 PART OF SECTION 1 AND SECTION 2**

AMENDMENT OF DECLARATION No. 727 OF 2005

By virtue of section 40 (1)(b) of the South African National Roads Agency Limited and the National Roads Act, 1998 (Act No. 7 of 1998), I hereby amend Declaration No. 727 of 2005 by substituting Annexure paragraph (l), with the subjoined sheets 1 to 20 of Plan No.P699/08.

**(National Road R37 Part of Section 1 and Section 2: Steelpoort River -Lydenburg)**

  
\_\_\_\_\_  
**MINISTER OF TRANSPORT**

---

## GOEWERMENTSKENNISGEWING

---

### DEPARTEMENT VAN VERVOER

No. 301

24 Maart 2009

## DIE SUID-AFRIKAANSE NASIONALE PADAGENTSKAP BEPERK

Registrasie No: 98/09584/06

---

### VERKLARING WYSIGING VAN NASIONALE PAD R37 GEDEELTE VAN SEKSIE 1 EN SEKSIE 2.

WYSIGING VAN VERKLARING NO. 727 VAN 2005.

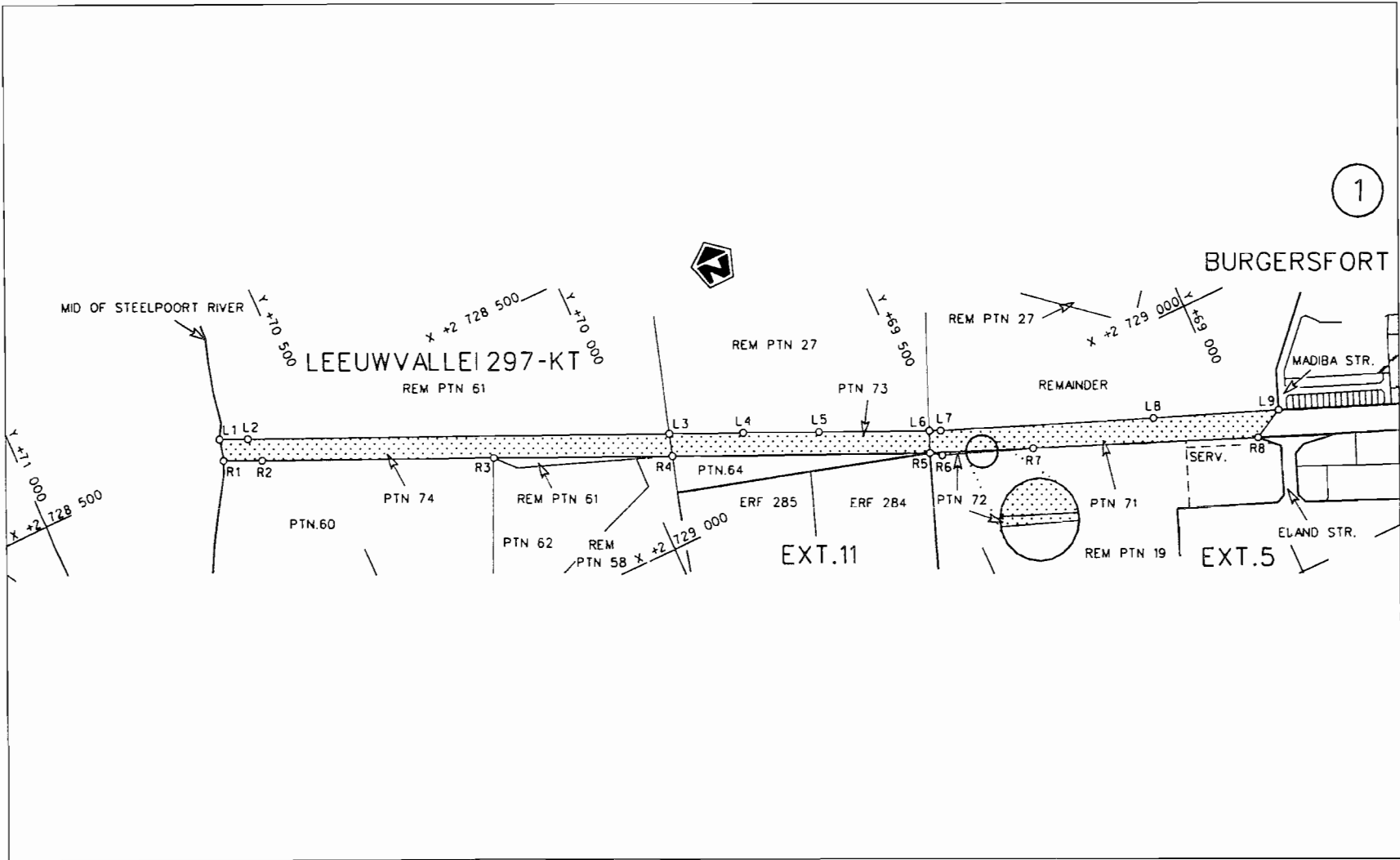
Kragtens Artikel 40(1)(b) van die Suid-Afrikaanse Nasionale Padagentskap Beperk en die Nasionale Paaie Wet, 1998 (Wet No.7 van 1998), wysig ek hiermee Verklaring no. 727 van 2005 deur Bylae paragraaf (I), te vervang met meegaande velle 1 tot 20 van Plan no. P699/08.

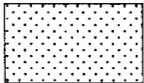
**(Nasionale Pad R37 Gedeelte van Seksie 1 en Seksie 2: Steelpoortrivier - Lydenburg)**

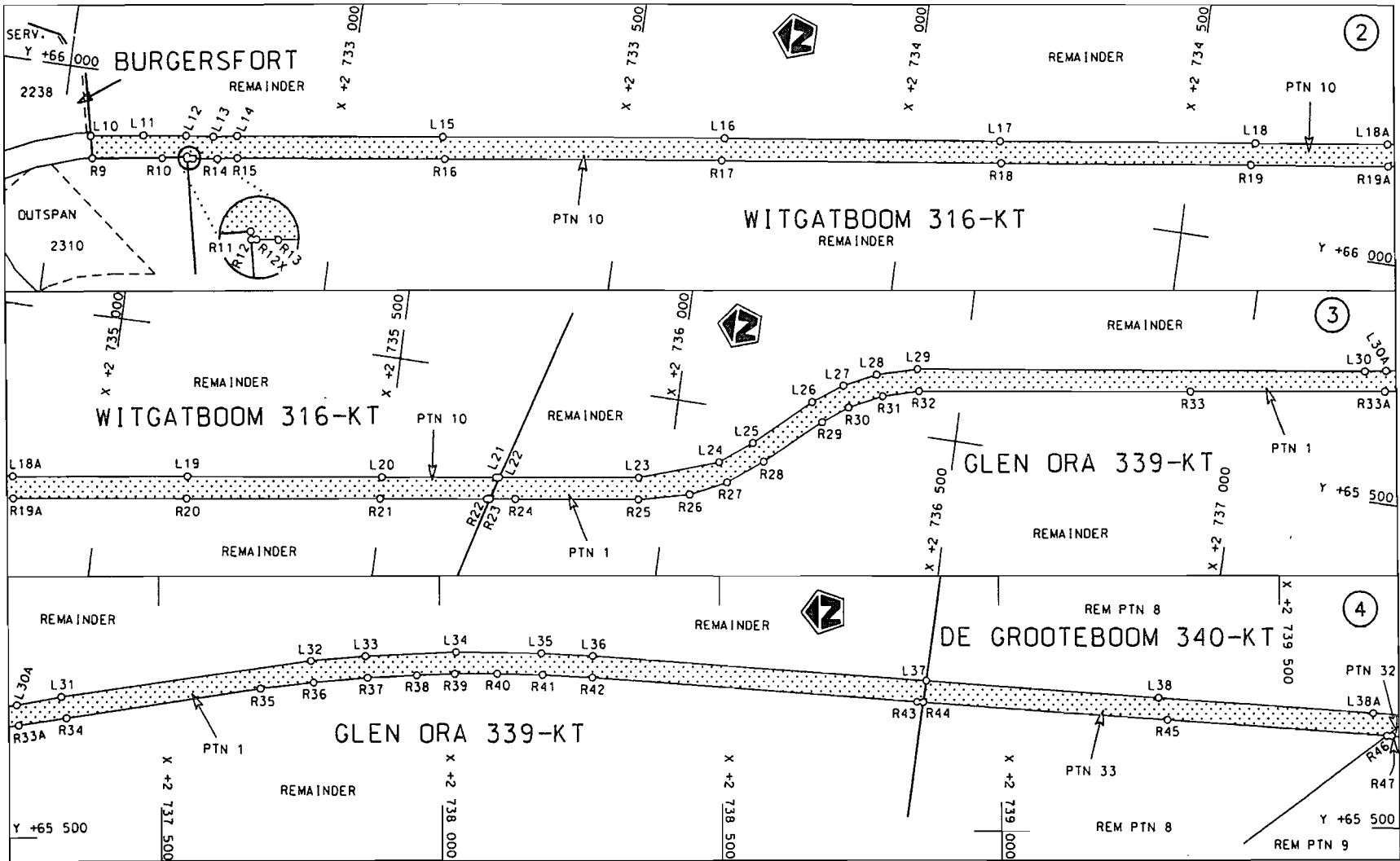



---

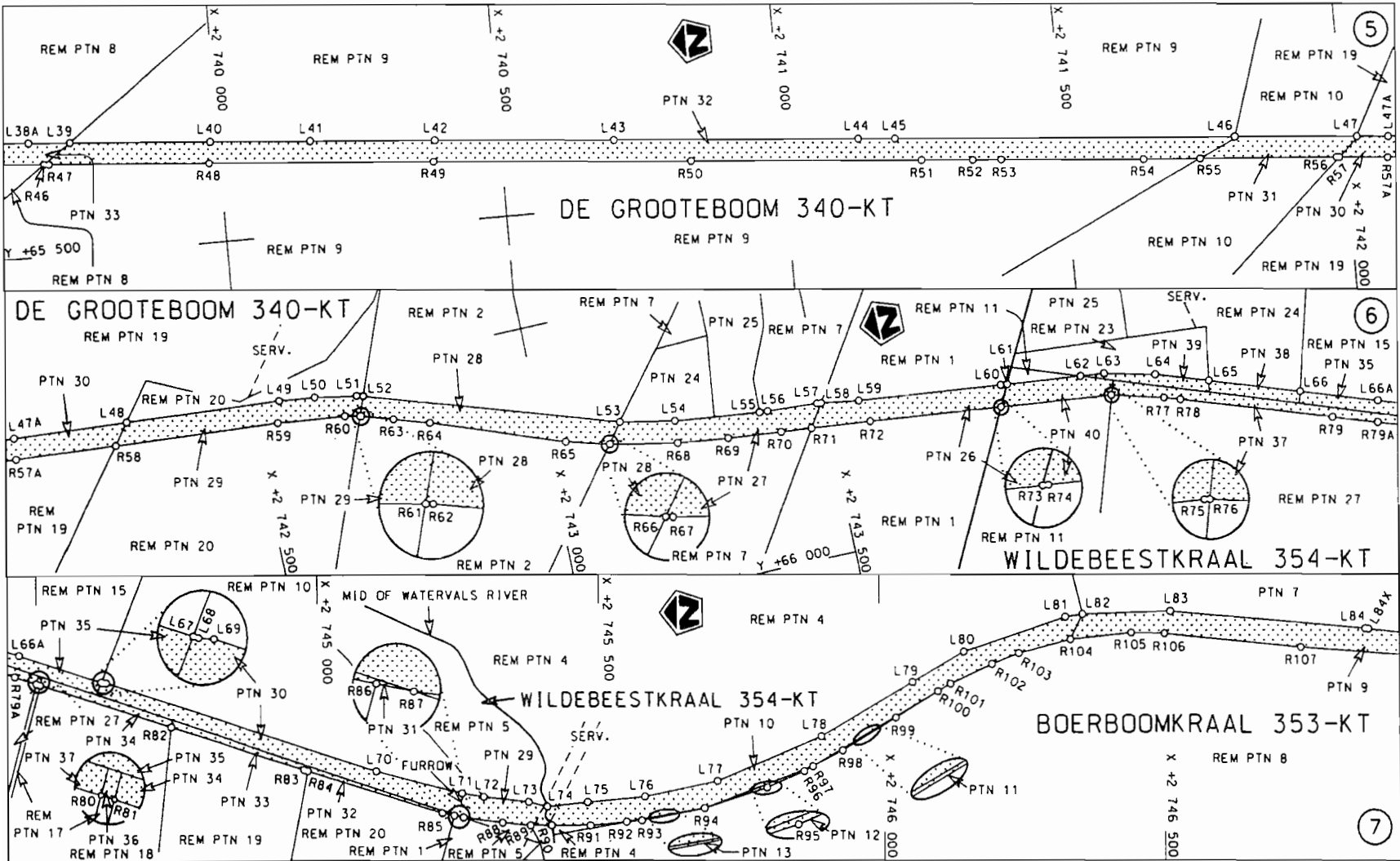
MINISTER VAN VERVOER



<p>Die Suid Afrikaanse Nasionale Padagentskap Beperk</p>	<p>Die figuur getoon</p>		<p>steldie padreserwe voor van 'n gedeelte represents the road reserve of a portion van Nasionale Roete R37 Seksie of National Route Section 1</p>	<p>Vel Sheet 1 van of 20</p>
<p>The South African National Roads Agency Limited</p>	<p>The figure shown</p>			<p>Plan P699/08</p>

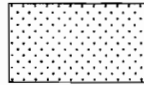


<p>Die Suid Afrikaanse Nasionale Padogentskap Beperk The South African National Roads Agency Limited</p>	<p>Die figuur getoon The figure shown</p> 	<p>steldie padreserwe voor van 'n gedeelte represents the road reserve of a portion van Nasionale Roete R37 Sektie of National Route R37 Section 2</p>	<p>Vel Sheet 2 van of 20 Plan P699/08</p>
--	--	--	---



Die Suid Afrikaanse Nasionale Padagentskap Beperk  
The South African National Roads Agency Limited

Die figuur getoon  
The figure shown

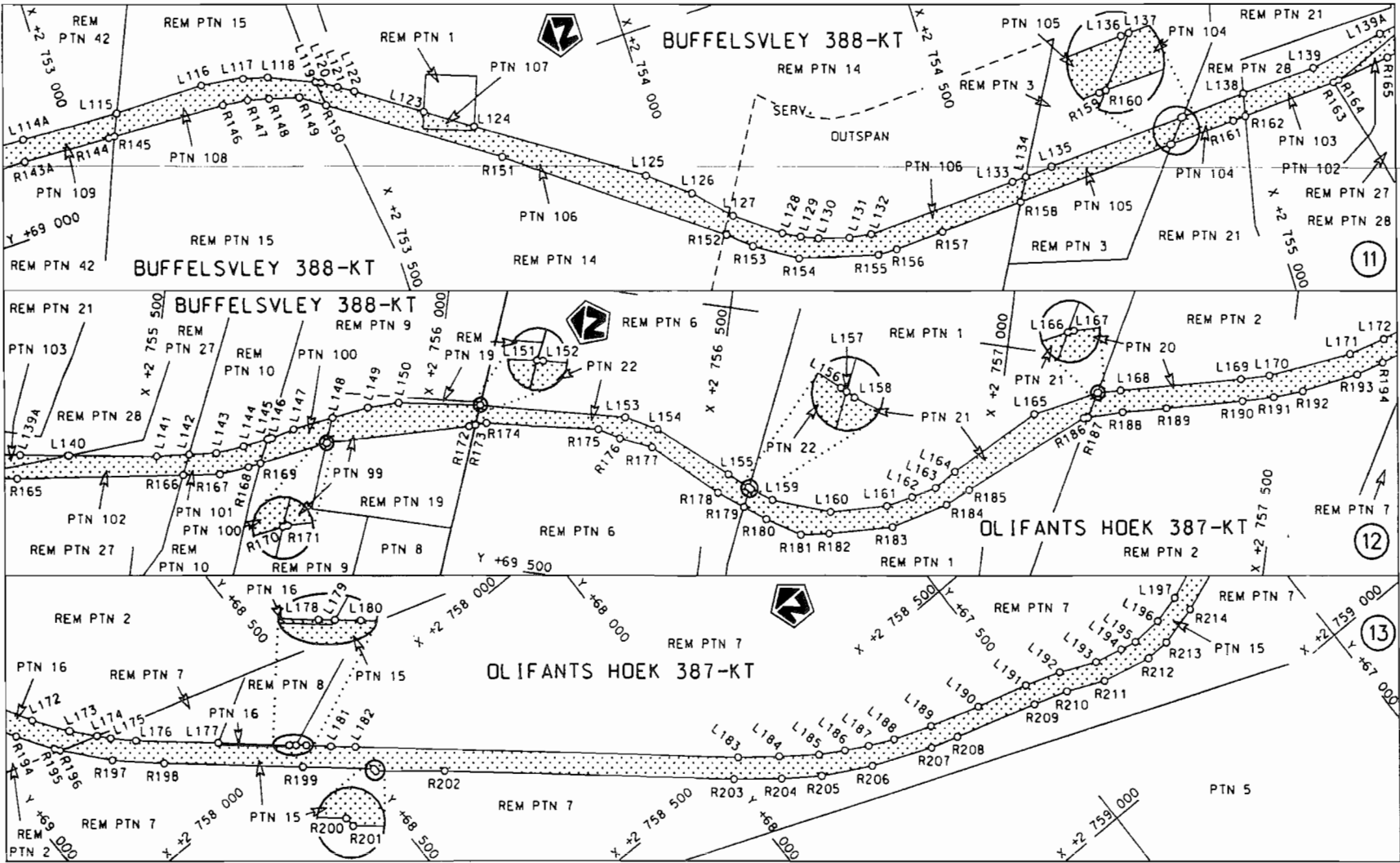


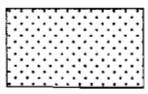
steldie padreserwe voor van 'n gedeelte  
represents the road reserve of a portion  
von Nasionale Roete R37 Seksie  
of National Route Section

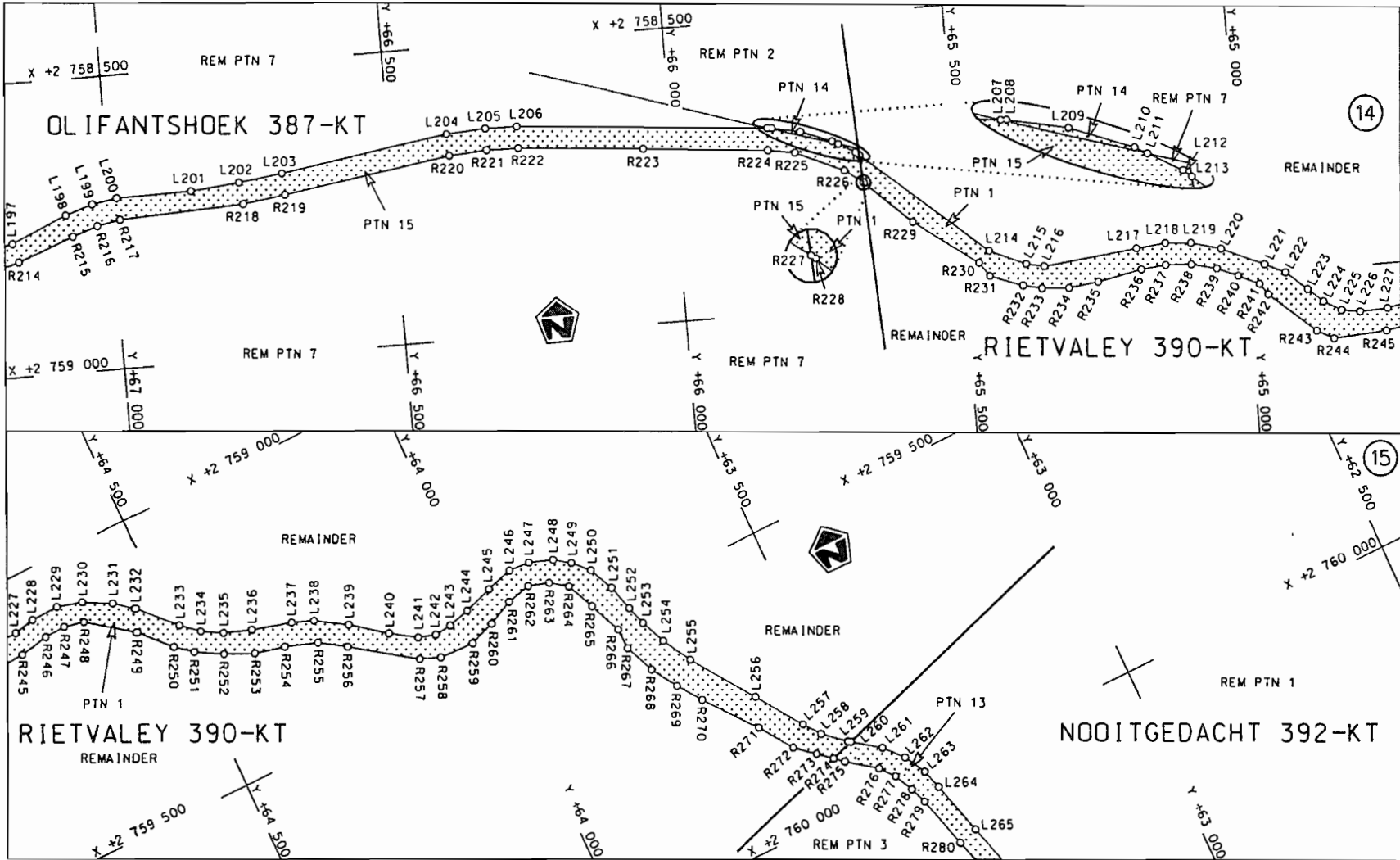
Vel Sheet 3 van 20  
Plan P699/08





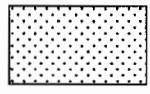


<p>Die Suid Afrikaanse Nasionale Padagentskap Beperk The South African National Roads Agency Limited</p>	<p>Die figuur getoon The figure shown</p>		<p>steldie padreserwe voor van 'n gedeelte represents the road reserve of a portion van Nasionale Roete of National Route R37</p> <p>Seksie Section 2</p>	<p>Vel Sheet 5 van of 20</p> <p>Plon P699/08</p>
--	---	--	---	--



Die Suid Afrikaanse Nasionale Padagentskap Beperk  
The South African National Roads Agency Limited

Die figuur getoon  
The figure shown



steldie podreserwe voor van 'n gedeelte  
represents the road reserve of a portion  
van Nasionale Roete  
of National Route

R37

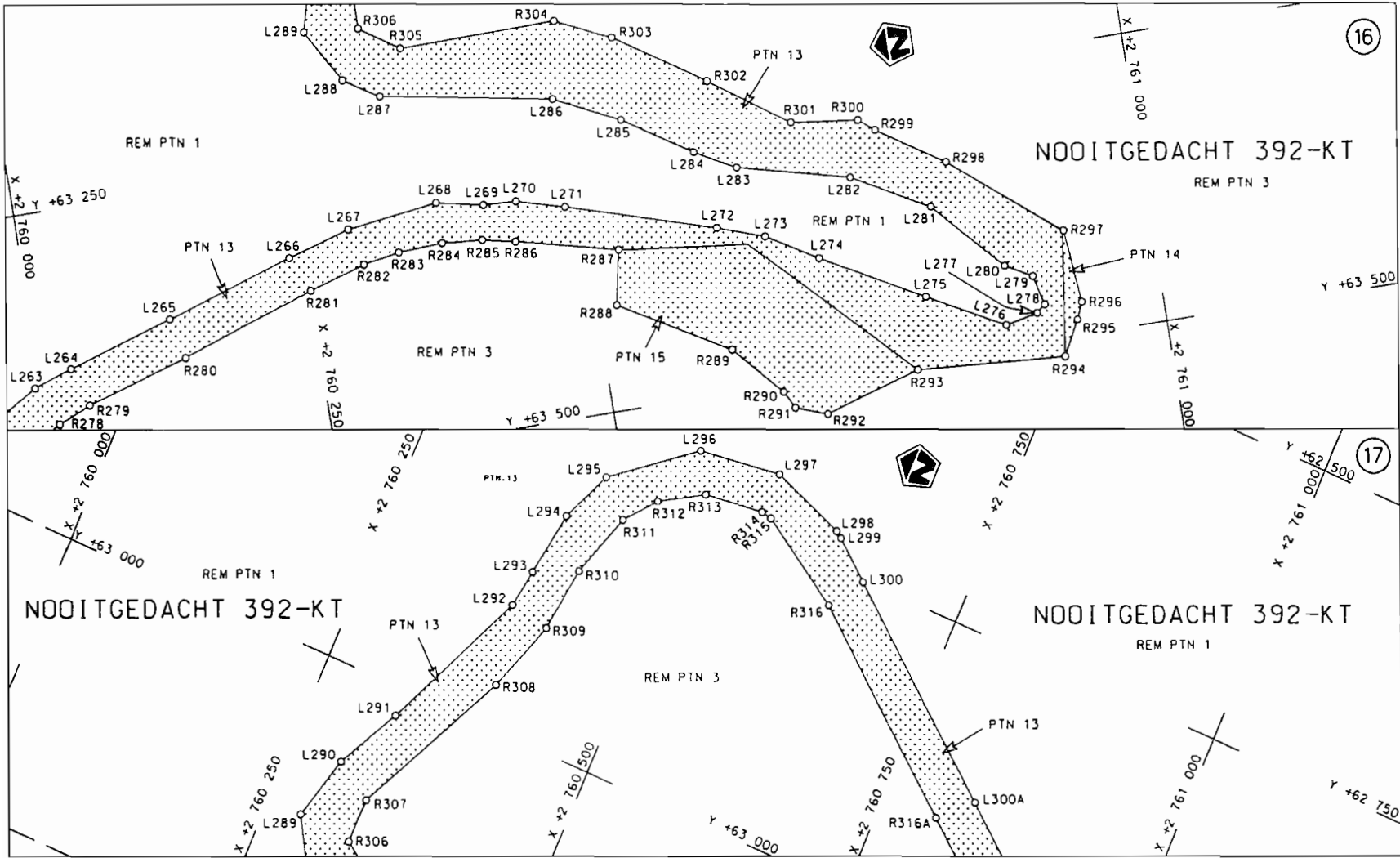
Seksie  
Section

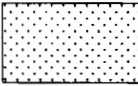
2

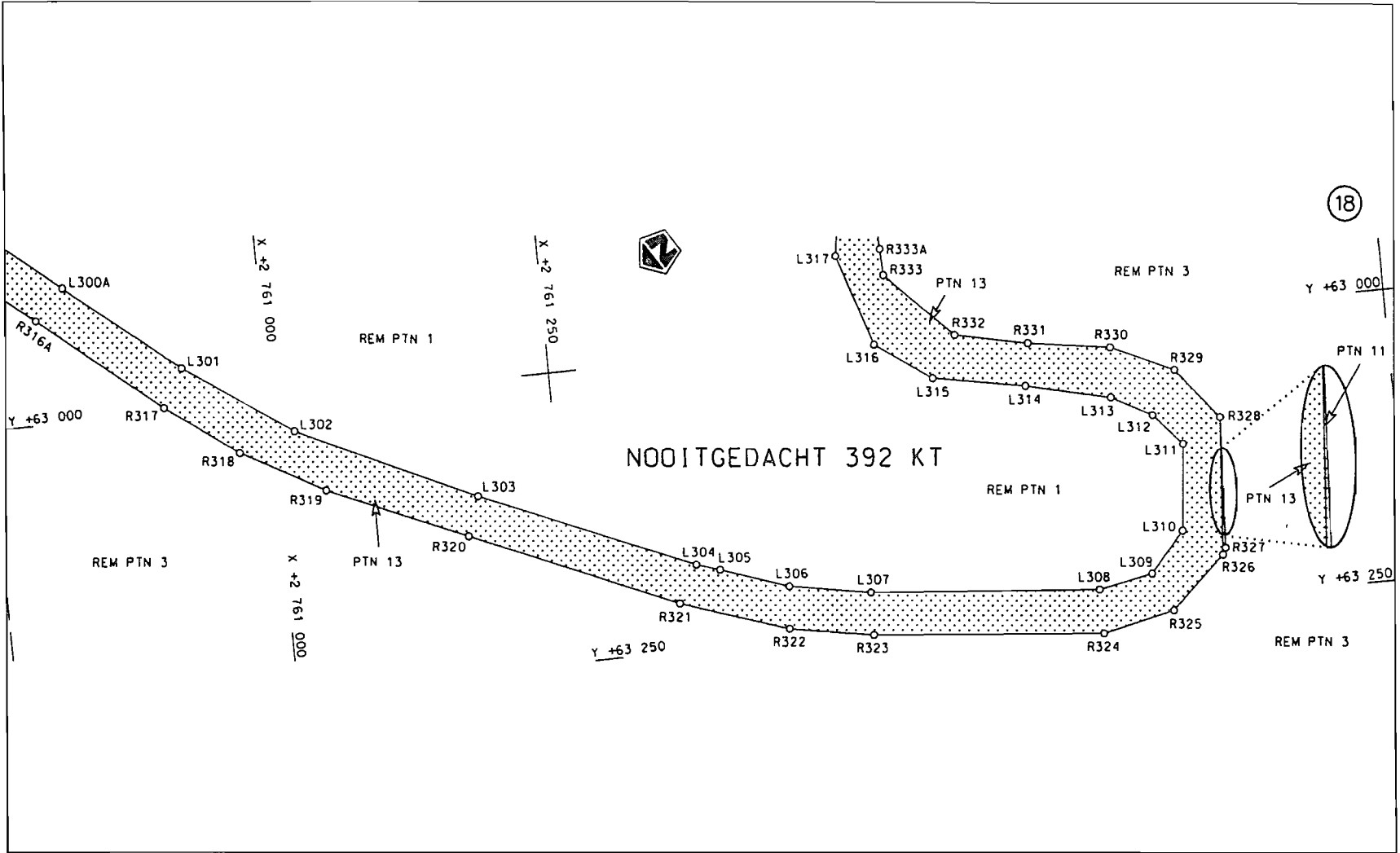
Vel  
Sheet

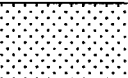
6 van  
of 20

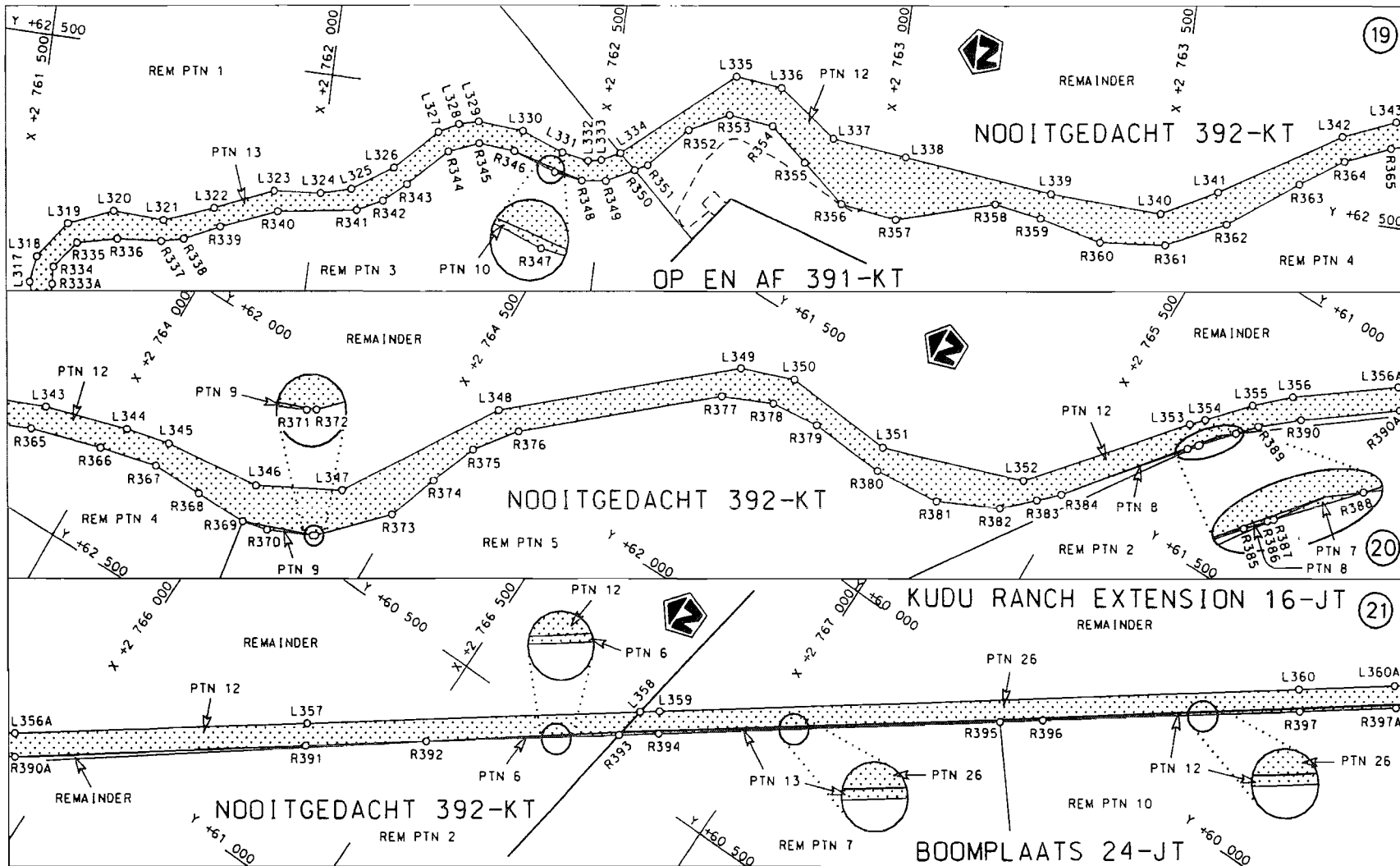
Plan  
P699/08

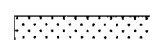


<p>Die Suid Afrikaanse Nasionale Padagentskap Beperk The South African National Roads Agency Limited</p>	<p>Die figuur getoon The figure shown</p>	<p>                        steldie padreserwe voor van 'n gedeelte                      represents the road reserve of a portion                      van Nasionale Roete                      of National Route                 </p>	<p>                     Vel                      Sheet 7 van 20                      of                      Plan P699/08                 </p>
<p>R37 Sektie Section 2</p>			

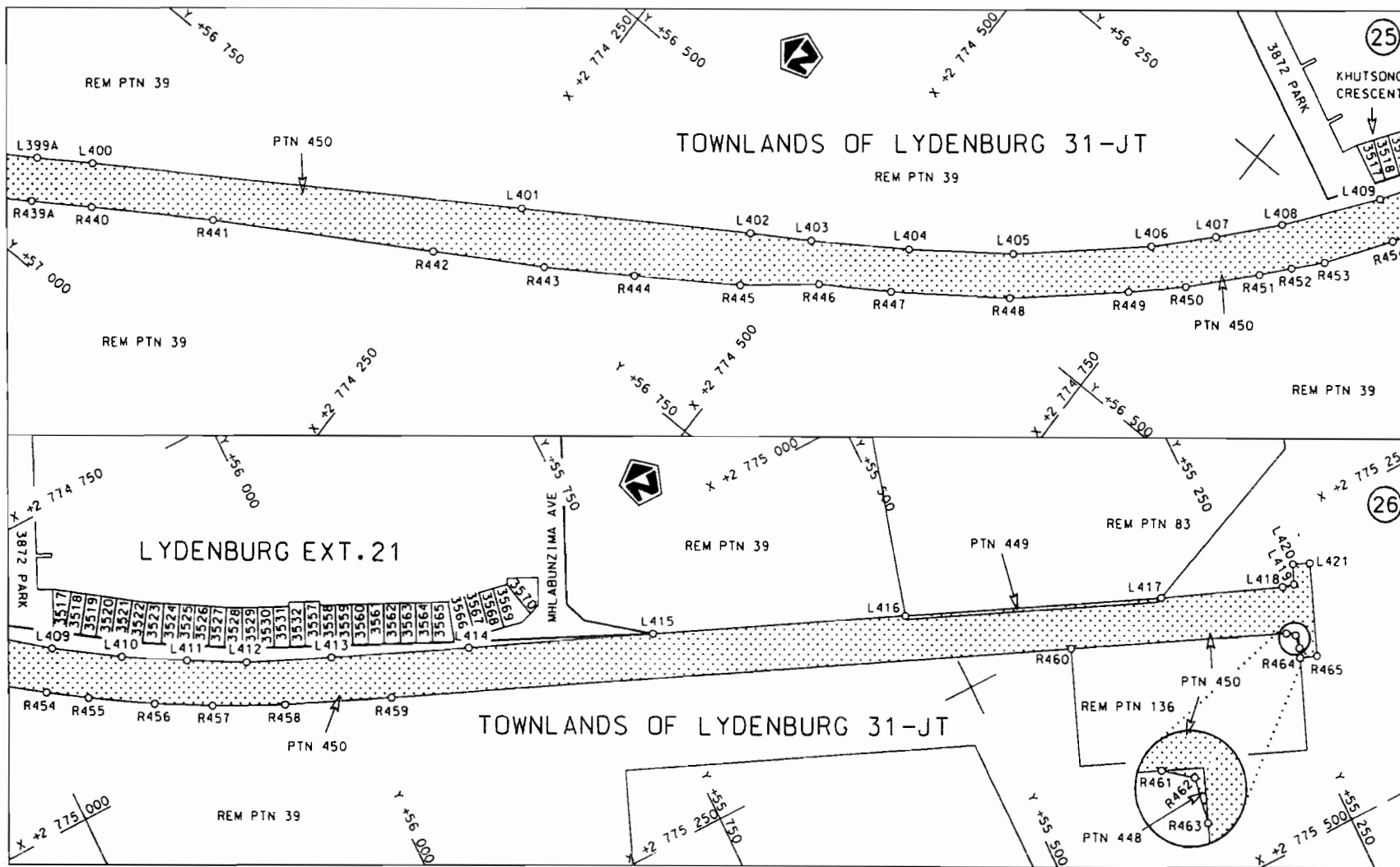


<p>Die Suid Afrikaanse Nasionale Padagentskop Beperk The South African National Roads Agency Limited</p>	<p>Die figuur getoon The figure shown</p>		<p>stel die padreserwe voor van 'n gedeelte represents the road reserve of a portion van Nasionale Roete R37 Sektie of National Route R37 Section 2</p>	<p>Vel Sheet 8 van of 20</p>
				<p>Plan P699/08</p>



Die Suid Afrikaanse Nasionale Padagentskop Beperk	Die figuur getoon		steldie padreserwe voor van 'n gedeelte represents the road reserve of a portion	Vel Sheet 9 van 20
The South African National Roads Agency Limited	The figure shown		van Nasionale Roete R37 Sektie 2 of National Route R37 Section 2	Plan P699/08





<p>Die Suid Afrikaanse Nasionale Padagentskap Beperk The South African National Roads Agency Limited</p>	<p>Die figuur getoon The figure shown</p>		<p>steldie padreserwe voor van 'n gedeelte represents the road reserve of a portion van Nasionale Roete R37 Seksie of National Route R37 Section 2</p>	<p>Vel Sheet 11 van 20 Plan P699/08</p>
--	---	--	--	---

PADRESERWE KOÖRDINATE / ROAD RESERVE CO-ORDINATES									
LINKERKANT/LEFT HAND SIDE					REGTERKANT/RIGHT HAND SIDE				
	Y		X		WG 31°		Y		X
L1	70	656.317	2	728	492.835	R1	70	665.332	2 728 529.510
L2	70	609.700	2	728	513.520	R2	70	602.030	2 728 557.760
L3	69	925.960	2	728	816.910	R3	70	228.760	2 728 724.350
L4	69	806.240	2	728	870.030	R4	69	937.080	2 728 854.270
L5	69	683.080	2	728	925.030	R5	69	516.880	2 729 040.800
L6	69	501.740	2	729	005.600	R6	69	498.260	2 729 053.640
L7	69	483.310	2	729	013.790	R7	69	347.470	2 729 109.120
L8	69	130.240	2	729	151.790	R8	68	975.360	2 729 259.180
L9	68	921.820	2	729	231.660	R9	66	151.530	2 732 560.210
L10	66	114.440	2	732	552.070	R10	66	133.990	2 732 682.360
L11	66	100.280	2	732	643.720	R11	66	124.560	2 732 725.780
L12	66	089.930	2	732	719.250	R12	66	128.330	2 732 726.600
L13	66	084.620	2	732	767.770	R12X	66	128.190	2 732 727.160
L14	66	077.200	2	732	809.530	R13	66	126.840	2 732 736.810
L15	66	027.040	2	733	171.810	R14	66	120.960	2 732 779.910
L16	65	956.610	2	733	669.910	R15	66	114.400	2 732 815.270
L17	65	890.260	2	734	158.790	R16	66	063.840	2 733 180.660
L18	65	827.770	2	734	610.550	R17	65	995.230	2 733 670.080
L19	65	752.380	2	735	151.560	R18	65	927.490	2 734 166.060
L20	65	705.470	2	735	494.460	R19	65	866.390	2 734 607.920
L21	65	677.820	2	735	696.170	R20	65	790.360	2 735 154.880
L22	65	677.030	2	735	701.760	R21	65	742.640	2 735 495.880
L23	65	642.280	2	735	947.690	R22	65	716.580	2 735 684.470
L24	65	595.110	2	736	086.330	R23	65	715.740	2 735 690.350
L25	65	554.010	2	736	141.740	R24	65	709.330	2 735 734.990
L26	65	469.620	2	736	237.410	R25	65	679.440	2 735 951.950
L27	65	434.440	2	736	288.850	R26	65	657.820	2 736 041.600
L28	65	407.300	2	736	344.440	R27	65	627.660	2 736 105.380
L29	65	387.110	2	736	416.010	R28	65	582.960	2 736 165.440
L30	65	278.610	2	737	208.450	R29	65	501.300	2 736 259.620
L31	65	258.900	2	737	325.300	R30	65	469.840	2 736 302.790
L32	65	199.680	2	737	770.020	R31	65	442.240	2 736 359.990
L33	65	192.320	2	737	866.870	R32	65	424.420	2 736 423.980
L34	65	186.520	2	738	028.340	R33	65	356.880	2 736 904.530
L35	65	189.540	2	738	180.760	R34	65	295.720	2 737 334.040
L36	65	194.740	2	738	272.420	R35	65	247.000	2 737 680.000
L37	65	240.370	2	738	867.280	R36	65	237.110	2 737 774.590
L38	65	272.170	2	739	281.880	R37	65	229.780	2 737 870.410
L39	65	307.280	2	739	736.590	R38	65	225.980	2 737 957.740
L40	65	326.490	2	739	985.460	R39	65	224.280	2 738 025.910
L41	65	340.590	2	740	164.050	R40	65	224.430	2 738 101.530
L42	65	358.280	2	740	383.900	R41	65	226.840	2 738 182.760
L43	65	384.410	2	740	702.490	R42	65	232.000	2 738 271.130
L44	65	419.000	2	741	136.500	R43	65	276.510	2 738 850.140
L45	65	424.550	2	741	202.370	R44	65	277.380	2 738 861.470
L46	65	471.780	2	741	804.470	R45	65	311.010	2 739 297.050
L47	65	488.950	2	742	023.280	R46	65	341.290	2 739 688.640
L48	65	508.980	2	742	278.670	R47	65	341.990	2 739 697.650
L49	65	530.540	2	742	553.520	R48	65	363.660	2 739 980.520
L50	65	538.020	2	742	616.750	R49	65	395.420	2 740 378.560
L51	65	552.260	2	742	694.190	R50	65	432.520	2 740 835.630

Vel  
Sheet

12

Van  
of

20

P699/08



PADRESERWE KOÖRDINATE / ROAD RESERVE CO-ORDINATES								
LINKERKANT/LEFT HAND SIDE					REGTERKANT/RIGHT HAND SIDE			
	Y	X	WG 31°		Y	X		
L52	65 554.580	2 742	101.540	R51	65 465.940	2 741	246.320	
L53	65 694.390	2 743	137.900	R52	65 473.430	2 741	337.330	
L54	65 712.780	2 743	233.460	R53	65 476.710	2 741	387.790	
L55	65 727.500	2 743	383.405	R54	65 497.480	2 741	639.870	
L56	65 727.431	2 743	398.060	R55	65 504.650	2 741	740.140	
L57	65 727.005	2 743	487.532	R56	65 522.040	2 741	983.480	
L58	65 726.969	2 743	495.096	R57	65 522.470	2 741	988.760	
L59	65 748.170	2 743	562.020	R58	65 543.650	2 742	251.260	
L60	65 775.740	2 743	820.040	R59	65 567.220	2 742	543.300	
L61	65 776.490	2 743	827.050	R60	65 581.240	2 742	661.960	
L62	65 790.380	2 743	957.510	R61	65 587.140	2 742	688.500	
L63	65 794.820	2 743	999.170	R62	65 587.600	2 742	690.580	
L64	65 815.710	2 744	087.940	R63	65 604.590	2 742	745.220	
L65	65 846.180	2 744	179.040	R64	65 624.380	2 742	806.530	
L66	65 898.610	2 744	334.010	R65	65 706.590	2 743	036.220	
L67	65 992.040	2 744	611.380	R66	65 727.280	2 743	111.670	
L68	65 992.770	2 744	613.530	R67	65 727.470	2 743	112.380	
L69	65 993.290	2 744	619.930	R68	65 750.450	2 743	229.960	
L70	66 153.710	2 745	097.390	R69	65 761.360	2 743	319.820	
L71	66 194.860	2 745	247.280	R70	65 771.300	2 743	414.520	
L72	66 201.680	2 745	285.650	R71	65 776.720	2 743	469.120	
L73	66 211.690	2 745	366.400	R72	65 787.170	2 743	574.360	
L74	66 220.408	2 745	399.703	R73	65 812.740	2 743	807.710	
L75	66 213.790	2 745	471.720	R74	65 812.760	2 743	807.930	
L76	66 205.940	2 745	573.880	R75	65 833.900	2 744	003.540	
L77	66 180.440	2 745	702.820	R76	65 834.080	2 744	004.220	
L78	66 107.533	2 745	904.386	R77	65 858.230	2 744	094.570	
L79	66 017.630	2 746	056.210	R78	65 867.230	2 744	122.560	
L80	65 967.340	2 746	148.760	R79	65 953.850	2 744	381.910	
L81	65 910.800	2 746	330.370	R80	65 992.290	2 744	497.120	
L82	65 906.810	2 746	361.220	R81	65 994.670	2 744	504.250	
L83	65 904.900	2 746	517.680	R82	66 071.210	2 744	733.620	
L84	65 939.840	2 746	865.720	R83	66 148.540	2 744	968.750	
L84X	65 940.110	2 746	867.730	R84	66 150.940	2 744	976.110	
L85	65 949.610	2 746	943.520	R85	66 227.860	2 745	211.480	
L86	65 966.210	2 747	004.410	R86	66 232.510	2 745	232.610	
L87	65 998.850	2 747	071.560	R87	66 236.050	2 745	248.670	
L88	66 037.770	2 747	124.340	R88	66 246.040	2 745	318.350	
L89	66 091.450	2 747	176.320	R89	66 251.480	2 745	368.780	
L90	67 186.010	2 747	963.650	R90	66 252.202	2 745	407.022	
L91	67 226.540	2 748	003.830	R91	66 253.500	2 745	475.510	
L92	67 258.840	2 748	043.380	R92	66 248.550	2 745	540.150	
L93	67 283.450	2 748	085.650	R93	66 246.470	2 745	567.370	
L94	67 314.400	2 748	161.230	R94	66 227.040	2 745	678.680	
L95	67 348.710	2 748	259.310	R95	66 193.780	2 745	790.740	
L96	67 433.250	2 748	505.640	R96	66 166.740	2 745	858.430	
L97	67 501.170	2 748	701.280	R97	66 158.390	2 745	874.250	
L98	67 671.300	2 749	190.540	R98	66 132.100	2 745	928.070	
L99	67 678.430	2 749	211.040	R99	66 077.810	2 746	024.780	
L100	67 907.320	2 749	866.470	R100	66 034.180	2 746	100.960	
L101	67 987.420	2 750	094.810	R101	66 021.780	2 746	123.590	

Vel	13	Van	20	P699/08
Sheet		of		

PADRESERWE KOÖRDINATE / ROAD RESERVE CO-ORDINATES					
LINKERKANT/LEFT HAND SIDE			REGTERKANT/RIGHT HAND SIDE		
	Y	X	WG 31°	Y	X
L102	68 111.330	2 750 448.030	R102	65 989.320	2 746 198.290
L103	68 302.010	2 750 997.610	R103	65 971.640	2 746 246.230
L104	68 302.910	2 750 999.090	R104	65 949.650	2 746 338.700
L105	68 365.800	2 751 180.600	R105	65 940.020	2 746 446.820
L106	68 449.870	2 751 419.520	R106	65 942.550	2 746 506.290
L107	68 568.670	2 751 757.020	R107	65 970.310	2 746 748.940
L108	68 800.680	2 752 430.270	R108	65 986.330	2 746 935.240
L109	68 801.230	2 752 434.440	R109	66 000.310	2 746 987.850
L110	68 812.210	2 752 510.550	R110	66 031.330	2 747 051.610
L111	68 816.810	2 752 574.820	R111	66 066.550	2 747 100.280
L112	68 817.910	2 752 594.000	R112	66 112.130	2 747 138.860
L113	68 823.410	2 752 706.480	R113	66 118.200	2 747 148.400
L114	68 823.510	2 752 708.330	R114	66 492.730	2 747 418.300
L115	68 843.930	2 753 100.070	R115	66 876.920	2 747 694.130
L116	68 852.590	2 753 287.500	R116	67 147.110	2 747 888.030
L117	68 858.570	2 753 335.130	R117	67 210.080	2 747 936.800
L118	68 870.100	2 753 377.700	R118	67 255.280	2 747 980.910
L119	68 904.630	2 753 454.020	R119	67 289.040	2 748 023.390
L120	68 908.940	2 753 463.700	R120	67 319.360	2 748 069.600
L121	68 925.350	2 753 488.480	R121	67 349.330	2 748 150.210
L122	68 941.730	2 753 514.080	R122	67 380.720	2 748 239.960
L123	69 013.630	2 753 620.360	R123	67 380.840	2 748 240.300
L124	69 065.730	2 753 697.860	R124	67 408.380	2 748 320.480
L125	69 239.920	2 753 961.220	R125	67 476.530	2 748 513.040
L126	69 294.050	2 754 029.470	R126	67 515.900	2 748 628.290
L127	69 353.610	2 754 086.880	R127	67 537.120	2 748 688.870
L128	69 409.400	2 754 160.350	R128	67 613.960	2 748 909.680
L129	69 425.190	2 754 189.160	R129	67 705.790	2 749 173.090
L130	69 437.930	2 754 218.230	R130	67 769.920	2 749 357.040
L131	69 454.250	2 754 271.110	R131	67 931.420	2 749 819.070
L132	69 460.720	2 754 310.060	R132	68 022.000	2 750 079.650
L133	69 455.210	2 754 580.170	R133	68 027.050	2 750 088.340
L134	69 454.490	2 754 605.170	R134	68 337.460	2 750 983.800
L135	69 453.070	2 754 654.190	R135	68 604.910	2 751 746.270
L136	69 445.540	2 754 899.580	R136	68 704.100	2 752 031.910
L137	69 445.450	2 754 902.780	R137	68 817.550	2 752 359.030
L138	69 442.060	2 755 018.340	R138	68 837.620	2 752 425.460
L139	69 438.141	2 755 152.308	R139	68 840.150	2 752 433.830
L140	69 410.790	2 755 365.690	R140	68 849.820	2 752 521.190
L141	69 390.960	2 755 521.710	R141	68 853.530	2 752 580.940
L142	69 380.040	2 755 579.140	R142	68 859.040	2 752 669.620
L143	69 370.920	2 755 627.140	R143	68 860.540	2 752 698.750
L144	69 352.960	2 755 674.180	R144	68 880.030	2 753 077.100
L145	69 335.560	2 755 715.100	R145	68 880.370	2 753 084.120
L146	69 332.460	2 755 722.380	R146	68 890.250	2 753 285.810
L147	69 312.500	2 755 757.740	R147	68 896.180	2 753 331.120
L148	69 283.740	2 755 822.940	R148	68 906.140	2 753 368.210
L149	69 257.650	2 755 882.090	R149	68 920.850	2 753 418.920
L150	69 241.750	2 755 935.660	R150	68 948.250	2 753 459.300
L151	69 226.460	2 756 080.410	R151	69 131.000	2 753 728.590
L152	69 226.440	2 756 080.620	R152	69 381.110	2 754 065.530

Vel 14 Van 20  
Sheet of

P699/08

PADRESERWE KOÖRDINATE / ROAD RESERVE CO-ORDINATES									
LINKERKANT/LEFT HAND SIDE					REGTERKANT/RIGHT HAND SIDE				
	Y	X	WG 31°		Y	X			
L153	69 212.840	2 756 338.250		R153	69 413.970	2 754 103.750			
L154	69 225.250	2 756 397.800		R154	69 459.450	2 754 174.760			
L155	69 284.790	2 756 533.330		R155	69 497.820	2 754 310.790			
L156	69 302.210	2 756 570.980		R156	69 499.180	2 754 345.440			
L157	69 303.240	2 756 572.980		R157	69 496.960	2 754 433.230			
L158	69 305.060	2 756 576.550		R158	69 492.540	2 754 582.830			
L159	69 318.060	2 756 616.310		R159	69 484.160	2 754 866.530			
L160	69 324.760	2 756 721.180		R160	69 484.070	2 754 869.280			
L161	69 300.950	2 756 819.520		R161	69 480.400	2 754 986.780			
L162	69 279.800	2 756 862.660		R162	69 479.590	2 755 009.490			
L163	69 258.410	2 756 902.810		R163	69 473.660	2 755 176.430			
L164	69 226.370	2 756 933.240		R164	69 472.540	2 755 187.080			
L165	69 108.810	2 757 061.790		R165	69 462.610	2 755 281.320			
L166	69 057.680	2 757 167.690		R166	69 416.690	2 755 573.150			
L167	69 056.950	2 757 169.210		R167	69 406.460	2 755 638.180			
L168	69 047.680	2 757 207.830		R168	69 387.410	2 755 687.590			
L169	68 999.450	2 757 418.350		R169	69 378.060	2 755 708.150			
L170	68 986.610	2 757 467.640		R170	69 327.980	2 755 818.220			
L171	68 930.150	2 757 604.220		R171	69 327.390	2 755 819.520			
L172	68 897.150	2 757 660.660		R172	69 265.640	2 756 065.410			
L173	68 858.030	2 757 715.340		R173	69 262.010	2 756 076.430			
L174	68 825.300	2 757 752.510		R174	69 255.700	2 756 095.580			
L175	68 809.050	2 757 770.970		R175	69 239.720	2 756 294.050			
L176	68 776.390	2 757 802.440		R176	69 250.320	2 756 333.730			
L177	68 663.780	2 757 898.680		R177	69 257.100	2 756 391.890			
L178	68 567.730	2 757 980.770		R178	69 318.820	2 756 518.640			
L179	68 558.770	2 757 988.240		R179	69 336.790	2 756 567.610			
L180	68 544.820	2 757 999.870		R180	69 352.410	2 756 610.160			
L181	68 512.220	2 758 028.110		R181	69 370.750	2 756 674.170			
L182	68 479.300	2 758 055.810		R182	69 362.050	2 756 723.590			
L183	67 960.000	2 758 496.230		R183	69 336.020	2 756 834.470			
L184	67 902.080	2 758 540.720		R184	69 284.490	2 756 925.910			
L185	67 845.290	2 758 582.890		R185	69 253.980	2 756 962.430			
L186	67 804.610	2 758 606.150		R186	69 103.850	2 757 149.500			
L187	67 766.680	2 758 626.670		R187	69 101.600	2 757 157.210			
L188	67 724.150	2 758 646.370		R188	69 084.400	2 757 216.200			
L189	67 657.800	2 758 670.470		R189	69 067.000	2 757 292.510			
L190	67 570.730	2 758 697.630		R190	69 027.921	2 757 426.078			
L191	67 481.150	2 758 722.550		R191	69 022.310	2 757 479.730			
L192	67 420.230	2 758 743.200		R192	69 005.370	2 757 529.560			
L193	67 358.780	2 758 770.070		R193	68 963.740	2 757 621.640			
L194	67 310.990	2 758 780.880		R194	68 936.910	2 757 663.660			
L195	67 283.300	2 758 786.780		R195	68 894.160	2 757 728.000			
L196	67 229.710	2 758 783.800		R196	68 890.680	2 757 732.050			
L197	67 180.530	2 758 771.830		R197	68 830.510	2 757 802.220			
L198	67 079.990	2 758 732.370		R198	68 761.240	2 757 864.900			
L199	67 032.030	2 758 717.830		R199	68 572.930	2 758 024.630			
L200	66 987.900	2 758 711.260		R200	68 477.970	2 758 105.630			
L201	66 858.210	2 758 711.040		R201	68 477.610	2 758 110.630			
L202	66 771.800	2 758 703.470		R202	68 381.670	2 758 187.200			
L203	66 694.420	2 758 695.080		R203	67 989.220	2 758 520.370			

Vel Sheet	15	Van of	20	P699/08
--------------	----	-----------	----	---------

PADRESERWE KOÖRDINATE / ROAD RESERVE CO-ORDINATES						
LINKERKANT/LEFT HAND SIDE				REGTERKANT/RIGHT HAND SIDE		
	Y	X	WG 31°		Y	X
L204	66 396.260	2 758	652.640	R204	67 922.630	2 758 572.880
L205	66 326.730	2 758	648.910	R205	67 864.330	2 758 614.100
L206	66 271.350	2 758	650.080	R206	67 783.290	2 758 657.310
L207	65 828.240	2 758	690.230	R207	67 680.300	2 758 700.140
L208	65 822.600	2 758	690.740	R208	67 632.780	2 758 714.590
L209	65 770.320	2 758	101.670	R209	67 489.530	2 758 757.770
L210	65 715.430	2 758	122.820	R210	67 430.780	2 758 776.550
L211	65 704.880	2 758	128.830	R211	67 367.860	2 758 804.350
L212	65 675.870	2 758	145.340	R212	67 282.877	2 758 834.230
L213	65 668.780	2 758	751.290	R213	67 240.702	2 758 834.023
L214	65 452.290	2 758	932.860	R214	67 171.800	2 758 804.490
L215	65 388.310	2 758	960.960	R215	67 070.850	2 758 769.000
L216	65 357.040	2 758	967.630	R216	67 025.890	2 758 755.100
L217	65 191.060	2 758	950.690	R217	66 985.010	2 758 748.300
L218	65 138.990	2 758	946.210	R218	66 767.740	2 758 740.960
L219	65 093.630	2 758	949.780	R219	66 692.160	2 758 732.030
L220	65 041.520	2 758	964.250	R220	66 394.460	2 758 690.460
L221	64 967.620	2 758	997.310	R221	66 327.730	2 758 686.580
L222	64 931.850	2 759	014.320	R222	66 271.850	2 758 688.020
L223	64 895.030	2 759	046.490	R223	66 051.070	2 758 708.000
L224	64 868.870	2 759	069.380	R224	65 830.480	2 758 728.960
L225	64 838.420	2 759	086.790	R225	65 782.710	2 758 737.090
L226	64 805.930	2 759	091.920	R226	65 698.070	2 758 774.880
L227	64 756.600	2 759	090.160	R227	65 653.969	2 758 798.211
L228	64 719.590	2 759	082.620	R228	65 653.964	2 758 799.308
L229	64 670.090	2 759	081.130	R229	65 583.730	2 758 872.560
L230	64 625.640	2 759	093.210	R230	65 472.170	2 758 951.790
L231	64 577.510	2 759	118.430	R231	65 454.920	2 758 976.060
L232	64 546.450	2 759	143.310	R232	65 397.280	2 758 997.340
L233	64 489.160	2 759	202.690	R233	65 364.410	2 759 004.860
L234	64 459.490	2 759	228.240	R234	65 316.470	2 759 008.330
L235	64 424.100	2 759	247.720	R235	65 263.970	2 759 002.350
L236	64 376.100	2 759	264.160	R236	65 185.810	2 758 987.470
L237	64 306.800	2 759	283.220	R237	65 141.930	2 758 983.830
L238	64 268.890	2 759	297.880	R238	65 096.400	2 758 986.670
L239	64 216.040	2 759	330.840	R239	65 051.810	2 758 997.410
L240	64 157.530	2 759	375.080	R240	65 015.300	2 759 013.120
L241	64 113.970	2 759	403.600	R241	64 979.460	2 759 030.470
L242	64 084.210	2 759	412.600	R242	64 965.740	2 759 049.350
L243	64 053.910	2 759	409.650	R243	64 885.100	2 759 118.260
L244	64 015.560	2 759	399.680	R244	64 855.970	2 759 133.730
L245	63 964.800	2 759	382.820	R245	64 761.750	2 759 128.370
L246	63 918.880	2 759	369.460	R246	64 710.690	2 759 119.320
L247	63 881.830	2 759	371.550	R247	64 673.040	2 759 118.020
L248	63 840.960	2 759	385.880	R248	64 637.750	2 759 125.390
L249	63 813.710	2 759	404.380	R249	64 562.070	2 759 181.520
L250	63 787.980	2 759	430.830	R250	64 513.630	2 759 231.520
L251	63 767.100	2 759	473.620	R251	64 485.140	2 759 254.850
L252	63 753.880	2 759	518.190	R252	64 438.740	2 759 280.620
L253	63 742.770	2 759	551.750	R253	64 388.490	2 759 302.610
L254	63 722.920	2 759	594.400	R254	64 335.420	2 759 315.210

PADRESERWE KOÖRDINATE / ROAD RESERVE CO-ORDINATES							
LINKERKANT/LEFT HAND SIDE				REGTERKANT/RIGHT HAND SIDE			
	Y	X	WG 31°		Y	X	
L255	63 693.830	2 759 643.780		R255	64 278.420	2 759 334.860	
L256	63 616.690	2 759 750.480		R256	64 233.900	2 759 363.600	
L257	63 560.980	2 759 829.160		R257	64 127.300	2 759 438.100	
L258	63 538.990	2 759 857.670		R258	64 092.480	2 759 451.360	
L259	63 501.010	2 759 889.330		R259	64 030.890	2 759 453.820	
L260	63 496.390	2 759 892.630		R260	63 985.950	2 759 438.230	
L261	63 449.550	2 759 925.930		R261	63 942.410	2 759 417.260	
L262	63 419.910	2 759 957.880		R262	63 900.130	2 759 407.380	
L263	63 398.690	2 759 994.700		R263	63 864.310	2 759 418.340	
L264	63 387.510	2 760 028.690		R264	63 835.080	2 759 438.950	
L265	63 359.570	2 760 122.760		R265	63 812.430	2 759 486.800	
L266	63 324.090	2 760 236.370		R266	63 787.700	2 759 542.920	
L267	63 308.320	2 760 291.880		R267	63 786.090	2 759 578.500	
L268	63 298.410	2 760 372.540		R268	63 763.140	2 759 629.770	
L269	63 307.020	2 760 414.020		R269	63 734.190	2 759 674.070	
L270	63 308.350	2 760 443.070		R270	63 704.230	2 759 714.480	
L271	63 319.980	2 760 486.070		R271	63 633.930	2 759 800.900	
L272	63 358.010	2 760 616.420		R272	63 593.530	2 759 857.830	
L273	63 371.979	2 760 661.930		R273	63 560.950	2 759 885.100	
L274	63 398.050	2 760 701.880		R274	63 536.920	2 759 905.240	
L275	63 445.730	2 760 791.540		R275	63 520.900	2 759 918.440	
L276	63 481.270	2 760 858.250		R276	63 470.310	2 759 955.070	
L277	63 475.230	2 760 886.890		R277	63 449.500	2 759 979.500	
L278	63 469.000	2 760 894.830		R278	63 432.620	2 760 011.650	
L279	63 443.340	2 760 888.340		R279	63 420.900	2 760 040.430	
L280	63 430.530	2 760 865.140		R280	63 394.020	2 760 131.190	
L281	63 370.210	2 760 808.390		R281	63 354.930	2 760 250.880	
L282	63 334.410	2 760 741.150		R282	63 340.240	2 760 301.030	
L283	63 310.130	2 760 642.180		R283	63 334.840	2 760 332.930	
L284	63 290.980	2 760 606.700		R284	63 333.070	2 760 372.460	
L285	63 254.120	2 760 547.240		R285	63 336.230	2 760 408.290	
L286	63 226.750	2 760 490.160		R286	63 342.140	2 760 437.260	
L287	63 200.290	2 760 338.450		R287	63 363.350	2 760 526.990	
L288	63 181.530	2 760 307.700		R288	63 410.020	2 760 517.740	
L289	63 134.970	2 760 280.820		R289	63 463.510	2 760 612.740	
L290	63 079.320	2 760 295.560		R290	63 506.170	2 760 662.550	
L291	63 023.440	2 760 324.190		R291	63 521.168	2 760 662.620	
L292	62 895.060	2 760 382.160		R292	63 531.000	2 760 687.940	
L293	62 861.910	2 760 387.280		R293	63 506.170	2 760 774.200	
L294	62 805.790	2 760 396.330		R294	63 515.660	2 760 905.370	
L295	62 761.400	2 760 415.790		R295	63 486.430	2 760 921.310	
L296	62 706.820	2 760 483.850		R296	63 471.860	2 760 927.540	
L297	62 697.410	2 760 555.630		R297	63 408.740	2 760 921.640	
L298	62 721.090	2 760 621.610		R298	63 334.640	2 760 828.160	
L299	62 725.060	2 760 627.530		R299	63 297.480	2 760 769.970	
L300	62 751.820	2 760 660.820		R300	63 286.780	2 760 756.030	
L301	62 963.770	2 760 924.910		R301	63 279.350	2 760 695.740	
L302	63 027.150	2 761 019.670		R302	63 232.470	2 760 628.250	
L303	63 098.560	2 761 176.380		R303	63 182.590	2 760 550.920	
L304	63 176.270	2 761 364.700		R304	63 160.490	2 760 502.200	
L305	63 182.680	2 761 385.250		R305	63 162.310	2 760 362.840	

Vel	17	Van	20	P699/08
Sheet		of		

PADRESERWE KOÖRDINATE / ROAD RESERVE CO-ORDINATES							
LINKERKANT/LEFT HAND SIDE				REGTERKANT/RIGHT HAND SIDE			
	Y	X	WG 31°		Y	X	
L306	63 202.730	2 761 445.370		R306	63 139.480	2 760 328.840	
L307	63 215.310	2 761 517.900		R307	63 100.570	2 760 329.180	
L308	63 232.530	2 761 721.730		R308	62 963.590	2 760 395.800	
L309	63 223.460	2 761 769.770		R309	62 901.250	2 760 417.670	
L310	63 189.390	2 761 800.560		R310	62 844.680	2 760 425.150	
L311	63 115.180	2 761 808.600		R311	62 788.730	2 760 443.630	
L312	63 088.190	2 761 784.090		R312	62 761.770	2 760 465.950	
L313	63 069.350	2 761 748.600		R313	62 739.160	2 760 502.560	
L314	63 052.220	2 761 673.490		R314	62 733.070	2 760 554.090	
L315	63 037.680	2 761 592.230		R315	62 734.920	2 760 563.320	
L316	63 003.790	2 761 542.380		R316	62 782.420	2 760 640.050	
L317	62 924.740	2 761 515.390		R317	62 995.850	2 760 906.040	
L318	62 879.250	2 761 522.570		R318	63 040.840	2 760 968.800	
L319	62 815.890	2 761 569.900		R319	63 080.280	2 761 043.160	
L320	62 783.600	2 761 647.110		R320	63 132.000	2 761 164.770	
L321	62 787.400	2 761 735.450		R321	63 208.230	2 761 346.800	
L322	62 753.680	2 761 820.720		R322	63 239.260	2 761 441.960	
L323	62 709.820	2 761 923.600		R323	63 252.010	2 761 516.960	
L324	62 703.160	2 762 005.810		R324	63 270.680	2 761 721.950	
L325	62 688.700	2 762 058.460		R325	63 256.830	2 761 785.980	
L326	62 642.040	2 762 128.050		R326	63 213.310	2 761 834.130	
L327	62 570.680	2 762 197.690		R327	63 207.470	2 761 837.060	
L328	62 552.360	2 762 231.380		R328	63 095.580	2 761 843.510	
L329	62 543.160	2 762 265.290		R329	63 051.490	2 761 807.490	
L330	62 548.410	2 762 344.430		R330	63 026.630	2 761 752.460	
L331	62 575.030	2 762 419.180		R331	63 016.010	2 761 679.290	
L332	62 583.340	2 762 466.360		R332	63 002.700	2 761 615.250	
L333	62 578.521	2 762 504.600		R333	62 945.250	2 761 556.770	
L334	62 562.130	2 762 521.760		R334	62 893.020	2 761 554.460	
L335	62 403.740	2 762 707.200		R335	62 846.720	2 761 590.470	
L336	62 412.010	2 762 788.650		R336	62 830.420	2 761 659.740	
L337	62 484.810	2 762 891.930		R337	62 823.700	2 761 736.480	
L338	62 498.950	2 763 023.460		R338	62 813.840	2 761 774.850	
L339	62 526.140	2 763 286.620		R339	62 784.540	2 761 835.900	
L340	62 533.200	2 763 484.260		R340	62 744.200	2 761 934.530	
L341	62 482.800	2 763 580.020		R341	62 723.430	2 762 072.590	
L342	62 357.160	2 763 785.350		R342	62 701.140	2 762 116.430	
L343	62 319.040	2 763 877.340		R343	62 667.330	2 762 154.510	
L344	62 278.190	2 764 018.880		R344	62 601.180	2 762 219.280	
L345	62 260.580	2 764 094.460		R345	62 579.550	2 762 271.200	
L346	62 241.210	2 764 263.400		R346	62 584.410	2 762 334.040	
L347	62 168.730	2 764 398.530		R347	62 611.080	2 762 409.660	
L348	61 909.000	2 764 563.570		R348	62 618.860	2 762 460.040	
L349	61 624.600	2 764 893.300		R349	62 613.620	2 762 504.760	
L350	61 591.870	2 764 983.910		R350	62 588.030	2 762 550.650	
L351	61 609.750	2 765 178.520		R351	62 576.380	2 762 572.320	
L352	61 528.520	2 765 420.630		R352	62 506.260	2 762 636.120	
L353	61 293.640	2 765 623.210		R353	62 470.190	2 762 703.880	
L354	61 272.860	2 765 642.600		R354	62 478.620	2 762 781.410	
L355	61 208.460	2 765 701.470		R355	62 533.090	2 762 846.170	
L356	61 159.290	2 765 754.020		R356	62 594.580	2 762 920.900	

Vel	18	Van	20	P699/08
Sheet		of		

PADRESERWE KOÖRDINATE / ROAD RESERVE CO-ORDINATES									
LINKERKANT/LEFT HAND SIDE					REGTERKANT/RIGHT HAND SIDE				
	Y	X	WG 31°		Y	X			
L357	60 739.260	2 766 323.840		R357	62 608.050	2 763 020.180			
L358	60 389.080	2 766 196.940		R358	62 557.240	2 763 191.650			
L359	60 368.540	2 766 824.690		R359	62 570.420	2 763 274.050			
L360	59 695.700	2 767 134.840		R360	62 596.730	2 763 384.250			
L361	59 310.630	2 768 255.400		R361	62 585.530	2 763 499.660			
L362	59 142.430	2 768 482.890		R362	62 535.860	2 763 602.090			
L363	59 013.690	2 768 657.000		R363	62 449.830	2 763 719.360			
L364	58 739.760	2 769 027.780		R364	62 399.230	2 763 794.610			
L365	58 414.500	2 769 467.720		R365	62 365.000	2 763 873.770			
L366	58 137.130	2 769 841.700		R366	62 328.910	2 763 995.390			
L367	58 121.969	2 769 870.211		R367	62 304.510	2 764 094.340			
L368	57 775.240	2 770 332.620		R368	62 305.810	2 764 183.000			
L369	57 637.390	2 770 519.680		R369	62 306.360	2 764 274.540			
L370	57 625.080	2 770 536.390		R370	62 295.970	2 764 319.060			
L371	57 499.660	2 770 706.590		R371	62 261.528	2 764 393.857			
L372	57 446.110	2 770 806.370		R372	62 259.560	2 764 397.990			
L373	57 411.660	2 770 912.670		R373	62 158.360	2 764 494.920			
L374	57 400.760	2 770 994.940		R374	62 070.840	2 764 527.750			
L375	57 396.840	2 771 024.440		R375	61 990.060	2 764 559.210			
L376	57 402.850	2 771 143.890		R376	61 922.600	2 764 611.940			
L377	57 407.930	2 771 165.740		R377	61 683.010	2 764 889.330			
L378	57 427.290	2 771 248.990		R378	61 646.660	2 764 972.990			
L379	57 487.720	2 771 444.080		R379	61 638.500	2 765 058.160			
L380	57 501.060	2 771 487.160		R380	61 648.350	2 765 191.040			
L381	57 530.530	2 771 630.470		R381	61 638.010	2 765 307.150			
L382	57 529.130	2 771 733.200		R382	61 590.290	2 765 409.170			
L383	57 499.100	2 771 827.020		R383	61 544.710	2 765 457.660			
L384	57 493.602	2 771 852.401		R384	61 513.600	2 765 489.850			
L385	57 487.400	2 771 881.030		R385	61 331.000	2 765 640.980			
L386	57 442.870	2 772 050.780		R386	61 316.810	2 765 653.750			
L387	57 385.720	2 772 232.050		R387	61 314.550	2 765 655.810			
L388	57 391.500	2 772 346.660		R388	61 265.030	2 765 700.890			
L389	57 412.530	2 772 623.560		R389	61 234.520	2 765 728.660			
L390	57 413.770	2 772 750.310		R390	61 185.920	2 765 786.760			
L391	57 409.310	2 772 814.100		R391	60 772.030	2 766 342.920			
L392	57 404.840	2 772 876.660		R392	60 645.300	2 766 514.330			
L393	57 386.190	2 772 995.900		R393	60 442.620	2 766 788.470			
L394	57 353.390	2 773 124.690		R394	60 400.930	2 766 844.870			
L395	57 346.500	2 773 152.000		R395	60 040.770	2 767 331.410			
L396	57 303.390	2 773 271.810		R396	59 996.110	2 767 391.740			
L397	57 250.720	2 773 387.860		R397	59 726.230	2 767 757.100			
L398	57 190.530	2 773 492.420		R398	59 455.120	2 768 123.590			
L399	57 120.120	2 773 602.220		R399	59 339.020	2 768 280.700			
L400	56 896.010	2 773 950.530		R400	59 181.930	2 768 493.190			
L401	56 690.710	2 774 270.700		R401	59 043.130	2 768 680.950			
L402	56 581.340	2 774 441.220		R402	58 767.950	2 769 052.570			
L403	56 552.510	2 774 487.040		R403	58 606.630	2 769 270.930			
L404	56 503.720	2 774 559.680		R404	58 446.620	2 769 487.510			
L405	56 449.250	2 774 633.850		R405	58 174.940	2 769 855.020			
L406	56 368.150	2 774 724.920		R406	58 156.340	2 769 879.030			
L407	56 326.630	2 774 164.620		R407	57 801.790	2 770 359.990			

