

# Government Gazette Staatskoerant

REPUBLIC OF SOUTH AFRICA  
REPUBLIEK VAN SUID-AFRIKA

Vol. 525

Pretoria, 24 **March**  
Maart 2009

**No. 32022**

**CONTENTS****INHOUD**

<i>No.</i>	<i>Page No.</i>	<i>Gazette No.</i>	<i>No.</i>	<i>Bladsy No.</i>	<i>Koerant No.</i>
<b>GOVERNMENT NOTICE</b>			<b>GOEWERMENTSKENNISGEWING</b>		
<b>Transport, Department of</b>			<b>Vervoer, Departement van</b>		
<i>Government Notice</i>			<i>Goewermentskennisgewing</i>		
302			302		
South African National Roads Agency Limited and the National Roads Act (7/1998): The South African National Roads Agency Limited: Declaration amendment of National Road R61 Section 7: Amendment of Declaration No. 546 of 2003 .....	3	32022	Suid-Afrikaanse Nasionale Padagentskap Beperk en die Nasionale Paaie Wet (7/1998): Die Suid-Afrikaanse Nasionale Padagentskap Beperk: Verklaring wysiging van Nasionale Pad R61 Seksie 7: Wysiging van Verklaring No. 546 van 2003 .....	4	32022

---

**GOVERNMENT NOTICE**

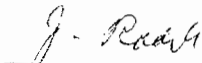
---

**DEPARTMENT OF TRANSPORT****No. 302****24 March 2009****THE SOUTH AFRICAN NATIONAL ROADS  
AGENCY LIMITED**Registration No: 98/09584/06

---

**DECLARATION AMENDMENT OF NATIONAL ROAD R61 SECTION 7****AMENDMENT OF DECLARATION NO. 546 OF 2003**

By virtue of Section 40(1)(b) of the South African National Roads Agency Limited and the National Roads Act, 1998 (Act No. 7 of 1998), I hereby amend Declaration No. 546 of 2003, by substituting Annexure paragraph (III) the descriptive section from Langdon up to Umtata (Mthatha), with the subjoined sheets 1 to 19 of Plan No. P671/08.

**[National Road R61 Section 7: Langdon – Umtata (Mthatha)]**

---

**MINISTER OF TRANSPORT**

---

## GOEWERMENTSKENNISGEWING

---

### DEPARTEMENT VAN VERVOER

No. 302

24 Maart 2009

## DIE SUID-AFRIKAANSE NASIONALE PADAGENTSKAP BEPERK

Registrasie No: 98/09584/06

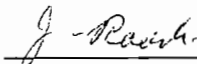
---

### VERKLARING WYSIGING VAN NASIONALE PAD R61 SEKSIE 7

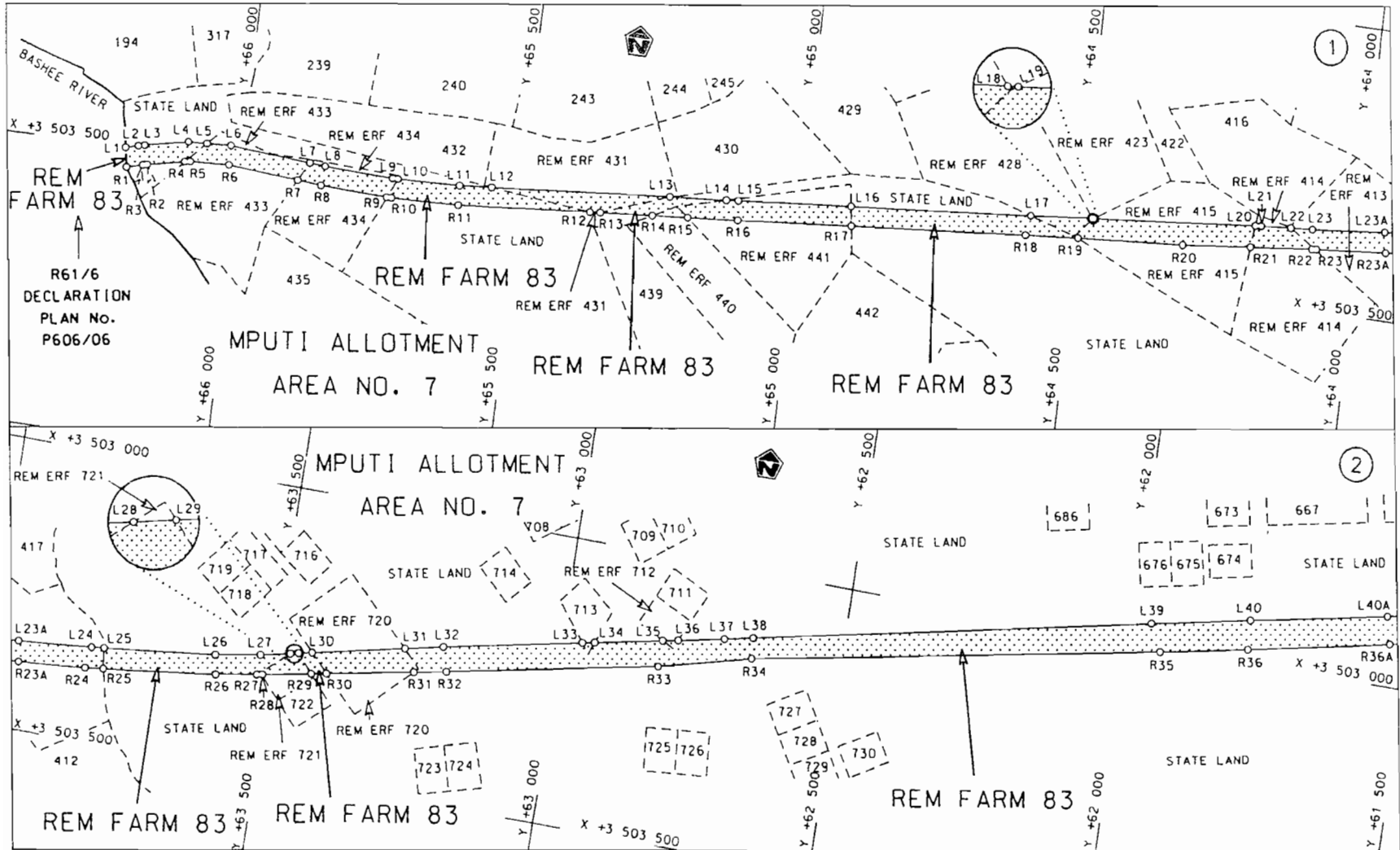
WYSIGING VAN VERKLARING NO. 546 VAN 2003

Kragtens Artikel 40(1)(b) van die Suid-Afrikaanse Nasionale Padagentskap Beperk en die Nasionale Paaie Wet, 1998 (Wet no.7 van 1998), wysig ek hiermee Verklaring no. 546 van 2003, Bylae paragraaf (III) die beskrywende gedeelte vanaf Langdon tot by Umtata (Mthatha), te vervang met meegaande velle 1 tot 19 van Plan no. P671/08.

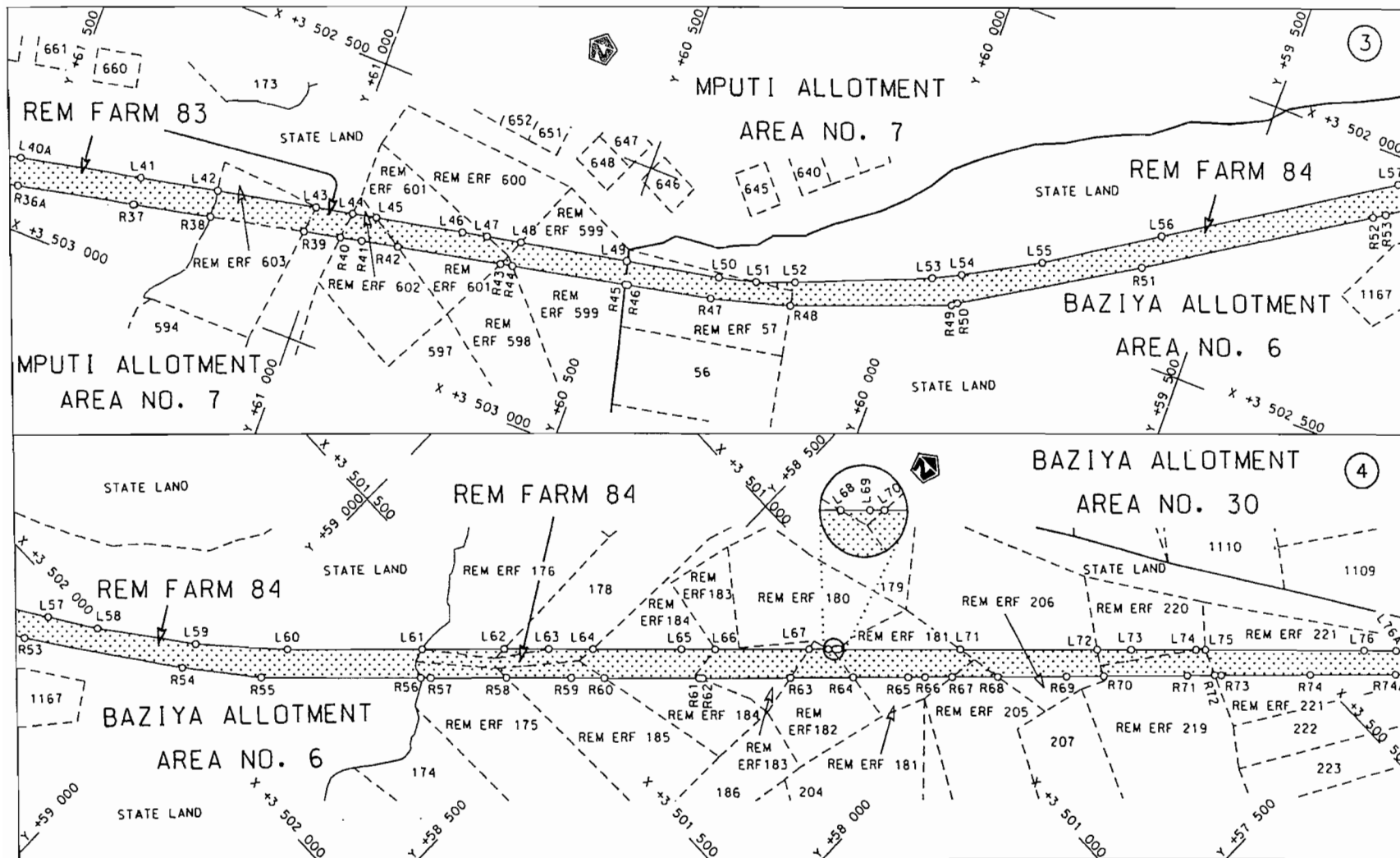
[Nasionale Pad R61 Seksie 7: Langdon – Umtata (Mthatha)]




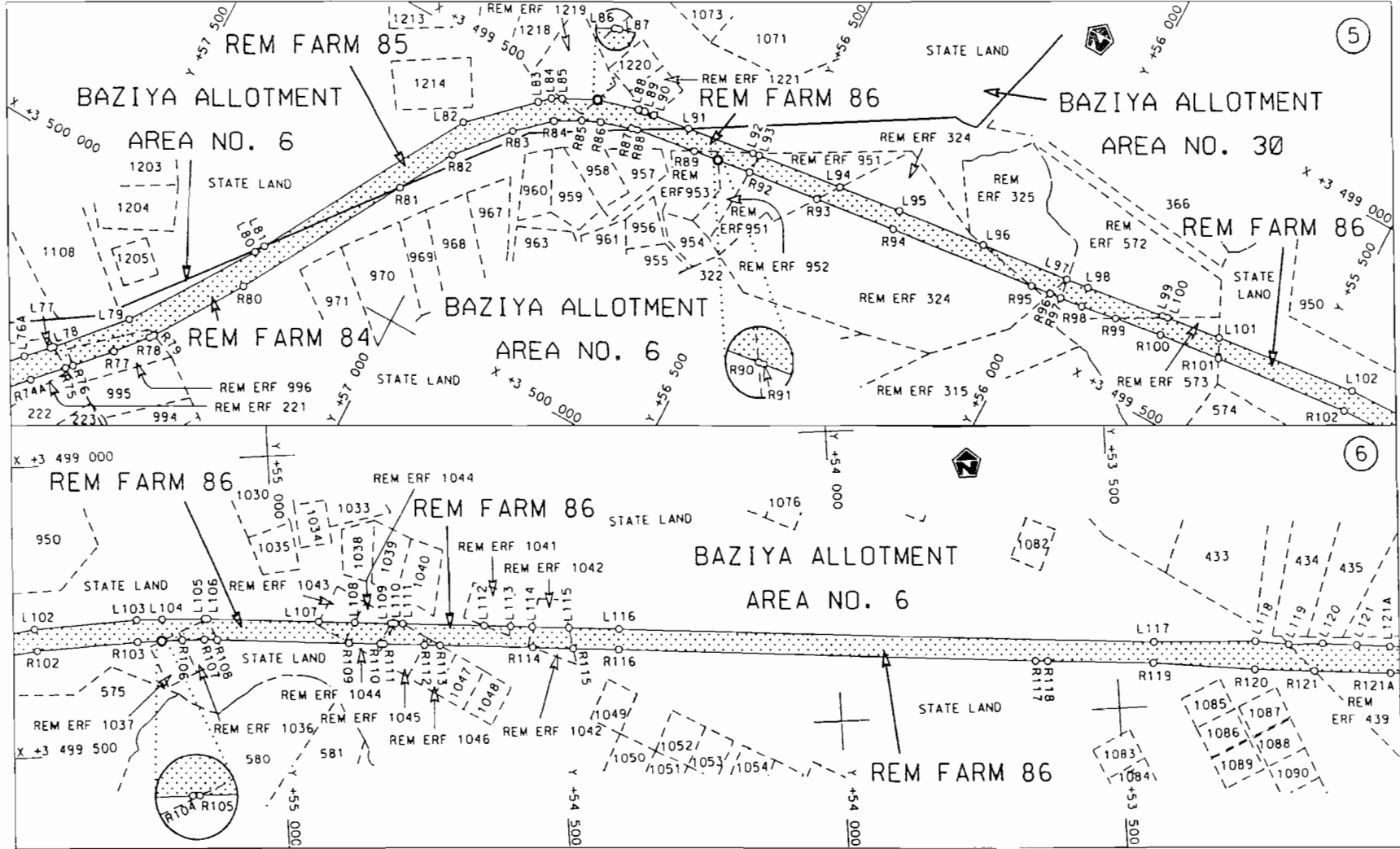
MINISTER VAN VERVOER




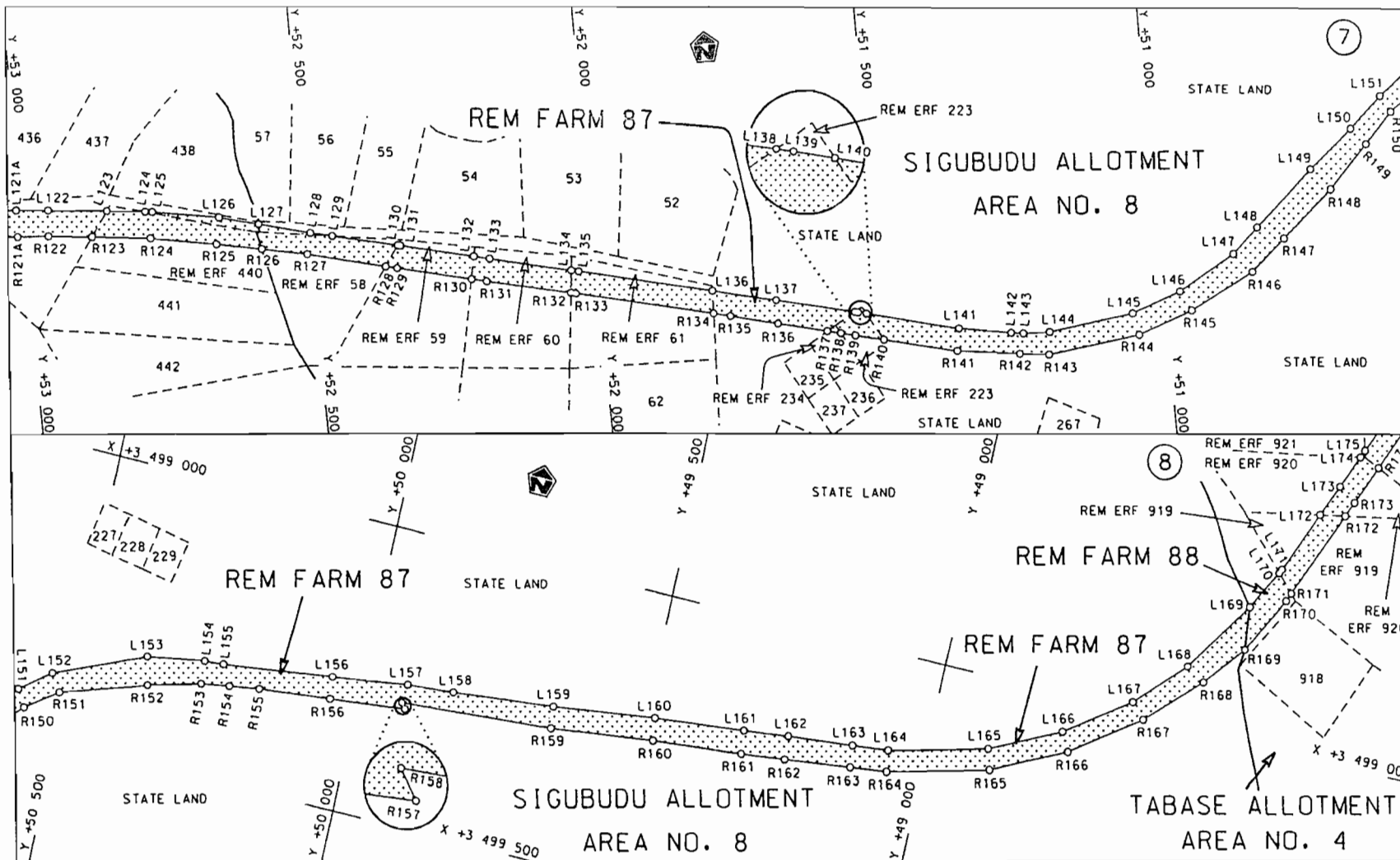
<p>Die Suid Afrikaanse Nasionale Padogenskop Beperk The South African National Roads Agency Limited</p>	<p>Die figuur getoon The figure shown</p>		<p>steldie padreserve voor van 'n gedeelte represents the road reserve of a portion van Nasionale Roete R61 Seksie of National Route 7 Section</p>	<p>Vel Sheet 1 van of 19</p>
				<p>Plan P671/08</p>



<p>Die Suid Afrikaanse Nasionale Padagentskap Beperk The South African National Roads Agency Limited</p>	<p>Die figuur getoon The figure shown</p>		<p>steldie padreserwe voor van 'n gedeelte represents the road reserve of a portion van Nasionale Roete R61 Seksie 7 of National Route</p>	<p>Vel Sheet 2 van 19 of</p>
			<p>R61 Seksie 7</p>	<p>Plan P671/08</p>

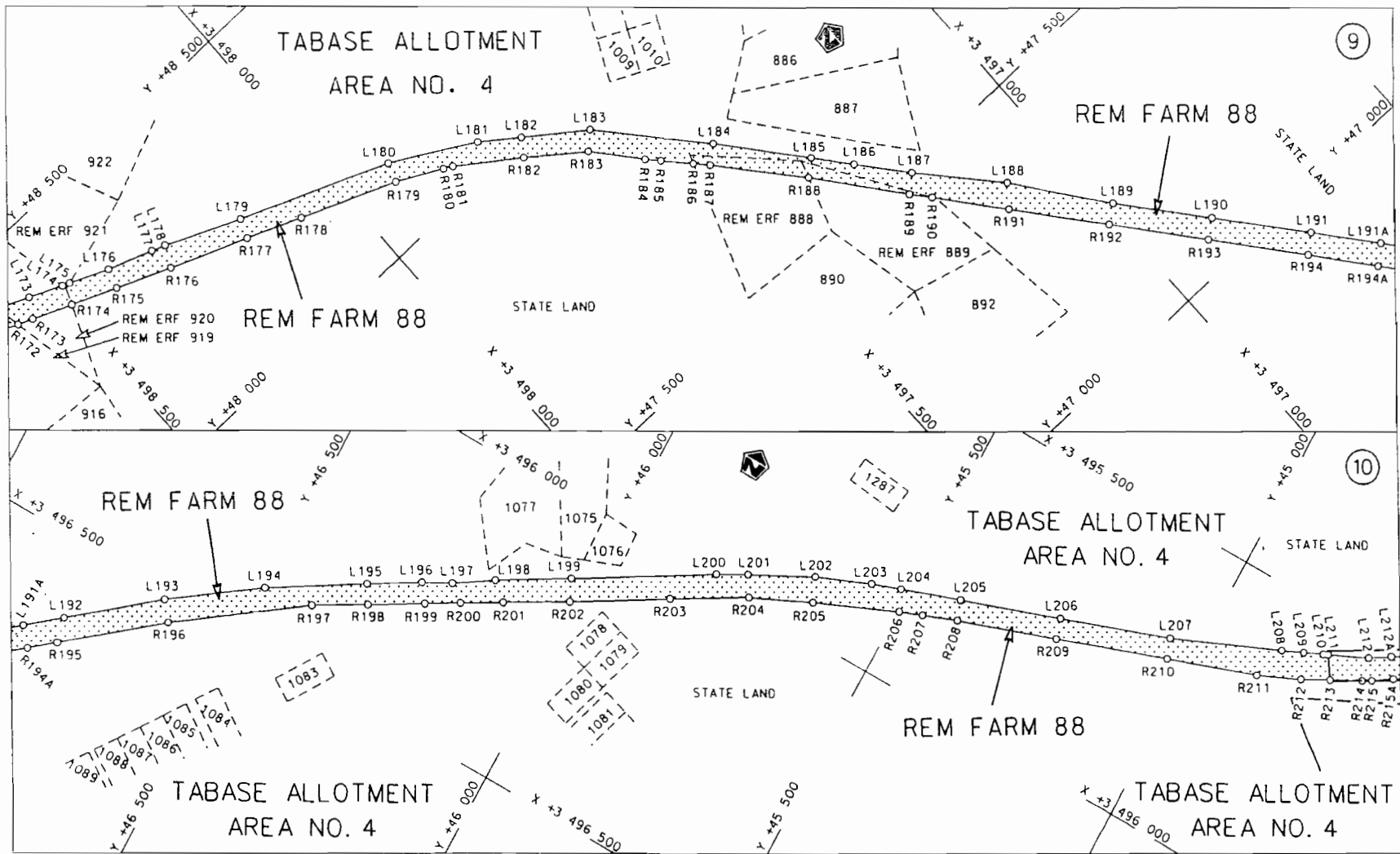


<p>Die Suid Afrikaanse Nasionale Padagentskap Beperk The South African National Roads Agency Limited</p>	<p>Die figuur getoon The figure shown</p>		<p>steldie padreserwe voor van 'n gedeelte represents the road reserve of a portion van Nasionale Roete R61 Seksie 7 of National Route</p>	<p>Vel Sheet 3 van 19 Plan P671/08</p>
--	---	--	--	--

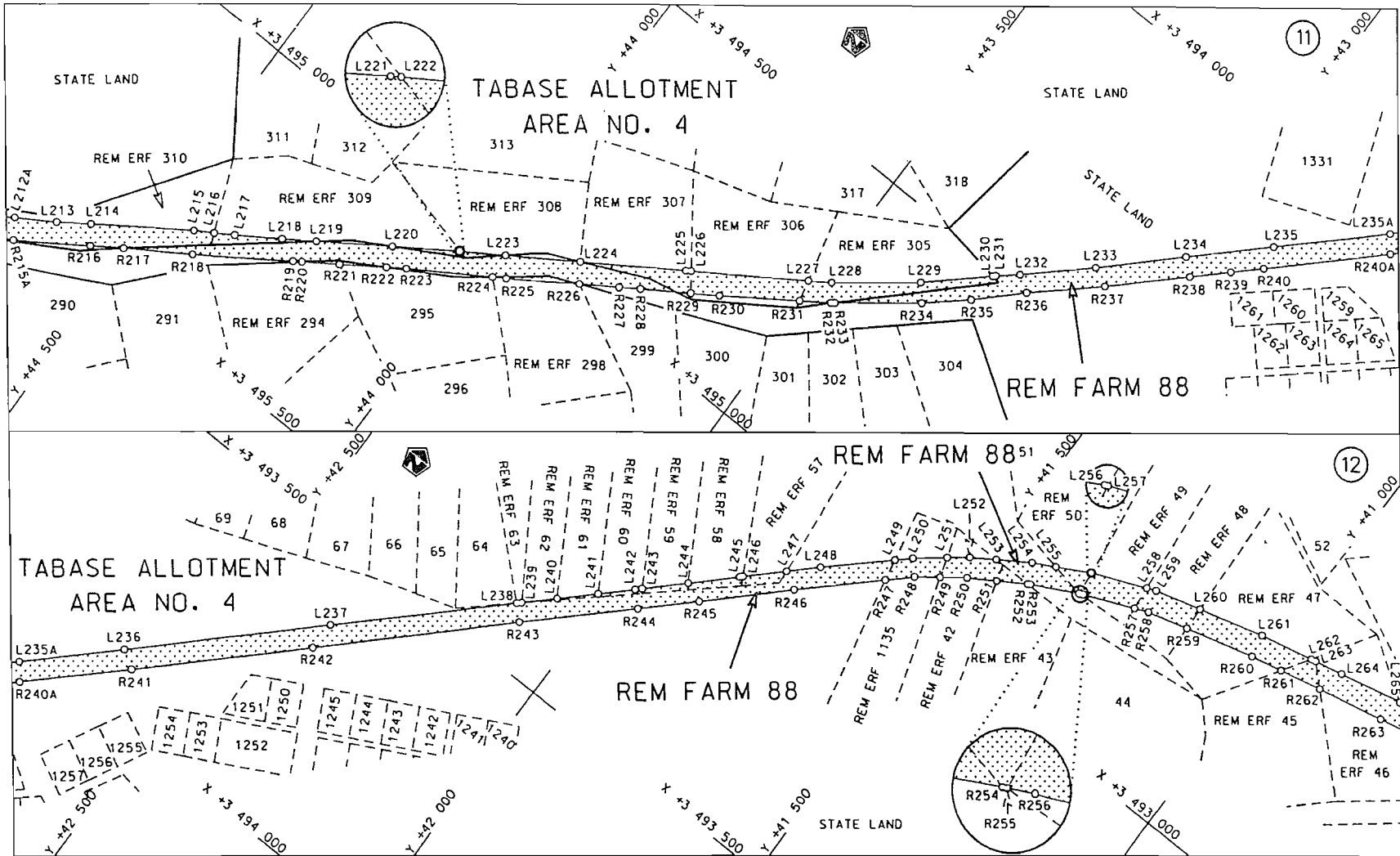


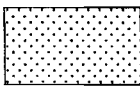
<p>Die Suid Afrikaanse Nasionale Padagentskap Beperk The South African National Roads Agency Limited</p>	<p>Die figuur getoon The figure shown</p>	<p>stel die padreserwe voor van 'n gedeelte represents the road reserve of a portion van Nasionale Roete R61 Seksie 7 of National Route Section</p>	<p>Vel Sheet 4 van of 19 Plan P671/08</p>
--	---	---	---

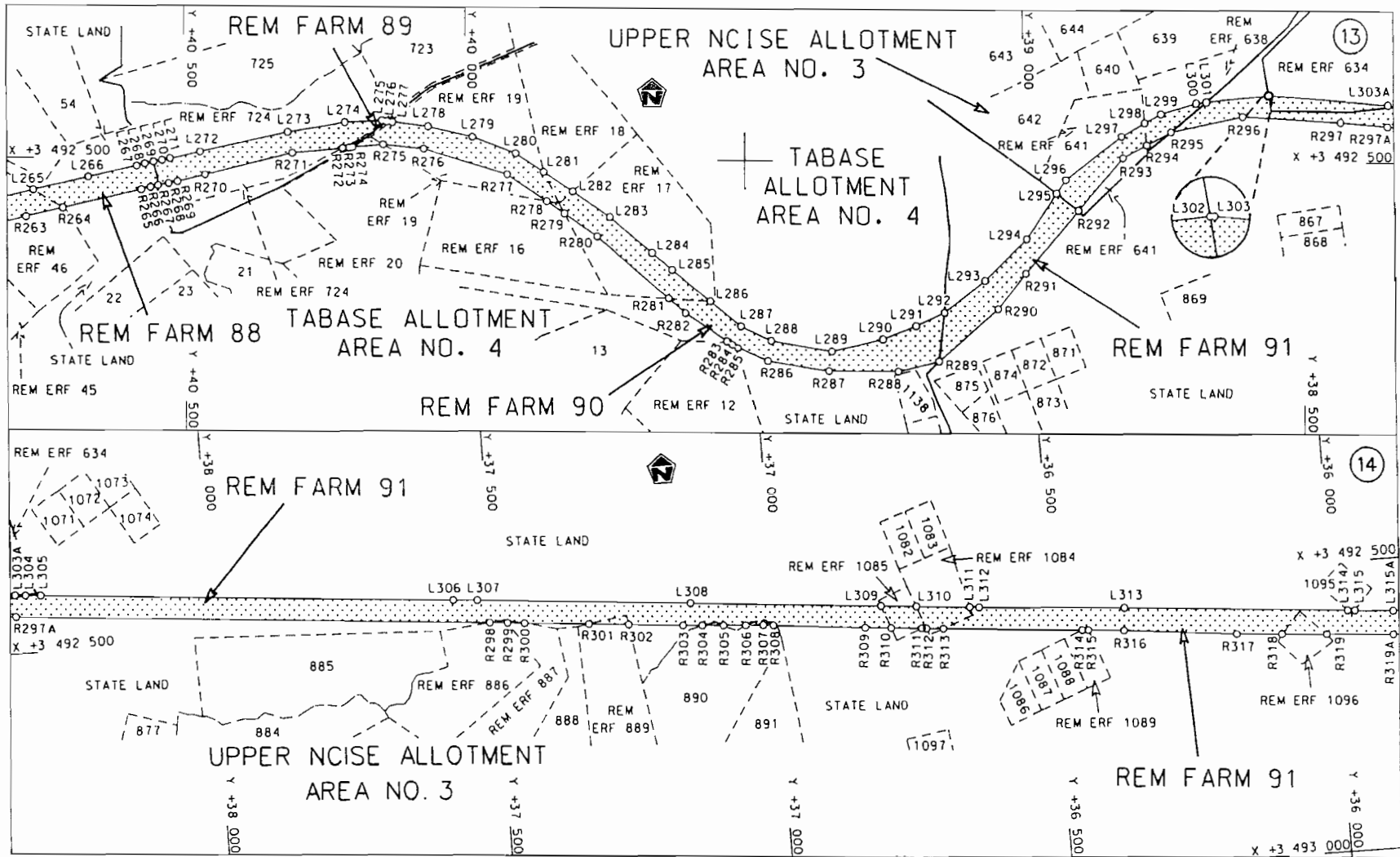




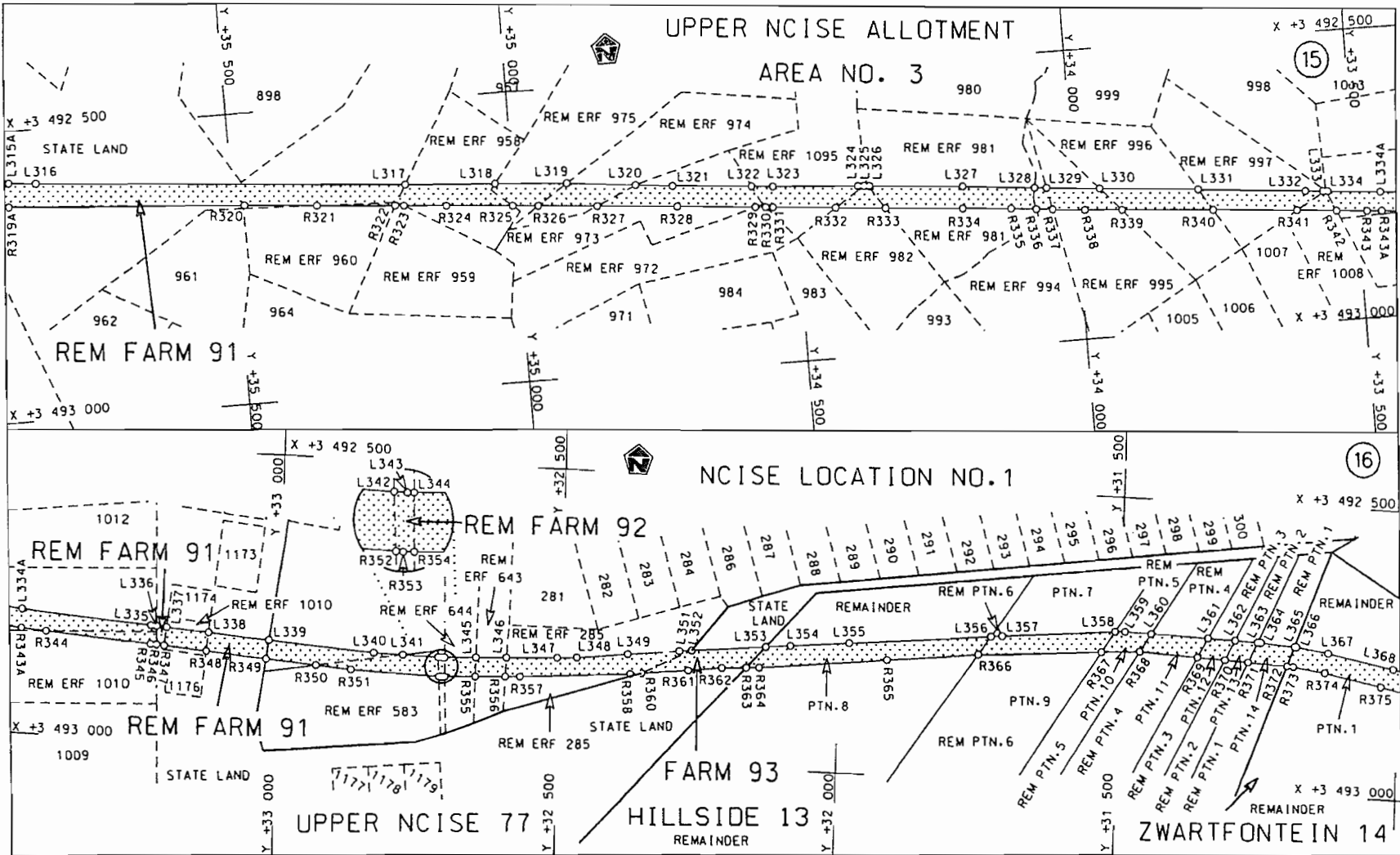
<p>Die Suid Afrikaanse Nasionale Padogentskap Beperk The South African National Roads Agency Limited</p>	<p>Die figuur getoon The figure shown</p>		<p>steldie padreserwe voor van 'n gedeelte represents the road reserve of a portion van Nasionale Roete R61 Seksie of National Route Section 7</p>	<p>Vel Sheet 5 van 19 of 19 Plan P671/08</p>
--	---	--	--	--




<p>Die Suid Afrikaanse Nasionale Padogentskop Beperk The South African National Roads Agency Limited</p>	<p>Die figuur getoon The figure shown</p>		<p>steldie padreserwe voor van 'n gedeelte represents the raad reserve of a portion van Nasionale Roete R61 Sektie 7 of National Route Section</p>	<p>Vel Sheet 6 van of 19 Plan P671/08</p>
--	---	--	--	---

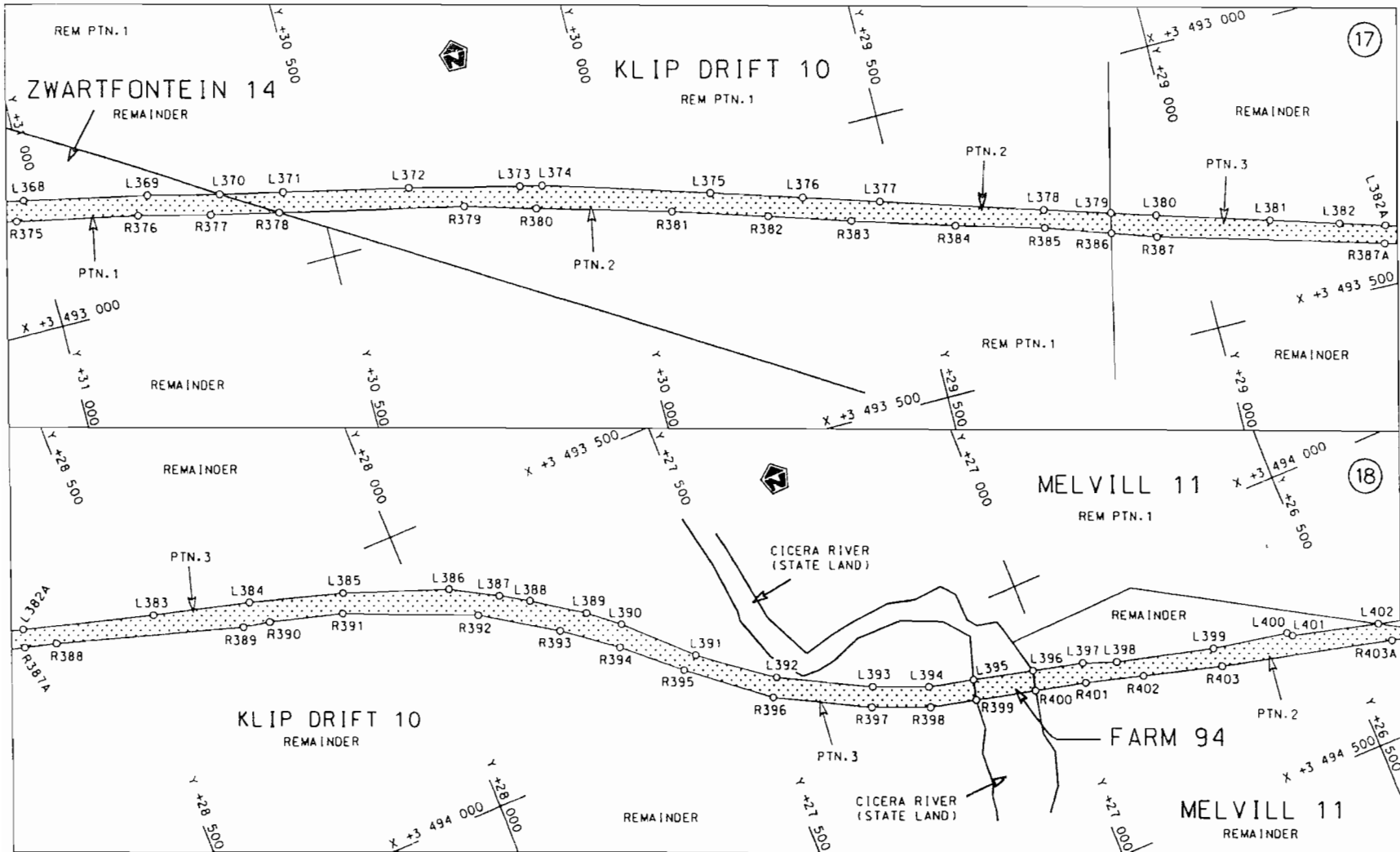


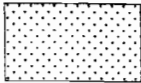
<p>Die Suid Afrikaanse Nasionale Padagentskap Beperk The South African National Roads Agency Limited</p>	<p>Die figuur getoon The figure shown</p>		<p>steldie padreserwe voor van 'n gedeelte represents the raad reserve of a portion von Nasionale Roete R61 Seksie Section of National Route 7</p>	<p>Vel Sheet 7 van of 19 Plan P671/08</p>
--	---	--	--	---

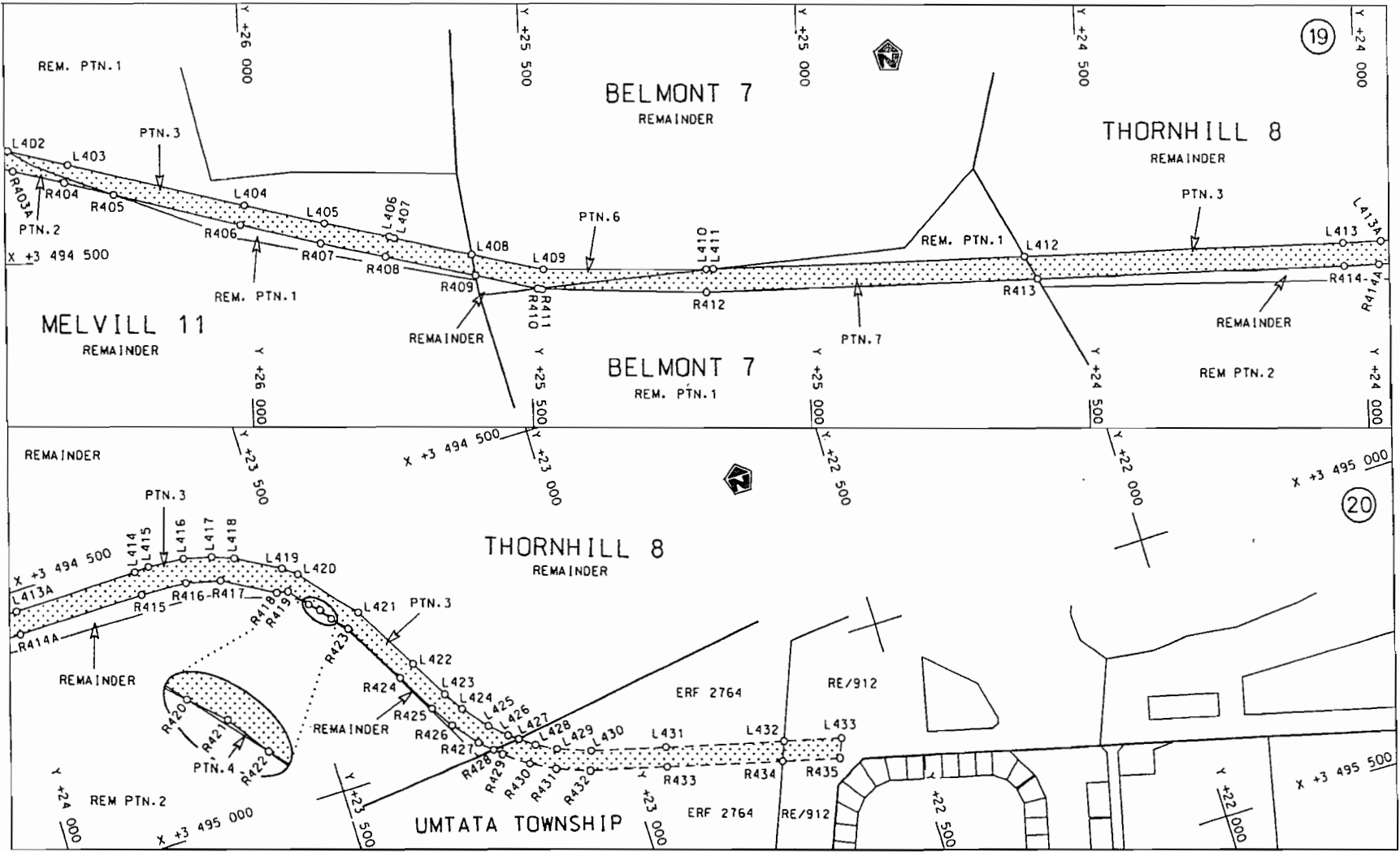


<p>Die Suid Afrikaanse Nasionale Padogentskap Beperk The South African National Roads Agency Limited</p>	<p>Die figuur getoon The figure shown</p> 	<p>steldie podreserwe voor van 'n gedeelte represents the road reserve of a portion van Nasionale Route R61 of National Route</p> <p>R61</p>	<p>Vel Sheet 8 van 19 of of</p> <p>Plan P671/08</p>
--	--	--	---

7



<p>Die Suid Afrikaanse Nasionale Padagentskap Beperk The South African National Roads Agency Limited</p>	<p>Die figuur getoon The figure shown</p>		<p>steldie padreserwe voor van 'n gedeelte represents the road reserve of a portion van Nasionale Roete R61 Seksie 7 of Notional Route Section</p>	<p>Vel Sheet 9 van 19 of of</p>
				<p>Plan P671/08</p>



<p>Die Suid Afrikaanse Nasionale Padagentskop Beperk The South African National Roads Agency Limited</p>	<p>Die figuur getoon The figure shown</p> <div style="border: 1px solid black; width: 50px; height: 20px; background-color: #d3d3d3; margin: 5px 0;"></div>	<p>steldie padreserwe voor van 'n gedeelte represents the road reserve of a portion van Nasionale Roete of National Route</p> <p style="text-align: right;">R61    Seksie Section</p>	<p>Vel Sheet 10 van of 19</p> <p>Plan P671/08</p>
--	---	---	---

PADRESERWE KOÖRDINATE / ROAD RESERVE CO-ORDINATES									
LINKERKANT/LEFT HAND SIDE					REGTERKANT/RIGHT HAND SIDE				
	Y	X	WG 29°		Y	X			
L1	66 207.042	3 503 503.297		R1	66 201.371	3 503 536.995			
L2	66 185.320	3 503 497.470		R2	66 172.280	3 503 529.150			
L3	66 176.150	3 503 495.010		R3	66 167.570	3 503 527.880			
L4	66 097.880	3 503 478.160		R4	66 099.560	3 503 513.270			
L5	66 064.895	3 503 476.493		R5	66 091.850	3 503 511.600			
L6	66 021.920	3 503 474.320		R6	66 021.620	3 503 508.290			
L7	65 878.103	3 503 486.543		R7	65 896.013	3 503 519.098			
L8	65 850.610	3 503 488.880		R8	65 853.680	3 503 522.740			
L9	65 729.250	3 503 493.600		R9	65 734.647	3 503 527.403			
L10	65 719.013	3 503 493.301		R10	65 730.140	3 503 527.580			
L11	65 608.740	3 503 490.080		R11	65 606.980	3 503 524.040			
L12	65 552.090	3 503 485.290		R12	65 372.530	3 503 504.220			
L13	65 233.630	3 503 458.360		R13	65 354.240	3 503 502.670			
L14	65 132.169	3 503 449.779		R14	65 261.206	3 503 494.809			
L15	65 110.900	3 503 447.980		R15	65 197.391	3 503 489.416			
L16	64 907.540	3 503 430.490		R16	65 107.970	3 503 481.860			
L17	64 586.770	3 503 402.870		R17	64 902.860	3 503 464.220			
L18	64 476.310	3 503 392.980		R18	64 592.380	3 503 437.510			
L19	64 473.770	3 503 392.750		R19	64 497.948	3 503 430.702			
L20	64 185.720	3 503 366.940		R20	64 309.550	3 503 417.120			
L21	64 179.600	3 503 366.390		R21	64 189.705	3 503 404.814			
L22	64 122.830	3 503 362.460		R22	64 080.890	3 503 393.640			
L23	64 083.800	3 503 359.770		R23	64 074.880	3 503 393.120			
L24	63 822.420	3 503 334.740		R24	63 828.240	3 503 371.740			
L25	63 800.200	3 503 332.190		R25	63 795.830	3 503 367.710			
L26	63 603.910	3 503 309.530		R26	63 598.000	3 503 343.110			
L27	63 524.220	3 503 295.580		R27	63 518.320	3 503 329.060			
L28	63 472.160	3 503 284.100		R28	63 516.540	3 503 328.720			
L29	63 457.895	3 503 280.955		R29	63 430.080	3 503 312.140			
L30	63 434.240	3 503 275.740		R30	63 403.420	3 503 307.030			
L31	63 273.010	3 503 240.200		R31	63 250.890	3 503 277.780			
L32	63 206.120	3 503 225.450		R32	63 193.760	3 503 266.820			
L33	62 963.191	3 503 175.392		R33	62 823.410	3 503 191.680			
L34	62 941.767	3 503 170.978		R34	62 660.790	3 503 148.320			
L35	62 822.250	3 503 146.350		R35	61 940.800	3 503 009.800			
L36	62 795.140	3 503 140.760		R36	61 787.180	3 502 979.230			
L37	62 713.790	3 503 124.000		R37	61 335.380	3 502 883.460			
L38	62 663.410	3 503 113.210		R38	61 201.380	3 502 855.050			
L39	61 963.950	3 502 964.530		R39	61 038.294	3 502 820.475			
L40	61 790.680	3 502 929.070		R40	60 973.459	3 502 806.729			
L41	61 339.690	3 502 837.010		R41	60 936.060	3 502 798.800			
L42	61 204.281	3 502 809.375		R42	60 873.368	3 502 785.539			
L43	61 031.754	3 502 774.166		R43	60 693.919	3 502 747.580			
L44	60 967.250	3 502 761.001		R44	60 673.063	3 502 743.168			
L45	60 925.696	3 502 752.521		R45	60 474.520	3 502 701.170			
L46	60 774.870	3 502 721.740		R46	60 469.780	3 502 700.170			
L47	60 732.018	3 502 712.987		R47	60 324.600	3 502 668.910			
L48	60 672.008	3 502 700.730		R48	60 188.030	3 502 630.150			
L49	60 485.860	3 502 662.710		R49	59 919.470	3 502 525.530			
L50	60 323.570	3 502 629.920		R50	59 910.860	3 502 518.330			
L51	60 259.027	3 502 613.048		R51	59 626.420	3 502 342.940			

Vel	11	Van	19	P671/08
Sheet		of		

PADRESERWE KOÖRDINATE / ROAD RESERVE CO-ORDINATES							
LINKERKANT/LEFT HAND SIDE				REGTERKANT/RIGHT HAND SIDE			
	Y	X	WG 29°		Y	X	
L52	60 194.270	3 502	589.060	R52	59 273.180	3 502	115.040
L53	59 967.710	3 502	493.460	R53	59 253.660	3 502	102.430
L54	59 920.890	3 502	469.540	R54	59 022.450	3 501	939.130
L55	59 795.420	3 502	399.140	R55	58 914.030	3 501	851.210
L56	59 611.750	3 502	280.230	R56	58 716.098	3 501	648.344
L57	59 250.470	3 502	046.350	R57	58 704.190	3 501	636.140
L58	59 175.150	3 501	997.540	R58	58 611.049	3 501	540.101
L59	59 035.370	3 501	893.210	R59	58 530.620	3 501	457.170
L60	58 916.660	3 501	783.650	R60	58 489.455	3 501	414.787
L61	58 749.872	3 501	611.321	R61	58 370.150	3 501	291.950
L62	58 649.362	3 501	507.472	R62	58 369.200	3 501	290.980
L63	58 594.096	3 501	450.370	R63	58 259.712	3 501	176.527
L64	58 539.410	3 501	393.870	R64	58 181.601	3 501	094.875
L65	58 430.230	3 501	281.060	R65	58 112.950	3 501	023.110
L66	58 388.148	3 501	237.520	R66	58 092.300	3 501	001.350
L67	58 271.804	3 501	117.142	R67	58 059.385	3 500	966.957
L68	58 247.507	3 501	092.003	R68	58 003.641	3 500	908.710
L69	58 238.960	3 501	083.160	R69	57 919.520	3 500	820.810
L70	58 234.710	3 501	078.769	R70	57 873.510	3 500	772.482
L71	58 083.599	3 500	922.663	R71	57 770.440	3 500	664.220
L72	57 914.827	3 500	748.312	R72	57 736.901	3 500	628.617
L73	57 872.930	3 500	705.030	R73	57 733.240	3 500	624.730
L74	57 791.772	3 500	621.274	R74	57 620.390	3 500	506.290
L75	57 780.033	3 500	609.160	R75	57 471.109	3 500	348.966
L76	57 584.270	3 500	407.130	R76	57 461.140	3 500	338.460
L77	57 507.510	3 500	328.330	R77	57 408.160	3 500	282.630
L78	57 505.618	3 500	326.245	R78	57 360.260	3 500	226.440
L79	57 409.980	3 500	220.830	R79	57 358.670	3 500	224.040
L80	57 268.210	3 500	010.790	R80	57 258.430	3 500	073.110
L81	57 258.330	3 499	993.900	R81	57 093.540	3 499	790.060
L82	57 048.090	3 499	634.600	R82	57 038.020	3 499	694.780
L83	56 945.850	3 499	540.190	R83	56 963.080	3 499	605.850
L84	56 927.850	3 499	523.440	R84	56 906.170	3 499	554.660
L85	56 910.838	3 499	514.882	R85	56 862.690	3 499	530.250
L86	56 854.631	3 499	486.608	R86	56 831.650	3 499	516.470
L87	56 853.760	3 499	486.170	R87	56 770.520	3 499	497.500
L88	56 775.530	3 499	463.890	R88	56 768.600	3 499	497.220
L89	56 770.668	3 499	463.168	R89	56 661.750	3 499	481.361
L90	56 753.572	3 499	460.627	R90	56 616.672	3 499	474.670
L91	56 689.320	3 499	451.080	R91	56 616.200	3 499	474.600
L92	56 568.116	3 499	433.827	R92	56 556.051	3 499	466.405
L93	56 553.530	3 499	431.750	R93	56 427.770	3 499	448.928
L94	56 400.563	3 499	410.908	R94	56 282.820	3 499	429.180
L95	56 287.440	3 499	395.510	R95	56 018.636	3 499	395.487
L96	56 128.140	3 499	375.180	R96	55 982.666	3 499	390.900
L97	55 968.020	3 499	354.770	R97	55 962.767	3 499	388.362
L98	55 928.020	3 499	349.670	R98	55 922.840	3 499	383.270
L99	55 784.470	3 499	327.550	R99	55 859.860	3 499	372.730
L100	55 778.030	3 499	326.690	R100	55 775.910	3 499	358.670
L101	55 682.542	3 499	313.971	R101	55 667.219	3 499	345.858
L102	55 430.670	3 499	280.420	R102	55 427.420	3 499	317.590

Vel	12	Van	19	P671/08
Sheet		of		



PADRESERWE KOÖRDINATE / ROAD RESERVE CO-ORDINATES					
LINKERKANT/LEFT HAND SIDE			REGTERKANT/RIGHT HAND SIDE		
	Y	X	WG 29°	Y	X
L103	55 249.150	3 499 272.140	R103	55 249.420	3 499 309.800
L104	55 204.270	3 499 273.270	R104	55 207.950	3 499 310.250
L105	55 127.990	3 499 276.020	R105	55 206.540	3 499 310.270
L106	55 123.140	3 499 276.350	R106	55 170.280	3 499 310.730
L107	54 925.406	3 499 289.753	R107	55 130.720	3 499 311.390
L108	54 861.439	3 499 294.089	R108	55 107.861	3 499 312.925
L109	54 797.462	3 499 298.426	R109	54 873.757	3 499 328.644
L110	54 790.339	3 499 298.909	R110	54 818.469	3 499 332.356
L111	54 776.767	3 499 299.829	R111	54 811.347	3 499 332.834
L112	54 632.170	3 499 309.630	R112	54 740.226	3 499 337.610
L113	54 584.627	3 499 312.840	R113	54 712.763	3 499 339.454
L114	54 545.468	3 499 315.493	R114	54 546.584	3 499 350.612
L115	54 480.020	3 499 319.928	R115	54 474.199	3 499 355.472
L116	54 390.410	3 499 326.000	R116	54 392.760	3 499 360.940
L117	53 431.170	3 499 390.500	R117	53 645.910	3 499 412.660
L118	53 251.990	3 499 397.620	R118	53 623.800	3 499 413.990
L119	53 192.510	3 499 405.690	R119	53 434.280	3 499 425.960
L120	53 130.980	3 499 406.930	R120	53 255.370	3 499 445.450
L121	53 069.720	3 499 412.330	R121	53 148.185	3 499 452.987
L122	52 952.660	3 499 422.640	R122	52 956.300	3 499 466.480
L123	52 850.284	3 499 433.387	R123	52 880.507	3 499 474.847
L124	52 784.430	3 499 440.300	R124	52 779.120	3 499 486.040
L125	52 771.860	3 499 441.620	R125	52 663.190	3 499 505.780
L126	52 654.390	3 499 460.830	R126	52 584.590	3 499 521.390
L127	52 586.200	3 499 478.380	R127	52 505.890	3 499 537.020
L128	52 497.190	3 499 501.280	R128	52 370.962	3 499 569.784
L129	52 459.543	3 499 509.883	R129	52 351.130	3 499 574.600
L130	52 346.776	3 499 535.650	R130	52 221.608	3 499 604.694
L131	52 341.700	3 499 536.810	R131	52 195.370	3 499 610.790
L132	52 213.646	3 499 566.272	R132	52 049.050	3 499 643.482
L133	52 186.140	3 499 572.600	R133	52 040.110	3 499 645.480
L134	52 044.480	3 499 605.101	R134	51 799.913	3 499 700.640
L135	52 031.670	3 499 608.040	R135	51 770.260	3 499 707.450
L136	51 798.123	3 499 661.473	R136	51 687.400	3 499 727.520
L137	51 686.810	3 499 686.940	R137	51 600.292	3 499 748.013
L138	51 548.686	3 499 718.945	R138	51 576.835	3 499 753.531
L139	51 542.750	3 499 720.320	R139	51 551.380	3 499 759.520
L140	51 528.631	3 499 723.744	R140	51 502.147	3 499 771.005
L141	51 367.830	3 499 762.740	R141	51 374.600	3 499 800.760
L142	51 276.110	3 499 778.640	R142	51 264.200	3 499 815.720
L143	51 254.160	3 499 781.450	R143	51 212.360	3 499 821.350
L144	51 207.190	3 499 782.890	R144	51 049.790	3 499 801.520
L145	51 057.930	3 499 763.880	R145	50 952.860	3 499 768.200
L146	50 970.500	3 499 733.180	R146	50 838.580	3 499 710.740
L147	50 868.950	3 499 677.540	R147	50 777.850	3 499 658.590
L148	50 822.840	3 499 635.360	R148	50 687.090	3 499 581.660
L149	50 719.290	3 499 544.840	R149	50 617.090	3 499 509.330
L150	50 641.510	3 499 481.220	R150	50 567.660	3 499 459.780
L151	50 584.240	3 499 431.170	R151	50 512.320	3 499 419.740
L152	50 531.910	3 499 389.780	R152	50 365.860	3 499 370.750
L153	50 377.250	3 499 322.520	R153	50 273.190	3 499 346.350

Vel  
Sheet

13

Van  
of

19

P671/08

PADRESERWE KOÖRDINATE / ROAD RESERVE CO-ORDINATES											
LINKERKANT/LEFT HAND SIDE					REGTERKANT/RIGHT HAND SIDE						
	Y		X	WG 29°		Y		X			
L154	50	275.910	3	499	306.180	R154	50	223.710	3	499	337.990
L155	50	242.230	3	499	303.490	R155	50	171.300	3	499	329.770
L156	50	051.300	3	499	278.990	R156	50	047.400	3	499	317.320
L157	49	920.020	3	499	261.670	R157	49	915.820	3	499	303.560
L158	49	838.450	3	499	255.210	R158	49	923.140	3	499	294.420
L159	49	660.820	3	499	236.500	R159	49	656.550	3	499	273.730
L160	49	482.670	3	499	212.880	R160	49	477.350	3	499	251.100
L161	49	323.310	3	499	195.460	R161	49	319.220	3	499	234.760
L162	49	244.410	3	499	186.130	R162	49	241.910	3	499	225.940
L163	49	128.400	3	499	173.950	R163	49	124.640	3	499	210.700
L164	49	065.890	3	499	167.100	R164	49	060.750	3	499	202.530
L165	48	894.180	3	499	122.650	R165	48	883.960	3	499	156.640
L166	48	771.750	3	499	062.810	R166	48	755.010	3	499	093.830
L167	48	662.620	3	498	983.380	R167	48	637.800	3	499	008.720
L168	48	582.320	3	498	900.360	R168	48	548.830	3	498	920.710
L169	48	498.640	3	498	772.830	R169	48	489.920	3	498	847.680
L170	48	460.926	3	498	702.964	R170	48	438.740	3	498	747.470
L171	48	458.970	3	498	699.340	R171	48	432.597	3	498	732.654
L172	48	413.070	3	498	589.120	R172	48	369.390	3	498	580.219
L173	48	389.920	3	498	533.670	R173	48	358.680	3	498	554.390
L174	48	365.850	3	498	476.760	R174	48	330.432	3	498	486.488
L175	48	360.386	3	498	463.973	R175	48	297.810	3	498	408.070
L176	48	331.750	3	498	396.960	R176	48	259.650	3	498	312.990
L177	48	303.460	3	498	318.850	R177	48	205.620	3	498	176.960
L178	48	294.870	3	498	295.090	R178	48	167.300	3	498	082.580
L179	48	237.520	3	498	163.760	R179	48	099.420	3	497	916.500
L180	48	132.260	3	497	904.250	R180	48	059.230	3	497	838.110
L181	48	054.310	3	497	760.540	R181	48	051.310	3	497	822.910
L182	48	007.790	3	497	696.360	R182	47	978.090	3	497	717.540
L183	47	934.920	3	497	596.480	R183	47	908.740	3	497	625.120
L184	47	769.280	3	497	448.840	R184	47	830.120	3	497	559.440
L185	47	632.450	3	497	334.290	R185	47	809.410	3	497	539.930
L186	47	573.170	3	497	284.940	R186	47	766.956	3	497	499.791
L187	47	493.200	3	497	218.380	R187	47	744.870	3	497	478.910
L188	47	366.070	3	497	103.660	R188	47	609.868	3	497	361.412
L189	47	213.580	3	496	986.500	R189	47	468.820	3	497	246.470
L190	47	076.300	3	496	872.120	R190	47	437.460	3	497	220.400
L191	46	939.190	3	496	757.240	R191	47	331.010	3	497	131.910
L192	46	786.050	3	496	629.020	R192	47	191.840	3	497	016.070
L193	46	646.050	3	496	513.590	R193	47	053.160	3	496	901.880
L194	46	499.680	3	496	407.410	R194	46	914.250	3	496	787.010
L195	46	345.620	3	496	311.580	R195	46	775.540	3	496	672.250
L196	46	262.580	3	496	261.130	R196	46	621.610	3	496	544.720
L197	46	214.820	3	496	235.910	R197	46	413.860	3	496	392.300
L198	46	151.790	3	496	193.660	R198	46	327.400	3	496	341.890
L199	46	034.500	3	496	123.270	R199	46	240.780	3	496	290.240
L200	45	813.030	3	495	987.650	R200	46	186.620	3	496	258.160
L201	45	763.450	3	495	959.870	R201	46	121.140	3	496	219.610
L202	45	656.120	3	495	903.090	R202	46	017.580	3	496	159.370
L203	45	562.760	3	495	863.630	R203	45	864.800	3	496	065.880
L204	45	512.870	3	495	845.670	R204	45	742.980	3	495	993.550

Vel 14  
Sheet

Van 19  
of

P671/08

PADRESERWE KOÖRDINATE / ROAD RESERVE CO-ORDINATES									
LINKERKANT/LEFT HAND SIDE				REGTERKANT/RIGHT HAND SIDE					
	Y	X	WG 29°		Y	X			
L205	45	411.870	3 495	809.410	R205	45	638.640	3 495	943.560
L206	45	241.200	3 495	747.950	R206	45	497.650	3 495	880.440
L207	45	054.440	3 495	680.780	R207	45	458.390	3 495	865.150
L208	44	871.730	3 495	600.880	R208	45	400.320	3 495	842.580
L209	44	834.800	3 495	584.210	R209	45	230.850	3 495	782.400
L210	44	802.810	3 495	569.180	R210	45	042.310	3 495	714.320
L211	44	794.856	3 495	565.403	R211	44	890.160	3 495	660.770
L212	44	728.610	3 495	533.950	R212	44	816.670	3 495	627.590
L213	44	630.320	3 495	471.810	R213	44	770.413	3 495	602.455
L214	44	580.620	3 495	437.980	R214	44	719.500	3 495	574.790
L215	44	431.060	3 495	335.570	R215	44	704.350	3 495	565.900
L216	44	400.450	3 495	316.700	R216	44	558.940	3 495	468.640
L217	44	369.520	3 495	296.620	R217	44	510.194	3 495	436.582
L218	44	299.620	3 495	250.540	R218	44	408.510	3 495	369.710
L219	44	249.135	3 495	216.227	R219	44	261.290	3 495	268.990
L220	44	138.192	3 495	140.824	R220	44	248.337	3 495	260.138
L221	44	038.240	3 495	072.890	R221	44	193.083	3 495	222.377
L222	44	036.756	3 495	071.913	R222	44	124.883	3 495	175.770
L223	43	968.810	3 495	027.190	R223	44	095.720	3 495	155.840
L224	43	857.490	3 494	953.850	R224	43	964.580	3 495	071.708
L225	43	697.570	3 494	847.090	R225	43	943.680	3 495	058.300
L226	43	693.246	3 494	844.206	R226	43	835.344	3 494	985.736
L227	43	517.822	3 494	727.202	R227	43	776.840	3 494	946.550
L228	43	482.690	3 494	703.770	R228	43	745.540	3 494	925.610
L229	43	358.530	3 494	605.510	R229	43	670.550	3 494	875.348
L230	43	264.247	3 494	516.923	R230	43	627.270	3 494	846.340
L231	43	259.720	3 494	512.670	R231	43	508.999	3 494	764.464
L232	43	227.260	3 494	484.710	R232	43	462.610	3 494	732.350
L233	43	128.130	3 494	391.230	R233	43	456.790	3 494	727.800
L234	43	013.450	3 494	277.040	R234	43	335.390	3 494	632.900
L235	42	901.750	3 494	166.800	R235	43	269.940	3 494	573.730
L236	42	618.250	3 493	887.560	R236	43	198.690	3 494	502.570
L237	42	355.850	3 493	629.540	R237	43	095.460	3 494	407.280
L238	42	116.770	3 493	394.900	R238	42	987.090	3 494	300.580
L239	42	110.261	3 493	388.478	R239	42	934.670	3 494	248.940
L240	42	065.261	3 493	344.306	R240	42	892.990	3 494	207.520
L241	42	012.667	3 493	292.682	R241	42	588.090	3 493	907.470
L242	41	965.740	3 493	246.620	R242	42	356.870	3 493	680.220
L243	41	956.900	3 493	237.810	R243	42	093.210	3 493	418.250
L244	41	898.080	3 493	179.150	R244	41	942.150	3 493	269.800
L245	41	832.050	3 493	113.300	R245	41	863.530	3 493	191.930
L246	41	827.671	3 493	108.931	R246	41	741.330	3 493	070.420
L247	41	771.661	3 493	053.057	R247	41	623.172	3 492	955.685
L248	41	728.070	3 493	009.570	R248	41	586.000	3 492	919.590
L249	41	631.177	3 492	917.071	R249	41	550.009	3 492	892.329
L250	41	608.100	3 492	895.040	R250	41	511.580	3 492	863.220
L251	41	561.241	3 492	856.909	R251	41	466.046	3 492	834.279
L252	41	529.770	3 492	831.300	R252	41	419.077	3 492	804.427
L253	41	489.673	3 492	804.981	R253	41	414.410	3 492	801.460
L254	41	435.680	3 492	769.540	R254	41	336.820	3 492	760.770
L255	41	397.510	3 492	748.930	R255	41	335.713	3 492	760.194

Vel	15	Van	19	P671/08
Sheet		of		

PADRESERWE KOÖRDINATE / ROAD RESERVE CO-ORDINATES							
LINKERKANT/LEFT HAND SIDE				REGTERKANT/RIGHT HAND SIDE			
	Y	X	WG 29°		Y	X	
L256	41	341.660	3 492 718.770	R256	41	329.660	3 492 757.020
L257	41	340.962	3 492 718.473	R257	41	243.725	3 492 720.003
L258	41	247.550	3 492 678.662	R258	41	220.040	3 492 709.800
L259	41	231.660	3 492 671.890	R259	41	149.569	3 492 690.592
L260	41	151.315	3 492 649.613	R260	41	029.370	3 492 657.830
L261	41	036.870	3 492 617.880	R261	40	973.502	3 492 645.008
L262	40	942.682	3 492 595.947	R262	40	898.963	3 492 627.902
L263	40	933.834	3 492 593.887	R263	40	781.350	3 492 600.910
L264	40	884.250	3 492 582.340	R264	40	717.859	3 492 586.219
L265	40	767.895	3 492 555.200	R265	40	567.850	3 492 551.510
L266	40	672.300	3 492 532.930	R266	40	558.660	3 492 549.550
L267	40	575.130	3 492 510.280	R267	40	548.323	3 492 547.343
L268	40	567.120	3 492 508.770	R268	40	529.040	3 492 543.220
L269	40	555.976	3 492 506.669	R269	40	513.050	3 492 539.810
L270	40	540.820	3 492 503.800	R270	40	463.060	3 492 527.870
L271	40	534.170	3 492 502.550	R271	40	307.810	3 492 490.200
L272	40	471.660	3 492 488.440	R272	40	219.210	3 492 481.629
L273	40	315.700	3 492 453.660	R273	40	207.540	3 492 480.500
L274	40	215.090	3 492 436.550	R274	40	201.204	3 492 479.886
L275	40	145.790	3 492 433.840	R275	40	147.240	3 492 474.660
L276	40	140.450	3 492 434.400	R276	40	075.160	3 492 481.560
L277	40	133.894	3 492 435.088	R277	39	926.280	3 492 524.710
L278	40	067.230	3 492 442.080	R278	39	855.779	3 492 571.756
L279	39	988.080	3 492 459.640	R279	39	824.586	3 492 592.571
L280	39	910.660	3 492 488.530	R280	39	766.310	3 492 631.460
L281	39	861.040	3 492 521.200	R281	39	639.336	3 492 737.945
L282	39	809.650	3 492 555.037	R282	39	609.270	3 492 763.160
L283	39	744.110	3 492 598.190	R283	39	531.060	3 492 812.620
L284	39	668.350	3 492 659.240	R284	39	523.490	3 492 817.390
L285	39	632.800	3 492 688.330	R285	39	519.703	3 492 819.064
L286	39	564.272	3 492 742.144	R286	39	461.680	3 492 844.710
L287	39	509.010	3 492 785.540	R287	39	351.570	3 492 862.140
L288	39	455.380	3 492 809.900	R288	39	228.000	3 492 862.380
L289	39	345.980	3 492 827.590	R289	39	155.460	3 492 844.310
L290	39	255.080	3 492 806.410	R290	39	047.340	3 492 753.670
L291	39	195.700	3 492 783.510	R291	38	996.240	3 492 691.720
L292	39	144.990	3 492 760.260	R292	38	901.250	3 492 583.770
L293	39	070.620	3 492 704.440	R293	38	821.160	3 492 492.750
L294	38	994.450	3 492 632.280	R294	38	778.590	3 492 469.850
L295	38	940.090	3 492 554.670	R295	38	735.200	3 492 447.010
L296	38	923.540	3 492 531.040	R296	38	608.010	3 492 421.080
L297	38	823.520	3 492 454.830	R297	38	431.040	3 492 430.180
L298	38	781.770	3 492 431.770	R298	37	509.205	3 492 502.916
L299	38	753.290	3 492 416.500	R299	37	477.266	3 492 505.436
L300	38	690.160	3 492 398.100	R300	37	447.085	3 492 507.818
L301	38	671.870	3 492 396.170	R301	37	332.666	3 492 516.846
L302	38	561.150	3 492 384.510	R302	37	262.068	3 492 522.416
L303	38	560.890	3 492 384.480	R303	37	164.940	3 492 530.080
L304	38	326.984	3 492 401.508	R304	37	130.128	3 492 532.211
L305	38	300.170	3 492 403.460	R305	37	091.737	3 492 534.561

Vel	16	Van	19	P671/08
Sheet		of		

PADRESERWE KOÖRDINATE / ROAD RESERVE CO-ORDINATES							
LINKERKANT/LEFT HAND SIDE				REGTERKANT/RIGHT HAND SIDE			
	Y	X	WG 29°		Y	X	
L306	37 570.770	3 492	459.930	R306	37 051.707	3 492	537.012
L307	37 528.460	3 492	463.090	R307	37 020.700	3 492	538.910
L308	37 148.410	3 492	492.960	R308	37 002.098	3 492	540.643
L309	36 807.408	3 492	520.506	R309	36 838.230	3 492	555.910
L310	36 744.590	3 492	525.580	R310	36 792.244	3 492	559.500
L311	36 649.113	3 492	533.290	R311	36 738.082	3 492	563.729
L312	36 632.150	3 492	534.660	R312	36 729.490	3 492	564.400
L313	36 372.160	3 492	553.260	R313	36 699.691	3 492	566.725
L314	35 973.882	3 492	584.230	R314	36 450.106	3 492	586.197
L315	35 961.039	3 492	585.229	R315	36 439.323	3 492	587.039
L316	35 843.610	3 492	594.360	R316	36 375.990	3 492	591.980
L317	35 192.471	3 492	646.429	R317	36 176.780	3 492	611.700
L318	35 032.480	3 492	657.196	R318	36 095.860	3 492	617.330
L319	34 905.363	3 492	665.750	R319	36 014.870	3 492	622.970
L320	34 783.648	3 492	677.464	R320	35 479.550	3 492	660.250
L321	34 718.160	3 492	683.590	R321	35 350.531	3 492	670.475
L322	34 576.913	3 492	694.170	R322	35 212.964	3 492	681.378
L323	34 538.470	3 492	697.050	R323	35 197.655	3 492	682.592
L324	34 379.970	3 492	706.980	R324	35 122.350	3 492	688.560
L325	34 374.897	3 492	707.388	R325	35 003.780	3 492	697.523
L326	34 367.640	3 492	707.972	R326	34 958.624	3 492	700.936
L327	34 200.270	3 492	721.440	R327	34 854.798	3 492	708.785
L328	34 071.410	3 492	732.490	R328	34 712.780	3 492	719.520
L329	34 049.990	3 492	734.327	R329	34 572.742	3 492	730.250
L330	33 954.600	3 492	742.507	R330	34 554.161	3 492	731.673
L331	33 779.966	3 492	757.483	R331	34 541.020	3 492	732.680
L332	33 590.050	3 492	773.770	R332	34 428.037	3 492	741.584
L333	33 555.564	3 492	776.544	R333	34 339.479	3 492	748.562
L334	33 553.174	3 492	776.736	R334	34 203.350	3 492	759.290
L335	33 223.270	3 492	803.270	R335	34 116.710	3 492	765.420
L336	33 218.814	3 492	803.589	R336	34 071.484	3 492	769.464
L337	33 200.940	3 492	804.870	R337	34 041.812	3 492	772.117
L338	33 125.531	3 492	810.261	R338	33 984.300	3 492	777.260
L339	33 017.150	3 492	818.010	R339	33 917.816	3 492	782.296
L340	32 830.550	3 492	831.350	R340	33 756.338	3 492	794.526
L341	32 779.580	3 492	832.500	R341	33 607.778	3 492	805.779
L342	32 717.180	3 492	833.960	R342	33 537.420	3 492	811.110
L343	32 709.570	3 492	834.140	R343	33 482.730	3 492	815.250
L344	32 705.580	3 492	833.960	R344	33 411.625	3 492	820.724
L345	32 649.940	3 492	831.410	R345	33 224.880	3 492	835.100
L346	32 595.250	3 492	828.900	R346	33 217.671	3 492	835.656
L347	32 505.020	3 492	824.760	R347	33 204.106	3 492	836.702
L348	32 469.980	3 492	822.600	R348	33 128.743	3 492	842.515
L349	32 379.860	3 492	812.590	R349	33 021.450	3 492	850.790
L350	32 311.540	3 492	805.510	R350	32 932.380	3 492	857.660
L351	32 288.210	3 492	803.090	R351	32 870.020	3 492	862.470
L352	32 266.280	3 492	800.970	R352	32 714.920	3 492	867.920
L353	32 133.340	3 492	788.120	R353	32 710.790	3 492	868.070
L354	32 088.980	3 492	784.070	R354	32 704.370	3 492	867.740
L355	31 982.840	3 492	774.170	R355	32 650.220	3 492	864.960
L356	31 731.770	3 492	750.850	R356	32 596.550	3 492	862.200

Vel	17	Van	19	P671/08
Sheet		of		

PADRESERWE KOÖRDINATE / ROAD RESERVE CO-ORDINATES						
LINKERKANT/LEFT HAND SIDE				REGTERKANT/RIGHT HAND SIDE		
	Y	X	WG 29°		Y	X
L357	31 711.680	3 492 748.940		R357	32 570.220	3 492 860.850
L358	31 508.770	3 492 731.820		R358	32 374.550	3 492 847.120
L359	31 490.970	3 492 730.690		R359	32 360.470	3 492 845.610
L360	31 443.870	3 492 732.030		R360	32 354.560	3 492 844.980
L361	31 343.040	3 492 734.900		R361	32 271.660	3 492 836.090
L362	31 295.530	3 492 736.250		R362	32 211.300	3 492 828.500
L363	31 255.440	3 492 737.400		R363	32 167.930	3 492 826.190
L364	31 249.300	3 492 737.570		R364	32 144.440	3 492 824.940
L365	31 189.140	3 492 742.230		R365	31 914.682	3 492 800.430
L366	31 185.590	3 492 742.510		R366	31 753.630	3 492 783.250
L367	31 128.780	3 492 750.570		R367	31 532.140	3 492 768.280
L368	31 010.850	3 492 773.080		R368	31 463.360	3 492 763.740
L369	30 796.250	3 492 817.830		R369	31 360.890	3 492 768.830
L370	30 669.730	3 492 846.890		R370	31 312.470	3 492 771.200
L371	30 559.520	3 492 870.940		R371	31 271.560	3 492 773.200
L372	30 342.880	3 492 918.220		R372	31 201.810	3 492 776.620
L373	30 149.080	3 492 963.710		R373	31 190.520	3 492 777.170
L374	30 110.100	3 492 972.260		R374	31 133.700	3 492 785.230
L375	29 822.310	3 493 055.930		R375	31 031.890	3 492 805.160
L376	29 662.470	3 493 103.600		R376	30 820.930	3 492 847.850
L377	29 529.970	3 493 143.310		R377	30 694.060	3 492 877.270
L378	29 249.440	3 493 227.460		R378	30 574.690	3 492 903.220
L379	29 134.460	3 493 261.470		R379	30 254.820	3 492 972.740
L380	29 056.520	3 493 284.520		R380	30 129.910	3 493 007.560
L381	28 863.500	3 493 341.120		R381	29 897.460	3 493 070.240
L382	28 743.160	3 493 375.730		R382	29 731.500	3 493 119.640
L383	28 441.250	3 493 462.910		R383	29 587.910	3 493 163.610
L384	28 272.500	3 493 508.790		R384	29 410.780	3 493 215.380
L385	28 113.950	3 493 556.720		R385	29 255.720	3 493 257.940
L386	27 938.430	3 493 621.880		R386	29 142.450	3 493 295.520
L387	27 859.680	3 493 666.560		R387	29 064.280	3 493 321.460
L388	27 811.400	3 493 695.470		R388	28 619.120	3 493 443.150
L389	27 726.610	3 493 752.540		R389	28 299.150	3 493 544.220
L390	27 677.100	3 493 794.240		R390	28 252.290	3 493 553.600
L391	27 574.910	3 493 893.470		R391	28 128.310	3 493 588.720
L392	27 454.690	3 493 983.600		R392	27 907.480	3 493 682.720
L393	27 300.810	3 494 064.270		R393	27 781.880	3 493 763.630
L394	27 208.370	3 494 102.000		R394	27 695.310	3 493 829.970
L395	27 130.380	3 494 120.920		R395	27 604.560	3 493 908.970
L396	27 025.060	3 494 146.460		R396	27 473.890	3 494 013.050
L397	26 936.980	3 494 167.830		R397	27 315.580	3 494 096.040
L398	26 880.140	3 494 189.150		R398	27 219.170	3 494 135.400
L399	26 711.630	3 494 232.990		R399	27 139.360	3 494 154.760
L400	26 579.910	3 494 257.240		R400	27 034.340	3 494 180.230
L401	26 572.630	3 494 265.500		R401	26 945.230	3 494 201.840
L402	26 421.390	3 494 304.120		R402	26 845.050	3 494 229.750
L403	26 312.750	3 494 331.870		R403	26 709.260	3 494 266.650
L404	26 000.680	3 494 411.850		R404	26 319.950	3 494 362.240
L405	25 858.760	3 494 447.400		R405	26 233.700	3 494 385.430
L406	25 745.330	3 494 473.500		R406	26 009.260	3 494 445.780
L407	25 736.520	3 494 476.790		R407	25 866.910	3 494 481.410

Vel	18	Van	19	P671/08
Sheet		of		

## PADRESERWE KOÖRDINATE / ROAD RESERVE CO-ORDINATES

LINKERKANT/LEFT HAND SIDE				REGTERKANT/RIGHT HAND SIDE			
	Y	X	WG 29°		Y	X	
L408	25 599.270	3 494 508.530		R408	25 753.130	3 494 507.640	
L409	25 471.420	3 494 538.100		R409	25 593.740	3 494 545.210	
L410	25 179.590	3 494 546.540		R410	25 483.280	3 494 571.260	
L411	25 166.650	3 494 546.420		R411	25 479.320	3 494 572.250	
L412	24 605.550	3 494 541.180		R412	25 180.760	3 494 586.500	
L413	24 032.250	3 494 535.820		R413	24 583.580	3 494 580.960	
L414	23 744.760	3 494 530.870		R414	24 031.760	3 494 575.810	
L415	23 718.220	3 494 529.070		R415	23 744.110	3 494 570.860	
L416	23 653.470	3 494 533.740		R416	23 661.540	3 494 575.370	
L417	23 603.800	3 494 545.660		R417	23 600.840	3 494 589.230	
L418	23 565.490	3 494 559.350		R418	23 510.430	3 494 637.870	
L419	23 489.240	3 494 601.250		R419	23 490.800	3 494 641.690	
L420	23 465.440	3 494 619.100		R420	23 462.010	3 494 674.140	
L421	23 381.890	3 494 713.150		R421	23 445.420	3 494 689.470	
L422	23 316.040	3 494 826.640		R422	23 430.480	3 494 709.890	
L423	23 277.510	3 494 893.540		R423	23 407.280	3 494 735.640	
L424	23 255.820	3 494 926.590		R424	23 345.490	3 494 843.640	
L425	23 219.630	3 494 968.410		R425	23 306.920	3 494 910.550	
L426	23 190.610	3 494 994.080		R426	23 281.510	3 494 948.850	
L427	23 173.990	3 495 005.570		R427	23 245.330	3 494 990.680	
L428	23 148.170	3 495 023.400		R428	23 223.120	3 495 010.380	
L429	23 113.530	3 495 041.400		R429	23 209.930	3 495 022.070	
L430	23 055.660	3 495 062.000		R430	23 167.500	3 495 051.370	
L431	22 926.120	3 495 094.130		R431	23 124.940	3 495 073.430	
L432	22 719.380	3 495 145.550		R432	23 067.070	3 495 094.030	
L433	22 617.620	3 495 170.860		R433	22 934.240	3 495 127.140	
				R434	22 732.240	3 495 177.380	
				R435	22 630.550	3 495 202.670	

Vel	19	Van	19	P671/08
Sheet		of		