

Government Gazette Staatskoerant

REPUBLIC OF SOUTH AFRICA
REPUBLIEK VAN SUID-AFRIKA

Vol. 525

Pretoria, 25 March
Maart 2009

No. 32024

CONTENTS**INHOUD**

<i>No.</i>	<i>Page No.</i>	<i>Gazette No.</i>	<i>No.</i>	<i>Bladsy No.</i>	<i>Koerant No.</i>
GOVERNMENT NOTICE			GOEWERMENTSKENNISGEWING		
Transport, Department of			Vervoer, Departement van		
<i>Government Notice</i>			<i>Goewermentskennisgewing</i>		
304			304		
South African National Roads Agency Limited and the National Roads Act (7/1998): The South African National Roads Agency Limited: Declaration amendment of National Road N12 Section 10: Amendment of Declaration No. 631 of 2005			Suid-Afrikaanse Nasionale Padagentskap Beperk en die Nasionale Paaie Wet (7/1998): Die Suid-Afrikaanse Nasionale Padagentskap Beperk: Verklaring wysiging van Nasionale Pad N12 Seksie 10: Wysiging van Verklaring No. 631 van 2005		
	3	32024		4	32024

GOVERNMENT NOTICE

DEPARTMENT OF TRANSPORT

No. 304

25 March 2009

THE SOUTH AFRICAN NATIONAL ROADS AGENCY LIMITED


Registration No: 98/09584/06

DECLARATION AMENDMENT OF NATIONAL ROAD N12 SECTION 10

AMENDMENT OF DECLARATION No. 631OF 2005

By virtue of section 40 (1)(b) of the South African National Roads Agency Limited and the National Roads Act, 1998 (Act No. 7 of 1998), I hereby amend Declaration No. 631 of 2005, by substituting the descriptive section of the route from Kimberly up to the Northern Cape/North West Provincial Border, with the subjoined sheets 1 to 18 of Plan P611/07.

(National Road N12 Section 10: Kimberly – Northern Cape/North West Provincial Border)



MINISTER OF TRANSPORT

GOEWERMENTSKENNISGEWING

DEPARTEMENT VAN VERVOER

No. 304

25 Maart 2009

DIE SUID-AFRIKAANSE NASIONALE PADAGENTSKAP BEPERK

Registrasie No: 98/09584/06

VERKLARING WYSIGING VAN NASIONALE PAD N12 SEKSIE 10.

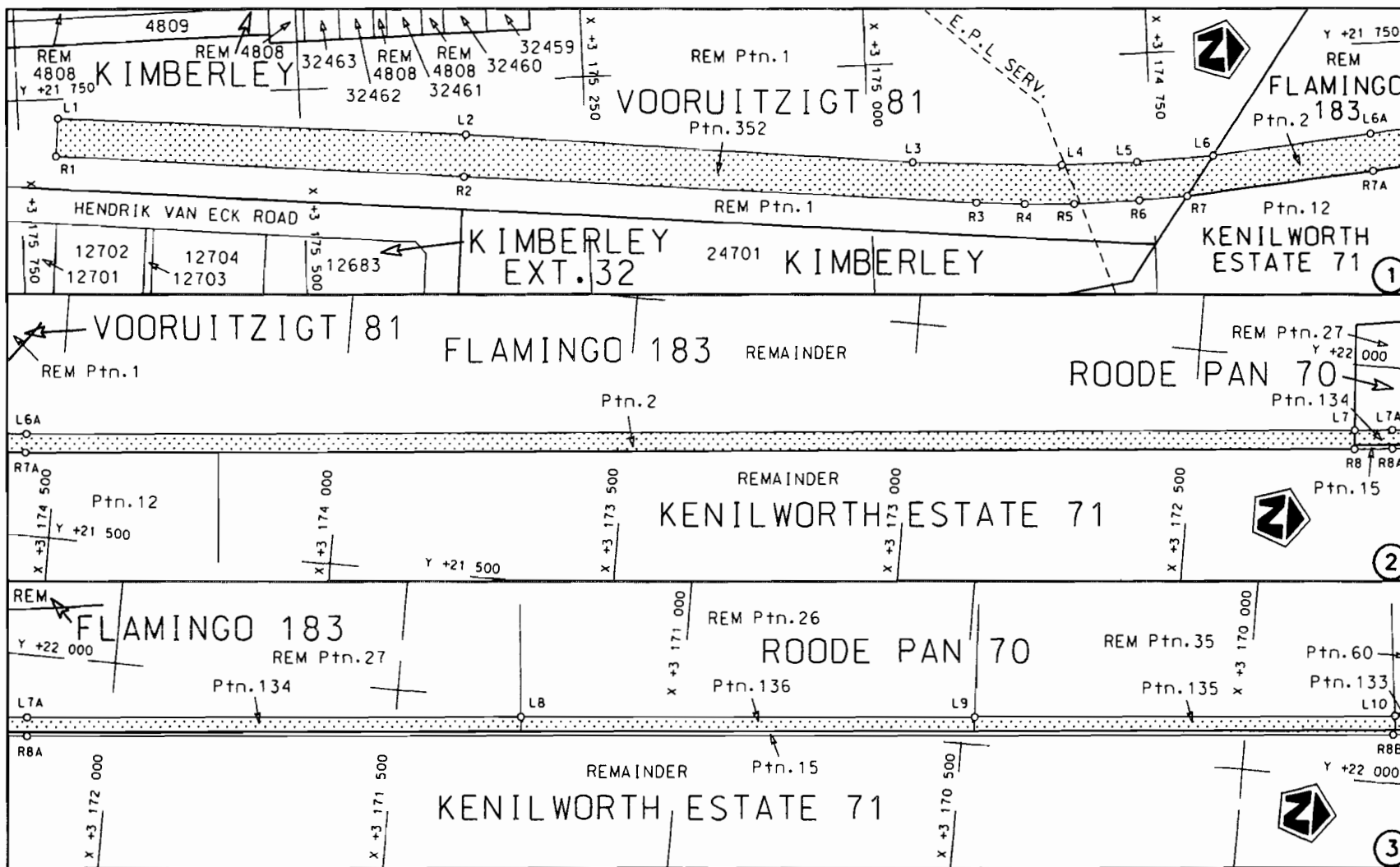
WYSIGING VAN VERKLARING NO. 631 VAN 2005


Kragtens Artikel 40(1)(b) van die Suid Afrikaanse Nasionale Padagentskap Beperk en die Nasionale Paaie Wet, 1998 (Wet No.7 van 1998), wysig ek hiermee Verklaring No.631 van 2005, deur die beskrywende gedeelte van die roete vanaf Kimberly tot by die Noord Kaap/Noord Wes Provinsiale Grens te vervang met meegaande velle 1 tot 18 van Plan No. P611/07.

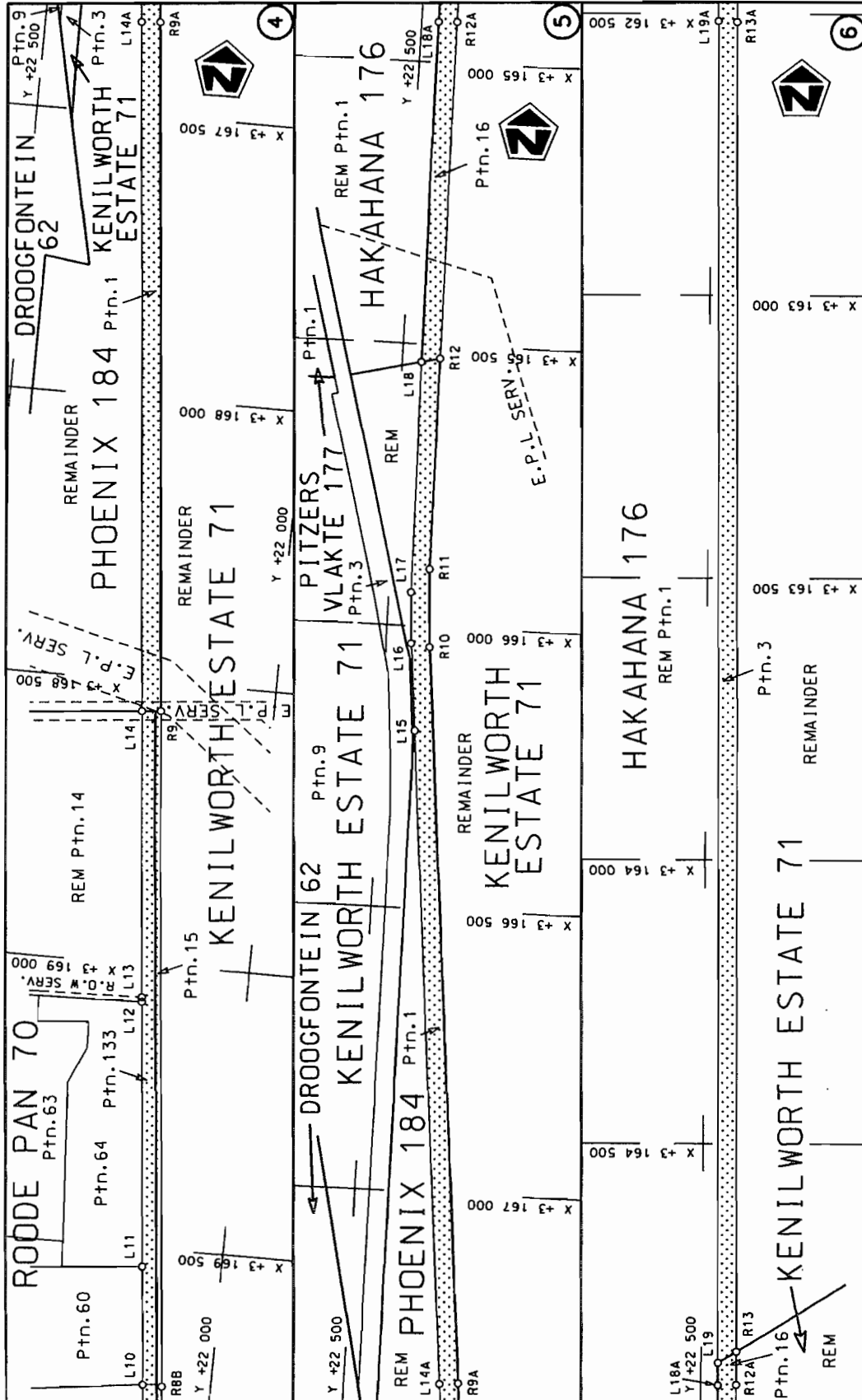
(Nasionale Pad N12 Seksie 10: Kimberly – Noord Kaap/Noord Wes Provinsiale Grens)



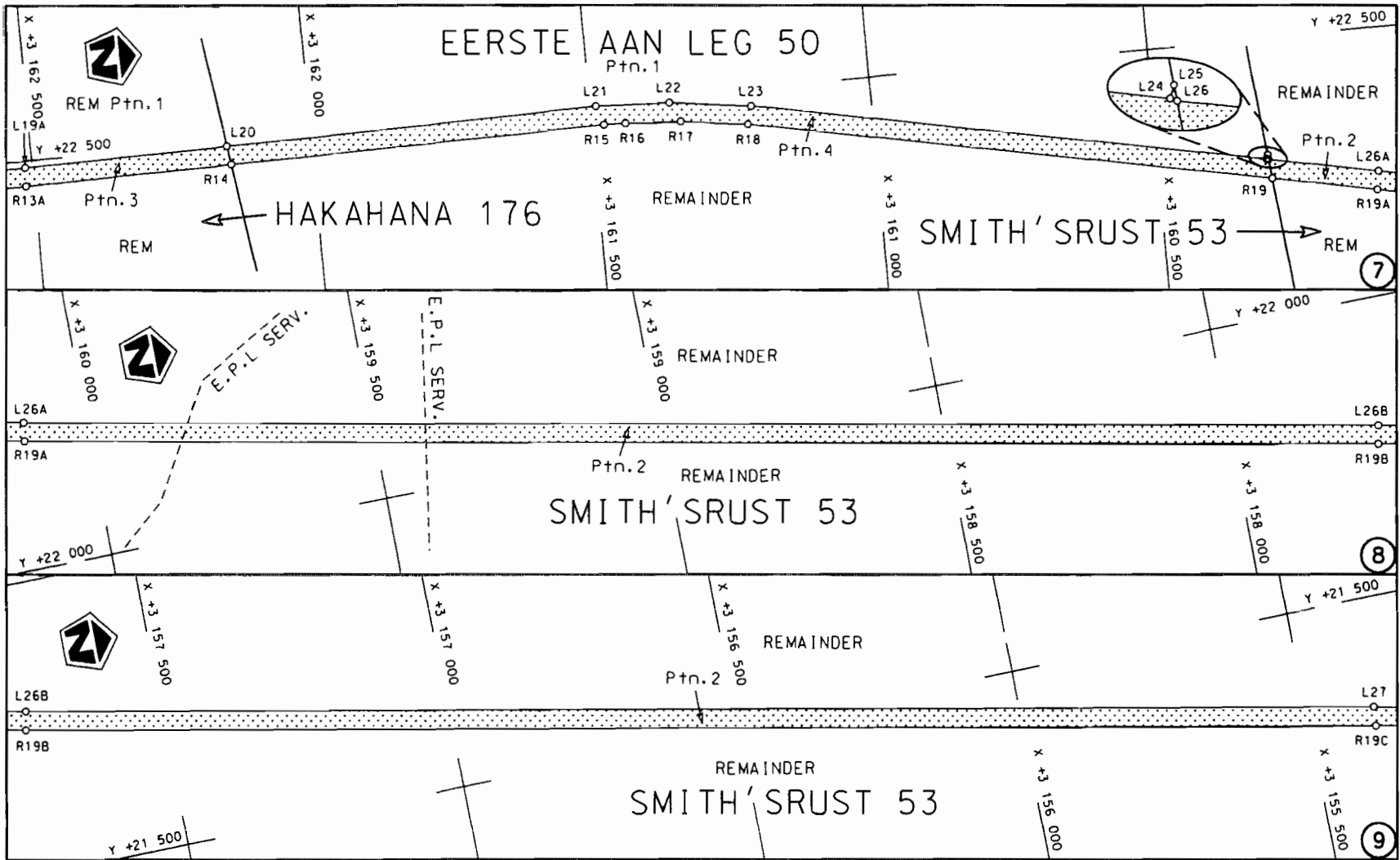
MINISTER VAN VERVOER

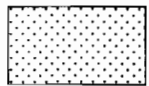


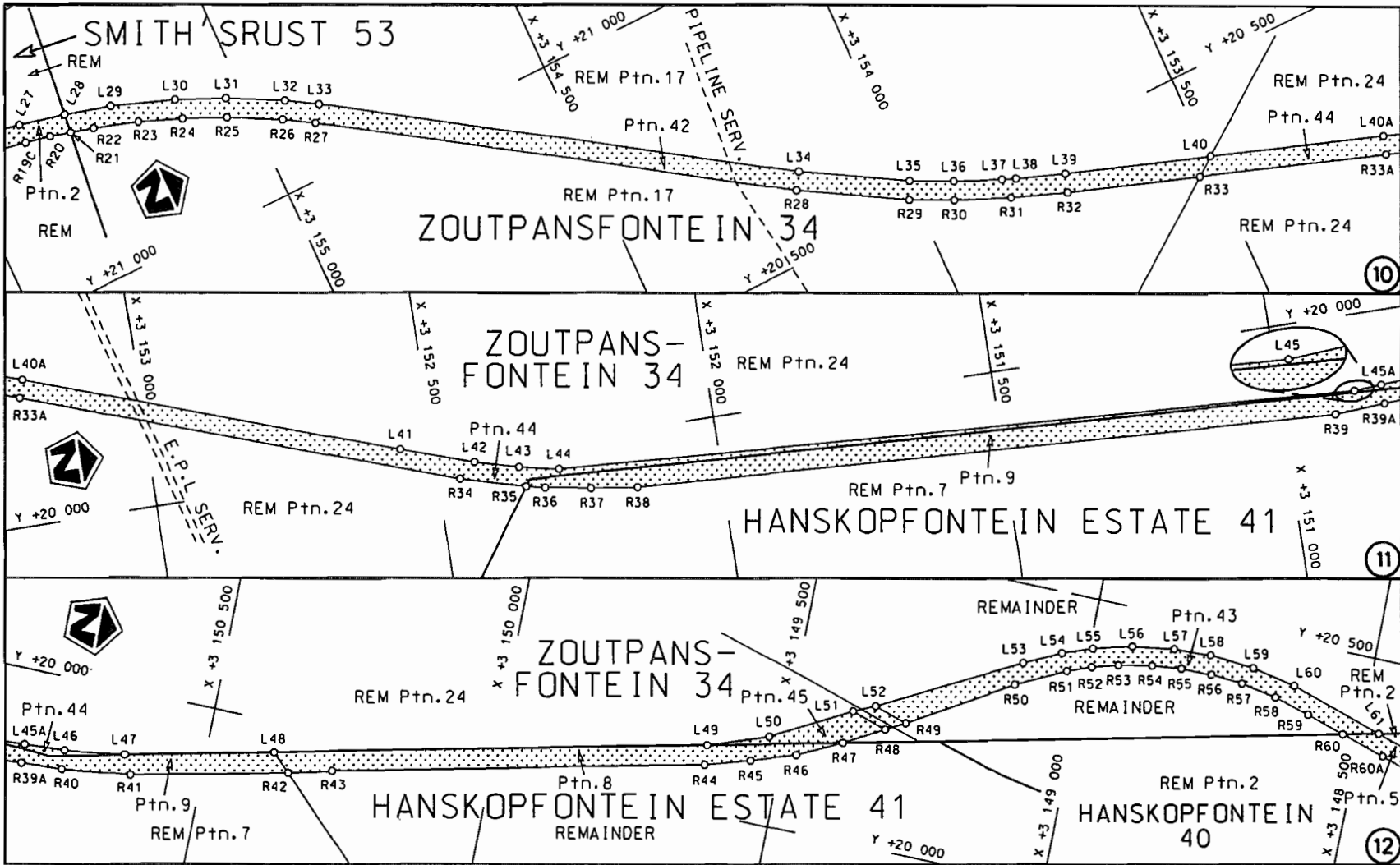
<p>Die Suid Afrikaanse Nasionale Padagentskap Beperk The South African National Roads Agency Limited</p>	<p>Die figuur getoon The figure shown</p>		<p>steldie podreserve voor van 'n gedeelte represents the rood reserve of a portion van Nasionale Raete N12 Seksie Section of National Route 10</p>	<p>Vel Sheet 1 van of 18 Plan P611/07</p>
--	---	--	---	---



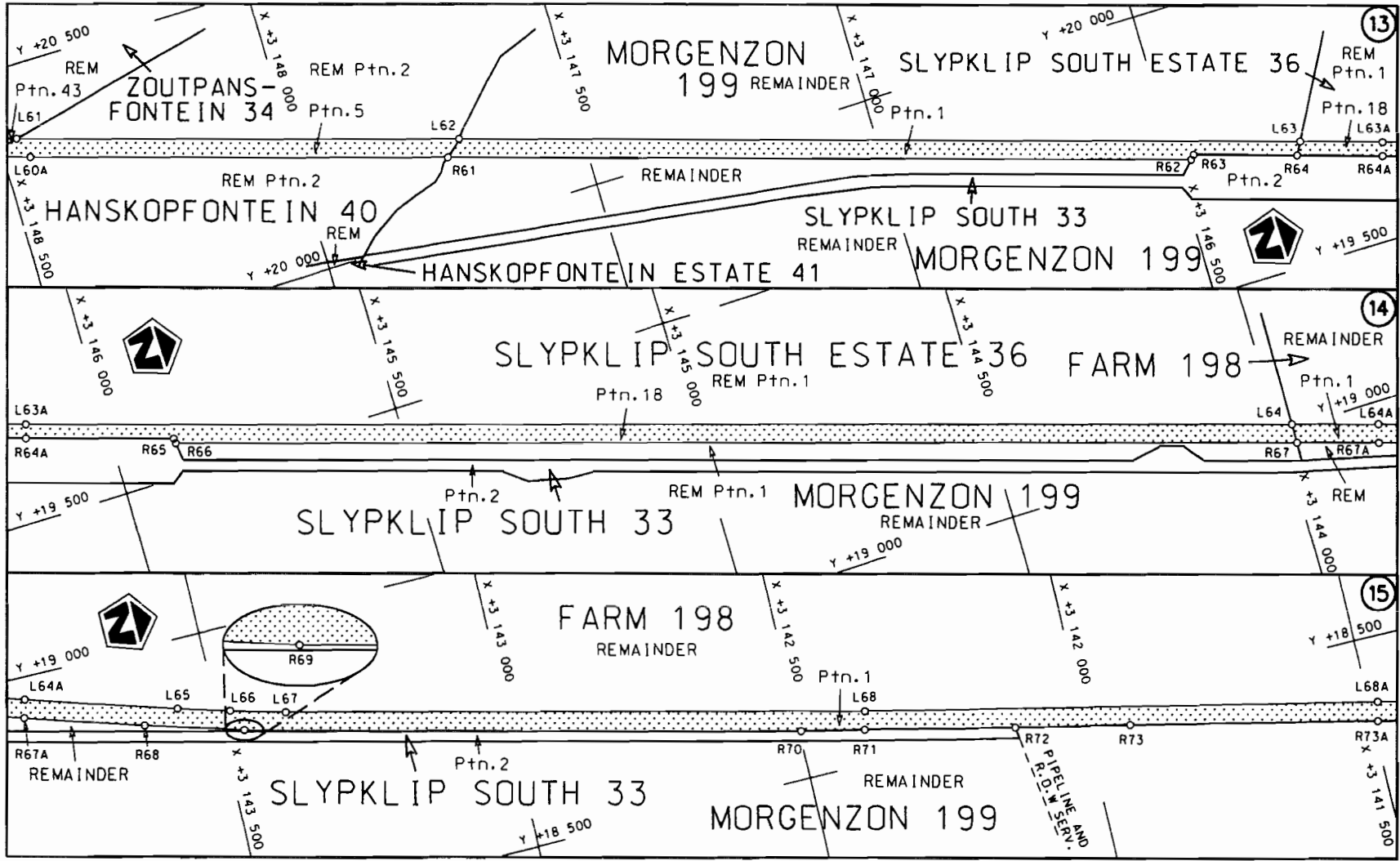
<p>Die Suid Afrikaanse Nasionale Padagentskop Beperk The South African National Roads Agency Limited</p>	<p>Die figuur getoon The figure shown</p>		<p>steldie podreserwe voor van 'n gedeelte represents the road reserve of a portion van Nasionale Roete N12 of National Route</p>	<p>Vel Sheet 2 of 18 Plan P611/07</p>
--	---	--	---	---



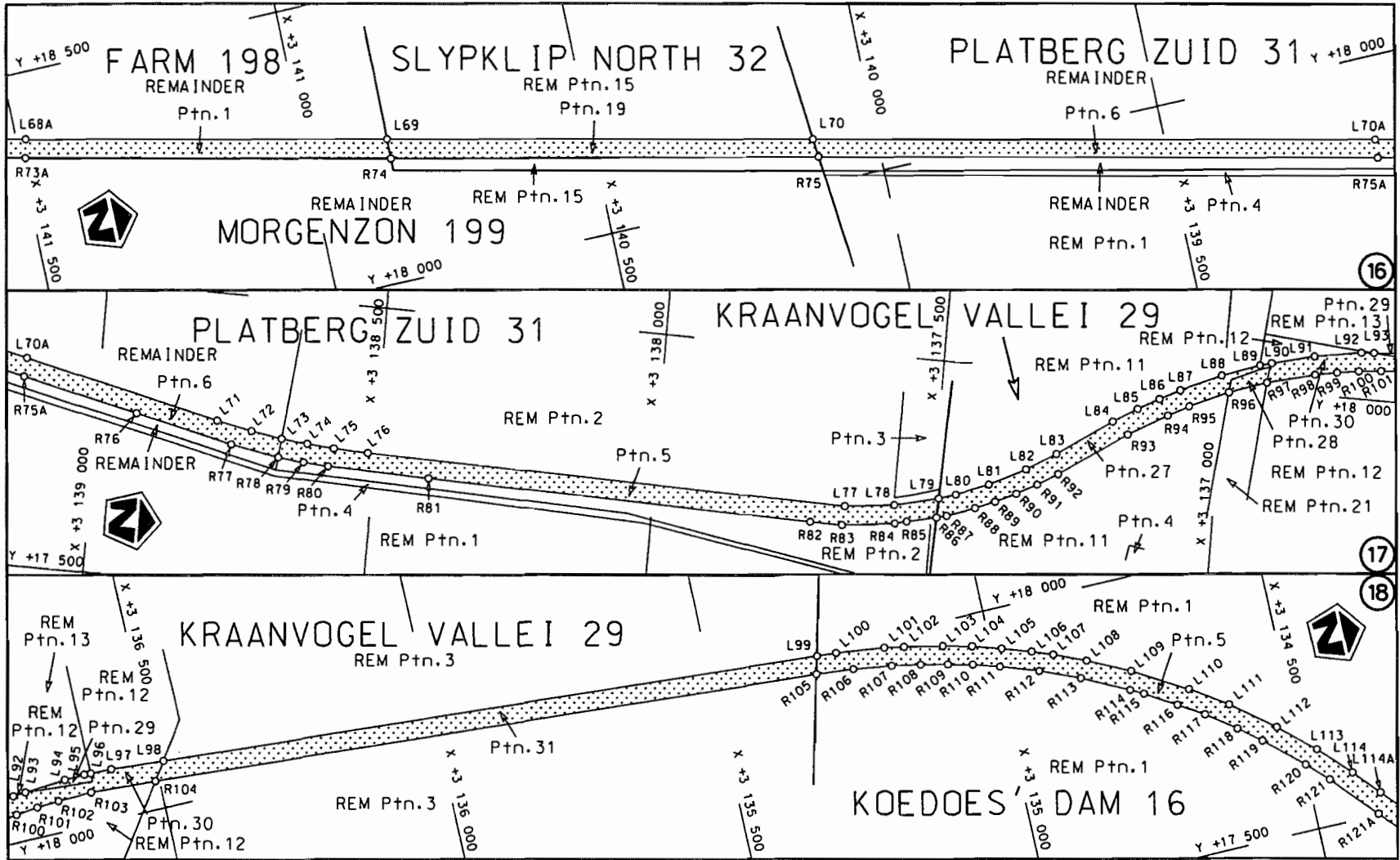
<p>Die Suid Afrikaanse Nasionale Padagentskap Beperk The South African National Roads Agency Limited</p>	<p>Die figuur getoon The figure shown</p>		<p>steldie padreserwe voor van 'n gedeelte represents the road reserve of a portion van Nasionale Roete of National Route N12</p>	<p>10</p>	<p>Vel Sheet 3 van of 18</p>	<p>Plan P611/07</p>
--	---	--	---	-----------	------------------------------	---------------------




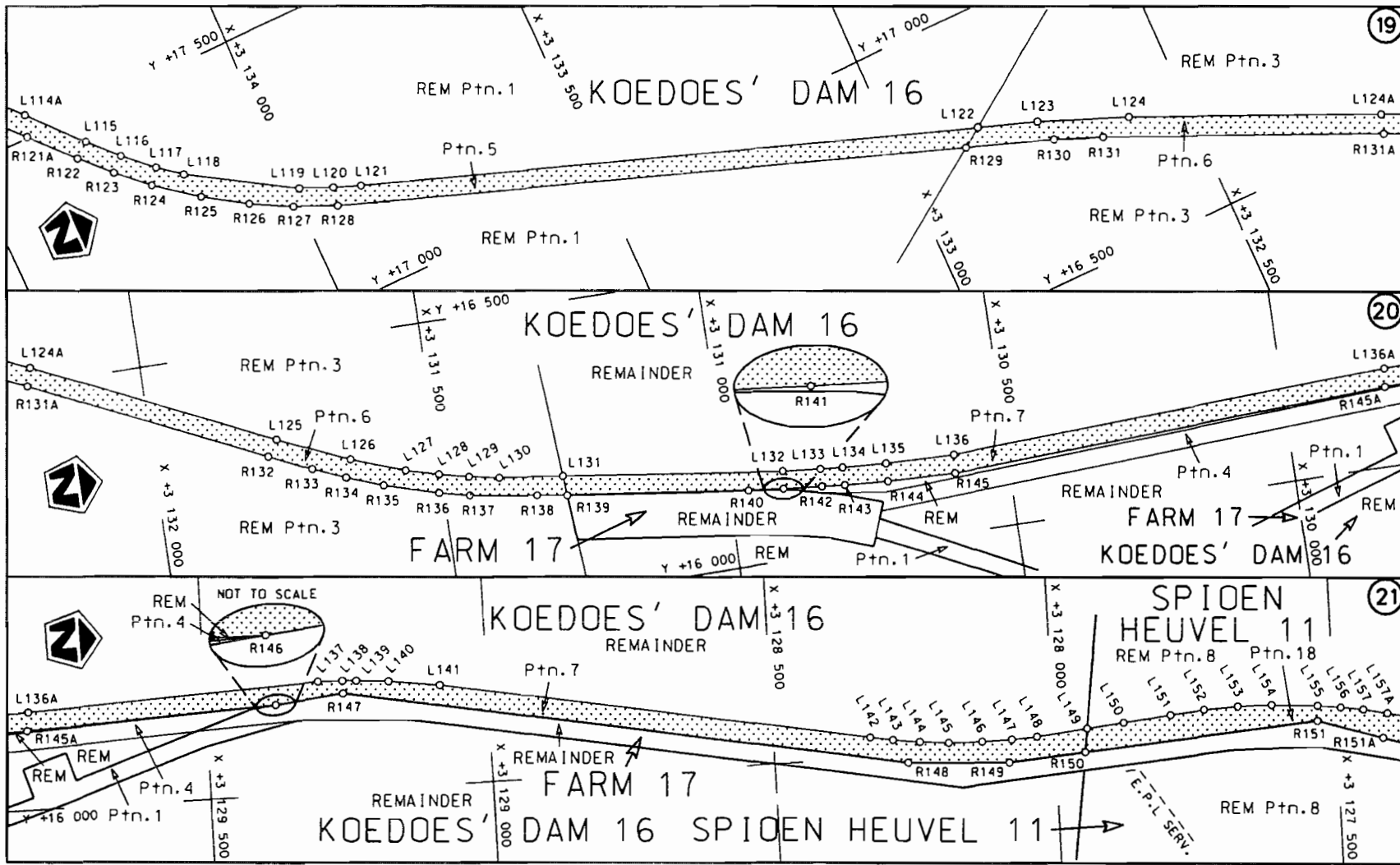
<p>Die Suid Afrikaanse Nasionale Padogentskap Beperk The South African National Roads Agency Limited</p>	<p>Die figuur getoon The figure shown</p>		<p>stel die padreserwe voor van 'n gedeelte represents the road reserve of a portion van Nasionale Roete N12 Seksie of National Route Section</p>	<p>10</p>	<p>Vel Sheet 4 van 18 Plan P611/07</p>
--	---	--	---	-----------	--



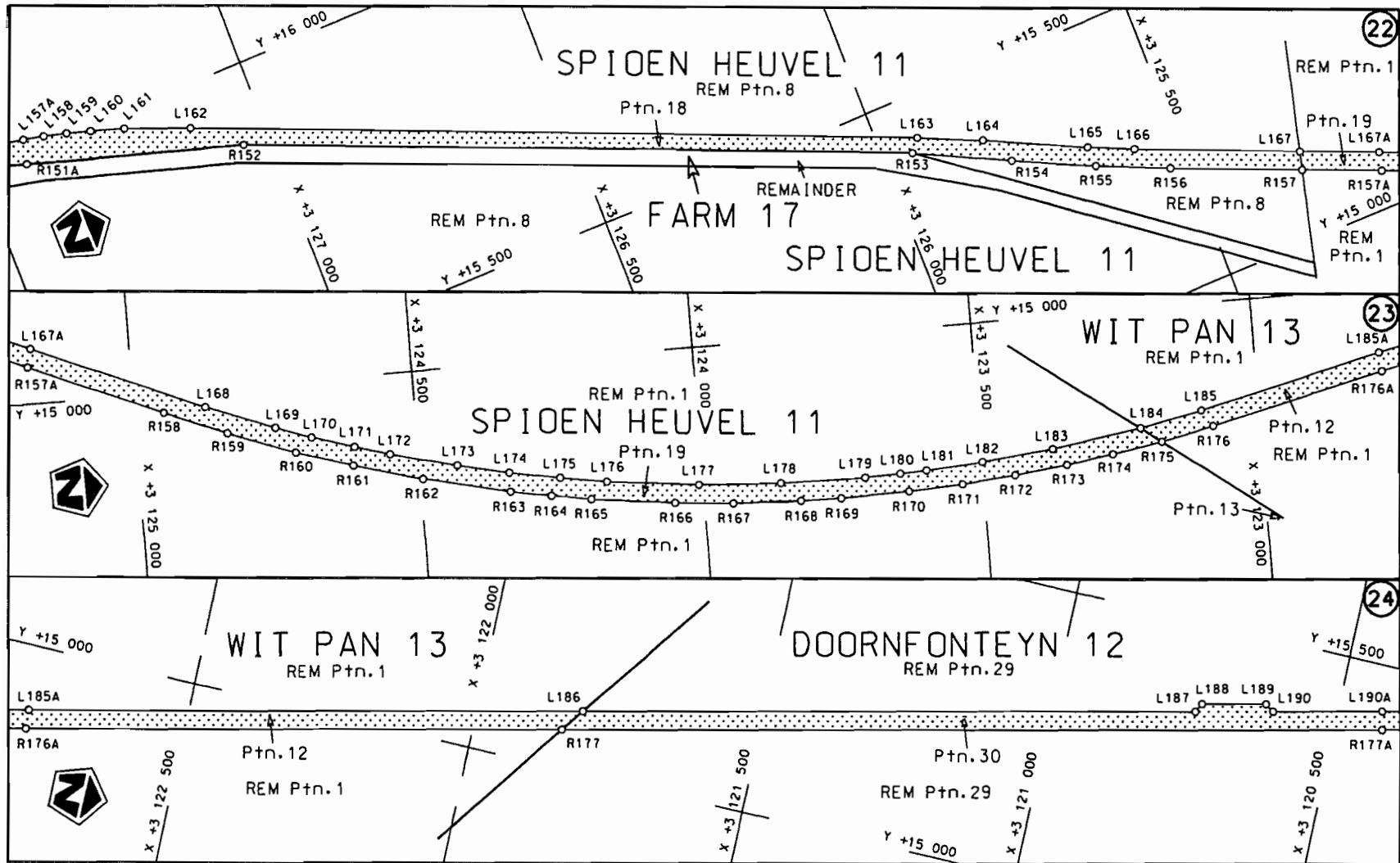
<p>Die Suid Afrikaanse Nasionale Padagentskap Beperk The South African National Roads Agency Limited</p>	<p>Die figuur getoon The figure shown</p>		<p>st die padreserwe voor van 'n gedeelte represents the road reserve of a portion van Nasionale Roete of National Route N12</p>	<p>Seksie Section 10</p>	<p>Vel Sheet 5 van of 18</p>
					<p>Plan P611/07</p>



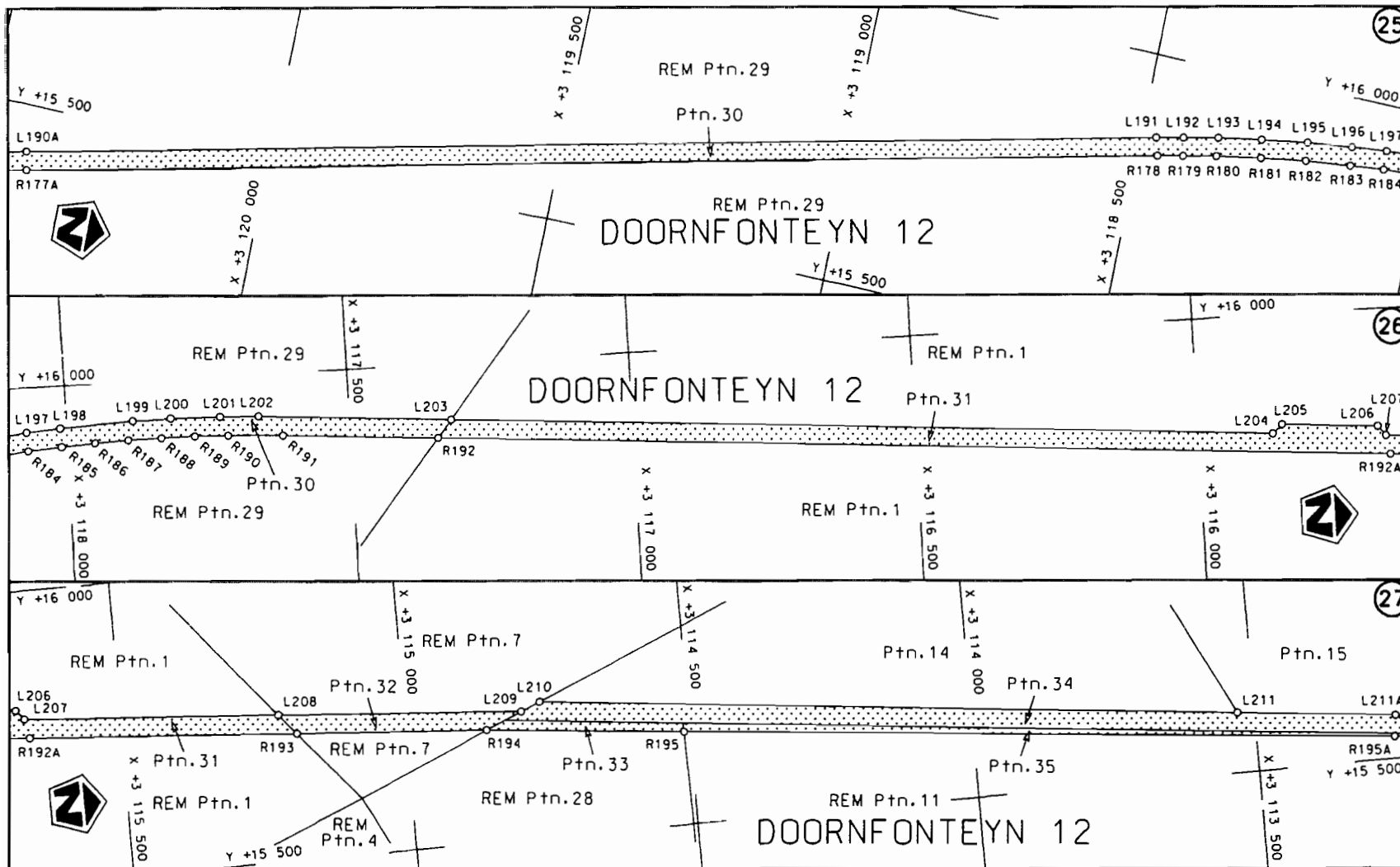
<p>Die Suid Afrikaanse Nasionale Padagentskap Beperk The South African National Roads Agency Limited</p>	<p>Die figuur getoon The figure shown</p> 	<p>stel die padreserwe voor van 'n gedeelte represents the road reserve of a portion van Nasionale Roete N12 Seksie Section of National Route 10</p>	<p>Vel Sheet 6 van of 18 Plan P611/07</p>
--	--	--	---




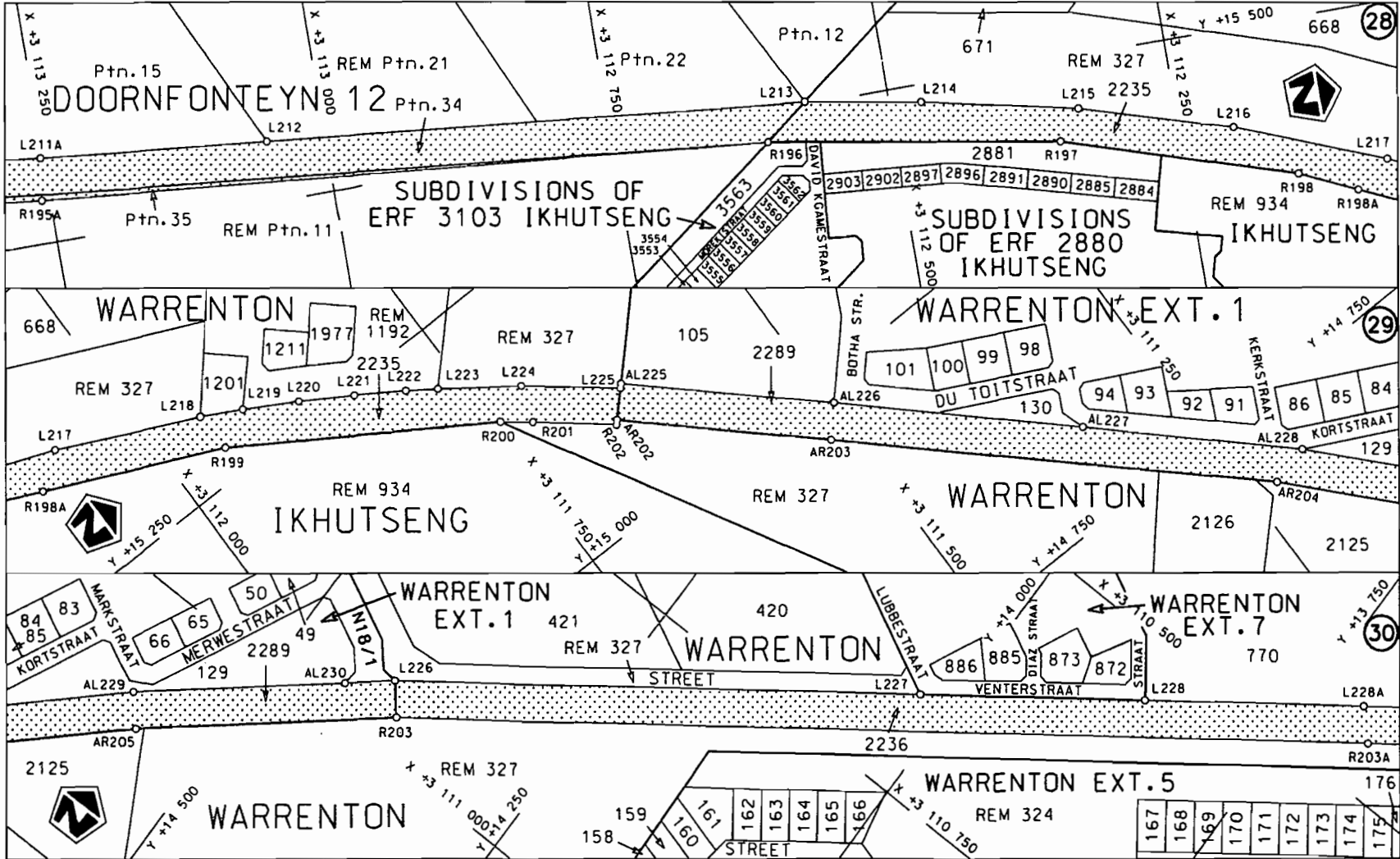
<p>Die Suid Afrikaanse Nasionale Padogentskop Beperk The South African National Roads Agency Limited</p>	<p>Die figuur getoon The figure shown</p>		<p>stel die padreserwe voor van 'n gedeelte represents the road reserve of a portion von Nasionale Roete N12 Sektie of National Route Section 10</p>	<p>Vel Sheet 7 van of 18</p>
				<p>Plan P611/07</p>




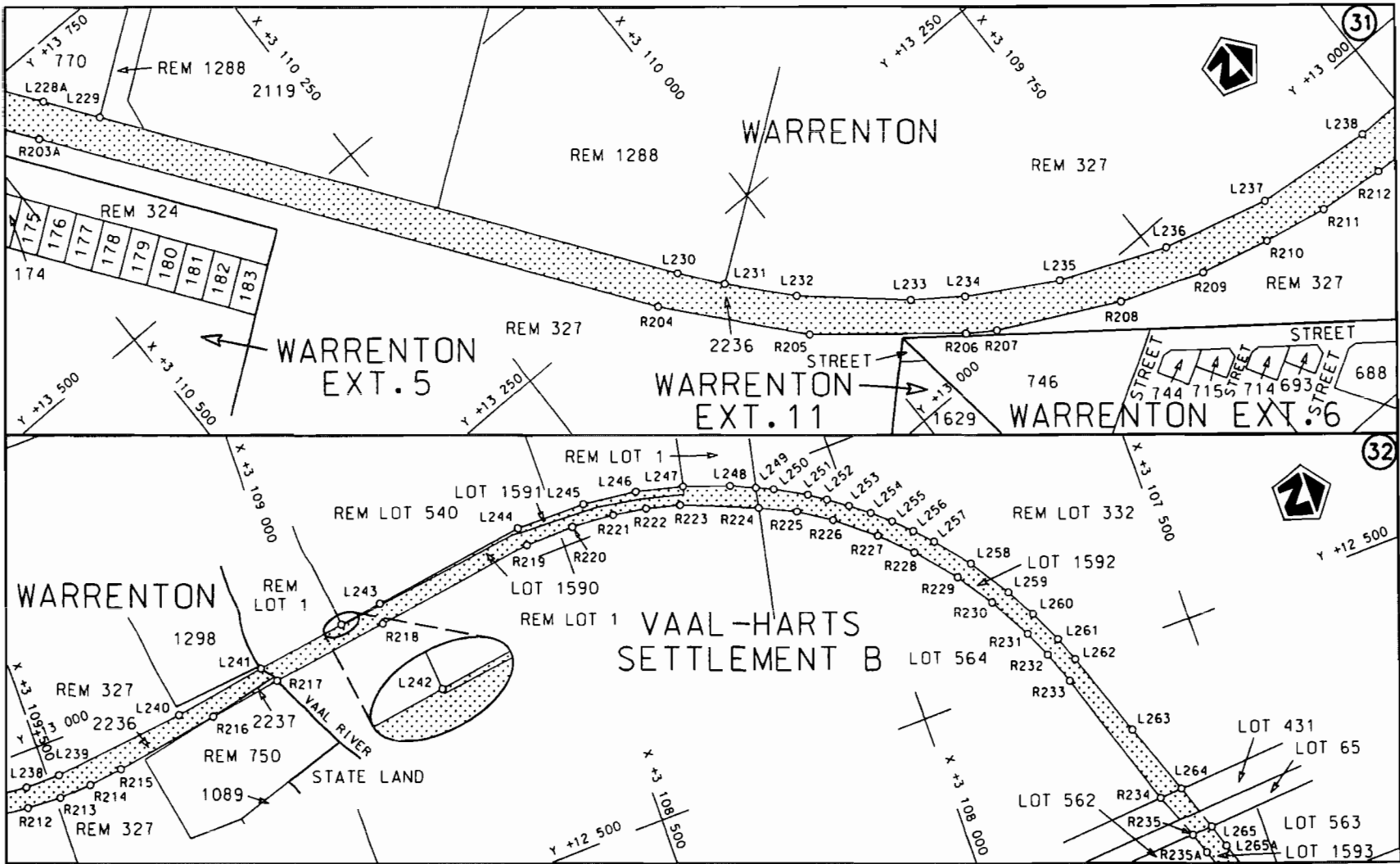
Die Suid Afrikaanse Nasionale Padagentskap Beperk	Die figuur getoon	steldie padreserwe voor van 'n gedeelte	Vel Sheet 8 van of 18
The South African National Roads Agency Limited	The figure shown	represents the road reserve of a portion von Nasionale Roete N12	Plan P611/07
		Seksie Section 10	

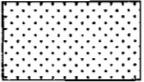


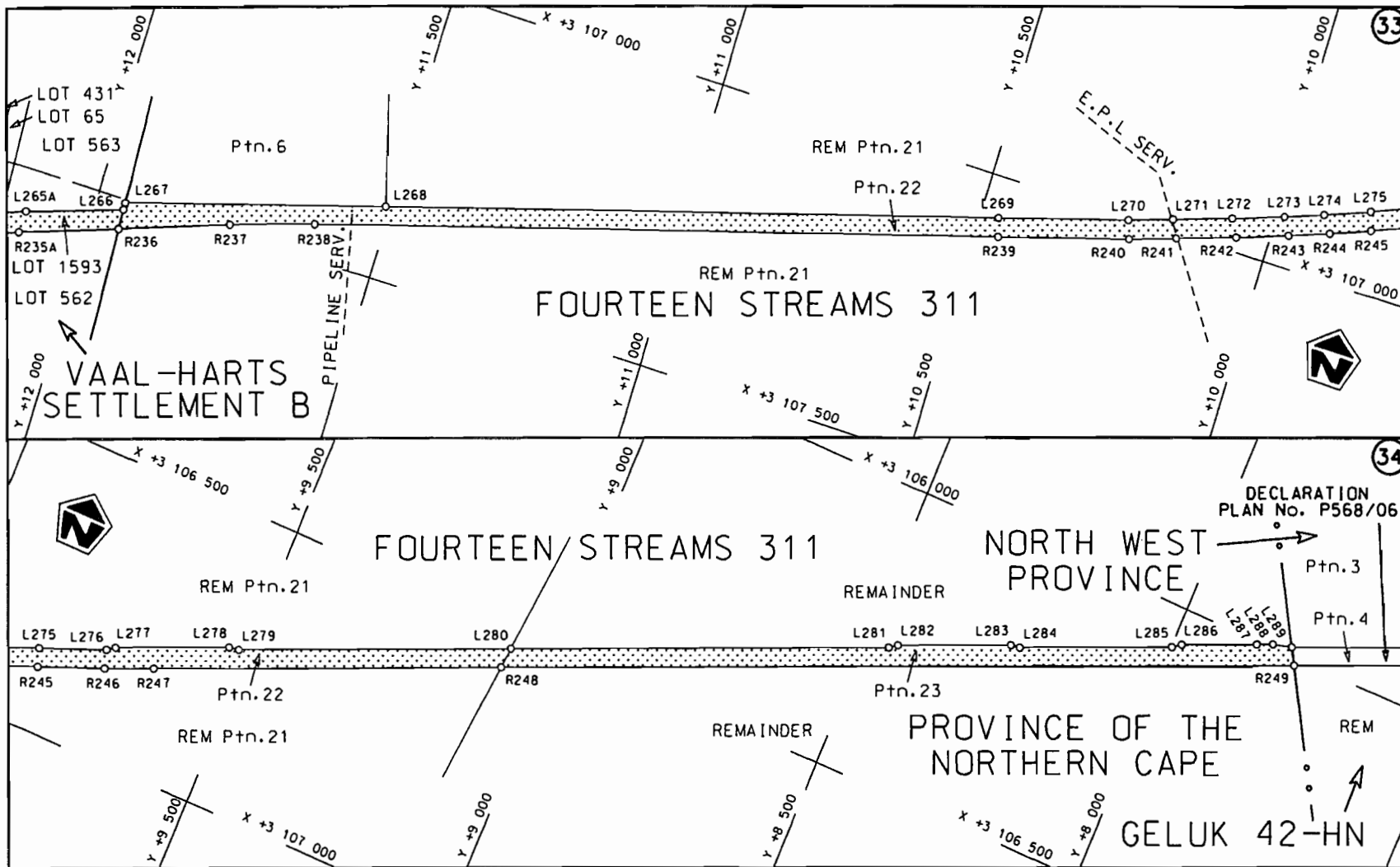
<p>Die Suid Afrikaanse Nasionale Podagentskap Beperk The South African National Roads Agency Limited</p>	<p>Die figuur getoon The figure shown</p>		<p>steldie podreserwe voor van 'n gedeelte represents the road reserve of a portion van Nasionale Roete N12 Seksie of National Route 10 Section</p>	<p>Vel Sheet 9 van of 18 Plan P611/07</p>
--	---	--	---	---

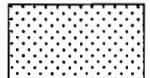


<p>Die Suid Afrikaanse Nasionale Padagentskap Beperk The South African National Roads Agency Limited</p>	<p>Die figuur getoon The figure shown</p>		<p>steldie padreserwe voor van 'n gedeelte represents the road reserve of a portion van Nasionale Roete N12 Seksie 10 of National Route Section</p>	<p>Vel Sheet 10 of 18 Plan P611/07</p>
--	---	--	---	--



<p>Die Suid Afrikaanse Nasionale Padagentskap Beperk The South African National Roads Agency Limited</p>	<p>Die figuur getoon The figure shown</p> 	<p>steldie padreserve voor van 'n gedeelte represents the road reserve of a portion van Nasionale Roete N12 Seksie 10 of National Route N12 Section 10</p>	<p>Vel Sheet 11 van of 18 Plan P611/07</p>
--	--	--	--



<p>Die Suid Afrikaanse Nasionale Padagentskap Beperk The South African National Roads Agency Limited</p>	<p>Die figuur getoon The figure shown</p>		<p>steldie padreserwe voor van 'n gedeelte represents the road reserve of a portion van Nasionale Roete of National Route N12 Seksie Section 10</p>	<p>Vel Sheet 12 van of 18</p>
				<p>Plan P611/07</p>

PADRESERWE KOÖRDINATE				/ ROAD RESERVE CO-ORDINATES			
LINKERKANT/LEFT HAND SIDE				REGTERKANT/RIGHT HAND SIDE			
	Y	X	WG 25°		Y	X	
L1	+21 733,280	+3 175 714,870		R1	+21 701,380	+3 175 717,750	
L2	+21 704,990	+3 175 355,510		R2	+21 669,160	+3 175 358,690	
L3	+21 665,070	+3 174 961,270		R3	+21 628,090	+3 174 906,090	
L4	+21 657,360	+3 174 830,040		R4	+21 625,230	+3 174 863,910	
L5	+21 657,310	+3 174 763,290		R5	+21 623,320	+3 174 820,460	
L6	+21 660,140	+3 174 694,780		R6	+21 624,090	+3 174 762,480	
L7	+21 887,570	+3 172 214,340		R7	+21 626,140	+3 174 719,740	
L8	+21 973,720	+3 171 280,500		R8	+21 855,540	+3 172 212,050	
L9	+22 047,290	+3 170 479,900		R9	+22 192,200	+3 168 550,610	
L10	+22 115,630	+3 169 739,270		R10	+22 424,750	+3 166 035,990	
L11	+22 134,730	+3 169 533,400		R11	+22 432,630	+3 165 897,400	
L12	+22 177,250	+3 169 066,180		R12	+22 435,470	+3 165 523,810	
L13	+22 178,000	+3 169 058,200		R13	+22 439,720	+3 164 868,700	
L14	+22 224,670	+3 168 553,530		R14	+22 459,120	+3 162 144,810	
L15	+22 442,370	+3 166 185,860		R15	+22 463,510	+3 161 478,130	
L16	+22 456,370	+3 166 030,930		R16	+22 462,550	+3 161 439,710	
L17	+22 461,910	+3 165 940,100		R17	+22 456,180	+3 161 341,830	
L18	+22 466,850	+3 165 531,510		R18	+22 440,540	+3 161 223,370	
L19	+22 471,210	+3 164 888,620		R19	+22 257,350	+3 160 298,390	
L20	+22 491,210	+3 162 149,640		R20	+21 271,610	+3 155 339,550	
L21	+22 496,000	+3 161 489,810		R21	+21 261,830	+3 155 303,270	
L22	+22 489,620	+3 161 359,260		R22	+21 250,990	+3 155 263,000	
L23	+22 470,800	+3 161 214,770		R23	+21 226,600	+3 155 187,740	
L24	+22 292,060	+3 160 305,530		R24	-21 197,500	+3 155 114,250	
L25	+22 298,520	+3 160 302,790		R25	-21 165,380	+3 155 042,120	
L26	+22 290,530	+3 160 301,940		R26	-21 119,310	+3 154 954,190	
L27	+21 312,790	+3 155 380,480		R27	+21 089,280	+3 154 903,720	
L28	+21 294,080	+3 155 299,870		R28	+20 617,230	+3 154 184,660	
L29	+21 270,880	+3 155 219,730		R29	+20 516,770	+3 154 009,930	
L30	+21 231,720	+3 155 112,340		R30	+20 481,640	+3 153 937,570	
L31	+21 195,080	+3 155 029,900		R31	+20 441,730	+3 153 844,890	
L32	+21 146,290	+3 154 936,910		R32	+20 406,490	+3 153 750,380	
L33	+21 114,760	+3 154 884,320		R33	+20 328,970	+3 153 525,590	
L34	+20 644,030	+3 154 167,320		R34	+19 963,220	+3 152 461,200	
L35	+20 545,410	+3 153 995,200		R35	+19 932,580	+3 152 348,690	
L36	+20 511,080	+3 153 924,220		R36	+19 925,280	+3 152 315,470	
L37	+20 476,480	+3 153 846,030		R37	+19 911,320	+3 152 235,060	
L38	+20 466,920	+3 153 822,510		R38	+19 900,030	+3 152 152,290	
L39	+20 437,020	+3 153 740,220		R39	+19 833,770	+3 150 906,900	
L40	+20 351,680	+3 153 493,250		R40	+19 843,580	+3 150 745,950	
L41	+20 029,670	+3 152 557,940		R41	+19 858,060	+3 150 625,260	
L42	+19 987,750	+3 152 431,690		R42	+19 918,450	+3 150 350,570	
L43	+19 967,520	+3 152 356,020		R43	+19 936,860	+3 150 274,300	
L44	+19 952,420	+3 152 286,400		R44	+20 081,430	+3 149 629,230	
L45	+19 868,980	+3 150 867,500		R45	+20 105,100	+3 149 550,930	
L46	+19 876,590	+3 150 747,220		R46	+20 129,920	+3 149 474,320	
L47	+19 890,200	+3 150 640,900		R47	+20 167,740	+3 149 397,800	
L48	+19 948,060	+3 150 381,750		R48	+20 205,640	+3 149 328,090	
L49	+20 115,560	+3 149 631,520		R49	+20 223,780	+3 149 294,230	
L50	+20 152,240	+3 149 526,920		R50	+20 326,710	+3 149 117,110	
L51	+20 224,310	+3 149 390,750		R51	+20 368,110	+3 149 031,950	

Vel	13	Van	18	P611/07
Sheet		of		

PADRESERWE KOÖRDINATE				/ ROAD RESERVE CO-ORDINATES		
LINKERKANT/LEFT HAND SIDE				REGTERKANT/RIGHT HAND SIDE		
	Y	X	WG 25°		Y	X
L52	+20 241,070	+3 149 352,620		R52	+20 383,660	+3 148 990,260
L53	+20 366,240	+3 149 109,880		R53	+20 396,400	+3 148 944,440
L54	+20 396,620	+3 149 046,020		R54	+20 407,810	+3 148 885,870
L55	+20 415,280	+3 148 994,350		R55	+20 413,510	+3 148 833,540
L56	+20 433,200	+3 148 926,300		R56	+20 414,040	+3 148 777,990
L57	+20 443,830	+3 148 852,120		R57	+20 409,940	+3 148 721,320
L58	+20 446,280	+3 148 785,510		R58	+20 399,350	+3 148 659,090
L59	+20 440,120	+3 148 707,040		R59	+20 382,210	+3 148 596,920
L60	+20 425,080	+3 148 630,280		R60	+20 361,950	+3 148 530,380
L61	+20 375,880	+3 148 468,230		R61	+20 122,430	+3 147 743,290
L62	+20 147,130	+3 147 715,230		R62	+19 734,530	+3 146 472,040
L63	+19 708,710	+3 146 277,810		R63	+19 741,340	+3 146 465,300
L64	+19 006,850	+3 143 976,230		R64	+19 687,560	+3 146 289,710
L65	+18 882,590	+3 143 567,890		R65	+19 565,750	+3 145 892,010
L66	+18 856,420	+3 143 477,350		R66	+19 557,280	+3 145 890,720
L67	+18 831,140	+3 143 381,510		R67	+18 973,910	+3 143 976,850
L68	+18 588,650	+3 142 377,160		R68	+18 868,360	+3 143 631,500
L69	+18 246,230	+3 140 855,070		R69	+18 818,330	+3 143 459,790
L70	+18 079,370	+3 140 112,480		R70	+18 581,810	+3 142 496,760
L71	+17 781,460	+3 138 785,290		R71	+18 557,490	+3 142 384,640
L72	+17 769,130	+3 138 721,650		R72	+18 497,850	+3 142 124,020
L73	+17 760,660	+3 138 666,320		R73	+18 453,440	+3 141 922,320
L74	+17 755,570	+3 138 619,340		R74	+18 211,250	+3 140 855,460
L75	+17 751,820	+3 138 572,070		R75	+18 046,840	+3 140 109,230
L76	+17 749,520	+3 138 512,320		R76	+17 781,130	+3 138 930,520
L77	+17 733,660	+3 137 655,020		R77	+17 742,950	+3 138 756,080
L78	+17 743,950	+3 137 566,870		R78	+17 728,610	+3 138 669,640
L79	+17 762,160	+3 137 489,170		R79	+17 723,260	+3 138 623,520
L80	+17 771,730	+3 137 459,310		R80	+17 720,420	+3 138 579,260
L81	+17 793,900	+3 137 402,010		R81	+17 715,280	+3 138 400,720
L82	+17 826,020	+3 137 337,740		R82	+17 701,180	+3 137 714,130
L83	+17 857,490	+3 137 286,510		R83	+17 700,750	+3 137 657,120
L84	+17 922,210	+3 137 191,450		R84	+17 712,430	+3 137 563,340
L85	+17 948,230	+3 137 149,350		R85	+17 717,470	+3 137 542,480
L86	+17 968,690	+3 137 112,050		R86	+17 729,330	+3 137 490,200
L87	+17 986,940	+3 137 076,240		R87	+17 733,720	+3 137 472,210
L88	+18 018,110	+3 137 004,550		R88	+17 750,810	+3 137 423,150
L89	+18 041,770	+3 136 937,530		R89	+17 765,090	+3 137 388,300
L90	+18 047,510	+3 136 916,580		R90	+17 782,420	+3 137 351,470
L91	+18 065,950	+3 136 840,900		R91	+17 801,660	+3 137 315,630
L92	+18 079,820	+3 136 757,910		R92	+17 823,060	+3 137 280,460
L93	+18 081,400	+3 136 735,580		R93	+17 902,410	+3 137 163,140
L94	+18 086,580	+3 136 662,190		R94	+17 941,500	+3 137 095,090
L95	+18 086,860	+3 136 626,740		R95	+17 960,360	+3 137 058,030
L96	+18 086,330	+3 136 615,270		R96	+17 990,440	+3 136 989,190
L97	+18 085,180	+3 136 578,310		R97	+18 013,010	+3 136 922,170
L98	+18 078,360	+3 136 485,350		R98	+18 034,390	+3 136 837,190
L99	+17 991,790	+3 135 305,960		R99	+18 041,820	+3 136 798,130
L100	+17 989,330	+3 135 271,710		R100	+18 047,400	+3 136 759,450
L101	+17 978,990	+3 135 185,280		R101	+18 051,420	+3 136 720,570
L102	+17 972,720	+3 135 150,590		R102	+18 053,950	+3 136 681,300

Vel	14	Van	18	P611/07
Sheet		of		

PADRESERWE KOÖRDINATE				/ ROAD RESERVE CO-ORDINATES			
LINKERKANT/LEFT HAND SIDE				REGTERKANT/RIGHT HAND SIDE			
	Y	X	WG 25°		Y	X	
L103	+17 958,590	+3 135	082,920	R103	+18 054,700	+3 136	621,630
L104	+17 945,770	+3 135	032,550	R104	+18 048,020	+3 136	507,180
L105	+17 930,100	+3 134	981,950	R105	+17 960,980	+3 135	314,080
L106	+17 913,000	+3 134	930,660	R106	+17 954,940	+3 135	247,890
L107	+17 899,520	+3 134	894,680	R107	+17 945,470	+3 135	179,610
L108	+17 875,980	+3 134	838,870	R108	+17 936,080	+3 135	128,970
L109	+17 840,650	+3 134	766,190	R109	+17 925,350	+3 135	081,240
L110	+17 786,960	+3 134	672,800	R110	+17 914,390	+3 135	038,570
L111	+17 744,220	+3 134	608,770	R111	+17 900,290	+3 134	992,090
L112	+17 687,000	+3 134	533,930	R112	+17 877,010	+3 134	925,150
L113	+17 633,940	+3 134	472,250	R113	+17 848,510	+3 134	855,720
L114	+17 581,260	+3 134	419,240	R114	+17 809,170	+3 134	775,110
L115	+17 451,150	+3 134	299,830	R115	+17 797,230	+3 134	752,720
L116	+17 402,980	+3 134	253,020	R116	+17 765,370	+3 134	698,650
L117	+17 358,340	+3 134	203,970	R117	+17 737,310	+3 134	654,630
L118	+17 326,390	+3 134	163,920	R118	+17 700,700	+3 134	603,600
L119	+17 218,010	+3 133	986,290	R119	+17 670,400	+3 134	564,330
L120	+17 193,860	+3 133	932,160	R120	+17 613,060	+3 134	498,070
L121	+17 176,530	+3 133	887,500	R121	+17 578,790	+3 134	461,630
L122	+16 808,120	+3 132	852,470	R122	+17 431,440	+3 134	325,150
L123	+16 772,390	+3 132	751,670	R123	+17 381,480	+3 134	276,240
L124	+16 712,220	+3 132	601,630	R124	+17 333,790	+3 134	223,960
L125	+16 340,860	+3 131	775,720	R125	+17 278,360	+3 134	152,130
L126	+16 287,410	+3 131	653,520	R126	+17 230,430	+3 134	077,890
L127	+16 254,530	+3 131	560,250	R127	+17 193,700	+3 134	009,300
L128	+16 238,930	+3 131	503,090	R128	+17 161,930	+3 133	939,060
L129	+16 226,870	+3 131	450,740	R129	+16 786,100	+3 132	885,520
L130	+16 217,060	+3 131	397,620	R130	+16 733,010	+3 132	737,660
L131	+16 202,370	+3 131	285,810	R131	+16 700,660	+3 132	656,810
L132	+16 152,470	+3 130	899,400	R132	+16 314,130	+3 131	794,170
L133	+16 146,520	+3 130	832,470	R133	+16 281,280	+3 131	721,720
L134	+16 143,310	+3 130	792,890	R134	+16 257,720	+3 131	665,350
L135	+16 138,730	+3 130	714,940	R135	+16 234,740	+3 131	602,200
L136	+16 135,330	+3 130	594,010	R136	+16 206,970	+3 131	507,560
L137	+16 189,330	+3 129	298,060	R137	+16 194,720	+3 131	454,000
L138	+16 187,990	+3 129	255,460	R138	+16 176,400	+3 131	336,180
L139	+16 186,670	+3 129	231,600	R139	+16 168,290	+3 131	283,160
L140	+16 182,440	+3 129	174,990	R140	+16 129,150	+3 130	964,500
L141	+16 170,740	+3 129	085,030	R141	+16 122,350	+3 130	902,640
L142	+16 035,280	+3 128	327,230	R142	+16 116,150	+3 130	834,220
L143	+16 028,630	+3 128	286,930	R143	+16 112,630	+3 130	793,570
L144	+16 022,690	+3 128	239,820	R144	+16 107,630	+3 130	716,330
L145	+16 018,330	+3 128	188,670	R145	+16 103,810	+3 130	596,540
L146	+16 016,130	+3 128	129,280	R146	+16 154,210	+3 129	373,720
L147	+16 016,500	+3 128	076,180	R147	+16 166,470	+3 129	255,740
L148	+16 018,830	+3 128	030,710	R148	+15 988,290	+3 128	262,390
L149	+16 027,350	+3 127	941,310	R149	+15 977,530	+3 128	082,680
L150	+16 033,550	+3 127	876,330	R150	+15 987,060	+3 127	947,070
L151	+16 041,950	+3 127	792,850	R151	+16 016,330	+3 127	531,650
L152	+16 046,910	+3 127	732,430	R152	+15 866,700	+3 127	046,950
L153	+16 049,060	+3 127	671,790	R153	+15 406,750	+3 125	947,520

Vel	15	Van	18	P611/07
Sheet		of		

PADRESERWE KOÖRDINATE				/ ROAD RESERVE CO-ORDINATES			
LINKERKANT/LEFT HAND SIDE				REGTERKANT/RIGHT HAND SIDE			
	Y	X	WG 25°		Y	X	
L154	+16 048,280	+3 127 611,280		R154	+15 327,730	+3 125 787,770	
L155	+16 042,280	+3 127 529,870		R155	+15 262,640	+3 125 651,650	
L156	+16 037,170	+3 127 489,070		R156	+15 209,620	+3 125 530,540	
L157	+16 031,270	+3 127 449,020		R157	+15 118,280	+3 125 312,310	
L158	+16 015,230	+3 127 371,520		R158	+14 965,330	+3 124 946,780	
L159	+16 004,930	+3 127 331,470		R159	+14 920,760	+3 124 835,860	
L160	+15 992,930	+3 127 291,020		R160	+14 878,180	+3 124 715,480	
L161	+15 973,810	+3 127 234,190		R161	+14 847,000	+3 124 615,630	
L162	+15 929,980	+3 127 124,080		R162	+14 814,270	+3 124 495,360	
L163	+15 428,310	+3 125 929,480		R163	+14 779,740	+3 124 342,210	
L164	+15 379,660	+3 125 822,450		R164	+14 766,090	+3 124 269,830	
L165	+15 298,560	+3 125 653,120		R165	+14 754,620	+3 124 199,420	
L166	+15 264,440	+3 125 577,460		R166	+14 736,060	+3 124 052,560	
L167	+15 149,400	+3 125 304,270		R167	+14 726,990	+3 123 948,150	
L168	+14 969,050	+3 124 872,020		R168	+14 720,870	+3 123 827,010	
L169	+14 923,300	+3 124 748,600		R169	+14 719,630	+3 123 755,510	
L170	+14 901,900	+3 124 685,310		R170	+14 720,950	+3 123 634,080	
L171	+14 879,030	+3 124 611,290		R171	+14 725,380	+3 123 537,330	
L172	+14 861,650	+3 124 550,090		R172	+14 732,730	+3 123 442,110	
L173	+14 832,030	+3 124 433,060		R173	+14 742,870	+3 123 348,420	
L174	+14 812,090	+3 124 341,330		R174	+14 754,050	+3 123 265,500	
L175	+14 795,550	+3 124 251,650		R175	+14 768,720	+3 123 177,400	
L176	+14 782,300	+3 124 169,580		R176	+14 787,110	+3 123 083,910	
L177	+14 763,570	+3 124 007,660		R177	+15 066,880	+3 121 844,190	
L178	+14 754,000	+3 123 860,370		R178	+15 830,610	+3 118 465,290	
L179	+14 751,390	+3 123 709,750		R179	+15 840,150	+3 118 420,880	
L180	+14 752,520	+3 123 646,790		R180	+15 851,700	+3 118 362,740	
L181	+14 754,260	+3 123 599,740		R181	+15 865,280	+3 118 284,560	
L182	+14 760,130	+3 123 498,680		R182	+15 876,590	+3 118 206,210	
L183	+14 772,270	+3 123 371,830		R183	+15 885,890	+3 118 127,890	
L184	+14 794,720	+3 123 213,320		R184	+15 891,380	+3 118 068,890	
L185	+14 815,820	+3 123 102,460		R185	+15 895,660	+3 118 010,030	
L186	+15 106,020	+3 121 814,750		R186	+15 898,740	+3 117 950,490	
L187	+15 346,850	+3 120 749,990		R187	+15 900,690	+3 117 891,340	
L188	+15 361,760	+3 120 740,880		R188	+15 901,410	+3 117 831,840	
L189	+15 386,990	+3 120 629,000		R189	+15 900,730	+3 117 772,560	
L190	+15 377,550	+3 120 614,380		R190	+15 898,960	+3 117 713,500	
L191	+15 861,160	+3 118 473,650		R191	+15 893,420	+3 117 617,490	
L192	+15 871,510	+3 118 426,470		R192	+15 873,720	+3 117 345,250	
L193	+15 883,570	+3 118 365,420		R193	+15 714,890	+3 115 191,200	
L194	+15 896,690	+3 118 289,960		R194	+15 690,210	+3 114 857,300	
L195	+15 908,330	+3 118 209,530		R195	+15 657,450	+3 114 510,350	
L196	+15 917,590	+3 118 131,500		R196	+15 474,700	+3 112 613,360	
L197	+15 923,320	+3 118 070,520		R197	+15 430,400	+3 112 356,010	
L198	+15 927,560	+3 118 011,020		R198	+15 367,000	+3 112 151,990	
L199	+15 932,770	+3 117 881,460		R199	+15 275,920	+3 111 950,720	
L200	+15 933,220	+3 117 813,700		R200	+15 144,790	+3 111 743,160	
L201	+15 931,410	+3 117 725,850		R201	+15 127,000	+3 111 720,280	
L202	+15 928,080	+3 117 657,340		R202	+15 079,600	+3 111 662,540	
L203	+15 903,350	+3 117 320,370		R203	+14 386,160	+3 110 965,440	
L204	+15 796,680	+3 115 868,200		R204	+13 226,150	+3 110 121,460	

Vel	16	Van	18	P611/07
Sheet		of		

PADRESERWE KOÖRDINATE				/ ROAD RESERVE CO-ORDINATES		
LINKERKANT/LEFT HAND SIDE				REGTERKANT/RIGHT HAND SIDE		
	Y	X	WG 25°		Y	X
L205	+15 810,850	+3 115 851,100		R205	+13 122,760	+3 110 031,990
L206	+15 798,470	+3 115 682,850		R206	+13 034,820	+3 109 923,040
L207	+15 782,000	+3 115 669,120		R207	+13 019,650	+3 109 900,400
L208	+15 749,130	+3 115 220,620		R208	+12 967,910	+3 109 799,110
L209	+15 716,500	+3 114 793,170		R209	+12 940,520	+3 109 726,550
L210	+15 730,290	+3 114 759,510		R210	+12 925,300	+3 109 665,860
L211	+15 601,640	+3 113 530,130		R211	+12 913,540	+3 109 609,680
L212	+15 552,120	+3 113 052,280		R212	+12 907,050	+3 109 550,800
L213	+15 502,900	+3 112 574,610		R213	+12 903,520	+3 109 490,850
L214	+15 485,110	+3 112 471,710		R214	+12 906,130	+3 109 432,220
L215	+15 455,680	+3 112 335,320		R215	+12 912,940	+3 109 372,510
L216	+15 416,080	+3 112 202,010		R216	+12 940,920	+3 109 188,110
L217	+15 366,020	+3 112 071,280		R217	+12 958,400	+3 109 058,306
L218	+15 310,070	+3 111 952,450		R218	+12 986,680	+3 108 848,270
L219	+15 292,010	+3 111 918,320		R219	+13 025,610	+3 108 562,500
L220	+15 267,000	+3 111 874,020		R220	+13 026,380	+3 108 475,110
L221	+15 241,310	+3 111 831,840		R221	+13 020,140	+3 108 399,640
L222	+15 216,760	+3 111 793,480		R222	+13 010,280	+3 108 340,900
L223	+15 200,990	+3 111 770,350		R223	+12 995,650	+3 108 282,060
L224	+15 157,960	+3 111 709,590		R224	+12 942,880	+3 108 152,730
L225	+15 102,290	+3 111 640,690		R225	+12 913,210	+3 108 090,830
L226	+14 406,330	+3 110 941,260		R226	+12 876,810	+3 108 035,150
L227	+14 027,730	+3 110 665,280		R227	+12 824,020	+3 107 968,560
L228	+13 866,080	+3 110 547,750		R228	+12 774,450	+3 107 917,330
L229	+13 666,340	+3 110 402,460		R229	+12 707,780	+3 107 860,750
L230	+13 237,320	+3 110 089,810		R230	+12 647,000	+3 107 818,560
L231	+13 203,710	+3 110 063,260		R231	-12 574,220	+3 107 778,110
L232	+13 155,330	+3 110 020,120		R232	-12 528,100	+3 107 757,200
L233	+13 087,480	+3 109 942,910		R233	+12 472,610	+3 107 736,190
L234	+13 059,480	+3 109 903,730		R234	+12 228,030	+3 107 655,110
L235	+13 016,680	+3 109 829,840		R235	+12 150,380	+3 107 622,500
L236	+12 978,200	+3 109 738,630		R236	+11 948,600	+3 107 551,510
L237	+12 952,480	+3 109 645,560		R237	+11 762,780	+3 107 486,520
L238	+12 940,870	+3 109 541,170		R238	+11 618,690	+3 107 441,000
L239	+12 940,710	+3 109 479,830		R239	+10 459,080	+3 107 100,230
L240	+12 964,640	+3 109 244,340		R240	+10 237,540	+3 107 034,290
L241	+12 987,915	+3 109 077,856		R241	+10 157,820	+3 107 008,670
L242	+13 010,334	+3 108 917,455		R242	+10 057,590	+3 106 975,040
L243	+13 020,980	+3 108 841,270		R243	+9 969,970	+3 106 943,880
L244	+13 057,580	+3 108 567,960		R244	+9 900,160	+3 106 917,930
L245	+13 056,410	+3 108 442,800		R245	+9 831,650	+3 106 891,530
L246	+13 044,110	+3 108 347,660		R246	+9 722,240	+3 106 847,460
L247	+13 023,770	+3 108 265,920		R247	+9 642,700	+3 106 814,060
L248	+12 995,810	+3 108 187,580		R248	+9 079,100	+3 106 570,750
L249	+12 977,620	+3 108 145,320		R249	+7 787,630	+3 106 013,120
L250	+12 963,910	+3 108 116,260		AR202	+15 082.600	+3 111 659.650
L251	+12 933,810	+3 108 062,420		AR203	+14 953.060	+3 111 518.200
L252	+12 914,050	+3 108 033,160		AR204	+14 682.760	+3 111 225.410
L253	+12 890,340	+3 107 999,550		AR205	+14 564.310	+3 111 113.990
L254	+12 864,580	+3 107 966,870				
L255	+12 837,850	+3 107 936,220				

Vel	17	Van	18	P611/07
Sheet		of		

PADRESERWE KOÖRDINATE			/	ROAD RESERVE CO-ORDINATES		
LINKERKANT/LEFT HAND SIDE				REGTERKANT/RIGHT HAND SIDE		
	Y	X	WG 25°	Y	X	
L256	+12 809,370	+3 107 906,460				
L257	+12 779,360	+3 107 878,130				
L258	+12 722,420	+3 107 830,520				
L259	+12 653,440	+3 107 785,680				
L260	+12 603,380	+3 107 757,280				
L261	+12 547,120	+3 107 730,570				
L262	+12 504,090	+3 107 713,800				
L263	+12 355,010	+3 107 661,080				
L264	+12 230,250	+3 107 614,450				
L265	+12 152,280	+3 107 586,520				
L266	+11 950,130	+3 107 518,040				
L267	+11 950,660	+3 107 506,350				
L268	+11 508,540	+3 107 375,780				
L269	+10 467,620	+3 107 069,460				
L270	+10 247,350	+3 107 003,830				
L271	+10 172,420	+3 106 979,850				
L272	+10 073,390	+3 106 946,480				
L273	+9 985,940	+3 106 915,840				
L274	+9 919,010	+3 106 890,940				
L275	+9 841,640	+3 106 861,080				
L276	+9 731,620	+3 106 816,790				
L277	+9 718,410	+3 106 807,150				
L278	+9 534,010	+3 106 727,480				
L279	+9 516,880	+3 106 724,540				
L280	+9 075,460	+3 106 534,390				
L281	+8 459,550	+3 106 268,350				
L282	+8 446,030	+3 106 258,250				
L283	+8 262,260	+3 106 178,730				
L284	+8 246,380	+3 106 176,430				
L285	+7 998,980	+3 106 069,770				
L286	+7 984,580	+3 106 058,960				
L287	+7 862,710	+3 106 006,110				
L288	+7 836,680	+3 105 995,090				
L289	+7 803,610	+3 105 986,100				
AL225	+15 105.280	+3 111 637.810				
AL226	+14 976.240	+3 111 496.890				
AL227	+14 825.260	+3 111 333.350				
AL228	+14 691.500	+3 111 190.420				
AL229	+14 585.200	+3 111 090.420				
AL230	+14 440.180	+3 111 969.520				

Vel	18	Van	18	P611/07
Sheet		of		