

# Government Gazette Staatskoerant

REPUBLIC OF SOUTH AFRICA  
REPUBLIEK VAN SUID-AFRIKA

Vol. 525

Pretoria, 25 March  
Maart 2009

**No. 32025**

**CONTENTS****INHOUD**

<i>No.</i>	<i>Page No.</i>	<i>Gazette No.</i>	<i>No.</i>	<i>Bladsy No.</i>	<i>Koerant No.</i>
<b>GOVERNMENT NOTICE</b>			<b>GOEWERMENSKENNISGEWING</b>		
<b>Transport, Department of</b>			<b>Vervoer, Departement van</b>		
<i>Government Notice</i>			<i>Goewermentskennisgewing</i>		
305			305		
South African National Roads Agency Limited and the National Roads Act (7/1998): The South African National Roads Agency Limited: Declaration amendment of National Road R61 Section 6: Amendment of Declaration No. 546 of 2003 .....	3	32025	Suid-Afrikaanse Nasionale Padagentskap Beperk en die Nasionale Paaie Wet (7/1998): Die Suid-Afrikaanse Nasionale Padagentskap Beperk: Verklaring wysiging van Nasionale Pad R61 Seksie 6: Wysiging van Verklaring No. 546 van 2003 .....	4	32025

---

**GOVERNMENT NOTICE**

---

**DEPARTMENT OF TRANSPORT****No. 305****25 March 2009****THE SOUTH AFRICAN NATIONAL ROADS  
AGENCY LIMITED**Registration No: 98/09584/06

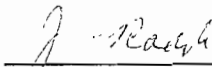
---

**DECLARATION AMENDMENT OF NATIONAL ROAD R61 SECTION 6**

AMENDMENT OF DECLARATION NO. 546 OF 2003

By virtue of section 40(1)(b) of the South African National Roads Agency Limited and the National Roads Act, 1998 (Act No. 7 of 1998), I hereby amend Declaration No. 546 of 2003, by substituting Annexure paragraph 3, the descriptive section from Cofimvaba to Engcobo, with the subjoined sheets 1 to 30 of Plan No. P606/06.

(National Road R61 Section 6: Cofimvaba – Engcobo )



---

**MINISTER OF TRANSPORT**

---

## GOEWERMENTSKENNISGEWING

---

### DEPARTEMENT VAN VERVOER

No. 305

25 Maart 2009

## DIE SUID-AFRIKAANSE NASIONALE PADAGENTSKAP BEPERK

Registrasie No: 98/09584/06

---

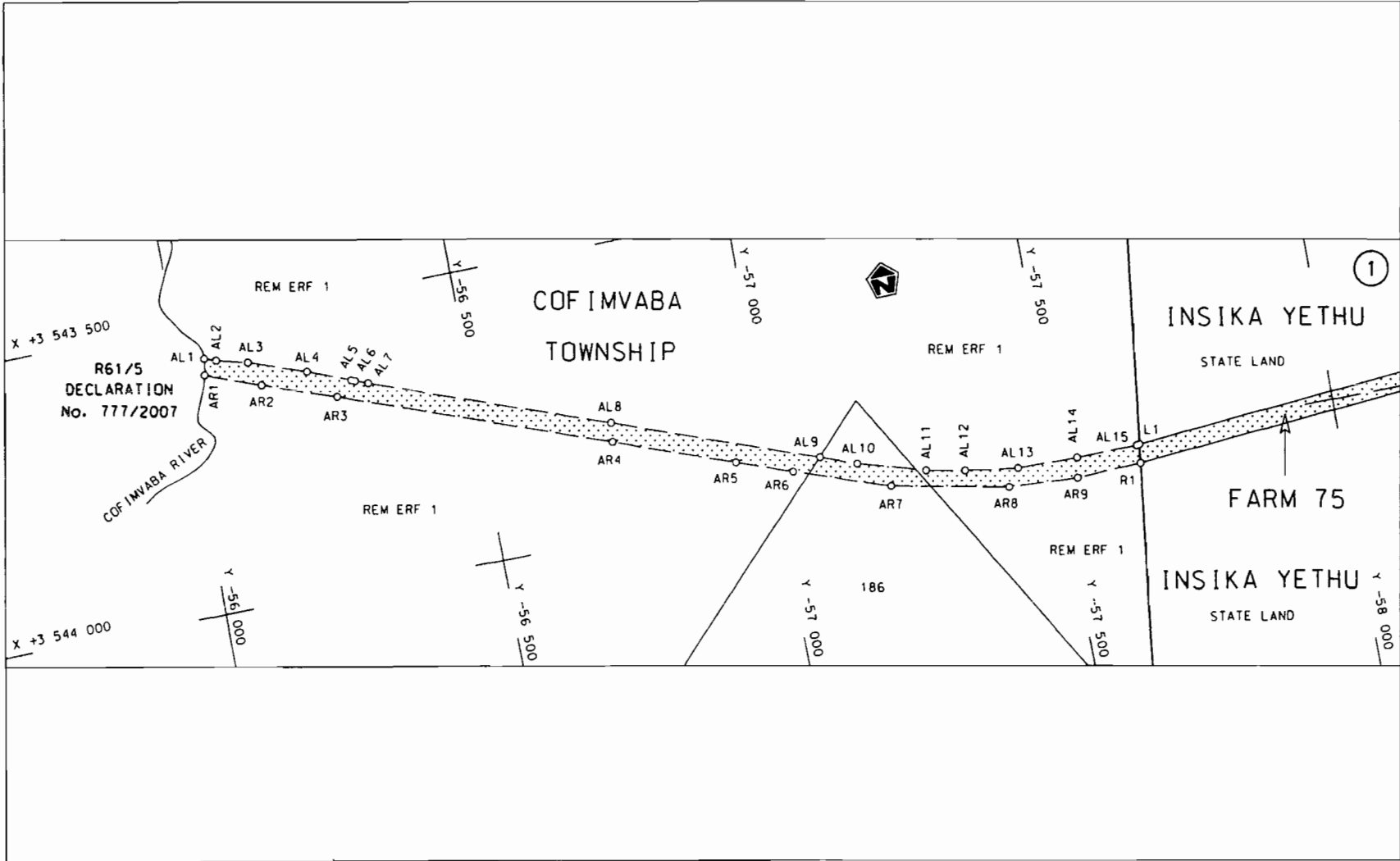
### VERKLARING WYSIGING VAN NASIONALE PAD R61 SEKSIE 6


WYSIGING VAN VERKLARING NO. 546 VAN 2003

Kragtens Artikel 40(1)(b) van die Suid-Afrikaanse Nasionale Padagentskap Beperk en die Nasionale Paaie Wet, 1998 (Wet no.7 van 1998), wysig ek hiermee Verklaring no.546 van 2003, deur Bylae paragraaf 3, die beskrywende gedeelte vanaf Cofimvaba tot Engcobo, te vervang met meegaande velle 1 tot 30 van Plan no. P606/06.

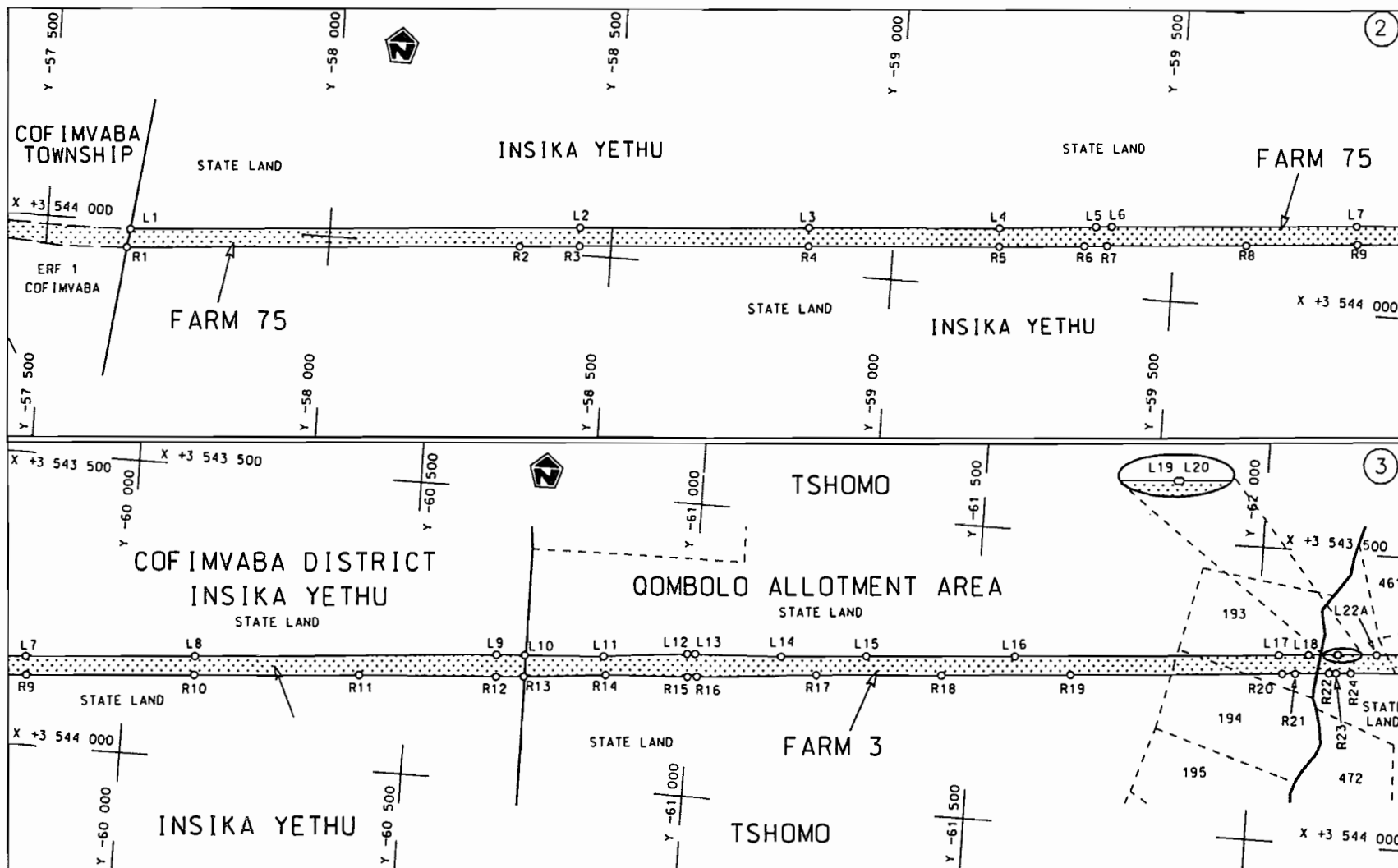
(Nasionale Pad R61 Seksie 6: Cofimvaba – Engcobo )

  
\_\_\_\_\_  
MINISTER VAN VERVOER

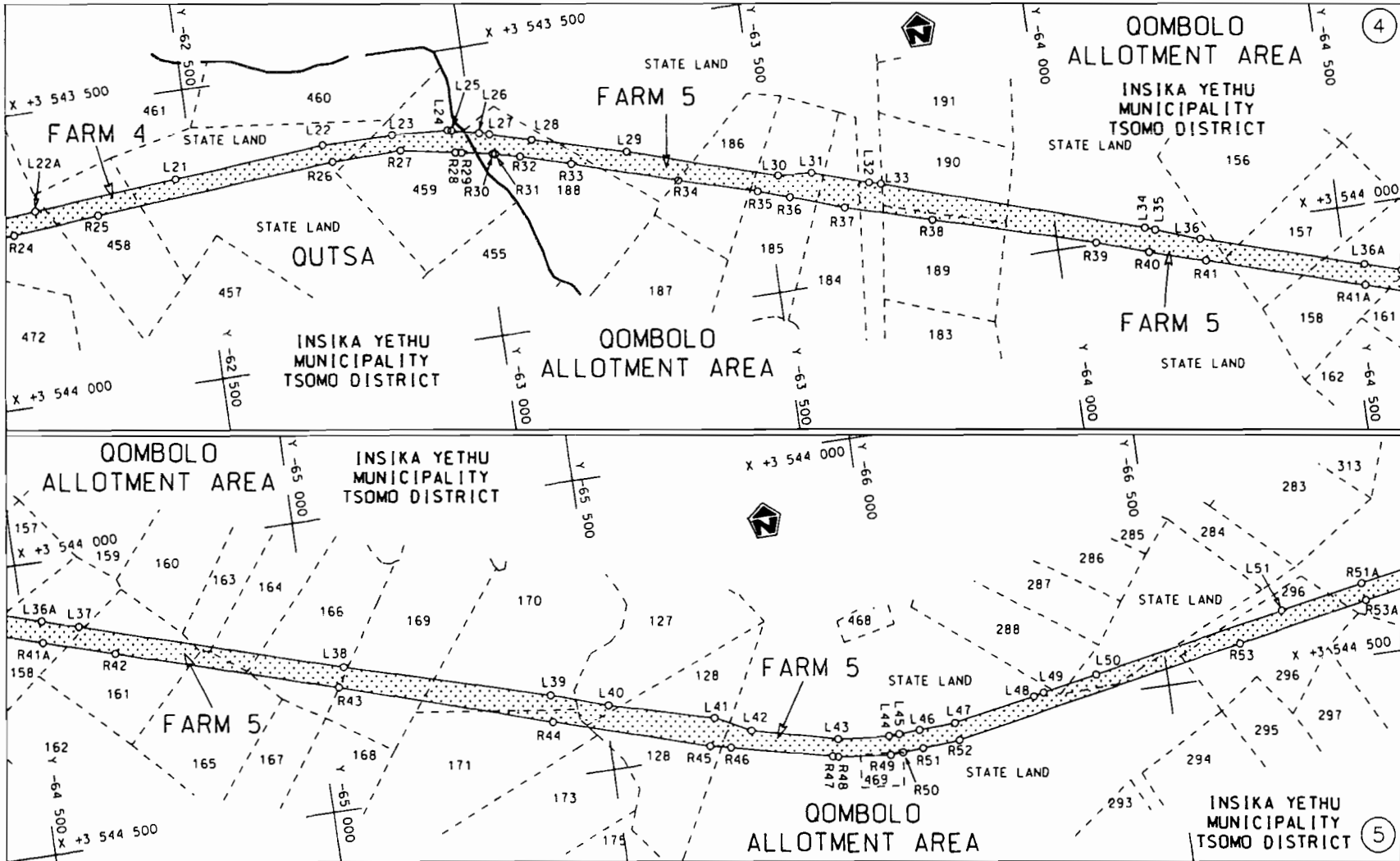


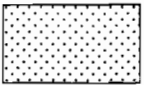
Suid-Afrikaanse Padagentskap Bpk. South African National Roads Agency Ltd.	Die figuur getoon The figure shown		stel die padreserwe voor van 'n gedeelte represents the road reserve of a portion van Nasionale Roete of National Route R61 Seksie Section 6	Vel Sheet 1 van of 30 P P606/06
---	---------------------------------------	--	---	------------------------------------

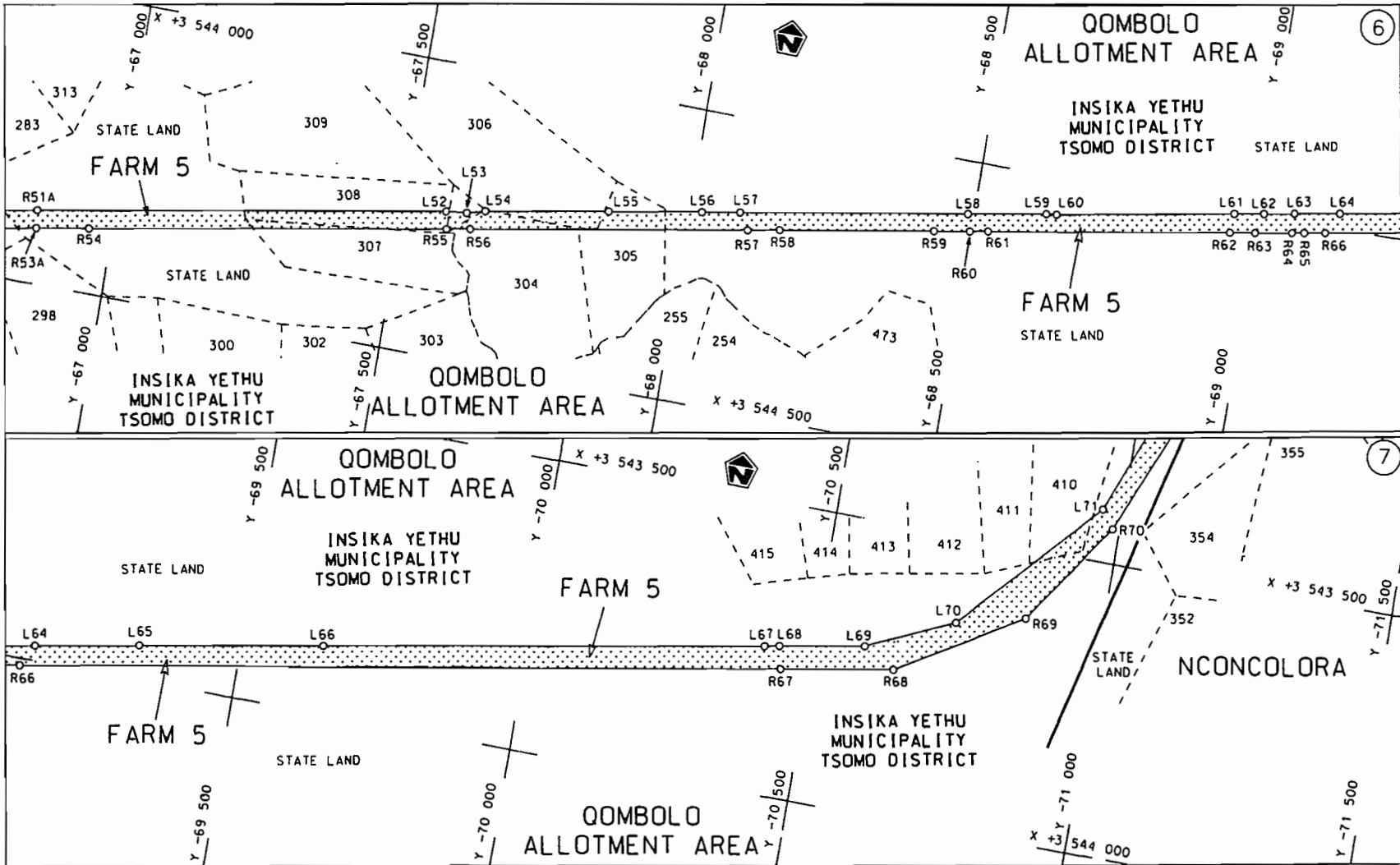
D.O.9.A



<p>Die Suid Afrikaanse Nasionale Padagentskap Beperk The South African National Roads Agency Limited</p>	<p>Die figuur getoon The figure shown</p>		<p>steldie padreserwe voor van 'n gedeelte represents the road reserve of a portion van Nasionale Roete R61 Seksie of Notional Route R61 Section</p>	<p>6</p>	<p>Vel Sheet 2 van of 30</p>	<p>Plan P606/06</p>
--	---	--	--	----------	--------------------------------------	---------------------

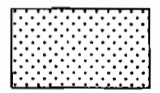


<p>Die Suid Afrikaanse Nasionale Podagentskap Beperk The South African National Roads Agency Limited</p>	<p>Die figuur getoon The figure shown</p>		<p>steldie podreserve voor van 'n gedeelte represents the road reserve of a portion van Nasionale Roete R61 Seksie 6 of National Route R61 Section 6</p>	<p>Vel Sheet 3 van 30 Plan P606/06</p>
--	---	--	--	--



Die Suid Afrikaanse Nasionale Padagentskap Beperk  
The South African National Roads Agency Limited

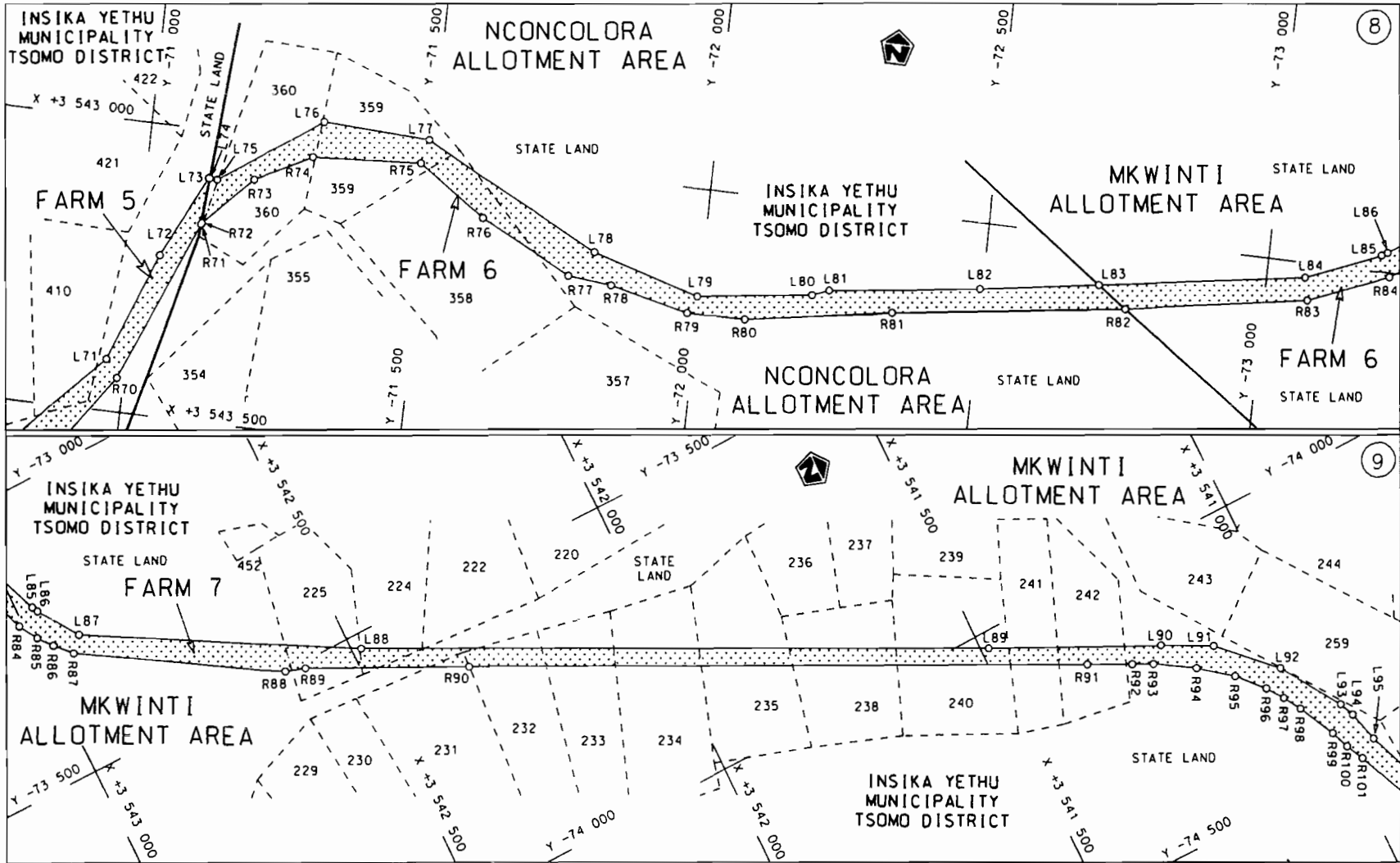
Die figuur getoon  
The figure shown

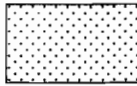


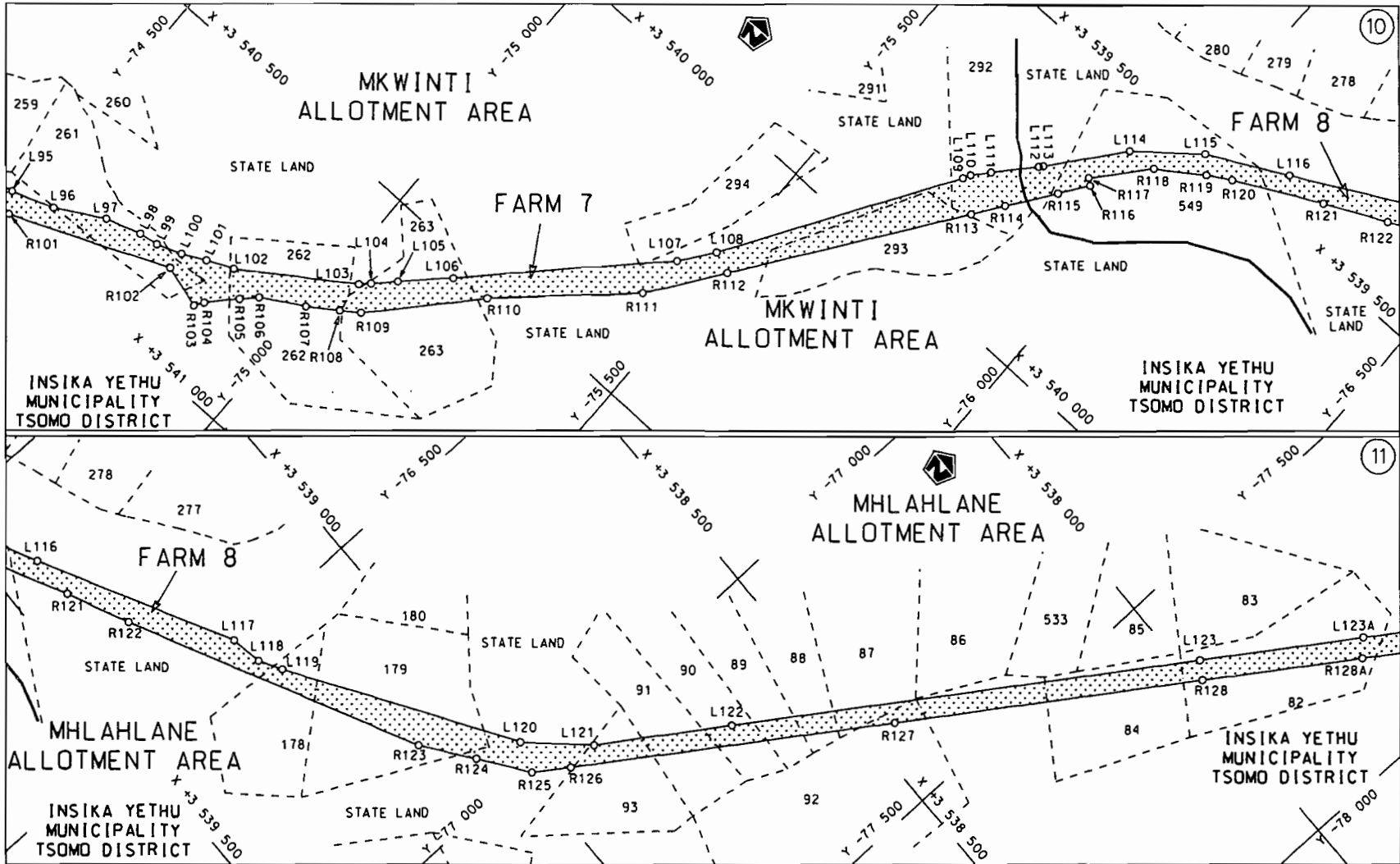
steldie padreserwe voor van 'n gedeelte  
represents the road reserve of a portion  
van Nasionale Roete R61 Sektie Section  
of National Route 6


Vel Sheet 4 van of 30  
Plan P606/06

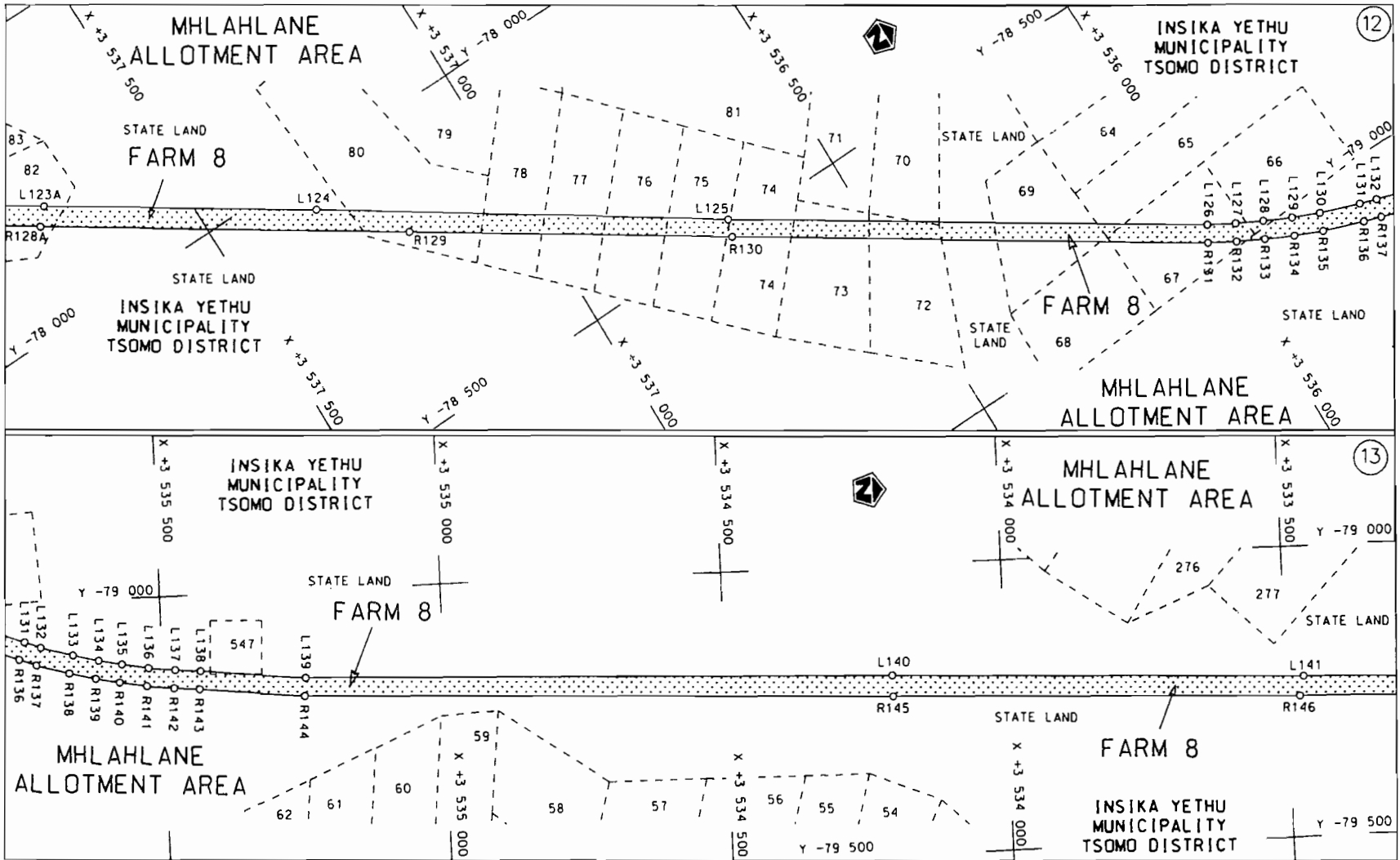





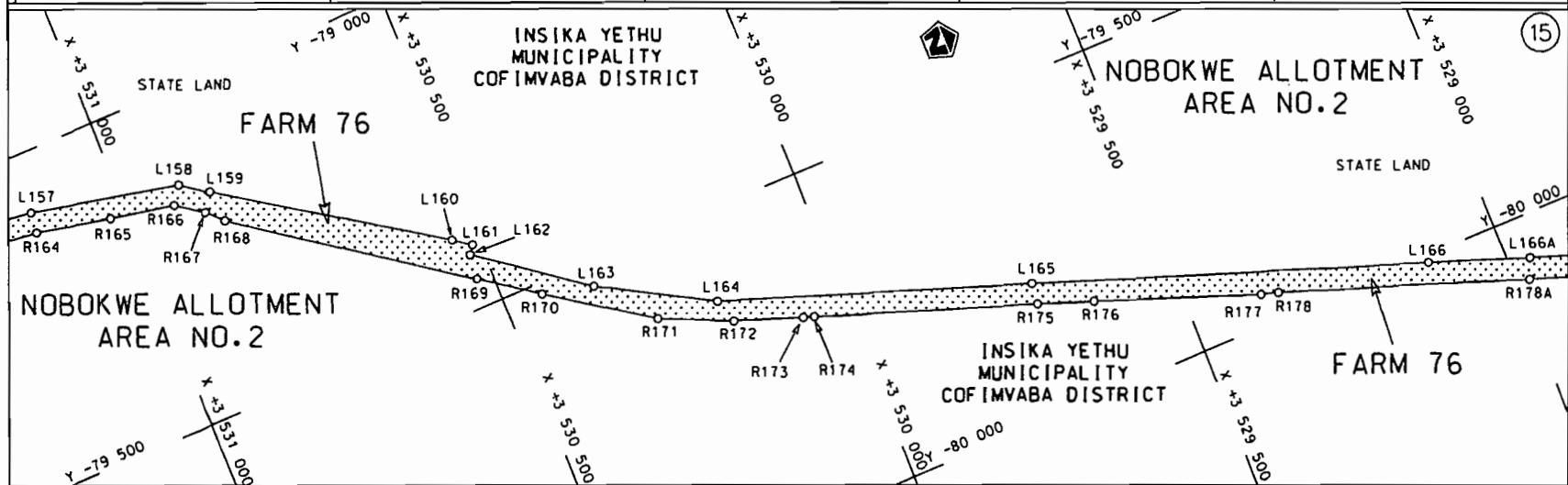
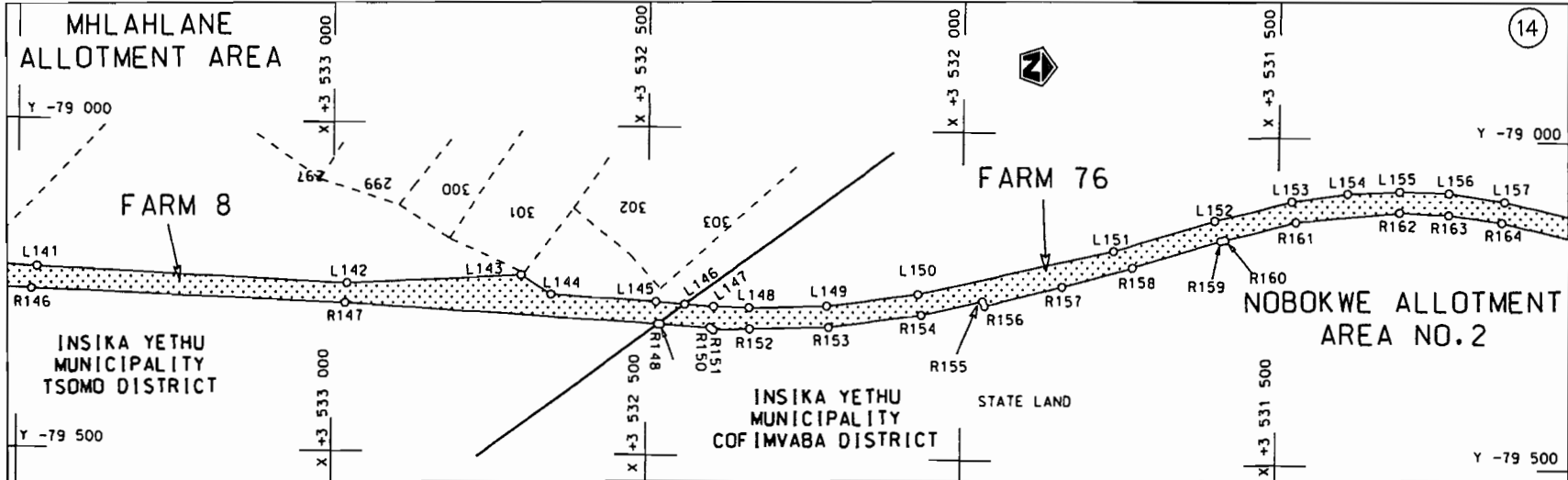
<p>Die Suid Afrikaanse Nasionale Padagentskop Beperk The South African National Roads Agency Limited</p>	<p>Die figuur getoon The figure shown</p> 	<p>steldie padreserwe voor van 'n gedeelte represents the road reserve of a portion van Nasionale Roete R61 Seksie Section of National Route 6</p>	<p>Vel Sheet 5 van of 30 Plan P606/06</p>
--	--	--	---

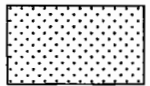


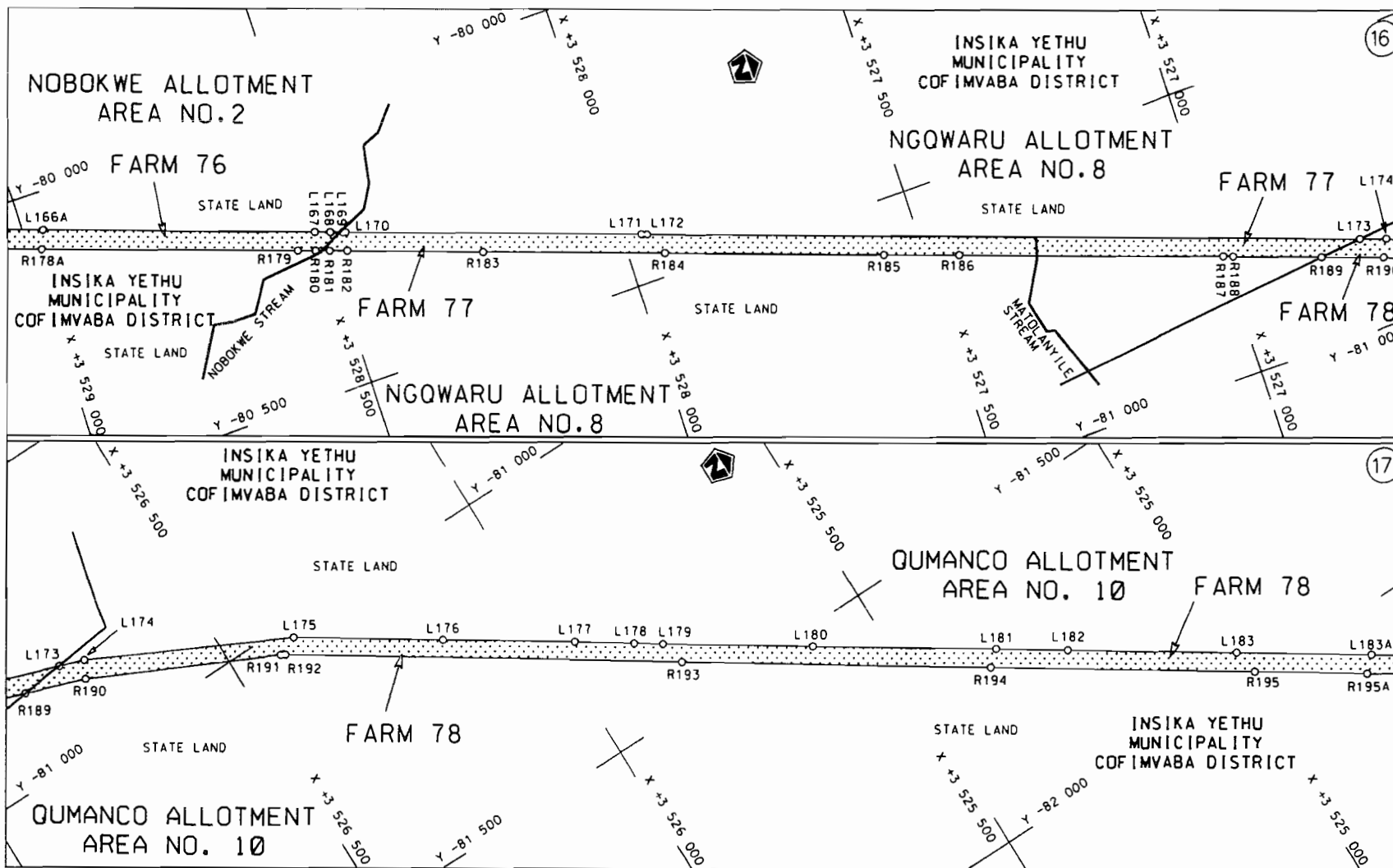
<p>Die Suid Afrikaanse Nasionale Padagentskap Beperk The South African National Roads Agency Limited</p>	<p>Die figuur getoon The figure shown</p>		<p>steldie padreserwe voor van 'n gedeelte represents the road reserve of a portion van Nasionale Roete R61 Seksie of National Route R61 Section</p>	<p>Vel Sheet 6 van 30 Plan P606/06</p>
			<p>6</p>	



<p>Die Suid Afrikaanse Nasionale Padagentskap Beperk The South African National Roads Agency Limited</p>	<p>Die figuur getoon The figure shown</p>		<p>steldie podreserve voor van 'n gedeelte represents the road reserve of a portion van Nasionale Roete of National Route R61 Seksie Section 6</p>	<p>Vel Sheet 7 van of 30 Plan P606/06</p>
--	---	--	--	---

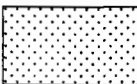


<p>Die Suid Afrikaanse Nasionale Padogenskap Beperk</p>	<p>Die figuur getoon</p>		<p>steldie padreserwe voor van 'n gedeelte represents the road reserve of a portion van Nasionale Roete R61 Seksie 6 of National Route R61 Section 6</p>	<p>Vel Sheet 8 von 30 of 30</p>
<p>The South African National Roads Agency Limited</p>	<p>The figure shown</p>			<p>Plan P606/06</p>



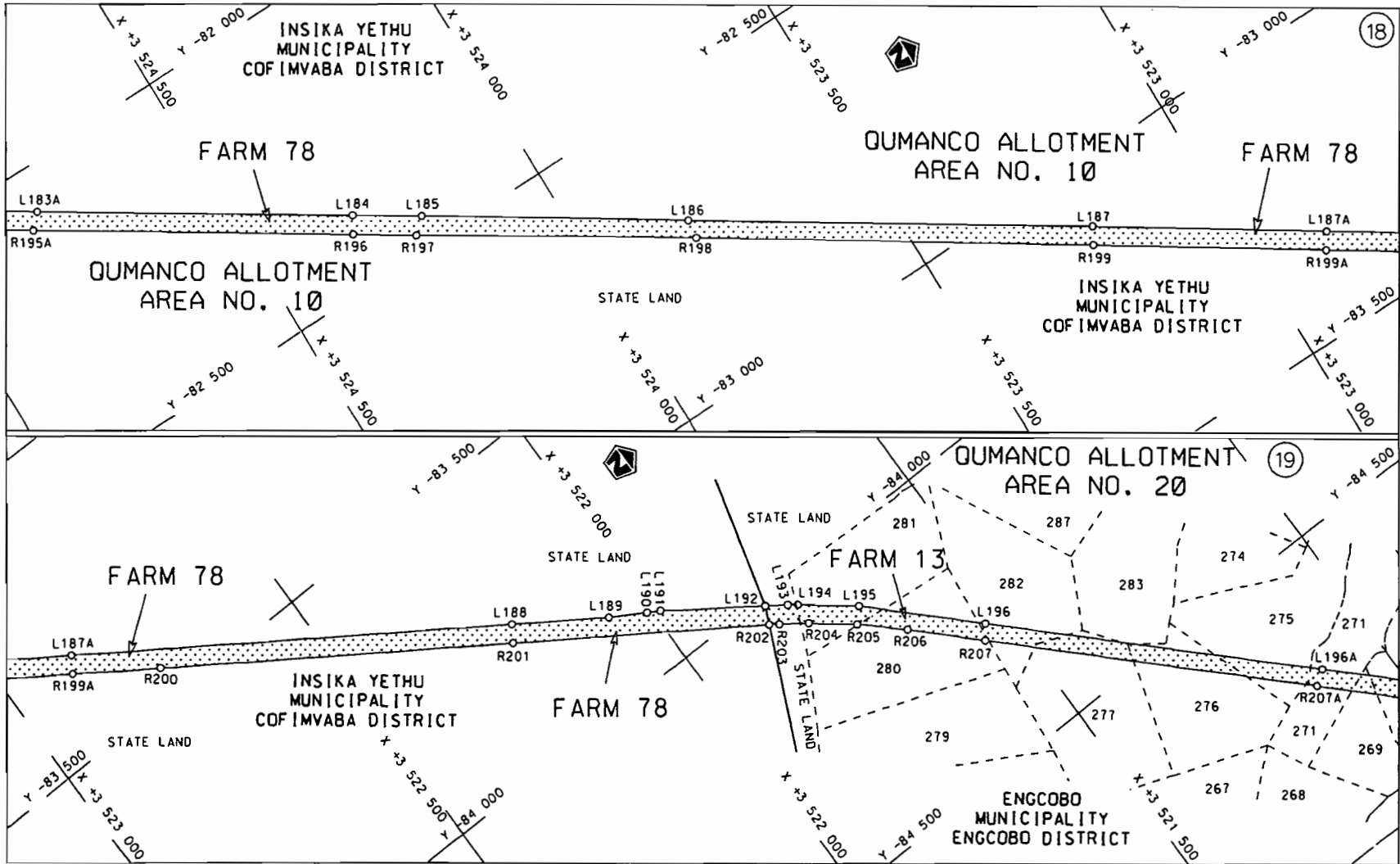
Die Suid Afrikaanse Nasionale Padagentskap Beperk  
The South African National Roads Agency Limited


Die figuur getoon  
The figure shown

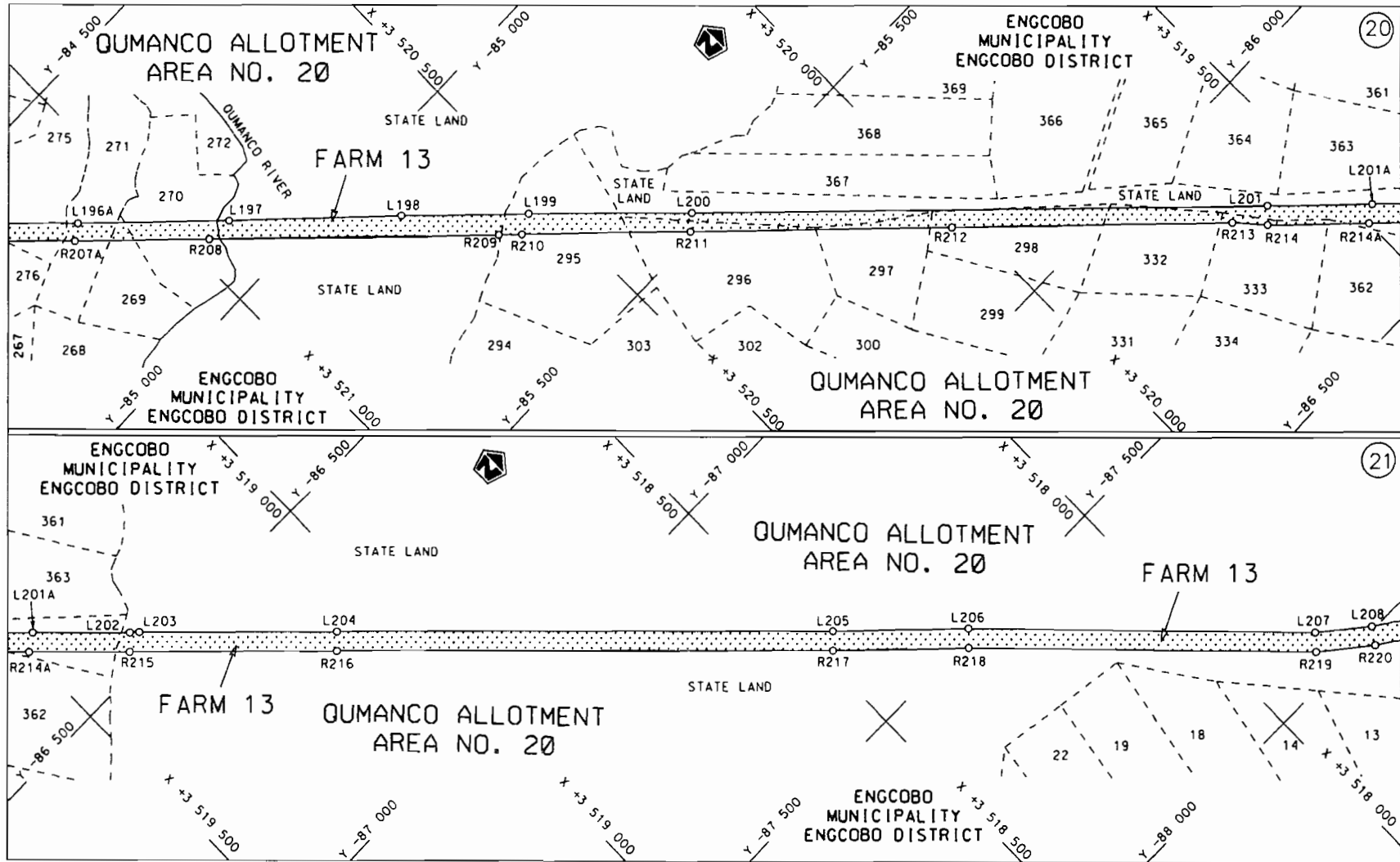



steldie padreserwe voor van 'n gedeelte  
represents the road reserve of a portion  
van Nasionale Roete R61 Seksie 6  
of National Route

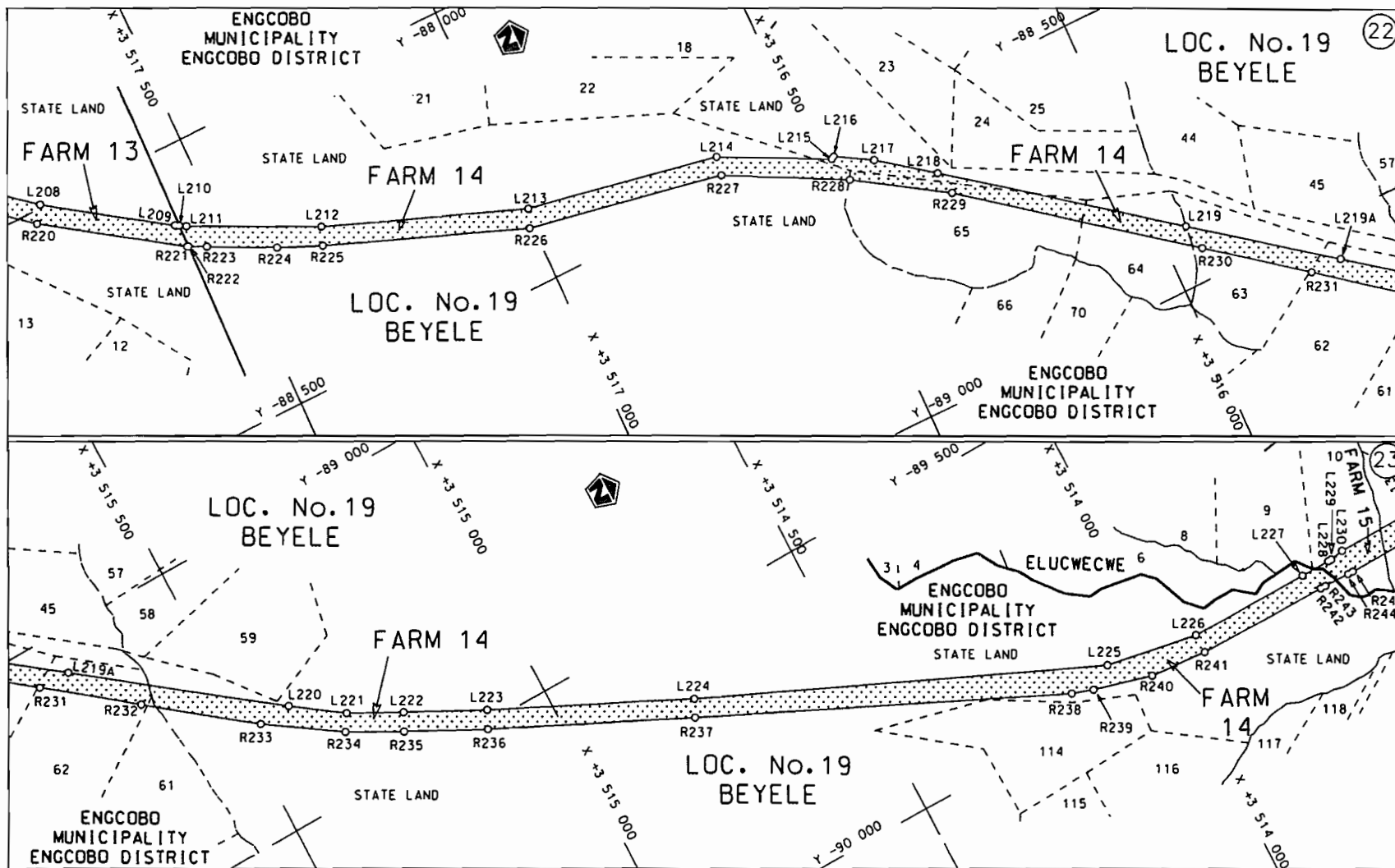
Vel Sheet 9 van 30  
Plan P606/06




<p>Die Suid Afrikaanse Nasionale Padagentskop Beperk</p>	<p>Die figuur getoon</p>		<p>steldie padreserwe voor van 'n gedeelte represents the road reserve of a portion van Nasionale Raete of Nationale Route</p>	<p>Vel Sheet 10 van of 30</p>
<p>The South African National Roads Agency Limited</p>	<p>The figure shown</p>		<p>R61 Seksie Section 6</p>	<p>Plan P606/06</p>

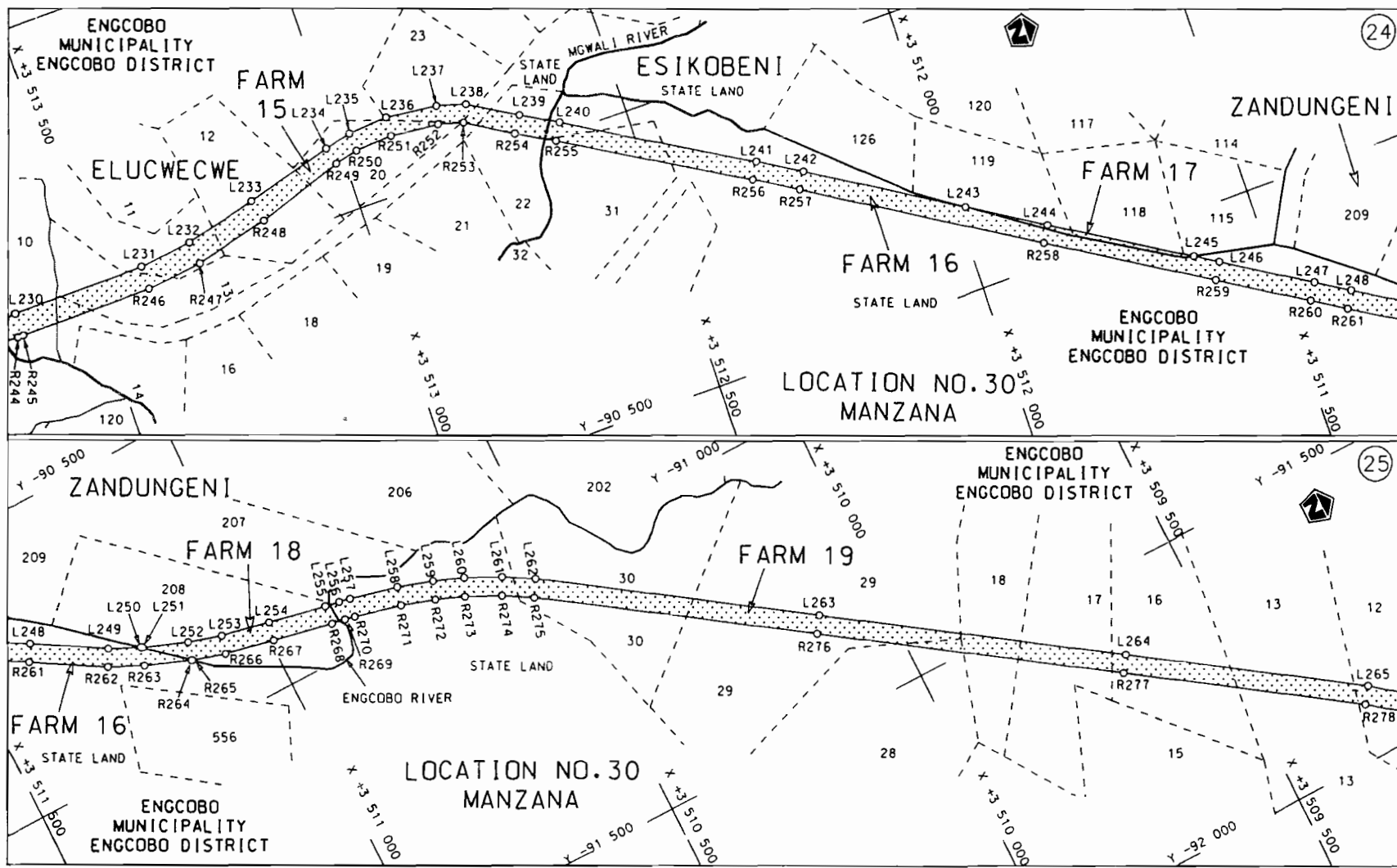



<p>Die Suid Afrikaanse Nasionale Padagentskap Beperk The South African National Roads Agency Limited</p>	<p>Die figuur getoon The figure shown</p> 	<p>steldie padreserwe voor van 'n gedeelte represents the road reserve of a portion van Nasionale Roete R61 Seksie 6 of National Route</p>	<p>Vel Sheet 11 van 30 Plan P606/06</p>
--	--	--	---

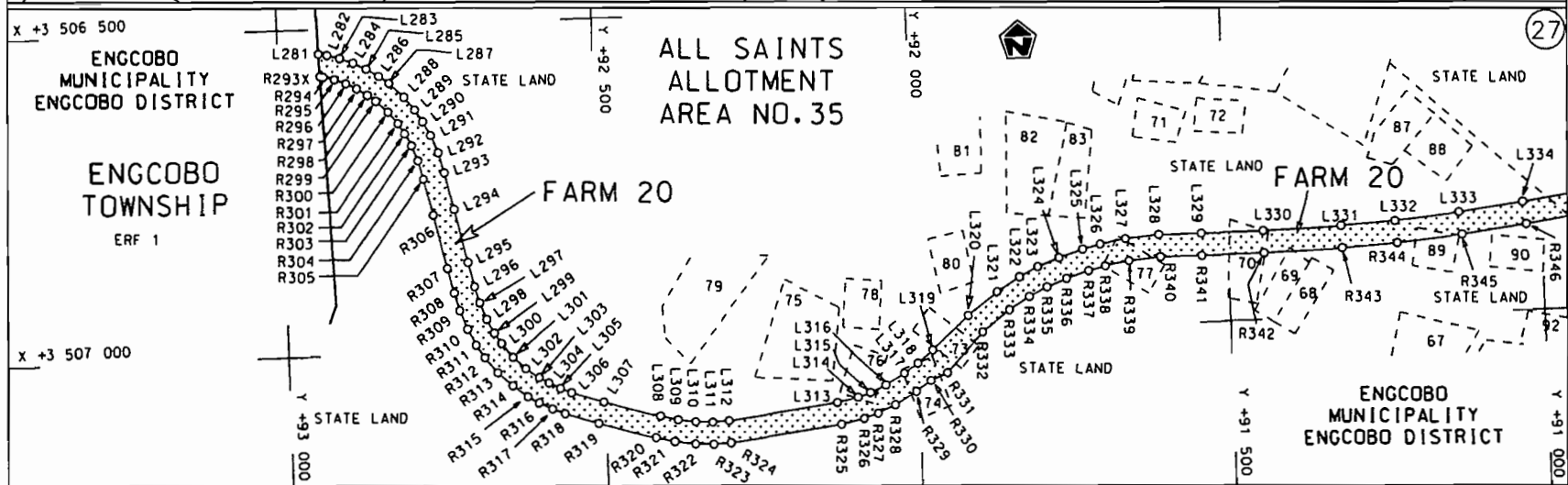
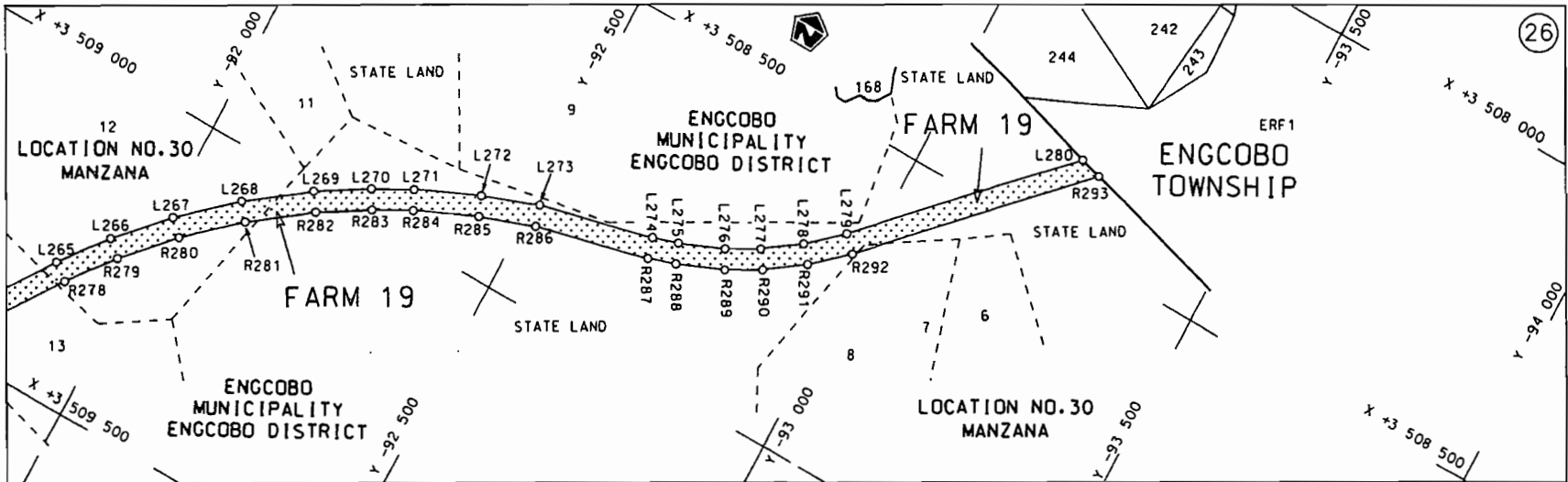


<p>Die Suid Afrikaanse Nasionale Padagentskap Beperk The South African National Roads Agency Limited</p>	<p>Die figuur getoon The figure shown</p>		<p>steldie podreserve voor van 'n gedeelte represents the road reserve of a portion van Nasionale Roete R61 Seksie 6 of National Route R61 Section 6</p>	<p>Vel Sheet 12 van 30 of 30</p>
				<p>Plan P606/06</p>



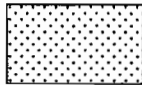


<p>Die Suid Afrikaanse Nasionale Padogentskap Beperk The South African National Roads Agency Limited</p>	<p>Die figuur getoon The figure shown</p> 	<p>steldie padreserwe voor van 'n gedeelte represents the road reserve of a portion van Nasionale Roete R61 Seksie of National Route Section 6</p>	<p>Vel Sheet 13 van of 30 Plan P606/06</p>
--	--	--	--



Die Suid Afrikaanse Nasionale Padagentskap Beperk  
The South African National Roads Agency Limited

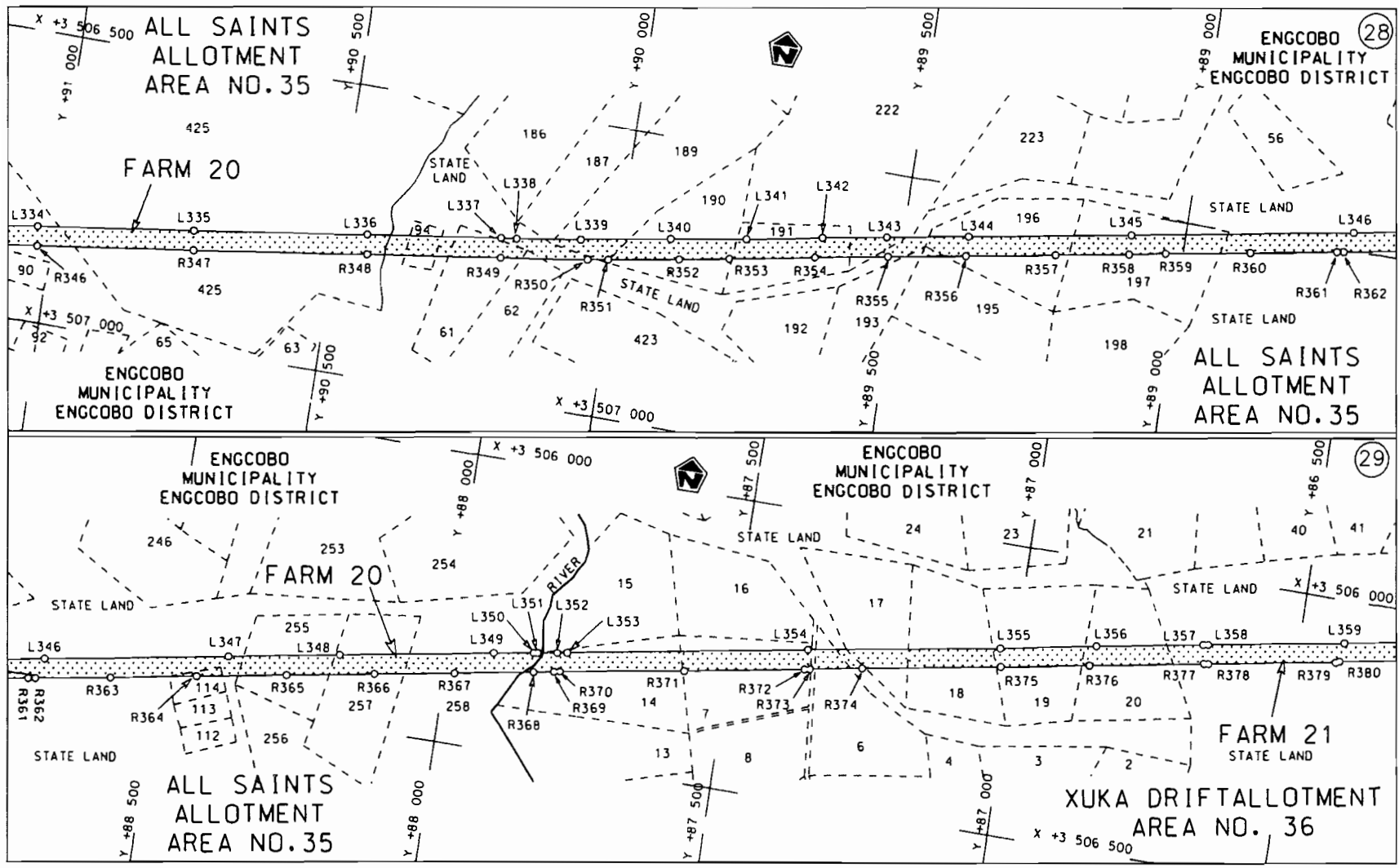
Die figuur getoon  
The figure shown

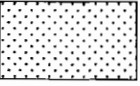


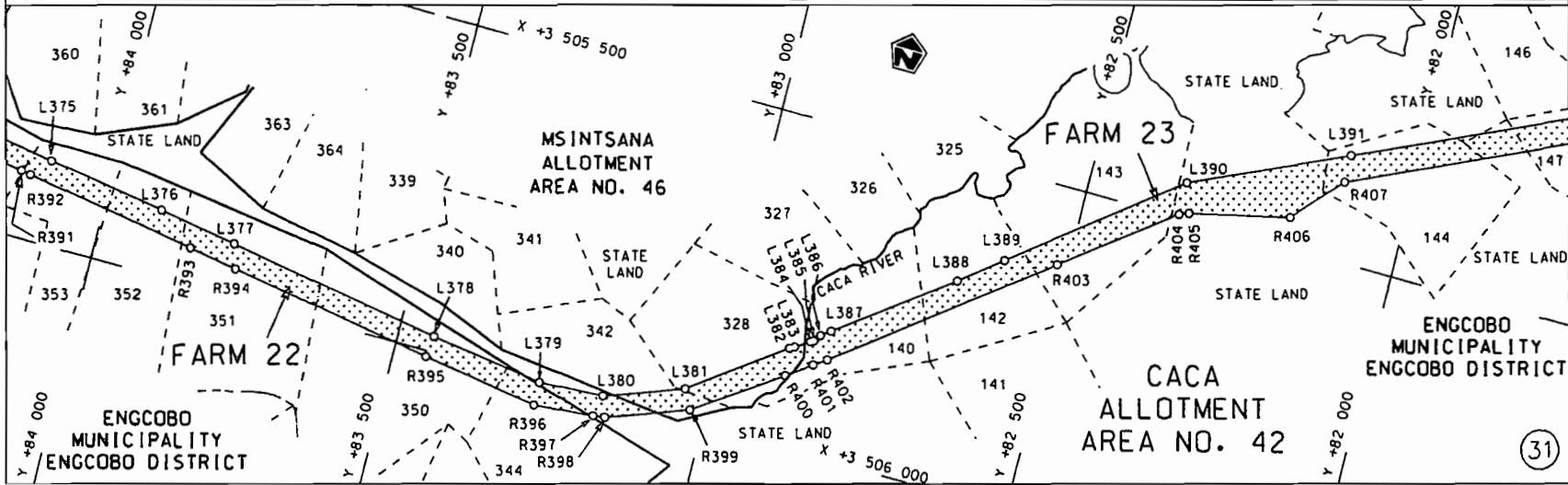
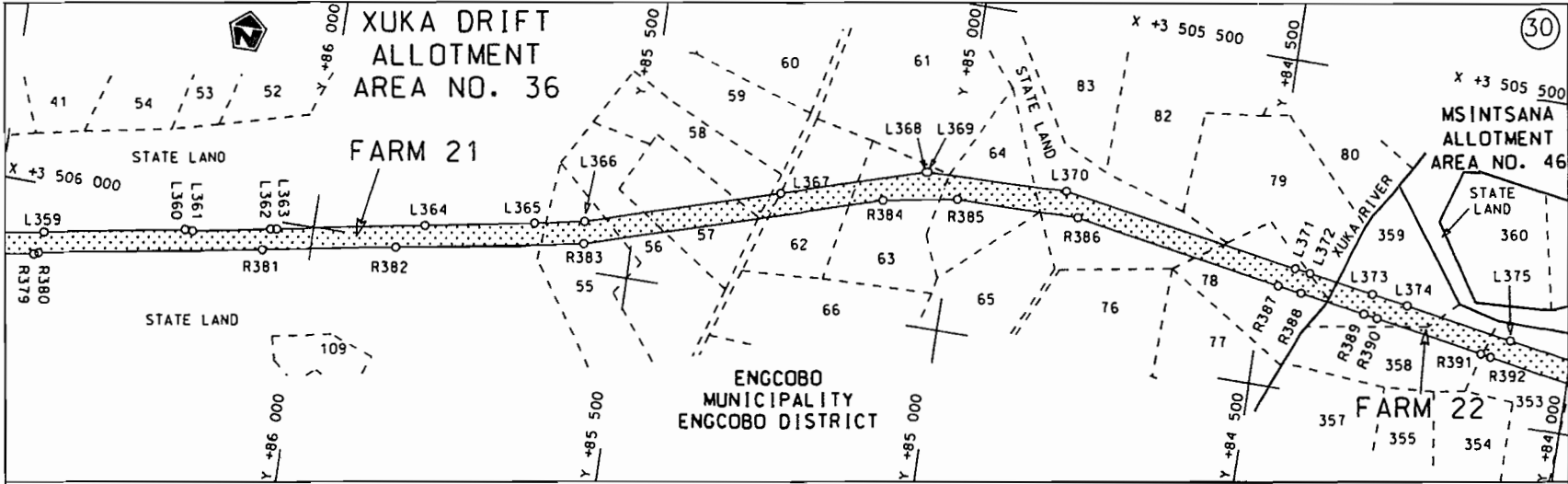
steldie padreserwe voor van 'n gedeelte  
represents the road reserve of a portion  
van Nasionale Roete R61 Seksie  
of National Route R61 Section

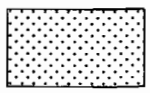
Vel van  
Sheet 14 of 30  
Plan P606/06

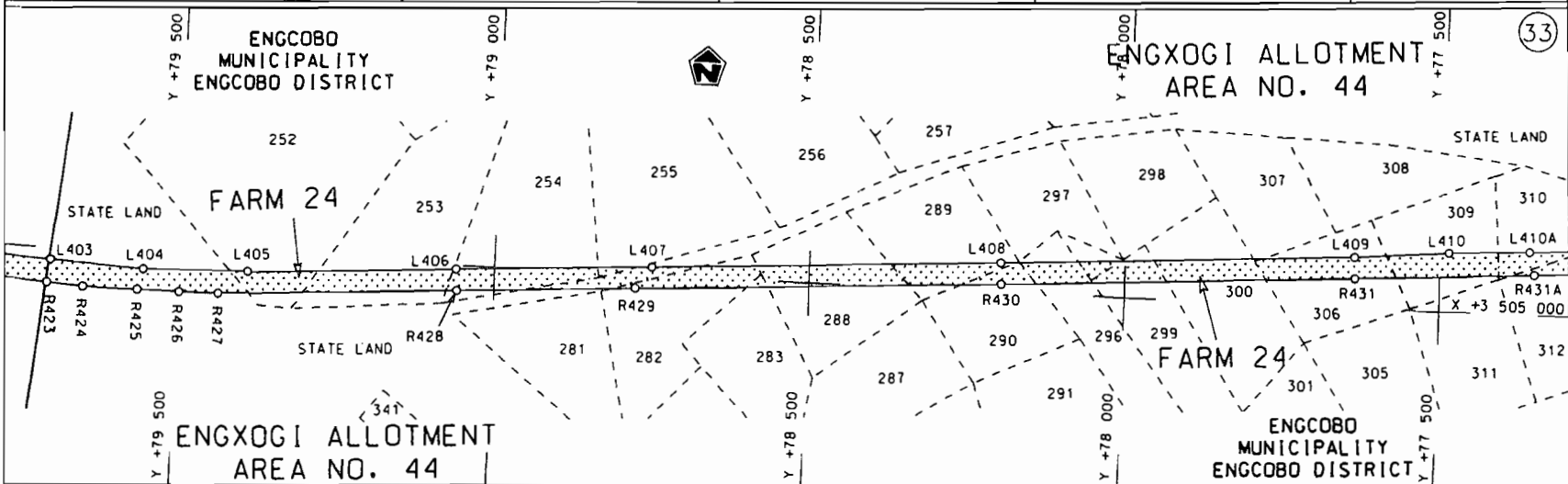
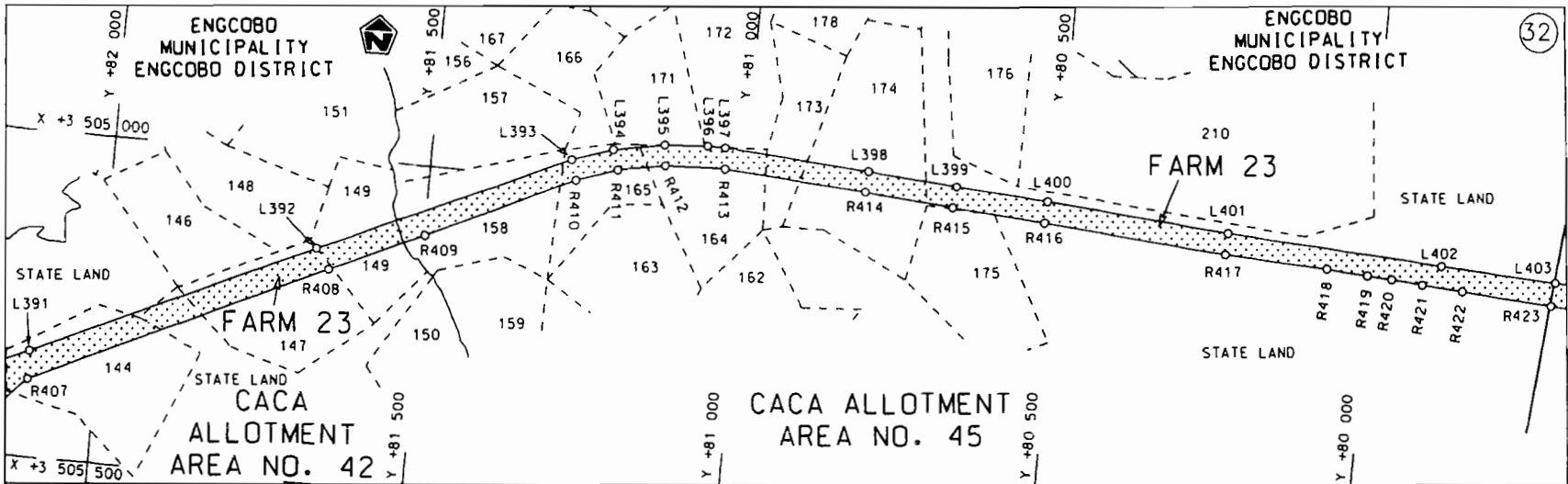
6

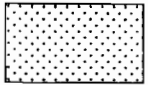


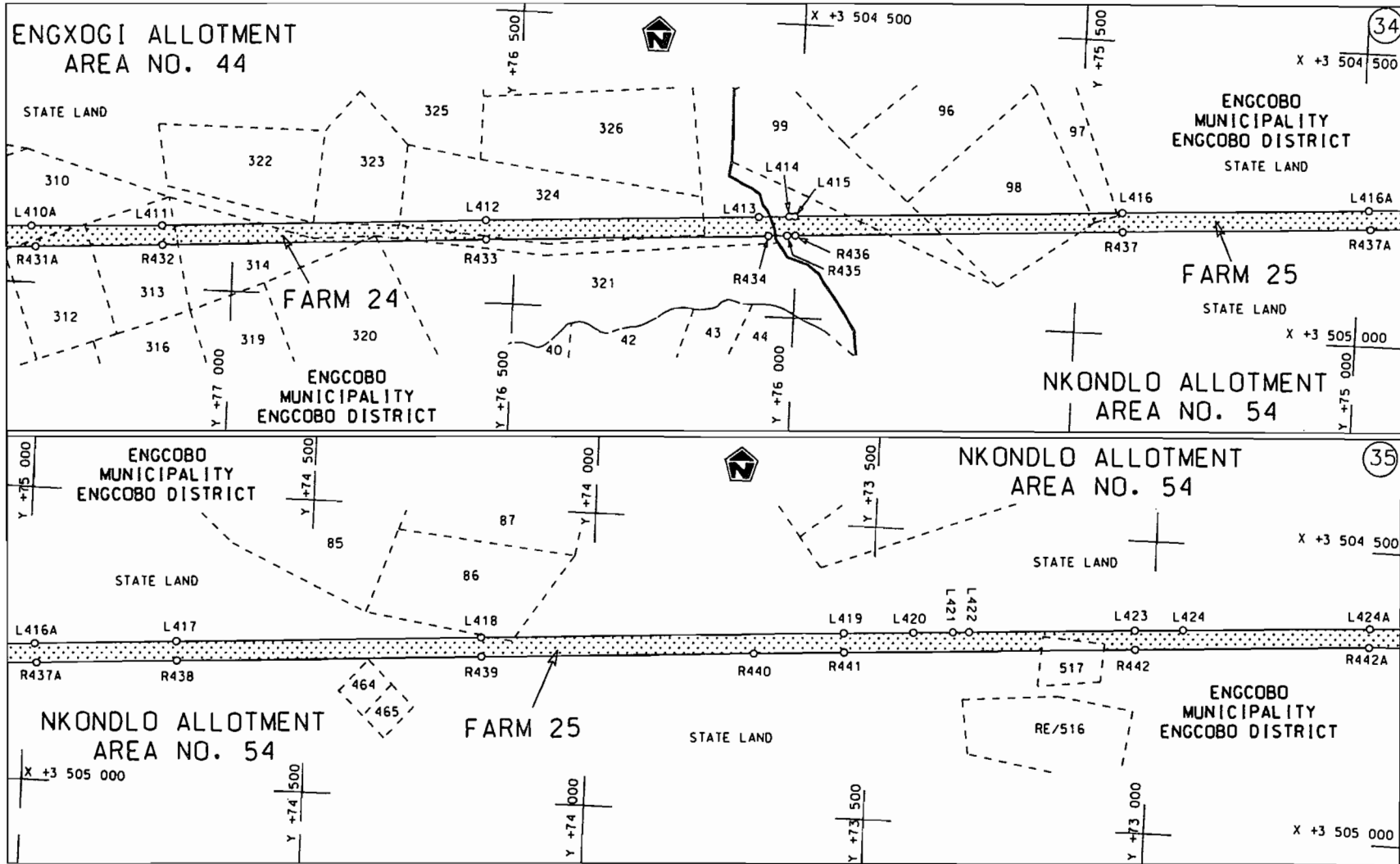
<p>Die Suid Afrikaanse Nasionale Padagentskap Beperk The South African National Roads Agency Limited</p>	<p>Die figuur getoon The figure shown</p>		<p>steldie padreserwe voor van 'n gedeelte represents the road reserve of a portion van Nasionale Roete of National Route R61 Seksie Section 6</p>	<p>Vel Sheet 15 van of 30 Plan P606/06</p>
--	---	--	--	--

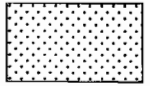


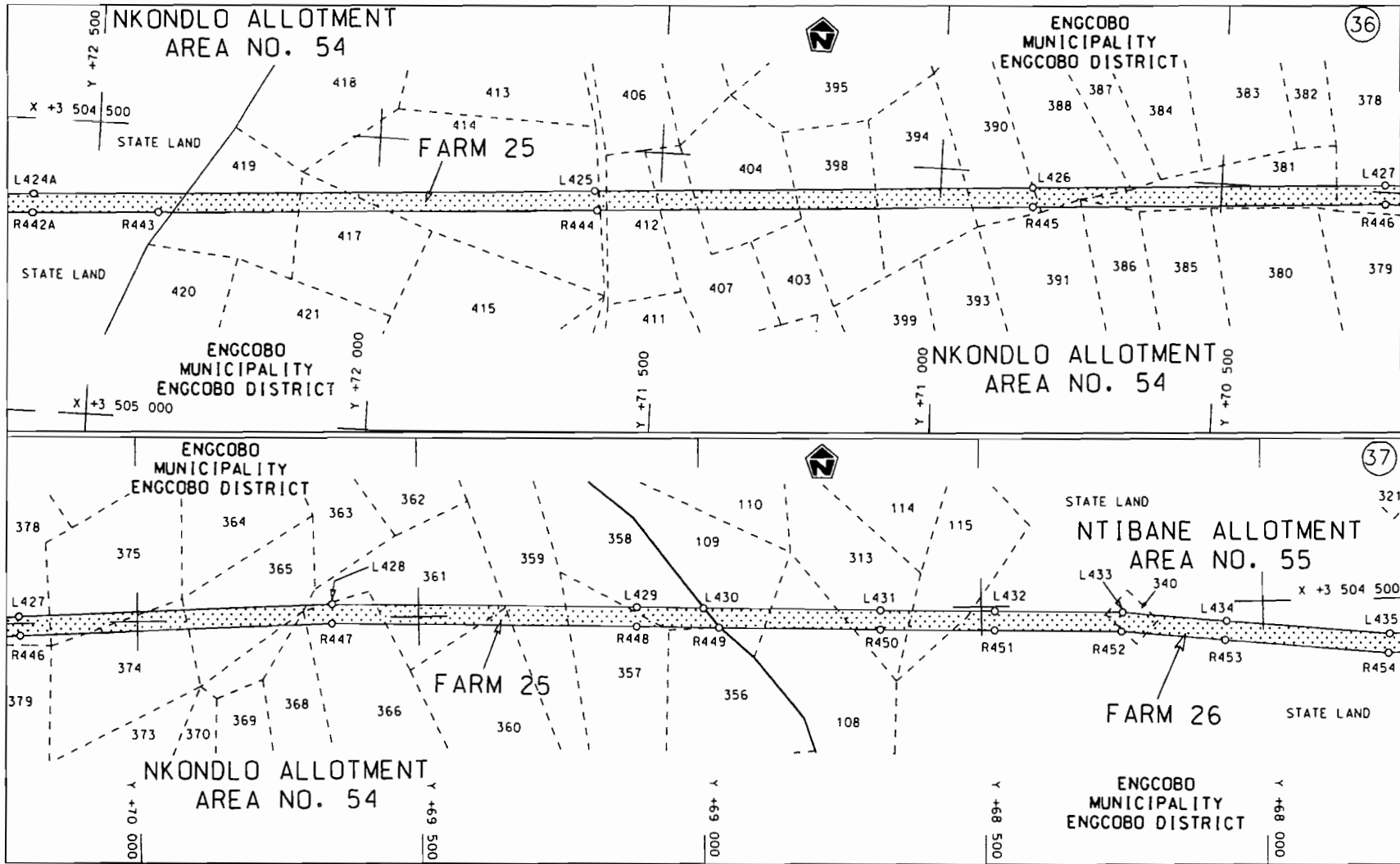
<p>Die Suid Afrikaanse Nasionale Padagentskap Beperk The South African National Roads Agency Limited</p>	<p>Die figuur getoon The figure shown</p>		<p>steldie padreserwe voor van 'n gedeelte represents the road reserve of a portion van Nasionale Roete of National Route</p> <p>R61    Seksie    6</p>	<p>Vel van Sheet 16 of 30 Plan P606/06</p>
--	---	--	---	--

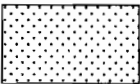


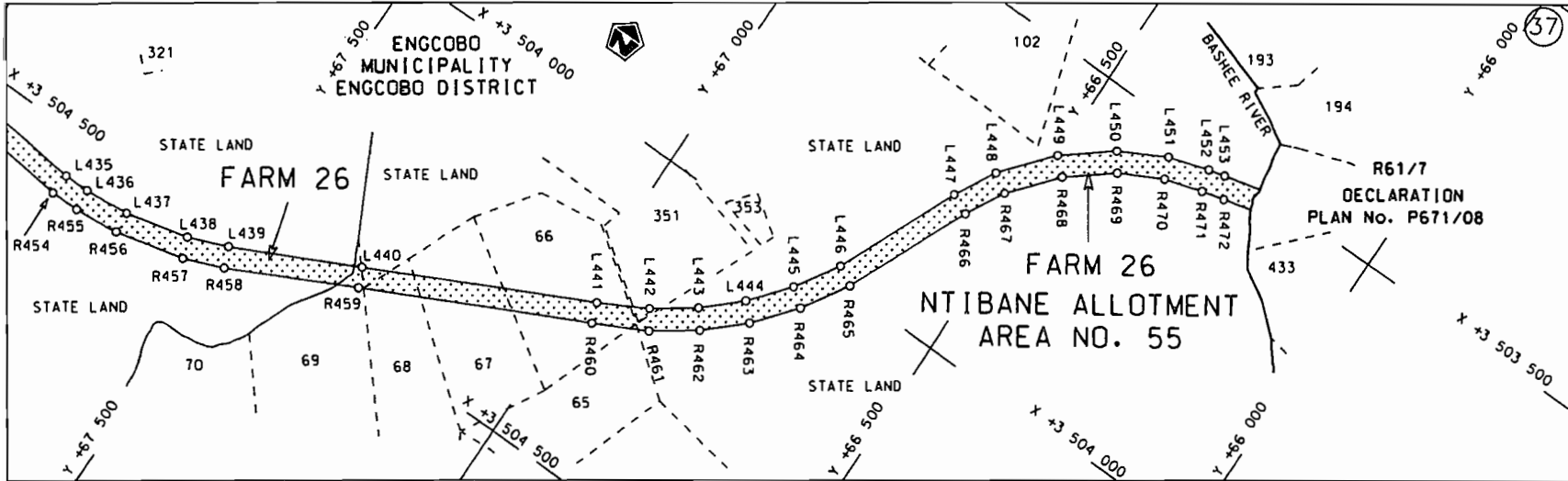
<p>Die Suid Afrikaanse Nasionale Padagentskap Beperk The South African National Roads Agency Limited</p>	<p>Die figuur getoon The figure shown</p>		<p>steldie padreserwe voor van 'n gedeelte represents the road reserve of a portion van Nasionale Roete R61 Seksie of National Route R61 Section 6</p>	<p>Vel Sheet 17 van 30 of of Plan P606/06</p>
--	---	--	--	---

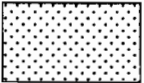


<p>Die Suid Afrikaanse Nasionale Padagentskap Beperk The South African National Roads Agency Limited</p>	<p>Die figuur getoon The figure shown</p>		<p>steldie padreserwe voor van 'n gedeelte represents the road reserve of a portion van Nasionale Roete of National Route R61 Seksie Section 6</p>	<p>Vel Sheet 18 van 30 Plan P606/06</p>
--	---	--	--	---



<p>Die Suid Afrikaanse Nasionale Padagentskap Beperk The South African National Roads Agency Limited</p>	<p>Die figuur getoon The figure shown</p>		<p>steldie padreserwe voor van 'n gedeelte represents the road reserve of a portion van Nasionale Roete R61 Seksie 6 of National Route of Section</p>	<p>Vel Sheet 19 van of 30 Plan P606/06</p>
--	---	--	---	--



<p>Die Suid Afrikaanse Nasionale Padagentskap Beperk The South African National Roads Agency Limited</p>	<p>Die figuur getoon The figure shown</p>		<p>steldie padreserwe voor van 'n gedeelte represents the road reserve of a portion von Nasionale Roete R61 Seksie of National Route Section</p>	<p>Vel Sheet 20 van 30 Plan P606/06</p>
--	---	--	--	---



PADRESERWE KOÖRDINATE / ROAD RESERVE CO-ORDINATES					
LINKERKANT/LEFT HAND SIDE			REGTERKANT/RIGHT HAND SIDE		
			WG 27°	X	
AL1	- 56 043.31	3 543 562.76	AR1	- 56 038.90	3 543 590.68
AL2	- 56 063.80	3 543 568.93	AR2	- 56 135.52	3 543 626.07
AL3	- 56 118.90	3 543 583.14	AR3	- 56 263.10	3 543 669.88
AL4	- 56 218.18	3 543 617.83	AR4	- 56 728.44	3 543 835.91
AL5	- 56 292.88	3 543 647.13	AR5	- 56 938.04	3 543 910.92
AL6	- 56 299.48	3 543 649.22	AR6	- 57 034.02	3 543 945.16
AL7	- 56 321.35	3 543 657.39	AR7	- 57 201.12	3 544 002.29
AL8	- 56 732.03	3 543 803.80	AR8	- 57 407.11	3 544 042.50
AL9	- 57 085.54	3 543 929.85	AR9	- 57 529.87	3 544 049.16
AL10	- 57 149.01	3 543 952.56	R1	- 57 644.63	3 544 044.46
AL11	- 57 267.07	3 543 986.86	R2	- 58 338.56	3 543 992.52
AL12	- 57 334.87	3 544 000.33	R3	- 58 444.76	3 543 984.47
AL13	- 57 428.74	3 544 013.21	R4	- 58 849.69	3 543 954.11
AL14	- 57 535.71	3 544 014.70	R5	- 59 188.22	3 543 928.82
AL15	- 57 643.63	3 544 013.24	R6	- 59 339.42	3 543 917.46
L1	- 57 648.62	3 544 012.85	R7	- 59 380.05	3 543 914.49
L2	- 58 443.37	3 543 952.84	R8	- 59 628.24	3 543 895.67
L3	- 58 848.07	3 543 922.36	R9	- 59 824.61	3 543 880.78
L4	- 59 186.31	3 543 897.08	R10	- 60 122.76	3 543 858.52
L5	- 59 357.76	3 543 882.91	R11	- 60 413.76	3 543 836.62
L6	- 59 386.04	3 543 880.47	R12	- 60 656.70	3 543 821.50
L7	- 59 821.31	3 543 849.40	R13	- 60 705.75	3 543 817.09
L8	- 60 121.89	3 543 826.54	R14	- 60 850.06	3 543 804.06
L9	- 60 654.85	3 543 784.12	R15	- 60 995.44	3 543 796.19
L10	- 60 705.17	3 543 780.79	R16	- 61 012.03	3 543 794.82
L11	- 60 844.43	3 543 772.81	R17	- 61 222.50	3 543 775.86
L12	- 60 992.47	3 543 757.55	R18	- 61 444.84	3 543 759.33
L13	- 61 006.82	3 543 756.41	R19	- 61 672.71	3 543 742.08
L14	- 61 159.00	3 543 749.01	R20	- 62 047.45	3 543 713.87
L15	- 61 309.29	3 543 737.35	R21	- 62 070.40	3 543 712.13
L16	- 61 572.71	3 543 717.82	R22	- 62 130.11	3 543 707.55
L17	- 62 039.38	3 543 682.55	R23	- 62 142.62	3 543 706.61
L18	- 62 092.36	3 543 678.66	R24	- 62 168.46	3 543 704.78
L19	- 62 143.13	3 543 674.94	R25	- 62 321.43	3 543 693.11
L20	- 62 144.66	3 543 674.82	R26	- 62 748.11	3 543 661.89
L21	- 62 466.45	3 543 650.70	R27	- 62 868.81	3 543 660.46
L22	- 62 734.61	3 543 630.67	R28	- 62 964.62	3 543 677.00
L23	- 62 857.60	3 543 631.47	R29	- 62 975.16	3 543 679.03
L24	- 62 956.55	3 543 637.27	R30	- 63 029.16	3 543 689.41
L25	- 62 963.50	3 543 639.00	R31	- 63 033.35	3 543 690.21
L26	- 63 010.58	3 543 650.64	R32	- 63 076.67	3 543 700.77
L27	- 63 028.22	3 543 654.99	R33	- 63 165.11	3 543 727.46
L28	- 63 101.07	3 543 675.14	R34	- 63 348.63	3 543 783.76
L29	- 63 265.25	3 543 720.80	R35	- 63 485.91	3 543 823.27
L30	- 63 526.31	3 543 801.50	R36	- 63 541.83	3 543 841.73
L31	- 63 586.03	3 543 806.03	R37	- 63 635.90	3 543 873.44
L32	- 63 684.89	3 543 836.87	R38	- 63 786.85	3 543 916.48
L33	- 63 705.07	3 543 843.05	R39	- 64 068.43	3 543 996.66
L34	- 64 157.20	3 543 984.15	R40	- 64 159.11	3 544 026.43
L35	- 64 174.93	3 543 990.28	R41	- 64 255.93	3 544 055.40
L36	- 64 251.74	3 544 017.18	R42	- 64 655.85	3 544 174.61

Vel	21	Van	30	P606/06
Sheet		of		

PADRESERWE KOÖRDINATE / ROAD RESERVE CO-ORDINATES					
LINKERKANT/LEFT HAND SIDE			REGTERKANT/RIGHT HAND SIDE		
WG 27°			X		
L37	- 64 598.34	3 544 120.30	R43	- 65 040.49	3 544 289.73
L38	- 65 054.12	3 544 256.77	R44	- 65 404.74	3 544 403.92
L39	- 65 407.48	3 544 357.53	R45	- 65 675.83	3 544 484.92
L40	- 65 506.79	3 544 389.77	R46	- 65 711.70	3 544 493.15
L41	- 65 690.41	3 544 438.02	R47	- 65 890.24	3 544 534.39
L42	- 65 752.08	3 544 469.54	R48	- 65 899.97	3 544 536.38
L43	- 65 903.80	3 544 506.30	R49	- 65 992.86	3 544 547.01
L44	- 65 994.18	3 544 514.63	R50	- 66 015.28	3 544 545.71
L45	- 66 012.58	3 544 513.62	R51	- 66 051.69	3 544 543.57
L46	- 66 049.65	3 544 511.68	R52	- 66 117.23	3 544 539.54
L47	- 66 113.41	3 544 508.81	R53	- 66 635.02	3 544 447.91
L48	- 66 259.10	3 544 484.16	R54	- 66 958.83	3 544 391.19
L49	- 66 276.60	3 544 480.81	R55	- 67 582.03	3 544 281.21
L50	- 66 374.71	3 544 463.60	R56	- 67 623.96	3 544 274.0
L51	- 66 716.03	3 544 402.94	R57	- 68 107.30	3 544 188.27
L52	- 67 576.56	3 544 251.93	R58	- 68 164.36	3 544 178.17
L53	- 67 613.32	3 544 248.34	R59	- 68 434.55	3 544 130.30
L54	- 67 645.63	3 544 239.55	R60	- 68 497.27	3 544 119.54
L55	- 67 860.43	3 544 201.24	R61	- 68 530.15	3 544 114.03
L56	- 68 022.12	3 544 172.77	R62	- 68 953.94	3 544 041.25
L57	- 68 089.21	3 544 161.05	R63	- 68 997.67	3 544 033.78
L58	- 68 489.27	3 544 090.88	R64	- 69 062.70	3 544 022.54
L59	- 68 628.28	3 544 066.10	R65	- 69 084.24	3 544 018.81
L60	- 68 646.67	3 544 063.67	R66	- 69 121.35	3 544 012.43
L61	- 68 956.89	3 544 008.29	R67	- 70 448.41	3 543 780.38
L62	- 69 008.41	3 543 999.03	R68	- 70 645.52	3 543 745.95
L63	- 69 061.97	3 543 989.47	R69	- 70 862.59	3 543 618.21
L64	- 69 141.93	3 543 975.13	R70	- 70 987.89	3 543 441.09
L65	- 69 321.87	3 543 942.70	R71	- 71 106.94	3 543 162.70
L66	- 69 644.35	3 543 884.22	R72	- 71 107.89	3 543 160.48
L67	- 70 413.37	3 543 746.80	R73	- 71 193.56	3 543 075.59
L68	- 70 439.68	3 543 742.01	R74	- 71 291.63	3 543 026.05
L69	- 70 589.10	3 543 715.15	R75	- 71 483.09	3 543 013.59
L70	- 70 740.34	3 543 647.39	R76	- 71 604.17	3 543 093.38
L71	- 70 965.62	3 543 410.93	R77	- 71 766.76	3 543 175.49
L72	- 71 039.53	3 543 224.00	R78	- 71 843.01	3 543 182.83
L73	- 71 111.38	3 543 082.73	R79	- 71 982.06	3 543 213.79
L74	- 71 113.78	3 543 082.83	R80	- 72 086.09	3 543 213.14
L75	- 71 127.31	3 543 083.42	R81	- 72 344.67	3 543 171.01
L76	- 71 305.10	3 542 964.08	R82	- 72 757.87	3 543 116.09
L77	- 71 493.40	3 542 971.75	R83	- 73 077.42	3 543 063.51
L78	- 71 807.44	3 543 130.45	R84	- 73 218.05	3 543 007.35
L79	- 71 996.63	3 543 183.40	R85	- 73 249.89	3 542 987.39
L80	- 72 200.01	3 543 157.80	R86	- 73 275.14	3 542 968.30
L81	- 72 229.71	3 543 146.54	R87	- 73 302.78	3 542 942.49
L82	- 72 496.41	3 543 112.53	R88	- 73 500.06	3 542 621.63
L83	- 72 706.75	3 543 080.48	R89	- 73 511.21	3 542 587.33
L84	- 73 069.43	3 543 025.23	R90	- 73 640.13	3 542 326.58
L85	- 73 200.04	3 542 972.11	R91	- 74 131.65	3 541 340.60
L86	- 73 210.33	3 542 966.58	R92	- 74 166.85	3 541 269.22
L87	- 73 278.62	3 542 920.21	R93	- 74 183.45	3 541 235.75

Vel	22	Van	30	P606/06
Sheet		of		

PADRESERWE KOÖRDINATE / ROAD RESERVE CO-ORDINATES							
LINKERKANT/LEFT HAND SIDE			REGTERKANT/RIGHT HAND SIDE				
WG 27°			X				
L88	- 73 525.82	3 542 483.90	R94	- 74 224.69	3 541 171.65		
L89	- 74 027.71	3 541 486.29	R95	- 74 267.13	3 541 117.11		
L90	- 74 161.57	3 541 209.65	R96	- 74 310.85	3 541 076.55		
L91	- 74 204.17	3 541 127.49	R97	- 74 339.42	3 541 055.51		
L92	- 74 291.54	3 541 037.79	R98	- 74 369.13	3 541 036.43		
L93	- 74 394.88	3 540 968.16	R99	- 74 432.48	3 541 002.91		
L94	- 74 420.36	3 540 956.88	R100	- 74 463.99	3 540 990.08		
L95	- 74 472.90	3 540 942.38	R101	- 74 494.26	3 540 975.02		
L96	- 74 546.95	3 540 913.75	R102	- 74 769.62	3 540 854.69		
L97	- 74 629.90	3 540 865.39	R103	- 74 844.310	3 540 875.430		
L98	- 74 692.00	3 540 846.08	R104	- 74 854.610	3 540 859.740		
L99	- 74 725.94	3 540 839.98	R105	- 74 897.300	3 540 813.680		
L100	- 74 769.12	3 540 823.16	R106	- 74 921.570	3 540 789.070		
L101	- 74 810.23	3 540 802.79	R107	- 74 994.120	3 540 745.770		
L102	- 74 855.97	3 540 781.49	R108	- 75 044.570	3 540 710.810		
L103	- 75 039.390	3 540 655.690	R109	- 75 074.750	3 540 689.660		
L104	- 75 055.000	3 540 640.700	R110	- 75 226.850	3 540 523.630		
L105	- 75 088.240	3 540 606.030	R111	- 75 429.690	3 540 333.520		
L106	- 75 158.780	3 540 536.630	R112	- 75 520.240	3 540 207.220		
L107	- 75 439.040	3 540 250.830	R113	- 75 779.560	3 539 846.110		
L108	- 75 482.690	3 540 193.300	R114	- 75 816.270	3 539 795.010		
L109	- 75 727.950	3 539 809.230	R115	- 75 872.460	3 539 716.880		
L110	- 75 734.520	3 539 796.040	R116	- 75 907.080	3 539 668.700		
L111	- 75 759.330	3 539 768.390	R117	- 75 896.170	3 539 660.410		
L112	- 75 816.590	3 539 704.520	R118	- 75 974.340	3 539 571.540		
L113	- 75 822.130	3 539 698.340	R119	- 76 052.060	3 539 517.840		
L114	- 75 921.040	3 539 577.340	R120	- 76 092.320	3 539 494.000		
L115	- 76 026.500	3 539 491.840	R121	- 76 240.170	3 539 417.600		
L116	- 76 162.850	3 539 421.310	R122	- 76 346.910	3 539 366.510		
L117	- 76 493.050	3 539 245.080	R123	- 76 842.760	3 539 115.940		
L118	- 76 547.600	3 539 235.760	R124	- 76 927.290	3 539 052.450		
L119	- 76 586.190	3 539 214.210	R125	- 77 008.850	3 538 992.750		
L120	- 76 956.600	3 538 974.830	R126	- 77 047.900	3 538 935.150		
L121	- 77 046.210	3 538 879.520	R127	- 77 367.570	3 538 449.880		
L122	- 77 182.090	3 538 670.650	R128	- 77 672.510	3 537 986.970		
L123	- 77 643.800	3 537 967.660	R129	- 78 191.490	3 537 199.140		
L124	- 78 070.170	3 537 318.500	R130	- 78 508.930	3 536 718.830		
L125	- 78 479.730	3 536 709.110	R131	- 78 978.280	3 536 008.660		
L126	- 78 951.170	3 535 992.610	R132	- 79 004.370	3 535 964.570		
L127	- 78 976.950	3 535 949.060	R133	- 79 028.370	3 535 920.130		
L128	- 79 000.310	3 535 905.800	R134	- 79 051.380	3 535 872.370		
L129	- 79 022.790	3 535 859.150	R135	- 79 072.610	3 535 824.470		
L130	- 79 043.410	3 535 812.610	R136	- 79 098.330	3 535 755.010		
L131	- 79 068.660	3 535 744.440	R137	- 79 108.680	3 535 724.760		
L132	- 79 078.580	3 535 715.410	R138	- 79 124.790	3 535 667.200		
L133	- 79 094.320	3 535 659.210	R139	- 79 136.320	3 535 619.930		
L134	- 79 105.550	3 535 613.150	R140	- 79 144.720	3 535 577.340		
L135	- 79 113.740	3 535 571.610	R141	- 79 153.090	3 535 529.070		
L136	- 79 121.890	3 535 524.630	R142	- 79 158.480	3 535 480.770		
L137	- 79 127.140	3 535 477.580	R143	- 79 162.640	3 535 435.520		
L138	- 79 131.290	3 535 432.450	R144	- 79 181.930	3 535 249.720		
			Vel	23	Van	30	P606/06
			Sheet		of		

PADRESERWE KOÖRDINATE / ROAD RESERVE CO-ORDINATES					
LINKERKANT/LEFT HAND SIDE			REGTERKANT/RIGHT HAND SIDE		
			WG 27°	X	
L139	- 79 150.600	3 535 246.470	R145	- 79 226.910	3 534 201.210
L140	- 79 190.730	3 534 201.220	R146	- 79 257.950	3 533 477.540
L141	- 79 224.170	3 533 469.120	R147	- 79 275.260	3 532 979.050
L142	- 79 244.780	3 532 976.610	R148	- 79 300.610	3 532 482.910
L143	- 79 229.040	3 532 700.370	R149	- 79 300.830	3 532 477.810
L144	- 79 257.650	3 532 652.660	R150	- 79 304.160	3 532 399.990
L145	- 79 266.780	3 532 485.570	R151	- 79 307.720	3 532 394.320
L146	- 79 269.580	3 532 439.880	R152	- 79 305.680	3 532 337.180
L147	- 79 272.400	3 532 393.900	R153	- 79 300.540	3 532 212.370
L148	- 79 273.720	3 532 338.190	R154	- 79 280.340	3 532 064.220
L149	- 79 268.630	3 532 215.200	R155	- 79 257.680	3 531 966.660
L150	- 79 248.830	3 532 070.010	R156	- 79 264.670	3 531 963.070
L151	- 79 176.850	3 531 760.090	R157	- 79 233.400	3 531 840.580
L152	- 79 128.280	3 531 600.870	R158	- 79 201.670	3 531 730.330
L153	- 79 097.480	3 531 477.800	R159	- 79 158.860	3 531 591.440
L154	- 79 083.760	3 531 388.630	R160	- 79 157.200	3 531 584.320
L155	- 79 078.800	3 531 307.220	R161	- 79 128.750	3 531 470.950
L156	- 79 079.410	3 531 229.320	R162	- 79 110.830	3 531 306.650
L157	- 79 090.940	3 531 140.600	R163	- 79 112.760	3 531 229.140
L158	- 79 141.290	3 530 907.250	R164	- 79 122.720	3 531 144.330
L159	- 79 170.360	3 530 865.860	R165	- 79 148.160	3 531 026.890
L160	- 79 385.420	3 530 538.870	R166	- 79 167.480	3 530 925.640
L161	- 79 404.860	3 530 512.110	R167	- 79 196.550	3 530 884.250
L162	- 79 417.230	3 530 521.760	R168	- 79 220.730	3 530 860.540
L163	- 79 537.110	3 530 359.050	R169	- 79 456.350	3 530 525.650
L164	- 79 633.720	3 530 186.410	R170	- 79 516.850	3 530 439.320
L165	- 79 800.930	3 529 712.720	R171	- 79 621.680	3 530 284.510
L166	- 80 010.730	3 529 117.930	R172	- 79 671.320	3 530 174.140
L167	- 80 224.650	3 528 511.060	R173	- 79 708.350	3 530 070.580
L168	- 80 233.660	3 528 485.500	R174	- 79 713.870	3 530 054.200
L169	- 80 241.020	3 528 464.590	R175	- 79 833.020	3 529 716.150
L170	- 80 242.760	3 528 459.670	R176	- 79 863.060	3 529 631.380
L171	- 80 417.330	3 527 965.980	R177	- 79 954.000	3 529 383.190
L172	- 80 420.880	3 527 955.660	R178	- 79 962.610	3 529 356.450
L173	- 80 842.570	3 526 760.660	R179	- 80 245.430	3 528 550.030
L174	- 80 858.020	3 526 716.890	R180	- 80 255.460	3 528 520.770
L175	- 81 025.360	3 526 382.990	R181	- 80 263.600	3 528 497.010
L176	- 81 170.500	3 526 162.520	R182	- 80 273.660	3 528 467.650
L177	- 81 298.240	3 525 967.140	R183	- 80 353.830	3 528 240.870
L178	- 81 356.470	3 525 879.770	R184	- 80 461.380	3 527 936.700
L179	- 81 384.710	3 525 836.860	R185	- 80 591.160	3 527 569.330
L180	- 81 530.880	3 525 613.700	R186	- 80 635.790	3 527 442.800
L181	- 81 709.300	3 525 341.410	R187	- 80 792.160	3 526 998.550
L182	- 81 779.090	3 525 235.460	R188	- 80 798.210	3 526 982.330
L183	- 81 944.420	3 524 984.260	R189	- 80 850.230	3 526 834.630
L184	- 82 382.250	3 524 316.560	R190	- 80 886.460	3 526 731.790
L185	- 82 449.620	3 524 213.770	R191	- 81 038.500	3 526 417.570
L186	- 82 710.450	3 523 817.300	R192	- 81 042.690	3 526 410.660
L187	- 83 105.510	3 523 214.290	R193	- 81 428.540	3 525 824.560
L188	- 83 766.960	3 522 212.420	R194	- 81 730.620	3 525 366.660
L189	- 83 862.170	3 522 067.230	R195	- 81 988.970	3 524 974.420

Vel	24	Van	30	P606/06
Sheet		of		

PADRESERWE KOÖRDINATE / ROAD RESERVE CO-ORDINATES					
LINKERKANT/LEFT HAND SIDE			REGTERKANT/RIGHT HAND SIDE		
		WG 27°		X	
L190	- 83 897.260	3 522 008.700	R196	- 82 410.300	3 524 333.320
L191	- 83 909.490	3 521 987.890	R197	- 82 472.240	3 524 239.770
L192	- 84 015.490	3 521 834.330	R198	- 82 743.230	3 523 821.330
L193	- 84 038.030	3 521 801.670	R199	- 83 133.350	3 523 230.440
L194	- 84 048.800	3 521 787.550	R200	- 83 448.290	3 522 754.330
L195	- 84 117.060	3 521 701.330	R201	- 83 793.610	3 522 230.380
L196	- 84 277.420	3 521 538.370	R202	- 84 045.070	3 521 848.080
L197	- 84 891.480	3 520 916.800	R203	- 84 055.350	3 521 833.450
L198	- 85 103.330	3 520 697.080	R204	- 84 085.900	3 521 790.970
L199	- 85 263.510	3 520 535.790	R205	- 84 140.130	3 521 722.410
L200	- 85 470.000	3 520 331.500	R206	- 84 201.490	3 521 655.790
L201	- 86 194.740	3 519 605.420	R207	- 84 300.120	3 521 556.360
L202	- 86 447.080	3 519 349.650	R208	- 84 887.910	3 520 964.170
L203	- 86 458.560	3 519 337.140	R209	- 85 250.090	3 520 599.090
L204	- 86 704.410	3 519 087.230	R210	- 85 279.540	3 520 569.480
L205	- 87 324.680	3 518 459.040	R211	- 85 490.650	3 520 356.370
L206	- 87 490.550	3 518 284.660	R212	- 85 818.430	3 520 024.830
L207	- 87 930.310	3 517 850.820	R213	- 86 170.960	3 519 668.940
L208	- 87 994.360	3 517 771.420	R214	- 86 218.230	3 519 628.600
L209	- 88 128.790	3 517 571.470	R215	- 86 470.570	3 519 372.830
L210	- 88 132.700	3 517 564.650	R216	- 86 727.890	3 519 110.420
L211	- 88 139.000	3 517 553.660	R217	- 87 348.160	3 518 482.230
L212	- 88 242.130	3 517 337.220	R218	- 87 514.100	3 518 307.780
L213	- 88 372.960	3 516 994.090	R219	- 87 954.820	3 517 873.000
L214	- 88 434.960	3 516 654.070	R220	- 88 020.950	3 517 790.020
L215	- 88 526.970	3 516 470.170	R221	- 88 171.130	3 517 567.380
L216	- 88 524.170	3 516 464.730	R222	- 88 172.170	3 517 565.250
L217	- 88 560.720	3 516 402.390	R223	- 88 186.620	3 517 535.780
L218	- 88 629.050	3 516 310.720	R224	- 88 241.070	3 517 423.710
L219	- 88 899.860	3 515 950.970	R225	- 88 272.960	3 517 348.980
L220	- 89 305.700	3 515 410.260	R226	- 88 403.790	3 517 005.850
L221	- 89 365.840	3 515 326.120	R227	- 88 467.420	3 516 659.990
L222	- 89 411.990	3 515 238.420	R228	- 88 573.100	3 516 455.860
L223	- 89 479.280	3 515 105.310	R229	- 88 670.610	3 516 302.690
L224	- 89 637.990	3 514 773.250	R230	- 88 946.000	3 515 940.700
L225	- 89 937.560	3 514 099.710	R231	- 89 067.080	3 515 782.820
L226	- 89 967.970	3 513 936.570	R232	- 89 177.500	3 515 639.480
L227	- 89 969.360	3 513 721.450	R233	- 89 308.420	3 515 468.220
L228	- 89 969.700	3 513 669.080	R234	- 89 393.050	3 515 343.320
L229	- 89 969.740	3 513 663.090	R235	- 89 441.320	3 515 253.550
L230	- 89 965.920	3 513 639.180	R236	- 89 508.730	3 515 120.200
L231	- 89 965.270	3 513 401.860	R237	- 89 666.750	3 514 787.400
L232	- 89 954.330	3 513 306.560	R238	- 89 950.080	3 514 178.350
L233	- 89 924.380	3 513 176.920	R239	- 89 962.560	3 514 141.460
L234	- 89 882.250	3 513 023.030	R240	- 89 991.140	3 514 037.610
L235	- 89 872.450	3 512 975.830	R241	- 90 000.970	3 513 936.780
L236	- 89 868.330	3 512 905.890	R242	- 90 004.250	3 513 703.230
L237	- 89 878.850	3 512 814.450	R243	- 90 004.500	3 513 693.450
L238	- 89 894.320	3 512 763.430	R244	- 90 005.660	3 513 648.850
L239	- 89 943.560	3 512 679.140	R245	- 90 005.910	3 513 639.080
L240	- 89 980.230	3 512 616.360	R246	- 90 005.270	3 513 401.750

Vel	25	Van	30	P606/06
Sheet		of		

PADRESERWE KOÖRDINATE / ROAD RESERVE CO-ORDINATES					
LINKERKANT/LEFT HAND SIDE			REGTERKANT/RIGHT HAND SIDE		
			WG 27°	X	
L241	- 90 159.570	3 512 309.360	R247	- 89 993.940	3 513 300.910
L242	- 90 204.470	3 512 235.240	R248	- 89 963.350	3 513 167.910
L243	- 90 357.840	3 511 983.450	R249	- 89 913.230	3 513 015.130
L244	- 90 436.590	3 511 854.170	R250	- 89 904.380	3 512 973.840
L245	- 90 574.700	3 511 626.760	R251	- 89 900.280	3 512 908.070
L246	- 90 598.710	3 511 587.220	R252	- 89 909.940	3 512 822.130
L247	- 90 688.900	3 511 439.560	R253	- 89 922.940	3 512 777.890
L248	- 90 723.510	3 511 382.720	R254	- 89 970.240	3 512 696.910
L249	- 90 794.030	3 511 262.930	R255	- 90 007.780	3 512 632.650
L250	- 90 819.140	3 511 211.270	R256	- 90 187.070	3 512 325.720
L251	- 90 820.710	3 511 208.040	R257	- 90 231.820	3 512 251.850
L252	- 90 850.540	3 511 131.310	R258	- 90 463.930	3 511 870.800
L253	- 90 868.230	3 511 072.520	R259	- 90 626.010	3 511 603.910
L254	- 90 886.880	3 510 987.300	R260	- 90 716.220	3 511 456.220
L255	- 90 907.380	3 510 886.590	R261	- 90 751.090	3 511 398.940
L256	- 90 912.480	3 510 861.540	R262	- 90 822.210	3 511 278.060
L257	- 90 916.490	3 510 841.870	R263	- 90 850.540	3 511 219.610
L258	- 90 937.060	3 510 758.480	R264	- 90 881.210	3 511 140.460
L259	- 90 957.260	3 510 696.820	R265	- 90 881.620	3 511 139.070
L260	- 90 978.930	3 510 644.560	R266	- 90 898.990	3 511 080.700
L261	- 91 008.450	3 510 583.670	R267	- 90 918.180	3 510 993.950
L262	- 91 038.410	3 510 531.830	R268	- 90 939.420	3 510 889.610
L263	- 91 324.820	3 510 112.300	R269	- 90 944.230	3 510 865.990
L264	- 91 636.480	3 509 657.540	R270	- 90 947.840	3 510 848.250
L265	- 91 882.200	3 509 300.180	R271	- 90 967.790	3 510 767.310
L266	- 91 939.360	3 509 227.760	R272	- 90 987.240	3 510 707.940
L267	- 92 010.900	3 509 151.120	R273	- 91 007.720	3 510 658.520
L268	- 92 094.960	3 509 076.380	R274	- 91 036.690	3 510 598.660
L269	- 92 187.380	3 509 007.880	R275	- 91 065.470	3 510 548.870
L270	- 92 265.580	3 508 959.680	R276	- 91 351.230	3 510 130.370
L271	- 92 325.230	3 508 927.470	R277	- 91 662.860	3 509 675.660
L272	- 92 422.550	3 508 884.370	R278	- 91 907.940	3 509 319.170
L273	- 92 510.500	3 508 852.740	R279	- 91 963.600	3 509 248.600
L274	- 92 691.960	3 508 808.220	R280	- 92 034.280	3 509 172.970
L275	- 92 731.710	3 508 795.230	R281	- 92 115.130	3 509 101.180
L276	- 92 800.460	3 508 766.220	R282	- 92 205.310	3 509 034.350
L277	- 92 850.100	3 508 738.280	R283	- 92 281.600	3 508 987.370
L278	- 92 906.030	3 508 698.320	R284	- 92 339.330	3 508 956.170
L279	- 92 958.430	3 508 651.290	R285	- 92 434.360	3 508 914.090
L280	- 93 230.660	3 508 368.720	R286	- 92 520.350	3 508 883.760
			R287	- 92 700.770	3 508 838.960
			R288	- 92 743.530	3 508 824.980
			R289	- 92 815.360	3 508 794.550
			R290	- 92 867.990	3 508 764.820
			R291	- 92 926.750	3 508 722.730
			R292	- 92 981.070	3 508 673.910
			R293	- 93 265.730	3 508 378.350

Vel 26 Van 30  
Sheet of

P606/06

PADRESERWE KOÖRDINATE / ROAD RESERVE CO-ORDINATES					
LINKERKANT/LEFT HAND SIDE			REGTERKANT/RIGHT HAND SIDE		
	Y	X	WG 29°	Y	X
L281	92 935.170	3 506 538.700	R293X	92 933.940	3 506 573.310
L282	92 921.560	3 506 540.940	R294	92 928.570	3 506 574.180
L283	92 901.350	3 506 546.310	R295	92 911.550	3 506 578.720
L284	92 879.950	3 506 554.290	R296	92 893.160	3 506 585.550
L285	92 859.790	3 506 564.010	R297	92 876.010	3 506 593.840
L286	92 840.650	3 506 575.820	R298	92 859.550	3 506 604.010
L287	92 825.130	3 506 587.290	R299	92 846.650	3 506 613.560
L288	92 801.620	3 506 608.910	R300	92 827.790	3 506 630.670
L289	92 785.210	3 506 628.890	R301	92 812.610	3 506 648.880
L290	92 773.240	3 506 647.800	R302	92 802.630	3 506 664.810
L291	92 762.020	3 506 669.380	R303	92 792.850	3 506 683.620
L292	92 751.330	3 506 696.400	R304	92 783.570	3 506 707.040
L293	92 742.970	3 506 727.940	R305	92 775.970	3 506 736.240
L294	92 729.680	3 506 784.120	R306	92 762.760	3 506 791.970
L295	92 710.670	3 506 865.960	R307	92 743.730	3 506 873.960
L296	92 701.580	3 506 903.400	R308	92 734.470	3 506 911.950
L297	92 694.460	3 506 928.820	R309	92 726.680	3 506 939.570
L298	92 684.590	3 506 953.990	R310	92 715.570	3 506 967.890
L299	92 673.570	3 506 975.350	R311	92 702.820	3 506 992.580
L300	92 662.560	3 506 991.480	R312	92 689.790	3 507 011.800
L301	92 645.020	3 507 012.660	R313	92 669.790	3 507 035.840
L302	92 625.500	3 507 030.700	R314	92 647.360	3 507 056.640
L303	92 604.840	3 507 046.200	R315	92 623.980	3 507 074.240
L304	92 589.880	3 507 055.250	R316	92 606.330	3 507 085.010
L305	92 571.890	3 507 064.100	R317	92 585.690	3 507 095.140
L306	92 553.990	3 507 071.090	R318	92 565.400	3 507 103.090
L307	92 502.610	3 507 086.790	R319	92 511.890	3 507 119.460
L308	92 413.720	3 507 112.190	R320	92 422.020	3 507 145.170
L309	92 386.130	3 507 119.150	R321	92 392.800	3 507 152.400
L310	92 358.750	3 507 123.270	R322	92 360.430	3 507 157.250
L311	92 331.330	3 507 124.640	R323	92 331.330	3 507 158.570
L312	92 305.110	3 507 123.240	R324	92 303.430	3 507 157.200
L313	92 131.700	3 507 101.650	R325	92 125.910	3 507 135.120
L314	92 098.060	3 507 094.580	R326	92 089.530	3 507 127.440
L315	92 078.340	3 507 088.360	R327	92 066.940	3 507 120.380
L316	92 053.710	3 507 078.360	R328	92 039.580	3 507 109.270
L317	92 023.110	3 507 061.260	R329	92 005.170	3 507 090.130
L318	92 001.270	3 507 046.630	R330	91 981.390	3 507 074.140
L319	91 976.500	3 507 027.110	R331	91 954.240	3 507 062.820
L320	91 918.140	3 506 976.660	R332	91 895.930	3 507 002.390
L321	91 870.460	3 506 942.550	R333	91 851.910	3 506 971.000
L322	91 833.860	3 506 920.950	R334	91 818.970	3 506 951.480
L323	91 803.940	3 506 906.380	R335	91 790.390	3 506 937.570
L324	91 769.950	3 506 893.450	R336	91 758.920	3 506 925.510
L325	91 731.500	3 506 881.600	R337	91 723.600	3 506 914.660
L326	91 703.320	3 506 874.940	R338	91 696.670	3 506 908.260
L327	91 663.060	3 506 868.420	R339	91 658.810	3 506 902.120
L328	91 609.930	3 506 863.790	R340	91 608.250	3 506 897.680
L329	91 541.950	3 506 864.010	R341	91 542.480	3 506 897.990
L330	91 442.860	3 506 864.190	R342	91 442.390	3 506 898.180
L331	91 316.840	3 506 861.420	R343	91 315.800	3 506 895.410

Vel	27	Van	30	P606/06
Sheet		of		

PADRESERWE KOÖRDINATE / ROAD RESERVE CO-ORDINATES					
LINKERKANT/LEFT HAND SIDE			REGTERKANT/RIGHT HAND SIDE		
	Y	X	WG 29°	Y	X
L332	91 231.150	3 506 856.620	R344	91 228.350	3 506 890.510
L333	91 129.570	3 506 847.630	R345	91 125.360	3 506 881.360
L334	91 028.350	3 506 835.020	R346	91 023.700	3 506 868.700
L335	90 750.770	3 506 796.720	R347	90 746.080	3 506 830.380
L336	90 446.220	3 506 754.730	R348	90 441.530	3 506 788.380
L337	90 209.850	3 506 721.800	R349	90 205.390	3 506 755.510
L338	90 181.830	3 506 718.590	R350	90 050.830	3 506 734.630
L339	90 068.080	3 506 702.110	R351	90 014.400	3 506 728.640
L340	89 909.380	3 506 675.010	R352	89 889.000	3 506 706.990
L341	89 776.030	3 506 653.430	R353	89 800.880	3 506 691.800
L342	89 642.110	3 506 630.250	R354	89 650.680	3 506 665.670
L343	89 528.460	3 506 610.360	R355	89 521.730	3 506 643.050
L344	89 385.170	3 506 585.720	R356	89 384.650	3 506 619.480
L345	89 096.540	3 506 536.440	R357	89 226.760	3 506 592.380
L346	88 707.040	3 506 468.460	R358	89 095.790	3 506 569.700
L347	88 383.070	3 506 412.360	R359	89 031.040	3 506 558.300
L348	88 189.480	3 506 378.600	R360	88 882.640	3 506 532.500
L349	87 918.800	3 506 332.740	R361	88 731.370	3 506 506.350
L350	87 848.640	3 506 320.670	R362	88 719.080	3 506 504.200
L351	87 841.480	3 506 319.440	R363	88 585.160	3 506 481.300
L352	87 806.640	3 506 313.450	R364	88 434.000	3 506 455.110
L353	87 789.040	3 506 310.390	R365	88 277.400	3 506 428.030
L354	87 365.660	3 506 236.670	R366	88 123.820	3 506 402.020
L355	87 026.400	3 506 179.500	R367	87 982.990	3 506 377.790
L356	86 856.700	3 506 148.380	R368	87 844.000	3 506 353.680
L357	86 667.720	3 506 115.820	R369	87 807.830	3 506 346.480
L358	86 659.330	3 506 114.420	R370	87 797.190	3 506 344.360
L359	86 420.800	3 506 073.310	R371	87 577.550	3 506 307.890
L360	86 201.450	3 506 035.090	R372	87 367.060	3 506 270.770
L361	86 189.160	3 506 035.220	R373	87 357.060	3 506 269.180
L362	86 067.590	3 506 013.280	R374	87 264.460	3 506 252.780
L363	86 057.840	3 506 011.650	R375	87 020.850	3 506 210.770
L364	85 827.160	3 505 970.100	R376	86 864.560	3 506 183.490
L365	85 657.700	3 505 939.580	R377	86 661.850	3 506 148.210
L366	85 578.950	3 505 925.290	R378	86 653.790	3 506 146.850
L367	85 278.640	3 505 832.290	R379	86 431.300	3 506 108.640
L368	85 054.550	3 505 763.580	R380	86 424.330	3 506 105.530
L369	85 050.600	3 505 762.970	R381	86 075.660	3 506 046.330
L370	84 830.430	3 505 757.520	R382	85 867.060	3 506 010.330
L371	84 453.880	3 505 816.180	R383	85 575.170	3 505 958.990
L372	84 429.380	3 505 820.000	R384	85 115.630	3 505 817.450
L373	84 326.380	3 505 836.040	R385	84 998.480	3 505 796.900
L374	84 269.260	3 505 844.940	R386	84 806.280	3 505 794.790
L375	84 098.160	3 505 871.950	R387	84 477.060	3 505 846.040
L376	83 911.280	3 505 901.290	R388	84 438.630	3 505 852.090
L377	83 786.300	3 505 920.690	R389	84 334.890	3 505 868.420
L378	83 444.800	3 505 976.360	R390	84 313.390	3 505 871.800
L379	83 266.860	3 506 001.320	R391	84 140.900	3 505 899.040
L380	83 163.750	3 505 995.670	R392	84 125.190	3 505 901.540
L381	83 040.390	3 505 951.710	R393	83 852.370	3 505 944.830
L382	82 896.660	3 505 849.770	R394	83 774.840	3 505 957.030

Vel	28	Van	30	P606/06
Sheet		of		



PADRESERWE KOÖRDINATE / ROAD RESERVE CO-ORDINATES					
LINKERKANT/LEFT HAND SIDE			REGTERKANT/RIGHT HAND SIDE		
	Y	X	WG 29°	Y	X
L383	82 888.810	3 505 845.180	R395	83 449.380	3 506 009.040
L384	82 866.290	3 505 832.040	R396	83 266.650	3 506 036.870
L385	82 861.500	3 505 829.280	R397	83 171.280	3 506 029.220
L386	82 853.090	3 505 818.850	R398	83 152.670	3 506 026.760
L387	82 838.590	3 505 808.110	R399	83 025.010	3 505 981.270
L388	82 662.790	3 505 682.160	R400	82 892.390	3 505 891.630
L389	82 598.280	3 505 632.610	R401	82 853.210	3 505 865.170
L390	82 350.200	3 505 444.980	R402	82 833.440	3 505 851.810
L391	82 107.220	3 505 337.390	R403	82 516.620	3 505 618.470
L392	81 666.620	3 505 140.900	R404	82 350.090	3 505 494.860
L393	81 278.100	3 504 969.160	R405	82 335.240	3 505 489.440
L394	81 213.300	3 504 948.690	R406	82 177.760	3 504 453.660
L395	81 132.180	3 504 933.660	R407	82 106.810	3 505 380.100
L396	81 063.850	3 504 929.610	R408	81 644.630	3 505 171.230
L397	81 035.720	3 504 929.080	R409	81 499.430	3 505 105.750
L398	80 805.330	3 504 944.600	R410	81 268.450	3 504 999.680
L399	80 663.060	3 504 955.030	R411	81 203.660	3 504 979.180
L400	80 517.830	3 504 965.310	R412	81 128.560	3 504 965.420
L401	80 227.600	3 504 987.840	R413	81 033.260	3 504 961.800
L402	79 884.010	3 505 009.170	R414	80 807.590	3 504 976.540
L403	79 701.830	3 505 019.260	R415	80 666.800	3 504 988.040
L404	79 554.630	3 505 027.440	R416	80 520.070	3 504 998.220
L405	79 386.920	3 505 024.420	R417	80 229.650	3 505 020.770
L406	79 060.430	3 505 005.500	R418	80 065.470	3 505 029.600
L407	78 749.380	3 504 987.390	R419	80 000.470	3 505 034.000
L408	78 196.690	3 504 955.190	R420	79 961.070	3 505 036.670
L409	77 636.890	3 504 922.240	R421	79 912.160	3 505 040.000
L410	77 487.060	3 504 909.800	R422	79 847.650	3 505 044.580
L411	77 127.000	3 504 893.250	R423	79 705.700	3 505 054.630
L412	76 553.490	3 504 859.080	R424	79 648.730	3 505 058.680
L413	76 068.100	3 504 830.690	R425	79 563.190	3 505 059.170
L414	76 014.360	3 504 827.490	R426	79 496.680	3 505 059.620
L415	76 004.410	3 504 826.930	R427	79 433.160	3 505 059.910
L416	75 423.970	3 504 792.790	R428	79 058.520	3 505 038.430
L417	74 734.050	3 504 752.530	R429	78 774.980	3 505 021.630
L418	74 193.780	3 504 720.870	R430	78 194.740	3 504 988.140
L419	73 548.880	3 504 683.220	R431	77 634.970	3 504 955.210
L420	73 424.560	3 504 676.050	R432	77 125.150	3 504 926.210
L421	73 353.660	3 504 672.080	R433	76 551.580	3 504 892.060
L422	73 324.880	3 504 670.310	R434	76 049.720	3 504 862.590
L423	73 031.420	3 504 653.130	R435	76 016.880	3 504 860.690
L424	72 945.140	3 504 648.590	R436	76 002.460	3 504 859.860
L425	71 617.040	3 504 571.380	R437	75 422.040	3 504 825.730
L426	70 836.870	3 504 524.400	R438	74 732.120	3 504 785.500
L427	70 210.160	3 504 487.920	R439	74 191.820	3 504 753.820
L428	69 652.530	3 504 476.270	R440	73 707.010	3 504 725.790
L429	69 114.040	3 504 490.790	R441	73 546.950	3 504 716.140
L430	68 995.090	3 504 494.210	R442	73 029.500	3 504 686.050
L431	68 679.310	3 504 503.330	R443	72 388.530	3 504 648.790
L432	68 476.130	3 504 508.180	R444	71 610.960	3 504 604.300
L433	68 249.630	3 504 514.760	R445	70 834.920	3 504 557.350

Vel	29	Van	30	P606/06
Sheet		of		

PADRESERWE KOÖRDINATE / ROAD RESERVE CO-ORDINATES					
LINKERKANT/LEFT HAND SIDE			REGTERKANT/RIGHT HAND SIDE		
			WG 29°	X	
L434	68 064.530	3 504 533.190	R446	70 208.230	3 504 520.880
L435	67 775.750	3 504 560.610	R447	69 653.400	3 504 509.270
L436	67 736.430	3 504 560.160	R448	69 114.940	3 504 523.790
L437	67 667.050	3 504 554.250	R449	68 968.250	3 504 528.000
L438	67 567.680	3 504 531.050	R450	68 680.110	3 504 536.320
L439	67 505.150	3 504 505.920	R451	68 477.010	3 504 541.130
L440	67 311.550	3 504 411.050	R452	68 252.890	3 504 547.610
L441	66 973.370	3 504 245.340	R453	68 067.640	3 504 566.030
L442	66 899.590	3 504 205.200	R454	67 778.890	3 504 593.470
L443	66 836.360	3 504 159.750	R455	67 733.660	3 504 593.020
L444	66 781.700	3 504 108.800	R456	67 664.260	3 504 587.150
L445	66 732.120	3 504 048.270	R457	67 555.380	3 504 561.670
L446	66 688.820	3 503 979.210	R458	67 492.870	3 504 536.570
L447	66 601.020	3 503 786.380	R459	67 298.320	3 504 440.350
L448	66 565.540	3 503 721.950	R460	66 962.600	3 504 275.280
L449	66 500.750	3 503 644.120	R461	66 880.900	3 504 233.610
L450	66 426.800	3 503 584.840	R462	66 815.360	3 504 186.470
L451	66 353.250	3 503 545.580	R463	66 757.720	3 504 132.920
L452	66 289.440	3 503 525.150	R464	66 704.850	3 504 068.600
L453	66 263.880	3 503 518.360	R465	66 659.310	3 503 996.170
			R466	66 570.030	3 503 800.380
			R467	66 536.270	3 503 739.230
			R468	66 475.850	3 503 667.290
			R469	66 406.830	3 503 612.360
			R470	66 339.210	3 503 576.570
			R471	66 279.950	3 503 557.780
			R472	66 244.560	3 503 548.390

Vel	30	Van	30	P606/06
Sheet		of		