

**REPUBLIC OF SOUTH AFRICA
REPUBLIEK VAN SUID-AFRIKA**

Vol. 527

**Pretoria, 15 May
Mei 2009**

No. 32171

CONTENTS**INHOUD**

<i>No.</i>	<i>Page No.</i>	<i>Gazette No.</i>	<i>No.</i>	<i>Bladsy No.</i>	<i>Koerant No.</i>
GOVERNMENT NOTICE			GOEWERMENTSKENNISGEWING		
Transport, Department of			Vervoer, Departement van		
<i>Government Notice</i>			<i>Goewermentskennisgewing</i>		
454			454		
South African National Roads Agency Limited and the National Roads Act (7/1998): The South African National Roads Agency Limited: Declaration amendment of National Road R36 Section 7: Amendment of Declaration No. 1229 of 2004	3	32171	Suid-Afrikaanse Nasionale Padagentskap Beperk en die Nasionale Paaie Wet (7/1998): Die Suid-Afrikaanse Nasionale Padagentskap Beperk: Verklaring wysiging van Nasionale Pad R36 Seksie 7: Wysiging van Verklaring No. 1229 van 2004	4	32171

GOVERNMENT NOTICE

DEPARTMENT OF TRANSPORT

No. 454

15 May 2009

DEPARTMENT OF TRANSPORT

THE SOUTH AFRICAN NATIONAL ROADS AGENCY LIMITED

Registration No: 98/09584/06

DECLARATION AMENDMENT OF NATIONAL ROAD R36 SECTION 7

AMENDMENT OF DECLARATION No. 1229 OF 2004

By virtue of section 40 (1)(b) of the South African National Roads Agency Limited and the National Roads Act, 1998 (Act No. 7 of 1998), I hereby amend Declaration No. 1229 of 2004 by substituting the section of the descriptive declaration from Tzaneen up to Duiwelskloof in paragraph (III) of the Annexure, with the subjoined sheets 1 to 7 of Plan No.P683/08.

(National Road R36 Section 7: Tzaneen - Duiwelskloof)



MINISTER OF TRANSPORT

GOEWERMENSKENNISGEWING

DEPARTEMENT VAN VERVOER

No. 454

15 Mei 2009

DEPARTEMENT VAN VERVOER

DIE SUID-AFRIKAANSE NASIONALE PADAGENTSKAP BEPERK

Registrasie No: 98/09584/06

VERKLARING WYSIGING VAN NASIONALE PAD R36 SEKSIE 7.

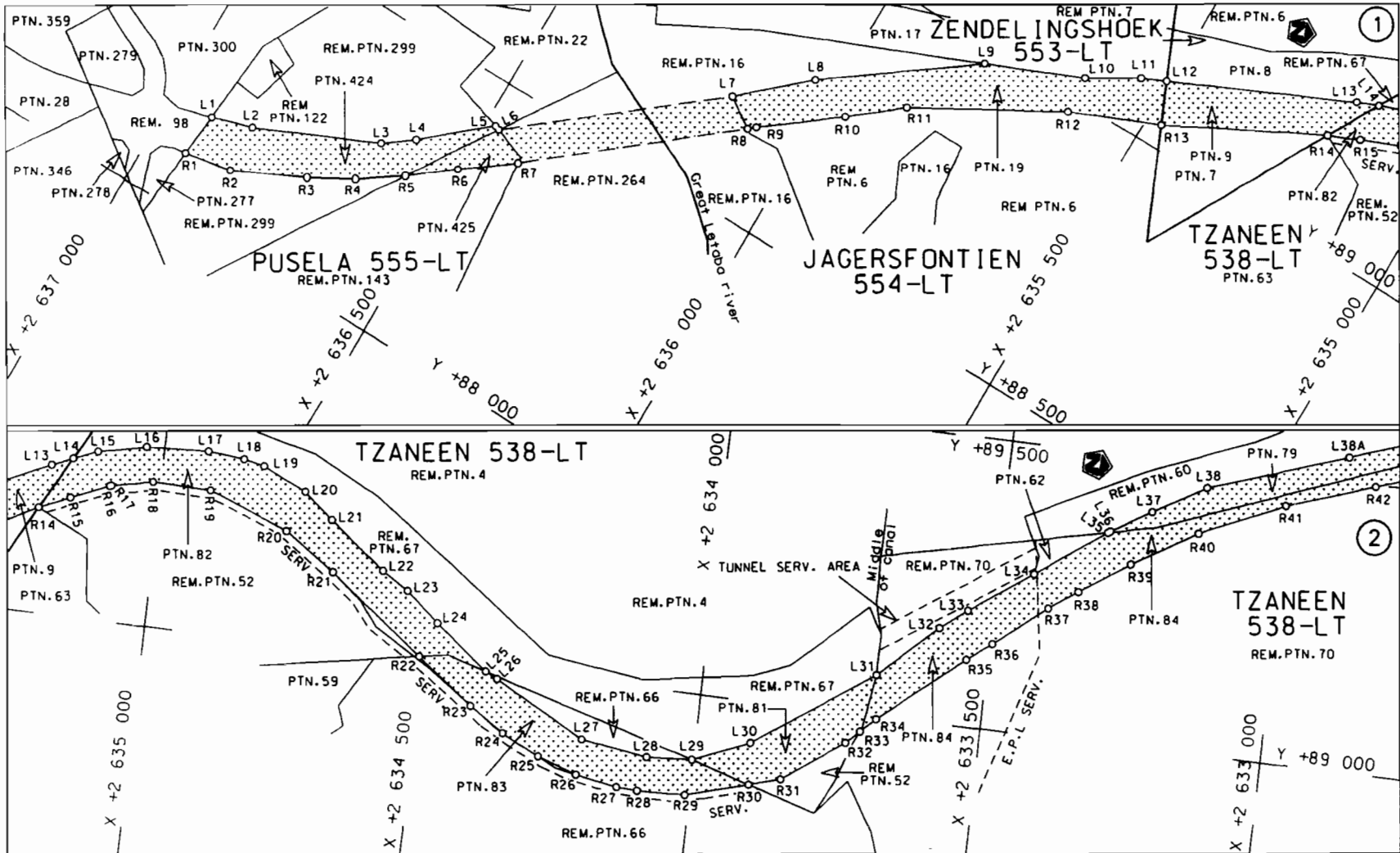
WYSIGING VAN VERKLARING NO. 1229 VAN 2004.

Kragtens Artikel 40(1)(b) van die Suid-Afrikaanse Nasionale Padagentskap Beperk en die Nasionale Paaie Wet, 1998 (Wet No.7 van 1998), wysig ek hiermee Verklaring no. 1229 van 2004 deur die gedeelte van die beskrywende verklaring vanaf Tzaneen tot by Duiwelskloof in paragraaf (III) van die bylae, te vervang met meegaande velle 1 tot 7 van Plan No. P683/08.

(Nasionale Pad R36 Seksie 7: Tzaneen - Duiwelskloof)



MINISTER VAN VERVOER



Suid-Afrikaanse Padraad
South African Roads Board

Die figuur getoon
The figure shown

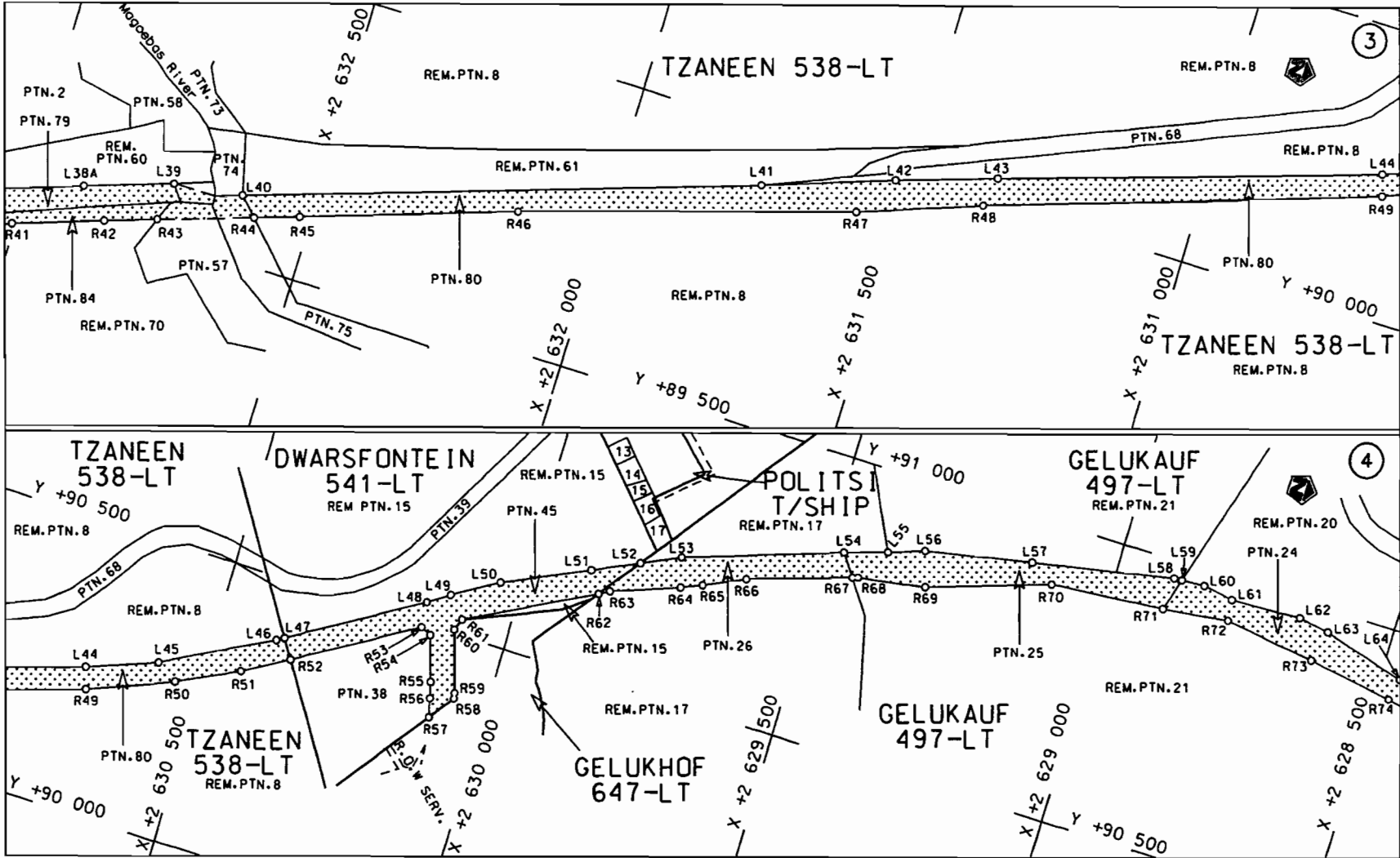


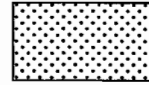
steldie padreserwe voor van 'n gedeelte
represents the road reserve of a portion
van Nasionale Raete
of National Route R36

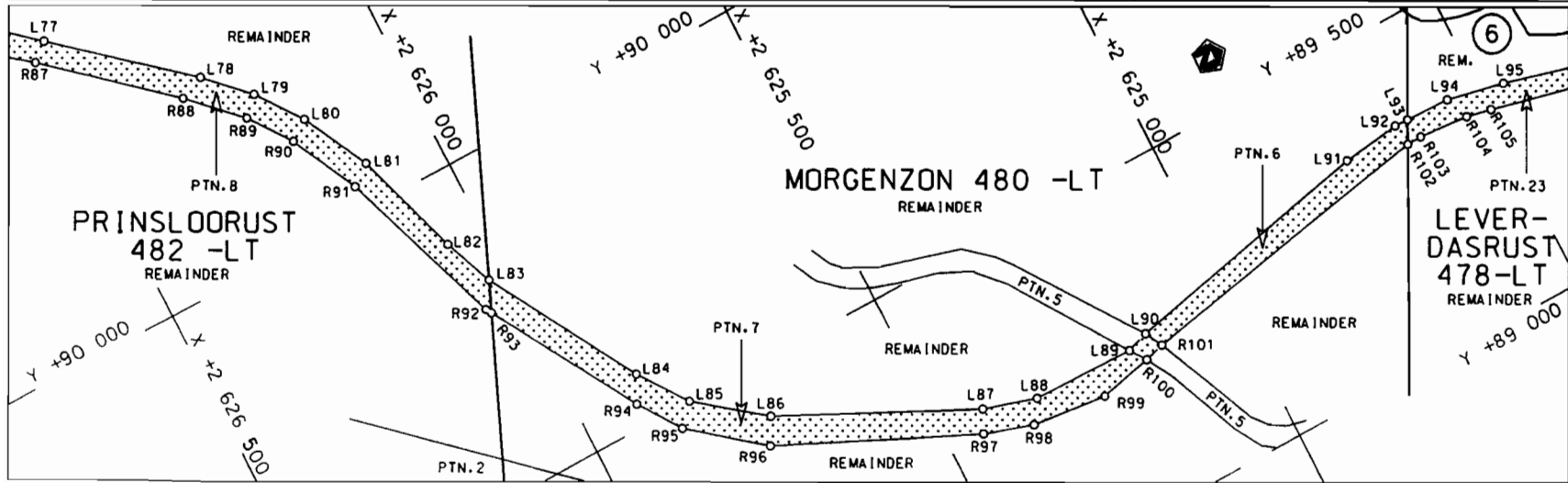
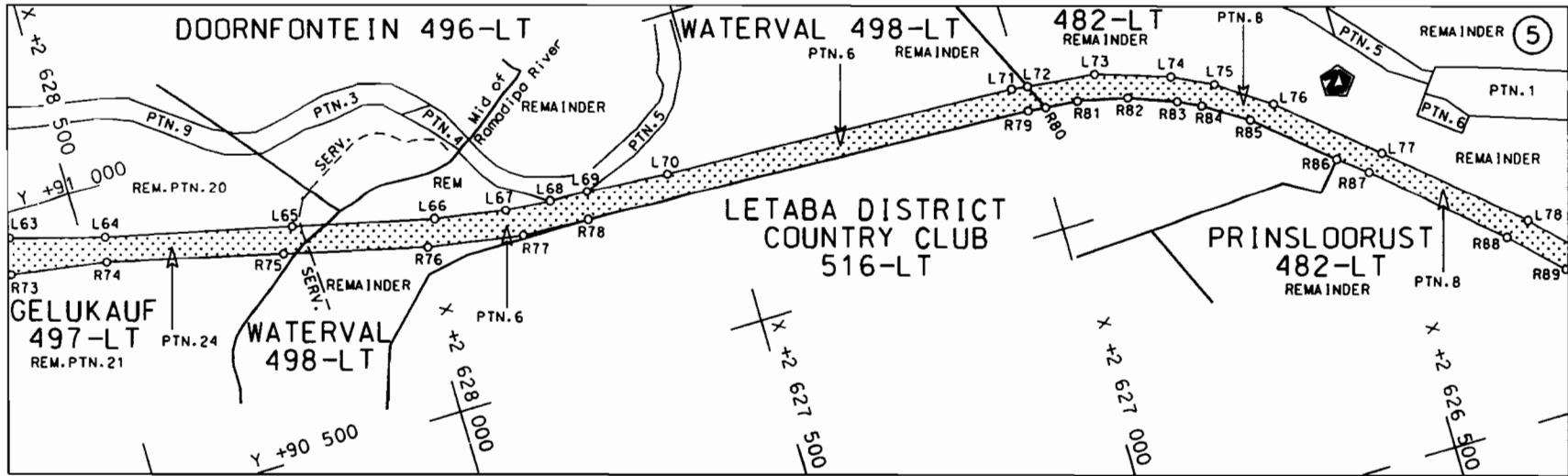
Seksie
Section 7


Vel
Sheet 1 van 7
of 7

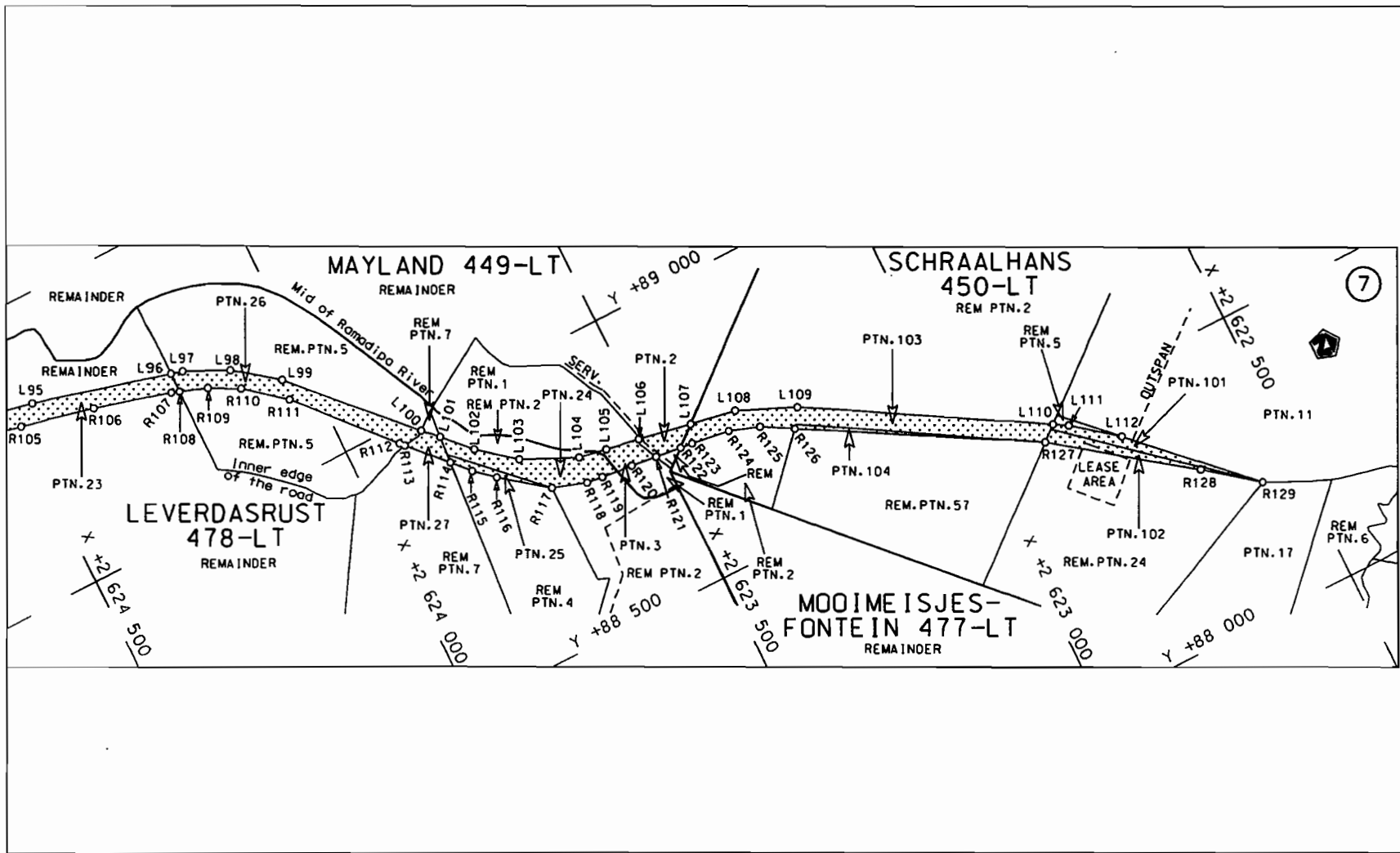
P P683/08




<p>Suid-Afrikaanse Podraad South African Roads Board</p>	<p>Die figuur getoon The figure shown</p> 	<p>steldie padreserwe voor van 'n gedeelte represents the road reserve of a portion van Nasionale Roete R36 Seksie 7 of National Route</p>	<p>Vel Sheet 2 van of 7 P P683/08</p>
--	---	--	---



Suid-Afrikaanse Padraad South African Roads Board	Die figuur getoon The figure shown		steldie padreserwe voor van 'n gedeelte represents the road reserve of a portion van Nasionale Roete of National Route R36 Seksie Section 7	Vel Sheet 3 van of 7 P 683/08
--	---------------------------------------	--	--	--



<p>Suid-Afrikaanse Padrood South African Roads Board</p>	<p>Die figuur getoon The figure shown</p> 	<p>steldie padreserwe voor van 'n gedeelte represents the road reserve of a portion van Nasionale Roete of National Route R36</p> <p>Seksie Section 7</p>	<p>Vel Sheet 4 of 7 P P683/08</p>
--	---	---	---------------------------------------

PADRESERWE KOÖRDINATE				/	ROAD RESERVE CO-ORDINATES		
LINKERKANT/LEFT HAND SIDE					REGTERKANT/RIGHT HAND SIDE		
	Y	X	WG	31°	Y	X	
L1	88 173.46	2 636	922.96	R1	88 094.87	2 636	930.48
L2	88 196.01	2 636	851.14	R2	88 110.85	2 636	846.46
L3	88 291.42	2 636	639.87	R3	88 172.24	2 636	721.40
L4	88 329.31	2 636	590.55	R4	88 215.26	2 636	647.15
L5	88 423.85	2 636	482.52	R5	88 265.56	2 636	574.30
L6	88 421.13	2 636	473.57	R6	88 323.59	2 636	500.02
L7	88 687.67	2 636	147.86	R7	88 388.71	2 636	414.03
L8	88 789.70	2 636	037.23	R8	88 652.96	2 636	095.48
L9	88 970.33	2 635	795.66	R9	88 663.23	2 636	083.11
L10	89 042.55	2 635	629.91	R10	88 761.53	2 635	958.16
L11	89 092.21	2 635	545.40	R11	88 832.37	2 635	872.87
L12	89 111.51	2 635	504.47	R12	88 975.82	2 635	624.95
L13	89 256.33	2 635	195.53	R13	89 040.75	2 635	472.80
L14	89 271.22	2 635	159.12	R14	89 179.83	2 635	209.58
L15	89 288.40	2 635	116.93	R15	89 202.66	2 635	156.04
L16	89 306.00	2 635	032.27	R16	89 231.27	2 635	088.91
L17	89 312.54	2 634	921.00	R17	89 232.62	2 635	086.19
L18	89 306.02	2 634	855.82	R18	89 247.04	2 635	013.89
L19	89 298.73	2 634	817.94	R19	89 245.32	2 634	909.38
L20	89 262.63	2 634	739.10	R20	89 191.87	2 634	764.82
L21	89 219.87	2 634	687.07	R21	89 131.51	2 634	674.74
L22	89 144.10	2 634	586.54	R22	89 007.31	2 634	506.05
L23	89 115.71	2 634	539.56	R23	88 932.78	2 634	404.83
L24	89 067.95	2 634	480.31	R24	88 893.02	2 634	342.57
L25	88 995.46	2 634	385.28	R25	88 859.88	2 634	275.36
L26	88 985.02	2 634	363.63	R26	88 836.50	2 634	204.79
L27	88 898.69	2 634	201.97	R27	88 823.23	2 634	131.51
L28	88 881.28	2 634	084.08	R28	88 821.39	2 634	094.58
L29	88 886.12	2 634	002.62	R29	88 824.06	2 634	008.73
L30	88 927.83	2 633	901.45	R30	88 855.74	2 633	896.28
L31	89 071.62	2 633	692.36	R31	88 871.38	2 633	840.73
L32	89 164.83	2 633	591.83	R32	88 948.00	2 633	733.43
L33	89 200.32	2 633	545.30	R33	88 970.70	2 633	709.97
L34	89 276.02	2 633	434.62	R34	88 995.43	2 633	684.41
L35	89 361.77	2 633	313.07	R35	89 116.76	2 633	538.47
L36	89 364.64	2 633	309.00	R36	89 148.26	2 633	495.48
L37	89 406.00	2 633	240.52	R37	89 220.99	2 633	403.29
L38	89 458.93	2 633	148.71	R38	89 254.71	2 633	353.18
L39	89 594.65	2 632	749.75	R39	89 312.05	2 633	267.41
L40	89 612.32	2 632	627.25	R40	89 379.04	2 633	154.47
L41	89 903.68	2 631	749.22	R41	89 444.10	2 633	005.59
L42	89 983.66	2 631	525.37	R42	89 496.23	2 632	850.44
L43	90 040.17	2 631	352.28	R43	89 526.34	2 632	761.01
L44	90 249.59	2 630	703.67	R44	89 581.61	2 632	596.85
L45	90 295.39	2 630	581.98	R45	89 607.50	2 632	519.96
L46	90 395.08	2 630	392.03	R46	89 732.66	2 632	149.96
L47	90 402.69	2 630	379.27	R47	89 910.13	2 631	575.01
L48	90 537.00	2 630	154.20	R48	89 988.35	2 631	363.54
L49	90 561.75	2 630	117.25	R49	90 212.89	2 630	692.65
L50	90 608.21	2 630	038.38	R50	90 271.90	2 630	544.11
L51	90 676.37	2 629	891.77	R51	90 324.16	2 630	436.53

Vel	5	Van	7	P683/08
Sheet		of		