

**REPUBLIC OF SOUTH AFRICA
REPUBLIEK VAN SUID-AFRIKA**

Vol. 527

**Pretoria, 15 May
Mei 2009**

No. 32173

CONTENTS

<i>No.</i>	<i>Page No.</i>	<i>Gazette No.</i>
GOVERNMENT NOTICE		
Transport, Department of		
<i>Government Notice</i>		
456		
South African National Roads Agency Limited and the National Roads Act (7/1998): The South African National Roads Agency Limited: Declaration amendment of National Road N7 Section 6: Amendment of Declaration No. 218 of 2006 and 283 of 2006		
	3	32173

INHOUD

<i>No.</i>	<i>Bladsy No.</i>	<i>Koerant No.</i>
GOEWERMENTSKENNISGEWING		
Vervoer, Departement van		
<i>Goewermentskennisgewing</i>		
456		
Suid-Afrikaanse Nasionale Padagentskap Beperk en die Nasionale Paaie Wet (7/1998): Die Suid-Afrikaanse Nasionale Padagentskap Beperk: Verklaring wysiging van Nasionale Pad N7 Seksie 6: Wysiging van Verklaring No. 218 van 2006 en 283 van 2006		
	4	32173

GOVERNMENT NOTICE

DEPARTMENT OF TRANSPORT

No. 456

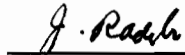
15 May 2009

**THE SOUTH AFRICAN NATIONAL ROADS
AGENCY LIMITED**Registration No: 98/09584/06

DECLARATION AMENDMENT OF NATIONAL ROAD N7 SECTION 6

AMENDMENT OF DECLARATION NO's. 218 OF 2006 AND 283 OF 2006.

By virtue of section 40(1)(b) of the South African National Roads Agency Limited and the National Roads Act, 1998 (Act No. 7 of 1998), I hereby amend the following declarations by substituting (I) Declaration No. 218 of 2006 the descriptive section from Bitterfontein up to the Northern Cape/Western Cape Provincial Border and (II) Declaration No. 283 of 2006 in its entirety, with the subjoined sheets 1 to 22 of Plan No. P687/08.

(National Road N7 Section 6: Bitterfontein – Garies)

MINISTER OF TRANSPORT

GOEWERMENTSKENNISGEWING

DEPARTEMENT VAN VERVOER

No. 456

15 Mei 2009

DIE SUID-AFRIKAANSE NASIONALE PADAGENTSAP BEPERK

Registrasie No: 98/09584/06

VERKLARING WYSIGING VAN NASIONALE PAD N7 SEKSIE 6.

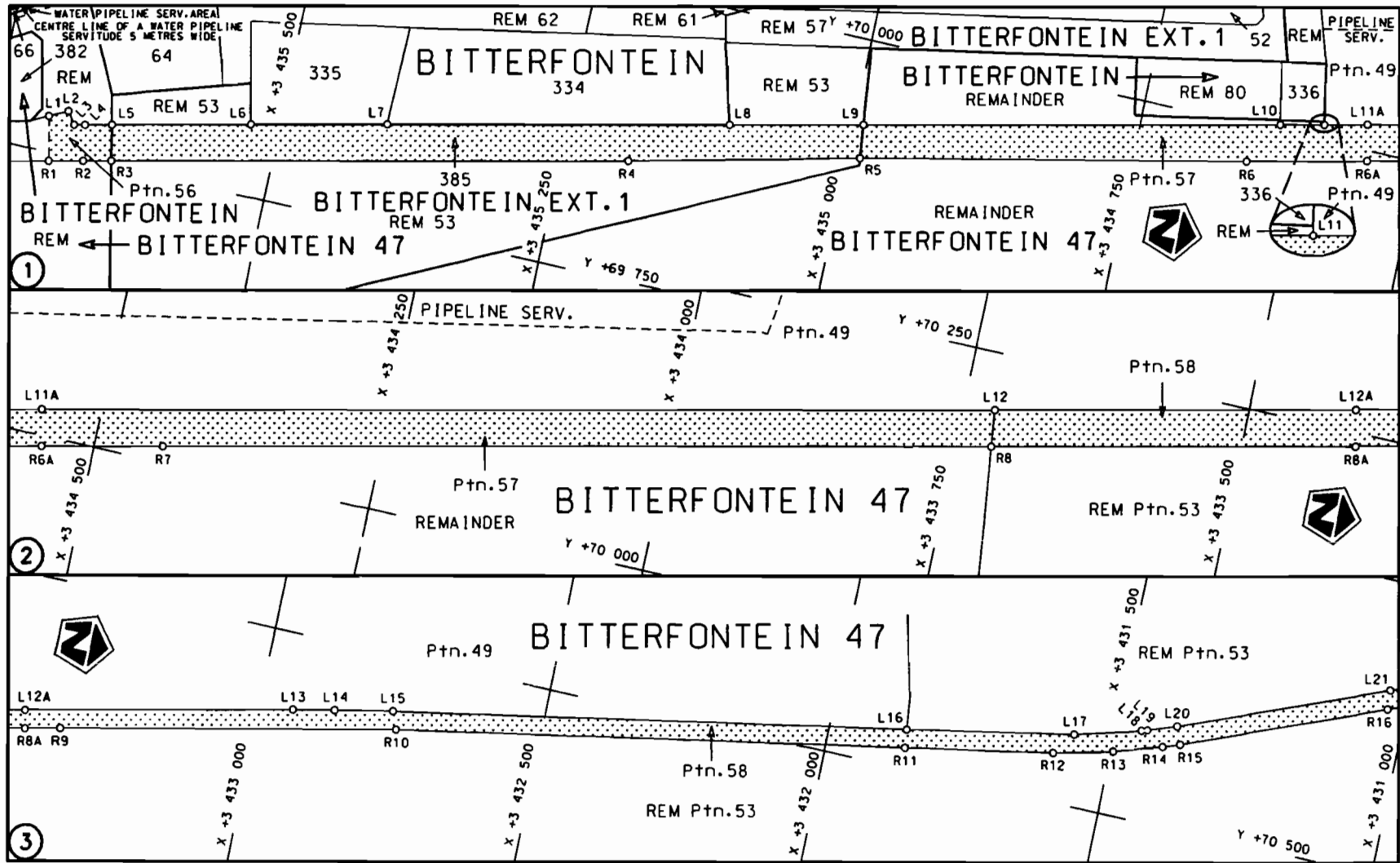
WYSIGING VAN VERKLARING NO's. 218 VAN 2006 EN 283 VAN 2006

Kragtens Artikel 40(1)(b) van die Suid-Afrikaanse Nasionale Padagentskap Beperk en die Nasionale Paaie Wet, 1998 (Wet no.7 van 1998), wysig ek hiermee die volgende verklarings deur (I) Verklaring no. 218 van 2006 die beskrywende gedeelte vanaf Bitterfontein tot by die Noord Kaap/Wes Kaap Provinsiale Grens en (II) Verklaring no. 283 van 2006 in sy geheel, te vervang met meegaande velle 1 tot 22 van Plan no. P687/08.

(Nasionale Pad N7 Seksie 6: Bitterfontein – Garies)



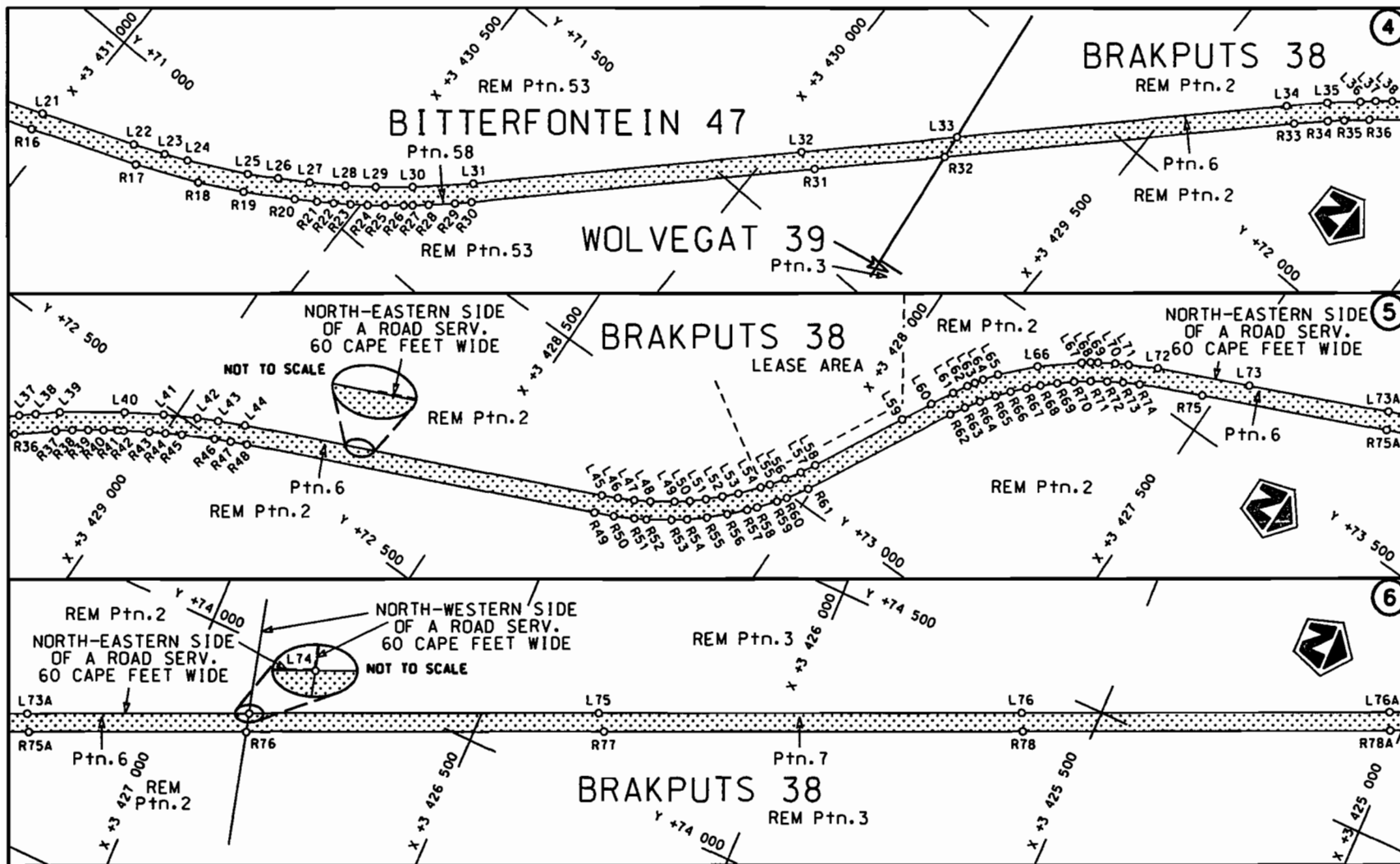
MINISTER VAN VERVOER




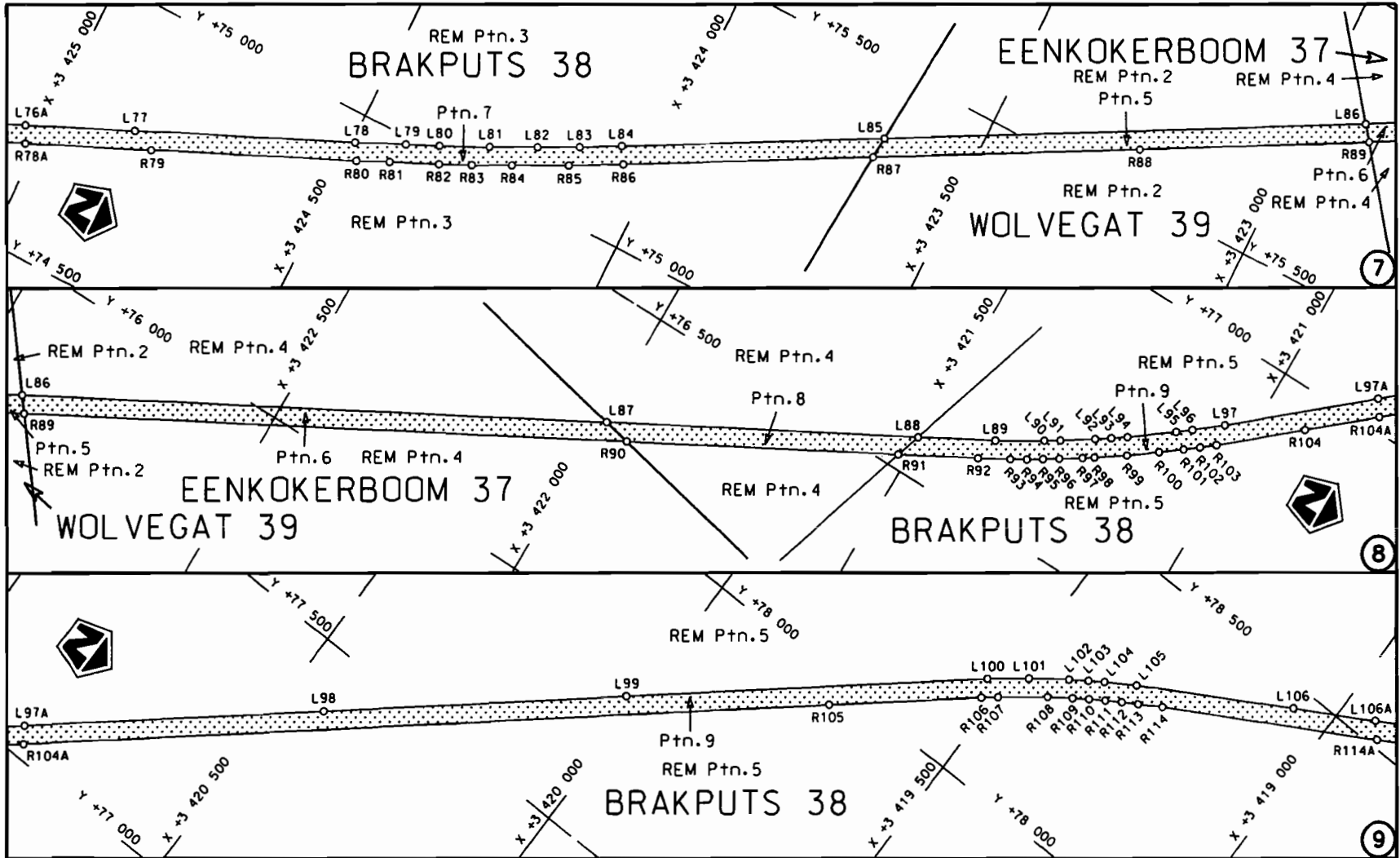
Die Suid Afrikaanse Nasionale Padagentskap Beperk	Die figuur getoon	steldie padreserwe voor van 'n gedeelte	Vel Sheet 1 van 22
The South African National Roads Agency Limited	The figure shown	represents the road reserve of a portion van Nasionale Roete N7 Seksie Section 6	Plan P687/08

STAATSKOERANT, 15 MEI 2009

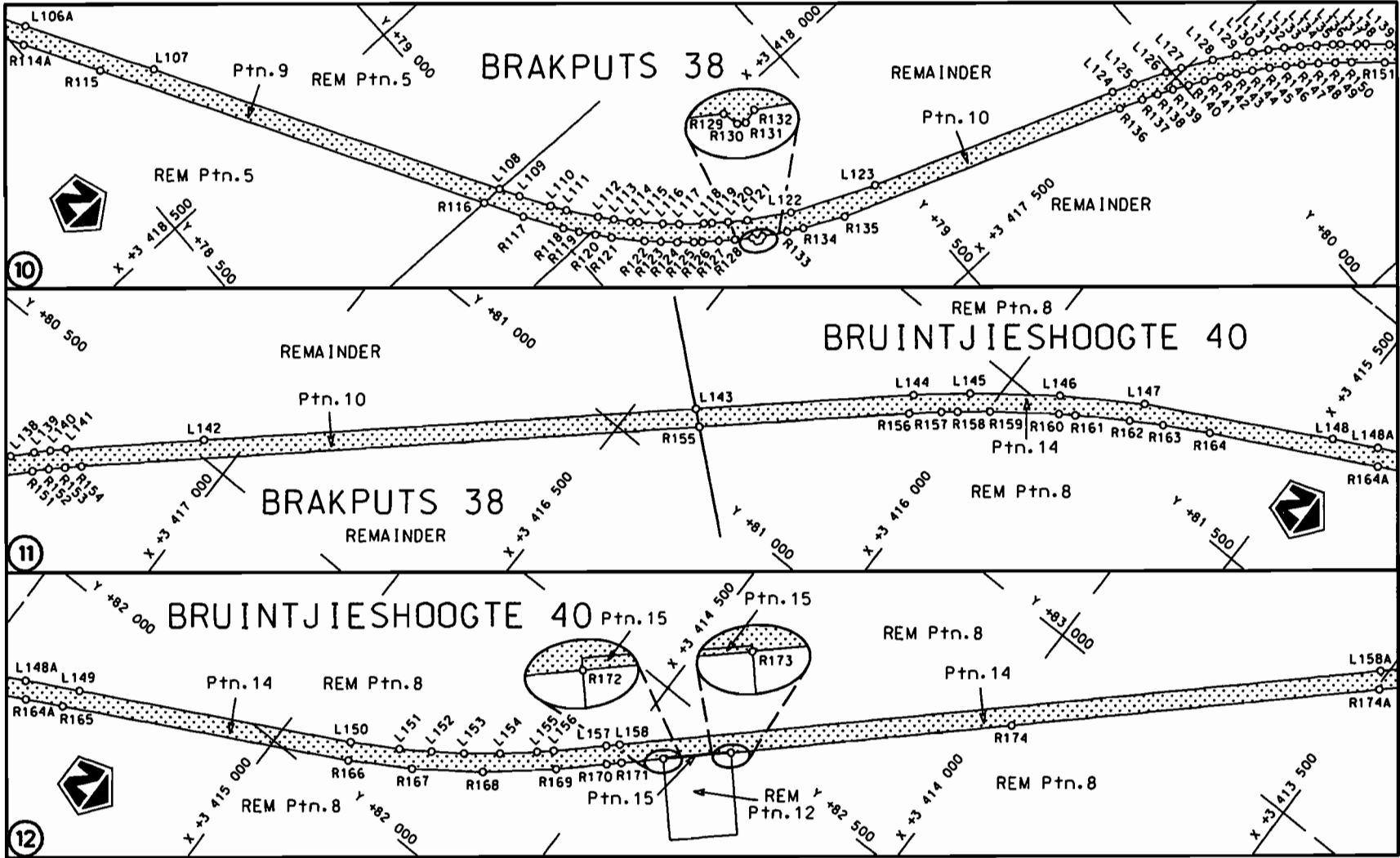
No. 32173 5

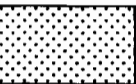


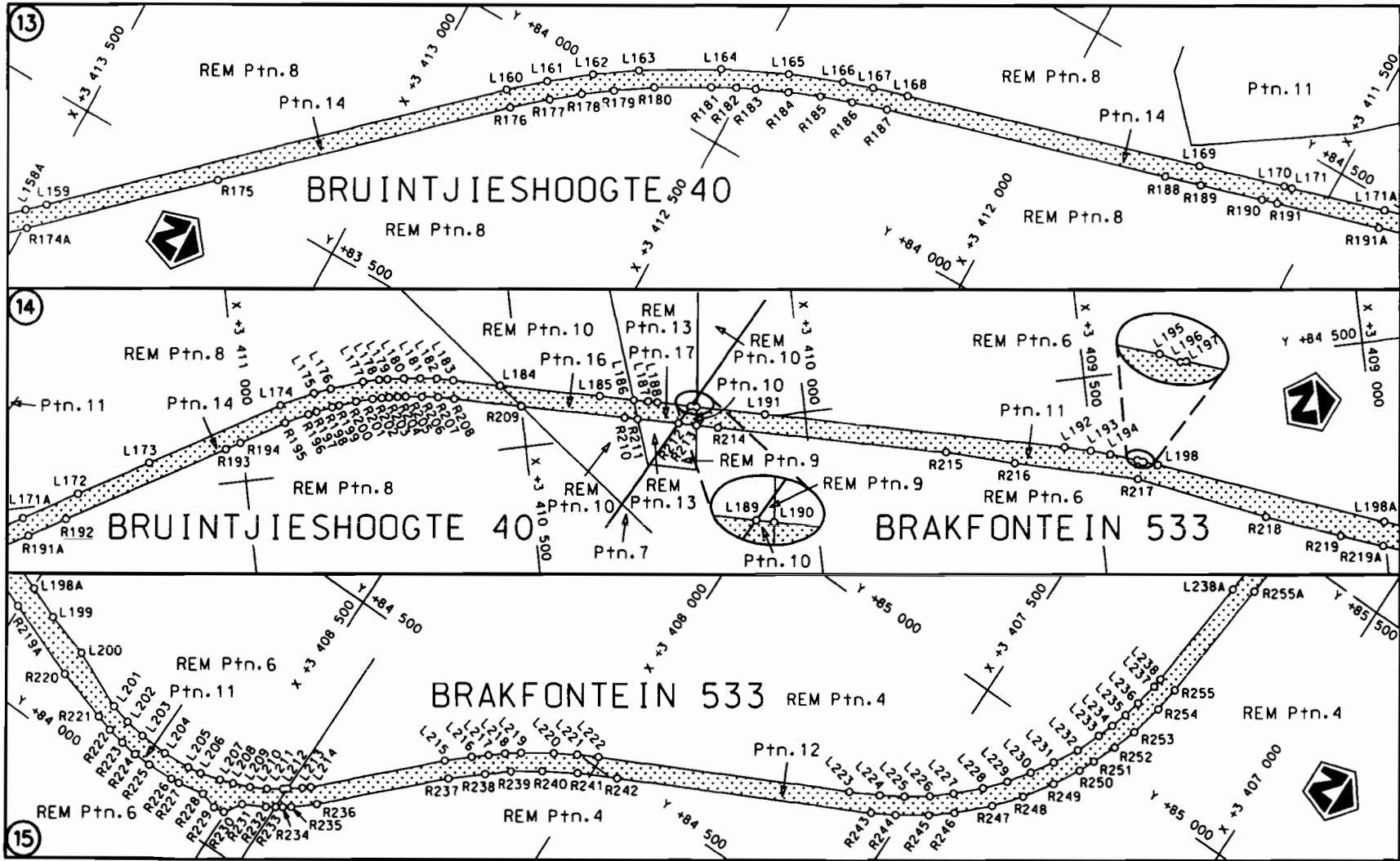
<p>Die Suid Afrikaanse Nasionale Podagentskap Beperk The South African National Roads Agency Limited</p>	<p>Die figuur getoon The figure shown</p>		<p>steldie padreserwe voor van 'n gedeelte represents the road reserve of a portion van Nasionale Roete N7 Seksie of National Route N7 Section</p>	<p>Vel Sheet 2 van 22 Plan P687/08</p>
--	---	--	--	--



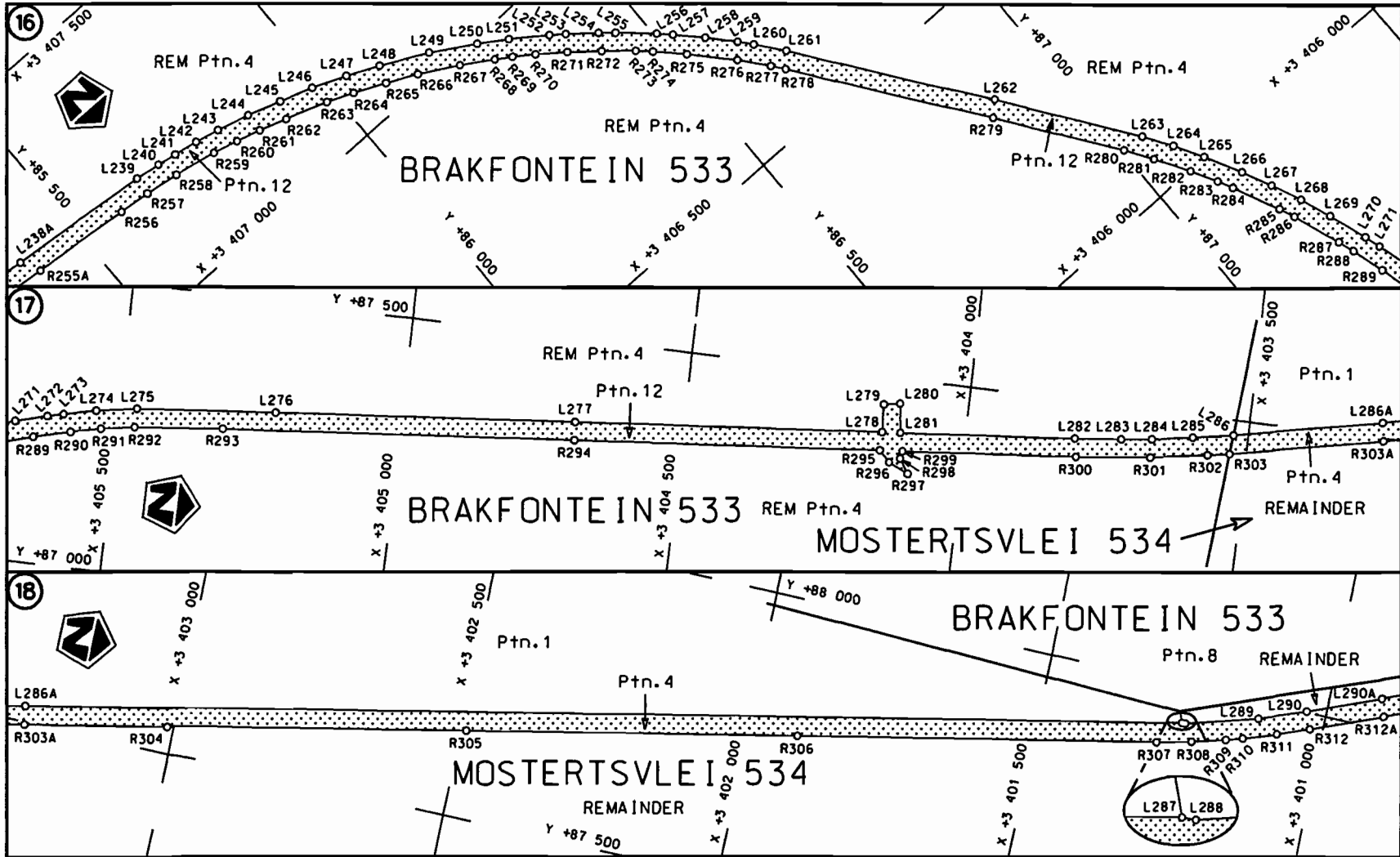
<p>Die Suid Afrikaanse Nasionale Padagentskap Beperk The South African National Roads Agency Limited</p>	<p>Die figuur getoon The figure shown</p>		<p>steldie padreserwe voor van 'n gedeelte represents the road reserve of a portion van Nasionale Roete N7 of National Route N7</p> <p>Seksie Section 6</p>	<p>Vel Sheet 3 van of 22 Plan P687/08</p>
--	---	--	---	---



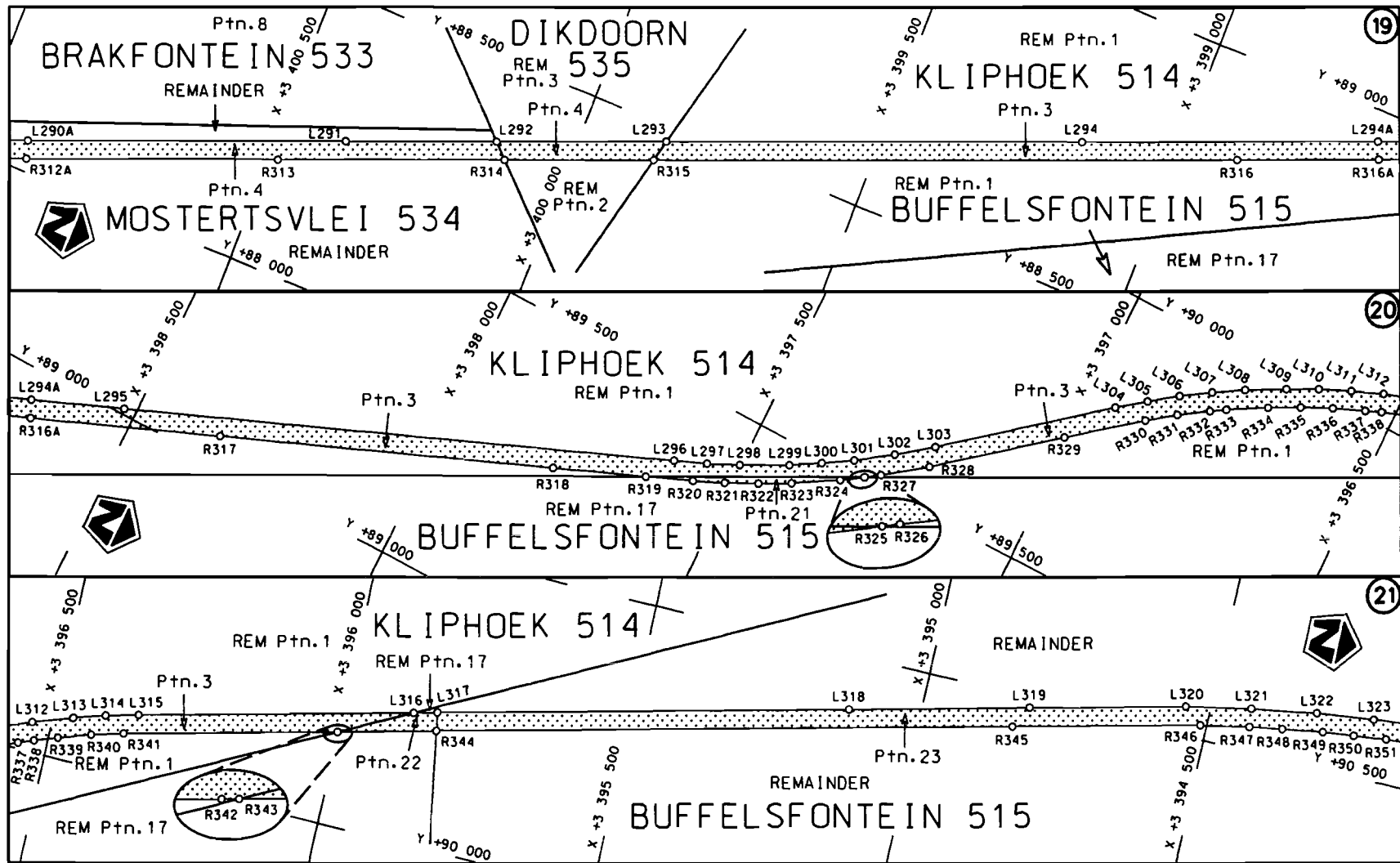
<p>Die Suid Afrikaanse Nasionale Padogentskap Beperk The South African National Roads Agency Limited</p>	<p>Die figuur getoon The figure shown</p>		<p>střední podrezerva voor van 'n gedeelte represents the road reserve of a portion van Nasionale Roete N7 Sektie of National Route N7 Section</p>	<p>Vel Sheet 4 van of 22</p>
				<p>Plan P687/08</p>

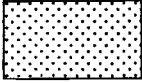


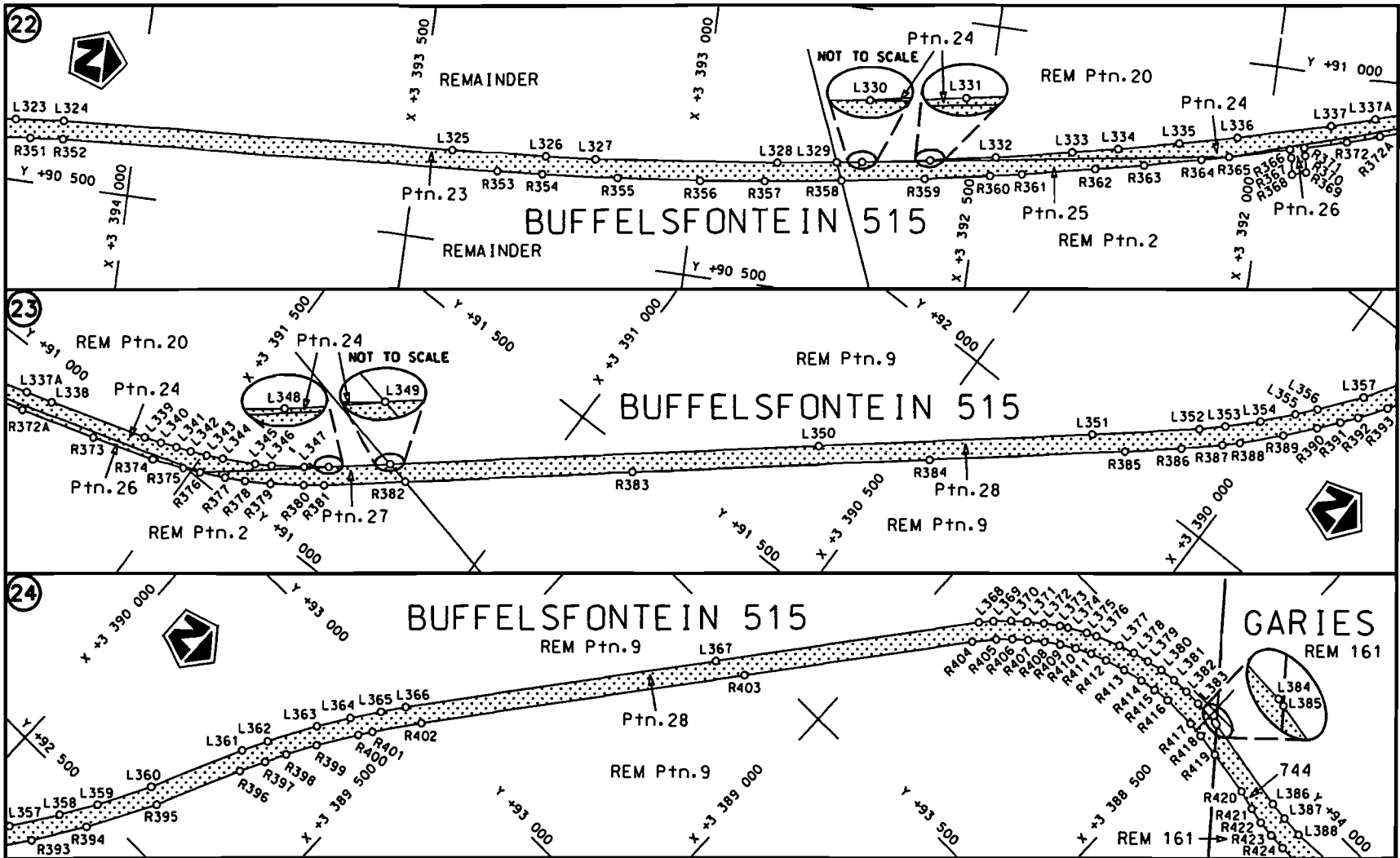
<p>Die Suid Afrikaanse Nasionale Padagentskap Beperk The South African National Roads Agency Limited</p>	<p>Die figuur getoon The figure shown</p>		<p>steldie podreserve voor van 'n gedeelte represents the road reserve of a portion von Nasionale Roete N7 Sektie of Notional Route Section</p>	<p>Vel Sheet 5 van of 22</p>
			<p>6</p>	<p>Plan P687/08</p>

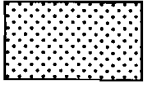


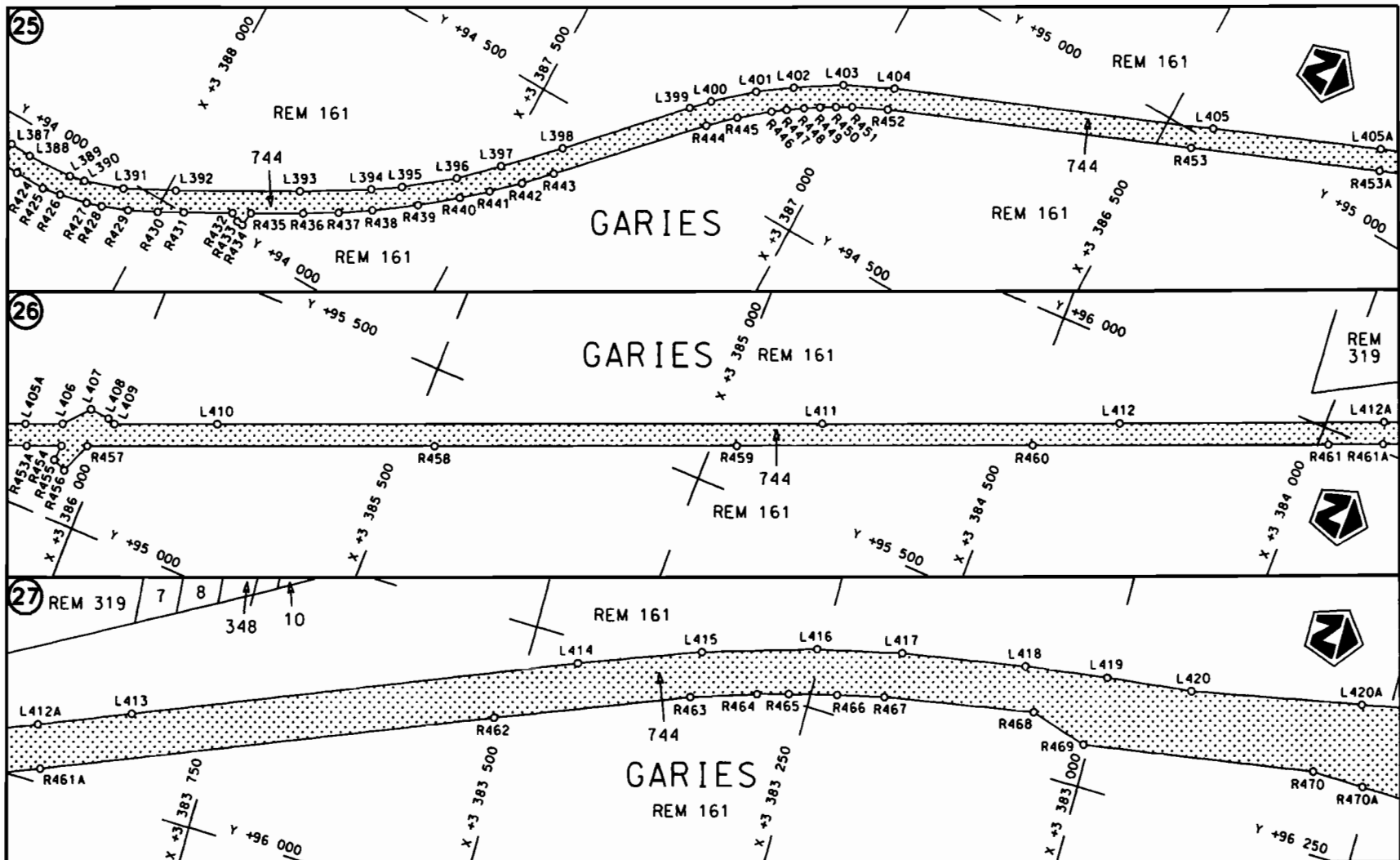
<p>Die Suid Afrikaanse Nasionale Padagentskop Beperk The South African National Roads Agency Limited</p>	<p>Die figuur getoon The figure shown</p>		<p>steldie padreserwe voor van 'n gedeelte represents the road reserve of a portion van Nasionale Roete N7 of National Route</p>	<p>Vel Sheet 6 van 22 of</p>
			<p>Seksie Section 6</p>	<p>Plan P687/08</p>

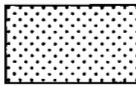


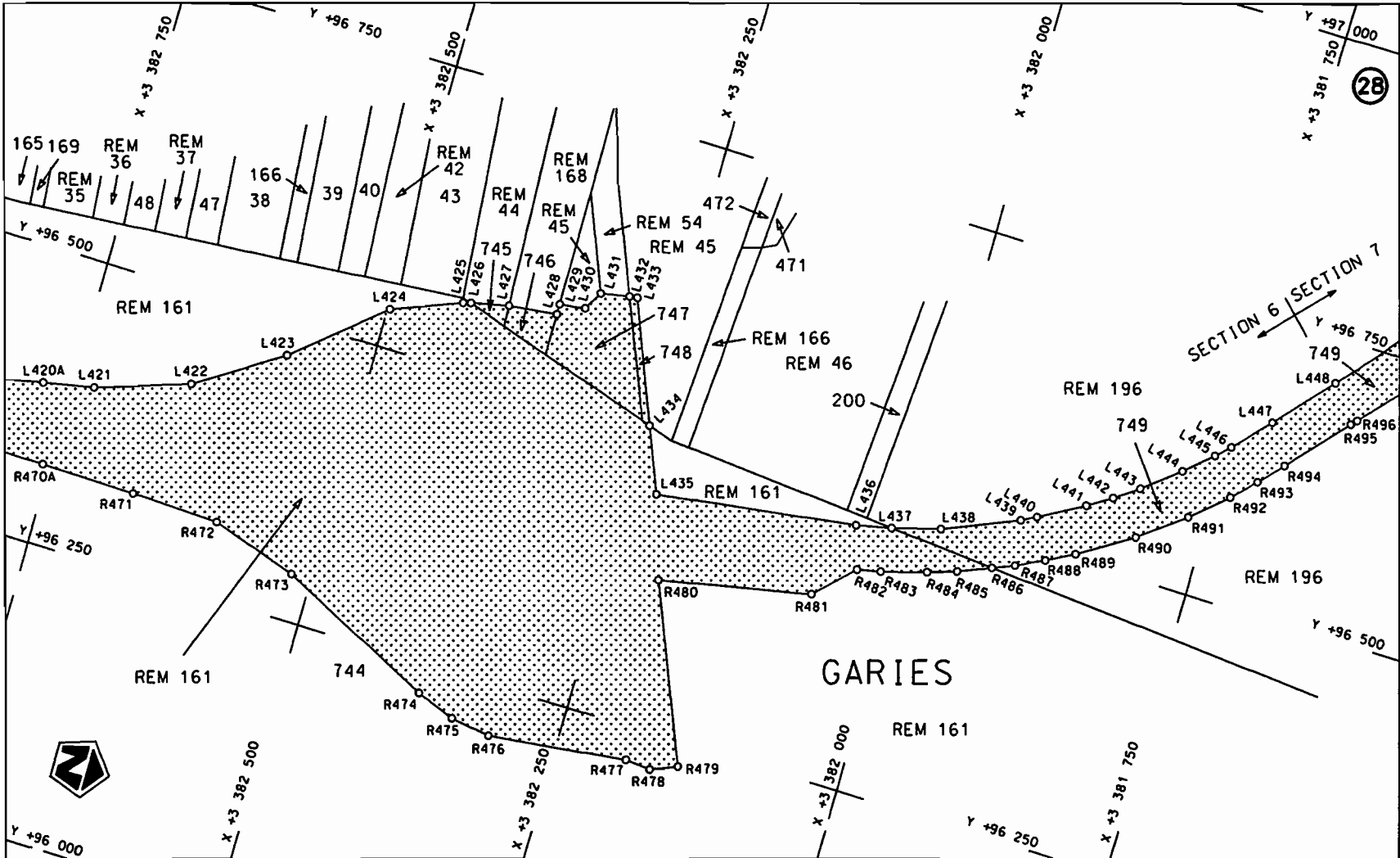
<p>Die Suid Afrikaanse Nasionale Padagentskap Beperk The South African National Roads Agency Limited</p>	<p>Die figuur getoon The figure shown</p> 	<p>steldie padreserwe voor van 'n gedeelte represents the road reserve of a portion van Nasionale Roete N7 of National Route N7</p> <p>Seksie 6 Section 6</p>	<p>Vel Sheet 7 van 22 of 22</p> <p>Plan P687/08</p>
--	--	---	---




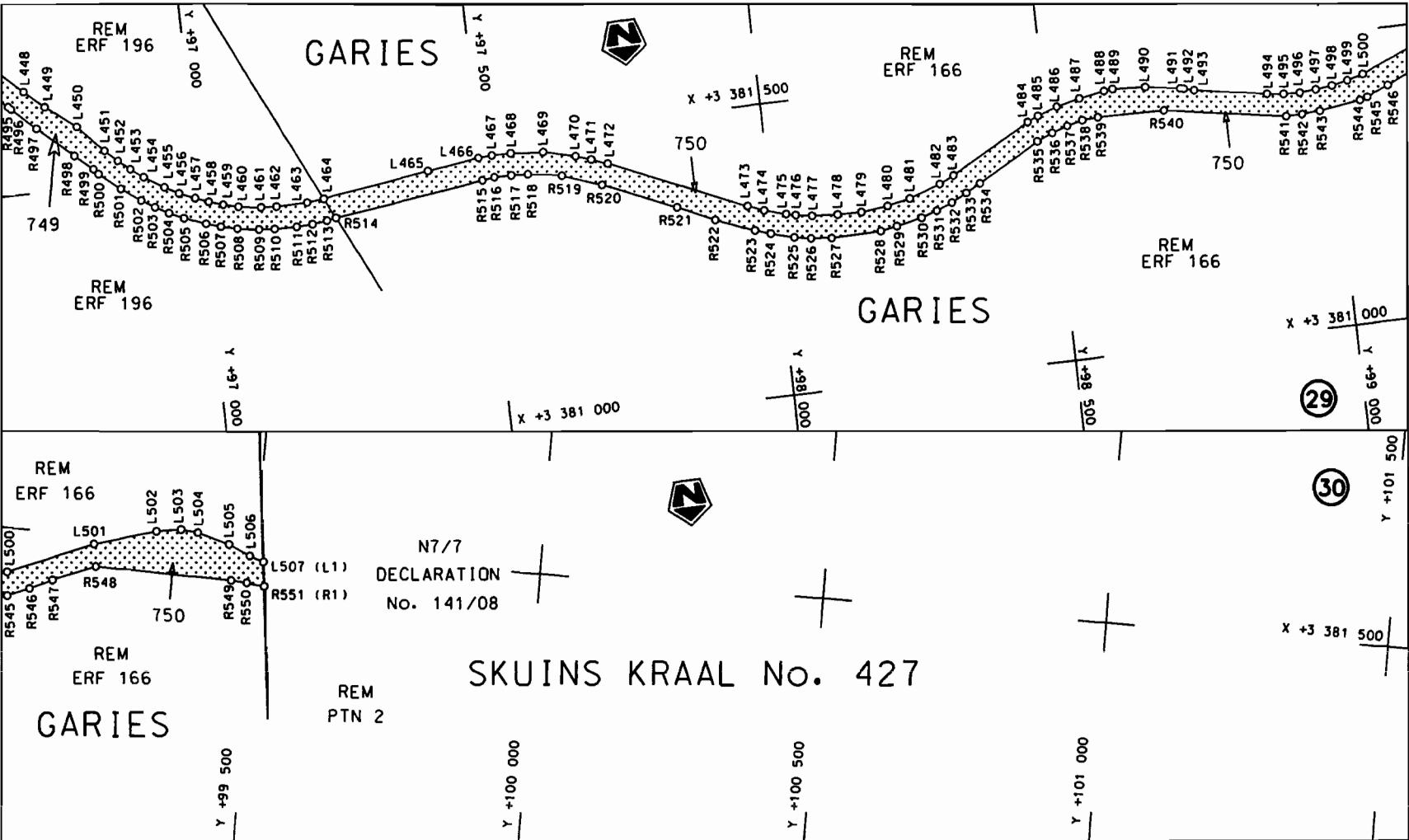
<p>Die Suid Afrikaanse Nasionale Padagentskap Beperk The South African National Roads Agency Limited</p>	<p>Die figuur getoon The figure shown</p> 	<p>steldie padreserwe voor van 'n gedeelte represents the road reserve of a portion van Nasionale Roete N7 Seksie 6 of National Route N7 Section 6</p>	<p>Vel 8 van Sheet 8 of 22 Plan P687/08</p>
--	--	--	---



<p>Die Suid Afrikaanse Nasionale Padagentskap Beperk The South African National Roads Agency Limited</p>	<p>Die figuur getoon The figure shown</p> 	<p>steldie podreserwe voor van 'n gedeelte represents the road reserve of a portion van Nasionale Roete N7 of National Route N7</p> <p>Seksie 6 Section 6</p>	<p>Vel 9 van 22 Sheet 9 of 22</p> <p>Plan P687/08</p>
--	--	---	---



<p>Die Suid Afrikaanse Nasionale Padagentskap Beperk The South African National Roads Agency Limited</p>	<p>Die figuur getaan The figure shown</p> 	<p>steldie padreserwe voor van 'n gedeelte represents the road reserve of a portion van Nasionale Roete of National Route N7</p> <p>Seksie Section 6 + 7</p>	<p>Vel Sheet 10 van of 22 Plan P687/08</p>
--	--	--	--



Suid-Afrikaanse Padagentskap Bpk.
South African National Roads Agency Ltd.

Die figuur getoon
The figure shown



steldie padreserwe voor van 'n gedeelte
represents the road reserve of a portion
van Nasionale Roete
of National Route

N7

Seksie
Section

7

Vel
Sheet

11 van
of 22

P P687/08

PADRESERWE KOÖRDINATE				/	ROAD RESERVE CO-ORDINATES			
LINKERKANT/LEFT HAND SIDE					REGTERKANT/RIGHT HAND SIDE			
	Y	X	WG	19°	Y	X		
L1	69 780.476	3 435 702.318		R1	69 742.496	3 435 694.113		
L2	69 788.270	3 435 686.730		R2	69 749.130	3 435 664.990		
L3	69 777.820	3 435 679.400		R3	69 754.410	3 435 640.550		
L4	69 779.810	3 435 669.990		R4	69 851.620	3 435 190.590		
L5	69 784.880	3 435 646.700		R5	69 897.950	3 434 988.460		
L6	69 811.400	3 435 525.080		R6	69 968.190	3 434 650.600		
L7	69 836.870	3 435 407.510		R7	70 013.630	3 434 440.190		
L8	69 901.310	3 435 108.470		R8	70 169.710	3 433 718.790		
L9	69 926.580	3 434 991.730		R9	70 251.790	3 433 339.320		
L10	70 005.310	3 434 627.930		R10	70 374.870	3 432 755.850		
L11	70 013.640	3 434 589.060		R11	70 535.860	3 431 861.950		
L12	70 201.070	3 433 722.420		R12	70 582.890	3 431 600.340		
L13	70 370.180	3 432 940.310		R13	70 608.270	3 431 495.770		
L14	70 385.060	3 432 868.340		R14	70 634.440	3 431 410.950		
L15	70 404.490	3 432 767.700		R15	70 644.710	3 431 381.600		
L16	70 567.230	3 431 865.250		R16	70 781.090	3 431 031.800		
L17	70 622.130	3 431 569.590		R17	70 852.120	3 430 850.620		
L18	70 653.180	3 431 453.760		R18	70 898.650	3 430 746.370		
L19	70 656.380	3 431 443.530		R19	70 938.000	3 430 674.370		
L20	70 674.030	3 431 393.380		R20	70 985.010	3 430 596.940		
L21	70 813.880	3 431 033.780		R21	71 007.010	3 430 564.030		
L22	70 876.140	3 430 875.210		R22	71 024.250	3 430 539.320		
L23	70 898.070	3 430 823.200		R23	71 042.290	3 430 514.620		
L24	70 915.500	3 430 785.010		R24	71 060.680	3 430 490.510		
L25	70 965.930	3 430 688.430		R25	71 079.660	3 430 466.560		
L26	70 993.810	3 430 642.330		R26	71 101.330	3 430 440.360		
L27	71 023.780	3 430 595.250		R27	71 111.840	3 430 428.080		
L28	71 061.040	3 430 542.350		R28	71 130.590	3 430 406.870		
L29	71 093.580	3 430 499.670		R29	71 161.930	3 430 372.840		
L30	71 135.960	3 430 448.120		R30	71 182.450	3 430 351.650		
L31	71 208.990	3 430 369.780		R31	71 613.810	3 429 920.750		
L32	71 621.410	3 429 957.250		R32	71 777.330	3 429 756.410		
L33	71 817.490	3 429 761.310		R33	72 217.710	3 429 316.270		
L34	72 232.710	3 429 345.900		R34	72 258.970	3 429 273.460		
L35	72 282.870	3 429 294.210		R35	72 278.510	3 429 251.870		
L36	72 321.270	3 429 250.730		R36	72 307.670	3 429 218.080		
L37	72 338.980	3 429 229.640		R37	72 353.540	3 429 160.610		
L38	72 357.540	3 429 206.730		R38	72 371.070	3 429 137.030		
L39	72 383.880	3 429 172.760		R39	72 387.520	3 429 113.860		
L40	72 449.380	3 429 077.950		R40	72 402.900	3 429 091.410		
L41	72 485.010	3 429 019.530		R41	72 416.950	3 429 070.390		
L42	72 514.150	3 428 966.810		R42	72 422.930	3 429 060.960		
L43	72 530.970	3 428 933.530		R43	72 445.760	3 429 023.890		
L44	72 551.760	3 428 890.350		R44	72 460.500	3 428 998.660		
L45	72 811.600	3 428 300.760		R45	72 474.960	3 428 973.000		
L46	72 824.300	3 428 274.560		R46	72 501.950	3 428 921.440		
L47	72 837.410	3 428 248.910		R47	72 514.860	3 428 895.020		
L48	72 852.050	3 428 224.140		R48	72 527.040	3 428 868.650		
L49	72 876.290	3 428 188.740		R49	72 779.890	3 428 295.010		
L50	72 892.570	3 428 167.060		R50	72 794.540	3 428 262.940		
L51	72 911.120	3 428 145.600		R51	72 811.610	3 428 230.880		

Vel	12	Van	22	P687/08
Sheet		of		

PADRESERWE KOÖRDINATE				/	ROAD RESERVE CO-ORDINATES			
LINKERKANT/LEFT HAND SIDE					REGTERKANT/RIGHT HAND SIDE			
	Y	X	WG	19°	Y	X		
L52	72 930.730	3 428 124.160		R52	72 822.470	3 428 212.250		
L53	72 950.990	3 428 103.750		R53	72 847.310	3 428 175.160		
L54	72 982.070	3 428 077.520		R54	72 863.850	3 428 153.080		
L55	72 995.120	3 428 066.830		R55	72 886.100	3 428 126.280		
L56	73 018.800	3 428 050.100		R56	72 910.710	3 428 099.880		
L57	73 044.170	3 428 033.210		R57	72 936.740	3 428 075.090		
L58	73 068.950	3 428 018.950		R58	72 950.190	3 428 063.090		
L59	73 221.520	3 427 937.050		R59	72 978.720	3 428 040.090		
L60	73 272.260	3 427 909.420		R60	72 993.420	3 428 029.220		
L61	73 309.690	3 427 888.060		R61	73 028.200	3 428 006.310		
L62	73 333.900	3 427 873.690		R62	73 276.540	3 427 871.400		
L63	73 346.080	3 427 865.850		R63	73 300.860	3 427 856.500		
L64	73 358.980	3 427 856.860		R64	73 324.860	3 427 840.280		
L65	73 381.120	3 427 840.130		R65	73 348.270	3 427 823.030		
L66	73 432.370	3 427 790.700		R66	73 369.600	3 427 805.170		
L67	73 481.410	3 427 731.040		R67	73 390.530	3 427 785.660		
L68	73 491.020	3 427 718.760		R68	73 408.150	3 427 767.950		
L69	73 497.980	3 427 707.750		R69	73 428.380	3 427 745.940		
L70	73 514.010	3 427 681.620		R70	73 447.130	3 427 723.400		
L71	73 526.100	3 427 660.730		R71	73 464.150	3 427 700.220		
L72	73 550.260	3 427 613.460		R72	73 480.370	3 427 676.120		
L73	73 618.080	3 427 462.880		R73	73 495.400	3 427 651.630		
L74	73 881.270	3 426 876.480		R74	73 509.830	3 427 625.250		
L75	74 135.060	3 426 311.160		R75	73 557.230	3 427 521.580		
L76	74 442.380	3 425 626.990		R76	73 850.270	3 426 868.140		
L77	74 788.440	3 424 856.680		R77	74 110.180	3 426 289.540		
L78	74 950.770	3 424 495.200		R78	74 414.330	3 425 612.270		
L79	74 988.040	3 424 413.700		R79	74 772.110	3 424 815.780		
L80	75 013.100	3 424 360.110		R80	74 923.590	3 424 478.710		
L81	75 051.790	3 424 280.020		R81	74 948.050	3 424 425.260		
L82	75 090.670	3 424 202.670		R82	74 984.650	3 424 346.410		
L83	75 125.160	3 424 136.340		R83	75 009.710	3 424 294.010		
L84	75 160.450	3 424 070.550		R84	75 041.990	3 424 229.160		
L85	75 386.130	3 423 658.690		R85	75 088.210	3 424 138.780		
L86	75 798.970	3 422 905.370		R86	75 133.600	3 424 053.610		
L87	76 300.080	3 421 990.560		R87	75 348.170	3 423 662.000		
L88	76 567.300	3 421 502.750		R88	75 576.760	3 423 245.130		
L89	76 633.610	3 421 382.570		R89	75 773.690	3 422 885.670		
L90	76 678.260	3 421 307.740		R90	76 290.150	3 421 943.190		
L91	76 693.870	3 421 283.290		R91	76 523.720	3 421 516.880		
L92	76 728.190	3 421 231.420		R92	76 591.540	3 421 393.140		
L93	76 744.650	3 421 207.590		R93	76 619.940	3 421 343.190		
L94	76 761.380	3 421 183.980		R94	76 635.050	3 421 317.930		
L95	76 814.050	3 421 113.540		R95	76 650.300	3 421 293.150		
L96	76 831.950	3 421 090.910		R96	76 665.890	3 421 268.490		
L97	76 868.920	3 421 046.100		R97	76 688.620	3 421 233.740		
L98	77 398.200	3 420 428.670		R98	76 700.680	3 421 215.850		
L99	77 748.760	3 420 019.880		R99	76 733.900	3 421 168.180		
L100	78 168.350	3 419 530.900		R100	76 768.430	3 421 121.320		
L101	78 214.430	3 419 473.100		R101	76 795.140	3 421 086.590		
L102	78 257.130	3 419 414.570		R102	76 813.240	3 421 063.790		

Vel	13	Van	22	P687/08
Sheet		of		

PADRESERWE KOÖRDINATE				/	ROAD RESERVE CO-ORDINATES			
LINKERKANT/LEFT HAND SIDE					REGTERKANT/RIGHT HAND SIDE			
	Y	X	WG	19°	Y	X		
L103	78 276.800	3 419 386.140		R103	76 831.760	3 421 041.150		
L104	78 292.870	3 419 361.980		R104	76 935.840	3 420 919.370		
L105	78 323.720	3 419 313.210		R105	77 959.860	3 419 725.290		
L106	78 463.470	3 419 068.720		R106	78 136.480	3 419 519.140		
L107	78 655.680	3 418 729.600		R107	78 155.380	3 419 496.400		
L108	78 975.750	3 418 164.580		R108	78 209.600	3 419 426.380		
L109	78 993.830	3 418 132.620		R109	78 235.660	3 419 390.090		
L110	79 023.720	3 418 083.000		R110	78 252.250	3 419 366.000		
L111	79 039.440	3 418 059.220		R111	78 268.590	3 419 341.450		
L112	79 073.870	3 418 012.300		R112	78 284.350	3 419 316.730		
L113	79 091.930	3 417 990.330		R113	78 299.730	3 419 291.670		
L114	79 111.240	3 417 967.890		R114	78 322.220	3 419 253.620		
L115	79 121.190	3 417 956.980		R115	78 583.770	3 418 792.040		
L116	79 151.430	3 417 925.670		R116	78 939.160	3 418 165.430		
L117	79 172.600	3 417 905.730		R117	78 975.250	3 418 101.800		
L118	79 205.340	3 417 877.130		R118	79 014.450	3 418 039.730		
L119	79 216.500	3 417 867.890		R119	79 031.580	3 418 015.850		
L120	79 239.540	3 417 849.860		R120	79 049.360	3 417 992.470		
L121	79 267.410	3 417 829.340		R121	79 067.880	3 417 969.660		
L122	79 333.480	3 417 787.290		R122	79 107.250	3 417 925.730		
L123	79 476.690	3 417 721.530		R123	79 127.850	3 417 904.940		
L124	79 897.380	3 417 559.100		R124	79 149.180	3 417 884.630		
L125	79 935.900	3 417 543.530		R125	79 171.030	3 417 864.970		
L126	79 991.900	3 417 518.240		R126	79 182.180	3 417 855.430		
L127	80 017.480	3 417 505.640		R127	79 204.970	3 417 836.900		
L128	80 068.220	3 417 478.220		R128	79 228.180	3 417 819.250		
L129	80 105.270	3 417 456.060		R129	79 253.520	3 417 800.930		
L130	80 129.690	3 417 440.620		R130	79 255.910	3 417 791.300		
L131	80 153.800	3 417 424.510		R131	79 260.120	3 417 788.380		
L132	80 177.470	3 417 407.900		R132	79 268.800	3 417 790.490		
L133	80 200.480	3 417 390.850		R133	79 306.320	3 417 767.190		
L134	80 223.470	3 417 373.200		R134	79 331.900	3 417 752.690		
L135	80 245.780	3 417 354.910		R135	79 400.190	3 417 717.850		
L136	80 256.840	3 417 345.640		R136	79 887.670	3 417 529.220		
L137	80 278.560	3 417 326.590		R137	79 928.360	3 417 512.870		
L138	80 290.060	3 417 316.060		R138	79 954.750	3 417 500.960		
L139	80 320.740	3 417 287.340		R139	79 981.090	3 417 488.400		
L140	80 341.170	3 417 266.740		R140	80 007.250	3 417 475.310		
L141	80 361.190	3 417 245.840		R141	80 033.150	3 417 461.650		
L142	80 525.550	3 417 062.880		R142	80 058.700	3 417 447.320		
L143	81 110.920	3 416 409.740		R143	80 083.920	3 417 432.350		
L144	81 370.230	3 416 120.300		R144	80 108.520	3 417 416.730		
L145	81 434.930	3 416 043.210		R145	80 134.470	3 417 399.680		
L146	81 530.330	3 415 915.840		R146	80 158.350	3 417 382.980		
L147	81 612.590	3 415 788.560		R147	80 181.790	3 417 365.600		
L148	81 773.900	3 415 486.380		R148	80 205.020	3 417 347.570		
L149	81 855.820	3 415 327.550		R149	80 227.740	3 417 328.990		
L150	82 081.790	3 414 890.270		R150	80 249.840	3 417 310.030		
L151	82 124.990	3 414 814.910		R151	80 293.380	3 417 269.790		
L152	82 156.280	3 414 766.240		R152	80 314.260	3 417 249.120		
L153	82 189.340	3 414 718.770		R153	80 334.570	3 417 227.990		

Vel	14	Van	22	P687/08
Sheet		of		

PADRESERWE KOÖRDINATE				/	ROAD RESERVE CO-ORDINATES			
LINKERKANT/LEFT HAND SIDE					REGTERKANT/RIGHT HAND SIDE			
	Y	X	WG	19°	Y	X		
L154	82 228.200	3 414 667.740		R154	80 354.400	3 417 206.530		
L155	82 270.320	3 414 617.140		R155	81 090.280	3 416 385.550		
L156	82 289.680	3 414 595.070		R156	81 340.250	3 416 106.770		
L157	82 353.810	3 414 526.060		R157	81 377.730	3 416 063.090		
L158	82 370.070	3 414 508.450		R158	81 396.190	3 416 040.960		
L159	83 324.600	3 413 483.940		R159	81 432.130	3 415 995.790		
L160	83 897.450	3 412 868.510		R160	81 504.330	3 415 897.610		
L161	83 946.230	3 412 811.690		R161	81 520.760	3 415 873.800		
L162	83 996.130	3 412 746.600		R162	81 573.530	3 415 791.640		
L163	84 042.780	3 412 678.940		R163	81 604.690	3 415 739.540		
L164	84 116.280	3 412 552.780		R164	81 645.960	3 415 664.910		
L165	84 168.030	3 412 443.610		R165	81 816.790	3 415 334.160		
L166	84 203.470	3 412 351.970		R166	82 054.190	3 414 874.470		
L167	84 220.710	3 412 300.040		R167	82 112.120	3 414 775.910		
L168	84 238.680	3 412 240.320		R168	82 184.340	3 414 672.350		
L169	84 388.120	3 411 727.440		R169	82 267.630	3 414 572.460		
L170	84 431.590	3 411 579.110		R170	82 329.090	3 414 505.950		
L171	84 435.180	3 411 565.510		R171	82 346.970	3 414 486.830		
L172	84 512.720	3 411 299.860		R172	82 398.310	3 414 431.690		
L173	84 551.090	3 411 167.570		R173	82 480.720	3 414 343.230		
L174	84 622.070	3 410 923.730		R174	82 822.830	3 413 976.140		
L175	84 635.610	3 410 862.490		R175	83 509.340	3 413 239.180		
L176	84 639.970	3 410 831.620		R176	83 873.670	3 412 847.730		
L177	84 644.510	3 410 773.670		R177	83 920.710	3 412 792.790		
L178	84 644.730	3 410 744.890		R178	83 956.350	3 412 747.390		
L179	84 644.090	3 410 730.410		R179	83 990.080	3 412 700.550		
L180	84 642.090	3 410 701.350		R180	84 029.860	3 412 640.310		
L181	84 638.920	3 410 672.280		R181	84 080.630	3 412 552.720		
L182	84 634.450	3 410 643.640		R182	84 101.100	3 412 513.170		
L183	84 628.380	3 410 615.160		R183	84 116.270	3 412 481.860		
L184	84 609.520	3 410 533.280		R184	84 139.920	3 412 429.050		
L185	84 570.540	3 410 358.810		R185	84 161.420	3 412 375.320		
L186	84 556.730	3 410 299.550		R186	84 180.990	3 412 320.630		
L187	84 551.280	3 410 274.250		R187	84 199.870	3 412 260.560		
L188	84 547.420	3 410 258.120		R188	84 342.040	3 411 772.310		
L189	84 534.230	3 410 199.920		R189	84 360.360	3 411 709.520		
L190	84 531.890	3 410 189.600		R190	84 391.520	3 411 602.350		
L191	84 504.900	3 410 070.490		R191	84 399.290	3 411 575.800		
L192	84 385.740	3 409 548.200		R192	84 472.170	3 411 325.800		
L193	84 373.750	3 409 503.040		R193	84 558.080	3 411 030.410		
L194	84 363.430	3 409 468.810		R194	84 566.180	3 411 002.780		
L195	84 348.330	3 409 422.460		R195	84 590.770	3 410 918.540		
L196	84 343.650	3 409 413.660		R196	84 600.780	3 410 876.520		
L197	84 343.650	3 409 410.870		R197	84 603.700	3 410 861.730		
L198	84 335.430	3 409 386.430		R198	84 608.220	3 410 833.090		
L199	84 168.610	3 408 941.810		R199	84 609.830	3 410 820.170		
L200	84 146.080	3 408 864.920		R200	84 612.360	3 410 789.620		
L201	84 103.700	3 408 765.170		R201	84 613.280	3 410 760.430		
L202	84 095.260	3 408 730.320		R202	84 613.010	3 410 744.060		
L203	84 089.680	3 408 694.920		R203	84 612.780	3 410 731.340		
L204	84 087.830	3 408 646.160		R204	84 611.930	3 410 716.510		

Vel	15	Van	22	P687/08
Sheet		of		

PADRESERWE KOÖRDINATE				/ ROAD RESERVE CO-ORDINATES			
LINKERKANT/LEFT HAND SIDE				REGTERKANT/RIGHT HAND SIDE			
	Y	X	WG 19°		Y	X	
L205	84 091.740	3 408	598.230	R205	84 610.840	3 410	702.080
L206	84 095.820	3 408	574.670	R206	84 607.120	3 410	673.410
L207	84 105.240	3 408	540.040	R207	84 602.550	3 410	645.210
L208	84 113.440	3 408	517.400	R208	84 596.740	3 410	617.400
L209	84 125.930	3 408	488.100	R209	84 569.690	3 410	499.790
L210	84 140.590	3 408	461.440	R210	84 528.970	3 410	319.030
L211	84 156.420	3 408	437.190	R211	84 523.670	3 410	296.040
L212	84 161.480	3 408	430.730	R212	84 507.540	3 410	224.630
L213	84 176.880	3 408	410.050	R213	84 500.500	3 410	193.610
L214	84 186.440	3 408	398.870	R214	84 492.030	3 410	156.160
L215	84 357.310	3 408	228.200	R215	84 401.950	3 409	759.290
L216	84 389.610	3 408	193.000	R216	84 368.700	3 409	639.990
L217	84 409.090	3 408	169.860	R217	84 315.920	3 409	425.300
L218	84 427.470	3 408	146.770	R218	84 223.120	3 409	206.660
L219	84 444.620	3 408	123.760	R219	84 174.480	3 409	077.120
L220	84 477.620	3 408	074.770	R220	84 099.480	3 408	868.300
L221	84 498.730	3 408	038.800	R221	84 073.570	3 408	777.160
L222	84 516.640	3 408	005.420	R222	84 066.190	3 408	748.080
L223	84 719.290	3 407	603.210	R223	84 060.390	3 408	717.810
L224	84 744.310	3 407	554.960	R224	84 056.240	3 408	687.450
L225	84 767.040	3 407	517.910	R225	84 055.420	3 408	657.200
L226	84 792.880	3 407	481.580	R226	84 058.300	3 408	612.020
L227	84 819.480	3 407	449.960	R227	84 060.080	3 408	596.980
L228	84 856.250	3 407	412.300	R228	84 069.070	3 408	551.790
L229	84 890.380	3 407	382.940	R229	84 060.710	3 408	521.880
L230	84 926.480	3 407	356.250	R230	84 063.630	3 408	503.190
L231	84 964.240	3 407	332.310	R231	84 093.560	3 408	483.380
L232	85 005.620	3 407	308.810	R232	84 114.160	3 408	445.330
L233	85 046.540	3 407	291.190	R233	84 123.720	3 408	430.880
L234	85 074.540	3 407	281.180	R234	84 130.450	3 408	419.630
L235	85 103.070	3 407	272.100	R235	84 139.160	3 408	407.510
L236	85 132.240	3 407	265.220	R236	84 168.610	3 408	373.230
L237	85 172.660	3 407	257.220	R237	84 335.450	3 408	205.680
L238	85 188.800	3 407	254.760	R238	84 378.740	3 408	156.750
L239	85 640.180	3 407	208.790	R239	84 408.330	3 408	120.380
L240	85 684.580	3 407	202.360	R240	84 440.470	3 408	074.630
L241	85 719.120	3 407	196.420	R241	84 473.070	3 408	020.240
L242	85 761.090	3 407	188.260	R242	84 505.680	3 407	957.850
L243	85 804.450	3 407	178.450	R243	84 710.660	3 407	550.280
L244	85 861.890	3 407	163.500	R244	84 732.220	3 407	512.530
L245	85 920.650	3 407	145.270	R245	84 764.600	3 407	464.910
L246	85 978.340	3 407	125.790	R246	84 792.840	3 407	429.970
L247	86 038.250	3 407	101.400	R247	84 840.870	3 407	381.780
L248	86 094.730	3 407	076.480	R248	84 884.770	3 407	344.280
L249	86 175.880	3 407	035.890	R249	84 933.510	3 407	311.740
L250	86 251.140	3 406	991.750	R250	84 978.940	3 407	286.320
L251	86 299.920	3 406	960.200	R251	85 005.350	3 407	273.730
L252	86 359.260	3 406	918.350	R252	85 046.090	3 407	256.900
L253	86 382.460	3 406	900.820	R253	85 087.920	3 407	242.660
L254	86 427.430	3 406	864.950	R254	85 144.570	3 407	229.540
L255	86 450.100	3 406	845.630	R255	85 187.790	3 407	222.610

Vel	16	Van	22	P687/08
Sheet		of		

PADRESERWE KOÖRDINATE				ROAD RESERVE CO-ORDINATES			
LINKERKANT/LEFT HAND SIDE				REGTERKANT/RIGHT HAND SIDE			
	Y	X	WG	19°	Y	X	
L256	86 504.070	3 406	796.580	R256	85 581.320	3 407	183.510
L257	86 524.810	3 406	776.530	R257	85 637.270	3 407	177.450
L258	86 565.380	3 406	735.000	R258	85 697.900	3 407	168.290
L259	86 604.120	3 406	691.810	R259	85 772.990	3 407	153.560
L260	86 623.090	3 406	669.600	R260	85 817.430	3 407	142.710
L261	86 659.750	3 406	624.010	R261	85 860.900	3 407	130.600
L262	86 885.810	3 406	317.660	R262	85 909.080	3 407	115.370
L263	87 043.840	3 406	100.010	R263	85 982.410	3 407	090.030
L264	87 075.050	3 406	051.290	R264	86 028.780	3 407	070.910
L265	87 104.360	3 406	001.170	R265	86 083.440	3 407	046.650
L266	87 138.420	3 405	937.560	R266	86 136.510	3 407	020.300
L267	87 163.450	3 405	885.170	R267	86 203.540	3 406	983.510
L268	87 186.830	3 405	831.290	R268	86 257.760	3 406	950.170
L269	87 207.940	3 405	776.770	R269	86 284.790	3 406	932.390
L270	87 231.450	3 405	707.850	R270	86 318.570	3 406	909.040
L271	87 240.050	3 405	680.040	R271	86 364.130	3 406	875.110
L272	87 255.260	3 405	624.420	R272	86 411.150	3 406	837.300
L273	87 262.050	3 405	595.890	R273	86 456.510	3 406	797.660
L274	87 274.220	3 405	539.300	R274	86 478.790	3 406	777.110
L275	87 286.360	3 405	468.110	R275	86 521.940	3 406	734.520
L276	87 310.290	3 405	222.810	R276	86 583.110	3 406	668.020
L277	87 356.900	3 404	690.810	R277	86 621.710	3 406	621.540
L278	87 404.470	3 404	148.320	R278	86 638.070	3 406	600.500
L279	87 452.270	3 404	150.800	R279	86 863.000	3 406	295.440
L280	87 457.250	3 404	122.050	R280	87 003.450	3 406	103.330
L281	87 407.250	3 404	115.870	R281	87 034.080	3 406	057.190
L282	87 434.410	3 403	806.230	R282	87 069.990	3 405	998.120
L283	87 443.210	3 403	724.340	R283	87 095.030	3 405	953.060
L284	87 450.210	3 403	670.150	R284	87 108.320	3 405	927.280
L285	87 461.270	3 403	598.100	R285	87 147.040	3 405	844.520
L286	87 473.950	3 403	526.550	R286	87 158.690	3 405	816.760
L287	87 935.100	3 401	248.730	R287	87 190.400	3 405	732.020
L288	87 935.290	3 401	242.500	R288	87 199.770	3 405	703.370
L289	87 971.560	3 401	117.030	R289	87 216.920	3 405	645.580
L290	88 001.490	3 401	034.910	R290	87 233.240	3 405	580.190
L291	88 263.000	3 400	383.310	R291	87 244.330	3 405	527.850
L292	88 362.690	3 400	134.040	R292	87 254.440	3 405	468.930
L293	88 475.400	3 399	853.770	R293	87 270.940	3 405	312.840
L294	88 751.700	3 399	165.230	R294	87 325.510	3 404	688.630
L295	89 009.600	3 398	521.580	R295	87 372.760	3 404	148.530
L296	89 375.690	3 397	609.520	R296	87 354.330	3 404	129.640
L297	89 397.820	3 397	555.570	R297	87 338.580	3 404	094.030
L298	89 421.680	3 397	502.400	R298	87 363.260	3 404	110.840
L299	89 461.800	3 397	424.180	R299	87 376.140	3 404	108.300
L300	89 491.200	3 397	373.650	R300	87 403.350	3 403	800.420
L301	89 522.200	3 397	324.080	R301	87 418.490	3 403	669.020
L302	89 563.730	3 397	263.990	R302	87 434.330	3 403	568.040
L303	89 608.200	3 397	205.990	R303	87 441.000	3 403	529.410
L304	89 813.580	3 396	951.370	R304	87 545.340	3 403	011.520
L305	89 848.840	3 396	905.250	R305	87 650.550	3 402	490.250
L306	89 882.900	3 396	857.420	R306	87 767.180	3 401	912.650

Vel	17	Van	22	P687/08
Sheet		of		

PADRESERWE KOÖRDINATE				/ ROAD RESERVE CO-ORDINATES			
LINKERKANT/LEFT HAND SIDE				REGTERKANT/RIGHT HAND SIDE			
	Y	X	WG 19°		Y	X	
L307	89 914.930	3 396 808.500		R307	87 893.410	3 401 286.010	
L308	89 944.650	3 396 758.320		R308	87 907.090	3 401 225.030	
L309	89 979.500	3 396 694.370		R309	87 923.220	3 401 166.140	
L310	90 005.280	3 396 641.930		R310	87 932.030	3 401 137.150	
L311	90 028.840	3 396 588.760		R311	87 951.710	3 401 078.540	
L312	90 050.460	3 396 534.520		R312	87 972.800	3 401 022.880	
L313	90 074.510	3 396 465.630		R313	88 188.690	3 400 483.920	
L314	90 091.490	3 396 409.770		R314	88 339.000	3 400 108.960	
L315	90 106.380	3 396 353.380		R315	88 437.630	3 399 863.120	
L316	90 223.140	3 395 876.950		R316	88 825.090	3 398 897.540	
L317	90 233.180	3 395 835.990		R317	89 045.190	3 398 348.900	
L318	90 407.110	3 395 125.960		R318	89 267.040	3 397 795.400	
L319	90 483.990	3 394 813.930		R319	89 328.600	3 397 642.220	
L320	90 549.120	3 394 544.040		R320	89 359.890	3 397 564.350	
L321	90 572.120	3 394 430.360		R321	89 382.370	3 397 512.800	
L322	90 591.040	3 394 314.800		R322	89 408.250	3 397 458.560	
L323	90 603.920	3 394 213.370		R323	89 435.690	3 397 406.670	
L324	90 612.080	3 394 128.310		R324	89 480.370	3 397 331.010	
L325	90 657.860	3 393 437.170		R325	89 504.590	3 397 294.920	
L326	90 669.680	3 393 268.010		R326	89 505.150	3 397 294.090	
L327	90 677.080	3 393 180.680		R327	89 521.090	3 397 269.570	
L328	90 713.270	3 392 859.340		R328	89 573.100	3 397 199.730	
L329	90 728.290	3 392 754.840		R329	89 727.550	3 397 007.740	
L330	90 735.130	3 392 710.120		R330	89 817.960	3 396 894.010	
L331	90 754.870	3 392 591.500		R331	89 852.110	3 396 846.470	
L332	90 775.640	3 392 475.930		R332	89 884.440	3 396 797.800	
L333	90 802.710	3 392 341.520		R333	89 899.810	3 396 773.020	
L334	90 819.890	3 392 261.530		R334	89 935.910	3 396 709.080	
L335	90 844.330	3 392 154.630		R335	89 962.970	3 396 657.430	
L336	90 868.970	3 392 053.830		R336	89 987.310	3 396 604.750	
L337	90 911.990	3 391 890.470		R337	90 009.890	3 396 551.380	
L338	90 946.800	3 391 769.630		R338	90 020.640	3 396 524.110	
L339	90 998.700	3 391 601.610		R339	90 035.620	3 396 482.890	
L340	91 008.070	3 391 573.800		R340	90 053.550	3 396 427.590	
L341	91 018.320	3 391 546.340		R341	90 069.310	3 396 371.610	
L342	91 028.630	3 391 521.090		R342	90 160.070	3 396 001.810	
L343	91 040.570	3 391 494.070		R343	90 160.260	3 396 001.040	
L344	91 053.370	3 391 467.880		R344	90 202.290	3 395 830.570	
L345	91 081.440	3 391 416.790		R345	90 445.810	3 394 836.240	
L346	91 096.860	3 391 391.520		R346	90 523.960	3 394 511.340	
L347	91 129.770	3 391 343.590		R347	90 540.900	3 394 426.220	
L348	91 156.550	3 391 308.820		R348	90 550.880	3 394 369.000	
L349	91 225.760	3 391 224.910		R349	90 561.880	3 394 296.960	
L350	91 714.440	3 390 635.390		R350	90 568.890	3 394 241.780	
L351	92 025.750	3 390 259.910		R351	90 575.400	3 394 183.810	
L352	92 148.970	3 390 114.020		R352	90 580.710	3 394 125.910	
L353	92 180.600	3 390 080.440		R353	90 632.160	3 393 350.880	
L354	92 225.870	3 390 035.650		R354	90 638.060	3 393 269.890	
L355	92 273.080	3 389 992.900		R355	90 649.420	3 393 137.950	
L356	92 304.430	3 389 966.590		R356	90 664.740	3 392 992.530	
L357	92 370.440	3 389 914.650		R357	90 678.950	3 392 877.400	

Vel	18	Van	22	P687/08
Sheet		of		

PADRESERWE KOÖRDINATE				/	ROAD RESERVE CO-ORDINATES			
LINKERKANT/LEFT HAND SIDE					REGTERKANT/RIGHT HAND SIDE			
	Y	X	WG	19°	Y	X		
L358	92 445.990	3 389 863.270		R358	90 698.230	3 392 742.300		
L359	92 505.400	3 389 826.630		R359	90 721.820	3 392 596.910		
L360	92 593.410	3 389 779.560		R360	90 742.540	3 392 481.750		
L361	92 750.870	3 389 704.890		R361	90 753.410	3 392 425.390		
L362	92 793.850	3 389 682.910		R362	90 779.870	3 392 296.870		
L363	92 872.890	3 389 637.300		R363	90 798.850	3 392 211.400		
L364	92 924.500	3 389 604.140		R364	90 822.090	3 392 112.030		
L365	92 969.560	3 389 572.650		R365	90 834.030	3 392 064.060		
L366	93 005.020	3 389 546.350		R366	90 861.220	3 391 957.670		
L367	93 445.450	3 389 201.140		R367	90 847.400	3 391 953.430		
L368	93 818.050	3 388 908.850		R368	90 818.820	3 391 947.760		
L369	93 837.670	3 388 891.550		R369	90 826.290	3 391 923.390		
L370	93 860.240	3 388 869.080		R370	90 854.670	3 391 928.980		
L371	93 879.570	3 388 847.040		R371	90 867.930	3 391 932.690		
L372	93 897.660	3 388 823.920		R372	90 888.090	3 391 859.060		
L373	93 914.120	3 388 799.710		R373	90 942.800	3 391 673.990		
L374	93 921.850	3 388 787.180		R374	90 976.720	3 391 567.620		
L375	93 939.020	3 388 756.780		R375	90 997.190	3 391 514.520		
L376	93 946.970	3 388 740.380		R376	91 009.930	3 391 485.980		
L377	93 963.680	3 388 700.090		R377	91 029.640	3 391 445.260		
L378	93 972.480	3 388 672.650		R378	91 046.960	3 391 413.100		
L379	93 979.980	3 388 644.600		R379	91 070.600	3 391 374.130		
L380	93 985.270	3 388 616.150		R380	91 104.280	3 391 325.350		
L381	93 988.440	3 388 588.050		R381	91 126.160	3 391 296.270		
L382	93 989.400	3 388 558.490		R382	91 217.680	3 391 185.660		
L383	93 988.700	3 388 529.420		R383	91 476.770	3 390 872.660		
L384	93 986.310	3 388 485.970		R384	91 814.650	3 390 464.810		
L385	93 985.420	3 388 481.050		R385	92 038.020	3 390 195.770		
L386	93 956.980	3 388 312.790		R386	92 103.030	3 390 118.280		
L387	93 953.050	3 388 280.720		R387	92 151.850	3 390 064.800		
L388	93 950.760	3 388 243.030		R388	92 174.050	3 390 042.050		
L389	93 956.090	3 388 162.910		R389	92 231.070	3 389 987.840		
L390	93 961.690	3 388 136.930		R390	92 278.050	3 389 947.550		
L391	93 984.260	3 388 069.340		R391	92 311.080	3 389 920.580		
L392	94 026.940	3 387 986.480		R392	92 336.520	3 389 900.960		
L393	94 133.850	3 387 792.500		R393	92 380.210	3 389 869.090		
L394	94 198.390	3 387 683.370		R394	92 464.070	3 389 814.460		
L395	94 229.000	3 387 637.610		R395	92 577.480	3 389 751.490		
L396	94 289.800	3 387 559.300		R396	92 722.290	3 389 683.390		
L397	94 346.280	3 387 500.900		R397	92 764.610	3 389 662.000		
L398	94 426.640	3 387 420.580		R398	92 799.490	3 389 643.450		
L399	94 597.910	3 387 256.950		R399	92 848.840	3 389 615.070		
L400	94 626.420	3 387 228.950		R400	92 913.320	3 389 573.620		
L401	94 680.270	3 387 167.390		R401	92 934.240	3 389 559.490		
L402	94 718.720	3 387 112.890		R402	93 004.440	3 389 507.190		
L403	94 766.250	3 387 036.820		R403	93 463.890	3 389 146.580		
L404	94 805.440	3 386 954.190		R404	93 785.450	3 388 894.640		
L405	95 021.060	3 386 424.140		R405	93 818.380	3 388 866.280		
L406	95 160.420	3 386 082.610		R406	93 838.880	3 388 845.800		
L407	95 202.700	3 386 046.230		R407	93 857.540	3 388 824.330		
L408	95 199.450	3 386 010.710		R408	93 875.240	3 388 801.270		

Vel	19	Van	22	P687/08
Sheet		of		

PADRESERWE KOÖRDINATE				/	ROAD RESERVE CO-ORDINATES		
LINKERKANT/LEFT HAND SIDE					REGTERKANT/RIGHT HAND SIDE		
	Y	X	WG	19°	Y	X	
L409	95 195.130	3 385	997.390	R409	93 891.220	3 388	777.320
L410	95 264.120	3 385	828.230	R410	93 905.730	3 388	752.510
L411	95 670.490	3 384	830.580	R411	93 918.420	3 388	726.400
L412	95 869.950	3 384	340.110	R412	93 928.680	3 388	699.330
L413	96 079.710	3 383	825.580	R413	93 939.400	3 388	664.600
L414	96 230.140	3 383	456.370	R414	93 948.040	3 388	629.770
L415	96 269.470	3 383	352.600	R415	93 952.710	3 388	601.110
L416	96 299.870	3 383	254.780	R416	93 955.460	3 388	572.380
L417	96 317.280	3 383	180.690	R417	93 954.720	3 388	514.740
L418	96 336.410	3 383	072.370	R418	93 951.990	3 388	487.400
L419	96 346.810	3 382	999.920	R419	93 945.910	3 388	447.480
L420	96 356.100	3 382	924.650	R420	93 933.950	3 388	368.980
L421	96 394.610	3 382	731.580	R421	93 925.380	3 388	335.140
L422	96 421.960	3 382	649.080	R422	93 919.170	3 388	307.150
L423	96 469.530	3 382	574.880	R423	93 916.050	3 388	277.540
L424	96 533.390	3 382	497.930	R424	93 914.360	3 388	247.930
L425	96 557.370	3 382	437.160	R425	93 914.310	3 388	195.030
L426	96 558.930	3 382	430.370	R426	93 919.800	3 388	162.380
L427	96 566.460	3 382	396.830	R427	93 930.490	3 388	115.150
L428	96 571.530	3 382	354.300	R428	93 938.460	3 388	088.160
L429	96 580.530	3 382	354.400	R429	93 955.690	3 388	043.970
L430	96 583.240	3 382	331.850	R430	93 978.670	3 387	996.930
L431	96 599.360	3 382	322.290	R431	94 000.880	3 387	955.720
L432	96 604.320	3 382	297.090	R432	94 042.020	3 387	879.850
L433	96 605.240	3 382	290.220	R433	94 033.310	3 387	865.100
L434	96 503.160	3 382	248.750	R434	94 032.460	3 387	854.520
L435	96 448.240	3 382	226.210	R435	94 057.860	3 387	850.820
L436	96 473.330	3 382	048.200	R436	94 103.460	3 387	769.070
L437	96 480.280	3 382	017.130	R437	94 135.420	3 387	714.210
L438	96 491.760	3 381	974.970	R438	94 167.790	3 387	663.970
L439	96 519.670	3 381	908.570	R439	94 215.620	3 387	597.360
L440	96 526.150	3 381	895.310	R440	94 263.130	3 387	538.070
L441	96 548.240	3 381	856.480	R441	94 298.790	3 387	497.260
L442	96 561.390	3 381	835.800	R442	94 338.960	3 387	454.410
L443	96 575.700	3 381	815.010	R443	94 380.660	3 387	413.020
L444	96 600.940	3 381	783.020	R444	94 585.560	3 387	216.250
L445	96 622.060	3 381	758.930	R445	94 624.530	3 387	174.300
L446	96 633.190	3 381	747.230	R446	94 662.830	3 387	126.730
L447	96 663.750	3 381	718.440	R447	94 678.710	3 387	105.070
L448	96 712.627	3 381	674.258	R448	94 696.090	3 387	079.170
L449	96 745.680	3 381	644.380	R449	94 711.620	3 387	054.570
L450	96 796.920	3 381	603.780	R450	94 726.330	3 387	029.620
L451	96 840.390	3 381	557.700	R451	94 740.290	3 387	004.190
L452	96 861.650	3 381	538.060	R452	94 767.850	3 386	946.710
L453	96 882.420	3 381	520.420	R453	94 973.290	3 386	442.350
L454	96 904.180	3 381	504.130	R454	95 124.680	3 386	070.190
L455	96 938.770	3 381	482.990	R455	95 097.720	3 386	073.380
L456	96 963.180	3 381	470.020	R456	95 087.340	3 386	049.840
L457	96 990.900	3 381	457.930	R457	95 141.740	3 386	028.460
L458	97 014.460	3 381	449.090	R458	95 375.540	3 385	454.770
L459	97 039.760	3 381	441.160	R459	95 578.030	3 384	957.050

Vel	20	Van	22	P687/08
Sheet		of		

PADRESERWE KOÖRDINATE				/	ROAD RESERVE CO-ORDINATES		
LINKERKANT/LEFT HAND SIDE					REGTERKANT/RIGHT HAND SIDE		
	Y	X	WG	19°	Y	X	
L460	97 066.380	3 381 434.710		R460	95 776.940	3 384 469.250	
L461	97 106.750	3 381 428.620		R461	95 975.170	3 383 982.150	
L462	97 133.880	3 381 426.580		R462	96 165.130	3 383 514.420	
L463	97 188.400	3 381 427.590		R463	96 229.570	3 383 351.940	
L464	97 218.100	3 381 430.520		R464	96 248.240	3 383 295.690	
L465	97 404.590	3 381 455.890		R465	96 256.100	3 383 268.750	
L466	97 495.800	3 381 467.350		R466	96 267.270	3 383 226.820	
L467	97 520.270	3 381 468.810		R467	96 277.240	3 383 185.670	
L468	97 610.090	3 381 468.850		R468	96 300.630	3 383 054.690	
L469	97 610.090	3 381 463.760		R469	96 286.010	3 383 004.540	
L470	97 665.870	3 381 450.390		R470	96 319.030	3 382 802.220	
L471	97 692.420	3 381 441.750		R471	96 316.940	3 382 672.530	
L472	97 719.770	3 381 431.240		R472	96 314.390	3 382 594.000	
L473	97 957.680	3 381 329.410		R473	96 290.230	3 382 517.760	
L474	97 985.560	3 381 318.520		R474	96 224.800	3 382 380.090	
L475	98 023.370	3 381 307.870		R475	96 212.390	3 382 345.900	
L476	98 039.770	3 381 304.350		R476	96 207.090	3 382 310.190	
L477	98 068.420	3 381 299.770		R477	96 221.910	3 382 187.570	
L478	98 112.940	3 381 296.100		R478	96 220.060	3 382 165.140	
L479	98 155.380	3 381 295.560		R479	96 229.690	3 382 141.790	
L480	98 201.740	3 381 300.580		R480	96 378.170	3 382 203.400	
L481	98 241.450	3 381 308.490		R481	96 405.200	3 382 069.440	
L482	98 296.740	3 381 327.270		R482	96 437.100	3 382 036.340	
L483	98 323.320	3 381 338.770		R483	96 441.610	3 382 015.680	
L484	98 464.840	3 381 413.500		R484	96 452.730	3 381 976.010	
L485	98 484.180	3 381 421.590		R485	96 461.150	3 381 950.610	
L486	98 518.620	3 381 433.520		R486	96 473.030	3 381 921.640	
L487	98 560.400	3 381 443.110		R487	96 480.920	3 381 902.390	
L488	98 604.540	3 381 449.940		R488	96 492.540	3 381 877.760	
L489	98 619.750	3 381 451.400		R489	96 505.570	3 381 853.690	
L490	98 677.300	3 381 448.170		R490	96 534.640	3 381 807.040	
L491	98 731.880	3 381 438.370		R491	96 564.460	3 381 766.710	
L492	98 744.200	3 381 436.880		R492	96 591.570	3 381 735.790	
L493	98 761.550	3 381 432.540		R493	96 610.760	3 381 716.510	
L494	98 890.750	3 381 410.670		R494	96 631.070	3 381 697.360	
L495	98 920.320	3 381 407.230		R495	96 682.320	3 381 651.380	
L496	98 949.490	3 381 405.860		R496	96 687.042	3 381 646.955	
L497	98 978.310	3 381 407.120		R497	96 727.460	3 381 609.080	
L498	99 007.070	3 381 410.520		R498	96 786.920	3 381 554.950	
L499	99 035.130	3 381 416.420		R499	96 817.770	3 381 528.510	
L500	99 063.450	3 381 424.440		R500	96 825.810	3 381 519.090	
L501	99 210.280	3 381 484.970		R501	96 861.500	3 381 489.180	
L502	99 318.930	3 381 515.760		R502	96 895.020	3 381 465.310	
L503	99 362.000	3 381 522.730		R503	96 918.280	3 381 451.100	
L504	99 392.620	3 381 519.430		R504	96 942.050	3 381 438.460	
L505	99 449.470	3 381 504.540		R505	96 967.030	3 381 426.850	
L506	99 488.530	3 381 488.340		R506	97 005.250	3 381 412.280	
L507	99 513.730	3 381 479.640		R507	97 030.960	3 381 404.500	
				R508	97 060.080	3 381 397.650	
				R509	97 098.370	3 381 391.560	
				R510	97 125.830	3 381 388.980	

Vel	21	Van	22	P687/08
Sheet		of		

PADRESERWE KOÖRDINATE			/ ROAD RESERVE CO-ORDINATES		
LINKERKANT/LEFT HAND SIDE			REGTERKANT/RIGHT HAND SIDE		
Y	X	WG 19°	Y	X	
			R511	97 164.950	3 381 388.340
			R512	97 193.290	3 381 389.780
			R513	97 219.140	3 381 392.540
			R514	97 235.500	3 381 394.890
			R515	97 491.050	3 381 429.410
			R516	97 520.830	3 381 431.220
			R517	97 550.630	3 381 431.250
			R518	97 579.760	3 381 429.680
			R519	97 636.310	3 381 419.740
			R520	97 705.610	3 381 396.480
			R521	97 833.310	3 381 342.110
			R522	97 897.910	3 381 312.560
			R523	97 965.710	3 381 286.260
			R524	97 992.330	3 381 277.510
			R525	98 032.650	3 381 266.750
			R526	98 061.840	3 381 261.610
			R527	98 097.990	3 381 257.490
			R528	98 185.200	3 381 259.630
			R529	98 213.750	3 381 264.100
			R530	98 257.920	3 381 273.570
			R531	98 286.450	3 381 282.670
			R532	98 314.770	3 381 293.460
			R533	98 341.820	3 381 306.030
			R534	98 368.060	3 381 319.340
			R535	98 477.900	3 381 378.360
			R536	98 505.620	3 381 389.860
			R537	98 533.500	3 381 398.890
			R538	98 560.860	3 381 405.540
			R539	98 588.620	3 381 406.840
			R540	98 705.020	3 381 404.510
			R541	98 919.880	3 381 368.580
			R542	98 948.760	3 381 368.390
			R543	98 980.840	3 381 369.910
			R544	98 053.550	3 381 380.310
			R545	99 066.890	3 381 384.440
			R546	99 105.000	3 381 400.150
			R547	99 143.130	3 381 417.620
			R548	99 216.920	3 381 447.020
			R549	99 458.510	3 381 443.760
			R550	99 487.050	3 381 442.180
			R551	99 518.420	3 381 438.220

Vel	22	Van	22	P687/08
Sheet		of		