

# Government Gazette Staatskoerant

REPUBLIC OF SOUTH AFRICA  
REPUBLIEK VAN SUID-AFRIKA

Vol. 527

Pretoria, 15 **May**  
Mei 2009

**No. 32174**

**CONTENTS****INHOUD**

<i>No.</i>	<i>Page No.</i>	<i>Gazette No.</i>	<i>No.</i>	<i>Bladsy No.</i>	<i>Koerant No.</i>
<b>GOVERNMENT NOTICE</b>			<b>GOEWERMENTSKENNISGEWING</b>		
<b>Transport, Department of</b>			<b>Vervoer, Departement van</b>		
<i>Government Notice</i>			<i>Goewermentskennisgewing</i>		
457			457		
South African National Roads Agency Limited and the National Roads Act (7/1998): The South African National Roads Agency Limited: Declaration amendment of National Road N8 Section 6: Amendment of Declaration No. 284 of 2006 .....	3	32174	Suid-Afrikaanse Nasionale Padagentskap Beperk en die Nasionale Paaie Wet (7/1998): Die Suid-Afrikaanse Nasionale Padagentskap Beperk: Verklaring wysiging van Nasionale Pad N8 Seksie 6: Wysiging van Verklaring No. 284 van 2006 .....	4	32174

---

**GOVERNMENT NOTICE**

---

**DEPARTMENT OF TRANSPORT**

No. 457

15 May 2009

**THE SOUTH AFRICAN NATIONAL ROADS  
AGENCY LIMITED**Registration No: 98/09584/06

---

**DECLARATION AMENDMENT OF NATIONAL ROAD N8 SECTION 6**

## AMENDMENT OF DECLARATION No. 284 OF 2006

By virtue of section 40(1)(b) of the South African National Roads Agency Limited and the National Roads Act, 1998 (Act No. 7 of 1998), I hereby amend declaration No. 284 of 2006, by substituting the section of the descriptive declaration from Groblershoop up to Griquatown, with the subjoined sheets 1 to 28 of Plan No. P742/09. Including only the roadway and shoulders (surfaced or gravel) but excluding kerbs, channels, sidewalks and parking areas through the township of Griekwastad.

**(National Road N8 Section 6: Groblershoop – Griquatown)**

---

**MINISTER OF TRANSPORT**

---

# GOEWERMENSKENNISGEWING

---

## DEPARTEMENT VAN VERVOER

No. 457

15 Mei 2009

### DIE SUID-AFRIKAANSE NASIONALE PADAGENTSAP BEPERK

Registrasie No: 98/09584/06

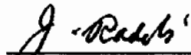
---

#### VERKLARING WYSIGING VAN NASIONALE PAD N8 SEKSIE 6.

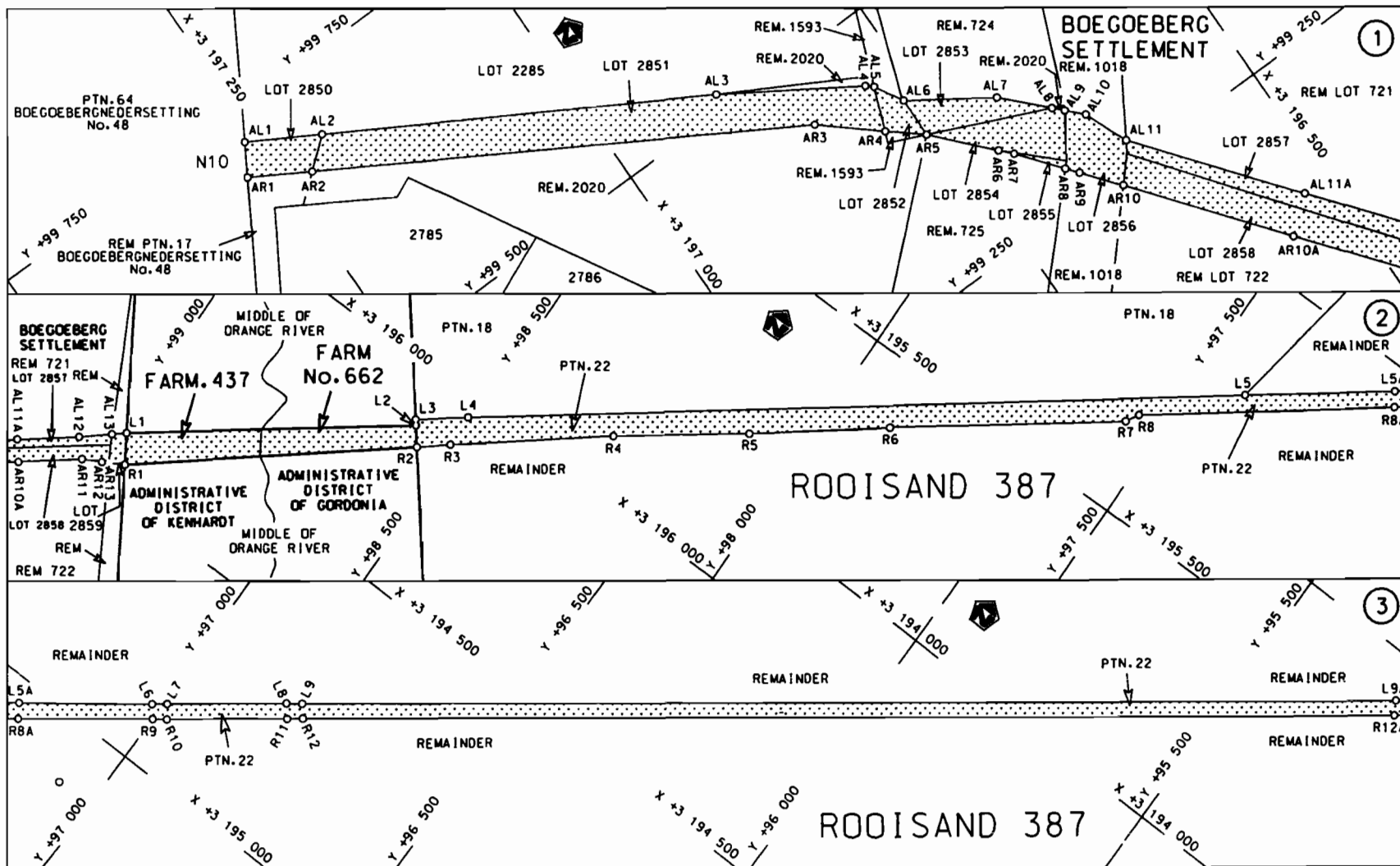
##### WYSIGING VAN VERKLARING NO. 284 VAN 2006

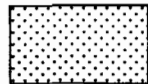
Kragtens Artikel 40(1)(b) van die Suid-Afrikaanse Nasionale Padagentskap Beperk en die Nasionale Paaie Wet, 1998 (Wet no. 7 van 1998), wysig ek hiermee verklaring no. 284 van 2006, deur die gedeelte van die beskrywende verklaring vanaf Groblershoop tot by Griekwastad, te vervang met meegaande velle 1 tot 28 van Plan no. P742/09. Insluitende slegs die padbaan en skouers (geplavlei of grond) maar uitsluitende randstene, kanale, sypaadjies en parker areas, deur die dorpsgebied van Griekwastad.

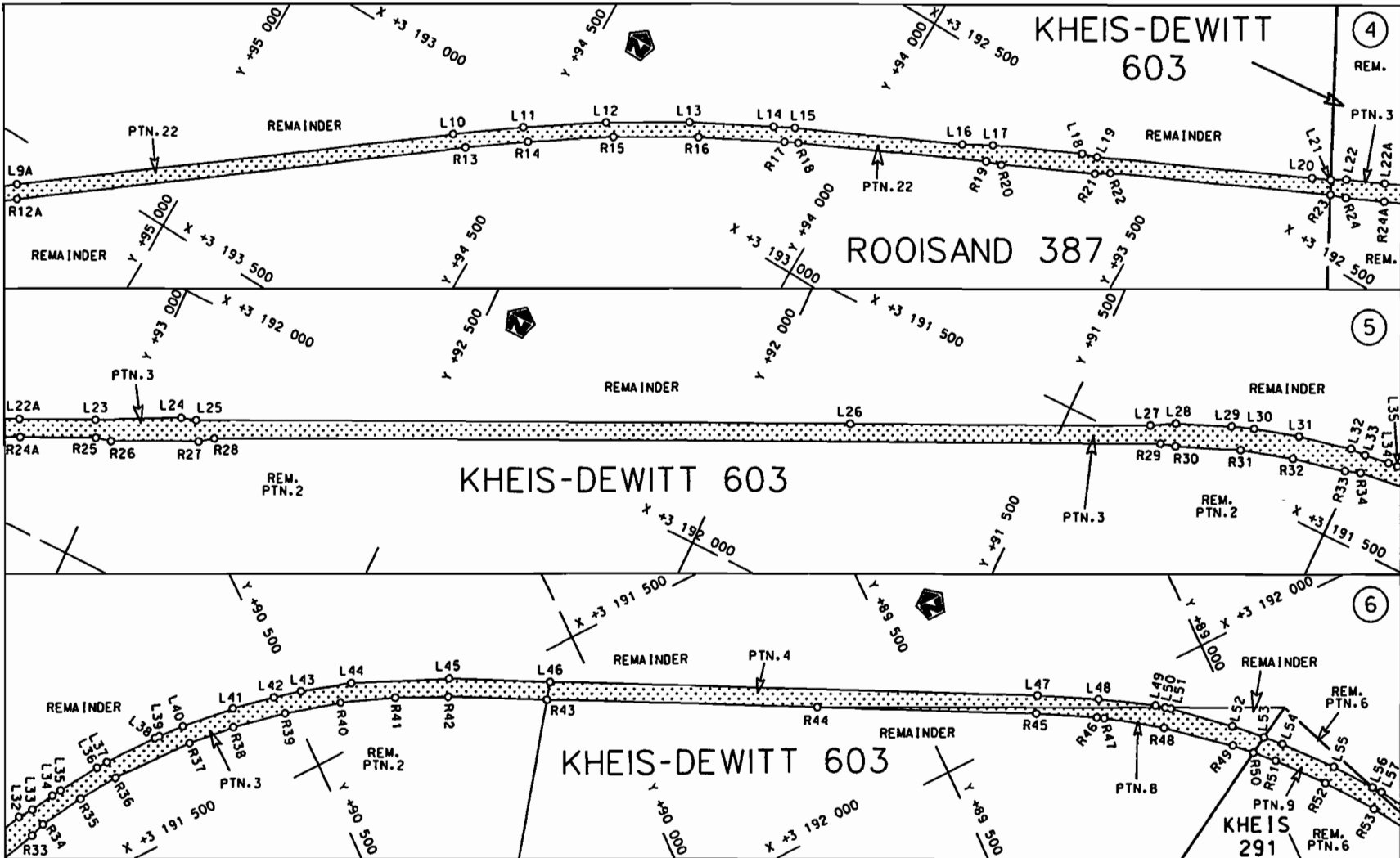
**(Nasionale Pad N8 Seksie 6: Groblershoop – Griekwastad)**

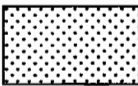


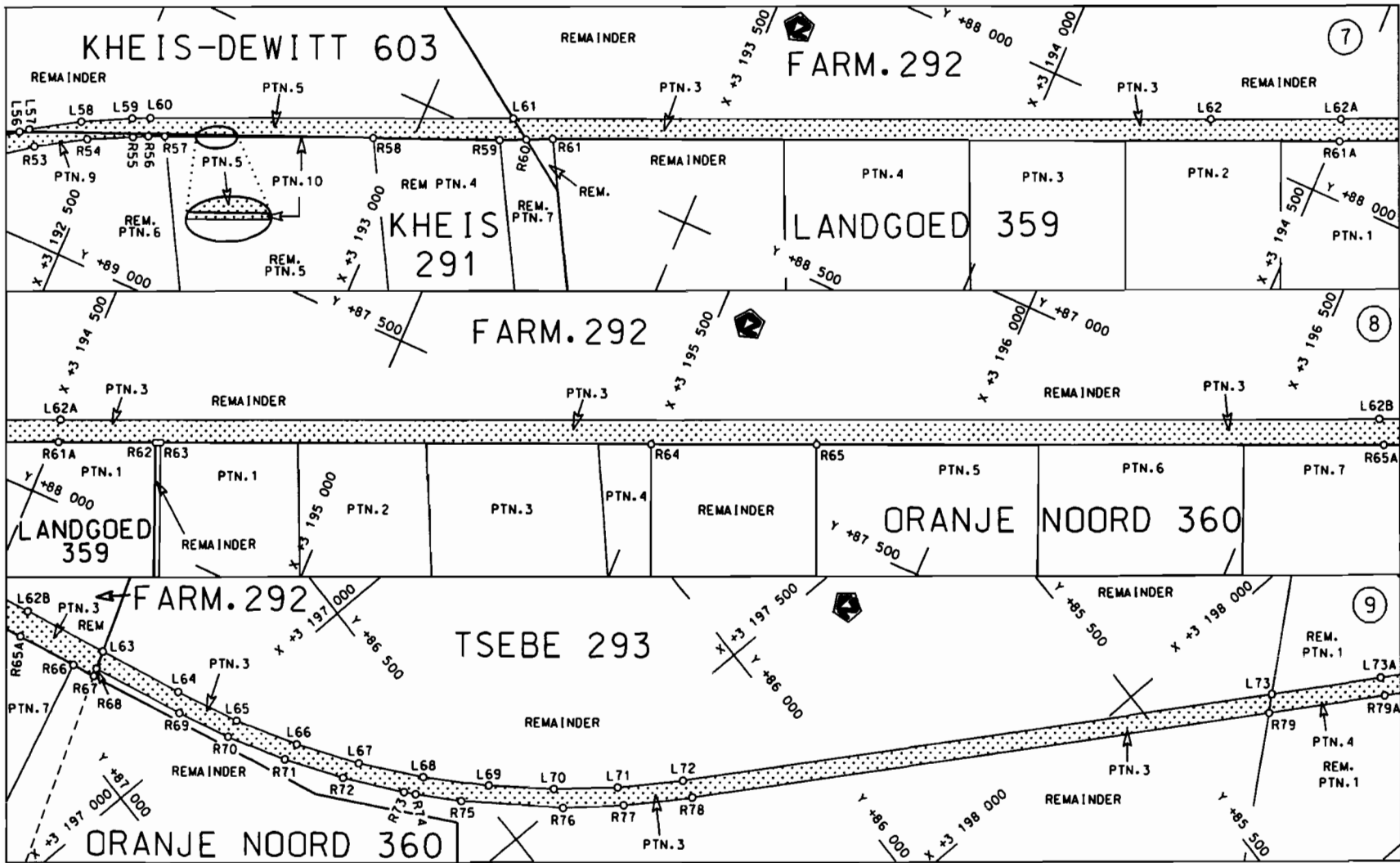
**MINISTER VAN VERVOER**

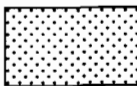


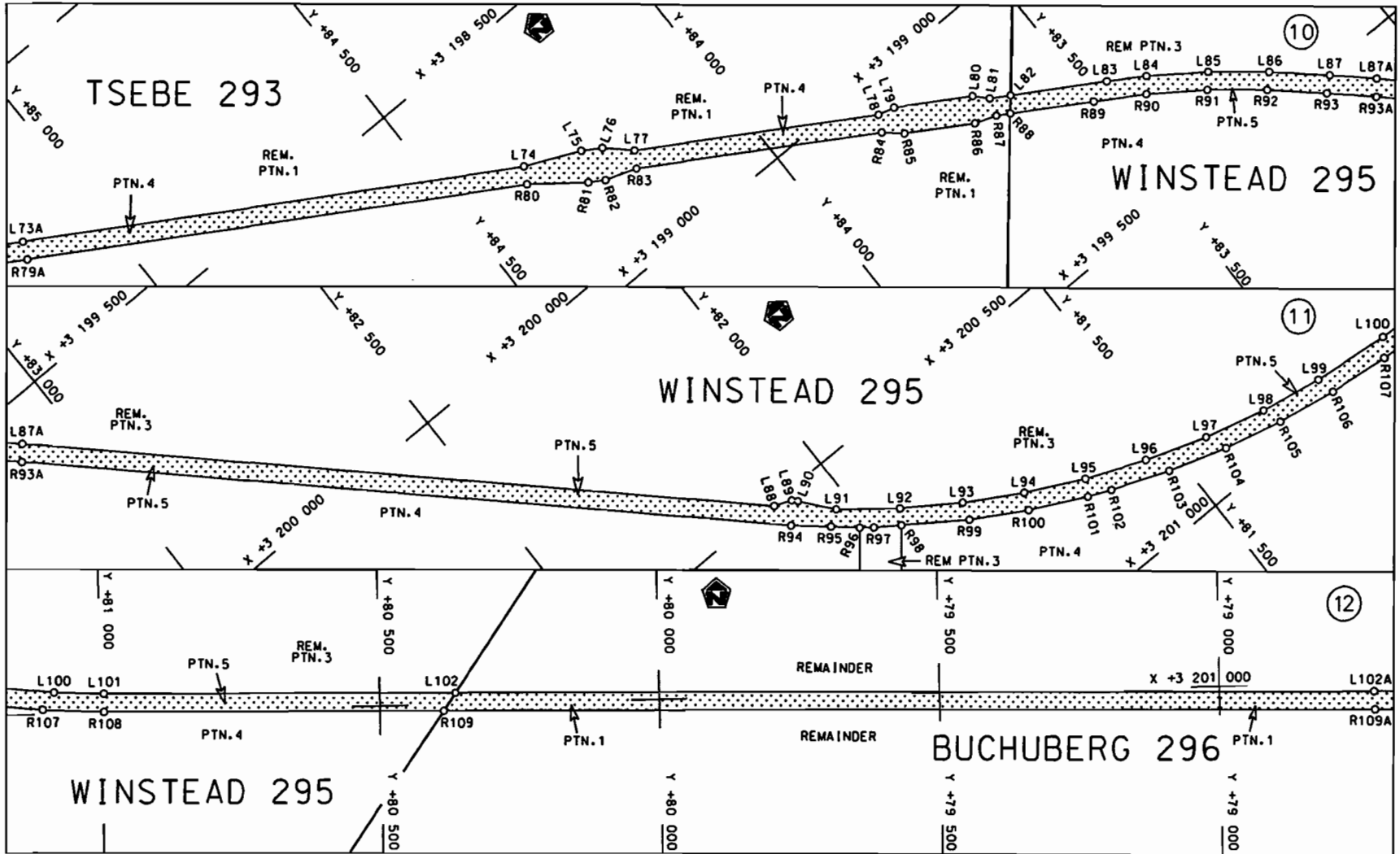
<p>Die Suid Afrikaanse Nasionale Padogenskop Beperk The South African National Roads Agency Limited</p>	<p>Die figuur getoon The figure shown</p> 	<p>steldie padreserwe voor van 'n gedeelte represents the road reserve of a portion van Nasionale Roete N8 Seksie Section of National Route 6</p>	<p>Vel Sheet 1 van 28 Plan P742/09</p>
---	--	---	--

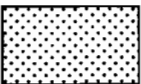


<p>Die Suid Afrikaanse Nasionale Padogentskap Beperk The South African National Roads Agency Limited</p>	<p>Die figuur getoon The figure shown</p>	<p> steldie padreserwe voor van 'n gedeelte represents the road reserve of a portion van Nasionale Roete N8 of National Route Section 6</p>	<p>Vel Sheet 2 van of 28 Plan P742/09</p>
--	---	---	---

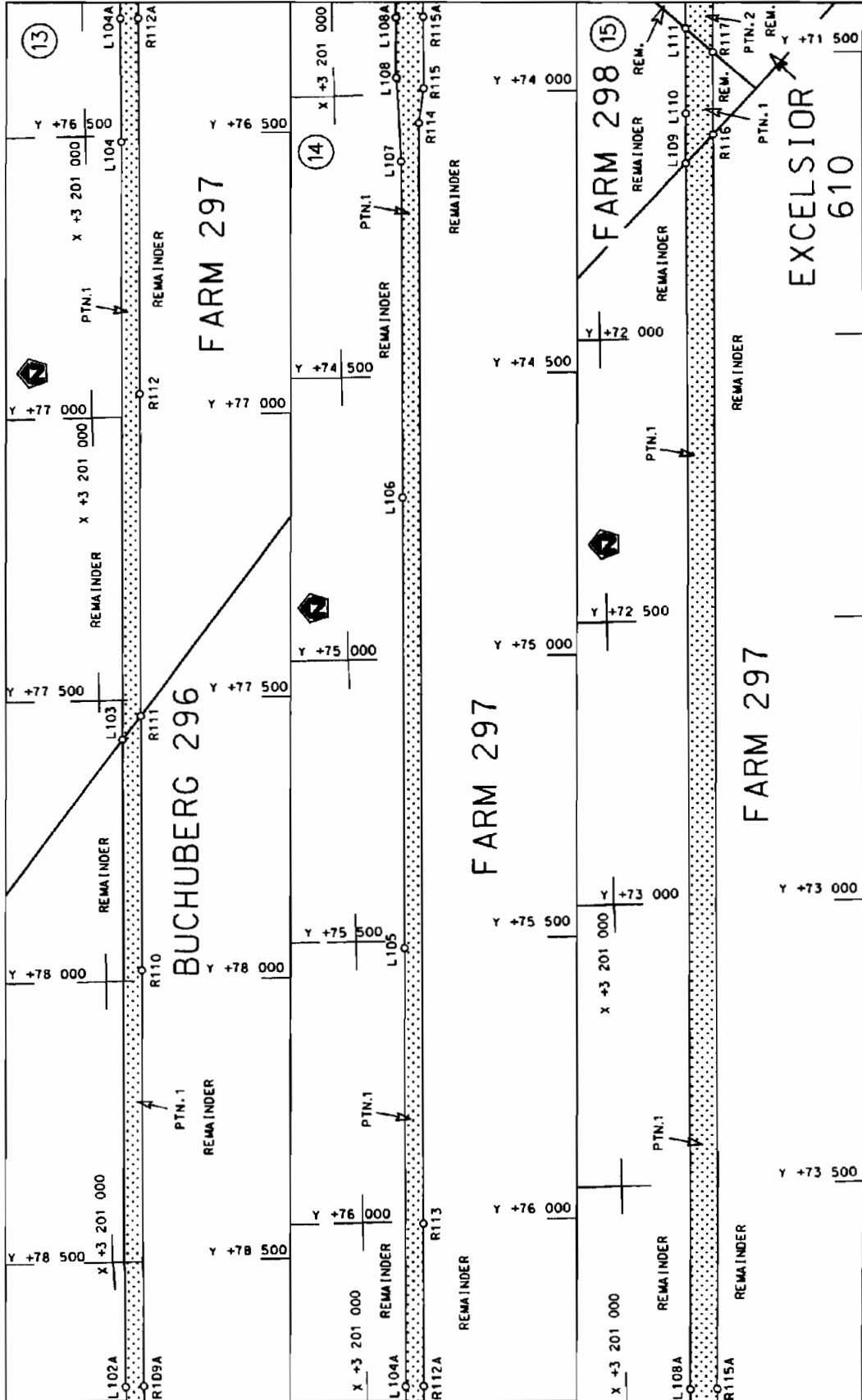


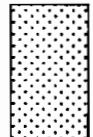
Die Suid Afrikaanse Nasionale Padagentskap Beperk The South African National Roads Agency Limited	Die figuur getoon The figure shown	 steldie padreserwe voor van 'n gedeelte represents the road reserve of a portion van Nasionale Roete N8 Seksie Section of National Route 6	Vel Sheet 3 van of 28 Plan P742/09
--	---------------------------------------	--	---------------------------------------

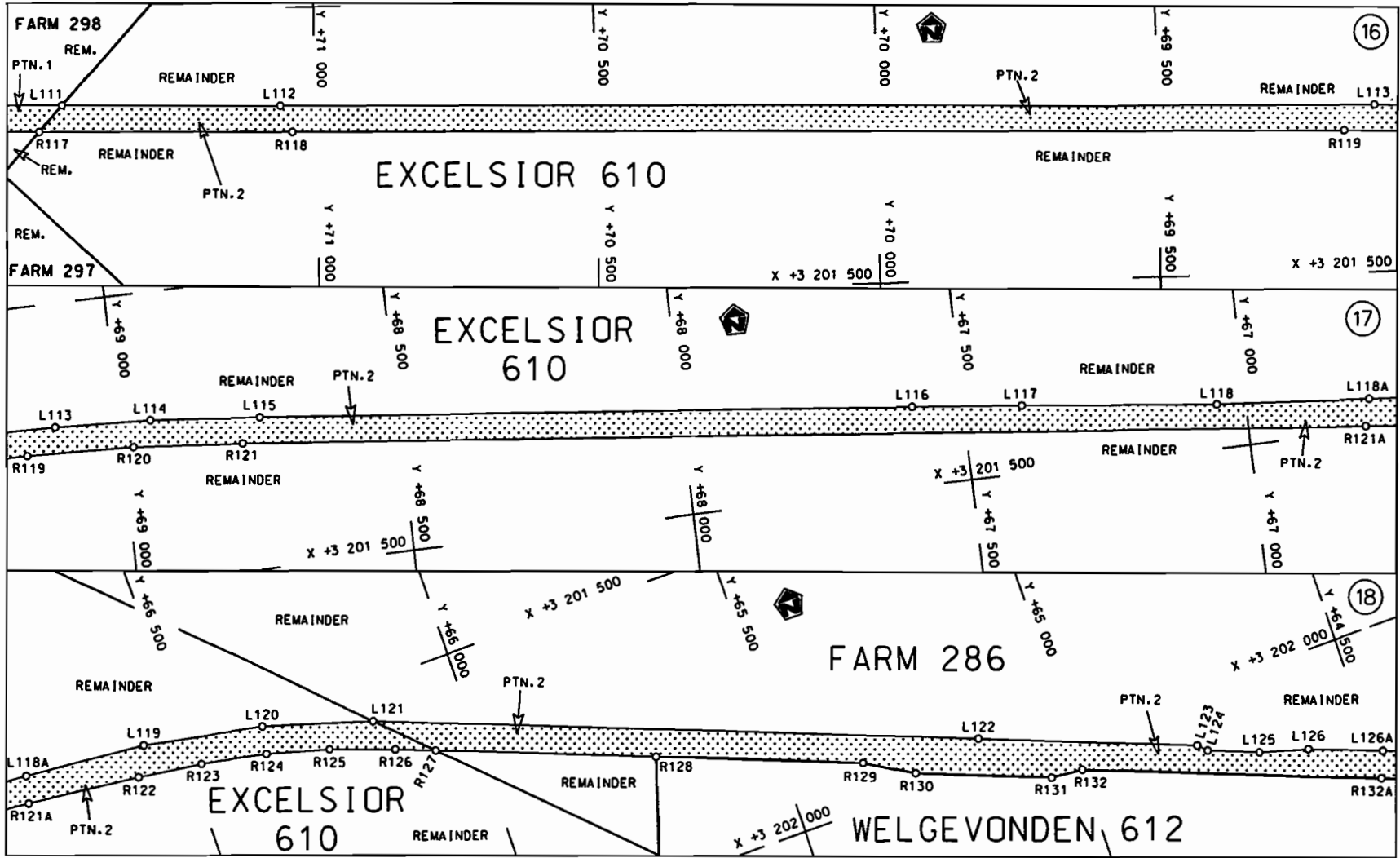


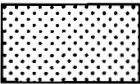
<p>Die Suid Afrikaanse Nasionale Padagentskap Beperk The South African National Roads Agency Limited</p>	<p>Die figuur getoon The figure shown</p> 	<p>steldie padreserwe voor van 'n gedeelte represents the road reserve of a portion von Nasionale Roete N8 Sektie of National Route Section 6</p>	<p>Vel Sheet 4 van 28 Plan P74209</p>
--	--	---	---

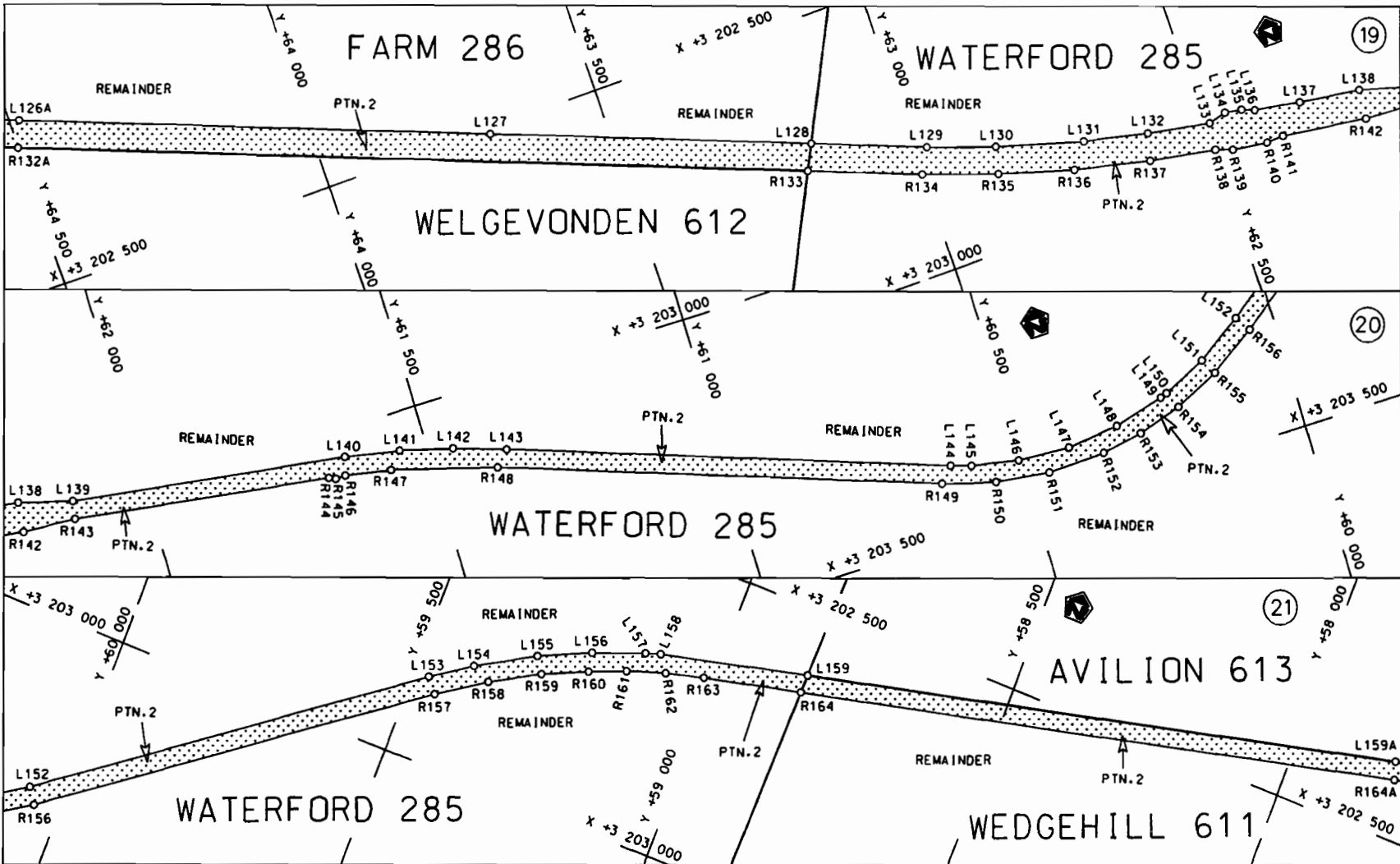




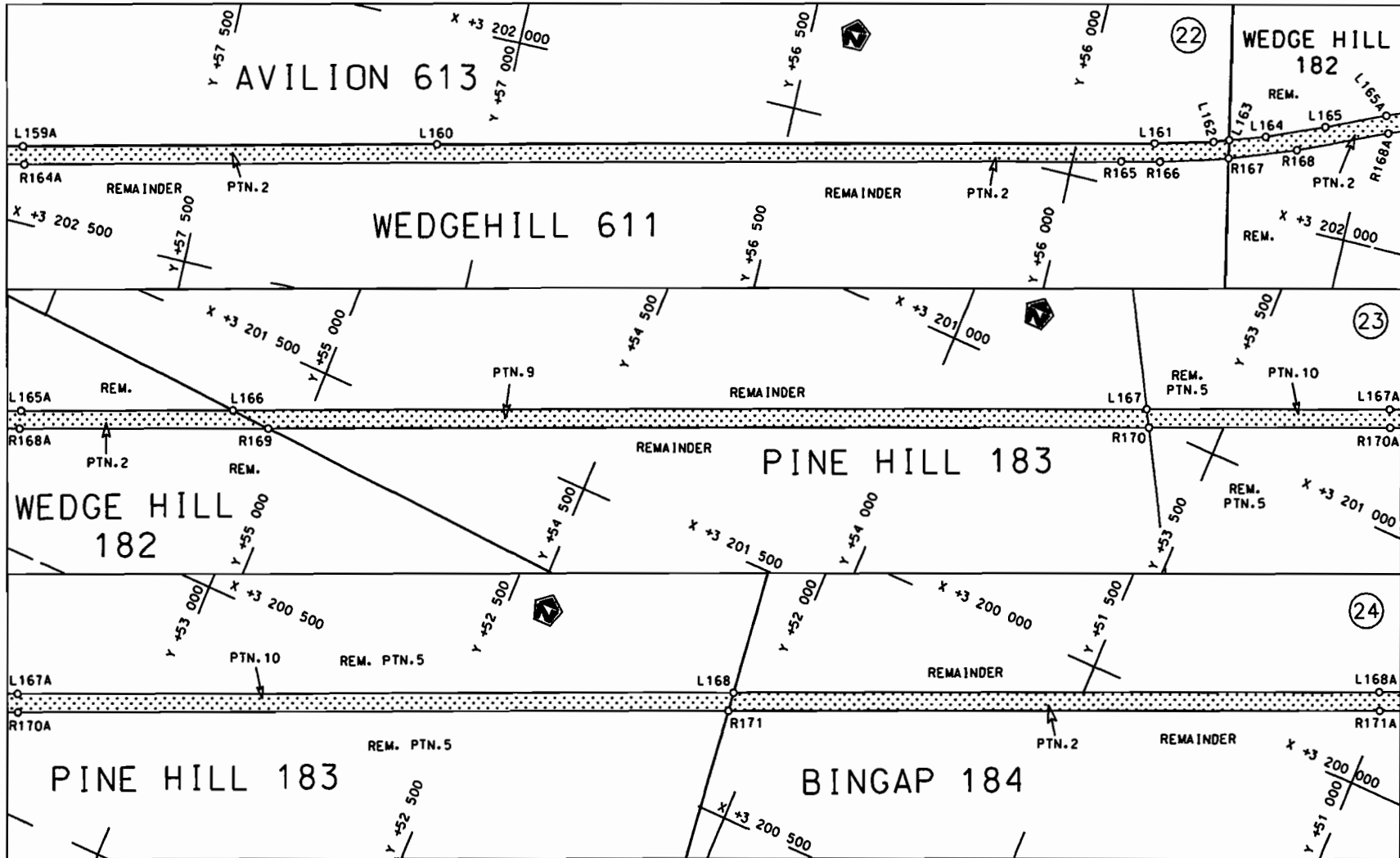
<p>Die Suid Afrikaanse Nasionale Padagentskap Beperk The South African National Roads Agency Limited</p>	<p>Die figuur getoon The figure shown</p> 	<p>Die Suid Afrikaanse Nasionale Padagentskap Beperk The South African National Roads Agency Limited</p>
<p>ste die padreserwe voor van 'n gedeelte represents the road reserve of a portion van Nasionale Roete NB of National Route Section</p>	<p>6</p>	<p>Plan P742/09</p>
<p>Vel Sheet</p>	<p>5 of 28</p>	<p>Plan P742/09</p>

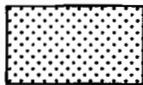


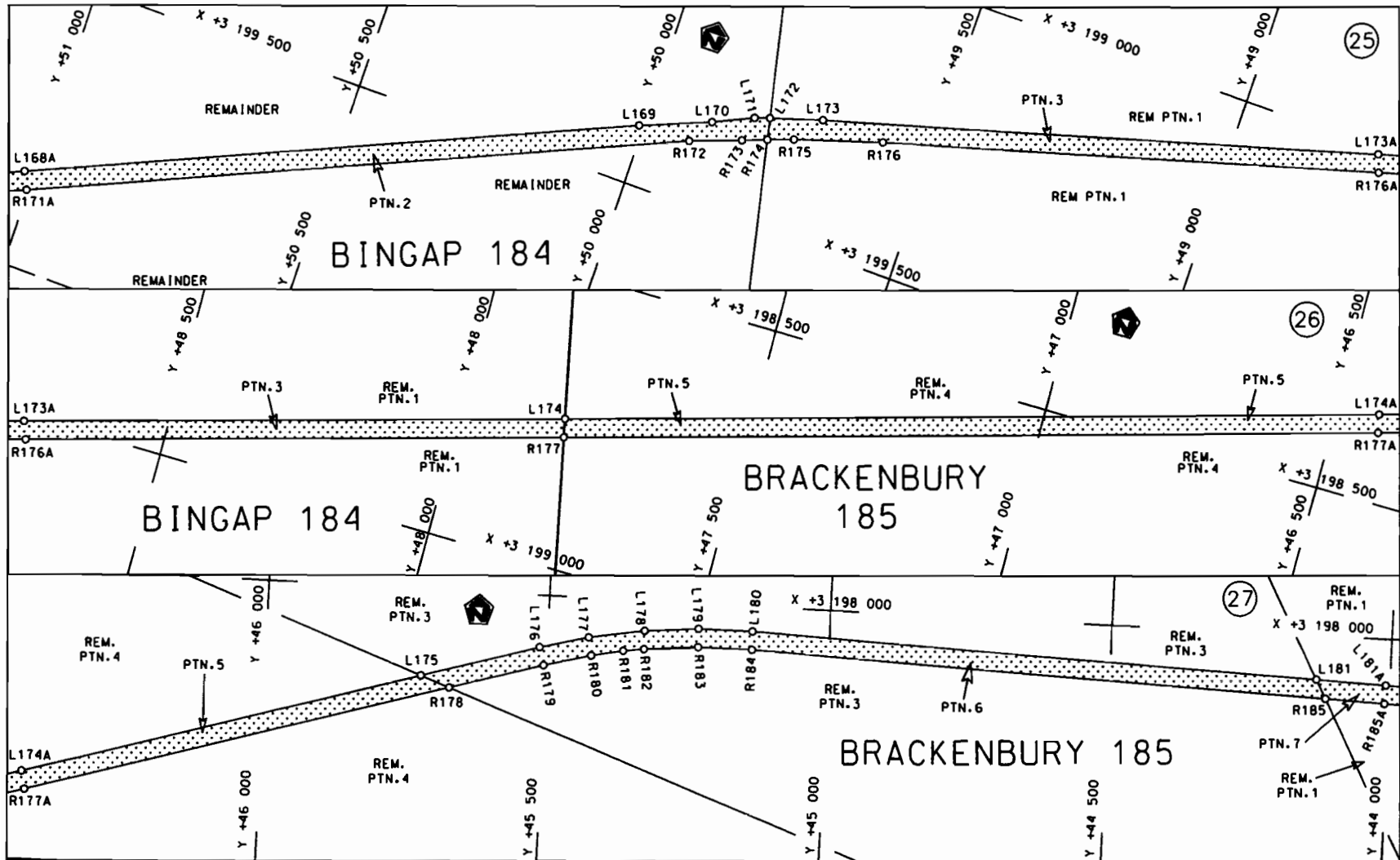
<p>Die Suid Afrikaanse Nasionale Padagentskap Beperk The South African National Roads Agency Limited</p>	<p>Die figuur getoon The figure shown</p>		<p>stel die padreserwe voor van 'n gedeelte represents the road reserve of a portion van Nasionale Roete N8 Sektie 6 of National Route N8 Section 6</p>	<p>Vel Sheet 6 van of 28 Plan P742/09</p>
--	---	--	---	---



<p>Die Suid Afrikaanse Nasionale Padagentskap Beperk The South African National Roads Agency Limited</p>	<p>Die figuur getoon The figure shown</p>	<p>steldie padreserwe voor van 'n gedeelte represents the road reserve of a portion von Nasionale Roete N8 Sektie of National Route Section 6</p>	<p>Vel Sheet 7 van of 28 Plan P742/09</p>
--	---	---	---



<p>Die Suid Afrikaanse Nasionale Padogenskap Beperk The South African National Roads Agency Limited</p>	<p>Die figuur getoon The figure shown</p>	<p></p> <p>steldie padreserwe voor van 'n gedeelte represents the road reserve of a portion van Nasionale Roete N8 of National Route</p> <p>N8    Seksie    6 Section</p>	<p>Vel Sheet 8 of 28</p> <p>Plan P742/09</p>
---	---	---	--



Die Suid Afrikaanse Nasionale Padogenskap Beperk  
The South African National Roads Agency Limited

Die figuur getoon  
The figure shown

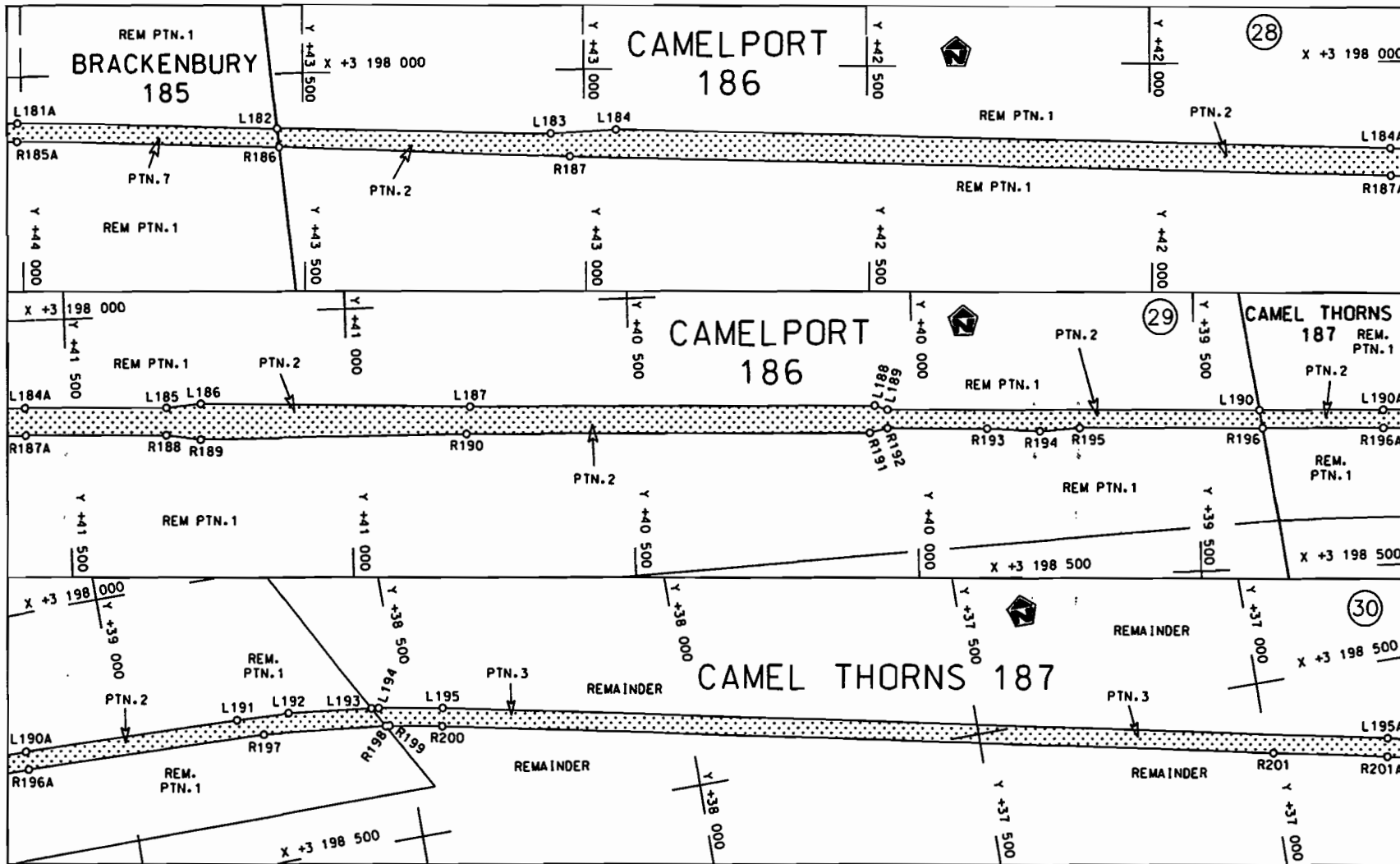


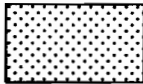
steldie padreserwe voor van 'n gedeelte  
represents the road reserve of a portion  
van Nasionale Roete N8 Seksie  
of National Route Section

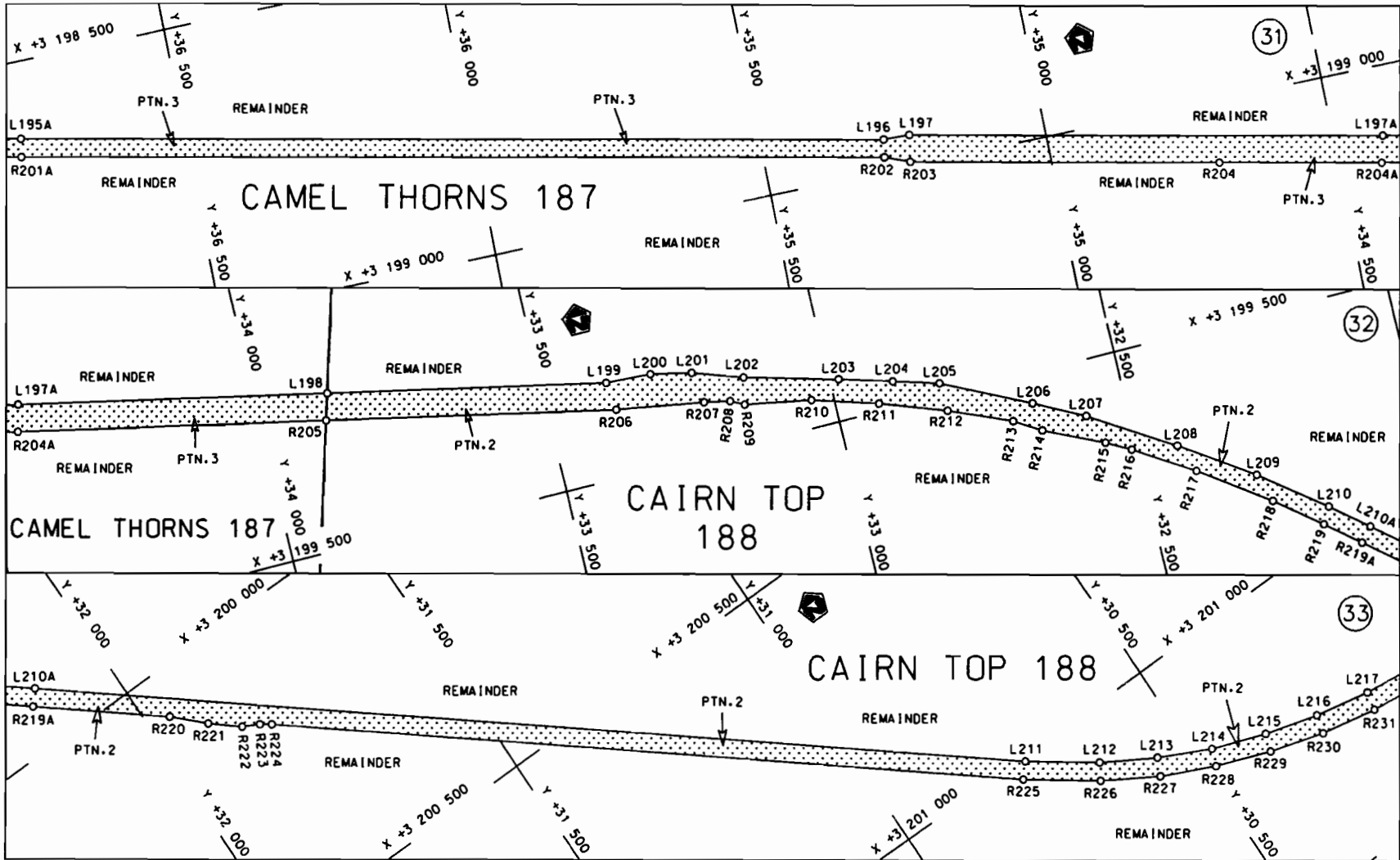
N8 Seksie 6

Vel Sheet 9 van 28

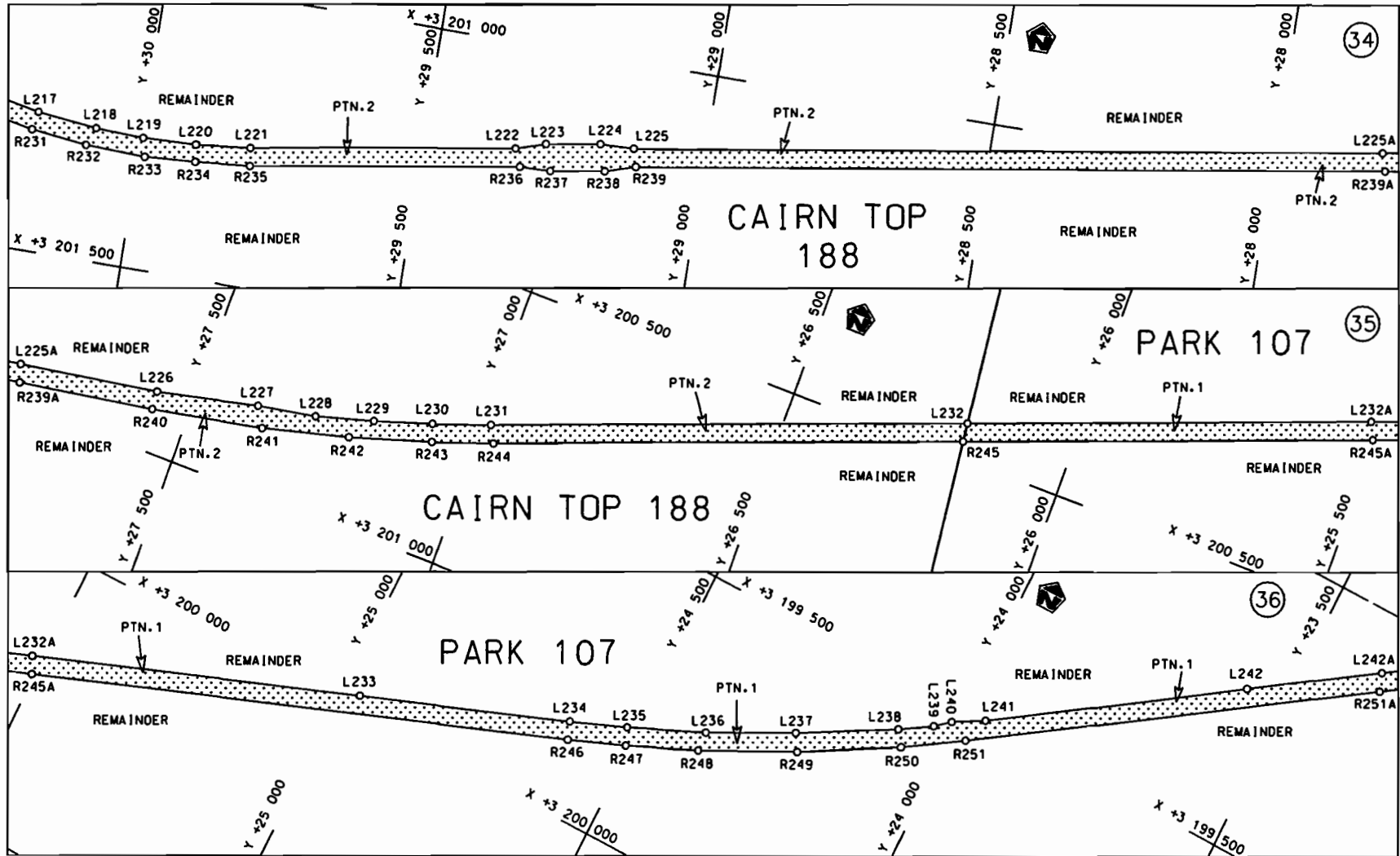
Plan P742/09




<p>Die Suid Afrikaanse Nasionale Padagentskap Beperk The South African National Roads Agency Limited</p>	<p>Die figuur getoon The figure shown</p> 	<p>steldie podreserwe voor van 'n gedeelte represents the road reserve of a portion van Nasionale Roete of National Route</p> <p>N8</p> <p>Seksie Section</p> <p>6</p>	<p>Vel Sheet</p> <p>10 of</p> <p>28</p> <p>Plan P742/09</p>
--	--	--	---

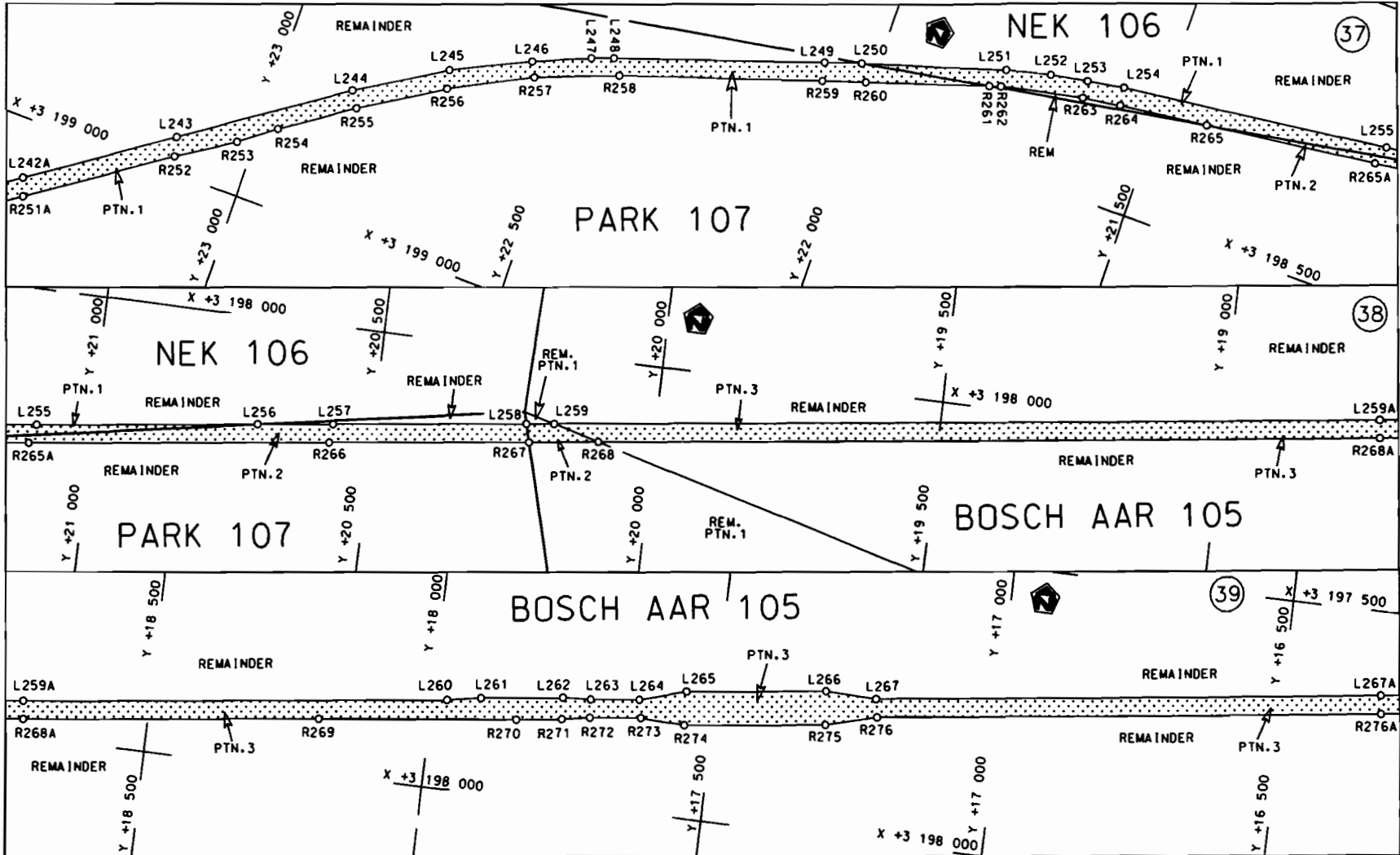


<p>Die Suid Afrikaanse Nasionale Padagentskap Beperk The South African National Roads Agency Limited</p>	<p>Die figuur getoon The figure shown</p>	<p>Die stippleerde figuur represents the road reserve of a portion van Nasionale Roete N8 of National Route</p>	<p>Vel Sheet 11 van of 28 Plan P742/09</p>
--	---	---	--

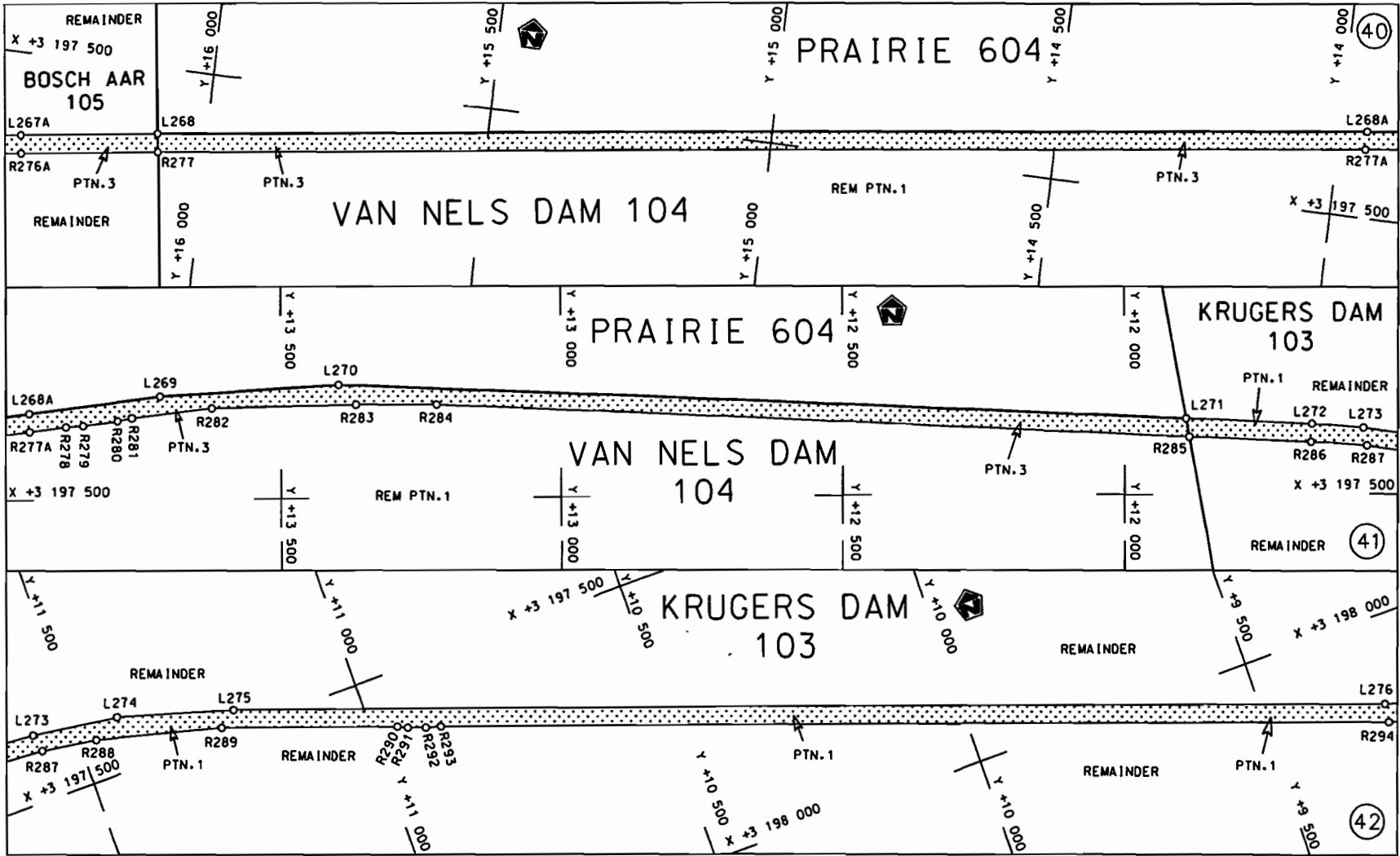


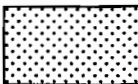
<p>Die Suid Afrikaanse Nasionale Podogentskap Beperk The South African National Roads Agency Limited</p>	<p>Die figuur getoon The figure shown</p> 	<p>stel die podereserve voor van 'n gedeelte represents the road reserve of a portion van Nasionale Roete N8 of National Route N8</p> <p>Seksie 6</p>	<p>Vel Sheet 12 van of 28 Plan P742/09</p>
--	--	---	--

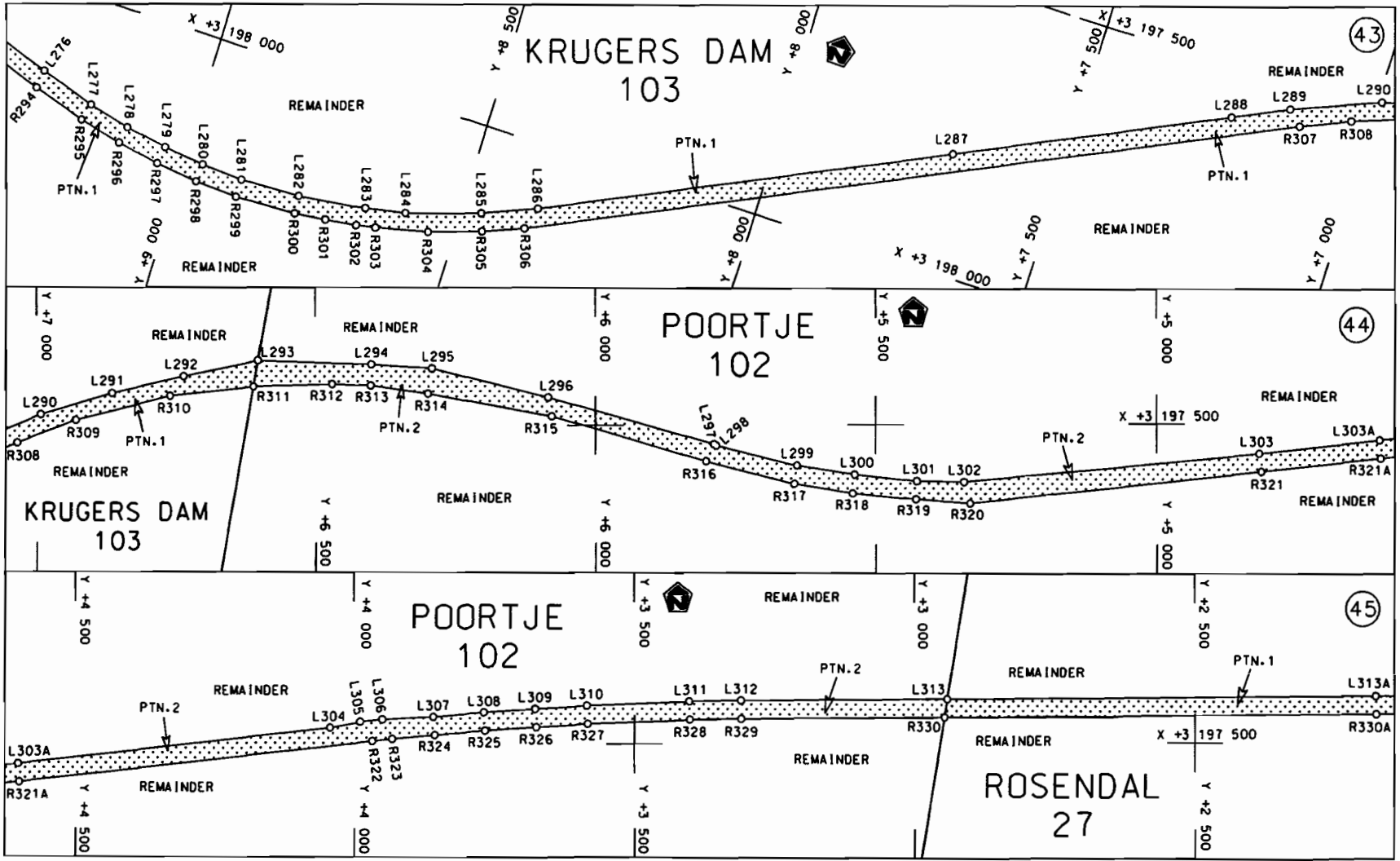


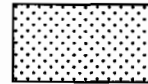


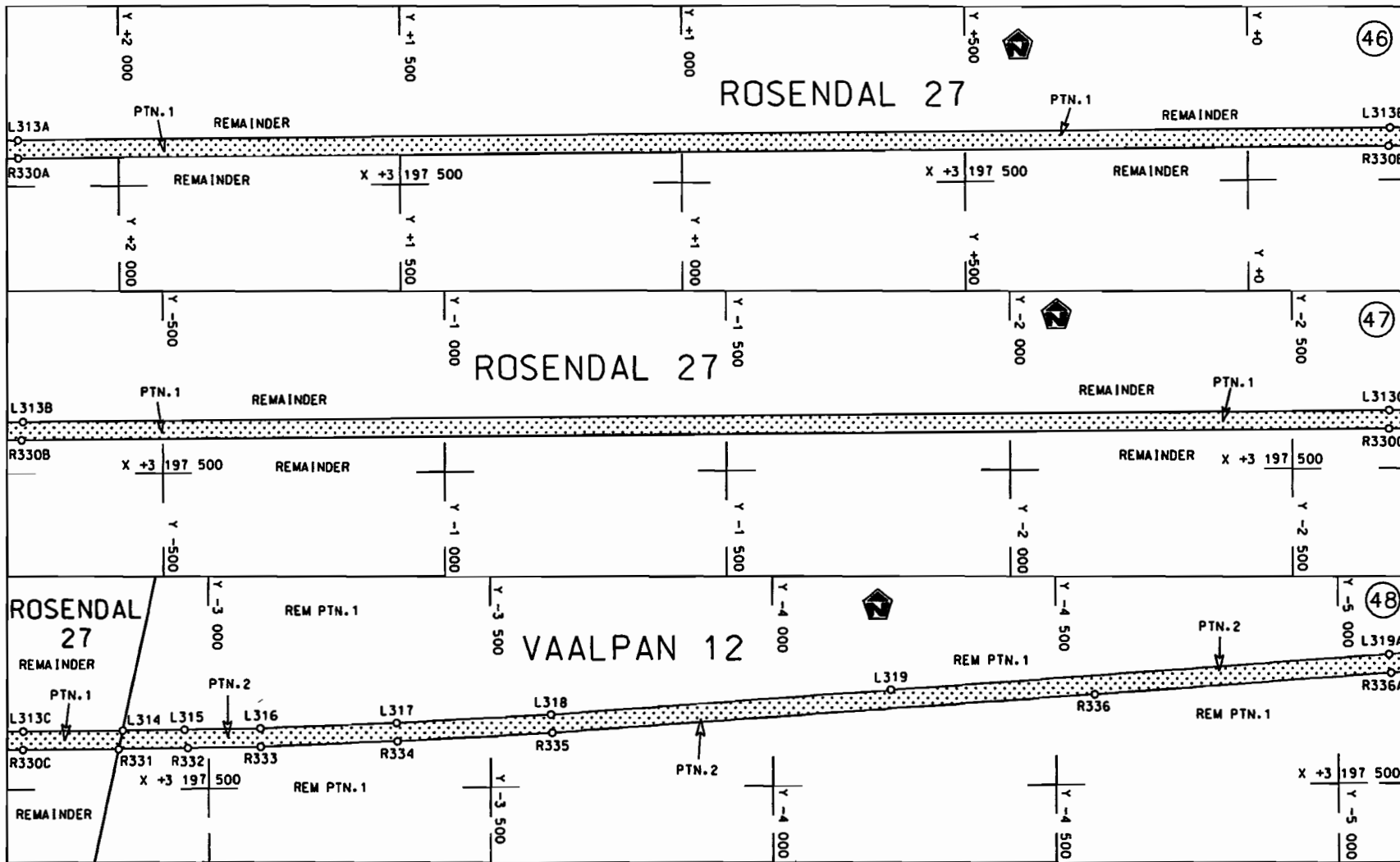
<p>Die Suid Afrikaanse Nasionale Padagentskap Beperk The South African National Roads Agency Limited</p>	<p>Die figuur getoon The figure shown</p>	<p>steldie padreserwe voor van 'n gedeelte represents the road reserve of a portion van Nasionale Roete N8 of National Route N8</p> <p>Seksie Section 6</p>	<p>Vel Sheet 13 van of 28 Plan P742/09</p>
--	---	---	--

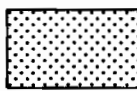


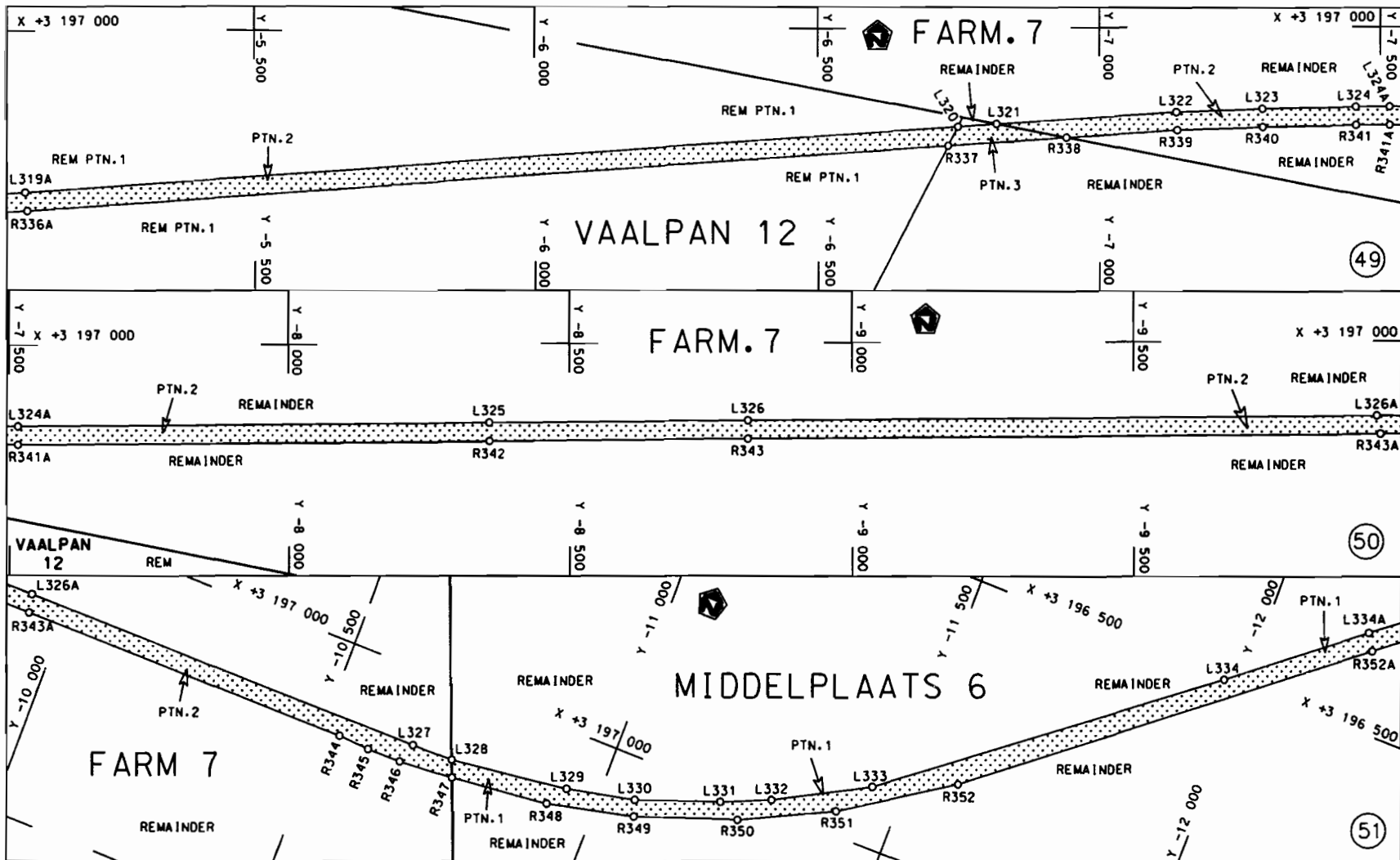
<p>Die Suid Afrikaanse Nasionale Padagentskap Beperk The South African National Roads Agency Limited</p>	<p>Die figuur getoon The figure shown</p> 	<p>steldie padreserwe voor van 'n gedeelte represents the road reserve of a portion van Nasionale Roete N8 Sektie of National Route N8 Section</p>	<p>Vel Sheet 14 van of 28 Plan P742/09</p>
--	--	--	--

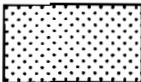


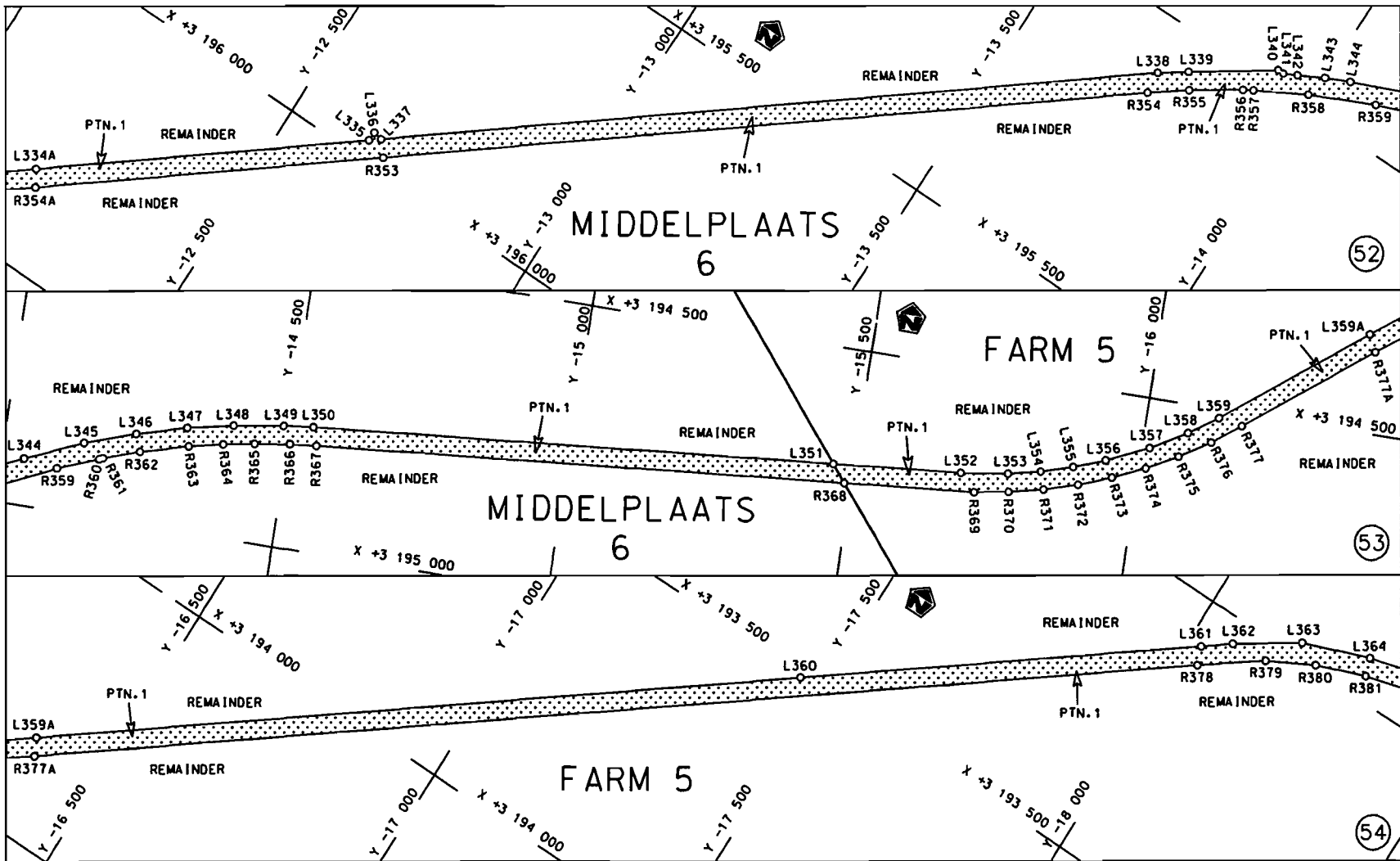
<p>Die Suid Afrikaanse Nasionale Padagentskap Beperk The South African National Roads Agency Limited</p>	<p>Die figuur getoon The figure shown</p> 	<p>st die padreserwe voor van 'n gedeelte represents the road reserve of a portion van Nasionale Roete N8 of National Route N8</p> <p>Seksie Section 6</p>	<p>Vel Sheet 15 van of 28 Plan P742/09</p>
--	--	--	--

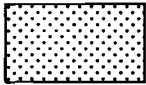


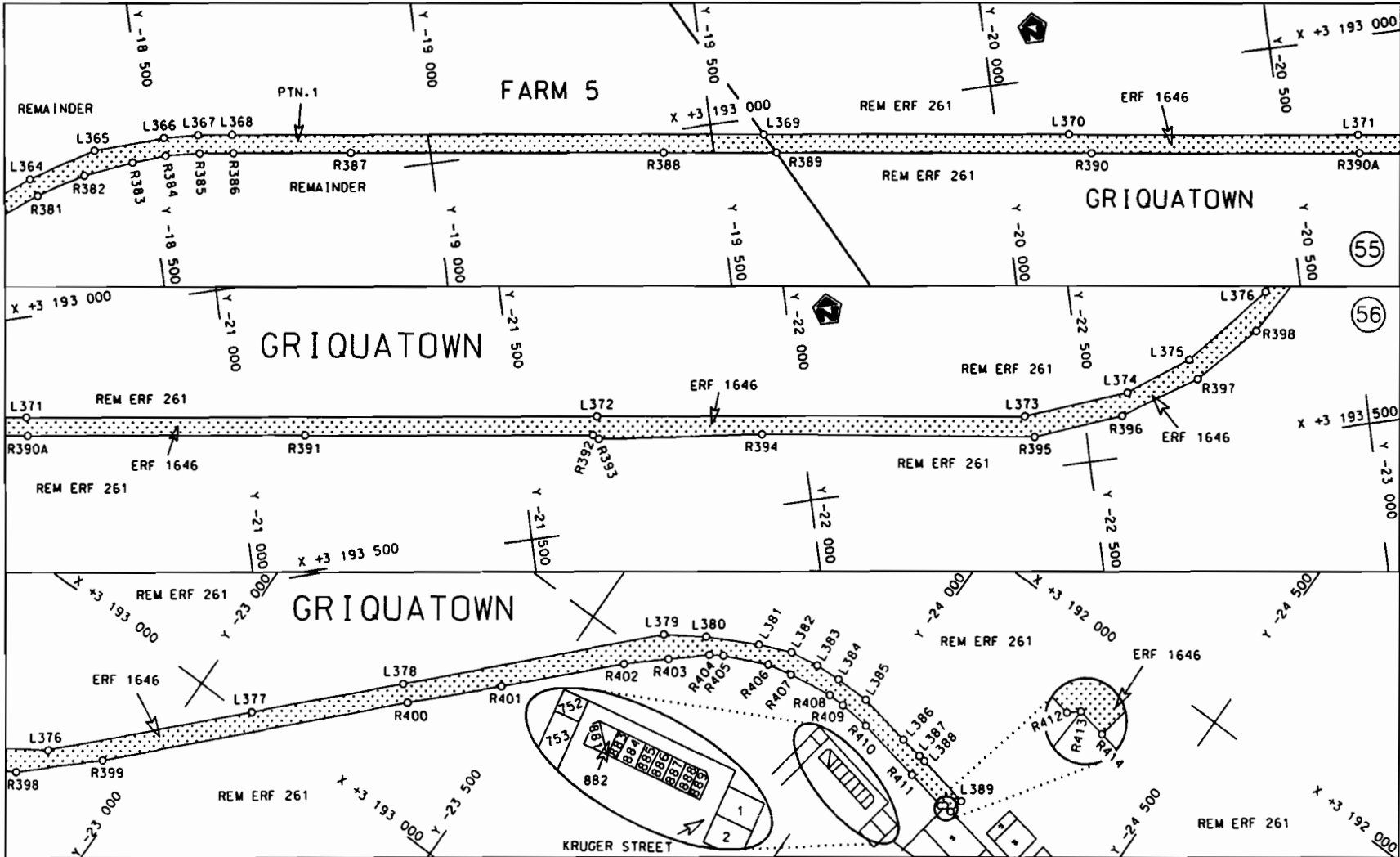
<p>Die Suid Afrikaanse Nasionale Padagentskap Beperk The South African National Roads Agency Limited</p>	<p>Die figuur getoon The figure shown</p> 	<p>stel die padreserwe voor van 'n gedeelte represents the road reserve of a portion van Nasionale Roete N8 of National Route N8</p> <p>Seksie 6 Section 6</p>	<p>Vel Sheet 16 van of 28 Plan P742/09</p>
--	--	--	--




Die Suid Afrikaanse Nasionale Padagentskap Beperk The South African National Roads Agency Limited	Die figuur getoon The figure shown	 steldie padreserve voor van 'n gedeelte represents the road reserve of a portion van Nasionale Roete of National Route	Vel Sheet 17 van of 28 Plan P742/09
			NB      Seksie      6



<p>Die Suid Afrikaanse Nasionale Podagentskap Beperk The South African National Roads Agency Limited</p>	<p>Die figuur getoon The figure shown</p> 	<p>steldie podreserwe voor van 'n gedeelte represents the road reserve of a portion van Nasionale Roete N8 Seksie of National Route N8 Section</p>	<p>Vel Sheet 18 van 28 Plan P742/09</p>
--	--	--	---



<p>Die Suid Afrikaanse Nasionale Padagentskap Beperk The South African National Roads Agency Limited</p>	<p>Die figuur getoon The figure shown</p>		<p>steldie podreserwe voor van 'n gedeelte represents the road reserve of a portion van Nasionale Roete N8 Seksie of National Route N8 Section</p>	<p>Vel Sheet 19 van 28 Plan P742/09</p>
--	---	--	--	---

PADRESERWE KOÖRDINATE / ROAD RESERVE CO-ORDINATES									
LINKERKANT/LEFT HAND SIDE					REGTERKANT/RIGHT HAND SIDE				
	Y	X	WG 23°		Y	X			
AL1	99 723.560	3 197 259.770		AR1	99 697.440	3 197 275.350			
AL2	99 689.050	3 197 200.190		AR2	99 668.200	3 197 225.760			
AL3	99 513.550	3 196 897.190		AR3	99 441.780	3 196 841.690			
AL4	99 442.750	3 196 785.500		AR4	99 400.860	3 196 794.260			
AL5	99 437.700	3 196 779.610		AR5	99 376.800	3 196 766.380			
AL6	99 412.470	3 196 765.670		AR6	99 328.450	3 196 721.890			
AL7	99 366.190	3 196 696.360		AR7	99 317.910	3 196 712.200			
AL8	99 329.990	3 196 661.640		AR8	99 280.890	3 196 682.480			
AL9	99 321.830	3 196 653.790		AR9	99 270.830	3 196 674.400			
AL10	99 308.270	3 196 640.810		AR10	99 239.540	3 196 649.790			
AL11	99 269.470	3 196 625.250		AR11	99 028.920	3 196 484.070			
AL12	99 055.220	3 196 456.390		AR12	98 989.420	3 196 462.820			
AL13	99 010.750	3 196 418.820		AR13	98 986.790	3 196 461.390			
L1	98 991.150	3 196 402.270		R1	98 962.300	3 196 448.230			
L2	98 579.710	3 196 091.870		R2	98 556.620	3 196 121.090			
L3	98 586.140	3 196 083.740		R3	98 510.910	3 196 084.190			
L4	98 512.660	3 196 028.150		R4	98 284.600	3 195 903.500			
L5	97 415.280	3 195 197.950		R5	98 091.430	3 195 761.100			
L6	97 015.490	3 194 900.120		R6	97 895.340	3 195 607.800			
L7	96 994.130	3 194 883.500		R7	97 561.230	3 195 356.960			
L8	96 822.320	3 194 753.410		R8	97 548.430	3 195 334.930			
L9	96 800.120	3 194 737.450		R9	96 999.550	3 194 919.930			
L10	94 634.790	3 193 099.620		R10	96 978.570	3 194 904.850			
L11	94 534.460	3 193 025.890		R11	96 805.430	3 194 773.720			
L12	94 412.440	3 192 944.700		R12	96 784.000	3 194 756.730			
L13	94 283.580	3 192 867.570		R13	94 603.920	3 193 108.170			
L14	94 152.620	3 192 797.980		R14	94 514.930	3 193 043.320			
L15	94 119.340	3 192 781.160		R15	94 388.440	3 192 959.550			
L16	93 850.880	3 192 653.560		R16	94 257.080	3 192 882.000			
L17	93 803.480	3 192 626.580		R17	94 123.060	3 192 811.180			
L18	93 660.870	3 192 559.140		R18	94 101.040	3 192 800.320			
L19	93 634.970	3 192 550.660		R19	93 799.420	3 192 656.680			
L20	93 288.370	3 192 385.750		R20	93 773.300	3 192 648.380			
L21	93 258.620	3 192 371.360		R21	93 623.600	3 192 577.140			
L22	93 235.190	3 192 357.240		R22	93 600.280	3 192 562.110			
L23	93 051.090	3 192 269.930		R23	93 246.310	3 192 393.730			
L24	92 914.980	3 192 201.040		R24	93 219.860	3 192 384.670			
L25	92 889.270	3 192 192.820		R25	93 036.980	3 192 297.630			
L26	91 839.290	3 191 694.320		R26	93 009.890	3 192 290.730			
L27	91 358.400	3 191 465.170		R27	92 869.300	3 192 223.900			
L28	91 319.210	3 191 442.280		R28	92 846.660	3 192 207.270			
L29	91 227.850	3 191 403.870		R29	91 328.500	3 191 485.610			
L30	91 189.690	3 191 390.110		R30	91 302.440	3 191 477.930			
L31	91 112.070	3 191 367.020		R31	91 195.340	3 191 433.740			
L32	91 020.170	3 191 346.650		R32	91 105.220	3 191 406.280			
L33	90 993.260	3 191 345.740		R33	91 013.290	3 191 385.450			
L34	90 950.880	3 191 339.690		R34	90 987.560	3 191 376.500			
L35	90 933.920	3 191 337.980		R35	90 907.870	3 191 366.190			
L36	90 857.760	3 191 331.000		R36	90 835.250	3 191 361.120			
L37	90 837.600	3 191 330.320		R37	90 690.830	3 191 365.670			
L38	90 743.670	3 191 330.810		R38	90 609.280	3 191 375.320			



PADRESERWE KOÖRDINATE / ROAD RESERVE CO-ORDINATES						
LINKERKANT/LEFT HAND SIDE				REGTERKANT/RIGHT HAND SIDE		
	Y	X	WG 23°		Y	X
L39	90 734.680	3 191	331.400	R39	90 515.810	3 191 393.910
L40	90 688.980	3 191	334.480	R40	90 417.330	3 191 421.670
L41	90 596.030	3 191	345.910	R41	90 325.350	3 191 456.600
L42	90 521.380	3 191	360.590	R42	90 240.240	3 191 496.420
L43	90 473.310	3 191	372.240	R43	90 086.070	3 191 576.650
L44	90 384.870	3 191	400.180	R44	89 659.970	3 191 798.390
L45	90 225.300	3 191	469.160	R45	89 314.770	3 191 978.040
L46	90 067.730	3 191	551.550	R46	89 221.730	3 192 029.930
L47	89 298.850	3 191	951.130	R47	89 210.070	3 192 037.030
L48	89 204.840	3 192	002.920	R48	89 121.290	3 192 099.020
L49	89 118.350	3 192	057.560	R49	89 024.240	3 192 179.590
L50	89 104.430	3 192	067.950	R50	88 996.720	3 192 206.830
L51	89 096.100	3 192	074.160	R51	88 967.160	3 192 236.100
L52	89 010.600	3 192	149.320	R52	88 904.130	3 192 308.320
L53	88 968.330	3 192	191.090	R53	88 847.010	3 192 386.120
L54	88 943.570	3 192	215.570	R54	88 797.380	3 192 467.640
L55	88 879.040	3 192	289.620	R55	88 761.450	3 192 539.910
L56	88 833.470	3 192	351.670	R56	88 749.540	3 192 564.200
L57	88 823.010	3 192	365.930	R57	88 737.620	3 192 591.350
L58	88 773.780	3 192	445.700	R58	88 589.440	3 192 934.980
L59	88 732.520	3 192	525.860	R59	88 503.160	3 193 141.200
L60	88 719.250	3 192	554.910	R60	88 483.140	3 193 183.990
L61	88 459.190	3 193	148.370	R61	88 463.140	3 193 226.770
L62	87 961.160	3 194	284.840	R62	87 836.060	3 194 667.220
L63	86 866.890	3 196	785.370	R63	87 832.210	3 194 675.870
L64	86 806.510	3 196	923.350	R64	87 483.610	3 195 478.640
L65	86 756.400	3 197	027.620	R65	87 367.170	3 195 747.150
L66	86 698.090	3 197	127.530	R66	86 922.040	3 196 770.420
L67	86 632.180	3 197	223.130	R67	86 905.890	3 196 807.940
L68	86 559.230	3 197	312.900	R68	86 894.380	3 196 801.290
L69	86 478.780	3 197	397.560	R69	86 828.000	3 196 952.290
L70	86 392.950	3 197	474.990	R70	86 785.790	3 197 038.900
L71	86 302.450	3 197	545.100	R71	86 730.850	3 197 134.330
L72	86 205.010	3 197	609.350	R72	86 669.550	3 197 224.950
L73	85 302.070	3 198	155.190	R73	86 601.860	3 197 311.480
L74	84 359.000	3 198	725.280	R74	86 588.200	3 197 327.170
L75	84 263.250	3 198	768.590	R75	86 533.160	3 197 386.840
L76	84 231.140	3 198	788.350	R76	86 400.620	3 197 510.600
L77	84 189.230	3 198	827.840	R77	86 313.550	3 197 575.430
L78	83 813.820	3 199	055.210	R78	86 211.180	3 197 642.330
L79	83 784.470	3 199	063.240	R79	85 327.040	3 198 176.830
L80	83 663.260	3 199	136.730	R80	84 374.490	3 198 752.670
L81	83 641.850	3 199	159.290	R81	84 288.270	3 198 818.830
L82	83 609.160	3 199	178.960	R82	84 262.070	3 198 834.980
L83	83 460.400	3 199	268.520	R83	84 206.490	3 198 854.260
L84	83 400.740	3 199	306.500	R84	83 828.860	3 199 082.720
L85	83 311.570	3 199	369.820	R85	83 798.870	3 199 109.720
L86	83 226.020	3 199	438.420	R86	83 689.620	3 199 176.210
L87	83 144.790	3 199	511.800	R87	83 651.180	3 199 190.050
L88	82 110.930	3 200	504.400	R88	83 629.440	3 199 202.800
L89	82 080.430	3 200	516.310	R89	83 500.680	3 199 281.210

Vel	21	Van	28	P742/09
Sheet		of		

PADRESERWE KOÖRDINATE / ROAD RESERVE CO-ORDINATES					
LINKERKANT/LEFT HAND SIDE				REGTERKANT/RIGHT HAND SIDE	
	Y	X	WG 23°	Y	X
L90	82 072.600	3 200	524.830	R90	83 420.580 3 199 331.020
L91	82 028.890	3 200	578.120	R91	83 332.520 3 199 393.290
L92	81 940.170	3 200	647.980	R92	83 248.610 3 199 460.460
L93	81 846.910	3 200	711.620	R93	83 168.400 3 199 532.750
L94	81 750.000	3 200	767.740	R94	82 108.870 3 200 549.660
L95	81 649.690	3 200	817.830	R95	82 055.010 3 200 595.610
L96	81 545.670	3 200	861.090	R96	82 016.830 3 200 628.830
L97	81 438.080	3 200	897.180	R97	81 996.990 3 200 644.440
L98	81 329.030	3 200	925.960	R98	81 956.690 3 200 672.120
L99	81 218.160	3 200	947.210	R99	81 856.200 3 200 742.290
L100	81 082.680	3 200	962.770	R100	81 762.640 3 200 796.300
L101	80 994.440	3 200	966.770	R101	81 665.580 3 200 844.860
L102	80 364.160	3 200	980.120	R102	81 625.660 3 200 862.240
L103	77 570.880	3 201	039.150	R103	81 525.580 3 200 901.450
L104	76 510.930	3 201	061.780	R104	81 422.710 3 200 934.240
L105	75 513.120	3 201	082.810	R105	81 317.470 3 200 960.430
L106	74 715.870	3 201	099.190	R106	81 211.140 3 200 979.920
L107	74 118.760	3 201	111.890	R107	81 103.700 3 200 992.530
L108	73 970.290	3 201	107.240	R108	80 995.160 3 200 998.380
L109	71 689.780	3 201	155.230	R109	80 386.280 3 201 010.820
L110	71 600.720	3 201	157.100	R110	77 981.220 3 201 061.960
L111	71 451.760	3 201	160.700	R111	77 529.100 3 201 071.250
L112	71 063.990	3 201	170.080	R112	76 959.180 3 201 082.960
L113	69 112.290	3 201	211.870	R113	76 004.010 3 201 103.300
L114	68 944.250	3 201	219.940	R114	74 051.300 3 201 143.850
L115	68 749.780	3 201	238.190	R115	73 990.450 3 201 153.280
L116	67 590.800	3 201	362.460	R116	71 639.240 3 201 203.020
L117	67 397.070	3 201	383.430	R117	71 493.850 3 201 206.100
L118	67 051.630	3 201	423.410	R118	71 043.770 3 201 215.620
L119	66 566.050	3 201	466.490	R119	69 167.730 3 201 255.110
L120	66 356.590	3 201	507.660	R120	68 979.500 3 201 262.340
L121	66 162.710	3 201	565.580	R121	68 785.640 3 201 279.390
L122	65 155.770	3 201	951.100	R122	66 592.790 3 201 515.190
L123	64 792.100	3 202	090.980	R123	66 479.410 3 201 531.070
L124	64 777.190	3 202	105.460	R124	66 365.180 3 201 554.740
L125	64 691.520	3 202	138.360	R125	66 253.020 3 201 585.560
L126	64 607.290	3 202	161.750	R126	66 141.710 3 201 624.260
L127	63 702.010	3 202	508.400	R127	66 074.700 3 201 649.920
L128	63 169.190	3 202	713.100	R128	65 708.090 3 201 790.250
L129	62 978.110	3 202	786.510	R129	65 363.330 3 201 922.660
L130	62 862.530	3 202	826.860	R130	65 280.860 3 201 970.820
L131	62 711.250	3 202	870.180	R131	65 054.980 3 202 057.040
L132	62 599.700	3 202	895.350	R132	64 999.230 3 202 062.090
L133	62 489.360	3 202	914.750	R133	63 190.480 3 202 755.320
L134	62 458.290	3 202	906.980	R134	63 001.280 3 202 828.010
L135	62 428.970	3 202	911.540	R135	62 873.490 3 202 872.740
L136	62 407.090	3 202	920.010	R136	62 743.360 3 202 910.670
L137	62 326.970	3 202	934.190	R137	62 611.290 3 202 941.290
L138	62 220.320	3 202	949.880	R138	62 495.670 3 202 961.480
L139	62 127.930	3 202	975.890	R139	62 466.800 3 202 972.100
L140	61 641.780	3 203	046.640	R140	62 405.710 3 202 980.680

Vel	22	Van	28	P742/09
Sheet		of		

PADRESERWE KOÖRDINATE / ROAD RESERVE CO-ORDINATES						
LINKERKANT/LEFT HAND SIDE				REGTERKANT/RIGHT HAND SIDE		
	Y	X	WG 23°		Y	X
L141	61 547.880	3 203 064.750		R141	62 375.290	3 202 979.560
L142	61 456.160	3 203 088.600		R142	62 225.740	3 203 000.790
L143	61 364.640	3 203 118.480		R143	62 133.040	3 203 006.390
L144	60 620.910	3 203 377.300		R144	61 679.510	3 203 072.720
L145	60 585.900	3 203 388.430		R145	61 667.790	3 203 077.840
L146	60 503.250	3 203 404.930		R146	61 650.200	3 203 077.250
L147	60 411.120	3 203 409.950		R147	61 571.570	3 203 091.610
L148	60 318.830	3 203 400.550		R148	61 388.820	3 203 143.240
L149	60 230.440	3 203 377.460		R149	60 644.300	3 203 402.360
L150	60 218.390	3 203 373.250		R150	60 552.710	3 203 428.400
L151	60 141.800	3 203 338.370		R151	60 457.070	3 203 440.640
L152	60 063.340	3 203 287.790		R152	60 354.980	3 203 437.630
L153	59 472.950	3 202 856.130		R153	60 282.580	3 203 425.080
L154	59 404.580	3 202 809.330		R154	60 205.450	3 203 401.770
L155	59 304.900	3 202 752.700		R155	60 126.060	3 203 365.440
L156	59 216.340	3 202 712.010		R156	60 045.770	3 203 313.750
L157	59 128.320	3 202 679.080		R157	59 452.880	3 202 880.230
L158	59 102.630	3 202 670.630		R158	59 371.220	3 202 825.580
L159	58 847.380	3 202 609.560		R159	59 286.940	3 202 778.730
L160	57 105.130	3 202 202.610		R160	59 210.480	3 202 744.140
L161	55 865.290	3 201 913.920		R161	59 147.880	3 202 718.690
L162	55 764.250	3 201 887.570		R162	59 082.640	3 202 697.520
L163	55 737.930	3 201 878.800		R163	59 017.200	3 202 680.020
L164	55 675.520	3 201 858.110		R164	58 848.250	3 202 641.120
L165	55 575.790	3 201 817.540		R165	55 915.630	3 201 957.820
L166	55 127.990	3 201 623.320		R166	55 848.760	3 201 942.670
L167	53 637.530	3 200 975.930		R167	55 731.680	3 201 909.710
L168	52 070.000	3 200 295.940		R168	55 615.390	3 201 867.950
L169	50 007.720	3 199 398.360		R169	55 057.610	3 201 626.830
L170	49 887.010	3 199 349.540		R170	53 621.380	3 201 003.540
L171	49 819.140	3 199 317.980		R171	52 066.140	3 200 328.430
L172	49 793.400	3 199 309.540		R172	49 914.540	3 199 393.940
L173	49 702.690	3 199 281.590		R173	49 827.220	3 199 361.860
L174	47 819.620	3 198 745.470		R174	49 785.300	3 199 346.340
L175	45 721.510	3 198 148.710		R175	49 740.520	3 199 330.000
L176	45 513.240	3 198 089.420		R176	49 588.690	3 199 281.930
L177	45 427.550	3 198 068.220		R177	47 813.050	3 198 776.460
L178	45 327.990	3 198 051.720		R178	45 670.220	3 198 166.770
L179	45 232.280	3 198 043.410		R179	45 504.660	3 198 119.670
L180	45 137.490	3 198 043.000		R180	45 421.460	3 198 098.990
L181	44 131.150	3 198 075.250		R181	45 364.640	3 198 088.060
L182	43 547.600	3 198 093.860		R182	45 327.660	3 198 083.280
L183	43 060.340	3 198 109.570		R183	45 231.520	3 198 074.860
L184	42 944.110	3 198 103.910		R184	45 137.110	3 198 074.520
L185	41 325.600	3 198 157.910		R185	44 113.810	3 198 107.230
L186	41 264.710	3 198 152.900		R186	43 544.140	3 198 125.700
L187	40 785.680	3 198 175.170		R187	43 026.670	3 198 149.150
L188	40 069.020	3 198 198.110		R188	41 327.300	3 198 204.820
L189	40 046.910	3 198 205.870		R189	41 266.770	3 198 214.360
L190	39 388.880	3 198 227.110		R190	40 793.360	3 198 221.590
L191	38 792.640	3 198 246.220		R191	40 079.040	3 198 244.490

PADRESERWE KOÖRDINATE / ROAD RESERVE CO-ORDINATES							
LINKERKANT/LEFT HAND SIDE				REGTERKANT/RIGHT HAND SIDE			
	Y	X	WG 23°		Y	X	
L192	38 699.290	3 198 251.050		R192	40 047.750	3 198 237.440	
L193	38 551.040	3 198 268.930		R193	39 872.110	3 198 243.460	
L194	38 538.490	3 198 270.440		R194	39 778.200	3 198 250.640	
L195	38 427.310	3 198 289.930		R195	39 707.710	3 198 248.060	
L196	35 283.480	3 198 946.720		R196	39 384.190	3 198 258.350	
L197	35 237.620	3 198 948.160		R197	38 749.490	3 198 278.650	
L198	33 872.510	3 199 234.240		R198	38 531.510	3 198 302.970	
L199	33 387.930	3 199 335.770		R199	38 524.800	3 198 303.720	
L200	33 308.020	3 199 340.340		R200	38 433.520	3 198 320.640	
L201	33 236.480	3 199 355.540		R201	36 990.360	3 198 622.190	
L202	33 148.730	3 199 385.370		R202	35 288.300	3 198 977.070	
L203	32 984.260	3 199 429.200		R203	35 245.440	3 198 993.640	
L204	32 892.260	3 199 455.450		R204	34 708.420	3 199 106.810	
L205	32 813.050	3 199 478.310		R205	33 885.620	3 199 279.080	
L206	32 660.730	3 199 551.180		R206	33 381.170	3 199 384.850	
L207	32 574.170	3 199 595.140		R207	33 227.090	3 199 409.810	
L208	32 428.960	3 199 683.340		R208	33 181.310	3 199 419.220	
L209	32 303.220	3 199 766.040		R209	33 157.650	3 199 431.140	
L210	32 191.220	3 199 850.180		R210	33 039.730	3 199 452.180	
L211	30 753.630	3 201 008.770		R211	32 924.830	3 199 486.740	
L212	30 646.750	3 201 085.170		R212	32 810.190	3 199 527.340	
L213	30 557.350	3 201 137.100		R213	32 701.050	3 199 572.820	
L214	30 469.530	3 201 180.250		R214	32 655.070	3 199 600.650	
L215	30 375.760	3 201 214.210		R215	32 551.880	3 199 647.800	
L216	30 282.480	3 201 240.580		R216	32 509.410	3 199 670.300	
L217	30 186.350	3 201 259.850		R217	32 406.400	3 199 733.640	
L218	30 081.470	3 201 271.550		R218	32 285.880	3 199 816.620	
L219	29 996.460	3 201 274.290		R219	32 207.100	3 199 877.630	
L220	29 901.280	3 201 270.500		R220	31 959.580	3 200 076.970	
L221	29 805.340	3 201 259.040		R221	31 908.610	3 200 126.440	
L222	29 335.370	3 201 182.350		R222	31 861.440	3 200 165.960	
L223	29 283.320	3 201 166.080		R223	31 832.520	3 200 181.010	
L224	29 188.100	3 201 150.690		R224	31 815.160	3 200 193.210	
L225	29 127.710	3 201 148.710		R225	30 774.260	3 201 031.870	
L226	27 567.240	3 200 895.330		R226	30 663.520	3 201 111.770	
L227	27 390.130	3 200 854.920		R227	30 571.530	3 201 166.340	
L228	27 285.810	3 200 835.530		R228	30 480.410	3 201 208.680	
L229	27 184.830	3 200 806.880		R229	30 385.720	3 201 243.930	
L230	27 084.580	3 200 774.650		R230	30 290.960	3 201 272.060	
L231	26 985.620	3 200 739.090		R231	30 193.000	3 201 291.090	
L232	26 191.370	3 200 438.640		R232	30 094.560	3 201 302.670	
L233	24 968.870	3 199 975.880		R233	29 988.610	3 201 306.030	
L234	24 615.760	3 199 842.460		R234	29 897.580	3 201 299.770	
L235	24 520.280	3 199 804.360		R235	29 801.010	3 201 289.760	
L236	24 391.490	3 199 746.750		R236	29 322.720	3 201 212.140	
L237	24 249.670	3 199 673.800		R237	29 268.140	3 201 210.870	
L238	24 090.840	3 199 583.510		R238	29 173.070	3 201 195.700	
L239	24 037.080	3 199 549.460		R239	29 119.290	3 201 179.130	
L240	24 011.270	3 199 527.740		R240	27 564.720	3 200 926.800	
L241	23 958.180	3 199 497.920		R241	27 369.280	3 200 888.370	
L242	23 571.190	3 199 234.700		R242	27 216.490	3 200 848.540	

Vel	24	Van	28	P742/09
Sheet		of		

PADRESERWE KOÖRDINATE / ROAD RESERVE CO-ORDINATES					
LINKERKANT/LEFT HAND SIDE			REGTERKANT/RIGHT HAND SIDE		
	Y	X	WG 23°	Y	X
L243	23 135.220	3 198 939.930	R243	27 074.720	3 200 804.500
L244	22 865.860	3 198 757.960	R244	26 970.280	3 200 767.580
L245	22 716.450	3 198 666.990	R245	26 187.790	3 200 470.880
L246	22 582.080	3 198 601.920	R246	24 604.630	3 199 871.760
L247	22 484.280	3 198 561.360	R247	24 508.060	3 199 833.340
L248	22 446.150	3 198 547.350	R248	24 389.160	3 199 780.240
L249	22 091.540	3 198 428.650	R249	24 231.930	3 199 701.460
L250	22 028.480	3 198 407.160	R250	24 072.400	3 199 608.520
L251	21 781.970	3 198 332.790	R251	23 974.280	3 199 545.010
L252	21 704.420	3 198 314.010	R252	23 127.420	3 198 972.740
L253	21 639.040	3 198 301.970	R253	23 030.260	3 198 911.570
L254	21 573.340	3 198 291.430	R254	22 968.730	3 198 865.550
L255	21 098.530	3 198 233.040	R255	22 848.800	3 198 784.730
L256	20 704.910	3 198 184.180	R256	22 709.380	3 198 698.860
L257	20 570.840	3 198 167.530	R257	22 569.170	3 198 626.820
L258	20 230.050	3 198 125.580	R258	22 427.180	3 198 572.970
L259	20 180.970	3 198 119.510	R259	22 084.540	3 198 460.510
L260	17 973.670	3 197 847.070	R260	22 010.480	3 198 435.920
L261	17 913.620	3 197 836.440	R261	21 800.750	3 198 368.790
L262	17 768.590	3 197 818.440	R262	21 780.990	3 198 362.470
L263	17 719.410	3 197 815.510	R263	21 637.110	3 198 332.390
L264	17 633.120	3 197 805.070	R264	21 569.420	3 198 322.770
L265	17 551.260	3 197 781.280	R265	21 412.280	3 198 303.350
L266	17 307.820	3 197 751.330	R266	20 574.130	3 198 199.480
L267	17 217.580	3 197 753.740	R267	20 221.580	3 198 156.220
L268	16 088.510	3 197 613.790	R268	20 098.770	3 198 141.100
L269	13 718.540	3 197 321.810	R269	18 195.520	3 197 905.890
L270	13 394.480	3 197 303.730	R270	17 846.720	3 197 865.360
L271	11 891.430	3 197 368.430	R271	17 766.260	3 197 855.480
L272	11 665.610	3 197 378.280	R272	17 717.220	3 197 846.980
L273	11 573.480	3 197 385.340	R273	17 626.640	3 197 835.830
L274	11 422.950	3 197 406.020	R274	17 548.500	3 197 839.290
L275	11 222.170	3 197 464.840	R275	17 302.360	3 197 809.250
L276	9 286.250	3 198 149.190	R276	17 212.160	3 197 784.800
L277	9 189.020	3 198 179.620	R277	16 084.360	3 197 645.320
L278	9 114.900	3 198 197.030	R278	13 885.480	3 197 373.700
L279	9 039.670	3 198 209.550	R279	13 854.890	3 197 371.730
L280	8 965.980	3 198 216.980	R280	13 794.060	3 197 364.050
L281	8 890.690	3 198 220.290	R281	13 769.500	3 197 359.380
L282	8 785.970	3 198 216.730	R282	13 625.630	3 197 342.520
L283	8 666.440	3 198 201.230	R283	13 364.250	3 197 338.400
L284	8 595.300	3 198 187.390	R284	13 222.680	3 197 338.910
L285	8 464.390	3 198 146.570	R285	11 885.700	3 197 400.220
L286	8 370.900	3 198 107.850	R286	11 667.070	3 197 409.560
L287	7 693.950	3 197 793.960	R287	11 567.070	3 197 416.130
L288	7 239.620	3 197 582.490	R288	11 470.910	3 197 430.500
L289	7 143.800	3 197 537.910	R289	11 253.110	3 197 486.430
L290	6 992.800	3 197 477.420	R290	10 955.050	3 197 592.360
L291	6 865.530	3 197 440.880	R291	10 938.560	3 197 600.190
L292	6 735.720	3 197 412.710	R292	10 908.800	3 197 610.620
L293	6 600.950	3 197 386.130	R293	10 883.200	3 197 617.780

Vel	25	Van	28	P742/09
Sheet		of		

PADRESERWE KOÖRDINATE / ROAD RESERVE CO-ORDINATES						
LINKERKANT/LEFT HAND SIDE				REGTERKANT/RIGHT HAND SIDE		
	Y	X	WG 23°		Y	X
L294	6 400.890	3 197 393.810		R294	9 290.470	3 198 181.130
L295	6 291.780	3 197 400.660		R295	9 197.270	3 198 209.470
L296	6 083.620	3 197 451.200		R296	9 121.750	3 198 226.980
L297	5 788.620	3 197 532.920		R297	9 044.990	3 198 240.300
L298	5 784.270	3 197 535.550		R298	8 968.470	3 198 248.360
L299	5 640.270	3 197 570.070		R299	8 891.610	3 198 251.380
L300	5 537.270	3 197 585.610		R300	8 783.220	3 198 247.460
L301	5 427.230	3 197 597.630		R301	8 728.220	3 198 241.110
L302	5 342.060	3 197 599.000		R302	8 673.040	3 198 233.700
L303	4 815.680	3 197 552.440		R303	8 639.090	3 198 227.740
L304	4 043.340	3 197 470.240		R304	8 546.420	3 198 205.920
L305	3 989.900	3 197 460.800		R305	8 453.730	3 198 176.020
L306	3 950.710	3 197 456.850		R306	8 382.560	3 198 147.560
L307	3 858.510	3 197 452.260		R307	7 119.030	3 197 561.320
L308	3 767.270	3 197 445.130		R308	7 034.720	3 197 525.650
L309	3 675.760	3 197 439.000		R309	6 930.660	3 197 487.370
L310	3 584.490	3 197 434.020		R310	6 760.340	3 197 446.390
L311	3 401.460	3 197 427.200		R311	6 609.290	3 197 431.090
L312	3 309.510	3 197 425.420		R312	6 470.340	3 197 427.000
L313	2 940.850	3 197 423.860		R313	6 401.790	3 197 430.150
L314	-2 846.760	3 197 399.550		R314	6 298.730	3 197 444.070
L315	-2 957.110	3 197 398.320		R315	6 077.190	3 197 483.700
L316	-3 091.650	3 197 396.720		R316	5 802.250	3 197 562.600
L317	-3 334.390	3 197 388.750		R317	5 645.600	3 197 601.580
L318	-3 607.880	3 197 375.870		R318	5 540.940	3 197 618.170
L319	-4 209.260	3 197 336.340		R319	5 428.520	3 197 628.900
L320	-6 747.820	3 197 171.100		R320	5 330.880	3 197 636.020
L321	-6 816.750	3 197 166.630		R321	4 811.910	3 197 583.660
L322	-7 136.820	3 197 147.660		R322	3 968.570	3 197 494.060
L323	-7 289.780	3 197 141.960		R323	3 932.760	3 197 490.380
L324	-7 456.180	3 197 139.360		R324	3 855.980	3 197 483.680
L325	-8 357.350	3 197 135.550		R325	3 765.110	3 197 476.430
L326	-8 814.220	3 197 133.080		R326	3 673.780	3 197 470.360
L327	-10 658.680	3 197 124.630		R327	3 582.870	3 197 465.320
L328	-10 733.010	3 197 123.660		R328	3 400.610	3 197 458.610
L329	-10 942.880	3 197 096.230		R329	3 309.200	3 197 456.940
L330	-11 061.380	3 197 070.760		R330	2 946.160	3 197 455.030
L331	-11 203.470	3 197 020.160		R331	-2 839.610	3 197 431.280
L332	-11 287.330	3 196 984.180		R332	-2 962.760	3 197 429.830
L333	-11 446.780	3 196 897.900		R333	-3 091.850	3 197 428.140
L334	-11 963.440	3 196 502.230		R334	-3 335.530	3 197 420.000
L335	-12 642.400	3 195 966.580		R335	-3 610.010	3 197 407.010
L336	-12 643.210	3 195 950.210		R336	-4 568.310	3 197 345.130
L337	-12 658.950	3 195 953.450		R337	-6 730.250	3 197 204.130
L338	-13 745.800	3 195 095.020		R338	-6 941.350	3 197 190.570
L339	-13 790.660	3 195 063.310		R339	-7 138.530	3 197 178.970
L340	-13 926.510	3 194 970.840		R340	-7 290.470	3 197 173.540
L341	-13 929.260	3 194 974.190		R341	-7 456.240	3 197 170.920
L342	-13 945.140	3 194 967.190		R342	-8 357.880	3 197 167.150
L343	-13 998.930	3 194 937.540		R343	-8 814.310	3 197 164.620
L344	-14 040.540	3 194 919.130		R344	-10 531.720	3 197 156.520

Vel	26	Van	28	P742/09
Sheet		of		

PADRESERWE KOÖRDINATE / ROAD RESERVE CO-ORDINATES						
LINKERKANT/LEFT HAND SIDE				REGTERKANT/RIGHT HAND SIDE		
	Y	X	WG 23°		Y	X
L345	-14	140.680	3 194 876.390	R345	-10	586.540 3 197 160.040
L346	-14	229.160	3 194 846.130	R346	-10	646.600 3 197 159.580
L347	-14	318.110	3 194 821.850	R347	-10	744.320 3 197 152.020
L348	-14	399.340	3 194 804.660	R348	-10	919.050 3 197 132.660
L349	-14	488.430	3 194 790.820	R349	-11	069.620 3 197 098.090
L350	-14	542.050	3 194 784.820	R350	-11	242.920 3 197 038.030
L351	-15	463.560	3 194 700.750	R351	-11	401.500 3 196 960.550
L352	-15	688.700	3 194 680.000	R352	-11	586.650 3 196 839.900
L353	-15	772.060	3 194 668.670	R353	-12	679.570 3 195 977.560
L354	-15	829.500	3 194 655.400	R354	-13	749.630 3 195 133.970
L355	-15	885.750	3 194 638.300	R355	-13	808.970 3 195 089.310
L356	-15	940.240	3 194 618.590	R356	-13	888.470 3 195 036.410
L357	-16	013.460	3 194 585.040	R357	-13	904.340 3 195 026.680
L358	-16	076.800	3 194 548.770	R358	-13	990.690 3 194 978.080
L359	-16	127.070	3 194 514.770	R359	-14	100.300 3 194 927.170
L360	-17	456.210	3 193 506.590	R360	-14	170.980 3 194 899.880
L361	-18	024.350	3 193 076.020	R361	-14	177.300 3 194 897.090
L362	-18	069.200	3 193 042.400	R362	-14	240.180 3 194 875.670
L363	-18	172.980	3 192 973.220	R363	-14	325.310 3 194 852.930
L364	-18	288.300	3 192 930.320	R364	-14	385.430 3 194 839.520
L365	-18	408.100	3 192 896.960	R365	-14	441.230 3 194 829.520
L366	-18	533.860	3 192 892.710	R366	-14	504.300 3 194 820.610
L367	-18	595.020	3 192 895.750	R367	-14	551.940 3 194 815.800
L368	-18	655.670	3 192 902.900	R368	-15	487.970 3 194 730.160
L369	-19	591.580	3 193 029.640	R369	-15	717.460 3 194 709.250
L370	-20	127.860	3 193 101.590	R370	-15	778.180 3 194 699.490
L371	-20	635.550	3 193 170.650	R371	-15	839.620 3 194 685.180
L372	-21	643.340	3 193 306.360	R372	-15	899.070 3 194 667.190
L373	-22	393.820	3 193 406.860	R373	-15	955.940 3 194 646.150
L374	-22	582.320	3 193 390.590	R374	-16	012.030 3 194 620.810
L375	-22	697.380	3 193 349.520	R375	-16	066.160 3 194 591.660
L376	-22	846.180	3 193 251.740	R376	-16	119.850 3 194 558.310
L377	-23	101.670	3 192 987.080	R377	-16	169.290 3 194 522.420
L378	-23	291.720	3 192 791.360	R378	-18	036.180 3 193 106.640
L379	-23	618.610	3 192 451.400	R379	-18	134.470 3 193 034.860
L380	-23	681.900	3 192 411.090	R380	-18	213.710 3 192 992.310
L381	-23	765.390	3 192 367.300	R381	-18	298.630 3 192 960.410
L382	-23	820.510	3 192 343.470	R382	-18	384.170 3 192 937.270
L383	-23	871.270	3 192 335.550	R383	-18	472.960 3 192 926.410
L384	-23	915.920	3 192 332.540	R384	-18	532.460 3 192 923.380
L385	-23	975.810	3 192 331.760	R385	-18	593.160 3 192 927.310
L386	-24	068.960	3 192 348.110	R386	-18	653.160 3 192 934.560
L387	-24	111.290	3 192 355.049	R387	-18	860.990 3 192 962.160
L388	-24	115.840	3 192 355.450	R388	-19	411.570 3 193 037.130
L389	-24	214.140	3 192 373.990	R389	-19	609.920 3 193 063.690
				R390	-20	163.950 3 193 139.060
				R391	-21	124.480 3 193 268.090
				R392	-21	631.760 3 193 337.020
				R393	-21	640.890 3 193 345.140
				R394	-21	927.780 3 193 375.580
				R395	-22	406.610 3 193 444.710

Vel	27	Van	28	P742/09
Sheet		of		

