

**REPUBLIC OF SOUTH AFRICA
REPUBLIEK VAN SUID-AFRIKA**

Vol. 527

**Pretoria, 15 May
Mei 2009**

No. 32175

CONTENTS**INHOUD**

<i>No.</i>	<i>Page No.</i>	<i>Gazette No.</i>	<i>No.</i>	<i>Bladsy No.</i>	<i>Koerant No.</i>
GOVERNMENT NOTICE			GOEWERMENSKENNISGEWING		
Transport, Department of			Vervoer, Departement van		
<i>Government Notice</i>			<i>Goewermentskennisgewing</i>		
458			458		
South African National Roads Agency Limited and the National Roads Act (7/1998): The South African National Roads Agency Limited: Declaration amendment of National Road N8 Section 10: Amendment of Declaration No. 1322 of 1989	3	32175	Suid-Afrikaanse Nasionale Padagentskap Beperk en die Nasionale Paaie Wet (7/1998): Die Suid-Afrikaanse Nasionale Padagentskap Beperk: Verklaring wysiging van Nasionale Pad N8 Seksie 10: Wysiging van Verklaring No. 1322 van 1989	4	32175

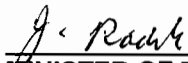
GOVERNMENT NOTICE

DEPARTMENT OF TRANSPORT**No. 458****15 May 2009****THE SOUTH AFRICAN NATIONAL ROADS
AGENCY LIMITED****Registration No: 98/09584/06**

DECLARATION AMENDMENT OF NATIONAL ROAD N8 SECTION 10**AMENDMENT OF DECLARATION NO. 1322 OF 1989**

By virtue of section 40(1)(b) of the South African National Roads Agency Limited and the National Roads Act, 1998 (Act No. 7 of 1998), I hereby amend Declaration No. 1322 of 1989 by substituting Paragraph 9 the descriptive section from the N1/15 up to Petrusburg, with the subjoined sheets 1 to 18 of Plan No. P730/08.

(National Road N8 Section 10: Petrusburg – Bloemfontein)



MINISTER OF TRANSPORT

GOEWERMENTSKENNISGEWING

DEPARTEMENT VAN VERVOER

No. 458

15 Mei 2009

DIE SUID-AFRIKAANSE NASIONALE PADAGENTSKAP BEPERK

Registrasie No: 98/09584/06

VERKLARING WYSIGING VAN NASIONALE PAD N8 SEKSIE 10.

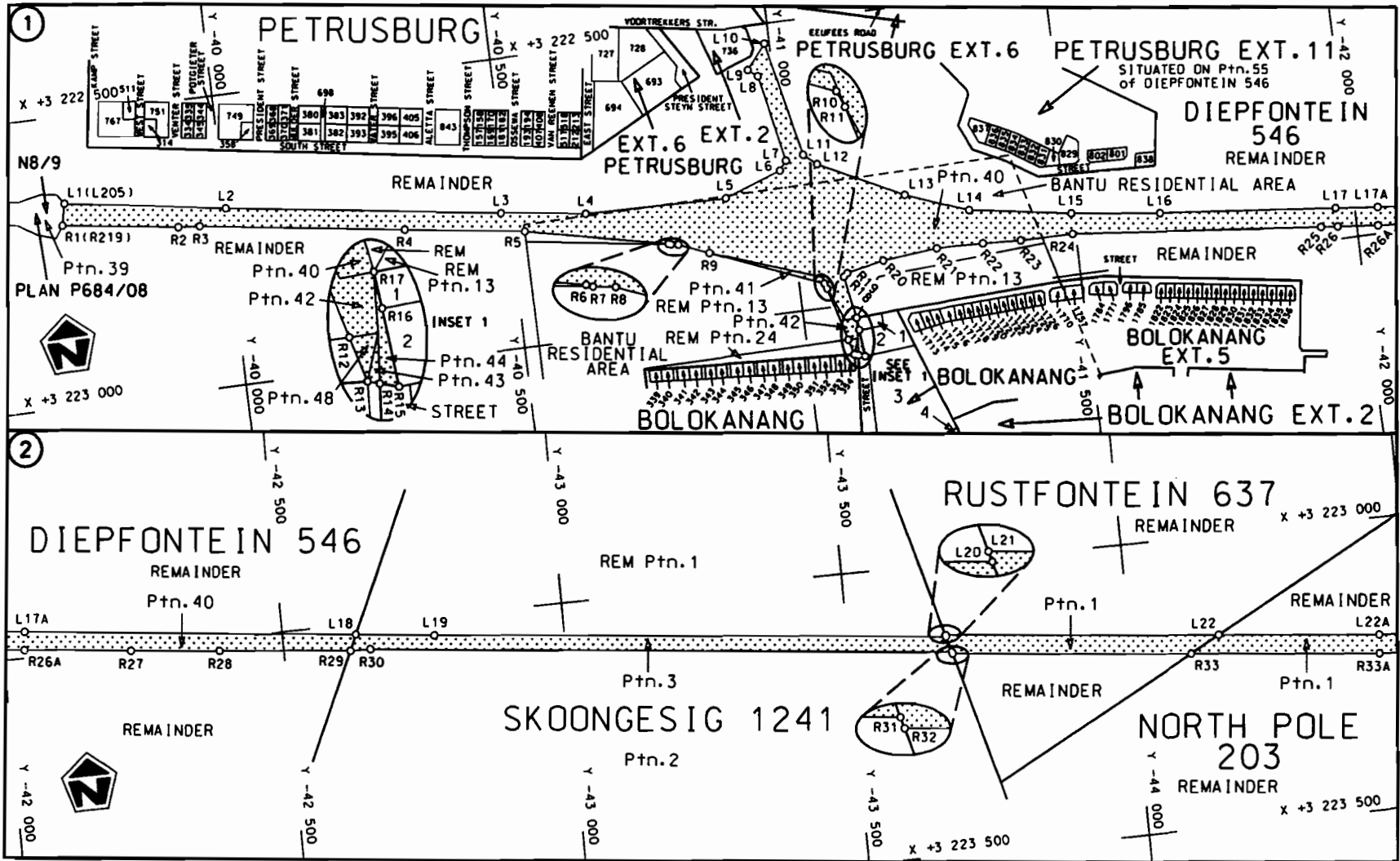
WYSIGING VAN VERKLARING NO. 1322 VAN 1989

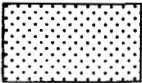
Kragtens Artikel 40(1)(b) van die Suid-Afrikaanse Nasionale Padagentskap Beperk en die Nasionale Paaie Wet, 1998 (Wet no.7 van 1998), wysig ek hiermee Verklaring no. 1322 van 1989, deur Paragraaf 9 die beskrywende gedeelte vanaf die N1/15 tot by Petrusburg, te vervang met meegaande velle 1 tot 18 van Plan no. P730/08

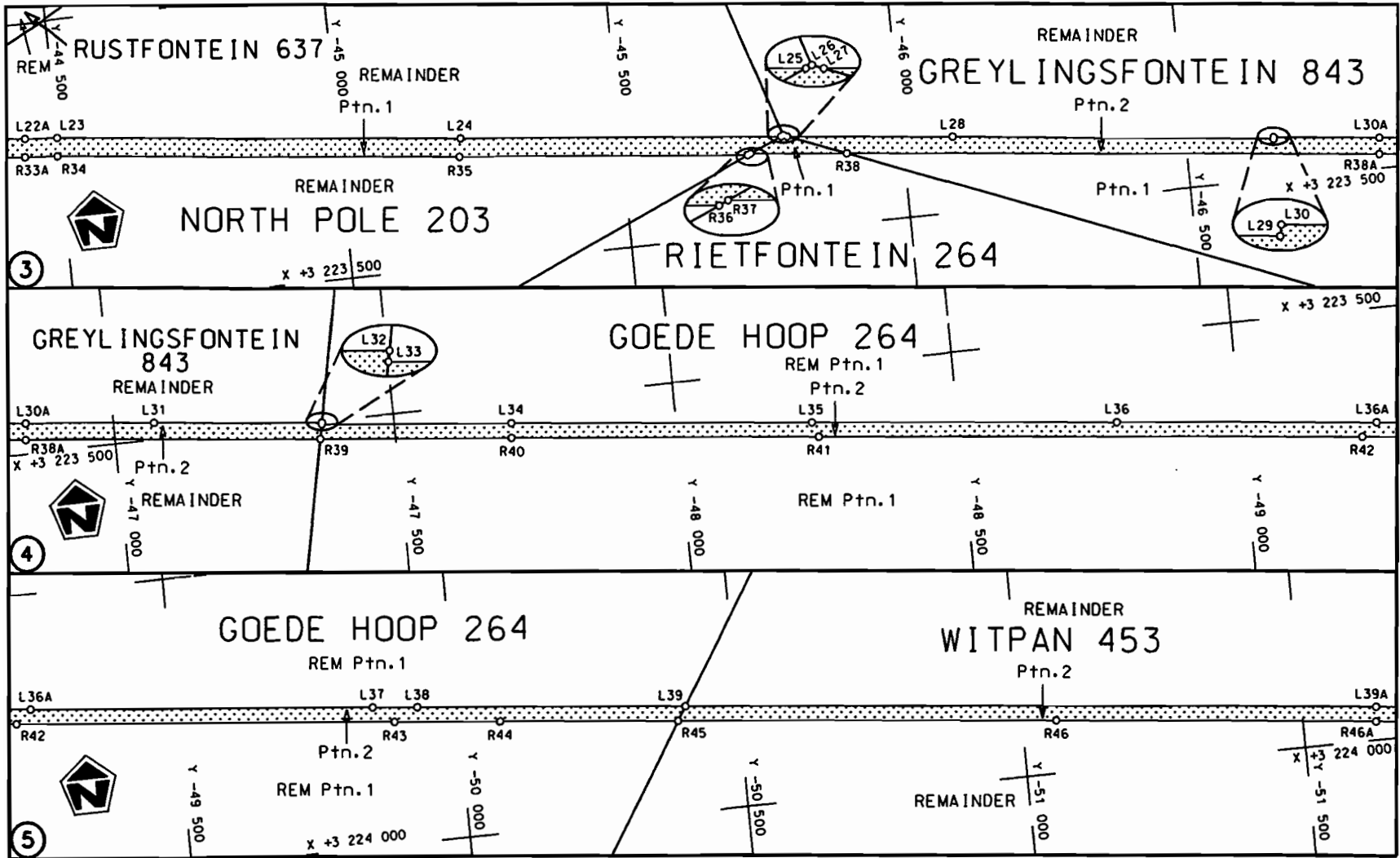
(Nasionale Pad N8 Seksie 10: Petrusburg – Bloemfontein)

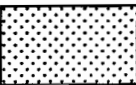


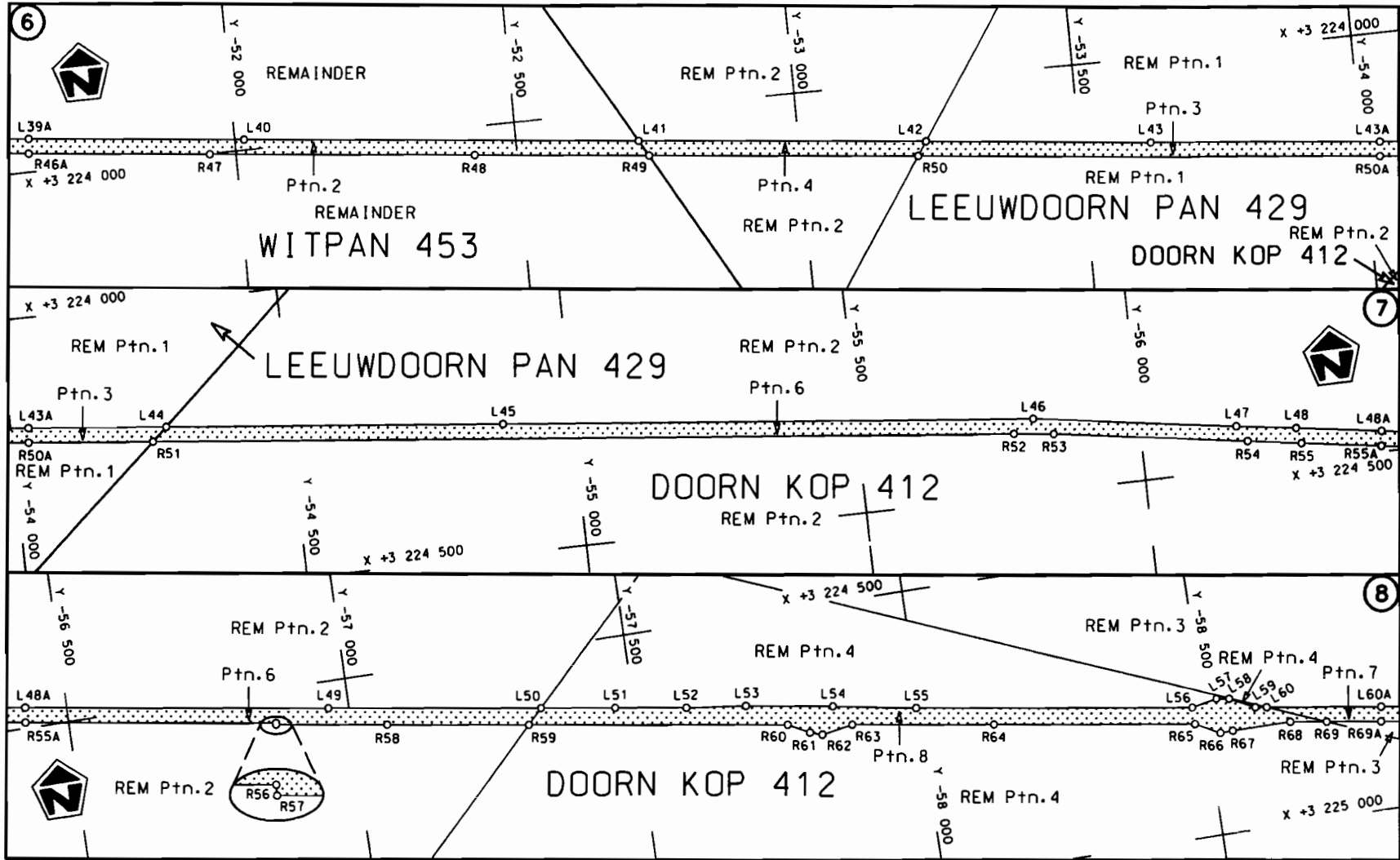
MINISTER VAN VERVOER




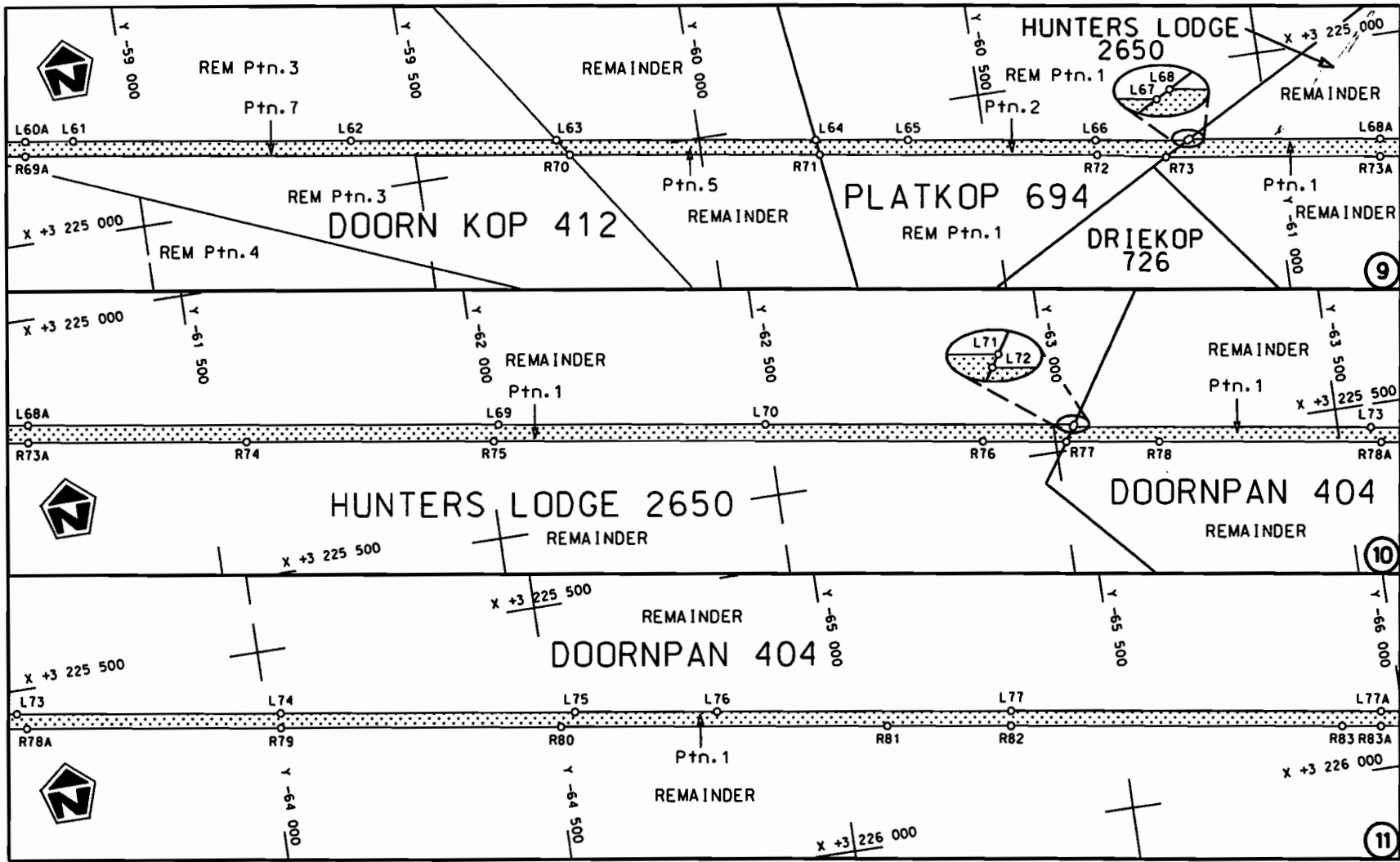
Die Suid Afrikaanse Nasionale Padagentskap Beperk The South African National Roads Agency Limited	Die figuur getoon The figure shown		steldie padreserwe voor van 'n gedeelte represents the road reserve of a portion van Nasionale Raete N8 of National Route Section 10	Vel Sheet 1 van of 18 Plan P730/08
--	---------------------------------------	--	---	---

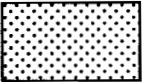


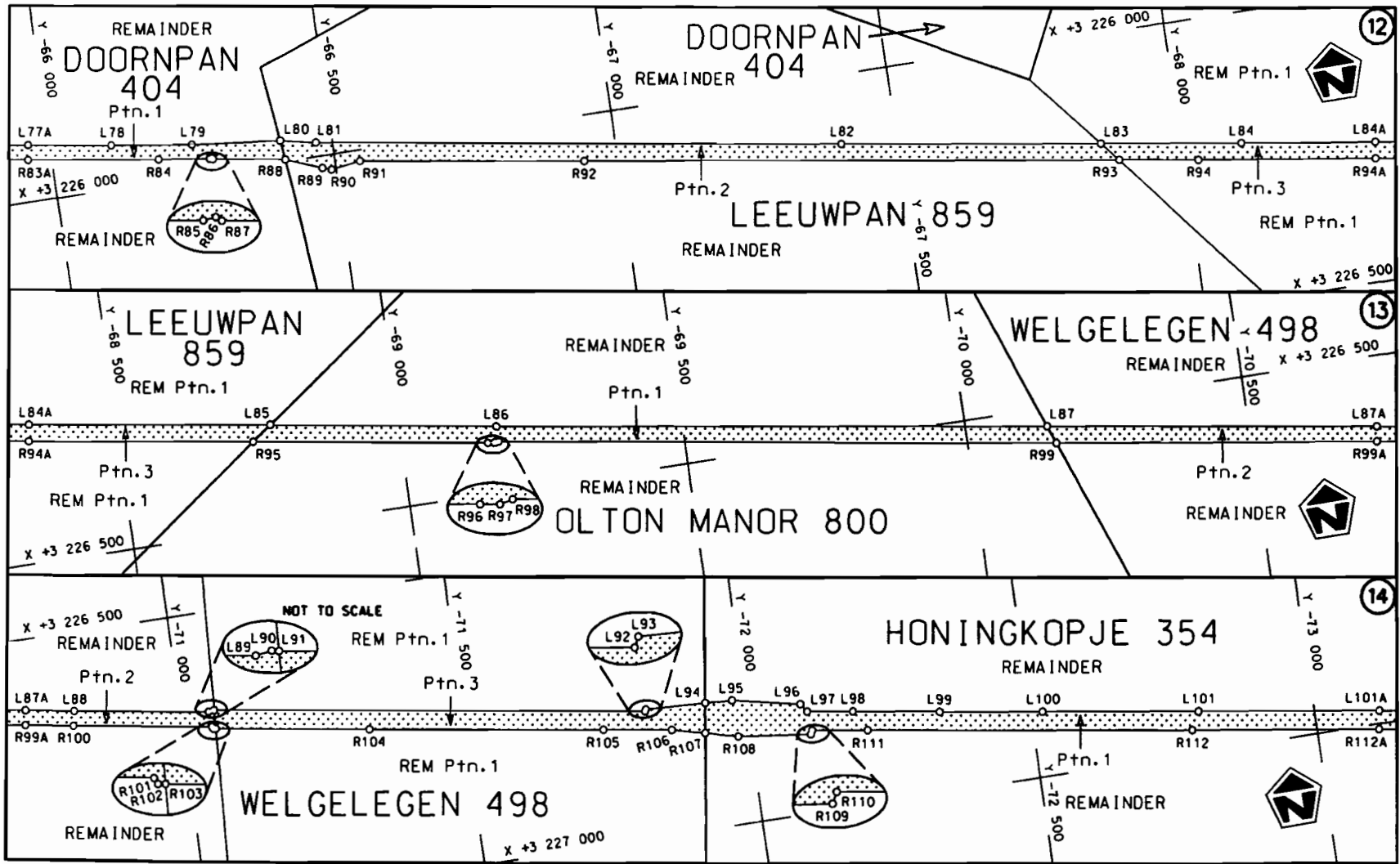
<p>Die Suid Afrikaanse Nasionale Padagentskap Beperk The South African National Roads Agency Limited</p>	<p>Die figuur getoon The figure shown</p>		<p>steldie padreserwe voor van 'n gedeelte represents the road reserve of a portion van Nasionale Roete N8 of National Route N8</p> <p>Seksie Section 10</p>	<p>Vel Sheet 2 of 18</p> <p>Plan P730/08</p>
--	---	--	--	--



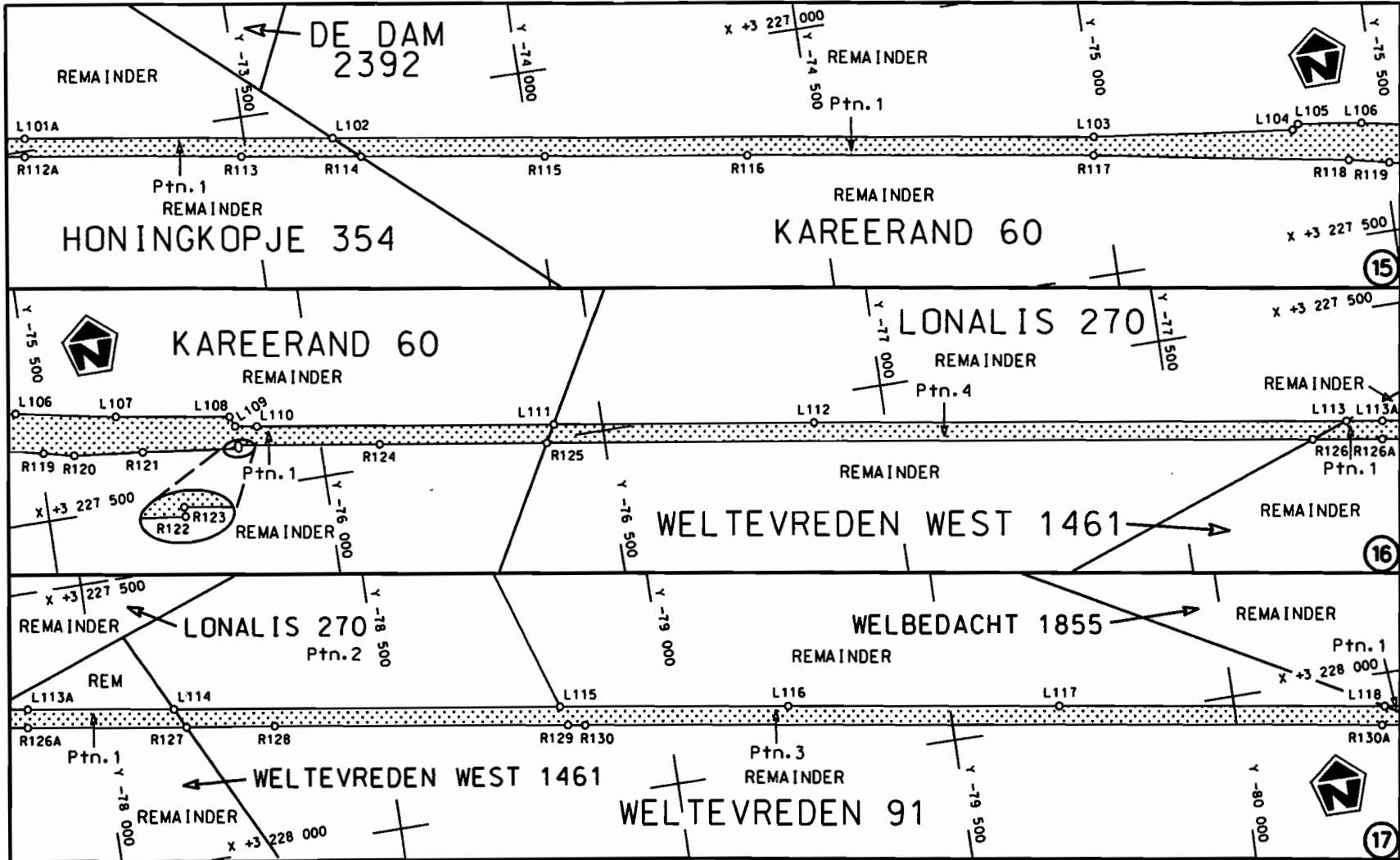
<p>Die Suid Afrikaanse Nasionale Padagentskap Beperk The South African National Roads Agency Limited</p>	<p>Die figuur getoon The figure shown</p> 	<p>steldie padreserwe voor van 'n gedeelte represents the road reserve of a portion van Nasionale Roete N8 of National Route N8</p> <p>Seksie Section 10</p>	<p>Vel Sheet 3 van of 18 Plan P730/08</p>
--	--	--	---




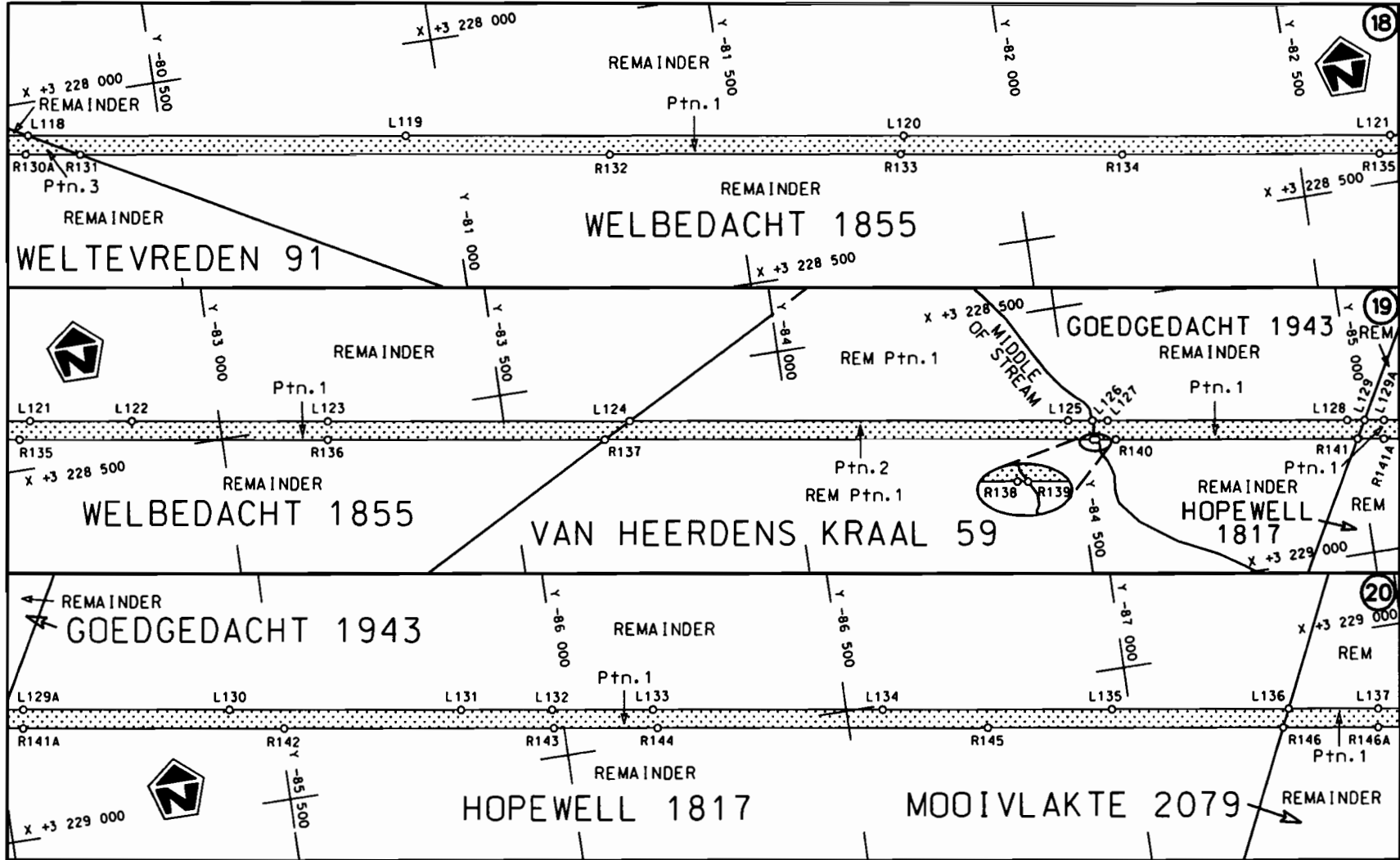
<p>Die Suid Afrikaanse Nasionale Padagentskap Beperk The South African National Roads Agency Limited</p>	<p>Die figuur getoon The figure shown</p>	<p></p> <p>steldie padreserwe voor van 'n gedeelte represents the road reserve of a portion van Nasionale Roete NB Seksie 10 of National Route NB Section 10</p>	<p>Vel Sheet 4 van 18 Plan P730/08</p>
--	---	--	--




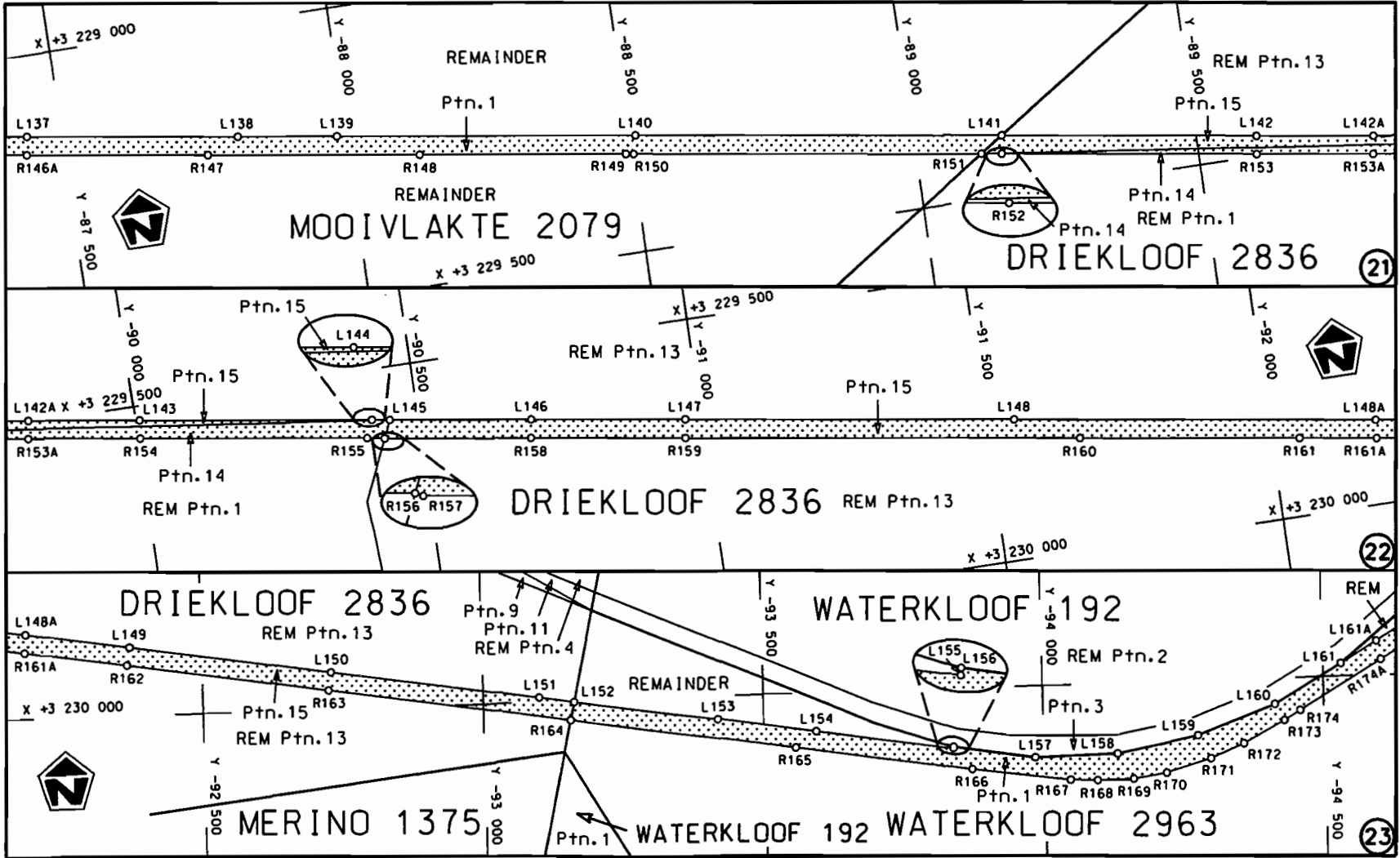
Die Suid Afrikaanse Nasionale Padagentskap Beperk The South African National Roads Agency Limited	Die figuur getoon The figure shown	steldie podreserwe voor van 'n gedeelte represents the road reserve of a portion van Nasionale Roete of National Route N8 Seksie Section 10	Vel Sheet 5 van of 18 Plan P730/08
--	---------------------------------------	--	---



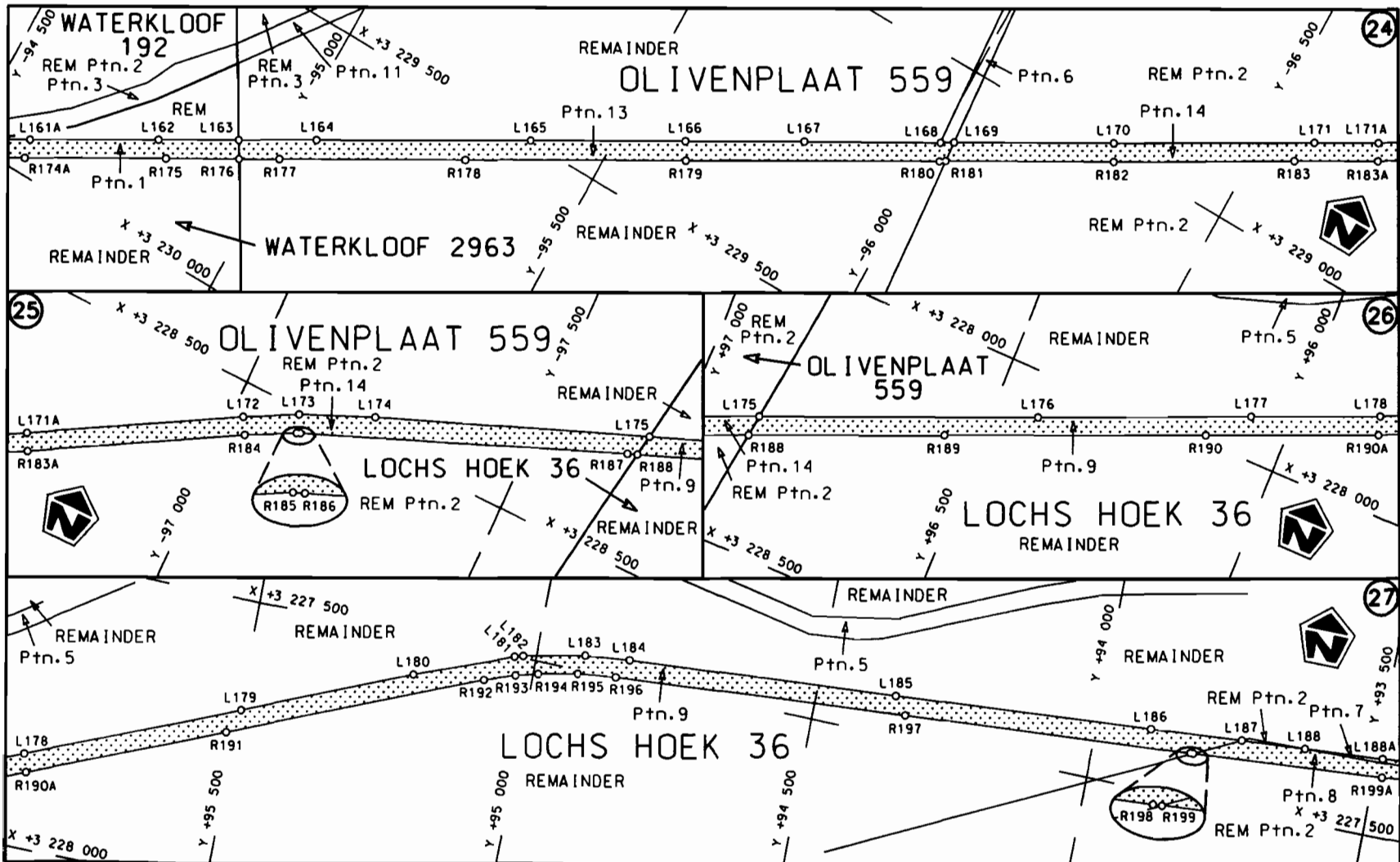
<p>Die Suid Afrikaanse Nasionale Padagentskop Beperk</p>	<p>Die figuur getoon</p>		<p>steldie padreserwe voor van 'n gedeelte represents the road reserve of a portion van Nasionale Roete of National Route</p>	<p>Vel Sheet 6 van of 18</p>
<p>The South African National Roads Agency Limited</p>	<p>The figure shown</p>		<p>N8 Seksie Section 10</p>	<p>Plan P730/08</p>

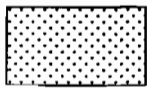


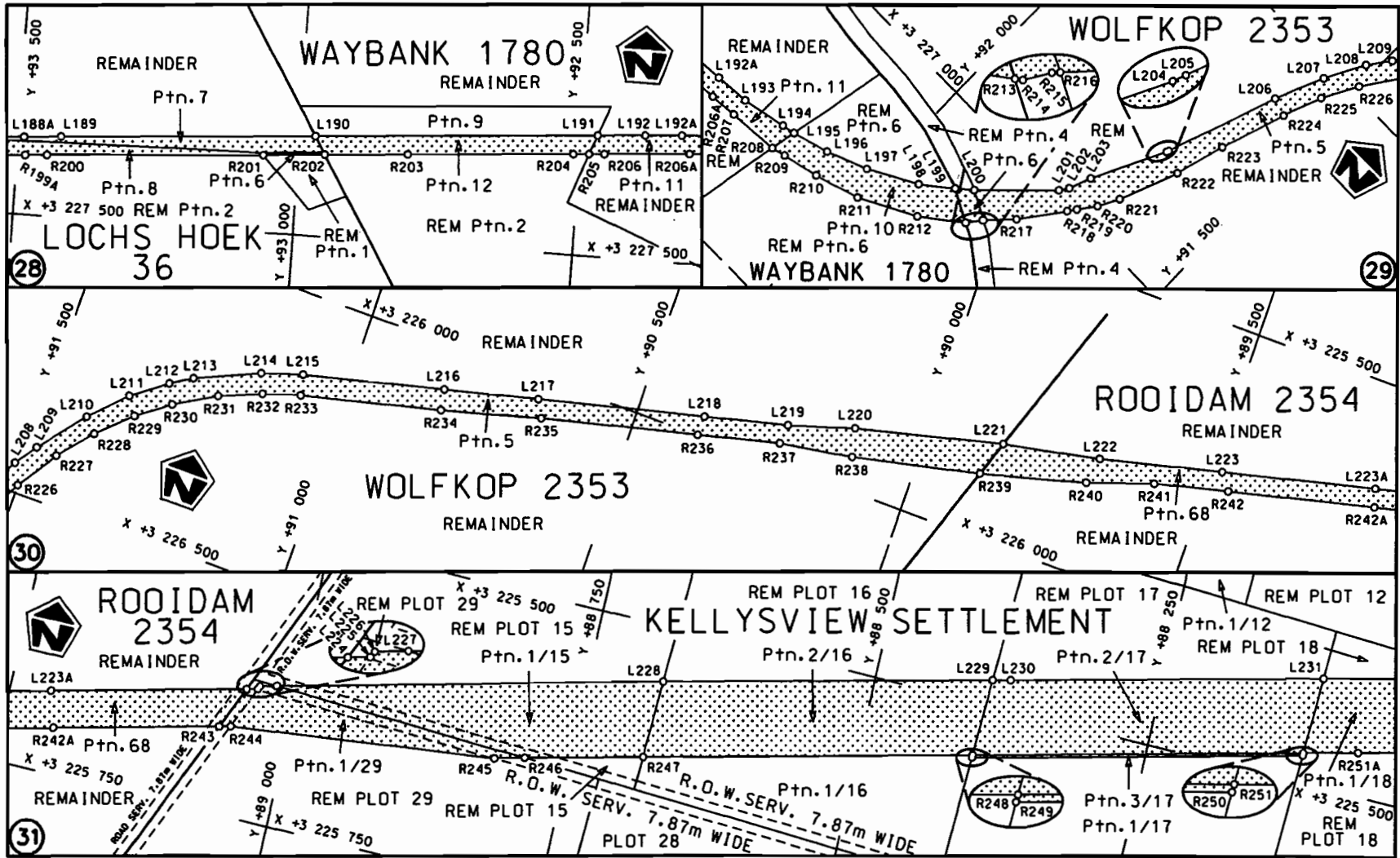
<p>Die Suid Afrikaanse Nasionale Padagentskap Beperk The South African National Roads Agency Limited</p>	<p>Die figuur getoon The figure shown</p> 	<p>steldie padreserwe voor van 'n gedeelte represents the road reserve of a portion van Nasionale Roete N8 of National Route</p> <p>Seksie Section 10</p>	<p>Vel Sheet 7 van of 18 Plan P730/08</p>
--	--	---	---



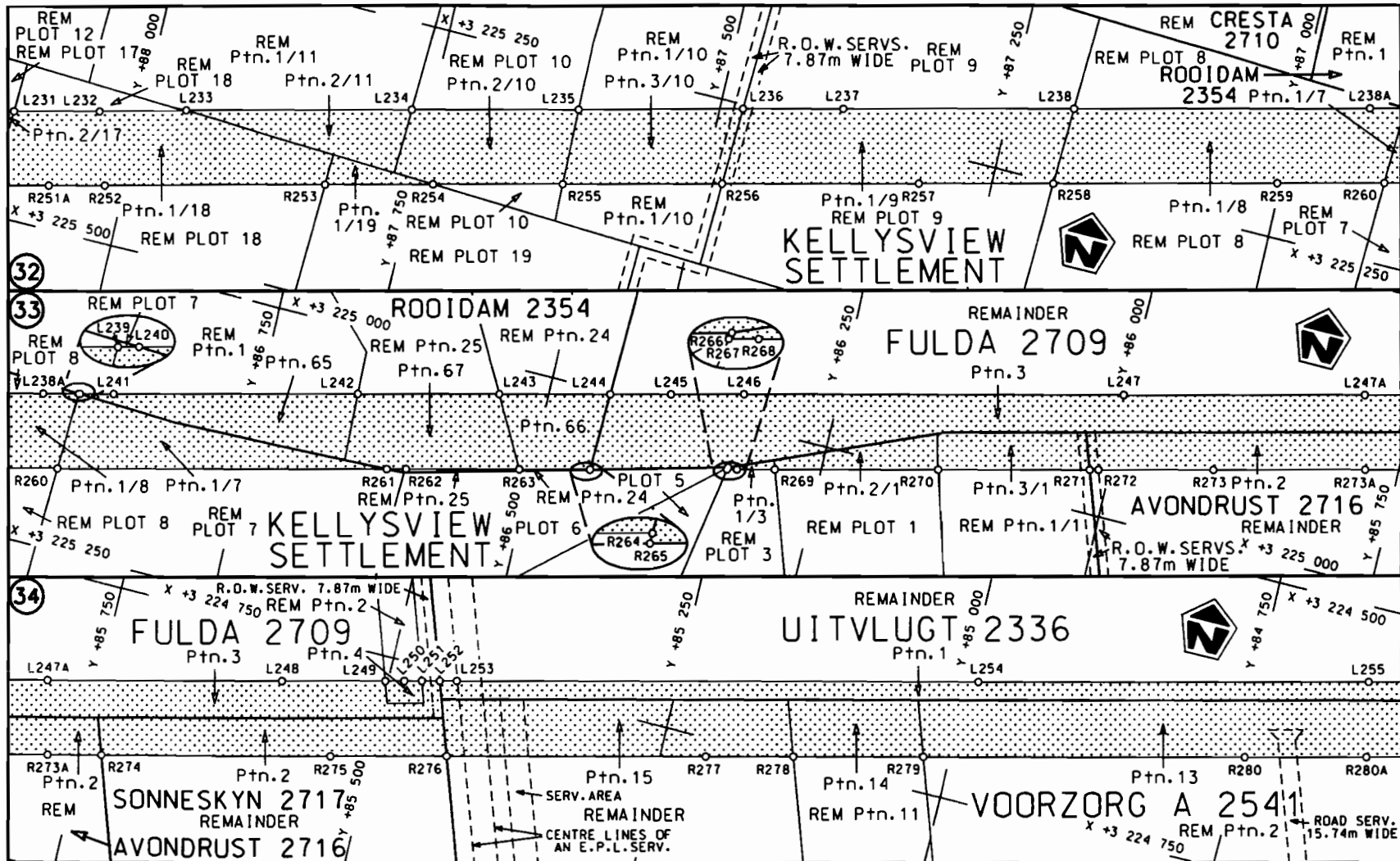
<p>Die Suid Afrikaanse Nasionale Padagentskap Beperk The South African National Roads Agency Limited</p>	<p>Die figuur getoon The figure shown</p>		<p>st die padreserwe voor van 'n gedeelte represents the road reserve of a portion van Nasionale Roete N8 of National Route Section 10</p>	<p>Vel Sheet 8 van 18 Plan P730/08</p>
--	---	--	--	--

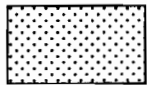


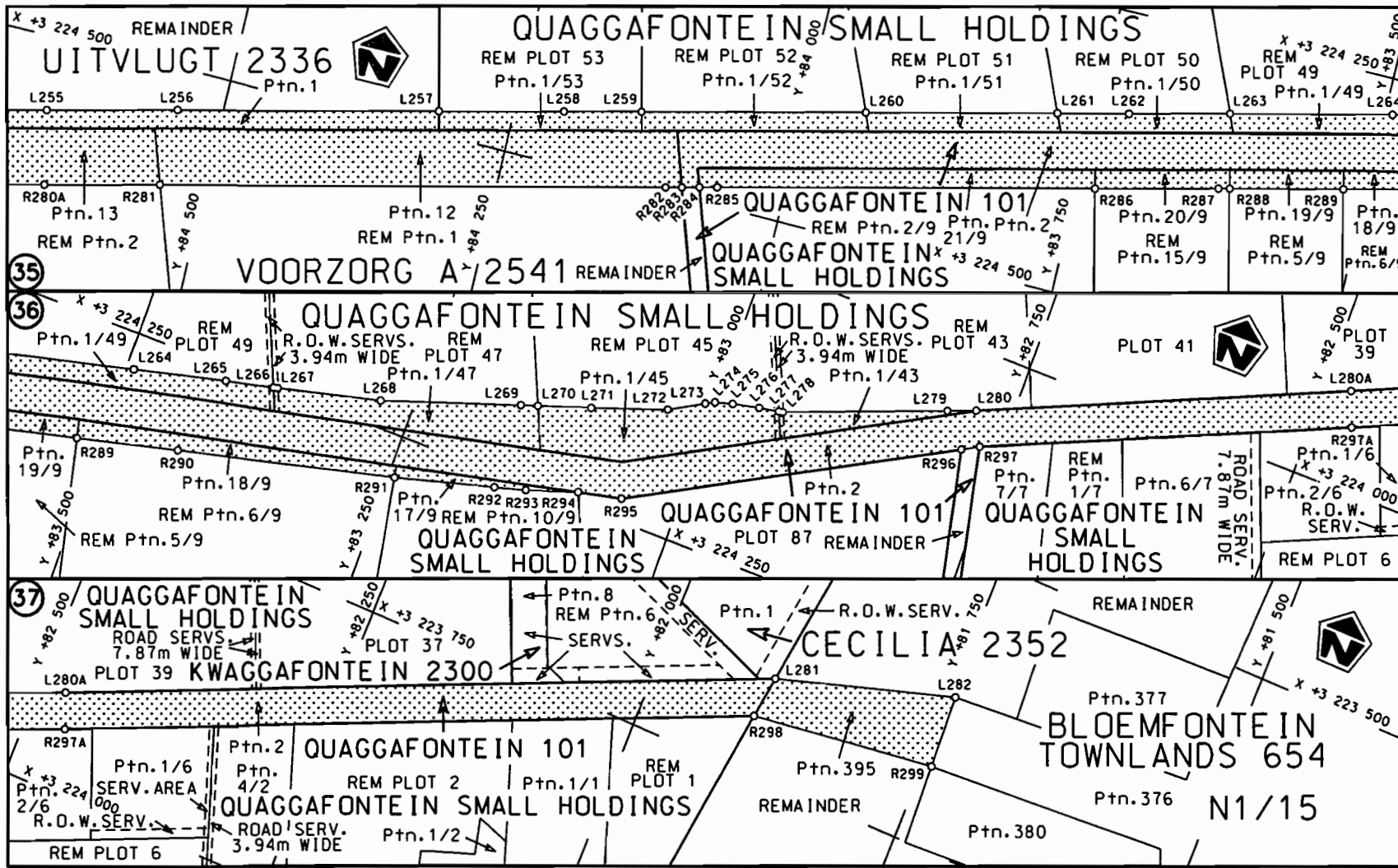
<p>Die Suid Afrikaanse Nasionale Padagentskap Beperk The South African National Roads Agency Limited</p>	<p>Die figuur getoon The figure shown</p> 	<p>steldie podreserwe voor van 'n gedeelte represents the road reserve of a portion van Nasionale Raete N8 of National Route N8</p> <p>Seksie Section 10</p>	<p>Vel Sheet 9 van of 18 Plan P730/08</p>
--	--	--	---



<p>Die Suid Afrikaanse Nasionale Padagentskap Beperk The South African National Roads Agency Limited</p>	<p>Die figuur getoon The figure shown</p>		<p>steldie padreserwe voor van 'n gedeelte represents the road reserve of a portion van Nasionale Roete of National Route</p>	<p>NB</p>	<p>Seksie Section</p>	<p>10</p>	<p>Vel Sheet 10 van of 18 Plan P730/08</p>
--	---	--	---	-----------	---------------------------	-----------	--



<p>Die Suid Afrikaanse Nasionale Padagentskap Beperk The South African National Roads Agency Limited</p>	<p>Die figuur getoon The figure shown</p> 	<p>steldie padreserwe voor van 'n gedeelte represents the road reserve of a portion von Nasionale Roete of National Route</p> <p>N8 Seksie Section</p> <p>10</p>	<p>Vel Sheet 11 von of 18</p> <p>Plan P730/08</p>
--	--	---	---



<p>Die Suid Afrikaanse Nasionale Padagentskap Beperk The South African National Roads Agency Limited</p>	<p>Die figuur getoon The figure shown</p>		<p>steldie padreserwe voor van 'n gedeelte represents the road reserve of a portion van Nasionale Roete N8 of National Route Section 10</p>	<p>Vel Sheet 12 van 18 Plan P730/08</p>
--	---	--	---	---

PADRESERWE KOÖRDINATE				/	ROAD RESERVE CO-ORDINATES			
LINKERKANT/LEFT HAND SIDE					REGTERKANT/RIGHT HAND SIDE			
	Y	X	WG	25°	Y	X		
L1	-39 715.980	3 222	651.080	R1	-39 707.630	3 222	688.310	
L2	-40 000.750	3 222	694.990	R2	-39 912.740	3 222	716.880	
L3	-40 486.420	3 222	764.770	R3	-39 950.600	3 222	719.830	
L4	-40 637.450	3 222	785.650	R4	-40 314.200	3 222	772.020	
L5	-40 889.850	3 222	790.760	R5	-40 524.890	3 222	801.940	
L6	-40 991.150	3 222	755.730	R6	-40 778.920	3 222	855.500	
L7	-41 003.730	3 222	740.110	R7	-40 783.010	3 222	856.920	
L8	-40 972.710	3 222	589.660	R8	-40 796.330	3 222	858.860	
L9	-40 956.520	3 222	576.920	R9	-40 849.220	3 222	879.980	
L10	-40 991.470	3 222	534.840	R10	-41 044.330	3 222	957.870	
L11	-41 035.110	3 222	733.810	R11	-41 048.380	3 222	967.350	
L12	-41 057.480	3 222	753.020	R12	-41 074.140	3 223	058.910	
L13	-41 206.080	3 222	824.570	R13	-41 081.880	3 223	085.380	
L14	-41 316.190	3 222	865.570	R14	-41 088.990	3 223	087.430	
L15	-41 497.090	3 222	894.230	R15	-41 100.280	3 223	090.700	
L16	-41 653.950	3 222	913.900	R16	-41 095.630	3 223	044.930	
L17	-41 966.150	3 222	946.460	R17	-41 093.430	3 223	023.590	
L18	-42 630.810	3 223	017.140	R18	-41 080.280	3 222	950.830	
L19	-42 769.850	3 223	031.920	R19	-41 087.450	3 222	945.100	
L20	-43 675.300	3 223	125.140	R20	-41 153.740	3 222	931.940	
L21	-43 674.450	3 223	122.090	R21	-41 250.910	3 222	922.700	
L22	-44 159.200	3 223	171.630	R22	-41 333.110	3 222	925.560	
L23	-44 499.600	3 223	206.420	R23	-41 400.970	3 222	928.930	
L24	-45 215.940	3 223	280.360	R24	-41 494.850	3 222	929.720	
L25	-45 785.640	3 223	337.960	R25	-41 936.410	3 222	975.510	
L26	-45 789.380	3 223	336.390	R26	-41 966.100	3 222	978.430	
L27	-45 796.280	3 223	339.070	R27	-42 228.330	3 223	005.340	
L28	-46 088.380	3 223	369.830	R28	-42 385.040	3 223	020.710	
L29	-46 654.240	3 223	430.970	R29	-42 618.190	3 223	044.060	
L30	-46 654.900	3 223	427.690	R30	-42 653.950	3 223	044.790	
L31	-47 072.150	3 223	471.070	R31	-43 682.840	3 223	152.220	
L32	-47 370.880	3 223	501.510	R32	-43 683.780	3 223	155.510	
L33	-47 370.220	3 223	504.640	R33	-44 106.700	3 223	198.570	
L34	-47 705.480	3 223	538.930	R34	-44 496.910	3 223	238.310	
L35	-48 240.900	3 223	594.590	R35	-45 210.750	3 223	311.870	
L36	-48 780.210	3 223	649.630	R36	-45 722.900	3 223	364.330	
L37	-49 851.150	3 223	759.870	R37	-45 728.410	3 223	362.010	
L38	-49 930.930	3 223	767.620	R38	-45 899.330	3 223	379.040	
L39	-50 406.220	3 223	816.660	R39	-47 365.020	3 223	529.400	
L40	-52 016.770	3 223	982.210	R40	-47 703.110	3 223	564.260	
L41	-52 716.360	3 224	053.890	R41	-48 250.740	3 223	620.510	
L42	-53 225.500	3 224	106.030	R42	-49 213.820	3 223	719.520	
L43	-53 624.440	3 224	147.400	R43	-49 887.740	3 223	788.700	
L44	-54 275.560	3 224	214.130	R44	-50 073.160	3 223	807.980	
L45	-54 875.200	3 224	276.080	R45	-50 390.740	3 223	840.350	
L46	-55 814.460	3 224	372.670	R46	-51 061.170	3 223	909.270	
L47	-56 170.450	3 224	426.490	R47	-51 952.870	3 224	001.140	
L48	-56 276.340	3 224	441.740	R48	-52 424.290	3 224	049.350	
L49	-56 963.720	3 224	546.050	R49	-52 732.200	3 224	081.030	
L50	-57 338.020	3 224	601.860	R50	-53 208.950	3 224	129.800	
L51	-57 466.870	3 224	621.120	R51	-54 249.110	3 224	236.830	

Vel	13	Van	18	P730/08
Sheet		of		

PADRESERWE KOÖRDINATE				/	ROAD RESERVE CO-ORDINATES			
LINKERKANT/LEFT HAND SIDE					REGTERKANT/RIGHT HAND SIDE			
	Y	X	WG	25°	Y	X		
L52	-57 592.080	3 224 640.070		R52	-55 776.920	3 224 394.520		
L53	-57 697.740	3 224 652.720		R53	-55 847.780	3 224 402.670		
L54	-57 849.510	3 224 676.320		R54	-56 187.570	3 224 454.130		
L55	-57 994.950	3 224 701.320		R55	-56 283.210	3 224 468.900		
L56	-58 480.100	3 224 774.780		R56	-56 867.870	3 224 557.070		
L57	-58 524.960	3 224 766.390		R57	-56 867.680	3 224 560.140		
L58	-58 547.520	3 224 769.820		R58	-57 062.720	3 224 589.710		
L59	-58 591.460	3 224 791.340		R59	-57 312.220	3 224 627.160		
L60	-58 611.390	3 224 794.310		R60	-57 765.840	3 224 695.820		
L61	-58 898.110	3 224 837.140		R61	-57 802.610	3 224 715.000		
L62	-59 389.750	3 224 911.030		R62	-57 823.950	3 224 721.850		
L63	-59 750.270	3 224 965.420		R63	-57 879.000	3 224 712.830		
L64	-60 204.890	3 225 034.040		R64	-58 128.110	3 224 750.230		
L65	-60 367.090	3 225 058.250		R65	-58 480.340	3 224 803.550		
L66	-60 694.470	3 225 107.700		R66	-58 523.380	3 224 825.480		
L67	-60 856.500	3 225 131.820		R67	-58 545.880	3 224 825.280		
L68	-60 860.720	3 225 129.540		R68	-58 649.350	3 224 825.600		
L69	-62 026.310	3 225 305.250		R69	-58 714.160	3 224 835.350		
L70	-62 495.170	3 225 376.270		R70	-59 770.300	3 224 994.290		
L71	-63 036.300	3 225 457.460		R71	-60 208.400	3 225 060.210		
L72	-63 033.980	3 225 460.960		R72	-60 693.740	3 225 133.410		
L73	-63 558.580	3 225 539.810		R73	-60 814.000	3 225 154.750		
L74	-64 024.770	3 225 610.240		R74	-61 577.200	3 225 266.740		
L75	-64 544.900	3 225 688.500		R75	-62 013.790	3 225 332.500		
L76	-64 793.640	3 225 726.200		R76	-62 872.360	3 225 462.200		
L77	-65 310.050	3 225 803.720		R77	-63 018.310	3 225 484.560		
L78	-66 109.050	3 225 924.600		R78	-63 182.880	3 225 509.060		
L79	-66 251.440	3 225 946.520		R79	-64 021.550	3 225 635.130		
L80	-66 408.980	3 225 962.670		R80	-64 516.160	3 225 709.840		
L81	-66 470.680	3 225 975.770		R81	-65 090.000	3 225 796.180		
L82	-67 399.990	3 226 119.400		R82	-65 306.320	3 225 829.100		
L83	-67 857.460	3 226 188.530		R83	-65 889.550	3 225 917.280		
L84	-68 106.820	3 226 226.210		R84	-66 188.660	3 225 962.080		
L85	-68 773.040	3 226 324.860		R85	-66 279.740	3 225 975.480		
L86	-69 171.520	3 226 386.530		R86	-66 283.560	3 225 975.100		
L87	-70 143.970	3 226 531.760		R87	-66 285.190	3 225 976.400		
L88	-70 811.910	3 226 634.190		R88	-66 413.010	3 225 996.220		
L89	-71 050.470	3 226 670.150		R89	-66 475.860	3 226 020.540		
L90	-71 060.110	3 226 668.630		R90	-66 491.540	3 226 025.710		
L91	-71 060.590	3 226 668.700		R91	-66 544.220	3 226 019.000		
L92	-71 820.410	3 226 783.410		R92	-66 940.960	3 226 078.720		
L93	-71 821.970	3 226 780.460		R93	-67 885.050	3 226 221.360		
L94	-71 927.880	3 226 785.250		R94	-68 026.710	3 226 242.760		
L95	-71 976.020	3 226 787.430		R95	-68 738.690	3 226 349.350		
L96	-72 095.470	3 226 812.100		R96	-69 152.180	3 226 412.450		
L97	-72 105.890	3 226 826.520		R97	-69 163.830	3 226 413.950		
L98	-72 186.590	3 226 838.440		R98	-69 171.710	3 226 412.130		
L99	-72 340.600	3 226 862.210		R99	-70 155.820	3 226 562.680		
L100	-72 521.030	3 226 889.060		R100	-70 806.840	3 226 659.210		
L101	-72 796.200	3 226 930.340		R101	-71 052.660	3 226 696.190		
L102	-73 658.270	3 227 060.580		R102	-71 054.490	3 226 699.880		

Vel	14	Van	18	P730/08
Sheet		of		

PADRESERWE KOÖRDINATE				/	ROAD RESERVE CO-ORDINATES			
LINKERKANT/LEFT HAND SIDE					REGTERKANT/RIGHT HAND SIDE			
	Y	X	WG	25°	Y	X		
L103	-74 993.970	3 227 261.850		R103	-71 058.970	3 226 700.560		
L104	-75 346.460	3 227 302.210		R104	-71 330.290	3 226 741.740		
L105	-75 357.240	3 227 293.600		R105	-71 742.210	3 226 803.650		
L106	-75 469.620	3 227 309.180		R106	-71 863.120	3 226 822.220		
L107	-75 646.020	3 227 342.110		R107	-71 920.720	3 226 836.340		
L108	-75 845.260	3 227 373.250		R108	-71 978.430	3 226 850.200		
L109	-75 852.910	3 227 390.650		R109	-72 106.340	3 226 866.080		
L110	-75 891.280	3 227 396.600		R110	-72 109.770	3 226 859.800		
L111	-76 414.570	3 227 475.880		R111	-72 208.190	3 226 874.190		
L112	-76 872.630	3 227 544.860		R112	-72 780.500	3 226 960.170		
L113	-77 810.280	3 227 686.590		R113	-73 490.890	3 227 067.270		
L114	-78 131.380	3 227 735.060		R114	-73 702.810	3 227 099.370		
L115	-78 812.070	3 227 837.790		R115	-74 025.270	3 227 148.210		
L116	-79 214.140	3 227 898.060		R116	-74 380.480	3 227 201.530		
L117	-79 691.510	3 227 970.120		R117	-74 988.930	3 227 293.400		
L118	-80 266.460	3 228 056.680		R118	-75 437.710	3 227 368.560		
L119	-80 931.620	3 228 156.990		R119	-75 507.790	3 227 383.780		
L120	-81 809.820	3 228 289.860		R120	-75 561.930	3 227 396.070		
L121	-82 666.830	3 228 418.540		R121	-75 682.690	3 227 409.240		
L122	-82 845.020	3 228 445.460		R122	-75 853.230	3 227 429.020		
L123	-83 191.500	3 228 498.230		R123	-75 853.210	3 227 423.600		
L124	-83 723.500	3 228 578.320		R124	-76 103.820	3 227 461.260		
L125	-84 495.710	3 228 694.350		R125	-76 397.190	3 227 505.650		
L126	-84 538.318	3 228 700.754		R126	-77 745.740	3 227 708.810		
L127	-84 565.040	3 228 704.770		R127	-78 148.910	3 227 768.840		
L128	-84 987.020	3 228 768.630		R128	-78 304.690	3 227 792.140		
L129	-85 017.680	3 228 773.250		R129	-78 821.390	3 227 870.890		
L130	-85 414.770	3 228 833.160		R130	-78 851.820	3 227 875.750		
L131	-85 821.380	3 228 894.820		R131	-80 352.530	3 228 102.280		
L132	-85 983.120	3 228 919.190		R132	-81 287.960	3 228 243.060		
L133	-86 160.200	3 228 945.830		R133	-81 799.830	3 228 320.290		
L134	-86 565.050	3 229 007.180		R134	-82 189.650	3 228 378.880		
L135	-86 968.530	3 229 067.610		R135	-82 643.460	3 228 447.470		
L136	-87 279.130	3 229 114.250		R136	-83 186.690	3 228 529.290		
L137	-87 437.699	3 229 138.231		R137	-83 675.190	3 228 603.230		
L138	-87 808.150	3 229 194.250		R138	-84 534.460	3 228 733.120		
L139	-87 984.660	3 229 220.850		R139	-84 540.638	3 228 734.054		
L140	-88 511.160	3 229 300.140		R140	-84 574.660	3 228 739.200		
L141	-89 156.720	3 229 397.000		R141	-85 000.530	3 228 803.210		
L142	-89 605.650	3 229 464.720		R142	-85 506.920	3 228 879.170		
L143	-90 006.990	3 229 525.030		R143	-85 981.580	3 228 950.670		
L144	-90 418.180	3 229 586.820		R144	-86 163.620	3 228 978.090		
L145	-90 449.870	3 229 591.650		R145	-86 745.390	3 229 065.820		
L146	-90 698.460	3 229 629.120		R146	-87 264.480	3 229 144.410		
L147	-90 971.570	3 229 670.210		R147	-87 750.860	3 229 217.530		
L148	-91 551.140	3 229 757.910		R148	-88 124.770	3 229 274.230		
L149	-92 372.710	3 229 882.360		R149	-88 489.870	3 229 329.300		
L150	-92 731.760	3 229 936.620		R150	-88 503.440	3 229 331.410		
L151	-93 100.540	3 229 992.290		R151	-89 116.280	3 229 422.850		
L152	-93 163.710	3 230 001.650		R152	-89 152.340	3 229 428.290		
L153	-93 418.760	3 230 039.470		R153	-89 601.550	3 229 495.780		

Vel	15	Van	18	P730/08
Sheet		of		

PADRESERWE KOÖRDINATE				/	ROAD RESERVE CO-ORDINATES			
LINKERKANT/LEFT HAND SIDE					REGTERKANT/RIGHT HAND SIDE			
	Y	X	WG	27°	Y	X		
L201	91 751.350	3 226 990.070		R201	93 062.160	3 227 366.160		
L202	91 740.420	3 226 975.180		R202	92 951.630	3 227 358.000		
L203	91 726.040	3 226 936.710		R203	92 803.580	3 227 347.640		
L204	91 663.360	3 226 808.850		R204	92 509.840	3 227 326.010		
L205	91 661.740	3 226 804.910		R205	92 481.800	3 227 323.840		
L206	91 592.030	3 226 605.990		R206	92 454.890	3 227 321.750		
L207	91 555.020	3 226 520.650		R207	92 254.510	3 227 306.900		
L208	91 517.650	3 226 450.970		R208	92 164.880	3 227 299.560		
L209	91 490.010	3 226 412.890		R209	92 140.500	3 227 293.180		
L210	91 423.250	3 226 333.730		R210	92 077.700	3 227 278.370		
L211	91 363.320	3 226 274.110		R211	91 998.270	3 227 253.620		
L212	91 303.650	3 226 230.730		R212	91 899.490	3 227 200.570		
L213	91 266.360	3 226 207.780		R213	91 829.700	3 227 147.800		
L214	91 155.150	3 226 158.460		R214	91 829.060	3 227 147.320		
L215	91 083.470	3 226 136.380		R215	91 811.270	3 227 123.070		
L216	90 835.930	3 226 075.840		R216	91 810.070	3 227 121.810		
L217	90 672.710	3 226 035.970		R217	91 769.280	3 227 078.650		
L218	90 383.730	3 225 965.180		R218	91 715.040	3 227 005.470		
L219	90 238.410	3 225 929.340		R219	91 705.080	3 226 991.490		
L220	90 124.480	3 225 894.730		R220	91 683.460	3 226 961.820		
L221	89 864.440	3 225 830.180		R221	91 664.340	3 226 925.740		
L222	89 694.730	3 225 797.070		R222	91 623.450	3 226 821.980		
L223	89 482.300	3 225 745.480		R223	91 599.360	3 226 732.690		
L224	89 044.340	3 225 638.310		R224	91 560.670	3 226 616.300		
L225	89 034.680	3 225 635.950		R225	91 534.010	3 226 548.020		
L226	89 033.240	3 225 633.190		R226	91 500.150	3 226 485.820		
L227	89 018.670	3 225 629.610		R227	91 452.180	3 226 415.370		
L228	88 683.510	3 225 547.140		R228	91 400.880	3 226 356.910		
L229	88 396.760	3 225 477.730		R229	91 343.840	3 226 303.650		
L230	88 380.990	3 225 473.850		R230	91 287.070	3 226 263.180		
L231	88 109.930	3 225 407.950		R231	91 214.410	3 226 221.670		
L232	88 036.620	3 225 390.130		R232	91 141.060	3 226 191.280		
L233	87 962.050	3 225 371.960		R233	91 075.420	3 226 171.540		
L234	87 766.450	3 225 324.060		R234	90 830.010	3 226 111.560		
L235	87 621.580	3 225 288.520		R235	90 656.960	3 226 065.400		
L236	87 479.960	3 225 253.790		R236	90 384.530	3 225 998.820		
L237	87 393.780	3 225 232.650		R237	90 241.330	3 225 963.820		
L238	87 193.470	3 225 183.900		R238	90 112.790	3 225 943.310		
L239	86 907.010	3 225 114.230		R239	89 886.910	3 225 892.890		
L240	86 906.200	3 225 114.030		R240	89 703.240	3 225 844.190		
L241	86 877.030	3 225 106.940		R241	89 589.900	3 225 804.890		
L242	86 665.080	3 225 054.710		R242	89 460.510	3 225 773.140		
L243	86 543.420	3 225 025.130		R243	89 060.950	3 225 675.510		
L244	86 446.830	3 225 001.590		R244	89 050.960	3 225 673.070		
L245	86 394.810	3 224 988.890		R245	88 814.980	3 225 645.690		
L246	86 331.550	3 224 973.310		R246	88 788.770	3 225 639.340		
L247	86 003.190	3 224 893.310		R247	88 686.370	3 225 614.550		
L248	85 591.170	3 224 792.630		R248	88 399.600	3 225 544.900		
L249	85 502.340	3 224 770.730		R249	88 399.690	3 225 547.110		
L250	85 486.240	3 224 766.770		R250	88 112.850	3 225 476.760		
L251	85 471.120	3 224 763.070		R251	88 112.750	3 225 474.430		

Vel	17	Van	18	P730/08
Sheet		of		

PADRESERWE KOÖRDINATE				/	ROAD RESERVE CO-ORDINATES			
LINKERKANT/LEFT HAND SIDE					REGTERKANT/RIGHT HAND SIDE			
	Y	X	WG	27°	Y	X		
L252	85 455.680	3 224 759.300		R252	88 017.160	3 225 451.090		
L253	85 440.990	3 224 755.700		R253	87 826.000	3 225 404.380		
L254	84 990.480	3 224 645.940		R254	87 733.030	3 225 381.660		
L255	84 652.160	3 224 563.360		R255	87 620.270	3 225 354.120		
L256	84 539.620	3 224 535.880		R256	87 482.790	3 225 320.550		
L257	84 314.400	3 224 480.680		R257	87 312.930	3 225 279.060		
L258	84 206.930	3 224 454.490		R258	87 196.310	3 225 250.690		
L259	84 139.880	3 224 438.050		R259	87 002.960	3 225 203.500		
L260	83 947.360	3 224 390.970		R260	86 909.840	3 225 180.870		
L261	83 782.010	3 224 350.620		R261	86 624.790	3 225 111.150		
L262	83 721.040	3 224 335.790		R262	86 608.570	3 225 107.190		
L263	83 633.500	3 224 314.370		R263	86 510.500	3 225 083.320		
L264	83 493.410	3 224 280.300		R264	86 448.900	3 225 068.330		
L265	83 413.450	3 224 260.680		R265	86 448.900	3 225 068.580		
L266	83 372.020	3 224 250.550		R266	86 330.390	3 225 037.570		
L267	83 368.440	3 224 249.670		R267	86 330.860	3 225 039.560		
L268	83 279.190	3 224 227.710		R268	86 322.290	3 225 037.460		
L269	83 161.530	3 224 187.790		R269	86 289.790	3 225 029.520		
L270	83 147.060	3 224 182.990		R270	86 148.840	3 224 994.880		
L271	83 101.980	3 224 168.040		R271	86 017.310	3 224 962.690		
L272	83 037.820	3 224 145.480		R272	86 009.720	3 224 960.830		
L273	83 008.200	3 224 128.780		R273	85 910.760	3 224 936.680		
L274	83 000.450	3 224 124.810		R274	85 732.830	3 224 893.220		
L275	82 985.310	3 224 120.610		R275	85 534.200	3 224 844.710		
L276	82 962.020	3 224 115.490		R276	85 434.480	3 224 820.240		
L277	82 944.680	3 224 112.180		R277	85 210.340	3 224 765.640		
L278	82 940.960	3 224 111.470		R278	85 135.100	3 224 747.270		
L279	82 806.050	3 224 059.310		R279	85 022.480	3 224 719.760		
L280	82 782.000	3 224 050.120		R280	84 745.170	3 224 652.020		
L281	81 898.060	3 223 665.480		R281	84 539.740	3 224 601.880		
L282	81 745.550	3 223 619.240		R282	84 103.650	3 224 495.630		
				R283	84 089.460	3 224 492.130		
				R284	84 074.210	3 224 488.370		
				R285	84 058.840	3 224 484.580		
				R286	83 734.570	3 224 405.060		
				R287	83 627.950	3 224 378.970		
				R288	83 618.450	3 224 376.650		
				R289	83 520.200	3 224 352.600		
				R290	83 432.620	3 224 331.110		
				R291	83 244.300	3 224 285.030		
				R292	83 158.760	3 224 261.860		
				R293	83 131.770	3 224 254.410		
				R294	83 087.350	3 224 239.650		
				R295	83 049.460	3 224 231.440		
				R296	82 782.780	3 224 085.930		
				R297	82 768.220	3 224 077.950		
				R298	81 903.290	3 223 702.020		
				R299	81 742.670	3 223 681.900		

Vel	18	Van	18	P730/08
Sheet		of		