

**REPUBLIC OF SOUTH AFRICA
REPUBLIEK VAN SUID-AFRIKA**

Vol. 527

**Pretoria, 15 May
Mei 2009**

No. 32176

CONTENTS**INHOUD**

<i>No.</i>	<i>Page No.</i>	<i>Gazette No.</i>	<i>No.</i>	<i>Bladsy No.</i>	<i>Koerant No.</i>
GOVERNMENT NOTICE			GOEWERMENSKENNISGEWING		
Transport, Department of			Vervoer, Departement van		
<i>Government Notice</i>			<i>Goewermenskennisgewing</i>		
459			459		
South African National Roads Agency Limited and the National Roads Act (7/1998): The South African National Roads Agency Limited: Declaration amendment of National Road N8 Section 12: Amendment of Declaration No. 549 of 2003	3	32176	Suid-Afrikaanse Nasionale Padagentskap Beperk en die Nasionale Paaie Wet (7/1998): Die Suid-Afrikaanse Nasionale Padagentskap Beperk: Verklaring wysiging van Nasionale Pad N8 Seksie 12: Wysiging van Verklaring No. 549 van 2003	4	32176

GOVERNMENT NOTICE

DEPARTMENT OF TRANSPORT

No. 459

15 May 2009

THE SOUTH AFRICAN NATIONAL ROADS AGENCY LIMITED

Registration No: 98/09584/06

DECLARATION AMENDMENT OF NATIONAL ROAD N8 SECTION 12

AMENDMENT OF DECLARATION NO. 549 OF 2003

By virtue of section 40 (1)(b) of the South African National Roads Agency Limited and the National Roads Act, 1998 (Act No. 7 of 1998), I hereby amend Declaration No. 549 of 2003 by substituting the Annexure paragraph II, with the subjoined sheets 1 to 20 of Plan No. P685/08.

(National Road N8 Section 12: Thaba Nchu - Ladybrand)



MINISTER OF TRANSPORT

GOEWERMENSKENNISGEWING

DEPARTEMENT VAN VERVOER

No. 459

15 Mei 2009

DIE SUID-AFRIKAANSE NASIONALE PADAGENTSKAP BEPERK

Registrasie No: 98/09584/06

VERKLARING WYSIGING VAN NASIONALE PAD N8 SEKSIE 12.

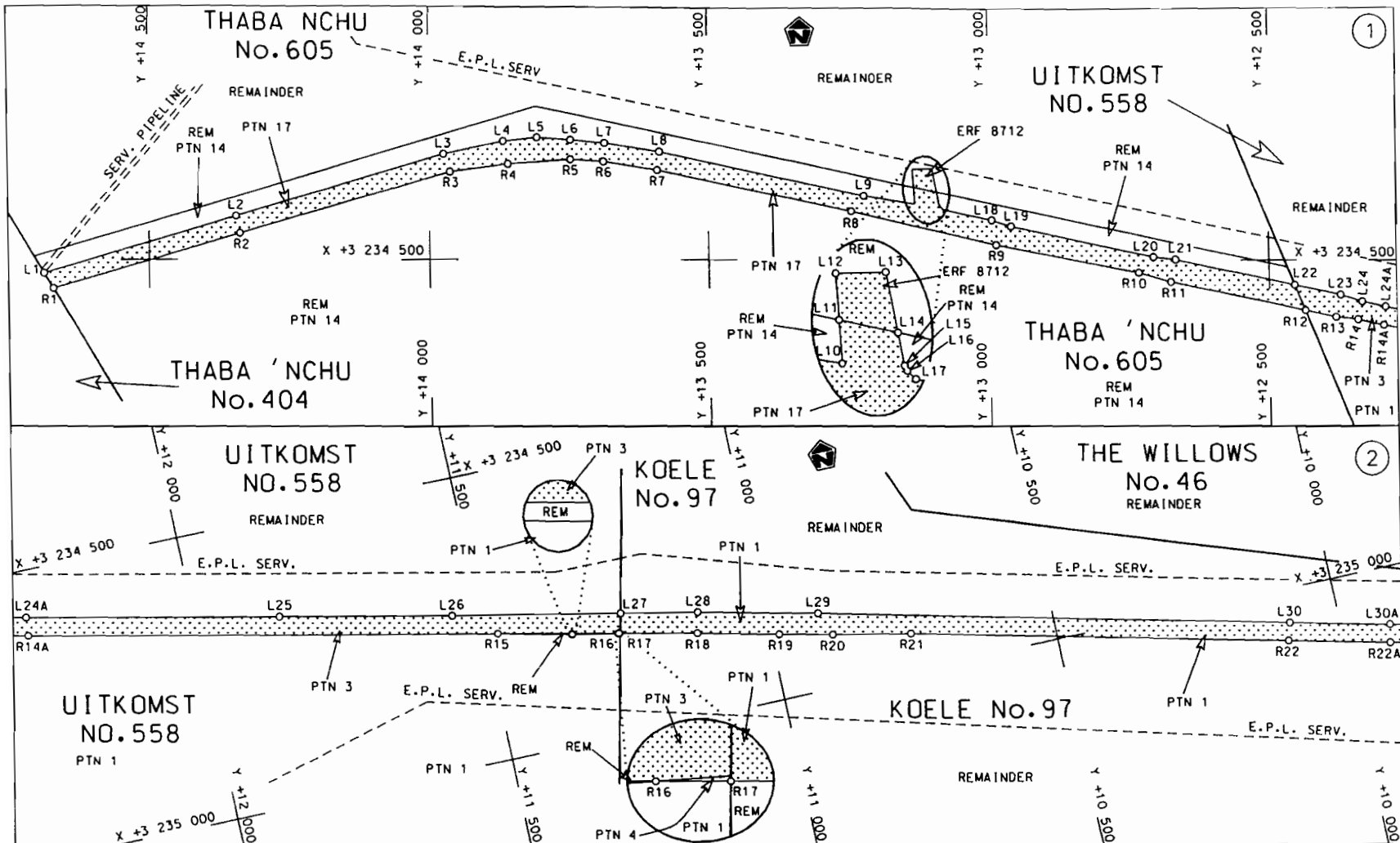
WYSIGING VAN VERKLARING NO. 549 VAN 2003

Kragtens Artikel 40(1)(b) van die Suid-Afrikaanse Nasionale Padagentskap Beperk en die Nasionale Paaie Wet, 1998 (Wet No.7 van 1998), wysig ek hiermee Verklaring no. 549 van 2003 deur die Bylae paragraaf II, te vervang met meegaande velle 1 tot 20 van Plan No. P685/08.

(Nasionale Pad N8 Seksie 12 Thaba Nchu - Ladybrand)

J. Raddi

MINISTER VAN VERVOER

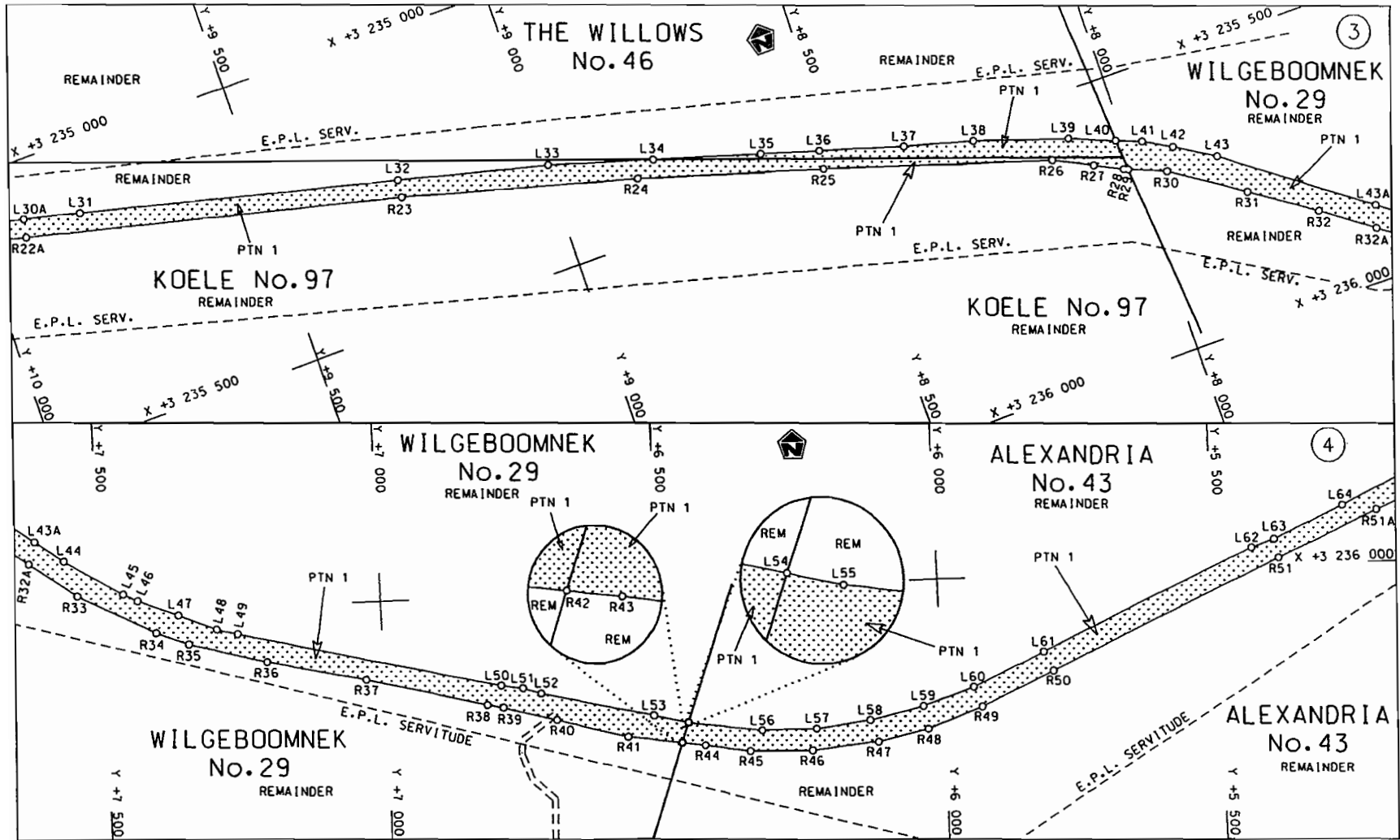


STAATSKOERANT, 15 MEI 2009

No. 32176 5

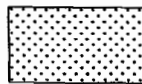
Die Suid Afrikaanse Nasionale Padagentskap Beperk	Die figuur getoon	steldie padreserwe voor van 'n gedeelte	Vel Sheet 1 van 20
The South African National Roads Agency Limited	The figure shown	represents the road reserve of a portion van Nasionale Roete N8 Seksie 12 of National Route	Plan P685/08

D.O.9.A



Die Suid Afrikaanse Nasionale Padagentskap Beperk
The South African National Roads Agency Limited

Die figuur getoon
The figure shown

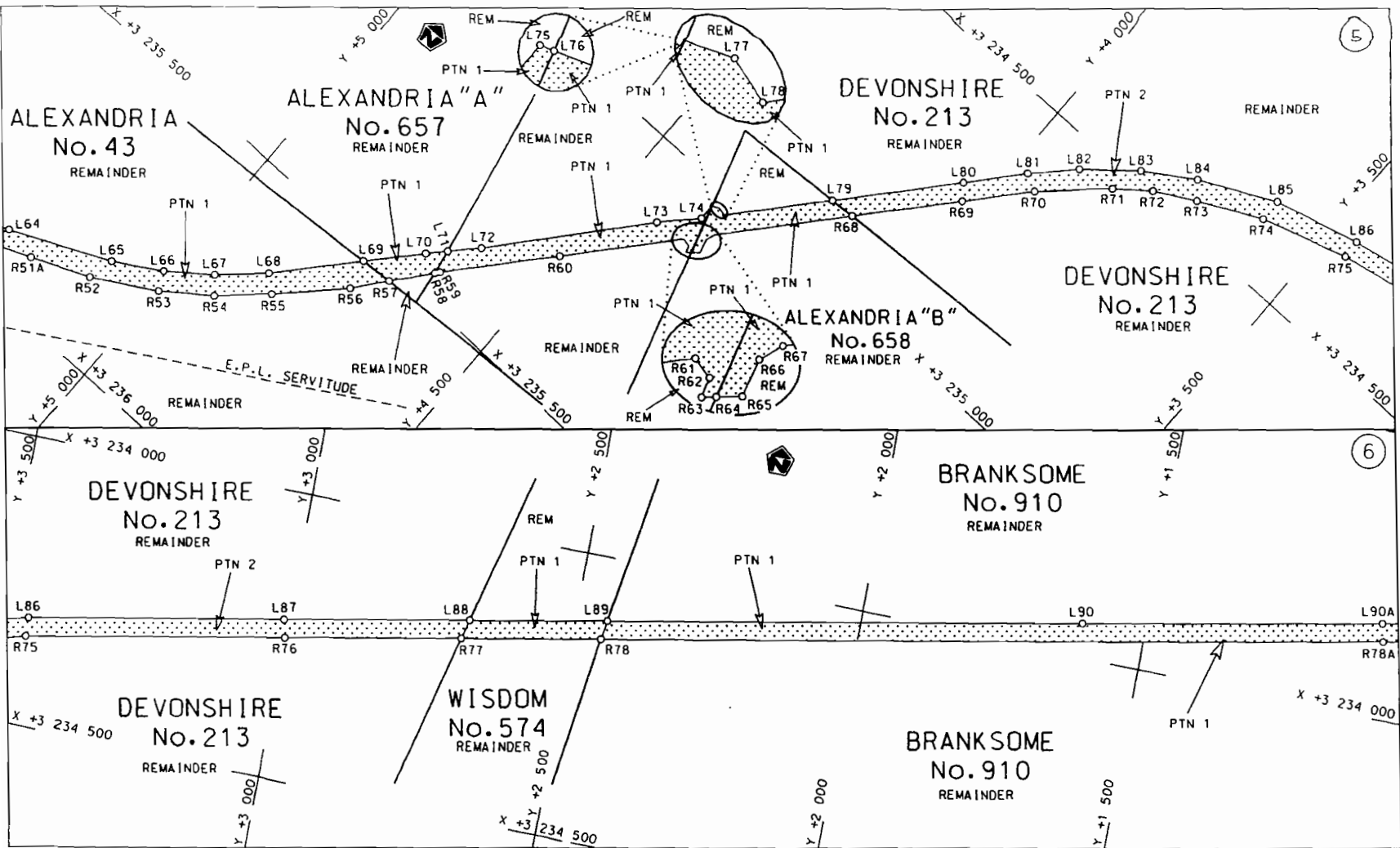



steldie padreserwe voor van 'n gedeelte
represents the road reserve of a portion
van Nasionale Roete N8
of National Route N8

12

Vel Sheet 2 van 20
Plan P685/08

D.O.9.A

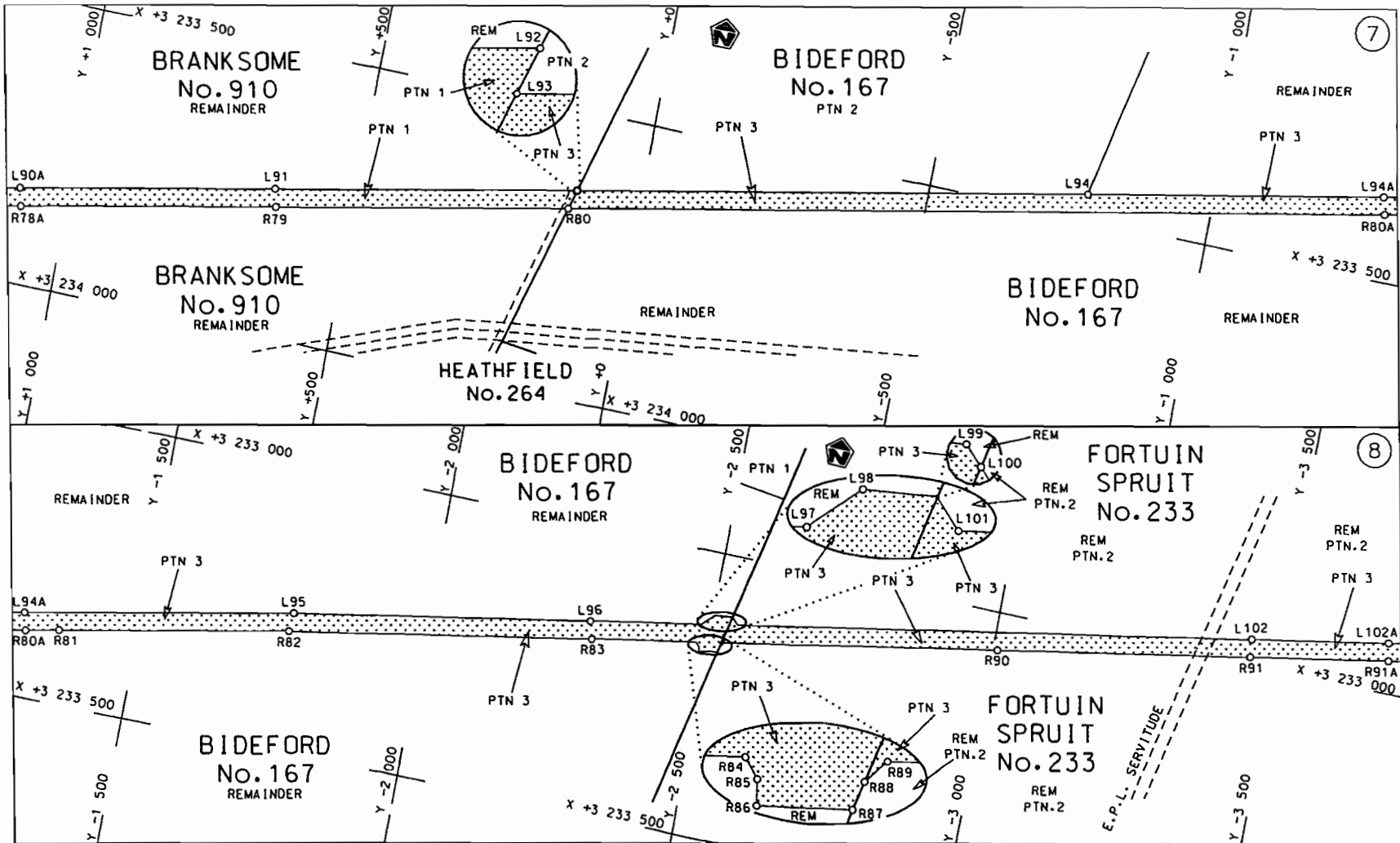


Die Suid Afrikaanse Nasionale Padagentskap Beperk The South African National Roads Agency Limited	Die figuur getoon The figure shown		steldie padreserwe voor van 'n gedeelte represents the road reserve of a portion van Nasionale Roete N8 of National Route N8 Seksie 12 Section 12	Vel Sheet 3 of 20 Plon P685/08
--	---------------------------------------	--	--	-----------------------------------

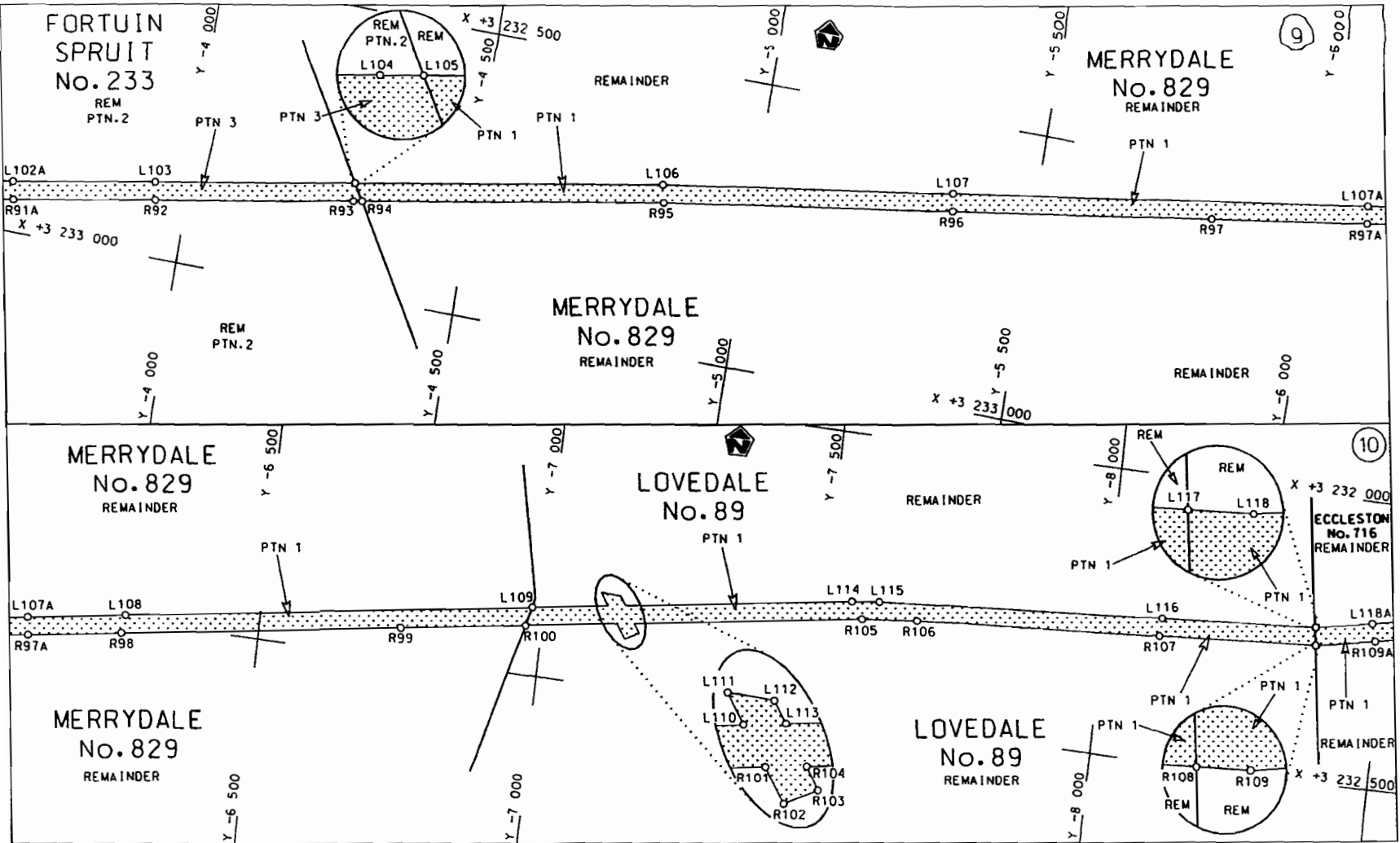
D.O.9.A


STAATSKOERANT, 15 MEI 2009

No. 32176 7

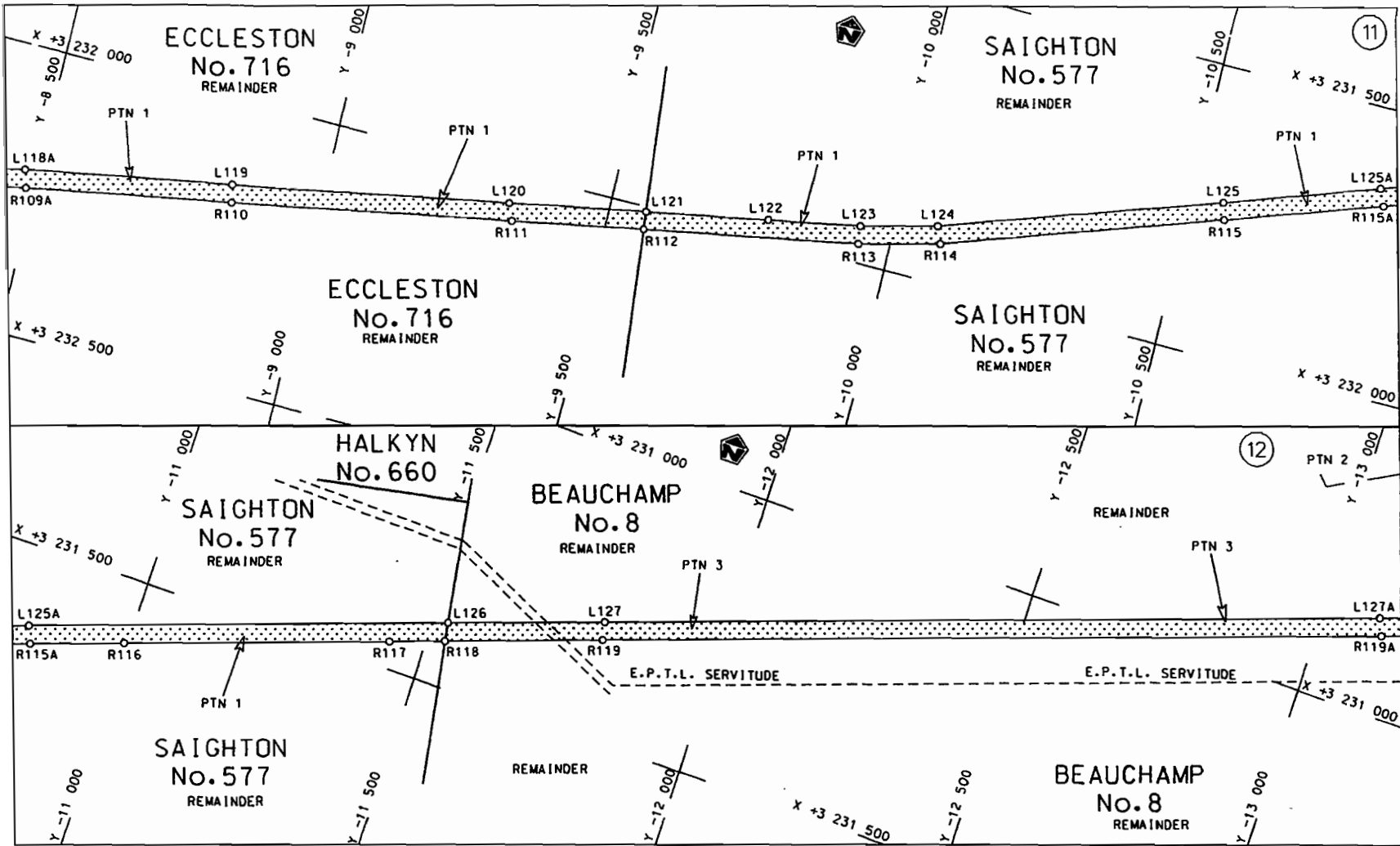


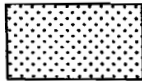
<p>Die Suid Afrikaanse Nasionale Padogentskap Beperk The South African National Roads Agency Limited</p>	<p>Die figuur getoon The figure shown</p>	<p>steldie padreserwe voor van 'n gedeelte represents the road reserve of a portion van Nasionale Roete N8 of National Route N8</p>	<p>Vel Sheet 4 van 20 of of Plan P685/08</p>
--	---	---	--



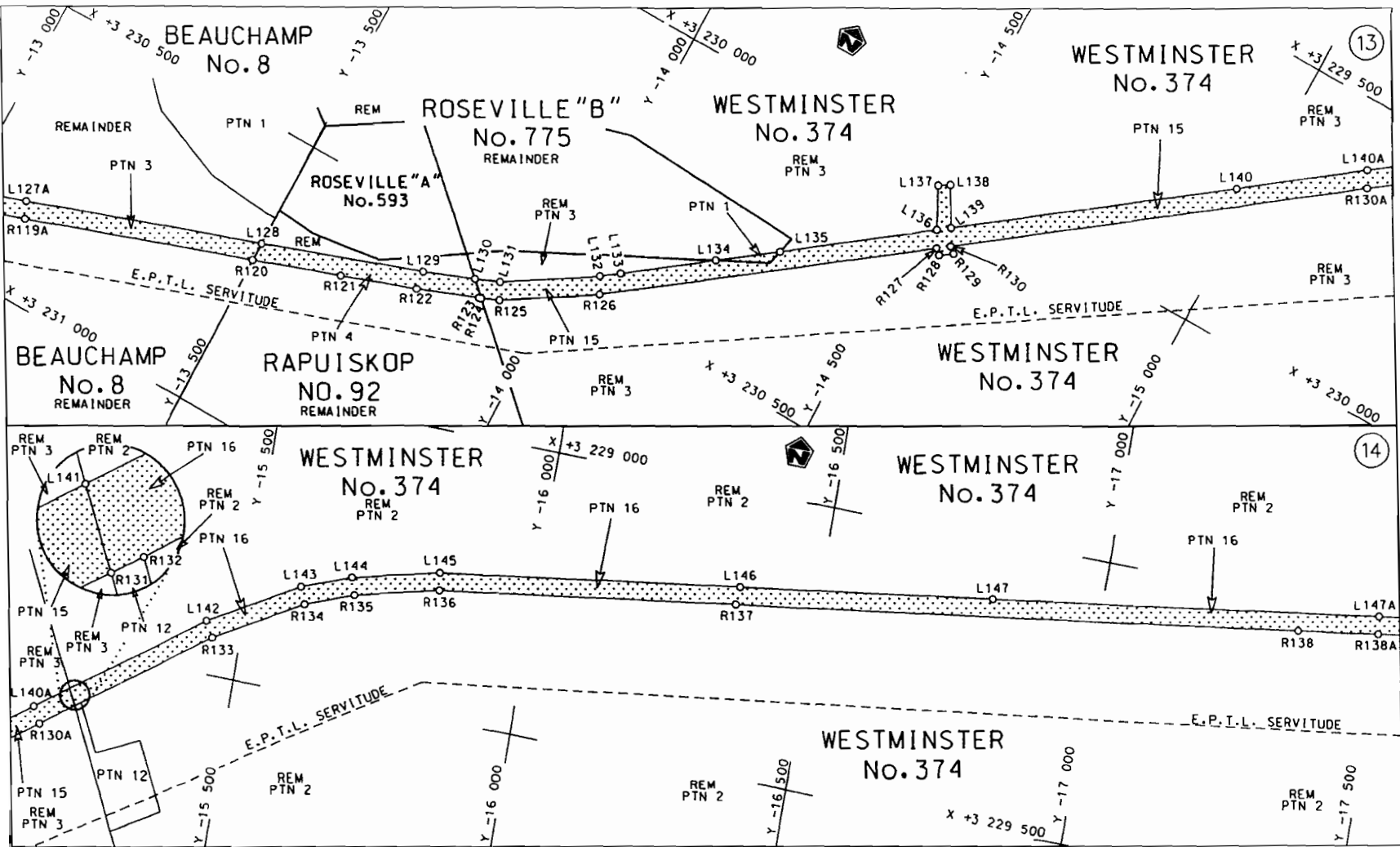
<p>Die Suid Afrikaanse Nasionale Padogentskap Beperk The South African National Roads Agency Limited</p>	<p>Die figuur getoon The figure shown</p>		<p>steldie padreserwe voor van 'n gedeelte represents the road reserve of a portion van Nasionale Roete N8 of National Route N8</p> <p>Seksie 12 Section</p>	<p>Vel Sheet 5 van 20 of Plan P685/08</p>
--	---	--	--	---


D.O.9.A



<p>Die Suid Afrikaanse Nasionale Padagentskop Beperk The South African National Roads Agency Limited</p>	<p>Die figuur getoon The figure shown</p>		<p>steldie padreserwe voor van 'n gedeelte represents the road reserve of a portion van Nasionale Roete of National Route</p> <p>N8</p>	<p>Vel Sheet 6 van of 20</p> <p>Plan P685/08</p>
--	---	--	---	--

D.O.9.A

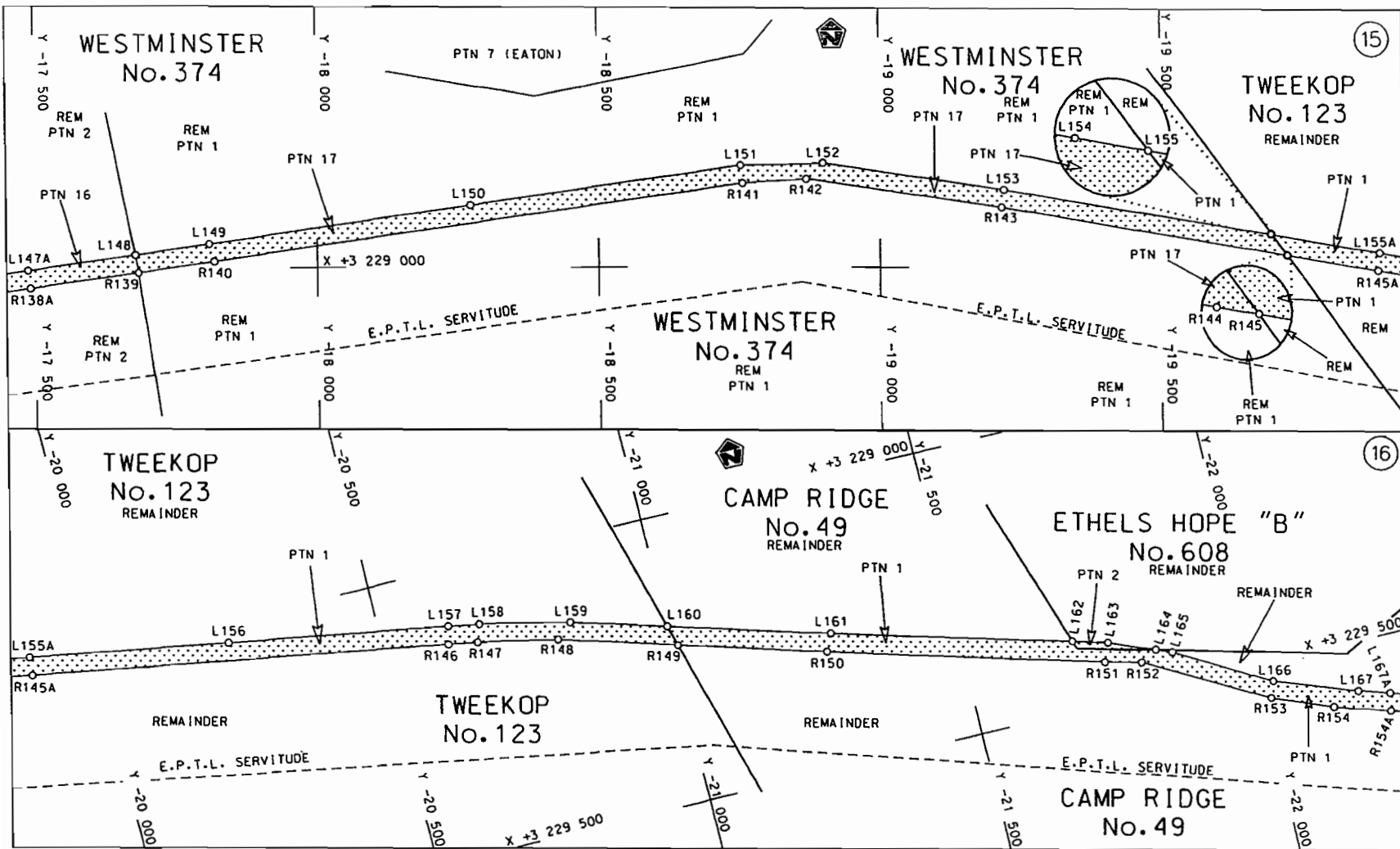


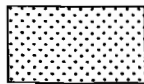
Die Suid Afrikaanse Nasionale Podagentskap Beperk The South African National Roads Agency Limited	Die figuur getoon The figure shown		steldie padreserwe voor van 'n gedeelte represents the road reserve of a portion van Nasionale Roete N8 of National Route N8 Seksie Section 12	Vel Sheet 7 van of 20 Plan P685/08
--	---------------------------------------	--	--	--

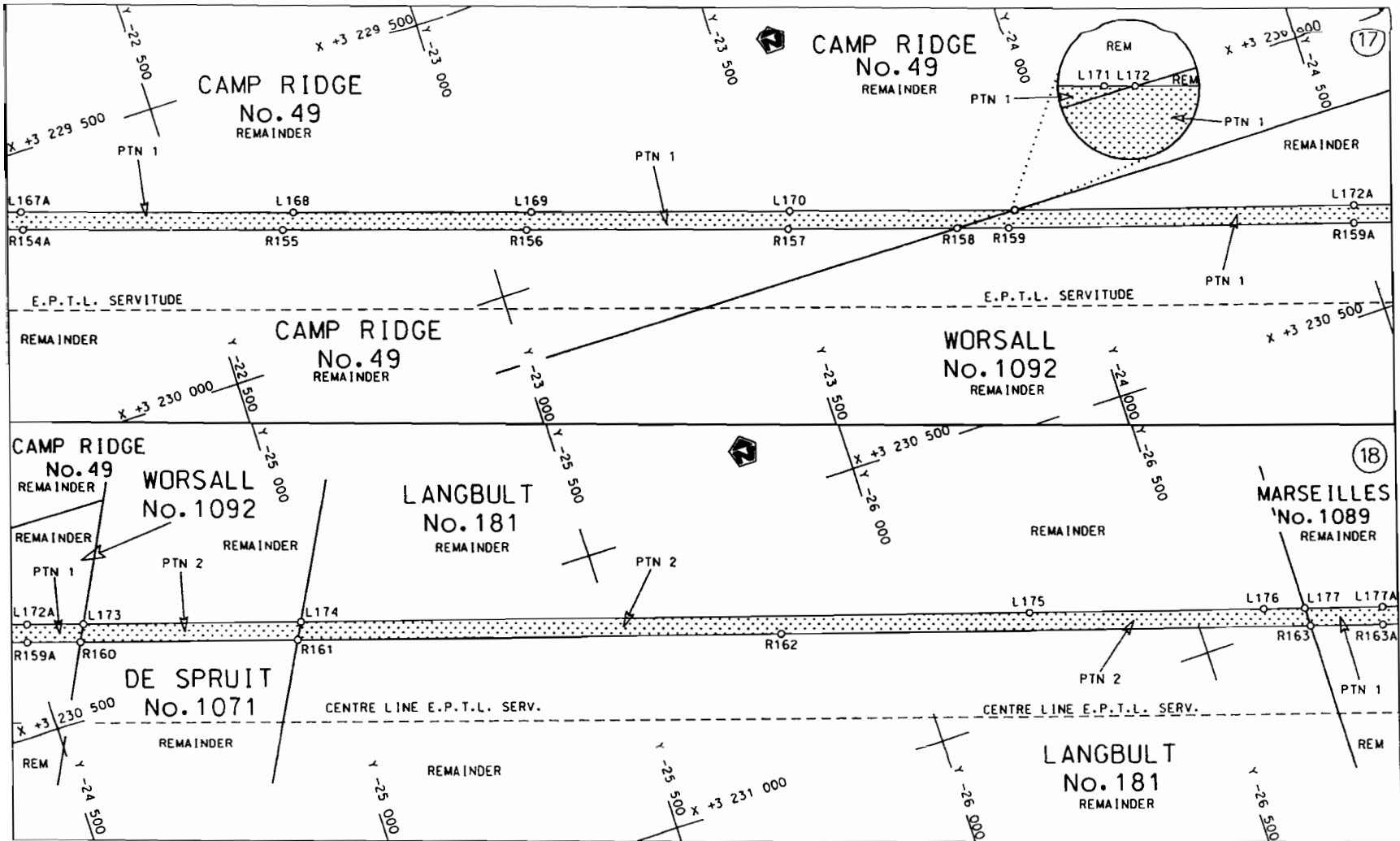
D.O.9.A


STAATSKOERANT, 15 MEI 2009

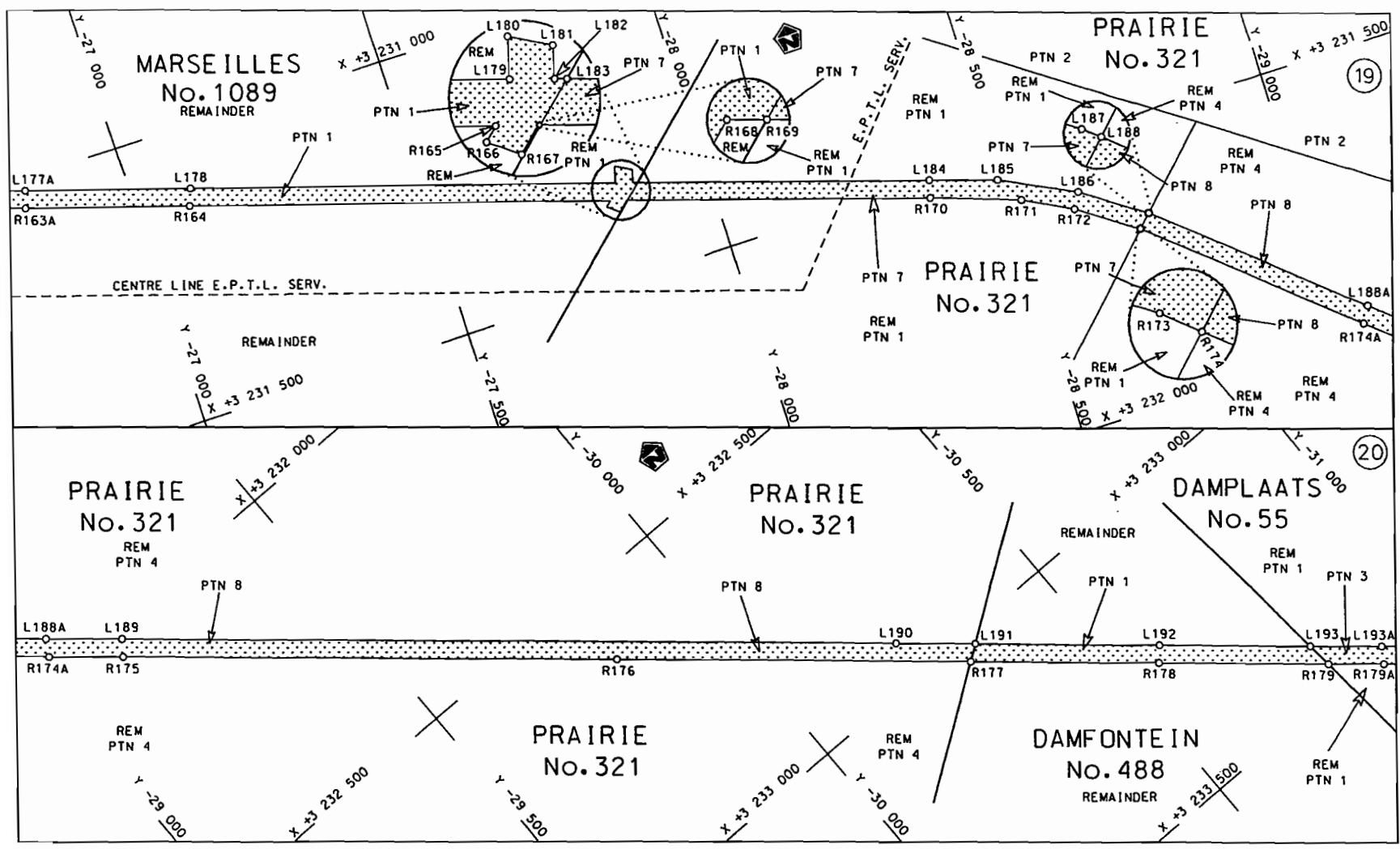
No. 32176 11

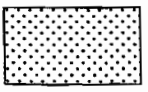


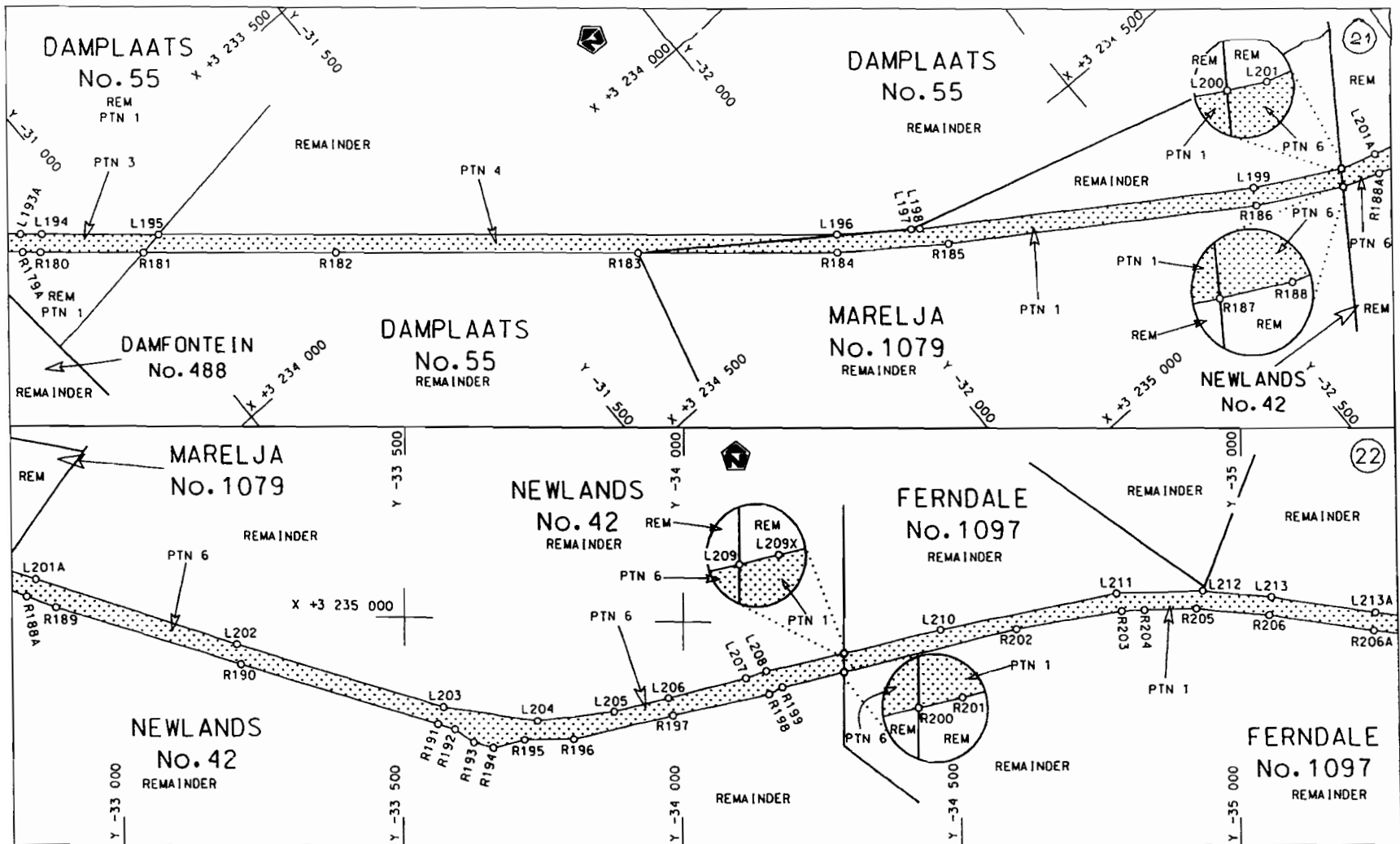
Die Suid Afrikaanse Nasionale Padagentskap Beperk The South African National Roads Agency Limited	Die figuur getoon The figure shown		steldie padreserwe voor van 'n gedeelte represents the road reserve of a portion van Nasionale Roete N8 Seksie of National Route Section	12	Vel Sheet 8 van of 20 Plan P685/08
--	---------------------------------------	--	---	----	---------------------------------------



<p>Die Suid Afrikaanse Nasionale Padagentskap Beperk The South African National Roads Agency Limited</p>	<p>Die figuur getoon The figure shown</p>		<p>steld die padreserwe voor van 'n gedeelte represents the road reserve of a portion van Nasionale Roete of National Route</p> <p>N8 Seksie 12</p>	<p>Vel Sheet 9 van 20</p> <p>Plan P685/08</p>
--	---	--	---	---



Die Suid Afrikaanse Nasionale Padagentskap Beperk The South African National Roads Agency Limited	Die figuur getoon The figure shown		steldie padreserwe voor van 'n gedeelte represents the road reserve of a portion van Nasionale Roete N8 Seksie 12 of National Route Section	Vel Sheet 10 van 20 Plan P685/08
--	---------------------------------------	--	--	-------------------------------------



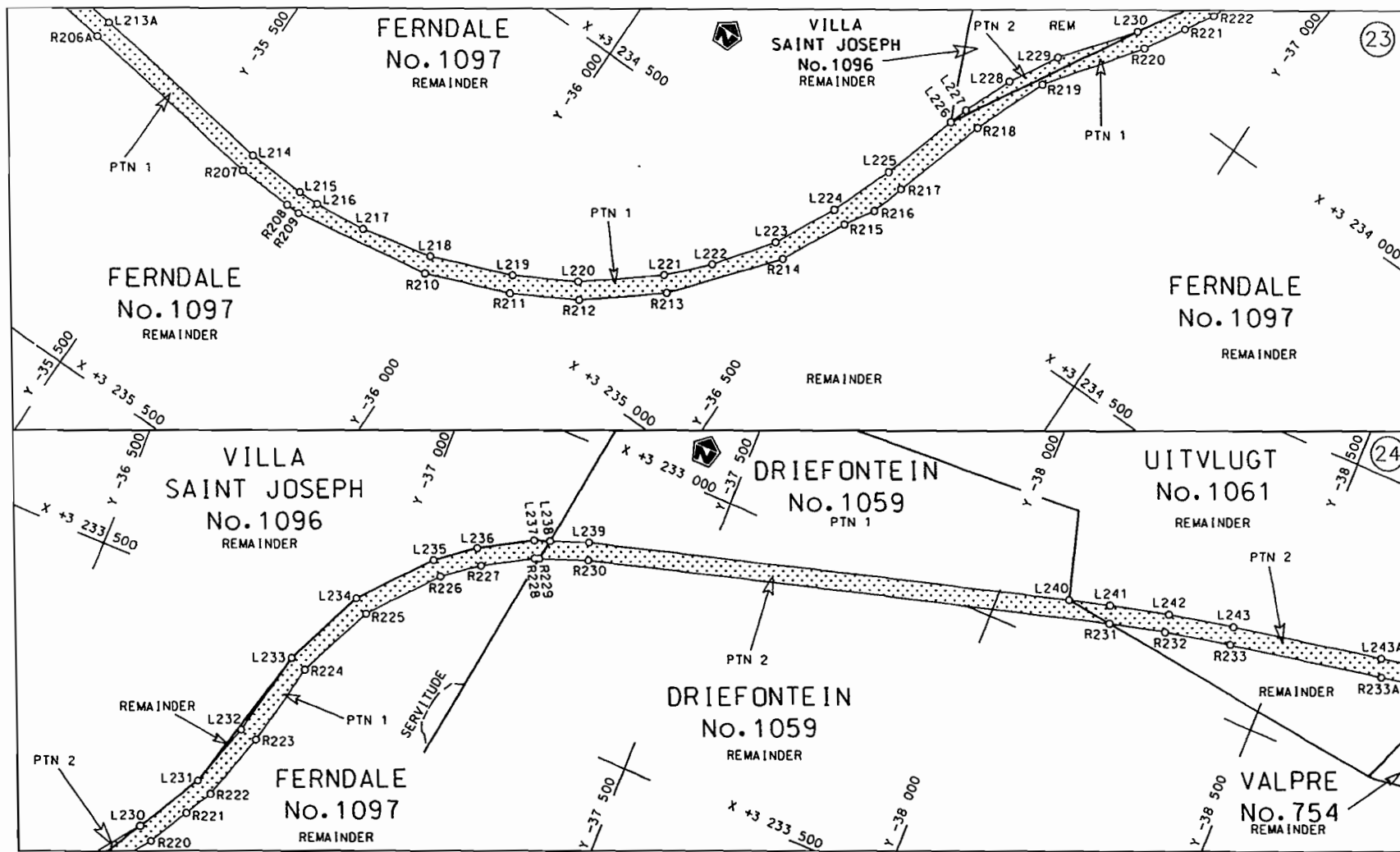
STATSKOERANT, 15 MEI 2009

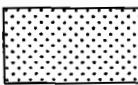
No. 32176 15

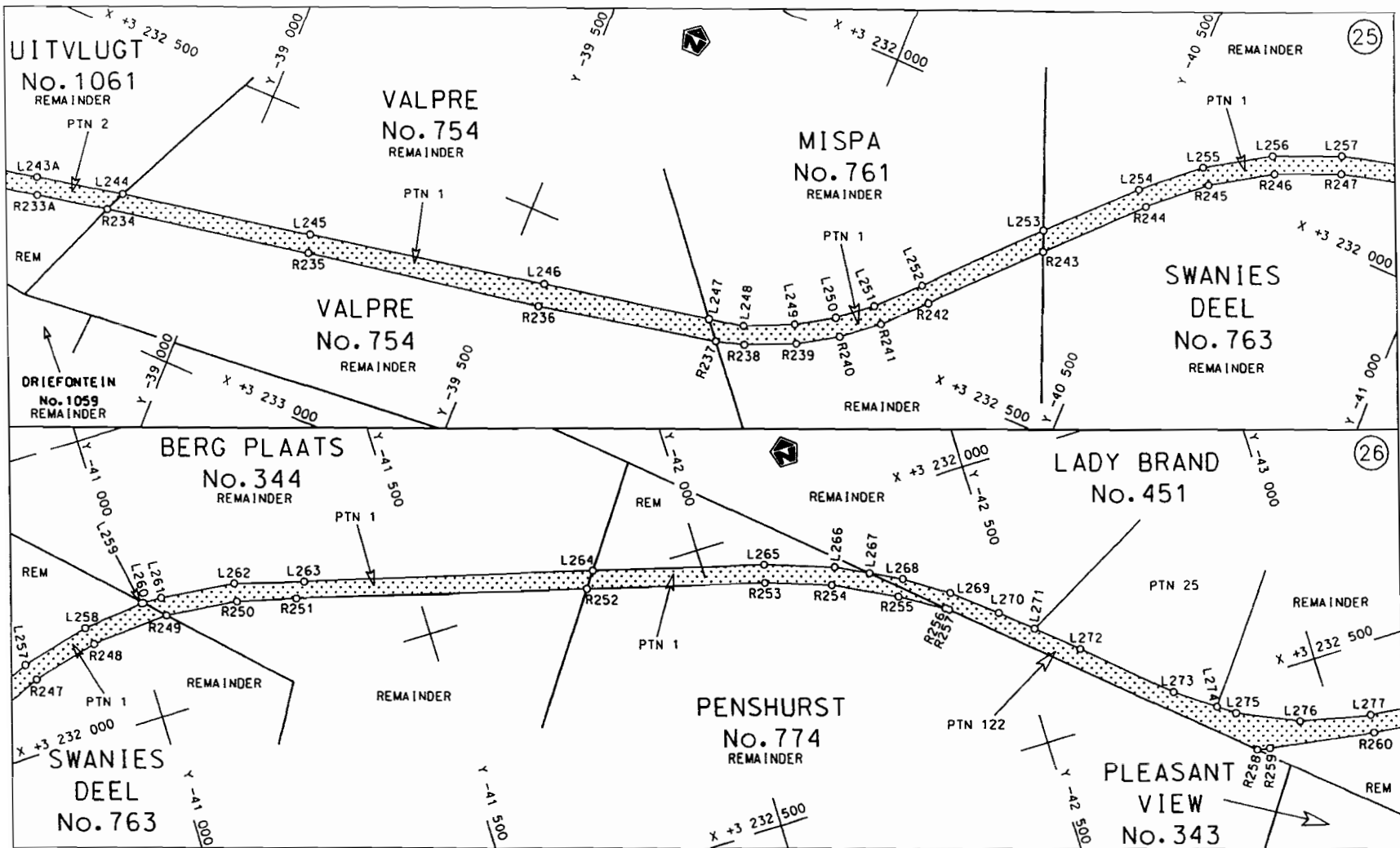
<p>Die Suid Afrikaanse Nasionale Padagentskap Beperk The South African National Roads Agency Limited</p>	<p>Die figuur getoon The figure shown</p>	<p>steldie padreserwe voor van 'n gedeelte represents the road reserve of a portion van Nasionale Roete of National Route</p> <p style="text-align: right;">N8</p>	<p>Vel Sheet 11 of 20</p> <p>Plan P685/08</p>
--	---	--	---

12

D.O.9.A




<p>Die Suid Afrikaanse Nasionale Padogentskop Beperk The South African National Roads Agency Limited</p>	<p>Die figuur getoon The figure shown</p> 	<p>steldie padreserve voor van 'n gedeelte represents the road reserve of a portion van Nasionale Roete N8 Sektie 12 of National Route N8 Section 12</p>	<p>Vel Sheet 12 van of 20 Plan P685/08</p>
--	--	--	--



Die Suid Afrikaanse Nasionale Padagentskap Beperk
The South African National Roads Agency Limited

Die figuur getoon
The figure shown



steldie padreserwe voor van 'n gedeelte
represents the road reserve of a portion
van Nasionale Roete N8
of National Route N8

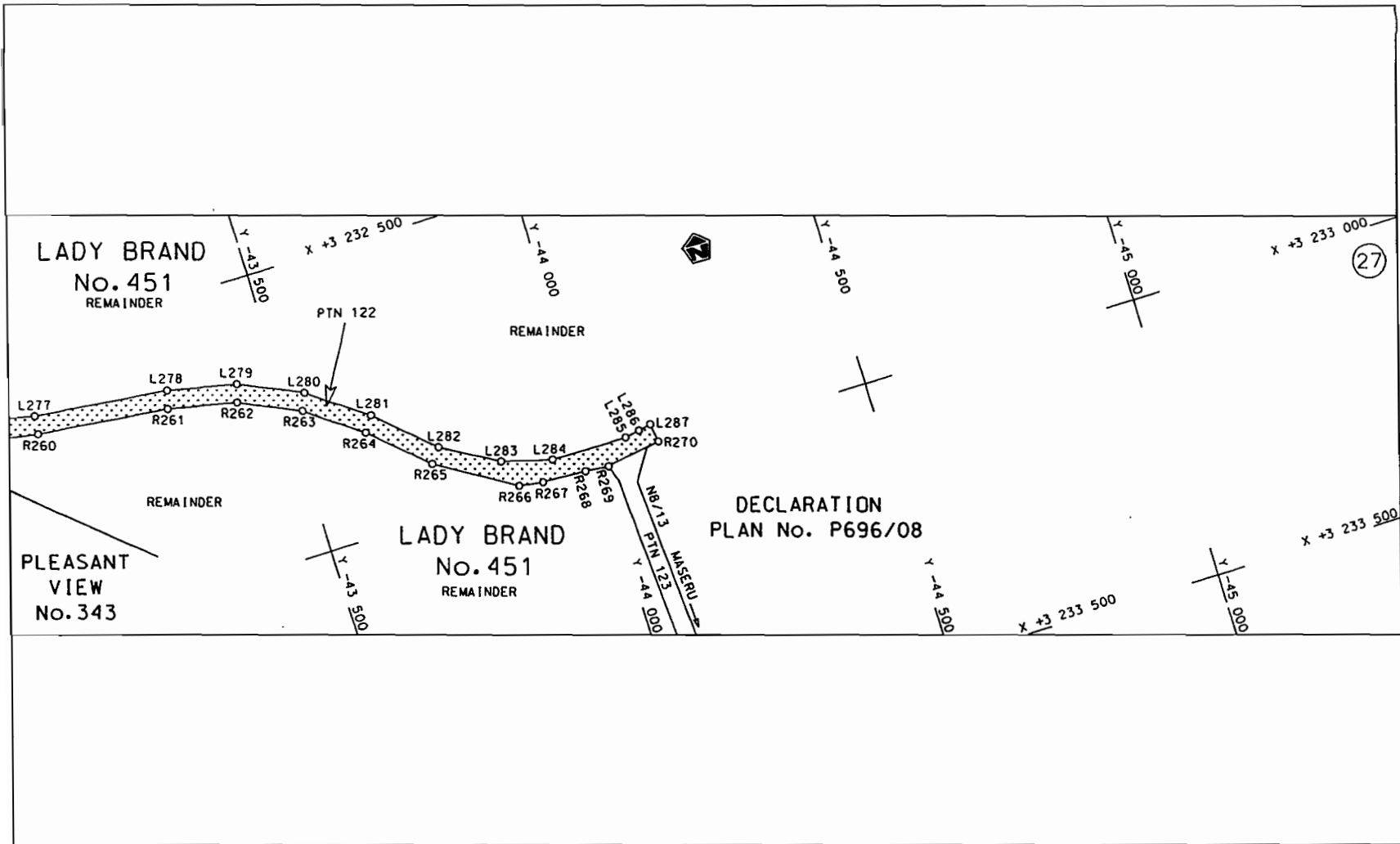
Seksie Section 12

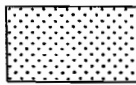
Vel Sheet 13 van of 20
Plan P685/08

D.O.9.A

STAATSKOERANT, 15 MEI 2009

No. 32176 17



<p>Die Suid Afrikaanse Nasionale Padogentskop Beperk The South African National Roads Agency Limited</p>	<p>Die figuur getoon The figure shown</p>		<p>steldie padreserwe voor van 'n gedeelte represents the road reserve of a portion van Nasionale Roete N8 of National Route N8</p> <p>Seksie 12 Section</p>	<p>Vel Sheet 14 van of 20 Plan P685/08</p>
--	---	--	--	--

D.O.9.A

PADRESERWE KOÖRDINATE / ROAD RESERVE CO-ORDINATES						
LINKERKANT/LEFT HAND SIDE				REGTERKANT/RIGHT HAND SIDE		
	Y	X	WG 27°		Y	X
L1	14 685.84	3 234 523.73		R1	14 669.44	3 234 550.58
L2	14 344.22	3 234 423.83		R2	14 337.27	3 234 453.73
L3	13 974.41	3 234 316.29		R3	13 963.39	3 234 346.91
L4	13 868.11	3 234 294.13		R4	13 859.66	3 234 333.52
L5	13 806.57	3 234 287.64		R5	13 746.77	3 234 325.86
L6	13 746.41	3 234 292.18		R6	13 687.37	3 234 329.50
L7	13 685.08	3 234 297.69		R7	13 590.36	3 234 343.97
L8	13 586.24	3 234 312.51		R8	13 245.27	3 234 415.16
L9	13 222.63	3 234 388.24		R9	12 987.52	3 234 474.10
L10	13 131.68	3 234 402.38		R10	12 731.94	3 234 522.14
L11	13 133.48	3 234 373.52		R11	12 674.20	3 234 538.09
L12	13 135.43	3 234 342.34		R12	12 435.03	3 234 587.43
L13	13 100.74	3 234 341.43		R13	12 380.21	3 234 598.99
L14	13 092.87	3 234 381.94		R14	12 340.58	3 234 603.24
L15	13 088.62	3 234 403.81		R15	11 478.05	3 234 782.07
L16	13 086.82	3 234 407.27		R16	11 268.16	3 234 826.15
L17	13 081.08	3 234 412.77		R17	11 261.11	3 234 827.63
L18	12 995.06	3 234 431.08		R18	11 126.50	3 234 855.96
L19	12 960.70	3 234 441.88		R19	10 984.90	3 234 887.99
L20	12 705.36	3 234 494.84		R20	10 891.66	3 234 908.83
L21	12 665.52	3 234 499.25		R21	10 754.46	3 234 935.90
L22	12 453.56	3 234 543.30		R22	10 097.62	3 235 089.36
L23	12 371.73	3 234 560.22		R23	9 262.28	3 235 285.09
L24	12 333.07	3 234 572.09		R24	8 850.12	3 235 393.80
L25	11 848.88	3 234 672.41		R25	8 528.10	3 235 486.94
L26	11 549.83	3 234 734.56		R26	8 135.44	3 235 606.87
L27	11 253.09	3 234 793.40		R27	8 067.34	3 235 639.45
L28	11 118.01	3 234 820.18		R28	8 018.52	3 235 663.72
L29	10 909.26	3 234 866.81		R29	8 010.59	3 235 666.86
L30	10 088.46	3 235 059.11		R30	7 946.61	3 235 692.15
L31	9 814.59	3 235 122.89		R31	7 822.84	3 235 773.16
L32	9 258.73	3 235 254.51		R32	7 712.64	3 235 847.27
L33	8 994.75	3 235 318.35		R33	7 540.45	3 235 969.54
L34	8 812.55	3 235 371.24		R34	7 405.22	3 236 038.79
L35	8 626.36	3 235 425.29		R35	7 347.46	3 236 061.17
L36	8 524.40	3 235 454.81		R36	7 209.40	3 236 097.27
L37	8 380.00	3 235 496.64		R37	7 031.91	3 236 135.25
L38	8 258.67	3 235 528.41		R38	6 818.44	3 236 188.71
L39	8 094.85	3 235 580.98		R39	6 789.28	3 236 194.55
L40	8 014.80	3 235 612.15		R40	6 694.06	3 236 219.68
L41	7 970.64	3 235 629.34		R41	6 567.20	3 236 254.50
L42	7 922.16	3 235 655.68		R42	6 470.66	3 236 268.27
L43	7 853.68	3 235 697.36		R43	6 469.93	3 236 268.37
L44	7 561.44	3 235 907.88		R44	6 428.97	3 236 274.76
L45	7 460.04	3 235 969.53		R45	6 348.60	3 236 287.83
L46	7 434.66	3 235 982.36		R46	6 236.57	3 236 290.79
L47	7 363.82	3 236 009.75		R47	6 118.07	3 236 280.21
L48	7 297.19	3 236 037.40		R48	6 028.85	3 236 261.23
L49	7 259.95	3 236 046.22		R49	5 929.25	3 236 225.91
L50	6 791.47	3 236 155.64		R50	5 797.49	3 236 167.72
L51	6 752.24	3 236 161.42		R51	5 383.09	3 235 986.37

Vel	15	Van	20	P685/08
Sheet		of		

PADRESERWE KOÖRDINATE / ROAD RESERVE CO-ORDINATES						
LINKERKANT/LEFT HAND SIDE				REGTERKANT/RIGHT HAND SIDE		
	Y	X	WG 27°		Y	X
L52	6 720.14	3 236 172.31		R52	5 102.61	3 235 866.77
L53	6 518.90	3 236 218.52		R53	4 996.24	3 235 804.27
L54	6 457.62	3 236 233.43		R54	4 916.19	3 235 743.38
L55	6 456.10	3 236 233.80		R55	4 840.86	3 235 671.71
L56	6 325.83	3 236 252.17		R56	4 743.94	3 235 571.33
L57	6 227.83	3 236 253.00		R57	4 700.81	3 235 516.77
L58	6 130.91	3 236 242.04		R58	4 650.19	3 235 452.74
L59	6 035.27	3 236 221.06		R59	4 644.48	3 235 445.51
L60	5 943.13	3 236 190.62		R60	4 502.23	3 235 280.83
L61	5 813.77	3 236 134.05		R61	4 356.12	3 235 110.56
L62	5 431.62	3 235 966.35		R62	4 341.94	3 235 113.63
L63	5 390.22	3 235 953.40		R63	4 337.95	3 235 125.64
L64	5 263.54	3 235 899.02		R64	4 331.20	3 235 119.46
L65	5 092.08	3 235 820.36		R65	4 319.24	3 235 108.52
L66	5 012.48	3 235 771.86		R66	4 325.89	3 235 084.63
L67	4 939.99	3 235 714.99		R67	4 319.97	3 235 068.49
L68	4 868.40	3 235 647.04		R68	4 157.16	3 234 879.31
L69	4 757.56	3 235 520.52		R69	4 027.83	3 234 729.04
L70	4 684.62	3 235 437.26		R70	3 941.84	3 234 629.69
L71	4 658.33	3 235 408.91		R71	3 840.85	3 234 532.92
L72	4 616.77	3 235 364.10		R72	3 783.82	3 234 488.67
L73	4 410.83	3 235 120.52		R73	3 714.02	3 234 449.51
L74	4 356.60	3 235 062.10		R74	3 604.90	3 234 395.43
L75	4 356.68	3 235 033.04		R75	3 451.52	3 234 347.17
L76	4 356.57	3 235 033.00		R76	2 999.73	3 234 255.20
L77	4 343.70	3 235 027.83		R77	2 695.09	3 234 193.40
L78	4 330.48	3 235 031.61		R78	2 448.40	3 234 143.35
L79	4 201.51	3 234 881.89		R79	637.61	3 233 776.23
L80	4 047.27	3 234 702.82		R80	125.85	3 233 672.38
L81	3 971.24	3 234 614.71		R81	-1 362.30	3 233 370.64
L82	3 907.02	3 234 547.51		R82	-1 761.35	3 233 290.15
L83	3 822.44	3 234 476.31		R83	-2 293.95	3 233 194.41
L84	3 737.36	3 234 421.02		R84	-2 479.52	3 233 161.33
L85	3 605.09	3 234 355.16		R85	-2 484.89	3 233 167.80
L86	3 452.31	3 234 314.75		R86	-2 486.40	3 233 176.71
L87	3 006.92	3 234 224.55		R87	-2 519.36	3 233 171.38
L88	2 686.45	3 234 159.47		R88	-2 521.67	3 233 161.26
L89	2 443.31	3 234 110.12		R89	-2 528.10	3 233 152.80
L90	1 612.41	3 233 941.44		R90	-3 008.00	3 233 066.40
L91	644.27	3 233 745.20		R91	-3 452.98	3 232 986.81
L92	115.95	3 233 638.21		R92	-3 944.99	3 232 898.60
L93	116.01	3 233 638.39		R93	-4 294.68	3 232 836.02
L94	- 778.46	3 233 456.85		R94	-4 309.78	3 232 833.31
L95	-1 763.96	3 233 257.35		R95	-4 842.96	3 232 737.61
L96	-2 285.23	3 233 163.96		R96	-5 355.30	3 232 659.31
L97	-2 483.24	3 233 128.61		R97	-5 815.57	3 232 589.12
L98	-2 503.39	3 233 109.01		R98	-6 256.35	3 232 522.34
L99	-2 534.00	3 233 105.65		R99	-6 750.46	3 232 447.48
L100	-2 534.26	3 233 105.92		R100	-6 970.64	3 232 413.97
L101	-2 545.28	3 233 117.37		R101	-7 135.34	3 232 388.90
L102	-3 449.68	3 232 955.54		R102	-7 152.25	3 232 413.89

Vel	16	Van	20	P685/08
Sheet		of		

PADRESERWE KOÖRDINATE / ROAD RESERVE CO-ORDINATES						
LINKERKANT/LEFT HAND SIDE				REGTERKANT/RIGHT HAND SIDE		
	Y	X	WG 27°		Y	X
L103	-3 939.93	3 232	867.49	R103	-7 177.00	3 232 400.27
L104	-4 291.79	3 232	804.53	R104	-7 166.45	3 232 384.33
L105	-4 292.75	3 232	804.36	R105	-7 569.99	3 232 323.35
L106	-4 836.76	3 232	706.73	R106	-7 667.47	3 232 313.14
L107	-5 350.63	3 232	628.16	R107	-8 101.05	3 232 283.94
L108	-6 260.14	3 232	490.01	R108	-8 380.44	3 232 264.19
L109	-6 979.15	3 232	380.78	R109	-8 381.90	3 232 264.09
L110	-7 115.46	3 232	360.07	R110	-8 844.00	3 232 177.80
L111	-7 100.81	3 232	338.14	R111	-9 337.11	3 232 083.78
L112	-7 136.46	3 232	339.74	R112	-9 568.22	3 232 039.56
L113	-7 147.18	3 232	355.16	R113	-9 945.91	3 231 967.31
L114	-7 548.60	3 232	294.57	R114	-10 086.44	3 231 930.42
L115	-7 597.09	3 232	288.91	R115	-10 567.01	3 231 761.77
L116	-8 102.62	3 232	252.33	R116	-10 992.73	3 231 611.32
L117	-8 375.95	3 232	232.90	R117	-11 438.71	3 231 453.55
L118	-8 377.28	3 232	232.81	R118	-11 531.98	3 231 420.06
L119	-8 837.58	3 232	146.94	R119	-11 798.15	3 231 326.04
L120	-9 325.28	3 232	054.23	R120	-13 499.78	3 230 723.75
L121	-9 565.13	3 232	008.36	R121	-13 649.06	3 230 671.27
L122	-9 780.79	3 231	967.11	R122	-13 776.02	3 230 626.36
L123	-9 942.13	3 231	936.06	R123	-13 880.45	3 230 585.41
L124	-10 074.83	3 231	900.97	R124	-13 884.37	3 230 583.77
L125	-10 558.26	3 231	732.15	R125	-13 914.96	3 230 571.00
L126	-11 526.96	3 231	388.09	R126	-14 066.39	3 230 474.64
L127	-11 791.65	3 231	295.35	R127	-14 552.96	3 230 108.42
L128	-13 500.15	3 230	690.73	R128	-14 562.77	3 230 117.17
L129	-13 771.88	3 230	594.59	R129	-14 583.77	3 230 102.41
L130	-13 858.43	3 230	559.83	R130	-14 573.15	3 230 093.20
L131	-13 900.88	3 230	542.78	R131	-15 230.63	3 229 597.82
L132	-14 051.78	3 230	446.43	R132	-15 240.75	3 229 590.21
L133	-14 081.92	3 230	423.92	R133	-15 449.01	3 229 433.29
L134	-14 219.24	3 230	320.47	R134	-15 601.45	3 229 344.74
L135	-14 312.12	3 230	250.51	R135	-15 685.60	3 229 311.49
L136	-14 538.17	3 230	080.21	R136	-15 830.53	3 229 275.42
L137	-14 503.50	3 230	011.34	R137	-16 355.34	3 229 199.30
L138	-14 522.03	3 229	999.45	R138	-17 350.94	3 229 055.75
L139	-14 558.38	3 230	064.73	R139	-17 679.42	3 229 008.48
L140	-14 971.13	3 229	754.37	R140	-17 814.53	3 228 989.03
L141	-15 216.57	3 229	569.53	R141	-18 756.99	3 228 853.57
L142	-15 433.35	3 229	406.28	R142	-18 870.65	3 228 845.76
L143	-15 589.77	3 229	315.59	R143	-19 216.95	3 228 895.12
L144	-15 675.87	3 229	281.83	R144	-19 721.05	3 228 978.66
L145	-15 825.93	3 229	244.68	R145	-19 724.13	3 228 979.15
L146	-16 357.87	3 229	167.40	R146	-20 614.05	3 229 126.73
L147	-16 805.11	3 229	103.00	R147	-20 665.60	3 229 135.25
L148	-17 674.64	3 228	977.56	R148	-20 806.89	3 229 164.62
L149	-17 805.86	3 228	958.63	R149	-21 011.11	3 229 223.55
L150	-18 271.54	3 228	891.55	R150	-21 267.35	3 229 297.50
L151	-18 753.46	3 228	822.49	R151	-21 744.58	3 229 429.83
L152	-18 900.60	3 228	818.74	R152	-21 808.30	3 229 445.59
L153	-19 221.47	3 228	864.54	R153	-22 015.72	3 229 559.30

Vel	17	Van	20	P685/08
Sheet		of		

PADRESERWE KOÖRDINATE / ROAD RESERVE CO-ORDINATES						
LINKERKANT/LEFT HAND SIDE				REGTERKANT/RIGHT HAND SIDE		
	Y	X	WG 27°		Y	X
L154	-19 693.91	3 228 942.49		R154	-22 121.89	3 229 600.64
L155	-19 696.78	3 228 942.97		R155	-22 662.10	3 229 771.11
L156	-20 233.96	3 229 032.27		R156	-23 077.60	3 229 902.26
L157	-20 620.99	3 229 096.21		R157	-23 525.47	3 230 042.65
L158	-20 676.02	3 229 105.68		R158	-23 814.21	3 230 132.71
L159	-20 834.86	3 229 140.79		R159	-23 903.10	3 230 160.43
L160	-21 000.64	3 229 188.10		R160	-24 585.49	3 230 369.06
L161	-21 281.85	3 229 268.36		R161	-24 958.04	3 230 482.95
L162	-21 696.72	3 229 381.65		R162	-25 785.43	3 230 735.91
L163	-21 757.99	3 229 398.38		R163	-26 692.38	3 231 013.06
L164	-21 837.62	3 229 430.51		R164	-27 094.41	3 231 135.95
L165	-21 864.67	3 229 441.42		R165	-27 818.00	3 231 357.47
L166	-22 026.10	3 229 531.59		R166	-27 808.43	3 231 365.96
L167	-22 171.60	3 229 583.65		R167	-27 829.02	3 231 381.56
L168	-22 689.00	3 229 747.05		R168	-27 846.27	3 231 366.03
L169	-23 095.23	3 229 875.19		R169	-27 847.94	3 231 366.55
L170	-23 538.15	3 230 013.24		R170	-28 366.89	3 231 527.47
L171	-23 923.11	3 230 133.91		R171	-28 522.99	3 231 580.61
L172	-23 923.43	3 230 134.01		R172	-28 609.10	3 231 624.49
L173	-24 600.13	3 230 340.84		R173	-28 710.29	3 231 693.43
L174	-24 973.23	3 230 454.88		R174	-28 710.44	3 231 693.56
L175	-26 220.15	3 230 835.99		R175	-29 139.75	3 232 056.15
L176	-26 621.33	3 230 958.50		R176	-29 817.07	3 232 630.05
L177	-26 692.62	3 230 980.35		R177	-30 302.96	3 233 041.95
L178	-27 105.50	3 231 106.93		R178	-30 561.35	3 233 261.00
L179	-27 837.13	3 231 330.49		R179	-30 794.27	3 233 457.79
L180	-27 844.99	3 231 302.58		R180	-30 894.76	3 233 542.69
L181	-27 873.09	3 231 317.65		R181	-31 033.98	3 233 658.88
L182	-27 867.06	3 231 339.69		R182	-31 300.22	3 233 881.08
L183	-27 875.29	3 231 342.24		R183	-31 715.56	3 234 227.75
L184	-28 375.16	3 231 496.95		R184	-31 990.78	3 234 457.27
L185	-28 493.19	3 231 534.13		R185	-32 153.56	3 234 572.25
L186	-28 624.97	3 231 597.21		R186	-32 621.57	3 234 877.00
L187	-28 732.92	3 231 671.40		R187	-32 761.62	3 234 952.09
L188	-28 733.13	3 231 671.57		R188	-32 762.22	3 234 952.41
L189	-29 158.93	3 232 031.16		R189	-32 878.10	3 234 993.46
L190	-30 220.63	3 232 930.84		R190	-33 209.24	3 235 086.37
L191	-30 330.00	3 233 023.58		R191	-33 560.44	3 235 184.97
L192	-30 582.60	3 233 237.77		R192	-33 591.13	3 235 193.66
L193	-30 789.73	3 233 412.91		R193	-33 625.86	3 235 216.81
L194	-30 916.82	3 233 520.37		R194	-33 661.39	3 235 225.43
L195	-31 075.28	3 233 652.57		R195	-33 718.05	3 235 210.22
L196	-32 010.28	3 234 432.60		R196	-33 805.85	3 235 207.54
L197	-32 118.39	3 234 510.63		R197	-33 981.78	3 235 163.35
L198	-32 131.25	3 234 519.70		R198	-34 154.45	3 235 123.75
L199	-32 637.81	3 234 850.04		R199	-34 177.99	3 235 110.84
L200	-32 779.81	3 234 926.27		R200	-34 289.02	3 235 083.33
L201	-32 780.48	3 234 926.63		R201	-34 289.18	3 235 083.29
L202	-33 201.57	3 235 051.75		R202	-34 597.56	3 235 002.93
L203	-33 570.59	3 235 155.14		R203	-34 786.06	3 234 969.49
L204	-33 740.84	3 235 176.49		R204	-34 826.85	3 234 966.22

Vel
Sheet18 Van 20
of

P685/08

PADRESERWE KOÖRDINATE / ROAD RESERVE CO-ORDINATES						
LINKERKANT/LEFT HAND SIDE				REGTERKANT/RIGHT HAND SIDE		
	Y	X	WG 27°		Y	X
L205	-33 876.79	3 235	158.23	R205	-34 919.51	3 234 963.75
L206	-33 973.81	3 235	132.95	R206	-35 050.79	3 234 973.67
L207	-34 112.65	3 235	095.88	R207	-35 577.28	3 235 041.64
L208	-34 149.20	3 235	083.60	R208	-35 675.21	3 235 045.12
L209	-34 288.89	3 235	050.95	R209	-35 700.90	3 235 045.45
L209X	-34 289.01	3 235	050.92	R210	-35 944.22	3 235 002.73
L210	-34 461.26	3 235	006.07	R211	-36 087.31	3 234 944.16
L211	-34 776.65	3 234	938.95	R212	-36 194.73	3 234 882.73
L212	-34 931.00	3 234	932.84	R213	-36 315.57	3 234 783.44
L213	-35 054.28	3 234	942.37	R214	-36 451.53	3 234 615.90
L214	-35 577.80	3 235	010.01	R215	-36 507.08	3 234 503.83
L215	-35 681.88	3 235	014.10	R216	-36 537.29	3 234 454.01
L216	-35 719.19	3 235	013.18	R217	-36 554.32	3 234 394.91
L217	-35 811.08	3 235	002.00	R218	-36 607.61	3 234 229.36
L218	-35 935.29	3 234	972.67	R219	-36 659.29	3 234 101.03
L219	-36 073.42	3 234	915.88	R220	-36 771.44	3 233 946.64
L220	-36 175.78	3 234	857.65	R221	-36 811.44	3 233 877.12
L221	-36 294.32	3 234	760.68	R222	-36 838.49	3 233 828.94
L222	-36 354.02	3 234	695.95	R223	-36 876.79	3 233 710.29
L223	-36 424.83	3 234	599.44	R224	-36 911.18	3 233 564.48
L224	-36 478.06	3 234	492.24	R225	-36 976.67	3 233 432.16
L225	-36 519.81	3 234	382.95	R226	-37 073.08	3 233 320.37
L226	-36 562.93	3 234	249.02	R227	-37 132.15	3 233 274.08
L227	-36 573.57	3 234	216.15	R228	-37 215.16	3 233 225.24
L228	-36 608.93	3 234	130.70	R229	-37 223.13	3 233 222.15
L229	-36 655.32	3 234	046.81	R230	-37 304.54	3 233 190.90
L230	-36 745.35	3 233	928.88	R231	-38 199.87	3 232 928.95
L231	-36 809.16	3 233	816.91	R232	-38 296.51	3 232 904.14
L232	-36 845.77	3 233	704.44	R233	-38 411.54	3 232 879.24
L233	-36 881.90	3 233	554.96	R234	-38 803.19	3 232 800.37
L234	-36 950.44	3 233	414.35	R235	-39 161.06	3 232 728.31
L235	-37 050.52	3 233	298.33	R236	-39 573.80	3 232 649.30
L236	-37 113.97	3 233	248.04	R237	-39 887.18	3 232 578.86
L237	-37 203.02	3 233	196.16	R238	-39 936.49	3 232 564.97
L238	-37 228.89	3 233	185.86	R239	-40 021.59	3 232 526.64
L239	-37 293.87	3 233	161.48	R240	-40 088.55	3 232 484.54
L240	-38 119.42	3 232	919.31	R241	-40 147.62	3 232 435.63
L241	-38 189.12	3 232	899.26	R242	-40 212.20	3 232 369.28
L242	-38 290.58	3 232	873.26	R243	-40 368.15	3 232 208.12
L243	-38 405.08	3 232	848.31	R244	-40 507.77	3 232 063.53
L244	-38 817.79	3 232	765.27	R245	-40 596.67	3 231 984.34
L245	-39 151.81	3 232	698.06	R246	-40 697.19	3 231 920.23
L246	-39 568.81	3 232	610.52	R247	-40 806.50	3 231 873.03
L247	-39 861.47	3 232	548.57	R248	-40 922.11	3 231 843.76
L248	-39 922.93	3 232	535.56	R249	-41 060.14	3 231 833.91
L249	-40 006.24	3 232	496.80	R250	-41 188.79	3 231 847.32
L250	-40 069.71	3 232	457.46	R251	-41 291.07	3 231 872.26
L251	-40 124.98	3 232	412.24	R252	-41 792.15	3 232 007.12
L252	-40 190.46	3 232	345.77	R253	-42 100.00	3 232 089.53
L253	-40 354.46	3 232	174.12	R254	-42 213.74	3 232 127.81
L254	-40 484.12	3 232	040.22	R255	-42 320.88	3 232 180.64

PADRESERWE KOÖRDINATE / ROAD RESERVE CO-ORDINATES						
LINKERKANT/LEFT HAND SIDE				REGTERKANT/RIGHT HAND SIDE		
	Y	X	WG 27°		Y	X
L255	-40 575.84	3 231	959.61	R256	-42 395.76	3 232 224.77
L256	-40 682.30	3 231	892.43	R257	-42 401.85	3 232 229.29
L257	-40 795.32	3 231	843.71	R258	-42 854.80	3 232 621.31
L258	-40 915.06	3 231	813.12	R259	-42 877.27	3 232 625.10
L259	-41 023.49	3 231	801.68	R260	-43 062.71	3 232 654.54
L260	-41 027.15	3 231	801.75	R261	-43 293.58	3 232 679.37
L261	-41 060.52	3 231	802.41	R262	-43 415.34	3 232 704.67
L262	-41 193.56	3 231	816.27	R263	-43 523.73	3 232 752.82
L263	-41 313.10	3 231	848.64	R264	-43 620.45	3 232 821.53
L264	-41 811.64	3 231	980.01	R265	-43 716.05	3 232 907.70
L265	-42 108.11	3 232	059.21	R266	-43 853.15	3 232 988.81
L266	-42 227.94	3 232	099.73	R267	-43 896.26	3 232 995.38
L267	-42 284.28	3 232	127.54	R268	-43 974.69	3 232 999.36
L268	-42 337.58	3 232	153.85	R269	-44 016.48	3 233 002.84
L269	-42 412.52	3 232	202.56	R270	-44 114.60	3 232 987.60
L270	-42 485.11	3 232	260.40			
L271	-42 537.42	3 232	304.62			
L272	-42 604.36	3 232	361.32			
L273	-42 742.14	3 232	482.20			
L274	-42 808.68	3 232	528.84			
L275	-42 837.66	3 232	549.18			
L276	-42 943.25	3 232	596.44			
L277	-43 066.08	3 232	623.19			
L278	-43 301.93	3 232	648.69			
L279	-43 424.06	3 232	674.44			
L280	-43 536.21	3 232	723.81			
L281	-43 637.95	3 232	795.37			
L282	-43 735.25	3 232	882.81			
L283	-43 834.92	3 232	939.20			
L284	-43 924.19	3 232	963.41			
L285	-44 060.80	3 232	964.47			
L286	-44 087.25	3 232	959.62			
L287	-44 109.76	3 232	955.08			

Vel	20	Van	20
Sheet		of	

P685/08