

**REPUBLIC OF SOUTH AFRICA  
REPUBLIEK VAN SUID-AFRIKA**

**Vol. 527**

**Pretoria, 15 May  
Mei 2009**

**No. 32178**

**CONTENTS****INHOUD**

<i>No.</i>	<i>Page No.</i>	<i>Gazette No.</i>	<i>No.</i>	<i>Bladsy No.</i>	<i>Koerant No.</i>
<b>GOVERNMENT NOTICE</b>			<b>GOEWERMENTSKENNISGEWING</b>		
<b>Transport, Department of</b>			<b>Vervoer, Departement van</b>		
<i>Government Notice</i>			<i>Goewermentskennisgewing</i>		
461			461		
South African National Roads Agency Limited and the National Roads Act (7/1998): The South African National Roads Agency Limited: Declaration amendment of National Road N10 Section 9: Amendment of Declaration No. 630 of 2005 .....	3	32178	Suid-Afrikaanse Nasionale Padagentskap Beperk en die Nasionale Paaie Wet (7/1998): Die Suid-Afrikaanse Nasionale Padagentskap Beperk: Verklaring wysiging van Nasionale Pad N10 Seksie 9: Wysiging van Verklaring No. 630 van 2005 .....	4	32178

---

**GOVERNMENT NOTICE**

---

**DEPARTMENT OF TRANSPORT**

No. 461

15 May 2009

**THE SOUTH AFRICAN NATIONAL ROADS  
AGENCY LIMITED****Registration No: 98/09584/06**

---

**DECLARATION AMENDMENT OF NATIONAL ROAD N10 SECTION 9**

AMENDMENT OF DECLARATION No. 630 OF 2005

By virtue of section 40(1)(b) of the South African National Roads Agency Limited and the National Roads Act, 1998 (Act No. 7 of 1998), I hereby amend declaration No. 630 of 2005, by substituting the section of the descriptive declaration from Prieska up to Marydale, with the subjoined sheets 1 to 15 of Plan No. P720/08.

**(National Road N10 Section 9: Prieska – Marydale)**

---

**MINISTER OF TRANSPORT**

---

# GOEWERMENTSKENNISGEWING

---

**DEPARTEMENT VAN VERVOER**

**No. 461**

**15 Mei 2009**

**DEPARTEMENT VAN VERVOER**

## **DIE SUID-AFRIKAANSE NASIONALE PADAGENTSKAP BEPERK**

**Registrasie No: 98/09584/06**

---

### **VERKLARING WYSIGING VAN NASIONALE PAD N10 SEKSIE 9.**

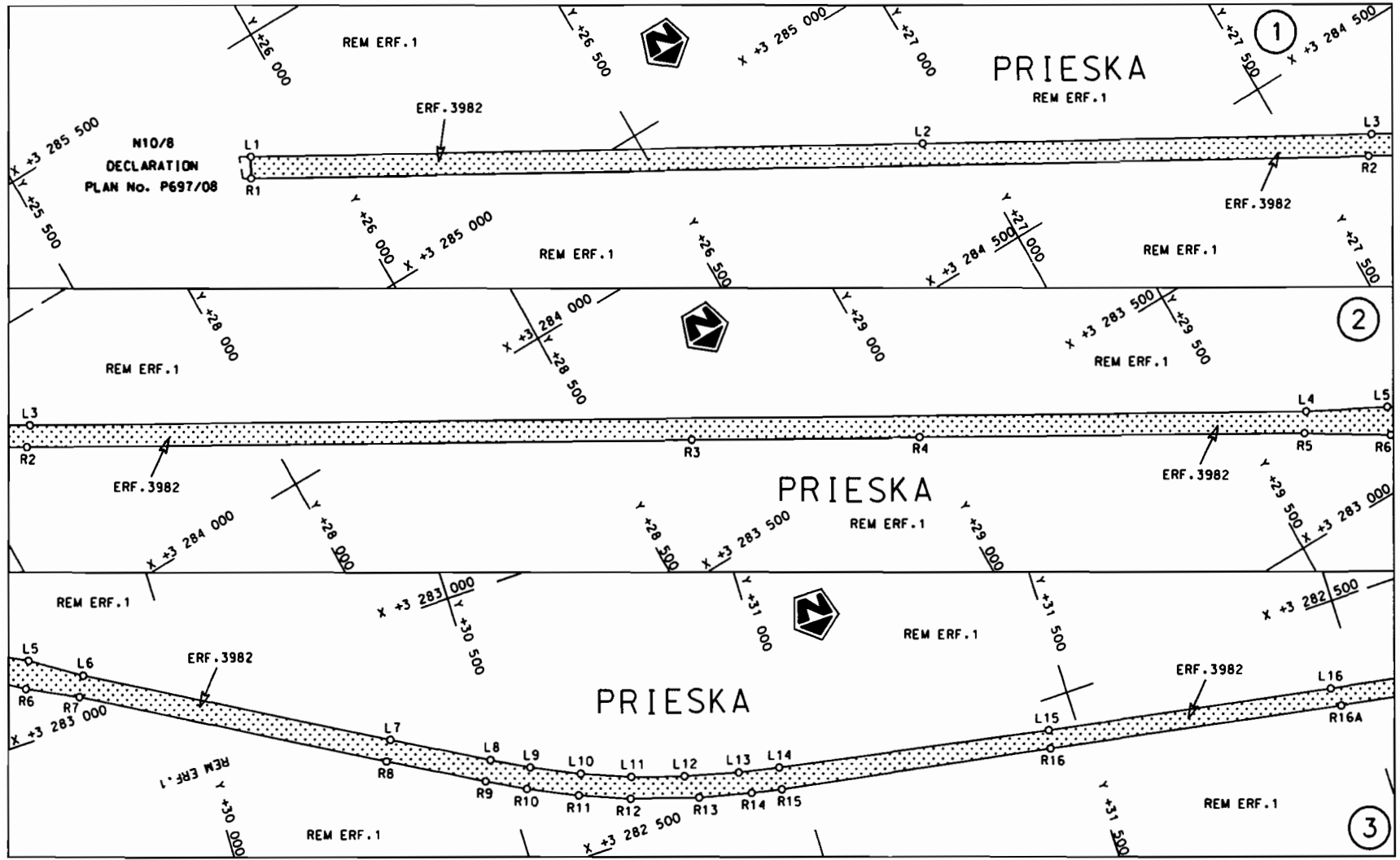
#### **WYSIGING VAN VERKLARING NO. 630 VAN 2005**

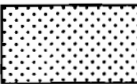
Kragtens Artikel 40(1)(b) van die Suid-Afrikaanse Nasionale Padagentskap Beperk en die Nasionale Paaie Wet, 1998 (Wet no. 7 van 1998), wysig ek hiermee verklaring no.630 van 2005, deur die gedeelte van die beskrywende verklaring vanaf Prieska tot by Marydale, te vervang met meegaande velle 1 tot 15 van Plan no. P720/08.

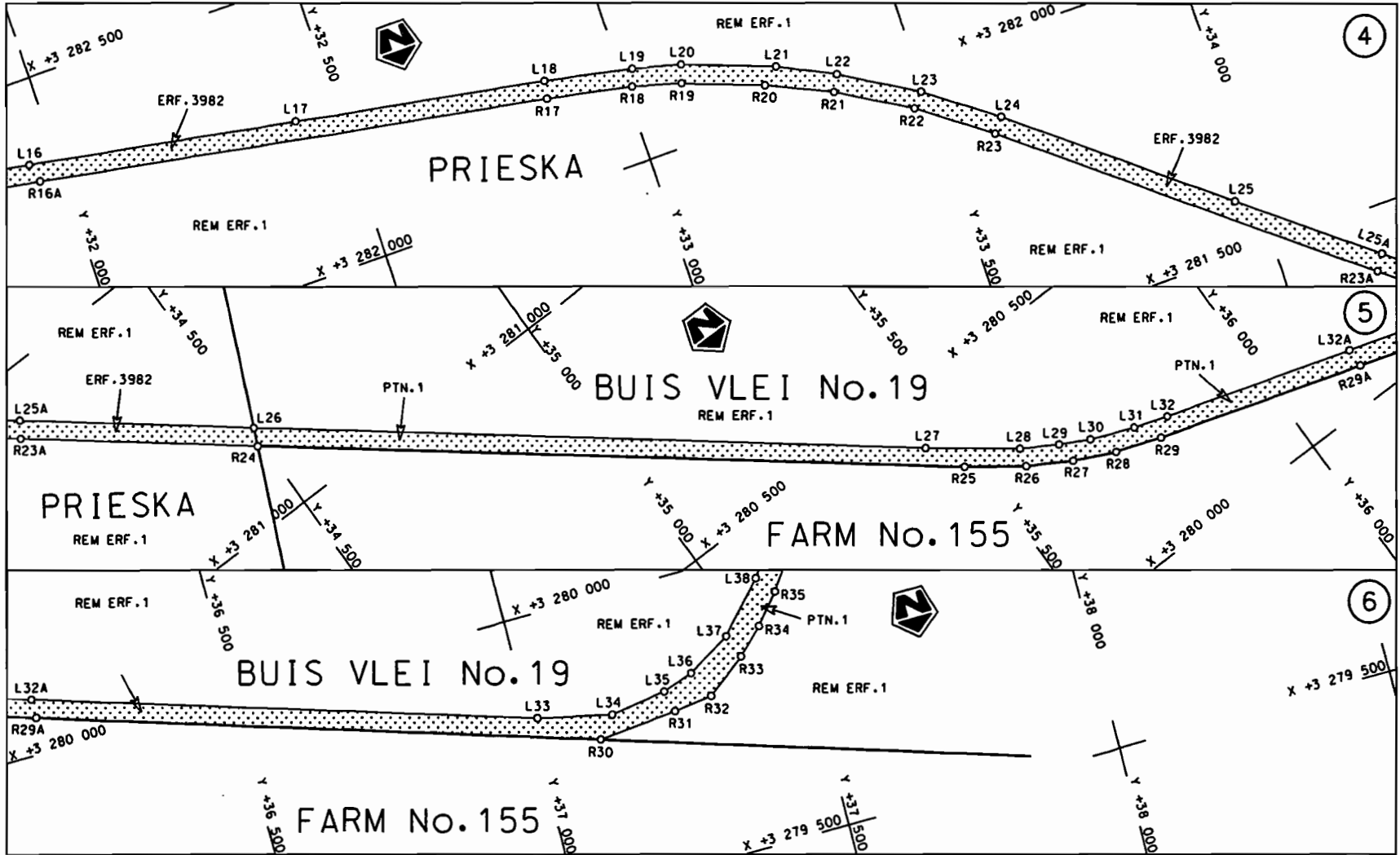
**(Nasionale Pad N10 Seksie 9: Prieska – Marydale)**




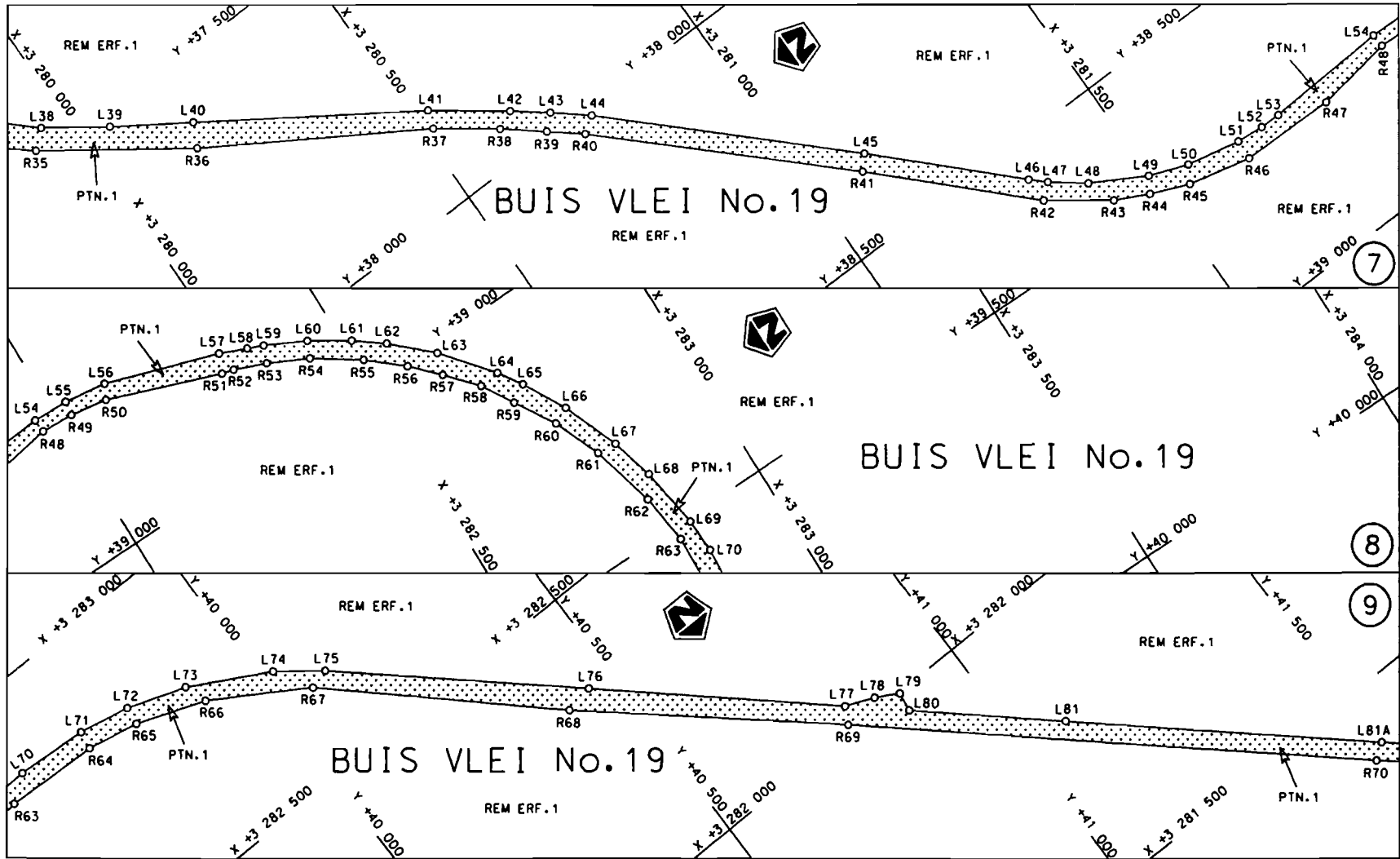
**MINISTER VAN VERVOER**

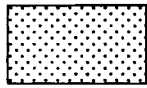


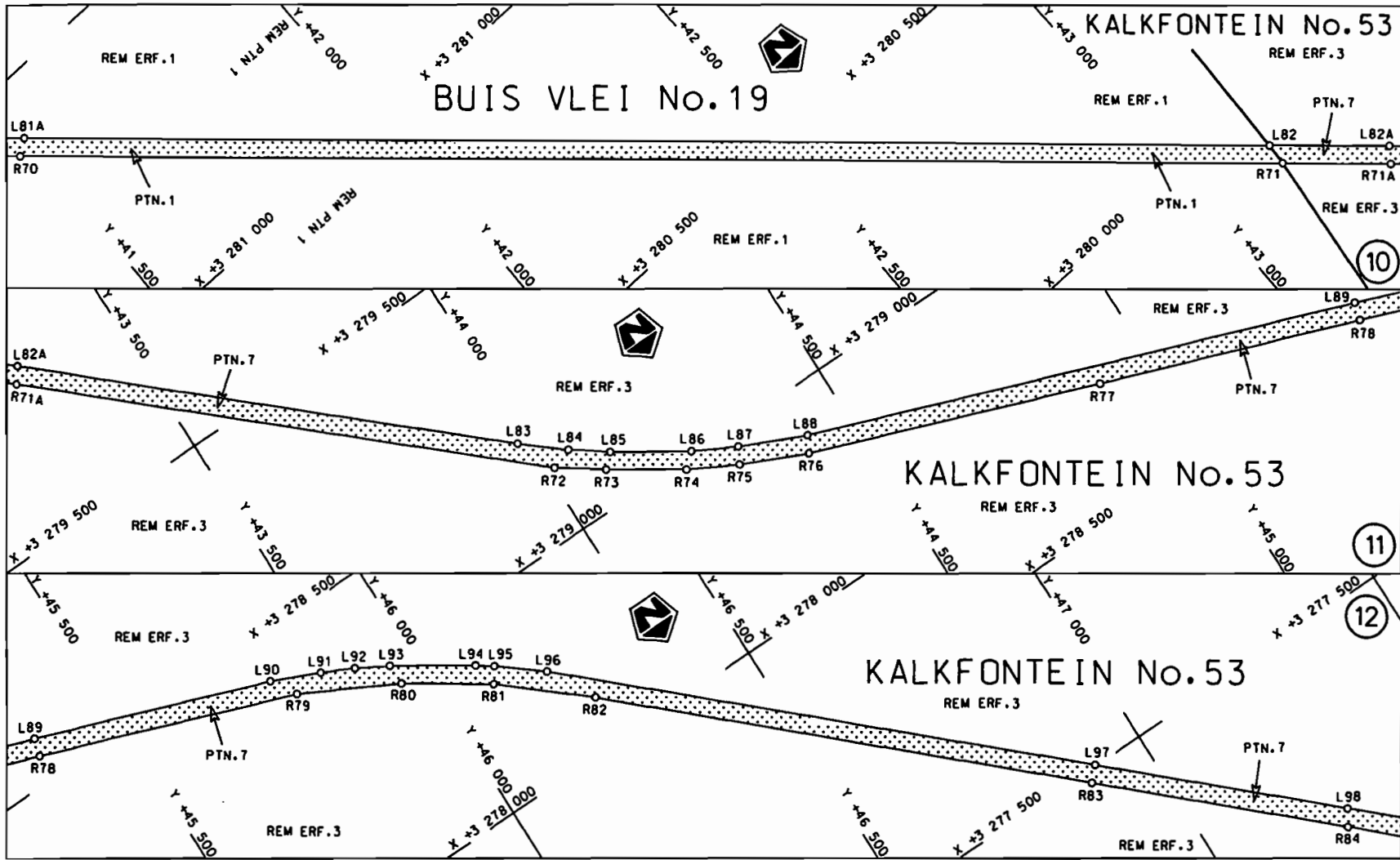
<p>Die Suid Afrikaanse Nasionale Padagentskap Beperk The South African National Roads Agency Limited</p>	<p>Die figuur getoon The figure shown</p>		<p>steldie padreserwe voor van 'n gedeelte represents the road reserve of a portion von Nasionale Roete N10 Sektie of National Route Section 9</p>	<p>Vel Sheet 1 von of 15 Plan P720/08</p>
--	---	--	--	---

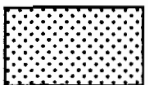


<p>Die Suid Afrikaanse Nasionale Padagentskap Beperk The South African National Roads Agency Limited</p>	<p>Die figuur getoon The figure shown</p>		<p>steldie padreserwe voor van 'n gedeelte represents the road reserve of a portion van Nasionale Roete N10 Seksie 9 of National Route</p>	<p>Vel Sheet 2 van 15 Plan P720/08</p>
--	---	--	--	--

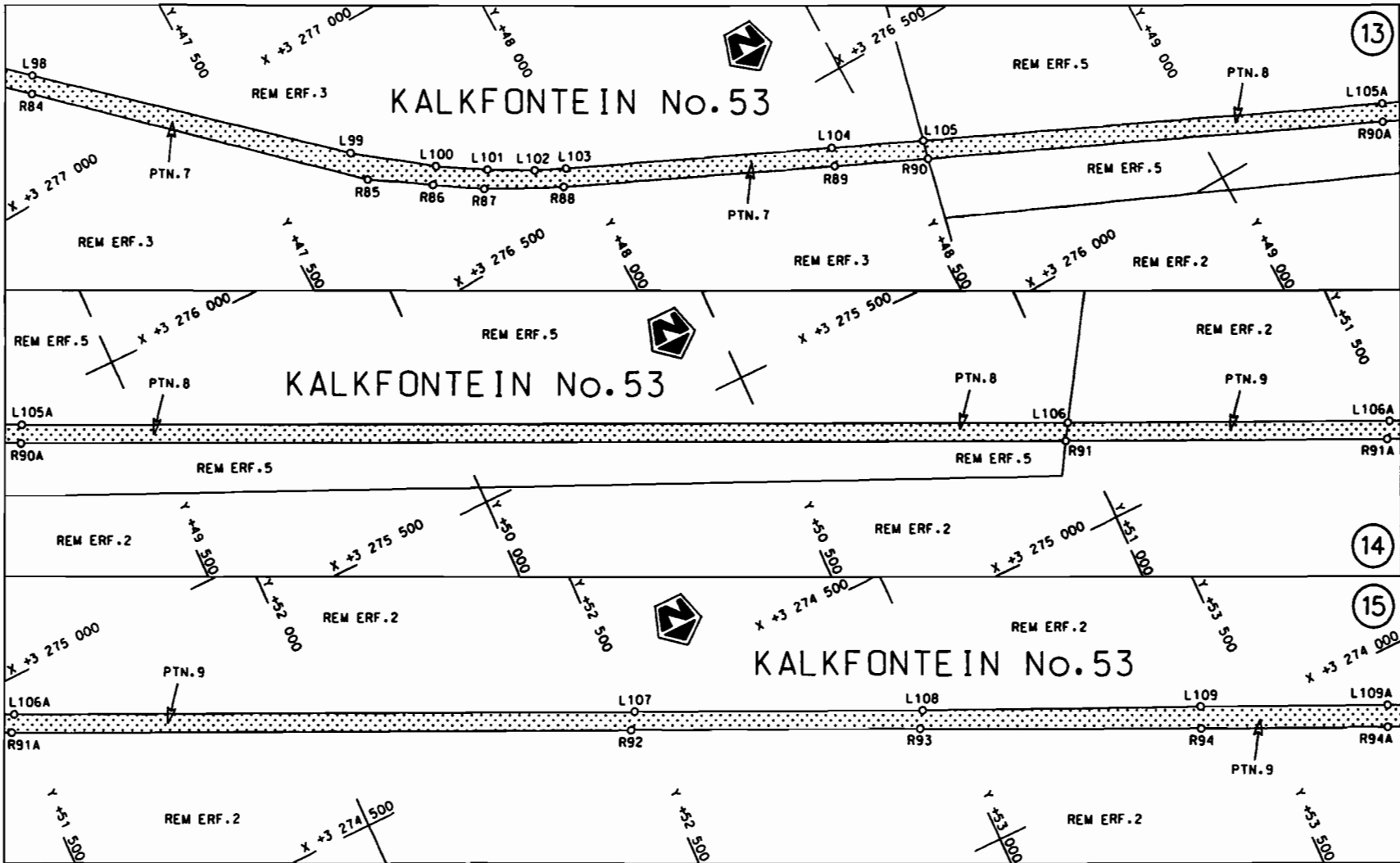


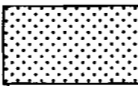
<p>Die Suid Afrikaanse Nasionale Padagentskap Beperk The South African National Roads Agency Limited</p>	<p>Die figuur getoon The figure shown</p>		<p>steldie padreserwe voor van 'n gedeelte represents the road reserve of a portion van Nasionale Roete N10 Seksie Section 9 of National Route</p>	<p>Vel Sheet 3 of 15 Plan P720/08</p>
--	---	--	--	---

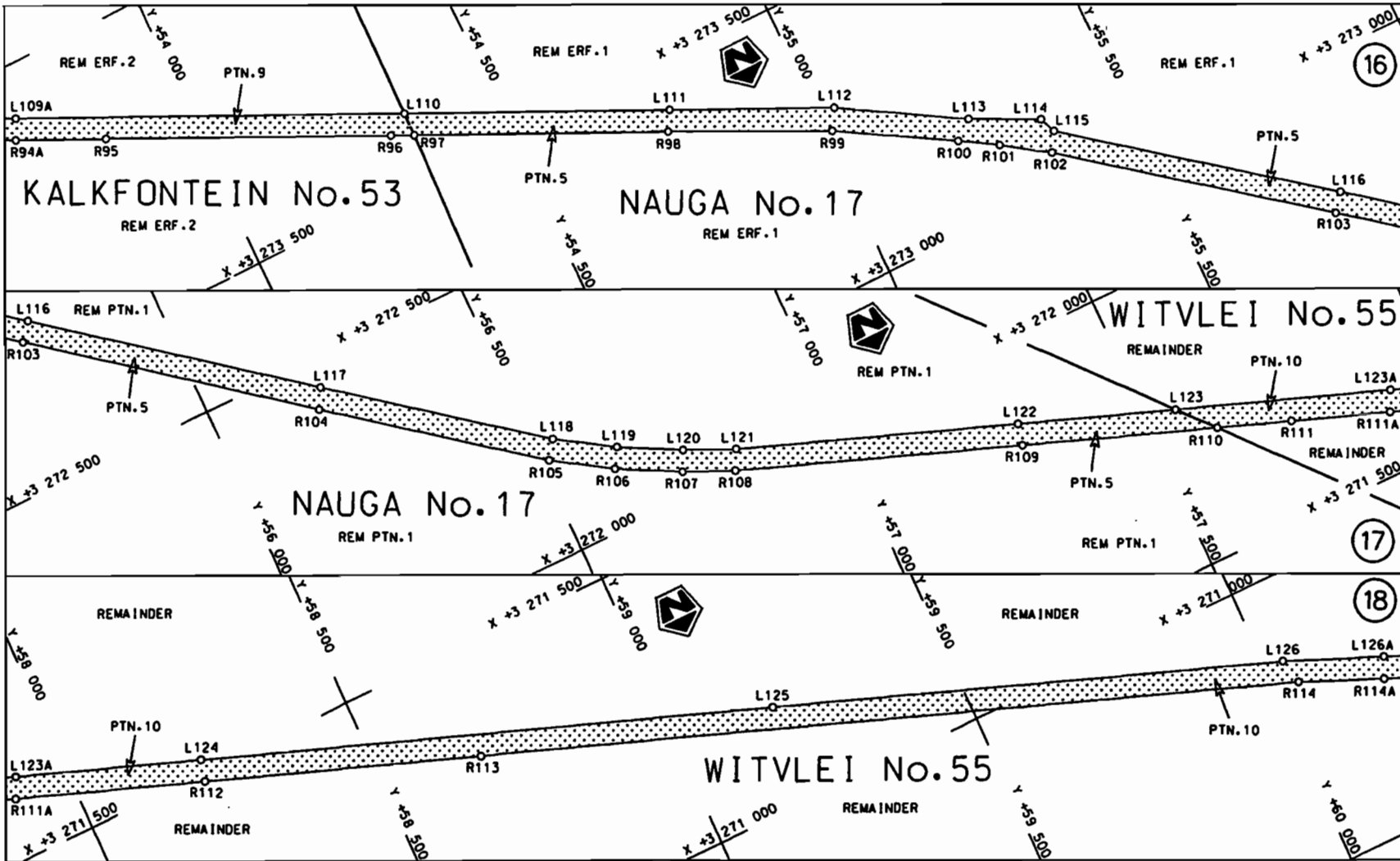



Die Suid Afrikaanse Nasionale Padagentskap Beperk The South African National Roads Agency Limited	Die figuur getoon The figure shown		steldie padreserwe voor van 'n gedeelte represents the road reserve of a portion van Nasionale Roete N10 of National Route N10	Seksie 9 Section 9	Vel Sheet 4 van 15
					Plan P720/08

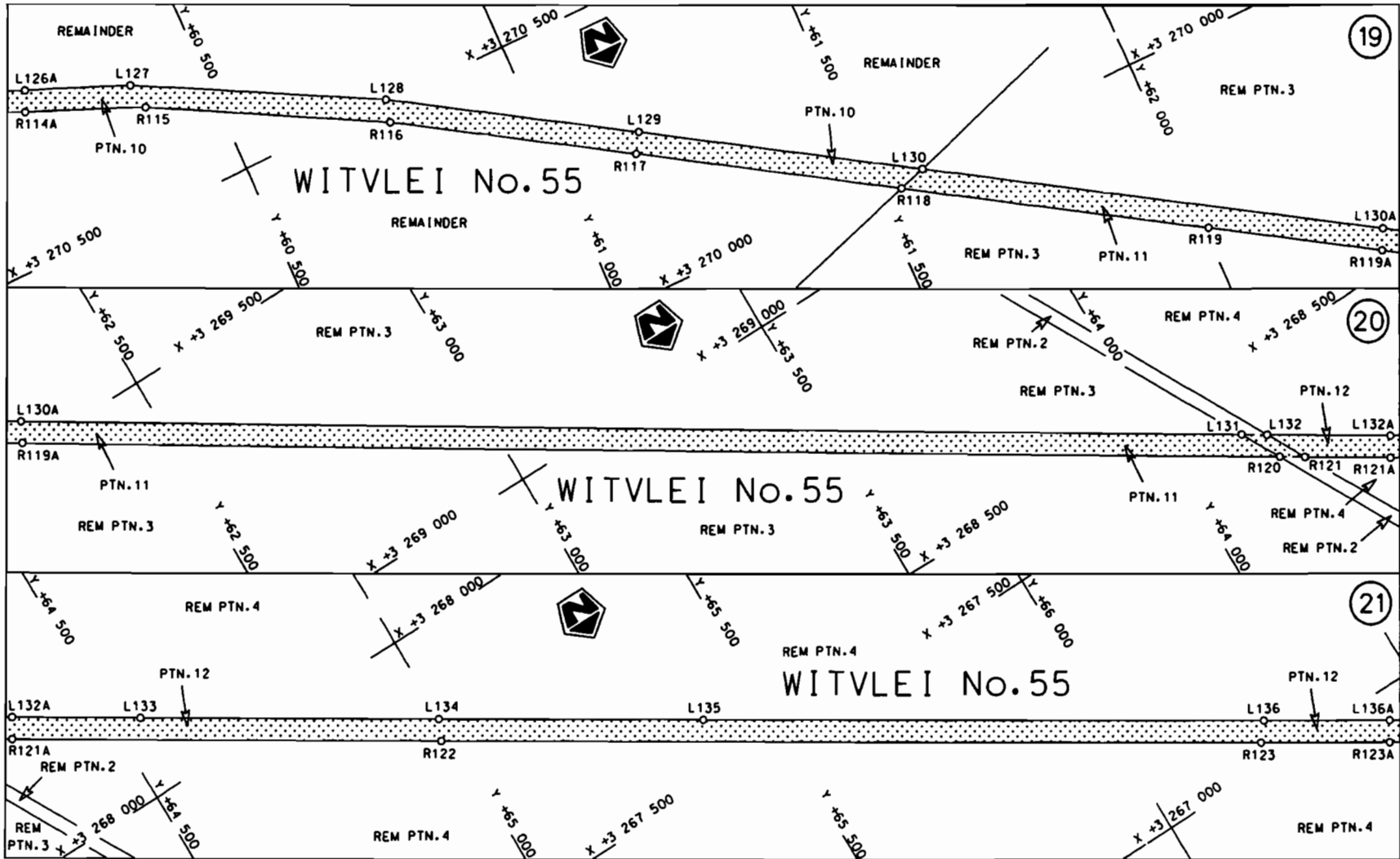





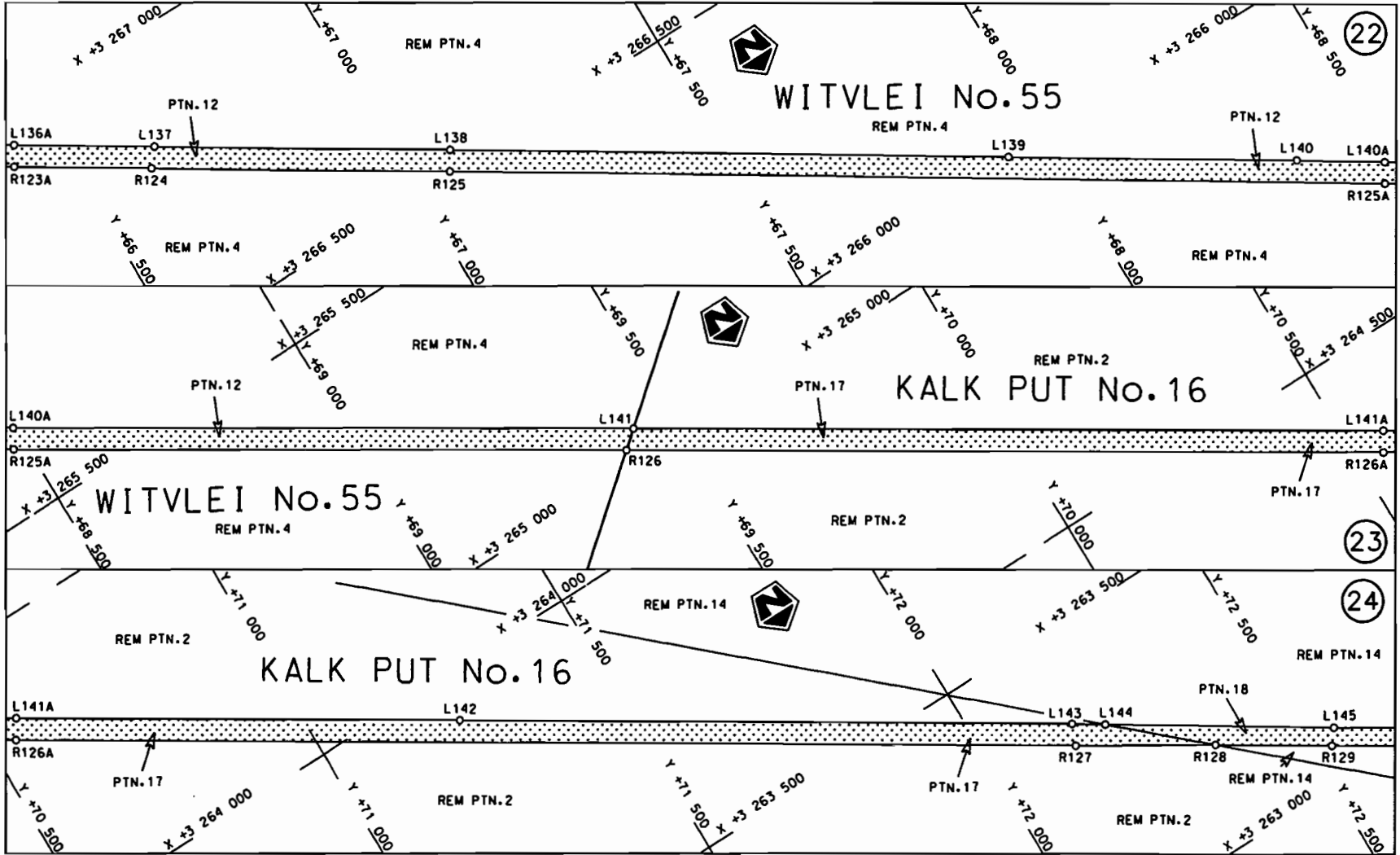
<p>Die Suid Afrikaanse Nasionale Padogentskop Beperk The South African National Roads Agency Limited</p>	<p>Die figuur getoon The figure shown</p> 	<p>stel die padreserwe voor van 'n gedeelte represents the road reserve of a portion van Nasionale Roete of National Route</p> <p>N10      Seksie                  Section</p> <p>9</p>	<p>Vel Sheet 5      von                  of 15</p> <p>Plan P720/08</p>
--	--	---	--

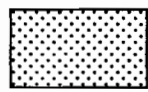


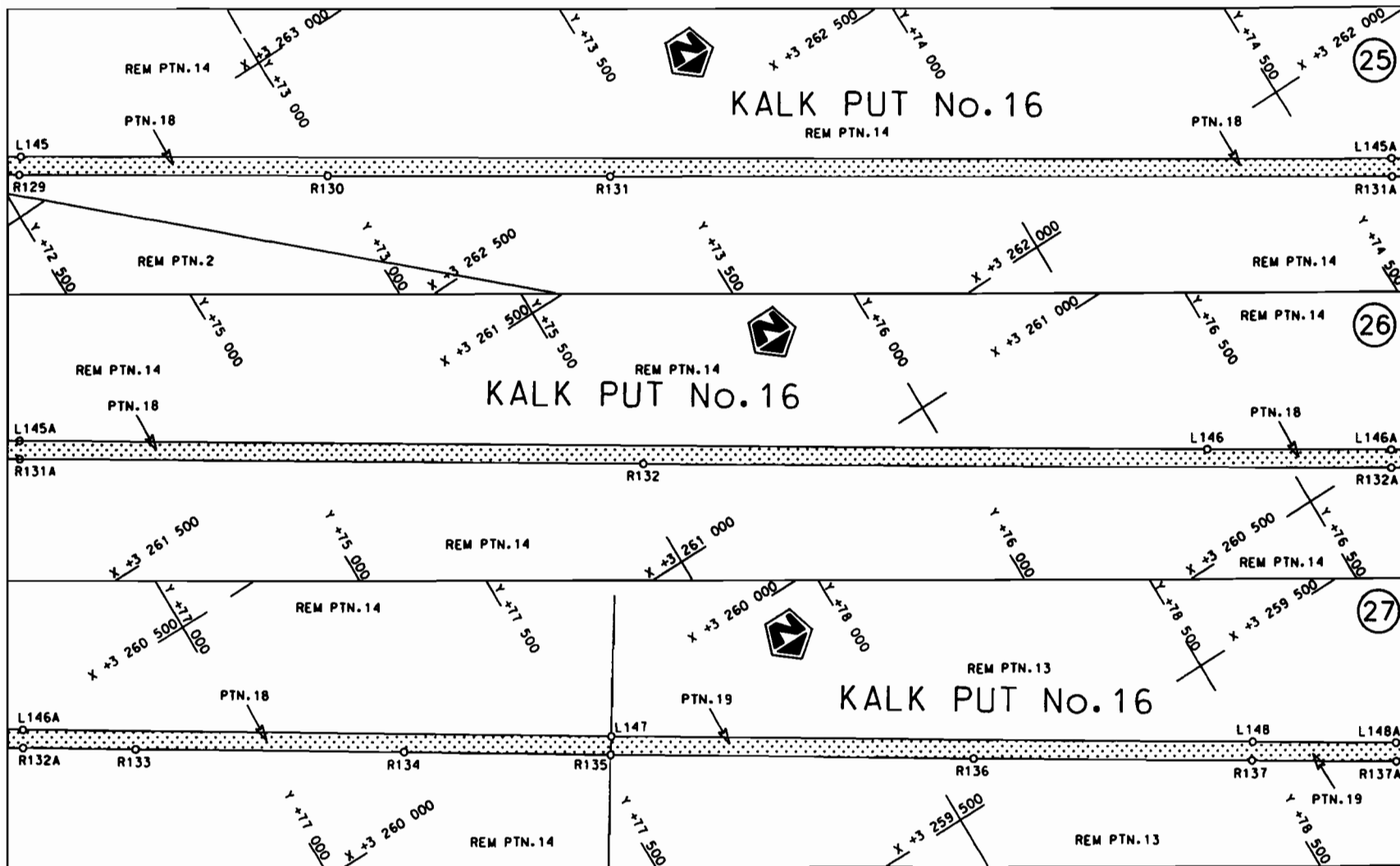
<p>Die Suid Afrikaanse Nasionale Padagentskap Beperk The South African National Roads Agency Limited</p>	<p>Die figuur getoon The figure shown</p> 	<p>steldie padreserwe voor van 'n gedeelte represents the road reserve of a portion van Nasionale Roete N10 Sektie of National Route Section 9</p>	<p>Vel Sheet 6 van 15 Plan P720/08</p>
--	--	--	--



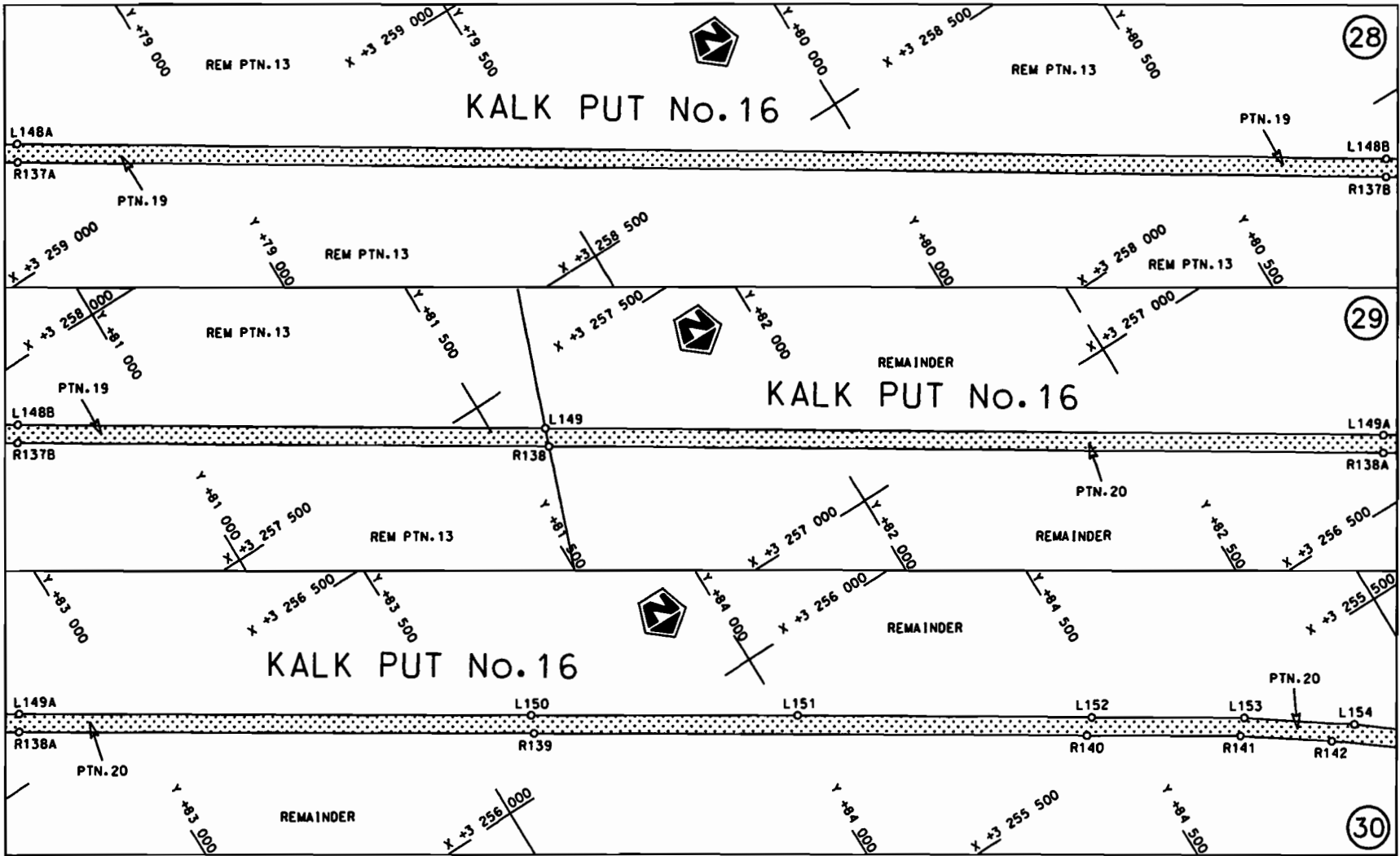
Die Suid Afrikaanse Nasionale Padogenskap Beperk	Die figuur getoon		steldie padreserwe voor van 'n gedeelte represents the road reserve of a portion van Nasionale Roete N10	Vel Sheet 7 van of 15
The South African National Roads Agency Limited	The figure shown		Seksie Section 9	Plan P720/08

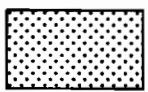


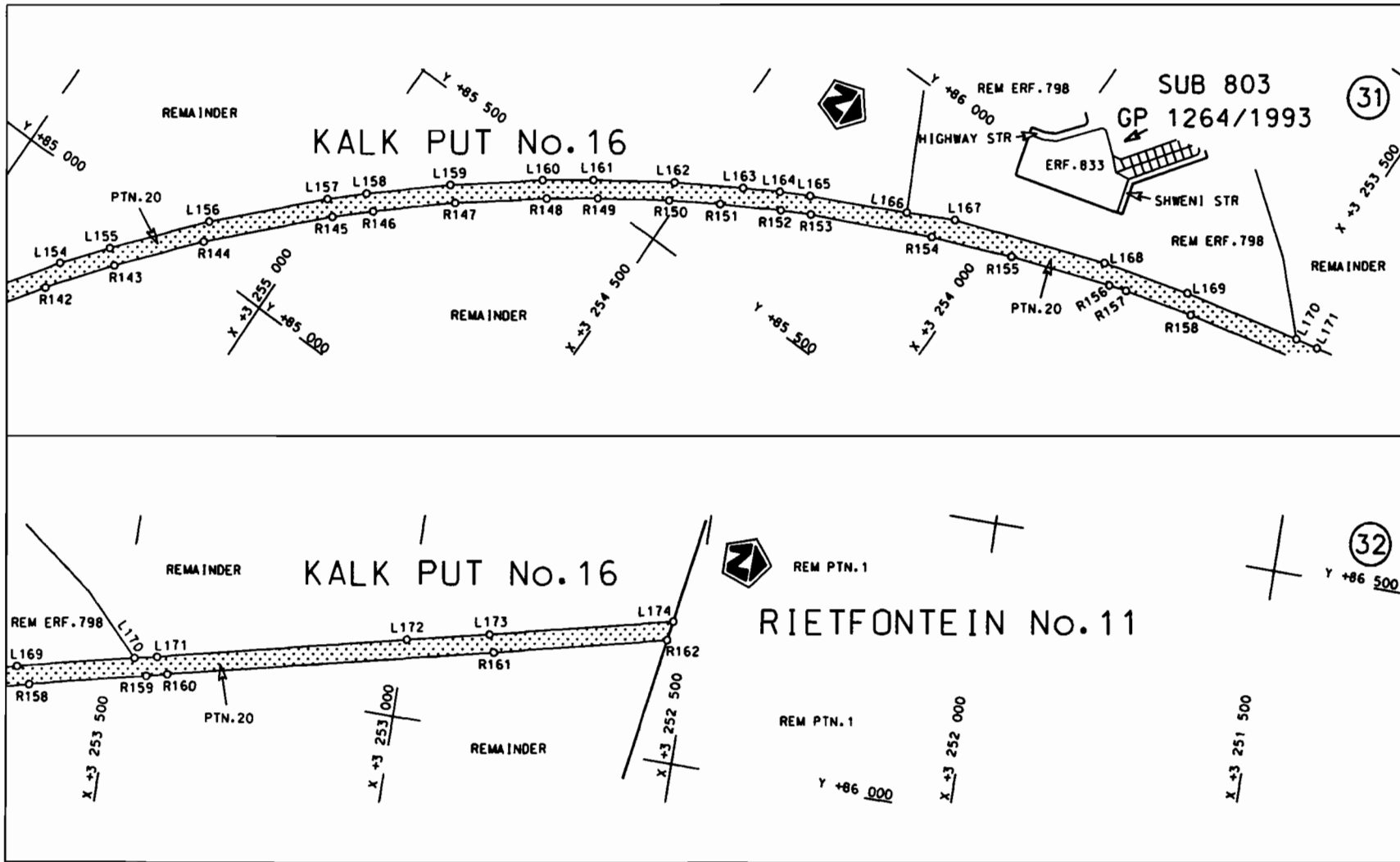
<p>Die Suid Afrikaanse Nasionale Padagentskap Beperk The South African National Roads Agency Limited</p>	<p>Die figuur getoon The figure shown</p>		<p>steldie padreserwe voor van 'n gedeelte represents the road reserve of a portion van Nasionale Roete N10 Sektie 9 of National Route Section</p>	<p>Vel Sheet 8 van 15 Plan P720/08</p>
--	---	--	--	--




<p>Die Suid Afrikaanse Nasionale Padagentskap Beperk The South African National Roads Agency Limited</p>	<p>Die figuur getoon The figure shown</p>		<p>steldie padreserwe voor van 'n gedeelte represents the rood reserve of a portion van Nasionale Roete N10 Sektie of National Route Section 9</p>	<p>Vel Sheet 9 van of 15 Plan P720/08</p>
--	---	--	--	---



<p>Die Suid Afrikaanse Nasionale Padagentskap Beperk The South African National Roads Agency Limited</p>	<p>Die figuur getoon The figure shown</p>		<p>steldie padreserwe voor van 'n gedeelte represents the road reserve of a portion van Nasionale Roete N10 Sektie of National Route Section 9</p>	<p>Vel Sheet 10 van 15 of Plan P720/08</p>
--	---	--	--	--



Die Suid Afrikaanse Nasionale Padagentskap Beperk The South African National Roads Agency Limited	Die figuur getoon The figure shown		steldie padreserwe voor van 'n gedeelte represents the road reserve of a portion van Nasionale Roete N10 of National Route N10	Vel Sheet 11 van 15
				Plan P720/08

PADRESERWE KOÖRDINATE / ROAD RESERVE CO-ORDINATES						
LINKERKANT/LEFT HAND SIDE				REGTERKANT/RIGHT HAND SIDE		
	Y	X	WG 23°		Y	X
L1	25 892.280	3 285 318.100		R1	25 873.764	3 285 285.476
L2	26 936.290	3 284 725.670		R2	27 612.360	3 284 298.390
L3	27 636.070	3 284 328.420		R3	28 648.500	3 283 711.030
L4	29 623.920	3 283 201.000		R4	29 003.320	3 283 510.540
L5	29 753.240	3 283 133.860		R5	29 602.360	3 283 170.280
L6	29 838.110	3 283 079.590		R6	29 733.510	3 283 089.260
L7	30 328.150	3 282 801.770		R7	29 820.440	3 283 046.570
L8	30 485.970	3 282 712.110		R8	30 310.150	3 282 768.610
L9	30 550.780	3 282 677.530		R9	30 465.760	3 282 680.250
L10	30 632.790	3 282 639.070		R10	30 532.930	3 282 644.350
L11	30 716.520	3 282 605.920		R11	30 617.350	3 282 604.890
L12	30 806.230	3 282 577.000		R12	30 703.100	3 282 570.690
L13	30 901.300	3 282 552.340		R13	30 819.250	3 282 533.980
L14	30 972.850	3 282 537.820		R14	30 911.930	3 282 511.780
L15	31 448.700	3 282 448.300		R15	30 965.250	3 282 500.930
L16	31 950.450	3 282 357.190		R16	31 442.040	3 282 417.530
L17	32 423.500	3 282 271.720		R17	32 860.710	3 282 160.140
L18	32 866.350	3 282 190.860		R18	33 011.550	3 282 129.720
L19	33 021.550	3 282 159.000		R19	33 096.290	3 282 105.820
L20	33 106.100	3 282 137.140		R20	33 234.740	3 282 054.140
L21	33 263.650	3 282 078.510		R21	33 346.400	3 282 002.420
L22	33 361.270	3 282 030.120		R22	33 473.040	3 281 928.660
L23	33 493.780	3 281 952.230		R23	33 594.320	3 281 840.070
L24	33 613.680	3 281 864.230		R24	34 492.080	3 281 127.440
L25	33 961.000	3 281 589.190		R25	35 480.370	3 280 343.620
L26	34 505.510	3 281 157.040		R26	35 568.760	3 280 279.570
L27	35 444.120	3 280 411.680		R27	35 640.920	3 280 237.290
L28	35 577.930	3 280 310.540		R28	35 711.550	3 280 203.800
L29	35 637.640	3 280 274.820		R29	35 791.800	3 280 174.630
L30	35 687.630	3 280 249.120		R30	37 113.700	3 279 758.500
L31	35 763.050	3 280 217.730		R31	37 253.880	3 279 770.530
L32	35 822.920	3 280 197.330		R32	37 323.180	3 279 779.110
L33	37 014.180	3 279 824.300		R33	37 392.140	3 279 830.320
L34	37 144.260	3 279 794.650		R34	37 436.390	3 279 872.780
L35	37 244.370	3 279 808.330		R35	37 479.170	3 279 922.810
L36	37 298.870	3 279 826.370		R36	37 645.350	3 280 157.970
L37	37 375.850	3 279 871.600		R37	37 866.720	3 280 517.830
L38	37 452.750	3 279 953.770		R38	37 938.250	3 280 615.190
L39	37 523.240	3 280 053.400		R39	37 991.330	3 280 679.750
L40	37 604.960	3 280 178.490		R40	38 034.800	3 280 732.210
L41	37 835.900	3 280 528.680		R41	38 378.100	3 281 092.170
L42	37 923.920	3 280 648.000		R42	38 607.900	3 281 322.530
L43	37 968.710	3 280 704.350		R43	38 681.700	3 281 423.530
L44	38 015.510	3 280 760.300		R44	38 710.770	3 281 482.100
L45	38 354.680	3 281 113.110		R45	38 738.870	3 281 549.320
L46	38 562.900	3 281 322.080		R46	38 765.160	3 281 659.770
L47	38 586.610	3 281 347.120		R47	38 768.790	3 281 828.200
L48	38 631.000	3 281 404.090		R48	38 748.670	3 281 966.570
L49	38 684.280	3 281 498.840		R49	38 752.170	3 282 023.760
L50	38 709.970	3 281 566.860		R50	38 763.740	3 282 089.390
L51	38 730.620	3 281 661.520		R51	38 839.060	3 282 288.770

Vel	12	Van	15	P720/08
Sheet		of		



PADRESERWE KOÖRDINATE / ROAD RESERVE CO-ORDINATES						
LINKERKANT/LEFT HAND SIDE				REGTERKANT/RIGHT HAND SIDE		
	Y	X	WG 23°		Y	X
L52	38 735.170	3 281 709.870		R52	38 844.720	3 282 309.720
L53	38 736.140	3 281 745.840		R53	38 868.530	3 282 366.590
L54	38 725.250	3 281 964.630		R54	38 902.970	3 282 435.400
L55	38 727.720	3 282 027.260		R55	38 957.530	3 282 514.010
L56	38 739.160	3 282 102.280		R56	39 008.820	3 282 572.870
L57	38 807.220	3 282 303.040		R57	39 055.320	3 282 617.550
L58	38 827.700	3 282 350.430		R58	39 108.900	3 282 665.390
L59	38 839.800	3 282 378.750		R59	39 165.270	3 282 699.880
L60	38 875.340	3 282 447.970		R60	39 235.960	3 282 742.900
L61	38 917.950	3 282 514.030		R61	39 318.940	3 282 777.440
L62	38 956.180	3 282 563.360		R62	39 434.020	3 282 807.900
L63	39 018.230	3 282 629.770		R63	39 522.880	3 282 818.930
L64	39 105.990	3 282 702.320		R64	39 687.630	3 282 812.800
L65	39 147.430	3 282 730.140		R65	39 778.700	3 282 794.840
L66	39 222.910	3 282 771.740		R66	39 900.920	3 282 749.350
L67	39 322.430	3 282 811.900		R67	40 067.110	3 282 648.490
L68	39 398.490	3 282 832.810		R68	40 403.200	3 282 335.770
L69	39 506.600	3 282 849.530		R69	40 777.570	3 282 011.360
L70	39 566.910	3 282 852.280		R70	41 479.090	3 281 384.310
L71	39 692.820	3 282 844.210		R71	43 151.140	3 279 889.460
L72	39 782.270	3 282 825.970		R72	44 015.220	3 279 116.730
L73	39 886.770	3 282 790.000		R73	44 089.800	3 279 063.740
L74	40 028.160	3 282 713.470		R74	44 208.580	3 278 985.660
L75	40 101.610	3 282 657.800		R75	44 292.240	3 278 941.070
L76	40 452.970	3 282 344.250		R76	44 406.460	3 278 889.140
L77	40 793.080	3 282 039.900		R77	44 903.950	3 278 707.190
L78	40 843.320	3 282 019.220		R78	45 350.600	3 278 544.790
L79	40 883.180	3 281 997.310		R79	45 791.450	3 278 381.990
L80	40 878.030	3 281 964.070		R80	45 956.650	3 278 295.390
L81	41 085.320	3 281 778.480		R81	46 092.120	3 278 204.410
L82	43 153.960	3 279 928.620		R82	46 230.630	3 278 085.880
L83	43 983.330	3 279 187.180		R83	46 886.970	3 277 479.550
L84	44 052.740	3 279 129.260		R84	47 226.900	3 277 165.760
L85	44 112.700	3 279 085.160		R85	47 676.430	3 276 744.210
L86	44 233.620	3 279 007.350		R86	47 772.210	3 276 679.520
L87	44 307.270	3 278 968.480		R87	47 847.540	3 276 628.730
L88	44 421.320	3 278 916.760		R88	47 971.640	3 276 562.540
L89	45 359.610	3 278 574.630		R89	48 409.290	3 276 357.210
L90	45 763.120	3 278 426.690		R90	48 559.820	3 276 286.700
L91	45 847.440	3 278 389.460		R91	50 974.640	3 275 156.870
L92	45 902.450	3 278 361.820		R92	52 489.290	3 274 448.270
L93	45 956.400	3 278 331.800		R93	52 952.900	3 274 231.280
L94	46 082.780	3 278 249.580		R94	53 403.890	3 274 016.760
L95	46 110.070	3 278 229.680		R95	53 846.840	3 273 810.180
L96	46 183.600	3 278 170.380		R96	54 306.860	3 273 594.410
L97	46 908.470	3 277 502.550		R97	54 344.320	3 273 576.900
L98	47 243.710	3 277 192.880		R98	54 751.130	3 273 386.700
L99	47 672.080	3 276 798.610		R99	55 013.120	3 273 261.400
L100	47 792.620	3 276 704.660		R100	55 207.930	3 273 149.350
L101	47 868.810	3 276 654.620		R101	55 270.490	3 273 111.190
L102	47 941.340	3 276 613.100		R102	55 347.300	3 273 059.500

Vel	13	Van	15	P720/08
Sheet		of		

PADRESERWE KOÖRDINATE / ROAD RESERVE CO-ORDINATES						
LINKERKANT/LEFT HAND SIDE				REGTERKANT/RIGHT HAND SIDE		
	Y	X	WG 23°		Y	X
L103	47 990.800	3 276 588.040		R103	55 756.170	3 272 747.930
L104	48 419.930	3 276 386.880		R104	56 182.880	3 272 417.910
L105	48 567.380	3 276 317.910		R105	56 514.220	3 272 164.300
L106	50 991.610	3 275 183.600		R106	56 612.590	3 272 101.310
L107	52 507.880	3 274 474.070		R107	56 719.020	3 272 044.780
L108	52 970.160	3 274 257.900		R108	56 803.900	3 272 006.900
L109	53 418.900	3 274 051.320		R109	57 283.780	3 271 829.010
L110	54 344.990	3 273 618.200		R110	57 608.790	3 271 708.700
L111	54 769.480	3 273 419.400		R111	57 733.010	3 271 662.730
L112	55 033.520	3 273 295.810		R112	58 215.080	3 271 485.490
L113	55 240.390	3 273 175.140		R113	58 677.950	3 271 316.060
L114	55 354.900	3 273 119.710		R114	60 043.560	3 270 814.240
L115	55 366.650	3 273 091.520		R115	60 380.110	3 270 672.350
L116	55 779.230	3 272 777.240		R116	60 765.550	3 270 464.930
L117	56 201.330	3 272 451.310		R117	61 138.700	3 270 230.980
L118	56 535.330	3 272 194.830		R118	61 542.880	3 269 977.230
L119	56 631.740	3 272 133.610		R119	62 008.030	3 269 684.630
L120	56 736.000	3 272 078.280		R120	64 166.040	3 268 326.310
L121	56 821.210	3 272 040.010		R121	64 204.720	3 268 301.970
L122	57 292.450	3 271 865.540		R122	64 979.790	3 267 814.150
L123	57 555.710	3 271 768.430		R123	66 211.900	3 267 039.050
L124	58 224.220	3 271 522.200		R124	66 616.270	3 266 784.780
L125	59 180.170	3 271 171.880		R125	67 066.770	3 266 501.190
L126	60 033.770	3 270 858.050		R126	69 402.730	3 265 030.920
L127	60 371.970	3 270 717.930		R127	72 147.570	3 263 303.530
L128	60 774.810	3 270 503.880		R128	72 360.620	3 263 173.110
L129	61 158.820	3 270 262.970		R129	72 536.650	3 263 062.400
L130	61 590.040	3 269 992.280		R130	72 999.990	3 262 770.610
L131	64 128.000	3 268 395.030		R131	73 422.690	3 262 504.970
L132	64 166.680	3 268 370.690		R132	75 531.090	3 261 177.880
L133	64 546.670	3 268 131.580		R133	76 821.180	3 260 366.140
L134	64 995.720	3 267 848.650		R134	77 224.110	3 260 112.610
L135	65 393.540	3 267 598.720		R135	77 532.570	3 259 917.950
L136	66 236.310	3 267 068.320		R136	78 074.430	3 259 576.870
L137	66 640.740	3 266 813.950		R137	78 491.890	3 259 314.640
L138	67 086.860	3 266 532.910		R138	81 573.740	3 257 375.180
L139	67 928.240	3 266 002.980		R139	83 609.160	3 256 094.630
L140	68 364.000	3 265 729.140		R140	84 441.780	3 255 570.840
L141	69 433.320	3 265 055.940		R141	84 672.740	3 255 424.860
L142	71 237.140	3 263 920.960		R142	84 807.640	3 255 331.200
L143	72 161.790	3 263 339.010		R143	84 908.950	3 255 253.720
L144	72 211.400	3 263 307.310		R144	85 033.420	3 255 147.960
L145	72 555.860	3 263 087.190		R145	85 202.360	3 254 984.100
L146	76 392.410	3 260 673.080		R146	85 251.620	3 254 931.580
L147	77 549.700	3 259 944.390		R147	85 346.760	3 254 822.390
L148	78 509.610	3 259 340.960		R148	85 446.560	3 254 694.530
L149	81 584.810	3 257 405.300		R149	85 499.920	3 254 620.730
L150	83 621.350	3 256 123.970		R150	85 570.210	3 254 514.930
L151	84 021.450	3 255 873.110		R151	85 617.910	3 254 437.940
L152	84 465.380	3 255 593.150		R152	85 671.480	3 254 343.230
L153	84 695.200	3 255 447.780		R153	85 696.960	3 254 295.360

Vel	14	Van	15	P720/08
Sheet		of		

PADRESERWE KOÖRDINATE / ROAD RESERVE CO-ORDINATES

LINKERKANT/LEFT HAND SIDE				REGTERKANT/RIGHT HAND SIDE			
	Y	X	WG 23°		Y	X	
L154	84 856.450	3 255 334.140		R154	85 789.880	3 254 098.790	
L155	84 928.760	3 255 277.580		R155	85 844.160	3 253 964.030	
L156	85 067.340	3 255 159.890		R156	85 905.450	3 253 794.420	
L157	85 222.160	3 255 009.050		R157	85 914.430	3 253 764.560	
L158	85 269.600	3 254 958.540		R158	85 947.160	3 253 647.450	
L159	85 366.940	3 254 847.220		R159	85 995.580	3 253 444.720	
L160	85 468.050	3 254 718.750		R160	86 004.570	3 253 408.280	
L161	85 520.890	3 254 645.520		R161	86 136.240	3 252 843.460	
L162	85 600.880	3 254 525.190		R162	86 207.250	3 252 542.150	
L163	85 663.960	3 254 420.810					
L164	85 696.180	3 254 363.230					
L165	85 722.080	3 254 314.810					
L166	85 798.220	3 254 158.670					
L167	85 837.730	3 254 082.220					
L168	85 931.460	3 253 823.590					
L169	85 974.090	3 253 673.770					
L170	86 022.130	3 253 470.110					
L171	86 030.890	3 253 430.750					
L172	86 132.680	3 252 997.430					
L173	86 165.440	3 252 855.880					
L174	86 240.250	3 252 536.840					

Vel Sheet	15	Van of	15	P720/08
--------------	----	-----------	----	---------