

**REPUBLIC OF SOUTH AFRICA
REPUBLIEK VAN SUID-AFRIKA**

Vol. 527

**Pretoria, 15 May
Mei 2009**

No. 32179

CONTENTS**INHOUD**

<i>No.</i>	<i>Page No.</i>	<i>Gazette No.</i>	<i>No.</i>	<i>Bladsy No.</i>	<i>Koerant No.</i>
GOVERNMENT NOTICE			GOEWERMENSKENNISGEWING		
Transport, Department of			Vervoer, Departement van		
<i>Government Notice</i>			<i>Goewermentskennisgewing</i>		
462			462		
South African National Roads Agency Limited and the National Roads Act (7/1998): The South African National Roads Agency Limited: Declaration amendment of National Road N12 Section 9: Amendment of Declaration No. 631 of 2005	3	32179	Suid-Afrikaanse Nasionale Padagentskap Beperk en die Nasionale Paaie Wet (7/1998): Die Suid-Afrikaanse Nasionale Padagentskap Beperk: Verklaring wysiging van Nasionale Pad N12 Seksie 9: Wysiging van Verklaring No. 631 van 2005	4	32179

GOVERNMENT NOTICE

DEPARTMENT OF TRANSPORT

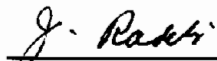
No. 462

15 May 2009

**THE SOUTH AFRICAN NATIONAL ROADS
AGENCY LIMITED**Registration No: 98/09584/06

DECLARATION AMENDMENT OF NATIONAL ROAD N12 SECTION 9**AMENDMENT OF DECLARATION No. 631 OF 2005**

By virtue of section 40(1)(b) of the South African National Roads Agency Limited and the National Roads Act, 1998 (Act No. 7 of 1998), I hereby amend Declaration No. 631 of 2005, by substituting the descriptive section of the route from Hopetown up to Kimberley, with the subjoined sheets 1 to 25 of Plan No. P737/09.

(National Road N12 Section 9: Hopetown – Kimberley)

MINISTER OF TRANSPORT

GOEWERMENSKENNISGEWING

DEPARTEMENT VAN VERVOER

No. 462

15 Mei 2009

DIE SUID-AFRIKAANSE NASIONALE PADAGENTSKAP BEPERK

Registrasie No: 98/09584/06

VERKLARING WYSIGING VAN NASIONALE PAD N12 SEKSIE 9.

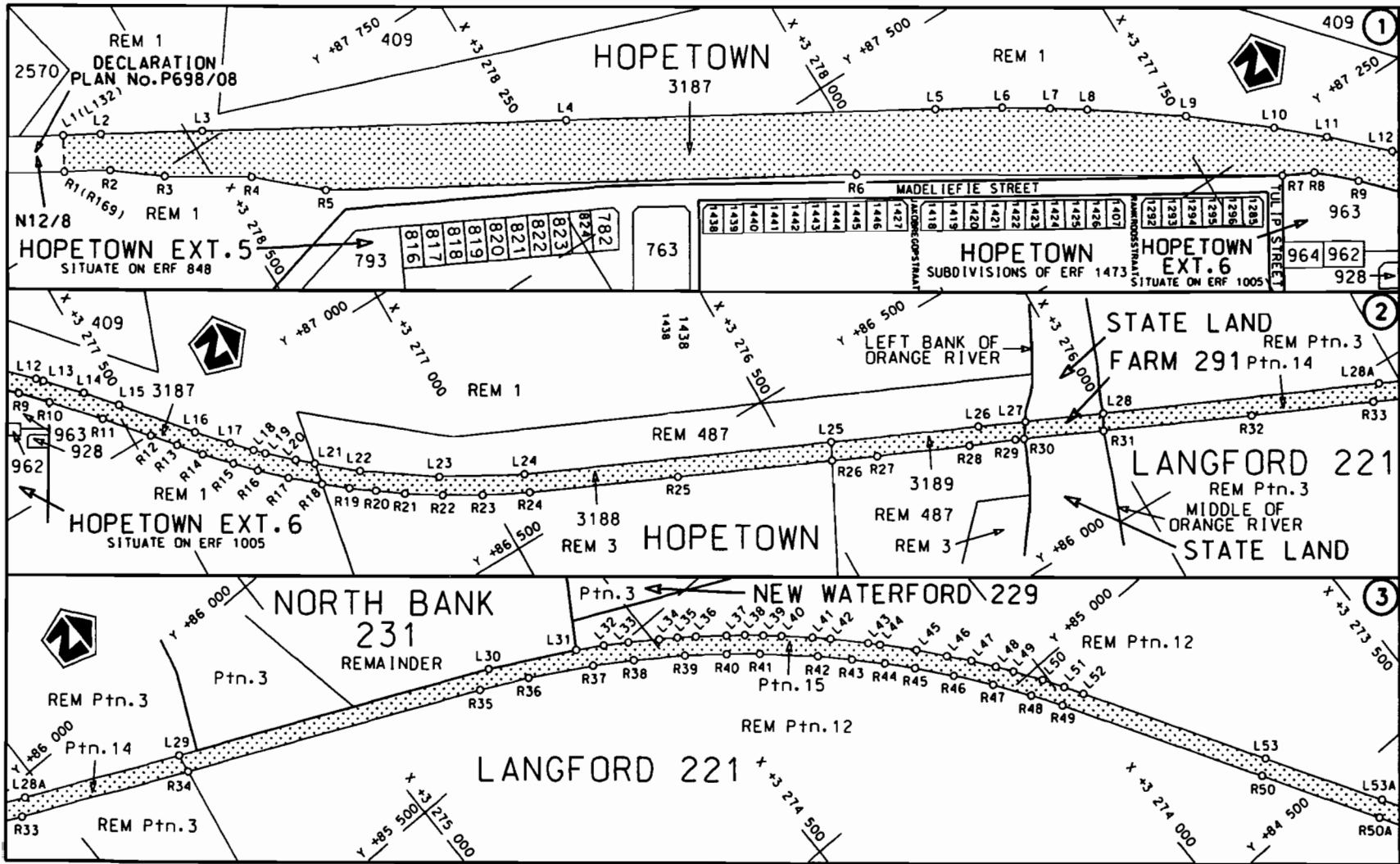
WYSIGING VAN VERKLARING NO. 631 VAN 2005


Kragtens Artikel 40(1)(b) van die Suid-Afrikaanse Nasionale Padagentskap Beperk en die Nasionale Paaie Wet, 1998 (Wet no.7 van 1998), wysig ek hiermee Verklaring no. 631 van 2005, deur die beskrywende gedeelte van die roete vanaf Hopetown tot by Kimberley, te vervang met meegaande velle 1 tot 25 van Plan no. P737/09.

(Nasionale Pad N12 Seksie 9: Hopetown – Kimberley)



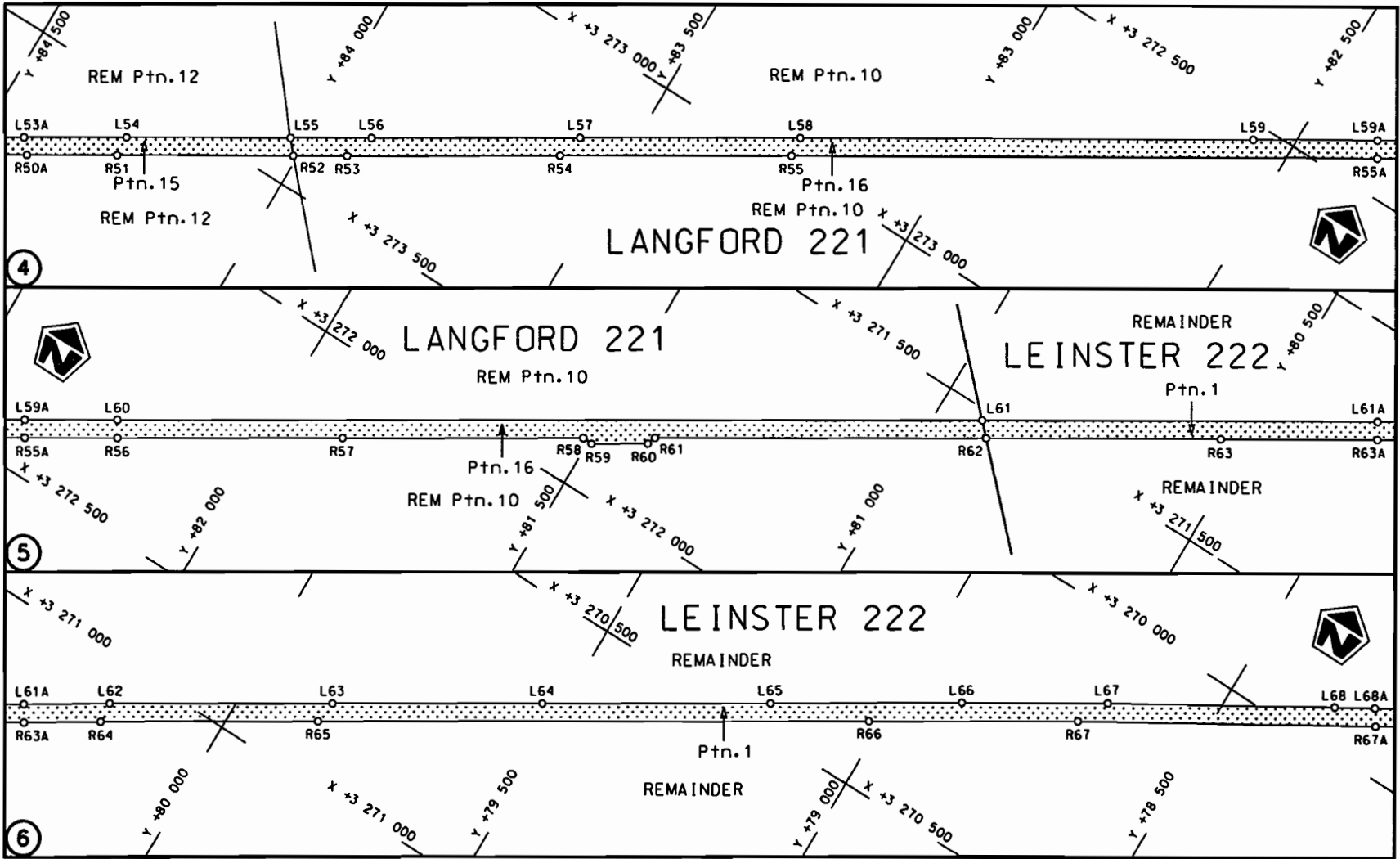
MINISTER VAN VERVOER

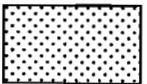


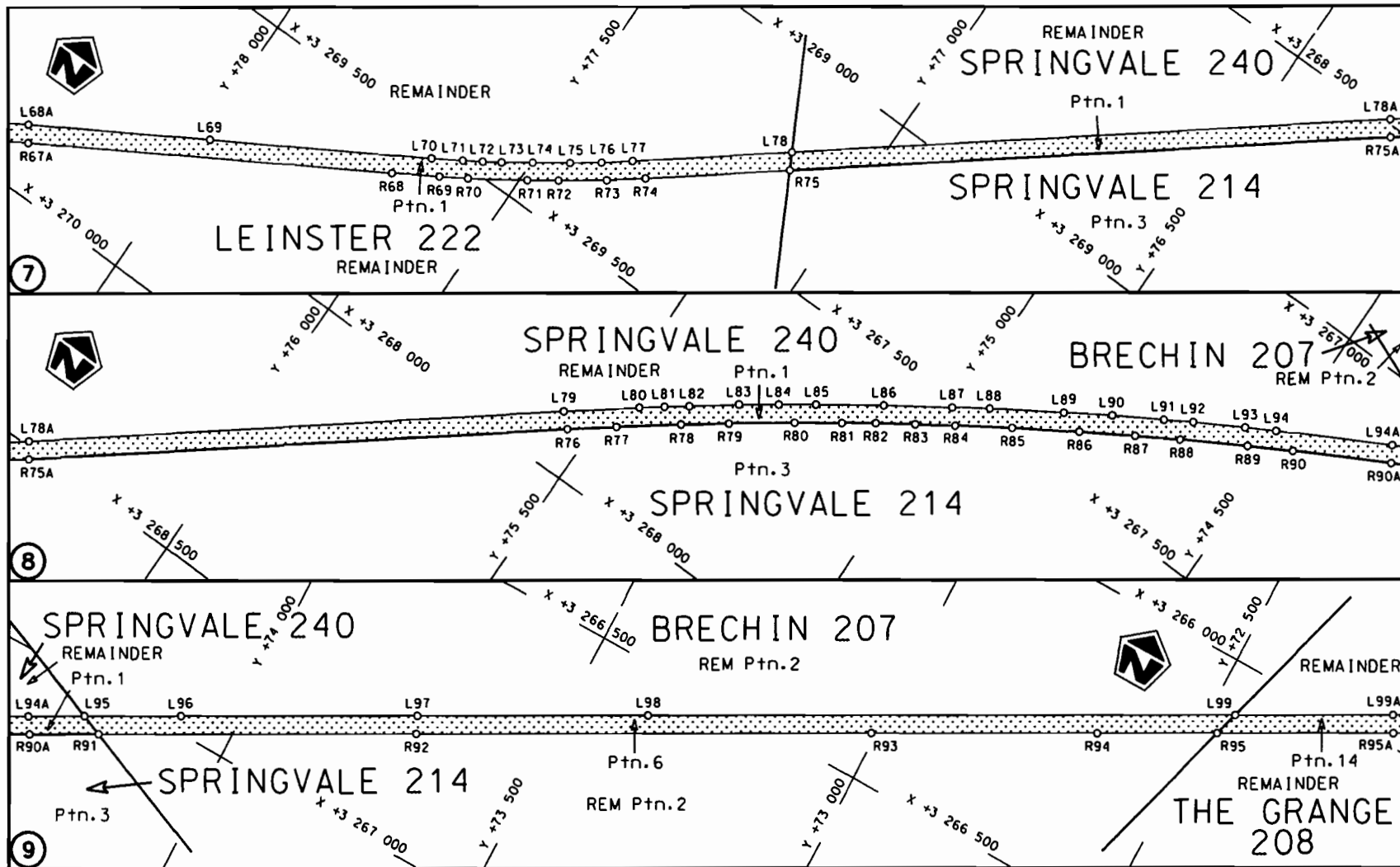
Die Suid Afrikaanse Nasionale Padagentskap Beperk The South African National Roads Agency Limited	Die figuur getoon The figure shown		steldie padreserwe voor van 'n gedeelte represents the road reserve of a portion van Nasionale Raete N12 Seksie Section of National Route 9	Vel Sheet 1 van 25 Plan P737/09
--	---------------------------------------	--	--	------------------------------------

STAATSKOERANT, 15 MEI 2009

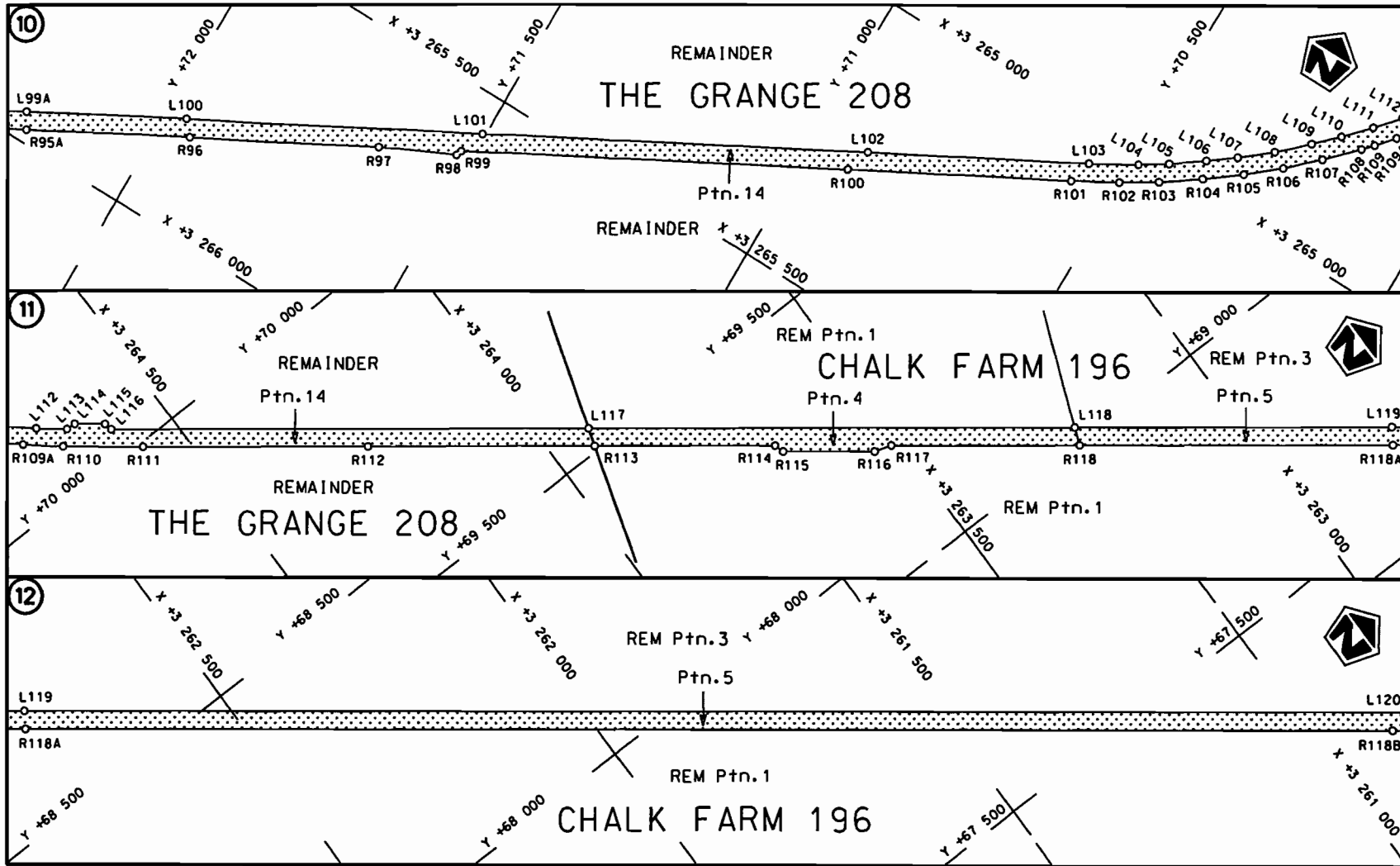
No. 32179 5

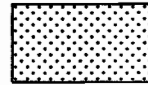


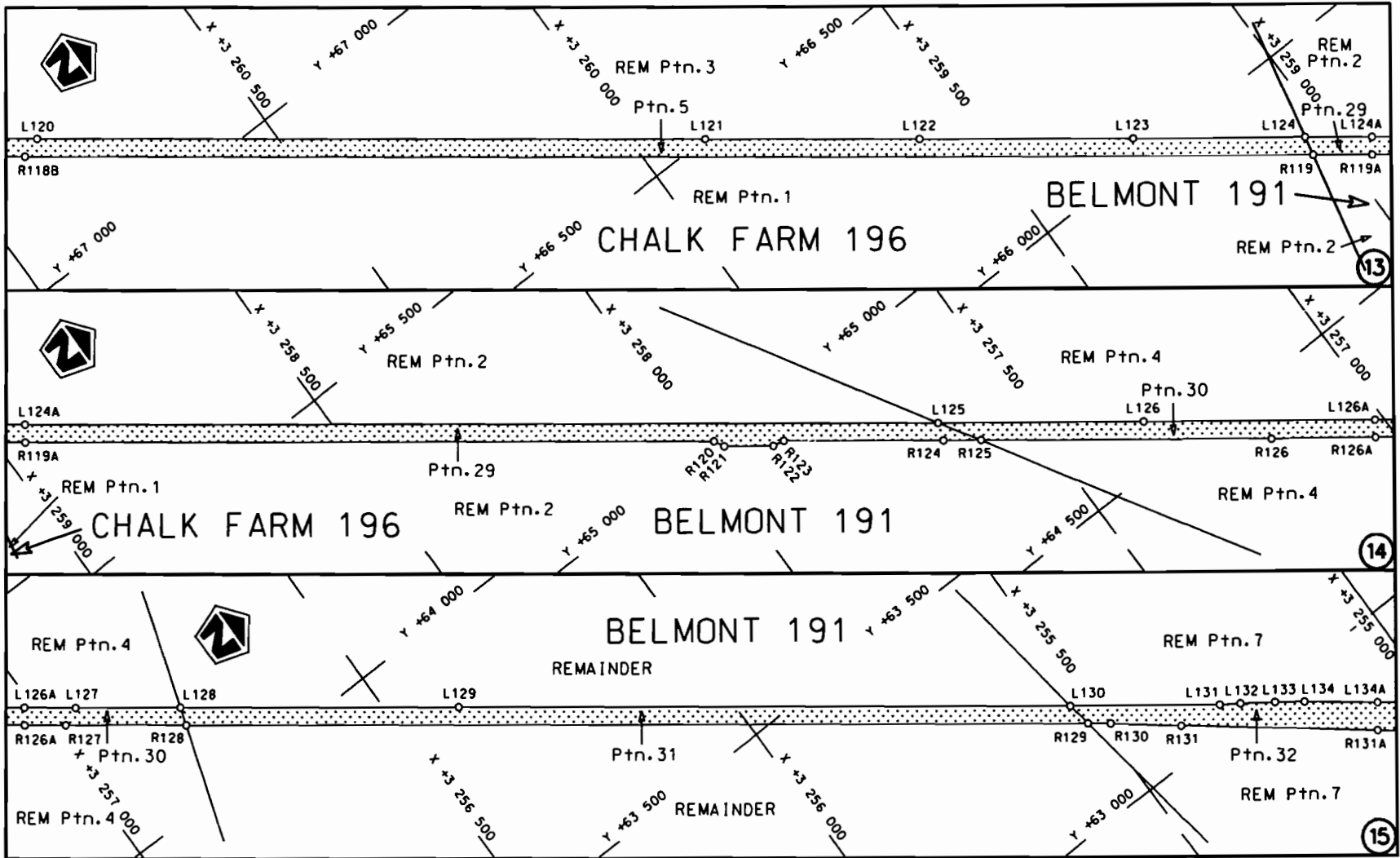
<p>Die Suid Afrikaanse Nasionale Padogentskap Beperk The South African National Roads Agency Limited</p>	<p>Die figuur getoon The figure shown</p>		<p>steldie padreserwe voor van 'n gedeelte represents the road reserve of a portion van Nasionale Roete of National Route</p> <p>N12</p> <p>Seksie Section</p> <p>9</p>	<p>Vel Sheet 2 van of 25</p> <p>Plan P737/09</p>
--	---	--	---	--

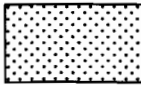


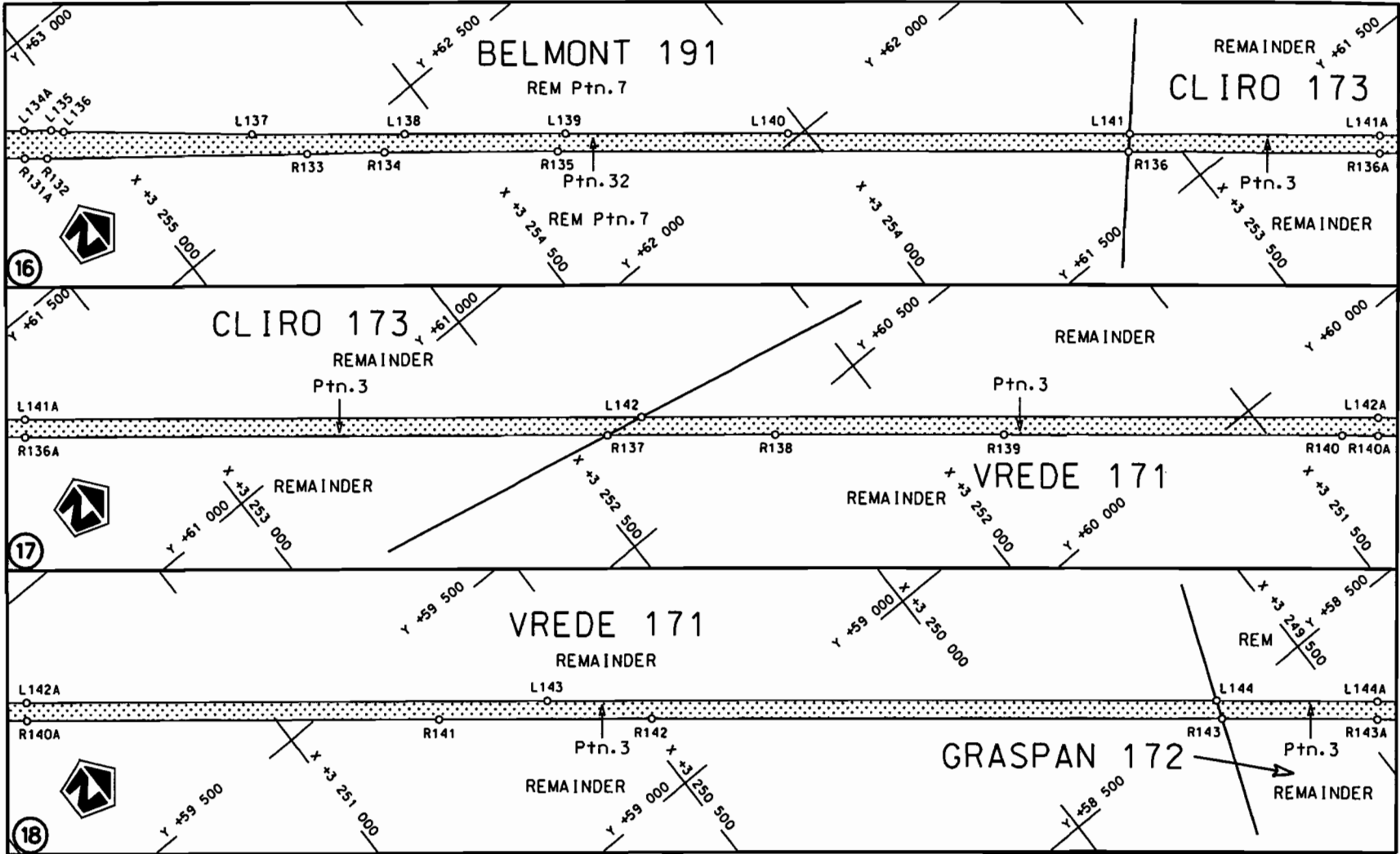
<p>Die Suid Afrikaanse Nasionale Padagentskap Beperk The South African National Roads Agency Limited</p>	<p>Die figuur getoon The figure shown</p>		<p>steldie podreserwe voor van 'n gedeelte represents the road reserve of a portion van Nasionale Roete N12 of National Route N12</p> <p>Seksie Section 9</p>	<p>Vel Sheet 3 van of 25 Plan P737/09</p>
--	---	--	---	---




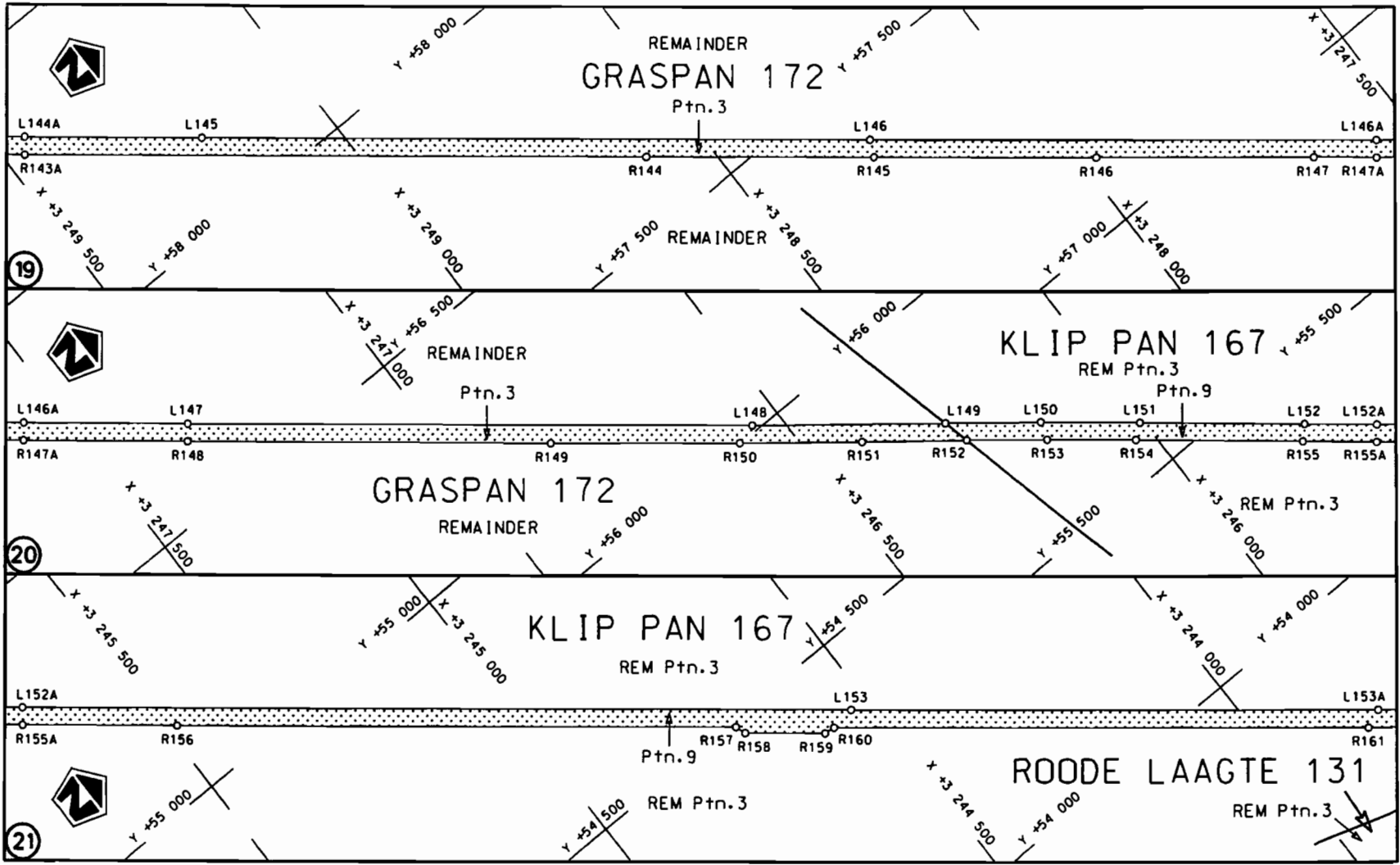
<p>Die Suid Afrikaanse Nasionale Podagentskap Beperk The South African National Roads Agency Limited</p>	<p>Die figuur getoon The figure shown</p> 	<p>steldie podreserwe voor van 'n gedeelte represents the road reserve of a portion van Nasionale Roete N12 of National Route Section 9</p>	<p>Vel Sheet 4 van of 25 Plan P737/09</p>
--	--	---	---



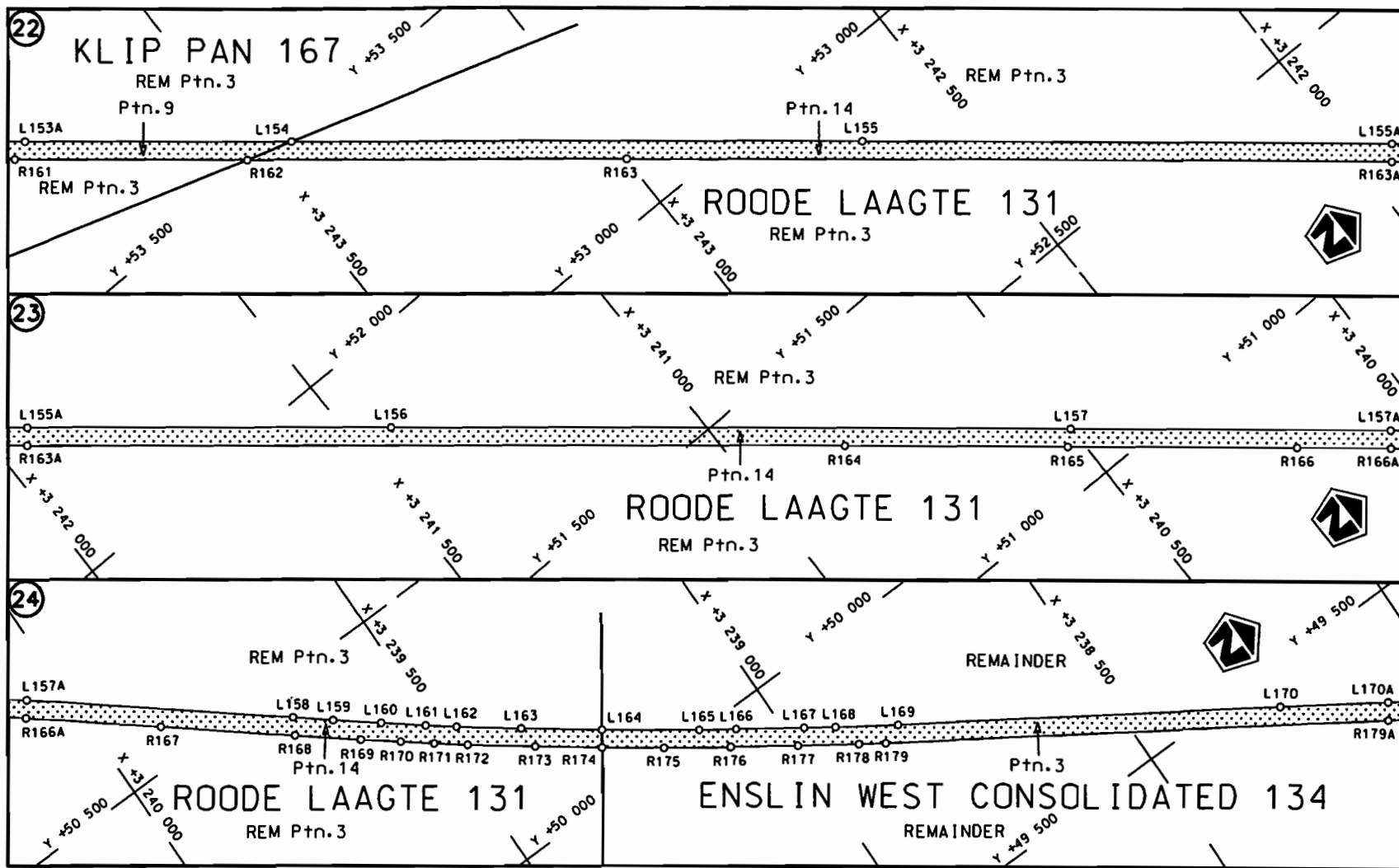
<p>Die Suid Afrikaanse Nasionale Podagentskap Beperk The South African National Roads Agency Limited</p>	<p>Die figuur getoon The figure shown</p> 	<p>steldie podreserwe voor van 'n gedeelte represents the road reserve of a portion van Nasionale Roete N12 of National Route</p> <p>Seksie Section 9</p>	<p>Vel Sheet 5 van of 25 Plan P737/09</p>
--	--	---	---

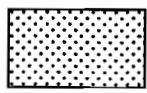


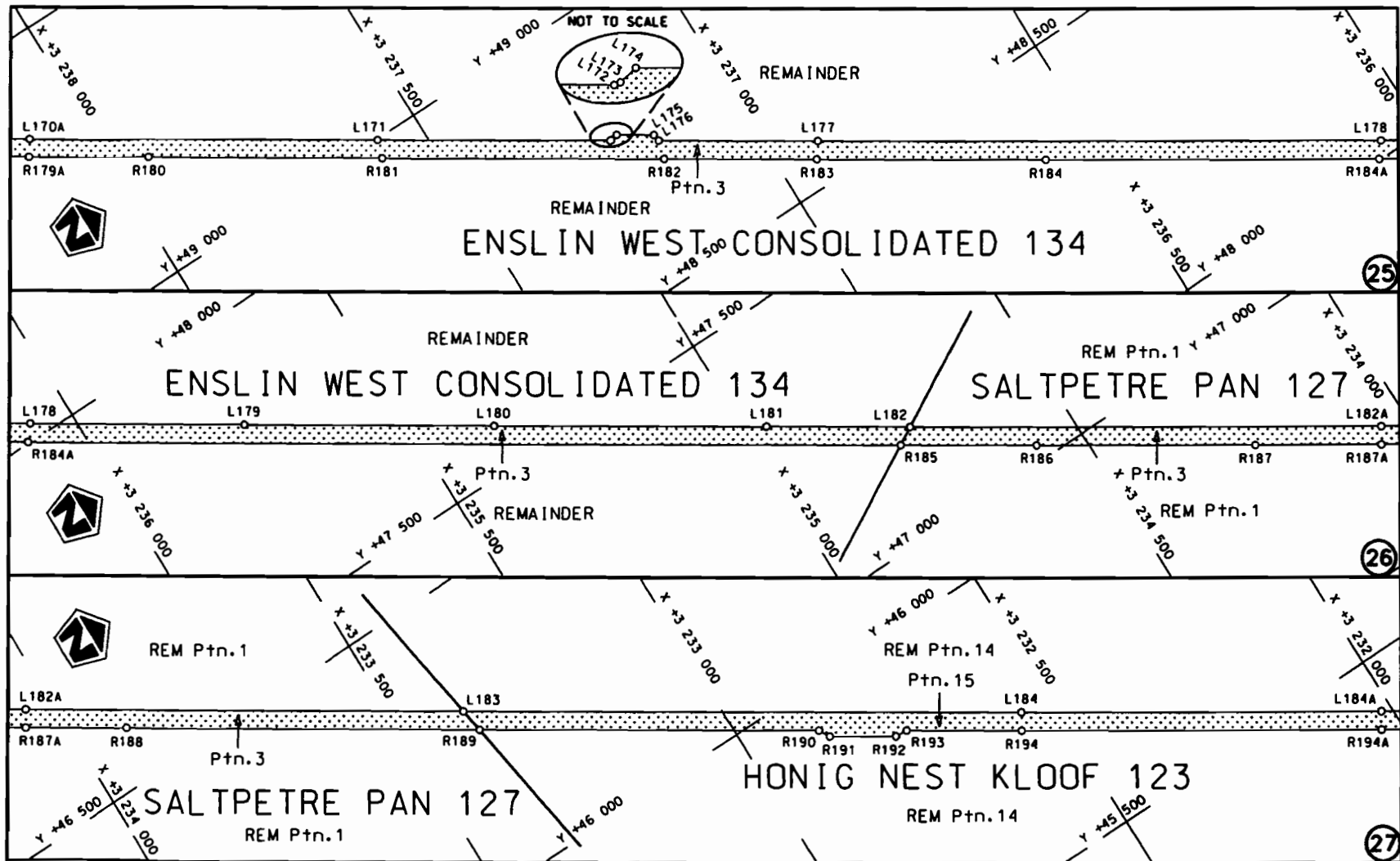
Die Suid Afrikaanse Nasionale Padagentskap Beperk The South African National Roads Agency Limited	Die figuur getoon The figure shown		steldie padreserwe voor van 'n gedeelte represents the road reserve of a portion van Nasionale Roete N12 Seksie 9 of National Route	Vel Sheet 6 van 25
				Plan P737/09



<p>Die Suid Afrikaanse Nasionale Padagentskap Beperk The South African National Roads Agency Limited</p>	<p>Die figuur getoon The figure shown</p> <div style="border: 1px solid black; width: 50px; height: 30px; background-color: #e0e0e0; margin: 5px 0;"></div>	<p>steldie padreserwe voor van 'n gedeelte represents the road reserve of a portion van Nasionale Roete N12 Seksie of National Route Section 9</p>	<p>Vel Sheet 7 van of 25 Plan P737/09</p>
--	---	--	---

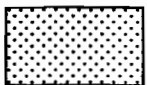


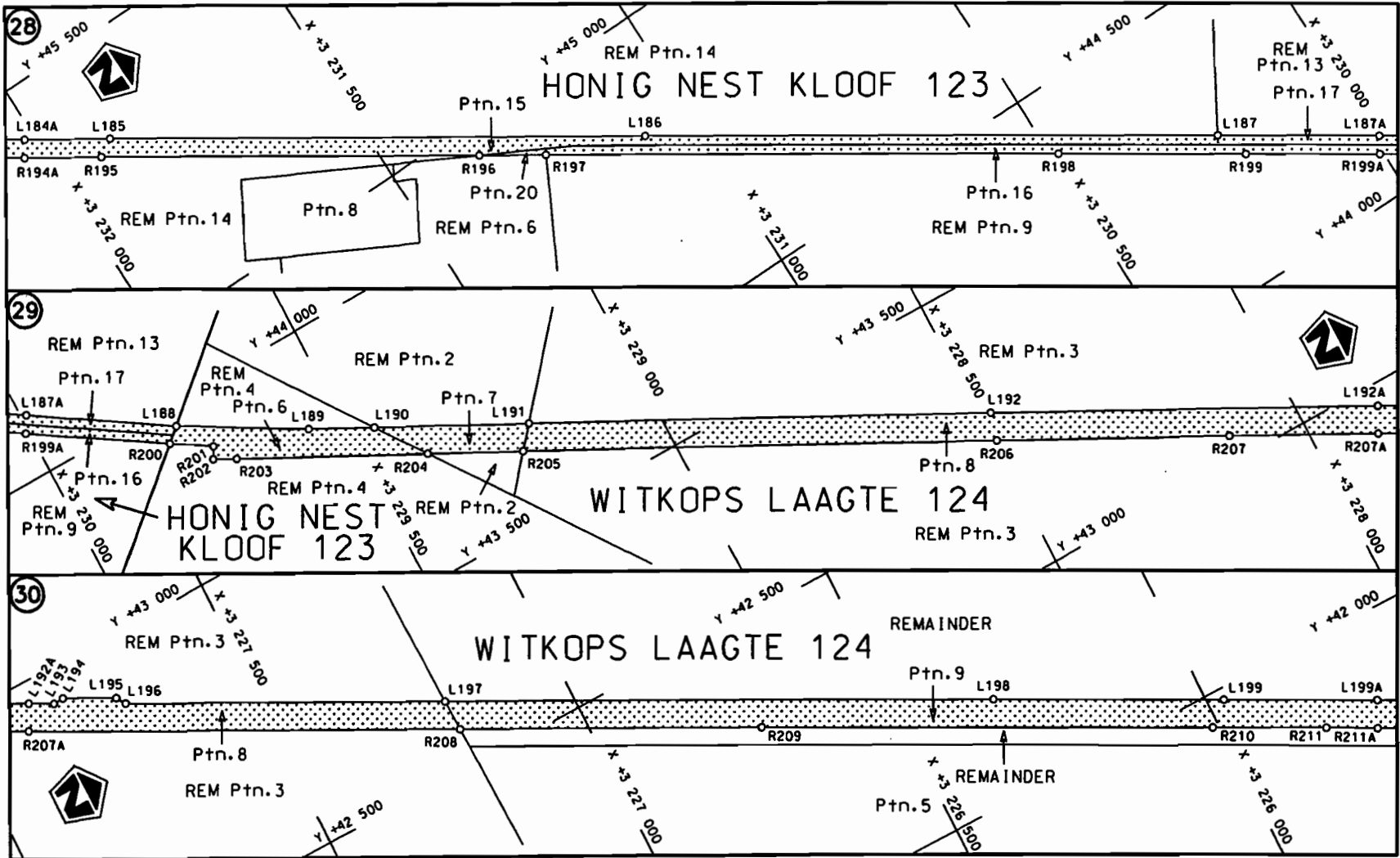
<p>Die Suid Afrikaanse Nasionale Padagentskap Beperk The South African National Roads Agency Limited</p>	<p>Die figuur getoon The figure shown</p>		<p>steldie padreserwe voor van 'n gedeelte represents the road reserve of a portion von Nasionale Roete N12 Seksie Section of National Route 9</p>	<p>Vel Sheet 8 van of 25 Plan P737/09</p>
--	---	--	--	---

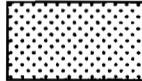


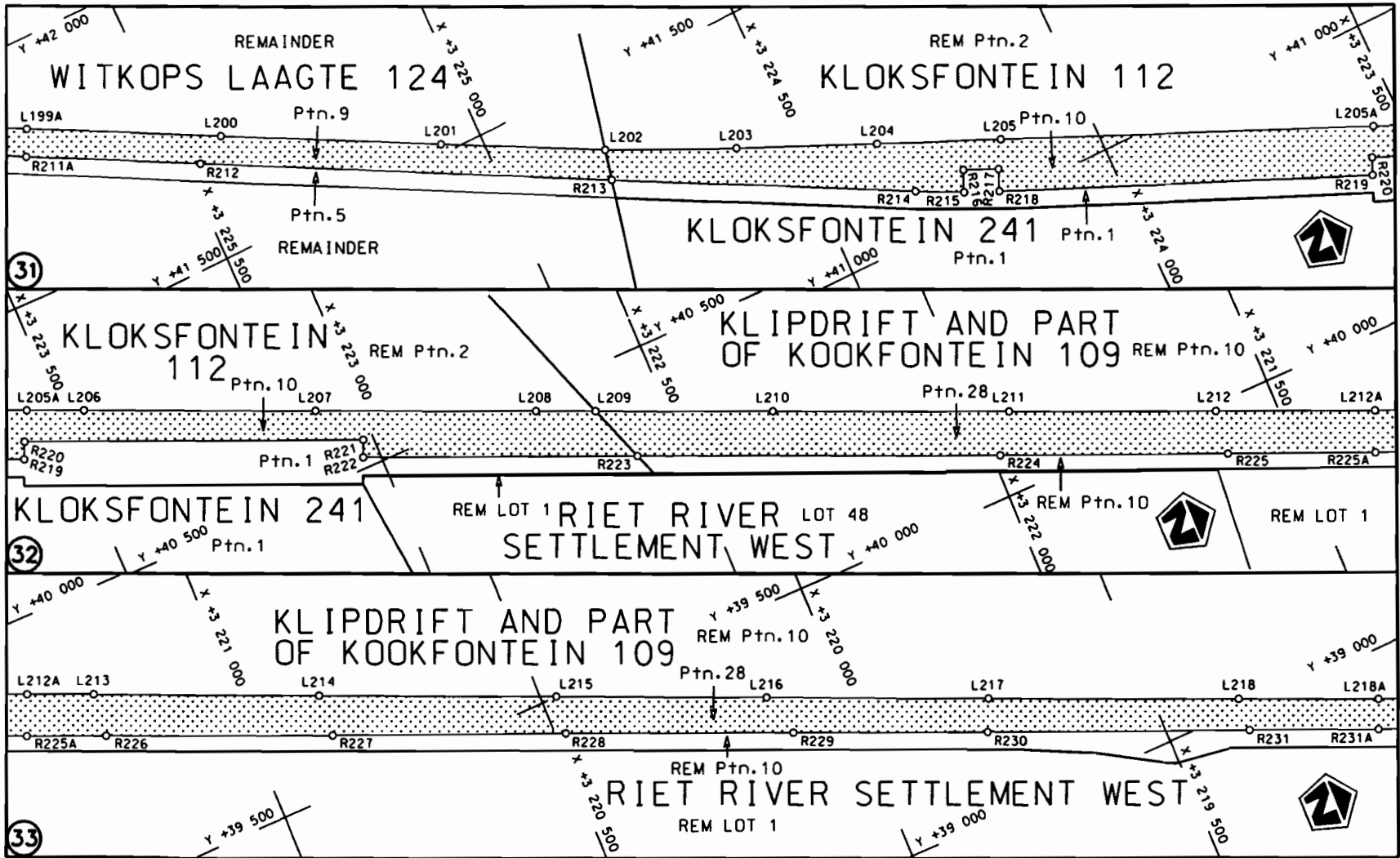
STAATSKOERANT, 15 MEI 2009

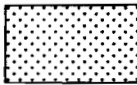
No. 32179 13

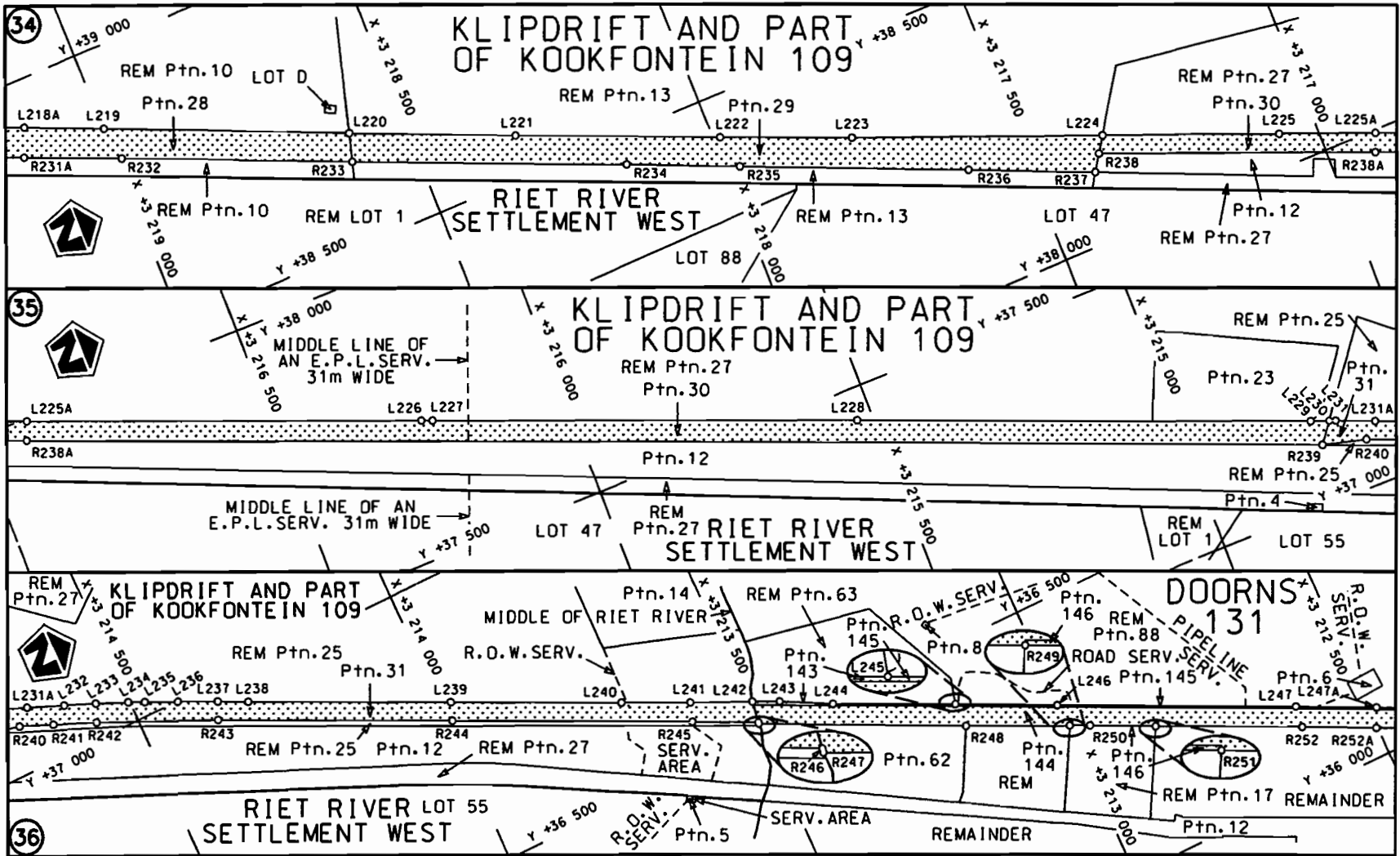
Die Suid Afrikaanse Nasionale Podagentskop Beperk The South African National Roads Agency Limited	Die figuur getoon The figure shown		steldie podereserve voor van 'n gedeelte represents the road reserve of a portion van Nasionale Roete N12 Seksie 9 of National Route Section	Vel Sheet 9 van of 25 Plan P737/09
--	---------------------------------------	--	---	---------------------------------------




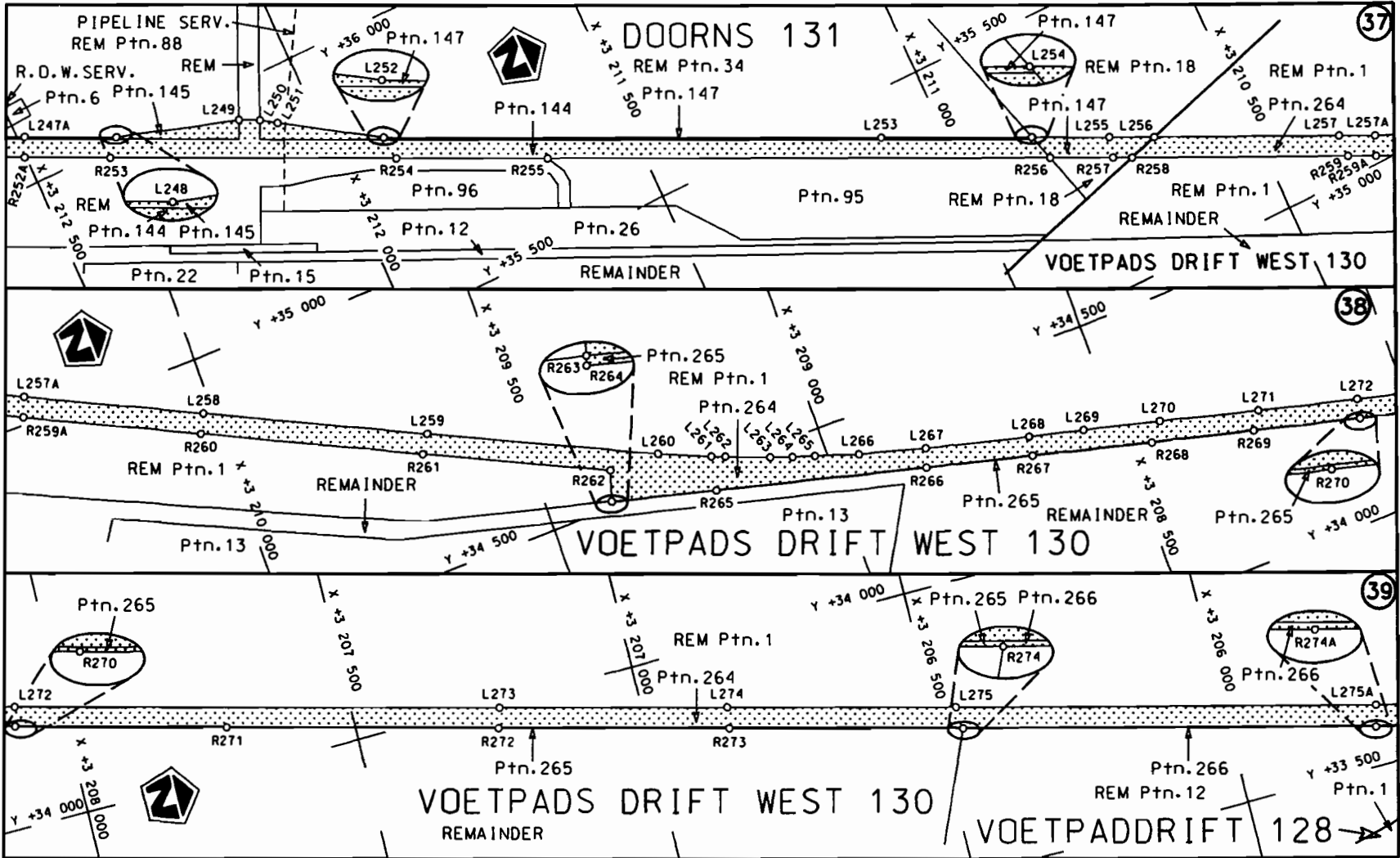
<p>Die Suid Afrikaanse Nasionale Padagentskap Beperk The South African National Roads Agency Limited</p>	<p>Die figuur getoon The figure shown</p> 	<p>stel die padreserwe voor van 'n gedeelte represents the road reserve of a portion van Nasionale Roete N12 of National Route N12</p> <p>Seksie Section 9</p>	<p>Vel Sheet 10 van 25 of</p> <p>Plan P737/09</p>
--	--	--	---

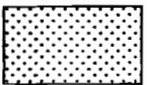


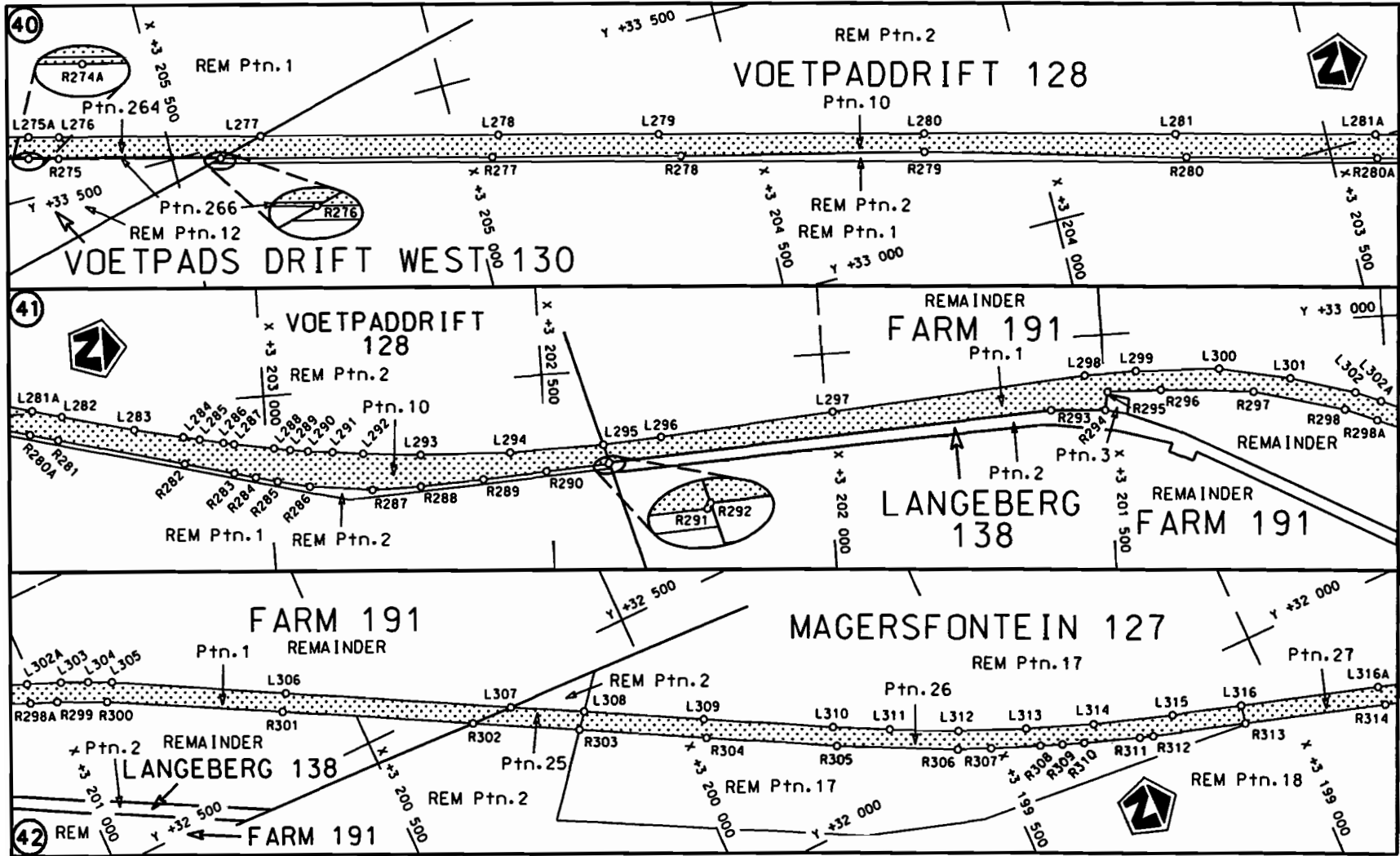
Die Suid Afrikaanse Nasionale Padagentskap Beperk The South African National Roads Agency Limited	Die figuur getoon The figure shown	 steldie padreserwe voor van 'n gedeelte represents the road reserve of a portion von Nasionale Roete of National Route	Vel Sheet 11 von of 25 Plan P737/09
			N12 Seksie Section 9

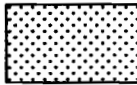


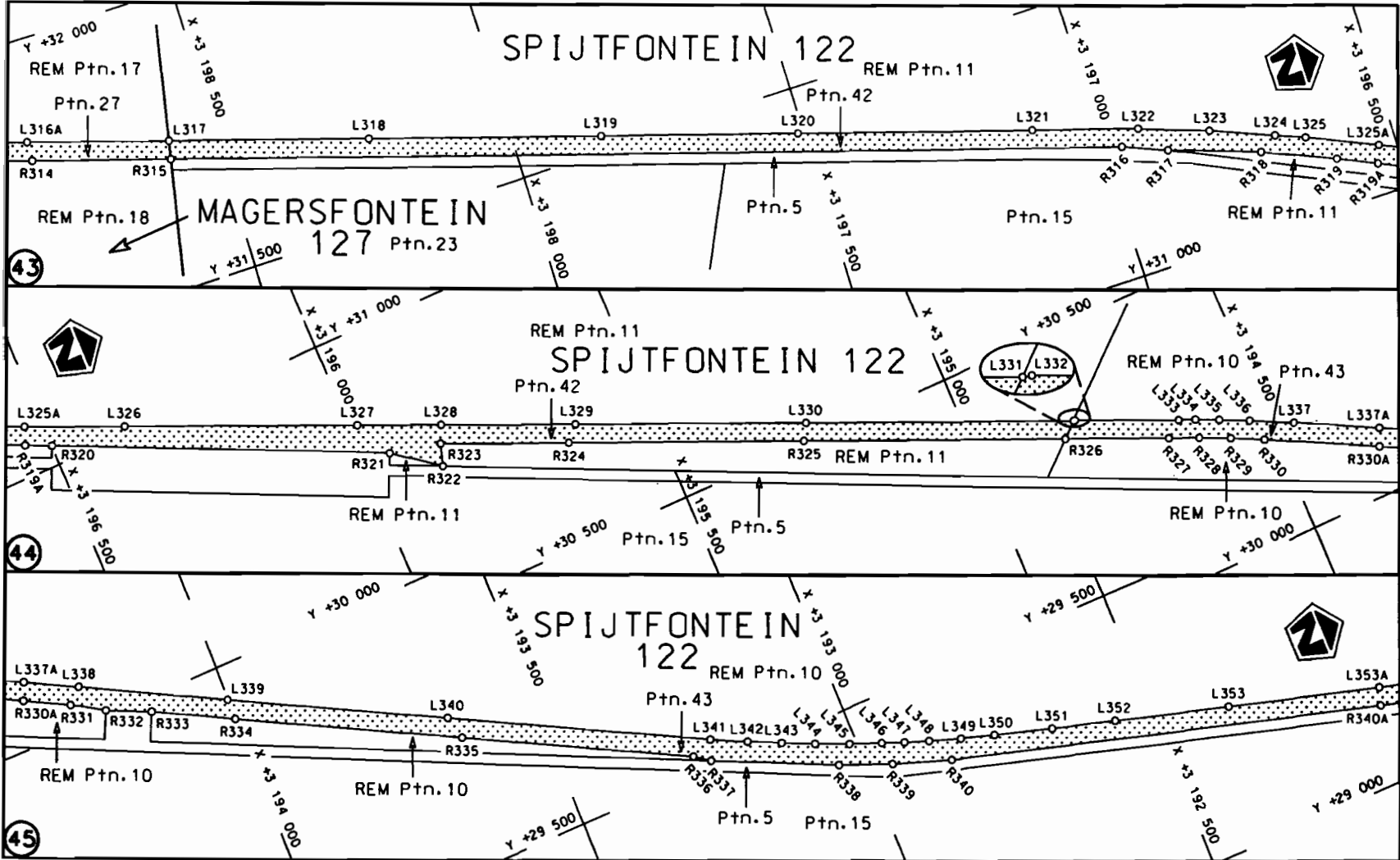
<p>Die Suid Afrikaanse Nasionale Padogentskap Beperk The South African National Roads Agency Limited</p>	<p>Die figuur getoon The figure shown</p>		<p>steldie padreserwe voor van 'n gedeelte represents the road reserve of a portion van Nasionale Roete N12 Seksie 9 of National Route</p>	<p>Vel Sheet 12 van 25 Plan P737/09</p>
--	---	--	--	---

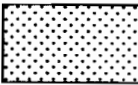


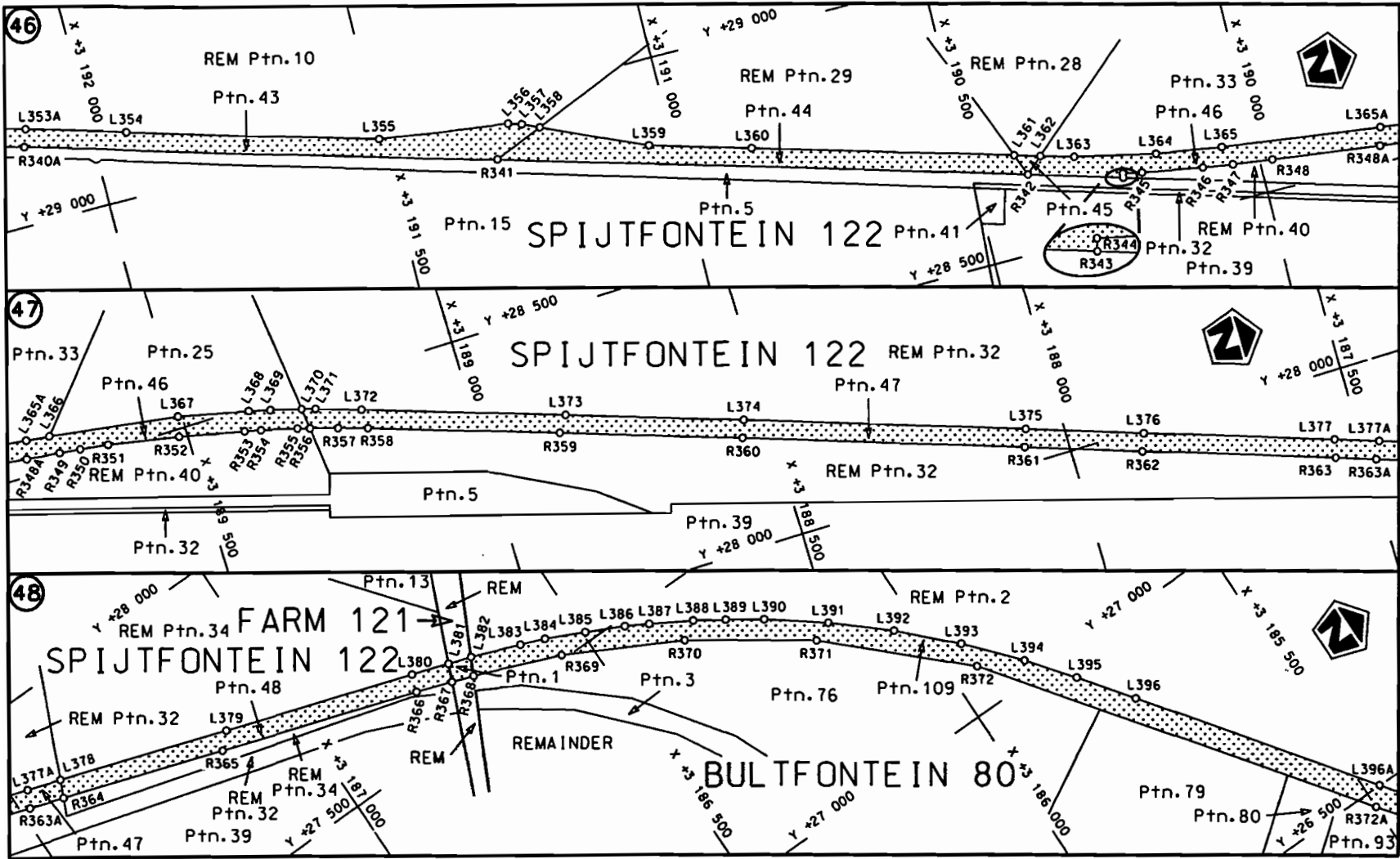
<p>Die Suid Afrikaanse Nasionale Padogentskap Beperk The South African National Roads Agency Limited</p>	<p>Die figuur getoon The figure shown</p> 	<p>stel die podreserwe voor van 'n gedeelte represents the road reserve of a portion van Nasionale Roete N12 Sektie of National Route Section</p> <p>9</p>	<p>Vel Sheet 13 von of 25 Plan P737/09</p>
--	--	--	--



<p>Die Suid Afrikaanse Nasionale Padagentskap Beperk The South African National Roads Agency Limited</p>	<p>Die figuur getoon The figure shown</p> 	<p>steldie padreserve voor van 'n gedeelte represents the road reserve of a portion van Nasionale Roete N12 of National Route N12</p> <p>Seksie 9</p>	<p>Vel Sheet 14 van 25 of of 25</p> <p>Plan P737/09</p>
--	--	---	---

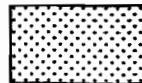


Die Suid Afrikaanse Nasionale Padogentskap Beperk The South African National Roads Agency Limited	Die figuur getoon The figure shown	 steldie padreserwe voor van 'n gedeelte represents the road reserve of a portion van Nasionale Roete N12 of National Route N12 Seksie 9 Section 9	Vel 15 van 25 Sheet 15 of 25 Plan P737/09
--	---------------------------------------	---	---



Die Suid Afrikaanse Nasionale Padagentskap Beperk
The South African National Roads Agency Limited

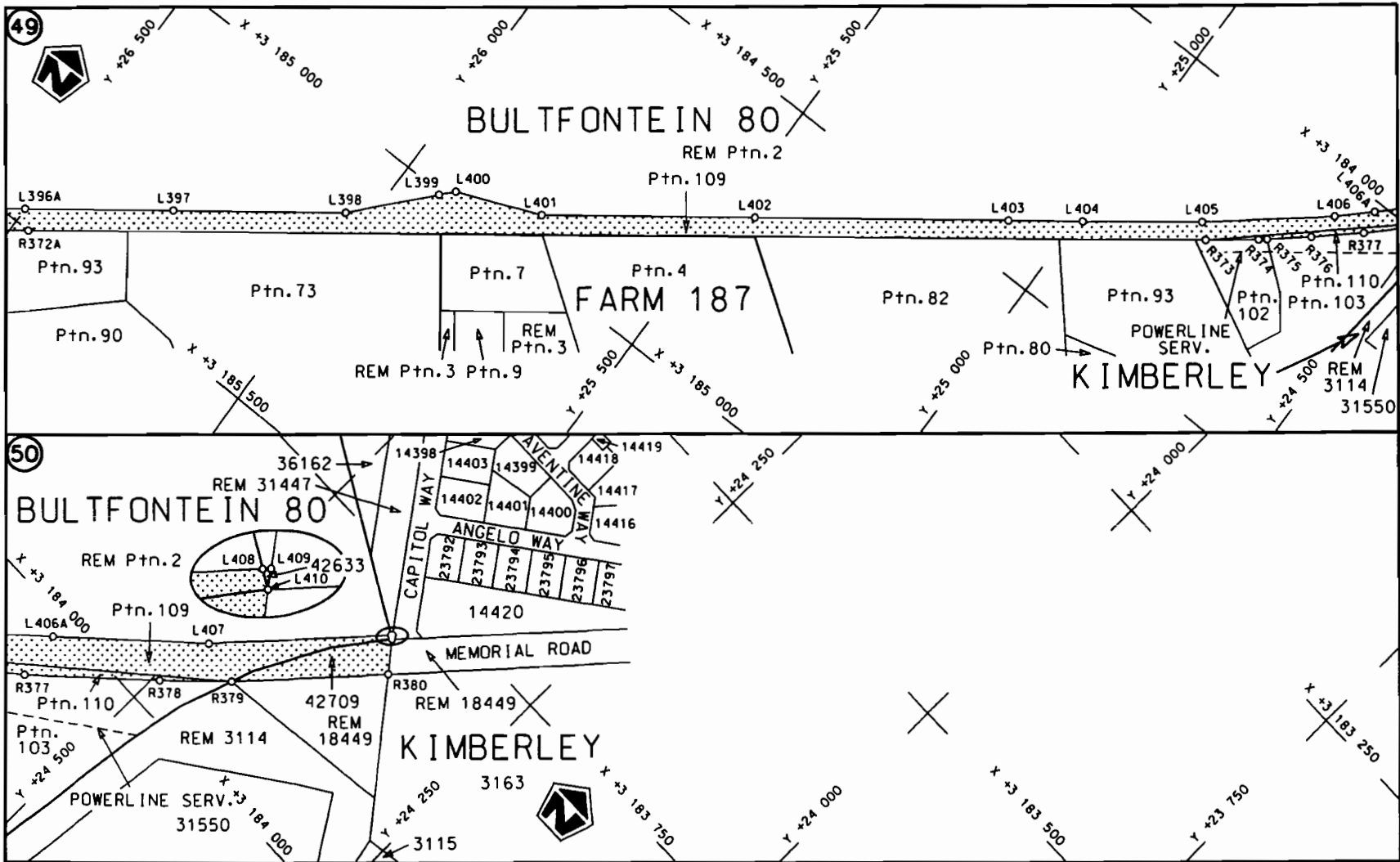
Die figuur getoon
The figure shown

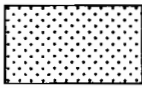


steldie padreserwe voor van 'n gedeelte
represents the road reserve of a portion
van Nasionale Roete N12 Sektie
of National Route N12 Section

9

Vel van
Sheet 16 of 25
Plan P737/09



Die Suid Afrikaanse Nasionale Padagentskap Beperk The South African National Roads Agency Limited	Die figuur getoon The figure shown		st die podreserwe voor van 'n gedeelte represents the road reserve of a portion van Nasionale Roete N12 of National Route N12 Sektie Section 9	Vel Sheet 17 van of 25
				Plan P737/09

PADRESERWE KOÖRDINATE				/	ROAD RESERVE CO-ORDINATES			
LINKERKANT/LEFT HAND SIDE					REGTERKANT/RIGHT HAND SIDE			
	Y	X	WG	25°	Y	X		
L1	87 822.471	3 278 594.652		R1	87 795.365	3 278 610.459		
L2	87 805.600	3 278 565.720		R2	87 774.770	3 278 575.000		
L3	87 760.170	3 278 487.280		R3	87 744.710	3 278 536.530		
L4	87 596.960	3 278 207.010		R4	87 702.860	3 278 470.210		
L5	87 431.710	3 277 922.990		R5	87 658.600	3 278 420.080		
L6	87 401.550	3 277 871.910		R6	87 420.850	3 278 011.870		
L7	87 377.890	3 277 835.400		R7	87 219.200	3 277 690.320		
L8	87 359.560	3 277 807.750		R8	87 206.240	3 277 664.590		
L9	87 308.090	3 277 736.320		R9	87 178.910	3 277 634.810		
L10	87 257.900	3 277 674.850		R10	87 138.360	3 277 595.460		
L11	87 226.000	3 277 638.810		R11	87 066.050	3 277 527.900		
L12	87 184.820	3 277 595.740		R12	86 998.260	3 277 468.960		
L13	87 175.300	3 277 586.480		R13	86 960.450	3 277 436.150		
L14	87 121.350	3 277 534.890		R14	86 923.820	3 277 404.180		
L15	87 072.170	3 277 490.970		R15	86 881.510	3 277 364.440		
L16	86 963.740	3 277 397.260		R16	86 849.440	3 277 332.340		
L17	86 914.870	3 277 352.100		R17	86 811.370	3 277 291.340		
L18	86 883.460	3 277 321.310		R18	86 771.940	3 277 245.290		
L19	86 868.330	3 277 305.630		R19	86 741.450	3 277 207.130		
L20	86 831.200	3 277 264.820		R20	86 713.840	3 277 169.440		
L21	86 808.650	3 277 238.580		R21	86 683.540	3 277 127.010		
L22	86 757.850	3 277 176.270		R22	86 647.730	3 277 070.450		
L23	86 678.430	3 277 060.130		R23	86 611.990	3 277 009.100		
L24	86 605.240	3 276 926.990		R24	86 573.560	3 276 934.530		
L25	86 377.060	3 276 426.240		R25	86 463.820	3 276 693.770		
L26	86 269.310	3 276 188.860		R26	86 348.680	3 276 440.950		
L27	86 234.055	3 276 111.402		R27	86 315.490	3 276 368.060		
L28	86 176.295	3 275 984.502		R28	86 248.660	3 276 219.310		
L29	85 853.690	3 275 275.720		R29	86 216.890	3 276 142.880		
L30	85 617.290	3 274 756.320		R30	86 210.316	3 276 128.675		
L31	85 543.340	3 274 615.200		R31	86 150.360	3 275 999.118		
L32	85 518.100	3 274 573.080		R32	86 038.920	3 275 758.310		
L33	85 494.490	3 274 535.760		R33	85 949.130	3 275 559.090		
L34	85 464.150	3 274 490.350		R34	85 822.210	3 275 280.790		
L35	85 445.350	3 274 463.550		R35	85 599.200	3 274 791.050		
L36	85 425.820	3 274 436.900		R36	85 560.470	3 274 711.580		
L37	85 392.370	3 274 393.250		R37	85 503.470	3 274 609.440		
L38	85 371.550	3 274 367.240		R38	85 465.000	3 274 547.880		
L39	85 350.080	3 274 342.060		R39	85 412.970	3 274 472.670		
L40	85 328.380	3 274 317.110		R40	85 367.420	3 274 412.940		
L41	85 291.410	3 274 276.860		R41	85 329.350	3 274 366.600		
L42	85 269.010	3 274 253.410		R42	85 260.280	3 274 289.630		
L43	85 221.790	3 274 206.500		R43	85 218.050	3 274 246.610		
L44	85 206.360	3 274 192.250		R44	85 175.890	3 274 206.280		
L45	85 158.380	3 274 148.990		R45	85 135.960	3 274 170.820		
L46	85 116.460	3 274 114.000		R46	85 082.890	3 274 126.080		
L47	85 082.450	3 274 086.350		R47	85 026.490	3 274 082.490		
L48	85 047.450	3 274 059.200		R48	84 968.610	3 274 041.070		
L49	85 020.950	3 274 039.630		R49	84 919.740	3 274 008.780		
L50	84 975.930	3 274 008.660		R50	84 600.970	3 273 812.630		
L51	84 941.740	3 273 986.190		R51	84 275.400	3 273 612.690		

Vel	18	Van	25	P737/09
Sheet		of		

PADRESERWE KOÖRDINATE				/	ROAD RESERVE CO-ORDINATES				
LINKERKANT/LEFT HAND SIDE					REGTERKANT/RIGHT HAND SIDE				
	Y	X	WG	25°	Y	X			
L52	84 911.390	3 273 967.190		R52	84 007.110	3 273 448.150			
L53	84 619.810	3 273 788.950		R53	83 925.470	3 273 397.900			
L54	84 277.140	3 273 577.610		R54	83 600.800	3 273 198.500			
L55	84 027.660	3 273 424.200		R55	83 249.320	3 272 982.960			
L56	83 904.670	3 273 348.820		R56	82 221.240	3 272 351.820			
L57	83 586.520	3 273 153.530		R57	81 878.520	3 272 141.300			
L58	83 252.210	3 272 948.420		R58	81 511.450	3 271 916.000			
L59	82 566.300	3 272 527.250		R59	81 493.990	3 271 916.880			
L60	82 237.350	3 272 325.210		R60	81 408.340	3 271 864.580			
L61	80 923.040	3 271 518.350		R61	81 403.010	3 271 849.350			
L62	80 192.100	3 271 069.670		R62	80 900.840	3 271 541.040			
L63	79 852.970	3 270 861.400		R63	80 543.690	3 271 322.410			
L64	79 533.240	3 270 665.290		R64	80 189.770	3 271 104.970			
L65	79 186.520	3 270 452.300		R65	79 858.650	3 270 901.200			
L66	78 897.330	3 270 273.150		R66	79 020.970	3 270 387.040			
L67	78 675.400	3 270 137.180		R67	78 704.840	3 270 191.990			
L68	78 326.960	3 269 929.960		R68	77 689.790	3 269 586.780			
L69	77 987.310	3 269 728.300		R69	77 618.050	3 269 543.450			
L70	77 647.320	3 269 526.260		R70	77 575.520	3 269 516.880			
L71	77 600.860	3 269 497.250		R71	77 488.270	3 269 459.220			
L72	77 571.210	3 269 478.420		R72	77 442.840	3 269 427.470			
L73	77 543.600	3 269 460.380		R73	77 374.570	3 269 377.960			
L74	77 497.940	3 269 429.190		R74	77 320.010	3 269 336.200			
L75	77 443.700	3 269 391.110		R75	77 120.650	3 269 178.090			
L76	77 399.420	3 269 358.570		R76	75 537.460	3 267 923.240			
L77	77 355.690	3 269 325.260		R77	75 469.850	3 267 870.380			
L78	77 135.330	3 269 150.620		R78	75 378.380	3 267 800.870			
L79	75 560.020	3 267 901.820		R79	75 310.970	3 267 750.720			
L80	75 454.940	3 267 820.130		R80	75 217.280	3 267 683.080			
L81	75 419.750	3 267 793.320		R81	75 148.630	3 267 634.760			
L82	75 384.550	3 267 766.930		R82	75 099.070	3 267 600.520			
L83	75 314.510	3 267 714.480		R83	75 041.180	3 267 561.300			
L84	75 257.810	3 267 673.740		R84	74 983.170	3 267 522.650			
L85	75 204.290	3 267 635.720		R85	74 899.180	3 267 468.200			
L86	75 105.100	3 267 567.320		R86	74 797.800	3 267 404.440			
L87	75 005.040	3 267 500.000		R87	74 714.300	3 267 353.510			
L88	74 950.210	3 267 463.840		R88	74 645.280	3 267 312.380			
L89	74 839.040	3 267 393.020		R89	74 541.710	3 267 252.620			
L90	74 766.850	3 267 348.030		R90	74 471.670	3 267 213.320			
L91	74 688.570	3 267 301.340		R91	74 208.740	3 267 070.160			
L92	74 643.290	3 267 274.840		R92	73 712.900	3 266 800.870			
L93	74 563.610	3 267 229.300		R93	73 008.180	3 266 417.610			
L94	74 515.630	3 267 202.480		R94	72 658.250	3 266 227.650			
L95	74 245.320	3 267 055.330		R95	72 471.580	3 266 126.130			
L96	74 095.340	3 266 973.680		R96	71 945.220	3 265 840.490			
L97	73 725.790	3 266 772.910		R97	71 649.350	3 265 680.060			
L98	73 369.190	3 266 578.900		R98	71 525.640	3 265 620.540			
L99	72 458.570	3 266 083.940		R99	71 522.050	3 265 610.540			
L100	71 966.440	3 265 816.510		R100	70 922.430	3 265 284.440			
L101	71 505.270	3 265 566.310		R101	70 576.030	3 265 096.290			
L102	70 906.990	3 265 240.860		R102	70 501.460	3 265 054.150			
					Vel	19	Van	25	P737/09
					Sheet		of		

PADRESERWE KOÖRDINATE				/	ROAD RESERVE CO-ORDINATES			
LINKERKANT/LEFT HAND SIDE					REGTERKANT/RIGHT HAND SIDE			
	Y	X	WG	25°	Y	X		
L103	70 564.220	3 265 054.700		R103	70 441.720	3 265 016.790		
L104	70 488.150	3 265 010.350		R104	70 377.970	3 264 972.480		
L105	70 442.380	3 264 980.610		R105	70 320.910	3 264 928.610		
L106	70 388.660	3 264 942.780		R106	70 267.450	3 264 883.310		
L107	70 344.920	3 264 909.260		R107	70 215.870	3 264 835.490		
L108	70 294.600	3 264 867.360		R108	70 165.650	3 264 784.390		
L109	70 246.090	3 264 822.670		R109	70 149.200	3 264 766.740		
L110	70 207.290	3 264 784.560		R110	70 077.020	3 264 681.100		
L111	70 167.230	3 264 742.020		R111	69 992.080	3 264 569.190		
L112	70 131.290	3 264 700.630		R112	69 751.710	3 264 250.970		
L113	70 096.690	3 264 657.690		R113	69 509.740	3 263 930.400		
L114	70 095.340	3 264 641.300		R114	69 319.360	3 263 678.180		
L115	70 063.720	3 264 599.350		R115	69 302.760	3 263 673.020		
L116	70 049.590	3 264 595.880		R116	69 204.730	3 263 543.890		
L117	69 540.360	3 263 920.900		R117	69 195.270	3 263 513.990		
L118	69 025.280	3 263 237.930		R118	68 995.710	3 263 249.540		
L119	68 688.290	3 262 791.210		R119	65 818.910	3 259 042.210		
L120	67 218.970	3 260 844.840		R120	65 012.770	3 257 974.850		
L121	66 499.300	3 259 892.020		R121	64 994.780	3 257 965.440		
L122	66 267.900	3 259 585.720		R122	64 941.800	3 257 895.490		
L123	66 037.170	3 259 280.180		R123	64 937.570	3 257 875.140		
L124	65 851.980	3 259 035.040		R124	64 765.950	3 257 647.760		
L125	64 795.510	3 257 636.600		R125	64 725.730	3 257 594.700		
L126	64 574.630	3 257 343.430		R126	64 412.910	3 257 181.570		
L127	64 269.390	3 256 940.550		R127	64 256.560	3 256 973.040		
L128	64 157.590	3 256 791.990		R128	64 127.380	3 256 802.030		
L129	63 857.480	3 256 393.900		R129	63 156.800	3 255 516.590		
L130	63 200.430	3 255 523.210		R130	63 132.800	3 255 484.810		
L131	63 040.920	3 255 312.120		R131	63 054.320	3 255 388.210		
L132	63 020.760	3 255 281.620		R132	62 809.540	3 255 083.220		
L133	62 985.730	3 255 231.610		R133	62 524.420	3 254 717.010		
L134	62 953.720	3 255 189.770		R134	62 439.440	3 254 606.730		
L135	62 843.050	3 255 047.100		R135	62 245.910	3 254 365.520		
L136	62 826.770	3 255 030.770		R136	61 610.920	3 253 574.480		
L137	62 613.160	3 254 773.050		R137	60 680.870	3 252 415.760		
L138	62 441.400	3 254 559.730		R138	60 494.330	3 252 183.620		
L139	62 261.450	3 254 335.420		R139	60 239.350	3 251 865.890		
L140	62 014.260	3 254 027.640		R140	59 862.560	3 251 396.860		
L141	61 633.980	3 253 553.810		R141	59 361.050	3 250 772.220		
L142	60 667.090	3 252 349.260		R142	59 123.480	3 250 476.150		
L143	59 263.840	3 250 601.080		R143	58 485.900	3 249 682.210		
L144	58 516.400	3 249 670.230		R144	57 617.510	3 248 600.450		
L145	58 138.210	3 249 200.180		R145	57 362.990	3 248 282.980		
L146	57 390.670	3 248 269.470		R146	57 114.980	3 247 974.420		
L147	56 641.150	3 247 335.750		R147	56 870.820	3 247 670.440		
L148	56 010.830	3 246 548.470		R148	56 617.490	3 247 354.790		
L149	55 801.250	3 246 278.480		R149	56 210.790	3 246 848.370		
L150	55 695.430	3 246 143.090		R150	56 000.850	3 246 584.620		
L151	55 585.590	3 246 007.000		R151	55 867.170	3 246 412.860		
L152	55 399.110	3 245 778.020		R152	55 754.340	3 246 266.950		
L153	54 383.680	3 244 532.070		R153	55 664.700	3 246 152.910		

Vel	20	Van	25	P737/09
Sheet		of		

PADRESERWE KOÖRDINATE				/	ROAD RESERVE CO-ORDINATES			
LINKERKANT/LEFT HAND SIDE					REGTERKANT/RIGHT HAND SIDE			
	Y	X	WG	25°	Y	X		
L154	53 493.160	3 243 439.790		R154	55 566.740	3 246 030.940		
L155	52 854.700	3 242 656.970		R155	55 377.740	3 245 799.040		
L156	51 856.680	3 241 432.970		R156	55 120.140	3 245 483.410		
L157	51 096.940	3 240 501.800		R157	54 489.460	3 244 710.080		
L158	50 440.070	3 239 696.210		R158	54 471.180	3 244 703.610		
L159	50 394.690	3 239 640.910		R159	54 381.390	3 244 593.690		
L160	50 341.510	3 239 574.850		R160	54 379.240	3 244 575.150		
L161	50 291.930	3 239 512.750		R161	53 778.890	3 243 838.910		
L162	50 257.930	3 239 468.940		R162	53 518.880	3 243 520.260		
L163	50 188.880	3 239 378.140		R163	53 093.680	3 242 998.780		
L164	50 103.480	3 239 262.870		R164	51 324.880	3 240 830.000		
L165	50 003.730	3 239 123.270		R165	51 076.110	3 240 525.170		
L166	49 966.340	3 239 069.330		R166	50 820.430	3 240 211.470		
L167	49 898.210	3 238 969.580		R167	50 563.840	3 239 897.040		
L168	49 867.310	3 238 923.800		R168	50 412.710	3 239 711.570		
L169	49 806.470	3 238 831.460		R169	50 339.090	3 239 621.060		
L170	49 439.950	3 238 262.340		R170	50 294.620	3 239 564.860		
L171	48 998.100	3 237 577.120		R171	50 257.810	3 239 518.010		
L172	48 773.790	3 237 228.640		R172	50 221.200	3 239 470.800		
L173	48 773.410	3 237 226.490		R173	50 149.070	3 239 375.620		
L174	48 775.770	3 237 213.280		R174	50 078.650	3 239 280.250		
L175	48 739.910	3 237 157.600		R175	50 015.290	3 239 192.580		
L176	48 726.670	3 237 155.560		R176	49 946.930	3 239 094.920		
L177	48 572.790	3 236 916.620		R177	49 879.570	3 238 996.170		
L178	48 027.430	3 236 070.990		R178	49 819.670	3 238 907.020		
L179	47 818.760	3 235 747.890		R179	49 793.290	3 238 867.200		
L180	47 577.530	3 235 374.090		R180	49 194.040	3 237 938.260		
L181	47 313.530	3 234 965.450		R181	48 967.060	3 237 586.810		
L182	47 175.360	3 234 751.260		R182	48 694.800	3 237 164.610		
L183	46 295.920	3 233 388.220		R183	48 547.180	3 236 935.290		
L184	45 758.200	3 232 554.660		R184	48 324.880	3 236 591.020		
L185	45 329.500	3 231 889.960		R185	47 158.240	3 234 782.640		
L186	44 811.180	3 231 086.670		R186	47 026.420	3 234 578.220		
L187	44 260.040	3 230 231.330		R187	46 815.580	3 234 251.530		
L188	43 958.970	3 229 765.730		R188	46 595.710	3 233 910.600		
L189	43 839.470	3 229 558.950		R189	46 254.110	3 233 381.330		
L190	43 785.330	3 229 454.550		R190	45 927.000	3 232 874.310		
L191	43 658.940	3 229 210.860		R191	45 908.440	3 232 863.910		
L192	43 280.100	3 228 479.890		R192	45 844.680	3 232 765.070		
L193	42 942.140	3 227 827.060		R193	45 842.780	3 232 743.890		
L194	42 943.140	3 227 808.430		R194	45 731.640	3 232 571.400		
L195	42 899.780	3 227 724.130		R195	45 311.150	3 231 919.880		
L196	42 883.480	3 227 713.430		R196	44 944.820	3 231 351.980		
L197	42 619.370	3 227 205.720		R197	44 880.430	3 231 252.160		
L198	42 169.840	3 226 337.310		R198	44 386.410	3 230 486.440		
L199	41 980.130	3 225 971.260		R199	44 206.220	3 230 207.420		
L200	41 695.790	3 225 420.040		R200	43 937.930	3 229 790.370		
L201	41 515.680	3 225 070.230		R201	43 896.030	3 229 724.190		
L202	41 381.150	3 224 808.060		R202	43 876.670	3 229 734.990		
L203	41 284.010	3 224 595.600		R203	43 857.460	3 229 698.270		
L204	41 184.200	3 224 365.450		R204	43 699.410	3 229 392.840		

Vel	21	Van	25	P737/09
Sheet		of		

PADRESERWE KOÖRDINATE				/	ROAD RESERVE CO-ORDINATES			
LINKERKANT/LEFT HAND SIDE					REGTERKANT/RIGHT HAND SIDE			
	Y	X	WG	25°	Y	X		
L205	41 096.330	3 224	162.300	R205	43 621.860	3 229	242.990	
L206	40 790.990	3 223	456.930	R206	43 233.020	3 228	493.230	
L207	40 625.840	3 223	075.930	R207	43 042.680	3 228	124.820	
L208	40 469.640	3 222	714.620	R208	42 565.100	3 227	204.440	
L209	40 427.280	3 222	616.930	R209	42 317.740	3 226	726.760	
L210	40 301.720	3 222	327.410	R210	41 946.550	3 226	010.690	
L211	40 134.400	3 221	941.170	R211	41 853.750	3 225	831.960	
L212	39 988.540	3 221	603.900	R212	41 668.470	3 225	474.140	
L213	39 828.790	3 221	232.810	R213	41 329.260	3 224	819.510	
L214	39 668.290	3 220	861.780	R214	41 081.180	3 224	338.730	
L215	39 500.690	3 220	473.030	R215	41 041.990	3 224	261.580	
L216	39 351.890	3 220	130.080	R216	41 077.280	3 224	246.010	
L217	39 195.350	3 219	768.710	R217	41 051.580	3 224	187.820	
L218	39 018.900	3 219	360.930	R218	41 016.590	3 224	203.190	
L219	38 862.730	3 218	999.690	R219	40 755.540	3 223	588.020	
L220	38 689.030	3 218	597.380	R220	40 783.290	3 223	575.430	
L221	38 571.200	3 218	324.760	R221	40 546.760	3 223	018.210	
L222	38 429.400	3 217	988.350	R222	40 518.940	3 223	030.270	
L223	38 338.810	3 217	771.470	R223	40 327.250	3 222	579.730	
L224	38 174.390	3 217	358.050	R224	40 071.600	3 221	986.340	
L225	38 058.350	3 217	066.540	R225	39 912.860	3 221	614.220	
L226	37 733.460	3 216	251.510	R226	39 753.940	3 221	240.490	
L227	37 726.060	3 216	232.880	R227	39 596.070	3 220	866.590	
L228	37 445.070	3 215	528.240	R228	39 435.580	3 220	482.300	
L229	37 146.310	3 214	778.230	R229	39 277.500	3 220	110.050	
L230	37 134.890	3 214	746.690	R230	39 142.920	3 219	792.800	
L231	37 130.940	3 214	735.780	R231	38 961.810	3 219	364.030	
L232	37 079.380	3 214	608.320	R232	38 803.120	3 218	990.070	
L233	37 057.770	3 214	555.460	R233	38 641.140	3 218	611.060	
L234	37 035.610	3 214	502.770	R234	38 448.980	3 218	160.510	
L235	37 023.250	3 214	475.880	R235	38 368.620	3 217	974.640	
L236	36 998.370	3 214	422.080	R236	38 209.440	3 217	602.130	
L237	36 968.230	3 214	356.990	R237	38 120.200	3 217	393.780	
L238	36 944.840	3 214	307.520	R238	38 147.500	3 217	375.780	
L239	36 789.440	3 213	981.140	R239	37 100.320	3 214	773.180	
L240	36 658.370	3 213	705.260	R240	37 080.580	3 214	696.690	
L241	36 606.310	3 213	593.410	R241	37 057.860	3 214	640.170	
L242	36 560.087	3 213	492.229	R242	37 027.430	3 214	568.300	
L243	36 539.740	3 213	447.690	R243	36 939.080	3 214	370.210	
L244	36 496.110	3 213	363.950	R244	36 759.470	3 213	992.110	
L245	36 403.020	3 213	167.660	R245	36 574.640	3 213	604.120	
L246	36 324.770	3 213	002.650	R246	36 523.029	3 213	497.583	
L247	36 141.950	3 212	617.680	R247	36 520.630	3 213	497.930	
L248	36 009.580	3 212	338.720	R248	36 360.880	3 213	166.480	
L249	35 941.930	3 212	126.430	R249	36 282.950	3 212	997.480	
L250	35 925.440	3 212	092.750	R250	36 267.640	3 212	964.280	
L251	35 908.230	3 212	066.030	R251	36 217.570	3 212	858.800	
L252	35 803.740	3 211	905.300	R252	36 105.330	3 212	622.380	
L253	35 423.430	3 211	104.280	R253	35 982.410	3 212	363.520	
L254	35 307.960	3 210	860.860	R254	35 762.500	3 211	900.250	
L255	35 249.120	3 210	736.820	R255	35 647.510	3 211	658.090	

Vel	22	Van	25	P737/09
Sheet		of		

PADRESERWE KOÖRDINATE				/	ROAD RESERVE CO-ORDINATES			
LINKERKANT/LEFT HAND SIDE					REGTERKANT/RIGHT HAND SIDE			
	Y	X	WG	25°	Y	X		
L256	35 214.880	3 210 664.740		R256	35 262.290	3 210 847.200		
L257	35 072.910	3 210 365.850		R257	35 214.710	3 210 746.530		
L258	34 907.300	3 210 016.510		R258	35 200.210	3 210 716.010		
L259	34 734.400	3 209 653.000		R259	35 034.320	3 210 366.850		
L260	34 558.500	3 209 280.880		R260	34 875.910	3 210 032.690		
L261	34 521.240	3 209 193.900		R261	34 704.600	3 209 672.340		
L262	34 511.880	3 209 170.930		R262	34 561.410	3 209 370.970		
L263	34 483.400	3 209 096.710		R263	34 510.750	3 209 387.260		
L264	34 470.000	3 209 059.460		R264	34 510.070	3 209 387.480		
L265	34 457.120	3 209 021.980		R265	34 463.010	3 209 205.790		
L266	34 432.980	3 208 946.190		R266	34 368.690	3 208 842.020		
L267	34 400.270	3 208 831.140		R267	34 320.890	3 208 657.710		
L268	34 353.350	3 208 651.750		R268	34 267.730	3 208 452.620		
L269	34 331.310	3 208 557.770		R269	34 222.000	3 208 275.220		
L270	34 297.460	3 208 426.680		R270	34 174.290	3 208 090.650		
L271	34 251.390	3 208 255.550		R271	34 078.830	3 207 722.690		
L272	34 206.960	3 208 083.170		R272	33 957.620	3 207 255.310		
L273	33 991.180	3 207 245.160		R273	33 854.480	3 206 857.960		
L274	33 890.120	3 206 852.600		R274	33 750.580	3 206 456.340		
L275	33 788.690	3 206 459.660		R275	33 553.270	3 205 695.460		
L276	33 589.420	3 205 685.680		R276	33 480.780	3 205 416.150		
L277	33 499.460	3 205 336.890		R277	33 358.780	3 204 944.670		
L278	33 393.450	3 204 924.830		R278	33 275.510	3 204 618.470		
L279	33 322.050	3 204 647.430		R279	33 173.670	3 204 198.310		
L280	33 204.510	3 204 190.880		R280	33 048.130	3 203 748.260		
L281	33 092.580	3 203 756.920		R281	32 950.680	3 203 372.170		
L282	32 990.780	3 203 362.080		R282	32 892.880	3 203 150.130		
L283	32 957.980	3 203 234.730		R283	32 870.260	3 203 062.650		
L284	32 939.300	3 203 149.180		R284	32 860.330	3 203 024.070		
L285	32 933.160	3 203 120.720		R285	32 850.510	3 202 985.440		
L286	32 924.370	3 203 078.450		R286	32 837.500	3 202 926.770		
L287	32 920.800	3 203 059.460		R287	32 822.940	3 202 815.510		
L288	32 908.380	3 202 987.900		R288	32 822.700	3 202 729.350		
L289	32 903.640	3 202 958.870		R289	32 827.360	3 202 617.740		
L290	32 899.110	3 202 925.950		R290	32 832.320	3 202 503.280		
L291	32 893.390	3 202 882.150		R291	32 837.380	3 202 391.910		
L292	32 886.810	3 202 827.710		R292	32 839.740	3 202 390.420		
L293	32 877.640	3 202 725.810		R293	32 875.530	3 201 598.960		
L294	32 870.370	3 202 566.680		R294	32 869.720	3 201 501.350		
L295	32 871.330	3 202 399.140		R295	32 900.770	3 201 495.140		
L296	32 877.590	3 202 295.640		R296	32 898.430	3 201 399.790		
L297	32 899.390	3 201 987.530		R297	32 883.810	3 201 236.850		
L298	32 931.840	3 201 534.240		R298	32 842.890	3 201 075.890		
L299	32 933.660	3 201 442.180		R299	32 802.770	3 200 975.240		
L300	32 927.430	3 201 294.900		R300	32 764.220	3 200 894.350		
L301	32 902.670	3 201 170.140		R301	32 615.770	3 200 617.690		
L302	32 871.210	3 201 055.520		R302	32 452.290	3 200 317.520		
L303	32 830.590	3 200 955.280		R303	32 360.280	3 200 148.820		
L304	32 810.480	3 200 910.170		R304	32 251.850	3 199 950.020		
L305	32 791.390	3 200 872.300		R305	32 140.350	3 199 745.430		
L306	32 642.100	3 200 598.890		R306	32 044.390	3 199 552.280		

Vel	23	Van	25	P737/09
Sheet		of		

PADRESERWE KOÖRDINATE				/	ROAD RESERVE CO-ORDINATES			
LINKERKANT/LEFT HAND SIDE					REGTERKANT/RIGHT HAND SIDE			
	Y	X	WG	25°	Y	X		
L307	32 448.810	3 200	244.790	R307	32 020.530	3 199	497.480	
L308	32 385.180	3 200	128.070	R308	31 987.510	3 199	414.980	
L309	32 283.050	3 199	940.710	R309	31 972.700	3 199	377.790	
L310	32 172.800	3 199	738.020	R310	31 958.940	3 199	340.990	
L311	32 126.140	3 199	646.840	R311	31 925.090	3 199	246.260	
L312	32 072.800	3 199	537.650	R312	31 917.500	3 199	223.190	
L313	32 024.940	3 199	426.090	R313	31 868.800	3 199	066.260	
L314	31 981.100	3 199	311.970	R314	31 793.970	3 198	825.120	
L315	31 936.030	3 199	176.790	R315	31 722.080	3 198	590.120	
L316	31 899.890	3 199	060.300	R316	31 223.090	3 196	969.480	
L317	31 753.070	3 198	583.910	R317	31 192.550	3 196	893.130	
L318	31 647.800	3 198	241.340	R318	31 137.200	3 196	735.260	
L319	31 525.960	3 197	845.800	R319	31 083.870	3 196	609.840	
L320	31 422.440	3 197	510.400	R320	31 034.570	3 196	499.790	
L321	31 299.490	3 197	111.230	R321	30 781.450	3 195	951.970	
L322	31 244.190	3 196	932.300	R322	30 722.960	3 195	875.100	
L323	31 200.540	3 196	811.700	R323	30 760.210	3 195	863.800	
L324	31 157.120	3 196	703.060	R324	30 669.900	3 195	653.720	
L325	31 135.940	3 196	652.280	R325	30 504.350	3 195	269.310	
L326	31 013.000	3 196	367.960	R326	30 320.170	3 194	842.860	
L327	30 848.330	3 195	986.090	R327	30 247.440	3 194	675.310	
L328	30 789.380	3 195	850.210	R328	30 225.180	3 194	625.540	
L329	30 694.370	3 195	630.080	R329	30 201.720	3 194	574.350	
L330	30 531.300	3 195	253.550	R330	30 175.500	3 194	520.410	
L331	30 342.610	3 194	816.970	R331	30 042.380	3 194	263.130	
L332	30 341.890	3 194	814.190	R332	30 009.330	3 194	209.190	
L333	30 268.430	3 194	646.520	R333	29 976.230	3 194	135.660	
L334	30 256.430	3 194	619.240	R334	29 906.070	3 194	000.880	
L335	30 238.720	3 194	580.340	R335	29 720.770	3 193	642.670	
L336	30 215.900	3 194	531.420	R336	29 530.930	3 193	276.340	
L337	30 180.590	3 194	460.810	R337	29 512.000	3 193	250.240	
L338	30 065.100	3 194	237.840	R338	29 416.750	3 193	043.790	
L339	29 941.600	3 194	000.980	R339	29 380.970	3 192	955.880	
L340	29 761.610	3 193	653.200	R340	29 347.550	3 192	857.270	
L341	29 546.150	3 193	237.440	R341	28 898.210	3 191	308.780	
L342	29 516.480	3 193	177.760	R342	28 635.480	3 190	403.360	
L343	29 490.820	3 193	122.880	R343	28 588.460	3 190	241.280	
L344	29 466.690	3 193	068.960	R344	28 595.780	3 190	239.660	
L345	29 442.690	3 193	012.220	R345	28 589.100	3 190	206.980	
L346	29 421.690	3 192	959.570	R346	28 569.730	3 190	100.300	
L347	29 407.430	3 192	922.290	R347	28 561.950	3 190	047.810	
L348	29 392.840	3 192	881.670	R348	28 552.940	3 189	977.620	
L349	29 374.830	3 192	828.300	R349	28 521.810	3 189	727.620	
L350	29 356.760	3 192	771.460	R350	28 517.120	3 189	690.630	
L351	29 326.970	3 192	672.290	R351	28 510.150	3 189	640.470	
L352	29 295.570	3 192	564.650	R352	28 486.690	3 189	515.380	
L353	29 238.550	3 192	370.080	R353	28 461.600	3 189	400.470	
L354	29 113.460	3 191	938.860	R354	28 454.900	3 189	371.790	
L355	28 987.030	3 191	503.190	R355	28 437.680	3 189	308.280	
L356	28 953.450	3 191	274.520	R356	28 431.160	3 189	285.980	
L357	28 946.510	3 191	251.240	R357	28 416.880	3 189	237.180	

Vel	24	Van	25	P737/09
Sheet		of		

PADRESERWE KOÖRDINATE				/	ROAD RESERVE CO-ORDINATES			
LINKERKANT/LEFT HAND SIDE					REGTERKANT/RIGHT HAND SIDE			
	Y	X	WG	25°	Y	X		
L358	28 933.260	3 191 221.480		R358	28 401.510	3 189 186.990		
L359	28 853.590	3 191 042.520		R359	28 293.200	3 188 861.780		
L360	28 802.300	3 190 866.460		R360	28 189.750	3 188 553.230		
L361	28 673.790	3 190 419.190		R361	28 029.800	3 188 077.130		
L362	28 660.980	3 190 373.590		R362	27 963.190	3 187 879.200		
L363	28 645.000	3 190 315.880		R363	27 853.820	3 187 552.490		
L364	28 614.420	3 190 174.990		R364	27 811.340	3 187 425.820		
L365	28 595.910	3 190 059.260		R365	27 717.070	3 187 144.720		
L366	28 554.770	3 189 736.500		R366	27 602.970	3 186 800.750		
L367	28 520.580	3 189 506.860		R367	27 581.420	3 186 738.870		
L368	28 492.750	3 189 382.560		R368	27 568.300	3 186 701.190		
L369	28 483.090	3 189 345.470		R369	27 507.830	3 186 551.990		
L370	28 467.570	3 189 290.600		R370	27 405.430	3 186 357.080		
L371	28 460.240	3 189 266.100		R371	27 271.570	3 186 163.080		
L372	28 435.180	3 189 188.070		R372	27 073.690	3 185 952.280		
L373	28 319.790	3 188 842.820		R373	24 797.760	3 184 237.780		
L374	28 219.100	3 188 542.040		R374	24 723.080	3 184 180.410		
L375	28 059.460	3 188 066.480		R375	24 711.710	3 184 170.650		
L376	27 992.770	3 187 868.010		R376	24 651.310	3 184 119.110		
L377	27 884.810	3 187 545.430		R377	24 580.930	3 184 057.450		
L378	27 840.330	3 187 412.800		R378	24 494.280	3 183 973.920		
L379	27 741.910	3 187 119.370		R379	24 448.550	3 183 927.710		
L380	27 632.060	3 186 790.200		R380	24 355.970	3 183 822.190		
L381	27 610.740	3 186 726.270						
L382	27 597.600	3 186 686.440						
L383	27 564.620	3 186 602.430						
L384	27 547.890	3 186 560.350						
L385	27 516.410	3 186 494.620						
L386	27 485.770	3 186 431.300						
L387	27 464.310	3 186 393.420						
L388	27 424.740	3 186 324.850						
L389	27 392.430	3 186 276.250						
L390	27 353.910	3 186 218.940						
L391	27 285.170	3 186 128.710						
L392	27 207.840	3 186 039.350						
L393	27 121.600	3 185 953.720						
L394	27 034.110	3 185 876.340						
L395	26 957.230	3 185 815.530						
L396	26 869.140	3 185 749.490						
L397	26 289.460	3 185 315.930						
L398	26 040.970	3 185 129.940						
L399	25 927.900	3 185 004.300						
L400	25 907.040	3 184 982.180						
L401	25 762.730	3 184 921.690						
L402	25 458.530	3 184 694.290						
L403	25 096.560	3 184 423.240						
L404	24 991.430	3 184 344.820						
L405	24 821.310	3 184 216.830						
L406	24 639.270	3 184 066.200						
L407	24 486.660	3 183 920.000		L409	24 377.420	3 183 796.070		
L408	24 378.420	3 183 797.200		L410	24 375.240	3 183 798.960		
				Vel	25	Van	25	P737/09
				Sheet		of		