

# Government Gazette Staatskoerant

REPUBLIC OF SOUTH AFRICA  
REPUBLIEK VAN SUID-AFRIKA

Vol. 527

Pretoria, 15 <sup>May</sup>  
<sup>Mei</sup> 2009

No. 32180

**CONTENTS****INHOUD**

<i>No.</i>	<i>Page No.</i>	<i>Gazette No.</i>	<i>No.</i>	<i>Bladsy No.</i>	<i>Koerant No.</i>
<b>GOVERNMENT NOTICE</b>			<b>GOEWERMENSKENNISGEWING</b>		
<b>Transport, Department of</b>			<b>Vervoer, Departement van</b>		
<i>Government Notice</i>			<i>Goewermentskennisgewing</i>		
463			463		
South African National Roads Agency Limited and the National Roads Act (7/1998): The South African National Roads Agency Limited: Declaration amendment of National Road N14 Section 1: Amendment of Declaration No. 629 of 2005 .....	3	32180	Suid-Afrikaanse Nasionale Padagentskap Beperk en die Nasionale Paale Wet (7/1998): Die Suid-Afrikaanse Nasionale Padagentskap Beperk: Verklaring wysiging van Nasionale Pad N14 Seksie 1: Wysiging van Verklaring No. 629 van 2005 .....	4	32180

---

**GOVERNMENT NOTICE**

---

**DEPARTMENT OF TRANSPORT****No. 463****15 May 2009****THE SOUTH AFRICAN NATIONAL ROADS  
AGENCY LIMITED****Registration No: 98/09584/06**

---

**DECLARATION AMENDMENT OF NATIONAL ROAD N14 SECTION 1****AMENDMENT OF DECLARATION No. 629 OF 2005**

By virtue of section 40(1)(b) of the South African National Roads Agency Limited and the National Roads Act, 1998 (Act No. 7 of 1998), I hereby amend Declaration No. 629 of 2005, by substituting the descriptive section of the route from Springbok up to Pofadder, with the subjoined sheets 1 to 29 of Plan P733/08.

**(National Road N14 Section 1: Springbok – Pofadder )**

  
\_\_\_\_\_  
**MINISTER OF TRANSPORT**

---

# GOEWERMENTSKENNISGEWING

---

## DEPARTEMENT VAN VERVOER

No. 463

15 Mei 2009

### **DIE SUID-AFRIKAANSE NASIONALE PADAGENTSKAP BEPERK**

Registrasie No: 98/09584/06

---

#### **VERKLARING WYSIGING VAN NASIONALE PAD N14 SEKSIE 1**

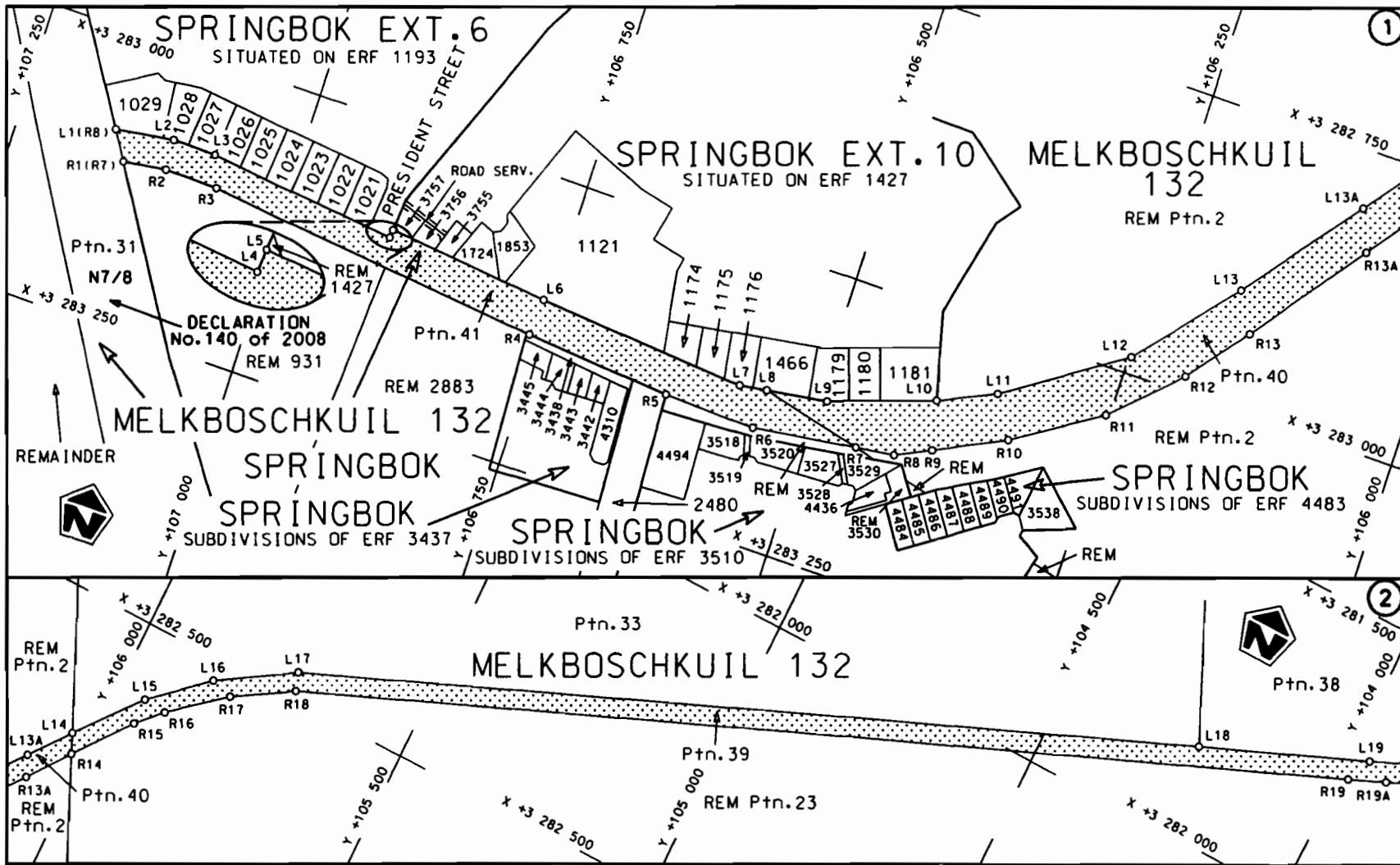
##### **WYSIGING VAN VERKLARING NO. 629 VAN 2005**

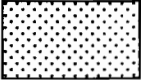
Kragtens Artikel 40(1)(b) van die Suid Afrikaanse Nasionale Padagentskap Beperk en die Nasionale Paaie Wet, 1998 (Wet no.7 van 1998), wysig ek hiermee Verklaring no. 629 van 2005, deur die beskrywende gedeelte van die roete vanaf Springbok tot by Pofadder, te vervang met meegaande velle 1 tot 29 van Plan no. P733/08.

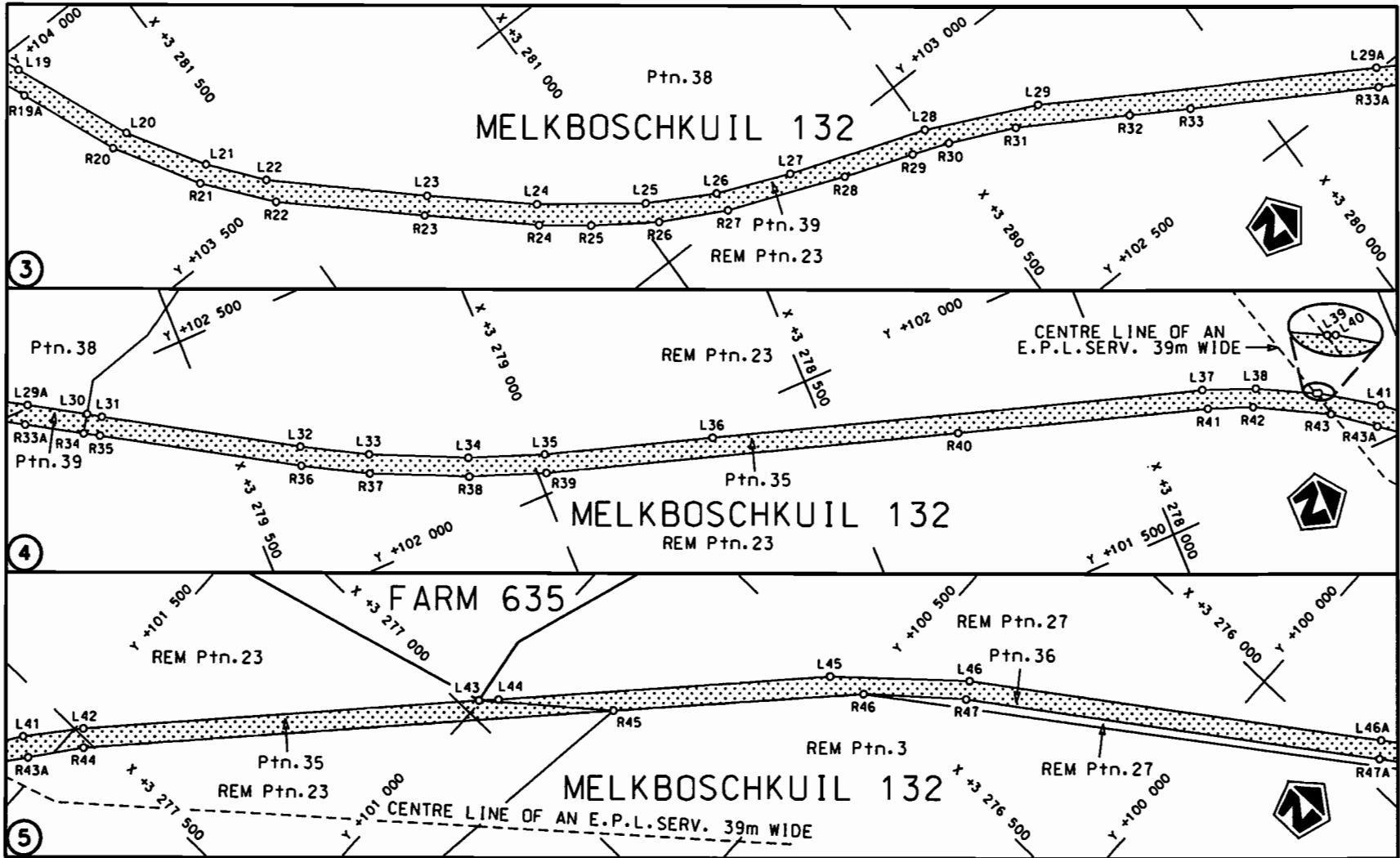
**(Nasionale Pad N14 Seksie 1: Springbok – Pofadder)**

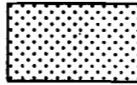


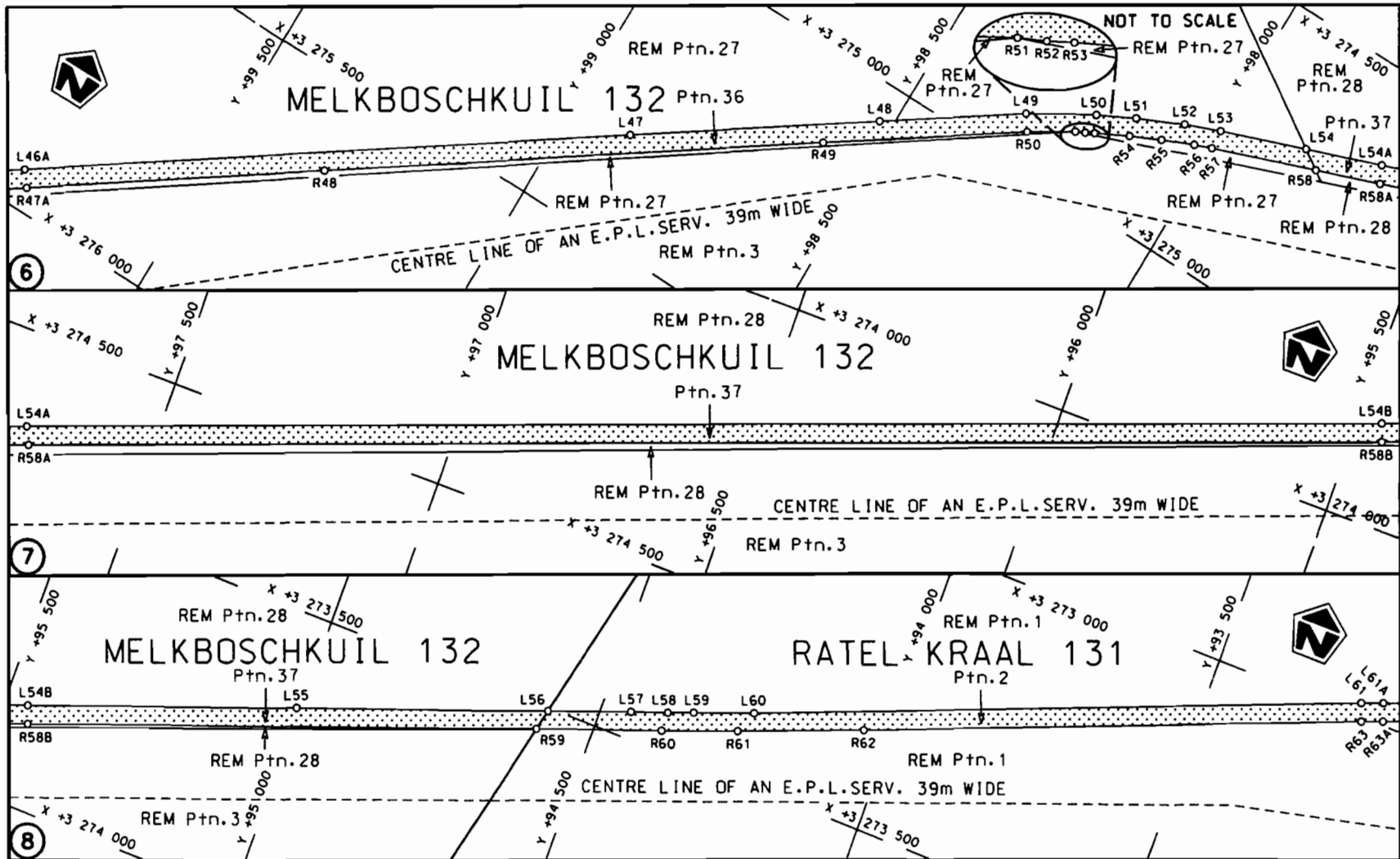
**MINISTER VAN VERVOER**

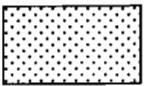


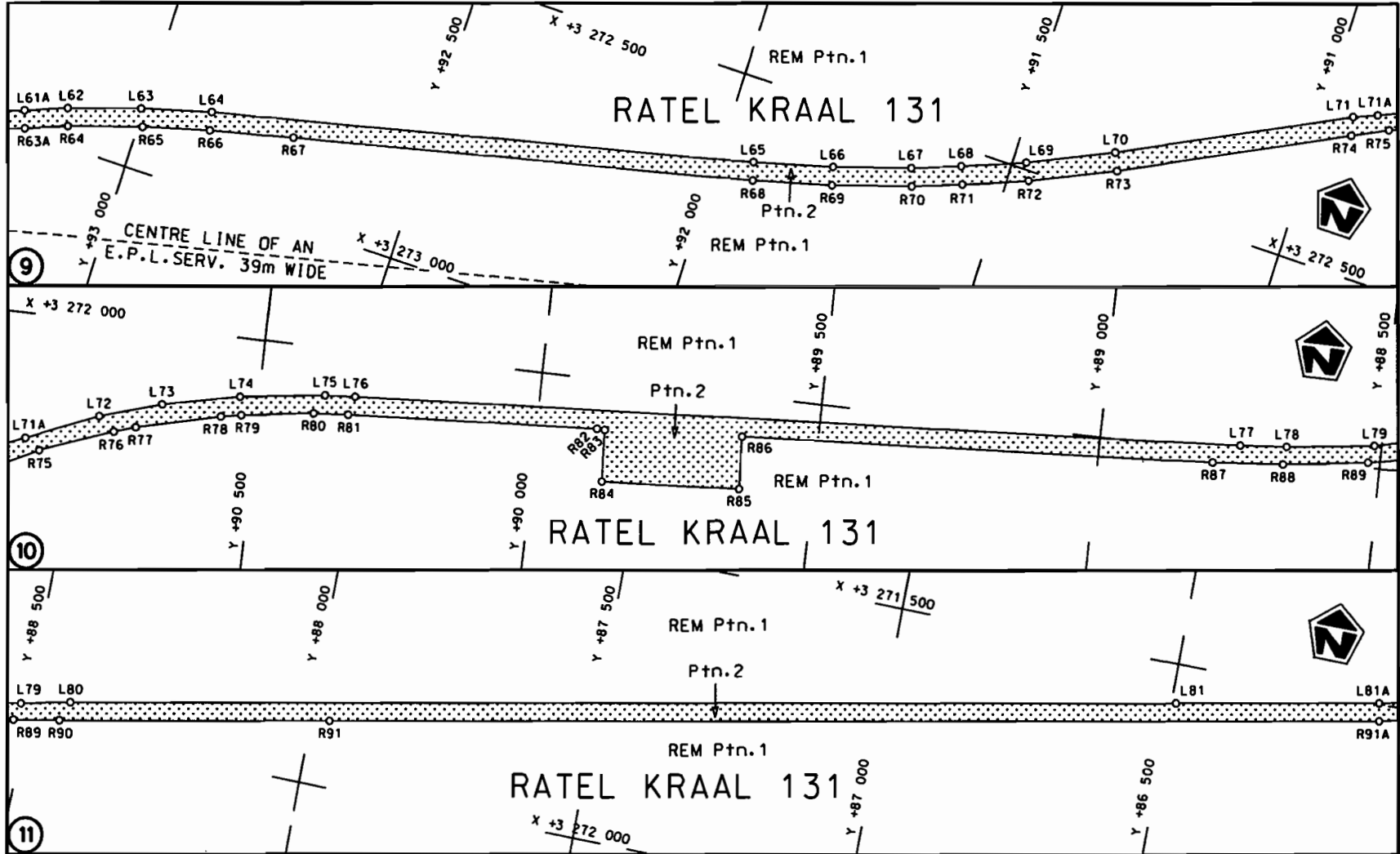
<p>Die Suid Afrikaanse Nasionale Padagentskop Beperk The South African National Roads Agency Limited</p>	<p>Die figuur getoon The figure shown</p> 	<p>steldie padreserwe voor van 'n gedeelte represents the road reserve of a portion van Nasionale Roete N14 Seksie of National Route Section 1</p>	<p>Vel Sheet 1 van 29 Plan P733/08</p>
--	--	--	--

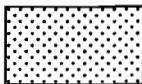


<p>Die Suid Afrikaanse Nasionale Padagentskap Beperk The South African National Roads Agency Limited</p>	<p>Die figuur getoon The figure shown</p> 	<p>steldie padreserwe voor van 'n gedeelte represents the road reserve of a portion van Nasionale Roete of National Route N14</p> <p>Seksie Section 1</p>	<p>Vel Sheet 2 van of 29</p> <p>Plan P733/08</p>
--	--	---	--

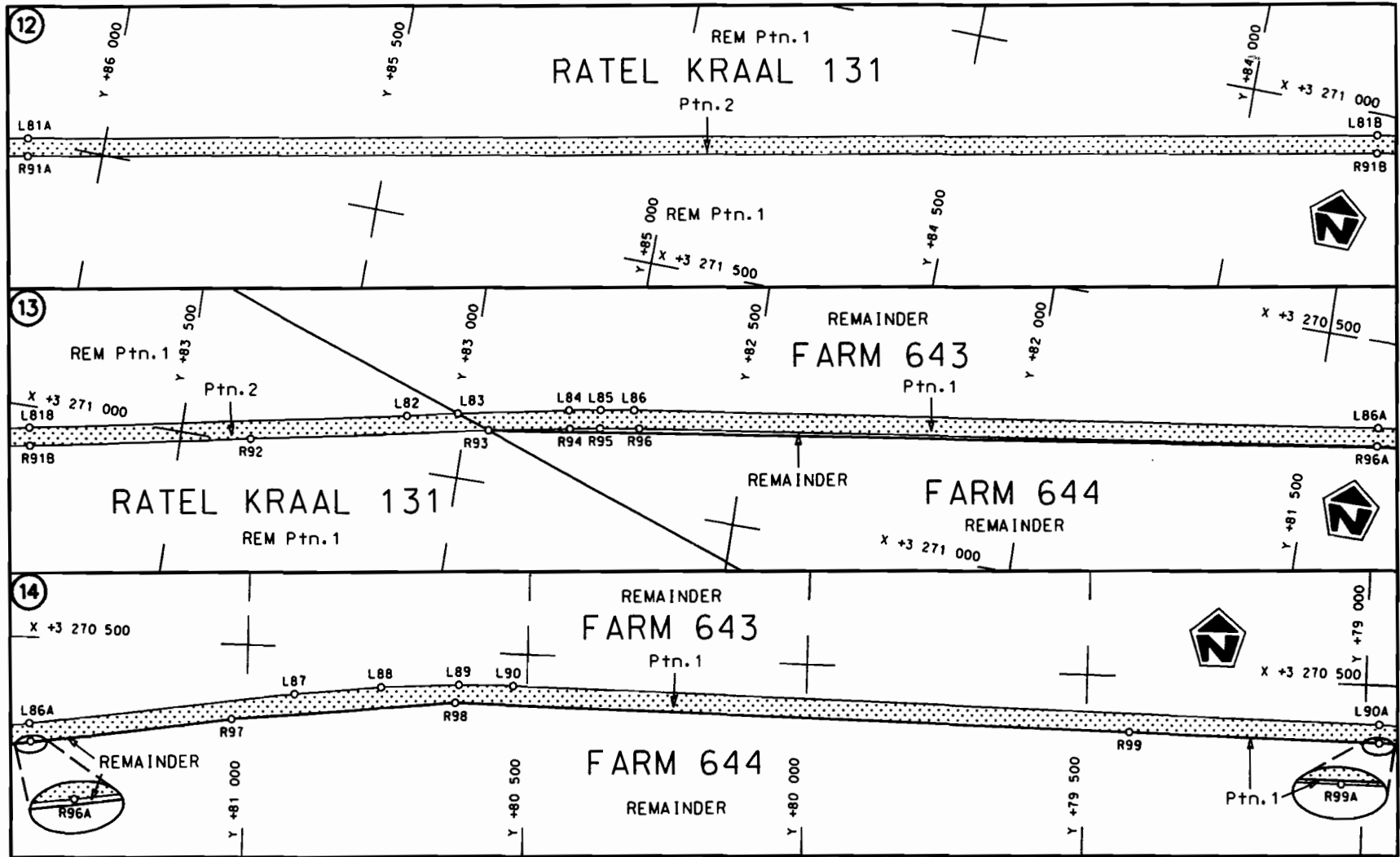


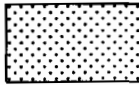
<p>Die Suid Afrikaanse Nasionale Padagentskap Beperk The South African National Roads Agency Limited</p>	<p>Die figuur getoon The figure shown</p> 	<p>steldie padreserwe voor van 'n gedeelte represents the road reserve of a portion van Nasionale Roete N14 Seksie of National Route Section</p> <p>1</p>	<p>Vel Sheet 3 van 29 Plan P733/08</p>
--	--	---	--

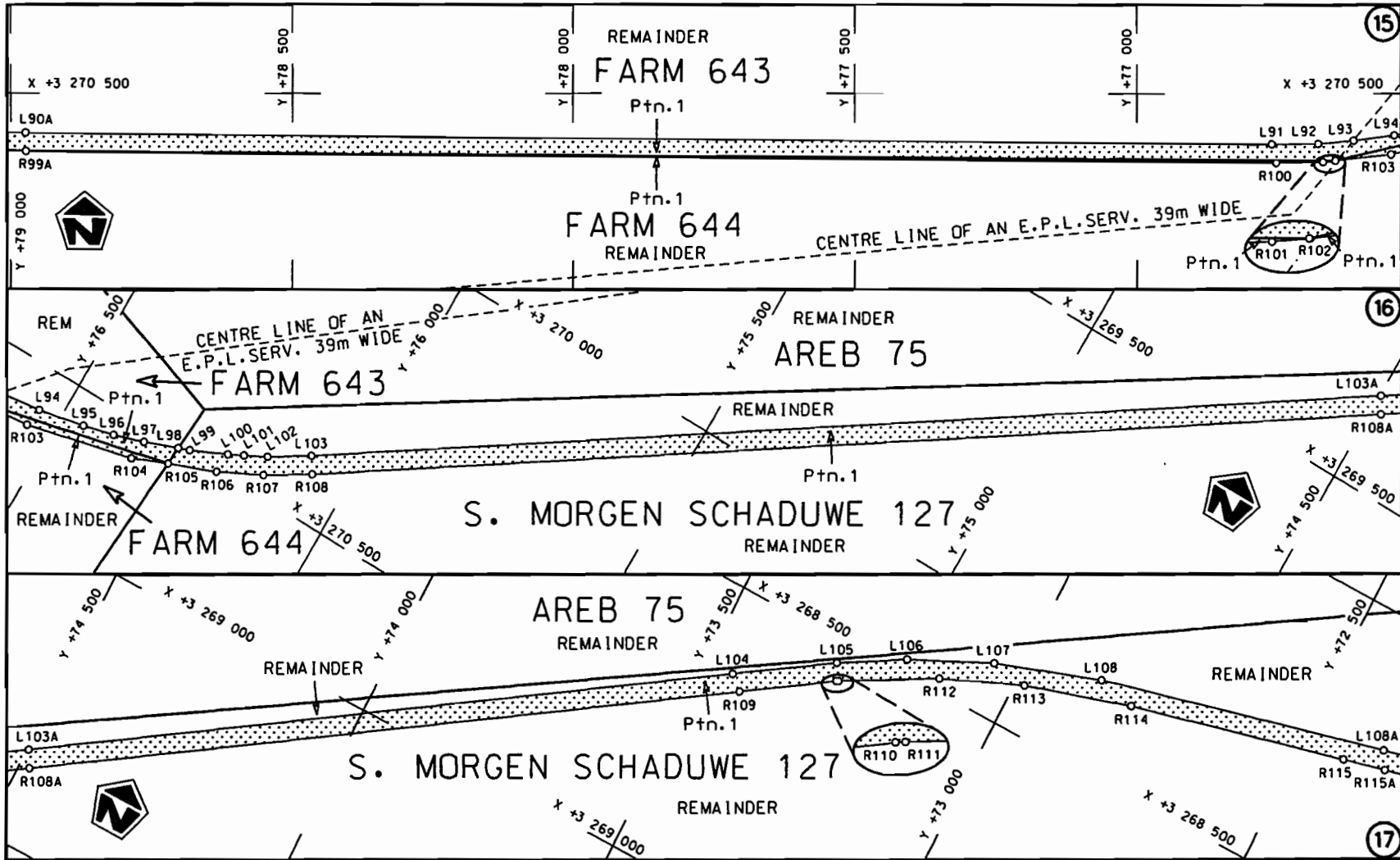


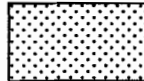
<p>Die Suid Afrikaanse Nasionale Padagentskap Beperk The South African National Roads Agency Limited</p>	<p>Die figuur getoon The figure shown</p> 	<p>steldie padreserwe voor van 'n gedeelte represents the road reserve of a portion van Nasionale Roete N14 Seksie of National Route N14 Section 1</p>	<p>Vel Sheet 4 von of 29 Plan P733/08</p>
--	--	--	---

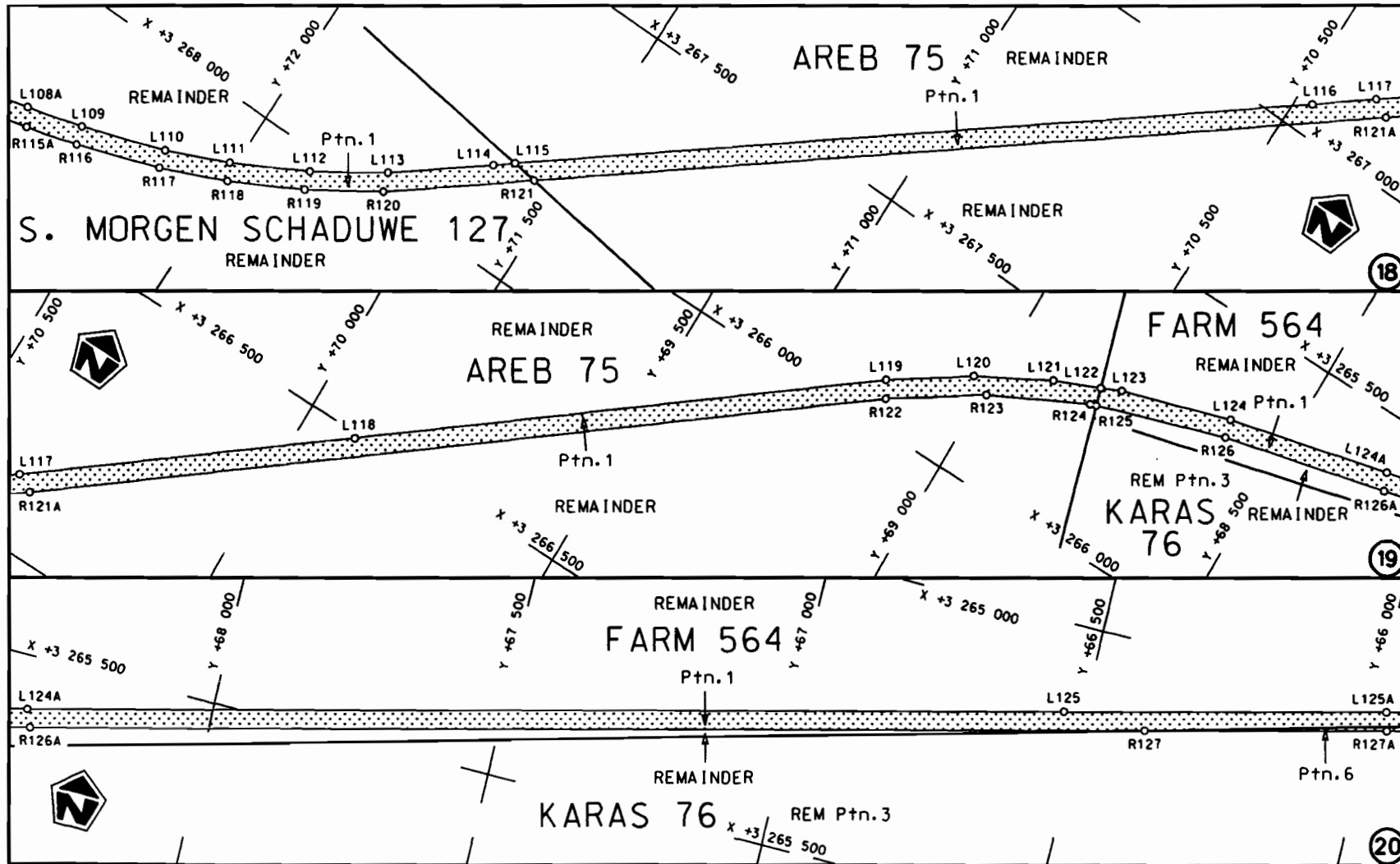




<p>Die Suid Afrikaanse Nasionale Padagentskap Beperk The South African National Roads Agency Limited</p>	<p>Die figuur getoon The figure shown</p>		<p>steldie padreserwe voor van 'n gedeelte represents the road reserve of a portion van Nasionale Roete N14 of National Route      Seksie Section      1</p>	<p>Vel Sheet 5 van 29 Plan P733/08</p>
--	---	--	--	--



<p>Die Suid Afrikaanse Nasionale Padagentskap Beperk The South African National Roads Agency Limited</p>	<p>Die figuur getoon The figure shown</p> 	<p>steldie padreserwe voor van 'n gedeelte represents the road reserve of a portion van Nasionale Raete N14 Seksie of National Route Section 1</p>	<p>Vel Sheet 6 van 29 of of Plan P733/08</p>
--	--	--	--



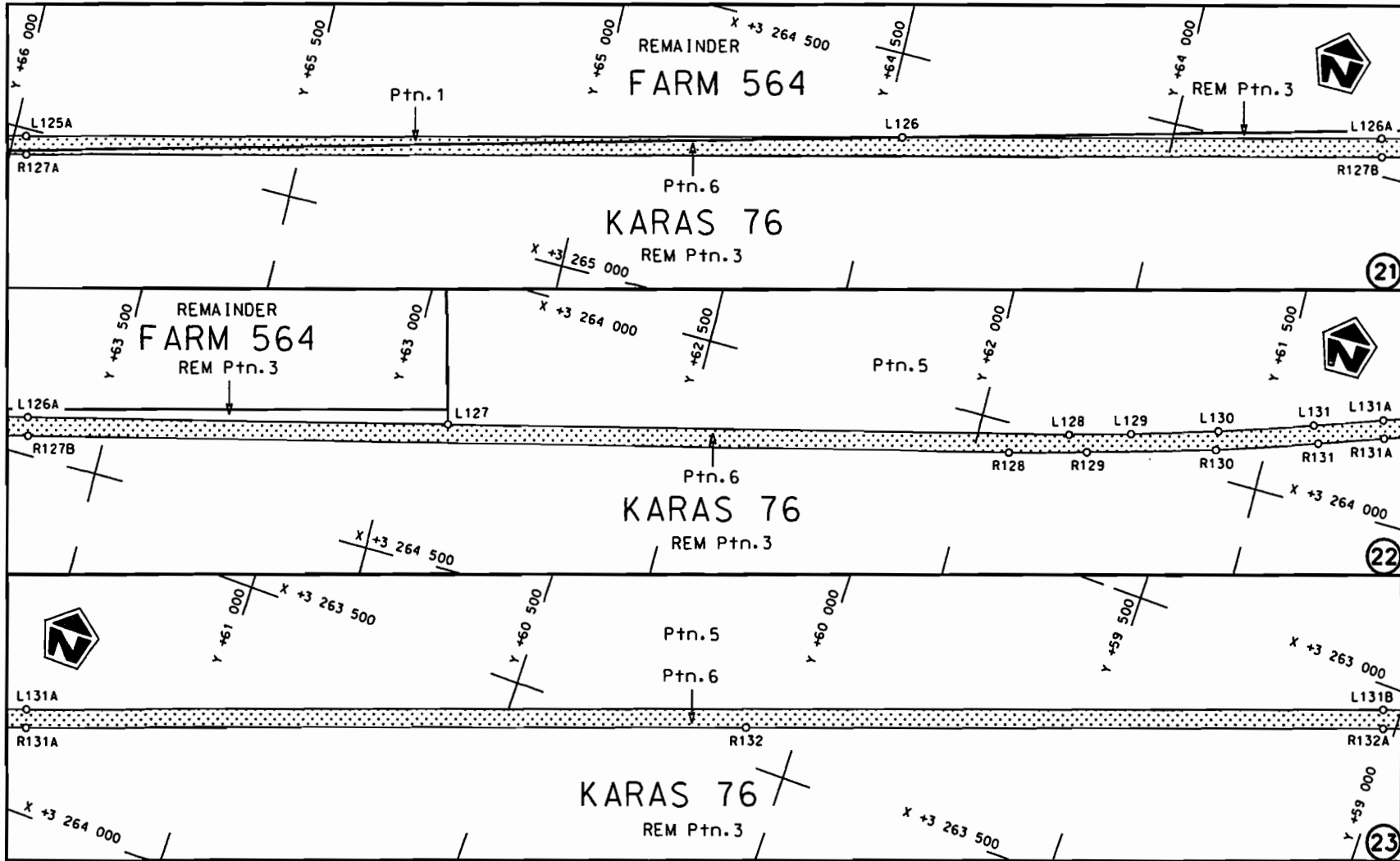
Die Suid Afrikaanse Nasionale Padagentskop Beperk  
The South African National Roads Agency Limited

Die figuur getoon  
The figure shown

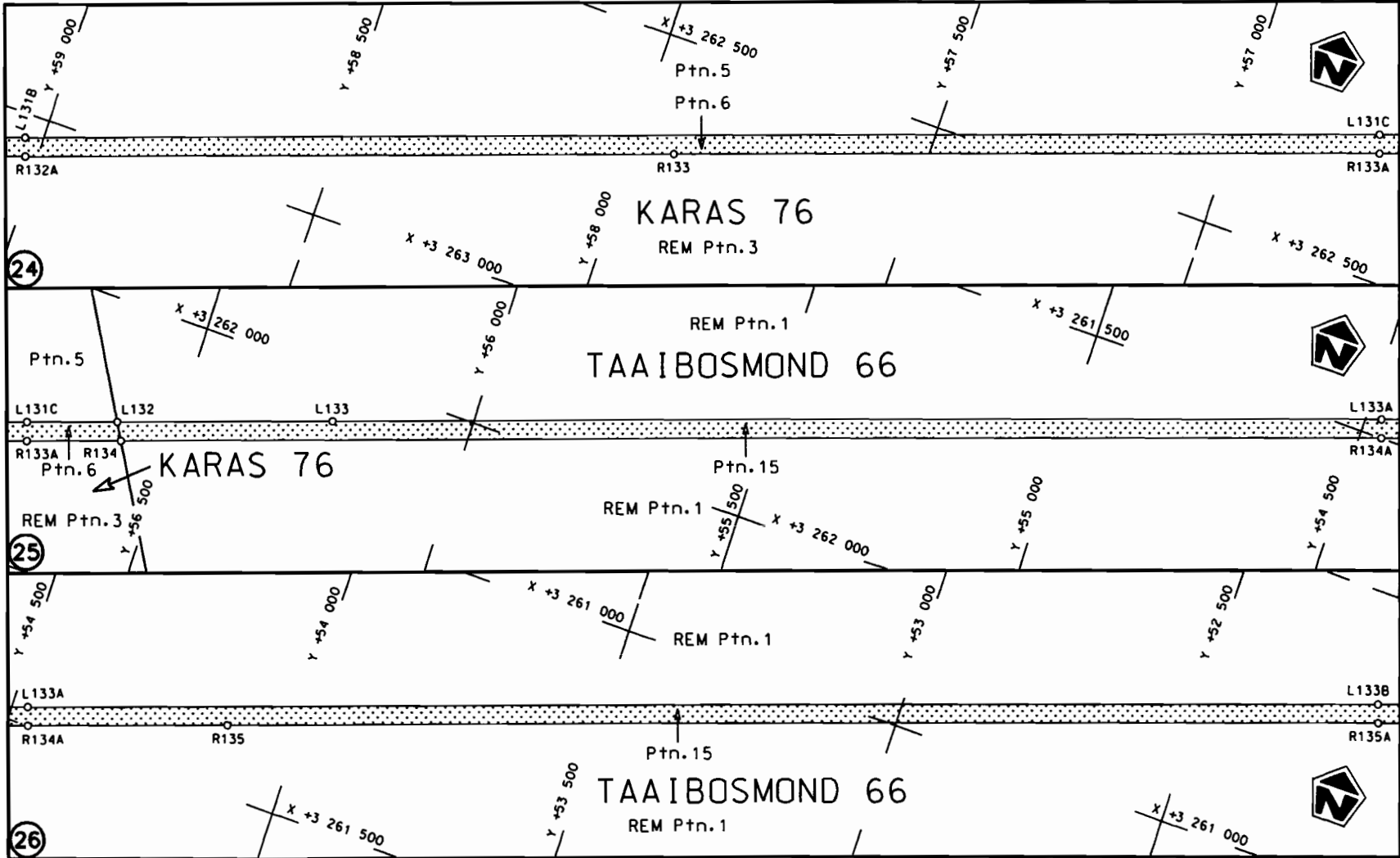


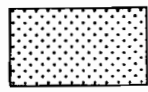
steldie podreserve voor van 'n gedeelte  
represents the road reserve of a portion  
van Nasionale Roete N14 Sektie 1  
of National Route N14 Section 1

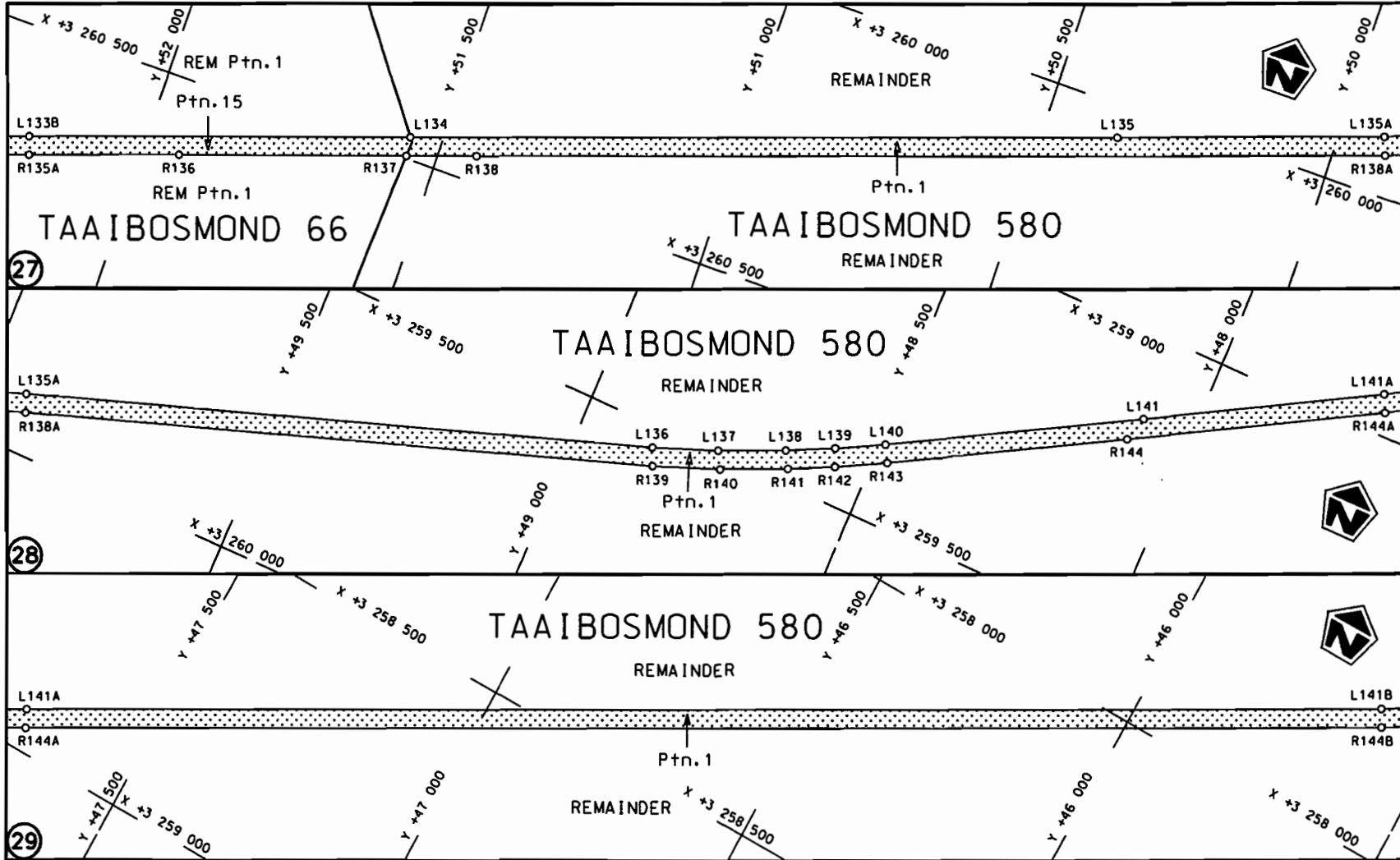
Vel  
Sheet 7 van  
of 29  
Plan P733/08

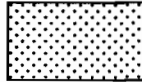


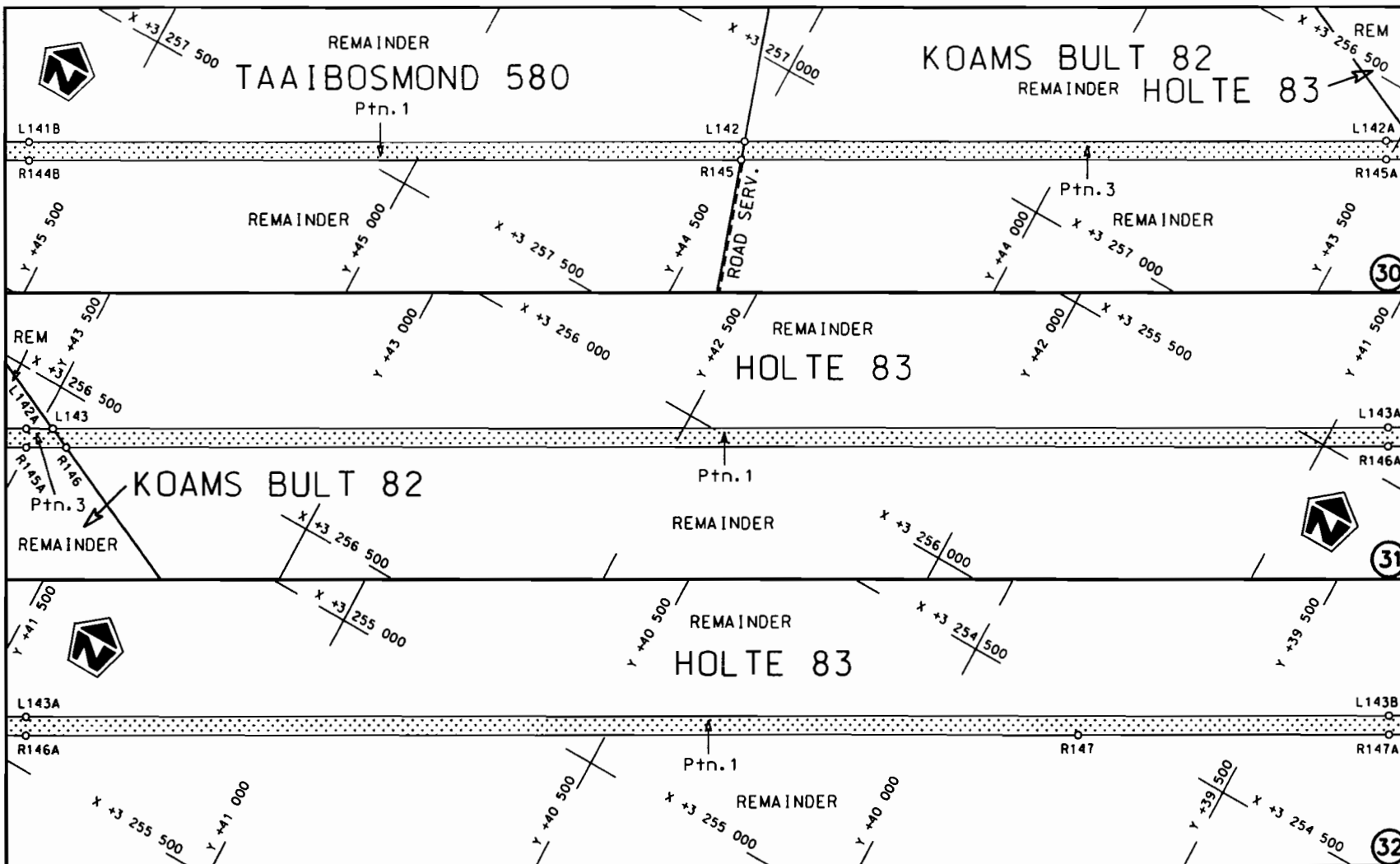
<p>Die Suid Afrikaanse Nasionale Padagentskap Beperk The South African National Roads Agency Limited</p>	<p>Die figuur getoon The figure shown</p>	<p>steldie padreserwe voor van 'n gedeelte represents the road reserve of a portion van Nasionale Roete N14 Seksie of National Route Section 1</p>	<p>Vel Sheet 8 van of 29 Plan P733/08</p>
--	---	--	---

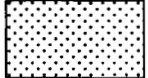


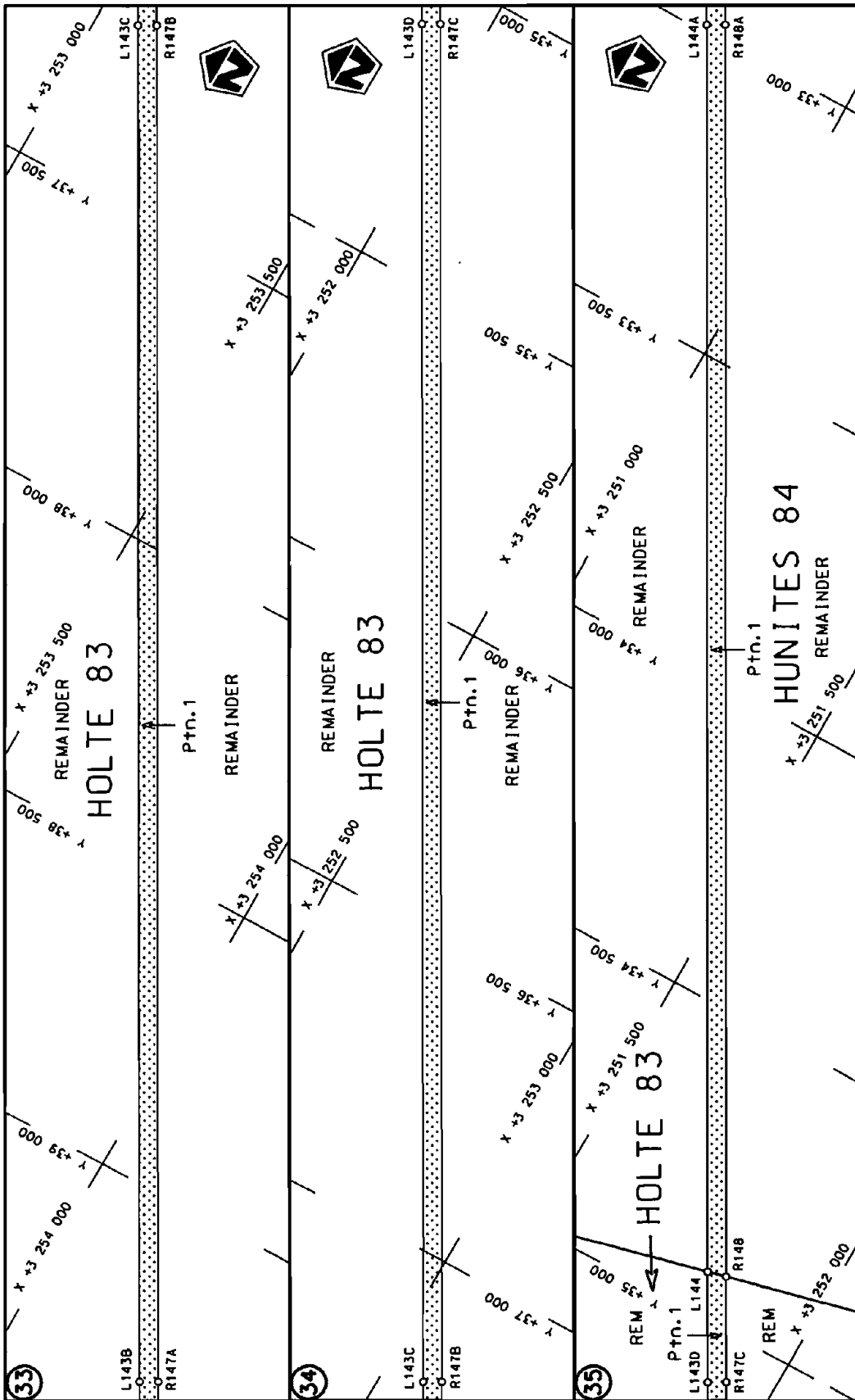
<p>Die Suid Afrikaanse Nasionale Padagentskap Beperk The South African National Roads Agency Limited</p>	<p>Die figuur getoon The figure shown</p> 	<p>steldie padreserwe voor van 'n gedeelte represents the road reserve of a portion van Nasionale Roete N14 Sektie Section of National Route 1</p>	<p>Vel Sheet 9 van of 29 Plan P733/08</p>
--	--	--	---



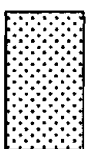
<p>Die Suid Afrikaanse Nasionale Padagentskap Beperk The South African National Roads Agency Limited</p>	<p>Die figuur getoon The figure shown</p> 	<p>stel die padreserwe voor van 'n gedeelte represents the road reserve of a portion van Nasionale Roete N14 of National Route N14</p> <p>Seksie 1 Section 1</p>	<p>Vel Sheet 10 van 29 Plan P733/08</p>
--	--	--	---



<p>Die Suid Afrikaanse Nasionale Padagentskop Beperk The South African National Roads Agency Limited</p>	<p>Die figuur getoon The figure shown</p>		<p>steldie podreserwe voor van 'n gedeelte represents the road reserve of a portion van Nasionale Roete N14 Sektie of Notional Route Section</p>	<p>Vel Sheet 11 van 29 of of Plan P733/08</p>
--	---	--	--	---

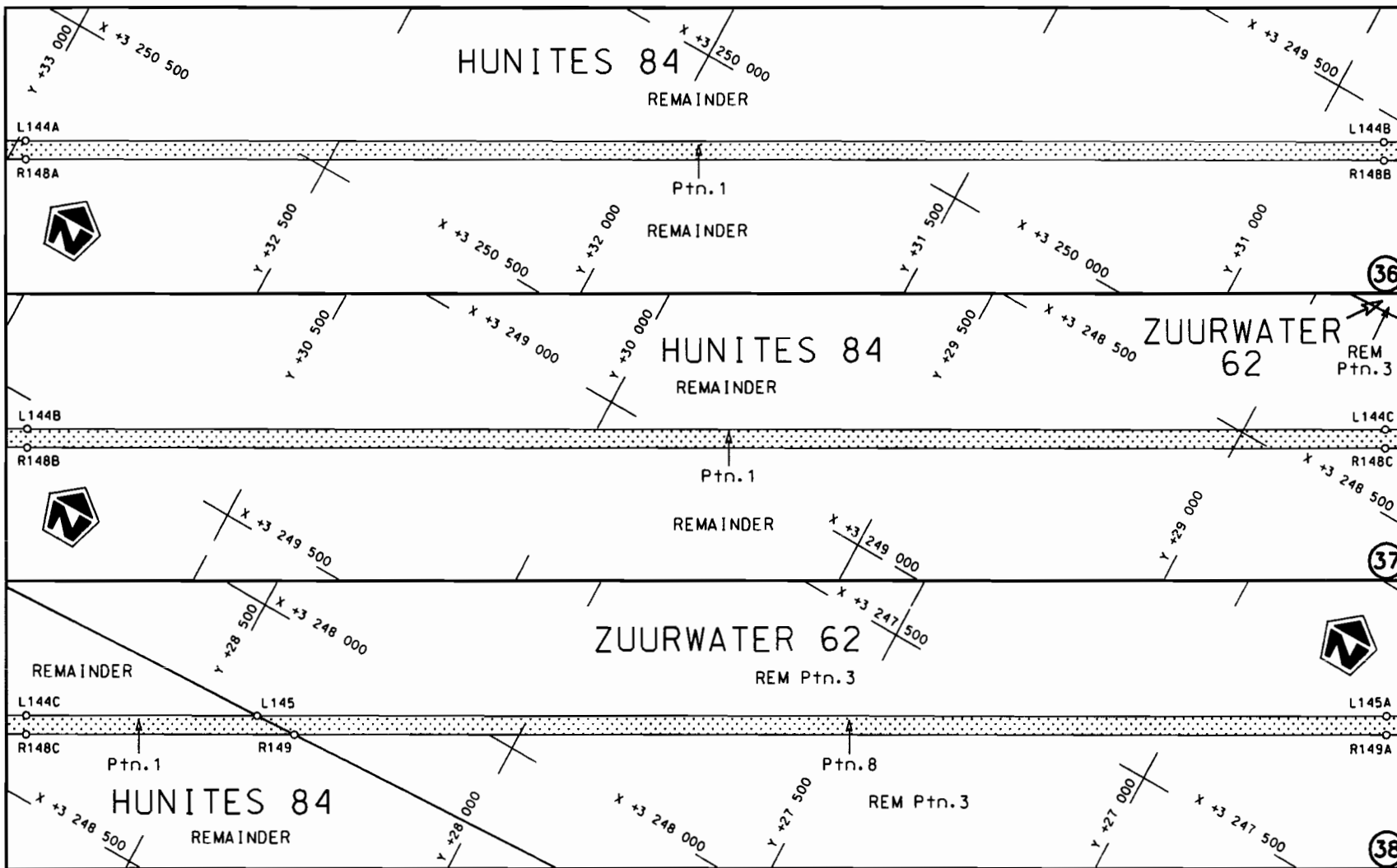



Vel van van Sheet 12 of 29 Plan P733/08	stelde padreserwe voor van 'n gedeelte represents the road reserve of a portion van Nasionale Roete N14 of National Route 1 Seksie Section	Die Suid Afrikaanse Nasionale Padagentskap Beperk The South African National Roads Agency Limited
---	---	--

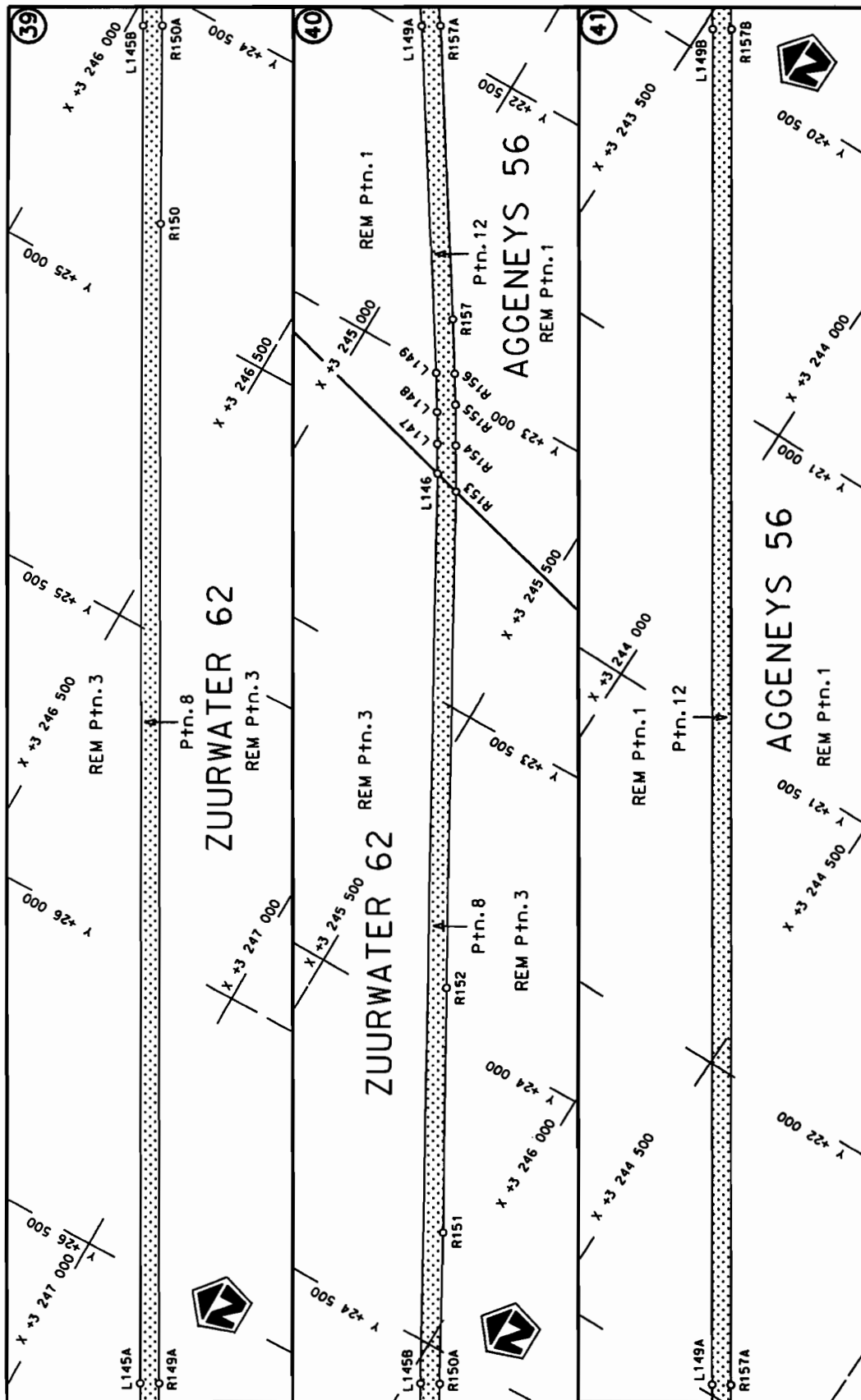



Die figuur getoon  
 The figure shown

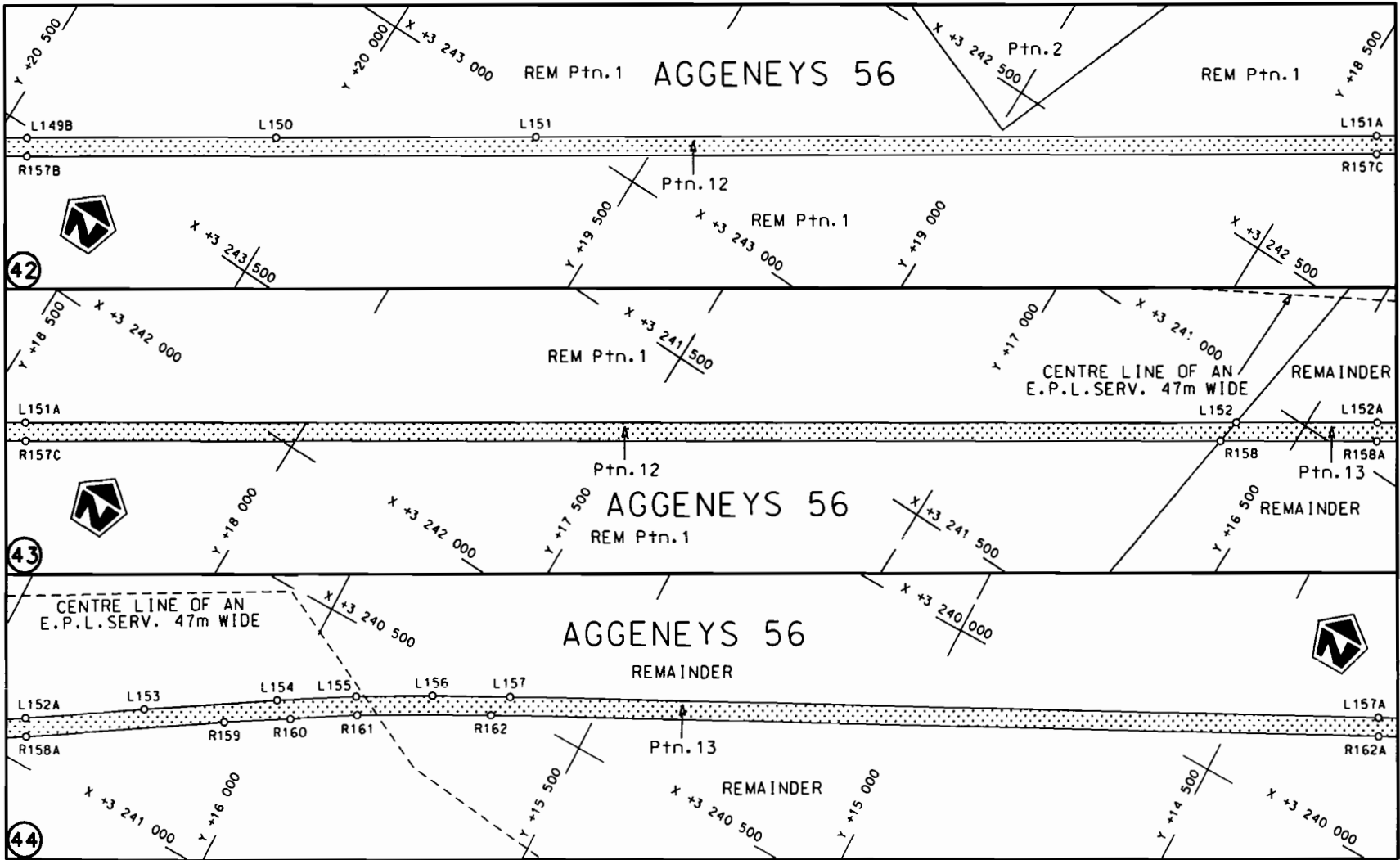


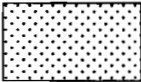


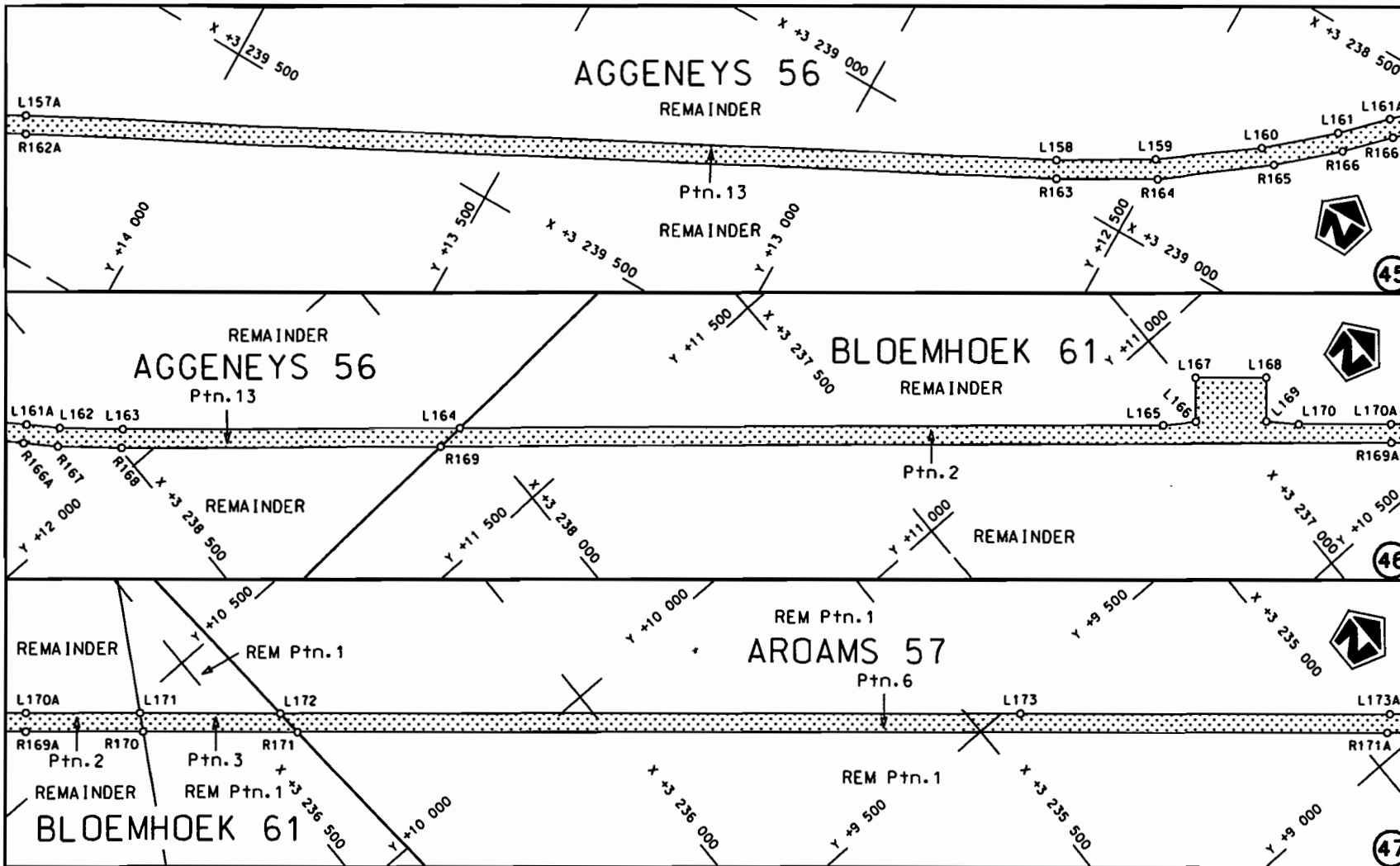
<p>Die Suid Afrikaanse Nasionale Padagentskap Beperk The South African National Roads Agency Limited</p>	<p>Die figuur getoon The figure shown</p>		<p>steldie padreserwe voor van 'n gedeelte represents the road reserve of a portion van Nasionale Roete N14 Sektie of Notional Route Section 1</p>	<p>Vel Sheet 13 van of 29 Plan P733/08</p>
--	---	--	--	--




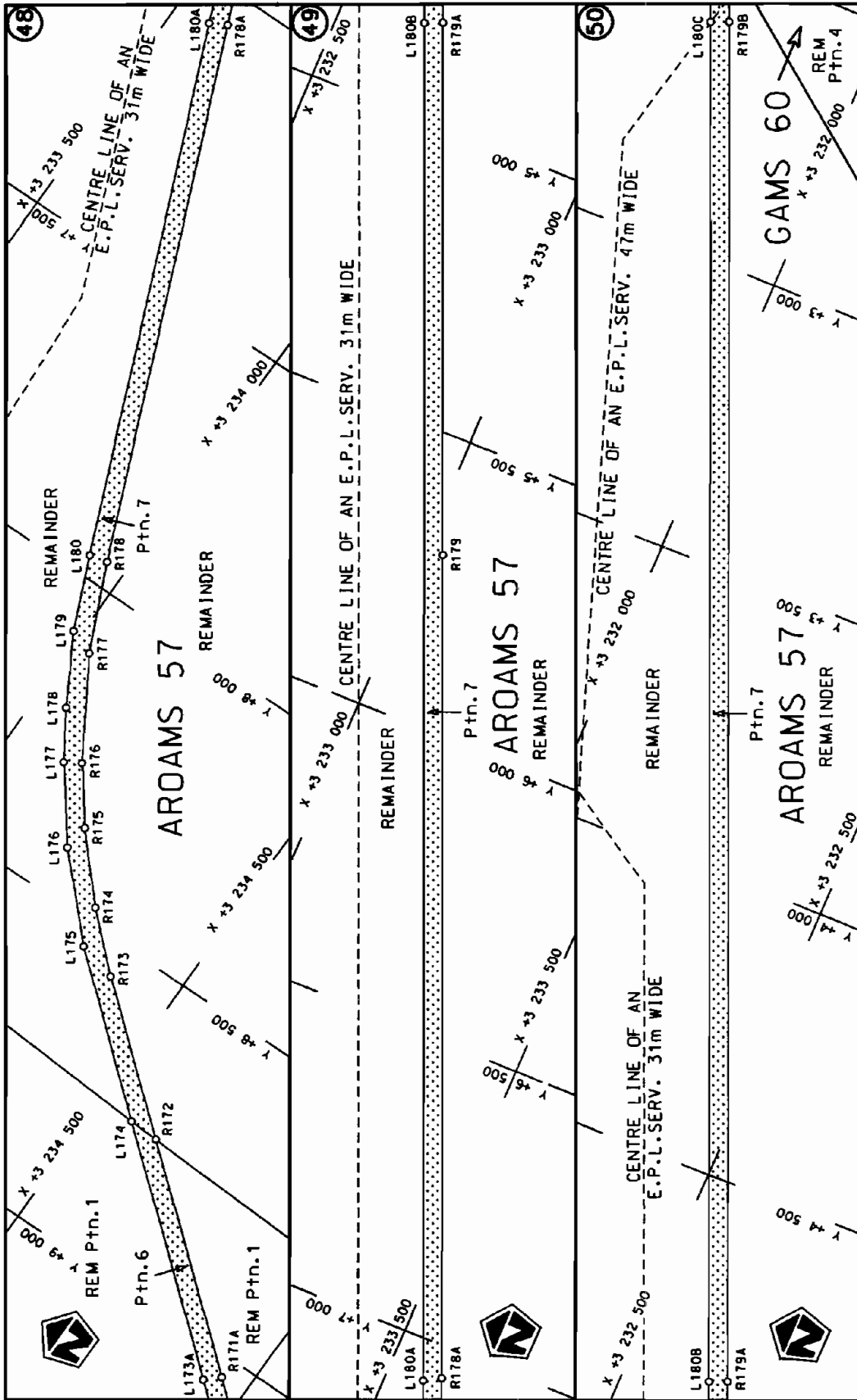
Die Suid Afrikaanse Nasionale Padagentskap Beperk The South African National Roads Agency Limited	Die figuur getoon The figure shown		steldie padreserwe voor van 'n gedeelte represents the road reserve of a portion van Nasionale Roete N14 of National Route	Vel Sheet 14 of 29
				Plan P733/08




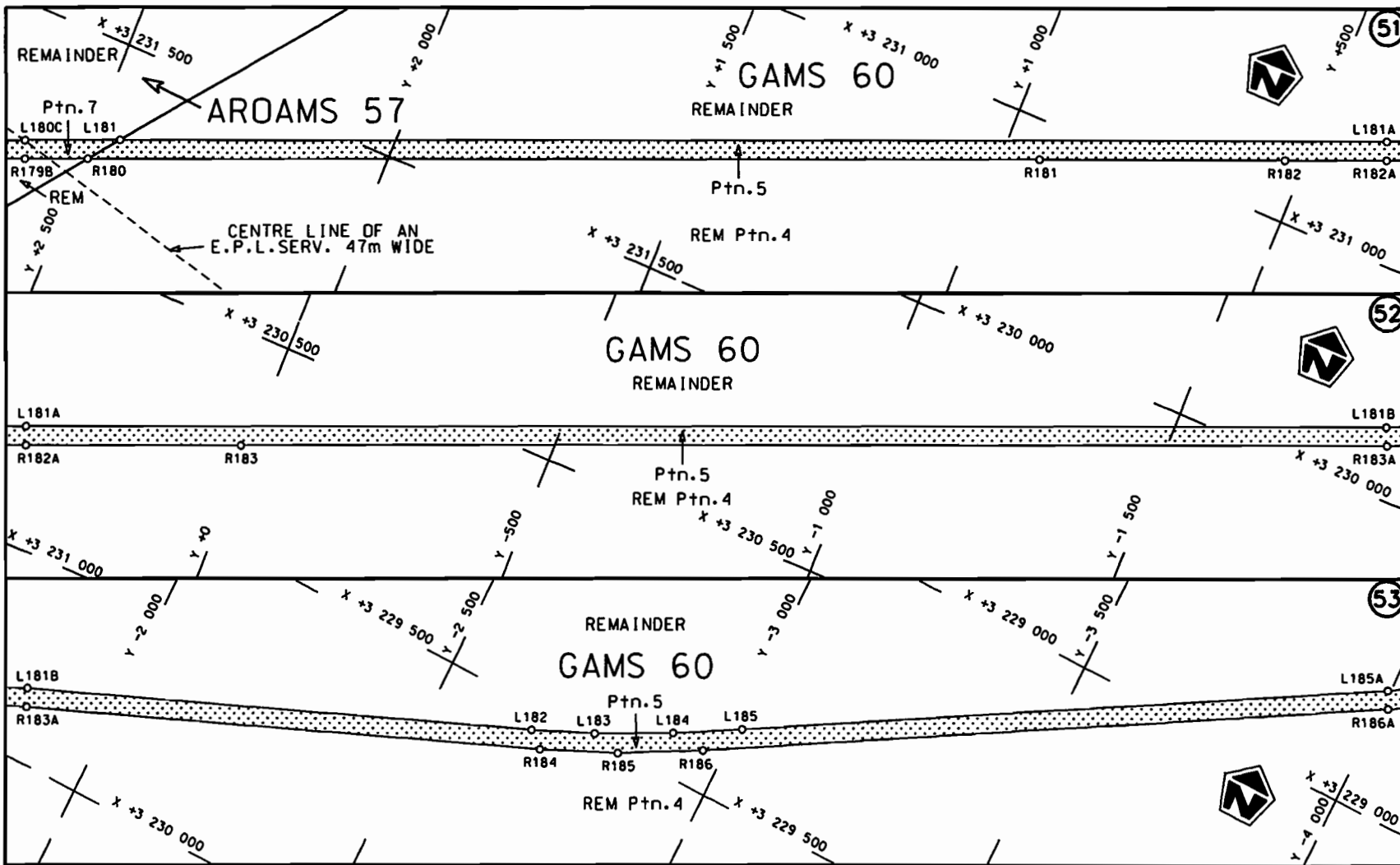
Die Suid Afrikaanse Nasionale Podagentskap Beperk The South African National Roads Agency Limited	Die figuur getoon The figure shown		steldie podreserwe voor van 'n gedeelte represents the road reserve of a portion van Nasionale Roete N14 Seksie 1 of National Route	Vel van Sheet 15 of 29 Plan P733/08
--	---------------------------------------	--	--	---




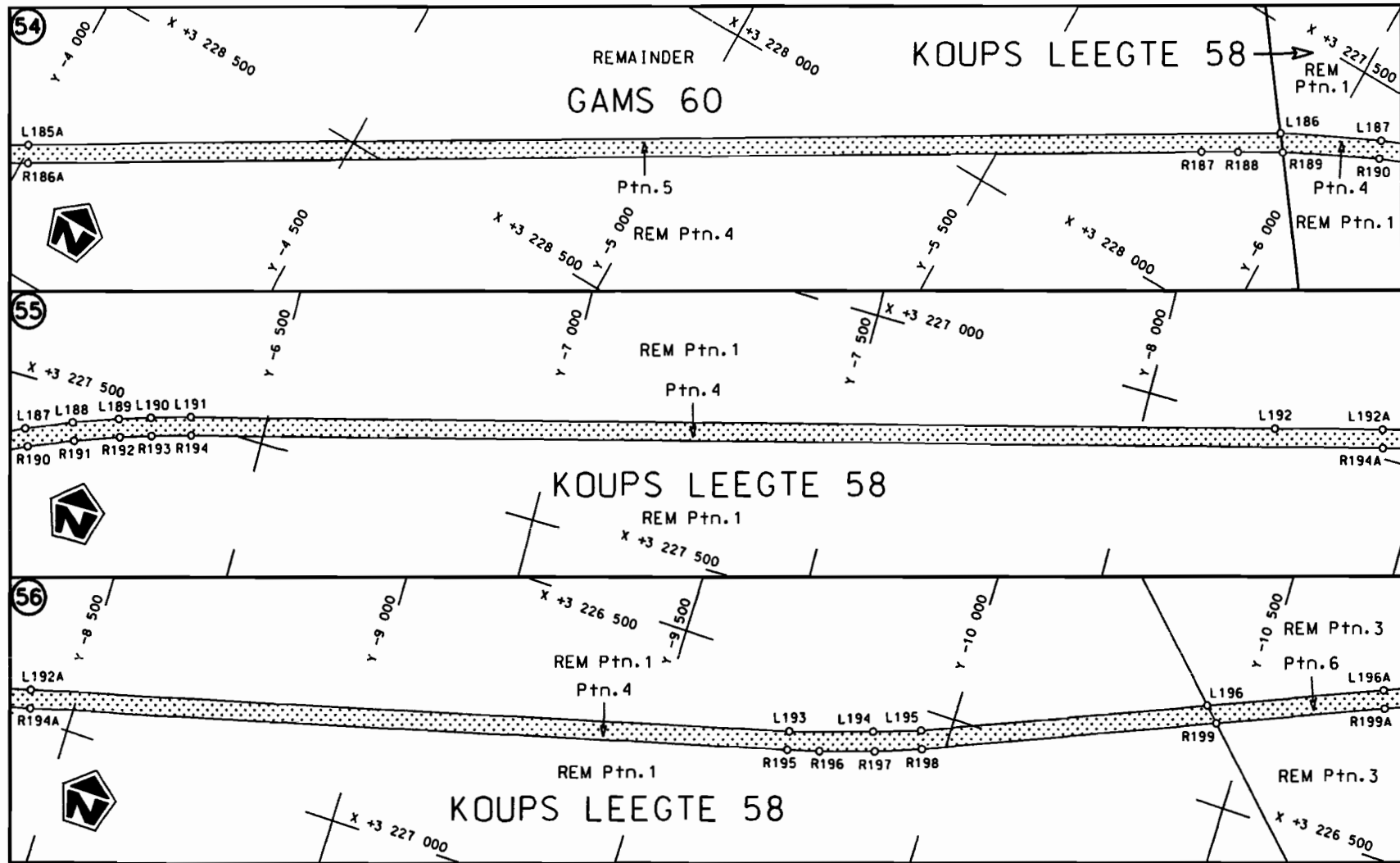
<p>Die Suid Afrikaanse Nasionale Padagentskap Beperk The South African National Roads Agency Limited</p>	<p>Die figuur getoon The figure shown</p>	<p> steldie padreserwe voor van 'n gedeelte represents the rood reserve of a portion von Nasionale Roete N14 Seksie 1 of National Route Section 1</p>	<p>Vel Sheet 16 van of 29 Plan P733/08</p>
--	---	---	--



<p>Die Suid Afrikaanse Nasionale Podogentskap Beperk The South African National Roads Agency Limited</p>	<p>Die figuur getoon The figure shown</p> 	<p>stelsie podreserwe voor van 'n gedeelte represents the rood reserve of a portion van Nasionale Roete N14 Sektie of National Route N14 Section</p>	<p>Vel Sheet 17 of 29</p> <p>Plan P733/08</p>
--	--	--	---

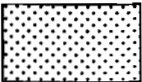


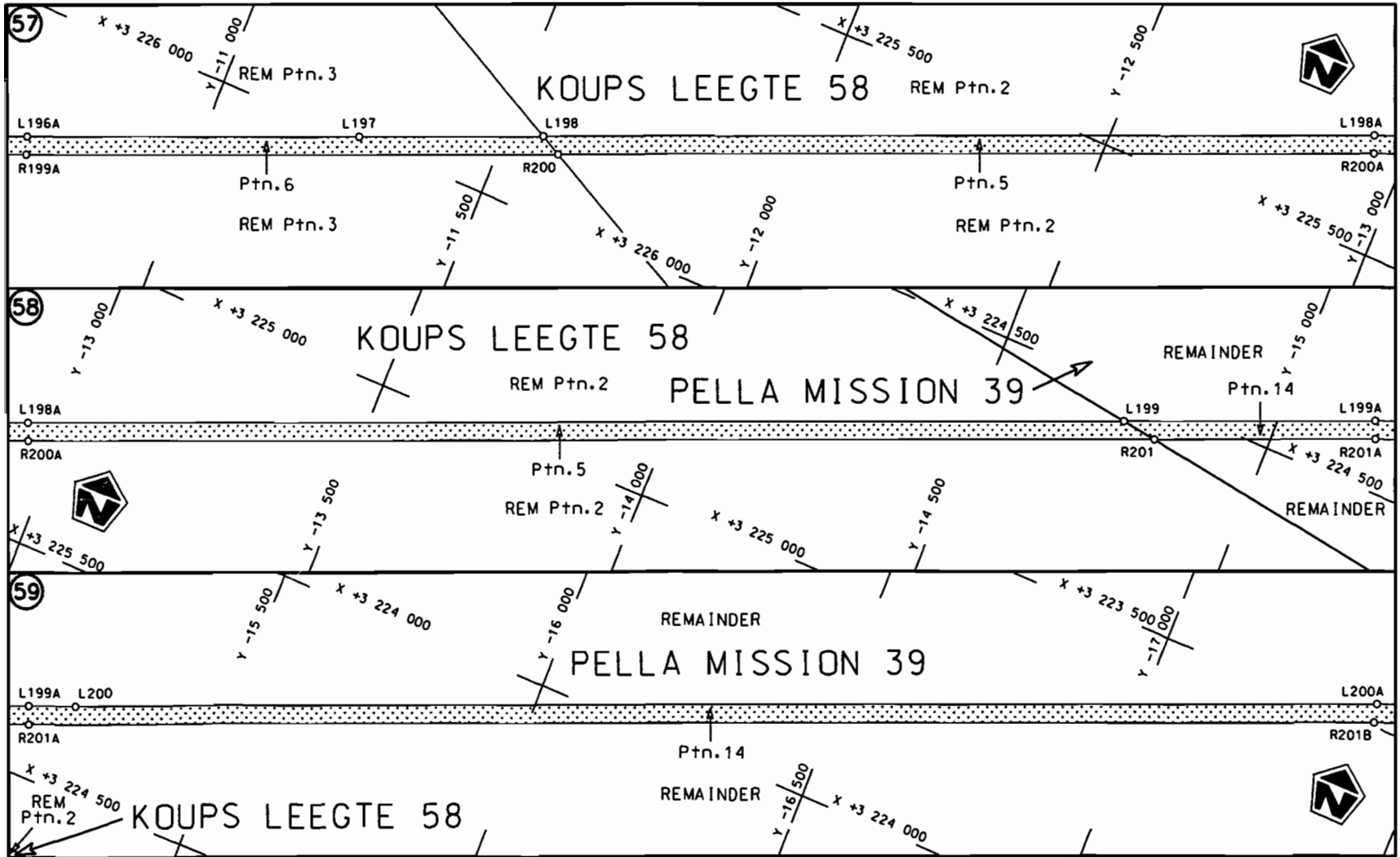
<p>Die Suid Afrikaanse Nasionale Padagentskap Beperk The South African National Roads Agency Limited</p>	<p>Die figuur getoon The figure shown</p> 	<p>steldie padreserwe voor van 'n gedeelte represents the road reserve of a portion van Nasionale Roete N14 Seksie of National Route N14 Section</p> <p>1</p>	<p>Vel Sheet 18 van of 29</p> <p>Plan P733/08</p>
--	--	---	---

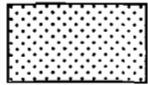


STAATSKOERANT, 15 MEI 2009

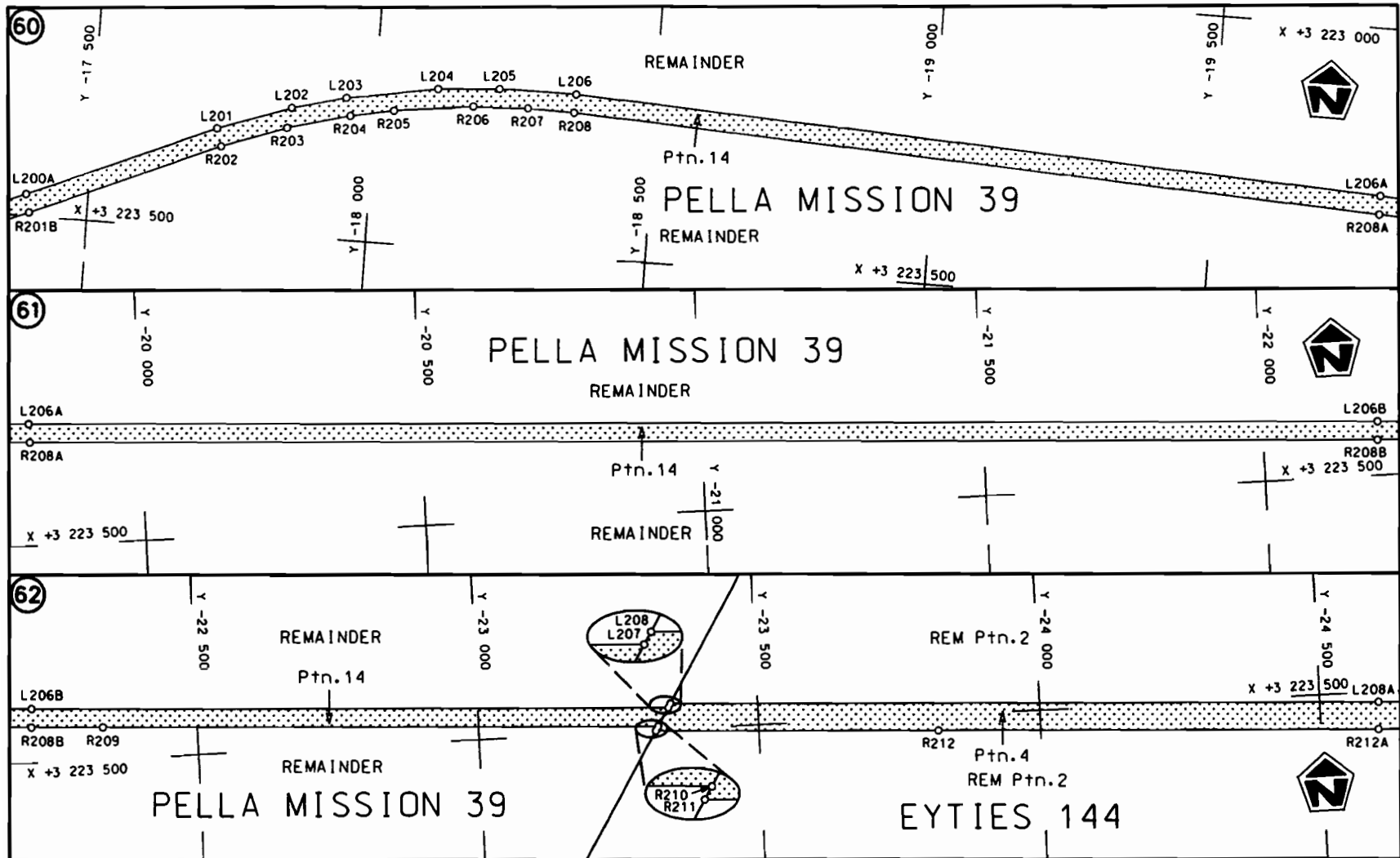
No. 32180 23


<p>Die Suid Afrikaanse Nasionale Padagentskap Beperk The South African National Roads Agency Limited</p>	<p>Die figuur getoon The figure shown</p> 	<p>steldie padreserwe voor van 'n gedeelte represents the road reserve of a portion van Nasionale Roete N14 of National Route N14</p> <p>Seksie 1 Section 1</p>	<p>Vel 19 van 29 Sheet 19 of 29</p> <p>Plan P733/08</p>
--	--	---	---

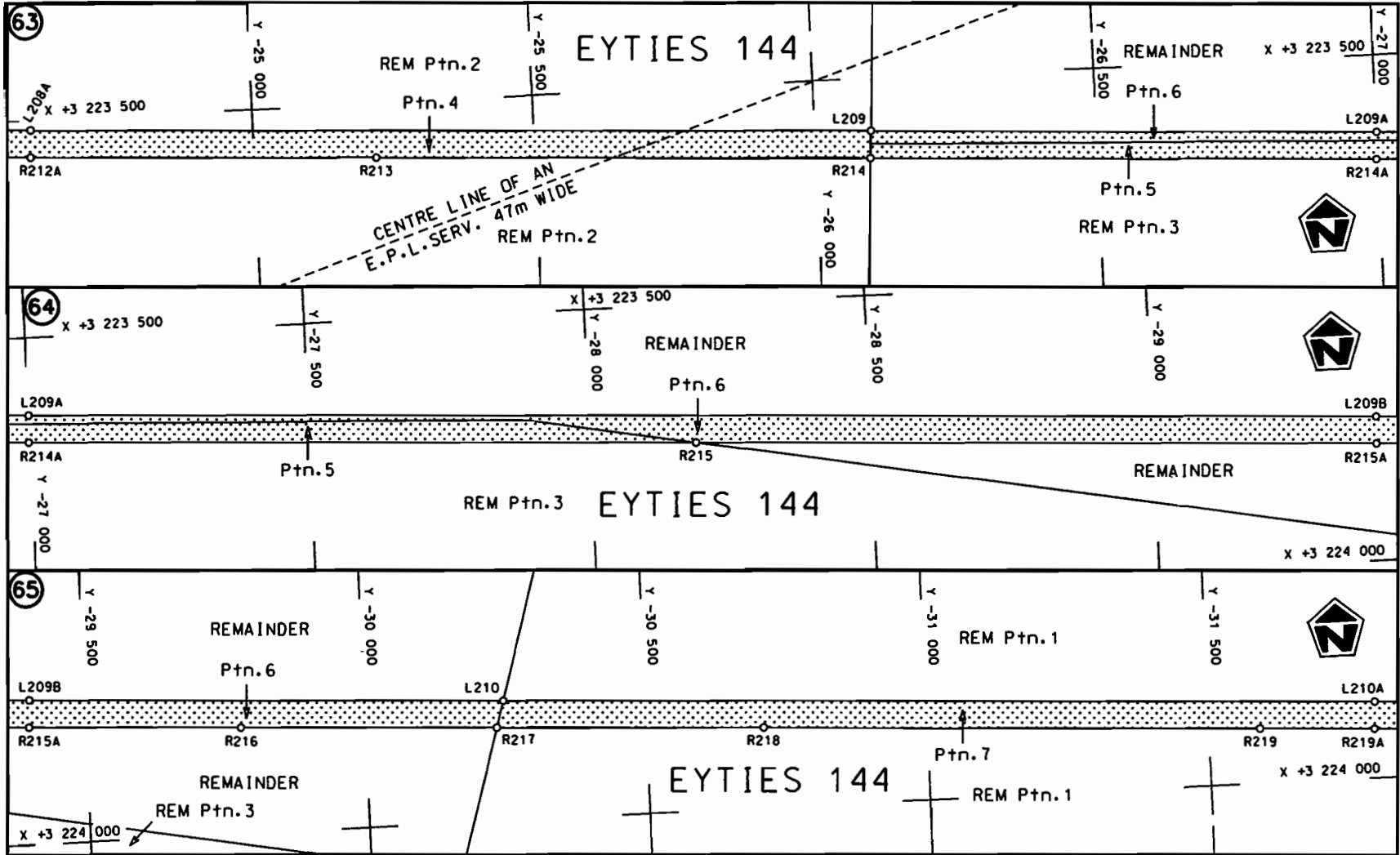


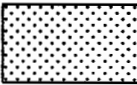
Die Suid Afrikaanse Nasionale Padagentskap Beperk The South African National Roads Agency Limited	Die figuur getoon The figure shown		steldie padreserwe voor van 'n gedeelte represents the road reserve of a portion van Nasionale Roete N14 Seksie of National Route Section 1	Vel Sheet 20 van of 29 Plan P733/08
--	---------------------------------------	--	--	--

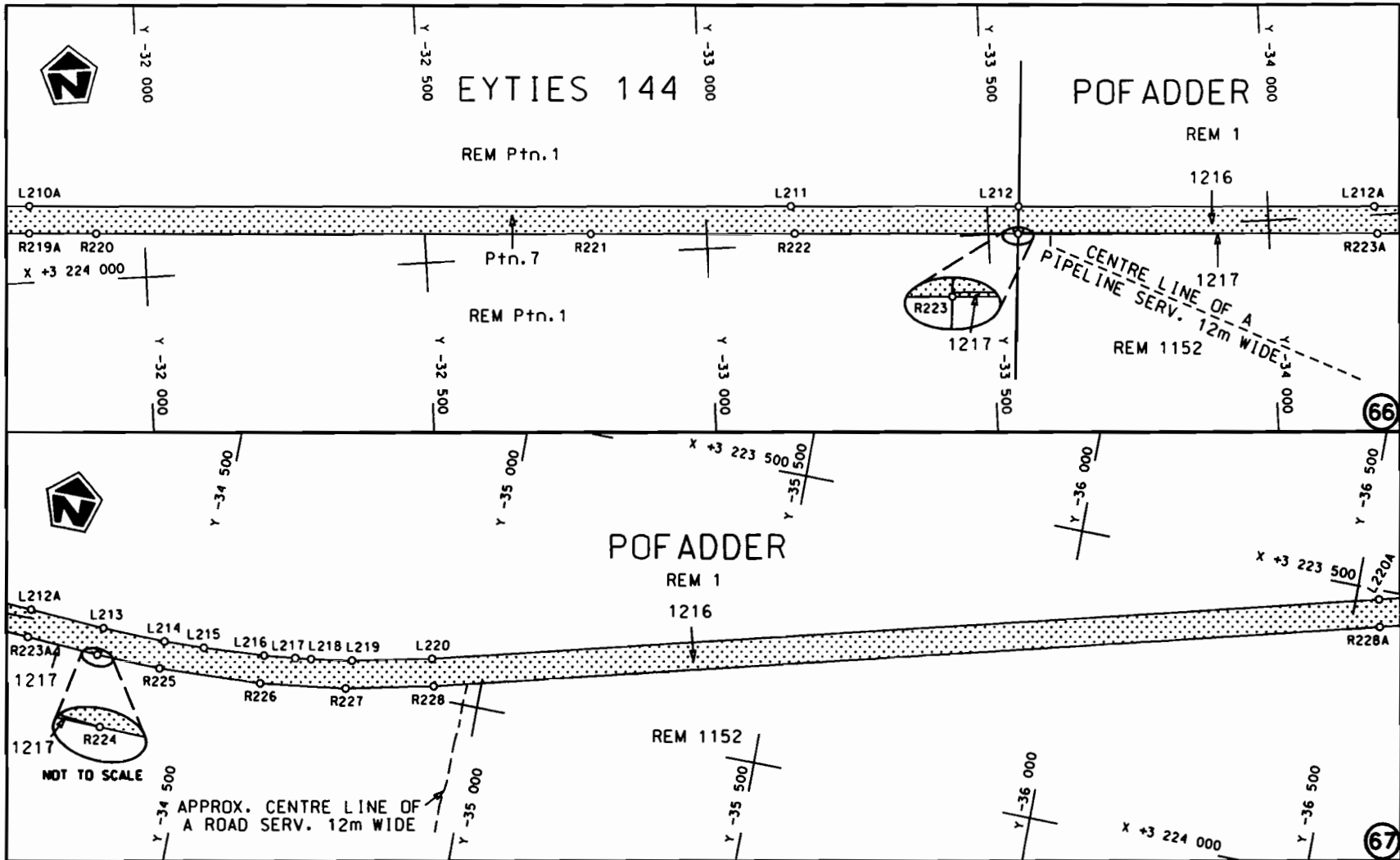


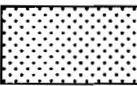


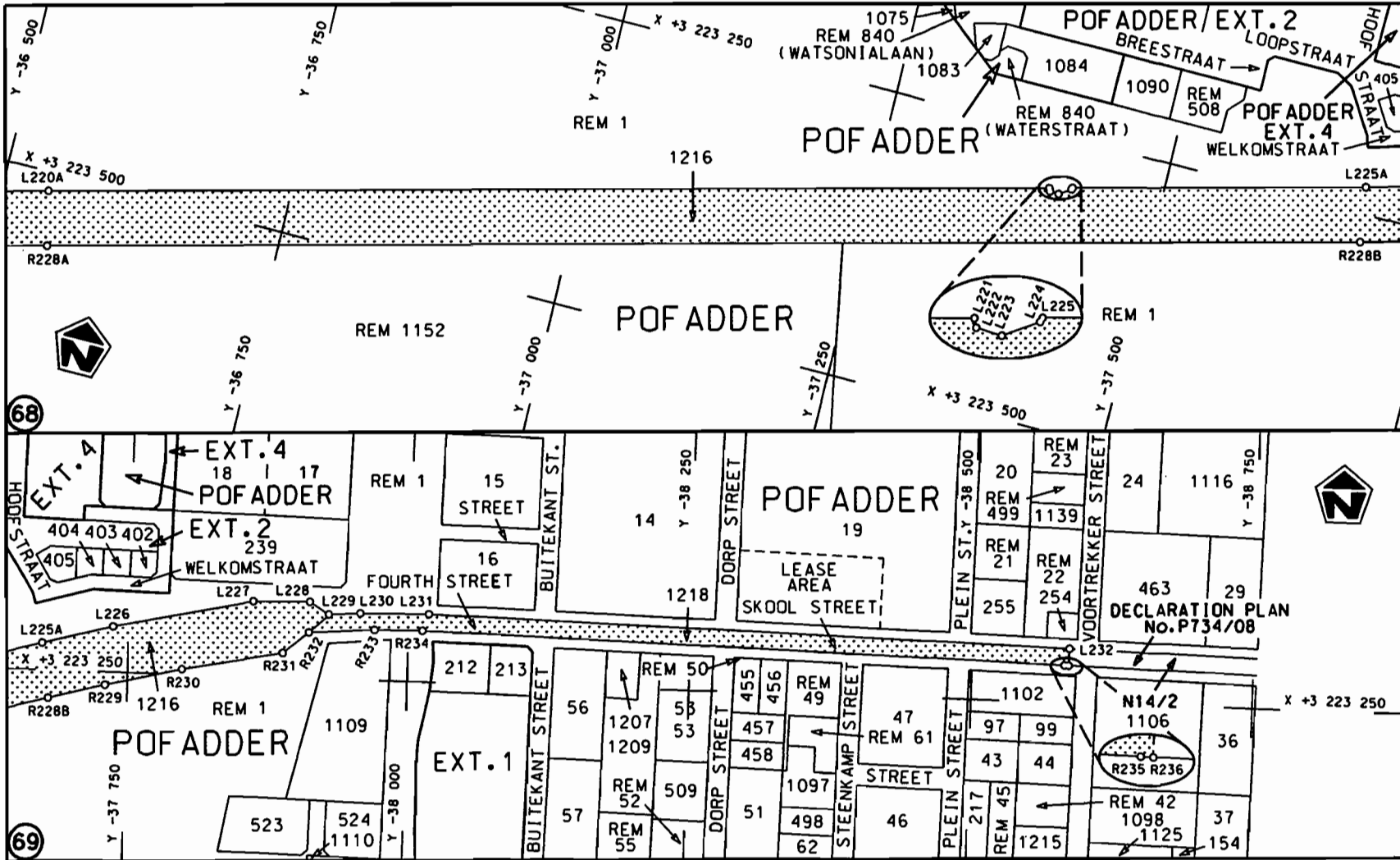
<p>Die Suid Afrikaanse Nasionale Padogentskop Beperk The South African National Roads Agency Limited</p>	<p>Die figuur getoon The figure shown</p>		<p>steldie padreserve voor van 'n gedeelte represents the road reserve of a portion van Nasionale Roete N14 Seksie of National Route N14 Section</p>	<p>Vel Sheet 21 van of 29 Plan P733/08</p>
--	---	--	--	--




<p>Die Suid Afrikaanse Nasionale Padagentskap Beperk The South African National Roads Agency Limited</p>	<p>Die figuur getoon The figure shown</p>		<p>steldie podreserwe voor van 'n gedeelte represents the road reserve of a portion van Nasionale Roete N14 Sektie of National Route N14 Section 1</p>	<p>Vel Sheet 22 van 29 Plan P733/08</p>
--	---	--	--	---



Die Suid Afrikaanse Nasionale Padogenskop Beperk The South African National Roads Agency Limited	Die figuur getoon The figure shown		steldie padreserwe voor van 'n gedeelte represents the road reserve of a portion von Nasionale Roete N14 Seksie of National Route Section 1	Vel Sheet 23 van of 29 Plan P733/08
---	---------------------------------------	--	--	--



<p>Die Suid Afrikaanse Nasionale Padagentskap Beperk The South African National Roads Agency Limited</p>	<p>Die figuur getoon The figure shown</p> 	<p>steldie padreserwe voor van 'n gedeelte represents the road reserve of a portion van Nasionale Roete N14 of National Route N14</p> <p>Seksie 1 Section 1</p>	<p>Vel Sheet 24 van of 29 Plan P733/08</p>
--	--	---	--

PADRESERWE KOÖRDINATE				/	ROAD RESERVE CO-ORDINATES			
LINKERKANT/LEFT HAND SIDE					REGTERKANT/RIGHT HAND SIDE			
	Y	X	WG	19°	Y	X		
L1	107 163.450	3 283 085.100		R1	107 148.400	3 283 109.530		
L2	107 111.960	3 283 077.790		R2	107 110.320	3 283 104.110		
L3	107 073.090	3 283 078.630		R3	107 062.730	3 283 105.160		
L4	106 902.850	3 283 096.250		R4	106 759.520	3 283 136.440		
L5	106 902.120	3 283 089.300		R5	106 627.780	3 283 146.560		
L6	106 756.710	3 283 104.260		R6	106 546.270	3 283 149.340		
L7	106 568.610	3 283 118.640		R7	106 454.730	3 283 136.730		
L8	106 544.740	3 283 115.070		R8	106 420.460	3 283 132.020		
L9	106 491.580	3 283 107.110		R9	106 389.650	3 283 117.130		
L10	106 399.350	3 283 075.440		R10	106 328.530	3 283 087.480		
L11	106 349.930	3 283 053.000		R11	106 253.180	3 283 039.780		
L12	106 247.800	3 282 985.440		R12	106 197.130	3 282 986.180		
L13	106 173.290	3 282 900.310		R13	106 154.250	3 282 933.380		
L14	106 038.870	3 282 729.940		R14	106 024.090	3 282 762.360		
L15	105 948.810	3 282 619.890		R15	105 947.850	3 282 665.080		
L16	105 855.470	3 282 536.180		R16	105 907.810	3 282 623.250		
L17	105 726.030	3 282 454.730		R17	105 816.010	3 282 546.650		
L18	104 245.520	3 281 842.150		R18	105 715.420	3 282 485.030		
L19	103 964.780	3 281 726.520		R19	103 984.950	3 281 771.300		
L20	103 761.680	3 281 638.500		R20	103 755.240	3 281 673.170		
L21	103 632.680	3 281 557.720		R21	103 612.840	3 281 585.420		
L22	103 546.660	3 281 487.740		R22	103 506.130	3 281 496.540		
L23	103 350.990	3 281 274.770		R23	103 326.840	3 281 298.770		
L24	103 221.520	3 281 127.610		R24	103 190.710	3 281 146.340		
L25	103 105.800	3 280 972.010		R25	103 134.100	3 281 072.900		
L26	103 042.990	3 280 860.420		R26	103 065.700	3 280 972.680		
L27	102 990.600	3 280 735.460		R27	103 007.590	3 280 861.870		
L28	102 907.970	3 280 498.970		R28	102 929.110	3 280 661.730		
L29	102 820.540	3 280 311.400		R29	102 887.280	3 280 541.920		
L30	102 449.810	3 279 700.680		R30	102 863.910	3 280 478.870		
L31	102 435.250	3 279 678.280		R31	102 813.230	3 280 367.230		
L32	102 248.910	3 279 371.430		R32	102 707.790	3 280 192.120		
L33	102 187.820	3 279 262.990		R33	102 650.970	3 280 098.860		
L34	102 113.220	3 279 102.770		R34	102 421.430	3 279 719.150		
L35	102 065.540	3 278 975.400		R35	102 406.590	3 279 694.010		
L36	101 974.580	3 278 688.300		R36	102 217.560	3 279 382.780		
L37	101 709.090	3 277 854.710		R37	102 156.900	3 279 274.740		
L38	101 673.780	3 277 765.830		R38	102 082.450	3 279 114.010		
L39	101 624.020	3 277 670.150		R39	102 034.500	3 278 985.040		
L40	101 622.120	3 277 665.440		R40	101 811.590	3 278 284.330		
L41	101 559.400	3 277 572.300		R41	101 675.350	3 277 858.380		
L42	101 489.480	3 277 489.130		R42	101 646.120	3 277 782.710		
L43	101 003.470	3 276 972.970		R43	101 580.180	3 277 659.760		
L44	100 978.880	3 276 948.240		R44	101 466.590	3 277 512.860		
L45	100 573.200	3 276 518.490		R45	100 815.790	3 276 822.970		
L46	100 386.260	3 276 356.150		R46	100 508.930	3 276 500.080		
L47	98 888.920	3 275 316.860		R47	100 369.190	3 276 383.350		
L48	98 523.650	3 275 063.800		R48	99 319.450	3 275 654.520		
L49	98 309.600	3 274 915.950		R49	98 590.710	3 275 148.540		
L50	98 202.890	3 274 852.520		R50	98 291.380	3 274 941.940		
L51	98 140.480	3 274 820.550		R51	98 219.120	3 274 896.510		

Vel	25	Van	29	P733/08
Sheet		of		

PADRESERWE KOÖRDINATE				/	ROAD RESERVE CO-ORDINATES			
LINKERKANT/LEFT HAND SIDE					REGTERKANT/RIGHT HAND SIDE			
	Y	X	WG	19°	Y	X		
L52	98 060.600	3 274 784.490		R52	98 203.380	3 274 889.040		
L53	97 999.830	3 274 760.570		R53	98 189.110	3 274 881.140		
L54	97 853.770	3 274 706.780		R54	98 134.450	3 274 852.870		
L55	95 005.760	3 273 658.610		R55	98 082.520	3 274 828.650		
L56	94 586.730	3 273 505.730		R56	98 027.440	3 274 805.460		
L57	94 447.480	3 273 454.310		R57	97 997.440	3 274 793.830		
L58	94 385.510	3 273 432.100		R58	97 820.180	3 274 728.500		
L59	94 342.620	3 273 415.690		R59	94 595.250	3 273 541.410		
L60	94 242.120	3 273 379.010		R60	94 385.230	3 273 464.890		
L61	93 238.040	3 272 977.370		R61	94 258.450	3 273 418.130		
L62	93 127.790	3 272 935.980		R62	94 049.100	3 273 336.270		
L63	93 004.150	3 272 895.560		R63	93 226.830	3 273 007.050		
L64	92 883.910	3 272 861.920		R64	93 117.960	3 272 965.500		
L65	91 937.590	3 272 640.450		R65	92 991.790	3 272 925.070		
L66	91 800.680	3 272 603.840		R66	92 877.020	3 272 893.000		
L67	91 667.170	3 272 561.290		R67	92 731.400	3 272 857.760		
L68	91 584.070	3 272 531.220		R68	91 929.490	3 272 671.170		
L69	91 475.930	3 272 488.090		R69	91 793.040	3 272 634.800		
L70	91 329.930	3 272 421.530		R70	91 656.920	3 272 591.190		
L71	90 947.000	3 272 230.980		R71	91 572.620	3 272 560.830		
L72	90 778.120	3 272 162.960		R72	91 462.620	3 272 517.050		
L73	90 670.150	3 272 130.120		R73	91 317.170	3 272 451.050		
L74	90 533.570	3 272 101.090		R74	90 940.130	3 272 262.700		
L75	90 381.560	3 272 081.930		R75	90 878.950	3 272 233.230		
L76	90 325.930	3 272 078.230		R76	90 749.400	3 272 186.540		
L77	88 751.820	3 271 987.270		R77	90 711.430	3 272 174.750		
L78	88 669.870	3 271 980.360		R78	90 564.300	3 272 139.110		
L79	88 513.470	3 271 961.180		R79	90 528.310	3 272 132.500		
L80	88 425.860	3 271 942.940		R80	90 399.410	3 272 115.330		
L81	86 491.250	3 271 567.040		R81	90 335.630	3 272 110.590		
L82	83 104.020	3 270 907.810		R82	89 891.950	3 272 085.420		
L83	83 015.350	3 270 889.620		R83	89 878.050	3 272 085.870		
L84	82 819.280	3 270 851.690		R84	89 872.850	3 272 175.200		
L85	82 763.200	3 270 842.170		R85	89 629.650	3 272 161.340		
L86	82 704.780	3 270 833.030		R86	89 634.540	3 272 070.540		
L87	80 912.320	3 270 581.180		R87	88 797.110	3 272 021.680		
L88	80 759.680	3 270 564.880		R88	88 672.960	3 272 011.380		
L89	80 621.860	3 270 556.480		R89	88 521.410	3 271 991.310		
L90	80 524.850	3 270 554.660		R90	88 439.420	3 271 977.240		
L91	76 759.690	3 270 587.400		R91	87 965.470	3 271 885.330		
L92	76 676.150	3 270 586.270		R92	83 372.940	3 270 992.050		
L93	76 612.130	3 270 581.240		R93	82 956.840	3 270 909.610		
L94	76 539.990	3 270 571.810		R94	82 812.710	3 270 882.970		
L95	76 458.190	3 270 555.370		R95	82 759.220	3 270 873.740		
L96	76 405.050	3 270 541.490		R96	82 690.880	3 270 863.150		
L97	76 352.420	3 270 524.970		R97	81 025.970	3 270 628.810		
L98	76 294.670	3 270 503.160		R98	80 627.830	3 270 587.590		
L99	76 275.350	3 270 495.870		R99	79 422.110	3 270 596.090		
L100	76 212.540	3 270 467.430		R100	76 751.470	3 270 619.320		
L101	76 186.640	3 270 453.970		R101	76 667.440	3 270 617.610		
L102	76 149.340	3 270 434.410		R102	76 645.190	3 270 615.680		

Vel	26	Van	29	P733/08
Sheet		of		

PADRESERWE KOÖRDINATE				/	ROAD RESERVE CO-ORDINATES			
LINKERKANT/LEFT HAND SIDE					REGTERKANT/RIGHT HAND SIDE			
	Y	X	WG	19°	Y	X		
L103	76 082.080	3 270 393.130		R103	76 545.800	3 270 604.990		
L104	73 449.460	3 268 640.210		R104	76 357.620	3 270 560.250		
L105	73 294.960	3 268 538.300		R105	76 297.050	3 270 535.560		
L106	73 186.960	3 268 475.080		R106	76 214.910	3 270 503.650		
L107	73 048.620	3 268 409.650		R107	76 139.930	3 270 465.460		
L108	72 865.450	3 268 346.080		R108	76 064.820	3 270 419.930		
L109	72 265.220	3 268 195.240		R109	73 424.380	3 268 661.900		
L110	72 119.290	3 268 147.470		R110	73 281.280	3 268 566.520		
L111	72 010.970	3 268 100.180		R111	73 277.890	3 268 564.540		
L112	71 883.840	3 268 032.720		R112	73 121.770	3 268 477.590		
L113	71 768.060	3 267 957.600		R113	72 983.170	3 268 418.140		
L114	71 620.790	3 267 842.640		R114	72 798.930	3 268 361.680		
L115	71 590.560	3 267 819.090		R115	72 420.610	3 268 267.790		
L116	70 471.270	3 266 947.190		R116	72 256.140	3 268 226.470		
L117	70 381.760	3 266 876.880		R117	72 111.110	3 268 177.960		
L118	69 907.060	3 266 507.830		R118	71 997.060	3 268 128.860		
L119	69 159.770	3 265 925.670		R119	71 874.530	3 268 064.040		
L120	69 030.190	3 265 837.410		R120	71 756.950	3 267 989.370		
L121	68 906.440	3 265 769.370		R121	71 545.910	3 267 824.890		
L122	68 829.720	3 265 735.940		R122	69 143.150	3 265 953.200		
L123	68 795.600	3 265 721.070		R123	68 994.400	3 265 852.770		
L124	68 605.610	3 265 660.620		R124	68 830.990	3 265 769.110		
L125	66 533.450	3 265 149.510		R125	68 820.520	3 265 765.620		
L126	64 466.400	3 264 640.190		R126	68 597.320	3 265 691.080		
L127	62 914.130	3 264 257.700		R127	66 389.300	3 265 146.960		
L128	61 843.030	3 263 992.920		R128	61 938.090	3 264 050.040		
L129	61 736.750	3 263 963.810		R129	61 804.230	3 264 014.280		
L130	61 588.430	3 263 919.980		R130	61 584.190	3 263 952.250		
L131	61 428.410	3 263 867.810		R131	61 412.730	3 263 895.680		
L132	56 601.990	3 262 203.090		R132	60 089.760	3 263 440.090		
L133	56 236.510	3 262 077.500		R133	57 927.300	3 262 694.900		
L134	51 556.360	3 260 463.320		R134	56 585.350	3 262 231.800		
L135	50 371.500	3 260 054.100		R135	54 125.890	3 261 383.660		
L136	48 866.270	3 259 535.340		R136	51 936.430	3 260 628.100		
L137	48 757.150	3 259 493.180		R137	51 552.500	3 260 495.880		
L138	48 647.440	3 259 445.280		R138	51 435.000	3 260 455.200		
L139	48 569.270	3 259 406.780		R139	48 852.880	3 259 564.570		
L140	48 490.250	3 259 364.790		R140	48 740.890	3 259 521.360		
L141	48 089.990	3 259 141.510		R141	48 631.200	3 259 473.010		
L142	44 509.320	3 257 144.620		R142	48 556.830	3 259 436.380		
L143	43 477.790	3 256 569.450		R143	48 474.800	3 259 392.620		
L144	34 924.350	3 251 799.690		R144	48 102.900	3 259 185.180		
L145	28 420.220	3 248 171.720		R145	44 499.030	3 257 175.450		
L146	23 154.740	3 245 234.630		R146	43 441.390	3 256 585.770		
L147	23 109.720	3 245 208.270		R147	39 771.720	3 254 539.670		
L148	23 061.600	3 245 179.580		R148	34 916.500	3 251 831.720		
L149	23 002.340	3 245 143.310		R149	28 347.110	3 248 167.740		
L150	20 075.410	3 243 275.220		R150	24 859.270	3 246 222.050		
L151	19 686.960	3 243 027.720		R151	24 316.380	3 245 921.480		
L152	16 606.260	3 241 061.020		R152	23 936.180	3 245 707.180		
L153	16 215.080	3 240 811.180		R153	23 166.500	3 245 278.090		

Vel	27	Van	29	P733/08
Sheet		of		

PADRESERWE KOÖRDINATE				/	ROAD RESERVE CO-ORDINATES				
LINKERKANT/LEFT HAND SIDE					REGTERKANT/RIGHT HAND SIDE				
	Y	X	WG	19°	Y	X			
L154	16 011.170	3 240 682.240		R154	23 096.250	3 245 237.330			
L155	15 891.410	3 240 611.280		R155	23 034.410	3 245 200.520			
L156	15 773.640	3 240 545.800		R156	22 987.570	3 245 171.560			
L157	15 651.430	3 240 481.880		R157	22 905.700	3 245 119.830			
L158	12 655.090	3 238 948.600		R158	16 612.820	3 241 102.950			
L159	12 504.120	3 238 861.160		R159	16 077.670	3 240 761.290			
L160	12 349.760	3 238 752.460		R160	15 975.160	3 240 699.190			
L161	12 243.640	3 238 663.120		R161	15 874.630	3 240 638.360			
L162	12 133.970	3 238 556.540		R162	15 666.340	3 240 525.450			
L163	12 059.830	3 238 474.170		R163	12 639.230	3 238 976.320			
L164	11 674.330	3 238 019.140		R164	12 484.220	3 238 889.300			
L165	10 873.790	3 237 073.890		R165	12 316.980	3 238 766.960			
L166	10 840.110	3 237 026.420		R166	12 221.620	3 238 686.500			
L167	10 897.590	3 236 978.150		R167	12 112.330	3 238 580.060			
L168	10 816.790	3 236 883.000		R168	12 037.100	3 238 496.890			
L169	10 759.450	3 236 931.190		R169	11 672.060	3 238 065.760			
L170	10 718.510	3 236 890.750		R170	10 454.330	3 236 628.180			
L171	10 482.240	3 236 611.960		R171	10 276.400	3 236 417.980			
L172	10 320.840	3 236 421.350		R172	8 750.600	3 234 616.570			
L173	9 478.250	3 235 426.910		R173	8 557.240	3 234 388.390			
L174	8 747.490	3 234 563.450		R174	8 472.370	3 234 296.800			
L175	8 539.810	3 234 319.350		R175	8 365.230	3 234 201.070			
L176	8 410.880	3 234 196.210		R176	8 273.640	3 234 131.900			
L177	8 290.580	3 234 105.160		R177	8 106.760	3 234 031.100			
L178	8 209.590	3 234 053.170		R178	7 955.840	3 233 963.830			
L179	8 089.440	3 233 986.090		R179	5 701.430	3 233 032.460			
L180	7 963.000	3 233 932.290		R180	2 493.220	3 231 707.900			
L181	2 452.680	3 231 656.670		R181	934.720	3 231 065.220			
L182	-2 676.800	3 229 538.540		R182	533.340	3 230 899.600			
L183	-2 779.390	3 229 493.740		R183	14.350	3 230 684.510			
L184	-2 903.170	3 229 429.770		R184	-2 705.210	3 229 561.310			
L185	-3 009.600	3 229 368.680		R185	-2 831.040	3 229 504.900			
L186	-5 921.270	3 227 664.700		R186	-2 963.910	3 229 431.990			
L187	-6 084.080	3 227 587.000		R187	-5 815.380	3 227 763.150			
L188	-6 162.810	3 227 555.340		R188	-5 871.920	3 227 730.850			
L189	-6 241.620	3 227 527.240		R189	-5 941.140	3 227 691.450			
L190	-6 296.700	3 227 509.750		R190	-6 096.490	3 227 615.670			
L191	-6 365.650	3 227 490.280		R191	-6 173.810	3 227 585.060			
L192	-8 231.080	3 227 000.480		R192	-6 251.620	3 227 557.030			
L193	-9 726.010	3 226 608.530		R193	-6 305.860	3 227 539.880			
L194	-9 869.280	3 226 563.410		R194	-6 374.320	3 227 520.670			
L195	-9 949.850	3 226 535.120		R195	-9 732.110	3 226 639.490			
L196	-10 420.290	3 226 341.040		R196	-9 787.280	3 226 624.240			
L197	-11 261.690	3 225 993.990		R197	-9 882.330	3 226 594.720			
L198	-11 565.920	3 225 868.020		R198	-9 960.770	3 226 565.020			
L199	-14 746.470	3 224 554.230		R199	-10 444.670	3 226 364.970			
L200	-15 238.680	3 224 350.370		R200	-11 602.670	3 225 886.820			
L201	-17 723.500	3 223 324.570		R201	-14 807.610	3 224 562.880			
L202	-17 854.750	3 223 279.140		R202	-17 733.210	3 223 354.900			
L203	-17 949.440	3 223 254.560		R203	-17 848.480	3 223 314.080			
L204	-18 110.770	3 223 227.190		R204	-17 958.540	3 223 285.190			
					Vel	28	Van	29	P733/08
					Sheet		of		



PADRESERWE KOÖRDINATE				/	ROAD RESERVE CO-ORDINATES			
LINKERKANT/LEFT HAND SIDE					REGTERKANT/RIGHT HAND SIDE			
	Y	X	WG	19°	Y	X		
L205	-18 220.620	3 223 218.610		R205	-18 035.130	3 223 270.150		
L206	-18 358.790	3 223 219.190		R206	-18 176.100	3 223 252.640		
L207	-23 339.340	3 223 462.820		R207	-18 274.020	3 223 249.590		
L208	-23 343.790	3 223 455.680		R208	-18 357.510	3 223 251.100		
L209	-26 101.170	3 223 590.140		R209	-22 329.520	3 223 445.140		
L210	-30 246.090	3 223 792.830		R210	-23 319.890	3 223 494.000		
L211	-33 151.720	3 223 934.730		R211	-23 315.300	3 223 501.360		
L212	-33 556.220	3 223 954.520		R212	-23 817.950	3 223 525.650		
L213	-34 321.160	3 223 992.030		R213	-25 219.550	3 223 594.070		
L214	-34 431.560	3 223 994.250		R214	-26 098.310	3 223 637.240		
L215	-34 502.100	3 223 991.540		R215	-28 188.210	3 223 739.080		
L216	-34 611.860	3 223 983.700		R216	-29 776.520	3 223 816.700		
L217	-34 668.420	3 223 977.400		R217	-30 232.590	3 223 838.540		
L218	-34 696.010	3 223 973.770		R218	-30 708.240	3 223 862.240		
L219	-34 767.790	3 223 962.570		R219	-31 591.420	3 223 905.480		
L220	-34 906.190	3 223 932.870		R220	-31 914.690	3 223 921.110		
L221	-37 401.300	3 223 296.620		R221	-32 796.330	3 223 964.880		
L222	-37 402.530	3 223 299.140		R222	-33 156.370	3 223 981.930		
L223	-37 410.420	3 223 299.520		R223	-33 552.920	3 224 001.340		
L224	-37 420.500	3 223 292.900		R224	-34 318.860	3 224 038.830		
L225	-37 420.940	3 223 291.510		R225	-34 431.570	3 224 041.060		
L226	-37 736.720	3 223 210.770		R226	-34 613.550	3 224 031.800		
L227	-37 861.130	3 223 185.490		R227	-34 765.540	3 224 011.460		
L228	-37 911.390	3 223 184.370		R228	-34 917.850	3 223 978.320		
L229	-37 928.680	3 223 194.560		R229	-37 730.770	3 223 261.090		
L230	-37 957.050	3 223 192.790		R230	-37 798.660	3 223 245.530		
L231	-38 017.550	3 223 191.640		R231	-37 888.430	3 223 229.060		
L232	-38 586.367	3 223 203.592		R232	-37 911.290	3 223 210.590		
				R233	-37 969.950	3 223 206.680		
				R234	-38 012.310	3 223 206.060		
				R235	-38 582.310	3 223 217.960		
				R236	-38 586.063	3 223 218.039		