

# Government Gazette Staatskoerant

REPUBLIC OF SOUTH AFRICA  
REPUBLIEK VAN SUID-AFRIKA

Vol. 527

Pretoria, 15 **May**  
Mei 2009

**No. 32181**

**CONTENTS****INHOUD**

<i>No.</i>	<i>Page No.</i>	<i>Gazette No.</i>	<i>No.</i>	<i>Bladsy No.</i>	<i>Koerant No.</i>
<b>GOVERNMENT NOTICE</b>			<b>GOEWERMENTSKENNISGEWING</b>		
<b>Transport, Department of</b>			<b>Vervoer, Departement van</b>		
<i>Government Notice</i>			<i>Goewermentskennisgewing</i>		
464		South African National Roads Agency Limited and the National Roads Act (7/1998): The South African National Roads Agency Limited: Declaration amendment of National Road N18 Section 1: Amendment of Declaration No. 632 of 2005 .....	3	32181	
					464
					Suid-Afrikaanse Nasionale Padagentskap Beperk en die Nasionale Paaie Wet (7/1998): Die Suid-Afrikaanse Nasionale Padagentskap Beperk: Verklaring wysiging van Nasionale Pad N18 Seksie 1: Wysiging van Verklaring No. 632 van 2005 .....
					4
					32181

---

## GOVERNMENT NOTICE

---

### DEPARTMENT OF TRANSPORT

No. 464

15 May 2009

## THE SOUTH AFRICAN NATIONAL ROADS AGENCY LIMITED

Registration No: 98/09584/06

---

### DECLARATION AMENDMENT OF NATIONAL ROAD N18 SECTION 1

#### AMENDMENT OF DECLARATION NO. 632 OF 2005

By virtue of section 40(1)(b) of the South African National Roads Agency Limited and the National Roads Act, 1998 (Act No. 7 of 1998), I hereby amend Declaration No. 632 of 2005 by substituting it, with the subjoined sheets 1 to 13 of Plan No. P719/08.

**(National Road N18 Section 1: Warrenton – Northern Cape/North West Provincial Border)**

*J. Radebe*

\_\_\_\_\_  
MINISTER OF TRANSPORT

---

## GOEWERMENSKENNISGEWING

---

### DEPARTEMENT VAN VERVOER

No. 464

15 Mei 2009

## DIE SUID-AFRIKAANSE NASIONALE PADAGENTSKAP BEPERK

Registrasie No: 98/09584/06

---

### VERKLARING WYSIGING VAN NASIONALE PAD N18 SEKSIE 1

WYSIGING VAN VERKLARING NO. 632 VAN 2005

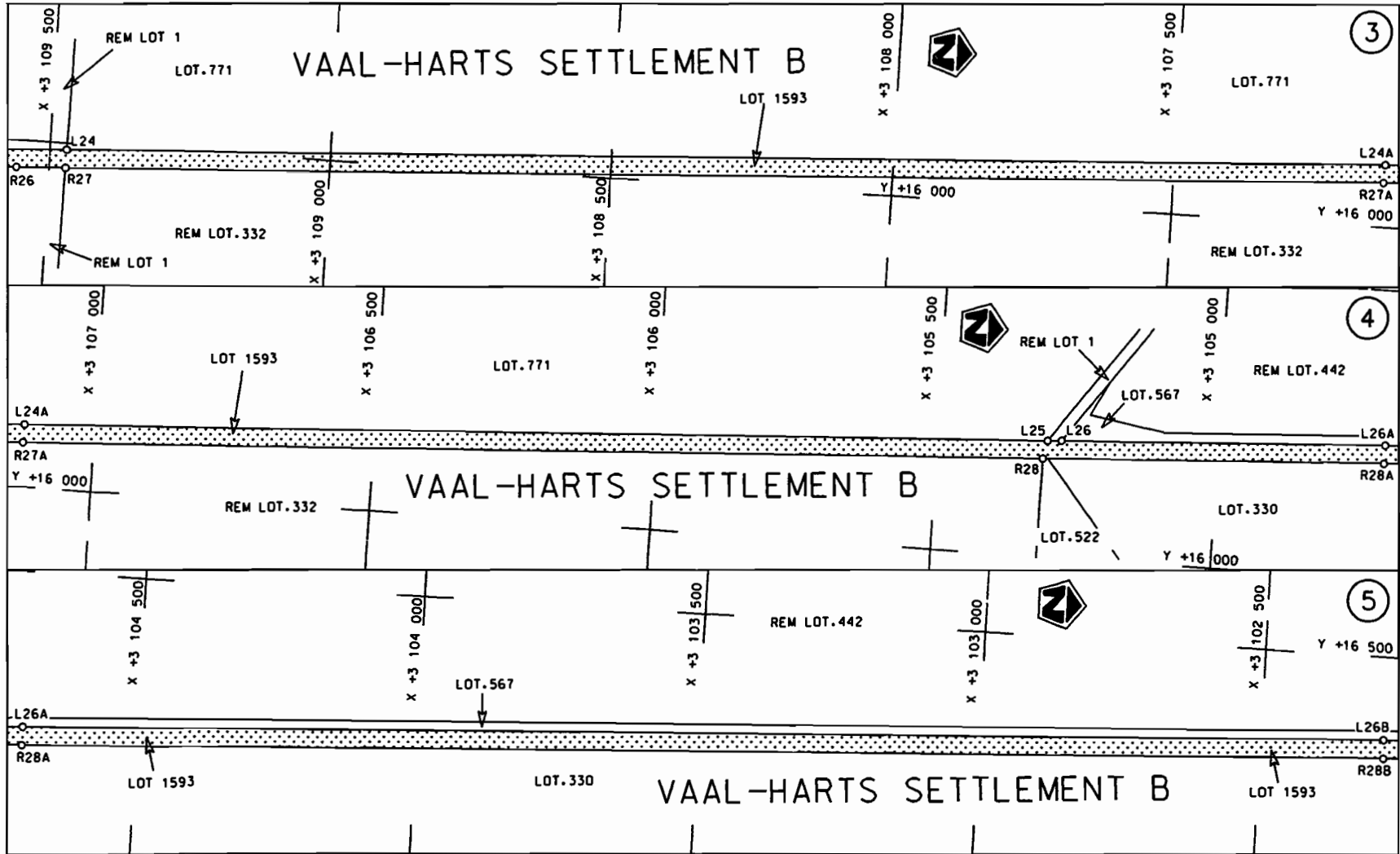
Kragtens Artikel 40(1)(b) van die Suid-Afrikaanse Nasionale Padagentskap Beperk en die Nasionale Paaie Wet, 1998 (Wet no.7 van 1998), wysig ek hiermee Verklaring no. 632 van 2005 deur dit, te vervang met meegaande velle 1 tot 13 van Plan no. P719/08.

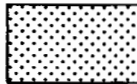
**(Nasionale Pad N18 Seksie 1 Warrenton – Noord Kaap/Noord Wes Provinsiale Grens)**

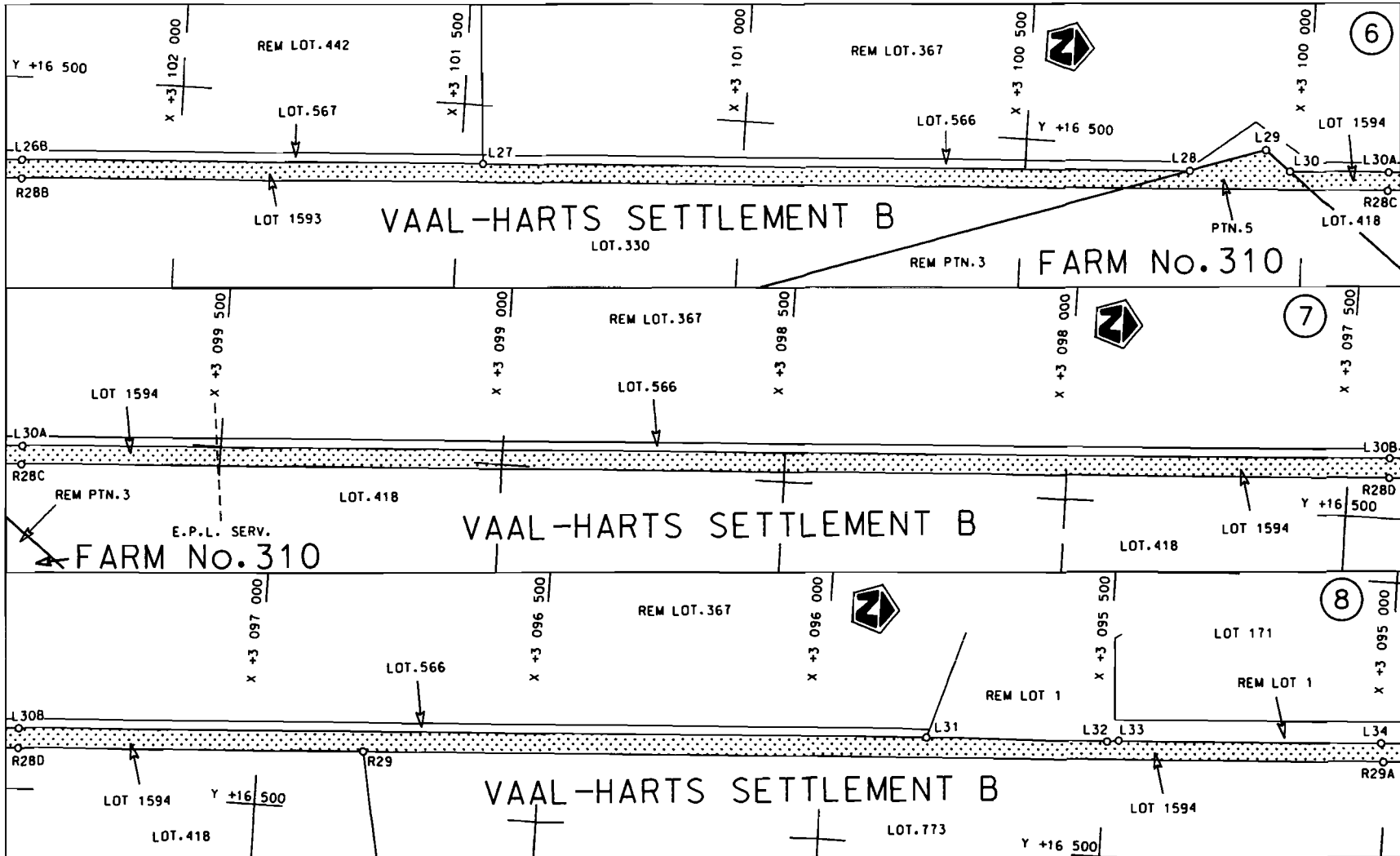


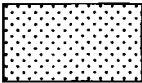
**MINISTER VAN VERVOER**

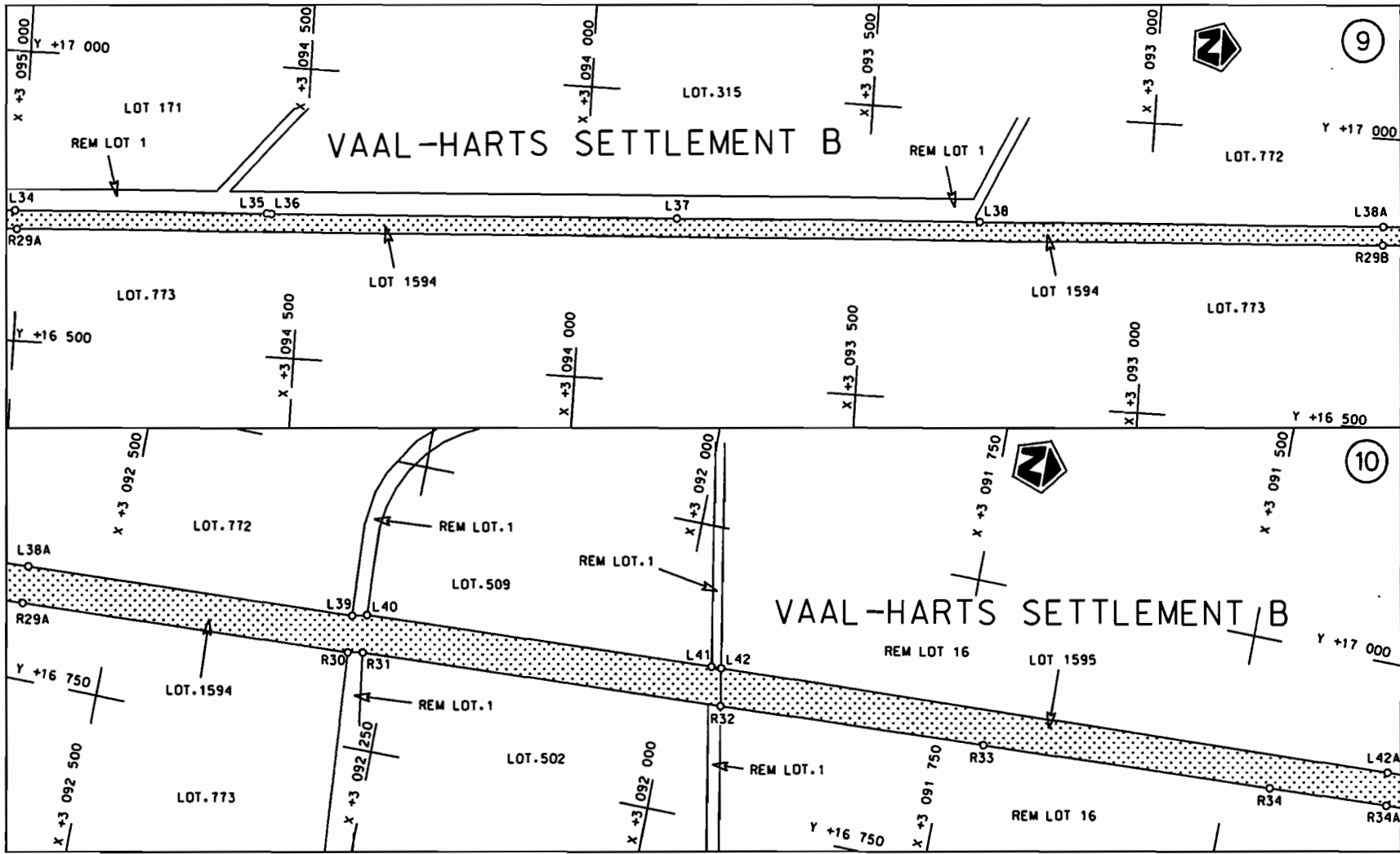




<p>Die Suid Afrikaanse Nasionale Padagentskap Beperk The South African National Roads Agency Limited</p>	<p>Die figuur getoon The figure shown</p> 	<p>stel die padreserwe voor van 'n gedeelte represents the road reserve of a portion van Nasionale Roete N18 of National Route N18</p> <p>Seksie 1 Section 1</p>	<p>Vel 2 van 13 Sheet 2 of 13</p> <p>Plan P719/08</p>
--	--	--	---

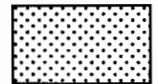


Die Suid Afrikaanse Nasionale Padagentskap Beperk The South African National Roads Agency Limited	Die figuur getoon The figure shown	 steldie padreserwe voor van 'n gedeelte represents the road reserve of a portion van Nasionale Roete N18 Seksie 1 of National Route	Vel Sheet 3 van 13 Plan P719/08
--	---------------------------------------	---	------------------------------------



Die Suid Afrikaanse Nasionale Padagentskop Beperk  
The South African National Roads Agency Limited

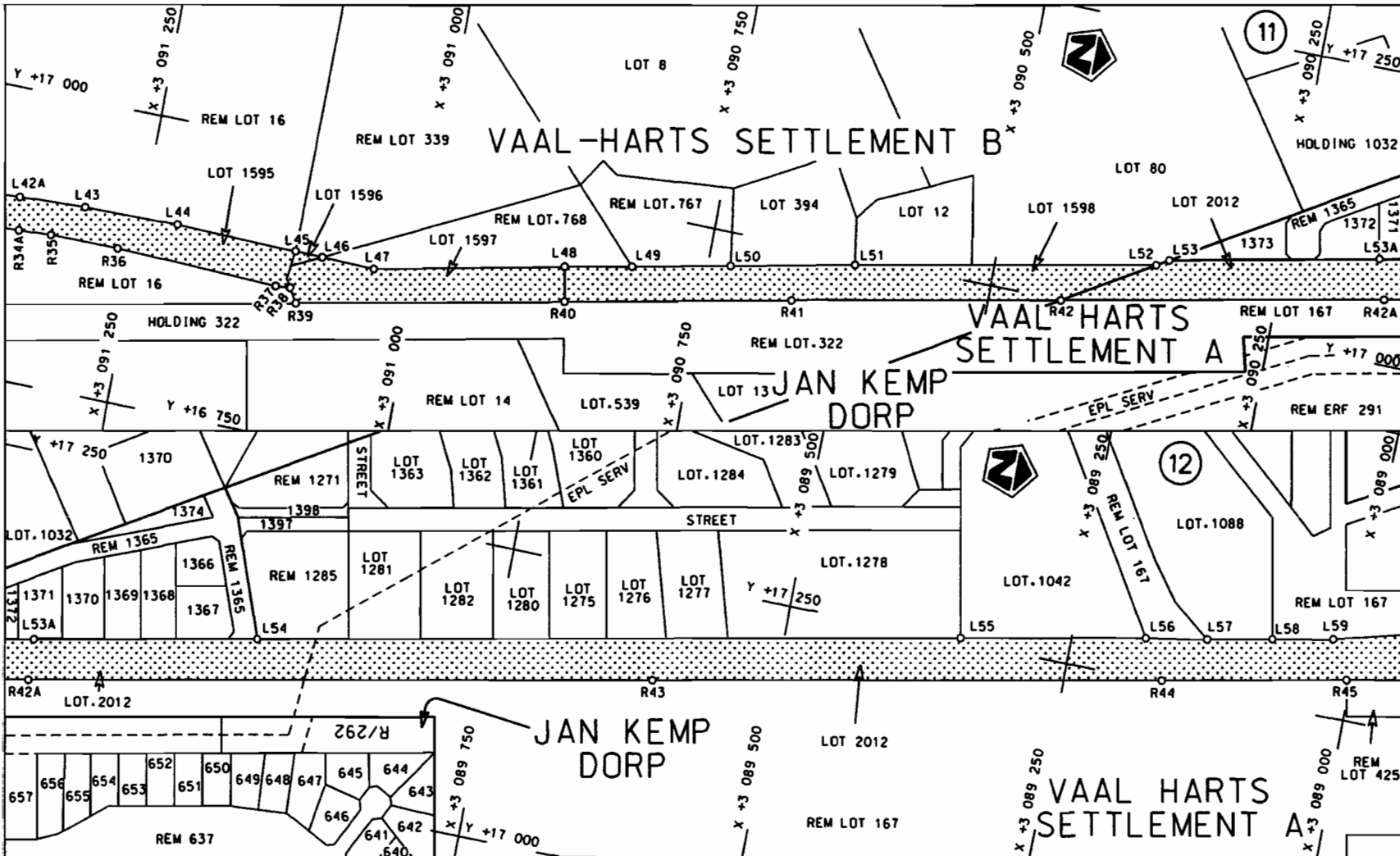
Die figuur getoon  
The figure shown

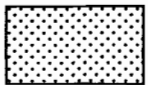


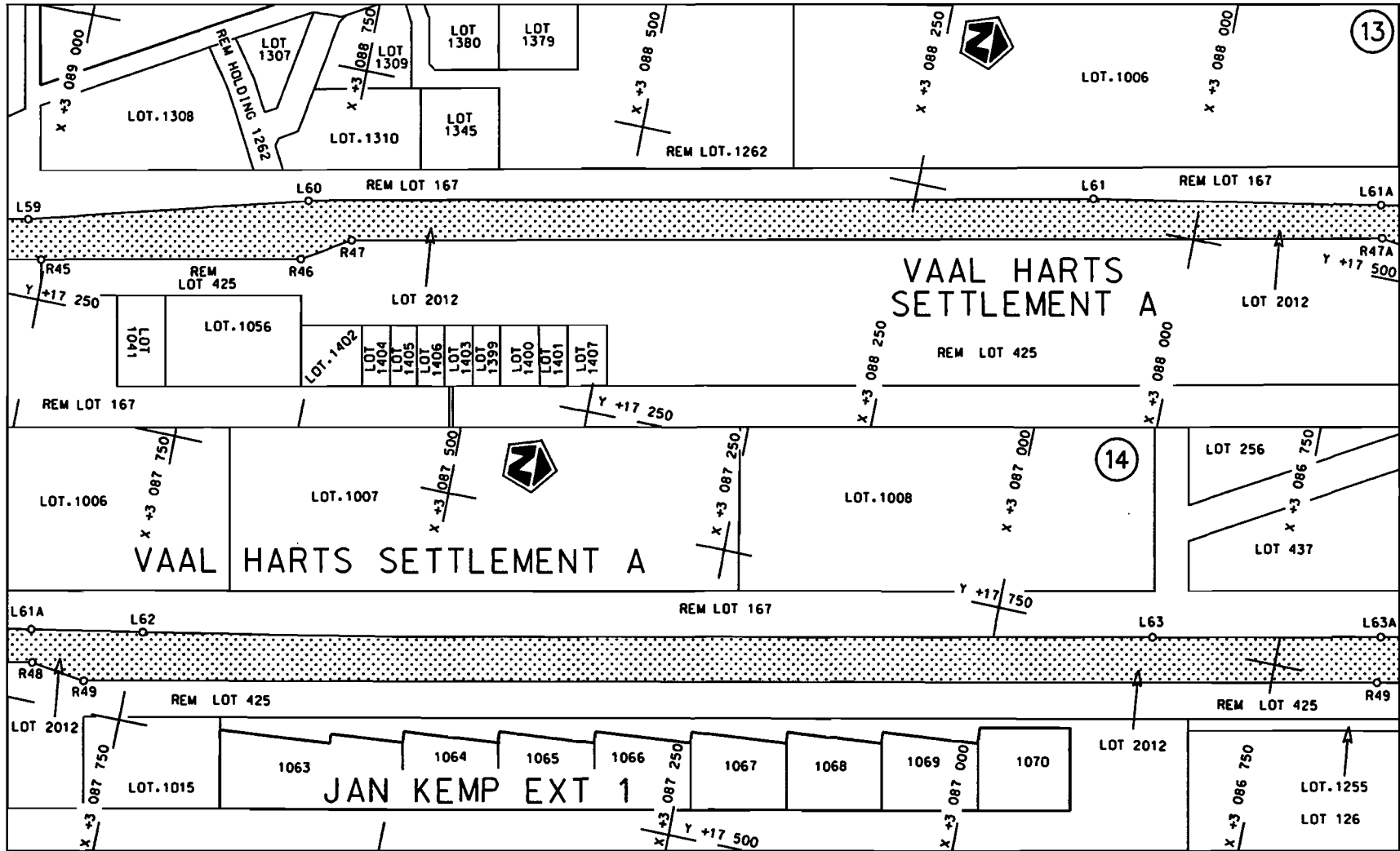
steldie padreserwe voor van 'n gedeelte  
represents the road reserve of a portion  
van Nasionale Roete N18 Sektie 1  
of National Route Section 1

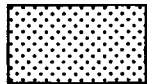
Vel Sheet 4 van of 13  
Plan P719/08





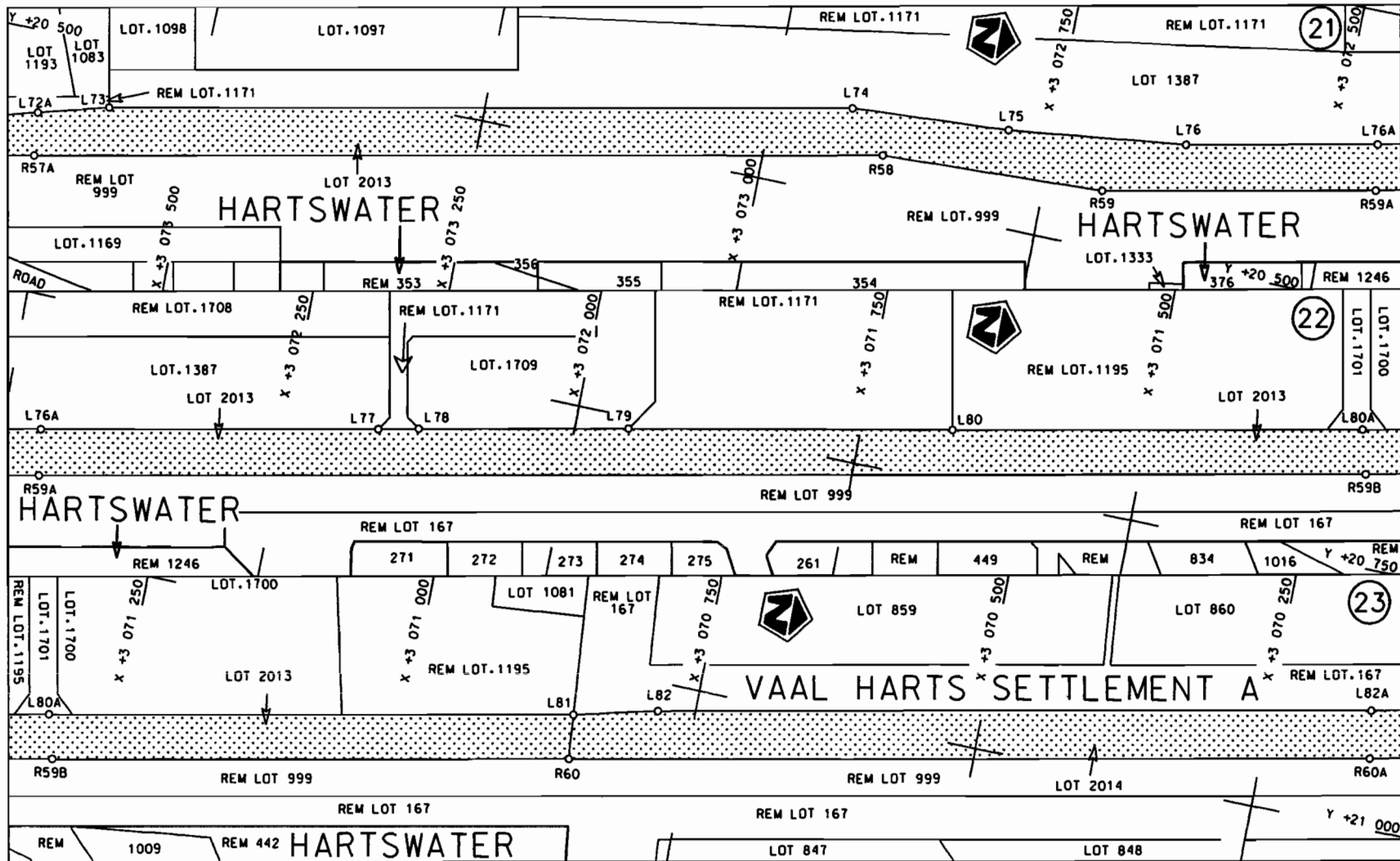
<p>Die Suid Afrikaanse Nasionale Padagentskap Beperk The South African National Roads Agency Limited</p>	<p>Die figuur getoon The figure shown</p> 	<p>steldie podreserwe voor van 'n gedeelte represents the road reserve of a portion van Nasionale Roete N18 of National Route N18</p> <p>Seksie 1 Section 1</p>	<p>Vel Sheet 5 van of 13 Pion P719/08</p>
--	--	---	---

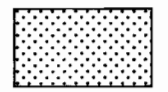


<p>Die Suid Afrikaanse Nasionale Padagentskap Beperk The South African National Roads Agency Limited</p>	<p>Die figuur getoon The figure shown</p>		<p>steldie padreserwe voor van 'n gedeelte represents the road reserve of a portion van Nasionale Roete N18 Seksie of National Route Section 1</p>	<p>Vel Sheet 6 van of 13</p>
				<p>Plan P719/08</p>







Die Suid Afrikaanse Nasionale Podagentskop Beperk The South African National Roads Agency Limited	Die figuur getoon The figure shown		steldie padreserwe voor van 'n gedeelte represents the road reserve of a portion van Nasionale Roete N18 Seksie of National Route Section 1	Vel Sheet 9 van 13 Plan P719/08
--	---------------------------------------	--	--	------------------------------------





PADRESERWE KOÖRDINATE / ROAD RESERVE CO-ORDINATES						
LINKERKANT/LEFT HAND SIDE				REGTERKANT/RIGHT HAND SIDE		
	Y	X	WG 23°		Y	X
L1	14 440.180	3 110	969.520	R1	14 406.330	3 110 941.260
L2	14 438.980	3 110	956.220	R2	14 417.850	3 110 933.830
L3	14 452.020	3 110	940.590	R3	14 429.660	3 110 928.040
L4	14 458.090	3 110	933.820	R4	14 529.680	3 110 879.000
L5	14 714.230	3 110	807.770	R5	14 703.240	3 110 793.720
L6	14 816.980	3 110	757.390	R6	14 723.060	3 110 781.330
L7	15 054.080	3 110	641.010	R7	14 808.220	3 110 739.490
L8	15 114.780	3 110	611.180	R8	14 875.740	3 110 706.240
L9	15 123.740	3 110	601.370	R9	14 977.530	3 110 656.190
L10	15 127.200	3 110	598.270	R10	15 039.250	3 110 625.840
L11	15 148.320	3 110	585.820	R11	15 129.610	3 110 581.170
L12	15 227.230	3 110	533.680	R12	15 220.140	3 110 521.550
L13	15 249.890	3 110	518.710	R13	15 241.870	3 110 507.240
L14	15 255.550	3 110	526.810	R14	15 232.680	3 110 494.080
L15	15 528.860	3 110	335.890	R15	15 505.850	3 110 303.140
L16	15 526.500	3 110	332.530	R16	15 508.870	3 110 307.440
L17	15 533.150	3 110	327.810	R17	15 567.560	3 110 265.480
L18	15 767.200	3 110	161.490	R18	15 747.570	3 110 136.790
L19	15 824.180	3 110	101.440	R19	15 762.040	3 110 121.020
L20	15 899.800	3 109	991.630	R20	15 763.680	3 110 114.770
L21	15 940.150	3 109	900.590	R21	15 891.680	3 109 933.460
L22	15 965.190	3 109	808.960	R22	15 909.890	3 109 892.130
L23	15 981.650	3 109	602.650	R23	15 934.350	3 109 803.460
L24	15 988.270	3 109	470.680	R24	15 942.820	3 109 728.150
L25	16 201.350	3 105	302.730	R25	15 945.330	3 109 698.040
L26	16 202.760	3 105	277.730	R26	15 952.660	3 109 558.430
L27	16 399.070	3 101	460.510	R27	15 956.760	3 109 471.130
L28	16 462.960	3 100	205.770	R28	16 170.110	3 105 309.070
L29	16 506.220	3 100	073.670	R29	16 601.120	3 096 812.780
L30	16 472.070	3 100	028.690	R30	16 830.090	3 092 286.590
L31	16 686.620	3 095	816.720	R31	16 832.520	3 092 273.720
L32	16 698.330	3 095	497.680	R32	16 848.790	3 091 953.070
L33	16 701.000	3 095	476.840	R33	16 860.990	3 091 718.570
L34	16 723.960	3 095	011.040	R34	16 874.070	3 091 461.360
L35	16 746.580	3 094	563.470	R35	16 880.600	3 091 326.940
L36	16 746.190	3 094	554.780	R36	16 881.020	3 091 266.450
L37	16 783.220	3 093	835.460	R37	16 877.010	3 091 121.780
L38	16 811.560	3 093	299.240	R38	16 877.910	3 091 109.060
L39	16 861.760	3 092	288.710	R39	16 865.580	3 091 101.460
L40	16 864.880	3 092	276.280	R40	16 913.000	3 090 868.650
L41	16 880.530	3 091	967.740	R41	16 953.270	3 090 671.350
L42	16 880.880	3 091	958.870	R42	16 999.740	3 090 437.110
L43	16 909.880	3 091	301.790	R43	17 164.250	3 089 607.650
L44	16 911.160	3 091	217.890	R44	17 252.360	3 089 164.520
L45	16 909.190	3 091	110.150	R45	17 284.420	3 089 003.790
L46	16 908.750	3 091	086.110	R46	17 329.740	3 088 776.380
L47	16 907.900	3 091	039.340	R47	17 354.110	3 088 734.600
L48	16 942.330	3 090	874.230	R48	17 533.470	3 087 835.200
L49	16 953.990	3 090	815.820	R49	17 526.920	3 087 787.280
L50	16 971.550	3 090	730.030	R50	18 727.830	3 081 781.030
L51	16 993.790	3 090	621.530	R51	18 752.200	3 081 739.230

Vel	12	Van	13	P719/08
Sheet		of		



PADRESERWE KOÖRDINATE / ROAD RESERVE CO-ORDINATES						
LINKERKANT/LEFT HAND SIDE				REGTERKANT/RIGHT HAND SIDE		
	Y	X	WG 23°		Y	X
L52	17 045.510	3 090 359.700		R52	18 892.230	3 081 040.240
L53	17 051.860	3 090 349.010		R53	18 885.750	3 080 992.320
L54	17 130.480	3 089 957.180		R54	19 460.520	3 078 112.900
L55	17 253.020	3 089 346.020		R55	20 338.100	3 073 752.090
L56	17 285.030	3 089 185.540		R56	20 351.270	3 073 686.050
L57	17 294.350	3 089 131.660		R57	20 380.920	3 073 690.470
L58	17 305.990	3 089 075.260		R58	20 540.560	3 072 894.960
L59	17 316.230	3 089 021.940		R59	20 549.250	3 072 698.260
L60	17 380.390	3 088 779.290		R60	20 920.100	3 070 852.530
L61	17 517.340	3 088 093.980		R61	22 621.690	3 062 384.230
L62	17 578.230	3 087 744.510		R62	22 646.020	3 062 338.860
L63	17 752.010	3 086 861.120		R63	22 756.470	3 061 793.270
L64	18 666.670	3 082 298.350		R64	22 750.100	3 061 745.220
L65	18 682.490	3 082 264.210		R65	23 322.790	3 058 901.530
L66	18 925.390	3 081 046.280		R66	23 350.080	3 058 763.520
L67	18 927.530	3 080 998.950		R67	23 539.880	3 057 817.170
L68	20 332.340	3 073 994.120				
L69	20 337.530	3 073 976.080				
L70	20 357.070	3 073 899.530				
L71	20 390.620	3 073 782.470				
L72	20 399.370	3 073 750.010				
L73	20 445.820	3 073 577.620				
L74	20 575.310	3 072 929.000				
L75	20 583.940	3 072 789.880				
L76	20 602.820	3 072 632.960				
L78	20 702.890	3 072 135.050				
L77	20 695.710	3 072 170.460				
L79	20 739.410	3 071 953.180				
L80	20 795.120	3 071 670.690				
L81	20 958.060	3 070 855.750				
L82	20 976.070	3 070 782.980				
L83	21 178.030	3 069 775.740				
L84	21 451.040	3 068 412.820				
L85	21 602.970	3 067 655.810				
L86	21 751.400	3 066 916.030				
L87	21 884.180	3 066 253.170				
L88	22 128.210	3 065 036.790				
L89	22 563.170	3 062 865.650				
L90	22 786.800	3 061 809.970				
L91	22 784.410	3 061 793.620				
L92	22 853.790	3 061 448.570				
L93	22 853.060	3 061 418.690				
L94	22 928.810	3 061 041.830				
L95	22 999.810	3 060 687.920				
L96	23 211.780	3 059 637.510				
L97	23 319.120	3 059 104.500				
L98	23 369.520	3 058 909.010				
L99	23 397.220	3 058 771.570				
L100	23 411.440	3 058 644.320				
L101	23 575.510	3 057 824.310				

Vel Sheet	13	Van of	13	P719/08
--------------	----	-----------	----	---------