

**REPUBLIC OF SOUTH AFRICA
REPUBLIEK VAN SUID-AFRIKA**

Vol. 527

**Pretoria, 15 May
Mei 2009**

No. 32182

CONTENTS**INHOUD**

| <i>No.</i> | <i>Page No.</i> | <i>Gazette No.</i> | <i>No.</i> | <i>Bladsy No.</i> | <i>Koerant No.</i> |
|--|---------------------|------------------------|--|-----------------------|------------------------|
| GOVERNMENT NOTICE | | | GOEWERMENSKENNISGEWING | | |
| Transport, Department of | | | Vervoer, Departement van | | |
| <i>Government Notice</i> | | | <i>Goewermentskennisgewing</i> | | |
| 465 | | | 465 | | |
| South African National Roads Agency Limited and the National Roads Act (7/1998): The South African National Roads Agency Limited: Declaration amendment of National Road N14 Section 2: Amendment of Declaration No. 629 of 2005 | 3 | 32182 | Suid-Afrikaanse Nasionale Padagentskap Beperk en die Nasionale Paaie Wet (7/1998): Die Suid-Afrikaanse Nasionale Padagentskap Beperk: Verklaring wysiging van Nasionale Pad N14 Seksie 2: Wysiging van Verklaring No. 629 van 2005 | 4 | 32182 |

GOVERNMENT NOTICE

DEPARTMENT OF TRANSPORT

No. 465

15 May 2009

THE SOUTH AFRICAN NATIONAL ROADS AGENCY LIMITED

Registration No: 98/09584/06

DECLARATION AMENDMENT OF NATIONAL ROAD N14 SECTION 2

AMENDMENT OF DECLARATION No. 629 OF 2005

By virtue of section 40(1)(b) of the South African National Roads Agency Limited and the National Roads Act, 1998 (Act No. 7 of 1998), I hereby amend Declaration No. 629 of 2005, by substituting the descriptive section of the route from Pofadder up to Kakamas, with the subjoined sheets 1 to 25 of Plan No. P734/08.

(National Road N14 Section 2: Pofadder – Kakamas)



MINISTER OF TRANSPORT

GOEWERMENSKENNISGEWING

DEPARTEMENT VAN VERVOER

No. 465

15 Mei 2009

DIE SUID-AFRIKAANSE NASIONALE PADAGENTSKAP BEPERK

Registrasie No: 98/09584/06

VERKLARING WYSIGING VAN NASIONALE PAD N14 SEKSIE 2

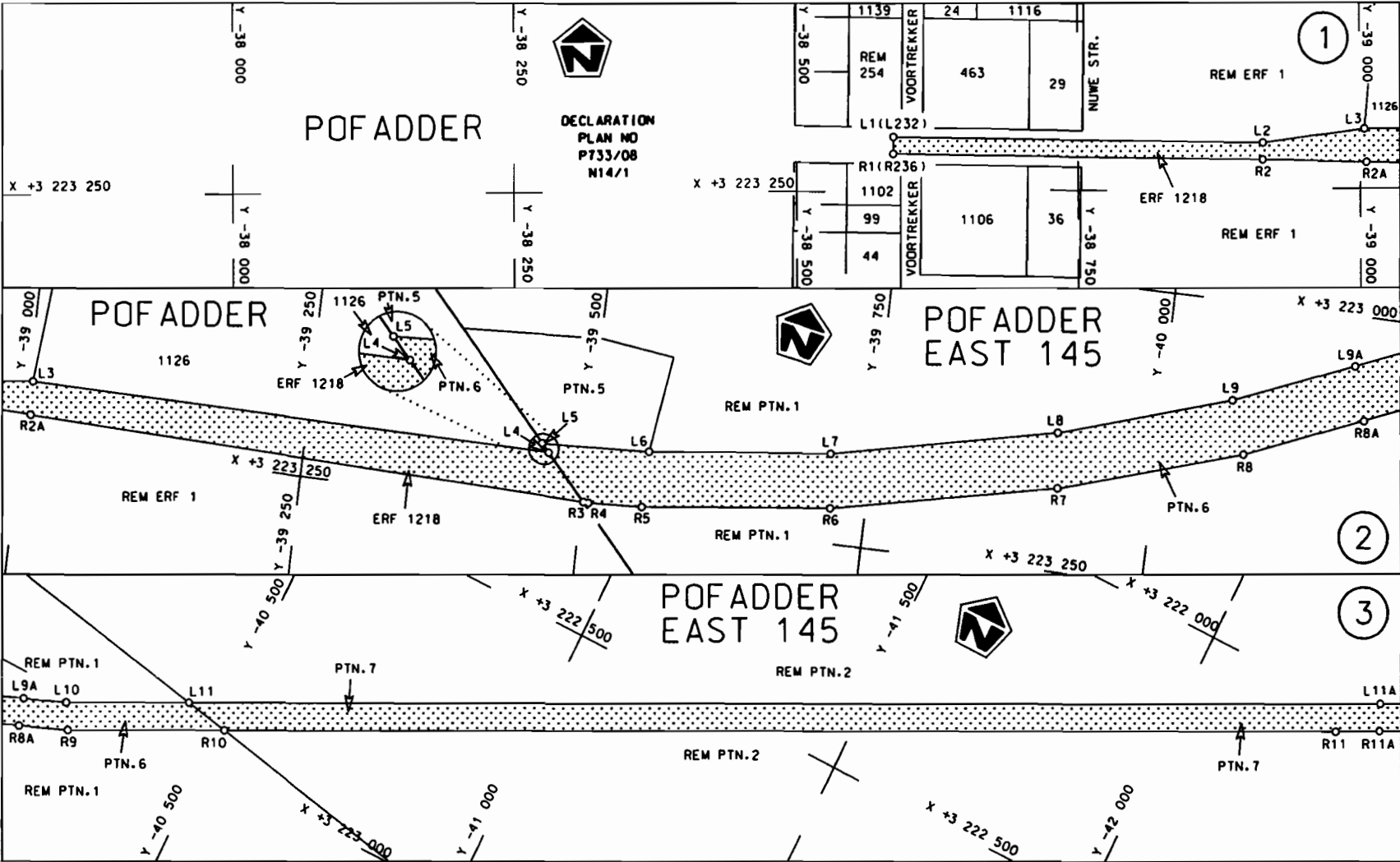
WYSIGING VAN VERKLARING NO. 629 VAN 2005

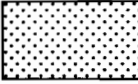
Kragtens Artikel 40(1)(b) van die Suid Afrikaanse Nasionale Padagentskap Beperk en die Nasionale Paaie Wet, 1998 (Wet no.7 van 1998), wysig ek hiermee Verklaring no. 629 van 2005, deur die beskrywende gedeelte van die roete vanaf Pofadder tot by Kakamas, te vervang met meegaande velle 1 tot 25 van Plan no. P734/08

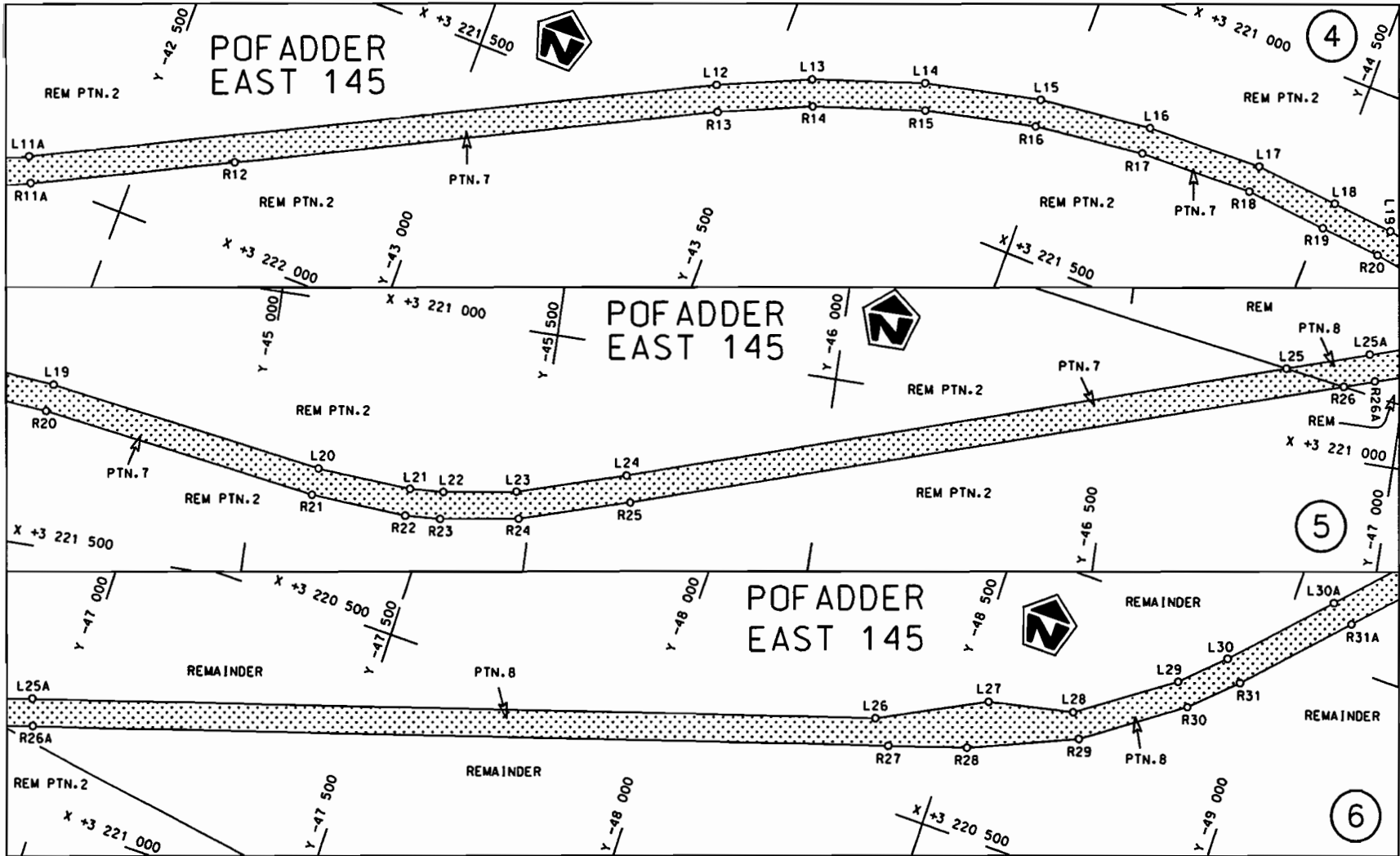
(Nasionale Pad N14 Seksie 2: Pofadder – Kakamas)



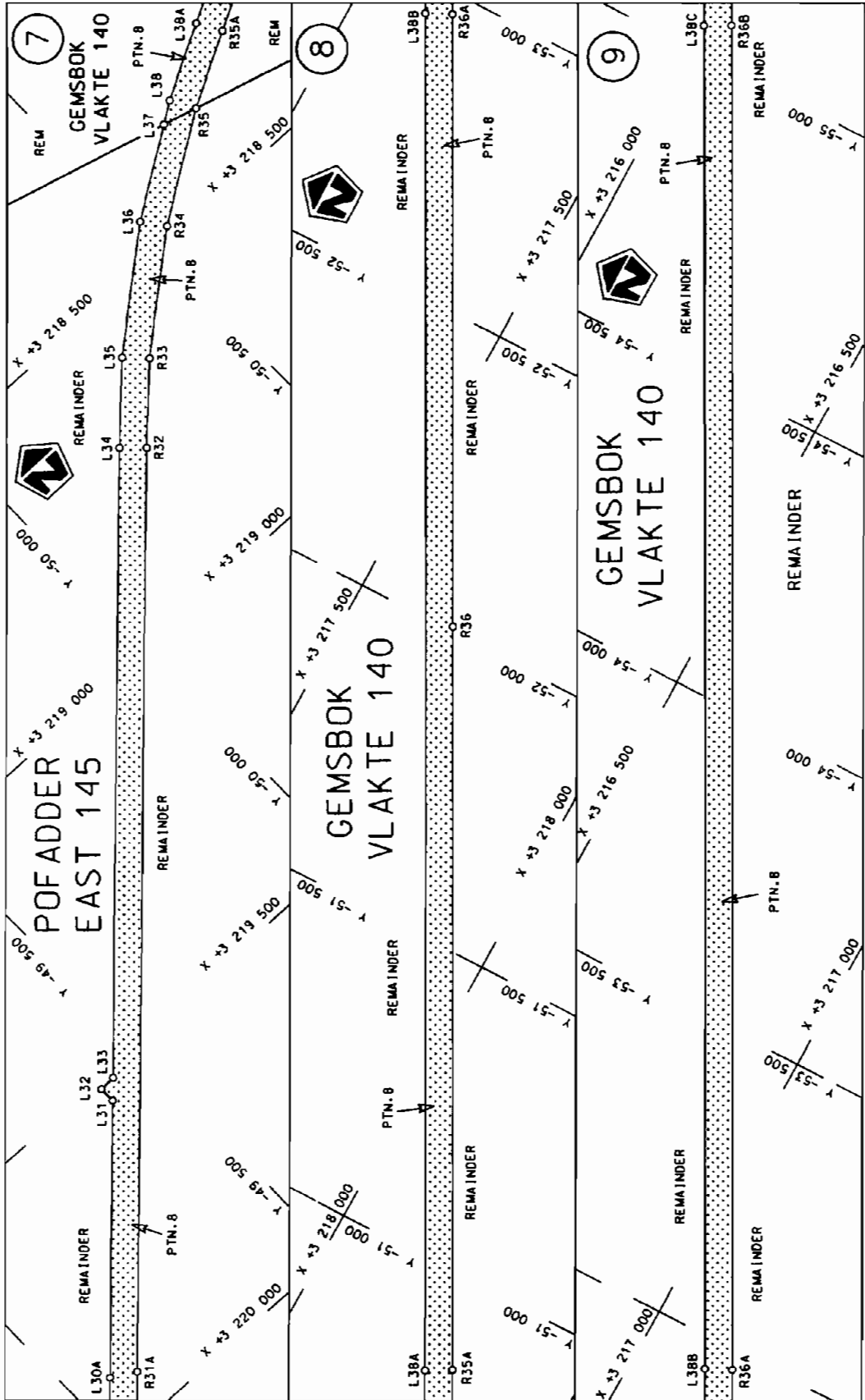
MINISTER VAN VERVOER



| | | | |
|--|---------------------------------------|--|--|
| Die Suid Afrikaanse Nasionale Padagentskap Beperk The South African National Roads Agency Limited | Die figuur getoon The figure shown |  stel die padreserve voor van 'n gedeelte represents the road reserve of a portion van Nasionale Roete N14 of National Route N14 Seksie 2 Section 2 | Vel Sheet 1 van 25 of Plon P734/08 |
|--|---------------------------------------|--|--|

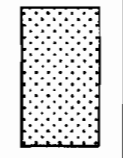


| | | | | |
|--|---|--|--|-------------------------------------|
| <p>Die Suid Afrikaanse Nasionale Padagentskap Beperk The South African National Roads Agency Limited</p> | <p>Die figuur getoon The figure shown</p> | | <p>steldie padreserwe voor van 'n gedeelte represents the road reserve of a portion van Nasionale Roete N14 Seksie of National Route Section 2</p> | <p>Vel Sheet 2 van 25 of of</p> |
| | | | | <p>Plan P734/08</p> |



Die Suid-Afrikaanse Nasionale Padagogenkap Beperk
The South African National Roads Agency Limited

Die figuur getoon
The figure shown



stelt die padreserwe voor van 'n gedeelte
represents the road reserve of a portion
van Nasionale Roete N14
of National Route

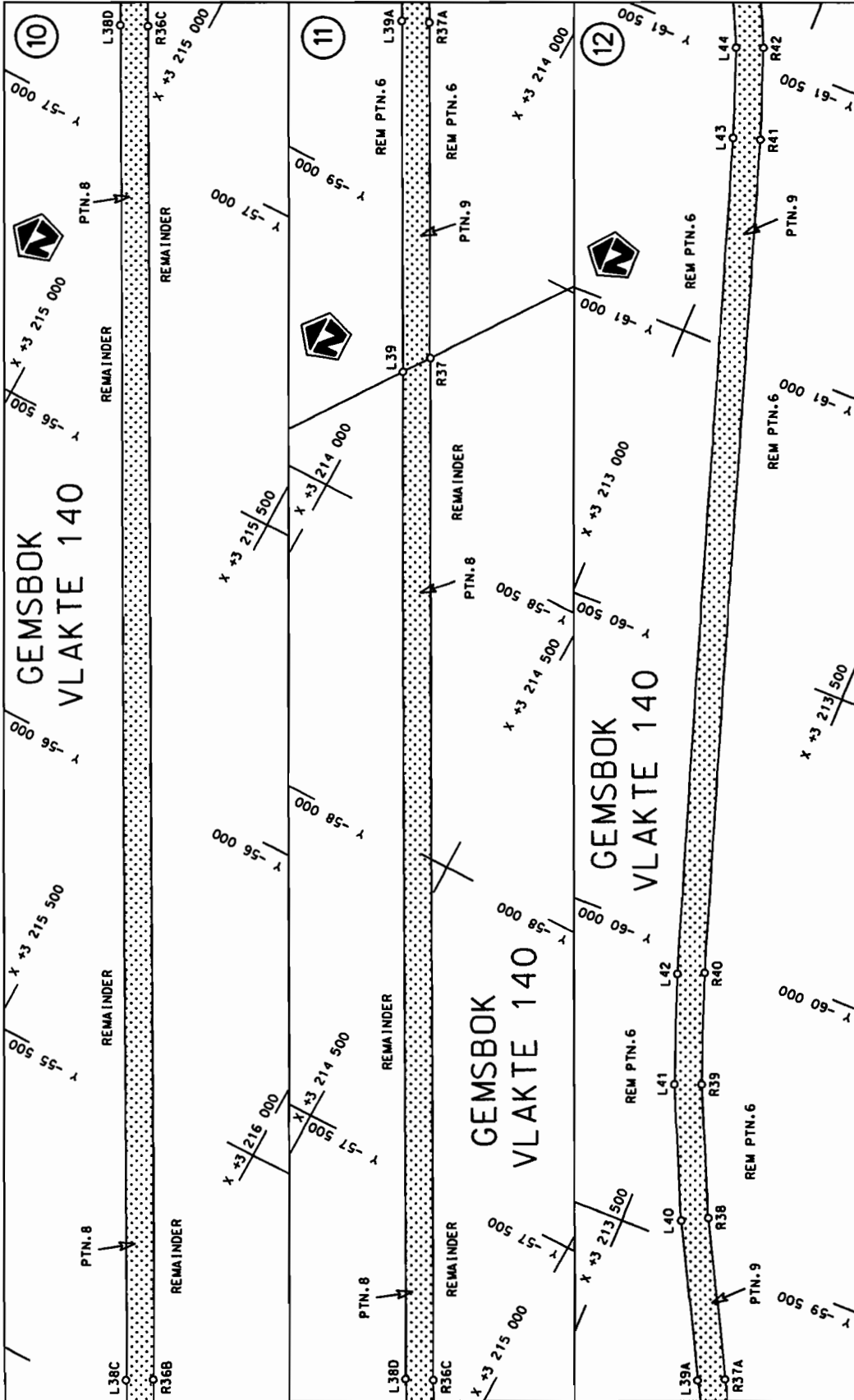
Seksie
Section

2

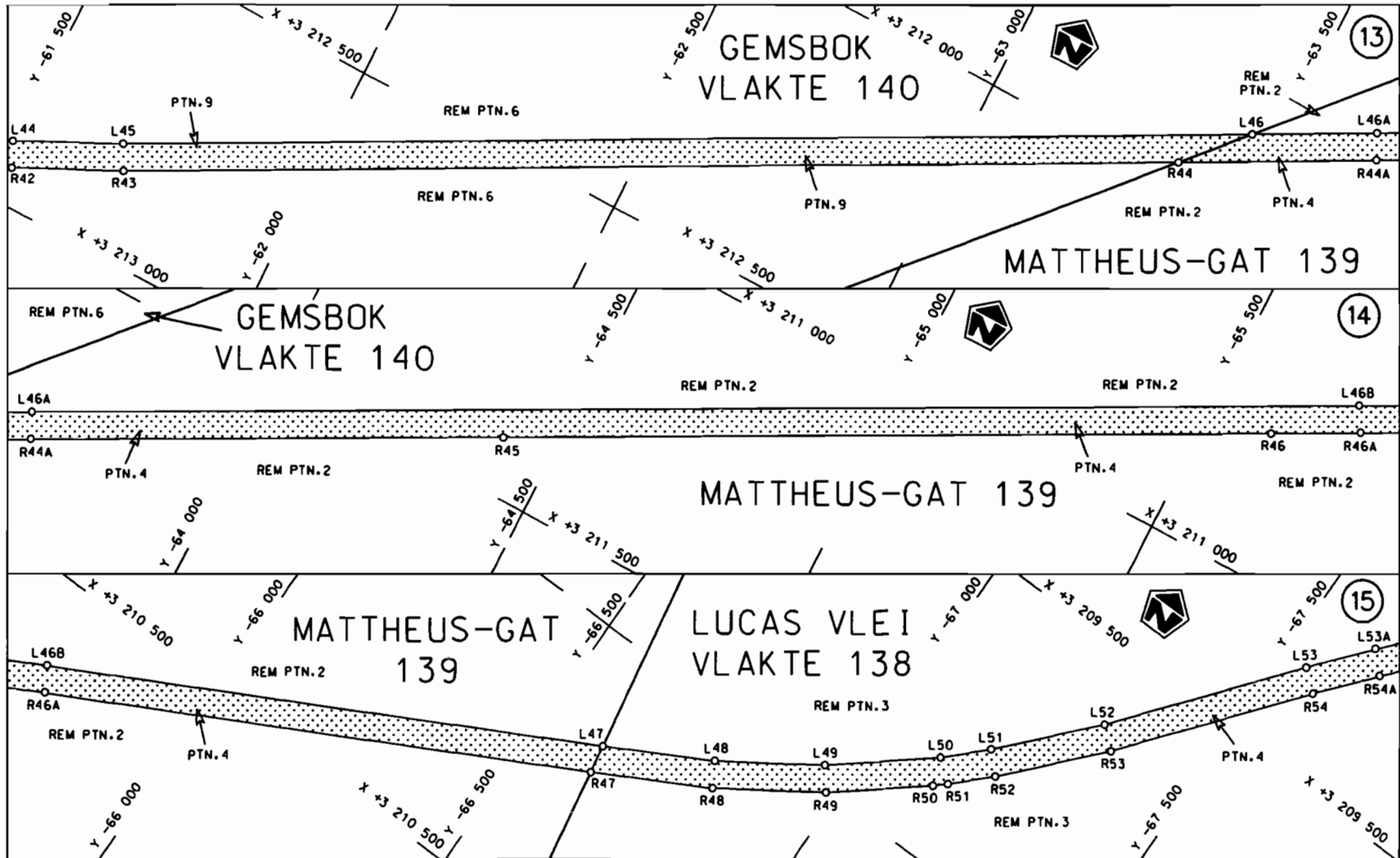
Vel
Sheet


3 of 25

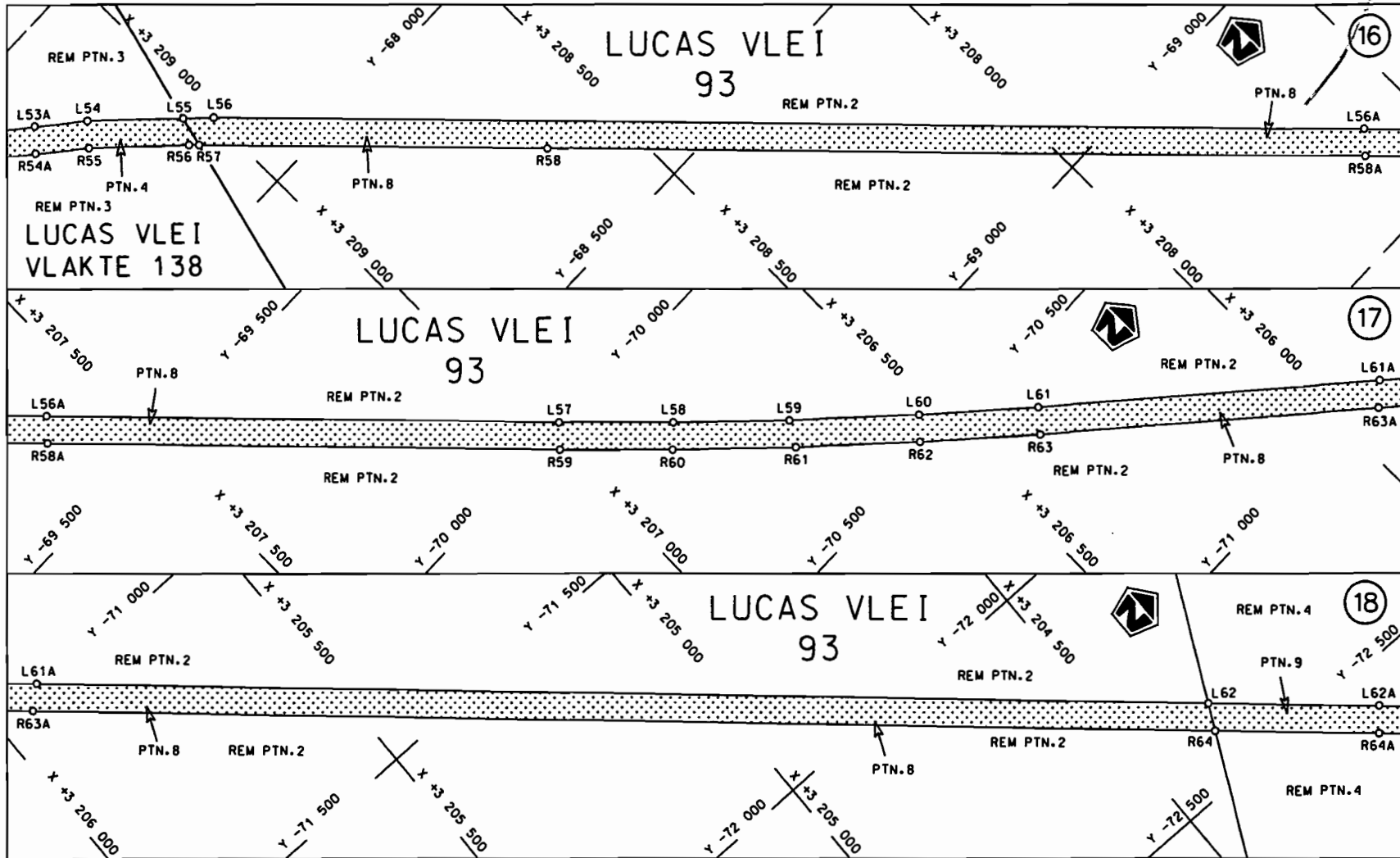
Plan P734/08

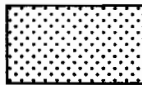


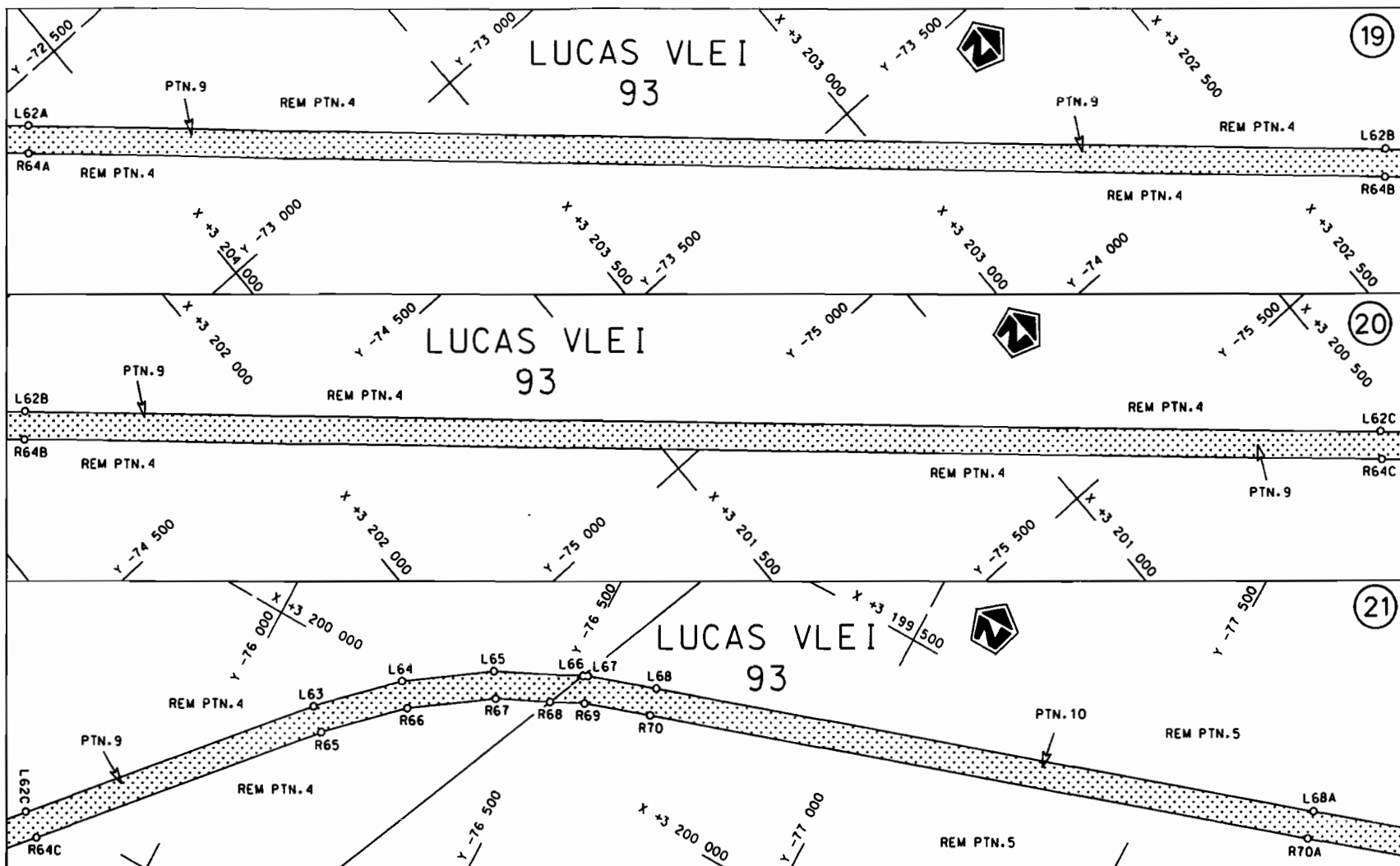
| | | | |
|--|---|--|--|
| <p>Die Suid Afrikaanse Nasionale Padagentskap Beperk The South African National Roads Agency Limited</p> | <p>Die figuur getoon The figure shown</p> | <p>stel die podreserwe voor van 'n gedeelte represents the road reserve of a portion von Nasionale Roete N14 of National Route</p> | <p>Vel Sheet 4 of 25</p> <p>Plan P734/08</p> |
| <p>2</p> | | <p>Section</p> | |



| | | | | | |
|--|---------------------------------------|--|--|---|--------------------------------------|
| Die Suid Afrikaanse Nasionale Padagentskap Beperk The South African National Roads Agency Limited | Die figuur getoon The figure shown |  | steldie padreserwe voor van 'n gedeelte represents the road reserve of a portion van Nasionale Roete N14 Seksie of National Route Section | 2 | Vel Sheet 5 of 25 Plan P734/08 |
|--|---------------------------------------|--|--|---|--------------------------------------|



| | | | |
|--|--|--|--|
| <p>Die Suid Afrikaanse Nasionale Padagentskap Beperk The South African National Roads Agency Limited</p> | <p>Die figuur getoon The figure shown</p>  | <p>steldie podreserwe voor van 'n gedeelte represents the road reserve of a portion van Nasionale Roete N14 Seksie of National Route N14 Section</p> | <p>Vel Sheet 6 van of 25</p> <p>Plan P734/08</p> |
|--|--|--|--|



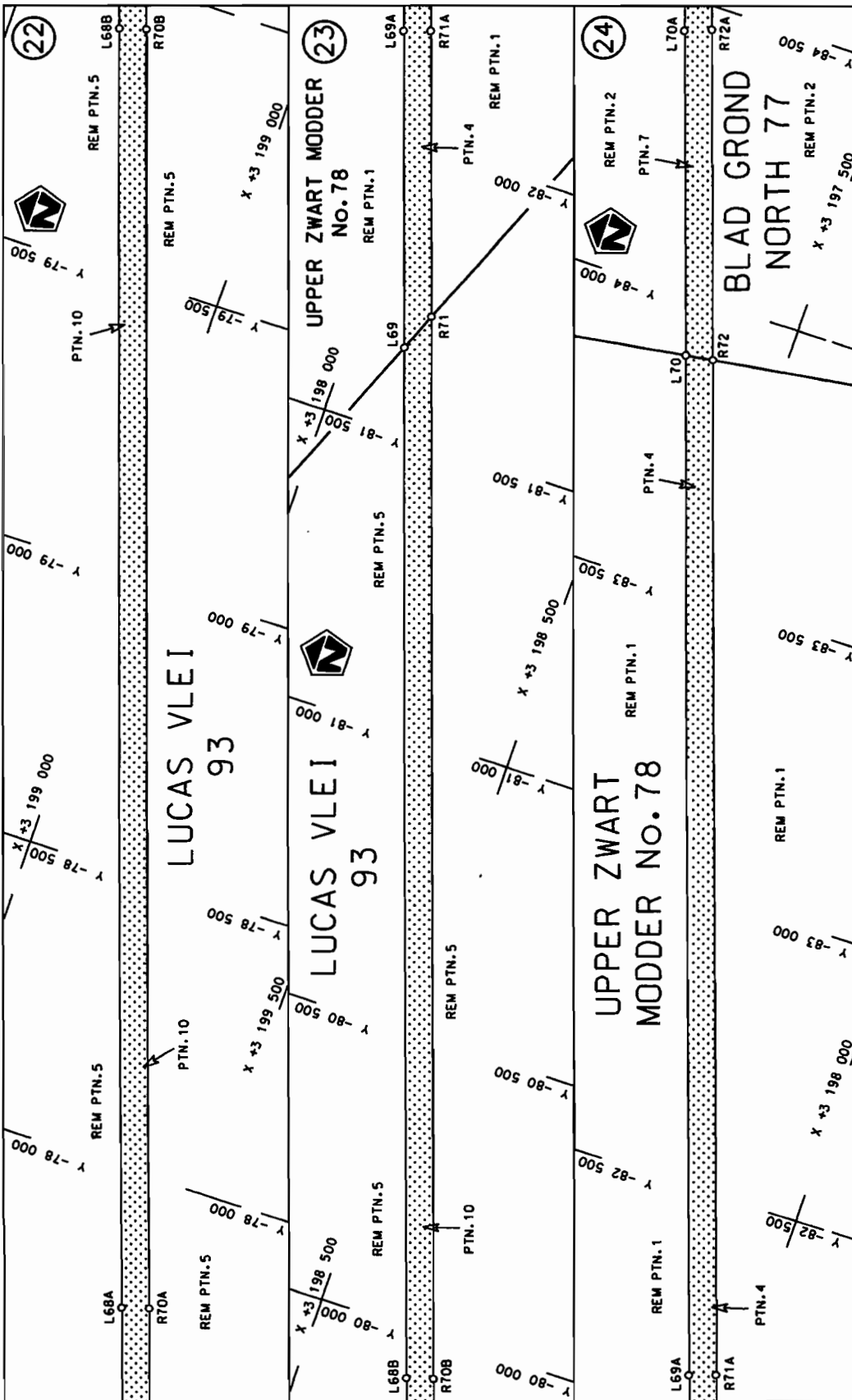
Die Suid Afrikaanse Nasionale Padagentskap Beperk
 The South African National Roads Agency Limited


Die figuur getoon
 The figure shown

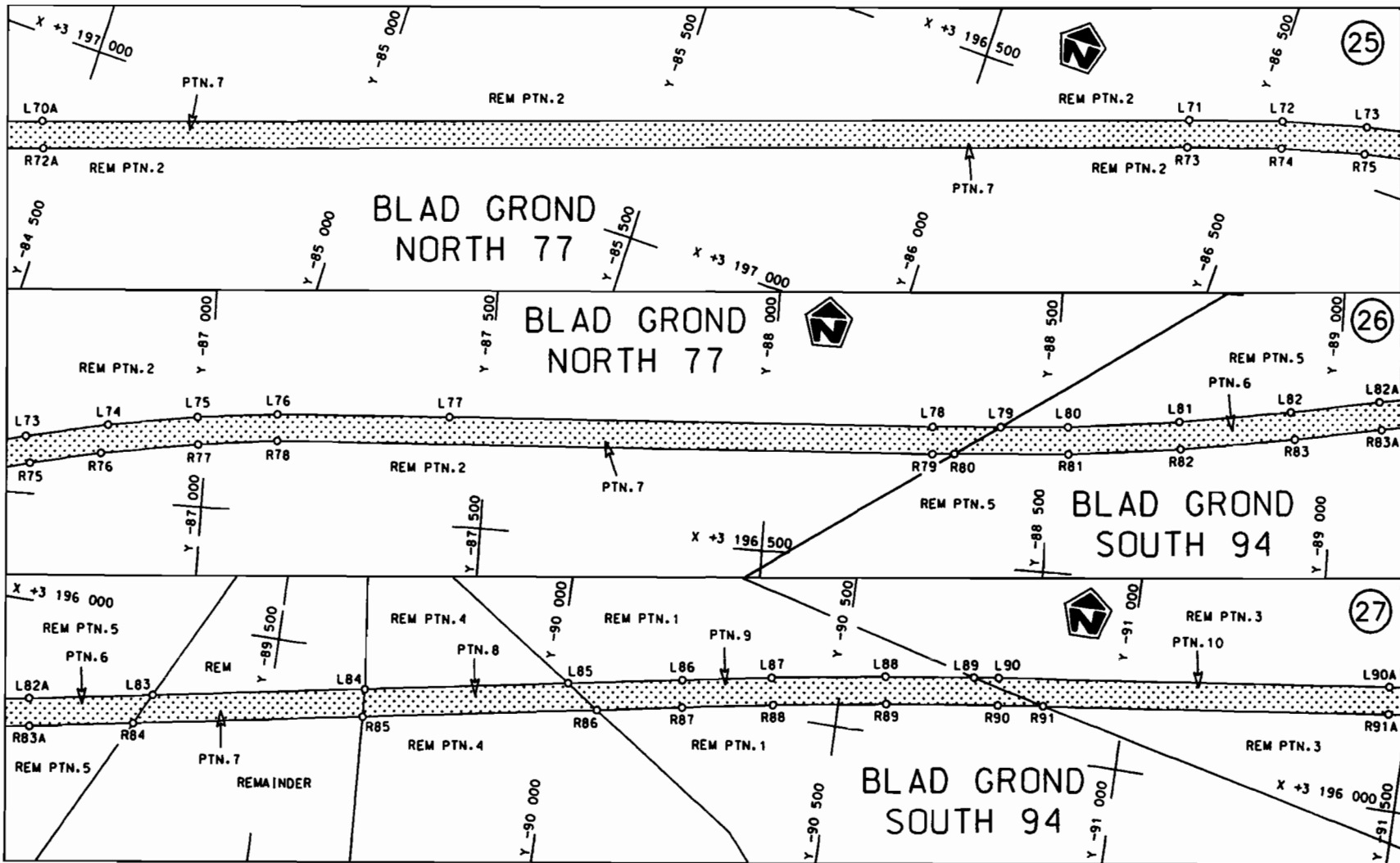



steldie padreserwe voor van 'n gedeelte
 represents the road reserve of a portion
 van Nasionale Roete N14 Seksie Section
 of National Route N14 Section 2

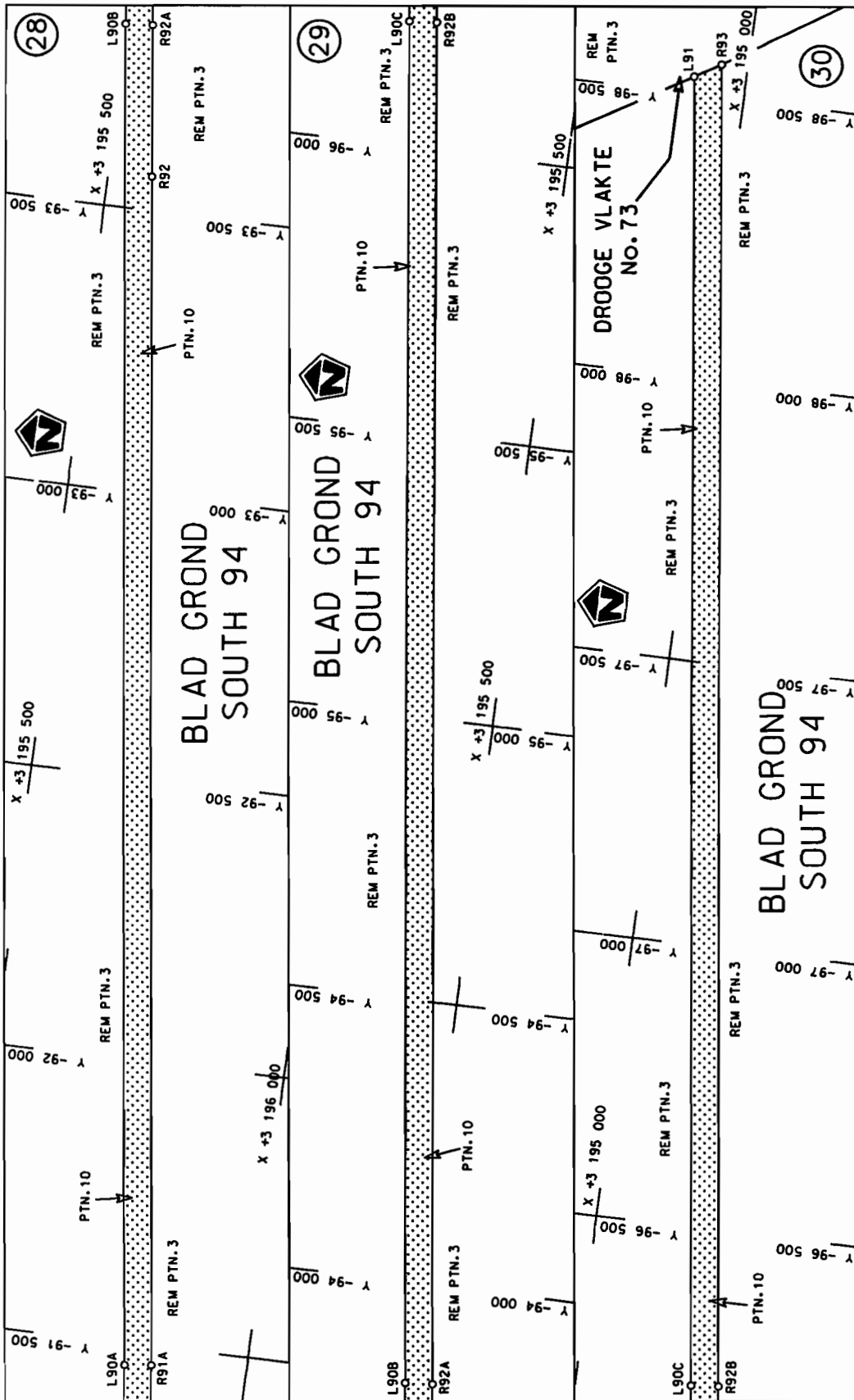
Vel Sheet 7 van of 25
 Plan P734/08



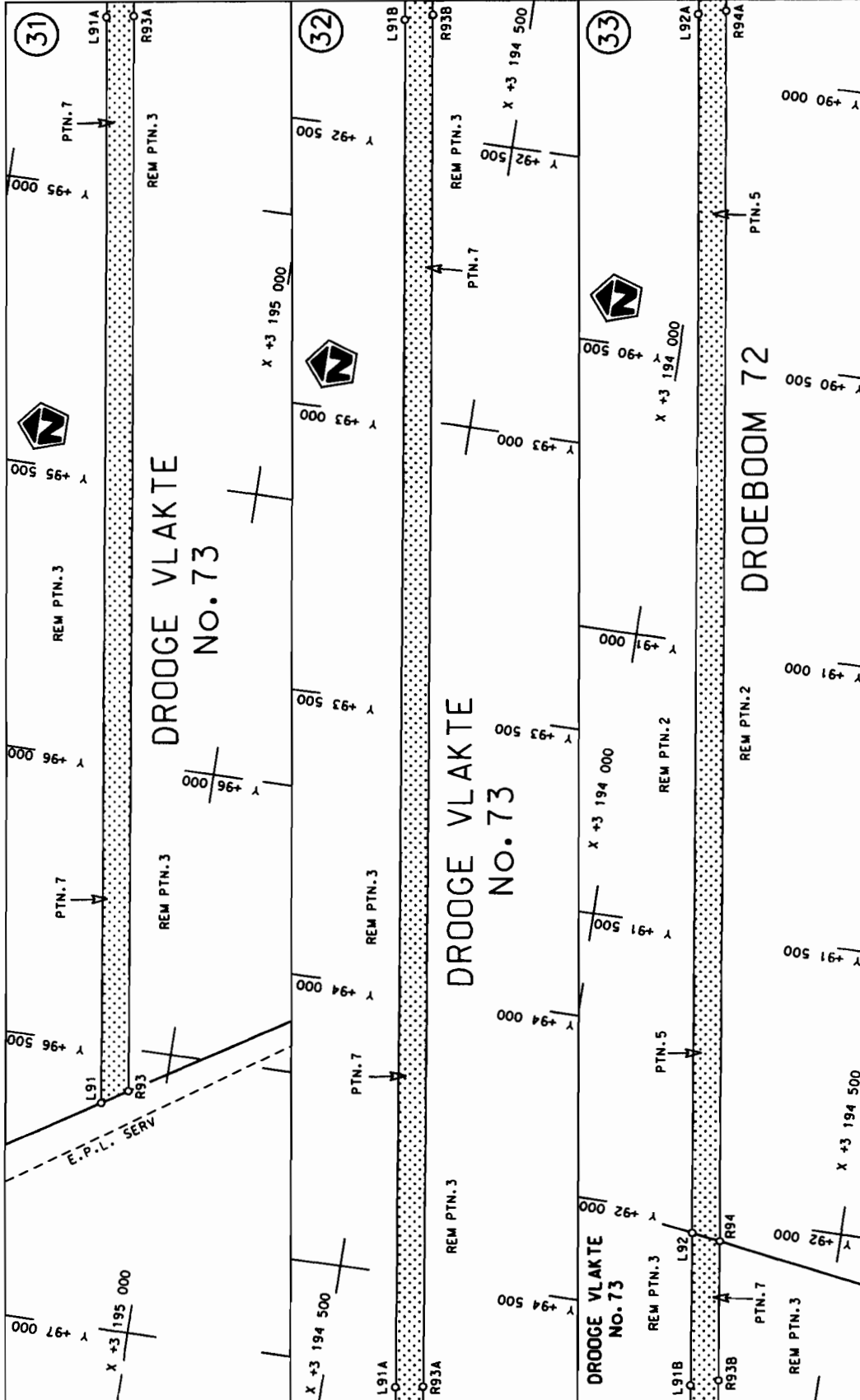
| | | | |
|--|---|---|--|
| <p>Die Suid Afrikaanse Nasionale Padagentskap Beperk The South African National Roads Agency Limited</p> | <p>Die figuur getoon The figure shown</p>  | <p>stel die padreserwe voor van 'n gedeelte represents the road reserve of a portion van Nasionale Roete N14 of National Route</p> <p>2</p> | <p>Vel Sheet 8 of 25</p> <p>Plan P734/08</p> |
|--|---|---|--|

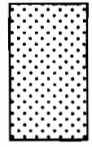


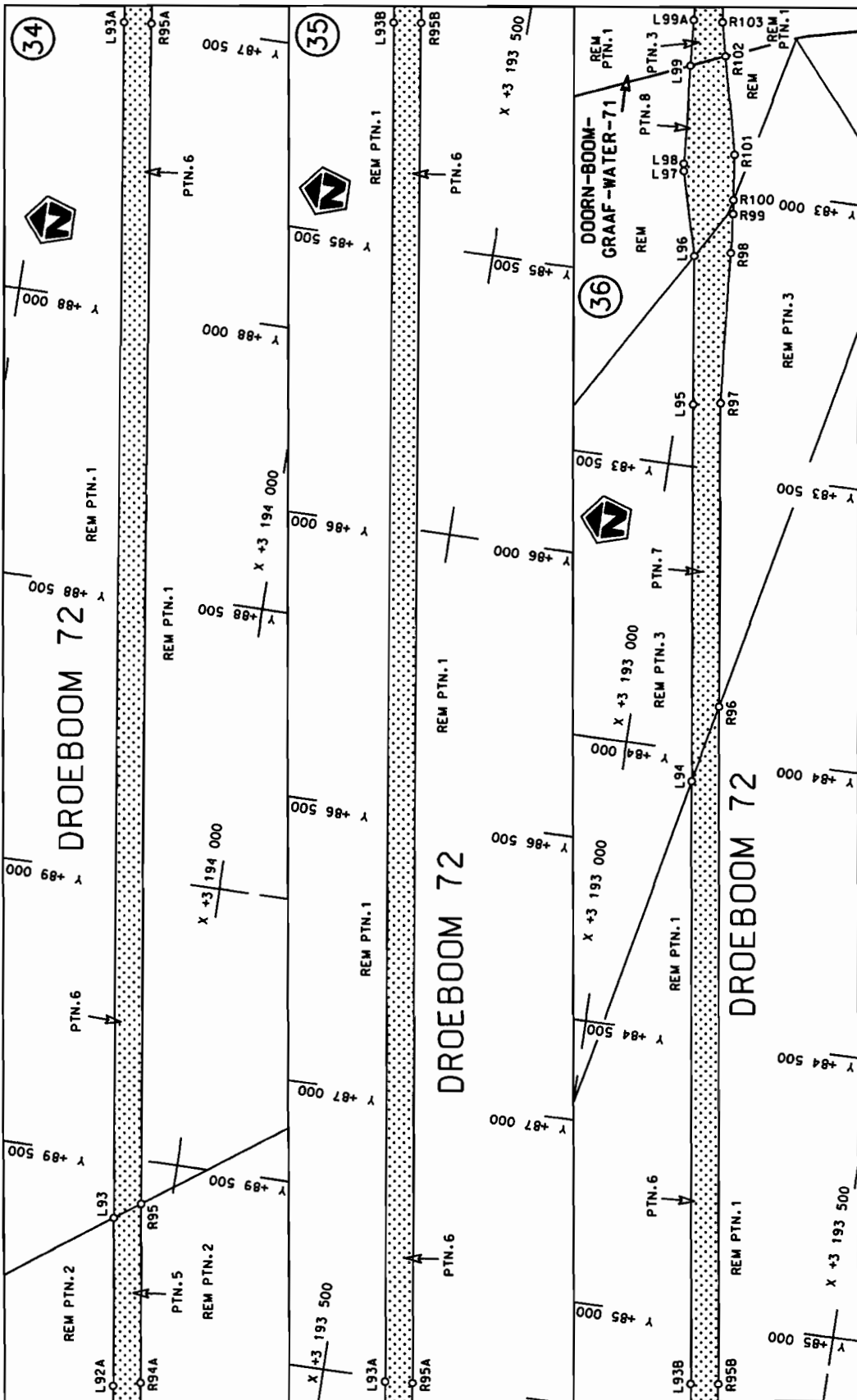
| | | | |
|--|--|---|---|
| <p>Die Suid Afrikaanse Nasionale Padogentskap Beperk The South African National Roads Agency Limited</p> | <p>Die figuur getaan The figure shown</p>  | <p>steldie padreserwe voor van 'n gedeelte represents the road reserve of a portion van Nasionale Roete N14 of National Route</p> <p>Seksie Section 2</p> | <p>Vel Sheet 9 van of 25 Plan P734/08</p> |
|--|--|---|---|



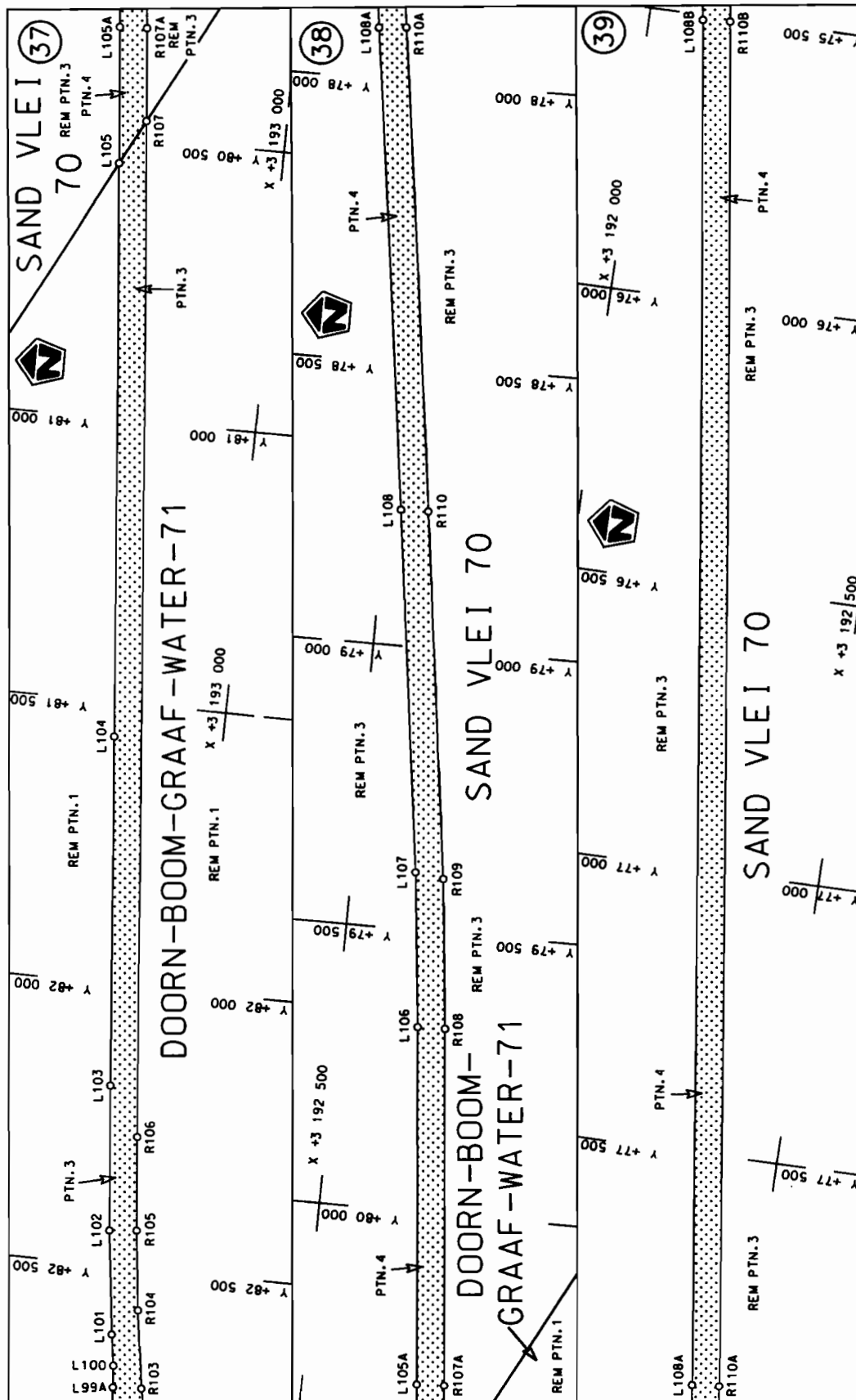
| | | |
|--|---|--|
| <p>Die Suid Afrikaanse Nasionale Padagentskap Beperk The South African National Roads Agency Limited</p> | <p>Die figuur getoon The figure shown</p> | <p>stel die padreserwe voor van 'n gedeelte represents the road reserve of a portion van Nasionale Roete N14 of National Route</p> |
| <p>Vel Sheet 10 of 25</p> | <p>2</p> | <p>Plan P734/08</p> |



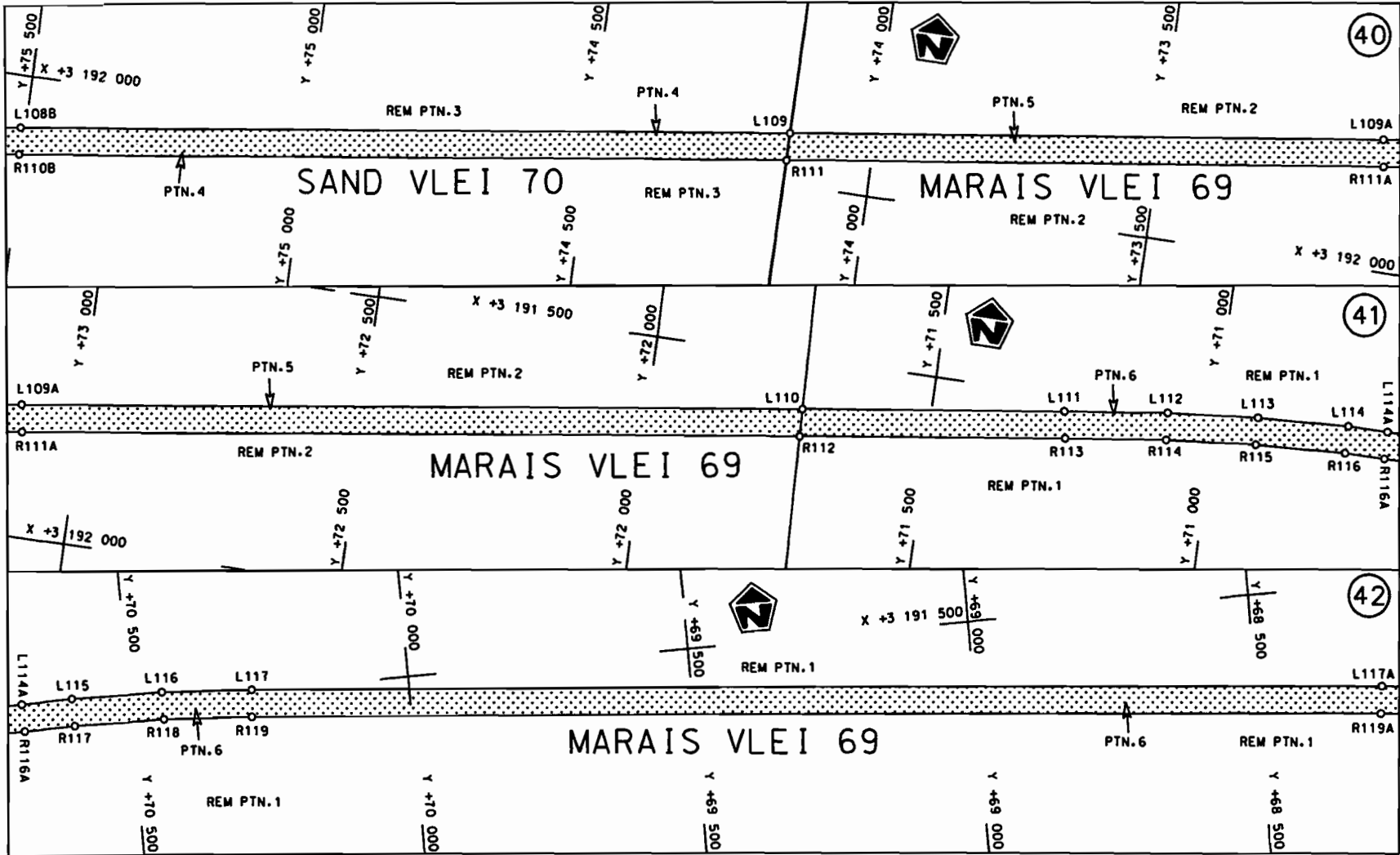
| | | |
|--|---|--|
| Vel van Sheet 11 of 25 Plan P734/08 |  <p>stel die padreserwe voor van 'a gedeelte represents the road reserve of a portion van Nasionale Roete N14 Seksie Section</p> | Die Suid Afrikaanse Nasionale Padagentskap Beperk The South African National Roads Agency Limited |
|--|---|--|



| | | |
|--|---|--|
| <p>Die Suid Afrikaanse Nasionale Padagentskap Beperk The South African National Roads Agency Limited</p> | <p>Die figuur getoon The figure shown</p> | <p>steldie padreserwe voor van 'n gedeelte represents the road reserve of a portion van Nasionale Roete N14 Sektie of National Route N14 Section</p> |
| <p>Vel Sheet 12 of 25</p> | <p>2</p> | <p>Plan P734/08</p> |

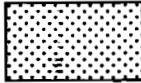


| | | |
|------------------------------------|---|--|
| Vel Sheet 13 of 25 Plan P734/08 | steldie padreserwe voor van 'n gedeelte represents the rood reserve of a portion van Nasionale Roete N14 of National Route Section | Die Suid Afrikaanse Nasionale Padogentskap Beperk The South African National Roads Agency Limited |
|------------------------------------|---|--|



Die Suid Afrikaanse Nasionale Padagentskap Beperk
The South African National Roads Agency Limited

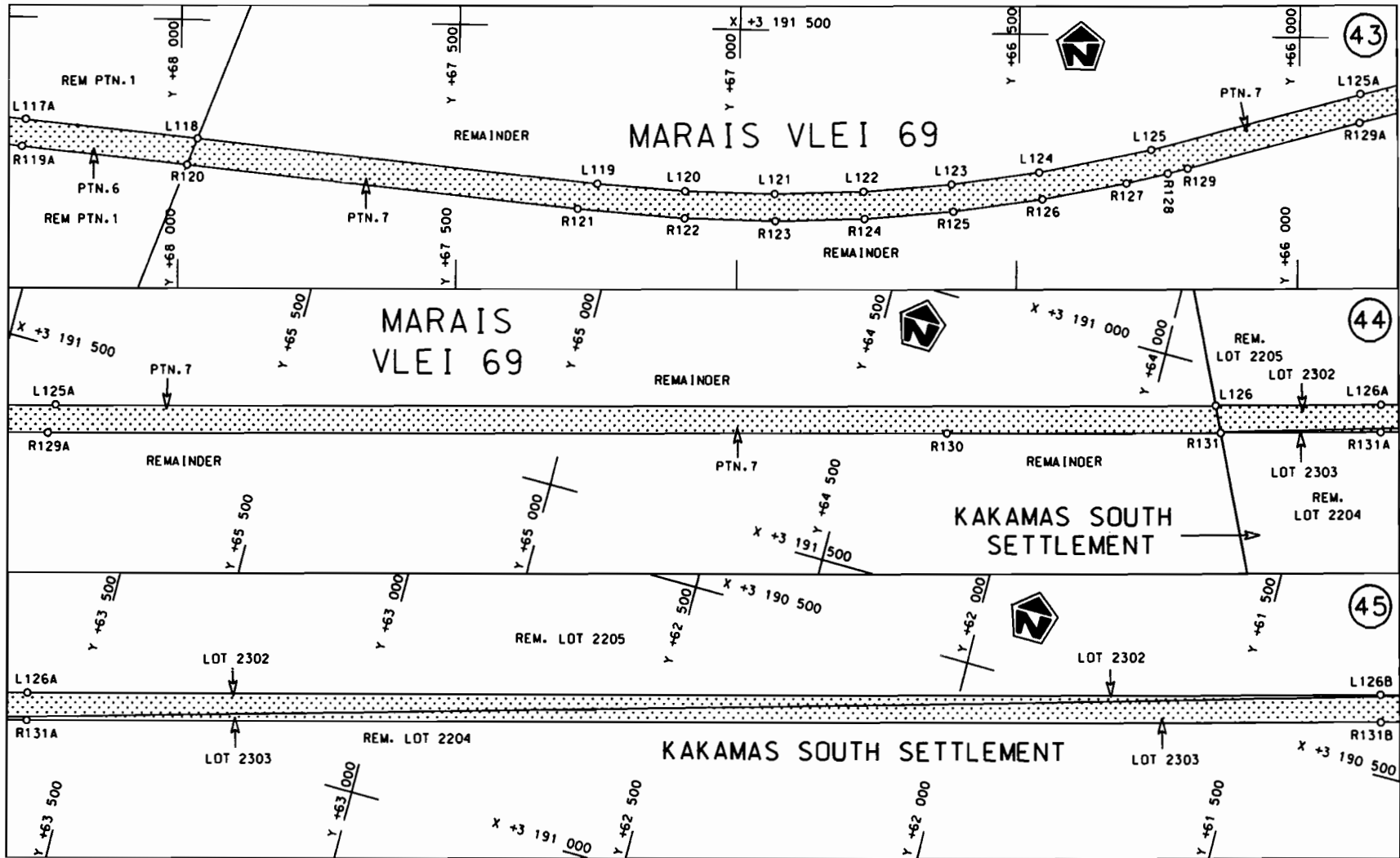
Die figuur getoon
The figure shown




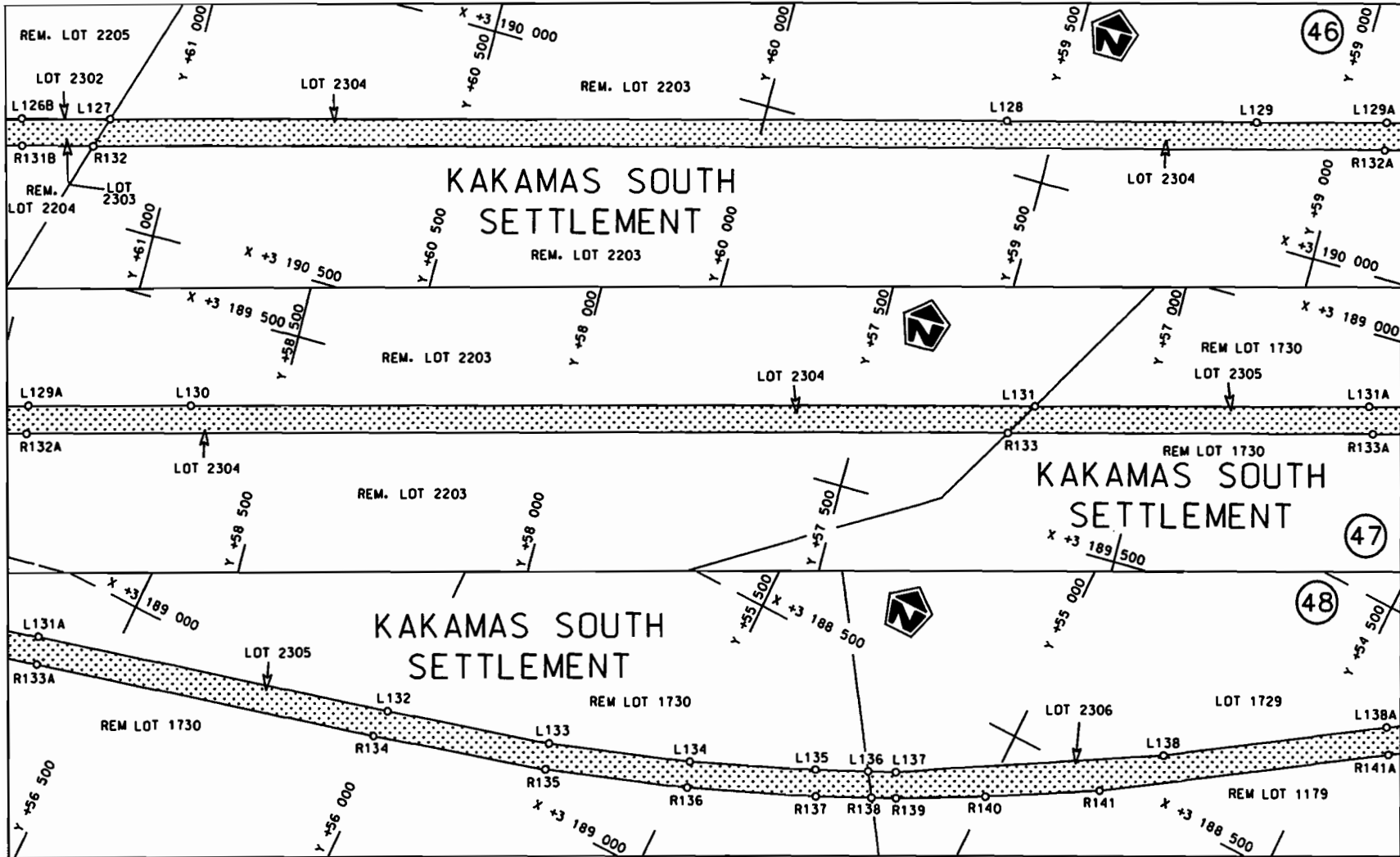
steldie padreserwe voor van 'n gedeelte
represents the road reserve of a portion
von Nasionale Roete N14
of National Route N14
Seksie
Section

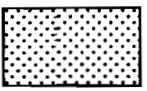
Vel
Sheet 14 van
of 25
Plan P734/08

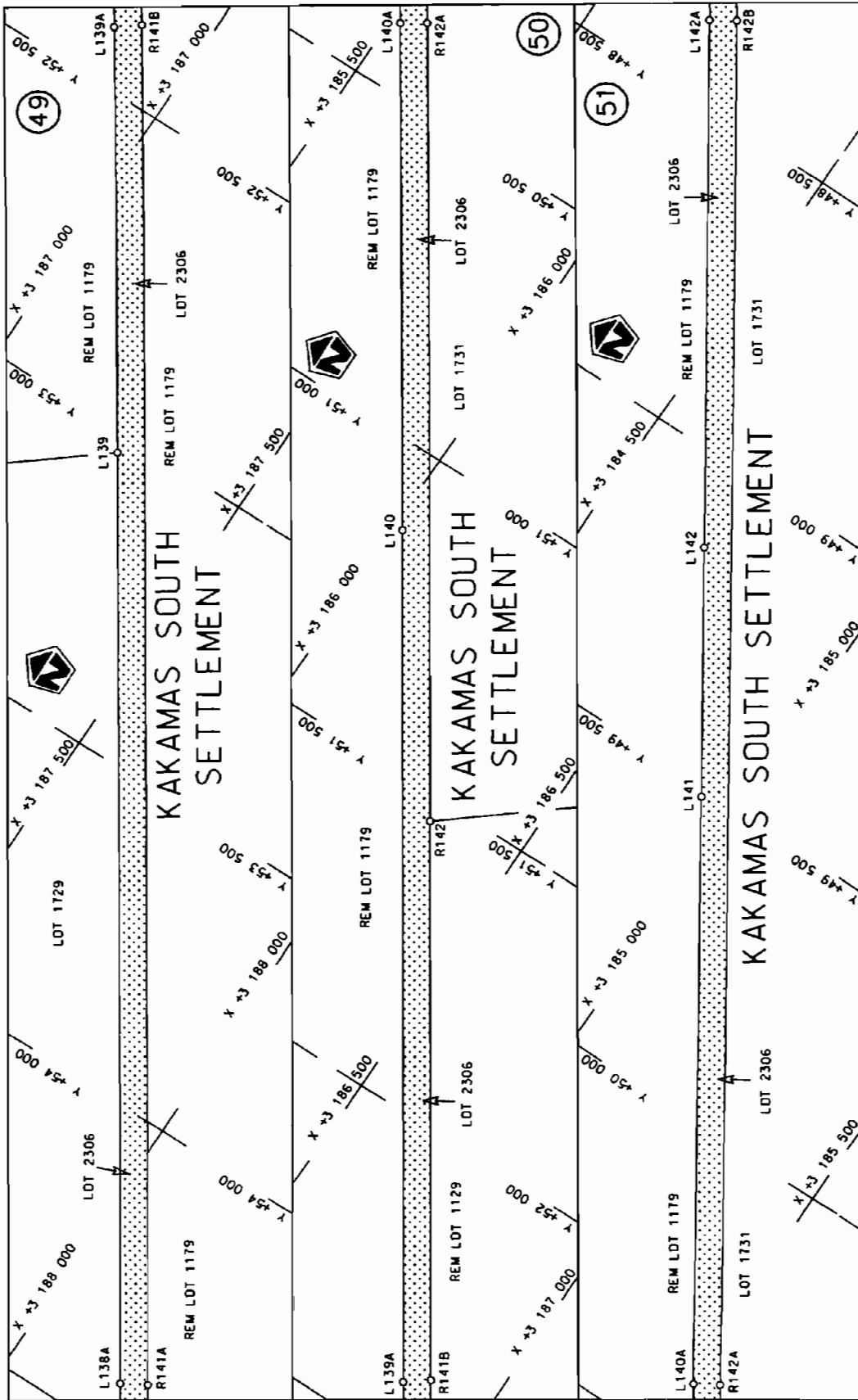
2

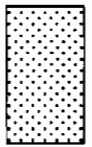


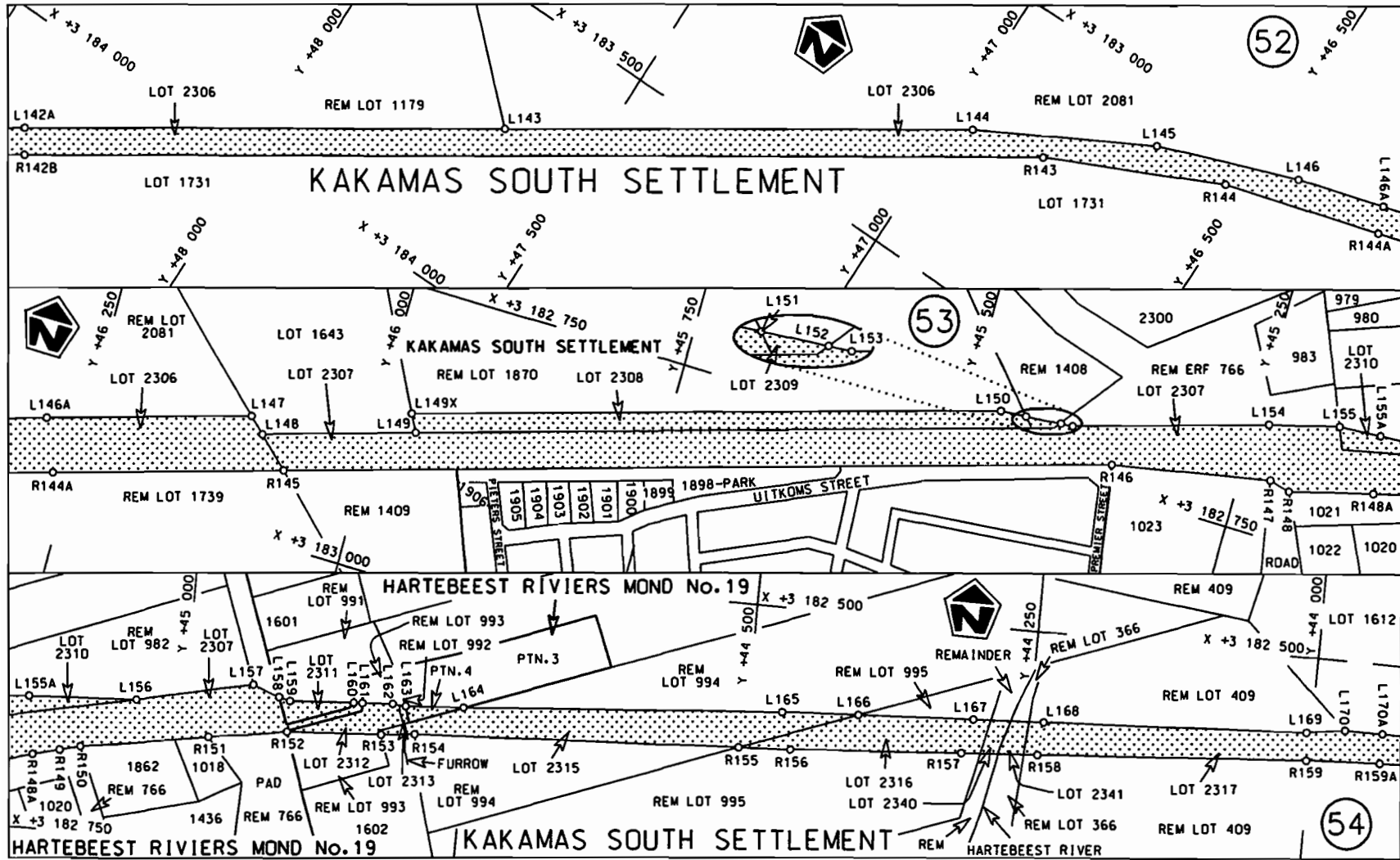
| | | | | |
|---|-------------------|--|--|------------------------|
| Die Suid Afrikaanse Nasionale Padagentskap Beperk | Die figuur getoon |  | steldie padreserwe voor van 'n gedeelte represents the road reserve of a portion | Vel Sheet 15 van of 25 |
| The South African National Roads Agency Limited | The figure shown | | van Nasionale Roete N14 Seksie Section 2 | Plan P734/08 |



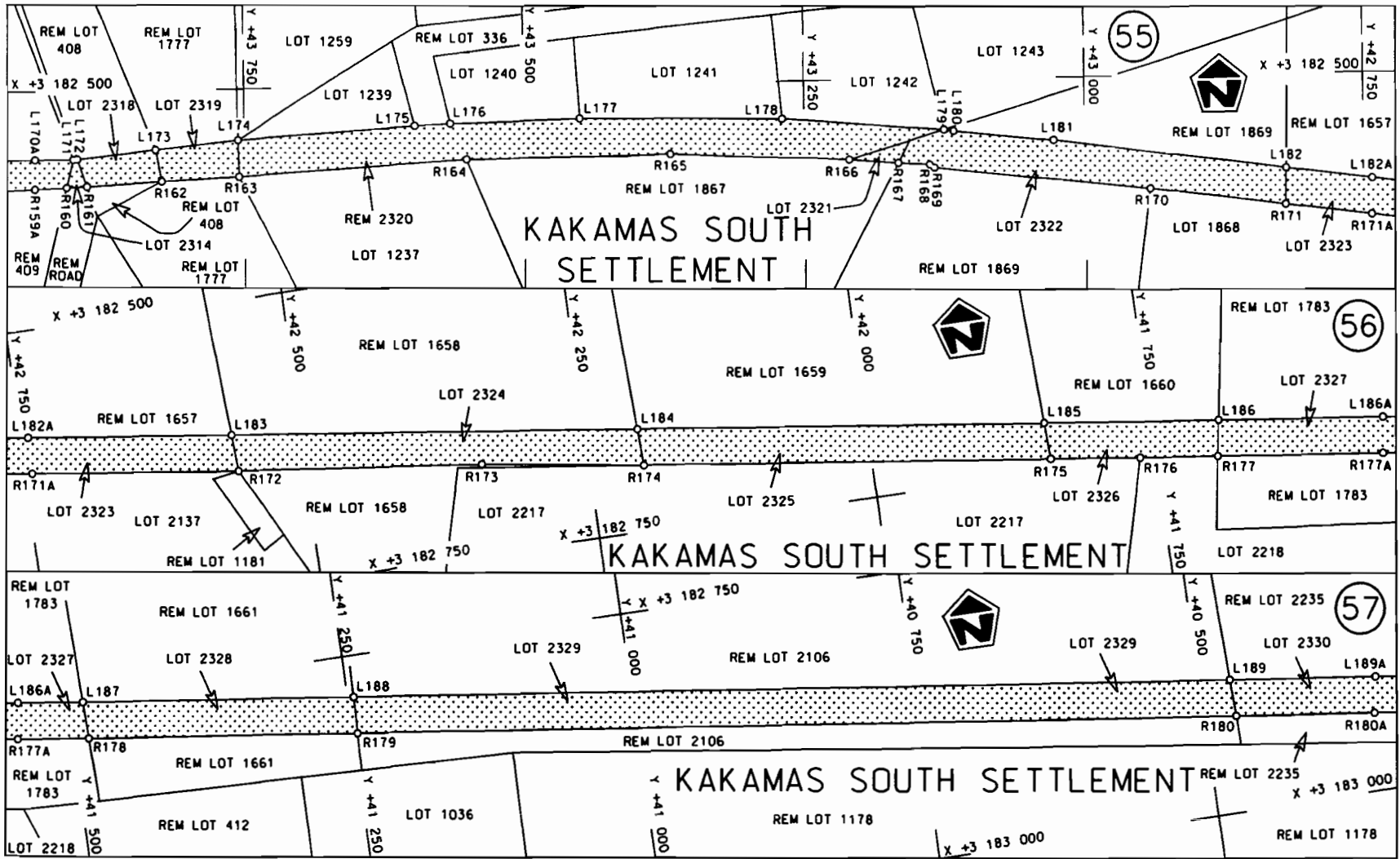
| | | | |
|--|--|--|--|
| <p>Die Suid Afrikaanse Nasionale Podagentskap Beperk The South African National Roads Agency Limited</p> | <p>Die figuur getoon The figure shown</p>  | <p>steldie padreserwe voor van 'n gedeelte represents the road reserve of a portion van Nasionale Roete N14 Seksie 2 of National Route N14 Section 2</p> | <p>Vel Sheet 16 of 25 Plan P734/08</p> |
|--|--|--|--|



| | | |
|--|---|--|
| <p>Die Suid Afrikaanse Nasionale Padagentskap Beperk The South African National Roads Agency Limited</p> | <p>Die figuur getoon The figure shown</p>  | <p>steldie padreserwe voor van 'n gedeelte represents the road reserve of a portion van Nasionale Roete N14 of National Route</p> <p>Seksie Section</p> <p>N14 2</p> |
| <p>Vel Sheet</p> <p>van 17 of</p> <p>25</p> | | <p>Plan P734/08</p> |

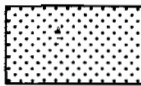


| | | | | |
|--|---|--|---|--|
| <p>Die Suid Afrikaanse Nasionale Padogentskap Beperk The South African National Roads Agency Limited</p> | <p>Die figuur getoon The figure shown</p> | | <p>stel die padreserwe voor van 'n gedeelte represents the road reserve of a portion van Nasionale Roete N14 Seksie of National Route N14 Section 2</p> | <p>Vel Sheet 18 of 25 Plan P734/08</p> |
|--|---|--|---|--|



Die Suid Afrikaanse Nasionale Padagentskap Beperk
The South African National Roads Agency Limited

Die figuur getoon
The figure shown

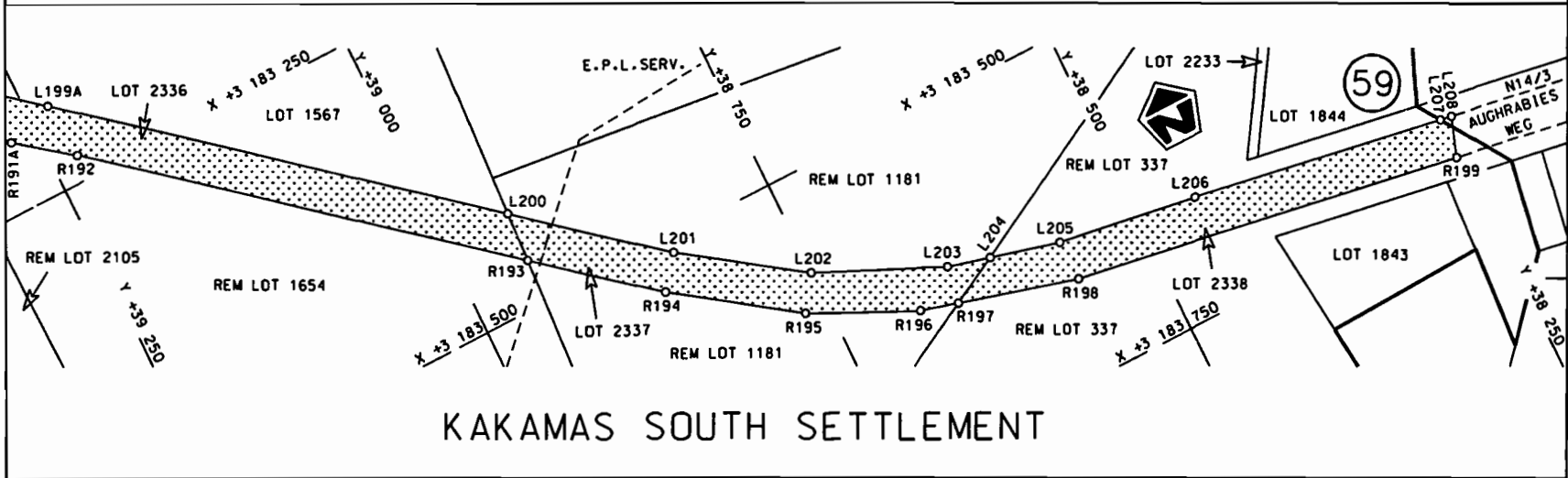
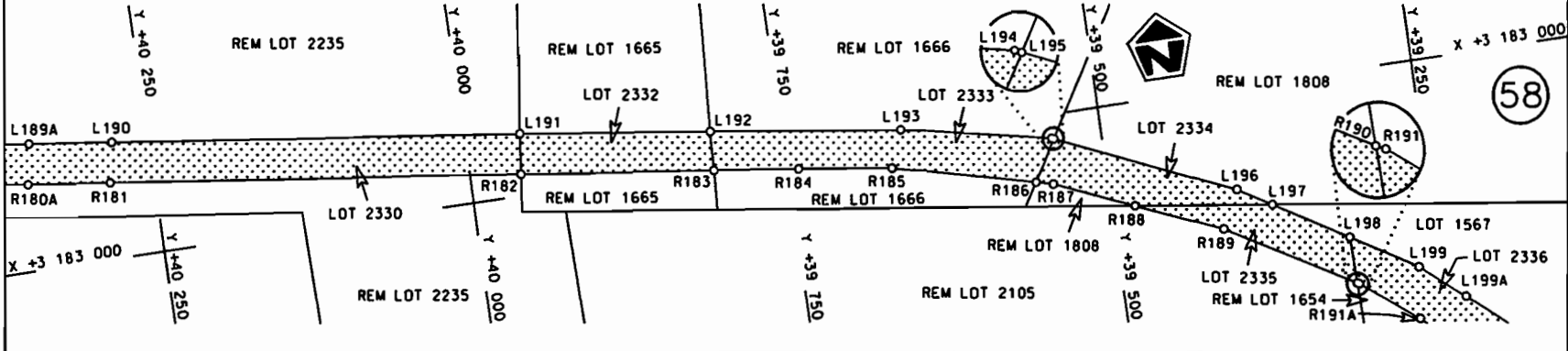


steldie padreserwe voor van 'n gedeelte
represents the road reserve of a portion
van Nasionale Roete N14
of National Route N14
Seksie
Section

2

Vel
Sheet 19 of 25
Plan P734/08

KAKAMAS SOUTH SETTLEMENT



KAKAMAS SOUTH SETTLEMENT

| | | | | |
|--|---|--|--|---------------------------------------|
| <p>Die Suid Afrikaanse Nasionale Padagentskap Beperk The South African National Roads Agency Limited</p> | <p>Die figuur getoon The figure shown</p> | | <p>steldie padreserwe voor van 'n gedeelte represents the road reserve of a portion van Nasionale Roete N14 Sektie of National Route Section</p> | <p>Vel Sheet 20 van of 25</p> |
| | | | <p>2</p> | <p>Plan P734/08</p> |

| PADRESERWE KOÖRDINATE / ROAD RESERVE CO-ORDINATES | | | | | | | | | |
|---|-------------|-------|---------|-----|----------------------------|-------|---------|--|--|
| LINKERKANT/LEFT HAND SIDE | | | | | REGTERKANT/RIGHT HAND SIDE | | | | |
| | Y | X | WG 19° | | Y | X | | | |
| L1 | -38 586.370 | 3 223 | 203.590 | R1 | -38 586.060 | 3 223 | 218.040 | | |
| L2 | -38 913.220 | 3 223 | 210.460 | R2 | -38 912.980 | 3 223 | 224.960 | | |
| L3 | -39 003.920 | 3 223 | 198.860 | R3 | -39 501.070 | 3 223 | 241.140 | | |
| L4 | -39 465.850 | 3 223 | 202.860 | R4 | -39 505.690 | 3 223 | 241.270 | | |
| L5 | -39 459.360 | 3 223 | 195.810 | R5 | -39 553.070 | 3 223 | 239.160 | | |
| L6 | -39 553.830 | 3 223 | 191.400 | R6 | -39 718.620 | 3 223 | 219.710 | | |
| L7 | -39 713.530 | 3 223 | 173.280 | R7 | -39 916.760 | 3 223 | 178.290 | | |
| L8 | -39 911.490 | 3 223 | 130.990 | R8 | -40 076.120 | 3 223 | 129.770 | | |
| L9 | -40 061.160 | 3 223 | 084.800 | R9 | -40 259.000 | 3 223 | 055.590 | | |
| L10 | -40 235.300 | 3 223 | 014.640 | R10 | -40 507.730 | 3 222 | 930.850 | | |
| L11 | -40 430.540 | 3 222 | 916.790 | R11 | -42 265.790 | 3 222 | 045.820 | | |
| L12 | -43 415.970 | 3 221 | 414.520 | R12 | -42 660.630 | 3 221 | 847.480 | | |
| L13 | -43 571.500 | 3 221 | 344.230 | R13 | -43 434.410 | 3 221 | 457.620 | | |
| L14 | -43 759.840 | 3 221 | 278.990 | R14 | -43 589.050 | 3 221 | 387.460 | | |
| L15 | -43 962.030 | 3 221 | 231.630 | R15 | -43 776.890 | 3 221 | 323.060 | | |
| L16 | -44 162.330 | 3 221 | 205.670 | R16 | -43 969.970 | 3 221 | 277.900 | | |
| L17 | -44 365.390 | 3 221 | 198.770 | R17 | -44 165.370 | 3 221 | 251.760 | | |
| L18 | -44 513.260 | 3 221 | 210.720 | R18 | -44 364.720 | 3 221 | 245.580 | | |
| L19 | -44 623.250 | 3 221 | 219.610 | R19 | -44 508.880 | 3 221 | 258.140 | | |
| L20 | -45 111.560 | 3 221 | 291.680 | R20 | -44 616.580 | 3 221 | 266.370 | | |
| L21 | -45 278.810 | 3 221 | 301.720 | R21 | -45 106.420 | 3 221 | 338.240 | | |
| L22 | -45 338.550 | 3 221 | 298.160 | R22 | -45 277.470 | 3 221 | 348.660 | | |
| L23 | -45 468.230 | 3 221 | 277.580 | R23 | -45 339.720 | 3 221 | 345.080 | | |
| L24 | -45 658.200 | 3 221 | 220.610 | R24 | -45 479.090 | 3 221 | 323.380 | | |
| L25 | -46 787.870 | 3 220 | 859.130 | R25 | -45 672.000 | 3 221 | 265.590 | | |
| L26 | -48 362.820 | 3 220 | 354.990 | R26 | -46 893.170 | 3 220 | 874.810 | | |
| L27 | -48 542.660 | 3 220 | 262.540 | R27 | -48 399.810 | 3 220 | 392.470 | | |
| L28 | -48 691.680 | 3 220 | 230.390 | R28 | -48 532.190 | 3 220 | 350.120 | | |
| L29 | -48 852.450 | 3 220 | 118.880 | R29 | -48 716.550 | 3 220 | 270.370 | | |
| L30 | -48 921.990 | 3 220 | 053.070 | R30 | -48 882.080 | 3 220 | 154.970 | | |
| L31 | -49 409.200 | 3 219 | 544.870 | R31 | -48 955.930 | 3 220 | 085.510 | | |
| L32 | -49 409.080 | 3 219 | 516.350 | R32 | -50 243.820 | 3 218 | 742.220 | | |
| L33 | -49 437.430 | 3 219 | 515.430 | R33 | -50 357.110 | 3 218 | 629.520 | | |
| L34 | -50 209.500 | 3 218 | 710.260 | R34 | -50 540.040 | 3 218 | 478.720 | | |
| L35 | -50 323.910 | 3 218 | 596.210 | R35 | -50 718.120 | 3 218 | 362.580 | | |
| L36 | -50 511.830 | 3 218 | 441.320 | R36 | -52 009.170 | 3 217 | 672.030 | | |
| L37 | -50 658.330 | 3 218 | 345.510 | R37 | -58 781.770 | 3 214 | 051.810 | | |
| L38 | -50 695.000 | 3 218 | 321.560 | R38 | -59 560.460 | 3 213 | 635.830 | | |
| L39 | -58 738.080 | 3 214 | 021.670 | R39 | -59 775.270 | 3 213 | 535.850 | | |
| L40 | -59 538.550 | 3 213 | 594.580 | R40 | -59 961.360 | 3 213 | 465.120 | | |
| L41 | -59 757.920 | 3 213 | 492.330 | R41 | -61 363.990 | 3 212 | 993.170 | | |
| L42 | -59 941.750 | 3 213 | 422.360 | R42 | -61 514.580 | 3 212 | 937.010 | | |
| L43 | -61 348.950 | 3 212 | 948.710 | R43 | -61 696.680 | 3 212 | 850.010 | | |
| L44 | -61 497.110 | 3 212 | 893.590 | R44 | -63 353.360 | 3 211 | 965.800 | | |
| L45 | -61 674.650 | 3 212 | 808.690 | R45 | -64 409.150 | 3 211 | 402.730 | | |
| L46 | -63 447.060 | 3 211 | 862.550 | R46 | -65 612.490 | 3 210 | 759.800 | | |
| L47 | -66 611.980 | 3 210 | 173.420 | R47 | -66 620.500 | 3 210 | 222.170 | | |
| L48 | -66 788.800 | 3 210 | 076.180 | R48 | -66 812.970 | 3 210 | 116.260 | | |
| L49 | -66 951.500 | 3 209 | 966.820 | R49 | -66 980.390 | 3 210 | 003.700 | | |
| L50 | -67 108.890 | 3 209 | 835.550 | R50 | -67 126.430 | 3 209 | 882.360 | | |
| L51 | -67 173.520 | 3 209 | 771.930 | R51 | -67 146.110 | 3 209 | 864.620 | | |

| | | | | |
|-------|----|-----|----|---------|
| Vel | 21 | Van | 25 | P734/08 |
| Sheet | | of | | |

| PADRESERWE KOÖRDINATE / ROAD RESERVE CO-ORDINATES | | | | | | |
|---|-------------|-------|---------|----------------------------|-------------|---------------|
| LINKERKANT/LEFT HAND SIDE | | | | REGTERKANT/RIGHT HAND SIDE | | |
| | Y | X | WG 19° | | Y | X |
| L52 | -67 311.060 | 3 209 | 618.960 | R52 | -67 206.410 | 3 209 805.510 |
| L53 | -67 543.970 | 3 209 | 328.280 | R53 | -67 346.930 | 3 209 649.280 |
| L54 | -67 686.590 | 3 209 | 159.190 | R54 | -67 580.010 | 3 209 358.240 |
| L55 | -67 805.590 | 3 209 | 038.110 | R55 | -67 720.880 | 3 209 191.400 |
| L56 | -67 843.720 | 3 208 | 999.320 | R56 | -67 844.490 | 3 209 063.870 |
| L57 | -69 990.470 | 3 206 | 964.870 | R57 | -67 857.630 | 3 209 051.400 |
| L58 | -70 134.790 | 3 206 | 825.150 | R58 | -68 308.860 | 3 208 623.340 |
| L59 | -70 280.930 | 3 206 | 678.220 | R59 | -70 024.510 | 3 206 997.320 |
| L60 | -70 438.430 | 3 206 | 511.760 | R60 | -70 166.930 | 3 206 859.600 |
| L61 | -70 581.380 | 3 206 | 354.280 | R61 | -70 321.580 | 3 206 703.410 |
| L62 | -72 367.040 | 3 204 | 344.270 | R62 | -70 472.260 | 3 206 544.280 |
| L63 | -76 126.890 | 3 200 | 112.180 | R63 | -70 616.400 | 3 206 385.520 |
| L64 | -76 243.190 | 3 199 | 999.510 | R64 | -72 410.720 | 3 204 365.880 |
| L65 | -76 377.390 | 3 199 | 905.230 | R65 | -76 160.500 | 3 200 144.890 |
| L66 | -76 518.210 | 3 199 | 836.720 | R66 | -76 273.790 | 3 200 035.030 |
| L67 | -76 526.290 | 3 199 | 832.790 | R67 | -76 402.820 | 3 199 944.670 |
| L68 | -76 642.880 | 3 199 | 792.190 | R68 | -76 489.260 | 3 199 902.860 |
| L69 | -81 648.260 | 3 198 | 094.350 | R69 | -76 543.420 | 3 199 876.670 |
| L70 | -83 897.540 | 3 197 | 331.390 | R70 | -76 655.200 | 3 199 837.590 |
| L71 | -86 375.790 | 3 196 | 490.470 | R71 | -81 715.030 | 3 198 121.240 |
| L72 | -86 533.700 | 3 196 | 440.160 | R72 | -83 904.330 | 3 197 378.240 |
| L73 | -86 680.300 | 3 196 | 401.690 | R73 | -86 387.520 | 3 196 535.830 |
| L74 | -86 823.710 | 3 196 | 371.310 | R74 | -86 546.510 | 3 196 485.250 |
| L75 | -86 982.330 | 3 196 | 346.170 | R75 | -86 690.960 | 3 196 447.270 |
| L76 | -87 124.540 | 3 196 | 331.010 | R76 | -86 814.710 | 3 196 420.700 |
| L77 | -87 430.990 | 3 196 | 312.650 | R77 | -86 986.650 | 3 196 392.970 |
| L78 | -88 287.300 | 3 196 | 265.130 | R78 | -87 127.600 | 3 196 376.320 |
| L79 | -88 408.620 | 3 196 | 256.490 | R79 | -88 290.220 | 3 196 311.940 |
| L80 | -88 526.060 | 3 196 | 248.120 | R80 | -88 330.050 | 3 196 309.080 |
| L81 | -88 722.780 | 3 196 | 225.370 | R81 | -88 530.040 | 3 196 294.680 |
| L82 | -88 918.500 | 3 196 | 194.810 | R82 | -88 728.180 | 3 196 271.940 |
| L83 | -89 291.210 | 3 196 | 128.230 | R83 | -88 929.080 | 3 196 240.810 |
| L84 | -89 665.470 | 3 196 | 061.150 | R84 | -89 263.610 | 3 196 180.870 |
| L85 | -90 018.890 | 3 195 | 997.740 | R85 | -89 668.260 | 3 196 108.470 |
| L86 | -90 219.210 | 3 195 | 961.990 | R86 | -90 076.550 | 3 196 035.470 |
| L87 | -90 375.320 | 3 195 | 934.550 | R87 | -90 225.770 | 3 196 008.430 |
| L88 | -90 574.940 | 3 195 | 902.610 | R88 | -90 384.770 | 3 195 980.440 |
| L89 | -90 731.180 | 3 195 | 880.890 | R89 | -90 583.110 | 3 195 948.800 |
| L90 | -90 774.390 | 3 195 | 874.890 | R90 | -90 779.660 | 3 195 921.550 |
| L91 | -98 531.160 | 3 194 | 910.920 | R91 | -90 858.360 | 3 195 911.730 |
| | | | | R92 | -93 559.650 | 3 195 575.700 |
| | | | | R93 | -98 557.980 | 3 194 954.880 |

| | | | | |
|-------|----|-----|----|---------|
| Vel | 22 | Van | 25 | P734/08 |
| Sheet | | of | | |

| PADRESERWE KOÖRDINATE / ROAD RESERVE CO-ORDINATES | | | | | | |
|---|------------|-------|---------|----------------------------|------------|---------------|
| LINKERKANT/LEFT HAND SIDE | | | | REGTERKANT/RIGHT HAND SIDE | | |
| | Y | X | WG 21° | | Y | X |
| L91 | 96 601.550 | 3 194 | 894.660 | R93 | 96 573.980 | 3 194 938.160 |
| L92 | 92 034.440 | 3 194 | 248.990 | R94 | 92 042.450 | 3 194 297.500 |
| L93 | 89 607.730 | 3 193 | 906.050 | R95 | 89 576.260 | 3 193 948.850 |
| L94 | 84 053.940 | 3 193 | 120.430 | R96 | 83 916.170 | 3 193 148.250 |
| L95 | 83 390.440 | 3 193 | 026.550 | R97 | 83 381.620 | 3 193 072.810 |
| L96 | 83 130.230 | 3 192 | 990.260 | R98 | 83 115.730 | 3 193 051.460 |
| L97 | 82 980.810 | 3 192 | 950.300 | R99 | 83 046.680 | 3 193 045.890 |
| L98 | 82 976.490 | 3 192 | 949.580 | R100 | 83 022.030 | 3 193 042.720 |
| L99 | 82 796.080 | 3 192 | 934.850 | R101 | 82 942.170 | 3 193 032.440 |
| L100 | 82 675.960 | 3 192 | 925.570 | R102 | 82 770.840 | 3 192 991.920 |
| L101 | 82 621.170 | 3 192 | 918.380 | R103 | 82 711.860 | 3 192 977.970 |
| L102 | 82 438.330 | 3 192 | 895.390 | R104 | 82 573.950 | 3 192 959.020 |
| L103 | 82 179.840 | 3 192 | 869.770 | R105 | 82 433.880 | 3 192 942.070 |
| L104 | 81 561.150 | 3 192 | 813.180 | R106 | 82 267.320 | 3 192 925.410 |
| L105 | 80 546.490 | 3 192 | 719.470 | R107 | 80 467.510 | 3 192 759.260 |
| L106 | 79 670.440 | 3 192 | 638.820 | R108 | 79 669.040 | 3 192 685.890 |
| L107 | 79 396.950 | 3 192 | 609.630 | R109 | 79 404.090 | 3 192 658.020 |
| L108 | 78 759.230 | 3 192 | 525.100 | R110 | 78 758.210 | 3 192 572.320 |
| L109 | 74 149.240 | 3 191 | 910.750 | R111 | 74 149.380 | 3 191 958.060 |
| L110 | 71 725.780 | 3 191 | 587.830 | R112 | 71 724.420 | 3 191 634.940 |
| L111 | 71 266.560 | 3 191 | 526.930 | R113 | 71 258.640 | 3 191 573.160 |
| L112 | 71 084.710 | 3 191 | 503.380 | R114 | 71 080.620 | 3 191 550.080 |
| L113 | 70 924.990 | 3 191 | 489.130 | R115 | 70 922.090 | 3 191 535.860 |
| L114 | 70 762.400 | 3 191 | 481.020 | R116 | 70 761.890 | 3 191 527.880 |
| L115 | 70 602.250 | 3 191 | 479.600 | R117 | 70 601.620 | 3 191 526.520 |
| L116 | 70 442.000 | 3 191 | 484.480 | R118 | 70 442.560 | 3 191 531.360 |
| L117 | 70 281.240 | 3 191 | 495.810 | R119 | 70 285.140 | 3 191 542.530 |
| L118 | 67 968.340 | 3 191 | 706.420 | R120 | 67 986.240 | 3 191 751.900 |
| L119 | 67 251.660 | 3 191 | 771.690 | R121 | 67 286.080 | 3 191 815.570 |
| L120 | 67 094.180 | 3 191 | 782.030 | R122 | 67 094.250 | 3 191 828.860 |
| L121 | 66 935.550 | 3 191 | 783.850 | R123 | 66 933.890 | 3 191 830.730 |
| L122 | 66 776.890 | 3 191 | 777.490 | R124 | 66 774.520 | 3 191 824.410 |
| L123 | 66 618.820 | 3 191 | 762.480 | R125 | 66 614.810 | 3 191 809.300 |
| L124 | 66 462.140 | 3 191 | 739.260 | R126 | 66 455.740 | 3 191 785.600 |
| L125 | 66 264.400 | 3 191 | 697.550 | R127 | 66 307.550 | 3 191 755.910 |
| L126 | 63 890.580 | 3 191 | 063.450 | R128 | 66 234.670 | 3 191 737.880 |
| L127 | 61 126.410 | 3 190 | 324.890 | R129 | 66 199.350 | 3 191 728.850 |
| L128 | 59 585.690 | 3 189 | 913.010 | R130 | 64 340.040 | 3 191 231.820 |
| L129 | 59 159.350 | 3 189 | 799.400 | R131 | 63 869.740 | 3 191 106.540 |
| L130 | 58 655.130 | 3 189 | 664.340 | R132 | 61 143.000 | 3 190 377.810 |
| L131 | 57 205.300 | 3 189 | 277.420 | R133 | 57 239.780 | 3 189 334.630 |
| L132 | 56 015.670 | 3 188 | 959.260 | R134 | 56 018.570 | 3 189 008.670 |
| L133 | 55 733.570 | 3 188 | 881.380 | R135 | 55 719.730 | 3 188 924.340 |
| L134 | 55 496.730 | 3 188 | 798.120 | R136 | 55 481.290 | 3 188 840.190 |
| L135 | 55 289.310 | 3 188 | 709.810 | R137 | 55 268.190 | 3 188 750.450 |
| L136 | 55 205.140 | 3 188 | 670.170 | R138 | 55 179.610 | 3 188 707.990 |
| L137 | 55 161.140 | 3 188 | 649.450 | R139 | 55 140.740 | 3 188 689.350 |
| L138 | 54 748.780 | 3 188 | 409.640 | R140 | 55 000.330 | 3 188 616.120 |
| L139 | 53 032.710 | 3 187 | 271.780 | R141 | 54 823.470 | 3 188 515.490 |
| L140 | 51 138.290 | 3 186 | 015.020 | R142 | 51 542.930 | 3 186 339.690 |
| L141 | 49 516.170 | 3 184 | 939.590 | R143 | 46 832.650 | 3 183 215.600 |

| | | | | |
|-------|----|-----|----|---------|
| Vel | 23 | Van | 25 | P734/08 |
| Sheet | | of | | |

| PADRESERWE KOÖRDINATE / ROAD RESERVE CO-ORDINATES | | | | | |
|---|------------|---------------|----------------------------|------|--------------------------|
| LINKERKANT/LEFT HAND SIDE | | | REGTERKANT/RIGHT HAND SIDE | | |
| | Y | X | WG 21° | Y | X |
| L142 | 49 147.670 | 3 184 694.620 | | R144 | 46 536.580 3 183 074.910 |
| L143 | 47 654.040 | 3 183 704.490 | | R145 | 46 069.150 3 182 936.460 |
| L144 | 46 962.280 | 3 183 245.270 | | R146 | 45 362.120 3 182 726.870 |
| L145 | 46 674.350 | 3 183 086.110 | | R147 | 45 223.110 3 182 700.670 |
| L146 | 46 434.470 | 3 182 995.770 | | R148 | 45 204.980 3 182 705.360 |
| L147 | 46 109.110 | 3 182 898.970 | | R149 | 45 108.670 3 182 680.360 |
| L148 | 46 095.800 | 3 182 911.480 | | R150 | 45 090.440 3 182 675.620 |
| L149 | 45 964.000 | 3 182 872.300 | | R151 | 44 976.850 3 182 657.160 |
| L149X | 45 971.740 | 3 182 857.420 | | R152 | 44 908.730 3 182 646.760 |
| L150 | 45 469.640 | 3 182 709.700 | | R153 | 44 823.690 3 182 641.500 |
| L151 | 45 447.080 | 3 182 708.100 | | R154 | 44 794.120 3 182 638.720 |
| L152 | 45 416.680 | 3 182 705.940 | | R155 | 44 505.600 3 182 623.850 |
| L153 | 45 406.250 | 3 182 705.200 | | R156 | 44 459.980 3 182 621.500 |
| L154 | 45 237.830 | 3 182 654.840 | | R157 | 44 322.600 3 182 611.510 |
| L155 | 45 177.420 | 3 182 639.190 | | R158 | 44 241.050 3 182 605.580 |
| L156 | 45 043.960 | 3 182 630.610 | | R159 | 44 002.720 3 182 588.250 |
| L157 | 44 941.750 | 3 182 608.780 | | R160 | 43 909.550 3 182 583.580 |
| L158 | 44 918.310 | 3 182 617.760 | | R161 | 43 891.690 3 182 582.680 |
| L159 | 44 908.500 | 3 182 620.140 | | R162 | 43 825.120 3 182 579.350 |
| L160 | 44 850.950 | 3 182 616.440 | | R163 | 43 754.920 3 182 575.830 |
| L161 | 44 843.140 | 3 182 615.940 | | R164 | 43 552.052 3 182 563.824 |
| L162 | 44 815.810 | 3 182 614.190 | | R165 | 43 370.130 3 182 562.057 |
| L163 | 44 804.200 | 3 182 615.380 | | R166 | 43 209.827 3 182 568.944 |
| L164 | 44 753.160 | 3 182 611.920 | | R167 | 43 166.340 3 182 571.970 |
| L165 | 44 470.140 | 3 182 590.000 | | R168 | 43 138.530 3 182 573.980 |
| L166 | 44 402.650 | 3 182 586.270 | | R169 | 43 134.240 3 182 576.780 |
| L167 | 44 312.710 | 3 182 581.320 | | R170 | 42 942.050 3 182 597.410 |
| L168 | 44 238.040 | 3 182 577.190 | | R171 | 42 820.920 3 182 612.960 |
| L169 | 44 004.600 | 3 182 564.320 | | R172 | 42 560.600 3 182 646.540 |
| L170 | 43 970.770 | 3 182 559.730 | | R173 | 42 344.740 3 182 671.770 |
| L171 | 43 903.570 | 3 182 559.310 | | R174 | 42 202.000 3 182 693.140 |
| L172 | 43 900.010 | 3 182 558.950 | | R175 | 41 842.560 3 182 739.770 |
| L173 | 43 830.320 | 3 182 551.870 | | R176 | 41 763.544 3 182 749.862 |
| L174 | 43 755.520 | 3 182 544.280 | | R177 | 41 695.494 3 182 758.690 |
| L175 | 43 597.519 | 3 182 534.292 | | R178 | 41 485.590 3 182 786.060 |
| L176 | 43 565.970 | 3 182 532.720 | | R179 | 41 245.950 3 182 817.140 |
| L177 | 43 450.101 | 3 182 529.881 | | R180 | 40 471.710 3 182 917.390 |
| L178 | 43 269.874 | 3 182 532.679 | | R181 | 40 284.710 3 182 941.580 |
| L179 | 43 125.326 | 3 182 543.852 | | R182 | 39 959.310 3 182 983.820 |
| L180 | 43 116.700 | 3 182 545.240 | | R183 | 39 807.820 3 183 003.500 |
| L181 | 43 027.720 | 3 182 554.540 | | R184 | 39 741.320 3 183 012.140 |
| L182 | 42 820.200 | 3 182 581.590 | | R185 | 39 668.020 3 183 022.400 |
| L183 | 42 562.690 | 3 182 614.930 | | R186 | 39 557.370 3 183 049.740 |
| L184 | 42 203.400 | 3 182 661.460 | | R187 | 39 543.810 3 183 053.100 |
| L185 | 41 843.970 | 3 182 708.240 | | R188 | 39 481.550 3 183 079.090 |
| L186 | 41 690.310 | 3 182 728.120 | | R189 | 39 414.500 3 183 107.090 |
| L187 | 41 486.370 | 3 182 754.490 | | R190 | 39 316.770 3 183 163.260 |
| L188 | 41 244.970 | 3 182 785.720 | | R191 | 39 315.020 3 183 164.110 |
| L189 | 40 472.720 | 3 182 885.900 | | R192 | 39 229.360 3 183 230.110 |
| L190 | 40 278.640 | 3 182 911.110 | | R193 | 38 946.100 3 183 464.970 |
| L191 | 39 955.400 | 3 182 952.950 | | R194 | 38 859.730 3 183 536.570 |

Vel 24 Van 25
Sheet of

P734/08

| PADRESERWE KOÖRDINATE / ROAD RESERVE CO-ORDINATES | | | | | | |
|---|----|---------|-------|----------------------------|------|--------------------------|
| LINKERKANT/LEFT HAND SIDE | | | | REGTERKANT/RIGHT HAND SIDE | | |
| | | | | WG 21° | Y | X |
| L192 | 39 | 806.020 | 3 182 | 973.680 | R195 | 38 768.270 3 183 601.100 |
| L193 | 39 | 656.710 | 3 182 | 994.390 | R196 | 38 686.210 3 183 640.640 |
| L194 | 39 | 539.770 | 3 183 | 018.230 | R197 | 38 656.950 3 183 648.830 |
| L195 | 39 | 538.240 | 3 183 | 018.890 | R198 | 38 563.070 3 183 675.130 |
| L196 | 39 | 399.920 | 3 183 | 078.530 | R199 | 38 253.370 3 183 727.150 |
| L197 | 39 | 373.910 | 3 183 | 094.000 | | |
| L198 | 39 | 317.470 | 3 183 | 127.550 | | |
| L199 | 39 | 266.600 | 3 183 | 157.830 | | |
| L200 | 38 | 944.000 | 3 183 | 425.780 | | |
| L201 | 38 | 840.320 | 3 183 | 512.180 | | |
| L202 | 38 | 750.220 | 3 183 | 575.260 | | |
| L203 | 38 | 652.000 | 3 183 | 620.070 | | |
| L204 | 38 | 618.850 | 3 183 | 628.840 | | |
| L205 | 38 | 563.960 | 3 183 | 643.360 | | |
| L206 | 38 | 451.560 | 3 183 | 661.340 | | |
| L207 | 38 | 252.040 | 3 183 | 695.420 | | |
| L208 | 38 | 243.000 | 3 183 | 696.900 | | |

| | | | | |
|--------------|----|-----------|----|---------|
| Vel Sheet | 25 | Van of | 25 | P734/08 |
|--------------|----|-----------|----|---------|