

# Government Gazette Staatskoerant

REPUBLIC OF SOUTH AFRICA  
REPUBLIEK VAN SUID-AFRIKA

Vol. 527

Pretoria, 22 **May** 2009  
**Mei**

**No. 32242**

**CONTENTS****INHOUD**

<i>No.</i>	<i>Page No.</i>	<i>Gazette No.</i>	<i>No.</i>	<i>Bladsy No.</i>	<i>Koerant No.</i>
<b>GOVERNMENT NOTICE</b>			<b>GOEWERMENTSKENNISGEWING</b>		
<b>Transport, Department of</b>			<b>Vervoer, Departement van</b>		
<i>Government Notice</i>			<i>Goewermentskennisgewing</i>		
567			567		
South African National Roads Agency Limited and the National Roads Act (7/1998): The South African National Roads Agency Limited: Declaration amendment of National Road N9 Section 4: Amendment of Declaration No. 544 of 2003 .....	3	32242	Suid-Afrikaanse Nasionale Padagentskap Beperk en die Nasionale Paaie Wet (7/1998): Die Suid-Afrikaanse Nasionale Padagentskap Beperk: Verklaring wysiging van Nasionale Pad N9 Seksie 4: Wysiging van Verklaring No. 544 van 2003 .....	4	32242

---

# GOVERNMENT NOTICE

---

## DEPARTMENT OF TRANSPORT

No. 567

22 May 2009

### THE SOUTH AFRICAN NATIONAL ROADS AGENCY LIMITED

Registration No: 98/09584/06

---

#### DECLARATION AMENDMENT OF NATIONAL ROAD N9 SECTION 4

AMENDMENT OF DECLARATION NO. 544 OF 2003

By virtue of section 40(1)(b) of the South African National Roads Agency Limited and the National Roads Act, 1998 (Act No. 7 of 1998), I hereby amend Declaration No. 544 of 2003, by substituting, the descriptive section from Willowmore to Aberdeen, with the subjoined sheets 1 to 26 of Plan No. P664/08.

**(National Road N9 Section 4: Willowmore – Aberdeen )]**

  
\_\_\_\_\_  
MINISTER OF TRANSPORT

---

# GOEWERMENSKENNISGEWING

---

## DEPARTEMENT VAN VERVOER

No. 567

22 Mei 2009

### DIE SUID-AFRIKAANSE NASIONALE PADAGENTSKAP BEPERK

Registrasie No: 98/09584/06

---

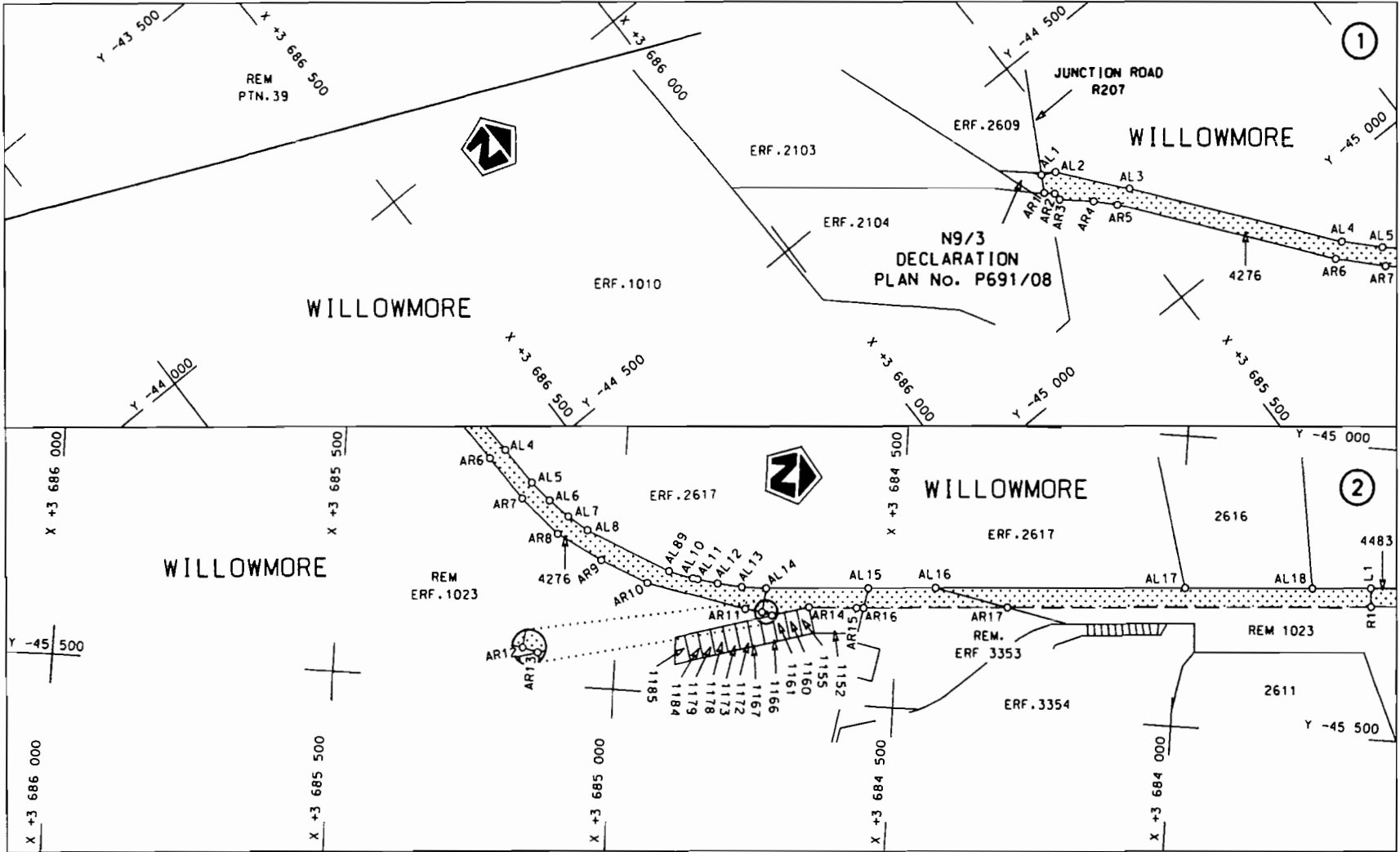
#### VERKLARING WYSIGING VAN NASIONALE PAD N9 SEKSIE 4

WYSIGING VAN VERKLARING NO. 544 VAN 2003

Kragtens Artikel 40(1)(b) van die Suid-Afrikaanse Nasionale Padagentskap Beperk en die Nasionale Paaie Wet, 1998 (Wet no.7 van 1998), wysig ek hiermee Verklaring no.544 van 2003, deur die beskrywende gedeelte vanaf Willowmore tot Aberdeen, te vervang met meegaande velle 1 tot 26 van Plan no. P664/08.

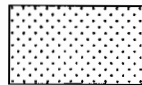
**(Nasionale Pad N9 Seksie 4: Willowmore – Aberdeen )]**

  
\_\_\_\_\_  
MINISTER VAN VERVOER



Suid-Afrikaanse Padagentskap Bpk.  
South African National Roads Agency Ltd.

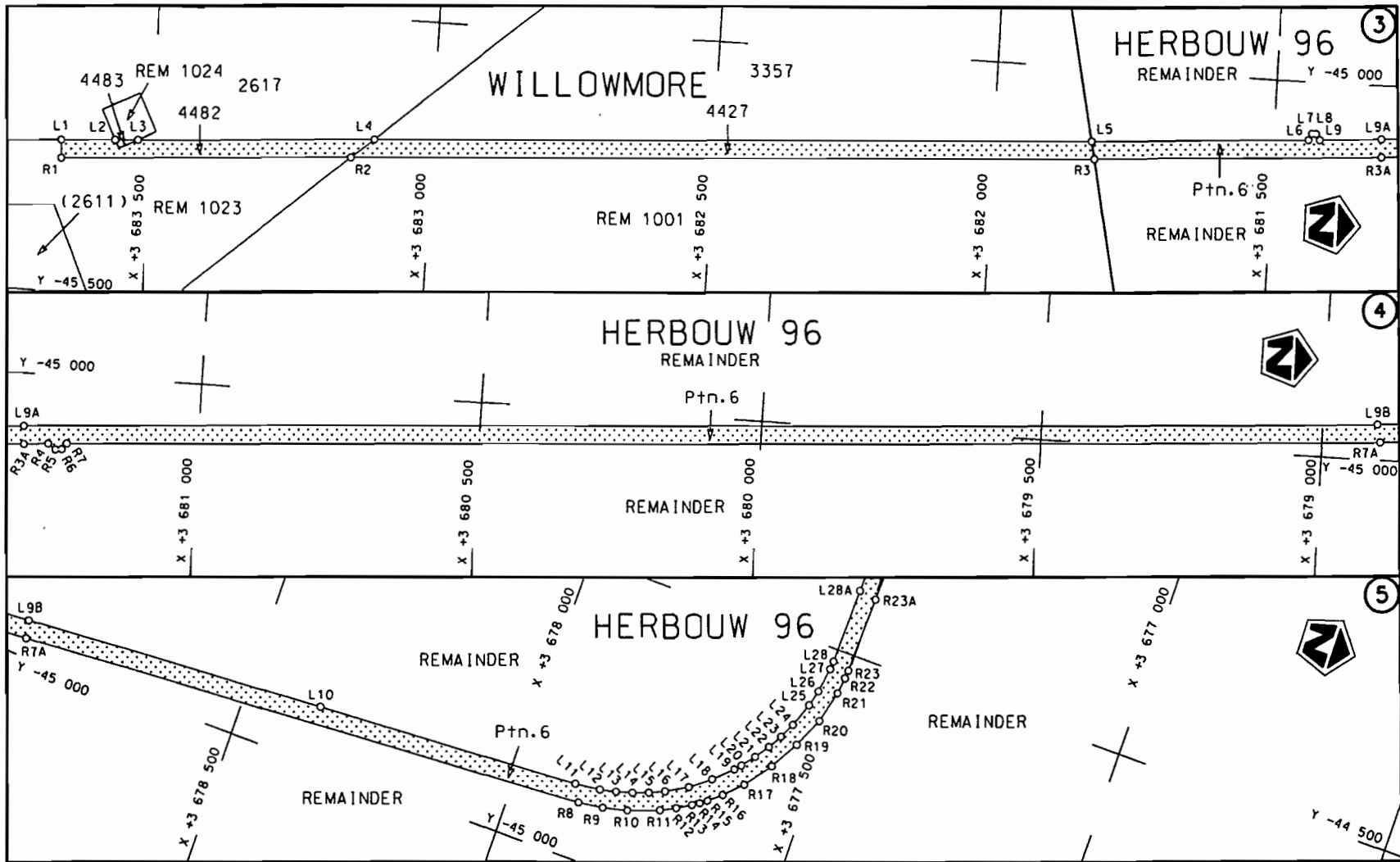
Die figuur getoon  
The figure shown



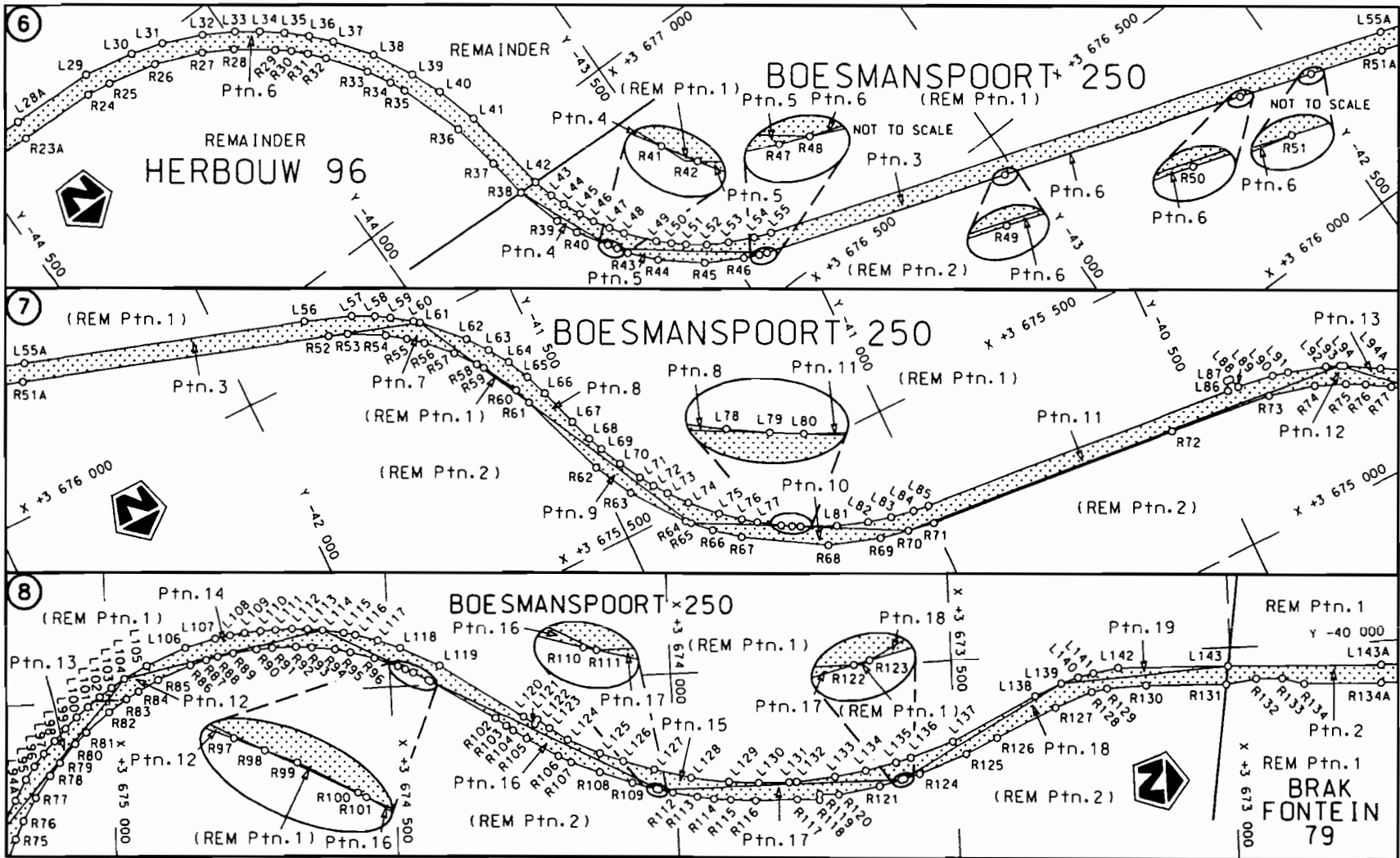
steldie padreserwe voor van 'n gedeelte  
represents the road reserve of a portion  
van Nasionale Roete N9 Seksie  
of National Route N9 Section 4

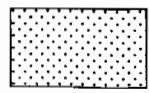
Vel van  
Sheet 1 of 26

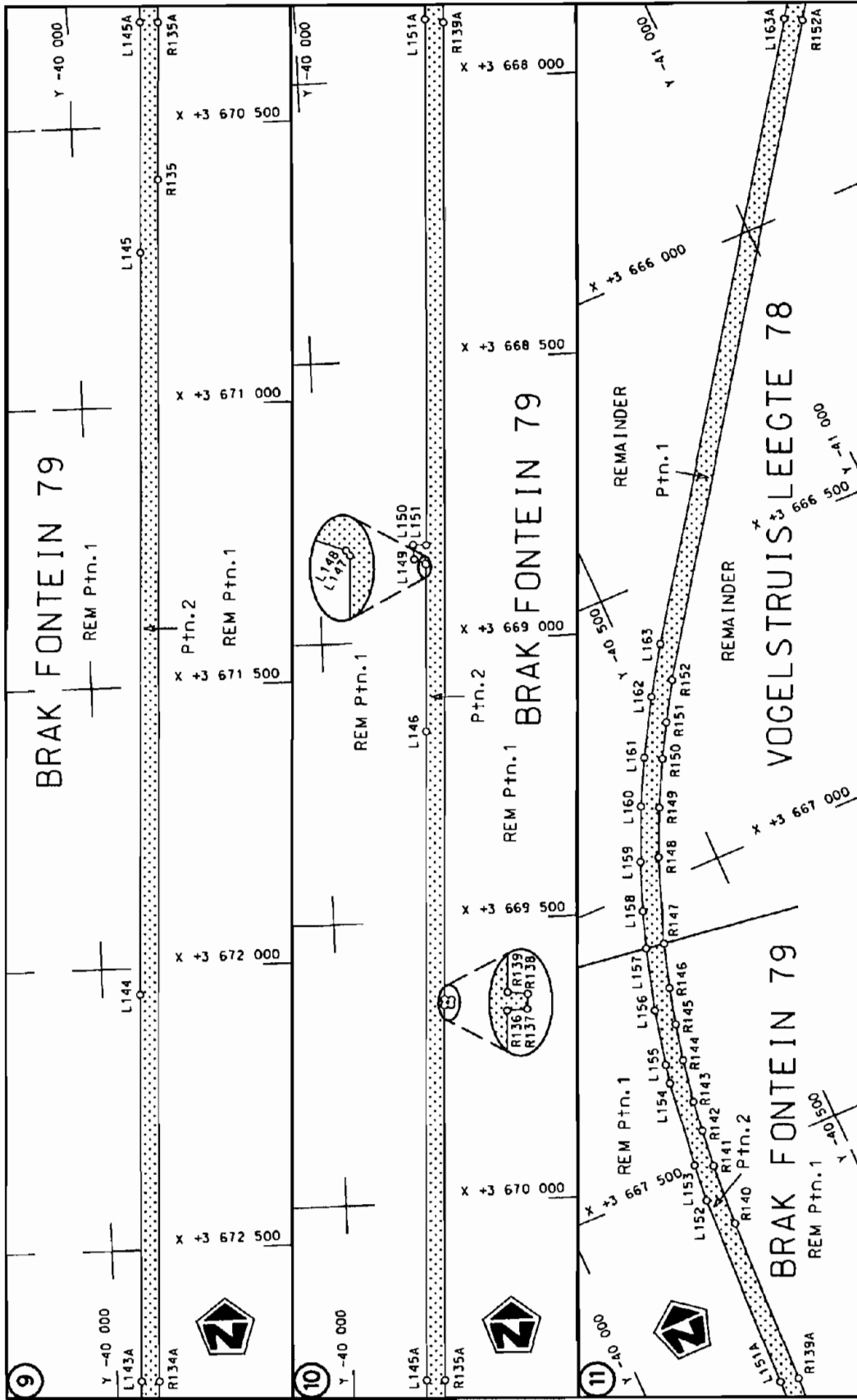
P P664/08



<p>Die Suid Afrikaanse Nasionale Padagentskap Beperk The South African National Roads Agency Limited</p>	<p>Die figuur getoon The figure shown</p>	<p>steldie padreserwe voor van 'n gedeelte represents the road reserve of a portion van Nasionale Roete N9 Seksie 4 of National Route</p>	<p>Vel Sheet 2 van of 26 Plan P664/08</p>
--	---	---	---

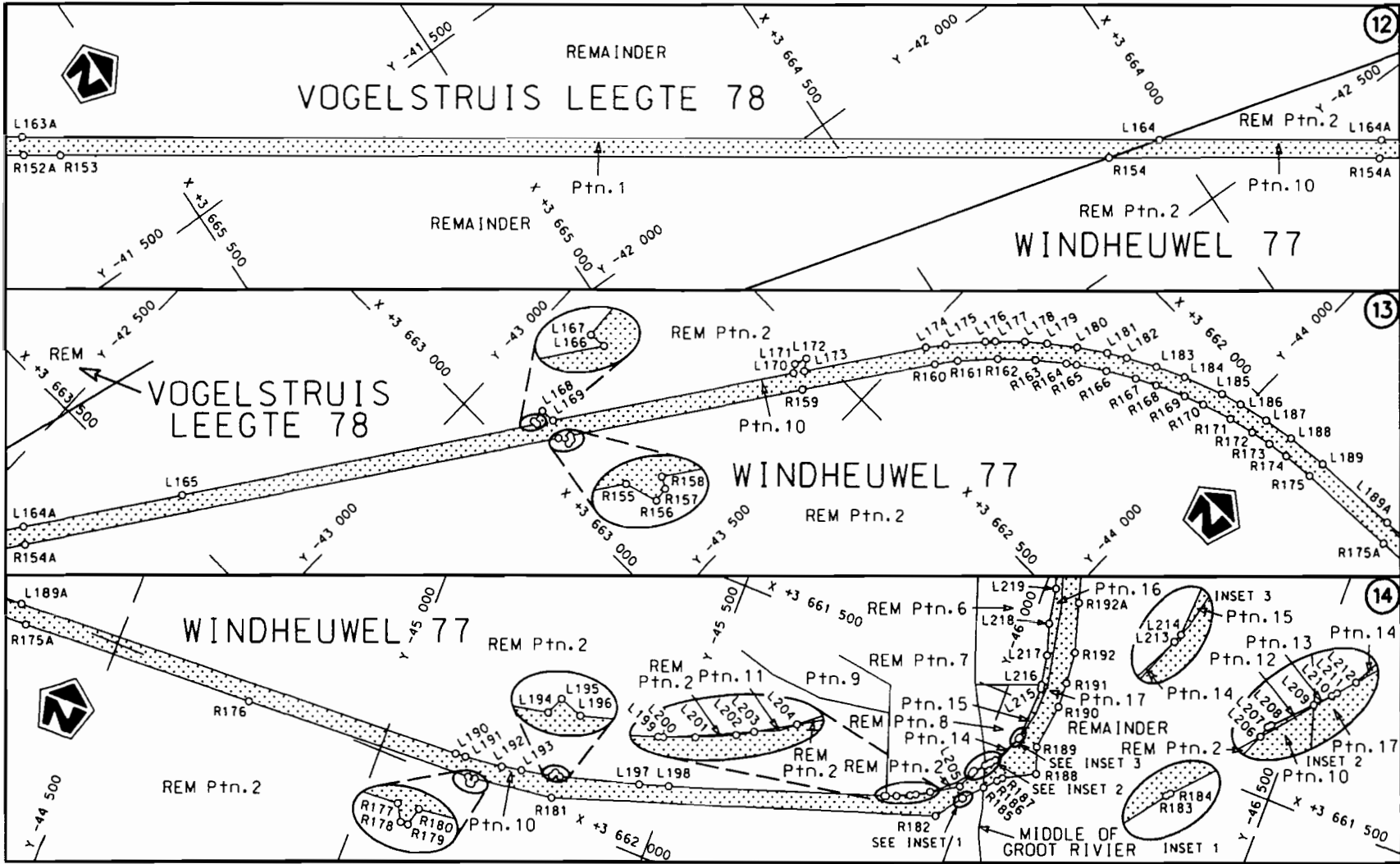


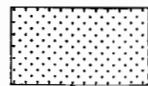
Die Suid Afrikaanse Nasionale Padagentskap Beperk The South African National Roads Agency Limited	Die figuur getoon The figure shown	 steldie padreserwe voor van 'n gedeelte represents the road reserve of a portion van Nasionale Roete of National Route	Vel Sheet 3 van 26 Plan P664/08
			N9 Seksie Section 4

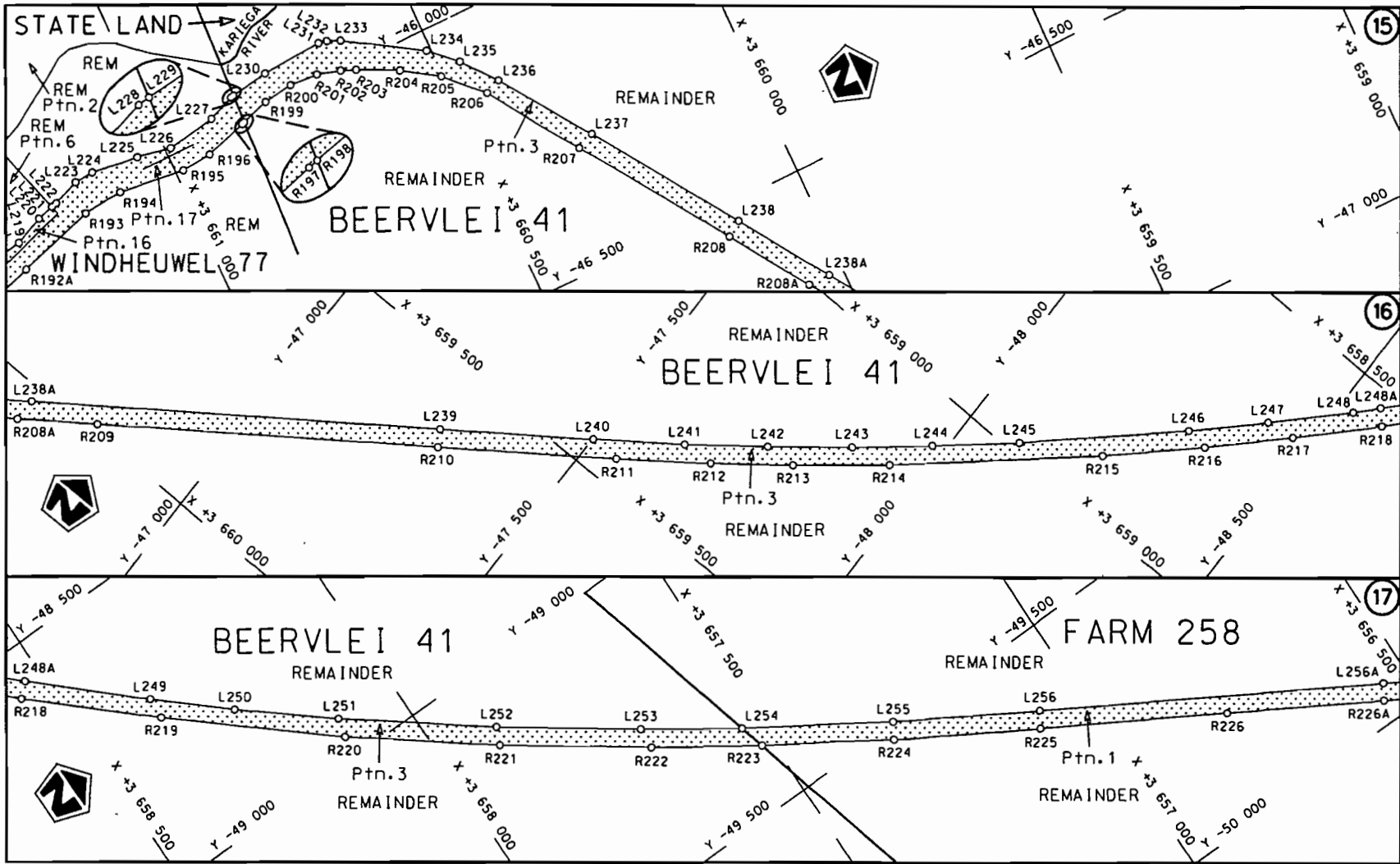


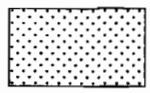
Die Suid Afrikaanse Nasionale Padogenskop Beperk The South African National Roads Agency Limited	Die figuur getoon The figure shown		stelt die podreserwe voor van 'n gedeelte represents the road reserve of a portion van Nasionale Roete N9 of National Route	
			Seksie Section	4
			Vel Sheet	van of
			4	26
			Plan	P664/08

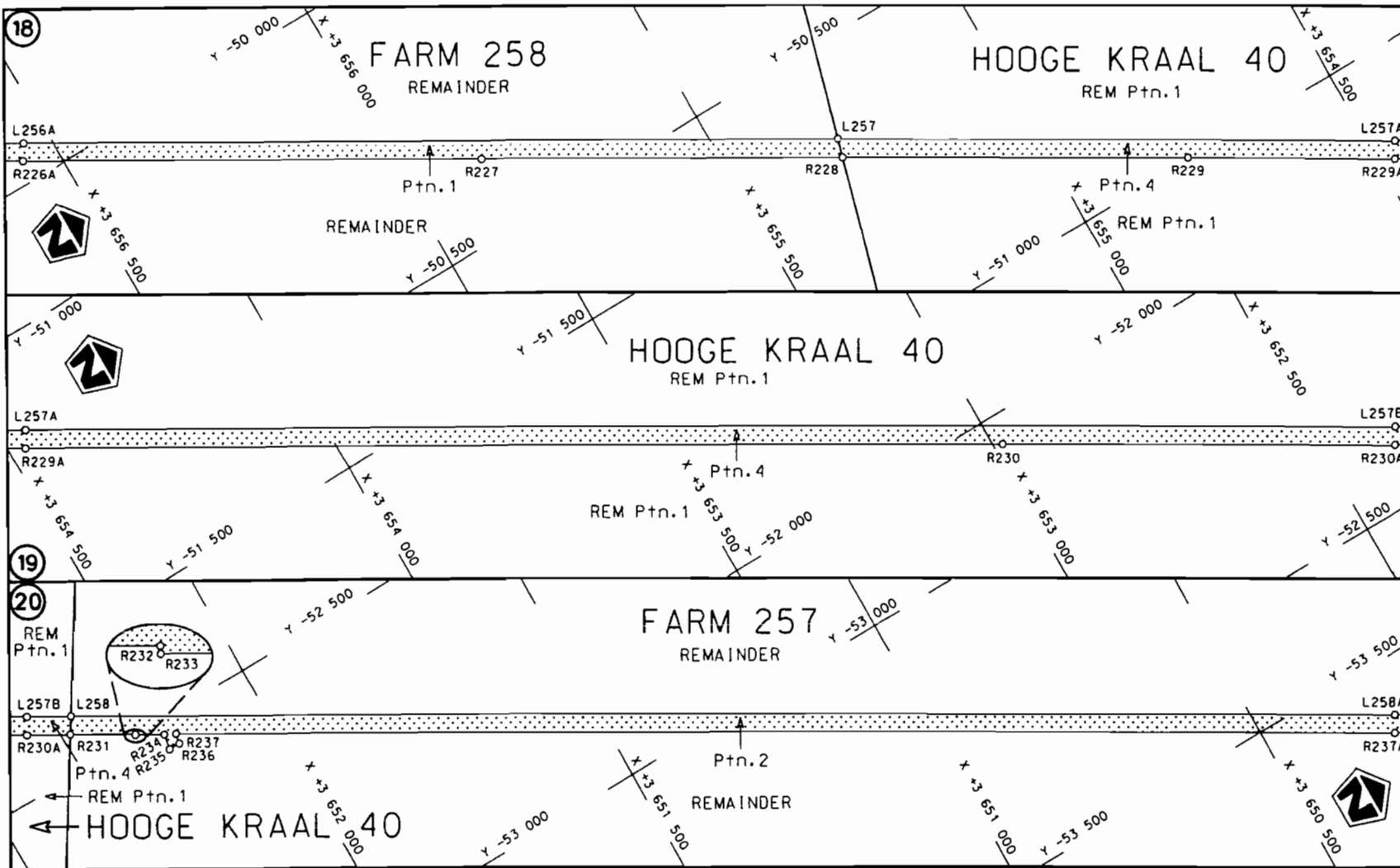





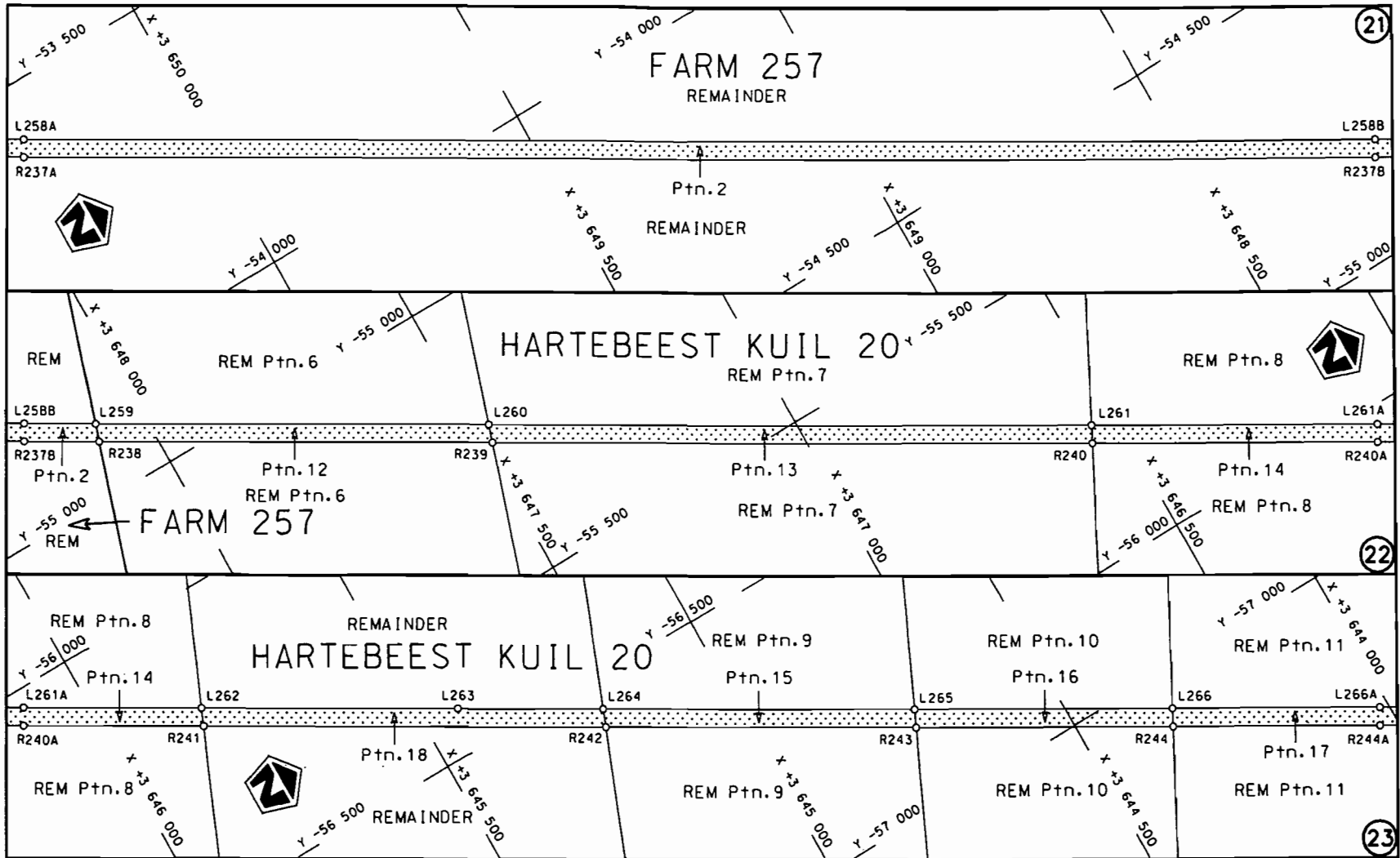
Die Suid Afrikaanse Nasionale Padagentskap Beperk The South African National Roads Agency Limited	Die figuur getoon The figure shown	 steldie padreserwe voor van 'n gedeelte represents the road reserve of a portion van Nasionale Roete of National Route	Vel Sheet 5 van of 26
		N9 Seksie of National Route Section 4	Plon P664/08

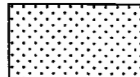


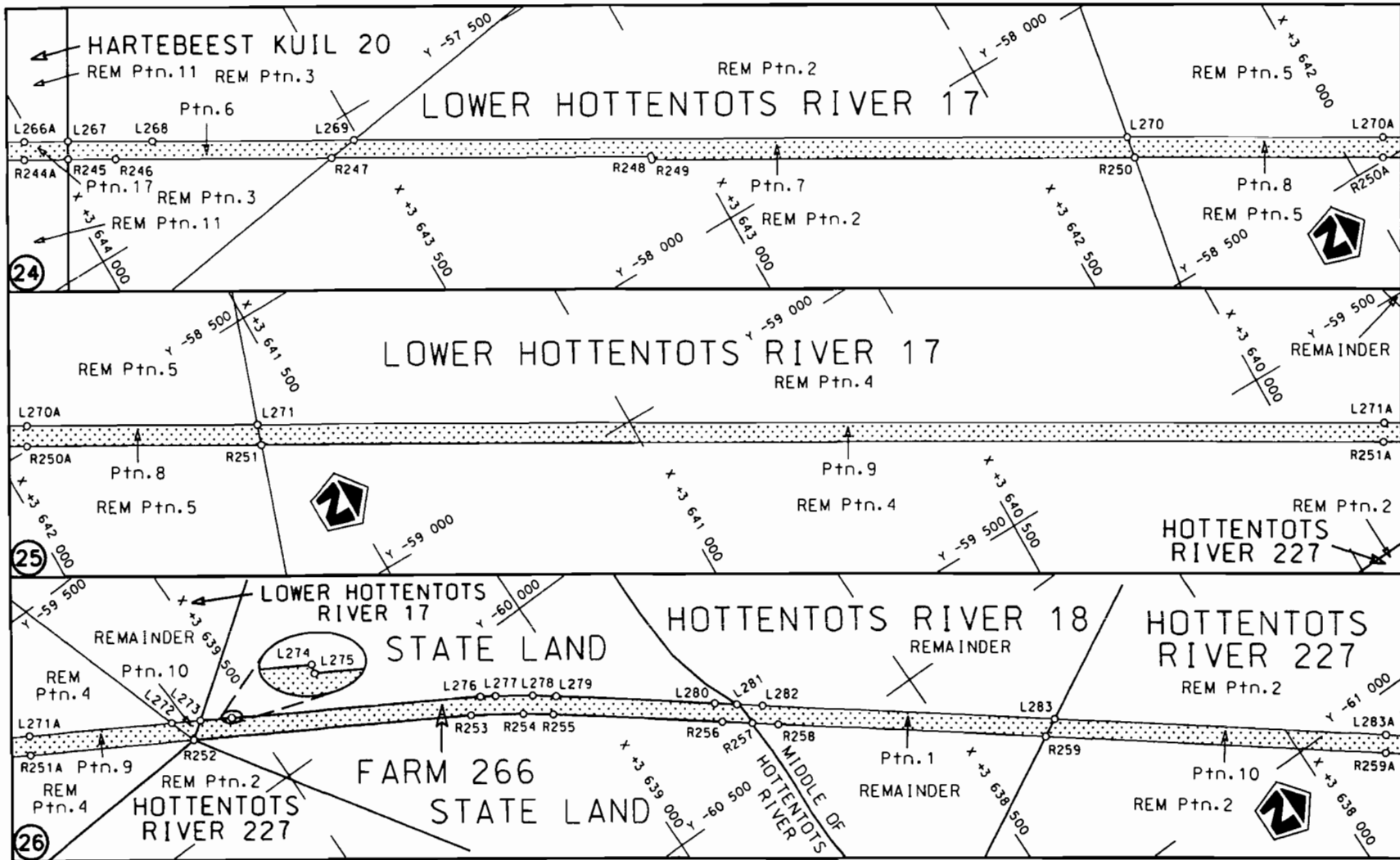
<p>Die Suid Afrikaanse Nasionale Padagentskap Beperk The South African National Roads Agency Limited</p>	<p>Die figuur getoon The figure shown</p>		<p>stel die padreserwe voor van 'n gedeelte represents the road reserve of a portion van Nasionale Roete N9 of National Route N9</p> <p>Seksie 4 Section 4</p>	<p>Vel 6 van Sheet of 26</p> <p>Plan P664/08</p>
--	---	--	--	--



<p>Die Suid Afrikaanse Nasionale Padagentskap Beperk The South African National Roads Agency Limited</p>	<p>Die figuur getoon The figure shown</p>		<p>steldie padreserwe voor van 'n gedeelte represents the road reserve of a portion von Nasionale Roete N9 Sektie 4 of National Route</p>	<p>Vel Sheet 7 van 26 Plan P664/08</p>
--	---	--	---	--



<p>Die Suid Afrikaanse Nasionale Padagentskap Beperk The South African National Roads Agency Limited</p>	<p>Die figuur getoon The figure shown</p>		<p>steldie padreserwe voor van 'n gedeelte represents the road reserve of a portion van Nasionale Roete N9 of National Route</p>	<p>Vel Sheet 8 van of 26</p>
			<p>Seksie Section 4</p>	<p>Plan P664/08</p>



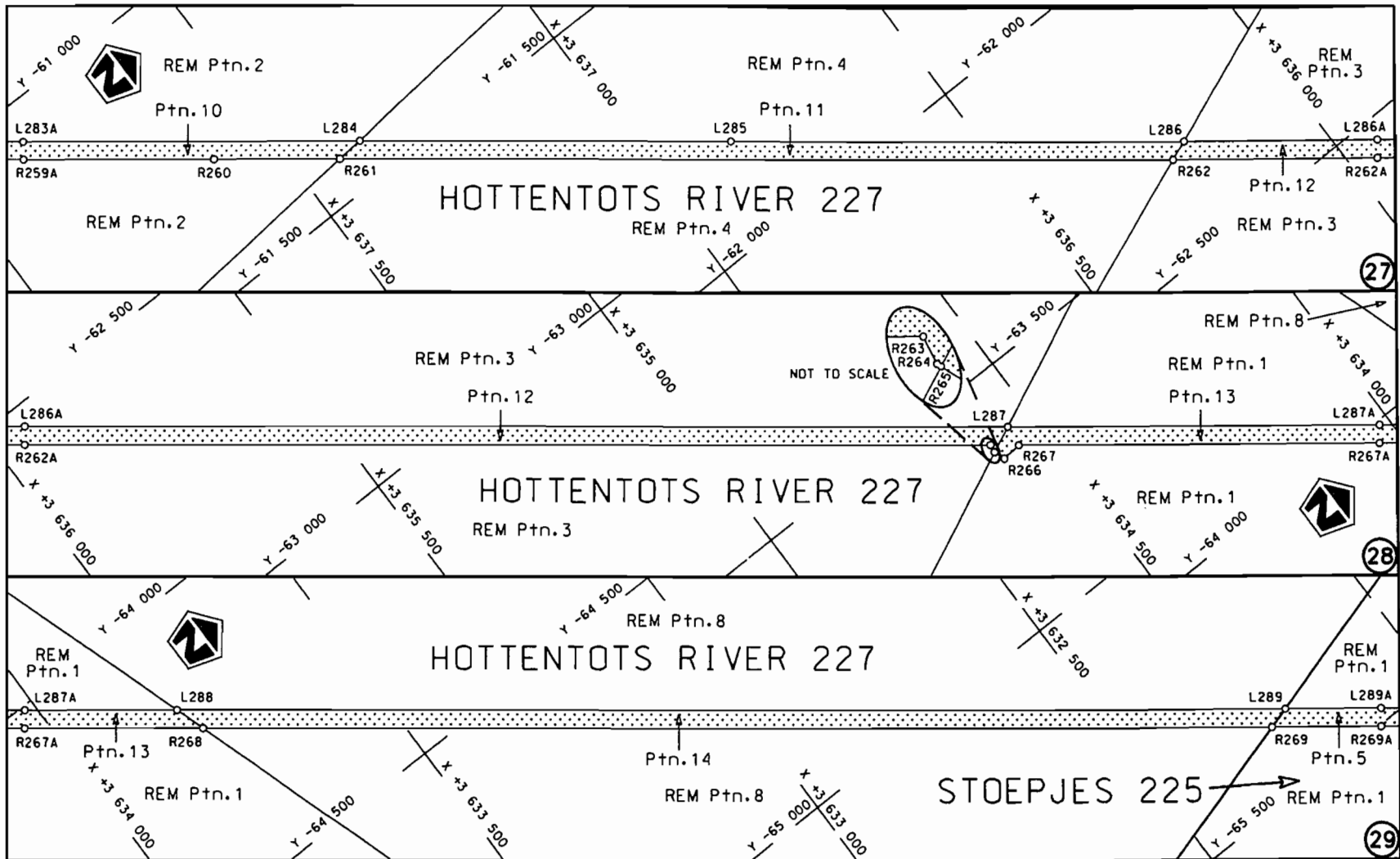
Die Suid Afrikaanse Nasionale Padagentskap Beperk  
The South African National Roads Agency Limited

Die figuur getoon  
The figure shown

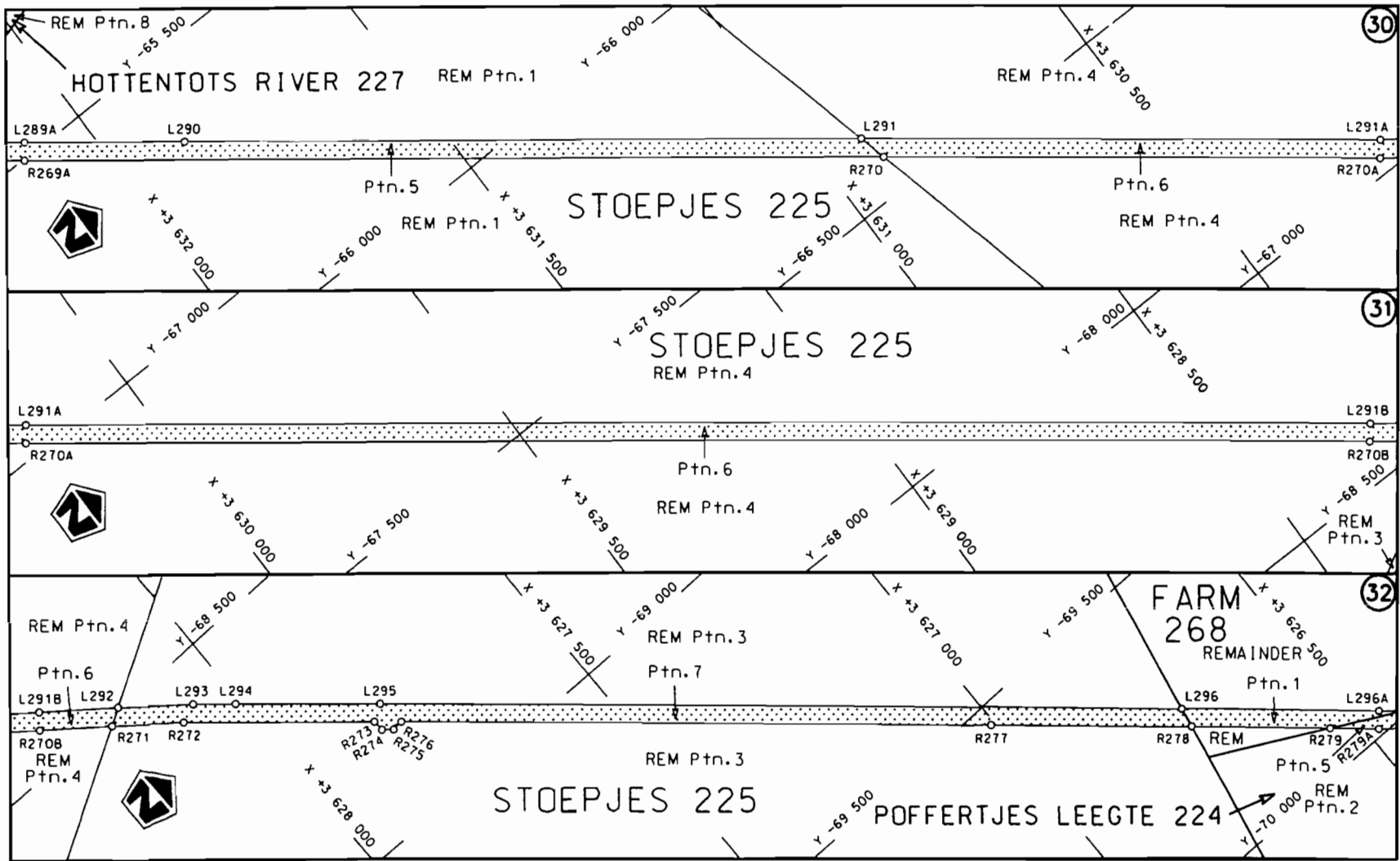



steldie podreserwe voor van 'n gedeelte  
represents the road reserve of a portion  
van Nasionale Roete N9 Sektie Section  
of National Route 4

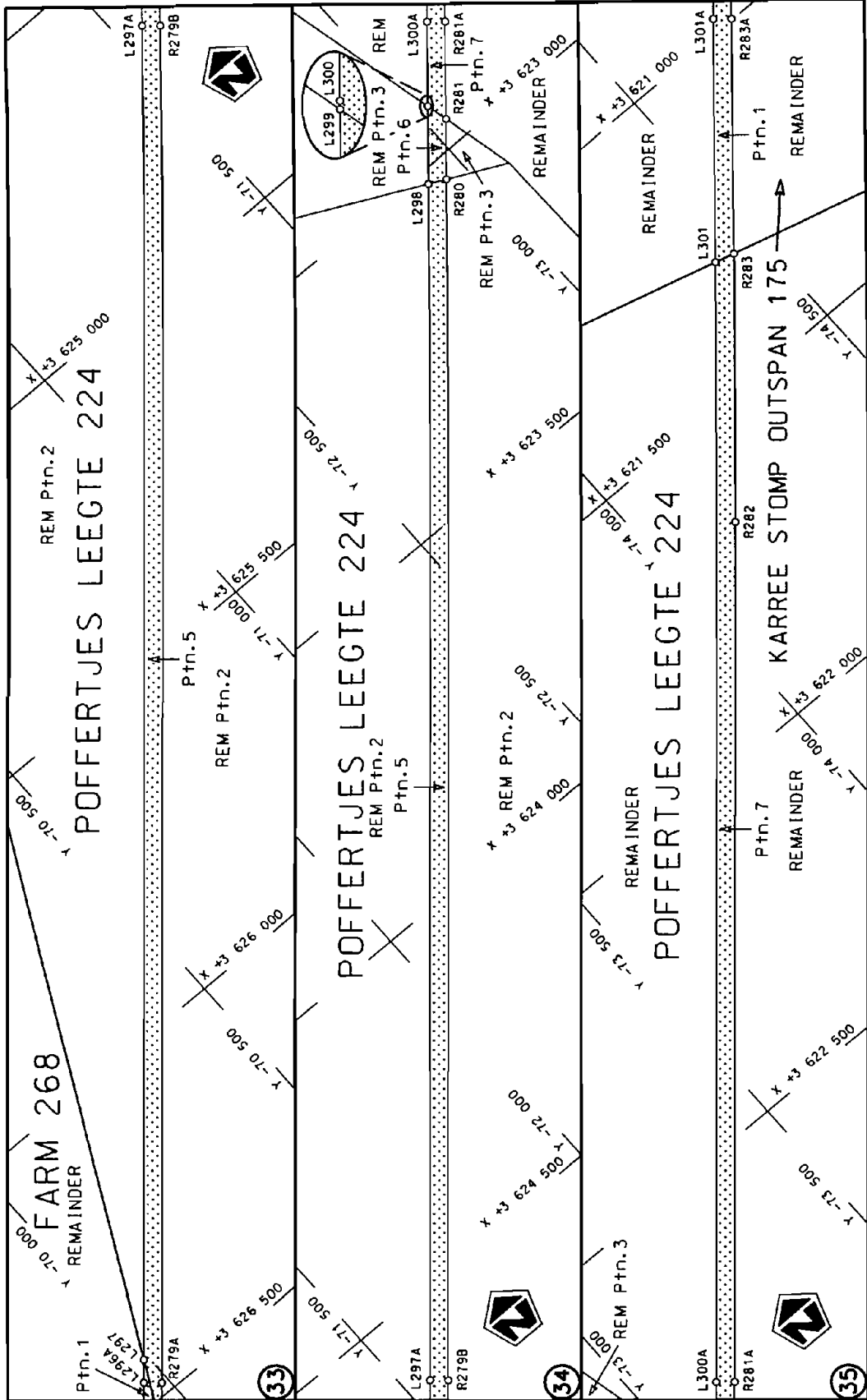
Vel Sheet 9 van of 26  
Plan P664/08




<p>Die Suid Afrikaanse Nasionale Padagentskap Beperk The South African National Roads Agency Limited</p>	<p>Die figuur getoon The figure shown</p>		<p>steldie padreserwe voor van 'n gedeelte represents the road reserve of a portion van Nasionale Roete N9 Sektie of National Route 4 Section</p>	<p>Vel Sheet 10 van of 26 Plan P664/08</p>
--	---	--	---	--

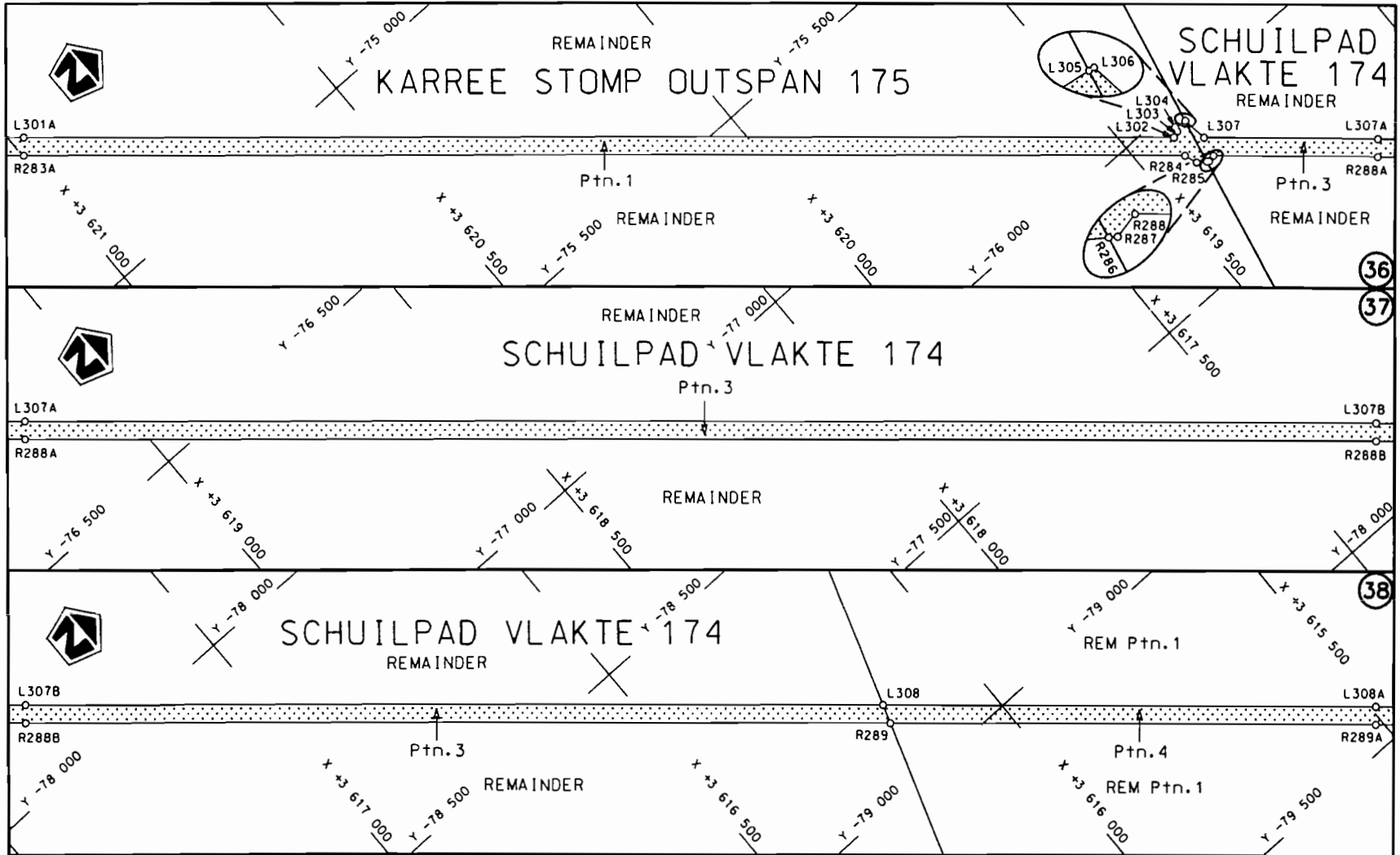


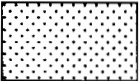
<p>Die Suid Afrikaanse Nasionale Padagentskap Beperk The South African National Roads Agency Limited</p>	<p>Die figuur getoon The figure shown</p>		<p>steldie padreserwe voor van 'n gedeelte represents the road reserve of a portion van Nasionale Roete NG of National Route      NG      Seksie Section      4</p>	<p>Vel Sheet 11 van 26 Plan P664/08</p>
--	---	--	---	---

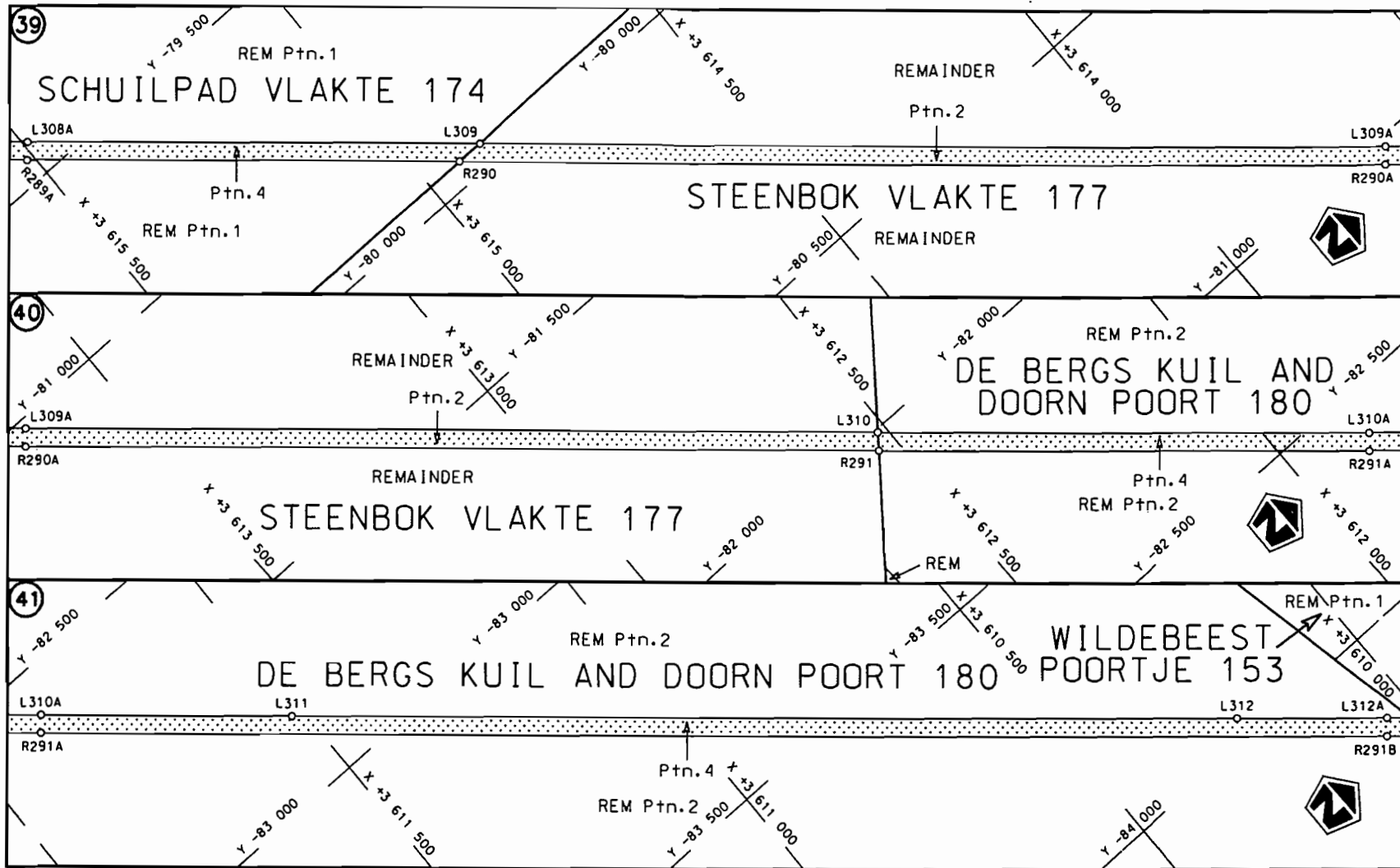


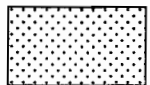
Die Suid Afrikaanse Nasionale Padagentskap Beperk The South African National Roads Agency Limited	Die figuur getoon The figure shown		steldie padreserwe voor van 'n gedeelte represents the road reserve of a portion van Nasionale Roete N9 of National Route	4
	Vel Sheet 12 of 26	Plan P664/08		

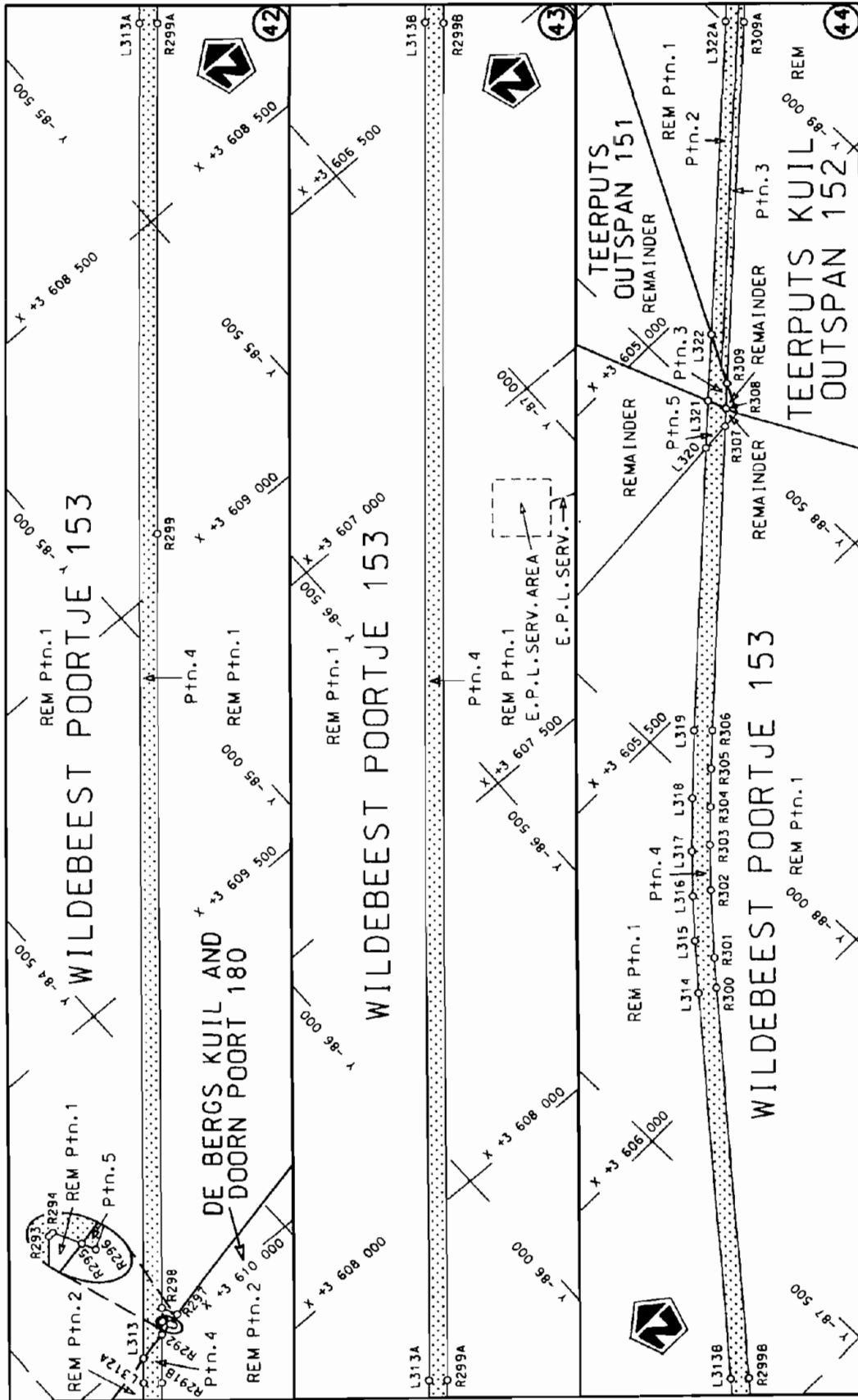





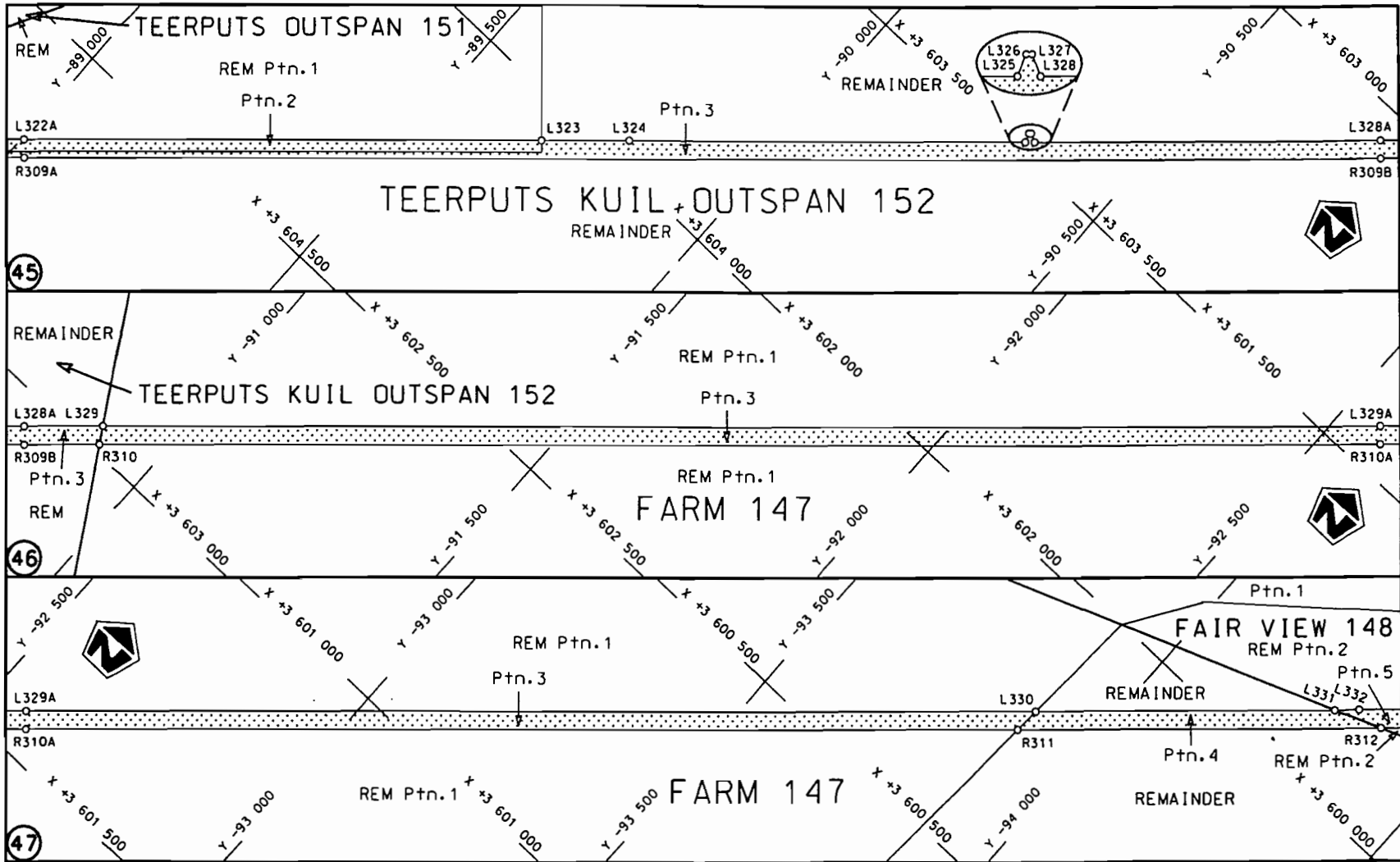
Die Suid Afrikaanse Nasionale Padagentskap Beperk The South African National Roads Agency Limited	Die figuur getoon The figure shown	 steldie padreserwe voor van 'n gedeelte represents the road reserve of a portion van Nasionale Roete N9 of National Route N9 Seksie 4 Section 4	Vel Sheet 13 van 26 of of Plan P664/08
--	---------------------------------------	---	--

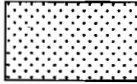


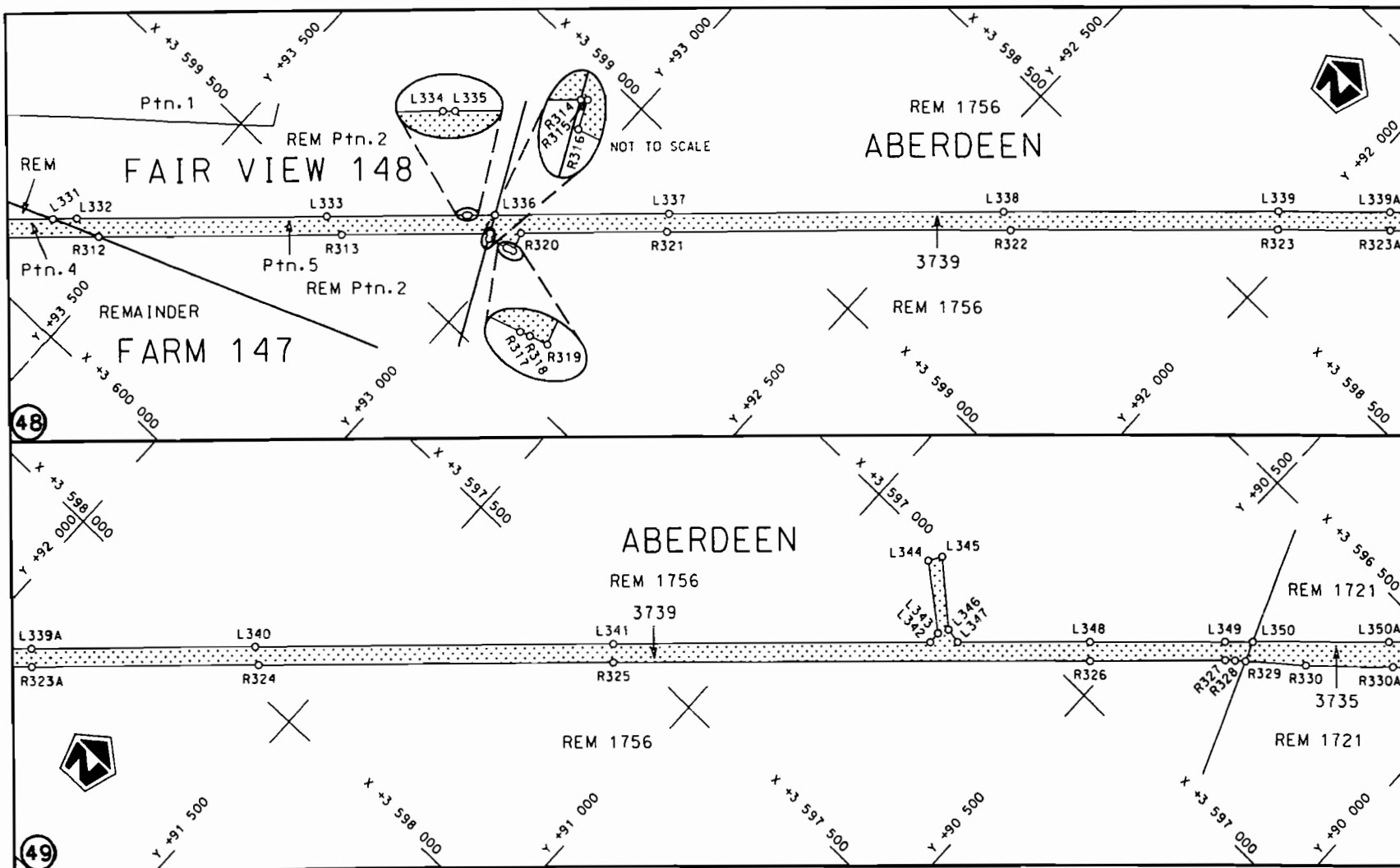
<p>Die Suid Afrikaanse Nasionale Padagentskap Beperk The South African National Roads Agency Limited</p>	<p>Die figuur getoon The figure shown</p>		<p>steldie padreserwe voor van 'n gedeelte represents the road reserve of a portion van Nasionale Roete of National Route</p>	<p>Vel Sheet 14 van of 26</p>
			<p>N9 Seksie Section</p>	<p>4 Plan P664/08</p>

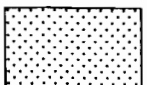


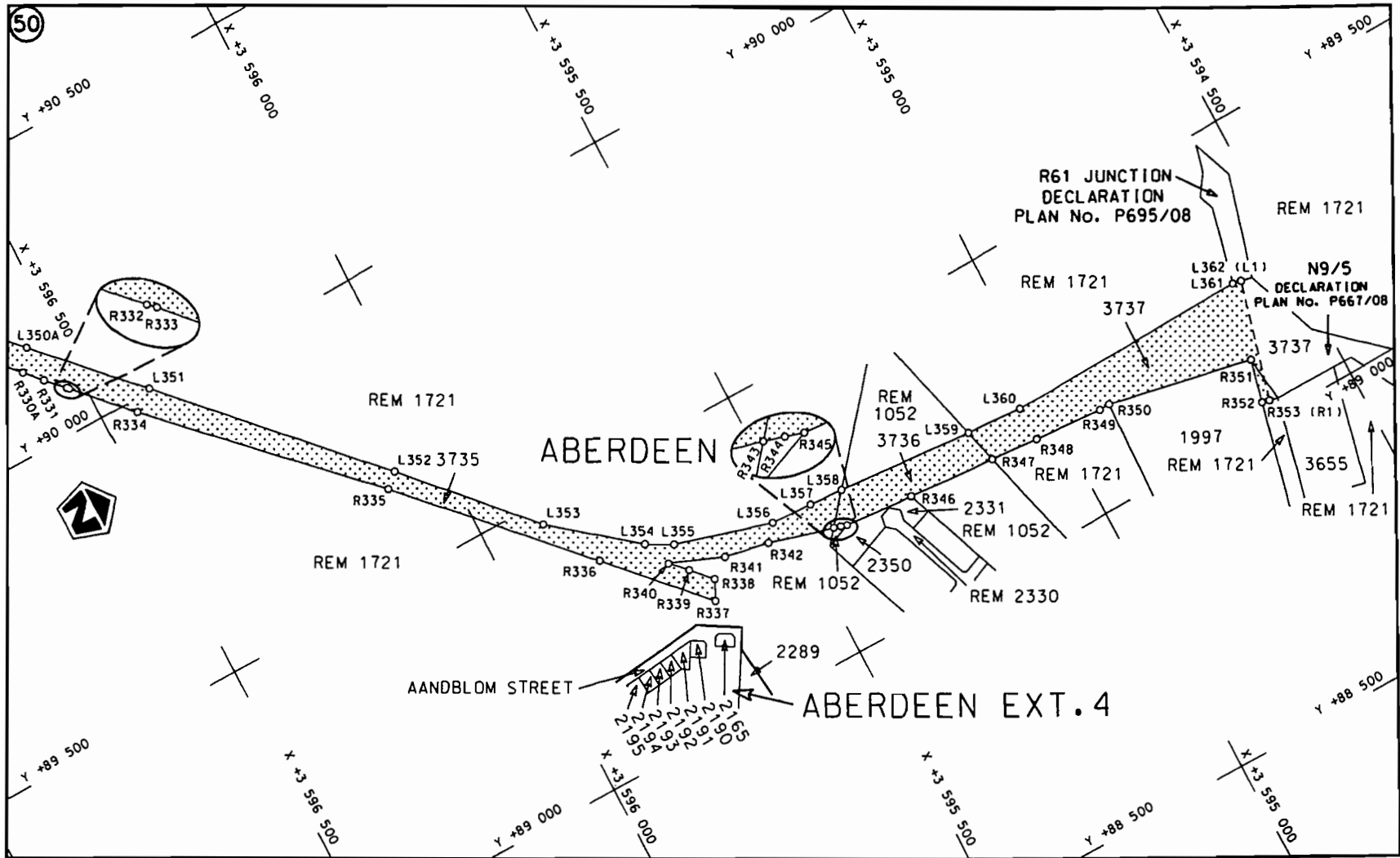
Die Suid Afrikaanse Nasionale Podogentenskap Beperk The South African National Roads Agency Limited	Die figuur getoon The figure shown		stelt die padreserwe voor van 'n gedeelte represents the road reserve of a portion van Nasionale Roete N9 of National Route N9	
			Sekste Section	4
			Vel Sheet	van of
			Plan	P664/08

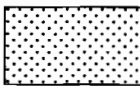


<p>Die Suid Afrikaanse Nasionale Padagentskap Beperk The South African National Roads Agency Limited</p>	<p>Die figuur getoon The figure shown</p>		<p>stel die padreserwe voor van 'n gedeelte represents the road reserve of a portion van Nasionale Roete N9 of National Route N9</p> <p>Seksie Section 4</p>	<p>Vel Sheet 16 van 26 Plan P664/08</p>
--	---	--	--	---



<p>Die Suid Afrikaanse Nasionale Padagentskap Beperk The South African National Roads Agency Limited</p>	<p>Die figuur getoon The figure shown</p>		<p>steldie padreserve voor van 'n gedeelte represents the road reserve of a portion van Nasionale Roete N9 Seksie of National Route N9 Section</p>	<p>Vel Sheet 17 van of 26</p>
			<p>4</p>	<p>Plan P664/08</p>



<p>Die Suid Afrikaanse Nasionale Padagentskap Beperk The South African National Roads Agency Limited</p>	<p>Die figuur getoon The figure shown</p>	 <p>steldie padreserwe voor van 'n gedeelte represents the road reserve of a portion van Nasionale Roete N9 of National Route N9</p>	<p>Vel Sheet 18 van 26 of of</p>
<p>Seksie 4</p>			<p>Plan P664/08</p>

PADRESERWE KOÖRDINATE				ROAD RESERVE CO-ORDINATES					
LINKERKANT/LEFT HAND SIDE				REGTERKANT/RIGHT HAND SIDE					
				WG 23°	X				
AL1	-44	680.850	3 685	565.030	AR1	-44	708.420	3 685	580.450
AL2	-44	692.590	3 685	542.280	AR2	-44	720.650	3 685	566.760
AL3	-44	797.010	3 685	457.040	AR3	-44	734.070	3 685	565.860
AL4	-45	101.440	3 685	216.400	AR4	-44	774.200	3 685	520.210
AL5	-45	154.140	3 685	165.750	AR5	-44	804.980	3 685	490.970
AL6	-45	182.860	3 685	131.920	AR6	-45	117.480	3 685	243.180
AL7	-45	208.740	3 685	096.790	AR7	-45	182.730	3 685	181.270
AL8	-45	230.510	3 685	061.260	AR8	-45	240.110	3 685	113.800
AL9	-45	291.010	3 684	912.320	AR9	-45	280.100	3 685	033.750
AL10	-45	301.430	3 684	869.440	AR10	-45	313.700	3 684	949.640
AL11	-45	302.540	3 684	861.210	AR11	-45	347.680	3 684	774.170
AL12	-45	307.350	3 684	825.740	AR12	-45	351.240	3 684	743.800
AL13	-45	310.760	3 684	782.360	AR13	-45	355.800	3 684	725.460
AL14	-45	310.060	3 684	738.550	AR14	-45	337.300	3 684	660.020
AL15	-45	298.350	3 684	555.280	AR15	-45	333.500	3 684	574.480
AL16	-45	290.670	3 684	435.230	AR16	-45	332.660	3 684	561.730
AL17	-45	262.160	3 683	989.120	AR17	-45	315.630	3 684	304.300
AL18	-45	247.750	3 683	762.670	R1	-45	272.760	3 683	655.980
L1	-45	241.250	3 683	658.210	R2	-45	240.120	3 683	144.150
L2	-45	235.250	3 683	563.260	R3	-45	155.550	3 681	818.310
L3	-45	232.790	3 683	524.590	R4	-45	120.190	3 681	264.090
L4	-45	206.030	3 683	104.100	R5	-45	129.600	3 681	251.180
L5	-45	124.910	3 681	824.950	R6	-45	128.330	3 681	239.950
L6	-45	099.800	3 681	438.780	R7	-45	118.060	3 681	231.590
L7	-45	088.320	3 681	433.080	R8	-44	903.780	3 677	879.490
L8	-45	088.140	3 681	425.570	R9	-44	898.000	3 677	836.480
L9	-45	098.590	3 681	418.380	R10	-44	887.820	3 677	794.190
L10	-44	904.130	3 678	366.040	R11	-44	867.490	3 677	739.470
L11	-44	875.080	3 677	895.130	R12	-44	854.030	3 677	713.560
L12	-44	869.830	3 677	851.230	R13	-44	839.380	3 677	688.730
L13	-44	863.790	3 677	823.560	R14	-44	831.710	3 677	676.600
L14	-44	855.500	3 677	795.690	R15	-44	823.240	3 677	664.790
L15	-44	845.320	3 677	768.300	R16	-44	804.960	3 677	642.300
L16	-44	833.370	3 677	741.810	R17	-44	775.010	3 677	610.920
L17	-44	811.760	3 677	704.210	R18	-44	728.690	3 677	576.210
L18	-44	785.860	3 677	668.910	R19	-44	678.960	3 677	546.800
L19	-44	756.170	3 677	636.880	R20	-44	626.760	3 677	522.410
L20	-44	745.630	3 677	627.020	R21	-44	570.950	3 677	507.770
L21	-44	723.280	3 677	608.680	R22	-44	542.280	3 677	503.480
L22	-44	699.230	3 677	592.030	R23	-44	527.980	3 677	502.180
L23	-44	675.080	3 677	577.710	R24	-44	263.470	3 677	493.620
L24	-44	648.780	3 677	564.720	R25	-44	220.470	3 677	488.040
L25	-44	607.520	3 677	548.860	R26	-44	135.400	3 677	467.340
L26	-44	579.390	3 677	541.080	R27	-44	055.500	3 677	434.550
L27	-44	536.320	3 677	533.620	R28	-44	005.500	3 677	405.890
L28	-44	521.980	3 677	532.450	R29	-43	947.480	3 677	362.930
L29	-44	246.050	3 677	524.440	R30	-43	925.380	3 677	344.100
L30	-44	158.380	3 677	506.300	R31	-43	904.860	3 677	323.600
L31	-44	103.760	3 677	488.840	R32	-43	883.170	3 677	298.420
L32	-44	036.980	3 677	459.240	R33	-43	836.740	3 677	237.330
L33	-43	986.420	3 677	429.870	R34	-43	814.390	3 677	198.080

Vel	19	Van	26	P664/08
Sheet		of		

PADRESERWE KOÖRDINATE				/	ROAD RESERVE CO-ORDINATES						
LINKERKANT/LEFT HAND SIDE					REGTERKANT/RIGHT HAND SIDE						
			WG	23°	Y		X				
L34	-43	950.700	3	677	404.790	R35	-43	802.120	3	677	171.820
L35	-43	917.180	3	677	377.040	R36	-43	763.630	3	677	063.010
L36	-43	885.350	3	677	346.760	R37	-43	748.350	3	676	978.220
L37	-43	856.160	3	677	314.360	R38	-43	738.240	3	676	908.640
L38	-43	811.270	3	677	254.250	R39	-43	713.570	3	676	831.060
L39	-43	774.310	3	677	186.590	R40	-43	696.830	3	676	794.700
L40	-43	752.070	3	677	133.980	R41	-43	664.580	3	676	744.750
L41	-43	731.140	3	677	061.190	R42	-43	655.070	3	676	730.020
L42	-43	706.240	3	676	907.660	R43	-43	643.900	3	676	712.710
L43	-43	696.340	3	676	873.220	R44	-43	605.980	3	676	671.520
L44	-43	687.130	3	676	847.410	R45	-43	540.860	3	676	618.490
L45	-43	673.770	3	676	817.220	R46	-43	479.820	3	676	583.910
L46	-43	661.190	3	676	793.000	R47	-43	454.240	3	676	572.520
L47	-43	645.020	3	676	766.990	R48	-43	441.160	3	676	567.550
L48	-43	629.390	3	676	744.540	R49	-43	018.640	3	676	430.590
L49	-43	590.170	3	676	699.770	R50	-42	598.590	3	676	294.780
L50	-43	570.010	3	676	681.060	R51	-42	472.620	3	676	254.680
L51	-43	549.720	3	676	664.040	R52	-41	824.840	3	676	045.420
L52	-43	519.700	3	676	642.070	R53	-41	793.240	3	676	034.150
L53	-43	486.480	3	676	622.070	R54	-41	733.090	3	676	002.100
L54	-43	444.320	3	676	602.440	R55	-41	701.810	3	675	980.220
L55	-43	415.020	3	676	591.530	R56	-41	676.490	3	675	960.220
L56	-41	851.990	3	676	086.930	R57	-41	637.270	3	675	921.540
L57	-41	773.290	3	676	058.690	R58	-41	609.780	3	675	886.760
L58	-41	736.070	3	676	040.080	R59	-41	601.060	3	675	875.720
L59	-41	712.500	3	676	025.790	R60	-41	566.930	3	675	816.340
L60	-41	678.070	3	676	002.080	R61	-41	555.780	3	675	787.010
L61	-41	668.310	3	675	994.860	R62	-41	497.490	3	675	633.710
L62	-41	606.630	3	675	933.500	R63	-41	461.620	3	675	567.530
L63	-41	580.330	3	675	899.920	R64	-41	393.750	3	675	480.910
L64	-41	558.260	3	675	865.150	R65	-41	386.010	3	675	473.440
L65	-41	539.060	3	675	827.510	R66	-41	357.040	3	675	445.430
L66	-41	523.040	3	675	788.920	R67	-41	315.910	3	675	411.280
L67	-41	500.590	3	675	723.290	R68	-41	184.010	3	675	331.510
L68	-41	486.230	3	675	683.980	R69	-41	095.250	3	675	302.230
L69	-41	475.160	3	675	658.270	R70	-41	045.090	3	675	292.550
L70	-41	456.280	3	675	620.960	R71	-40	998.400	3	675	284.580
L71	-41	434.560	3	675	584.220	R72	-40	545.830	3	675	239.470
L72	-41	418.500	3	675	560.830	R73	-40	362.980	3	675	219.440
L73	-41	401.600	3	675	537.970	R74	-40	282.180	3	675	199.110
L74	-41	374.970	3	675	507.060	R75	-40	230.630	3	675	177.580
L75	-41	334.060	3	675	466.420	R76	-40	199.470	3	675	162.170
L76	-41	302.110	3	675	439.310	R77	-40	160.820	3	675	138.050
L77	-41	279.720	3	675	422.420	R78	-40	123.830	3	675	111.370
L78	-41	244.120	3	675	399.150	R79	-40	102.460	3	675	093.210
L79	-41	227.460	3	675	389.310	R80	-40	071.830	3	675	064.260
L80	-41	214.190	3	675	382.270	R81	-40	052.970	3	675	043.710
L81	-41	155.980	3	675	355.270	R82	-40	019.910	3	675	001.470
L82	-41	102.860	3	675	337.070	R83	-39	998.930	3	674	969.410
L83	-41	062.290	3	675	326.750	R84	-39	986.260	3	674	946.870
L84	-41	021.490	3	675	319.340	R85	-39	968.530	3	674	910.730

Van	20	Van	26	P664/08
Sheet		of		



PADRESERWE KOÖRDINATE				/	ROAD RESERVE CO-ORDINATES						
LINKERKANT/LEFT HAND SIDE					REGTERKANT/RIGHT HAND SIDE						
			WG	23°	Y		X				
L85	-40	993.600	3	675	315.580	R86	-39	946.430	3	674	852.450
L86	-40	425.070	3	675	258.460	R87	-39	938.680	3	674	823.840
L87	-40	419.280	3	675	274.470	R88	-39	933.780	3	674	802.560
L88	-40	412.910	3	675	274.160	R89	-39	928.930	3	674	774.610
L89	-40	405.620	3	675	256.650	R90	-39	923.990	3	674	733.030
L90	-40	342.270	3	675	247.290	R91	-39	922.790	3	674	705.440
L91	-40	315.140	3	675	240.610	R92	-39	923.470	3	674	663.950
L92	-40	249.330	3	675	219.750	R93	-39	925.940	3	674	636.110
L93	-40	226.510	3	675	210.360	R94	-39	931.210	3	674	595.330
L94	-40	219.380	3	675	206.760	R95	-39	937.670	3	674	568.700
L95	-40	128.700	3	675	154.140	R96	-39	949.520	3	674	526.390
L96	-40	106.890	3	675	137.870	R97	-39	965.250	3	674	485.280
L97	-40	085.780	3	675	120.320	R98	-39	971.060	3	674	472.020
L98	-40	064.510	3	675	100.900	R99	-39	977.200	3	674	457.990
L99	-40	044.660	3	675	080.580	R100	-39	991.350	3	674	431.940
L100	-40	025.850	3	675	059.660	R101	-39	993.550	3	674	428.380
L101	-40	009.100	3	675	038.850	R102	-40	062.380	3	674	317.100
L102	-39	993.000	3	675	017.200	R103	-40	077.350	3	674	298.780
L103	-39	978.090	3	674	995.130	R104	-40	086.030	3	674	286.740
L104	-39	963.750	3	674	970.860	R105	-40	101.150	3	674	262.970
L105	-39	943.490	3	674	930.000	R106	-40	133.710	3	674	207.780
L106	-39	916.040	3	674	859.880	R107	-40	145.620	3	674	185.400
L107	-39	902.540	3	674	805.700	R108	-40	164.890	3	674	135.330
L108	-39	897.840	3	674	778.830	R109	-40	185.200	3	674	077.940
L109	-39	894.660	3	674	752.320	R110	-40	197.650	3	674	034.930
L110	-39	892.530	3	674	724.730	R111	-40	198.760	3	674	030.290
L111	-39	891.660	3	674	698.420	R112	-40	205.070	3	674	005.950
L112	-39	892.140	3	674	669.370	R113	-40	213.870	3	673	961.980
L113	-39	893.980	3	674	641.870	R114	-40	218.500	3	673	932.770
L114	-39	896.940	3	674	615.800	R115	-40	221.870	3	673	903.170
L115	-39	903.520	3	674	578.900	R116	-40	225.560	3	673	858.780
L116	-39	908.040	3	674	558.410	R117	-40	226.360	3	673	785.030
L117	-39	919.430	3	674	518.970	R118	-40	229.490	3	673	745.730
L118	-39	933.980	3	674	479.800	R119	-40	218.640	3	673	744.950
L119	-39	967.680	3	674	410.690	R120	-40	221.300	3	673	710.580
L120	-40	062.790	3	674	267.000	R121	-40	209.700	3	673	637.410
L121	-40	076.980	3	674	247.020	R122	-40	200.130	3	673	598.210
L122	-40	068.790	3	674	242.000	R123	-40	198.750	3	673	592.560
L123	-40	084.750	3	674	221.260	R124	-40	192.020	3	673	564.980
L124	-40	106.250	3	674	189.800	R125	-40	162.630	3	673	480.180
L125	-40	132.430	3	674	133.530	R126	-40	137.180	3	673	423.210
L126	-40	147.600	3	674	092.720	R127	-40	089.090	3	673	316.210
L127	-40	164.550	3	674	037.250	R128	-40	064.810	3	673	250.500
L128	-40	180.790	3	673	971.580	R129	-40	059.900	3	673	223.010
L129	-40	190.910	3	673	904.370	R130	-40	057.540	3	673	153.590
L130	-40	194.940	3	673	851.460	R131	-40	062.950	3	673	009.120
L131	-40	196.300	3	673	797.780	R132	-40	055.180	3	672	954.920
L132	-40	196.130	3	673	784.140	R133	-40	056.600	3	672	908.920
L133	-40	190.490	3	673	716.270	R134	-40	067.230	3	672	870.150
L134	-40	182.530	3	673	661.030	R135	-40	145.120	3	670	595.580
L135	-40	170.730	3	673	606.440	R136	-40	183.630	3	669	649.950
					Vel	21	Van	26	P664/08		
					Sheet		of				

PADRESERWE KOÖRDINATE				/	ROAD RESERVE CO-ORDINATES			
LINKERKANT/LEFT HAND SIDE					REGTERKANT/RIGHT HAND SIDE			
			WG	23°	Y		X	
L136	-40	163.620	3 673	579.650	R137	-40	195.310	3 669 649.510
L137	-40	140.030	3 673	503.890	R138	-40	196.030	3 669 640.510
L138	-40	067.850	3 673	351.720	R139	-40	184.380	3 669 639.080
L139	-40	047.910	3 673	303.660	R140	-40	265.880	3 667 606.050
L140	-40	038.910	3 673	272.940	R141	-40	272.660	3 667 497.590
L141	-40	032.940	3 673	245.890	R142	-40	279.770	3 667 432.890
L142	-40	025.610	3 673	201.700	R143	-40	287.630	3 667 379.120
L143	-40	031.910	3 673	004.450	R144	-40	300.910	3 667 304.070
L144	-40	064.030	3 672	046.640	R145	-40	315.060	3 667 240.330
L145	-40	108.960	3 670	724.630	R146	-40	331.530	3 667 177.110
L146	-40	171.550	3 669	162.750	R147	-40	354.440	3 667 101.570
L147	-40	183.680	3 668	864.440	R148	-40	408.010	3 666 957.460
L148	-40	182.400	3 668	862.590	R149	-40	444.100	3 666 877.690
L149	-40	163.430	3 668	854.660	R150	-40	483.900	3 666 799.970
L150	-40	162.590	3 668	828.310	R151	-40	516.050	3 666 742.760
L151	-40	185.030	3 668	829.690	R152	-40	555.770	3 666 677.270
L152	-40	237.370	3 667	548.970	R153	-41	272.830	3 665 643.520
L153	-40	242.660	3 667	483.360	R154	-42	337.500	3 664 110.470
L154	-40	263.940	3 667	331.680	R155	-43	161.310	3 662 924.230
L155	-40	270.270	3 667	299.500	R156	-43	180.840	3 662 918.490
L156	-40	292.070	3 667	203.140	R157	-43	179.760	3 662 910.030
L157	-40	322.900	3 667	097.140	R158	-43	173.500	3 662 906.460
L158	-40	344.290	3 667	034.150	R159	-43	412.640	3 662 561.900
L159	-40	376.200	3 666	952.710	R160	-43	550.660	3 662 364.480
L160	-40	416.300	3 666	863.090	R161	-43	576.100	3 662 332.450
L161	-40	456.200	3 666	785.380	R162	-43	625.020	3 662 279.720
L162	-40	510.510	3 666	690.470	R163	-43	675.620	3 662 233.240
L163	-40	563.590	3 666	609.980	R164	-43	719.140	3 662 198.600
L164	-42	362.840	3 664	019.130	R165	-43	733.910	3 662 187.570
L165	-42	751.170	3 663	461.430	R166	-43	778.820	3 662 158.280
L166	-43	117.360	3 662	934.120	R167	-43	825.390	3 662 131.220
L167	-43	109.920	3 662	934.690	R168	-43	859.480	3 662 114.210
L168	-43	108.460	3 662	911.570	R169	-43	909.160	3 662 092.830
L169	-43	133.430	3 662	909.650	R170	-43	942.930	3 662 080.300
L170	-43	381.530	3 662	552.470	R171	-43	994.320	3 662 064.580
L171	-43	372.400	3 662	539.420	R172	-44	038.080	3 662 053.770
L172	-43	380.110	3 662	518.480	R173	-44	073.320	3 662 046.890
L173	-43	392.930	3 662	536.610	R174	-44	108.820	3 662 041.420
L174	-43	518.960	3 662	355.050	R175	-44	162.530	3 662 036.220
L175	-43	541.170	3 662	327.360	R176	-44	754.020	3 662 006.120
L176	-43	588.540	3 662	273.900	R177	-45	161.330	3 661 983.880
L177	-43	600.920	3 662	261.000	R178	-45	166.740	3 661 993.260
L178	-43	639.790	3 662	224.130	R179	-45	171.140	3 661 992.990
L179	-43	670.390	3 662	198.320	R180	-45	173.990	3 661 982.510
L180	-43	713.540	3 662	165.420	R181	-45	312.320	3 661 963.910
L181	-43	758.150	3 662	134.870	R182	-45	958.800	3 661 741.470
L182	-43	789.150	3 662	116.780	R183	-45	992.560	3 661 696.810
L183	-43	837.150	3 662	090.800	R184	-45	993.810	3 661 695.450
L184	-43	886.420	3 662	069.380	R185	-46	021.722	3 661 665.103
L185	-43	953.830	3 662	044.270	R186	-46	039.880	3 661 645.400
L186	-43	989.920	3 662	034.120	R187	-46	047.290	3 661 637.350

Vel	22	Van	26	P664/08
Sheet		of		

PADRESERWE KOÖRDINATE				ROAD RESERVE CO-ORDINATES			
LINKERKANT/LEFT HAND SIDE				REGTERKANT/RIGHT HAND SIDE			
				WG 23°	Y	X	
L187	-44	041.400	3 662 022.230	R188	-46	101.190	3 661 608.590
L188	-44	094.170	3 662 013.250	R189	-46	085.730	3 661 565.790
L189	-44	165.440	3 662 005.180	R190	-46	096.730	3 661 487.560
L190	-45	126.970	3 661 955.630	R191	-46	095.720	3 661 444.530
L191	-45	144.820	3 661 954.420	R192	-46	091.010	3 661 390.440
L192	-45	210.570	3 661 946.390	R193	-46	025.760	3 661 172.530
L193	-45	245.660	3 661 940.070	R194	-46	017.540	3 661 103.690
L194	-45	299.990	3 661 928.480	R195	-46	032.280	3 660 986.130
L195	-45	303.550	3 661 920.900	R196	-46	027.430	3 660 931.620
L196	-45	313.890	3 661 924.500	R197	-46	005.040	3 660 856.980
L197	-45	449.370	3 661 884.790	R198	-46	003.780	3 660 852.320
L198	-45	499.130	3 661 868.270	R199	-45	990.580	3 660 803.810
L199	-45	861.780	3 661 742.950	R200	-45	983.470	3 660 750.330
L200	-45	864.770	3 661 742.010	R201	-45	986.440	3 660 699.980
L201	-45	882.220	3 661 735.040	R202	-45	998.480	3 660 659.740
L202	-45	904.240	3 661 725.170	R203	-46	008.960	3 660 634.220
L203	-45	913.500	3 661 719.630	R204	-46	043.820	3 660 564.850
L204	-45	935.590	3 661 706.430	R205	-46	084.280	3 660 502.890
L205	-45	981.490	3 661 678.990	R206	-46	146.180	3 660 441.490
L206	-45	993.360	3 661 651.070	R207	-46	299.510	3 660 334.260
L207	-45	994.800	3 661 646.070	R208	-46	550.780	3 660 158.980
L208	-45	996.040	3 661 644.770	R209	-46	800.900	3 659 983.920
L209	-46	010.502	3 661 629.748	R210	-47	295.580	3 659 636.870
L210	-46	016.650	3 661 623.200	R211	-47	553.780	3 659 454.520
L211	-46	018.470	3 661 621.220	R212	-47	689.690	3 659 354.430
L212	-46	024.670	3 661 613.840	R213	-47	806.080	3 659 264.040
L213	-46	050.010	3 661 564.530	R214	-47	939.160	3 659 156.210
L214	-46	051.290	3 661 561.500	R215	-48	226.580	3 658 903.750
L215	-46	056.420	3 661 470.890	R216	-48	358.060	3 658 779.200
L216	-46	055.110	3 661 463.590	R217	-48	470.190	3 658 667.750
L217	-46	046.050	3 661 413.050	R218	-48	581.500	3 658 552.980
L218	-46	030.050	3 661 361.030	R219	-48	748.570	3 658 370.350
L219	-46	019.680	3 661 301.010	R220	-48	961.930	3 658 119.020
L220	-45	998.950	3 661 251.180	R221	-49	130.470	3 657 901.700
L221	-45	990.500	3 661 221.740	R222	-49	285.460	3 657 683.590
L222	-45	987.670	3 661 211.900	R223	-49	395.210	3 657 518.540
L223	-45	969.480	3 661 165.700	R224	-49	519.930	3 657 319.380
L224	-45	966.570	3 661 131.870	R225	-49	653.850	3 657 091.820
L225	-45	976.210	3 661 050.030	R226	-49	820.050	3 656 803.970
L226	-45	988.040	3 660 990.010	R227	-50	369.320	3 655 862.890
L227	-45	973.490	3 660 902.710	R228	-50	689.390	3 655 313.360
L228	-45	956.370	3 660 855.790	R229	-50	995.800	3 654 787.280
L229	-45	955.550	3 660 850.290	R230	-52	050.000	3 652 984.010
L230	-45	945.490	3 660 783.470	R231	-52	438.020	3 652 318.900
L231	-45	940.140	3 660 674.840	R232	-52	496.290	3 652 219.030
L232	-45	943.250	3 660 659.820	R233	-52	497.060	3 652 219.440
L233	-45	952.950	3 660 638.050	R234	-52	522.710	3 652 175.270
L234	-46	034.180	3 660 507.650	R235	-52	549.210	3 652 180.120
L235	-46	075.930	3 660 462.090	R236	-52	550.000	3 652 160.190
L236	-46	134.680	3 660 413.650	R237	-52	532.680	3 652 156.780
L237	-46	286.970	3 660 304.050	R238	-54	906.810	3 648 091.080

Vel	23	Van	26	P664/08
Sheet		of		

PADRESERWE KOÖRDINATE				ROAD RESERVE CO-ORDINATES					
LINKERKANT/LEFT HAND SIDE				REGTERKANT/RIGHT HAND SIDE					
				WG 23°	Y	X			
L238	-46	533.660	3 660	132.630	R239	-55	260.160	3 647	485.930
L239	-47	279.630	3 659	610.420	R240	-55	800.960	3 646	559.340
L240	-47	501.780	3 659	453.260	R241	-56	219.990	3 645	841.620
L241	-47	632.900	3 659	357.940	R242	-56	581.260	3 645	222.830
L242	-47	751.040	3 659	267.580	R243	-56	860.840	3 644	743.960
L243	-47	869.230	3 659	174.130	R244	-57	091.870	3 644	348.230
L244	-47	978.230	3 659	082.840	R245	-57	316.310	3 643	963.780
L245	-48	096.740	3 658	979.810	R246	-57	358.770	3 643	891.050
L246	-48	318.900	3 658	774.510	R247	-57	552.180	3 643	558.120
L247	-48	419.120	3 658	675.540	R248	-57	836.750	3 643	068.270
L248	-48	526.340	3 658	566.210	R249	-57	842.390	3 643	069.370
L249	-48	711.520	3 658	368.120	R250	-58	272.830	3 642	326.570
L250	-48	811.230	3 658	253.830	R251	-58	703.510	3 641	583.350
L251	-48	929.520	3 658	110.940	R252	-59	852.380	3 639	603.530
L252	-49	101.270	3 657	888.690	R253	-60	100.340	3 639	177.170
L253	-49	249.220	3 657	680.910	R254	-60	151.700	3 639	099.530
L254	-49	350.830	3 657	530.790	R255	-60	183.360	3 639	055.530
L255	-49	494.030	3 657	302.930	R256	-60	366.360	3 638	816.720
L256	-49	627.670	3 657	075.330	R257	-60	399.267	3 638	773.774
L257	-50	657.910	3 655	304.520	R258	-60	427.820	3 638	736.510
L258	-52	411.730	3 652	302.070	R259	-60	718.450	3 638	357.260
L259	-54	876.480	3 648	081.130	R260	-61	294.730	3 637	605.230
L260	-55	229.780	3 647	475.970	R261	-61	430.750	3 637	427.960
L261	-55	773.150	3 646	544.590	R262	-62	338.850	3 636	244.510
L262	-56	191.070	3 645	829.140	R263	-63	609.420	3 634	588.670
L263	-56	421.640	3 645	434.410	R264	-63	623.230	3 634	590.670
L264	-56	551.710	3 645	211.110	R265	-63	623.630	3 634	590.520
L265	-56	832.130	3 644	730.370	R266	-63	642.770	3 634	583.270
L266	-57	064.100	3 644	333.070	R267	-63	640.240	3 634	548.650
L267	-57	289.030	3 643	947.810	R268	-64	225.250	3 633	786.430
L268	-57	364.230	3 643	819.010	R269	-65	384.390	3 632	276.180
L269	-57	545.050	3 643	507.860	R270	-66	435.430	3 630	906.670
L270	-58	235.500	3 642	319.960	R271	-68	511.340	3 628	201.550
L271	-58	670.450	3 641	571.700	R272	-68	590.960	3 628	100.890
L272	-59	805.550	3 639	618.940	R273	-68	812.630	3 627	842.030
L273	-59	831.530	3 639	574.330	R274	-68	832.130	3 627	840.720
L274	-59	859.940	3 639	525.020	R275	-68	845.500	3 627	824.790
L275	-59	860.970	3 639	525.350	R276	-68	844.070	3 627	805.590
L276	-60	083.610	3 639	145.490	R277	-69	534.310	3 627	007.060
L277	-60	098.320	3 639	122.720	R278	-69	769.570	3 626	733.840
L278	-60	136.030	3 639	067.630	R279	-69	931.830	3 626	545.700
L279	-60	160.970	3 639	033.710	R280	-72	962.200	3 623	037.360
L280	-60	332.850	3 638	809.390	R281	-73	031.840	3 622	956.750
L281	-60	356.904	3 638	777.992	R282	-74	141.380	3 621	673.170
L282	-60	385.120	3 638	741.160	R283	-74	452.060	3 621	312.040
L283	-60	702.770	3 638	326.570	R284	-76	078.980	3 619	428.390
L284	-61	427.220	3 637	381.060	R285	-76	101.560	3 619	420.160
L285	-61	829.890	3 636	855.510	R286	-76	112.050	3 619	405.520
L286	-62	325.550	3 636	209.720	R287	-76	114.420	3 619	402.220
L287	-63	603.150	3 634	545.170	R288	-76	112.040	3 619	389.920
L288	-64	171.830	3 633	804.240	R289	-78	891.640	3 616	171.860

Vel	24	Van	26	P664/08
Sheet		of		



PADRESERWE KOÖRDINATE				/ ROAD RESERVE CO-ORDINATES		
LINKERKANT/LEFT HAND SIDE				REGTERKANT/RIGHT HAND SIDE		
			WG 25°		Y	X
L336	93 065.280	3 599	308.260	R336	89 358.920	3 595 834.380
L337	92 842.850	3 599	097.770	R337	89 201.910	3 595 686.630
L338	92 412.730	3 598	688.550	R338	89 235.570	3 595 669.760
L339	92 061.480	3 598	355.110	R339	89 270.600	3 595 702.700
L340	91 629.820	3 597	946.300	R340	89 298.550	3 595 729.660
L341	91 170.500	3 597	511.550	R341	89 260.760	3 595 635.650
L342	90 760.490	3 597	121.830	R342	89 243.960	3 595 555.320
L343	90 760.930	3 597	101.450	R343	89 210.760	3 595 439.450
L344	90 857.880	3 597	023.140	R344	89 207.170	3 595 426.900
L345	90 844.450	3 597	001.040	R345	89 203.720	3 595 415.500
L346	90 751.660	3 597	083.750	R346	89 193.300	3 595 291.240
L347	90 725.240	3 597	088.040	R347	89 180.000	3 595 132.460
L348	90 554.660	3 596	926.080	R348	89 172.770	3 595 046.210
L349	90 379.920	3 596	759.530	R349	89 162.220	3 594 923.110
L350	90 344.560	3 596	725.900	R350	89 162.910	3 594 904.040
L351	90 005.080	3 596	403.040	R351	89 107.170	3 594 644.730
L352	89 669.460	3 596	084.540	R352	89 033.010	3 594 662.720
L353	89 461.490	3 595	892.590	R353	89 029.800	3 594 649.440
L354	89 346.920	3 595	750.720			
L355	89 321.940	3 595	705.280			
L356	89 271.170	3 595	532.050			
L357	89 267.470	3 595	456.790			
L358	89 262.300	3 595	395.660			
L359	89 241.450	3 595	149.140			
L360	89 232.820	3 595	047.180			
L361	89 238.740	3 594	608.930			
L362	89 235.600	3 594	593.840			

Vel	26	Van	26	P664/08
Sheet		of		